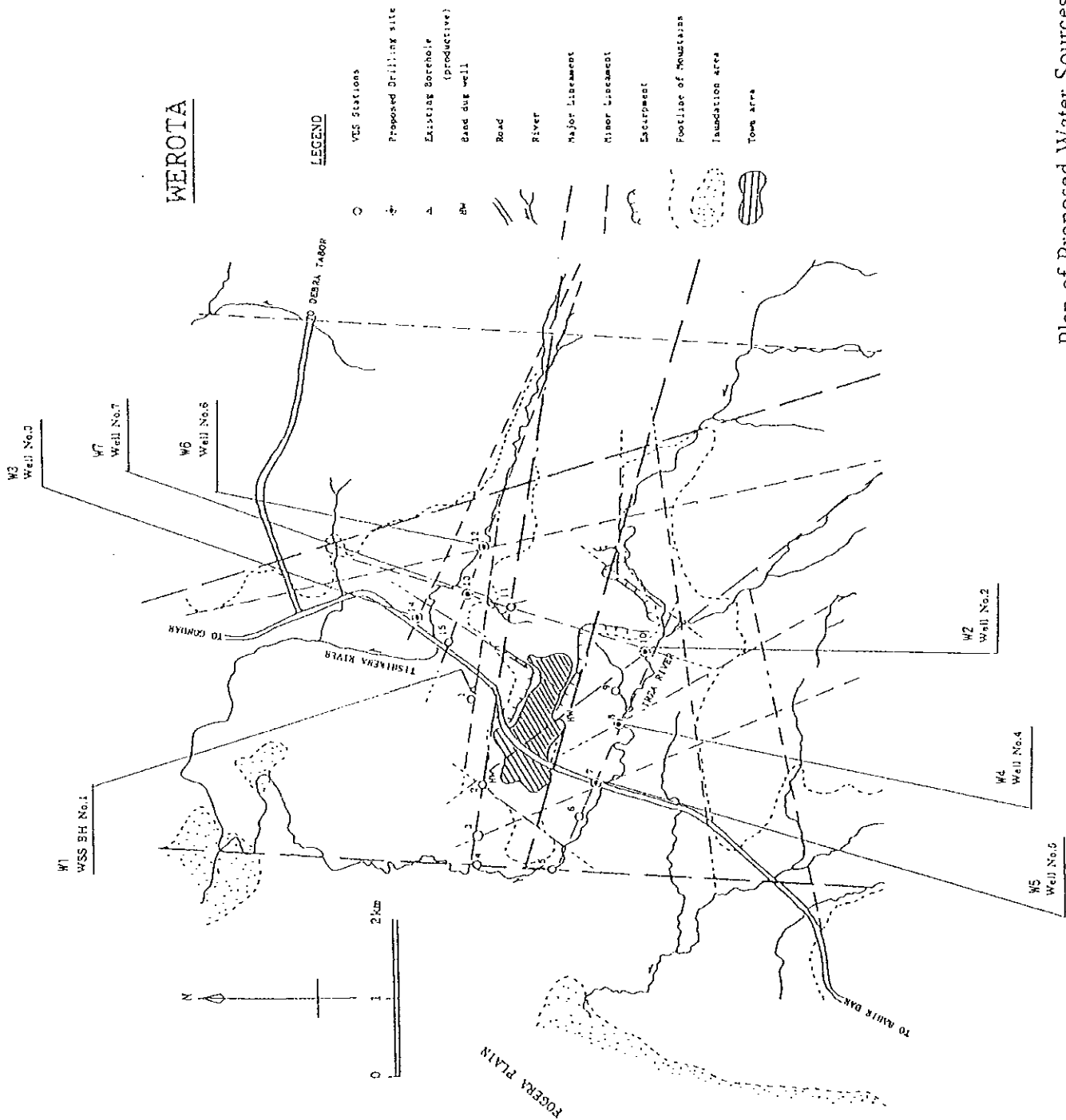
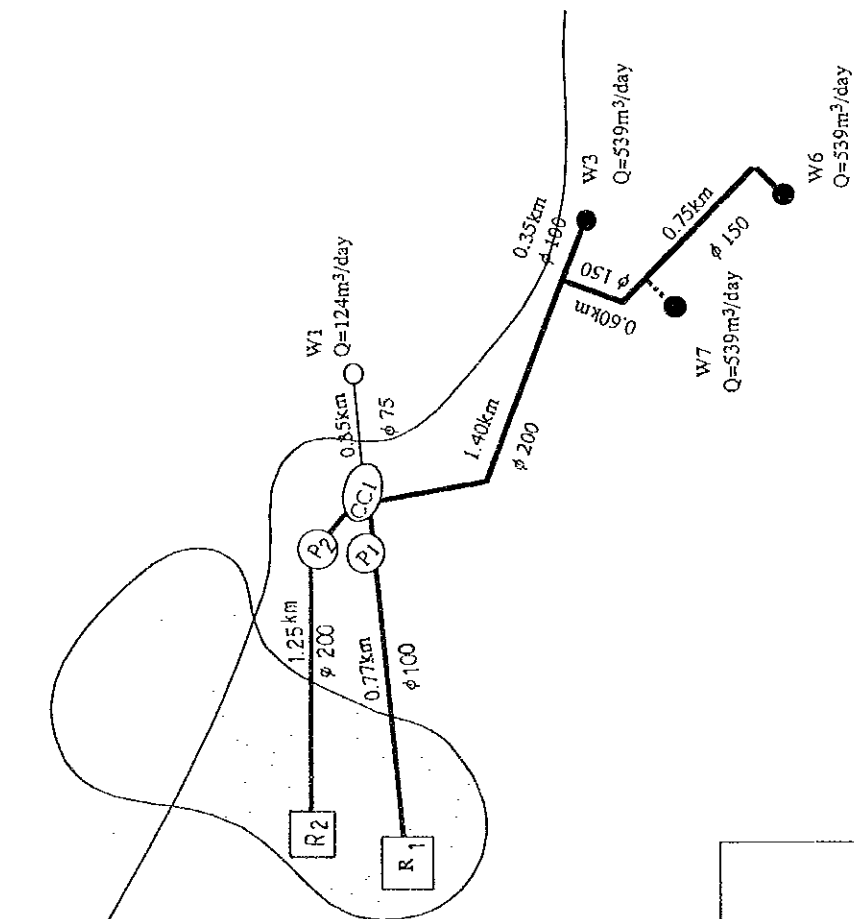


Supplied Area in 2000 (Werota)

WEROTA



Plan of Proposed Water Sources (Werota)



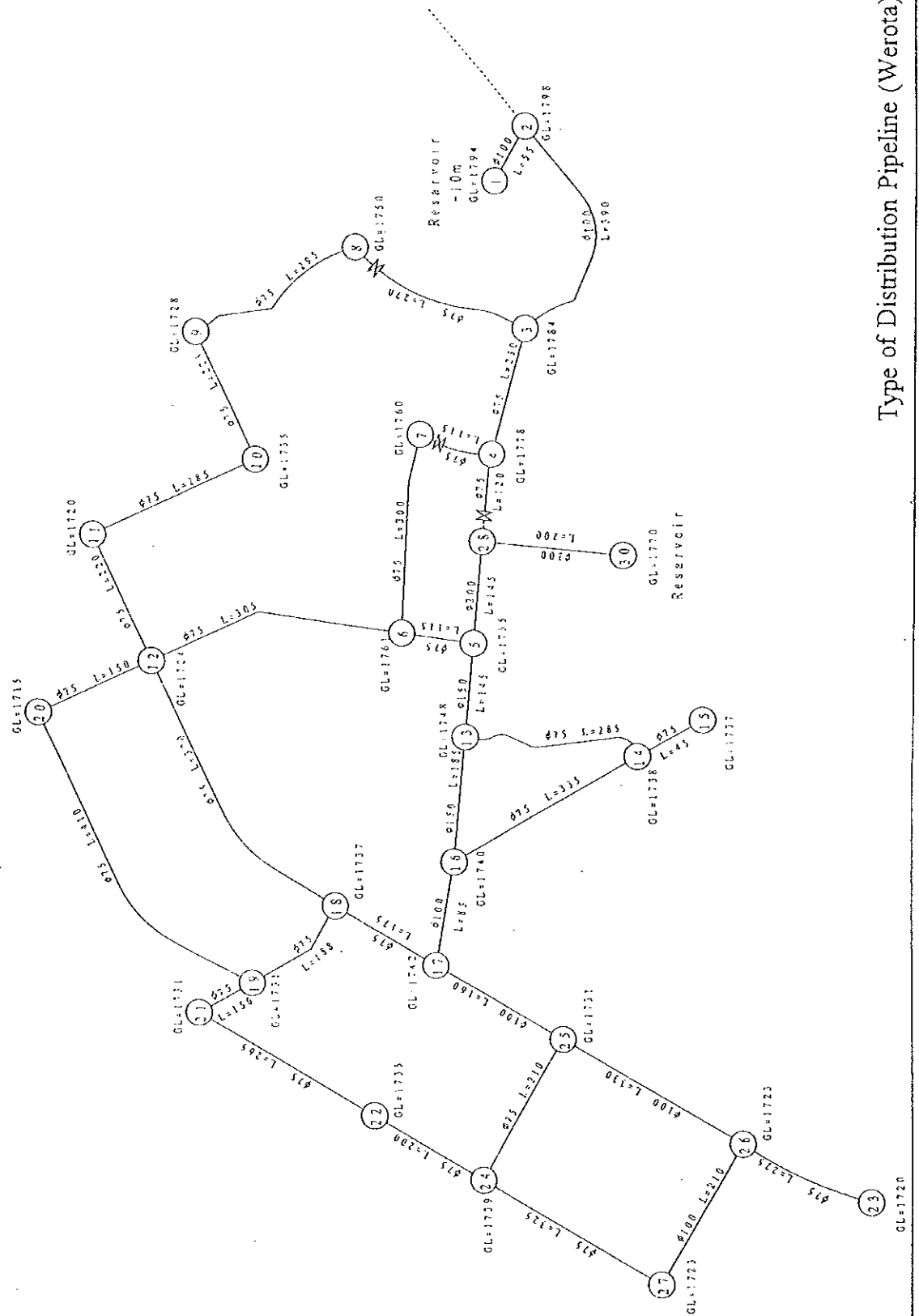
Legend

- : Water Supply Area
- : Existing Well
- : Proposed Well or Spring
- R : Proposed Reservoir
- P : Boosting Pump Station
- CC : Collecting Chamber
- Q : Planned production rate (m³/day)
- 0.6km : Dia. & Length of Pipeline
- 0.6km : Dia. & Length of Pipeline to be constructed by the year of 2005

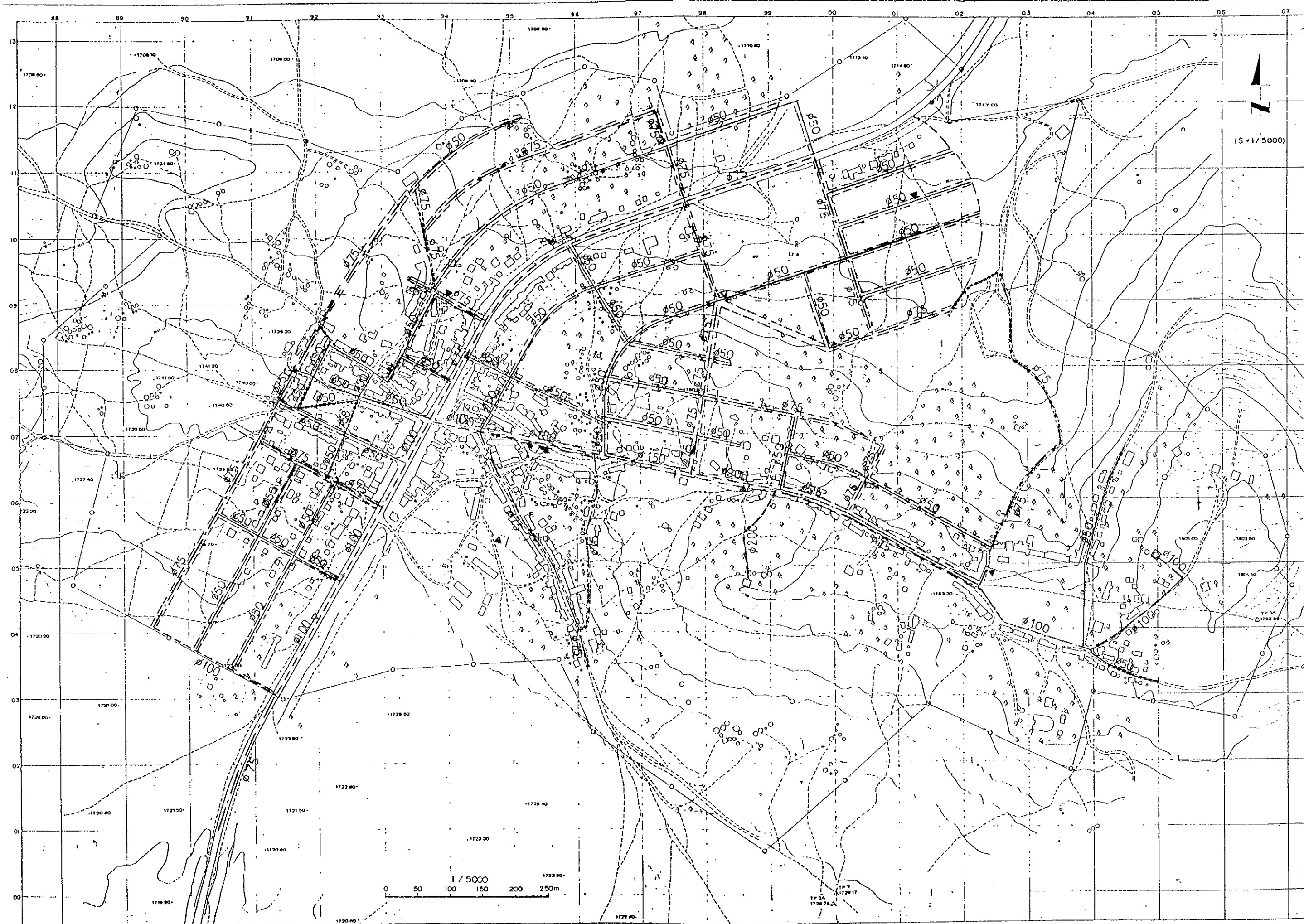
Well Development Plan

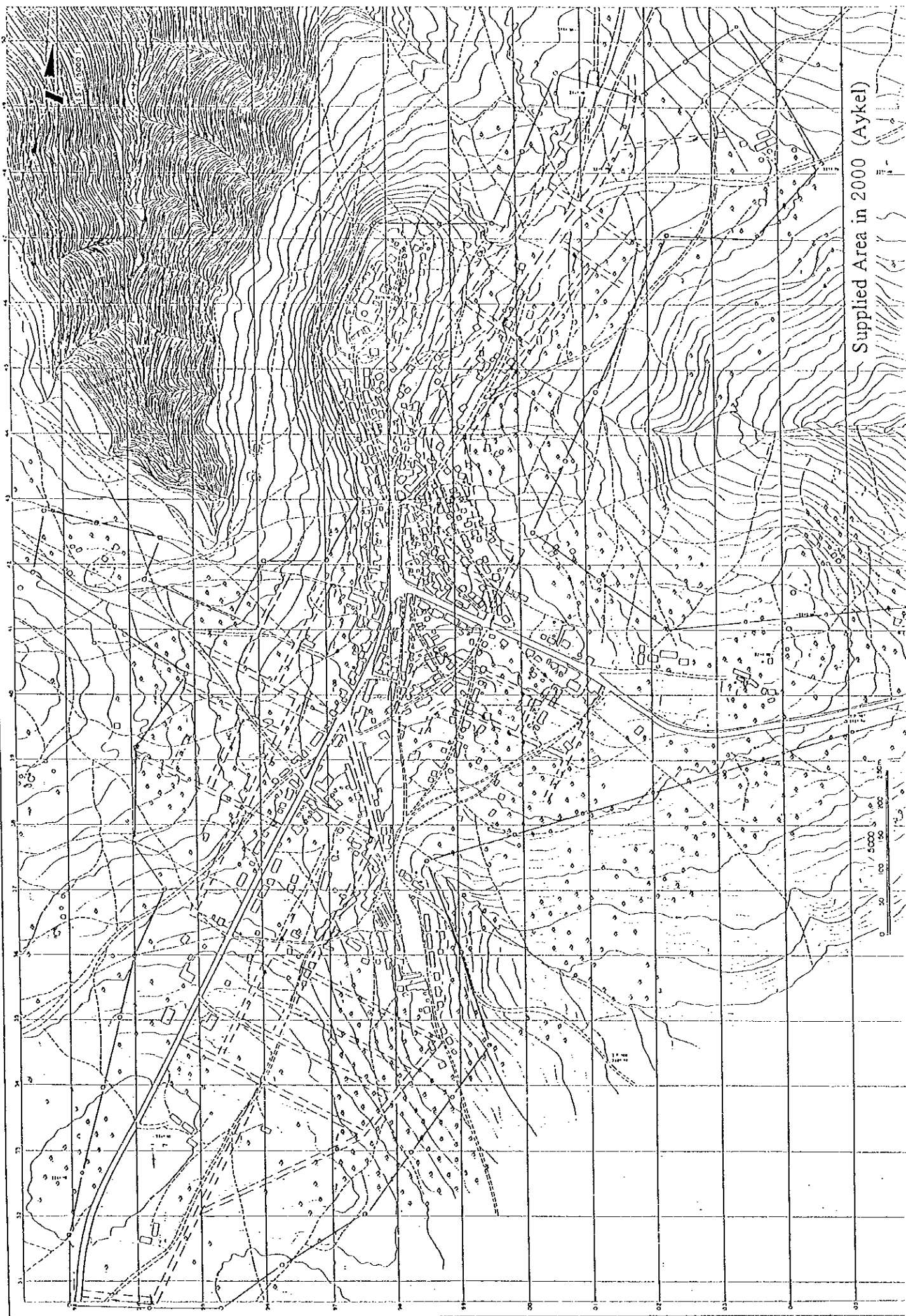
Target Year	Well No.	Production (m³/day)	Max. Day Demand (m³/day)
2000	W3+W6	1,078	1,057
2005	W3+W6+W1+W7	1,741	1,708

Plan of Wells and Transmission Facility (Werota)



Type of Distribution Pipeline (Werota)

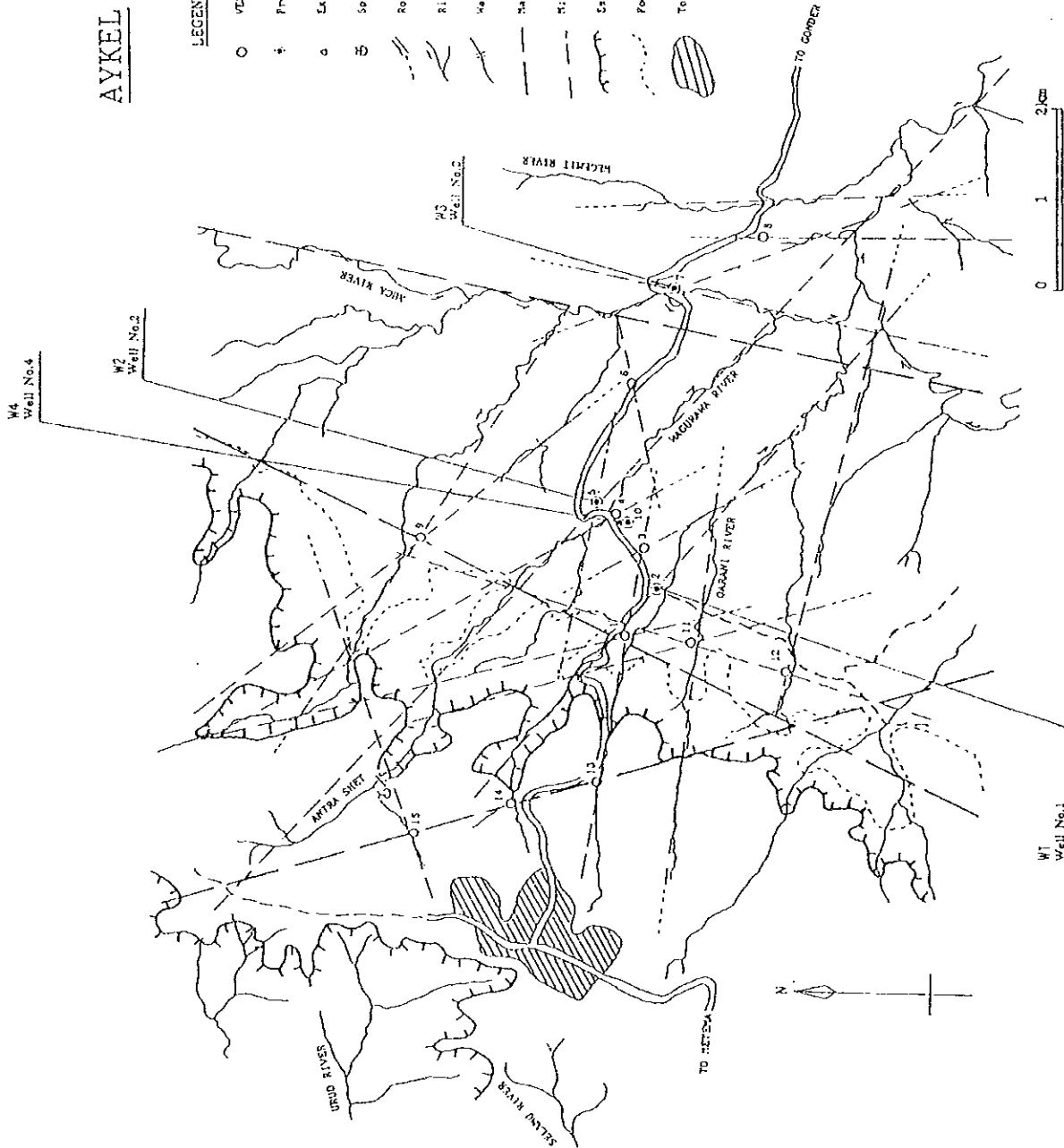




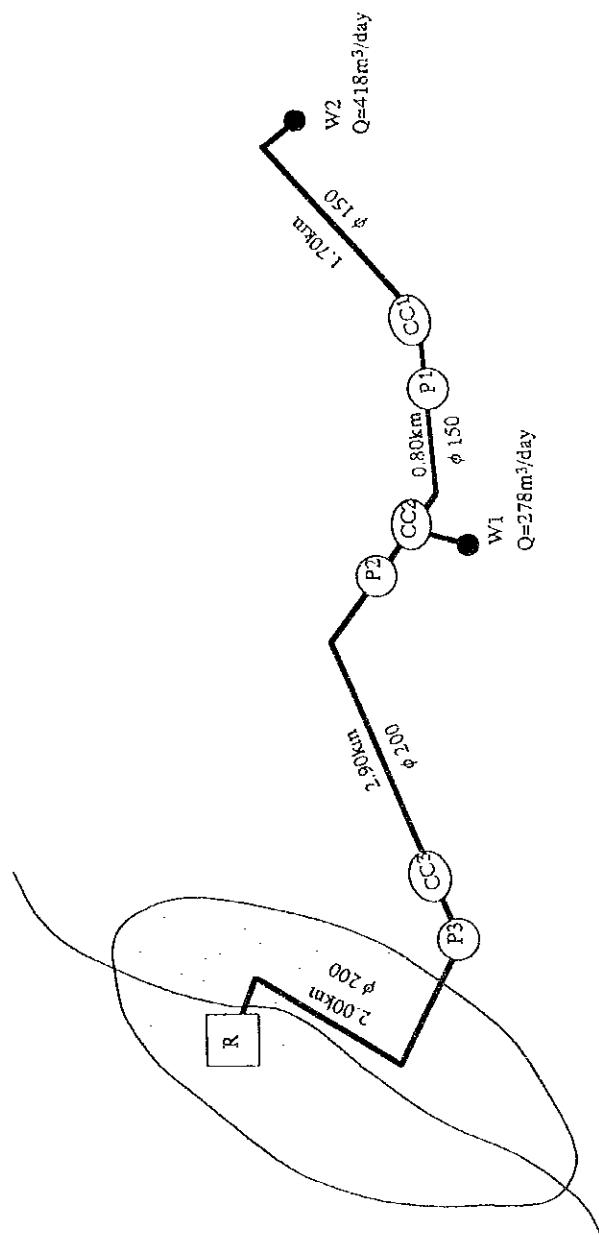
AYKEL

LEGEND

- VES Stations
- ⊙ Proposed Drilling site
- Existing Borehole (abandoned)
- ⊙ Spring
- Road
- River
- Waterfall
- Major Limestone
- Minor Limestone
- Escarpment
- Footline of Escarpment
- ▨ Town Area



Plan of Proposed Water Sources (Aykel)



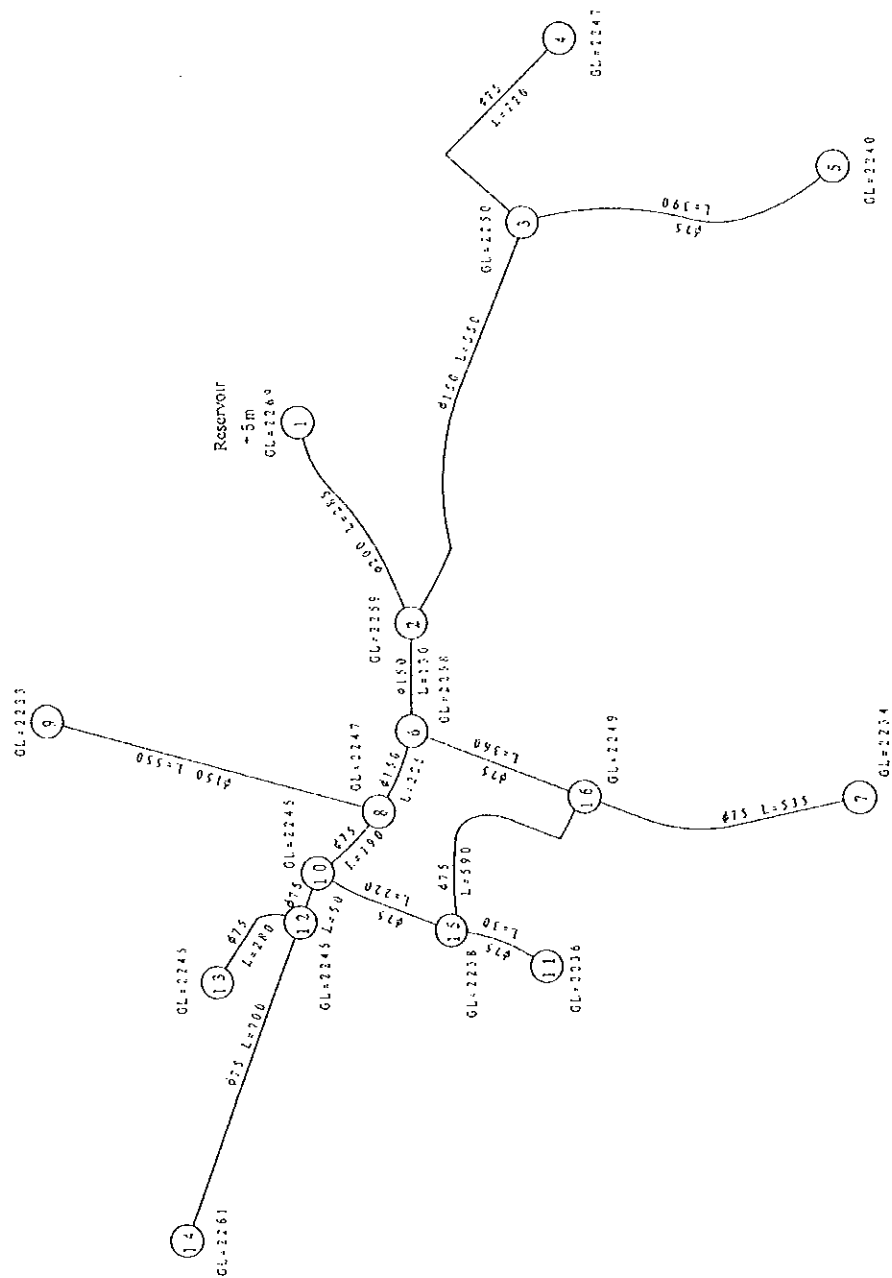
Legend

- : Water Supply Area
- : Existing Well
- : Proposed Well or Spring
- [R] : Proposed Reservoir
- (P) : Boosting Pump Station
- (CC) : Collecting Chamber
- (Q) : Planned production rate (m³/day)
- 0.6km : Dia. & Length of Pipeline
- 0.150 : Dia. & Length of Pipeline to be constructed by the year of 2005
- 0.150

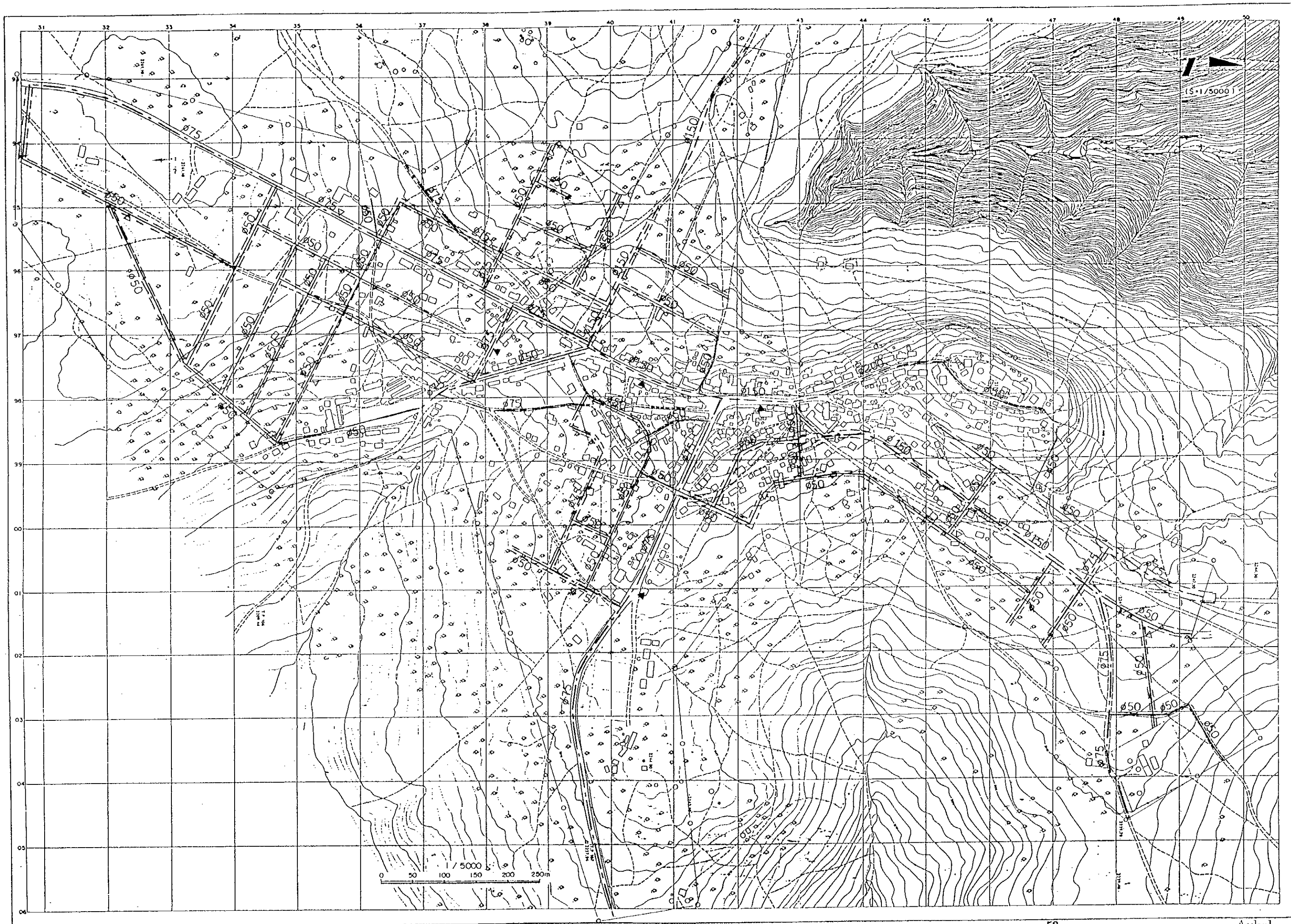
Well Development Plan

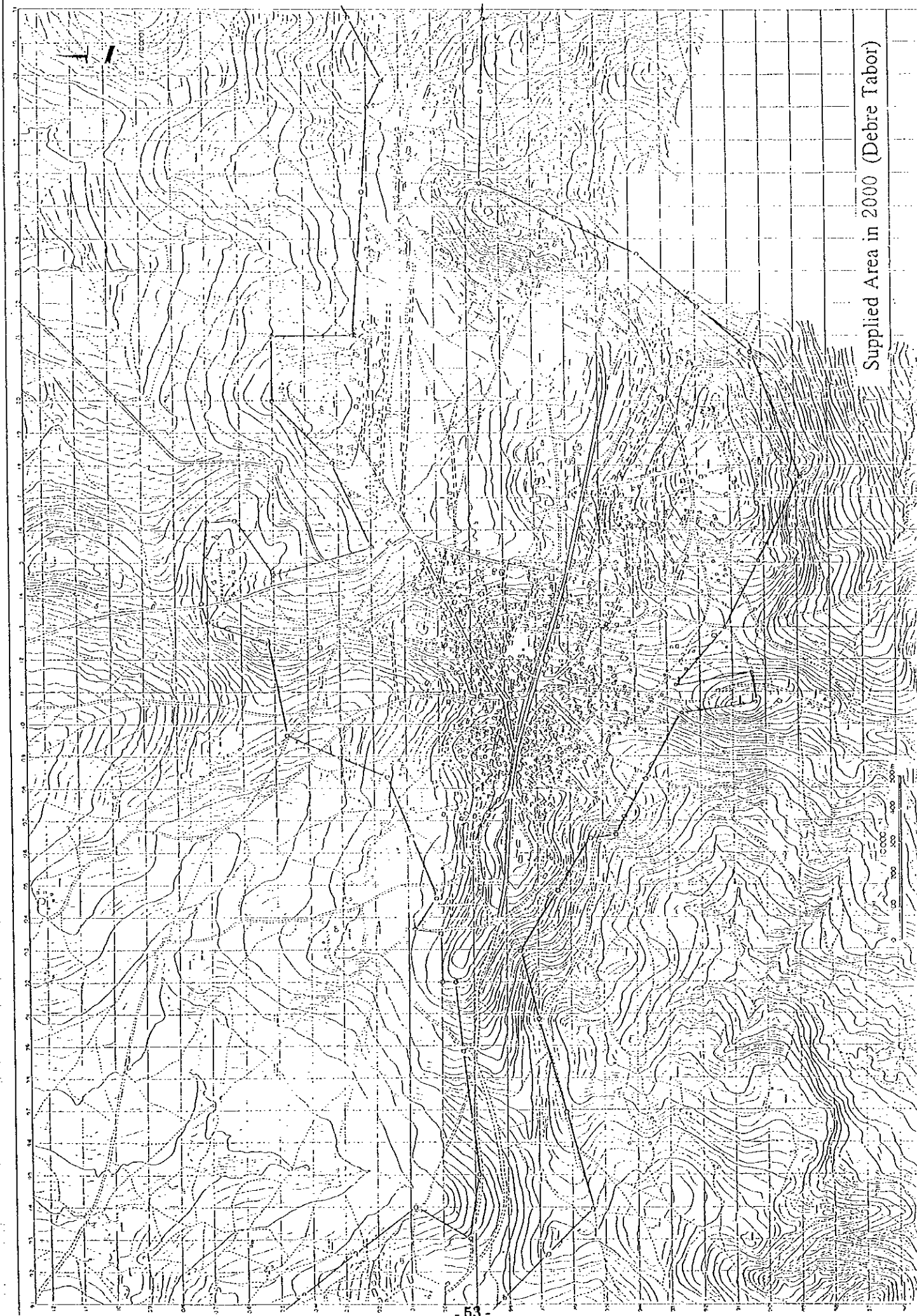
Target Year	Well No.	Production (m³/day)	Max. Day Demand (m³/day)
2000	W1+W2	696	3-8
2005	W1+W2	696	606

Plan of Wells and Transmission Facility (Aykel)

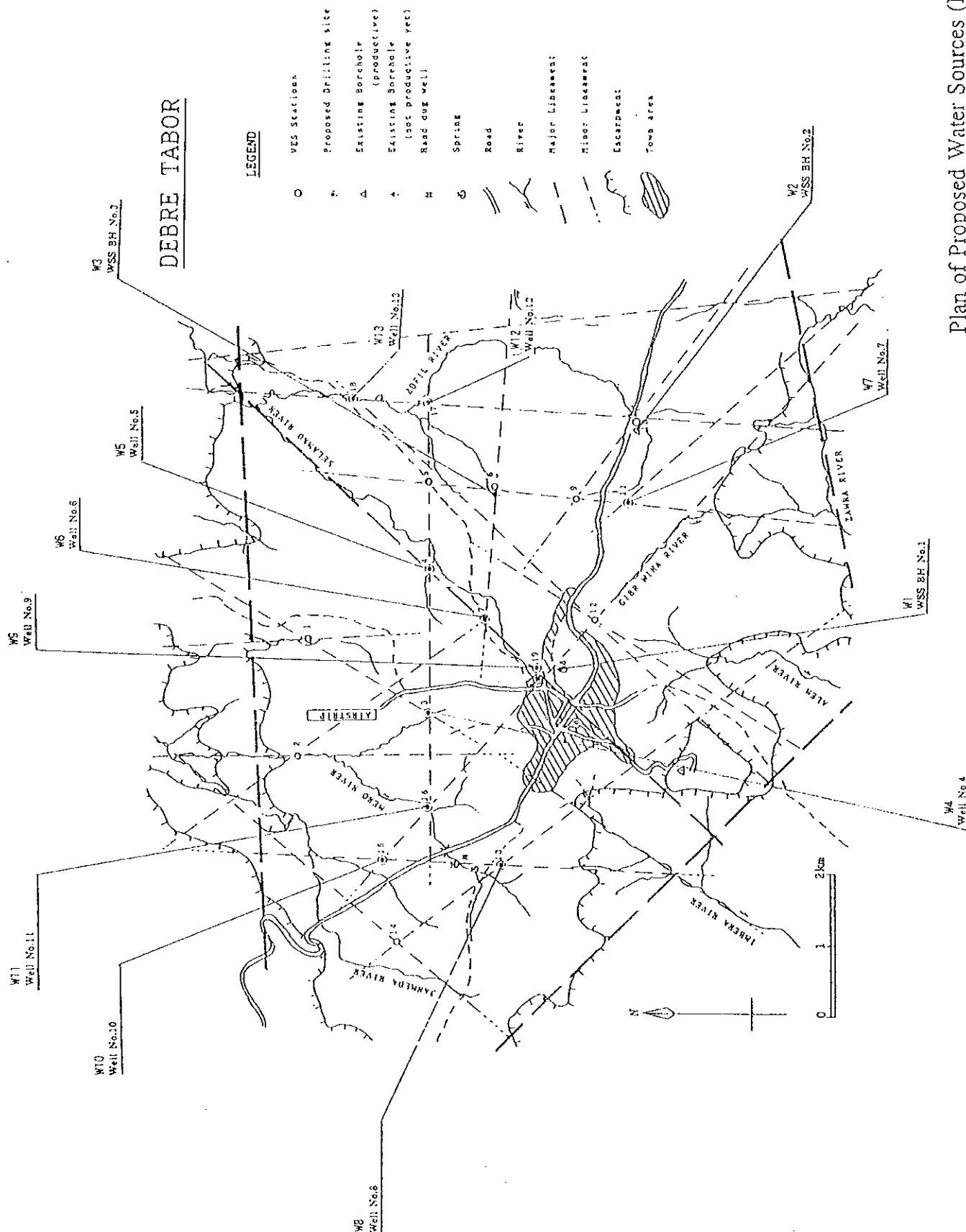


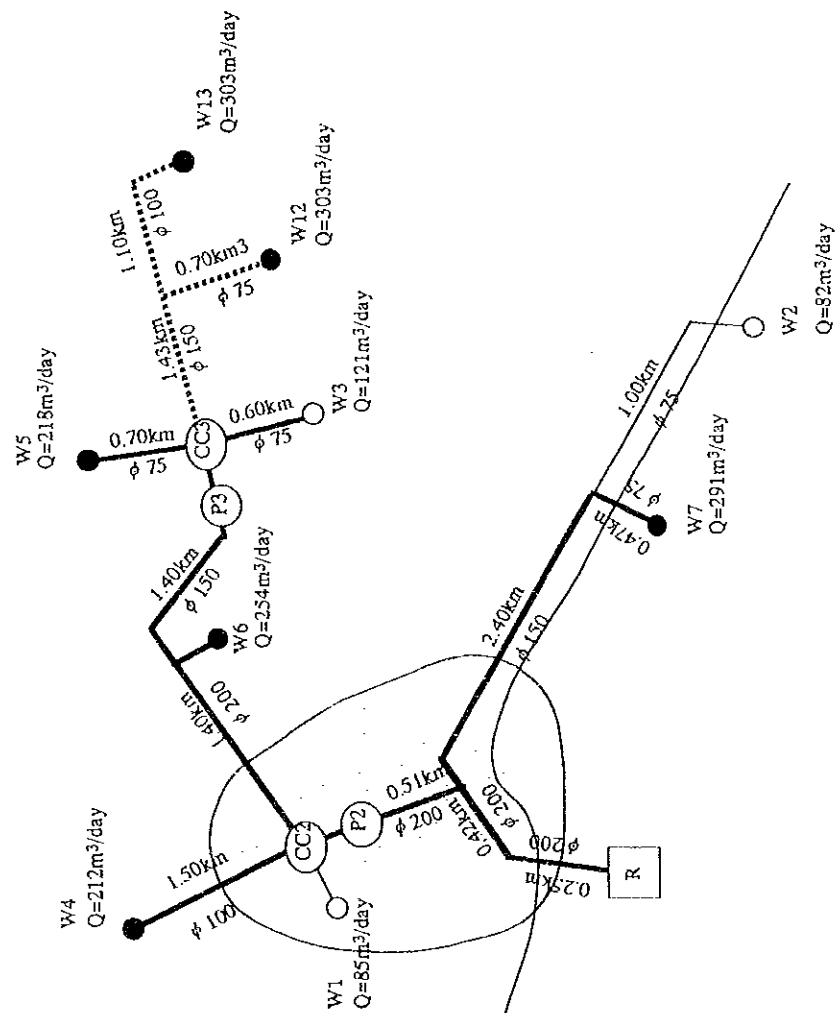
Type of Distribution Pipeline (Aykel)





Supplied Area in 2000 (Debre Tabor)

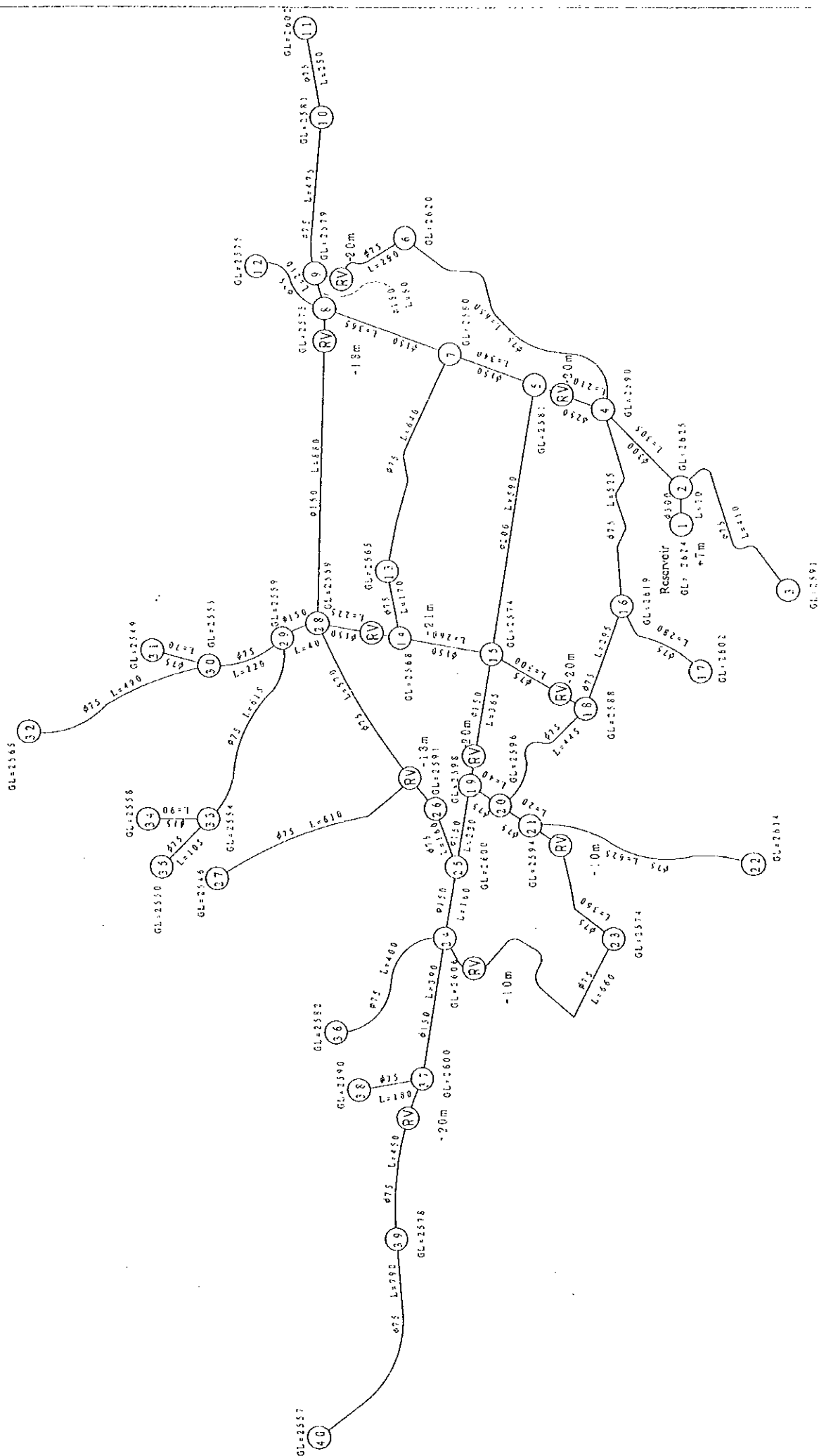




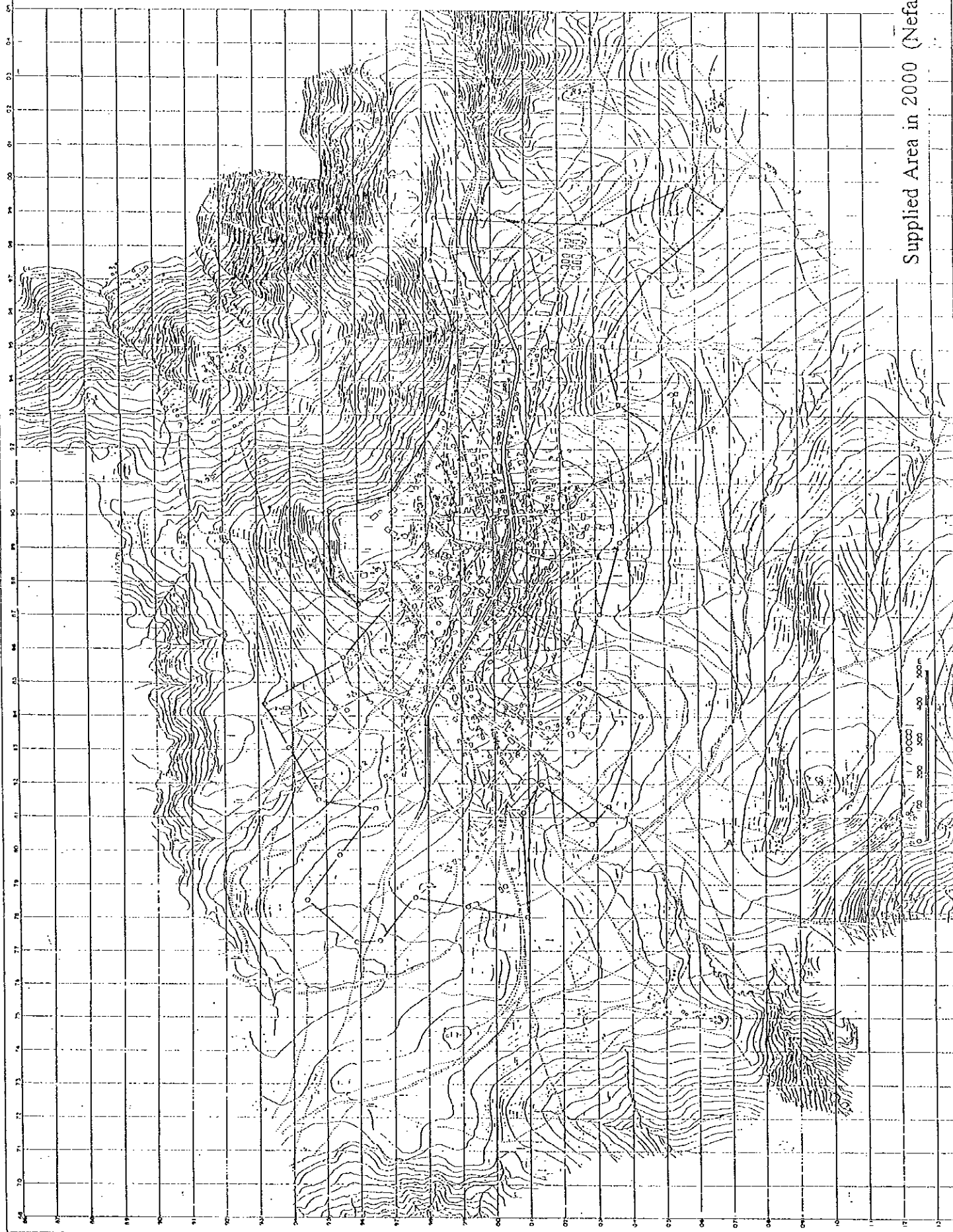
Well Development Plan

Target Year	Well No.	Production (m ³ /day)	Max. Day Demand (m ³ /day)
2000	W3+W4+W5+W6+W7	1,096	997
2005	W3+W4+W5+W6+W7+W12+W13	1,702	1,661

Plan of Wells and Transmission Facility (Debre Tabor)

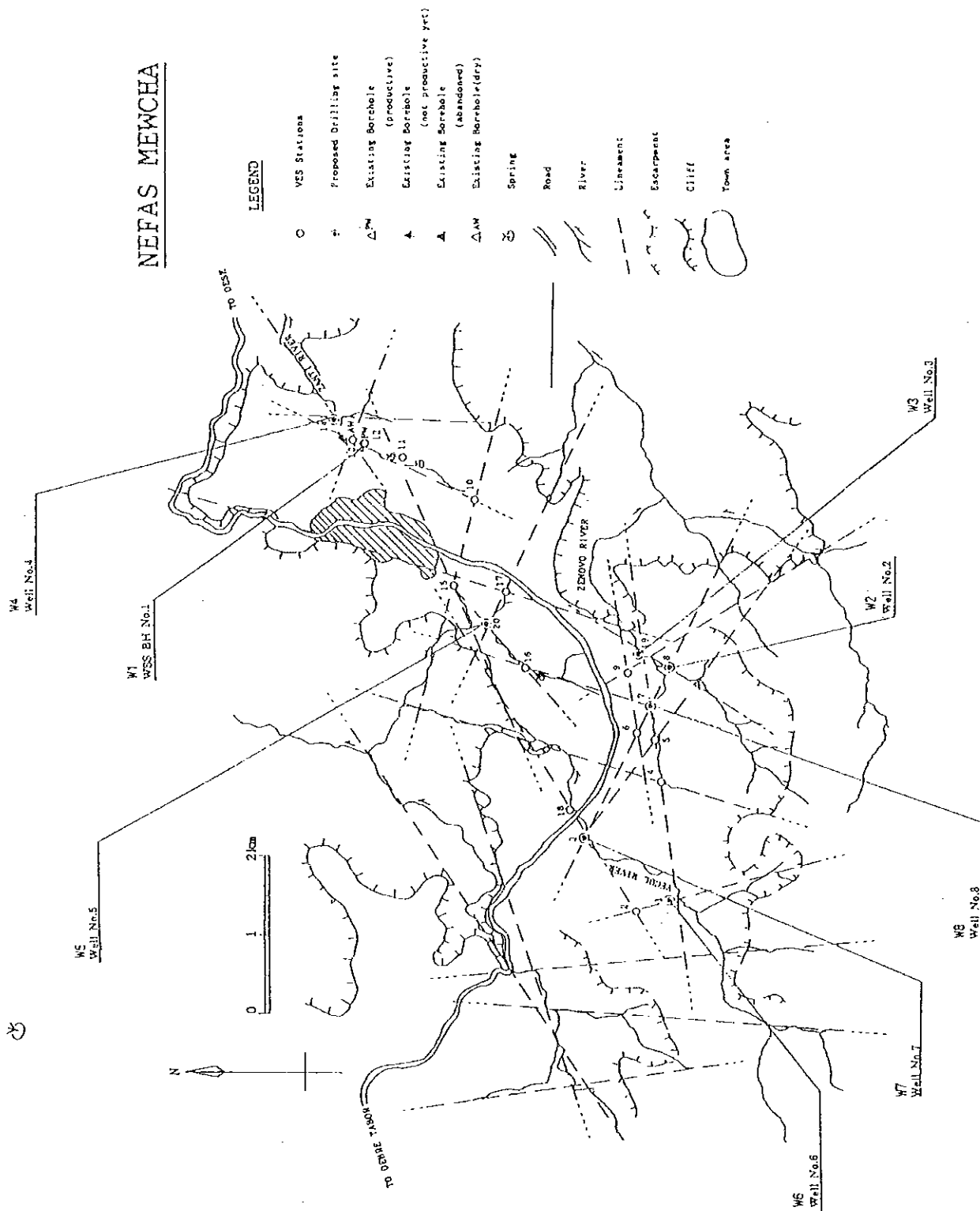


Type of Distribution Pipeline (Debre Tabor)

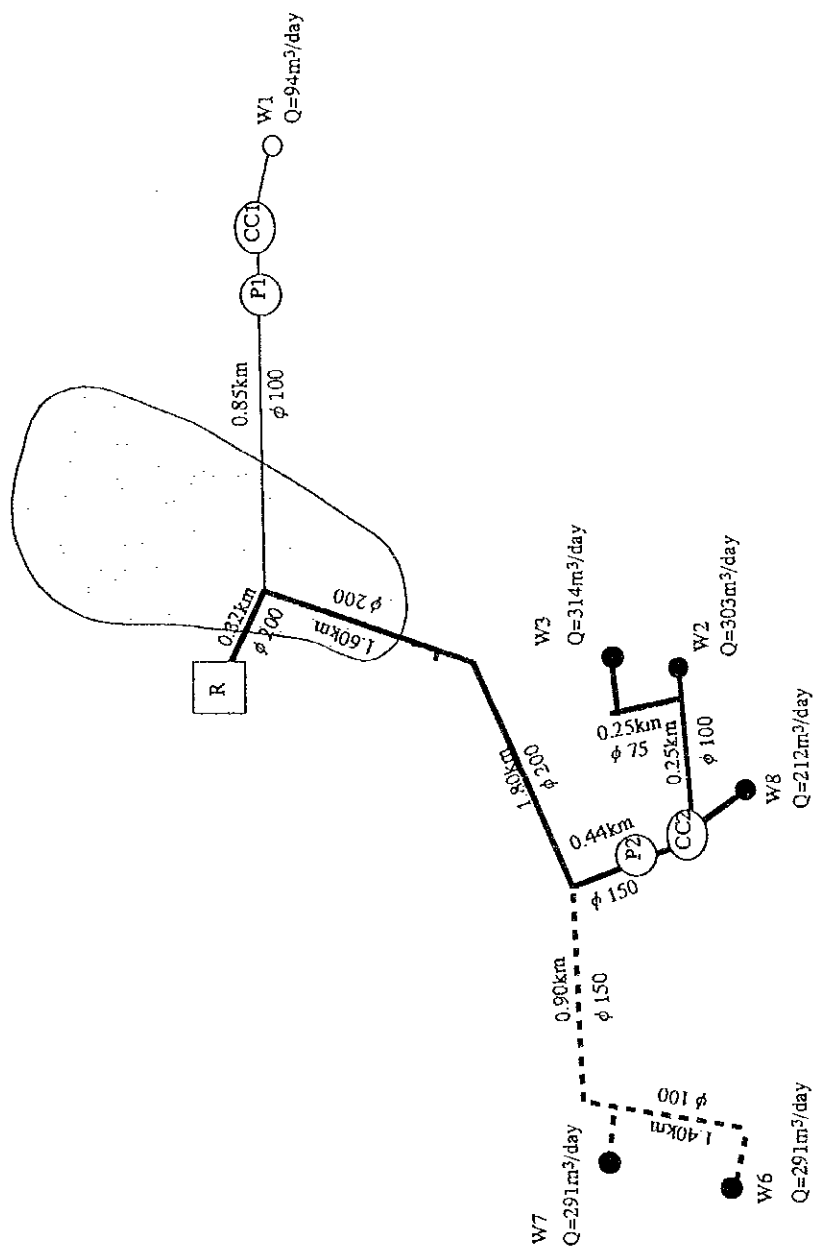


Supplied Area in 2000 (Nefas Mewcha)

NEFAS MEWCHA



Plan of Proposed Water Sources (Nefas Mewcha)



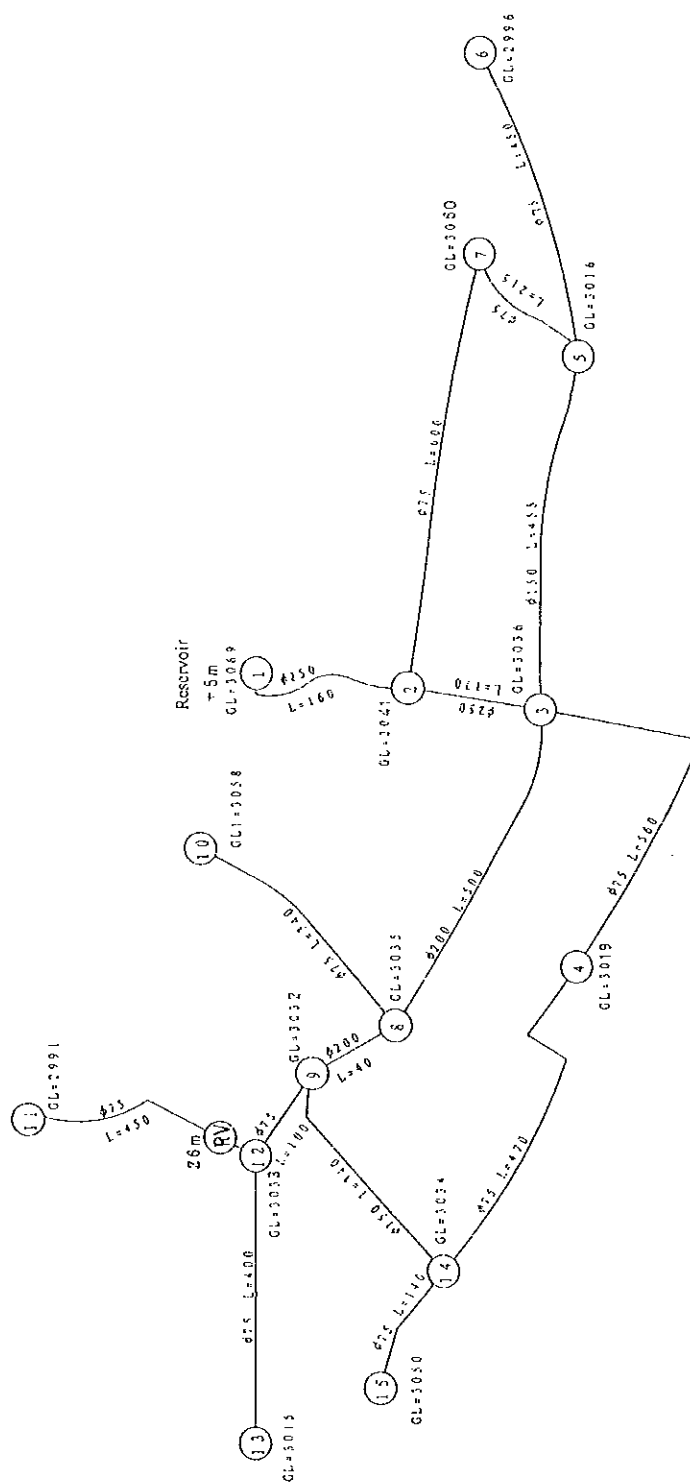
Well Development Plan

Target Year	Well No.	Production (m³/day)	Max. Day Demand (m³/day)
2000	W2+W3+W8	529	700
2005	W2+W3+W8+W6+W7	1,411	1,168

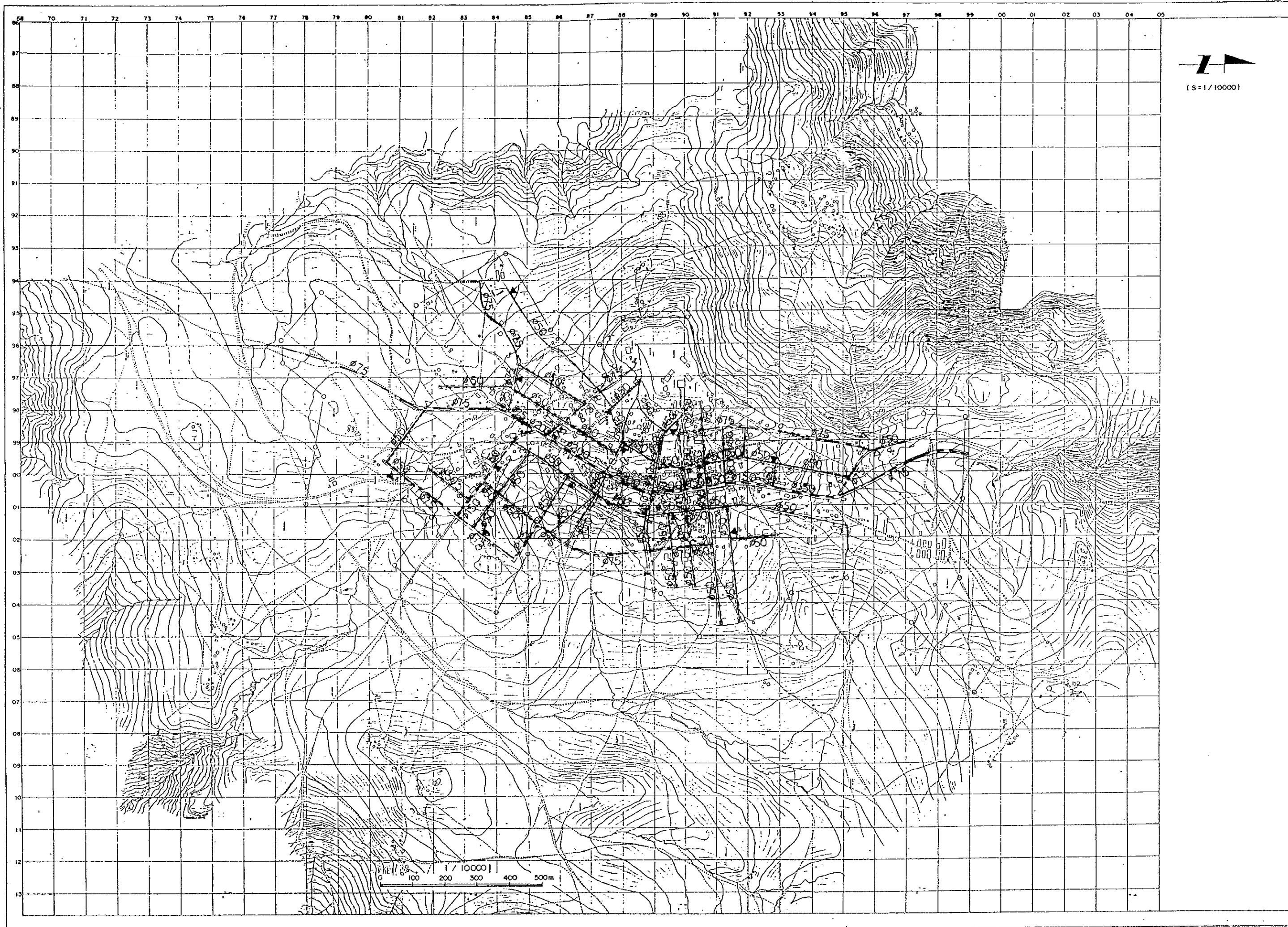
Legend

- : Water Supply Area
- : Existing Well
- : Proposed Well or Spring
- [R] : Proposed Reservoir
- [P] : Boosting Pump Station
- [CC] : Collecting Chamber
- Q : Planned production rate (m³/day)
- 0.6km : Dia. & Length of Pipeline
- 0.6km : Dia. & Length of Pipeline to be constructed by the year of 2005

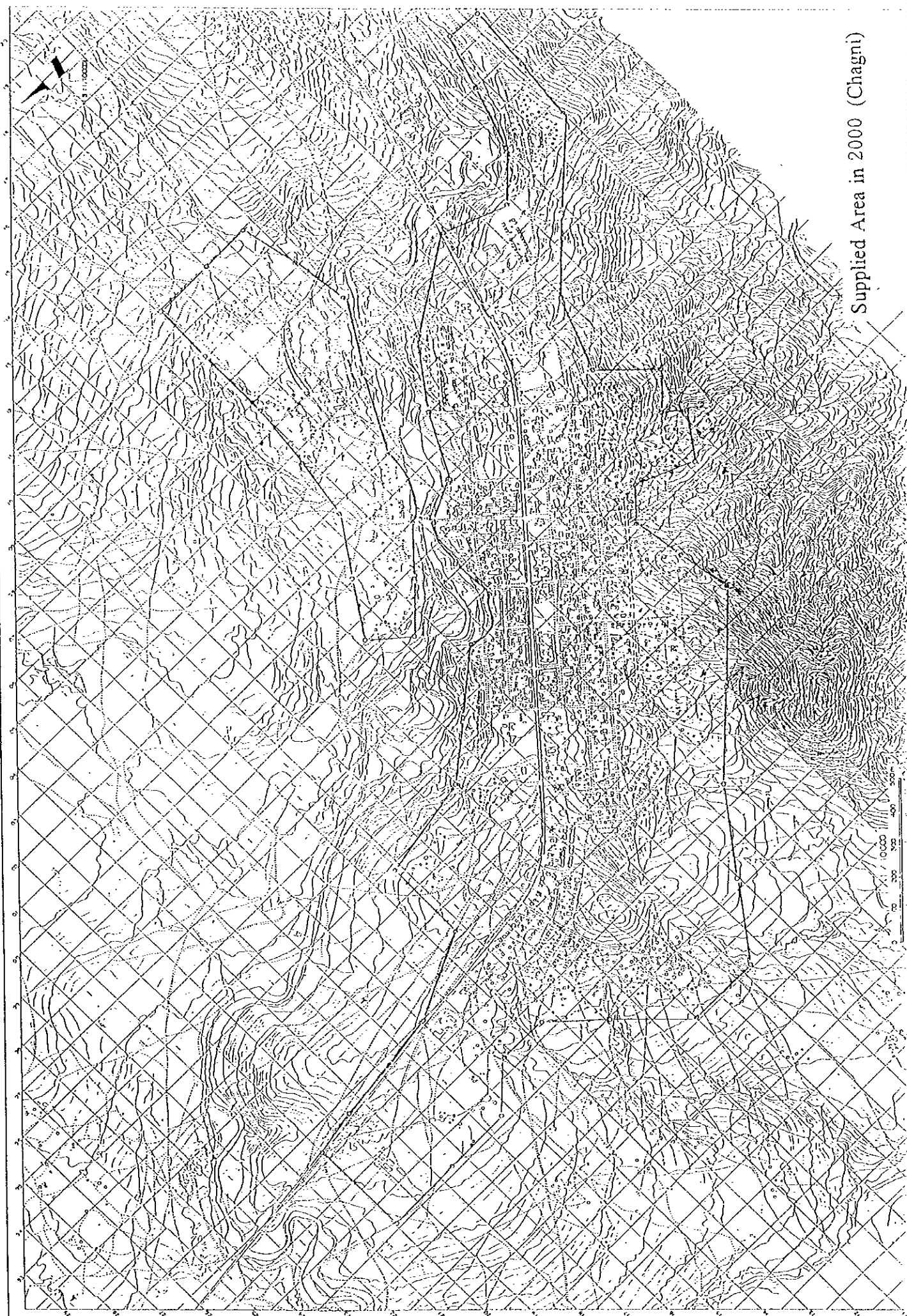
Plan of Wells and Transmission Facility (Nefas Mewcha)



Type of Distribution Pipeline (Nefas Mewcha)



(S=1/10000)

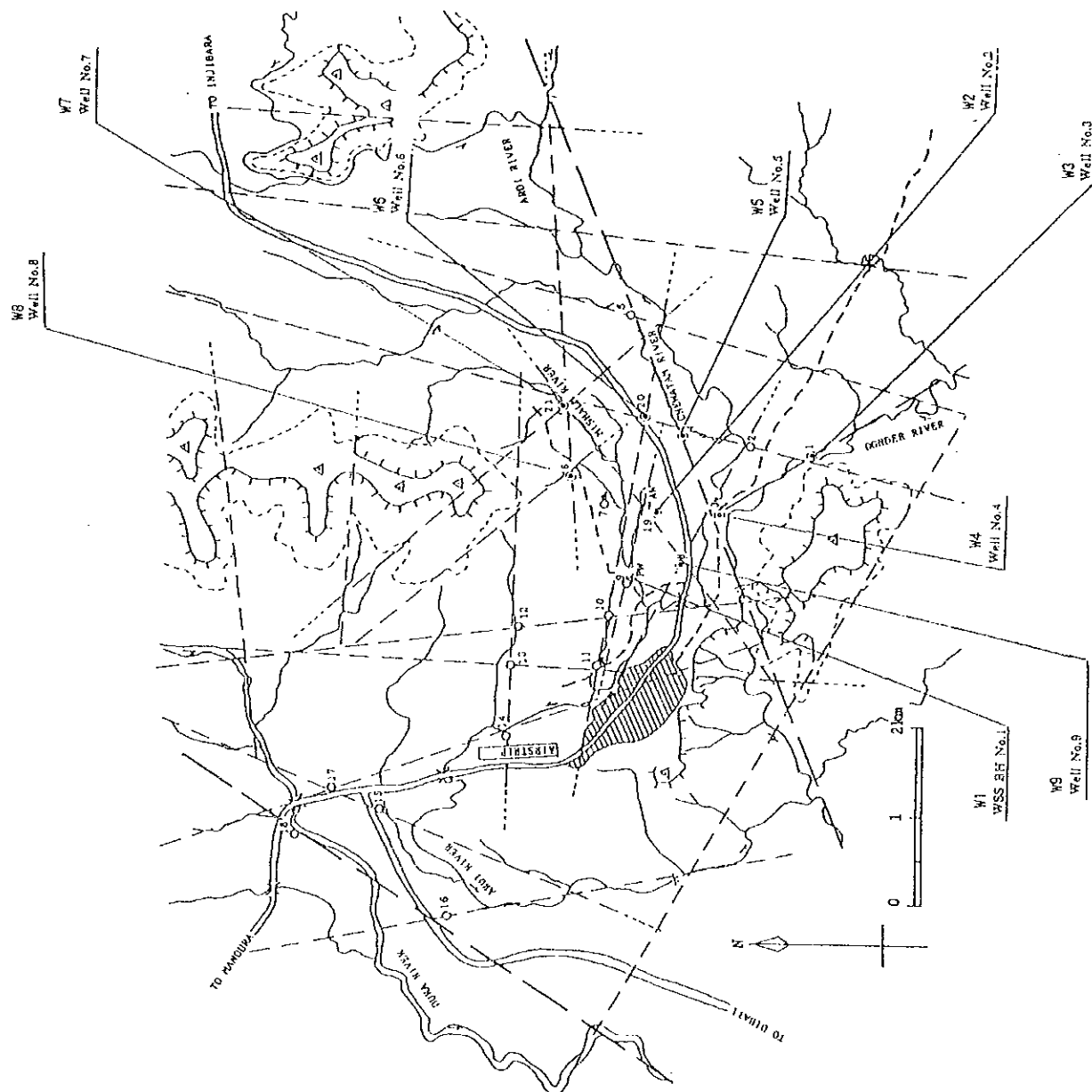


Supplied Area in 2000 (Chagní)

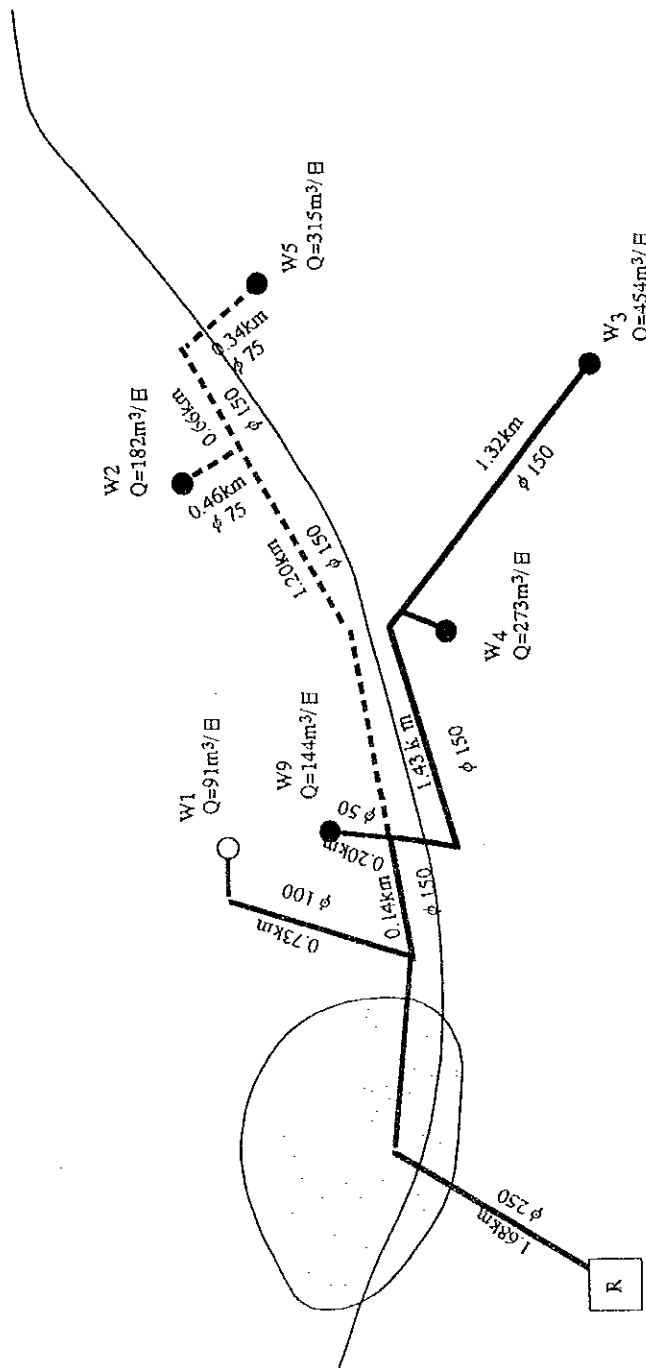
CHAGNI

LEGEND

- VES Stations
- ⊗ Proposed Drilling site
- △ Existing Borehole (productive)
- △ Existing Borehole (abandoned)
- ▲ Existing Borehole (dry)
- Road
- River
- Major Lineament
- Minor Lineament
- Escarpment
- Footline of Mountains
- Town area



Plan of Proposed Water Sources (Chagni)



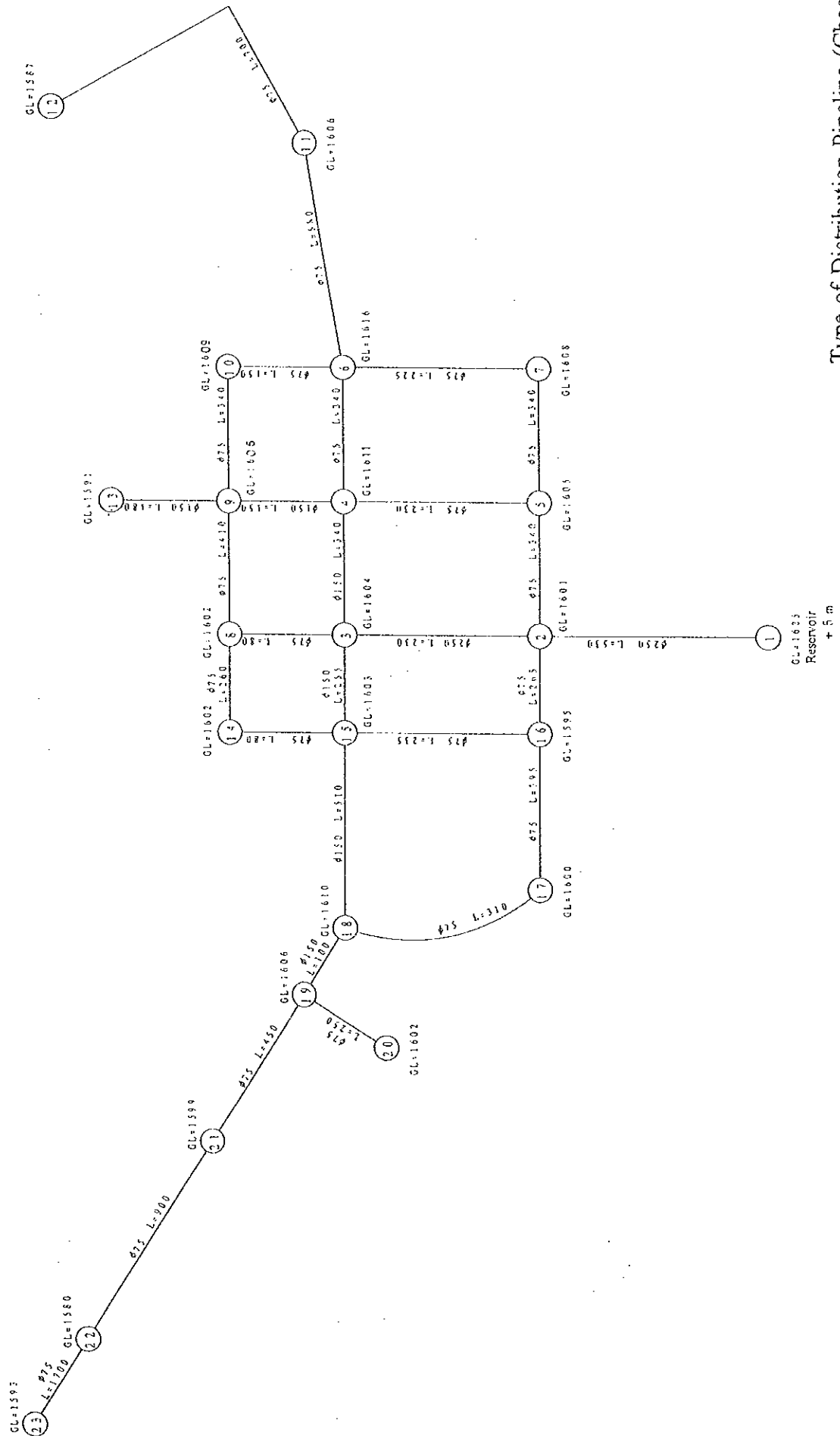
Legend

- : Water Supply Area
- : Existing Well
- : Proposed Well or Spring
- R : Proposed Reservoir
- P : Boosting Pump Station
- CC : Collecting Chamber
- Q : Planned production rate (m³/day)
- Q : Dia. & Length of Pipeline
- Q : Dia. & Length of Pipeline to be constructed by the year of 2005

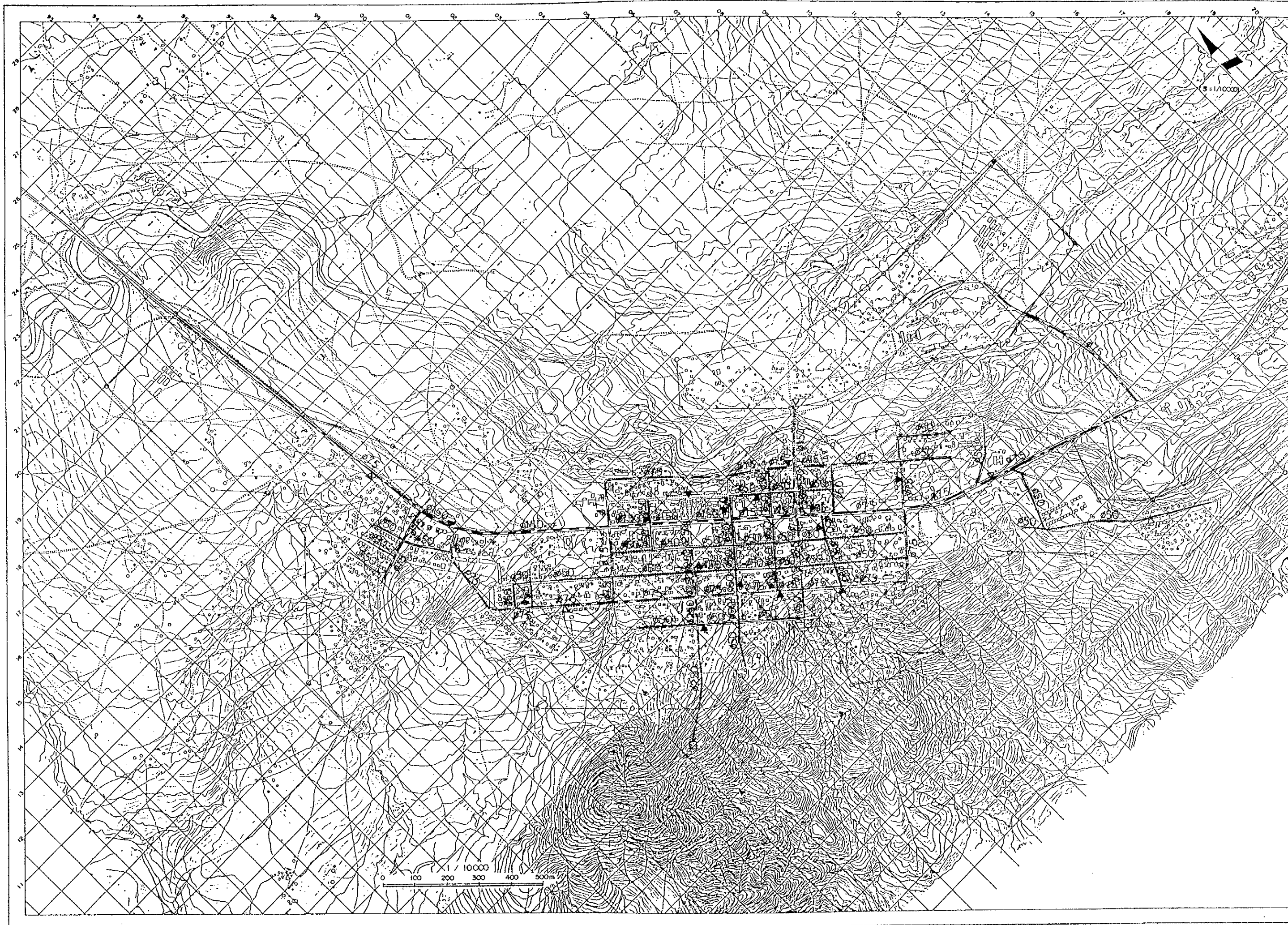
Well Development Plan

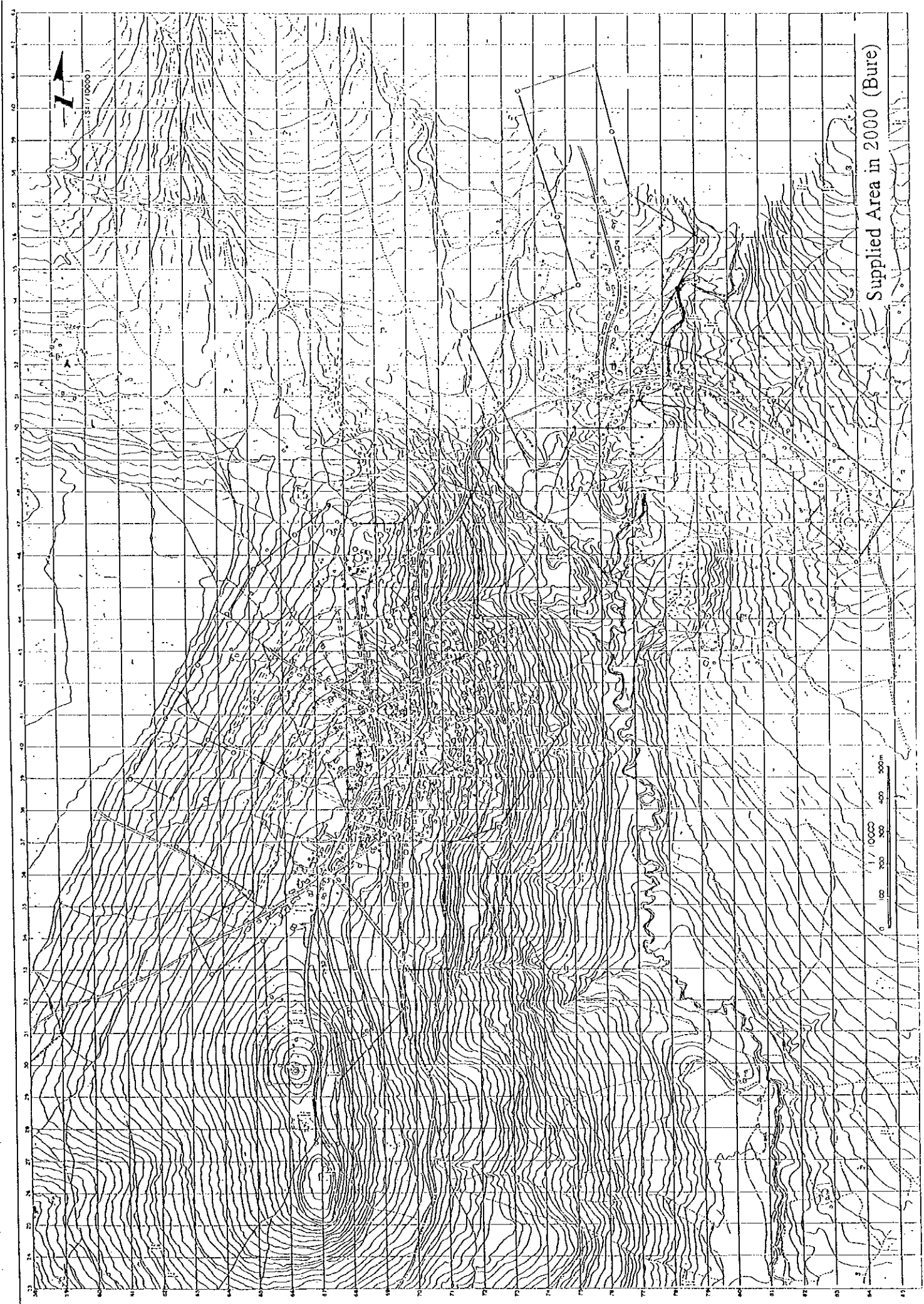
Target Year	Well No.	Production (m ³ /day)	Max. Day Demand (m ³ /day)
2000	W1+W3+W4+W9	962	859
2005	W1+W3+W4+W9+W2+W5	1,459	1,438

Plan of Wells and Transmission Facility (Chagni)

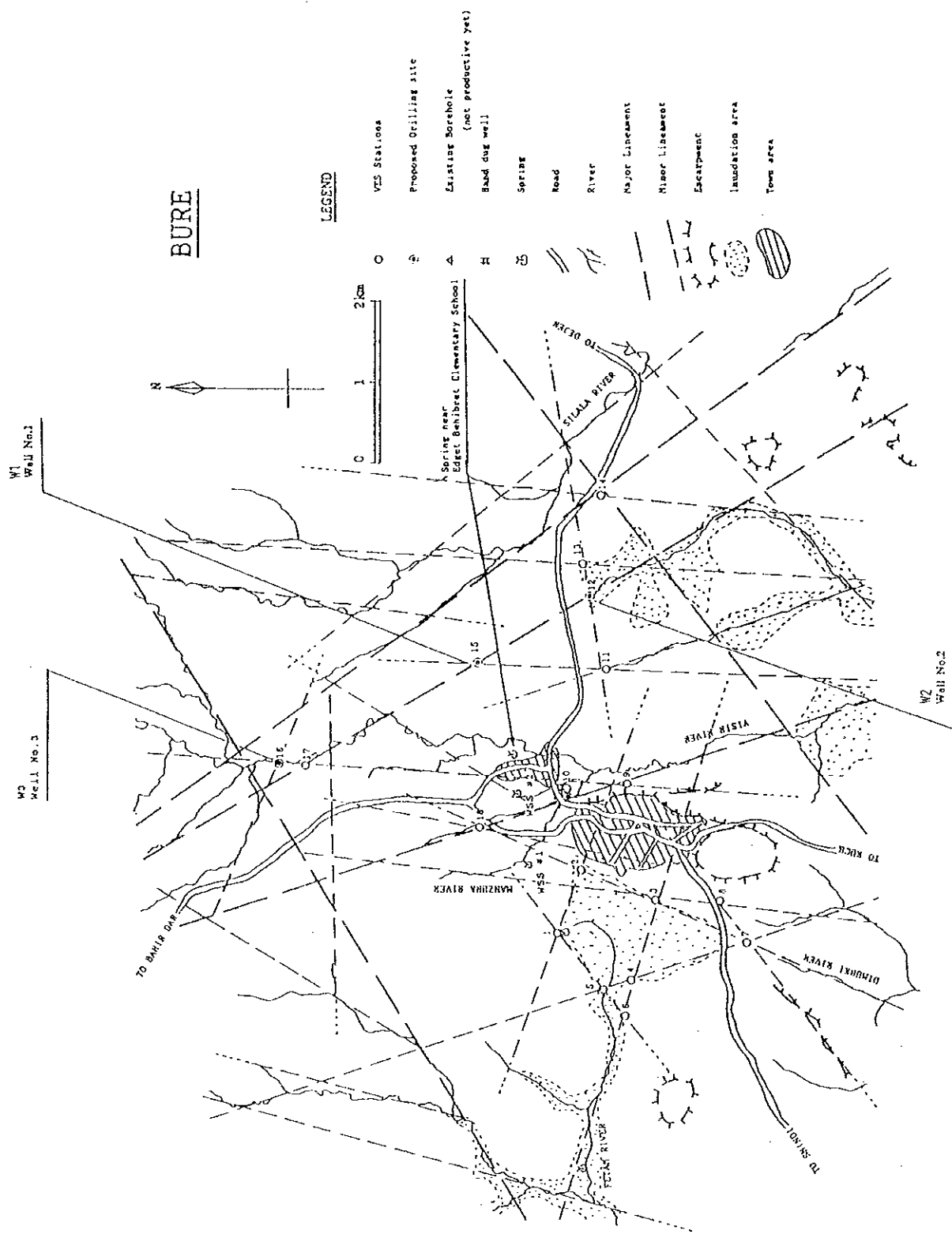


Type of Distribution Pipeline (Chagni)





Supplied Area in 2000 (Bure)

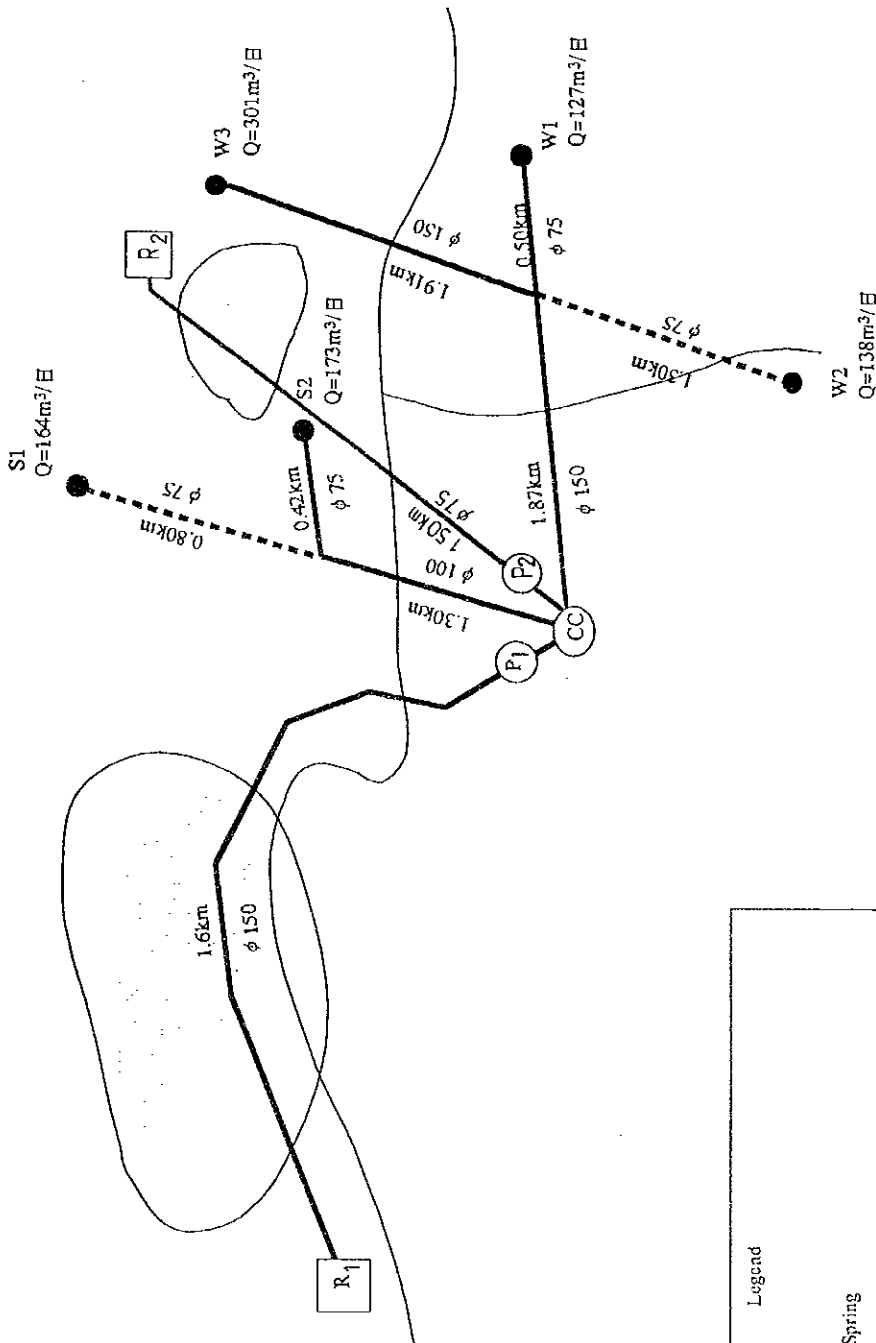


BURE

LEGEND

- VTS Stations
- Proposed Drilling site
- Existing Borehole (not productive yet)
- Band dug well
- Spring
- Road
- River
- Major Lineament
- Minor Lineament
- Escarpment
- Inundation area
- Town area

Plan of Proposed Water Sources (Bure)



Well Development Plan

Target Year	Well No.	Production (m^3/day)	Max. Day Demand (m^3/day)
2000	W1+W3+S2	601	602
2005	W1+W3+S2+W2+S1	903	938

Legend

- : Water Supply Area
- : Existing Well
- : Proposed Well or Spring
- : Proposed Reservoir
- : Boosting Pump Station
- : Collecting Chamber
- : Planned production rate (m^3/day)
- $\frac{0.6\text{km}}{0.150}$: Dia. & Length of Pipeline
- $\frac{0.6\text{km}}{0.150}$: Dia. & Length of Pipeline to be constructed by the year of 2005

Plan of Wells and Transmission Facility (Bure)