

23

TERMS OF REFERENCE  
OF  
FEASIBILITY STUDY  
FOR  
THE FERRY TRANSPORT DEVELOPMENT PLANS

DIRECTORATE GENERAL OF LAND TRANSPORT  
AND INLAND WATERWAYS  
MINISTRY OF COMMUNICATIONS  
THE REPUBLIC OF INDONESIA

## 1. Background

1. The development of transport infrastructure which shoulders the responsibility of physical and human flow, has the very important role in sustaining the activities of the national economy in Indonesia, especially in the field of marine sector. Because, this country is the largest archipelago consisting of 13,667 islands scattered over 5,100km from west to east, while 1,700km from north to south.
2. Particularly, ferry transport formulates the vital points of the Major National Trunk Line Passage Routes along the Sunda Archipelago (from Sumatera island to Timor island). Besides, it moreover contributes to the development of local economy and the stabilization of the people's livelihood in the region which is separated from the other region by water, without it they will be isolated. It has been developed as a movable bridge compensating lacked parts of railway/road network separated by water in this country.
3. At present, ferry transport which consists of 43 ferry services with 121 ships handles over 70% of the inter-islands passengers traffic. The annual average increasing rates of ferry transportation volume in past decade are 11% per year on the passenger, 17% per year on the cargo, they have been increasing enormously. They exceed the substantial economic growth rate by far. In 1992, total ferry transportation volumes were 37.3 million passengers, 7.51 million tons cargo, 3.25 million automobiles and 2.22 million two-wheeled vehicles.
4. The introductions of new ferry routes are strongly requested from all over the country. On the other hand, the existing ones themselves don't have sufficient capacities for the various demands. They are sometimes outworn facilities which can't correspond to large-sizing of ferry vessels, or sometimes still temporary terminals which serve restricted operation. Measures have to be taken to meet the situations from the standpoint of safety also.
5. So, the JICA Study in 1991, "Development Study on the Nation Wide Ferry Service Routes in the Republic of Indonesia", carried out on pressing 9 routes for the first time in the field of ferry transport. Now, the Government of Indonesia is proceeding them in order to start the projects. But, it's not enough to assist proceeding the ferry works in this country.
6. In the Sixth Five-Years National Development Plan (1994/1995-1999/2000), the Government has to be planning over 80 construction/reconstruction of terminal facilities, over 25 repair/rehabilitation of jetties and so on. Therefore, the Government has to develop the ferry transport by making efficient use of limited budget, together with maintaining the safety of its operation.

## II. Objective of the Study

7. In order to conduce to safer, steadier, more comfortable, and more frequent ferry services for the purpose of promoting regional/nation-wide economic development in Indonesia, the overall objectives of the study are to:
  - (i) provide an overview of the ferry transport and of its role and potential in the national economy;
  - (ii) offer the integral development method of ferry transport, for example, a simple inter-regional demand forecast method, planning/design methods of a mooring basin, a breakwater and so on;
  - (iii) recommend a ferry port terminal planning guideline and a ferry port facilities design standard manual.

## III. Scope of the Study

The Study shall cover the following items;

8. Review and Analysis of the Existing Data and Information
  - (i) to collect and review relevant data, information, reports and plans related to the Study on socioeconomic features, natural conditions, engineering data, present ferry service system and the public and private sector development plans.
  - (ii) to analyze the present situation of the ferry transport.
  - (iii) to estimate its future requirements and problems by which it will be confronted.
9. Classification of Ferry Routes and Selection of Case Study Routes
  - (i) to classify existing and planning routes into functional categories.
  - (ii) to decide the total about 10 case study routes, which may consist of a few routes from each categories.
10. Field Survey of Case Study Routes
  - (i) to carry out field reconnaissance of them in order to survey at ferry ports, terminal, access roads and other related facilities.
  - (ii) to conduct natural conditions survey on the hydrography and the soil in accordance with the demands.

## 11. Formulation of Each Master Plans

- (i) to analyze the national and each regional socioeconomic features and then, to establish its framework for the year 2010.
- (ii) to forecast the ferry traffic demand on passenger, cargo and vehicle up to the year 2010 with each demand forecast methods which are proposed, for example, by each functional categories.
- (iii) to prepare the basic ferry operation plan. If it's possible, the integral operation area of ferry ships in due consideration of docking is to be prepared, for example, in Riau, Nusa Tenggara Timur.
- (iv) to prepare the ferry terminal development plans. If it's an existing route, to evaluate the existing facilities and to prepare the its rehabilitation plans.
- (v) to carry out the standard design of port facilities.
- (vi) to roughly estimate the costs.
- (vii) to prioritize the case study routes for the feasibility study.
- (viii) to decide 3 cases of feasibility studies in due consideration of port facility plans.

## 12. Feasibility Study

- (i) to precisely review the 3 case study routes on the demand forecast, the ferry operation plan and the master plan for the short-term plan.
- (ii) to collect the supplementary data, information.
- (iii) to carry out the detail natural conditions survey on the topography, the oceanography, the boring and so on, if necessary.
- (iv) to carry out the basic design at each terminal.
- (v) to estimate the costs.
- (vi) to prepare the construction schedule on each port.
- (vii) to carry out the economic and financial analyses at each route.

## 13. Formulation of Effective Management and Operation System

- (i) to prepare the implementation plan for all case study routes with priority.
- (ii) to propose the terminal facility inventory format and the ferry transport statistic format.

(iii) to prepare the preliminary design of the management information system of ferry transport.

(iv) to offer examples of a simple inter-regional demand forecast method, planning/design methods of a mooring basin, a breakwater and so on.

(v) to recommend a ferry port terminal planning guideline and a ferry port facilities design standard manual.

(vi) to recommend on management, operation and maintenance systems.

(vii) to recommend a basic policy and strategy for the ferry transport development.

#### IV. Study Schedule and cost estimation

14. The Study shall be carried out within 18 months.

#### 15. Scope of Assistance Requested

a. Expert services	:	200m.m.	=	US\$ 3,000,000.-
b. Fellowships	:	10m.m.	=	US\$ 100,000.-
c. Equipment	:	m.m.	=	US\$
				<hr/>
Total cost			=	US\$ 3,100,000.-

## CLASSIFICATION EXAMPLES

- A) Accessibility to Provincial Capital
- a) National Route  
(A ferry route located on the route having direct accessibility to) Provincial capitals on both ends.
  - b) Regional Trunk Route  
A provincial capital on the end.
  - c) Regional Route  
No provincial capital.
- B) Demand Level
- a) High Demand Route  
(A ferry route providing service of ) More than six trips/day in terms of 300-500 GRT ship.
  - b) Medium Demand Route  
Between two and six trips/day in terms of 300-500 GRT ship.
  - c) Low Demand Route  
Less than two trips/day in terms of 300-500 GRT ship.
- C) Geographical Characteristic
- a) Inter-regional Route  
A route connecting different regions, which tends to be a long-haul route, i.e. Jawa-Kalimantan, Jawa-Sulawesi etc.
  - b) Inter-island Route  
A route connecting different islands within a region, which includes a route serving remote islands.
  - c) Short-cut Route  
A route which helps to shorten a land transportation distance, which are expected to be developed more in Sulawesi and Halmahera, i.e. Dajoe-Kolaka.
  - d) Inland Route  
A route located in the inland area, which serves to cross rivers and lakes.
  - e) Bypassing Route  
A route which mainly avoids a road traffic congestion, which is not exist now in Indonesia, for example, Bakauheni-Cirebon, Jakarta-Semarang routes are ideas.

## APPENDIX-II

## PRESENT FERRY SERVICE

				April 1993	
o.	Routes	Region(Island)	Dist.	Ships	Fre.
1.	Balohan-Malahayati	D.I.Aceh(P.Weh)	15(NH)	1	2/D
2.	Meulaboh-Sinabang	D.I.Aceh(P.Sim.)	101	2	1/D
3.	Tomok-Ajibata(d.Toba)	Suma.Ut.	3	2	10/D
4.	Sibolga-Gn.Sitoli	Suma.Ut.(P.Nias)	78	1	1/D
5.	Palembang-Kayu Arang	Suma.Sl.(P.Bang.)	83	3	2/D
6.	PangkalPinang-Tg.Pandan	P.Bang.-P.Beli.	110	1	4/W
7.	Merak-Bakauheni	Lamp.-Jawa B.	15	12	56/D
8.	Cilacap-Kalipucang	Jawa B.-Jawa Te.	35	7	5/D
9.	Ujung-Kamal	Jawa Ti.(P.Madura)	2.5	11	240/D
10.	Jangkar-Kalianget	Jawa Ti.(P.Madura)	40	2	2/D
	Kalianget-Kangean		?		2/D
11.	Ketapang-Gilimanuk	Jawa Ti.-Bali	4	14	192/D
12.	Padangbai-Lembar	Bali-P.Lombok	34	10	10/D
13.	Lombok-Pototano	P.Lombok-P.Sumb.	11	9	4/D
14.	Sape-Komodo	P.Sumb.-P.Komodo	54	2	1/D
	Komodo-L.Bajo	P.Komodo-P.Frores	?		1/D
15.	Kupang-Rote	P.Timor-P.Rote	40	2	8/W
	Kupang-Sabu	P.Timor-P.Sawu	115		2/W
	Kupang-Larantuka	P.Timor-P.Frores	120		4/W
	Kupang-Ende	P.Timor-P.Frores	148		2/W
	Kupang-Kalabahi	P.Timor-P.Alor	137		4/W
16.	Larantuka-Waiwerang	P.Frores-P.Adon.	?	2	?
	Waiwerang-Lewoleba	P.Adon.-P.Lmbln.	15		?
17.	Kalabahi-Atapupu	P.Alor-P.Timor	64	1	?
18.	Baranusa-Balauring	P.Alor-P.Lmbln.	?	1	?
19.	Ende-Waingapu	P.Frores-P.Sumba	100	1	?
	Waingapu-Sabu	P.Sumba-P.Sawu	?		?
20.	Penajam-Balikpapan	Kalim.Ti.	8	4	36/D
21.	Rasaujaya-Telokbatang	Kalim.B.	80	1	1/D
22.	Bira-Pamatata	Sula.Sl.(P.Sala.)	17	1	2/D
23.	Bajoe-Kolaka	Sula.Sl.-Sula.Te.	96	5	4/D
24.	Torobulu-Tampo	Sula.Tr.(P.Muna)	20	1	4/D
	Tampo-Maligano	P.Muna-?	?		?
25.	Tolandona-Baubau	P.Muna-P.Buton	6	1	4/D
26.	Luwuk-Salakan	Sula.Te.(P.Pele.)	46	2	?
	Kolonodale-Baturube	?-?	?		?
27.	Poka-Galala	Maluku(P.Ambon)	0.5	2	117/D
28.	Hunimua-Waipirit	P.Ambon-P.Seram	11	3	12/D
29.	Bastiong-Sidangole	P.Tern.-P.Halm.	11	1	4/D
30.	Sorong-Jeffman	Irian(?)	15	2	6/D
31.	Batulicin-Kotabaru	Kalim.Sl.(P.Laut)	15	1	?
32.	Negerilima-Mamlea	P.Sulabesi-P.Buru	?	1	?
33.	Biak-Serui	P.Biak-P.Yapen.	112	1	?
34.	Serui(Yobi)-Nabire	Irian(P.Yapen.)	104	1	?
35.	Tual-Elat	P.Kaid.-P.Nuhu.	180	1	?
36.	Ternate-Bitung	P.Tern.-Sula.Ut.	156	1	?
37.	Hamuju-Balikpapan	Sula.Sl.-Kalim.Ti.	184	1	?
38.	Pagimana-Gorontalo	Sula.Te.-Sula.Ut.	95	1	?
39.	Jambi	Jambi	0.8	2	?
40.	Kartiasa	Kalim.B.	0.5	1	22/D
41.	Semuntal-Sedakan	Kalim.B.	0.5	1	40/D
42.	Pontianak	Kalim.B.	0.8	1	40/D
43.	Sekura	Kalim.B.	0.5	1	40/D

## APPENDIX-III

## CONSTRUCTION PLAN OF FERRY TERMINAL IN REPELITA VI

No.	Site	Region
1.	Atapupu	Nusa Tenggara Timur
2.	Tg. Serdang	Kalimantan Selatan
3.	Ambon	Maruku
4.	Namlea	Maruku
5.	Tual	Maruku
6.	Elat	Maruku
7.	Mamuju	Sulawesi Selatan
8.	Balikpapan	Kalimantan Timur
9.	Mentawai	Sumatera Barat
10.	Pananaro	Sulawesi Utara
11.	Untung Jawa	DKI Jakarta
12.	Jakarta	DKI Jakarta
13.	P. Panggang	DKI Jakarta
14.	Bolok II	Nusa Tenggara Timur
15.	Tj. Barong	Sumatera Selatan
16.	Bengkalis	Riau
17.	Kabir	Nusa Tenggara Timur
18.	Balauring	Nusa Tenggara Timur
19.	Muntok	Sumatera Selatan
20.	Palembang	Sumatera Selatan
21.	Aimere	Nusa Tenggara Timur
22.	Waingapu	Nusa Tenggara Timur
23.	Hengkapan	Riau
24.	Tobelo	Maluku
25.	Daruba	Maluku
26.	Ambon II	Maluku
27.	Haruku	Maluku
28.	Saparua	Maluku
29.	Nusa Laut	Maluku
30.	Adonara	Nusa Tenggara Timur
31.	Lewo Leba	Nusa Tenggara Timur
32.	Tg. Balai	Riau
33.	Bengkulu	Bengkulu
34.	Enggano	Bengkulu
35.	Kendari	Sulawesi Tenggara
36.	Langgara	Sulawesi Tenggara
37.	Biak	Irian Jaya
38.	Serui	Irian Jaya
39.	Habire	Irian Jaya
40.	Balo	Sulawesi Tenggara
41.	Hawasangka	Sulawesi Tenggara
42.	Bambaea	Sulawesi Tenggara
43.	Sikeli	Sulawesi Tenggara
44.	Tanjung Red	Kalimantan Timur
45.	Tarakan	Kalimantan Timur



46.	Bali Utara	Bali
47.	Lombok Utara	Lombok
48.	Aceh Barat	Aceh
49.	Semarang	Jawa Tengah
50.	Kumai	Kalimantan Tengah
51.	Banjarnasin	Kalimantan Selatan
52.	Merak III	Jawa Barat
53.	Bakauheni III	Lampung
54.	Tembilahan	Riau
55.	Dabo	Riau
56.	Tanjung Selor	Kalimantan Timur
57.	Daik	Riau
58.	Kamuru	Sulawesi Utara
59.	Wangi-Wangi	Sulawesi Utara
60.	Labuha	Maluku
61.	Lauwui	Maluku
62.	Tahuna	Sulawesi Utara
63.	Rainis	Sulawesi Utara
64.	Kisar	Maruku
65.	Iwaki	Maruku
66.	Tj. Pinang	Riau
67.	Senayang	Riau
68.	Gresik	Jawa Timur
69.	Bawean	Jawa Timur
70.	Berangas	Kalimantan Selatan
71.	Sungai Bali	Kalimantan Selatan
72.	Sorong	Irian Jaya
73.	Samate	Irian Jaya
74.	Waigeo	Irian Jaya
75.	Yenboru	Irian Jaya
76.	Manokwari	Irian Jaya
77.	Seram	Maruku
78.	Fak-Fak	Irian Jaya
79.	Tj. Selor	Kalimantan Timur
80.	Toli-Toli	Sulawesi Tengah
81.	Sanana	Maluku

## APPENDIX-IV

## REHABILITATION PLAN OF FERRY TERMINAL IN REPUBLIC VI

No.	Site	Region
1.	Poka	Ambon
2.	Galala	Ambon
3.	Ujung	Jawa Timur
4.	Kamal	Jawa Timur
5.	Ketapang	Jawa Timur
6.	Gilimanuk	Jawa Timur
7.	Padangbai	Bali
8.	Hunimua	Maluku
9.	Waipirit	Maluku
10.	Melaboh	D.I.Aceh
11.	Sinabang	D.I.Aceh
12.	Salakan	Sulawesi Utara
13.	Torobulu	Sulawesi Tenggara
14.	Tampo	Sulawesi Tenggara
15.	Bau-Bau	Sulawesi Tenggara
16.	Tolandona	Sulawesi Tenggara
17.	Birá	Sulawesi Selatan
18.	Pamatata	Sulawesi Selatan
19.	Palembang	Sumatera Selatan
20.	Bajoe	Sulawesi Selatan
21.	Kolaka	Sulawesi Tenggara
22.	Lembar	Nusa Tenggara Barat
23.	Bolok	Kupang
24.	Pototano	Nusa Tenggara Timur
25.	Lombok	Nusa Tenggara Barat

SS 1895 号 9/39

2 页

QUESTIONNAIRE  
(LIST OF DATA/INFORMATION REQUESTED)

FOR

THE DEVELOPMENT STUDY

ON

THE NATIONWIDE FERRY SERVICE ROUTES (STAGE I)

IN

THE REPUBLIC OF INDONESIA

Mark in the column "Request" is the Data/Information which the Preparatory Study Team strongly requests to get during the stay in Indonesia for the smooth conduct of the Study.

Please mark O for the Data/Information in the column "Availability" which is available.

Please mark X for the Data/Information in the column "Availability" which is not available.

General Information

No	Data/Information	Request	Availability	Name of Reports and Files	Place of Data Available
	1. Annual socio-economic and financial information in the latest 5 years (1) GNP/GDP by sector and by region (2) Population by regions and sub-regions (3) Other data indicating the socio-economic characteristics	<input checked="" type="radio"/> <input checked="" type="radio"/>	<input type="radio"/> <input type="radio"/> <input type="radio"/>	Statistic of Indonesia Statistic of Indonesia	Bureau Statistic Bureau Statistic Bureau Statistic
	2. National development plans (1) Long term national development plan (2) 5-year national development plan (3) Transportation sector development plans (4) Forecast of socio-economic indicators by region	<input checked="" type="radio"/> <input checked="" type="radio"/> <input checked="" type="radio"/> <input checked="" type="radio"/>	<input type="radio"/> <input type="radio"/> <input type="radio"/> <input type="radio"/>		DGLC M O C
	3. Regional development plan of Sulawesi, Java, Kalimantan, Sulawesi and Irian Jaya Province	<input checked="" type="radio"/>	<input type="radio"/>	JICA Office - South and North Sumatera regional development study - East Kalimantan-regional development study.	JICA Office CIPTA KARYA, JAKARTA.

II Transportation Systems

No	Data/Information	Request	Availability	Name of Reports and Files	Place of Data Available
	<p>1. Transportation administration</p> <p>(1) Administrative organization chart with jurisdictional responsibilities and brief explanation</p> <p>① National government agencies</p> <p>② Local government agencies</p> <p>③ Transport state enterprises</p> <p>④ Other indispensable organization and their functions of administrative bodies in ferry terminal</p> <p>(2) Organization/Relation charts of XOC, DGIC, DGSC, Perum ASDP and other authorities concerned to the port, especially ferry terminal, management</p> <p>(Please attach a description of the function of each section of planning, financing, construction, operation, facility maintenance, etc.)</p>	<p>⊙</p> <p>⊙</p> <p>⊙</p>	<p>○</p> <p>○</p> <p>○</p>	<p>M O C</p> <p>M O C Branch office at Province PASDP for ferry transport and service terminal operation.</p> <p>See Attachment-5.</p> <p>See next page Attachment-4</p>	<p>M O C</p> <p>KANWIL</p> <p>DGIC</p>
	<p>2. Development/Improvement policies, plans, and studies in the field of transport</p> <p>(1) Railways</p> <p>(2) Roads</p> <p>(3) Airports</p> <p>(4) ports</p> <p>(5) Ferry</p>	<p>⊙</p> <p>⊙</p> <p>⊙</p>	<p>○</p> <p>○</p> <p>○</p>	<p><del>2000</del> DPW</p> <p>DGSC</p> <p>DGIC</p>	

SS 1835 号 11/39

NO. 01 of 1976

1976 MAY 1976

SS 1895 月 12/39

No	Data/information	Request	Availability	Name of Reports and Files	Place of Data Available
	3. Domestic transportation system (1) Railway transport ① Railway network map ② Annual cargoes and passengers volume (by main long distance arteries in Sumatera and Java) ③ Fares and tariffs (by main long distance arteries in Sumatera and Java) ④ Time required railway transport (by main long distance arteries in Sumatera and Java) (2) Road transport ① Road network map ② The number of vehicles by kind (cars, trucks etc.) by region ③ Annual traffic number of vehicles by kind (by main long distance arteries in Sumatera and Java) ④ Annual cargoes and passengers volume (by main long distance arteries in Sumatera and Java) ⑤ Fares and tariffs (by main long distance arteries in Sumatera and Java) ⑥ Time required road transport (by main long distance arteries in Sumatera and Java) (3) Commercial flight ① Airline network map ② Annual cargoes and passengers volume by each route ③ Fares and tariffs by each route	<input type="radio"/> <input checked="" type="radio"/> <input checked="" type="radio"/>  <input type="radio"/> <input checked="" type="radio"/> <input checked="" type="radio"/>  <input checked="" type="radio"/>  <input checked="" type="radio"/> <input checked="" type="radio"/>  <input checked="" type="radio"/> <input checked="" type="radio"/>	<input type="radio"/> <input type="radio"/>  <input type="radio"/> <input type="radio"/> <input type="radio"/>  <input type="radio"/> <input type="radio"/> <input type="radio"/>  <input type="radio"/> <input type="radio"/>	Statistic of Indonesia Statistic of Indonesia  Statistic of Indonesia  Statistic of Province Statistic of Province  Statistic of Province  Statistic of Province  Statistic of Province  Statistic of Province	DGLC/PERUMKA DGLC/PERUMKA   Bureau Statistic Bureau Statistic Public Works Dept.  Public Works Dept.  Public Works Dept.  Public Works Dept.  Directorate General of Air Transport.

\* We hope to get the information or data concerned Table 1-4.

No	Data/Information	Request	Availability	Name of Reports and Files	Place of Data Available
(4) ports	<ul style="list-style-type: none"> <li>① port location map</li> <li>(5) Ferry terminal</li> <li>② Ferry terminal location map</li> <li>③ Management body of each ferry terminal</li> <li>④ Layout of each ferry terminal</li> <li>⑤ Management situation by each ferry terminal in the latest 5 years</li> <li>⑥ Construction and rehabilitation plan of ferry terminal</li> </ul>	<ul style="list-style-type: none"> <li>① <input type="radio"/></li> <li>② <input type="radio"/></li> <li>③ Table 1-1 * <input type="checkbox"/></li> <li>④ <input type="radio"/></li> <li>⑤ <input type="radio"/></li> <li>⑥ <input type="radio"/></li> </ul>	<ul style="list-style-type: none"> <li>① <input type="radio"/></li> <li>② <input type="radio"/></li> <li>③ <input type="radio"/></li> <li>④ <input type="radio"/></li> <li>⑤ <input type="radio"/></li> <li>⑥ <input type="radio"/></li> </ul>	<ul style="list-style-type: none"> <li>See Attachment-1 1994/1995</li> <li>See Attachment-2 Table</li> </ul>	<ul style="list-style-type: none"> <li>DGLC</li> <li>DGLC</li> <li>PASDP</li> <li>DGLC</li> <li>DGLC</li> </ul>
(6) Ferry transport	<ul style="list-style-type: none"> <li>(Please attach a description of each new established route in the column on Table 2)</li> <li>(7) Cargo ship transport</li> <li>① Cargo ship network map</li> <li>② Annual volume of cargoes (by main route)</li> </ul>	<ul style="list-style-type: none"> <li>① Table 2-1 * <input type="checkbox"/></li> <li>② <input type="radio"/></li> <li>③ Table 3-1 * <input type="checkbox"/></li> <li>④ <input type="radio"/></li> <li>⑤ Table 4-1 * <input type="checkbox"/></li> </ul>	<ul style="list-style-type: none"> <li>① <input type="radio"/></li> <li>② <input type="radio"/></li> <li>③ <input type="radio"/></li> <li>④ <input type="radio"/></li> <li>⑤ <input type="radio"/></li> </ul>	<ul style="list-style-type: none"> <li>See Attachment Table-3</li> <li>Cargo transport data are available at DGSC</li> <li>Cargo transport data are available at DGSC</li> </ul>	<ul style="list-style-type: none"> <li>DGSC</li> <li>DGSC</li> <li>DGSC</li> <li>DGSC</li> <li>DGSC</li> </ul>
(8) Passenger ship transport	<ul style="list-style-type: none"> <li>① Passenger ship network map</li> <li>② Annual number of passengers (by main route)</li> <li>(9) Traffic flow data and forecasts on cargoes, passengers and vehicles by each location-above mode</li> </ul>	<ul style="list-style-type: none"> <li>① Table 4-1 * <input type="checkbox"/></li> <li>② <input type="radio"/></li> </ul>	<ul style="list-style-type: none"> <li>① <input type="radio"/></li> <li>② <input type="radio"/></li> </ul>	<ul style="list-style-type: none"> <li>Cargo transport data are available at DGSC</li> </ul>	<ul style="list-style-type: none"> <li>DGSC</li> <li>DGSC</li> </ul>

SS 1895 号 14/39

No	Data/Information	Request	Availability	Name of Reports and Files	Place of Data Available
74247 1895	4. The latest national Origin/Destination survey data on cargoes, container cargoes, passengers and vehicles by each mode (road transport, railway transport, ferry transport, ship transport, etc.)	①	○	National O-D Survey in 1992	MOC
	5. Laws, regulations and technical standards (1) Laws and related regulations on ferry administration, management and construction (2) Maritime laws and regulations of the national shipping ① Laws/Acts on franchising system ② Approval system of fare and freight rate ③ Laws and regulations related to private sector joining in ferry service ④ Other laws and regulation related to ferry shipping (3) Technical standards for ferry facilities ① Technical standards related to design of ferry facilities, fishing port and coastal structures ② Other technical standards related to ferry facilities		○ ○ ○ ○ ○ ○ ○ ○ ○ ○		DGLC  M O C   DGLC / DGSC DGLC / DGSC DGLC / DGSC



III Environmental Protection

No	Data/Information	Request	Availability	Name of Reports and Files	Place of Data Available
	1. Legislation and policy (1) The latest legislative structure on Environmental Impact Assessment (EIA) (2) Policies on public participation in the process of development projects	⊙	○	AMDAL See Attachment-6	DGLC / MOC DGLC / MOC
	2. Socio-economic environment (1) Special attention to be paid in terms of public relation about development projects (including resettlement process)		○	AMDAL See Attachment-6	DGLC / MOC

IV Consultants

No	Data/Information	Request	Availability	Name of Reports and Files	Place of Data Available
1.	List of consultants (including ability, actual results, and the number of staffs, etc.) with their performance record (1) Meteorological survey (2) Hydrographic survey (3) Topographic survey (4) Geological survey (5) Environmental impact assessment	<input checked="" type="radio"/> <input checked="" type="radio"/> <input checked="" type="radio"/> <input checked="" type="radio"/> <input checked="" type="radio"/>	<input type="radio"/> <input type="radio"/> <input type="radio"/> <input type="radio"/> <input type="radio"/>	DGIC have a list of qualified consultants for such service, who registered in the procurement section. Sample of Consultant is listed in Attachment-7.	DGIC
2.	Laws/Regulations related to the consulting contract	<input checked="" type="radio"/>	<input type="radio"/>	DGIC have laws/regulation for selection of consulting firms for the project.	DGIC
3.	Available materials and equipments to conduct investigation and survey	<input checked="" type="radio"/>	<input type="radio"/>	Necessary materials and equipment in general are owned by consultants or the following rate on average for foreign aid projects was applocated.	
4.	Cost of investigation and survey (1) Meteorological survey (2) Hydrographic survey (3) Topographic survey (4) Geological survey (5) Environmental impact assessment	<input checked="" type="radio"/> <input checked="" type="radio"/> <input checked="" type="radio"/> <input checked="" type="radio"/> <input checked="" type="radio"/>	<input type="radio"/> <input type="radio"/> <input type="radio"/> <input type="radio"/> <input type="radio"/>	Current observation= 15 Mil Rp/site 200 - 250 Rp./m2 150 - 200 Rp./m2 450,000 - 500,000 Rp./m/hole 30 - 40 Mil. Rp./site	DGIC
5.	Sample estimation (1) Meteorological survey (2) Hydrographic survey (3) Topographic survey (4) Geological survey (5) Environmental impact assessment	<input checked="" type="radio"/> <input checked="" type="radio"/> <input checked="" type="radio"/> <input checked="" type="radio"/> <input checked="" type="radio"/>	<input type="radio"/> <input type="radio"/> <input type="radio"/> <input type="radio"/> <input type="radio"/>		

SS 1895 号17/39

V Counterpart

No	Data/Information	Request	Availability	Name of Reports and Files	Place of Data Available
	1. List of Counterpart of Indonesian Side	<input checked="" type="radio"/>	<input type="radio"/>		MOC/DGLC/DGSC

Kode Terminal	Nama Terminal	Propinsi	Subsidi	Kategori Operasi	Tempat	Administrasi	Alamat Terminal	Kota Terminal	Periode	Kategori Operasi	Alasan
101	Diponegoro	O. Jawa Tengah	P. Semarang	0							
102	Maliyand	O. Jawa Tengah	P. Semarang	0							
103	Maulaboh	O. Aceh	P. Aceh	0							
104	Glabang	O. Aceh	P. Aceh	0							
105	Ujungrejo	O. Aceh	P. Aceh	0							
106	Sirol	Sumatera Utara	P. Medan	0							
107	Sirol	Sumatera Utara	P. Medan	0							
108	Sirol	Sumatera Utara	P. Medan	0							
109	Sirol	Sumatera Utara	P. Medan	0							
110	Sirol	Sumatera Utara	P. Medan	0							
111	Sirol	Sumatera Utara	P. Medan	0							
112	Sirol	Sumatera Utara	P. Medan	0							
113	Sirol	Sumatera Utara	P. Medan	0							
114	Sirol	Sumatera Utara	P. Medan	0							
115	Sirol	Sumatera Utara	P. Medan	0							
116	Sirol	Sumatera Utara	P. Medan	0							
117	Sirol	Sumatera Utara	P. Medan	0							
118	Sirol	Sumatera Utara	P. Medan	0							
119	Sirol	Sumatera Utara	P. Medan	0							
120	Sirol	Sumatera Utara	P. Medan	0							
121	Sirol	Sumatera Utara	P. Medan	0							
122	Sirol	Sumatera Utara	P. Medan	0							
123	Sirol	Sumatera Utara	P. Medan	0							
124	Sirol	Sumatera Utara	P. Medan	0							
125	Sirol	Sumatera Utara	P. Medan	0							
126	Sirol	Sumatera Utara	P. Medan	0							
127	Sirol	Sumatera Utara	P. Medan	0							
128	Sirol	Sumatera Utara	P. Medan	0							
129	Sirol	Sumatera Utara	P. Medan	0							
130	Sirol	Sumatera Utara	P. Medan	0							
131	Sirol	Sumatera Utara	P. Medan	0							
132	Sirol	Sumatera Utara	P. Medan	0							
133	Sirol	Sumatera Utara	P. Medan	0							
134	Sirol	Sumatera Utara	P. Medan	0							
135	Sirol	Sumatera Utara	P. Medan	0							
136	Sirol	Sumatera Utara	P. Medan	0							
137	Sirol	Sumatera Utara	P. Medan	0							
138	Sirol	Sumatera Utara	P. Medan	0							
139	Sirol	Sumatera Utara	P. Medan	0							
140	Sirol	Sumatera Utara	P. Medan	0							
141	Sirol	Sumatera Utara	P. Medan	0							
142	Sirol	Sumatera Utara	P. Medan	0							
143	Sirol	Sumatera Utara	P. Medan	0							
144	Sirol	Sumatera Utara	P. Medan	0							
145	Sirol	Sumatera Utara	P. Medan	0							
146	Sirol	Sumatera Utara	P. Medan	0							
147	Sirol	Sumatera Utara	P. Medan	0							
148	Sirol	Sumatera Utara	P. Medan	0							
149	Sirol	Sumatera Utara	P. Medan	0							
150	Sirol	Sumatera Utara	P. Medan	0							
151	Sirol	Sumatera Utara	P. Medan	0							
152	Sirol	Sumatera Utara	P. Medan	0							
153	Sirol	Sumatera Utara	P. Medan	0							
154	Sirol	Sumatera Utara	P. Medan	0							
155	Sirol	Sumatera Utara	P. Medan	0							
156	Sirol	Sumatera Utara	P. Medan	0							
157	Sirol	Sumatera Utara	P. Medan	0							
158	Sirol	Sumatera Utara	P. Medan	0							
159	Sirol	Sumatera Utara	P. Medan	0							
160	Sirol	Sumatera Utara	P. Medan	0							
161	Sirol	Sumatera Utara	P. Medan	0							
162	Sirol	Sumatera Utara	P. Medan	0							
163	Sirol	Sumatera Utara	P. Medan	0							
164	Sirol	Sumatera Utara	P. Medan	0							
165	Sirol	Sumatera Utara	P. Medan	0							
166	Sirol	Sumatera Utara	P. Medan	0							
167	Sirol	Sumatera Utara	P. Medan	0							
168	Sirol	Sumatera Utara	P. Medan	0							
169	Sirol	Sumatera Utara	P. Medan	0							
170	Sirol	Sumatera Utara	P. Medan	0							
171	Sirol	Sumatera Utara	P. Medan	0							
172	Sirol	Sumatera Utara	P. Medan	0							
173	Sirol	Sumatera Utara	P. Medan	0							
174	Sirol	Sumatera Utara	P. Medan	0							
175	Sirol	Sumatera Utara	P. Medan	0							
176	Sirol	Sumatera Utara	P. Medan	0							
177	Sirol	Sumatera Utara	P. Medan	0							
178	Sirol	Sumatera Utara	P. Medan	0							
179	Sirol	Sumatera Utara	P. Medan	0							
180	Sirol	Sumatera Utara	P. Medan	0							
181	Sirol	Sumatera Utara	P. Medan	0							
182	Sirol	Sumatera Utara	P. Medan	0							
183	Sirol	Sumatera Utara	P. Medan	0							
184	Sirol	Sumatera Utara	P. Medan	0							
185	Sirol	Sumatera Utara	P. Medan	0							
186	Sirol	Sumatera Utara	P. Medan	0							
187	Sirol	Sumatera Utara	P. Medan	0							
188	Sirol	Sumatera Utara	P. Medan	0							
189	Sirol	Sumatera Utara	P. Medan	0							
190	Sirol	Sumatera Utara	P. Medan	0							
191	Sirol	Sumatera Utara	P. Medan	0							
192	Sirol	Sumatera Utara	P. Medan	0							
193	Sirol	Sumatera Utara	P. Medan	0							
194	Sirol	Sumatera Utara	P. Medan	0							
195	Sirol	Sumatera Utara	P. Medan	0							
196	Sirol	Sumatera Utara	P. Medan	0							
197	Sirol	Sumatera Utara	P. Medan	0							
198	Sirol	Sumatera Utara	P. Medan	0							
199	Sirol	Sumatera Utara	P. Medan	0							
200	Sirol	Sumatera Utara	P. Medan	0							

SS 1895 5/7/39

Kode Terminal	Nama Terminal	Propinsi	Lebahl	Kategori Operasi	Alamat	Alamat Terminal	Kota Terminal	Rencana	Kategori Damar	Gedung
3101	Dukuh Atas	Jawa Barat	P. Bandung	1			Bandung	33/31-36/79	0	
3102	Pulau Indah	Jawa Barat	P. Bandung	1			Bandung	33/31-36/79	0	
3103	Jakarta Selatan	Jawa Barat	P. Jakarta	1			Jakarta		0	
3104	Pulau Pramuka	Jawa Barat	P. Jakarta	1			Jakarta		0	
3105	Ujung Murni	Jawa Barat	P. Jakarta	1			Jakarta	34/25-36/78	0	Akan termasuk ke kelas 301/102
3106	Pulau Pramuka	Jawa Barat	P. Jakarta	1			Jakarta	34/25-36/78	0	Akan termasuk ke kelas 101/102
3201	Metro	Jawa Barat	P. Bandung	2			Bandung		0	
3202	Metro	Jawa Barat	P. Bandung	2			Bandung		0	
3203	Metro	Jawa Barat	P. Bandung	2			Bandung		0	
3204	Metro	Jawa Barat	P. Bandung	2			Bandung		0	
3205	Metro	Jawa Barat	P. Bandung	2			Bandung		0	
3206	Metro	Jawa Barat	P. Bandung	2			Bandung		0	
3207	Metro	Jawa Barat	P. Bandung	2			Bandung		0	
3208	Metro	Jawa Barat	P. Bandung	2			Bandung		0	
3209	Metro	Jawa Barat	P. Bandung	2			Bandung		0	
3210	Metro	Jawa Barat	P. Bandung	2			Bandung		0	
3211	Metro	Jawa Barat	P. Bandung	2			Bandung		0	
3212	Metro	Jawa Barat	P. Bandung	2			Bandung		0	
3213	Metro	Jawa Barat	P. Bandung	2			Bandung		0	
3214	Metro	Jawa Barat	P. Bandung	2			Bandung		0	
3215	Metro	Jawa Barat	P. Bandung	2			Bandung		0	
3216	Metro	Jawa Barat	P. Bandung	2			Bandung		0	
3217	Metro	Jawa Barat	P. Bandung	2			Bandung		0	
3218	Metro	Jawa Barat	P. Bandung	2			Bandung		0	
3219	Metro	Jawa Barat	P. Bandung	2			Bandung		0	
3220	Metro	Jawa Barat	P. Bandung	2			Bandung		0	
3221	Metro	Jawa Barat	P. Bandung	2			Bandung		0	
3222	Metro	Jawa Barat	P. Bandung	2			Bandung		0	
3223	Metro	Jawa Barat	P. Bandung	2			Bandung		0	
3224	Metro	Jawa Barat	P. Bandung	2			Bandung		0	
3225	Metro	Jawa Barat	P. Bandung	2			Bandung		0	
3226	Metro	Jawa Barat	P. Bandung	2			Bandung		0	
3227	Metro	Jawa Barat	P. Bandung	2			Bandung		0	
3228	Metro	Jawa Barat	P. Bandung	2			Bandung		0	
3229	Metro	Jawa Barat	P. Bandung	2			Bandung		0	
3230	Metro	Jawa Barat	P. Bandung	2			Bandung		0	
3231	Metro	Jawa Barat	P. Bandung	2			Bandung		0	
3232	Metro	Jawa Barat	P. Bandung	2			Bandung		0	
3233	Metro	Jawa Barat	P. Bandung	2			Bandung		0	
3234	Metro	Jawa Barat	P. Bandung	2			Bandung		0	
3235	Metro	Jawa Barat	P. Bandung	2			Bandung		0	
3236	Metro	Jawa Barat	P. Bandung	2			Bandung		0	
3237	Metro	Jawa Barat	P. Bandung	2			Bandung		0	
3238	Metro	Jawa Barat	P. Bandung	2			Bandung		0	
3239	Metro	Jawa Barat	P. Bandung	2			Bandung		0	
3240	Metro	Jawa Barat	P. Bandung	2			Bandung		0	
3241	Metro	Jawa Barat	P. Bandung	2			Bandung		0	
3242	Metro	Jawa Barat	P. Bandung	2			Bandung		0	
3243	Metro	Jawa Barat	P. Bandung	2			Bandung		0	
3244	Metro	Jawa Barat	P. Bandung	2			Bandung		0	
3245	Metro	Jawa Barat	P. Bandung	2			Bandung		0	
3246	Metro	Jawa Barat	P. Bandung	2			Bandung		0	
3247	Metro	Jawa Barat	P. Bandung	2			Bandung		0	
3248	Metro	Jawa Barat	P. Bandung	2			Bandung		0	
3249	Metro	Jawa Barat	P. Bandung	2			Bandung		0	
3250	Metro	Jawa Barat	P. Bandung	2			Bandung		0	
3251	Metro	Jawa Barat	P. Bandung	2			Bandung		0	
3252	Metro	Jawa Barat	P. Bandung	2			Bandung		0	
3253	Metro	Jawa Barat	P. Bandung	2			Bandung		0	
3254	Metro	Jawa Barat	P. Bandung	2			Bandung		0	
3255	Metro	Jawa Barat	P. Bandung	2			Bandung		0	
3256	Metro	Jawa Barat	P. Bandung	2			Bandung		0	
3257	Metro	Jawa Barat	P. Bandung	2			Bandung		0	
3258	Metro	Jawa Barat	P. Bandung	2			Bandung		0	
3259	Metro	Jawa Barat	P. Bandung	2			Bandung		0	
3260	Metro	Jawa Barat	P. Bandung	2			Bandung		0	
3261	Metro	Jawa Barat	P. Bandung	2			Bandung		0	
3262	Metro	Jawa Barat	P. Bandung	2			Bandung		0	

SS 1895 20/39

No	Nama	Tempat	Agama	Organisasi	Uraian	Kategori Organisasi	Administrasi	Alamat	Kota	Tanggal	Revisi	Kategori Organisasi
5403	Karabala	Timor Timur				3			Sulawesi	31/03-01/08		Kategori Organisasi
5404	Pulau Alvaro	Timor Timur			P Alvaro	3			Moy Mgl			Kategori Organisasi
6101	Bandarabala	Kalimantan Barat			S	0			Pontianak			Kategori Organisasi
6102	Siantan	Kalimantan Barat			S	0			Sintang			Kategori Organisasi
6103	Kertias Darat	Kalimantan Barat			S	0			Kertala			Kategori Organisasi
6104	Kertias Laut	Kalimantan Barat			S	0			Sabura			Kategori Organisasi
6105	Sakura I	Kalimantan Barat			S	0			Sakura			Kategori Organisasi
6106	Sakura II	Kalimantan Barat			S	0			Sakura			Kategori Organisasi
6107	Samarinda	Kalimantan Barat			S	0			Samarinda			Kategori Organisasi
6108	Samarinda	Kalimantan Barat			S	0			Samarinda			Kategori Organisasi
6109	Siak Jaya	Kalimantan Barat			S	0			Pangkalan	25/10-30/97		Kategori Organisasi
6110	Tangkubana	Kalimantan Barat			S	0			Tangkubana	25/10-30/97		Kategori Organisasi
6111	Kampung	Kalimantan Barat			P Kalimantan	0			Kalangan			Kategori Organisasi
6112	Tanah	Kalimantan Barat			P Kalimantan	0			Tanah			Kategori Organisasi
6113	Tanah	Kalimantan Barat			P Kalimantan	0			Tanah			Kategori Organisasi
6114	Tanah	Kalimantan Barat			P Kalimantan	0			Tanah			Kategori Organisasi
6115	Sungai	Kalimantan Barat			P Kalimantan	0			Sungai			Kategori Organisasi
6116	Tambelan	Kalimantan Barat			P Tambelan	0			Tambelan			Kategori Organisasi
6117	Peluh	Kalimantan Barat			P Peluh	0			Peluh			Kategori Organisasi
6118	Bukit	Kalimantan Barat			P Bukit	0			Bukit			Kategori Organisasi
6119	Kalangan	Kalimantan Barat			P Kalimantan	0			Kalangan			Kategori Organisasi
6201	Kumpi	Kalimantan Tengah			S Kumpi	0			Kumpi			Kategori Organisasi
6202	Pala	Kalimantan Tengah			S Pala	0			Pala			Kategori Organisasi
6203	Pala II	Kalimantan Tengah			S Pala	0			Pala			Kategori Organisasi
6204	Kulakapusa I	Kalimantan Tengah			S Kulakapusa	0			Kulakapusa			Kategori Organisasi
6205	Kulakapusa II	Kalimantan Tengah			S Kulakapusa	0			Kulakapusa			Kategori Organisasi
6206	Daruta I	Kalimantan Tengah			S Daruta	0			Daruta			Kategori Organisasi
6207	Daruta II	Kalimantan Tengah			S Daruta	0			Daruta			Kategori Organisasi
6301	Darumasin	Kalimantan Selatan			S Darumasin	0			Darumasin			Kategori Organisasi
6302	Batu	Kalimantan Selatan			S Batu	0			Batu			Kategori Organisasi
6303	Pangkal	Kalimantan Selatan			S Pangkal	0			Pangkal			Kategori Organisasi
6304	Qaranga	Kalimantan Selatan			S Qaranga	0			Qaranga			Kategori Organisasi
6401	Sungai	Kalimantan Timur			S Sungai	0			Sungai			Kategori Organisasi
6402	Panjajene	Kalimantan Timur			S Panjajene	0			Panjajene			Kategori Organisasi
6403	Tarakan	Kalimantan Timur			S Tarakan	0			Tarakan			Kategori Organisasi
6404	Tanjung	Kalimantan Timur			S Tanjung	0			Tanjung			Kategori Organisasi
6405	Ancam	Kalimantan Timur			S Ancam	0			Ancam			Kategori Organisasi
6406	Samarinda	Kalimantan Timur			S Samarinda	0			Samarinda			Kategori Organisasi
6407	Balangan	Kalimantan Timur			S Balangan	0			Balangan			Kategori Organisasi
6408	Balangan	Kalimantan Timur			S Balangan	0			Balangan			Kategori Organisasi
6409	Balangan	Kalimantan Timur			S Balangan	0			Balangan			Kategori Organisasi
7101	Bilung	Sulawesi Utara			S Bilung	0			Bilung			Kategori Organisasi
7102	Panarero	Sulawesi Utara			S Panarero	0			Panarero			Kategori Organisasi
7103	Tanaka	Sulawesi Utara			S Tanaka	0			Tanaka			Kategori Organisasi
7104	Itanika	Sulawesi Utara			S Itanika	0			Itanika			Kategori Organisasi
7105	Obontale	Sulawesi Utara			S Obontale	0			Obontale			Kategori Organisasi
7106	Pulubeh	Sulawesi Utara			S Pulubeh	0			Pulubeh			Kategori Organisasi
7201	Sulawesi	Sulawesi Tengah			S Sulawesi	0			Sulawesi			Kategori Organisasi
7202	Sulawesi	Sulawesi Tengah			S Sulawesi	0			Sulawesi			Kategori Organisasi
7203	Dado	Sulawesi Tengah			S Dado	0			Dado			Kategori Organisasi
7204	Pegemana	Sulawesi Tengah			S Pegemana	0			Pegemana			Kategori Organisasi
7205	Tali Tali	Sulawesi Tengah			S Tali Tali	0			Tali Tali			Kategori Organisasi
7206	Qanaka	Sulawesi Tengah			S Qanaka	0			Qanaka			Kategori Organisasi
7207	Darube	Sulawesi Tengah			S Darube	0			Darube			Kategori Organisasi

Pengecilan, Bungkusan, elijam  
Akan pindah ke Bungkusan baru

Kode Terminal	Nama Terminal	Pemodal	Kategori	Kategori Terminal	Administrasi	Alamat Terminal	Kota Terminal	Masukan	Kategori Dama	Gedung
7200	Kolondale	Sulawesi Tengah	3				Kolondale			
7201	Ongel	Sulawesi Tengah	3				Ongel			
7202	O'Nawa	Sulawesi Selatan	3				Walongga			
7203	Ora	Sulawesi Selatan	3				Ora	97/38-98/39 Type III		
7204	Pamalite	Sulawesi Selatan	3				Kennedy	30/7-31/790 Type III		
7205	Mampoy	Sulawesi Selatan	3				Mampoy	20/7-21/790 Type III		
7206	Ujung Pandang	Sulawesi Selatan	3				Ujung Pandang	94/95-95/96		
7207	Tonke Tonke	Sulawesi Selatan	3				Bontang	90/97-97/98 Type III		
7208	Kelapa	Sulawesi Tenggara	3				Kelapa			
7209	Torobalu	Sulawesi Tenggara	3				Torobalu			
7210	Tampo	Sulawesi Tenggara	3				Tampo	94/95-95/96 Type III		
7211	Day Day	Sulawesi Tenggara	3				Day Day			Akan pindah ke Were
7212	Solendong	Sulawesi Tenggara	3				Tolondora			
7213	Kandari	Sulawesi Tenggara	3				Kandari			
7214	Kantera	Sulawesi Tenggara	3				Kantero	37/98-30/99		
7215	Dembasa	Sulawesi Tenggara	3				Dembasa			
7216	Sikak	Sulawesi Tenggara	3				Sikak			
7217	Dulo	Sulawesi Tenggara	3				Dulo			
7218	Mawasangka	Sulawesi Tenggara	3				Mawasangka			
7219	Raha	Sulawesi Tenggara	3				Raha			
7220	Makindu	Sulawesi Tenggara	3				Makindu			
7221	Kamaru	Sulawesi Tenggara	3				Kamaru			
7222	Kemuro	Sulawesi Tenggara	3				Kemuro			
7223	Wandel	Sulawesi Tenggara	3				Wandel			
7224	Ambau	Sulawesi Tenggara	3				Ambau			
7225	Waha	Sulawesi Tenggara	3				Waha			
7226	Pigihulu	Sulawesi Tenggara	3				Pigihulu			
7227	Theoby	Sulawesi Tenggara	3				Theoby			
7228	Wasa	Sulawesi Tenggara	3				Wasa	25/98-30/99 Type III		Pulandang Tolondora
8101	Paha	Maluku	4				Paha	94/95-95/96		
8102	Qelita	Maluku	4				Ambon	31/95-95/96		
8103	Xumimus	Maluku	4				Ambon	94/95-95/96		
8104	Xisaput	Maluku	4				Clark	84/93-93/98		
8105	Mitu	Maluku	4				Ranibabi	87/90-98/99		
8106	Nemisa	Maluku	4				Wilems			
8107	Oridong	Maluku	4				Nemisa	94/95-95/96		
8108	Siganpeli	Maluku	4				Termale			
8109	Rum	Maluku	4				Siganpeli			
8110	Pobbale	Maluku	4				Tidora			
8111	Orumba	Maluku	4				Malamfara			
8112	Sakela	Maluku	4				Malamfara			
8113	Dobakak	Maluku	4				P.O. acim			
8114	Ruta	Maluku	4				Kesayla			
8115	Luhuhu	Maluku	4				P.O. bean			
8116	Lariud	Maluku	3				P.O. On			
8117	Tari	Maluku	3				Kelacell			
8118	Etel	Maluku	4				P. Nuhuywa			
8119	Suru	Maluku	4				P. Soram			
8120	P. Sauram	Maluku	4				P. Sulebani			
8121	P. Sauram	Maluku	4				P. Sauram			
8122	Otin	Maluku	3				P. Sauram			
8123	Narabau	Maluku	1				P. Narabau			
8124	Simpuku	Maluku	1				P. Simpuku			
8125	Tihauk	Maluku	1				P. Tihauk			
8126	Dofa	Maluku	1				P. Mandala			
9117	Dura	Maluku	1				Dura			
9170	Miran	Maluku	1				Miran			

SS 1895 22/39

Kode Terminal	Name Terminal	Propinsi	Lokasi	Kategori Terminal	Administrasi	Alamat Terminal	Kota Terdaftar	Pendataan	Kategori Damsas	Catatan
8129	Ula	Maluku	P. Ula	0			Ula		0	
8130	Oebe	Maluku	P. Oebe	0			Oebe		0	
8131	Dangina	Maluku	P. Dangina	0			Dangina		0	
8132	Juring	Maluku	P. Juring	0			Juring		0	
8133	Kola	Maluku	P. Kola	0			Kola		0	
8134	Wamun	Maluku	P. Wamun	0			Wamun		0	
8135	Sambisi	Maluku	P. Sambisi	0			Sambisi		0	
8136	Tapa	Maluku	P. Tapa	0			Tapa		0	
8137	Mohor	Maluku	P. Mohor	0			Mohor		0	
8138	Kelatu	Maluku	P. Kelatu	0			Kelatu		0	
8139	Mila	Maluku	P. Mila	0			Mila		0	
8140	Aneksa	Maluku	P. Aneksa	0			Aneksa		0	
8141	Napar	Maluku	P. Napar	0			Napar		0	
8142	Dandanya	Maluku	P. Dandanya	0			Dandanya		0	
8143	Parepuh	Maluku	P. Parepuh	0			Parepuh		0	
8144	Pulau Tilora	Maluku	P. Pulau Tilora	0			Pulau Tilora		0	
8145	Kela	Maluku	P. Kela	0			Kela		0	
8146	Woreli	Maluku	P. Woreli	0			Woreli		0	
8147	Thesu	Maluku	P. Thesu	0			Thesu		0	
8148	Lera	Maluku	P. Lera	0			Lera		0	
8201	Soraga	Maluku	P. Soraga	0			Soraga		0	
8202	Jeffman	Maluku	P. Jeffman	0			Jeffman		0	
8203	P. Gokong	Maluku	P. Gokong	0			P. Gokong		0	
8204	Samata	Maluku	P. Samata	0			Samata		0	
8205	Suloh	Maluku	P. Suloh	0			Suloh		0	
8206	Kilabo	Maluku	P. Kilabo	0			Kilabo		0	
8207	Wajama	Maluku	P. Wajama	0			Wajama		0	
8208	Mambawa	Maluku	P. Mambawa	0			Mambawa		0	
8209	Yamburu	Maluku	P. Yamburu	0			Yamburu		0	
8210	Makmar	Maluku	P. Makmar	0			Makmar		0	
8211	Sabana	Maluku	P. Sabana	0			Sabana		0	
8212	Kabusana	Maluku	P. Kabusana	0			Kabusana		0	
8213	Sami	Maluku	P. Sami	0			Sami		0	
8214	P. Nuk Kiri	Maluku	P. Nuk Kiri	0			P. Nuk Kiri		0	
8215	Inawatan	Maluku	P. Inawatan	0			Inawatan		0	
8216	Kokes	Maluku	P. Kokes	0			Kokes		0	
8217	Echik	Maluku	P. Echik	0			Echik		0	
8218	Quarantina	Maluku	P. Quarantina	0			Quarantina		0	
8219	Distary	Maluku	P. Distary	0			Distary		0	
8220	Mangawitu	Maluku	P. Mangawitu	0			Mangawitu		0	
8221	Mimani	Maluku	P. Mimani	0			Mimani		0	
8222	Moroka	Maluku	P. Moroka	0			Moroka		0	
8223	Wirba	Maluku	P. Wirba	0			Wirba		0	
8224	Dupul	Maluku	P. Dupul	0			Dupul		0	
8225	Kababa	Maluku	P. Kababa	0			Kababa		0	
8226	Olak	Maluku	P. Olak	0			Olak		0	
8227	Ayela	Maluku	P. Ayela	0			Ayela		0	
8228	Kwar	Maluku	P. Kwar	0			Kwar		0	
8229	Lepu Marsh	Maluku	P. Lepu Marsh	0			Lepu Marsh		0	
8230	Sandi	Maluku	P. Sandi	0			Sandi		0	
8231	Maba	Maluku	P. Maba	0			Maba		0	
8232	Mopora Jaya	Maluku	P. Mopora Jaya	0			Mopora Jaya		0	
8233	P. Maba	Maluku	P. Maba	0			P. Maba		0	



Table 2 Ferry Transportation Volume in the latest year (Year)

Kode	Name Lines	Kategori Operation Category	Kategori Lines Category	Mulai Operasi Opening Period	Jarak(NM) Distance	Lama Pelayaran Time of Trip	Frekuensi of Trip	Passenger	Car	Vehicle	Number Information	Stasiun	Stasiun
001	Balohar-Melabayan	3	B	15/1/20	15	15:00	2						
002	Ujung Pandang-Sinjene	3	B										
003	Walisaba-Sinjene	3	B										
A01	Sibela-Siloli	1	B	01/1/00	01	14:00	6/m						
A02	Abela-Tomah	1	B	02/8/00	02	8:00	10						
D01	Paling-Mura-Sibau	2	B	10/2/00	10	2:00							
002	Pulau-Silaban	4	B										
003	Pulau-Mentawai	1	B										
004	Pulau-Darumbasa	1	B										
005	Pulau-Darumbasa	1	B										
006	Teluk-Pondam-Ubon	1	B	11/12/00	11	12:30	6/m						
007	Teluk-Pondam-Ubon	1	B	10/1/00	10	1:00	3						
008	Teluk-Pondam-Ubon	1	B										
009	Teluk-Pondam-Ubon	1	B										
010	Teluk-Pondam-Ubon	1	B										
011	Qub-Dabo	4	B										
012	Qub-Tambahan	4	B										
013	Kundur-Sulawesi	4	B										
014	Salun-Temayu	4	B										
015	Terampur-Natuna	4	B										
016	Natuna-Subi	4	B										
017	Subi-Serasan	4	B										
018	Rumbili-Mumpa	3	B										
001	Jambi-T. Binang	1	B										
001	Serasan-Paloh	4	B										
001	Jambi-Kuala Tunggal	2	C										
002	Kuala Kunin-Melawa-Jabo	1	C			160/2/00							
003	Dasa-Pingir-Dalung-Daruruch	1	C										
001	Pulau-Serau-Jaball	1	D			26/12/00	2						
002	Pulau-Serau-Jaball	1	D										
003	Pulau-Serau-Jaball	1	D										
004	Pulau-Serau-Jaball	1	D										
005	Pulau-Serau-Jaball	1	D			110/1/00	1						
001	Teluk Sembilan-Kalumpang	1	A										

SS 1895 24/39

Kode	Nama Lintas	Kategori	Operasi	Kategori	Muti	Jarak(NM)	Lama	Polisi	Frekuensi	Staff Table	Passenger	Cargo	Vehicle	Info	Passenger	Cargo	Vehicle
Code	Ferry	Route(Lane)	Category	Line	Category	Opening	Distance	Time of Trip	Number	Passenger	Cargo	Vehicle	Info	Passenger	Cargo	Vehicle	
001	Zenitulum-Engano	1	A	A	2220	15.00	80										
002	Marak-Saib-Pam	2	A	A	2220	15.00	80										
003	Marak-Dakwahani	3	A	A	2220	15.00	80										
004	Marak-Dakwahani-Kapal Cepat	4	A	A	2220	15.00	80										
005	Jahar-Pulau Tidung	1	B	B	3457	20.215	2										
006	Jahar-Pulau Kelapa	2	B	B	3457	20.215	2										
007	Jahar-Pulau-Surabaya	3	B	B	3457	20.215	2										
008	Kampung-Celip	4	C	C	3457	20.215	2										
009	Samaran-Kurimulawa	1	D	D	3457	20.215	2										
010	Kirimulawa-Seger	2	D	D	3457	20.215	2										
011	Samaran-Kurimulawa	3	D	D	3457	20.215	2										
012	Samaran-Kurimulawa	4	D	D	3457	20.215	2										
013	Ulu-Kamal	1	A	A	2220	15.00	80										
014	Janjeh-Kafingel	2	B	B	3457	20.215	2										
015	Kafingel-Kinjaran	3	B	B	3457	20.215	2										
016	Qanin-Bewas	4	D	D	3457	20.215	2										
017	Katapan-Olimasuh	1	A	A	2220	15.00	80										
018	Ulu-Kamal	2	B	B	3457	20.215	2										
019	Pulau-Dak-Lember	3	A	A	2220	15.00	80										
020	Bano-Seger	4	A	A	2220	15.00	80										
021	Kayangan-Piolano	1	A	A	2220	15.00	80										
022	Seger-Lab-Bo	2	A	A	2220	15.00	80										
023	Seger-Komodo	3	A	A	2220	15.00	80										
024	Lab-Bo-Komodo	4	D	D	3457	20.215	2										
025	Sepa-Komodo-Lajo	1	B	B	3457	20.215	2										
026	Lab-Bo-Komodo	2	B	B	3457	20.215	2										
027	Kupang-Lerantuba	3	D	D	3457	20.215	2										
028	Kupang-Roi	4	A	A	2220	15.00	80										
029	Kupang-Lerantuba	1	B	B	3457	20.215	2										
030	Kupang-Lerantuba	2	B	B	3457	20.215	2										
031	Kupang-Lerantuba	3	A	A	2220	15.00	80										
032	Kupang-Lerantuba	4	A	A	2220	15.00	80										
033	Kupang-Lerantuba	1	B	B	3457	20.215	2										
034	Kupang-Lerantuba	2	B	B	3457	20.215	2										
035	Kupang-Lerantuba	3	D	D	3457	20.215	2										
036	Kupang-Lerantuba	4	D	D	3457	20.215	2										
037	Kupang-Lerantuba	1	D	D	3457	20.215	2										
038	Kupang-Lerantuba	2	D	D	3457	20.215	2										
039	Kupang-Lerantuba	3	C	C	3457	20.215	2										
040	Kupang-Lerantuba	4	D	D	3457	20.215	2										
041	Kupang-Lerantuba	1	B	B	3457	20.215	2										
042	Kupang-Lerantuba	2	D	D	3457	20.215	2										
043	Kupang-Lerantuba	3	D	D	3457	20.215	2										
044	Kupang-Lerantuba	4	D	D	3457	20.215	2										

SS 1895 7/25/39

Kode Code	Nama Lintas Route(Line)	Kategori Operation Category	Kategori Line Category	Mula Opening Period	Jarak(NM) Distance	Waktu Time of Trip	Freshwater	Tariff Table		Vessels on the Route		Statistics	
								Passenger Car	Vehicle	List	Number Information	Passenger Car	Vehicle
Q14	Sabu-Raba	4	B										
Q15	Wangapur-Almora	5	B										
Q16	Wangapur-Ciawadaha	1	B		15	1:30							
Q17	Kalibabak-Alipupu	1	B		64	2:00	47m						
Q18	Kalibabak-Nuhawati	4	B										
Q19	Kalibabak-Berembris	1	B		36	1:00							
Q20	Kabim-Bajauras	0	B		75								
Q21	Berembris-Bajauras	1	B	34	7:00	26	2:15						
Q22	Kalibabak-Bajauras	1	B										
Q23	Lerantukan-Bajauras	1	B		32	1:30							
Q24	Lerantukan-Kalibabak	2	B										
Q25	Wangapur-Rupa	1	B										
OP1	Kalibabak-Dili	4	B										
OP2	Mentawai-Dili	4	B										
OP3	Tondra-Tongkolab-Dapo	4	B										
OP4	Kalibabak-Keger	4	B										
OP5	Dili-Pulau Alau	3	B										
PV1	Negeri-Dili	4	B										
PV2	Wulum-Com	4	B										
PV3	Kelawatu-Com	4	B										
PV4	Amal-Com	4	B										
PV5	Klum-Com	4	B										
PV6	Wahab-Kalibabak	3	B										
PV7	Wahab-Pulau Alau	3	B										
Q01	Pontianak-Kelau-Sintian	1	B			0:0:15	40						
Q02	Kardasa-Berembris-Kardasa-Timur	5	B			0:0:15	22						
Q03	Sabura SDR	5	B			0:0:15	40						
Q04	Sempitai-Sabuday	5	B			0:0:15	40						
Q05	Re. Juvet. B. Siant	1	C			70	8:00	27m					
Q06	Taluk-Datun-Kalupang	1	C		34	7:00	27m						
Q07	Kelupang-T. Sana	4	B										
Q08	Tayan-Tarasu	1	B			0:1							
Q09	Singawang-Tambalan	4	B										
Q10	Re. Juvet. B. Siant-Kalupang	5	B										
Q11	Tillawangan-Kelau	1	B										
RO1	P. Talo SDR	1	B			0:1							
RO2	Kusaburpas SDR	1	B			0:1							
RO3	Denho SDR	4	B										
RS1	Kumar-Danyarman	4	B										
SO1	Batuksin-T. Sardan	1	B			4	10:25						

SS 1895 26/39

Code	Nama Lintas	Kategori Operasi	Kategori Lintas	Muti Operasi	Jarak (km)	Waktu Perjalanan	Frekuensi	Tarif	Penumpang	Vehicle	Statistics
Code Ferry	Rute (Line)	Operation	Category	Opening Period	Distance	Time of Trip	Number of Trip	Rate	Passenger	Vehicle	Value
S02	Gorontalo-Sungai Bui	4	A								
S01	Daly-Son-Ujung Pandani	4	A			1:00					
T01	Daly-Son-Pangajene	4	C			1:00	36				
T02	Tarakam-Sabukung	4	B		125	1:00	2/m				
T03	Tarakam-Talalar	4	B		63	0:30	2/m				
T04	Tarakam-Angem	4	B								
T05	Tanjungmadah-Sengkuluan	4	B								
T06	Santufuran-Samarinda	4	C								
T07	Tanjungmadah-Tali Tali	4	A								
T08	Sangguluan-Tali Tali	4	A								
T09	Sempidan-Tali Tali	4	A								
T10	Samarinda-Ompalih	4	A								
T11	Daly-Son-Mauju	4	A		184	2:25	4/m				
U01	Dusun-Panarang	4	D		144	1:00	6/m				
U02	Panarang-Tahunu	4	D								
U03	Tahunu-Rains	4	D								
U04	Dusun-P. Lambah	4	B								
U05	Ompalih-P. Limbata	4	A		55	1:30					
U06	Tempale-Bilung	4	A		158	1:20	5/m				
U07	Dusun-Pulau Many	4	D								
U08	Dusun-Pulau Ourado	4	B								
U09	Rafais-Daruba	4	B								
V01	Luwu-Sakur	4	B		48	5:00	1				
V02	Sakur-Banggai	4	B		58	6:25	2/m				
V03	Dusun-Kobnedala	4	C								
V04	B. Ilo-T. Bang	4	D								
W01	B. Ilo-P. Matela	4	B		17	3:00	2				
W02	D. Ilo-Kelaba	4	A		36	1:00	6				
X01	Tombokan-Tempo	4	D	31784	20	1:30	4				
X02	Tempo-Mafrene	4	D								
X03	Dusun-Tolondosa	4	D	37732	2	1:00	4				
X04	Dusun-Bur-Wa	4	B								
X05	Kendari-T. Ilo	4	B								
X06	Kendari-T. Ilo	4	B								
X07	Dusun-Sakali	4	D								
X08	Dusun-Masarak	4	D								
X09	Raha-Madano	4	D								
X10	Kamany-Wanci	4	D								
X11	Wangi-Ambau	4	D								
X12	Ambau-Waha	4	D								

SS 1895 27/39

Kode	Nama Lintas	Kategori Operasi	Kategori Operasi	Operasi	Jarak (NM)	Lama	Perkiraan	Frekuensi	Passenger	Vehicle	Vessels on the Route	Information	Station
Code Ferry	Route (Lines)	Category	Line	Period	Distance	Time of Trip	Number				List		
X13	Waher-Palshku	4	B	C	0.7	0.15	170						
Y01	Pohar-Galis	4	D										
Y02	Pohar-Bandane	4	D										
Y03	Satja-Namias	4	D		10.3	1.15	12						
Y04	Mummas-Wajepi	4	D										
Y05	Hudonur-Hukuh	4	D										
Y06	Pisu-Namias	4	D										
Y07	Mudis-Sipura	4	D										
Y08	Dastion-Sidangoh	4	D										
Y09	Dastion-Rum	4	D										
Y10	Dastion-Pulau Mery	4	D										
Y11	Dastion-Pulau Garuda	4	D										
Y12	Tobala-Daruba	4	D										
Y13	Sakata-Babant	4	D										
Y14	Sakata-Rusa	4	D										
Y15	Sakata-Kamal	4	D										
Y16	Kambo-Ora	4	D										
Y17	Tual-Elat	4	D		26	2.50	2						
Y18	Tual-Dobo	4	D		118	13.00	2/m						
Y19	Tual-Latal	4	D		126	15.00	4/m						
Y20	Elat-Dobo	4	D										
Y21	Elat-Walamud	4	D										
Y22	Sura-Dera	4	D										
Y23	Sura-Bandaneira	4	D										
Y24	Sana-Tobak Dura	4	D										
Y25	Sana-Ora	4	D										
Y26	Murahu-Sapura	4	D										
Y27	Samura-Tona	4	D										
Y28	Samura-Dola	4	D										
Y29	Mura-Vila	4	D										
Y30	Dobo-Dano	4	D										
Y31	Dobo-Kola	4	D										
Y32	Doga-Durak	4	D										
Y33	Samudra-Tapa	4	D										
Y34	Larut-Semula	4	D		176	14.00	2/m						
Y35	Tapa-Mulur	4	D										
Y36	Wahur-Vila	4	D										
Y37	Kor-Awala	4	D										
Y38	Hila-Wonca	4	D										
Y39	Kira-Ira	4	D										

SS 1895 号. 28/39

Kode	Name Lines	Kategori	Kategori	Muti	Jarak (NM)	Lama	Polayan	Frekwensi	Tarif Table		Vehicles on the Route		Statistik
									Operation Category	Opening Period	Distance	Time of Trip	
Y21	Sura-Tak Fak	4	0										
Y22	Opin-Wajima	4	0										
Y23	Opin-Tak Fak	4	0										
Y24	Kota-Manene	4	0										
Z01	Sorong-Jaliman	4	0			2 1:00		4					
Z02	Sorong-Tepohari	4	0										
Z03	Sorong-Samite	4	0										
Z04	Jaliman-Kilobo	4	0			2 1:00		2					
Z05	Suloh-Kalifa	4	0										
Z06	Manohari-Yemburao	4	0										
Z07	Yemburao-Nalvori	4	0										
Z08	Mohor-Sami	4	0										
Z09	Inamas-Koba	4	0										
Z10	Overinan-Disyany	4	0										
Z11	Bidayun-Mengawilu	4	0										
Z12	Morok-Wiba	4	0										
Z13	Marijau-Dugel	4	0			170 2:00							
Z14	Marauk-Tanah Merah	4	0										
Z15	Biak-Seni	4	0			112 1:00							
Z16	Aelis-Swar	4	0										
Z17	Sandi-Nabr	4	0										
Z18	Mopua Jay-Pumako	4	0			104 1:00							

SS 1895 29/39

Table 3. Cargo Ship Transportation Volume in the latest year (Year: )

No	Route	Distance (Kile)	Cargo ship operation/management		List	Yessels on the route		Statistics on the route Cargoes (1.000)
			Number of Trip/Day	Time of Trip		Tariff Table. Cargo	Information(Oracr, Type Size, Tonnage etc.)	
	1. Jakarta-Surabaya 2. Medan-Jakarta 3. Surabaya-Banjarmasin 4. Sulabaya-Ujungpandang							

Table 4. Passenger Ship Transportation Volume in the latest year (Year: )

No	Route	Distance (Kile)	Passenger ship operation/management		List	Yessels on the route		Statistics on the route Passengers (1.000)
			Number of Trip/Day	Time of Trip		Tariff Table Passenger	Information(Oracr, Type Size, Tonnage etc.)	
	1. Jakarta-Surabaya 2. Medan-Jakarta 3. Surabaya-Banjarmasin 4. Sulabaya-Ujungpandang							

SS 1895 号30/39

QUESTIONNAIRE  
(LIST OF DATA/INFORMATION REQUESTED)

FOR

THE DEVELOPMENT STUDY

ON

THE NATIONWIDE FERRY SERVICE ROUTES (STAGE I)

IN

THE REPUBLIC OF INDONESIA

2

• Mark in the column "Request" is the Data/Information which the Preparatory Study Team strongly requests to get during the stay in Indonesia for the smooth conduct of the Study.

• Please mark  for the Data/Information in the column "Availability" which is available.

• Please mark  for the Data/Information in the column "Availability" which is not available.



I. Ferry routes / terminals

No	Data/Information	Request	Availability					Name of Report and Files	Place of Data Available
			#1	#2	#3	#4	#5		
1. Facilities (1) Layout of facilities (on scale of 1/1000) (2) Inventory of facilities (Type, dimension, construction year, etc.) ⊙ Port facilities (mooring facilities, breakwater, etc.) ⊙ Navigational aids ⊙ Ferry terminals	⊙	○	○	○	○	○	DGSC PTPI I-IV	DGSC PTPI I-IV	
	○	○	○	○	○	○	DGSC PTPI I-IV	DGSC PTPI I-IV	
	○	○	○	○	○	○	DGSC PTPI I-IV	DGSC PTPI I-IV	
	○	○	○	○	○	○	DGSC PTPI I-IV	DGSC PTPI I-IV	
2. Outline of ports (1) Port tariffs, charges, and income (2) Construction and maintenance budget (3) Port administration and management systems (4) Management body of ferry terminal (including Port Management Body) (5) Role cargoes and passengers Statistics ⊙ Cargo handled volume by commodity (Ferry, Others) ⊙ Passenger traffic volume (Ferry, Others) ⊙ Express data of ferry transport	○	○	○	○	○	○	DGLC office	DGLC office	
	○	○	○	○	○	○	DGLC office	DGLC office	
	○	○	○	○	○	○	See Attachment-5	DGLC office	
	○	○	○	○	○	○	See Attachment-5	PASDP office KANWIL	
	○	○	○	○	○	○		DGSC	
	○	○	○	○	○	○		DGSC office-PTPI Office	

Legend #1) marked column: Belawan . #2) marked column: Jambi . #3) marked column: Tanjung Priok . #4) marked column: Tanjung Serak #5) marked column: Jombang Pandan . #6) marked column: Batak

SS 1895 27/3/39

SS 1895 17/32/39

No	Data/Information	Request	Availability						Name of Report and Files	Place of Data Available
			*1)	*2)	*3)	*4)	*5)	*6)		
	3. Information of existing facilities (for improvement) (1) Design conditions (Surcharge, ships, etc.) (2) Use of facilities		X	X	X	X	X	X	DGSC, PTF I-IV for respective points.	
	4. Information of new facilities for construction		X	X	X	X	X	X	DGSC, PTF I-IV for respective port	
	5. Natural data of proposed project sites (1) Meteorological conditions ① Wind data (2) Hydrographic conditions ① Wave data ② Tidal current data ③ Tidal level data ④ Sedimentation and drift sand data ⑤ Erosion data (3) Topographic maps (Land and sea) ① 1/1000~1/2000 ② 1/1000~1/50000 (4) Aerial photo. (5) Geological conditions ① Boring data ② Results of soil tests ③ Sounding data ④ Seabed materials data	⊙	⊙	⊙	⊙	⊙	⊙	⊙	⊙	Respective port office Respective port office Respective port office Respective port office Respective port office Respective port office Respective port office Respective port office Respective port office Respective port office Respective port office Respective port office Respective port office Respective port office

Legend \*1) marked column: Belawan . \*2) marked column: Tanjung . \*3) marked column: Tanjung Priok .  
\*4) marked column: Tanjung Pagar . \*5) marked column: Ujung Pandang \*6) marked column: Biak .

SS 1895 7/33/39

No	Data/Information	Request	Availability						Name of Report and Files	Place of Data Available
			*1)	*2)	*3)	*4)	*5)	*6)		
	③ Earthquake data (5) River conditions ① River basin and discharge ② River improvement condition (7) Typhoon and other disaster data (Landslide, flood, high tide, etc.)	<input checked="" type="radio"/>	<input type="radio"/>	<input type="radio"/>	<input type="radio"/>	<input type="radio"/>	<input type="radio"/>	<input type="radio"/>	Respective port office  Respective port office  Regional Development Office (BAPPEDA).	Respective port office  Respective port office  Regional Development Office (BAPPEDA).
	6. Land and coastal use in and around proposed project sites	<input checked="" type="radio"/>	<input type="radio"/>	<input type="radio"/>	<input type="radio"/>	<input type="radio"/>	<input type="radio"/>	<input type="radio"/>	BAPPEDA of Respective province.	BAPPEDA of Respective province.

Legend: \*1) marked column: Belawan. \*2) marked column: Jambi. \*3) marked column: Tanjung Priok.  
 \*4) marked column: Tanjung Perak. \*5) marked column: Ujung Pandang. \*6) marked column: Diak

SS 1895 07/34/39

II Environmental Protection

No	Data/Information	Request	Availability	Name of Reports and Files	Place of Data Available
	1. Natural environment by region (1) Species of valuable plants and animals (2) Present state of conservation or protection	○	○	See Attachment-6	AMDAL committee office of each province.
	2. Natural environment in and around proposed project Sites (1) Vegetation map (2) Location of environmentally vulnerable areas (Wetlands, mangroves, coral reefs, etc.) (3) Location of natural park and tourism zones	○ ○	○ ○		BAPPEDA office of each province. BAPPEDA office of each province.
	3. Environmental pollution (1) Present water quality in and around proposed project sites	○	○		AMDAL committee office of each province.
	4. Ratification of international conventions (Ramsar Convention, Washington Convention, etc.)	○	○		Environmental agency of central government.

SS 1895  $\frac{17}{35/39}$

V Latest/Updated data/information  
 The Preparatory Study Team has already got the mentioned - below data/information. If Indonesian side keeps the latest/updated one, please offer them to the Team.

No	Name of Reports and and Files	Year of Publication or Research	Publisher	Request	Availability	Latest/Updated Year of Publication	Place of Data Available
	1. Annual socio-economic and financial information						
	⊙ BULETIN STATISTIK SULAWESI KONTINYU STATISTICAL BULLETIN Indikator Ekonomi	1991	BIRO PUSAT STATISTIK	⊙	○	1995	Biro Pusat Statistik
	⊙ PENDAPATAN NASIONAL INDONESIA, 1985-1990	1986	BIRO PUSAT STATISTIK	⊙	○	1995	Biro Pusat Statistik
	⊙ NATIONAL Income of Indonesia, 1985-1990						
	⊙ SENSUS EKONOMI, 1986						
	Statistik Usaha Rumah tangga Angkatan Darat, Sunzai dan Danau						
	ECONOMIC CENSUS, 1986						
	Inland Waterway and Land Transport Statistics						
	Unincorporated Enterprises						
	⊙ Statistik, Keuangan Desa	1988/1989	BIRO PUSAT STATISTIK	⊙			
	Selaresi, Maluku, Bali dan Nusantara, 1988/1989						
	Village Government Financial Statistics, 1988/1989	1987/1988	BIRO PUSAT STATISTIK	⊙			
	⊙ Statistik Keuangan, 1987/1988						
	Financial Statistics, 1987/1988						
	⊙ Statistik Keuangan Pemerintah Daerah	1987/1988	BIRO PUSAT STATISTIK	⊙			
	Daerah Tingkat I (Province), 1987/1988						
	State & Local Government Financial Statistics						
	First Stage Region (Province).						
	⊙ SENSUS EKONOMI 1986	1986	BIRO PUSAT STATISTIK	⊙	○	1995	Biro Pusat Statistik
	ANALISA INVESTASI						
	2. Domestic regional information						
	(1) PRODUK DOMESTIK REGIONAL BRUTO	1983-1989					
	⊙ PRODUK DOMESTIK REGIONAL BRUTO KOTA/KABUPATEN PANGKAL PINANG, 1983-1989						
	XERJASAMA: BAPPEDA TINGKAT II KOTA/KABUPATEN PANGKAL PINANG						
	DENGAN: KANTOR STATISTIK KOTA/KABUPATEN PANGKAL PINANG						

No	Name of Reports and Files	Year of Publication or Research	Publisher	Request	Availability	Latest/Updated Year of Publication	Place of Data Available
	<p>① PRODUK DOMESTIK REGIONAL BRUTO NUSA TENGGARA TIMUR Kecuali Penggunaan</p> <p>② DEPARTEMEN PERUBUNGAN DEPARTEMEN PERUBUNGAN KANTOR PELAYANAN KE PROPINSI SUMATERA SELATAN KANTOR ADMINISTRATOR PELABUHAN PANGKALBALAK LAPORAN TAHUNAN KANTOR ADMINISTRATOR PELABUHAN PANGKALBALAK 1990/1991</p> <p>③ DEPARTEMEN PERUBUNGAN KANTOR PELAYANAN KE PROPINSI SUMATERA SELATAN KANTOR ADMINISTRATOR PELABUHAN KUNTOX LAPORAN TAHUNAN KANTOR ADMINISTRATOR PELABUHAN KUNTOX</p> <p>④ PENDAPATAN REGIONAL ⑤ PENDAPATAN REGIONAL KABUPATEN DATI II BANGKA TAHUN 1990 HASIL KERJA SAMA: PEKERINTAH KABUPATEN DATI II BANGKA DENGAN: KANTOR STATISTIK PROPINSI SUMATERA SELATAN</p> <p>⑥ REPELITA V RENCANA PEMBANGUNAN KECAKATAN (RPTK) KECAKATAN KOBARNA. 1992/1993 RENCANA PEMBANGUNAN LIXA TAHUN KELIMA DAERAH 1989/1990-1993/1994</p> <p>⑦ DALAX ANGKA PERUBUNGAN, DALAX ANGKA. 1990</p> <p>⑧ KECAKATAN KASONDI DALAX ANGKA 1990</p>	<p>1986-1989</p> <p>1990/1991</p> <p>1990/1991</p> <p>1990</p> <p>1992/1993</p> <p>1989-1994</p> <p>1990</p> <p>1990</p>	<p>KABUPATEN DATI II BUTON KABUPATEN DASAR TINGKAT II ALOR</p> <p>DEPARTEMEN PERUBUNGAN R. I. KANTOR STATISTIK</p>	<p>○</p> <p>○</p> <p>○</p> <p>○</p> <p>○</p> <p>○</p> <p>○</p>	<p>○</p> <p>○</p> <p>○</p> <p>○</p> <p>○</p> <p>○</p> <p>○</p>	<p>DGIC / MOG</p> <p>Bureau Statistic</p>	

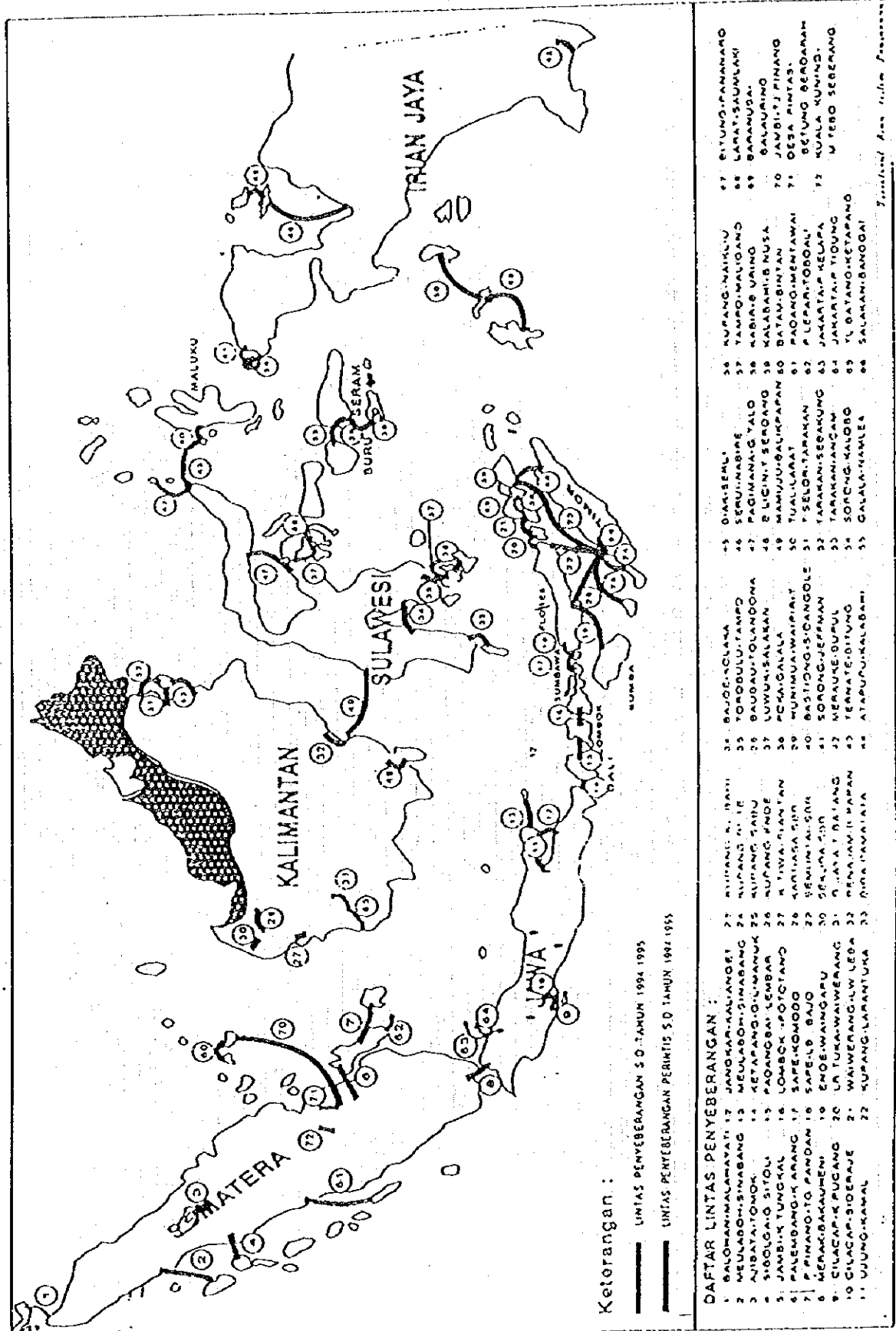
No	Name of Reports and and Files	Year of Publication or Research	Publisher	Request	Availability	Latest/Updated Year of Publication	Place of Data Available
3.	National development plans ① THE FIFTH FIVE-YEARS DEVELOPMENT PLAN OF DEPARTMENT OF COMMUNICATION. 1989 ② SEA COMMUNICATION DEVELOPMENT PROGRAM (A summary) 1990	1989 1990	DGLT (JAKARTA) DGSC	① ②	○ ○		BAPPENAS DGSC
4.	Domestic transportation system ① STATISTIK KENDARAAN BEROTOR DAN PANJANG JALAN VEKICES AND LENGTH OF ROAD STATISTICS. 1989 ② Statistik Angkutan Udara. 1987 ③ Direktori Perusahaan Bis Antar Provinsi. 1987 ④ DEPARTEMEN PERHUBUNGAN DIREKTORAT JENDERAL PERHUBUNGAN DARAT DATA KAPAL, PELABUHAN, DAN VOLUME ANGGUTAN PENYEBERANGAN TAHUN 1990 ⑤ DEPARTEMEN PERHUBUNGAN DIREKTORAT JENDERAL PERHUBUNGAN DARAT DAFTAR PERUSAHAAN PENYEBERANGAN DAN DATA KAPAL PENYEBERANGAN TAHUN 1988 DIREKTORAT LALU LINTAS DAN ANGGUTAN SUNGAI, DAKAU DAN PENYEBERANGAN ⑥ KATERI RAPAT DINAS PERUK ASOP TAHUN - 1991 ⑦ DEPARTEMEN PERHUBUNGAN DIREKTORAT JENDERAL PERHUBUNGAN DARAT DIREKTORAT LALU LINTAS DAN ANGGUTAN BUKU KUMPULAN SK. TARIK ANGGUTAN PENYEBERANGAN TAHUN 1991. SUBDIT. ANGGUTAN PERAIRAN DARATAN & PENYEBERANGAN	1989 1987 1987 1990 1985	BIRO PUSAT STATISTIK BIRO PUSAT STATISTIK BIRO PUSAT STATISTIK DIREKTORAT BINA SISTEM PRASARANA	① ② ③ ④ ⑤ ⑥ ⑦	○ ○ ○ ○ ○ ○ ○	1995	PU

SS 1895 2/15/38/39

No	Name of Reports and and Files	Year of Publication or Research	Publisher	Request	Availability	Latest/Updated Year of Publication	Place of Data Available
5.	The national Origin/Destination survey data ⊙ LALU LINTAS ANGGUTAN ANTAR PULAU, 1984 ⊙ MEKURUT GOLONGAN BARANG, DAERAH ASAL DAN TUJUAN INTERISLAND CARGO TRAFFIC BY COXODITY GROUP. ⊙ REGION OF ORIGIN AND REGION OF DESTINATION, 1984. ⊙ OTHERS	1984	BIRO PUSAT STATISTIK	⊙			
6.	⊙ DATA POKOK ⊙ KABUPATEN DAERAH TINGKAT I BELITUNG TAHUN 1991/1992 ⊙ BADAN PERENCANAAN PEMBANGUNAN DAERAH TINGKAT I BELITUNG ⊙ LAPORAN ⊙ SURVEY HYDROGRAFI PELABURHAN TOBELO MALAMBERA 1985	1991/1992					
		1985					



Fig. 1-1(1) INTER-ISLAND TRANSPORTATION  
UPTO YEAR 1994/1995



## ATTACHMENT-2

Table 1-4-1 Management Body of Ferry Transportation

No	Route	Shipping		Terminal	
		PASDP	Private	MOC	PASDP
1	Saban-Malahayati	○		○	
2	Melaboh-Sinabang	○		○	
3	Ajibata-Tomok		○	○	
4	Jambi City	○		○	
5	Jambi-Kualatungkal	○		○	
6	Palembang-Kayuarang		○	○	
7	Bangka-Belitung	○		○(1)	
8	Merak-Bakaheuni	○	○		○
9	Cilacap-Kalipucang	○	○	○	
10	Ujung-Kamal	○	○		○
11	Jankar-Kalianget	○		○	
12	Ketapang-Gilimanuk	○	○		○
13	Padangbai-Lembar	○	○		○
14	Lombok-Tano	○	○		○
15	Sape-Komodo-Labuh.	○		○	
16	Kupang-Larantuka	○		○	
17	Kupang-Rote	○		○	
18	Kupang-Kalabahi	○		○	
19	Kupang-Sabu	○		○	
20	Lar.-Yaiv.-Lewol.	○		○	
21	Pontianak City	○		○	
22	Kartiasa River Cr.	○		○	
23	Semuntai River Cr.	○		○	
24	Sekura River Cr.	○		○	
25	Kerauke-Bupul	○		○	
26	Penajam-Balikpapan	○	○	○	
27	Bajoe-Kolaka	○	○	○	
28	Bira-Pamatata	○		○	
29	Toroburu-Tampo	○		○	
30	Baubau-Tolandona	○		○	
31	Luwuk-Sabang-Salakan	○		○	
32	Poka-Galala	○		○	
33	Huninua-Waipirit	○	○	○	
34	Sorong-Jeffman	○		○	
35	Sibolga-Gn.Sitoli	○	○	○	

Note: PASDP: Perum ASDP

(1): Terminal facilities belong to DGSC (Directorate  
General Sea Communications)

MOC: Regional office of MOC (Ministry of Communications)

TABLE 1-5-1(1) FERRY TRAFFIC VOLUME DURING PAST THREE YEARS

## DATA ANGKUTAN PENYEBERANGAN TAHUN 1994

No.	Route	Distance (Mile)	Passenger	Cargo (Ton)	4-Wheels Vehicle (Unit)	2-Wheels Vehicle (Unit)	No. of Trip	No of Ship	Time of Trip (hour)
1	Merak - Bakauheni	15.0	11,363,156	4,541,757	1,389,755	15,069	80 / day	15	1:30.00
2	Kelapang - Gilimanuk	4.0	5,536,954	2,035,480	855,705	101,716	244 / day	15	0:30.00
3	Ujung - Kamal	2.5	16,390,961	1,290,630	1,535,548		220 / day	11	0:20.00
4	Padangbai - Lembar	34.0	1,413,944	275,208	85,387	48,246	24 / day	13	4:00.00
5	Lombok - Poto Lano	11.0	916,040	62,232	90,042		28 / day	7	1:30.00
6	Bajoe - Kotaka	96.0	333,626	56,932	21,587	1,528	6 / day	7	10:00.00
7	Jangkar - Kafanget	42.0	73,988	3,327		5,603	2 / day	11	4:00.00
8	Kalianget - Kangean	90.0	49,374	6,328		1,531	4 / day	1	
9	Bira - Pamalata	17.0	85,078	1,716	4,705	3,018	2 / day	1	3:00.00
10	Palembang - Kayuarang	96.0	54,282	2,530	3,632		2 / day	3	12:00.00
11	Bangka - Belitung	110.0	29,127	1,194	412	505	1 / day	1	14:00.00
12	Meulaboh - Sinabang	101.0	21,202	2,034	518	398	6 / week	1	14:00.00
13	Balohan - Malahayati	15.0	90,172	5,012	3,300	7,518	2 / day	1	1:20.00
14	Kodya Pontianak	8.0					40 / day	2	0:15.00
15	Kartasa	5.0	1,082,090	12,325	55,531	851,998	22 / day	1	0:15.00
16	Semuntai	5.0					40 / day	1	0:15.00
17	Sekura	4.0					40 / day	1	0:15.00
18	Balikpapan - Penajam	8.0	484,900	135,924	91,216	38,390	36 / day	5	1:00.00
19	Poka - Galala	7.0	4,922,261	15,394	395,682	468,510	120 / day	3	0:15.00
20	Hunimua - Waipirit	10.3	361,115	9,248	18,698	9,388	12 / day	2	1:15.00
21	Kupang - Lantuka	120.0	54,773	5,858	749	671	4 / week	1	14:00.00
22	Kupang - Rote	40.0	108,244	4,021	2,921	10,658	2 / day	2	3:30.00
23	Kupang - Kalabahi	137.0	22,782	2,999	178	294	4 / week	2	14:00.00
24	Kupang - Sabu	115.0	19,127	2,977	62	243	2 / week	1	11:00.00
25	Atapupu - Kalabahi	64.0	4,103	163	21	50	4 / week	1	7:00.00
26	Sape - Komodo - L. Bajo	54.0	52,209	1,936	2,090	291	3 / day	2	8:00.00
27	Luwuk - Salakan	46.0	17,242	3,789	477	837	1 / day	1	5:00.00
28	Salakan - Banggai	58.0	1,500	271	34	9	2 / week	1	6:25.00
29	Sorong - Jeffman	9.0	38,443	2,678			4 / day	2	1:00.00
30	Merauke		9,374	28,188					
31	Ajibata - Tomok	3.0	195,193	313,822	51,633				
32	Kalipucang - Citacap	35.0	145,364	484		675	10 / day	4	6:00.00
33	Citacap - Sidareja	22.0					2 / day	1	1:00.00
34	Torobutu - Tampo	20.0	78,521	4,482	6,158	2,994	6 / day	1	1:30.00
35	Lantuka - Waiwerang	15.0	4,469	361	95	48	1 / day	1	1:30.00
36	Waiwerang - Lewoleba	15.0	1,768	7	14	2	1 / day	1	1:30.00
37	Lewoleba - Lantuka	30.0	6,147	125	146	80	1 / day	1	1:30.00
38	Kupang - Ende	148.0	32,781	4,255	474	465	2 / week	1	3:10.00
39	Kupang - Naikliu		199	7	3	2			
40	Ende - Waingapu	95.0	16,236	1,357	323	439	4 / week	1	16:00.00
41	Waingapu - Sabu	114.0	5,962	666	22	32	4 / week	1	10:00.00
42	Baranusa - Kalabahi	35.0	10,199	603	132	128	1 / day	12	4:00.00
43	Balauring - Kalabahi		1,921	51	5		1 / day	1	4:00.00
44	Balauring - Baranusa	26.0	828	14	22		1 / day	1	2:45.00
45	Balauring - Lewoleba	32.0	844	2			1 / day	1	3:30.00
46	Baubau - Totandona	9.0	69,597	4,671	3,364	5,480	4 / day	1	1:00.00
	<b>Total 1:</b>		<b>44,106,096</b>	<b>8,841,061</b>	<b>4,677,441</b>	<b>1,576,916</b>			

## DATA ANGKUTAN PENYEBERANGAN TAHUN 1994

No.	Route	Distance (Mile)	Passenger	Cargo (Ton)	4-Wheels Vehicle (Unit)	2-Wheels Vehicle (Unit)	No. of Trip	No. of Ship	Time of Trip (hour)
Total I :			44,106,096	8,841,061	4,677,441	1,576,916			
47	Ternate - Sidanghole	11.0	322,507	10,757	10,741	5,024	4/day	1	1:15.00
48	Ternate - Bitung	156.0	29,482	10,611	395	195	5/week	1	17:20.00
49	Bitung - Pananaro	144.0	2,076	98	93	20	6/week	1	16:00.00
50	Rasau Jaya - Tik. Balang	70.0	133,010	388	639	62	2/week	1	8:00.00
51	Teluk Balang - Ketapang	45.0					2/week	1	5:00.00
52	Sibolga - Nias	82.0	50,241	12,815	3,954	1,458	1/day	1	8:00.00
53	Padang - Mentawai/Sikaka	113.0	6,818	1,050	17	14	6/week	1	12:30.00
54	Galala - Namies	85.0	30,697	4,069	234	624	1/day	1	9:25.00
55	Mamuju - Balikpapan	184.0	23,030	3,311	1,214	221	4/week	1	20:25.00
56	Pagimana - Gorontalo	95.0	31,297	9,817	399	426	1/day	1	10:30.00
57	Batulicin - Tj. Serdang	4.0	99,302	17,225	32,284	22,194	10/day	1	0:25.00
58	Tual - Elai	26.0	9,450	229	19	95	2/day	1	2:50.00
59	Tual - Larat	136.0	6,804	973	10	53	2/week	1	14:00.00
60	Larat - Sauntaki	126.0	3,700	589	9	19	2/week	1	13:00.00
61	Tual - Dobo	118.0	1,406	13	4		2/week	1	13:00.00
62	Biak - Serui	112.0	28,866	2,251	3	34	1/day	1	12:00.00
63	Serui - Nabire	104.0	10,164	935	3	10	1/day	1	12:00.00
64	Telaga Pungkur - Tj. Uban	10.0	7,792	2,860	21	255			
65	Marina - P. Kelapa	26.0	8,724	71		18	NA	NA	NA
66	Marina - P. Tidung	20.0	3,969	6		1	NA	NA	NA
67	Jambi		1,087	711	176		NA	NA	NA
68	Tarakan - Tj. Selor		402	962			NA	NA	NA
69	Tarakan - Ancan		991	230			NA	NA	NA
70	Tarakan - Sembakung		2,707	88			NA	NA	NA
<b>TOTAL :</b>			<b>44,920,618</b>	<b>8,921,117</b>	<b>4,727,656</b>	<b>1,607,697</b>			

## 1-4 Ferry Transportation System and Activities

### 1-4-1 General

Ferry transportation plays an important role in archipelagic countries like Indonesia. The Indonesian government defines ferry services as follows.

1. A ferry is a floating bridge.
2. Ferry activities consist of carrying passengers and cargoes across a river or body of water.
3. Ferry activities have fixed routes and regular schedules.
4. A ferry vessel is a special form of vessel.

The Indonesian government constructs ferry terminals with its own funds and offers low rates for users. Furthermore, the government is making efforts to develop ferry services on non-profitable routes, the called pioneer routes, to improve the lives of its people.

### 1-4-2 Organizations Responsible for Administering Ferry Transportation

#### 1. Ministry of Communications

In Indonesia, the transportation of cargoes and passengers is supervised by the Ministry of Communications. Organization chart of the Ministry of Communications is shown in Fig. 1-4-1.

The Ministry of Communications has three directorate generals corresponding to the three means of transportation, namely, Directorate General of Land Transport & Inland Waterways, Directorate General of Sea Communications and Directorate General of Air Communications.

Major functions of government in ferry port development are as follows:

- a. Establishing the national ferry port policy
- b. Review and coordination of ferry port planning
- c. Financing ferry port development
- d. Undertaking port construction
- e. Establishment of technical standards
- f. Investigation of natural conditions

Directorate General of Land Transport & Inland Waterways has the central responsibility for ferry route administration at the national level. In addition, the Ministry of Communications has 27 regional offices. Regional office Heads are responsible for ferry port development at the regional level.

The head of a port (terminal), under the head of a regional office, is responsible for daily management such as the operation of public facilities, maintenance, etc.

The construction of ferry port is executed by a special agency (project manager) who is appointed by the Minister of Communications.

Perum ASDP operates ferry transportation on rivers, lakes and sea in all areas of Indonesia and terminal (port) branch services.

### 3) Responsibilities of DGLT in Ferry Transportation

Before DGLT's reorganization in 1989, there was an integrated directorate to supervise ferry transportation. The present organization has been divided into three directorates, each with their respective function.

Sub Directorate of Inland Waterways & Ferry Transport in Directorate of Traffic and Transport is responsible for granting permission for ferry transportation including terminal services and management as well as supervising and providing technical guidance to management.

Sub Directorate of Inland waterways Terminal & Port in Directorate of Infrastructural System Development oversees the construction of ferry ports & terminals and provides technical guidance for the development, rehabilitation and maintenance of ferry ports & terminals.

Sub Directorate of Inland Waterways & Ferry Lines in Directorate of Infrastructural System Development provides technical guidance for mapping, planning of navigation aids and maintenance dredging and development of inland waterways and ferry lines.

Sub Directorate of Safety & Technique for Inland Waterways & Ferry Transport prepares technical guidelines for shipping operations and oversees shipbuilding and maintenance of ships.

The number of personnel engaged in ferry transportation sections of DGLT is 87 at present.

## 1-4-3 Organizations Responsible for Management/Operation of Ferry Transportation

### 1. General

Concerning the operation of ferry transportation, shipping is managed and operated by the Perum ASDP or private companies; ferry terminals are managed by terminal offices of either MOC or the Perum ASDP. The Perum ASDP manages and operates 10 terminals in five lines at present. Management bodies for the existing routes are shown in Table 1-4-1.

The Perum ASDP operates not only benefit lines but also non-benefit lines. Benefit lines are called commercial lines and non-benefit lines are called pioneer lines.

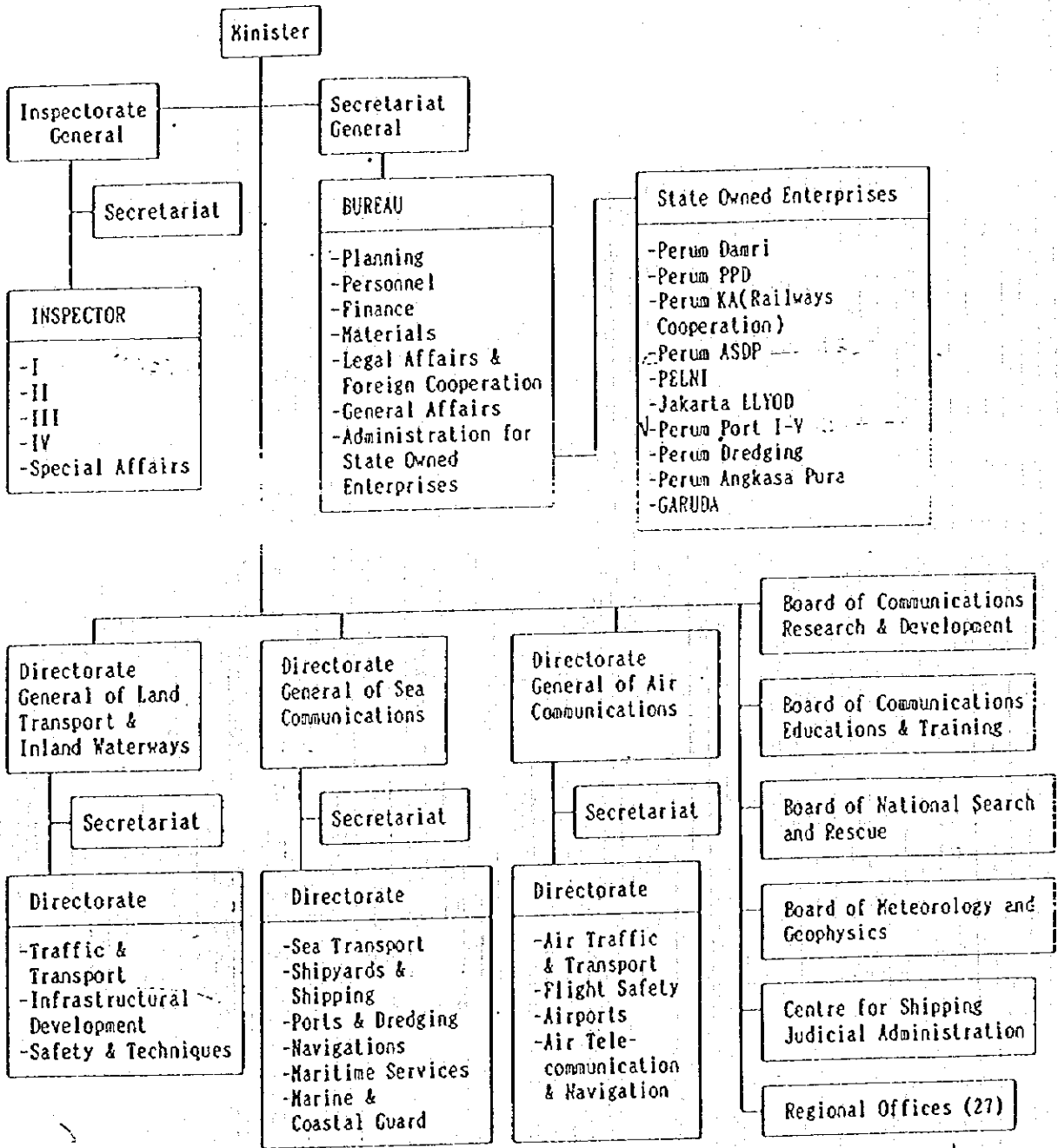


Fig. 1-4-1 Organization Chart of Ministry of Communications

1. 1017 P.S.  
 2. Perencanaan, s.  
 3. Koordinasi, s.  
 4. Penyelenggaraan  
 sistem komunikasi  
 di C.T.

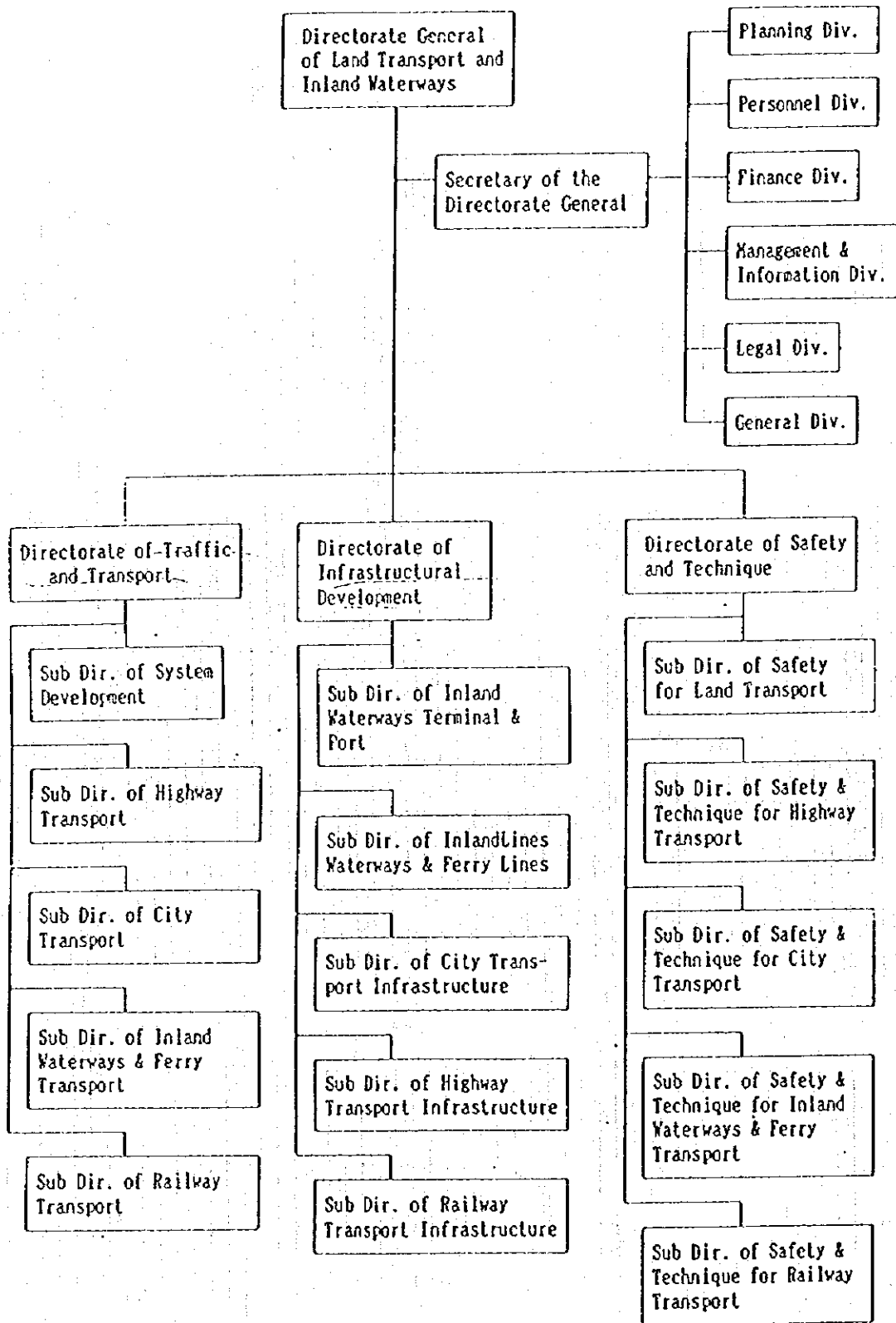


Fig. 1-4-2 Organization Chart of DGLT



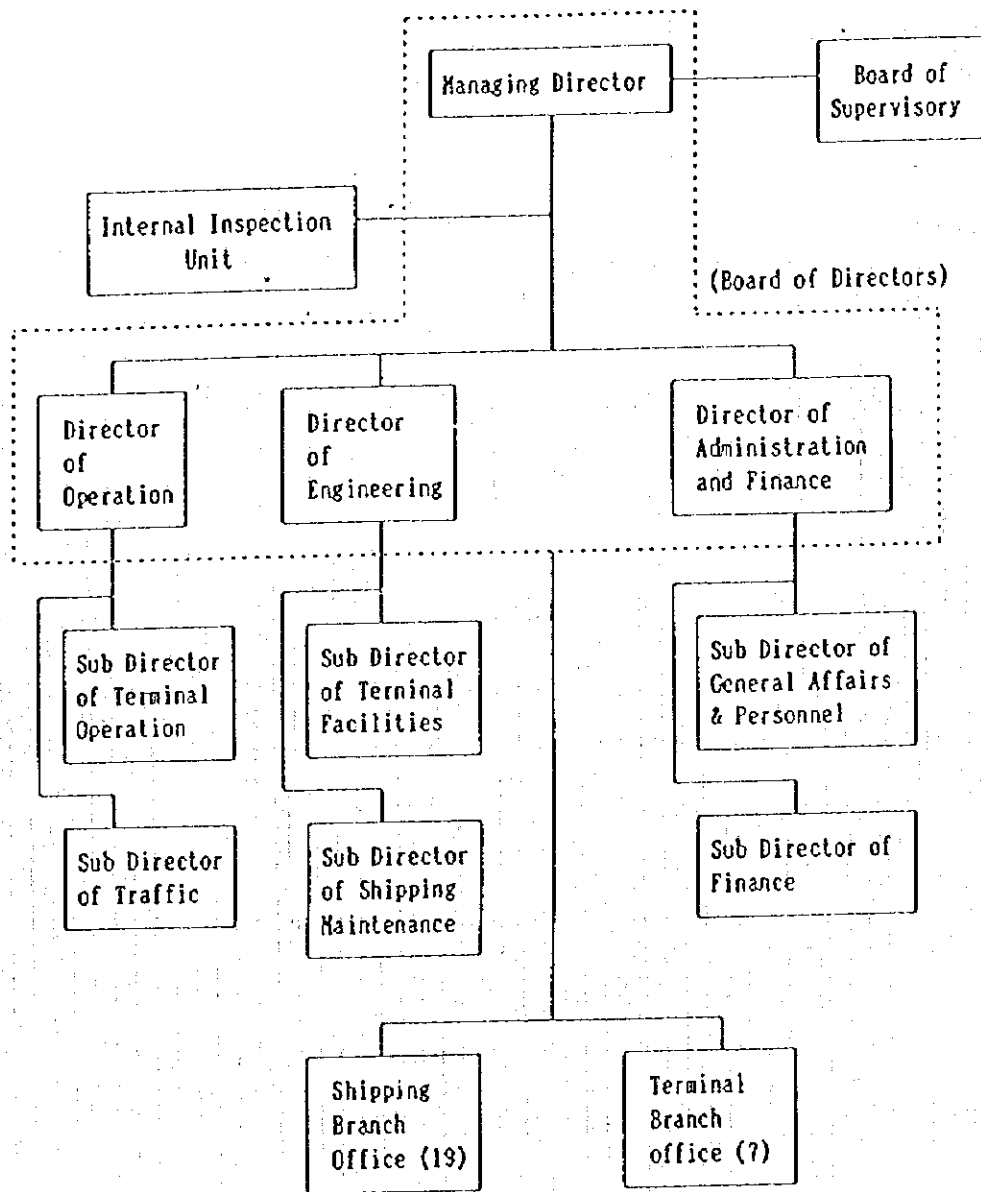


Fig. 1-4-3 Organization Chart of Perum ASDP

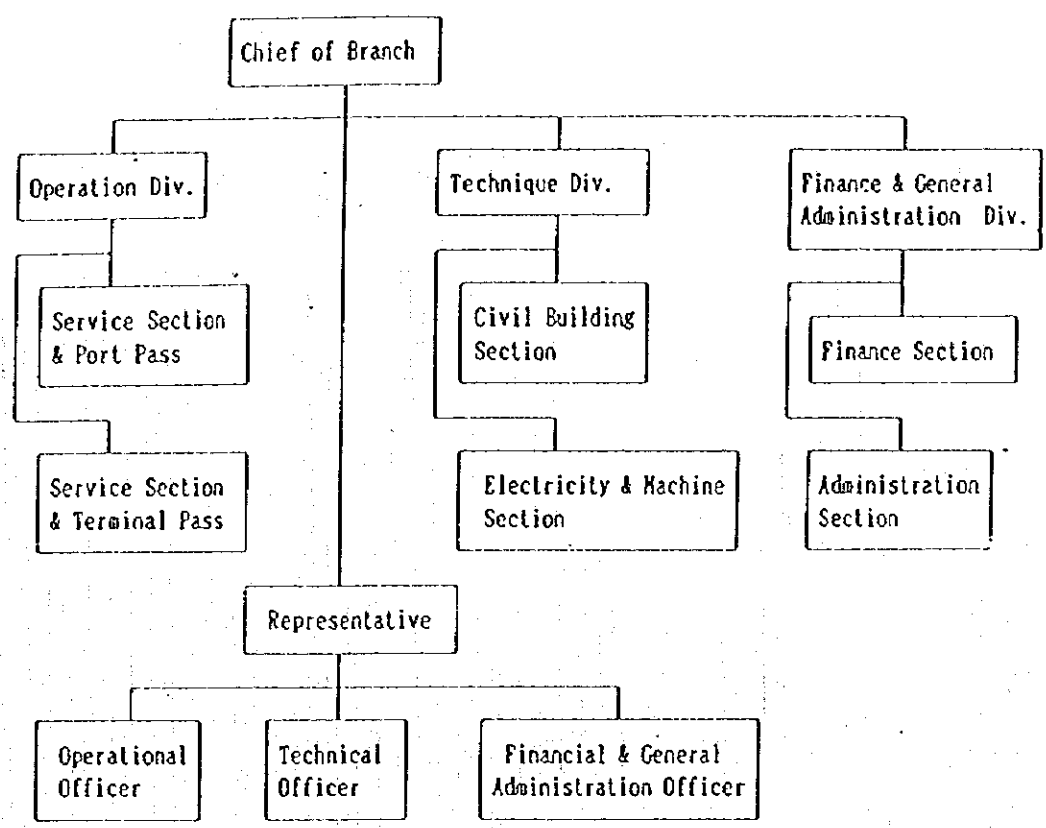


Fig. 1-4-5 Organization Chart of Terminal Branch (Class II) of the Perum ASDP

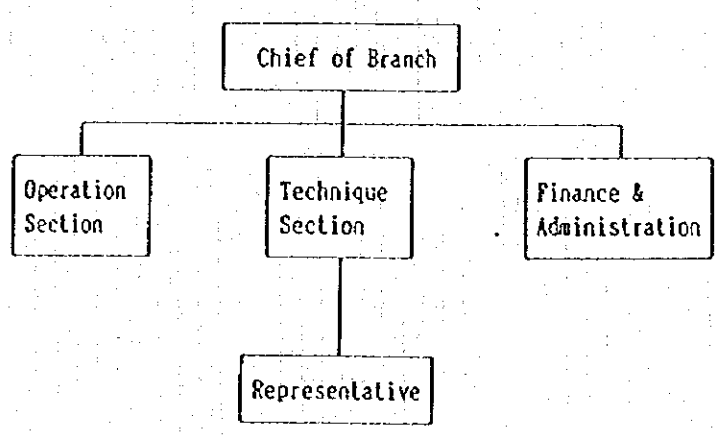


Fig. 1-4-6 Organization Chart of Terminal Branch (Class II) of the Perum ASDP

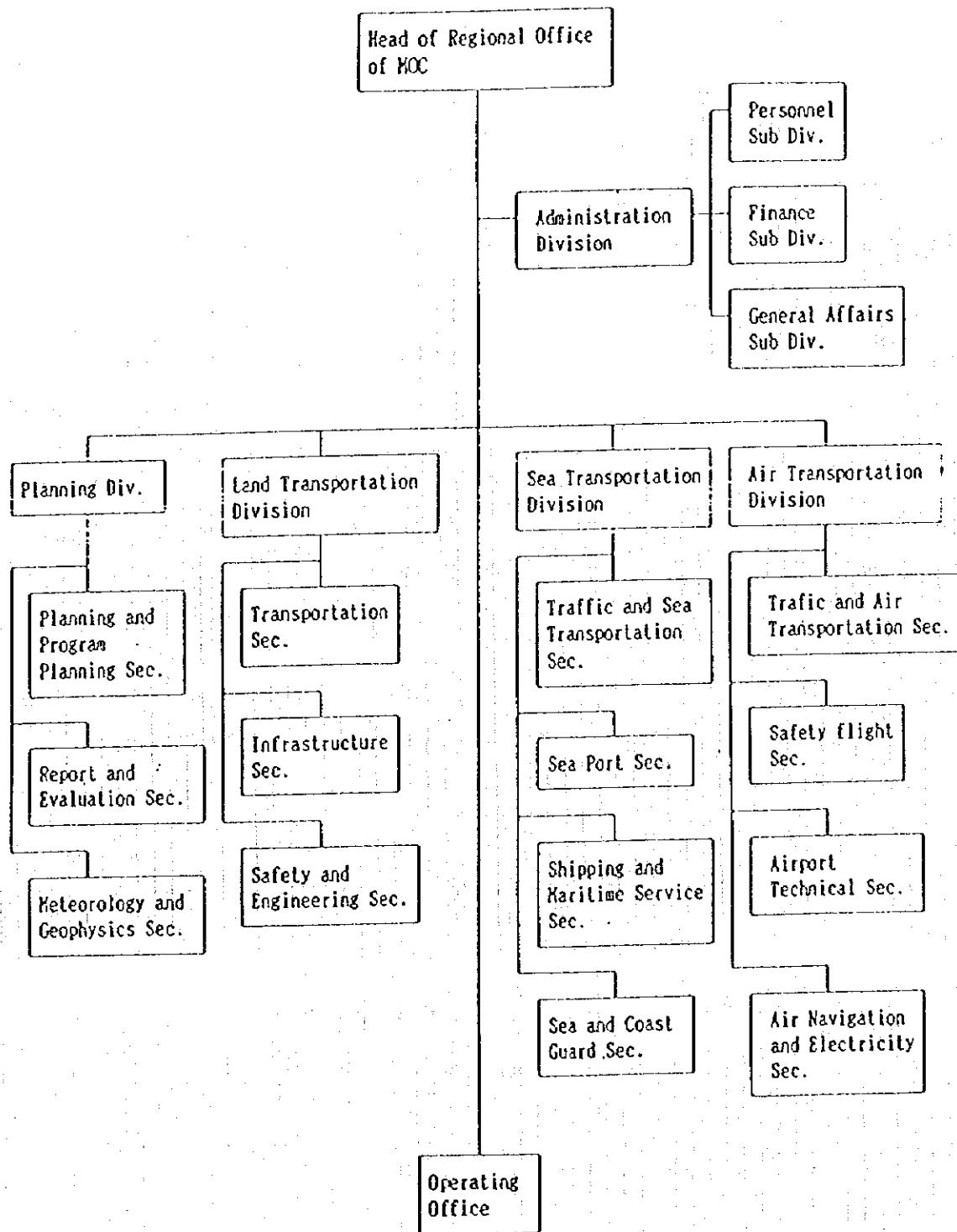


Fig. 1-4-7 Organization Chart of Regional Office of MOC

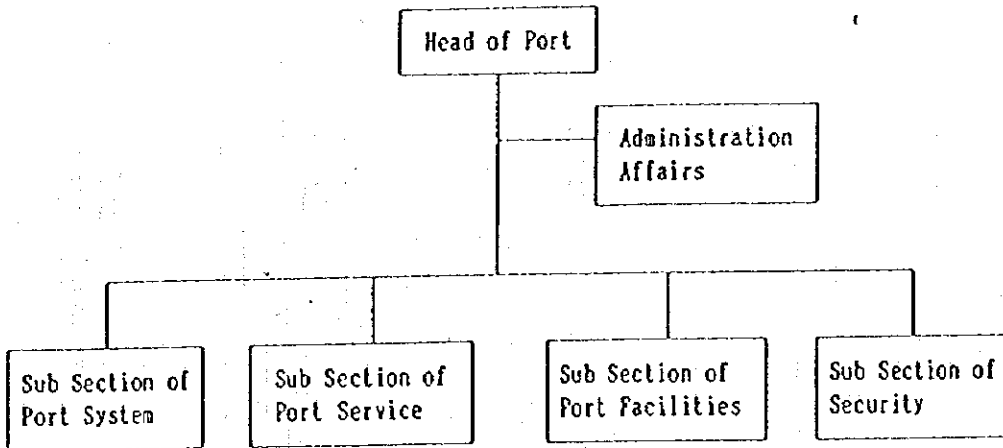


Fig. 1-4-8(1) Terminal Office of MOC (Class II)

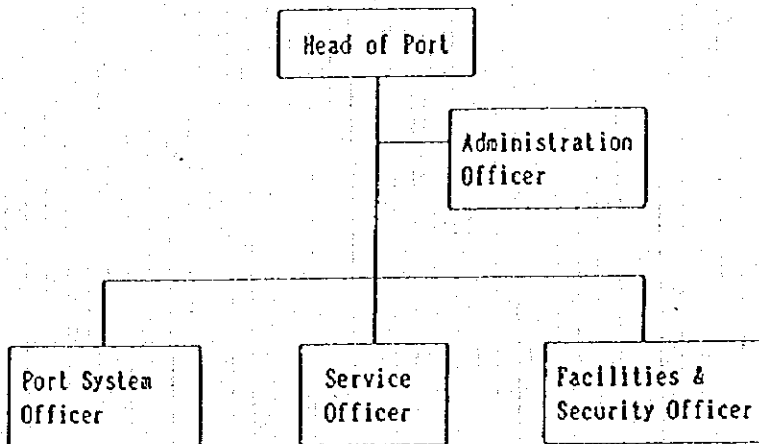


Fig. 1-4-8(2) Terminal Office of MOC (Class III)

*3-20-63*  
*Copy*  
*G. H.*

Table 1-4-2 Shipping Branch Offices of the ASDP

	Class	Office	Location	Shipping Routes
Shipping Branch	I	Jabar-Lampung Bali-NTB	Merak Kataran	Merak-Bakauheni Padangbai-Leubar Lombok-Pototano Sape-Komodo-L. Rajo Ketapang-Gilimanuk
		Ketapang -Gilimanuk Sulseira	Ketapang	
			Ujung Pandang	Bajoe-Kolaka Bira-Pamatata Bau bau-Tolando Torobulu-Tampo-Kaligono
	II	Surabaya NTT	Surabaya Kupang	Ujung-Kamal Kupang-Rote Kupang-Larantuka Larantuka-Waiwerang -Lewoleba Kupang-Kalabahi Kupang-Sabu Kupang-Ende
			Balikpapan -Panajam Maluku	Balikpapan Ambon
		KSO PASDP	Banjarmasin	Semarang-Kumai -Banjarmasin -Surebaya-Sampit
	III	Banda Aceh Meulaboh Jambi -Sunbar	Banda Aceh Meulaboh Jambi	Balohan-Malahayati Meulaboh-Sinabang Jambi City Jambi-T. pinang Jambi-S. Gantung Jambi-Temb P. Balan-Tanjung Pandan
			Bangka -Belitaung Cilacap -Kalipucang	Bangka Cilacap
		Kalianget -Jangkar Kal-Bar	Nadura	
Pontianak			Kartiassa Barat-Timur Senggau-Sekado(Semuntai) Kota-Siantan Tharapan-Tkalong(Sekura)	
Luwuk-Salakan Sorong Merauke		Luwuk Sorong Merauke	Luwuk-Salakan Sorong-Jeiman Merauke Jaya-Ponako Bade-Tanah Kerah-Midiptana Merauke-Bupul Merauke-Tanah Kerah	

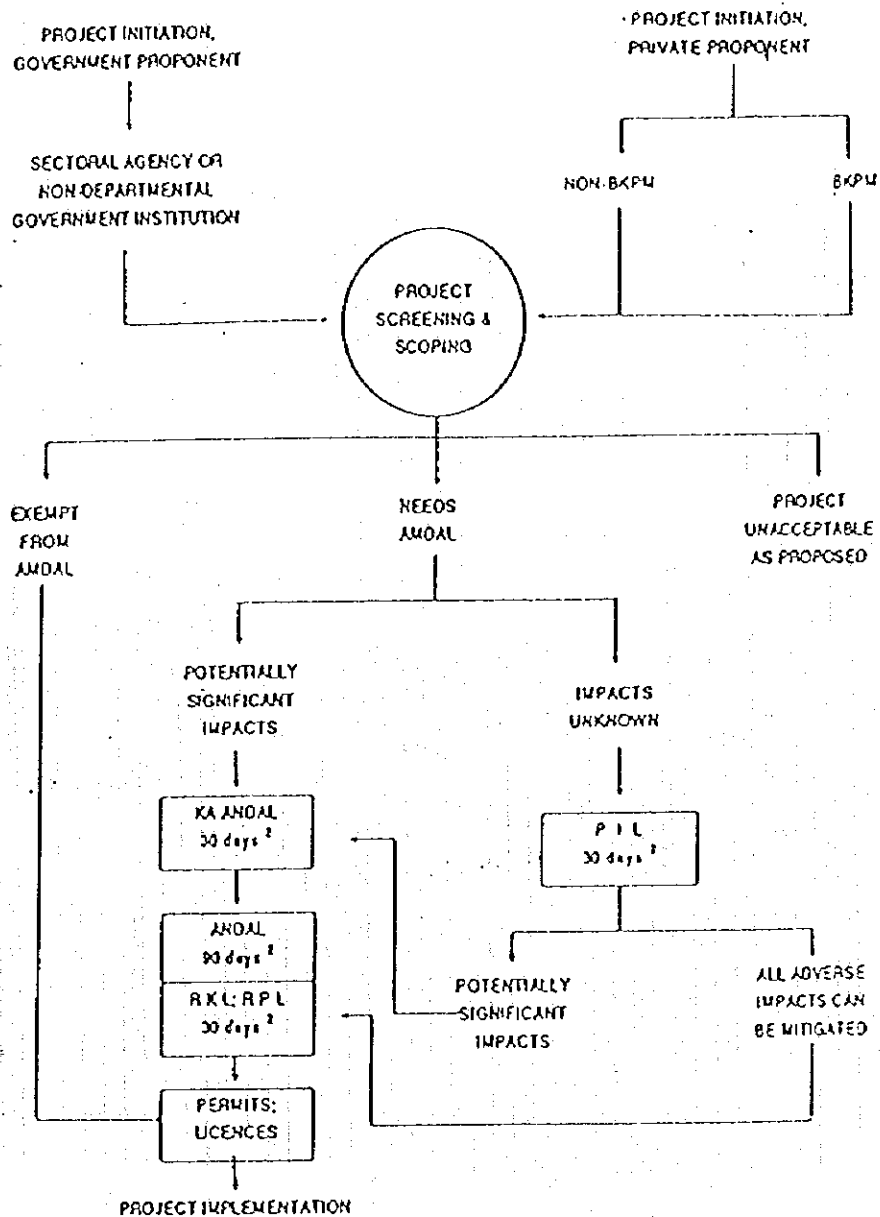
### 2-13-1 Environmental Impact Assessment Process in Indonesia

(Source: AMDAL a Guide to Environmental Assessment in Indonesia, Bapedal-Environmental Impact Management Agency July, 1991)

The AMDAL (Analysis Mengenai Dampak Lingkungan, or Analysis of Environmental Impacts) process is established through Government Regulation No.29, 1986, or PP29/1986. PP29/1986 was the first piece of environmental protection legislation promulgated under the key Indonesian environmental law, Act Number 4, 1982, which establishes the principle of sustainable development.

Overall coordination of the AMDAL process was initially the responsibility of the Ministry of State for Population and Environment (KLH). This responsibility was transferred to the new Environmental Impact Management Agency (Bapedal-Badan Pengendalian Dampak Lingkungan) in June, 1990. Authority for process implementation currently lies with the Central and Provincial levels of government: 1) at the central level with 14 sectorial government departments and non-department institutions, and 2) at the regional level with 27 provincial governments of Indonesia.

AMDAL procedures are shown in Fig. 2-13-1.



Meaning in English of the abbreviations used above:

- PIL: Preliminary Environmental Information
- PEL: Preliminary Environmental Evaluation
- KA: Terms-of-Reference
- SEL: Environmental Evaluation Study
- RKL: Environmental Management Plan
- RPL: Environmental Monitoring Plan

Fig. 2-13-1 AMDAL PROCEDURES

ATTACHMENT-7

**LIST OF CONSULTANT FIRMS**

INDONESIAN CONSULTANT FIRMS	
1.	PT. PEDICINAL
2.	PT. INTI ERA CIPTA
3.	PT. SATWINDU UTAMA
4.	PT. MULTI PHI BETA
5.	PT. NUSA CONSULTANTS
6.	PT. DARDELA YASA GUNA
7.	BIRO INSINYUR EXACTA
8.	PT. ASTRI ARENA
9.	PT. LAPI GANESHATAMA CONSULTING
10.	PT. WIRATMAN & ASSOCIATES



付属資料 ローカルコンサルタントについて

自然条件に係る調査について、国際協力事業団により下記の調査が行われている。

「自然条件等の調査に係るローカルコンサルタント及び公的研究機関等の技術水準に係る調査（プロジェクト研究）平成4年3月」

上記の報告書は、インドネシア、タイ、フィリピンおよびマレーシアの4カ国を対象に、再委託の際に必要となるローカルコンサルタントおよび公的研究機関の自然条件等調査の調査能力や積算のための単価の参考資料を取りまとめたものである。

インドネシア国においては、JICAによるスマラン港整備計画調査やバンジャルマン港航路維持・浚渫計画調査等が行われており、自然条件調査の再委託の実績を有している。上記報告書には、コンサルタントの業務内容を示したリストが掲載されており、本格調査において活用できるものと考えられる。

今回の調査でDGLTが推薦したコンサルタントは下記のとおりである。

1. PT. PEDICINAL
2. PT. INTI ERA CIPTA
3. PT. SATWINDU UTAMA
4. PT. MULTI PHI BETA
5. PT. NUSA CONSULTANTS
6. PT. DARDELA YASA GUNA
7. BIRO INSINYUR EXACTA
8. PT. ASTRI ARENA
9. PT. LAPI GANESHATAMA CONSULTING
10. PT. WIRATMAN & ASSOCIATES



資料リスト(□収集資料/□専門家作成資料)

平成8年12月24日作成

主管理 課長	文書管理 課長	主管理 課長	情報管理 課長	技術情報 課長	図書館受入 日

地域	プロジェクトID	調査団番号	調査の種別又は 指標科目	担当部署	社会開発調査部 社員第一課
アジア	インドネシア	インドネシア国企業フェリー船整備計画 面事前調査(フェーズII)(SW協議)	現地調査期間又は 派遣期間	8年11月13日~8年11月30日	担当者氏名 小野 正博

番号	資料の名称	形態(図書・ビデオ 地図・写真等)	収集 資料	取 集 作 成 資 料	JICA 作成資料	テキ スト	発行機関	取扱区分	図書館記入欄
1	PELABUHAN BELAWAN PORT BELAWAN	図書 P43(A4)	○	○			DGLTより	JR・CR( )・SC	
2	INFORMASI UMUM(GENERAL INFORMATION)	図書 P66(A5)	○	○			REGIONAL OFFICE, JAMBIより	JR・CR( )・SC	
3	ジャンボの資料	図書 P8(A4)	○	○			HARBOR MASTER OFFICE より	JR・CR( )・SC	
4	MUARASABAKの計画資料	図書 P4(A4)	○	○			同上	JR・CR( )・SC	
5	PT.(PERERO) PELABUHAN INDONESIA II	図書 P102(A4)	○	○			PELINDOより	JR・CR( )・SC	
6	INDONESIA PORT CORPORATION II	図書 P49(A4)	○	○			同上	JR・CR( )・SC	
7	PELABUHAN JAMBI (PORT OF JAMBI)	図書 P777P1	○	○			同上	JR・CR( )・SC	
8	DATA KUNJUNGAN KAPAL & ARUS BARANG DI PELABUHAN JAMBI	図書 P4(A4)	○	○			同上	JR・CR( )・SC	
9	PERUSAHAAN UMUM PELABUHAN JAMBI	図面書誌	○	○			同上	JR・CR( )・SC	
10	DAFTAR LINTAS DAN DERMACA PENYEBERANGAN DI INDONESIA	図書 P17(A4)	○	○			DGLT(ANTON) より	JR・CR( )・SC	
11	GAMBARAN UMUM PERKEMBANGAN ANGGUTAN PENYEBERANGAN DI INDONESIA	図書 P66(A4)	○	○			同上	JR・CR( )・SC	
12	STATISTIK INDONESIA(1991-1993)	図書 P461(A4,B0)	○	○			DGLT(CUCU)より	JR・CR( )・SC	
13	SIXTH FIVE-YEAR DEVELOPMENT PLAN	図書 P11(A4)	○	○			同上	JR・CR( )・SC	

資料リスト (  収集資料 /  専門家作成資料 )

(収集/作成資料)

平成8年12月24日作成

文書管理課長	情報管理課長	技術情報課長	図書館受入日
課長	課長	課長	
主官部長			

地域	プロジェクトID	調査団番号	調査団名又は専門家 氏名	調査の趣旨又は 指導科目	調査期間又は 派遣期間	担当者氏名	所属
アジア			インドネシア	インドネシア全国フェリー船隻備計 画事前調査(フェーズI) (SW 協議)	8年11月13日～8年11月30日	担当課長	社会開発調査部 社調第一課
国名	インドネシア		配属機関名	現地調査期間又は 派遣期間		担当者氏名	小野 正博

番号	資料の名称	形態(図書・ビデオ・ 地図・写真)	収集 資料	複製 作成資料	JICA 作成資料	テキスト 資料	発行機関	取扱区分	図書館記入欄
14	SISTEM TRANSPORTASI NASIONAL	図書 P81(A4)	○				DGLT(CUCU)より	JR・CR( )・SC	
15	SISTEM TRANSPORTASI NASIONAL (SISTRANS)	図書 P88(A4)	○				同上	JR・CR( )・SC	
16	CIVIL AVIATION IN INDONESIA 1996	図書 P24(A4)	○				同上	JR・CR( )・SC	
17	PROJECT INFORMATION FOR AIRPORT DEVELOPMENT	図書 P46(A4)	○				同上	JR・CR( )・SC	
18	航空輸送の統計	図書 P41(A4)	○				同上	JR・CR( )・SC	
19	LAY OUT DERMAGA MUARA ANGKE JAKARTA	図面 写真焼き	○				DGLT(SUPENA)より	JR・CR( )・SC	
20	SUWANGI CHANNELS (BATURICIN)	海図	○					JR・CR( )・SC	
21	LAPORAN ACHIR VOLUME II B.1 (OD調査)	図 P7(A4)	○				DGLT(CUCU)より	JR・CR( )・SC	
22	同上	図 P6(A4)	○				同上	JR・CR( )・SC	
23	同上	図 P6(A4)	○				同上	JR・CR( )・SC	
24	同上	図 P6(A4)	○				同上	JR・CR( )・SC	
25	同上	図 P5(A4)	○				同上	JR・CR( )・SC	
26	同上	図 P20(A4)	○				同上	JR・CR( )・SC	

資料リスト (  収集資料 /  専門家作成資料 )

平成8年12月24日作成

主管部長	文書管理 課長	主管部長	情報管理 課長	技術情報 課長	図書館受入 日

地域	プロジェクトID	調査団番号	調査の種類又は指導科目	担当部課	社会開発調査部 社調第一課
アジア	インドネシア	調査団名又は専門家氏名	インドネシア国全国フェリー網整備計画事前調査(フェーズII) (SNV 協賛)	事前調査	社調第一課
図名	インドネシア	配属機関名	現地調査期間又は派遣期間	8年11月13日～8年11月30日	担当者氏名 小野 正博

番号	資料の名称	形態(図書・ビデオ・地図・写真等)	収集資料	取寄作成資料	JICA 作成資料	テキスト	発行機関	取扱区分	図書館記入欄
31	Port of Tanjung Perak	図書(A4)	○				フェリー公社より	JR・CR( )・SC	
32	LAND USED IN PORT FO TANJUNG PERAK SURROUNDING	コピーP1(A3)	○				同上	JR・CR( )・SC	
33	ARUS PENUMPANG KAFAL LAUT DE TERMINAL GAPURA SURYA etc.	コピーP1(A2) P3(A4)	○				同上	JR・CR( )・SC	
34	P.T. PEIA YARAN NASIONAL INDONESIA CABANG SUYABAYA	コピーP1(A4)	○				同上	JR・CR( )・SC	
35	OPERATED FERRY ROUTES IN INDONESIA	コピーP1(A4)	○				同上	JR・CR( )・SC	
36	JADWAL KAPAL PELNI	新聞 P1(A1)	○				同上	JR・CR( )・SC	
37	パトナリ港の需算予測・計画平面図	コピーP14(A4)	○				DGLT(ジャカルタ)より	JR・CR( )・SC	
38	PELABUHAN・PENYEBERANGAN BATULICIN・TANJUNG SERDANG KOTABARU・KALINANTAN SELATAN	パンフレット P8	○				同上	JR・CR( )・SC	
39	BRIEF SITES VISIT REPORT ON LONG HAUL CAR FERRY NET-WORK	図書 P77(A4)	○				DGLT(ジャカルタ)より	JR・CR( )・SC	
40	KANWIL DEPHUB PROP. KALSEL DALAM ANGKA TAHUN 1995	図書(A4)	○				同上	JR・CR( )・SC	
41	GARUDA	図書 P72(A4)	○				図書より	JR・CR( )・SC	

(収集/作成資料)

資料リスト (  収集資料 /  専門家作成資料 )

平成8年12月24日作成

文書管理 課長	情報管理 課長	技術情報 課長	図書搬入 日
主管部長	主管課長	情報管理 課長	図書搬入 日

地域	プロジェクトID	調査団番号	調査の種類又は 指図科目	担当部課	社会開発調査部 社調第一課
アジア	調査団名又は専門家 氏名		事前調査		
インドネシア	配属機関名		現地調査期間又は 派遣期間	8年11月13日～8年11月30日	担当者氏名 小野 正博

番号	資料の名称	形態(図書・ビデオ・ 地図・写真等)	収集 資料	専門家 作成資料	JICA 作成資料	テキスト	発行機関	取級区分	図書館記入欄
51	インドネシア共和国第6次5カ年開発計画	図書 P114	<input type="checkbox"/>	<input type="checkbox"/>	<input type="checkbox"/>		インドネシア 日本経済 センター	JR・CR( )・SC	
52	マカッサル港(Ujung pandang 港)計画平面図	図面	<input type="checkbox"/>	<input type="checkbox"/>	<input type="checkbox"/>		PT.PERSERONG RELABUHAN INDONESIA IV	JR・CR( )・SC	
53	マカッサル港の施設と使用状況および将来計画	図書 P80	<input type="checkbox"/>	<input type="checkbox"/>	<input type="checkbox"/>		同上	JR・CR( )・SC	
54	ウジュンバンダンから全土への距離一覧表	P1	<input type="checkbox"/>	<input type="checkbox"/>	<input type="checkbox"/>		同上	JR・CR( )・SC	
55	マカッサル港の施設	P1	<input type="checkbox"/>	<input type="checkbox"/>	<input type="checkbox"/>		同上	JR・CR( )・SC	
56	PELNI 船 'KELIMUTU' の Tonnage Certificate	P2	<input type="checkbox"/>	<input type="checkbox"/>	<input type="checkbox"/>		インドネシア政府	JR・CR( )・SC	
57	PELNI 船 'KAMPUNA' の Tonnage Certificate	P2	<input type="checkbox"/>	<input type="checkbox"/>	<input type="checkbox"/>		同上	JR・CR( )・SC	
58	PT.PELAYARAN NASIONAL INDONESIA(PELND)	P1	<input type="checkbox"/>	<input type="checkbox"/>	<input type="checkbox"/>		同上	JR・CR( )・SC	
59	PELNI 船の運航表 PT.(PERSERO) RELABUHAN INDONESIA IV	P4	<input type="checkbox"/>	<input type="checkbox"/>	<input type="checkbox"/>		PT.PERSERONG RELABUHAN INDONESIA IV	JR・CR( )・SC	
60	BAPEDAL(Environmental Impact Management Agency)	図書 P36	<input type="checkbox"/>	<input type="checkbox"/>	<input type="checkbox"/>		BAPEDAL	JR・CR( )・SC	
61	運輸省環境影響評価ガイドライン	図書 P80	<input type="checkbox"/>	<input type="checkbox"/>	<input type="checkbox"/>		BAPEDAL	JR・CR( )・SC	
62	Act of Republic of Indonesia No.4 of 1982	図書	<input type="checkbox"/>	<input type="checkbox"/>	<input type="checkbox"/>		同上	JR・CR( )・SC	
63	Government Regulation of the Republic of Indonesia No.51 of 1993	図書	<input type="checkbox"/>	<input type="checkbox"/>	<input type="checkbox"/>		同上	JR・CR( )・SC	

資料リスト (  収集資料 /  専門家作成資料 )

平成8年12月24日作成

文書管理 課長	情報管理 課長	技術情報 課長	図書館受入 日
主管部長			

地域	プロジェクトID	調査団番号	調査の種類又は 指導科目	調査団名又は専門家 氏名	配属機関名
アジア			インドネシア国全国フェリー網整備計 画事前調査(フェーズII) (S/W 協議)	事前調査	社会開発調査部 社研第一課
インドネシア			現地調査期間又は 派遣期間	6年11月13日～8年11月30日	担当者氏名 小野 正博

番号	資料の名称	形態(図書・ビデオ・ 地図・写真等)	収集 資料	研究 作成資料	JICA 作成資料	スキ ット	発行機関	取扱区分	図書館記入欄
64	Guidelines for the Implementation of Government Regulation No. 51 of 1994	図書	○				BAPEDAL	JR・CR( )・SC	
65	Government Regulation of the Republic of Indonesia No. 19 of 1994	図書	○				同上	JR・CR( )・SC	
66	Decree of President of the Republic of Indonesia No. 77 of 1994	図書	○				同上	JR・CR( )・SC	
67	Decree of the Minister of State for Environment of the Republic of Indonesia No. KEP-42/MENLH/1/1994	図書	○				同上	JR・CR( )・SC	
68	Government Regulation of the Republic of Indonesia No. 20 of 1990	図書	○				同上	JR・CR( )・SC	
69	Decree of the State Minister for Environment of the Republic of Indonesia No. KEP-13/MENLH/3/1995	図書	○				同上	JR・CR( )・SC	
								JR・CR( )・SC	
								JR・CR( )・SC	
								JR・CR( )・SC	
								JR・CR( )・SC	
								JR・CR( )・SC	
								JR・CR( )・SC	

(収集/作成資料)

資料リスト(  収集資料 /  専門家作成資料 )

平成8年12月24日作成

主管部長	文書管理課長	情報管理課長	技術情報課長	図書部受入日

地域	アジア	調査団名又は専門家氏名	プロジェクトID	調査団番号	調査の種類又は指導科目	担当部課	社会開発調査部 社研第一課
国名	インドネシア	画事前調査(フェーズII) (SAM協議)			現地調査期間又は派遣期間	8年11月13日~8年11月30日	担当者氏名 小野 正博

番号	資料の名称	形態(図書・ビデオ・地図・写図等)	収集資料	複製作成資料	JICA作成資料	テキスト	発行機関	取扱区分	図書登記入拠
101	OPERATIONAL NAVIGATION CHART ONC-L10 1:1,000,000	地図	○				UK	JR・CR( )・SC	
102	JAKARTA INCLUDING TANJUNPERIUK AND JAKARTA ROADSTEAD 71186 1:20,000	海図(縮小コピー)	○				JAPANESE MARITIME AGENCY HYDROGRAPHIC CENTER	JR・CR( )・SC	
103	APPROACH TO BELAWAN 71071 1:25,000	海図(縮小コピー)	○				同上	JR・CR( )・SC	
104	PORTS IN MAKASSAR STRAIT 72161 1:20,150	海図(縮小コピー)	○				同上	JR・CR( )・SC	
105	APPROACHES TO UJUNG PANDANG 72190 1:100,000	海図(縮小コピー)	○				同上	JR・CR( )・SC	
106	TANJUNG SELATAN TO TANJUNG MALATAYUR 72080 1:200,640	海図(縮小コピー)	○				同上	JR・CR( )・SC	
107	PORT OF SURABAYA AND APPROACHES 72231 1:75,000	海図(縮小コピー)	○				同上	JR・CR( )・SC	
108	PELABUHAN SURABAYA AND GRESIK 72234 1:12,500	海図(縮小コピー)	○				同上	JR・CR( )・SC	
109	JAMBI 1:350,000	地図	○				CY. TUNGKAL JAYA	JR・CR( )・SC	
110	CATALOGUE OF INDOONESIAN NAUTICAL CHART AND BOOKS	海図のインデックス	○				DIREKTORAN OLAH RANGKAIAN LAUT JAKARTA KEMENTERIAN OSEANOGRAFI JAKARTA	JR・CR( )・SC	
								JR・CR( )・SC	
								JR・CR( )・SC	



様式第1号（記第2関係）

（収集／作成資料）

資料リスト（収集資料/専門家作成資料）

平成8年12月24日作成

主管部長	文書管理課長	主管課長	情報管理課長	技術情報課長	図書部受入日

地域	プロジェクトID	調査団番号	調査の種類又は指称科目	調査の種別又は指称科目	担当課	社務研究調査部
アジア	インドネシア	インドネシア全国フェリー網整備計画事前調査(フェーズII)(SAN 協議)	現地調査期間又は派遣期間	8年11月13日～8年11月30日	担当部長	小野 正博

番号	資料の名称	形態(図書・ビデオ・地図・写真等)	収集資料	専門家作成資料	JICA作成資料	デッキ	発行機関	取扱区分	図書館記入欄
151	SURAWESI 1:500,000 Nelles Maps	地図	○					JR・CR( )・SC	
152	JAKARTA 1:22,500 Nelles Maps	地図	○					JR・CR( )・SC	
153	INDONESIA 1:4,000,000 Nelles Maps	地図	○					JR・CR( )・SC	
154	Surabaya 1:25,000 Periplus Travel Maps	地図	○					JR・CR( )・SC	
155	海図クジュンバンガン付近	海図	○					JR・CR( )・SC	
								JR・CR( )・SC	
								JR・CR( )・SC	
								JR・CR( )・SC	
								JR・CR( )・SC	
								JR・CR( )・SC	
								JR・CR( )・SC	
								JR・CR( )・SC	
								JR・CR( )・SC	
								JR・CR( )・SC	
								JR・CR( )・SC	
								JR・CR( )・SC	
								JR・CR( )・SC	
								JR・CR( )・SC	
								JR・CR( )・SC	
								JR・CR( )・SC	
								JR・CR( )・SC	

資料リスト(  収集資料 /  専門家作成資料 )

平成8年12月24日作成

主管部長	文書管理課長	主管課長	情報管理課長	交際情報課長	図書館受入日

地域	アジア	プロジェクトID	調査団番号	調査の種類又は調査科目	事前調査	担当部署	社団法人
国名	インドネシア			インドネシア全国フェリー網整備計画(フェーズII)(SAW協議)		8年11月13日～8年11月30日	小野 正成
		調査団名又は専門家氏名		西影前調査(フェーズII)			社団法人
		配属機関名		現地調査期間又は派遣期間			社団法人

番号	資料の名称	形態(図書・ビデオ・地図・写真等)	収集資料	複製作成資料	JICA作成資料	テキスト	発行機関	取扱区分	図書館記入欄
301	ATLAS INDONESIA & DUNIA	地図	○				購入	JR・CR( )・SC	
302	Road Atlas of INDONESIA	地図	○				同上	JR・CR( )・SC	
303	JAWA・TIMUR	地図	○				同上	JR・CR( )・SC	
304	BANJARMASIN & PERKEMBANGANNYA	地図	○				レンタカー	JR・CR( )・SC	
305	Indonesia 4 KALIMANTAN	地図	○				購入	JR・CR( )・SC	
								JR・CR( )・SC	
								JR・CR( )・SC	
								JR・CR( )・SC	
								JR・CR( )・SC	
								JR・CR( )・SC	
								JR・CR( )・SC	
								JR・CR( )・SC	
								JR・CR( )・SC	
								JR・CR( )・SC	
								JR・CR( )・SC	
								JR・CR( )・SC	
								JR・CR( )・SC	
								JR・CR( )・SC	
								JR・CR( )・SC	

主要面会者リスト

[National Development Planning Board : BAPPENAS]  
Suyono Dikun                      Transportation Bureau Chief

[Ministry of Communication Research and Development Board]  
Soemanto                      Chief of Research Transportation  
Abdul R. Manan MM. MSi      Executive Secretary, Center Commission for EIA

[Ministry of Communication Planning Bureau]  
Soetjahjo Reksoprodjo      Head of Planning Bureau, Secretariat General  
Djoko Mulyanto              Chief of Planning Division  
Dedi Darmawan              Chief of Programme Division  
Tri Sunoko                    Chief of Foreign Aid and Technical Cooperation Division  
Herman M. Kaharmen      Chief of Foreign Aid Section, Foreign Aid and Technical  
   Cooperation Division  
P. Tarigan                    Chief of Section II Section  
Sutan Helmy                 Chief of Programming Section  
D. Sasono                    Chief of Sea Transportation Evaluation

[Ministry of Communication Financial Bureau]  
Sukarno S. E.                Chief of Foreign Aid Budget  
Sudarnadi S. E.              Chief of Land Transportation Budget

[Ministry of Communication Legal Bureau]  
Sahar Andika, S. H         Chief of Legal Aspects

[Ministry of Communication Sea Communication Bureau : DGSC]  
Tjipto T. Hannyanto        Head of Planning Division  
Lukri AM                    Chief of Sea Worthiness of Marine Safety Directorate  
Insan Kamil                 Chief of Marine Pollution of Marine Safety Directorate  
佐々木 秀郎                JICA Expert on Port Planning

[Ministry of Communication Land Communication Bureau : DGLI]  
Anton Simbolon             Head of Inland Waterways and Ferry, Transportation  
   Directorate  
Harris Fabillar             Chief of Planning Division  
Amal Hamsyar              Chief of Engineering of Ferry Port Section  
As'ad                        Chief of Inland Waterway Terminal Section  
Supena Rusyana            Chief of Maintenance of Ferry Port Section  
山根 信治                 JICA Expert on Railway Improvement Plan

[Regional Development Planning Board : BAPPEDA]  
Abdul Madjid Sallatu      Vice Chairman, Regional Development Planning Board,  
   Province of South Sulawesi

[Ministry of Communication Regional Office : KANWIL]  
J. Tadjudin                 Head of Land Communication (Ujung Pandang)  
Moelyono                    Sub-Chief of Administration (Jambi)  
Rumaniar                    Chief of Sea Transportation Division (Jambi)

【海外経済協力基金 ジャカルタ駐在員事務所】  
河西 裕之                    駐在員

【在インドネシア日本大使館】  
八木 一夫 一等書記官 運輸 観光担当

【国際協力事業団インドネシア事務所】  
諏訪 龍 所長  
中垣 長睦 次長  
竹内 智子 所員

JICA