

Table E.40a Agricultural Profile of Beneficial Area of Brewery DAD

Name of Dam	Brewary			TOTAL	%
Name of Village	Killi Kirani	Killi Gulzar	Killi Sardar		
Total Agricultural Land (ha)	167	55	192	414	
Cultivated Area (ha)	159	55	85	299	
- Cropped Area (ha)	120	28	84	232	
- Current Fallow (ha)	39	28	1	67	
Culturable Waste (ha)	8	0	107	115	
Number of Tubewells	8	1	17	26	
Number of Karezes	2		0	2	
Number of Tractors	0	0	1	1	
Irrigated Area (ha)	122	24	85	231	56%
- by Well (ha)	20			20	9%
- by Tubewell (ha)	38	22	85	145	63%
- by Karez / Spring (ha)	64	2		66	28%
- Others (ha)				0	0%
Un-irrigated Area (ha)	25	27	107	160	
- Khushkaba (ha)	25	27	102	154	
- Sailaba (ha)			6	6	
Area of Rabi Crops	8	24	5	38	
- Wheat (irrigated) (ha)	4	1	4	9	24%
- Wheat (un-irrigated) (ha)		22		22	59%
- Barley (ha)				0	0%
- Cumin (ha)				0	0%
- Vegetables (ha)	3	1		4	10%
- Fodder (ha)	1	0.4	1	3	7%
Area of Kharif Crops	118	19	78	216	
- Apple (ha)	43	4	16	63	29%
- Apricot (ha)	20	3	7	30	14%
- Grape (ha)	54	12	37	103	48%
- Cherry (ha)				0	0%
- Almond (ha)				0	0%
- Onion (ha)				0	0%
- Potato (ha)				0	0%
- Vegetables (ha)	1		18	18	9%
- Melons (ha)				0	0%
- Fodder (ha)	1	1		2	1%
- Tobacco (ha)				0	0%
Number of Livestock				15,314	
- Cattle	7	3	8	18	0%
- Buffalos	21		2	23	0%
- Sheep	4	25	50	79	1%
- Goats	27	10	17	54	0%
- Camel				0	0%
- Horse			5	5	0%
- Donkey				0	0%
- Poultry (Chicken)	95	25	15,015	15,135	99%
- Others				0	0%
Source of Livestock Feed	Self(Orchard)				

Source : Agriculture Extension, Agriculture Department, Balochistan.

Table E.40b Agricultural Profile of Beneficial Area of Dara DAD

Name of Dam	Dara			
Name of Village	Ragha	Sara Ghurgi	TOTAL	%
Total Agricultural Land (ha)	299	1232	1531	
Cultivated Area (ha)		462	462	
- Cropped Area (ha)	45	462	507	
- Current Fallow (ha)	254		254	
Culturable Waste (ha)		770	770	
Number of Tubewells	2	38	40	
Number of Karezes		0	0	
Number of Tractors	2	10	12	
Irrigated Area (ha)	45	462	507	33%
- by Well (ha)			0	0%
- by Tubewell (ha)	20	350	370	73%
- by Karez / Spring (ha)	25	112	137	27%
- Others (ha)			0	0%
Un-irrigated Area (ha)	254	200	454	
- Khushkaba (ha)	254	200	454	
- Sailaba (ha)			0	
Area of Rabi Crops	20	160	180	
- Wheat (irrigated) (ha)	15	160	175	97%
- Wheat (un-irrigated) (ha)			0	0%
- Barley (ha)	5		5	3%
- Cumin (ha)			0	0%
- Vegetables (ha)			0	0%
- Fodder (ha)			0	0%
Area of Kharif Crops	25	310	335	
- Apple (ha)	25	160	185	55%
- Apricot (ha)		80	80	24%
- Grape (ha)		10.0	10	3%
- Cherry (ha)			0	0%
- Almond (ha)			0	0%
- Onion (ha)			0	0%
- Potato (ha)			0	0%
- Vegetables (ha)		60	60	18%
- Melons (ha)			0	0%
- Fodder (ha)			0	0%
- Tobacco (ha)			0	0%
Number of Livestock			3036	
- Cattle		15	15	0%
- Buffalos			0	0%
- Sheep		2,000	2000	66%
- Goats			0	0%
- Camel			0	0%
- Horse		1	1	0%
- Donkey		20	20	1%
- Poultry (Chicken)		1,000	1000	33%
- Others			0	0%
Source of Livestock Feed	Self (Orchard)	Self (Orchard)		

Source : Agriculture Extension, Agriculture Department, Balochistan.

Table E.40c Agricultural Profile of Beneficial Area of Murgi Kotal DAD

Name of Dam	Mulgi Kotal					
Name of Village	Killi Kateer	Killi Samli	Killi Mulazai	Chasma Achozai	TOTAL	%
Total Agricultural Land (ha)	648	303	395	211	1,558	
Cultivated Area (ha)	210	303	395	146	1,055	
- Cropped Area (ha)	72	14	6	125	217	
- Current Fallow (ha)	138	289	389	22	838	
Culturable Waste (ha)	438			65	503	
Number of Tubewells	8	3	2	20	33	
Number of Karezes	0	0	0	2	2	
Number of Tractors	2	0	0	3	5	
Irrigated Area (ha)	80	14	6	113	213	14%
- by Well (ha)					0	0%
- by Tubewell (ha)	80	14	6	76	176	83%
- by Karez / Spring (ha)				37	37	17%
- Others (ha)					0	
Un-irrigated Area (ha)	570	289	389	44	1,292	
- Khushkaba (ha)	570	289	389	44	1,292	
- Sailaba (ha)					0	
Area of Rabi Crops	126	164	151	33	473	
- Wheat (irrigated) (ha)	8	2		15	25	5%
- Wheat (un-irrigated) (ha)	89	121	120	10	340	72%
- Barley (ha)	17	40	30	0.4	87	18%
- Cumin (ha)					0	0%
- Vegetables (ha)				3	3	1%
- Fodder (ha)	12		0.4	4.4	17	4%
Area of Kharif Crops	68	12	6	106	192	
- Apple (ha)	39	10	3	62	114	59%
- Apricot (ha)	10	2	2	16	30	16%
- Grape (ha)	0.4			11	12	6%
- Cherry (ha)	0.4				0	0%
- Almond (ha)					0	0%
- Onion (ha)	2				2	1%
- Potato (ha)					0	0%
- Vegetables (ha)	4			16	21	11%
- Melons (ha)					0	0%
- Fodder (ha)	12		0.4		13	7%
- Tobacco (ha)					0	0%
Number of Livestock					1,230	
- Cattle		8	5	23	36	3%
- Buffalos				1	1	0%
- Sheep	51	79	116		246	20%
- Goats	41	76	78	5	200	16%
- Camel					0	0%
- Horse					0	0%
- Donkey					0	0%
- Poultry (Chicken)	110	137	100	400	747	61%
- Others					0	0%
Source of Livestock Feed	Orch/Mnt.	Mountain	Mountain	Orch/Purch		

Source : Agriculture Extension, Agriculture Department, Balochistan.

Table E.40d Agricultural Profile of Beneficial Area of Kach DAD

Name of Dam	Kach			
Name of Village	Sara Ghurgi	Killi Umar	TOTAL	%
Total Agricultural Land (ha)	1232	201	1433	
Cultivated Area (ha)	462	164	626	
- Cropped Area (ha)	462	142	604	
- Current Fallow (ha)		22	22	
Culturable Waste (ha)	770	36	806	
Number of Tubewells	38	30	68	
Number of Karezes	0		0	
Number of Tractors	10	4	14	
Irrigated Area (ha)	462	154	616	43%
- by Well (ha)			0	0%
- by Tubewell (ha)	350	130	480	78%
- by Karez / Spring (ha)	112	24	136	22%
- Others (ha)			0	0%
Un-irrigated Area (ha)	200	40	240	
- Khushkaba (ha)	200	40	240	
- Sailaba (ha)			0	
Area of Rabi Crops	160	32	192	
- Wheat (irrigated) (ha)	160	13	173	90%
- Wheat (un-irrigated) (ha)		5	5	3%
- Barley (ha)			0	0%
- Cumin (ha)			0	0%
- Vegetables (ha)		13	13	7%
- Fodder (ha)		0.4	0	0%
Area of Kharif Crops	310	139	449	
- Apple (ha)	160	116	276	61%
- Apricot (ha)	80	15	95	21%
- Grape (ha)	10.0	2	12	3%
- Cherry (ha)			0	0%
- Almond (ha)			0	0%
- Onion (ha)			0	0%
- Potato (ha)			0	0%
- Vegetables (ha)	60	6	66	15%
- Melons (ha)			0	0%
- Fodder (ha)			0	0%
- Tobacco (ha)			0	0%
Number of Livestock			3196	
- Cattle	15	50	65	2%
- Buffalos		3	3	0%
- Sheep	2,000	32	2032	64%
- Goats		6	6	0%
- Camel			0	0%
- Horse	1		1	0%
- Donkey	20		20	1%
- Poultry (Chicken)	1,000	35	1035	32%
- Others		34	34	1%
Source of Livestock Feed	Self (Orchard)	Purchase		

Source : Agriculture Extension, Agriculture Department, Balochistan.

Table E.40e Agricultural Profile of Beneficial Area of Jigda DAD

Name of Dam	Jigda				
Name of Village	Jigda	Sharan	Kamalzai		%
Total Agricultural Land (ha)	330	280	1055	1666	
Cultivated Area (ha)	330	280	783	1394	
- Cropped Area (ha)	14	8	474	496	
- Current Fallow (ha)	316	273	309	898	
Culturable Waste (ha)			272	272	
Number of Tubewells	0	0	20	20	
Number of Karezes	2	1	0	3	
Number of Tractors	1	1	12	14	
Irrigated Area (ha)	14	8	426	448	27%
- by Well (ha)				0	0%
- by Tubewell (ha)			426	426	95%
- by Karez / Spring (ha)	14	8		22	5%
- Others (ha)				0	0%
Un-irrigated Area (ha)	316	272	297	886	
- Khushkaba (ha)	316	272	297	886	
- Sailaba (ha)				0	
Area of Rabi Crops	14	3	393	409	
- Wheat (irrigated) (ha)	2	0.4	213	215	53%
- Wheat (un-irrigated) (ha)		0.4	110	111	27%
- Barley (ha)				0	0%
- Cumin (ha)				0	0%
- Vegetables (ha)	10	2	69	80	20%
- Fodder (ha)	2	0.4	1	3	1%
Area of Kharif Crops	17	9	232	257	
- Apple (ha)	6	3	116	126	49%
- Apricot (ha)	0.4			0	0%
- Grape (ha)			57	57	22%
- Cherry (ha)				0	0%
- Almond (ha)				0	0%
- Onion (ha)			25	25	10%
- Potato (ha)				0	0%
- Vegetables (ha)	7	6	30	43	17%
- Melons (ha)			3	3	1%
- Fodder (ha)	3			3	1%
- Tobacco (ha)				0	0%
Number of Livestock				658	
- Cattle	15	7	33	55	8%
- Buffalos				0	0%
- Sheep	36	15	164	215	33%
- Goats	13	10	134	157	24%
- Camel				0	0%
- Horse				0	0%
- Donkey				0	0%
- Poultry (Chicken)			231	231	35%
- Others				0	0%
Source of Livestock Feed	Mountain/Orchard		Purchase		

Source : Agriculture Extension, Agriculture Department, Balochistan.

Table E.40f Agricultural Profile of Beneficial Area of Sanzali DAD

Name of Dam	Sanzali			TOTAL	%
Name of Village	Sanzali	Sehibzada	Killi Haji Abdulla Jan		
Total Agricultural Land (ha)	54	0	59	113	
Cultivated Area (ha)	54	0	59	113	
- Cropped Area (ha)	30		38	68	
- Current Fallow (ha)	23		21	44	
Culturable Waste (ha)				0	
Number of Tubewells	0		12	12	
Number of Karezes	2		0	2	
Number of Tractors	4		2	6	
Irrigated Area (ha)	30	1	40	72	63%
- by Well (ha)		1		1	2%
- by Tubewell (ha)			40	40	56%
- by Karez / Spring (ha)	30			30	42%
- Others (ha)				0	0%
Un-irrigated Area (ha)	0	0	0	0	
- Khushkaba (ha)				0	
- Sailaba (ha)				0	
Area of Rabi Crops	16	0	30	46	
- Wheat (irrigated) (ha)	14		16	30	65%
- Wheat (un-irrigated) (ha)				0	0%
- Barley (ha)				0	0%
- Cumin (ha)				0	0%
- Vegetables (ha)	2		14	16	35%
- Fodder (ha)				0	0%
Area of Kharif Crops	14	0	19	33	
- Apple (ha)			2	2	7%
- Apricot (ha)			1	1	2%
- Grape (ha)	2			2	5%
- Cherry (ha)				0	0%
- Almond (ha)				0	0%
- Onion (ha)	6			6	18%
- Potato (ha)				0	0%
- Vegetables (ha)	1		14	15	45%
- Melons (ha)			1	1	2%
- Fodder (ha)				0	0%
- Tobacco (ha)	6		1	6	20%
Number of Livestock				899	
- Cattle	20		18	38	4%
- Buffalos				0	0%
- Sheep	400		90	490	55%
- Goats	230			230	26%
- Camel				0	0%
- Horse				0	0%
- Donkey	9			9	1%
- Poultry (Chicken)	107		25	132	15%
- Others				0	0%
Source of Livestock Feed	Field/Purch.	Mountain?	Purchase		

Source : Agriculture Extension, Agriculture Department, Balochistan.

Table E.40g Agricultural Profile of Beneficial Area of Sakhol DAD

Name of Dam	Sakhol					
Name of Village	Killi Ladha	M.Rashid Khan	Killi Afghan	Killi Murgha	TOTAL	%
Total Agricultural Land (ha)	22	131	88	38	279	
Cultivated Area (ha)	16	22	4	16	59	
- Cropped Area (ha)	14	10	3	10	36	
- Current Fallow (ha)	3	13	1	6	23	
Culturable Waste (ha)	5	109	84	22	220	
Number of Tubewells	0	10	6	16	32	
Number of Karezes	1	0	1	1	3	
Number of Tractors	0	3	0	0	3	
Irrigated Area (ha)	13	22	4	14	53	19%
- by Well (ha)					0	0%
- by Tubewell (ha)		22	3	14	39	73%
- by Karez / Spring (ha)	13		1		14	27%
- Others (ha)					0	0%
Un-irrigated Area (ha)	7	109	84	18	218	
- Khushkaba (ha)	7	109	84	18	218	
- Sailaba (ha)					0	
Area of Rabi Crops	12	2	3	3	20	
- Wheat (irrigated) (ha)	8		2	3	14	67%
- Wheat (un-irrigated) (ha)	2	1		0.4	3	16%
- Barley (ha)	2	1	0.4		4	18%
- Cumin (ha)					0	0%
- Vegetables (ha)					0	0%
- Fodder (ha)					0	0%
Area of Kharif Crops	2	8	1	6	16	
- Apple (ha)					0	0%
- Apricot (ha)					0	0%
- Grape (ha)	1		1		2	13%
- Cherry (ha)					0	0%
- Almond (ha)					0	0%
- Onion (ha)	0.4	8		5	13	80%
- Potato (ha)				1	1	8%
- Vegetables (ha)					0	0%
- Melons (ha)					0	0%
- Fodder (ha)					0	0%
- Tobacco (ha)					0	0%
Number of Livestock					217	
- Cattle		0			0	0%
- Buffalos		0			0	0%
- Sheep	4	0	122	28	154	71%
- Goats	13	0	8	41	62	29%
- Camel		0	1		1	0%
- Horse		0			0	0%
- Donkey		0			0	0%
- Poultry (Chicken)		0			0	0%
- Others		0			0	0%
Source of Livestock Feed	Mountain Grazing					

Source : Agriculture Extension, Agriculture Department, Balochistan.

Table E.40h Agricultural Profile of Beneficial Area of Mangi DAD

Name of Dam	Mangi			TOTAL	%
Name of Village	Shapch	Khali	Mal		
Total Agricultural Land (ha)	143	83	163	389	
Cultivated Area (ha)	143	22	163	328	
- Cropped Area (ha)	56	12	66	134	
- Current Fallow (ha)	86	10	97	194	
Culturable Waste (ha)		61		61	
Number of Tubewells	12	5	6	23	
Number of Karezes	1	0	1	2	
Number of Tractors	4	1	4	9	
Irrigated Area (ha)	56	10	163	230	59%
- by Well (ha)				0	0%
- by Tubewell (ha)	54	10	163	228	99%
- by Karez / Spring (ha)	2			2	1%
- Others (ha)				0	0%
Un-irrigated Area (ha)	0	71	0	71	
- Khushkaba (ha)		71		71	
- Sailaba (ha)				0	
Area of Rabi Crops	30	6	49	86	
- Wheat (irrigated) (ha)	15	3	29	47	55%
- Wheat (un-irrigated) (ha)		1		1	1%
- Barley (ha)			1	1	1%
- Cumin (ha)	14	2	16	31	36%
- Vegetables (ha)			1	1	1%
- Fodder (ha)	2		2.8	5	6%
Area of Kharif Crops	26	4	16	46	
- Apple (ha)	1		1	2	4%
- Apricot (ha)				0	0%
- Grape (ha)				0	0%
- Cherry (ha)				0	0%
- Almond (ha)				0	0%
- Onion (ha)	25	4	14	43	93%
- Potato (ha)				0	0%
- Vegetables (ha)				0	0%
- Melons (ha)				0	0%
- Fodder (ha)	0.4		1	1	3%
- Tobacco (ha)				0	0%
Number of Livestock				1056	
- Cattle	3		12	15	1%
- Buffalos				0	0%
- Sheep	199		281	480	45%
- Goats	189	24	164	377	36%
- Camel		3		3	0%
- Horse			1	1	0%
- Donkey	22	2	19	43	4%
- Poultry (Chicken)	62	75		137	13%
- Others				0	0%
Source of Livestock Feed	Self/Mountain Grazing		Mountain		

Source : Agriculture Extension, Agriculture Department, Balochistan.

Table E.40i Agricultural Profile of Beneficially Area of Kad Kocha DAD

Name of Dam	Kad Kocha					
Name of Village	Malli Khurma	Gadi Ghar	Kulozai	Kabul Mohd	TOTAL	%
Total Agricultural Land (ha)	268	254	400	437	1,358	
Cultivated Area (ha)	172	166	242	297	876	
- Cropped Area (ha)	122	86	124	181	512	
- Current Fallow (ha)	50	80	118	116	364	
Culturable Waste (ha)	96	88	158	140	482	
Number of Tubewells	13	20	16	13	62	
Number of Karezes	0	0	0	0	0	
Number of Tractors	2	6	2	1	11	
Irrigated Area (ha)	90	72	102	130	394	29%
- by Well (ha)					0	0%
- by Tubewell (ha)	90	72	102	130	394	100%
- by Karez / Spring (ha)					0	0%
- Others (ha)					0	0%
Un-irrigated Area (ha)	73	24	96	116	309	
- Khushkaba (ha)	73	24	96	116	309	
- Sailaba (ha)					0	
Area of Rabi Crops	39	38	59	87	222	
- Wheat (irrigated) (ha)	27	21	38	60	146	66%
- Wheat (un-irrigated) (ha)		4	4	8	16	7%
- Barley (ha)	2	1	1	4	8	3%
- Cumin (ha)					0	0%
- Vegetables (ha)	5	6	9	7	28	13%
- Fodder (ha)	5	6	6.4	7	24	11%
Area of Kharif Crops	65	52	84	80	282	
- Apple (ha)	26	17	21	28	92	33%
- Apricot (ha)	8				8	3%
- Grape (ha)	4	1	2	2	10	4%
- Cherry (ha)					0	0%
- Almond (ha)	2				2	1%
- Onion (ha)	15	26	45	37	124	44%
- Potato (ha)	2				2	1%
- Vegetables (ha)	4	2	8	7	20	7%
- Melons (ha)	4	3	4	1	12	4%
- Fodder (ha)	1	3	4	4	12	4%
- Tobacco (ha)			1		1	0%
Number of Livestock					2,100	
- Cattle	10		1		11	1%
- Buffalos					0	0%
- Sheep	379	325	245	355	1,304	62%
- Goats	85	150	75	220	530	25%
- Camel		1			1	0%
- Horse	1				1	0%
- Donkey			2		2	0%
- Poultry (Chicken)	80	46	105	20	251	12%
- Others					0	0%
Source of Livestock Feed	Orchard/Mountain Grazing					

Source : Agriculture Extension, Agriculture Department, Balochistan.

Table E.40j Agricultural Profile of Beneficially Area of Ghazlona DAD

Name of Dam	Ghazlona			TOTAL	%
Name of Village	Mullayan	Silad	Kamran Kaul		
Total Agricultural Land (ha)	106	219	325	650	
Cultivated Area (ha)	106	219	325	650	
- Cropped Area (ha)	37	67	193	297	
- Current Fallow (ha)	68	152	132	353	
Culturable Waste (ha)				0	
Number of Tubewells	1	8	2	11	
Number of Karezes	1	3	2	6	
Number of Tractors	0	0	2	2	
Irrigated Area (ha)	37	67	154	259	40%
- by Well (ha)				0	0%
- by Tubewell (ha)	7	26	37	70	27%
- by Karez / Spring (ha)	30	42	117	189	73%
- Others (ha)				0	0%
Un-irrigated Area (ha)	0	20	17	37	
- Khushkaba (ha)		20	17	37	
- Sailaba (ha)				0	
Area of Rabi Crops	0	3	31	34	
- Wheat (irrigated) (ha)		2		2	6%
- Wheat (un-irrigated) (ha)		1	31	32	94%
- Barley (ha)				0	0%
- Cumin (ha)				0	0%
- Vegetables (ha)				0	0%
- Fodder (ha)				0	0%
Area of Kharif Crops	42	80	156	278	
- Apple (ha)	22	39	72	133	48%
- Apricot (ha)	8	16	29	52	19%
- Grape (ha)	0.4	3	23	27	10%
- Cherry (ha)				0	0%
- Almond (ha)				0	0%
- Onion (ha)	4	7	13	25	9%
- Potato (ha)	4	4	10	19	7%
- Vegetables (ha)	3	9	8	20	7%
- Melons (ha)				0	0%
- Fodder (ha)		1		1	0%
- Tobacco (ha)		0.4	1	1	0%
Number of Livestock				355	
- Cattle	31	55	78	164	46%
- Buffalos		7	13	20	6%
- Sheep	6	13	14	33	9%
- Goats	14	33	73	120	34%
- Camel				0	0%
- Horse	2	4	5	11	3%
- Donkey			7	7	2%
- Poultry (Chicken)				0	0%
- Others				0	0%
Source of Livestock Feed	Self (Orchard)				

Source : Agriculture Extension, Agriculture Department, Balochistan.

Table E.41 Use of Fertilizers, Manures and Insecticides by Size of Farm

District	Size of Farm	Total Number of Farms	Farms-Fodders* Farms Reporting Use of		Fertilizers only		Manures only		Insecticides	
			F & M *		Number	%	Number	%	Number	%
Quetta	All Farms	3,139	463	15	182	6	660	21	1,281	41
	Government Farms	8	2	25	-	-	1	13	3	38
	Private Farms - Total	3,131	461	15	182	6	659	21	1,278	41
	under 1 ha	1,056	34	3	41	4	353	33	432	41
	1 - 2 ha	358	23	6	21	6	102	28	139	39
	2 - 3 ha	293	70	24	10	3	44	15	124	42
	3 - 5 ha	399	45	11	15	4	44	11	101	25
	5 - 10 ha	357	87	24	39	11	26	7	139	39
	10 - 20 ha	325	109	34	21	6	40	12	174	54
	20 - 60 ha	244	56	23	22	9	44	18	120	49
	60 ha and above	99	37	37	13	13	6	6	49	49
Pishin **	All Farms	20,871	6,351	30	1,137	5	3,992	19	8,717	42
	Government Farms	-	-	-	-	-	-	-	-	-
	Private Farms - Total	20,871	6,351	30	1,137	5	3,992	19	8,717	42
	under 1 ha	2,338	507	22	130	6	693	30	840	36
	1 - 2 ha	3,192	945	30	187	6	873	27	1,451	45
	2 - 3 ha	3,860	1,235	32	273	7	759	20	1,748	45
	3 - 5 ha	4,321	1,446	33	298	7	685	16	1,946	45
	5 - 10 ha	3,738	1,114	30	177	5	481	13	1,412	38
	10 - 20 ha	1,988	625	31	49	2	330	17	772	39
	20 - 60 ha	1,272	428	34	21	2	152	12	487	38
	60 ha and above	162	51	31	2	1	19	12	61	38
Kalat ***	All Farms	23,935	3,721	16	842	4	1,250	5	3,946	16
	Government Farms	6	2	33	-	-	-	-	2	33
	Private Farms - Total	23,929	3,719	16	842	4	1,250	5	3,944	16
	under 1 ha	2,114	123	5	63	3	102	5	107	5
	1 - 2 ha	2,387	93	4	73	3	93	4	140	6
	2 - 3 ha	3,683	213	6	24	1	111	3	170	5
	3 - 5 ha	5,003	445	9	125	2	233	5	527	11
	5 - 10 ha	4,847	857	18	197	4	216	4	857	18
	10 - 20 ha	3,723	1,201	32	229	6	314	8	1,298	35
	20 - 60 ha	1,895	684	36	115	6	170	9	739	39
	60 ha and above	277	103	37	16	6	11	4	106	38
Total	All Farms	47,945	10,535	22	2,161	5	5,902	12	13,944	29
	Government Farms	14	4	29	-	-	1	7	5	36
	Private Farms - Total	47,931	10,531	22	2,161	5	5,901	12	13,939	29
	under 1 ha	5,508	664	12	234	4	1,148	21	1,379	25
	1 - 2 ha	5,937	1,061	18	281	5	1,068	18	1,730	29
	2 - 3 ha	7,836	1,518	19	307	4	914	12	2,042	26
	3 - 5 ha	9,723	1,936	20	438	5	962	10	2,574	26
	5 - 10 ha	8,942	2,058	23	413	5	723	8	2,408	27
	10 - 20 ha	6,036	1,935	32	299	5	684	11	2,244	37
	20 - 60 ha	3,411	1,168	34	158	5	366	11	1,346	39
	60 ha and above	538	191	36	31	6	36	7	216	40
Balochistan	All Farms	242,811	32,105	13	28,498	12	31,249	13	433,397	18
	Government Farms	26	12	46	1	4	1	4	12	46
	Private Farms - Total	242,785	32,093	13	28,497	12	31,248	13	433,385	18

* Fertilizers & Manures

** includes Qila Abdullah District

*** includes Mastung District

Source: 1990 Census of Agriculture (Agricultural Census Organization)

Table E.42 Use of Tractors and Draught Animals by Size of Farm

District	Size of Farm	No. of Farms Reporting Cultivated Area *	ms-FodderReporting Use of					
			Tractor Only		Both Tractor & Draught Animals		Draught Animals Only	
			Number	%	Number	%	Number	%
Quetta	Private Farms - Total	2,053	1,005	49	1,000	49	50	2
	under 1 ha	522	64	12	452	87	6	1
	1 - 2 ha	225	98	44	123	55	5	2
	2 - 3 ha	232	120	52	102	44	10	4
	3 - 5 ha	282	168	60	114	40	0	0
	5 - 10 ha	251	158	63	87	35	6	2
	10 - 20 ha	265	175	66	79	30	11	4
	20 - 60 ha	192	158	82	29	15	5	3
	60 ha and above	84	64	76	14	17	6	7
Pishin **	Private Farms - Total	17,370	13,826	80	3,198	18	345	2
	under 1 ha	1,947	1,364	70	487	25	96	5
	1 - 2 ha	2,826	2,163	77	574	20	88	3
	2 - 3 ha	3,322	2,765	83	511	15	44	1
	3 - 5 ha	3,604	2,888	80	656	18	61	2
	5 - 10 ha	2,875	2,306	80	541	19	27	1
	10 - 20 ha	1,602	1,355	85	230	14	18	1
	20 - 60 ha	1,070	871	81	192	18	8	1
	60 ha and above	124	114	92	7	6	3	2
Kalat ***	Private Farms - Total	21,596	4,477	21	8,361	39	8,758	41
	under 1 ha	1,846	367	20	1,000	54	478	26
	1 - 2 ha	2,187	407	19	877	40	903	41
	2 - 3 ha	3,399	754	22	1,012	30	1,633	48
	3 - 5 ha	4,589	829	18	1,488	32	2,272	50
	5 - 10 ha	4,365	939	22	1,433	33	1,992	46
	10 - 20 ha	3,238	699	22	1,581	49	959	30
	20 - 60 ha	1,698	429	25	880	52	390	23
	60 ha and above	274	53	19	90	33	131	48
Total	Private Farms - Total	41,019	19,308	47	12,559	31	9,153	22
	under 1 ha	4,315	1,795	42	1,939	45	580	13
	1 - 2 ha	5,238	2,668	51	1,574	30	996	19
	2 - 3 ha	6,953	3,639	52	1,625	23	1,687	24
	3 - 5 ha	8,475	3,885	46	2,258	27	2,333	28
	5 - 10 ha	7,491	3,403	45	2,061	28	2,025	27
	10 - 20 ha	5,105	2,229	44	1,890	37	988	19
	20 - 60 ha	2,960	1,458	49	1,101	37	403	14
	60 ha and above	482	231	48	111	23	140	29
Balochistan	Private Farms - Total	192,153	57,200	30	69,094	36	65,865	34
	under 1 ha	20,289	6,052	30	6,026	30	8,213	40
	1 - 2 ha	20,545	7,171	35	6,717	33	6,657	32
	2 - 3 ha	25,794	9,031	35	8,200	32	8,561	33
	3 - 5 ha	44,084	13,907	32	15,417	35	14,761	33
	5 - 10 ha	39,758	10,979	28	14,843	37	13,935	35
	10 - 20 ha	23,939	5,706	24	10,006	42	8,229	34
	20 - 60 ha	14,231	3,486	24	6,039	42	4,706	33
	60 ha and above	3,513	868	25	1,846	53	803	23

* This number of farms is less than total number of farms. (see other tables)

** includes Qila Abdullah District

*** includes Mastung District

Source: 1990 Census of Agriculture (Agricultural Census Organization)

Table E.43 Number of Major Livestock by Type of Household

District	Type of Household	Sheep-Fodder		Goats		Cattle	Buffaloes
		Households	Heads	Households	Heads	Heads	Heads
Quetta	All Agricultural Households	1,854	27,185	2,532	24,562	3,024	1,898
	Livestock Holders	1,120	14,329	1,428	14,407	1,946	1,320
	Farm Households Total	734	12,856	1,104	10,155	1,078	578
	under 1 ha	213	1,894	281	1,754	76	34
	1 - 2 ha	79	575	148	1,046	70	169
	2 - 3 ha	58	798	102	1,091	111	1
	3 - 5 ha	69	1,198	136	1,044	62	144
	5 - 10 ha	124	2,534	155	1,529	150	83
	10 - 20 ha	97	2,086	149	1,924	182	40
	20 - 60 ha	72	2,919	90	1,131	273	102
	60 ha and above	22	852	43	636	154	5
	Non Agricultural Households	344	849	919	2,433		
Pishin *	All Agricultural Households	9,957	240,358	15,233	365,011	34,545	6,808
	Livestock Holders	3,872	111,527	5,075	124,499	8,831	1,319
	Farm Households Total	6,085	128,831	10,158	240,512	25,714	5,489
	under 1 ha	714	9,081	1,292	23,198	2,138	917
	1 - 2 ha	905	10,954	1,531	29,861	3,737	952
	2 - 3 ha	1,149	17,018	1,928	41,564	4,337	1,026
	3 - 5 ha	1,282	27,284	2,068	49,287	5,287	1,412
	5 - 10 ha	951	25,717	1,721	52,575	4,644	674
	10 - 20 ha	620	25,791	978	26,056	2,621	298
	20 - 60 ha	415	10,961	582	16,953	2,303	101
	60 ha and above	49	2,025	58	1,018	647	109
	Non Agricultural Households	201	519	528	1,535		
Kalat **	All Agricultural Households	20,329	871,416	23,725	1,003,957	34,664	1,433
	Livestock Holders	4,216	189,042	5,783	279,687	3,983	28
	Farm Households Total	16,113	682,374	17,942	724,270	30,681	1,405
	under 1 ha	1,067	28,027	1,289	31,325	1,228	30
	1 - 2 ha	1,413	43,938	1,604	59,531	2,347	102
	2 - 3 ha	2,480	99,768	2,564	114,804	3,683	0
	3 - 5 ha	3,530	150,028	3,900	169,300	5,918	162
	5 - 10 ha	3,422	165,585	3,701	135,839	6,729	150
	10 - 20 ha	2,701	114,768	3,072	110,674	6,759	355
	20 - 60 ha	1,289	51,761	1,590	65,303	3,778	600
	60 ha and above	211	28,499	222	37,494	239	6
	Non Agricultural Households	121	248	622	1,612		
Total	All Agricultural Households	32,140	1,138,959	41,490	1,393,530	72,233	10,139
	Livestock Holders	9,208	314,898	12,286	418,593	14,760	2,667
	Farm Households Total	22,932	824,061	29,204	974,937	57,473	7,472
	under 1 ha	1,994	39,002	2,862	56,277	3,442	981
	1 - 2 ha	2,397	55,467	3,283	90,438	6,154	1,223
	2 - 3 ha	3,687	117,584	4,594	157,459	8,131	1,027
	3 - 5 ha	4,881	178,510	6,104	219,631	11,267	1,718
	5 - 10 ha	4,497	193,836	5,577	189,943	11,523	907
	10 - 20 ha	3,418	142,645	4,199	138,654	9,562	693
	20 - 60 ha	1,776	65,641	2,262	83,387	6,354	803
	60 ha and above	282	31,376	323	39,148	1,040	120
	Non Agricultural Households	666	1,616	2,069	5,580		
Balochistan	All Agricultural Households	138,370	6,475,663	250,750	6,346,529	865,203	51,379

* includes Qila Abdullah District

** includes Mastung District

Source : 1990 Census of Agriculture (Agricultural Census Organization)

Table E.44 Number of Cattle & Buffaloes by Size of Herd

District	Size of Herd	Number Farms-Fodders*				Number of Animals			
		Farm Households	Non-Farm Households	Total Households	(%)	Farm Households	Non-Farm Households	Total Households	(%)
Quetta	Total	418	877	1,295	100	1,656	3,268	4,924	100
	1 to 2 Animals	252	560	812	63	417	983	1,400	28
	3 to 4	86	177	263	20	302	622	924	19
	5 to 10	59	87	146	11	385	564	949	19
	11 to 15	13	33	46	4	156	417	573	12
	16 to 20	0	5	5	0	0	90	90	2
	21 to 30	0	7	7	1	0	164	164	3
	31 to 50	6	0	6	0	268	0	268	5
	51 and Above	2	8	10	1	128	428	556	11
Pishin *	Total	8,922	3,623	12,545	100	31,202	10,151	41,353	100
	1 to 2 Animals	5,658	2,539	8,197	65	10,033	4,523	14,556	35
	3 to 4	2,036	775	2,811	22	7,200	2,632	9,832	24
	5 to 10	710	253	963	8	4,319	1,603	5,922	14
	11 to 15	221	22	243	2	2,964	272	3,236	8
	16 to 20	130	9	139	1	2,379	155	2,534	6
	21 to 30	161	19	180	1	3,849	439	4,288	10
	31 to 50	1	1	2	0	37	50	87	0
	51 and Above	5	5	10	0	421	477	898	2
Kalat **	Total	11,794	1,630	13,424	100	32,087	4,011	36,098	100
	1 to 2 Animals	8,506	1,137	9,643	72	15,986	1,971	17,957	50
	3 to 4	2,324	398	2,722	20	8,153	1,359	9,512	26
	5 to 10	769	75	844	6	4,545	441	4,986	14
	11 to 15	102	20	122	1	1,235	240	1,475	4
	16 to 20	20	0	20	0	393	0	393	1
	21 to 30	73	0	73	1	1,775	0	1,775	5
	31 to 50	0	0	0	0	0	0	0	0
	51 and Above	0	0	0	0	0	0	0	0
Total	Total	21,134	6,130	27,264	100	64,945	17,430	82,375	100
	1 to 2 Animals	14,416	4,236	18,652	68	26,436	7,477	33,913	41
	3 to 4	4,446	1,350	5,796	21	15,655	4,613	20,268	25
	5 to 10	1,538	415	1,953	7	9,249	2,608	11,857	14
	11 to 15	336	75	411	2	4,355	929	5,284	6
	16 to 20	150	14	164	1	2,772	245	3,017	4
	21 to 30	234	26	260	1	5,624	603	6,227	8
	31 to 50	7	1	8	0	305	50	355	0
	51 and Above	7	13	20	0	549	905	1,454	2
Balochistan	Total	147,177	37,625	184,802	100	712,853	203,742	916,595	100
	1 to 2 Animals	56,043	16,286	72,329	39	101,633	28,284	129,917	14
	3 to 4	39,470	9,977	49,447	27	141,668	34,887	176,555	19
	5 to 10	40,499	7,964	48,463	26	271,744	53,682	325,426	36
	11 to 15	6,647	1,734	8,381	5	83,629	21,886	105,515	12
	16 to 20	2,203	642	2,845	2	38,989	11,440	50,429	6
	21 to 30	1,514	415	1,929	1	36,854	10,464	47,318	5
	31 to 50	567	339	906	0	21,722	13,487	35,209	4
	51 and Above	234	268	502	0	16,614	29,612	46,226	5

* includes Qila Abdullah District

** includes Mastung District

Source: 1990 Census of Agriculture (Agricultural Census Organization)

Table E.45 Number of Sheep & Goats by Size of Herd

District	Size of Herd	Number Farms-Podders*				Number of Animals			
		Farm Households	Non-Farm Households	Total Households	(%)	Farm Households	Non-Farm Households	Total Households	(%)
Quetta	Total	1,400	3,093	4,493	100	23,009	32,019	55,028	100
	1 to 4 Animals	473	1,284	1,757	39	1,403	3,539	4,942	9
	5 to 15	552	1,352	1,904	42	4,669	11,413	16,082	29
	16 to 30	205	296	501	11	4,653	6,529	11,182	20
	31 to 50	85	89	174	4	3,433	3,528	6,961	13
	51 to 100	59	55	114	3	4,085	3,822	7,907	14
	101 to 150	18	11	29	1	2,459	1,553	4,012	7
	151 to 200	2	2	4	0	379	430	809	1
	201 and Above	6	4	10	0	1,928	1,205	3,133	6
Pishin *	Total	12,027	6,682	18,709	100	369,339	238,080	607,419	100
	1 to 4 Animals	975	799	1,774	9	3,075	2,463	5,538	1
	5 to 15	4,331	2,915	7,246	39	41,664	27,797	69,461	11
	16 to 30	3,307	1,338	4,645	25	73,496	28,530	102,026	17
	31 to 50	1,620	571	2,191	12	65,532	22,108	87,640	14
	51 to 100	1,223	495	1,718	9	86,761	35,055	121,816	20
	101 to 150	333	220	553	3	41,905	26,908	68,813	11
	151 to 200	129	115	244	1	23,357	20,441	43,798	7
	201 and Above	109	229	338	2	33,549	74,778	108,327	18
Kalat **	Total	20,556	7,056	27,612	100	1,406,644	470,590	1,877,234	100
	1 to 4 Animals	1,150	742	1,892	7	3,541	1,974	5,515	0
	5 to 15	3,904	1,421	5,325	19	37,928	13,957	51,885	3
	16 to 30	4,155	1,399	5,554	20	94,167	30,973	125,140	7
	31 to 50	3,012	721	3,733	14	118,059	28,373	146,432	8
	51 to 100	4,042	1,213	5,255	19	299,267	90,004	389,271	21
	101 to 150	2,126	866	2,992	11	256,839	106,368	363,207	19
	151 to 200	887	380	1,267	5	155,182	65,349	220,531	12
	201 and Above	1,280	314	1,594	6	441,661	133,592	575,253	31
Total	Total	33,983	16,831	50,814	100	1,798,992	740,689	2,539,681	100
	1 to 4 Animals	2,598	2,825	5,423	11	8,019	7,976	15,995	1
	5 to 15	8,787	5,688	14,475	28	84,261	53,167	137,428	5
	16 to 30	7,667	3,033	10,700	21	172,316	66,032	238,348	9
	31 to 50	4,717	1,381	6,098	12	187,024	54,009	241,033	9
	51 to 100	5,324	1,763	7,087	14	390,113	128,881	518,994	20
	101 to 150	2,477	1,097	3,574	7	301,203	134,829	436,032	17
	151 to 200	1,018	497	1,515	3	178,918	86,220	265,138	10
	201 and Above	1,395	547	1,942	4	477,138	209,575	686,713	27
Balochistan	Total	181,792	99,580	281,372	100	8,632,419	4,189,775	12,822,194	100
	1 to 4 Animals	29,809	26,583	56,392	20	84,514	72,760	157,274	1
	5 to 15	55,316	34,854	90,170	32	512,253	300,549	812,802	6
	16 to 30	33,182	11,472	44,654	16	744,334	252,687	997,021	8
	31 to 50	20,160	6,509	26,669	9	809,722	262,806	1,072,528	8
	51 to 100	21,524	8,746	30,270	11	1,557,130	642,550	2,199,680	17
	101 to 150	8,670	4,141	12,811	5	1,070,947	513,193	1,584,140	12
	151 to 200	4,662	2,342	7,004	2	823,426	411,113	1,234,539	10
	201 and Above	8,459	4,933	13,392	5	3,030,093	1,734,117	4,764,210	37

* includes Qila Abdullah District

** includes Mastung District

Source: 1990 Census of Agriculture (Agricultural Census Organization)

Table E.46 Farms Reporting Fodders and Fodders Area by Size of Farm

District	Size of Farm	Total No. of Farms	Farms-Fodders*		Area Under Fodders (ha)					Fodders (%) **
			No.	(%)	Kharif	Rabi	Total	Irrigated	Unirrig	
Quetta	All Farms	3,139	125	4	96	135	231	172	59	19
	Government Farms	8	1	13	24	24	48	48	0	100
	Private Farms - Total	3,131	124	4	72	111	183	124	59	15
	under 1 ha	1,056	1	0	0	0	0	0	0	0
	1 - 2 ha	358	10	3	0	5	5	5	0	32
	2 - 3 ha	293	5	2	0	4	4	4	0	20
	3 - 5 ha	399	7	2	2	1	3	1	2	11
	5 - 10 ha	357	28	8	0	39	39	39	0	16
	10 - 20 ha	325	42	13	47	21	68	24	44	15
	20 - 60 ha	244	30	12	23	37	60	51	9	14
	60 ha and above	99	1	1	0	4	4	0	4	20
Pishin ***	All Farms	20,871	531	3	297	98	395	367	28	12
	Government Farms	0	0	0	0	0	0	0	0	0
	Private Farms - Total	20,871	531	3	297	98	395	367	28	12
	under 1 ha	2,338	7	0	4	1	5	5	0	86
	1 - 2 ha	3,192	52	2	6	14	20	20	0	36
	2 - 3 ha	3,860	34	1	16	5	21	20	1	31
	3 - 5 ha	4,321	94	2	29	16	45	39	6	14
	5 - 10 ha	3,738	137	4	78	13	91	88	3	14
	10 - 20 ha	1,988	97	5	93	10	103	94	9	12
	20 - 60 ha	1,272	105	8	64	36	100	91	9	9
	60 ha and above	162	5	3	8	4	12	12	0	10
Kalat ****	All Farms	23,935	3,110	13	1,327	1,224	2,551	2,065	486	8
	Government Farms	6	0	0	0	0	0	0	0	0
	Private Farms - Total	23,929	3,110	13	1,327	1,224	2,551	2,065	486	8
	under 1 ha	2,114	20	1	8	0	8	8	0	40
	1 - 2 ha	2,387	101	4	32	2	34	34	0	23
	2 - 3 ha	3,683	193	5	84	18	102	101	1	24
	3 - 5 ha	5,003	407	8	176	56	232	192	40	16
	5 - 10 ha	4,847	607	13	195	192	387	286	101	11
	10 - 20 ha	3,723	1,141	31	308	576	884	788	96	8
	20 - 60 ha	1,895	562	30	308	322	630	524	106	6
	60 ha and above	277	79	29	216	58	274	132	142	7
Total	All Farms	47,945	3,766	8	1,720	1,457	3,177	2,604	573	9
	Government Farms	14	1	7	24	24	48	48	0	100
	Private Farms - Total	47,931	3,765	8	1,696	1,433	3,129	2,556	573	9
	under 1 ha	5,508	28	1	12	1	13	13	0	50
	1 - 2 ha	5,937	163	3	38	21	59	59	0	27
	2 - 3 ha	7,836	232	3	100	27	127	125	2	25
	3 - 5 ha	9,723	508	5	207	73	280	232	48	16
	5 - 10 ha	8,942	772	9	273	244	517	413	104	12
	10 - 20 ha	6,036	1,280	21	448	607	1,055	906	149	9
	20 - 60 ha	3,411	697	20	395	395	790	666	124	7
	60 ha and above	538	85	16	224	66	290	144	146	7
Balochistan	All Farms	242,811	12,612	5	10,314	8,185	18,499	12,897	5,602	15
	Government Farms	26	6	23	107	56	163	163	0	33
	Private Farms - Total	242,785	12,606	5	10,207	8,129	18,336	12,734	5,602	15

* Farms reporting fodders

** Fodder area as % of cropped area of farms reporting fodders

*** includes Qila Abdullah District,

**** includes Mastung District

Source : 1990 Census of Agriculture (Agricultural Census Organization)

Table E.47 Cooperatives by Type in Balochistan (1995-96)

Cooperative Type	Number	Member ship	Members/Coop.	Share Capital Rs. million	Working Capital Rs. million
Agricultural					
Credit	122	2,598	21	0.445	0.803
Development	41	930	23	0.216	0.593
Service	22	359	16	0.039	0.204
Multi Purpose	213	4,981	23	3.296	16.847
Farming	6	198	33	0.008	3.140
Seed Supply	2	39	20	0.007	0.007
IRDP*	84	1,421	17	0.399	1.298
Tube Well	41	607	15	0.242	0.853
Marketing	14	525	38	0.121	0.273
Sugarcane	x	x	x	x	x
Fishermen	39	1,899	49	0.268	1.289
Others	24	532	22	0.086	0.121
Sub-Total	608	14,089	23	5.127	25.428 0
Non-Agricultural					
Credit	19	539	28	0.073	0.442
Industrial	26	1,127	43	0.105	0.500
Housing	21	10,900	519	2.789	22.278
Consumer	38	1,741	46	0.215	0.472
Women	46	899	20	0.045	5.585
Others	53	1,933	36	1.067	7.960
Sub-Total	203	17,139	84	4.294	37.237
Grand Total	811	31,228	39	9.421	62.665
Provincial Cooperative	1	468	468	12.413	40.649

* Integrated Rural Development Programme (Farm Inputs Supply)

Source : Agricultural & Cooperative Department

**Table E.48 Number of Cooperatives by Type in the Study Area
(1996)**

Cooperative Type	Quetta	Qila Abdullah	Pishin	Mastung	Kalat	Total
Agricultural						
Credit	11	*	3	**	25	39
Development	3	*	5	**	3	11
Service	0		0		0	0
Multi Purpose	13	*	51	**	46	110
Farming	1		0	**	2	3
Farm Service Centre	0		0		0	0
IRDP***	10	*	5	**	24	39
Tube Well	28	*	11	**	10	49
Marketing	5	*	3	**	0	8
Sugarcane	0		0		0	0
Fishermen	0		0		0	0
Others	26	*	14	**	4	44
Sub-Total	97	*	92	**	114	303
Non-Agricultural						
Credit	9	*	1	**	2	12
Industrial	4		0	**	13	17
Housing	18		0		0	18
Consumer	11	*	6	**	4	21
Women	0	*	3	**	0	3
Others	15	*	1	**	6	22
Sub-Total	57	*	11	**	25	93
Grand Total	154	*	103	**	139	396

* included in Pishin District

** included in Kalat District

*** Integrated Rural Development Programme (Farm Inputs Supply)

Source : Agricultural & Cooperative Department

Remark : Some figures in this table are not necessarily consistent to table 2.7.1 (1).

Table E.49 Cooperatives in the Beneficial Areas

Beneficial Area	Name of Cooperative	Membership
(Quetta District)		
Brewary		
1. Kirrani	The new Shah Cooperative Society, Kirrani.	?
Murgi Kotal		
2. Chashma Achozai:	Taj Agricultural Cooperative Society Ltd: Chashma-Achozai.	15
3. Kateer	The Villa Kateer, Multipurpose Cooperative Society, Kateer.	13
4. Samli	The Samli Multipurpose Cooperative Societies, Samli.	15
(Mastung District)		
Sakhol		
5.Fizabad	The Rural Multipurpose Cooperative Society Ltd: Mastung, Faizabad.	12
Mangi		
6. Shapchi	The Multipurpose Cooperative Society Ltd: Shapchi, Gerdgab Kargend, Mastung.	37
Kad Kocha II		
7.Mall Kharm	The Rural Multipurpose Cooperative Society, Mall Kharna, Kad Kocha, Mastung.	12
(Qila Abdullah District)		
Ghazlona (Arambi)		
8.Killa Abdullah	The Agricultural Multipurpose Cooperative Society, Killa Abdullah, Pishin. (Broader-based)	?

Source: Department of Agricultural Cooperatives, 1996

Table E.50 Major NGOs for Rural Development in Balochistan

No.	Nam of NGOs	Function
1	BRSP (Balochistan Rural Support Programme)	<ul style="list-style-type: none"> - Integral services for income genelation - Rural Finance - Human resources development - Infrastructure preparation - Health education and Formal and Informal education
2	SPO (Strengthening Participatry Organization)	<ul style="list-style-type: none"> - Capacity Building of CBOs - Their working area is in whole of Balochistan - Formal and informal Female education in Mekran Division
3	TARAQEE Development	<ul style="list-style-type: none"> - Rural development, Environment and Sanitation upgrading and provision of new facilities
4	IUCN	<ul style="list-style-type: none"> - Environment awareness and Rural development
5	SHAJAR	<ul style="list-style-type: none"> - Environment awareness and Rural development
6	TVO	<ul style="list-style-type: none"> - Environment awareness and Rural development
7	OXFOM	<ul style="list-style-type: none"> - Small project finding of any kind
8	AURAT Foundation	<ul style="list-style-type: none"> - Dissemination of information - Linkages between different NGOs

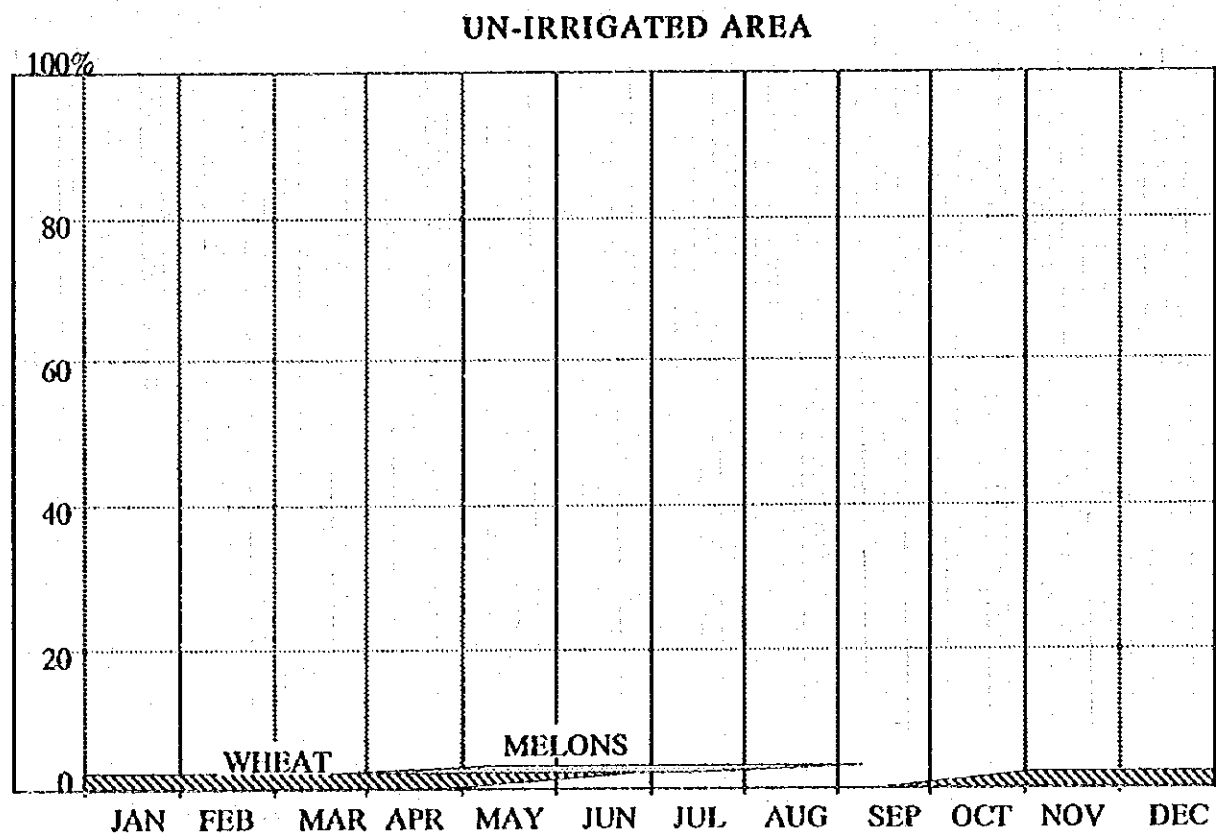
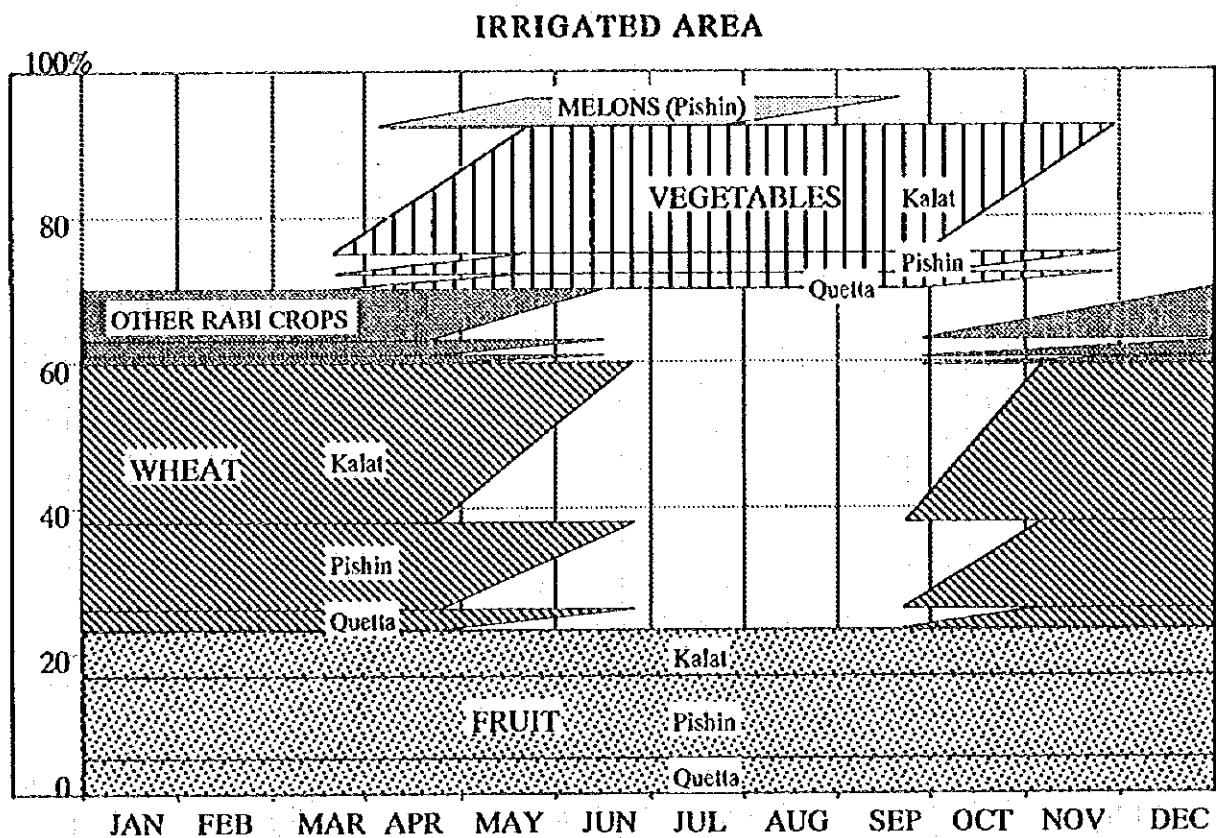


Fig. E-1 Present Cropping Pattern in the Study Area

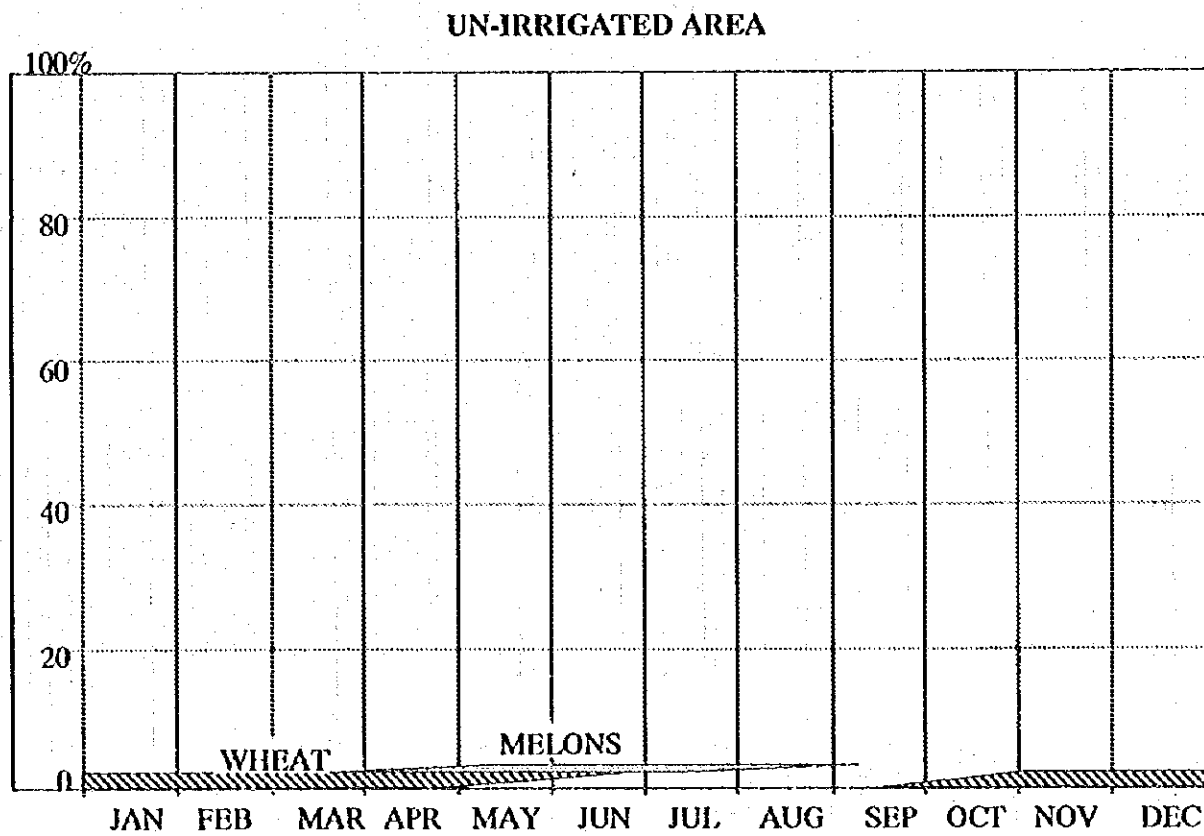
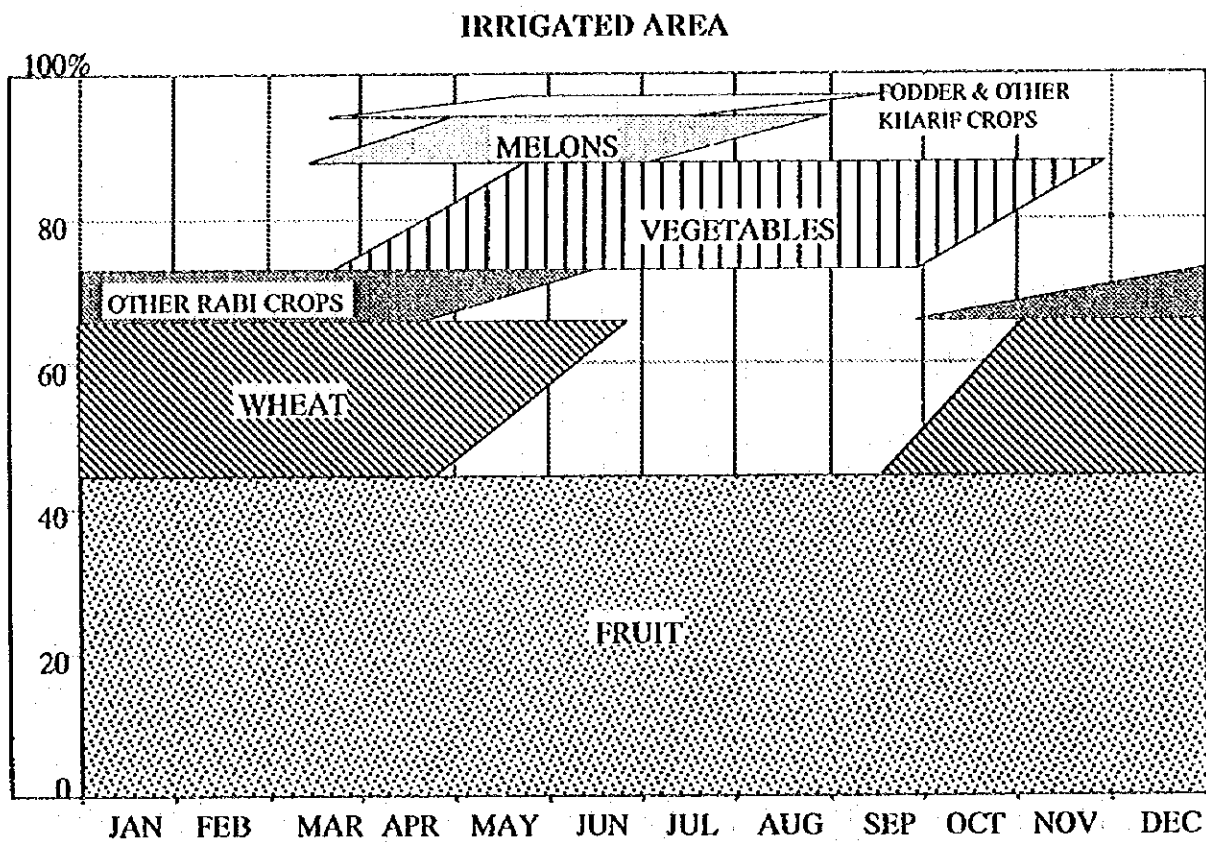


Fig. E-2 Present Cropping Pattern in Quetta District

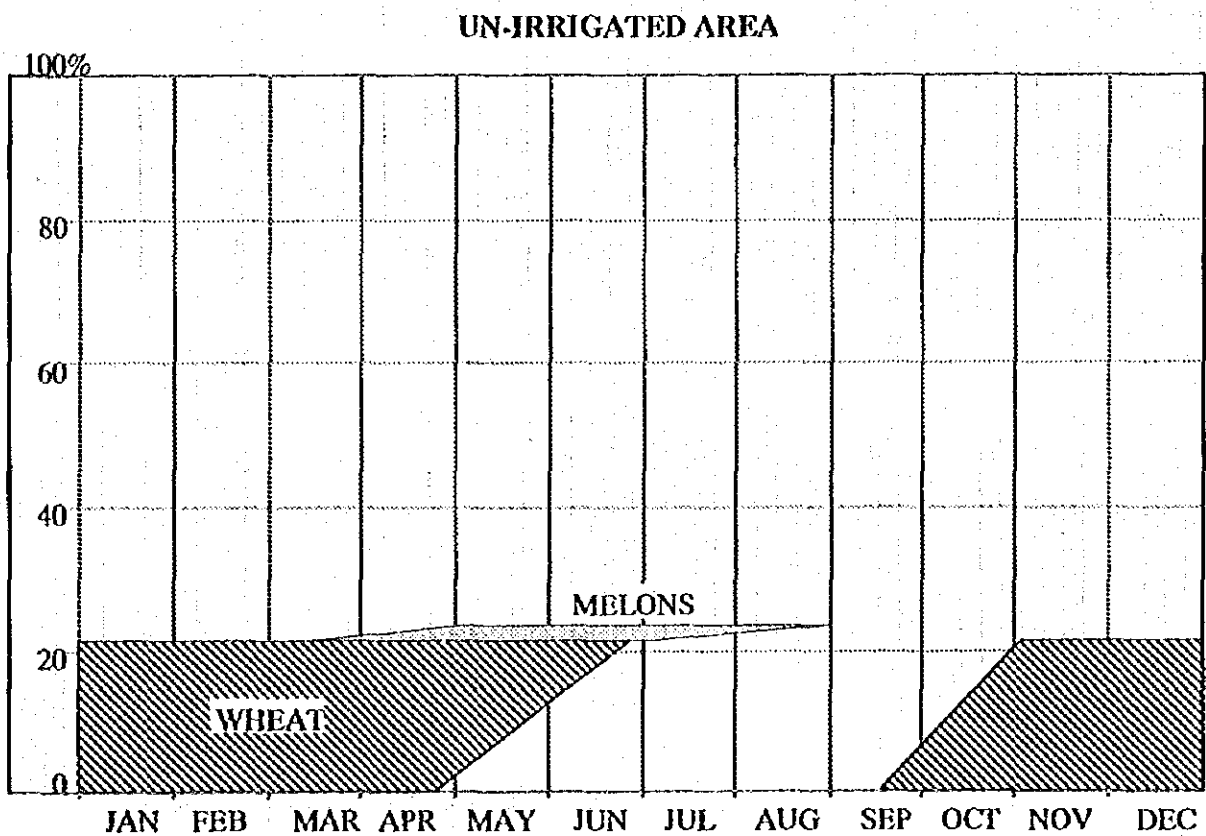
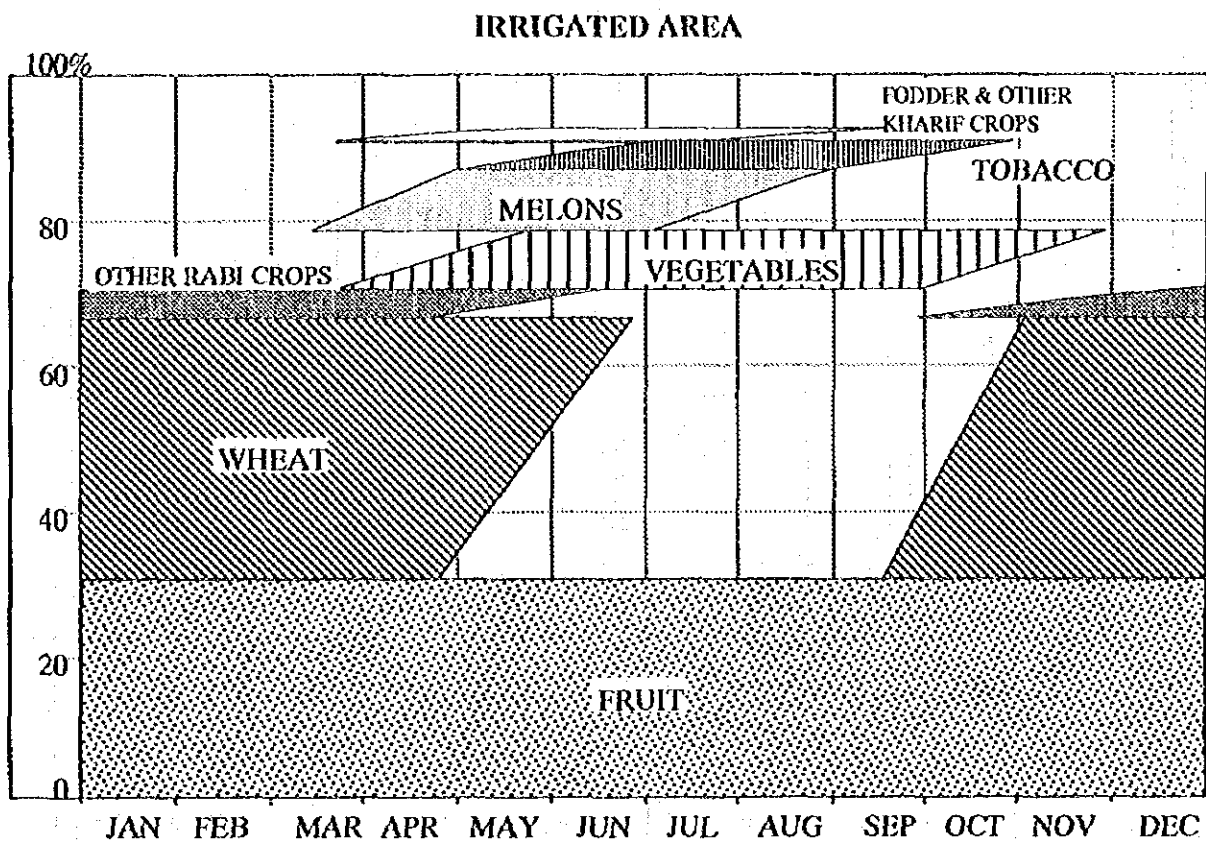


Fig. E-3 Present Cropping Pattern in Pishin District

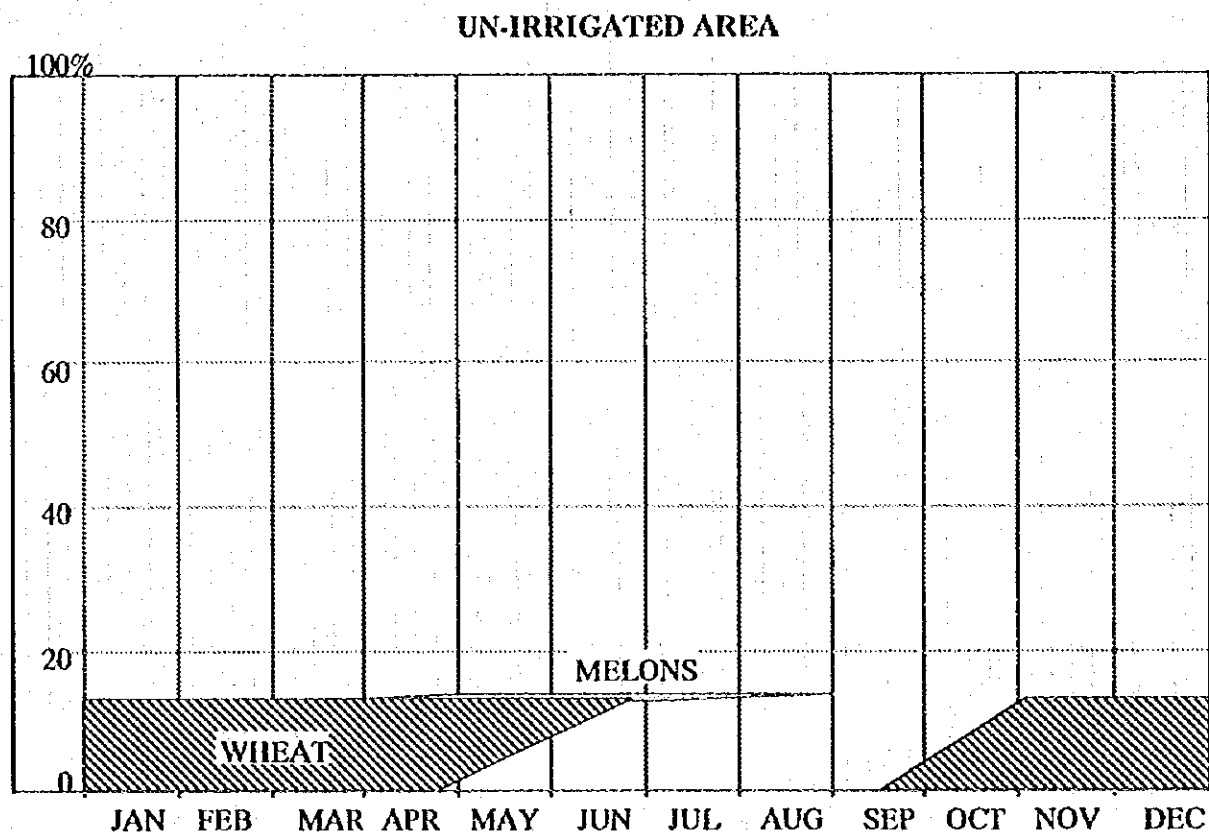
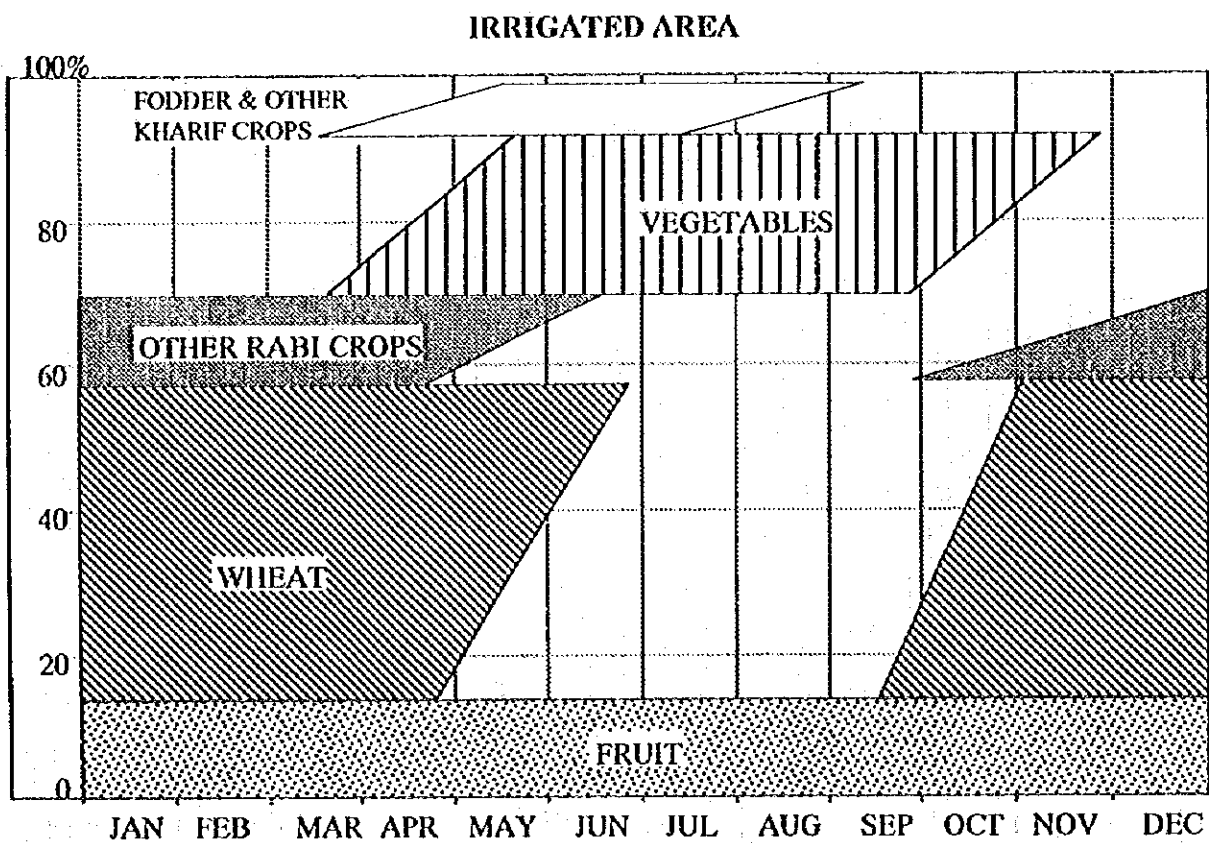


Fig. E-4 Present Cropping Pattern in Kalat District

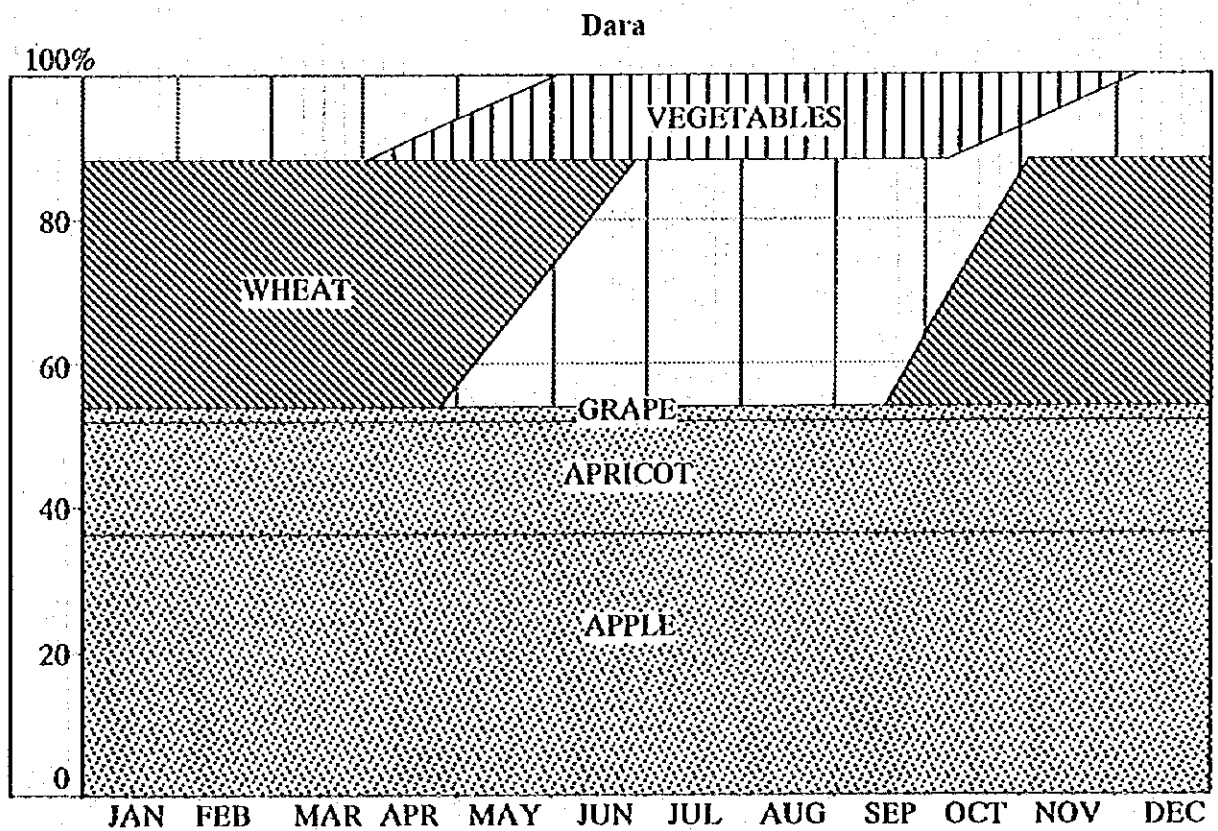
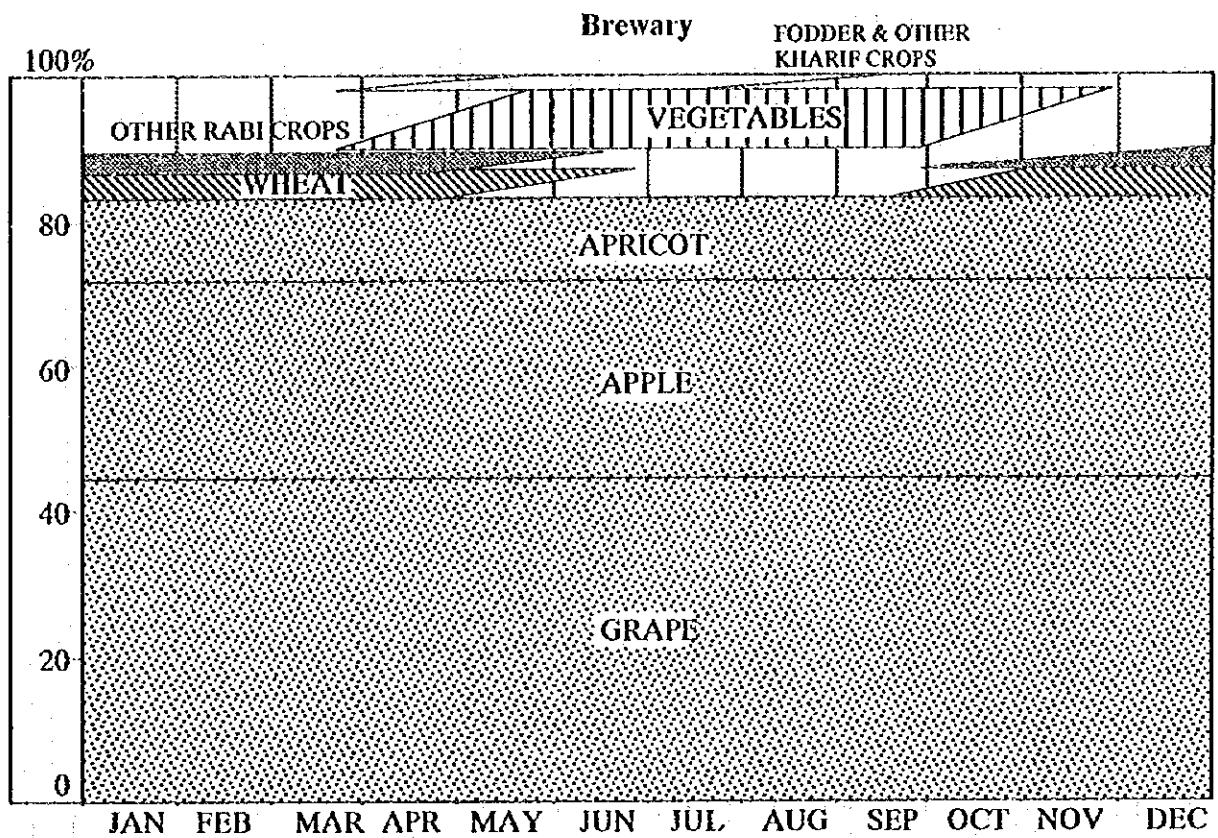


Fig. E-5a Present Cropping Pattern in Brewary & Dara

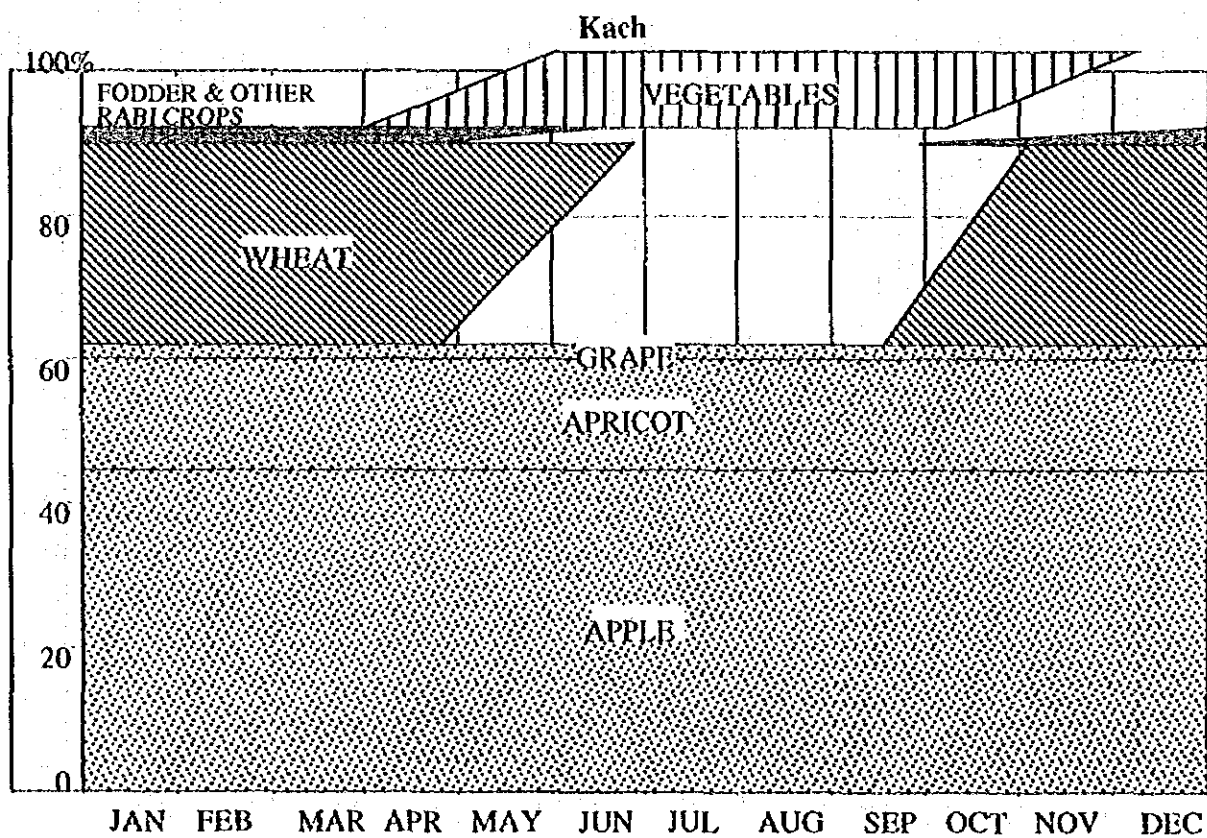
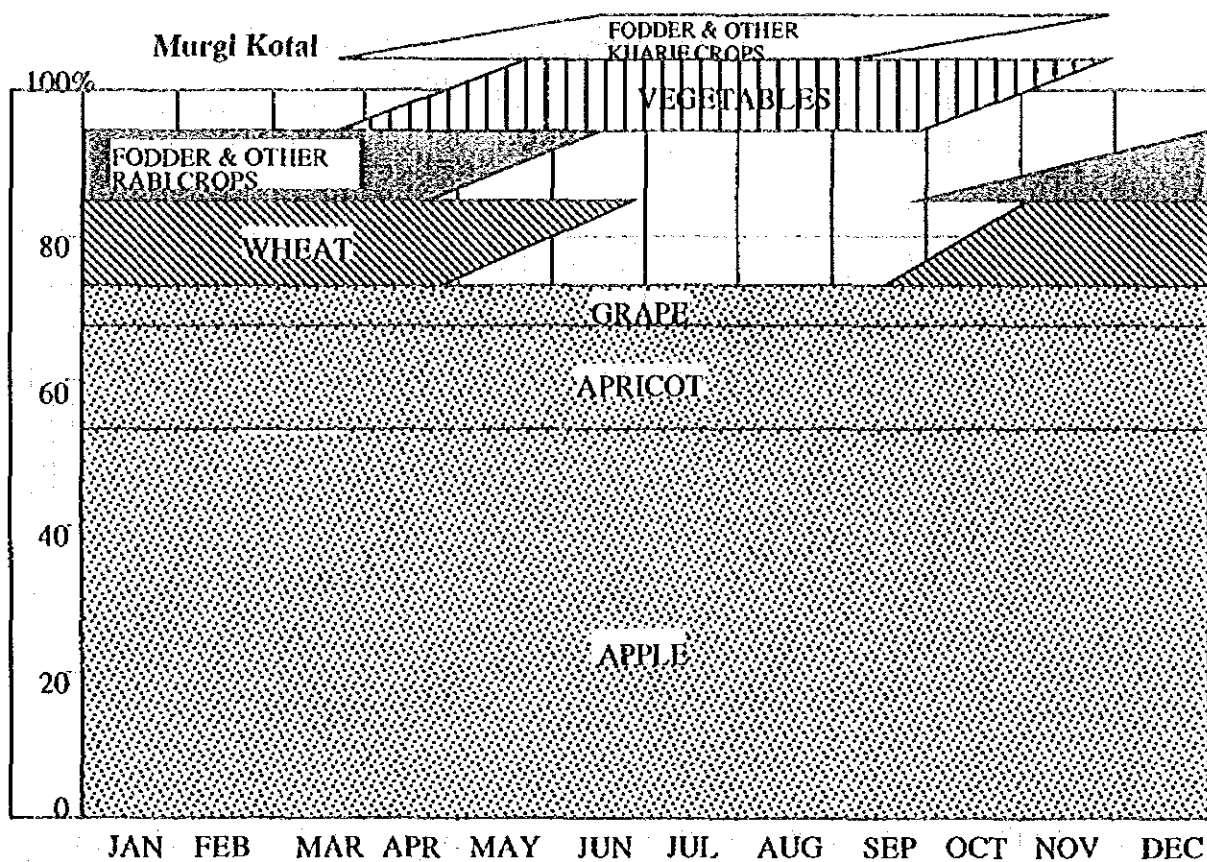


Fig. E-5b Present Cropping Pattern in Murgi Kotal & Kach

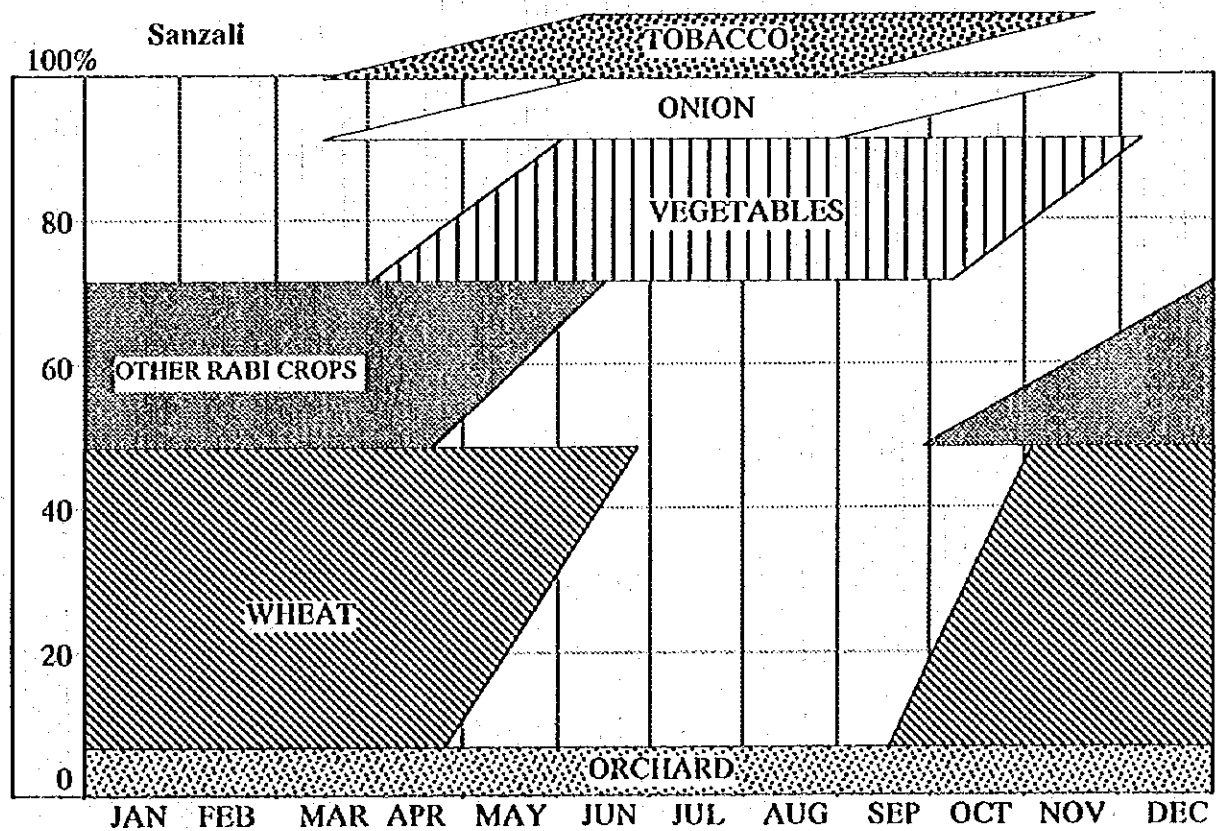
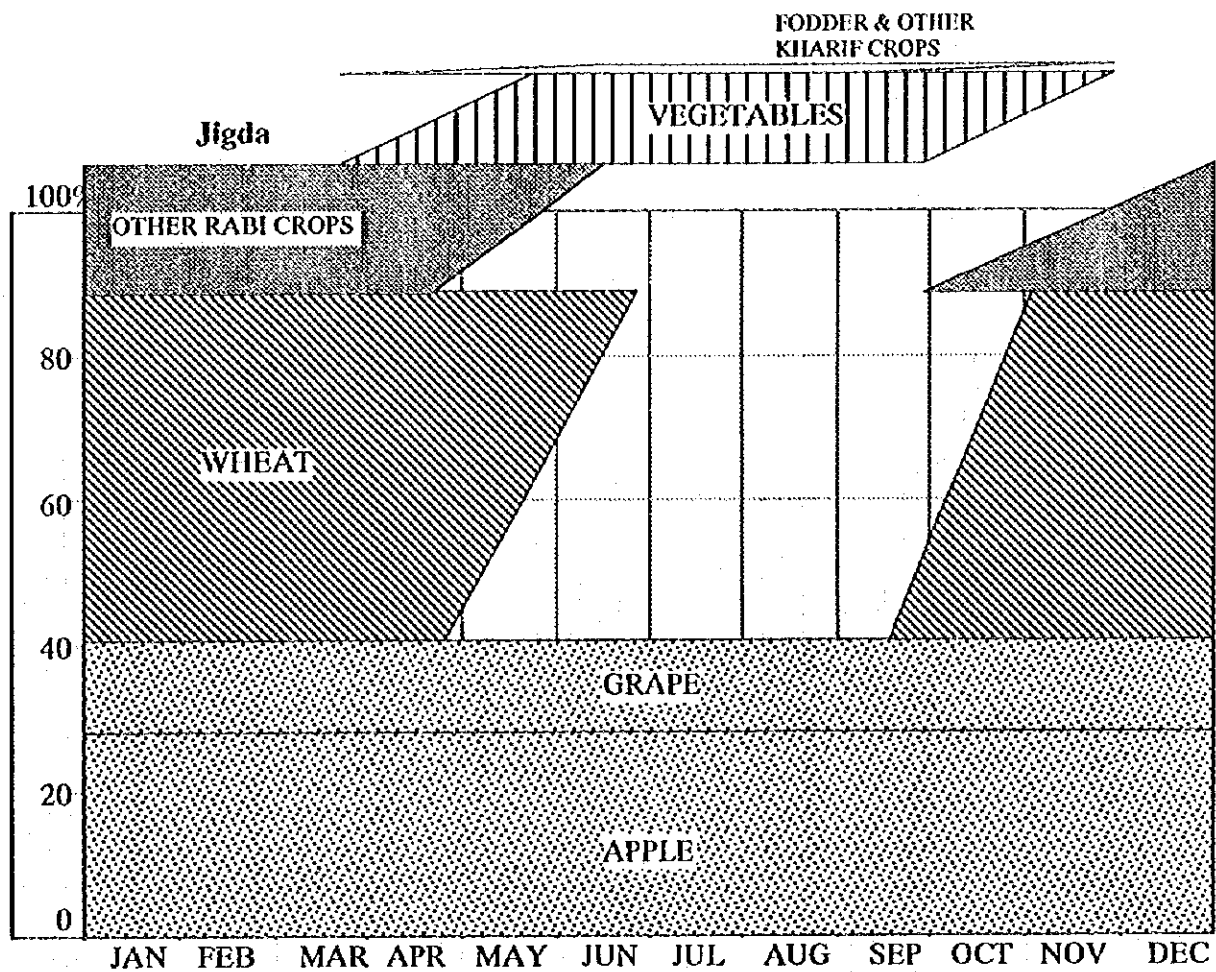


Fig. E-5c Present Cropping Pattern in Jigda & Sanzali

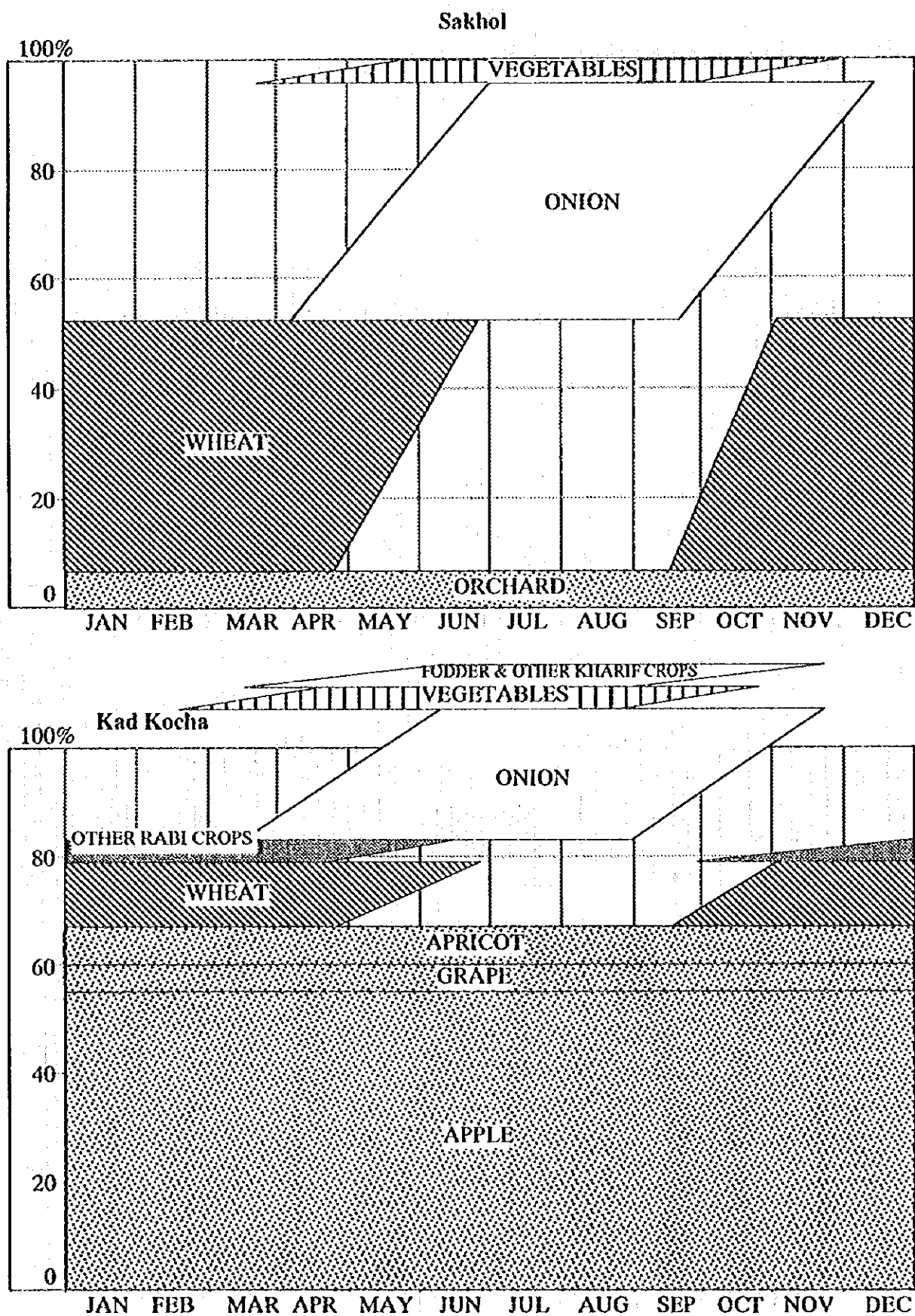


Fig. E-5d Present Cropping Pattern in Sakhol & Kad Kocha

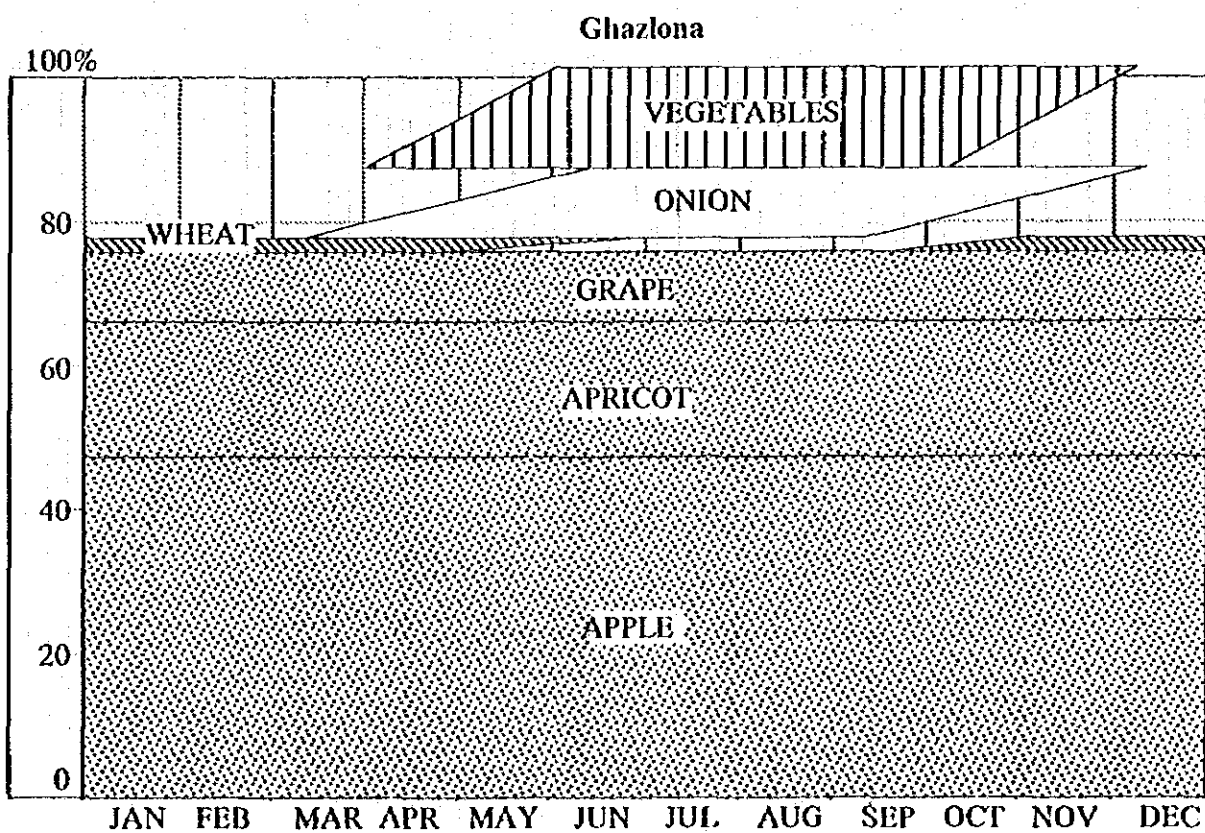
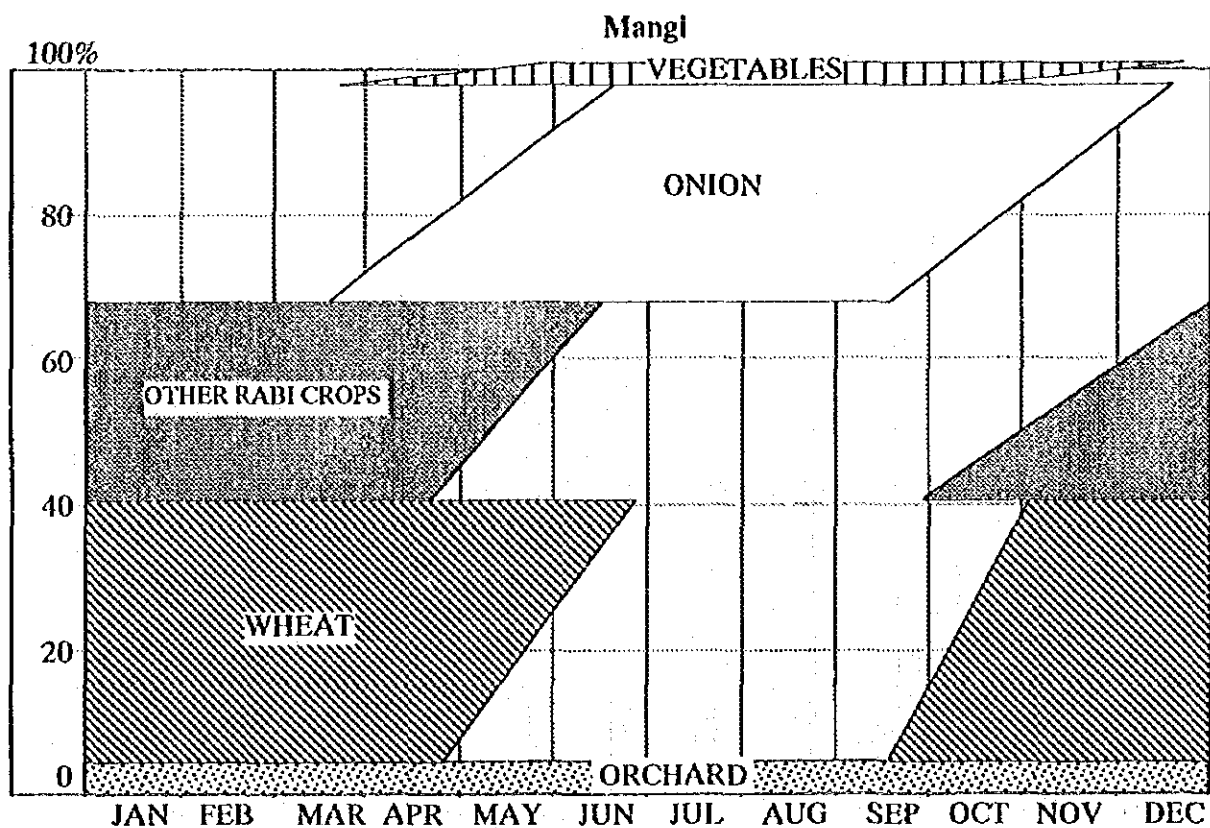
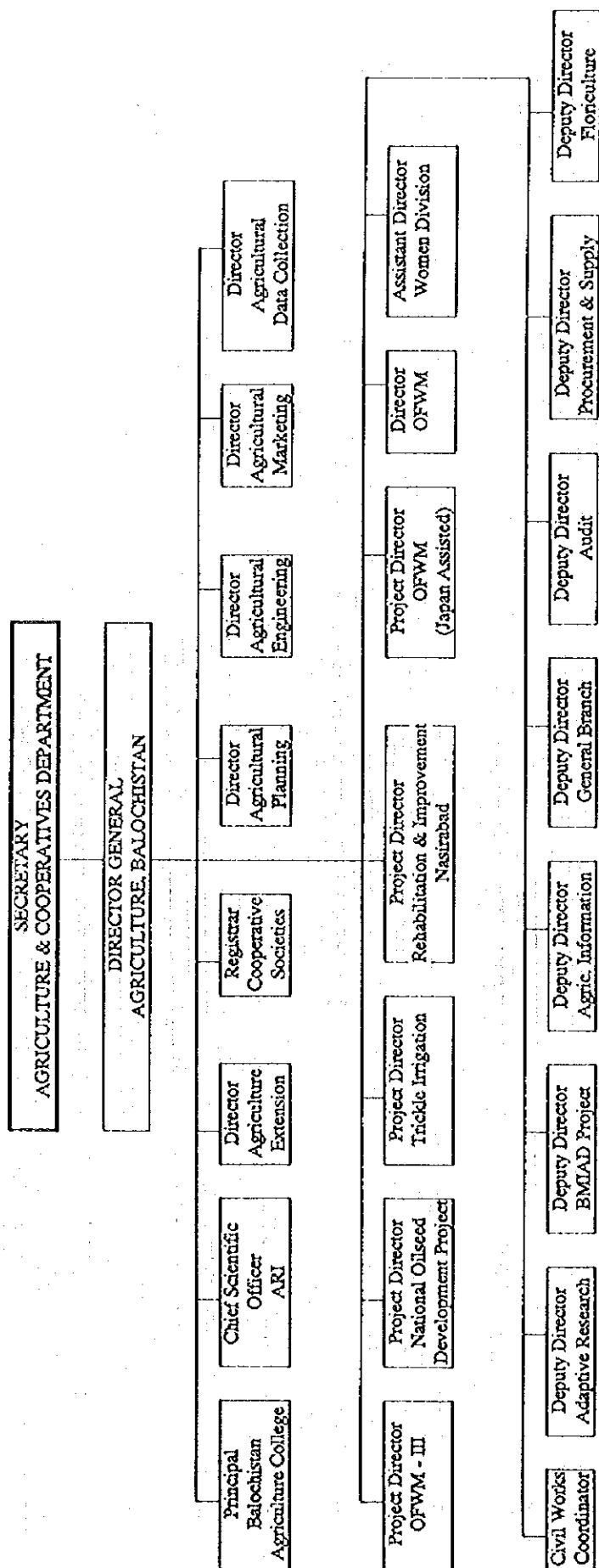


Fig. E-5e Present Cropping Pattern in Mangl & Ghazlona

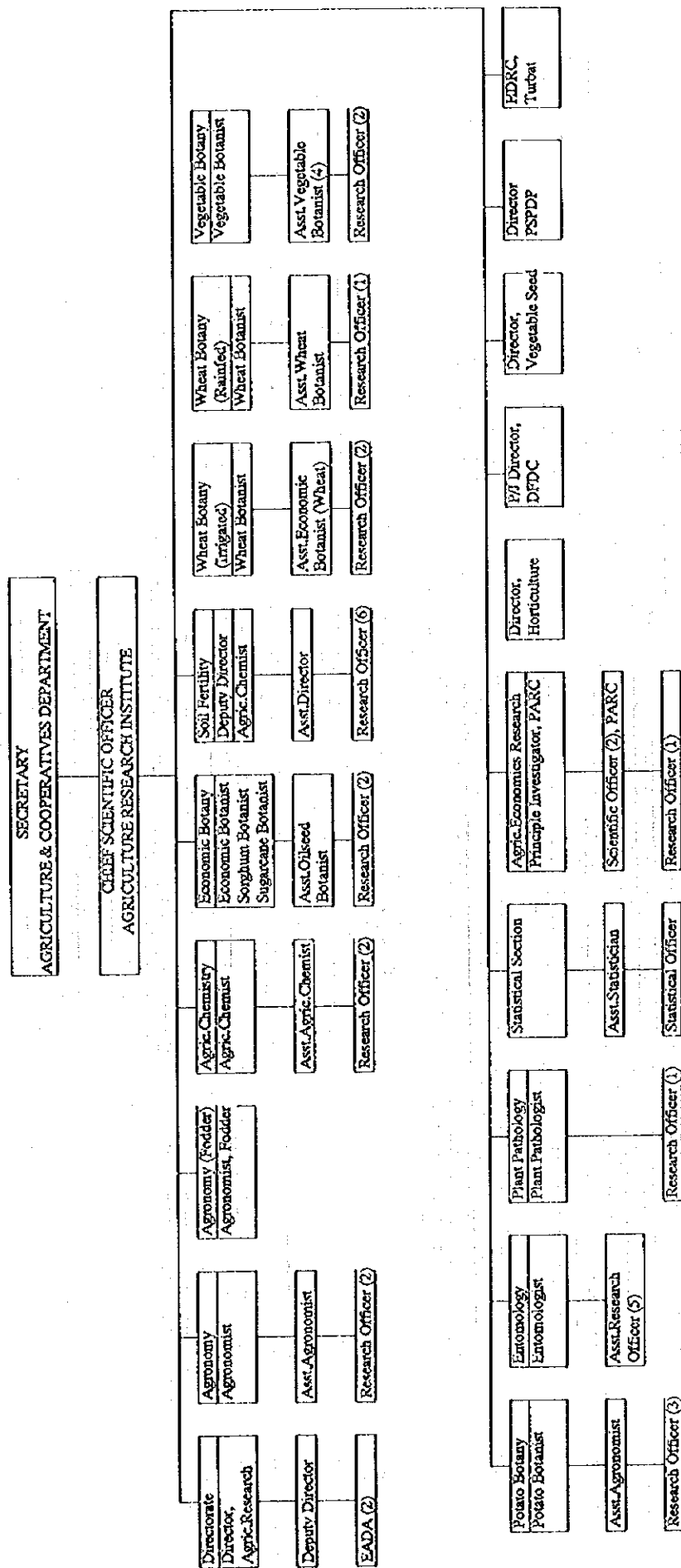


Remarks : ARI = Agriculture Research Institute

BMIAD = Balochistan Minor Irrigation & Agriculture Development Project

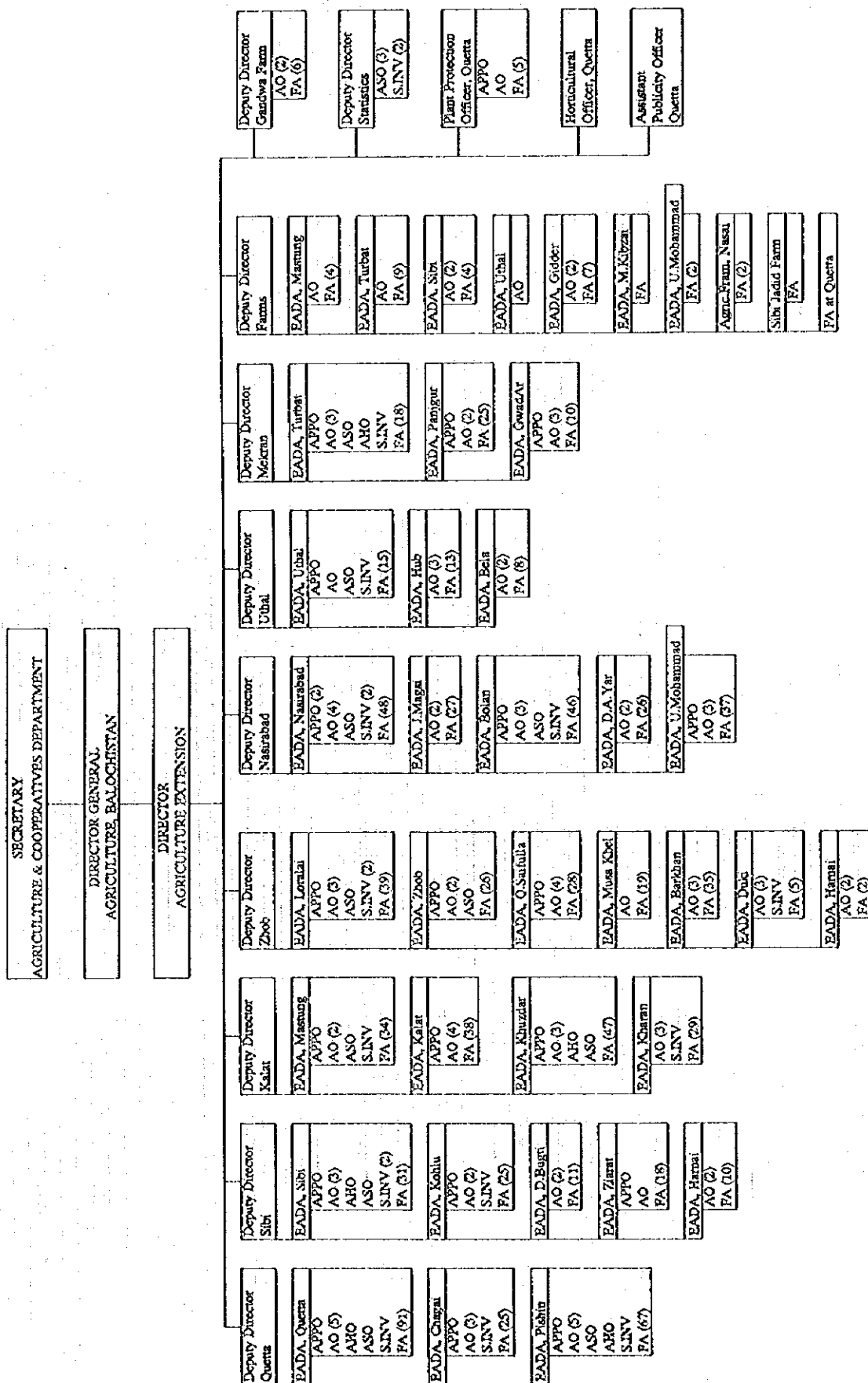
OFWM = On-Farm Water Management

FIG. E - 6 Organizational Set Up of Agriculture Department, Balochistan



Remarks : DFDC = Deciduous Fruit Development Centre.
 HDRC = Horticulture date Research Centre, Turbat.
 PSPDP = PAK - SWISS Potato Development Project.

FIG. E-7 Organizational Set Up of Agricultural Research in Balochistan



Remarks: EADA = Extra Assistant Director of Agriculture, APPO = Assistant Plant Protection Officer, AO = Agriculture Officer, AHO = Assistant Horticulture Officer, ASO = Assistant Statistical Officer, SINV = Statistical Investigator, FA = Field Assistant.

FIG. E - 8 Organizational Set Up of Agriculture Extension of Agriculture Department, Balochistan

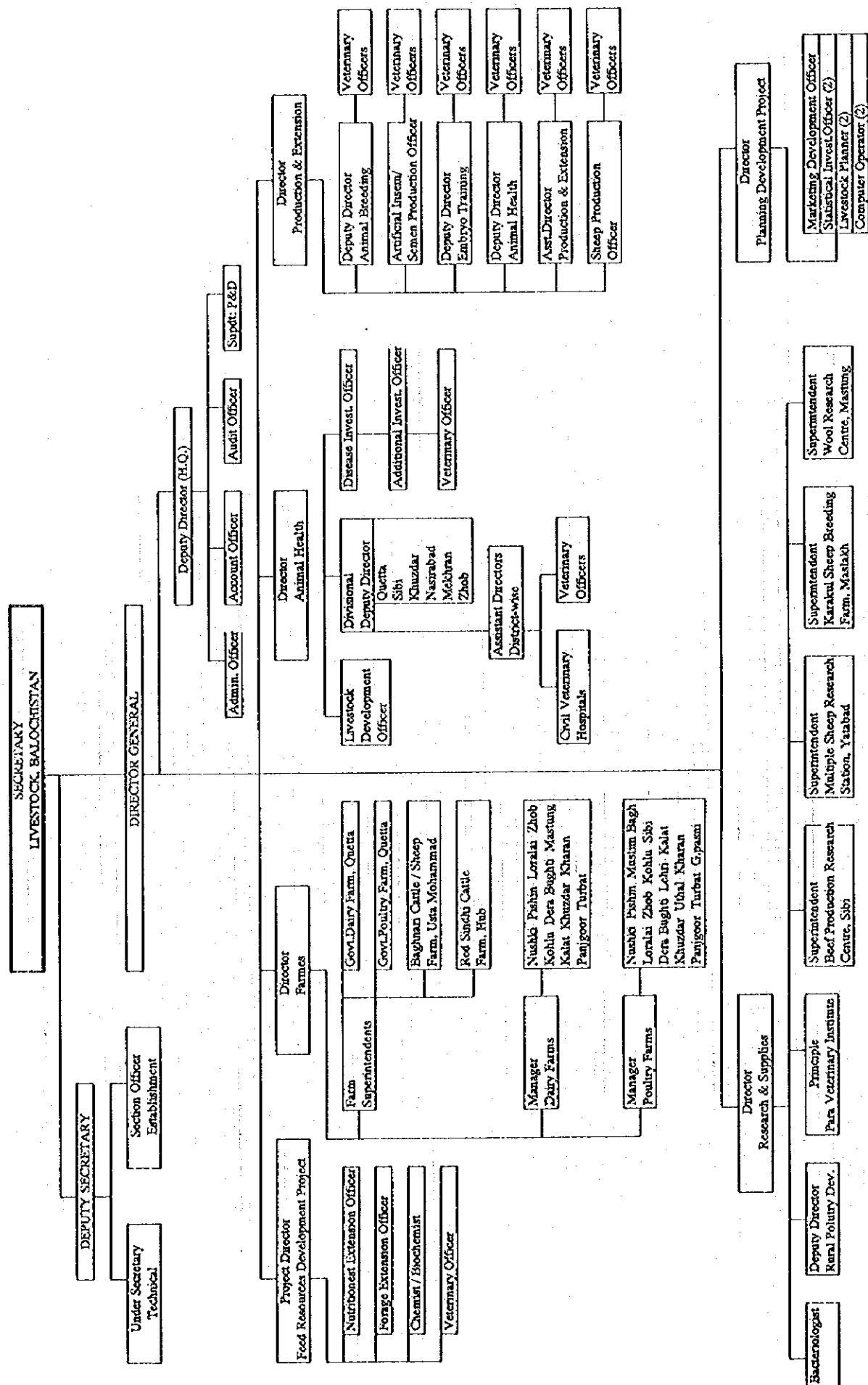


FIG. E-9 Organizational Set Up of Livestock Department, Balochistan

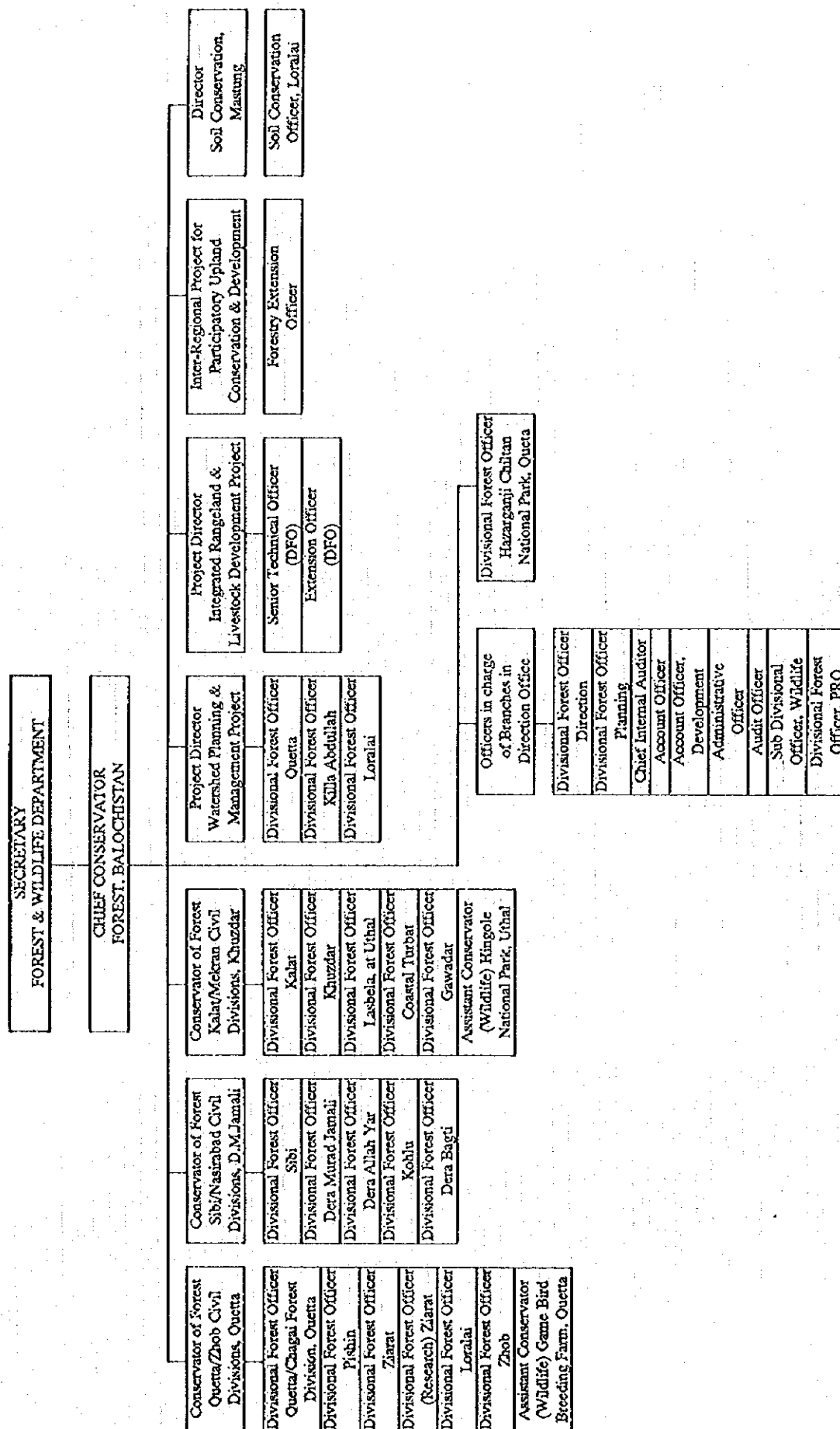


FIG. E - 10 Organizational Set Up of Forestry & Wildlife Department, Balochistan