

土壤断面調査結果（資料-37）の凡例

〔土壤型〕 Soil Types

NT NITOSOLS

NTd Dystric Nitosols

NTu Humic Nitosols

FR FERRALSOLS

FRr Rhodic Ferralsols

FRu Humic Ferralsols

FRh Haplic Ferralsols

CM CAMBISOLS

CMe Eutric Cambisols

CMd Dystric Cambisols

CMu Humic Cambisols

CMg Gleyic Cambisols

CMx Chronic Cambisols

AN ANDOSOLS

ANh Haplic Andosols

ANm Mollic Andosols

ANu Umblic Andosols

GL GLEYSOLS

GLu Humic Gleysols,

GLd Dystric Gleysols

LP LEPTOSOLS

LPq Lithic Leptosols

LPd Dystric Leptosols

LPk Rendzic Leptosols

FL FLUVISOLS

FLe Eutric Fluvisols

FLd Dystric Fluvisols

〔地形〕

(1) (大地形) Topography

MO : Mountainous

MV : Volcano

HI : Hilly

PT : Plateaus

BA : Basin

VA : Valley

PL : Plain

(2) (小地形) Location

CR : Ridge

US : Upper slope

MS : Middle slope

LS : Lower slope

BO : Bottom of valley

(3) (斜面形) Slopes

S : Straight slope

C : Concave slope

V : Convex slope

X : Mixed slope

T : Terrace

s : Slightly

記載例

MO	·	US	·	S
(1)		(2)		(3)

〔植生・土地利用〕

(4) (植生) Vegetation

PO : *Pinus oocarpa*

PM : *Pinus maximinoi*

PT : *Pinus tecunumanii*

PN : *Pinus montezumae*

C : *Cupressus* sp.

Q : *Quercus* spp.

L : *Liquidambar styraciflua*

G l : Grass land

(5) (土地利用) Land use

FN : Natural forest

FA : Plantation

FS : Secondary forest

記載例

PM · Q ·	FN
(4)	(5)

(6) (土壤母材) Parent material

c : clay

s : Sand

g : Gravel

sh : Shale

ss : Sandstone

q : Quartzite

li : Limestone

Va : Volcanic ash

sis : Sersite shist

sim : Mica shist

ph : Phyllite

sig : Graphite

sp : Serpentine

cl : Clayslate

cg : Conglomerate

(7) (堆積様式) Made of slope

Re : Residual

Cr : Creeping

Co : Colluvial

(8) (土壤層位)

Master horizons and layers

H : Organic material at the soil surface.

O : Organic material; litter, leaves, needles, twigs, moss.

L : Follen leaves, undecomposed.

F : Decomposed leaves, originals is distinctly.

H : Humus, decomposed completly.

A : A₁, A₂, A₃ ;

Mineral horizons, accumulation of organic matter.

B : B₁, B₂, B₃ ;

Mineral horizons, formed below H, O, A, horizons.

C : C₁, C₂ ;

Parent materials of soils, from bedrock or sediments.

R : Bedrocks

Ch : Charcoal

(付加記号) Figure suffixes

g : Strong gleying

t : Accumulation of selicate

(9) (土壤層位界)

Horizon boundary distinctness

A : Abrupt 明瞭

C : Clear 判然

G : Gradual 渐变

D : Diffuse

(10) (腐植) Humus

V : very rich すこぶる富

R : Rich 富

C : Common 含

F : Few 乏

N : None なし

(石礫) Rock fragments.

(11) (含有量)

N : None ナシ

F : Few 有
 C : Common 含
 M : Many 富
 A : Abundant すこぶる富

(17) (区分) Grade

H : Hard
 M : Medium
 S : Soft

(12) (サイズ) Size

F : Fine gravel 小礫
 C : Coarse gravel 中礫
 S : Stones 大礫
 B : Boulders 巨礫

記載例

$$\frac{15 \cdot M}{(16) \quad (17)}$$

[土壤構造] structure

(18) (発達状態) Grade

W : weak……弱度に示す
 M : Moderate……中庸 “
 S : Strong……顕著 “

(13) (形状) Shape

A : Angular 角礫
 S : Subrounded 亜角・半角
 R : Rounded 円礫

(19) (構造型)

CR : Crumb
 Sing : Single grain
 LG : Loose granular
 MA : Massive
 GR : Granular
 SN : Nutty subangular
 BK : Blocky

(14) (風化状態) Weathering

: Fresh (特に記録せず)
 W : Weathered 風化礫

記載例

$$\frac{F \cdot C \cdot A}{(11) \quad (12) \quad (13/14)}$$

(15) (土性) Texture

C : Clay
 L : Loam
 CL : Clay loam
 SiC : Silty clay
 SiL : Silty loam
 SC : Sandy clay
 SL : Sandy loam

記載例

$$\frac{W \cdot GR}{(18) \quad (19)}$$

(20) (水湿状態) Moisture

DR : Dry ……乾
 sD : slightly dry やや乾
 MO : Moderately moist 潤
 WE : Wet 湿
 OW : over wet 多湿

[堅密度] Hardness

(16) (山中式硬度計の値)

>21mm
 11~20mm
 <10mm

(21) (溶脱・集積)

N : なし
 t : 粘土

Mn : マンガン

[菌根・菌糸]

(22) (種類)

My : Mycorrhiza

Mm : Mycelium

(23) (発達状態) Grade

N : なし

I : Very few

II : Few

III : Common

IIII : Many

記載例

$\frac{Mm \cdot I}{(22) (23)}$

[根系] Content of roots

(24) (直径) Diameter

V : Very fine < 0.5mm (細)

F : Fine 0.5~2 (小)

M : Medium 2~5 (中)

C : coarse > 5 (大)

(25) (発達状態) Content

N : No roots

V : very few

F : Few

C : Common

M : Many

記載例

$\frac{V \cdot V}{(24) (25)}$

資料-38 森林調査簿 (パイロット・フォレスト) (1)

Comp. No.	Unidad No.	Uso de suelo	Superficie (ha)	Altitud (m s. n. m.)	Exposicion	Pend. (grado)	Tipo de bosque	Altura (m)	D. Copa (%)	Especie	Edad	% de mezcla	Volumen /ha (m ³)	Volumen total (m ³)	Tasa inc. (%)	Inc. anual (m ³)	Observacion
1	1	F	2.06	1135	NE	41	NC	18	60	Po	39		119	245	3.26		8
1	2	F	4.81	1230	N	28	NC	20	75	Po	47		150	722	2.86		21
1	3	F	1.44	1300	N	36	R	16	75	Po	33		113	163	3.72		6
1	4	F	1.25	1330	NE	29	R	16	90	Po	33		123	154	3.72		6
1	5	F	1.38	1400	E	40	NC	14	90	Po	28		104	144	4.25		6
1	6	F	5.81	1325	N	25	D										
1	7	F	4.13	1280	N	23	NC	18	20	Po	39		72	297	3.26		10
1	8	F	17.50	1215	NW	19	NC	24	5	Po	66		55	963	2.19		21
1	9	F	3.69	1375	NE	29	R	9	80	Po	18		56	207	5.92		12
1	10	F	1.19	1425	NW	24	R	12	90	Po	23		86	102	4.85		5
1	11	F	1.69	1410	N	29	NC	28	40	Po	93		173	292	1.68		5
1	12	F	0.81	1435	NE	23	D										
1	13	A	0.81	1465	E	27											
1	14	F	3.19	1485	NE	24	NM	23	40	Po	61	Po	50	431	2.34		10
1	15	F	0.63	1475	N	22	NL	14	35	Q		Q	50	290			
1	16	A	10.38	1510	NW	19		22	80	Q			248	156			
1	17	F	1.06	1550	NE	27	NC	22	80	Pmx-t	20		228	242	5.23		13
1	18	F	0.94	1570	N	23	NM	27	35	Pmx-t	25	Pmx-t	50	146	4.09		6
1	19	A	1.31	1665	N	23		20	35	Q		Q	50	133			
1	20	F	2.44	1640	N	25	R	24	90	Pmx-t	22		283	691	4.74		33
1	21	A	0.44	1630	N	17											
1	22	A	0.13	1635	NE	30											
1	23	F	0.38	1695	N	22	R	12	95	Pmx-t	13		114	43	8.54		4
1	24	F	0.88	1650	N	17	D										
1	25	F	3.69	1700	N	27	R	24	90	Pt	22		283	1,044	4.74		49 P136
1	26	A	1.06	1725	N	16											
1	27	F	1.56	1770	NE	34	NM	30	25	Pmx-t	29	Pmx-t	30	214	3.53		8
1	28	F	0.56	1830	N	29	D	20	50	Q		Q	70	268			
1	29	F	3.06	1650	NW	27	NC	30	90	Pmx-t	29		386	1,181	3.53		42

資料-38 森林調査簿 (パイロット・フォレスト) (2)

Comp. No.	Unidad No.	Use de suelo	Superficie (ha)	Altitud (m. s. n. m.)	Exposición	Pend. (grados)	Tipo de bosque	Altura (m)	D. Copa (%)	Especie	Edad	% de mezcla	Volumen /ha (m³)	Volumen total (m³)	Tasa inc. (%)	Inc. anual (m³)	Observacion
1	30	F	5.81	1625	N	21	R	27	75	Pmx-t	25		288	1,673	4.09	68	P177
1	31	A	0.50	1615	NW	13											
1	32	F	0.69	1615	NE	38	R	20	95	Pmx-t	18		230	159	5.77	9	
1	33	A	2.75	1540	N	16											
1	34	F	0.81	1540	E	32	NC	18	85	Pmx-t	17		182	147	6.36	9	
1	35	F	0.25	1510	NE	33	NL	26	80	Q			305	76			
1	36	F	1.88	1480	NE	32	R	16	95	Po	18		126	237	3.72	9	P165
1	37	F	5.00	1420	N	14	NL	26	35	Q			196	980			
1	38	F	2.19	1485	N	28	NC	20	80	Pmx-t	18		200	438	5.77	25	
1	39	F	1.94	1515	NW	28	R	22	90	Pmx-t	20		251	487	5.23	25	
1	40	F	0.50	1540	NW	29	R	22	100	Pmx-t	20		274	137	5.23	7	
1	41	F	0.88	1555	NW	23	NC	26	70	Pmx-t	24		258	227	4.30	10	
1	42	F	1.25	1550	NW	40	NM	28	30	Pmx-t	27	Pmx-t	144	180	3.90	7	
1	43	A	16.50	1500	NW	14		18	40	Q		Q	134	168			
1	44	F	0.63	1455	N	24	R	15	50	Ci	19	Ci	96	60	8.90	5	P164
1	45	F	0.56	1430	NW	15	NC	19	35	Po	19	Po	99	62	3.05	2	
1	46	F	1.56	1400	N	15	NC	26	80	Po	79		216	121	1.92	2	
1	47	F	1.19	1400	NW	34	NC	24	45	Po	66		150	234	2.19	5	
1	48	F	3.13	1390	N	18	NL	20	90	Po	47		163	194	2.86	6	
1	49	F	1.50	1365	N	34	NC	20	60	Li			189	592			
1	50	F	2.13	1360	N	36	NC	26	55	Po	74		182	273	1.92	5	P173
1	51	F	4.19	1360	NW	25	R	12	90	Po	20		86	183	4.85	9	P174
1	52	F	1.00	1300	NW	25	NC	23	35	Po	75		127	532	2.34	12	P172
1	53	F	5.38	1370	W	28	R	12	85	Po	23		83	83	4.85	4	
1	54	F	13.75	1200	N	30	NC	18	25	Po	65		80	430	3.26	14	P175
1	55	F	1.81	1085	SE	40	NC	21	60	Po	72		144	1,980	2.67	53	P109,176
1	56	I	1.19	-	-	-	D										Camino
1	57	F	17.13	1175	S	24	NC	18	15	Po	21		63	1,079	3.26	35	P181
1	58	F	7.81	1190	W	23	NC	18	35	Po	39		93	726	3.26	24	
1	59	F	2.50	1225	N	30	NC	11	55	Po	22		61	153	5.19	8	

資料-38 森林調査簿 (パイロット・フォレスト) (3)

Comp. No.	Unidad No.	Uso de suelo	Superficie (ha)	Altitud (m. s. n. m.)	Exposición	Pend. (grados)	Tipo de bosque	Altura (m)	D. Copa (ft)	Especie	Edad % de mezcla	Volumen /ha (m ³)	Volumen total (m ³)	Tasa inc. (%)	Inc. anual (m ³)	Observacion
1	60	F	1.88	1240	W	40	NC	21	10	Po	51	64	120	2.67	3	
1	61	F	3.13	1250	NW	29	NC	21	75	Po	51	160	501	2.67	13	
1	62	F	3.94	1260	S	32	NC	17	45	Po	36	97	382	3.49	13	
1	63	F	2.56	1225	NW	38	NC	14	90	Po	28	104	266	4.25	11	
1	64	F	6.06	1200	NW	40	NC	20	20	Po	47	82	497	2.86	14	
1	65	F	7.69	1320	NW	23	NM	26	10	Po	79	83	638	1.92	12	
								14	10	Q		47	361			
1	66	A	2.88	1370	W	13										
1	67	F	1.13	1420	W	24	NC	24	20	Po	66	103	116	2.19	3	
1	68	A	1.06	1440	W	23										
1	69	F	1.38	1390	W	24	NC	20	75	Po	47	150	207	2.86	6	
1	70	F	4.25	1400	N	27	NC	24	40	Po	66	142	604	2.19	13	
1	71	F	2.88	1350	NW	23	NC	24	5	Po	66	55	158	2.19	3	
1	72	F	6.25	1325	W	28	NC	15	85	Po	30	111	694	3.98	28	
1	73	F	13.88	1325	N	23	NC	20	85	Po	60	159	2,207	2.86	63	P178, 180
1	74	F	2.31	1325	SW	30	NC	28	5	Po	93	67	155	1.68	3	
1	75	F	2.69	1275	NW	18	NC	28	15	Po	93	110	296	1.68	5	
1	76	F	2.00	1275	SW	25	NC	22	45	Po	56	134	268	2.50	7	
1	77	F	10.06	1310	W	27	NC	19	65	Po	59	132	1,328	3.05	41	P179
1	78	F	3.13	1360	W	27	NC	11	20	Po	22	38	119	5.19	6	
1	79	F	9.06	1300	NE	36	NC	12	75	Po	23	79	716	4.85	35	
1	80	F	1.19	1275	N	34	D									
1	81	I	5.38	-	-	-										Camino
1	82	F	1.19	1230	N	32	V									
1	83	F	3.00	1125	NE	31	NC	17	55	Po	36	106	318	3.49	11	
1	84	F	3.75	1125	NW	34	V									
1	85	F	4.81	1125	NW	33	NC	22	40	Po	56	127	611	2.50	15	
1	86	F	7.44	1175	S	33	NC	14	65	Po	28	90	670	4.25	28	
1	87	F	5.25	1100	NW	31	V									
1	88	F	7.69	1175	W	31	NC	24	25	Po	66	114	877	2.19	19	
1	89	F	20.91	1200	N	29	NC	23	85	Po	58	190	3,973	2.34	93	P111
1	90	F	4.25	1180	NE	30	NC	23	20	Po	61	98	417	2.34	10	

資料-38 森林調査簿 (パイロット・フォレスト) (4)

Comp. No.	Unidad No.	Uso de suelo	Superficie (ha)	Altitud (m. s. n. m.)	Exposición	Pend. (grados)	Tipo de bosque	Altura (m)	D. Cope (%)	Especie	Edad	% de mezcla	Volumen /ha (m ³)	Volumen total (m ³)	Tasa inc. (%)	Inc. anual (m ³)	Observacion
1	91	F	1.07	1175	NE	30	NC	24	80	Po...	66		195	209	2.19	5	
		Camino (1575m)	0.63														
		Subtotal	339.47											36,447		1,078	

資料-38 森林調査簿 (パイロット・フォレスト) (5)

Comp. No.	Unidad No.	Uso de suelo	Superficie (ha)	Altitud (m. s. n. m.)	Exposición	Pend. (grados)	Tipo de bosque	Altura (m)	D. Copa (%)	Especie	Edad	% de mezcla	Volumen /ha (m ³)	Volumen total (m ³)	Tasa inc. (%)	Inc. anual (m ³)	Observacion
2	1	F	2.88	1115	NW	28	NC	16	65	Po	33		106	305	3.72	11	
2	2	F	8.88	1210	N	27	NC	21	85	Po	51		169	1,501	2.67	40	
2	3	F	2.63	1350	W	30	R	16	90	Po	33		123	323	3.72	12	
2	4	F	2.56	1385	NW	24	R	14	90	Po	17		104	266	4.25	11	P166
2	5	F	0.25	1425	NW	16	D										
2	6	F	0.38	1435	N	29	D										
2	7	F	1.69	1450	NW	27	NC	25	75	Po	72		199	336	2.05	7	
2	8	F	0.75	1470	W	25	D										
2	9	F	2.44	1495	NW	30	NC	29	70	Po	102		233	569	1.57	9	
2	10	F	1.88	1460	N	19	NC	27	50	Po	86		183	344	1.80	6	
2	11	F	16.44	1325	NW	32	NC	24	40	Po	66		142	2,334	2.19	51	
2	12	F	12.44	1325	N	34	NL	26	65	Q			273	3,396			
2	13	F	7.94	1375	N	29	NL	18	85	Q			200	1,588			
2	14	F	1.13	1485	NW	42	R	21	55	Pmx	16	Pmx	158	179	5.49	10	P168
2	15	F	1.44	1505	NW	32	R	22	40	Ci	14	Ci	133	150	8.45	13	
2	16	F	1.50	1615	NW	27	R	22	35	Pmx	20	Pmx	117	168	5.23	9	
2	17	F	3.56	1625	N	24	NC	22	25	Ci	18	Ci	108	156	8.37	13	
2	18	F	0.75	1660	N	27	R	27	75	Pmx-t	25		288	432	4.09	18	
2	19	F	0.56	1640	NE	31	R	32	90	Pt	83		422	1,502	3.20	48	P137
2	20	F	0.94	1600	N	30	R	28	90	Pmx-t	27		351	263	3.90	10	
2	21	A	29.69	1550	N	17		25	90	Pmx-t	23		300	168	4.51	8	
2	22	F	1.31	1560	NE	40	NC	29	95	Pmx-t	28		385	362	3.71	13	P138
2	23	F	0.88	1585	N	40	R	25	75	Pmx	26		259	339	4.51	15	P167
2	24	F	0.50	1565	N	22	NC	22	90	Pmx-t	20		251	221	5.23	12	
2	25	F	1.81	1625	NW	22	NC	25	80	Pmx-t	23		273	137	4.51	6	
2	26	F	0.38	1615	NW	11	NC	31	70	Pmx-t	31		329	595	3.36	20	
2	27	F	0.50	1680	N	45	NC	20	95	Pmx-t	18		230	87	5.77	5	
2	28	F	1.44	1680	NE	45	NM	21	95	Pmx-t	19		246	123	5.49	7	
2	29	F	0.81	1700	N	30	NL	30	20	Pmx-t	29	Pmx-t	114	164	3.53	6	
								30	70	Li		Li	339	488			
								30	15	Li			149	121			

資料-38 森林調査簿 (パイロット・フォレスト) (6)

Comp. No.	Unidad No.	Uso de suelo	Superficie (ha)	Altitud (m. s. n. m.)	Exposi- cion	Pend. (grado)	Tipo de bosque	Altura D. Copa (m)	% D. Copa (%)	Especie	Edad	% de mezcla	Volumen /ha (m ³)	Volumen total (m ³)	Tasa inc. (%)	Inc. anual (m ³)	Observacion
2	30	F	1.38	1730	N	29	NM	25	30	Pmx-t	23	Pmx-t 40	123	170	4.51	8	
								30	50	Li		Li 60	283	391			
2	31	F	0.56	1765	N	40	D										
2	32	F	1.07	1725	NW	29	R	24	95	Pmx-t	22		296	317	4.74	15	
2	33	F	0.63	1755	N	30	NM	30	25	Pmx-t	29	Pmx-t 30	137	86	3.53	3	
								20	50	Q		Q 70	172	108			
2	34	F	1.75	1830	E	16	D										
2	35	F	2.19	1805	E	20	R	26	95	Pmx-t	24		331	725	4.30	31	
2	36	F	3.13	1785	N	23	R	22	90	Pmx-t	20		251	786	5.23	41	
2	37	F	3.00	1710	NW	21	R	21	95	Pmx	19		246	738	5.49	41	P112
2	38	A	2.81	1730	W	11											
2	39	F	2.06	1755	NW	32	NM	27	75	Pmx	31	Pmx 80	288	593	4.09	24	P113
								12	20	Q		Q 20	56	115			
2	40	F	2.44	1760	NW	16	R	29	95	Pmx	28		385	939	3.71	35	P114
2	41	F	4.94	1710	NW	21	NC	32	85	Pmx	32		403	1,991	3.20	64	
2	42	A	12.44	1770	W	8											
2	43	F	1.44	1770	NW	9	NC	30	65	Pmx-t	29		296	426	3.53	15	
2	44	F	0.63	1815	N	11	R	25	95	Pmx-t	23		313	197	4.51	9	
2	45	F	1.88	1820	N	13	R	24	95	Ci	20		266	500	8.23	41	P117
2	46	F	1.69	1835	N	23	D										
2	47	A	0.31	1850	N	11											
2	48	F	0.31	1870	N	9	D										
2	49	F	0.44	1900	N	23	D										
2	50	I	0.38	-	-	-											
2	51	F	0.44	1875	N	13	NC	28	80	Pmx	27		319	140	3.90	5	P119
2	52	F	11.75	1845	N	10	R	22	100	Pmx	17		274	3,220	5.23	168	P118, 121
2	53	F	12.94	1775	N	17	R	31	95	Pmx-t	31		422	5,461	3.36	183	P115, 116, 122
2	54	F	1.44	1805	N	16	D										
2	55	F	1.00	1780	N	16	NM	32	20	Pmx-t	32	Pmx-t 20	125	125	3.20	4	
								32	75	Q		Q 80	380	380			
2	56	F	1.69	1780	N	24	R	24	95	Pmx	16		296	500	4.74	24	P123
2	57	F	0.06	1820	N	22	D										

資料-38 森林調査簿 (パイロット・フォレスト) (7)

Comp. No.	Unidad No.	Uso de suelo	Superficie (ha)	Altitud (m. s. n. m.)	Exposición	Pend. (grado)	Tipo de bosque	Altura (m)	D. Copa (%)	Especie	Edad	% de mezcla	Volumen /ha (m ³)	Volumen total (m ³)	Tasa inc. (%)	inc. anual (m ²)	Observacion
2	58	F	1.50	1790	NE	30	R	28	100	Pmx	17		382	573	3.90		22 P124
2	59	F	0.50	1775	E	29	NM	36	25	Pmx-t	38	Pmx-t	176	88	2.63		2
2	60	F	4.81	1750	N	20	R	26	55	Q		Q	250	125			
2	61	F	0.75	1680	NW	29	R	24	95	Pmx-t	22		296	1,424	4.74		67
2	62	F	2.56	1650	N	28	NM	27	100	Pmx-t	26		309	232	4.74		11 P159
2	63	F	2.19	1690	NE	27	NC	27	70	Pmx-t	25	Pmx-t	272	696	4.09		28
2	64	F	0.75	1705	E	36	NC	27	20	Q		Q	152	389			
2	65	F	1.19	1665	NW	28	NC	35	85	Pmx-t	37		456	999	2.77		28
2	66	F	2.44	1645	N	25	NC	24	85	Pt	19		271	203	4.74		10 P163
2	67	F	1.81	1605	N	36	NC	30	90	Pt	35		386	459	3.53		16 P162
2	68	F	1.75	1600	NE	29	NC	28	95	Pmx-t	27		366	893	3.90		35
2	69	F	2.56	1590	NW	32	NC	36	20	Pmx-t	38		147	266	2.63		7
2	70	A	87.81	1540	NW	17		24	85	Pt	22		271	474	4.74		22 P161
2	71	F	2.44	1595	NE	36	NM	32	70	Pmx-t	32		344	881	3.20		28
2	72	A	0.19	1645	NE	27		28	50	Pt	23	Pt	218	532	3.90		21 P160
2	73	F	1.19	1540	N	27	NC	18	35	Q		Q	125	305			
2	74	F	1.69	1500	N	27	NC	29	40	Po	102		180	214	1.57		3
2	75	F	2.56	1435	N	27	NC	24	60	Po	66		171	289	2.19		6
2	76	F	1.38	1420	N	27	D	27	35	Po	86		155	397	1.80		7
2	77	F	1.56	1400	N	32	NC	30	80	Po	30		107	167	3.98		7
2	78	F	0.94	1480	NW	27	NC	30	55	Po	111		218	205	1.47		3
2	79	F	0.81	1510	N	38	NC	30	65	Po	111		235	190	1.47		3
2	80	F	1.31	1470	NE	32	NC	30	30	Po	111		165	216	1.47		3
2	81	F	12.75	1210	N	36	NL	26	10	Q			100	1,275			
2	82	F	4.50	1290	NE	34	NC	18	20	Po	39		72	324	3.26		11
2	83	F	8.38	1245	N	27	NC	21	75	Po	51		160	1,341	2.67		36
2	84	F	4.00	1250	N	23	NL	21	65	Q			210	840			
2	85	F	7.75	1300	E	32	NC	21	40	Po	51		120	930	2.67		25
2	86	F	3.13	1325	W	32	R	7	80	Po	15		41	128	6.76		9

資料-38 森林調査簿 (パイロット・フォレスト) (8)

Comp. No.	Unidad No.	Uso de suelo	Superficie (ha)	Altitud (m. s. n. m.)	Exposición	Pend. (grados)	Tipo de bosque	Altura (m)	D. Copa (%)	Especie	Edad	% de mezcla	Volumen /ha (m³)	Volumen total (m³)	Tasa inc. (%)	Inc. anual (m³)	Observacion	
2	87	F	10.00	1175	NE	23	NC	16	15	Po	43		54	540	3.72	20	P171	
2	88	F	18.69	1150	NE	29	NC	21	35	Po	59		113	2,112	2.67	56	P110	
2	89	F	22.38	1235	N	25	NC	21	75	Po	64		160	3,581	2.67	96	P170	
2	90	F	10.56	1260	NW	27	NC	21	50	Po	51		133	1,404	2.67	37		
2	91	F	10.31	1325	N	25	NC	21	20	Po	51		87	897	2.67	24		
2	92	F	20.75	1350	N	20	NC	20	20	Po	47		82	1,702	2.86	49	P169	
2	93	F	6.31	1390	E	32	NC	21	20	Po	51		87	549	2.67	15		
2	94	F	9.00	1370	E	31	NC	21	60	Po	51		144	1,296	2.67	35		
2	95	F	10.94	1275	E	36	NC	22	15	Po	56		81	886	2.50	22		
2	96	F	11.94	1160	E	36	NL	7	70	Q			56	669				
Camino (2525m)			1.01															
Subtotal			480.25											63,216		1,835		

資料-38 森林調査簿 (パイロット・フォレスト) (9)

Comp. No.	Unidad No.	Uso de suelo	Superficie (ha)	Altitud (m. s. n. m.)	Exposición	Pend. (grados)	Tipo de bosque	Altura (m)	D. Copa (%)	Especie	Edad	% de mezcla	Volumen /ha (m ³)	Volumen tota. (m ³)	Tasa inc. (%)	Inc. anual (m ³)	Observacion	
3	1	F	2.88	1185	N	27	NC	22	20	Po	56		93	268	2.50		7	
3	2	F	12.31	1320	NW	22	NC	22	70	Po	56		164	2,019	2.50		50 P157	
3	3	F	12.56	1275	NE	36	NC	19	30	Po	43		93	1,168	3.05		36	
3	4	F	20.19	1205	E	34	NC	8	70	Po	17		46	929	6.33		59	
3	5	F	7.38	1165	E	39	D											
3	6	F	71.50	1120	W	36	D											
3	7	F	35.31	1175	W	34	NW	21	25	Po	54	Po	97	3,425	2.67		91 P158	
3	8	F	49.19	1075	NW	23	NL	8	50	Q		Q	55	1,942				
3	9	F	8.88	1190	N	31	NL	8	70	Q			66	3,247				
3	10	F	14.75	1260	W	27	NL	22	60	Q			213	1,891				
3	11	F	6.81	1260	SW	29	NC	20	80	Q			221	3,260				
3	12	F	11.06	1240	N	27	NC	22	45	Po	56		134	913	2.50		23	
3	13	F	3.88	1125	N	33	NC	19	75	Po	43		141	1,559	3.05		48	
							NC	23	15	Po	61		86	334	2.34		8	
			256.70											20,955			322	

資料-38 森林調査簿 (パイロット・フォレスト) (10)

Comp. No.	Unitad No.	Uso de suelo	Superficie (ha)	Altitud (m. s. n. m.)	Exposi- cion	Pend. (grado)	Tipo de bosque	Altura (m)	D. Copa (%)	Especie	Edad	% de mezcla	Volumen /ha (m ³)	Volumen total (m ³)	Tasa inc. (%)	Inc. anual (m ²)	Observacion
4	1	F	13.75	1150	SW	33	NC	23	15	Po	61		86	1,183	2.34	28	
4	2	F	1.63	1290	W	17	NC	22	80	Po	56		175	285	2.50	7	
4	3	F	15.06	1275	W	21	NC	23	45	Po	61		142	2,139	2.34	50	
4	4	F	0.38	1385	NW	21	NC	22	80	Po	56		175	67	2.50	2	
4	5	F	14.31	1325	NW	20	NC	16	70	Po	55		110	1,574	3.72	59	P156
4	6	F	9.56	1400	W	26	NC	24	25	Po	66		114	1,090	2.19	24	P155
4	7	F	0.25	1465	SW	23	NC	27	20	Po	86		120	30	1.80	1	
4	8	F	1.19	1490	W	30	NC	26	30	Po	79		138	164	1.92	3	
4	9	F	0.50	1535	W	24	NC	27	65	Po	86		206	103	1.80	2	
4	10	F	0.75	1565	NW	28	NC	29	60	Pmx-t	28		265	199	3.71	7	
4	11	A	0.19	1645	W	27											
4	12	F	3.69	1605	W	27	NC	33	85	Pmx	30		420	1,550	3.05	47	P154
4	13	F	0.38	1675	W	25	NC	33	75	Po	144		283	108	1.21	1	
4	14	F	1.38	1700	W	23	R	22	70	Ci	18	Ci	197	272	8.37	23	
4	15	A	0.44	1750	NW	13		22	30	Pmx-t	20	Pmx-t	103	142	5.23	7	
4	16	F	0.63	1715	W	14	D										
4	17	F	3.13	1750	W	21	R	22	100	Pmx	19		274	858	5.23	45	P125
4	18	F	1.19	1705	NW	25	NC	28	85	Pmx-t	27		335	399	3.90	16	
4	19	F	0.44	1805	SW	27	D										
4	20	F	2.31	1770	SW	42	NC	25	90	Pmx	23		300	693	4.51	31	P126
4	21	F	1.06	1785	SW	28	R	24	95	Pmx-t	22		296	314	4.74	15	
4	22	F	1.56	1825	SW	20	NW	31	50	Pmx	79	Pmx	251	392	3.36	13	P120
4	23	F	1.63	1830	W	24	R	21	35	Q		Q	151	236			
4	24	F	0.56	1880	W	18	NC	22	100	Pmx-t	20		274	447	5.23	23	
4	25	F	1.38	1885	SW	19	R	22	80	Pmx-t	20		228	128	5.23	7	
4	26	A	71.88	1650	NW	9		22	100	Pmx-t	20		274	378	5.23	20	
4	27	F	1.13	1750	N	21	NC	26	75	Pmx-t	24		273	308	4.30	13	
4	28	F	1.00	1750	N	19	D										
4	29	F	1.06	1735	N	31	NC	32	75	Pmx-t	32		364	386	3.20	12	
4	30	F	2.63	1730	NE	27	NC	26	90	Pmx-t	24		317	834	4.30	36	P150

資料-38 森林調査簿 (パイロット・フォレスト) (11)

Comp. No.	Unidad No.	Uso de suelo	Superficie (ha)	Altitud (m. s. n. m.)	Exposición	Pend. (grados)	Tipo de bosque	Altura (m)	D. Copa (%)	Especie	Edad	% de mezcla	Volumen /ha (m ³)	Volumen total (m ³)	Tasa inc. (%)	Inc. anual (m ²)	Observacion	
4	31	F	3.63	1725	N	20	NC	32	75	Pmx-t	32		364	1,321	3.20	42		
4	32	F	0.38	1675	N	19	NC	28	90	Pmx-t	27		351	133	3.90	5		
4	33	F	5.19	1715	N	21	R	28	95	Pmx-t	27		366	1,900	3.90	74	P127, 151, 152	
4	34	F	1.69	1675	NW	35	NC	29	60	Pmx-t	28		265	448	3.71	17		
4	35	F	2.88	1725	N	24	NM	32	40	Pmx-t	56	Pmx-t 60	219	631	3.20	20	P128	
4	36	F	2.31	1750	N	27	R	24	30	Q		Q 40	164	472				
4	37	F	0.81	1750	E	21	D	28	95	Pmx-t	27		366	845	3.90	33	P129, 130	
4	38	F	5.06	1710	E	38	NC	30	75	Pmx-t	29		333	1,685	3.53	59		
4	39	F	2.00	1725	NE	44	R	28	100	Pmx-t	27		382	764	3.90	30	P131	
4	40	F	0.88	1705	NE	16	NC	26	85	Pmx-t	24		302	266	4.30	11		
4	41	F	1.63	1690	N	28	R	24	85	Pmx-t	22		271	442	4.74	21		
4	42	A	1.25	1665	NE	16												
4	43	F	6.25	1665	N	20	NC	33	75	Pmx-t	33		380	2,375	3.05	72		
4	44	F	1.00	1630	NE	30	R	4	60	Pmx-t	9		17	17	12.64	2		
4	45	F	4.38	1565	NE	30	NM	26	50	Pmx-t	24	Pmx-t 60	197	863	4.30	37		
4	46	F	0.31	1595	NE	21	D	16	30	Q		Q 40	99	434				
4	47	F	2.63	1600	NE	29	NM	30	65	Pmx-t	29	Pmx-t 70	296	778	3.53	27	P149	
4	48	A	0.63	1620	E	17		16	30	Q		Q 30	99	260				
4	49	F	3.81	1575	NE	24	NM	30	30	Pmx-t	29	Pmx-t 30	159	606	3.53	21		
4	50	F	4.94	1625	N	23	NC	16	65	Q		Q 70	150	572				
4	51	A	0.94	1610	W	28		31	90	Pmx-t	26		404	1,996	3.36	67	P153	
4	52	F	2.75	1585	W	26	NC	30	75	Pmx-t	29		333	916	3.53	32		
4	53	F	8.81	1510	N	26	NC	31	55	Pmx-t	31		271	2,388	3.36	80		
4	54	A	18.06	1430	N	16												
4	55	F	9.06	1500	N	23	NC	22	10	Pmx-t	20		42	381	5.23	20		
4	56	F	16.00	1260	NW	13	NL	12	40	Q			81	1,296				
4	57	F	17.19	1285	NW	40	NC	16	65	Pmx-t	15		124	2,132	7.02	150		
4	58	F	44.88	1195	N	15	Y											

資料-38 森林調査簿 (パイロット・フォレスト) (12)

Comp. No.	Unidad No.	Uso de suelo	Superficie (ha)	Altitud (m. s. n. m.)	Exposicion	Pend. (grado)	Tipo de bosque	Altura D. Copa (m)	% D. Copa	Especie	Edad	% de mezcla	Volumen /ha(m ³)	Volumen total (m ³)	Tasa inc. (%)	Inc. anual (m ³)	Observacion
4	59	F	17.81	1385	N	24	NC	27	65	Pmx-t	25		256	4,559	4.09	186	
4	60	A	14.38	1520	NW	23											
4	61	F	2.13	1525	NW	33	NM	29	35	Pmx-t	28	Pmx-t 40	171	364	3.71	14	
								14	55	Q		Q 60	116	247			
4	62	F	0.25	1570	NW	29	D										
4	63	F	4.38	1570	N	28	NC	28	80	Pmx-t	27		319	1,397	3.90	54	P148
4	64	F	2.94	1635	NW	14	NC	20	60	Pmx-t	18		159	467	5.77	27	
4	65	F	1.00	1600	N	29	R	24	85	Pt	26		271	271	4.74	13	P147
4	66	F	3.56	1640	N	18	R	27	15	Pmx-t	25		78	278	4.09	11	
4	67	F	0.63	1725	NE	25	NC	30	90	Pmx-t	29		386	243	3.53	9	
4	68	F	1.00	1735	N	26	R	26	90	Pt	29		317	317	4.30	14	P146
4	69	F	2.00	1730	N	13	NC	28	80	Pmx-t	27		319	638	3.90	25	
4	70	F	2.06	1780	NE	18	NC	28	65	Pmx-t	27		269	554	3.90	22	
4	71	F	7.75	1735	N	24	NM	26	55	Pmx-t	28	Pmx-t 60	212	1,643	4.30	71	P135
								14	35	Q		Q 40	91	705			
4	72	F	2.06	1750	NE	24	R	33	95	Pmx-t	33		460	948	3.05	29	P134
4	73	A	8.63	1640	N	16											
4	74	F	1.38	1675	NE	12	NL	26	70	Q			284	392			
4	75	F	0.94	1710	E	14	D										
4	76	F	3.81	1750	E	23	NC	29	70	Pmx-t	28		300	1,143	3.71	42	
4	77	F	0.88	1735	E	27	NC	29	95	Pmx-t	28		385	339	3.71	13	P133
4	78	F	2.75	1650	NE	17	NM	30	40	Pmx-t	29	Pmx-t 40	200	550	3.53	19	
								14	55	Q		Q 60	116	319			
4	79	F	1.56	1690	NE	17	D										
4	80	F	5.44	1625	N	20	NC	29	90	Pmx-t	28		368	2,002	3.71	74	
4	81	F	4.06	1550	N	25	NM	24	10	Po	66	Po 30	75	305	2.19	7	
								12	25	Q		Q 70	63	256			
4	82	F	2.75	1640	N	23	R	26	95	Pmx-t	24		331	910	4.30	39	
4	83	F	6.94	1635	NE	27	NM	29	50	Pmx	28	Pmx 60	229	1,589	3.71	59	P142
								16	30	Q		Q 40	99	687			
4	84	F	8.06	1625	N	21	NC	28	65	Pmx-t	27		269	2,168	3.90	85	
4	85	F	1.94	1450	N	33	NC	16	70	Po	33		110	213	3.72	8	

資料-38 森林調査簿 (パイロット・フォレスト) (13)

Comp. No.	Unidad No.	Uso de suelo	Superficie (ha)	Altitud (m. s. n. m.)	Exposición	Pend. (grado)	Tipo de bosque	Altura (m)	D. Copa (%)	Especie	Edad	% de mezcla	Volumen /ha (m ³)	Volumen total (m ³)	Tasa inc. (%)	Inc. anual (m ³)	Observacion
4	86	F	3.81	1340	NE	25	NC	24	55	Po	66		164	625	2.19	14	
4	87	F	15.69	1185	N	24	NC	23	45	Po	61		142	2,228	2.34	52	
4	88	F	21.81	1510	N	27	NC	23	40	Po	61		135	2,944	2.34	69	
4	89	F	6.81	1375	N	29	NC	23	20	Po	61		98	667	2.34	16	
4	90	F	7.31	1315	NW	26	NC	24	35	Po	39		134	980	2.19	21	P144
4	91	F	6.56	1420	NE	32	NC	19	15	Po	43		67	440	3.05	13	P145
4	92	F	4.69	1315	NE	24	NC	23	40	Po	61		135	633	2.34	15	
4	93	F	8.19	1340	N	17	NL	16	45	Q			123	1,007			
4	94	F	7.31	1250	NE	31	V										
4	95	F	4.38	1165	NE	22	NC	23	15	Po	61		86	377	2.34	9	
4	96	F	30.63	1125	N	30	D										
Subtotal			552.68											71,605		2,342	

資料-38 森林調査簿 (パイロット・フォレスト) (14)

Comp. No.	Unidad No.	Uso de suelo	Superficie (ha)	Altitud (m. s. n. m.)	Exposición	Pend. (grado)	Tipo de bosque	Altura (m)	D. Copa (%)	Especie	Edad	% de mezcla	Volumen /ha (m ³)	Volumen total (m ³)	Tasa inc. (%)	Inc. anual (m ³)	Observacion	
5	1	F	5.56	1450	NW	11	NC	19	20	Po	43		77	428	3.05	13		
5	2	F	5.19	1500	NW	13	D											
5	3	F	11.31	1510	NW	14	NC	30	5	Pmx-t	29		37	418	3.53	15		
5	4	F	11.56	1550	W	12	NC	30	20	Pmx-t	29		114	1,318	3.53	47		
5	5	F	2.63	1525	W	27	NC	21	30	Po	51		105	276	2.67	7		
5	6	F	17.38	1670	NW	18	NC	28	65	Pmx	37		269	4,675	3.90	182	P143	
5	7	F	1.19	1710	W	16	D											
5	8	F	7.06	1725	W	16	R	29	85	Pmx-t	22		352	2,485	3.71	92	P141	
5	9	F	1.88	1730	NW	20	NC	32	80	Pmx-t	32		383	720	3.20	23		
5	10	A	3.31	1765	W	15												
5	11	F	0.44	1815	N	21	NC	26	80	Pmx-t	24		288	127	4.30	5		
5	12	A	0.19	1825	NW	22												
5	13	F	4.13	1810	N	31	R	30	85	Pmx-t	35		368	1,520	3.53	54	P132	
5	14	F	4.44	1775	NW	25	R	32	75	Pmx-t	32		364	1,616	3.20	52		
5	15	F	1.69	1750	NW	24	D											
5	16	A	1.19	1715	NW	12												
5	17	F	0.63	1780	NE	38	R	28	65	Ci	16	Ci	70	166	7.94	13	P140	
5	18	F	1.06	1765	N	32	R	16	25	Pmx	15	Pmx	30	36	7.02	3		
5	19	A	5.25	1750	SW	18		26	95	Pmx-t	28		331	351	4.30	15	P139	
5	20	F	22.69	1660	NW	18	NC	33	10	Pmx-t	33		74	1,679	3.05	51		
5	21	A	52.63	1650	NW	17												
5	22	F	11.81	1660	W	18	NC	32	15	Pmx-t	32		99	1,169	3.20	37		
5	23	F	1.00	1635	N	32	R	7	40	Ci	6		29	29	9.55	3		
5	24	F	3.81	1660	N	27	NC	22	20	Pmx	20		74	282	5.23	15	P183	
5	25	F	1.00	1665	NW	15	R	10	70	Ci	9		66	66	9.30	6	P182	
5	26	F	0.63	1675	W	22	NC	14	75	Pmx-t	14		116	73	7.74	6		
5	27	F	6.50	1600	NW	18	R	7	70	Ci	6		41	267	9.55	25		
Subtotal														186.16	17,701		664	

資料-38 森林調査簿 (パイロット・フォレスト) (15)

Comp. No.	Unidad No.	Uso de suelo	Superficie (ha)	Altitud (m. s. n. m.)	Exposición	Pendiente (grados)	Tipo de bosque	Altura D. Copa (m)	% D. Copa (%)	Especie	Edad	% de mezcla	Volumen /ha (m ³)	Volumen total (m ³)	Tasa inc. (%)	Inc. anual (m ³)	Observacion
6	1	F	0.81	1685	S	21	NL	12	75	Q			113	92			Area pendiente
6	2	A	0.10	1700	SW	12											Area pendiente
6	3	F	0.13	1705	S	27	NC	29	30	Pmx-t	28		151	20	3.71	1	Area pendiente
6	4	D	0.21	1700	SE	11											Area pendiente
6	5	F	0.40	1695	SE	29	NL	21	25	Q			126	50			Area pendiente
6	6	A	1.24	1685	S	18											Area pendiente
6	7	F	0.65	1695	SW	23	NC	26	50	Pmx-t	24		197	128	4.30	6	Area pendiente
6	8	A	0.80	1715	SW	28											Area pendiente
6	9	D	0.98	1700	SW	27											Area pendiente
6	10	D	0.33	1740	SW	35											Area pendiente
6	11	F	0.69	1755	W	17	NL	30	30	Q			215	148			Area pendiente
6	12	A	0.25	1795	S	28											Area pendiente
6	13	F	1.11	1800	S	24	NL	22	45	Q			182	202			Area pendiente
6	14	D	4.19	1775	S	21											Area pendiente
6	15	F	2.69	1800	SE	27	NL	26	75	Q			294	791			Area pendiente
6	16	A	0.31	1740	SW	15											Area pendiente
6	17	D	0.29	1740	SE	14											Area pendiente
6	18	F	9.50	1780	SE	21	NL	26	85	Q			315	2,993			Area pendiente
6	19	A	1.44	1740	SE	18											Area pendiente
6	20	A	1.06	1775	S	12											Area pendiente
6	21	D	2.38	1775	S	19											Area pendiente
6	22	A	4.38	1775	S	29											Area pendiente
6	23	F	2.50	1750	S	27	NL	30	80	Q			364	910			Area pendiente
6	24	D	2.88	1730	S	17											Area pendiente
6	25	A	4.69	1720	S	17											Area pendiente
6	26	D	2.00	1740	S	24											Area pendiente
6	27	F	0.60	1760	S	31	NC	26	85	Pmx-t	24		302	181	4.30	8	Area pendiente
6	28	D	0.66	1760	S	17											Area pendiente
6	29	A	0.62	1700	SW	24											Area pendiente
6	30	F	7.63	1740	S	19	NM	32	35	Pmx-t	32	Pmx-t	40	1,495	3.20	48	Area pendiente
6	31	F	4.06	1710	S	31	R	27	90	Pmx-t	25	Q	60	2,457	4.09	55	Area pendiente

資料-38 森林調査簿 (パイロット・フォレスト) (16)

Comp. No.	Unidad No.	Uso de suelo	Superficie (ha)	Altitud (m. s. n. m.)	Exposicion	Pend. (grado)	Tipo de bosque	Altura (m)	D. Copa (%)	Especie	Edad	% de mezcla	Volumen /ha.(m ³)	Volumen total (m ³)	Tasa inc. (%)	Inc. anual (m ³)	Observacion
6	32	F	2.75	1660	S	28	NL	29	70	Q			325	894			Area pendiente
6	33	F	13.13	1755	W	25	R	1	95	PmX-t	3		-			0	Area pendiente
6	34	F	0.39	1845	N	22	NM	28	15	PmX-t	27	PmX-t	82	32	3.90	1	Area pendiente
6	35	A	0.26	1855	NW	20		15	5	Q		Q	35	14			Area pendiente
6	36	F	0.32	1870	NW	14	R	16	80	PmX-t	15		147	47	7.02	3	Area pendiente
6	37	F	0.16	1910	W	17	NL	28	40	Q			231	37			Area pendiente
Subtotal			76.59											11,847		122	
Total			1,891.85											221,771		6,363	

資料－39 アンケート調査様式
(パイロット・フォレスト)

資料-39 アンケート調査様式 (パイロット・フォレスト)

〔一般住民に対する質問〕

私達は森林を保全し、育成し、林業・林産業の発展を通じて地域社会への貢献をするための計画作りを行っています。このことについて意見を聞かせて下さい。

- a. 目的は理解でき、計画の内容に興味を持っている
- b. 目的は理解できるがあまり関心はない
- c. 目的に反対である(理由)
- d. 目的が理解できない
- e. その他

聴取者 _____ 日付 _____

氏名:	年齢: ____歳	性別: 男/女	地位: 既婚/未婚, 寡夫/寡婦	居住年数: ____年
住所: ALDEA:	CASERIO:			
主たる職業: a. 自作農 b. 小作農 c. 農業賃労働 e. その他	従たる職業:			
最終学歴: a. なし b. 小学校 c. 中学校 d. 高等学校以上				

家族構成

年齢	0~5	6~12	13~15	16~19	20~29	30~39	40~49	50~59	60~69	70~	備考
男											
女											
計											

(生活に関すること)

1. 家計

(1)収入の多いものからそれぞれ順位をつけて下さい

収入	順位	備考
農作物の販売		
家畜の販売		
林産物の販売		
県内の就労		賃金Q. /日(月)
県外の就労		賃金Q. /日(月)
その他		
総収入		Q. /月(年)

2. 現在、日常生活で困っていることは何ですか？

(2)支出は月(または年)にどのくらいですか？

Q. _____ /月・年

(3)主な支出項目を3つ上げて下さい。

1. _____

2. _____

3. _____

3. 現在利用している土地の所有形態について教えてください。

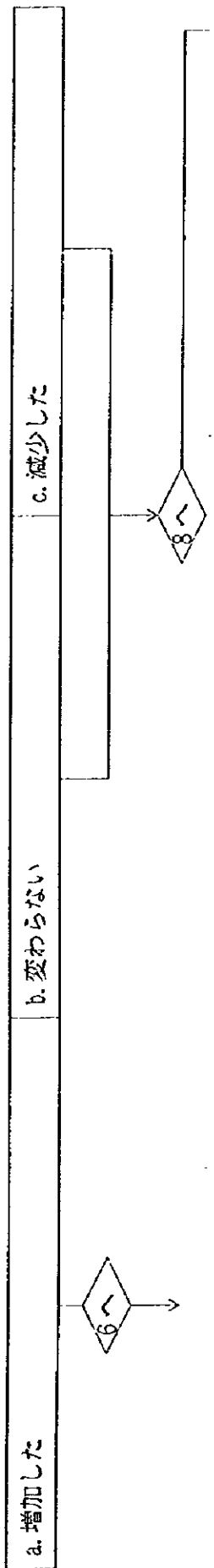
区分	自有地 (ha)	国有地 (ha)	共有地 (ha)	借地 (ha)	備考(作目、樹種、借地料等)
住宅敷地					
農地					
菜園					
果樹園・永年作物					
牧草地					
天然林					
森林					
造林地					
灌木地					
その他					

所有者は？
どこに？所有者？
無許可またはなんら
かの契約？

〔農地に関すること〕

4. 利用している農地は； a. 傾斜地にある b. 平坦地にある

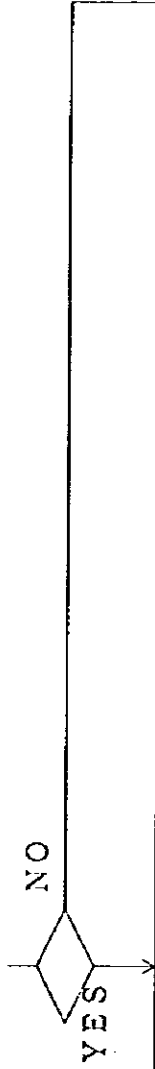
5. 農作物の生産量は以前と比較して；



6. 作物生産量が減少した理由は何だと思えますか？

- a. 雨量が少なくなった
- b. 土地が痩せてしまった
- c. 病害虫が多くなった
- d. その他
- e. わからない

7. 作物の生産量が低下しないために何か対策を行いましたか？



何を行いましたか？	行わない理由は何ですか？
<ul style="list-style-type: none"> a. 農地を年間休ませた b. 肥料(化学肥料・有機肥料・緑肥) c. テラスを作った d. 等高線沿いに畝を作った e. 防風林を作った f. その他 	<ul style="list-style-type: none"> a. 資金がない b. 技術がない c. 時間がない d. 労働力がない e. その他

8. 過去一年間に生産した農作物の種類、作付面積、生産量を教えて下さい ←

作物	作付面積 h a	生産量 K g	生産量の内訳		販売価格 Q.
			自家用%	販売用%	
a. Maiz b. Frijol c. Sorgo d. Café e. Caña de Azúcar f. Banano g. Tomate h. Papa i. Cacahuete j. Tabaco k. Citrico l. Broccorri l. Otros					

9. 焼き畑を行っていますか？

10. 焼き畑の目的は何ですか？

- a. 不要物の除去
- b. 病害虫の除去
- c. 肥料効果
- d. その他
- e. わからない

11. 焼き畑の実施時期はいつですか？

- a. 月頃
- b. 年に1回
- c. 特に関わらない

12. 焼き畑を今後も続けられますか？ a. はい b. いいえ

13. 農機具は何を持っていますか？

- a. トラクター
- b. 鋤
- c. 鎌
- d. 鋤
- e. その他

(家畜に関すること)

13. 飼育している家畜について教えて下さい

種類	飼育頭数		販売価格 Q. / 頭	飼育場所 (×印をつける)					
	計	自家用		販売用	森林	牧草地	舎飼い	家の周囲	その他
肉牛									
乳牛									
役牛									
羊									
馬									
豚									
山羊									
家禽									

14. 森林にいつごろ放牧しますか? ____月～____月頃

15. 放牧のための火入れを行っていますか?

16. 火入れの実施時期はいつですか?

- a. ____月頃
- b. ____年に1回
- c. 特に決まっていない

17. 火入れを今後も続けますか? a. はい b. いいえ

(森林に関すること)

18. あなたの所有する森林及び周辺の森林の利用目的は何ですか? (×印をつける)

- 薪炭採取
- 放牧
- 狩猟
- 食糧採取
- 薬草採取
- その他

19. 森林に被害がありますか?

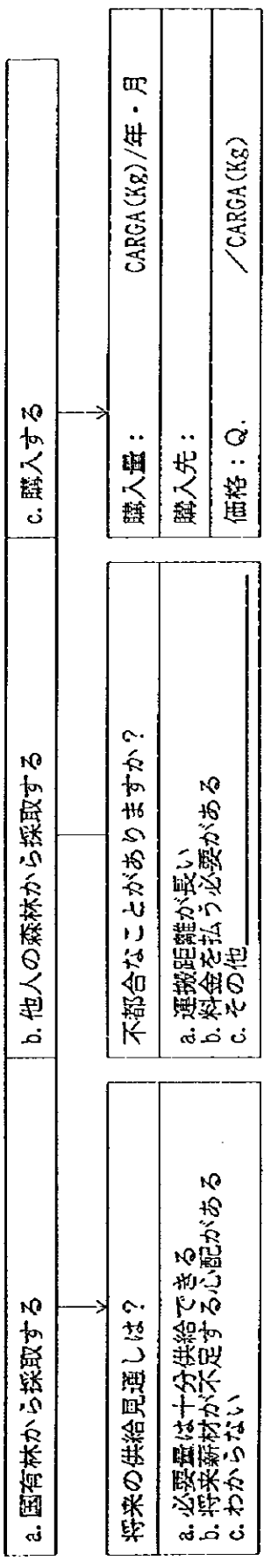
20. 森林被害の原因は何ですか？
- a. 焼き畑の延焼による山火事
 - b. 放牧による山火事
 - c. 放牧による踏みつけ
 - d. 病害虫（種類）
 - e. その他

[薪炭に関すること]

21. 使用燃料はなんですか？
- a. 薪
 - b. 木炭
 - c. 石油
 - d. ガス
 - e. その他（ ）

薪に使う樹種はなんですか？（ ）

22. 薪はどうやって手にいれますか？



23. 炭の入手方法は？

- a. 消費量（ kg / 年）
- b. 購入価格（ Q. / kg）

24. 炭を使わない理由は何ですか？

- a. 値段が高い
- b. 炭の絶対量が少ない
- c. 良質の炭が少ない
- d. その他（ ）

〔女性（主婦）に対する質問〕

25. あなたの最終学歴は？ a. なし b. 小学校 c. 中学校 d. 高等学校以上

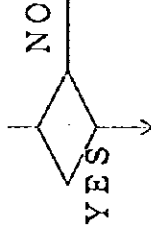
26. 家庭内であなたが主にやっていることは何ですか？

- a. 炊事・洗濯
- b. 水汲み
- c. 薪採取
- d. 放牧
- e. 農作業
- f. 農作物の販売
- g. その他

27. 家庭内であなたが主に決めていることは何ですか？

- a. 農作業
- b. 家畜管理
- c. 現金の支出
- d. 子供の教育
- e. その他

28. 現在、家計を助けるために就労をしていますか？



区分	仕事の種類	収入Q. / 月・年
a.	家庭内での請け負 い仕事（内職）	
b.	賃金労働	
c.	その他	

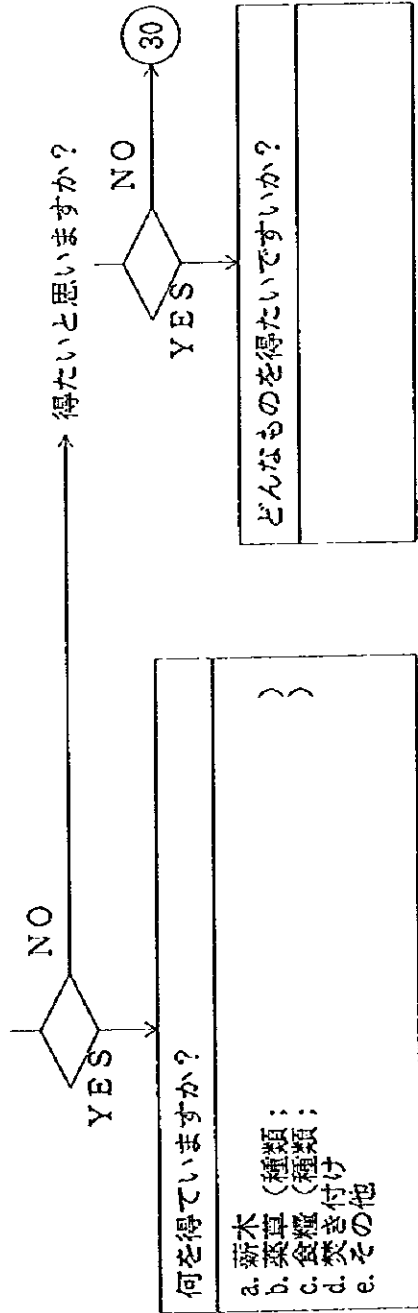
働いていない理由は何ですか？

- a. 余分な時間がない
- b. 教育を受けていない
- c. 夫が許さない
- d. 就労の場がない
- e. その他

もし可能ならば家庭外で働きたいと思えますか？

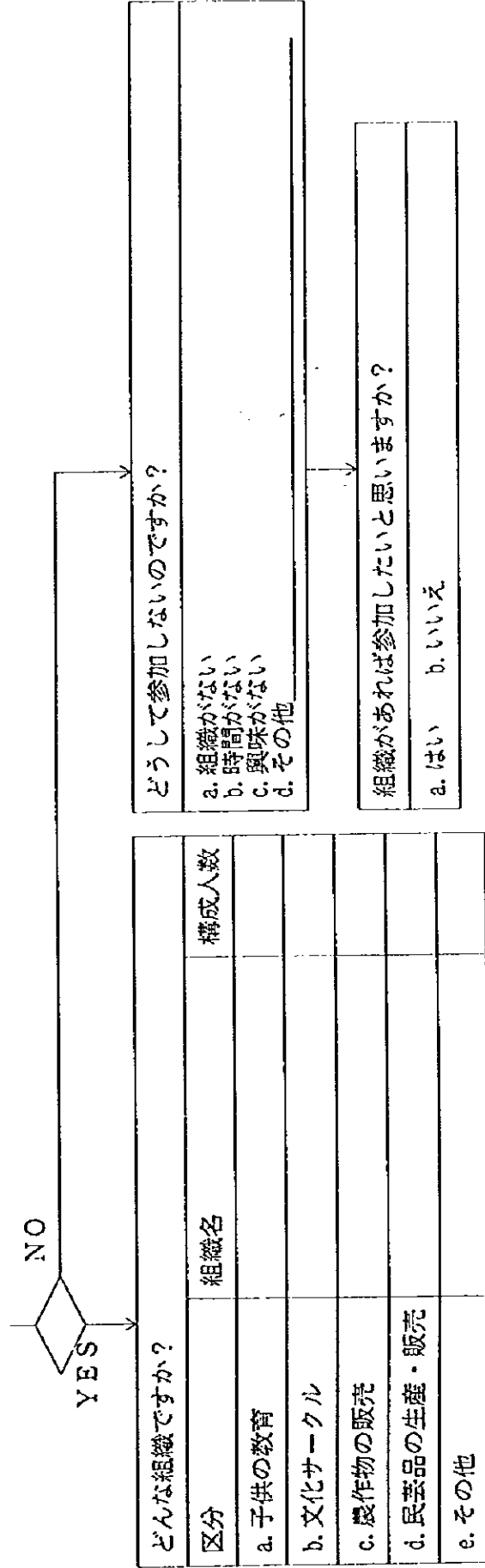
- a. はい
- b. いいえ

29. 森林から日常生活に必要なものを何か得ていますか？



30. 苗木の育成、植林等木を育てる仕事をやってみたいと思いますか？ a. はい b. いいえ

31. 地域の社会組織に参加していますか？



資料－40 アンケート調査
(パイロット・フォレスト)

資料-40 アンケート調査 (パイロット・フォレスト)

1. 調査結果

(1) 調査戸数

国有林内入り込み者についてはアルデアBI Duraznoの67戸全部および Sibabajの2戸の合計69戸を対象に、さらに国有林に隣接するアルデア Las Anonas については、アグロフォレストリー委員会を構成する Las Anonas、Chiteoおよび Saguesitas の3カセリオから3戸ずつの9戸を対象として実施した。調査の結果、不在または調査拒否を含め調査戸数は表-1のとおりとなった。

表-1 調査戸数内訳

単位：戸

行政単位	調査実施	調査拒否	不在	合計
BI Durazno (小計)	55	3	9	67
Sector I	20	1	4	25
Sector II	11	1	3	15
Sector III	21	1	2	24
Aguacate	3	0	0	3
Sibabaj	2	0	0	2
Las Anonas (小計)	6	3	0	9
Las Anonas	3	0	0	3
Chiteo	3	0	0	3
Saguesitas	0	3	0	3
合計	63	6	9	78

(2) 回答数

実際に回答が得られた戸数は BI Durazno 55戸、Sibabaj 2戸および Las Anonas 6戸の合計63戸である。ただし、この63戸中には女性のみに対する質問への回答が1件含まれているので、一般的質問に対する回答を行った戸数は62戸となる。一般的質問に対する主回答者の性別人数は表-2のとおりである。

表-2 主回答者の性別人数

単位：人

性別	男性	女性	合計
主回答者	45	17	62

また、女性の状況に関する質問は原則として、すべての聴取対象戸について行ったが、妻が不在あるいは回答拒否などの理由によりこれに関する回答数は39であった。

(3) 主回答者の婚姻状況

アンケートは原則として世帯主を対象に行ったが、世帯主が不在の場合はその配偶者に代わって回答してもらった。主回答者の婚姻状況は表-3のとおりである。

表-3 主回答者の婚姻状況

単位：人

既婚	同棲	独身	寡夫	不明	合計
48	11	2	1	1	63

ここで既婚とは正式に結婚している夫婦を意味し、同棲とは正式に結婚を届けていない夫婦を意味している。

(4) 居住年数

国有林内居住者の居住年数をみると、およそ70%の者が国有林内で生まれており、その最年長者は72歳である。したがって、少なくとも70年ほど前にはすでに国有林内への入り込みが行われていたことが分かる。

(5) 世帯主の職業

世帯主の職業は表-4のとおりである。

表-4 世帯主の職業（回答者数は62、複数回答可）

単位：回答数

職 業	主職業	副職業	計
自作農†	46	12	58
農業労働者‡	7	30	37
GUATEL職員	2	1	3
DIGBOS職員	3	0	3
DIGESA職員	0	2	2
民間会社勤務	3	0	3
借地農	1	0	1
仲買人	0	1	1
無し	0	15	15
不明	0	1	1

† 自作農-国有林内に有する専用の区画で耕作を行っている者。

‡ 農業労働者-国有林内外の農場で日雇い賃労働を行っている者。

国有林を利用する世帯主の主職業でもっとも回答の多かったのは自作農である。副職業に自作農を挙げた者と併せると62人中58人の者が自作農を職業としてあげた。また、農業労働者を主および副職業にあげた者は62人中37人、およそ60%となっている。半数以上が自作農だけで生計をたてるのは難しく、それを補うために農業労働者として働いていることになる。

(6) 世帯主の教育水準

世帯主の教育水準は表-5のとおりで就学率が極めて低い。

El Duraznoには小学校があり、1994年には新校舎が建設された。しかし、以前は学校がなかったため、年配者に無就学者が多いのは理解できるが、「就学した」と回答した者でも小学校を終了した者がきわめて少ないことをみると、教育水準が低いのは単に学校施設の未整備だけが原因とは思われない。

表-5 世帯主の教育水準

水準	無	小1	小2	小3	小4	小5	小6	合計
人数	23	2	8	17	4	5	3	62

(7) 国有林内居住者の人口構成

国有林内居住者の人口構成は表-6のとおりである。

表-6 男女別人口構成 単位：人

性別	0 - 12歳	13歳以上	合計
男性	72	95	167
女性	74	103	177
合計	146	198	344

また、1戸あたりの家族構成員数は平均 6.0人であった。

El Duraznoの戸数および人口は、アンケート調査結果によると、居住を確認した戸数が67で、1戸あたりの家族構成員数が平均 6.0人であることから、全体の人口を推計すると 402人となる。

(8) 家計

収入については主な収入源の順位付けを行ってもらい、支出に関しては1ヶ月あたりの支出額について回答を得た(表-7)。

表-7 主な収入源の順位付け(複数回答可) 単位：回答数

順位	農産物販売	畜産物販売	日雇い	給与所得	林産物販売
1位	26	3	18	7	4
2位	11	16	18		2
3位		11	6	2	
4位		2			
合計	37	32	42	9	6

農産物販売を収入源の1位に挙げた者が62人中26人ともっとも多い。しかし、農産物販売だけで家計を支えられる世帯は希で、ほとんどの世帯で日雇いや畜産物販売による現金収入を必要としている。また、Las Anonasでは回答者6人中4人が林産物販売を収入源の1位に、1人が2位に挙げており、このアルデアにとって林業がいかに重要であるかが分かる。

他方、支出については一戸あたりの平均月額が296ケツァルで、主な支出項目は表-8のとおりである。

表-8 主な支出項目（複数回答可）
単位：回答数

順位	食料品	薬品	衣料品
1位	53	2	2
2位	2	8	24
3位	2	12	6
4位			2
合計	57	22	34

支出項目でもっとも多かったのは食料品で、これには砂糖、塩、油といった補助食品の他に、主食であるトウモロコシやフリホールマメといった基幹作物も含まれている。これらの作物は大部分の居住者によって作られているが自家消費量をカバーするに至っていない。医療費は公立機関を利用すれば無償だが薬代は受益者負担が原則のため、子供の多い家では薬代がかさむ傾向にある。

(9) 生活上の必要事項

「生活上の必要事項は何か」という質問に対する主な回答は表-9のとおりである。

表-9 生活上の必要事項

項目	輸送	上水	電力	保健所	道路整備	雇用機会	土地
回答数	9	9	32	15	12	9	8

もっとも回答数が多かったのは電力施設の整備で、これに保健所の設置が続く。この2点が居住者のもっとも大きな要望であり、生活改善委員会ではすでに関連機関に整備の申請をしているとのことである。国有林内の道路はGUATELのアンテナまでの道と以前に開設された林道の一部だけが車両通行可能で、道路整備を望む声は大きい。水道に関してはほとんどの家に簡易水道がすでに整備されており、それほど不自由はしていないが、水源に湧水を利用しているため、乾季に水が不足するところがある。雇用機会が少

ないとの回答は9人から寄せられたが、これは農業だけで生計をたてるのが難しいために別の現金収入の手段を得たいという希望の現れである。土地と回答した者の具体的内容は土地の所有権を得たいというものである。

(10) 土地利用状況

入り込み者は国有林内の土地を宅地、耕作地あるいは牧草地として利用している。このうち牧草地としての利用は共同利用できる牧草地と回答したものが多く、面積を特定することができなかつたため宅地および耕作地の平均利用面積を表-10に示す。

表-10 国有林内の宅地及び耕作地としての平均利用面積
単位：面積/回答数

行政区分	宅地	耕作地
Bl Durazno		
Sector I	6.751ha/19	42.49ha/17
Sector II	7.145ha/10	18.60ha/11
Sector III	10.032ha/21	66.15ha/21
Aguacate	0.790ha/ 3	2.24ha/ 3
Sibabaj	0.012ha /2	—
Las Anonas	—	7.70ha/ 6
合 計	24.730ha/55	137.18ha/58
1 戸 平 均	0.450ha	2.37ha

(11) 収穫量の変化

ここ10年来の収穫量の変化傾向についての質問に対する回答は表-11のとおりである。

表-11 収穫量の変化

収穫量の変化	増	無し	減	合 計
回 答 数	8	18	32	58

収穫量の変化については、農業技術の向上や化学肥料の使用を理由に増加したと回答した者が8人、その一方で減少したと回答した者は32人と半分以上に達している。減少したと回答したものがあげた原因の中でもっとも多かったのは、土地痩せ、肥料流出、土壌流亡と言った地力の低下である。こうした収穫量の減少に対する対策としては、化学肥料の使用という回答が半数以上を占めている。中には、新規開墾による耕作地の拡大と回答した者もいる。実際のところ、林地の農地への転換を求める声は現在もあり、農地拡大にともなう林地減少の潜在的圧力は依然として大きい。

02) 主要作物

国有林内で耕作されている主要な作物はトウモロコシ、フリホールマメ、トマト、コーヒーである。それぞれの作物を作付している回答者の割合は、トウモロコシが97%、フリホールマメが85%、トマトが70%、コーヒーが66%となっている。これら主要作物の1戸あたりの平均作付面積および平均収穫量ならびに販売の割合は表-12のとおりである。

表-12 主要作物

作 目	平均作付面積	平均収穫量	販売割合
トウモロコシ	0.99ha	867kg	12.5%
フリホールマメ	0.35ha	203kg	14.3%
ト マ ト	0.15ha	297箱*	88.9%
コ ー ヒ ー	-	-	28.6%

*箱=50 lib=50 x 0.454kg=約23kg

他にサトウキビ、トウガラシ、キャベツがあり、また、主に家の周辺にバナナやモモ、オレンジ等の果樹を植栽する場合もある。

生産物の用途をみると、トウモロコシおよびフリホールマメはほとんど自家消費用であるのに対して、トマトは販売用である。コーヒーは果樹と同様、家の周辺に植栽されていることが多く、本数も少ないため販売用の割合は少ないが、トマトと並んで換金作物となっている。トマトの値段は時期によって、1箱当たり 10-20ケツァルから150-200 ケツァルと変動が著しい。なお、トマトは同一場所で連作ができないため、フリホールマメやトウモロコシと交替で栽培したり、作付場所を変えたりしている。トマトは畑の条件に応じて年に1ないし2回作付し、1回の作付で3回から5回収穫している。

03) 火入れ

耕作地の火入れを行っているかとの質問に対して、行っていると回答した者は30%で、それほど火入れが行われているわけではない。火入れの目的は雑草およびごみの除去であり、牧草地造成のために火入れを行っているとは回答した者はいなかった。

04) 牧畜

国有林内では農業の他に牧畜も行われているが、畜産経営とよべるほど規模は大きくない。農家の副業であるが必要に応じて家畜を売却するという形で牧畜も家計を支える重要な収入源となっている。家畜の保有状況は表-13~14のとおりである。

表-13 家畜保有の割合

家畜種類	肉牛	乳牛	役牛	豚	馬	鶏	あひる
保有割合	48%	58%	5%	42%	15%	90%	27%

表-14 家畜の総数および1戸当り平均 単位：頭、羽

家畜種類	肉牛	乳牛	役牛	豚	馬	鶏	あひる
総数	77	72	4	47	14	816	66
平均	2.6	2.0	1.3	1.8	1.5	14.6	3.9

(15) 森林利用

森林利用に関しては、木材採取、薪およびオコテ（松脂を含んだマツの材部でたき付けや照明に使う）採取、放牧、狩猟、食用植物採取、薬用植物採取およびその他の選択肢について複数回答を可として、「はい」または「いいえ」の回答を求めた。それぞれの選択肢に対する肯定回答を表-15に示す。

表-15 森林利用項目に対する肯定回答数（回答総数）

	木材	薪・オコテ	放牧	狩猟	食用植物	薬用植物
肯定回答	46	60	24	4	49	17
肯定回答率	74%	97%	39%	6%	79%	27%

森林利用でもっとも高い割合を示しているのは「薪・オコテ」の採取である。木材利用は74%と高い割合を示すが、46人のうち44人は自分の家屋の建築修理のために、販売目的で木材を利用していると回答したのは2人にすぎない。たとえ自己家屋の建築修理用とはいえ、国有林内の立木伐採には営林署の許可が必要であり、回答者の多くもその点は認識していると述べている。しかし、営林署の許可を求めると回答した者はほんの2、3人である。

薪・オコテ採取に次いで割合が高かったのは食用植物採取である。回答者のほとんどが挙げた食用植物は、おもにマクイおよびチピリンという緑色の山野草で、スープなどにいれて食する。

(16) 森林被害

森林被害があると思うかとの質問に対しては、62人中40人が「ある」と答えている。それら40人の回答者にその理由は何かと質問したところ、虫害が30人、火災が18人、と

他に比べて多く、他のアルデア住民の不法伐採を挙げたものも2人いた。

(17) 使用燃料

使用燃料は全員が薪および火付け用オコテと回答し、木炭、ガス、石油といった他の燃料はゼロであった。また、オコテは火付け用としても用いられているが、むしろ、照明で用いられることが多い。したがって、電力施設が整備されるとすくなくとも照明用のオコテ採取量は減少する可能性がある。

薪の採取場所は例外なく国有林であり、将来の薪供給量に対する見込みについては「将来も充分ある」と回答した者は62人中34人と半数を越えている。しかし、その一方で「現在も既に不足している」と回答したのも10人いて、薪の供給量見通しについては居住者の間でも認識に違いがある。

薪の原木は主に *Quercus* spp. が用いられているが、不足した場合 *Pinus* spp. も利用している。

木炭については「木炭の作り方を知らない」及び「木炭使用の習慣がない」という回答が大部分を占め、入り込み者にとって木炭は使われていないといえる。

(18) 女性の状況に関する質問

既述したように女性の状況に関する質問に対する回答総数は39である。このうち独身の世帯主が1名あるが、それ以外は届けのあるなしにかかわらず世帯主の妻である。以下にその結果をまとめる。

a. 教育水準

表-16 回答女性の教育水準

水準	無	小1	小2	小3	小4	小5	小6	中3
人数	16	2	7	9	2	1	1	1

世帯主の教育水準でも回答女性の教育水準でも小学校3年での就学終了が無就学歴に次いで人数が多くなっており、世帯主の場合、小学校3年までの就学率は80%、女性の場合は87%となっている。つまり、小学校3年が就学上の一つの節目で小学校4年以降も継続して就学する者は少ないということである。

b. 女性の主な仕事

女性の仕事は、炊事洗濯といった家事および薪採取が主体であるが、そのほかに放牧や農作業で夫を助け、農産物を販売に町の市場にてかける女性も多い。子供がいる場合にはこれに子供の世話も加わる。個人差はあるものの概して女性は働き者で、し

っかりしている。

c. 家庭内の意思決定

農作業、家畜飼育、買物および子供の教育の4項目に関して「意思決定はだれが行うか」との質問を行った。その結果、それぞれの項目に対する「夫と妻の両者」「妻のみ」あるいは「夫のみ」という回答の比率は表-17のとおりである。

表-17 家庭内の意思決定

単位：%

決定者	農作業	家畜飼育	買物	子供の教育
両者	38	38	46	74
妻のみ	0	7	13	8
夫のみ	62	55	41	18
計	100	100	100	100

農作業や家畜の飼育といった主要な経済活動に関する面ではやはり夫が決定権を握っている家庭が多いが、買物や子供の教育では妻の発言権も相当あるとみることができる。

d. 女性の対外的活動

家庭外で仕事をもっている女性は39人中3人にすぎず、ほとんどは家庭内で家事や育児に時間を費やしている。しかし、収入不足を補うためとはいえ、機会があれば家庭の外でも働きたいと考える女性は70%以上に達している。

また、仕事以外のなんらかの社会活動についても、「時間がない」、「グループが近くにない」などの理由でほとんどの者が参加していない。しかし機会があれば参加したいとする女性がほぼ70%に達していることから、仕事にせよ、仕事以外の社会活動にせよ、女性の参加意欲は相当高いといえる。これまでも保健所が組織した栄養改善活動グループやDIGESAが組織した野菜耕作グループあるいは識字教育活動などが実施され、そうした活動に参加したことがあると回答した者もいた。

2. アンケート集計結果

TABULATED RESULTS OF SURVEY FOR INHABITANTS IN NATIONAL FOREST (1) 1/2

Sector I	NUMBER OF MAIN RESPONDENTS BY SEX	AGE MALE	AGE FEMALE	ANSWER FOR QUESTIONS OF WOMEN'S LIFE	FAMILY STATUS
1	M	41	39	YES	MARRIED
2	M	24	28	YES	COHABITED
3	M	42	48	YES	MARRIED
4	M	48	45	NO	MARRIED
5	F	36	37	YES	COHABITED
6	M	68	67	NO	COHABITED
7	M	56	52	YES (BY HUSBAND)	MARRIED
8	F	25	21	YES	UNKNOWN
9	F	-	35	YES	SINGLE
10	M	40	38	NO	MARRIED
11	M	23	25	YES	MARRIED
12	M	26	23	NO	MARRIED
13	F	38	25	YES	COHABITED
14	M	59	48	YES	MARRIED
15	M	48	41	YES	MARRIED
16	F	35	28	YES	MARRIED
17	F	31	23	YES	COHABITED
18	M	87	68	NO (REFUSED)	MARRIED
19	M	40	-	NO	SINGLE
20	M	35	31	NO (SICE)	COHABITED
TOTAL	M 14 F 6			YES 13 NO 7	MARRIED 11 COHABITED 6 SINGLE 2 UNKNOWN 1

Sector II	NUMBER OF MAIN RESPONDENTS BY SEX	AGE MALE	AGE FEMALE	ANSWER FOR QUESTIONS OF WOMEN'S LIFE	FAMILY STATUS
1	M	47	42	YES	COHABITED
2	F	68	58	YES	MARRIED
3	M	43	37	NO	COHABITED
4	M	41	UNKNOWN	NO	MARRIED
5	F	26	24	YES	MARRIED
6	M	56	48	YES	MARRIED
7	M	49	35	YES	MARRIED
8	F	23	20	YES	MARRIED
9	M	22	19	NO (ASSENT)	MARRIED
10	M	26	24	NO (REFUSED)	MARRIED
11	M	72	56	YES	COHABITED
TOTAL	M 8 F 3			YES 7 NO 4	MARRIED 8 COHABITED 3

TABULATED RESULTS OF SURVEY FOR INHABITANTS IN NATIONAL FOREST (1) 2/2

Sector III	NUMBER OF MAIN RESPONDENTS BY SEX	AGE MALE	AGE FEMALE	ANSWER FOR QUESTIONS OF WOMEN'S LIFE	FAMILY STATUS
1	M	42	44	YES	MARRIED
2	F	25	24	YES	MARRIED
3	F	32	28	YES	MARRIED
4	M	25	28	YES	MARRIED
5	M	28	23	YES	MARRIED
6	M	37	34	NO	MARRIED
7	M	29	28	NO (REFUSED)	MARRIED
8	F	25	22	YES	MARRIED
9	F	50	47	YES	MARRIED
10	F	26	23	YES	MARRIED
11	M	60	45	NO	MARRIED
12	M	38	35	YES (BY HUSBAND)	MARRIED
13	M	44	42	YES	MARRIED
14	F	33	34	YES	MARRIED
15	F	40	31	YES	COHABITED
16	F	50	63	YES	MARRIED
17	M	56	-	NO	WIDOWER
18	F	27	25	YES	MARRIED
19	M	24	19	YES	MARRIED
20	M	22	20	NO	MARRIED
21	M	34	28	YES	MARRIED
合計	M 12 F 9			YES 16 NO 5	MARRIED 15 COHABITED 1 WIDOWER 1

Aguate	NUMBER OF MAIN RESPONDENTS BY SEX	AGE MALE	AGE FEMALE	ANSWER FOR QUESTIONS OF WOMEN'S LIFE	FAMILY STATUS
1	M	25	UNKNOWN	NO	MARRIED
2	M	66	44	NO	COHABITED
3	M	65	57	YES	MARRIED
TOTAL	M 3 F 0			YES 1 NO 2	MARRIED 2 COHABITED 1

Sibataj	NUMBER OF MAIN RESPONDENTS BY SEX	AGE MALE	AGE FEMALE	ANSWER FOR QUESTIONS OF WOMEN'S LIFE	FAMILY STATUS
1	M	53	43	YES	MARRIED
2	M	29	UNKNOWN	YES	MARRIED
TOTAL	M 2			YES 2	MARRIED 2

Las Anapas	NUMBER OF MAIN RESPONDENTS BY SEX	AGE MALE	AGE FEMALE	ANSWER FOR QUESTIONS OF WOMEN'S LIFE	FAMILY STATUS
Las Anapas 1	M	49	45	NO	MARRIED
2	M	70	64	NO	MARRIED
3	M	60	56	NO	MARRIED
Chiteo 1	M	34	31	NO	MARRIED
2	M	48	43	NO	MARRIED
3	M	36	32	NO	MARRIED
TOTAL	M 6			NO 6	MARRIED 6

GRAND TOTAL	M 45 F 18			YES 39 NO 24	MARRIED 48 COHABITED 11 SINGLE 2 WIDOWER 1 UNKNOWN 1
-------------	--------------	--	--	-----------------	--

TASGLATED RESULTS OF SURVEY FOR INHABITANTS IN NATIONAL FOREST (2)

1/2

Sector I	LIVING YEARS OF MAIN RESPONDENT	MAIN PROFESSION OF HOUSEHOLDER	SECONDARY PROFESSION	EDUCATION LEVEL
1	BORN (41YEARS)(FATHER SETTLED IN 1923)	EMPLOYEE OF GUATEL	FARMER	ELEM. 1
2	BORN (21YEARS)	FARMER	NONE	ELEM. 3
3	BORN (42YEARS)	FARMER	NONE	ELEM. 3
4	35YEARS	FARMER	AGRI.LABOR (IN & OUT OF FN)	ELEM. 1
5	BORN (36YEARS)	FARMER	AGRI.LABOR (IN & OUT OF FN)	ELEM. 2
6	UNKNOWN (FATHER SETTLED)	FARMER	NONE	NONE
7	BORN (56YEARS)	FARMER	NONE	NONE
8	NO ANSWER	NO ANSWER	NO ANSWER	ELEM. 3
9	BORN (35YEARS)	FARMER	DIGESA REPRESENTANT	ELEM. 3
10	BORN (42YEARS)	FARMER	NONE	ELEM. 1
11	22YEARS (FATHER SETTLED)	FARMER	AGRI.LABOR (IN & OUT OF FN)	ELEM. 5
12	BORN (26YEARS)	AGRI.LABOR (IN & OUT OF FN)	FARMER	ELEM. 4
13	BORN (38YEARS)	AGRI.LABOR (OUT OF FN)	FARMER	UNKNOWN
V.F.	14 BORN (59YEARS)	FARMER	EMPLOYEE OF GUATEL	ELEM. 2
	15 BORN (42YEARS)	FARMER	AGRI.LABOR (OUT OF FN)	NONE
	16 BORN (28YEARS)	FARMER	AGRI.LABOR	ELEM. 3
	17 HUSBAND BORN (31YEARS)	AGRI.LABOR (OUT OF FN)	FARMER (EL CACAO)	ELEM. 3
	18 65YEARS	FARMER	NONE	NONE
	19 38YEARS	FARMER	NONE	NONE
	20 BORN (35 YEARS)	FARMER	AGRI.LABOR (IN & OUT OF FN)	ELEM. 4
TOTAL	BORN 14/19	FARMER 15 AGRI.LABOR 3 EMPLOYEE OF GUATEL 1 NO ANSWER 1	FARMER 4 AGRI.LABOR 6 EMPLOYEE OF GUATEL 1 DIGESA REPRESENTANT 1 NONE 7 NO ANSWER 1	NONE 5 ELEM. 1 2 ELEM. 2 2 ELEM. 3 7 ELEM. 4 2 ELEM. 5 1

Sector II	LIVING YEARS OF MAIN RESPONDENT	MAIN PROFESSION OF HOUSEHOLDER	SECONDARY PROFESSION	EDUCATION LEVEL
1	BORN (47YEARS)	AGRI.LABOR (IN & OUT OF FN)	NONE	NONE
2	BORN (58YEARS)	EMPLOYEE OF GUATEL	FARMER	ELEM. 3
3	BORN (37YEARS)	FARMER	AGRI.LABOR (IN & OUT OF FN)	ELEM. 2
4	BORN (41YEARS)	FARMER	AGRI.LABOR (OUT OF FN)	ELEM. 2
5	UNKNOWN(HUSBAND BORN 26Y)	AGRI.LABOR (IN & OUT OF FN)	FARMER	ELEM. 4
6	BORN (56YEARS)	EMPLOYEE OF DIGEBOS	FARMER	NONE
7	BORN (40YEARS)	EMPLOYEE OF DIGEBOS	FARMER	ELEM. 3
8	BORN (20YEARS)	COMPANY EMPLOYEE(GUATE)	FARMER	ELEM. 3
9	BORN (22YEARS)	FARMER	BROKER	ELEM. 5
10	BORN (26YEARS)	AGRI.LABOR (IN & OUT OF FN)	FARMER	ELEM. 5
11	BORN (72YEARS)	FARMER	AGRI.LABOR (IN & OUT OF FN)	NONE
TOTAL	BORN 11/11	FARMER 4 AGRI.LABOR 3 EMPLOYEE OF GUATEL 1 EMPLOYEE OF DIGEBOS 2 COMPANY EMPLOYEE 1	FARMER 6 AGRI.LABOR 3 BROKER 1 NONE 1	NONE 3 ELEM. 2 2 ELEM. 3 3 ELEM. 4 1 ELEM. 5 2

TABULATED RESULTS OF SURVEY FOR INHABITANTS IN NATIONAL FOREST (2)

2/2

Sector III	LIVING YEARS OF MAIN RESPONDENT	MAIN PROFESSION OF HOUSEHOLDER	SECONDARY PROFESSION	EDUCATION LEVEL
Presidential	32YEARS (FROM LAS ANONAS)	FARMER	DIGESA REPRESENTANT	ELEM. 3
2	NO ANSWER	FARMER	AGRI. LABOR (IN & OUT OF FN)	NONE
3	BORN (32YEARS)	FARMER	AGRI. LABOR (IN & OUT OF FN)	NONE
4	BORN (25YEARS)	FARMER	AGRI. LABOR (IN & OUT OF FN)	ELEM. 3
5	12YEARS	FARMER	AGRI. LABOR (IN & OUT OF FN)	ELEM. 6
6	BORN (37YEARS)	EMPLOYEE OF DIGEBOS	FARMER	ELEM. 3
7	BORN (29YEARS)	FARMER	AGRI. LABOR (OUT OF FN)	NONE
8	BORN (25YEARS)	FARMER	AGRI. LABOR (IN OF FN)	ELEM. 6
9	BORN (50YEARS)	FARMER	AGRI. LABOR (IN OF FN)	ELEM. 2
10	BORN (26YEARS)	FARMER	AGRI. LABOR (IN OF FN)	ELEM. 5
11	BORN (60YEARS)	FARMER	NONE	NONE
12	20YEARS	FARMER	AGRI. LABOR (IN OF FN)	ELEM. 3
13	BORN (44YEARS)	FARMER	AGRI. LABOR (OUT OF FN)	NONE
14	UNKNOWN (HUSBAND BORN 33Y)	FARMER	AGRI. LABOR (OUT OF FN)	ELEM. 3
15	BORN (40YEARS)	FARMER	NONE	NONE
16	BORN (63YEARS)	FARMER	UNKNOWN	ELEM. 2
17	BORN (56YEARS)	FARMER	AGRI. LABOR (IN & OUT OF FN)	NONE
18	BORN (27YEARS)	COMPANY EMPLOYEE (GUATE)	NONE	NONE
19	BORN (24YEARS)	COMPANY EMPLOYEE	FARMER	ELEM. 3
20	18YEARS	FARMER	AGRI. LABOR (OUT OF FN)	ELEM. 5
21	BORN (34YEARS)	FARMER	AGRI. LABOR (OUT OF FN)	NONE
TOTAL	BORN 16/21	FARMER 18 EMPLOYEE OF DIGEBOS 1 COMPANY EMPLOYEE 2	DIGESA REPRESENTANT 1 AGRI. LABOR 14 FARMER 2 NONE 3 UNKNOWN 1	NONE 9 ELEM. 2 2 ELEM. 3 6 ELEM. 5 2 ELEM. 6 2

Aguateca	LIVING YEARS OF MAIN RESPONDENT	MAIN PROFESSION OF HOUSEHOLDER	SECONDARY PROFESSION	EDUCATION LEVEL
1	UNKNOWN	FARMER	AGRI. LABOR (IN & OUT OF FN)	ELEM. 6
2	58YEARS	FARMER	AGRI. LABOR (IN & OUT OF FN)	NONE
3	20YEARS	FARMER	AGRI. LABOR (IN & OUT OF FN)	NONE
TOTAL	BORN 0/3	FARMER 3	AGRI. LABOR 3	NONE 2 ELEM. 6 1

Sibabaj	LIVING YEARS OF MAIN RESPONDENT	MAIN PROFESSION OF HOUSEHOLDER	SECONDARY PROFESSION	EDUCATION LEVEL	
Leader	1	11YEARS	FARMER (RENTAL LAND OUT OF FN)	AGRI. LABOR (OUT OF FN)	ELEM. 2
2	13YEARS	AGRI. LABOR (OUT OF FN)	NONE	ELEM. 2	
TOTAL	BORN 0/2	FARMER (RENTAL LAND OUT OF FN) 1 AGRI. LABOR 1	AGRI. LABOR 1 NONE 1	ELEM. 2 2	

Las Anonas	LIVING YEARS OF MAIN RESPONDENT	MAIN PROFESSION OF HOUSEHOLDER	SECONDARY PROFESSION	EDUCATION LEVEL
Las Anonas	1	BORN (49YEARS)	FARMER	NONE
2	BORN (70YEARS)	FARMER	AGRI. LABOR (IN L.A.)	NONE
3	BORN (60YEARS)	FARMER	AGRI. LABOR	NONE
Chiteo	1	BORN (34YEARS)	FARMER	NONE
2	BORN (48YEARS)	FARMER	NONE	NONE
3	BORN (36YEARS)	FARMER	AGRI. LABOR (IN L.A.)	ELEM. 3
TOTAL		FARMER 6	AGRI. LABOR 3 NONE 3	NONE 4 ELEM. 3 1 ELEM. 4 1

GRAND TOTAL	BORN 41/56	FARMER 46 AGRI. LABOR 7 EMPLOYEE OF GUATEL 2 EMPLOYEE OF DIGEBOS 3 COMPANY EMPLOYEE 3 RENTAL LAND FARMER 1	FARMER 12 AGRI. LABOR 30 EMPLOYEE OF GUATEL 1 EMPLOYEE OF DIGESA 2 BROKER 1 NONE 15	NONE 23 ELEM. 1 2 ELEM. 2 8 ELEM. 3 17 ELEM. 4 4 ELEM. 5 5 ELEM. 6 3 UNKNOWN 1
-------------	------------	---	--	---

TABULATED RESULTS OF SURVEY FOR INHABITANTS IN NATIONAL FOREST(3) - POPULATION BY SEX

1/2

Sector I	0-5	0-5	6-12	6-12	13-15	13-15	16-19	16-19	20-29	20-29	30-39	30-39	40-49	40-49	<50	<50	SMALL
	MALE	FEMALE	MALE	FEMALE	MALE	FEMALE	MALE	FEMALE	MALE	FEMALE	MALE	FEMALE	MALE	FEMALE	MALE	FEMALE	
1		2		2					2				1	1			10
2	1	1							1	1							4
3								1					1	1			3
4	1		1	2	1	1	1	1					1	1			10
5	1		1	2								1	1				6
6															1	1	2
7	1	1	1	1			2	2			2				1	1	12
8	2								1	1							4
9													1				2
10		1	3				1						1	1			7
11	1	1	2						1	1							6
12	2								1	1							4
13																	
14		1	1	1						1	1						5
V.P.							1								1	1	4
15	1	1											1	1			4
16	3	1	1	3						1	1						10
17	1	2		1						1	1						6
18									1						1	1	3
19				1								1	1			1	4
20	2									1	1						4
TOTAL	16	11	12	13	1	5	4	3	5	11	6	4	6	4	4	5	110
		MALE 29, FEMALE 24=52				MALE 26, FEMALE 32=58											

Sector II	0-5	0-5	6-12	6-12	13-15	13-15	16-19	16-19	20-29	20-29	30-39	30-39	40-49	40-49	<50	<50	SMALL
	MALE	FEMALE	MALE	FEMALE	MALE	FEMALE	MALE	FEMALE	MALE	FEMALE	MALE	FEMALE	MALE	FEMALE	MALE	FEMALE	
1	1		2	3	2		2						1	1			12
2			1	1				2	1	1					1	1	8
3	2		2			1	1	1	1			1	1				10
4		1		1									1	1			4
5	1	1							1	1							4
6		1		2		2	2		1					1	1		10
7	1	2	2			2						1	1				9
8	1			1					1	1							4
9	1							1	1								3
10	1	2							1	1							5
11							1	2							1	1	5
TOTAL	8	7	7	8	2	5	6	6	7	4	8	2	4	3	3	2	74
		MALE 15, FEMALE 15=30				MALE 22, FEMALE 22=44											

TABULATED RESULTS OF SURVEY FOR INHABITANTS IN NATIONAL FOREST(3) - POPULATION BY SEX

2/2

Sector III	0-5	0-5	6-12	6-12	13-15	13-15	16-19	16-19	20-29	20-29	30-39	30-39	40-49	40-49	<50	<50	Small
	MALE	FEMALE	MALE	FEMALE	MALE	FEMALE	MALE	FEMALE	MALE	FEMALE	MALE	FEMALE	MALE	FEMALE	MALE	FEMALE	TOTAL
Presidential	2			2	1	2	1		2				1	1			12
2	1	1							1	1							5
3	1	1	1	2						1	1						7
4		1			1				1	1							5
5	2	1	1						1	1							6
6	1		1	2				1			1	1					8
7		1		1					1	1							4
8	2								1	1							4
9		2	1	2	1			2	1				1	1			11
10		1				1			1	1							4
11			2		1			1	1	1			1	1			8
12		1		2	1	1					1	1					7
13	1		1	1	1	1		1	2				1	1			9
14	1	1		1							1	1					5
15		2	2	1	1							1	1				8
16								1	2						1	1	5
17							2	1								1	4
18	1	1		1					1	1							5
19								1	1								2
20									1	1							2
21	1	1	2	2						1	1						8
TOTAL	13	14	11	17	6	5	3	7	16	13	5	4	3	4	4	4	129
		MALE 24, FEMALE 31=55				MALE 37, FEMALE 37=74											

Agucate	0-5	0-5	6-12	6-12	13-15	13-15	16-19	16-19	20-29	20-29	30-39	30-39	40-49	40-49	<50	<50	小計
	MALE	FEMALE	MALE	FEMALE	MALE	FEMALE	MALE	FEMALE	MALE	FEMALE	MALE	FEMALE	MALE	FEMALE	MALE	FEMALE	
1									1	1							2
2										1				1	1		3
3					2	1									1	1	5
TOTAL	0	0	0	0	2	1	0	0	1	2	0	0	0	1	2	1	10
		MALE 0, FEMALE 0=0				MALE 5, FEMALE 5=10											

Sibabaj	0-5	0-5	6-12	6-12	13-15	13-15	16-19	16-19	20-29	20-29	30-39	30-39	40-49	40-49	<50	<50	小計
	MALE	FEMALE	MALE	FEMALE	MALE	FEMALE	MALE	FEMALE	MALE	FEMALE	MALE	FEMALE	MALE	FEMALE	MALE	FEMALE	
Leader 1	1		2	1		1	1	1	1	1				1	1		10
2		2	2	1			1	1	2	1		1					11
TOTAL	1	2	4	2	0	1	2	2	2	2	0	1	0	1	1	0	21
		MALE 5, FEMALE 4=9				MALE 5, FEMALE 7=12											

Las Anonas	0-5	0-5	6-12	6-12	13-15	13-15	16-19	16-19	20-29	20-29	30-39	30-39	40-49	40-49	<50	<50	小計
	MALE	FEMALE	MALE	FEMALE	MALE	FEMALE	MALE	FEMALE	MALE	FEMALE	MALE	FEMALE	MALE	FEMALE	MALE	FEMALE	
Las Anonas)			1			1	1						1	1			5
2															1	1	2
3						1	1			1					1	1	5
Chiteo	1	2		1	1						1	1					7
2	1		3			1			1				1	1			8
3		1	1	3							1	1					7
TOTAL	3	1	5	4	1	3	2	1	0	1	2	2	2	2	2	3	34

AGE 0-12	146	<13	198	GRAND TOTAL	344
MALE	72		95	MALE	167
FEMALE	74		103	FEMALE	177

TABULATED RESULTS OF SURVEY FOR INHABITANTS IN NATIONAL FOREST(4)-EARNINGS 1/2

Sector I	AGRI. PRODUCT SELLING	DOM. ANIMAL SELLING	DAILY LABOR	(DAYLY WAGE)	REGULAR WORK	(MONTHLY WAGE)	OTHERS
1		2			1(GUATEL)	1000Q	
2	1	2					
3	1	2					
4	1	3	2	14.5-15Q			
5	1	3	2	12Q			
6		1					
7	1						
8	NO ANSWER	NO ANSWER	NO ANS.	NO ANSWER	NO ANSWER	NO ANS.	NO ANSWER
9	2	4			3(DIGESA)	380Q	1(PISCICULT. PROD. SELLING)
10		1					
11	2	3	1	12Q			
12	1		2	10Q			
13		2	1	100Q/WEEK			
V.P. 14		2			1(GUATEL)	1200Q	
15	1		2	15Q			
16	1	2	3	14Q			
17			1	70-102Q/W			
18	1	3	2	15Q			
19	1	2					
20		2	1	20Q			
TOTAL	1ST 10 2ND 2 NO ANS. 1	1ST 2 2ND 7 3RD 4 4TH 1 NO ANS. 1	1ST 4 2ND 5 3RD 1 NO ANS. 1		1ST 2 2ND 8 3RD 1 NO ANS. 1		1ST 1

Sector II	AGRI. PRODUCT SELLING	DOM. ANIMAL SELLING	DAILY LABOR	(DAYLY WAGE)	REGULAR WORK	(MONTHLY WAGE)	OTHERS
1	1		2	10-15Q			
2		2			1(GUATEL)	1000Q	
3			1	15Q			
4	1		2	12Q			
5	2		1	14Q			
6	2		3	12Q	1(DIGEBOS)	780Q	
7					1(DIGEBOS)	760Q	
8	1		2	200Q/MON.			
9	1						2(BROKER)
10	2	3	1	12Q			
11	1	3	2	12-15Q			
TOTAL	1ST 5 2ND 3	1ST 0 2ND 1 3RD 2	1ST 3 2ND 4 3RD 1		1ST 3		1ST 0 2ND 1

TABULATED RESULTS OF SURVEY FOR INHABITANTS IN NATIONAL FOREST(4)-EARNINGS

2/2

Sector III	AGRI. PRODUCT SELLING	DOM. ANIMAL SELLING	DAYLY LABOR	(DAYLY WAGE)	REGULAR WORK	(MONTHLY WAGE)	OTHERS
Presidential	1	2			3(DIGESA)	400Q	
2							
3	1	2	3	12Q			
4	1	2	3	12-15Q			
5	1	3	2	15Q			
6					1(DIGESOS)	767Q	
7			1	12Q			
8	2		1	12Q			
9	2		1	12Q			
10	2		1	15Q			
11	1	2					
12	1		2	15Q			
13	2	3	1	15Q			
14	1	3	2	12Q			
15	1						
16			2	12Q			
17	2		1	12Q			
18					1(Guate)	300Q	
19			1	241Q/2W			
20	2	4	3	14.5Q			1(GROS. STORE)
21	1	2	3	14Q			
TOTAL	1ST 9 2ND 6	2ND 5 3RD 3 4TH 1	1ST 7 2ND 4 3RD 4		1ST 2 3RD 1		1ST 1

Aguate	AGRI. PRODUCT SELLING	DOM. ANIMAL SELLING	DAYLY LABOR	(DAYLY WAGE)	REGULAR WORK	(MONTHLY WAGE)	OTHERS
1	1						2(FOREST PROD SELLING)
2		1	2	12Q			
3			1	12Q			
TOTAL	1ST 1	1ST 1	1ST 1 2ND 1				2ND 1

Sibabaj	AGRI. PRODUCT SELLING	DOM. ANIMAL SELLING	DAYLY LABOR	(DAYLY WAGE)	REGULAR WORK	(MONTHLY WAGE)	OTHERS
1	1(OUT OF FN)		2(OUT OF FN)	15Q			
2			1	218Q/2W			
TOTAL	1ST 1		1ST 1 2ND 1				

Las Anonas	AGRI. PRODUCT SELLING	DOM. ANIMAL SELLING	DAYLY LABOR	(DAYLY WAGE)	REGULAR WORK	(MONTHLY WAGE)	OTHERS
Las Anonas	1	3	2	15Q			1(FOREST PROD. SELLING)
2			2	UNKNOWN			1(FOREST PROD. SELLING)
3		3	1	10-15Q			2(FOREST PROD. SELLING)
Chiteo	1	2					1(FOREST PROD. SELLING)
2			2				1(FOREST PROD. SELLING)
TOTAL		2ND 2 3RD 2	1ST 2 2ND 3	15Q			1ST 5 2ND 1

GRAND TOTAL	1ST 26 2ND 11 NO ANSWER 1	1ST 3 2ND 16 3RD 11 4TH 2 NO ANS. 1	1ST 18 2ND 18 3RD 6 NO ANS. 1		1ST 7 2ND 0 3RD 2 NO ANS. 1		1ST 7 2ND 2 NO ANS. 1
TOTAL OF ANSWERS 62	38	33	43		10		12

TABULATED RESULTS OF SURVEY FOR INHABITANTS IN NATIONAL FOREST(S)-NECESSITIES

1/2

Sector I	TRANS-PORTATION	WATER	ELECTRI-FICATION	CONTENT	PUB. HEALTH CENTER	LAND	COMMUNAL SALON	JOB	ROAD CONST.	FOOTBALL STADIUM	MONEY	OTHERS
1	YES	YES(D.S.)	YES									
2				YES								
3			YES		YES	YES	YES					
4								YES				MUTUAL COOPERATION OF INHABITANTS SOIL AMELIORATION
5								YES				
6				YES								INCREASING AGRI. PRODUCTION
7			YES	YES								
8												
9												EXTENSION & TRAINING
10				YES								
11			YES		YES							
12			YES						YES	YES		
13			YES		YES							
V.P.			YES		YES				YES			
14			YES	YES								
15			YES					YES			YES	
16												
17												
18			YES									
19											YES	
20								YES				
TOTAL	1	1	9	5	4	1	1	4	2	1	2	4

Sector II	TRANS-PORTATION	WATER	ELECTRI-FICATION	CONTENT	PUB. HEALTH CENTER	LAND	COMMUNAL SALON	JOB	ROAD CONST.	FOOTBALL STADIUM	MONEY	OTHERS
1				YES								
2												ALIMENTATION
3			YES									
4	YES											
5	YES				YES							
6			YES	YES	YES							
7			YES		YES		YES					
8												ALIMENTATION
9			YES						YES	YES		
10			YES		YES	YES					YES	
11			YES	YES								
TOTAL	2	8	6	3	4	1	1	0	1	1	1	2

TABULATED RESULTS OF SURVEY FOR INHABITANTS IN NATIONAL FOREST(S)-NECESSITIES

2/2

Sector III	TRANS-PORTATION	WATER	ELECTRI-FICATION	CONTENT	PUB. HEALTH CENTER	LAND	COMMUNAL SALON	JOB	ROAD CONST.	FOOTBALL STADIUM	MONEY	OTHERS
President	1	YES	YES		YES				YES			
	2	YES	YES									
	3		YES									
	4		YES			YES						
	5		YES					YES			YES	
	6	YES	YES								YES	
	7		YES				YES			YES	YES	
	8	YES	YES(D.S.)		YES				YES			
	9	YES	YES		YES				YES			
	10		YES		YES				YES			
	11			YES								
	12		YES		YES				YES			
	13		YES(D.S.)		YES				YES			TELEPHON
	14		YES		YES				YES			
	15		YES									
	16											
	17			YES								
	18			YES								
	19		YES		YES				YES	YES		
	20	YES	YES						YES			
	21							YES				ALIMENTATION AID BY GOVERNMENT
TOTAL	6	2	16	3	7	1	1	2	9	2	3	2

Agucate	TRANS-PORTATION	WATER	ELECTRI-FICATION	CONTENT	PUB. HEALTH CENTER	LAND	COMMUNAL SALON	JOB	ROAD CONST.	FOOTBALL STADIUM	MONEY	OTHERS
	1					YES						
	2					YES						
	3		YES(NATD.)					YES				
TOTAL	0	1	0	0	0	2	0	1	0	0	0	0

Sibabaj	TRANS-PORTATION	WATER	ELECTRI-FICATION	CONTENT	PUB. HEALTH CENTER	LAND	COMMUNAL SALON	JOB	ROAD CONST.	FOOTBALL STADIUM	MONEY	OTHERS
	1	YES(D.S.)				YES		YES				
	2	YES	YES			YES						
TOTAL	0	2	1	0	0	2	0	1	0	0	0	0

Las Anonas	TRANS-PORTATION	WATER	ELECTRI-FICATION	CONTENT	PUB. HEALTH CENTER	LAND	COMMUNAL SALON	JOB	ROAD CONST.	FOOTBALL STADIUM	MONEY	OTHERS
Las Anonas	1					YES(ASRI)					YES	
	2							YES				
	3											
Chiteo	1					YES(ASRI)					INVTIMENT FINANCE	INCREASING ASRI. PRODUCTION
	2										INVTIMENT FINANCE	
	3											
TOTAL	0	0	0	0	0	2	0	1	0	0	3	1

S.TOTAL	TRANS-PORTATION	WATER	ELECTRI-FICATION	CONTENT	PUB. HEALTH CENTER	LAND	COMMUNAL SALON	JOB	ROAD CONST.	FOOTBALL STADIUM	MONEY	OTHERS
	9	9	32		15	9	3	9	12	4	7	9

TABLED RESULTS OF SURVEY FOR INHABITANTS IN NATIONAL FOREST(6)

1/3

Sector I	LAND USE						TOPOGRAPHY OF AGRI. LAND FLAT/INCLINED	VARIATION OF PRODUCTION INCREASE/ DECREASE	REASON	COUNTER- MEASURES
	OWNER- SHIP	RESIDENT AREA(ha)	OWNER- SHIP	AGRICUL. LAND(ha)	OWNER- SHIP	GRAZING LAND(ha)				
1	NATIONAL	0.81	NATIONAL	1.40	NATIONAL	0.70	FLAT-INCLINED	NO VARI.		
2	NATIONAL	0.26	UNKNOWN	UNKNOWN	NATIONAL	COMMUNAL	INCLINED	INCREASE	ANHLT. OF CULTURE TECHNIQUE	FERTILIZER SPREADING
3	NATIONAL	1.05	NATIONAL	3.50	NATIONAL	3.50	INCLINED>FLAT	INCREASE	ANHLT. OF CULTURE TECHNIQUE	ERRACING, FENCE INSTALLATION, CONTOUR-PARALLELED CULTURE
4	NATIONAL	0.35	NATIONAL	0.40	NATIONAL	COMMUNAL	INCLINED>FLAT	INCREASE	ANHLT. OF CULTURE TECHNIQUE	FENCE INST. FERTILIZING
5	NATIONAL	0.70	NATIONAL	0.70	NATIONAL	COMMUNAL	INCLINED	DECREASE	LAND FERTILITY REDUCING	ENLARGEMENT OF AGRI. LAND
6	NATIONAL	0.09	NATIONAL	0.35	NATIONAL	COMMUNAL	INCLINED	DECREASE	CLIMATE CHANGE, INTERDICTION OF NEW CULTIVATION	FERTILIZING
7	NATIONAL	1.40	NATIONAL	2.10	NATIONAL	COMMUNAL	INCLINED>FLAT	DECREASE	UNKNOWN	FERTILIZING, AGRI. CHEMICALS
8		NO ANSWER		NO ANSWER		NO ANSWER	NO ANSWER	NO ANSWER	NO ANSWER	NO ANSWER
9	NATIONAL	0.22	NATIONAL	2.00	NATIONAL	0.70	INCLINED>FLAT	INCREASE	USE OF APPROVED SPECIES	
10	NATIONAL	0.04	NATIONAL	2.00			FLAT	INCREASE		
11	NATIONAL	0.04	NATIONAL	1.40			FLAT-INCLINED	DECREASE	UNKNOWN	CHEMICAL FERTILIZER
12	NATIONAL	0.07	NATIONAL	1.45			INCLINED	DECREASE	SOIL LOSS	ORGANIC FERTILIZER
13	NATIONAL	0.04	NATIONAL	0.18			INCLINED	NO VARI.		
V.P.	NATIONAL	0.70	NATIONAL	3.50	NATIONAL	COMMUNAL	INCLINED	DECREASE	LAND FERTILITY REDUCING	CULTURE ROTATION CHEMICAL FERTILIZER
15	NATIONAL	0.04	NATIONAL	0.65			INCLINED<FLAT	DECREASE	LAND FERTILITY REDUCING	ORGANIC FERTILIZER
16	NATIONAL	0.70	NATIONAL	0.70	NATIONAL	1.40	FLAT	DECREASE	TOMATO DAMAGED BY INSECTS	USE OF PESTICIDE
17	NATIONAL	0.04	NATIONAL	0.70						
18	NATIONAL	0.70	NATIONAL	7.00	NATIONAL	7.00	INCLINED	NO VARI.		
19	NATIONAL	0.001	NATIONAL	4.20	NATIONAL	COMMUNAL	INCLINED<FLAT	DECREASE	INSECT DAMAGE	IMPOSSIBLE-NO MONEY
20	NATIONAL	0.30	NATIONAL	1.05			INCLINED	DECREASE	CULTURE OF SAME FIELD	CHEMICAL FERTILIZER AGRI. CHEMICALS
		19	0.36	17	2.50	12	INCLINED 8 INCLINED>FLAT 4 FLAT-INCLINED 2 INCLINED<FLAT 2 FLAT 2	INCREASE 5 NO VARI. 3 DECREASE 10		

Sector II	LAND USE						TOPOGRAPHY OF AGRI. LAND FLAT/INCLINED	VARIATION OF PRODUCTION INCREASE/ DECREASE	REASON	COUNTER- MEASURES
	OWNER- SHIP	RESIDENT AREA(ha)	OWNER- SHIP	AGRICUL. LAND(ha)	OWNER- SHIP	GRAZING LAND(ha)				
1	NATIONAL	0.22	NATIONAL	0.44			INCLINED	DECREASE	MUCH RAIN, INSECT DAMAGE	CHEMICAL FERTILIZER
2	NATIONAL	1.40	NATIONAL	2.10			INCLINED	INCREASE		
3	NATIONAL	0.70	NATIONAL	7.00	NATIONAL	5.00	FLAT-INCLINED	DECREASE	UNKNOWN	CHEMICAL FERTILIZER AGRI. CHEMICALS
4		UNKNOWN		0.44	NATIONAL	COMMUNAL	INCLINED	INCREASE		CHEMICAL FERTILIZER
5	NATIONAL	0.13	NATIONAL	0.70	NATIONAL	COMMUNAL	FLAT	DECREASE	MUCH RAIN	CHEMICAL FERTILIZER
6	NATIONAL	0.70	NATIONAL	0.70	NATIONAL	COMMUNAL	INCLINED	DECREASE	LAND FERTILITY REDUCING, SOIL LOSS	POTATION, CHEMICAL FERTILIZER, CONTOUR- PARALLELED CULTURE
7	NATIONAL	0.0015	NATIONAL	1.25						
8	NATIONAL	0.13	NATIONAL	0.22	NATIONAL	0.22	FLAT	NO VARI.		
9	NATIONAL	2.10	NATIONAL	1.40			INCLINED	NO VARI.		
10	NATIONAL	0.70	PRIVATE	0.70			INCLINED	NO VARI.		
11	NATIONAL	0.70	NATIONAL	1.40	NATIONAL	COMMUNAL	INCLINED	DECREASE	SOIL LOSS	CONTOUR-PARALLELED CULTURE
12	NATIONAL	1.05	NATIONAL	1.40	NATIONAL	COMMUNAL	FLAT	DECREASE	UNKNOWN	CHEMICAL FERTILIZER
		10	0.71	11	1.70	8	INCLINED 7 FLAT-INCLINED 1 FLAT 3	INCREASE 2 NO VARI. 3 DECREASE 6		

TABULATED RESULTS OF SURVEY FOR INHABITANTS IN NATIONAL FOREST(6)

Sector III	LAND USE						TOPOGRAPHY OF AGRI. LAND FLAT/INCLINED	VARIATION OF PRODUCTION		COUNTER-MEASURES	
	OWNER-SHIP	RESIDENT AREA (ha)	OWNER-SHIP	AGRICUL. LAND (ha)	OWNER-SHIP	GRAZING LAND (ha)		INCREASE/DECREASE	REASON		
Presid.	1	NATIONAL	0.89	NATIONAL	2.88	NATIONAL	4.98	INCLINED	DECREASE	SOIL LOSS EROSION	ROTATION, CONTOUR-PARALLELED CULTURE
	2	NATIONAL	0.13	NATIONAL	0.78			INCLINED	DECREASE	UNKNOWN	CHEMICAL FERTILIZER
	3	NATIONAL	0.89	NATIONAL	2.18	NATIONAL	HARVESTED AGRI. LAND	INCLINED	DECREASE	UNKNOWN	CHEMICAL FERTILIZER
	4	NATIONAL	0.18	NATIONAL	1.75	NATIONAL	COMMUNAL	INCLINED	NO VARI.	USE OF CHEMICAL FERTILIZER	
	5	NATIONAL	0.04	NATIONAL	0.26	NATIONAL	COMMUNAL	INCLINED<FLAT	DECREASE	LOSS OF ORGANIC FERTILIZER	NO TECHNICAL GUIDANCE
	6	NATIONAL	0.35	NATIONAL	2.88	NATIONAL	0.53	INCLINED	NO VARI.	USE OF CHEMICAL FERTILIZER	
	7	NATIONAL	0.35	NATIONAL	2.88			INCLINED	NO VARI.		
	8	NATIONAL	0.13	NATIONAL	0.78			INCLINED	NO VARI.		
	9	NATIONAL	0.53	NATIONAL	2.88	NATIONAL	1.48	FLAT	INCREASE		
	10	NATIONAL	0.89	NATIONAL	4.28	NATIONAL	1.48	FLAT=INCLINED	NO VARI.		
	11	NATIONAL	1.48	NATIONAL	14.88	NATIONAL	COMMUNAL	INCLINED	DECREASE	FERTILIZER LOSS	CHEMICAL FERTILIZER
	12	NATIONAL	0.26	NATIONAL	0.78			INCLINED	NO VARI.		
	13	NATIONAL	0.18	NATIONAL	4.28	NATIONAL	1.48	FLAT=INCLINED	DECREASE	UNKNOWN	NO MEASURES FOR ACT OF GOD
	14	NATIONAL	0.22	NATIONAL	0.26	NATIONAL	COMMUNAL	INCLINED	DECREASE	UNKNOWN	CHEMICAL FERTILIZER
	15	NATIONAL	2.18	NATIONAL	2.18	NATIONAL	COMMUNAL	INCLINED	DECREASE	MUCH RAIN	INCREASE OF CULTIVATED AREA
	16	NATIONAL	2.88	NATIONAL	0.88	NATIONAL	2.88	INCLINED	NO VARI.	FERTILIZER LOSS	CHEMICAL FERTILIZER
	17	NATIONAL	0.78	NATIONAL	6.38			INCLINED<FLAT	DECREASE		
	18	NATIONAL	0.24	NATIONAL	0.78						
	19	NATIONAL	1.48	NATIONAL	(NO USE) 0.48 (FAMILY USE)			INCLINED	DECREASE	UNKNOWN	DIGGING UP PRODUCTION OF ORGANIC FERTILIZER
	20	NATIONAL	0.78	NATIONAL	4.28	NATIONAL	1.48	INCLINED>FLAT	DECREASE	LOSS OF SOIL AND FERTILIZER	USE OF CHEMICAL & ORGANIC FERTILIZER TERRACING, CONTOUR-PARALLELED CULTURE
	21	NATIONAL	1.85	NATIONAL	3.58	NATIONAL	0.78	FLAT	NO VARI.		
	21	0.48	21	3.15	14			INCLINED 13 INCLINED>FLAT 1 FLAT=INCLINED 2 INCLINED<FLAT 2 FLAT 2	INCREASE 1 NO VARI. 8 DECREASE 11		

Agucate	LAND USE						TOPOGRAPHY OF AGRI. LAND FLAT/INCLINED	VARIATION OF PRODUCTION		COUNTER-MEASURES	
	OWNER-SHIP	RESIDENT AREA (ha)	OWNER-SHIP	AGRICUL. LAND (ha)	OWNER-SHIP	GRAZING LAND (ha)		INCREASE/DECREASE	REASON		
	1	NATIONAL	0.84	NATIONAL	0.78	NATIONAL	HARVESTED AGRI. LAND	FLAT=INCLINED	NO VARI.		
	2	NATIONAL	0.66	NATIONAL	0.66			INCLINED<FLAT	DECREASE	LAND FERTILITY REDUCING	ORGANIC FERTILIZER
	3	NATIONAL	0.89	NATIONAL	0.88	NATIONAL	2.88	INCLINED	DECREASE	INSECT DAMAGE	
	3	0.26	3	0.75	2			INCLINED 1 FLAT=INCLINED 1 INCLINED<FLAT 1	INCREASE 8 NO VARI. 1 DECREASE 2		

Sibaha	LAND USE						TOPOGRAPHY OF AGRI. LAND FLAT/INCLINED	VARIATION OF PRODUCTION		COUNTER-MEASURES	
	OWNER-SHIP	RESIDENT AREA (ha)	OWNER-SHIP	AGRICUL. LAND (ha)	OWNER-SHIP	GRAZING LAND (ha)		INCREASE/DECREASE	REASON		
Leader	2	NATIONAL	0.82								
	2	0.88									

TABLED RESULTS OF SURVEY FOR INHABITANTS IN NATIONAL FOREST(6)

3/3

Las Amadas	OWNER-SHIP	RESIDENTIAL AREA(ha)	LAND USE			GRAZING LAND(ha)	TOPOGRAPHY OF AGRI. LAND FLAT/INCLINED	VARIATION OF PRODUCTION		COUNTER-MEASURES
			OWNER-SHIP	AGRICUL. LAND(ha)	OWNER-SHIP			INCREASE/DECREASE	REASON	
1	PRIVATE	2.10	NATIONAL	0.70	NATIONAL	COMMUNAL	FLAT	DECREASE	LAND FERTILITY REDUCING	TERRACING CONTOUR-PARALLELED CULTURE
	PRIVATE	1.40	RENTED	0.70						
	PRIVATE	0.70	NATIONAL	1.40			INCLINED	DECREASE	LAND FERTILITY REDUCING	TERRACING ORGANIC FERTILIZER
3	PRIVATE	2.10	NATIONAL	2.10	NATIONAL	1.05	INCLINED	DECREASE	SMALL ANIMALS	ORGANIC FERTILIZER
	PRIVATE	2.10	RENTED	0.99						
Chiteo	PRIVATE	0.13	PRIVATE	1.40	NATIONAL	COMMUNAL	INCLINED/FLAT	NO VARI.		
	PRIVATE	1.40	NATIONAL	1.40						
	PRIVATE	UNKNOWN	NATIONAL	0.70	NATIONAL	HARVESTED AGRI. LAND	INCLINED	NO VARI.	INSECT DAMAGE	PESTICIDE TOO EXPENSIVE
3	PRIVATE	0.18	NATIONAL	0.70			INCLINED	NO VARI.	EXCESSIVE USE OF CHEMICAL FERTILIZER	ORGANIC FERTILIZER USE
							INCLINED 4 INCLINED/FLAT 1 FLAT 3	INCREASE 0 NO VARI. 3 DECREASE 3		
G. TOTAL AVERAGE		0.45ha/ HOUSE		2.37ha/ HOUSE			INCLINED 33 INCLINED/FLAT 6 FLAT-INCLINED 6 INCLINED/FLAT 5 FLAT 8 TOTAL 58	INCREASE 8 NO VARI. 18 DECREASE 32 TOTAL 58		

TABLATED RESULTS OF SURVEY FOR INHABITANTS IN NATIONAL FOREST(?) MAIN PRODUCTS

1/4

Sector I	MAISE				FRIJOL			
	AREA (ha)	PRODUCTION (kg)	SELF CONSUM. / SELLING	SELLING PRICE	AREA (ha)	PRODUCTION (kg)	SELF CONSUM. / SELLING	SELLING PRICE
1	1.05	368	SELF CONSUM.		0.22	92	SELF CONSUM.	
2	0.26	230	SELF CONSUM.		0.09	92	PARTIAL SELLING	150-200Q/46kg
3	3.58	1618	70% FOR SELLING	35-45Q/46kg	0.35	60	50% FOR SELLING	60-80Q/46kg
4	0.70	1380	SELF CONSUM.		0.35	460	SELF CONSUM.	
5	0.09	138	SELF CONSUM.					
6	0.35	69	SELF CONSUM.		UNKNOWN	UNKNOWN	SELF CONSUM.	
7	1.40	552	SELF CONSUM.		0.09	92	PARTIAL SELLING	100-125Q/46kg
8								
9	0.13	230	SELF CONSUM.		0.09	92		
10	0.70	138	SELF CONSUM.		0.09	69	SELF CONSUM.	
11	0.70	1840	SELF CONSUM.		0.09	368	SELF CONSUM.	
12	0.35	460	SELF CONSUM.		0.22	184	SELF CONSUM.	
13	0.35	460	SELF CONSUM.		0.22	46	SELF CONSUM.	
V.P.	14	1.40	2760	SELF CONSUM.	0.35	690	SELF CONSUM.	
15	0.13	460	SELF CONSUM.		0.04	138	SELF CONSUM.	
16	0.35	460	SELF CONSUM.		0.04	23	SELF CONSUM.	
17								
18	1.40	920	20% FOR SELLING	40-50Q/46kg	0.04	46	SELF CONSUM.	
19	0.70	230	SELF CONSUM.		0.04	10	SELF CONSUM.	
20	1.05	1380	SELF CONSUM.		0.09	92	SELF CONSUM.	
TOTAL	14.61	13685	SELLING 2/18		2.41	2554	SELLING 3/16	

Sector II	MAISE				FRIJOL			
	AREA (ha)	PRODUCTION (kg)	SELF CONSUM. / SELLING	SELLING PRICE	AREA (ha)	PRODUCTION (kg)	SELF CONSUM. / SELLING	SELLING PRICE
1	UNKNOWN	276	SELF CONSUM.		0.01	16	SELF CONSUM.	
2	2.10	4600	SELF CONSUM.		0.70	184	SELF CONSUM.	
3	1.40	460	SELF CONSUM.		0.13	92	SELF CONSUM.	
4	0.26	UNKNOWN	SELF CONSUM.		0.04	92	SELF CONSUM.	
5	0.70	4600	SELF CONSUM.		0.09	92	SELF CONSUM.	
6	REST	REST			REST	REST		
7	0.88	1380	SELF CONSUM.		0.09	322	SELF CONSUM.	
8	0.18	138	SELF CONSUM.					
9					0.35	552	50% FOR SELLING	150-200Q/46kg
10	0.35	736	SELF CONSUM.		0.09	138	SELF CONSUM.	
11	1.40	2300	SELF CONSUM.		0.09	92	SELF CONSUM.	
TOTAL	7.27	14490	SELLING 0/10		1.59	1580	SELLING 1/9	

TABULATED RESULTS OF SURVEY FOR INHABITANTS IN NATIONAL FOREST(7) MAIN PRODUCTS

2/4

Sector III	MAISE				FRIJOL			
	AREA (ha)	PRODUCTION (kg)	SELF CONSUM. / SELLING	SELLING PRICE	AREA (ha)	PRODUCTION (kg)	SELF CONSUM. / SELLING	SELLING PRICE
Residente1	1.40	1610	10% FOR SELLING	UNKNOWN	0.35	920	SELF CONSUM.	
2	1.40	276	SELF CONSUM.		1.40	276	SELF CONSUM.	
3	1.40		SELF CONSUM.		0.70	368	PARTIAL SELLING	UNKNOWN
4	0.70	230	SELF CONSUM.		0.70	276	SELF CONSUM.	
5	0.18	276	SELF CONSUM.		0.09	92	SELF CONSUM.	
6	0.35	368	SELF CONSUM.		0.04	46	SELF CONSUM.	
7	0.70	184	SELF CONSUM.		0.70	115	SELF CONSUM.	
8	0.13	UNKNOWN	SELF CONSUM.		0.04	UNKNOWN	SELF CONSUM.	
9	2.80	690	SELF CONSUM.		0.13	69	SELF CONSUM.	
10	1.40	368	SELF CONSUM.		0.09	18	SELF CONSUM.	
11	0.88	460	SELF CONSUM.		0.22	230	SELF CONSUM.	
12	0.70	UNKNOWN	SELF CONSUM.		0.35	69	SELF CONSUM.	
13	1.40	322	UNKNOWN		0.70	322	UNKNOWN	
14	0.22	230	SELF CONSUM.		0.09	23	SELF CONSUM.	
15	0.70	230	SELF CONSUM.		0.70	230	SELF CONSUM.	
16	0.88	460	SELF CONSUM.		0.09	230	SELF CONSUM.	
17	6.30	2070	40% FOR SELLING	40Q/46kg	6.30	1840	SELF CONSUM.	
18	NOT	CULTIVATED						
19	1.40	920	SELF CONSUM.		0.02	46	SELF CONSUM.	
20	1.40	2091	0% FOR SELLING	UNKNOWN	0.09	368	60% FOR SELLING	UNKNOWN
21	1.40	2070	10% FOR SELLING	45Q/46kg	0.13	184	SELF CONSUM.	
TOTAL	25.74	12765	SELLING 4/19		12.93	5722	SELLING 2/19	

Agucate	MAISE				FRIJOL			
	AREA (ha)	PRODUCTION (kg)	SELF CONSUM. / SELLING	SELLING PRICE	AREA (ha)	PRODUCTION (kg)	SELF CONSUM. / SELLING	SELLING PRICE
1	0.70	1150	20% FOR SELLING	40-50Q/46kg				
2	0.22	184	SELF CONSUM.		0.04	5	SELF CONSUM.	
3	1.40	276	SELF CONSUM.		0.09	46	SELF CONSUM.	
TOTAL	2.32	1610	SELLING 1/3		0.13	51	SELLING 0/2	

Sikabaj	MAISE				FRIJOL			
	AREA (ha)	PRODUCTION (kg)	SELF CONSUM. / SELLING	SELLING PRICE	AREA (ha)	PRODUCTION (kg)	SELF CONSUM. / SELLING	SELLING PRICE
Leader 1								
2								
TOTAL								

Las Anonas	MAISE				FRIJOL			
	AREA (ha)	PRODUCTION (kg)	SELF CONSUM. / SELLING	SELLING PRICE	AREA (ha)	PRODUCTION (kg)	SELF CONSUM. / SELLING	SELLING PRICE
Las Anonas1	0.70	130	SELF CONSUM.		0.09	46	SELF CONSUM.	
2	1.05	184	SELF CONSUM.					
3	0.70	322	SELF CONSUM.		0.13	138	PARTIAL SELLING	1Q/11lb
Chiteo 1	1.40	920	SELF CONSUM.		0.13	46	SELF CONSUM.	
2	0.70	230	SELF CONSUM.					
3	0.70	736	SELF CONSUM.					
TOTAL	5.25	2530	SELLING 0/6		0.35	230	SELLING 1/3	

TOTAL	MAISE	FRIJOL
PROPORTION OF CULTIVATION	56/58=97%	50/59=85%
AVERAGE AREA OF CULTIVATION	0.99ha	0.35ha
AVERAGE PRODUCTION	867kg	203kg
PROPORTION OF SELLING	12.5%	14.3%

TABULATED RESULTS OF SURVEY FOR INHABITANTS IN NATIONAL FOREST(7) MAIN PRODUCTS

3/4

Sector I	TOMATO				COFFEE			
	AREA (ha)	PRODUCTION (case)	SELF CONSUM. / SELLING	SELLING PRICE	AREA OR NUMBER	PRODUCTION (kg)	SELF CONSUM. / SELLING	SELLING PRICE
1					0.13	238	SELF CONSUM.	
2	0.04	100	SELLING	25-100Q/CASE	0.09	92	SELF CONSUM.	
3	0.35	1850	SELLING	15-35Q/CASE	0.35	506	70% FOR SELLING	60-80Q/46kg
4	0.35	200	SELLING	15-50Q/CASE	0.35	276	30% FOR SELLING	125-140Q/46kg
5	0.02	9	SELLING	10-150Q/CASE				
6					0.04	92	SELF CONSUM.	
7	0.18	240	SELLING	10-50Q/CASE	0.35	920	SELLING	80Q/46kg
8								
9					0.13	184	SELF CONSUM.	
10	0.09	127	SELLING	100-200Q/CASE	0.13	92	SELF CONSUM.	
11	0.13	800	SELLING	20-80Q/CASE	0.09	322	SELF CONSUM.	
12					0.04	184	PARTIAL SELLING	UNKNOWN
13	0.09	UNKNOWN			300 TREES	UNKNOWN	SELF CONSUM.	
V.P.					0.13-500T	92	SELF CONSUM.	
14								
15	0.04	42	SELLING WHEN GOOD PRODUCTION	UNKNOWN				
16	0.13	62	SELLING	35Q/CASE	0.02	69	SELF CONSUM.	
17								
18	0.09	40	SELLING	25-90Q/CASE	0.13	184	PARTIAL SELLING	5-6Q/116
19					0.04	138	SELF CONSUM.	
20					0.02	92	SELF CONSUM.	
TOTAL	1.51	3470	SELLING 10/11				SELLING 5/16	

Sector II	TOMATO				COFFEE			
	AREA (ha)	PRODUCTION (case)	SELF CONSUM. / SELLING	SELLING PRICE	AREA OR NUMBER	PRODUCTION (kg)	SELF CONSUM. / SELLING	SELLING PRICE
1	UNKNOWN	40	SOMETIMES SELLING	80-100Q/CASE				
2	0.04	100	SELLING	10-40Q/CASE	0.04	138	SELLING	
3	0.09	110	SELLING WHEN GOOD PRODUCTION	UNKNOWN	70 TREES	46	SELF CONSUM.	
4	0.03	282	SELLING	25-125Q/CASE				
5	0.04	50	SELLING	30Q/CASE				
6	0.04	50	SELLING	25Q/CASE	50 TREES	46	SELF CONSUM.	
7								
8	0.13	25	SELLING	15-20Q/CASE	0.09	92	SELF CONSUM.	
9	0.70	3920	SELLING	20-100Q/CASE	2000T5	460	SELF CONSUM.	150-200Q/46kg
10	0.09	200	SELLING	20-70Q/CASE				
11	0.18	290	SELLING	75-100Q/CASE	0.70	276	50% FOR SELLING	120Q/46kg
TOTAL	1.40	5047	SELLING 10/10				SELLING 1/6	

TABULATED RESULTS OF SURVEY FOR INHABITANTS IN NATIONAL FOREST(7) MAIN PRODUCTS

4/4

Sector III	TOMATO				COFFEE			
	AREA (ha)	PRODUCTION (case)	SELF CONSUM. / SELLING	SELLING PRICE	AREA OR NUMBER	PRODUCTION (kg)	SELF CONSUM. / SELLING	SELLING PRICE
Residente 1	0.18	150	SELLING	15- 60Q/CASE				
2								
3	0.18	180	SELLING	20- 30Q/CASE	0.09	138	PARTIAL SELLING	UNKNOWN
4	0.09	84	SELLING	UNKNOWN	0.09	138	SELF CONSUM.	
5								
6	0.02	20	SELLING	20-100Q/CASE				
7								
8	0.02	UNKNOWN	UNKNOWN					
9	0.04	20	UNKNOWN		0.44	368	UNKNOWN	
10	0.04	25	SELLING	25- 30Q/CASE				
11	0.13	50	SELLING	20- 50Q/CASE	0.70	460	SELF CONSUM.	
12	0.22	225	SELLING	35-100Q/CASE				
13	0.09	100	UNKNOWN	UNKNOWN	0.09	368	UNKNOWN	
14	0.18	250	SELLING	25- 80Q/CASE	0.04	46	SELF CONSUM.	
15	0.70	50	SELLING	40-100Q/CASE				
16								
17					100TRS	CHERY230	20% FOR SELLING	CHERY50/2 1lb
18					100TRS	CHERY920	50% FOR SELLING	CHERY100Q/46kg
19	NOT CULTIVATED							
20	0.13	27	SELLING	10-125Q/CASE	10TRS	UNKNOWN	UNKNOWN	
21	0.09	100	SELLING	25-100Q/CASE	SOME			
22	0.09	100	SELLING	25-100Q/CASE				
23	0.09	UNKNOWN	SELLING	5- 80Q/CASE	0.35	1840	SELLING	80Q/46kg
TOTAL	2.20	1281	SELLING 12/15				SELLING 4/11	

Aguacate	TOMATO				COFFEE			
	AREA (ha)	PRODUCTION (case)	SELF CONSUM. / SELLING	SELLING PRICE	AREA OR NUMBER	PRODUCTION (kg)	SELF CONSUM. / SELLING	SELLING PRICE
1								
2								
3					8TRS	CHERY50 1lb	SELF CONSUM.	
TOTAL					100TRS	63	SELF CONSUM.	
							SELLING 0/2	

Sibataj	TOMATO				COFFEE			
	AREA (ha)	PRODUCTION (case)	SELF CONSUM. / SELLING	SELLING PRICE	AREA OR NUMBER	PRODUCTION (kg)	SELF CONSUM. / SELLING	SELLING PRICE
Leader 1								
2								
TOTAL								

Las Aronas	TOMATO				COFFEE			
	AREA (ha)	PRODUCTION (case)	SELF CONSUM. / SELLING	SELLING PRICE	AREA OR NUMBER	PRODUCTION (kg)	SELF CONSUM. / SELLING	SELLING PRICE
Las Aronas 1								
2								
3								
Chiteo 1					80TRS OUT OF FN			
2					40TRS OUT OF FN			
3					30TRS OUT OF FN			

	TOMATO	COFFEE
PROPORTION OF CULTIVATION	35/50=70%	35/53=66%
AVERAGE AREA OF CULTIVATION	0.15ha	
AVERAGE PRODUCTION	297 cases	
PROPORTION OF SELLING	80.9%	29%

TABULATED RESULTS OF SURVEY FOR INHABITANTS IN NATIONAL FOREST(8)

1/2

Sector I		OTHER CULTIVATED PRODUCTS							
1									
2	SUGARCANE								
3	SUGARCANE	POTATO 58-75Q/46kg	CHILI 58-88Q/CASE						
4									
5									
6									
7	SUGARCANE								
8									
9	SUGARCANE					BANANA			
10	SUGARCANE		CHILI	RADISH	CABBAGE	BANANA			
11						BANANA 0.20-0.25Q/T	PEACH 20-25Q/CASE	PASSION FRUIT	
12	SUGARCANE							PASSION FRUIT	ORANGE
13						BANANA	PEACH 10Q/BASKET	PASSION FRUIT 10-15Q/CASE	ORANGE
V.P.	14	SUGARCANE				BANANA			ORANGE
	15			CUCUMBER 7Q/CASE	ONION 2-5Q/100PCS				
	16			CUCUMBER 20Q/CASE		BANANA 0.25Q/T			
	17								
	18					BANANA			
	19					BANANA			ORANGE
	20	SUGARCANE				BANANA			
NUMBER OF FARMERS	8	1	2	CUCUMBER 2 RADISH 1	CABBAGE 1 ONION 1	9	2	3	4

Sector II		OTHER CULTIVATED PRODUCTS							
1									
2									
3									
4			CHILI						
5									
6	SUGARCANE				CABBAGE	BANANA	PEACH		
7									
8									
9	SUGARCANE 58-100Q/46kg					BANANA 20Q/CASE			
10						BANANA			
11	SUGARCANE					BANANA			ORANGE
N.OF FARMERS	3	0	1		CABBAGE 1	4	1		1

TABLED RESULTS OF SURVEY FOR INHABITANTS IN NATIONAL FOREST(8)

2/2

Sector III		OTHER CULTIVATED PRODUCTS							
1					CABBAGE 12-35Q/25PCS				
2									
3									
4	SUGARCANE					BANANA		ABOGADO	
5									
6									
7									
8									
9	SUGARCANE								
10									
11	SUGARCANE								
12									
13	SUGARCANE		CHILI						
14	SUGARCANE					BANANA			
15									
16									ORANGE
17						BANANA			
18									
19						BANANA BANANA	PEACH		ORANGE
20				CADLIFLOWER	CABBAGE 12-15Q/25PCS	BANANA BANANA	PEACH		ORANGE
21	SUGARCANE	POTATO 30Q/CASE	CHILI 35Q/CASE	BROCCOLI 1Q/11b		BANANA 20Q/1SERIES	PEACH 30Q/CASE		
N. OF FARMERS	6	1	2	CALIFLOWER 1 BROCCOLI 1	CABBAGE 2	6	PEACH 2	ABOGADO 1	2

Agucate		OTHER CULTIVATED PRODUCTS							
1	SUGARCANE								
2		CARTOCHO # 25Q/DOUZEN		GLADIOLUS 3-4Q/DOUZEN	ASUNCENA # 25Q/PIECE	BANANA			ORANGE
3		CARTOCHO # 25Q/DOUZEN		GLADIOLUS # 25Q/DOUZEN		BANANA			
N. OF FARMERS	1	CARTOCHO 2		GLADIOLUS 2	ASUNCENA 1	2			1

Sitabaj NONE

Las Aodas		OTHER CULTIVATED PRODUCTS							
Las Aodas 1	SUGARCANE								
2	SUGARCANE								
3	SUGARCANE						PEACH	ABOGADO	ORANGE
Chited 1						BANANA			
2						BANANA			
3						BANANA			ORANGE
N. OF FARMERS	3					3	1	ABOGADO 1	2

	NUMBER OF FARMERS
SUGARCANE	21
CHILI	5
CABBAGE	4
BANANA	24
PEACH	6
ORANGE	10

TABLATED RESULTS OF SURVEY FOR INHABITANTS IN NATIONAL FOREST(9)

1/2

Sector I	FARM LAND BURNING	BEEF CATTLE	MILCH COW	WORK COW	PIG	EQUINE	DOMESTIC FOWL	DUCK	OTHERS
1	NO	2	1		2		20	2	
2	YES(RUBBISH ELIMINATION)	2 1000Q			1 300Q		12		
3	NO	4 700-800Q	3 900Q				25 200		
4	NO						18	9	RABBIT 7 GOATH 1
5	YES(RUBBISH ELIMINATION)	1	1				15		
6	YES(RUBBISH ELIMINATION)						10		
7	NO		2	2	2		30 20-25Q		EGG 0.5Q
8									
9	NO	3 1500Q	2 1900Q		1 100Q		25 25Q		RABBIT 22 20Q
10	NO		1		1 400Q		15 25Q	3 20Q	
11	NO				1 400-500Q		11		
12	YES(RUBBISH ELIMINATION)				1 100-400Q		36 35-40Q		
13	NO							15	
V.P. 14		2	2	1	3		7		EGG 0.5Q
15	NO						2		
16	NO	4 1000Q	2 1000Q						
17	NO								
18	NO	2 1400Q	3				10		
19	YES(RUBBISH ELIMINATION)	1					4		
20	NO						15		
	YES 5/19	21HEADS/9	17HEADS/9	3HEADS/2	12BEADS/8		255FOWLS/16	29DUCKS/4	

Sector II	FARM LAND BURNING	BEEF CATTLE	MILCH COW	WORK COW	PIG	EQUINE	DOMESTIC FOWL	DUCK	OTHERS
1	YES(RUBBISH ELIMINATION)		2		1	2	18		RABBIT 6
2	NO	8 600Q	3	1	3 400-500Q		14		
3	YES(RUBBISH ELIMINATION)		2		1			2	
4	YES(RUBBISH ELIMINATION)	2 800-900Q						6	
5	YES(RUBBISH ELIMINATION)	2	1						
6	YES(RUBBISH ELIMINATION)		1				2		
7	NO	3 500-700Q	6		7 400-500Q		30	3	EGG 0.5Q
8	NO	2	1			2	6		
9	NO	4 800-900Q	5			2	36		EGG 5Q/ DOZEN
10	NO	2 1000Q	1 1200Q		1 400Q		15	2	
11	NO	2 700-800Q	3			2	17 20-25Q	7	
	YES 5/11	25HEADS/8	25HEADS/10	1HEAD/1	13HEADS/5	8HEADS/4	138FOWLS/8	20DUCKS/5	

TABULATED RESULTS OF SURVEY FOR INHABITANTS IN NATIONAL FOREST(9)

Sector III	FARM LAND BURNING	BEEF CATTLE	MILCH COW	WORK COW	PIG	EQUINE	DOMESTIC FOWL	DUCK	OTHERS
President	1 NO			3			25		
	2 NO						5		
	3 NO	1		3			14	1	
	4 YES(RUBBISH ELIMINATION)			1			10		
	5 NO	2					8		
	6 YES(RUBBISH ELIMINATION)	1000-1500Q		1			30	2	
	7 YES(RUBBISH ELIMINATION)						6	2	
	8 NO					1	10		
	9 NO	4		1			15		
	10 NO	1		1			8		
	11 YES(RUBBISH ELIMINATION)	3		2			10		
	12 NO						12		
	13 NO	3		1		2	15	1	
	14 NO	900-1000Q		2		1	20		
	15 YES(RUBBISH ELIMINATION)	5		1		500Q 1 YOUNGS 100Q	25		
	16 YES(RUBBISH ELIMINATION)	2 500-600Q		1		1 YOUNGS 60Q	9	2	
	17 NO						5		
	18 NO					1 200Q	10		
	19 NO						1	1	
	20 NO	2 1200Q		2		1 300Q	25		EGG 0.5Q
	21 NO	3 800Q		3			40 30Q		
	YES 6/21	22HEADS/11	22HEADS/13		12HEADS/8	1HEAD/1	303FOWLS/21	9DUCKS/6	

Aguate	FARM LAND BURNING	BEEF CATTLE	MILCH COW	WORK COW	PIG	EQUINE	DOMESTIC FOWL	DUCK	OTHERS
1	YES(RUBBISH ELIMINATION)					1	2		
2	NO				1 200Q		10		EGG 0.5Q
3	NO		2				6		EGG 0.5Q
	YES 1/3		2HEADS/1		1HEAD/1	1HEAD/1	18FOWLS/3		

Sibabaj	FARM LAND BURNING	BEEF CATTLE	MILCH COW	WORK COW	PIG	EQUINE	DOMESTIC FOWL	DUCK	OTHERS
Leader	1 NO CULTIVATED LAND						10	14	
	2 NO CULTIVATED LAND						6		
							16FOWLS/2	14DUCKS/1	

Las Anonas	FARM LAND BURNING	BEEF CATTLE	MILCH COW	WORK COW	PIG	EQUINE	DOMESTIC FOWL	DUCK	OTHERS
Las Anonas	1 NO		2		2 200-300Q		10 20-30Q		EGG 0.5Q
	2 NO	1 1000Q	2		5 300Q	1	15 30Q		TURKEY 125Q
	3 NO	2 CALF 300Q	2		1 200Q	2	20 25Q	2	
Chiteo	1 YES(RUBBISH ELIMINATION)					1	15		
	2 NO						12 30-40Q	6 25Q	
	3 NO				1		14 30-35Q		
	YES 1/6	3HEADS/2	6HEADS/3		9HEADS/4	4HEADS/3	86FOWLS/6	8DUCKS/2	

	FARM LAND BURNING
PROPORTION OF YES	30%

	BEEF CATTLE	MILCH COW	WORK COW	PIG	EQUINE	DOMESTIC FOWL	DUCK	OTHERS
TOTAL HEADS	77	72	4	47	14	816	66	
AVERAGE HEAD	2.6	2.0	3.3	1.8	3.5	14.6	3.9	
PROPORTION OF BREEDINGS	48%	58%	4.8%	42%	15%	90%	21%	

TABULATED RESULTS OF SURVEY FOR INHABITANTS IN NATIONAL FOREST(10)

1/2

Sector I	UTILIZATION OF FOREST						FOREST DAMAGE
	WOOD	FUELWOOD/OCOTE	PASTURE	HUNTING	EDIBLE PLANTS	MEDICINAL PLANTS	
1		YES	YES		MAGUY,CHIPILIN	SIETE PUNTOS	FIRE, INSECTS
2	HOUSE CONST.	YES	YES		MAGUY,CHIPILIN		INSECTS
3	HOUSE CONST.	YES	YES		MAGUY,CHIPILIN		NO DAMAGE
4	HOUSE CONST.	YES	YES		MAGUY,CHIPILIN	WANGHE	FIRE, INSECTS
5	HOUSE CONST.	YES			MAGUY,AYOTE		FIRE, INSECTS
6	HOUSE CONST.	YES			MAGUY,CHIPILIN		INSECTS
7	HOUSE CONST.	YES	YES		MAGUY,CHIPILIN		FIRE
8	NO ANSWER						
9	HOUSE CONST.	YES			CHIPILIN	COLA DE CABALLO	INSECTS
10	HOUSE CONST.	YES			MAGUY,CHIPILIN	COLA DE CABALLO	NO DAMAGE
11	HOUSE CONST.	YES			MAGUY,CHIPILIN BLEDO		FIRE
12	HOUSE CONST.	YES			MAGUY,CHIPILIN	NAME UNKNOWN	INSECTS
13	HOUSE CONST.	YES					NO DAMAGE
V.P.	HOUSE CONST.	YES			MAGUY,CHIPILIN	NAME UNKNOWN	INSECTS
15		YES	YES	SQUIRREL, POUCHED MOUSE	MAGUY,CHIPILIN		UNKNOWN
16	HOUSE CONST.	YES					
17	HOUSE CONST.	YES			MAGUY,AYOTE		NO DAMAGE
18	HOUSE CONST.	YES			MAGUY,CHIPILIN		INSECTS
19		YES	YES		MAGUY,CHIPILIN	ESENCIA DE TIERRA CONTANERO	INSECTS
20	HOUSE CONST.	YES			MAGUY		FIRE
	YES 10/19	YES 19/19	YES 7/19	YES 1/19	YES 17/19	YES 7/19	FIRE 6/19 INSECTS 10/19 NO DAMAGE 5/19 UNKNOWN 1/19

Sector II	UTILIZATION OF FOREST						FOREST DAMAGE
	WOOD	FUELWOOD/OCOTE	PASTURE	HUNTING	EDIBLE PLANTS	MEDICINAL PLANTS	
1		YES			MAGUY,CHIPILIN		FIRE, INSECTS
2	HOUSE CONST.	YES	YES		MAGUY,CHIPILIN		NO DAMAGE
3	HOUSE CONST.	YES	YES		MAGUY,CHIPILIN		NO DAMAGE
4	HOUSE CONST.	YES					FIRE, INSECTS
5	HOUSE CONST.	YES	YES				NO DAMAGE
6	HOUSE CONST.	YES			MAGUY,CHIPILIN		INSECTS
7	HOUSE CONST.	YES			MAGUY,CHIPILIN	NAME UNKNOWN	FIRE, INSECTS
8	HOUSE CONST. / SELLING	YES	YES	RABBIT, SQUIRREL	MAGUY,CHIPILIN	TINTE	NO DAMAGE
9	HOUSE CONST.	YES	YES		MAGUY,CHIPILIN	CORTANERO	NO DAMAGE
10	HOUSE CONST.	YES	YES		MAGUY,CHIPILIN		NO DAMAGE
11	HOUSE CONST.	YES	YES		MAGUY,CHIPILIN		INSECTS
	YES 10/11	YES 11/11	YES 7/11	YES 1/11	YES 9/11	YES 3/11	FIRE 3/11 INSECTS 5/11 NO DAMAGE 6/11

TABULATED RESULTS OF SURVEY FOR INHABITANTS IN NATIONAL FOREST(18)

2/2

Sector III	UTILIZATION OF FOREST						FOREST DAMAGE
	WOOD	FUELWOOD/OCOTE	PASTURE	HUNTING	EDIBLE PLANTS	MEDICINAL PLANTS	
Resident 1		YES			MACDY,CHIPILIN	RABAPLATO	FIRE,INSECTS
2		YES					WINDFALL
3		YES			MACDY,CHIPILIN		UNKNOWN
4	HOUSE CONST.	YES			MACDY		FIRE,INSECTS
5	HOUSE CONST.	YES			MACDY,CHIPILIN		FIRE,INSECTS
6	HOUSE CONST.	YES		SQUIRREL, ARMADILLO, POUCHED MOUSE, RACCOON, RABBIT	MACDY,CHIPILIN	ABBACA BUDA	INSECTS
7	HOUSE CONST.	YES			MACDY,CHIPILIN		FIRE,INSECTS
8		YES			MACDY		NO DAMAGE
9	HOUSE CONST.	YES			MACDY,CHIPILIN AYOTE		NO DAMAGE
10		YES					FIRE,INSECTS
11	HOUSE CONST.	YES	YES				FIRE,INSECTS
12	HOUSE CONST.	YES			MACDY		NO DAMAGE
13	HOUSE CONST.	YES	YES		MACDY,CHIPILIN		FIRE
14	HOUSE CONST.	YES	YES		MACDY,CHIPILIN	APASOTE BUDA	FIRE,INSECTS
15	HOUSE CONST.	YES	YES	RACCOON, RABBIT	MACDY,CHIPILIN BLEDO		INSECTS
16	HOUSE CONST.	YES	YES				INSECTS
17		YES					INSECTS
18	HOUSE CONST.	YES			MACDY		NO DAMAGE
19	HOUSE CONST.	YES			MACDY,CHIPILIN		INSECTS
20	HOUSE CONST.	YES			MACDY,CHIPILIN	ARTANIS	INSECTS
21	HOUSE CONST.	YES			MACDY,CHIPILIN		ILLEGAL FELLING
	YES 15/21	YES 21/21	YES 5/21	YES 2/21	YES 16/21	YES 4/21	FIRE 9/21 INSECTS 14/21 WINDFALL 1/21 ILL. FELLING 1/21 UNKNOWN 1/21 NO DAMAGE 4/21

Associate	UTILIZATION OF FOREST						FOREST DAMAGE
	WOOD	FUELWOOD/OCOTE	PASTURE	HUNTING	EDIBLE PLANTS	MEDICINAL PLANTS	
1		YES	YES			TRES PUNTOS	NO DAMAGE
2	HOUSE CONST.	YES	YES		MACDY,CHIPILIN		NO DAMAGE
3	HOUSE CONST.	YES			MACDY,CHIPILIN		NO DAMAGE
	YES 2/3	YES 3/3	YES 2/3	YES 0/3	YES 2/3	YES 1/3	NO DAMAGE 3/3

Sibabaj	UTILIZATION OF FOREST						FOREST DAMAGE
	WOOD	FUELWOOD/OCOTE	PASTURE	HUNTING	EDIBLE PLANTS	MEDICINAL PLANTS	
Leader 1		YES					NO DAMAGE
2		YES					NO DAMAGE
	YES 0/2	YES 2/2	YES 0/2	YES 0/2	YES 0/2	YES 0/2	NO DAMAGE 2/2

Las Anonas	UTILIZATION OF FOREST						FOREST DAMAGE
	WOOD	FUELWOOD/OCOTE	PASTURE	CULTURE	EDIBLE PLANTS	MEDICINAL PLANTS	
Las Anonas 1			YES	YES	MACDY		ILLEGAL FELLING
2			YES	YES			NO DAMAGE
3	HOUSE CONST.	YES	YES	YES	MACDY, BLEDO	CARLOSSANTO SARCHE	DEAD
Miteo 1	SELLING	YES	YES	YES			DEAD
2	HOUSE CONST.	YES		YES	MACDY,CHIPILIN BLEDO	APASOTE	INSECTS
3		YES		YES	MACDY,CHIPILIN BLEDO		PARASITE
	YES 3/6	YES 4/6	YES 3/6	YES 6/6	YES 5/6	YES 2/6	ILL. FELLING 1/6 DEAD 2/6 INSECTS 1/6 PARASITE 1/6

WOOD	46/62=74% (HOUSE CONST. 44/46, HOUSE CONST./SELLING 1/46, SELLING 1/46)
FUELWOOD/OCOTE COLLECTION	60/62=97%
PASTURE	24/62=39%
HUNTING	4/56= 7%
EDIBLE PLANTS COLLECTION	49/62=79%
MEDICINAL PLANTS COLLECT.	17/62=27%

TABULATED RESULTS OF SURVEY FOR INHABITANTS IN NATIONAL FOREST(11)

1/2

Sector I	USED COMBUSTIBLE	COLLECTING PLACE	FUTURE SUPPLY	LIGHTING	REASON FOR NO USE OF CHARCOAL
	1 FUELWOOD, OCOTE	NAT. FOREST	SUFFICIENT	UNKNOWN	UNKNOWN
	2 FUELWOOD	NAT. FOREST	SHORT IN FUTURE	OCOTE	NO EXPERIENCE OF ITS USE
	3 FUELWOOD, OCOTE	NAT. FOREST	ALREADY SHORT	OCOTE	HAVE FUELWOOD
	4 FUELWOOD	NAT. FOREST	SUFFICIENT	OCOTE, CANDLE GAS LAMP	DIFFICULT TO PRODUCE
	5 FUELWOOD, OCOTE	NAT. FOREST	SHORT IN FUTURE	OCOTE, GAS LAMP	DON'T KNOW HOW TO MAKE
	6 FUELWOOD, OCOTE	NAT. FOREST	NO PROBLEM IF COLLECTING ONLY NECESSARY VOLUME	UNKNOWN	HAVE FUELWOOD FORBIDDEN TO CUT ENCINO DON'T KNOW HOW TO MAKE
	7 FUELWOOD, OCOTE	NAT. FOREST	SUFFICIENT	OCOTE, GAS LAMP	DON'T KNOW HOW TO MAKE
	8 NO ANSWER				
	9 FUELWOOD, OCOTE	NAT. FOREST	ALREADY NO SUPPLY OF ENCINO	UNKNOWN	NO CUSTOM TO USE CHARCOAL
	10 FUELWOOD, OCOTE	NAT. FOREST	SUFFICIENT	OCOTE	DIFFICULT TO PRODUCE NO ENCINO TO BE USED
	11 FUELWOOD, OCOTE	NAT. FOREST	ALREADY NO FUELWOOD NEAR HOUSE	OCOTE, CANDLE GAS LAMP	NO CHARCOAL MAKER FORBIDDEN TO FELL LIVING TREES
	12 FUELWOOD, OCOTE	NAT. FOREST	SUFFICIENT (WITH NATURAL REGENERATION OF PINUS)	CANDLE, OCOTE	FORBIDDEN TO CUT LIVING ENCINO
	13 FUELWOOD, OCOTE	NAT. FOREST	NO FUELWOOD COLLECTED WITH MACHETE	CANDLE, OCOTE	NO CHARCOAL
V.P.	14 FUELWOOD, OCOTE	NAT. FOREST	SUFFICIENT	OCOTE	DON'T KNOW HOW TO MAKE
	15 FUELWOOD, OCOTE	NAT. FOREST	ACTUALLY SUFFICIENT BUT UNKNOWN FOR FUTURE	OCOTE	NO ENCINO
	16 FUELWOOD, OCOTE	NAT. FOREST	ALREADY SHORT	OCOTE	NO EXPERIENCE
	17 FUELWOOD, OCOTE	NAT. FOREST	SUFFICIENT	CANDLE	HAVE FUELWOOD
	18 FUELWOOD, OCOTE	NAT. FOREST	SUFFICIENT	OCOTE	NO EXPERIENCE
	19 FUELWOOD, OCOTE	NAT. FOREST	SUFFICIENT (REGENERATION)	OCOTE	DON'T KNOW HOW TO MAKE
	20 FUELWOOD, OCOTE	NAT. FOREST	SHORT IN FUTURE	OCOTE	DON'T KNOW HOW TO MAKE
	FUELWOOD 2	NAT. FOREST 19	SUFFICIENT 9/19		
	FUELWOOD/OCOTE 16				
	UNKNOWN 1				

Sector II	USED COMBUSTIBLE	COLLECTING PLACE	FUTURE SUPPLY	LIGHTING	REASON FOR NO USE OF CHARCOAL
	1 FUELWOOD, OCOTE	NAT. FOREST	SUFFICIENT	UNKNOWN	NO EXPERIENCE, FORBIDDEN TO FELL LIVING TREES
	2 FUELWOOD, OCOTE	NAT. FOREST	SUFFICIENT	UNKNOWN	DON'T KNOW HOW TO MAKE
	3 FUELWOOD, OCOTE	NAT. FOREST	SUFFICIENT	OCOTE	NO EXPERIENCE
	4 FUELWOOD, OCOTE	NAT. FOREST	NO ENCINO, USING PINUS	OCOTE	NO EXPERIENCE
	5 FUELWOOD, OCOTE	NAT. FOREST	SUFFICIENT	UNKNOWN	DON'T KNOW HOW TO MAKE
	6 FUELWOOD, OCOTE	NAT. FOREST	SUFFICIENT	UNKNOWN	DON'T KNOW HOW TO MAKE
	7 FUELWOOD, OCOTE	NAT. FOREST	INSUFFICIENT IF CONTINUING FELLING	CANDLE, OCOTE GAS LAMP	FOREST DEVASTATION BY USING ENCINO
	8 FUELWOOD, OCOTE	NAT. FOREST	SUFFICIENT	OCOTE	NO EXPERIENCE
	9 FUELWOOD, OCOTE	NAT. FOREST	SUFFICIENT	BATTERY LAMP, OCOTE	CUSTOM TO USE FUELWOOD
	10 FUELWOOD, OCOTE	NAT. FOREST	SUFFICIENT	GAS LAMP	NO MAKING & SELLING CHARCOAL
	11 FUELWOOD, OCOTE	NAT. FOREST	SUFFICIENT	OCOTE	DON'T KNOW HOW TO MAKE
	FUELWOOD/OCOTE 11	NAT. FOREST 11	SUFFICIENT 9/11		

TABULATED RESULTS OF SURVEY FOR INHABITANTS IN NATIONAL FOREST(1)

2/2

Sector III	USED COMBUSTIBLE	COLLECTING PLACE	FUTURE SUPPLY	LIGHTING	REASON FOR NO USE OF CHARCOAL
President 1	FUELWOOD, OCOTE	NAT. FOREST	SUFFICIENT WITH SPROUT REGENERATION OF ENCINO	UNKNOWN	NO EXPERIENCE, USING GAS WHEN IMPROVING ROAD CONDITION
2	FUELWOOD, OCOTE	NAT. FOREST	SUFFICIENT	UNKNOWN	UNKNOWN
3	FUELWOOD, OCOTE	NAT. FOREST	DRIED TREES FAR FROM HOUSE	UNKNOWN	UNKNOWN
4	FUELWOOD, OCOTE	NAT. FOREST	SUFFICIENT	UNKNOWN	NO EXPERIENCE
5	FUELWOOD, OCOTE	NAT. FOREST	INSUFFICIENT BECAUSE OF COLLECTION BY OTHER ALDEAS' INHABITANTS	UNKNOWN	NO ANSWER
6	FUELWOOD, OCOTE	NAT. FOREST	SUFFICIENT	UNKNOWN	NO ANSWER
7	FUELWOOD, OCOTE	NAT. FOREST	INSUFFICIENT FOR ENCINO	UNKNOWN	NO ANSWER
8	FUELWOOD	NAT. FOREST	ALREADY NO FUELWOOD NEAR HOUSE	UNKNOWN	NO ANSWER
9	FUELWOOD, OCOTE	NAT. FOREST	ALREADY NO FUELWOOD NEAR HOUSE	UNKNOWN	NO ANSWER
10	FUELWOOD, OCOTE	NAT. FOREST	ALREADY INSUFFICIENT	UNKNOWN	NO ANSWER
11	FUELWOOD, OCOTE	NAT. FOREST	SUFFICIENT	GAS LAMP	DON'T KNOW HOW TO MAKE
12	FUELWOOD, OCOTE	NAT. FOREST	NO PROBLEM WITH YOUNG TREES	UNKNOWN	DON'T KNOW HOW TO MAKE
13	FUELWOOD, OCOTE	NAT. FOREST	SUFFICIENT	UNKNOWN	UNKNOWN
14	FUELWOOD, OCOTE	NAT. FOREST	ALREADY NO FUELWOOD NEAR HOUSE	UNKNOWN	UNKNOWN
15	FUELWOOD, OCOTE	NAT. FOREST	ACTUALLY SUFFICIENT BUT UNKNOWN FOR FUTURE	OCOTE	DON'T KNOW HOW TO MAKE
16	FUELWOOD, OCOTE	NAT. FOREST	SUFFICIENT	OCOTE	NO FURNACE FOR MAKING CHARCOAL
17	FUELWOOD, OCOTE	NAT. FOREST	SUFFICIENT	OCOTE	NO FURNACE FOR MAKING CHARCOAL
18	FUELWOOD, OCOTE	NAT. FOREST	ACTUALLY SUFFICIENT BUT UNKNOWN FOR FUTURE	OCOTE	DIFFICULT TO MAKE
19	FUELWOOD, OCOTE	NAT. FOREST	ACTUALLY SUFFICIENT BUT SHORT IN FUTURE	CANDLE	NO EXPERIENCE
20	FUELWOOD, OCOTE	NAT. FOREST	SUFFICIENT	OCOTE	DON'T KNOW HOW TO MAKE
21	FUELWOOD, OCOTE	NAT. FOREST	NO PROBLEM WITH AFFORESTATION	GAS LAMP, CANDLE	DON'T KNOW HOW TO MAKE
	FUELWOOD 1	NAT. FOREST 21	SUFFICIENT 11/21		
	FUELWOOD/OCOTE 28				

Agucate	USED COMBUSTIBLE	COLLECTING PLACE	FUTURE SUPPLY	LIGHTING	REASON FOR NO USE OF CHARCOAL
1	FUELWOOD, OCOTE	NAT. FOREST	NO PROBLEM WITH PLANTING TREES	UNKNOWN	USING FUELWOOD
2	FUELWOOD, OCOTE	NAT. FOREST	SHORT IN FUTURE	OCOTE, CANDLE	DON'T KNOW HOW TO MAKE
3	FUELWOOD, OCOTE	NAT. FOREST	SUFFICIENT	OCOTE	DON'T KNOW HOW TO MAKE
	FUELWOOD/OCOTE 3	NAT. FOREST 3	SUFFICIENT 2/3		

Sibabaj	USED COMBUSTIBLE	COLLECTING PLACE	FUTURE SUPPLY	LIGHTING	REASON FOR NO USE OF CHARCOAL
Leader 1	FUELWOOD	NAT. FOREST	SUFFICIENT	OCOTE	FORBIDDEN TO FELL LIVING TREES
2	FUELWOOD, OCOTE	NAT. FOREST	ALREADY SHORT	OCOTE	UNKNOWN
	FUELWOOD 1	NAT. FOREST 2	SUFFICIENT 1/2		
	FUELWOOD/OCOTE 1				

Las Anchas	USED COMBUSTIBLE	COLLECTING PLACE	FUTURE SUPPLY	LIGHTING	REASON FOR NO USE OF CHARCOAL
1	FUELWOOD, OCOTE	OWN FOREST	UNKNOWN	ELECTRIC	NO EXPERIENCE
2	FUELWOOD, OCOTE	SON'S FOREST	UNKNOWN	ELECTRIC	NEED TO BUY
3	FUELWOOD, OCOTE	NAT. FOREST	SUFFICIENT FOR FUTURE	ELECTRIC	DON'T KNOW HOW TO MAKE
Chites 1	FUELWOOD	NAT. FOREST	NO PROBLEM IF CONTINUING AFFORESTATION	ELECTRIC	NO EXPERIENCE
2	FUELWOOD, OCOTE	NAT. FOREST	ACTUALLY SUFFICIENT BUT SHORT IN FUTURE	ELECTRIC	DON'T KNOW HOW TO MAKE
3	FUELWOOD, OCOTE	NAT. FOREST	SHORT WITHOUT MANAGEMENT	ELECTRIC	DON'T KNOW HOW TO MAKE
	FUELWOOD 1	NAT. FOREST 4	SUFFICIENT 2/6		
	FUELWOOD/OCOTE 5	OWN FOREST 1			
		SON'S FOREST 1			

TOTAL NUMBER OF "YES" 34/62

TABLED RESULTS OF SURVEY FOR INHABITANTS IN NATIONAL FOREST(12)
(QUESTIONS FOR WOMEN)

1/2

Sector I	EDUCATION LEVEL	MAIN WORK	DECISION MAKING				REMARK	
			AGRI. WORK	GRAZING	PURCHASE	EDUCATION OF CHILDREN		
1	ELEM 2	COOKING/WASHING, WATER TRANSPORT FUELWOOD COLLECTION, CULTIVATION HUIPIL MAKING, DRUGSTORE	BOTH	BOTH	BOTH	BOTH		
2	ELEM 3	COOKING/WASHING, FUELWOOD COLLECT. GRAZING, CULTIVATION, AGRI. PRODUCT SELLING	BOTH	BOTH	BOTH	BOTH		
3	NONE	COOKING/WASHING, FUELWOOD COLLECT. GRAZING, CULTIVATION, AGRI. PRODUCT SELLING	HUSBAND	HUSBAND	HUSBAND	HUSBAND		
4	ABSENT							
5	ELEM. 2	COOKING/WASHING, FUELWOOD COLLECT. GRAZING, CULTIVATION, AGRI. PRODUCT SELLING	HUSBAND	BOTH	BOTH	BOTH		
6	QUESTION NOT PERMITTED							
7	NONE	COOKING/WASHING, FUELWOOD COLLECT. CULTIVATION, AGRI. PRODUCT SELLING, HUIPIL MAKING	BOTH	CATTLE-HUS PIG/FOWL- WIFE	BOTH	BOTH	ANSWERED BY HUSBAND	
8	ELEM. 3	COOKING/WASHING, AGRI. PRODUCT SELLING	HUSBAND	HUSBAND	BOTH	BOTH		
9	ELEM. 3	COOKING/WASHING, FUELWOOD COLLECT. GRAZING, CULTIVATION, AGRI. PRODUCT SELLING	HERSELF	HERSELF	HERSELF	HERSELF	SHE IS SINGLE	
10	ABSENT							
11	ELEM. 3	COOKING/WASHING, FUELWOOD COLLECT. CULTIVATION, AGRI. PRODUCT SELLING	HUSBAND	NO ANIMAL	HUSBAND	BOTH		
12	ABSENT							
13	NONE	COOKING/WASHING, WATER TRANSPORT, FUELWOOD COLLECT., CULTIVATION, AGRI. PRODUCT SELLING	BOTH	NO ANIMAL	BOTH	BOTH		
V. P.	14	ELEM 1	COOKING/WASHING, FUELWOOD COLLECT. GRAZING, CULTIVATION	BOTH	HUSBAND	BOTH	BOTH	
	15	NONE	COOKING/WASHING, FUELWOOD COLLECT. CULTIVATION, AGRI. PRODUCT SELLING	HUSBAND	NO ANIMAL	WIFE	BOTH	
	16	ELEM. 3	COOKING/WASHING, WATER TRANSPORT, FUELWOOD COLLECT., CULTIVATION, AGRI. PRODUCT SELLING	HUSBAND	HUSBAND	HUSBAND	BOTH	
	17	NONE	COOKING/WASHING, FUELWOOD COLLECT. CULTIVATION	BOTH	NO ANIMAL	HUSBAND	HUSBAND	
	18	QUESTION NOT PERMITTED						
	19	EXCLUSION					NOT PERMITTED SINGLE MAN	
	20	WIFE-SICK						
		NONE 5	BOTH 7/13	BOTH 5/9	BOTH 8/13	BOTH 11/13		
		ELEM. 1 1	HUS. 6/13	HUS. 4/9	HUS. 4/13	HUS. 2/13		
		ELEM. 2 2	WIFE 0/13	WIFE 0/9	WIFE 1/13	WIFE 0/13		
		ELEM. 3 5						

Sector II	EDUCATION LEVEL	MAIN WORK	DECISION MAKING				REMARK
			AGRI. WORK	GRAZING	PURCHASE	EDUCATION OF CHILDREN	
1	NONE	COOKING/WASHING, FUELWOOD COLLECT. GRAZING, CULTIVATION, AGRI. PRODUCT SELLING	BOTH	BOTH	BOTH	BOTH	
2	ELEM. 3	COOKING/WASHING, FUELWOOD COLLECT. CULTIVATION, AGRI. PRODUCT SELLING	HUSBAND	HUSBAND	HUSBAND	WIFE	
3	QUESTION NOT PERMITTED						
4	QUESTION NOT PERMITTED						
5	NONE	COOKING/WASHING, FUELWOOD COLLECT. CULTIVATION, AGRI. PRODUCT SELLING	BOTH	HUSBAND	HUSBAND	HUSBAND	
6	NONE	COOKING/WASHING, FUELWOOD COLLECT. CULTIVATION, AGRI. PRODUCT SELLING MIDWIFE	BOTH	BOTH	HUSBAND	HUSBAND	
7	ELEM. 6	COOKING/WASHING, WATER TRANSPORT, FUELWOOD COLLECT., CULTIVATION, AGRI. PRODUCT SELLING, EMBROIDERY	BOTH	BOTH	BOTH	BOTH	DAUGHTER OF VICE PRESIDENT
8	ELEM. 2	COOKING/WASHING, FUELWOOD COLLECT. GRAZING, CULTIVATION	HUSBAND	WIFE	BOTH	BOTH	
9	ABSENT						
10	REFUSE						
11	NONE	COOKING/WASHING, FUELWOOD COLLECT. GRAZING, CULTIVATION	BOTH	BOTH	BOTH	HUSBAND	
		NONE 4	BOTH 5/7	BOTH 4/7	BOTH 4/7	BOTH 3/7	
		ELEM. 2 1	HUS. 2/7	HUS. 2/7	HUS. 3/7	HUS. 3/7	
		ELEM. 3 1	WIFE 0/7	WIFE 1/7	WIFE 0/7	WIFE 1/7	
		ELEM. 6 1					

TABULATED RESULTS OF SURVEY FOR INHABITANTS IN NATIONAL FOREST(12)
(QUESTIONS FOR WOMEN)

2/2

Sector III	EDUCATION LEVEL	MAIN WORK	DECISION MAKING				REMARK
			AGRI. WORK	GRAZING	PURCHASE	EDUCATION OF CHILDREN	
1	ELEM. 2	COOKING/WASHING, WATER TRANSPORT, FUELWOOD COLLECTION	HUSBAND	HUSBAND	HUSBAND	BOTH	WIFE OF PRESIDENT
2	ELEM. 2	COOKING/WASHING, FUELWOOD COLLECT.	HUSBAND	HUSBAND	HUSBAND	BOTH	
3	NONE	COOKING/WASHING, FUELWOOD COLLECT. GRAZING, CULTIVATION, AGRI. PRODUCT SELLING	HUSBAND	HUSBAND	HUSBAND	BOTH	
4	ELEM. 4	COOKING/WASHING, FUELWOOD COLLECT. AGRI. PRODUCT SELLING	BOTH	BOTH	BOTH	BOTH	
5	ELEM. 2	COOKING/WASHING, FUELWOOD COLLECT. CULTIVATION	HUSBAND	HUSBAND	HUSBAND	WIFE	
6	ABSENT						
7	REFUSE TO ANSWER						
8	H. HIGH 3	COOKING/WASHING, CULTIVATION	HUSBAND	NO ANIMAL	HUSBAND	WIFE	
9	ELEM. 2	COOKING/WASHING, FUELWOOD COLLECT. GRAZING, CULTIVATION	HUSBAND	HUSBAND	BOTH	BOTH	
10	ELEM. 5	COOKING/WASHING, FUELWOOD COLLECT. GRAZING, CULTIVATION	HUSBAND	HUSBAND	HUSBAND	BOTH	
11	ABSENT						
12	NONE	COOKING/WASHING, FUELWOOD COLLECT. CULTIVATION, AGRI. PRODUCT SELLING	HUSBAND	NO ANIMAL	HUSBAND	BOTH	
13	ELEM. 3	COOKING/WASHING, FUELWOOD COLLECT. GRAZING, CULTIVATION, AGRI. PRODUCT SELLING	HUSBAND	HUSBAND	BOTH	BOTH	
14	NONE	COOKING/WASHING, FUELWOOD COLLECT. GRAZING, CULTIVATION	HUSBAND	WIFE	BOTH	HUSBAND	
15	ELEM. 3	COOKING/WASHING, FUELWOOD COLLECT. CULTIVATION, AGRI. PRODUCT SELLING	HUSBAND	HUSBAND	HUSBAND	HUSBAND	
16	NONE	COOKING/WASHING, FUELWOOD COLLECT. GRAZING, AGRI. PRODUCT SELLING	BOTH	BOTH	BOTH	BOTH	
17							WIDOWER
18	NONE	COOKING/WASHING, FUELWOOD COLLECT.	HUSBAND	NO ANIMAL	WIFE	BOTH	
19	ELEM. 3	COOKING/WASHING, CULTIVATION	BOTH	NO ANIMAL	BOTH	NO CHILDREN	ANSWERED BY HUSBAND
20	ELEM. 4	COOKING/WASHING, FUELWOOD COLLECT. GRAZING, CULTIVATION	HUSBAND	HUSBAND	WIFE	BOTH	
21	ABSENT						
	NONE 5		BOTH 3/16	BOTH 2/12	BOTH 6/16	BOTH 11/15	
	ELEM. 2 4		HUS. 13/16	HUS. 9/12	HUS. 8/16	HUS. 2/15	
	ELEM. 3 3		WIFE 0/16	WIFE 1/12	WIFE 2/16	WIFE 2/15	
	ELEM. 4 2						
	ELEM. 5 1						
	SEC. 3 1						

Agucate	EDUCATION LEVEL	MAIN WORK	DECISION MAKING				REMARK
			AGRI. WORK	GRAZING	PURCHASE	EDUCATION OF CHILDREN	
1	ABSENT						
2	ABSENT						
3	NONE	COOKING/WASHING, WATER TRANSPORT, FUELWOOD COLLECT., CULTIVATION, AGRI. PRODUCT SELLING	HUSBAND	HUSBAND	HUSBAND	BOTH	
	NONE 1		BOTH 0/1 HUS. 1/1 WIFE 0/1	BOTH 0/1 HUS. 1/1 WIFE 0/1	BOTH 0/1 HUS. 1/1 WIFE 0/1	BOTH 1/1 HUS. 0/1 WIFE 0/1	

Sibataj	EDUCATION LEVEL	MAIN WORK	DECISION MAKING				REMARK
			AGRI. WORK	GRAZING	PURCHASE	EDUCATION OF CHILDREN	
1	NONE	COOKING/WASHING, FUELWOOD COLLECT. AGRI. PRODUCT SELLING	HUSBAND	UNKNOWN	WIFE	BOTH	
2	ELEM. 1	COOKING/WASHING	HUSBAND	NO ANIMAL	WIFE	BOTH	
	NONE 1		BOTH 0/2 HUS. 2/2 WIFE 0/2	BOTH 0/0 HUS. 0/0 WIFE 0/0	BOTH 0/2 HUS. 0/2 WIFE 2/2	BOTH 2/2 HUS. 0/2 WIFE 0/2	
	ELEM. 1 1						

EDUCATION LEVEL
NONE 16
ELEM. 1 2
ELEM. 2 7
ELEM. 3 9
ELEM. 4 2
ELEM. 5 1
SEC. 3 1
TOTAL 39

DECISION MAKING			
AGRI. WORK	GRAZING	PURCHASE	EDUCATION OF CHILDREN
BOTH 15/39	BOTH 11/29	BOTH 18/39	BOTH 28/38
HUS. 24/39	HUS. 16/29	HUS. 16/39	HUS. 7/38
WIFE 0/39	WIFE 2/29	WIFE 5/39	WIFE 3/38

TABULATED RESULTS OF SURVEY FOR INHABITANTS IN NATIONAL FOREST(13)
(QUESTIONS FOR WOMEN)

1/2

Sector I	WORK OUTSIDE OF HOUSE	REASON FOR "NO"	INTENTION TO WORK OUTSIDE OF HOUSE	PARTICIPATION TO SOCIAL ACTIVITY	REASON FOR "NO"	INTENTION TO PARTICIPATE	REMARK
1	NO	CARE OF CHILDREN & STORE	NO	NO	NO TIME AVAILABLE	NO	
2	NO	NO CHANCE TO WORK	YES	NO	NO TIME AVAILABLE	YES	
3	NO	NO TIME AVAILABLE	YES	NO	NO TIME AVAILABLE	YES	
4	ABSENT						
5	NO	NO TIME AVAILABLE	NO	NO	NO TIME AVAILABLE	YES	
6	QUESTION NOT PERMITTED						
7	NO	NO TIME AVAILABLE	UNKNOWN	NO	NEED TO DO HOUSEHOLD MATTERS	YES	
8	NO	NO TIME AVAILABLE	YES	NO	DON'T KNOW	YES	
9	YES(DIGESA)			YES (PISCICULTURE)			HERSELF BEING A LEADER
10	ABSENT						
11	NO	CARE OF CHILDREN	YES	NO	NO SUCH GROUP	YES	
12	ABSENT						
13	NO	NO TIME AVAILABLE	YES	NO	DON'T KNOW	NO	
14	NO	NOT NECESSARY	NO	YES(IMPROVEMENT OF NUTRITION, CHILDCARE & COOKING)			ORGANIZED BY HEALTHCARE CENTER
15	NO	CARE OF CHILDREN	YES	NO	CAN'T READ & WRITE	NO	
16	NO	CARE OF CHILDREN	YES	YES(ALPHABETIZATION)			
17	YES(DAY LABORER) 700/WEEK			NO	NO TIME AVAILABLE	YES	EXISTING A GROUP FOR VEGETABLE CULTURE
18	QUESTION NOT PERMITTED						
19							
20	WIFE-SICK						
	YES 2/13 NO 11/13	CARE OF CHILDREN 4/11 NO TIME AVAILABLE 5/11 NO CHANCE TO WORK 1/11	YES 7/11 NO 3/11 UNKNOWN 1/11	YES 3/13 NO 10/13	NO TIME 5/10 NO GROUP 1/10 OTHERS 4/10	YES 7/10 NO 3/10	

Sector II	WORK OUTSIDE OF HOUSE	REASON FOR "NO"	INTENTION TO WORK OUTSIDE OF HOUSE	PARTICIPATION TO SOCIAL ACTIVITY	REASON FOR "NO"	INTENTION TO PARTICIPATE	REMARK
1	NO	NO TIME AVAILABLE	YES	NO	NO SUCH GROUP	YES	
2	NO	NO CHANCE TO WORK	YES	NO	NO SUCH GROUP	YES	
3	QUESTION NOT PERMITTED						
4	QUESTION NOT PERMITTED						
5	NO	NO TIME AVAILABLE	YES	NO	NO TIME AVAILABLE	YES	
6	YES(MIDWIFE) 200/101010			NO	NO SUCH GROUP	YES	
7	NO	CARE OF CHILDREN	YES	YES(GRORCH) VESETABLE CULTURE BY DIGESA)			DAUGHTER OF VICE PRESIDENT & WIFE OF MALLO
8	NO	NO TIME AVAILABLE	YES	NO	DON'T KNOW	NO	
9	ABSENT						
10	REFUSE TO ANSWER						
11	NO	CARE OF HUSBAND	NO	NO	CAN'T SEE	NO	
	YES 3/7 NO 6/7	NO TIME 3/6 NO CHANCE TO WORK 2/6 CARE OF CHILDREN 1/6 CARE OF HUSBAND 1/6	YES 5/6 NO 1/6	YES 1/7 NO 6/7	NO TIME 1/6 NO GROUP 3/6 OTHERS 2/6	YES 4/6 NO 2/6	

TABULATED RESULTS OF SURVEY FOR INHABITANTS IN NATIONAL FOREST(13)
(QUESTIONS FOR WOMEN)

2/2

Sector III	WORK OUTSIDE OF HOUSE	REASON FOR "NO"	INTENTION TO WORK OUTSIDE OF HOUSE	PARTICIPATION TO SOCIAL ACTIVITY	REASON FOR "NO"	INTENTION TO PARTICIPATE	REMARK
1	NO	SICK	NO	NO	NO SUCH GROUP	YES	PRESIDENT'S WIFE
2	NO	NO TIME AVAILABLE	YES	NO	NO TIME AVAILABLE HUSBAND'S PERMISSION NECESSARY	YES	DEPENDING ON HUSBAND'S PERMISSION
3	NO	NO TIME AVAILABLE	NO	NO	DEPENDING ON HUSBAND	YES	
4	NO	NO TIME AVAILABLE	YES	YES (ALPHA-PETIZATION)			TWICE/WEEK
5	NO	CARE OF CHILDREN	YES	NO	NO SUCH GROUP	NO	
6	ABSENT						
7	REFUSE TO ANSWER						
8	NO	NO CHANCE TO WORK	YES	NO	NO SUCH GROUP	YES	
9	NO	NO CHANCE TO WORK CARE OF CHILDREN	YES	NO	NO INTEREST	NO	
10	NO	NO EDUCATION RECEIVED	YES (TO MAKE FOR EARNINGS)	NO	NO OCCASION	YES	
11	ABSENT						
12	NO	NOT PERMITTED BY BUS.	YES	NO	NO TIME AVAILABLE	YES	
13	NO	CARE OF CHILDREN	YES	NO	NO INTEREST	NO	
14	NO	CARE OF CHILDREN	YES	NO	NO TIME AVAILABLE	YES	
15	NO	CARE OF CHILDREN	YES	NO	NO SUCH GROUP	NO	
16	NO	CARE OF CHILDREN	NO	NO	NO TIME AVAILABLE	NO	
17	ABSENT						
18	NO	CARE OF CHILDREN	YES	NO	NO TIME AVAILABLE	YES	
19	NO	EDUCATED TO BE JUST HOUSEWIFE	NO	YES (IMPROVEMENT OF NUTRITION & COOKING)			ORGANIZED BY HEALTHCARE CENTER
20	ABSENT						
21	NO	NO TIME AVAILABLE	YES	NO	NO SUCH GROUP	YES	
	YES 8/16 NO 16/16	NO TIME 4/16 CARE OF CHILDREN 7/16 NO CHANCE TO WORK 2/16	YES 12/16 NO 4/16	YES 2/16 NO 14/16	NO TIME 5/14 NO GROUP 5/14 NO INTEREST 2/14 HUSBAND'S PERMISSION NECESSARY 2/14	YES 9/14 NO 5/14	

Agucate	WORK OUTSIDE OF HOUSE	REASON FOR "NO"	INTENTION TO WORK OUTSIDE OF HOUSE	PARTICIPATION TO SOCIAL ACTIVITY	REASON FOR "NO"	INTENTION TO PARTICIPATE	REMARK
1	ABSENT						
2	ABSENT						
3	NO	CARE OF CHILDREN	NO	NO	NO SUCH GROUP	YES	HAVE EXPERIENCE TO PARTICIPATE
	NO 1/1	CARE OF CHILDREN 1/1	NO 1/1	NO 1/1	NO GROUP 1/1	YES 1/1	

Sibasa	WORK OUTSIDE OF HOUSE	REASON FOR "NO"	INTENTION TO WORK OUTSIDE OF HOUSE	PARTICIPATION TO SOCIAL ACTIVITY	REASON FOR "NO"	INTENTION TO PARTICIPATE	REMARK
1	NO	CARE OF CHILDREN	YES	NO	NO SUCH GROUP	YES	
2	NO	CARE OF CHILDREN	YES	NO	NO SUCH GROUP	YES	
	NO 2/2	CARE OF CHILDREN 2/2	YES 2/2	NO 2/2	NO GROUP 2/2	YES 2/2	

WORK OUTSIDE OF HOUSE	REASON FOR "NO"	INTENTION TO WORK OUTSIDE OF HOUSE	PARTICIPATION TO SOCIAL ACTIVITY	REASON FOR "NO"	INTENTION TO PARTICIPATE
YES 3/39 NO 36/39	NO TIME 12/39 NO CHANCE TO WORK 3/39 CARE OF CHILDREN 16/35	YES 26/36 NO 10/36	YES 6/39 NO 33/39	NO TIME 11/33 NO GROUP 12/33 NO INTEREST 2/33 HUSBAND'S PERMISSION NECESSARY 2/33	YES 23/33 NO 10/33

資料-41 サン・ヘロニモ国有林の1995年度月別計画

業務項目	単位	1月	2月	3月	4月	5月	6月	7月	8月	9月	10月	11月	12月	合計
(1)苗木生産量 (<i>Cupressus, Pinus</i>)	本	7,000	7,000	4,000	—	—	—	—	—	—	—	—	—	18,000
(2)植林面積	ha	—	—	—	—	—	—	2	2	2	—	—	—	6
(3)植栽区域の整備	ha	—	—	—	—	—	2	—	—	—	—	—	—	2
3-1 地帯え	本	—	—	—	—	—	—	—	1,500	—	—	—	—	3,000
3-2 補植	本	—	—	—	2,000	—	—	—	—	—	—	—	—	4,000
3-3 下草刈り	m ²	1,200	1,200	1,200	—	—	—	—	—	—	—	—	—	3,600
3-4 防火帯整備	本	—	—	—	—	—	—	—	—	—	800	—	—	1,600
3-5 枝打ち	本	—	300	300	300	300	300	300	—	—	—	—	—	2,400
3-6 間伐	ha	—	—	—	—	—	0.5	0.5	—	—	—	—	—	1.0
(4)天然林の管理	ha	—	—	—	—	—	—	—	—	—	—	—	—	—
(5)森林保護	回	—	1	1	1	—	—	—	—	—	—	—	—	3
5-1 森林火災	班	1	—	—	—	—	—	—	—	—	—	—	—	1
5-2 消火班編成	ha	—	—	0.5	0.5	0.5	0.5	—	—	—	—	—	—	2
(6)森林害虫	ha	—	—	—	—	—	—	—	—	—	—	—	—	—
被害林分	ha	—	—	—	—	—	—	—	—	—	—	—	—	—
処置林分	ha	—	—	—	—	—	—	—	—	—	—	—	—	—

出典: PLAN OPERATIVO 1995 'PROGRAMA DE INVERSION' (DIGEBOS)

資料-42 サン・ヘロニモ国有林の造林実績

年	場所	植栽樹種	植栽本数(本/ha)	植栽面積(ha)
1988	El Limar	<i>Cupressus</i> sp.	7,500	3
1989	El Limar	<i>Cupressus</i> sp.	7,500	3
1990	El Cantario	<i>Cupressus</i> sp.	7,500	2
1991	Santa Cruz	<i>Pinus</i> spp., <i>Cupressus</i> sp.	5,000	2
1992	Santa Cruz	<i>Pinus</i> spp., <i>Cupressus</i> sp.	5,000	2
1993	El Volcán	<i>Pinus</i> spp., <i>Cupressus</i> sp.	5,000	2
1994	El Naranjo	<i>Pinus</i> spp.	5,000	2

注)・植栽区域の図面なし
・1988年に林野組織はINAFORからDIGEBOSへ変わった
出典: DIGEBOS(II-4 営林署)

資料--43 施業計画面積内訳表 (林班No 1)

単位 : ha

現 況		計 画					
林相区分	面 積	皆伐用材林		択伐用材林		薪炭林	演習林
		Po	Pmx-t	Po	Pmx-t		
Po	119.02	76.64		39.05			3.33
Po-Ci	0.63						0.63
Po-Q	5.78	2.09				3.69	
Pmx-t	23.45		9.69		8.76		5.00
Pmx-t-Ci							
Pmx-t-Q	3.75				1.25	2.50	
Pmx-t-Li							
Ci							
Q	5.50					5.25	0.25
Li	3.13					2.09	1.04
V	5.25			5.25			
D							
計	166.51	78.73	9.69	44.30	10.01	13.53	10.25

Po : *Pinus oocarpa*, Pmx-t : *P. maximinoi-tecunumanii*,
 Ci : *Cupressus lusitanica*, Q : *Quercus* spp.
 Li : *Liquidambar styraciflua*, V : 灌木地, D : 無立木地

施業計画面積内訳表 (林班No 2)

単位 : ha

現 況		計 画					
林相区分	面 積	皆伐用材林		択伐用材林		薪炭林	演習林
		Po	Pmx-t	Po	Pmx-t		
Po	136.45	51.85		68.41		6.51	9.68
Po-Ci							
Po-Q							
Pmx-t	77.85		65.54		10.50	1.18	0.63
Pmx-t-Ci	2.19		2.19				
Pmx-t-Q	9.19		1.81		5.57	1.81	
Pmx-t-Li	2.82				2.82		
Ci	1.88		1.31				0.57
Q	7.94			2.19		5.75	
Li	0.81				0.81		
V							
D							
計	239.13	51.85	70.85	70.60	19.70	15.25	10.88

Po : *Pinus oocarpa*, Pmx-t : *P. maximinoi-tecunumanii*,
 Ci : *Cupressus lusitanica*, Q : *Quercus* spp.
 Li : *Liquidambar styraciflua*, V : 灌木地, D : 無立木地

施業計画面積内訳表 (林班No 3)

単位 : ha

現 況		計 画					
林相区分	面 積	皆伐用材林		択伐用材林		薪炭林	演習林
		Po	Pmx-t	Po	Pmx-t		
Po	36.76	34.09		2.67			
Po-Ci							
Po-Q	28.62	18.61		10.01			
Pmx-t							
Pmx-t-Ci							
Pmx-t-Q							
Pmx-t-Li							
Ci							
Q	52.07	38.64		13.43			
Li							
V							
D	45.72	11.81		16.61		17.30	
計	163.17	103.15		42.72		17.30	

Po : *Pinus oocarpa*, Pmx-t : *P. maximinoi-tecunumanii*,
 Ci : *Cupressus lusitanica*, Q : *Quercus* spp.
 Li : *Liquidambar styraciflua*, V : 灌木地, D : 無立木地

施業計画面積内訳表 (林班No 4)

単位 : ha

現 況		計 画					
林相区分	面 積	皆伐用材林		択伐用材林		薪炭林	演習林
		Po	Pmx-t	Po	Pmx-t		
Po	122.83	98.46	0.88	23.49			
Po-Ci							
Po-Q	2.47				2.47		
Pmx-t	142.54	6.38	79.10		57.06		
Pmx-t-Ci	1.38		1.38				
Pmx-t-Q	21.96		11.24		6.59	4.13	
Pmx-t-Li							
Ci							
Q	25.07					20.07	5.00
Li							
V	40.75	5.12	6.38	19.25		10.00	
D	30.63	0.88				29.75	
計	387.63	110.84	98.98	42.74	66.12	63.95	5.00

Po : *Pinus oocarpa*, Pmx-t : *P. maximinoi-tecunumanii*,
 Ci : *Cupressus lusitanica*, Q : *Quercus* spp.
 Li : *Liquidambar styraciflua*, V : 灌木地, D : 無立木地

施業計画面積内訳表（林班№5）

単位：ha

現 況		計 画					
林相区分	面 積	皆伐用材林		択伐用材林		薪炭林	演習林
		Po	Pmx-t	Po	Pmx-t		
Po	8.19	8.19					
Po-Ci							
Po-Q							
Pmx-t	79.12		75.32		3.80		
Pmx-t-Ci	0.63		0.63				
Pmx-t-Q							
Pmx-t-Li							
Ci	8.44		8.44				
Q							
Li							
V							
D							
計	96.38	8.19	84.39		3.80		

Po : *Pinus oocarpa*, Pmx-t : *P. maximinoi-tecunumanii*,
 Ci : *Cupressus lusitanica*, Q : *Quercus* spp.
 Li : *Liquidambar styraciflua*, V : 灌木地, D : 無立木地