

Japan International Cooperation Agency  
Metall Mining Agency of Japan  
February 1987

Scale 1 : 10,000  
500 1000m

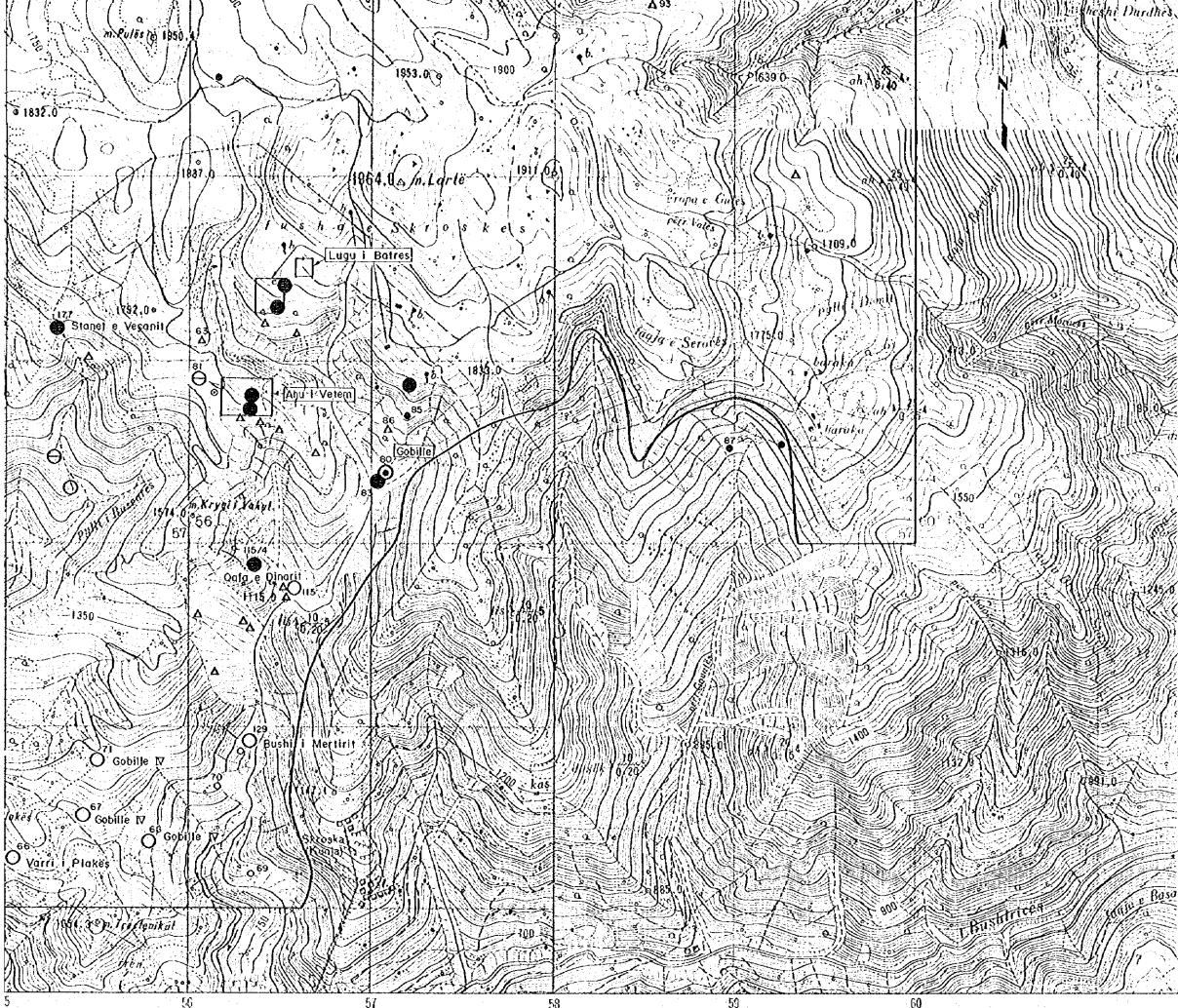
LEGEND

Deposited and indicators confirmed in the field work

Mark	Major type classification
●	Mafic dioritic
○	Nodular and amorphous chertlike
⊙	Discolored radiolaritic
⊖	Ruska chertlike

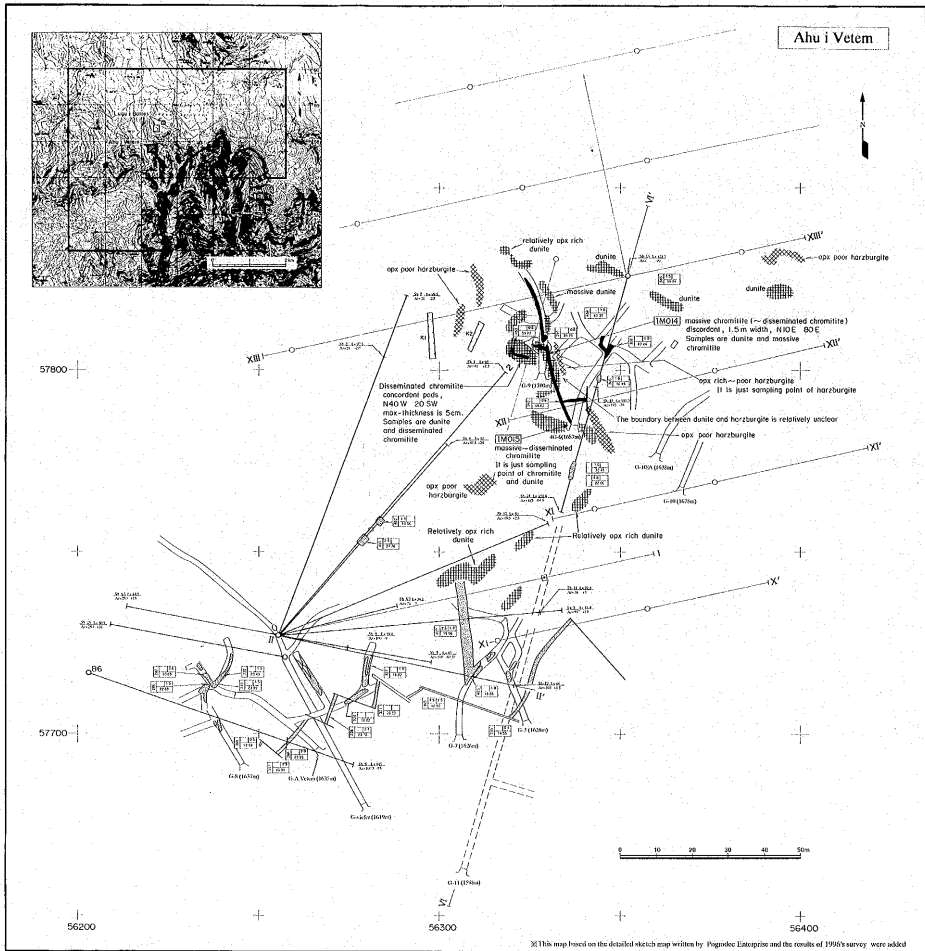
Not acknowledged in the field work but indicated in the pre-existing data

△	
○ 55	Right-hand number of Prospektivna's activities



5 56 57 58 59 60

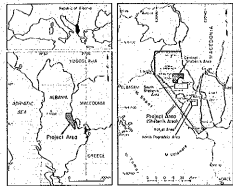
50  
58  
57  
50  
55



X This map based on the detailed sketch map written by Paqindze, Esterupise and the results of 1995's survey were added

Report on the Mineral Exploration  
in  
the Shebek Area, Republic of Abkhaz  
(Phase 3)

**Geological Fact Map  
of  
Ahu i Vetem**



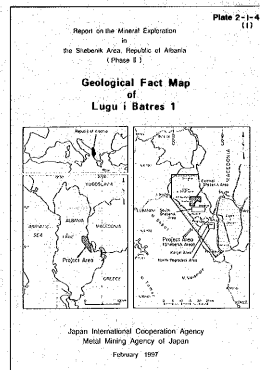
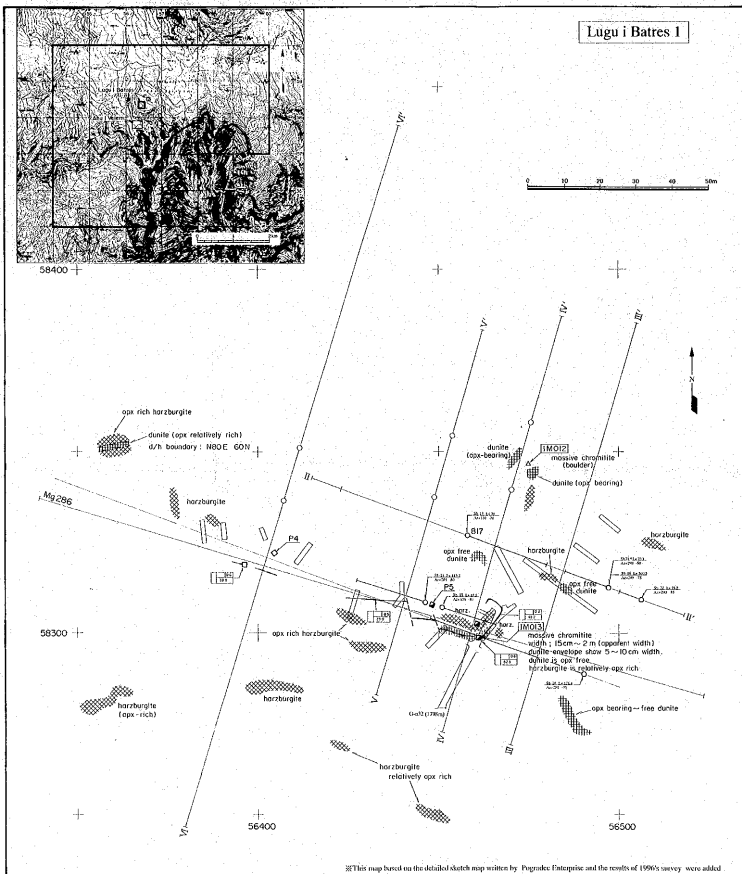
Japan International Cooperation Agency  
Metal Mining Agency of Japan  
February 1997

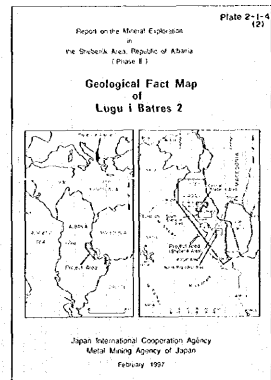
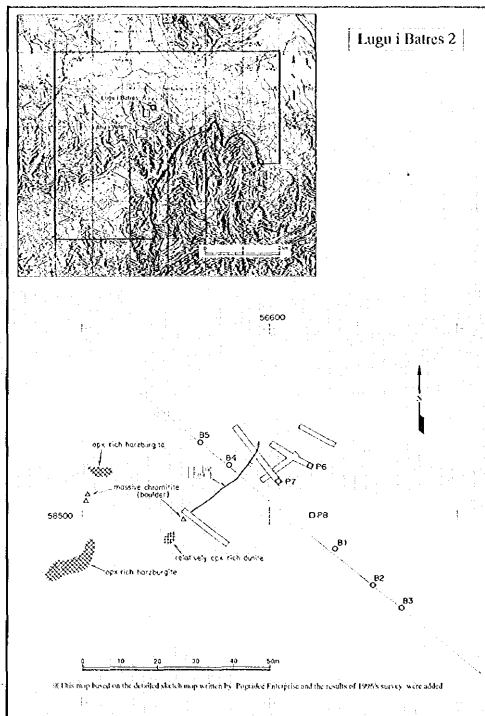
Scale 1 : 500



**LEGEND**

- massive chromitite
- disseminated chromitite
- hornblende
- dunite
- gallery
- trench
- pit
- hornblende 1:1000
- hornblende 1:250
- hornblende 1:100
- hornblende 1:50
- hornblende 1:25
- hornblende 1:10
- hornblende 1:5
- hornblende 1:2.5
- hornblende 1:1.25
- hornblende 1:0.625





Scale 1 : 500

0 10 20 30 40 50m

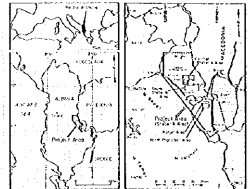
#### LEGEND

- |  |                       |  |                                |
|--|-----------------------|--|--------------------------------|
|  | massive chlorite      |  | massive chlorite (dotted)      |
|  | disseminated chlorite |  | disseminated chlorite (dotted) |
|  | amphibole             |  | amphibole (dotted)             |
|  | albite                |  | albite (dotted)                |
|  | galena                |  | galena (dotted)                |
|  | barite                |  | barite (dotted)                |
|  | pyrite                |  | pyrite (dotted)                |

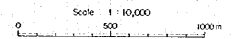


Report on the Mineral Exploration  
in  
the Shëbenik Area, Republic of Albania  
(Figure 1)

**Location of Geological Samples  
for Laboratory Test  
in the Central Shëbenik Area**

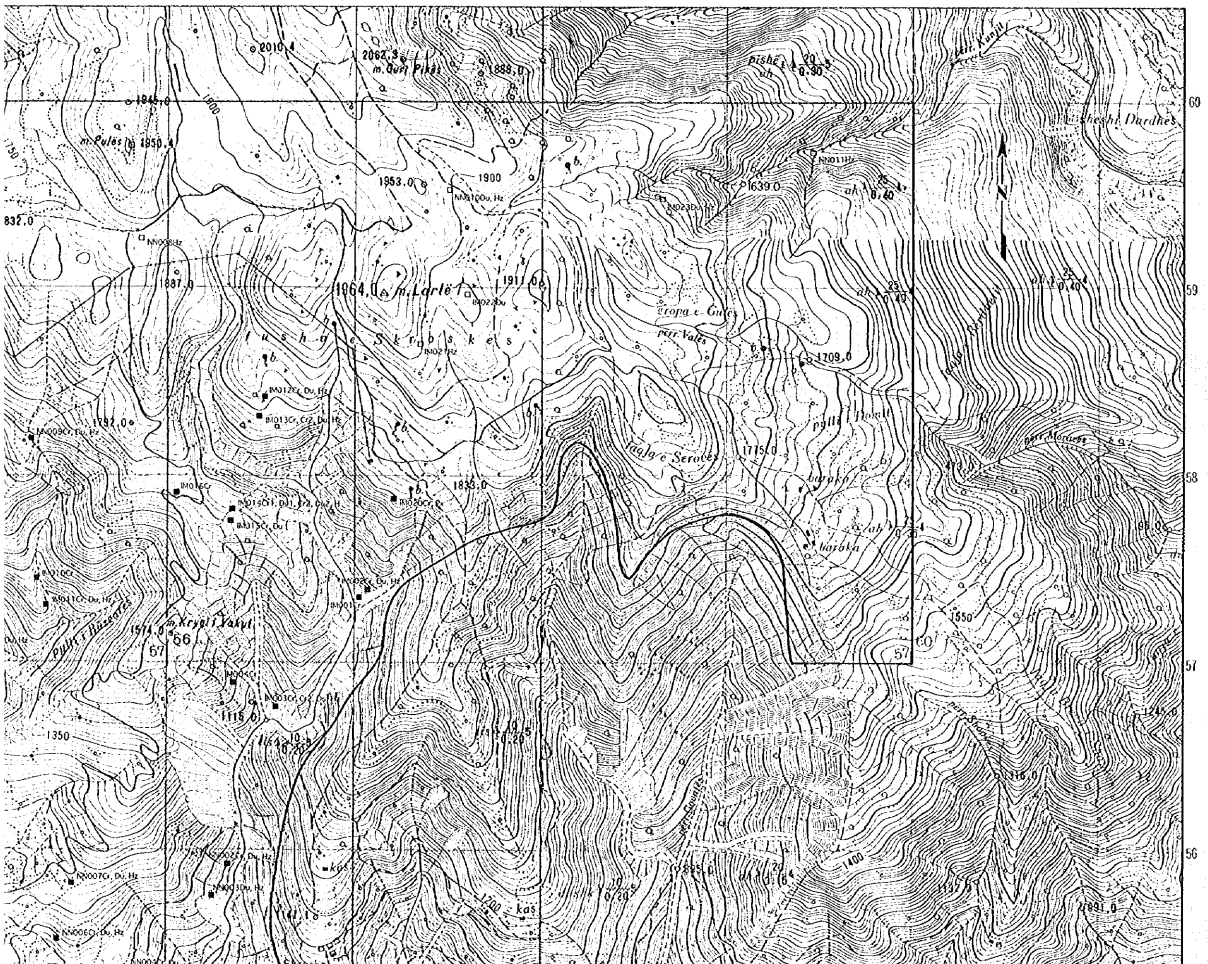


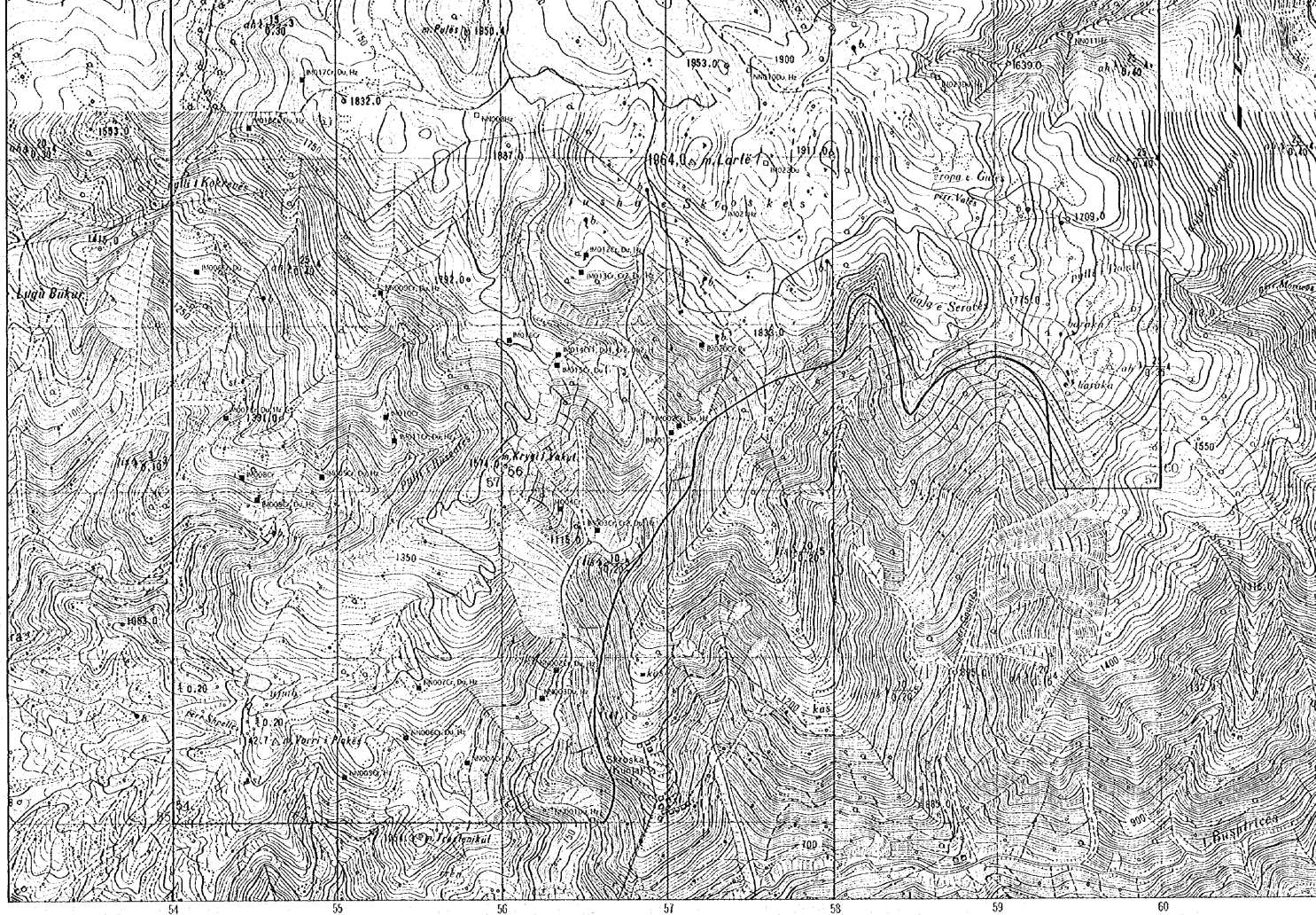
Japan International Cooperation Agency  
Metall Mining Agency of Japan  
February 1997



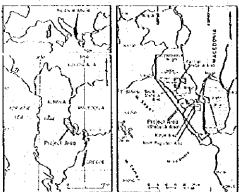
**LEGEND**

- Sample of the metallic deposit on indication
- Back sample
- Chemical
- △ Heavy metal
- ◇ Ductile
- ◇ Pyroxenite



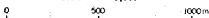






Japan International Cooperation Agency  
Metal Mining Agency of Japan  
February 1997

Scale 1:10,000



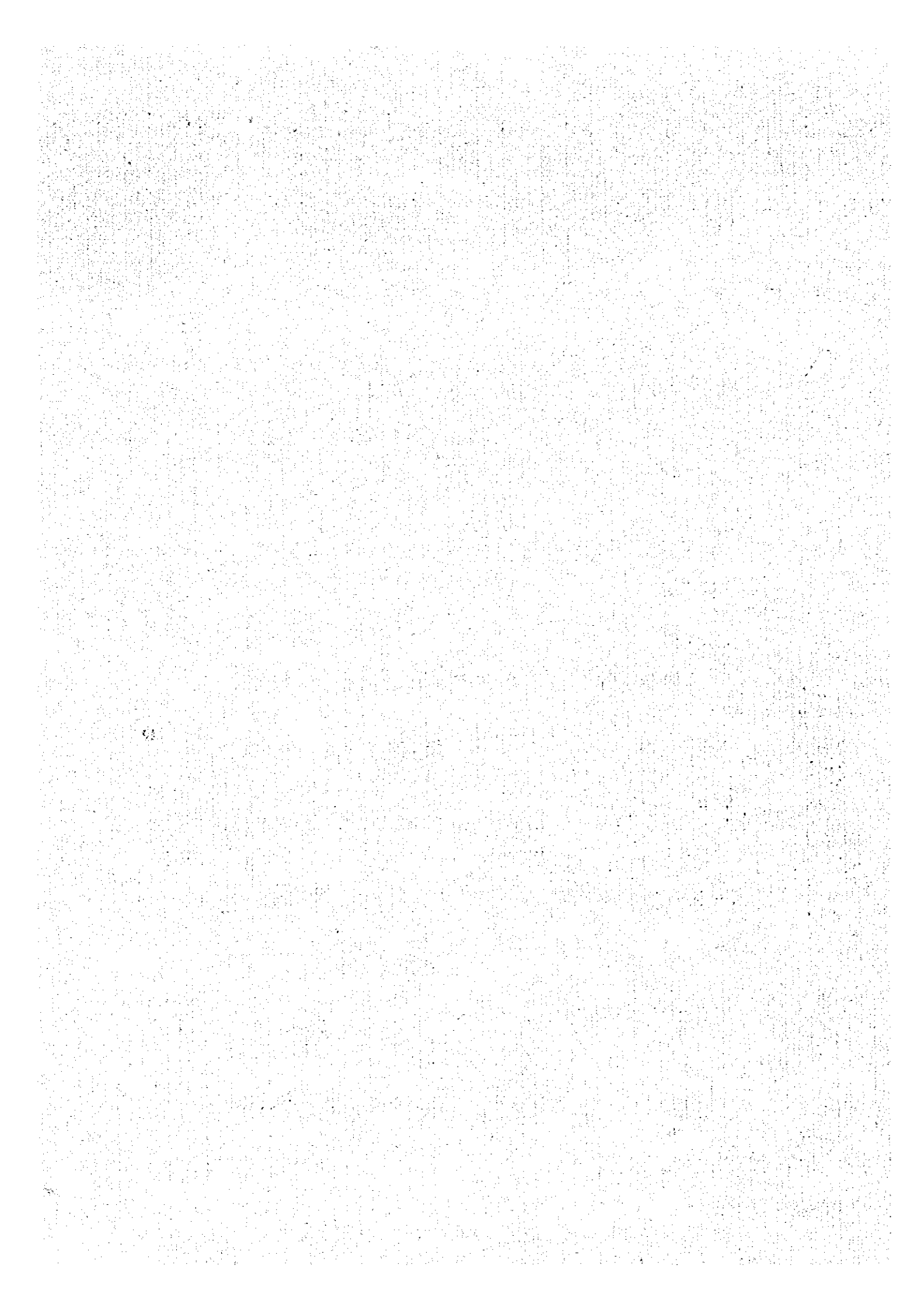
LEGEND

- Sample or chromitite deposits indication
- Rock sample
- Ct: Chromitite
- Hr: Harzburgite
- Dtr: Dunitite
- Py: Pyroxenite









JICA