

Table E.1-4 Monthly Relative Humidity at Vigan Station (1/13)

MONTHLY TOTAL AND ANNUAL CLIMATIC DATA  
RELATIVE HUMIDITY (%)

STATION: VIGAN, ILOCOS  
CMO: VIRGILIO ALON  
PERIOD: 1961-1994

LATITUDE: 17°34' N  
LONGITUDE: 120°23' E  
ELEVATION: 33 M

YEAR	JAN	FEB	MAR	APR	MAY	JUN	JUL	AUG	SEP	OCT	NOV	DEC	ANNUAL
1961	72	80	79	76	79	83	91	90	90	83	79	78	82
1962	77	70	74	72	73	82	87	85	87	81	77	76	78
1963	72	71	75	74	77	88	87	85	87	76	73	75	78
1964	73	72	72	73	77	82	84	88	86	80	83	79	79
1965	72	73	74	73	76	84	86	85	83	76	75	72	77
1966	76	75	73	73	79	80	81	84	85	76	83	81	79
1967	73	73	73	78	77	85	86	88	88	84	78	78	80
1968	74	72	75	73	74	79	86	91	88	75	67	76	78
1969	80	80	78	78	81	87	90	87	89	80	75	77	82
1970	74	73	78	77	79	85	87	91	91	87	82	83	82
1971	80	83	83	85	87	92	90	92	92	90	85	84	87
1972	83	81	79	83	87	89	95	92	87	80	79	79	85
1973	84	80	77	78	77	84	87	89	89	86	82	77	83
1974	72	77	76	80	81	86	85	92	88	90	86	84	83
1975	85	84	82	78	76	83	86	-20	84	86	83	84	83
1976	84	82	79	79	83	85	86	87	85	83	84	83	83
1977	82	80	81	78	79	82	86	88	90	83	84	84	83
1978	84	84	82	81	82	87	87	89	87	84	-20	78	84
1979	79	79	77	76	82	82	85	87	84	80	80	76	81
1980	77	74	73	74	78	79	85	82	87	82	82	78	79
1981	74	76	78	77	80	87	87	88	85	82	77	73	80
1982	70	77	77	77	79	81	-20	-20	-20	86	82	84	79
1983	81	83	80	77	77	80	80	86	82	82	74	67	79
1984	74	72	72	72	79	82	83	86	82	79	79	78	78
1985	-20	-20	-20	-20	79	89	80	85	82	81	76	63	79
1986	67	71	73	75	82	82	85	87	81	79	78	74	78
1987	64	62	69	70	68	79	79	77	79	77	76	73	73
1988	78	72	74	68	72	75	75	73	73	74	66	68	72
1989	71	69	73	71	-20	-20	-20	-20	-20	-20	-20	-20	71
1990	-20	-20	-20	-20	-20	-20	-20	-20	-20	-20	-20	-20	-20
1991	-20	-20	-20	-20	-20	-20	-20	-20	-20	-20	-20	-20	-20
1992	-20	-20	-20	-20	-20	-20	-20	-20	-20	-20	-20	-20	-20
1993	-20	-20	-20	-20	-20	-20	-20	-20	-20	-20	-20	-20	-20
1994	-20	-20	-20	85	78	83	88	86	79	77	72	70	80
TOTAL	2,132	2,125	2,136	2,211	2,278	2,422	2,394	2,340	2,390	2,359	2,197	2,232	2,395
MEAN	76	76	76	76	79	84	86	87	85	81	78	77	80
STDEV	5.5	5.4	3.6	4.2	4	3.7	4	4.3	4.2	4.3	5.1	5.5	3.6

\*\*NOTE: -20 means data is missing.

PREPARED BY: PAGASA/CAB/CDS

Table E.1-4 Monthly Relative Humidity at Dagupan Station (2/13)

MONTHLY TOTAL AND ANNUAL CLIMATIC DATA  
RELATIVE HUMIDITY (%)

STATION: DAGUPAN CITY, PANGASINAN      LATITUDE: 16°03' N  
 CMO: VIRGINIA BRASIA      LONGITUDE: 120°20' E  
 PERIOD: 1961-1994      ELEVATION: 2 M

YEAR	JAN	FEB	MAR	APR	MAY	JUN	JUL	AUG	SEP	OCT	NOV	DEC	ANNUAL
1961	72	73	71	68	77	81	87	86	87	81	75	75	78
1962	72	69	74	72	71	80	86	82	84	77	75	69	76
1963	70	68	68	68	70	87	84	84	86	76	76	77	76
1964	75	71	73	65	77	82	83	88	86	83	86	80	79
1965	75	72	73	73	80	82	86	85	85	77	78	74	78
1966	75	74	70	71	83	80	82	85	87	78	83	80	79
1967	73	71	73	74	74	86	87	89	85	83	77	77	79
1968	74	75	73	69	77	79	86	89	85	78	72	73	78
1969	75	75	74	73	77	83	86	84	89	81	76	76	79
1970	75	70	73	71	75	82	84	90	84	83	78	78	79
1971	72	71	69	72	78	82	82	79	83	82	79	74	77
1972	76	73	70	72	77	80	93	89	82	75	72	76	78
1973	75	69	67	65	73	81	83	88	81	81	77	72	76
1974	66	74	70	73	74	83	81	89	81	85	80	76	78
1975	71	68	72	66	76	80	83	87	82	83	74	74	76
1976	71	69	69	67	82	82	82	84	85	76	75	75	76
1977	77	71	70	68	73	78	82	84	88	74	78	71	76
1978	72	71	73	71	76	83	85	89	87	84	79	78	79
1979	73	77	70	72	80	78	82	85	82	80	80	73	78
1980	77	75	71	69	77	76	85	85	88	80	82	77	79
1981	70	74	69	69	77	86	84	88	81	82	79	73	78
1982	71	75	70	79	77	79	84	84	82	78	78	83	78
1983	81	76	76	67	74	82	80	86	84	84	79	75	79
1984	78	73	77	77	82	84	85	90	85	86	81	79	81
1985	77	74	73	78	75	89	85	90	86	86	82	80	81
1986	76	77	71	68	79	80	84	89	87	84	84	78	80
1987	71	71	68	72	72	82	83	84	85	83	81	79	78
1988	79	79	75	76	78	83	84	84	84	87	81	75	80
1989	77	76	78	76	80	82	84	85	84	81	77	75	80
1990	75	74	73	70	76	84	84	88	87	84	82	82	80
1991	81	82	75	78	79	82	86	89	89	84	83	78	82
1992	82	78	77	78	79	83	86	89	88	84	82	83	82
1993	77	77	76	79	78	82	86	88	89	85	84	84	82
1994	82	80	77	81	83	87	92	89	88	85	82	82	84
TOTAL	2,543	2,502	2,458	2,447	2,616	2,790	2,876	2,944	2,896	2,770	2,687	2,611	2,679
MEAN	75	74	72	72	77	82	85	87	85	81	79	77	79
STDEV	3.7	3.5	2.9	4.4	3.2	2.8	2.7	2.7	2.5	3.5	3.5	3.6	2.0

\*\*NOTE: 10 means data is missing.

PREPARED BY: PAGASA/CAB/CDS

Table E.1-4 Monthly Relative Humidity at Baler Station (3/13)

MONTHLY TOTAL AND ANNUAL CLIMATIC DATA  
RELATIVE HUMIDITY (%)

STATION: BALER, QUEZON  
CMO: AMADO FLORES  
PERIOD: 1961-1994

LATITUDE: 15°46' N  
LONGITUDE: 121°34' E  
ELEVATION: 6 M

YEAR	JAN	FEB	MAR	APR	MAY	JUN	JUL	AUG	SEP	OCT	NOV	DEC	ANNUAL
1961	77	83	84	83	83	83	80	78	77	83	84	82	81
1962	82	79	83	84	83	81	82	81	84	81	85	80	82
1963	82	85	82	80	80	79	80	84	82	80	83	85	82
1964	84	81	85	85	84	80	83	79	83	87	89	81	83
1965	80	82	82	83	82	79	82	82	82	83	85	81	82
1966	84	85	82	80	87	82	86	79	79	82	89	89	84
1967	81	80	82	84	77	80	79	81	80	81	81	78	80
1968	79	77	83	80	79	80	78	79	80	78	75	81	79
1969	84	77	79	82	78	79	87	83	81	81	80	83	81
1970	82	80	83	83	81	84	77	77	83	88	88	85	83
1971	79	81	77	77	83	85	80	76	79	87	86	87	81
1972	81	80	79	82	80	79	85	82	81	80	86	85	82
1973	83	84	80	81	78	78	81	80	86	83	85	80	82
1974	76	78	81	80	81	78	76	79	77	84	82	86	80
1975	86	83	83	82	80	83	79	76	83	84	81	85	82
1976	85	80	79	79	0	0	0	0	0	0	0	0	81
1977	0	0	0	0	0	0	0	0	0	0	0	0	0
1978	0	0	0	0	0	0	0	0	0	0	0	88	88
1979	84	84	81	81	80	86	80	82	84	85	85	81	83
1980	85	83	86	84	82	86	84	82	83	85	83	0	84
1981	0	0	0	0	0	0	0	0	0	0	0	0	0
1982	0	0	0	0	0	0	0	0	79	80	82	82	81
1983	84	82	84	81	81	80	80	78	79	82	77	79	81
1984	84	80	83	82	80	79	79	79	80	85	79	81	81
1985	79	83	80	80	80	77	79	76	81	80	81	79	80
1986	80	80	81	81	77	78	79	82	81	85	84	81	81
1987	82	81	81	80	79	79	78	80	81	81	83	82	81
1988	84	83	82	82	81	79	77	75	75	82	80	77	80
1989	79	80	83	79	82	79	79	75	77	79	78	75	79
1990	81	84	84	79	82	81	82	81	83	84	84	86	83
1991	87	86	83	84	82	83	83	83	82	82	85	85	84
1992	85	85	85	78	82	83	83	82	80	80	81	83	82
1993	81	80	81	81	78	80	78	78	82	83	85	87	81
1994	86	85	83	81	79	81	81	76	81	79	83	84	82
TOTAL	2,466	2,451	2,461	2,438	2,341	2,341	2,337	2,305	2,425	2,474	2,489	2,478	2,616
MEAN	82	82	82	81	81	81	81	79	81	82	83	83	82
STDEV	2.8	2.5	2.0	1.9	2.2	2.5	2.7	2.6	2.4	2.6	3.3	3.4	1.7

\*\*NOTE: 10 means data is missing.

PREPARED BY: PAGASA/CAB/CDS

Table E.1-4 Monthly Relative Humidity at Sangley Point Station (4/13)

MONTHLY TOTAL AND ANNUAL CLIMATIC DATA  
RELATIVE HUMIDITY (%)

STATION: SANGLEY POINT, CAVITE  
CMO: MARILYN MEDINA  
PERIOD: 1974-1994

LATITUDE: 14°30' N  
LONGITUDE: 120°55' E  
ELEVATION: 3 M

YEAR	JAN	FEB	MAR	APR	MAY	JUN	JUL	AUG	SEP	OCT	NOV	DEC	ANNUAL
1974	-	-	-	-	-	-	-	-	76	79	77	75	77
1975	75	69	66	65	64	74	76	82	79	80	79	80	74
1976	70	68	66	68	77	75	74	82	81	74	77	79	74
1977	80	76	69	68	68	74	80	80	84	76	80	73	76
1978	74	73	71	69	72	81	81	88	87	85	77	74	78
1979	77	-	-	71	-	-	81	83	81	82	81	77	79
1980	78	77	78	77	80	82	86	83	82	82	86	-	81
1981	89	85	78	76	81	84	82	85	83	84	86	87	83
1982	84	82	77	76	76	77	83	83	82	79	78	79	80
1983	76	76	71	68	68	72	78	80	80	84	80	77	76
1984	77	75	72	71	77	79	78	85	80	84	81	77	78
1985	75	73	71	69	68	81	78	80	80	81	79	77	76
1986	73	73	70	68	73	73	79	81	79	81	79	76	75
1987	72	69	65	65	64	71	75	74	75	74	76	77	71
1988	76	71	67	65	70	77	75	75	74	83	77	73	74
1989	75	75	74	70	73	77	80	84	82	80	-	-	77
1990	-	-	-	-	-	-	-	-	-	-	-	-	-
1991	-	-	-	-	-	-	-	-	87	82	84	79	83
1992	80	75	72	70	73	77	83	84	79	77	81	80	78
1993	79	78	69	67	67	71	77	83	82	79	76	78	76
1994	76	73	70	70	77	79	87	81	82	77	71	73	76
TOTAL	1,386	1,268	1,206	1,253	1,228	1,304	1,433	1,473	1,615	1,603	1,505	1,391	1,542
MEAN	77	75	71	70	72	77	80	82	81	80	79	77	77
STDEV	4.4	4.4	4.0	3.6	5.3	3.9	3.7	3.4	3.4	3.3	3.6	3.4	3.0

\*\*NOTE: 10 means data is missing.

PREPARED BY: PAGASA/CAB/CDS

Table E.1-4 Monthly Relative Humidity at Tayabas Station (5/13)

MONTHLY TOTAL AND ANNUAL CLIMATIC DATA  
RELATIVE HUMIDITY (%)

STATION: TAYABAS, QUEZON  
CMO: ENRIQUETA CAYETANO  
PERIOD: 1971-1994

LATITUDE: 14°02' N  
LONGITUDE: 121°35' E  
ELEVATION: 157.7 M

YEAR	JAN	FEB	MAR	APR	MAY	JUN	JUL	AUG	SEP	OCT	NOV	DEC	ANNUAL
1971	82	86	81	81	88	86	85	80	85	87	86	89	85
1972	84	83	83	82	82	83	83	85	87	83	86	86	84
1973	85	84	81	80	77	82	82	87	88	88	90	91	85
1974	89	87	82	79	84	82	85	82	84	87	88	88	85
1975	87	85	82	85	81	86	83	81	86	85	84	88	84
1976	87	83	81	80	83	83	85	87	86	87	89	90	85
1977	90	91	84	82	81	85	87	84	86	84	87	88	86
1978	83	85	82	79	85	87	87	89	89	91	88	88	86
1979	86	87	83	82	85	87	85	84	87	87	88	86	86
1980	85	85	83	81	82	87	90	89	89	89	89	89	87
1981	86	84	82	84	85	89	88	86	87	89	89	87	86
1982	85	87	83	84	81	83	84	84	86	87	89	90	85
1983	89	85	83	79	79	82	87	86	89	90	90	91	86
1984	91	88	87	85	87	89	88	90	89	89	89	90	89
1985	86	87	87	86	86	85	86	82	87	87	88	90	86
1986	91	89	87	82	82	82	85	87	87	89	87	90	87
1987	88	88	87	83	80	81	84	85	86	86	86	90	85
1988	89	87	83	83	81	85	85	84	86	90	89	83	85
1989	87	87	88	84	84	85	84	85	86	86	85	88	86
1990	87	86	85	79	82	85	85	84	85	90	88	90	86
1991	87	87	83	82	82	85	86	87	85	85	89	89	86
1992	86	85	82	80	83	83	88	85	85	87	87	87	85
1993	88	84	82	78	76	83	87	88	88	89	88	88	85
1994	86	84	84	83	82	85	87	86	89	86	87	88	86
TOTAL	2,084	2,064	2,005	1,963	1,978	2,030	2,056	2,047	2,082	2,098	2,106	2,124	2,056
MEAN	87	86	84	82	82	85	86	85	87	87	88	89	86
STDEV	2.3	2.0	2.1	2.2	2.9	2.2	1.9	2.5	1.5	2.0	1.5	1.8	1.0

\*\*NOTE: 10 means data is missing.

PREPARED BY: PAGASA/CAB/CDS

**Table E.1-4 Monthly Relative Humidity at Legaspi Station (6/13)**

**MONTHLY TOTAL AND ANNUAL CLIMATIC DATA  
RELATIVE HUMIDITY (%)**

**STATION: LEGASPI CITY, ALBAY**  
**CMO: ANTON ARISPE**  
**PERIOD: 1961-1994**

**LATITUDE: 13°08' N**  
**LONGITUDE: 123°44' E**  
**ELEVATION: 17 M**

YEAR	JAN	FEB	MAR	APR	MAY	JUN	JUL	AUG	SEP	OCT	NOV	DEC	ANNUAL
1961	80	81	82	83	83	82	83	85	83	85	84	84	83
1962	83	82	82	82	83	83	86	85	89	84	85	87	84
1963	85	84	83	81	81	83	86	88	88	85	87	86	85
1964	86	85	83	85	81	79	82	82	85	86	86	86	84
1965	0	80	83	83	81	84	85	84	85	86	86	86	84
1966	86	83	84	82	84	83	86	85	84	86	88	86	85
1967	83	80	79	81	79	81	83	83	84	84	82	83	82
1968	83	82	83	80	78	81	82	84	85	83	84	85	83
1969	83	82	80	81	79	77	80	82	86	85	83	87	82
1970	84	81	84	85	82	84	85	88	87	88	89	88	85
1971	84	87	82	85	86	87	85	84	86	88	87	91	86
1972	91	88	88	86	84	85	84	85	88	83	89	86	86
1973	81	81	77	80	78	80	83	84	86	85	85	89	82
1974	83	85	80	81	82	83	86	82	80	86	85	87	83
1975	85	84	82	86	83	83	85	84	88	86	83	87	85
1976	86	83	82	80	83	84	83	85	86	86	86	86	84
1977	86	85	81	83	82	82	85	82	87	84	88	84	84
1978	82	81	83	81	84	85	84	86	86	84	85	86	84
1979	80	81	78	81	81	84	84	85	84	83	85	83	82
1980	83	82	81	80	78	86	82	84	85	86	84	84	83
1981	82	82	79	82	81	82	84	81	83	85	87	85	83
1982	81	82	81	81	81	80	83	84	84	82	86	85	83
1983	83	77	77	75	75	77	82	81	83	86	85	86	81
1984	85	83	84	81	84	83	84	84	85	86	85	83	84
1985	82	83	83	84	83	82	86	84	86	87	87	85	84
1986	85	82	83	83	81	87	0	85	86	87	86	80	84
1987	82	81	81	80	79	80	83	82	84	83	87	87	82
1988	86	83	82	83	80	81	82	80	84	87	85	84	83
1989	86	88	86	84	82	84	85	83	85	84	83	84	85
1990	86	82	81	78	81	85	85	83	85	89	84	87	84
1991	85	86	82	82	84	85	85	85	84	86	85	86	85
1992	85	82	82	79	81	82	86	84	85	87	84	86	84
1993	84	84	83	80	80	82	87	87	88	86	89	89	85
1994	86	84	83	85	84	86	86	83	88	85	85	87	85
TOTAL	2,774	2,816	2,784	2,783	2,768	2,812	2,777	2,853	2,902	2,903	2,909	2,915	2,848
MEAN	84	83	82	82	81	83	84	84	85	85	86	86	84
STDEV	2.3	2.3	2.3	2.4	2.3	2.5	1.6	1.8	1.9	1.6	1.8	2.0	1.2

\*\*NOTE: 10 means data is missing.

PREPARED BY: PAGASA/CAB/CDS

Table E.1-4 Monthly Relative Humidity at Catbalogan Station (7/13)

MONTHLY TOTAL AND ANNUAL CLIMATIC DATA  
RELATIVE HUMIDITY (%)

STATION: CATBALOGAN, WESTERN SAMAR  
CMO: ANTONIO CABER  
PERIOD: 1961-1994

LATITUDE: 11°47' N  
LONGITUDE: 124°53' E  
ELEVATION: 5 M

YEAR	JAN	FEB	MAR	APR	MAY	JUN	JUL	AUG	SEP	OCT	NOV	DEC	ANNUAL
1961	81	83	82	81	83	80	78	79	79	84	82	84	81
1962	82	82	82	80	81	80	82	82	85	82	83	84	82
1963	84	77	77	77	78	74	79	82	79	84	83	81	80
1964	80	78	76	79	81	80	81	75	79	83	84	84	80
1965	81	80	85	84	79	81	81	81	81	84	84	84	82
1966	80	79	76	74	77	79	85	79	75	85	84	83	80
1967	81	82	78	76	75	76	78	77	81	82	82	82	79
1968	81	80	76	74	77	76	77	77	77	80	81	80	78
1969	77	72	69	74	76	80	80	80	80	81	82	86	78
1970	84	81	76	75	75	81	81	78	80	85	86	81	80
1971	79	84	83	79	83	85	81	80	79	82	86	83	82
1972	87	79	79	76	75	79	73	79	83	81	82	83	80
1973	76	75	71	72	74	76	80	80	84	83	83	88	79
1974	83	83	78	78	77	82	83	80	83	86	84	86	82
1975	84	83	77	81	80	83	82	78	82	82	84	87	82
1976	86	83	77	76	77	81	80	82	80	83	87	87	82
1977	84	85	80	75	76	81	82	79	80	85	84	81	81
1978	81	81	77	74	78	81	77	77	83	84	85	87	80
1979	83	84	80	79	79	84	82	80	83	83	89	86	83
1980	86	82	80	79	77	86	84	85	84	86	87	88	84
1981	87	83	80	79	80	81	84	78	84	86	88	87	83
1982	85	86	80	79	81	79	80	78	80	81	84	84	81
1983	80	73	75	68	69	74	81	78	80	82	83	86	77
1984	84	81	79	75	76	77	76	74	82	83	85	86	80
1985	85	77	76	76	77	75	79	74	82	81	82	82	79
1986	81	80	79	79	76	80	80	78	79	82	82	80	80
1987	82	81	76	74	75	76	82	81	78	81	87	85	80
1988	81	79	76	77	76	81	80	80	82	84	86	85	81
1989	85	85	84	78	83	81	81	77	79	81	84	83	82
1990	83	78	74	73	81	83	81	77	80	85	86	82	80
1991	80	80	79	77	80	82	82	77	79	81	79	0	80
1992	0	0	0	0	0	0	0	0	0	81	80	78	80
1993	78	80	77	75	72	78	81	80	80	0	86	86	79
1994	85	78	78	81	80	84	81	79	83	84	83	84	82
TOTAL	2,716	2,654	2,572	2,534	2,564	2,636	2,654	2,601	2,665	2,737	2,857	2,773	2,739
MEAN	82	80	78	77	78	80	80	79	81	83	84	84	81
STDEV	2.8	3.3	3.3	3.2	3.2	3.1	2.4	2.3	2.3	1.7	2.3	2.5	1.6

\*\*NOTE: 10 means data is missing.

PREPARED BY: PAGASA/CAB/CDS

**Table E.1-4 Monthly Relative Humidity at Tacloban Station (8/13)**

**MONTHLY TOTAL AND ANNUAL CLIMATIC DATA  
RELATIVE HUMIDITY (%)**

<b>STATION:</b>	<b>TACLOBAN CITY, LEYTE</b>	<b>LATITUDE:</b>	<b>11°14' N</b>
<b>CMO:</b>	<b>BONIFACIO FURING</b>	<b>LONGITUDE:</b>	<b>125°02' E</b>
<b>PERIOD:</b>	<b>1961-1994</b>	<b>ELEVATION:</b>	<b>3 M</b>

YEAR	JAN	FEB	MAR	APR	MAY	JUN	JUL	AUG	SEP	OCT	NOV	DEC	ANNUAL
1961	82	82	79	78	81	80	80	79	77	80	81	84	80
1962	84	85	85	80	82	82	80	80	83	81	84	85	83
1963	87	82	84	79	82	74	78	82	77	80	83	82	81
1964	81	81	78	82	81	81	81	75	79	82	82	83	81
1965	81	82	84	84	82	83	82	82	84	84	86	87	83
1966	84	86	83	78	80	82	84	82	75	85	84	86	82
1967	86	85	81	79	79	77	78	76	79	81	83	83	81
1968	83	81	81	80	79	79	76	76	77	79	81	83	80
1969	81	78	78	81	81	82	81	80	78	82	82	86	81
1970	83	81	81	79	79	82	81	79	79	85	90	87	82
1971	82	87	83	81	86	85	81	81	81	84	86	85	84
1972	87	81	83	82	80	86	73	83	85	82	84	87	83
1973	80	82	79	81	81	81	83	83	85	83	86	88	83
1974	83	86	82	83	83	84	83	77	84	86	83	88	84
1975	85	84	82	86	84	85	85	81	86	86	88	91	85
1976	91	89	85	82	82	84	82	80	80	84	87	87	84
1977	86	86	84	80	81	83	84	79	75	80	85	83	82
1978	85	84	81	79	80	81	80	79	82	84	87	88	83
1979	80	83	79	81	85	87	84	82	86	85	88	88	84
1980	90	86	83	84	83	89	89	89	87	91	91	93	88
1981	92	87	85	86	87	86	88	86	90	91	91	90	88
1982	91	90	88	86	86	87	86	85	85	85	86	90	87
1983	86	86	84	0	77	86	90	88	88	88	90	91	87
1984	91	90	89	85	86	86	88	85	89	88	90	89	88
1985	90	87	85	84	82	78	82	82	89	88	87	87	85
1986	91	87	86	85	82	84	84	81	85	87	87	86	85
1987	86	87	84	81	78	83	88	86	83	87	89	87	85
1988	87	85	83	84	84	86	85	87	87	85	90	91	86
1989	90	89	90	86	88	88	86	84	85	86	88	88	87
1990	87	85	84	83	85	86	84	82	84	87	86	85	85
1991	0	84	83	79	83	81	80	79	77	80	82	82	81
1992	83	80	80	76	75	72	80	79	82	84	83	86	80
1993	84	84	82	81	78	80	86	85	87	85	89	90	84
1994	88	84	80	83	82	85	80	82	84	82	85	86	83
<b>TOTAL</b>	<b>2,827</b>	<b>2,876</b>	<b>2,818</b>	<b>2,698</b>	<b>2,784</b>	<b>2,815</b>	<b>2,812</b>	<b>2,776</b>	<b>2,814</b>	<b>2,867</b>	<b>2,924</b>	<b>2,952</b>	<b>2,845</b>
<b>MEAN</b>	<b>86</b>	<b>85</b>	<b>83</b>	<b>82</b>	<b>82</b>	<b>83</b>	<b>83</b>	<b>82</b>	<b>83</b>	<b>84</b>	<b>86</b>	<b>87</b>	<b>84</b>
<b>STDEV</b>	<b>3.6</b>	<b>2.9</b>	<b>2.9</b>	<b>2.7</b>	<b>3.0</b>	<b>3.8</b>	<b>3.8</b>	<b>3.4</b>	<b>4.2</b>	<b>3.1</b>	<b>3.0</b>	<b>2.8</b>	<b>2.4</b>

\*\*NOTE: 10 means data is missing.

PREPARED BY: PAGASA/CAB/CDS



Table E.1-4 Monthly Relative Humidity at Tagbilaran Station (9/13)

MONTHLY TOTAL AND ANNUAL CLIMATIC DATA  
RELATIVE HUMIDITY (%)

STATION: TAGBILARAN CITY, BOHOL  
CMO: EMMANUEL ORONAN  
PERIOD: 1961-1994

LATITUDE: 09°38' N  
LONGITUDE: 123°52' E  
ELEVATION: 6 M

YEAR	JAN	FEB	MAR	APR	MAY	JUN	JUL	AUG	SEP	OCT	NOV	DEC	ANNUAL
1961	83	83	82	82	83	84	83	79	78	83	85	86	83
1962	84	84	85	79	79	84	82	84	85	84	84	85	83
1963	87	84	84	77	77	75	79	83	81	85	88	85	82
1964	84	84	78	84	84	84	84	78	83	85	86	86	83
1965	86	83	86	84	81	82	81	83	81	85	85	83	83
1966	79	79	78	73	77	81	85	81	76	85	86	86	81
1967	86	83	83	78	78	77	80	76	76	81	83	84	80
1968	82	81	77	74	77	80	78	78	75	82	80	82	79
1969	79	75	73	72	76	81	81	82	80	84	81	85	79
1970	82	81	78	72	77	82	80	76	79	84	84	84	80
1971	81	86	81	77	85	85	82	81	80	87	88	85	83
1972	85	82	81	79	78	82	72	80	84	82	84	81	81
1973	81	74	77	78	78	81	83	83	88	83	88	89	82
1974	84	86	83	85	84	85	84	78	84	86	87	89	85
1975	88	86	83	83	86	85	0	81	86	87	87	88	85
1976	88	88	86	82	82	86	83	84	84	85	88	87	85
1977	86	86	83	76	80	86	86	84	84	86	86	82	84
1978	84	83	76	77	81	82	82	79	85	84	83	85	82
1979	80	78	76	77	79	84	83	79	83	84	85	80	81
1980	86	84	77	79	77	86	82	83	81	84	86	86	83
1981	84	83	76	75	81	77	82	75	82	86	87	81	81
1982	80	83	82	80	80	83	80	80	81	82	84	84	82
1983	0	75	74	72	72	76	83	81	83	85	85	87	79
1984	87	85	84	83	83	83	82	77	84	83	86	87	84
1985	85	82	79	79	82	81	84	78	84	86	87	85	83
1986	88	83	81	80	74	77	79	76	80	84	86	84	81
1987	82	83	80	73	72	75	81	80	82	83	85	85	80
1988	80	81	75	79	80	82	83	83	82	83	84	82	81
1989	83	80	81	83	83	82	82	80	80	82	83	80	82
1990	84	78	79	76	82	86	82	0	81	85	85	82	82
1991	82	81	80	77	81	80	84	79	79	82	83	81	81
1992	80	75	73	71	70	76	80	78	77	82	83	84	77
1993	80	87	82	81	77	79	82	82	81	82	86	86	82
1994	85	81	81	82	83	86	80	77	82	83	84	87	83
TOTAL	2,755	2,787	2,714	2,659	2,699	2,775	2,694	2,638	2,771	2,854	2,892	2,873	2,782
MEAN	83	82	80	78	79	82	82	80	82	84	85	85	82
STDEV	2.8	3.6	3.6	3.9	3.8	3.4	2.5	2.6	3.0	1.6	2.0	2.4	1.8

\*\*NOTE: 10 means data is missing.

PREPARED BY: PAGASA/CAB/CDS

Table E.1-4 Monthly Relative Humidity at Roxas Station (10/13)

MONTHLY TOTAL AND ANNUAL CLIMATIC DATA  
RELATIVE HUMIDITY (%)

STATION: ROXAS CITY AKLAN  
CMO: TEDDY ROLLAN  
PERIOD: 1961-1994  
LATITUDE: 11°35' N  
LONGITUDE: 122°45' E  
ELEVATION: 4 M

YEAR	JAN	FEB	MAR	APR	MAY	JUN	JUL	AUG	SEP	OCT	NOV	DEC	ANNUAL
1961	78	82	78	76	79	80	78	81	79	80	77	79	79
1962	81	81	80	75	75	78	82	81	84	77	79	78	79
1963	81	77	77	72	73	76	79	82	81	79	81	79	78
1964	78	80	73	73	76	76	80	76	81	84	85	80	79
1965	81	77	79	76	75	78	81	81	82	81	81	85	80
1966	81	74	72	69	81	76	81	80	78	80	81	83	78
1967	84	82	78	72	72	73	78	77	76	80	80	76	77
1968	78	76	74	68	71	77	77	77	79	77	78	78	76
1969	78	73	71	71	73	79	83	80	80	80	81	83	78
1970	76	74	76	74	71	81	81	82	80	77	77	75	77
1971	78	83	82	79	83	89	84	81	77	84	82	82	82
1972	84	80	80	76	77	81	76	81	84	79	80	81	80
1973	77	78	75	76	74	79	81	83	85	81	83	82	80
1974	79	79	77	77	77	80	80	78	81	83	81	81	79
1975	81	86	84	84	84	86	85	85	88	88	80	86	85
1976	79	78	77	75	79	79	82	81	81	81	80	84	80
1977	82	-20	79	78	78	80	82	82	82	78	79	76	80
1978	77	78	78	77	76	79	78	78	75	-20	74	74	77
1979	76	80	78	76	79	84	85	86	87	86	83	82	82
1980	85	85	83	80	81	85	85	85	84	86	84	85	84
1981	82	85	83	-20	80	84	86	84	84	85	85	84	84
1982	80	85	83	82	80	82	83	85	86	84	82	83	83
1983	81	77	77	74	74	81	84	84	85	86	85	89	81
1984	87	88	84	83	82	82	82	83	84	85	82	-20	84
1985	-20	-20	-20	-20	-20	-20	87	85	87	87	87	86	87
1986	88	86	86	85	82	85	86	86	86	87	87	85	86
1987	87	87	83	80	79	81	86	85	87	85	88	88	85
1988	86	85	82	83	81	86	87	86	87	89	88	87	86
1989	89	89	87	84	86	87	87	88	87	86	87	86	87
1990	87	85	83	82	81	85	85	85	86	86	86	86	85
1991	84	84	83	82	80	83	86	87	87	86	84	88	85
1992	86	84	83	81	81	83	87	87	86	88	88	86	85
1993	85	83	80	80	79	81	85	86	85	83	86	87	83
1994	86	82	81	80	82	85	85	83	84	82	82	85	83
TOTAL	2,702	2,603	2,626	2,480	2,581	2,681	2,814	2,811	2,825	2,740	2,603	2,729	2,774
MEAN	82	81	80	78	78	81	83	83	83	83	82	83	82
STDEV	3.8	4.3	4.0	4.5	3.9	3.7	3.2	3.2	3.6	3.5	3.5	4.0	3.3

\*\*NOTE: -20 means data is missing.

PREPARED BY: PAGASA/CAB/CDS

Table E.1-4 Monthly Relative Humidity at Surigao Station (11/13)

MONTHLY TOTAL AND ANNUAL CLIMATIC DATA  
RELATIVE HUMIDITY (%)

STATION: SURIGAO, SURIGAO DEL NORTE  
CMO: GERALDINO WARLITO  
PERIOD: 1961-1994

LATITUDE: 09°48' N  
LONGITUDE: 125°30' E  
ELEVATION: 39 M

YEAR	JAN	FEB	MAR	APR	MAY	JUN	JUL	AUG	SEP	OCT	NOV	DEC	ANNUAL
1961	91	90	86	86	83	82	82	78	83	81	87	89	85
1962	92	94	89	84	86	82	81	84	85	85	88	91	87
1963	94	94	91	84	85	78	81	84	80	85	90	88	86
1964	90	89	86	88	85	85	87	80	83	86	-	87	86
1965	87	89	88	86	81	80	79	80	80	85	86	88	84
1966	86	84	85	84	85	83	85	80	77	86	87	89	84
1967	87	89	86	84	81	78	79	76	78	82	85	88	83
1968	91	87	86	84	83	82	79	80	79	84	86	89	84
1969	86	85	86	85	85	85	84	83	82	84	88	91	85
1970	92	90	86	85	87	86	84	82	83	88	89	90	87
1971	90	92	89	85	86	85	80	82	80	85	88	90	86
1972	90	88	88	86	82	82	76	83	81	84	89	87	85
1973	82	85	83	86	84	82	82	81	86	86	90	90	85
1974	90	90	87	86	83	81	81	80	80	82	86	91	85
1975	88	88	85	86	83	82	83	78	80	79	82	87	83
1976	87	89	85	82	81	84	84	85	83	85	85	88	85
1977	85	87	86	81	80	82	83	78	78	-	83	84	82
1978	88	85	80	83	84	81	81	79	80	80	84	85	83
1979	-	-	-	-	-	-	-	-	-	-	-	-	-
1980	-	-	-	-	-	-	-	-	-	-	-	-	-
1981	-	-	-	-	-	-	-	-	-	-	-	-	-
1982	-	-	-	-	-	-	-	-	-	-	-	-	-
1983	-	-	-	-	-	-	-	-	-	-	-	-	-
1984	-	-	-	-	-	-	-	-	-	-	-	91	91
1985	87	84	85	84	84	78	84	76	83	85	88	87	84
1986	92	86	88	86	82	82	81	77	81	85	87	86	84
1987	85	89	85	83	80	80	83	80	77	82	88	88	83
1988	87	88	86	85	83	85	83	84	84	85	89	91	86
1989	93	91	88	86	85	86	84	81	81	86	89	88	87
1990	91	89	87	85	86	84	-	-	-	-	-	82	86
1991	85	81	79	79	-	-	-	-	-	-	84	88	83
1992	86	84	85	82	80	81	84	79	77	84	85	88	83
1993	87	89	83	85	84	80	83	84	83	85	-	-	84
1994	89	88	88	87	83	86	81	81	83	84	88	89	86
TOTAL	2,478	2,464	2,406	2,367	2,251	2,222	2,134	2,095	2,107	2,103	2,171	2,470	2,462
MEAN	89	88	86	85	83	82	82	81	81	84	87	88	85
STDEV	2.9	3.0	2.5	1.9	2.0	2.4	2.3	2.6	2.5	2.1	2.2	2.2	1.8

\*\*NOTE: 10 means data is missing.

PREPARED BY: PAGASA/CAB/CDS

Table E.1-4 Monthly Relative Humidity at Malaybalay Station (12/13)

MONTHLY TOTAL AND ANNUAL CLIMATIC DATA  
RELATIVE HUMIDITY (%)

STATION: MALAYBALAY BUKIDNON  
CMO: JOVITO CABACOG  
PERIOD: 1961-1994

LATITUDE: 08°09' N  
LONGITUDE: 125°05' E  
ELEVATION: 627 M

YEAR	JAN	FEB	MAR	APR	MAY	JUN	JUL	AUG	SEP	OCT	NOV	DEC	ANNUAL
1961	88	84	78	79	81	85	88	87	87	86	82	83	84
1962	84	89	84	80	87	93	89	87	87	83	81	82	86
1963	87	87	83	73	81	86	98	90	88	86	81	81	85
1964	80	81	78	83	86	86	83	85	85	86	88	85	84
1965	84	81	83	81	79	89	89	88	87	85	83	81	84
1966	81	78	80	81	86	84	88	86	85	87	87	85	84
1967	86	85	82	76	82	85	88	87	86	87	85	83	84
1968	87	84	81	73	75	79	84	86	86	86	82	89	83
1969	86	84	79	76	77	83	86	82	88	79	80	79	82
1970	80	83	80	73	73	79	82	84	79	83	82	86	80
1971	84	85	82	75	77	85	85	80	80	87	83	83	82
1972	84	81	84	76	76	78	81	83	86	80	79	79	81
1973	76	77	75	76	77	80	84	83	85	83	86	83	80
1974	84	84	78	82	81	83	86	84	79	88	85	88	84
1975	84	82	83	83	83	88	87	87	86	89	84	88	85
1976	88	83	82	79	86	88	88	89	87	85	87	89	86
1977	85	84	77	70	80	82	87	89	89	86	84	81	83
1978	94	92	90	77	81	79	87	85	85	85	83	84	85
1979	80	77	78	77	79	81	87	85	86	86	84	86	82
1980	90	87	79	82	81	88	86	87	88	87	85	87	86
1981	90	88	83	80	78	86	87	84	85	85	84	85	85
1982	86	-20	-20	-20	-20	-20	-20	-20	-20	-20	-20	-20	86
1983	-20	-20	-20	-20	-20	-20	-20	-20	-20	-20	91	90	91
1984	91	89	88	83	84	86	86	89	88	88	83	84	87
1985	84	84	82	82	85	86	90	90	92	90	86	86	86
1986	89	81	83	75	82	88	89	87	89	86	88	79	85
1987	81	83	78	75	79	89	92	91	89	90	89	86	85
1988	81	85	81	82	84	90	88	85	88	89	88	89	86
1989	87	87	86	82	86	90	90	91	87	89	84	82	87
1990	86	79	76	76	85	89	90	90	89	88	91	87	86
1991	85	85	79	80	86	87	91	91	89	90	88	85	86
1992	87	84	82	81	82	88	89	90	88	92	88	89	87
1993	83	87	82	82	81	87	89	89	88	87	85	87	86
1994	82	82	83	82	84	88	87	86	88	85	82	83	84
TOTAL	2,804	2,682	2,599	2,512	2,604	2,735	2,801	2,777	2,769	2,763	2,798	2,794	2,877
MEAN	85	84	81	79	81	85	88	87	87	86	85	85	85
STDEV	3.7	3.5	3.3	3.6	3.7	3.8	3.2	2.8	2.8	2.8	3.0	3.1	2.2

\*\*NOTE: -20 means data is missing.

PREPARED BY: PAGASA/CAB/CDS

Table E.1-4 Monthly Relative Humidity at Davao Station (13/13)

MONTHLY TOTAL AND ANNUAL CLIMATIC DATA  
RELATIVE HUMIDITY (%)

STATION: DAVAO CITY, DAVAO DEL SUR  
CMO: CARLOS ARISPE  
PERIOD: 1961-1994

LATITUDE: 07°07' N  
LONGITUDE: 125°39' E  
ELEVATION: 18 M

YEAR	JAN	FEB	MAR	APR	MAY	JUN	JUL	AUG	SEP	OCT	NOV	DEC	ANNUAL
1961	82	82	76	80	82	83	84	82	81	80	78	82	81
1962	87	88	83	80	83	83	84	84	84	79	81	83	83
1963	83	85	80	76	80	79	83	83	81	81	81	80	81
1964	80	82	78	82	83	83	82	79	81	82	81	80	81
1965	81	82	81	79	80	84	83	81	82	81	80	84	82
1966	82	79	76	78	83	83	84	83	80	81	81	82	81
1967	85	83	80	77	81	81	80	79	79	80	79	80	80
1968	83	82	80	75	78	78	80	79	78	81	79	83	80
1969	83	77	77	75	79	84	84	83	84	81	83	83	81
1970	83	82	82	80	81	84	81	82	79	84	83	84	82
1971	83	84	79	78	82	84	82	81	80	83	82	82	82
1972	79	80	81	77	81	82	80	80	81	79	81	80	80
1973	77	80	78	83	80	80	81	81	82	80	84	82	81
1974	83	87	84	84	82	83	83	81	80	84	83	85	83
1975	84	83	83	83	84	85	83	82	83	84	83	86	84
1976	86	84	83	79	80	82	81	81	80	81	82	83	82
1977	86	85	83	78	80	84	85	85	83	84	84	85	84
1978	82	82	76	79	85	85	80	81	79	81	79	81	81
1979	79	78	79	76	81	83	84	79	79	79	81	79	80
1980	84	81	73	77	79	85	82	83	81	83	82	84	81
1981	84	81	78	78	82	82	82	78	82	82	85	82	81
1982	86	86	79	81	82	86	83	85	84	83	83	82	83
1983	80	77	75	72	75	83	86	86	84	85	82	88	81
1984	88	88	83	84	83	85	84	81	85	84	84	85	85
1985	82	82	81	83	83	81	84	83	85	85	85	84	83
1986	88	81	85	79	81	85	84	81	83	83	84	78	83
1987	82	82	77	75	81	84	85	92	82	85	82	81	82
1988	79	84	81	80	85	85	83	83	83	82	83	83	83
1989	82	82	84	82	82	83	82	81	83	85	82	84	83
1990	89	80	78	75	80	84	82	80	82	82	81	79	81
1991	82	82	74	73	81	83	83	80	78	77	79	77	79
1992	74	70	69	70	76	81	82	81	78	78	78	83	77
1993	79	81	77	77	78	81	83	82	83	79	80	82	80
1994	80	80	80	79	81	85	80	81	81	78	78	80	80
TOTAL	2,807	2,782	2,693	2,664	2,754	2,823	2,809	2,773	2,770	2,776	2,773	2,796	2,771
MEAN	83	82	79	78	81	83	83	82	81	82	82	82	82
STDEV	3.2	3.4	3.5	3.4	2.2	1.9	1.6	1.8	2.0	2.3	2.0	2.4	1.6

\*\*NOTE: 10 means data is missing.

PREPARED BY: PAGASA/CAB/CDS

**Table E.1-5 Monthly Pan Evaporation at Bsu La Trinidad Benguet Station (1/10)**

**MONTHLY MEAN AND ANNUAL AGROCLIMATIC DATA  
OPEN PAN EVAPORATION (mm)**

**STATION:** BSU (MSAC) LA TRINIDAD BENGUET  
**CMO:** PEDRO RIGOS  
**PERIOD:** 1976-1994

**LATITUDE:** 16°27' N  
**LONGITUDE:** 120°35' E  
**ELEVATION:** 1317.4 M

YEAR	JAN	FEB	MAR	APR	MAY	JUN	JUL	AUG	SEP	OCT	NOV	DEC	ANNUAL
1976	-2	-2	-2	-2	-2	-2	-2	2	2.7	3.2	2.6	2.5	2.6
1977	2.7	3.6	3.5	3.8	3	3.6	3	2.9	2.2	2.9	2.5	3	3.1
1978	3.1	3.2	3.4	3.3	3.1	2.2	2.6	1.7	2.2	2.3	3	3.1	2.8
1979	3.4	3.4	3.4	2.8	2.7	3.2	2.6	2.2	2.6	2.5	2.5	2.4	2.8
1980	-2	3.3	3.6	3.6	2.6	2.9	1.9	2.4	2.6	2.7	2.3	3	2.8
1981	-2	3.5	4.6	4.6	3.1	3.1	3.2	1.9	3	3	2.7	2.6	3.2
1982	-2	3.4	3.9	3	3.5	3.2	1.5	1.6	2.7	2.9	3.1	2.5	2.8
1983	-2	3.7	4.5	4.2	8.5	6.8	5.1	2.6	3.9	-2	5.7	6.9	5.2
1984	-2	-2	-2	-2	-2	-2	-2	-2	-2	-2	-2	-2	-2
1985	-2	-2	-2	-2	-2	-2	-2	-2	-2	-2	5.2	6	5.6
1986	-2	6.5	6.7	7.5	4.8	4.7	3.6	1.9	3.3	3.7	4.9	5.1	4.8
1987	6.4	7	10.5	7	4.4	3.1	4.4	3.4	3.6	-2	6.7	-2	5.7
1988	5.5	4.9	7.8	5.3	3.2	2.2	3.9	2.8	2.2	2.9	5.9	6.3	4.4
1989	7.8	6.3	-2	-2	-2	-2	-2	5.3	-2	-2	-2	-2	22.5
1990	-2	-2	-2	-2	-2	0.3	-2	-2	-2	-2	-2	-2	0.3
1991	-2	-2	-2	-2	-2	-2	-2	-2	-2	-2	2.8	2.9	2.8
1992	2.2	3.2	-2	3.1	6	3	2.4	2.6	2.5	-2	2.3	2.3	3
1993	2.5	3	3.4	3.2	3.2	-2	-2	-2	-2	-2	-2	-2	3.1
1994	-2	-2	-2	-2	-2	-2	-2	-2	-2	-2	-2	-2	-2
TOTAL	33.6	55.0	55.3	51.4	48.1	38.3	34.2	81.4	33.5	26.1	52.2	48.6	77.4
MEAN (mm/day)	4.2	4.2	5.0	4.3	4.0	3.2	3.1	2.8	2.8	2.9	3.7	3.7	4.6
(mm/month)	130.2	117.6	155.0	129.0	124.0	120.0	96.1	86.8	84.0	89.9	111.0	114.7	1,358.3
STDEV	2.1	1.4	2.3	1.6	1.7	1.5	1.1	14.2	0.6	0.4	1.6	1.7	4.8

\*\*NOTE: -2 means data is missing.

PREPARED BY: PAGASA/CAB/CDS

Table E.1-5 Monthly Pan Evaporation at Hacienda Luisita Station (2/10)

MONTHLY MEAN AND ANNUAL AGROCLIMATIC DATA  
OPEN PAN EVAPORATION (mm)

STATION: HACIENDA LUISITA TARLAG  
CMO: MARY PASION  
PERIOD: 1968-1994

LATITUDE: 15°26' N  
LONGITUDE: 120°36' E  
ELEVATION: 0 M

YEAR	JAN	FEB	MAR	APR	MAY	JUN	JUL	AUG	SEP	OCT	NOV	DEC	ANNUAL
1968	5.1	5.9	7.8	8.0	6.1	5.5	5.1	3.5	3.9	5.1	5.5	4.9	5.5
1969	5.2	6.2	7.6	8.3	6.7	5.0	4.7	4.6	3.5	4.2	4.6	4.9	5.5
1970	-2	-2	-2	-2	-2	-2	-2	-2	-2	-2	-2	-2	-2
1971	5.0	6.2	7.0	7.6	4.9	4.3	4.3	4.5	3.7	4.5	4.0	4.0	5.0
1972	4.2	5.2	6.2	6.3	5.4	4.8	1.9	2.7	4.3	4.7	4.7	-2	4.6
1973	-2	-2	7.2	8.3	6.7	4.9	4.4	3.4	4.2	4.4	4.4	4.6	5.3
1974	5.1	6.0	6.7	7.3	5.4	4.1	5.0	2.8	4.9	2.9	4.0	5.3	5.0
1975	0.0	-2	-2	-2	-2	-2	-2	-2	-2	-2	-2	-2	-2
1976	5.2	6.2	7.7	7.4	5.4	4.8	4.4	3.6	3.2	3.8	5.4	4.4	5.1
1977	4.1	6.3	6.5	7.3	5.8	4.5	4.0	3.7	3.2	4.8	4.6	5.5	5.0
1978	5.2	5.7	6.6	7.1	6.7	4.0	3.5	2.2	2.8	2.9	4.1	5.0	4.7
1979	4.4	5.0	6.1	6.9	4.8	4.3	3.5	3.9	3.9	3.5	3.9	4.3	4.5
1980	-2	-2	-2	-2	-2	-2	-2	-2	-2	-2	-2	-2	-2
1981	4.5	5.9	7.4	8.2	6.1	3.8	4.3	3.3	4.2	4.0	4.4	4.2	5.0
1982	4.9	5.8	6.6	5.7	5.6	4.4	3.1	2.7	3.2	3.8	4.4	3.8	4.5
1983	3.9	4.8	6.0	7.4	6.4	5.5	5.0	3.6	3.8	3.0	4.0	5.2	4.9
1984	3.9	5.9	6.2	6.7	4.0	4.0	3.7	1.8	3.9	2.8	3.9	4.0	4.2
1985	4.5	5.5	6.5	5.4	5.8	-2	-2	0.0	-2	-2	0.0	-2	4.0
1986	-2	-2	4.9	5.9	4.3	3.3	4.0	2.5	4.3	4.2	3.3	4.2	4.1
1987	-2	4.4	5.2	5.6	5.3	3.4	2.7	3.2	2.7	3.5	3.2	2.7	3.8
1988	3.2	4.5	6.2	7.0	5.8	4.3	4.6	4.1	4.2	3.3	3.8	4.8	4.6
1989	5.9	5.8	5.6	5.9	5.6	4.7	3.3	3.4	4.1	6.8	4.9	3.8	5.0
1990	3.9	4.6	6.4	7.1	6.3	7.1	-2	4.1	4.5	4.5	4.1	4.8	5.2
1991	-2	5.9	7.2	6.8	6.3	5.2	4.2	2.8	2.8	4.4	4.0	4.9	5.0
1992	4.3	5.8	6.5	6.5	5.6	5.1	4.0	2.7	3.6	4.3	4.3	4.8	4.8
1993	4.9	5.3	6.2	-2	-2	-2	-2	-2	-2	-2	-2	-2	5.5
1994	-2	-2	-2	-2	-2	-2	-2	-2	-2	-2	-2	4.6	4.6
TOTAL	87.4	116.9	150.3	152.7	125.0	97.0	79.7	69.1	78.9	85.4	89.5	94.7	115.3
MEAN (mm/day)	4.6	5.6	6.5	6.9	5.7	4.6	4.0	3.1	3.8	4.1	4.1	4.5	4.8
(mm/month)	142.6	156.8	201.5	207.0	176.7	138.0	124.0	96.1	114.0	127.1	123.0	139.5	1,746.3
STDEV	0.6	0.6	0.7	0.9	0.7	0.8	0.8	1.0	0.6	0.9	1.1	0.6	0.5

\*\*NOTE: -2 means data is missing

PREPARED BY: PAGASA/CAB/CDS

**Table E.1-5 Monthly Pan Evaporation at National Agromet Research Station (3/10)**

**MONTHLY MEAN AND ANNUAL AGROCLIMATIC DATA  
OPEN PAN EVAPORATION (mm)**

**STATION:** NATIONAL AGROMET RESEARCH **LATITUDE:** 14°38' N  
**CMO:** BERT YOMUL **LONGITUDE:** 121°00' E  
**PERIOD:** 1979-1994 **ELEVATION:** 42 M

YEAR	JAN	FEB	MAR	APR	MAY	JUN	JUL	AUG	SEP	OCT	NOV	DEC	ANNUAL
1979	3.1	4.3	6.2	-2	5.1	-2	-2	3.7	3.4	2.7	2.9	3.5	3.9
1980	3.6	4.5	5.2	6.2	5.4	3.6	2.8	3.5	2.2	2.4	2.3	2.4	3.7
1981	2.6	3.7	5.3	5.6	5.0	2.6	3.4	3.5	3.2	2.7	2.6	2.8	3.6
1982	2.3	3.3	5.2	4.2	4.4	5.4	3.1	3.9	4.2	3.2	2.7	2.3	3.7
1983	2.6	4.1	5.4	7.1	6.5	4.7	3.7	4.1	3.3	2.8	3.0	2.7	4.2
1984	2.4	3.5	5.3	6.3	3.7	3.3	4.3	2.6	3.0	2.7	2.7	2.7	3.5
1985	3.1	5.1	5.5	4.7	4.8	3.0	3.9	3.8	3.7	3.2	2.9	2.8	3.9
1986	3.4	3.5	5.3	5.5	5.1	4.5	3.0	3.0	2.8	2.4	3.1	3.3	3.7
1987	3.1	4.0	6.1	5.8	5.6	4.4	4.0	4.4	3.6	3.5	3.2	3.0	4.2
1988	2.7	3.5	4.9	5.1	4.4	3.7	3.0	3.5	3.1	1.9	2.7	3.0	3.5
1989	3.4	3.3	3.8	4.8	4.3	4.0	3.5	3.5	3.2	3.4	2.8	2.5	3.5
1990	2.7	4.0	4.5	6.3	4.8	-2	-2	-2	-2	-2	-2	-2	4.5
1991	2.7	3.3	4.7	4.7	4.8	3.8	3.2	2.6	3.3	3.4	2.7	2.5	3.5
1992	2.5	3.9	5.4	6.3	6.0	4.0	3.4	2.9	2.9	3.3	2.6	2.5	3.8
1993	3.2	3.3	4.6	5.6	6.1	4.4	3.1	3.4	3.4	-2	2.7	2.9	3.9
1994	3.1	3.5	3.8	4.7	3.9	3.9	2.4	3.4	3.0	3.3	3.7	3.5	3.5
<b>TOTAL</b>	<b>46.5</b>	<b>60.8</b>	<b>81.2</b>	<b>82.9</b>	<b>79.9</b>	<b>55.3</b>	<b>46.8</b>	<b>51.8</b>	<b>48.3</b>	<b>40.9</b>	<b>42.6</b>	<b>42.4</b>	<b>60.5</b>
<b>MEAN (mm/day)</b>	<b>2.9</b>	<b>3.8</b>	<b>5.1</b>	<b>5.5</b>	<b>5.0</b>	<b>4.0</b>	<b>3.3</b>	<b>3.5</b>	<b>3.2</b>	<b>2.9</b>	<b>2.8</b>	<b>2.8</b>	<b>3.8</b>
<b>(mm/month)</b>	<b>89.9</b>	<b>106.4</b>	<b>158.1</b>	<b>165.0</b>	<b>155.0</b>	<b>120.0</b>	<b>102.3</b>	<b>108.5</b>	<b>96.0</b>	<b>89.9</b>	<b>84.0</b>	<b>86.8</b>	<b>1,361.9</b>
<b>STDEV</b>	<b>0.4</b>	<b>0.5</b>	<b>0.7</b>	<b>0.8</b>	<b>0.8</b>	<b>0.7</b>	<b>0.5</b>	<b>0.5</b>	<b>0.5</b>	<b>0.5</b>	<b>0.3</b>	<b>0.4</b>	<b>0.3</b>

\*\*NOTE: -2 means data is missing.

PREPARED BY: PAGASA/CAB/CDS



Table E.1-5 Monthly Pan Evaporation at NasUplb Los Banns Station (4/10)

MONTHLY MEAN AND ANNUAL AGROCLIMATIC DATA  
OPEN PAN EVAPORATION (mm)

STATION: NAS UPLB LOS BAÑOS LAGUNA  
CMO: FÉLICISIMA RAMIREZ  
PERIOD: 1977-1994

LATITUDE: 14°10' N  
LONGITUDE: 121°15' E  
ELEVATION: 21.7 M

YEAR	JAN	FEB	MAR	APR	MAY	JUN	JUL	AUG	SEP	OCT	NOV	DEC	ANNUAL
1977	4.0	4.2	7.0	8.8	7.3	6.0	5.1	-2	4.2	5.2	3.6	3.8	5.4
1978	4.0	-2	6.8	6.4	5.5	4.1	3.8	3.3	3.0	3.2	3.2	2.8	4.2
1979	3.5	4.8	6.0	5.8	4.3	3.9	4.2	3.8	-2	3.5	3.0	3.4	4.2
1980	3.1	4.5	5.2	5.7	5.1	4.0	3.7	3.7	3.1	3.5	3.5	2.9	4.0
1981	3.3	4.8	7.1	7.7	5.5	4.4	4.3	5.0	4.2	4.0	3.4	3.1	4.7
1982	3.9	5.8	6.0	5.5	5.3	5.1	3.7	4.0	3.6	4.0	3.6	3.3	4.5
1983	3.5	6.0	5.5	7.3	7.3	5.9	4.3	3.6	3.5	3.0	3.3	3.1	4.7
1984	3.2	4.2	5.3	6.1	4.6	3.7	4.2	3.8	4.6	3.0	3.3	3.3	4.1
1985	3.8	5.2	5.6	6.3	6.4	5.1	4.4	5.2	4.0	3.6	3.7	3.3	4.7
1986	3.2	4.4	6.2	6.8	5.4	5.0	4.4	3.8	3.6	3.2	3.1	3.8	4.4
1987	3.7	4.8	6.2	7.3	6.8	4.6	3.7	4.6	-2	4.4	3.3	2.7	4.7
1988	3.0	4.5	5.8	5.7	6.1	4.1	3.9	4.2	4.3	2.2	2.9	3.1	4.2
1989	3.4	3.3	4.1	5.5	-2	-2	4.0	3.9	3.6	3.5	3.8	3.5	3.9
1990	3.9	4.8	5.6	7.0	5.3	3.4	3.5	3.9	3.8	3.3	3.3	3.1	4.2
1991	3.5	3.9	5.5	6.0	6.3	4.8	3.7	2.6	3.6	4.0	3.1	3.1	4.2
1992	3.3	4.6	6.0	6.4	5.8	4.8	3.1	3.4	3.3	3.9	3.1	2.8	4.2
1993	3.1	5.2	5.8	6.7	6.8	4.8	3.8	3.0	3.0	2.4	2.8	2.1	4.1
1994	2.9	4.3	5.0	5.5	4.3	3.5	3.6	4.7	3.1	3.7	4.2	3.4	4.0
TOTAL	62.3	79.3	104.7	116.5	98.1	77.2	71.4	66.5	58.5	63.6	60.2	56.6	78.4
MEAN (mm/day)	3.5	4.7	5.8	6.5	5.8	4.5	4.0	3.9	3.7	3.5	3.3	3.1	4.4
(mm/month)	108.5	131.6	179.8	195.0	179.8	135.0	124.0	120.9	111.0	108.5	99.0	96.1	1,589.2
STDEV	0.4	0.7	0.7	0.9	1.0	0.8	0.4	0.7	0.5	0.7	0.3	0.4	0.4

\*\*NOTE: -2 means data is missing.

PREPARED BY: PAGASA/CAB/CDS

Table E.1-5 Monthly Pan Evaporation at Csac Pili Camarines Station (5/10)

MONTHLY MEAN AND ANNUAL AGROCLIMATIC DATA  
OPEN PAN EVAPORATION (mm)

STATION: CSAC PILI CAMARINES SUR  
CMO: MANUEL LANUZO  
PERIOD: 1975-1994

LATITUDE: 13°34' N  
LONGITUDE: 123°16' E  
ELEVATION: 0 M

YEAR	JAN	FEB	MAR	APR	MAY	JUN	JUL	AUG	SEP	OCT	NOV	DEC	ANNUAL
1975	-2	-2	-2	-2	-2	-2	-2	-2	4.0	4.1	4.4	4.2	4.2
1976	4.1	5.1	5.9	6.6	5.4	5.3	4.6	4.8	4.8	4.7	4.0	3.0	4.9
1977	3.4	4.8	5.6	7.6	7.0	6.2	5.4	5.7	4.6	5.4	-2	4.4	5.5
1978	5.2	5.8	7.4	8.4	7.7	5.3	5.7	4.4	3.9	4.0	4.0	3.8	5.5
1979	5.0	6.1	7.1	4.8	6.2	4.9	5.5	5.2	4.4	4.4	3.9	4.7	5.2
1980	4.6	4.7	5.8	7.2	6.4	4.7	5.7	4.7	4.3	4.5	4.1	4.0	5.1
1981	3.9	5.0	6.5	7.0	7.3	5.5	4.7	5.4	4.9	3.9	3.2	3.6	5.1
1982	4.3	4.2	5.0	5.1	5.1	4.7	4.0	4.0	3.7	3.5	3.7	3.4	4.2
1983	3.7	4.9	6.4	8.9	7.2	6.9	4.2	4.9	4.0	3.9	2.8	2.9	5.1
1984	3.4	3.8	4.7	5.8	4.9	4.7	4.7	4.3	4.3	3.8	3.2	3.7	4.3
1985	3.9	4.6	4.7	4.6	6.0	5.1	4.9	5.1	4.2	4.2	3.3	4.3	4.6
1986	4.0	4.8	5.6	6.2	6.7	5.8	5.0	4.9	5.2	3.5	4.1	5.6	5.1
1987	5.8	5.8	7.7	6.8	7.3	6.2	4.4	4.9	3.8	4.8	4.0	4.2	5.5
1988	4.4	5.8	7.6	7.2	7.8	5.1	5.3	5.3	4.5	3.2	3.9	4.3	5.4
1989	-2	-2	-2	-2	-2	-2	-2	-2	-2	-2	-2	-2	-2
1990	3.8	4.7	6.1	8.1	6.4	4.4	5.2	5.1	4.5	4.1	3.6	3.5	5.0
1991	4.4	5.3	5.6	-2	-2	-2	-2	-2	-2	-2	-2	-2	5.1
1992	4.2	5.4	6.8	7.3	6.6	5.6	4.0	4.2	3.7	3.5	3.6	3.6	4.9
1993	3.9	3.8	4.8	6.2	6.8	5.4	4.1	4.4	3.7	3.9	-2	-2	4.7
1994	-2	-2	-2	-2	-2	5.1	3.8	-2	3.4	4.3	4.2	-2	4.2
TOTAL	72.0	84.6	103.3	107.8	104.8	90.9	81.2	77.3	75.9	73.7	60.0	63.2	93.2
MEAN (mm/day)	4.2	5.0	6.1	6.7	6.6	5.3	4.8	4.8	4.2	4.1	3.7	3.9	4.9
(mm/month)	130.2	148.4	189.1	201.0	204.6	159.0	148.8	148.8	126.0	127.1	111.0	120.9	1,814.9
STDEV	0.6	0.7	1.0	1.2	0.9	0.6	0.6	0.5	0.5	0.5	0.4	0.7	0.4

\*\*NOTE: -2 means data is missing.

PREPARED BY: PAGASA/CAB/CDS

**Table E.1-5 Monthly Pan Evaporation at PSPC Mambusao Capiz Station (6/10)**

**MONTHLY MEAN AND ANNUAL AGROCLIMATIC DATA  
OPEN PAN EVAPORATION (mm)**

STATION:	PSPC MAMBUSAO CAPIZ	LATITUDE:	11°26' N
CMO:	ROSELIE NONATO	LONGITUDE:	122°36' E
PERIOD:	1978-1994	ELEVATION:	0 M

YEAR	JAN	FEB	MAR	APR	MAY	JUN	JUL	AUG	SEP	OCT	NOV	DEC	ANNUAL
1978	-2	-2	4.9	-2	4.7	3.9	4.8	3.2	4.1	3.8	4.2	4.1	4.2
1979	3.8	3.8	4.7	4.6	4.6	3.3	4.2	3.4	4.3	3.8	4.3	3.7	4.0
1980	-2	-2	-2	-2	-2	-2	-2	-2	-2	-2	-2	-2	-2
1981	3.6	3.5	4.5	5.0	5.0	4.1	4.4	4.7	4.8	4.6	4.5	3.9	4.4
1982	3.5	3.6	4.3	5.5	5.3	4.9	3.9	3.8	-2	4.2	3.9	3.7	4.2
1983	4.2	4.2	5.4	6.7	-2	0.3	-2	-2	-2	-2	-2	-2	4.2
1984	-2	-2	-2	-2	-2	-2	-2	-2	-2	-2	-2	-2	-2
1985	-2	-2	-2	-2	-2	-2	-2	-2	-2	4.3	4.7	5.4	4.8
1986	3.8	4.3	4.6	4.7	5.0	4.8	4.0	4.3	4.8	4.3	3.7	4.0	4.4
1987	4.1	3.9	5.0	6.9	6.7	-2	-2	4.8	4.6	5.3	4.2	4.1	5.0
1988	4.3	4.2	5.3	5.3	5.2	3.5	3.7	3.6	4.1	3.4	3.2	3.2	4.1
1989	2.9	3.2	4.0	4.8	4.0	4.2	3.8	3.8	3.8	4.1	3.1	3.4	3.8
1990	2.9	4.0	5.1	6.2	4.7	3.7	3.9	3.9	3.9	3.5	3.7	3.3	4.1
1991	3.2	3.7	4.0	5.1	4.9	3.6	3.1	3.1	3.5	3.8	3.5	3.1	3.7
1992	3.3	3.8	4.7	5.1	4.7	4.1	3.6	3.7	3.9	3.4	-2	-2	4.0
1993	3.4	3.5	4.0	4.5	5.6	5.0	3.6	3.4	4.0	3.3	3.2	2.7	3.9
1994	3.0	3.5	3.8	7.0	4.4	2.9	4.6	3.6	2.9	4.5	3.3	2.7	3.9
TOTAL	46.0	49.2	64.3	71.4	64.8	48.3	47.6	49.3	48.7	56.3	49.5	47.3	62.5
MEAN (mm/day)	3.5	3.8	4.6	5.5	5.0	3.7	4.0	3.8	4.1	4.0	3.8	3.6	4.2
(mm/month)	108.5	106.4	142.6	165.0	155.0	111.0	124.0	117.8	123.0	124.0	114.0	111.6	1,502.9
STDEV	0.5	0.3	0.5	0.9	0.7	1.2	0.5	0.5	0.5	0.6	0.5	0.7	0.4

\*\*NOTE: -2 means data is missing.

PREPARED BY: PAGASA/CAB/CDS

Table E.1-5 Monthly Pan Evaporation at Visca Bayberry Station (7/10)

MONTHLY MEAN AND ANNUAL AGROCLIMATIC DATA  
OPEN PAN EVAPORATION (mm)

STATION: VISCA BAYBAY LEYTE  
CMO: TRINIDAD VILLA  
PERIOD: 1978-1994

LATITUDE: 10°08' N  
LONGITUDE: 124°47' E  
ELEVATION: 7 M

YEAR	JAN	FEB	MAR	APR	MAY	JUN	JUL	AUG	SEP	OCT	NOV	DEC	ANNUAL
1978	3.5	3.7	-2	5.3	4.5	4.6	-2	-2	5.4	4.1	4.0	2.2	4.1
1979	3.9	4.8	5.6	5.1	4.2	3.2	3.8	3.3	3.0	3.0	3.4	2.3	3.8
1980	-2	3.9	3.9	3.6	4.1	2.8	2.4	2.5	3.2	2.7	2.5	2.1	3.1
1981	2	3.3	4.0	-2	4.2	-2	3.0	3.9	3.2	2.5	2.4	2.9	3.1
1982	2.9	2.7	2.9	3.7	3.9	3.2	3.1	3.5	2.6	2.9	2.5	2.2	3.0
1983	3.0	4.1	4.4	5.9	5.4	3.7	2.1	4.7	3.0	2.8	2.5	1.5	3.6
1984	1.8	2.6	3.0	2.9	3.5	2.9	3.4	2.8	2.8	-2	-2	-2	2.9
1985	-2	-2	-2	-2	-2	3.3	2.2	3.0	2.3	2.5	2.4	2.3	2.6
1986	1.8	2.8	2.6	3.0	3.9	2.9	3.0	3.2	3.3	2.8	2.4	2.8	2.9
1987	2.9	2.4	3.5	4.6	5.1	3.9	2.4	3.1	3.1	3.1	2.0	3.2	3.3
1988	3.1	3.0	4.2	4.0	3.7	2.5	3.1	3.0	2.7	2.5	1.8	2.1	3.0
1989	2.2	2.6	3.2	3.3	3.6	3.3	3.0	3.9	4.3	3.7	2.8	2.9	3.2
1990	2.9	4.3	4.9	4.8	4.0	3.0	3.4	3.6	3.9	2.7	2.8	3.4	3.6
1991	3.8	3.8	4.0	4.6	4.1	3.8	3.6	4.0	4.0	3.7	2.9	3.7	3.8
1992	3.9	4.5	4.7	5.5	5.6	4.6	3.6	4.4	4.7	3.3	-2	-2	4.5
1993	-2	-2	-2	-2	-2	-2	-2	-2	-2	-2	-2	-2	-2
1994	-2	-2	3.7	3.9	-2	3.3	3.6	3.7	3.2	4.4	-2	-2	3.7
TOTAL	37.7	48.5	54.6	60.2	59.8	51.0	45.7	52.6	54.7	46.7	34.4	33.6	54.2
MEAN (mm/day)	2.9	3.5	3.9	4.3	4.3	3.4	3.0	3.5	3.4	3.1	2.6	2.6	3.4
(mm/month)	89.9	98.0	120.9	129.0	133.3	102.0	93.0	108.5	102.0	96.1	78.0	80.6	1,231.3
STDEV	0.8	0.8	0.8	1.0	0.7	0.6	0.5	0.6	0.8	0.6	0.6	0.6	0.5

\*\*NOTE: -2 means data is missing.

PREPARED BY: PAGASA/CAB/CDS

Table E.1-5 Monthly Pan Evaporation at Cmu Musuan Station (8/10)

MONTHLY MEAN AND ANNUAL AGROCLIMATIC DATA  
OPEN PAN EVAPORATION (mm)

STATION: CMU MUSUAN BUKIDNON  
CMO: HERMIS HINLAYAGAN  
PERIOD: 1978-1990

LATITUDE: 07°56' N  
LONGITUDE: 125°04' E  
ELEVATION: 0 M

YEAR	JAN	FEB	MAR	APR	MAY	JUN	JUL	AUG	SEP	OCT	NOV	DEC	ANNUAL
1978	-2	-2	-2	-2	6.9	5.4	5.0	4.6	5.1	4.4	4.5	5.2	5.1
1979	5.9	8.1	7.5	9.3	7.2	6.3	4.8	5.2	5.4	4.2	4.0	4.9	6.1
1980	5.2	6.0	8.9	7.9	7.5	4.6	4.3	4.5	4.2	4.7	-2	-2	5.8
1981	4.0	6.1	7.8	8.7	7.9	4.5	4.4	4.8	4.8	5.1	4.7	4.7	5.6
1982	-2	-2	-2	-2	-2	-2	-2	-2	-2	-2	-2	-2	-2
1983	7.2	8.6	8.8	10.5	9.8	6.1	4.4	-2	5.2	4.8	4.6	4.7	6.8
1984	4.6	4.4	6.4	6.6	5.6	4.7	5.2	4.0	4.8	4.2	5.4	5.3	5.1
1985	5.6	6.6	7.4	6.4	6.0	-2	-2	4.9	4.2	4.2	4.8	-2	5.6
1986	-2	5.5	5.7	7.3	5.6	4.9	3.9	4.2	4.3	5.0	4.1	5.7	5.1
1987	6.4	6.6	8.4	8.8	7.1	4.5	3.3	3.9	4.2	4.0	4.3	4.6	5.5
1988	5.8	5.5	6.9	6.7	5.7	3.7	4.3	4.6	4.6	3.6	4.2	3.5	4.9
1989	5.0	4.7	5.8	-2	5.5	4.6	3.9	4.1	4.7	3.9	-2	5.5	4.8
1990	5.5	7.2	7.8	7.7	4.9	3.3	3.6	3.9	4.5	-2	-2	-2	5.4
TOTAL	55.2	69.3	81.4	79.9	79.7	52.6	47.1	48.7	56.0	48.1	40.6	44.1	65.8
MEAN (mm/day)	5.5	6.3	7.4	8.0	6.6	4.8	4.3	4.4	4.7	4.4	4.5	4.9	5.5
(mm/month)	170.5	176.4	229.4	240.0	204.6	144.0	133.3	136.4	141.0	136.4	135.0	151.9	1,998.9
STDEV	0.9	1.3	1.1	1.3	1.4	0.9	0.6	0.4	0.4	0.5	0.4	0.7	0.6

\*\*NOTE: -2 means data is missing.

PREPARED BY: PAGASA/CAB/CDS

Table E.1-5 Monthly Pan Evaporation at Msu Marawi city Station (9/10)

MONTHLY MEAN AND ANNUAL AGROCLIMATIC DATA  
OPEN PAN EVAPORATION (mm)

STATION: MSU MARAWI CITY LANA O DEL SUR      LATITUDE: 08°00' N  
CMO: MALIK MAUTEN      LONGITUDE: 124°18' E  
PERIOD: 1969-1994      ELEVATION: 0 M

YEAR	JAN	FEB	MAR	APR	MAY	JUN	JUL	AUG	SEP	OCT	NOV	DEC	ANNUAL
1969	-2	-2	-2	-2	-2	-2	-2	-2	4.9	3.6	3.3	2.0	3.5
1970	1.7	1.9	1.8	4.8	4.3	3.4	3.2	3.9	3.3	3.3	2.9	3.3	3.1
1971	-2	2.9	-2	-2	-2	-2	-2	-2	-2	-2	-2	-2	2.9
1972	-2	-2	-2	-2	-2	-2	-2	-2	-2	-2	-2	-2	-2
1973	-2	-2	-2	-2	-2	-2	-2	-2	-2	-2	-2	-2	-2
1974	7.5	3.6	4.0	4.0	3.4	3.7	3.5	4.1	3.3	1.9	3.2	2.5	3.7
1975	3.2	3.2	2.6	3.9	3.1	3.1	2.5	3.7	2.9	2.2	2.8	2.2	3.0
1976	1.9	2.9	3.2	3.9	4.5	2.2	2.2	2.4	2.8	3.1	-2	2.3	2.9
1977	3.1	3.1	3.2	4.6	3.5	2.1	4.5	2.5	3.1	3.3	4.0	3.0	3.3
1978	2.2	3.9	3.8	3.8	3.4	-2	3.3	2.7	3.7	3.1	3.0	3.7	3.3
1979	3.0	4.1	3.9	3.7	3.7	2.9	2.5	2.7	2.8	2.6	2.7	2.3	3.1
1980	2.8	3.5	3.8	3.9	3.9	-2	-2	-2	2.5	-2	-2	-2	3.4
1981	1.3	3.5	3.3	3.4	2.8	3.0	3.0	4.0	2.8	2.7	2.6	3.6	3.0
1982	1.1	-2	-2	-2	-2	1.7	2.7	1.5	3.0	3.6	3.3	1.7	2.3
1983	3.6	4.5	4.0	3.4	3.2	2.9	4.4	4.4	4.2	2.9	3.5	2.3	3.6
1984	1.9	-2	-2	-2	-2	3.6	2.9	-2	-2	3.7	-2	-2	3.0
1985	-2	-2	-2	-2	-2	-2	-2	-2	-2	-2	-2	-2	-2
1986	-2	-2	-2	-2	-2	-2	-2	-2	-2	-2	-2	-2	-2
1987	0.3	-2	-2	-2	-2	-2	-2	-2	-2	-2	-2	-2	0.3
1988	-2	-2	-2	-2	-2	-2	-2	-2	3.5	2.8	1.3	1.9	2.4
1989	5.8	4.1	4.0	5.4	2.9	3.7	3.2	3.4	2.8	3.5	-2	-2	3.9
1990	3.4	4.0	2.9	2.7	2.8	2.9	2.7	3.0	3.4	2.5	2.2	2.7	2.9
1991	-2	-2	-2	-2	-2	-2	-2	-2	-2	-2	-2	-2	-2
1992	-2	-2	-2	-2	-2	-2	-2	-2	-2	-2	-2	-2	-2
1993	-2	-2	-2	-2	-2	-2	-2	-2	-2	-2	-2	-2	-2
1994	-2	-2	-2	-2	-2	-2	-2	-2	-2	-2	-2	-2	-2
TOTAL	42.8	45.2	40.5	47.5	41.5	35.2	40.6	38.3	49.0	44.8	34.8	33.5	53.6
MEAN (mm/day)	2.9	3.5	3.4	4.0	3.5	2.9	3.1	3.2	3.3	3.0	2.9	2.6	3.0
(mm/month)	89.9	98.0	105.4	120.0	108.5	87.0	96.1	99.2	99.0	93.0	87.0	80.6	1,163.7
STDEV	1.8	0.7	0.7	0.7	0.6	0.6	0.7	0.9	0.6	0.5	0.7	0.6	0.8

\*\*NOTE: -2 means data is missing.

PREPARED BY: PAGASA/CAB/CDS

**Table E.1-5 Monthly Pan Evaporation at Twin river Tagum Davao Station (10/10)**

**MONTHLY MEAN AND ANNUAL AGROCLIMATIC DATA  
OPEN PAN EVAPORATION(mm)**

STATION: TWIN RIVER TAGUM DAVAO  
CMO: OSCAR ZABATE  
PERIOD: 1977-1994

LATITUDE: 07°24' N  
LONGITUDE: 125°51' E  
ELEVATION: 0 M

YEAR	JAN	FEB	MAR	APR	MAY	JUN	JUL	AUG	SEP	OCT	NOV	DEC	ANNUAL
1977	-2	-2	3.5	4.1	-2	4.1	3.8	3.3	4.0	3.1	3.3	4.2	3.7
1978	-2	-2	-2	-2	-2	3.6	3.7	3.7	4.2	3.5	3.7	-2	3.7
1979	3.3	3.9	4.2	4.3	3.3	3.0	3.6	-2	4.0	3.5	-2	3.7	3.7
1980	3.0	3.3	4.6	4.0	4.8	2.9	-2	-2	4.1	-2	3.8	3.1	3.7
1981	3.0	3.3	-2	3.9	3.9	3.9	3.7	4.4	-2	4.3	3.6	3.6	3.8
1982	3.1	2.9	-2	-2	-2	4.1	4.9	4.8	5.2	4.4	4.1	4.4	4.2
1983	4.5	4.7	-2	5.4	5.6	-2	4.2	3.8	4.9	3.2	4.0	3.0	4.3
1984	-2	-2	-2	-2	-2	-2	-2	-2	-2	-2	-2	-2	-2
1985	-2	-2	-2	-2	-2	-2	-2	-2	-2	-2	-2	4.2	4.2
1986	2.8	4.2	2.9	-2	-2	-2	-2	-2	-2	-2	-2	4.6	3.6
1987	3.3	4.0	4.8	5.9	-2	-2	-2	-2	-2	-2	-2	-2	4.5
1988	-2	-2	3.2	-2	3.7	2.9	4.5	4.1	4.8	3.5	2.7	3.1	3.6
1989	3.2	3.0	4.2	4.5	3.9	3.3	3.9	3.6	4.6	4.5	4.1	4.5	3.9
1990	3.3	4.5	4.4	5.0	4.0	-2	-2	-2	-2	-2	-2	-2	4.2
1991	-2	-2	-2	-2	-2	-2	-2	-2	-2	-2	-2	-2	-2
1992	4.1	4.1	4.4	4.7	-2	-2	4.9	4.6	5.4	-2	-2	-2	4.6
1993	4.3	3.8	4.4	4.5	4.7	3.4	4.3	4.1	3.6	4.2	3.7	3.4	4.0
1994	-2	-2	-2	-2	-2	-2	-2	-2	-2	-2	-2	-2	-2
TOTAL	37.9	41.7	40.6	46.3	33.9	31.2	41.5	36.4	44.8	34.2	33.0	41.8	59.9
MEAN (mm/day)	3.4	3.8	4.1	4.6	4.2	3.5	4.2	4.0	4.5	3.8	3.7	3.8	4.0
(mm/month)	105.4	106.4	127.1	138.0	130.2	105.0	130.2	124.0	135.0	117.8	111.0	117.8	1,447.9
STDEV	0.6	0.6	0.6	0.6	0.7	0.5	0.5	0.5	0.6	0.5	0.4	0.6	0.3

\*\*NOTE: -2 means data is missing.

PREPARED BY: PAGASA/CAB/CDS

Table E.1-6 Monthly Rainfall at Vigan Station (1/13)  
MONTHLY TOTAL AND ANNUAL CLIMATIC DATA  
RAINFALL AMOUNT (mm)

STATION: VIGAN ILOCOS SUR  
CMO: VIRGILIO ALON  
PERIOD: 1961-1994

LATITUDE: 17°34' N  
LONGITUDE: 120°23' E  
ELEVATION: 33 M

YEAR	JAN	FEB	MAR	APR	MAY	JUN	JUL	AUG	SEP	OCT	NOV	DEC	ANNUAL
1961	-	-	23.6	22.9	116.3	709.6	1,499.8	778.6	494.7	9.0	2.8	5.1	3,662.4
1962	1.5	-	-	2.0	18.2	325.2	1,197.2	667.1	229.4	139.3	41.5	0.0	2,621.4
1963	0.8	1.0	8.6	-	61.7	1,025.5	478.8	144.9	589.6	21.3	0.5	3.4	2,336.1
1964	2.0	-	-	23.1	109.7	391.5	354.6	1,019.9	486.1	89.7	82.3	77.9	2,636.8
1965	-	-	-	6.1	451.6	383.8	450.4	261.4	411.1	-	9.0	-	1,973.4
1966	-	-	4.3	6.6	337.5	112.4	124.7	711.3	651.4	20.4	103.7	3.6	2,075.9
1967	-	-	-	124.2	53.6	838.0	486.5	1,027.4	379.7	318.5	8.5	0.2	3,236.6
1968	-	-1.0	-	7.8	61.4	150.9	455.8	1,821.0	698.4	58.4	-	-	3,253.7
1969	-	-	1.0	-	210.4	412.3	845.5	486.7	853.0	170.8	7.6	-	2,987.3
1970	3.0	-	1.0	-	29.7	479.2	298.4	693.4	371.3	42.4	41.7	102.1	2,062.2
1971	-1	-1.0	0.5	-	76.8	270.0	527.5	397.7	377.4	292.0	21.6	26.6	1,990.1
1972	15.1	9.0	-	1.5	124.6	451.8	1,523.5	906.4	112.3	-1	1.6	-1	3,145.8
1973	1.0	-	-1	-	13.0	310.5	309.5	430.9	318.0	454.0	16.3	3.3	1,856.5
1974	-	-	-	3.6	309.5	646.1	149.0	1,374.3	329.8	582.9	80.0	14.0	3,489.2
1975	23.8	-	0.8	9.1	81.5	463.1	219.6	-2	89.8	143.2	4.9	2.1	1,037.9
1976	-1	-	-1.0	-1.0	339.5	290.9	206.1	355.5	121.5	93.3	-1	1.5	1,408.3
1977	2.0	2.5	-	-1.0	105.0	220.4	810.9	798.5	784.7	4.3	28.3	-	2,756.6
1978	-	-	-	50.8	85.1	573.0	441.3	612.7	294.3	43.1	-2	-	2,100.3
1979	-	-	-	55.6	350.4	271.1	549.0	601.9	88.3	44.3	3.3	15.9	1,979.8
1980	33.2	-	25.4	-1.0	343.5	151.5	463.2	43.6	575.1	152.5	118.8	18.8	1,925.6
1981	3.6	-	-1	1.7	306.4	450.5	555.7	1,028.5	331.2	61.6	40.5	-	2,779.7
1982	-	3.1	-	-	62.1	318.7	723.2	730.4	208.4	46.7	18.4	21.7	2,132.7
1983	2.2	36.7	1.1	4.6	16.8	416.0	179.3	986.7	460.1	64.2	4.3	-1	2,172.0
1984	-	-	1.2	27.2	193.8	334.6	192.5	1,030.0	118.5	53.9	18.3	-	1,970.0
1985	-	-	0.0	1.2	150.9	1,157.7	250.1	1,195.3	280.8	300.5	12.3	-1	3,348.8
1986	-1	4.5	0.0	7.1	593.6	329.4	682.1	1,140.0	748.8	98.1	5.6	0.7	3,609.9
1987	-	-	-	-	-1	381.7	382.5	231.2	324.1	343.7	4.3	5.4	1,672.9
1988	2.6	11.2	-	10.9	302.5	655.0	640.7	256.4	374.9	105.0	5.0	-	2,364.2
1989	-	2.4	3.9	-	49.1	156.3	680.2	478.5	615.5	79.7	1.2	-1	2,066.8
1990	2.6	11.0	-	1.8	248.0	691.1	664.6	905.5	557.0	88.0	15.0	6.6	3,191.2
1991	-	-	-	0.0	40.9	293.5	545.2	665.9	405.2	322.2	33.4	-	2,306.3
1992	2.8	1.5	0.6	147.6	380.5	89.9	181.5	714.1	746.5	6.8	0.8	-	2,272.6
1993	-	-	0.2	0.4	46.0	183.6	506.6	476.6	441.7	88.2	6.2	9.3	1,758.8
1994	2.7	-	0.2	8.2	100.7	225.5	1,077.5	394.8	347.5	50.7	-	0.6	2,208.4
TOTAL	98.9	82.9	72.4	524.0	5,770.3	14,160.3	18,653.0	23,367.1	14,216.1	4,388.7	737.7	318.8	82,390.2
MEAN	2.9	2.4	2.1	15.4	169.7	416.5	548.6	708.1	418.1	129.1	22.4	9.4	2,444.7
STDEV	7.1	6.8	5.9	33.5	2.9	249.8	351.8	381.0	209.4	140.9	31.0	21.8	653.2

\*\*NOTE: -2 means data is missing.  
-1 means trace

PREPARED BY: PAGASA/CAB/CDS



Table E.1-6 Monthly Rainfall at Dagupan Station (2/13)  
MONTHLY TOTAL AND ANNUAL CLIMATIC DATA  
RAINFALL AMOUNT (mm)

STATION: DAGUPAN CITY PANGASINAN  
CMO: VIRGINIA BRASIA  
PERIOD: 1961-1994  
LATITUDE: 16°03' N  
LONGITUDE: 120°20' E  
ELEVATION: 2 M

YEAR	JAN	FEB	MAR	APR	MAY	JUN	JUL	AUG	SEP	OCT	NOV	DEC	ANNUAL
1961	-1	-	2.3	40.2	162.5	652.5	463.8	449.1	347.1	296.6	26.3	-	2,440.4
1962	16.0	-	9.7	63.1	219.3	124.5	1,223.9	279.0	456.9	31.0	34.5	-1	2,457.9
1963	0.5	0.3	2.8	1.0	100.4	1,122.0	216.3	246.0	572.6	51.9	54.4	28.5	2,396.7
1964	0.3	-1	56.2	90.8	235.2	253.6	278.1	886.3	255.4	499.5	99.0	114.6	2,769.0
1965	-1	-1	66.1	137.8	352.0	296.3	484.7	339.0	296.2	66.5	16.6	-1	2,055.2
1966	10.2	1.8	2.3	105.0	687.8	209.3	429.3	344.1	945.9	62.1	118.2	15.0	2,931.0
1967	-1	-	-1	41.3	78.8	546.1	244.5	677.9	283.8	281.4	69.6	-1	2,223.4
1968	-	-1	1.0	149.5	131.4	175.2	561.4	1,499.8	373.2	29.0	64.0	-	2,984.5
1969	-	-	-	43.8	312.0	260.7	731.8	456.8	336.8	136.1	59.6	5.0	2,342.6
1970	10.2	4.0	9.7	91.9	174.1	534.3	292.5	610.4	292.9	223.3	31.4	16.9	2,291.6
1971	30.3	-1	-1	85.7	119.1	447.7	332.7	355.8	179.0	204.2	46.9	31.8	1,833.2
1972	13.5	2.1	29.5	26.4	79.8	295.8	2,659.4	1,273.8	201.4	59.8	2.8	15.7	4,660.0
1973	5.3	12.9	8.7	26.2	250.8	270.9	201.3	494.9	165.6	174.8	35.4	-1	1,647.8
1974	3.3	-	-1	60.6	256.3	576.2	339.4	1,260.1	125.6	568.5	149.1	9.4	3,348.5
1975	4.7	-1	33.0	54.6	262.0	173.5	216.1	443.5	279.6	198.3	20.8	10.7	1,696.8
1976	15.5	21.9	19.1	5.6	862.9	630.8	334.0	382.7	498.5	69.0	-1	-1	2,840.0
1977	53.3	-1	11.2	70.3	101.3	175.8	302.0	524.4	546.6	31.5	247.7	-	2,064.1
1978	-	-	-	33.4	149.0	368.3	488.2	1,069.7	308.2	204.9	76.5	1.0	2,699.2
1979	-	-1	-1	70.1	440.8	125.1	315.8	699.2	224.5	216.0	5.8	3.1	2,100.4
1980	1.0	3.3	24.1	5.5	204.0	232.5	703.7	162.2	391.0	221.7	159.0	4.2	2,112.2
1981	0.7	4.4	-	40.1	116.4	534.3	417.5	704.8	187.8	133.8	206.4	1.4	2,347.6
1982	-1	0.8	1.1	163.5	178.4	248.1	695.2	532.9	158.8	86.8	2.0	46.7	2,114.3
1983	13.1	0.2	2.0	0.4	61.3	97.5	141.9	692.7	222.9	111.4	37.2	7.2	1,387.8
1984	8.2	-1	31.4	94.2	141.3	312.1	222.1	1,067.2	210.4	328.5	7.7	1.0	2,424.1
1985	-	3.2	20.2	99.5	135.9	995.3	153.6	687.0	386.4	189.4	39.6	0.8	2,710.9
1986	21.7	28.4	13.0	-1	202.6	116.5	905.2	645.8	547.5	51.3	64.8	16.3	2,613.1
1987	-	-	11.0	11.4	61.6	237.4	319.2	250.0	261.7	157.8	2.2	3.0	1,315.3
1988	3.0	33.4	-1	78.2	285.0	304.2	654.4	443.8	372.6	232.6	23.8	-1	2,431.0
1989	14.2	8.4	97.8	16.2	155.6	247.3	619.0	448.6	540.4	241.0	53.8	0.6	2,444.9
1990	-1	-	-1	0.0	184.1	1,039.7	495.7	755.5	434.5	94.3	8.8	25.4	3,038.0
1991	-1	7.6	44.8	76.6	113.6	177.3	462.9	490.7	366.0	295.6	4.0	-	2,039.1
1992	15.6	-	-1	15.6	183.8	496.2	571.0	719.9	793.8	41.2	4.4	-	2,841.5
1993	-	4.4	6.4	81.6	52.7	392.9	309.0	264.9	376.7	353.5	86.3	7.5	1,935.9
1994	15.1	13.4	1.0	25.2	130.9	202.1	908.8	203.2	326.6	72.0	-1	2.0	1,900.3
TOTAL	255.7	150.5	504.4	1,907.3	7,182.7	12,872.0	17,694.4	20,361.7	12,266.9	6,015.3	1,859.6	367.8	61,438.3
MEAN	7.5	4.4	14.8	56.1	211.3	378.6	520.4	598.9	360.8	176.9	54.7	10.8	2,395.2
STDEV	11.3	8.3	22.5	44.3	168.7	263.1	449.1	325.9	177.7	130.8	60.4	21.5	615.8

\*\*NOTE: -2 means data is missing.  
-1 means trace.

PREPARED BY: PAGASA/CAB/CDS

Table E.1-6 Monthly Rainfall at Baler Station (3/13)

MONTHLY TOTAL AND ANNUAL CLIMATIC DATA  
RAINFALL AMOUNT (mm)

STATION: BALER QUEZON LATITUDE: 15°46' N  
CMO: AMADO FLORES LONGITUDE: 121°34' E  
PERIOD: 1961-1994 ELEVATION: 6 M

YEAR	JAN	FEB	MAR	APR	MAY	JUN	JUL	AUG	SEP	OCT	NOV	DEC	ANNUAL
1961	18.5	34.3	209.8	224.7	408.7	219.8	205.2	166.5	94.9	445.3	330.5	104.5	2,462.7
1962	98.6	53.3	96.8	240.1	288.6	148.4	406.8	314.8	861.1	160.4	521.8	65.6	3,256.3
1963	141.1	237.0	101.4	88.1	171.8	250.4	200.4	443.6	178.8	124.4	108.0	327.3	2,372.3
1964	188.2	128.5	115.8	346.8	176.7	453.2	313.7	228.6	191.4	461.3	1,217.4	356.5	4,178.1
1965	133.3	59.0	83.5	143.9	149.1	132.7	445.9	283.1	297.7	323.0	425.5	200.7	2,676.4
1966	281.1	139.2	271.1	31.6	1,110.4	230.2	381.2	171.8	241.9	313.7	1,152.2	509.2	4,833.6
1967	129.7	68.0	121.4	237.0	54.2	139.1	138.3	254.6	202.4	138.4	408.7	54.5	1,946.3
1968	179.1	57.4	189.4	232.4	244.0	141.3	160.9	111.2	167.1	105.8	292.8	42.0	1,923.4
1969	65.2	38.4	45.7	204.4	205.5	221.4	363.5	356.9	106.0	211.3	406.8	166.3	2,391.4
1970	135.8	59.0	257.3	326.8	235.4	503.3	59.2	104.6	563.7	1,052.2	430.6	395.3	4,123.2
1971	223.6	218.4	167.6	121.0	641.9	424.9	416.5	48.9	265.1	870.7	829.2	570.2	4,798.0
1972	405.0	150.7	240.0	194.7	248.1	183.1	338.5	215.3	248.7	145.5	532.2	224.0	3,125.8
1973	120.8	192.0	188.2	124.4	67.6	169.0	241.9	98.5	796.1	465.9	557.0	141.6	3,163.0
1974	35.1	52.5	194.3	158.0	193.0	499.8	279.0	114.4	88.4	495.7	717.7	543.4	3,371.3
1975	355.7	119.7	369.8	357.6	140.5	307.3	85.8	36.3	369.5	229.2	203.0	617.0	3,191.4
1976	257.6	84.2	55.7	216.9	551.4	404.9	125.1	145.4	326.0	326.0	199.2	234.3	2,926.7
1977	133.8	157.0	180.1	106.6	325.5	288.4	431.7	111.8	525.5	23.6	349.1	151.6	2,784.7
1978	53.8	129.5	199.8	307.0	179.8	223.3	89.4	271.5	665.6	588.0	140.3	291.0	3,139.0
1979	140.4	203.2	57.7	379.4	324.5	608.5	190.6	105.4	421.9	269.4	554.5	344.8	3,600.3
1980	230.7	133.9	296.7	84.0	292.8	363.6	351.5	230.6	223.5	539.0	583.4	209.8	3,539.5
1981	89.7	183.8	82.6	343.6	146.4	229.3	284.2	199.3	231.9	678.5	604.0	75.5	3,148.8
1982	47.5	169.6	303.6	248.8	361.2	105.7	332.3	330.8	147.4	280.3	368.4	444.8	3,160.4
1983	445.7	44.7	515.2	150.4	285.0	182.4	332.9	304.4	255.4	636.4	75.1	120.3	3,347.9
1984	534.5	94.6	319.5	248.0	263.7	432.1	163.0	127.4	246.5	1,089.2	157.5	69.9	3,745.9
1985	70.7	262.4	229.5	357.3	358.5	133.4	351.8	55.0	551.6	742.9	333.8	126.6	3,573.5
1986	48.9	95.1	108.4	241.2	135.0	153.1	296.5	387.3	190.3	1,032.0	651.3	272.1	3,611.2
1987	82.3	70.6	47.7	145.6	284.7	191.7	154.0	450.8	262.4	270.5	347.8	639.2	2,947.3
1988	343.9	439.4	132.7	256.5	216.0	175.8	111.2	64.3	181.6	790.4	308.1	76.7	3,096.6
1989	92.6	252.6	313.0	108.4	751.1	385.8	317.7	201.7	132.6	326.8	590.7	83.6	3,556.6
1990	178.8	293.2	173.5	247.5	366.6	265.2	215.0	161.5	301.6	630.1	821.2	368.2	4,042.4
1991	205.1	217.3	80.7	188.1	369.6	258.4	292.6	402.6	219.8	264.7	383.8	98.4	2,931.1
1992	229.4	128.4	218.3	27.9	180.0	261.3	505.0	266.7	198.2	549.2	184.1	334.8	3,083.3
1993	74.0	64.5	114.7	346.8	254.9	213.1	203.0	136.5	327.4	413.6	712.4	437.4	3,298.3
1994	307.1	185.4	137.6	214.7	410.1	365.8	162.1	198.4	514.8	313.8	184.3	220.4	3,214.5
TOTAL	6,077.3	4,815.8	6,219.1	7,250.2	10,412.3	9,265.7	8,946.4	7,100.5	10,596.8	15,307.2	15,702.4	8,917.5	110,611.2
MEAN	178.7	141.6	182.9	213.2	306.2	272.5	263.1	208.8	311.7	450.2	461.8	262.3	3,253.3
STDEV	126.3	89.4	105.4	96.5	205.9	127.7	116.8	115.3	193.6	283.2	272.2	176.4	662.3

\*\*NOTE: -2 means data is missing.  
-1 means trace.

PREPARED BY: PAGASA/CAB/CDS

Table E.1-6 Monthly Rainfall at Sangley Point Station (4/13)

MONTHLY TOTAL AND ANNUAL CLIMATIC DATA  
RAINFALL AMOUNT (mm)

STATION: SANGLEY POINT CAVITE  
CMO: MARILYN MEDINA  
PERIOD: 1971-1994

LATITUDE: 14°30' N  
LONGITUDE: 120°55' E  
ELEVATION: 3 M

YEAR	JAN	FEB	MAR	APR	MAY	JUN	JUL	AUG	SEP	OCT	NOV	DEC	ANNUAL
1971	-2	-2	-2	-2	-2	-2	-2	-2	-2	-2	-2	-2	-2
1972	-2	-2	-2	-2	-2	-2	-2	-2	-2	-2	-2	-2	-2
1973	-2	-2	-2	-2	-2	-2	-2	-2	-2	-2	-2	-2	-2
1974	-2	-2	-2	-2	-2	-2	-2	-2	48.2	225.9	313.1	73.6	660.8
1975	10.6	-1	0.0	55.1	17.8	257.8	109.7	327.6	78.7	147.8	65.3	66.5	1,136.9
1976	7.7	0.0	0.0	0.0	466.7	242.4	175.4	509.8	427.1	24.0	10.5	13.7	1,877.3
1977	150.9	4.1	0.8	0.0	26.8	80.7	409.1	432.4	549.6	26.2	252.0	11.2	1,943.8
1978	-1	5.8	-1	4.3	168.8	195.1	247.7	703.7	313.0	407.1	10.5	29.9	2,085.9
1979	-1	-2	-2	64.0	-2	-2	341.3	616.8	211.1	75.5	35.8	-1	1,344.5
1980	-1	-1	54.8	0.0	86.5	101.2	359.3	104.4	214.8	172.0	163.9	-2	1,256.9
1981	-1	1.8	0.0	-1	17.3	393.0	409.3	220.7	166.7	99.0	174.6	35.4	1,517.8
1982	-1	-1	2.0	0.4	23.3	124.6	270.4	305.5	203.7	24.3	5.4	49.2	1,008.8
1983	51.4	6.8	0.0	-1	0.0	68.9	185.4	358.5	399.0	284.3	12.1	0.7	1,367.1
1984	15.7	13.2	4.8	19.0	102.7	526.4	161.7	715.9	153.9	429.8	30.5	5.8	2,179.4
1985	0.1	3.1	6.8	28.4	8.0	760.2	249.0	253.8	150.8	386.9	77.8	31.5	1,956.4
1986	0.6	14.8	0.2	19.0	98.1	97.4	693.9	727.5	431.2	642.1	179.0	51.2	2,955.0
1987	0.8	0.0	0.0	2.3	50.9	381.7	205.6	291.8	414.2	139.2	94.7	123.6	1,704.8
1988	58.1	1.6	1.3	25.2	145.3	414.8	401.6	112.9	111.1	544.5	167.7	2.0	1,986.1
1989	22.4	19.7	16.2	0.8	284.2	151.5	482.9	652.8	264.0	189.0	31.9	1.8	2,117.2
1990	5.5	0.0	5.5	8.4	179.9	513.3	534.4	633.6	389.7	97.5	179.1	51.8	2,598.7
1991	4.3	2.8	19.9	10.6	13.4	153.8	437.5	1,324.3	320.7	49.4	98.5	6.0	2,441.2
1992	13.7	-1	0.0	0.8	44.2	167.1	370.7	745.0	476.5	266.2	152.0	6.1	2,242.3
1993	2.3	0.0	-1	16.3	11.8	334.2	410.2	400.6	242.9	158.0	153.5	122.2	1,852.0
1994	28.4	-1	5.2	36.9	81.6	240.8	677.7	442.4	245.0	73.4	5.0	148.2	1,984.6
TOTAL	372.5	73.7	117.5	291.5	1,827.3	5,204.9	7,132.8	9,880.0	5,811.9	4,462.1	2,212.9	830.4	38,217.5
MEAN	18.6	3.9	6.2	14.6	96.2	273.9	356.6	494.0	276.8	212.5	105.4	41.5	1,819.9
STDEV	35.4	5.8	13.1	19.0	116.9	185.4	161.7	283.5	139.4	177.4	88.7	45.2	555.0

\*\*NOTE: -2 means data is missing.  
-1 means trace.

PREPARED BY: PAGASA/CAB/CDS

Table E.1-6 Monthly Rainfall at Tayabas Station (5/13)

MONTHLY AND ANNUAL CLIMATIC DATA  
RAINFALL AMOUNT (mm)

STATION: TAYABAS QUEZON      LATITUDE: 140°02' N  
CMO: ENRIQUETA CAYETANO      LONGITUDE: 121°35' E  
PERIOD: 1971-1994      ELEVATION: 157.7 M

YEAR	JAN	FEB	MAR	APR	MAY	JUN	JUL	AUG	SEP	OCT	NOV	DEC	ANNUAL
1971	109.9	65.9	144.7	65.1	494.8	427.4	423.7	79.0	157.0	472.5	522.3	654.1	3,636.4
1972	204.6	61.1	76.8	90.7	284.3	283.6	457.5	245.4	282.1	382.0	597.5	297.2	3,272.8
1973	194.4	68.5	47.4	101.6	81.1	185.0	254.6	168.1	248.1	455.4	501.0	790.8	3,096.0
1974	41.4	134.3	65.3	50.8	245.6	205.2	144.3	148.4	183.1	373.4	851.3	597.5	3,040.6
1975	229.5	79.2	152.1	345.5	82.7	274.5	147.5	138.4	489.2	205.3	385.9	892.7	3,422.5
1976	213.9	27.3	43.4	38.2	1,060.8	214.8	169.7	307.3	278.3	517.6	653.5	618.4	4,143.2
1977	159.4	186.7	96.7	36.3	149.5	182.6	325.3	235.2	237.9	415.5	583.9	194.3	2,803.3
1978	137.7	64.5	19.7	120.9	154.5	161.0	155.9	223.0	505.1	873.9	419.9	319.1	3,155.2
1979	102.3	50.8	6.5	224.1	171.0	308.0	91.9	131.1	350.4	239.1	371.7	118.7	2,165.6
1980	67.9	66.3	227.3	25.1	130.8	543.8	279.2	236.2	139.4	636.7	510.8	260.0	3,143.5
1981	120.6	29.0	16.1	91.9	201.8	254.7	281.3	75.6	298.7	587.9	945.5	332.4	3,235.5
1982	126.8	90.6	35.6	51.9	65.8	49.1	213.6	218.6	466.9	133.0	290.4	241.2	1,983.5
1983	253.3	9.0	26.2	41.9	19.3	105.9	785.0	105.3	217.3	942.9	203.1	128.4	2,837.6
1984	194.3	75.4	42.8	117.5	131.5	186.2	80.3	241.1	312.3	621.8	223.5	102.0	2,328.7
1985	95.3	29.9	254.8	169.6	275.3	437.6	165.9	4.6	470.3	447.7	460.0	272.8	3,083.8
1986	197.7	44.2	27.8	67.9	74.0	289.0	448.5	255.0	179.3	1,057.6	600.7	188.8	3,440.5
1987	239.8	43.0	73.6	76.1	41.4	423.8	128.8	357.7	156.7	179.5	398.3	673.0	2,791.7
1988	354.2	207.5	50.2	243.5	230.5	236.4	134.9	87.3	365.6	1,030.4	756.8	85.6	3,782.9
1989	174.8	223.5	288.7	88.4	330.3	297.6	270.1	121.8	215.1	553.0	124.2	79.4	2,766.9
1990	10.9	67.5	110.1	6.5	154.5	262.0	254.1	411.7	189.6	384.7	618.6	472.5	2,942.7
1991	103.2	221.7	164.3	78.3	133.0	377.6	342.0	207.7	111.3	247.2	582.2	438.9	2,987.4
1992	51.6	94.5	75.3	68.5	217.5	149.7	435.6	143.9	203.4	272.6	859.1	266.6	2,838.3
1993	90.3	42.0	38.9	5.5	3.9	168.2	372.8	258.4	257.2	607.6	506.0	1,057.4	3,403.2
1994	241.8	61.5	111.6	199.9	95.2	282.0	235.9	168.0	258.4	372.0	337.3	431.6	2,795.2
TOTAL	3,715.6	2,083.9	2,195.9	2,405.7	4,829.1	6,305.7	6,608.4	4,568.8	6,572.7	12,019.3	12,283.5	9,513.4	73,102.0
MEAN	154.8	86.8	91.5	100.2	201.2	262.7	275.4	190.4	273.9	500.8	511.8	396.4	3,045.9
STDEV	80.9	62.4	77.6	82.3	213.8	115.7	158.9	94.4	114.7	261.7	209.2	271.2	485.5

\*\*NOTE: -2 means data is missing  
-1 means trace.

PREPARED BY: PAGASA/CAS/CDS

Table E.1-6 Monthly Rainfall at Legaspi Station (6/13)

MONTHLY TOTAL AND ANNUAL CLIMATIC DATA  
RAINFALL AMOUNT (mm)

STATION: LEGASPI CITY ALBAY  
CMO: ANTONIO ARISPE  
PERIOD: 1961-1994

LATITUDE: 13°08' N  
LONGITUDE: 123°44' E  
ELEVATION: 17 M

YEAR	JAN	FEB	MAR	APR	MAY	JUN	JUL	AUG	SEP	OCT	NOV	DEC	ANNUAL
1961	100.6	48.8	118.0	130.6	180.2	284.1	207.0	345.0	161.1	300.1	276.1	276.4	2,428.0
1962	280.1	181.3	163.8	91.8	405.1	142.5	393.0	343.0	462.4	174.9	410.0	173.3	3,221.2
1963	82.9	158.0	44.9	41.9	146.4	291.8	249.5	733.3	120.9	142.7	405.8	355.3	2,773.4
1964	305.0	253.3	96.6	435.2	166.1	151.2	247.0	257.2	295.3	210.1	359.8	642.2	3,419.0
1965	-2	198.1	242.7	158.4	189.6	311.9	478.4	308.4	257.0	318.1	486.6	536.9	3,486.1
1966	592.1	104.7	155.9	87.8	216.3	167.5	424.5	209.1	266.8	400.3	452.0	814.5	3,891.5
1967	490.5	148.9	215.3	139.5	47.2	122.2	124.0	388.2	193.9	219.8	723.4	281.1	3,094.0
1968	403.3	78.5	118.3	49.4	19.4	136.6	105.9	235.1	321.3	117.4	269.7	181.6	2,036.5
1969	48.2	24.1	73.1	143.7	31.6	149.7	203.3	168.1	443.5	158.5	333.7	541.4	2,318.9
1970	269.6	329.9	292.2	172.2	134.5	203.5	358.3	424.6	219.4	540.2	758.1	559.2	4,261.7
1971	391.3	307.6	423.3	137.9	407.8	189.9	394.2	169.3	173.0	473.9	322.0	836.0	4,226.2
1972	659.2	132.9	267.1	95.8	151.0	393.0	174.7	300.7	225.3	185.7	611.7	373.4	3,570.5
1973	169.2	101.2	83.0	108.0	98.7	183.3	317.3	316.6	185.2	511.0	773.6	978.3	3,825.4
1974	237.9	368.9	92.3	65.6	259.3	158.9	438.5	161.3	74.6	458.6	565.7	518.4	3,760.0
1975	356.7	210.7	122.0	376.1	151.4	154.2	196.5	228.5	318.6	139.3	372.9	1,548.8	4,175.7
1976	668.8	160.9	251.7	104.9	423.0	210.3	155.3	390.6	215.2	294.7	410.0	845.2	4,130.6
1977	239.3	217.3	141.9	114.1	245.3	107.3	378.1	233.7	391.6	219.7	657.2	175.6	3,121.1
1978	55.1	90.7	152.5	124.4	206.8	292.3	193.4	385.5	353.3	559.4	261.3	494.6	3,169.3
1979	137.7	241.2	69.9	272.7	129.3	302.3	244.8	148.4	464.6	234.9	321.8	248.4	2,816.0
1980	222.7	289.1	298.0	86.1	64.4	535.9	298.5	350.8	282.7	652.4	313.2	288.4	3,682.2
1981	463.6	168.5	61.8	150.2	138.6	349.5	238.8	255.6	352.6	491.2	862.8	477.7	4,010.9
1982	227.3	346.4	250.2	121.4	180.5	135.5	391.6	250.4	568.6	247.5	386.0	394.8	3,500.2
1983	137.2	11.4	33.4	52.2	22.0	283.5	532.9	112.8	269.5	271.9	466.9	471.0	2,664.7
1984	402.2	191.4	225.8	33.7	107.5	387.2	167.4	357.8	170.2	438.6	663.5	180.2	3,325.5
1985	305.9	182.2	181.7	181.8	140.4	263.5	313.2	68.9	240.9	386.5	417.9	261.2	2,944.1
1986	226.9	152.2	92.9	366.7	90.2	183.7	-2	216.4	272.5	484.9	337.5	165.4	2,589.3
1987	110.7	65.8	42.9	113.2	43.1	138.3	246.6	245.2	200.1	227.5	653.6	602.6	2,689.6
1988	266.3	119.6	85.9	287.2	118.8	186.7	174.1	93.2	147.0	693.5	897.1	295.2	3,364.6
1989	549.8	676.7	331.4	251.9	260.7	393.6	183.4	211.8	327.7	220.4	232.1	389.0	4,008.5
1990	447.1	104.9	32.9	63.4	266.4	384.9	199.2	276.2	207.2	442.7	396.0	358.3	3,179.2
1991	180.8	140.8	202.1	104.6	273.6	519.9	314.9	292.6	170.2	212.0	368.8	470.3	3,270.6
1992	233.2	134.5	54.2	46.9	128.0	120.5	327.7	275.7	209.3	184.4	294.5	351.8	2,360.7
1993	161.1	112.2	150.5	35.9	119.4	216.9	393.5	375.4	293.7	366.7	702.0	847.6	3,774.9
1994	590.4	76.0	169.0	277.7	134.2	195.7	377.2	65.1	253.8	170.5	127.9	464.2	2,901.7
TOTAL	6,128.7	5,337.2	5,022.9	5,696.8	8,607.8	9,422.7	9,194.5	9,109.0	11,150.0	15,911.0	16,393.0	15,911.2	16,398.3
MEAN	303.4	180.3	157.0	147.7	167.6	253.2	285.5	270.4	267.9	327.9	468.0	468.0	3,293.9
STDEV	176.3	125.4	96.2	102.9	104.1	121.9	110.1	125.9	107.8	157.7	194.7	288.5	603.4

\*\*NOTE: -2 means data is missing.  
-1 means trace.

PREPARED BY: PAGASA/CAB/CDS

**Table E.1-6 Monthly Rainfall at Catbalogan Station (7/13)**

MONTHLY TOTAL ND ANNUAL CLIMATIC DATA  
RAINFALL AMOUNT (mm)

STATION: CATBALOGAN WESTERN SAMAR  
CMO: ANTONIO CABER  
PERIOD: 1961-1994

LATITUDE: 11°47' N  
LONGITUDE: 124°53' E  
ELEVATION: 5 M

YEAR	JAN	FEB	MAR	APR	MAY	JUN	JUL	AUG	SEP	OCT	NOV	DEC	ANNUAL
1961	52.1	139.0	117.8	69.0	150.2	215.1	82.7	283.9	188.2	216.8	198.5	149.5	1,862.8
1962	146.3	174.2	176.2	122.0	303.2	109.5	372.0	309.6	381.6	103.6	316.1	177.6	2,691.9
1963	142.7	50.4	54.3	63.1	190.7	189.5	337.1	400.9	113.9	282.7	264.1	314.1	2,403.5
1964	116.5	169.6	21.6	164.3	228.2	90.3	241.3	189.9	270.5	305.1	242.1	296.3	2,335.7
1965	270.9	128.5	342.9	168.5	330.1	208.2	304.8	107.0	184.1	178.8	182.9	492.5	2,899.2
1966	93.4	86.4	69.3	33.0	281.8	139.0	414.4	116.0	104.9	381.2	388.1	528.3	2,635.8
1967	493.4	240.2	68.9	48.4	56.7	102.2	172.7	206.8	498.9	198.8	467.8	207.8	2,762.6
1968	349.3	102.1	53.2	35.8	109.1	91.0	115.1	296.9	195.7	218.1	535.4	173.8	2,275.5
1969	52.4	10.1	2.8	79.9	65.6	298.6	213.9	214.8	233.7	166.3	260.3	337.8	1,936.2
1970	260.7	239.4	99.2	89.8	121.5	247.3	294.0	162.5	146.6	594.4	468.3	163.1	2,886.8
1971	183.1	180.7	389.8	198.5	369.1	345.6	352.5	110.3	160.3	420.5	222.6	139.7	3,072.7
1972	643.9	107.1	128.6	41.4	64.7	241.1	236.2	249.8	518.9	112.9	208.1	259.4	2,812.1
1973	8.7	41.0	62.6	43.8	64.2	83.2	183.8	156.3	225.4	218.3	353.5	320.1	1,760.9
1974	124.3	169.2	44.7	113.4	135.1	323.7	226.1	101.2	143.6	509.3	229.0	342.7	2,482.3
1975	367.7	193.0	38.4	214.9	107.8	341.7	260.7	83.5	174.4	261.2	165.5	575.1	2,781.9
1976	384.0	177.4	148.4	68.8	182.6	401.2	158.8	166.8	93.4	167.5	255.0	482.2	2,686.1
1977	157.9	339.2	92.9	35.4	85.4	181.8	376.7	118.5	307.8	195.1	140.7	66.4	2,097.8
1978	95.7	212.5	108.3	189.7	150.4	88.4	69.0	205.9	549.3	238.9	188.2	327.1	2,423.4
1979	104.8	127.8	49.0	103.0	221.2	323.9	312.3	122.0	219.8	243.1	301.5	230.6	2,359.0
1980	293.5	128.5	345.9	71.3	63.4	322.9	198.5	416.2	218.6	386.5	541.9	158.5	3,145.7
1981	319.4	54.6	22.5	43.7	116.0	177.3	159.3	88.3	221.0	261.8	484.4	254.6	2,202.9
1982	233.2	204.7	248.6	102.0	281.1	130.9	467.8	118.6	400.2	169.7	201.0	144.8	2,702.6
1983	56.0	5.6	69.6	8.6	1.0	127.8	549.6	215.9	360.6	329.7	632.7	705.8	3,062.9
1984	233.9	257.6	213.0	60.4	84.6	189.8	143.1	191.4	318.8	352.2	343.7	232.6	2,621.1
1985	383.8	172.5	78.6	149.3	184.9	214.9	194.2	25.1	527.2	236.0	268.7	107.7	2,542.9
1986	386.9	123.3	142.4	361.8	106.1	262.6	209.1	219.8	133.7	463.0	145.7	90.2	2,649.6
1987	87.0	59.4	53.2	32.5	33.9	187.3	502.8	392.1	181.2	289.7	524.3	353.5	2,696.9
1988	99.5	28.7	50.2	76.9	122.0	228.2	244.7	112.8	296.2	756.2	648.2	515.6	3,179.2
1989	785.4	409.7	420.4	176.3	339.1	179.5	192.6	164.8	86.5	376.9	164.8	156.0	3,452.0
1990	220.1	33.3	4.4	43.5	319.6	600.2	102.6	184.0	203.4	289.0	347.8	94.7	2,442.6
1991	74.2	170.2	265.4	179.0	136.1	229.3	309.4	299.5	79.1	224.2	467.3	333.1	2,766.8
1992	76.9	11.2	10.1	22.6	39.3	311.7	409.0	130.9	110.7	13.6	325.8	104.2	1,566.0
1993	46.6	152.1	210.5	24.0	22.7	141.7	424.9	217.8	154.3	169.0	251.7	381.5	2,196.8
1994	176.4	36.6	90.9	217.3	263.0	293.9	393.6	188.5	509.7	204.0	145.3	240.8	2,760.0
<b>TOTAL</b>	<b>7,520.6</b>	<b>4,755.8</b>	<b>4,292.6</b>	<b>3,451.9</b>	<b>5,330.4</b>	<b>7,619.3</b>	<b>9,225.3</b>	<b>6,568.3</b>	<b>8,517.2</b>	<b>9,534.1</b>	<b>10,881.0</b>	<b>9,457.7</b>	<b>87,154.2</b>
<b>MEAN</b>	<b>221.2</b>	<b>139.9</b>	<b>126.3</b>	<b>101.5</b>	<b>156.8</b>	<b>224.1</b>	<b>271.3</b>	<b>193.2</b>	<b>250.5</b>	<b>280.4</b>	<b>320.0</b>	<b>278.2</b>	<b>2,563.4</b>
<b>STDEV</b>	<b>176.6</b>	<b>94.0</b>	<b>114.2</b>	<b>77.3</b>	<b>102.8</b>	<b>109.5</b>	<b>123.4</b>	<b>94.2</b>	<b>140.3</b>	<b>145.8</b>	<b>148.0</b>	<b>156.9</b>	<b>419.1</b>

\*\*NOTE: -2 means data is missing.  
-1 means trace.

PREPARED BY: PAGASA/CAB/CDS

**Table E.1-6 Monthly Rainfall at Tacloban Station (8/13)**

**MONTHLY TOTAL AND ANNUAL CLIMATIC DATA  
RAINFALL AMOUNT (mm)**

STATION: TACLOBAN CITY LEYTE  
CMO: BONIFACIO FURING  
PERIOD: 1961-1994

LATITUDE: 11°14' N  
LONGITUDE: 125°02' E  
ELEVATION: 3 M

YEAR	JAN	FEB	MAR	APR	MAY	JUN	JUL	AUG	SEP	OCT	NOV	DEC	ANNUAL
1961	108.2	224.2	109.5	109.3	176.2	82.4	194.0	113.8	64.6	203.3	290.0	139.2	1,814.7
1962	211.7	237.8	201.4	83.7	205.9	49.3	131.8	227.1	247.9	48.9	195.9	189.3	2,030.7
1963	241.7	125.5	108.0	83.7	61.5	170.2	120.2	303.0	150.0	86.1	276.8	185.1	1,911.8
1964	172.9	377.4	77.2	190.5	68.0	134.7	95.4	50.3	149.3	194.8	349.3	151.4	2,011.2
1965	224.3	264.9	235.2	194.7	116.3	174.3	159.3	87.5	173.7	93.8	194.0	543.3	2,461.3
1966	99.4	126.7	93.3	33.6	297.9	100.3	242.7	131.9	65.0	150.7	175.4	407.0	1,928.9
1967	862.5	339.8	136.3	48.9	71.9	51.2	116.3	148.4	75.8	137.8	225.1	204.0	2,418.0
1968	197.6	164.2	80.0	29.5	40.6	102.7	59.8	72.5	230.7	136.8	343.9	285.7	1,744.0
1969	58.4	35.9	13.5	83.1	56.3	162.0	246.9	97.4	96.1	95.7	155.8	376.1	1,477.2
1970	204.8	321.2	167.6	64.9	88.5	125.7	172.4	92.2	225.7	344.5	390.4	254.9	2,452.8
1971	325.8	195.0	280.6	201.8	181.0	320.1	185.5	97.9	137.8	287.6	184.9	225.8	2,603.8
1972	587.0	49.9	252.2	94.8	171.0	142.6	73.3	211.7	177.4	127.7	285.6	234.9	2,408.1
1973	46.2	70.4	95.9	80.7	112.4	55.9	242.3	191.1	175.3	157.3	272.3	279.8	1,779.6
1974	169.0	238.3	77.9	92.5	277.8	209.6	116.6	27.6	49.6	234.0	190.0	411.8	2,094.7
1975	272.3	219.1	167.1	326.9	115.0	163.9	157.9	131.4	151.5	97.4	149.7	611.1	2,563.3
1976	365.7	220.3	224.1	100.2	136.0	191.4	149.9	124.6	108.2	175.8	187.8	362.9	2,346.9
1977	141.8	481.3	101.0	73.8	134.8	124.1	319.2	71.2	95.1	73.6	94.7	89.9	1,800.5
1978	203.6	235.3	160.6	320.6	120.6	150.0	60.8	122.6	373.2	81.1	187.6	600.0	2,616.0
1979	106.9	161.5	48.6	132.7	167.4	308.5	213.2	60.7	181.6	274.6	201.8	287.8	2,145.3
1980	408.3	260.3	75.4	153.7	66.2	296.6	121.7	375.5	45.5	143.7	481.3	256.5	2,684.7
1981	332.5	111.5	43.1	135.7	138.0	170.4	216.9	45.0	246.9	299.4	348.0	312.1	2,399.5
1982	170.7	252.8	351.5	101.2	102.3	221.5	134.9	192.9	124.7	149.8	103.7	190.3	2,096.3
1983	83.5	26.4	59.5	20.1	23.6	98.6	474.5	128.8	190.9	220.6	318.8	752.7	2,398.0
1984	492.5	465.4	195.8	72.0	169.1	161.1	67.9	89.6	174.9	140.2	458.6	508.5	2,995.6
1985	537.3	184.7	73.4	116.6	275.6	81.7	224.2	71.4	215.5	297.4	231.2	186.7	2,495.7
1986	556.8	130.5	279.3	293.5	86.1	184.7	106.2	163.4	177.8	438.3	360.5	102.2	2,879.3
1987	206.7	169.0	69.8	29.6	22.8	172.4	215.0	284.2	64.0	201.8	581.5	235.5	2,252.3
1988	113.8	94.6	89.3	113.3	104.7	219.3	127.9	149.8	321.5	466.4	563.7	535.9	2,900.2
1989	597.8	330.1	309.7	149.6	334.0	198.3	102.0	187.2	106.1	289.8	191.5	124.5	2,920.6
1990	388.3	53.6	28.2	35.1	351.4	190.8	169.1	57.2	239.8	348.2	329.9	110.8	2,302.4
1991	-2	330.9	404.5	130.4	144.1	147.1	262.0	137.4	37.4	123.5	439.8	406.1	2,563.2
1992	139.4	54.0	66.5	22.5	27.4	141.6	255.3	124.4	101.9	157.4	141.9	198.9	1,431.2
1993	150.0	228.2	120.9	78.3	54.6	91.0	166.1	275.2	120.5	94.2	445.2	629.3	2,453.5
1994	284.3	68.8	165.8	204.5	176.3	152.5	125.2	123.8	172.4	82.1	163.2	508.9	2,227.8
TOTAL	9,061.7	6,849.5	4,947.7	4,002.0	4,675.3	5,346.5	5,826.4	4,768.7	5,268.3	6,454.3	9,509.8	10,898.9	77,609.1
MEAN	274.6	201.5	145.5	117.7	137.5	157.2	171.4	140.3	154.9	189.8	279.7	320.6	2,282.6
STDEV	189.5	118.2	96.6	80.2	87.4	66.7	84.0	80.2	78.5	105.6	128.2	175.7	398.8

\*\*NOTE: -2 means data is missing.  
-1 means trace.

PREPARED BY: PAGASA/CAB/CDS

Table E.1-6 Monthly Rainfall at Tagbilaran Station (9/13)

MONTHLY TOTAL AND ANNUAL CLIMATIC DATA  
RAINFALL AMOUNT (mm)

STATION: TAGBILARAN CITY BOHOL  
CMO: EMMANUEL ORONAN  
PERIOD: 1961-1994

LATITUDE: 09°38' N  
LONGITUDE: 123°52' E  
ELEVATION: 6 M

YEAR	JAN	FEB	MAR	APR	MAY	JUN	JUL	AUG	SEP	OCT	NOV	DEC	ANNUAL
1961	116.3	66.8	149.8	85.9	92.9	135.4	125.5	72.4	73.7	119.5	128.4	168.3	1,334.9
1962	49.7	148.3	132.4	17.8	56.4	190.4	161.8	158.3	158.5	183.7	181.5	78.6	1,515.4
1963	130.8	95.1	136.9	35.3	18.6	9.3	83.8	153.2	93.7	113.3	289.0	65.5	1,224.5
1964	104.5	175.4	7.6	233.9	164.4	121.2	193.4	73.0	230.5	199.0	307.5	112.8	1,923.2
1965	143.0	66.2	114.0	117.0	44.6	110.3	96.0	103.2	110.6	200.2	161.0	56.7	1,322.8
1966	20.1	86.9	43.9	10.1	72.6	106.9	227.8	123.2	63.0	154.1	226.0	192.1	1,326.7
1967	248.9	160.8	155.4	67.5	82.1	130.7	166.1	65.0	47.3	232.9	175.8	120.0	1,652.5
1968	45.1	40.3	44.9	38.2	81.5	150.7	52.5	93.9	87.9	112.2	235.8	107.4	1,090.4
1969	24.6	3.0	30.1	14.3	34.3	236.5	145.4	148.8	76.0	193.0	134.6	108.4	1,149.0
1970	159.1	61.8	55.3	14.0	73.0	303.4	65.0	58.0	99.2	155.5	219.6	96.0	1,359.9
1971	117.0	182.8	104.8	65.7	181.3	128.8	106.3	192.5	106.9	384.9	217.4	82.8	1,871.2
1972	166.1	83.5	130.7	25.4	137.2	105.7	10.4	164.1	200.2	44.1	169.1	120.1	1,356.6
1973	17.9	10.3	36.2	70.2	50.7	30.9	231.1	185.6	269.8	126.9	383.3	175.8	1,588.7
1974	70.4	131.7	129.5	196.1	167.2	267.1	144.8	11.0	62.5	316.8	131.3	98.4	1,726.8
1975	201.0	63.1	35.6	104.8	72.0	197.3	-2	55.5	202.4	239.9	124.0	155.4	1,451.0
1976	122.0	81.0	56.0	63.6	67.9	173.0	61.8	152.6	81.8	128.4	215.2	130.7	1,334.0
1977	85.7	111.6	111.2	0.3	55.1	103.3	170.1	170.9	124.4	135.4	154.4	38.0	1,260.4
1978	151.5	41.2	1.8	26.7	31.1	51.6	65.0	85.8	158.9	140.4	75.7	130.3	960.0
1979	35.4	8.9	28.9	35.6	73.8	62.3	135.9	26.0	133.9	147.1	138.1	60.0	885.9
1980	144.5	31.6	12.3	88.3	31.6	217.9	113.7	145.0	53.6	225.3	274.0	99.1	1,436.9
1981	110.1	81.3	7.2	11.1	90.5	64.0	49.2	57.2	188.5	174.7	215.2	184.9	1,233.9
1982	31.0	100.8	103.1	47.0	88.9	132.2	104.1	92.8	92.1	47.2	93.3	109.7	1,042.2
1983	-2	4.8	6.5	0.5	5.8	43.1	263.0	78.4	147.7	157.7	104.5	201.5	1,013.5
1984	115.7	84.9	116.6	54.0	120.8	67.8	82.2	74.7	265.2	95.6	218.3	213.0	1,508.8
1985	150.4	41.6	41.6	74.2	80.2	72.1	168.8	55.4	133.4	367.4	218.2	57.4	1,460.7
1986	321.6	21.9	12.0	48.9	12.2	105.4	98.0	61.2	269.4	179.2	124.9	146.2	1,400.9
1987	22.0	60.4	17.5	-1.0	0.2	24.2	118.2	89.6	128.9	110.2	123.2	104.8	799.2
1988	31.2	43.2	25.9	97.6	49.3	125.8	86.9	159.0	85.1	127.0	231.9	54.5	1,117.4
1989	119.0	40.5	132.0	158.8	124.5	82.8	115.5	85.2	77.3	122.5	149.4	47.3	1,254.8
1990	125.1	20.4	71.2	64.1	106.3	99.6	38.1	-2.0	96.4	174.0	371.8	74.1	1,241.1
1991	57.2	51.1	38.1	98.4	112.6	65.5	109.7	199.5	25.0	95.7	91.0	35.1	978.9
1992	43.4	31.5	19.5	4.1	-1	63.4	65.7	68.8	79.6	117.1	114.1	104.3	711.5
1993	32.5	151.4	51.8	75.7	57.4	77.0	125.7	99.4	126.2	147.1	136.4	255.0	1,335.6
1994	73.4	33.7	137.6	201.0	221.1	210.5	39.2	126.8	78.7	302.1	109.2	107.5	1,640.8
TOTAL	3,386.2	2,417.8	2,297.9	2,246.1	2,658.1	4,066.1	3,820.7	3,486.0	4,226.3	5,770.1	6,243.1	3,891.7	44,510.1
MEAN	102.6	71.1	67.6	66.1	78.2	119.6	115.8	105.6	124.3	169.7	183.6	114.5	1,309.1
STDEV	70.0	50.0	50.9	59.4	52.9	70.5	59.2	50.0	65.2	79.3	76.8	53.7	283.4

\*\*NOTE: -2 means data is missing.  
-1 means trace.

PREPARED BY: PAGASA/CAB/CDS



**Table E.1-6 Monthly Rainfall at Roxas Station (10/13)**

**MONTHLY TOTAL AND ANNUAL CLIMATIC DATA  
RAINFALL AMOUNT (mm)**

STATION: ROXAS CITY AKLAN  
CMO: TEDDY ROLLAN  
PERIOD: 1961-1994

LATITUDE: 11°35' N  
LONGITUDE: 122°45' E  
ELEVATION: 4 M

YEAR	JAN	FEB	MAR	APR	MAY	JUN	JUL	AUG	SEP	OCT	NOV	DEC	ANNUAL
1961	18.8	46.7	56.0	9.1	164.1	230.6	101.9	156.1	219.0	162.9	138.4	50.8	1,354.4
1962	94.2	61.9	61.8	50.0	172.7	182.2	343.0	455.0	439.3	257.2	263.1	41.1	2,421.5
1963	165.3	21.2	29.8	50.1	62.0	141.4	368.4	294.2	263.1	251.0	83.5	92.3	1,822.3
1964	24.8	77.6	17.2	8.5	267.2	258.1	352.0	220.0	386.7	475.3	448.0	104.0	2,639.4
1965	177.3	17.9	68.8	63.8	107.0	212.9	152.9	228.9	256.8	154.5	117.5	177.9	1,736.2
1966	122.1	5.6	-1	14.7	578.6	225.9	465.5	263.3	266.4	446.3	00	235.8	2,624.2
1967	322.1	120.2	21.4	23.9	102.3	170.9	202.4	172.6	61.7	267.2	312.0	65.7	1,842.4
1968	118.0	30.8	15.5	3.3	30.8	171.4	268.1	208.1	148.1	366.2	231.9	103.5	1,695.7
1969	43.1	32.3	21.1	10.5	163.0	193.8	394.9	275.9	137.4	153.3	80.6	169.4	1,675.3
1970	47.2	122.6	96.7	0.0	0.0	306.8	284.8	148.5	293.7	596.1	419.4	140.6	2,456.4
1971	138.8	72.0	118.3	131.3	307.0	625.5	447.4	171.9	248.9	379.3	372.9	78.9	3,092.2
1972	430.6	19.7	60.8	21.7	28.7	277.8	46.3	136.7	230.0	168.0	248.9	168.3	1,835.5
1973	3.5	25.5	39.0	12.9	-1	122.1	290.9	372.8	580.7	287.3	537.2	379.6	2,651.5
1974	102.8	74.2	21.2	22.6	74.1	154.4	284.2	149.2	114.5	464.0	224.3	231.8	1,917.3
1975	126.2	72.9	8.9	270.8	95.4	212.8	159.6	215.6	387.2	396.1	209.2	389.8	2,544.5
1976	33.3	25.6	30.0	12.9	164.7	141.4	143.5	299.1	138.3	237.2	362.3	267.3	1,855.6
1977	123.2	-2	29.5	46.6	79.4	315.8	227.9	209.2	197.0	183.0	74.7	78.5	1,564.8
1978	50.1	32.3	13.4	68.2	81.7	285.4	160.5	135.2	250.2	-2	209.8	211.9	1,498.7
1979	35.1	30.3	8.4	169.6	104.5	381.7	136.1	241.3	174.6	227.4	80.5	177.4	1,766.9
1980	82.3	60.3	99.9	39.0	88.8	706.6	255.8	182.2	122.0	254.5	214.4	119.9	2,225.7
1981	96.0	40.2	12.7	-2	77.3	211.7	122.7	145.8	222.8	235.9	192.6	118.5	1,476.2
1982	60.3	36.0	93.2	19.5	101.5	200.2	87.7	369.5	143.7	142.1	94.8	55.2	1,403.7
1983	22.8	4.0	5.7	1.5	6.4	292.4	366.8	211.6	245.8	426.1	223.0	111.7	1,917.8
1984	53.3	84.7	224.5	183.7	179.5	278.5	195.5	148.0	365.0	431.0	210.0	107.0	2,460.7
1985	163.0	24.0	56.0	181.5	222.5	103.5	278.4	89.5	234.0	273.8	146.5	92.5	1,865.2
1986	108.8	11.5	67.7	48.5	42.3	167.7	485.8	265.3	209.0	503.1	324.0	72.0	2,305.7
1987	42.2	34.4	-1	3.0	1.0	70.7	177.8	263.1	134.6	135.6	482.6	151.6	1,496.6
1988	46.7	30.4	20.6	103.5	126.9	265.1	322.8	213.6	157.6	528.4	640.2	103.1	2,558.9
1989	172.1	55.2	126.4	31.8	418.3	173.6	191.8	312.5	324.0	169.7	82.3	22.1	2,079.8
1990	70.4	3.0	5.5	5.8	199.8	122.3	314.0	135.3	178.3	255.6	372.0	40.0	1,702.0
1991	17.0	26.0	138.0	16.5	30.5	232.5	486.5	87.0	112.0	109.5	65.5	128.0	1,449.0
1992	40.5	5.5	1.0	15.5	36.5	165.5	299.5	230.5	46.0	356.0	180.5	51.0	1,448.0
1993	58.0	24.0	40.0	1.0	5.5	133.5	357.0	486.0	142.5	55.0	306.0	315.0	1,922.5
1994	99.0	9.5	21.5	46.5	136.0	220.5	142.5	144.5	122.5	280.5	47.0	202.5	1,472.5
TOTAL	3,308.9	1,338.0	1,630.5	1,687.8	4,256.0	7,975.2	8,914.9	7,638.0	7,553.4	9,629.1	7,994.6	4,852.7	66,779.1
MEAN	97.3	40.5	48.0	51.1	125.2	234.6	262.2	224.6	222.2	291.8	235.1	142.7	1,964.1
STDEV	86.9	31.0	49.7	65.4	123.5	129.1	119.3	94.4	113.2	136.4	152.4	92.7	457.6

\*\*NOTE: -2 means data is missing.  
-1 means trace.

PREPARED BY: PAGASA/CAB/CDS

**Table E.1-6 Monthly Rainfall at Surigao Station (11/13)**

**MONTHLY TOTAL AND ANNUAL CLIMATIC DATA  
RAINFALL AMOUNT (mm)**

STATION: SURIGAO SURIGAO DEL NORTE      LATITUDE: 09°48' N  
 CMO: GERALDINO WARLITO      LONGITUDE: 126°30' E  
 PERIOD: 1961-1994      ELEVATION: 39 M

YEAR	JAN	FEB	MAR	APR	MAY	JUN	JUL	AUG	SEP	OCT	NOV	DEC	ANNUAL
1961	638.1	351.3	133.0	348.3	163.4	161.8	145.9	168.7	112.3	145.1	590.0	589.2	3,547.1
1962	574.7	777.2	536.1	117.3	450.2	61.0	182.1	248.8	251.3	238.2	440.8	583.7	4,461.4
1963	1,852.2	882.0	677.0	140.9	71.2	119.0	154.0	279.8	59.2	238.0	454.1	198.8	5,126.2
1964	494.9	757.6	308.7	341.6	259.7	166.6	155.9	104.0	235.9	249.0	-2	302.3	3,376.2
1965	831.9	745.7	338.9	272.4	79.1	122.9	163.6	112.8	171.2	371.5	357.7	603.4	4,171.1
1966	322.1	209.3	211.4	207.4	154.0	41.0	301.8	59.2	135.1	208.7	493.1	785.1	3,128.2
1967	663.1	893.8	399.5	162.3	115.5	53.2	114.7	151.8	118.3	435.7	336.7	329.3	3,773.9
1968	611.1	234.7	394.9	153.1	70.6	71.6	20.3	89.9	248.0	201.9	750.2	532.6	3,378.9
1969	165.7	149.3	166.0	438.2	135.7	129.3	311.5	80.9	157.3	92.4	387.9	617.4	2,831.6
1970	456.4	606.8	314.2	141.3	181.0	449.0	107.6	180.8	129.3	335.3	441.1	582.2	3,925.0
1971	954.5	568.7	598.6	265.8	141.2	200.4	194.1	133.6	134.0	628.3	466.8	483.2	4,769.2
1972	1,142.5	376.4	495.8	206.3	57.4	168.2	78.0	235.1	106.9	143.3	535.7	179.3	3,729.9
1973	81.1	151.1	217.9	250.9	66.5	80.0	180.4	102.1	239.1	286.4	977.3	890.8	3,543.6
1974	537.9	1,105.5	375.1	269.5	134.1	60.3	180.1	70.2	11.5	285.1	288.6	781.4	4,099.3
1975	661.5	390.5	254.4	441.8	201.7	126.8	222.7	74.4	152.7	143.5	403.6	694.1	3,767.7
1976	942.3	397.4	333.2	143.3	46.1	163.6	127.6	342.0	76.4	244.5	261.6	687.6	3,765.6
1977	479.1	977.4	479.9	135.6	103.9	174.1	158.6	82.9	59.4	-2	257.1	160.5	3,088.5
1978	735.1	324.9	274.6	174.9	193.1	85.4	98.8	87.6	158.4	292.6	221.8	532.1	3,179.3
1979	-2	-2	-2	-2	-2	-2	-2	-2	-2	-2	-2	-2	-2
1980	-2	-2	-2	-2	-2	-2	-2	-2	-2	-2	-2	-2	-2
1981	-2	-2	-2	-2	-2	-2	-2	-2	-2	-2	-2	-2	-2
1982	-2	-2	-2	-2	-2	-2	-2	-2	-2	-2	-2	-2	-2
1983	-2	-2	-2	-2	-2	-2	-2	-2	-2	-2	-2	-2	-2
1984	346.9	860.1	233.0	168.2	68.1	172.0	114.1	130.5	382.8	133.3	386.5	1,237.7	4,253.2
1985	539.1	201.3	370.2	143.1	303.8	18.3	294.8	95.8	164.0	315.4	502.4	378.7	3,326.9
1986	1,205.2	231.0	498.5	566.1	143.3	81.0	161.9	68.6	146.9	283.6	531.1	422.3	4,339.5
1987	311.7	444.7	251.6	45.8	17.0	69.7	150.0	64.3	32.3	165.8	578.4	276.4	2,407.7
1988	306.5	359.8	283.1	209.8	97.0	194.1	182.5	257.5	137.4	302.3	724.8	641.8	3,698.6
1989	821.0	350.4	331.3	238.5	234.1	258.1	152.2	86.6	168.3	194.7	345.6	214.8	3,395.6
1990	652.8	218.9	170.4	314.5	297.5	197.4	165.7	89.7	84.4	350.3	654.7	240.3	3,656.6
1991	413.8	182.1	309.7	185.9	120.2	229.8	256.1	120.2	94.3	179.1	195.5	495.3	2,782.0
1992	183.8	127.3	151.0	103.4	61.7	31.1	228.5	77.6	104.8	355.3	292.8	536.5	2,253.8
1993	381.5	629.4	292.2	337.7	129.6	41.9	100.0	347.3	115.7	153.6	-2	-2	2,528.9
1994	399.5	401.7	417.8	807.5	106.2	207.3	84.9	154.7	193.8	176.5	638.8	512.4	4,101.1
TOTAL17	13,906.3	9,818.0	7,351.4	4,222.9	3,934.9	4,808.4	4,097.4	4,181.0	7,154.4	12,514.7	14,509.2	*****	
MEAN	617.4	479.5	338.6	253.5	145.6	135.7	165.8	141.3	144.2	255.5	463.5	518.2	3,600.2
STDEV	367.2	285.0	135.1	157.0	93.1	89.2	68.0	83.4	76.1	111.9	181.2	241.5	680.9

\*\*NOTE: -2 means data is missing.  
 -1 means trace.

PREPARED BY: PAGASA/CAB/CDS

**Table E.1-6 Monthly Rainfall at Malaybalay Station (12/13)**

**MONTHLY TOTAL AND ANNUAL CLIMATIC DATA  
RAINFALL AMOUNT (mm)**

STATION: MALAYBALAY BUKIONON  
CMO: JOVITO CABACOG  
PERIOD: 1961-1994

LATITUDE: 08°09' N  
LONGITUDE: 125°05' E  
ELEVATION: 627 M

YEAR	JAN	FEB	MAR	APR	MAY	JUN	JUL	AUG	SEP	OCT	NOV	DEC	ANNUAL
1961	222.7	61.1	142.3	43.0	153.8	165.4	299.3	206.1	277.7	336.7	152.0	145.5	2,205.6
1962	24.7	320.8	157.9	88.2	315.6	409.3	272.1	471.0	422.3	154.8	171.5	86.0	2,894.2
1963	247.9	176.3	174.0	91.7	344.5	270.2	338.9	473.0	406.9	367.2	46.9	72.2	3,009.7
1964	54.6	230.9	22.2	187.2	431.0	256.8	129.5	272.3	289.6	407.8	388.7	93.6	2,762.2
1965	155.9	119.9	195.7	258.8	215.6	530.5	371.7	378.2	233.6	145.0	215.4	31.4	2,851.7
1966	49.5	42.2	74.5	126.0	217.0	245.5	617.2	449.0	256.8	314.7	360.3	131.3	2,884.0
1967	122.2	88.7	101.5	84.1	195.3	343.9	294.0	169.3	277.0	186.9	116.1	101.2	2,080.2
1968	115.3	72.0	64.4	29.6	141.4	350.1	227.4	313.5	351.0	214.9	41.6	119.1	2,040.3
1969	52.4	14.8	21.0	51.4	147.6	288.9	193.9	264.4	442.0	376.5	105.3	42.5	2,000.7
1970	57.8	108.3	50.9	6.9	100.4	370.3	251.8	420.1	211.7	321.0	120.5	208.8	2,228.5
1971	47.7	219.8	81.4	73.7	251.7	309.7	332.3	452.4	357.8	298.7	290.5	103.7	2,819.4
1972	111.3	107.7	407.2	97.5	275.3	323.2	113.9	234.2	383.6	185.3	112.2	174.6	2,526.0
1973	2.5	52.4	17.2	73.0	161.6	138.1	382.2	305.1	393.9	281.5	397.1	134.1	2,338.7
1974	137.9	218.5	70.9	189.1	313.4	269.6	333.9	291.0	144.6	488.8	198.0	256.6	2,912.3
1975	177.1	73.0	112.0	299.4	336.4	404.5	400.9	309.0	358.5	542.5	174.5	285.2	3,473.0
1976	197.4	50.8	66.5	57.5	271.0	228.3	294.4	287.8	164.7	137.3	188.9	58.2	2,002.8
1977	122.2	55.6	44.2	72.4	253.8	237.8	443.7	367.3	58.2	139.7	262.0	54.6	2,111.5
1978	90.4	43.4	36.5	52.7	255.7	308.0	313.0	253.5	232.7	346.3	199.1	202.6	2,333.9
1979	54.0	59.0	29.1	25.1	210.9	319.3	314.7	268.3	343.6	467.6	142.8	181.3	2,415.7
1980	266.4	55.7	17.1	68.1	138.8	467.9	360.6	279.0	377.1	406.4	91.9	166.2	2,695.2
1981	417.5	165.0	55.9	52.6	144.4	410.6	332.4	96.1	257.5	233.5	122.1	53.1	2,340.7
1982	323.5	199.3	244.2	53.4	191.0	198.1	187.7	156.9	202.9	325.9	202.6	62.4	2,347.9
1983	43.6	1.0	4.9	4.0	60.5	409.5	415.6	374.0	445.2	423.2	157.7	94.7	2,433.9
1984	216.6	141.4	151.9	172.6	210.3	334.7	222.1	232.4	405.9	388.0	138.4	103.1	2,715.4
1985	150.2	27.1	45.4	268.8	184.7	153.6	311.1	320.1	420.7	395.1	136.7	278.5	2,692.0
1986	217.6	45.8	134.1	44.7	256.4	395.0	328.2	304.6	322.8	248.2	298.2	45.4	2,641.0
1987	83.5	156.1	67.1	21.0	260.0	281.7	311.5	329.5	374.0	266.1	226.4	187.5	2,564.4
1988	14.6	74.3	123.8	376.7	244.8	316.1	239.7	283.4	353.3	300.7	134.0	193.0	2,654.4
1989	88.9	90.8	276.3	97.7	379.3	409.1	432.2	651.0	257.1	169.3	123.5	14.3	2,989.5
1990	92.7	14.5	40.5	68.2	330.7	267.4	225.5	332.7	338.0	174.4	290.2	41.8	2,214.6
1991	147.4	82.3	41.0	85.9	264.5	263.6	263.5	230.5	96.4	285.0	143.1	45.3	1,948.5
1992	85.5	11.2	13.7	23.8	236.4	306.6	582.9	316.9	218.2	504.5	126.4	132.9	2,558.9
1993	57.7	194.7	146.3	78.6	67.0	206.7	456.0	184.3	250.8	397.3	263.5	216.1	2,519.0
1994	94.1	148.8	148.2	91.7	211.5	314.5	185.2	249.5	318.0	305.9	50.2	98.6	2,216.2
<b>TOTAL</b>	<b>4,343.3</b>	<b>3,523.2</b>	<b>3,379.8</b>	<b>3,413.1</b>	<b>7,772.3</b>	<b>10,504.5</b>	<b>10,779.0</b>	<b>10,526.4</b>	<b>10,154.0</b>	<b>10,624.8</b>	<b>6,186.3</b>	<b>4,215.3</b>	<b>85,422.0</b>
<b>MEAN</b>	<b>127.7</b>	<b>103.6</b>	<b>99.4</b>	<b>100.4</b>	<b>228.6</b>	<b>309.0</b>	<b>317.0</b>	<b>309.6</b>	<b>298.6</b>	<b>312.5</b>	<b>182.0</b>	<b>124.0</b>	<b>2,512.4</b>
<b>STDEV</b>	<b>92.8</b>	<b>76.3</b>	<b>86.9</b>	<b>87.9</b>	<b>85.1</b>	<b>89.1</b>	<b>110.7</b>	<b>107.6</b>	<b>100.5</b>	<b>109.8</b>	<b>91.7</b>	<b>73.6</b>	<b>354.9</b>

\*\*NOTE: -2 means data is missing.  
-1 means trace.

PREPARED BY: PAGASA/CAB/CDS

**Table E.1-6 Monthly Rainfall at Davao Station (13/13)**  
**MONTHLY TOTAL AND ANNUAL CLIMATIC DATA**  
**RAINFALL AMOUNT (mm)**

STATION: DAVAO CITY DAVAO DEL SUR  
 CMO: CARLOS ARISPE  
 PERIOD: 1961-1994

LATITUDE: 07°07' N  
 LONGITUDE: 125°39' E  
 ELEVATION: 18 M

YEAR	JAN	FEB	MAR	APR	MAY	JUN	JUL	AUG	SEP	OCT	NOV	DEC	ANNUAL
1961	110.0	258.8	57.5	165.4	158.4	195.4	128.5	175.7	112.1	162.9	89.9	147.8	1,762.4
1962	223.3	230.6	91.8	256.6	214.8	114.9	204.7	52.3	188.7	138.2	131.6	86.0	1,933.5
1963	63.4	102.9	144.8	107.6	154.0	21.4	387.3	119.1	184.1	151.9	82.0	57.5	1,576.0
1964	48.6	220.1	79.7	220.6	263.7	148.3	92.4	140.1	111.4	116.1	103.1	84.2	1,628.3
1965	170.0	180.9	176.6	262.6	178.2	194.2	85.6	186.1	278.7	224.6	128.3	135.0	2,200.8
1966	142.0	27.0	30.6	120.3	462.3	49.5	149.3	153.6	157.6	193.5	225.1	97.2	1,808.0
1967	96.6	64.3	92.1	138.5	224.3	100.9	146.6	37.9	61.4	96.5	40.1	29.0	1,128.2
1968	222.3	26.9	39.6	29.2	245.6	49.6	171.7	261.3	126.9	228.1	74.5	75.6	1,551.3
1969	151.3	96.8	57.3	89.8	174.6	295.0	86.8	177.7	291.2	159.7	246.7	177.3	2,004.2
1970	101.3	200.3	119.9	49.4	141.6	122.2	249.9	239.3	168.7	176.4	138.6	84.1	1,791.7
1971	144.9	70.1	14.6	325.6	292.6	313.5	125.5	246.5	329.1	125.4	184.0	79.6	2,251.4
1972	63.1	148.6	199.8	282.7	425.9	221.7	33.7	193.3	302.8	177.2	133.0	43.2	2,225.0
1973	4.3	19.9	41.3	108.5	122.6	133.3	266.8	347.6	320.1	73.6	247.4	84.0	1,769.4
1974	130.8	156.1	32.6	265.6	46.6	205.7	101.1	59.4	154.2	130.6	136.0	84.6	1,503.3
1975	95.1	71.9	146.0	87.4	175.3	248.9	139.9	231.2	205.5	132.4	123.7	227.0	1,884.3
1976	88.0	55.9	72.3	64.4	111.6	190.1	77.7	299.3	157.5	177.5	126.5	81.7	1,502.5
1977	177.5	130.3	56.5	13.5	120.3	253.9	174.3	197.7	82.7	349.3	89.4	30.0	1,675.4
1978	27.9	116.1	17.5	51.2	271.8	220.1	147.9	188.8	124.8	229.3	66.3	123.1	1,584.8
1979	37.0	32.5	104.0	101.9	285.7	325.9	127.1	70.0	246.9	163.3	118.9	91.0	1,704.2
1980	173.4	124.6	15.6	178.9	196.8	509.0	170.3	183.0	78.5	176.1	127.8	231.8	2,165.8
1981	166.4	120.8	57.4	174.2	168.6	159.6	75.8	106.5	214.2	193.8	175.5	70.3	1,683.1
1982	174.1	100.1	48.4	198.3	108.1	259.0	131.7	247.1	135.5	87.1	239.4	23.3	1,752.1
1983	59.8	14.8	11.2	15.4	106.6	221.8	321.7	258.7	174.2	134.0	114.2	194.6	1,627.0
1984	89.1	120.8	160.0	99.5	80.7	183.8	100.4	51.4	148.3	151.1	76.3	75.2	1,336.6
1985	65.7	61.9	77.8	305.5	222.9	42.4	170.1	325.7	206.8	456.7	145.1	111.9	2,192.5
1986	303.3	75.3	80.8	39.5	102.8	262.1	130.0	47.5	229.8	134.2	135.9	8.4	1,549.6
1987	137.0	114.1	13.6	92.9	155.7	223.7	111.1	236.2	86.7	335.3	67.2	137.4	1,710.9
1988	27.6	103.2	353.8	302.8	211.4	164.2	130.8	148.9	360.0	142.9	66.7	83.4	2,095.7
1989	121.8	108.0	192.1	180.5	214.1	295.7	61.3	216.1	92.7	117.9	160.9	89.2	1,850.3
1990	37.0	41.5	51.8	172.7	251.0	102.1	215.6	202.3	228.6	182.3	134.5	65.6	1,685.0
1991	152.2	95.7	13.3	133.5	194.5	183.9	143.2	99.5	39.4	59.7	213.1	11.4	1,339.4
1992	5.4	1.4	3.5	5.0	100.0	220.8	273.3	73.5	139.2	79.1	178.8	96.3	1,176.3
1993	103.0	118.4	95.9	234.0	91.3	92.8	296.3	120.4	390.8	58.5	72.3	179.4	1,853.1
1994	53.7	77.6	101.8	244.7	234.4	353.1	58.0	383.6	111.4	148.5	59.4	79.0	1,905.2
TOTAL	3,766.9	3,488.2	2,851.5	5,118.2	6,508.8	6,678.5	5,266.4	6,077.3	6,240.5	5,663.7	4,452.2	3,275.1	59,407.3
MEAN	110.8	102.6	83.9	150.5	191.4	196.4	155.5	178.7	183.5	166.6	130.9	96.3	1,747.3
STDEV	68.1	63.1	72.3	94.1	90.2	101.1	80.8	90.4	89.4	82.3	56.4	55.9	285.9

\*\*NOTE: -2 means data is missing  
 -1 means trace.

PREPARED BY: PAGASA/PAGASA/CAB/CDS







Table E.1-7 Monthly 24-hr Maximum Rainfall at Sangley Point Station (4/13)

STATION: SANGLEY POINT CAVITE  
 CMO: MARILYN MEDINA  
 PERIOD: 1971-1994

LATITUDE: 14°30' N  
 LONGITUDE: 120°55' E  
 ELEVATION: 3 M

YEAR	JAN		FEB		MAR		APR		MAY		JUN		JUL		AUG		SEP		OCT		NOV		DEC		ANNUAL MAX			
	RAIN	DAY	RAIN	DAY	RAIN	DAY	RAIN	DAY	RAIN	DAY	RAIN	DAY	RAIN	DAY	RAIN	DAY	RAIN	DAY	RAIN	DAY	RAIN	DAY	RAIN	DAY	MON	DAY	AMOUNT	
1971	-2	-2	-2	-2	-2	-2	-2	-2	-2	-2	-2	-2	-2	-2	-2	-2	-2	-2	-2	-2	-2	-2	-2	-2	-2	-2	-2	
1972	-2	-2	-2	-2	-2	-2	-2	-2	-2	-2	-2	-2	-2	-2	-2	-2	-2	-2	-2	-2	-2	-2	-2	-2	-2	-2	-2	
1973	-2	-2	-2	-2	-2	-2	-2	-2	-2	-2	-2	-2	-2	-2	-2	-2	-2	-2	-2	-2	-2	-2	-2	-2	-2	-2	-2	
1974	-2	-2	-2	-2	-2	-2	-2	-2	-2	-2	-2	-2	-2	-2	-2	-2	-2	-2	-2	-2	-2	-2	-2	-2	-2	-2	-2	
1975	5.1	25	0	0	0	0	53.9	24	7.5	23	40.1	30	18.2	29	44.6	10	27.0	13	56.6	12	26.4	2	34.0	25	OCT	12	56.6	
1976	6.9	10	0	0	0	0	0	0	124.6	26	52.6	14	83.3	23	185.7	10	130.6	13	10.2	31	2.1	25	7.4	18	AUG	10	185.7	
1977	94.0	12	1.5	15	0.8	12	0	0	13.5	17	37.4	28	77.4	17	235.8	19	134.1	11	15.3	15	142.4	14	11.2	1	AUG	19	235.8	
1978	0	0	5.8	17	0	0	0	4.3	20	66.0	31	63.2	23	53.5	20	157.1	12	45.4	17	150.7	9	5.0	10	AUG	12	157.1		
1979	0	0	0	0	0	0	0	24.4	26	0	0	0	0	0	238.8	14	54.6	16	19.3	2	18.0	14	0.0	0	AUG	14	238.8	
1980	0	0	0	0	0	0	0	0	73.0	25	26.0	20	95.5	25	23.5	15	42.3	12	58.6	28	82.8	4	-2	-2	JUL	25	95.5	
1981	0	0	0	0	0	0	0	0	8.1	31	87.3	14	128.8	17	91.4	6	61.4	25	22.6	2	87.6	24	27.1	26	JUL	17	128.8	
1982	0	0	0	0	0	0	0	0	15.0	23	39.2	24	54.1	15	48.9	27	62.2	9	12.4	7	1.8	9	18.6	27	SEP	9	62.2	
1983	21.8	14	6.3	17	0	0	0	0	0	0	36.0	5	101.7	15	82.3	15	96.4	25	59.2	10	5.3	16	0.7	13	JUL	15	101.7	
1984	7.2	19	13.2	6	4.8	6	19.0	28	25.4	29	99.4	22	45.5	5	91.5	12	24.0	2	93.3	30	9.3	26	3.6	2	JUN	22	99.4	
1985	0.1	1	1.6	25	3.2	15	12.7	23	6.6	30	172.4	27	120.8	5	34.4	10	29.8	10	70.0	2	17.2	22	17.8	5	JUN	27	172.4	
1986	0.4	4	8.6	4	0.2	1	18.8	7	15.8	25	20.8	23	121.4	9	102.8	25	119.5	2	260.7	5	44.5	7	42.3	22	OCT	5	260.7	
1987	0.8	8	0	0	0	0	1.5	18	23.3	3	90.4	7	60.0	10	102.3	18	94.5	1	63.6	14	27.2	25	59.8	4	AUG	18	102.3	
1988	36.6	16	1.6	15	1.3	8	25.2	9	49.0	30	107.8	2	93.2	29	40.1	8	21.2	29	108.1	24	71.4	3	0.8	29	OCT	18	108.1	
1989	16.1	18	7.1	24	6.4	30	0.8	15	119.0	4	43.0	6	60.1	17	83.7	19	63.3	11	65.0	11	16.2	21	1.0	19	MAY	4	119.0	
1990	1.8	11	0	0	0	0	8.4	13	34.3	19	79.1	21	115.6	27	307.8	24	180.0	1	31.5	13	51.7	13	44.2	15	AUG	24	307.8	
1991	4.3	15	1.9	2	12.1	14	9.0	21	5.0	19	67.7	14	106.2	26	176.5	21	60.6	14	13.5	4	36.3	16	3.2	11	AUG	21	176.5	
1992	13.3	7	0	0	0	0	0.8	22	16.0	31	64.1	30	131.8	20	142.8	20	129.0	20	160.4	25	72.3	11	2.0	1	OCT	25	160.4	
1993	1.7	13	0	0	0	0	8.3	17	10.8	25	168.0	25	99.5	29	109.0	9	66.2	5	58.2	4	60.0	1	32.0	6	JUN	25	168.0	
1994	9.0	26	0	0	5.2	25	23.8	5	40.4	16	119.4	22	118.0	18	103.0	2	41.0	12	40.0	21	5.0	27	68.0	22	JUN	22	119.4	
TOTAL	219.1	199.0	49.9	152.0	74.0	172.0	211.3	262.0	653.3	407.0	1413.9	653.3	1748	386	2,402	296	1,483	248	1,369	269	802.5	292	387.5	274			3,056.2	
AVE	11.0	10.0	2.6	8.0	3.9	9.1	10.6	13.1	34.4	21.4	74.4	34.4	87.4	19.3	120.1	14.8	74.2	12.4	68.5	13.5	40.1	14.6	20.4	14.4			152.8	
MAX	94	12	13.2	6	34.3	25	53.9	24	124.6	26	172.4	27	131.8	20	307.8	24	180	1	260.7	5	142.4	14	68	22	AUG	24	307.8	
		1977		1984		1980		1975		1976		1985		1992		1990		1990		1986		1977		1994				1990

\*\*NOTE:  
 -2 means data is missing.  
 -1 means rainfall amount is trace.

PREPARED BY: PAGASA/CAB/CDS



Table E.1-7 Monthly 24-hr Maximum Rainfall at Tayabas Station (5/13)

STATION: TAYABAS QUEZON  
 CMC: ENRIQUETA CAYETANO  
 PERIOD: 1971-1994

LATITUDE: 14°02' N  
 LONGITUDE: 121°35' E  
 ELEVATION: 157.7 M

YEAR	JAN		FEB		MAR		APR		MAY		JUN		JUL		AUG		SEP		OCT		NOV		DEC		ANNUAL MAX.			
	RAIN	DAY	RAIN	DAY	RAIN	DAY	RAIN	DAY	RAIN	DAY	RAIN	DAY	RAIN	DAY	RAIN	DAY	RAIN	DAY	RAIN	DAY	RAIN	DAY	RAIN	DAY	MON	DAY	AMOUNT	
1971	24.5	27.0	20.3	15.0	39.6	11.0	22.6	24.0	114.8	26.0	60.7	15.0	68.1	20.0	36.1	27.0	44.5	5.0	133.8	3.0	87.8	18.0	103.5	29.0	OCT	3.0	133.8	
1972	57.6	30.0	23.2	2.0	18.6	13.0	32.1	12.0	65.6	29.0	97.6	25.0	61.8	20.0	66.1	30.0	128.5	19.0	72.9	6.0	113.0	30.0	72.6	4.0	SEP	19.0	128.5	
1973	38.8	29.0	15.5	21.0	21.1	29.0	45.0	29.0	45.3	29.0	59.7	20.0	72.4	12.0	34.9	22.0	47.2	18.0	97.8	15.0	79.6	6.0	195.3	4.0	DEC	4.0	195.3	
1974	7.2	11.0	20.8	10.0	17.4	4.0	23.4	21.0	47.8	13.0	69.4	10.0	36.3	3.0	30.2	17.0	49.4	18.0	106.8	16.0	150.1	16.0	111.0	21.0	NOV	16.0	150.1	
1975	32.3	9.0	21.3	11.0	100.3	21.0	133.6	2.0	25.4	17.0	41.1	13.0	41.1	31.0	33.5	8.0	91.5	12.0	44.9	25.0	58.9	1.0	167.9	27.0	DEC	27.0	167.9	
1976	35.1	14.0	11.5	15.0	10.7	19.0	8.0	28.0	55.7	21.0	51.9	24.0	35.5	27.0	64.8	25.0	57.4	17.0	97.5	31.0	137.1	17.0	120.2	1.0	MAY	21.0	557.7	
1977	47.2	9.0	51.8	26.0	23.4	3.0	23.4	29.0	36.1	26.0	54.6	28.0	98.3	17.0	54.1	31.0	41.2	3.0	102.6	14.0	192.0	13.0	51.3	12.0	NOV	13.0	192.0	
1978	58.5	10.0	16.6	26.0	12.9	16.0	99.6	20.0	50.8	9.0	38.1	27.0	40.1	12.0	136.1	26.0	136.1	26.0	163.3	9.0	79.9	12.0	56.2	13.0	OCT	9.0	163.3	
1979	27.1	19.0	13.3	13.0	4.0	1.0	115.0	16.0	39.2	14.0	45.2	8.0	27.2	2.0	41.4	15.0	82.3	29.0	68.6	5.0	58.4	30.0	25.4	1.0	APR	16.0	115.0	
1980	20.6	17.0	20.4	13.0	138.9	24.0	13.5	7.0	55.8	1.0	155.2	4.0	62.7	15.0	30.5	25.0	35.5	2.0	225.7	28.0	138.9	4.0	45.7	16.0	OCT	28.0	225.7	
1981	35.6	28.0	4.6	26.0	9.1	30.0	38.1	22.0	81.3	5.0	55.5	30.0	66.0	4.0	19.4	13.0	107.5	25.0	103.7	27.0	359.7	6.0	112.7	26.0	NOV	6.0	359.7	
1982	28.9	6.0	25.9	10.0	16.5	23.0	30.5	10.0	17.8	24.0	15.2	7.0	56.6	15.0	72.1	23.0	201.0	9.0	28.7	25.0	44.8	25.0	52.6	13.0	SEP	9.0	201.0	
1983	60.8	3.0	5.0	22.0	22.1	5.0	37.1	22.0	17.8	28.0	30.5	15.0	254.0	14.0	30.7	6.0	56.4	22.0	194.6	27.0	59.9	18.0	15.8	13.0	JUL	14.0	254.0	
1984	51.8	25.0	15.5	23.0	13.7	11.0	70.1	23.0	27.4	17.0	68.4	26.0	27.2	26.0	58.7	29.0	64.2	27.0	155.7	20.0	63.3	30.0	24.9	22.0	OCT	20.0	155.7	
1985	16.3	31.0	25.4	23.0	53.6	9.0	34.8	23.0	83.5	9.0	131.7	27.0	55.6	5.0	1.8	2.0	58.1	18.0	86.9	18.0	93.5	2.0	60.4	9.0	JUN	27.0	131.7	
1986	65.3	27.0	14.5	26.0	10.0	3.0	20.9	30.0	33.5	17.0	102.3	23.0	68.4	3.0	56.4	5.0	68.8	2.0	240.7	5.0	96.0	12.0	36.6	22.0	OCT	5.0	240.7	
1987	62.2	7.0	9.6	19.0	53.3	21.0	63.8	1.0	13.0	24.0	68.3	13.0	65.3	30.0	126.5	12.0	35.8	28.0	25.1	16.0	83.3	25.0	155.4	3.0	DEC	3.0	155.4	
1988	76.7	9.0	74.3	20.0	15.7	8.0	50.6	10.0	120.4	24.0	56.9	5.0	20.8	29.0	33.7	21.0	50.8	23.0	214.2	24.0	212.9	3.0	19.6	19.0	OCT	24.0	214.2	
1989	50.8	11.0	68.3	26.0	49.4	14.0	21.5	1.0	127.2	17.0	87.7	6.0	74.9	20.0	39.6	30.0	55.8	10.0	242.3	10.0	25.4	22.0	28.1	16.0	OCT	10.0	242.3	
1990	3.5	13.0	26.9	5.0	74.4	8.0	2.5	5.0	35.3	31.0	51.9	20.0	48.2	6.0	76.4	24.0	52.5	1.0	71.6	17.0	134.6	18.0	83.8	15.0	NOV	18.0	134.6	
1991	24.0	14.0	80.8	23.0	65.5	13.0	32.2	21.0	71.9	18.0	84.1	29.0	153.4	9.0	25.2	2.0	26.4	15.0	75.2	21.0	175.5	16.0	126.0	10.0	NOV	16.0	175.5	
1992	11.2	10.0	57.5	21.0	26.0	14.0	31.5	14.0	68.8	12.0	84.3	14.0	82.6	11.0	22.4	8.0	31.0	19.0	79.3	2.0	225.0	2.0	74.4	18.0	NOV	2.0	225.0	
1993	30.4	26.0	8.1	18.0	14.7	13.0	3.0	14.0	3.1	19.0	56.1	26.0	149.5	8.0	34.2	9.0	57.8	14.0	160.6	24.0	73.2	1.0	194.2	5.0	DEC	5.0	194.2	
1994	49.8	25.0	28.2	10.0	29.0	11.0	122.2	5.0	44.2	24.0	170.1	22.0	32.0	25.0	27.8	23.0	53.7	22.0	101.9	21.0	44.6	21.0	120.5	22.0	JUN	22.0	170.1	
TOTAL	916.2	412.0	661.3	432.0	839.3	324.0	1075.0	399.0	1783.7	454.0	1736.5	437.0	1698.0	370.0	1074.9	431.0	1633.4	364.0	2894.4	409.0	2787.4	348.0	2054.1	341.0			337.0	4883.4
AVE	38.2	17.2	27.6	18.0	35.0	13.5	44.8	16.2	74.3	18.9	72.4	18.2	70.8	19.4	44.8	18.0	68.1	16.0	120.6	17.0	116.1	14.5	85.6	14.2			14.0	203.5
MAX	76.7	9	80.8	26	138.9	24	133.6	2	557.7	21	170.1	22	254	14	126.5	12	201	9	242.3	10	359.7	6	195.3	4	MAY	21	557.7	
	1988		1991	25	1980		1975		1976		1994		1983		1967		1982		1989		1981		1973				1976	

\*\*NOTE -2 means data is missing.  
 -1 means rainfall amount is trace.

PREPARED BY: PAGASAC/CAB/ICDS



Table E.1-7 Monthly 24-hr Maximum Rainfall at Catabalogan Station (7/13)

LATITUDE: 11°47' N  
LONGITUDE: 124°52' E  
ELEVATION: 6 M

STATION: CATABALOGAN WESTERN  
GMO: ANTONIO CABER  
PERIOD: 1961-1994

YEAR	JAN	FEB	MAR	APR	MAY	JUN	JUL	AUG	SEP	OCT	NOV	DEC	ANNUAL MAX													
	RAIN DAY	RAIN DAY	RAIN DAY	RAIN DAY	RAIN DAY	RAIN DAY	RAIN DAY	RAIN DAY	RAIN DAY	RAIN DAY	RAIN DAY	RAIN DAY	MON DAY AMOUNT													
1961	15.2	27	36.2	12	33.8	16	11.4	1	26.7	15	68.3	4	74.9	31	21.8	20	AUG	74.9								
1962	67.8	11	36.3	6	50.3	16	38.4	15	75.4	17	20.6	18	63.2	7	33.5	20	NOV	6								
1963	27.2	10	23.1	10	15.0	20	20.3	21	63.8	11	58.7	24	65.0	17	105.2	15	DEC	9								
1964	49.0	30	68.0	14	8.0	22	28.2	24	42.4	12	19.1	26	146.4	10	108.7	13	JUL	9								
1965	51.7	16	40.5	27	76.5	1	27.8	7	141.2	22	50.4	22	63.5	18	84.9	18	MAY	22								
1966	27.1	3	40.7	23	21.9	15	7.3	20	159.3	15	34.2	18	104.9	27	135.4	19	DEC	26								
1967	133.4	13	64.0	17	18.9	3	14.0	15	24.4	23	30.4	26	28.7	6	332.8	19	NOV	3								
1968	114.6	29	33.3	23	18.9	12	13.9	13	38.6	7	47.3	28	39.1	4	90.0	31	NOV	3								
1969	31.1	10	6.0	4	1.4	20	23.1	23	12.7	30	62.0	10	56.7	20	59.8	22	NOV	23								
1970	66.3	5	112.5	24	46.7	16	54.6	3	77.8	24	35.0	19	90.5	9	73.5	21	DEC	21								
1971	53.2	28	36.6	14	106.7	15	58.3	22	86.7	12	83.2	24	96.8	14	44.9	28	OCT	12								
1972	90.9	7	27.2	7	36.0	17	13.2	8	13.9	23	119.8	3	45.2	20	20.8	30	OCT	3								
1973	3.6	13	11.8	20	22.8	29	14.5	5	19.8	15	24.7	3	27.5	9	48.0	3	JUN	24								
1974	31.3	2	36.5	13	8.7	1	28.1	24	62.0	22	114.7	8	77.4	18	49.5	19	NOV	19								
1975	102.6	5	36.6	20	14.8	5	31.9	22	52.6	30	100.0	29	54.4	2	102.4	5	OCT	15								
1976	79.5	23	52.0	9	63.0	6	27.6	5	76.1	17	185.9	23	38.4	11	125.0	26	DEC	26								
1977	43.7	22	81.7	16	14.5	7	20.6	1	21.8	21	61.0	12	113.5	17	27.7	13	JUL	17								
1978	23.7	4	56.4	23	32.5	15	60.2	21	32.5	22	30.1	26	22.9	30	85.2	13	SEP	26								
1979	32.0	27	32.0	22	21.4	16	50.8	15	58.9	12	101.8	13	67.8	23	78.5	6	JUN	13								
1980	67.9	22	36.5	13	303.3	23	22.9	18	35.1	18	113.9	22	43.1	23	29.8	28	MAR	23								
1981	106.7	27	21.2	28	6.7	31	13.0	27	28.8	28	56.0	20	24.7	9	88.2	29	JAN	27								
1982	93.0	24	56.2	10	92.2	26	39.2	9	99.6	18	32.8	21	86.8	5	133.5	26	NOV	7								
1983	22.2	26	4.6	4	44.8	25	5.2	22	0.8	2	38.0	26	120.9	9	32.6	25	SEP	25								
1984	74.1	10	93.0	24	57.4	12	18.4	13	24.6	12	35.2	8	55.0	4	43.9	21	NOV	20								
1985	116.6	20	54.7	1	32.0	19	34.6	23	31.0	14	63.2	9	42.5	4	28.4	15	JAN	20								
1986	75.6	25	41.4	5	31.1	13	190.8	5	22.2	19	76.8	23	50.2	13	82.2	15	NOV	5								
1987	20.0	16	18.8	28	22.2	12	9.0	14	15.0	13	71.4	8	152.5	12	123.7	25	NOV	25								
1988	23.2	8	12.0	16	12.3	31	22.4	1	53.8	1	58.6	26	120.1	16	126.6	6	OCT	21								
1989	147.9	29	143.4	14	91.6	17	70.6	30	162.2	16	44.2	20	50.8	19	72.0	12	OCT	16								
1990	54.0	8	8.6	8	1.4	18	27.4	4	70.0	17	175.8	13	22.4	21	25.4	12	JUN	13								
1991	29.8	9	55.6	24	12.4	12	45.4	24	69.4	18	70.0	12	94.4	19	85.0	10	AUG	9								
1992	23.2	30	8.0	13	5.2	18	20.2	2	21.0	16	74.6	30	76.4	23	11.1	2	NOV	11								
1993	12.6	28	39.2	19	57.8	1	7.2	2	11.2	30	23.8	6	116.9	21	52.4	20	JUL	21								
1994	38.2	31	26.3	6	22.0	10	50.0	4	45.8	24	143.2	21	97.6	5	67.6	6	JUN	6								
TOTAL	1,947.9	600	1,451.5	517	1,521.0	525	1,121.5	473	1,777.1	596	2,394.7	639	2,416.7	468	2,025.9	697	2,496.5	451	2,989.4	551	2,583.0	588	584	5,470.5		
AVE	57.3	17.6	42.7	15.2	44.7	15.4	33.0	13.9	52.3	17.5	67.8	18.8	71.1	13.8	58.8	19.1	59.6	20.5	73.4	13.6	87.9	16.2	76.0	17.3	17.2	160.9
MAX	147.9	29	143.4	14	303.3	23	190.8	5	162.2	16	175.8	13	149.4	9	156.8	9	142.8	26	281.8	23	269	3	332.8	26	DEC	332.8
						1989			1989		1990		1994		1991		1978		1988		1967		1966			1966

\*\*NOTE -2 means data is missing.  
-1 means rainfall amount is trace.

PREPARED BY: PAGASACAB/CDS















FIGURE E.1-1 CLIMATE MAP OF THE PHILIPPINES

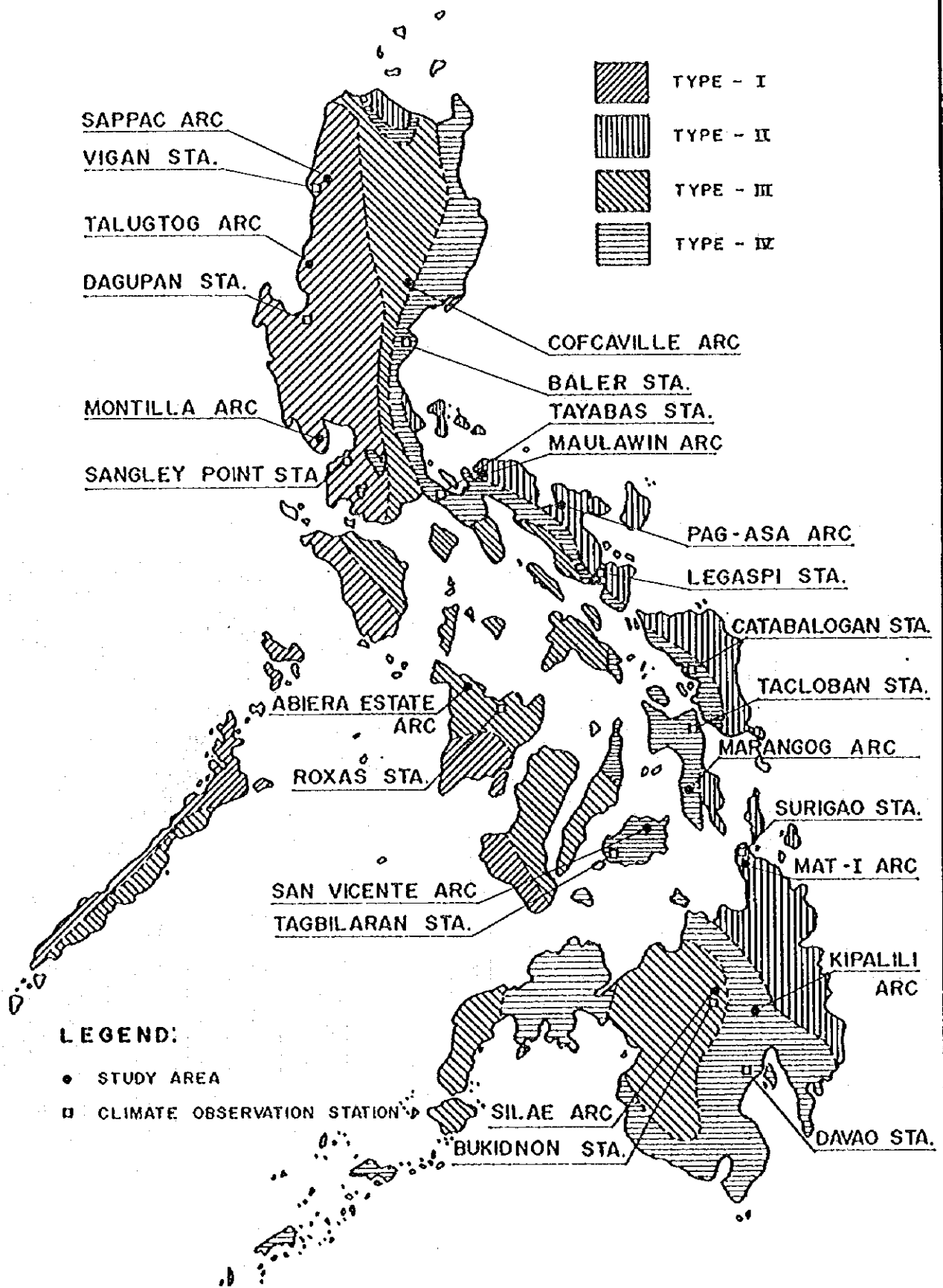
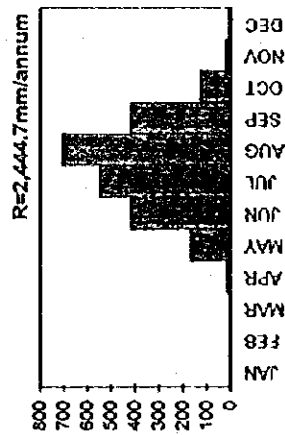


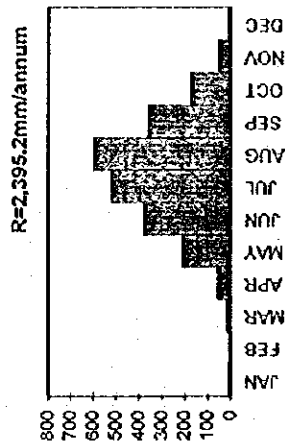
FIGURE E.1-2 FLUCTUATION OF MONTHLY RAINFALL (1/2)

(Unit: mm/month)

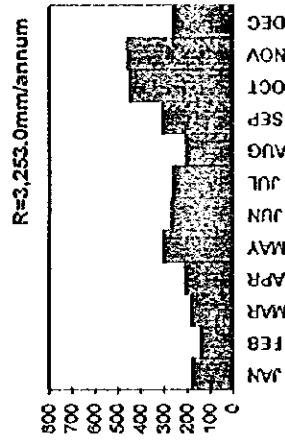
VIGAN, ILOCOS SUR



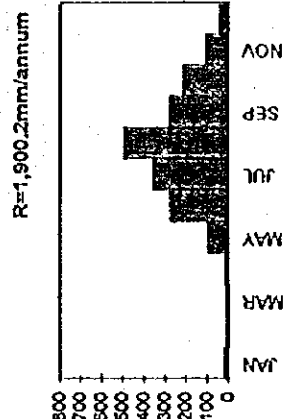
DAGUPAN CITY, PANGASINAN



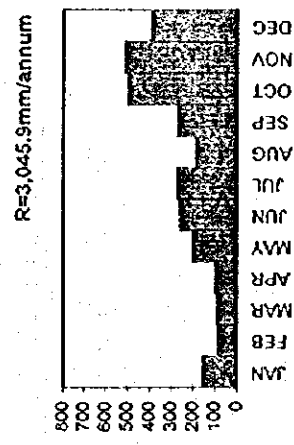
BALER, QUEZON



SANGLEY POINT, CAVITE



TAYBAS, QUEZON



LEGASPI CITY, ALBAY

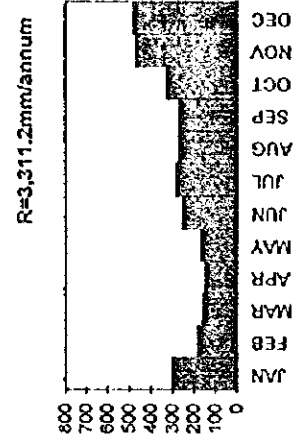
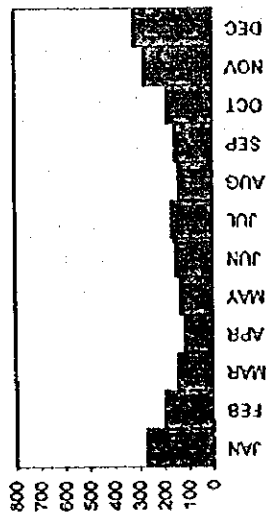


FIGURE E.1-2 FLUCTUATION OF MONTHLY RAINFALL (2/2)

(Unit: mm/month)

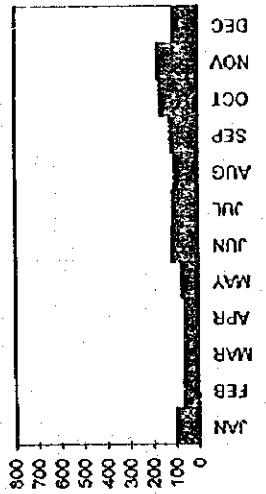
TACLOBAN CITY, LEYTE

R=2,290.7mm/annum



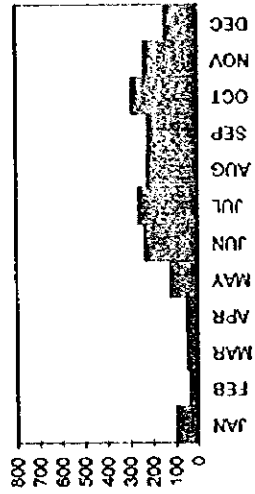
TAGBILARAN CITY, BOHOL

R=1,318.7mm/annum



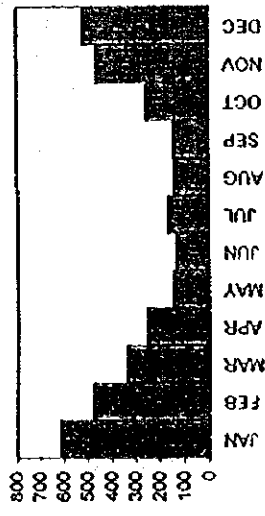
ROXAS CITY, AKLAN

R=1,975.3mm/annum



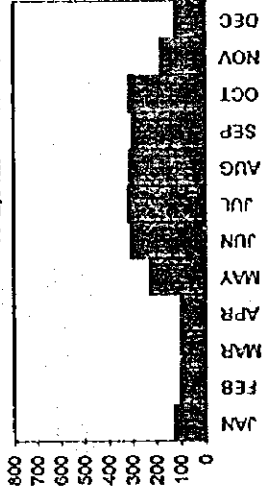
SURIGAO, SURIGAO DEL NORTE

R=3,651.8mm/annum



MALAYBALAY, BUKIDNON

R=2,512.4mm/annum



DAVAO CITY, DAVAO DEL SUR

R=1,747.1mm/annum

