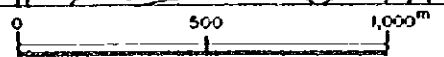


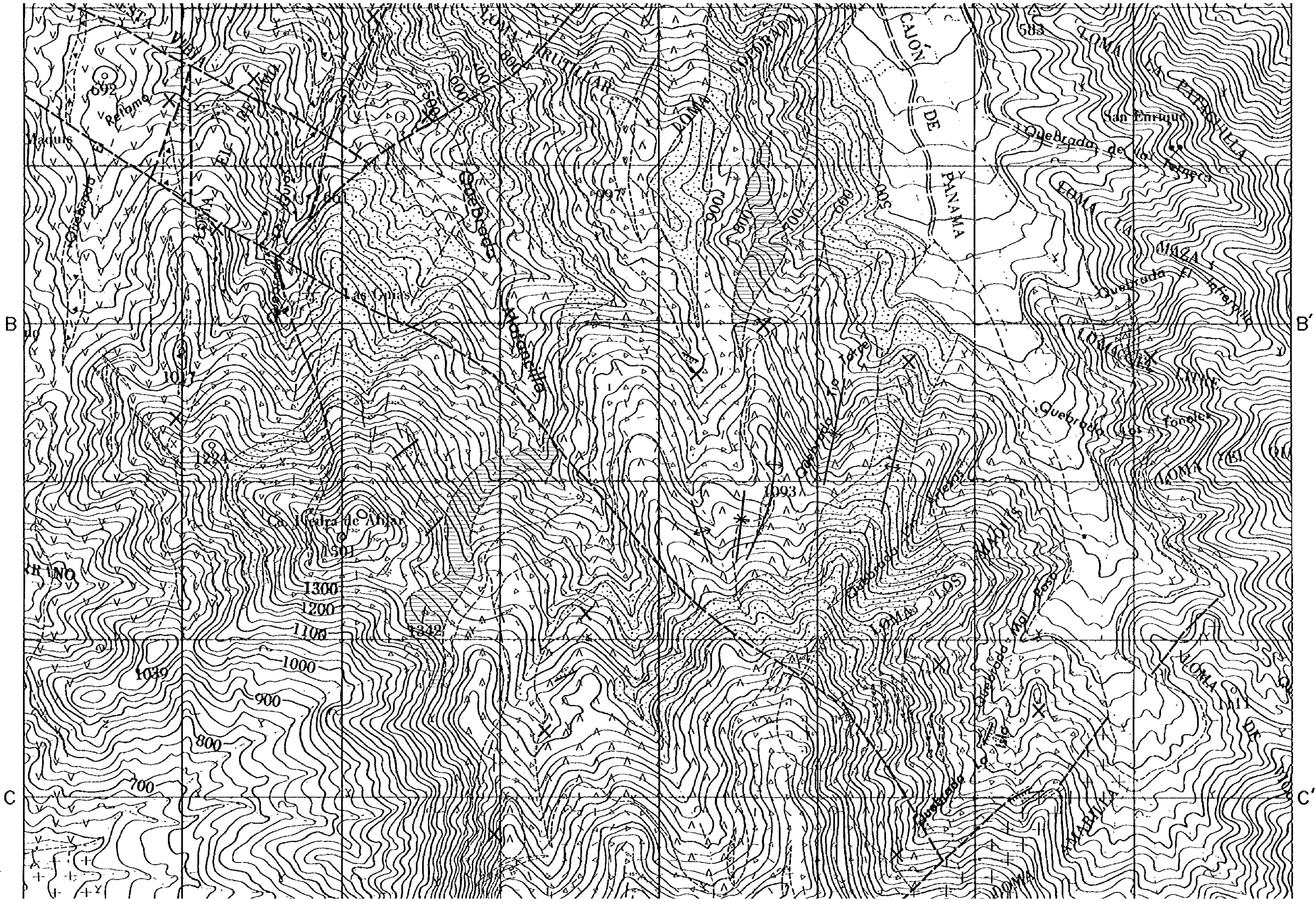
Legend

<b>Horqueta Formation (Lower member)</b>	<b>Horqueta Formation (Upper member I)</b>	<b>La Prada Formation</b>	<b>Other rocks</b>
Andesite (lavas)	Andesite (lavas)	Andesite (lavas)	Añuk Granite
Dacite (lava dome)	Andesite (Occidental)	Andesite (Occidental)	Tontahué Granite
Pyroclastic Rocks (Tf, Tp, Tt, Td)	Dacite (lava dome)	Dacite (lava dome)	Andesite (dyke)
	Pyroclastic Rocks (Tf, Tp, Tt, Td)	Pyroclastic Rocks (Tf, Tp, Tt, Td)	Dacite (dyke)
	Sandstone	Sandstone	Fault
	Shale	Shale	Probable Fault
			Old Pit
			Mineral Indication
			Dip Strike
			Joint



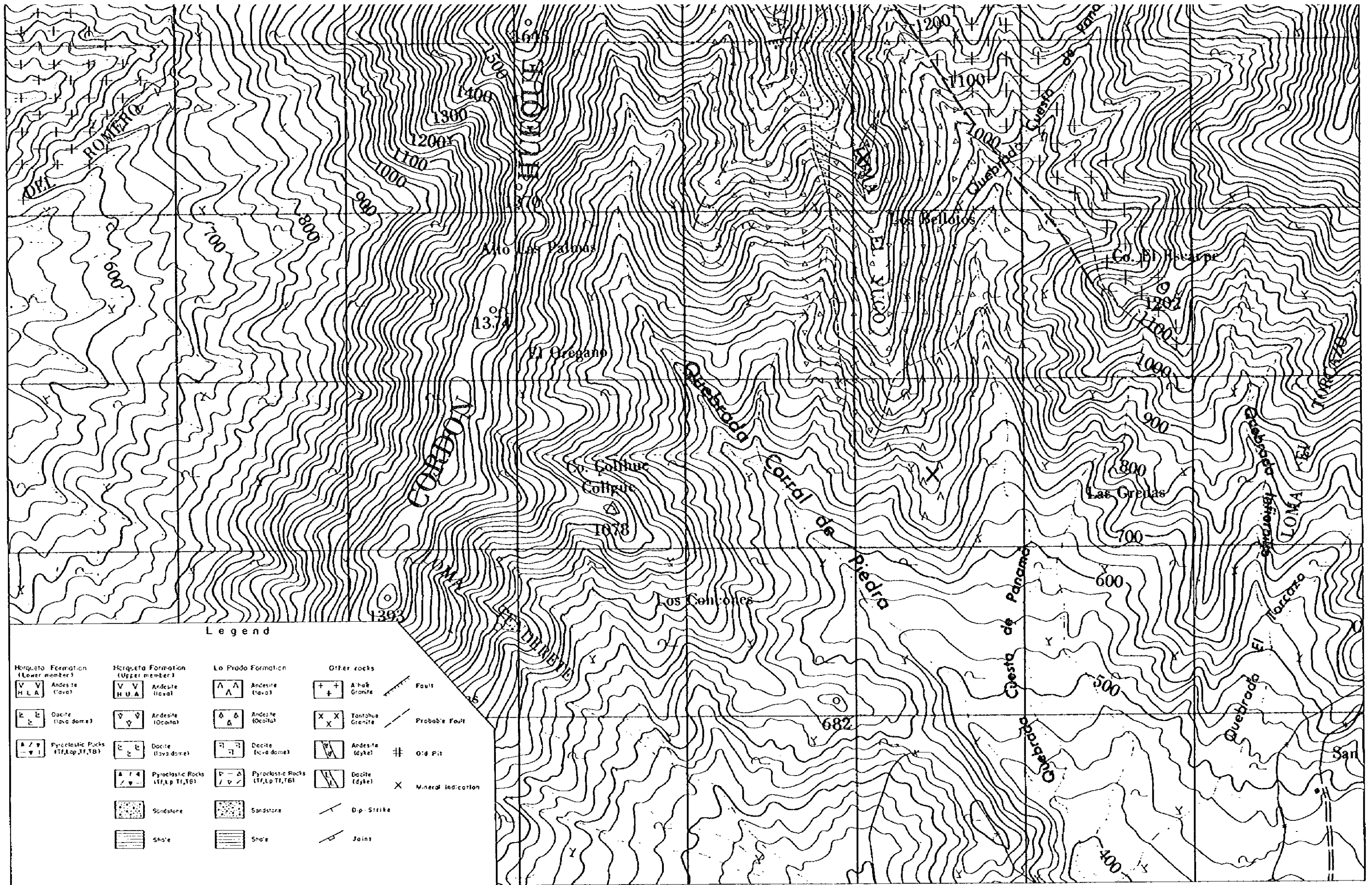






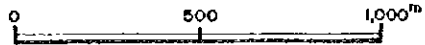






Legend

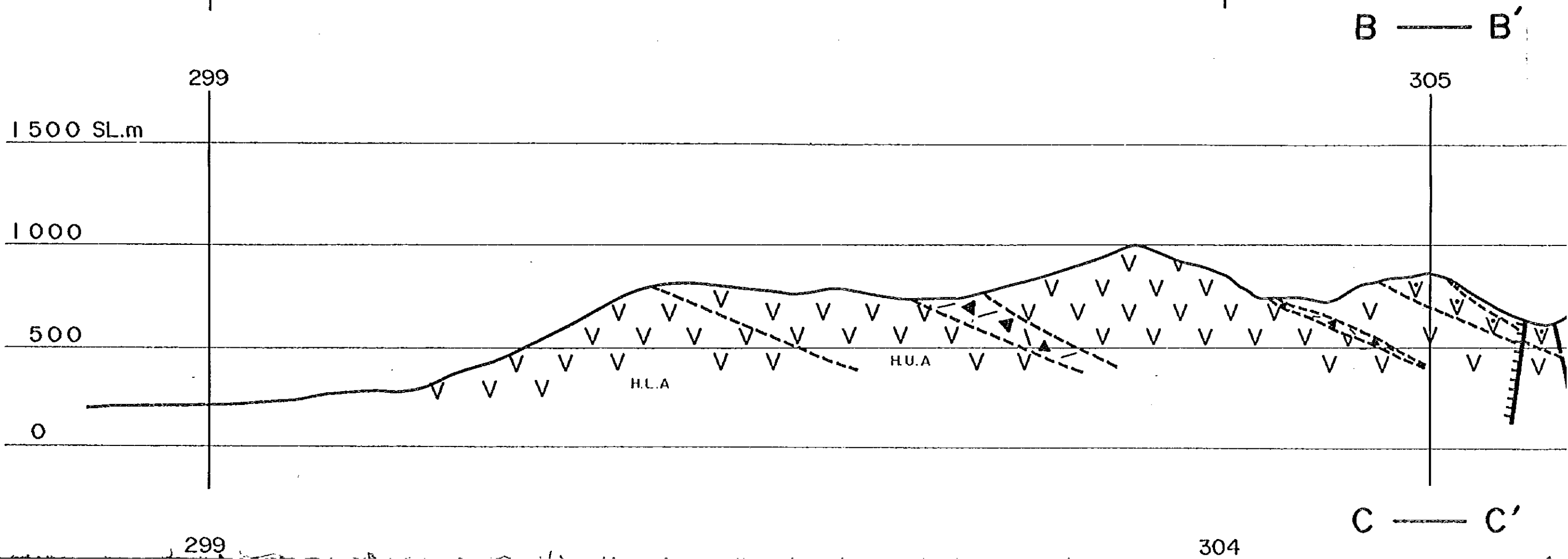
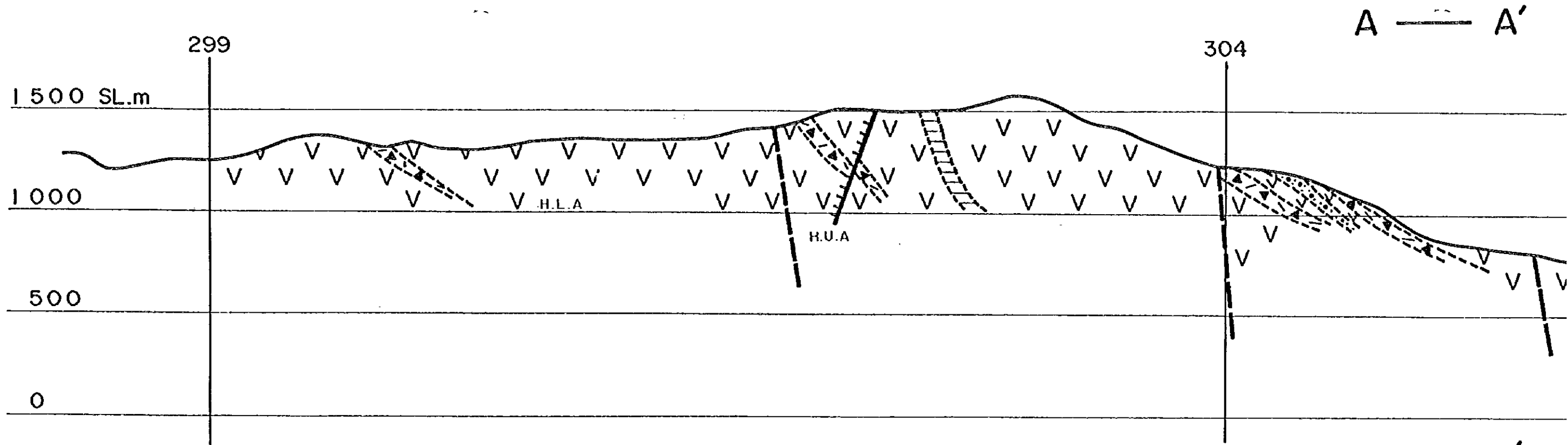
Marqueta Formation (Lower member)	Marqueta Formation (Upper member)	La Prado Formation	Other rocks
Andesite (lava)	Andesite (lava)	Andesite (lava)	Añás Granite
Dacite (lava dome)	Andesite (Ocoña)	Andesite (Ocoña)	Tantaua Granite
Pycroclastic Rocks (Tf, Lp, Tf, T6)	Dacite (lava dome)	Dacite (lava dome)	Andesite (dyke)
Pycroclastic Rocks (Tf, Lp, Tf, T6)	Pycroclastic Rocks (Tf, Lp, Tf, T6)	Dacite (lava dome)	Dacite (dyke)
Sandstone	Sandstone	Sandstone	Dip Strike
Shale	Shale	Shale	Joint
			Fault
			Probable Fault
			Old Pit
			Mineral indication





# Plate 2-1-2

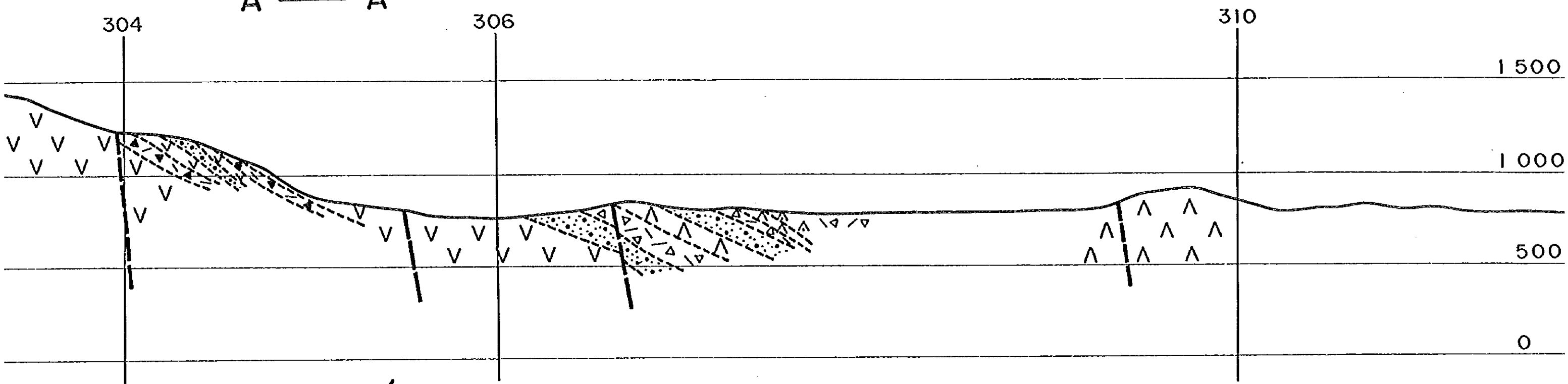
# Geological



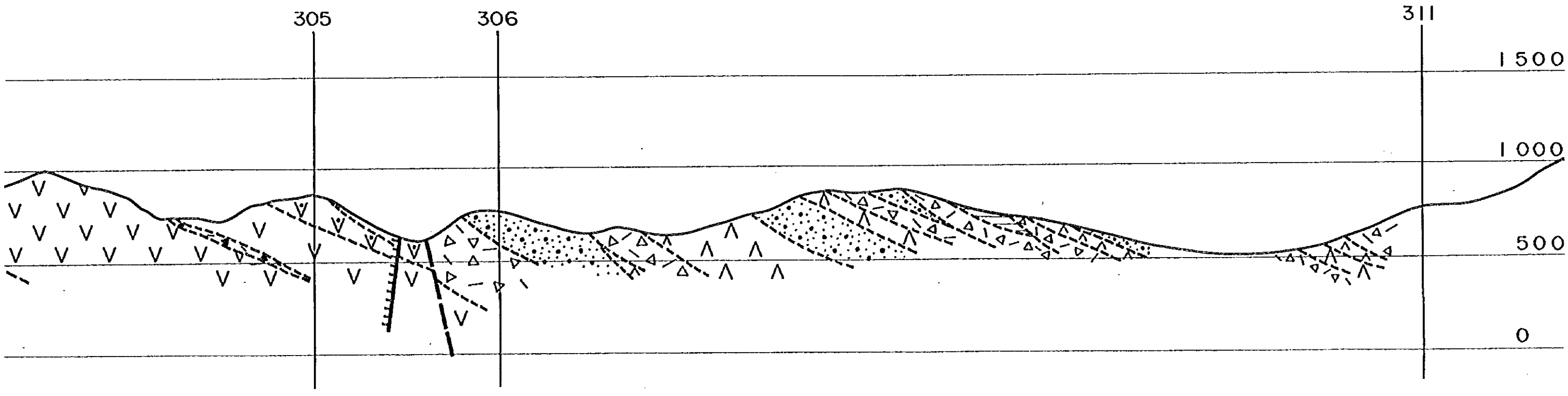
1-1-2

# Geological section of Cholqui area

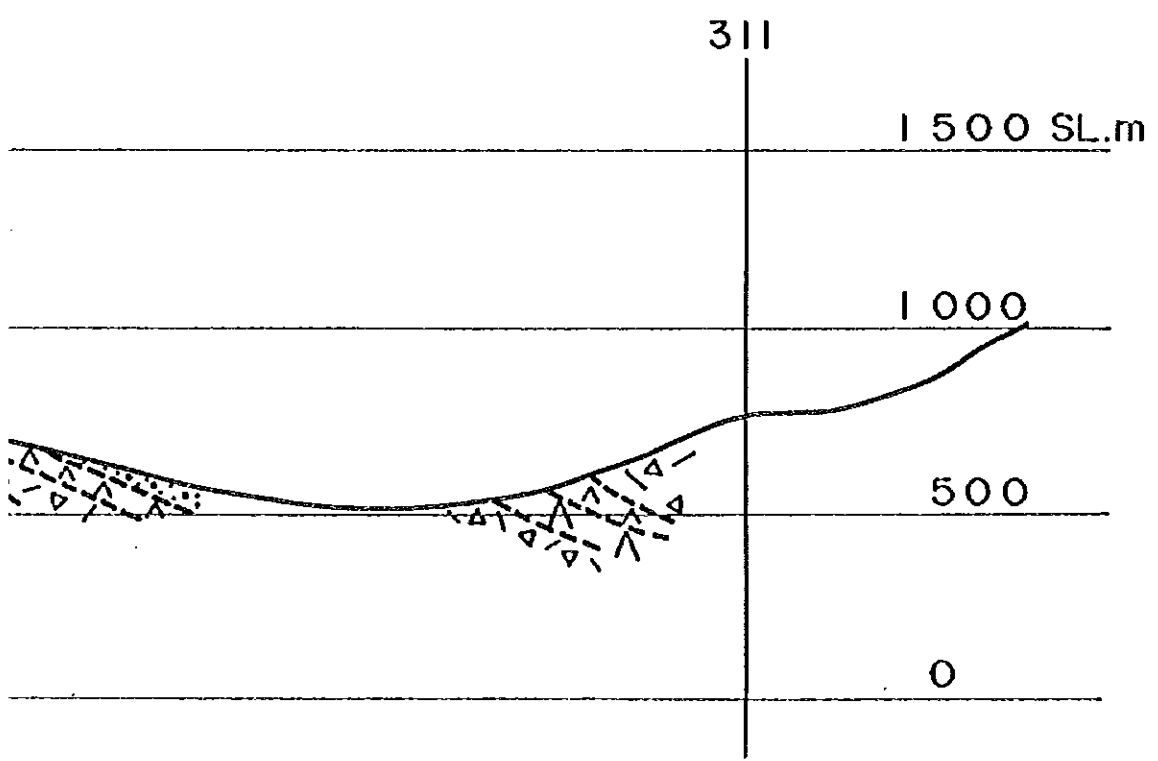
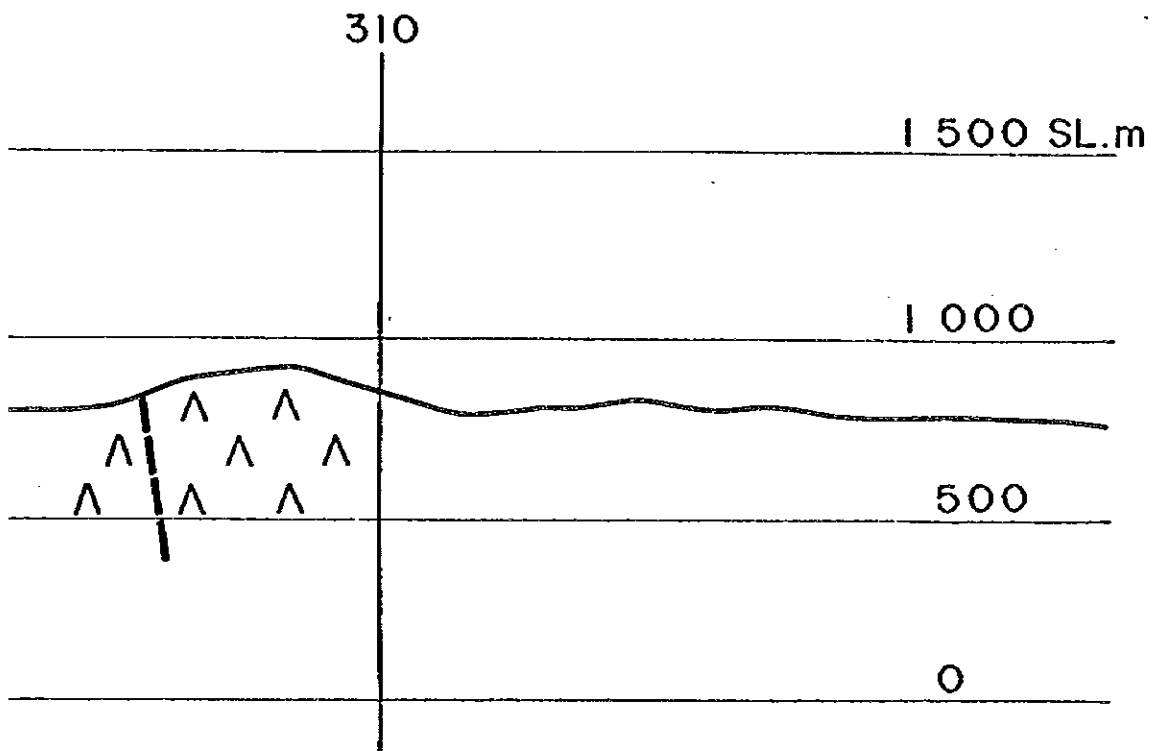
A — A'



B — B'

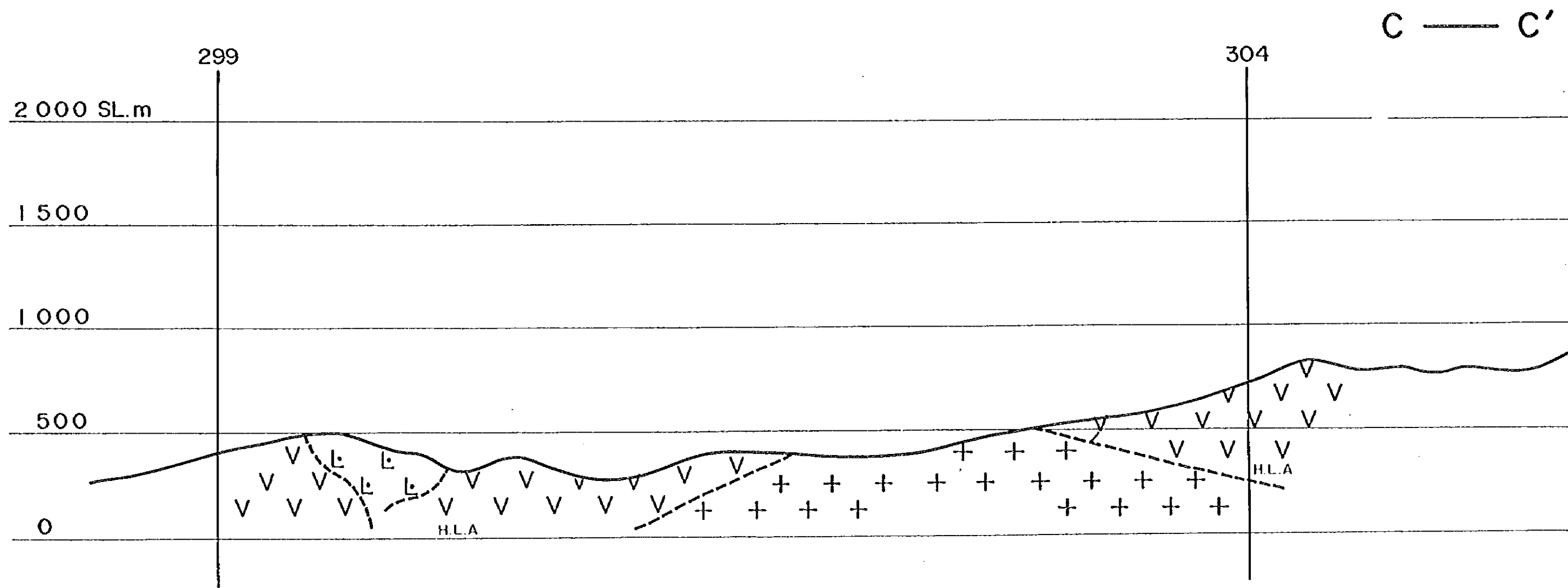
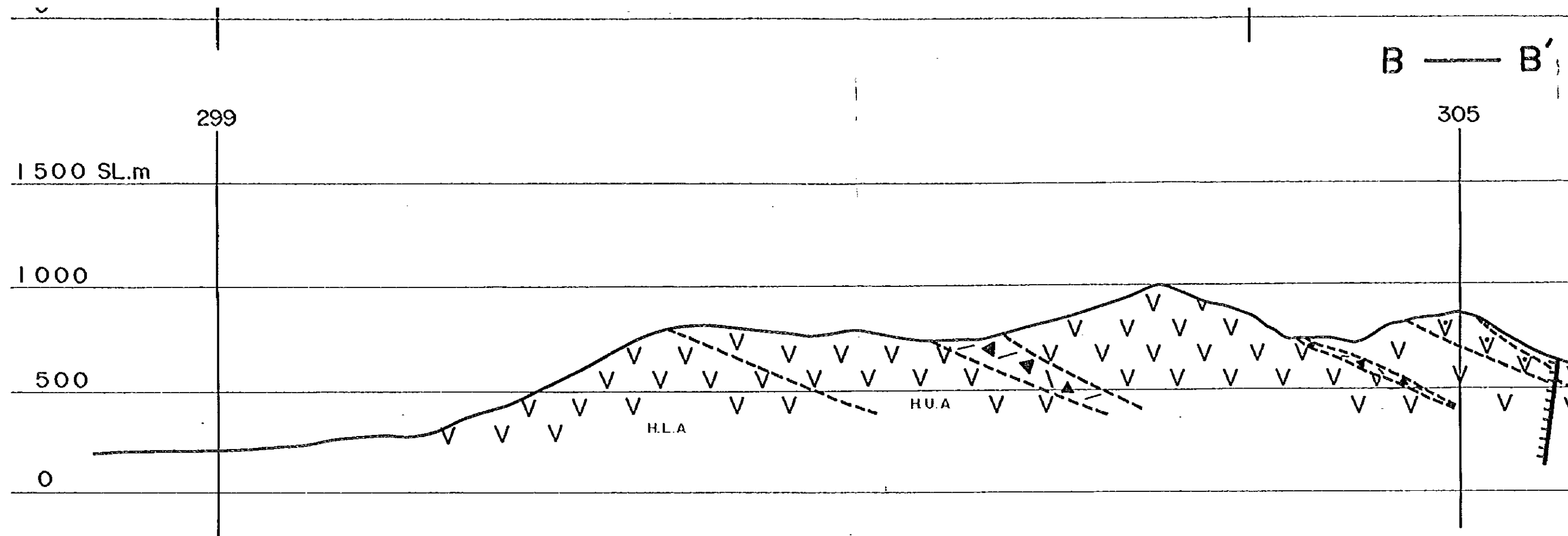






### Legend

<b>Horqueta Formation (Lower member)</b>		<b>Horqueta Formation (Upper member)</b>			
	Andesite (lava)		Andesite (lava)		Sandstone
	Dacite (lava dome)		Andesite (Ocoita)		Shale
	Pyroclastic Rocks (Tf, Lap, Tf, TB)		Dacite (lava dome)		
			Pyroclastic Rocks (Tf, Lp, Tf, TB)		
<b>Lo Prado Formation</b>				<b>Other rocks</b>	
	Andesite (lava)		Sandstone		Alhué Granite
	Andesite (Ocoita)		Shale		Tantahue Granite
	Dacite (lava dome)				Andesite (dyke)
	Pyroclastic Rocks (Tf, Lp, Tf, TB)				Dacite (dyke)





B — B'

305

306

311

1 500 SL.m

1 000

500

0

C — C'

304

308

310

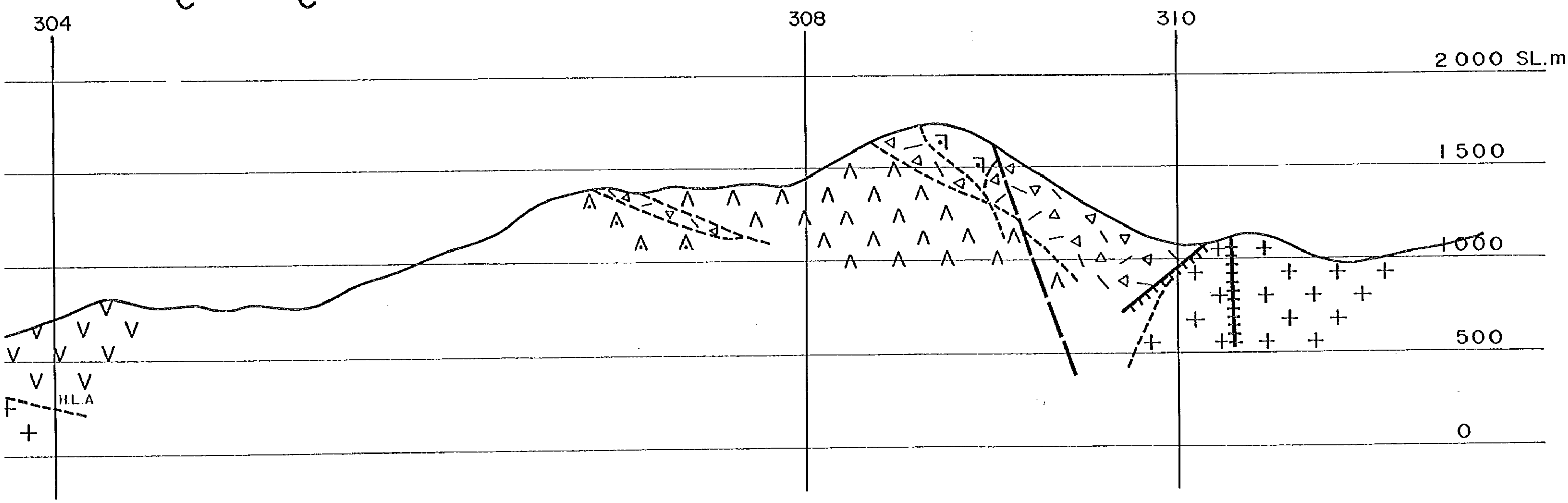
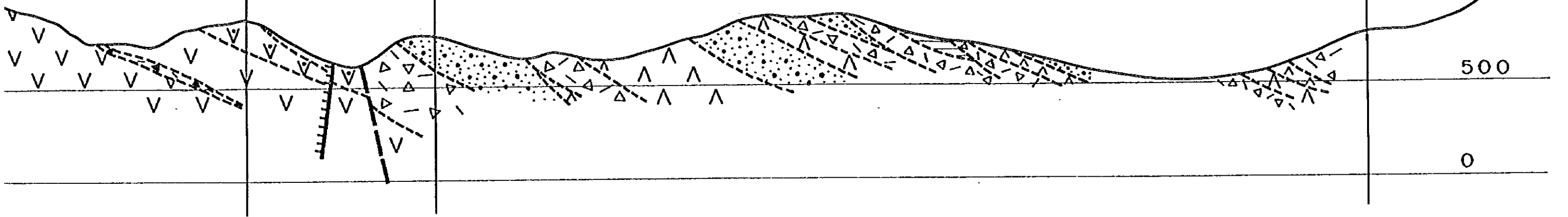
2 000 SL.m

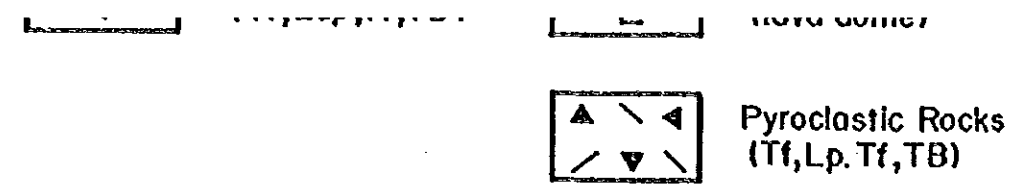
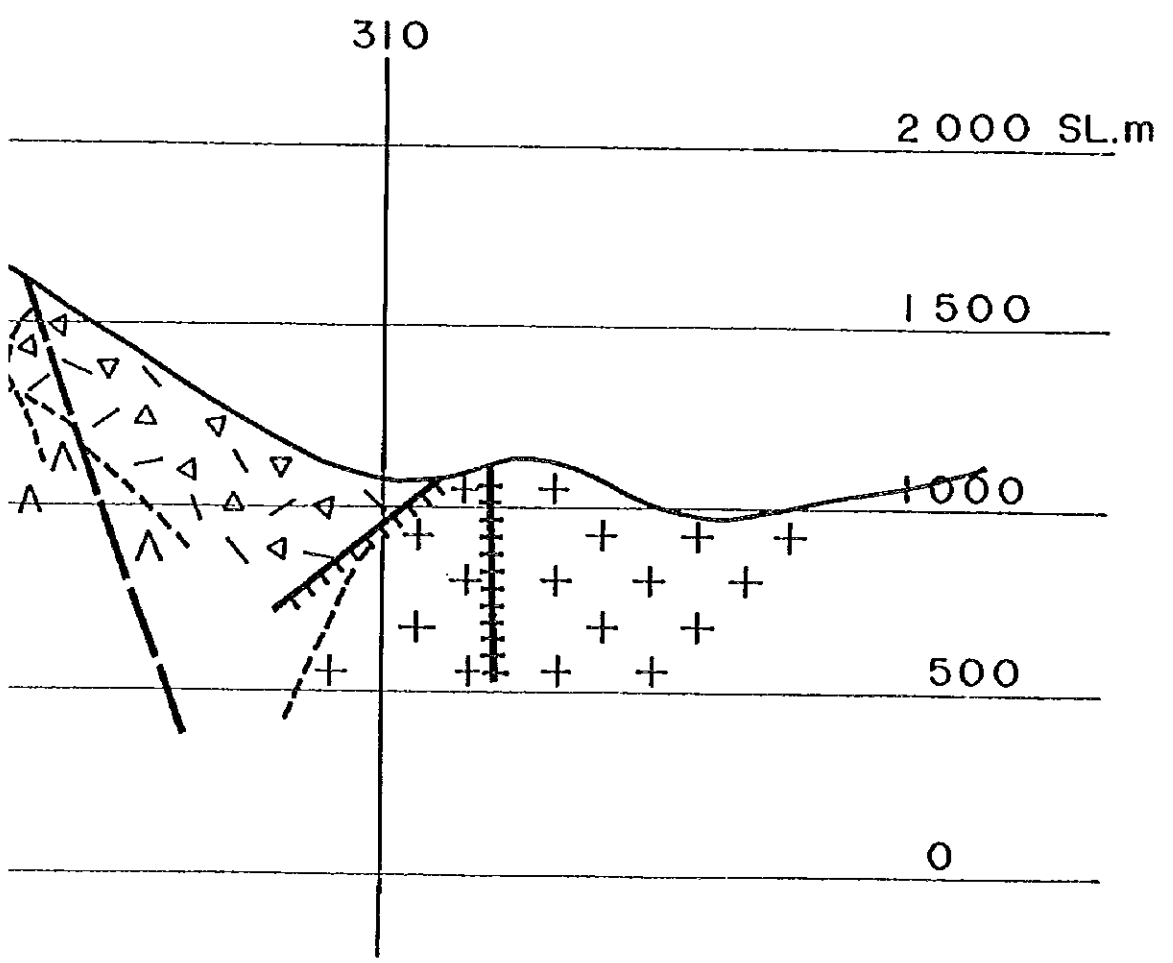
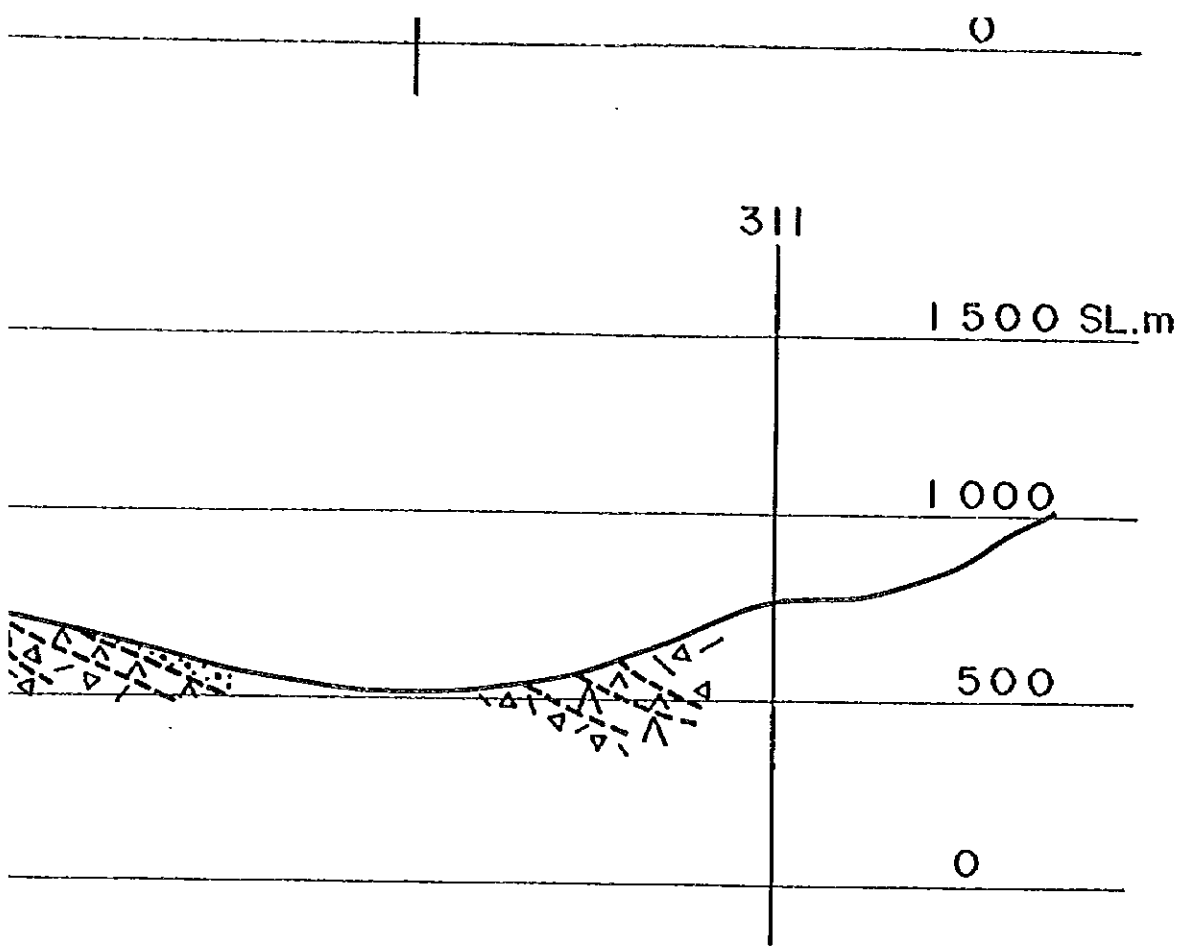
1 500

1 000

500

0





- Lo Prado Formation**
- Andesite (lava)
  - Andesite (Ocoita)
  - Dacite (lava dome)
  - Pyroclastic Rocks (Tf, Lp, Tf, TB)

- Sandstone
- Shale

- Other rocks**
- Alhué Granite
  - Tantahue Granite
  - Andesite (dyke)
  - Dacite (dyke)

