

AL MULADDAH(A)

SECTION		A1	A1-GE1	A1-S1	C4	P1-S1	P1-GE1	P1	P1-GE2	P1-S2	C11	P2-S1	P2-
STATION		0 + 925.0920	0 + 925.1420	0 + 925.5420	0 + 938.0920	0 + 950.6420	0 + 951.0420	0 + 951.0920	0 + 951.1420	0 + 951.5420	0 + 964.0920	0 + 976.6420	0 + 9
L4	X	0	0.05	0.45	13	25.55	25.95	26	26.05	26.45	39	51.55	
	Y	6.35	6.35	6.35	6.35	6.35	6.35	6.35	6.35	6.35	6.35	6.35	
	Z	13.4661	13.4668	13.4725	13.6435	13.7988	13.8035	13.8041	13.8046	13.8093	13.9477	14.0703	
L3	X	0	0.05	0.45	13	25.55	25.95	26	26.05	26.45	39	51.55	
	Y	5.35	5.35	5.35	5.35	5.35	5.35	5.35	5.35	5.35	5.35	5.35	
	Z	13.5811	13.5818	13.5875	13.7585	13.9138	13.9185	13.9191	13.9196	13.9243	14.0627	14.1853	
G6(PIER CENTER)	X	0	0.05	0.45	13	25.55	25.95	26	26.05	26.45	39	51.55	
	Y	0	0	0	0	0	0	0	0	0	0	0	
	Z	13.6813	13.662	13.6677	13.8388	13.994	13.9987	13.9993	13.9999	14.0046	14.143	14.2658	1
CL	X	0	0.05	0.45	13	25.55	25.95	26	26.05	26.45	39	51.55	
	Y	-4.15	-4.15	-4.15	-4.15	-4.15	-4.15	-4.15	-4.15	-4.15	-4.15	-4.15	
	Z	13.7236	13.7243	13.73	13.901	14.0563	14.061	14.0616	14.0621	14.0668	14.2052	14.3278	1
L2	X	0	0.05	0.45	13	25.55	25.95	26	26.05	26.45	39	51.55	
	Y	-5.35	-5.35	-5.35	-5.35	-5.35	-5.35	-5.35	-5.35	-5.35	-5.35	-5.35	
	Z	13.7416	13.7423	13.748	13.919	14.0743	14.079	14.0796	14.0801	14.0848	14.2232	14.3458	1
L1	X	0	0.05	0.45	13	25.55	25.95	26	26.05	26.45	39	51.55	
	Y	-6.35	-6.35	-6.35	-6.35	-6.35	-6.35	-6.35	-6.35	-6.35	-6.35	-6.35	
	Z	13.6566	13.6573	13.663	13.834	13.9893	13.994	13.9946	13.9951	13.9998	14.1382	14.2608	1

NOTE:

	P1	P1-GE2	P1-S2	G11	P2-S1	P2-GE1	P2	P2-GE2	P2-S2	C18	P3-S1	P3-GE1	P3	P3-GE2	P3-S2	C25	P4-S1	P4-GE1	P4	P4-GE2	P4-S2
00	+ 951.0920	+ 951.1420	+ 951.5420	+ 964.0920	+ 976.6420	+ 977.0420	+ 977.0920	+ 977.1420	+ 977.5420	+ 990.0920	1 + 2.6420	1 + 3.0420	1 + 3.0920	1 + 3.1420	1 + 3.5420	1 + 16.0920	1 + 28.6420	1 + 29.0420	1 + 29.0920	1 + 29.1420	1 + 29.5
95	26	26.05	26.45	39	51.55	51.95	52	52.05	52.45	65	77.55	77.95	78	78.05	78.45	91	103.55	103.95	104	104.05	104
95	6.35	6.35	6.35	6.35	6.35	6.35	6.35	6.35	6.35	6.35	6.35	6.35	6.35	6.35	6.35	6.35	6.35	6.35	6.35	6.35	6.35
95	13.8041	13.8046	13.8093	13.9477	14.0703	14.074	14.0745	14.0749	14.0785	14.1843	14.2743	14.2769	14.2773	14.2776	14.2802	14.3533	14.4107	14.4123	14.4124	14.4126	14.41
95	26	26.05	26.45	39	51.55	51.95	52	52.05	52.45	65	77.55	77.95	78	78.05	78.45	91	103.55	103.95	104	104.05	104
95	5.35	5.35	5.35	5.35	5.35	5.35	5.35	5.35	5.35	5.35	5.35	5.35	5.35	5.35	5.35	5.35	5.35	5.35	5.35	5.35	5.35
95	13.9191	13.9196	13.9243	14.0627	14.1853	14.189	14.1895	14.1899	14.1935	14.2993	14.3893	14.3919	14.3923	14.3926	14.3952	14.4683	14.5257	14.5273	14.5274	14.5276	14.52
95	26	26.05	26.45	39	51.55	51.95	52	52.05	52.45	65	77.55	77.95	78	78.05	78.45	91	103.55	103.95	104	104.05	104
00	0	0	0	0	0	0	0	0	0	0	0	0	0	0	0	0	0	0	0	0	0
87	13.9993	13.9999	14.0046	14.143	14.2656	14.2692	14.2697	14.2702	14.2738	14.3796	14.4696	14.4722	14.4725	14.4728	14.4754	14.5486	14.6059	14.6075	14.6077	14.6079	14.60
95	26	26.05	26.45	39	51.55	51.95	52	52.05	52.45	65	77.55	77.95	78	78.05	78.45	91	103.55	103.95	104	104.05	104
15	-4.15	-4.15	-4.15	-4.15	-4.15	-4.15	-4.15	-4.15	-4.15	-4.15	-4.15	-4.15	-4.15	-4.15	-4.15	-4.15	-4.15	-4.15	-4.15	-4.15	-4.15
81	14.0616	14.0621	14.0668	14.2052	14.3278	14.3315	14.332	14.3324	14.336	14.4418	14.5318	14.5344	14.5348	14.5351	14.5377	14.6108	14.6682	14.6698	14.67	14.6701	14.67
95	26	26.05	26.45	39	51.55	51.95	52	52.05	52.45	65	77.55	77.95	78	78.05	78.45	91	103.55	103.95	104	104.05	104
35	-5.35	-5.35	-5.35	-5.35	-5.35	-5.35	-5.35	-5.35	-5.35	-5.35	-5.35	-5.35	-5.35	-5.35	-5.35	-5.35	-5.35	-5.35	-5.35	-5.35	-5.35
79	14.0798	14.0801	14.0848	14.2232	14.3458	14.3495	14.3499	14.3504	14.354	14.4598	14.5498	14.5524	14.5527	14.5531	14.5557	14.6288	14.6862	14.6878	14.6879	14.6881	14.68
95	26	26.05	26.45	39	51.55	51.95	52	52.05	52.45	65	77.55	77.95	78	78.05	78.45	91	103.55	103.95	104	104.05	104
35	-6.35	-6.35	-6.35	-6.35	-6.35	-6.35	-6.35	-6.35	-6.35	-6.35	-6.35	-6.35	-6.35	-6.35	-6.35	-6.35	-6.35	-6.35	-6.35	-6.35	-6.35
94	13.9946	13.9951	13.9998	14.1382	14.2608	14.2645	14.265	14.2654	14.269	14.3748	14.4648	14.4674	14.4678	14.4681	14.4707	14.5438	14.6012	14.6028	14.603	14.6031	14.60

### FRAMING PLAN AT RA/05 AL MULADDAH (A-LINE)

-S2	C25	P4-S1	P4-GE1	P4	P4-GE2	P4-S2	C32	P5-S1	P5-GE1	P5	P5-GE2	P5-S2	C39	P6-S1	P6-GE1	P6	P6-GE2	P6-S2	C46	P7-S1	P7-GE1
3.5420	1+ 16.0920	1+ 28.6420	1+ 29.0420	1+ 29.0920	1+ 29.1420	1+ 29.5420	1+ 42.0920	1+ 54.6420	1+ 55.0420	1+ 55.0920	1+ 55.1420	1+ 55.5420	1+ 68.0920	1+ 80.6420	1+ 81.0420	1+ 81.0920	1+ 81.1420	1+ 81.5420	1+ 94.0920	1+ 106.6420	1+ 107.0420
78.45	91	103.55	103.95	104	104.05	104.45	117	129.55	129.95	130	130.05	130.45	143	155.55	155.95	156	156.05	156.45	169	181.55	181.95
6.35	6.35	6.35	6.35	6.35	6.35	6.35	6.35	6.35	6.35	6.35	6.35	6.35	6.35	6.35	6.35	6.35	6.35	6.35	6.35	6.35	6.35
4.2802	14.3533	14.4107	14.4123	14.4124	14.4126	14.4142	14.4547	14.4795	14.48	14.4801	14.4801	14.4806	14.4885	14.4806	14.4801	14.4801	14.48	14.4795	14.4547	14.4142	14.4142
78.45	91	103.55	103.95	104	104.05	104.45	117	129.55	129.95	130	130.05	130.45	143	155.55	155.95	156	156.05	156.45	169	181.55	181.95
5.35	5.35	5.35	5.35	5.35	5.35	5.35	5.35	5.35	5.35	5.35	5.35	5.35	5.35	5.35	5.35	5.35	5.35	5.35	5.35	5.35	5.35
4.3952	14.4683	14.5257	14.5273	14.5274	14.5276	14.5292	14.5697	14.5945	14.595	14.595	14.5951	14.5956	14.6035	14.5956	14.5951	14.595	14.595	14.595	14.5945	14.5697	14.5292
78.45	91	103.55	103.95	104	104.05	104.45	117	129.55	129.95	130	130.05	130.45	143	155.55	155.95	156	156.05	156.45	169	181.55	181.95
0	0	0	0	0	0	0	0	0	0	0	0	0	0	0	0	0	0	0	0	0	0
4.4754	14.5486	14.6059	14.6075	14.6077	14.6079	14.6094	14.65	14.6747	14.6752	14.6753	14.6754	14.6759	14.6838	14.6759	14.6754	14.6753	14.6752	14.6747	14.65	14.6094	14.6094
78.45	91	103.55	103.95	104	104.05	104.45	117	129.55	129.95	130	130.05	130.45	143	155.55	155.95	156	156.05	156.45	169	181.55	181.95
-4.15	-4.15	-4.15	-4.15	-4.15	-4.15	-4.15	-4.15	-4.15	-4.15	-4.15	-4.15	-4.15	-4.15	-4.15	-4.15	-4.15	-4.15	-4.15	-4.15	-4.15	-4.15
4.5377	14.6108	14.6682	14.6698	14.67	14.6701	14.6717	14.7122	14.737	14.7375	14.7376	14.7376	14.7381	14.746	14.7381	14.7376	14.7376	14.7375	14.737	14.7122	14.6717	14.6717
78.45	91	103.55	103.95	104	104.05	104.45	117	129.55	129.95	130	130.05	130.45	143	155.55	155.95	156	156.05	156.45	169	181.55	181.95
-5.35	-5.35	-5.35	-5.35	-5.35	-5.35	-5.35	-5.35	-5.35	-5.35	-5.35	-5.35	-5.35	-5.35	-5.35	-5.35	-5.35	-5.35	-5.35	-5.35	-5.35	-5.35
4.5557	14.6288	14.6862	14.6878	14.6879	14.6881	14.6897	14.7302	14.755	14.7555	14.7555	14.7556	14.7561	14.764	14.7561	14.7556	14.7555	14.7555	14.755	14.7302	14.6897	14.6897
78.45	91	103.55	103.95	104	104.05	104.45	117	129.55	129.95	130	130.05	130.45	143	155.55	155.95	156	156.05	156.45	169	181.55	181.95
-6.35	-6.35	-6.35	-6.35	-6.35	-6.35	-6.35	-6.35	-6.35	-6.35	-6.35	-6.35	-6.35	-6.35	-6.35	-6.35	-6.35	-6.35	-6.35	-6.35	-6.35	-6.35
4.4707	14.5438	14.6012	14.6028	14.603	14.6031	14.6047	14.6452	14.67	14.6705	14.6706	14.6706	14.6711	14.679	14.6711	14.6706	14.6706	14.6705	14.67	14.6452	14.6047	14.6047

A-LINE)

	P6-GE1	P6	P6-GE2	P6-S2	C46	P7-S1	P7-GE1	P7	P7-GE2	P7-S2	C53	P8-S1	P8-GE1	P8	P8-GE2	P8-S2	C60	P9-S1	P9-GE1	P9	P9-G
20	1 + 81.0420	1 + 81.0920	1 + 81.1420	1 + 81.5420	1 + 94.0920	1 + 106.6420	1 + 107.0420	1 + 107.0920	1 + 107.1420	1 + 107.5420	1 + 120.0920	1 + 132.6420	1 + 133.0420	1 + 133.0920	1 + 133.1420	1 + 133.5420	1 + 146.0920	1 + 158.6420	1 + 159.0420	1 + 159.0920	1 + 159.0920
55	155.95	156	156.05	156.45	169	181.55	181.95	182	182.05	182.45	195	207.55	207.95	208	208.05	208.45	221	233.55	233.95	234	234
35	6.35	6.35	6.35	6.35	6.35	6.35	6.35	6.35	6.35	6.35	6.35	6.35	6.35	6.35	6.35	6.35	6.35	6.35	6.35	6.35	6.35
06	14.4801	14.4801	14.48	14.4795	14.4547	14.4142	14.4126	14.4124	14.4123	14.4107	14.3533	14.2802	14.2776	14.2772	14.2769	14.2743	14.1843	14.0785	14.0749	14.0744	14.0744
55	155.95	156	156.05	156.45	169	181.55	181.95	182	182.05	182.45	195	207.55	207.95	208	208.05	208.45	221	233.55	233.95	234	234
35	5.35	5.35	5.35	5.35	5.35	5.35	5.35	5.35	5.35	5.35	5.35	5.35	5.35	5.35	5.35	5.35	5.35	5.35	5.35	5.35	5.35
58	14.5951	14.595	14.595	14.5945	14.5697	14.5292	14.5276	14.5274	14.5273	14.5257	14.4683	14.3952	14.3926	14.3922	14.3919	14.3893	14.2993	14.1935	14.1899	14.1894	14.1894
55	155.95	156	156.05	156.45	169	181.55	181.95	182	182.05	182.45	195	207.55	207.95	208	208.05	208.45	221	233.55	233.95	234	234
0	0	0	0	0	0	0	0	0	0	0	0	0	0	0	0	0	0	0	0	0	0
59	14.6754	14.6753	14.6752	14.6747	14.65	14.6094	14.6079	14.6077	14.6075	14.6059	14.5485	14.4754	14.4728	14.4725	14.4722	14.4696	14.3796	14.2738	14.2702	14.2697	14.2697
55	155.95	156	156.05	156.45	169	181.55	181.95	182	182.05	182.45	195	207.55	207.95	208	208.05	208.45	221	233.55	233.95	234	234
15	-4.15	-4.15	-4.15	-4.15	-4.15	-4.15	-4.15	-4.15	-4.15	-4.15	-4.15	-4.15	-4.15	-4.15	-4.15	-4.15	-4.15	-4.15	-4.15	-4.15	-4.15
81	14.7376	14.7376	14.7375	14.737	14.7122	14.6717	14.6701	14.67	14.6698	14.6682	14.6108	14.5377	14.5351	14.5348	14.5344	14.5318	14.4418	14.336	14.3324	14.3319	14.3319
55	155.95	156	156.05	156.45	169	181.55	181.95	182	182.05	182.45	195	207.55	207.95	208	208.05	208.45	221	233.55	233.95	234	234
35	-5.35	-5.35	-5.35	-5.35	-5.35	-5.35	-5.35	-5.35	-5.35	-5.35	-5.35	-5.35	-5.35	-5.35	-5.35	-5.35	-5.35	-5.35	-5.35	-5.35	-5.35
61	14.7556	14.7555	14.7555	14.755	14.7302	14.6897	14.6881	14.6879	14.6878	14.6862	14.6288	14.5557	14.5531	14.5527	14.5524	14.5498	14.4598	14.354	14.3504	14.3499	14.3499
55	155.95	156	156.05	156.45	169	181.55	181.95	182	182.05	182.45	195	207.55	207.95	208	208.05	208.45	221	233.55	233.95	234	234
35	-6.35	-6.35	-6.35	-6.35	-6.35	-6.35	-6.35	-6.35	-6.35	-6.35	-6.35	-6.35	-6.35	-6.35	-6.35	-6.35	-6.35	-6.35	-6.35	-6.35	-6.35
11	14.6706	14.6706	14.6705	14.67	14.6452	14.6047	14.6031	14.603	14.6028	14.6012	14.5438	14.4707	14.4681	14.4678	14.4674	14.4648	14.3748	14.269	14.2654	14.265	14.265

B-S2	C60	P9-S1	P9-GE1	P9	P9-GE2	P9-S2	C67	P10-S1	P10-GE1	P10	P10-GE2	P10-S2	C74	A2-S1	A2-GE1	A2
133.5420	1 + 146.0920	1 + 158.8420	1 + 159.0420	1 + 159.0920	1 + 159.1420	1 + 159.5420	1 + 172.0920	1 + 184.6420	1 + 185.0420	1 + 185.0920	1 + 185.1420	1 + 185.5420	1 + 198.0920	1 + 210.6420	1 + 211.0420	1 + 211.0920
208.45	221	233.55	233.95	234	234.05	234.45	247	259.55	259.95	260	260.05	260.45	273	285.55	285.95	286
6.35	6.35	6.35	6.35	6.35	6.35	6.35	6.35	6.35	6.35	6.35	6.35	6.35	6.35	6.35	6.35	6.35
14.2743	14.1843	14.0785	14.0749	14.0744	14.074	14.0703	13.9477	13.8093	13.8046	13.8041	13.8035	13.7988	13.6435	13.4725	13.4668	13.466
208.45	221	233.55	233.95	234	234.05	234.45	247	259.55	259.95	260	260.05	260.45	273	285.55	285.95	286
5.35	5.35	5.35	5.35	5.35	5.35	5.35	5.35	5.35	5.35	5.35	5.35	5.35	5.35	5.35	5.35	5.35
14.3893	14.2993	14.1935	14.1899	14.1894	14.189	14.1853	14.0627	13.9243	13.9196	13.919	13.9185	13.9138	13.7585	13.5875	13.5818	13.581
208.45	221	233.55	233.95	234	234.05	234.45	247	259.55	259.95	260	260.05	260.45	273	285.55	285.95	286
0	0	0	0	0	0	0	0	0	0	0	0	0	0	0	0	0
14.4696	14.3796	14.2738	14.2702	14.2697	14.2692	14.2656	14.143	14.0046	13.9999	13.9993	13.9987	13.994	13.8388	13.6677	13.662	13.6613
208.45	221	233.55	233.95	234	234.05	234.45	247	259.55	259.95	260	260.05	260.45	273	285.55	285.95	286
-4.15	-4.15	-4.15	-4.15	-4.15	-4.15	-4.15	-4.15	-4.15	-4.15	-4.15	-4.15	-4.15	-4.15	-4.15	-4.15	-4.15
14.5318	14.4418	14.336	14.3324	14.3319	14.3315	14.3278	14.2052	14.0668	14.0621	14.0616	14.061	14.0563	13.901	13.73	13.7243	13.7236
208.45	221	233.55	233.95	234	234.05	234.45	247	259.55	259.95	260	260.05	260.45	273	285.55	285.95	286
-5.35	-5.35	-5.35	-5.35	-5.35	-5.35	-5.35	-5.35	-5.35	-5.35	-5.35	-5.35	-5.35	-5.35	-5.35	-5.35	-5.35
14.5498	14.4598	14.354	14.3504	14.3499	14.3495	14.3458	14.2232	14.0848	14.0801	14.0795	14.079	14.0743	13.919	13.748	13.7423	13.7415
208.45	221	233.55	233.95	234	234.05	234.45	247	259.55	259.95	260	260.05	260.45	273	285.55	285.95	286
-6.35	-6.35	-6.35	-6.35	-6.35	-6.35	-6.35	-6.35	-6.35	-6.35	-6.35	-6.35	-6.35	-6.35	-6.35	-6.35	-6.35
14.4648	14.3748	14.269	14.2654	14.265	14.2645	14.2608	14.1382	13.9998	13.9951	13.9946	13.994	13.9893	13.834	13.663	13.6573	13.6566

	P10	P10-GE2	P10-S2	G74	A2-S1	A2-GE1	A2
01 + 185.0920	1 + 185.1420	1 + 185.5420	1 + 198.0920	1 + 210.6420	1 + 211.0420	1 + 211.0920	
5	260	260.05	260.45	273	285.55	285.95	286
5	6.35	6.35	6.35	6.35	6.35	6.35	6.35
8	13.8041	13.8035	13.7988	13.6435	13.4725	13.4668	13.466
5	260	260.05	260.45	273	285.55	285.95	286
5	5.35	5.35	5.35	5.35	5.35	5.35	5.35
6	13.919	13.9185	13.9138	13.7585	13.5875	13.5818	13.581
5	260	260.05	260.45	273	285.55	285.95	286
0	0	0	0	0	0	0	0
9	13.9993	13.9987	13.994	13.8388	13.6677	13.662	13.6613
5	260	260.05	260.45	273	285.55	285.95	286
5	-4.15	-4.15	-4.15	-4.15	-4.15	-4.15	-4.15
11	14.0616	14.061	14.0563	13.901	13.73	13.7243	13.7236
5	260	260.05	260.45	273	285.55	285.95	286
5	-5.35	-5.35	-5.35	-5.35	-5.35	-5.35	-5.35
01	14.0795	14.079	14.0743	13.918	13.748	13.7423	13.7415
5	260	260.05	260.45	273	285.55	285.95	286
35	-6.35	-6.35	-6.35	-6.35	-6.35	-6.35	-6.35
51	13.9946	13.994	13.9893	13.834	13.663	13.6573	13.6566

JAPAN INTERNATIONAL COOPERATION AGENCY  
(JICA)

JICA STUDY TEAM  
PACIFIC CONSULTANTS INTERNATIONAL  
FUKUYAMA CONSULTANTS INTERNATIONAL

CLIENT: MINISTRY OF COMMUNICATIONS, DIRECTORATE GENERAL OF ROADS

PROJECT: D/D ON ROAD DEVELOPMENT PROJECT ON NATHAN HIGHWAY

TITLE CO-ORDINATE LIST RA/BS AT A-LINE

DATE

DWGNO.

B-4

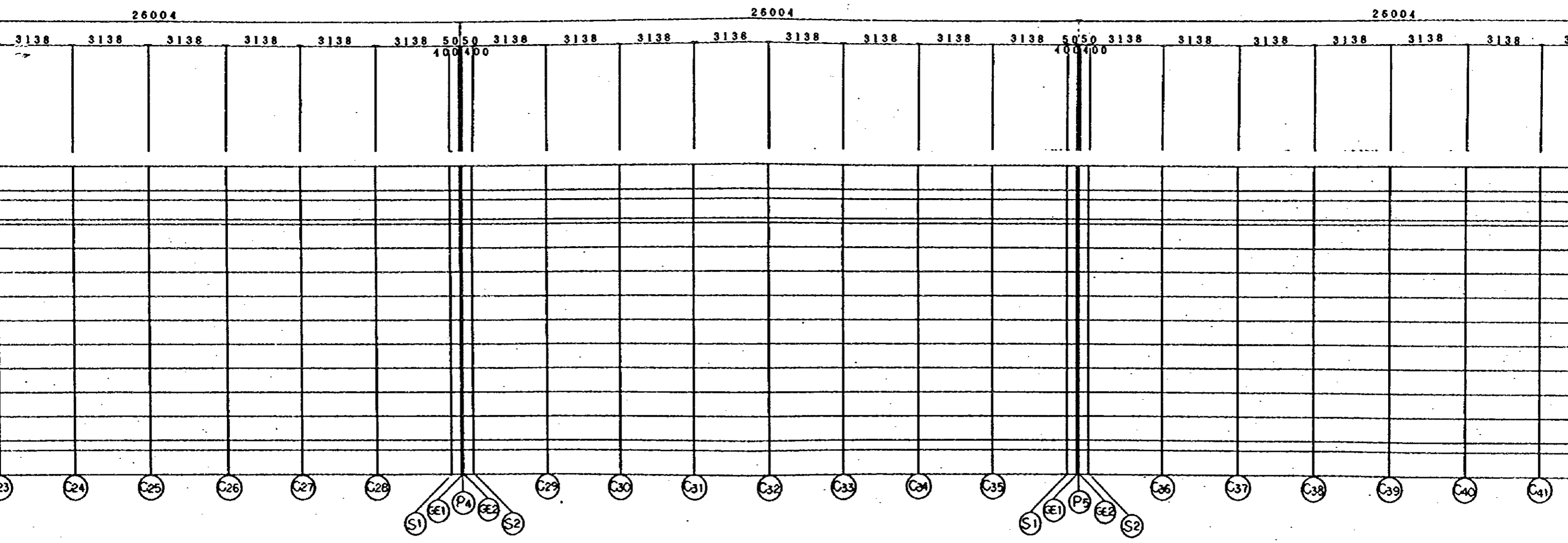






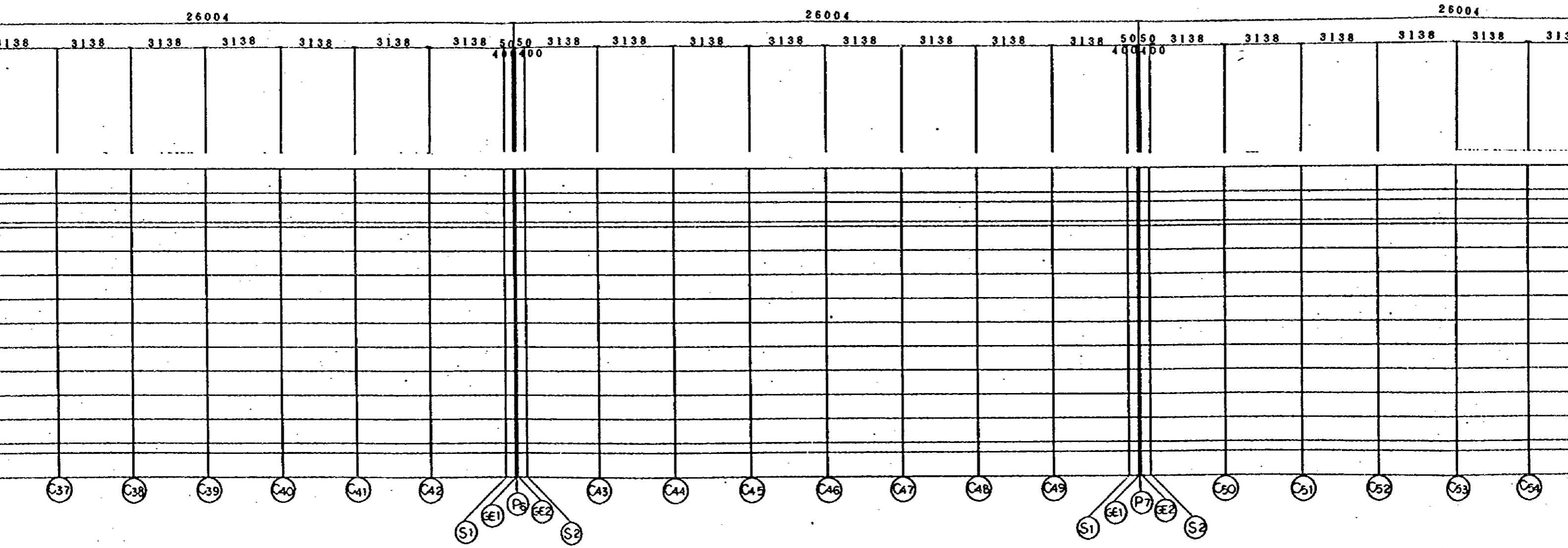
# R/A-5 ALMULAD

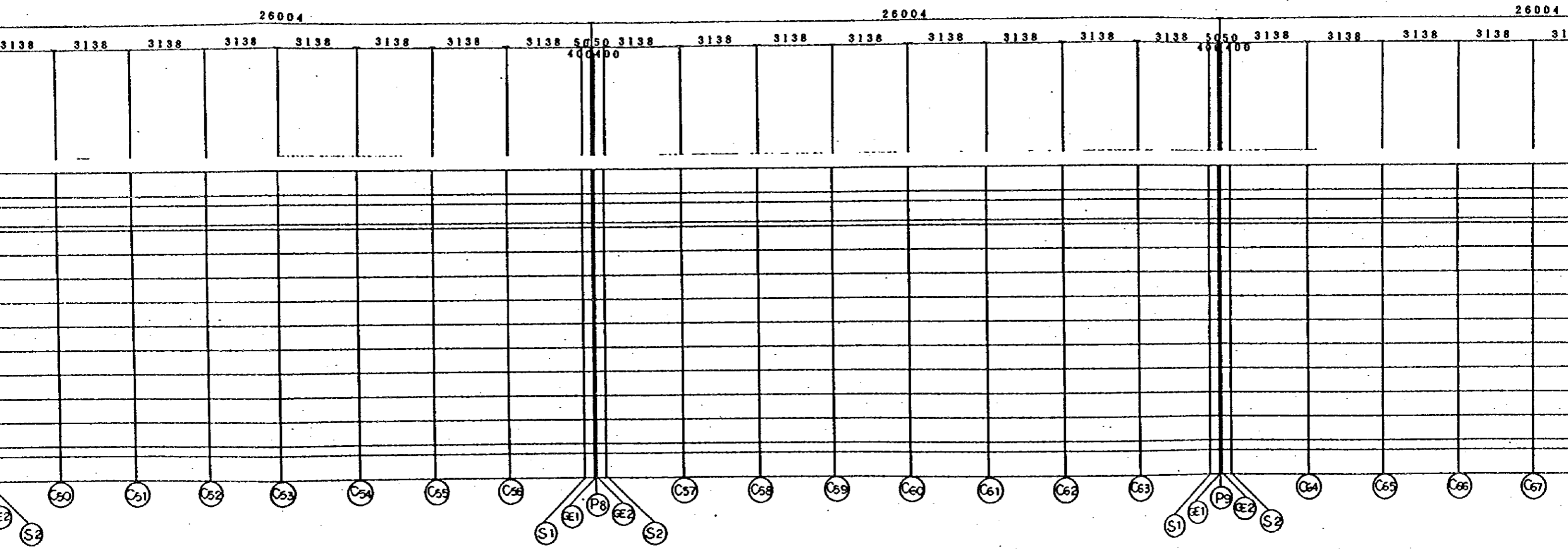
B-LINE



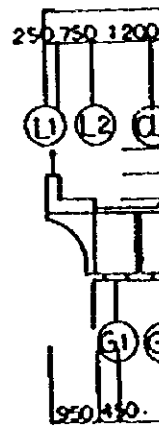
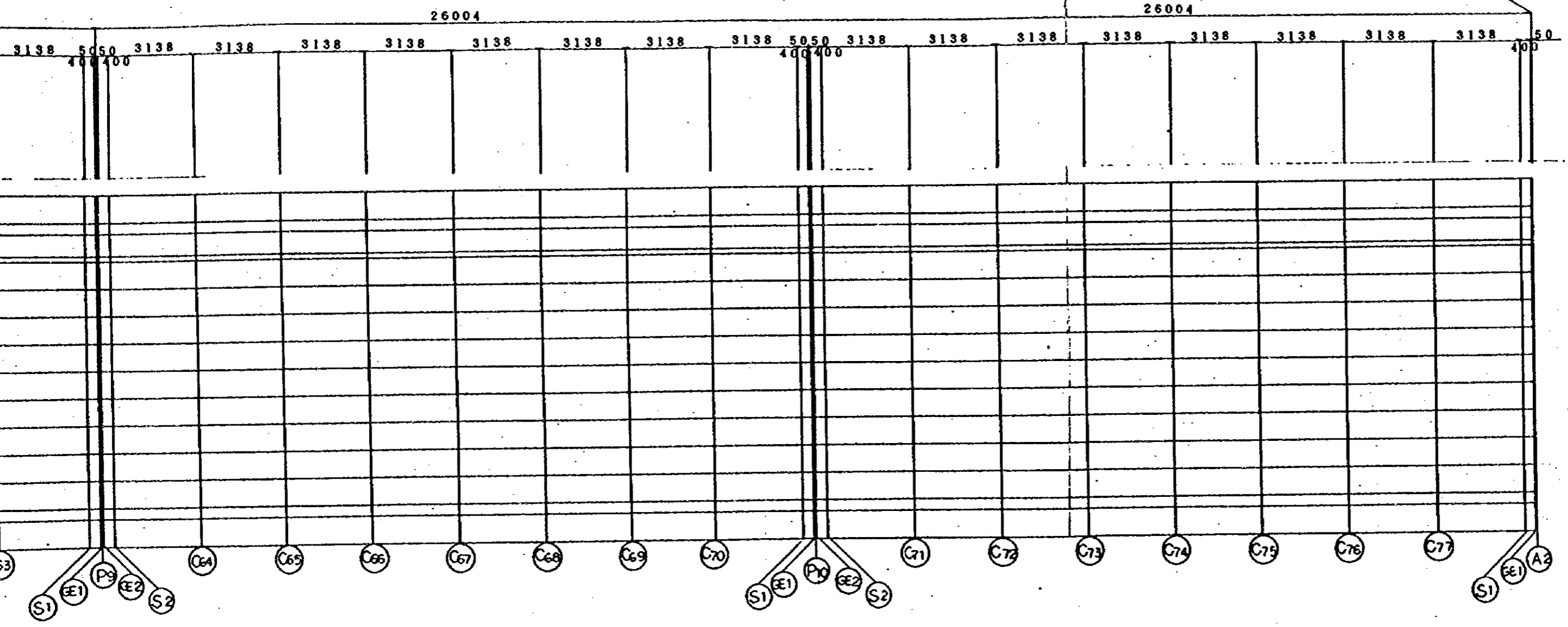
# /A-5 ALMULADDAH

B-LINE

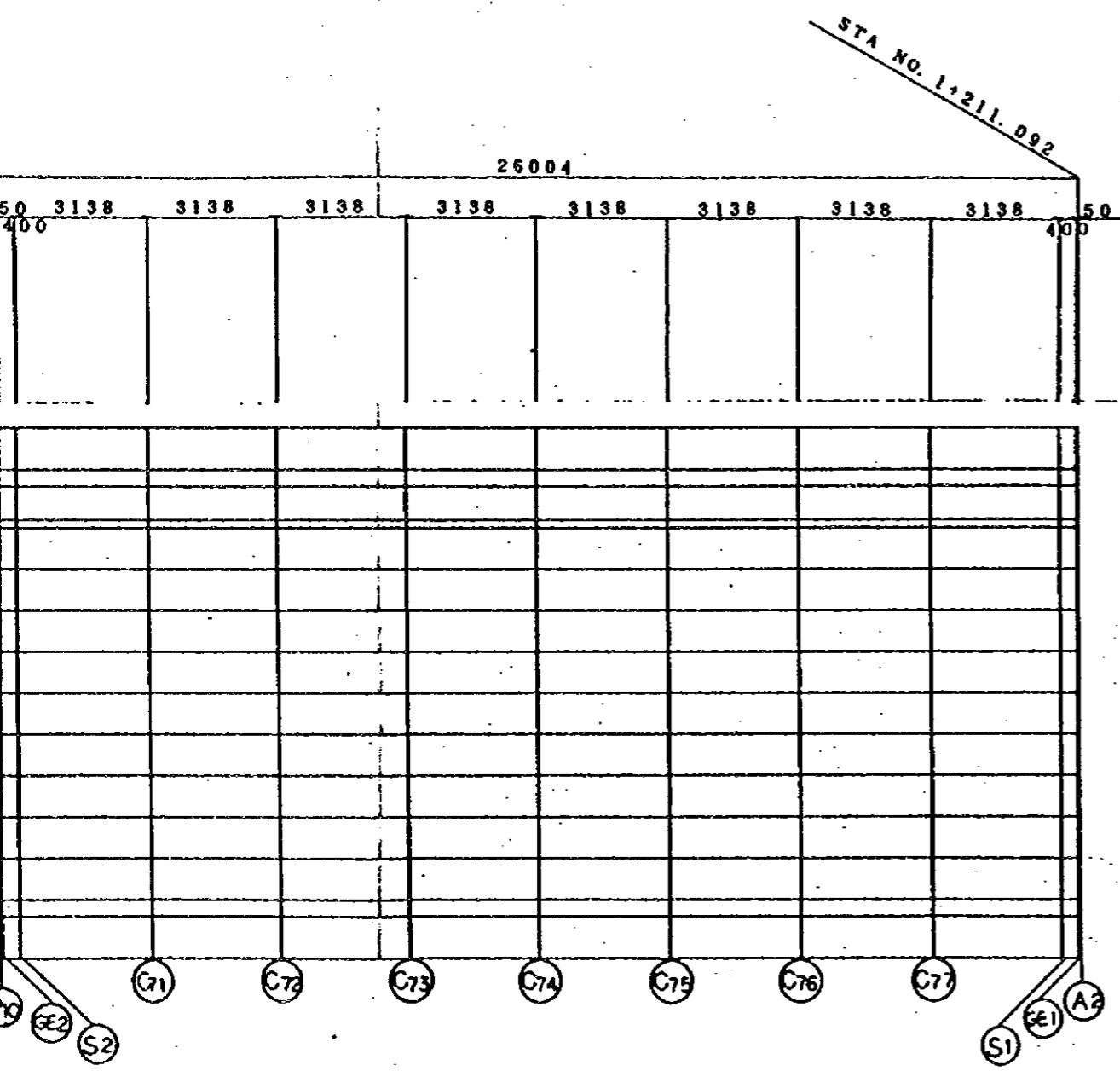




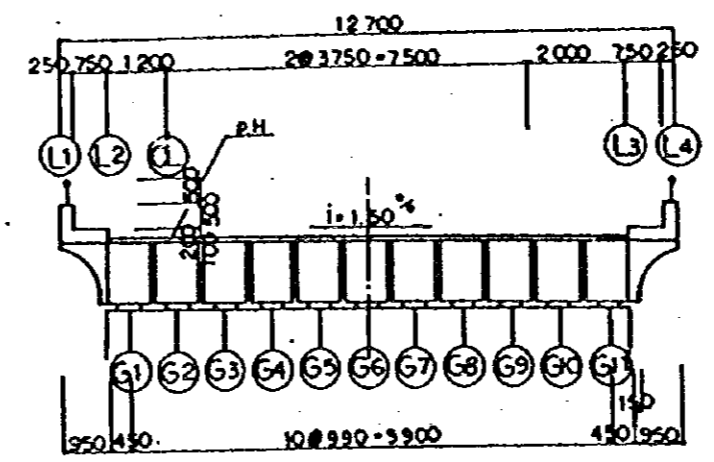
STA NO. 1+211.092



JAPAN INTERNATIONAL COOPERATION AGENCY (JICA) JICA STUDY TEAM PACIFIC CONSULTANTS INTERNATIONAL FUKUYAMA CONSULTANTS INTERNATIONAL	CLIENT: M
	PROJECT: D
	TITLE
	DATE



B-LINE



JAPAN INTERNATIONAL COOPERATION AGENCY (JICA) JICA STUDY TEAM PACIFIC CONSULTANTS INTERNATIONAL FUKUYAMA CONSULTANTS INTERNATIONAL	CLIENT: MINISTRY OF COMMUNICATIONS, DIRECTORATE GENERAL OF ROADS PROJECT: D/D ON ROAD DEVELOPMENT PROJECT ON BATINAB HIGHWAY	
	TITLE FRAMING PLAN RAAS AT B-LINE	DATE DWGNO. 3-5

AL MULADDAH (B)

SECTION		A1	A1-GE1	A1-S1	C4	P1-S1	P1-GE1	P1	P1-GE2	P1-S2	C11	
STATION		0 + 930.1650	0 + 930.2150	0 + 930.6150	0 + 943.1650	0 + 955.7150	0 + 958.1150	0 + 958.1650	0 + 956.2150	0 + 958.6150	0 + 969.1650	0 +
L1	X	0	0.05	0.45	13	25.55	25.95	26	26.05	26.45	39	
	Y	6.35	6.35	6.35	6.35	6.35	6.35	6.35	6.35	6.35	6.35	
	Z	13.6566	13.6573	13.663	13.834	13.9893	13.994	13.9946	13.9951	13.9998	14.1382	
L2	X	0	0.05	0.45	13	25.55	25.95	26	26.05	26.45	39	
	Y	5.35	5.35	5.35	5.35	5.35	5.35	5.35	5.35	5.35	5.35	
	Z	13.7416	13.7423	13.748	13.919	14.0743	14.079	14.0796	14.0801	14.0848	14.2232	
CL	X	0	0.05	0.45	13	25.55	25.95	26	26.05	26.45	39	
	Y	4.15	4.15	4.15	4.15	4.15	4.15	4.15	4.15	4.15	4.15	
	Z	13.7236	13.7243	13.73	13.901	14.0563	14.061	14.0618	14.0621	14.0668	14.2052	
G6(PIER CENTER)	X	0	0.05	0.45	13	25.55	25.95	26	26.05	26.45	39	
	Y	0	0	0	0	0	0	0	0	0	0	
	Z	13.6613	13.662	13.6677	13.8387	13.994	13.9987	13.9993	13.9999	14.0046	14.143	
L3	X	0	0.05	0.45	13	25.55	25.95	26	26.05	26.45	39	
	Y	-5.35	-5.35	-5.35	-5.35	-5.35	-5.35	-5.35	-5.35	-5.35	-5.35	
	Z	13.581	13.5818	13.5875	13.7585	13.9138	13.9185	13.919	13.9196	13.9243	14.0627	
L4	X	0	0.05	0.45	13	25.55	25.95	26	26.05	26.45	39	
	Y	-6.35	-6.35	-6.35	-6.35	-6.35	-6.35	-6.35	-6.35	-6.35	-6.35	
	Z	13.4661	13.4668	13.4725	13.6435	13.7988	13.8035	13.8041	13.8046	13.8093	13.9477	

NOTES:

41

P1-S1	P1-GE1	P1	P1-GE2	P1-S2	G11	P2-S1	P2-GE1	P2	P2-GE2	P2-S2	O18	P3-S1	P3-GE1	P3	P3-GE2	P3-S2	C25	P4-S1	P4-GE1	P4
+ 955.7150	+ 956.1150	+ 956.1650	+ 956.2150	+ 956.6150	+ 969.1650	+ 981.7150	+ 982.1150	+ 982.1650	+ 982.2150	+ 982.6150	+ 995.1650	1 + 7.7150	1 + 8.1150	1 + 8.1650	1 + 8.2150	1 + 8.6150	1 + 21.1650	1 + 33.7150	1 + 34.1150	1 + 34.1650
25.55	25.95	26	26.05	26.45	39	51.55	51.95	52	52.05	52.45	65	77.55	77.95	78	78.05	78.45	91	103.55	103.95	104
6.35	6.35	6.35	6.35	6.35	6.35	6.35	6.35	6.35	6.35	6.35	6.35	6.35	6.35	6.35	6.35	6.35	6.35	6.35	6.35	6.35
13.9893	13.994	13.9946	13.9951	13.9998	14.1382	14.2608	14.2645	14.2649	14.2654	14.269	14.3748	14.4648	14.4674	14.4677	14.4681	14.4707	14.5438	14.6012	14.6028	14.6029
25.55	25.95	26	26.05	26.45	39	51.55	51.95	52	52.05	52.45	65	77.55	77.95	78	78.05	78.45	91	103.55	103.95	104
5.35	5.35	5.35	5.35	5.35	5.35	5.35	5.35	5.35	5.35	5.35	5.35	5.35	5.35	5.35	5.35	5.35	5.35	5.35	5.35	5.35
14.0743	14.079	14.0796	14.0801	14.0848	14.2232	14.3458	14.3495	14.35	14.3504	14.354	14.4598	14.5498	14.5524	14.5528	14.5531	14.5557	14.6288	14.6862	14.6878	14.688
25.55	25.95	26	26.05	26.45	39	51.55	51.95	52	52.05	52.45	65	77.55	77.95	78	78.05	78.45	91	103.55	103.95	104
4.15	4.15	4.15	4.15	4.15	4.15	4.15	4.15	4.15	4.15	4.15	4.15	4.15	4.15	4.15	4.15	4.15	4.15	4.15	4.15	4.15
14.0563	14.061	14.0616	14.0621	14.0668	14.2052	14.3278	14.3315	14.3319	14.3324	14.336	14.4418	14.5318	14.5344	14.5348	14.5351	14.5377	14.6108	14.6682	14.6698	14.67
25.55	25.95	26	26.05	26.45	39	51.55	51.95	52	52.05	52.45	65	77.55	77.95	78	78.05	78.45	91	103.55	103.95	104
0	0	0	0	0	0	0	0	0	0	0	0	0	0	0	0	0	0	0	0	0
13.994	13.9987	13.9993	13.9999	14.0046	14.143	14.2656	14.2692	14.2697	14.2702	14.2738	14.3795	14.4696	14.4722	14.4725	14.4728	14.4754	14.5485	14.6059	14.6075	14.6077
25.55	25.95	26	26.05	26.45	39	51.55	51.95	52	52.05	52.45	65	77.55	77.95	78	78.05	78.45	91	103.55	103.95	104
-5.35	-5.35	-5.35	-5.35	-5.35	-5.35	-5.35	-5.35	-5.35	-5.35	-5.35	-5.35	-5.35	-5.35	-5.35	-5.35	-5.35	-5.35	-5.35	-5.35	-5.35
13.9138	13.9185	13.919	13.9196	13.9243	14.0627	14.1853	14.189	14.1894	14.1899	14.1935	14.2993	14.3893	14.3919	14.3922	14.3926	14.3952	14.4683	14.5257	14.5273	14.5274
25.55	25.95	26	26.05	26.45	39	51.55	51.95	52	52.05	52.45	65	77.55	77.95	78	78.05	78.45	91	103.55	103.95	104
-6.35	-6.35	-6.35	-6.35	-6.35	-6.35	-6.35	-6.35	-6.35	-6.35	-6.35	-6.35	-6.35	-6.35	-6.35	-6.35	-6.35	-6.35	-6.35	-6.35	-6.35
13.7988	13.8035	13.8041	13.8046	13.8093	13.9477	14.0703	14.074	14.0745	14.0749	14.0785	14.1843	14.2743	14.2769	14.2773	14.2776	14.2802	14.3533	14.4107	14.4123	14.4125

### FRAMING PLAN AT RA/05 AL MULADDAH (B-LINE)

C25	P4-S1	P4-GE1	P4	P4-GE2	P4-S2	C32	P5-S1	P5-GE1	P5	P5-GE2	P5-S2	C39	P6-S1	P6-GE1	P6	P6-GE2	P6-S2	C46	P7-S1	P7-GE1
1 + 21.1650	1 + 33.7150	1 + 34.1150	1 + 34.1650	1 + 34.2150	1 + 34.6150	1 + 47.1650	1 + 59.7150	1 + 60.1150	1 + 60.1650	1 + 60.2150	1 + 60.6150	1 + 73.1650	1 + 85.7150	1 + 86.1150	1 + 86.1650	1 + 86.2150	1 + 86.6150	1 + 99.1650	1 + 111.7150	1 + 112.1150
91	103.55	103.95	104	104.05	104.45	117	129.55	129.95	130	130.05	130.45	143	155.55	155.95	156	156.05	156.45	169	181.55	181.95
6.35	6.35	6.35	6.35	6.35	6.35	6.35	6.35	6.35	6.35	6.35	6.35	6.35	6.35	6.35	6.35	6.35	6.35	6.35	6.35	6.35
14.5438	14.6012	14.6028	14.6029	14.6031	14.6047	14.6452	14.67	14.6705	14.6705	14.6706	14.6711	14.679	14.6711	14.6706	14.6705	14.6705	14.67	14.6452	14.6047	14.6031
91	103.55	103.95	104	104.05	104.45	117	129.55	129.95	130	130.05	130.45	143	155.55	155.95	156	156.05	156.45	169	181.55	181.95
5.35	5.35	5.35	5.35	5.35	5.35	5.35	5.35	5.35	5.35	5.35	5.35	5.35	5.35	5.35	5.35	5.35	5.35	5.35	5.35	5.35
14.6288	14.6862	14.6878	14.688	14.6881	14.6897	14.7302	14.755	14.7555	14.7556	14.7556	14.7561	14.764	14.7561	14.7556	14.7556	14.7555	14.755	14.7302	14.6897	14.6881
91	103.55	103.95	104	104.05	104.45	117	129.55	129.95	130	130.05	130.45	143	155.55	155.95	156	156.05	156.45	169	181.55	181.95
4.15	4.15	4.15	4.15	4.15	4.15	4.15	4.15	4.15	4.15	4.15	4.15	4.15	4.15	4.15	4.15	4.15	4.15	4.15	4.15	4.15
14.6108	14.6682	14.6698	14.67	14.6701	14.6717	14.7122	14.737	14.7375	14.7376	14.7376	14.7381	14.746	14.7381	14.7376	14.7376	14.7375	14.737	14.7122	14.6717	14.6701
91	103.55	103.95	104	104.05	104.45	117	129.55	129.95	130	130.05	130.45	143	155.55	155.95	156	156.05	156.45	169	181.55	181.95
0	0	0	0	0	0	0	0	0	0	0	0	0	0	0	0	0	0	0	0	0
14.5485	14.6059	14.6075	14.6077	14.6079	14.6094	14.6499	14.6747	14.6752	14.6753	14.6754	14.6759	14.6838	14.6759	14.6754	14.6753	14.6752	14.6747	14.65	14.6094	14.6079
91	103.55	103.95	104	104.05	104.45	117	129.55	129.95	130	130.05	130.45	143	155.55	155.95	156	156.05	156.45	169	181.55	181.95
-5.35	-5.35	-5.35	-5.35	-5.35	-5.35	-5.35	-5.35	-5.35	-5.35	-5.35	-5.35	-5.35	-5.35	-5.35	-5.35	-5.35	-5.35	-5.35	-5.35	-5.35
14.4683	14.5257	14.5273	14.5274	14.5276	14.5292	14.5697	14.5945	14.595	14.595	14.5951	14.5956	14.6035	14.5956	14.5951	14.595	14.595	14.5945	14.5697	14.5292	14.5276
91	103.55	103.95	104	104.05	104.45	117	129.55	129.95	130	130.05	130.45	143	155.55	155.95	156	156.05	156.45	169	181.55	181.95
-6.35	-6.35	-6.35	-6.35	-6.35	-6.35	-6.35	-6.35	-6.35	-6.35	-6.35	-6.35	-6.35	-6.35	-6.35	-6.35	-6.35	-6.35	-6.35	-6.35	-6.35
14.3533	14.4107	14.4123	14.4125	14.4126	14.4142	14.4547	14.4795	14.48	14.4801	14.4801	14.4806	14.4885	14.4806	14.4801	14.4801	14.48	14.4795	14.4547	14.4142	14.4126



P6	P6-GE2	P6-S2	C46	P7-S1	P7-GE1	P7	P7-GE2	P7-S2	C53	P8-S1	P8-GE1	P8	P8-GE2	P8-S2	C60	P9-S1	P9-GE1	P9	P9-GE2	P9-S2
1 + 86.1650	1 + 86.2150	1 + 86.6150	1 + 99.1650	1 + 111.7150	1 + 112.1150	1 + 112.1650	1 + 112.2150	1 + 112.6150	1 + 125.1650	1 + 137.7150	1 + 138.1150	1 + 138.1650	1 + 138.2150	1 + 138.6150	1 + 151.1650	1 + 163.7150	1 + 164.1150	1 + 164.1650	1 + 164.2150	1 + 164.6150
156	156.05	156.45	169	181.55	181.95	182	182.05	182.45	195	207.55	207.95	208	208.05	208.45	221	233.55	233.95	234	234.05	234.45
6.35	6.35	6.35	6.35	6.35	6.35	6.35	6.35	6.35	6.35	6.35	6.35	6.35	6.35	6.35	6.35	6.35	6.35	6.35	6.35	6.35
14.6705	14.6705	14.67	14.6452	14.6047	14.6031	14.6029	14.6028	14.6012	14.5438	14.4707	14.4681	14.4677	14.4674	14.4648	14.3748	14.269	14.2654	14.2649	14.2645	14.264
156	156.05	156.45	169	181.55	181.95	182	182.05	182.45	195	207.55	207.95	208	208.05	208.45	221	233.55	233.95	234	234.05	234.45
5.35	5.35	5.35	5.35	5.35	5.35	5.35	5.35	5.35	5.35	5.35	5.35	5.35	5.35	5.35	5.35	5.35	5.35	5.35	5.35	5.35
14.7558	14.7555	14.755	14.7302	14.6897	14.6881	14.688	14.6878	14.6862	14.6288	14.5557	14.5531	14.5528	14.5524	14.5498	14.4598	14.354	14.3504	14.35	14.3495	14.349
156	156.05	156.45	169	181.55	181.95	182	182.05	182.45	195	207.55	207.95	208	208.05	208.45	221	233.55	233.95	234	234.05	234.45
4.15	4.15	4.15	4.15	4.15	4.15	4.15	4.15	4.15	4.15	4.15	4.15	4.15	4.15	4.15	4.15	4.15	4.15	4.15	4.15	4.15
14.7376	14.7375	14.737	14.7122	14.6717	14.6701	14.6699	14.6698	14.6682	14.6108	14.5377	14.5351	14.5348	14.5344	14.5318	14.4418	14.338	14.3324	14.332	14.3315	14.331
156	156.05	156.45	169	181.55	181.95	182	182.05	182.45	195	207.55	207.95	208	208.05	208.45	221	233.55	233.95	234	234.05	234.45
0	0	0	0	0	0	0	0	0	0	0	0	0	0	0	0	0	0	0	0	0
14.6753	14.6752	14.6747	14.65	14.6094	14.6079	14.6077	14.6075	14.6059	14.5485	14.4754	14.4728	14.4725	14.4722	14.4696	14.3796	14.2738	14.2702	14.2697	14.2692	14.269
156	156.05	156.45	169	181.55	181.95	182	182.05	182.45	195	207.55	207.95	208	208.05	208.45	221	233.55	233.95	234	234.05	234.45
-5.35	-5.35	-5.35	-5.35	-5.35	-5.35	-5.35	-5.35	-5.35	-5.35	-5.35	-5.35	-5.35	-5.35	-5.35	-5.35	-5.35	-5.35	-5.35	-5.35	-5.35
14.595	14.595	14.5945	14.5697	14.5292	14.5276	14.5274	14.5273	14.5257	14.4683	14.3952	14.3926	14.3922	14.3919	14.3893	14.2993	14.1935	14.1899	14.1894	14.189	14.189
156	156.05	156.45	169	181.55	181.95	182	182.05	182.45	195	207.55	207.95	208	208.05	208.45	221	233.55	233.95	234	234.05	234.45
-6.35	-6.35	-6.35	-6.35	-6.35	-6.35	-6.35	-6.35	-6.35	-6.35	-6.35	-6.35	-6.35	-6.35	-6.35	-6.35	-6.35	-6.35	-6.35	-6.35	-6.35
14.4801	14.48	14.4795	14.4547	14.4142	14.4126	14.4125	14.4123	14.4107	14.3533	14.2802	14.2776	14.2773	14.2769	14.2743	14.1843	14.0785	14.0749	14.0745	14.074	14.074

GE2	P8-S2	C60	P9-S1	P9-GE1	P9	P9-GE2	P9-S2	C67	P10-S1	P10-GE1	P10	P10-GE2	P10-S2	C74	A2-S1	A2-GE1	A2
18.2150	1 + 138.6150	1 + 151.1850	1 + 163.7150	1 + 164.1150	1 + 164.1650	1 + 164.2150	1 + 164.6150	1 + 177.1850	1 + 189.7150	1 + 190.1150	1 + 190.1650	1 + 190.2150	1 + 190.6150	1 + 203.1650	1 + 215.7150	1 + 216.1150	1 + 216.1650
208.05	208.45	221	233.55	233.95	234	234.05	234.45	247	259.55	259.95	260	260.05	260.45	273	285.55	285.95	286
6.35	6.35	6.35	6.35	6.35	6.35	6.35	6.35	6.35	6.35	6.35	6.35	6.35	6.35	6.35	6.35	6.35	6.35
4.4674	14.4648	14.3748	14.269	14.2654	14.2649	14.2645	14.2608	14.1382	13.9998	13.9951	13.9945	13.994	13.9893	13.834	13.663	13.6573	13.6565
208.05	208.45	221	233.55	233.95	234	234.05	234.45	247	259.55	259.95	260	260.05	260.45	273	285.55	285.95	286
5.35	5.35	5.35	5.35	5.35	5.35	5.35	5.35	5.35	5.35	5.35	5.35	5.35	5.35	5.35	5.35	5.35	5.35
4.5524	14.5498	14.4598	14.354	14.3504	14.35	14.3495	14.3458	14.2232	14.0848	14.0801	14.0796	14.079	14.0743	13.919	13.748	13.7423	13.7416
208.05	208.45	221	233.55	233.95	234	234.05	234.45	247	259.55	259.95	260	260.05	260.45	273	285.55	285.95	286
4.15	4.15	4.15	4.15	4.15	4.15	4.15	4.15	4.15	4.15	4.15	4.15	4.15	4.15	4.15	4.15	4.15	4.15
4.5344	14.5318	14.4418	14.336	14.3324	14.332	14.3315	14.3278	14.2052	14.0668	14.0621	14.0616	14.061	14.0563	13.901	13.73	13.7243	13.7235
208.05	208.45	221	233.55	233.95	234	234.05	234.45	247	259.55	259.95	260	260.05	260.45	273	285.55	285.95	286
0	0	0	0	0	0	0	0	0	0	0	0	0	0	0	0	0	0
4.4722	14.4696	14.3796	14.2738	14.2702	14.2697	14.2692	14.2656	14.1429	14.0046	13.9999	13.9993	13.9987	13.994	13.8388	13.6677	13.662	13.6613
208.05	208.45	221	233.55	233.95	234	234.05	234.45	247	259.55	259.95	260	260.05	260.45	273	285.55	285.95	286
-5.35	-5.35	-5.35	-5.35	-5.35	-5.35	-5.35	-5.35	-5.35	-5.35	-5.35	-5.35	-5.35	-5.35	-5.35	-5.35	-5.35	-5.35
14.3919	14.3893	14.2993	14.1935	14.1899	14.1894	14.189	14.1853	14.0627	13.9243	13.9196	13.919	13.9185	13.9138	13.7585	13.5875	13.5818	13.581
208.05	208.45	221	233.55	233.95	234	234.05	234.45	247	259.55	259.95	260	260.05	260.45	273	285.55	285.95	286
-6.35	-6.35	-6.35	-6.35	-6.35	-6.35	-6.35	-6.35	-6.35	-6.35	-6.35	-6.35	-6.35	-6.35	-6.35	-6.35	-6.35	-6.35
14.2769	14.2743	14.1843	14.0785	14.0749	14.0745	14.074	14.0703	13.9477	13.8093	13.8046	13.8041	13.8035	13.7988	13.6435	13.4725	13.4668	13.4661

JAPAN INTERNATIONAL COOPERATION AGENCY (JICA)		CLIENT:
JICA STUDY TEAM PACIFIC CONSULTANTS INTERNATIONAL FUKUYAMA CONSULTANTS INTERNATIONAL		PROJECT:
		TITLE
		DATE

-S1	P10-GE1	P10	P10-GE2	P10-S2	O74	A2-S1	A2-GE1	A2
199.71501 + 190.11501 + 190.16501 + 190.21501 + 190.81501 + 203.16501 + 215.71501 + 216.11501 + 216.1650								
259.55	259.95	260	260.05	260.45	273	285.55	285.95	286
6.35	6.35	6.35	6.35	6.35	6.35	6.35	6.35	6.35
3.9998	13.9951	13.9945	13.994	13.9893	13.834	13.663	13.6573	13.6565
259.55	259.95	260	260.05	260.45	273	285.55	285.95	286
5.35	5.35	5.35	5.35	5.35	5.35	5.35	5.35	5.35
4.0848	14.0801	14.0798	14.079	14.0743	13.919	13.748	13.7423	13.7416
259.55	259.95	260	260.05	260.45	273	285.55	285.95	286
4.15	4.15	4.15	4.15	4.15	4.15	4.15	4.15	4.15
4.0668	14.0621	14.0618	14.061	14.0563	13.901	13.73	13.7243	13.7235
259.55	259.95	260	260.05	260.45	273	285.55	285.95	286
0	0	0	0	0	0	0	0	0
14.0046	13.9999	13.9993	13.9987	13.994	13.8388	13.6677	13.662	13.6613
259.55	259.95	260	260.05	260.45	273	285.55	285.95	286
-5.35	-5.35	-5.35	-5.35	-5.35	-5.35	-5.35	-5.35	-5.35
13.9243	13.9198	13.919	13.9185	13.9138	13.7585	13.5875	13.5818	13.581
259.55	259.95	260	260.05	260.45	273	285.55	285.95	286
-6.35	-6.35	-6.35	-6.35	-6.35	-6.35	-6.35	-6.35	-6.35
13.8093	13.8046	13.8041	13.8035	13.7988	13.6435	13.4725	13.4668	13.4661

JAPAN INTERNATIONAL COOPERATION AGENCY  
(JICA)

JICA STUDY TEAM  
PACIFIC CONSULTANTS INTERNATIONAL  
FUKUYAMA CONSULTANTS INTERNATIONAL

CLIENT: MINISTRY OF COMMUNICATIONS, DIRECTORATE GENERAL OF ROADS

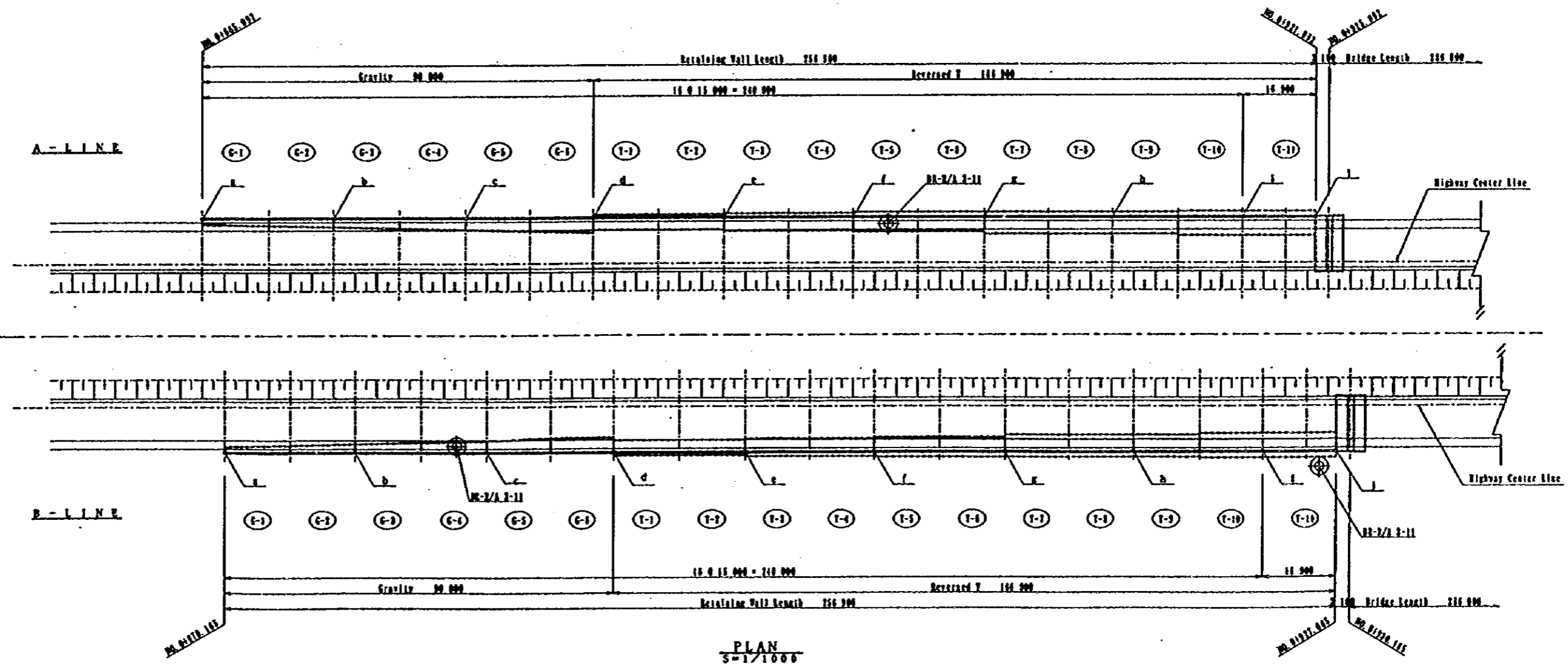
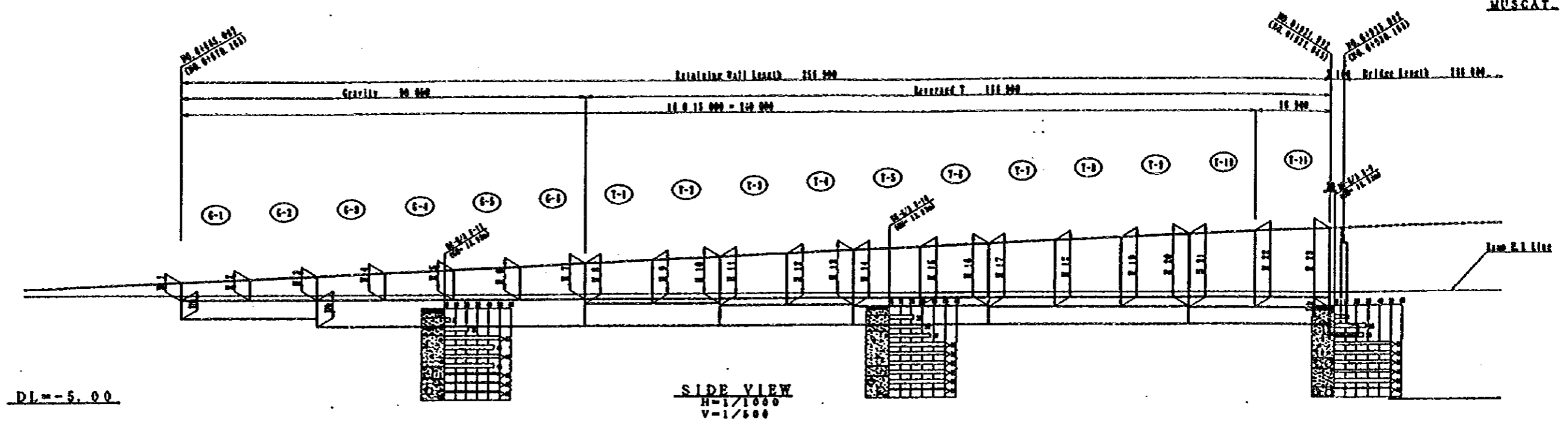
PROJECT: R/D ON ROAD DEVELOPMENT PROJECT ON BATAKIAN HIGHWAY

TITLE CO-ORDINATE LIST RA/MS AT B-LINE

DATE

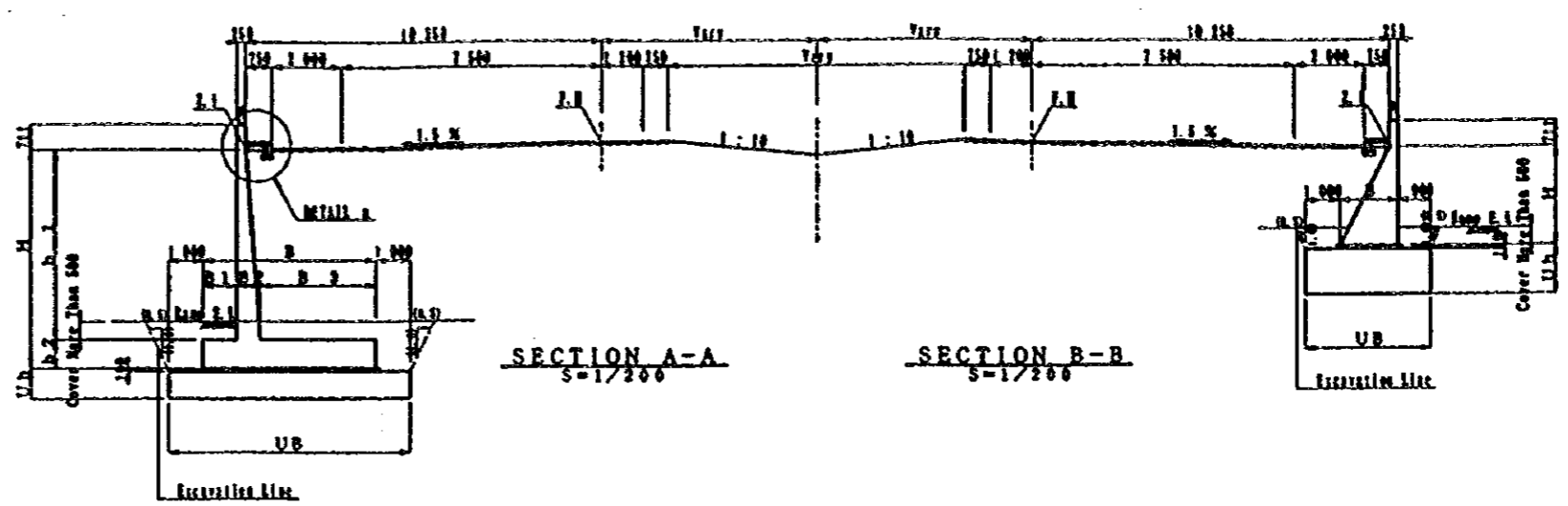
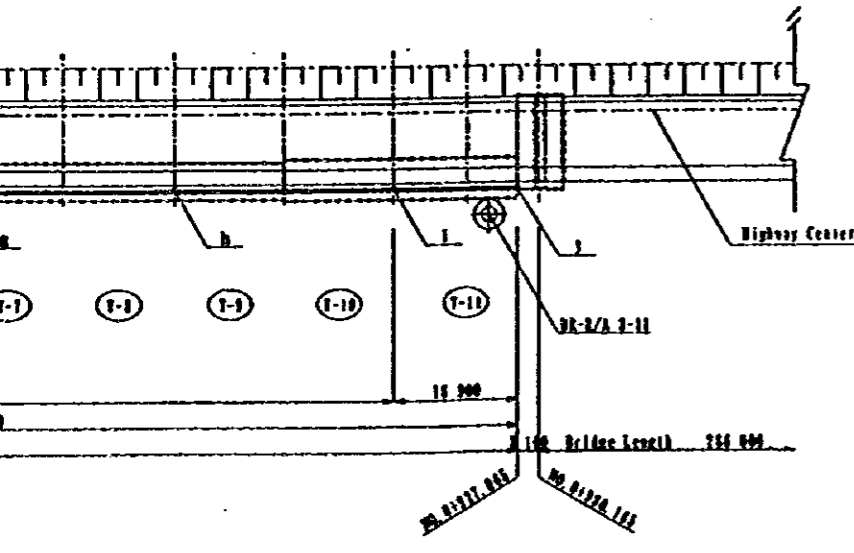
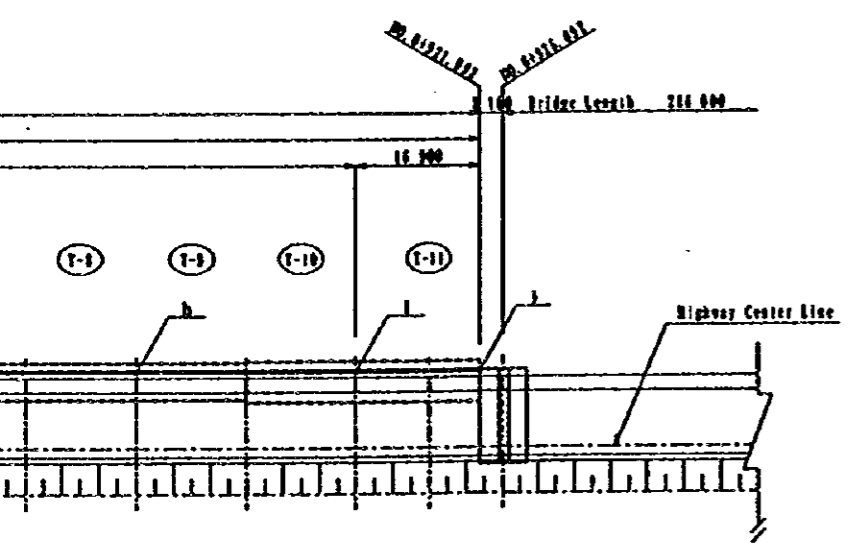
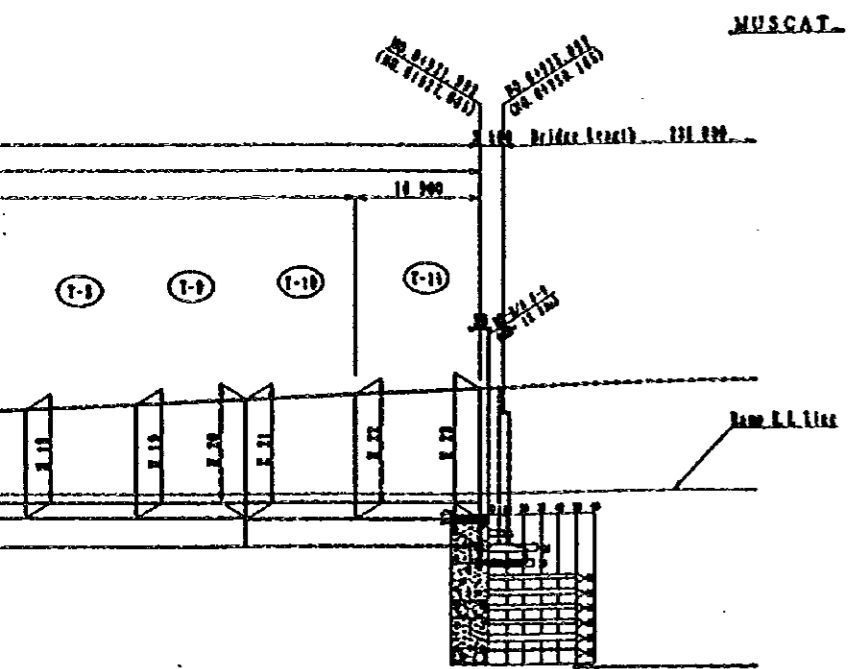
BWONO.

B-6



NOTES:

AS

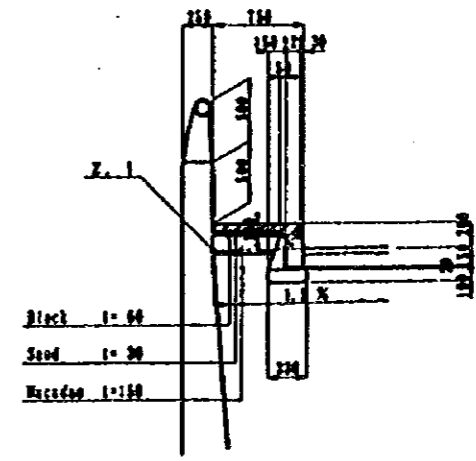


Reversed T

MARK TYPE	H	h 1	h 2	B	B 1	B 2	B 3	U h	U B	
A I L I N E	T-1	8-4 069	3 569	500	3 500	600	448	2 452	2 400	5 500
	T-2	9-4 507	4 007				473	2 427		
	T-3	10-4 944	4 444	700	4 000	800	497	2 403	2 200	6 000
	T-4	11-5 144	4 844				543	2 657		
	T-5	12-5 544	5 244				570	2 630		
	T-6	13-5 944	5 644				597	2 603		
	T-7	14-6 144	6 044	900	4 500	1 000	637	2 863	2 000	6 500
	T-8	15-6 508	6 408				663	2 837		
	T-9	16-6 862	6 762				690	2 810		
	T-10	17-6 962	7 162	1 000	5 000	1 000	718	3 282	1 900	7 000
	T-11	18-7 274	7 562				743	3 257		
B I L I N E	T-1	8-4 072	3 572	500	3 500	600	448	2 462	2 400	5 500
	T-2	9-4 510	4 010				473	2 427		
	T-3	10-4 947	4 447	700	4 000	800	497	2 403	2 200	6 000
	T-4	11-5 147	4 847				544	2 656		
	T-5	12-5 547	5 247				570	2 630		
	T-6	13-5 951	5 651				597	2 603		
	T-7	14-6 151	6 051	900	4 500	1 000	637	2 863	2 000	6 500
	T-8	15-6 508	6 408				664	2 836		
	T-9	16-6 862	6 762				690	2 810		
	T-10	17-6 962	7 162	1 000	5 000	1 000	719	3 281	1 900	7 000
	T-11	18-7 274	7 562				743	3 257		

Gravity

MARK TYPE	H	B	U h	U B	
A I L I N E	T-1	8-1 546	1 236	2 000	3 236
	T-2	9-1 826	1 413		3 413
	T-3	10-2 104	1 591	2 000	3 591
	T-4	11-2 441	1 806		3 806
	T-5	12-2 778	2 021		4 021
	T-6	13-3 174	2 273		4 273
B I L I N E	T-1	8-1 549	1 237	2 000	3 237
	T-2	9-1 828	1 415		3 415
	T-3	10-2 107	1 593	2 000	3 593
	T-4	11-2 444	1 808		3 808
	T-5	12-2 781	2 023		4 023
	T-6	13-3 177	2 275		4 275



JAPAN INTERNATIONAL COOPERATION AGENCY (JICA)  
 JICA STUDY TEAM  
 PACIFIC CONSULTANTS INTERNATIONAL  
 FUKUYAMA CONSULTANTS INTERNATIONAL

CLIENT : MINISTRY OF COMMUNICATIONS, DIRECTORATE GENERAL OF ROADS  
 PROJECT : D/D ON ROAD DEVELOPMENT PROJECT ON BATINAH HIGHWAY  
 TITLE : R/A-5, AL MULADDAH GENERAL VIEW FOR WALL (1)-1  
 DATE : \_\_\_\_\_ DWG NO. W-1

Point	a	b	c	d	e	f	g	h	i	j	
A L I N E	N	+2627123.64909	+2627128.56462	+2627133.48015	+2627138.39568	+2627143.31120	+2627148.22673	+2627153.14226	+2627158.05778	+2627162.97331	+2627166.25033
	E	+558352.91179	+558382.50634	+558412.10090	+558441.69545	+558471.29000	+558500.88456	+558530.47911	+558560.07366	+558589.66822	+558609.39792
	Z	7.490	8.248	8.922	9.713	10.588	11.392	12.106	12.730	13.264	13.570
B L I N E	N	+2627095.13917	+2627100.05470	+2627104.97022	+2627109.88575	+2627114.80128	+2627119.71681	+2627124.63234	+2627129.54786	+2627134.46339	+2627137.74041
	E	+558357.64414	+558387.23859	+558416.83325	+558446.42780	+558476.02235	+558505.61691	+558535.21146	+558564.80601	+558594.40057	+558614.13027
	Z	7.690	8.248	8.922	9.713	10.588	11.392	12.106	12.730	13.264	13.570

NOTES:

JAPAN INTERNATIONAL COOPERATION AGENCY  
(JICA)

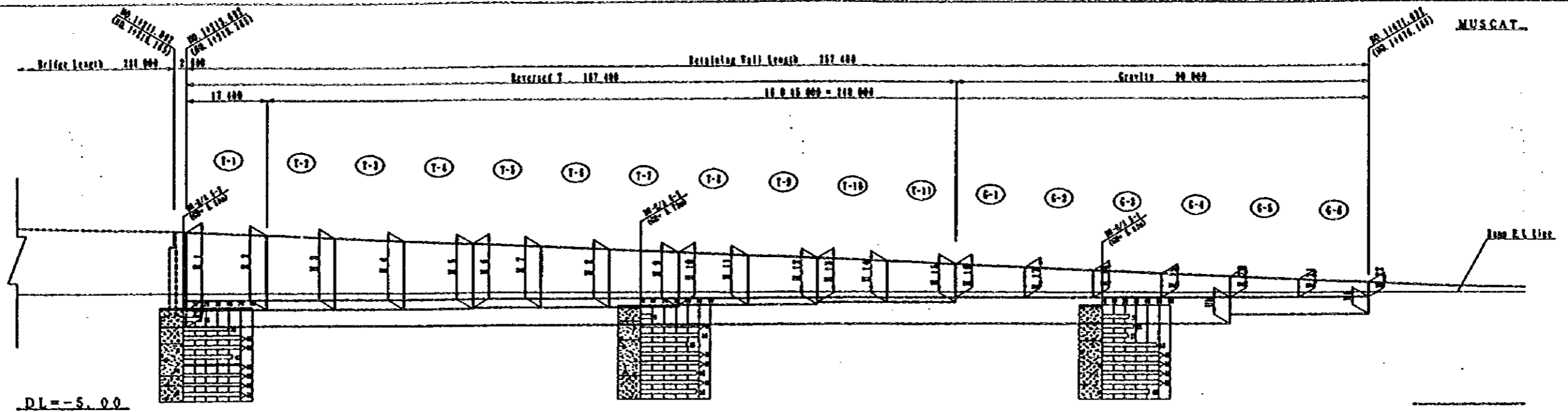
JICA STUDY TEAM  
PACIFIC CONSULTANTS INTERNATIONAL  
FURUYAMA CONSULTANTS INTERNATIONAL

CLIENT : MINISTRY OF COMMUNICATIONS, DIRECTORATE GENERAL OF ROADS

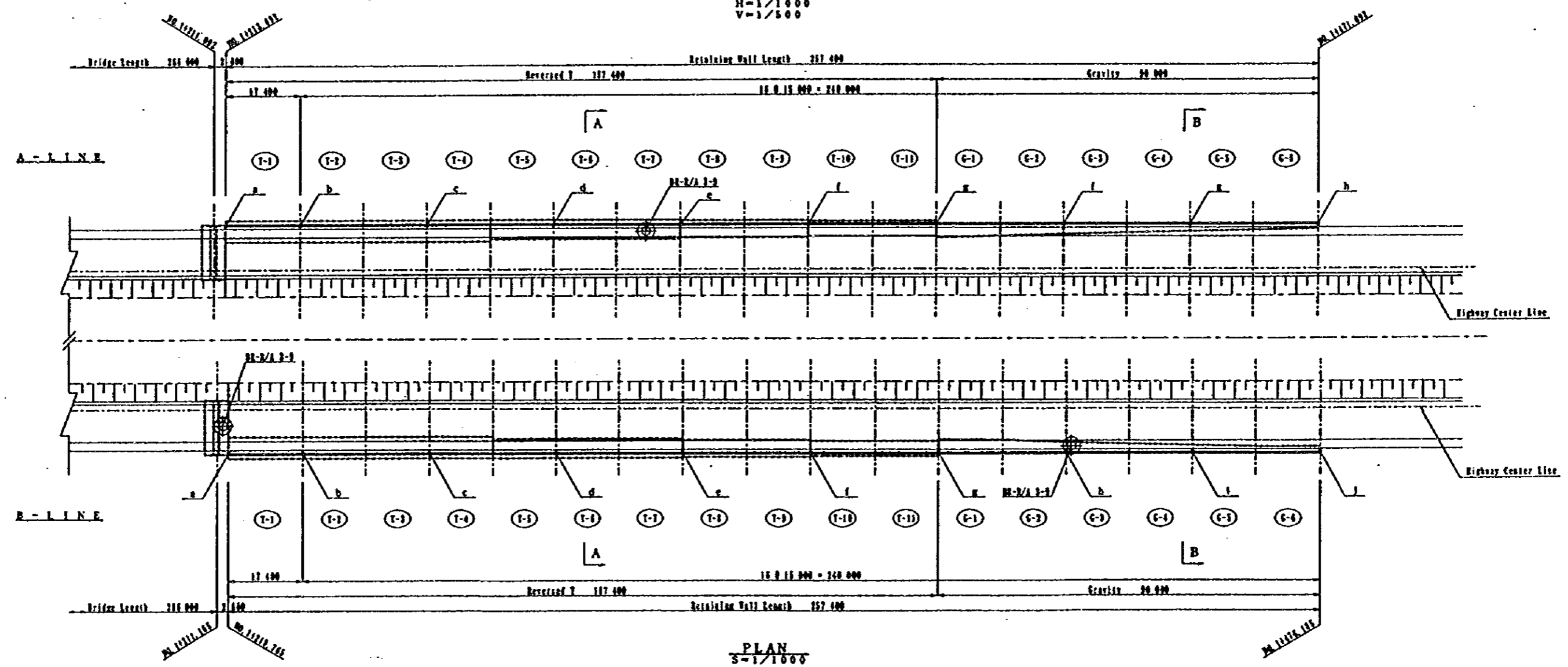
PROJECT : D/D ON ROAD DEVELOPMENT PROJECT ON BATINAH HIGHWAY

TITLE : P/U-S, AL MULADDAH GENERAL VIEW FOR WALL (i)-2

DATE : Dwg No. W-2

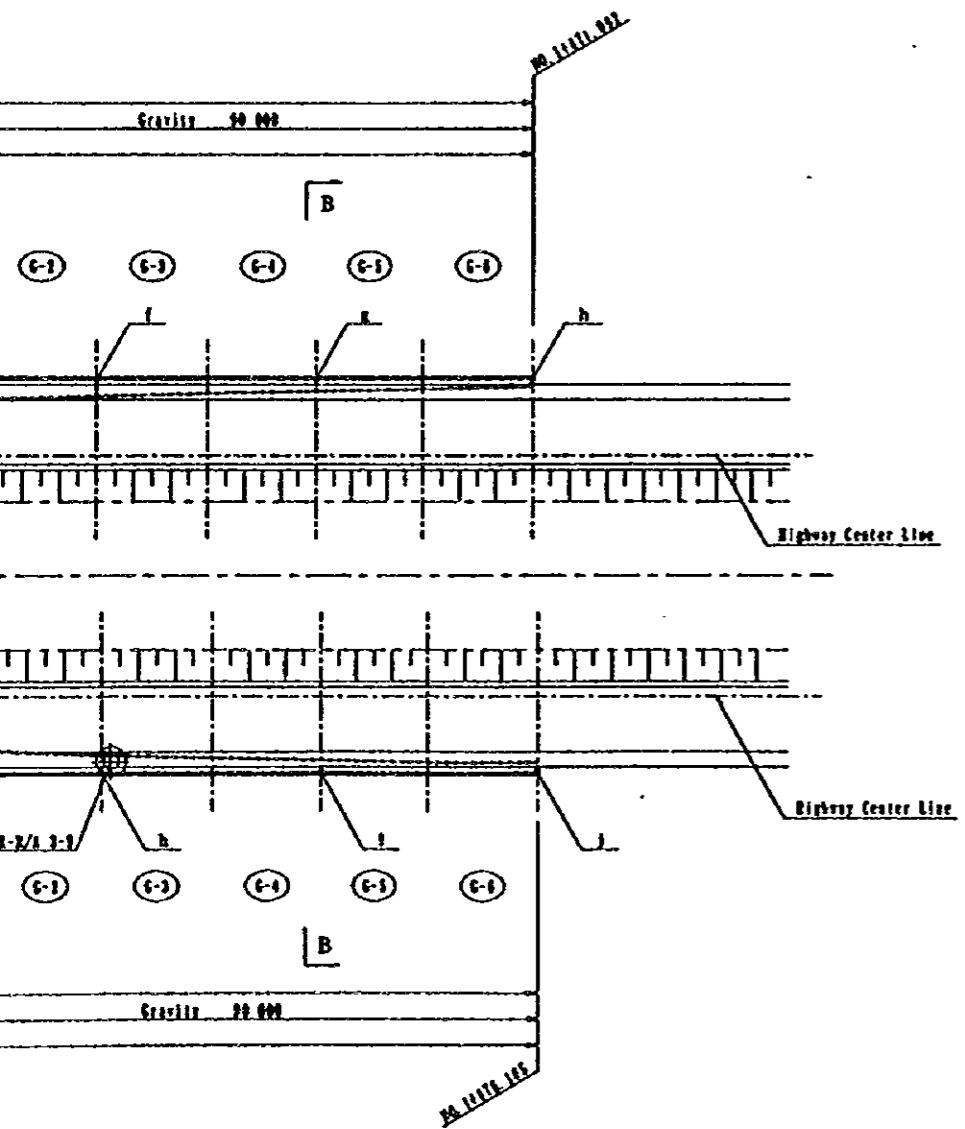
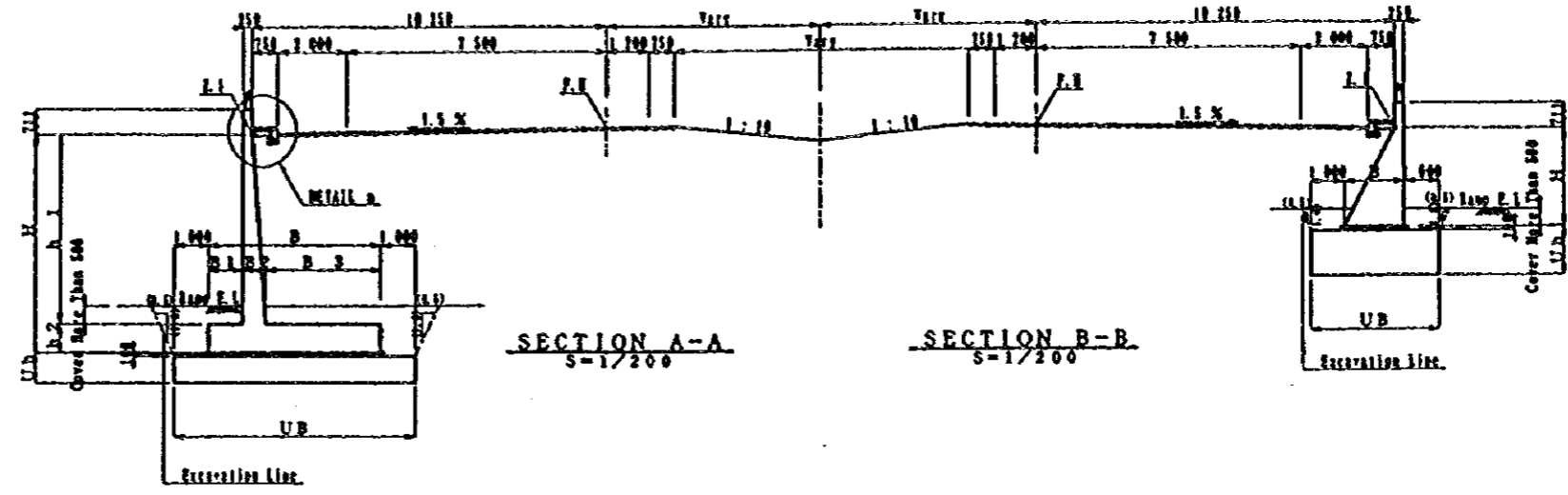
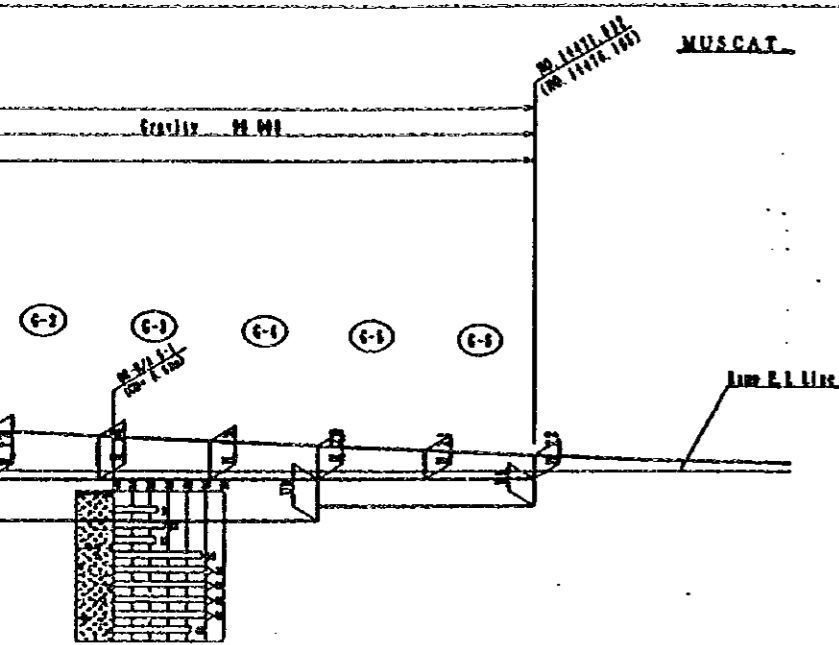


SIDE VIEW  
H-1/1000  
V-1/500



PLAN  
S-1/1000

NOTES:

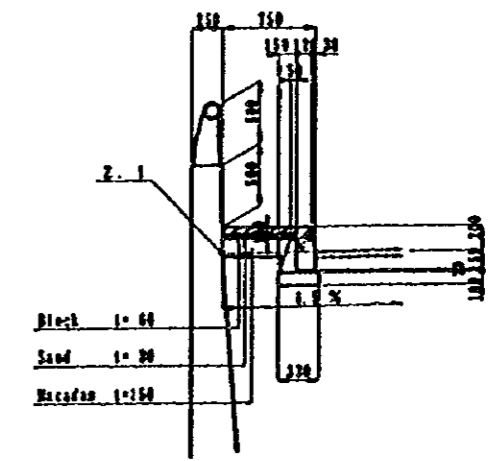


Reversed T

MARK TYPE	H	h 1	h 2	B	B 1	B 2	B 3	U h	U B	
A I L I N E	T-1	11-8 109	7 109	1 000	5 000	1 000	809	3 191	1 800	7 000
	T-2	12-7 843	6 843				788	3 212		
	T-3	13-7 576	6 576				767	3 233		
	T-4	14-7 309	6 309				746	3 254		
	T-5	15-6 997	5 997				721	3 279		
	T-6	16-5 897	5 897	900	4 500	1 000	692	2 808	1 900	6 500
	T-7	17-5 586	5 586				669	2 831		
	T-8	18-4 228	5 228				643	2 867		
	T-9	19-5 871	4 971	700	4 000	800	617	2 883	2 100	6 000
	T-10	20-5 269	4 569				578	2 622	2 100	6 000
	T-11	21-4 867	4 167	500	3 500	600	526	2 675	2 300	5 500
B I L I N E	T-1	11-8 152	7 152	1 000	5 000	1 000	812	3 188	1 800	7 000
	T-2	12-7 886	6 886				791	3 209		
	T-3	13-7 619	6 619				770	3 230		
	T-4	14-7 352	6 352				749	3 251		
	T-5	15-7 040	6 040				728	3 275		
	T-6	16-6 940	6 940	900	4 500	1 000	698	2 804	1 900	6 500
	T-7	17-6 628	6 628				673	2 827		
	T-8	18-6 271	6 271				646	2 854		
	T-9	19-5 914	5 914	700	4 000	800	620	2 880	2 100	6 000
	T-10	20-5 714	5 714				581	2 619	2 100	6 000
	T-11	21-4 312	4 612	500	3 500	600	555	2 645	2 300	5 500
E	T-10	13-4 710	4 210				628	2 672		
	T-11	14-4 273	3 773				484	2 416	2 300	5 500
	T-12	15-3 835	3 335				460	2 440		
	T-13	16-3 835	3 335				436	2 465		

Gravity

MARK TYPE	H	B	U h	U B	
A I L I N E	G-1	11-3 293	2 349	2 800	4 349
	G-2	12-2 901	2 099		4 099
	G-3	13-2 509	1 849		3 849
	G-4	14-2 179	1 639		3 639
	G-5	15-1 849	1 429	1 800	3 429
	G-6	16-1 562	1 258		3 258
B I L I N E	G-1	11-3 335	2 376	2 800	4 376
	G-2	12-2 843	2 126		4 126
	G-3	13-2 560	1 876		3 876
	G-4	14-2 219	1 665		3 665
	G-5	15-1 867	1 453	1 800	3 453
	G-6	16-1 617	1 282		3 281



DETAIL a  
S-1/60

JAPAN INTERNATIONAL COOPERATION AGENCY (JICA) JICA STUDY TEAM PACIFIC CONSULTANTS INTERNATIONAL FUJUYAMA CONSULTANTS INTERNATIONAL	CLIENT :	MINISTRY OF COMMUNICATIONS, DIRECTORATE GENERAL OF ROADS
	PROJECT :	D/D ON ROAD DEVELOPMENT PROJECT ON BATINAH HIGHWAY
	TITLE :	R/A-5. AL MULADDAH GENERAL VIEW FOR WALL (2)-1
	DATE :	DTC NO. W-23



Point		a	b	c	d	e	f	g	h	i	j
A L I N E	N	+2627213.11169	+2627216.38871	+2627221.30424	+2627226.21976	+2627231.13529	+2627236.05082	+2627240.96635	+2627245.88188	+2627250.79740	+2627255.71293
	E	+558891.53266	+558911.26236	+558940.85692	+558970.45147	+559000.04602	+559029.64058	+559059.23513	+559088.82968	+559118.42424	+559148.01879
	Z	13.570	13.264	12.730	12.106	11.392	10.588	9.714	8.930	8.270	7.735
B I L I N E	N	+2627184.60177	+2627187.87879	+2627192.79432	+2627197.70984	+2627202.62537	+2627207.54090	+2627212.45642	+2627217.37195	+2627222.28748	+2627227.20301
	E	+558896.26501	+558915.99471	+558945.58927	+558975.18382	+559004.77837	+559034.37293	+559063.96748	+559093.56203	+559123.15659	+559152.75114
	Z	13.570	13.264	12.730	12.106	11.392	10.588	9.713	8.928	8.265	7.724

NOTES:

JAPAN INTERNATIONAL COOPERATION AGENCY  
(JICA)

JICA STUDY TEAM  
PACIFIC CONSULTANTS INTERNATIONAL  
FLUYANA CONSULTANTS INTERNATIONAL

CLIENT : MINISTRY OF COMMUNICATIONS, DIRECTORATE GENERAL OF ROADS

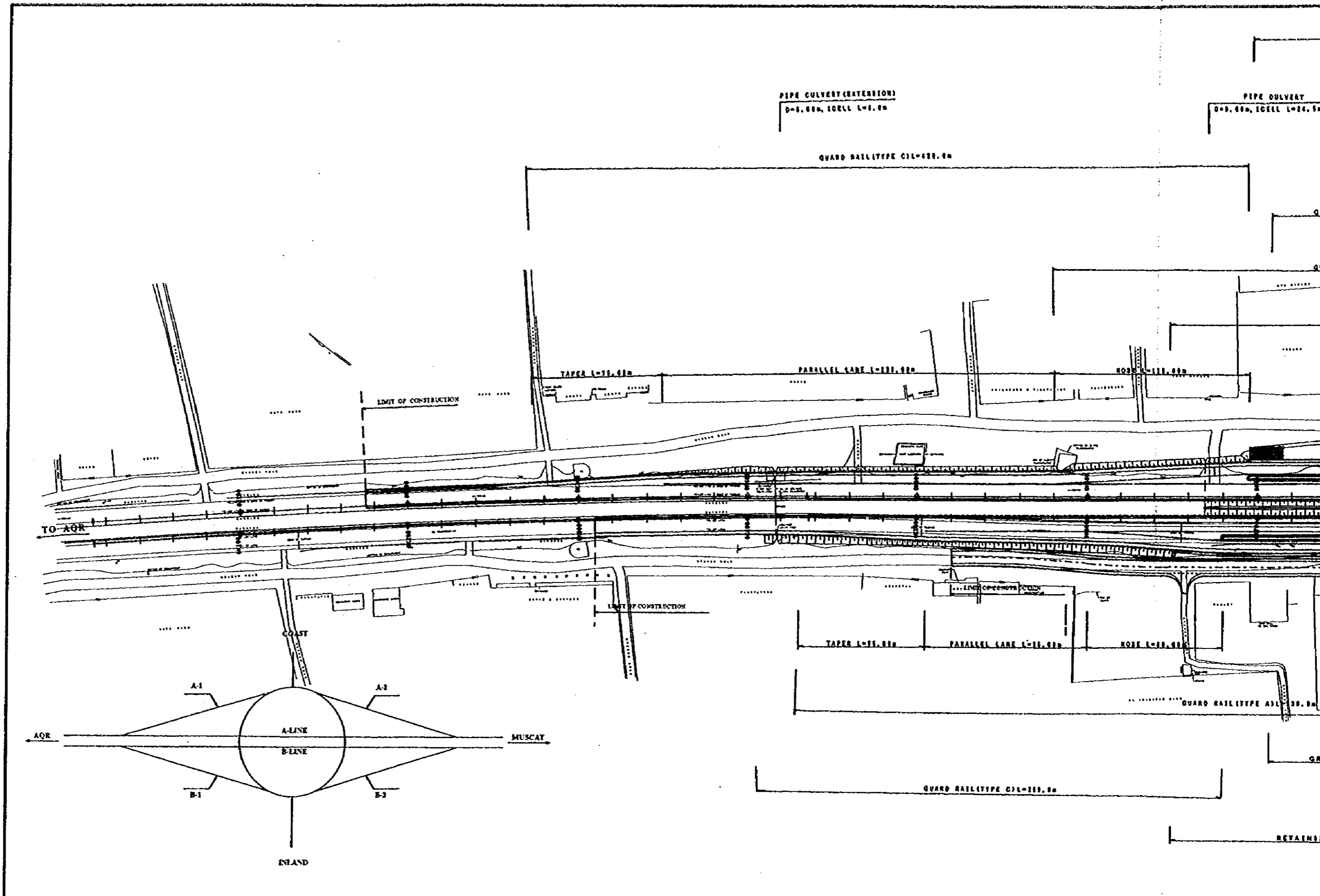
PROJECT : D/D ON ROAD DEVELOPMENT PROJECT ON BATINAH HIGHWAY

TITLE : R/A-5, AL MULADDAH GENERAL VIEW FOR WALL (2)-2

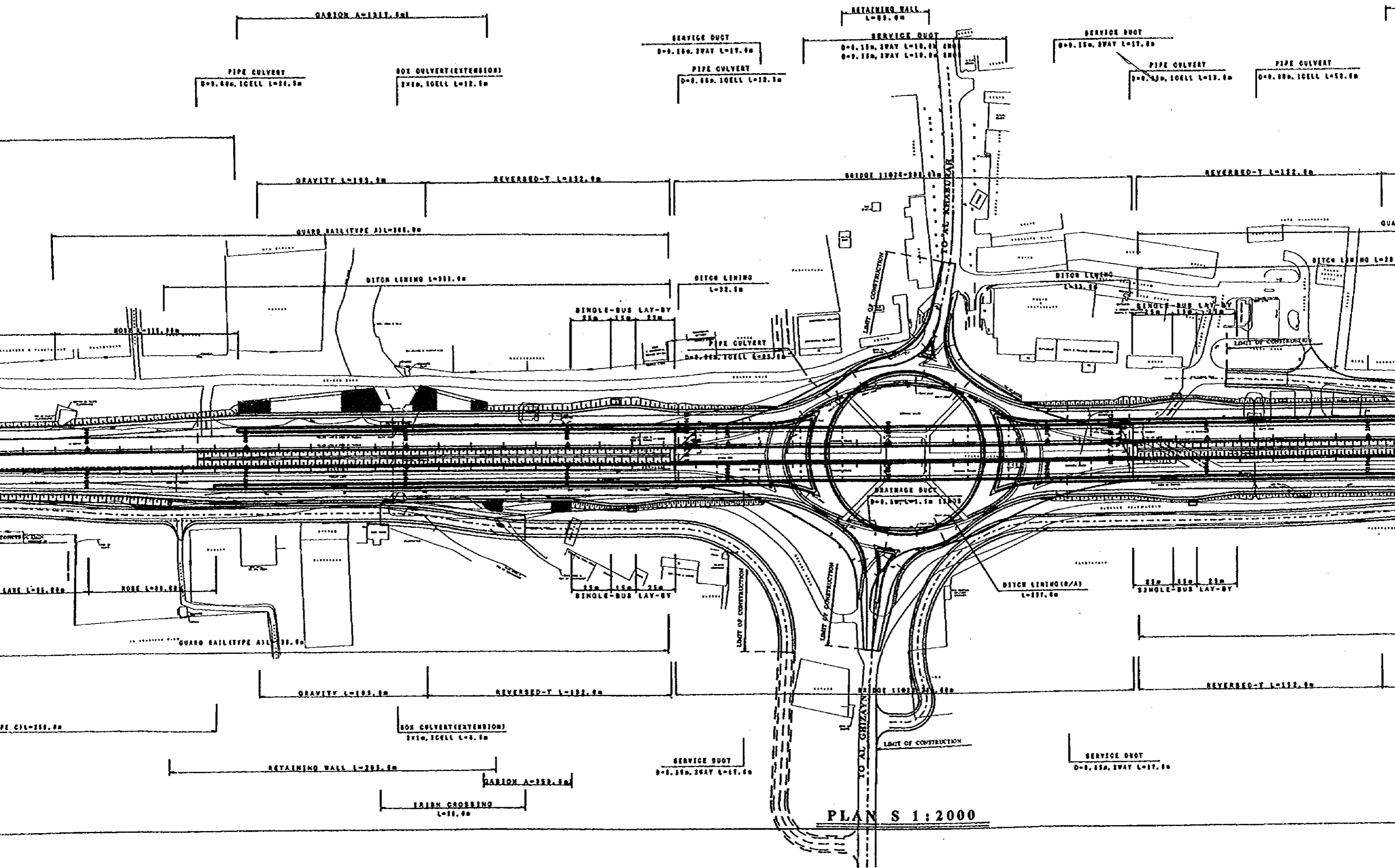
DATE

DTG NO. W-24

*Al Khalurah*  
FLYOVER



NOTES:



GABION A-191.5m  
 PIPE CULVERT  
 D=0.8m, 1 CELL L=24.5m  
 BOX CULVERT (EXTENSION)  
 2x1m, 10 CELL L=12.5m

SERVICE DUCT  
 D=0.15m, 2WAY L=17.5m  
 PIPE CULVERT  
 D=0.15m, 10 CELL L=12.5m

RETAINING WALL  
 L=55.0m  
 SERVICE DUCT  
 D=0.15m, 2WAY L=18.0m  
 D=0.15m, 2WAY L=18.0m

SERVICE DUCT  
 D=0.15m, 2WAY L=17.5m  
 PIPE CULVERT  
 D=0.15m, 10 CELL L=12.5m

PIPE CULVERT  
 D=0.15m, 10 CELL L=12.5m

GRAVITY L=192.5m  
 REVERSED-T L=132.5m

BRIDGE 11024-201 L=21.5m

REVERSED-T L=132.5m

GUARD RAIL TYPE A3 L=301.0m

DITCH LINING L=351.5m

DITCH LINING  
 L=32.5m

SINGLE-BUS LAY-BY  
 2.5m, 1.5m, 2.5m

PIPE CULVERT  
 D=0.4m, 10 CELL L=24.5m

DITCH LINING  
 L=33.5m

SINGLE-BUS LAY-BY  
 2.5m, 1.5m, 2.5m

LIMIT OF CONSTRUCTION

DRAINAGE DUCT  
 D=0.15m, L=1.5m

DITCH LINING (R/A)  
 L=137.5m

SINGLE-BUS LAY-BY

GRAVITY L=185.5m  
 REVERSED-T L=132.5m

REVERSED-T L=132.5m

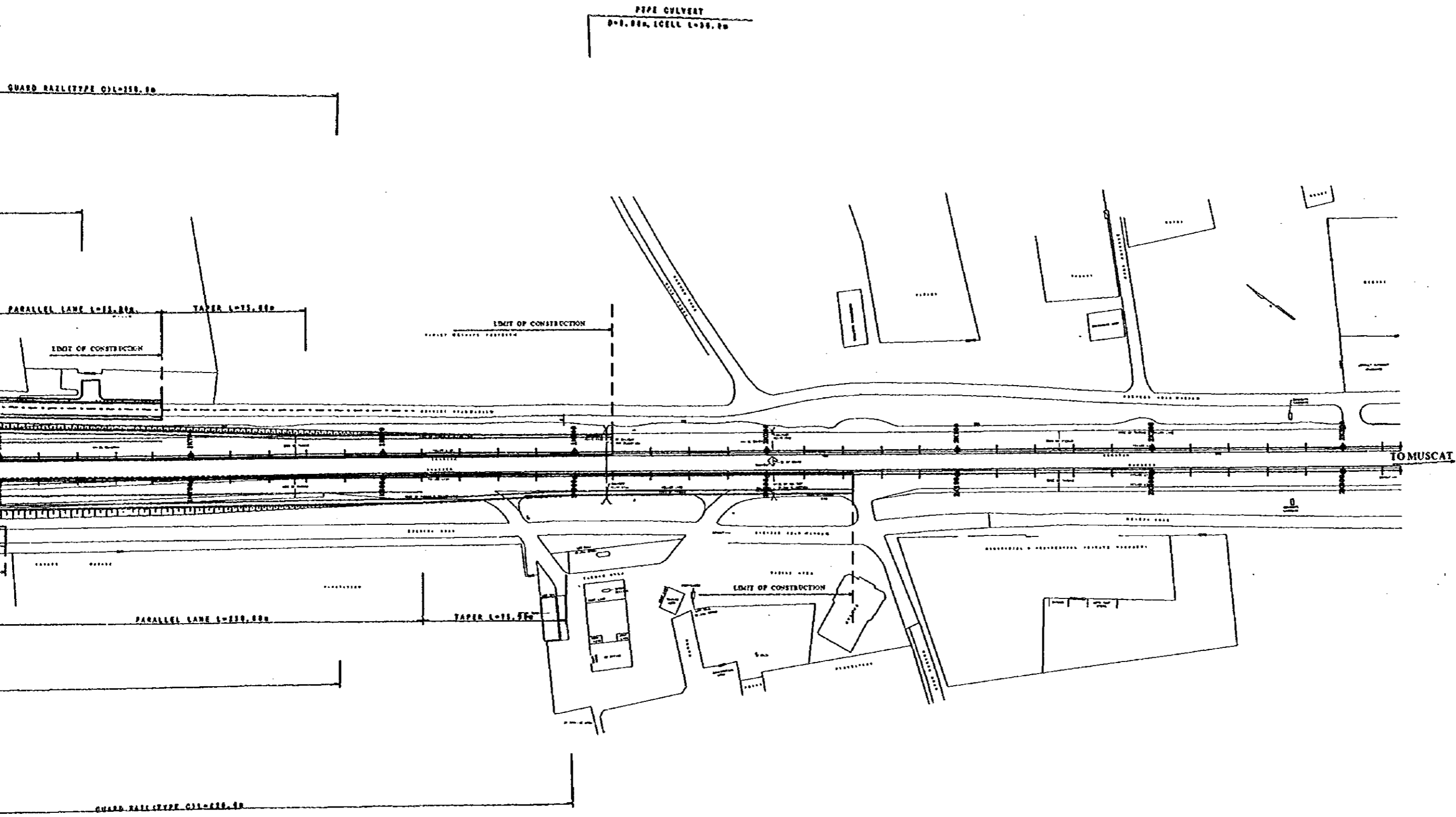
RETAINING WALL L=293.5m  
 BOX CULVERT (EXTENSION)  
 2x1m, 10 CELL L=9.5m  
 GABION A-352.5m  
 IRISH CROSSING  
 L=11.5m

SERVICE DUCT  
 D=0.15m, 2WAY L=17.5m

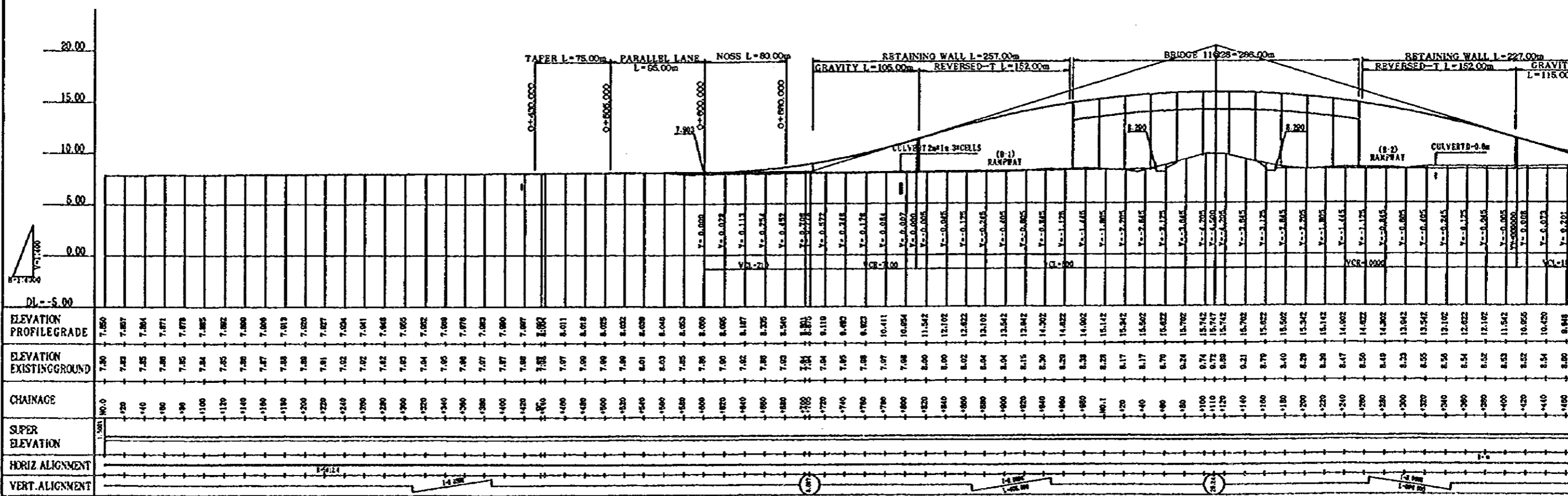
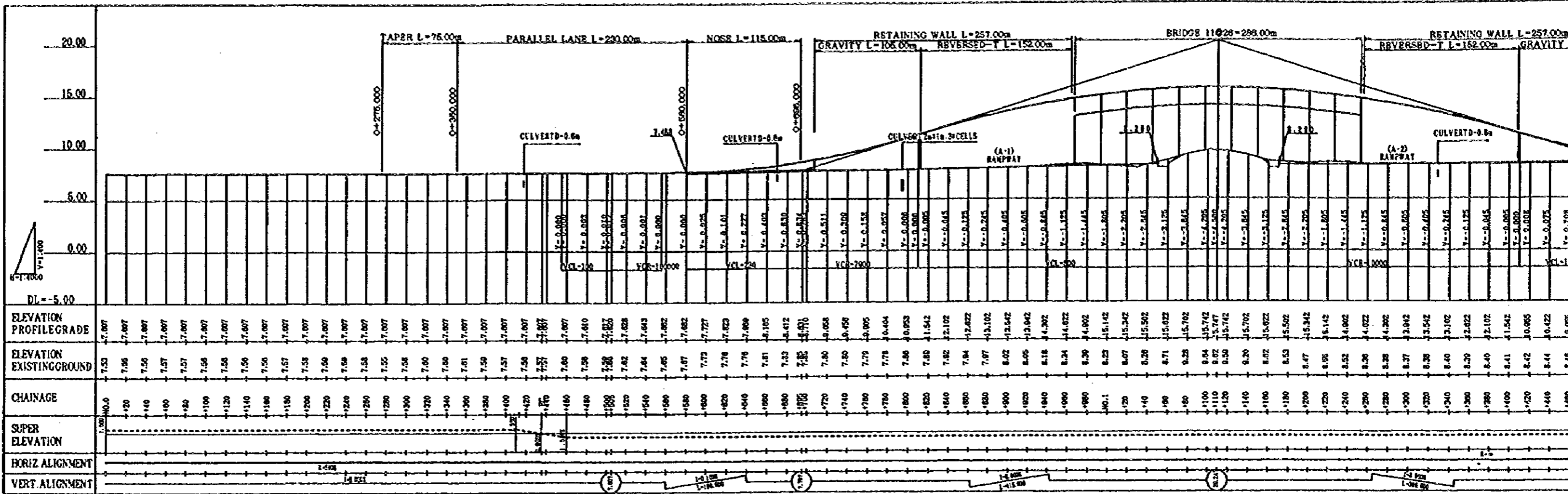
SERVICE DUCT  
 D=0.15m, 2WAY L=17.5m

PLAN S 1:2000



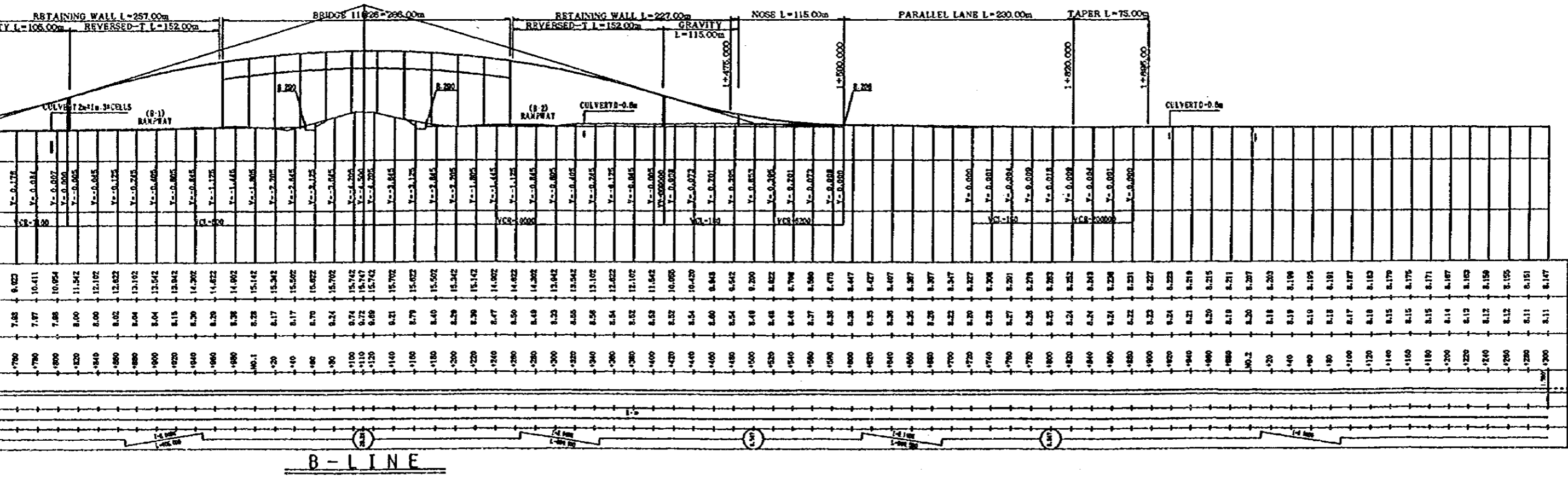
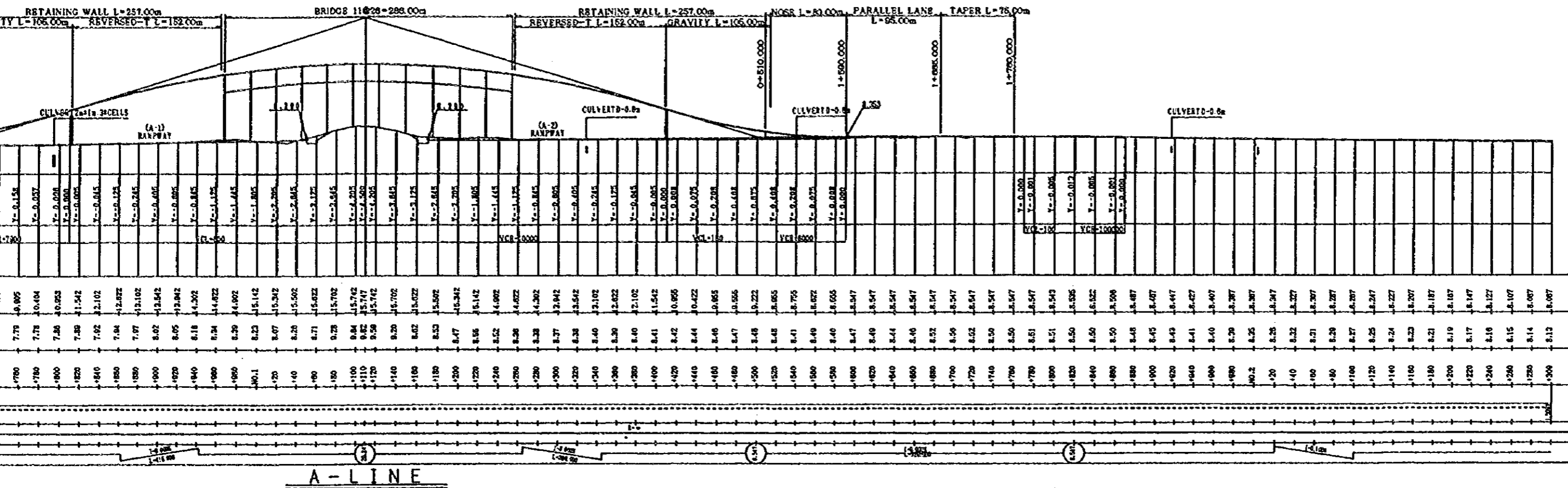


JAPAN INTERNATIONAL COOPERATION AGENCY (JICA) JICA STUDY TEAM PACIFIC CONSULTANTS INTERNATIONAL FUKUYAMA CONSULTANTS INTERNATIONAL	CLIENT: MINISTRY OF COMMUNICATIONS, DIRECTORATE GENERAL OF ROADS PROJECT: D/D ON ROAD DEVELOPMENT PROJECT ON SATINAH HIGHWAY
	TITLE RA/8 AL KHABURAH PLAN DATE _____ DWGNO. R-3



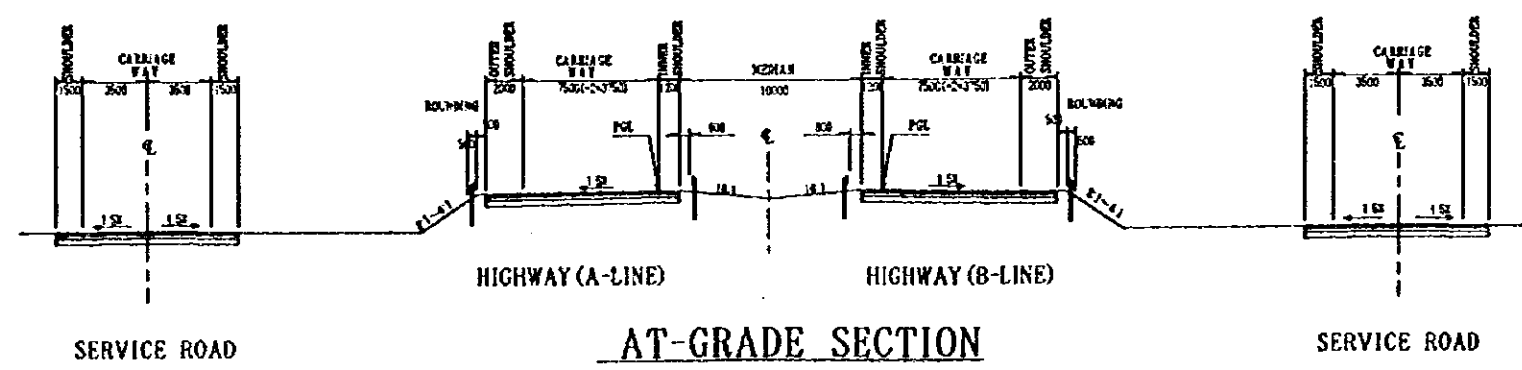
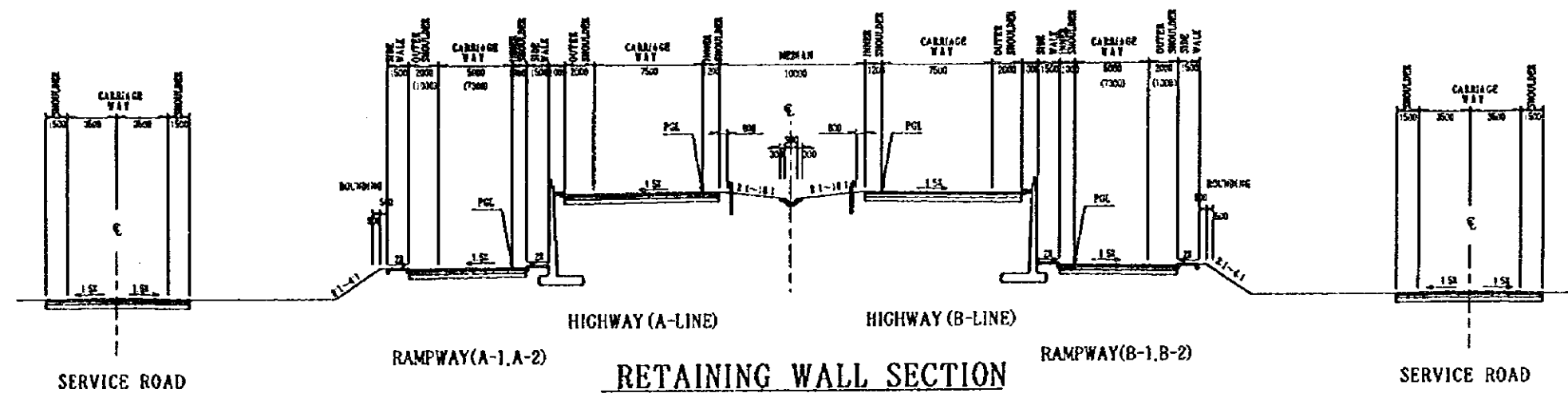
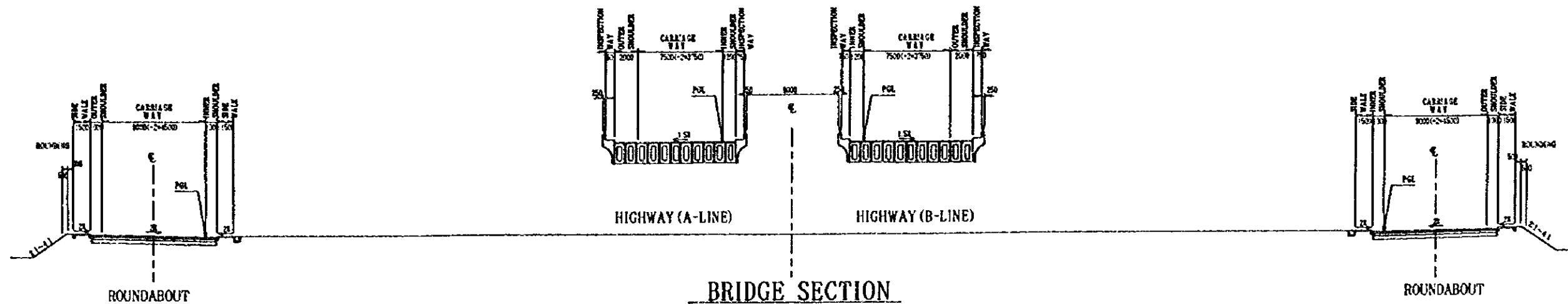
NOTES:

A



JAPAN INTERNATIONAL COOPERATION AGENCY (JICA) JICA STUDY TEAM PACIFIC CONSULTANTS INTERNATIONAL FUKUYAMA CONSULTANTS INTERNATIONAL	CLIENT : MINISTRY OF COMMUNICATIONS, DIRECTORATE GENERAL OF ROADS
	PROJECT : D/D ON ROAD DEVELOPMENT PROJECT ON BATINAH HIGHWAY
	TITLE : RA/S AL KHABURAH PROFILE-HIGHWAY
DATE	DWGNO. R-4

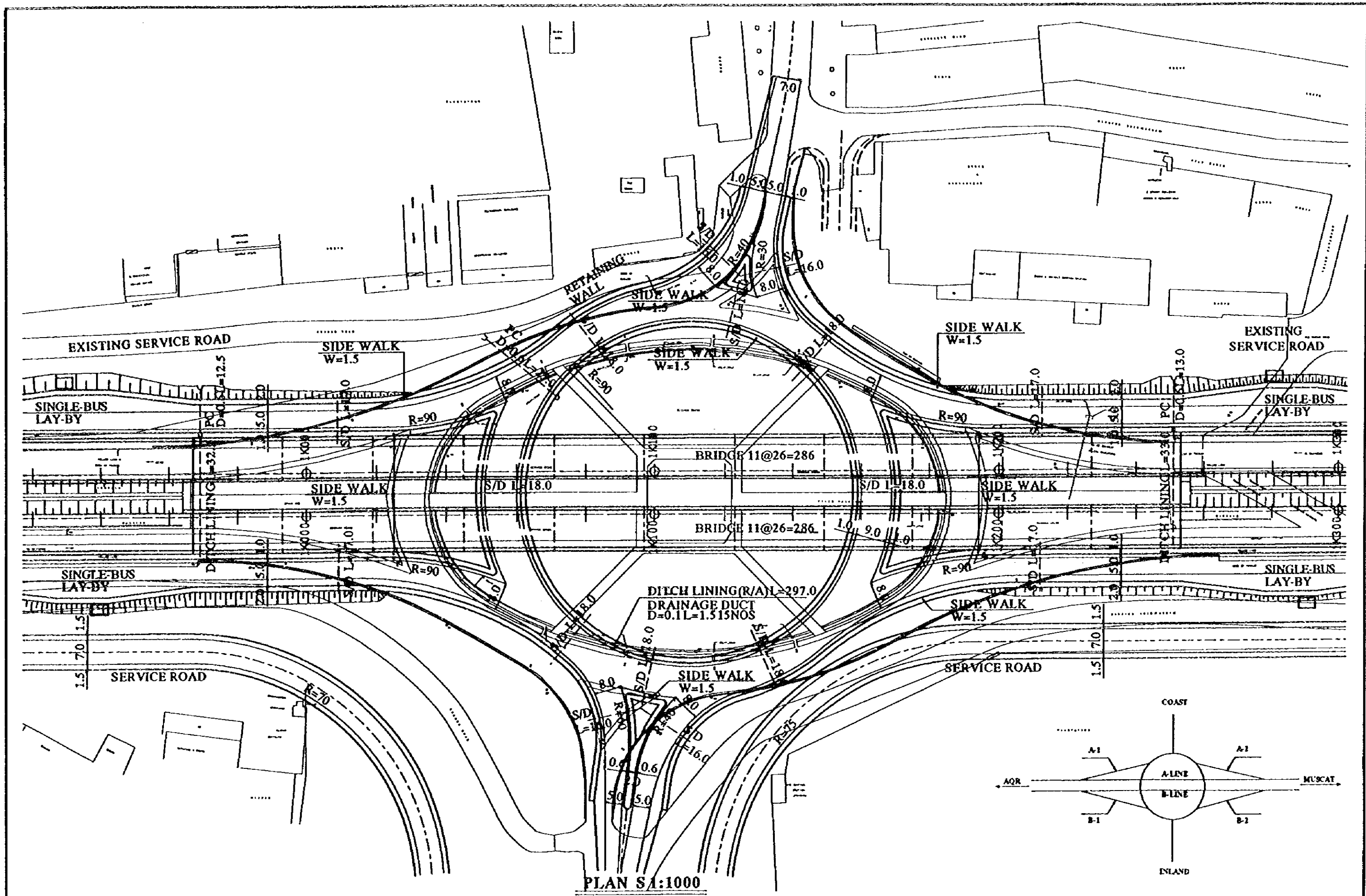




NOTES:  
 (1) SCALE 1:400, DIMENSIONS IN MILLIMETER.  
 (2) NUMBERS INSIDE BRACKETS ARE DIMENSIONS OF MUSCAT-SIDE RAMPWAY.  
 (3) THE TRANSITIONAL STRETCH FOR WIDTH AND CROSS FALL ADJUSTMENT SHOULD BE PROVIDED AT THE BEGINNING AND THE END.

JAPAN INTERNATIONAL COOPERATION AGENCY  
 (JICA)  
 JICA STUDY TEAM  
 PACIFIC CONSULTANTS INTERNATIONAL,  
 FUKUYAMA CONSULTANTS INTERNATIONAL

CLIENT: MINISTRY OF COMMUNICATIONS, DIRECTORATE GENERAL OF ROADS  
 PROJECT: D/D ON ROAD DEVELOPMENT PROJECT ON BATINAH HIGHWAY  
 TITLE: RA/8 AL KHABURAH TYPICAL CROSS SECTION  
 DATE: \_\_\_\_\_ DWG NO.: R-5



PLAN S1:1000

NOTES:  
 (1) ALL DIMENSIONS ARE IN METER.  
 (2) SD INDICATES SERVICE DUCT (D=0.15m, 2WAY)  
 (3) PC AND BC REPRESENTS PIPE CULVERT AND BOX CULVERT RESPECTIVELY.

JAPAN INTERNATIONAL COOPERATION AGENCY  
 (JICA)  
 JICA STUDY TEAM  
 PACIFIC CONSULTANTS INTERNATIONAL  
 FUKUYAMA CONSULTANTS INTERNATIONAL

CLIENT: MINISTRY OF COMMUNICATIONS, DIRECTORATE GENERAL OF ROADS  
 PROJECT: D/D ON ROAD DEVELOPMENT PROJECT ON BATINAH HIGHWAY  
 TITLE: RA/8 AL KABURAH DETAILED PLAN  
 DATE: \_\_\_\_\_ DWG NO.: R-6

