

**AP. 4-1      Cuadro sinóptico de las muestras recolectadas  
(rocas y minerales)**



AP. 4-1 CUADRO SINOPTICO DE LAS MUESTRAS RECOLECTADAS (ROCAS Y MINERALES)

(1)

No.	Nombre de pozo	Prof. de Muestra (m)	Tipo de roca	S.D.	S.P.	R.X.	I.P.	Comentario
1	MJHS-1	34.60	Toba riolitica intemperado	○		○		
2	MJHS-1	39.50	Toba				○	
3	MJHS-1	54.30	Arenisca			○		
4	MJHS-1	74.80	Arenisca		○			sp v.
5	MJHS-1	75.15	Arenisca	○		○	○	
6	MJHS-1	94.90	Conglomerado			○		
7	MJHS-1	123.00	Arenisca			○	○	
8	MJHS-1	148.70	Lutita	○		○		
9	MJHS-1	175.00	Conglomerado	○		○	○	
10	MJHS-1	200.50	Arenisca			○		
11	MJHS-1	226.15	Lutita calcarea	○		○	○	
12	MJHS-1	248.40	Caliza	○		○	○	
13	MJHS-1	267.80	Lutita			○		
14	MJHS-1	285.75	Arenisca		○			gn sp v.
15	MJHS-1	290.30	Arenisca		○			py dis.
16	MJHS-1	297.90	Arenisca		○			Ag?py v.
17	MJHS-1	298.20	Arenisca		○			Ag?v.
18	MJHS-1	300.00	Arenisca calcarea	○		○	○	
19	MJHS-2	36.10	Toba			○		
20	MJHS-2	37.10	Toba					
21	MJHS-2	48.20	Toba	○		○		
22	MJHS-2	73.20	Arenisca			○		
23	MJHS-2	99.80	Arenisca	○		○	○	
24	MJHS-2	125.00	Arenisca			○		
25	MJHS-2	150.00	Arenisca calcarea	○		○	○	
26	MJHS-2	175.20	Lutita			○		
27	MJHS-2	200.00	Conglomerado calcarea	○		○	○	
28	MJHS-2	225.00	Conglomerado			○		
29	MJHS-2	243.90	Arenisca				○	
30	MJHS-2	247.10	Arenisca	○		○		
31	MJHS-2	265.20	Conglomerado		○			sp dis.
32	MJHS-2	273.00	Arenisca			○		
33	MJHS-2	284.10	Conglomerado		○			py dis.
34	MJHS-2	294.20	Arenisca			○		
35	MJHS-3	21.40	Lutita			○	○	
36	MJHS-3	48.50	Lutita			○		
37	MJHS-3	71.30	Arenisca	○		○		
38	MJHS-3	89.00	Conglomerado			○	○	
39	MJHS-3	93.50	Conglomerado	○			○	
40	MJHS-3	104.00	Arenisca			○		
41	MJHS-3	125.20	Lutita			○		
42	MJHS-3	148.80	Caliza	○	○	○	○	py dis.
43	MJHS-3	175.00	Caliza	○		○		
44	MJHS-3	200.00	Caliza	○		○	○	
45	MJHS-3	224.90	Caliza			○		
46	MJHS-3	249.00	Caliza	○		○	○	
47	MJHS-3	270.20	Lutita			○		
48	MJHS-3	300.00	Arenisca			○	○	
49	MJHS-4	24.90	Lutita			○		
50	MJHS-4	50.80	Lutita			○		

S.D. : Seccion Delgada, S.P. : Seccion Pulida, R.X. : Rayos X, I.P. : Muestra de I.P.

AP. 4-1 CUADRO SINOPTICO DE LAS MUESTRAS RECOLECTADAS (ROCAS Y MINERALES)

(2)

No.	Nombre de pozo	Prof. de Muestra (m)	Tipo de roca	S.D.	S.P.	R.X.	I.P.	Comentario
51	MJHS-4	53.50	Lutita				○	
52	MJHS-4	76.10	Caliza	○		○		
53	MJHS-4	101.00	Lutita			○	○	
54	MJHS-4	125.30	Caliza			○		
55	MJHS-4	150.20	Lutita			○	○	
56	MJHS-4	175.00	Lutita			○		
57	MJHS-4	202.90	Caliza	○		○	○	
58	MJHS-4	203.20	Lutita				○	
59	MJHS-4	225.00	Lutita			○		
60	MJHS-4	249.00	Lutita			○	○	
61	MJHS-4	275.00	Lutita		○	○		
62	MJHS-4	281.00	Arenisca calcarea	○		○	○	
63	MJHS-4	298.90	Arenisca			○		
64	MJHS-5	22.40	Lutita			○	○	
65	MJHS-5	51.00	Caliza			○		
66	MJHS-5	74.60	Lutita			○	○	
67	MJHS-5	93.20	Brecha de caliza	○		○		caliza/lutita
68	MJHS-5	97.00	Caliza		○			py dis.
69	MJHS-5	125.00	Caliza			○		
70	MJHS-5	150.00	Caliza			○	○	
71	MJHS-5	160.80	Lutita		○			
72	MJHS-5	163.80	Caliza		○			py v
73	MJHS-5	175.00	Caliza			○		
74	MJHS-5	194.60	Lutita		○			caliza? py dis.
75	MJHS-5	201.50	Brecha de caliza	○		○	○	caliza/lutita
76	MJHS-5	224.50	Lutita		○	○		
77	MJHS-5	242.20	Lutita			○		

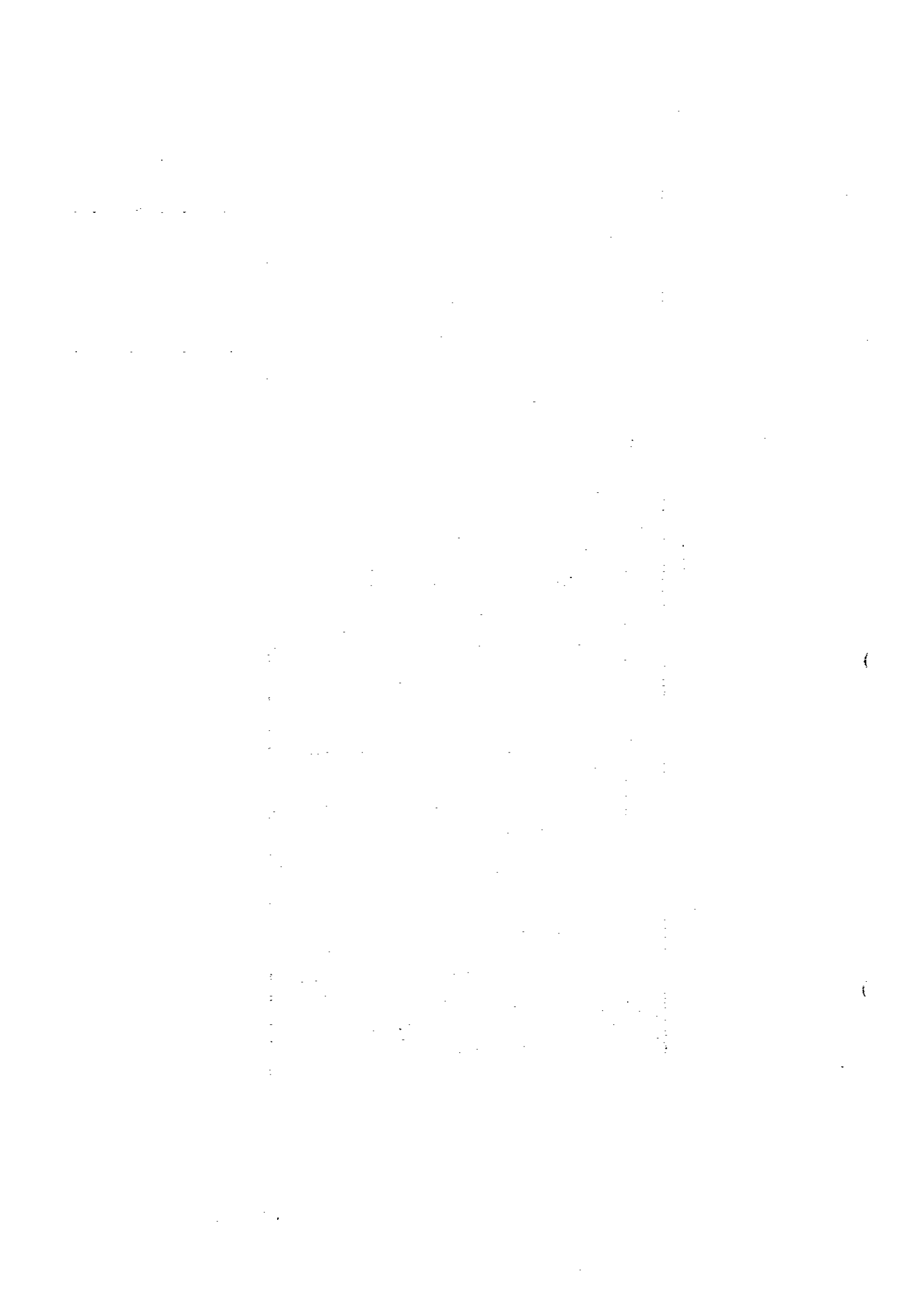
S.D. : Seccion Delgada, S.P. : Seccion Pulida, R.X. : Rayos X, I.P. : Muestra de I.P.

**AP. 4-2      Cuadro sinóptico de los resultados de los  
ensayos calcográficos**



AP. 4-2 CUADRO SINOPTICO DE LOS RESULTADOS DE LOS ENSAYOS CALCOGRAFICOS

No.	Nombre de pozo	Prof. (m)	Espesor (m)	Au (g/t)	Ag (g/t)	Cu (%)	Pb (%)	Zn (%)	Fe (%)	S (%)	As (ppm)	Sb (ppm)	Hg (ppb)	Cd (ppm)	In (ppm)	Ga (ppm)
1	MJHS2-01	262.5-263.5	1.00	0.075	2.2	<0.01	0.04	0.11	2.30	1.62	1995	12.0	40	<0.5	<2	<10
2	MJHS2-02	263.5-264.5	1.00	0.040	0.8	<0.01	0.01	0.03	2.08	1.53	938	8.0	10	<0.5	<2	<10
3	MJHS2-03	264.5-265.5	1.00	0.065	4.6	<0.01	0.11	0.15	1.86	1.24	2130	12.0	30	<0.5	<2	<10
4	MJHS2-04	265.5-266.2	0.70	0.085	8.6	<0.01	0.04	0.06	0.97	0.25	830	10.0	80	<0.5	2	<10
5	MJHS5-01	190.0-192.0	2.00	<0.005	<0.2	<0.01	<0.01	<0.01	1.60	0.80	18	6.8	10	<0.5	<2	<10
6	MJHS5-02	192.0-194.0	2.00	<0.005	<0.2	<0.01	<0.01	<0.01	1.50	1.08	18	6.8	<10	<0.5	<2	<10
7	MJHS5-03	194.0-196.0	2.00	<0.005	<0.2	<0.01	<0.01	<0.01	1.50	0.77	18	3.8	<10	<0.5	<2	<10
8	MJHS5-04	196.0-198.0	2.00	0.050	<0.2	<0.01	<0.01	<0.01	2.50	1.16	4	1.6	<10	<0.5	<2	11
9	MJHS5-05	198.0-200.0	2.00	<0.005	0.2	<0.01	<0.01	<0.01	1.60	1.01	10	0.4	10	<0.5	4	<10
10	MJHS5-06	200.0-202.0	2.00	<0.005	<0.2	<0.01	<0.01	<0.01	1.50	0.91	6	0.4	<10	<0.5	<2	<10
11	MJHS5-07	202.0-204.0	2.00	<0.005	0.2	<0.01	<0.01	<0.01	1.10	0.75	8	0.8	<10	<0.5	2	<10
12	MJHS5-08	204.0-206.0	2.00	<0.005	<0.2	<0.01	<0.01	<0.01	1.30	0.75	1	<0.2	<10	<0.5	<2	<10
13	MJHS5-09	206.0-208.0	2.00	<0.005	<0.2	<0.01	<0.01	<0.01	1.50	0.93	1	<0.2	<10	<0.5	2	<10
14	MJHS5-10	208.0-210.0	2.00	0.055	<0.2	<0.01	<0.01	<0.01	1.90	1.19	1	0.4	<10	<0.5	4	<10
15	MJHS5-11	210.0-212.0	2.00	0.015	<0.2	<0.01	<0.01	<0.01	1.35	0.79	1	0.2	<10	<0.5	4	<10
16	MJHS5-12	212.0-214.0	2.00	<0.005	<0.2	<0.01	<0.01	<0.01	1.40	0.89	4	0.2	<10	<0.5	2	<10
17	MJHS5-13	214.0-216.0	2.00	0.100	<0.2	<0.01	<0.01	<0.01	1.80	0.94	1	0.8	<10	<0.5	<2	<10
18	MJHS5-14	215.0-218.0	2.00	<0.005	<0.2	<0.01	<0.01	<0.01	1.85	1.27	8	1.4	<10	<0.5	6	<10
19	MJHS5-15	218.0-220.0	2.00	0.100	<0.2	<0.01	<0.01	0.01	2.20	1.00	1	0.8	10	<0.5	4	<10
20	MJHS5-16	220.0-222.0	2.00	0.040	<0.2	<0.01	<0.01	0.01	2.40	1.15	4	0.6	10	<0.5	<2	11





**AP. 4-3 Cuadro sinóptico de los resultados y fotografías de las observaciones de las secciones delgadas**

**ABBREVIATION**

An	: Andesita
Biv	: Bivalvia
Bivs	: Cascara de bivalvia
C	: Carbonato
Cals	: Lutita calcaréa
Da	: Dacita
Ech	: Echinoid
For	: Foraminifera
Gas	: Gastropoda
Lms	: Caliza
Mc	: Muscovita
Ms	: Esquisto de barro
Op	: Mineral de opaco
Pl	: Plagioclasa
(Pl)	: Seudomorfo
Py	: Pirita
Qz	: Cuarzo
Rh	: Riolita
Spg	: Esponja
Tf	: Toba

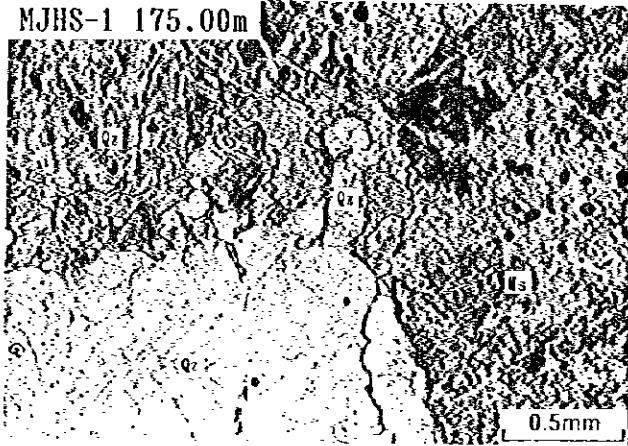




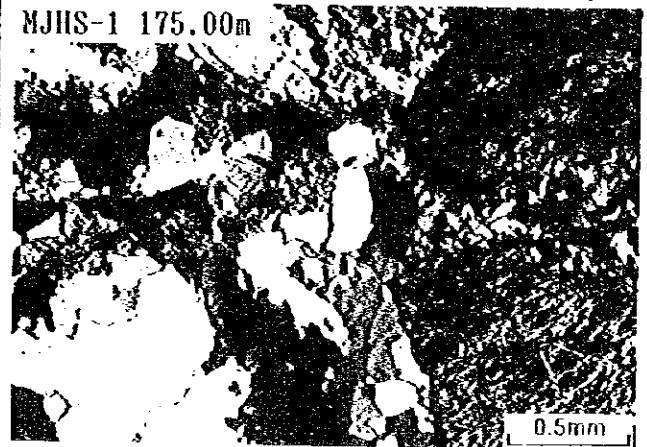
Plane polarized light

Crossed polarized light

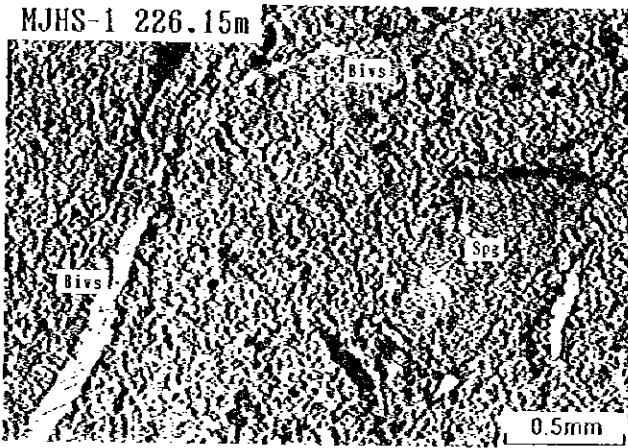
MJHS-1 175.00m



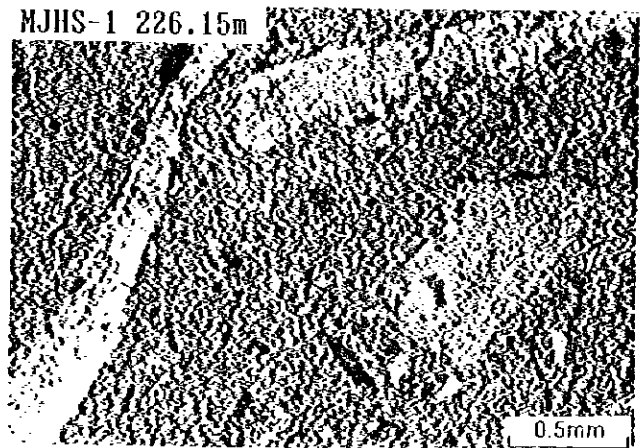
MJHS-1 175.00m



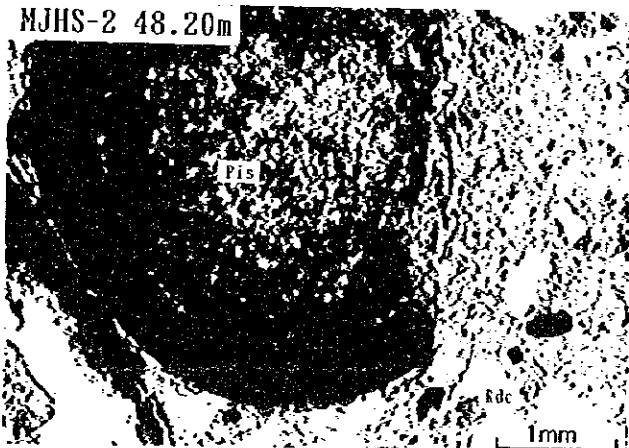
MJHS-1 226.15m



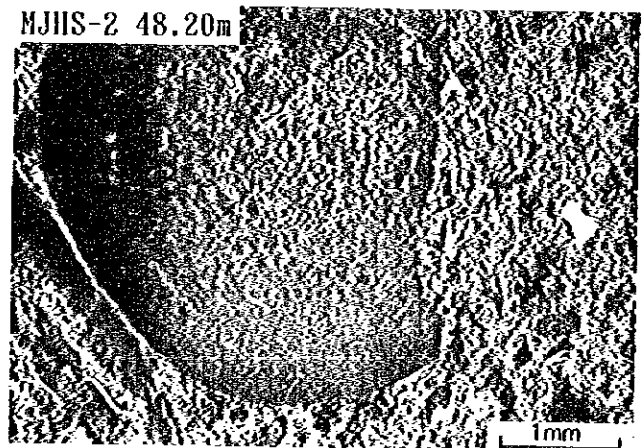
MJHS-1 226.15m



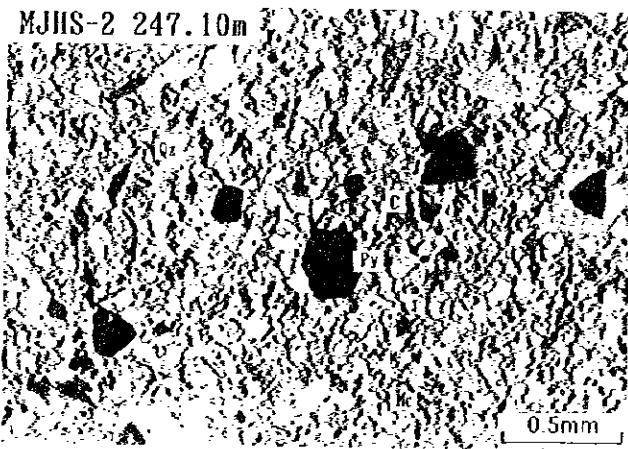
MJHS-2 48.20m



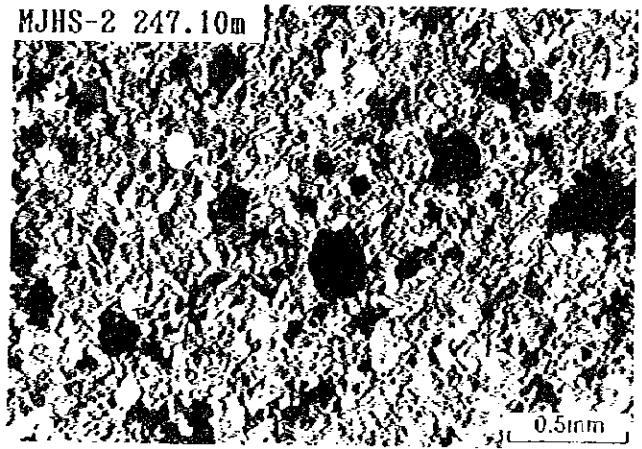
MJHS-2 48.20m



MJHS-2 247.10m



MJHS-2 247.10m

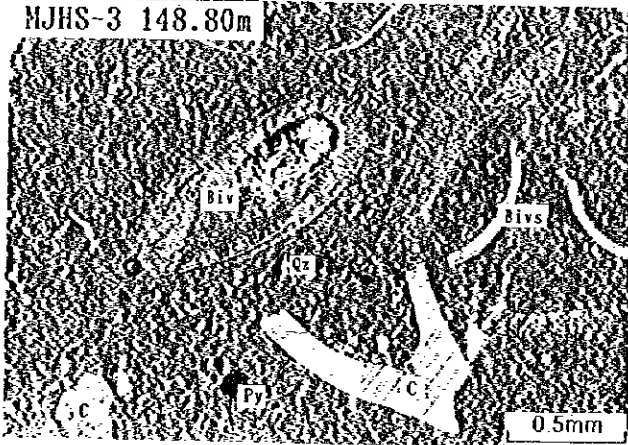




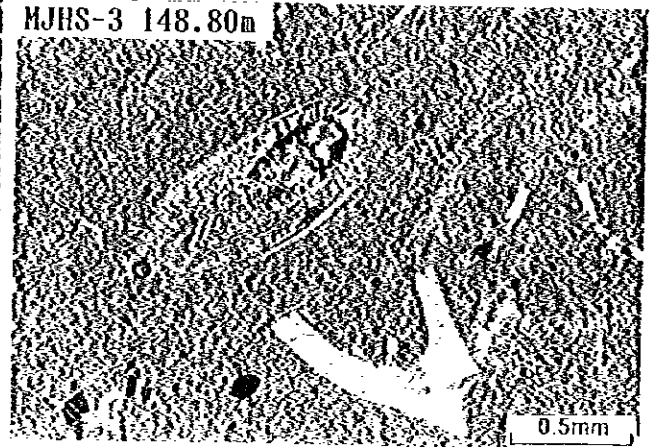
Plane polarized light

Crossed polarized light

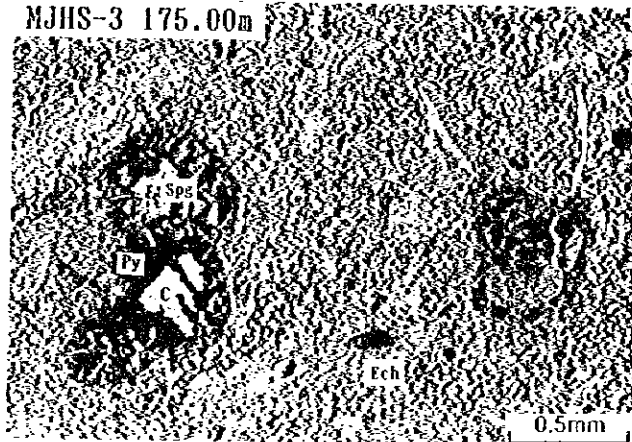
MJHS-3 148.80m



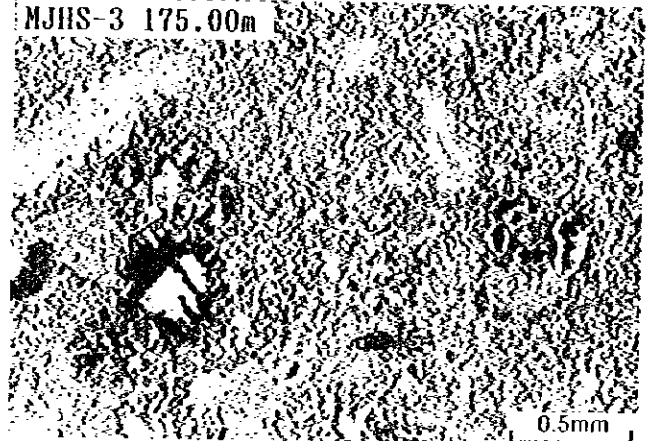
MJHS-3 148.80m



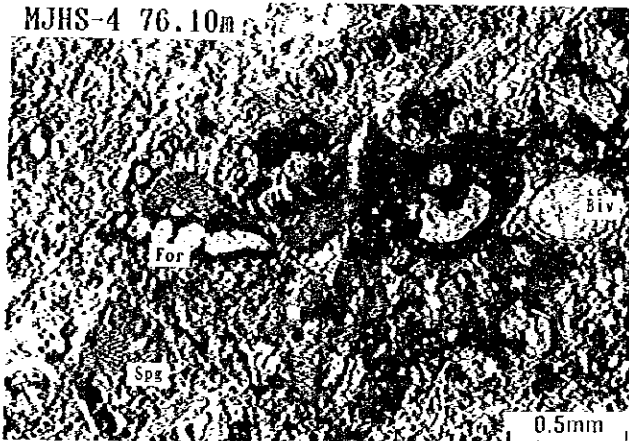
MJHS-3 175.00m



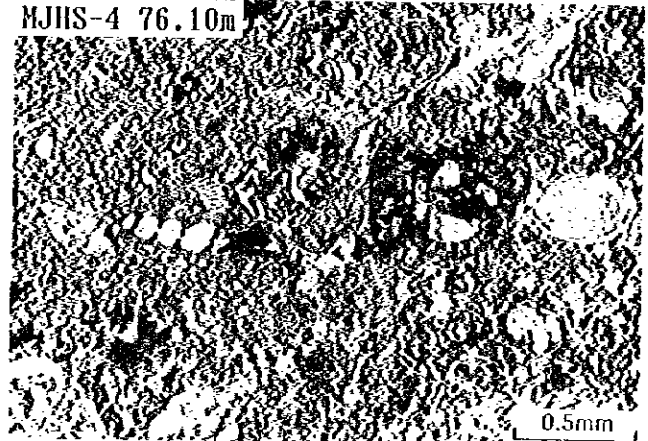
MJHS-3 175.00m



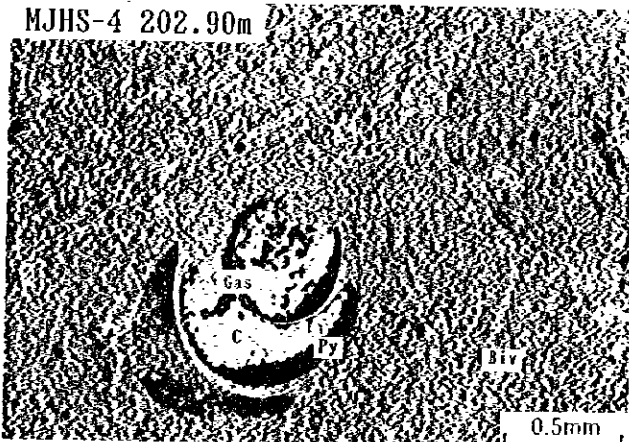
MJHS-4 76.10m



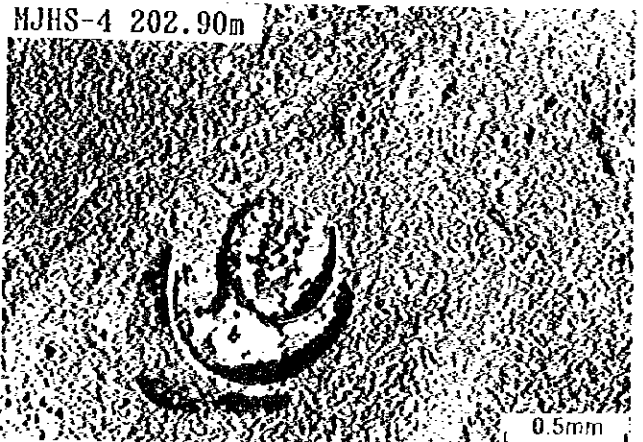
MJHS-4 76.10m



MJHS-4 202.90m



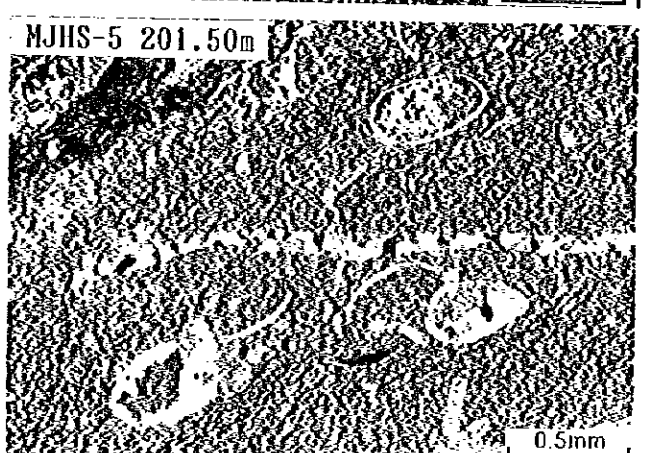
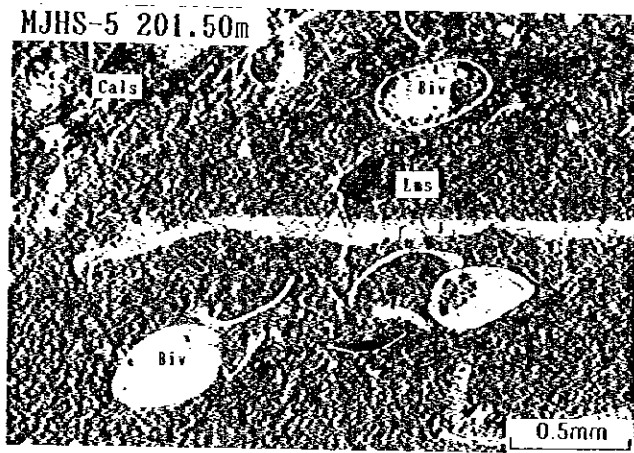
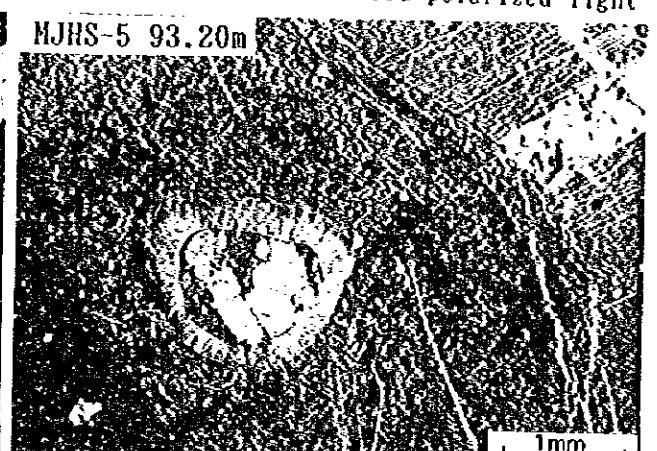
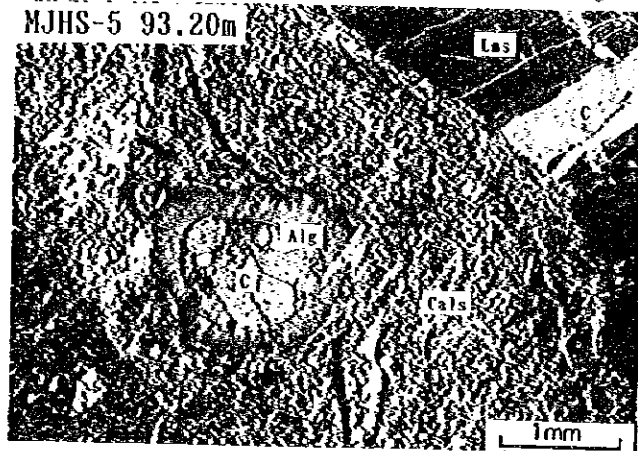
MJHS-4 202.90m



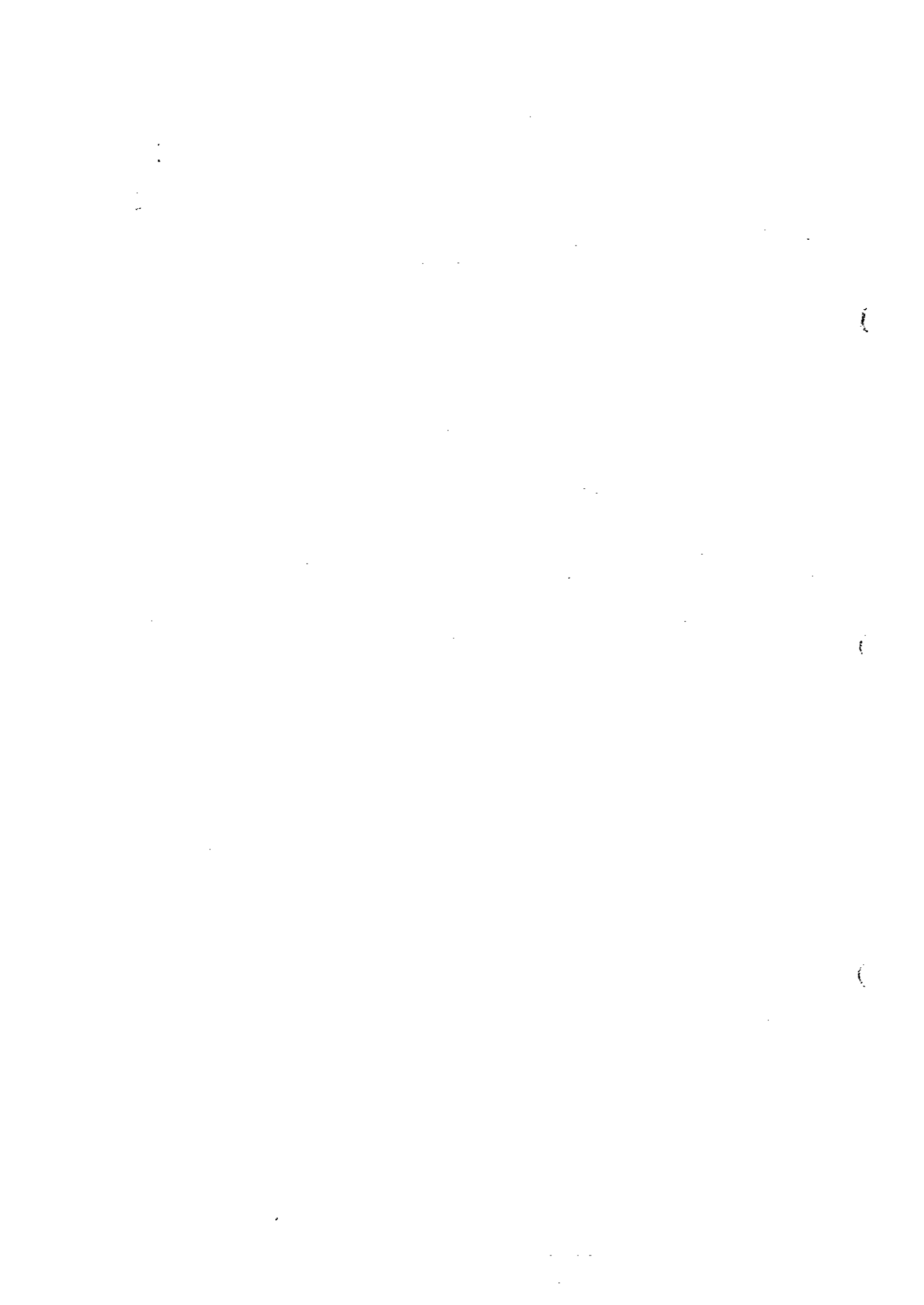


Plane polarized light

Crossed polarized light







**AP. 4-4 Cuadro sinóptico de los resultados y fotografías de las observaciones de las secciones pulidas**

**ABBREVIATION**

Py	: Pirita
Po	: Pirrotina
Mc	: Marcasita
Asp	: Arsenopirita
Hm	: Hematita
Goe	: Goethita
Sp	: Esfalerita
Bou	: Boulangerita
Gb	: Mineral de Pb-Bi-S
Gn	: Galena
Cp	: Calcopirita
Td	: Tetrahedrita
Cu	: Cobre nativo
El	: Electrum
Ag	: Plata nativo
Pol	: Polibasita
Arg	: Argentita
Pr	: Pirargirita
My	: Miargirita
Ps	: Pyrostilpnita
Mn	: Mineral oxidada de Mn
Ti	: Mineral de TiO <sub>2</sub>



AP. 4-4 CUADRO SINOPTICO DE LOS RESULTADOS DE LAS OBSERVACIONES DE LAS SECCIONES PULIDAS

No.	Nombre de pozo	Prof. de muestra	Mineral Tipo de roca	Pirita	Pirrotina	Marcasita	Arsenopirita	Hematita	Goethita	Esferita	Boulangierita	Mineral de Pb-Bi-S	Galena	Calcopirita	Calcocina	Tetrahedrita	Cobre nativo	Electrum	Plata nativo	Polibasita	Argentita	Pirargirita	Miargirita	Pyrostilpnita	Mineral oxidada de Mn
1	MJHS-1	74.80	Arenisca	.		○	.			⊙			.	.				.		.	.	.	.		
2	MJHS-1	285.75	Arenisca	⊙			⊙			⊙			○	.		.				.	.	.	.		
3	MJHS-1	290.30	Arenisca	⊙	.		△			.				.											
4	MJHS-1	297.90	Arenisca	⊙			○							.		△									
5	MJHS-1	298.20	Arenisca	⊙			○			⊙			○	△		△						.	.		
6	MJHS-2	265.20	Conglomerado	△			△			△			△												
7	MJHS-2	284.10	Conglomerado	⊙																					
8	MJHS-3	148.80	Caliza	△																					
9	MJHS-4	275.00	Lutita	⊙		△							.	.											
10	MJHS-5	97.00	Caliza	⊙																					
11	MJHS-5	160.80	Lutita	△			△																		
12	MJHS-5	163.80	Caliza	○			○			⊙			.	.											
13	MJHS-5	194.60	Lutita	○						.															
14	MJHS-5	224.50	Lutita	○						.															

⊙ : Abundante, ○ : Medio, △ : Poco, . : Escaso



