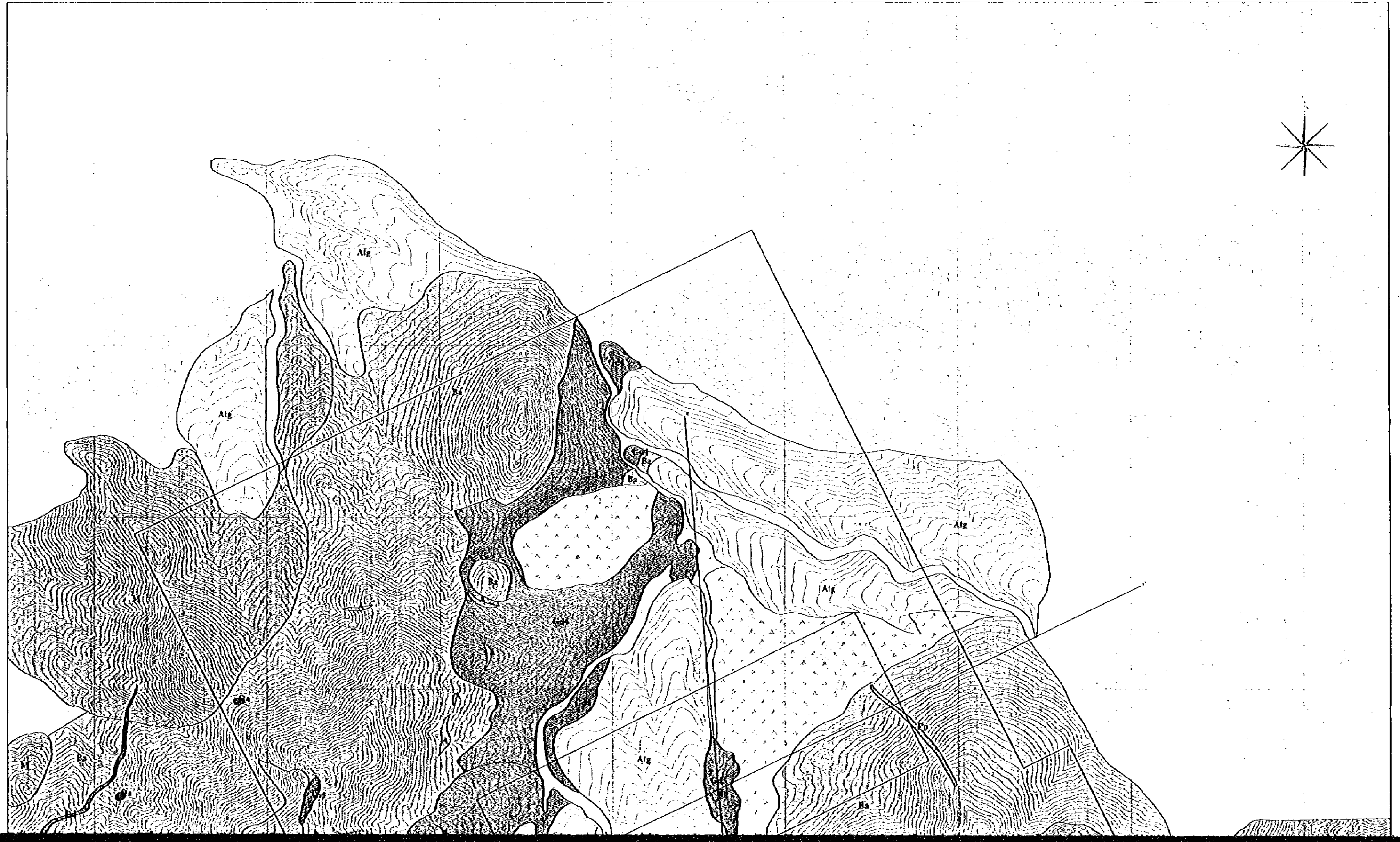
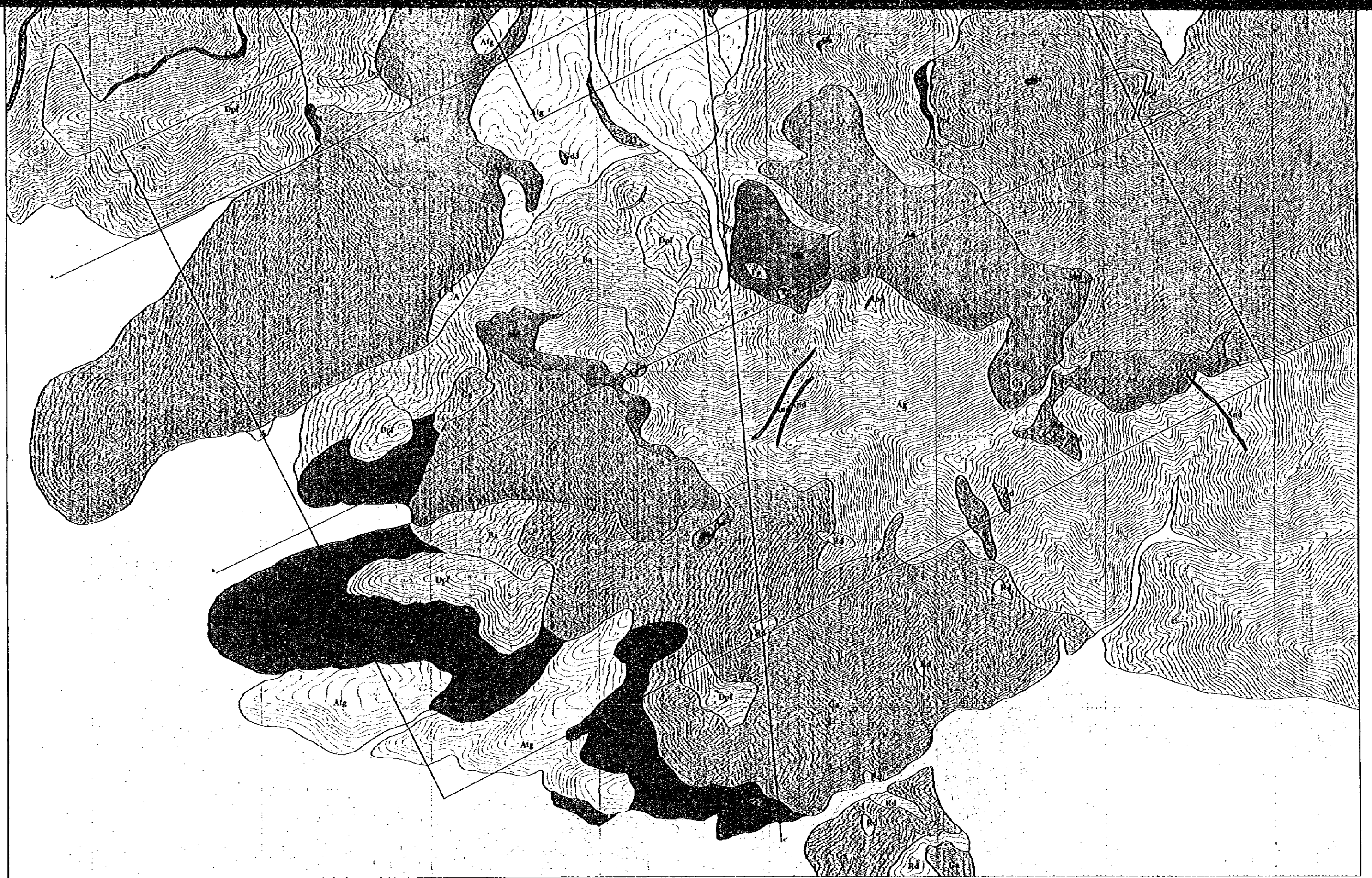


# Lithological Map of GUANACA

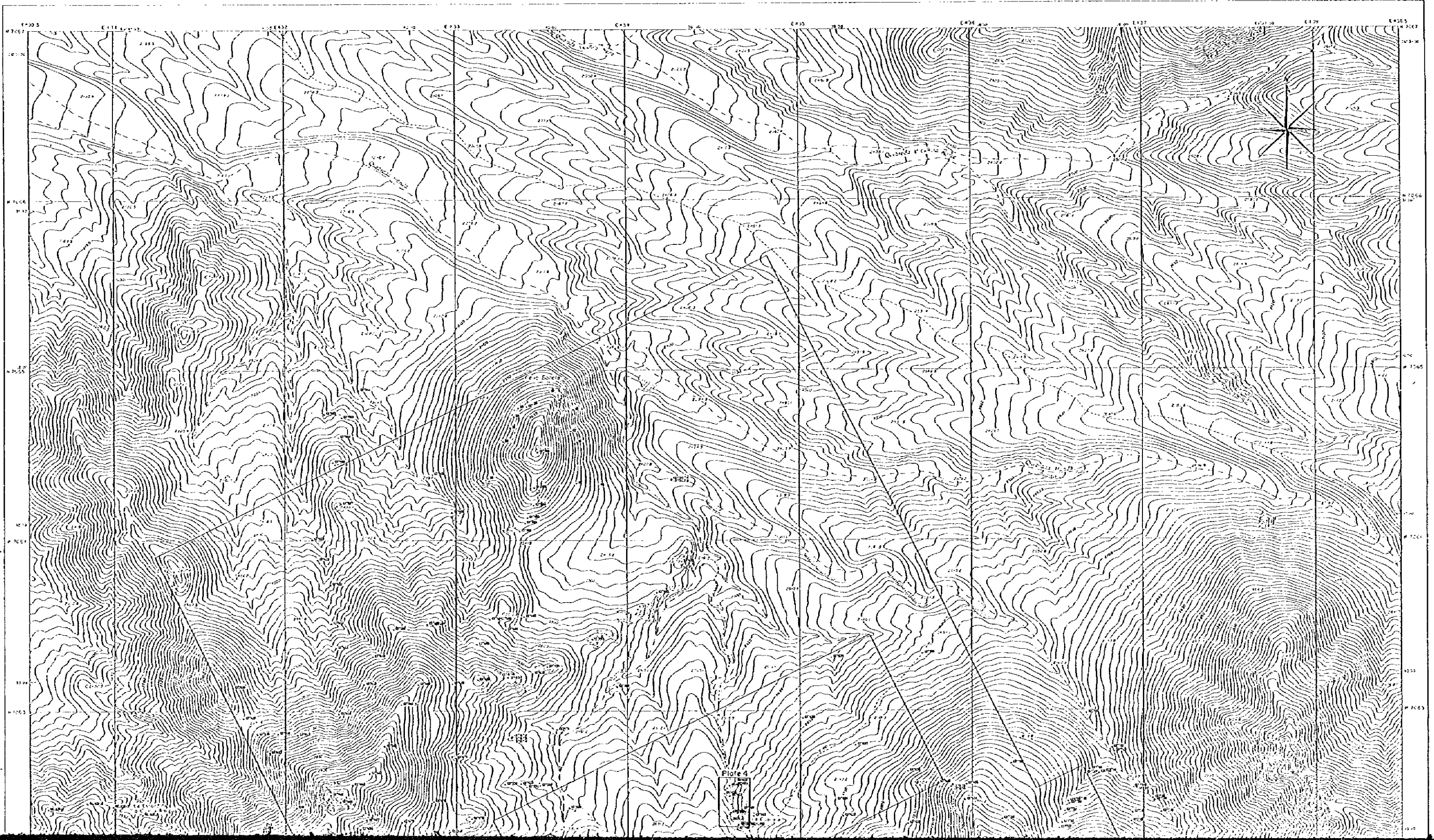






Scale 1:10000  
0 0.1 0.2 0.3 0.4 0.5 0.6 0.7 0.8 0.9 1.0 km

Sheet 2 Lithological map of the Guanaca area.



E 205 E 210 E 215 E 220 E 225 E 230 E 235 E 240 E 245 E 250 E 255 E 260 E 265 E 270 E 275 E 280 E 285 E 290 E 295

N 7050 N 7055 N 7060 N 7065 N 7070 N 7075 N 7080 N 7085 N 7090 N 7095

N 7100 N 7105 N 7110 N 7115 N 7120 N 7125 N 7130 N 7135 N 7140 N 7145

N 7150 N 7155 N 7160 N 7165 N 7170 N 7175 N 7180 N 7185 N 7190 N 7195

N 7200 N 7205 N 7210 N 7215 N 7220 N 7225 N 7230 N 7235 N 7240 N 7245

N 7250 N 7255 N 7260 N 7265 N 7270 N 7275 N 7280 N 7285 N 7290 N 7295

N 7300 N 7305 N 7310 N 7315 N 7320 N 7325 N 7330 N 7335 N 7340 N 7345

N 7350 N 7355 N 7360 N 7365 N 7370 N 7375 N 7380 N 7385 N 7390 N 7395

N 7400 N 7405 N 7410 N 7415 N 7420 N 7425 N 7430 N 7435 N 7440 N 7445

N 7450 N 7455 N 7460 N 7465 N 7470 N 7475 N 7480 N 7485 N 7490 N 7495

N 7500 N 7505 N 7510 N 7515 N 7520 N 7525 N 7530 N 7535 N 7540 N 7545

N 7550 N 7555 N 7560 N 7565 N 7570 N 7575 N 7580 N 7585 N 7590 N 7595

N 7600 N 7605 N 7610 N 7615 N 7620 N 7625 N 7630 N 7635 N 7640 N 7645

N 7650 N 7655 N 7660 N 7665 N 7670 N 7675 N 7680 N 7685 N 7690 N 7695

N 7700 N 7705 N 7710 N 7715 N 7720 N 7725 N 7730 N 7735 N 7740 N 7745

N 7750 N 7755 N 7760 N 7765 N 7770 N 7775 N 7780 N 7785 N 7790 N 7795

N 7800 N 7805 N 7810 N 7815 N 7820 N 7825 N 7830 N 7835 N 7840 N 7845

N 7850 N 7855 N 7860 N 7865 N 7870 N 7875 N 7880 N 7885 N 7890 N 7895

N 7900 N 7905 N 7910 N 7915 N 7920 N 7925 N 7930 N 7935 N 7940 N 7945

N 7950 N 7955 N 7960 N 7965 N 7970 N 7975 N 7980 N 7985 N 7990 N 7995

N 8000 N 8005 N 8010 N 8015 N 8020 N 8025 N 8030 N 8035 N 8040 N 8045

N 8050 N 8055 N 8060 N 8065 N 8070 N 8075 N 8080 N 8085 N 8090 N 8095

N 8100 N 8105 N 8110 N 8115 N 8120 N 8125 N 8130 N 8135 N 8140 N 8145

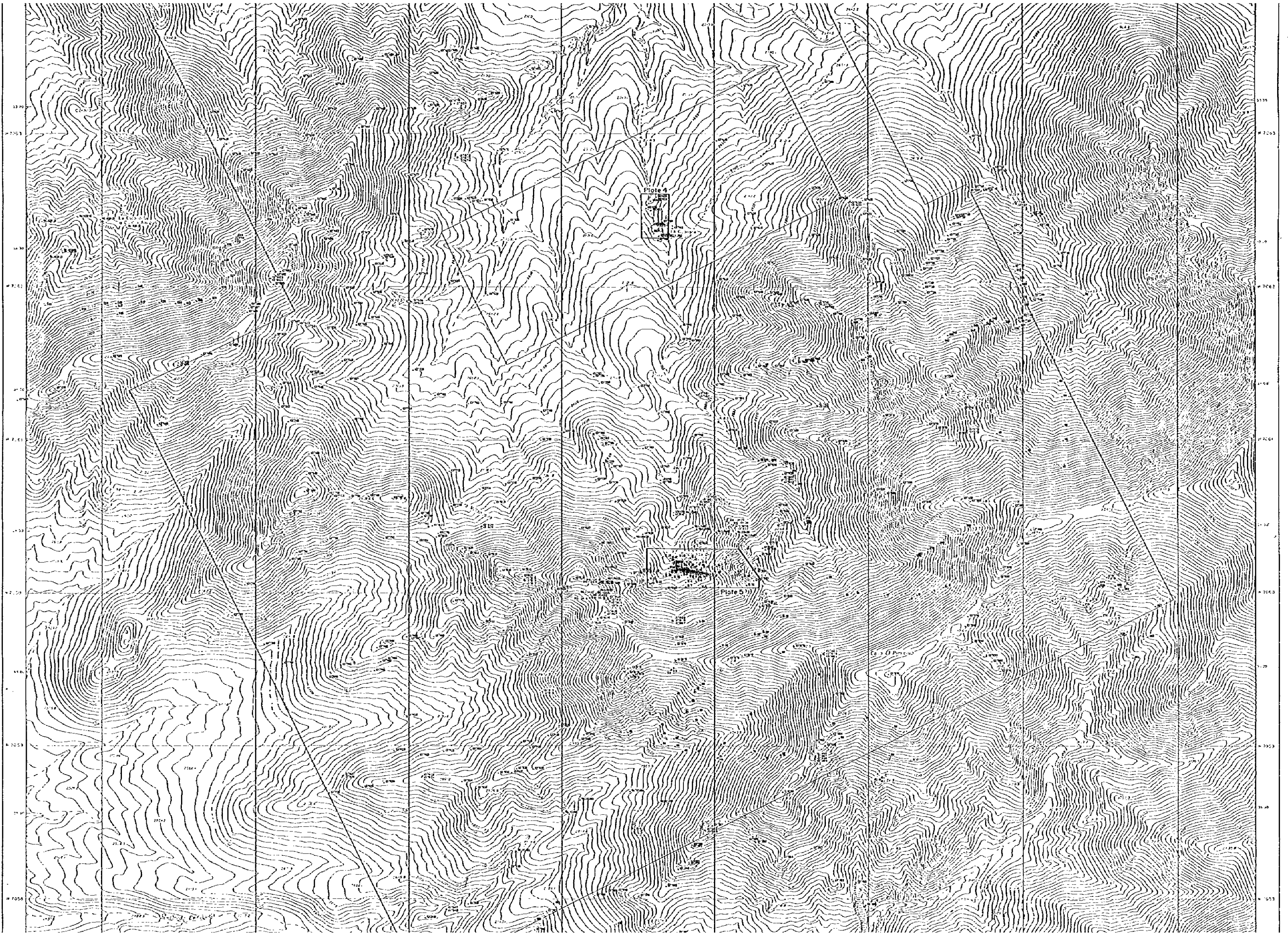
N 8150 N 8155 N 8160 N 8165 N 8170 N 8175 N 8180 N 8185 N 8190 N 8195

N 8200 N 8205 N 8210 N 8215 N 8220 N 8225 N 8230 N 8235 N 8240 N 8245

N 8250 N 8255 N 8260 N 8265 N 8270 N 8275 N 8280 N 8285 N 8290 N 8295

N 8300 N 8305 N 8310 N 8315 N 8320 N 8325 N 8330 N 8335 N 8340 N 8345

Plot 4





1916