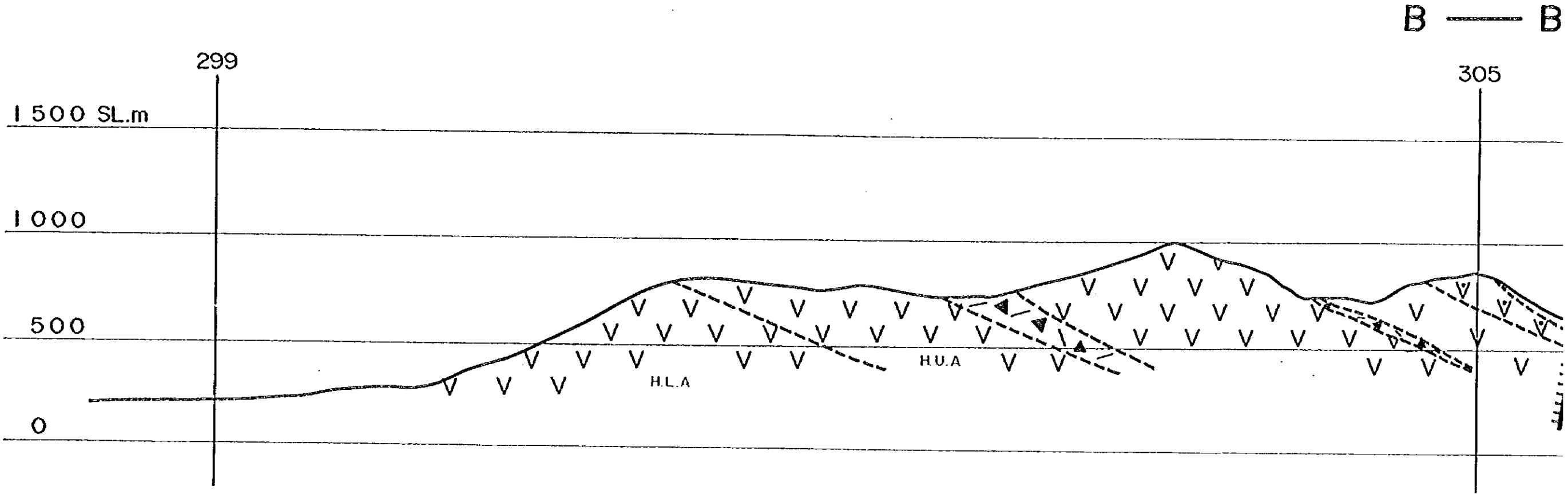
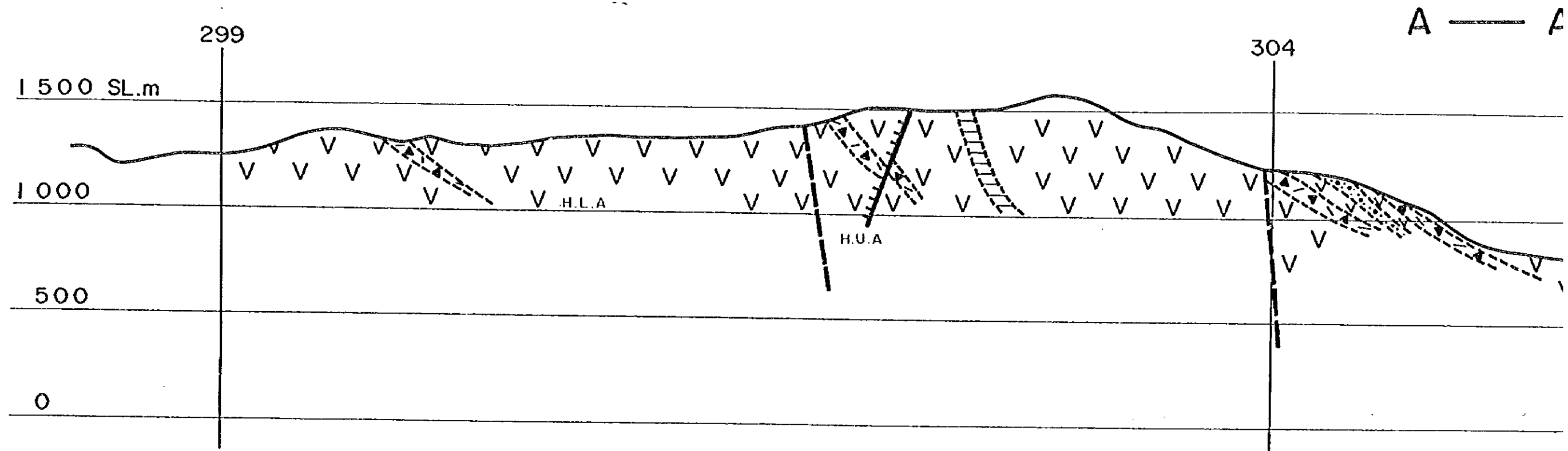
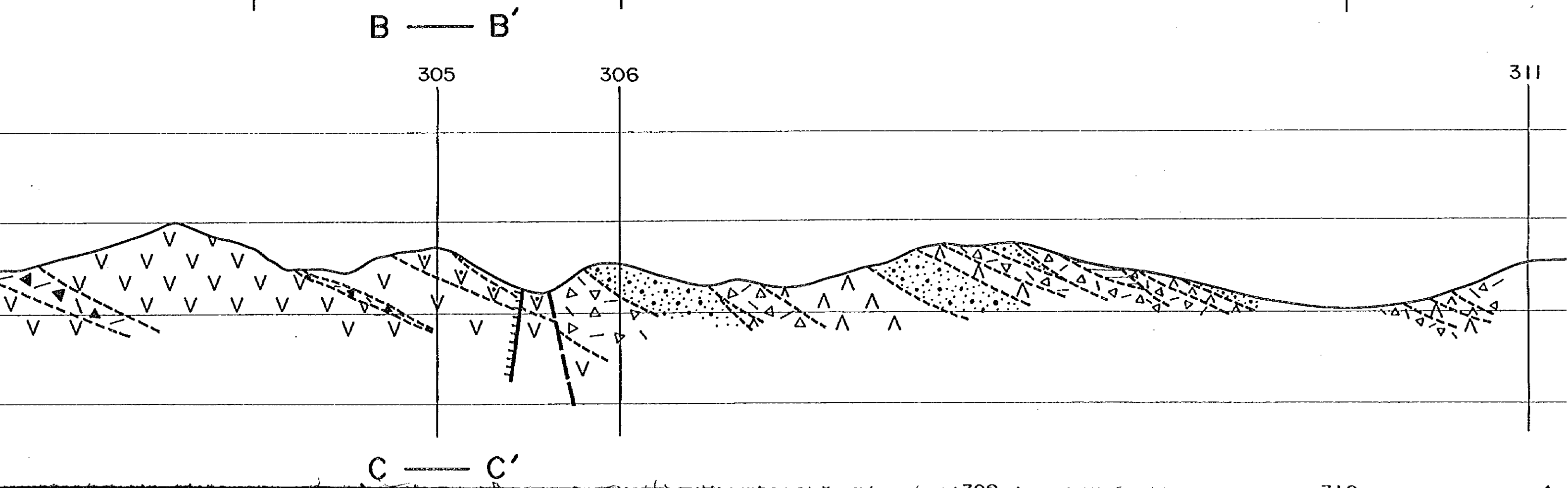
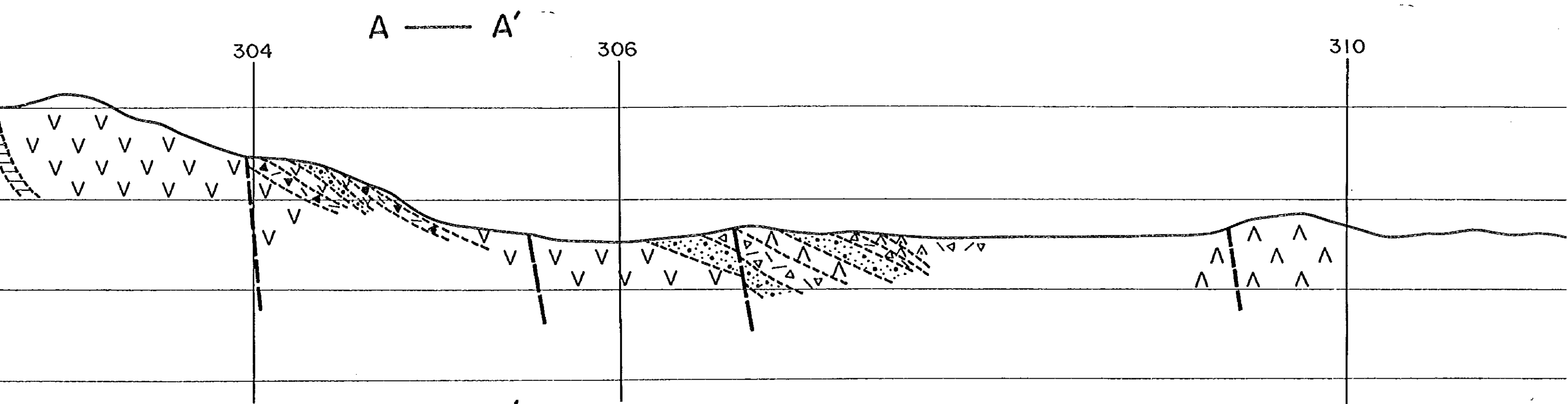


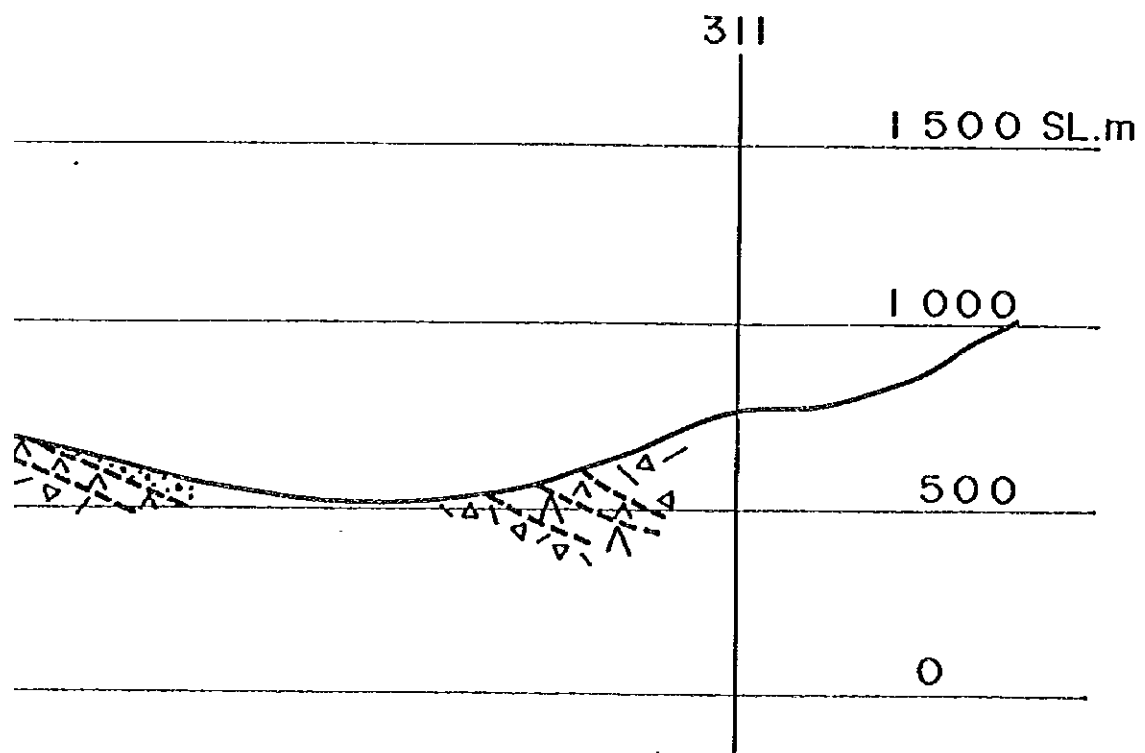
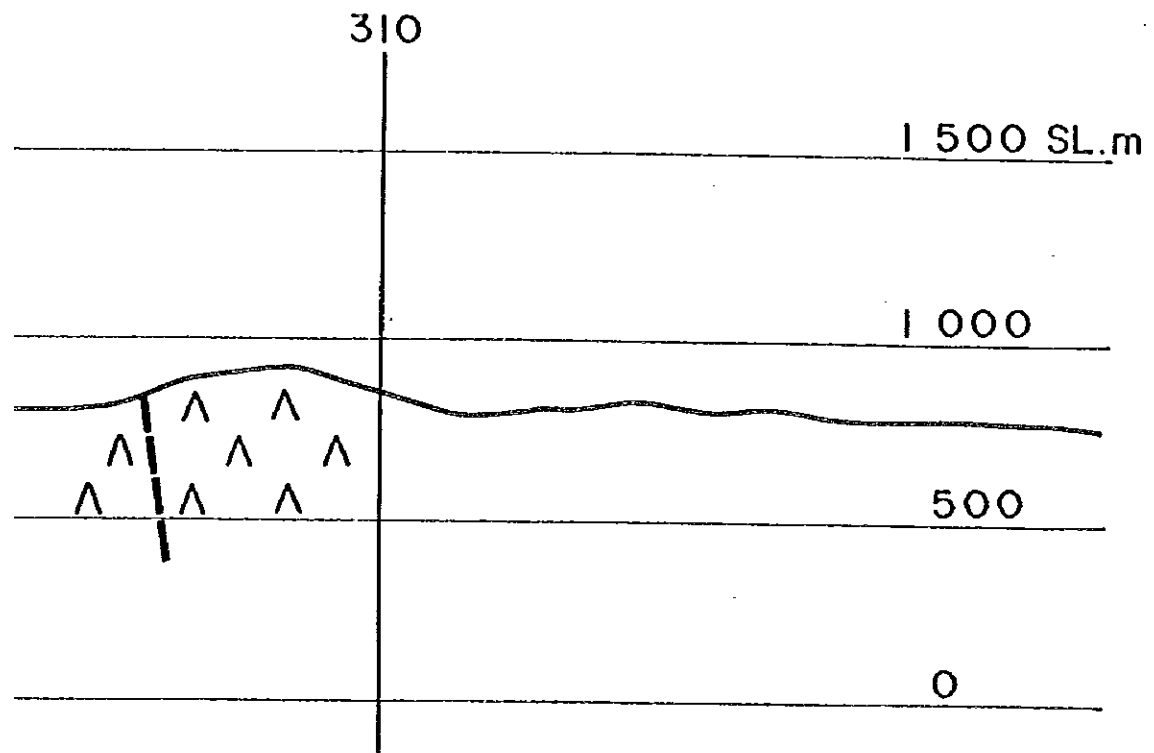
Plate 2-1-2

Geologic



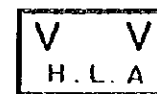
Geological section of Cholqui area



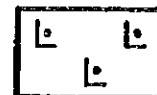


Legend

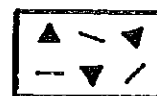
Horqueta Formation (Lower member)



Andesite (lava)



Dacite (lava dome)

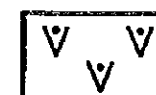


Pyroclastic Rocks (Tf, Lap, Tf, TB)

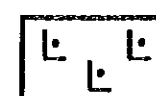
Horqueta Formation (Upper member)



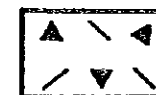
Andesite (lava)



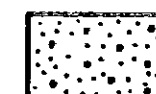
Andesite (Ocoita)



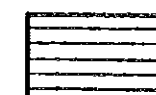
Dacite (lava dome)



Pyroclastic Rocks (Tf, Lp, Tf, TB)

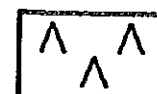


Sandstone

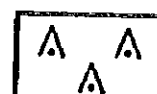


Shale

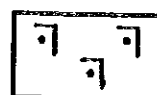
Lo Prado Formation



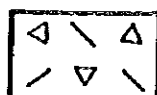
Andesite (lava)



Andesite (Ocoita)



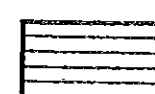
Dacite (lava dome)



Pyroclastic Rocks (Tf, Lp, Tf, TB)

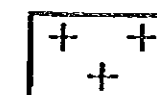


Sandstone

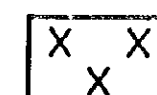


Shale

Other rocks



Alhué Granite



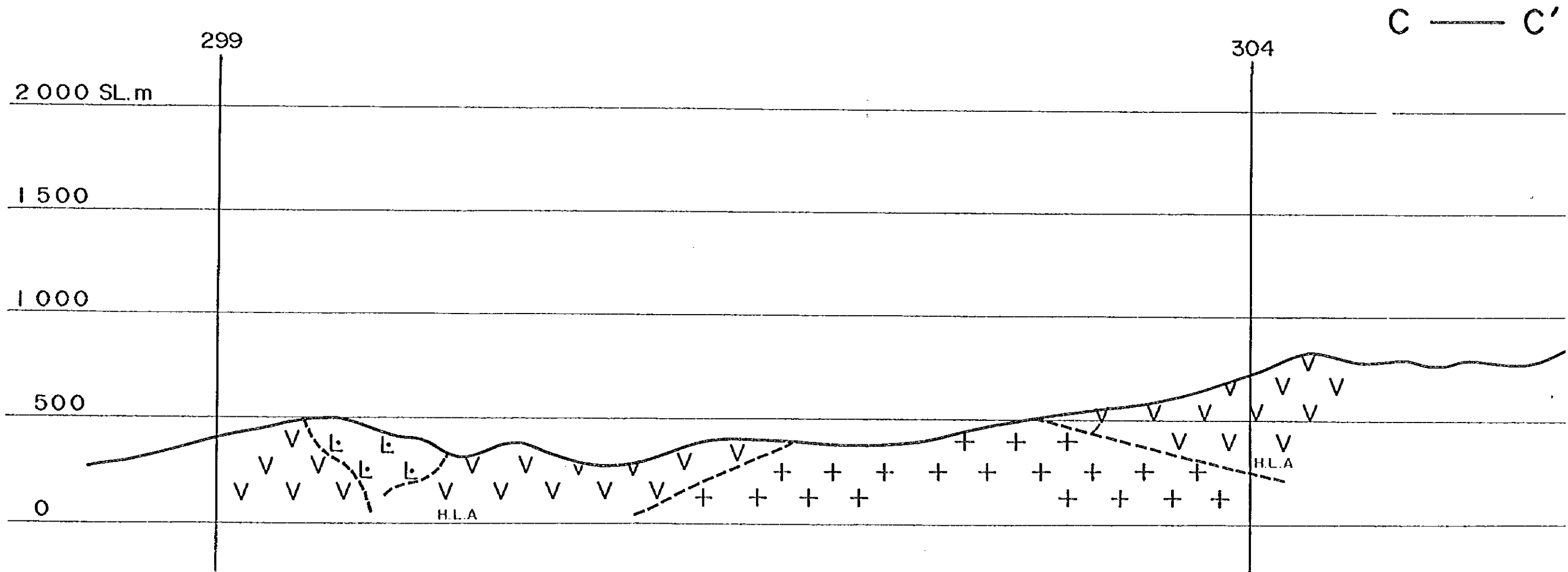
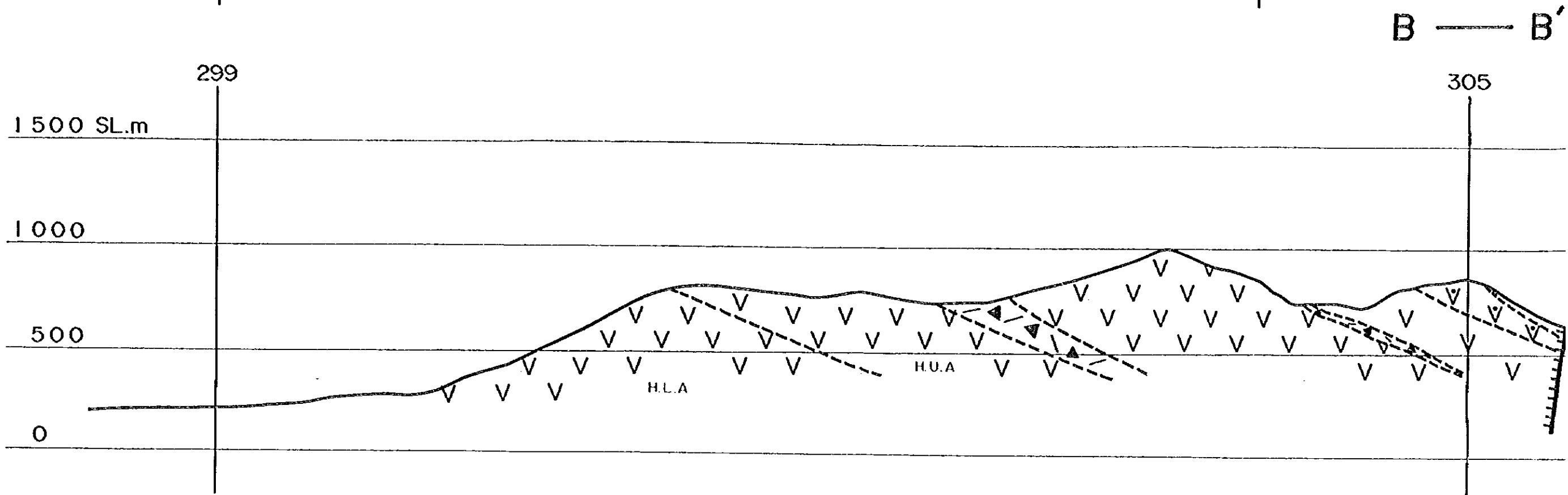
Tantahue Granite



Andesite (dyke)



Dacite (dyke)

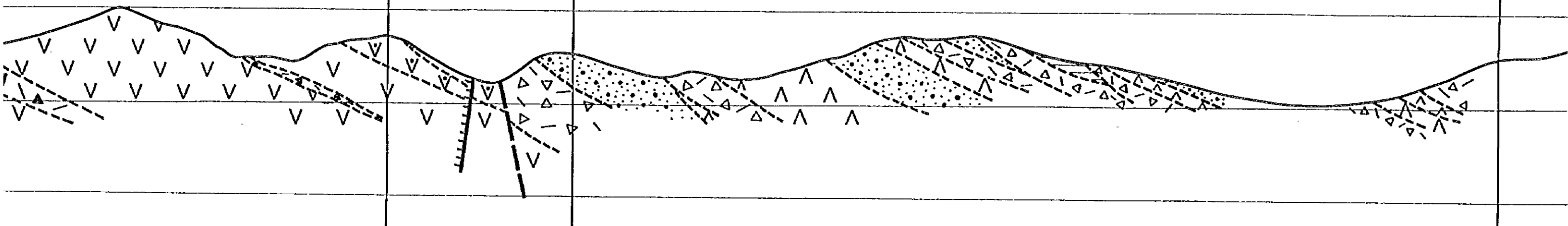


B — B'

305

306

311

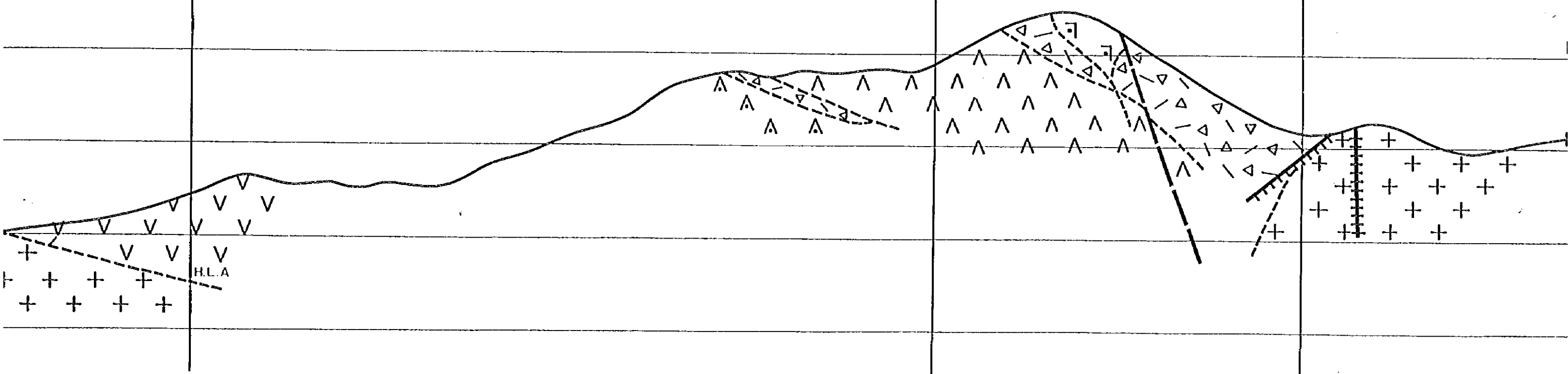


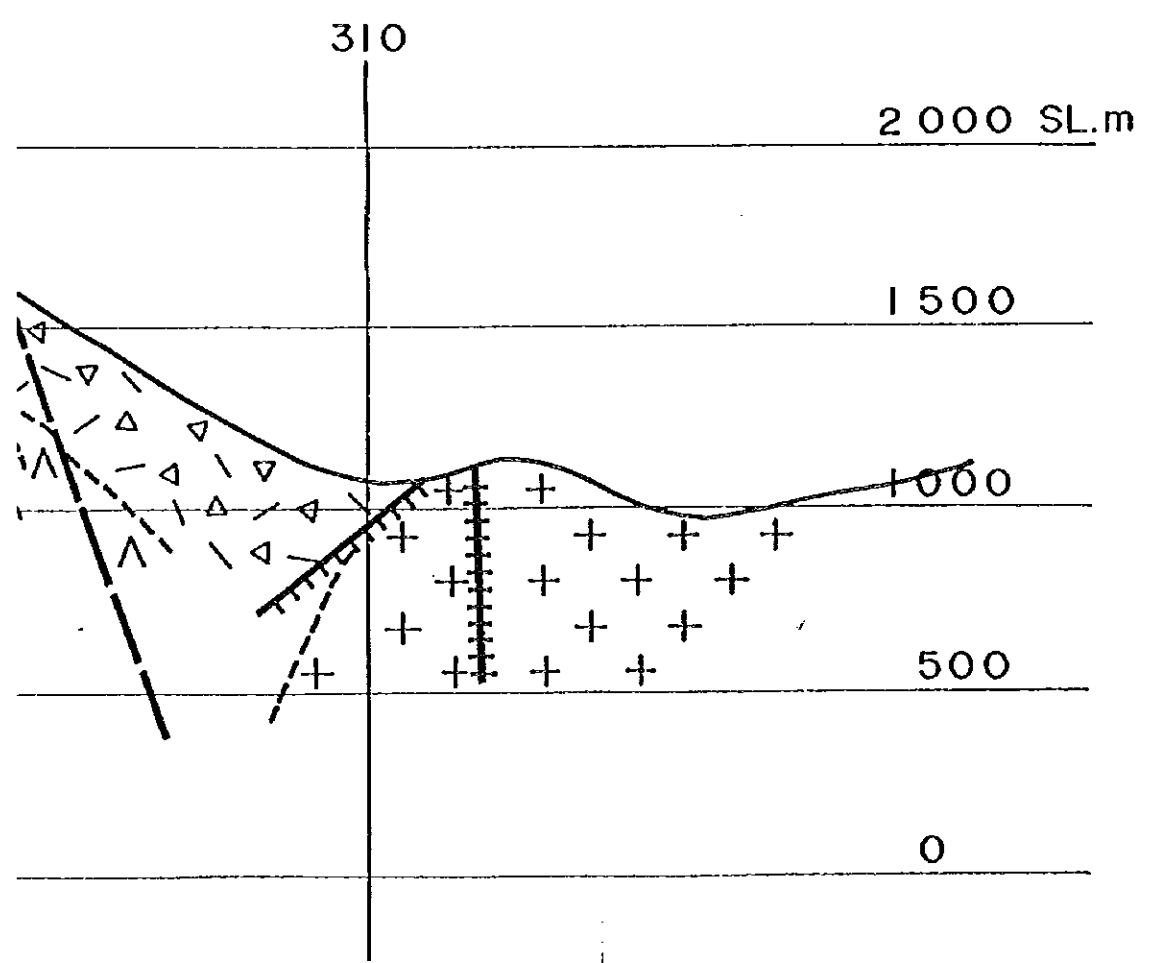
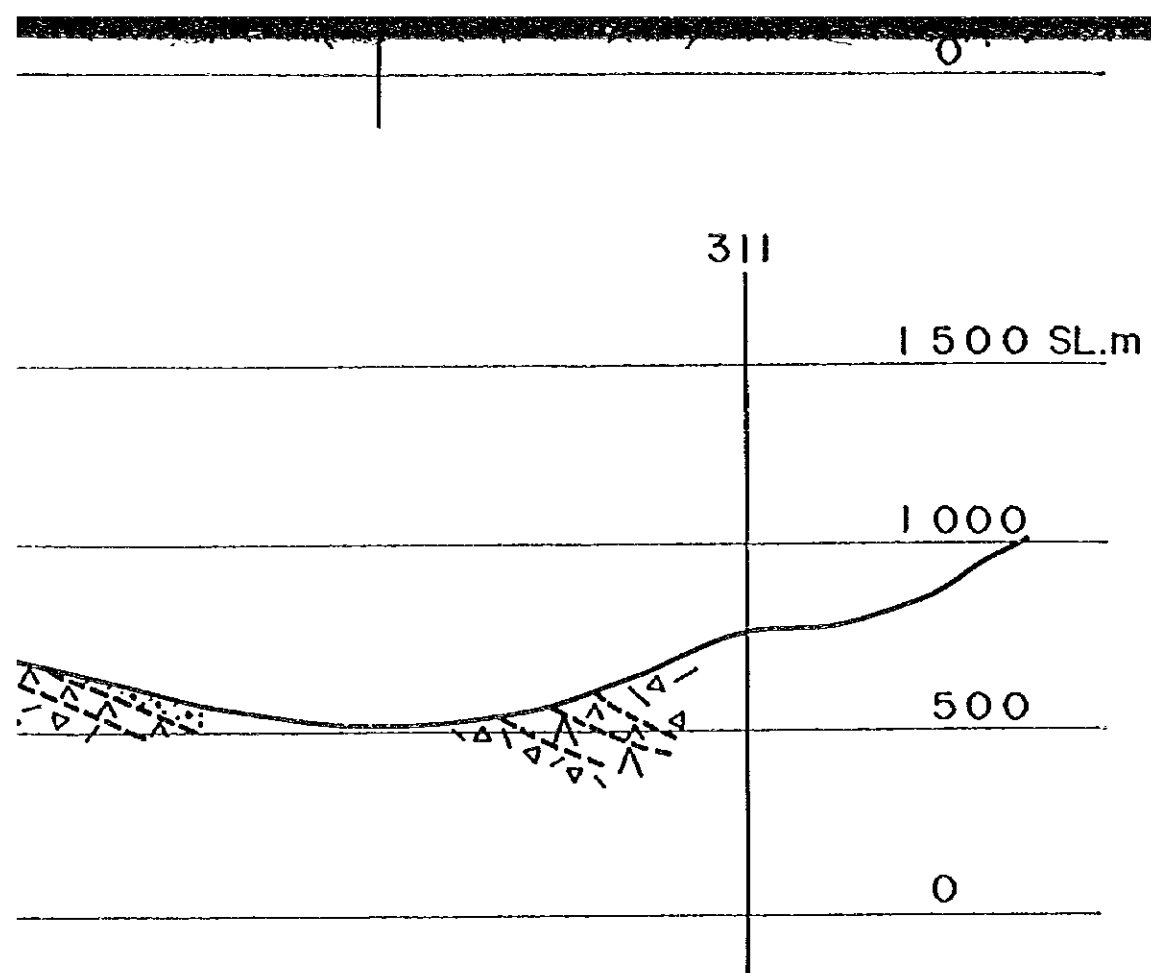
C — C'

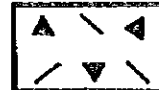
304

308


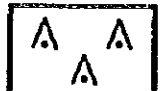


310

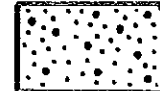
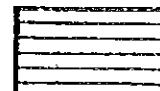




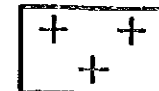
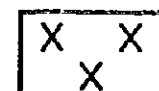



 Pyroclastic Rocks
 (Tf, Lp, Tf, TB)



Lo Prado Formation

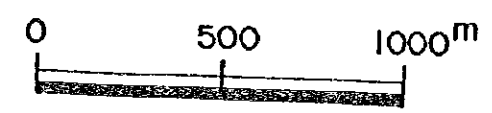
- 
 Andesite (lava)
- 
 Andesite (Ocoita)
- 
 Dacite (lava dome)
- 
 Pyroclastic Rocks
 (Tf, Lp, Tf, TB)

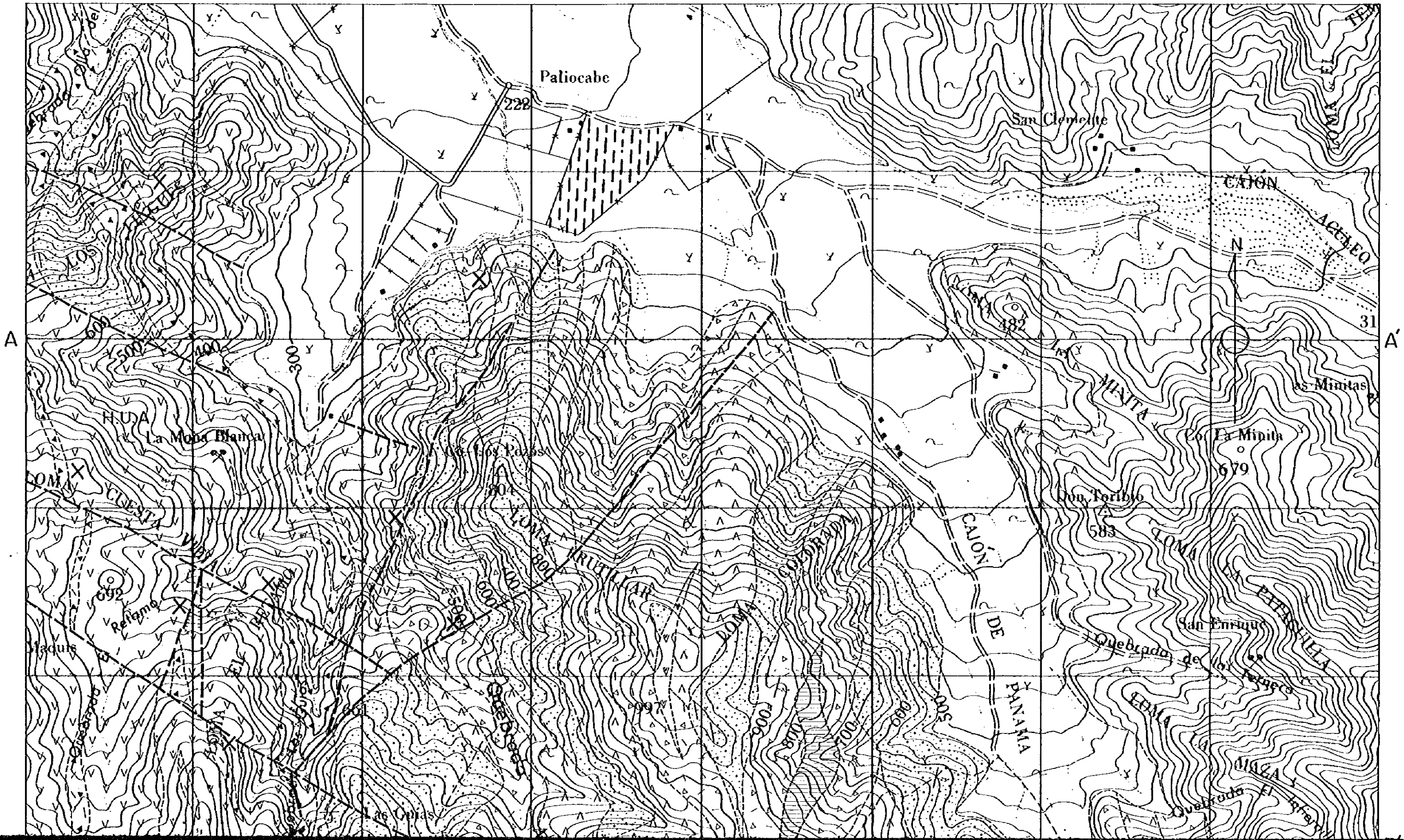
- 
 Sandstone
- 
 Shale

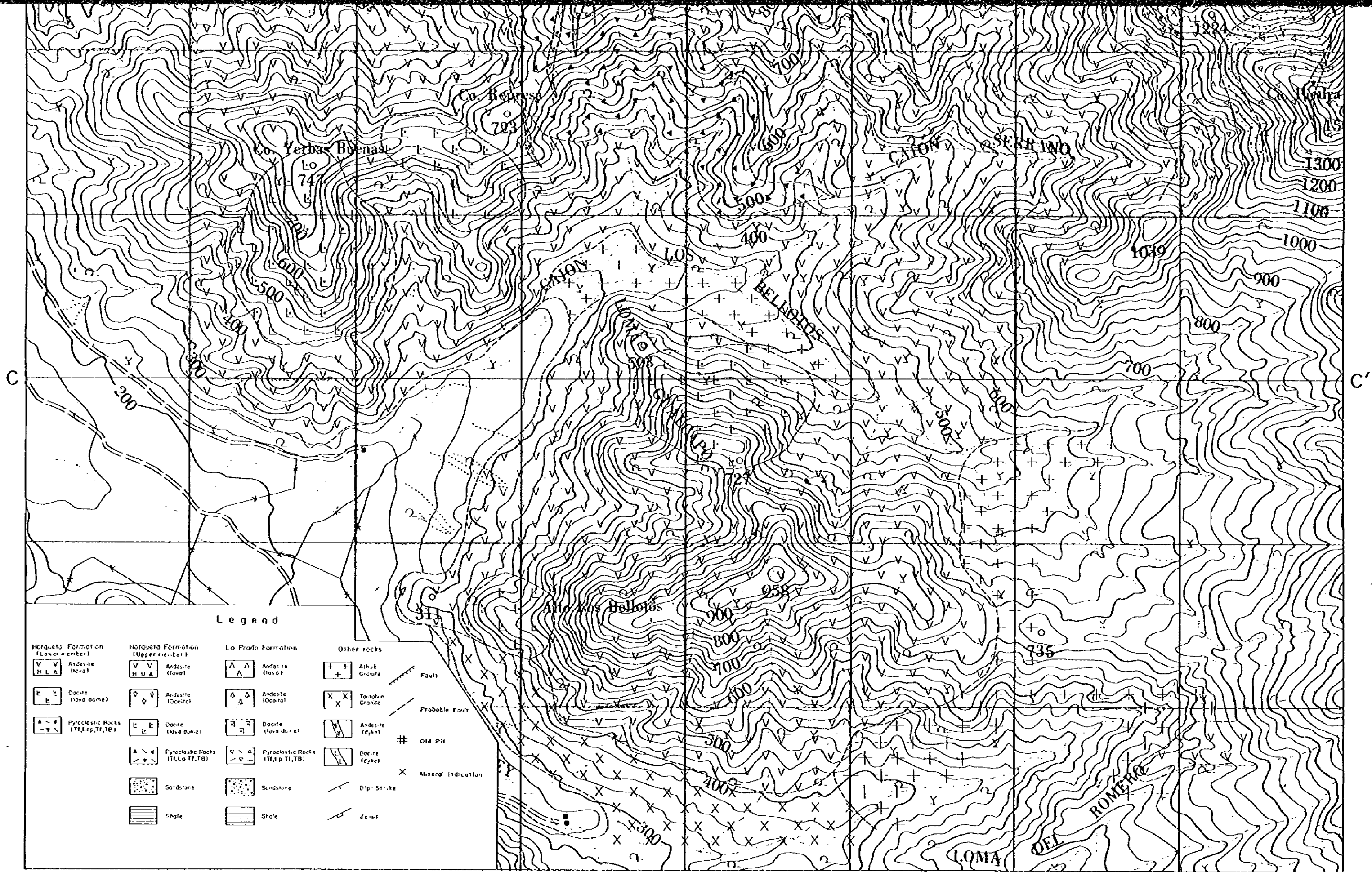
Other rocks

- 
 Alhué Granite
- 
 Tantahue Granite
- 
 Andesite (dyke)
- 
 Dacite (dyke)

- 
 Fault
- 
 Probable Fault

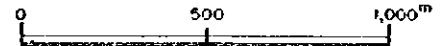


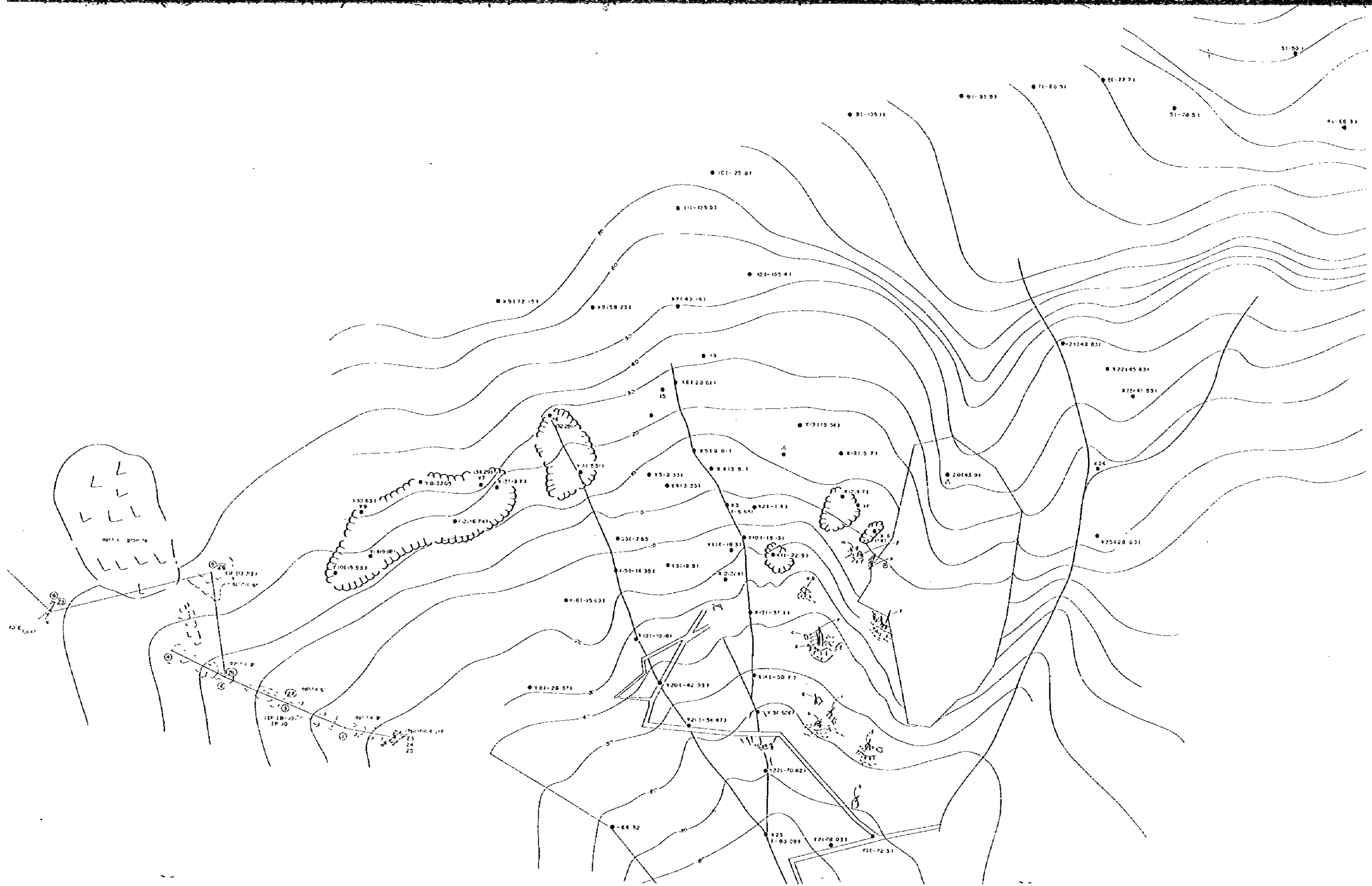




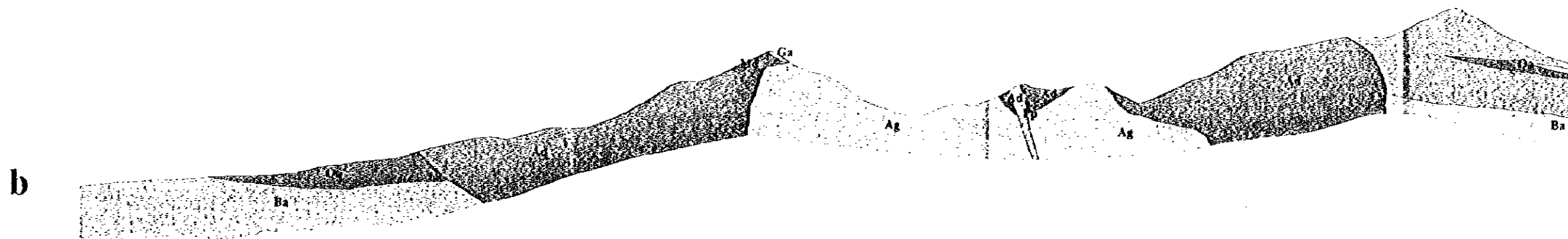
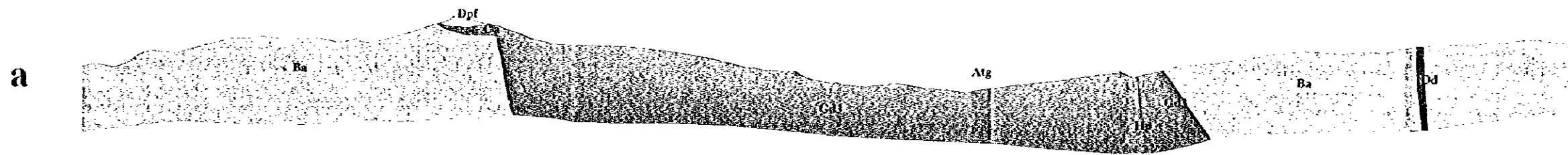
Legend

Horqueta Formation (Lower member)	Horqueta Formation (Upper member)	Lo Prado Formation	Other rocks
Andesite (flow)	Andesite (flow)	Andesite (flow)	Altiplano Granite
Dacite (lava dome)	Andesite (flow)	Andesite (flow)	Toralpa Granite
Pyroclastic Rocks (TI, Lp, Tl, TB)	Dacite (lava dome)	Dacite (lava dome)	Andesite (dyke)
Pyroclastic Rocks (TI, Lp, Tl, TB)	Pyroclastic Rocks (TI, Lp, Tl, TB)	Pyroclastic Rocks (TI, Lp, Tl, TB)	Dacite (dyke)
Sandstone	Sandstone	Sandstone	Dip-Strike
Shale	Shale	Shale	Joint
			Fault
			Probable Fault
			Old Pit
			Mineral Indication

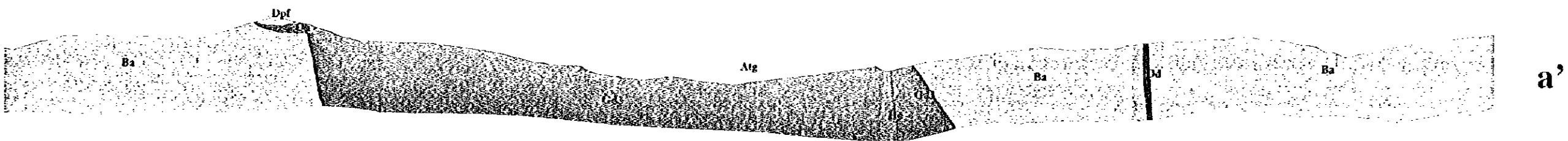




Cross Section of GUANACA



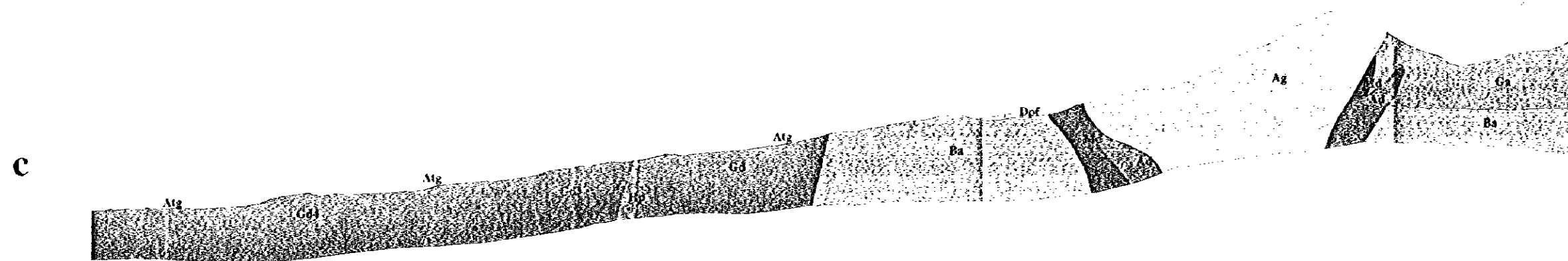
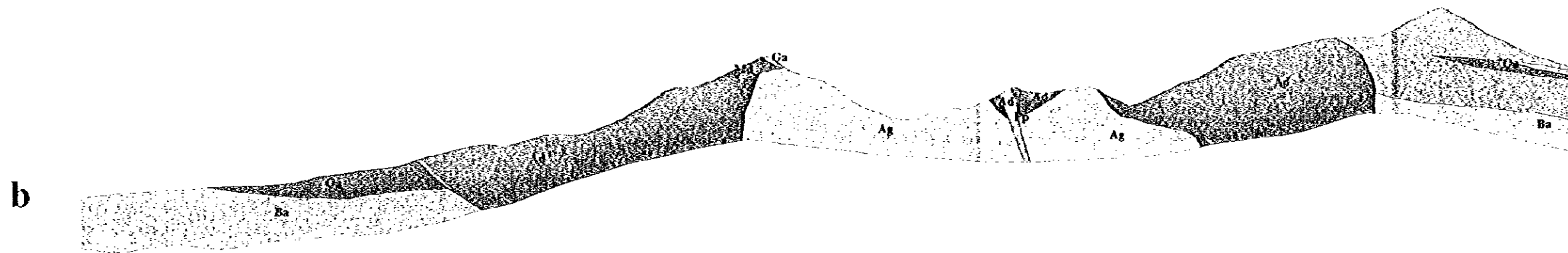
Cross Section of GUANACA



a'

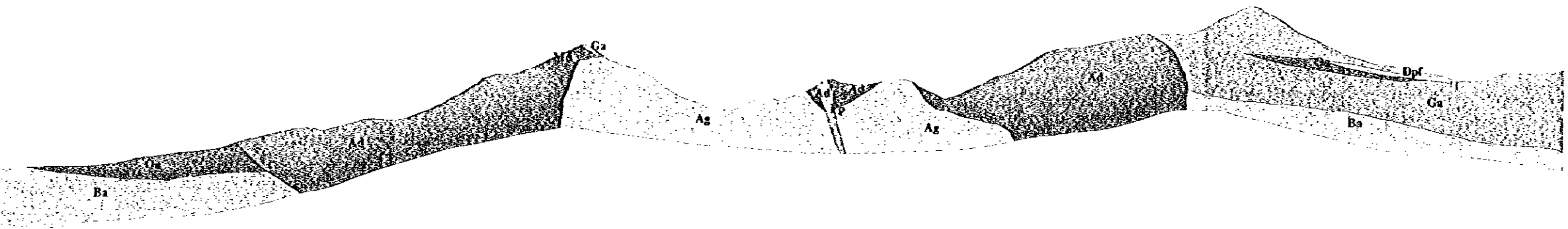


b'

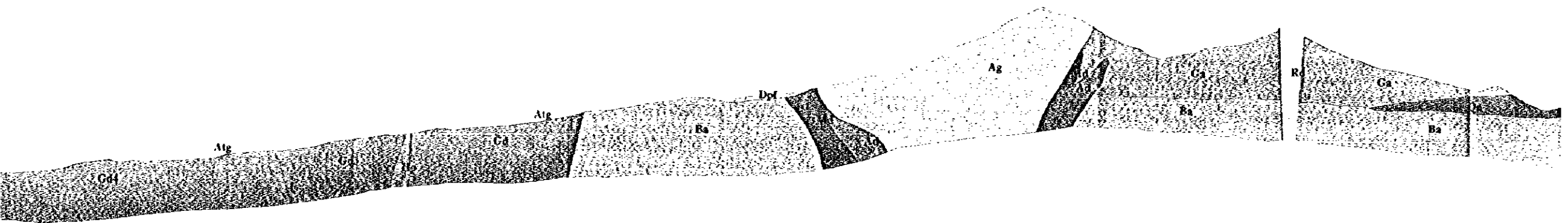


Scale 1:10000
 0 0.1 0.2 0.3 0.4 0.5 0.6 0.7 0.8 0.9 1.0
 0 100 200 300 400 500 600 700 800 900 1000
 Feet Meters

Sheet 3 Lithological map of the Guanaca area. section a-a', b-b', and c-c'.



b'



c'

Scale 1:10000
 0 0.2 0.4 0.6 0.8 1.0 km

Sheet 3 Lithological map of the Guanaca area. section a-a', b-b', and c-c'.