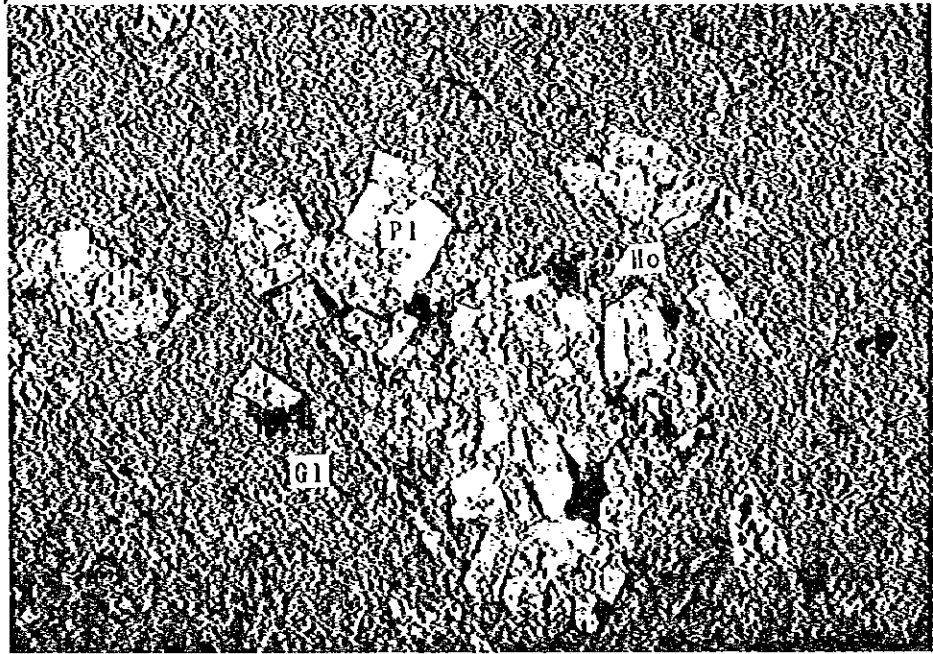
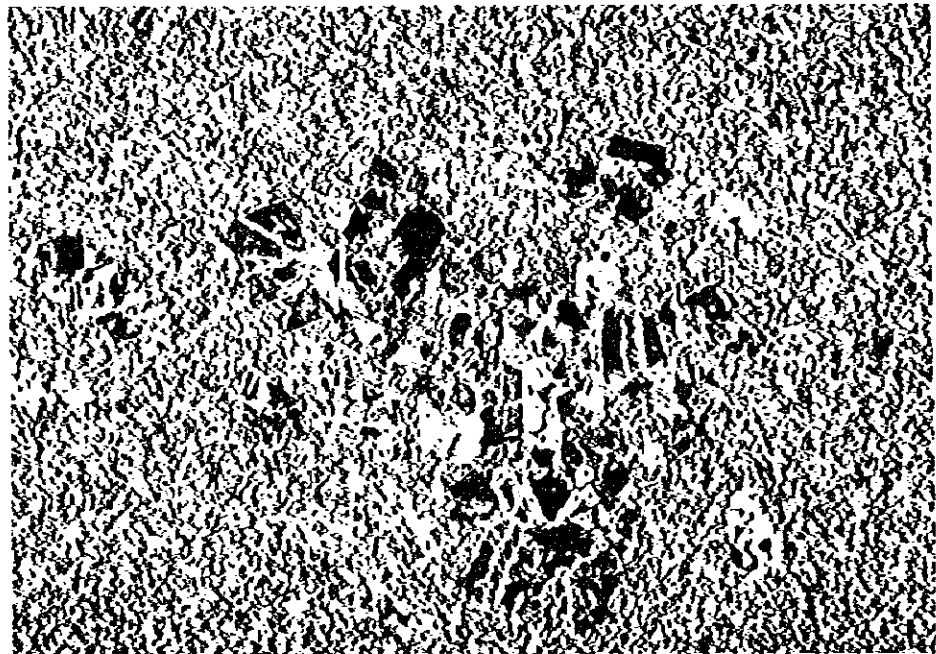


Appendix(2)
Photomicrograph





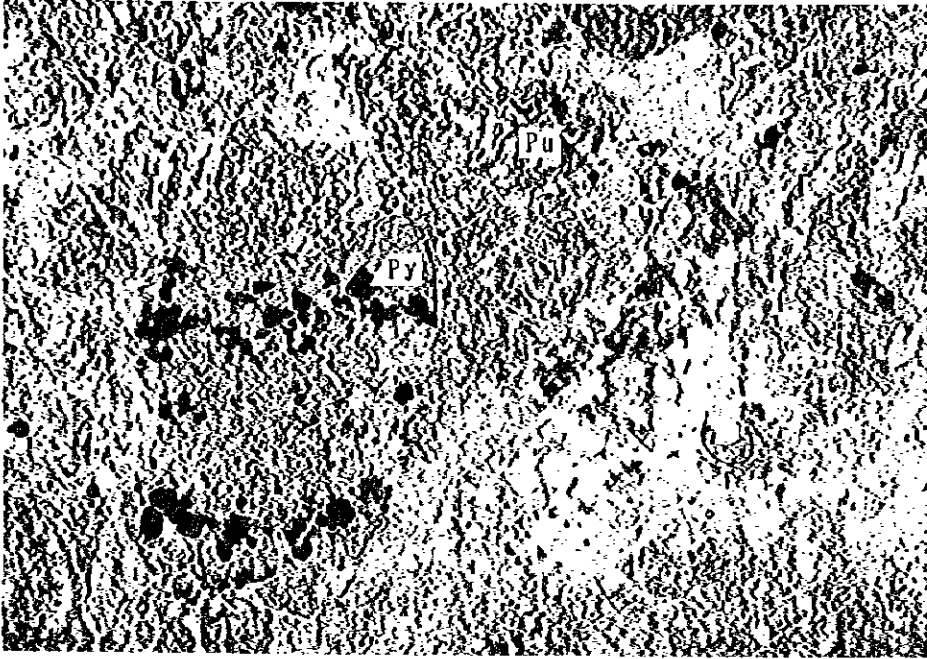
lower nicol



crossed nicols

0.2mm

Location: MJTE-6, 52.5m
Sample type: Hematite dacite (Dh)
Note : Pl=plagioclase, Ho=hornblende, Gl:glass



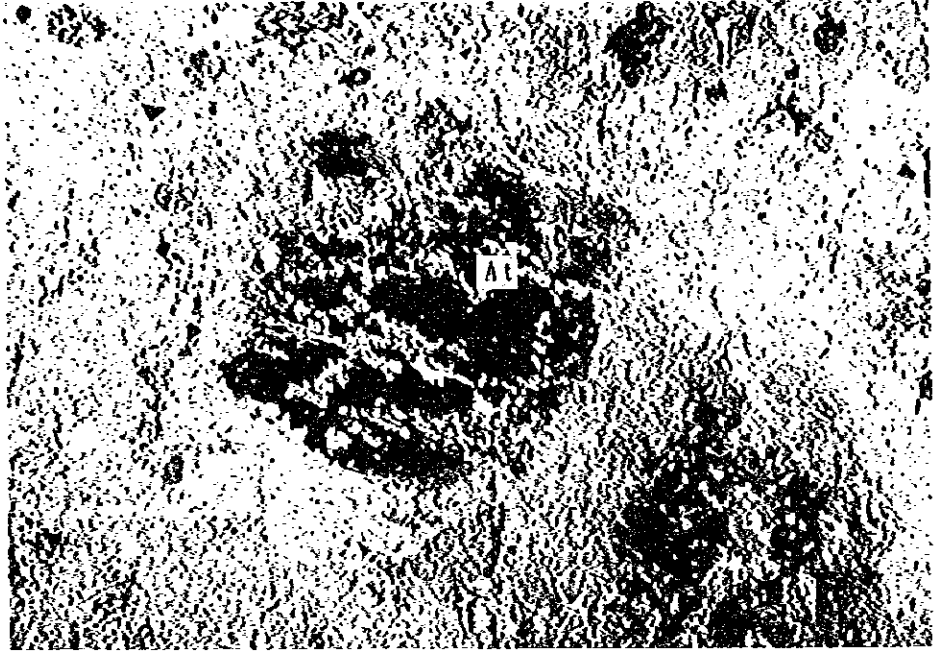
lower nicol



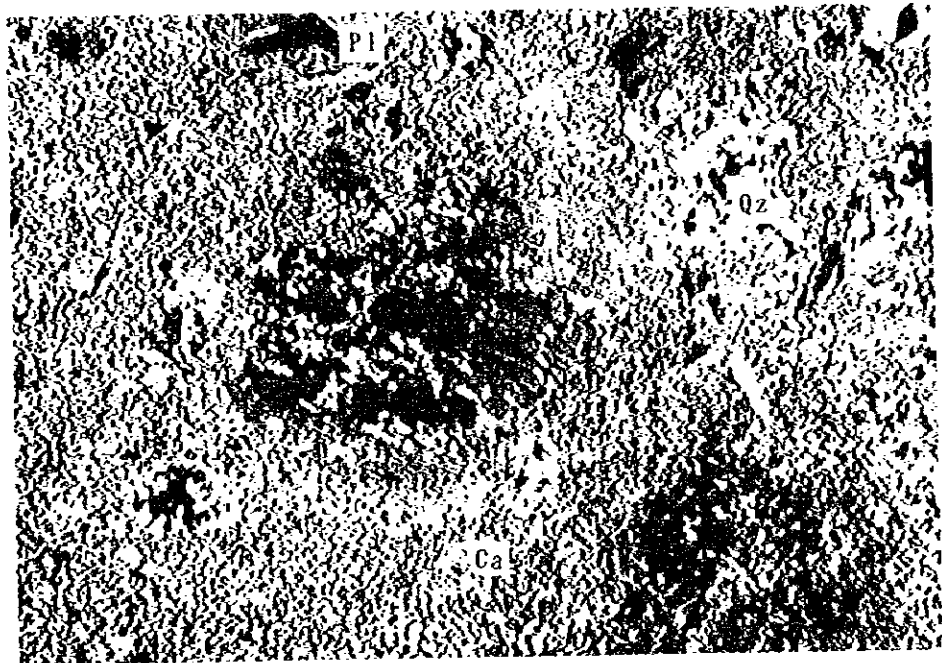
crossed nicols

0.2mm

Location: MJTE-3, 33.0m
Sample type: Dacite lapilli tuff(Clf)
Note : Pu=pumice, At=altered rock,
Qp=quartz porphyry, Py=pyrite



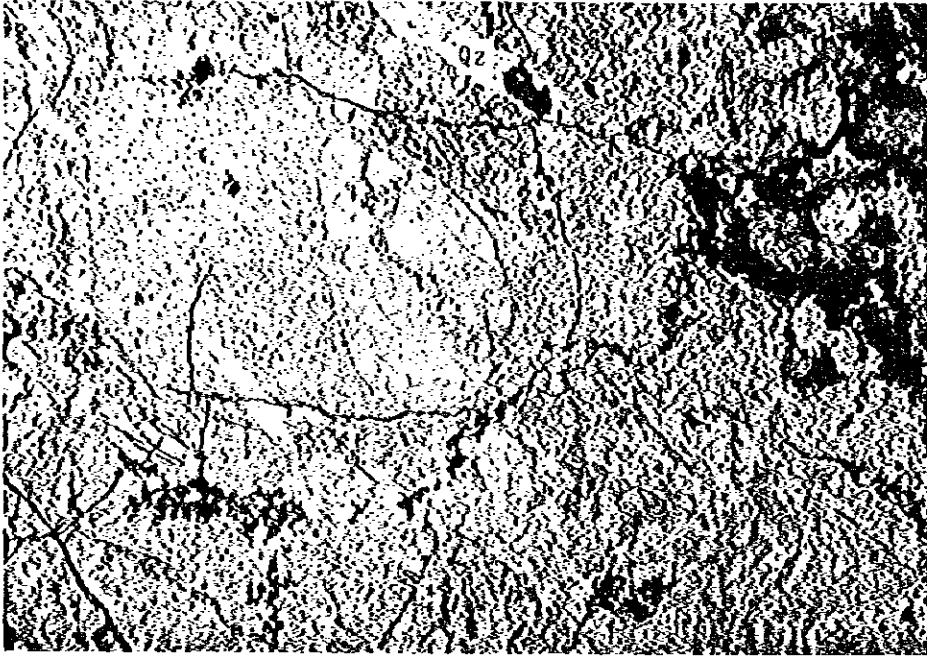
lower nicol



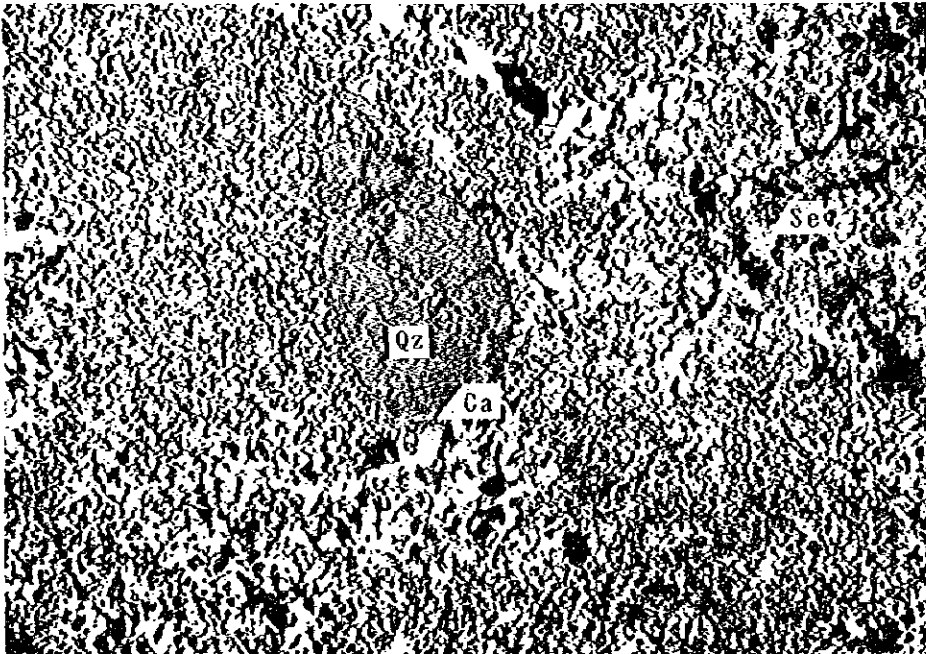
crossed nicols

0.2mm

Location: MJTE-6, 39.2m
Sample type: Dacite lapilli tuff(Kt2)
Note : Pl=plagioclase, Dc=dacite, Ca:calcite
Qz=quartz



lower nicol



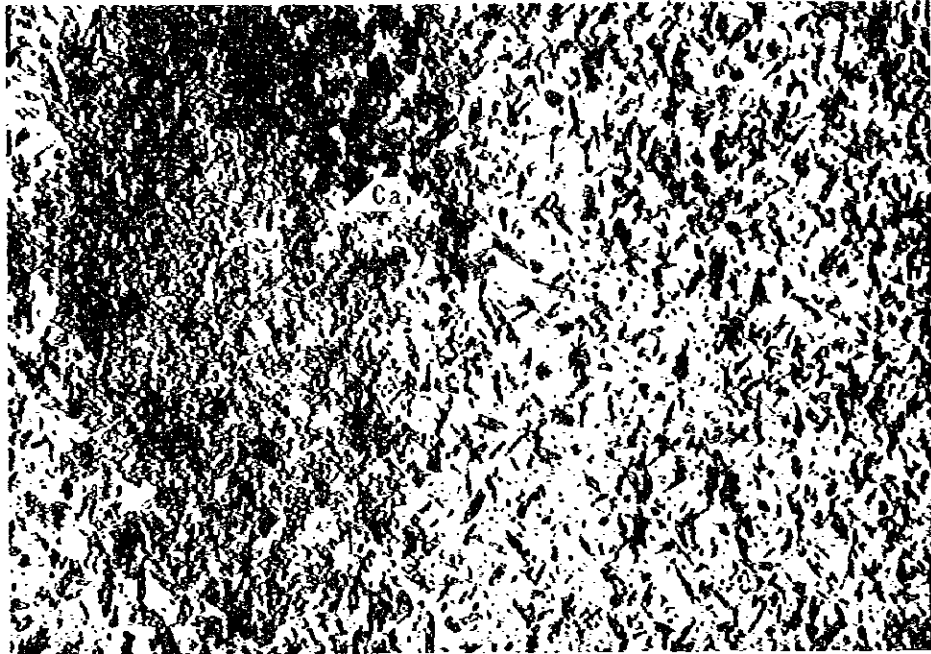
crossed nicols

0.2mm

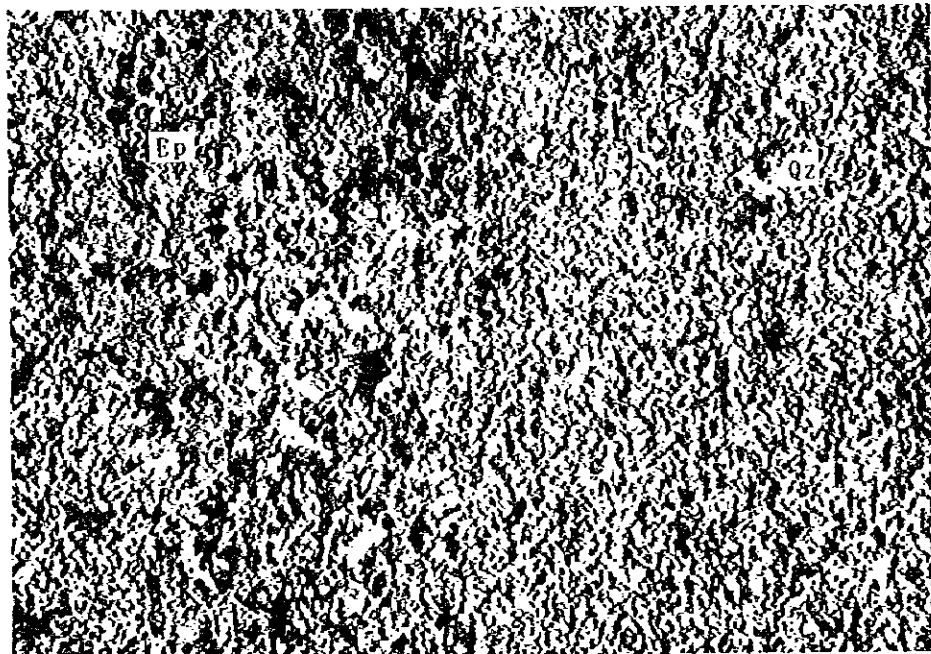
Location: MJTE-3, 145.5m

Sample type: Altered dacite (Kdc)

Note : Qz=quartz, Ca:calcite, Se=sericite



lower nicol



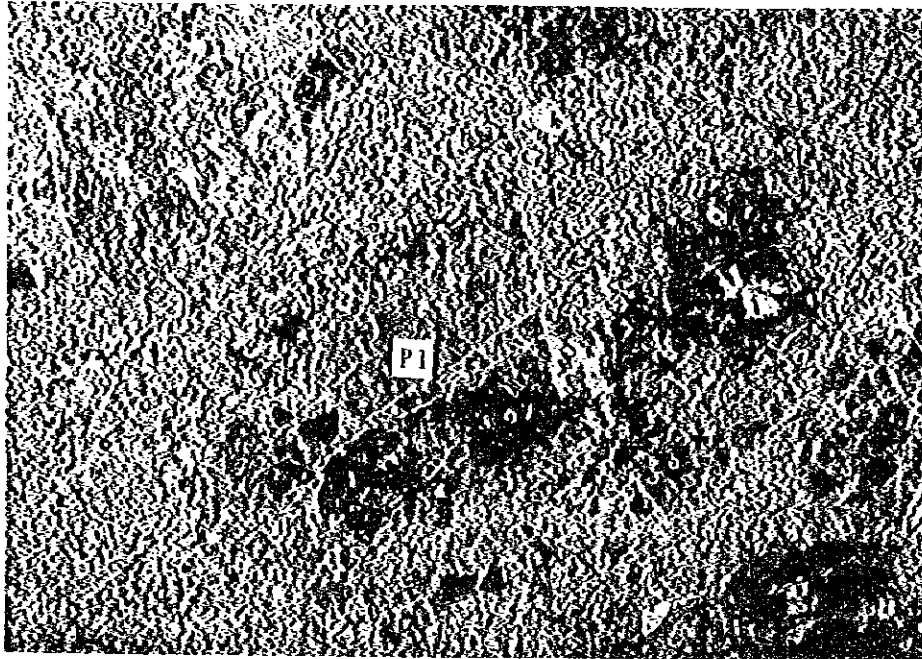
crossed nicols

0.2mm

Location: MJTE-2, 249.0m

Sample type: Altered rock (Cif)

Note : Ep=epidote, Qz=quartz, Ca:calcite,



lower nicol



crossed nicols

0.2mm

Location: MJTE-2, 258.5m

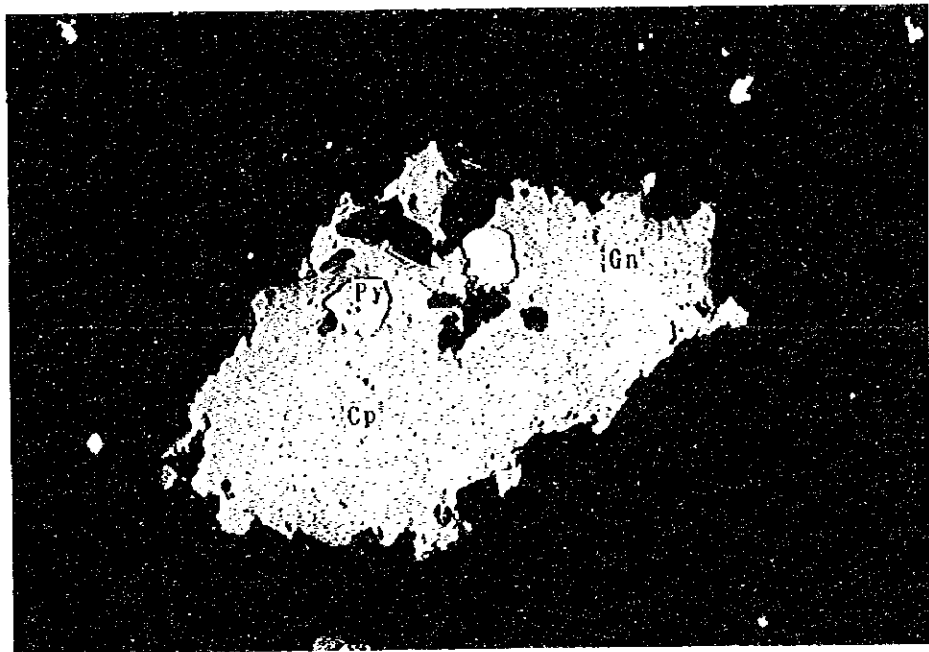
Sample type: Dacite (Dp)

Note : Pl=plagioclase, Qz=quartz, Ca:calcite.



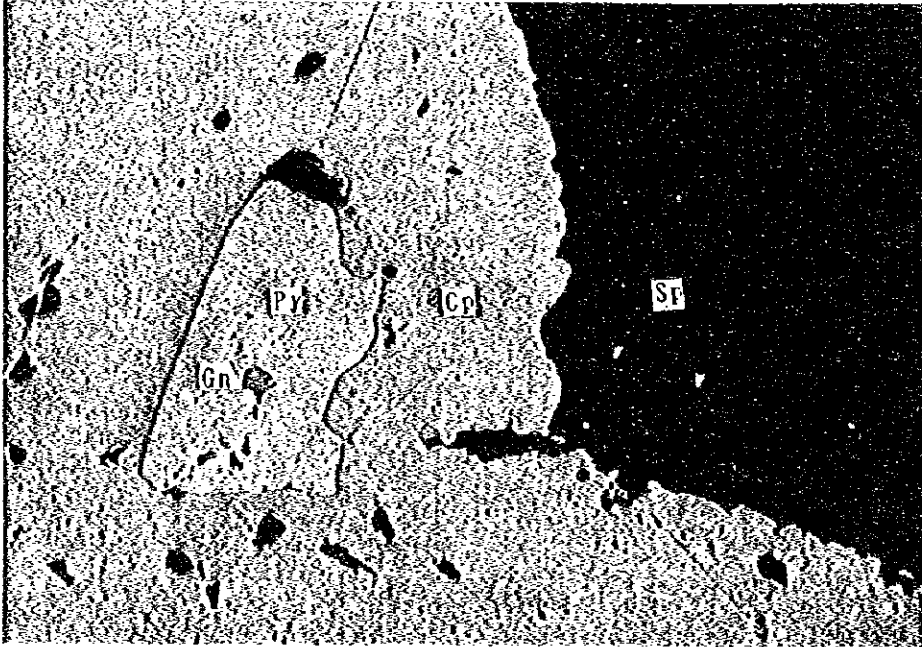
0.1mm

Location: MJTE-1, 234.5m
Sample type: Chalcopyrite disseminated ore
Note : Py=pyrite, Cp=chalcopyrite



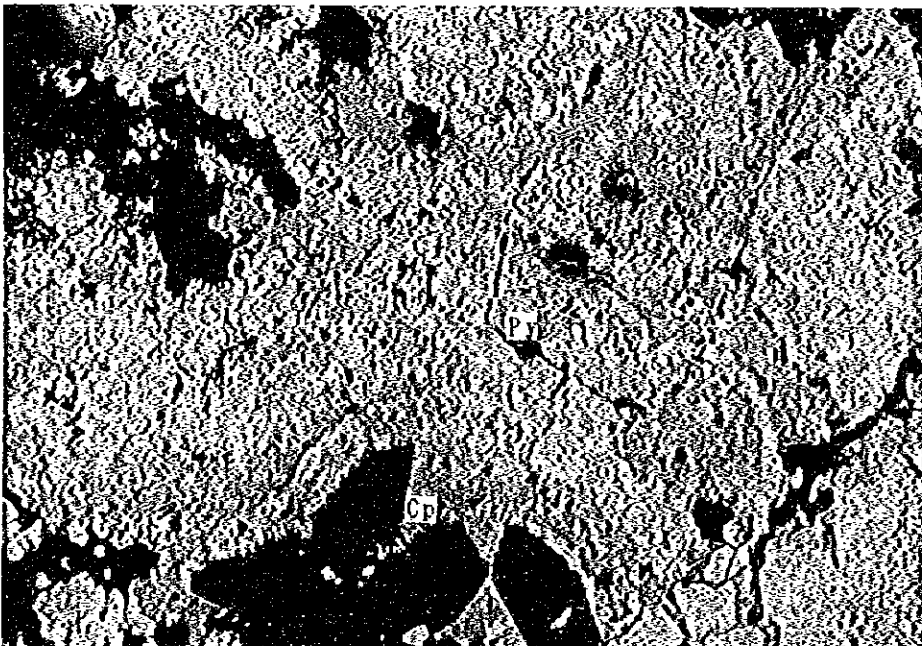
0.1mm

Location: MJTE-2, 207.0m
Sample type: Disseminated sulfide ore
Note : Py=pyrite, Cp=chalcopyrite, Gn=galena



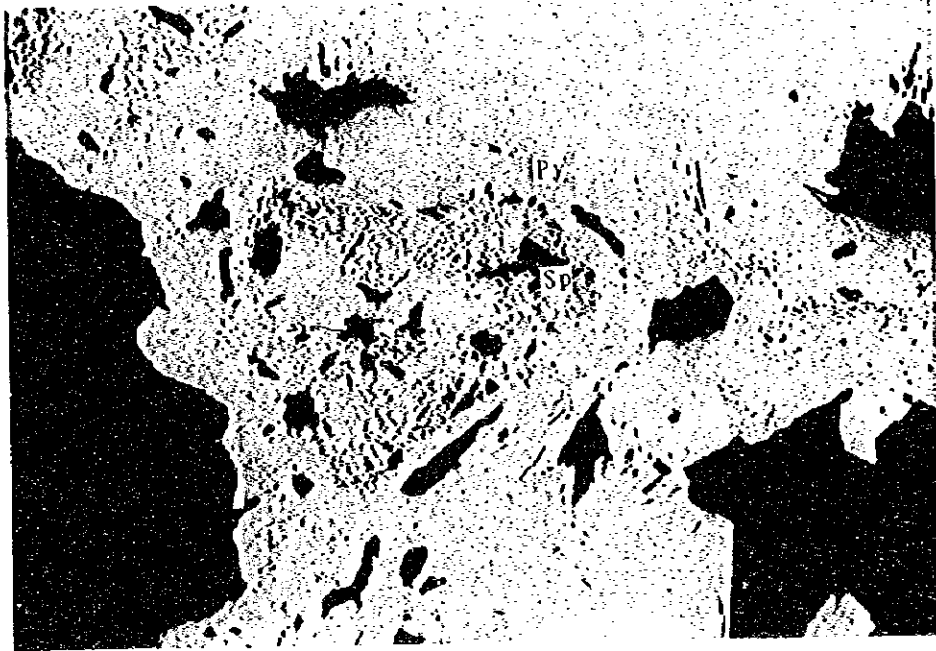
0.1mm

Location: MJTE-2, 240.7m
 Sample type: Sphalerite chalcopyrite vein
 Note : Py=pyrite, Cp=chalcopyrite, Gn=galena
 Sp=sphalerite



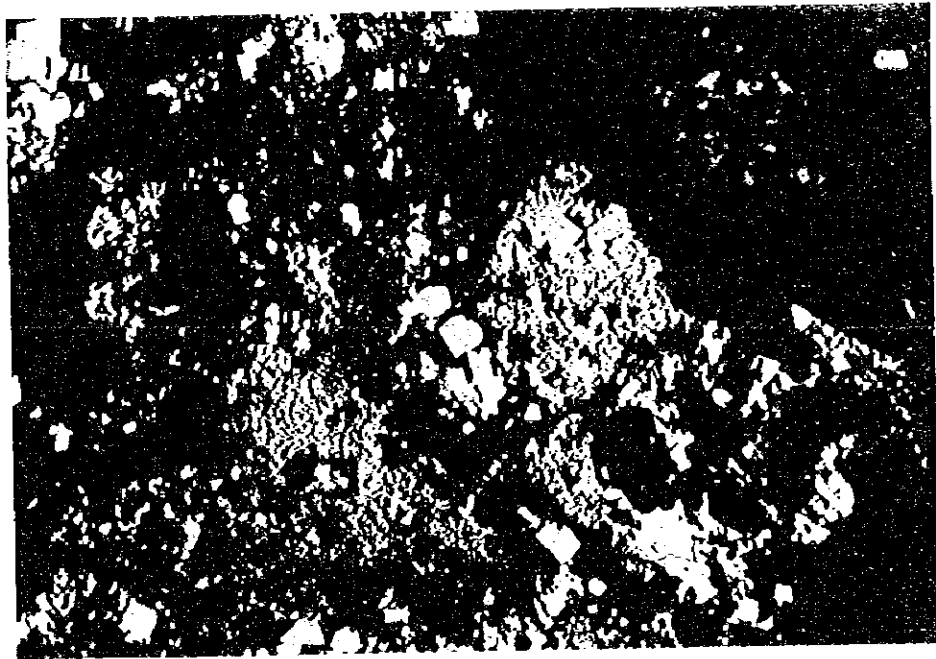
0.1mm

Location: MJTE-3, 109.3m
 Sample type: Yellow ore
 Note : Colloform texture of pyrite and chalcopyrite
 Py=pyrite, Cp=chalcopyrite



0.1mm

Location: MJTE-6, 127.0m
Sample type: Networked pyrite ore
Note : Colloform texture of pyrite
Py=pyrite, Sp=sphalerite



0.1mm

Location: MJTE-7, 162.0m
Sample type: Networked pyrite ore
Note : Framboidal texture of pyrite
Py=pyrite



JICA