

THE MINERAL EXPLORATION
IN THE TSAGAAN TSAKHIR UUL AREA
MONGOLIA
PHASE I

FIG. II-1-2

Geological profile of semi-detailed area

JAPAN INTERNATIONAL COOPERATION AGENCY
METAL MINING AGENCY OF JAPAN

FEBRUARY, 1997

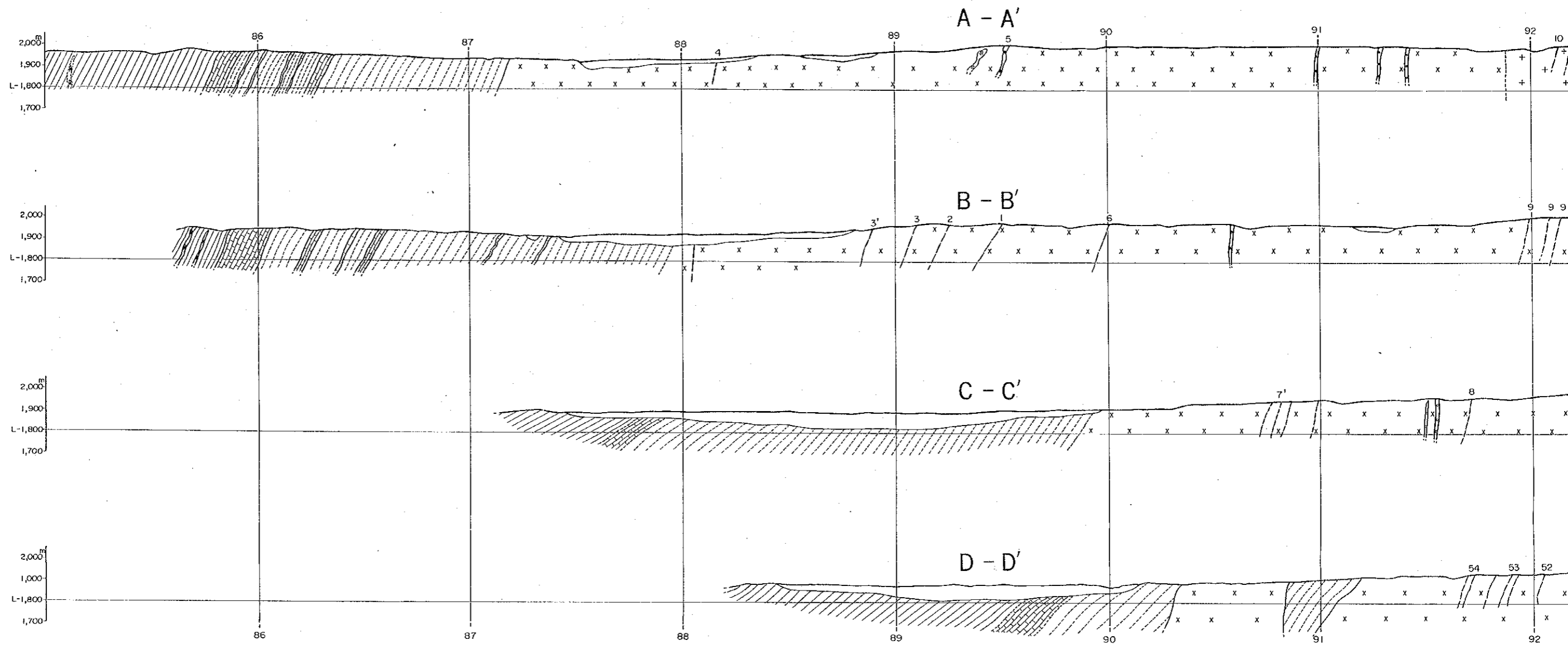
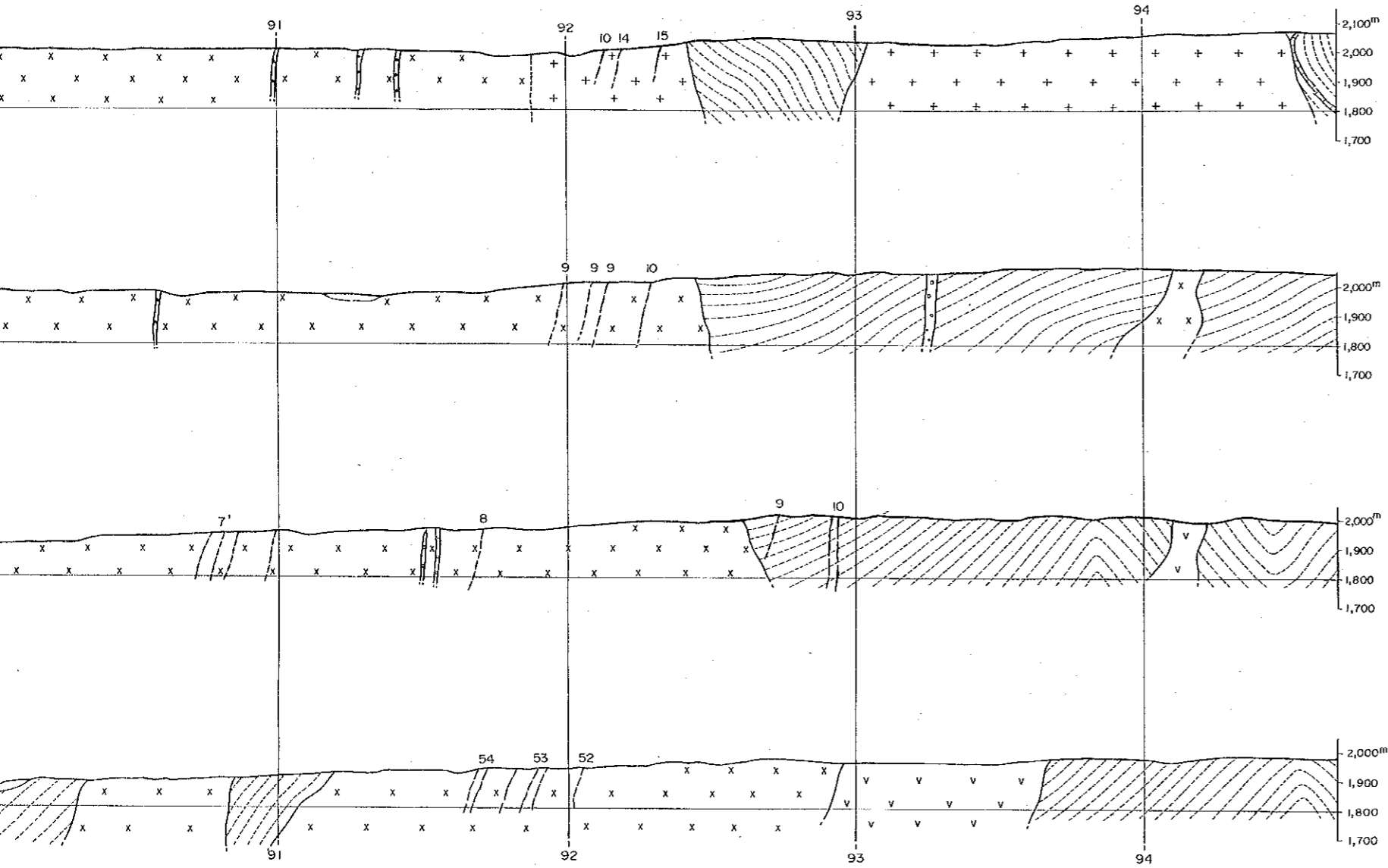
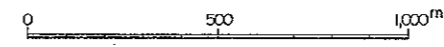


Fig. II -1-2 GEOLOGICAL PROFILE OF SEMI-DETAILED AREA



Legend

- Quaternary
- Lamprophyre dyke
- Quartz porphyry dyke
- Felsitic dyke
- Amphibolite dyke
- Diorite
- Two mica grano diorite
- Biotite adamellite
- Pelitic gneiss
- Crystalline limestone
- Psammitic gneiss
- Milky white quartz vein
- Fault



<p>THE MINERAL EXPLORATION IN THE TSAGAAN TSAKHIR UUL AREA MONGOLIA</p> <p>PHASE I</p>
<p>FIG. H-1-2 Geological profile of semi-detailed area</p>
<p>JAPAN INTERNATIONAL COOPERATION AGENCY METAL MINING AGENCY OF JAPAN</p>
<p>FEBRUARY, 1997</p>

PROFILE OF SEMI-DETAILED AREA

THE MINERAL EXPLORATION
IN THE TSAGAAN TSAKHIR UUL AREA
MONGOLIA

PHASE I

FIG. II-1-4

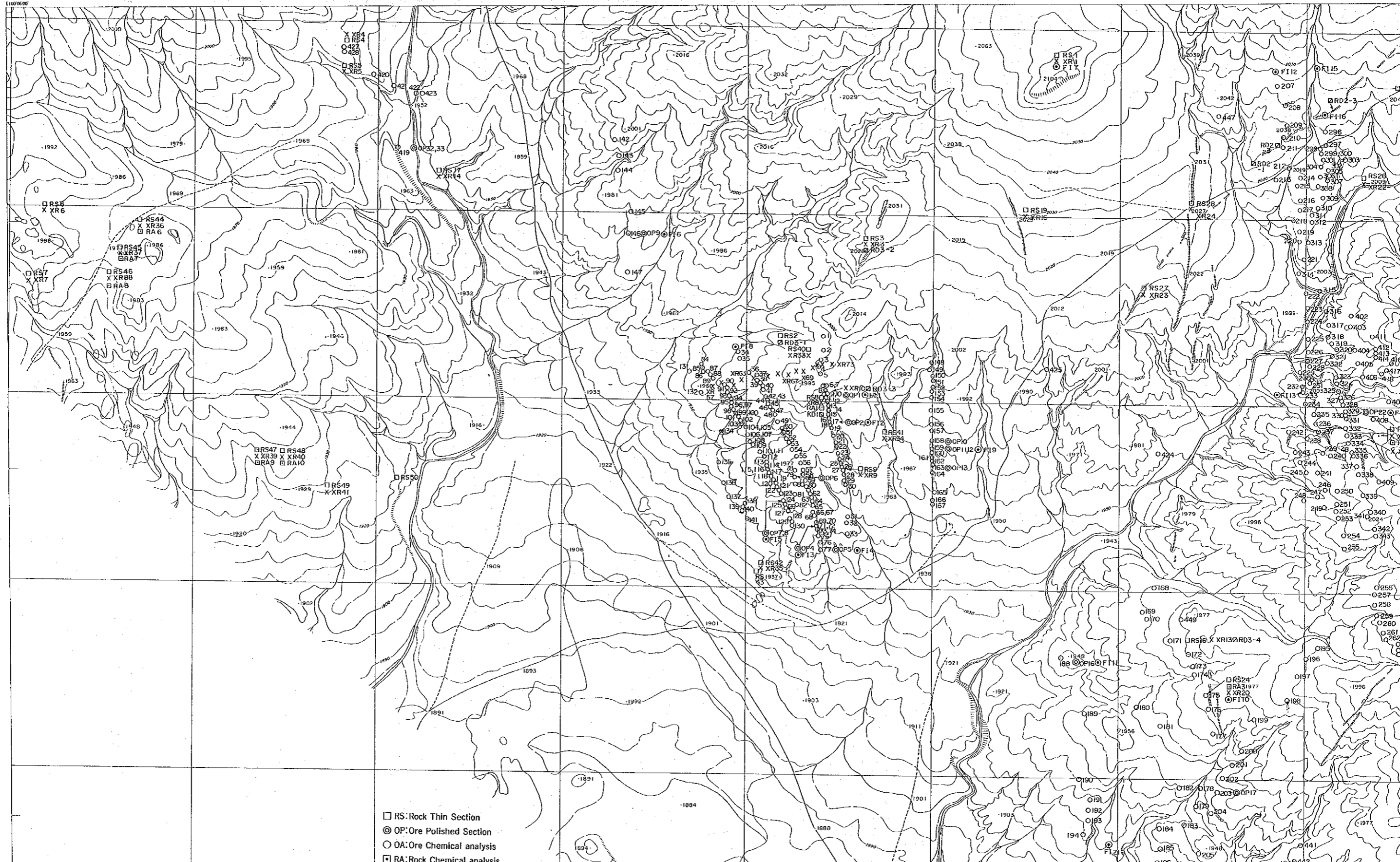
Location map of test samples

JAPAN INTERNATIONAL COOPERATION AGENCY

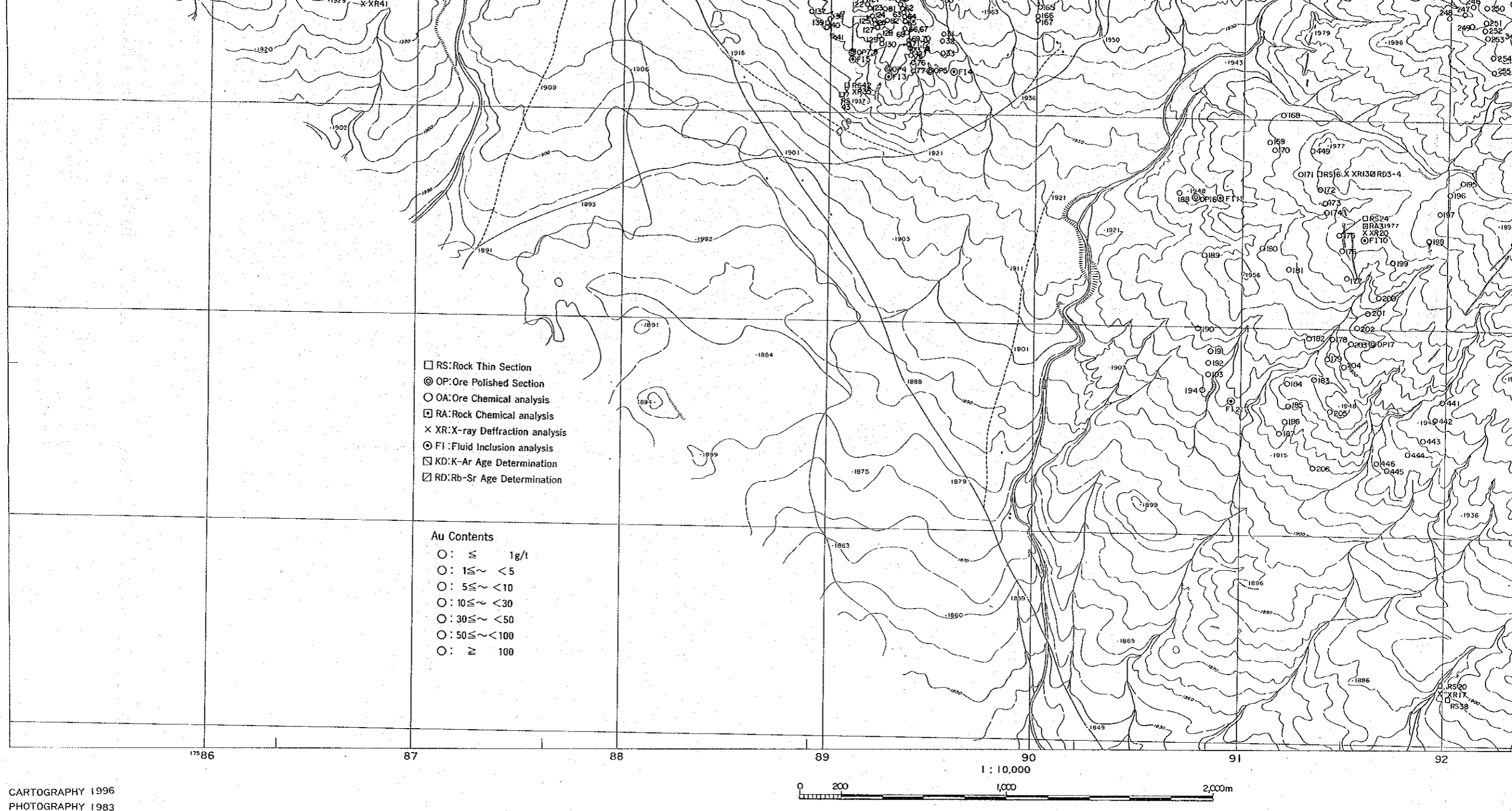
METAL MINING AGENCY OF JAPAN

FEBRUARY, 1997

1100600

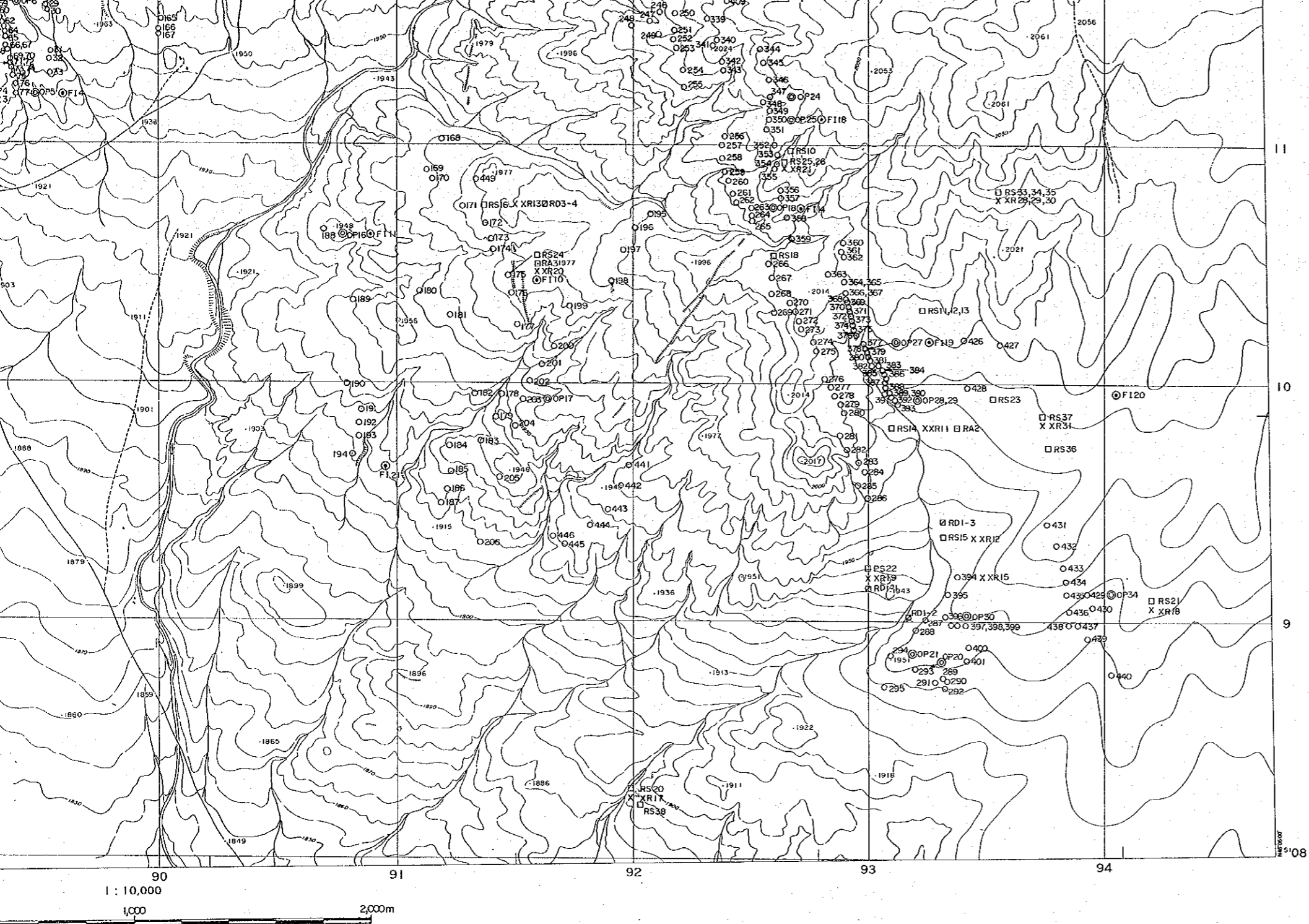


- RS: Rock Thin Section
- ⊙ OP: Ore Polished Section
- OA: Ore Chemical analysis
- ▣ RA: Rock Chemical analysis



CARTOGRAPHY 1996
 PHOTOGRAPHY 1983

Fig. II-1-4 LOCATION MAP OF TEST SAMPLES



MAP OF TEST SAMPLES

THE MINERAL EXPLORATION
IN THE TSAGAAN TSAKHIR UUL AREA
MONGOLIA

PHASE I

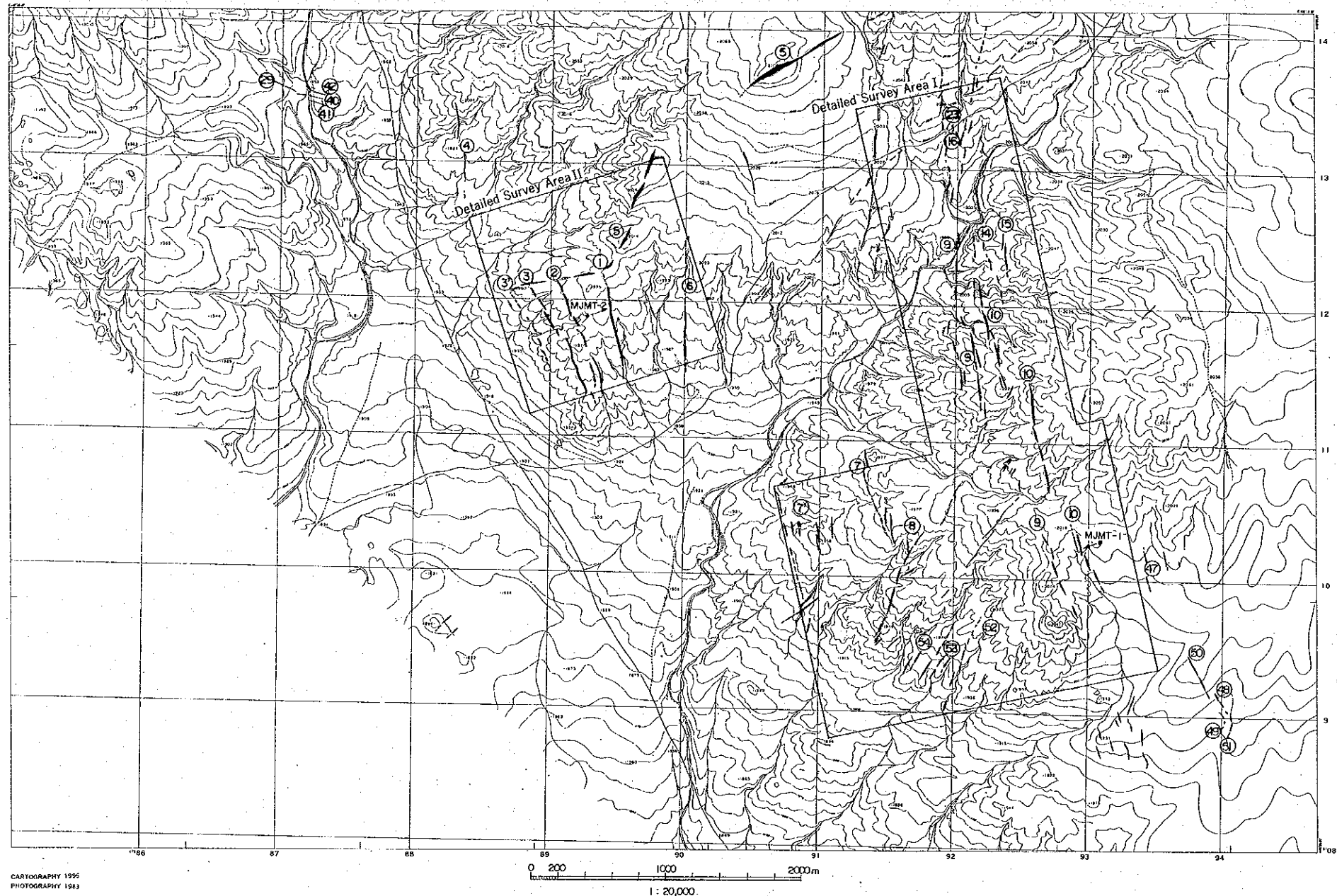
FIG. II-1-5

Location of quartz veins

JAPAN INTERNATIONAL COOPERATION AGENCY

METAL MINING AGENCY OF JAPAN

FEBRUARY, 1997



THE MINERAL EXPLORATION
 IN THE TSAGAAN TSAKHIR UUL AREA
 MONGOLIA

 PHASE I

 FIG. II-1-5
 Location of quartz veins

 JAPAN INTERNATIONAL COOPERATION AGENCY
 METAL MINING AGENCY OF JAPAN

 FEBRUARY, 1997

Fig. II-1-5. Location of Quartz Vein

CARTOGRAPHY 1996
PHOTOGRAPHY 1983

THE MINERAL EXPLORATION
IN THE TSAGAAN TSAKHIR UUL AREA
MONGOLIA

PHASE I

FIG. II-2-1

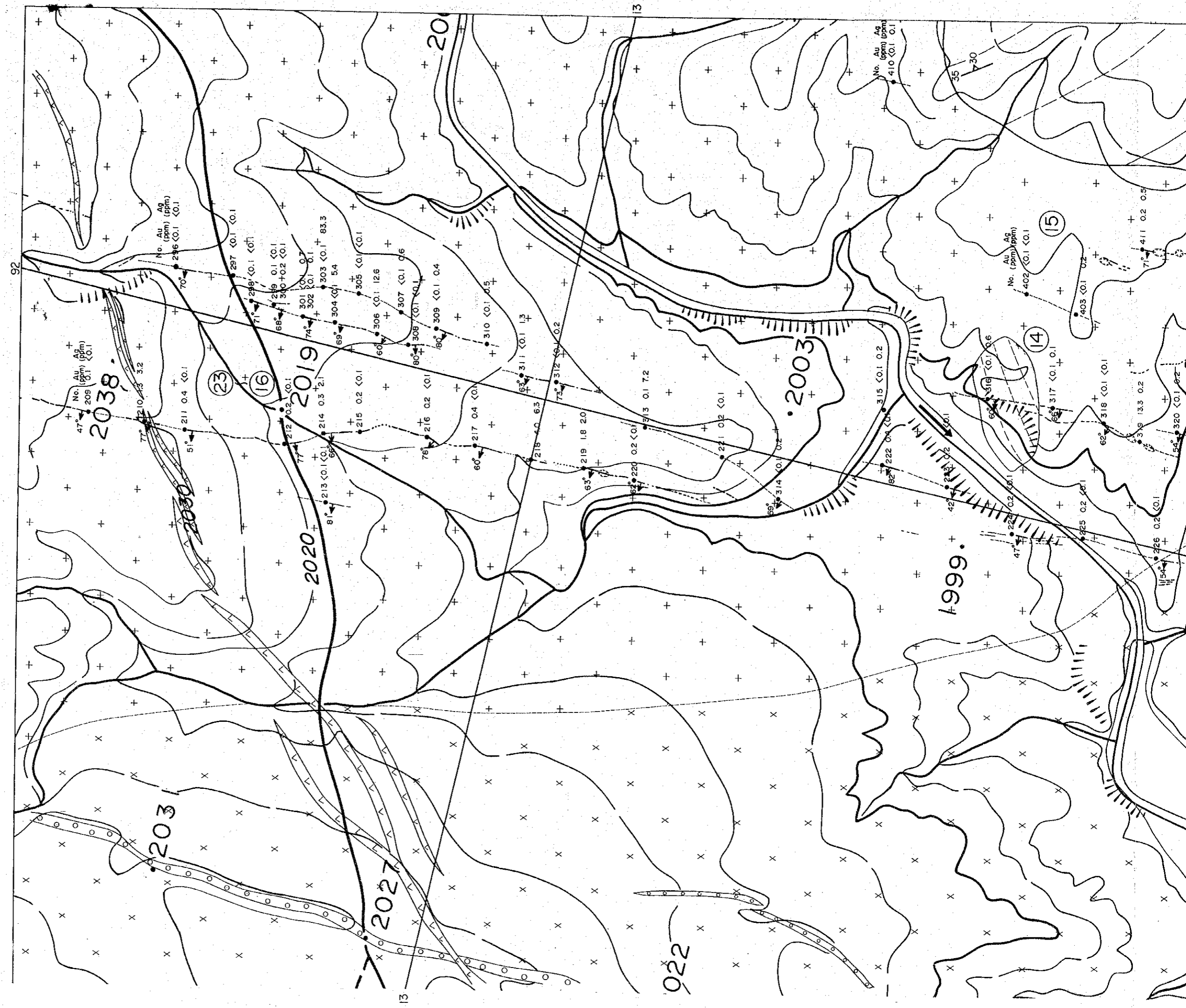
Map of Geological and quartz veins surveyed

(Area I) (1)

JAPAN INTERNATIONAL COOPERATION AGENCY
METAL MINING AGENCY OF JAPAN

FEBRUARY, 1997

THE MINERAL EXPLORATION IN THE TSGAAN TSAKHIR UUL AREA MONGOLIA	PHASE 1	FIG. II-2-1	Map of geological and quartz veins surveyed (Area 1) (I)	JAPAN INTERNATIONAL COOPERATION AGENCY METAL MINING AGENCY OF JAPAN	FEBRUARY, 1997
---	---------	-------------	---	--	----------------



THE MINERAL EXPLORATION
IN THE TSAGAAN TSAKHIR UUL AREA
MONGOLIA

PHASE I

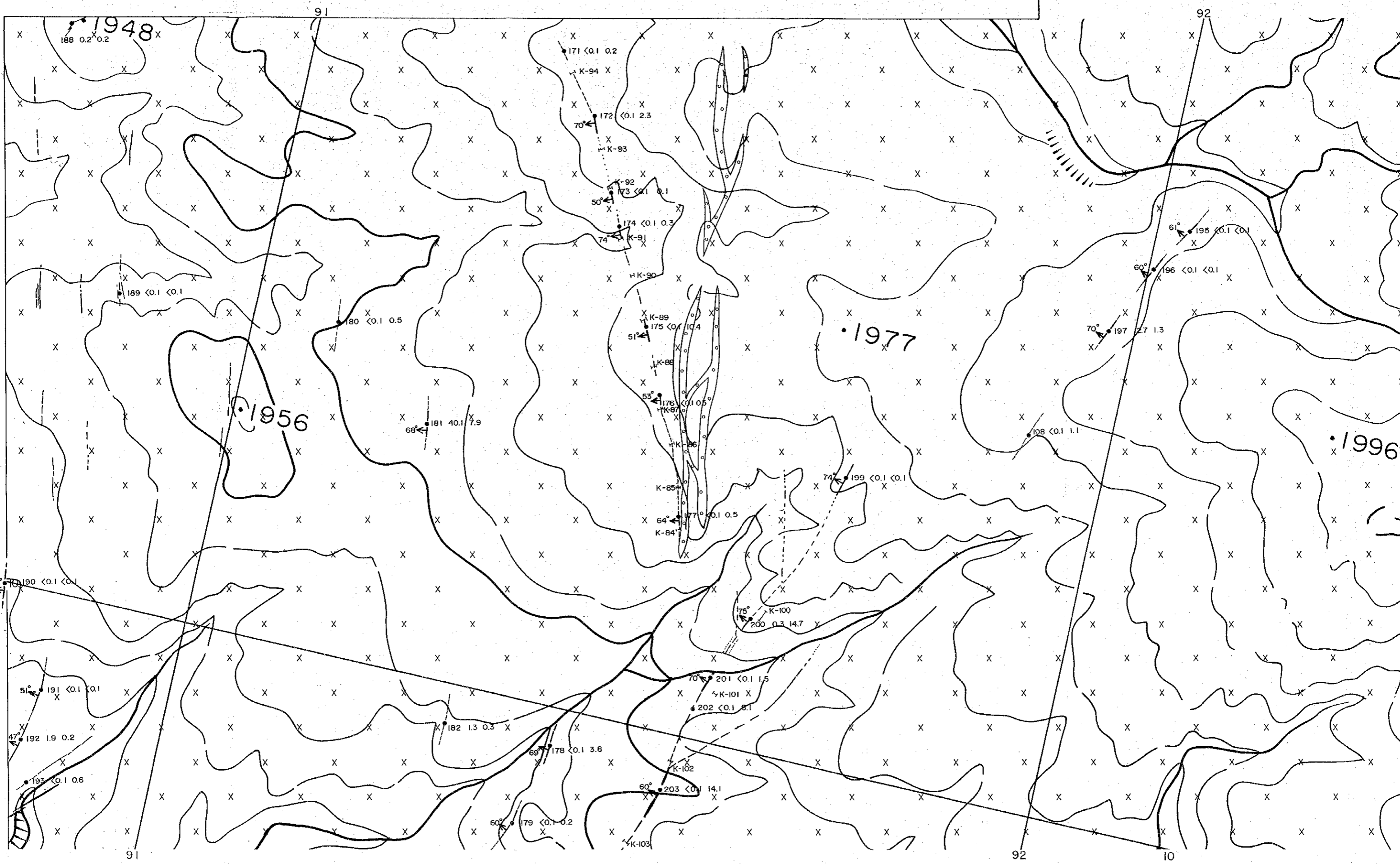
FIG. II-2-1

Map of Geological and quartz veins surveyed

(Area I) (2)

JAPAN INTERNATIONAL COOPERATION AGENCY
METAL MINING AGENCY OF JAPAN

FEBRUARY, 1997



THE MINERAL EXPLORATION
IN THE TSAGAN TSAKHIR UUL AREA
MONGOLIA
PHASE I

FIG. II-2-1
Map of Geological and quartz veins surveyed
(Area I) (2)

JAPAN INTERNATIONAL COOPERATION AGENCY
METAL MINING AGENCY OF JAPAN

FEBRUARY, 1997

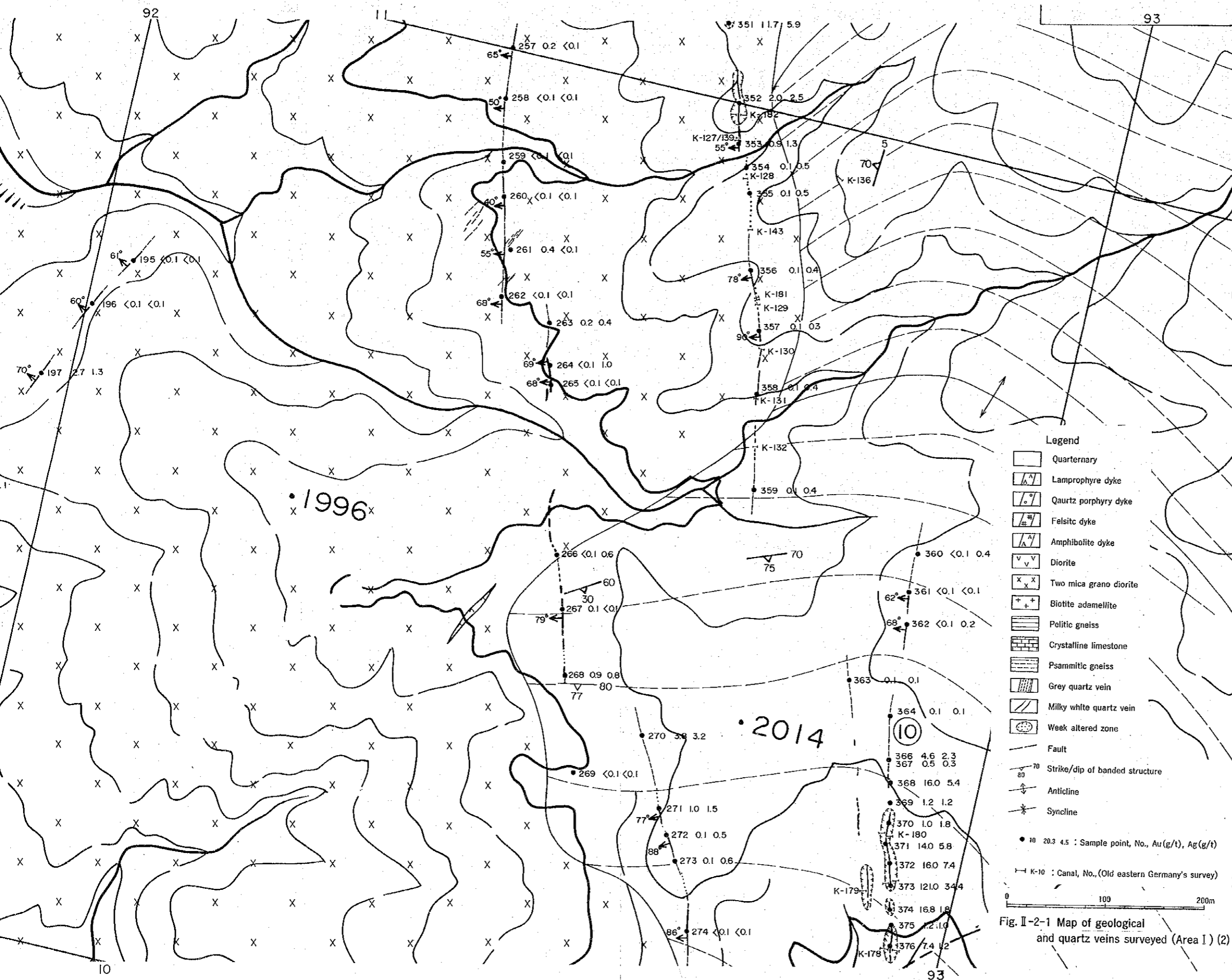


Fig. II-2-1 Map of geological and quartz veins surveyed (Area I) (2)

THE MINERAL EXPLORATION
IN THE TSAGAAN TSAKHIR UUL AREA
MONGOLIA

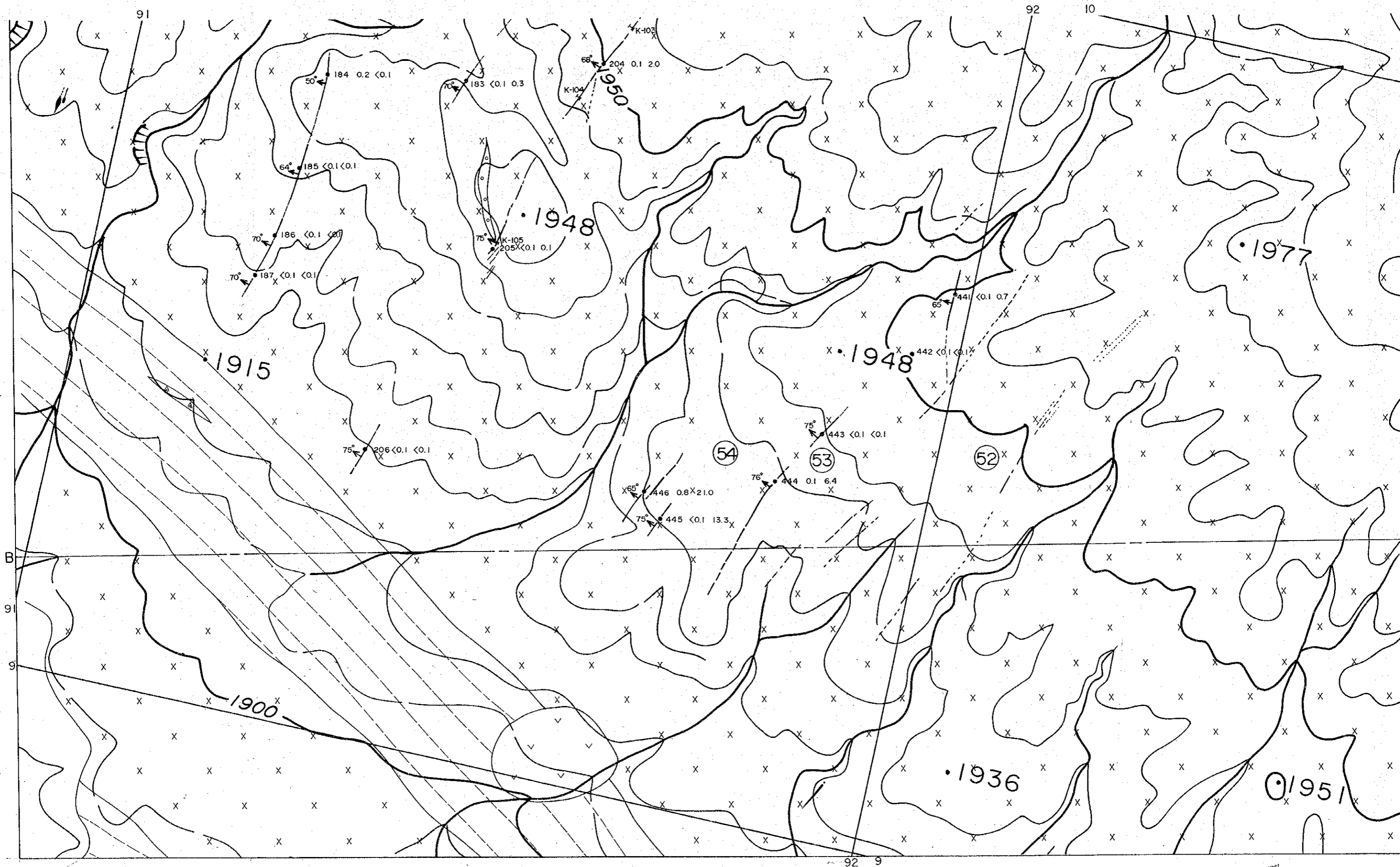
PHASE I

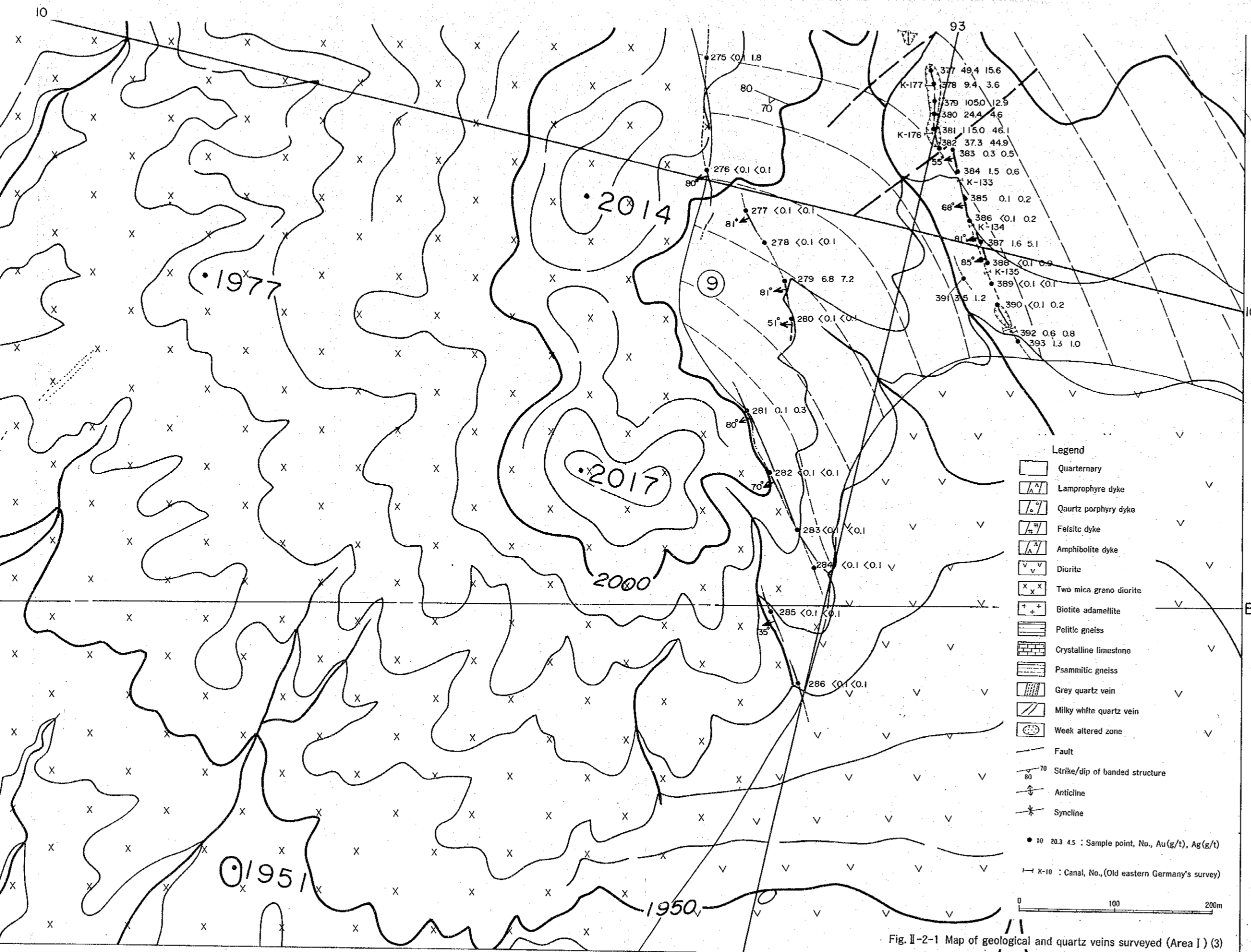
FIG. II-2-1

Map of Geological and quartz veins surveyed
(Area I) (3)

JAPAN INTERNATIONAL COOPERATION AGENCY
METAL MINING AGENCY OF JAPAN

FEBRUARY, 1997





THE MINERAL EXPLORATION
 IN THE TSAGAAN TSAKHIR UUL AREA
 MONGOLIA
 PHASE I

FIG. II-2-1
 Map of Geological and quartz veins surveyed
 (Area I) (3)

JAPAN INTERNATIONAL COOPERATION AGENCY
 METAL MINING AGENCY OF JAPAN

FEBRUARY, 1997

Fig. II-2-1 Map of geological and quartz veins surveyed (Area I) (3)

- Legend
- Quaternary
 - Lamprophyre dyke
 - Quartz porphyry dyke
 - Felsitic dyke
 - Amphibolite dyke
 - Diorite
 - Two mica grano diorite
 - Biotite adamellite
 - Pelitic gneiss
 - Crystalline limestone
 - Psammitic gneiss
 - Grey quartz vein
 - Milky white quartz vein
 - Weak altered zone
 - Fault
 - Strike/dip of banded structure
 - Anticline
 - Syncline
- 10 20.3 4.5 : Sample point, No., Au (g/t), Ag (g/t)
- K-10 : Canal, No., (Old eastern Germany's survey)
- 0 100 200m

THE MINERAL EXPLORATION
IN THE TSAGAAN TSAKHIR UUL AREA
MONGOLIA

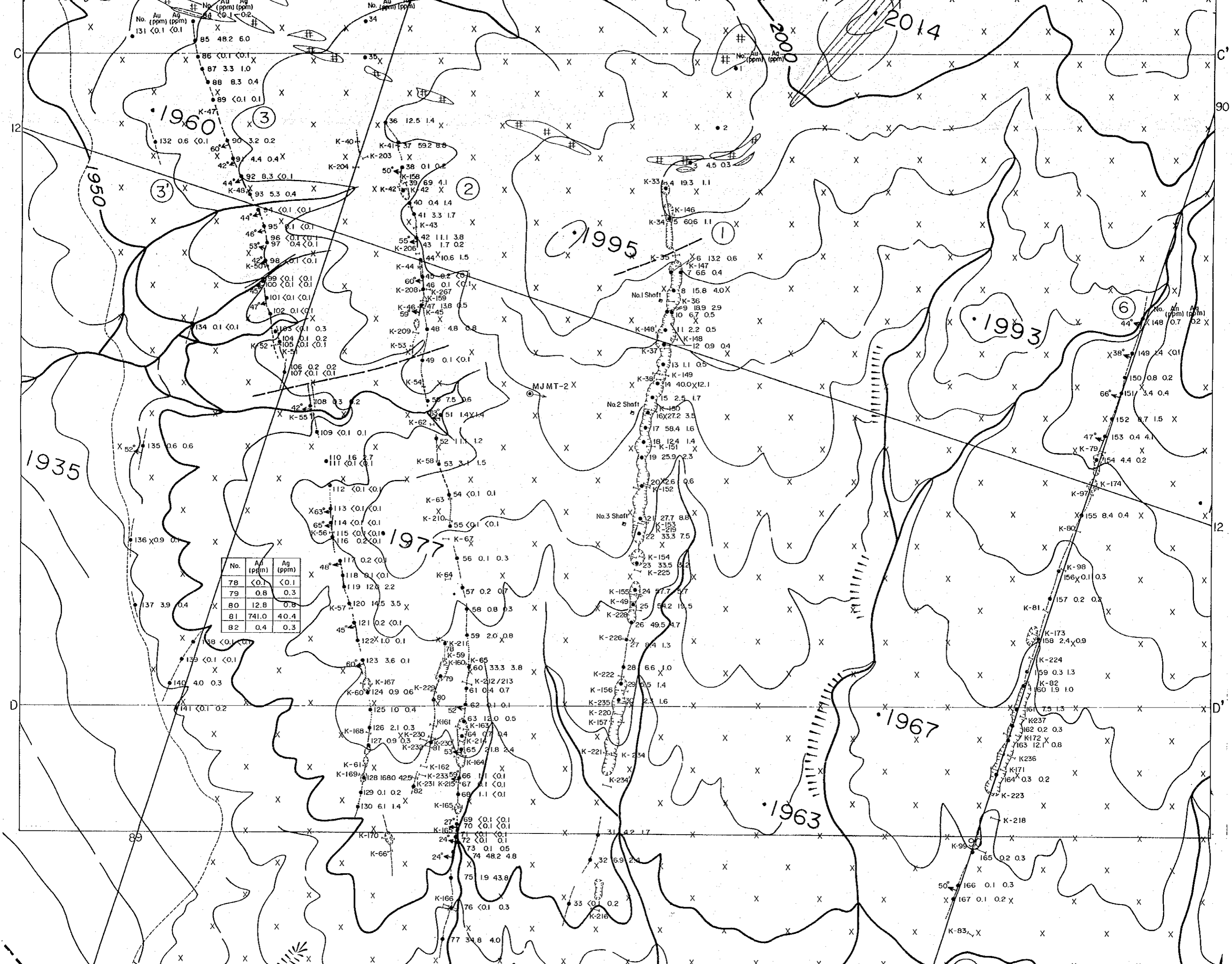
PHASE I

FIG. II-2-2

Map of Geological and quartz veins surveyed
(Area II)

JAPAN INTERNATIONAL COOPERATION AGENCY
METAL MINING AGENCY OF JAPAN

FEBRUARY, 1997



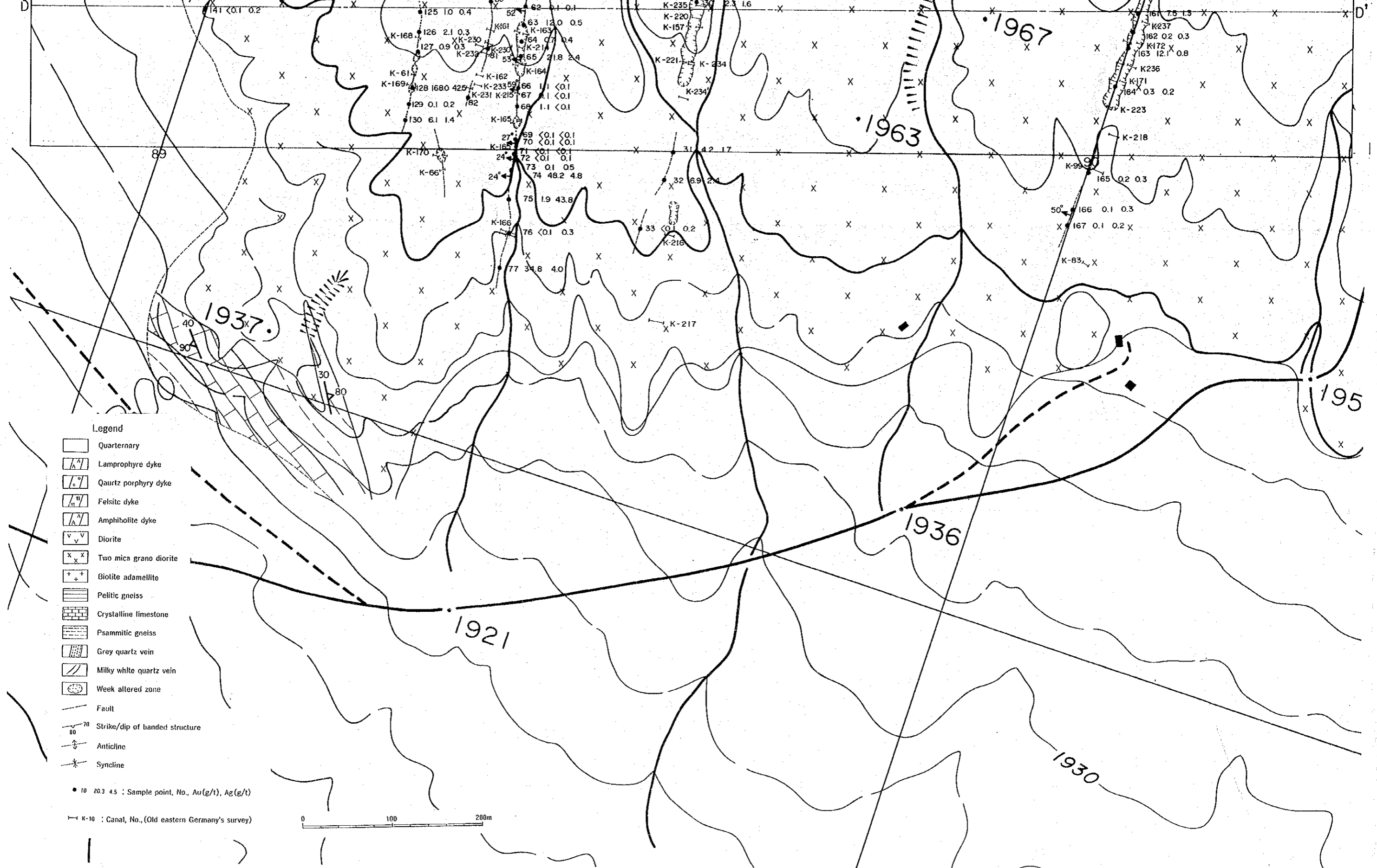


Fig. II-2-2 Map of geological and quartz veins surveyed (Area II)

THE MINERAL EXPLORATION
IN THE TSAGAAN TSAKHIR UUL AREA

MONGOLIA

PHASE I

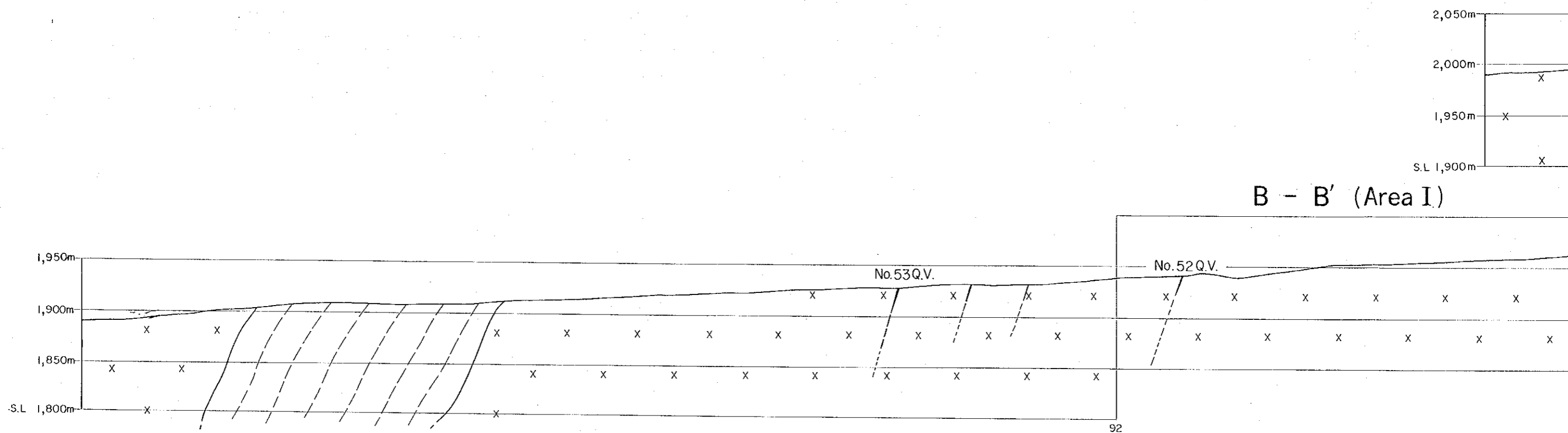
FIG. II-2-3

Geological profile of detailed area

JAPAN INTERNATIONAL COOPERATION AGENCY

METAL MINING AGENCY OF JAPAN

FEBRUARY, 1997



- Legend**
- Quarternary
 - Lamprophyre dyke
 - Quartz porphyry dyke
 - Felsitic dyke
 - Amphibolite dyke
 - Diorite
 - Two mica grano diorite
 - Biotite adamellite
 - Pelitic gneiss
 - Crystalline limestone
 - Psammitic gneiss
 - Grey quartz vein
 - Milky white quartz vein
 - Fault

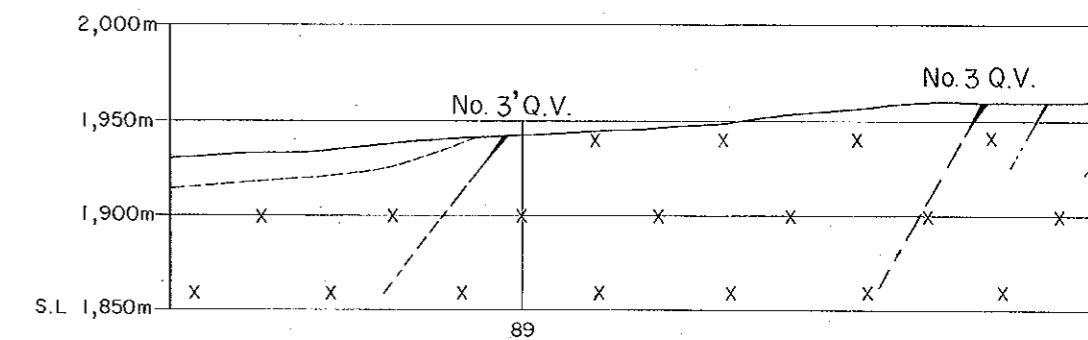
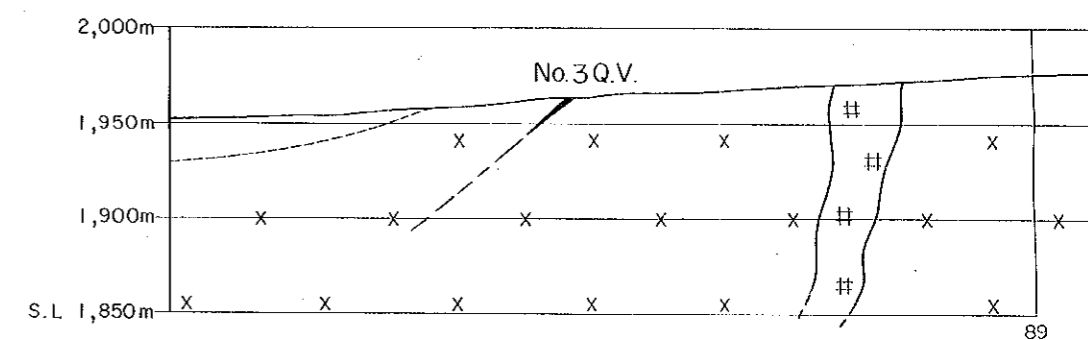
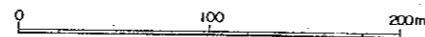
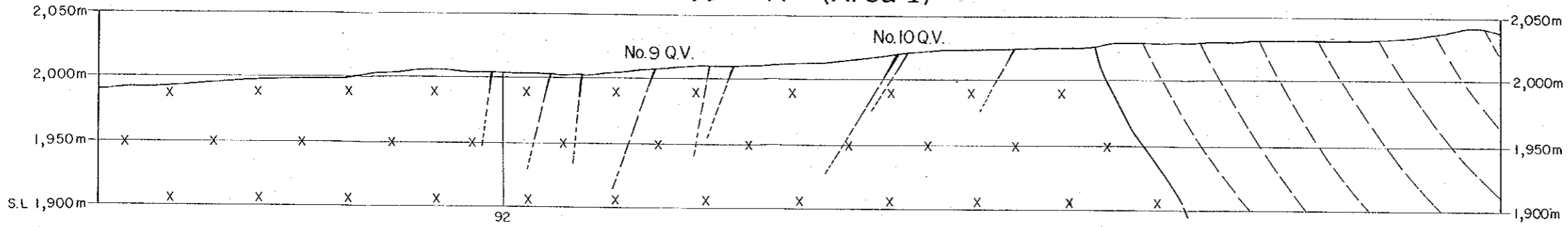


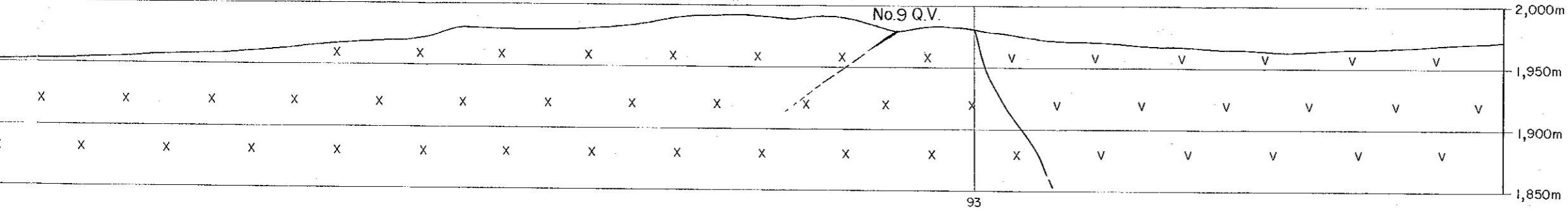
Fig. II-2-3 GEOLOGICAL PROFILE OF DETAILED AREA (I, II)

A - A' (Area I)



(Area I)

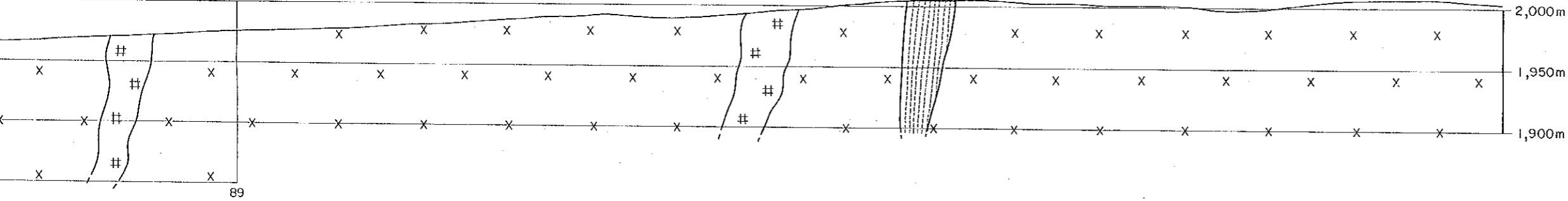
No. 9 Q.V.



93

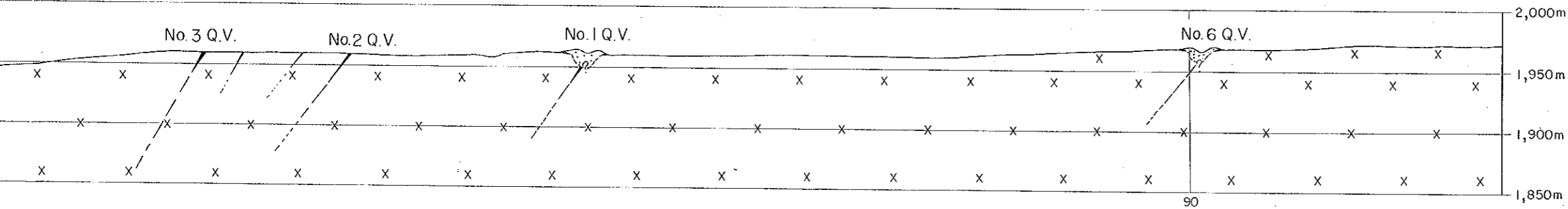
C - C' (Area II)

No. 5 Q.V.



89

D - D' (Area II)



90

<p>THE MINERAL EXPLORATION IN THE TSAGAAN TSAKHIR UUL AREA MONGOLIA</p> <p>PHASE I</p>
<p>FIG. II-2-3 Geological profile of detailed area</p>
<p>JAPAN INTERNATIONAL COOPERATION AGENCY METAL MINING AGENCY OF JAPAN</p>
<p>FEBRUARY, 1997</p>

THE MINERAL EXPLORATION
IN THE TSAGAAN TSAKHIR UUL AREA
MONGOLIA

PHASE I

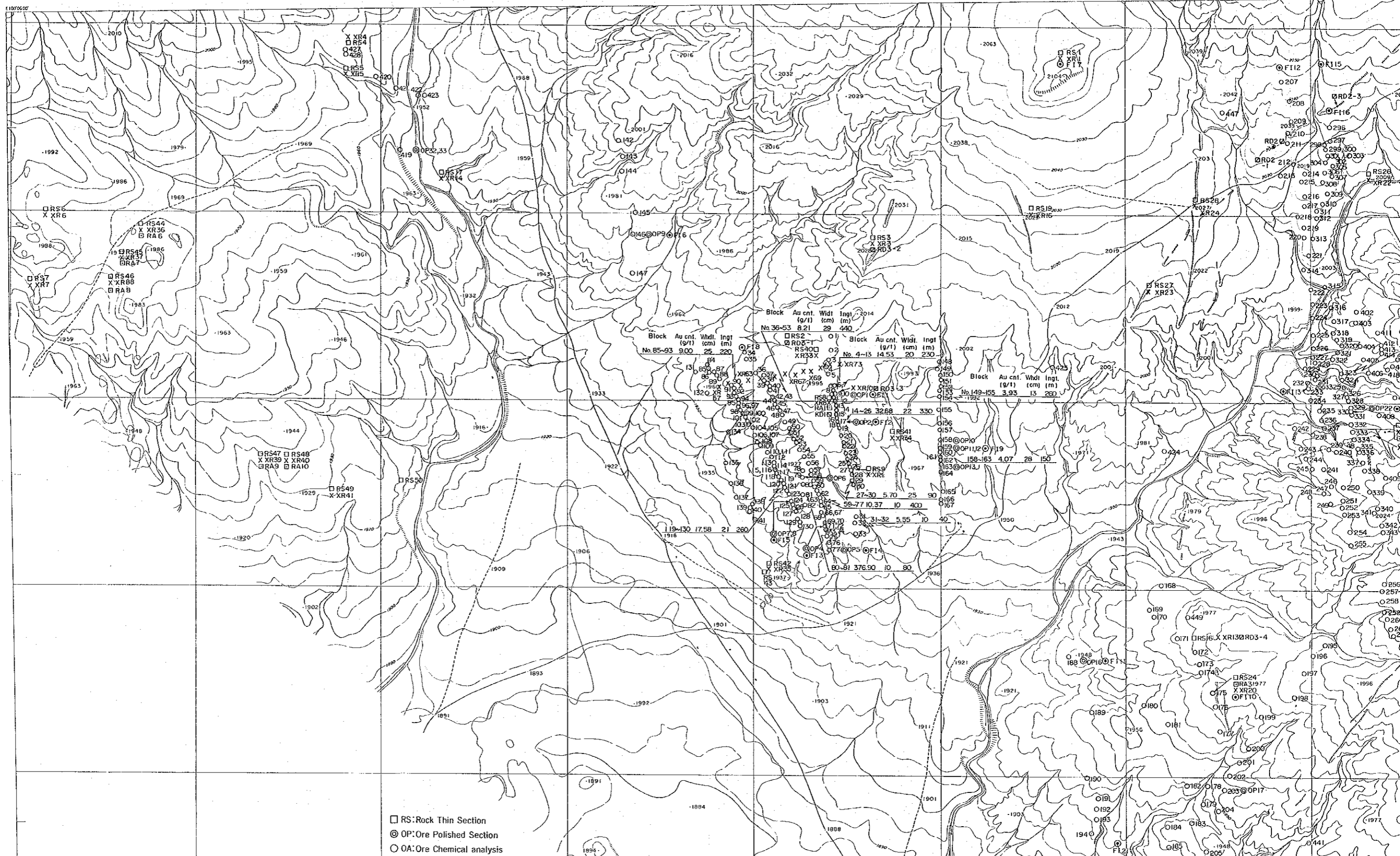
FIG. II-2-5

Classification of gold contents of each veins

JAPAN INTERNATIONAL COOPERATION AGENCY

METAL MINING AGENCY OF JAPAN

FEBRUARY, 1997



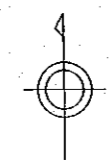
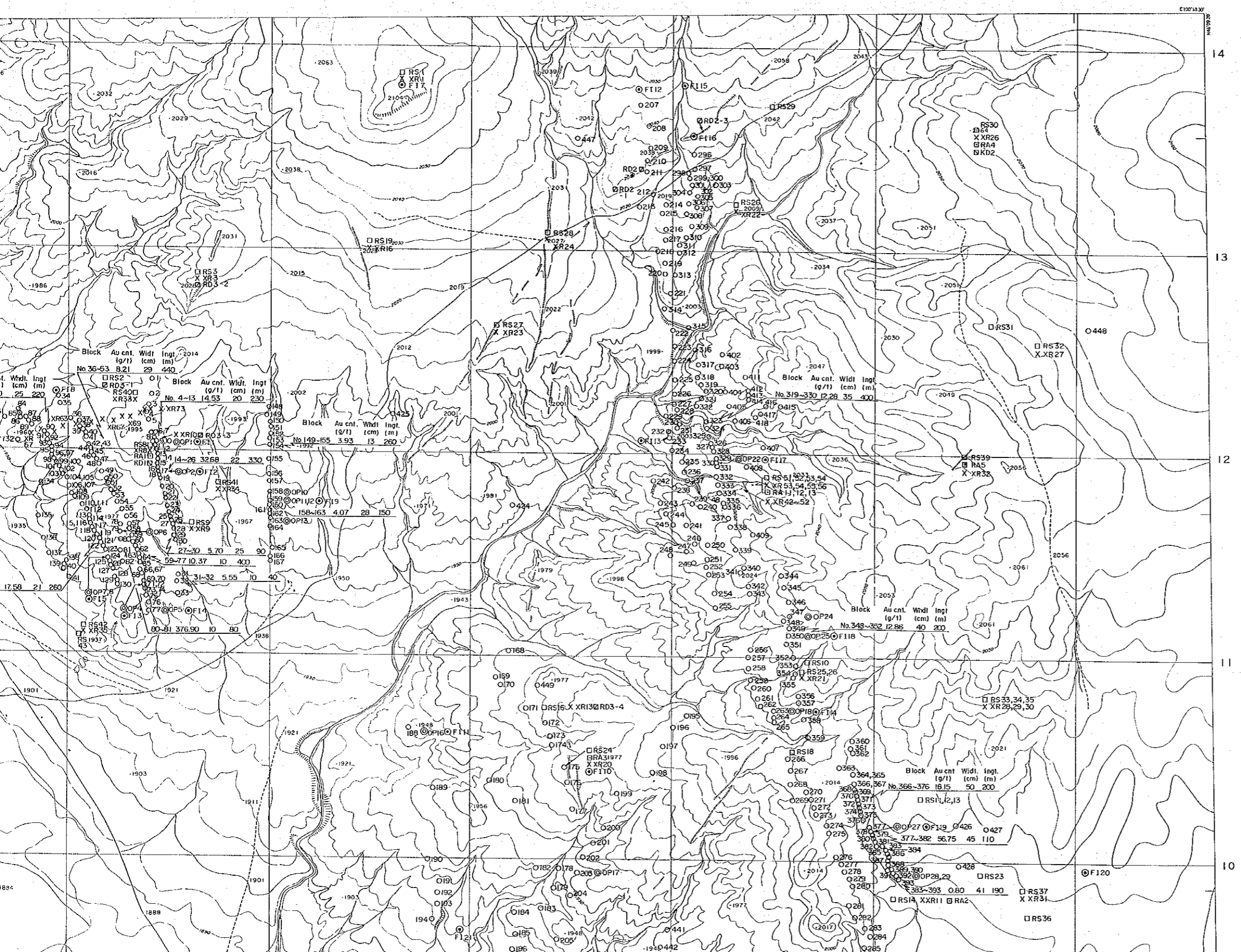
THE MINERAL EXPLORATION
IN THE TSAGAAN TSAKHIR UUL AREA
MONGOLIA

PHASE I

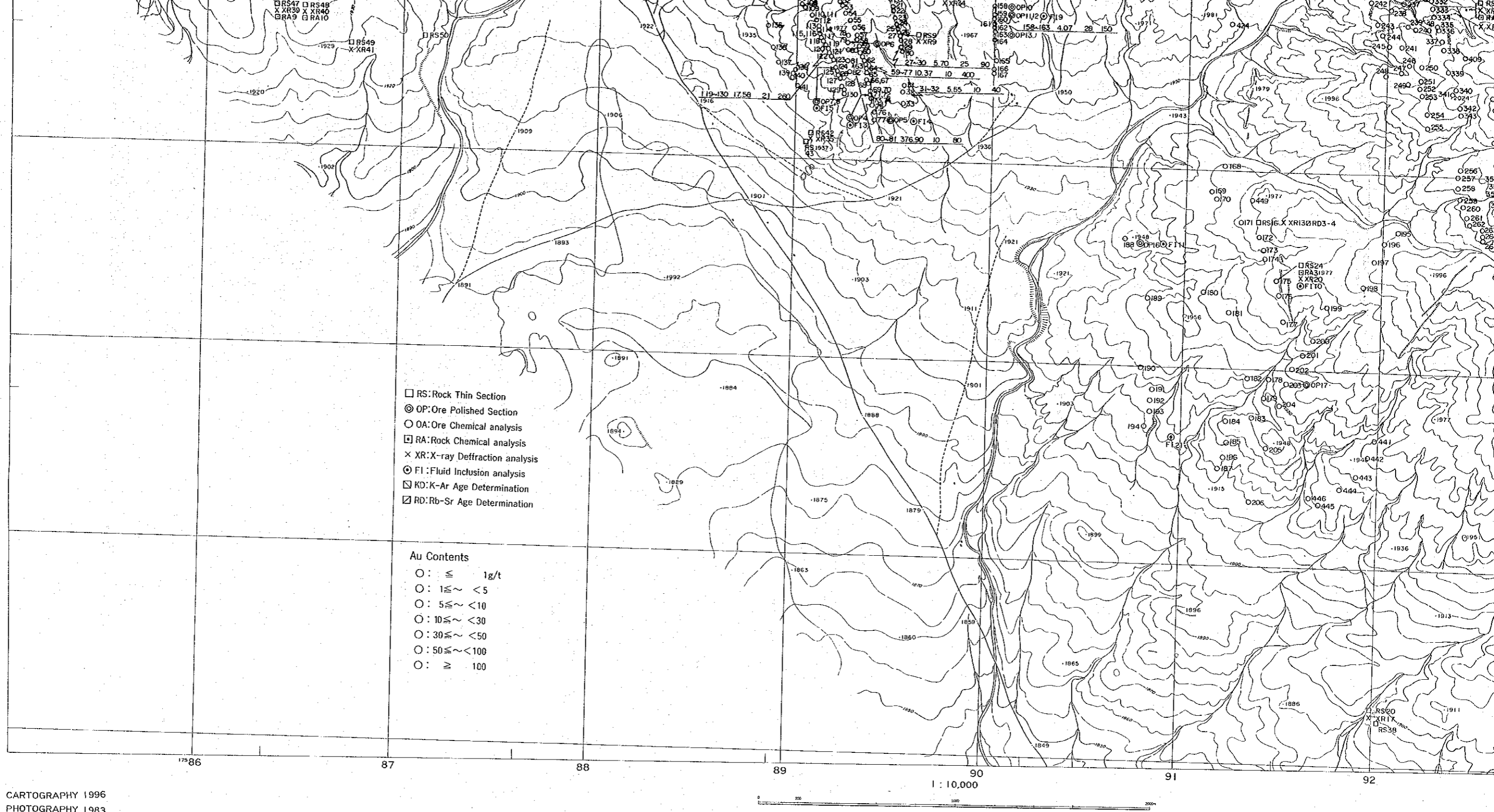
FIG. II-2-5
Classification of gold contents of each veins

JAPAN INTERNATIONAL COOPERATION AGENCY
METAL MINING AGENCY OF JAPAN

FEBRUARY, 1997

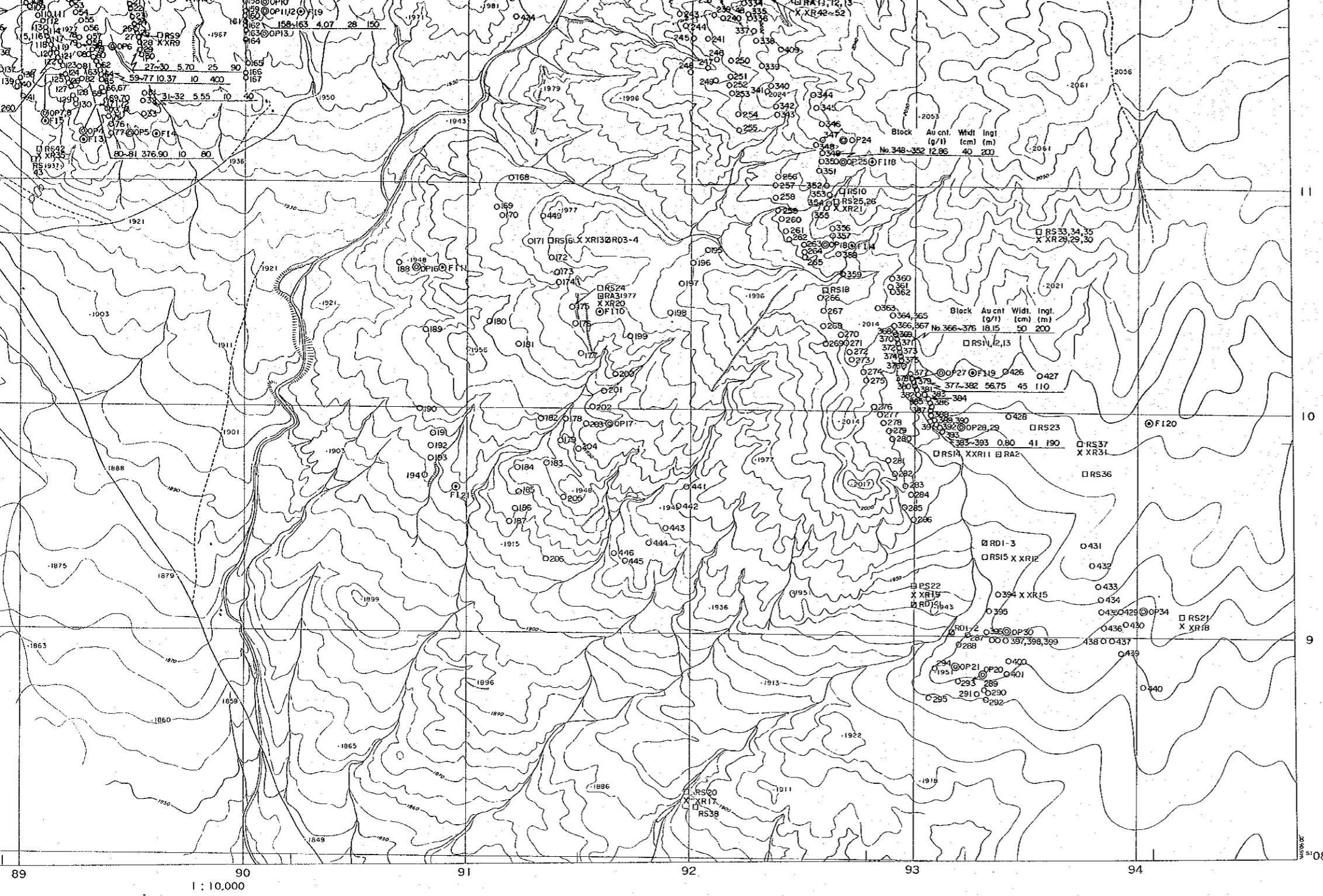


14
13
12
11
10



CARTOGRAPHY 1996
 PHOTOGRAPHY 1983

Fig. II -2-5 Classification of gold contents of each veins



lassification of gold contents of each veins

THE MINERAL EXPLORATION
IN THE TSAGAAN TSAKHIR UUL AREA

MONGOLIA

PHASE I

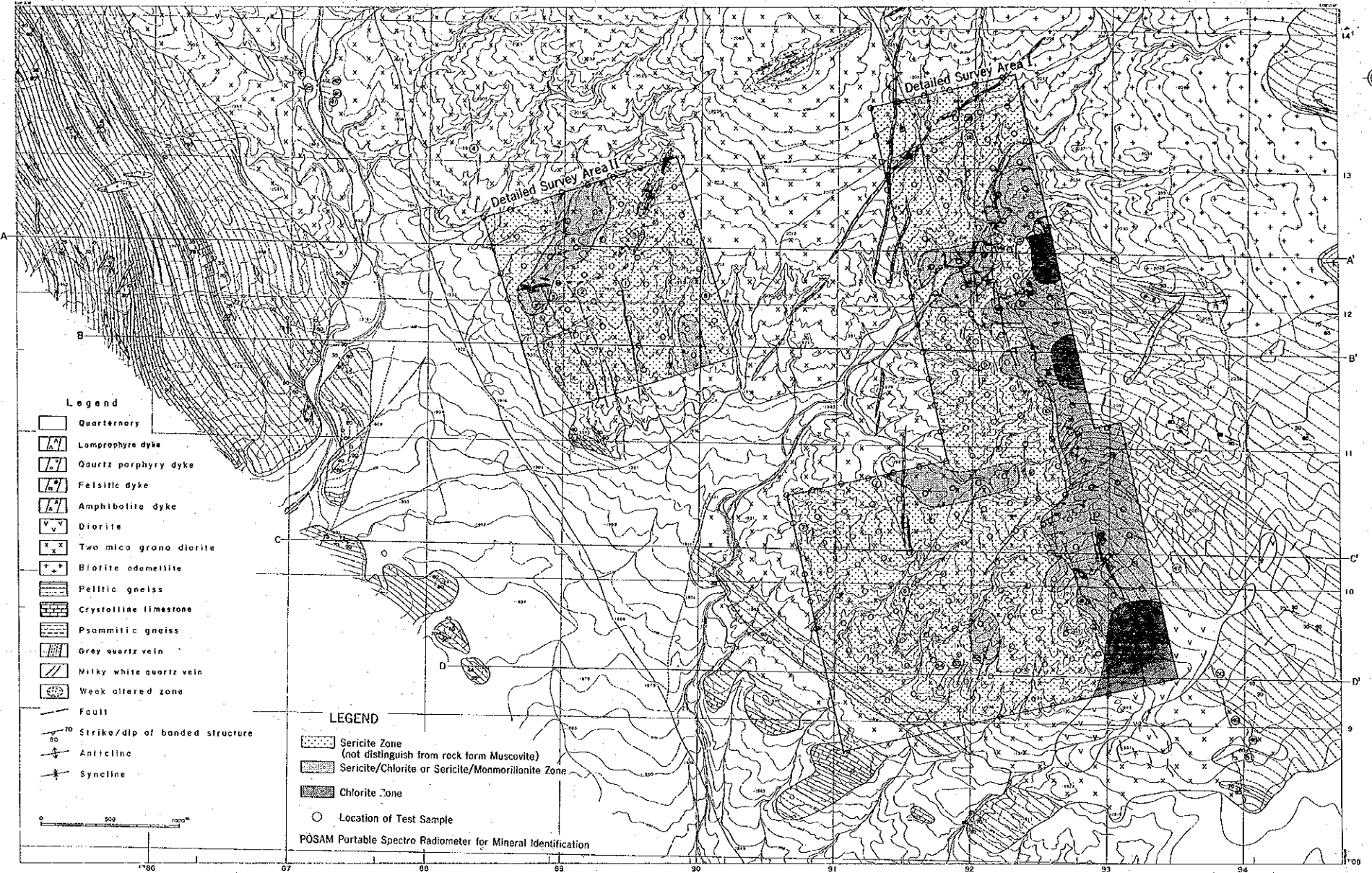
FIG. II-3-1

Distribution of altered clay minerals by POSAM

JAPAN INTERNATIONAL COOPERATION AGENCY

METAL MINING AGENCY OF JAPAN

FEBRUARY, 1997



THE MINERAL EXPLORATION
 IN THE TSAGAAN TSAKHIR UUL AREA
 MONGOLIA
 PHASE I

FIG. II-3-1
 Distribution of altered clay minerals by POSAM

JAPAN INTERNATIONAL COOPERATION AGENCY
 METAL MINING AGENCY OF JAPAN

FEBRUARY, 1997

Fig. II-3-1 DISTRIBUTION OF ALTERED CLAY MINERALS BY POSAM

CARTOGRAPHY 1976
 PHOTOGRAPHY 1983

JICA