

STATISTICAL ANNEX

A. BASIC ABSOLUTE SOCIAL AND DEMOGRAPHIC INDICATORS

TOTAL LAND AREA	331,041 sq km
ABSOLUTE POPULATION SIZE (1995 estimated)	74,199 million people
AVERAGE POPULATION DENSITY (1995)	224 people sq km
POPULATION SIZE UP TO THE AGE OF 14 (1995 estimated)	38.2%
POPULATION SIZE BETWEEN THE AGE OF 15 AND 59 YEARS (1995 estimated)	54.3%
POPULATION SIZE BETWEEN THE AGE OF 15 AND 64 YEARS (1995 estimated)	56.8%
POPULATION SIZE OF THE AGE OF 65 AND ABOVE (1995 estimated)	5.0%
TOTAL EMPLOYMENT (1993 preliminary)	32.72 million people
COMPOUND POPULATION GROWTH RATE 1976-1994	2.19% p.a.
COMPOUND POPULATION GROWTH RATE 1989 - 1994	2.39% p.a.
PER CAPITA INCOME IN 1989 CONSTANT PRICES	559,408 VDN
SHARE OF POOR POPULATION (World Bank estimation)	51%
LIFE EXPECTANCY AT BIRTH	67 years
INFANT MORTALITY RATE (Under 1 year of age)	42 per 1,000

B. ABSOLUTE ECONOMIC PERFORMANCE INDICATORS

(All VDN absolute values in 1989 constant prices)

	1990	1991	1992	1993	1994	1995
1.) REAL GDP (Billion VDN)	29,536	31,302	34,003	36,767	39,978	43,766
AGRICULTURE, FORESTRY, FISHERY	11,642	11,900	12,756	13,241	13,753	14,399
INDUSTRY	5,542	6,045	6,927	7,769	8,757	9,983
CONSTRUCTION	1,131	1,190	1,318	1,575	1,863	2,124
SERVICES	11,221	12,167	13,002	14,182	15,606	17,259
2.) DOMESTIC CONSUMPTION (Billion VDN)	27,203	27,295	28,461	32,649	33,981	36,675
3.) GROSS NATIONAL SAVINGS (Billion VDN)	2,333	4,007	5,542	4,118	5,997	7,000
NON-GOVERNMENT	[...]	4,414	5,066	4,081	4,438	5,471
GOVERNMENT	[...]	-407	476	37	1,559	1,619
4.) GROSS CAPITAL FORMATION (Billion VDN)	3,426	4,727	5,781	7,133	7,956	9,541
GOVERNMENT	[...]	876	1,972	2,574	2,878	3,457
GOVERNMENT GUARANTEED	[...]	0	0	0	80	360
PRIVATE	[...]	3,850	3,808	4,560	4,997	5,733
DOMESTIC PRIVATE	[...]	3,036	2,924	3,714	3,838	4,420
FOREIGN DIRECT INVESTMENT	[...]	814	884	846	1,159	1,313
5.) GOVERNMENT BUDGET (On cash basis, billion VDN)	4,755	5,666	6,363	7,942	9,915	10,810
GRANTS	[...]	125	272	257	240	360
TOTAL EXPENDITURE	6,646	5,384	7,119	10,479	11,234	12,804
(OFF WHICH : CURRENT EXPENDITURES)	[...]	4,507	5,713	7,942	8,355	9,069
(OFF WHICH : DEVELOPMENT EXPENDITURE)	[...]	877	2,006	2,537	2,879	3,545
OVERALL FISCAL BALANCE (On cash basis, billion VDN)**)	-1,891	282	-1,326	-2,537	-1,319	-1,794
OVERALL FISCAL BALANCE (in percent of GDP)**)	-6.40	0.90	-3.90	-6.90	-3.30	-4.10
OF WHICH : DOMESTIC FINANCING (Billion VDN)	[...]	-250	-1,394	1,250	720	700
OF WHICH : DOMESTIC FINANCING (in percent of GDP)	[...]	-0.80	-4.10	3.40	1.80	1.60

NOTES:

*) 1994 and 1995 data are preliminary estimates.

**) Excludes official transfers

[...]= Data are not available

SOURCE:

JICA Study Team, based on IMF data

ANNEX 18-2 : BASIC MACRO, SOCIO-ECONOMIC AND DEMOGRAPHIC DATA AT NATIONAL LEVEL 1990 TO 1995

(Unit : as indicated)

PARAMETER	1990	1991	1992	1993	1994	1995
(As percentage of GDP)						
REAL GDP	100.00	100.00	100.00	100.00	100.00	100.00
AGRICULTURE, FORESTRY, FISHERY	33.42	38.02	37.51	36.01	34.40	32.90
INDUSTRY	18.76	19.31	20.37	21.13	21.90	22.81
CONSTRUCTION	3.83	3.60	3.68	4.28	4.66	4.85
SERVICES	37.99	38.87	38.24	38.57	39.03	39.44
DOMESTIC CONSUMPTION	92.10	87.20	83.70	88.80	85.00	83.80
GROSS NATIONAL SAVINGS	7.90	12.80	16.30	11.20	15.00	16.20
NON-GOVERNMENT	[...]	14.10	14.90	11.10	11.10	12.50
GOVERNMENT	[...]	-1.30	1.40	0.10	3.90	3.70
GROSS CAPITAL FORMATION	11.60	15.10	17.00	13.40	19.70	21.00
GOVERNMENT	[...]	2.80	5.80	7.00	7.20	7.90
PRIVATE	[...]	12.30	11.20	12.40	12.50	13.10
DOMESTIC	[...]	9.70	8.60	10.10	9.60	10.10
FDI	[...]	2.60	2.60	2.30	2.90	3.00
BUDGET REVENUES **)	15.10	18.10	18.80	21.60	24.60	24.70
BUDGET EXPENDITURES	22.50	17.20	22.70	28.50	28.10	28.80
OF WHICH : CURRENT EXPENDITURES	[...]	14.40	16.80	21.60	20.90	20.70
OF WHICH : DEVELOPMENT EXPEND.	[...]	2.80	5.90	6.90	7.20	8.10
OVERALL FISCAL BALANCE	-5.40	0.90	-3.90	-6.90	-3.30	-4.10
(Real growth rates in percent)						
REAL GDP	4.90	5.98	8.63	8.13	8.73	9.47
AGRICULTURE, FORESTRY, FISHERY	1.50	2.22	7.19	3.80	3.67	4.70
INDUSTRY	2.50	9.08	14.59	12.16	12.72	14.00
CONSTRUCTION	1.40	5.22	10.76	19.50	18.29	14.01
SERVICES	10.40	8.43	6.86	9.08	10.03	10.60
DOMESTIC CONSUMPTION	0.22	0.34	4.27	14.71	4.08	7.93
GROSS NATIONAL SAVINGS	[..]	71.75	38.31	-25.69	45.63	18.23
NON-GOVERNMENT	[..]	[..]	14.77	-19.44	8.75	23.28
GOVERNMENT	[..]	[..]	216.95	-92.23	4,113.51	3.85
GROSS CAPITAL FORMATION	[..]	37.97	22.30	23.39	11.54	19.92
GOVERNMENT (**)	[..]	[..]	125.11	30.53	14.92	32.28
PRIVATE	[..]	[..]	-1.09	19.75	9.58	14.73
DOMESTIC	[..]	[..]	-3.69	27.02	3.34	15.16
FDI	[..]	[..]	8.60	-4.30	37.00	13.29
BUDGET REVENUES **)	[..]	[..]	12.83	24.23	24.84	9.03
BUDGET EXPENDITURES	[..]	[..]	43.37	35.76	7.20	12.20
OF WHICH : CURRENT EXPENDITURES	[..]	[..]	26.76	39.02	5.20	8.43
OF WHICH : DEVELOPMENT EXPEND.	[..]	[..]	128.73	26.47	13.68	23.13
OVERALL FISCAL BALANCE	[..]	[..]	-570.21	-91.33	48.01	-36.01

NOTES :

*) 1994 and 1995 data are preliminary estimates. **) On cash basis and including grants. ***) Including Government guaranteed

[] = Data are not available, or cannot be calculated. [..] = Base year.

Source : JICA study team computations based on IMF data.

ANNEX 18-V1 : GROSS REGIONAL DOMESTIC PRODUCT 1990 TO 1994 BY PROVINCE AND MAJOR ECONOMIC SECTORS (1989 CONSTANT PRICES)

SOCIO-ECONOMIC DEVELOPMENT REGION	PROVINCE	MAJOR ECONOMIC SECTOR	ABSOLUTE MAGNITUDE					ABSOLUTE AV.
			1990	1991	1992	1993	1994	MAGNITUDE
SDR I	(6) Lai Chau	Agriculture/Forestry	94	92	96	98	108	98
		Industry	4	5	6	6	7	6
		Construction	4	5	8	9	10	7
		Service	36	41	46	48	48	44
		GDP	138	143	156	161	173	154
	(12) Son La	Agriculture/Forestry	82	81	93	102	108	93
		Industry	2	2	2	2	3	2
		Construction	7	8	7	8	8	8
		Service	16	24	25	30	32	25
		GDP	107	115	127	142	151	128
	(18) Hanoi Binh	Agriculture/Forestry	74	77	81	83	84	80
		Industry	172	207	235	294	335	249
		Construction	5	13	23	20	19	16
		Service	84	81	76	76	78	79
		GDP	335	378	415	473	516	423
GROSS PROVINCIAL DOMESTIC PRODUCT SDR I			500	636	698	776	840	706
SDR II	(7) Lao Cai	Agriculture/Forestry	0	0	0	0	0	0
		Industry	0	0	0	0	0	0
		Construction	0	0	0	0	0	0
		Service	0	0	0	0	0	0
		GDP	0	0	0	0	0	0
	(4) Ha Giang	Agriculture/Forestry	46	52	53	56	59	53
		Industry	2	2	2	3	3	2
		Construction	4	4	4	4	5	4
		Service	2	2	2	2	2	2
		GDP	54	60	61	65	69	62
	(5) Cao Bang	Agriculture/Forestry	75	74	71	81	83	77
		Industry	1	2	6	6	3	4
		Construction	4	4	4	3	4	4
		Service	30	32	33	48	57	40
		GDP	110	112	114	138	147	124
	(11) Yen Bai	Agriculture/Forestry	99	107	116	113	122	111
		Industry	9	16	16	17	18	15
		Construction	25	27	26	28	29	27
		Service	114	121	128	134	134	125
		GDP	247	271	286	292	303	280
	(8) Tuyen Quang	Agriculture/Forestry	56	54	59	62	65	59
		Industry	13	16	17	17	18	16
		Construction	4	4	4	5	6	5
		Service	42	45	46	55	65	51
GDP		115	119	126	139	154	131	
(10) Bac Thai	Agriculture/Forestry	178	163	185	200	219	189	
	Industry	73	86	97	106	98	92	
	Construction	36	36	35	34	37	36	
	Service	129	128	143	144	147	137	
	GDP	419	413	461	484	501	454	

NOTE: 1) GDP = Gross Provincial Domestic Product.

SOURCE: 1) Development Strategy Institute (DSI), Ministry of Planning and Investment, General Statistical Office. 2) Computations and calculations by JICA study team.

ANNEX 18-3/1 : GROSS REGIONAL DOMESTIC PRODUCT 1990 TO 1994 BY PROVINCE AND MAJOR ECONOMIC SECTORS (1989 CONSTANT PRICES)

SOCIO-ECONOMIC DEVELOPMENT REGION	PROVINCE	MAJOR ECONOMIC SECTOR	ABSOLUTE MAGNITUDE					(Unit : Billion VND)
								ABSOLUTE AV.
			1990	1991	1992	1993	1994	1990 - 1994
SDR II (cont.)	(9) Lang Son	Agriculture/Forestry	95	91	91	102	106	97
		Industry	5	6	5	6	6	6
		Construction	6	6	6	8	9	7
		Service	51	55	58	76	82	64
		GPDP	157	158	160	192	203	174
	(13) Vinh Phu	Agriculture/Forestry	335	326	357	369	370	351
		Industry	95	101	104	105	112	103
		Construction	37	36	34	33	40	36
		Service	226	236	244	254	332	260
		GPDP	693	699	739	771	854	751
	(15) Ha Bac	Agriculture/Forestry	431	405	462	484	433	455
		Industry	50	51	59	59	59	56
		Construction	80	79	78	92	89	84
		Service	188	198	208	216	260	214
		GPDP	749	733	807	851	901	808
(14) Quang Ninh	Agriculture/Forestry	118	115	114	117	123	117	
	Industry	133	122	133	145	160	139	
	Construction	6	10	15	15	16	12	
	Service	149	232	276	287	318	252	
	GPDP	406	479	538	565	617	521	
GROSS PROVINCIAL DOMESTIC PRODUCT SDR II			2,941	3,044	3,292	3,497	3,749	3,305
SDR III	(1) Ha Noi	Agriculture/Forestry	124	118	133	145	162	137
		Industry	365	363	414	444	510	417
		Construction	102	72	89	117	154	107
		Service	1,280	1,428	1,516	1,631	1,754	1,522
		GPDP	1,861	1,981	2,152	2,338	2,580	2,182
	(22) Ninh Binh	Agriculture/Forestry	115	110	137	145	132	128
		Industry	28	27	29	31	34	30
		Construction	8	6	12	14	15	11
		Service	48	47	62	73	77	61
		GPDP	200	190	240	263	259	230
	(19) Nam Ha	Agriculture/Forestry	357	346	427	502	461	419
		Industry	81	76	78	76	83	79
		Construction	34	36	40	48	66	45
		Service	277	285	299	327	341	306
		GPDP	749	743	844	953	951	848
(20) Thai Bin	Agriculture/Forestry	326	322	385	474	480	397	
	Industry	46	44	39	47	50	45	
	Construction	12	16	26	33	38	25	
	Service	80	87	104	128	137	107	
	GPDP	464	469	554	682	706	575	
(17) Hai Hung	Agriculture/Forestry	391	419	481	531	586	462	
	Industry	95	102	124	133	150	121	
	Construction	22	26	39	49	56	36	
	Service	382	404	391	407	411	399	
	GPDP	890	961	1,035	1,120	1,203	1,040	

ANNEX 13-3/1 : GROSS REGIONAL DOMESTIC PRODUCT 1990 TO 1994 BY PROVINCE AND MAJOR ECONOMIC SECTORS (1989 CONSTANT PRICES)

(Unit : Billion VND)

SOCIO-ECONOMIC DEVELOPMENT REGION	PROVINCE	MAJOR ECONOMIC SECTOR	ABSOLUTE MAGNITUDE					ABSOLUTE AV. MAGNITUDE
			1990	1991	1992	1993	1994	1990 - 1994
SDR III (cont.)	(9) Hai Phong	Agriculture/Forestry	155	175	173	194	213	182
		Industry	116	109	158	173	205	152
		Construction	52	48	71	84	103	72
		Service	501	525	511	556	615	542
		GDP	824	857	913	1,007	1,136	947
	(16) Ha Tay	Agriculture/Forestry	352	300	378	391	388	362
		Industry	85	84	92	96	106	90
		Construction	41	50	37	36	40	41
		Service	178	183	161	210	220	194
		GDP	656	617	688	733	754	690
GROSS PROVINCIAL DOMESTIC PRODUCT SDR III			4,975	5,126	5,686	6,283	6,665	5,747
SDR IV	(21) Thanh Hoa	Agriculture/Forestry	470	474	477	508	521	490
		Industry	143	146	156	168	174	157
		Construction	56	55	53	57	62	57
		Service	358	373	383	425	451	398
		GDP	1,027	1,048	1,069	1,156	1,208	1,102
	(23) Nghe An	Agriculture/Forestry	426	411	439	480	514	450
		Industry	70	66	69	74	84	73
		Construction	40	41	39	45	47	42
		Service	190	213	227	259	263	230
		GDP	726	731	774	838	908	796
	(24) Ha Tinh	Agriculture/Forestry	186	178	199	247	278	218
		Industry	25	27	25	26	29	26
		Construction	18	17	16	18	19	18
		Service	47	50	54	60	66	55
		GDP	276	272	294	351	392	317
	(25) Quang Binh	Agriculture/Forestry	64	68	67	64	76	68
		Industry	24	21	23	26	28	24
		Construction	23	25	25	27	29	26
		Service	86	83	81	89	93	86
		GDP	197	197	196	206	226	204
	(26) Quang Tri	Agriculture/Forestry	76	79	69	49	52	65
		Industry	10	11	13	12	12	12
		Construction	17	18	17	16	17	17
		Service	56	58	71	54	97	75
		GDP	159	166	170	171	178	169
	(27) Thue T. Hue	Agriculture/Forestry	60	66	83	79	73	72
		Industry	70	70	77	90	90	79
Construction		13	11	20	40	45	26	
Service		196	208	212	247	283	229	
GDP		339	355	332	456	491	407	
GROSS PROVINCIAL DOMESTIC PRODUCT SDR IV			2,724	2,769	2,895	3,178	3,403	2,994
SDR V	(28) Q N - Da Nang	Agriculture/Forestry	279	261	276	267	285	278
		Industry	136	136	136	143	166	143
		Construction	33	37	34	39	46	38
		Service	329	337	350	384	415	363
		GDP	777	791	796	833	912	822

ANNEX 18.3/1 : GROSS REGIONAL DOMESTIC PRODUCT 1990 TO 1994 BY PROVINCE AND MAJOR ECONOMIC SECTORS (1989 CONSTANT PRICES)

SOCIO-ECONOMIC DEVELOPMENT REGION	PROVINCE	MAJOR ECONOMIC SECTOR	ABSOLUTE MAGNITUDE					ABSOLUTE AV.
			1990	1991	1992	1993	1994	1990 - 1994
			(Unit : Billion VND)					
SDR V (cont.)	(29) Quang Ngai	Agriculture/Forestry	120	127	121	110	126	121
		Industry	49	55	59	65	67	59
		Construction	7	7	9	15	22	12
		Service	79	86	91	97	106	92
		GPDP	255	275	280	287	321	264
	(31) Binh Dinh	Agriculture/Forestry	195	202	202	130	206	197
		Industry	60	62	64	69	76	66
		Construction	14	19	21	27	37	24
		Service	92	96	110	137	139	115
		GPDP	361	381	397	413	458	402
	(33) Phu Yen	Agriculture/Forestry	121	124	123	114	122	121
		Industry	30	31	37	34	27	32
		Construction	5	5	8	9	10	7
		Service	75	77	80	86	94	82
		GPDP	231	237	248	243	253	242
	(35) Khanh Hoa	Agriculture/Forestry	154	156	165	170	177	166
		Industry	142	154	181	189	194	174
		Construction	11	12	11	14	19	13
		Service	124	147	169	217	212	174
		GPDP	431	489	526	590	602	528
GROSS PROVINCIAL DOMESTIC PRODUCT SDR V			2,055	2,173	2,247	2,366	2,546	2,277
SDR VI	(30) Kon Tum	Agriculture/Forestry	64	66	65	67	68	66
		Industry	3	0	3	4	4	3
		Construction	3	3	3	3	3	3
		Service	20	22	23	21	23	22
		GPDP	90	91	94	95	98	94
	(32) Gia Lai	Agriculture/Forestry	100	137	140	138	152	139
		Industry	11	12	11	11	11	11
		Construction	5	5	6	7	9	6
		Service	33	35	33	35	36	34
		GPDP	179	189	190	191	208	191
	(34) Dac Lac	Agriculture/Forestry	284	306	331	351	390	332
		Industry	20	18	16	20	22	19
		Construction	30	30	29	32	36	31
		Service	114	113	110	110	116	113
		GPDP	448	467	486	513	564	496
GROSS PROVINCIAL DOMESTIC PRODUCT SDR VI			717	747	770	799	870	781
SDR VII	(38) Ninh Thuan	Agriculture/Forestry	96	101	124	128	135	117
		Industry	57	58	58	59	64	59
		Construction	4	5	6	5	6	5
		Service	81	85	94	97	98	91
		GPDP	238	249	282	290	303	272
	(40) Binh Thuan	Agriculture/Forestry	95	108	114	122	129	114
		Industry	32	34	37	41	44	38
		Construction	3	3	5	9	11	6
		Service	51	55	60	67	79	62
		GPDP	181	200	216	239	263	220

ANNEX 18.3/1 : GROSS REGIONAL DOMESTIC PRODUCT 1990 TO 1994 BY PROVINCE AND MAJOR ECONOMIC SECTORS (1989 CONSTANT PRICES)

SOCIO-ECONOMIC DEVELOPMENT REGION	PROVINCE	MAJOR ECONOMIC SECTOR	ABSOLUTE MAGNITUDE					ABSOLUTE AV. MAGNITUDE
			1990	1991	1992	1993	1994	1990 - 1994
SOR VII (cont.)	(36) Lam Dong	Agriculture/Forestry	132	153	153	171	185	161
		Industry	36	42	49	51	54	46
		Construction	9	10	10	13	12	11
		Service	64	70	69	75	86	73
		GPDP	241	275	291	310	337	291
	(41) Dong Nai	Agriculture/Forestry	463	464	445	445	488	461
		Industry	174	200	235	285	307	240
		Construction	15	17	17	35	40	25
		Service	281	303	339	371	403	339
		GPDP	933	964	1,035	1,137	1,238	1,066
	(37) Song Be	Agriculture/Forestry	208	235	238	249	278	242
		Industry	43	52	54	75	86	62
		Construction	5	5	5	7	8	6
		Service	80	87	92	106	118	97
		GPDP	336	379	389	437	490	406
	(45) B.R. Vung Tau	Agriculture/Forestry	104	109	127	148	158	129
		Industry	845	1,110	1,496	1,827	2,059	1,467
		Construction	8	10	11	19	25	15
		Service	189	198	297	312	337	267
		GPDP	1,146	1,427	1,931	2,306	2,579	1,878
(2) Ho Chi Minh	Agriculture/Forestry	164	173	179	177	187	176	
	Industry	1,326	1,387	1,534	1,667	2,053	1,593	
	Construction	180	218	249	304	401	270	
	Service	2,806	3,038	3,298	3,452	4,040	3,309	
	GPDP	4,476	4,816	5,170	5,600	6,681	5,349	
(39) Tay Ninh	Agriculture/Forestry	177	179	179	185	200	184	
	Industry	22	25	27	30	34	28	
	Construction	8	11	13	15	16	13	
	Service	102	115	129	142	147	127	
	GPDP	309	300	348	372	397	351	
GROSS PROVINCIAL DOMESTIC PRODUCT SOR VII			7,850	8,660	9,663	10,691	12,268	9,832
SOR VIII	(42) Long An	Agriculture/Forestry	346	372	351	369	362	358
		Industry	54	58	53	46	44	51
		Construction	10	10	13	14	15	12
		Service	126	137	129	131	140	133
		GPDP	536	577	546	560	561	554
	(43) Dong Thap	Agriculture/Forestry	711	695	831	827	832	779
		Industry	60	57	63	60	66	61
		Construction	17	16	21	19	21	19
		Service	170	175	220	220	238	206
		GPDP	958	943	1,135	1,126	1,157	1,064
	(46) Tien Giang	Agriculture/Forestry	474	457	448	455	441	455
		Industry	43	45	53	62	72	55
		Construction	10	11	15	23	26	17
		Service	184	203	190	227	254	212
		GPDP	711	716	706	767	793	739

ANNEX 18-3/1 : GROSS REGIONAL DOMESTIC PRODUCT 1990 TO 1994 BY PROVINCE AND MAJOR ECONOMIC SECTORS (1989 CONSTANT PRICES)

(Unit : Billion VND)

SOCIO-ECONOMIC DEVELOPMENT REGION	PROVINCE	MAJOR ECONOMIC SECTOR	ABSOLUTE MAGNITUDE					ABSOLUTE AV.
			1990	1991	1992	1993	1994	MAGNITUDE
SDR VIII (cont.)	(49) Ben Tre	Agriculture/Forestry	219	228	234	242	231	231
		Industry	70	72	67	69	76	71
		Construction	7	6	6	7	8	7
		Service	148	131	228	238	265	212
		GPDP	414	437	535	556	580	520
	(44) An Giang	Agriculture/Forestry	443	484	573	613	670	557
		Industry	63	71	74	80	88	75
		Construction	3	3	3	3	4	3
		Service	226	249	278	282	311	269
		GPDP	735	807	928	978	1,073	904
(48) Can Tho	Agriculture/Forestry	367	414	461	440	460	428	
	Industry	97	98	95	122	136	110	
	Construction	12	22	22	30	35	24	
	Service	251	254	268	333	372	298	
	GPDP	727	798	846	925	1,003	860	
(50) Vinh Long	Agriculture/Forestry	303	320	337	354	311	325	
	Industry	45	47	52	56	59	52	
	Construction	5	6	7	7	7	6	
	Service	106	117	140	148	151	132	
	GPDP	459	490	536	566	528	516	
(51) Tra Vinh	Agriculture/Forestry	276	288	268	299	298	290	
	Industry	34	33	35	34	26	32	
	Construction	6	5	6	6	6	6	
	Service	82	91	104	108	119	101	
	GPDP	398	417	433	447	449	429	
(52) Soc Trang	Agriculture/Forestry	246	283	293	240	258	264	
	Industry	55	56	57	55	61	57	
	Construction	7	8	7	9	10	8	
	Service	60	64	68	107	104	81	
	GPDP	368	411	425	411	433	410	
(47) Kien Giang	Agriculture/Forestry	364	372	373	381	391	374	
	Industry	118	132	158	189	190	156	
	Construction	44	36	34	37	40	38	
	Service	414	459	503	540	578	499	
	GPDP	930	999	1,068	1,141	1,199	1,067	
(53) Minh Hai	Agriculture/Forestry	331	353	348	342	347	344	
	Industry	210	228	244	270	294	249	
	Construction	14	17	19	23	26	20	
	Service	194	222	243	253	261	235	
	GPDP	749	820	854	888	928	818	
GROSS PROVINCIAL DOMESTIC PRODUCT SDR VIII			7,015	7,465	8,012	8,364	8,694	7,910
National Total	Agriculture/Forestry	11,642	11,900	12,756	13,241	13,753	12,658	
	Industry	5,542	6,045	6,927	7,769	8,757	7,008	
	Construction	1,131	1,190	1,318	1,575	1,663	1,415	
	Service	11,221	12,167	13,002	14,182	15,605	13,235	
	GPDP	29,536	31,302	34,003	36,767	39,978	34,317	

ANNEX 18-32 : GROSS REGIONAL DOMESTIC PRODUCT 1990 TO 1994 BY SDR AND MAJOR ECONOMIC SECTORS (1989 CONSTANT PRICES)

(Unit : Billion VND)

SOCIO-ECONOMIC DEVELOPMENT REGION	PROVINCE	MAJOR ECONOMIC SECTOR	ABSOLUTE MAGNITUDE					ABSOLUTE AV.
			1990	1991	1992	1993	1994	MAGNITUDE 1990 - 1994
		Agriculture/Forestry	250	250	270	283	300	271
		Industry	178	214	243	302	345	256
		Construction	16	26	38	37	37	31
		Service	136	146	147	154	158	148
GROSS PROVINCIAL DOMESTIC PRODUCT SDR I			580	636	698	776	840	706
		Agriculture/Forestry	1,433	1,387	1,509	1,584	1,640	1,511
		Industry	381	402	439	465	477	433
		Construction	202	206	206	222	235	214
		Service	925	1,049	1,138	1,226	1,397	1,147
GROSS PROVINCIAL DOMESTIC PRODUCT SDR II			2,941	3,044	3,292	3,497	3,749	3,305
		Agriculture/Forestry	1,821	1,790	2,114	2,383	2,422	2,106
		Industry	806	805	934	1,000	1,138	937
		Construction	271	254	314	381	473	339
		Service	2,745	2,959	3,064	3,332	3,555	3,131
GROSS PROVINCIAL DOMESTIC PRODUCT SDR III			5,644	5,808	6,426	7,096	7,588	6,512
		Agriculture/Forestry	1,282	1,276	1,334	1,407	1,514	1,363
		Industry	342	341	363	394	417	371
		Construction	167	167	170	203	219	185
		Service	933	985	1,023	1,174	1,253	1,075
GROSS PROVINCIAL DOMESTIC PRODUCT SDR VI			2,724	2,759	2,895	3,178	3,403	2,994
		Agriculture/Forestry	869	900	887	841	916	883
		Industry	417	448	477	500	530	474
		Construction	70	80	83	104	134	94
		Service	699	745	800	921	966	826
GROSS PROVINCIAL DOMESTIC PRODUCT SDR V			2,055	2,173	2,247	2,366	2,546	2,277
		Agriculture/Forestry	478	509	536	566	610	538
		Industry	34	30	30	35	37	33
		Construction	38	38	38	42	48	41
		Service	167	170	166	166	175	169
GROSS PROVINCIAL DOMESTIC PRODUCT SDR VI			717	747	770	799	870	781
		Agriculture/Forestry	1,439	1,522	1,569	1,625	1,760	1,583
		Industry	2,535	2,908	3,490	4,036	4,701	3,534
		Construction	232	279	316	408	519	351
		Service	3,654	3,951	4,289	4,622	5,308	4,305
GROSS PROVINCIAL DOMESTIC PRODUCT SDR VII			7,860	8,660	9,663	10,691	12,288	9,832
		Agriculture/Forestry	4,070	4,266	4,537	4,562	4,591	4,405
		Industry	849	897	951	1,037	1,112	969
		Construction	135	140	153	178	196	161
		Service	1,961	2,162	2,371	2,587	2,793	2,375
GROSS PROVINCIAL DOMESTIC PRODUCT SDR VIII			7,015	7,465	8,012	8,364	8,694	7,910
		Agriculture/Forestry	11,642	11,900	12,756	13,241	13,753	12,658
		Industry	5,542	6,045	6,927	7,769	8,757	7,008
		Construction	1,131	1,190	1,318	1,575	1,863	1,415
		Service	11,221	12,167	13,002	14,182	15,605	13,235
NATIONAL TOTAL GROSS DOMESTIC PRODUCT			29,536	31,302	34,003	36,767	39,978	34,317

NOTE : SDR = Socio Economic Development Region.

SOURCE: 1) Development Strategy Institute - DSI, Ministry of Planning and Investment, General Statistical Office.

2) Computations and calculations by JICA study team.

ANNEX 18.4 : RANKING OF PROVINCES BY GDP OVER THE PERIOD 1990 TO 1994 (CONSTANT 1989 PRICE BASE)

[Unit : Billion VND/percent]

1990 RANKING					1994 RANKING					AVERAGE 1990-94 RANKING				
RANK	PROVIN.	SDR	GDP	ACCUM. GDP	RANK	PROVIN.	SDR	GDP	ACCUM. GDP	RANK	PROVIN.	SDR	GDP	ACCUM. GDP
1	HOC	VII	4,476	15.15	1	HOC	VII	6,681	15.71	1	HOC	VII	5,349	15.59
2	Ha Noi	III	1,861	21.46	2	Ha Noi	III	2,580	23.17	2	Ha Noi	III	2,182	21.94
3	Vung Tau	VII	1,146	25.34	3	Vung Tau	VII	2,579	29.82	3	Vung Tau	VII	1,878	27.42
4	Thanh Hoa	IV	1,027	28.81	4	Dong Nai	VII	1,238	32.71	4	Thanh Hoa	IV	1,102	30.63
5	Dong Thap	VIII	968	32.06	5	Thanh Hoa	IV	1,208	35.73	5	Ken Giang	VIII	1,067	33.74
6	Dong Nai	VII	933	35.21	6	Hai Hung	III	1,203	38.74	6	Dong Nai	VII	1,066	36.84
7	Ken Giang	VIII	930	38.36	7	Ken Giang	VIII	1,199	41.74	7	Dong Thap	VIII	1,064	39.94
8	Hai Hung	III	890	41.38	8	Dong Thap	VIII	1,157	44.64	8	Hai Hung	III	1,040	42.97
9	Hai Phong	III	824	44.17	9	Hai Phong	III	1,136	47.48	9	Hai Phong	III	947	45.73
10	Q.N.D.N.	V	777	46.69	10	An Giang	VIII	1,073	50.16	10	An Giang	VIII	904	48.37
11	Ha Bac	II	749	49.33	11	Can Tho	VIII	1,003	52.67	11	Can Tho	VIII	860	50.87
12	Nam Ha	III	749	51.87	12	Nam Ha	III	961	55.06	12	Nam Ha	III	848	53.34
13	Minh Hai	VIII	749	54.40	13	Minh Hai	VIII	928	57.37	13	Minh Hai	VIII	848	55.81
14	An Giang	VIII	736	56.89	14	Q.N.D.N.	V	812	59.89	14	Q.N.D.N.	V	822	59.31
15	Can Tho	VIII	727	59.35	15	Nghi An	IV	908	61.92	15	Ha Bac	II	806	60.56
16	Nghi An	IV	726	61.81	16	Ha Bac	II	901	64.18	16	Nghi An	IV	795	62.88
17	Tien Giang	VIII	711	64.22	17	Vinh Phu	II	854	66.51	17	Vinh Phu	II	751	65.07
18	Vinh Phu	II	693	66.57	18	Tien Giang	VIII	793	68.30	18	Tien Giang	VIII	739	67.22
19	Ha Tay	III	666	68.73	19	Ha Tay	III	754	70.18	19	Ha Tay	III	690	69.23
20	Long An	VIII	536	70.60	20	Thai Bin	III	705	71.96	20	Thai Bin	III	575	70.91
21	Thai Bin	III	464	72.17	21	Quang Ninh	II	617	73.49	21	Long An	VIII	554	72.52
22	Vn Long	VIII	459	73.73	22	Khanh Hoa	V	602	75.00	22	Khanh Hoa	V	528	74.06
23	Dac Lac	VI	448	75.24	23	Ben Tre	VIII	580	76.45	23	Quang Ninh	II	521	75.58
24	Ben Tre	VIII	444	76.75	24	Dac Lac	VI	564	77.89	24	Ben Tre	VIII	520	77.09
25	Khan Hoa	V	431	78.21	25	Long An	VII	551	79.24	25	Vinh Long	VIII	516	78.60
26	Bac Thai	II	410	79.59	26	Vinh Long	VIII	528	80.56	26	Dac Lac	VI	456	80.04
27	Quang Ninh	II	406	80.97	27	Hao Binh	I	516	81.85	27	Bac Thai	II	454	81.37
28	Tra Vinh	VIII	398	82.32	28	Bac Thai	II	501	83.10	28	Tra Vinh	VIII	429	82.62
29	Soc Trang	VIII	388	83.56	29	T.T.Hoa	IV	491	84.32	29	Hao Binh	I	423	83.85
30	Binh Dinh	V	361	84.75	30	Song Be	VII	490	85.53	30	Soc Trang	VIII	410	85.04
31	T.T.Hoa	IV	359	85.93	31	Binh Dinh	V	458	86.70	31	T.T.Hoa	IV	407	85.22
32	Song Be	VII	336	87.07	32	Tra Vinh	VIII	449	87.82	32	Song Be	VII	406	87.41
33	Hao Binh	I	335	88.20	33	Soc Trang	VIII	433	88.91	33	Binh Dinh	V	402	88.58
34	Tay Ninh	VII	309	89.25	34	Tay Ninh	VII	397	89.90	34	Tay Ninh	VII	351	89.61
35	Ha Tinh	IV	276	90.18	35	Ha Tinh	IV	392	90.89	35	Ha Tinh	IV	317	90.53
36	Quang Ngai	V	253	91.09	36	Lam Dong	VII	337	91.72	36	Lam Dong	VII	291	91.38
37	Yen Bai	II	247	91.88	37	Quang Ngai	V	321	92.53	37	Quang Ngai	V	244	92.21
38	Lam Dong	VII	241	92.70	38	Yen Bai	II	303	93.28	38	Yen Bai	II	280	93.02
39	N. Thuan	VII	238	93.51	39	Ninh Thuan	VII	303	94.04	39	Ninh Thuan	VII	272	93.81
40	Phu Yen	V	231	94.29	40	Binh Thuan	VII	263	94.70	40	Phu Yen	V	242	94.52
41	Ninh Binh	III	200	94.97	41	Ninh Binh	III	259	95.35	41	Ninh Binh	III	230	95.19
42	Quang Binh	IV	197	95.63	42	Phu Yen	V	253	95.98	42	Binh Thuan	VII	220	95.83
43	Binh Thuan	VII	181	96.25	43	Quang Binh	IV	226	96.55	43	Quang Binh	IV	204	96.42
44	Gia Lai	VI	179	96.85	44	Gia Lai	VI	208	97.07	44	Gia Lai	VI	191	96.98
45	Quang Tri	IV	159	97.38	45	Lam Son	II	203	97.57	45	Lam Son	II	174	97.49
46	Lam Son	II	157	97.92	46	Quang Tri	IV	173	98.02	46	Quang Tri	IV	159	97.85
47	Lai Chau	I	138	98.39	47	Lai Chau	I	173	98.45	47	Lai Chau	I	154	98.43
48	Tuyen Quang	II	115	98.78	48	Tuyen Quang	II	154	98.84	48	Tuyen Quang	II	131	98.81
49	Cao Bang	II	110	99.15	49	Son La	I	151	99.21	49	Son La	I	128	99.18
50	Son La	I	107	99.51	50	Cao Bang	II	147	99.58	50	Cao Bang	II	124	99.55
51	Kon Thum	VI	90	99.82	51	Kon Thum	VI	98	99.89	51	Kon Thum	VI	94	99.82
52	Ha Giang	II	54	100.00	52	Ha Giang	II	69	100.00	52	Ha Giang	II	62	100.00
53	Lao Cai	II	0	100.00	53	Lao Cai	II	0	100.00	53	Lao Cai	II	0	100.00
TOTAL			29,536	100.00	TOTAL			39,978	100.00	TOTAL			34,319	100.00

Source : JICA study team.

ANNEX 18-5: RANKING OF PROVINCES BY GROSS VALUE OF AGRICULTURE & FORESTRY OUTPUT OVER THE PERIOD 1990 TO 1994 (CONSTANT 1989 PRICES)

Unit: Billion VND/percent														
1990 RANKING					1994 RANKING					AVERAGE 1990-94 RANKING				
RANK	PROVIN.	SDR	A/F	ACCUM. I A/F	RANK	PROVIN.	SDR	A/F	ACCUM. I A/F	RANK	PROVIN.	SDR	A/F	ACCUM. A/F
1	Thong Thap	VIII	711	6.11	1	Dong Thap	VIII	832	6.06	1	Dong Thap	VIII	779	6.15
2	Tien Giang	VIII	474	10.18	2	An Giang	VIII	670	10.95	2	An Giang	VIII	567	10.55
3	Thanh Hoa	IV	470	14.22	3	Hai Hung	III	586	15.22	3	Thanh Hoa	IV	490	14.42
4	Dong Nai	VII	463	18.19	4	Thanh Hoa	IV	521	19.01	4	Hai Hung	III	482	18.23
5	An Giang	VIII	443	22.00	5	Nghé An	IV	514	22.75	5	Dong Nai	VII	461	21.87
6	Ha Bac	II	431	25.70	6	Ha Bac	II	493	26.35	6	Ha Bac	II	455	25.47
7	Nghé An	IV	426	29.36	7	Dong Nai	VII	488	29.91	7	Tien Giang	VIII	455	29.06
8	Hai Hung	III	391	32.72	8	Thai Bin	III	480	33.40	8	Nghé An	IV	450	32.62
9	Can Tho	VIII	367	35.87	9	Nam Ha	III	461	38.76	9	Can Tho	VIII	428	36.00
10	Nam Ha	III	357	38.94	10	Can Tho	VIII	450	40.12	10	Nam Ha	III	419	39.31
11	Ken Giang	VIII	354	41.98	11	Tien Giang	VIII	411	43.11	11	Thai Bia	III	397	42.44
12	Ha Tay	III	352	45.00	12	Ken Giang	VIII	391	45.96	12	Ken Giang	VIII	374	45.40
13	Long An	VIII	346	47.97	13	Dac Lac	VI	390	48.80	13	Ha Tay	III	362	48.26
14	Vinh Phu	II	336	50.88	14	Ha Tay	III	388	51.63	14	Long An	VIII	358	51.09
15	Minh Hai	VIII	331	53.69	15	Vinh Phu	II	370	54.32	15	Vinh Phu	II	351	53.86
16	Thai Bin	III	326	56.49	16	Long An	VIII	362	56.89	16	Minh Hai	VIII	344	56.58
17	Vinh Long	VIII	303	59.10	17	Minh Hai	VIII	347	59.42	17	Dac Lac	VI	332	59.20
18	Dac Lac	VI	294	61.54	18	Vinh Long	VIII	311	61.68	18	Vinh Long	VIII	325	61.77
19	Q.N.D.N.	V	279	63.66	19	Tra Vinh	VIII	298	63.86	19	Tra Vinh	VIII	290	64.06
20	Tra Vinh	VIII	276	66.30	20	Q.N.D.N.	V	285	65.83	20	Q.N.D.N.	V	279	66.25
21	Soc Trang	VIII	246	68.42	21	Ha Tinh	IV	278	67.96	21	Soc Trang	VIII	264	68.34
22	Ben Tre	VIII	219	70.90	22	Song Be	VII	278	69.98	22	Song Be	VII	242	70.25
23	Song Be	VII	208	72.08	23	Soc Trang	VIII	258	71.86	23	Ben Tre	VIII	231	72.08
24	Binh Dinh	V	195	73.76	24	Ben Tre	VIII	231	73.55	24	Ha Tinh	IV	218	73.80
25	Ha Tinh	IV	186	75.36	25	Bac Thai	II	219	75.14	25	Binh Dinh	V	197	75.35
26	Bac Thai	II	178	76.89	26	Hai Phong	III	213	76.70	26	Bac Thai	II	189	76.85
27	Tay Ninh	VII	177	78.41	27	Binh Dinh	V	206	78.20	27	Tay Ninh	VII	184	78.30
28	HCC	VII	164	79.81	28	Tay Ninh	VII	200	79.65	28	Hai Phong	III	182	79.74
29	Hai Phong	III	155	81.15	29	HCC	VII	187	81.02	29	HCC	VII	176	81.13
30	Khanh Hoa	V	154	82.47	30	Lam Dong	VII	185	82.37	30	Khanh Hoa	V	166	82.44
31	Lam Dong	VII	132	83.60	31	Khanh Hoa	V	177	83.66	31	Lam Dong	VII	161	83.71
32	Gia Lai	VI	130	84.72	32	Ha Noi	III	162	84.84	32	Gia Lai	VI	139	84.81
33	Ha Noi	III	124	85.76	33	Vung Tau	VII	158	85.99	33	Ha Noi	III	137	85.89
34	Phu Yen	V	121	86.82	34	Gia Lai	VI	152	87.09	34	Vung Tau	VII	129	86.91
35	Quang Ngai	V	120	87.95	35	Ninh Thuan	VII	135	88.08	35	Ninh Binh	III	128	87.92
36	Quang Ninh	II	118	88.87	36	Ninh Binh	III	132	89.04	36	Quang Ngai	V	121	88.88
37	Ninh Binh	III	116	89.86	37	Binh Thuan	VII	129	89.98	37	Phu Yen	V	121	89.83
38	Vung Tau	VII	104	90.76	38	Quang Ngai	V	126	90.80	38	Quang Ninh	II	117	90.76
39	Yen Bai	II	99	91.61	39	Quang Ninh	II	123	91.79	39	Ninh Thuan	VII	117	91.68
40	Ninh Thuan	VII	96	92.43	40	Yen Bai	II	122	92.68	40	Binh Thuan	VII	114	92.58
41	Lang Son	II	95	93.25	41	Phu Yen	V	122	93.57	41	Yen Bai	II	111	93.46
42	Binh Thuan	VII	95	94.06	42	Lai Chau	I	108	94.36	42	Lai Chau	I	98	94.23
43	Lai Chau	I	94	94.87	43	Son La	I	108	95.15	43	Lang Son	II	97	95.00
44	Son La	I	82	95.98	44	Lang Son	II	106	95.92	44	Son La	I	93	95.73
45	Quang Tri	IV	76	96.77	45	Hao Binh	I	84	96.53	45	Hao Binh	I	80	96.37
46	Cao Bang	II	75	96.87	46	Cao Bang	II	83	97.14	46	Cao Bang	II	77	96.97
47	Hao Binh	I	74	97.51	47	Quang Binh	IV	76	97.63	47	T.T.Hue	IV	72	97.54
48	Quang Binh	IV	64	98.06	48	T.T.Hue	IV	73	98.22	48	Quang Binh	IV	68	98.08
49	Kon Thum	VI	64	98.61	49	Kon Thum	VI	68	98.72	49	Kon Thum	VI	66	98.60
50	T.T.Hue	IV	60	99.17	50	Tuyen Quang	II	65	99.19	50	Quang Tri	IV	65	99.12
51	Tuyen Quang	II	56	99.60	51	Ha Giang	II	59	99.62	51	Tuyen Quang	II	59	99.58
52	Ha Giang	II	46	100.00	52	Quang Tri	IV	52	100.00	52	Ha Giang	II	53	100.00
53	Lao Cai	II	0	100.00	53	Lao Cai	II	0	100.00	53	Lao Cai	II	0	100.00
TOTAL			11,642	100.00	TOTAL			13,723	100.00	TOTAL			12,659	100.00

Source: JICA study team.

ANNEX 18-6 : RANKING OF PROVINCES BY GROSS VALUE OF OUTPUT OF INDUSTRY OVER THE PERIOD 1990 TO 1994 (CONSTANT 1989 PRICES)

[Unit : Billion VND/percent]

1990 RANKING					1994 RANKING					AVERAGE 1990-94 RANKING				
RANK	PROVIN.	SDR	INDUS.	ACCUM. INDUS.	RANK	PROVIN.	SDR	INDUS.	ACCUM. INDUS.	RANK	PROVIN.	SDR	INDUS.	ACCUM. INDUS.
1	HCC	VII	1,326	23.93	1	Vung Tau	VII	2,059	23.51	1	HCC	VII	1,593	22.73
2	Vung Tau	VII	845	39.17	2	HCC	VII	2,053	45.96	2	Vung Tau	VII	1,467	43.67
3	Ha Noi	III	365	45.58	3	Ha Noi	III	510	52.78	3	Ha Noi	III	417	49.62
4	Minh Hai	VIII	210	49.37	4	Hao Binh	I	335	56.61	4	Hao Binh	I	249	53.18
5	Dong Nai	VII	174	52.51	5	Dong Nai	VII	307	60.11	5	Minh Hai	VIII	249	56.73
6	Hao Binh	I	172	55.61	6	Minh Hai	VIII	294	63.47	6	Dong Nai	VII	240	60.15
7	Thanh Hoa	IV	143	58.19	7	Hai Phong	III	205	65.81	7	Khanh Hoa	V	174	62.64
8	Khanh Hoa	V	142	60.75	8	Khanh Hoa	V	194	68.03	8	Thanh Hoa	IV	157	64.88
9	Q.N.D.N.	V	136	63.21	9	Kien Giang	VIII	190	70.20	9	Kien Giang	VIII	156	67.10
10	Quang Ninh	II	133	65.61	10	Thanh Hoa	IV	174	72.18	10	Hai Phong	III	152	69.27
11	Kien Giang	VIII	118	67.74	11	Q.N.D.N.	V	168	74.09	11	Q.N.D.N.	V	143	71.31
12	Hai Phong	III	116	69.83	12	Quang Ninh	II	160	75.99	12	Quang Ninh	II	139	73.30
13	Can Tho	VIII	97	71.58	13	Hai Hung	III	150	77.62	13	Hai Hung	III	121	75.02
14	Vinh Phu	II	95	73.29	14	Can Tho	VIII	136	79.17	14	Can Tho	VIII	110	76.59
15	Hai Hung	III	85	75.01	15	Vinh Phu	II	112	80.45	15	Vinh Phu	II	103	78.06
16	Ha Tay	III	85	76.54	16	Ha Tay	III	106	81.66	16	Ha Tay	III	93	79.39
17	Nam Ha	III	81	78.00	17	Bac Thai	II	98	82.78	17	Bac Thai	II	92	80.71
18	Bac Thai	II	73	79.34	18	T.T.Hoa	IV	89	83.89	18	Nam Ha	III	79	81.83
19	Nghen An	IV	70	80.58	19	An Giang	VIII	88	84.81	19	T.T.Hoa	IV	75	82.58
20	T.T.Hoa	IV	70	81.85	20	Song Be	VII	86	85.79	20	An Giang	VIII	75	84.03
21	Ben Tre	VIII	70	83.11	21	Nghen An	IV	84	85.75	21	Nghen An	IV	73	85.07
22	An Giang	VIII	63	84.25	22	Nam Ha	III	83	87.70	22	Ben Tre	VIII	71	86.09
23	Dong Thap	VIII	60	85.33	23	Binh Dinh	V	76	88.57	23	Binh Dinh	V	66	87.03
24	Binh Dinh	V	60	86.41	24	Ben Tre	VIII	76	89.44	24	Song Be	VII	62	87.91
25	Ninh Thuan	VII	57	87.44	25	Tien Giang	VIII	72	90.26	25	Dong Thap	VIII	61	88.78
26	Soc Trang	VIII	55	88.43	26	Quang Ngai	V	67	91.02	26	Quang Ngai	V	58	89.62
27	Long An	VIII	54	89.41	27	Dong Thap	VIII	66	91.78	27	Ninh Thuan	VII	59	90.47
28	Ha Bac	II	50	90.31	28	Ninh Thuan	VII	64	92.51	28	Soc Trang	VIII	57	91.28
29	Quang Ngai	V	49	91.19	29	Soc Trang	VIII	61	93.21	29	Ha Bac	II	56	92.08
30	Thai Bin	III	46	92.02	30	Ha Bac	II	59	93.88	30	Tien Giang	VIII	56	92.86
31	Vinh Long	VIII	45	92.84	31	Vinh Long	VIII	59	94.55	31	Vinh Long	VIII	52	93.61
32	Tien Giang	VIII	43	93.61	32	Lam Dong	VII	54	95.17	32	Long An	VIII	51	94.33
33	Song Be	VII	43	94.39	33	Thai Bin	III	50	95.74	33	Lam Dong	VII	46	94.99
34	Lam Dong	VII	36	95.04	34	Binh Thuan	VII	44	96.24	34	Thai Bin	III	45	95.63
35	Tra Vinh	VIII	34	95.65	35	Long An	VIII	44	96.75	35	Binh Thuan	VII	38	96.18
36	Binh Thuan	VII	32	96.23	36	Ninh Binh	III	34	97.13	36	Phu Yen	V	32	96.63
37	Phu Yen	V	30	96.77	37	Tay Ninh	VII	34	97.52	37	Tra Vinh	VIII	32	97.09
38	Ninh Binh	III	28	97.28	38	Ha Tinh	IV	29	97.85	38	Ninh Binh	III	30	97.52
39	Ha Tinh	IV	25	97.73	39	Quang Binh	IV	28	98.17	39	Tay Ninh	VII	28	97.92
40	Quang Binh	IV	24	98.16	40	Phu Yen	V	27	98.48	40	Ha Tinh	IV	26	98.29
41	Tay Ninh	VII	22	98.55	41	Tra Vinh	VIII	26	98.78	41	Quang Binh	IV	24	98.63
42	Dac Lac	VI	20	98.92	42	Dac Lac	VI	22	99.03	42	Dac Lac	VI	19	98.90
43	Tuyen Quang	II	13	99.15	43	Yen Bai	II	18	99.23	43	Tuyen Quang	II	16	99.13
44	Gia Lai	VI	11	99.39	44	Tuyen Quang	II	18	99.44	44	Yen Bai	II	15	99.34
45	Quang Tri	IV	10	99.53	45	Quang Tri	IV	12	99.55	45	Quang Tri	IV	12	99.51
46	Yen Bai	II	9	99.63	46	Gia Lai	VI	11	99.70	46	Gia Lai	VI	11	99.67
47	Lang Son	II	5	99.78	47	Lai Chau	I	7	99.78	47	Lai Chau	I	6	99.76
48	Lai Chau	I	4	99.85	48	Lang Son	II	6	99.85	48	Lang Son	II	6	99.84
49	Kon Thum	VI	3	99.91	49	Kon Thum	VI	4	99.90	49	Cao Bang	II	4	99.90
50	Son La	I	2	99.93	50	Son La	I	3	99.93	50	Kon Thum	VI	3	99.94
51	Ha Giang	II	2	99.98	51	Ha Giang	II	3	99.97	51	Son La	I	2	99.97
52	Cao Bang	II	1	100.00	52	Cao Bang	II	3	100.00	52	Ha Giang	II	2	100.00
53	Lao Cai	II	0	100.00	53	Lao Cai	II	0	100.00	53	Lao Cai	II	0	100.00
TOTAL			5,542	100.00	TOTAL			8,757	100.00	TOTAL			7,067	100.00

Source : JICA study team

ANNEX 10-7 : RANKING OF PROVINCES BY CONSTRUCTION OVER THE PERIOD 1990 TO 1994 (CONSTANT 1989 PRICES)

[Unit : Billion VND/percent]

1990 RANKING					1994 RANKING					AVERAGE 1990-94 RANKING				
RANK	PROVIN.	SDR	CONST.	ACCUM. CONST.	RANK	PROVIN.	SDR	CONST.	ACCUM. CONST.	RANK	PROVIN.	SDR	CONST.	ACCUM. CONST.
1	HCC	VII	180	15.92	1	HCC	VII	401	21.52	1	HCC	VII	270	19.07
2	Ha Noi	III	102	24.93	2	Ha Noi	III	154	29.79	2	Ha Noi	III	107	26.62
3	Ha Bac	II	80	32.01	3	Hai Phong	III	103	35.32	3	Ha Bac	II	84	32.56
4	Thanh Hoa	IV	56	36.96	4	Ha Bac	II	89	40.10	4	Hai Phong	III	72	37.64
5	Hai Phong	III	52	41.56	5	Nam Ha	III	66	43.64	5	Thanh Hoa	IV	57	41.67
6	Kien Giang	VIII	44	45.45	6	Thanh Hoa	IV	62	46.97	6	Nam Ha	III	45	44.84
7	Ha Tay	III	41	49.07	7	Hai Hung	III	56	49.97	7	Nghé An	IV	42	47.81
8	Nghé An	IV	40	52.61	8	Nghé An	IV	47	52.50	8	Ha Tay	III	41	50.71
9	Vinh Phu	II	37	55.88	9	Q.N.D.N.	V	46	54.97	9	Hai Hung	III	38	53.39
10	Bac Thai	II	36	59.06	10	T.T.Hue	IV	45	57.32	10	Q.N.D.N.	V	38	56.07
11	Nam Ha	III	34	62.07	11	Vinh Phu	II	40	59.53	11	Kien Giang	VIII	38	58.76
12	Q.N.D.N.	V	33	64.62	12	Ha Tay	III	40	61.67	12	Bac Thai	II	36	61.30
13	Dac Lac	VI	30	67.64	13	Dong Nai	VII	40	63.82	13	Vinh Phu	II	36	63.84
14	Yen Bai	II	25	69.85	14	Kien Giang	VIII	40	65.97	14	Dac Lac	VI	31	66.03
15	Quang Binh	IV	23	71.88	15	Thai Bin	III	38	68.01	15	Yen Bai	II	27	67.94
16	Hai Hung	III	22	73.83	16	Bac Thai	II	37	69.99	16	Quang Binh	IV	26	69.77
17	Ha Tinh	IV	18	75.42	17	Binh Dinh	V	37	71.99	17	T.T.Hue	IV	26	71.61
18	Quang Tri	IV	17	76.82	18	Dac Lac	VI	36	73.91	18	Thai Bin	III	25	73.58
19	Dong Thap	VIII	17	78.43	19	Can Tho	VIII	35	75.73	19	Dong Nai	VII	25	75.14
20	Dong Nai	VII	15	79.75	20	Yen Bai	II	29	77.39	20	Binh Dinh	V	24	76.84
21	Binh Dinh	V	14	80.99	21	Quang Binh	IV	29	78.90	21	Can Tho	VIII	24	78.53
22	Minh Hai	VIII	14	82.23	22	Tien Giang	VIII	26	80.90	22	Minh Hai	VIII	20	79.94
23	T.T.Hue	IV	13	83.58	23	Minh Hai	VIII	26	81.70	23	Dong Thap	VIII	19	81.29
24	Thai Bin	III	12	84.44	24	Vung Tau	VII	25	83.04	24	Ha Tinh	IV	18	82.56
25	Can Tho	VIII	12	85.50	25	Quang Hoa	V	22	84.22	25	Quang Tri	IV	17	83.78
26	Khanh Hoa	V	11	86.47	26	Dong Thap	VIII	21	85.35	26	Tien Giang	VIII	17	84.96
27	Long An	VIII	10	87.36	27	Hao Binh	I	19	86.37	27	Hao Binh	I	16	85.09
28	Tien Giang	VIII	10	88.24	28	Ha Tinh	IV	19	87.39	28	Vung Tau	VII	15	87.15
29	Lam Dong	VII	9	89.04	29	Khanh Hoa	V	19	88.41	29	Khanh Hoa	V	13	88.06
30	Ninh Binh	III	8	89.74	30	Quang Tri	IV	17	89.35	30	Tay Ninh	VII	13	88.98
31	Vung Tau	VII	8	90.45	31	Quang Ninh	II	16	90.18	31	Quang Ninh	II	12	89.83
32	Tay Ninh	VII	8	91.16	32	Ninh Binh	III	16	91.04	32	Quang Hoa	V	12	90.54
33	Son La	I	7	91.78	33	Tay Ninh	VII	16	91.89	33	Long An	VIII	12	91.53
34	Quang Hoa	V	7	92.41	34	Long An	VIII	15	92.70	34	Ninh Binh	III	11	92.30
35	Ben Tre	VIII	7	93.02	35	Lam Dong	VII	12	93.34	35	Lam Dong	VII	11	93.08
36	Soc Trang	VIII	7	93.63	36	Binh Thuan	VII	11	93.93	36	Son La	I	8	93.64
37	Lang Son	II	6	94.16	37	Lai Chau	I	10	94.47	37	Soc Trang	VIII	8	94.21
38	Quang Minh	II	6	94.69	38	Phu Yen	V	10	95.01	38	Lai Chau	I	7	94.70
39	Tra Vinh	VIII	6	95.23	39	Soc Trang	VIII	10	95.54	39	Lang Son	II	7	95.20
40	Hao Binh	I	5	95.67	40	Lang Son	II	9	96.03	40	Phu Yen	V	7	95.69
41	Phu Yen	V	5	96.11	41	Gia Lai	VI	9	96.51	41	Ben Tre	VIII	7	96.19
42	Gia Lai	VI	5	96.55	42	Son La	I	8	96.94	42	Gia Lai	VI	6	96.61
43	Song Be	VII	5	96.99	43	Song Be	VII	8	97.37	43	Binh Thuan	VII	6	97.03
44	Vinh Long	VIII	5	97.44	44	Ben Tre	VIII	8	97.80	44	Song Be	VII	6	97.45
45	Lai Chau	I	4	97.79	45	Vinh Long	VIII	7	98.17	45	Vinh Long	VIII	6	97.88
46	Ha Giang	II	4	98.14	46	Tuyen Quang	II	6	98.50	46	Tra Vinh	VIII	6	98.31
47	Cao Bang	II	4	98.50	47	Ninh Thuan	VII	6	98.82	47	Tuyen Quang	II	5	98.66
48	Tuyen Quang	II	4	98.85	48	Tra Vinh	VIII	6	99.14	48	Ninh Thuan	VII	5	99.01
49	Ninh Thuan	VII	4	99.20	49	Ha Giang	II	5	99.41	49	Ha Giang	II	4	99.29
50	Kon Thum	VI	3	99.47	50	Cao Bang	II	4	99.62	50	Cao Bang	II	4	99.58
51	Binh Thuan	VII	3	99.73	51	An Giang	VIII	4	99.84	51	Kon Thum	VI	3	99.79
52	An Giang	VIII	3	100.00	52	Kon Thum	VI	3	100.00	52	An Giang	VIII	3	100.00
53	Lao Cai	II	0	100.00	53	Lao Cai	II	0	100.00	53	Lao Cai	II	0	100.00
TOTAL			1,131	100.00	TOTAL			1,853	100.00	TOTAL			1,416	100.00

Source : JICA study team.

ANNEX 18-B : RANKING OF PROVINCES BY GROSS VALUE OF OUTPUT OF SERVICES OVER THE PERIOD 1990 TO 1994 (CONSTANT 1989 PRICES)

[Unit : Billion VND/percent]

1990 RANKING					1994 RANKING					AVERAGE 1990-94 RANKING				
RANK	PROVIN.	SDR	SERV.	ACCUM. SERV.	RANK	PROVIN.	SDR	SERV.	ACCUM. SERV.	RANK	PROVIN.	SDR	SERV.	ACCUM. SERV.
1	HCC	VII	6,881	44.26	1	HCC	VII	4,040	26.01	1	HCC	VII	3,309	25.00
2	Ha Noi	III	1,280	52.74	2	Ha Noi	III	1,754	37.30	2	Ha Noi	III	1,522	36.50
3	Hai Phong	III	501	56.05	3	Hai Phong	III	615	41.25	3	Hai Phong	III	542	40.60
4	Kien Giang	VIII	414	58.80	4	Kien Giang	VIII	578	44.98	4	Kien Giang	VIII	499	44.37
5	Hai Hung	III	382	61.33	5	Thanh Hoa	IV	451	47.88	5	Hai Hung	III	399	47.38
6	Thanh Hoa	IV	358	63.70	6	Q.N.D.N.	V	415	60.55	6	Thanh Hoa	IV	398	50.39
7	Q.N.D.N.	V	329	65.85	7	Hai Hung	III	411	53.20	7	Q.N.D.N.	V	363	53.13
8	Dong Nai	VII	281	67.74	8	Dong Nai	VII	403	55.79	8	Dong Nai	VII	339	55.69
9	Nam Ha	III	277	69.57	9	Can Tho	VIII	372	58.18	9	Nam Ha	III	306	58.01
10	Can Tho	VIII	251	71.24	10	Nam Ha	III	341	60.38	10	Can Tho	VIII	298	60.26
11	Vinh Phu	II	226	72.73	11	Vinh Phu	II	332	62.50	11	An Giang	VIII	269	62.29
12	An Giang	VIII	226	74.23	12	Quang Ninh	II	313	64.56	12	Vung Tau	VII	267	64.31
13	T.T.Hue	IV	199	75.53	13	An Giang	VIII	311	66.57	13	Vinh Phu	II	260	66.27
14	Minh Hai	VIII	194	76.82	14	T.T.Hue	IV	283	68.39	14	Quang Ninh	II	252	68.18
15	Nghen An	IV	190	78.07	15	Vung Tau	VII	267	70.11	15	Minh Hai	VIII	235	69.95
16	Vung Tau	VII	189	79.33	16	Ben Tre	VIII	265	71.81	16	Nghen An	IV	230	71.69
17	Ha Bac	II	188	80.57	17	Nghen An	IV	263	73.50	17	T.T.Hue	IV	229	73.42
18	Tien Giang	VIII	184	81.79	18	Minh Hai	VIII	261	75.19	18	Ha Bac	II	214	75.04
19	Ha Tay	III	178	82.97	19	Ha Bac	II	260	75.85	19	Tien Giang	VIII	212	76.64
20	Dong Thap	VIII	170	84.10	20	Tien Giang	VIII	254	78.49	20	Ben Tre	VIII	212	78.24
21	Quang Ninh	II	149	85.08	21	Dong Thap	VIII	238	80.03	21	Dong Thap	VIII	205	79.79
22	Ben Tre	VIII	148	85.06	22	Ha Tay	III	220	81.44	22	Ha Tay	III	194	81.25
23	Long An	VIII	126	86.90	23	Khanh Hoa	V	212	82.81	23	Khanh Hoa	V	174	82.57
24	Khanh Hoa	V	124	87.72	24	Vinh Long	VIII	151	83.78	24	Bac Thai	II	137	83.60
25	Bac Thai	II	123	88.53	25	Bac Thai	II	147	84.72	25	Long An	VIII	133	84.61
26	Yen Bai	II	114	89.29	26	Tay Ninh	VII	147	85.67	26	Vinh Long	VIII	132	85.61
27	Dac Lac	VI	114	90.04	27	Long An	VIII	140	86.57	27	Tay Ninh	VII	127	86.57
28	Vinh Long	VIII	106	90.75	28	Binh Dinh	V	139	87.47	28	Yen Bai	II	126	87.52
29	Tay Ninh	VII	102	91.42	29	Thai Bin	III	137	88.35	29	Binh Dinh	V	115	88.39
30	Binh Dinh	V	92	92.03	30	Yen Bai	II	134	89.21	30	Dac Lac	VI	113	89.24
31	Quang Binh	IV	86	92.60	31	Tra Vinh	VIII	119	89.98	31	Thai Bin	III	107	90.05
32	Hao Binh	I	84	93.16	32	Song Be	VII	118	90.74	32	Tra Vinh	VIII	101	90.81
33	Tra Vinh	VIII	82	93.70	33	Dac Lac	VI	116	91.48	33	Song Be	VII	97	91.55
34	Ninh Thuan	VII	81	94.24	34	Quang Ngai	V	106	92.17	34	Quang Ngai	V	92	92.22
35	Thai Ba	III	80	94.77	35	Soc Trang	VIII	104	92.84	35	Ninh Thuan	VII	91	92.93
36	Song Be	VII	80	95.30	36	Ninh Thuan	VII	98	93.47	36	Quang Binh	IV	86	93.58
37	Quang Ngai	V	79	95.82	37	Quang Tri	IV	97	94.09	37	Phu Yen	V	82	94.20
38	Phu Yen	V	75	96.32	38	Phu Yen	V	94	94.70	38	Soc Trang	VIII	81	94.81
39	Lam Dong	VII	64	96.74	39	Quang Binh	IV	93	95.29	39	Hao Binh	I	79	95.41
40	Soc Trang	VIII	60	97.14	40	Lam Dong	VII	86	95.85	40	Quang Tri	IV	75	95.97
41	Quang Tri	IV	56	97.51	41	Lang Son	II	82	96.38	41	Lam Dong	VII	73	96.52
42	Lang Son	II	51	97.83	42	Binh Thuan	VII	79	96.88	42	Lang Son	II	64	97.01
43	Binh Thuan	VII	51	98.18	43	Hao Binh	I	78	97.39	43	Binh Thuan	VII	62	97.48
44	Ninh Binh	III	48	98.50	44	Ninh Binh	III	77	97.88	44	Ninh Binh	III	61	97.94
45	Ha Tinh	IV	47	98.81	45	Ha Tinh	IV	66	98.31	45	Ha Tinh	IV	55	98.35
46	Tuyen Quang	II	42	99.09	46	Tuyen Quang	II	65	98.73	46	Tuyen Quang	II	51	98.74
47	Lai Chau	I	36	99.33	47	Cao Bang	II	57	99.09	47	Lai Chau	I	44	99.07
48	Gia Lai	VI	33	99.55	48	Lai Chau	I	48	99.40	48	Cao Bang	II	40	99.37
49	Cao Bang	II	30	99.75	49	Gia Lai	VI	36	99.63	49	Gia Lai	VI	34	99.63
50	Kon Thum	VI	20	99.88	50	Son La	I	32	99.84	50	Son La	I	25	99.82
51	Son La	I	16	99.99	51	Kon Thum	VI	23	99.99	51	Kon Thum	VI	22	99.98
52	Ha Giang	II	2	100.00	52	Ha Giang	II	2	100.00	52	Ha Giang	II	2	100.00
53	Lao Cai	II	0	100.00	53	Lao Cai	II	0	100.00	53	Lao Cai	II	0	100.00
TOTAL			15,096	100.00	TOTAL			15,535	100.00	TOTAL			13,235	100.00

Source : JICA study team.

ANNEX 18-9 : SHARES OF GROSS REGIONAL DOMESTIC PRODUCT 1990 TO 1994 BY SDR AND MAJOR ECONOMIC SECTOR (CONSTANT 1989 PRICES)

(Unit : Percent)

SOCIO-ECONOMIC DEVELOPMENT REGION	PROVINCE	MAJOR ECONOMIC SECTOR	ABSOLUTE SHARES					ABSOLUTE AV.
			1990	1991	1992	1993	1994	SHARES
			(percent)					1990 - 1994
		Agriculture/Forestry	2.15	2.10	2.12	2.14	2.18	2.14
		Industry	3.21	3.54	3.51	3.89	3.94	3.66
		Construction	1.41	2.18	2.88	2.35	1.99	2.18
		Service	1.21	1.20	1.13	1.09	1.01	1.12
GROSS PROVINCIAL DOMESTIC PRODUCT SDR I			1.96	2.03	2.05	2.11	2.10	2.06
		Agriculture/Forestry	12.31	11.66	11.83	11.96	11.92	11.90
		Industry	6.87	6.65	6.34	5.99	5.45	6.18
		Construction	17.86	17.31	15.63	14.10	12.61	15.13
		Service	8.24	8.62	8.75	8.64	8.95	8.67
GROSS PROVINCIAL DOMESTIC PRODUCT SDR II			9.96	9.72	9.68	9.51	9.38	9.63
		Agriculture/Forestry	15.64	15.04	16.57	18.00	17.61	16.64
		Industry	14.54	13.32	13.48	12.87	13.00	13.36
		Construction	23.96	21.34	23.82	24.19	25.39	23.92
		Service	24.47	24.32	23.57	23.49	22.78	23.66
GROSS PROVINCIAL DOMESTIC PRODUCT SDR III			19.11	18.55	18.90	19.30	18.98	18.98
		Agriculture/Forestry	11.01	10.72	10.46	10.63	11.01	10.76
		Industry	6.17	5.64	5.24	5.07	4.78	5.30
		Construction	14.77	14.03	12.90	12.89	11.78	13.08
		Service	8.31	8.10	7.91	8.28	8.03	8.12
GROSS PROVINCIAL DOMESTIC PRODUCT SDR VI			9.22	8.85	8.51	8.64	8.51	8.72
		Agriculture/Forestry	7.45	7.56	6.95	6.35	6.66	6.97
		Industry	7.52	7.41	6.89	6.44	6.05	6.77
		Construction	6.19	6.72	6.30	6.60	7.19	6.66
		Service	6.23	6.12	6.15	6.49	6.13	6.24
GROSS PROVINCIAL DOMESTIC PRODUCT SDR V			6.96	6.94	6.61	6.44	6.37	6.64
		Agriculture/Forestry	4.11	4.28	4.20	4.20	4.44	4.25
		Industry	0.61	0.50	0.43	0.45	0.42	0.47
		Construction	3.36	3.19	2.88	2.67	2.58	2.88
		Service	1.49	1.40	1.28	1.17	1.12	1.28
GROSS PROVINCIAL DOMESTIC PRODUCT SDR VI			2.43	2.39	2.26	2.17	2.18	2.27
		Agriculture/Forestry	12.36	12.79	12.30	12.27	12.80	12.51
		Industry	45.74	43.11	50.38	51.95	53.68	50.43
		Construction	20.51	23.45	23.98	25.90	27.85	24.78
		Service	32.56	32.47	32.98	32.59	34.01	32.98
GROSS PROVINCIAL DOMESTIC PRODUCT SDR VII			26.61	27.67	28.42	29.08	30.74	28.65
		Agriculture/Forestry	34.96	35.85	35.57	34.45	33.38	34.80
		Industry	15.32	14.84	13.73	13.35	12.70	13.83
		Construction	11.94	11.76	11.61	11.30	10.63	11.36
		Service	17.48	17.77	18.24	18.24	17.50	17.94
GROSS PROVINCIAL DOMESTIC PRODUCT SDR VIII			23.75	23.85	23.56	22.75	21.75	23.05
		Agriculture/Forestry	100.00	100.00	100.00	100.00	100.00	100.00
		Industry	100.00	100.00	100.00	100.00	100.00	100.00
		Construction	100.00	100.00	100.00	100.00	100.00	100.00
		Service	100.00	100.00	100.00	100.00	100.00	100.00
NATIONAL TOTAL GROSS DOMESTIC PRODUCT			100.00	100.00	100.00	100.00	100.00	100.00

NOTE : SDR = Socio Economic Development Region.

SOURCE : 1) Development Strategy Institute -DSI; Ministry of Planning and Investment. General Statistical Office

2) Computations and calculations by JICA study team.

ANNEX 18-10. RELATIVE POSITION OF THE TARGET AREA IN 1994 USING STATIC INDICATORS

(Unit: as indicated)

NAME OF PROVINCE	AREA 000sq.km	POPULATION SIZE 1994			RURAL 000	Popul. Dens. 34 sq.km	GROSS DOMESTIC PRODUCT 1994				SERVIC.									
		TOTAL 000	URBAN 000	%			A.F.F. Bil VND	%	INDUS. Bil VND	%	CONST. Bil VND	%	Bil VND	%	Bil VND	%				
1) QUANG TRI	4.6	16.70	535.0	11.48	89.2	8.49	445.8	12.05	116	178	9.96	52	9.70	12	3.58	17	13.08	97	10.77	
2) THUA T. HUE	5.0	18.18	996.4	21.35	256.6	24.41	739.8	20.46	199	491	25.81	73	13.62	90	26.87	45	34.62	283	31.41	
3) Q.N. DA NANG	12.0	43.64	1,992.7	41.89	603.4	57.40	1,349.3	37.37	163	912	47.96	285	53.17	166	49.55	46	35.38	415	46.06	
4) QUANG NGAI	5.9	21.45	1,178.8	25.29	102.0	9.70	1,076.8	29.82	200	321	16.88	126	23.51	67	20.00	22	16.92	106	11.76	
TOTAL TARGET AREA	27.5	100.00	4,662	100.00	1,051	100.00	3,611	100.00	170	1,922	100.00	536	100.00	335	100.00	130	100.00	901	100.00	
SDR IV	51.2		9,726.6		1,053.9		8,672.7		190	3,403		1,514		417		219		1,253		
SDR V	34.4		6,216.1		1,448.1		4,768.0		181	2,546		916		530		134		966		
RELATIVE POSITION OF THE TARGET AREA TO SDR AND NATIONAL TOTAL																				
(Unit: %)																				
SHARE OF QUANG TRI & HUE IN SDR IV	18.8		15.7		32.8		13.7		159	19.7		8.3		24.5		28.3		30.3		
SHARE OF Q.N.-DA NANG & QUANG NGAI IN SDR V	52.0		50.4		48.7		50.9		175	48.4		44.9		44.0		50.7		53.9		
SHARE OF TARGET AREA IN NATIONAL TOTAL	8.5		6.5		7.4		6.3		216	4.8		3.9		3.8		7.0		5.8		

Notes:

1) 1994 Gross Domestic Product in 1989 constant prices.

2) A.F.F.=Agriculture, Forestry & Fisheries, INDUS.=Industry, CONST.=Construction, SERVIC.=Services.

Source:

JICA study team.

TABLE 13.11 : RELATIVE POSITION OF THE EIGHT SOCIO-ECONOMIC DEVELOPMENT REGIONS IN 1994 USING DYNAMIC PERFORMANCE INDICATORS (Unit : as indicated)

NAME OF PROVINCE	1 1994 PER CAPITA INCOME ¹⁾ (VND)	2 REAL GDP GROWTH 90-94 (%)	3 DIFFERENTIALS TO NATIONAL		4 POPUL. GROWTH 90-94 (%)	5 GROWTH P.C.I. 90-94 (%)	6 RELAT. SIZE GDP (%)	7 RELAT. SIZE HA NOI (%)	STRUCTURE OF GDP 1994				
			NA (%)	SDRs (%)					A.F.F. (%)	INDUS. (%)	CONST. (%)	SERVIC. (%)	TOTAL (%)
1) QUANG TRI	332,710	2.87	-5.00		2,934	2,814	0.46	4.75	29.21	6.74	9.55	54.49	100.00
2) THUA T. HUE	492,264	9.79	1.92		2,558	2,465	1.26	13.10	14.87	18.33	9.16	57.64	100.00
3) Q.N.-DA NANG	467,046	4.14	-3.73		2,221	2,150	2.34	24.33	31.25	18.20	5.04	45.50	100.00
4) QUANG NGAI	271,463	6.00	-1.87		2,488	2,400	0.82	8.56	39.25	20.87	6.85	33.02	100.00
TOTAL TARGET AREA	407,559	6.08	-1.79		2,440	3,455	4.88	30.73	28.18	17.81	6.83	47.37	100.00

RELATIVE POSITION OF THE TARGET AREA TO NATIONAL LEVEL

RELATIVE POSITION OF TARGET AREA TO NATIONAL LEVEL	-1.79	n.a.	0.071	1.206	n.a.	n.a.	81.92	80.39	146.67	121.37	n.a.
--	-------	------	-------	-------	------	------	-------	-------	--------	--------	------

Notes : ¹⁾ In 1989 constant prices.

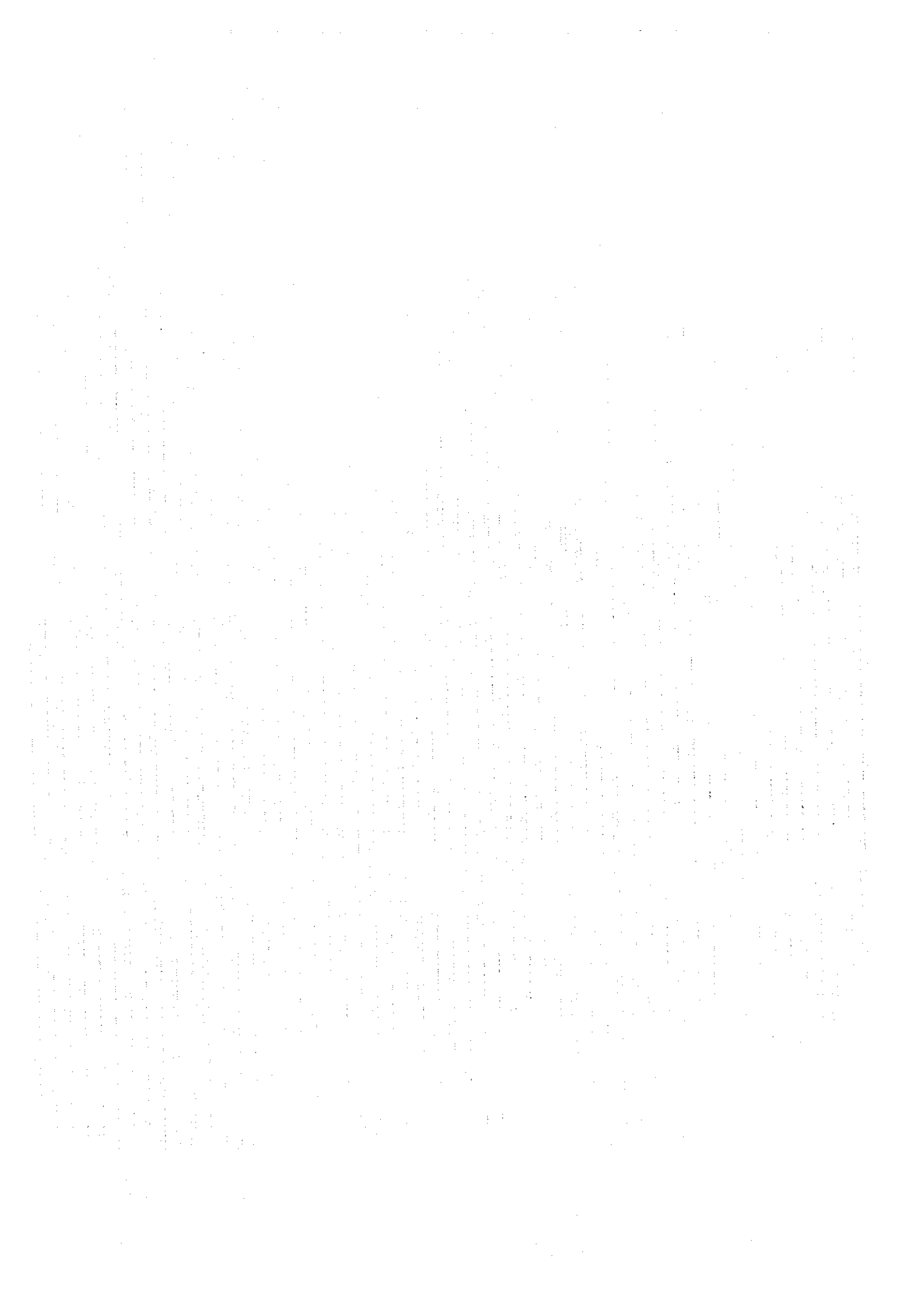
²⁾ Column 3 = Differential to national average.

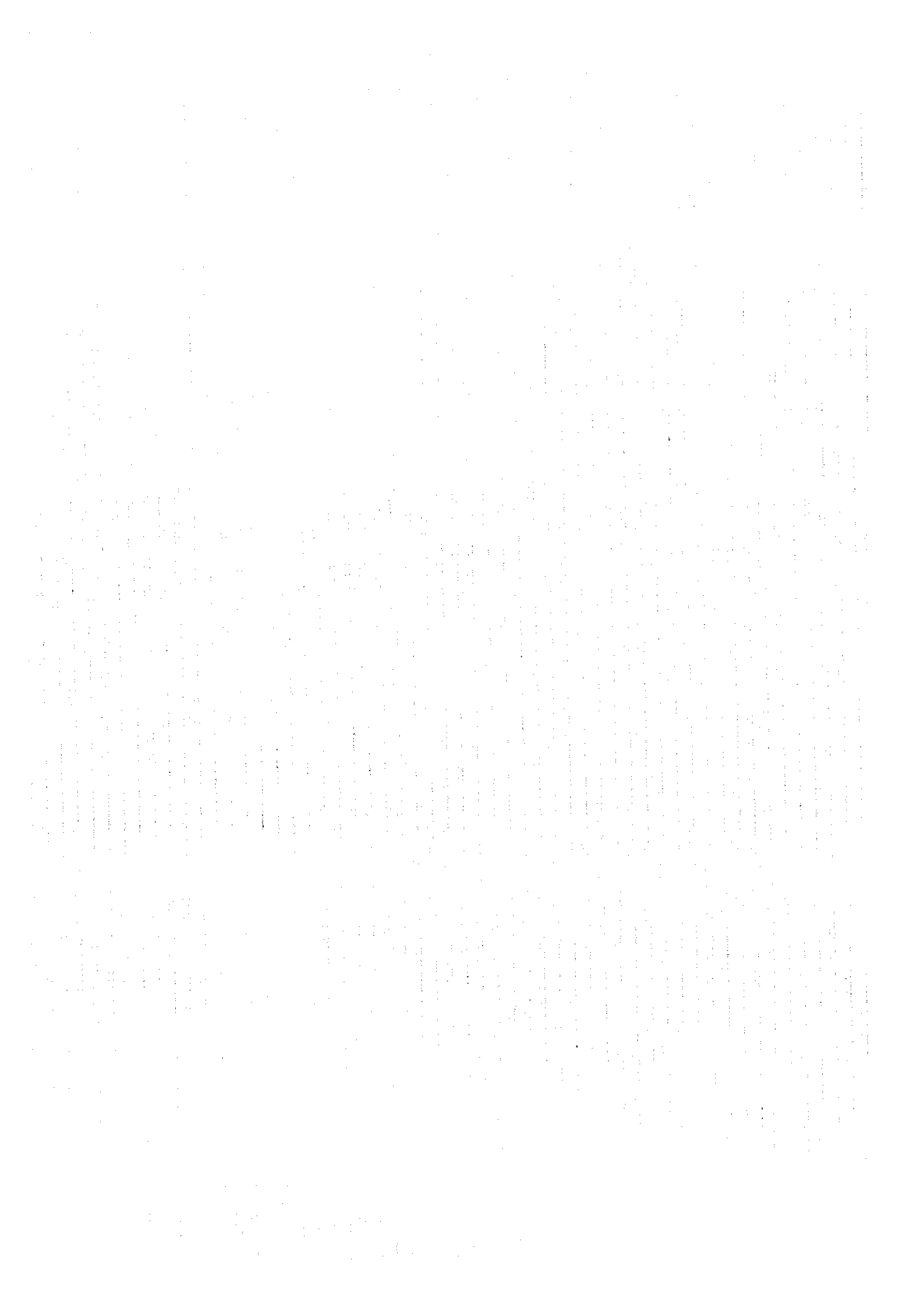
³⁾ Column 5 = Growth of real per capita income (constant 1989 prices).

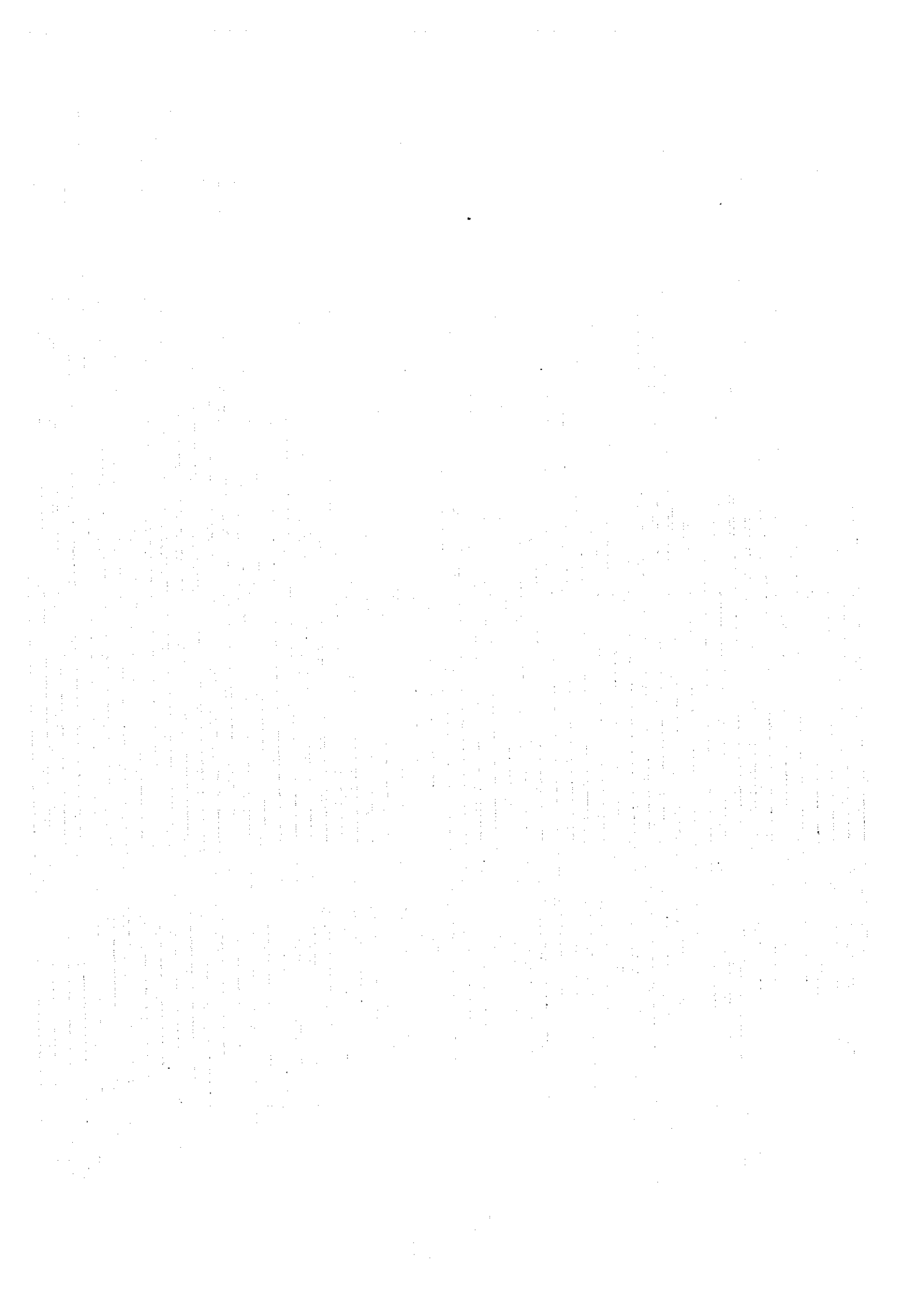
⁴⁾ Column 6 = Share in national total GDP.

⁵⁾ Column 7 = Expressed as relative size to Ha Noi's GDP. Ha Noi = 100; B.R. Vung Tau = 327.00; Ho Chi Minh = 129.44.

Source : JICA study team computations.







JICA

