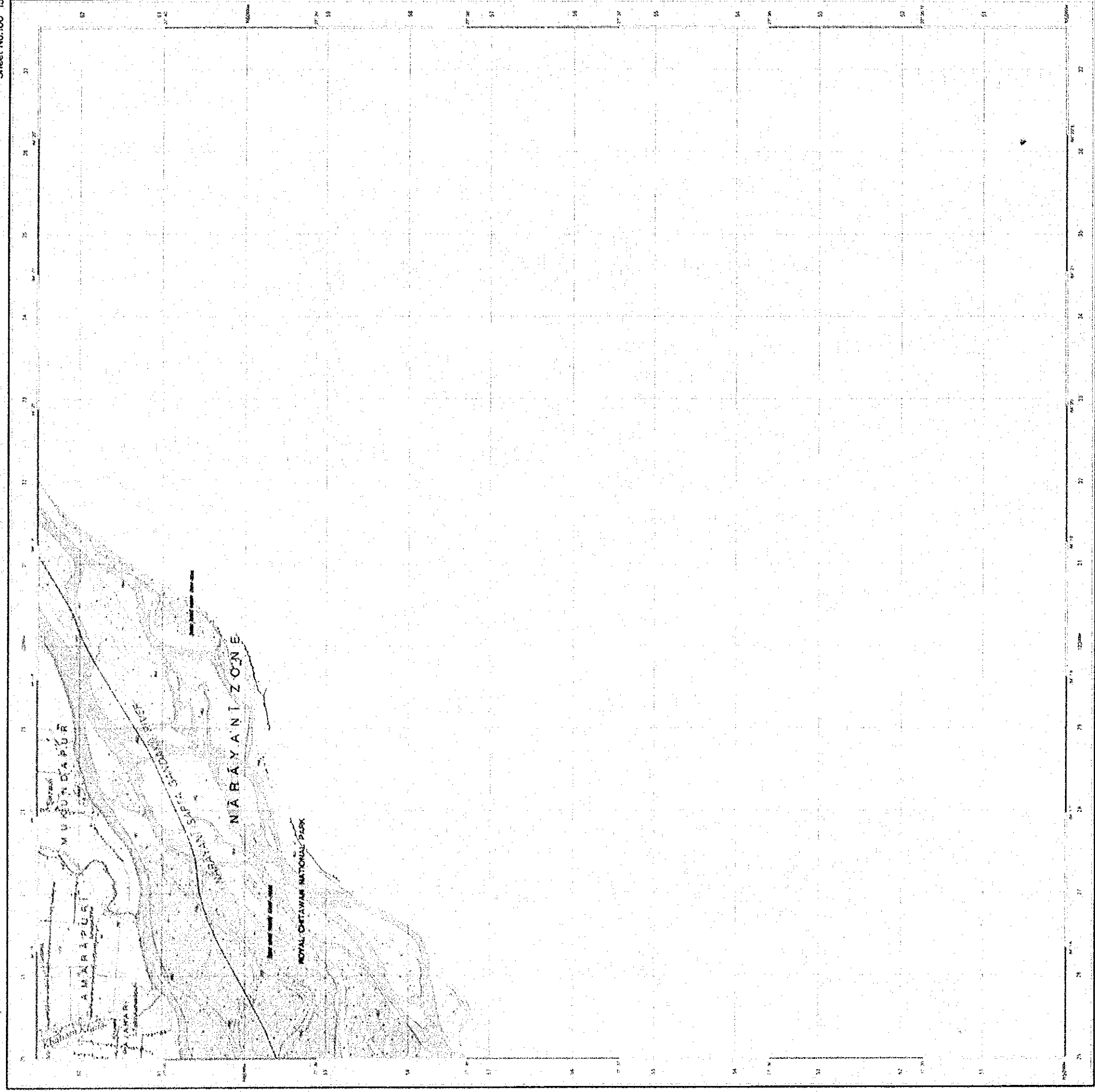


NEPAL 1:25,000

RAMPUR

Sheet No.100-15



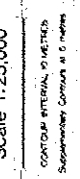
Scale 1:25,000

Projection: Universal Transverse Mercator
 Zone: 48 UTM
 Datum: Everest
 Contour Interval: 5 METERS
 Sheet No. 100-15



CONTRACT NO. 1210

Scale 1:25,000



CONTOUR INTERVAL, 5 METERS

Supplementary Contours, at 5 meters



Symbol	Description
...	1st Class Road, 6m wide
...	2nd Class Road, 4.5m wide
...	3rd Class Road, 3m wide
...	Footpath
...	Power Line
...	High Voltage Power Line
...	Telegraph Line
...	Telephone Line
...	Water Course
...	Canal
...	Ditch
...	Drainage Channel
...	Stream
...	River
...	Sea Level
...	Spot Height
...	Spot Height of 100m
...	Spot Height of 200m
...	Spot Height of 300m
...	Spot Height of 400m
...	Spot Height of 500m
...	Spot Height of 600m
...	Spot Height of 700m
...	Spot Height of 800m
...	Spot Height of 900m
...	Spot Height of 1000m

Symbol	Description
...	1st Class Boundary
...	2nd Class Boundary
...	3rd Class Boundary
...	4th Class Boundary
...	5th Class Boundary
...	6th Class Boundary
...	7th Class Boundary
...	8th Class Boundary
...	9th Class Boundary
...	10th Class Boundary
...	11th Class Boundary
...	12th Class Boundary
...	13th Class Boundary
...	14th Class Boundary
...	15th Class Boundary
...	16th Class Boundary
...	17th Class Boundary
...	18th Class Boundary
...	19th Class Boundary
...	20th Class Boundary

Symbol	Description
...	1st Class Building
...	2nd Class Building
...	3rd Class Building
...	4th Class Building
...	5th Class Building
...	6th Class Building
...	7th Class Building
...	8th Class Building
...	9th Class Building
...	10th Class Building
...	11th Class Building
...	12th Class Building
...	13th Class Building
...	14th Class Building
...	15th Class Building
...	16th Class Building
...	17th Class Building
...	18th Class Building
...	19th Class Building
...	20th Class Building

Symbol	Description
...	1st Class Monument
...	2nd Class Monument
...	3rd Class Monument
...	4th Class Monument
...	5th Class Monument
...	6th Class Monument
...	7th Class Monument
...	8th Class Monument
...	9th Class Monument
...	10th Class Monument
...	11th Class Monument
...	12th Class Monument
...	13th Class Monument
...	14th Class Monument
...	15th Class Monument
...	16th Class Monument
...	17th Class Monument
...	18th Class Monument
...	19th Class Monument
...	20th Class Monument

INDEX TO ADJOINING SHEETS

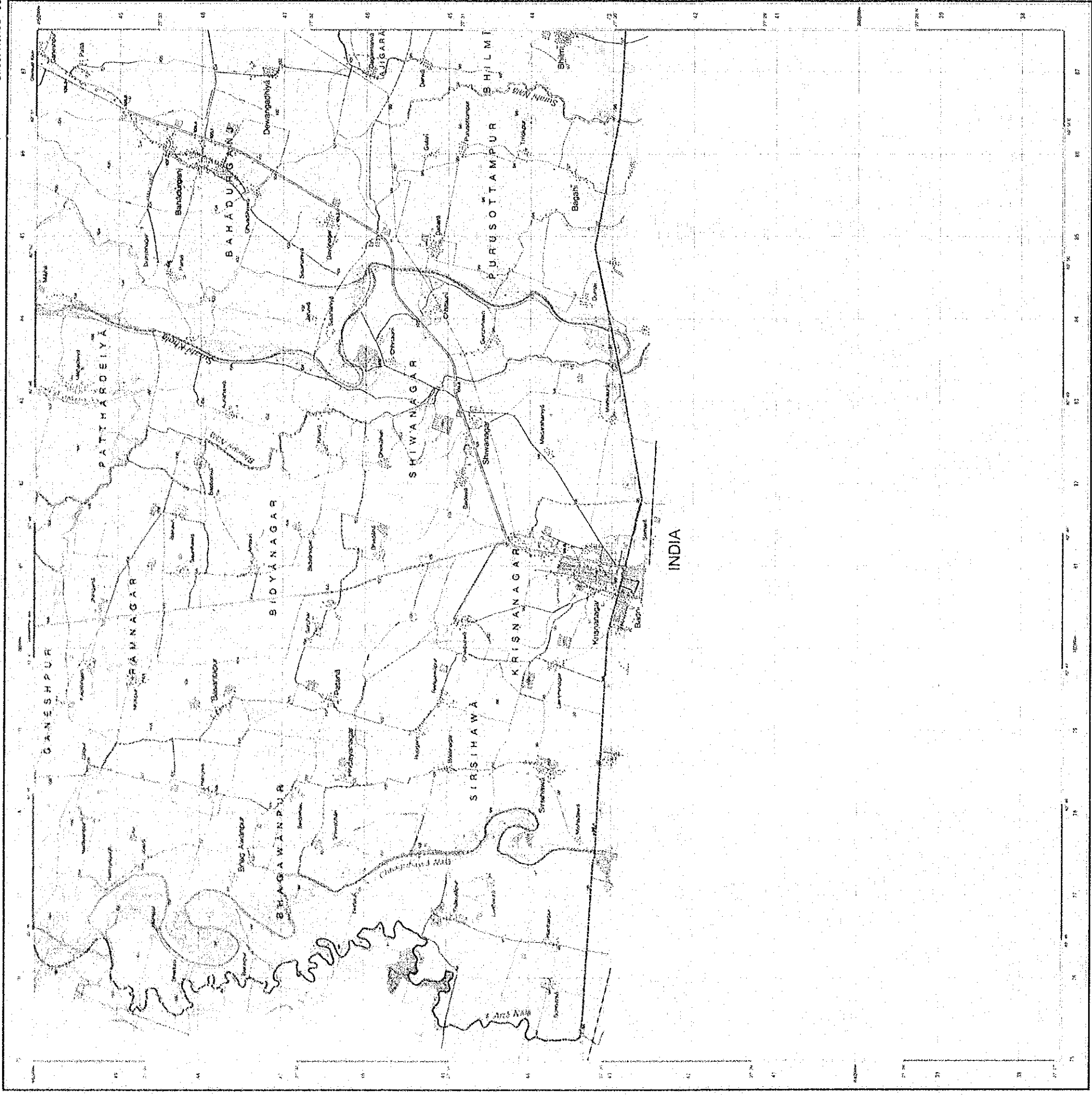
100-10	100-11	100-12
100-14	100-15	100-16
100-02		

ADMINISTRATIVE INDEX

Code	Name	Code	Name
1	Province	10	Police Station
2	District	11	Post Office
3	Municipality	12	Primary School
4	Ward	13	Secondary School
5	Village Development Committee	14	College
6	Health Centre	15	University
7	Public Building	16	Religious Building
8	Government Building	17	Other Building
9	Other Building	18	Other Building
19	Other Building	19	Other Building
20	Other Building	20	Other Building

PRODUCTION GUIDE

Code	Description	Code	Description
1	1st Class Building	1	1st Class Building
2	2nd Class Building	2	2nd Class Building
3	3rd Class Building	3	3rd Class Building
4	4th Class Building	4	4th Class Building
5	5th Class Building	5	5th Class Building
6	6th Class Building	6	6th Class Building
7	7th Class Building	7	7th Class Building
8	8th Class Building	8	8th Class Building
9	9th Class Building	9	9th Class Building
10	10th Class Building	10	10th Class Building



Scale 1:25,000

CONTOUR INTERVAL 10 METRES
Supplementary Contours at 5 metres

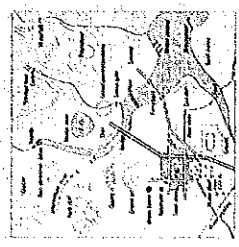
Surveyed by: Survey of India
 Date of Survey: 1974
 Scale: 1:25,000
 Projection: UTM
 Datum: Everest
 Contour Interval: 10 metres
 Supplementary Contours: 5 metres
 Vertical Datum: Mean Sea Level



This map was prepared under the Survey Department, Ministry of Home Affairs, Government of Nepal, and the Survey of India, Government of India, under the Technical Cooperation Programme.
 Copyright © 1974 by the Survey of India, Government of India.

INDEX TO ADJOINING SHEETS

103-01	103-02	103-03	103-04
103-05	103-06	103-07	103-08



ABBREVIATION FOR PUBLIC BUILDINGS

1	Police Station	11	Post Office
2	Government Office	12	Public School
3	Government School	13	Public Dispensary
4	Government Hospital	14	Public Library
5	Government Market	15	Public Well
6	Government Bazaar	16	Public Water Tap
7	Government Bus Stand	17	Public Toilet
8	Government Rest House	18	Public Bath
9	Government Office	19	Public Cemetery
10	Government Office	20	Public Crematorium

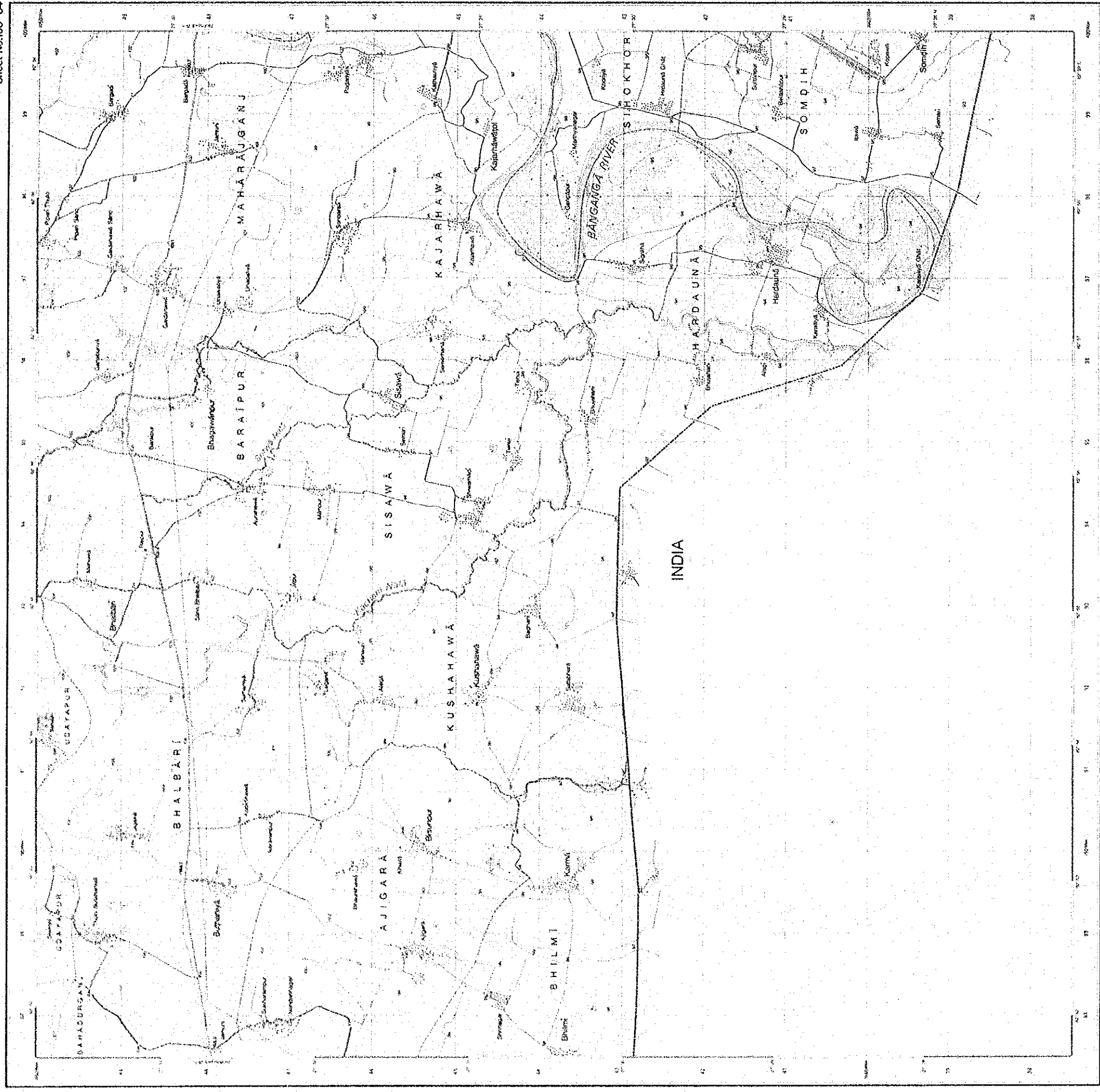
ABBREVIATION FOR PUBLIC BUILDINGS (continued)

21	Public Office	31	Public Office
22	Public Office	32	Public Office
23	Public Office	33	Public Office
24	Public Office	34	Public Office
25	Public Office	35	Public Office
26	Public Office	36	Public Office
27	Public Office	37	Public Office
28	Public Office	38	Public Office
29	Public Office	39	Public Office
30	Public Office	40	Public Office

BHĀLUBĀRĪ

Sheet No.103-04

NEPĀL 1:25,000



Scale 1:25,000
CONTOUR INTERVAL 10 METRES
Supplementary Contours at 5 metres

LEGEND

- National Boundary
- International Boundary
- State Boundary
- District Boundary
- Block Boundary
- Village Boundary
- Hamlet Boundary
- Road
- Railway
- Canal
- Dam
- Bridge
- Tunnel
- Waterfall
- Spring
- Well
- Pond
- Lake
- River
- Stream
- Hill
- Peak
- Snow
- Glacier
- Forest
- Cultivated Land
- Barren Land
- Marsh
- Sand
- Shrub
- Tree
- Building
- Temple
- Monument
- Boundary Marker
- Well Marker
- Spring Marker
- Peak Marker

ABBREVIATION FOR PUBLIC BUILDINGS

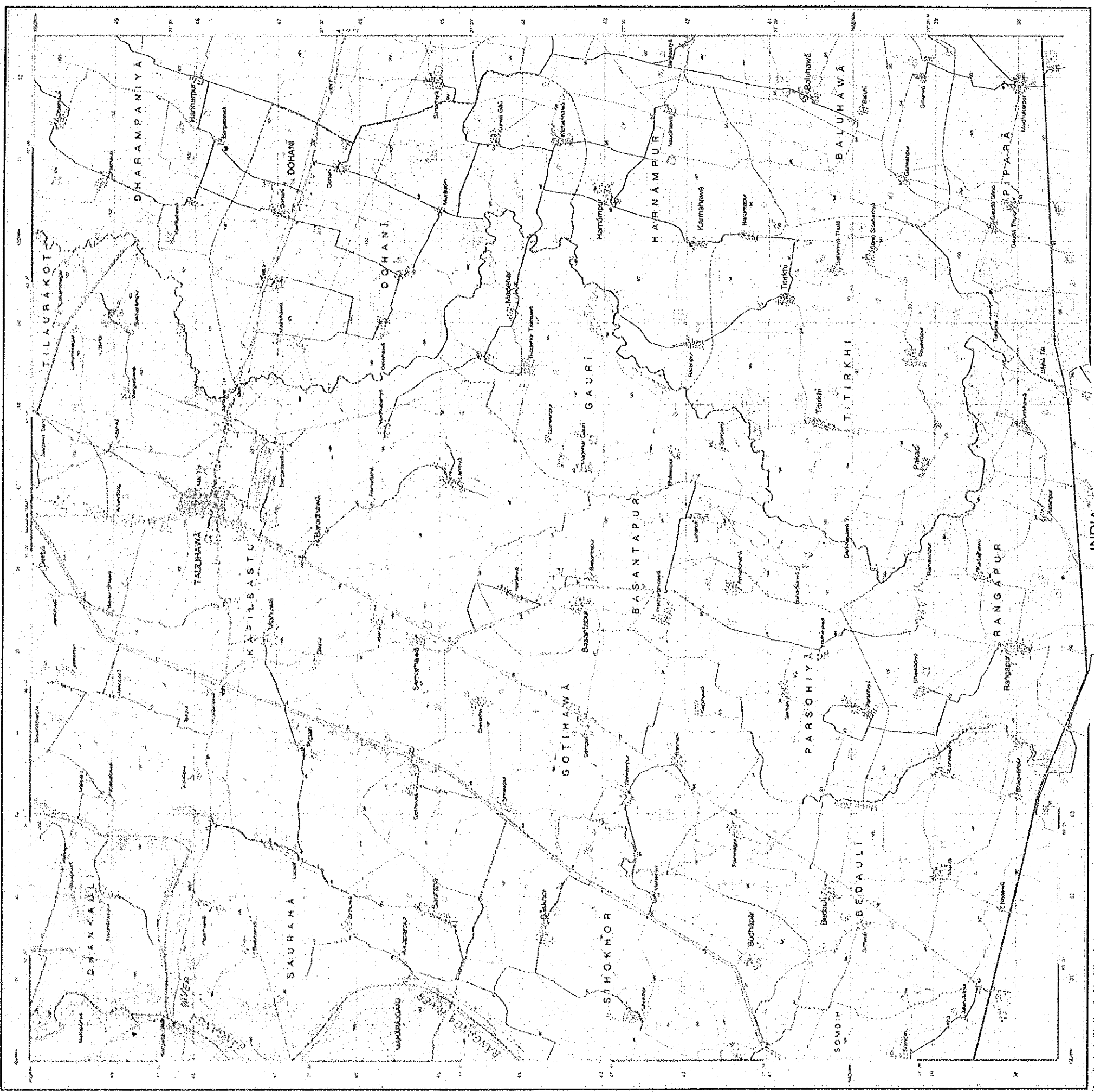
PRONUNCIATION GUIDE

INDEX TO ADJOINING SHEETS

ADMINISTRATIVE INDEX



Survey Department, P.O. Box 1, Kathmandu, Nepal



Scale 1:25,000
 Contour interval: 5 METERS
 Contour interval: 5 METERS
 Contour interval: 5 METERS

Scale 1:25,000
 Contour interval: 5 METERS
 Contour interval: 5 METERS
 Contour interval: 5 METERS

Scale 1:25,000
 Contour interval: 5 METERS
 Contour interval: 5 METERS
 Contour interval: 5 METERS

ROAD TO ADJOINING SHEETS	1971/8	1981/3	1981/4
	10/54	10/51	10/42
			10/8

ADMINISTRATIVE INDEX	
10/54	10/51
10/54	10/51
10/54	10/51

ABBREVIATION FOR PUBLIC BUILDINGS
 P. = Police Station
 S. = School
 C. = Court
 H. = Hospital
 M. = Municipality
 T. = Temple
 O. = Office
 W. = Water Tower
 L. = Library
 G. = Government
 P. = Private
 S. = School
 C. = Court
 H. = Hospital
 M. = Municipality
 T. = Temple
 O. = Office
 W. = Water Tower
 L. = Library
 G. = Government
 P. = Private

PROLEGATION GUIDE
 1. = 1st Class
 2. = 2nd Class
 3. = 3rd Class
 4. = 4th Class
 5. = 5th Class
 6. = 6th Class
 7. = 7th Class
 8. = 8th Class
 9. = 9th Class
 10. = 10th Class

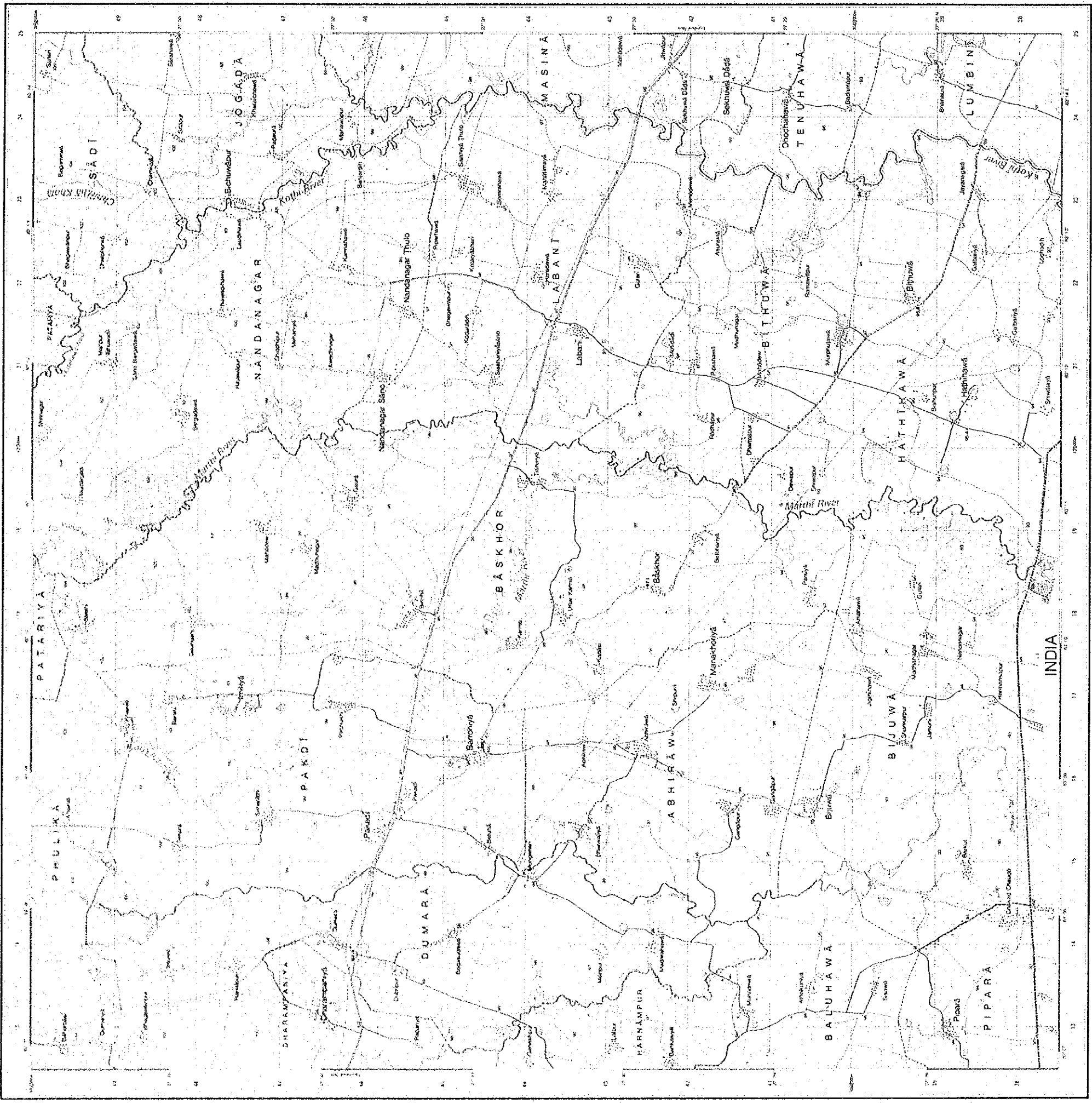
PROLEGATION GUIDE
 1. = 1st Class
 2. = 2nd Class
 3. = 3rd Class
 4. = 4th Class
 5. = 5th Class
 6. = 6th Class
 7. = 7th Class
 8. = 8th Class
 9. = 9th Class
 10. = 10th Class

PROLEGATION GUIDE
 1. = 1st Class
 2. = 2nd Class
 3. = 3rd Class
 4. = 4th Class
 5. = 5th Class
 6. = 6th Class
 7. = 7th Class
 8. = 8th Class
 9. = 9th Class
 10. = 10th Class

PROLEGATION GUIDE
 1. = 1st Class
 2. = 2nd Class
 3. = 3rd Class
 4. = 4th Class
 5. = 5th Class
 6. = 6th Class
 7. = 7th Class
 8. = 8th Class
 9. = 9th Class
 10. = 10th Class

PROLEGATION GUIDE
 1. = 1st Class
 2. = 2nd Class
 3. = 3rd Class
 4. = 4th Class
 5. = 5th Class
 6. = 6th Class
 7. = 7th Class
 8. = 8th Class
 9. = 9th Class
 10. = 10th Class

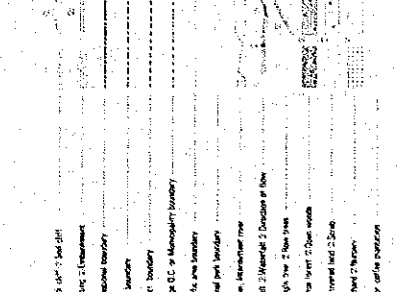
PROLEGATION GUIDE
 1. = 1st Class
 2. = 2nd Class
 3. = 3rd Class
 4. = 4th Class
 5. = 5th Class
 6. = 6th Class
 7. = 7th Class
 8. = 8th Class
 9. = 9th Class
 10. = 10th Class



Scale 1:25,000

CONTOUR INTERVAL 10 METRES
Spot-heights Contour at 5 metres

PROJECTION Universal Transverse Mercator
UNIT Metres
SCALE 1:25,000
COORDINATE SYSTEM UTM
GRANDEUR 10.4 x 10.0
DATE OF ORIGINAL SURVEY 1967
DATE OF THIS EDITION 1987
REVISIONS 1967, 1975, 1987
PROJ. AUTHORITY Survey of India
CONTROL POINT NO. 1107
ADDITIONAL INFO. The map is published under the Survey Department Act, 1972. All rights reserved. No part of this map may be reproduced, stored in a retrieval system, or transmitted in any form or by any means, electronic, mechanical, photocopying, recording, or by any information storage and retrieval system, without the prior written permission of the Survey Department, Nepal.



ABBREVIATION FOR PUBLIC BUILDINGS

1	High School	17	Government Post Office
2	Primary School	18	Police Station
3	Government Primary School	19	Public Office
4	Government Middle School	20	Public Office
5	Government Secondary School	21	Public Office
6	Government Senior Secondary School	22	Public Office
7	Government College	23	Public Office
8	Government University	24	Public Office
9	Government Hospital	25	Public Office
10	Government Dispensary	26	Public Office
11	Government Health Centre	27	Public Office
12	Government Health Sub-centre	28	Public Office
13	Government Health Post	29	Public Office
14	Government Health Worker's Quarters	30	Public Office
15	Government Health Officer's Quarters	31	Public Office
16	Government Health Assistant's Quarters	32	Public Office
17	Government Health Worker's Quarters	33	Public Office
18	Government Health Officer's Quarters	34	Public Office
19	Government Health Assistant's Quarters	35	Public Office
20	Government Health Worker's Quarters	36	Public Office
21	Government Health Officer's Quarters	37	Public Office
22	Government Health Assistant's Quarters	38	Public Office
23	Government Health Worker's Quarters	39	Public Office
24	Government Health Officer's Quarters	40	Public Office
25	Government Health Assistant's Quarters	41	Public Office
26	Government Health Worker's Quarters	42	Public Office
27	Government Health Officer's Quarters	43	Public Office
28	Government Health Assistant's Quarters	44	Public Office
29	Government Health Worker's Quarters	45	Public Office
30	Government Health Officer's Quarters	46	Public Office
31	Government Health Assistant's Quarters	47	Public Office
32	Government Health Worker's Quarters	48	Public Office
33	Government Health Officer's Quarters	49	Public Office
34	Government Health Assistant's Quarters	50	Public Office
35	Government Health Worker's Quarters	51	Public Office
36	Government Health Officer's Quarters	52	Public Office
37	Government Health Assistant's Quarters	53	Public Office
38	Government Health Worker's Quarters	54	Public Office
39	Government Health Officer's Quarters	55	Public Office
40	Government Health Assistant's Quarters	56	Public Office
41	Government Health Worker's Quarters	57	Public Office
42	Government Health Officer's Quarters	58	Public Office
43	Government Health Assistant's Quarters	59	Public Office
44	Government Health Worker's Quarters	60	Public Office
45	Government Health Officer's Quarters	61	Public Office
46	Government Health Assistant's Quarters	62	Public Office
47	Government Health Worker's Quarters	63	Public Office
48	Government Health Officer's Quarters	64	Public Office
49	Government Health Assistant's Quarters	65	Public Office
50	Government Health Worker's Quarters	66	Public Office
51	Government Health Officer's Quarters	67	Public Office
52	Government Health Assistant's Quarters	68	Public Office
53	Government Health Worker's Quarters	69	Public Office
54	Government Health Officer's Quarters	70	Public Office
55	Government Health Assistant's Quarters	71	Public Office
56	Government Health Worker's Quarters	72	Public Office
57	Government Health Officer's Quarters	73	Public Office
58	Government Health Assistant's Quarters	74	Public Office
59	Government Health Worker's Quarters	75	Public Office
60	Government Health Officer's Quarters	76	Public Office
61	Government Health Assistant's Quarters	77	Public Office
62	Government Health Worker's Quarters	78	Public Office
63	Government Health Officer's Quarters	79	Public Office
64	Government Health Assistant's Quarters	80	Public Office
65	Government Health Worker's Quarters	81	Public Office
66	Government Health Officer's Quarters	82	Public Office
67	Government Health Assistant's Quarters	83	Public Office
68	Government Health Worker's Quarters	84	Public Office
69	Government Health Officer's Quarters	85	Public Office
70	Government Health Assistant's Quarters	86	Public Office
71	Government Health Worker's Quarters	87	Public Office
72	Government Health Officer's Quarters	88	Public Office
73	Government Health Assistant's Quarters	89	Public Office
74	Government Health Worker's Quarters	90	Public Office
75	Government Health Officer's Quarters	91	Public Office
76	Government Health Assistant's Quarters	92	Public Office
77	Government Health Worker's Quarters	93	Public Office
78	Government Health Officer's Quarters	94	Public Office
79	Government Health Assistant's Quarters	95	Public Office
80	Government Health Worker's Quarters	96	Public Office

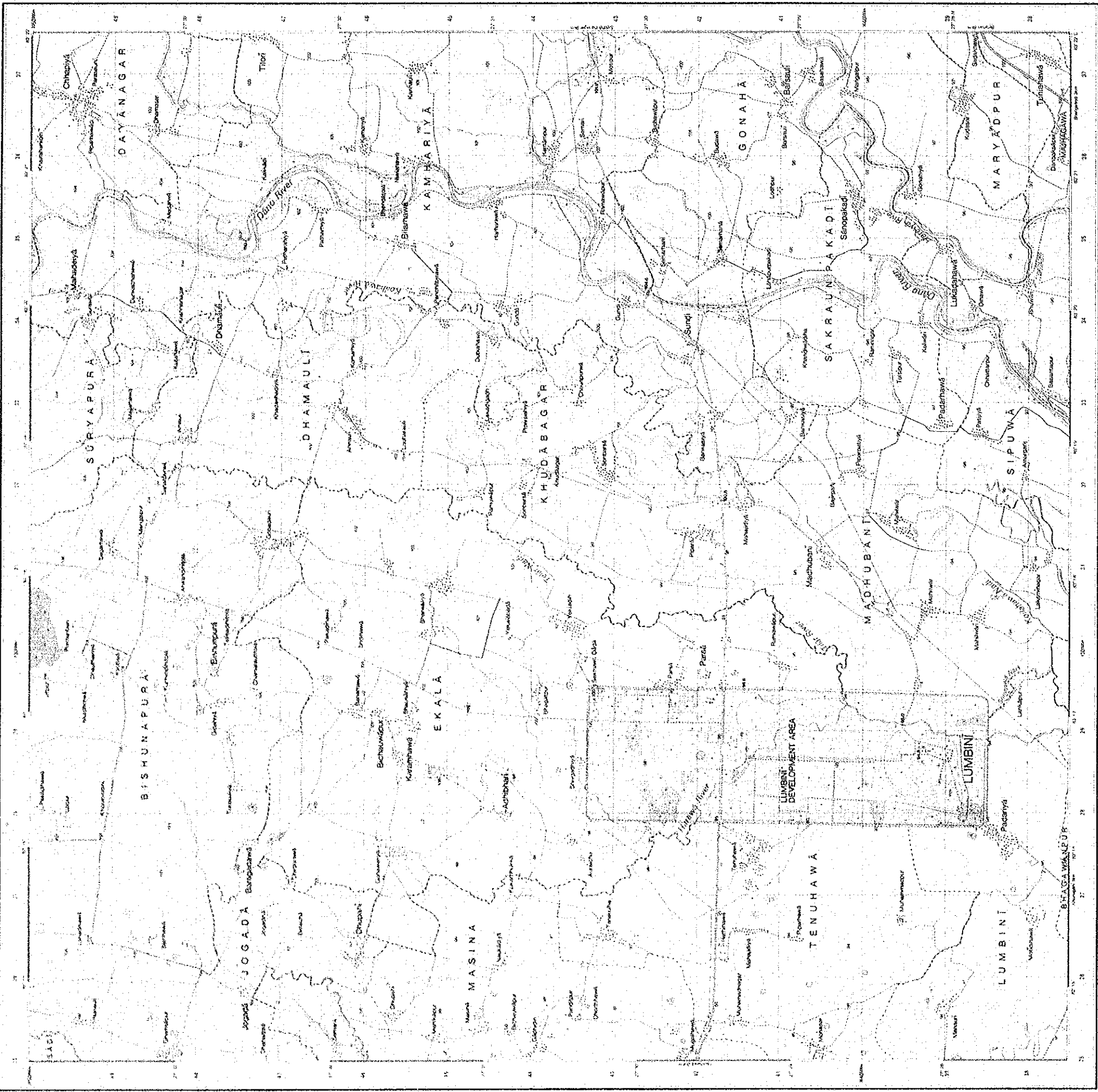
INDEX TO ADDRESS SHEETS

103	104	105	106
107	108	109	110
111	112	113	114
115	116	117	118
119	120	121	122
123	124	125	126
127	128	129	130
131	132	133	134
135	136	137	138
139	140	141	142
143	144	145	146
147	148	149	150
151	152	153	154
155	156	157	158
159	160	161	162
163	164	165	166
167	168	169	170
171	172	173	174
175	176	177	178
179	180	181	182
183	184	185	186
187	188	189	190
191	192	193	194
195	196	197	198
199	200	201	202

ADMINISTRATIVE INDEX

INDIA

NEPAL



Scale 1:25,000

CONTOUR INTERVAL 10 METRES.
Supplementary Contours at 5 metres.

Projection: Modified Universal Transverse Mercator
 Zone: 48N
 Unit of Measurement: Metres
 Contour Interval: 10 metres
 Datum: Everest
 Scale: 1:25,000
 Date of Issue: 1968
 Date of Revision: 1968
 Date of Survey: 1968
 Date of Publication: 1968
 Author: Survey of India
 Editor: Survey of India
 Designer: Survey of India
 Printer: Survey of India
 Published by: Survey of India
 Printed at: Survey of India Press, Dehra Dun, India
 Price: Rs. 10.00
 Copyright: © Survey of India, 1968



This map is a reproduction of the Survey of India map No. 104/03, which was published in 1968. It is a topographic map of the Lumbini region in Nepal, showing a grid, elevation contours, roads, and various settlements. The map covers an area from 27° 15' N to 28° 15' N and 83° 15' E to 84° 15' E. Major settlements include Lumbini, Tenuhawa, and various smaller villages. The map shows a dense network of roads and a grid system.

Symbol	Description
—	1st Class road
- - -	2nd Class road
---	3rd Class road
---	4th Class road
---	5th Class road
---	6th Class road
---	7th Class road
---	8th Class road
---	9th Class road
---	10th Class road
---	11th Class road
---	12th Class road
---	13th Class road
---	14th Class road
---	15th Class road
---	16th Class road
---	17th Class road
---	18th Class road
---	19th Class road
---	20th Class road
---	21st Class road
---	22nd Class road
---	23rd Class road
---	24th Class road
---	25th Class road
---	26th Class road
---	27th Class road
---	28th Class road
---	29th Class road
---	30th Class road
---	31st Class road
---	32nd Class road
---	33rd Class road
---	34th Class road
---	35th Class road
---	36th Class road
---	37th Class road
---	38th Class road
---	39th Class road
---	40th Class road
---	41st Class road
---	42nd Class road
---	43rd Class road
---	44th Class road
---	45th Class road
---	46th Class road
---	47th Class road
---	48th Class road
---	49th Class road
---	50th Class road
---	51st Class road
---	52nd Class road
---	53rd Class road
---	54th Class road
---	55th Class road
---	56th Class road
---	57th Class road
---	58th Class road
---	59th Class road
---	60th Class road
---	61st Class road
---	62nd Class road
---	63rd Class road
---	64th Class road
---	65th Class road
---	66th Class road
---	67th Class road
---	68th Class road
---	69th Class road
---	70th Class road
---	71st Class road
---	72nd Class road
---	73rd Class road
---	74th Class road
---	75th Class road
---	76th Class road
---	77th Class road
---	78th Class road
---	79th Class road
---	80th Class road
---	81st Class road
---	82nd Class road
---	83rd Class road
---	84th Class road
---	85th Class road
---	86th Class road
---	87th Class road
---	88th Class road
---	89th Class road
---	90th Class road
---	91st Class road
---	92nd Class road
---	93rd Class road
---	94th Class road
---	95th Class road
---	96th Class road
---	97th Class road
---	98th Class road
---	99th Class road
---	100th Class road

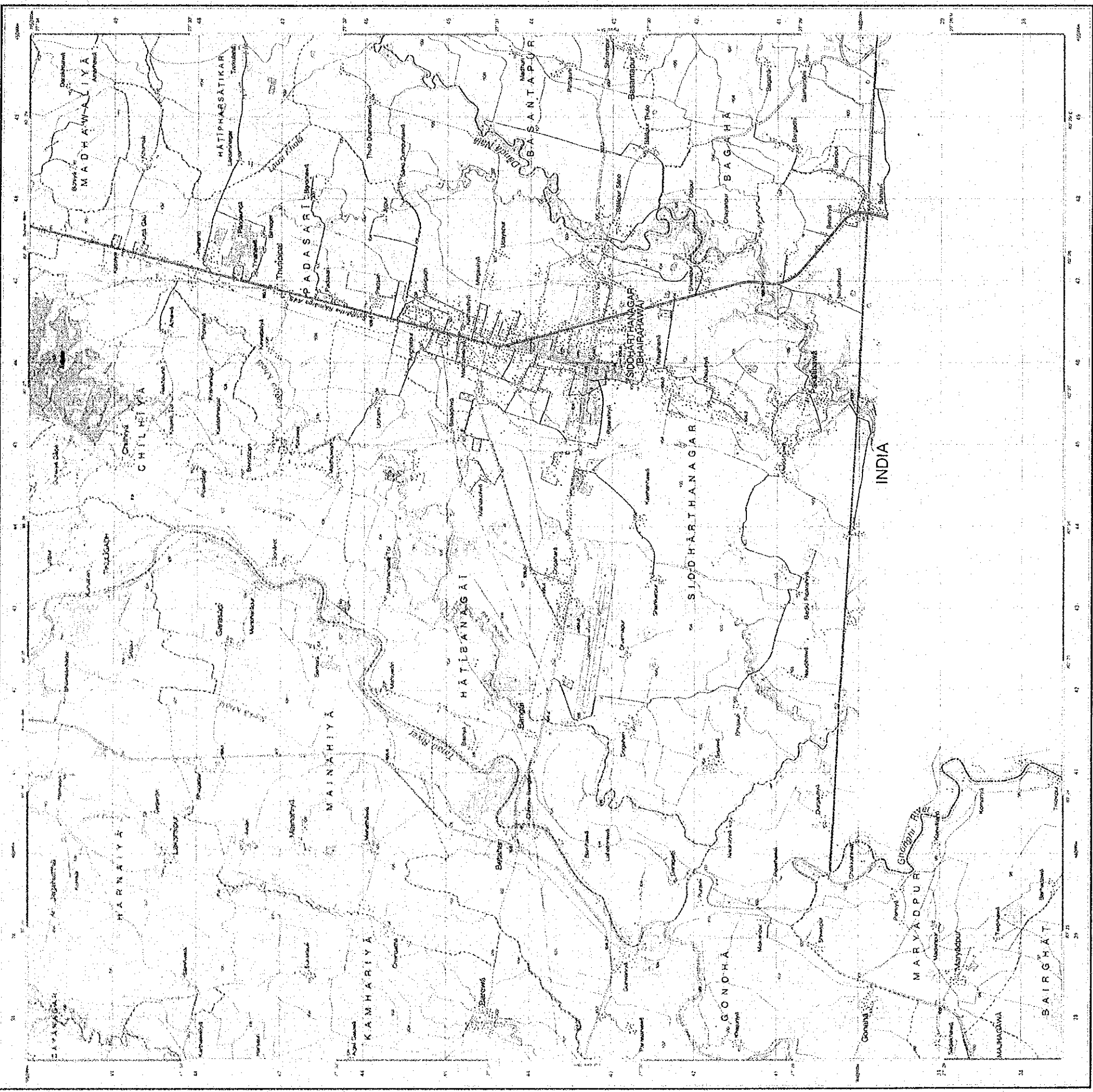


INDEX TO ADJOINING SHEETS

88-14	105-15	106-16
104-02	104-03	104-04
104-08	104-09	104-10
104-16	104-17	104-18

ADMINISTRATIVE INDEX

1	Chitwan
2	Dhanu Bhadgaon
3	Dhanu Bhadgaon
4	Dhanu Bhadgaon
5	Dhanu Bhadgaon
6	Dhanu Bhadgaon
7	Dhanu Bhadgaon
8	Dhanu Bhadgaon
9	Dhanu Bhadgaon
10	Dhanu Bhadgaon
11	Dhanu Bhadgaon
12	Dhanu Bhadgaon
13	Dhanu Bhadgaon
14	Dhanu Bhadgaon
15	Dhanu Bhadgaon
16	Dhanu Bhadgaon
17	Dhanu Bhadgaon
18	Dhanu Bhadgaon
19	Dhanu Bhadgaon
20	Dhanu Bhadgaon
21	Dhanu Bhadgaon
22	Dhanu Bhadgaon
23	Dhanu Bhadgaon
24	Dhanu Bhadgaon
25	Dhanu Bhadgaon
26	Dhanu Bhadgaon
27	Dhanu Bhadgaon
28	Dhanu Bhadgaon
29	Dhanu Bhadgaon
30	Dhanu Bhadgaon
31	Dhanu Bhadgaon
32	Dhanu Bhadgaon
33	Dhanu Bhadgaon
34	Dhanu Bhadgaon
35	Dhanu Bhadgaon
36	Dhanu Bhadgaon
37	Dhanu Bhadgaon
38	Dhanu Bhadgaon
39	Dhanu Bhadgaon
40	Dhanu Bhadgaon
41	Dhanu Bhadgaon
42	Dhanu Bhadgaon
43	Dhanu Bhadgaon
44	Dhanu Bhadgaon
45	Dhanu Bhadgaon
46	Dhanu Bhadgaon
47	Dhanu Bhadgaon
48	Dhanu Bhadgaon
49	Dhanu Bhadgaon
50	Dhanu Bhadgaon
51	Dhanu Bhadgaon
52	Dhanu Bhadgaon
53	Dhanu Bhadgaon
54	Dhanu Bhadgaon
55	Dhanu Bhadgaon
56	Dhanu Bhadgaon
57	Dhanu Bhadgaon
58	Dhanu Bhadgaon
59	Dhanu Bhadgaon
60	Dhanu Bhadgaon
61	Dhanu Bhadgaon
62	Dhanu Bhadgaon
63	Dhanu Bhadgaon
64	Dhanu Bhadgaon
65	Dhanu Bhadgaon
66	Dhanu Bhadgaon
67	Dhanu Bhadgaon
68	Dhanu Bhadgaon
69	Dhanu Bhadgaon
70	Dhanu Bhadgaon
71	Dhanu Bhadgaon
72	Dhanu Bhadgaon
73	Dhanu Bhadgaon
74	Dhanu Bhadgaon
75	Dhanu Bhadgaon
76	Dhanu Bhadgaon
77	Dhanu Bhadgaon
78	Dhanu Bhadgaon
79	Dhanu Bhadgaon
80	Dhanu Bhadgaon
81	Dhanu Bhadgaon
82	Dhanu Bhadgaon
83	Dhanu Bhadgaon
84	Dhanu Bhadgaon
85	Dhanu Bhadgaon
86	Dhanu Bhadgaon
87	Dhanu Bhadgaon
88	Dhanu Bhadgaon
89	Dhanu Bhadgaon
90	Dhanu Bhadgaon
91	Dhanu Bhadgaon
92	Dhanu Bhadgaon
93	Dhanu Bhadgaon
94	Dhanu Bhadgaon
95	Dhanu Bhadgaon
96	Dhanu Bhadgaon
97	Dhanu Bhadgaon
98	Dhanu Bhadgaon
99	Dhanu Bhadgaon
100	Dhanu Bhadgaon



Scale 1:25,000

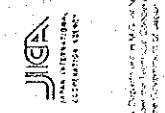
CONTOUR INTERVAL: 10 METRES
Supplementary Contours: 5 metres

Symbol	Description	Symbol	Description
	1st class road (red with bar)		Field cult 2.5m off
	2nd class road (red)		Clayey or limestone
	3rd class road (red)		International boundary
	4th class road (red)		Local boundary
	5th class road (red)		District boundary
	6th class road (red)		State D.D. or Municipality boundary
	7th class road (red)		State D.D. boundary
	8th class road (red)		Municipal boundary
	9th class road (red)		State boundary
	10th class road (red)		State boundary
	11th class road (red)		State boundary
	12th class road (red)		State boundary
	13th class road (red)		State boundary
	14th class road (red)		State boundary
	15th class road (red)		State boundary

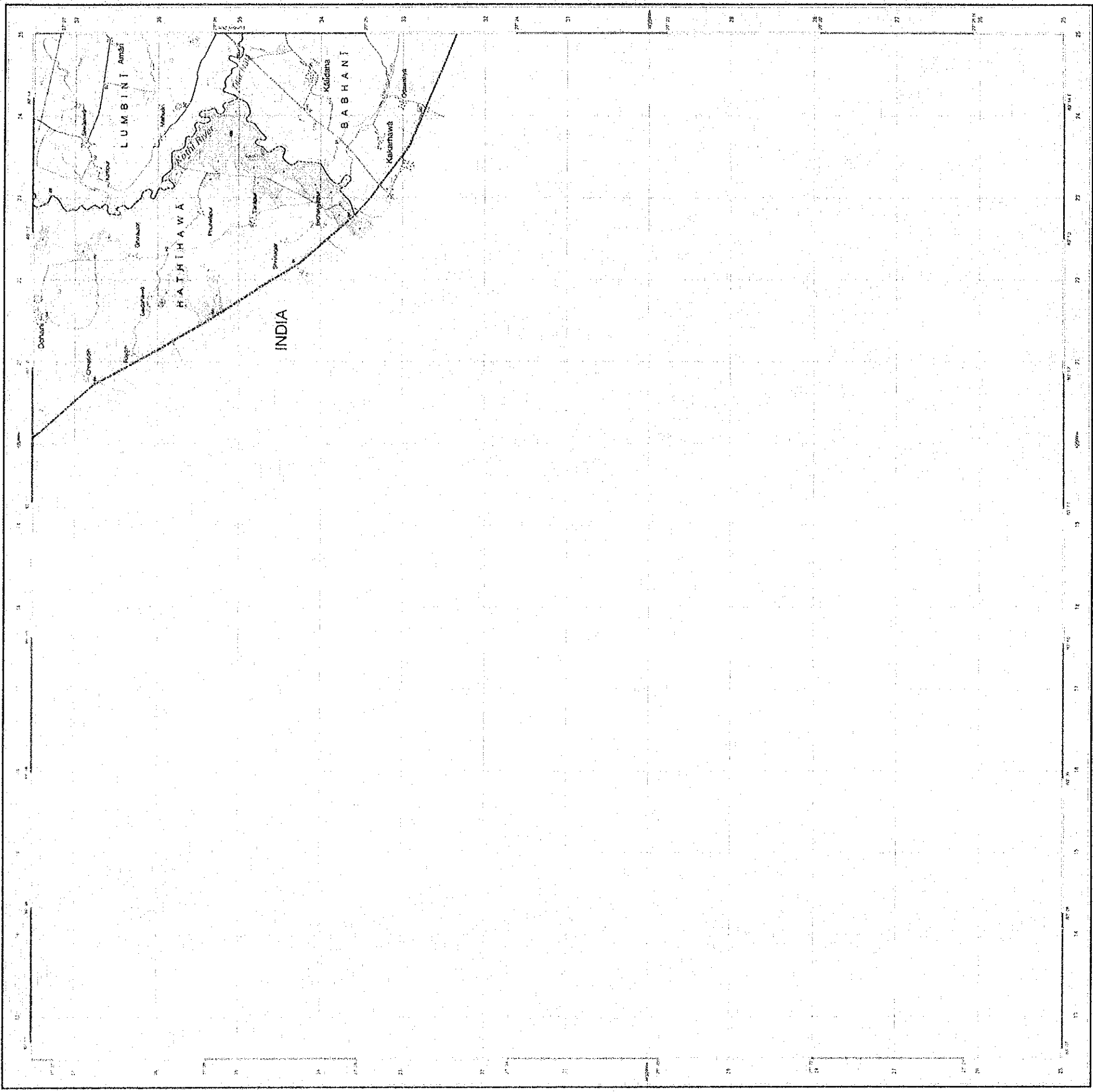


Year	Scale	Sheet No.
1961	1:50,000	104-04
1962	1:50,000	104-04
1963	1:50,000	104-04

Symbol	Description
	State boundary
	District boundary
	Municipality boundary
	State D.D. boundary
	Local boundary
	Field cult 2.5m off
	Clayey or limestone
	International boundary
	Local boundary
	District boundary
	State D.D. or Municipality boundary
	State boundary
	State boundary
	State boundary
	State boundary
	State boundary
	State boundary
	State boundary



Published under the authority of the Government of Nepal, Ministry of Land Management, Urban Planning and Construction. The map is a reproduction of the original map published in 1961.



Scale 1:25,000

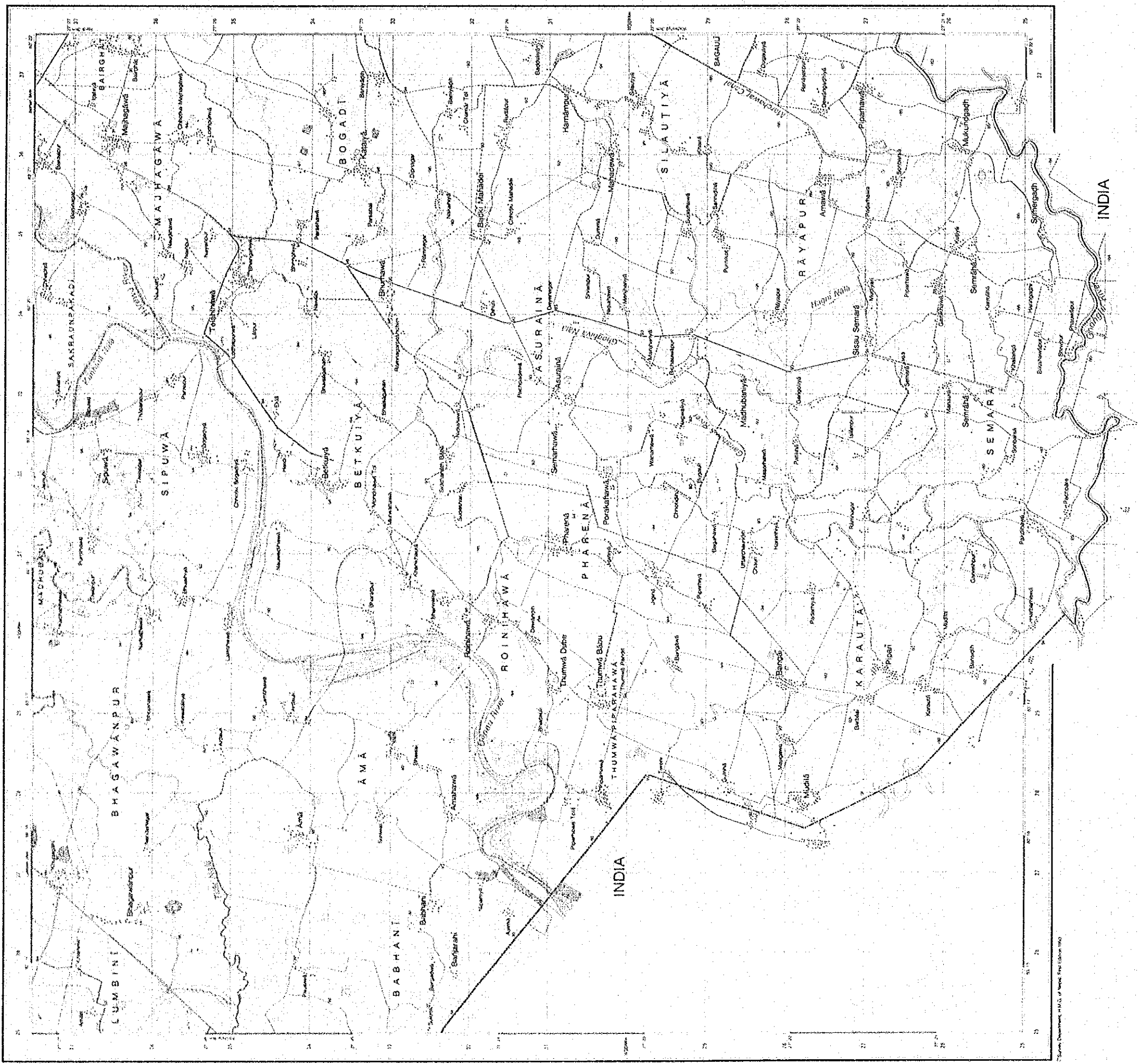
CONTOUR INTERVAL 10 METRES
Supplementary Contour at 5 metres

INDEX TO ADJOINING SHEETS
 104-05 104-02 104-13
 104-06 104-07

ADMINISTRATIVE INDEX
 District: ...
 Village: ...

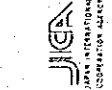
ABBREVIATION FOR PUBLIC BUILDINGS
 P: Police Station
 H: Health Centre
 S: School
 C: Government Guest House
 R: Railway Station
 M: Municipal Office
 T: Temple
 W: Water Tower
 P: Post Office
 G: Government Office
 B: Bank
 H: Hospital
 J: Jail
 N: Naya Bazar
 S: Signal Post
 T: Telephone Office
 P: Petrol Pump
 W: Well
 S: Slaughter House
 C: Cemetery
 M: Market
 T: Tea Room
 P: Post Office
 G: Government Office
 B: Bank
 H: Hospital
 J: Jail
 N: Naya Bazar
 S: Signal Post
 T: Telephone Office
 P: Petrol Pump
 W: Well
 S: Slaughter House
 C: Cemetery
 M: Market
 T: Tea Room

PRONUNCIATION GUIDE
 A: aa
 B: bb
 C: cc
 D: dd
 E: ee
 F: ff
 G: gg
 H: hh
 I: ii
 J: jj
 K: kk
 L: ll
 M: mm
 N: nn
 O: oo
 P: pp
 Q: qq
 R: rr
 S: ss
 T: tt
 U: uu
 V: vv
 W: ww
 X: xx
 Y: yy
 Z: zz



Scale 1:25,000

Publication: Modified Universal Transverse Mercator
 Unit of Measurement: Meter
 Contour Interval: 5 meters
 Date of Survey: 1982
 Date of Revision: 1982
 Scale: 1:25,000
 Projection: UTM
 Zone: 49 N
 Datum: Everest
 Contour Interval: 5 meters
 Vertical Datum: Everest



Joint India-Nepal Joint Survey Organization
 Survey Department, H.M.S., New Delhi-110 054, India
 Survey Department, Kathmandu-1, Nepal

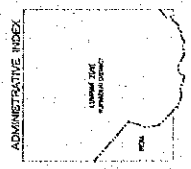
CARTOUCHE INTERNAL, IN METRES

1:50000	1:25000	1:12500	1:6250
1:50000	1:25000	1:12500	1:6250
1:50000	1:25000	1:12500	1:6250
1:50000	1:25000	1:12500	1:6250



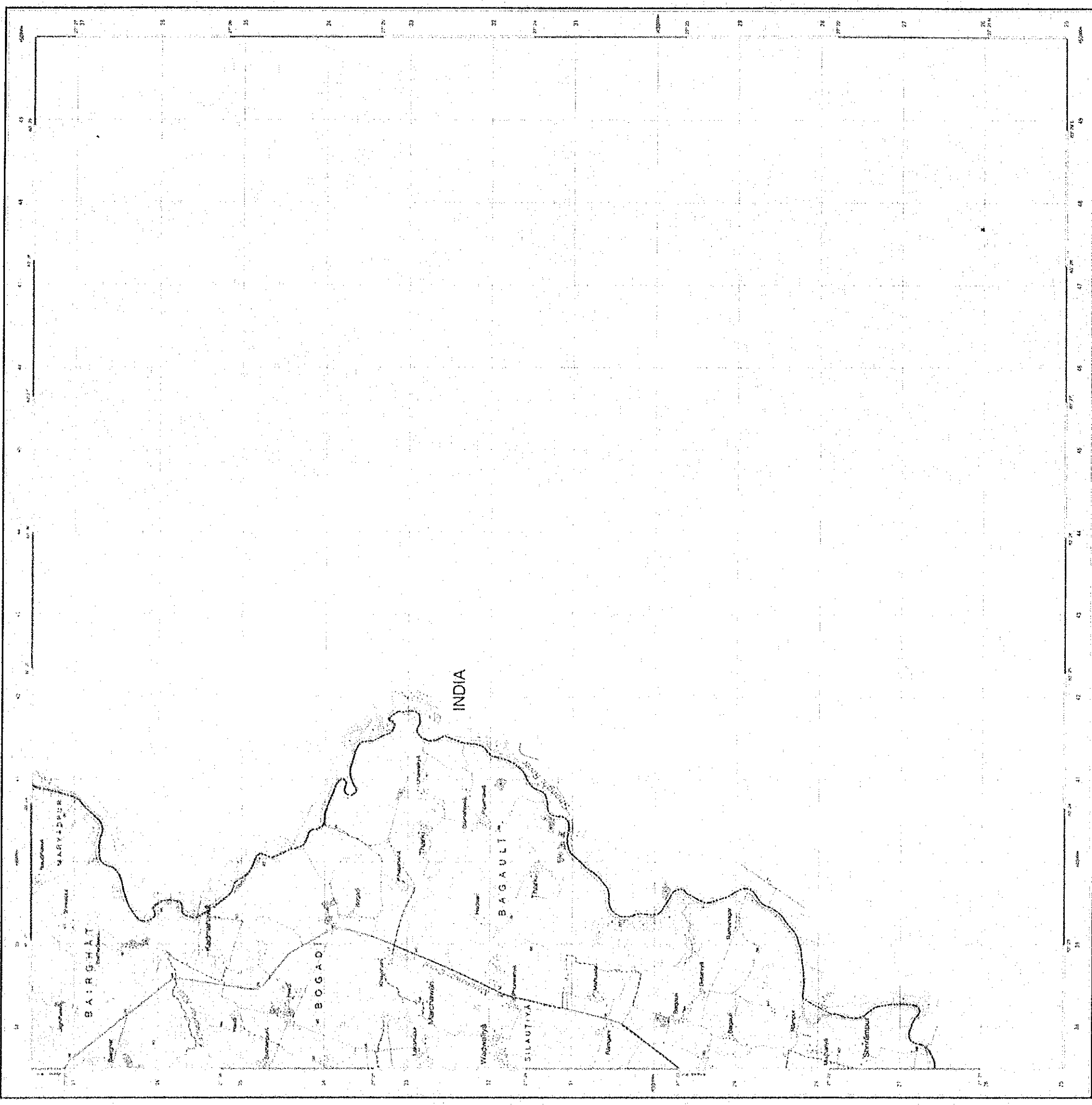
ABBREVIATION FOR PUBLIC BUILDINGS

15	Police Station
16	Post Office
17	Telegraph Office
18	Government Office
19	Bank
20	Public School
21	Religious Building
22	Public Well
23	Public Bath
24	Public Market
25	Public Entertainment
26	Public Assembly
27	Public Office
28	Public Building
29	Public Structure
30	Public Monument
31	Public Structure
32	Public Structure
33	Public Structure
34	Public Structure
35	Public Structure
36	Public Structure
37	Public Structure
38	Public Structure
39	Public Structure
40	Public Structure
41	Public Structure
42	Public Structure
43	Public Structure
44	Public Structure
45	Public Structure
46	Public Structure
47	Public Structure
48	Public Structure
49	Public Structure
50	Public Structure



INDEX TO ADJOINING SHEETS

104-07	104-08	104-09
104-06	104-07	104-08
104-05	104-06	104-07
104-04	104-05	104-06



Scale 1:25,000

CONTOUR INTERVAL IN METERS

Contour Interval of 5 meters

10 m	10 m	10 m	10 m	10 m	10 m	10 m	10 m	10 m	10 m	10 m
10 m	10 m	10 m	10 m	10 m	10 m	10 m	10 m	10 m	10 m	10 m

Legend:

- 10 m
- 20 m
- 30 m
- 40 m
- 50 m
- 60 m
- 70 m
- 80 m
- 90 m
- 100 m
- 110 m
- 120 m
- 130 m
- 140 m
- 150 m
- 160 m
- 170 m
- 180 m
- 190 m
- 200 m
- 210 m
- 220 m
- 230 m
- 240 m
- 250 m
- 260 m
- 270 m
- 280 m
- 290 m
- 300 m
- 310 m
- 320 m
- 330 m
- 340 m
- 350 m
- 360 m
- 370 m
- 380 m
- 390 m
- 400 m
- 410 m
- 420 m
- 430 m
- 440 m
- 450 m
- 460 m
- 470 m
- 480 m
- 490 m
- 500 m
- 510 m
- 520 m
- 530 m
- 540 m
- 550 m
- 560 m
- 570 m
- 580 m
- 590 m
- 600 m
- 610 m
- 620 m
- 630 m
- 640 m
- 650 m
- 660 m
- 670 m
- 680 m
- 690 m
- 700 m
- 710 m
- 720 m
- 730 m
- 740 m
- 750 m
- 760 m
- 770 m
- 780 m
- 790 m
- 800 m
- 810 m
- 820 m
- 830 m
- 840 m
- 850 m
- 860 m
- 870 m
- 880 m
- 890 m
- 900 m
- 910 m
- 920 m
- 930 m
- 940 m
- 950 m
- 960 m
- 970 m
- 980 m
- 990 m
- 1000 m
- 1010 m
- 1020 m
- 1030 m
- 1040 m
- 1050 m
- 1060 m
- 1070 m
- 1080 m
- 1090 m
- 1100 m
- 1110 m
- 1120 m
- 1130 m
- 1140 m
- 1150 m
- 1160 m
- 1170 m
- 1180 m
- 1190 m
- 1200 m
- 1210 m
- 1220 m
- 1230 m
- 1240 m
- 1250 m

INDEX TO ADJOINING SHEETS

104-07 104-04 104-01

104-01 104-06 104-08

ADMINISTRATIVE INDEX

104-07 104-04 104-01

104-01 104-06 104-08

ABBRVIATION FOR PUBLIC BUILDINGS

Public Office	PO	Public Office	PO
Government Office	GO	Government Office	GO
Police Station	PS	Police Station	PS
Sub Office	SO	Sub Office	SO
Post Office	PO	Post Office	PO
Municipal Office	MO	Municipal Office	MO
Range Office	RO	Range Office	RO
Post Office	PO	Post Office	PO

PROBATIONARY GUIDE

- 10 m
- 20 m
- 30 m
- 40 m
- 50 m
- 60 m
- 70 m
- 80 m
- 90 m
- 100 m
- 110 m
- 120 m
- 130 m
- 140 m
- 150 m
- 160 m
- 170 m
- 180 m
- 190 m
- 200 m
- 210 m
- 220 m
- 230 m
- 240 m
- 250 m
- 260 m
- 270 m
- 280 m
- 290 m
- 300 m
- 310 m
- 320 m
- 330 m
- 340 m
- 350 m
- 360 m
- 370 m
- 380 m
- 390 m
- 400 m
- 410 m
- 420 m
- 430 m
- 440 m
- 450 m
- 460 m
- 470 m
- 480 m
- 490 m
- 500 m
- 510 m
- 520 m
- 530 m
- 540 m
- 550 m
- 560 m
- 570 m
- 580 m
- 590 m
- 600 m
- 610 m
- 620 m
- 630 m
- 640 m
- 650 m
- 660 m
- 670 m
- 680 m
- 690 m
- 700 m
- 710 m
- 720 m
- 730 m
- 740 m
- 750 m
- 760 m
- 770 m
- 780 m
- 790 m
- 800 m
- 810 m
- 820 m
- 830 m
- 840 m
- 850 m
- 860 m
- 870 m
- 880 m
- 890 m
- 900 m
- 910 m
- 920 m
- 930 m
- 940 m
- 950 m
- 960 m
- 970 m
- 980 m
- 990 m
- 1000 m
- 1010 m
- 1020 m
- 1030 m
- 1040 m
- 1050 m
- 1060 m
- 1070 m
- 1080 m
- 1090 m
- 1100 m
- 1110 m
- 1120 m
- 1130 m
- 1140 m
- 1150 m
- 1160 m
- 1170 m
- 1180 m
- 1190 m
- 1200 m
- 1210 m
- 1220 m
- 1230 m
- 1240 m
- 1250 m

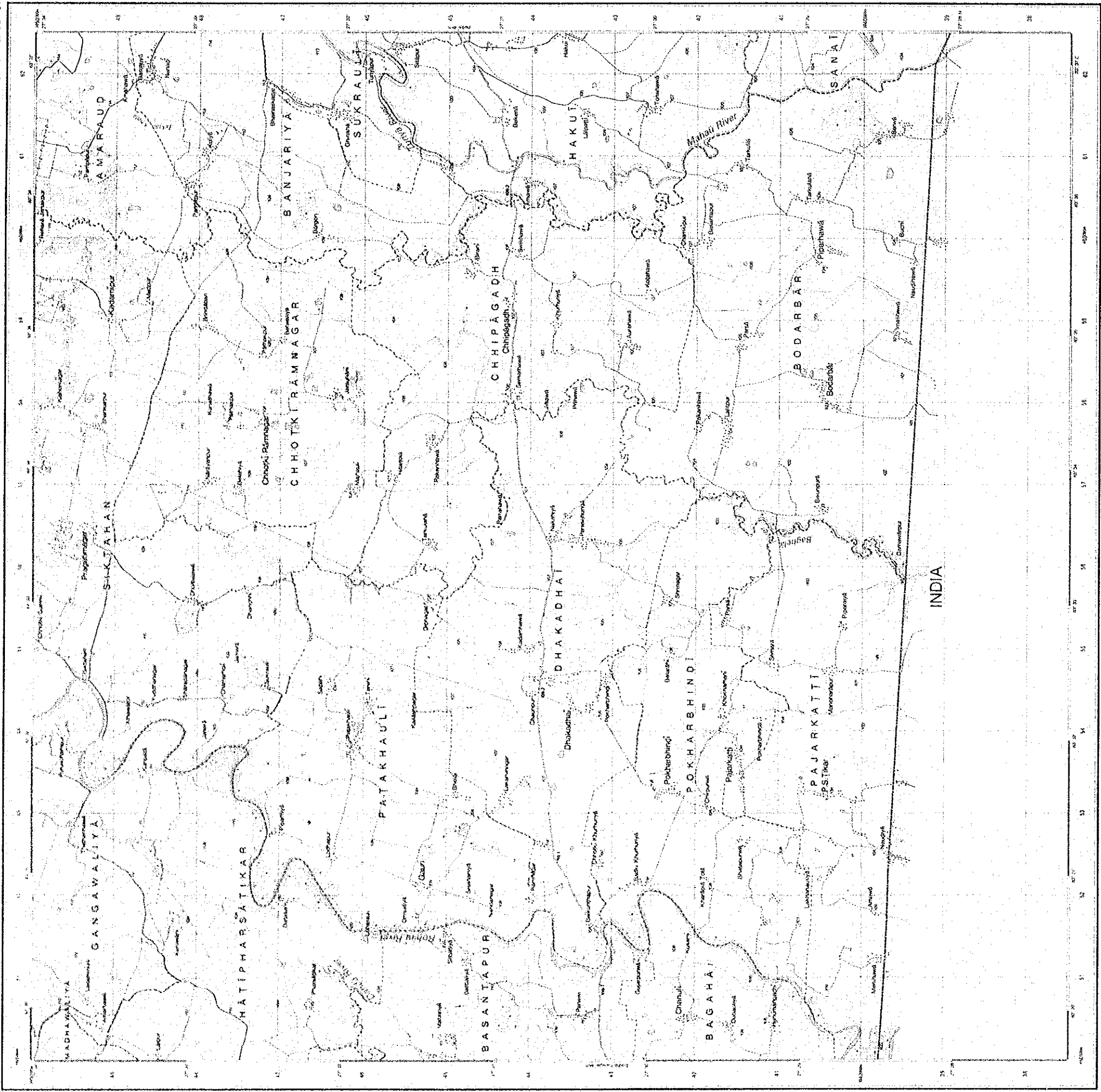


NATIONAL INSTITUTE OF SURVEYING AND MAPPING

Department of Surveying

Prepared by: JICA

Scale: 1:25,000



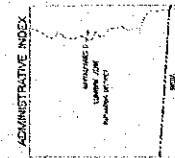
Source: Department, N.M.G. of Nepal, April (Elevation 1980)

Scale 1:25,000

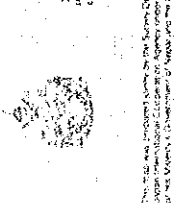
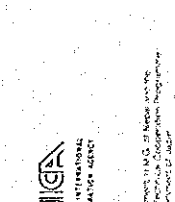
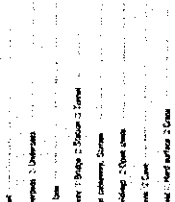
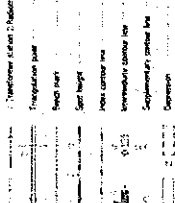
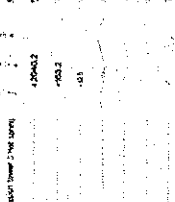
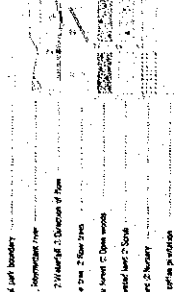
CONTOUR INTERVAL: 5 METERS
Secondary Contours at 5 meters

1.5m wide bridge with 2 lanes	2.0m wide bridge with 2 lanes	2.5m wide bridge with 2 lanes	3.0m wide bridge with 2 lanes	3.5m wide bridge with 2 lanes	4.0m wide bridge with 2 lanes	4.5m wide bridge with 2 lanes	5.0m wide bridge with 2 lanes	5.5m wide bridge with 2 lanes	6.0m wide bridge with 2 lanes	6.5m wide bridge with 2 lanes	7.0m wide bridge with 2 lanes	7.5m wide bridge with 2 lanes	8.0m wide bridge with 2 lanes	8.5m wide bridge with 2 lanes	9.0m wide bridge with 2 lanes	9.5m wide bridge with 2 lanes	10.0m wide bridge with 2 lanes
1.5m wide bridge with 1 lane	2.0m wide bridge with 1 lane	2.5m wide bridge with 1 lane	3.0m wide bridge with 1 lane	3.5m wide bridge with 1 lane	4.0m wide bridge with 1 lane	4.5m wide bridge with 1 lane	5.0m wide bridge with 1 lane	5.5m wide bridge with 1 lane	6.0m wide bridge with 1 lane	6.5m wide bridge with 1 lane	7.0m wide bridge with 1 lane	7.5m wide bridge with 1 lane	8.0m wide bridge with 1 lane	8.5m wide bridge with 1 lane	9.0m wide bridge with 1 lane	9.5m wide bridge with 1 lane	10.0m wide bridge with 1 lane
1.5m wide bridge with 0.5 lane	2.0m wide bridge with 0.5 lane	2.5m wide bridge with 0.5 lane	3.0m wide bridge with 0.5 lane	3.5m wide bridge with 0.5 lane	4.0m wide bridge with 0.5 lane	4.5m wide bridge with 0.5 lane	5.0m wide bridge with 0.5 lane	5.5m wide bridge with 0.5 lane	6.0m wide bridge with 0.5 lane	6.5m wide bridge with 0.5 lane	7.0m wide bridge with 0.5 lane	7.5m wide bridge with 0.5 lane	8.0m wide bridge with 0.5 lane	8.5m wide bridge with 0.5 lane	9.0m wide bridge with 0.5 lane	9.5m wide bridge with 0.5 lane	10.0m wide bridge with 0.5 lane
1.5m wide bridge with 0.25 lane	2.0m wide bridge with 0.25 lane	2.5m wide bridge with 0.25 lane	3.0m wide bridge with 0.25 lane	3.5m wide bridge with 0.25 lane	4.0m wide bridge with 0.25 lane	4.5m wide bridge with 0.25 lane	5.0m wide bridge with 0.25 lane	5.5m wide bridge with 0.25 lane	6.0m wide bridge with 0.25 lane	6.5m wide bridge with 0.25 lane	7.0m wide bridge with 0.25 lane	7.5m wide bridge with 0.25 lane	8.0m wide bridge with 0.25 lane	8.5m wide bridge with 0.25 lane	9.0m wide bridge with 0.25 lane	9.5m wide bridge with 0.25 lane	10.0m wide bridge with 0.25 lane
1.5m wide bridge with 0.125 lane	2.0m wide bridge with 0.125 lane	2.5m wide bridge with 0.125 lane	3.0m wide bridge with 0.125 lane	3.5m wide bridge with 0.125 lane	4.0m wide bridge with 0.125 lane	4.5m wide bridge with 0.125 lane	5.0m wide bridge with 0.125 lane	5.5m wide bridge with 0.125 lane	6.0m wide bridge with 0.125 lane	6.5m wide bridge with 0.125 lane	7.0m wide bridge with 0.125 lane	7.5m wide bridge with 0.125 lane	8.0m wide bridge with 0.125 lane	8.5m wide bridge with 0.125 lane	9.0m wide bridge with 0.125 lane	9.5m wide bridge with 0.125 lane	10.0m wide bridge with 0.125 lane

INDEX TO ADJOINING SHEETS	68/11	69/13	70/14
	15/04	16/01	16/23
	15/08		16/06



ABBREVIATION FOR PUBLIC BUILDINGS	
1	Police Station
2	Post Office
3	Public School
4	Public Dispensary
5	Public Market
6	Public Well
7	Public Bath
8	Public Toilet
9	Public Office
10	Public Store
11	Public Warehouse
12	Public Workshop
13	Public Workshop
14	Public Workshop
15	Public Workshop
16	Public Workshop
17	Public Workshop
18	Public Workshop
19	Public Workshop
20	Public Workshop
21	Public Workshop
22	Public Workshop
23	Public Workshop
24	Public Workshop
25	Public Workshop
26	Public Workshop
27	Public Workshop
28	Public Workshop
29	Public Workshop
30	Public Workshop
31	Public Workshop
32	Public Workshop
33	Public Workshop
34	Public Workshop
35	Public Workshop
36	Public Workshop
37	Public Workshop
38	Public Workshop
39	Public Workshop
40	Public Workshop
41	Public Workshop
42	Public Workshop
43	Public Workshop
44	Public Workshop
45	Public Workshop
46	Public Workshop
47	Public Workshop
48	Public Workshop
49	Public Workshop
50	Public Workshop
51	Public Workshop
52	Public Workshop
53	Public Workshop
54	Public Workshop
55	Public Workshop
56	Public Workshop
57	Public Workshop
58	Public Workshop
59	Public Workshop
60	Public Workshop
61	Public Workshop
62	Public Workshop
63	Public Workshop
64	Public Workshop
65	Public Workshop
66	Public Workshop
67	Public Workshop
68	Public Workshop
69	Public Workshop
70	Public Workshop
71	Public Workshop
72	Public Workshop
73	Public Workshop
74	Public Workshop
75	Public Workshop
76	Public Workshop
77	Public Workshop
78	Public Workshop
79	Public Workshop
80	Public Workshop
81	Public Workshop
82	Public Workshop
83	Public Workshop
84	Public Workshop
85	Public Workshop
86	Public Workshop
87	Public Workshop
88	Public Workshop
89	Public Workshop
90	Public Workshop
91	Public Workshop
92	Public Workshop
93	Public Workshop
94	Public Workshop
95	Public Workshop
96	Public Workshop
97	Public Workshop
98	Public Workshop
99	Public Workshop
100	Public Workshop



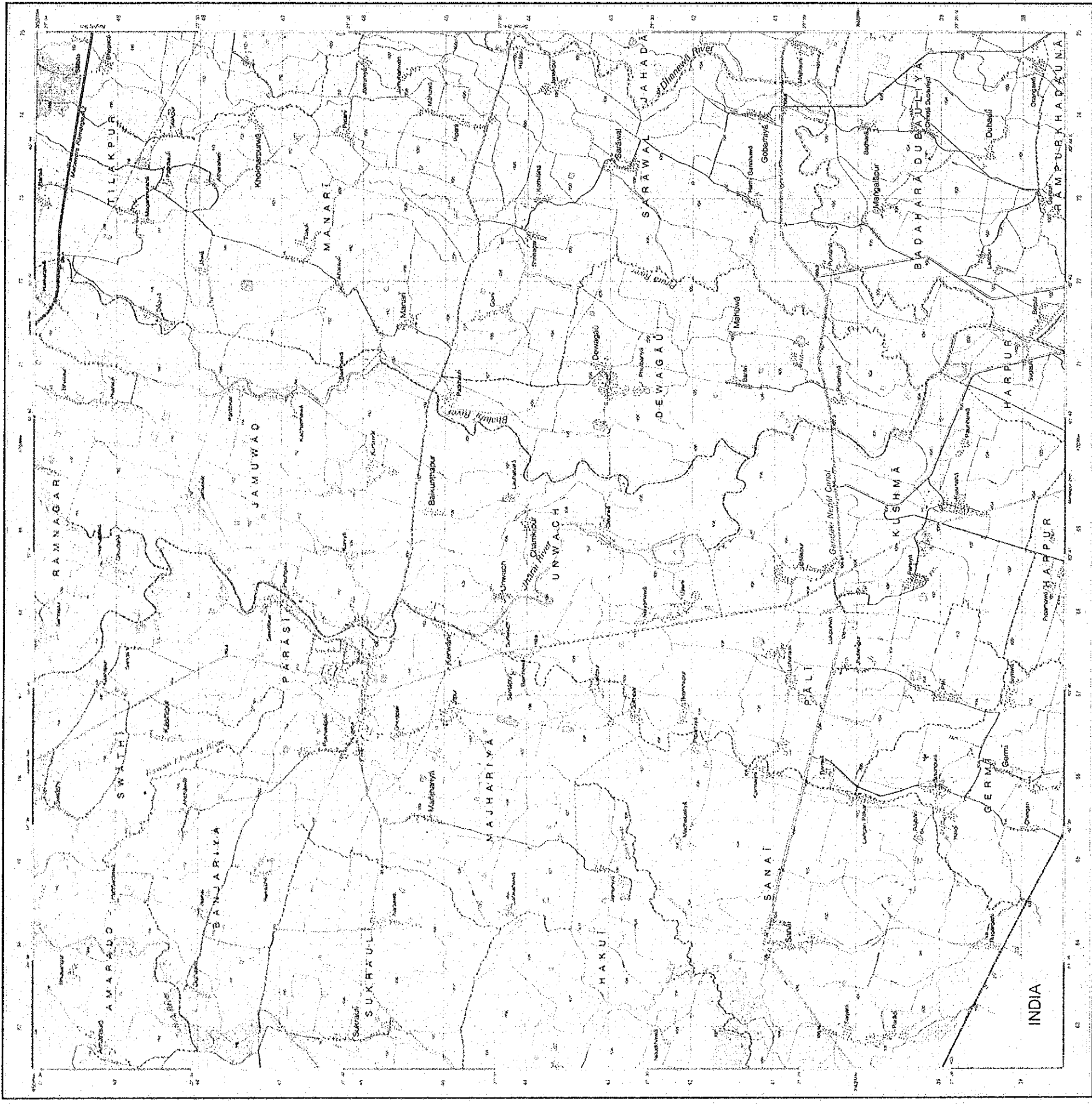
JICA
JAPAN INTERNATIONAL COOPERATION AGENCY

This map was prepared by the Survey Department, N.M.G. of Nepal, with the cooperation of the Japanese International Cooperation Agency (JICA). The map is published by the Survey Department, N.M.G. of Nepal, and is available for sale at a price of Rs. 100.00 per sheet.

NEPÁL 1:25,000

PARÁSÍ

Sheet No.105-02



Scale 1:25,000

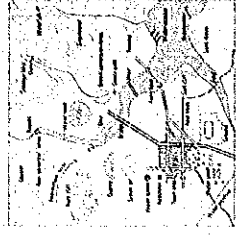
CONTOUR INTERVAL, 10 METRES
Inconspicuous Contours at 5 metres

PROJECTION UTM Zone 49N
COORDINATE SYSTEM UTM
UNIT Metres
SCALE 1:25,000
DATE 1987
EDITION 1st
CLASSIFICATION UNCLASSIFIED
KEYWORDS Nepal, Parasi, Topographic Map



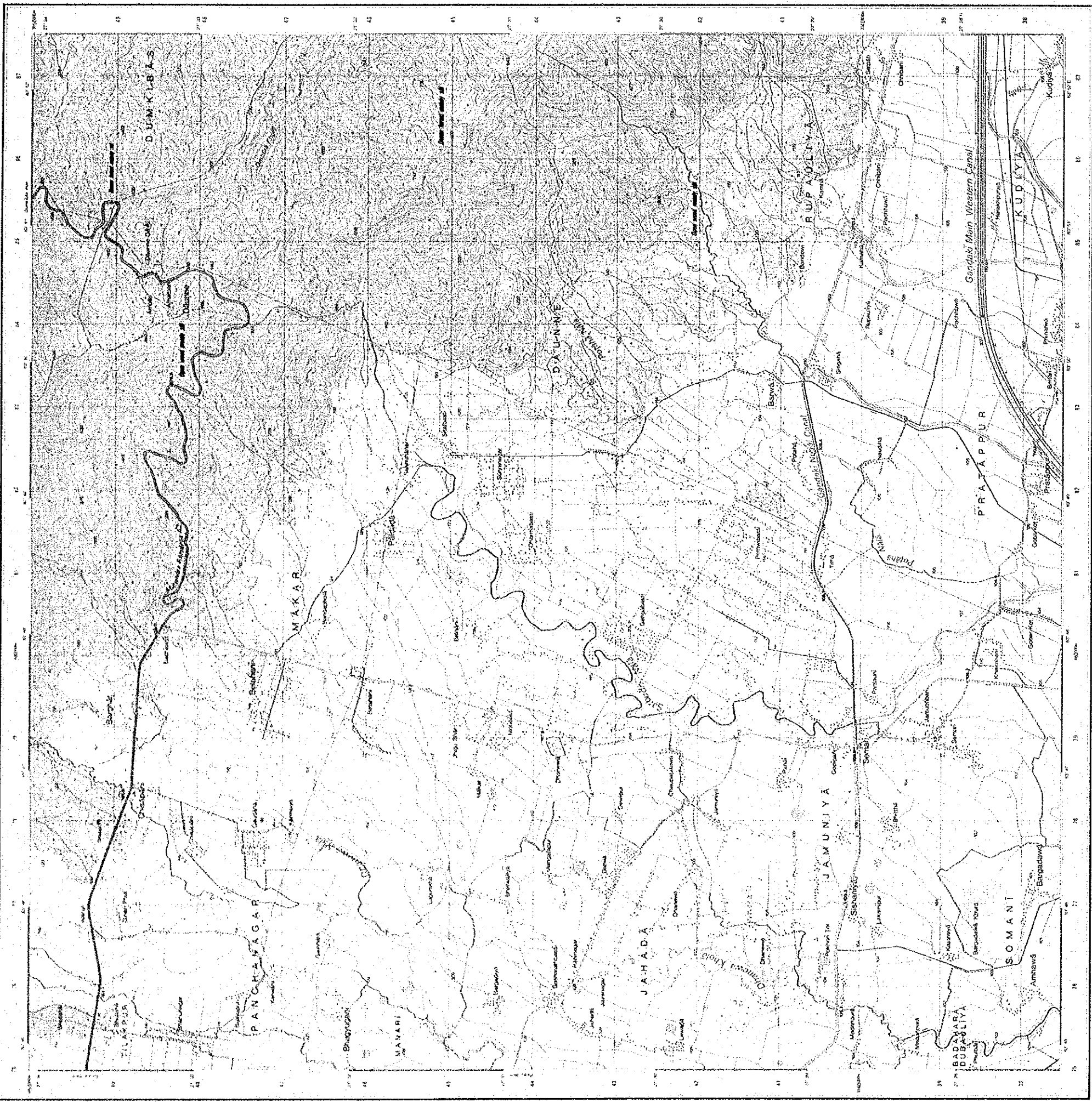
This map was prepared under the supervision of the National Mapping Authority, Nepal. It is based on the 1:25,000 scale maps of the Parasi region. The map is published under the authority of the National Mapping Authority, Nepal.

Sheet No.	Easting	Northing
105-01	83	26
105-02	84	26
105-03	85	26
105-04	86	26
105-05	87	26
105-06	88	26
105-07	89	26



Symbol	Building Type
(Square)	Police Station
(Circle)	Post Office
(Triangle)	Health Centre
(Star)	Government Office
(Diamond)	Public Office
(Hexagon)	Public Office
(Octagon)	Public Office
(Circle with dot)	Public Office
(Square with dot)	Public Office
(Triangle with dot)	Public Office
(Star with dot)	Public Office
(Diamond with dot)	Public Office
(Hexagon with dot)	Public Office
(Octagon with dot)	Public Office
(Circle with dot)	Public Office
(Square with dot)	Public Office
(Triangle with dot)	Public Office
(Star with dot)	Public Office
(Diamond with dot)	Public Office
(Hexagon with dot)	Public Office
(Octagon with dot)	Public Office

Symbol	Meaning
(Square)	Public Office
(Circle)	Post Office
(Triangle)	Health Centre
(Star)	Government Office
(Diamond)	Public Office
(Hexagon)	Public Office
(Octagon)	Public Office
(Circle with dot)	Public Office
(Square with dot)	Public Office
(Triangle with dot)	Public Office
(Star with dot)	Public Office
(Diamond with dot)	Public Office
(Hexagon with dot)	Public Office
(Octagon with dot)	Public Office

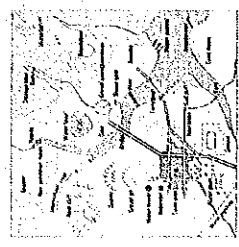


Scale 1:25,000

CONTOUR INTERVAL: 10 METRES
Supplementary contour at 5 metres

INDEX TO ADJOINING SHEETS

29-14	29-15	29-16
105-02	105-03	105-04
105-22	105-23	105-24



ABBREVIATION FOR PUBLIC BUILDINGS

1	Police Station
2	Post Office
3	Government Office
4	Public School
5	Religious Building
6	Public Well
7	Public Bath
8	Public Market
9	Public Square
10	Public Ground
11	Public Park
12	Public Garden
13	Public Cemetery
14	Public Burial Ground
15	Public Crematorium
16	Public Enclosure
17	Public Enclosure
18	Public Enclosure
19	Public Enclosure
20	Public Enclosure
21	Public Enclosure
22	Public Enclosure
23	Public Enclosure
24	Public Enclosure
25	Public Enclosure
26	Public Enclosure
27	Public Enclosure
28	Public Enclosure
29	Public Enclosure
30	Public Enclosure

ADMINISTRATIVE INDEX

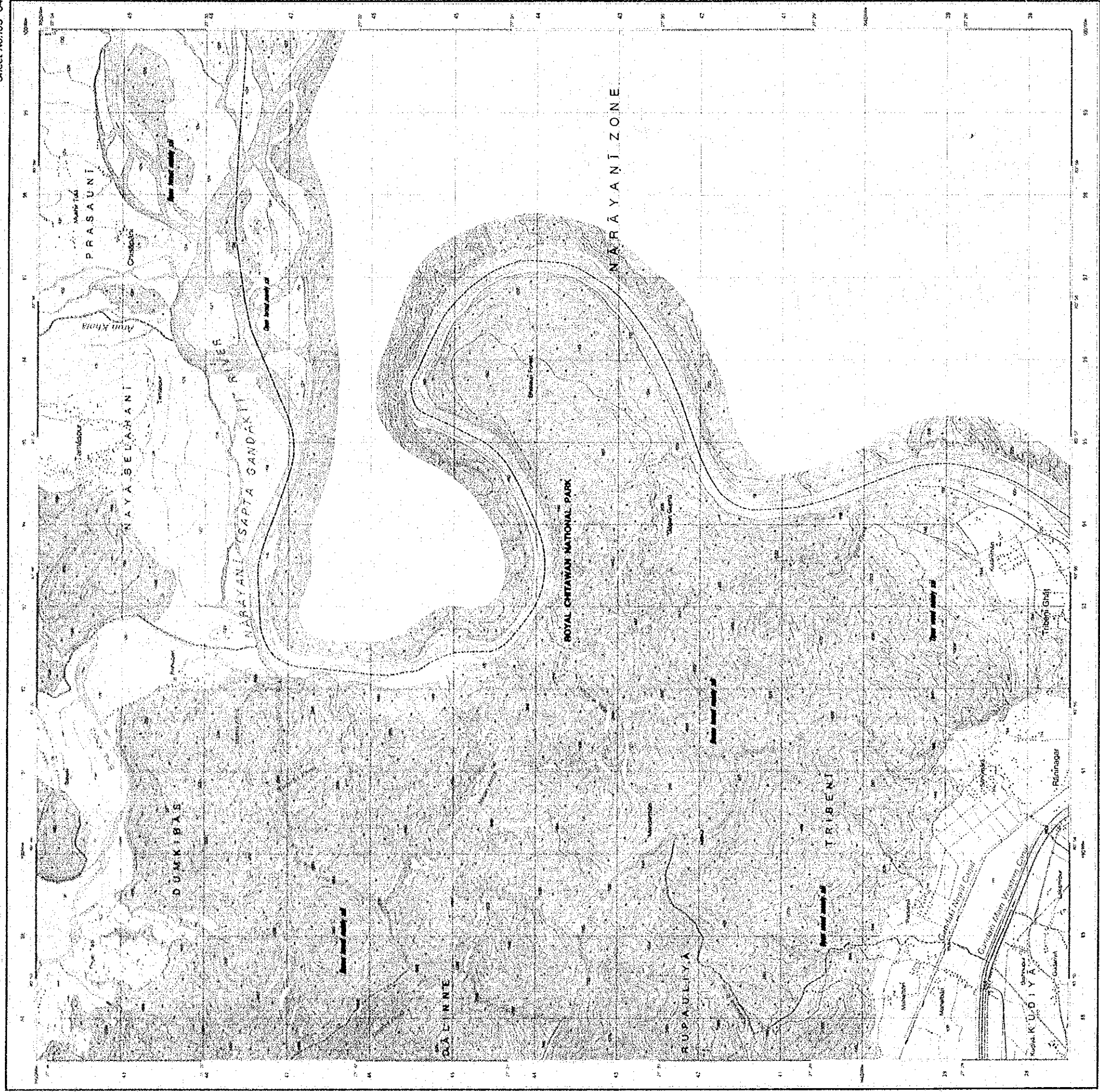
1	Province
2	District
3	Block
4	Local Government
5	Public Enclosure
6	Public Enclosure
7	Public Enclosure
8	Public Enclosure
9	Public Enclosure
10	Public Enclosure
11	Public Enclosure
12	Public Enclosure
13	Public Enclosure
14	Public Enclosure
15	Public Enclosure
16	Public Enclosure
17	Public Enclosure
18	Public Enclosure
19	Public Enclosure
20	Public Enclosure
21	Public Enclosure
22	Public Enclosure
23	Public Enclosure
24	Public Enclosure
25	Public Enclosure
26	Public Enclosure
27	Public Enclosure
28	Public Enclosure
29	Public Enclosure
30	Public Enclosure

Scale 1:25,000
CONTOUR INTERVAL: 10 METRES
Supplementary contour at 5 metres

ABBREVIATION FOR PUBLIC BUILDINGS

1	Police Station
2	Post Office
3	Government Office
4	Public School
5	Religious Building
6	Public Well
7	Public Bath
8	Public Market
9	Public Square
10	Public Ground
11	Public Park
12	Public Garden
13	Public Cemetery
14	Public Burial Ground
15	Public Crematorium
16	Public Enclosure
17	Public Enclosure
18	Public Enclosure
19	Public Enclosure
20	Public Enclosure
21	Public Enclosure
22	Public Enclosure
23	Public Enclosure
24	Public Enclosure
25	Public Enclosure
26	Public Enclosure
27	Public Enclosure
28	Public Enclosure
29	Public Enclosure
30	Public Enclosure

JICA
JAPAN INTERNATIONAL
CORPORATION



Scale 1:25,000

CONTOUR INTERVAL 10 METERS
Supplementary Contour at 5 meters

PRODUCTION GUIDE

ASSOCIATION FOR PUBLIC BUILDINGS

PRODUCTION GUIDE

INDEX TO ADJOINING SHEETS

09-03	09-10	10-11
10-01	10-06	10-07
10-08	10-09	

ASSOCIATION FOR PUBLIC BUILDINGS

PRODUCTION GUIDE

INDEX TO ADJOINING SHEETS

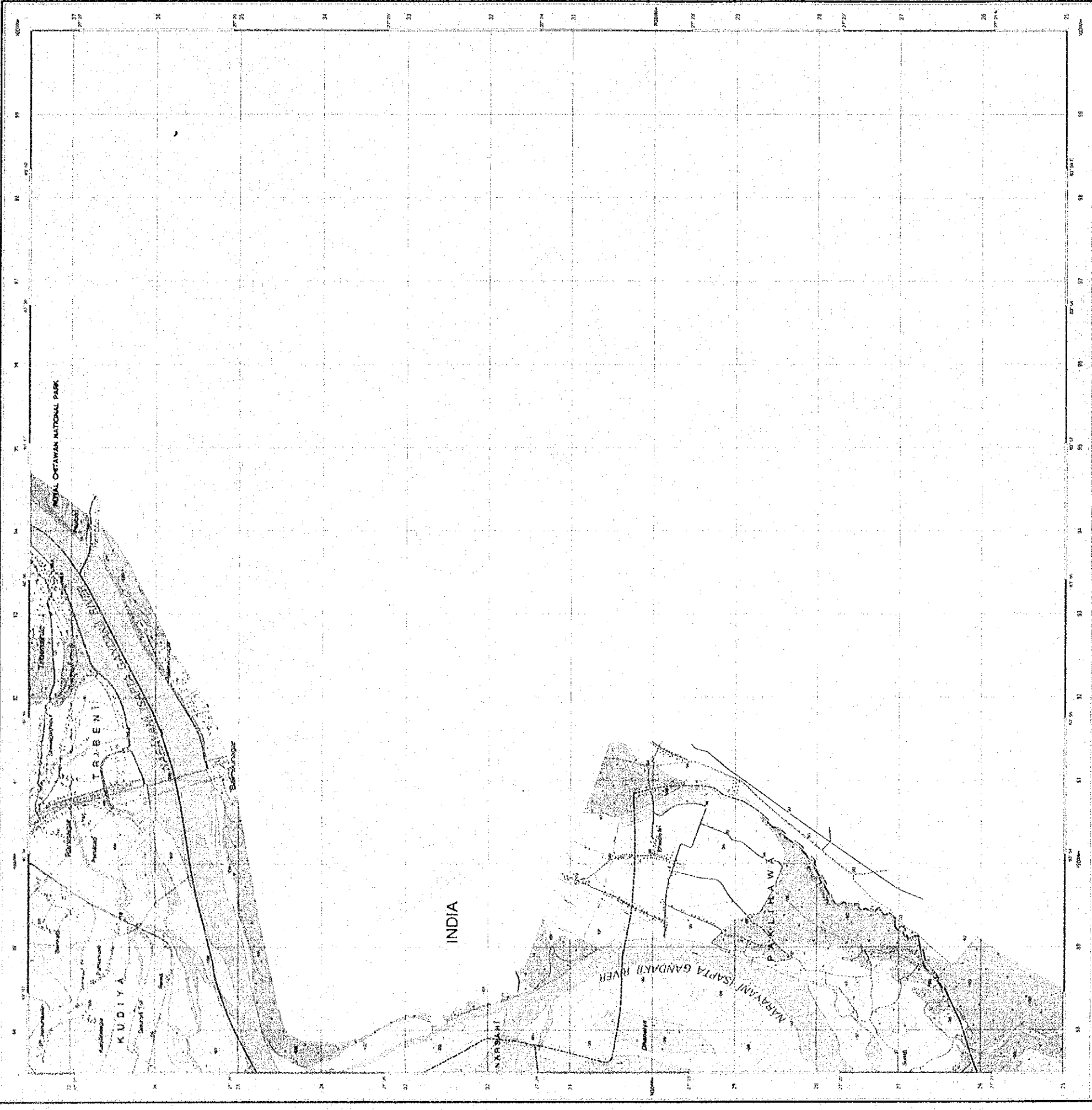
ASSOCIATION FOR PUBLIC BUILDINGS

PRODUCTION GUIDE

INDEX TO ADJOINING SHEETS



This map was prepared jointly by the Survey Department, Nepal, and JICA (Japan International Cooperation Agency).



© Survey Department, I.A.S.C. of Nepal, First Edition 2003

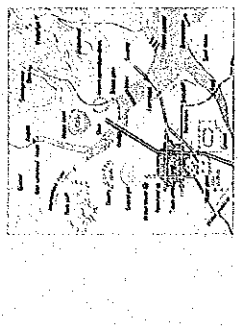
Scale 1:25,000
CONTOUR INTERVAL 10 METRES
Secondary Contours at 5 metres

PROJECTION: UTM
UNIT: METRE
SCALE: 1:25,000
CONTOUR INTERVAL: 10 METRES
SECONDARY CONTOUR INTERVAL: 5 METRES



This map was prepared jointly by the Survey Department of I.A.S.C. of Nepal and the Japan International Cooperation Agency under the Technical Cooperation Programme of the Japanese Government for Nepal and the Government of Nepal.

Symbol	Description
[Symbol]	1. Road 2. Motorway
[Symbol]	3. Foot path 4. Path
[Symbol]	5. Canal 6. Irrigation canal
[Symbol]	7. Dam 8. Dam with sluiceway
[Symbol]	9. Bridge 10. Bridge with approach
[Symbol]	11. Railway 12. Railway station
[Symbol]	13. Airfield 14. Airport
[Symbol]	15. Port 16. Harbour
[Symbol]	17. Pier 18. Quay
[Symbol]	19. Jetty 20. Wharf
[Symbol]	21. Breakwater 22. Pier and wharf
[Symbol]	23. Lock 24. Lock with sluiceway
[Symbol]	25. Weir 26. Weir with sluiceway
[Symbol]	27. Barrage 28. Barrage with sluiceway
[Symbol]	29. Dam with sluiceway 30. Dam with sluiceway and powerhouse
[Symbol]	31. Dam with sluiceway and powerhouse 32. Dam with sluiceway and powerhouse and powerhouse
[Symbol]	33. Dam with sluiceway and powerhouse and powerhouse and powerhouse
[Symbol]	34. Dam with sluiceway and powerhouse and powerhouse and powerhouse and powerhouse
[Symbol]	35. Dam with sluiceway and powerhouse and powerhouse and powerhouse and powerhouse and powerhouse
[Symbol]	36. Dam with sluiceway and powerhouse and powerhouse and powerhouse and powerhouse and powerhouse and powerhouse
[Symbol]	37. Dam with sluiceway and powerhouse and powerhouse and powerhouse and powerhouse and powerhouse and powerhouse and powerhouse
[Symbol]	38. Dam with sluiceway and powerhouse and powerhouse and powerhouse and powerhouse and powerhouse and powerhouse and powerhouse and powerhouse
[Symbol]	39. Dam with sluiceway and powerhouse and powerhouse and powerhouse and powerhouse and powerhouse and powerhouse and powerhouse and powerhouse and powerhouse
[Symbol]	40. Dam with sluiceway and powerhouse and powerhouse and powerhouse and powerhouse and powerhouse and powerhouse and powerhouse and powerhouse and powerhouse and powerhouse



Symbol	Description
[Symbol]	1. National Boundary
[Symbol]	2. Provincial Boundary
[Symbol]	3. District Boundary
[Symbol]	4. Village Development Committee Boundary
[Symbol]	5. Municipality Boundary
[Symbol]	6. Gram Panchayat Boundary
[Symbol]	7. Thana Boundary
[Symbol]	8. Thana Office
[Symbol]	9. Thana Office Building
[Symbol]	10. Thana Office Compound
[Symbol]	11. Thana Office Compound Wall
[Symbol]	12. Thana Office Compound Gate
[Symbol]	13. Thana Office Compound Wall
[Symbol]	14. Thana Office Compound Gate
[Symbol]	15. Thana Office Compound Wall
[Symbol]	16. Thana Office Compound Gate
[Symbol]	17. Thana Office Compound Wall
[Symbol]	18. Thana Office Compound Gate
[Symbol]	19. Thana Office Compound Wall
[Symbol]	20. Thana Office Compound Gate

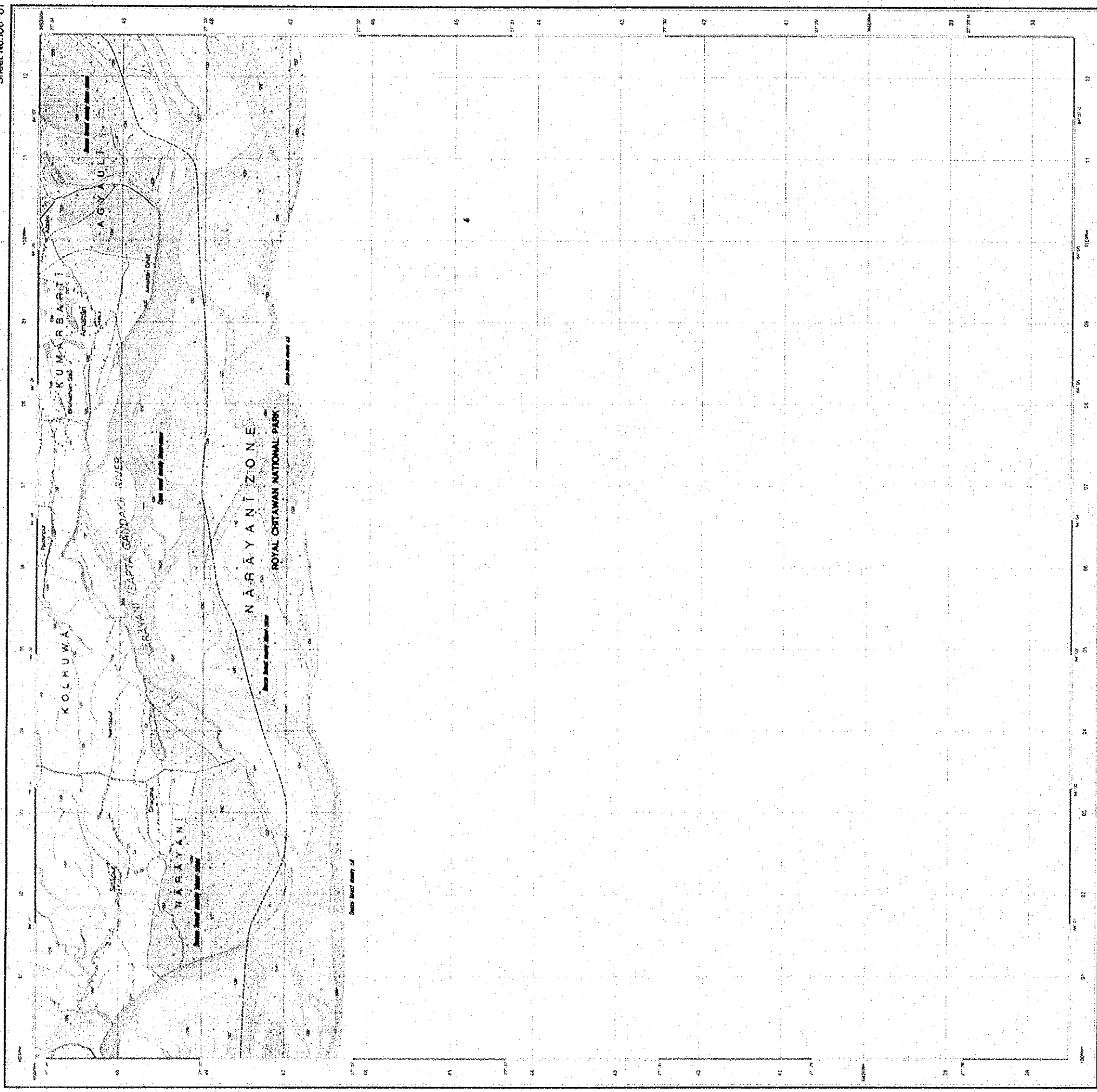
Year	Scale	Projection
1962	1:50,000	UTM
1967	1:50,000	UTM

ABBREVIATION FOR PUBLIC BUILDINGS

[Symbol] Police Station
 [Symbol] Court
 [Symbol] Government Office
 [Symbol] School
 [Symbol] Hospital
 [Symbol] Post Office
 [Symbol] Railway Station
 [Symbol] Airfield
 [Symbol] Port
 [Symbol] Pier
 [Symbol] Jetty
 [Symbol] Wharf
 [Symbol] Breakwater
 [Symbol] Lock
 [Symbol] Weir
 [Symbol] Barrage
 [Symbol] Dam
 [Symbol] Dam with sluiceway
 [Symbol] Dam with sluiceway and powerhouse
 [Symbol] Dam with sluiceway and powerhouse and powerhouse

PROUNCIATION GUIDE

1. a as in cat
 2. e as in bed
 3. i as in machine
 4. o as in note
 5. u as in put
 6. y as in yes
 7. r as in run
 8. l as in lot
 9. n as in no
 10. m as in man
 11. t as in top
 12. d as in day
 13. k as in cat
 14. g as in get
 15. ch as in church
 16. sh as in ship
 17. ph as in phone
 18. bh as in bubble
 19. jh as in job
 20. kh as in cat
 21. gh as in get
 22. ng as in long



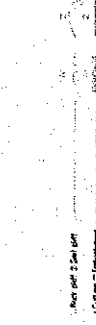
Scale 1:25,000

CONTOUR INTERVAL, 10 METERS
Supplementary Contour at 5 meters

Projection: Modified Universal Transverse Mercator
Datum: Everest 1960
Scale of Measurement: 1:25,000
Latitude of Origin: 27° 30' N
Longitude of Origin: 83° 30' E
False Easting at Origin: 500,000 meters
False Northing at Origin: 10,000,000 meters
Zone Number: 48U
Spheroid: Everest
Semi-Major Axis: 6,377,275.0 meters
Semi-Minor Axis: 6,356,581.5 meters
Flattening: 1/299.7256
Eccentricity: 0.081696558
Eccentricity Squared: 0.006674377



This map was compiled by the Survey Department, Ministry of Land Management, Urban Planning and Construction, Nepal, and the Survey Department, Ministry of Land Management, Urban Planning and Construction, Japan.



Symbol	Description
[Symbol]	City (Pop. 100,000 and over)
[Symbol]	Town (Pop. 50,000 and over)
[Symbol]	Village (Pop. 10,000 and over)
[Symbol]	Hamlet (Pop. 5,000 and over)
[Symbol]	Isolated building
[Symbol]	Religious building
[Symbol]	Public building
[Symbol]	Government building
[Symbol]	Police station
[Symbol]	Post office
[Symbol]	Telegraph office
[Symbol]	Telephone exchange
[Symbol]	Power station
[Symbol]	Water tower
[Symbol]	Well
[Symbol]	Cemetery
[Symbol]	Other

1: 100m
2: 200m
3: 300m
4: 400m
5: 500m
6: 600m
7: 700m
8: 800m
9: 900m
10: 1000m

ADMINISTRATIVE INDEX

Code	Name	Level
01	Nepal	Country
02	Province	Province
03	District	District
04	Municipality	Municipality
05	City	City
06	Town	Town
07	Village	Village
08	Hamlet	Hamlet
09	Isolated building	Isolated building
10	Religious building	Religious building
11	Public building	Public building
12	Government building	Government building
13	Police station	Police station
14	Post office	Post office
15	Telegraph office	Telegraph office
16	Telephone exchange	Telephone exchange
17	Power station	Power station
18	Water tower	Water tower
19	Well	Well
20	Cemetery	Cemetery
21	Other	Other

INDEX TO ADJOINING SHEETS

Sheet No.	Year
105-11	1975
105-12	1975
106-01	1975
106-02	1975
107-01	1975
107-02	1975

