

PART 1 APPENDICES

- 1 Outline Specification of 1,000DWT Cargo Ship**
- 2 Outline of Specification of 3,000DWT Cargo Ship**
- 3 Classified List of Ship and Their Main Particular**
- 4 List of Ship New Construction During 1990-1995**
- 5 IMO resolution A.761(18)**
"Recommendation on Condition for Approval of Serving
Statistics for Inflatable Liferafts"
- 6 Various Ships**

Appendix 1

Outline of Specification of 1,000 DWT Cargo Ship

(1) General

The vessels shall be steel construction single screw diesel engine propelled cargo vessels.

The vessels have a Fore deck, a poop deck and continuous upper deck.

Engine room, navigation bridge and accommodation are to be located at the aft part of the vessels.

The vessels have two (2) cargo holds with top and bottom side tanks (Optional).

The vessels shall be used for carrying general cargo, bulk cargo, container cargo and construction materials.

(2) Principal Dimensions

Length, overall	about 69.50 m
Length, (BP)	65.00 m
Breadth, molded	12.00 m
Depth, molded	5.00 m
Designated draft, molded	3.20 m
Dead Weight	about 1,000 tons

(3) Tonnage

Gross Tonnage	about 1,000 GRT
[International conference for Tonnage measurement of ships (1969)]	

(4) Speed and Endurance

Maximum trial speed	about 12.0 knots
Service speed	about 11.0 knots
Endurance (at service speed)	about 2,000 sea miles

(5) Complement

Officers and Crews	Total 20 persons
Officers	9

(6) Loading Capacity

Without shoulder tank

Cargo hold capacity (bale) about 1,400 m³Cargo hold capacity (grain) about 1,600 m³

With shoulder tank (optional)

Cargo hold capacity (bale) about 1,100 m³Cargo hold capacity (grain) about 1,300 m³

(7) Container 12 (on hatch)

(8) Tank Capacity

Fuel oil tanks about 45 m³Fresh water tanks about 30 m³Lubricating oil tanks about 2.3 m³Ballast water tanks (bottom) about 380 m³

(9) Deck Machinery

Steering gear 1 set

Windlass 1 set

Capstan (for stern anchor) 1 set

Air conditioning unit 1 set

Mechanical fan for ENG space 2 sets, axial flow

Exhaust fan for sanitary space 1 set, axial flow

Exhaust fan for galley 1 set, axial flow

(10) Cargo Gear (Option)

Cargo crane 5t-16m 1 set

If port facilities of service route are completed, cargo crane is not installed on deck.

(11) Life Saving and Fire fighting

Rescue boat 1 set

Rescue boat davit with winch 1 set

Life Raft 4 sets

Fire protection as Rule's requirement

Fixed fire extinguishing system 1 set,
CO₂ gas, for engine room

(12) Hatch Covers

Upper deck cargo hatches	No. 1 hatch and No. 2 hatch
	8.5 m x 14.5m
	single pull steel cover

(13) Engine Room Machinery

Main engine with reduction gear	1 set, MCR about 980 PS
Propeller	1 set, 4-blade fixed pitch diameter about 2,200 mm
Main generator engine	2 sets
Harbor use generator engine	1 set
Main air compressor	1 set
Aux. air compressor	1 set
Oil purifier	1 set
Fuel oil transfer pump	1 set
Ballast and bilge pump	1 set
Lube oil transfer pump	1 set
Fire and GS pump	1 set
Bilge pump	1 set
Sea water pump	1 set
Fresh water pump	2 sets
Others	

(14) Electric Part

Main generator	2 sets
Harbor use generator	1 set
Main switchboard	1 set
Emergency switchboard	1 set
General lighting system	1 set
Echo sounder	1 set
EPIRB	1 set
NAVTEX receiver	1 set
Radar	1 set
GPS receiver	1 set
Gyro compass with auto pilot system	1 set
Others	

(15) Spare Parts and Tools

Spare parts and tools for all machinery and equipment to be furnished in accordance with the Builder's and/or Manufacturer's Standard.

(16) Guarantee Period

Guarantee period to be twelve months

Appendix 2

Outline of Specification of 3,000 DWT Cargo Ship

(1) General

- The vessels shall be steel construction single screw diesel engine propelled cargo vessels.
- The vessel have a F'cle deck, a poop deck and continuous upper deck.
- Engine room, navigation bridge and accommodation are to be located aft part of the vessel.
- The vessels have two cargo holds with side tanks at top and bottom (optional).
- The vessels shall be used for carrying general cargo, bulk cargo, container cargo and construction materials.

(2) Principal Dimensions

Length, overall	about 90,00 m
Length, (BP)	85.00 m
Breadth, molded	14.50 m
Depth, molded	7.50 m
Designed draft, molded	5.00 m
Dead Weight	about 3,000 tons

(3) Tonnage

Gross Tonnage	about 2,800 GRT
[International conference for Tonnage measurement of ships (1969)]	

(4) Speed and Endurance

Maximum trial speed	about 12.0 knots
Service speed	about 11.0 knots
Endurance (at service speed)	about 2,000 sea miles

(5) Complement

Officer & crew	Total	28 persons
Officers		9
Crews		19

(6) Loading capacity

Without shoulder tank

Cargo hold capacity (grain)	about 3,900 m ³
With shoulder tank (optional)	
Cargo hold capacity (bale)	about 3,200 m ³
Cargo hold capacity (grain)	about 3,500 m ³
(7) Container	24 (on hatch)
(8) Tank Capacity	
Fuel oil tanks	about 80 m ³
Fresh water tanks	about 70 m ³
Lubricating oil tanks	about 4.0 m ³
Ballast water tanks (bottom)	about 450 m ³
(9) Deck Machinery	
Steering gear	1 set
Windlass	1 set
Capstan (for stern anchor)	1 set
Air conditioning unit	1 set
Mechanical fan for ENG space	2 sets, axial flow
Exhaust fan for sanitary space	1 set, axial flow
Exhaust fan for galley	1 set, axial flow
(10) Cargo Gears (Option)	
Cargo crane 10t - 16m	1 set
If port facilities of service route are completed, cargo crane is not installed on deck.	
(11) Life Saving and Fire fighting	
Rescue boat	1 set
Rescue boat dvalt with winch	1 set
Life Raft	4 sets
Fire protection	as Rule's requirement
Fixed fire extinguishing system	1 set, CO ₂ , gas for engine room
(12) Hatch Covers	
Upper deck cargo hatches	NO. 1 hatch and No. 2 hatch 10.0m x 19.0m single pull steel cover
(13) Engine Room Machinery	

Main engine with reduction gear	1 set, MCR about 1,800 PS
Propeller	1 set, 4-blade fixed pitch diameter about 2,800 mm
Main generator engine	2 sets
Harbor use generator engine	1 set
Main air compressor	1 set
Aux. air compressor	1 set
Oil purifier	1 set
Fuel oil transfer pump	1 set
Ballast and bilge pump	1 set
Lube oil transfer pump	1 set
Fire and G.S. pump	1 set
Bilge pump	1 set
Sea water pump	1 set
Fresh water pump	2 set
Others	

(14) Electric Part

Main generator	2 sets
Harbor use generator	1 set
Main switchboard	1 set
Emergency switchboard	1 set
General lighting system	1 set
Echo sounder	1 set
EPIRB	1 set
NAVTEX receiver	1 set
Radar	1 set
GPS receiver	1 set
Gyro compass with auto pilot system	1 set
Others	

(15) Spare Parts and Tools

Spare parts and tools for all machinery and equipment to be furnished in accordance with the Builder's and/or Manufacturer's Standard.

(16) Guarantee Period

Guarantee period to be twelve months.

Appendix 3

Classified List of Ship and Their Main Particular

VIETNAM REGISTER OF SHIPPING



CLASSIFIED LIST OF SHIP & THEIR MAIN PARTICULAR

- Ship under 500 G/T
- Ship 500 - 1000 G/T
- Ship 1000 - 2000 G/T
- Ship 2000 - 3000 G/T
- Ship over 3000 G/T

January, 1996

REGISTER OF SEA GOING SHIP UNDER VIRES (G/T under 500)

Date: 24.01.1996

No.	SHIP S NAME	CLASS.No.	TYPE & DES.	YEAR & PLACE	SHIP S CLASS	G.T	DWT	LxBxH	Ne(HP)
1	AN BIEN-09	880144	M-General Cargo	1988-Song Cam	VIRES KM III	398	400.00	48.60x7.6x3.2	350
2	AN GIANG-09	850369	M-General Cargo	1985-Song cam	VIRES KM III	327	400.00	48.30x8.1x3.2	305
3	AN GIANG-19	941094	M-General Cargo	1994-Hai phong	VIRES KM III	321	300.00	42x7.8x2.6	305
4	AN GIANG-27	941076	M-General Cargo	1994-Hai phong	VIRES KM III	238	300.00	41.53x7.8x3.0	218
5	AN LU-05	951092	M-General Cargo	1995-Hai phong	VIRES KM III	269	300.00	44.3x8.06x2.95	305
6	AN LU-06	951129	M-General Cargo	1996-Hai phong	VIRES KM III	285	350.00		
7	AN LU-08	951091	M-General Cargo	1996-Hai phong	VIRES KM III	242	300.00	41.28x7.7x3.0	225
8	AN LU-09	951138	M-General Cargo	1996-Hai phong	VIRES KM III	231	350.00		
9	AP BAC-03	420239	M-Oil Tanker	1973-Sai gon	VIRES KM II	496	650.00	45.0x9.80x4.2	578
10	AP BAC-04	910513	M-Oil Tanker	1991-Sai gon	VIRES KM II	441	700.00	48.04x8.5x3.9	408
11	BA TO	850055	M-General Cargo	1985-Ben Kien	VIRES KM II	385	400.00	44.5x8.22x4.1	400
12	BACH HO-02	820614	Tug		VIRES KM I	151			
13	BD-540	710342	Tug	1971 China	VIRES KM III	192		27.0x6.80x3.2	540
14	BD-540-02	710343	Tug	1971 China	VIRES KM III	192		27.0x6.80x3.2	540
15	BEN DAM-01	741157			VIRES KM III	93	150.00		
16	BEN DAM-06	820616	M-Cargo-Passenger		VIRES KM II	227			
17	BEN SUC	850514	M-General Cargo	1985-Kien An	VIRES KM III	70	80.00	26.6x5.20x2.4	90
18	BIEN DONG	760021	Sea Research/Ref.	1976 Germany	VIRES KM	495	251.00	42.98x10.3x6.48	1500
19	BIEN DONG-01	531036	Tug	1953-USA	VIRES KM III	69		20.5x5.8x2.58	408
20	BIEN DONG-02	680438	M-General Cargo	1968-Japan	VIRES KM I	343	250.00	36.00x7.3x3.2	890
21	BIEN DONG-03	531037	M-Tug/Sup	1953-GDR	VIRES KM III	91	100.00	22.5x6.5x3.02	400
22	BIEN DONG-39	531034	Tug	1953-USA	VIRES KM III	69		20.5x5.8x2.85	578
23	BIEN DONG-46	890491	M-General Cargo	1988-Bach dang	VIRES KM III	498	650.00	50.30x9.0x4.0	578
24	BIEN DONG-48	890229	M-General Cargo	1989-Bach Dang	VIRES KM II	498	605.00	50.30x9.0x4.0	578
25	BIEN DONG-50	941030	M-Tanker	1994-Hai phong	VIRES KM I	325	300.00	50.25x8.0x3.2	408
26	BINH MINH	870517	M-Tug	1987-USSR	VIRES KM III	11		11.76x2.8x1.44	150
27	BINH MINH	800882	M-Supply	1980-Hai phong	VIRES KM II	201		29.13x7.0x3.7	400
28	BINH MINH-05	941048	M-General Cargo	1994-Viet nam	VIRES KM III	195	300.00	36.97x6.7x3.65	200
29	BINH THUAN	870106	M-General Cargo	1987-Sai gon	VIRES KM II	385	400.00	44.35x8.2x4.1	470
30	BINH THUAN-06	850558	M-General Cargo	1985-Kien An	VIRES KM III	154	150.00	33.5x7.2x2.5	135
31	BINH THUAN-08	850549	M-General Cargo	1985-Song Cam	VIRES KM III	327	400.00	49.75x7.8x3.2	305
32	BINH THUAN-09	860561	M-General Cargo	1986-Kien An	VIRES KM III	109	150.00	33.50x7.5x2.5	135
33	BINH THUAN-12	870503	M-General Cargo	1987 Kien An	VIRES KM III	154	150.00	33.50x7.0x2.5	135
34	BINH THUAN-15	860562	M-General Cargo	1986- Kien An	VIRES KM III	154	150.00	33.50x7.0x2.5	135
35	CB-117	760433	M-General Cargo	1976-China	VIRES KM III	125		29.10x6.82x2.92	150
36	CB-118	880434	M-Fishing	1988 China	VIRES KM III	102		19.70x4.8x1.55	60
37	CHAU GIANG	800208	M-General Cargo	1988-Nam Ha	VIRES KM I	327	400.00	49.75x7.8x3.2	305
38	CHIEN THANG-101	770518	M-Fishing	1977-France	VIRES KM III	158		25.50x7.7x3.9	440
39	CHIEN THANG-104	770521	M-Fishing	1977-France	VIRES KM III	158		26.50x7.7x3.9	440
40	CHIEN THANG-105	770551	M-Fishing	1977-France	VIRES KM III	158		26.25x7.7x3.9	400
41	CHIEN THANG-28	660564	M-Fishing	1966-China	VIRES KM III	120		38.50x6.0x2.25	225
42	CHIEN THANG-29	660515	M-Fishing	1966-China	VIRES KM III	210		37.40x6.3x2.2	225
43	CHIEN THANG-309	770565	M-Fishing	1977-USSR	VIRES KM III	75		23.77x6.0x2.68	225
44	CHIEN THANG-331	720532	Tanker		VIRES KM II	71	100.00		
45	CHU AN	860092	M-General Cargo	1986-Ben Kien	VIRES KM II	375	400.00	44.0x8.2x4.1	400

REGISTER OF SEA GOING SHIP UNDER VIRES (G/T under 500)

No.	SHIP S NAME	CLASS.No.	TYPE & DES.	YEAR & PLACE	SHIP S CLASS	G.T	DWT	LxBxH	Ne(HP)
46	CON DAO-11	790519	Tug	1979-Norway	VIREs KM III	62		18.50x5.8x2.45	564
47	CSG-95	910608	Tug	1991-Malaysia	VIREs KM III	150		22.8x7.3x3.0	1000
48	CT-31	720532	M-Oil Tanker	1972-China	VIREs KM II	71	50.00	30.0x5.0x1.9	140
49	CUU HO-392	861099	Tug	1986-Song Cam	VIREs KM III	89		21.5x6.1x2.6	305
50	CUU LO-05	880026	M-General Cargo	1988-Germany	VIREs KM III	398	400.00	48.6x7.8x3.2	305
51	CUU LONG	910273	M-Supply	1991-Pha Rung	VIREs KM II	492	808.00	45.72x9.75x3.49	300
52	CUU LONG-106	660004	M-General Cargo	1966-China	VIREs KM II	131	120.00	34.85x6.2x2.8	225
53	CUU LONG-108	930346	M-General Cargo	1993-Ben Kien	VIREs KM III	155	200.00	40x6.2x2.8	225
54	CUU LONG-112	660300	M-General Cargo	1966-China	VIREs KM III	131	120.00	34.85x6.2x2.8	225
55	CUU LONG-114	660887	M-General Cargo	1966-China	VIREs KM III	131	120.00	34.85x6.2x2.8	140
56	CUU LONG-116	660006	M-General Cargo	1966-China	VIREs KM II	131	120.00	34.85x6.2x2.8	225
57	CUU LONG-124	660888	M-General Cargo	1966-China	VIREs KM III	131	120.00	34.85x6.2x2.8	225
58	DAI THANH-05	951134	M-General Cargo	1995-Hai phong	VIREs KM III	263	300.00		
59	DAI THANH-09	880121	M-General Cargo	1988-Ben Kien	VIREs KM II	385	400.00	44.5x8.2x4.1	400
60	DAI THANH-18	951133	M-General Cargo	1995-Haiphong	VIREs KM III	174	200.00	35.9x6.2x2.9	218
61	DAU KHI-101	690250	M-Supply	1969-USA	VIREs KM II	486		47.35x11.62x3.82	800
62	DAU KHI-104	670245	M-Supply	1967-USA	VIREs KM I	461		55.67x11.61x3.81	
63	DAU KHI-105	820444	Tug	1982-Japan	VIREs KM I	324		35.0x9.50x3.6	800
64	DINH VU-01	890390	M-General Cargo	1989-Hai phong	VIREs KM III	166	200.00	33.5x7.0x2.5	180
65	DINH VU-05	900393	M-General Cargo	1990-Tam Bac	VIREs KM III	130	150.00	36.0x6.20x2.8	135
66	DINH VU-06	850394	M-General Cargo	1985-Hai phong	VIREs KM III	154	150.00	33.50x7.0x2.5	135
67	DONG NAI-02	880537	M-General Cargo	1988-Ha noi	VIREs KM II	389	400.00	48.30x8.2x3.2	305
68	DONG NAI-04	510580	M-General Cargo	1951-USA	VIREs KM III	455	650.00	51.0x8.9x4.5	836
69	DONG PHUONG-04	941058	M-General Cargo	1994-Hai phong	VIREs KM I	239	450.00	46.5x7.80x3.7	408
70	DONG PHUONG-06	951118	M-General Cargo	1995-Ben Kien	VIREs KM I	390	600.00	50.62x7.8x4.0	500
71	DUC THO-08	871039	M-General Cargo	1987-Ben Thuy	VIREs KM III	190	147.00	38.55x7.2x2.5	140
72	DUYEN HAI-02	891108	M-General Cargo	1989-Hai phong	VIREs KM III	65	30.00	27.0x5.6x2.0	90
73	DUYEN HAI-05	890495	M-General Cargo	1989-Hai phong	VIREs KM III	65		27.00x	
74	GENECO-01	700486	M-General Cargo	1970-Japan	VIREs KM	495	350.00	49.4x8.3x3.7	100
75	GPTS-102	710354	M-Patrol	1971-China	VIREs KM III	123		26.52x7.0x3.75	400
76	GPTS-103	220415	M-Patrol	1972-China	VIREs KM III	123		26.52x7.0x3.75	408
77	HA LONG-03	740108	M-Oil Tanker	1974-Sanuki	VIREs KM III	499	1250.00	53.98x9.4x4.4	1300
78	HA LONG-06	870166	M-Oil Tanker	1987-Tam bac	VIREs KM III	327	400.00	49.75x7.8x3.2	405
79	HA LONG-22	920876	M-General Cargo	1992-Song Lo	VIREs KM I	227	200.00	41.70x7.0x3.1	200
80	HA LONG-406	780312	M-Fishing	1978-Norway	VIREs KM II	216		33.30x8.0x4.4	600
81	HA LONG-407	770356	M-Fishing	1977-Norway	VIREs KM III	216		30.30x8.0x4.4	600
82	HA LONG-408A	790336	M-Fishing	1979-Ben Kien	VIREs KM II	123	100.00	26.52x8.0x4.4	400
83	HA LONG-408B	810331	M-Fishing	1981-Ben Kien	VIREs KM III	216		30.30x8.0x4.4	600
84	HA LONG-409	810357	M-Fishing	1981-Ben Kien	VIREs KM III	284		30.30x8.0x4.4	600
85	HA LONG-411	690439	M-Fishing	1969-Japan	VIREs KM II	420	400.00	46.0x8.40x3.8	1250
86	HA LONG-428	670481	M-Fishing	1967-Japan	VIREs KM II	251		39.20x7.6x3.45	820
87	HA THAN-402	880260	M-General Cargo	1988-Da nang	VIREs KM III	327	360.00	48.30x7.6x3.2	305
88	HA TINH-04	830042	M-General Cargo	1983-Ben Kien	VIREs KM II	493	600.00	49.90x8.5x4.2	400
89	HA TINH-12	850287	M-General Cargo	1985-Ben Kien	VIREs KM III	385	400.00	46.0x8.2x4.1	400
90	HA TINH-14	860284	M-General Cargo	1986-Hai phong	VIREs KM III	436	400.00	45.20x8.3x3.0	300

REGISTER OF SEA GOING SHIP UNDER VIRES (G/T under 500)

Date: 24.01.1996

No.	SHIP S NAME	CLASS.No.	TYPE & DES.	YEAR & PLACE	SHIP S CLASS	G.T	DWT	LxBxH	Ne(HP)
91	HAI AU-04	830451	M-General Cargo	1989-Kien an	VIRES KM III	166	200.00	33.75x7.0x2.5	135
92	HAI AU-05	830438	M-General Cargo	1989-Kien an	VIRES KM III	154	200.00	33.5x7.0x2.5	200
93	HAI DANG-01	870308	M-General Cargo	1987-Tam bac	VIRES KM II	327	400.00	49.75x7.6x3.2	305
94	HAI DANG-04	790487	M-General Cargo	1979-Denmark	VIRES KM I	429	1520.00	64.80x10.4x6.0	1000
95	HAI HA-01	880432	M-General Cargo	1988-Hai phong	VIRES KM III	166	200.00	35.50x7.0x3.5	135
96	HAI HUNG-01	850382	M-General Cargo	1985-Hai Hung	VIRES KM II	327	400.00	53.50x7.6x3.2	305
97	HAI LONG-02	880234	M-General Cargo	1988-Hai phong	VIRES KM III	173	200.00	34.25x7.0x2.5	135
98	HAI LONG-09	941022	M-General Cargo	1994-Quang ninh	VIRES KM III	183	200.00	36.1x6.7x3.4	135
99	HAI NAM-01	870629	Barge	1980-USSR	VIRES KM III	175	374.00	18x9.5x3.65	
100	HAI NAM-02	860630	Barge	1981-USSR	VIRES KM III	175	374.00	18x9.5x3.65	
101	HAI NAM-03	850631	Barge	1982-USSR	VIRES KM III	175	374.00	18x9.5x3.65	
102	HAI NAM-04	850632	Barge	1983-USSR	VIRES KM III	175	374.00	18x9.5x3.65	
103	HAI NAM-05	850633	Barge	1984-USSR	VIRES KM III	175	374.00	18x9.5x3.65	
104	HAI NAM-06	850634	Barge	1985-USSR	VIRES KM III	175	374.00	18x9.5x3.65	
105	HAI NAM-07	880635	Barge	1986-USSR	VIRES KM III	175	374.00	18x9.5x3.65	
106	HAI NAM-08	880636	Barge	1987-USSR	VIRES KM III	175	374.00	18x9.5x3.65	
107	HAI NAM-09	880637	Barge	1988-USSR	VIRES KM III	175	374.00	18x9.5x3.65	
108	HAI NAM-10	880638	Barge	1988-USSR	VIRES KM III	175	374.00	18x9.5x3.65	
109	HAI THANH-01	870437	M-General Cargo	1987-Ben Kien	VIRES KM III	385	400.00	44.0x8.20x4.1	400
110	HAI VAN-02	890227	M-General Cargo	1989-Ha noi	VIRES KM II	379	300.00	39.22x8.2x3.5	305
111	HAI VAN-04	910852	M-General Cargo	1991-Ha noi	VIRES KM I	499	600.00	54.20x9.0x4.4	578
112	HAI VAN-06	600850	M-General Cargo	1980-Japan	VIRES KM II	359	450.00	42.80x7.8x4.05	450
113	HALISH-02	920850	M-General Cargo	1992-Ha long	VIRES KM II	186	200.00	36.30x7.0x3.3	200
114	HALISH-89	890263	M-General Cargo	1989-Ha long	VIRES KM II	499	650.00	50.50x9.0x4.0	578
115	HAM RONG-08	840052	M-General Cargo	1984-Ha long	VIRES KM I	493	600.00	49.5x8.5x4.25	578
116	HAM RONG-12	870257	M-General Cargo	1987-Ben Kien	VIRES KM III	385	400.00	44.0x8.20x4.1	408
117	HAM RONG-14	870068	M-General Cargo	1987-Ben Kien	VIRES KM II	385	400.00	44.0x8.2x4.1	400
118	HC-36	951106	Tug	1995-Hai phong	VIRES KM III	159		29.9x8.06x4.25	510
119	HCA	581137	M-Pilot		VIRES KM III	86			
120	HCB-02	761119	M-Pilot		VIRES KM III	99			
121	HCB-05	771070	M-Pilot	1977-Hai phong	VIRES KM I	99		27.00x6.0x3.2	305
122	HOA BINH-15	951114	M-General Cargo	1995-Hai phong	VIRES KM III	241	300.00	42.0x7.9x2.8	135
123	HOA MAI	730024	M-General Cargo	1973-Murakami	VIRES KM II	489	1232.00	56.60x10.5x5.7	1400
124	HOAN KIEM-01	840271	M-General Cargo	1984-Ha noi	VIRES KM III	325	400.00	48.25x7.6x3.0	305
125	HOAN KIEM-06	860257	M-General Cargo	1986-Ha noi	VIRES KM III	327	400.00	48.30x8.2x3.2	305
126	HOANG AN-01	941078	M-General Cargo	1994-Hai phong	VIRES KM III	271	350.00	44.5x8.24x3.2	135
127	HOANG CHIEN-01	941086	M-General Cargo	1994-Hai phong	VIRES KM III	262	350.00	43.1x8.04x3.2	200
128	HOANG CHIEN-02	931050	M-General Cargo	1993-Hai phong	VIRES KM III	217	350.00	46.20x8.2x2.75	305
129	HOANG DAT 18	951084	M-General Cargo	1995-Hai phong	VIRES KM III	205	300.00	45x7.9x3.0	315
130	HOANG GIANG 26	941061	M-General Cargo	1994-Hai phong	VIRES KM III	203	175.00	38.30x7.2x2.5	135
131	HOANG HAI-08	941128	M-General Cargo		VIRES KM III	162	200.00		
132	HOANG HAI-18	840063	M-General Cargo	1984-Hai phong	VIRES KM III	485	550.00	45.50x8.3x4.3	408
133	HOANG HOA-04	890796	M-General Cargo	1989-Kien an	VIRES KM III	201	200.00	33.36x7.4x2.5	135
134	HOANG HOA-05	941060	M-General Cargo	1994-De nang	VIRES KM II	130		36.2x6.2x2.8	135
135	HOANG MINH-01	941077	M-General Cargo	1994-Hai phong	VIRES KM III	256	250.00	40.50x8.2x3.0	135

REGISTER OF SEA GOING SHIP UNDER VIRES (G/T under 500)

No.	SHIP'S NAME	CLASS.No.	TYPE & DES.	YEAR & PLACE	SHIP'S CLASS	G.T	DWT	LxBxH	Ne(HP)
136	HOANG MINH-02	941069	M-General Cargo	1994-Hai phong	VIRES KM III	256	250.00	44.5x8.24x3.0	135
137	HOANG MINH-04	941068	M-General Cargo	1994-Hai phong	VIRES KM III	271	350.00	40.85x8.2x3.2	135
138	HOANG NGAN-08	951112	M-General Cargo	1995-Hai phong	VIRES KM III	224	340.00	43.5x7.8x3.1	400
139	HOANG NGAN-27	951111	M-General Cargo		VIRES KM III	256	250.00		
140	HOANG NGAN-36	941083	M-General Cargo		VIRES KM III	195	200.00		
141	HOANG PHUONG-09	890833	M-General Cargo	1989-Ha nam ninh	VIRES KM II	380	453.00	44.10x8.2x4.1	408
142	HOANG PHUONG-15	951123	M-General Cargo		VIRES KM III	250	320.00		
143	HOANG PHUONG-16	951131	M-General Cargo		VIRES KM III	276	350.00		
144	HOANG PHUONG-26	951112	M-General Cargo	1995-Hai phong	VIRES KM III	224	300.00	42x7.7x3.04	135
145	HOANG PHUONG-27	951120	M-General Cargo	1995-Hai phong	VIRES KM III	241	280.00	39.65x7.7x2.8	135
146	HOANG VINH-09	951113	M-General Cargo	1995-Work 82	VIRES KM III	252	290.00	42.7x7.8x3.0	200
147	HONG DUONG-09	951140	M-General Cargo	1995-Hai phong	VIRES KM III	299	430.00	42.95x7.7x3.4	2x135
148	HONG GAI	731029	Tug	1973-Japan	VIRES KM III	98	25.0x7.0x3.6		1200
149	HONG HA-15	811075	M-General Cargo	1981-Hai phong	VIRES KM III	498	600.00	54.80x8.8x4.06	578
150	HONG HA-16	831079	M-General Cargo	1983-Ben Kien	VIRES KM II	470	600.00	49.9x8.5x4.25	578
151	HONG HA-17	831081	M-General Cargo	1983-Ben Kien	VIRES KM II	470	600.00	49.90x8.5x4.25	578
152	HONG HA-18	871080	M-General Cargo	1987-Song Lo	VIRES KM II	327	400.00	48.5x7.6x3.2	305
153	HONG HAI BINH-09	840036	M-General Cargo	1984-Ben Kien	VIRES KM II	481	600.00	49.5x8.5x4.25	578
154	HONG HAI BINH-16	870038	M-General Cargo	1987-Ha long	VIRES KM I	499	600.00	51.50x9.0x4.0	578
155	HONG LINH-06	951087	M-General Cargo	1994-Hai phong	VIRES KM III	235	300.00	43.1x8.04x3.0	305
156	HONG QUANG-16	951116	M-General Cargo	1995-Hai phong	VIRES KM III	241	300.00	42x7.9x2.8	135
157	HP-01	940167	Dredger	1994-Holand	VIRES KM III	117		36.50x8.6x2.7	
158	HQ-887	850371	M-General Cargo	1985-Song cam	VIRES KM III	327	400.00	48.30x8.1x3.2	305
159	HQ871(BIENDONG-09)	700467	M-General Cargo	1970-China	VIRES KM III	253	369.00	38.0x7.30x3.65	200
160	HUAN LUYEN-02	690501	M-General Cargo	1969-China	VIRES KM III	130	100.00	44.0x6.20x2.80	225
161	HUAN LUYEN-03	630091	M-General Cargo	1963-Japan	VIRES KM II	487	1257.00	56.73x9.5x4.5	1000
162	HUE-02	860074	M-General Cargo	1986-Ben Kien	VIRES KM II	385	400.00	44.35x8.2x4.1	400
163	HUE-09	860706	M-General Cargo	1986-Hai phong	VIRES KM III	110	200.00	33.50x7.5x2.5	135
164	HUNG PHAT-02	781019	M-General Cargo	1978-Japan	VIRES KM I	498	699.00	48.0x8.40x5.1	800
165	HUNG THINH-09	931139	M-General Cargo	1995-Hai phong	VIRES KM III	255	373.00	38.95x2.68x3.63	270
166	HUNG VUONG-04	861105	M-General Cargo	1987-Hai phong	VIRES KM III	327	400.00	53.55x8.1x3.2	305
167	HUNG VUONG-06	861039	M-General Cargo	1986-Song Cam	VIRES KM III	327	400.00	49.75x7.65x3.2	205
168	HUONG DUONG-01	890529	M-General Cargo	1989-Vinh phu	VIRES KM III	327	400.00	48.60x8.2x3.2	578
169	HUONG SON-04	870306	M-General Cargo	1987-Ha nam ninh	VIRES KM III	327	400.00	48.25x8.2x3.2	305
170	HUU NGHI	780441	M-Passenger	1978-Japan	VIRES KM III	48	17.50	22.35x4.8x1.7	500
171	KET HOP-02	890322	M-General Cargo	1989-Hai phong	VIRES KM III	80	100.00	32.70x5.2x2.9	120
172	KHANH HOA-01	870581	M-General Cargo	1987-Ben Kien	VIRES KM III	168	200.00	34.10x6.2x2.9	135
173	KHANH HOI-02	880028	M-General Cargo	1988-Ben kien	VIRES KM II	327	400.00	48.6x8.20x3.2	408
174	KHANH HOI-04	880228	M-General Cargo	1984-Ben Kien	VIRES KM II	385	400.00	44.50x8.2x4.1	400
175	KIEN GIANG-57	860726	M-Passenger	1966-China	VIRES KM III	166	200.00	37.20x6.2x2.8	300
176	KIEN GIANG-63	900736	M-Passenger	1990-Kien giang	VIRES KM III	160		37.20x6.5x2.8	300
177	KIEN GIANG-94	870727	M-General Cargo	1987-Kien An	VIRES KM III	154	150.00	33.5x7.0x2.5	135
178	KIEN GIANG-95	870747	M-General Cargo	1987-Kien An	VIRES KM III	154	150.00	33.5x7.0x2.5	135
179	KS-01	750508	M-Service	1975-Hai phong	VIRES KM III	125	80.00	26.60x6.7x3.2	305
180	KS-02	770598	M-Service	1977-Hai phong	VIRES KM III	133		29.45x6.7x3.2	305

REGISTER OF SEA GOING SHIP UNDER VIRES (G/T under 500)

Date: 24.01.1996

No.	SHIP S NAME	CLASS.No.	TYPE & DES.	YEAR & PLACE	SHIP S CLASS	G.T	DWT	LxBxH	Ne(HP)
181	LACH TRAY-04	890252	M-General Cargo	1989-Hai phong	VIRES KM III	182	226.00	28.96x7.5x3.75	200
182	LACH TRAY-30	941071	M-General Cargo	1994-Viet nam	VIRES KM III	195	200.00	35.6x6.2x2.7	200
183	LAM SON-02	890019	M-General Cargo	1989-Kien An	VIRES KM III	166	200.00	33.35x7.46x2.5	135
184	LAM SON-04	900802	M-General Cargo	1990-Kien An	VIRES KM III	166	200.00	33.35x7.46x2.5	135
185	LAM SON-06	900803	M-General Cargo	1990-Kien An	VIRES KM III	166	200.00	33.35x7.46x2.5	135
186	LAM SON-12	920853	M-General Cargo	1990-Kien An	VIRES KM III	166	200.00	34.25x7.04x2.5	135
187	LAM SON-14	930475	M-General Cargo	1993-Hai phong	VIRES KM III	166	200.00	34.25x7.04x2.5	135
188	LAM SON-16	850374	M-General Cargo	1985-Tam bac	VIRES KM II	327	400.00	48.60x8.2x3.2	305
189	LAM SON-18	860021	M-General Cargo	1986-Danang	VIRES KM III	327	400.00	48.60x8.2x3.2	305
190	LE QUI DON	860373	M-General Cargo	1986-Tam bao	VIRES KM III	327	400.00	48.30x7.6x3.2	305
191	LIEN KET-01	890879	M-General Cargo	1989-Ben Kien	VIRES KM III	110	150.00	32.60x6.2x2.9	135
192	LIEN NGA-09	850388	M-General Cargo	1985-Vinh phu	VIRES KM III	154	200.00	34.3x7.0x2.5	135
193	LIVASO-02	890170	M-General Cargo	1989-Ha noi	VIRES KM II	398	400.00	48.80x7.6x3.2	305
194	LONG HAI-01	850088	M-Supply	1985-USSR	VIRES KM I	288	44.00	37.0x7.60x3.55	221
195	LONG SON-01	630002	M-Refriger	1963-Japan	VIRES KM II	314	660.00	44.0x7.70x2.80	1200
196	MAI HUNG-02	941051	M-General Cargo	1994-Hai phong	VIRES KM III	175	280.00	37.8x7.4x2.7	200
197	ME KONG-01	880205	M-General Cargo	1988-Song Cam	VIRES KM II	327	400.00	49.75x7.6x3.2	408
198	ME KONG-02	900206	M-General Cargo	1990-Ben Kien	VIRES KM II	385	400.00	44.0x8.20x4.1	408
199	MIEN TRUNG-09	760911	M-General Cargo	1976-Japan	VIRES KM	487	400.00	44.0x8.2x4.1	408
200	MIEN TRUNG-18	880222	M-General Cargo	1988-Hai phong	VIRES KM II	375	694.00	50.0x9.50x4.9	850
201	MIEN TRUNG-27	890225	M-General Cargo	1989-Hai phong	VIRES KM II	375	400.00	44.35x8.2x4.1	408
202	MIEN TRUNG-45	761015	M-General Cargo	1976-Japan	VIRES KM I	495	685.00	44.35x8.2x4.1	408
203	MINH TUAN-09	941135	M-General Cargo	1994-Hai phong	VIRES KM III	163	300.00	35.42x6.7x2.7	200
204	MY SON	900224	M-General Cargo	1990-Song Lo	VIRES KM II	376	400.00	44.00x8.2x4.1	408
205	NAM HAI	880274	M-Oil Tanker	1988-Sai gon	VIRES KM III	438	600.00	43.80x9.2x3.8	200
206	NANG LUONG-01	850311	M-General Cargo	1985-Ben Kien	VIRES KM III	385	400.00	44.0x8.22x4.1	408
207	NANG LUONG-02	870325	M-General Cargo	1987-Song Lo	VIRES KM III	327	400.00	48.30x7.6x3.2	408
208	NANG LUONG-06	890154	M-General Cargo	1989-Song Cam	VIRES KM III	327	400.00	48.40x8.2x3.2	408
209	NANG LUONG-09	880465	M-General Cargo	1988-Kien an	VIRES KM III	154	150.00	33.50x7.0x2.5	135
210	NGAN HA 06	941065	M-General Cargo	1994-Hai phong	VIRES KM III	266	350.00	44.55x7.4x2.95	305
211	NGAN HA-09	951130	M-General Cargo	1995-Hai phong	VIRES KM III	276	350.00	42.0x8.2x3.25	408
212	NGHIA HONG-01	941051	M-General Cargo	1994-Repair Work of Arr	VIRES KM III	164	250.00	36.5x7.4x3.0	275
213	NGHIA HONG-02	930499	M-General Cargo	1993-Hai phong	VIRES KM III	148	250.00	35.55 x 7.4x2.6	805
214	NGHIA HONG-05	941082	M-General Cargo	1994-Yard 6 of Army	VIRES KM III	152	250.00	41.35x7.5x2.6	250
215	NGOAI THUONG-04	870792	M-General Cargo	1987-Hai phong	VIRES KM III	156	200.00	38.6x6.7x3.16	140
216	NGOAI THUONG-06	890798	M-General Cargo	1989-Hai phong	VIRES KM III	201	200.00	33.70x7.0x2.05	140
217	NHA RONG	710574	M-General Cargo	1971 Higaki	VIRES KM I	499	1503.00	60.00x10.49x6.66	1600
218	NHA RONG 36	940627	M-General Cargo		VIRES KM III	99	150.00		
219	NHAT LE-10	870705	M-General Cargo	1987 Kien An	VIRES KM III	154	150.00	33.50x7.0x2.5	135
220	NHAT LE-12	880704	M-General Cargo	1988-Kien An	VIRES KM III	154	150.00	33.50x7.0x2.5	135
221	NHAT LE-15	890703	M-General Cargo	1989 Hai phong	VIRES KM III	166	150.00	33.50x7.4x2.5	135
222	NHAT TAN-02	850272	M-General Cargo	1985-Ha noi	VIRES KM III	325	400.00	48.25x7.6x3.0	305
223	NHAT TRANG-09	900414	M-General Cargo	1990-Song cam	VIRES KM III	129	150.00	38.00x8.2x2.0	135
224	NINH BINH-401	860825	M-General Cargo	1986 1/5 Ha nam ninh	VIRES KM III	327	400.00	52.40x8.2x3.2	305
225	NOI THUONG-09	880520	M-General Cargo	1988 1/5 Ha nam ninh	VIRES KM III	336	400.00	52.40x8.2x3.2	305

REGISTER OF SEA GOING SHIP UNDER VIRES (G/T under 500)

No.	SHIP S NAME	CLASS.No.	TYPE & DES.	YEAR & PLACE	SHIP S CLASS	G.T	DWT	Lx8xH	Ne(HP)
226	NTKT-01	800445	M-Fishing	1979-China	VIREs KM III	118		25.0x6.55x3.55	364
227	NTKT-02	800445	M-Fishing	1980-China	VIREs KM III	118		25.0x6.55x3.55	364
228	NTKT-03	800447	M-Fishing	1980-China	VIREs KM III	118		25.0x6.55x3.55	364
229	NTKT-04	800448	M-Fishing	1980-China	VIREs KM III	118		25.0x6.55x3.55	364
230	PHA RUNG 09	701090	M-General Cargo	1970-Japan	VIREs KM III	397	410.00	40.04x7.5x5.4	400
231	PHA RUNG-01	820339	Tug	1982 Phillipin	VIREs KM III	121		29.5x6.0x2.0	550
232	PHAO DONG COC-T3	771063	Floating	1977-Hai phong	VIREs K III	369		32.30x12.3x2.4	
233	PHU AN-13	951144	M-General Cargo	1995 Hai phong	VIREs KM III	239	280.00	39.45x7.4x2.75	270
234	PHU NINH	830031	M-General Cargo	1983-Ben Kien	VIREs KM II	385	400.00	44.35x8.2x4.1	400
235	PHU QUOC-09	730620	M-General Cargo			57	100.00		
236	PHU QUY-01	850086	Tug	1985 Yugoslav	VIREs KM I	356	377.00	38.21x10.2x5.0	1840
237	PHUOC HUNG	870619	M-General Cargo	1987 Qui Nhon	VIREs KM III	95	80.00	27.3x6.3x3.0	135
238	PHUONG DONG	880304	M-General Cargo	1988-Ha noi	VIREs KM II	499	650.00	50.68x9.0x4.0	978
239	PHUONG DONG-02	941066	M-General Cargo	1994-Viet nam	VIREs KM III	202	240.00	36.72x7.16x2.8	200
240	PHUONG MAI 09	830269	M-General Cargo	1983 Hai phong	VIREs KM I	385	400.00	44.0x8.20x4.1	408
241	PHUONG MAI 16	850050	M-General Cargo	1985-Ben Kien	VIREs KM II	385	400.00	44.5x8.2x4.1	400
242	PHUONG MAI 18	870101	M-General Cargo	1987-Ben kien	VIREs KM II	385	400.00	44.5x8.2x4.1	300
243	PHUONG NAM-02	951094	M-General Cargo			376	400.00	50.08x8.6x3.68	408
244	PHUONG NAM-09	951125	M-General Cargo			252	350.00		
245	PONTON P-51	951117	Ponton Service	1995 Ben Kien	VIREs K II	229		28.4x12.4x2.2	
246	PONTON-01	651035	Barge Cargo	1965-USA	VIREs KM III	280	600.00	35.2x10x3.2	
247	QUANG BINH	890160	M-General Cargo	1989-Ben Kien	VIREs KM II	375	400.00	48.57x8.2x4.1	400
248	QUANG BINH-02	860715	M-General Cargo	1986 Quang binh	VIREs KM III	327	400.00	52.0x7.60x3.2	305
249	QUANG BINH-04	900716	M-General Cargo	1990-Hai phong	VIREs KM II	130	200.00	35.90x6.2x2.9	135
250	QUANG MINH-01	880860	M-General Cargo	1988-Kien an	VIREs KM III	166	150.00	33.50x7.46x2.5	135
251	QUANG MINH-02	880861	M-General Cargo	1988-Kien an	VIREs KM III	166	150.00	33.50x7.46x2.5	135
252	QUANG MINH-05	850889	M-General Cargo	1985-Nghe An	VIREs KM III	154	200.00	33.5x7.0x2.5	140
253	QUANG MINH-08	911043	M-General Cargo	1991-Hai phong	VIREs KM III	110	200.00		180
254	QUANG MINH-12	720569	M-General Cargo	1972	VIREs KM III	210	250.00	35x6.65x3.42	
255	QUANG MINH-16	941021	M-General Cargo	1993 Vinh phu	VIREs KM III	166	150.00	38x6.2x2.8	135
256	QUANG MINH-18	890892	M-General Cargo	1989-Kien an	VIREs KM III	154	200.00	33.50x7.0x2.0	180
257	QUANG MINH-26	951050	M-General Cargo	1995-Ha long	VIREs KM III	195	300.00	36.9x6.7x3.65	118
258	QUANG NINH-04	880892	M-Fishing	1988-Song Lo	VIREs KM III	130	150.00	36x6.2x2.8	135
259	QUANG NINH-189	940604	M-General Cargo	1994	VIREs KM III	212	250.00	36.50x7.3x2.95	200
260	QUANG TRUNG-06	860856	M-General Cargo	1986 Sai gon	VIREs KM III	160	110.00	32.90x6.4x2.5	135
261	QUANG TRUNG-08	860041	M-General Cargo	1986 Hai phong	VIREs KM III	154	150.00	33.50x7.0x2.5	140
262	QUANG TRUNG-09	880858	M-General Cargo	1988 Hai phong	VIREs KM III	154	150.00	33.50x7.0x2.5	140
263	QUANG TRUNG-12	880855	M-General Cargo	1988 Thai binh	VIREs KM III	154	150.00	33.50x7.0x2.5	150
264	QUANG TRUNG-15	860556	M-General Cargo	1985-Ben Kien	VIREs KM II	385	400.00	44.50x8.2x4.1	400
265	QUANG TRUNG-16	950625	M-General Cargo	1995 Sai gon	VIREs KM III	208	250.00	37.5x7x2.9	200
266	QUANG TRUNG-18	900848	M-General Cargo	1990 Hai phong	VIREs KM I	285	352.00	36.0x7.0x3.10	218
267	QUOC VIET-08	951127	M-General Cargo	1995 Hai phong	VIREs KM III	250	250.00	42.2x7.7x2.85	275
268	QUYET THANG-06	931053	M-General Cargo	1983 Works 82	VIREs KM III	173	200.00	40.95x8.3x2.0	135
269	RIVSEA-01	890221	M-General Cargo	1989-Song Cam	VIREs KM II	499	600.00	51.5x9.0x4.0	478
270	SA LAN-06	840006	Barge		VIREs KM III	466	600.00		

REGISTER OF SEA GOING SHIP UNDER VIRES (G/T under 500)

Date: 24.01.1996

No.	SHIP'S NAME	CLASS.No.	TYPE & DES.	YEAR & PLACE	SHIP'S CLASS	G.T	DWT	LxBxH	Ne(HP)
271	SAM SON TS-01	730085	M-Fishing	1973 Japan	VIRES KM III	349		50.50x9.0x5.59	2300
272	SAM SON-240	730566	Tug	1973 China	VIRES KM III	392		35.05x9.1x5.49	2400
273	SAM SON-04	890156	M-General Cargo	1989-Ben Kien	VIRES KM II	385	400.00	44.5x8.20x4.1	408
274	SAM SON-06	880794	M-General Cargo	1989-Kien an	VIRES KM III	166	200.00	33.50x7.0x2.5	135
275	SAM SON-08	870791	M-General Cargo	1987 Hai phong	VIRES KM III	201	200.00	33.50x7.0x2.5	1400
276	SAM SON-09	860707	M-General Cargo	1986 Hai phong	VIRES KM III	166	200.00	36.5x7.5x2.5	1400
277	SAM SON-15	860375	M-General Cargo	1986-Tam bac	VIRES KM III	327	400.00	48.30x7.6x3.2	305
278	SAM SON-16	880795	M-General Cargo	1988 Thanh hoa	VIRES KM III	166	200.00	33.50x7.0x2.5	140
279	SAM SON-17	850151	M-General Cargo	1985-Sai gon	VIRES KM II	190	200.00	28.30x6.8x4.0	700
280	SAM SON-18	870724	M-General Cargo	1987 Hai phong	VIRES KM III	154	200.00	33.5x7.0x2.5	135
281	SAM SON-22	890792	M-General Cargo	1989-Hai phong	VIRES KM III	166	200.00	36.85x7.4x2.5	135
282	SAM SON-24	930811	M-General Cargo	1993-Hai phong	VIRES KM III	130	200.00	35x6.2x2.9	135
283	SAM SON-25	890809	M-General Cargo	1989-Hai phong	VIRES KM III	166	200.00	33.79x7.16x2.5	135
284	SAM SON-42	860784	M-General Cargo	1986 Hai phong	VIRES KM III	166	200.00	33.50x7.0x2.5	135
285	SAM SON-44	870786	M-General Cargo	1987 Hai phong	VIRES KM III	166	200.00	33.50x7.0x2.5	140
286	SAM SON-45	860707	M-General Cargo	1986 Hai phong	VIRES KM III	154	150.00	33.50x7.0x2.5	135
287	SAM SON-99	890807	M-General Cargo	1989-Hai phong	VIRES KM III	185	200.00		
288	SAO BIEN	701204	M-Training	1970-Japan	VIRES KM II	299	118.00	37.0x7.8x3.7	700
289	SAO MAI-03	770149	M-Tug/Supply	1977 Ulstein	VIRES KM	497	1080.00	60.10x13.8x6.91	5181
290	SAO MAI-18	870724	M-General Cargo	1987 Hai phong	VIRES KM III	154	200.00	36.5x7.5x2.5	135
291	SAO MAI-224	900405	M-General Cargo	1990-Kien An	VIRES KM III	166	200.00	35.20x7.46x2.5	218
292	SAPEXIM-01	870543	M-General Cargo	1987 Sai gon	VIRES KM III	126	100.00	34.50x5.8x2.55	135
293	SAPEXIM-02	750544	M-General Cargo	1975-Ben Kien	VIRES KM II	186	100.00	27.62x6.7x3.65	200
294	SEAPRODEX-03	770589	M-Refriger	1977-Japan	VIRES KM	494	1080.00	64.0x11.0x6.4	1800
295	SEAPRODEX-04	880153	M-Refriger	1988 Ha long	VIRES KM I	340	150.00	35.8x7.60x3.65	1000
296	SEAPRODEX-06	720167	M-Refriger	1972 Japan	VIRES KM	299	520.00	44.0x8.20x3.65	1250
297	SEAPRODEX-07	720083	M-Refriger	1972 Japan	VIRES KM II	369	219.00	40.66x8.0x3.45	1000
298	SERVICE-02	900032	M-Tanker		VIRES KM III	120	150.00		
299	SL AN DUONG-01	830289	General Cargo	1983-Hai phong	VIRES KM III	331	400.00	x8.50x3.0	
300	SLTH-03	881107	M-Spoil Barge	1988-Song cam	VIRES KM III	485		41.0x10.0x3.0	305
301	SLTH-04	880224	M-Spoil Barge	1988-Song cam	VIRES KM III	485		37.70x10.3x3.0	300
302	SOC TRANG-01	730058	M-Refriger	1973 Japan	VIRES KM II	194	230.00	36.00x7.5x3.1	750
303	SONG BIEN-04	890407	M-General Cargo	1989-Kien an	VIRES KM III	166	200.00	33.50x7.46x2.50	135
304	SONG BIEN-06	890408	M-General Cargo	1989 Vinh phu	VIRES KM III	129	150.00	36.0x6.2x2.8	135
305	SONG BIEN-10	890409	M-General Cargo	1989-Song cam	VIRES KM III	130	150.00	38.0x6.20x2.8	135
306	SONG BIEN-22	900419	M-General Cargo	1990-Song cam	VIRES KM III	258	350.00	47.20x8.6x3.0	305
307	SONG CAM-02	850370	M-General Cargo	1985-Song cam	VIRES KM III	327	400.00	48.30x8.1x3.2	305
308	SONG DIEM-05	890843	M-General Cargo	1989 Thai binh	VIRES KM III	166	200.00	33.75x7.0x2.5	135
309	SONG DIEM-09	941047	M-General Cargo	1994-Thai binh	VIRES KM III	166	200.00	33.75x7.0x2.7	135
310	SONG OOC-1	870115	M-General Cargo	1987 Sai gon	VIRES KM II	145	100.00	23.0x6.80x3.4	520
311	SONG HIEU-01	880708	M-General Cargo	1988 Hai phong	VIRES KM III	130	180.00	32.60x6.2x2.9	100
312	SONG HIEU-02	880709	M-General Cargo	1988 Hai phong	VIRES KM III	130	150.00	32.20x6.2x2.9	135
313	SONG HIEU-06	860710	M-General Cargo	1986 Hai phong	VIRES KM III	327	400.00	52.00x7.6x3.2	305
314	SONG HIEU-10	880711	M-General Cargo	1988 Hai phong	VIRES KM III	327	400.00	48.3x7.60x3.2	305
315	SONG HIEU-12	880712	M-General Cargo	1988-Song Lo	VIRES KM III	327	400.00	48.3x7.60x3.2	305

REGISTER OF SEA GOING SHIP UNDER VIRES (G/T under 500)

No.	SHIP'S NAME	CLASS.No.	TYPE & DES.	YEAR & PLACE	SHIP'S CLASS	G.T	DWT	LxBxH	Ne(HP)
316	SONG HIEU-14	880713	M-General Cargo	1988-Song Lo	VIRES KM III	327	400.00	48.6x7.80x3.2	408
317	SONG HIEU-16	900226	M-General Cargo	1990 Hai phong	VIRES KM II	380	400.00	44.10x8.2x4.1	408
318	SONG HOA-01	900847	M-General Cargo	1990 Kien An	VIRES KM III	166	200.00	33.5x7.46x2.5	135
319	SONG HONG-01	910268	M-General Cargo	1991-Ha noi	VIRES KM II	499	600.00	54.25x9.2x4.4	578
320	SONG HONG-09	910330	M-General Cargo	1990-Song Cam	VIRES KM II	327	400.00	48.30x7.6x3.2	408
321	SONG HONG-18	931015	M-General Cargo	1993-Ha noi	VIRES KM I	499	600.00	54.20x9.0x4.4	578
322	SONG KIEN-03	770150	M-General Cargo	1977 Taiwan	VIRES KM II	78		26.50x5.0x2.3	280
323	SONG KIEN-05	870157	M-General Cargo	1987-Ben Kien	VIRES KM II	385	400.00	44.0x8.2x4.1	470
324	SONG LAM-08	840288	M-General Cargo	1984-Ben Kien	VIRES KM III	385	400.00	46.57x8.0x4.1	400
325	SONG LAM-16	870286	M-General Cargo	1987-XN	VIRES KM III	327	400.00	48.30x7.9x3.2	305
326	SONG LO-01	850830	M-General Cargo	1985-Song Lo	VIRES KM III	327	400.00	48.30x7.6x3.2	305
327	SONG LO-02	860831	M-General Cargo	1985-Song Lo	VIRES KM III	327	400.00	48.30x7.6x3.2	305
328	SONG MA-01	870787	M-General Cargo	1987 Thanh hoa	VIRES KM III	166	200.00	33.50x7.0x2.5	140
329	SONG MA-03	860782	M-General Cargo	1986 Thanh hoa	VIRES KM III	166	200.00	33.50x7.0x2.5	140
330	SONG MA-04	860783	M-General Cargo	1986 Hai phong	VIRES KM III	166	200.00	33.50x7.0x2.5	140
331	SONG MA-05	860785	M-General Cargo	1986 Thanh hoa	VIRES KM III	201	200.00	33.50x7.0x2.5	140
332	SONG MA-06	870788	M-General Cargo	1987 Hai phong	VIRES KM III	166	200.00	33.50x7.0x2.5	140
333	SONG MA-07	870789	M-General Cargo	1987 Thanh hoa	VIRES KM III	201	200.00	33.50x7.0x2.5	140
334	SONG MA-08	910804	M-General Cargo	1987 Thanh hoa	VIRES KM III	166	200.00	33.50x7.0x2.5	140
335	SONG MA-09	880800	M-General Cargo	1988 Hai phong	VIRES KM III	166	200.00	33.50x7.46x2.5	140
336	SONG MA-10	890802	M-General Cargo	1989 Hai phong	VIRES KM III	166	200.00	33.50x6.2x2.9	140
337	SONG MA-11	870790	M-General Cargo	1987 Thanh hoa	VIRES KM III	201	185.00	33.50x7.0x2.5	140
338	SONG MA-18	910804	M-General Cargo	1991 Hai phong	VIRES KM III	130	170.00	35.20x6.2x2.8	135
339	SONG SAI GON		M-Passenger			100	100.00		
340	SONG SINH-09	890829	M-General Cargo	1989 Thanh hoa	VIRES KM II	154	150.00	33.25x7.0x2.5	140
341	SONG TIEN-02	800117	M-General Cargo	1980 Japan	VIRES KM II	499	1500.00	163.0x11.5x6.3	1600
342	SONG TRA	660210	M-Refriger	1966 Japan	VIRES KM II	403	403.00	47.55x8.2x3.8	1300
343	SONG VAN-01	850323	M-General Cargo	1985-Kien an	VIRES KM III	166	200.00	33.50x7.46x2.55	135
344	SONG VAN-09	880436	M-General Cargo	1988-Kien An	VIRES KM III	166	200.00	33.50x7.0x2.5	135
345	SONG VAN-10	920452	M-General Cargo	1992 Hai phong	VIRES KM III	322	450.00	45.50x8.6x3.0	300
346	SONG VAN-12	930483	M-General Cargo	1993-Ha long	VIRES KM III	284	300.00	41.1x6.4x3.0	218
347	TAM BAC-01	850327	M-General Cargo	1985-Tam bac	VIRES KM III	327	400.00	48.30x7.6x3.2	305
348	TAN LONG-04	870345	M-General Cargo	1987 Xuong 51	VIRES KM III	215	200.00	39.00 x7.0x2.80	180
349	TAN PHU	700486	M-Ref.	1970-Japan	VIRES KM	495	500.00		
350	TC-54	530455	Dredger	1954-Poland	VIRES KM III	421		50.0x9.0x3.3	275
351	TH-02	870462	M-General Cargo	1987-Yard 51	VIRES KM III	170	200.00	39.0x7.02.80	3000
352	TH-02	860281	M-Spoil Barge	1986 Hai phong	VIRES KM III	370		41x10.0x3.0	300
353	TH-03-6	800559	M-General Cargo	1980-Kien An	VIRES KM III	65	70.00	24.60x5.2x2.05	90
354	TH-04	860276	M-Spoil Barge	1986 Hai phong	VIRES KM III	485		41x10.0x3.0	300
355	TH-04-6	800557	M-General Cargo	1980-Kien An	VIRES KM III	61	70.00	24.60x5.4x2.05	90
356	TH-05	940607	M-Spoil	1994-Song Cam	VIRES KM III	372	300.00	28.4x12.4x2.2	305
357	TH-06	860280	M-Dredger	1986 Hai phong	VIRES KM III	485		x10.0x3.0	300
358	THACH HAN-01	940609	M-Oil Tanker	1994-Saigon	VIRES KM III	207	250.00	41.50x7.3x2.8	225
359	THAI BINH-01	900844	M-General Cargo	1990-Song Lo	VIRES KM III	129	150.00	36.0x6.20x2.8	135
360	THAI BINH-02	870345	M-General Cargo	1987 Nam Ha	VIRES KM III	327	400.00	48.20x3.2	305

REGISTER OF SEA GOING SHIP UNDER VIRES (G/T under 500)

No.	SHIP S NAME	CLASS.No.	TYPE & DES.	YEAR & PLACE	SHIP S CLASS	G.T	DWT	LxBxH	Ne(HP)
361	THANG TAM-06	931012	M-General Cargo	1993-Ha long	VIRES KM III	198	230.00	31.05x6.7x3.5	180
362	THANH DUNG-09	951136	M-General Cargo		VIRES KM III	248	300.00		
363	THANH NAM	951088	M-General Cargo	1995 Bach Dang	VIRES KM I	499	600.00	54.96x8.94x4.3	
364	THIEN AN	880118	M-General Cargo	1988-Ben Kien	VIRES KM II	385	400.00	44.5x8.22x4.1	408
365	THIEN AN-02	890219	M-General Cargo	1989-Ha noi	VIRES KM II	375	400.00	44.5x8.20x4.1	408
366	THUAN AN-02	860099	M-General Cargo	1986-Ben Kien	VIRES KM II	385	400.00	44.0x8.20x4.1	408
367	THUY BAC 01	900826	M-General Cargo	1989-Tam Bac	VIRES KM III	199	70.00	28.0x7.25x2.7	200
368	THUY NGUYEN-09	880228	M-General Cargo	1988-Hai phong	VIRES KM II	385	400.00	44.0x8.2x4.1	408
369	TIEN HUNG	900504	Tug	1990 Sai gon	VIRES KM III	55		21.70x5.35x3.0	578
370	TIEN SA	750365	M-Pilot	1975-Bach dang	VIRES KM III	98	50.00	27.17x6.4x3.2	305
371	TK-135	860258	Tug	1986 XNCK 622	VIRES KM III	55		23.0x5.80x2.2	150
372	TK-151	800506	Tug	1986-Bach dang	VIRES KM III	144		27.0x7.30x3.46	540
373	TK-173	671124	Tug		VIRES KM III	69	50.00		
374	TN-352	880538	M-Fishing	1988 Thailand	VIRES KM III	101		21.30x6.3x3.55	350
375	TN-452	880540	M-Fishing	1988 Thailand	VIRES KM III	107		24.20x6.56x3.2	450
376	TN-455	880539	M-Fishing	1988 Thailand	VIRES KM III	104		22.0x6.50x3.45	450
377	TRA LY-02	850838	M-General Cargo	1985 Thai binh	VIRES KM III	166	200.00	33.25x7.0x2.5	135
378	TRA LY-03	860839	M-General Cargo	1986 Thai binh	VIRES KM III	166	200.00	33.25x7.0x2.5	135
379	TRA LY-04	860840	M-General Cargo	1986 Thai binh	VIRES KM III	166	200.00	33.25x7.0x2.5	135
380	TRA LY-05	870841	M-General Cargo	1987 Thai binh	VIRES KM III	166	200.00	33.25x7.0x2.5	135
381	TRA LY-06	870842	M-General Cargo	1987 Thai binh	VIRES KM III	166	200.00	33.25x7.0x2.5	135
382	TRA LY-09	900846	M-General Cargo	1990 Kien An	VIRES KM II	166	200.00	33.5x7.46x2.5	135
383	TRAN DE-01	650606	M-Ref.Fishing	1965-Japan	VIRES KM I	341		41.46x7.7x3.45	750
384	TRUNG KIEN 14	941073	M-General Cargo	1994-Viet nam	VIRES KM III	245	320.00	39x7.70x2.95	200
385	TRUNG KIEN 18	941072	M-General Cargo	1994-Viet nam	VIRES KM III	242	290.00	42x7.90x2.95	200
386	TRUNG KIEN 19	951121	M-General Cargo	1995-Viet nam	VIRES KM III	240	280.00	39.45x7.4x2.75	270
387	TRUNG SON-09	941059	M-General Cargo	1994-Hai phong	VIRES KM III	257	300.00	40.75x7.4x3.1	3005
388	TRUNG TRUC-07	890534	M-General Cargo	1989 XN 627	VIRES KM III	225	250.00	39.0x7.50x3.0	135
389	TRUONG LAM-01	920881	M-General Cargo	1992 Viet nam	VIRES KM III	130	150.00		
390	TU LIEM 02	860488	M-General Cargo	1986-Ha long	VIRES KM III	196	200.00	32x7x2.6	135
391	TUAN CUONG-02	930492	M-General Cargo	1993 Yard No.	VIRES KM III	199	250.00	36.10x6.5x2.75	200
392	VAN DON-09	951195	M-General Cargo	1995 Quang ninh	VIRES KM III	191	300.00	36.05x6.73x5.7	200
393	VAN HAI-04	850261	M-General Cargo	1985-Ha long	VIRES KM II	327	400.00	48.30x7.83x2	305
394	VAN HAI-09	600897	M-General Cargo	1966-China	VIRES KM III	150	200.00	37.8x6.15x2.8	135
395	VAN LONG HAI	941074	M-General Cargo	1994 Halong	VIRES KM III	204	293.00	41x7.7x3.0	315
396	VI HOANG-14	890443	Tug	1989-Tam Bac	VIRES KM III	98		20.5x5.7x2.2	305
397	VIETRANIMEX-02	840456	M-General Cargo	1984 Hai phong	VIRES KM II	313	300.00	39.0x8.0x3.5	218
398	VIETRANSTIMEX-02	920468	M-General Cargo	1992 Song Cam	VIRES KM II	434	600.00	50.68x9.0x4.0	578
399	VINAFCO-01	900231	M-General Cargo	1990-Song Lo	VIRES KM III	150	150.00	36.40x6.2x2.8	135
400	VINAFCO-02	920836	M-General Cargo	1991-Song Lo	VIRES KM I	380	453.00	45.80x8.2x4.10	408
401	VINH DIEN	840046	M-General Cargo	1984-Ben Kien	VIRES KM I	385	400.00	44.0x8.22x4.10	200
402	VISDEMCO-01	801057	M-General Cargo	1980-Japan	VIRES KM I	445	600.00	45x8x3.30	760
403	VITA-09	870573	Oil Tanker	1987-Sai gon	VIRES KM II	453	800.00	49.0x10.0x4.3	
404	VS-61	690550	M-Tanker		VIRES KM III	54	100.00		
405	VSL-01	880506	Tug	1986-Yugoslavia	VIRES KM III	39		11.76x6.2x2.0	204

REGISTER OF SEA GOING SHIP UNDER VIRES (G/T above 500, under 1000)

Date: 24.01.1996

No.	SHIP'S NAME	CLASS.No.	TYPE & DES.	YEAR & PLACE	SHIP'S CLASS	G.T	DWT	LxBxH	Ne(HP)
1	AN GIANG-02	800516	M-General Cargo	1990	VIRES KM	856	1200.00	70.81x9.5x5.0	980
2	AN GIANG-05	890168	M-General Cargo	1989-Bach dang	VIRES KM II	967	1000.00	65.2x11.6x4.8	980
3	AN PHU DONG	700563	M-General Cargo	1970-Japan	VIRES KM II	546		54.08x8.9x4.25	1500
4	AP BAC-01	420240	M-Oil Tanker	1942-America	VIRES KM II	592		55.20x9.9x4.7	640
5	AP BAC-02	860237	M-Oil Tanker	1986-Sai gon	VIRES KM II	792	1200.00	62.0x10.5x4.2	980
6	BA TO-04	771019	M-General Cargo	1977-Japan	VIRES KM I	993	1235.00	60x11x6.1	1500
7	BACH DANG-01	840054	M-General Cargo	1984-Bach Dang	VIRES KM II	967	1000.00	75.50x10.5x4.5	980
8	BACH DANG-02	850061	M-General Cargo	1985-Bach dang	VIRES KM II	967	1000.00	75.50x10.5x4.5	980
9	BACH DANG-04	850062	M-General Cargo	1985-Bach Dang	VIRES KM II	967	1000.00	75.50x10.5x4.5	980
10	BACH DANG-06	850073	M-General Cargo	1985-Bach Dang	VIRES KM II	967	1000.00	75.50x10.5x4.5	900
11	BACH DANG-08	850093	M-General Cargo	1985-Bach Dang	VIRES KM II	964	1000.00	75.50x10.5x4.5	1200
12	BACH DANG-12	860095	M-General Cargo	1995-Bach Dang	VIRES KM II	964	1000.00	75.50x10.5x4.5	980
13	BACH DANG-14	860232	M-General Cargo	1986-Bach Dang	VIRES KM II	964	1000.00	75.50x10.5x4.5	980
14	BACH DANG-16	870317	M-General Cargo	1987-Bach Dang	VIRES KM II	967	1000.00	75.50x10.5x4.5	980
15	BACH DANG-22	880136	M-General Cargo	1988-Bach Dang	VIRES KM I	986	1150.00	65.2x11.6x4.8	1000
16	CAN THO	890140	M-General Cargo	1989-Bach Dang	VIRES KM I	986	1150.00	65.2x11.6x4.8	980
17	CUU LONG GIANG-02	890241	M-General Cargo	1989-Sai gon	VIRES KM I	877	1515.00	66.0x9.50x5.0	980
18	DAI LANH	690105	M-Tug	1969-Ship's "Dehoop"	VIRES KM I	862	790.00	55.0x11.2x5.34	3000
19	DAU KHI-106	701028	Tug	1970-USA	VIRES KM I	664		44.2x11.8x4.88	
20	DUY TAN	860094	M-General Cargo	1986-Bach dang	VIRES KM II	967	1050.00	75.00x10.50x4.5	1200
21	GANH HAO	710065	M-General Cargo	1971-Japan	VIRES KM II	839	1450.00	60.0x11.0x4.35	750
22	GIA DINH	910265	M-General Cargo	1990-Bach dang	VIRES KM I	985	100.00	64.0x11.6x4.8	980
23	HA LONG-01	740028	M-Oil Tanker	1974-Yokohama	VIRES KM II	919	2727.00	70.0x11.6x5.6	200
24	HA LONG-04	760109	M-Oil Tanker	1976-Yamanaka	VIRES KM II	999	2509.00	73.31x11.0x5.52	2200
25	HAI SON	900525	M-Supply	1983-Korea	VIRES KM	881	392.00	47.48x12.0x4.7	1100
26	HOANG DIEU	890324	M-General Cargo	1989-Bach dang	VIRES KM III	967	1000.00	64.0x11.8x4.8	980
27	HOANG LONG	870402	M-General Cargo	1987-Sai gon	VIRES KM II	868	1000.00	73.70x11.2x3.9	305
28	HOANG PHUONG-08	951095	M-General Cargo	1995-Song Cam	VIRES KM I	552	600.00	55.33x8.3x4.0	408
29	HONG PHAT	690586	M-General Cargo	1969-Japan	VIRES KM II	747	1200.00	49.50x9.2x6.6	1200
30	HQ-607	940605	M-General Cargo	1994-Viet nam	VIRES KM I	609	450.00	52x9.0x4.4	980
31	HQ-608		M-General Cargo	1993-Song Cam	VIRES KM I	660	450.00	52.0x9.0x4.4	980
32	HQ-609	940615	M-General Cargo	1994-Viet nam	VIRES KM I	612	450.00	52x9.0x4.4	980
33	HQ-902	420595	M-Oil Tanker	1942-USA	VIRES KM III	638	1000.00	53.07x10.06x4.8	1000
34	HUAN LUYEN-05	910259	M-General Cargo	1991-Ha noi	VIRES KM I	987	1000.00	64.00x11.64x4.8	980
35	KINH MON	610509	M-General Cargo	1961-Japan	VIRES KM II	618	1034.00	58.0x8.60x4.5	900
36	KY VAN-01	830110	Tug	1983-Matsuura	VIRES KM	888	1100.00	52.71x12.22x4.65	2x2400
37	KY VAN-02	830111	Tug	1983-Matsuura	VIRES KM	888	1100.00	52.71x12.22x4.65	2x2400
38	LE LOI	920457	M-General Cargo	1992-Ben Kien	VIRES KM I	996	1000.00	64.00x11.2x5.2	980
39	LONG SON-01	850087	M-Tug/Supply	1985-Yugoslavia	VIRES KM I	593	761.00	50.47x11.5x4.8	2133
40	ME KONG-04	910270	M-General Cargo	1991-Bach dang	VIRES KM I	985	1000.00	64.00x11.64x4.8	980
41	NGO QUYEN	890148	M-General Cargo	1989-Bach Dang	VIRES KM I	967	1150.00	65.2x11.6x4.8	980
42	NHA BE-02	770081	M-Oil Tanker	1977 Makita	VIRES KM II	995	2364.00	72.25x12.5x5.50	2000
43	NHA BE-03	790123	M-Oil Tanker	1979 Imabari	VIRES KM II	564	4793.00	92.03x16.51x6.51	8200
44	NHA RONG 09	580003	M-General Cargo	1958 Italia	VIRES KM I	875	1365.00	59.38x9.9x5.77	1000
45	NHA TRANG-01	770077	M-General Cargo	1977 Yamanaka	VIRES KM II	999	590.00	60.0x10.5x6.05	1600

REGISTER OF SEA GOING SHIP UNDER VIRES (G/T above 500, under 1000)

Date: 24.01.1995

No.	SHIP'S NAME	CLASS.No.	TYPE & DES.	YEAR & PLACE	SHIP'S CLASS	G.T.	DWT	LxBxH	Ne(HP)
46	NHA TRANG-08	780104	M-General Cargo	1978 Ba son	VIRES KM II	688	800.00	49.85x9.9x5.6	980
47	NHUT THUAN	730128	M-Oil Tanker	1973-Japan	VIRES KM III	879	1800.00	61.7x11.0x5.0	750
48	NHUT TAO	880147	M-General Cargo	1988-Bach Dang	VIRES KM I	985	1000.00	64.05x11.64x4.8	1000
49	PHU QUOC	580100	M-General Cargo	1989-	VIRES KM II	716	1100.00	61.40x9.5x6.15	900
50	PHUOC LONG-01	850337	M-General Cargo	1985 Works 62	VIRES KM III	967	1000.00	75.0x10.5x4.5	900
51	PHUONG MAI	790040	M-General Cargo	1979-Kochi	VIRES KM II	985	1600.00	65.59x11.5x6.1	1600
52	PHUONG MAI 06	880130	M-General Cargo	1988-Bach Dang	VIRES KM I	959	1150.00	65.2x11.64x4.8	1000
53	PHUONG NAM-01	650007	M-Oil Tanker	1965 Leninskaia	VIRES KM III	526	600.00	50.89x9.32x4.88	800
54	PONTON No.1	820553	Ponton/General Cargo	1982-Bach dang	VIRES K II	700	800.00	40.40x12.0x4.5	
55	PONTON No.2	820554	Ponton/General Cargo	1982-Bach dang	VIRES K II	700	800.00	40.40x12.0x4.5	
56	PONTON No.3	860535	Ponton/General Cargo	1986 Work 623	VIRES K II	694	800.00	40.40x12.0x4.5	
57	PONTON No.4	860536	Ponton/General Cargo	1986 Work 623	VIRES K II	694	800.00	40.40x12.0x4.5	
58	PONTON-02	651031	Barge Cargo	1965-USA	VIRES KM III	691	1400.00	54.4x15.16x3.2	
59	PONTON-06	651033	Barge Cargo	1965-USA	VIRES KM III	664	1100.00	61.0x10.3x3.3	
60	SA LAN BATTY-181	700570	General Cargo	1970 USA	VIRES KM II	945	1500.00	56.70x14.65x3.5	
61	SONG BA	610014	M-General Cargo	1961 VEB Peen	VIRES KM II	550	839.00	53.01x9.82x5.8	550
62	SONG HAU	660164	M-General Cargo	1966 Germany	VIRES KM II	831	1064.00	58.18x10.02x6.02	800
63	SONG TIEN-01	840097	M-General Cargo	1984-Sai gon	VIRES KM II	964	1000.00	75.0x10.5x4.5	980
64	TC-81	820038	M-Dredger	1982 S.d A.France	VIRES KM III	396		59.34x13.21x4.02	740
65	TC-82	820039	M-Dredger	1983 S.d A.France	VIRES KM III	396		59.34x13.21x4.02	740
66	TC-91	900478	Barge Dredger	1990-USSR	VIRES KM III	624			470
67	TRAMASCO-02	800497	M-General Cargo	1980-Korea	VIRES KM I	695	1192.00	59.0x9.30x4.6	1200
68	TRANSCO-01	780496	M-Oil Tanker	1978-Japan	VIRES KM II	634	1112.00	59.29x9.6x4.6	1200
69	TUY HA	700570	Service	1970 Viet nam	VIRES KM III	899	1200.00	54.7x14.6x3.5	
70	VIET BA-02	850253	M-General Cargo	1985-Ha long	VIRES KM I	981	1400.00	64.52x11.64x5.3	1320
71	VIET XO-02	650008	M-Fishing	1965 Leninska	VIRES KM II	696	395.00	50.89x9.33x4.88	800
72	VIET XO-08	780013	M-Fishing	1978 Leninska	VIRES KM II	665	395.00	50.29x9.8x5.0	1000
73	VIET XO-09	780017	M-Fishing	1978 Leninska	VIRES KM	665	395.00	50.29x9.8x5.0	1000
74	VIET XO-10	790018	M-Fishing	1979 Leninska	VIRES KM	665	395.00	50.29x9.8x5.0	1000
75	VIET XO-11	790019	M-Fishing	1979 Leninska	VIRES KM	665	395.00	50.29x9.8x5.0	1000
76	VIET XO-12	790351	M-Fishing	1979 Leninska	VIRES KM II	632	395.00	49.50x9.8x4.1	1000
77	VIET XO-79	800022	M-Fishing	1980 Leninska	VIRES KM I	643	300.00	50.66x9.3x5.16	1000
78	VIETRANSCIMEX-01	890159	M-General Cargo	1989-Bach Dang	VIRES KM II	967	1000.00	66.40x11.64x4.8	980
79	VIFRASAL-2	750089	M-Tug Salvage	1975 USA	VIRES KM II	627	942.00	48.77x11.58x4.39	1500
80	VISAL-2	690851	M-Tug/Supply	1969 USA	VIRES KM	543		48.45x12.25x4.4	2000
81	VUNG TAU-94	680590	M-Refriger	1968-USSR	VIRES KM I	573		50.75x9.3x4.70	800

REGISTER OF SEA GOING SHIP UNDER VIRES (G/T above 1001, under 2000)

Date: 24.01.1996

No.	SHIP S NAME	CLASS.No.	TYPE & DES.	YEAR & PLACE	SHIP S CLASS	G.T	DWT	LxBxH	Ne(HP)
1	BA DINH	840080	M-General Cargo	1984-Kimora Zosen	VIRES KM	1450	2209.00	68.0x13.0x7.0	1800
2	BACH LONG VI	810169	M-General Cargo	1981 Japan	VIRES KM I	1439	2118.00	71.0x12.0x4.8	1800
3	BEN THANH	790587	M-General Cargo	1979-Japan	VIRES KM I	1536	2534.00	71.50x12.0x7.4	20000
4	BIEN DONG-01	931052	Floating Crane	1993-Bach dang	VIRES K II	1733	1500.00	60x20x3.0	
5	BIEN DONG-04	950621	Barge	1995	VIRES K I	1105	2000.00		
6	CUU LONG GIANG-01	860248	M-General Cargo	1986-Sai gon	VIRES KM II	1047	1200.00	75.20x10.5x4.5	900
7	DONG BANG-04	560090	M-General Cargo	1956 Shioyama	VIRES KM II	1078	1606.00	67.0x10.8x5.7	1350
8	HA THANH	600033	M-General Cargo	1980-Kinoura	VIRES KM	1442	2230.00	68.0x13.0x7.0	1800
9	HA TINH-06	820037	M-General Cargo	1982-Fukushima	VIRES KM II	1143	1614.00	65.99x11.21x6.28	1600
10	HOA MAI-93	870613	M-Service	1987	VIRES KM	1817			
11	HOA SEN	811099	M-General Cargo	1981-Japan	VIRES KM	1468	2501.00	82.36x13.52x7.88	2600
12	HONG QUANG	800131	M-General Cargo	1980-Japan	VIRES KM I	1389	2042.00	67.0x11.4x7.0	2000
13	INLACO	600072	M-General Cargo	1980-Japan	VIRES KM I	1442	2223.00	68.0x13.0x7.0	1300
14	KY HA	680030	M-General Cargo	1968-K.K.Waka	VIRES KM I	1056	1865.00	65.0x11.3x5.6	2000
15	LAM SON-01	830051	M-Supply	1983-Viartsii	VIRES KM	1491	1178.00	61.06x13.8x6.9	2x4175
16	NHA BE-01	760076	M-Oil Tanker	1976-Nakamura	VIRES KM II	1582	3580.00	75.01x13.01x6.51	2800
17	PHATHANA-188	800141	M-General Cargo	1980 Japan	VIRES KM II	1091	1562.00	67.18x11.5x6.8	1300
18	PHU YEN-01	800207	M-General Cargo	1980 Japan	VIRES KM II	1421	2249.00	68.0x12.0x7.2	2000
19	SA LAN 2017	690502	Oil Tanker	1969 Hai phong	VIRES KM III	1220	1800.00	72.0x11.0x5.7	
20	SA PA			1975		1250			
21	SAO MAI-01	810124	M-Tug/Supply	1981 Ulstein	VIRES KM	1276	1050.00	58.4x13.81x6.91	40800
22	SEAPRODEX-01	800579	M-Refriger	1980 Japan	VIRES KM	1089	1172.00	64.58x11.0x6.65	18000
23	SEAPRODEX-08	790461	M-Refriger	1979 Setouchi Zosen	VIRES KM	1092	1061.00	64.00x11.0x6.4	1800
24	THANH DA	720211	M-General Cargo	1972 Imamura	VIRES KM II	1066		62.3x11.0x7.0	1800
25	THANH HOA-01	810044	M-General Cargo	1981 Matsura	VIRES KM II	1137	1567.00	67.0x12.0x6.2	1800
26	TRUONG SA-01	890254	M-General Cargo	1989-Ha long	VIRES KM	1038	1364.00	65.0x11.8x4.82	980
27	TRUONG SA-02	900255	M-General Cargo	1990-Ha long	VIRES KM	1038	1120.00	65.0x11.8x4.82	980
28	TRUONG SA-04	920849	M-General Cargo	1991-Ha long	VIRES KM	1038	1364.00	65.0x11.8x4.82	980
29	TRUONG SA-06	930088	M-General Cargo	1993-Ha long	VIRES KM	1038	1364.00	65.0x11.8x4.82	980
30	TRUONG SA-08	941029	M-General Cargo	1994-Ha long	VIRES KM	1038	1364.00	65.0x11.8x4.82	980
31	TRUONG SA-10	941049	M-General Cargo	1994-Ha long	VIRES KM	1038	1000.00	65.0x11.8x4.82	980
32	VIET BA-01	800025	M-General Cargo	1980-Ha long	VIRES KM II	1047	1400.00	66.01x11.64x5.3	1320
33	VIET BA-04	860102	M-General Cargo	1986-Ha long	VIRES KM II	1047	1400.00	64.52x11.64x5.295	1320
34	VIETRANSCIMEX-02	900246	M-General Cargo	1990-Bach dang	VIRES KM I	1060	1400.00	66.40x11.64x4.8	1105
35	VIETRANSTIMEX-01	781025	M-General Cargo	1978-Japan	VIRES KM I	1344	2056.00	68.00x12.01x6.9	2000
36	VINH TRA	810048	M-General Cargo	1981 Fujiwara	VIRES KM II	1505	2548.00	68.01x13.01x7.1	1600
37	VISAL-06	610582	M-Salvage	1981-USSR	VIRES KM I	1922			2000

Appendix 4

List of Ships Construction during 1990-1995

VIETNAM REGISTER OF SHIPPING



LIST OF SHIP NEW CONSTRUCTION DURING 1990 - 1995

January, 1996

REGISTER OF SEA GOING SHIP UNDER VIRES (New construction during 1990 - 1995)

Date: 24.01.1996

No.	SHIP'S NAME	CLASS.No.	TYPE & DES.	YEAR & PLACE	SHIP'S CLASS	G.T	DWT	LxExH	Ne(HP)
1	AN GIANG-02	300516	M-General Cargo	1990	VIRES KM	856	1200.00	70.81x9.5x5.0	980
2	AN GIANG-19	941064	M-General Cargo	1994-Hai phong	VIRES KM III	321	300.00	42x7.8x2.6	305
3	AN GIANG-27	941076	M-General Cargo	1994-Hai phong	VIRES KM III	238	300.00	41.53x7.8x3.0	218
4	AN LU-05	951092	M-General Cargo	1995-Hai phong	VIRES KM III	269	300.00	44.3x8.06x2.95	305
5	AN LU-06	951129	M-General Cargo	1995-Hai phong	VIRES KM III	285	350.00		
6	AN LU-08	951091	M-General Cargo	1995-Hai phong	VIRES KM III	242	300.00	41.28x7.7x3.0	225
7	AN LU-09	951138	M-General Cargo	1995-Hai phong	VIRES KM III	231	350.00		
8	AP BAC-04	910513	M-Oil Tanker	1991-Sai gon	VIRES KM II	441	700.00	48.04x8.5x3.9	408
9	BAC DAO	930791	M-Cargo-Passenger	1993	VIRES KM III		200.00		150
10	BACH DANG	900334	Floating Dock	1990-USSR	VIRES K III	4537	4200.00	96.0x30.1x13.6	
11	BIEN DONG-01	931052	Floating Crane	1993-Bach dang	VIRES K II	1733	1500.00	60x20x3.0	
12	BIEN DONG-04	950621	Barge	1995	VIRES K I	1105	2000.00		
13	BIEN DONG-50	941030	M-Tanker	1994-Hai phong	VIRES KM I	325	300.00	50.25x8.0x3.2	408
14	BINH MINH-05	941048	M-General Cargo	1994-Viet nam	VIRES KM III	195	300.00	36.97x5.7x3.65	200
15	CA NO HAI QUAN	941161	Tug	1994	VIRES KM III				
16	CSG-95	910608	Tug	1991-Malaysia	VIRES KM III	150		22.8x7.3x3.0	1000
17	CUU LONG	910273	M-Supply	1991-Pha Rung	VIRES KM II	492	808.00	45.72x9.75x3.49	300
18	CUU LONG-108	930346	M-General Cargo	1993-Ben kien	VIRES KM III	155	200.00	40x6.2x2.8	225
19	DAI THANH-05	951134	M-General Cargo	1995-Hai phong	VIRES KM III	263	300.00		
20	DAI THANH-18	951133	M-General Cargo	1995-Haiphong	VIRES KM III	174	200.00	35.9x6.2x2.9	218
21	DINH VU-05	900393	M-General Cargo	1990-Tam Bac	VIRES KM III	130	150.00	36.0x6.20x2.8	135
22	DONG PHUONG-04	941058	M-General Cargo	1994-Hai phong	VIRES KM I	299	450.00	46.5x7.80x3.7	408
23	DONG PHUONG-06	951118	M-General Cargo	1995-Ben Kien	VIRES KM I	390	600.00	50.62x7.8x4.0	500
24	DUC TRUNG	900738	M-Cargo-Passenger	1990	VIRES KM III				150
25	GIA DINH	910265	M-General Cargo	1990-Bach dang	VIRES KM I	985	100.00	64.0x11.6x4.8	980
26	HA LONG-22	920876	M-General Cargo	1992-Song Lo	VIRES KM I	227	200.00	41.70x7.0x3.1	200
27	HA TIEN-07	901175	M-General Cargo	1990	VIRES KM III				275
28	HAI DANG-02	900327	M-General Cargo	1990-Tam Bac	VIRES KM III				
29	HAI LONG-09	941022	M-General Cargo	1994-Quang ninh	VIRES KM III	183	200.00	32.61x6.2x2.9	135
30	HAI VAN-04	910852	M-General Cargo	1991-Ha noi	VIRES KM I	499	600.00	36.1x6.7x3.4	135
31	HAI SH-02	920850	M-General Cargo	1992-Ha long	VIRES KM II	186	200.00	54.20x9.0x4.4	578
32	HAU PHUONG	910744	M-Cargo-Passenger	1991	VIRES KM III				200
33	HC-34	930477	Tug	1993-USA	VIRES KM III				100
34	HC-36	951106	Tug	1995-Hai phong	VIRES KM III			24.25x7.2x3.35	550
35	HOA BINH-09	941023	M-General Cargo	1994-Kien An	VIRES KM III	159		29.9x8.06x4.25	510
36	HOA BINH-15	951114	M-General Cargo	1995-Hai phong	VIRES KM III	241	260.00	36.8x6.8x2.7	200
37	HOANG AN-01	941078	M-General Cargo	1994-Hai phong	VIRES KM III	271	300.00	42.0x7.9x2.8	135
38	HOANG CHIEN-01	941086	M-General Cargo	1994-Hai phong	VIRES KM III	262	350.00	44.5x8.24x3.2	135
							350.00	43.1x8.04x3.2	200

REGISTER OF SEA GOING SHIP UNDER VIRES (New construction during 1990 - 1995)

Date: 24.01.1996

No.	SHIP S NAME	CLASS.No.	TYPE & DES.	YEAR & PLACE	SHIP S CLASS	G.T	DWT	LxIxB	Ne(HP)
39	HOANG CHIEN-02	931050	M-General Cargo	1993-Hai phong	VIRES KM III	217	350.00	46.20x8.2x2.75	305
40	HOANG DAT 18	951084	M-General Cargo	1995-Hai phong	VIRES KM III	205	300.00	45x7.9x3.0	315
41	HOANG GIANG 20	941061	M-General Cargo	1994-Hai phong	VIRES KM III	203	175.00	38.30x7.2x2.5	135
42	HOANG HAI-08	941128	M-General Cargo	1994-Hai phong	VIRES KM III	162	200.00		
43	HOANG HAI-39	920470	M-General Cargo	1992-Hai phong	VIRES KM III		200.00	36.65x5.5x2.6	200
44	HOANG HOA-05	941060	M-General Cargo	1994-Da nang	VIRES KM II	130		36.2x5.2x2.8	135
45	HOANG MINH-01	941077	M-General Cargo	1994-Hai phong	VIRES KM III	256	250.00	40.50x8.2x3.0	135
46	HOANG MINH-02	941069	M-General Cargo	1994-Hai phong	VIRES KM III	256	250.00	44.5x8.24x3.0	135
47	HOANG MINH-04	941068	M-General Cargo	1994-Hai phong	VIRES KM III	271	350.00	40.85x8.2x3.2	135
48	HOANG NGAN-08	951112	M-General Cargo	1995-Hai phong	VIRES KM III	224	340.00	43.5x7.8x3.1	400
49	HOANG NGAN-27	951111	M-General Cargo	1995-Hai phong	VIRES KM III	256	250.00		
50	HOANG NGAN-36	941083	M-General Cargo	1994-Hai phong	VIRES KM III	195	200.00		
51	HOANG PHUONG-08	951095	M-General Cargo	1995-Song Cam	VIRES KM I	552	600.00	55.33x8.3x4.0	408
52	HOANG PHUONG-15	951123	M-General Cargo	1995	VIRES KM III	250	320.00		
53	HOANG PHUONG-16	951131	M-General Cargo	1995	VIRES KM III	276	350.00		
54	HOANG PHUONG-26	951112	M-General Cargo	1995-Hai phong	VIRES KM III	224	300.00	42x7.7x3.04	135
55	HOANG PHUONG-27	951120	M-General Cargo	1995-Hai phong	VIRES KM III	241	280.00	39.65x7.7x2.8	135
56	HOANG VINH-09	951113	M-General Cargo	1995-Work 82	VIRES KM III	252	290.00	42.7x7.8x3.0	200
57	HONG DUONG-09	951140	M-General Cargo	1995-Hai phong	VIRES KM III	299	430.00	42.95x7.7x3.4	2x135
58	HONG LINH-06	951087	M-General Cargo	1994-Hai phong	VIRES KM III	235	300.00	43.1x8.04x3.0	305
59	HONG QUANG-16	951116	M-General Cargo	1995-Hai phong	VIRES KM III	241	300.00	42x7.9x2.8	135
60	HP-01	940167	Dredger	1994-Holland	VIRES KM III	117		36.50x8.6x2.7	
61	HQ-607	940605	M-General Cargo	1994-Viet nam	VIRES KM I	609	450.00	52x9.0x4.4	980
62	HQ-608		M-General Cargo	1993-Song Cam	VIRES KM I	660	450.00	52.0x9.0x4.4	980
63	HQ-609	940615	M-General Cargo	1994-Viet nam	VIRES KM I	612	450.00	52x9.0x4.4	980
64	HUAN LUYEN-05	910259	M-General Cargo	1991-Ha noi	VIRES KM I	987	1000.00	54.00x11.64x4.8	980
65	HUNG THINH-09	931139	M-General Cargo	1995-Hai phong	VIRES KM III	255	373.00	38.95x2.68x3.63	270
66	HUYNH LONG	940794	M-Cargo-Passenger	1994					
67	KA LONG 01	931018	M-General Cargo	1993-Halong	VIRES KM III		200.00	34.8x6.7x3.4	180
68	KG-09	940800		1994					
69	KIEN GIANG-63	900736	M-Passenger	1990-Kien giang	VIRES KM III	160		37.20x6.5x2.8	300
70	KIEN THANH	920739	M-Passenger	1992	VIRES KM III				350
71	LACH TRAY-30	941071	M-General Cargo	1994-Viet nam	VIRES KM III	195	200.00	36.x6.6x2.7	200
72	LAM SON-04	900802	M-General Cargo	1990-Kien An	VIRES KM III	166	200.00	33.35x7.46x2.5	135
73	LAM SON-06	900803	M-General Cargo	1990-Kien An	VIRES KM III	166	200.00	33.35x7.46x2.5	135
74	LAM SON-12	920853	M-General Cargo	1990-Kien An	VIRES KM III	166	200.00	34.25x7.04x2.5	135
75	LAM SON-14	930475	M-General Cargo	1993-Hai phong	VIRES KM III	166	200.00	34.25x7.04x2.5	180
76	LE LOI	920457	M-General Cargo	1992-Ben Kien	VIRES KM I	996	1000.00	64.00x11.2x5.2	980

REGISTER OF SEA GOING SHIP UNDER VIRES (New construction during 1990 - 1995)

Date: 24.01.1996

No.	SHIP'S NAME	CLASS.No.	TYPE & DES.	YEAR & PLACE	SHIP'S CLASS	G.T	DWT	LxBxH	Ne(HP)
77	LUC QUOC	910784	M-Cargo-Passenger	1991	VIRES KM III				330
78	MAI HUNG-02	941051	M-General Cargo	1994-Hai phong	VIRES KM III	175	280.00	37.8x7.4x2.7	200
79	ME KONG-02	900208	M-General Cargo	1990-Ben Kien	VIRES KM II	385	400.00	44.0x8.20x4.1	408
80	ME KONG-04	910270	M-General Cargo	1991-Bach dang	VIRES KM I	985	1000.00	64.00x11.64x4.8	980
81	MINH HOANG-04	920577	Tug	1992-Sai gon	VIRES KM III				225
82	MINH TUAN-09	941135	M-General Cargo	1994-Hai phong	VIRES KM III	163	300.00	35.42x6.7x2.7	200
83	MY SON	900224	M-General Cargo	1990-Song Lo	VIRES KM II	376	400.00	44.00x8.2x5.1	408
84	NGAN HA 06	941065	M-General Cargo	1994-Hai phong	VIRES KM III	266	350.00	44.55x7.4x2.95	305
85	NGAN HA-09	951130	M-General Cargo	1995-Hai phong	VIRES KM II	276	350.00	42.0x8.2x3.25	408
86	NGHIA HONG-01	941051	M-General Cargo	1994-Repair Work of Arr	VIRES KM III	164	250.00	36.5x7.4x3.0	225
87	NGHIA HONG-02	930499	M-General Cargo	1993-Hai phong	VIRES KM III	148	250.00	35.55 x 7.4x2.6	805
88	NGHIA HONG-05	941082	M-General Cargo	1994-Yard 6 of Army	VIRES KM III	152	250.00	41.35x7.5x2.6	250
89	NGOC THANH-01	900730	M-Cargo-Passenger	1990	VIRES KM III				305
90	NHA RONG 36	940627	M-General Cargo	1994	VIRES KM III	99	150.00		
91	NHAT TRANG-09	900414	M-General Cargo	1990-Song cam	VIRES KM III	129	150.00	38.00x8.2x2.0	135
92	P-11	910340	Ponton Service	1991 Hai phong	VIRES K III			x12.50x3.7	
93	PA-04	930484	Tug	1993-Tam Bac	VIRES KM III				135
94	PA-06	951110	M-Supply	1995-Hai phong				7.66x2.4x1.25	140
95	PHU AN-19	951144	M-General Cargo	1995 Hai phong	VIRES KM III	239	280.00	39.45x7.4x2.75	270
96	PHUONG DONG-02	941066	M-General Cargo	1994-Viet nam	VIRES KM III	202	240.00	36.72x7.16x2.8	200
97	PHUONG NAM-02	951094	M-General Cargo	1995	VIRES KM III	376	400.00	50.08x8.6x3.68	408
98	PHUONG NAM-09	951125	M-General Cargo	1995	VIRES KM III	252	350.00		
99	PONTON P-51	951117	Ponton Service	1995 Ben Kien	VIRES K II	229		28.4x12.4x2.2	
100	QUANG BINH-04	900716	M-General Cargo	1990-Hai phong	VIRES KM III	130	200.00	35.90x6.2x2.9	135
101	QUANG HOA-10	941042	M-General Cargo	1994 Vinh phu	VIRES KM III		200.00		190
102	QUANG MINH-08	911043	M-General Cargo	1991-Hai phong	VIRES KM III	110	200.00		180
103	QUANG MINH-16	941021	M-General Cargo	1993 Vinh phu	VIRES KM III	166	150.00	36x6.2x2.8	135
104	QUANG MINH-26	951050	M-General Cargo	1995-Ha long	VIRES KM III	195	300.00	36.9x6.7x3.65	118
105	QUANG NINH-189	940604	M-General Cargo	1994	VIRES KM III	212	250.00	36.50x7.3x2.95	200
106	QUANG TRUNG-16	950625	M-General Cargo	1995 Sai gon	VIRES KM III	208	250.00	37.5x7x2.9	200
107	QUANG TRUNG-18	900848	M-General Cargo	1990 Hai phong	VIRES KM I	285	352.00	36.0x7.0x3.10	218
108	QUOC THAI	930789	M-Cargo-Passenger	1993	VIRES KM III				
109	QUOC TIEN	920795	M-Cargo-Passenger	1992	VIRES KM III				
110	QUOC VIET-08	951127	M-General Cargo	1995 Hai phong	VIRES KM III	250	250.00	42.2x7.7x2.85	275
111	SA KY	900859	M-Passenger	1990 Hai phong	VIRES KM III			24.0x5.40x2.3	140
112	SAM SON-24	930811	M-General Cargo	1993-Hai phong	VIRES KM III	130	200.00	35x6.2x2.9	135
113	SAO MAI-224	900405	M-General Cargo	1990-Kien An	VIRES KM III	166	200.00	35.20x7.46x2.5	218
114	SERVICE-02	900032	M-Tanker	1990	VIRES KM III	120	150.00		

REGISTER OF SEA GOING SHIP UNDER VIRES (New construction during 1990 - 1995)

Date: 24.01.1996

No.	SHIP S NAME	CLASS.No.	TYPE & DES.	YEAR & PLACE	SHIP S CLASS	G.T	DWT	LxBxH	Ne(HP)
115	SL 10-500	900302	General Cargo	1990-Hai phong	VIRES KM III		500.00	35.15x9.14x3.66	
116	SONG BIEN-22	900419	M-General Cargo	1990-Song cam	VIRES KM III	258	350.00	47.20x8.6x3.0	305
117	SONG DIEM-09	941047	M-General Cargo	1994-Thai binh	VIRES KM III	166	200.00	33.75x7.0x2.7	135
118	SONG HIEU-16	900226	M-General Cargo	1990 Hai phong	VIRES KM II	380	400.00	44.10x8.2x4.1	408
119	SONG HOA-01	900847	M-General Cargo	1990 Kien An	VIRES KM III	166	200.00	33.5x7.46x2.5	135
120	SONG HONG-01	910268	M-General Cargo	1991-Ha noi	VIRES KM II	499	500.00	54.25x9.2x4.4	578
121	SONG HONG-09	910330	M-General Cargo	1990-Song Cam	VIRES KM II	327	400.00	48.30x7.6x3.2	408
122	SONG HONG-18	931015	M-General Cargo	1993-Ha noi	VIRES KM I	499	600.00	54.20x9.0x4.4	578
123	SONG MA-08	910804	M-General Cargo	1991	VIRES KM III	166	200.00	33.50x7.0x2.5	140
124	SONG MA-18	910804	M-General Cargo	1991 Hai phong	VIRES KM III	130	170.00	35.20x6.2x2.8	135
125	SONG VAN-10	920452	M-General Cargo	1992 Haiphong	VIRES KM III	322	450.00	45.50x8.6x3.0	300
126	SONG VAN-12	930483	M-General Cargo	1993-Ha long	VIRES KM III	284	300.00	41.1x6.4x3.0	218
127	TC-91	900478	Barge Dredger	1990-USSR	VIRES KM III	624			470
128	TH-05	940607	M-Spoil	1994-Song Cam	VIRES KM III	372	300.00	28.4x12.4x2.2	305
129	THACH HAN-02	930593		1993					
130	THACH HAN-03	940609	M-Oil Tanker	1994-Saigon	VIRES KM III	207	250.00	41.50x7.3x2.8	225
131	THAI BINH-01	900844	M-General Cargo	1990-Song Lo	VIRES KM III	129	150.00	36.0x6.2x2.8	135
132	THANG TAM-02	931020	M-General Cargo	1993	VIRES KM III		200.00	37.7x6.7x3.4	180
133	THANG TAM-06	931012	M-General Cargo	1993-Ha long	VIRES KM III	198	230.00	31.05x6.7x3.5	180
134	THANH DUNG-09	951136	M-General Cargo	1995	VIRES KM III	248	300.00		
135	THANH NAM	951088	M-General Cargo	1995 Bach Dang	VIRES KM I	499	600.00	54.95x8.94x4.3	
136	THANH TU	910742	M-Cargo-Passenger	1991					275
137	THIEN AN	930591	M-Cargo-Passenger	1993					
138	TIEN HUNG	900504	Tug	1990 Sai gon	VIRES KM III	55		21.70x5.35x3.0	578
139	TIEN PHONG	930790	M-Cargo-Passenger	1993	VIRES KM III				150
140	TRA LY-09	900846	M-General Cargo	1990 Kien An	VIRES KM III	166	200.00	33.5x7.46x2.5	135
141	TRUNG KIEN 14	941073	M-General Cargo	1994-Viet nam	VIRES KM III	245	320.00	39x7.70x2.95	200
142	TRUNG KIEN 18	941072	M-General Cargo	1994-Viet nam	VIRES KM III	242	290.00	42x7.90x2.95	200
143	TRUNG KIEN 19	951121	M-General Cargo	1995-Viet nam	VIRES KM III	240	280.00	39.45x7.4x2.75	270
144	TRUNG SON-09	941059	M-General Cargo	1994-Hai phong	VIRES KM III	257	300.00	40.75x7.4x3.1	3005
145	TRUONG LAM-01	920881	M-General Cargo	1992 Viet nam	VIRES KM III	130	150.00		
146	TRUONG SA-02	900255	M-General Cargo	1990-Ha long	VIRES KM	1038	1120.00	65.0x11.8x4.82	980
147	TRUONG SA-04	920849	M-General Cargo	1991-Ha long	VIRES KM	1038	1364.00	65.0x11.8x4.82	980
148	TRUONG SA-06	930088	M-General Cargo	1993-Ha long	VIRES KM	1038	1364.00	65.0x11.8x4.82	980
149	TRUONG SA-08	941029	M-General Cargo	1994-Ha long	VIRES KM	1038	1364.00	65.0x11.8x4.82	980
150	TRUONG SA-10	941049	M-General Cargo	1994 Ha long	VIRES KM	1038	1000.00	65.0x11.8x4.82	980
151	TUAN CUONG-02	930492	M-General Cargo	1993 Yard No.	VIRES KM III	199	250.00	36.10x6.5x2.75	200
152	VAN DON-09	951195	M-General Cargo	1995 Quang ninh	VIRES KM III	191	300.00	36.05x6.73x5.7	200

Appendix 5

IMO Resolution A. 761(18)

Recommendation on Condition for Approval of Serving Statistics For Inflatable Lifeafts

Resolution A.761(18)
Adopted on 4 November 1993
(Agenda item 11)

RECOMMENDATION ON CONDITIONS FOR THE APPROVAL OF
SERVICING STATIONS FOR INFLATABLE LIFERAFTS

THE ASSEMBLY,

RECALLING Article 15(j) of the Convention on the International Maritime Organization concerning the functions of the Assembly in relation to regulations and guidelines concerning maritime safety,

NOTING that regulation III/19.8.1 of the International Convention for the Safety of Life at Sea, 1974, as amended, requires that every inflatable liferaft shall be serviced at intervals not exceeding 12 months but that, where it appears proper and reasonable, the Administration may extend this period to 17 months and that inflatable liferafts shall be serviced at an approved servicing station which is competent to service them, maintains proper servicing facilities and uses only properly trained personnel,

NOTING ALSO resolution A.693(17) on the conditions for the approval of servicing stations for inflatable liferafts,

HAVING CONSIDERED the recommendation made by the Maritime Safety Committee at its sixty-second session,

1. ADOPTS the Recommendation on Conditions for the Approval of Servicing Stations for Inflatable Liferafts, set out in the annex to the present resolution;
2. INVITES Governments to inspect servicing stations for inflatable liferafts within their authority in accordance with that Recommendation;
3. AUTHORIZES the Maritime Safety Committee to keep the Recommendation under review and to adopt, when appropriate, amendments thereto;
4. REVOKES resolution A.693(17).

Annex

RECOMMENDATION ON CONDITIONS FOR THE APPROVAL OF
SERVICING STATIONS FOR INFLATABLE LIFERAFTS

General

1 Administrations should ensure that the periodic survey of inflatable liferafts is performed at servicing stations that have demonstrated competence to service and repack rafts, maintain an adequate facility and use only properly trained personnel. In order to be approved, servicing stations should have demonstrated this capability for inflatable liferafts of each manufacturer whose liferafts they are competent to service and should comply with the following:

- .1 servicing of inflatable liferafts should be carried out in fully enclosed spaces only. There should be ample room for the number of inflatable liferafts expected to be serviced at any one time; the ceiling should be sufficiently high to allow the largest liferafts to be serviced to be turned over

- when inflated, or an equally efficient means to facilitate inspection of bottom seams should be provided;
- .2 the floor should be provided with a clean surface sufficiently smooth to ensure that no damage will occur to the liferaft fabric;
 - .3 the servicing space should be well lit, provided that direct rays of sunlight do not enter the space;
 - .4 the temperature and, when necessary, the relative humidity in the servicing space should be sufficiently controlled to ensure that servicing and repairs can be effectively carried out;
 - .5 the servicing space should be efficiently ventilated, but be free from draughts;
 - .6 separate areas or rooms should be provided for:
 - .6.1 liferafts awaiting servicing, repair or delivery;
 - .6.2 the repair of glass-fibre containers and the painting of compressed gas cylinders;
 - .6.3 materials or spare parts;
 - .6.4 administrative purposes;
 - .7 means should be provided in the liferaft storage space to ensure that liferafts in containers or valises are neither stored on top of each other in more than two tiers unless supported by shelving nor subjected to excessive loads;
 - .8 spare and obsolete pyrotechnics should be stored in a separate, safe and secure magazine well away from the servicing and storage spaces;
 - .9 sufficient tools should be available for the servicing of liferafts and release gear in accordance with the requirements of the manufacturer, including:
 - .9.1 suitable and accurate manometers or pressure gauges, thermometers and barometers which can be easily read;
 - .9.2 one or more air pumps for inflating and deflating liferafts, together with a means of cleaning and drying the air and including the necessary high-pressure hoses and adapters;
 - .9.3 a scale for weighing inflation gas cylinders with sufficient accuracy;
 - .9.4 sufficient gas for blowing through the inlet system of the liferafts;
 - .10 procedures should be established to ensure that each gas cylinder is properly filled and gastight before fitting to a liferaft;
 - .11 sufficient materials and accessories should be available for repairing liferafts, together with replacements of the emergency equipment to the satisfaction of the manufacturer;
 - .12 when servicing davit-launched liferafts, adequate means should be provided for overload testing of such liferafts;
 - .13 servicing and repair work should only be carried out by qualified persons who have been adequately trained and certificated by the liferaft manufacturer. The training procedure should ensure that servicing personnel are made aware of changes and new techniques;
 - .14 arrangements should be made for the manufacturer to make available to the service station:
 - .14.1 changes to servicing manuals, servicing bulletins and instructions;
 - .14.2 proper materials and replacement parts;
 - .14.3 bulletins or instructions from the Administration;
 - .14.4 training for servicing technicians;

- .15 smoking should not be allowed in the servicing and packing areas.
- 2 After initial approval, Administrations should arrange for the frequent inspection of servicing stations to ensure that manufacturer support is up to date and effective and that the requirements of this Recommendation are complied with.
- 3 Administrations should ensure that information regarding servicing facilities for inflatable liferafts is made available to mariners.

Servicing of inflatable liferafts

- 4 The following tests and procedures should be carried out, except where noted otherwise, at every servicing of an inflatable liferaft fitted as life-saving equipment.
- 5 Inflatable liferaft servicing should be carried out in accordance with the appropriate manufacturer's servicing manual. Necessary procedures should include, but not be limited to, the following:
 - .1 inspection of the container for damage;
 - .2 inspection of the folded liferaft and the interior of the container for signs of dampness;
 - .3 a gas inflation (GI) test should be carried out at 5-year intervals, and when undertaking a gas inflation test, special attention should be paid to the effectiveness of the relief valves. The folded liferaft should be removed from its container before activating the fitted gas inflation system. After gas inflation has been initiated, sufficient time should be allowed to enable the pressure in the buoyancy tubes to become stabilized and the solid particles of CO₂ to evaporate. After this period the buoyancy tubes should, if necessary, be topped up with air, and the liferaft subjected to a pressure holding test over a period of not less than one hour, during which the pressure drop will not exceed 5% of the working pressure;
 - .4 each liferaft should be subjected to the necessary additional pressure (NAP) test as described in appendix 1, or any other similar test recommended by the manufacturer, at yearly intervals after the tenth year of the liferaft's life unless earlier servicing is deemed necessary as a result of visual inspection. After allowing sufficient time for the liferaft to regain fabric tension at working pressure, the liferaft should be subjected to a pressure holding test over a period of not less than one hour, during which the pressure drop will not exceed 5% of the working pressure;
 - .5 when a NAP or GI test is not required, a working pressure (WP) test should be carried out (see appendix 2), by inflation of the liferaft with dry compressed air, after removing it from the container shell or valise and from its retaining straps, if fitted, to at least the working pressure, or to the pressure required by the manufacturer's servicing manual if higher. The liferaft should be subjected to a pressure holding test over a period of not less than one hour, during which the pressure drop will not exceed 5% of the working pressure;
 - .6 while inflated, the liferaft should be subjected to a thorough inspection inside and out in accordance with the manufacturer's instructions;
 - .7 the floor should be inflated, checked for broken reeds and tested in accordance with the manufacturer's instructions;
 - .8 the seams between floor and buoyancy tube should be checked for slippage or edge lifting;
 - .9 with the buoyancy tube supported at a suitable height above the service floor, a person weighing not less than 75 kg should walk/crawl around the perimeter of the floor for the entire circumference and the floor seams should be checked again. Manufacturers may substitute any other seam test which will determine the integrity of the floor seam until the next inspection is due. This test should be carried out at yearly intervals after the tenth year of the liferaft's life;
 - .10 after deflation, arch roots should be checked in accordance with the manufacturer's instructions;

- .11 all items of equipment should be checked to ensure that they are in good condition and that dated items are replaced at the time of servicing if there is less than 6 months remaining before the expiry date approved by the Administration;
- .12 davit-launched liferafts should be subjected to a 10% overload suspension test at every second servicing;
- .13 a check should be made to ensure that the liferaft and the atmosphere are dry when the liferaft is being repacked;
- .14 the required markings should be updated and checked;
- .15 a record of servicing should be maintained for at least 5 years after the date of service;
- .16 statistical records should be prepared on all liferafts serviced, indicating, in particular, defects found, repairs carried out and units condemned and withdrawn from service. Such statistics should be available to the Administration.

Responsibilities of manufacturers, Administrations and shipowners

6 In order to ensure that the servicing of inflatable liferafts is effectively conducted to provide reliable survival craft in an emergency, manufacturers, Administrations and shipowners have parallel and overlapping responsibilities; these include, but are not limited to, the following:

- .1 *Manufacturers* are responsible for:
 - .1.1 ensuring that their liferafts can be adequately serviced in accordance with this Recommendation or with any additional requirements necessary for that particular product and design and thereto accredit a sufficient number of servicing stations;
 - .1.2 ensuring that each servicing station accredited by them for servicing and repair of their liferafts has qualified persons whom they have adequately trained and certificated to perform such work and who are aware of any changes or new techniques;
 - .1.3 keeping Administrations fully informed as to the list of servicing stations accredited by them and any changes thereto;
 - .1.4 making available to service stations:
 - changes to servicing manuals, servicing bulletins and instructions;
 - proper materials and replacement parts;
 - bulletins or instructions from the Administration;
 - .1.5 keeping Administrations fully informed of any shipping casualties known to them and involving their liferafts; and also of any failures of liferafts, other than failures during inspections which are known to them; and
 - .1.6 informing shipowners whenever possible of any deficiency or danger known to them and related to the use of their liferafts and taking whatever remedial measures they deem necessary;
- .2 *Administrations* are responsible for conducting periodic checks of servicing stations to determine compliance with this recommendation and for checking quality assurance by spot checks or inspections that are deemed to be adequate to achieve compliance;
- .3 *Shipowners* are responsible for ensuring, as a minimum requirement, that all liferafts fitted as life-saving equipment are approved and are serviced at the appropriate intervals at an approved servicing station. Whenever practicable, a representative of the shipowner should be in attendance during service.

Appendix 1
Necessary additional pressure (NAP) test

- 1 Plug the pressure relief valves.
- 2 Gradually raise the pressure to the lesser of 2.0 times the working pressure or that sufficient to impose a tensile load on the inflatable tube fabric of at least 20% of the minimum required tensile strength.
- 3 After 5 minutes, there should be no seam slippage, cracking, or other defects (resolution A.521(13), part 1, paragraph 5.18.4.1), or significant pressure drop. If cracking in the buoyancy tubes is audible, the liferaft should be condemned; if no cracking is heard, the pressure in all buoyancy chambers should be reduced simultaneously by removing the plugs from the pressure relief valves.
- 4 Liferaft manufacturers should include tables in their servicing manuals of exact NAP test pressures corresponding to their particular tube sizes and fabric tensile strength requirements, calculated according to the equation:

$$p(\text{kg/cm}^2) = \frac{2 \times \text{tensile strength (kg per 5 cm)}}{25 \times \text{diameter (cm)}}$$

Appendix 2
Frequency of NAP tests: working pressure (WP), gas inflation (GI) and floor seam strength (FS)

Servicing intervals	Test method
End of first year	WP test
End of second year	WP test
End of third year	WP test
End of fourth year	WP test
End of fifth year	GI test
End of sixth year	WP test
End of seventh year	WP test
End of eighth year	WP test
End of ninth year	WP test
End of tenth year	GI test + FS
Eleventh to fourteenth year	NAP test + FS
Fifteenth year	GI test + NAP + FS
Sixteenth to nineteenth year	NAP test + FS
Twentieth year	GI test + NAP + FS
Twenty-first to twenty-fourth year	NAP test + FS
Twenty-fifth year onwards	GI test + NAP + FS

- NAP - Necessary additional pressure test (appendix 1)
 WP - Working pressure (compressed air)
 GI - Gas inflation (fitted gas)
 FS - Floor seam

ANNEX 7

DRAFT AMENDMENTS TO RESOLUTION A.761(18)

RECOMMENDATION ON CONDITIONS FOR THE APPROVAL OF SERVICING STATIONS FOR INFLATABLE LIFERAFTS

1 Replace paragraph 5.4 by:

"Each liferaft should be subjected to the necessary additional pressure (NAP) test as described in appendix 1, at yearly intervals after the tenth year of the liferaft's unless earlier servicing is deemed necessary as a result of visual inspection. After allowing sufficient time for the liferaft to regain fabric tension at working pressure, the liferaft should be subjected to a pressure holding test over a period of not less than one hour during which the pressure drop should not exceed 5% of the working pressure."

2 Replace paragraph 5.9 by:

"With the buoyancy tubes supported by a system which leaves the floor seams unsupported, at a suitable height above the service floor as shown in appendix 3 a person weighing not less than 75 kg should walk/crawl around the perimeter of the floor for the entire circumference and the floor seams should be checked again. Manufacturers may substitute this test with another test which will determine the integrity of the floor seam until the next inspection is due. This test should be carried out at yearly intervals after the tenth year of the liferaft's life".

3 Replace paragraph 5.12 by:

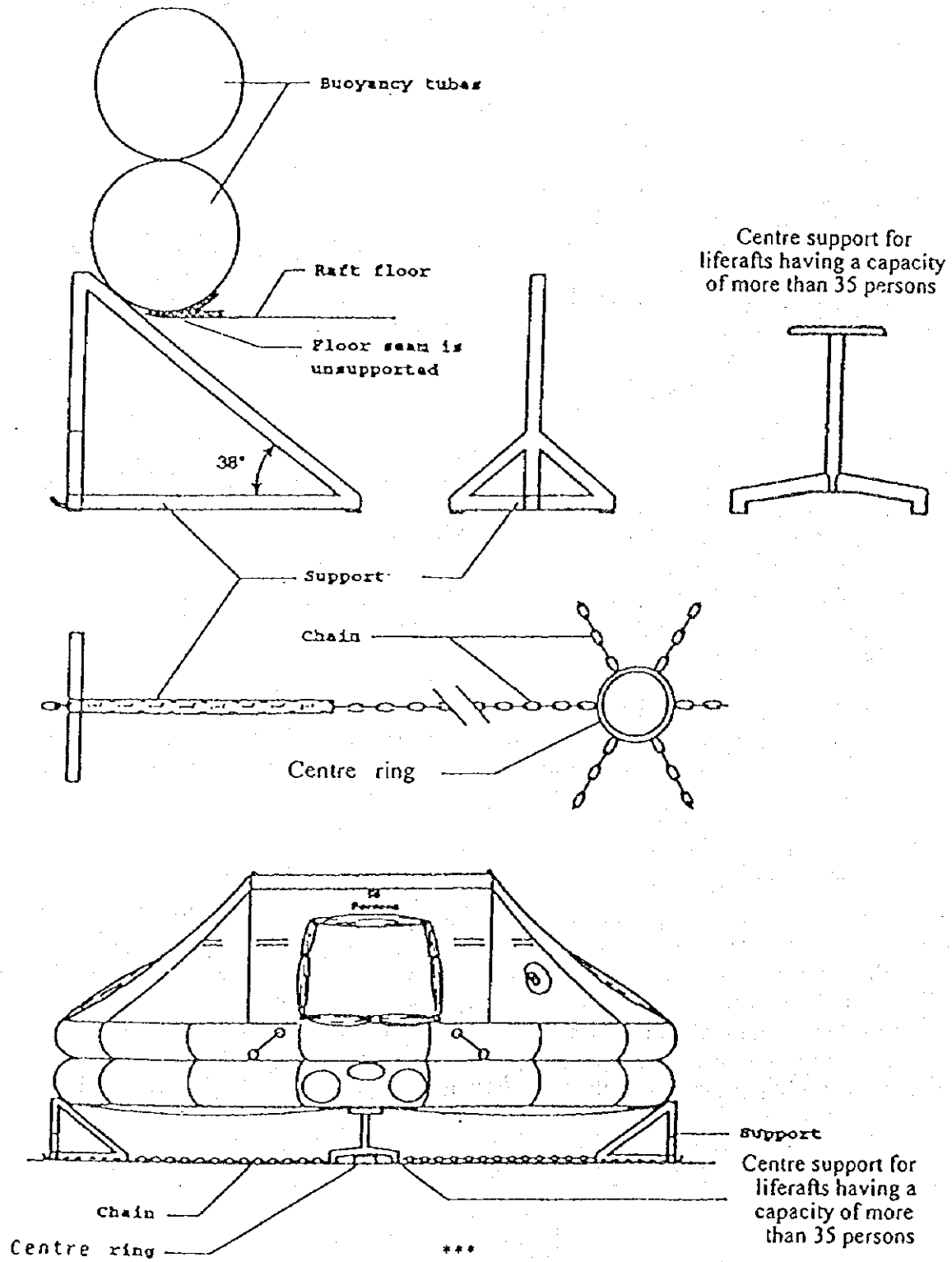
"Davit Launched liferafts should be subject to a 10% overload suspension test at every second servicing. The floor seam (FS) test required in the eleventh and subsequent years need not be carried out for davit launched liferafts at servicings when the overload suspension test is conducted."

4 Replace paragraph 6.2 by:

"The Administration is responsible for the approval of servicing stations for inflatable liferafts and for conducting periodic checks to determine compliance with this recommendation and for checking quality assurance by such checks or inspections as are deemed to be adequate to ensure compliance. However, for the approval of servicing stations for inflatable liferafts situated in other countries, the Administration may accept or recognize servicing stations approved, checked or inspected by surveyors nominated for the purpose or recognized organizations or by other SOLAS Contracting Governments.

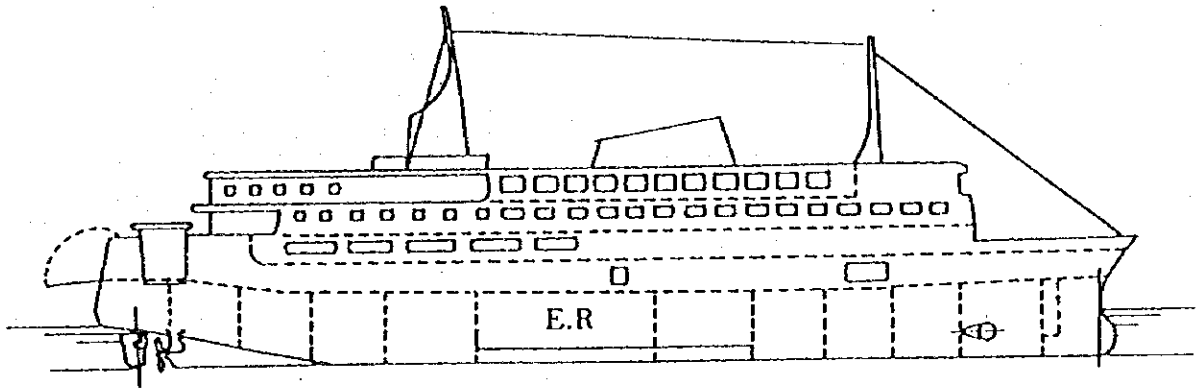
Appendix 3

GUIDELINES FOR FLOOR SEAM TEST SUPPORTS (REF. PARAGRAPH 5.9)

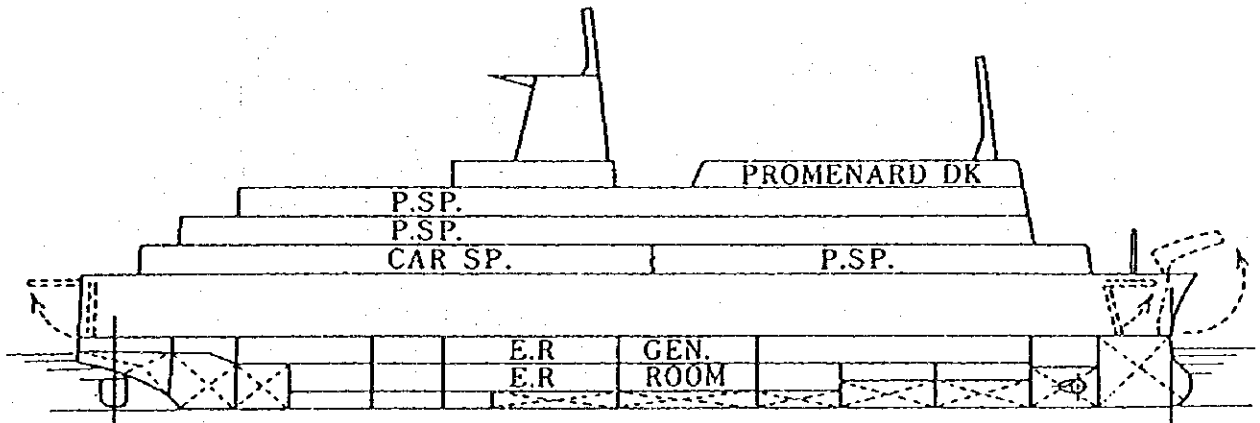


Appendix 6

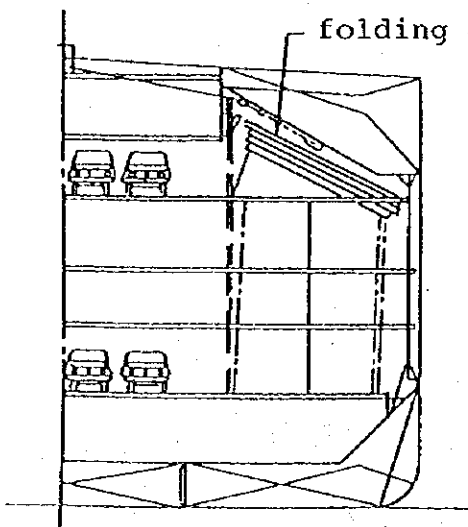
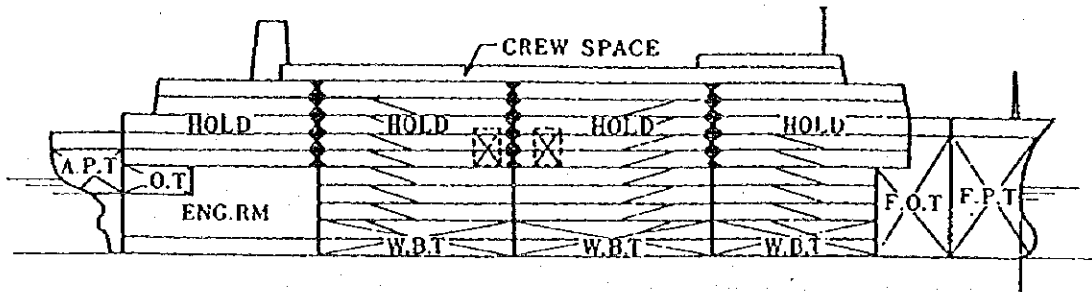
Various Ships



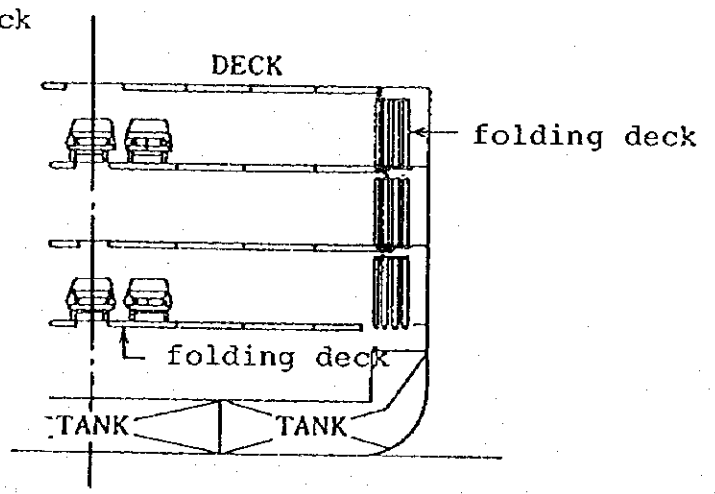
Coasting Service Passenger Ship



Passenger and Car Ferry

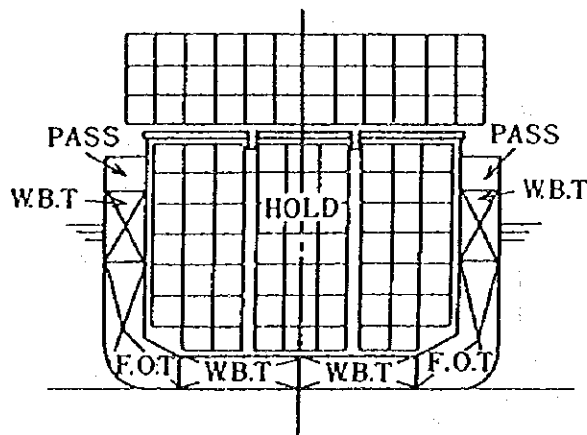
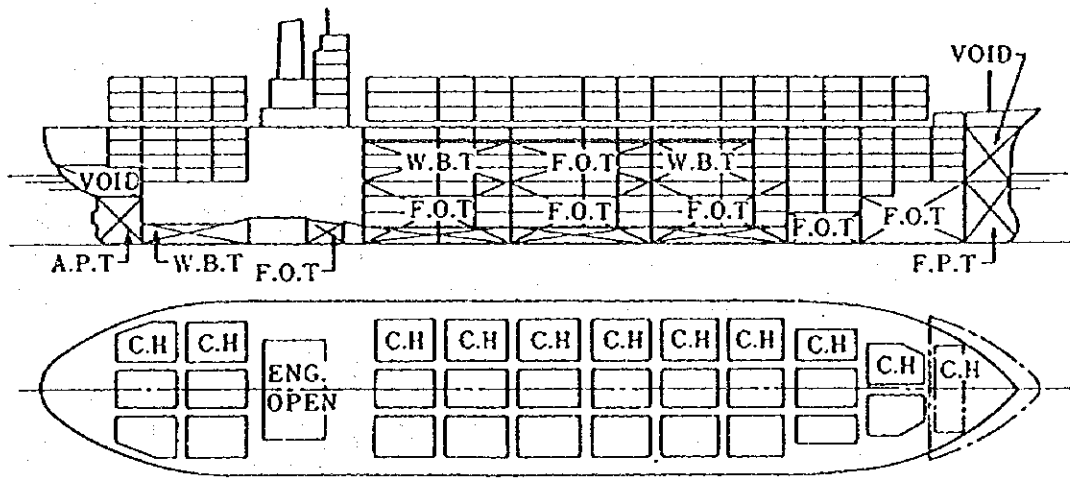


(a)

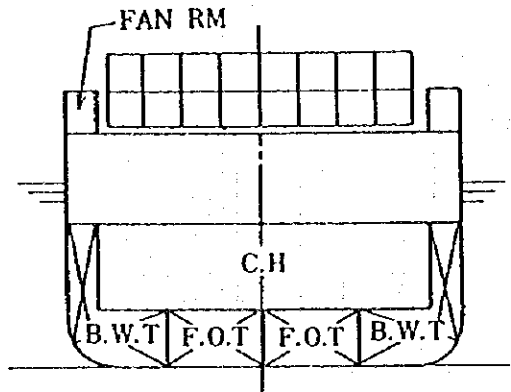
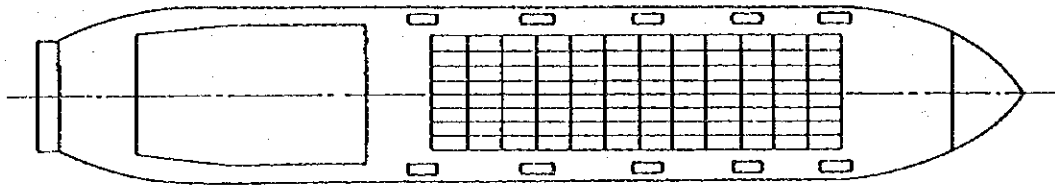
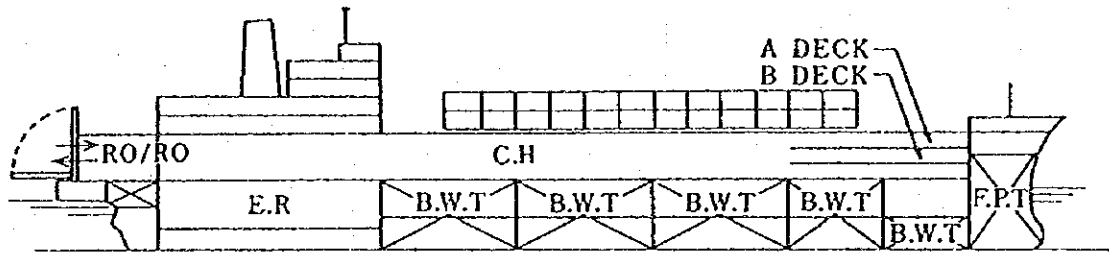


(b)

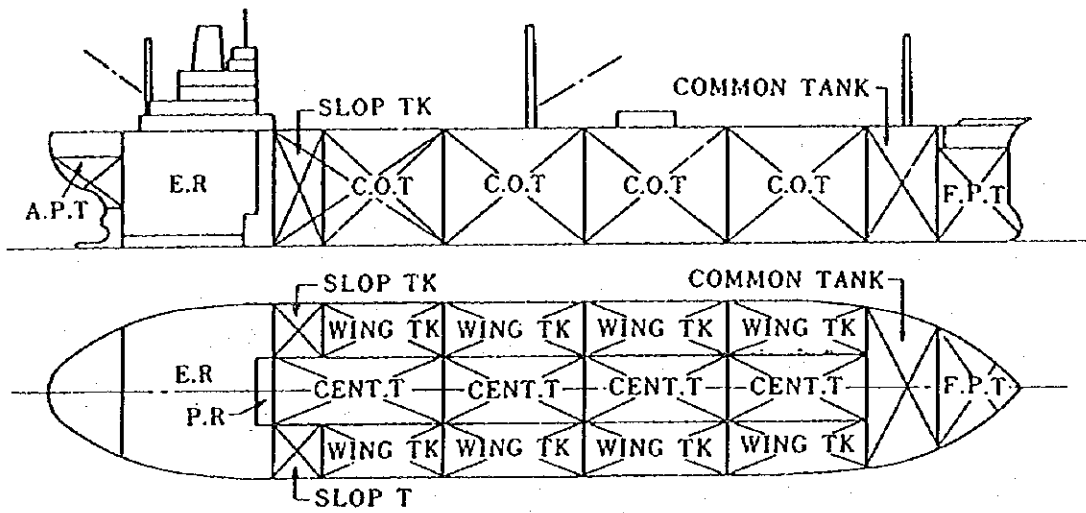
Car Carrier



Lift on/off Container Ship



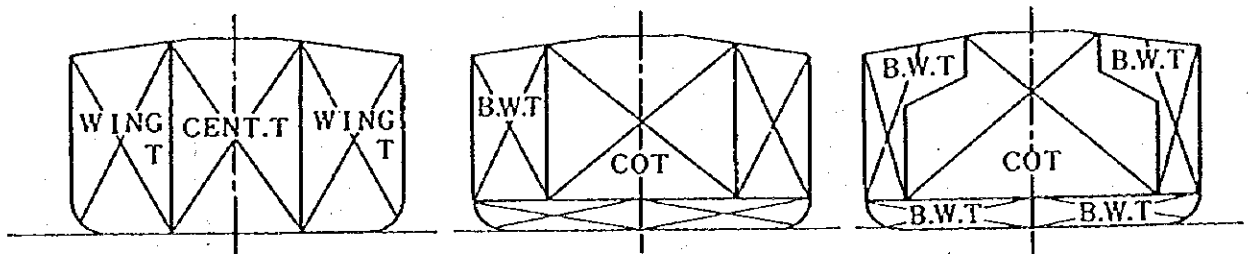
Roll of/off Container Ship



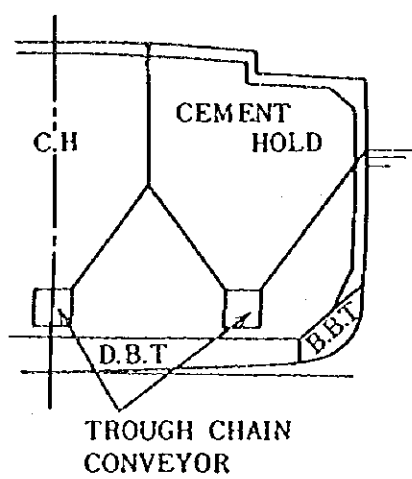
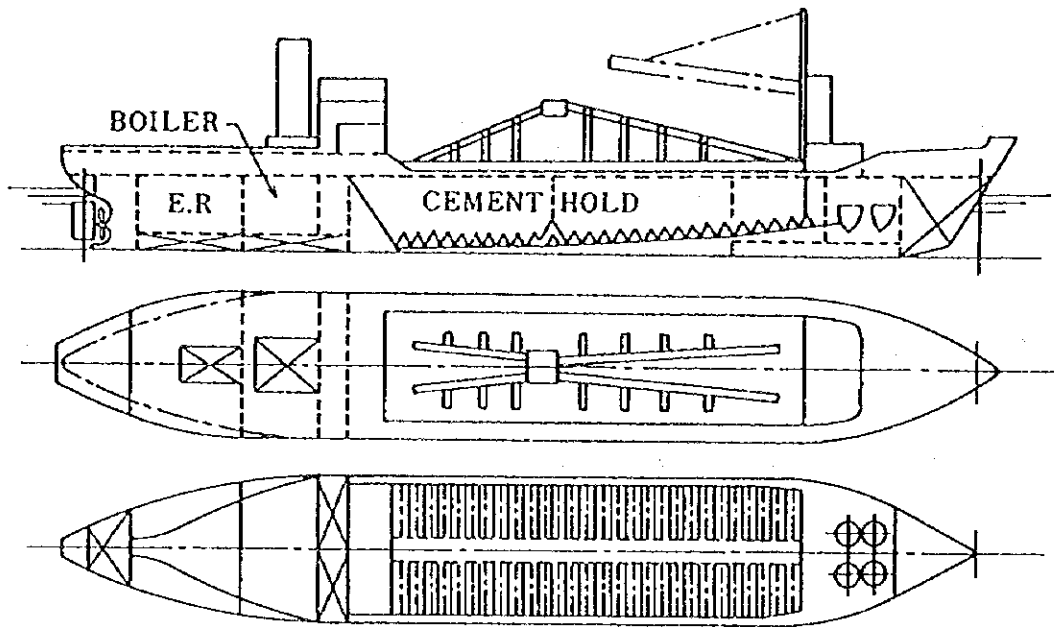
(A)

(B)

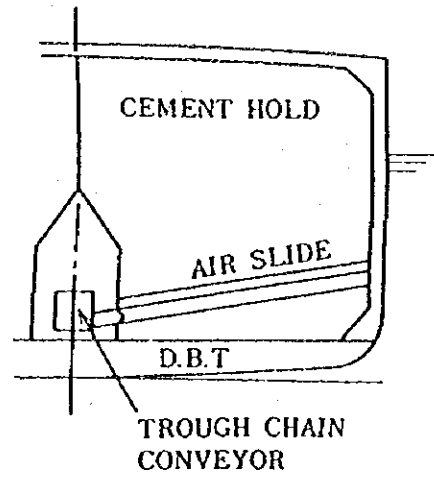
(C)



Crude Oil Tanker



Hopper Type



Air Slide Type

Cement Carrier with Self-Unloader