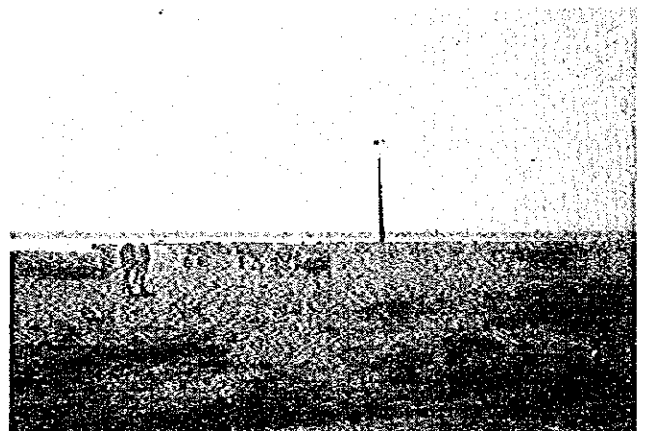
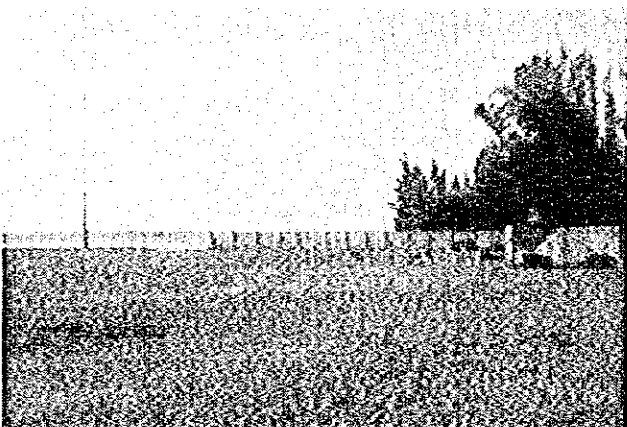
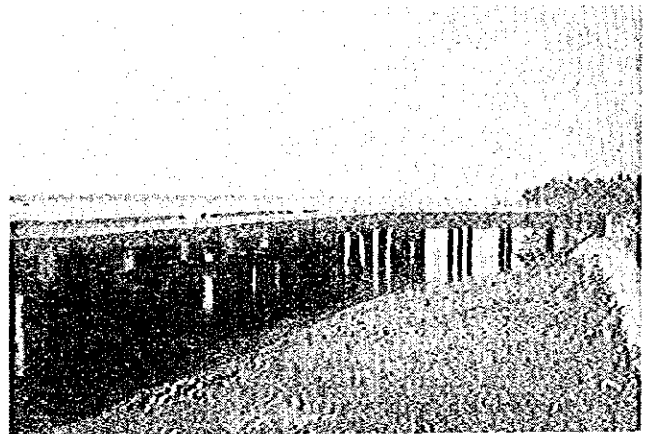
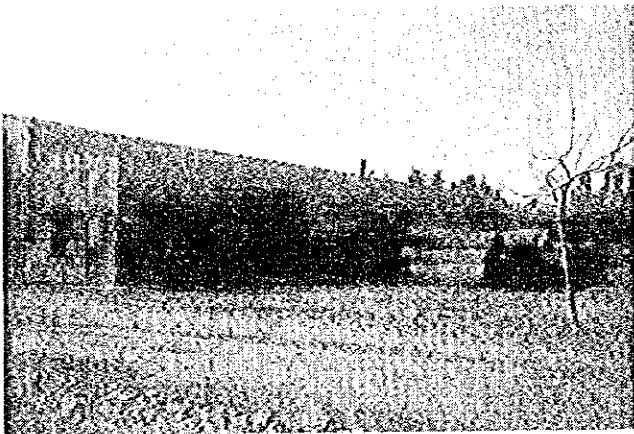
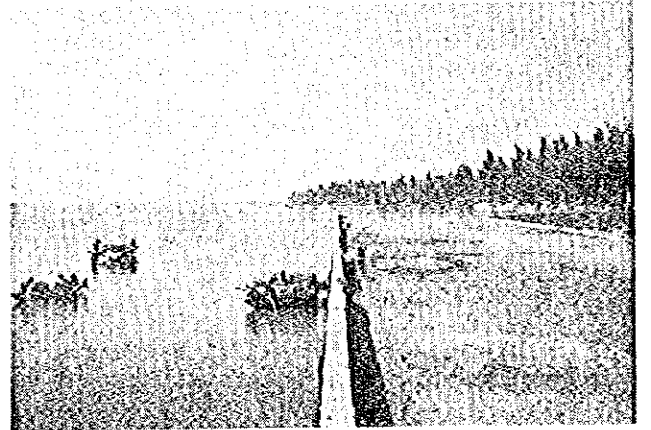
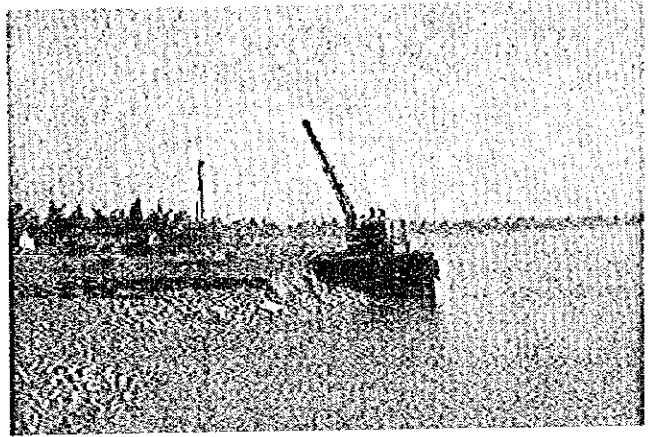
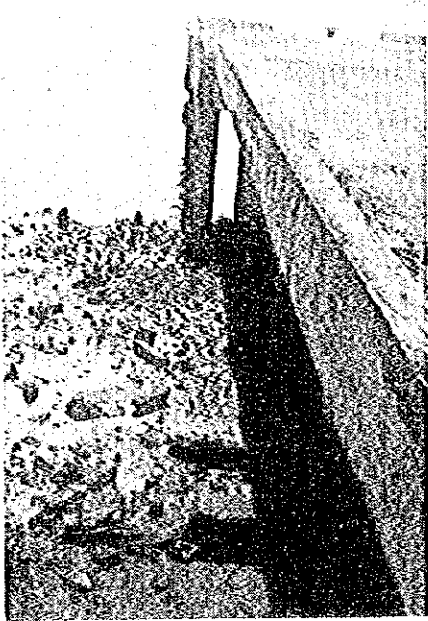
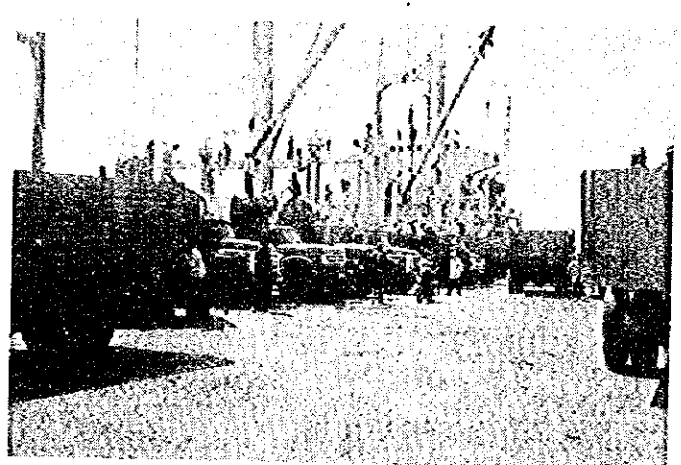
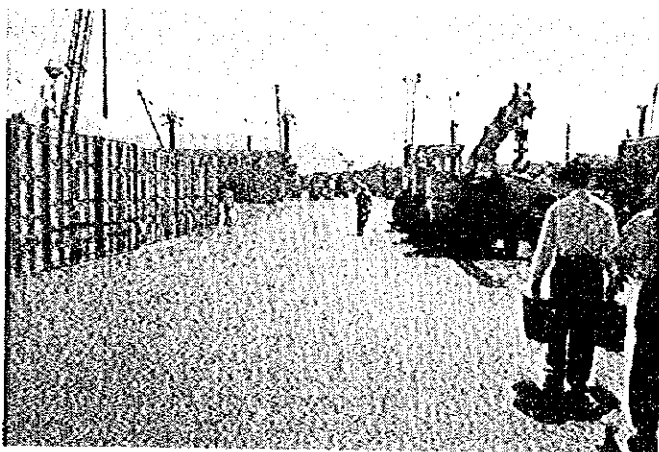
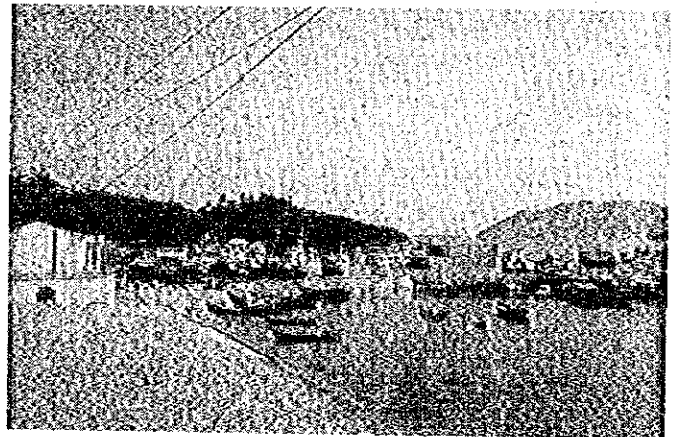
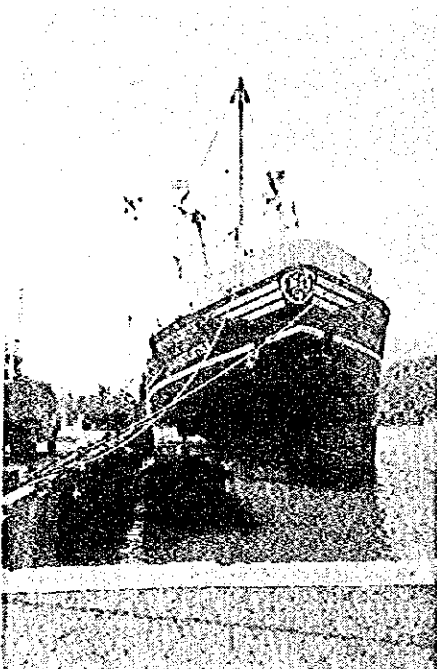
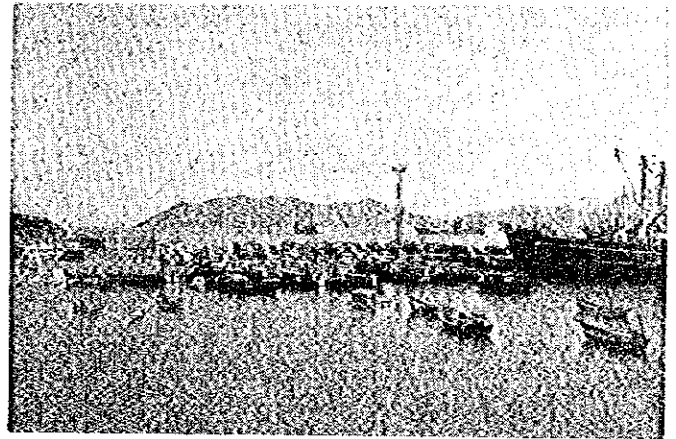
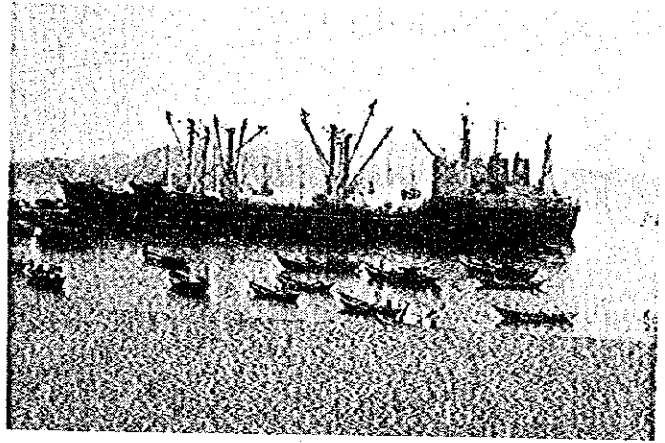
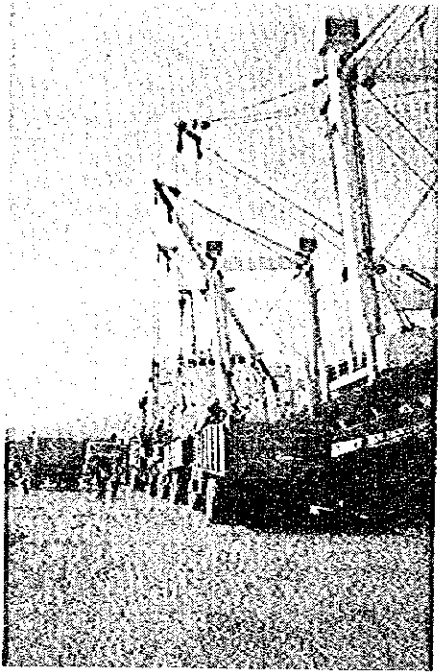


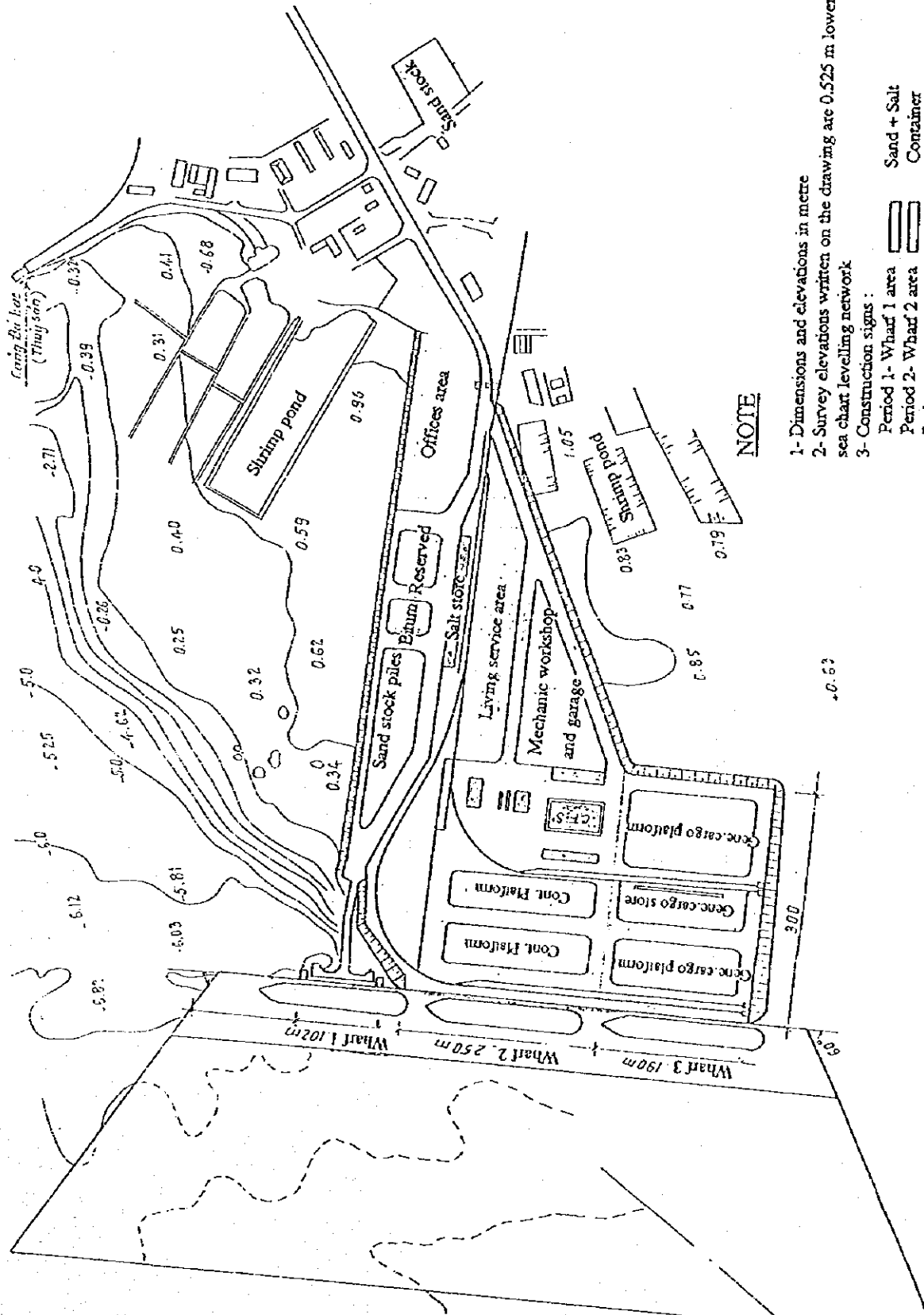
3.8 Xuan Hai Port



3.9 Nha Trang Port



3.10 Ba Ngoi Port

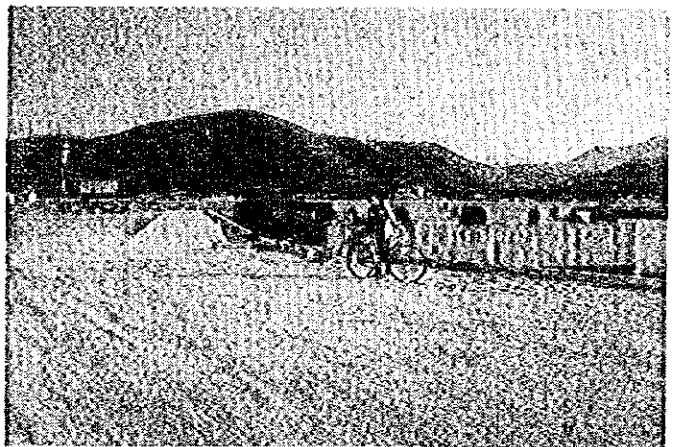
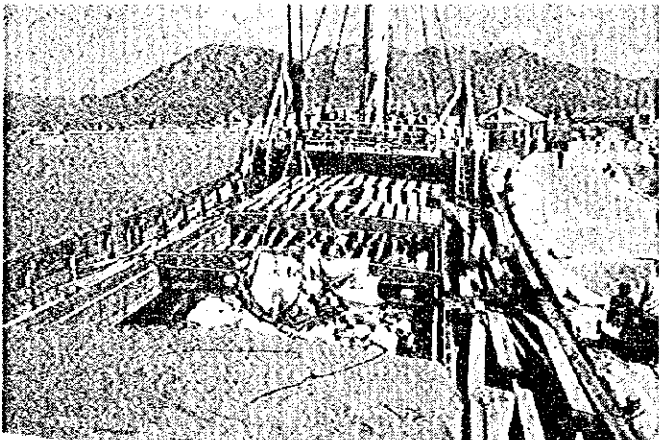
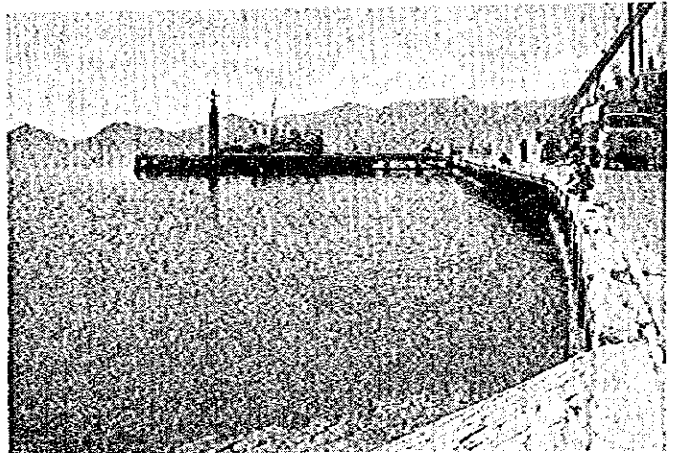
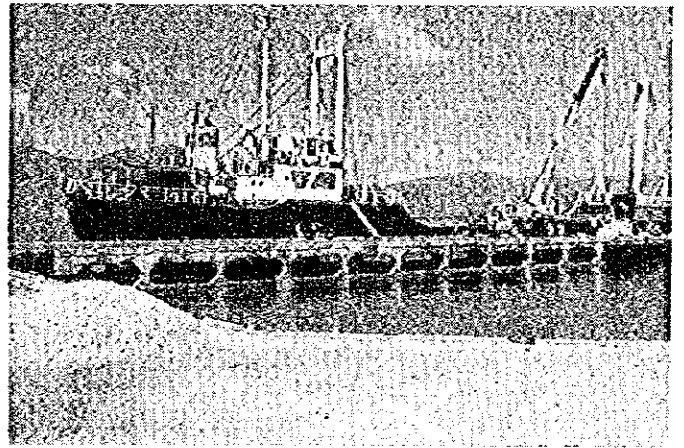
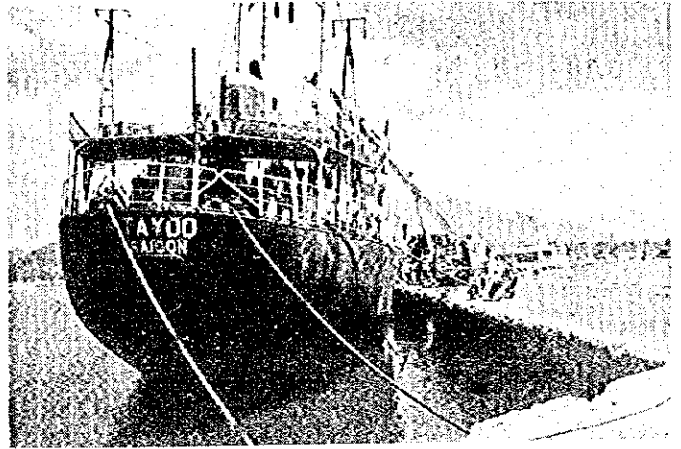
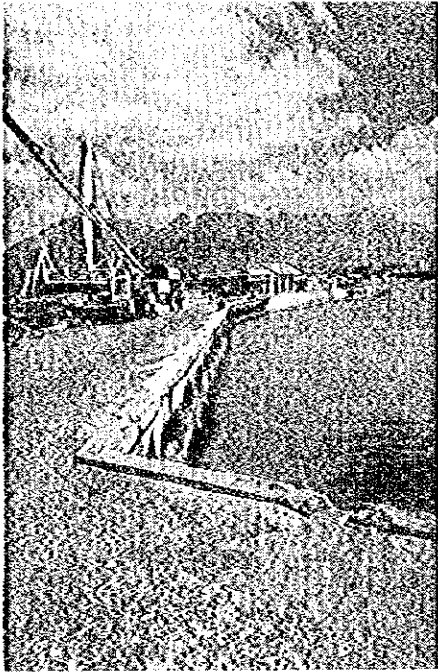


NOTE

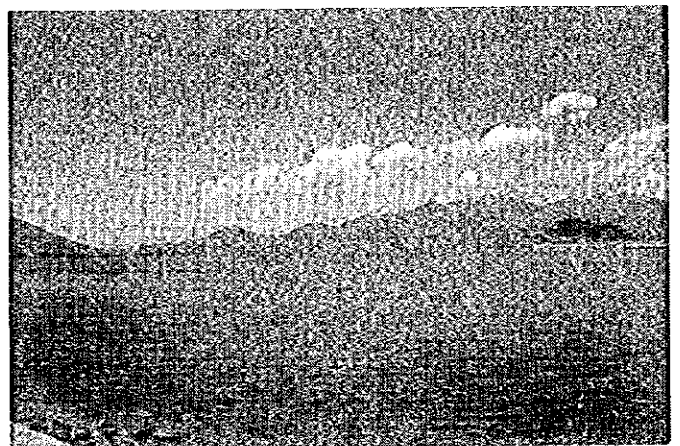
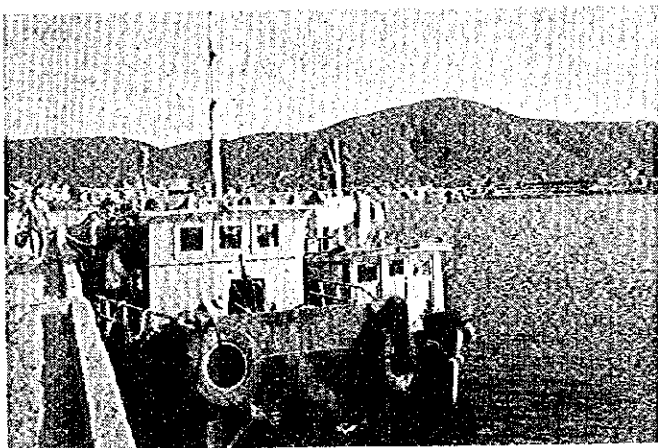
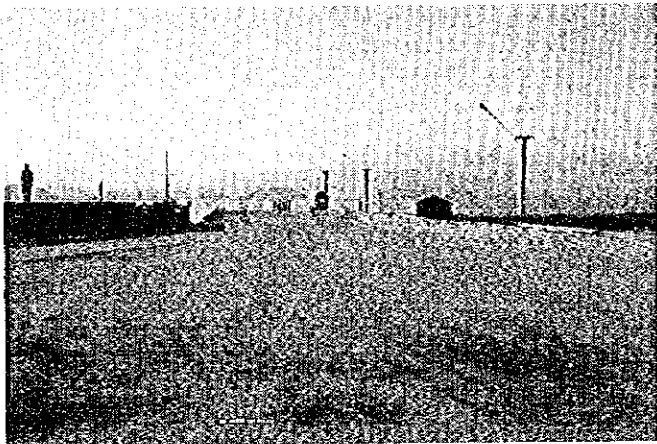
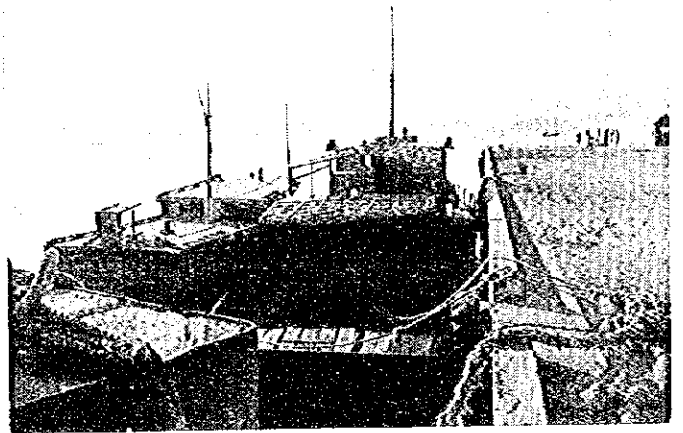
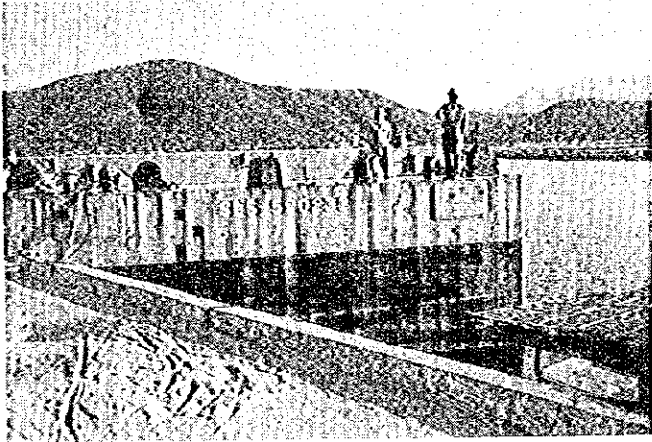
1- Dimensions and elevations in metre
 2- Survey elevations written on the drawing are 0.525 m lower than those of sea chart levelling network
 3- Construction signs :

Period 1- Wharf 1 area Sand + Salt
 Period 2- Wharf 2 area Container
 Period 3- Wharf 3 area General cargo

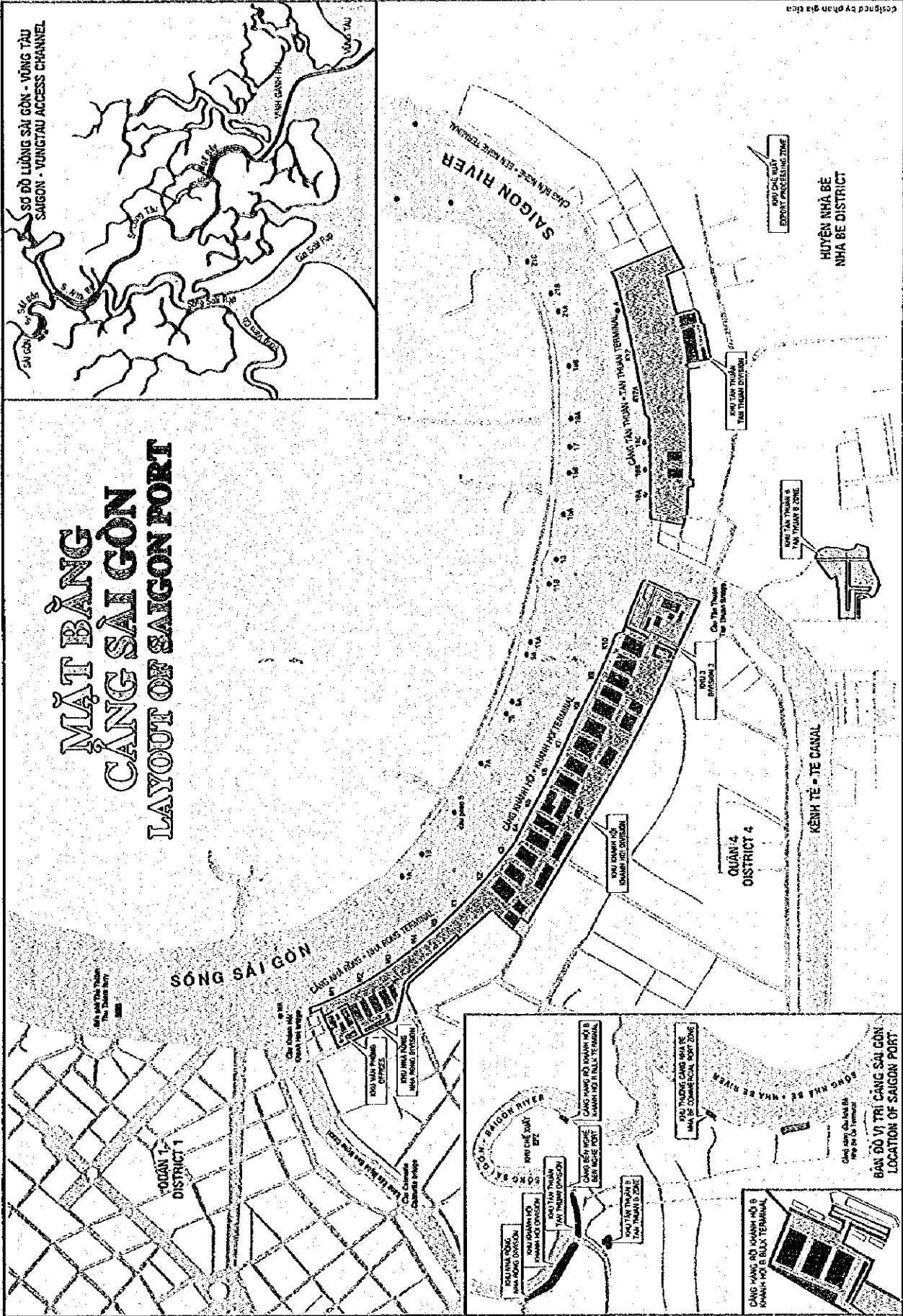
Ba Ngoi Port



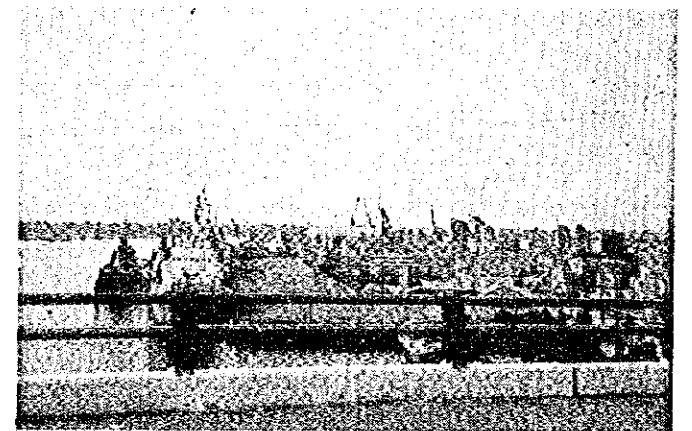
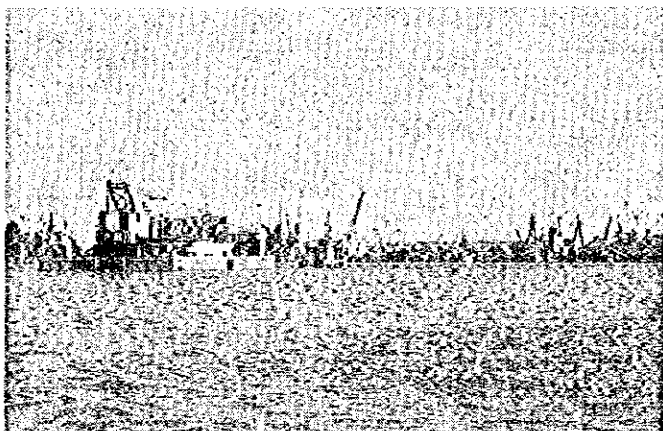
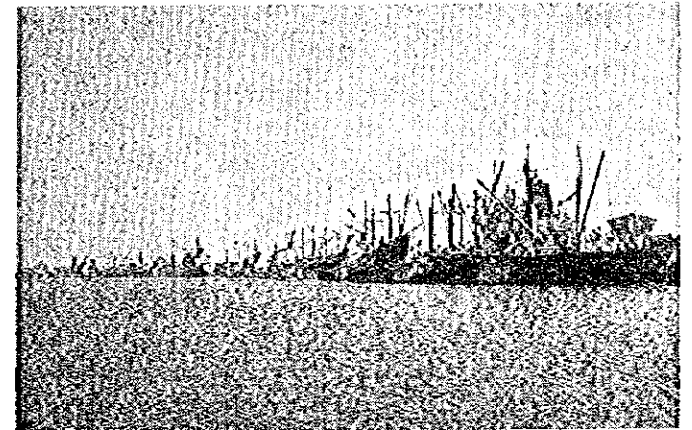
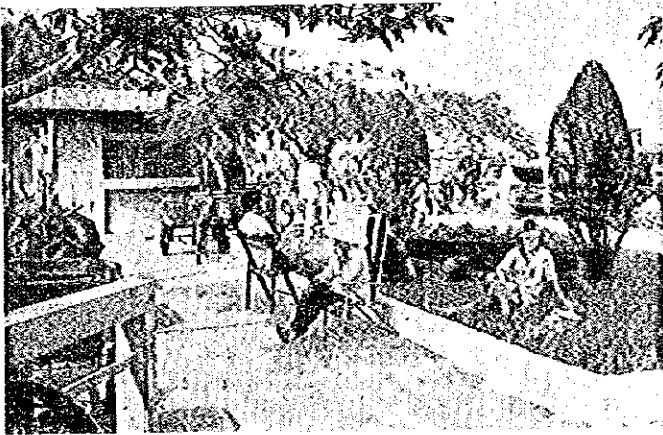
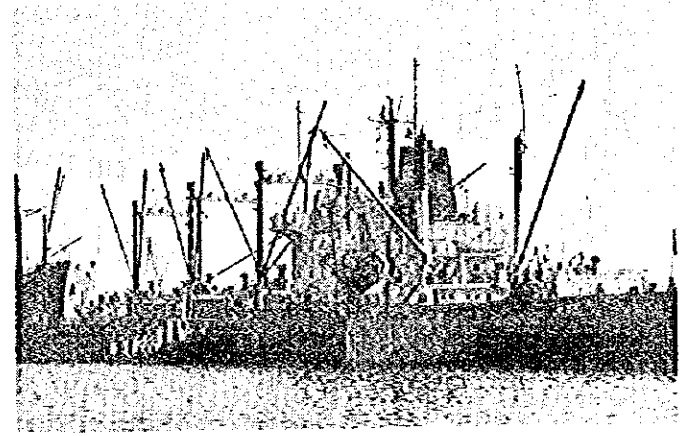
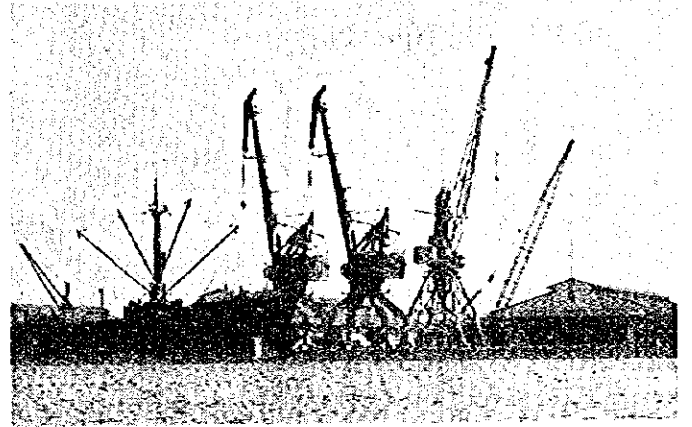
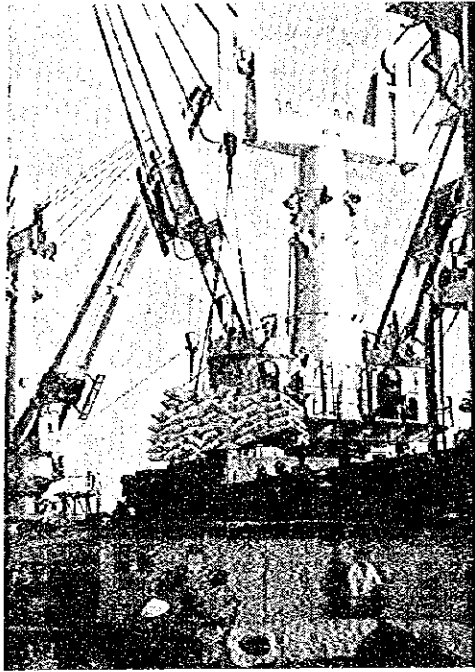
3.11 Hon Khoi Port



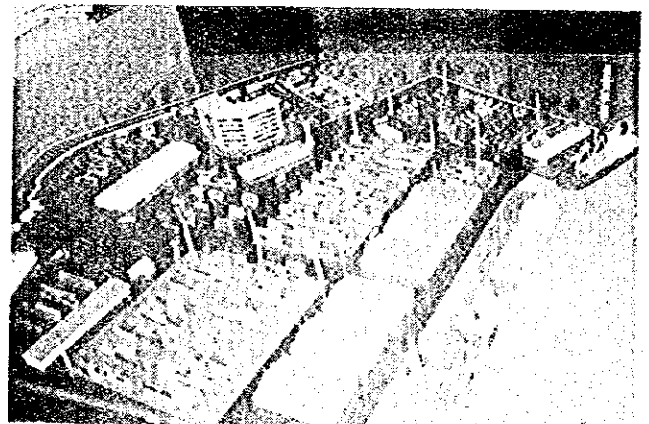
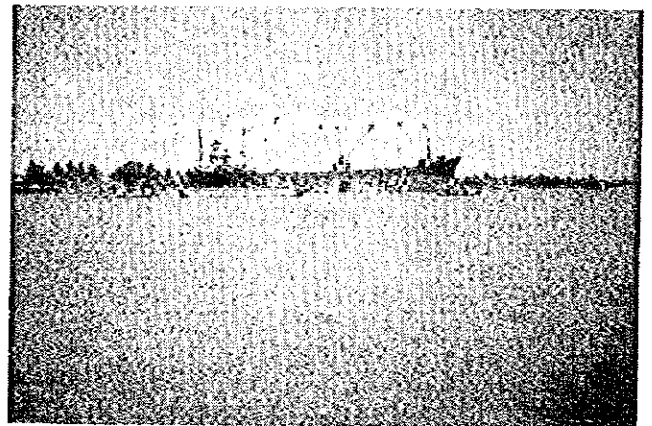
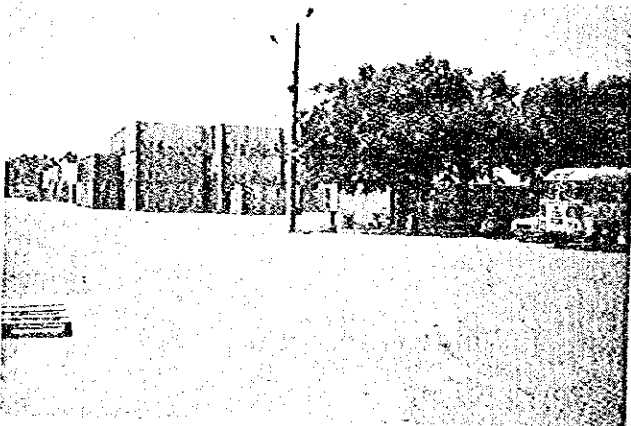
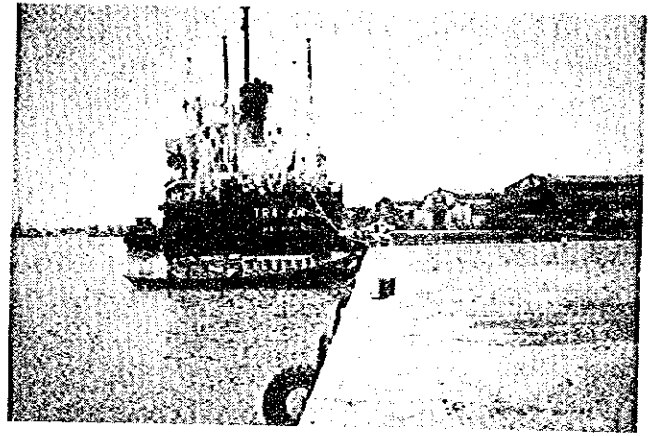
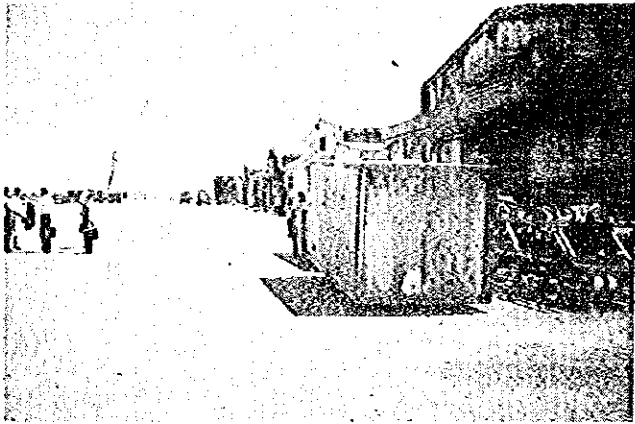
MẶT BẰNG CẢNG SÀI GÒN LAYOUT OF SAIGON PORT



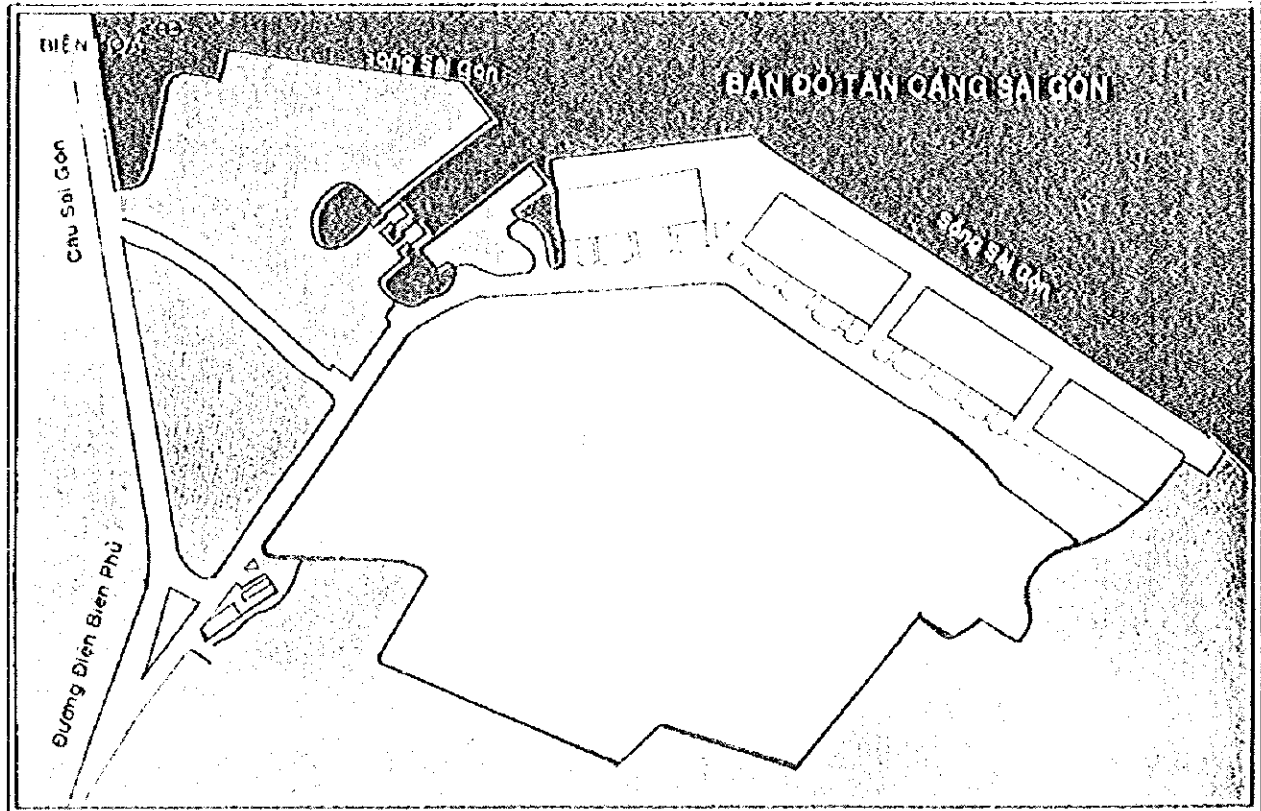
3.12 Saigon Port



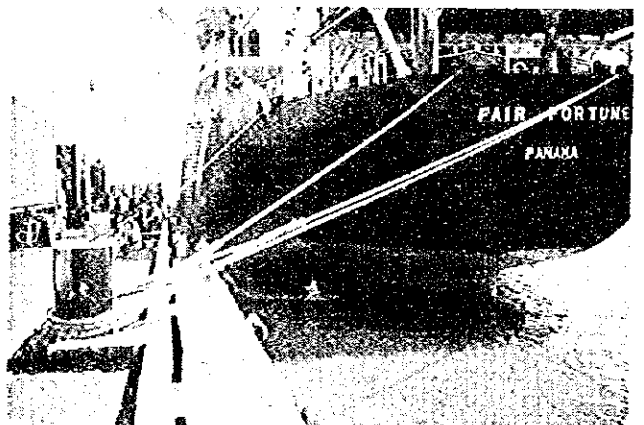
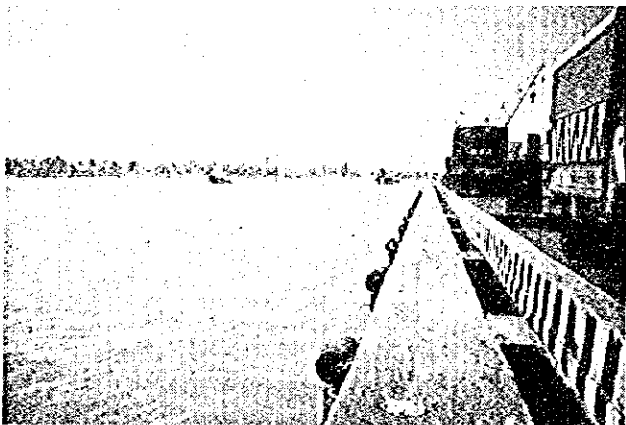
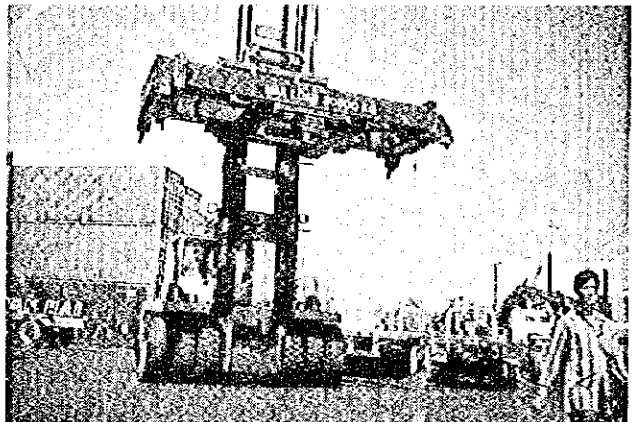
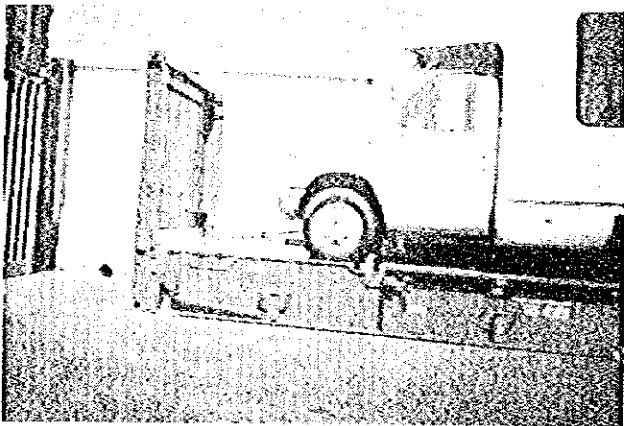
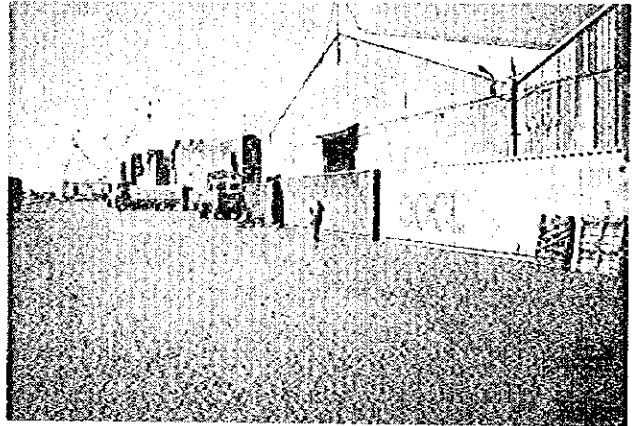
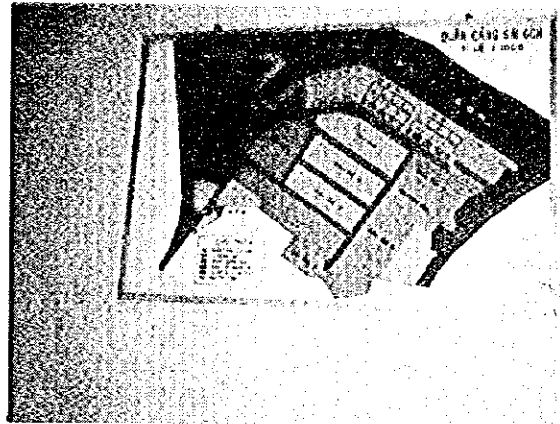
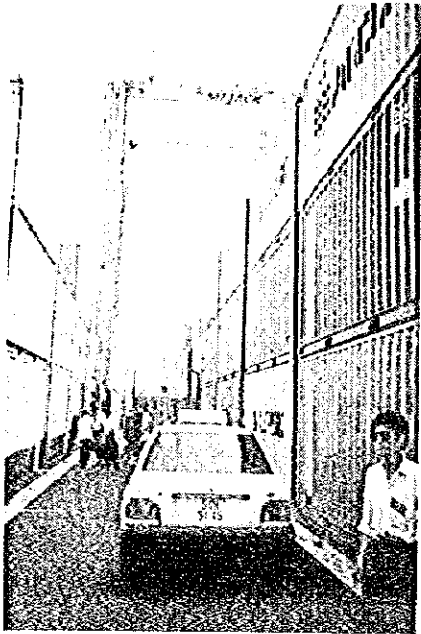
3.13 Ben Nghe Port



3.14 Tan Cang Port (New Saigon Port)



Tan Cang Port (New Saigon Port)



3.15 Nha Be Oil Port

