

Appendix 2.9 Shipcall Record in 1995 (Jan. - Jun) - Thi Nai Port (I)

No	Vessel Name	Flag	Arrival	Leave	Export Cargoes			Unloaded Cargoes			Loaded Cargoes		
					Commodity	Ton	To Foreign	Commodity	Ton	Origin Port	Commodity	Ton	Des. Port
1	Hong Hai Binh 09	VN	3/1/95	6/1/95							Wood	375	An Giang
2	Van Hai 04	VN	2/1/95	3/1/95				Electric Equipment	363	Quang Ninh			
3	Binh Thuan	VN	9/1/95	11/1/95							Wood	300	Dong Nai
4	Binh Dinh	VN	25/1/95	27/1/95				Cement	1,520	Hai Phong			
5	Song Hieu 12	VN	4/2/95	5/2/95							Wood	320	An Giang
6	Binh Dinh	VN	28/1/95	30/1/95							Wood	1,048	An Giang
7	Qui Nhon	VN	9/2/95	11/2/95							Wood	300	An Giang
8	Nguyen Hue	VN	8/2/95	13/2/95							Rice	816	Hai Phong
9	Ha Than 402	VN	11/2/95	13/2/95							Wood	340	Dong Nai
10	Song Hieu 16	VN	13/2/95	15/2/95							Wood	240	Cuu Long
11	Song Hieu 16	VN	14/2/95	15/2/95							Wood	80	Cuu Long
12	Bach Dang 02	VN	15/2/95	17/2/95							Wood	900	An Giang
13	Phuong Mai 09	VN	17/2/95	19/2/95							Wood	266	An Giang
14	Hai Van 06	VN	18/2/95	20/2/95				Cement	447	Hai Phong			
15	Hai Van 06	VN	21/2/95	22/2/95							Rice	396	Nghe An
16	Viet Ba 04	VN	20/2/95	23/2/95				Cement	1,488	Hai Phong			
17	Viet Ba 04	VN	24/2/95	27/2/95							Wood	1,150	An Giang
18	Song Hong 18	VN	27/2/95	28/2/95							Wood	266	An Giang
19	Song Hong 18	VN	1/3/95	1/3/95							Wood	130	An Giang
20	Le Loi	VN	1/3/95	4/3/95							Wood	604	An Giang
21	Phuong Mai 09	VN	2/3/95	3/3/95							Wood	266	Qui Nhon
22	Le Loi	VN	1/3/95	4/3/95							Wood	266	An Giang
23	Song Hong 18	VN	1/3/95	1/3/95							Wood	74	An Giang
24	Quang Trung 15	VN	16/3/95	17/3/95							Sliced Manioc	298	Quang Ninh
25	Bach Dang 04	VN	23/2/95	25/2/95							Wood	850	An Giang
26	Song Hong 01	VN	15/3/95	19/3/95				Cement	780	Hai Phong			
27	Song Hong 01	VN	21/3/95	22/3/95							Wood	380	An Giang
28	Pha Rung 09	VN	23/3/95	24/3/95				Electric Equipment	360	Quang Ninh			
29	Phuong Mai	VN	20/3/95	24/3/95				Cement	1,520	Hai Phong			
30	Pha Rung 09	VN	24/3/95	25/3/95							Wood	250	An Giang
31	Song Hong 18	VN	1/3/95	1/3/95							Wood	40	An Giang
32	Ham Rong 08	VN	26/3/95	27/3/95							Wood	300	An Giang
33	Song Hieu 14	VN	31/3/95	1/4/95							Wood	290	An Giang
34	Phuong Mai	VN	27/3/95	29/3/95	Sliced Manioc	789	China						
35	11 = 10 = 06	VN	31/3/95	1/4/95							Sliced Manioc	168	Quang Ninh
36	Vietranscimex 02	VN	3/4/95	4/4/95							Wood	430	An Giang
37	Ba To	VN	4/4/95	5/4/95	Sliced Manioc	300	China						
38	Halish 89	VN	3/4/95	7/4/95				Cement	752	Hai Phong			
39	Ha Lish 89	VN	8/4/95	9/4/95							Wood	460	An Giang
40	Phuong Dong	VN	10/4/95	11/4/95							Wood	480	An Giang
41	Song Hong 18	VN	13/4/95	16/4/95				Cement	702	Hai Phong			
42	Song Hong 18	VN	17/4/95	18/4/95							Wood	440	An Giang
43	B 10	VN	13/4/95	17/4/95							Wood	550	An Giang
44	Bach Dang 08	VN	19/4/95	22/4/95				Cement	1,305	Hai Phong			
45	Quang Ninh 01	VN	26/4/95	28/4/95	Sliced Manioc	187	China						
46	11 = 10 = 06	VN	28/4/95	29/4/95	Sliced Manioc	165	China						
47	14 = 10 = 09	VN	30/4/95	30/4/95				Electric Equipment	200	Quang Ninh			
48	Hung Phat 02	VN	8/5/95	9/5/95	Sliced Manioc	463	China						
49	Song Kien 05	VN	7/5/95	7/5/95							Wood	70	An Giang
50	Song Thu	VN	8/5/95	10/5/95							Wood	970	An Giang
51	Quang Ninh 01	VN	10/5/95	11/5/95							Sliced Manioc	190	Quang Ninh
52	Bach Dang 02	VN	12/5/95	13/5/95							Wood	900	An Giang
53	Phuong Mai 16	VN	14/5/95	14/5/95							Wood	270	An Giang
54	Song Hieu 12	VN	15/5/95	16/5/95				Fertilizer	513	Thanh Hoa			
55	Song Hieu 12	VN	17/5/95	18/5/95							Wood	330	An Giang
56	Bach Dang 06	VN	12/5/95	17/5/95				Cement	1,126	Hai Phong			
57	Bach Dang 06	VN	17/5/95	17/5/95				Cement	12	Hai Phong			
58	Ninh Binh 401	VN	22/5/95	23/5/95				Fertilizer	450	Thanh Hoa			
59	Ninh Binh 401	VN	23/5/95	25/5/95							Wood	319	An Giang
60	Phuong Dong	VN	26/5/95	27/5/95							Wood	510	An Giang
61	Quang Trung 08	VN	27/5/95	27/5/95	Titanium	200	China						
62	Viet Ba 02	VN	18/5/95	21/5/95							Wood	840	An Giang
63	Quang Ninh 01	VN	30/5/95	30/5/95							Sliced Manioc	203	Quang Ninh
64	Livaso 01	VN	29/5/95	1/6/95				Cement	406	Hai Phong			
65	Livaso 01	VN	1/6/95	1/6/95				Cement	3	Hai Phong			
66	Livaso 01	VN	1/6/95	2/6/95							Wood	230	Soc Trang
67	Quang Ninh 02	VN	30/5/95	31/5/95							Sliced Manioc	191	Quang Ninh

Appendix 2.9 Shipcall Record in 1995 (Jan. - Jun) - Thi Nai Port (2)

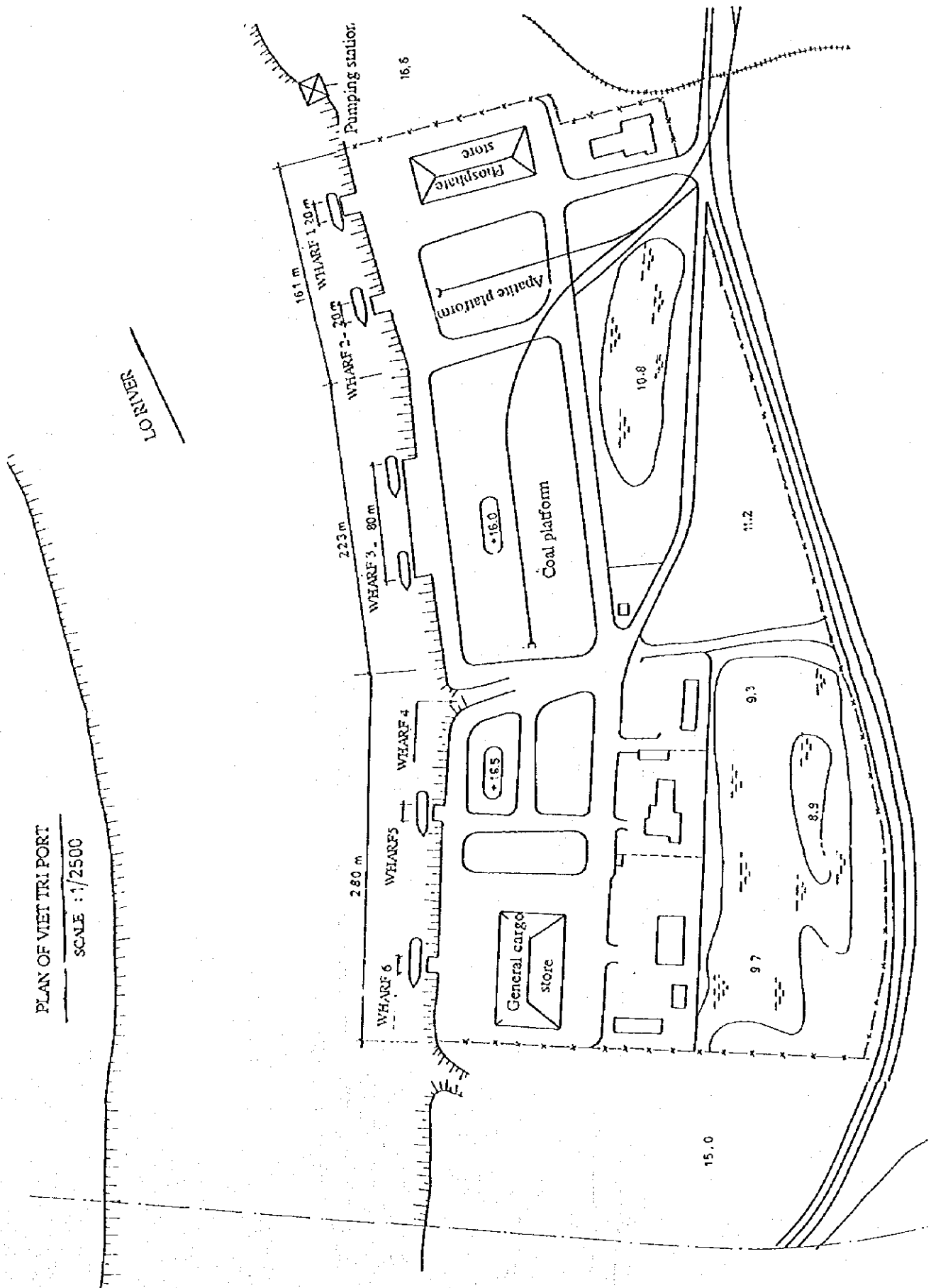
No.	Vessel Name	Flag	Arrival	Leave	Export Cargoes			Unloaded Cargoes			Loaded Cargoes		
					Commodity	Ton	To Foreign	Commodity	Ton	Origin Port	Commodity	Ton	Des. Port
68	Song Hong 18	VN	1/6/95	3/6/95							Wood	502	An Giang
69	Song Thu	VN	4/6/95	6/6/95							Wood	1,020	An Giang
70	Phuong Mai 06	VN	7/6/95	7/6/95							Wood	282	An Giang
71	Dong Phuong 04	VN	6/6/95	8/6/95							Sliced Manioc	350	Quang Ninh
72	Binh Thuan 8	VN	8/6/95	11/6/95				Cement	453	Quang Ninh			
73	Hoang Dieu	VN	9/6/95	11/6/95				Cement	774	Quang Ninh			
74	Binh Thuan 8	VN	12/6/95	14/6/95							Wood	300	An Giang
75	Viet Ba 01	VN	12/6/95	14/6/95							Wood	1,040	An Giang
<b>TOTAL</b>						2,104			13,174			21,590	

## APPENDIX 3

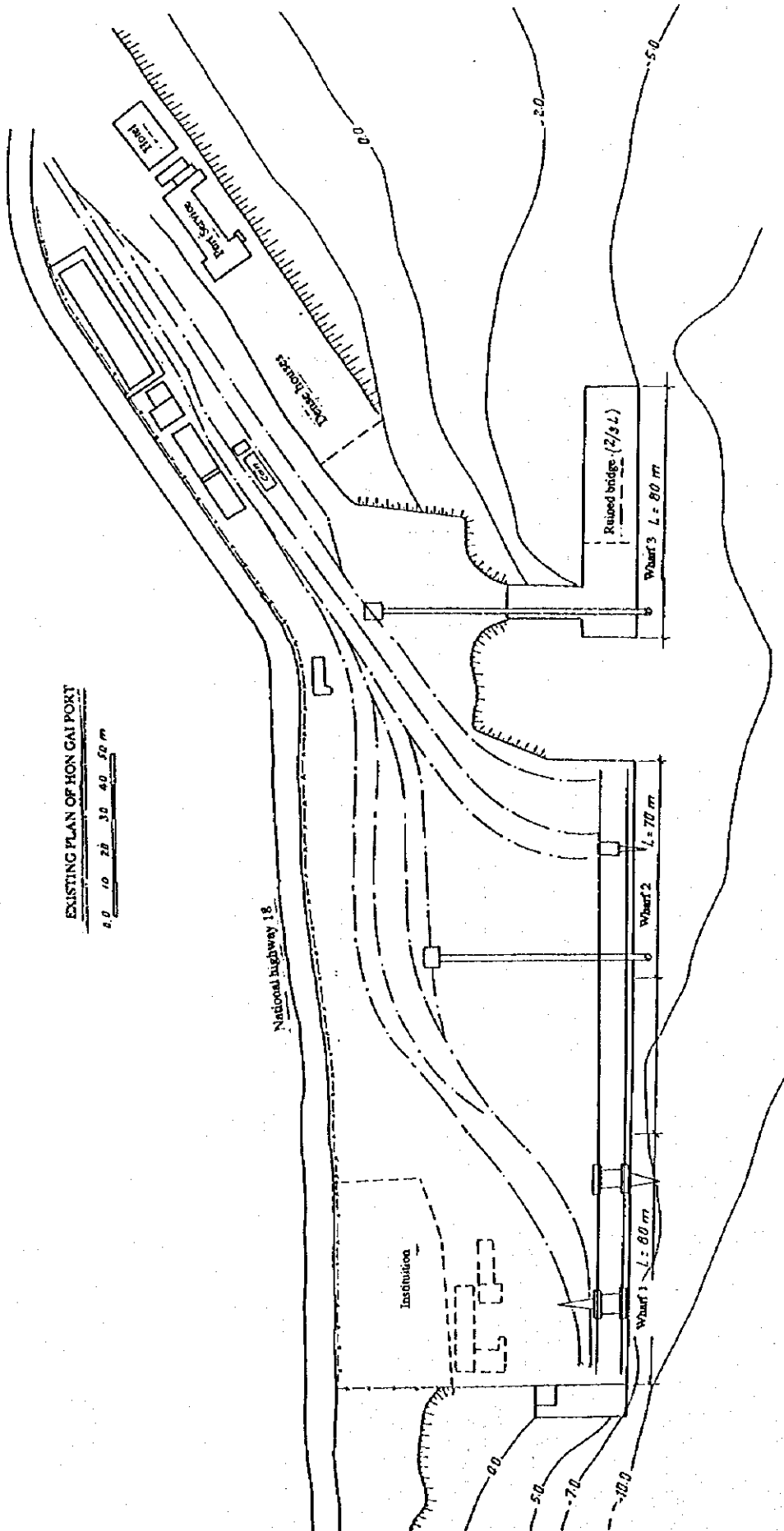
### PICTURES & PORT LAYOUT PLAN

3.1	Viet Tri Port	3.15	Nha Be Oil Port
3.2	Hong Gai Port	3.16	Nha Be Vegetable Port
3.3	Cai Lan Port	3.17	Vung Tau (Cat Lo) Port
3.4	Haigphong Port	3.18	Thi Vai (Phu My) Port
3.5	Cua Cam Port	3.19	My Tho Port
3.6	Cua Lo Port	3.20	Dong Thap Port
3.7	Ben Thuy Port	3.21	Vinh Long Port
3.8	Xuan Hai Port	3.22	My Thoi Port
3.9	Nha Trang Port	3.23	Kien Luong Port
3.10	Ba Ngoi Port	3.24	Hong Chong Port
3.11	Hon Khoi Port	3.25	Can Tho Port
3.12	Saigon Port	3.26	Nam Can Port
3.13	Ben Nghe Port	3.27	Ha Tien Cement Company No.2
3.14	Tan Cang Port (New Saigon Port)	3.28	PTSC Port

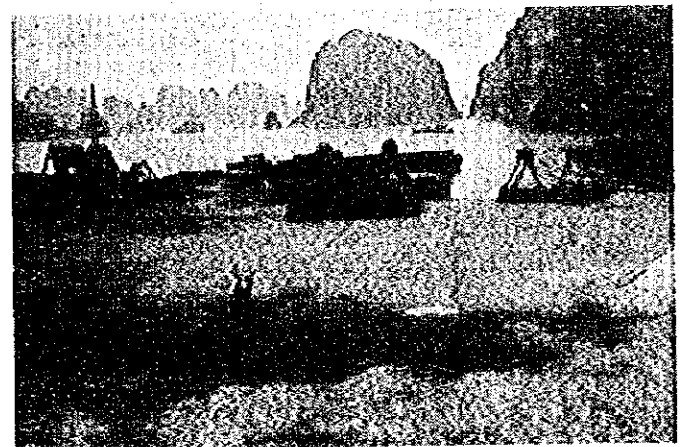
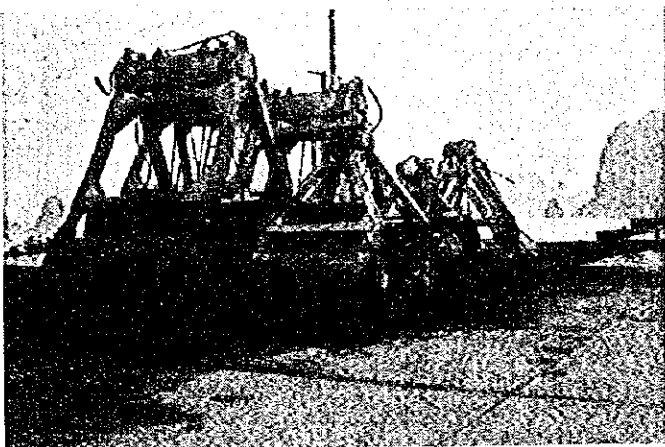
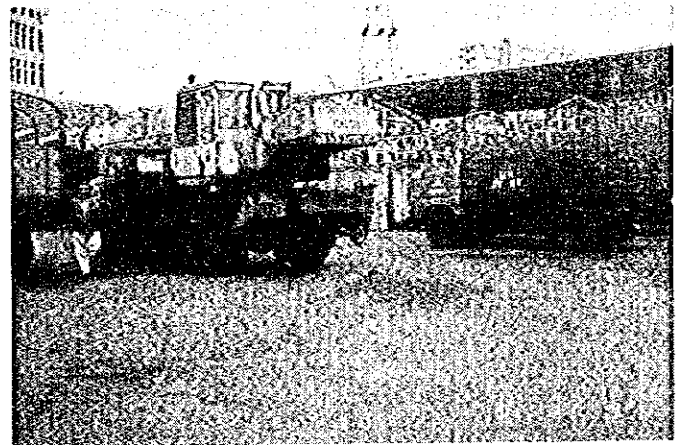
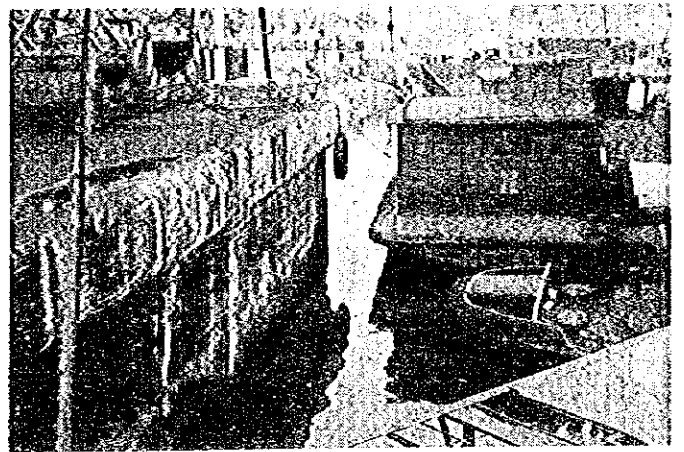
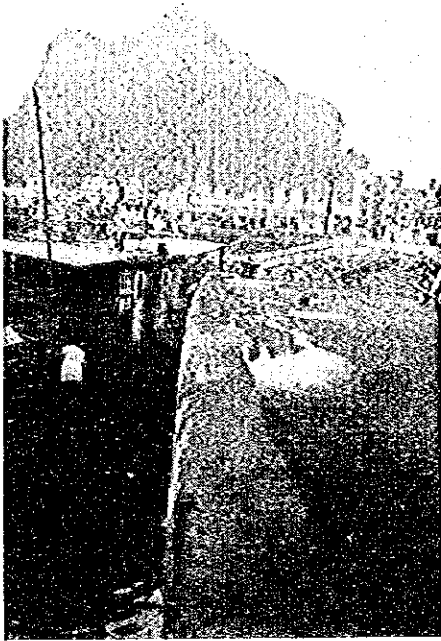
### 3.1 Viet Tri Port



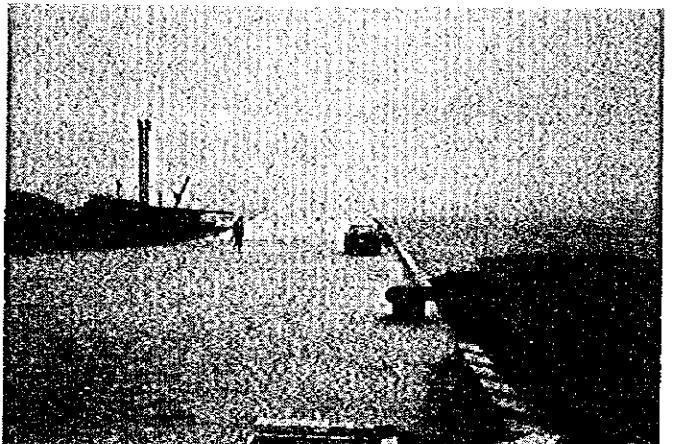
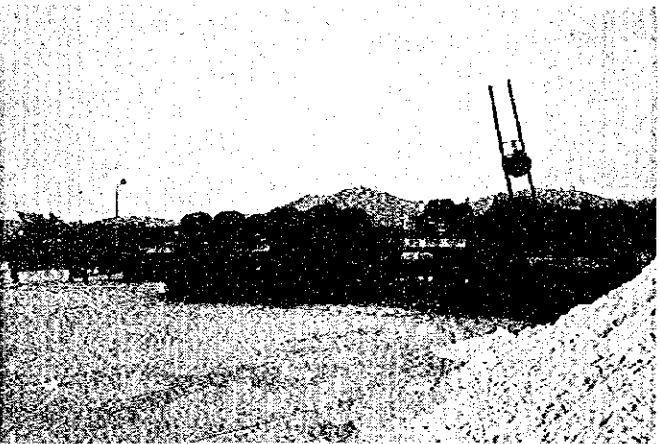
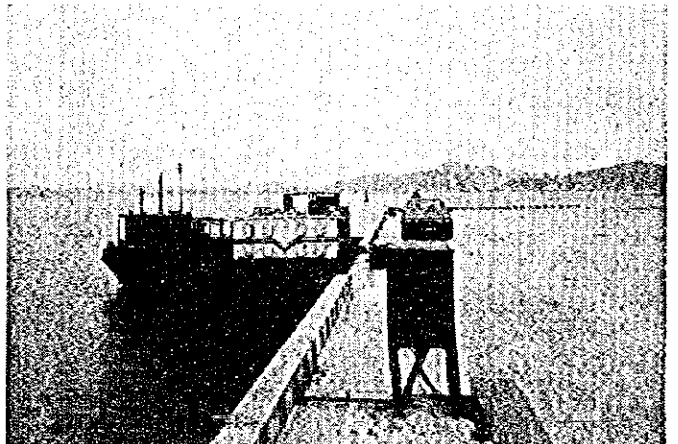
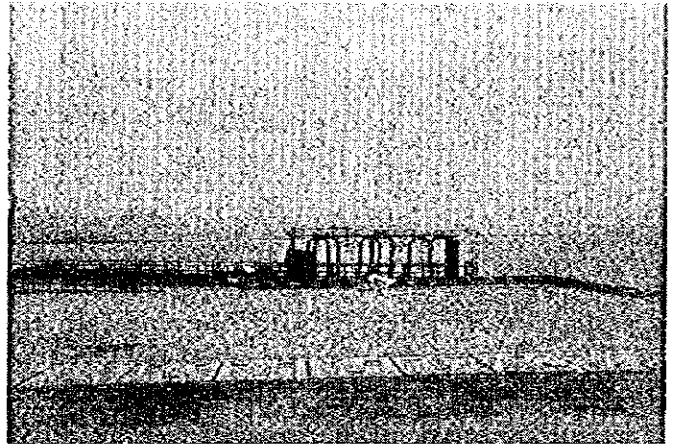
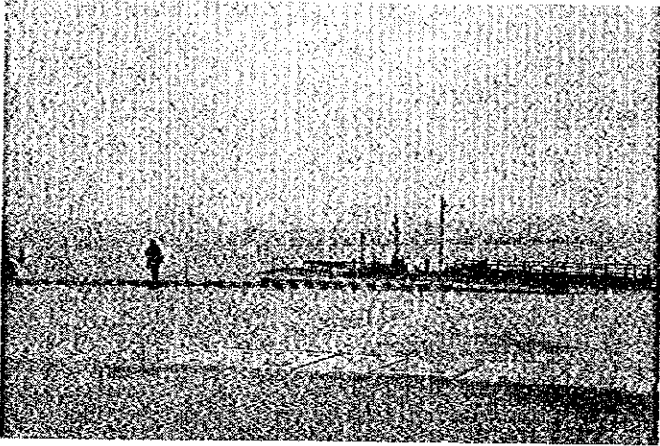
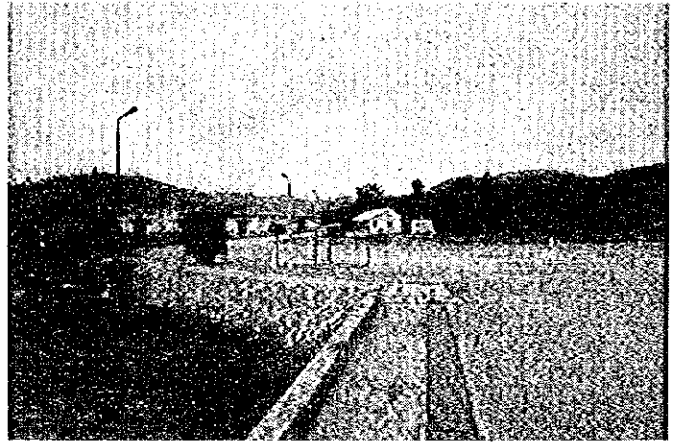
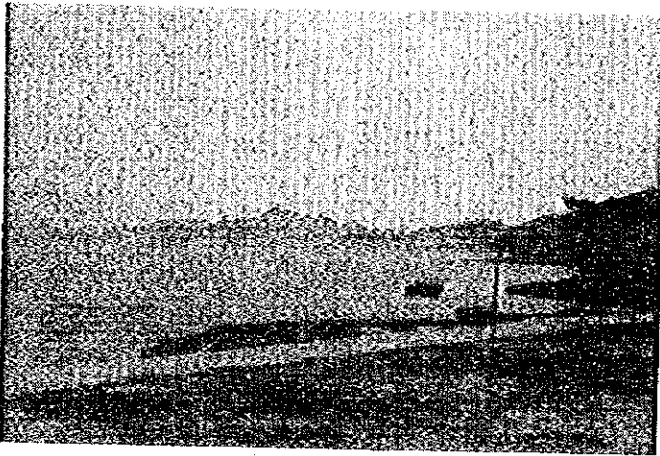
### 3.2 Hong Gai Port



Hong Gai Port



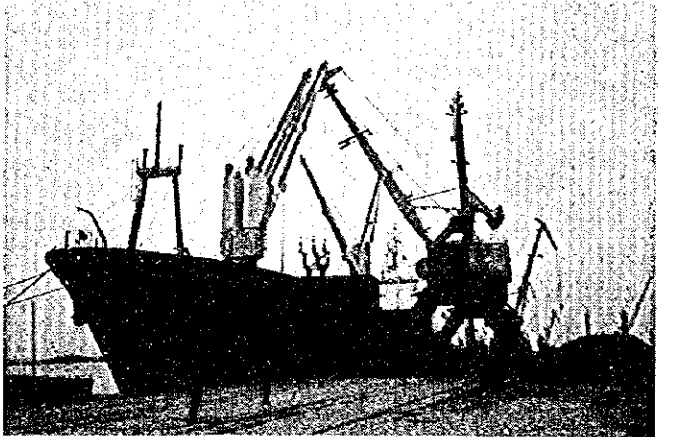
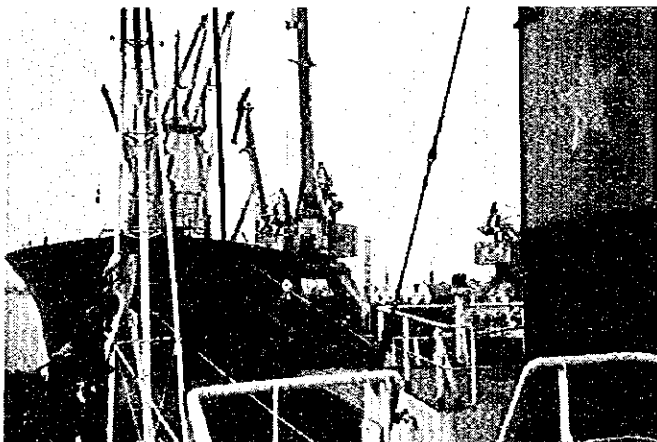
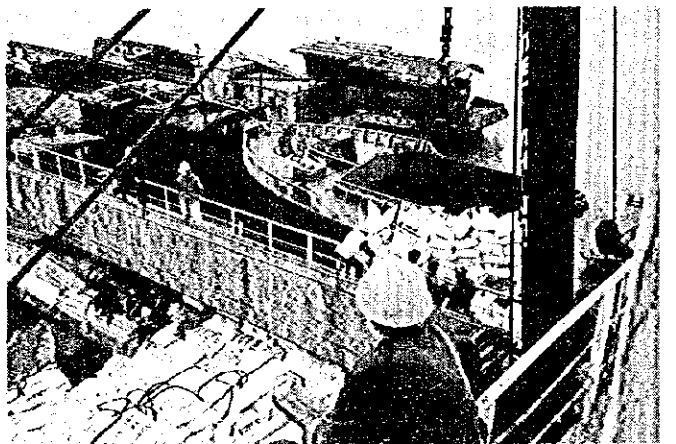
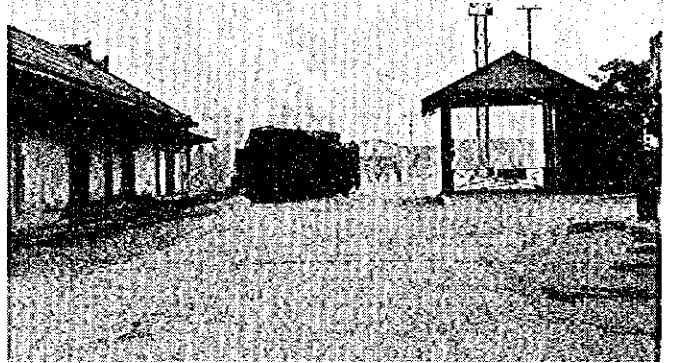
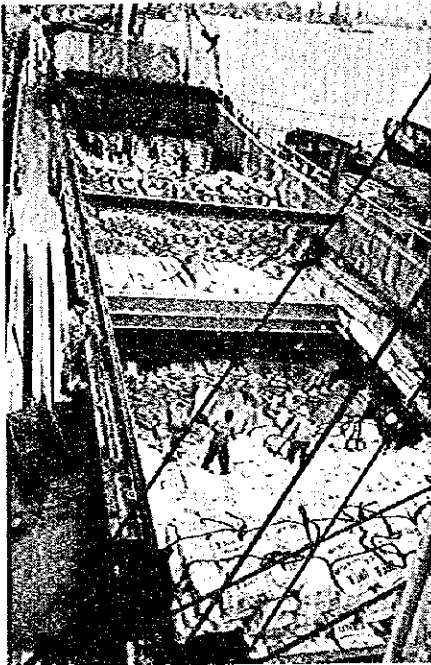
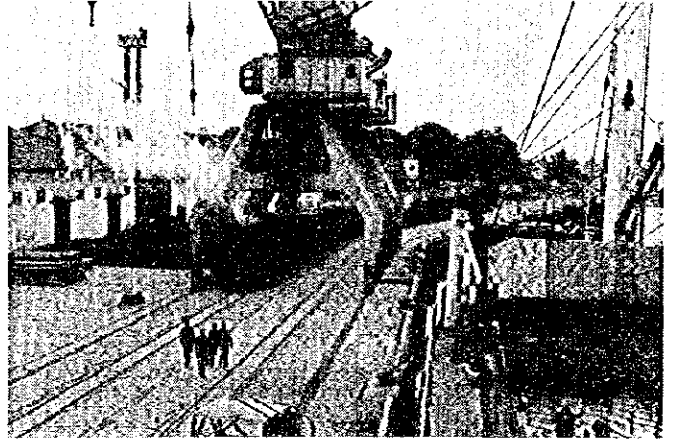
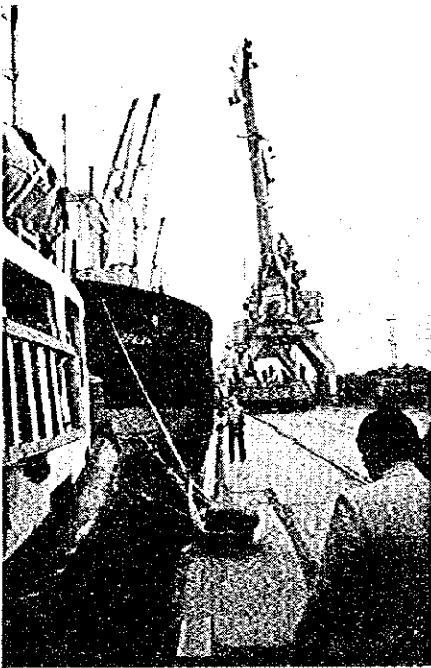
3.3 Cai Lan Port



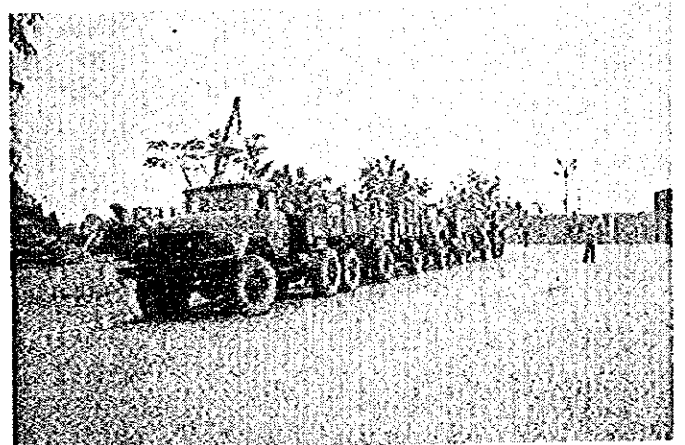
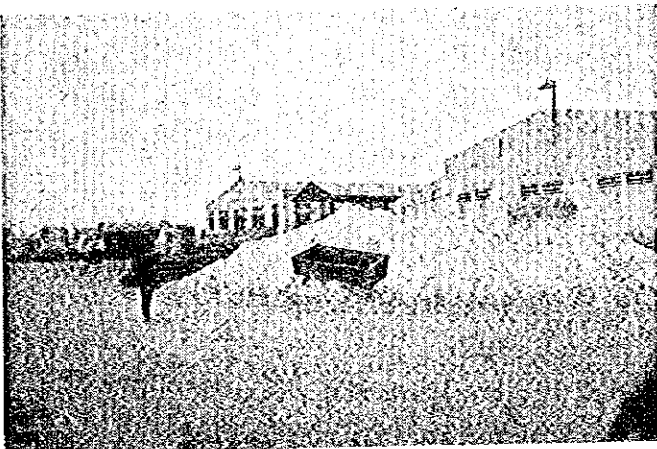
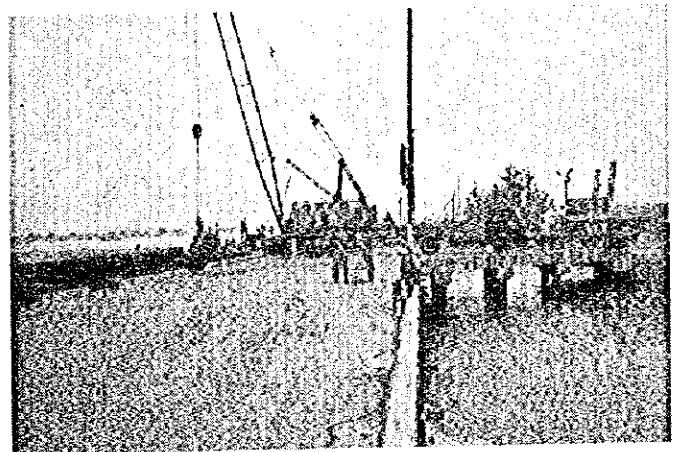
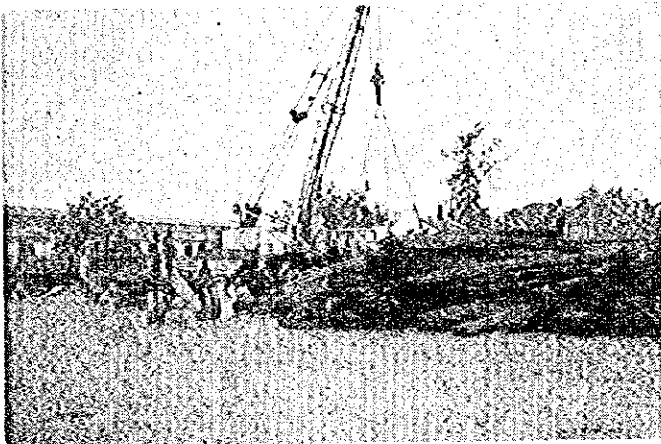
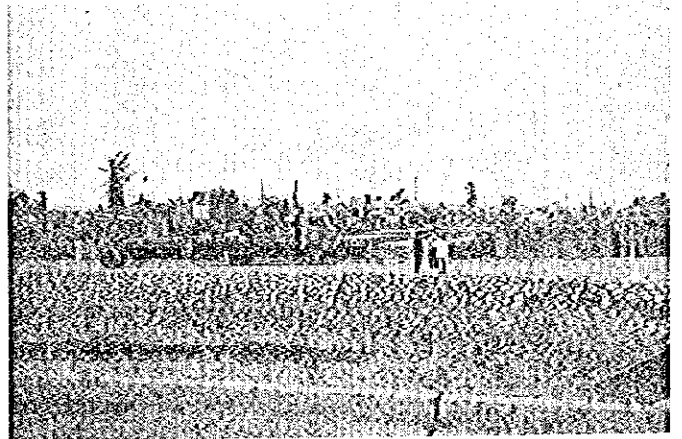
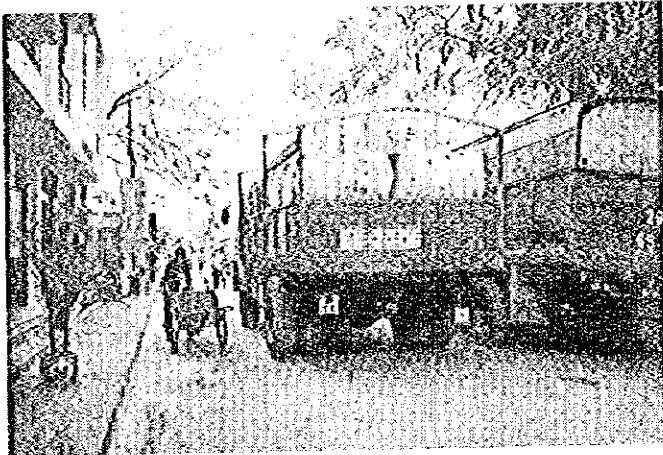
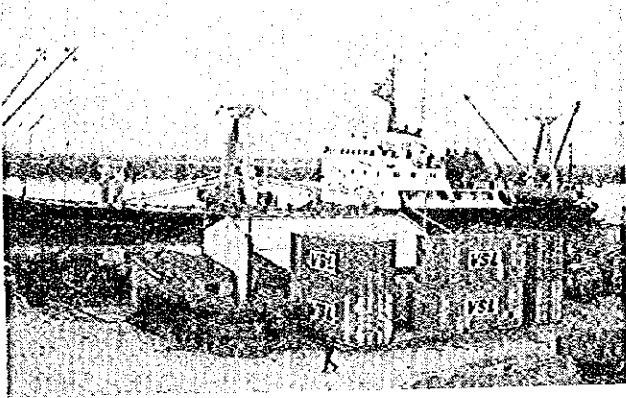




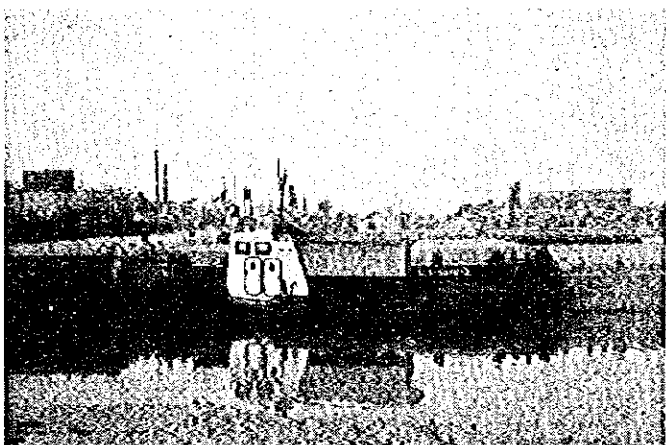
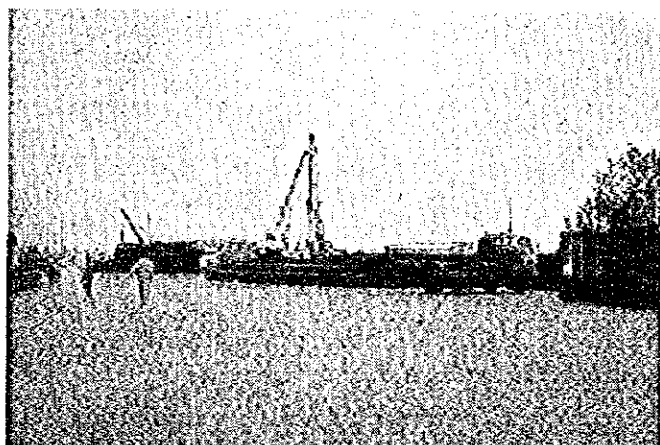
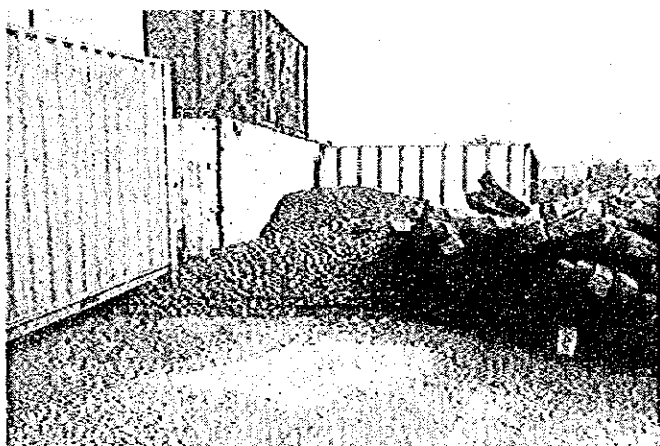
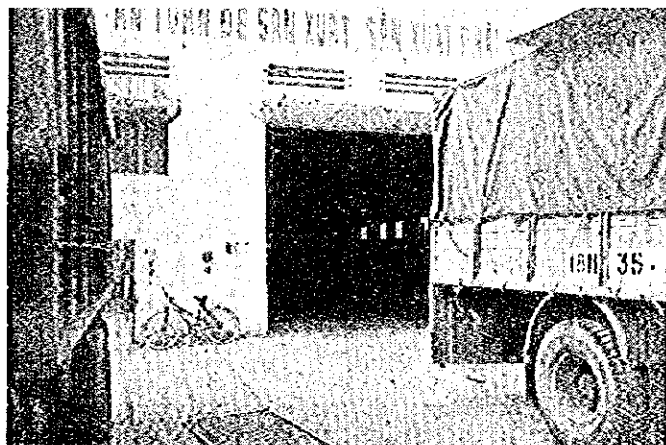
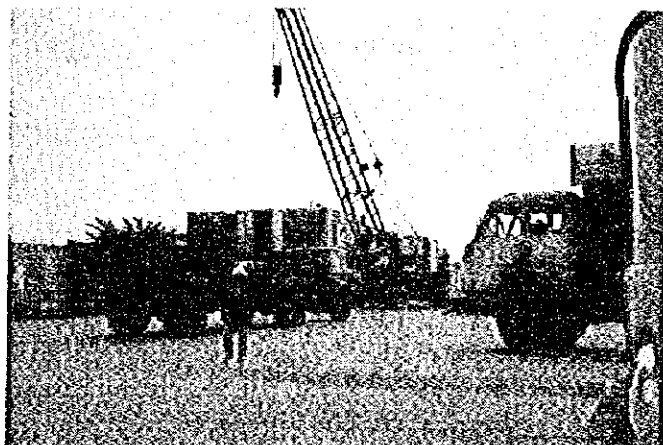
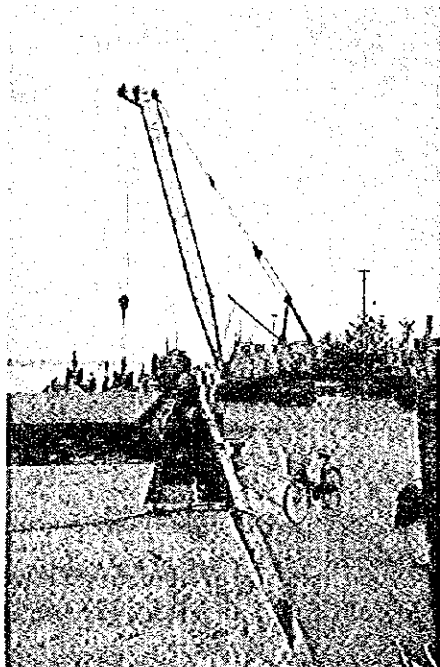
# Haiphong Port



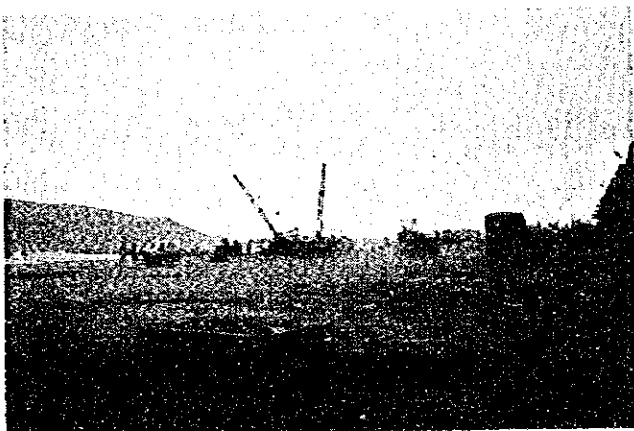
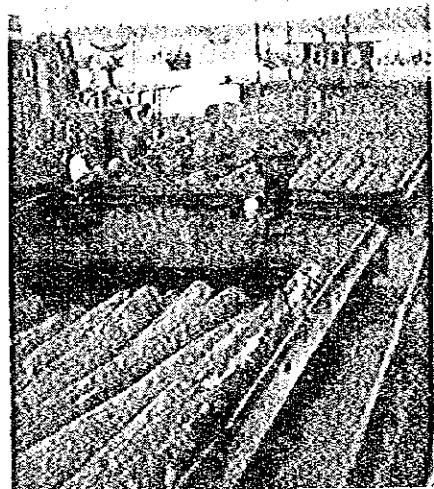
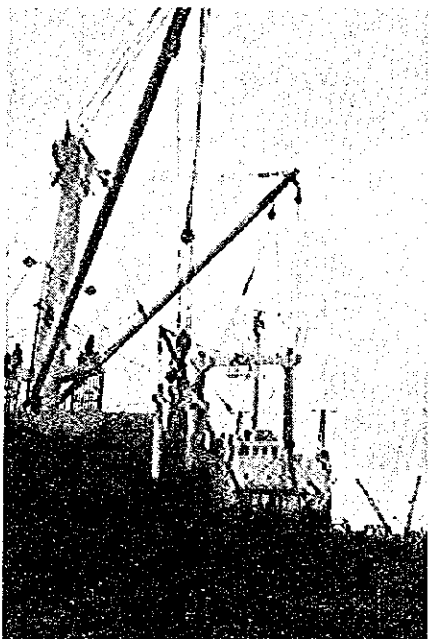
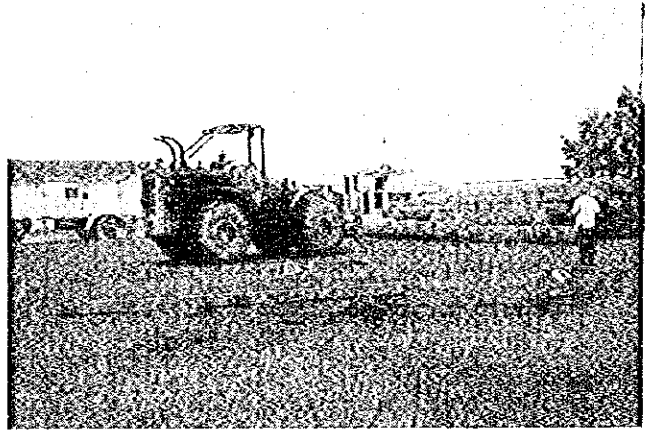
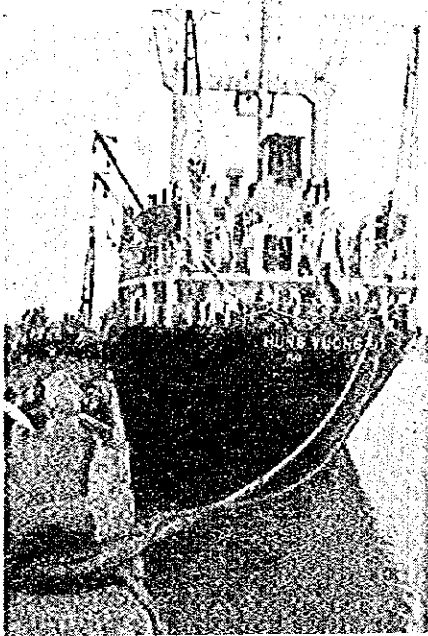
3.5 Cua Cam Port



Cua Cam Port ②



3.6 Cua Lo Port





3.7 Ben Thuy Port

