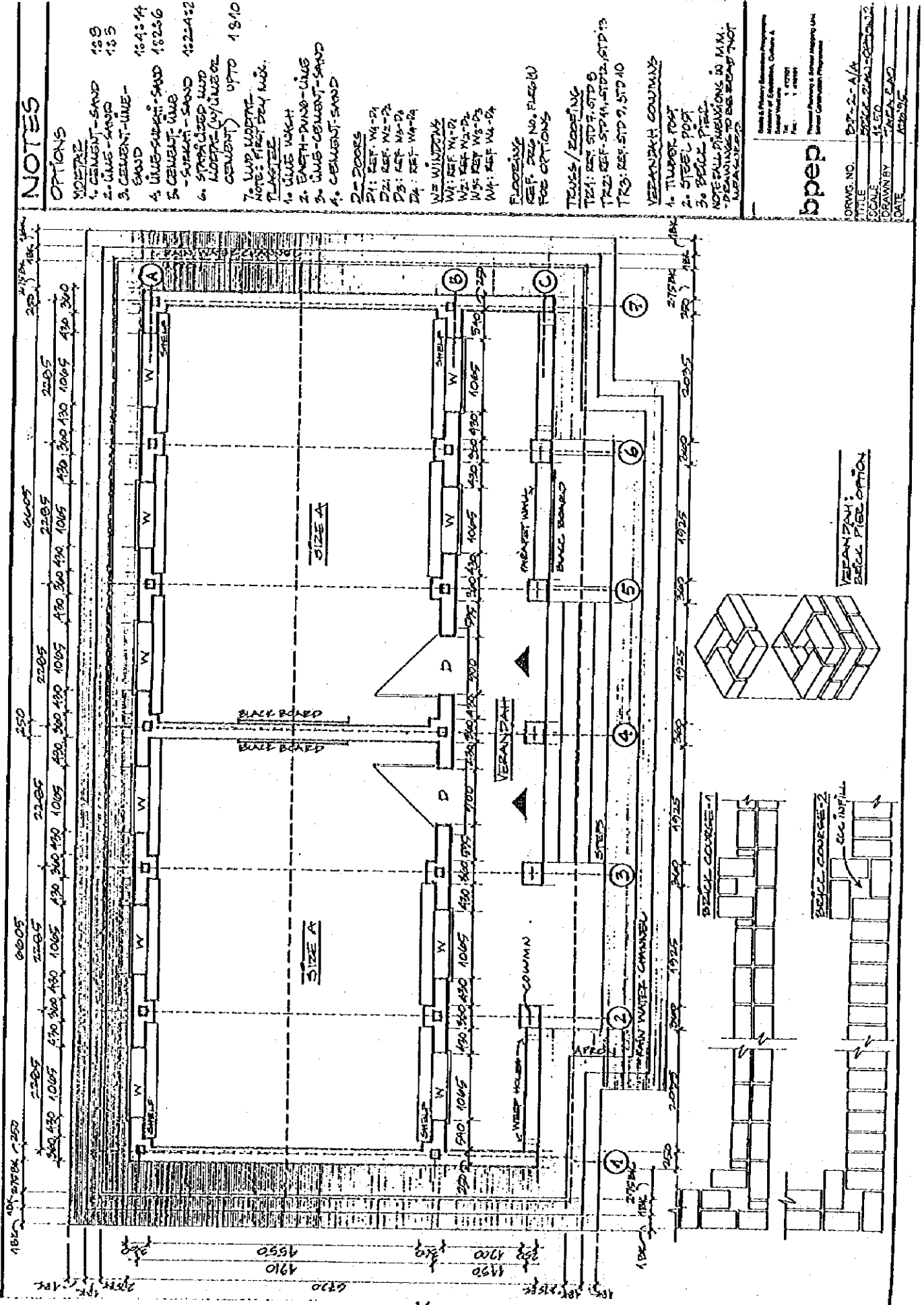


5. Drawings of the Facilities at the Pilot Stage



NOTES

OPTIONS

1. CEMENT-SAND
2. LINE-SAND
3. CEMENT-LIME-SAND
4. LIME-SWIFT-SAND
5. CEMENT-LIME-SWIFT-SAND
6. STABILIZED (M) LIME OR CEMENT
7. MUD MORTAR

NOTES:

1. FINEST DRY MIX
2. PLASTER
3. LIME WASH
4. EARTH-DUNG-LIME
5. LIME-CEMENT-SAND
6. CEMENT-SAND
7. EARTH-STEAM

- DOOR
- W
- WINDOW
- W
- W
- W

FLOORING

SEE PG. NO. FLOOR (1)

SEE OPTIONS

TRUSS / ROOFING

TR 1: REF STD 3, STD 8

TR 2: REF STD 4, STD 12, STD 13

TR 3: REF STD 9, STD 10

VERANDAH COLUMN

1. TIMBER POST

2. STEEL POST

3. BRICK PIECE

NOTE:

ALL DIMENSIONS IN MM.

DRAWINGS TO BE READ NOT MEASURED.

bpep

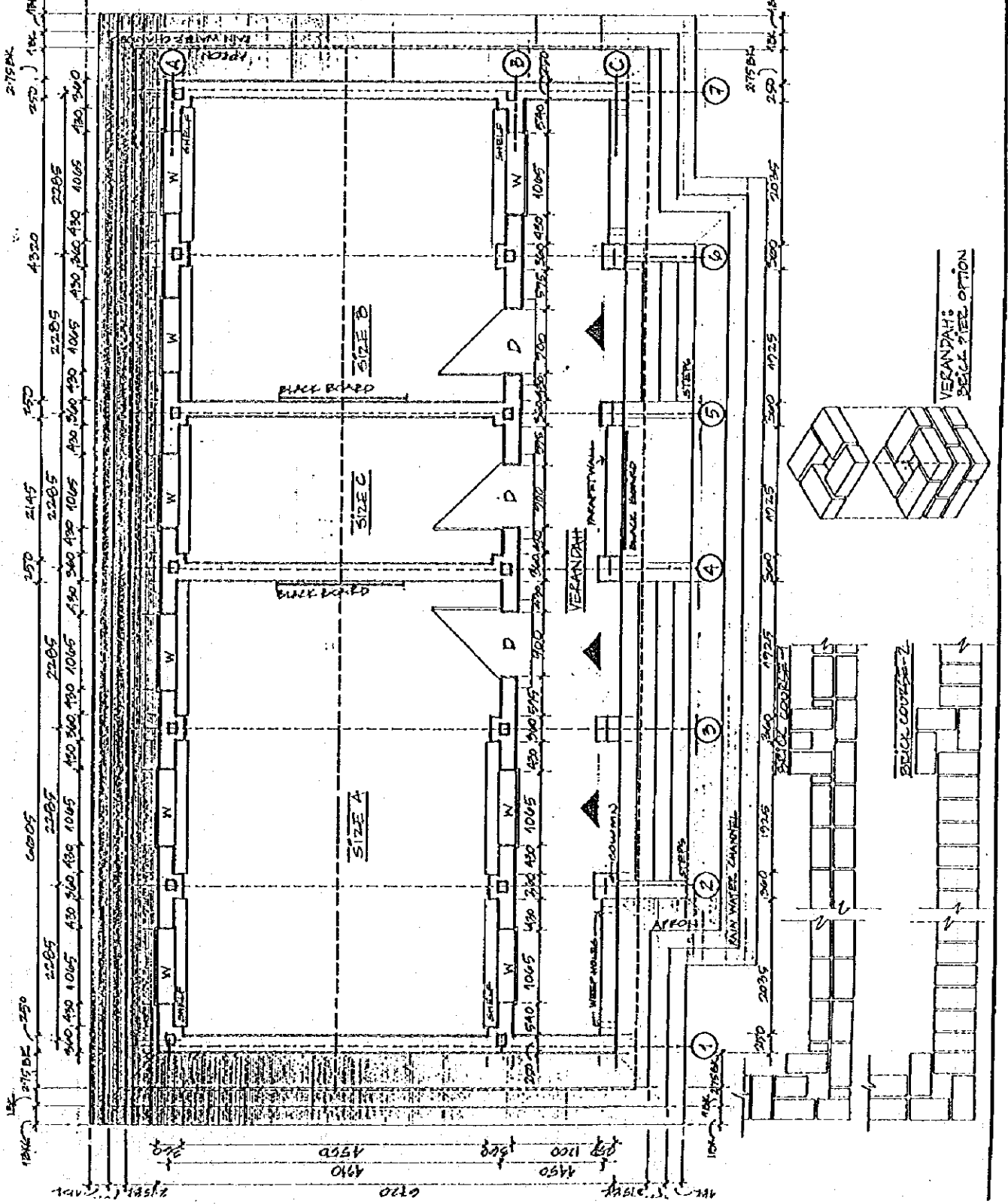
DRWG. NO. B/P-2-A/B/C

TITLE BRICK PLAN - OPTION

SCALE 1:50

DRAWN BY P. S. S. S.

DATE 15/12/25



NOTES

OPTIONS

- 1. 1.2B
- 2. 1.3
- 3. 1.4
- 4. 1.5
- 5. 1.6
- 6. 1.7
- 7. 1.8

- 1. CEMENT-SAND
- 2. LIME-SAND
- 3. CEMENT-LIME-SAND
- 4. LIME-SURFANT-SAND
- 5. CEMENT-LIME-SURFANT-SAND
- 6. STABILIZED/LIME OR CEMENT/LIME MORTAR
- 7. WOP MORTAR

- NOTE: FIRST DRY MIX
- PLASTER
- 1. LIME WASH
- 2. BATH-DUNG-LIME
- 3. LIME-CEMENT-SAND
- 4. CEMENT-SAND
- 5. EARTH-STRAW

- D-DOORS
- D1: REF W4-D1
- D2: REF W2-D2
- D3: REF W3-D3
- D4: REF W4-D4
- W-WINDOWS
- W1: REF W1-D1
- W2: REF W2-D2
- W3: REF W3-D3
- W4: REF W4-D4

- FLOORING
- F1: REF F1-D1
- F2: REF F2-D2
- F3: REF F3-D3
- F4: REF F4-D4

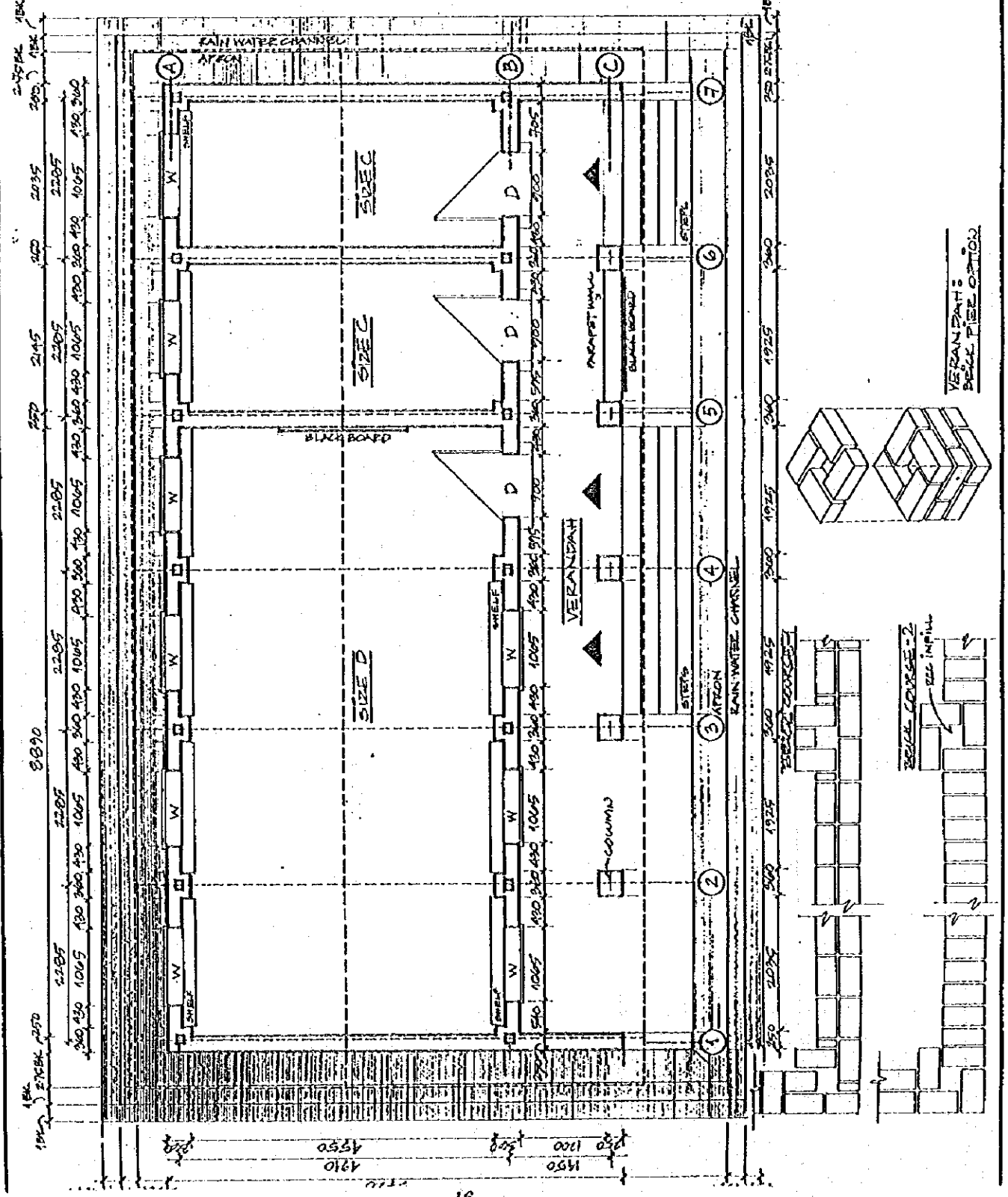
- TRUSS/ROOFING
- T1: REF STD 7, STD 8
- T2: REF STD 11, STD 12, STD 13
- T3: REF STD 9, STD 10

- VERANDA/COLUMNS
- V1: TIMBER POST
- V2: STEEL POST
- V3: BRICK PILE

NOTE:
 - ALL DIMENSIONS IN MM.
 - DRAWINGS TO BE READ NOT REVERSED.



DRWG. NO. 80-2-7/C/C
 TITLE 80-2-7/C/C
 SCALE 1:50
 DRAWN BY JASO BAO
 DATE 14/12/95



8/1/95

NOTES

OPTIONS

1. CEMENT-SAND 183
 2. LIME-SAND 193
 3. CEMENT-LIME-SAND 184:14
 4. LIME-SUPPORT-SAND 182:6
 5. CEMENT-LIME 182:125
 6. SUPPORTED MUD WORKING LIME OL CEMENT UPD 1310
 7. MUD WORKER

NOTES: FINEST SAND MIX

1. LIME WASH
 2. EARTH-DONK-LIME
 3. LIME-CEMENT-SAND
 4. CEMENT-SAND
 5. EARTH-STRAW
 6. DOORS

- D1: REF W1-D
 D2: REF W3-D
 D3: REF W3-D
 D4: REF W4-D

- W1: WINDOWS
 W2: REF W1-D
 W3: REF W2-D
 W4: REF W4-D

FLOORING

- REF: DRG. NO. FLEC (1)
 FOR OPTIONS
 TRUSS/ROOFING
 TR1: REF STD 7, STD 8
 TR2: REF STD 11, STD 12, STD 13
 TR3: REF STD 9, STD 10

VERANDAH COLUMNS

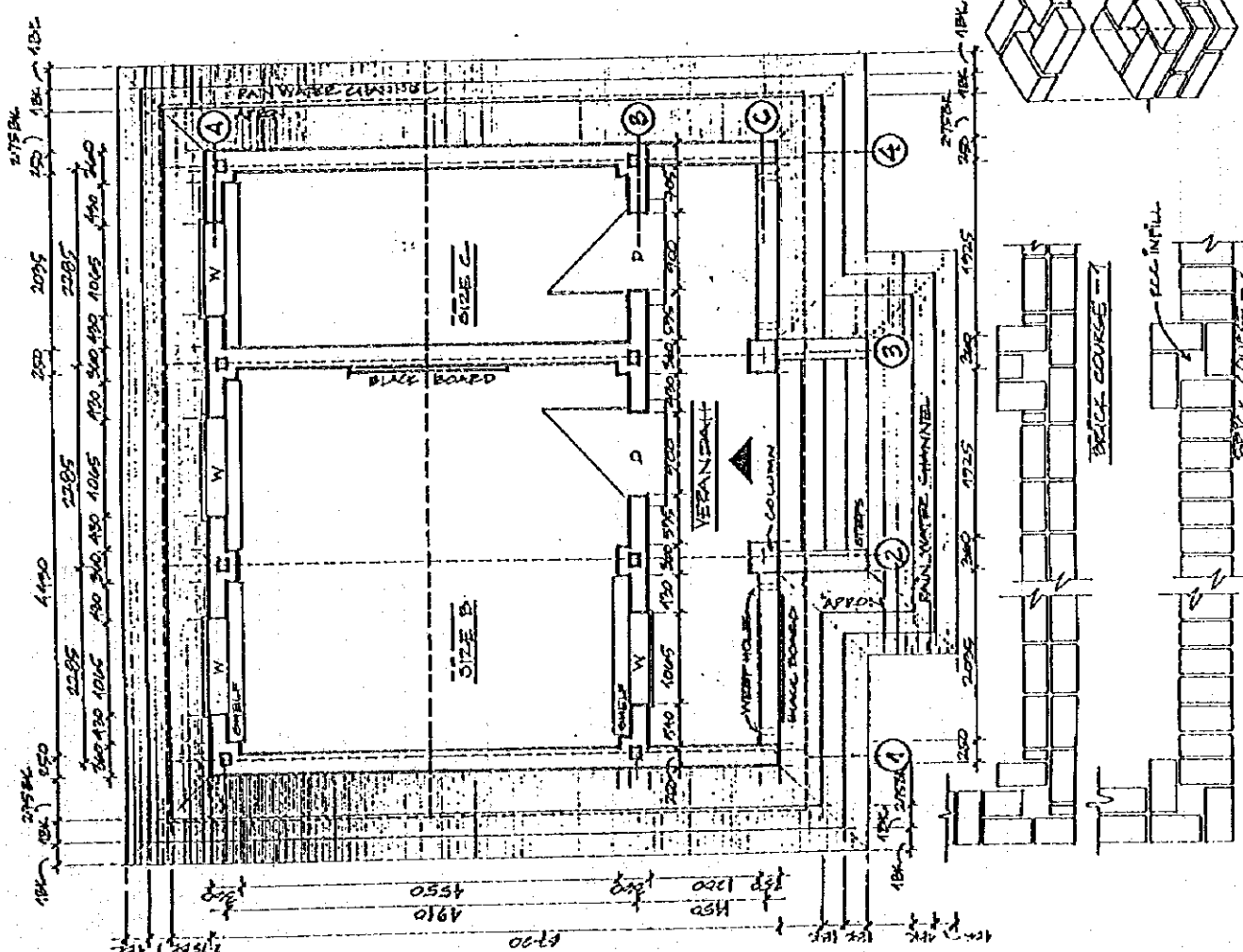
1. TIMBER POST
 2. STEEL POST
 3. BRICK PIER

NOTE:

ALL DIMENSIONS IN MM. SPACING TO BE READ FROM DRAWING.

bpep
 BUREAU OF PUBLIC ENGINEERING
 112701
 112702
 112703
 112704
 112705
 112706
 112707
 112708
 112709
 112710
 112711
 112712
 112713
 112714
 112715
 112716
 112717
 112718
 112719
 112720

DRWG. NO.	25-2-B/C
TITLE	BRICK PIER OPTION
SCALE	AS SHOWN
DRAWN BY	AREA 5/2
DATE	12/10/95



VERANDAH -
 BRICK PIER OPTION
 5. COLUMN BRIDGE

NOTES

OPTIONS

- MOISTURE
- 1. CEMENT-SAND 1:3
 - 2. CEMENT-SAND 1:3
 - 3. CEMENT-LIME-SAND 1:3:6
 - 4. LIME-SUPERSH-SAND 1:2:6
 - 5. CEMENT-LIME-SUPERSH-SAND 1:2:4:2:2
 - 6. SPECIFIED (LIME/CEMENT) MIX MOISTURE UPTO 11%
 - 7. W/D MOISTURE UPTO 11%
- NOTE: FIRST MAX 75%

PLASTER

- 1. LIME WASH
- 2. ENATH-DUNG-LIME
- 3. LIME-CEMENT-SAND
- 4. CEMENT-SAND
- 5. ENATH-STRAW
- 6. DOOR
- 7. REF W1-2%
- 8. REF W2-2%
- 9. REF W3-2%
- 10. REF W4-2%
- 11. WINDOW
- 12. REF W1-2%
- 13. REF W2-2%
- 14. REF W3-2%
- 15. REF W4-2%

FLOORING

- 1. SPEC. DEG. NO. F-26 (1)
- 2. FLOORING

TRUSS/ROOFING

- T1: REF STD 2, STD 8
- T2: REF STD 11, STD 12, STD 13
- T3: REF STD 7, STD 10

VERANDAH COLUMNS

- 1. TIMBER POST
- 2. STEEL POST
- 3. BRICK PILE

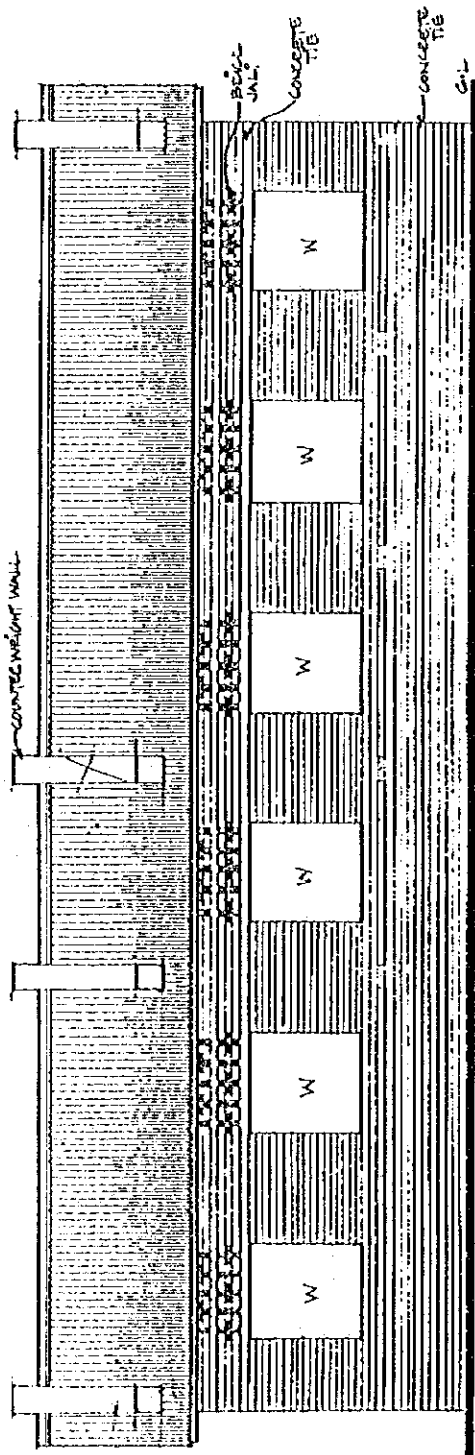
NOTE: DIMENSIONS TO BE FOUND NOT MENTIONED

ALL DIMENSIONS IN MM.

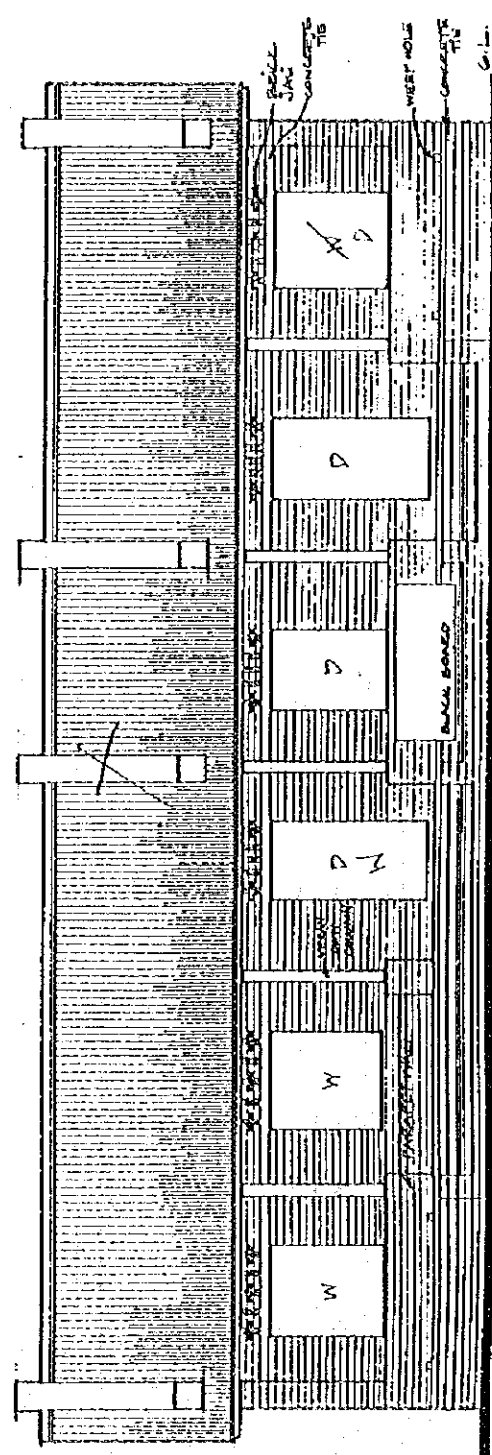
Basic & Primary Education Programme
 State of Karnataka, India
 District: Mysore
 Taluk: Channarayana
 Pin: 577 121

Physical Planning & Survey Institute
 Mysore
 Project Construction Programme

DRWG. NO. BE-118/C(1)
 TITLE: BRICK/GEN. BLDG.
 SCALE: 1:50
 DRAWN BY: JAKA/ED
 DATE: 24/12/15



REAR ELEVATION



FRONT ELEVATION

NOTES

OPTIONS

- MODERNE
 1. CEMENT-SAND 1:2:6
 2. LIME-SAND 1:2:4
 3. CEMENT-LIME-SAND 1:2:4:4
 4. LIME-SURCH-SAND 1:2:1:6
 5. CEMENT-LIME-SURCH 1:2:4:2:6
 6. STABILIZED (M/LIME OR CEMENT) MUD MORTAR UP TO 1:1:10

7. MUD MORTAR UP TO 1:1:10

NOTE: FIRST MIX ONLY.

PLASTER

1. LIME MORTAR
 2. PART-DUNG-LIME
 3. LIME-CEMENT-SAND
 4. CEMENT-SAND
 5. PART-STRAW

DOOR

- D1: REF WA-D1
 D2: REF WS-D2
 D3: REF WS-D3
 D4: REF WA-D4
 W: WINDOW
 W1: REF W1-D1
 W2: REF W2-D2
 W3: REF W3-D3
 W4: REF W4-D4

FLOORING

- REF STD NO. FLOORING FOR OPTIONS

TRUSS/ROOFING

- TR1: REF STD 7, STD 8
 TR2: REF STD 9, STD 10, STD 11, STD 12
 TR3: REF STD 9, STD 10

VERTICAL CURTAINS

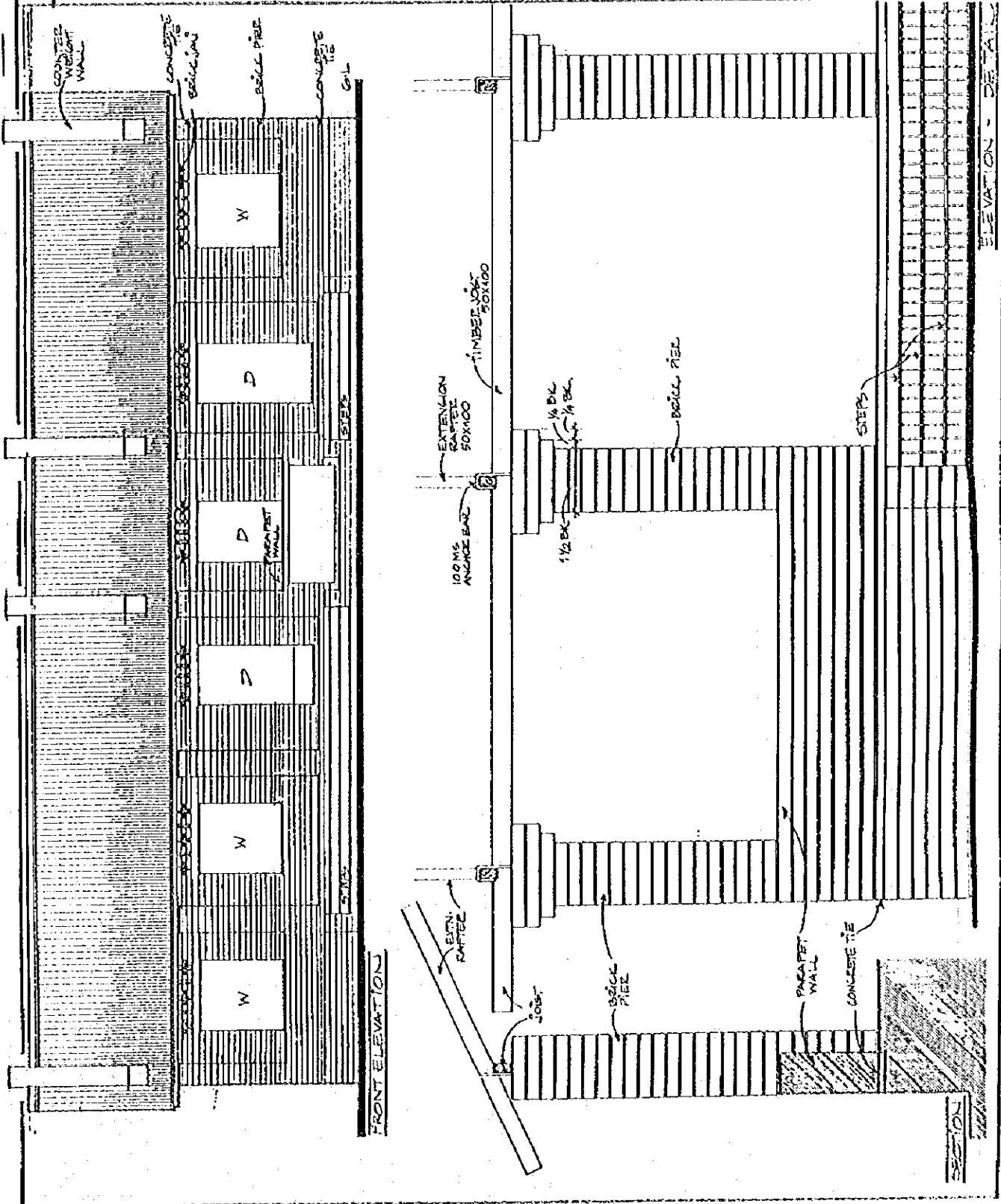
1. TIMBER POST
 2. STEEL POST
 3. BRICK PIER

MEASUREMENTS TO BE READ NOT MEASURES
 ALL DIMENSIONS IN MM.

Drawn by: [Name]
 Checked by: [Name]
 Scale: 1:1000
 Date: 1-18-1981
 Project: Planning & Designing
 School Construction Programme

bpep

DRWG NO: SE-A/13/C(2)
 TITLE: [Name]
 SCALE: 1:500
 DRAWN BY: [Name]
 DATE: [Date]



NOTES

OPTIONS

1. CEMENT-SAND
2. UUG-SAND
3. CEMENT-UUG-SAND
4. UUG-SURCH-SAND
5. CEMENT-UUG-SURCH
6. STABILIZED UUG OR CEMENT MUD MASONRY

7. MUD MASONRY

NOTE: FIRST MAX PLY.

PLASTER

1. UUG MASH
2. SAND-SURCH-UUG
3. CEMENT-UUG-SAND
4. CEMENT-SAND
5. SAND-SURCH

DOOR

- D1: REF M1-D1
- D2: REF M2-D2
- D3: REF M3-D3
- D4: REF M4-D4

WINDOW

- W1: REF M1-W1
- W2: REF M2-W2
- W3: REF M3-W3
- W4: REF M4-W4

FLOORING

REFER TO NO. FLOORING FOR OPTIONS

TRUSS/ROOFING

- T1: REF STD 7, STD 8
- T2: REF STD 4, STD 12, STD 13
- T3: REF STD 9, STD 10

VERANDAHS/COLUMNS

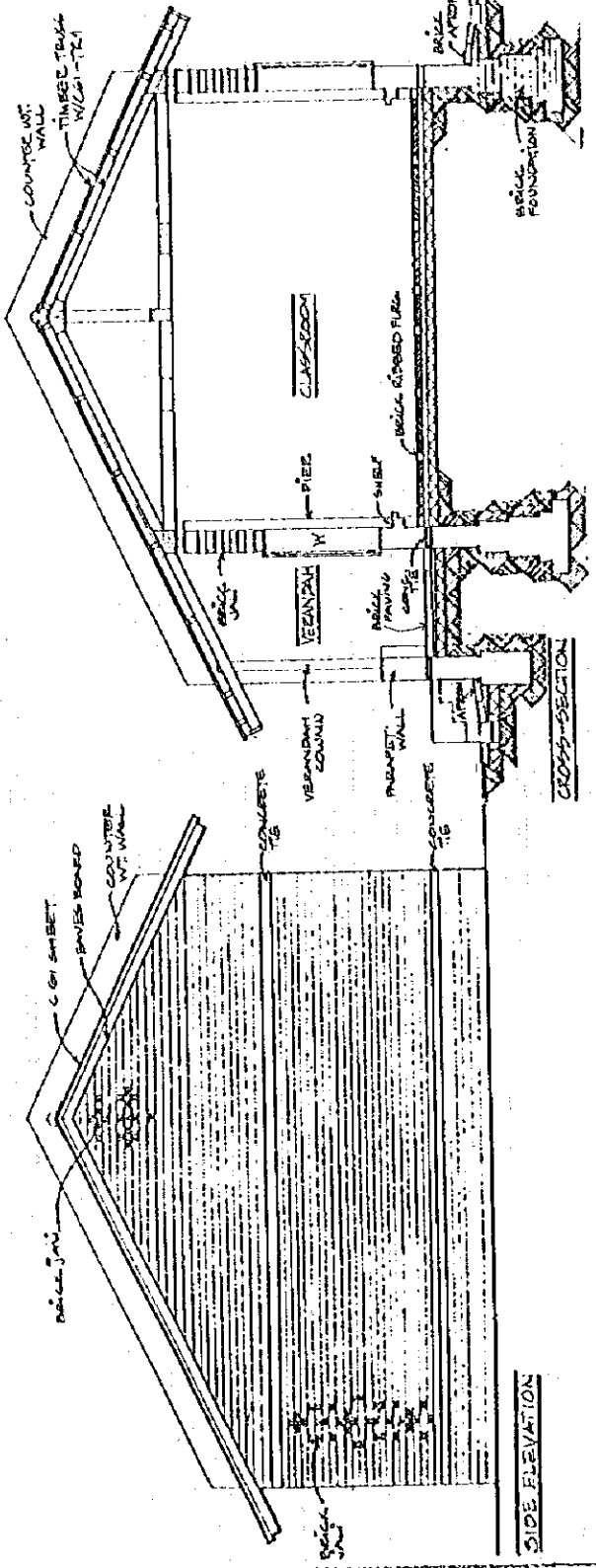
1. TIMBER POST
2. STEEL POST
3. BRICK PIER

-DRAWINGS TO BE READ NOT MEASURED
-ALL DIMENSIONS IN MM.

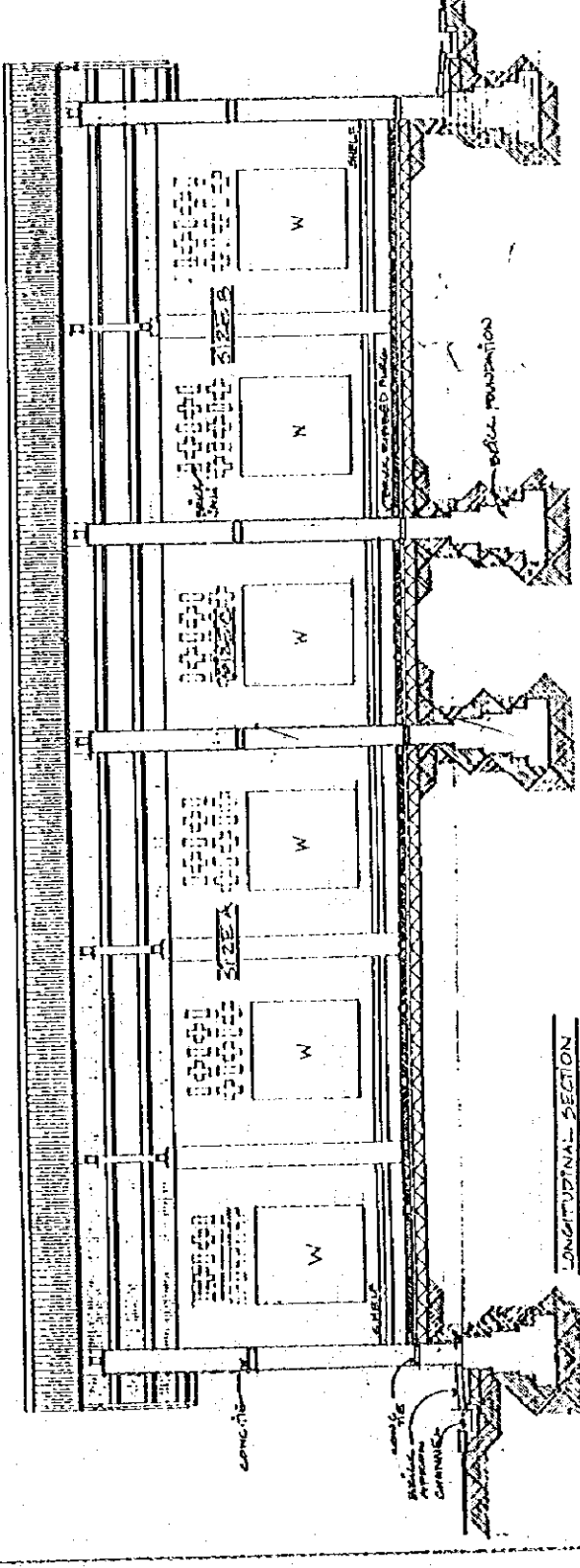
Scale: 1:100
Date: 1.11.1981

bped

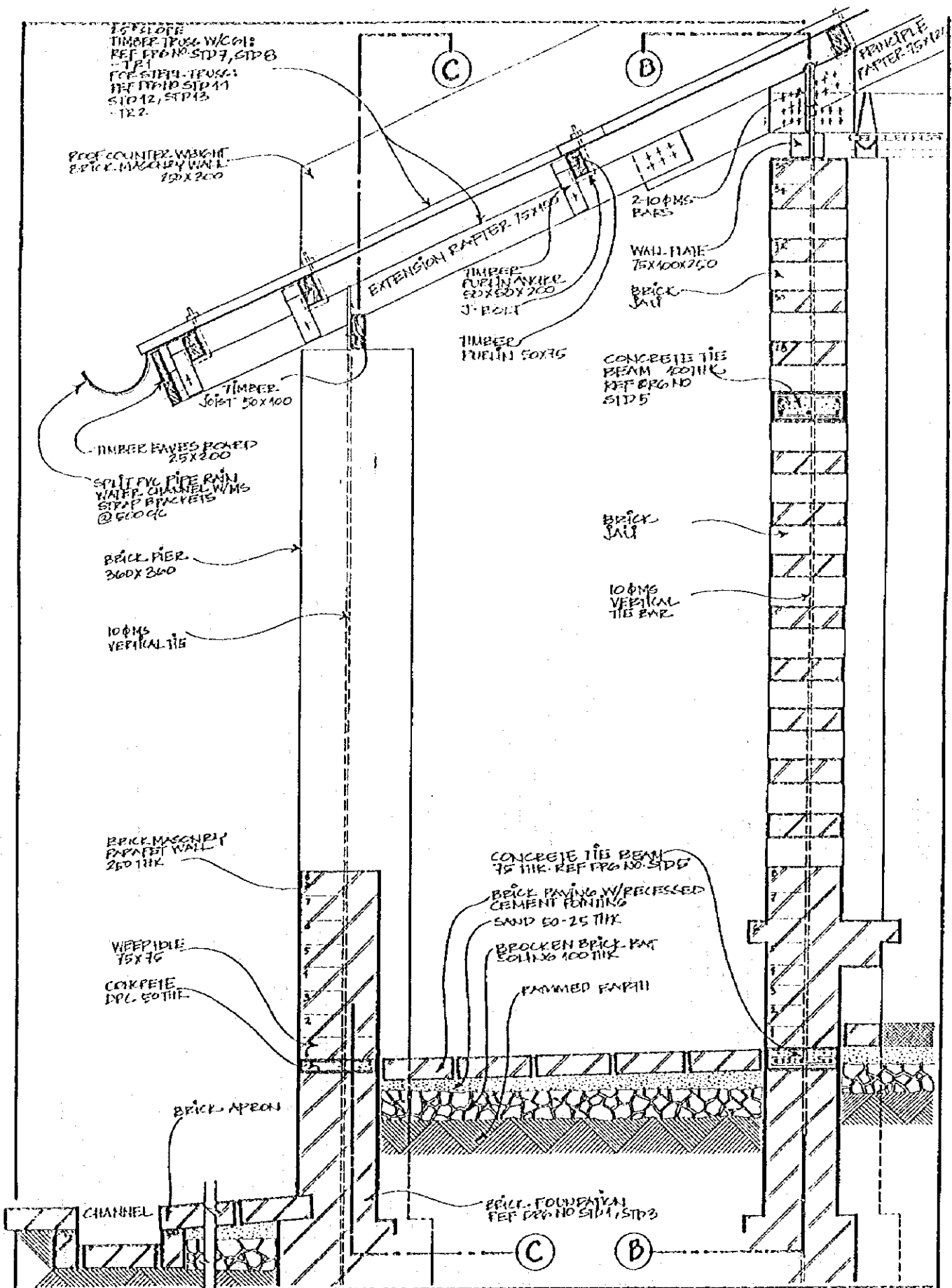
DRWG NO: 125-A/8/2 (1)
TITLE: BANGALOW
SCALE: 1:100
DRAWN BY: A. S. S.
DATE: 1.11.81



SIDE ELEVATION



LONGITUDINAL SECTION



1ST FLOOR
 TIMBER TRUSS W/C G1:
 REF. DPG NO. STD 7, STD 8
 TR 1
 2ND FLOOR
 TIMBER TRUSS:
 REF. DPG NO. STD 11
 STD 12, STD 13
 TR 2

PROOF COUNTER WEIGHT
 8-PICK MASONRY WALL
 150X200

EXTENSION RAFTER 75X100
 TIMBER
 CURLIN ANGLE
 50X50X200
 J-BOLT
 TIMBER
 PURLIN 50X75

2-10ØMS
 BARS
 WALL PLATE
 75X100X750
 BRICK
 JAIL

TIMBER
 JOIST 50X100
 TIMBER EAVES BOARD
 25X200
 SPLIT PVC PIPE RAIN
 WATER CHANNEL W/MS
 STRAP BRACKETS
 @ 500 GC

CONCRETE TIE
 BEAM 100THK
 REF. DPG NO.
 STD 5

BRICK PIER
 360X360
 10ØMS
 VERTICAL TIE

BRICK
 JAIL
 10ØMS
 VERTICAL
 TIE BAR

BRICK MASONRY
 PARAPET WALL
 250 THK

CONCRETE TIE BEAM
 75 THK. REF. DPG NO. STD 5
 BRICK PAVING W/ RECESSED
 CEMENT FOOTING
 SAND 50-25 THK
 BROKEN BRICK PAV
 50X100 THK
 RAMMED EARTH

WEEP HOLE
 75X75
 CONCRETE
 DPL 50 THK

BRICK APRON

BRICK FOUNDATION
 REF. DPG NO. STD 1, STD 3

CHANNEL

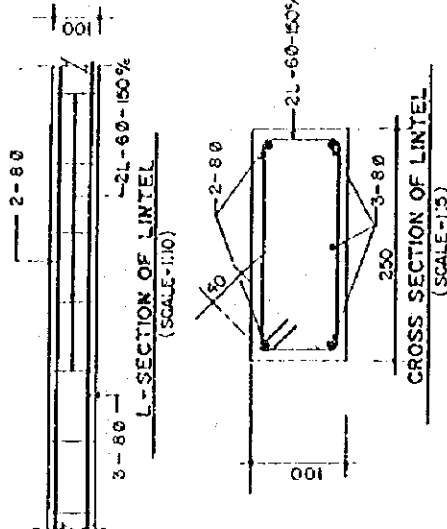
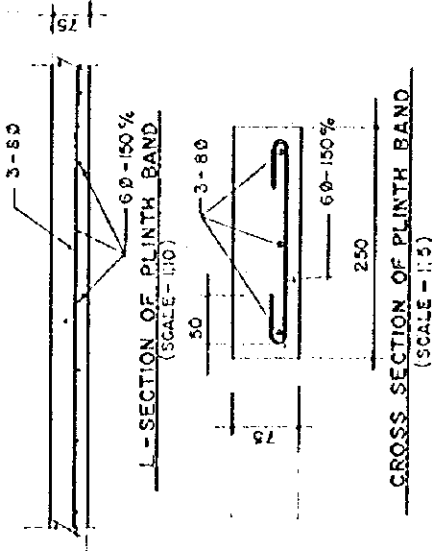
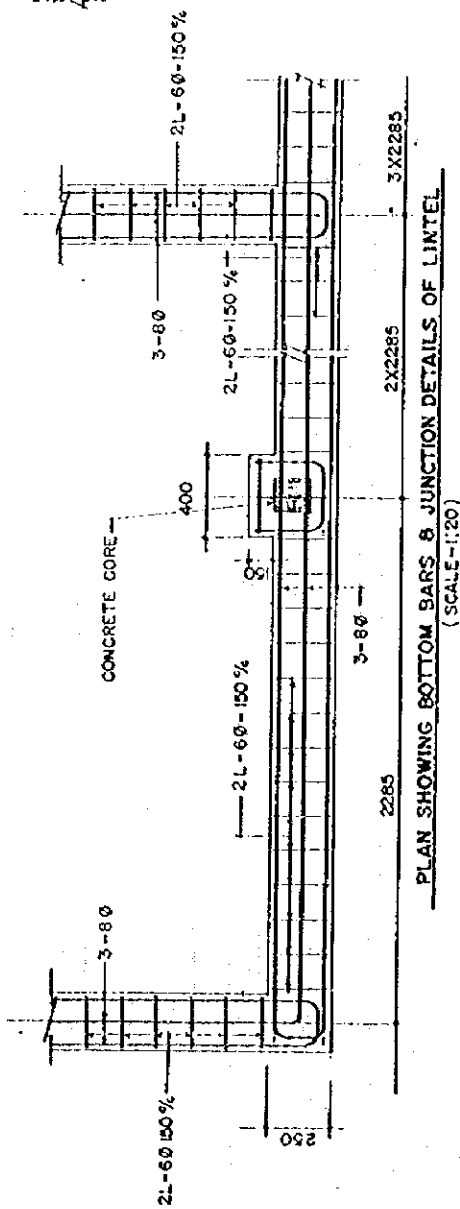
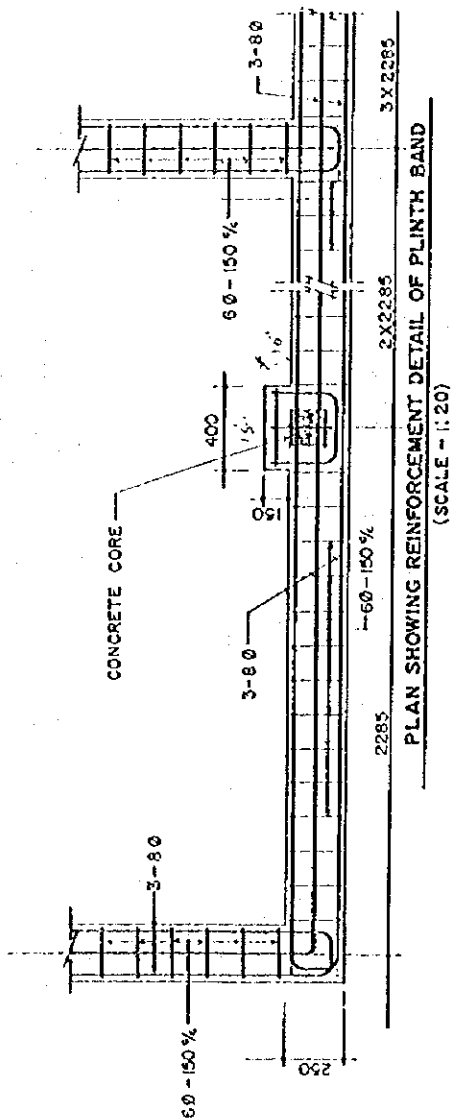
bpep

Drawn by: [Name]
 Checked by: [Name]
 Date: [Date]

DRWG NO.
 TITLE
 SCALE
 DRAWN BY
 DATE

BSP-NB/C(3)
 BRICK DETAIL - SECT
 1:10
 TARA P.S.O.
 AUG 95

ALL DIMENSIONS IN MILL.
 STAIRINGS TO BE CLAMP FOOT MEASURED
 HEIGHTS GIVEN IN TERMS OF BRICK COURSES.



NOTE: CONCRETE COVER 25mm.
 CONCRETE GRADE M15
 STEEL Fe 415 (80)
 Fe 250 (60)

All dimensions in mm.
 Drawings to be read not measured.

DRWG NO	STD 0
TITLE	REINFORCEMENT BEAMS
SCALE	AS SHOWN
DRAWN BY	AS SHOWN
DATE	10/2/05

State & Primary Education Programme
 Ministry of Education, Culture &
 Sports
 For
 1 1/2011
 1 1/2011
 Project Printing & Layout: Ministry of
 State Construction Programme

bpep

VIVID

OPTION'S

- MOORAGE
1. CEMENT-SAND 1:3
 2. LIME-SAND 1:3
 3. CEMENT-LIME-SAND 1:1:4
 4. LIME-SUGAR-SAND 1:2:6
 5. CEMENT-LIME-SUGAR-SAND 1:2:2:2
 6. STABILIZED (M/LIME) CEMENT/MUD UPTO 1:10
 7. MUD MOORAGE

NOTE: FIRST MIX TRY

PAVING

1. LIME WASH
2. EARTH-DUNG-LIME
3. LIME-CEMENT-SAND
4. CEMENT-SAND
5. EARTH-STRAW

DOORS

- D1: REF W1-D1
- D2: REF W2-D2
- D3: REF W3-D3
- D4: REF W4-D4

WINDOVS

- W1: REF W1-D1
- W2: REF W2-D2
- W3: REF W3-D3
- W4: REF W4-D4

ROOFING

TRUSS/ROOFING

- TR1: REF STD 7, STD 8
- TR2: REF STD 11, STD 12, STD 13
- TR3: REF STD 9, STD 10

VEHICULAR COLUMNS

1. TIMBER POST
2. STEEL POST

TRUSS/ROOFING

- TR1: REF STD 7, STD 8
- TR2: REF STD 11, STD 12, STD 13
- TR3: REF STD 9, STD 10

VEHICULAR COLUMNS

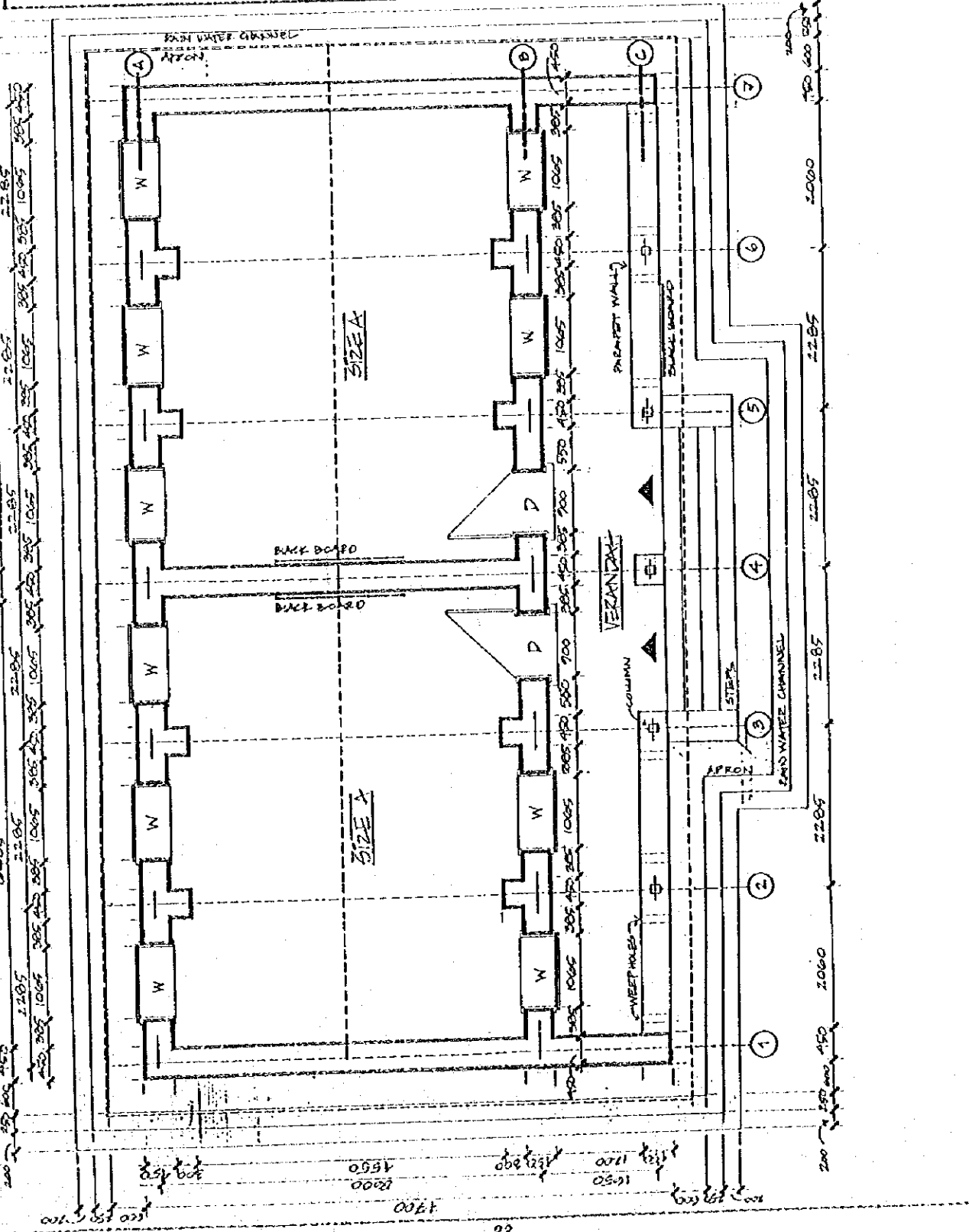
1. TIMBER POST
2. STEEL POST

DRAWINGS TO BE READ NOT MEASURED.

ALL DIMENSIONS IN M.M.

bpep

DRWG NO: 621-A/A
 TITLE: STONE ZAN - JERON
 SCALE: 1:50
 DRAWN BY: M.A. SAK
 DATE: 11/05



NOTES

OPTIONS

- 1. CEMENT-SAND 1:3
- 2. CEMENT-LIME-SAND 1:3:1:4
- 3. CEMENT-LIME-SAND 1:3:1:4
- 4. CEMENT-LIME-SAND 1:3:1:4
- 5. CEMENT-LIME-SAND 1:3:1:4
- 6. STABILIZED/LIME (CEMENT) MUD MORTAR UP TO 1:10
- 7. WUP MORTAR

NOTES: FIRST MIX 20%

PLASTER

- 1. LIME WASH
- 2. EARTH-DUNG-LIME
- 3. LIME-CEMENT-SAND
- 4. CEMENT-SAND
- 5. EARTH-STRAW

DOORS

- D1: REF WA-2A
- D2: REF WA-2B
- D3: REF WA-2C
- D4: REF WA-2A

WINDOWS

- W1: REF WA-2A
- W2: REF WA-2B
- W3: REF WA-2C
- W4: REF WA-2A

FLOORING

- REF: REF ST-1, ST-2, ST-3, ST-4, ST-5, ST-6
- TR: REF ST-1, ST-2, ST-3, ST-4, ST-5, ST-6
- TR: REF ST-1, ST-2, ST-3, ST-4, ST-5, ST-6

TRUSSES / ROOFING

- TR: REF ST-1, ST-2, ST-3, ST-4, ST-5, ST-6
- TR: REF ST-1, ST-2, ST-3, ST-4, ST-5, ST-6
- TR: REF ST-1, ST-2, ST-3, ST-4, ST-5, ST-6

VERANDA

- REF: REF ST-1, ST-2, ST-3, ST-4, ST-5, ST-6
- TR: REF ST-1, ST-2, ST-3, ST-4, ST-5, ST-6

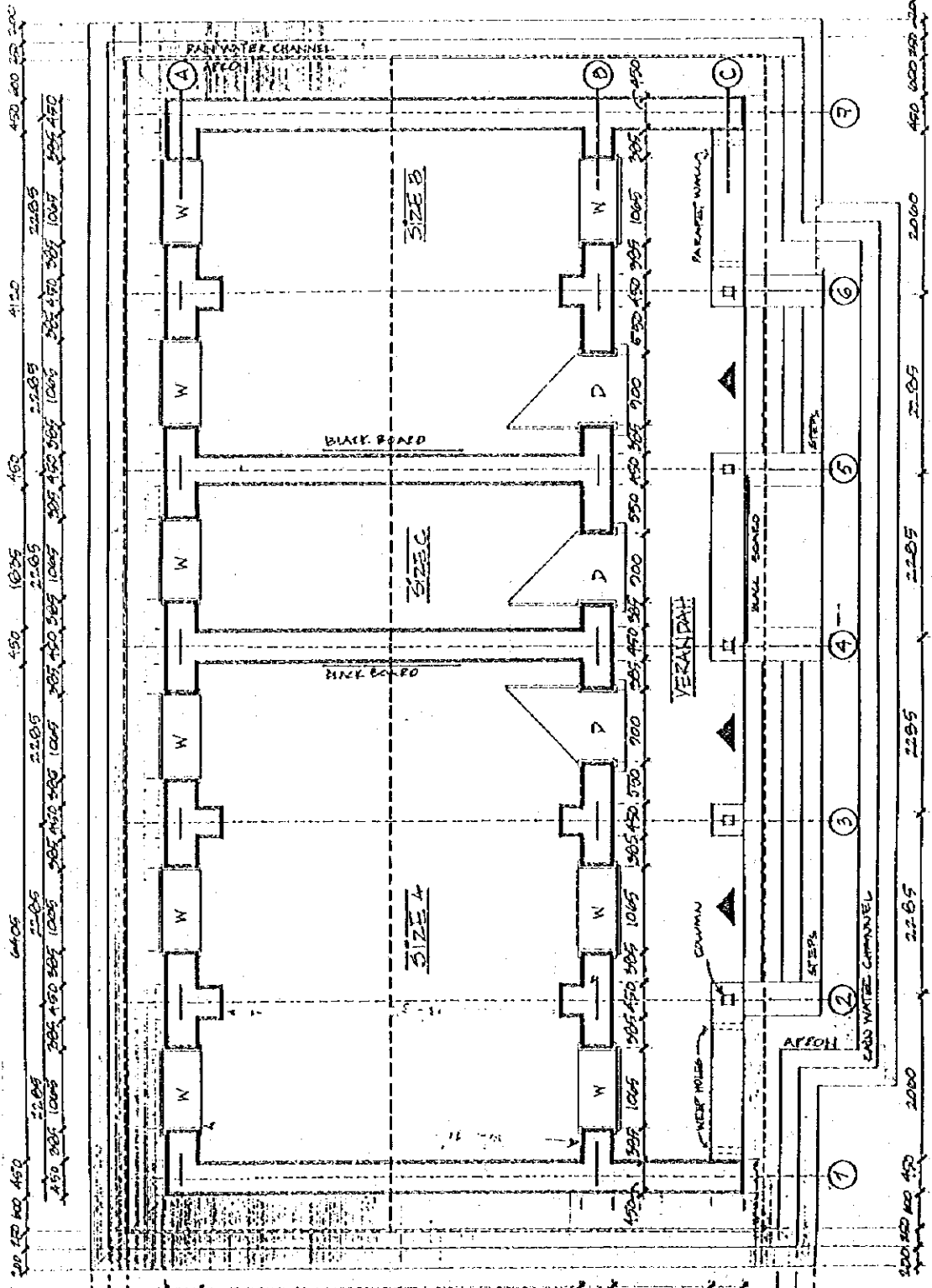
DRAWING TO BE READ NOT REVERSED

ALL DIMENSIONS IN M.M.

Basic & Primary Education Programme
Institute of Education, College St.
Level: Year 1
Date: 1/1/2000

bpep

FORM NO. 1
TITLE: STONE PLAN OPTION
SCALE: 1:50
DRAWN BY: ABA, KAC
DATE: AUG '95



NOTES

OPTIONS

- 1. CEMENT SAND 1:3
- 2. LIME SAND 1:3
- 3. CEMENT-LIME SAND 1:1:4:4
- 4. LIME SUEK-SAND 1:2:10
- 5. CEMENT-LIME SAND 1:2:14:20
- 6. STABILIZED (LIME OR CEMENT) W/MS MOBILE W/MS 1:3:10
- 7. WIND WALLS

NOTES

- 1. FIRST MAX. 200
- 2. PLASTER
- 3. LIME WASH
- 4. BATH-DUNG-LIME
- 5. LIME-CEMENT-SAND
- 6. COMBUST-SAND
- 7. BATH-SAND
- 8. DOOR
- 9. REF. M1-7A
- 10. REF. M2-2L
- 11. REF. M3-7A
- 12. REF. M4-7A
- 13. WINDOW
- 14. REF. M1-2A
- 15. REF. M2-2L
- 16. REF. M3-7A
- 17. REF. M4-7A
- 18. FLOORING
- 19. REFER TO NO. 2.2.5 (A)
- 20. REFER TO NO. 2.2.5 (A)
- 21. REFER TO NO. 2.2.5 (A)
- 22. REFER TO NO. 2.2.5 (A)
- 23. REFER TO NO. 2.2.5 (A)
- 24. REFER TO NO. 2.2.5 (A)
- 25. REFER TO NO. 2.2.5 (A)
- 26. REFER TO NO. 2.2.5 (A)
- 27. REFER TO NO. 2.2.5 (A)
- 28. REFER TO NO. 2.2.5 (A)
- 29. REFER TO NO. 2.2.5 (A)
- 30. REFER TO NO. 2.2.5 (A)
- 31. REFER TO NO. 2.2.5 (A)
- 32. REFER TO NO. 2.2.5 (A)
- 33. REFER TO NO. 2.2.5 (A)
- 34. REFER TO NO. 2.2.5 (A)
- 35. REFER TO NO. 2.2.5 (A)
- 36. REFER TO NO. 2.2.5 (A)
- 37. REFER TO NO. 2.2.5 (A)
- 38. REFER TO NO. 2.2.5 (A)
- 39. REFER TO NO. 2.2.5 (A)
- 40. REFER TO NO. 2.2.5 (A)
- 41. REFER TO NO. 2.2.5 (A)
- 42. REFER TO NO. 2.2.5 (A)
- 43. REFER TO NO. 2.2.5 (A)
- 44. REFER TO NO. 2.2.5 (A)
- 45. REFER TO NO. 2.2.5 (A)
- 46. REFER TO NO. 2.2.5 (A)
- 47. REFER TO NO. 2.2.5 (A)
- 48. REFER TO NO. 2.2.5 (A)
- 49. REFER TO NO. 2.2.5 (A)
- 50. REFER TO NO. 2.2.5 (A)

TRUSS/ROOFING

- TR.1: REF STD 7, STD 8
- TR.2: REF STD 11, STD 12, STD 13
- TR.3: REF STD 7, STD 10

VEGETATION

- 1. WOOD POST
- 2. STEEL POST

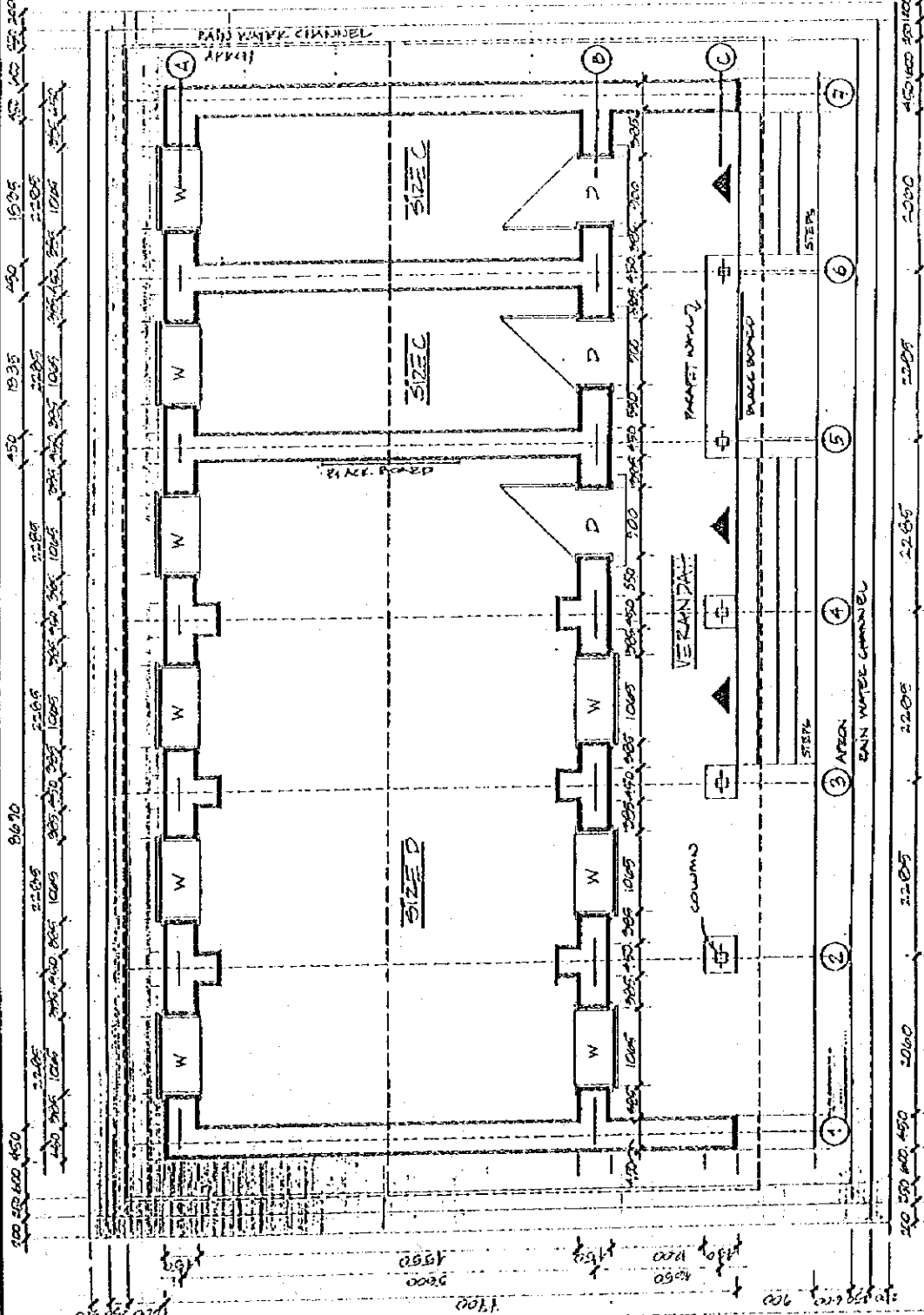
PLANNING TO BE READ OUT MEASURED

ALL DIMENSIONS IN MM.

Issue 3 - Project Information
 Project Name: ...
 Date: ...

bpep

DWG. NO. SP. 1. 216.16
 SCALE: 1:50
 DRAWN BY: ...
 DATE: ...



NOTES

OPTIONS

- 1. CEMENT SAND 1:3
- 2. CEMENT SAND 1:3
- 3. CEMENT LIME SAND 1:2:1:4
- 4. LIME PLASTER SAND 1:2:6:6
- 5. CEMENT LIME SAND 1:2:4:4
- 6. STABILIZED (W/LIME OR CEMENT) MUD
- 7. MUD MORTAR

NOTE: FIRST MIX 20%

PLASTER

- 1. LIME WASH
- 2. BATHOUND-LIME
- 3. LIME-CEMENT SAND
- 4. CEMENT SAND
- 5. BATH STRAW

DOOR

- D1: REF W-2
- D2: REF W-2
- D3: REF W-2
- D4: REF W-2
- D5: REF W-2
- D6: REF W-2
- D7: REF W-2
- D8: REF W-2
- D9: REF W-2
- D10: REF W-2

FLOORING

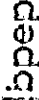
- REF: REF NO. FLOOR
- TRUSS/ROOFING
- TRUSS/ROOFING
- TRUSS/ROOFING
- TRUSS/ROOFING
- TRUSS/ROOFING
- TRUSS/ROOFING
- TRUSS/ROOFING
- TRUSS/ROOFING
- TRUSS/ROOFING

VEHICULAR LIFTWAYS

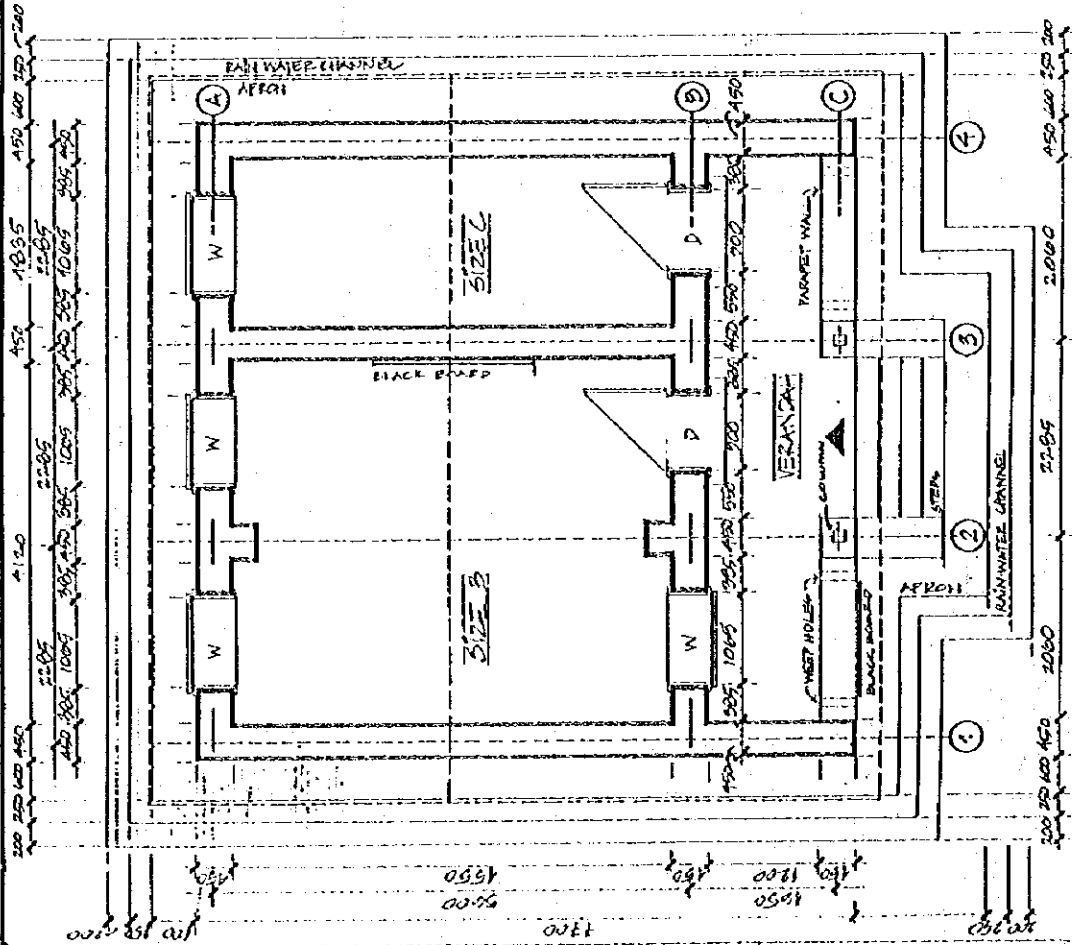
- 1. TUBES POST
- 2. STEEL POST

NOTE:
- ALL DIMENSIONS IN MM.
- DRAWING TO BE READ NOT MEASURES

Scale: 1:1000
Date: 11/10/10



DRWG NO: 57.1. B/C
SCALE: 1:1000
DRAWN BY: ANNA SAC
DATE: 11/10/10



NOTES

OPTIONS

- MEDIAE**
1. CEMENT-SAND 1:0.8
 2. LIME-SAND 1:1.3
 3. CEMENT-LIME-SAND 1:1.4:1.4
 4. LIME-SUBBITUM-SAND 1:2:2:6
 5. CEMENT-LIME-SUBBITUM-SAND 1:2:4:1:20
 6. STABILIZED (W/LIME OR CEMENT) MUD MORTAR UPTO 4% W
 7. MUD MORTAR

NOTE: FIRST MIX ONLY

PRACTICE

1. LIME WASH
2. EARTH-DUNG-LIME
3. LIME-CEMENT-SAND
4. CEMENT-SAND
5. EARTH-STRAW
6. DOORS
7. REF W-1A
8. REF W-2
9. REF W-3
10. REF W-4
11. WINDOWS
12. REF W-1A
13. REF W-2
14. REF W-3
15. REF W-4

FLOORING

- REF DOG NO. FLOOR(1)
- TRUCK/LOADING**
- TR-1: REF STD 7, STD 8
- TR-2: REF STD 4, STD 7, STD 15
- TR-3: REF STD 7, STD 10

VERANDAH COLUMNS

1. TIMBER POST
2. STEEL POST

JEANINGS TO BE READ NOT MEASURED
ALL DIMENSIONS IN M.M.

Scale: 1:100
Date: 1/19/71

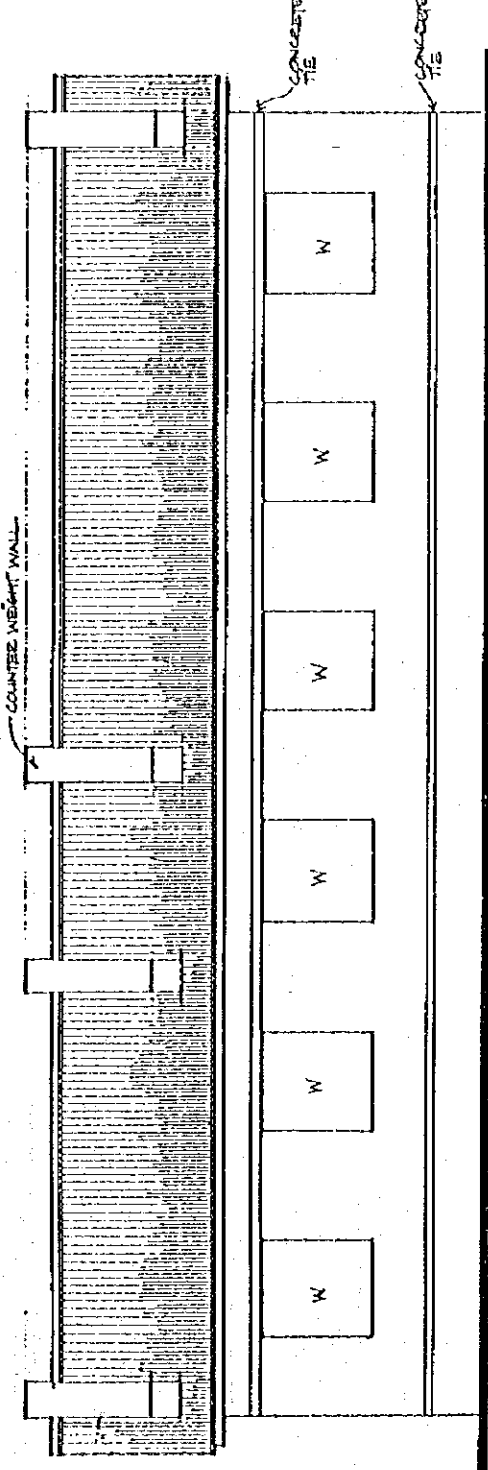
bpep

Project: Planning & Construction Unit

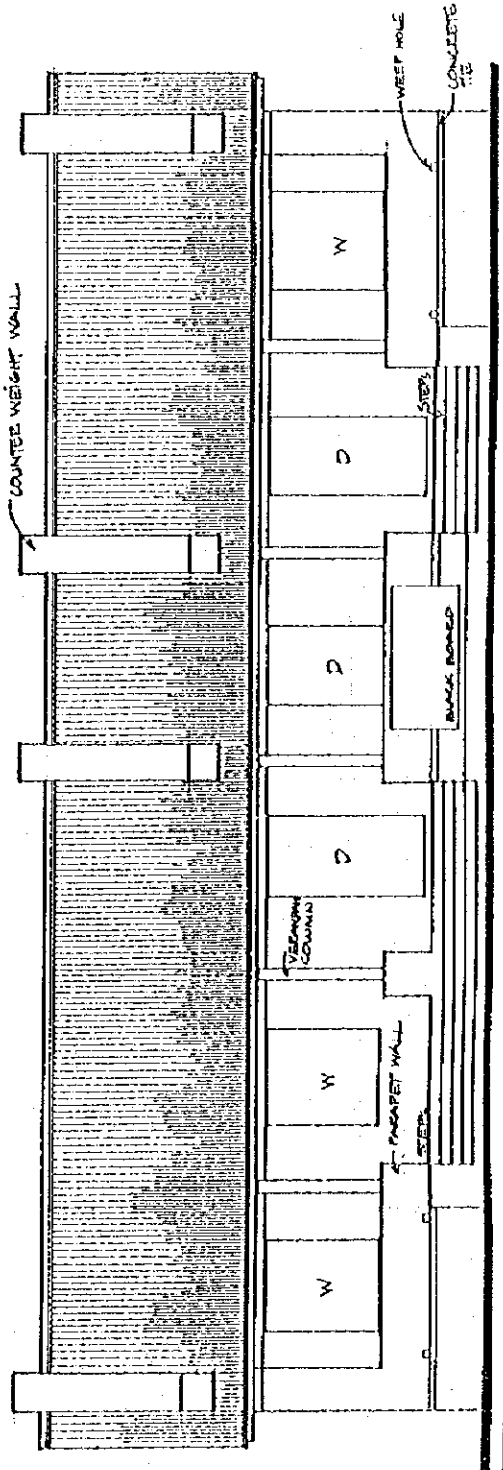
Drawn by: A.S. K. (1)

Scale: 1:100

Date: 1/19/71



REAR ELEVATION



FRONT ELEVATION

NOTES

OPTIONS

- 1. MORTAR
- 2. CEMENT-SAND 1:3
- 3. CEMENT-SAND 1:4
- 4. CEMENT-SAND 1:4:1
- 5. CEMENT-SAND 1:2:1
- 6. CEMENT-SAND 1:2:2
- 7. CEMENT-SAND 1:2:4
- 8. CEMENT-SAND 1:2:4 (2:1)
- 9. CEMENT-SAND 1:2:4 (3:1)
- 10. CEMENT-SAND 1:2:4 (4:1)
- 11. CEMENT-SAND 1:2:4 (5:1)
- 12. CEMENT-SAND 1:2:4 (6:1)
- 13. CEMENT-SAND 1:2:4 (7:1)
- 14. CEMENT-SAND 1:2:4 (8:1)
- 15. CEMENT-SAND 1:2:4 (9:1)
- 16. CEMENT-SAND 1:2:4 (10:1)

- 1. WINE WASH
- 2. CASH-DRAINAGE
- 3. WINE-DRAINAGE
- 4. WINE-DRAINAGE
- 5. WINE-DRAINAGE
- 6. WINE-DRAINAGE
- 7. WINE-DRAINAGE
- 8. WINE-DRAINAGE
- 9. WINE-DRAINAGE
- 10. WINE-DRAINAGE
- 11. WINE-DRAINAGE
- 12. WINE-DRAINAGE
- 13. WINE-DRAINAGE
- 14. WINE-DRAINAGE
- 15. WINE-DRAINAGE
- 16. WINE-DRAINAGE

- D=DOOR
- D1: REF W1-D1
- D2: REF W1-D2
- D3: REF W1-D3
- D4: REF W1-D4
- D5: REF W1-D5
- D6: REF W1-D6

- W=WINDOW
- W1: REF W1-D1
- W2: REF W1-D2
- W3: REF W1-D3
- W4: REF W1-D4
- W5: REF W1-D5
- W6: REF W1-D6

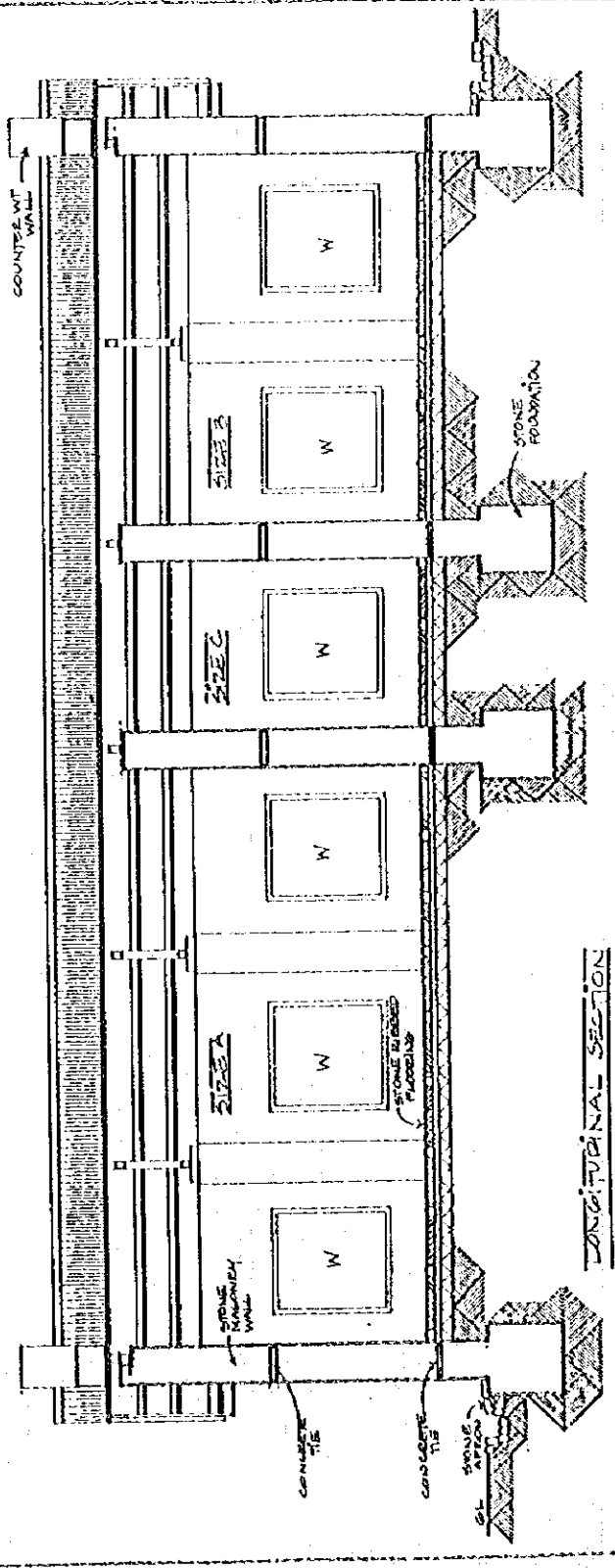
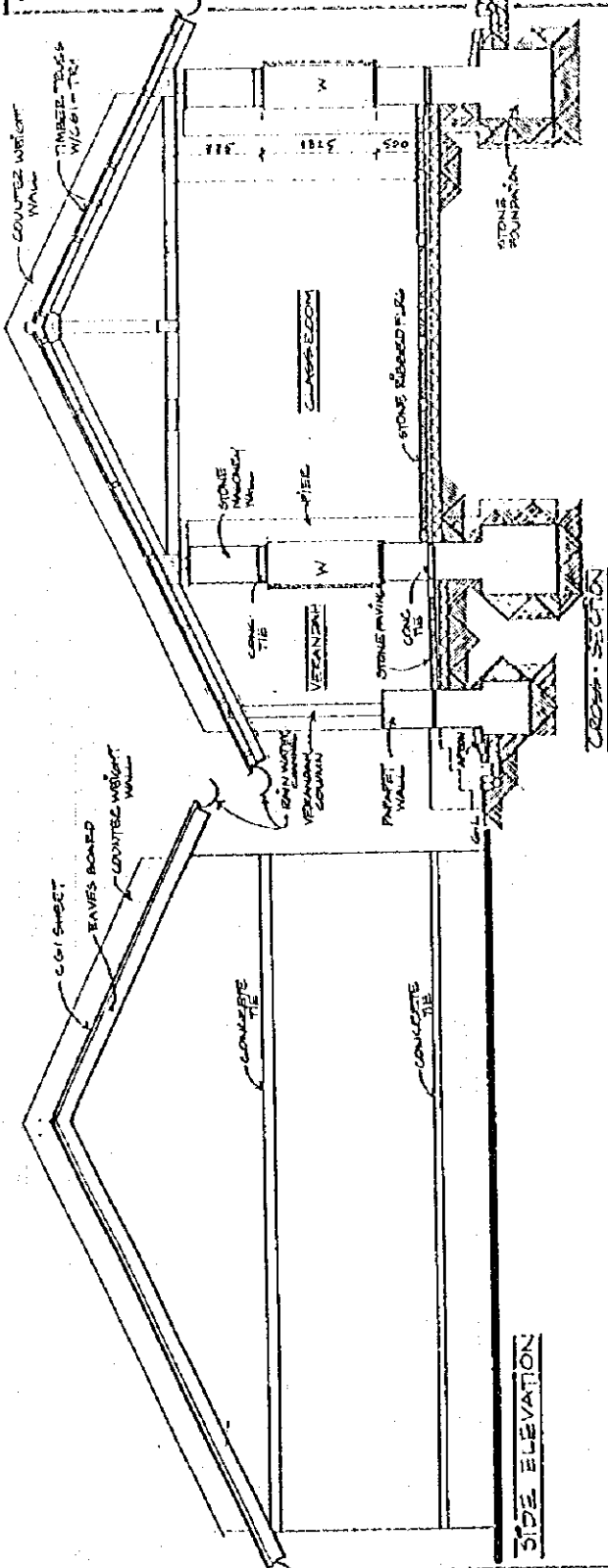
- FLOORING
- REF. NO. FUR. 1/1
- FOR OPTIONS

- TRUSS/ROOFING
- TR: STD 7/ STD 8 (C/F)
- TR: REF STD 14, STD 12, STD 10
- TR: REF STD 9, STD 10
- VEGETATION COUNTRY
- 1. TIMBER POST
- 2. STEEL POST

PLANNING TO BE BEING NOT
LOCATED
ALL DIMENSIONS IN MM.

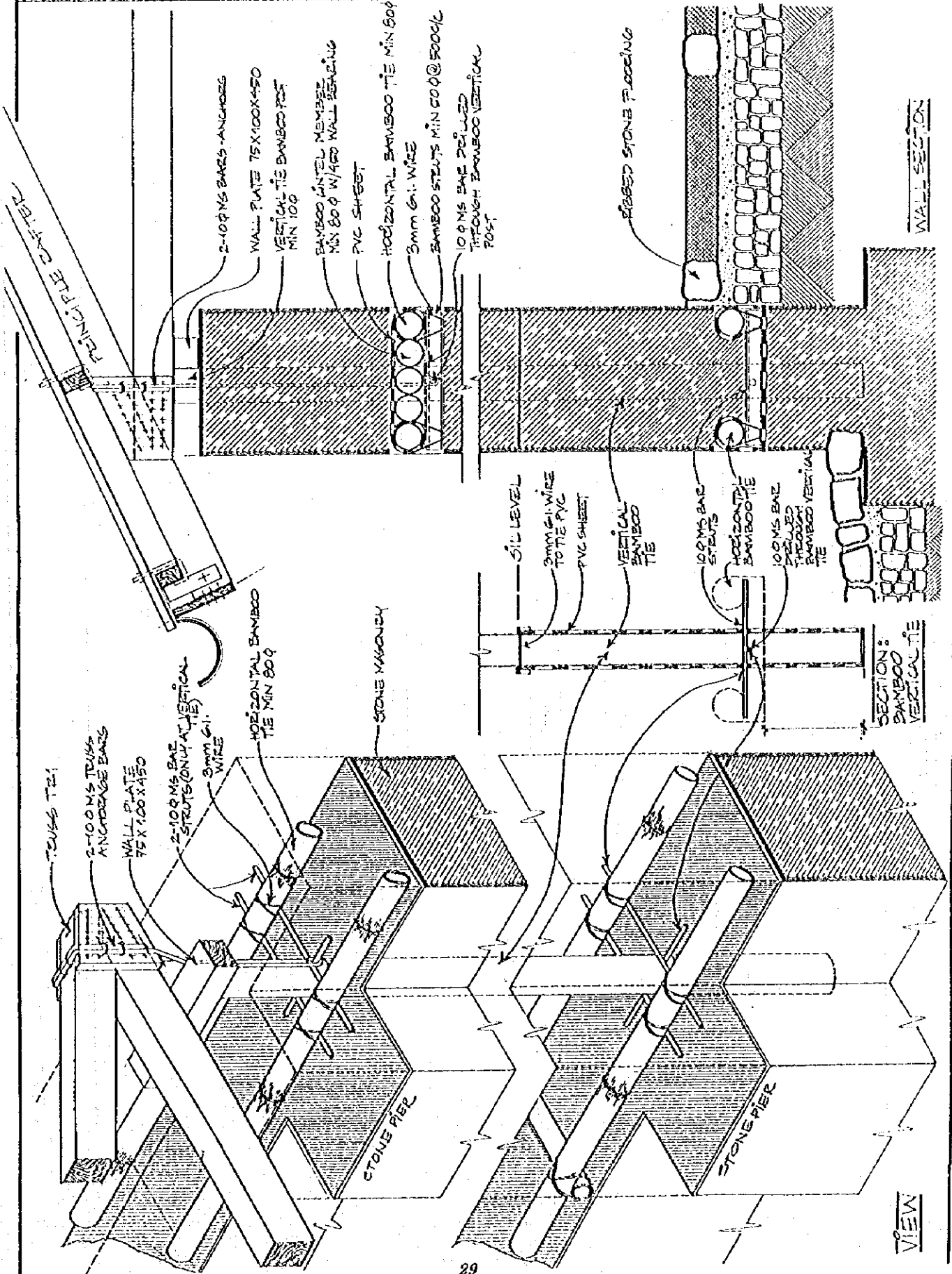
bbcc

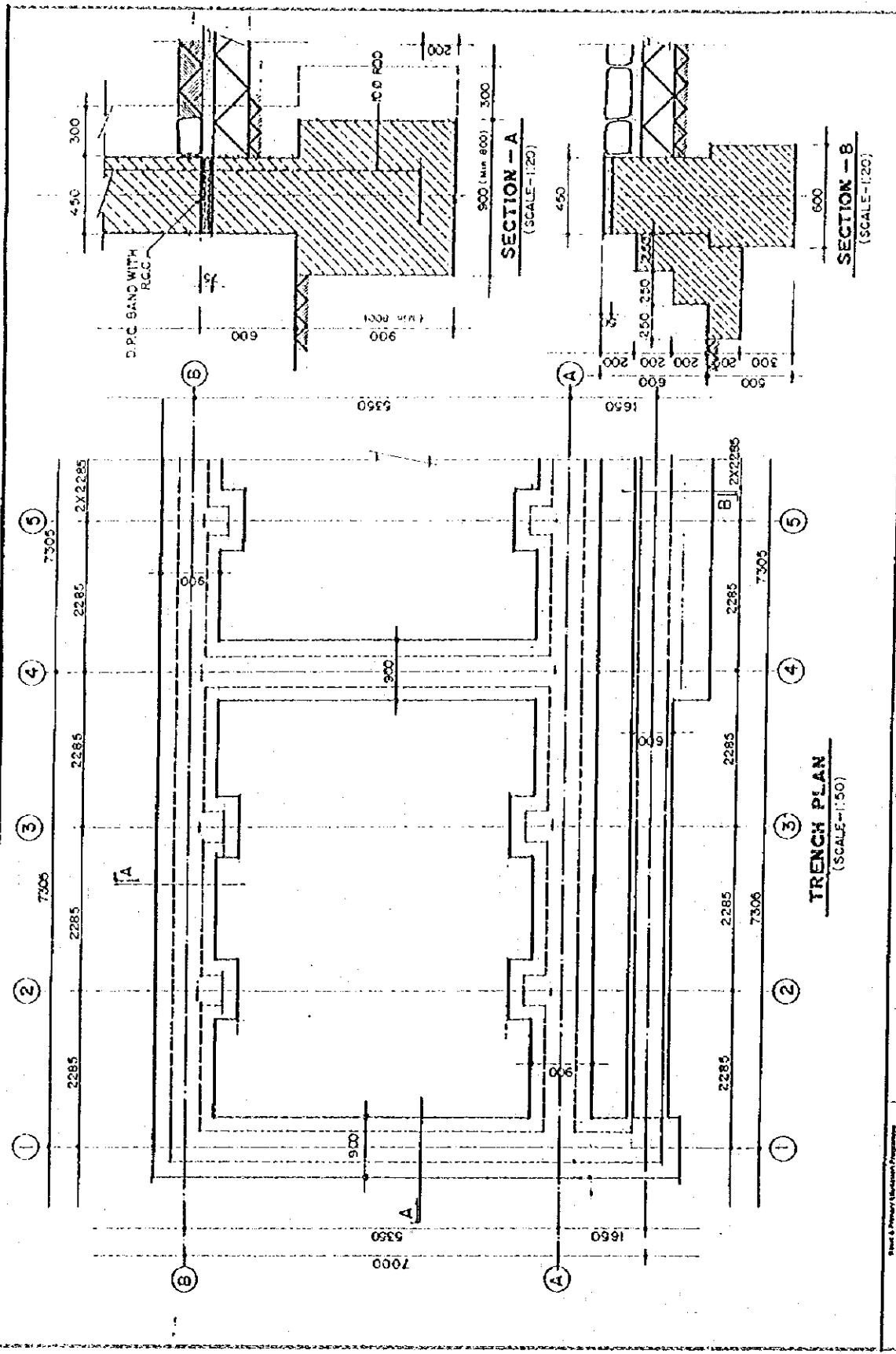
Drawn by: [Name]
Checked by: [Name]
Scale: 1:50
Date: [Date]



Drw. No. 10/25
Scale 1:100
Date 10/25
Drawn by
Title
OMP-Alpc (2)
Stone-Bamboo

all dimensions to mm - panels to be fixed not measured





ALL DIMENSIONS IN MM.
 DIMENSIONS TO BE SEAS NOT MEASURED

DRWG NO	5727 A
TITLE	STONE BOX
SCALE	AS SHOWN
DRAWN BY	AS SHOWN
DATE	11/01/12

State & Territory Education Programme
 Department of Education, Culture &
 Sport, Arts & Recreation
 Tel: 1 43701
 Fax: 1 43701
 Personal Planning & Student Support Unit
 Student Communication Programme

dppe

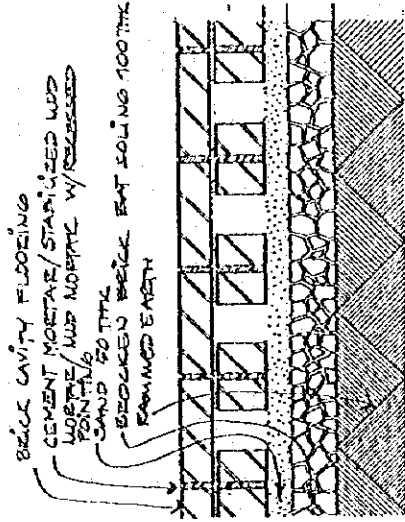
NOTES

*DIMENSIONS TO BE READ NOT
 *ALL DIMENSIONS IN MM.

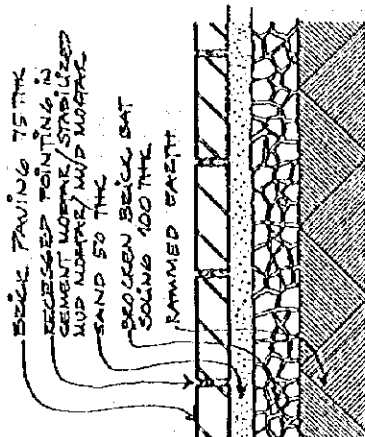
Ministry of Education
 Technical Drawing & Lettering Programme
 1-412701
 1-41891

bpep

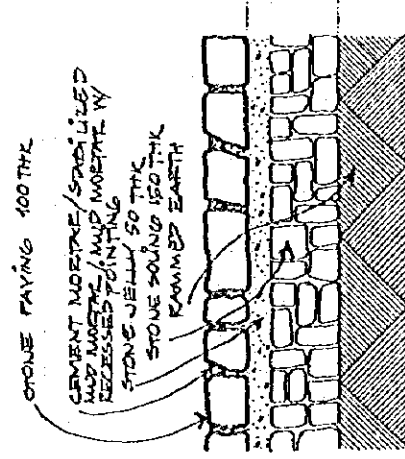
DRWG NO	F.15.1(1)
TITLE	FLOORING OPTIONS
SCALE	1:20
DRAWN BY	TARA SAO
DATE	APR 95



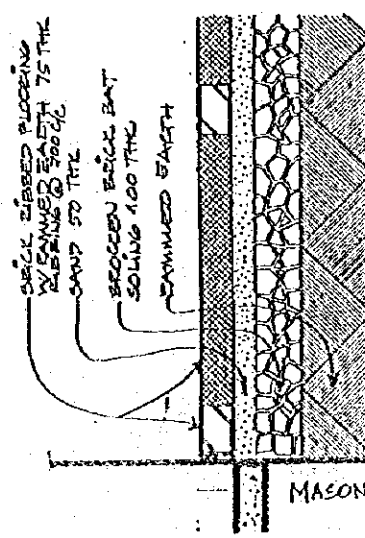
BRICK CAVITY FLOORING



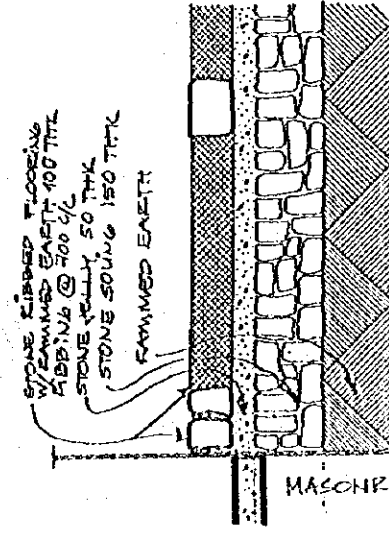
BRICK PAVING



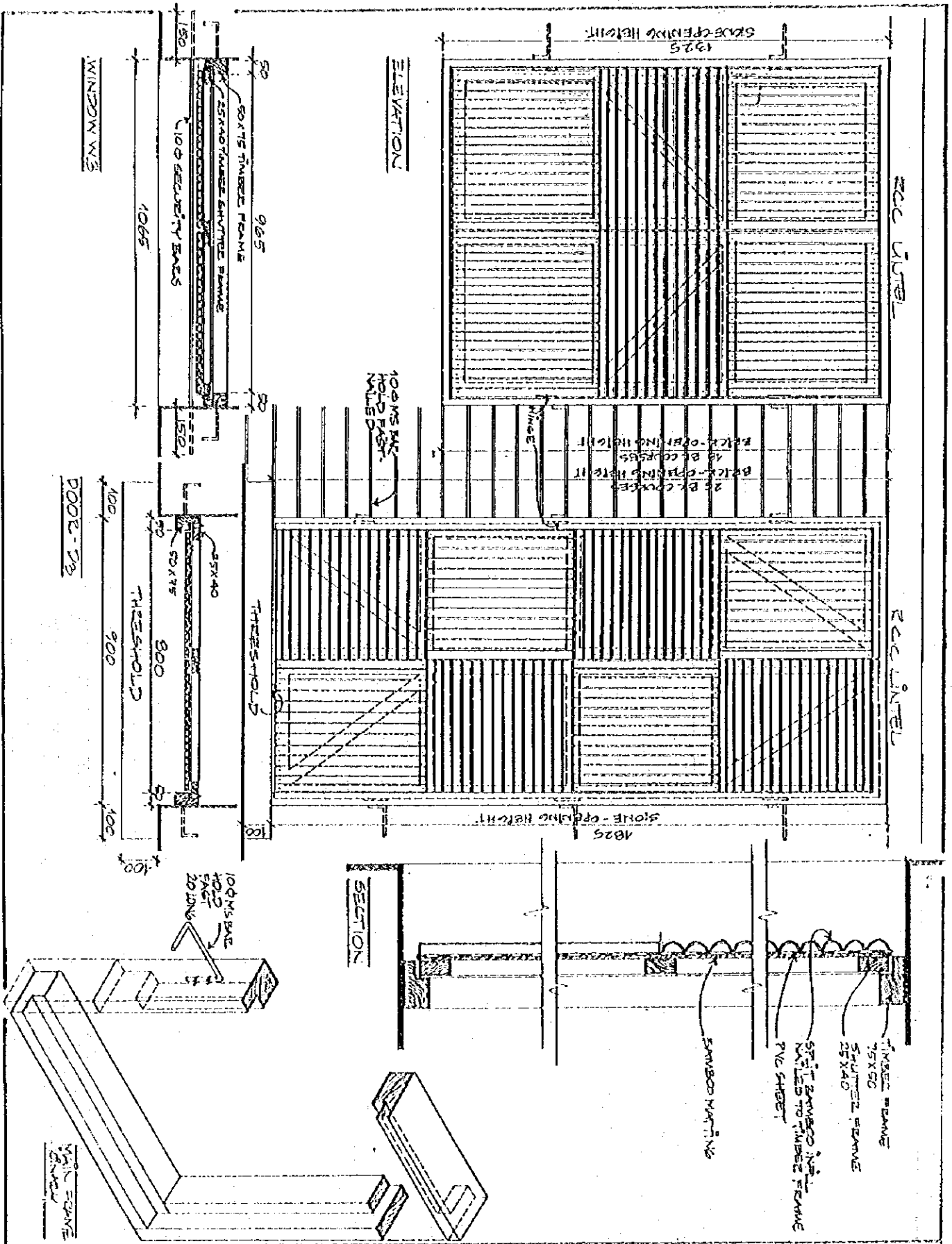
STONE PAVING



BRICK RIBBED FLOORING



STONE RIBBED FLOORING

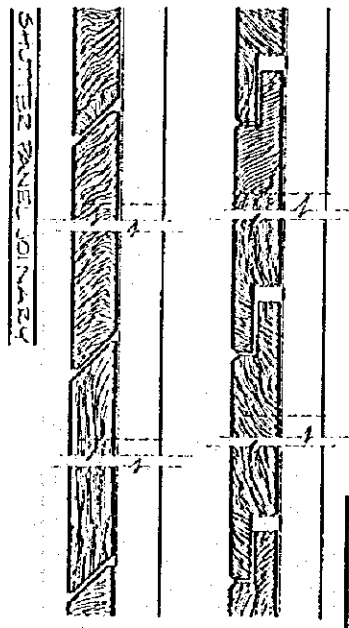
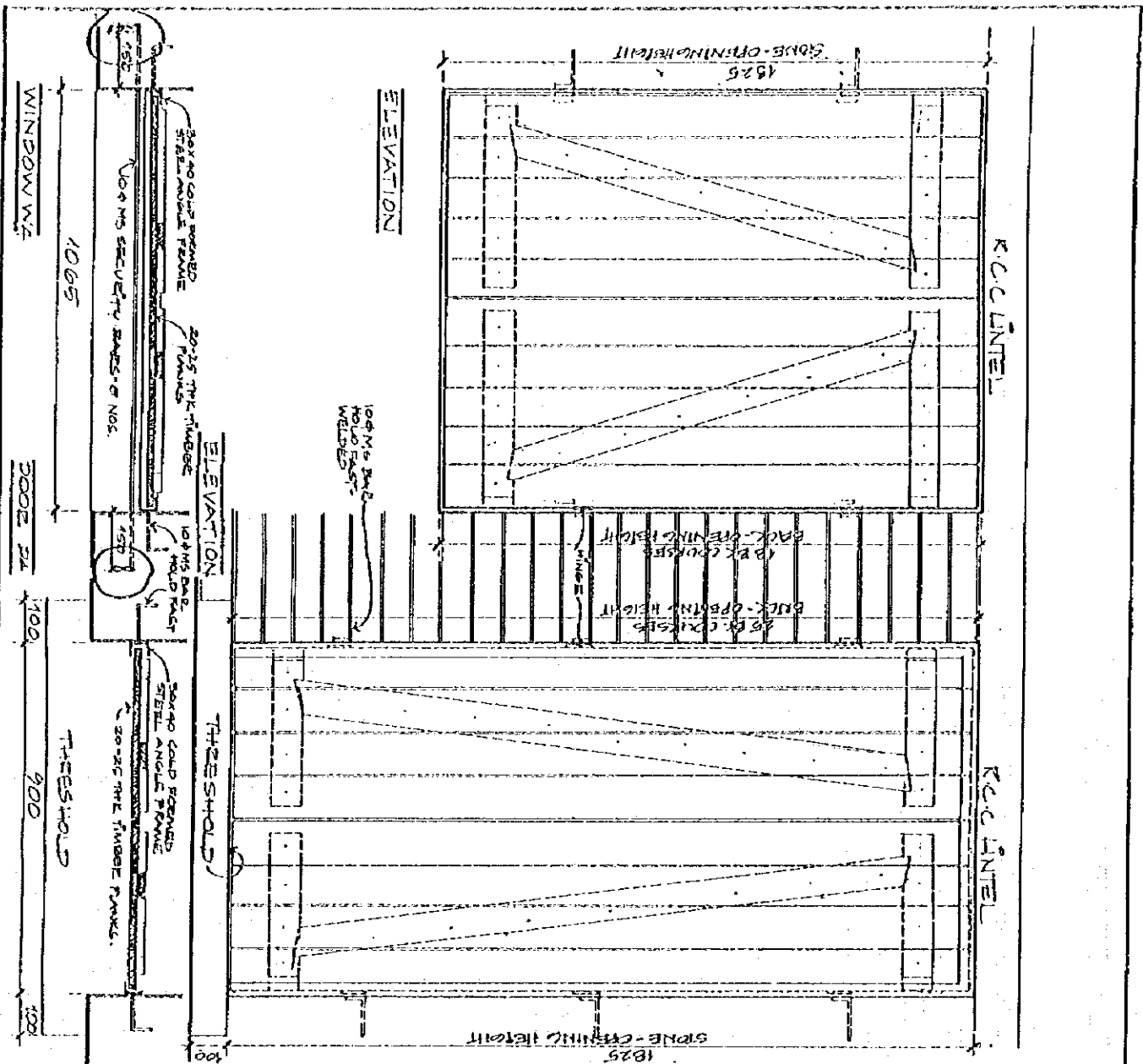


bpep

Bishop Primary Education Programme
 Ministry of Education, Culture &
 Sports, Waikato
 Tel: 1 432101
 Fax: 1 432191
 Physical Planning & Spatial Mapping Unit
 School Construction Programme

DRWG NO.
 TITLE
 SCALE
 DRAWN BY
 DATE

W3-0a
 WINDOW-DOOR DET.
 TARA PAD
 14/02/95

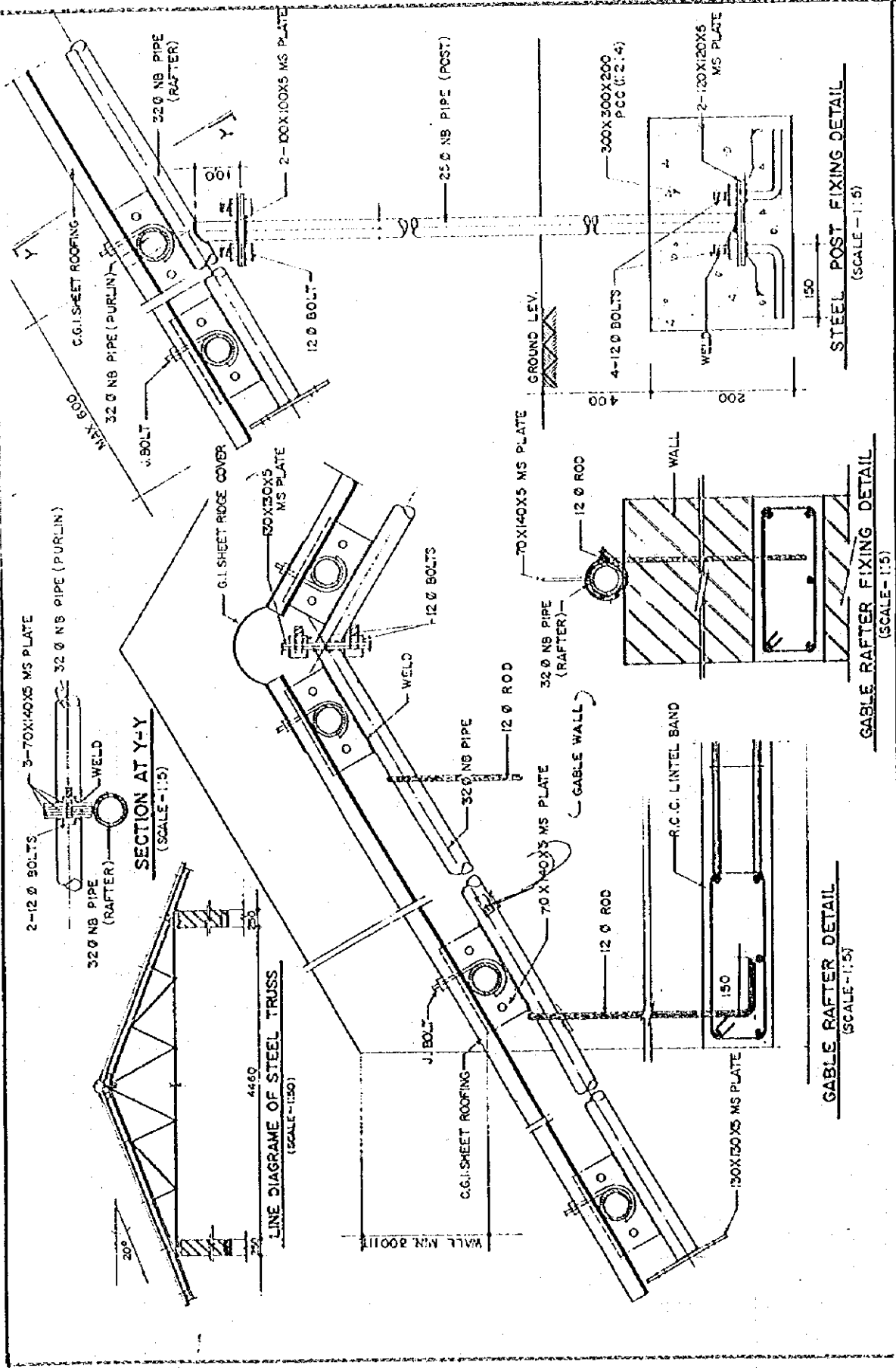


bpep

Bilk & Pilling Education Programme
 Ministry of Education, Culture & Social Welfare
 Tel: 1 812101
 Fax: 1 418 91
 Department of Planning & School Mapping Unit
 School Construction Programme

DRWG. NO.
 TITLE
 SCALE
 DRAWN BY
 DATE

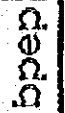
W4-52
 WINDOW-DOOR SET
 TATA CAD
 AUG 95



- DRAWINGS TO BE READ NOT REPRODUCED
 - ALL DIMENSIONS IN MM.

DRWG. NO.	STD 12
TITLE	STEEL TRUSS
SCALE	AS SHOWN
DRAWN BY	AS SHOWN
DATE	11/12/75

State & Primary Institution Programme
 Ministry of Education, Culture &
 Technical Education
 Tel. 1 41700
 Fax 1 41701
 Project Planning & Control Agency Ltd
 School Construction Programme



6. Cost Estimation of Works to be Covered by Nepalese Side (Unit: Rs.)

1/2 Phase Total	93,441,290
2/2 Phase Total	77,757,778
Ground Total	171,199,068

1/2 Phase	Unit Cost	No.	Total
1. Construction			
1-1 Skilled Labour for classrooms	10,000	1,100	11,000,000
1-2 Cost by SMC(Terai)	60,000	600	36,000,000
1-3 Cost by SMC(Hill)	43,000	500	21,500,000
1-4 skilled labour for WC	2,000	100	200,000
1. Total			68,700,000
2. Material & Equipment			
2-1 Cost for Depots incl. staff/district	75,000	10	750,000
2-2 Transportation from Depot(Class/Terai)	3,000	600	1,800,000
2-3 Transportation from Depot(Class/Hill)	7,000	500	3,500,000
2-4 Stone Collection	9,000	500	4,500,000
2-5 Transportation from Depot(WC/Terai)	1,000	35	35,000
2-6 Transportation from Depot(WC/Hill)	3,000	15	45,000
2-7 Local Materials by SMC	7,000	1,100	7,700,000
2. Total			18,330,000
3. Design			
3-1 Consulting fees at central	80,000	1	80,000
3-2 Engineers at central(man-month)	3,500	15	52,500
3-3 Overseers	2,500	331	827,500
3-4 Engineers	3,750	20	75,000
3. Total			1,035,000
4. Supervision			
4-1 Overseers including overhead	6,875	662	4,551,250
4-2 Engineers including overhead	10,313	80	825,040
4. Total			5,376,290
1/2 Phase Total			93,441,290

2/2 Phase

	Unit Cost	No.	Total
1. Construction			
1-1 Skilled Labour for classrooms	10,000	900	9,000,000
1-2 Cost by SMC(Terai)	60,000	600	36,000,000
1-3 Cost by SMC(Hill)	43,000	300	12,900,000
1-4 skilled labour for WC	2,000	100	200,000
1-5 Skilled labour for RC	35,000	14	490,000
1. Total			58,590,000
2. Material & Equipment			
2-1 Cost for Depots incl.staff/district	75,000	7	525,000
2-2 Transportation from Depot(Class/Terai)	3,000	600	1,800,000
2-3 Transportation from Depot(Class/Hill)	7,000	300	2,100,000
2-4 Stone Collection	9,000	300	2,700,000
2-5 Transportation from Depot(WC/Terai)	1,000	50	50,000
2-6 Transportation from Depot(RC)	6,000	14	84,000
2-7 Local Materials by SMC(Classrooms)	7,000	900	6,300,000
2-8 Local Materials by SMC(RC)	30,000	14	420,000
2. Total			13,979,000
3. Design			
3-1 Consulting fees at central	80,000	1	80,000
3-2 Engineers at central(man-month)	3,500	15	52,500
3-3 Overseers	2,500	271	677,500
3-4 Engineers	3,750	20	75,000
3. Total			885,000
4. Supervision			
4-1 Overseers including overhead	6,875	542	3,726,250
4-2 Engineers including overhead	10,313	56	577,528
4. Total			4,303,778
2/2 Phase Total			77,757,778



JICA

