

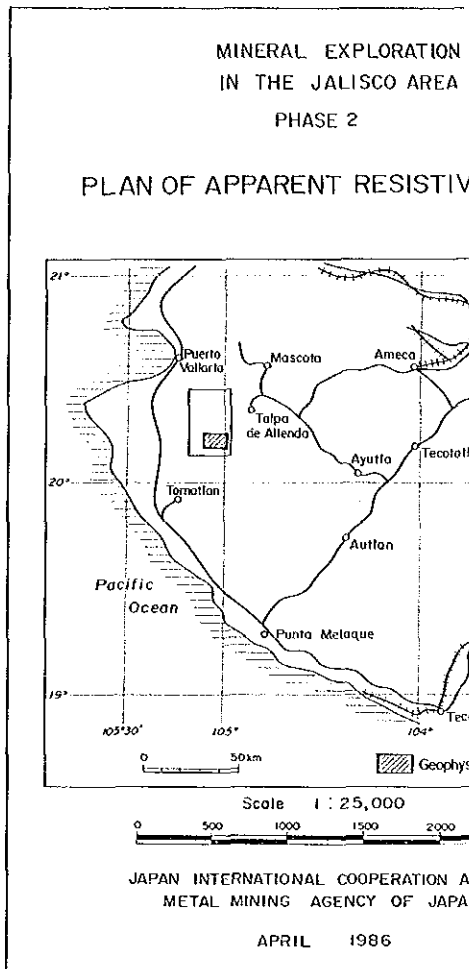
Y 15,000

20°15'

Y 10,000

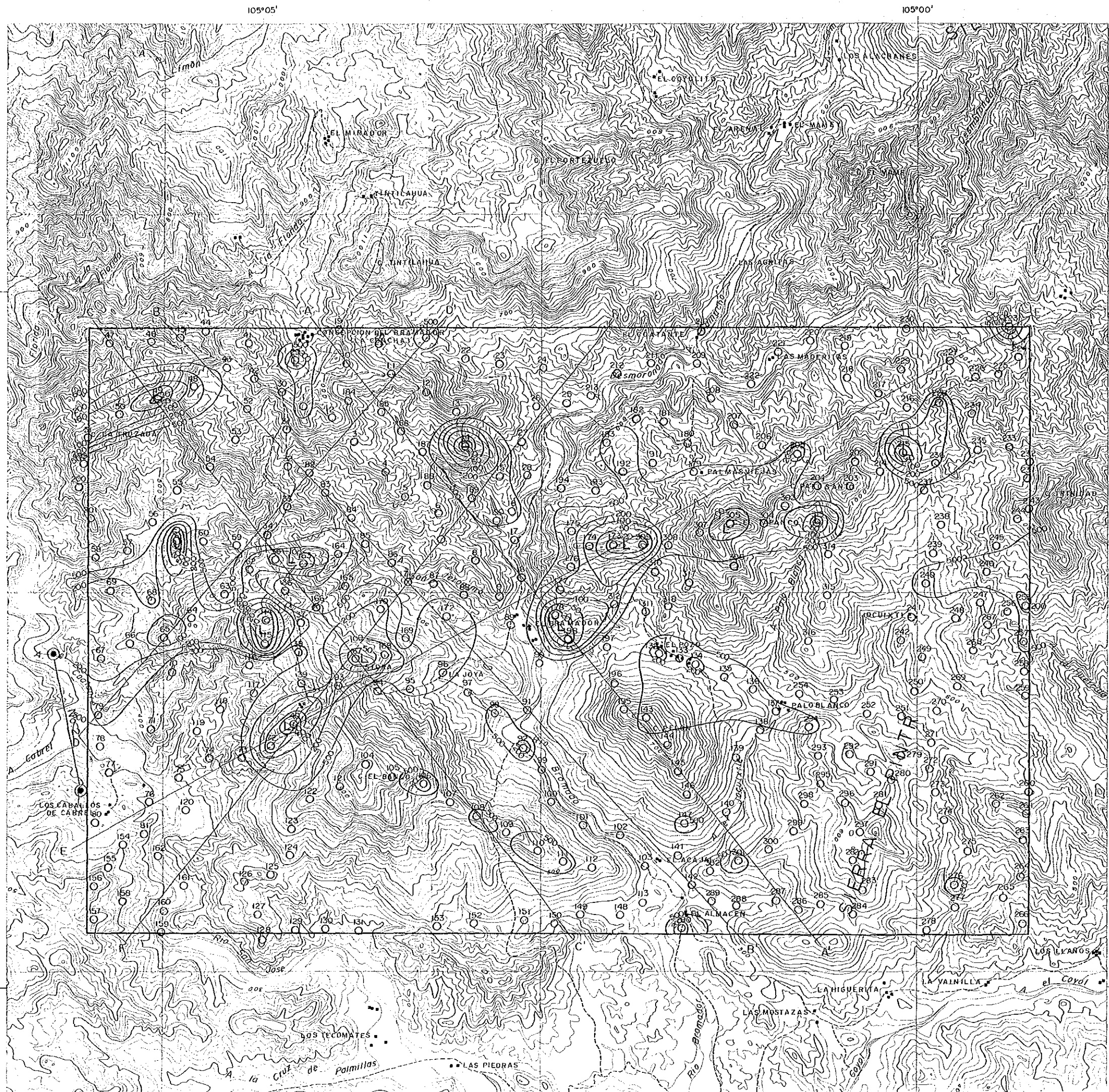
Y 5,000

20°10'



LEGEND

- 210
○ Station Point, No.
- ⊙—⊙ Transmitter Dipole
- Contour of Apparent Resistivity



Y 15,000

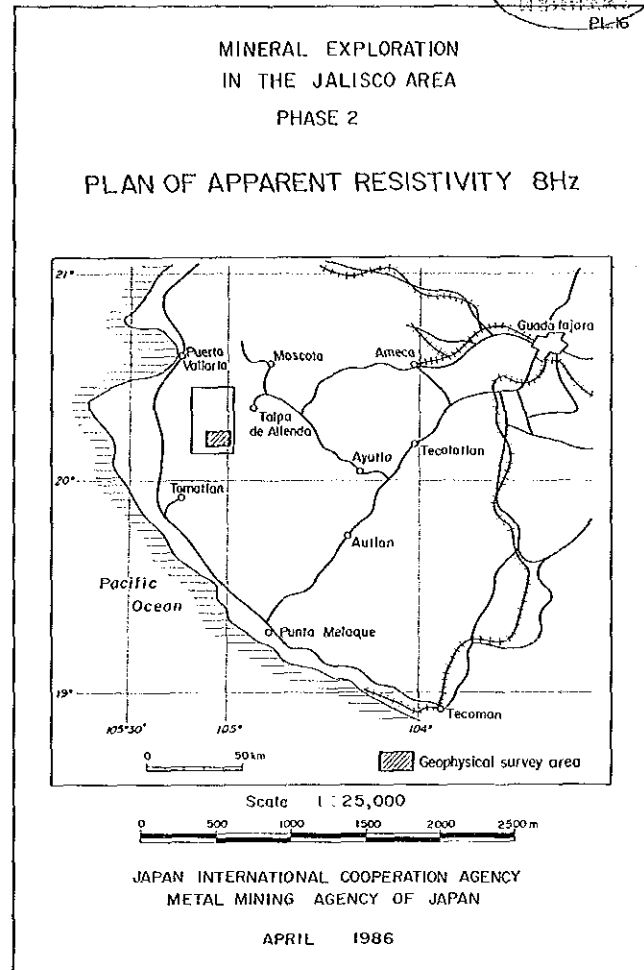
20°15'

Y 10,000

Y 5,000

20°10'

15978
PL-16

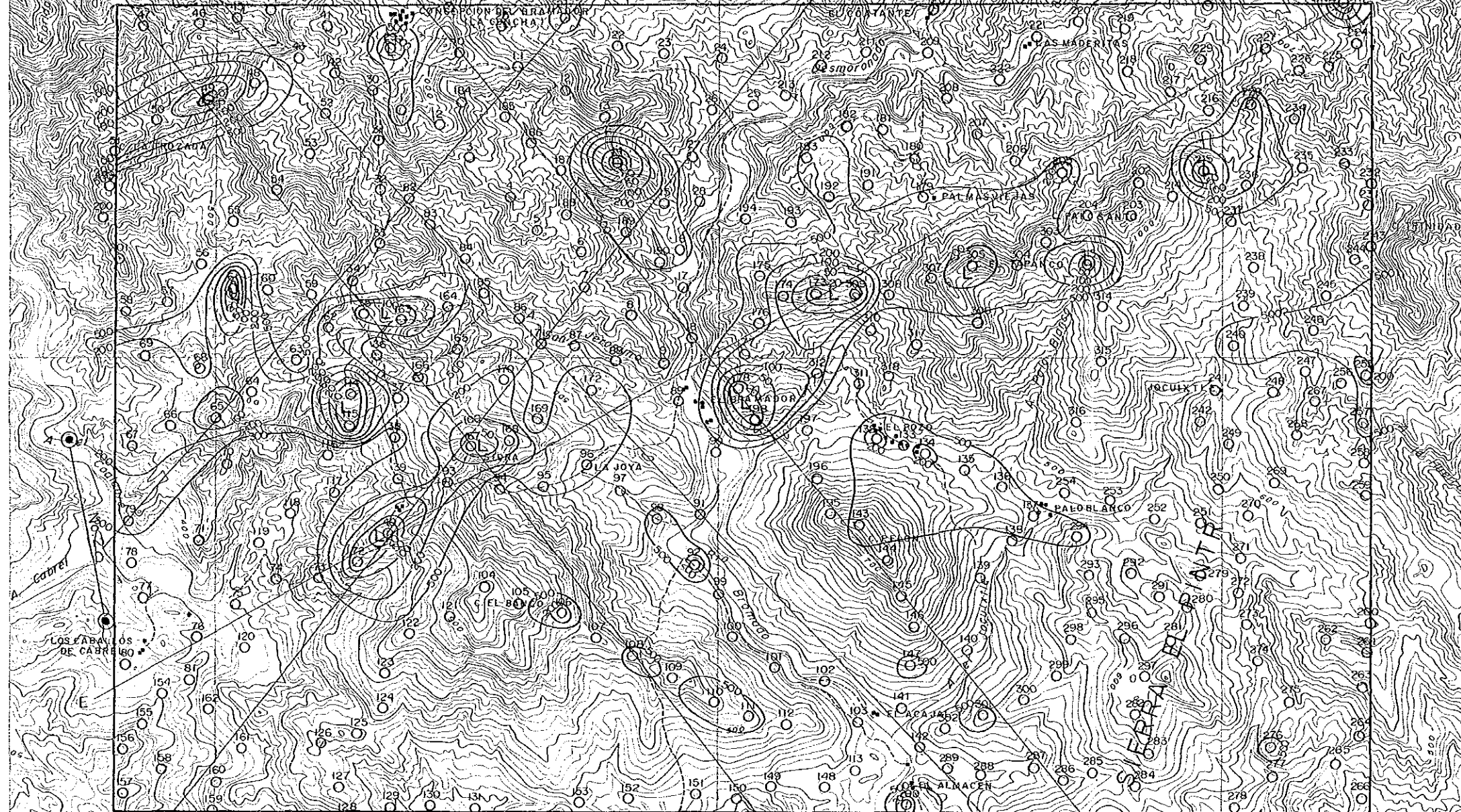


LEGEND

- Station Point, No.
- Transmitter Dipole
- Contour of Apparent Resistivity (Ω-m)

20°15'

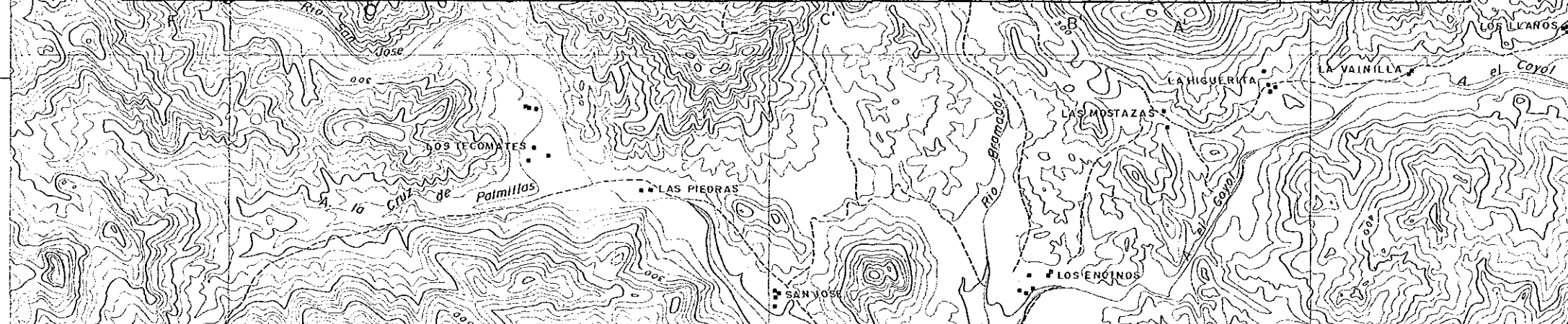
20°15'



Y 10,000

20°10'

20°10'



Y 5,000

X-15,000

105°05'

X-10,000

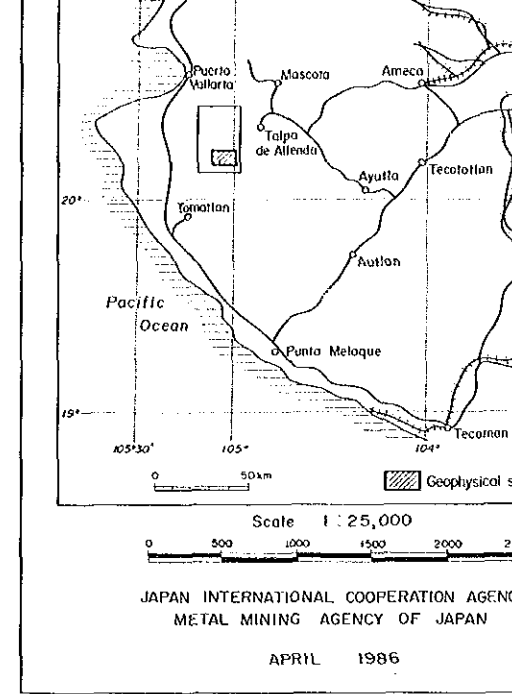
105°00'

X-5,000



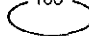
20°10'

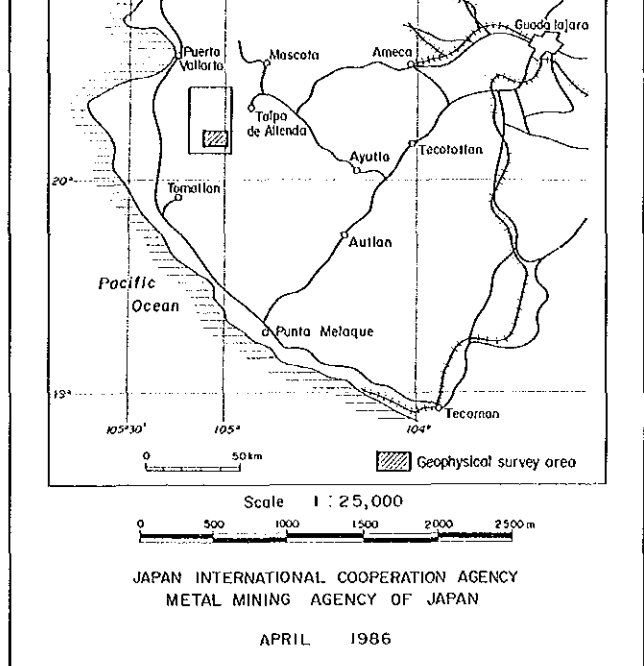
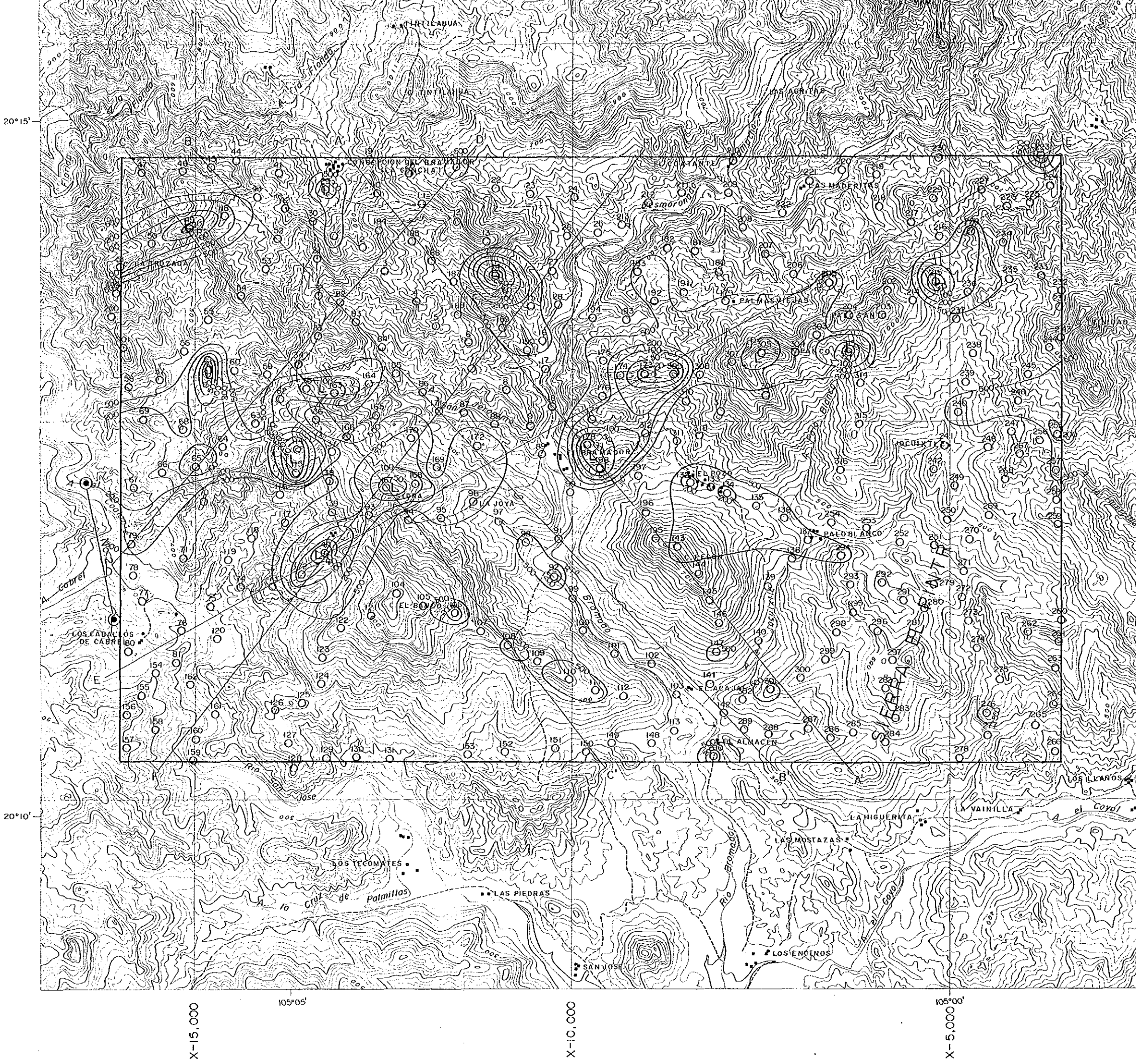
Y 5,000

Y 15,000

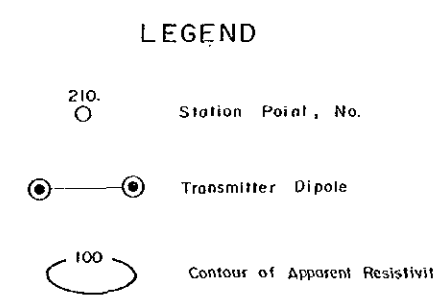
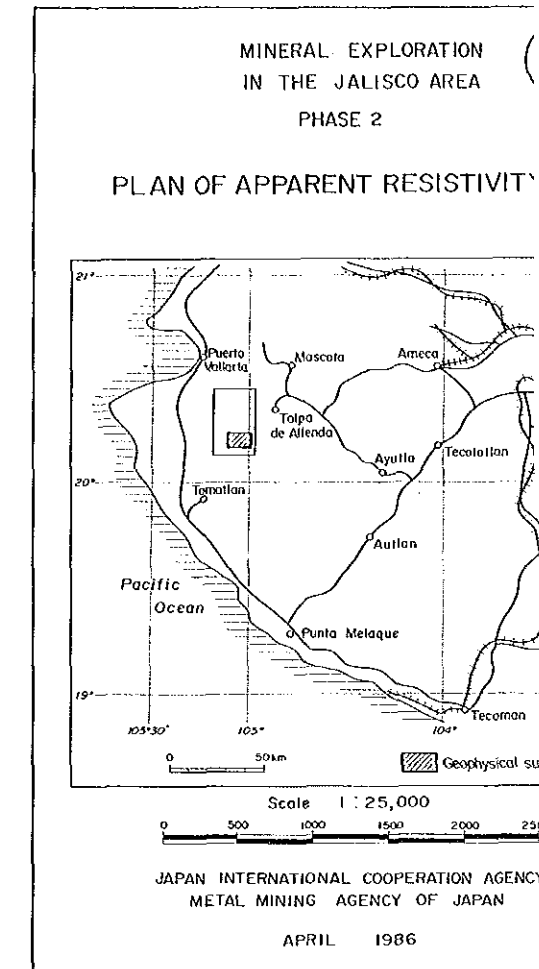
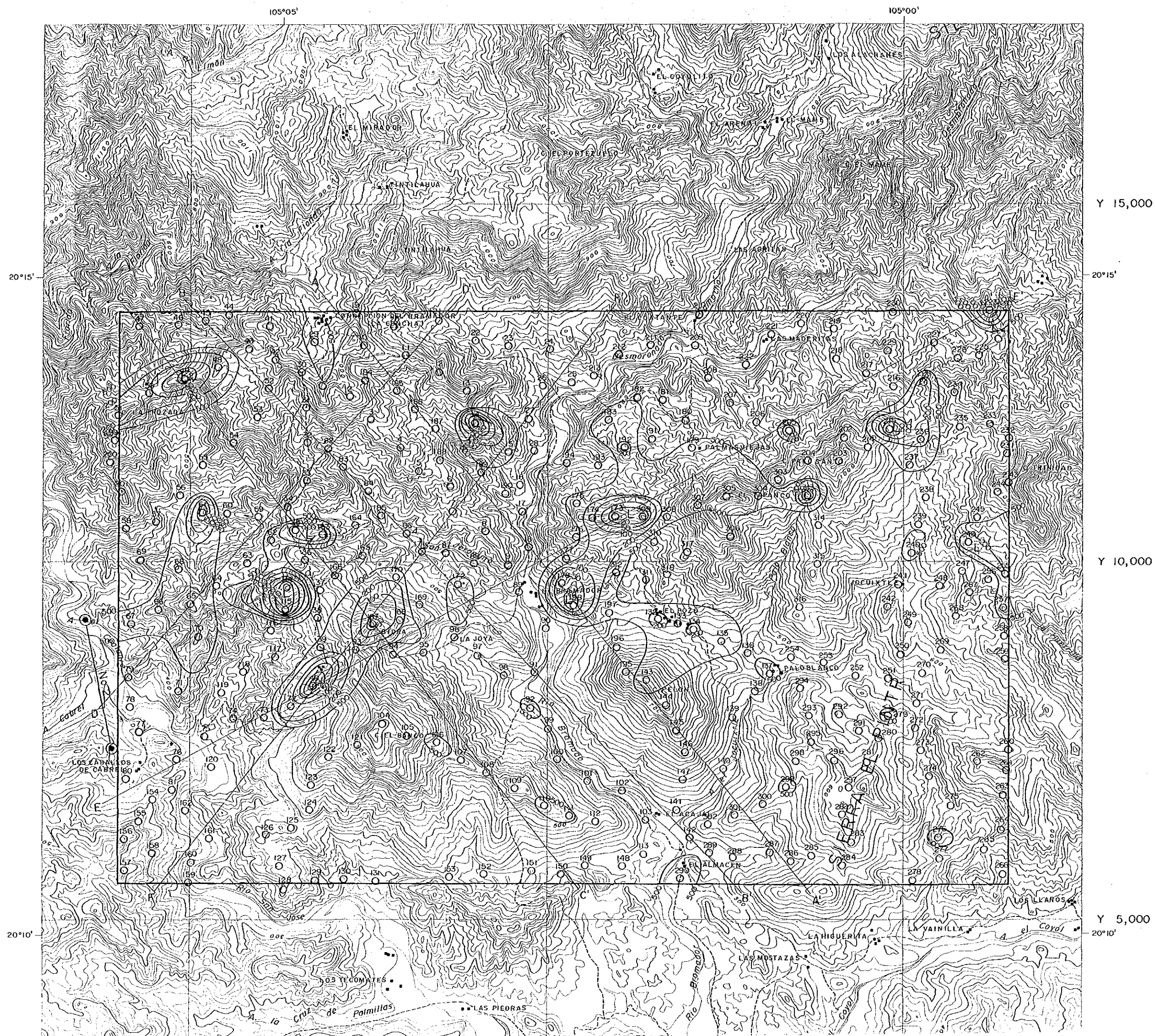


LEGEND

-  Station Point, No.
-  Transmitter Dipole
-  Contour of Apparent Resistivity



- LEGEND**
- Station Point, No.
 - Transmitter Dipole
 - Contour of Apparent Resistivity ($\Omega \cdot m$)



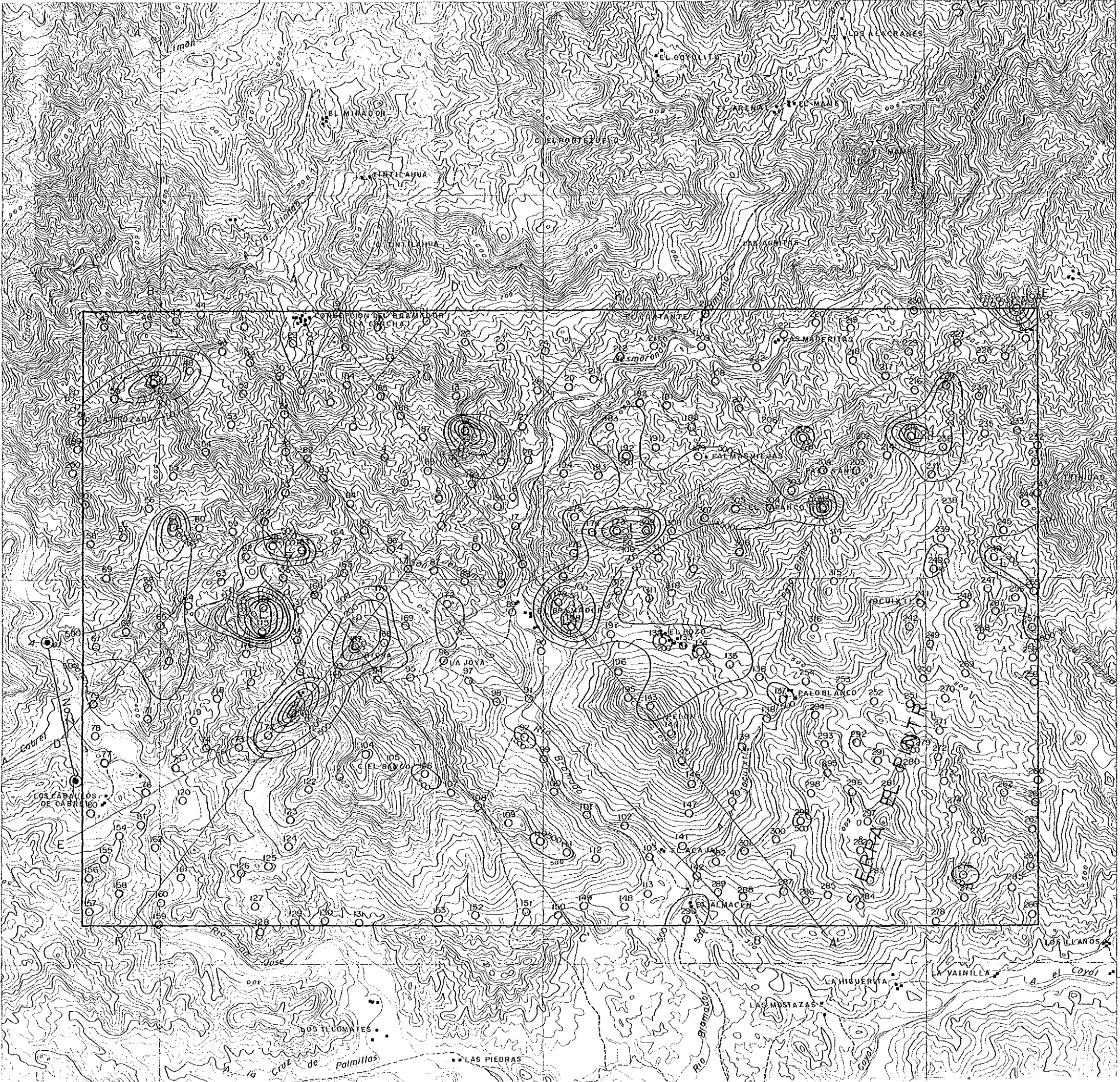
Y 15,000

Y 10,000

Y 5,000

105°05'

105°00'



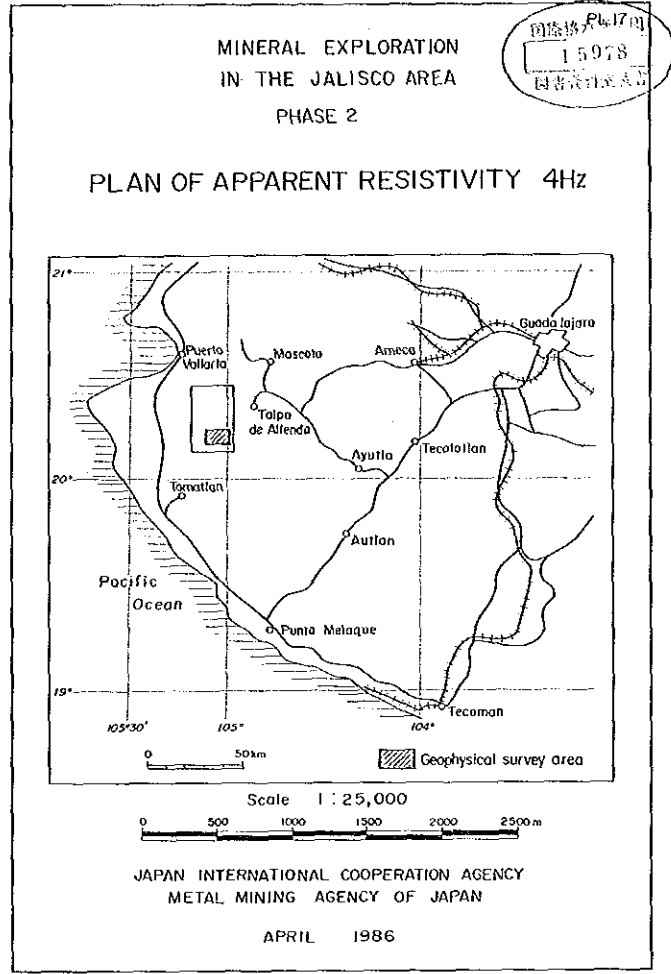
Y 15,000

20°15'

Y 10,000

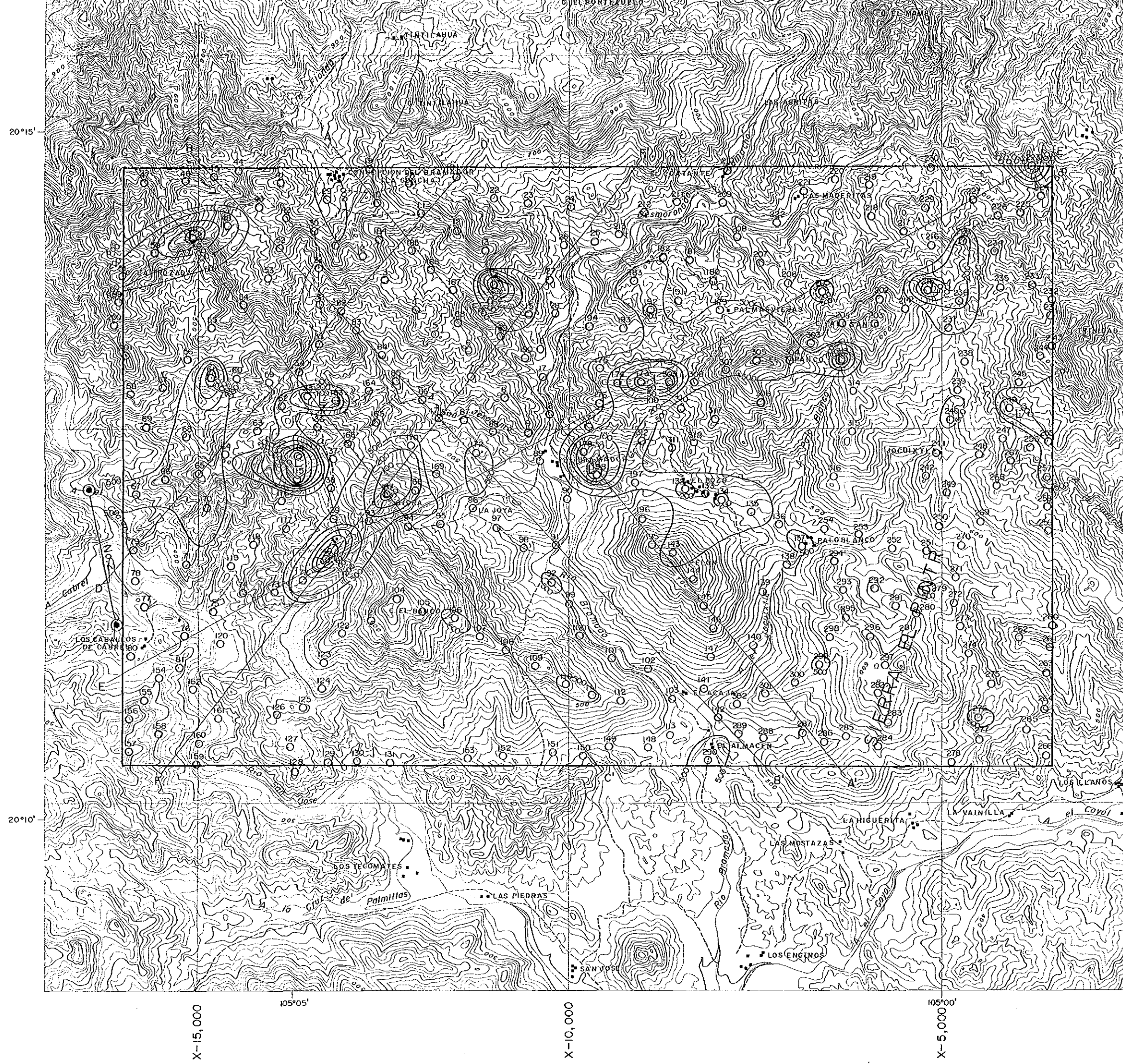
Y 5,000

20°10'



LEGEND

- Station Point, No.
- Transmitter Dipole
- Contour of Apparent Resistivity (Ω-m)



Y 15,000

20°15'

Y 10,000

Y 5,000

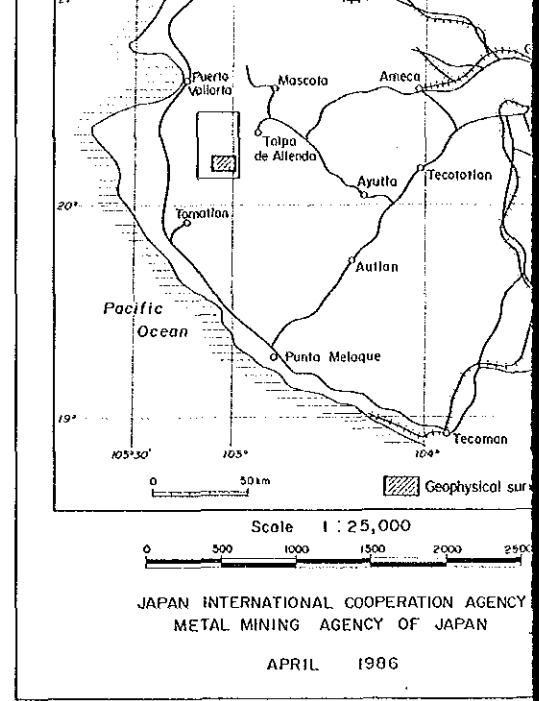
X-15,000

105°05'

X-10,000

X-5,000

20°10'



Scale 1 : 25,000
0 500 1000 1500 2000 2500

JAPAN INTERNATIONAL COOPERATION AGENCY
METAL MINING AGENCY OF JAPAN

APRIL 1986

LEGEND

- 210. ○ Station Point, No.
- Transmitter Dipole
- 100 Contour of Apparent Resistivity

