

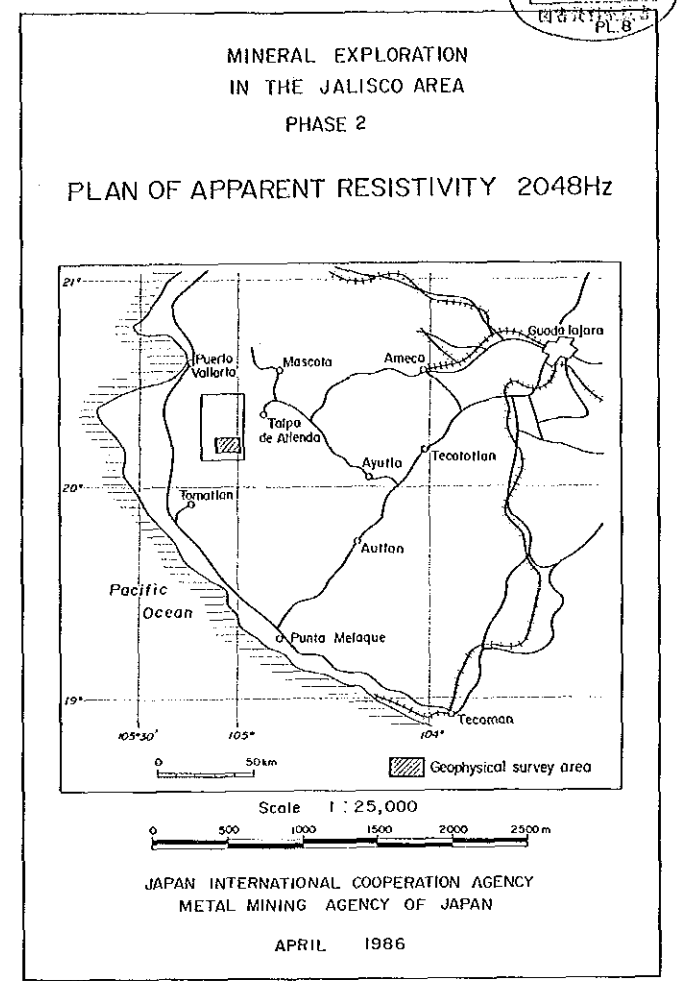
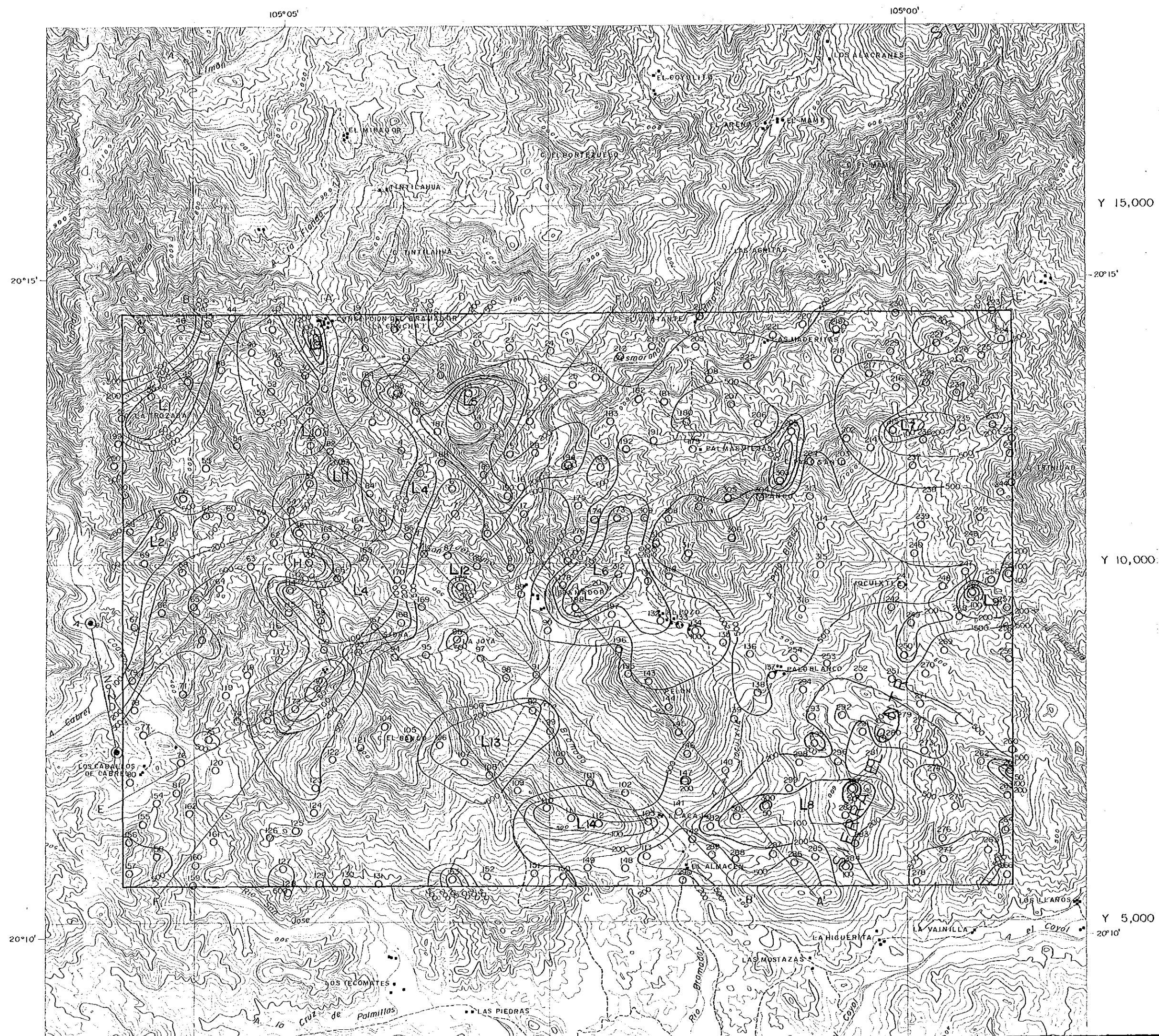
Y 15,000

20°15'

Y 10,000

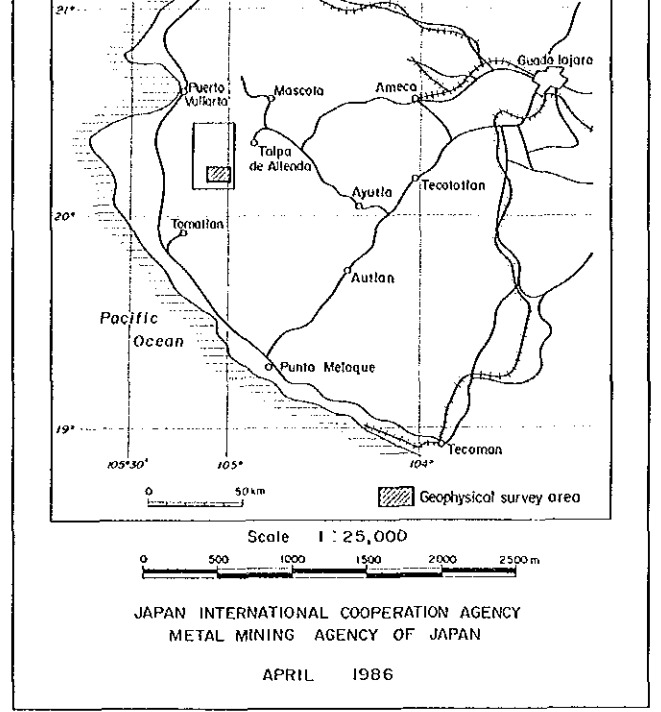
Y 5,000

20°10'



LEGEND

- Station Point, No.
- Transmitter Dipole
- 100 Contour of Apparent Resistivity (Ωm)



Y 15,000

20° 15'

Y 10,000

LEGEND

- 210 Station Point, No.
- Transmitter Dipole
- 100 Contour of Apparent Resistivity (Ωm)

Y 5,000

20° 10'

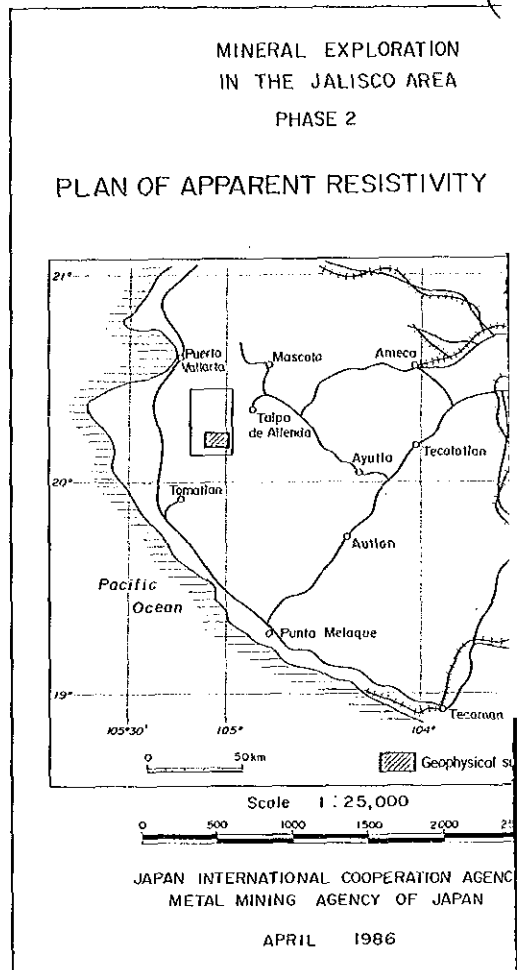
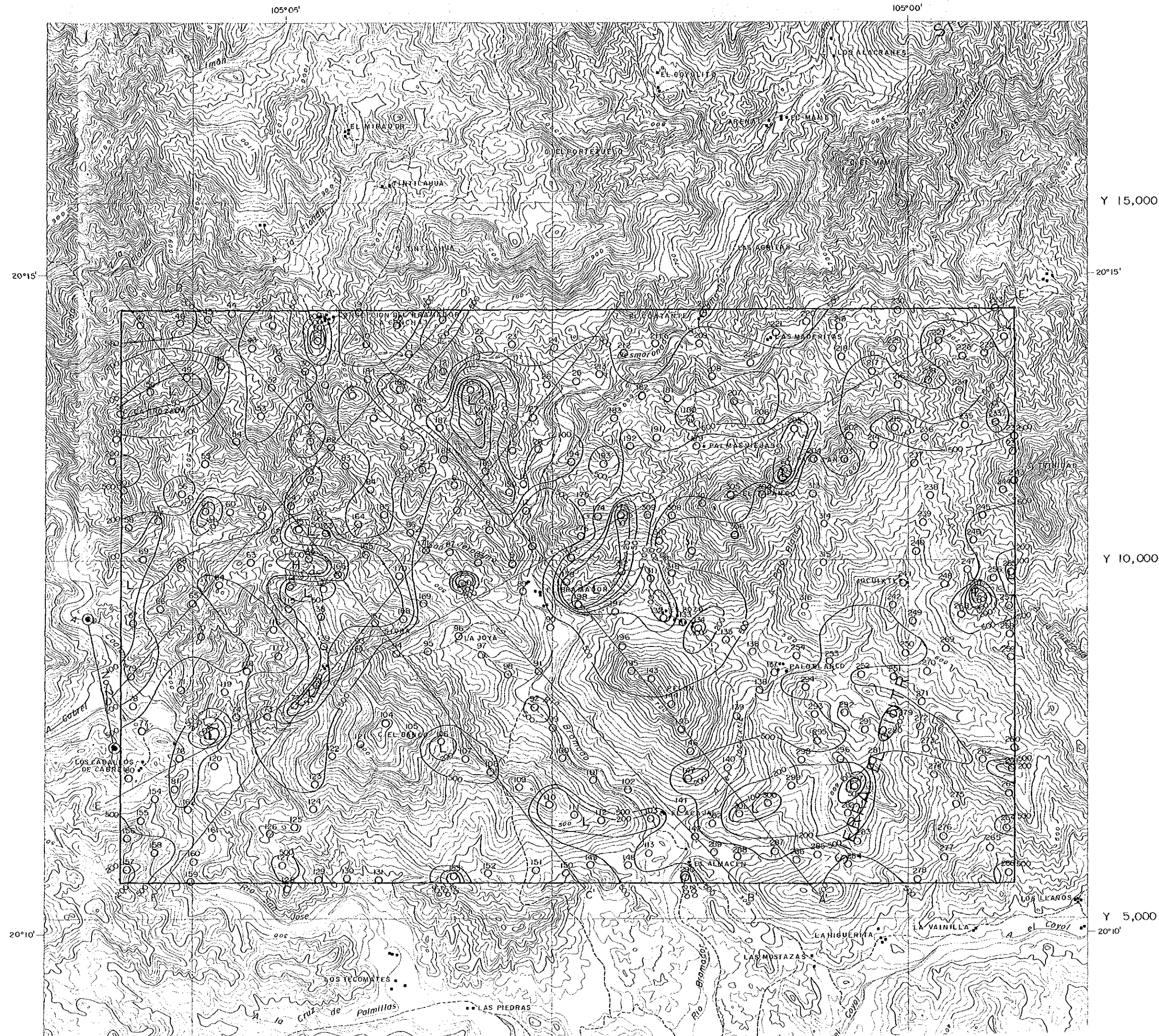
X-15,000

105° 05'

X-10,000

105° 00'

X-5,000



Y 15,000

20°15'

Y 10,000

Y 5,000

LEGEND

- Station Point, No.
- Transmitter Dipole
- Contour of Apparent Resistivity

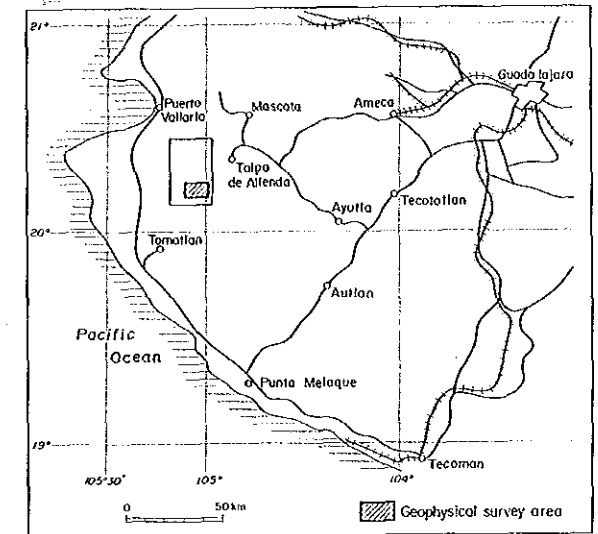
105°05'

105°00'

15978
1986-1987

MINERAL EXPLORATION
IN THE JALISCO AREA
PHASE 2

PLAN OF APPARENT RESISTIVITY 1024Hz



Scale 1 : 25,000
0 500 1000 1500 2000 2500 m

JAPAN INTERNATIONAL COOPERATION AGENCY
METAL MINING AGENCY OF JAPAN

APRIL 1986



Y 15,000

20°15'

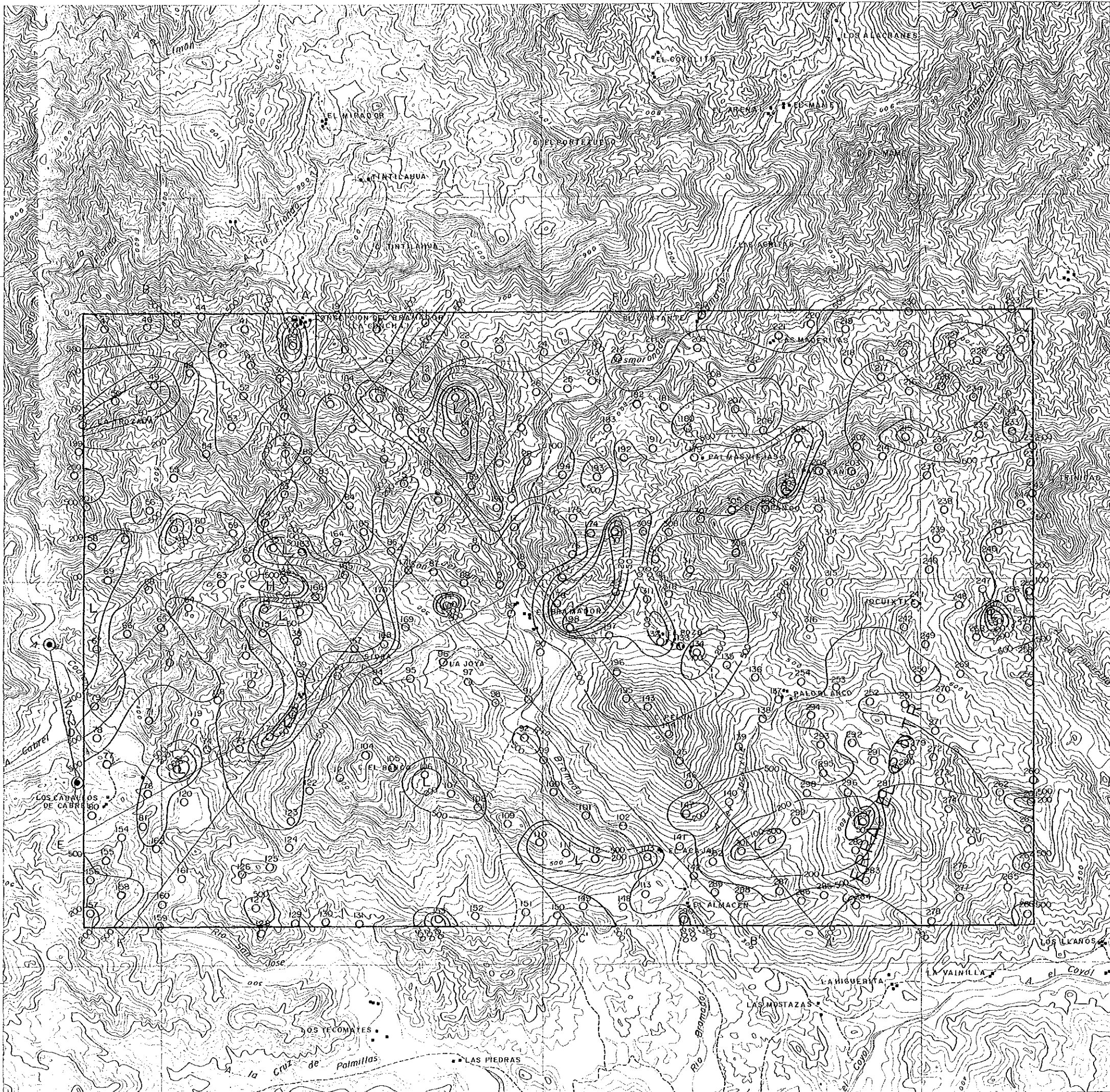
Y 10,000

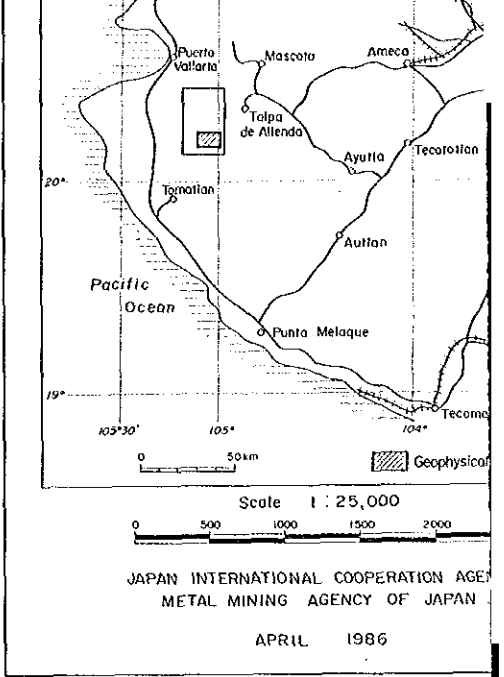
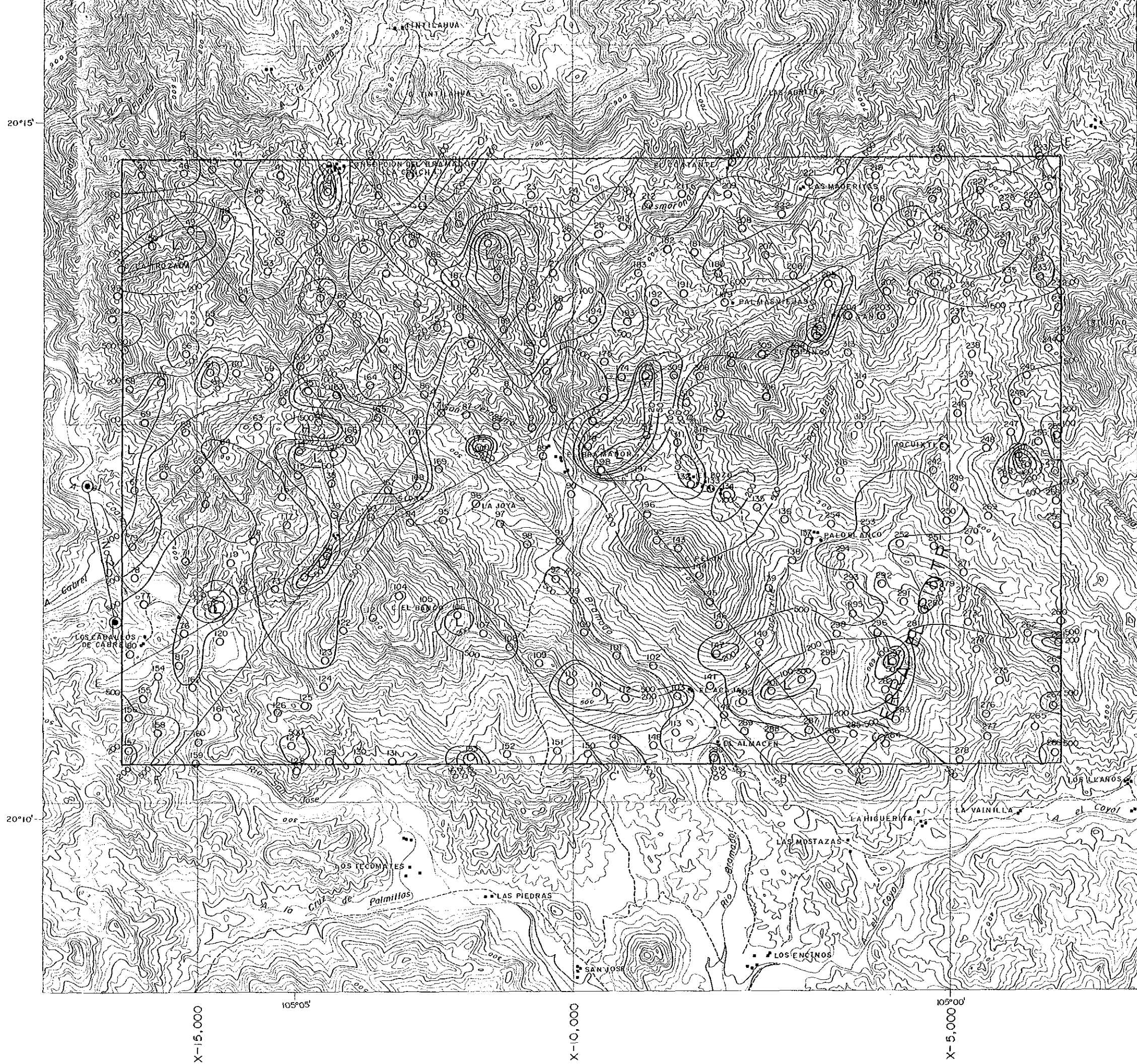
LEGEND

- Station Point, No.
- Transmitter Dipole
- Contour of Apparent Resistivity (Ω.m)

Y 5,000

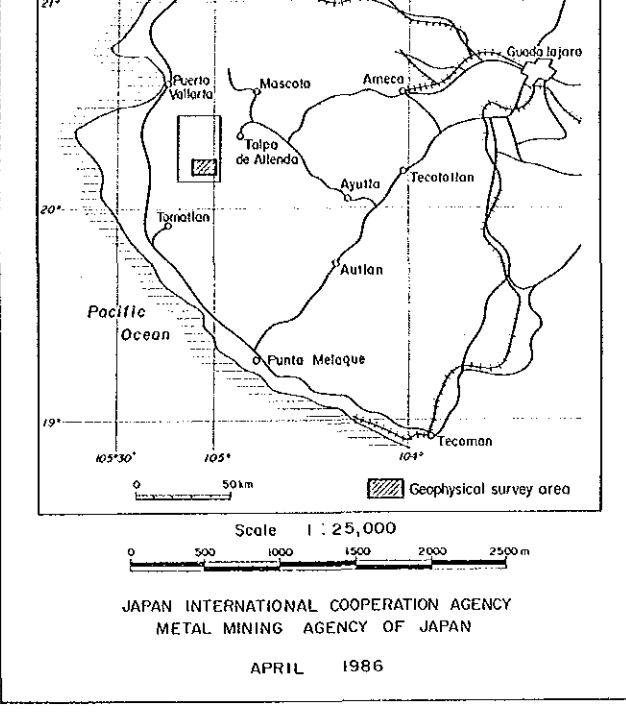
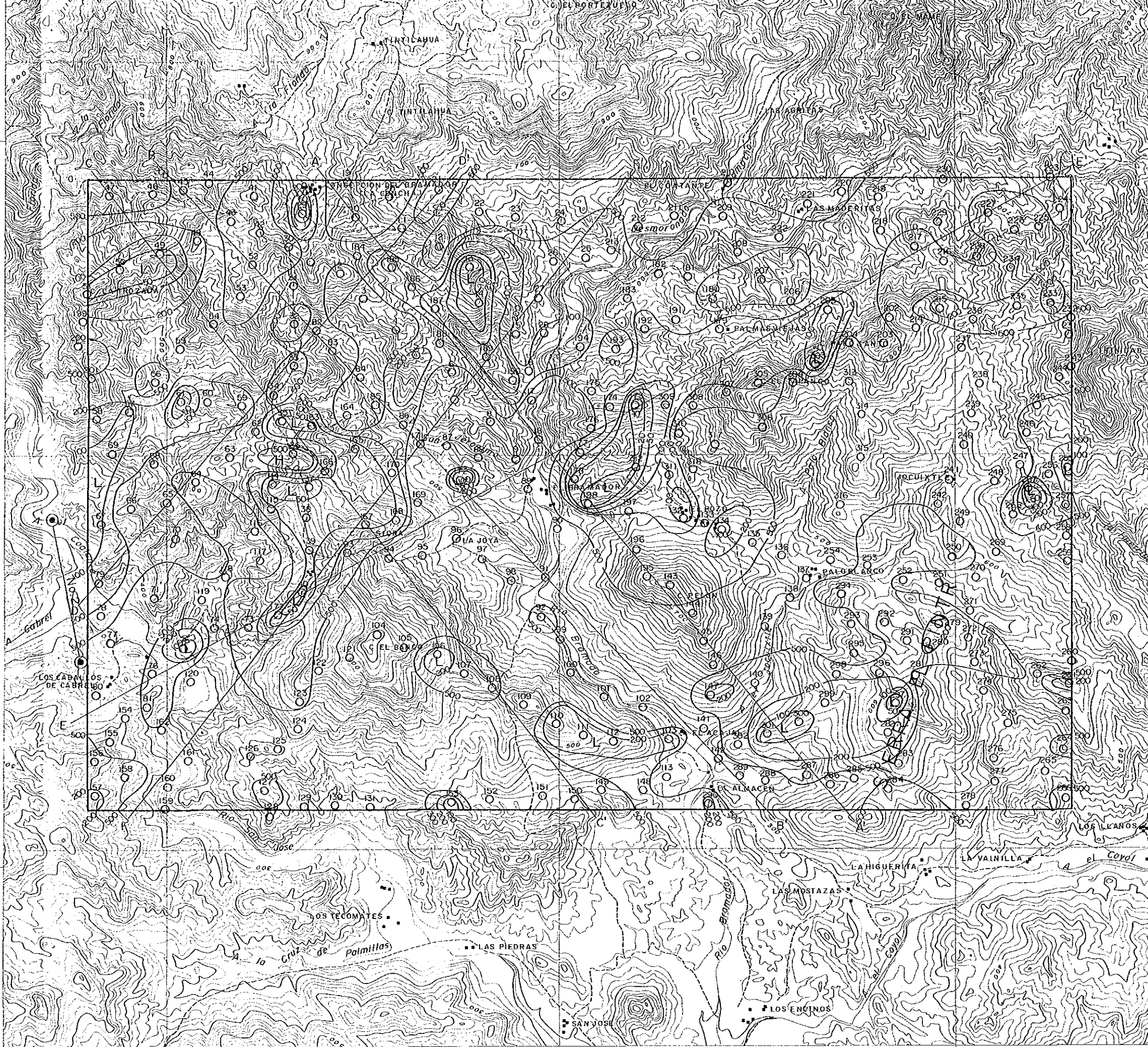
20°10'





LEGEND

- 210
○ Station Point, No.
- Transmitter Dipole
- 100 Contour of Apparent Resistivity



LEGEND

- Station Point, No.
- ⊖ Transmitter Dipole
- 100 Contour of Apparent Resistivity ($\Omega\text{-m}$)

X-15,000

105°05'

X-10,000

X-5,000

Y 5,000

20°10'

Y 10,000

Y 15,000

20°15'