

105°10'

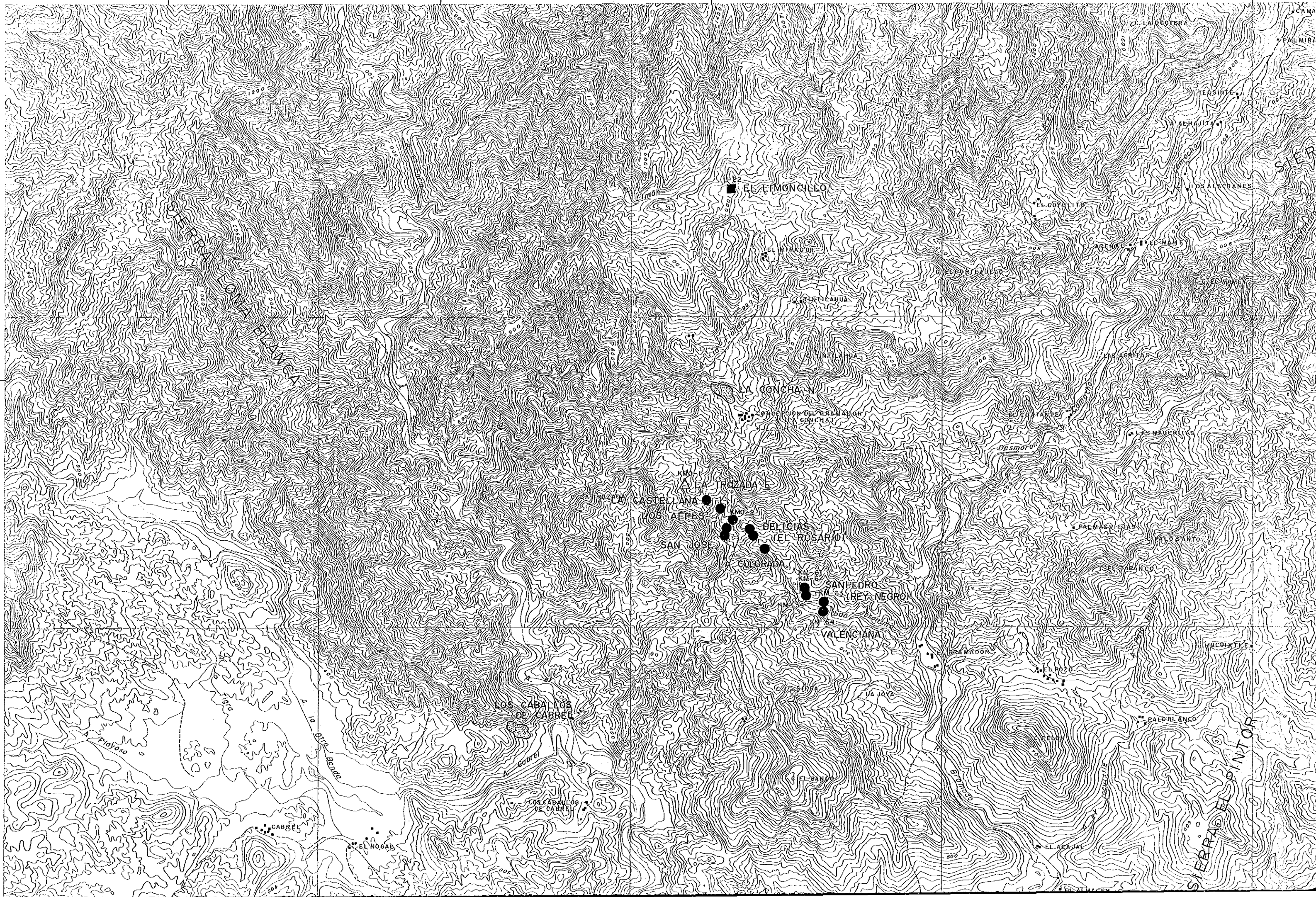
105°05'

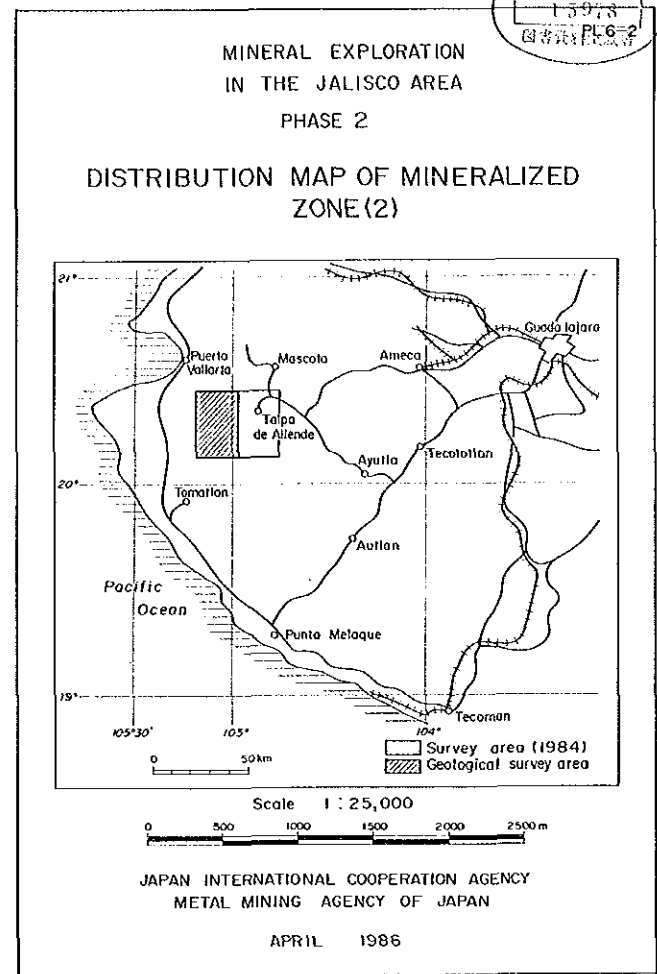
105°00'

Y 15,000

20°15'

Y 10,000

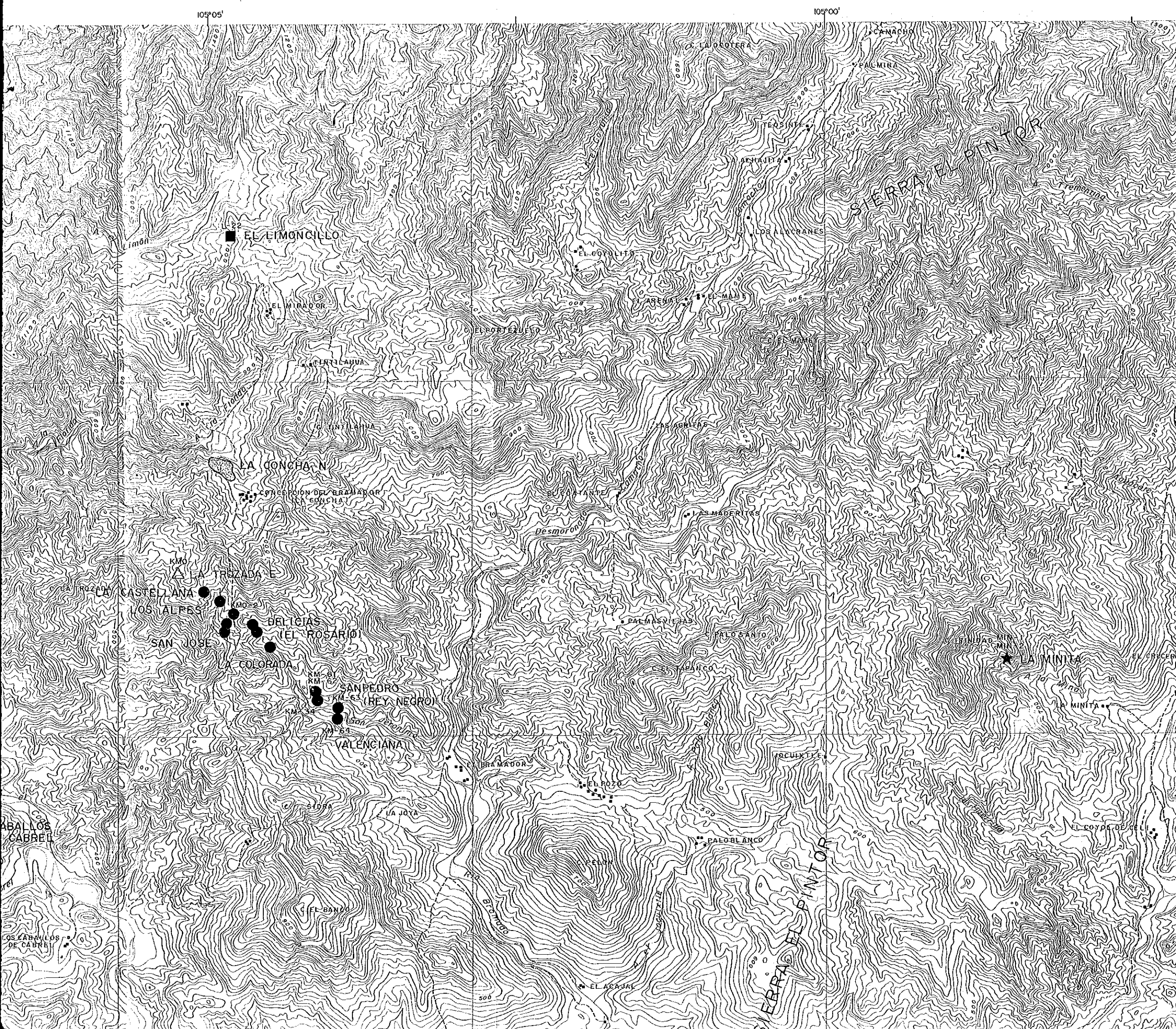




Y 15,000

20°15'

Y 10,000



LEGEND

- Kuroko-type Deposit
- △ liq Deposit
- ☆ Gold-Silver-Quartz Vein Deposit
- ★ Gold-Silver-Lead-Zinc Vein Deposit
- Lead-Zinc Vein Deposit
- ⊙ Pyrite Dissemination

Y 10,000

Y 5,000  
20°10'



105°10'

X-20,000

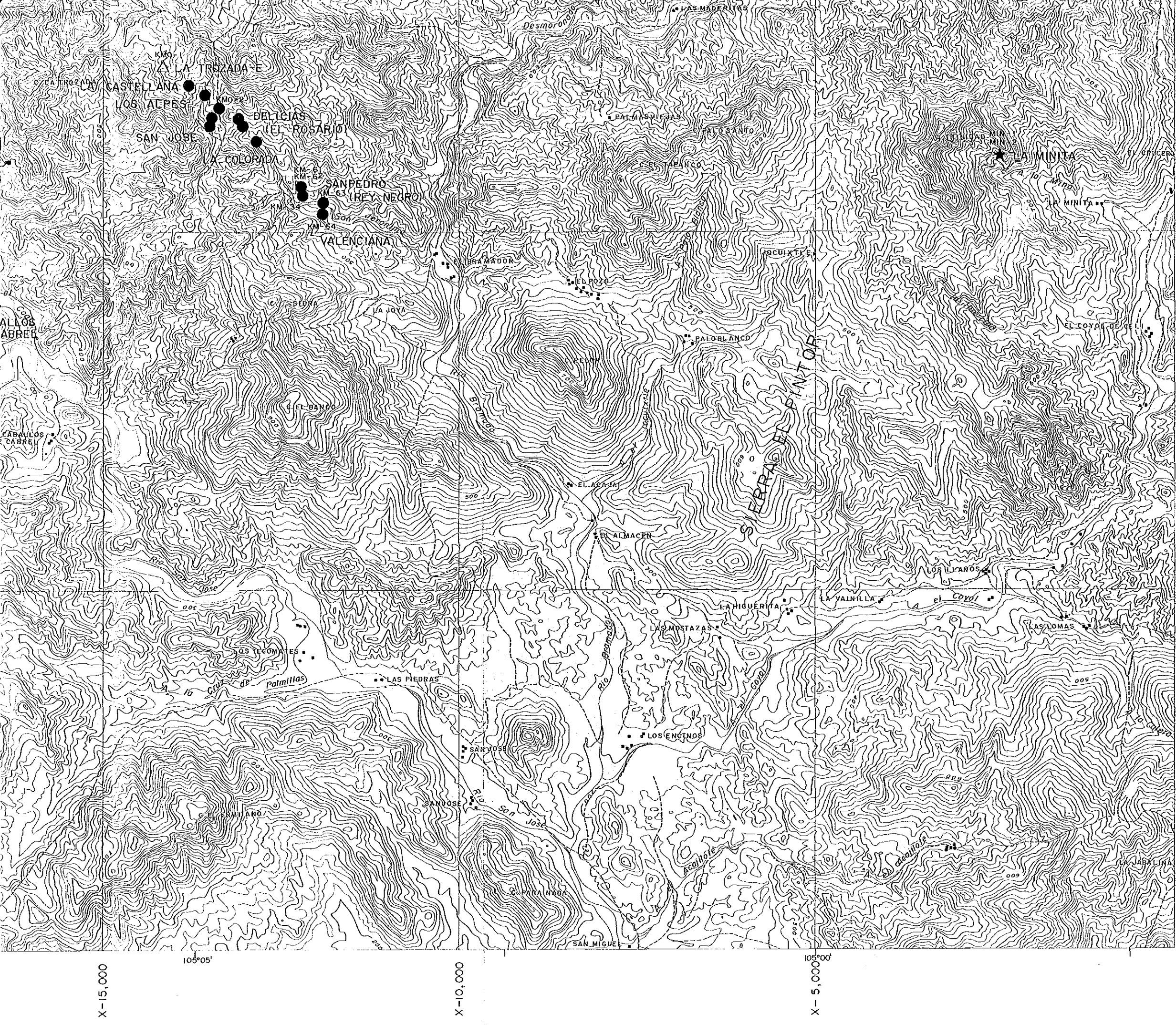
X-15,000

105°05'

X-10,000

105°00'

X-5,000



LEGEND

- Kuroko - type Deposit
- △ Itg Deposit
- ☆ Gold - Silver - Quartz Vein Deposit
- ★ Gold - Silver - Lead - Zinc Vein Deposit
- Lead - Zinc Vein Deposit
- ⊙ Pyrite Dissemination

Y 10,000

Y 5,000

20°10'

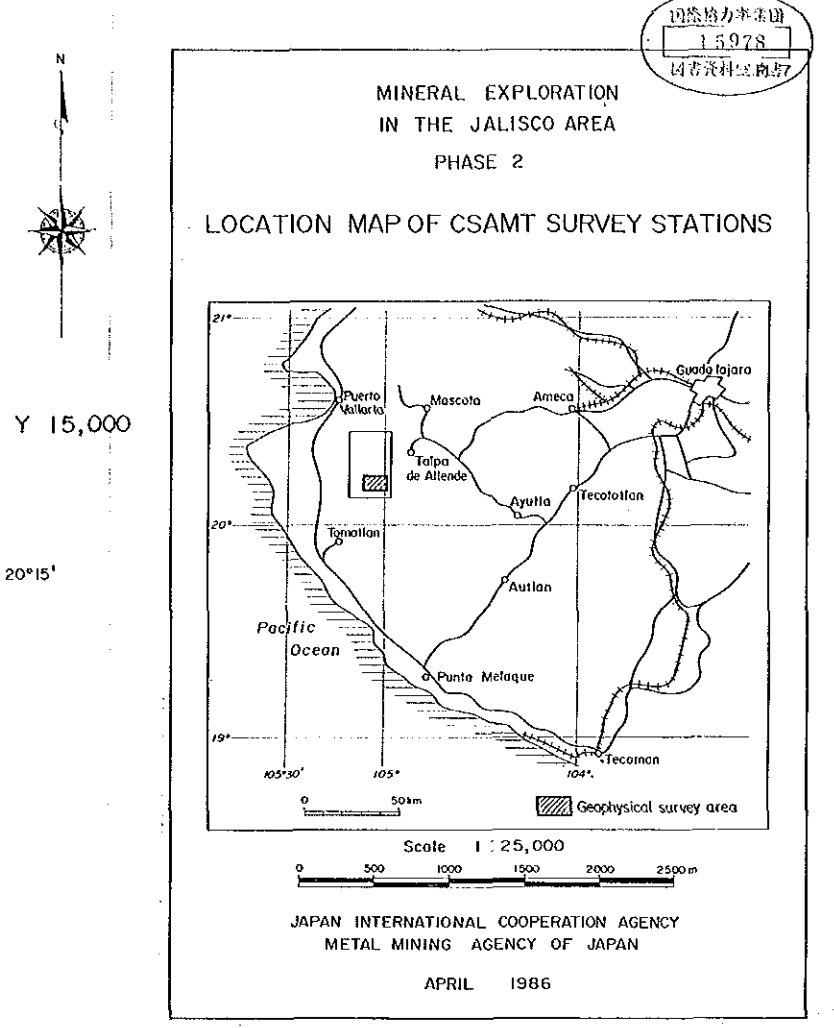
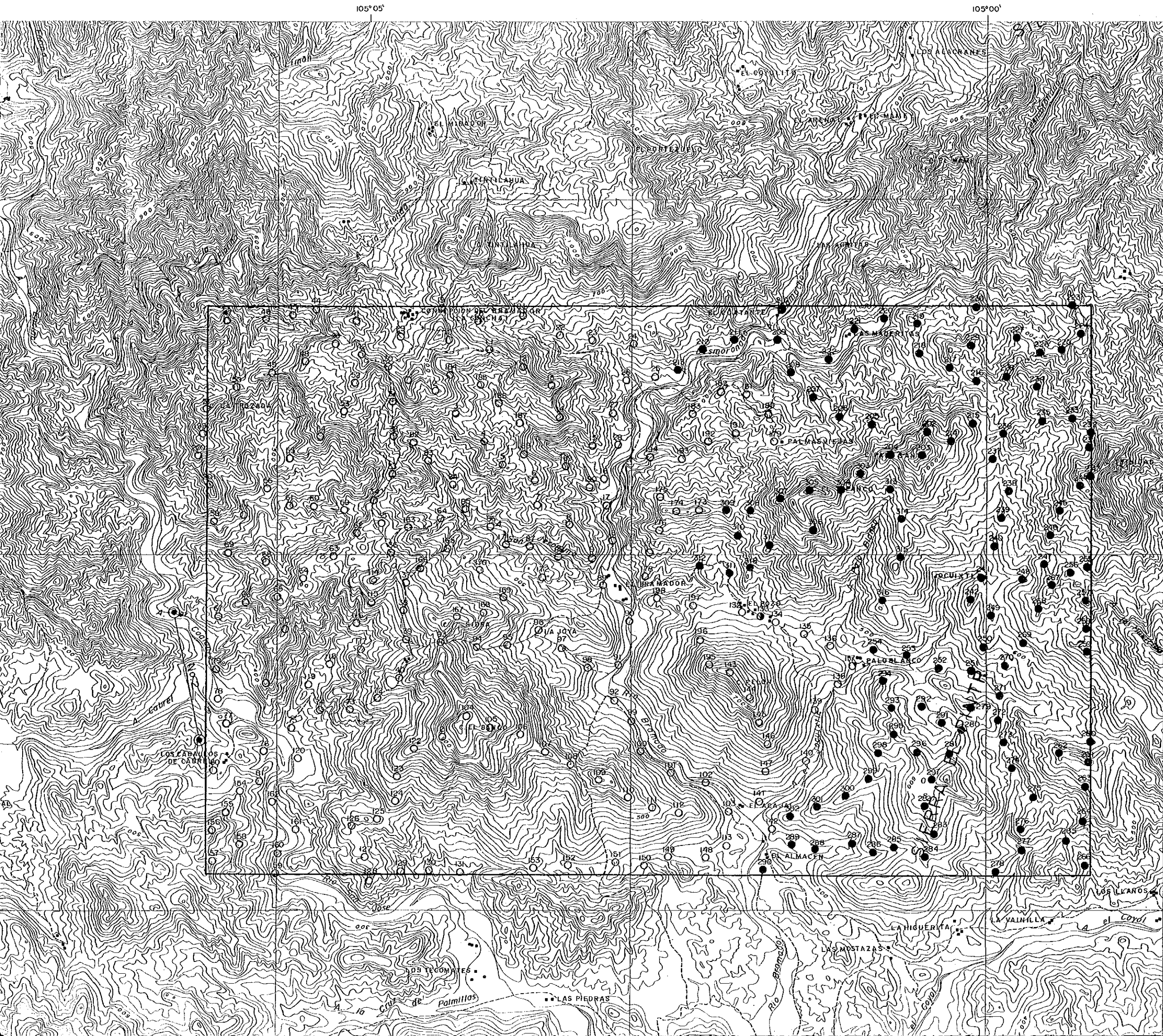
X - 15,000

105°05'

X - 10,000

X - 5,000





- Y 15,000
- 20°15'
- Y 10,000
- LEGEND
- 10 ○ CSAMT Station No. measured by Transmitter Dipole No.1
  - 280 ● CSAMT Station No. measured by Transmitter Dipole No.2
  - 133 ⊙ CSAMT Station No. measured by Transmitter Dipole No.1 and No.2
  - ⊕ Transmitter Dipole

Y 5,000  
20°10'

15978  
15978

Y 15,000

20°15'

Y 10,000

Y 5,000

20°10'

105°10'00"

X-20,000

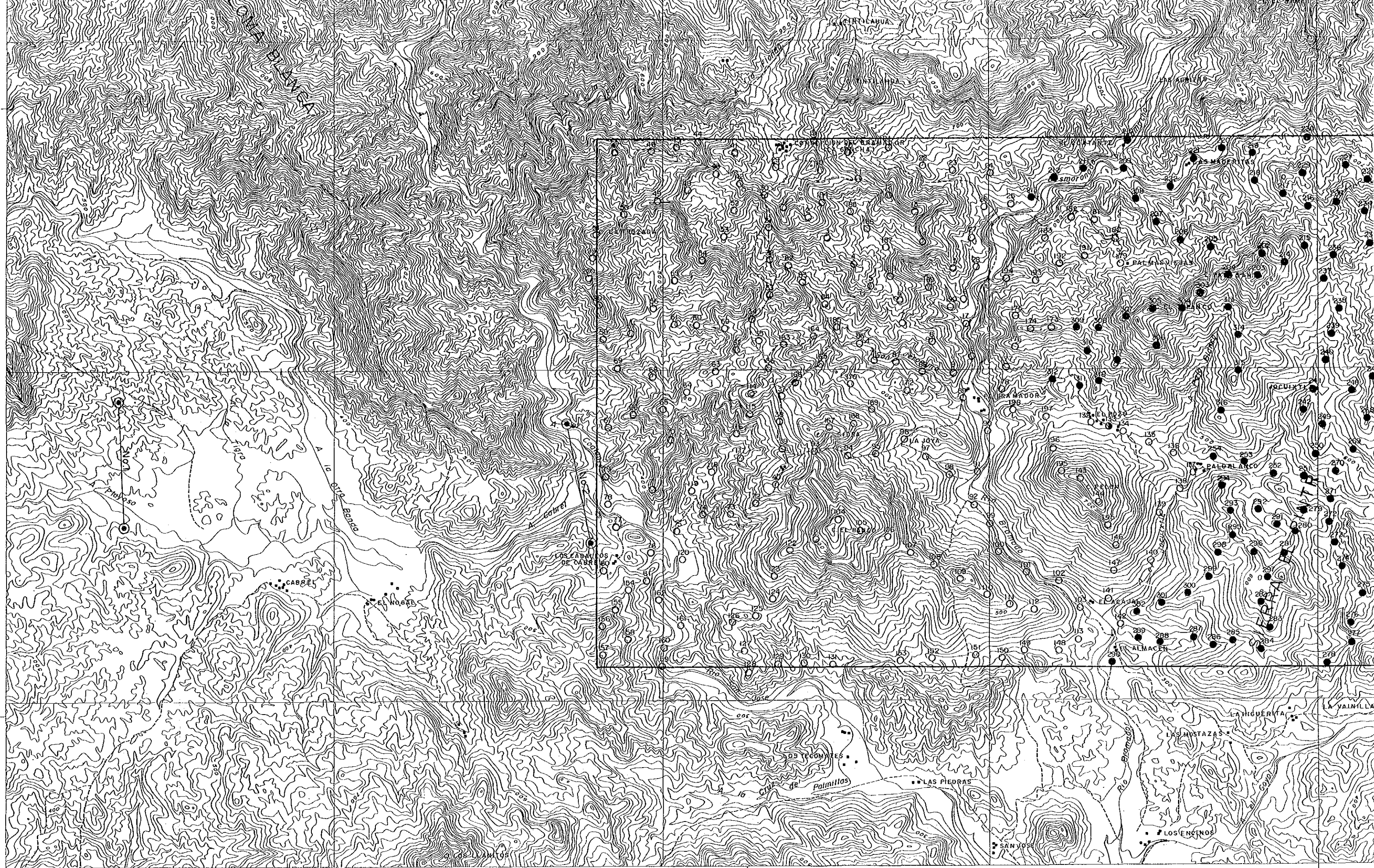
X-15,000

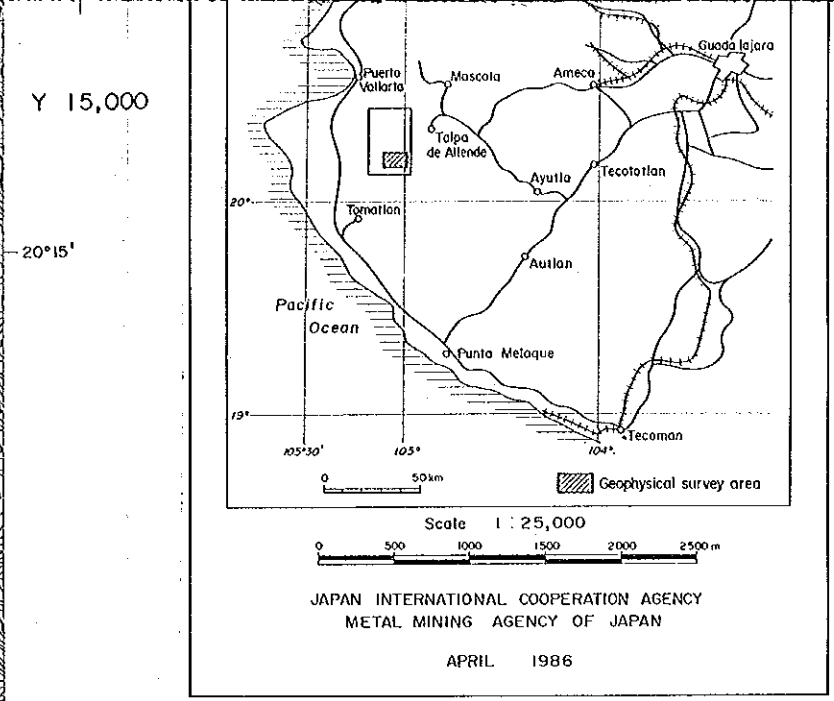
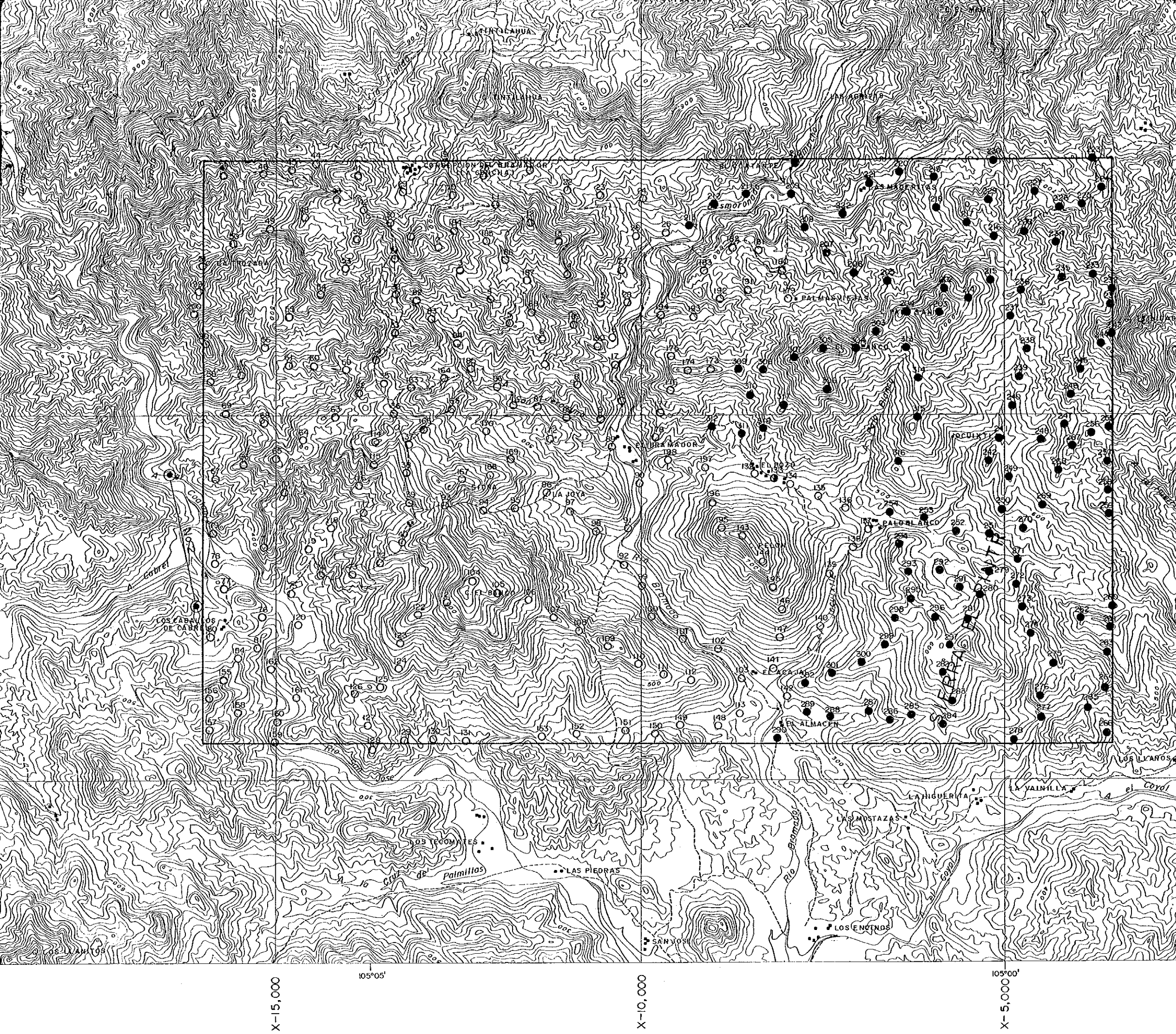
105°05'

X-10,000

105°00'

X-5,000





- Y 15,000
- 20°15'
- Y 10,000
- LEGEND
- 10 ○ CSAMT Station No. measured by Transmitter Dipole No.1
  - 280 ● CSAMT Station No. measured by Transmitter Dipole No.2
  - 133 ⊙ CSAMT Station No. measured by Transmitter Dipole No.1 and No.2
  - ⊙ Transmitter Dipole
- Y 5,000
- 20°10'
- X-15,000      105°05'      X-10,000      105°00'      X-5,000