

Y 10,000

Y 5,000
2010



105°10'

X-20,000

X-15,000

105°05'

SE

X-10,000

105°00'

X-5,000



LEGEND

Quaternary System		Intrusives	
[Q]	Alluvium - Diluvium	[T ⁺ Dc]	Dacite
Tertiary System		[X ^x Ad]	Andesite
[M ^A Tad4]	IV-Stage Andesite-Pyroclastics	[++ Gph]	Granophyre
[A ^A Tad3]	III-Stage Andesite-Pyroclastics	[+ Gd]	Granodiorite
[L ^L Tad1]	I-Stage Dacite-Pyroclastics	[/]	Fault
[A ^A Tad2]	II-Stage Andesite-Pyroclastics	[/]	Fold Axis
[fss1]	Sandstone (Conglomerate)	[35]	Strike and Dip
[A ^A Tad1]	I-Stage Andesite-Pyroclastics		
Cretaceous System			
[0-0-0 Kdc-sh]	Hanging Wall Dacite - Pyroclastics-shale		
[Kdc-0]	Basaltic Lava - Pyroclastics		
[ch-3]	Ore Horizon Pyroclastics		
[Kdc-3]	Footwall Dacite		
[Ksh1]	Shale Intercalated with Sandstone		
Jurassic System			
[Jsch]	Metamorphic Rocks		

Y 10,000

Y 5,000

20°10'

X-15,000

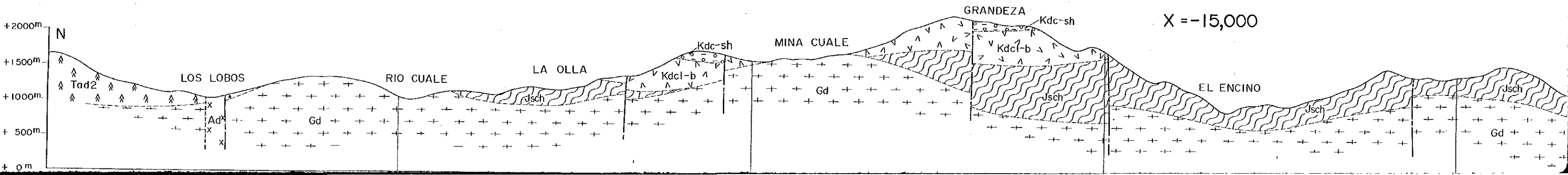
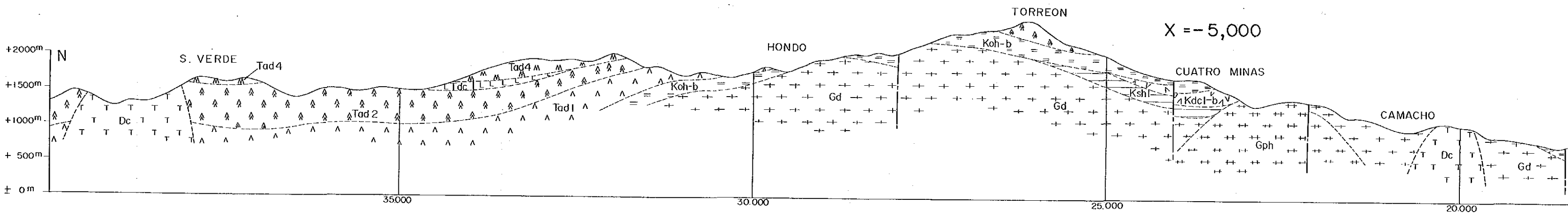
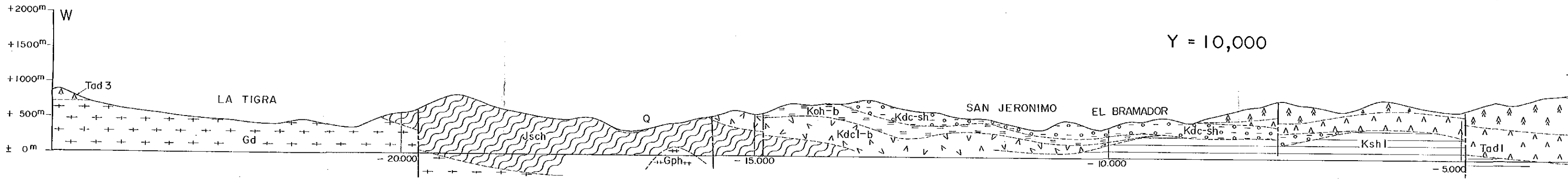
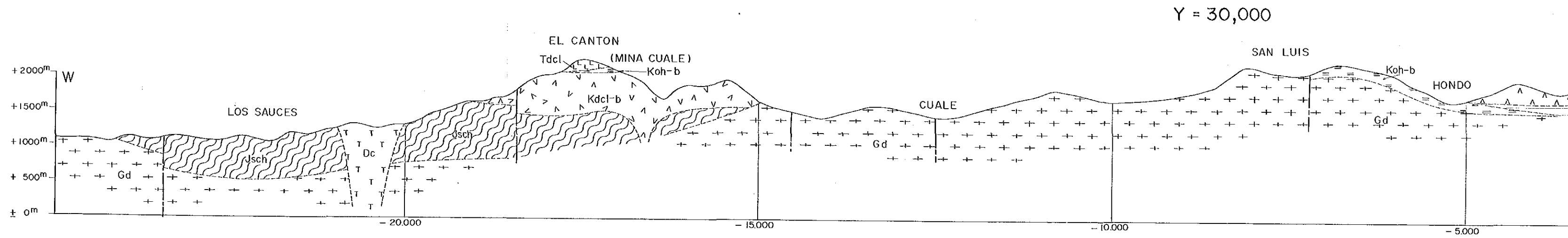
105°05'

SE

X-10,000

105°00'

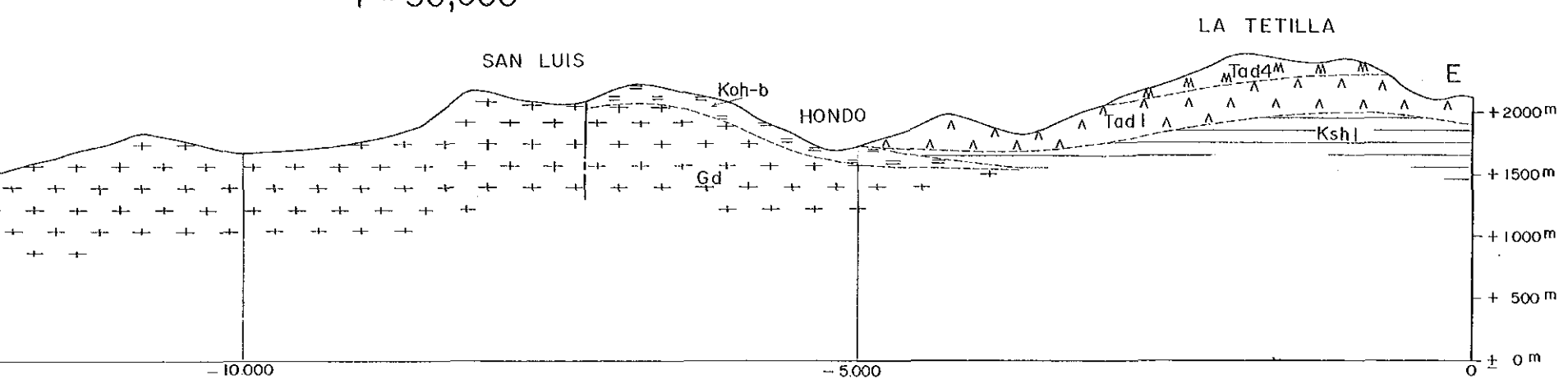
X-5,000



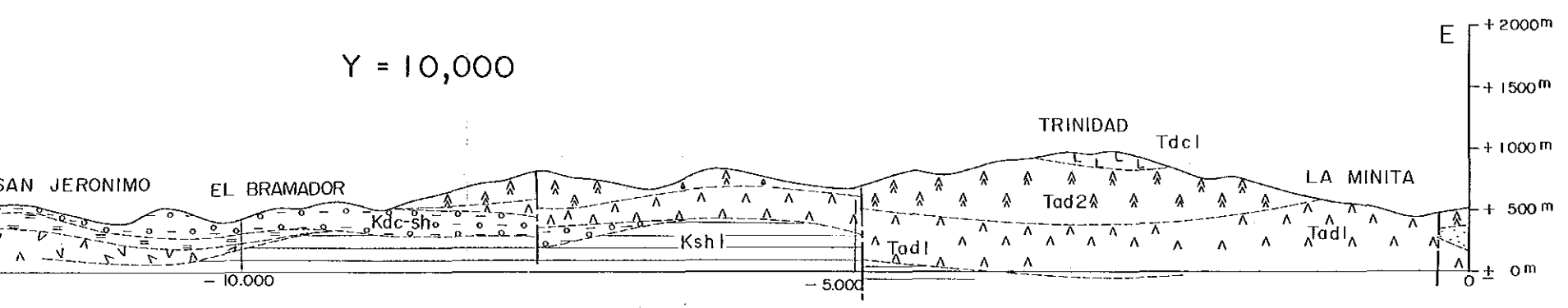
LEGEND

Quaternary System		Intrusive	
[Q]	Alluvium-Diluvium	[T] [Dc]	Dacite
Tertiary System		[X] [Ad]	Andesite
[M] [Tad4]	IV-Stage Andesite-Pyroclastics	[Gph]	Granophyre
[A] [Tad3]	III-Stage Andesite-Pyroclastics	[Gd]	Granodiorite
[L] [Tad1]	I-Stage Andesite-Pyroclastics	[Fault]	Fault
[A] [Tad2]	II-Stage Andesite-Pyroclastics		
[S]	Sandstone (Conglomerate)		
[A] [Tad1]	I-Stage Andesite-Pyroclastics		
Cretaceous System			
[Kdc-sh]	Hanging Wall Dacite - Pyroclastics - Shale		
[Ksh]	Basaltic Lava - Pyroclastics		
[Gh]	Ore Horizon Pyroclastics		
[Kdc]	Footwall Dacite		
[Ksh]	Shale Intercalated with Sandstone		
Jurassic System			
[Jsch]	Metamorphic Rocks		

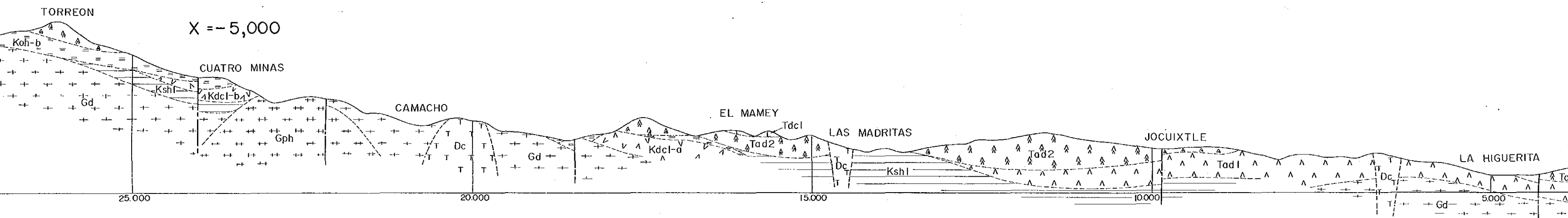
Y = 30,000



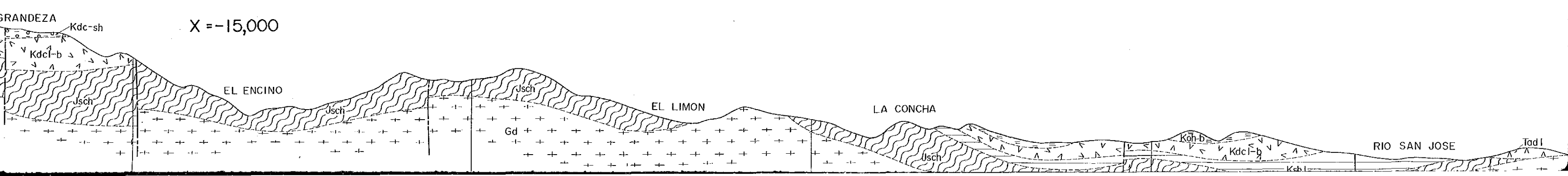
Y = 10,000

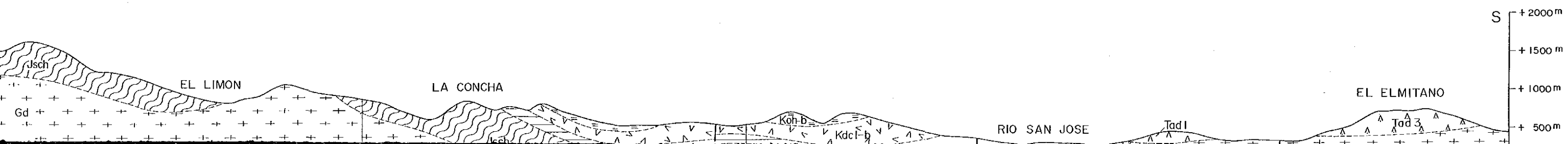
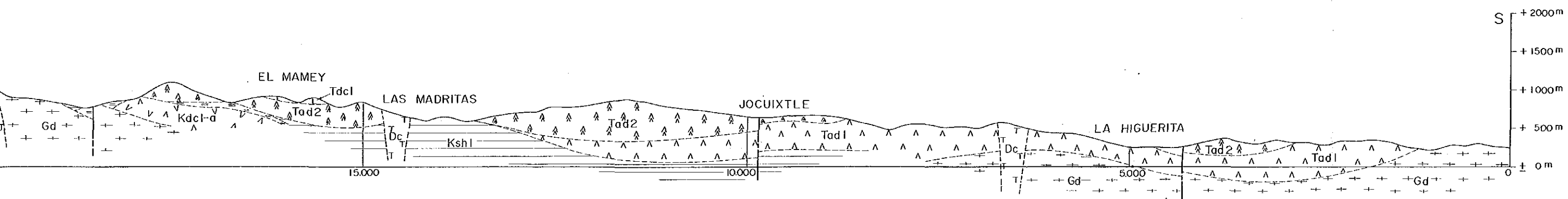
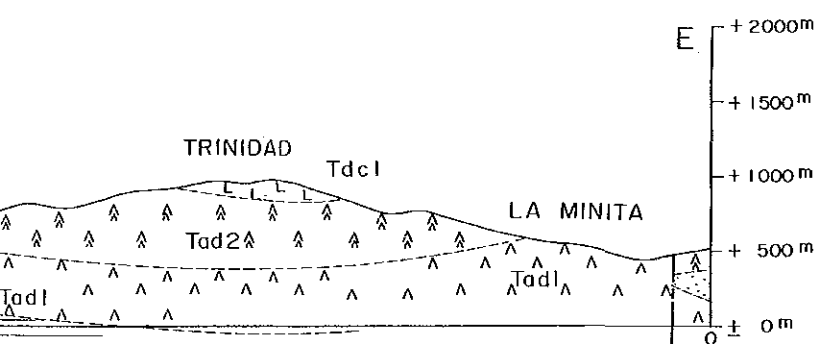
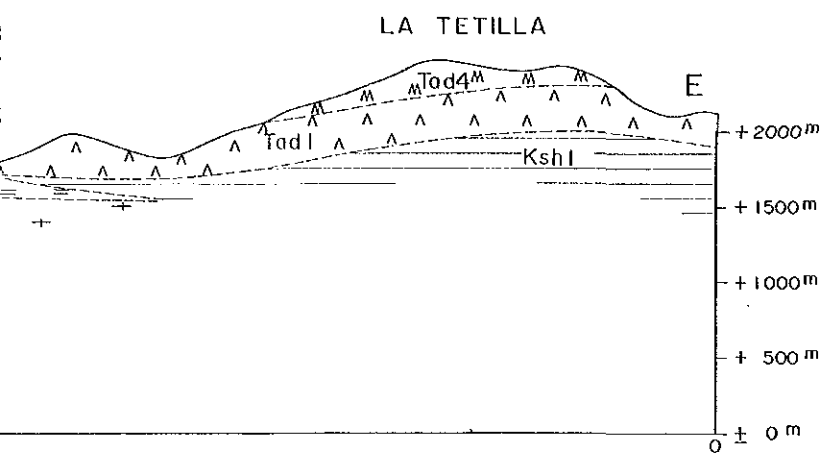


X = -5,000



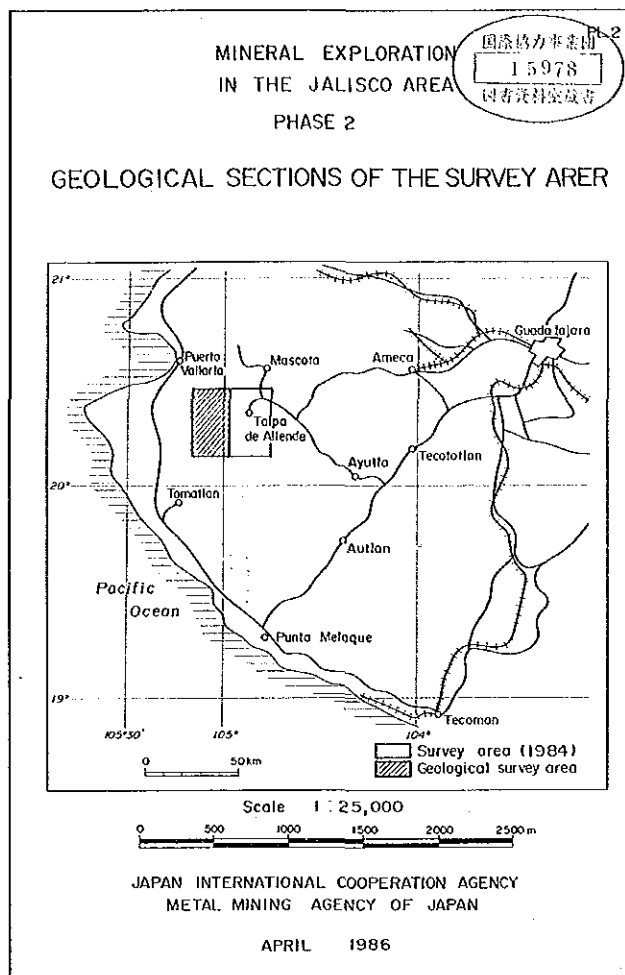
X = -15,000

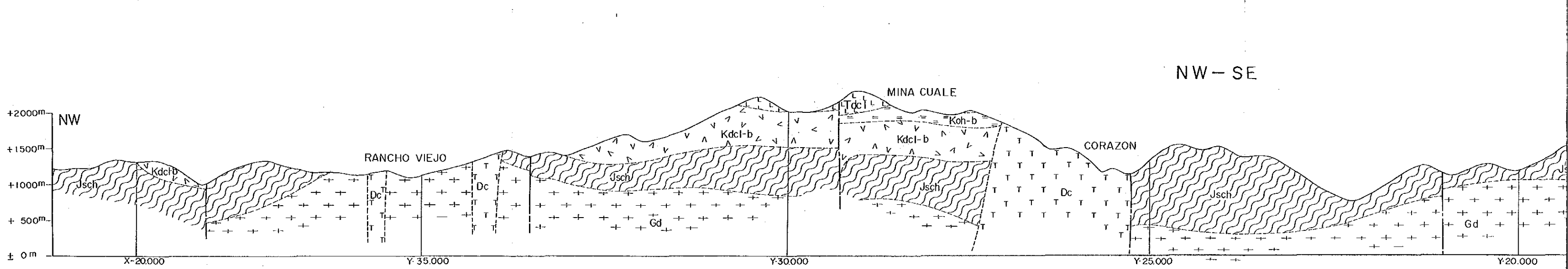
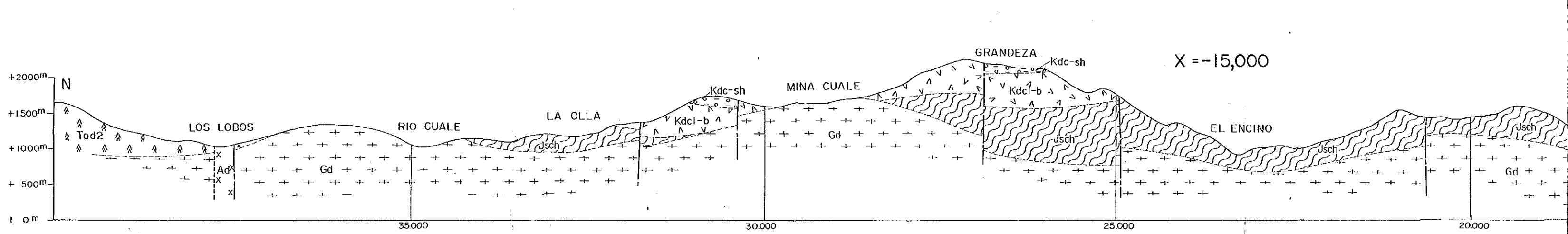
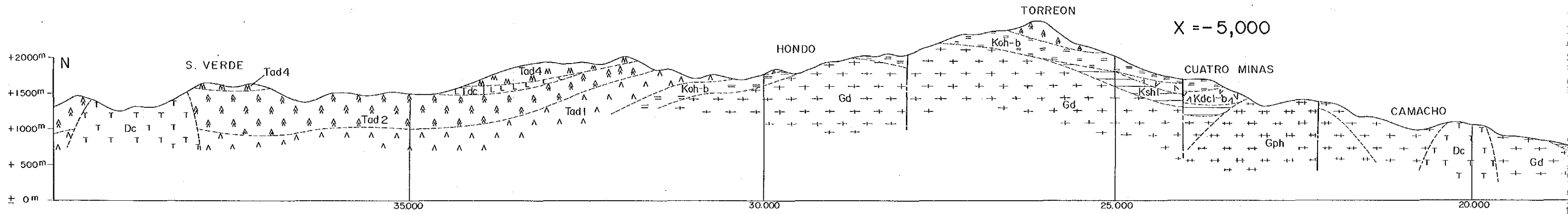
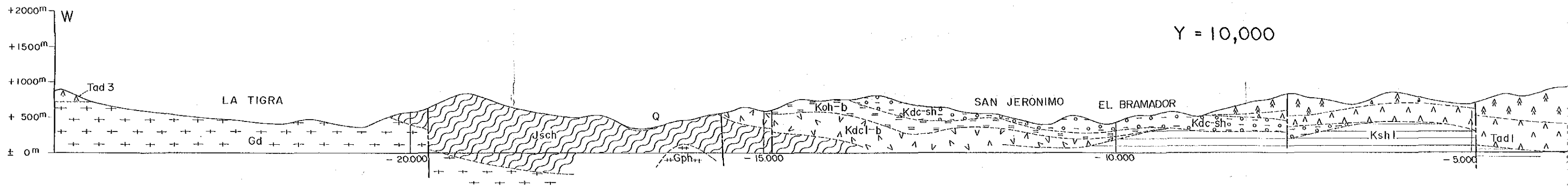


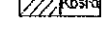
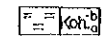
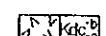
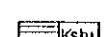
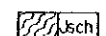


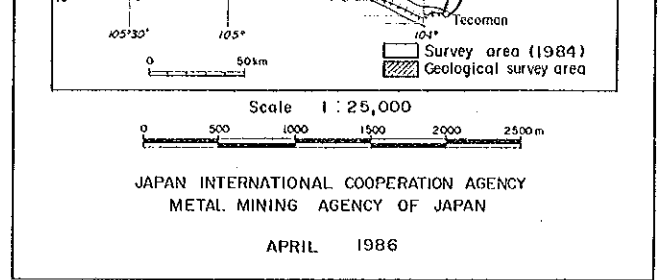
LEGEND

- | | | | |
|-----------------------|--|---------------------|--------------|
| Quaternary System | | Intrusive | |
| [Q] | Alluvium - Diluvium | [T ⁺ Dc] | Dacite |
| Tertiary System | | [X ^x Ad] | Andesite |
| [M ^M Tad4] | IV-Stage Andesite-Pyroclastics | [+ + Gph] | Granophyre |
| [A ^A Tad3] | III-Stage Andesite-Pyroclastics | [+ + Gd] | Granodiorite |
| [L ^L Tad1] | I-Stage Dacite-Pyroclastics | [/ / /] | Fault |
| [A ^A Tad2] | II-Stage Andesite-Pyroclastics | | |
| [+ +] | Sandstone (Conglomerate) | | |
| [A ^A Tad1] | I-Stage Andesite-Pyroclastics | | |
| Cretaceous System | | | |
| [O-O Kdc1] | Hanging Wall Dacite - Pyroclastics - Shale | | |
| [/ / /] | Basaltic Lava - Pyroclastics | | |
| [= = Koh-b] | Ore Horizon Pyroclastics | | |
| [T ⁺ Dc] | Footwall Dacite | | |
| [/ / /] | Shale Intercalated with Sandstone | | |
| Jurassic System | | | |
| [/ / /] | Metamorphic Rocks | | |





-  Basaltic Lava - Pyroclastics
-  Ore Horizon Pyroclastics
-  Footwall Dacite
-  Shale Intercalated with Sandstone
- Jurassic System**
-  Metamorphic Rocks



Scale 1 : 25,000

JAPAN INTERNATIONAL COOPERATION AGENCY
METAL MINING AGENCY OF JAPAN

APRIL 1986

