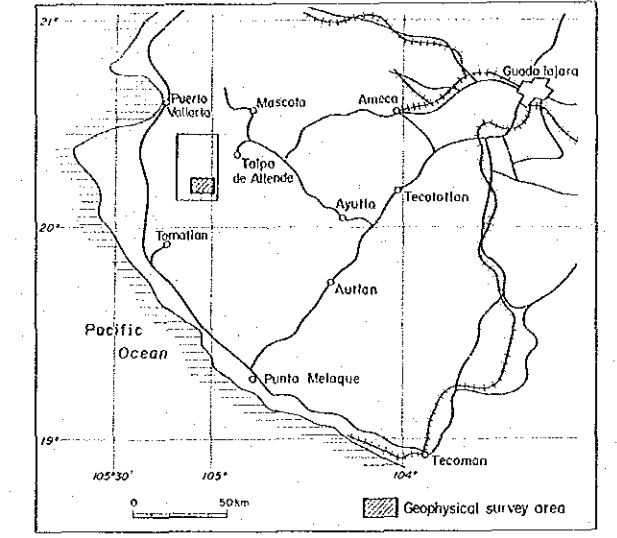


A - A' 断面图
見掛比抵抗断面图
比抵抗構造断面图
地質断面图

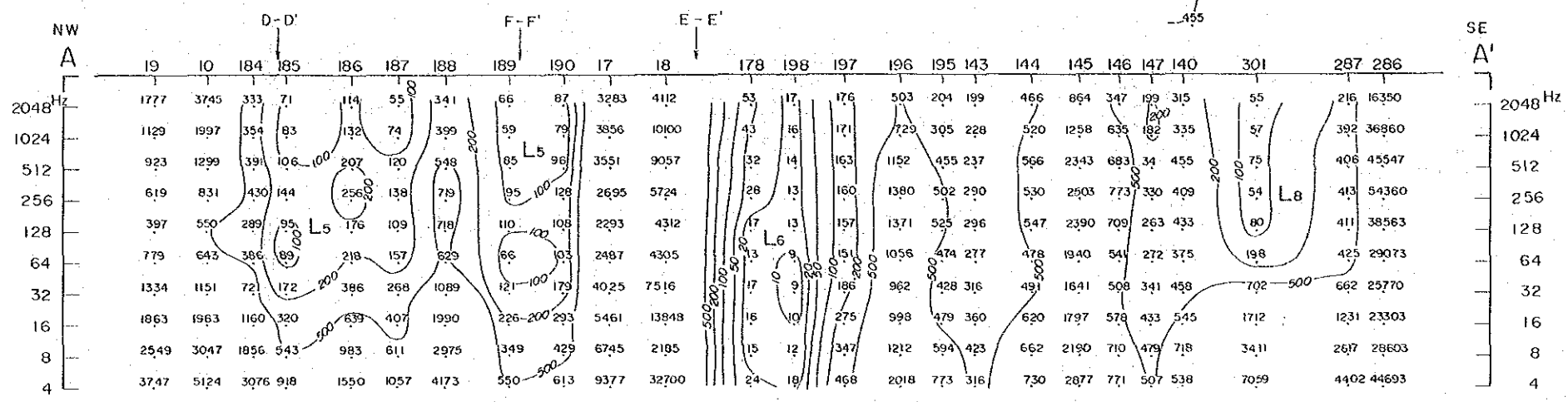


Scale 1:25,000

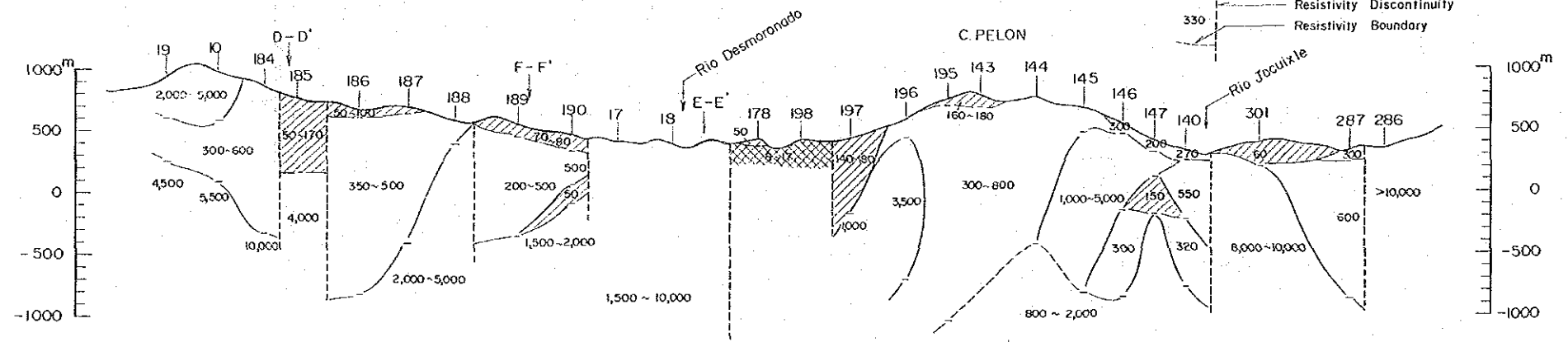
JAPAN INTERNATIONAL COOPERATION AGENCY
METAL MINING AGENCY OF JAPAN

APRIL 1986

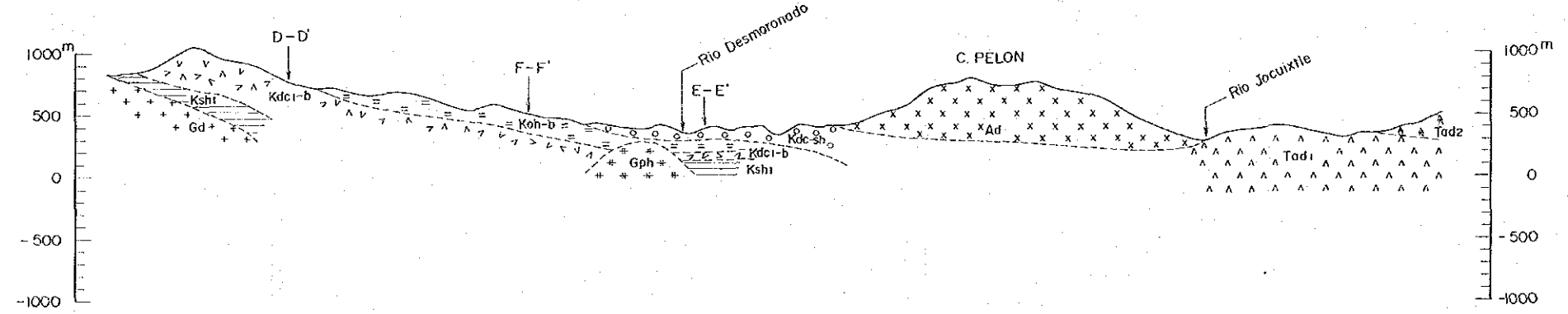
Resistivity Pseudo - Section



Structural Resistivity Section

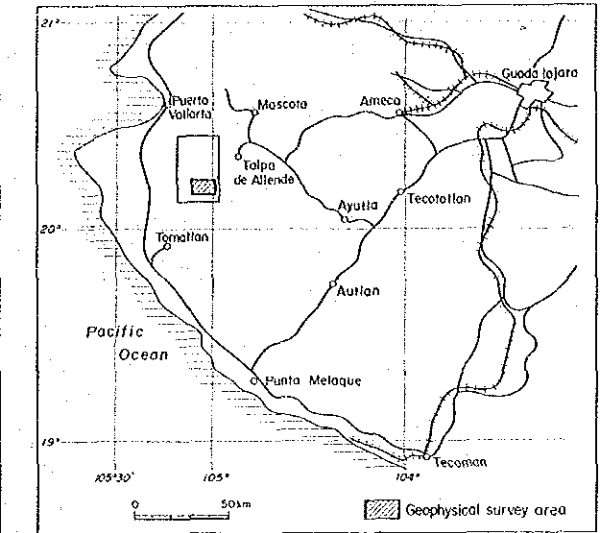


Geological Section



- LEGEND
- Low Resistivity Zone possibly related to Mineralization
 - <20 Ω-m
 - 20 ~ 200 Ω-m
 - Tertiary System
 - I - Stage Andesite - Pyroclastics
 - II - Stage Andesite - Pyroclastics
 - I - Stage Andesite - Pyroclastics
 - Cretaceous System
 - Hanging Wall Andesite - Pyroclastics - Shale
 - Ore Horizon Pyroclastics
 - Footwall Andesite
 - Shale intercalated with Sandstone
 - Jurassic System
 - Metamorphic Rocks
 - Intrusives
 - Dacite
 - Andesite
 - Granophyre
 - Granodiorite
 - Fault

B - B' 断面图
見掛比抵抗断面图
比抵抗構造断面图
地質断面图

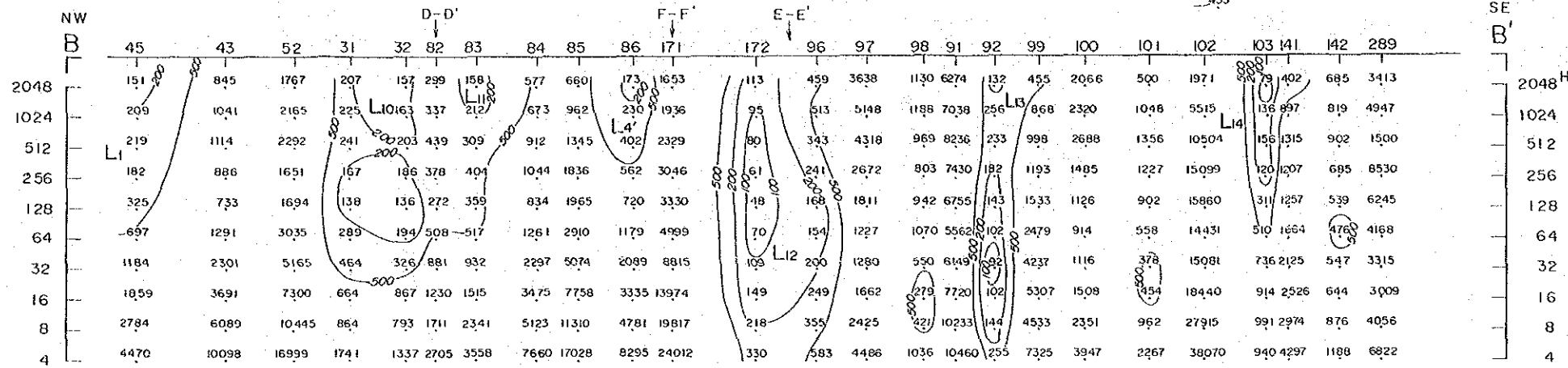


Scale 1 : 25,000
0 500 1000 1500 2000 2500 m

JAPAN INTERNATIONAL COOPERATION AGENCY
METAL MINING AGENCY OF JAPAN

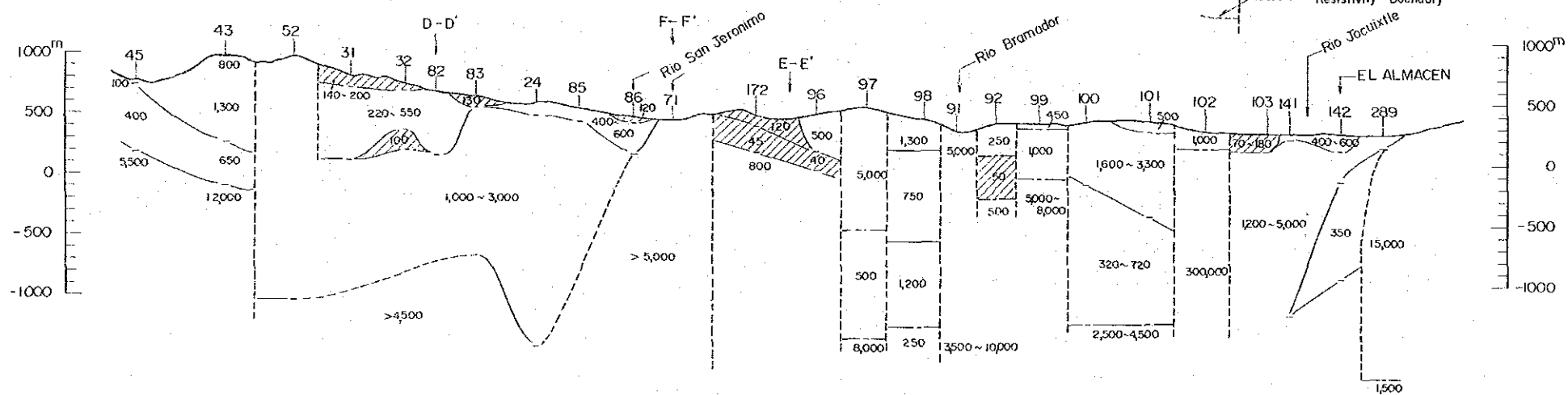
APRIL 1986

Resistivity Pseudo - Section



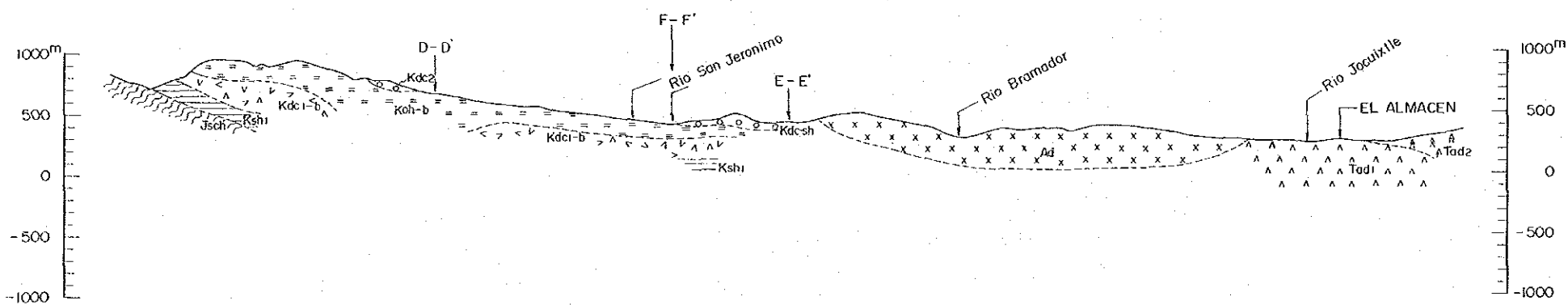
D-D' Intersection
34 Station No.
618 Apparent Resistivity (Ω·m)
565 Contour of Apparent Resistivity
540
455

Structural Resistivity Section



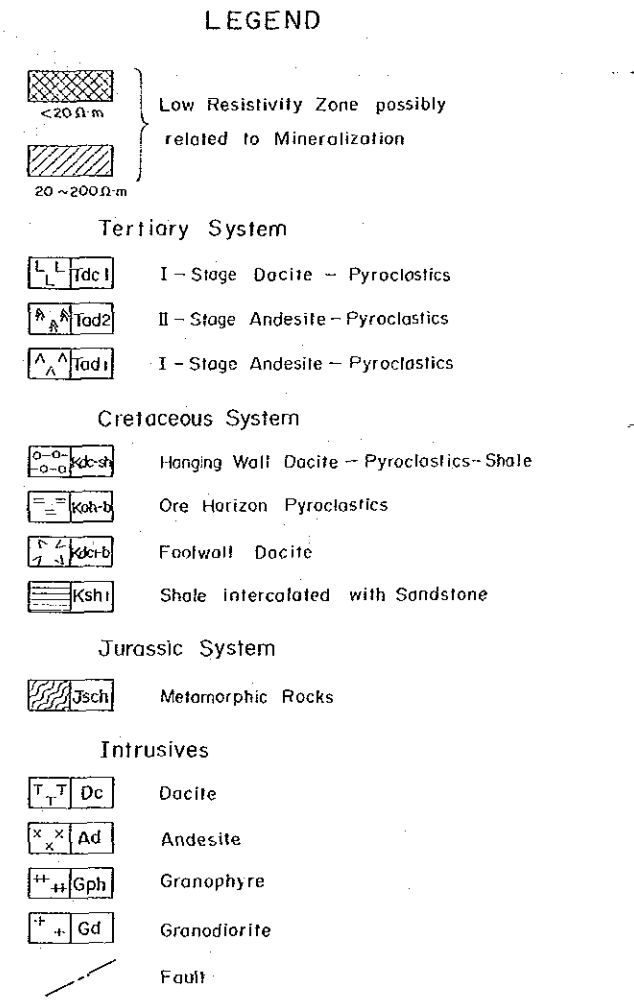
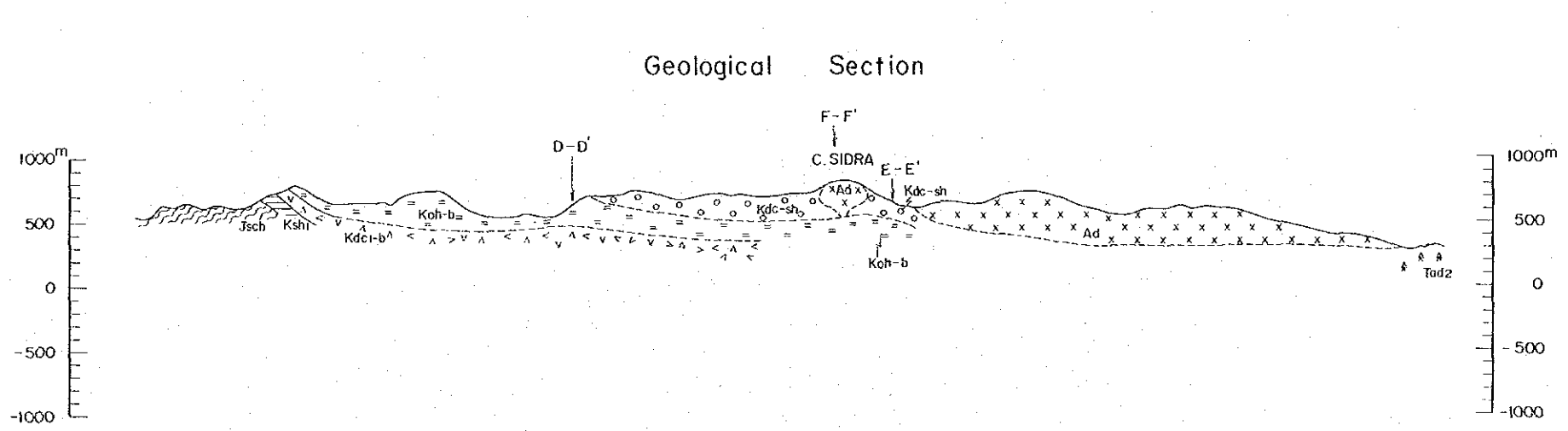
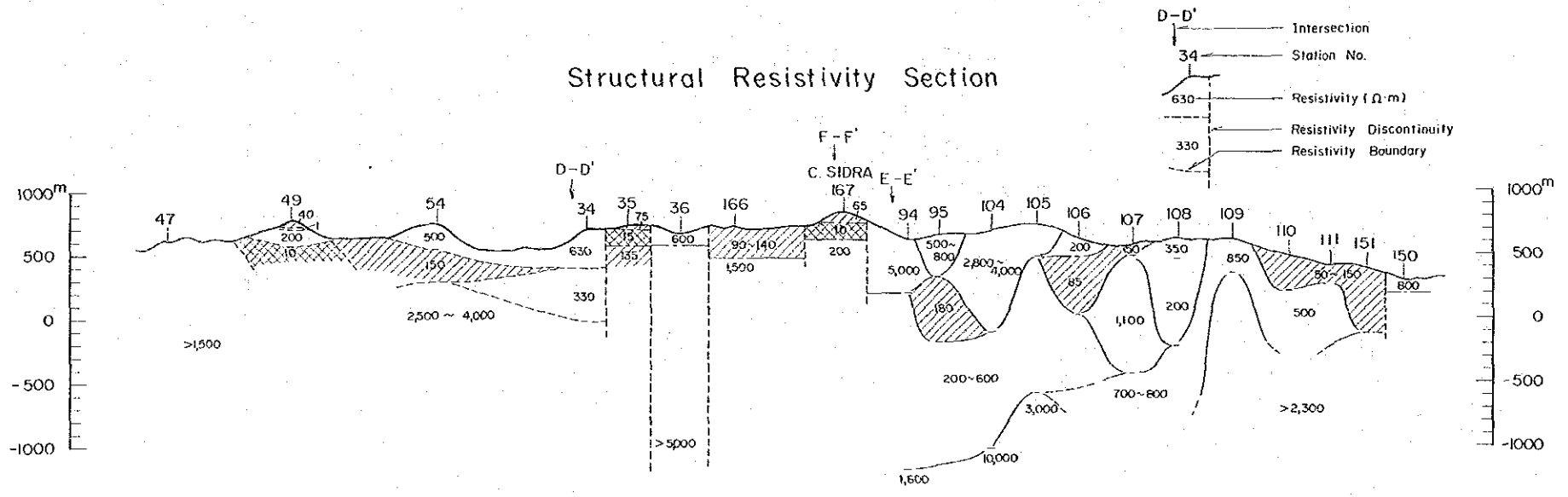
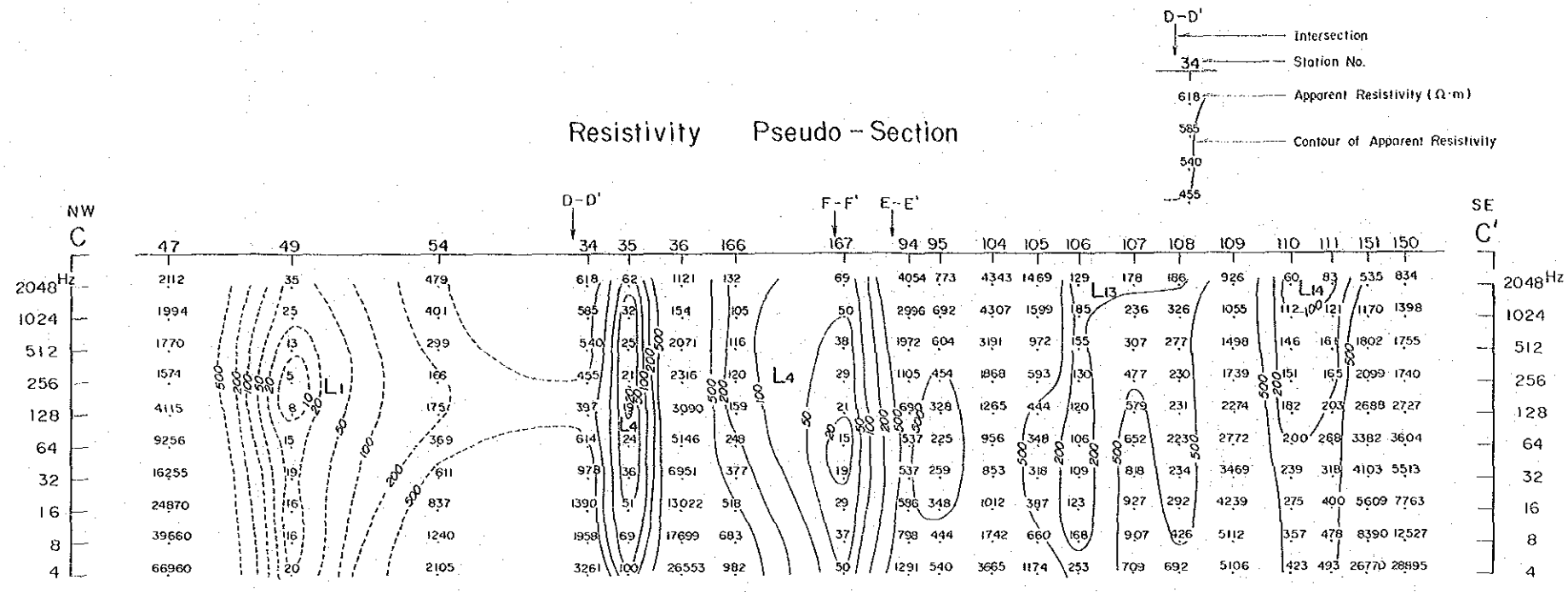
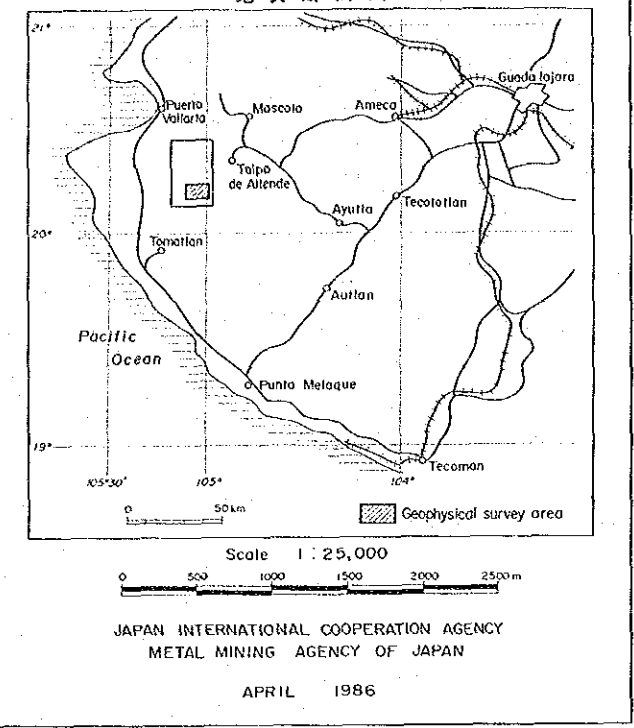
D-D' Intersection
34 Station No.
630 Resistivity (Ω·m)
330 Resistivity Discontinuity
Resistivity Boundary

Geological Section

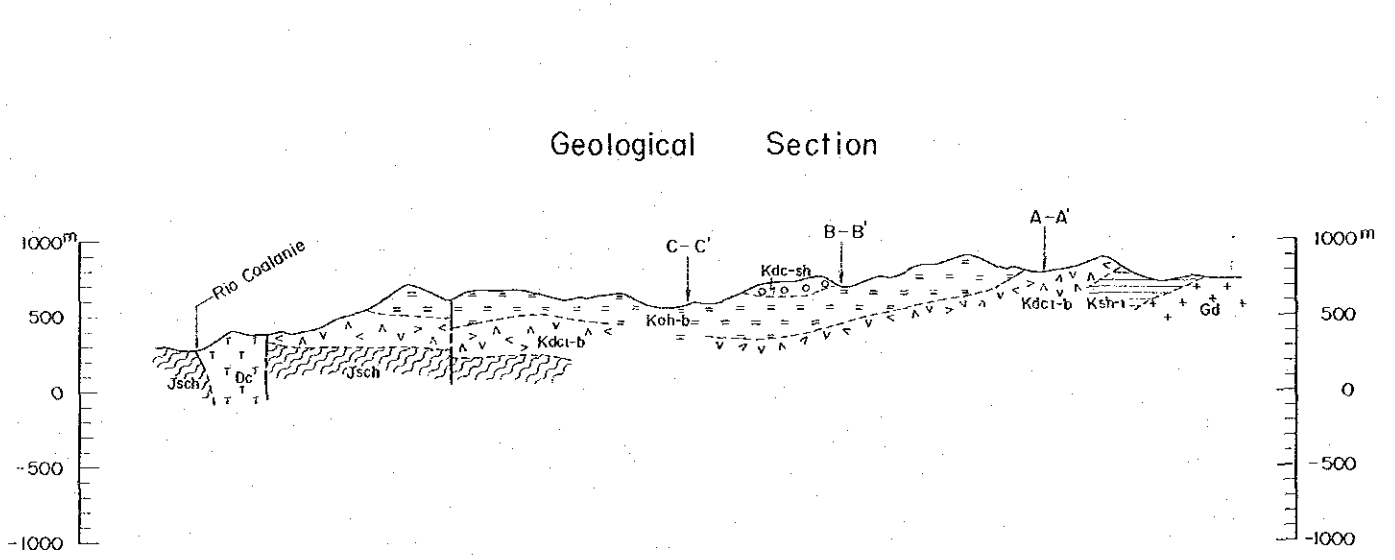
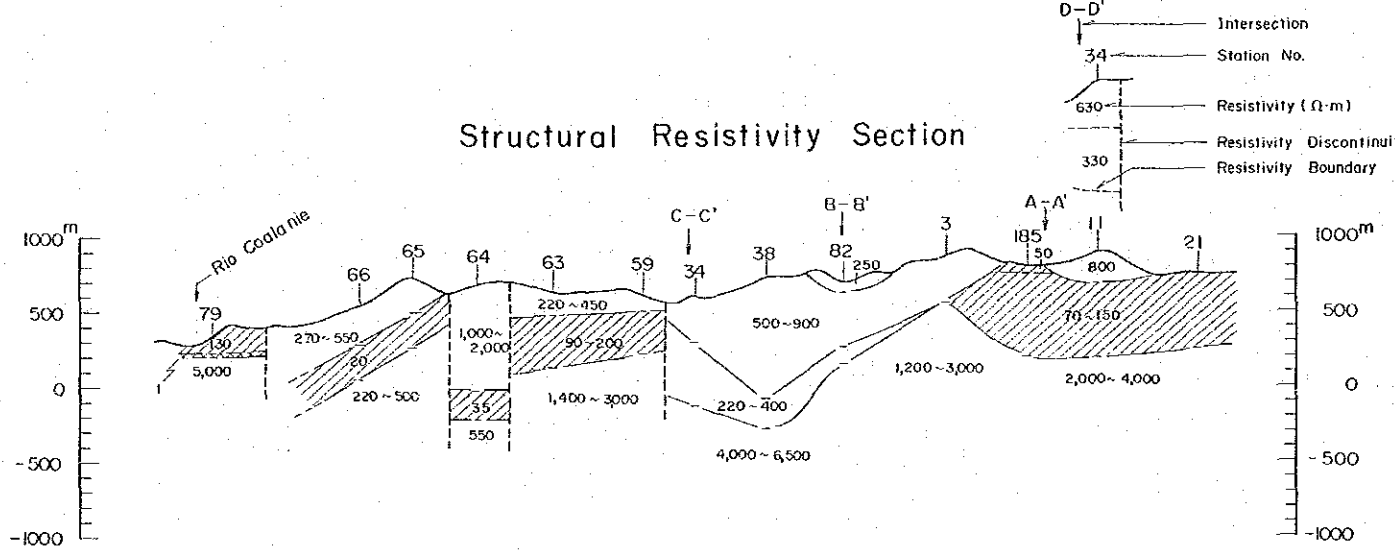
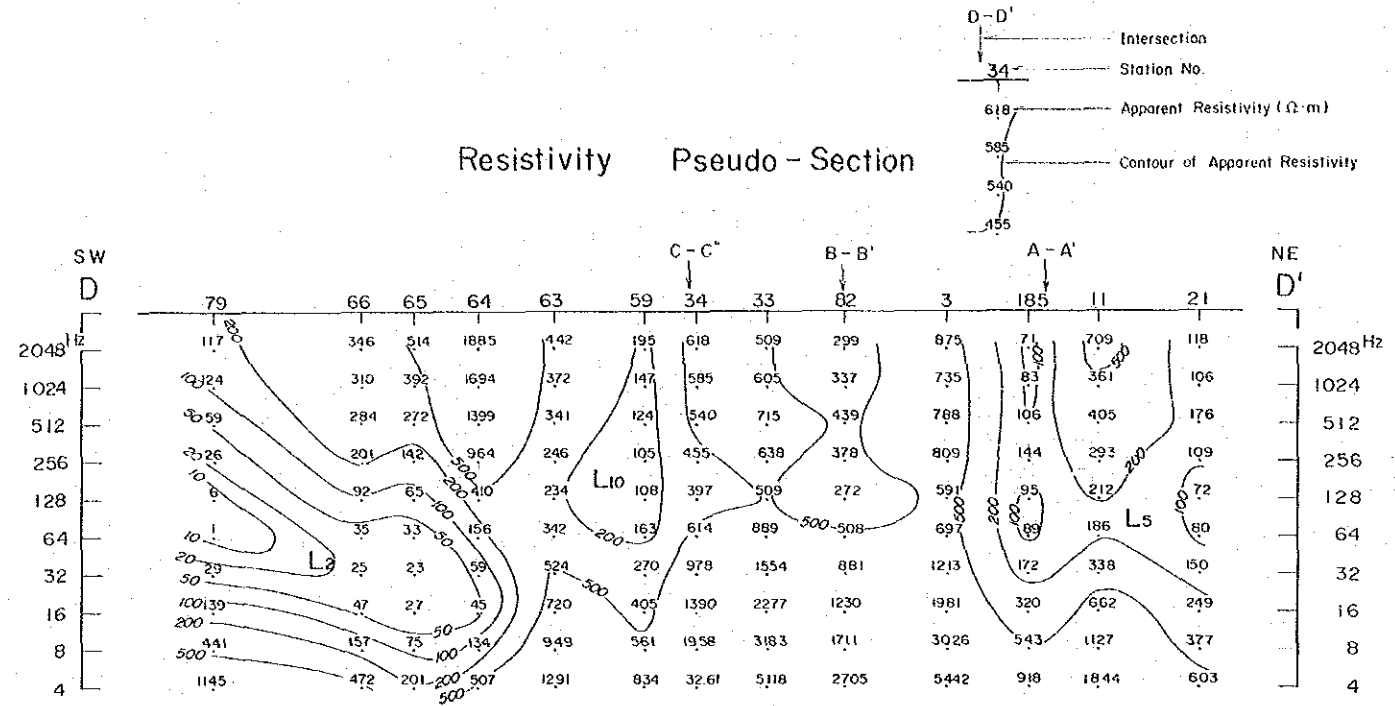
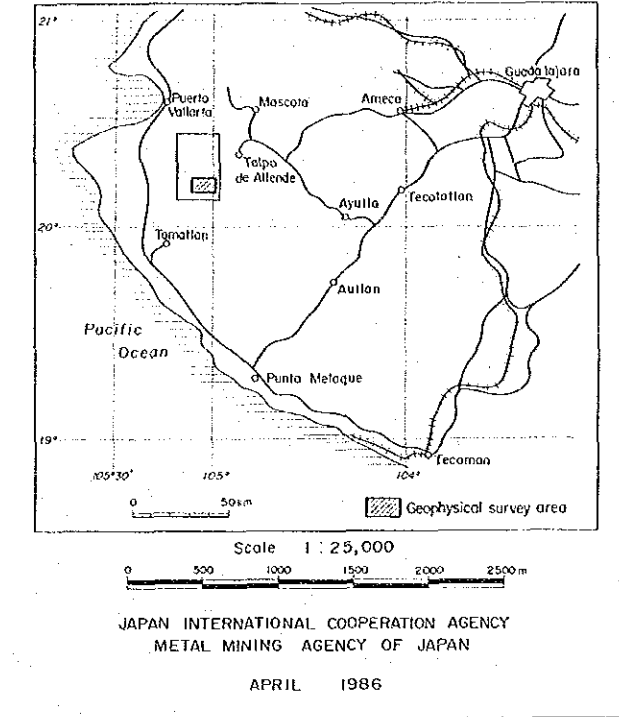


- LEGEND
- <math>< 20 \Omega \cdot m</math> Low Resistivity Zone possibly related to Mineralization
 - $20 \sim 200 \Omega \cdot m$
 - Tertiary System**
 - Tdc1 I - Stage Dacite - Pyroclastics
 - Tad2 II - Stage Andesite - Pyroclastics
 - Tad1 I - Stage Andesite - Pyroclastics
 - Cretaceous System**
 - Kdc-sh Hanging Wall Dacite - Pyroclastics - Shale
 - Koh-b Ore Horizon Pyroclastics
 - Kdc-b Footwall Dacite
 - Ksh1 Shale intercalated with Sandstone
 - Jurassic System**
 - Jsch Metamorphic Rocks
 - Intrusives**
 - Dc Dacite
 - Ad Andesite
 - Gph Granophyre
 - Gd Granodiorite
 - Fault

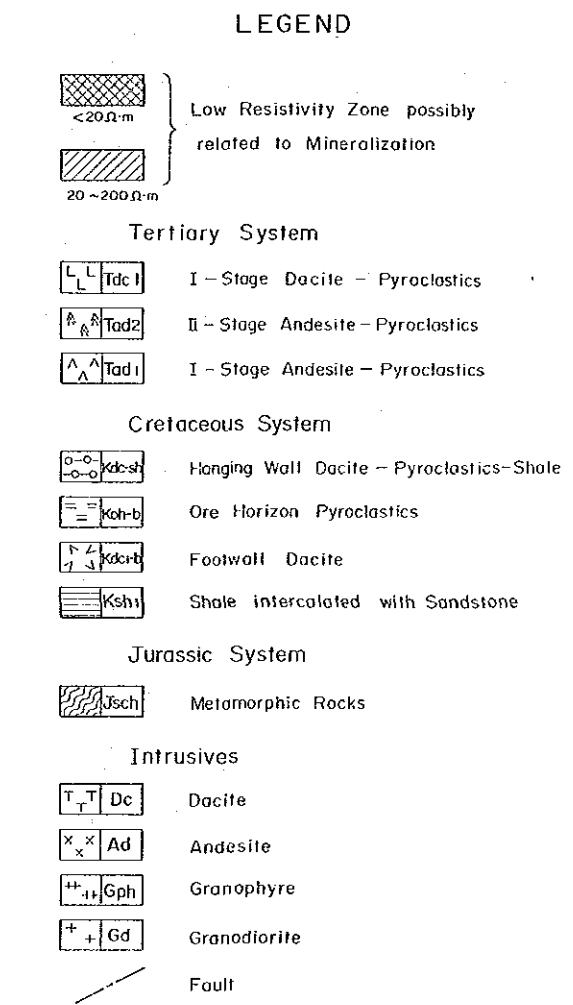
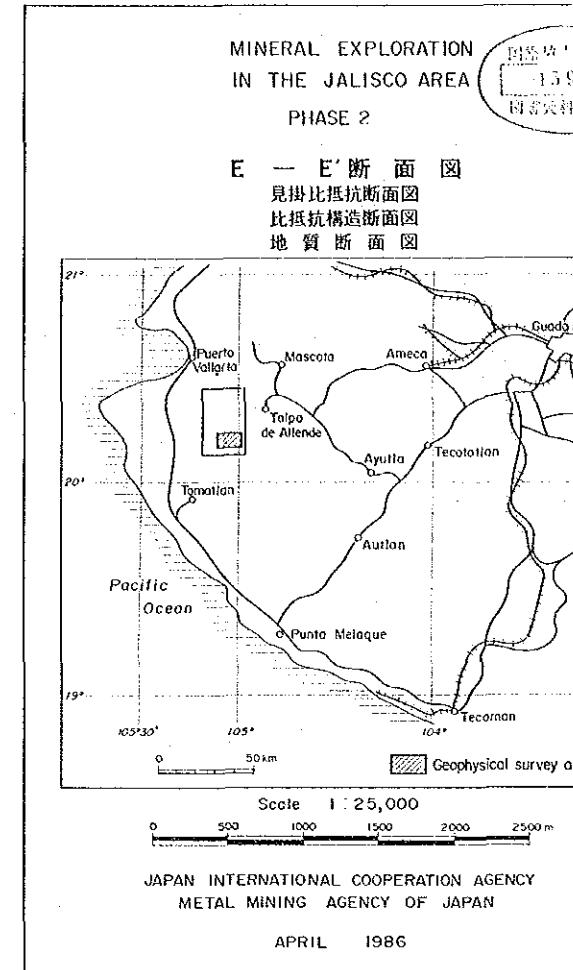
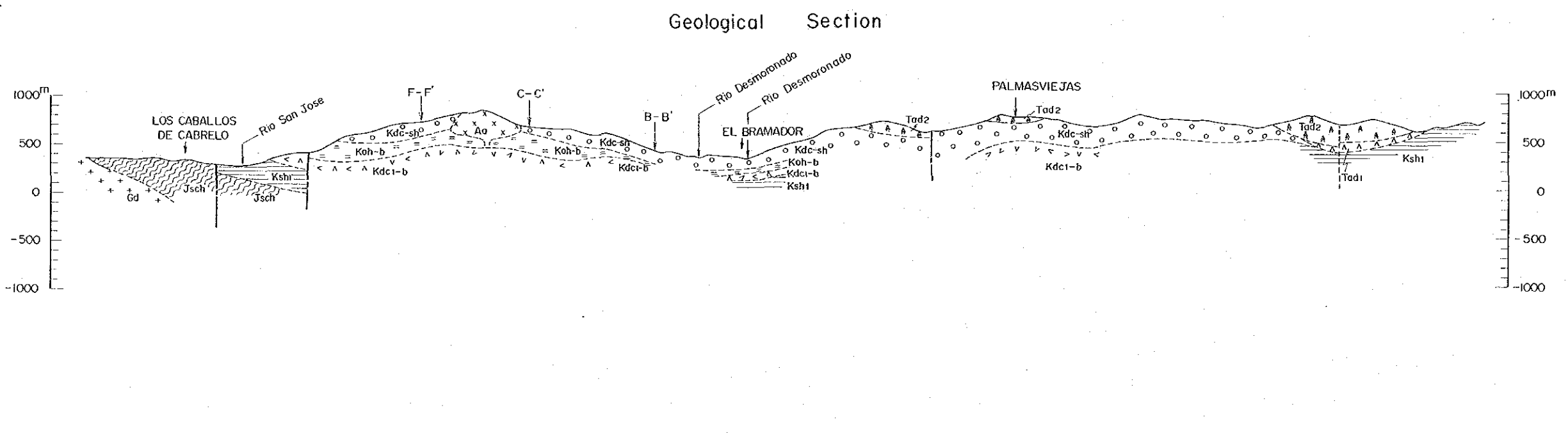
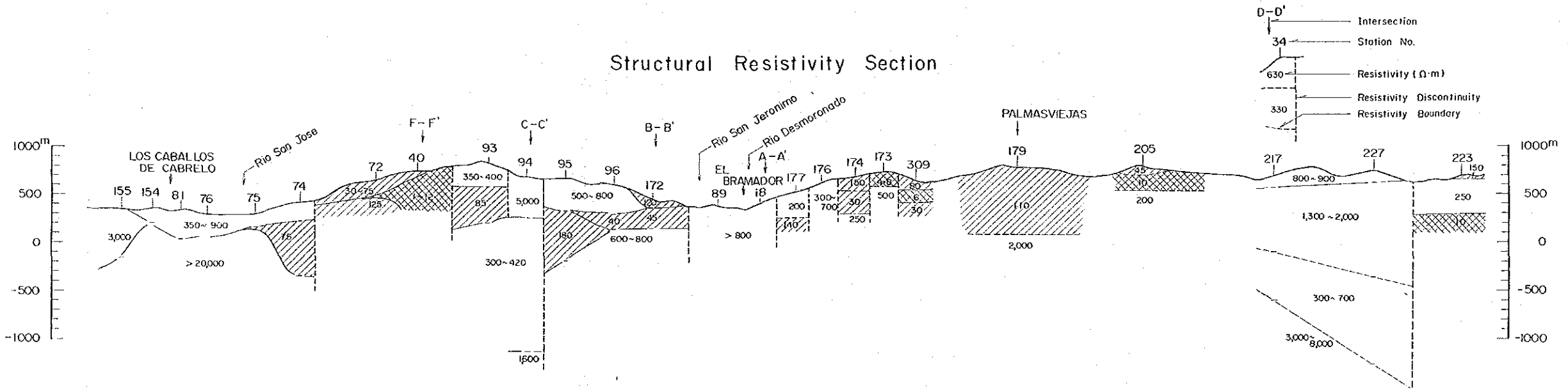
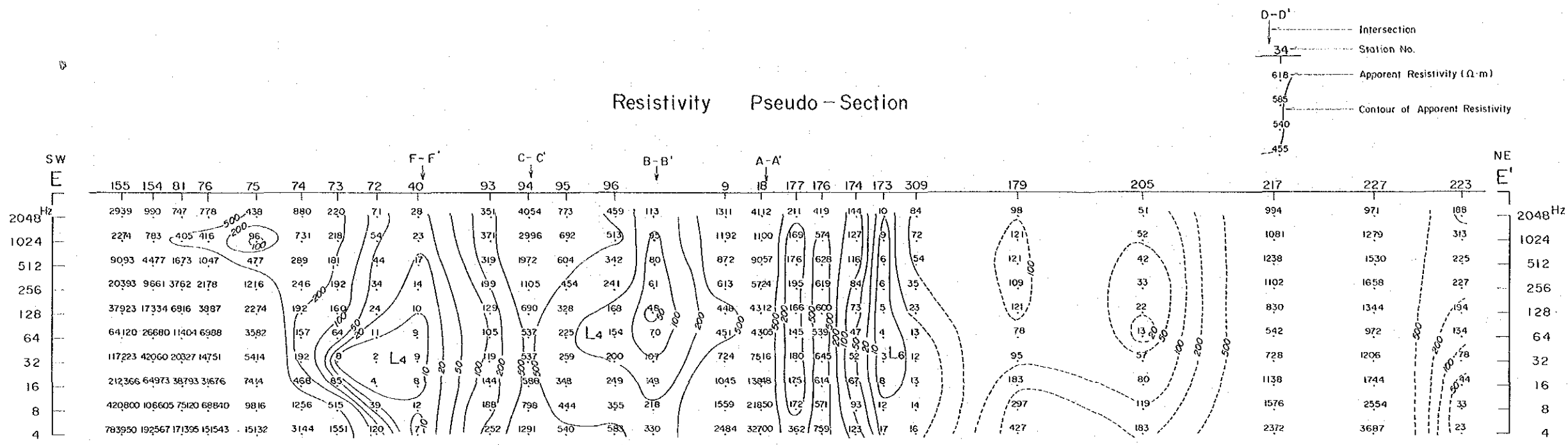
C - C' 断面图
見掛比抵抗断面图
比抵抗構造断面图
地質断面图



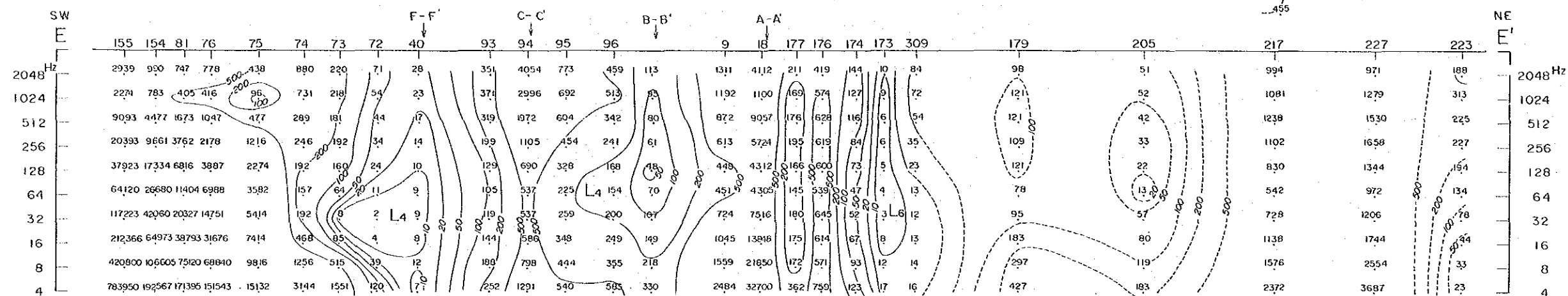
D - D' 断面図
見掛比抵抗断面図
比抵抗構造断面図
地質断面図



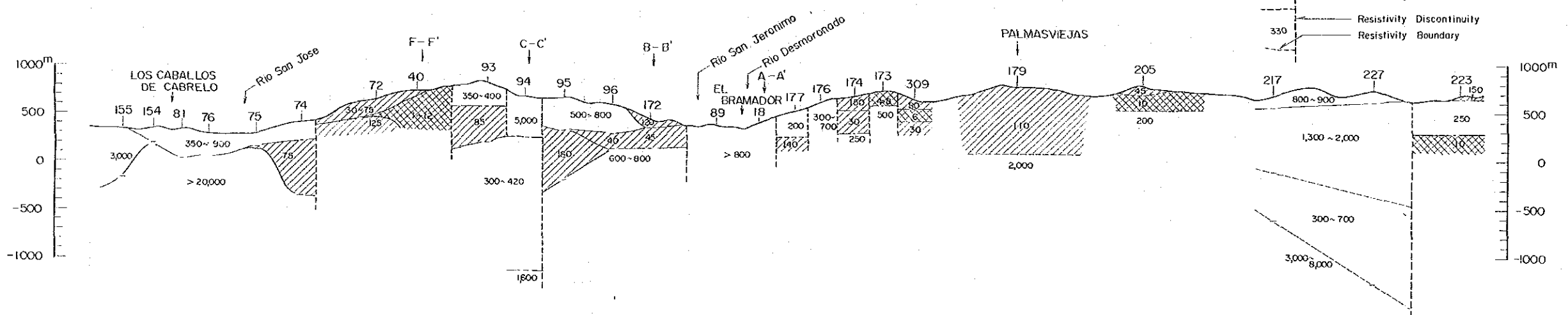
- LEGEND
- Low Resistivity Zone possibly related to Mineralization
 - < 20 $\Omega \cdot m$
 - 20 ~ 200 $\Omega \cdot m$
 - Tertiary System
 - I - Stage Dacite - Pyroclastics
 - II - Stage Andesite - Pyroclastics
 - I - Stage Andesite - Pyroclastics
 - Cretaceous System
 - Hanging Wall Dacite - Pyroclastics - Shale
 - Ore Horizon Pyroclastics
 - Footwall Dacite
 - Shale intercalated with Sandstone
 - Jurassic System
 - Metamorphic Rocks
 - Intrusives
 - Dacite
 - Andesite
 - Granophyre
 - Granodiorite
 - Fault



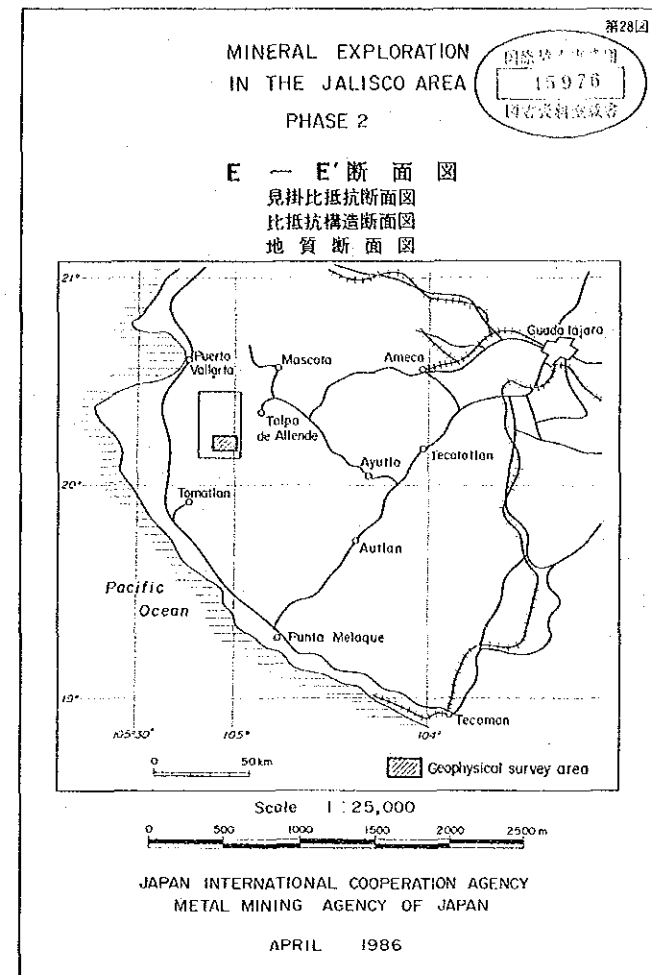
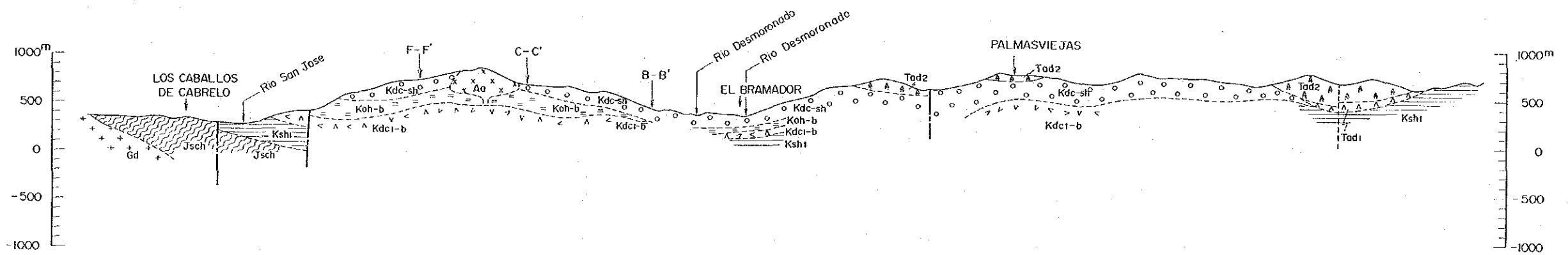
Resistivity Pseudo-Section



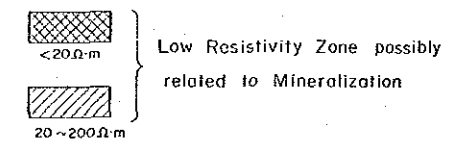
Structural Resistivity Section



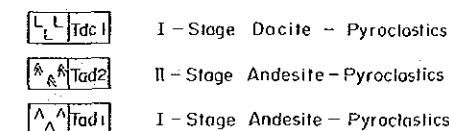
Geological Section



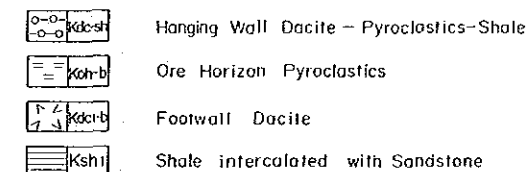
LEGEND



Tertiary System



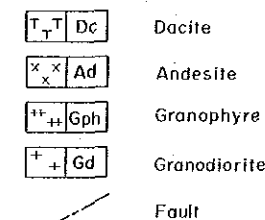
Cretaceous System



Jurassic System



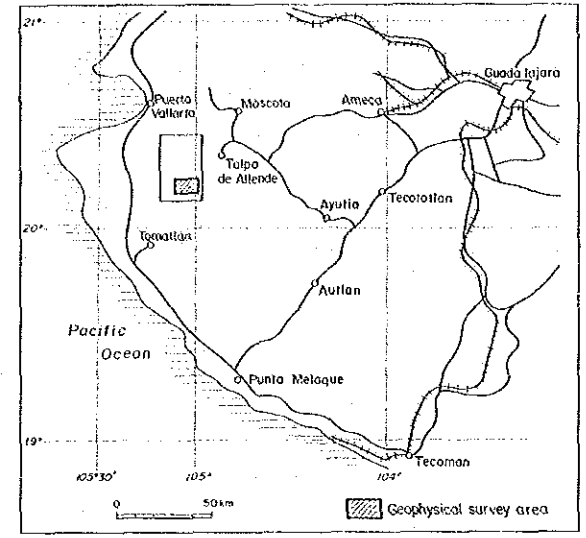
Intrusives



MINERAL EXPLORATION IN THE JALISCO AREA PHASE 2

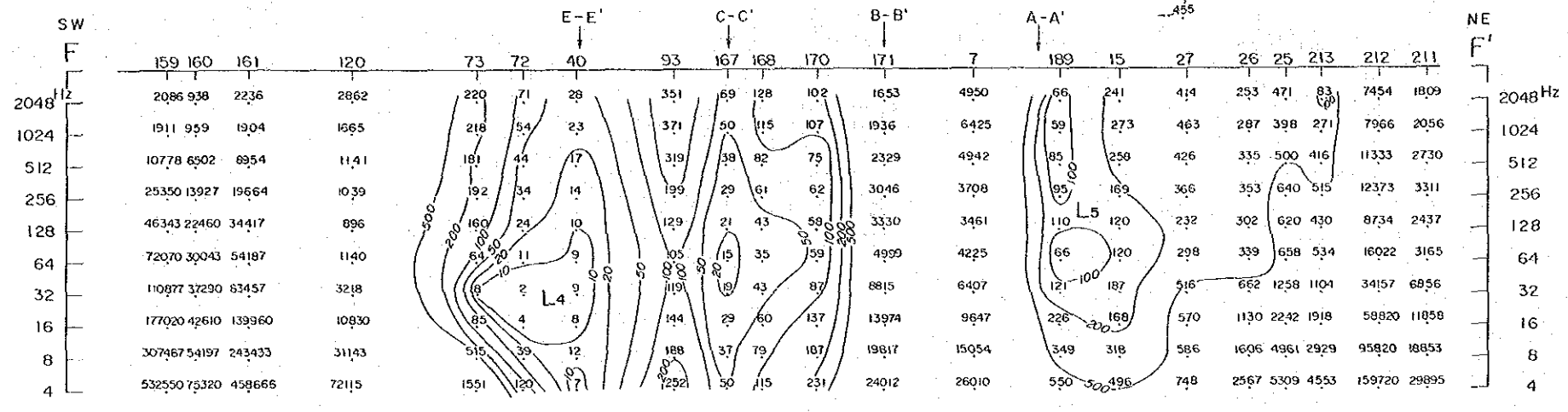
15976

F - F' 断面图 見掛比抵抗断面图 比抵抗構造断面图 地質断面图

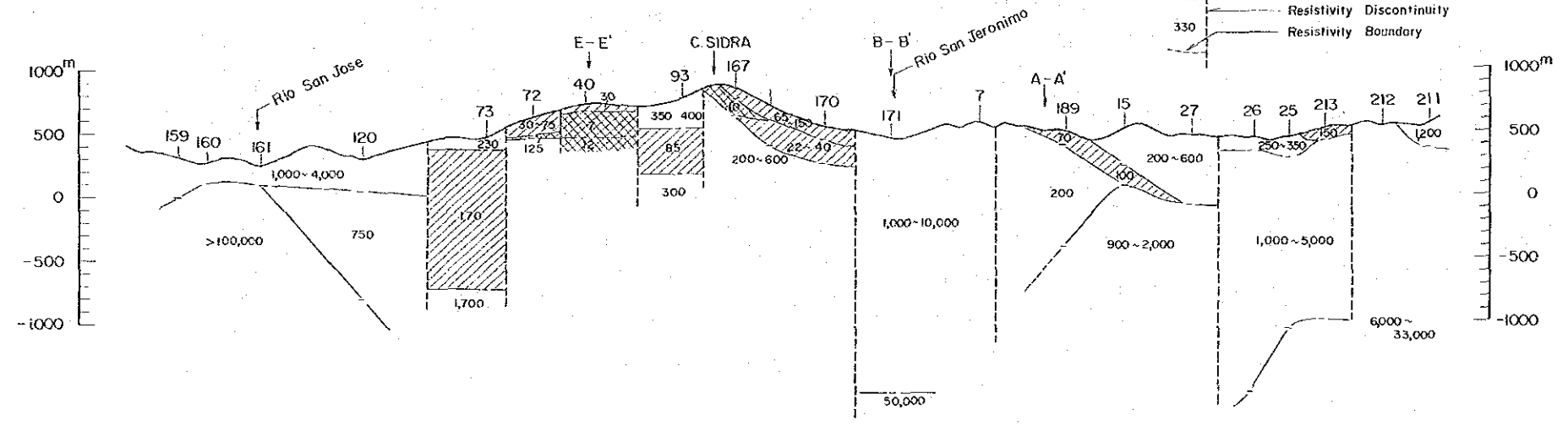


Scale 1:25,000 JAPAN INTERNATIONAL COOPERATION AGENCY METAL MINING AGENCY OF JAPAN APRIL 1986

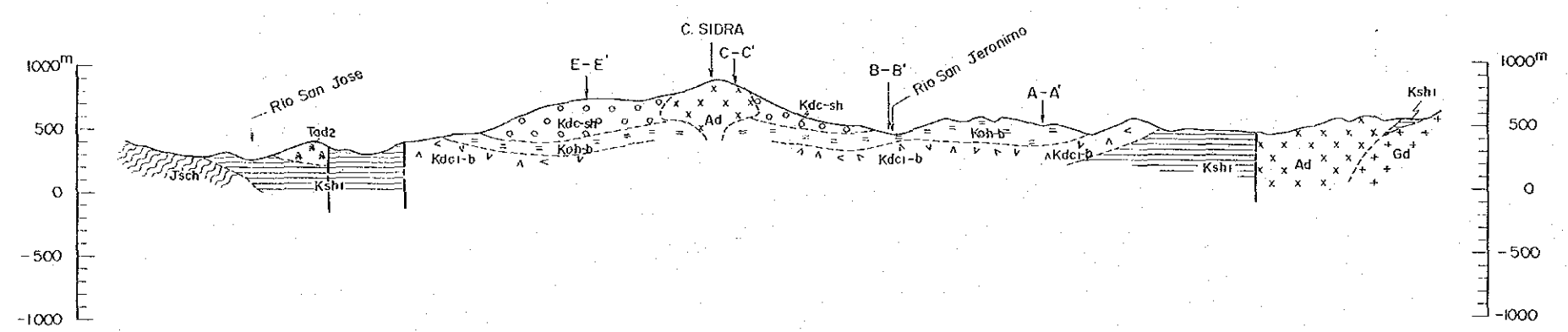
Resistivity Pseudo-Section



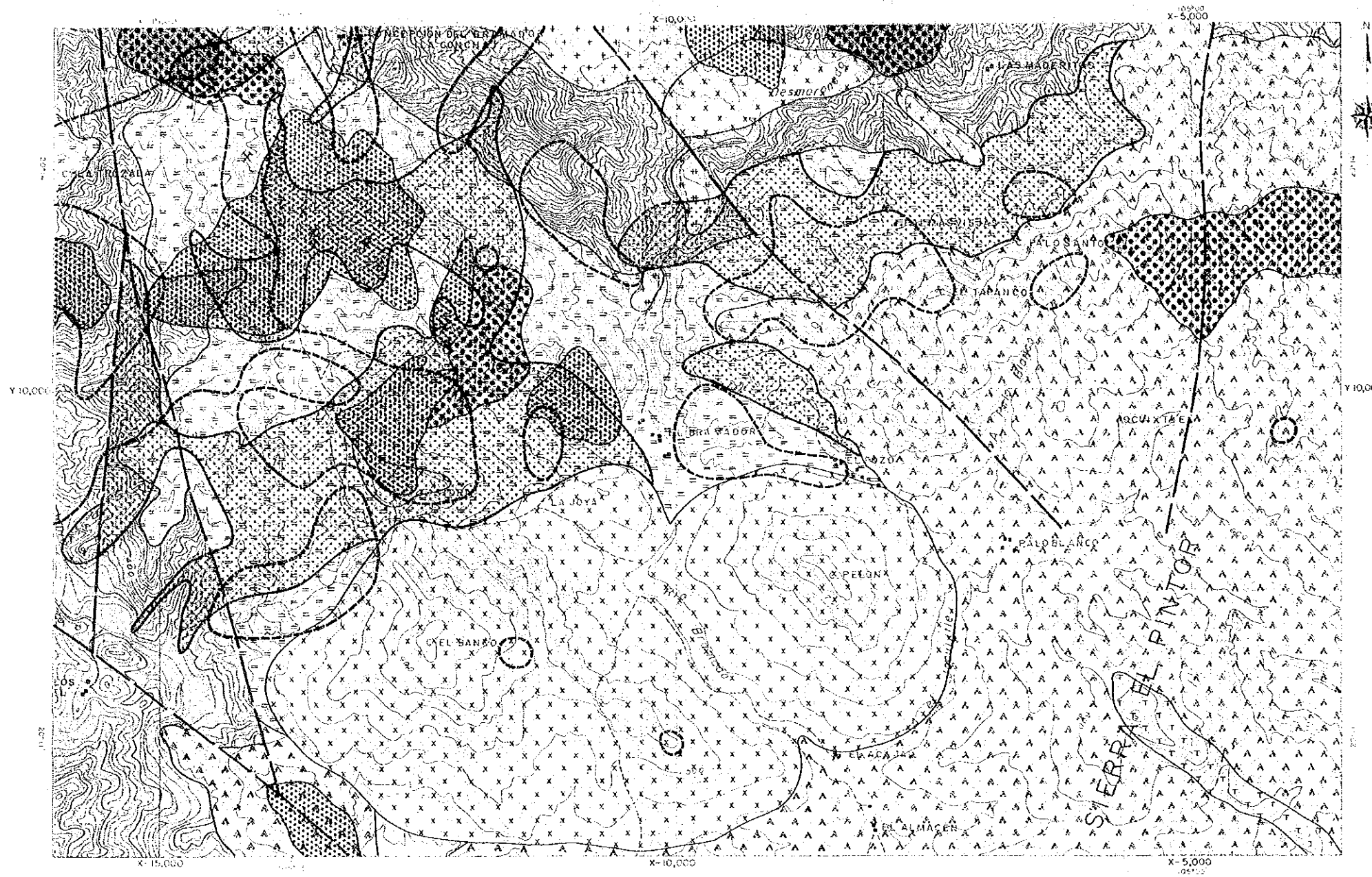
Structural Resistivity Section



Geological Section



LEGEND section detailing symbols for Low Resistivity Zone, Tertiary System (I-Stage, II-Stage), Cretaceous System (Hanging Wall, Ore Horizon, Footwall), Jurassic System (Metamorphic Rocks), and Intrusives (Dacite, Andesite, Granophyre, Granodiorite, Fault).



LEGEND

- Geochemical Anomalies
 - Anomaly zone by single indicator
 - Anomaly zone by composite indicators
- Alteration zone
 - K-Feldspar + Sericite + Chlorite zone
- Geophysical Anomalies
 - Detected low resistivity zone (<math>< 200 \Omega \cdot m</math> at 200m depth)
- Geology
 - Tertiary system
 - Hanging wall rocks and Ore horizon pyroclastics
 - Footwall rocks
 - Dacite
 - Andesite
 - Granophyre
 - Granodiorite
 - Fault

