

105°10'

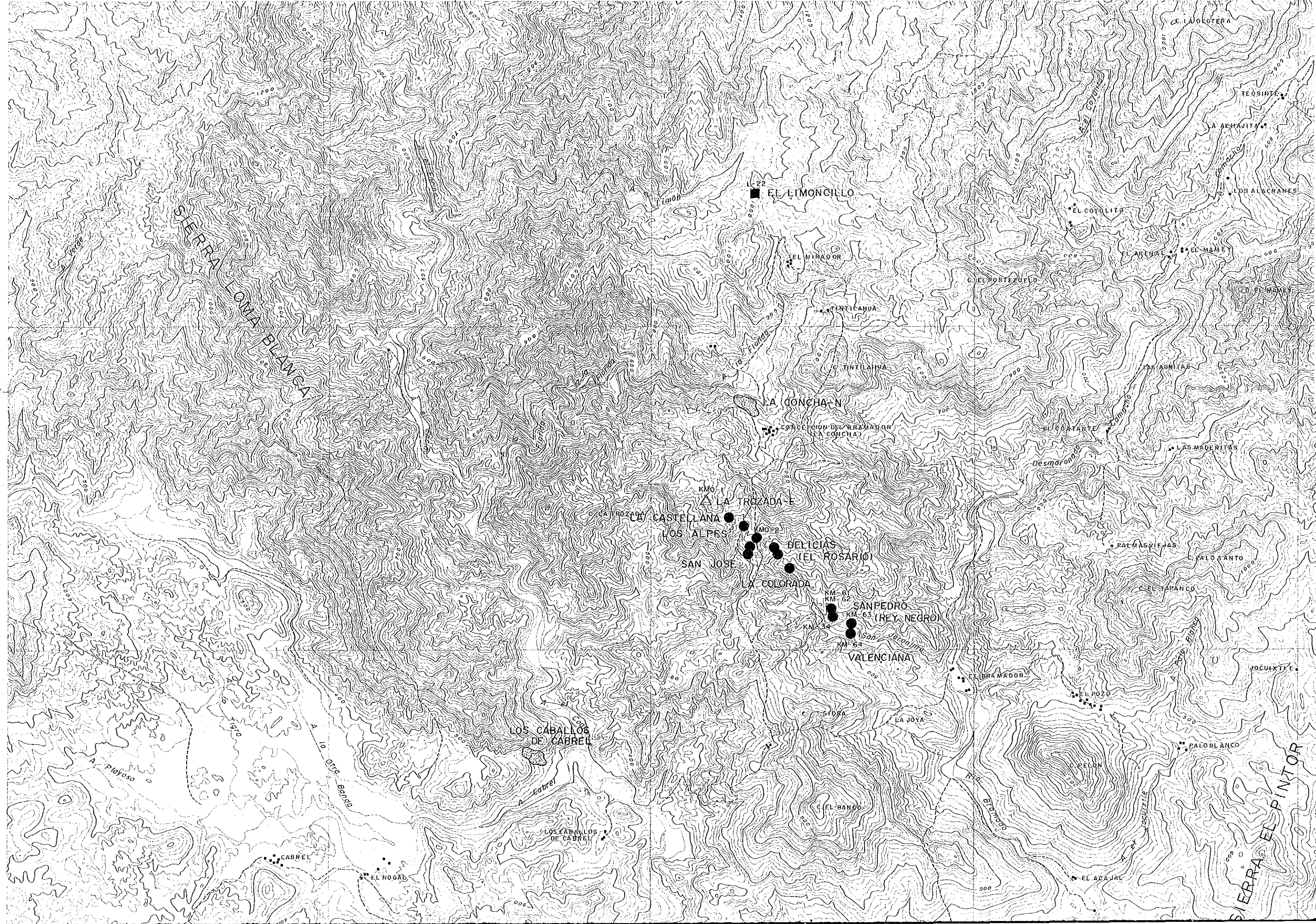
105°05'

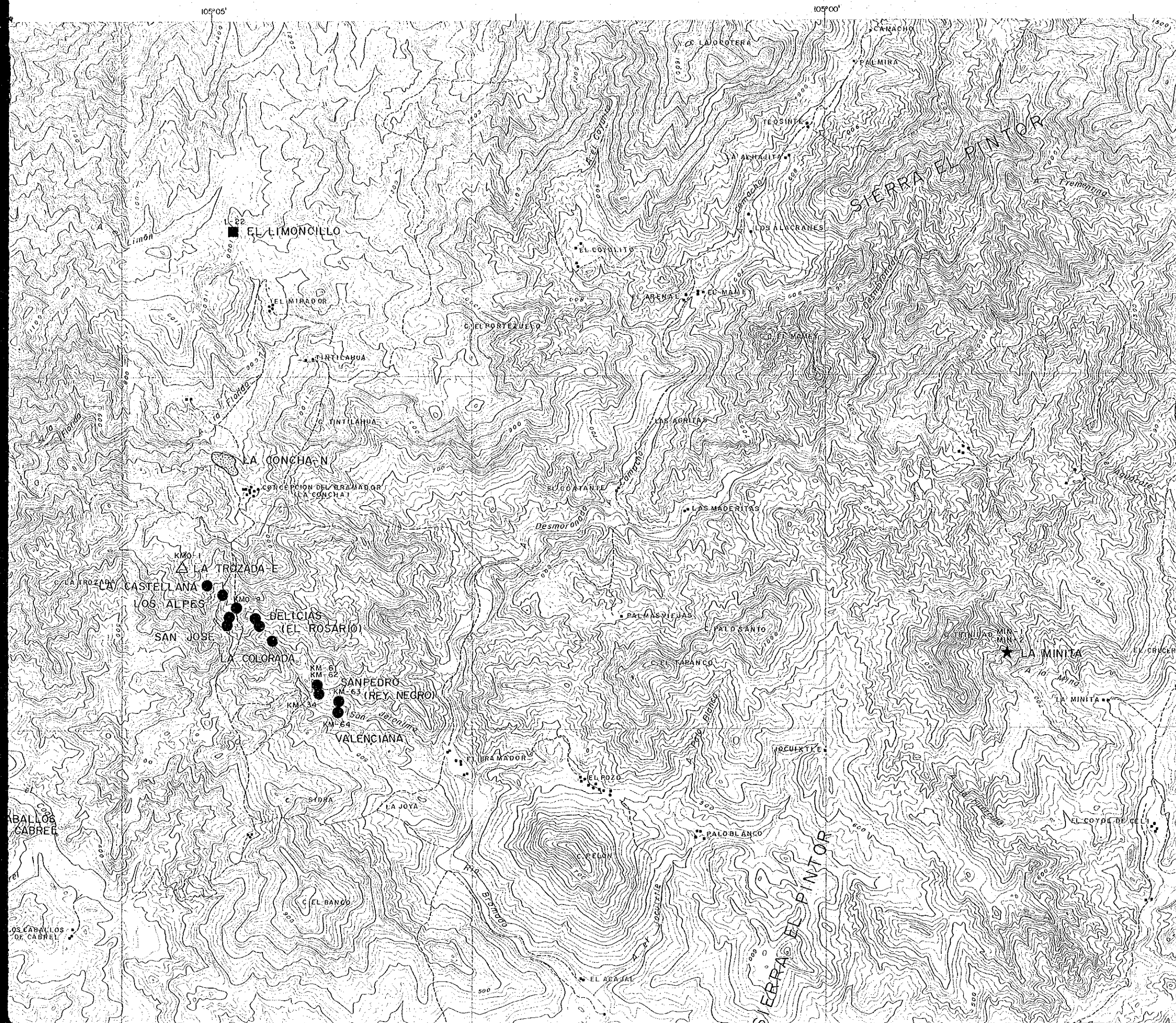
105°00'

Y 15,000

20°15'

Y 10,000

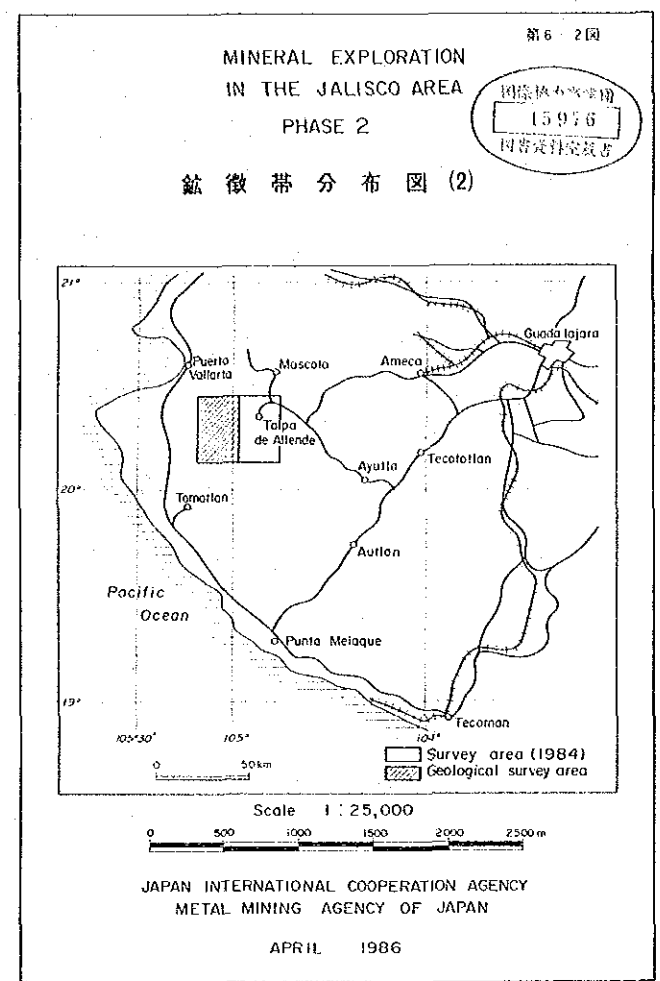




Y 15,000

20°15'

Y 10,000

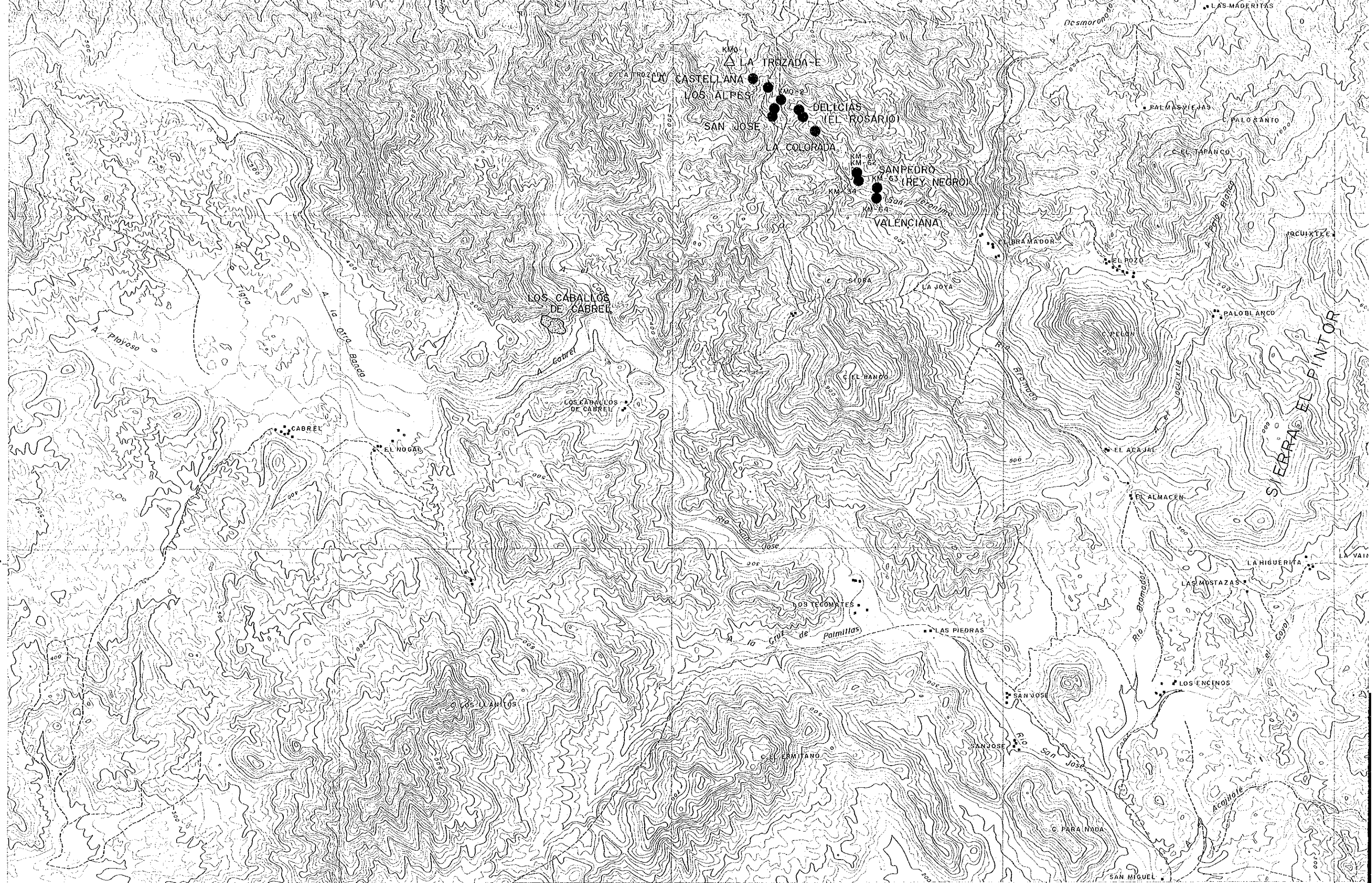


LEGEND

- Kuroko - type Deposit
- △ Hg Deposit
- ☆ Gold - Silver - Quartz Vein Deposit
- ★ Gold - Silver - Lead - Zinc Vein Deposit
- Lead - Zinc Vein Deposit
- Pyrite Dissemination

Y 10,000

Y 5,000
20°10'



105°10'

X-20,000

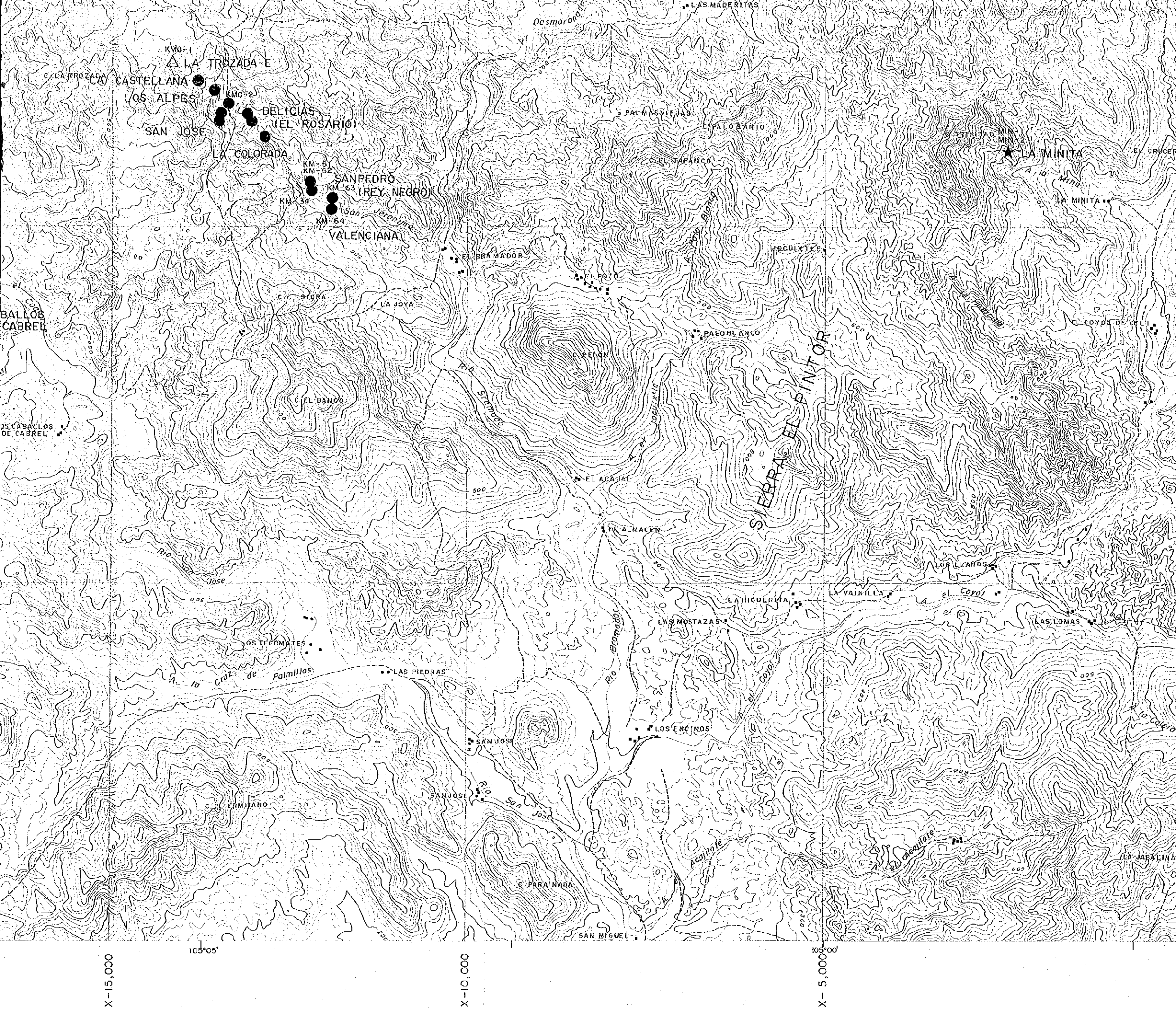
X-15,000

105°05'

X-10,000

105°00'

X-5,000



LEGEND

- Kuroko - type Deposit
- △ Hg Deposit
- ☆ Gold - Silver - Quartz Vein Deposit
- ★ Gold - Silver - Lead - Zinc Vein Deposit
- Lead - Zinc Vein Deposit
- Pyrite Dissemination

X-15,000

105°05'

X-10,000

X-5,000

Y 10,000

Y 5,000

20°10'

105°10'00"

105°05'

105°00'

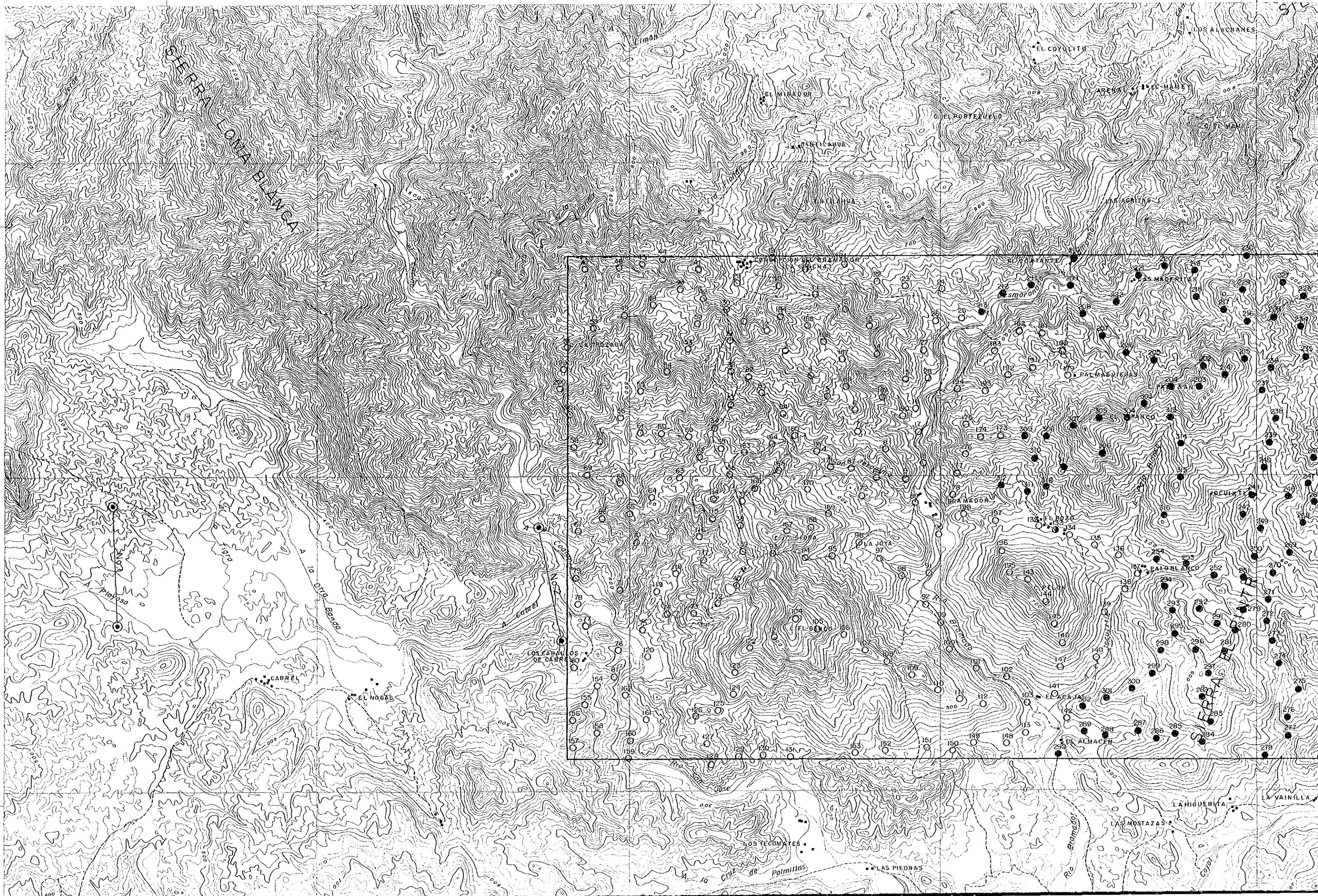
Y 15,000

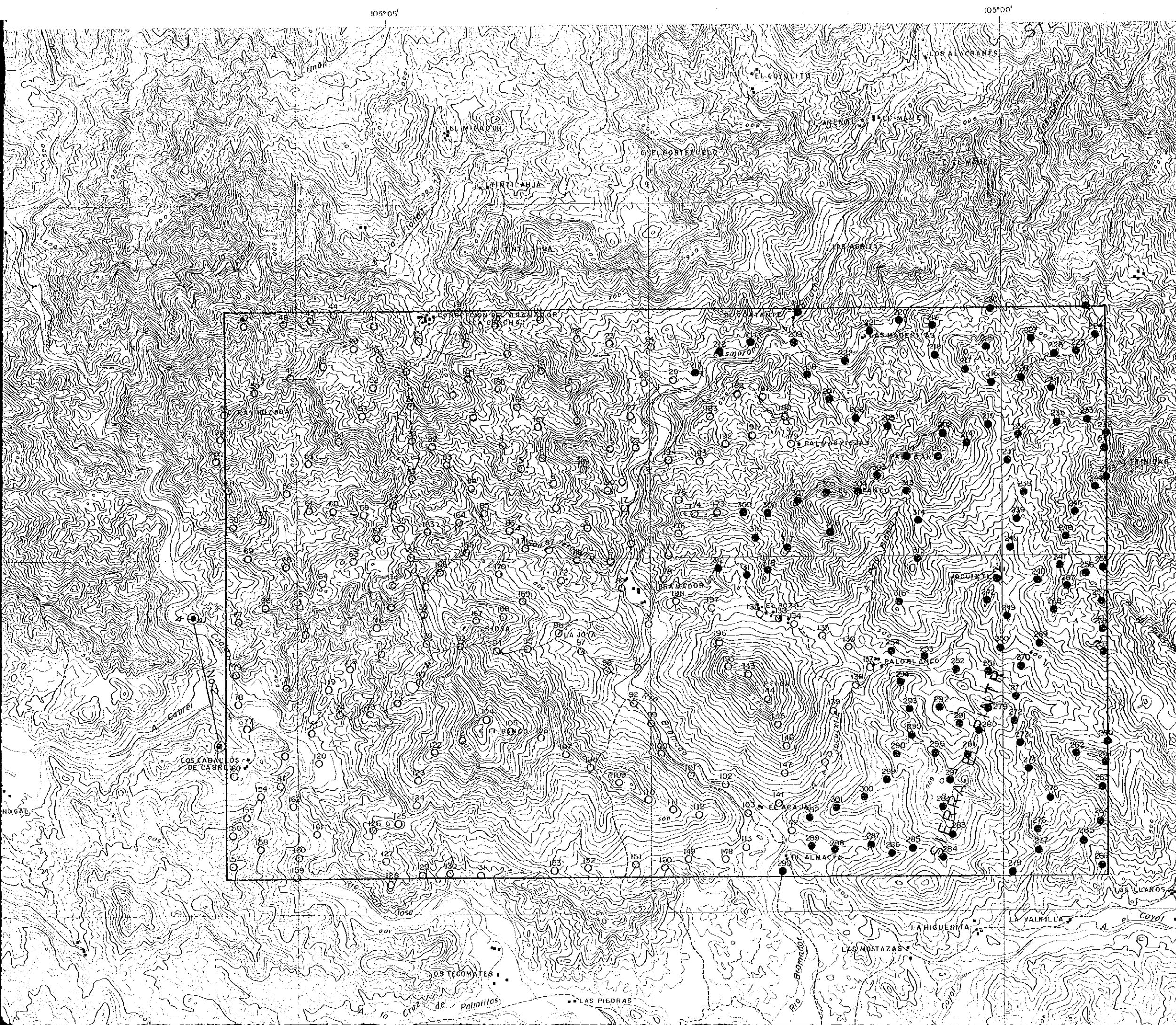
20°15'

Y 10,000

Y 5,000

20°10'





105°05' 105°00'

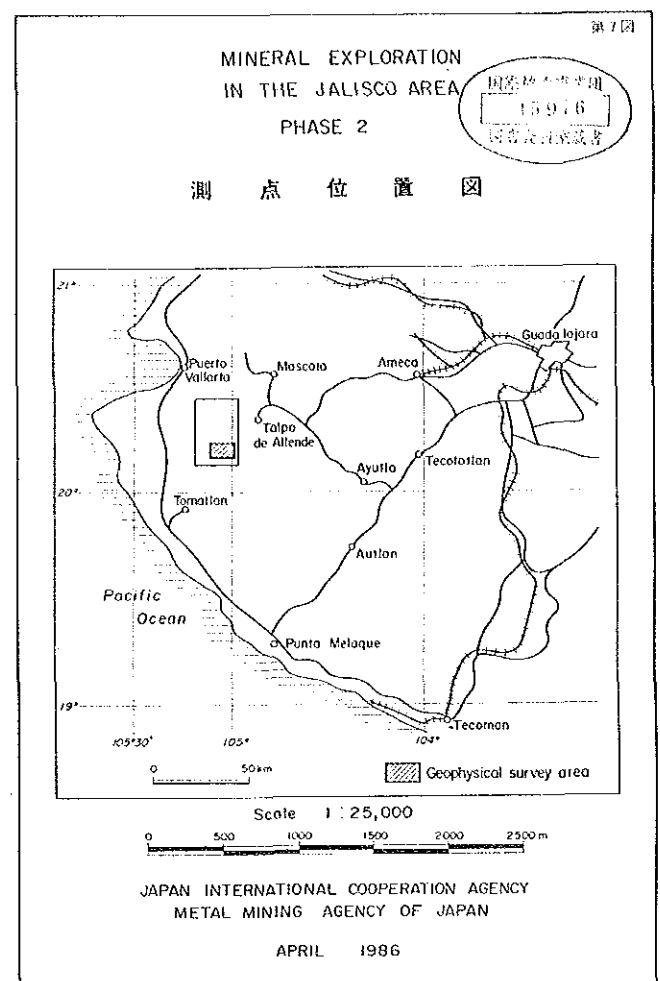
Y 15,000

20°15'

Y 10,000

Y 5,000

20°10'



- LEGEND
- CSAMT Station No. measured by Transmitter Dipole No.1
 - CSAMT Station No. measured by Transmitter Dipole No.2
 - ⊕ CSAMT Station No. measured by Transmitter Dipole No.1 and No.2
 - ⊗ Transmitter Dipole

Y 15,000

20°15'

Y 10,000

Y 5,000

20°10'

105°10'00"

X-20,000

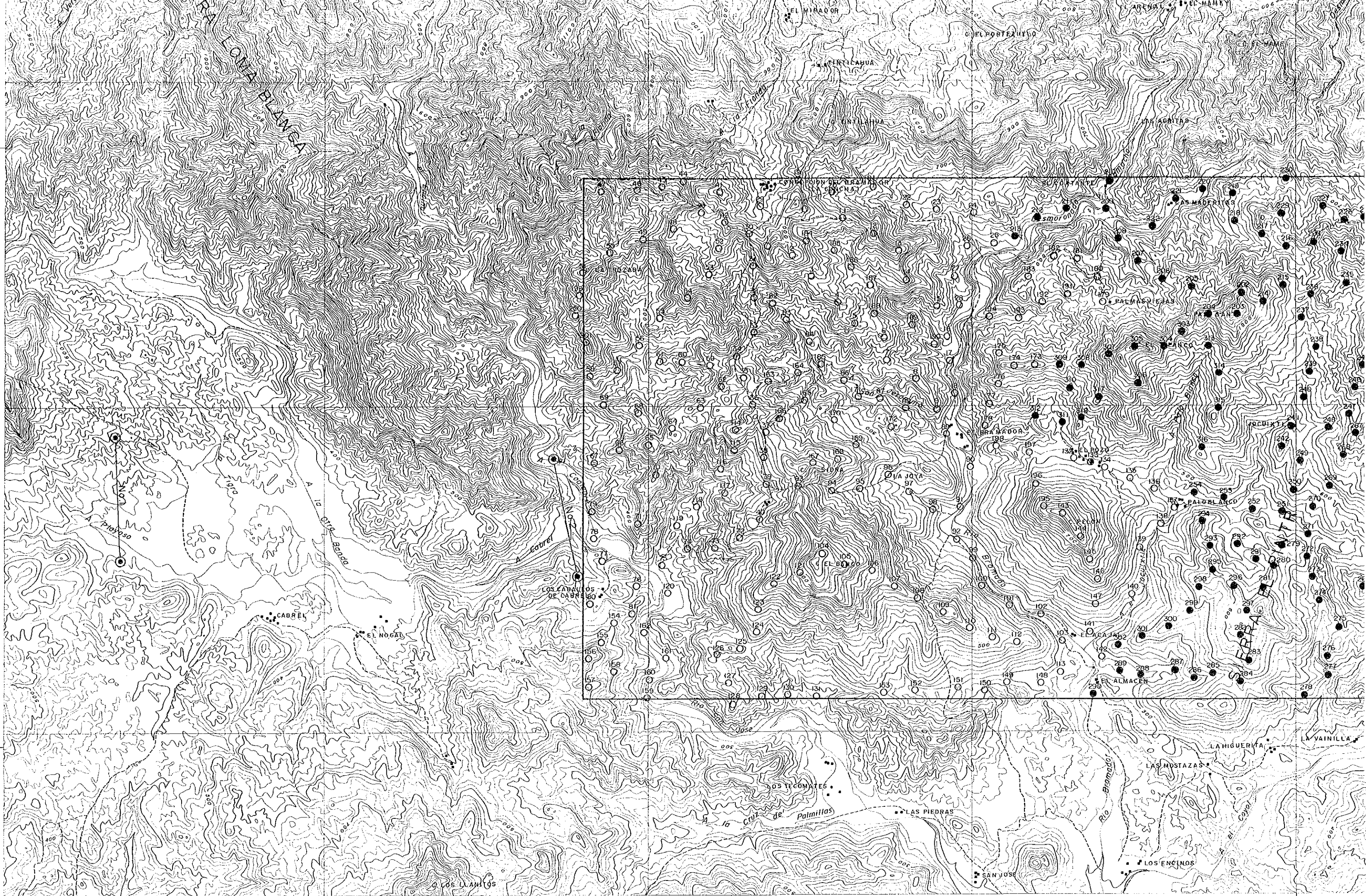
X-15,000

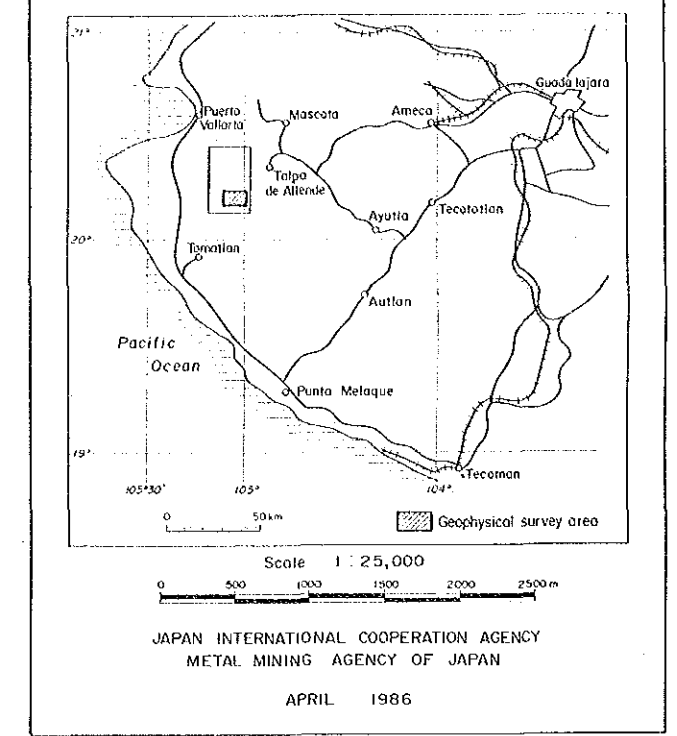
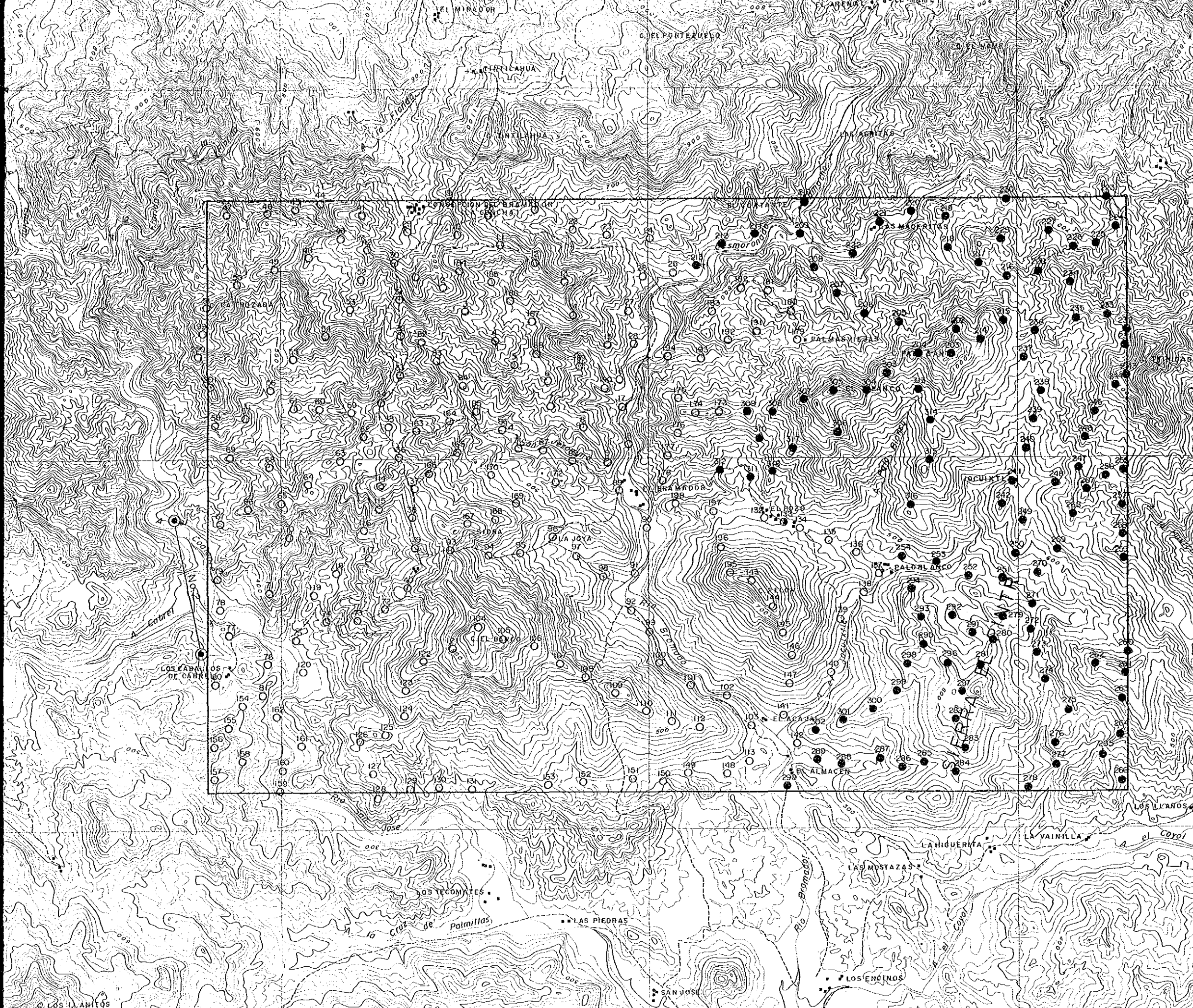
105°05'

X-10,000

105°00'

X-5,000





Y 15,000

20°15'

Y 10,000

Y 5,000

X-15,000

105°05'

X-10,000

105°00'

X-5,000

LEGEND

- 10
○ CSAMT Station No. measured by Transmitter Dipole No.1
- 280
● CSAMT Station No. measured by Transmitter Dipole No.2
- 133
⊙ CSAMT Station No. measured by Transmitter Dipole No.1 and No.2
- ⊙ Transmitter Dipole