

11/6

C-10

Serial No.	Name of village (V.C.) or community	Population in community	Existing Facilities										Req. service popu-lation (15)	Req. BH No. (16)	Unprotected Springs (US) (17)	US popu-lation (18)	pop after US upgrad (20)	Req. BH No. (21)	Bug well (DW) (22)	WZ. upgrad (24)	pop after upgrad (25)	Req. BH No. (26)	Serial No. (27)	Alternative water source					
			Types																										
			Borehole (5)	Well/pump (6)	Protected Spring (7)	Grav Fed. (8)	Yield (9)	HH (10)	Total pop (11)	Total HH (12)	Total pop (13)	Total HH (14)																	
MPICI DISTRICT 2/2																													
49	1207 Mageri	450										0	0	585	2	0	0	585	2	3L	45	211	374	1	1207	1			
50	1208 Kwencha T/C	960										0	0	1247	3	0	0	1247	3	1L	60	281	966	3	1208	3			
51	1210 Nhabato	750						1L	72			72	337	637	2	0	0	637	2	0	0	0	637	2	1210	2			
52	1211 Ruco	750										100	468	506	2	1H	87	407	99	0	0	0	99	0	1211	0			
53	1212 Mweni	1700										0	0	2208	6	1H	60	281	1927	5	0	0	1927	5	1212	5			
54	1213 Kaseza	1500										0	0	1948	5	0	0	1948	5	0	0	0	1948	5	1213	5			
55	1214 Lugo	520										100	468	207	1	1M	35	161	46	0	0	15	70	24	0	1214	0		
56	1215 Mure	800										0	0	1039	3	0	0	1039	3	111M	42	197	843	2	1215	2			
57	1216 Kasungu T/C Kazungu	200										30	140	119	0	2M	6	28	91	0	0	0	91	0	1216	0			
58	1216 Kasungu T/C Bulam	400										100	468	52	0	0	0	52	0	0	0	0	52	0	1216	0			
59	1217 Seta	300										107	500	411	0	4M	36	168	279	0	0	0	279	0	1217	0			
60	1218 Mageri	400										103	481	38	0	0	0	38	0	0	0	1L	6	27	11	0	1218	0	
61	1219 Kazungu	330										100	468	330	0	1M	60	281	320	0	0	0	320	0	1219	0			
62	1220 Kwilima	300										0	0	390	1	0	0	390	1	0	0	0	390	1	1220	1			
63	1221 Km A	250										0	0	325	1	0	0	325	1	1H	45	211	114	0	1221	0			
64	1222 Mnyangwen	750										400	1872	896	0	0	0	896	0	0	0	0	896	0	1222	0			
65	1223 Nalunagonja	450										200	956	351	0	1M	210	983	1334	0	0	0	1334	0	1223	0			
66	1301 Kwele	800										0	0	1039	3	0	0	1039	3	0	0	0	1039	3	1301	3			
67	1302 Ngando	550										15	70	644	2	0	0	644	2	0	0	0	644	2	1302	2			
68	1303 Kaniza	400										0	0	520	2	0	0	520	2	1H	120	562	42	0	1303	0			
69	1305 Ruwembu	475										40	187	430	1	1H	29	138	292	1	1H	20	91	20	1	1305	1		
70	1306 Lugali	700										0	0	909	3	1H	360	1685	2776	0	0	0	2776	0	1306	0			
71	1307 Nibuhungu	1000										0	0	1299	4	1H	12	56	1243	3	0	0	1243	3	1307	3			
72	1308 Butende	700										0	0	909	3	0	0	909	3	0	0	0	909	3	1308	3			
73	1309 Bukasa	300										0	0	390	1	0	0	390	1	0	0	0	390	1	1309	1			
74	1310 Tufubu	400										0	0	520	2	0	0	520	2	0	0	0	520	2	1310	2			
75	1311 Ruwembu	475										100	468	38	0	0	0	38	0	0	0	0	38	0	1311	0			
76	1401 Kwenza	500										0	0	649	2	0	0	649	2	0	0	0	649	2	1401	2			
77	1402 Wabwira	750										0	0	974	3	0	0	974	3	4M	42	197	778	2	1402	2			
78	1403 Nalukumbi	249										0	0	323	1	2M	16	76	248	1	0	0	248	1	1403	1			
79	1404 Masulita A	250										20	94	231	1	3H	7	32	199	1	0	0	199	1	1404	1			
80	1405 Kyamina	1300										0	0	1689	4	0	0	1689	4	0	0	0	1689	4	1405	4			
81	1406 Kwamrai	500										0	0	649	2	0	0	649	2	0	0	0	649	2	1406	2			
82	1407 Malunguza	420										0	0	546	2	1M	18	84	461	2	0	0	461	2	1407	2			
83	1408 Ruwembu	526										0	0	683	2	11M	27	125	538	2	4L	48	225	334	1	1408	1		
84	1409 Mugulika	600										0	0	779	2	1L	8	35	744	2	0	0	744	2	1409	2			
85	1410 Ruco	250										0	0	325	1	0	0	325	1	0	0	0	325	1	1410	1			
86	1411 Kwasa	630										0	0	818	2	1H	54	253	566	2	0	0	566	2	1411	2			
87	1412 Rumbi	500										0	0	649	2	1H	21	98	551	2	0	0	551	2	1412	2			
88	1413 Namaswamba	500										0	0	649	2	0	0	649	2	0	0	0	649	2	1413	2			
89	1414 Ruwembu	800										0	0	1039	3	1L	48	223	816	2	0	0	816	2	1414	2			
90	1415 Ruwembu	250										0	0	325	1	1H	29	133	191	1	0	0	191	1	1415	1			
91	1416 Kasengeje	960										0	0	1247	3	3M	72	337	910	3	0	0	910	3	1416	3			
92	1417 Mende Central	1000										0	0	1299	4	3H	39	181	1118	3	0	0	1118	3	1417	3			
93	1418 Bukasa T/C	600										360	1685	2212	diver	4H	141	660	1552	diver	0	0	1552	diver	1418	0	Protected Spring		
94	1501 Kiguru T/C	630										0	0	818	2	1L	30	140	678	2	0	0	678	2	1501	2			
95	1502 Mfui	819										0	0	1064	xxx		0	0	1064	xxx	0	0	0	1064	xxx	0	EU Programme		
96	1503 Kikomazi	650										0	0	844	2	0	0	844	2	0	0	0	844	2	1503	2			
Total MPICI		62478										2356	11025	76625	185	56									157	157	V.Dams, EU Proj. 1, Pt. Sp.		
Total MPICI Villages No.																(11)										(72)	(72)		

Serial No.	Name of village (LC1) or community	Population in community	Existing Facilities										Req. service population	Req. RH No.	Unprotected Spring (C/S)	US upgrade	pop. after upgrade	Req. RH No.	Dug well (DWS)	Yld (22)	HL pop. upgrade	Req. BH No.	Small No.	Shed BH No.	Alternative water source		
			Borehole Yld (5)	Well Yld (7)	Prot Spring Yld (9)	Over Spring Yld (10)	Over Fed Yld (11)	Total HH (12)	Total HH (13)	Total HH (14)	Req. RH No.	Yld (17)														HL pop. upgrade	Req. RH No.
MURINDI DISTRICT 1/2																											
1	2101 Pwachu/Kiemba	250	340	1M	80								80	386	46	0	0	46	0								
2	2102 Kharoya	327	444										0	444	2	0	0	444	2	2102	2						
3	2103 Kiveroga	595	808										0	808	2	1H 24	112	696	2	2103	2						
4	2104 Badiaga	602	818	1H	70								70	337	480	2	0	0	480	2	2104	2					
5	2105 Pwabaga	400	563										0	563	2	0	0	563	2	2105	2						
6	2106 Kalona	600	815	1H	100								100	482	333	1	0	0	333	1	2106	1					
7	2107 Mugungulu	700	951										0	951	3	0	0	951	3	2107	3						
8	2108 Kiveroga	800	1067	1M	20								20	96	990	3	0	0	990	3	2108	3					
9	2109 Kiemba	700	951										0	951	3	0	0	951	3	2109	3						
10	2110 Kiveroga	400	563										0	563	2	1M 30	140	301	1	2110	1						
11	2111 Babulila	325	441										0	441	2	1M 30	140	301	1	2111	1						
12	2112 Kabuya	350	475										0	475	2	0	0	475	2	2112	2						
13	2113 Kabubu	400	543										0	543	2	0	0	543	2	2113	2						
14	2114 Kiemba	1750	2377	dryzone									1M 250	250	1172	dryzone	0	0	1172	dryzone	2114	0	Valley Dam				
15	2115 Nakwale/Lungula	700	951	dryzone									0	951	dryzone	2L 80	140	810	dryzone	2115	0	Valley Dam					
16	2116 Nakwale	500	679										0	679	2	1M 1H	20	94	583	2	2116	2					
17	2117 Kiemba T/C	800	1067										0	1067	3	0	0	1067	3	2117	3						
18	2118 Kiemba	575	761										210	1012	231	0	0	231	0	2118	0						
19	2119 Ngaro	700	951										0	951	3	4H 18	84	867	3	2119	3						
20	2120 Kiemba	400	563										0	563	2	4M 18	84	459	2	2120	2						
21	2121 Kiemba T/C	1700	2309										0	2309	6	0	0	2309	6	2121	6						
22	2122 Nambale	350	475										0	475	2	0	0	475	2	2122	2						
23	2123 Kibalaro	300	380										0	380	1	0	0	380	1	2123	1						
24	2124 Kamili	300	408										0	408	1	0	0	408	1	2124	1						
25	2125 Pwamagile	362	492										0	492	2	1H 161	253	261	0	2125	0						
26	2126 Kasezi A	700	951										0	951	3	0	0	951	3	2126	3						
27	2127 Kiemba	360	489										0	489	2	2H 161	65	305	184	1	2127	1					
28	2128 Kibara	700	951										0	951	3	1L 8	39	232	1	2128	1						
29	2129 Bulunguwa A	560	761										0	761	2	0	0	761	2	2129	2						
30	2130 Mole	700	951										0	951	3	0	0	951	3	2130	3						
31	2131 Mole	390	530										0	530	2	0	0	530	2	2131	2						
32	2132 Kiemba	450	611										0	611	2	0	0	611	2	2132	2						
33	2133 Kibara	420	571										0	571	2	0	0	571	2	2133	2						
34	2134 Kibara	532	723										0	723	2	0	0	723	2	2134	2						
35	2135 Pwamagile	285	387										0	387	1	1L 0	0	387	1	2135	1						
36	2136 Kibara	910	1236										0	1236	3	0	0	1236	3	2136	3						
37	2137 Kiemba	630	856										0	856	2	0	0	856	2	2137	2						
38	2138 Kiemba	450	611										0	611	2	0	0	611	2	2138	2						
39	2139 Kibara	500	679										0	679	2	1M 1L	27	126	485	2	2139	2					
40	2140 Kiemba	600	815										0	815	2	0	0	815	2	2140	2						
41	2141 Maryogwa	740	1005	dry									0	1005	2	0	0	1005	2	2141	2						
42	2142 Kasezi	300	408										0	408	1	0	0	408	1	2142	1						
43	2143 Kiemba	470	638										0	638	1	0	0	638	1	2143	1						
44	2144 Mole	300	408										0	408	1	0	0	408	1	2144	1						
45	2145 Mole	200	272										0	272	1	1H 20	94	178	1	2145	1						
46	2146 Kasezi	400	563										0	563	2	1H 30	140	403	1	2146	1						
47	2147 Kibara	300	408										0	408	1	2H 44	206	201	1	2147	1						
48	2148 Kasezi	200	272										0	272	1	0	0	272	1	2148	1						

Serial No.	Name of village (LC1) or community (2)	Population in community (3)	Existing Facilities										Req. service pop. (15)	Req. 88 No. (16)	Unprotected Spring (US) Yld (17)	pop. after US upgrade (18)	Req. 88 No. (21)	Dug well (DW) Yld (22)	pop. after upgrade (23)	Req. 88 No. (24)	Serial No. (25)	Alternative water source (26)					
			Types																								
			Posthole	Well/runner	Post Spring	Grav Red.	Yld	HH	Yld	HH	HH	HH															
(1)	(2)	(3)	(4)	(5)	(6)	(7)	(8)	(9)	(10)	(11)	(12)	(13)	(14)	(15)	(16)	(17)	(18)	(19)	(20)	(21)	(22)	(23)	(24)	(25)	(26)	(27)	
MUBENDE DISTRICT 2/2																											
49	2301 Kibumba-Kiba	360					1L	61					61	294	195	1	0	0	195	1	0	0	195	1	2301	1	
50	2302 Nkoma	1200					1M	50					50	241	1389	4	0	0	1389	4	0	0	1389	4	2302	4	
51	2303 Nanyaso	400					2M	190					190	916	508	0	1M	6	28	536	0	0	0	536	0	2303	0
52	2304 Rugaba	500					1H	40					40	195	486	2	3H	10	46	440	2	0	0	440	2	2304	2
53	2305 Kibaka	400											0	0	815	2	0	0	815	2	1L	2	8	807	2	2305	2
54	2306 Magongo	700											0	0	951	3	1L	2M	19	864	3	0	0	864	3	2306	3
55	2307 Nkanga-Nyoni	300											0	0	408	1	0	0	408	1	1H	15	70	337	1	2307	1
56	2308 Mityana/Mityana A	700											0	0	951	3	0	0	951	3	1M	36	168	782	3	2308	3
57	2309 Mityana/Mityana B	340											0	0	951	3	0	0	951	3	1M	36	168	782	3	2309	3
58	2310 Kibumba	500											0	0	706	2	1H	18	84	622	2	0	0	622	2	2310	2
59	2311 Kibumba	520											0	0	1209	3	1H	20	95	1113	3	0	0	1113	3	2311	3
60	2312 Kiwanda	350											0	0	475	2	2H	14	63	412	1	0	0	412	1	2312	1
61	2313 Kiwanda	800											0	0	951	3	2H	14	63	412	1	0	0	412	1	2313	1
62	2314 Kiwanda	700											0	0	951	3	2H	14	63	412	1	0	0	412	1	2314	1
63	2315 Kibumba	450											0	0	951	3	2H	14	63	412	1	0	0	412	1	2315	1
64	2316 Kibumba	1000											0	0	1358	4	0	0	1358	4	0	0	1358	4	2316	4	
65	2317 Kiwanda	450											0	0	611	2	0	0	611	2	0	0	611	2	2317	2	
66	2318 Kiwanda	600											0	0	924	3	1H	51	239	685	2	0	0	685	2	2318	2
67	2319 Kiwanda	650											0	0	924	3	1H	51	239	685	2	0	0	685	2	2319	2
68	2320 Kiwanda	600											0	0	924	3	1H	51	239	685	2	0	0	685	2	2320	2
69	2321 Kiwanda	600											0	0	924	3	1H	51	239	685	2	0	0	685	2	2321	2
70	2322 Kiwanda	600											0	0	924	3	1H	51	239	685	2	0	0	685	2	2322	2
71	2323 Kiwanda	600											0	0	924	3	1H	51	239	685	2	0	0	685	2	2323	2
72	2324 Kiwanda	600											0	0	924	3	1H	51	239	685	2	0	0	685	2	2324	2
73	2325 Kiwanda	600											0	0	924	3	1H	51	239	685	2	0	0	685	2	2325	2
74	2326 Kiwanda	600											0	0	924	3	1H	51	239	685	2	0	0	685	2	2326	2
75	2327 Kiwanda	600											0	0	924	3	1H	51	239	685	2	0	0	685	2	2327	2
76	2328 Kiwanda	600											0	0	924	3	1H	51	239	685	2	0	0	685	2	2328	2
77	2329 Kiwanda	600											0	0	924	3	1H	51	239	685	2	0	0	685	2	2329	2
78	2330 Kiwanda	600											0	0	924	3	1H	51	239	685	2	0	0	685	2	2330	2
79	2331 Kiwanda	600											0	0	924	3	1H	51	239	685	2	0	0	685	2	2331	2
80	2332 Kiwanda	600											0	0	924	3	1H	51	239	685	2	0	0	685	2	2332	2
81	2333 Kiwanda	600											0	0	924	3	1H	51	239	685	2	0	0	685	2	2333	2
82	2334 Kiwanda	600											0	0	924	3	1H	51	239	685	2	0	0	685	2	2334	2
83	2335 Kiwanda	600											0	0	924	3	1H	51	239	685	2	0	0	685	2	2335	2
84	2336 Kiwanda	600											0	0	924	3	1H	51	239	685	2	0	0	685	2	2336	2
85	2337 Kiwanda	600											0	0	924	3	1H	51	239	685	2	0	0	685	2	2337	2
86	2338 Kiwanda	600											0	0	924	3	1H	51	239	685	2	0	0	685	2	2338	2
87	2339 Kiwanda	600											0	0	924	3	1H	51	239	685	2	0	0	685	2	2339	2
88	2340 Kiwanda	600											0	0	924	3	1H	51	239	685	2	0	0	685	2	2340	2
89	2341 Kiwanda	600											0	0	924	3	1H	51	239	685	2	0	0	685	2	2341	2
90	2342 Kiwanda	600											0	0	924	3	1H	51	239	685	2	0	0	685	2	2342	2
91	2343 Kiwanda	600											0	0	924	3	1H	51	239	685	2	0	0	685	2	2343	2
92	2344 Kiwanda	600											0	0	924	3	1H	51	239	685	2	0	0	685	2	2344	2
93	2345 Kiwanda	600											0	0	924	3	1H	51	239	685	2	0	0	685	2	2345	2
94	2346 Kiwanda	600											0	0	924	3	1H	51	239	685	2	0	0	685	2	2346	2
95	2347 Kiwanda	600											0	0	924	3	1H	51	239	685	2	0	0	685	2	2347	2
96	2348 Kiwanda	600											0	0	924	3	1H	51	239	685	2	0	0	685	2	2348	2
97	2349 Kiwanda	600											0	0	924	3	1H	51	239	685	2	0	0	685	2	2349	2
98	2350 Kiwanda	600											0	0	924	3	1H	51	239	685	2	0	0	685	2	2350	2
99	2351 Kiwanda	600											0	0	924	3	1H	51	239	685	2	0	0	685	2	2351	2
100	2352 Kiwanda	600											0	0	924	3	1H	51	239	685	2	0	0	685	2	2352	2
Total MUBENDE Village No.																											
Total MUBENDE Village No.																											

(5/26)

Serial No.	Name of village (LCI) or community	Population in community	Existing Facilities										Req. service population	Req. RH No. (1)	Unprotected Sprinkling (US) Yld (17)	US pop. upgrad. (19)	pop. after US (20)	Req. RH No. (2)	Dug well (DWM) Yld (22)	WT upgrad. pop. (24)	pop. after DW upgrad. (25)	Req. BR No. (2)	Serial No.	Req. SDRH No.	Alternative water source	
			Types																							
			Borehole	Well	Yld	HF	Yld	HF	Yld	HF	Yld	HF	Yld	HF	Yld	HF	Yld	HF	Yld	HF	Yld	HF				
(1)	(2)	(3)	(4)	(5)	(6)	(7)	(8)	(9)	(10)	(11)	(12)	(13)	(14)	(15)	(16)	(17)	(18)	(19)	(20)	(21)	(22)	(23)	(24)	(25)	(26)	(27)
KIBOGA DISTRICT 12																										
1	3101. Kaseko	504																								
2	3102. Kalandula A	900																								
3	3103. Kalandula B	300																								
4	3104. Kalandula C	470																								
5	3105. Kalandula D	600																								
6	3106. Kalandula E	800																								
7	3107. Kalandula F	280																								
8	3108. Kalandula G	320																								
9	3109. Kalandula H	800																								
10	3110. Kalandula I	760																								
11	3111. Kalandula J	350																								
12	3112. Kalandula K	480																								
13	3113. Kalandula L	175																								
14	3114. Kalandula M	1320																								
15	3115. Kalandula N	450																								
16	3116. Kalandula O	524																								
17	3117. Kalandula P	288																								
18	3118. Kalandula Q	222																								
19	3119. Kalandula R	500																								
20	3120. Kalandula S	200																								
21	3121. Kalandula T	540																								
22	3122. Kalandula U	200																								
23	3123. Kalandula V	450																								
24	3124. Kalandula W	380																								
25	3125. Kalandula X	600																								
26	3126. Kalandula Y	500																								
27	3127. Kalandula Z	210																								
28	3128. Kalandula AA	330																								
29	3129. Kalandula AB	300																								
30	3130. Kalandula AC	400																								
31	3131. Kalandula AD	468																								
32	3132. Kalandula AE	350																								
33	3133. Kalandula AF	200																								
34	3134. Kalandula AG	800																								
35	3135. Kalandula AH	500																								
36	3136. Kalandula AI	250																								
37	3137. Kalandula AJ	330																								
38	3138. Kalandula AK	400																								
39	3139. Kalandula AL	210																								
40	3140. Kalandula AM	500																								
41	3141. Kalandula AN	600																								
42	3142. Kalandula AO	300																								
43	3143. Kalandula AP	400																								
44	3144. Kalandula AQ	360																								
45	3145. Kalandula AR	280																								
46	3146. Kalandula AS	350																								

Serial No.	Name of village (LC1) or community	Population in community		Existing Facilities										Req. service population	Req. BR No.	Unprotected Springs (US)	pop after upgrade	Req. BR No.	Seq. No.	Req. BR No.	Alternative water source										
		1995	2005	Borehole	Well/pump	Type		Grav Fed	Total pop	Estat. pop	Total																				
						Yld	Yld					Yld	Yld									Yld	Yld	Yld	Yld						
(1)	(2)	(3)	(4)	(5)	(6)	(7)	(8)	(9)	(10)	(11)	(12)	(13)	(14)	(15)	(16)	(17)	(18)	(19)	(20)	(21)	(22)	(23)	(24)	(25)	(26)	(27)	(28)	(29)	(30)		
KIBOGA DISTRICT 2/2																															
47	3153 Buvunga	470	625					2H/L	94			94	427	198	1	0	0	0	0	0	0	0	0	0	0	0	0	0	0		
48	3155 Kabumba	340	503									0	0	505	2	4H	21	98	407	1	0	0	0	0	0	0	0	0	0		
49	3156 Kambugu	235	312									0	0	312	1		0	0	0	0	0	0	0	0	0	0	0	0	0		
50	3157 Kanyona	200	266									0	0	266	1		0	0	0	0	0	0	0	0	0	0	0	0	0		
51	3158 Kanyoni	515	685									0	0	685	2	3H	18	84	601	2	0	0	0	0	0	0	0	0	0	0	
52	3159 Karamiro	340	465									0	0	465	2		0	0	0	0	0	0	0	0	0	0	0	0	0		
53	3160 Kapulana	480	638									0	0	638	2		0	0	0	0	0	0	0	0	0	0	0	0	0		
54	3161 Kivuna P.	380	505									0	0	505	2		0	0	0	0	0	0	0	0	0	0	0	0	0		
55	3163 Bikoma A	257	342									0	0	342	1	4M	86	405	461	0	0	0	0	0	0	0	0	0	0	0	
56	3163 Bikoma B	272	362									0	0	362	1		0	0	0	0	0	0	0	0	0	0	0	0	0	0	
57	3164 Pangukuma	310	412									0	0	412	1		0	0	0	0	0	0	0	0	0	0	0	0	0	0	
58	3165 Nabwendo	600	798									0	0	798	2	3H	72	337	461	2	0	0	0	0	0	0	0	0	0	0	
59	3167 Ndawero	1100	1463									0	0	1463	4	2H/L	129	604	859	2	0	0	0	0	0	0	0	0	0	0	
60	3168 Nakason	350	465									0	0	465	2	4H	23	105	360	1	0	0	0	0	0	0	0	0	0	0	
61	3169 Nakasenge	300	399									0	0	399	1		0	0	0	0	0	0	0	0	0	0	0	0	0	0	
62	3170 Nanyole/Magala Men	400	532									0	0	532	2		0	0	0	0	0	0	0	0	0	0	0	0	0	0	
63	3171 Muvunga	600	798	dryzone								0	0	798	2	1H	30	140	140	2	0	0	0	0	0	0	0	0	0	0	0
64	3172 Kilonda	140	186	11	100							0	0	186	1		0	0	0	0	0	0	0	0	0	0	0	0	0	0	
65	3173 Nakababala	300	399									0	0	399	1		0	0	0	0	0	0	0	0	0	0	0	0	0	0	
66	3174 Kyanbogo	580	771									0	0	771	2		0	0	0	0	0	0	0	0	0	0	0	0	0	0	
67	3175 Kigando/Purusa	126	168									0	0	168	1		0	0	0	0	0	0	0	0	0	0	0	0	0	0	
68	3176 Mupurusa	356	473									0	0	473	2		0	0	0	0	0	0	0	0	0	0	0	0	0	0	
69	3178 Benanywa	1439	1913									0	0	1913	5	3L	93	435	1478	4	0	0	0	0	0	0	0	0	0	0	
70	3179 Nanywa	195	259									0	0	259	1		0	0	0	0	0	0	0	0	0	0	0	0	0	0	
71	3180 Kvakabaga	160	213									0	0	213	1		0	0	0	0	0	0	0	0	0	0	0	0	0	0	
72	3183 Bemuruta	850	1130	1M	100							0	0	1130	1		0	0	0	0	0	0	0	0	0	0	0	0	0	0	
73	3184 Kwaraga	280	372									0	0	372	1	3H	45	211	466	2	0	0	0	0	0	0	0	0	0	0	
74	3185 Masodde	900	1197									0	0	1197	3	1M	90	421	775	2	0	0	0	0	0	0	0	0	0	0	
75	3186 Vumba	500	665									0	0	665	2	2H	30	140	524	2	0	0	0	0	0	0	0	0	0	0	
76	3187 Kalagi	350	465									0	0	465	2	1H	15	70	395	1	0	0	0	0	0	0	0	0	0	0	
77	3188 Kivumbwa	500	665									0	0	665	2		0	0	0	0	0	0	0	0	0	0	0	0	0	0	
78	3189 Kwagaza	500	665									0	0	665	2	3H	112	548	112	0	0	0	0	0	0	0	0	0	0	0	
79	3190 Mulan	350	465									0	0	465	2	3H	73	154	175	1	0	0	0	0	0	0	0	0	0	0	
80	3191 Kigando	700	931									0	0	931	3	1H	210	983	52	0	0	0	0	0	0	0	0	0	0	0	
81	3192 Bulwazaga	500	665									0	0	665	2	1M	120	562	105	0	0	0	0	0	0	0	0	0	0	0	
82	3193 Owaza West	586	779									0	0	779	2		0	0	0	0	0	0	0	0	0	0	0	0	0	0	
83	3194 Kasamba P.	350	465									0	0	465	2	1M	16	73	392	1	0	0	0	0	0	0	0	0	0	0	
84	3195 Ntendo	500	665									0	0	665	2		0	0	0	0	0	0	0	0	0	0	0	0	0	0	
85	3196 Panambulu	520	691									0	0	691	2		0	0	0	0	0	0	0	0	0	0	0	0	0	0	
86	3197 Kivumbwa West	400	532									0	0	532	2		0	0	0	0	0	0	0	0	0	0	0	0	0	0	
87	3198 Luvura	300	399									0	0	399	1		0	0	0	0	0	0	0	0	0	0	0	0	0	0	
88	3199 Kimba	750	997									0	0	997	3		0	0	0	0	0	0	0	0	0	0	0	0	0	0	
89	3200 Kivumbwa East	600	798									0	0	798	2	1L	18	84	714	2	0	0	0	0	0	0	0	0	0	0	
90	Total KIBOGA	43988	58488									17640	40848	143	63	5806	31043	121	4	143	30809	115	0	115	0	115	0	115	0	115	
Grand Total (3 Districts)		165004	218861									40262	178579	499			5906	31043	449			143	30809	427			0	427			

(Note) 1. Population in 2005 is projected by using the annual growth rate for period (1909 - 1991) of each District. Mpop. - 2.65 %, Mubende - 3.11 %, Kiboga - 2.89 %

2. Average family size of each District: Mpop. - 4.68, Mubende - 4.82, Kiboga - 4.54. 3. " indicates no groundwater zone. 4. xxx indicates small town area.

5. BR : Household No. Yld : Yield upgrcs : Upgrading

COST ESTIMATE

BOREHOLE (Successful), 5 inch dia., Average Depth : 80m (Soil:25m, Rock:55mm)

Description	Specs.	No.	Unit	Unit Price		Amount		Remarks
				L.C.(US\$)	F.C.(US\$)	L.C.(US\$)	F.C.(US\$)	
Personnel								
Drilling								
Foreman	0.5 * 6 days	3.0	man/day	12,000		36,000		
Driller	1.0 * 6 days	6.0		10,000		60,000		
Asst.Driller	1.0 * 6 days	6.0		8,000		48,000		
Worker	4.0 * 6 days	24.0		6,000		144,000		
Pump Test								
Technician	1.0 * 2 days	2.0		10,000		20,000		
Worker	1.0 * 2 days	2.0		6,000		12,000		
Headworks								
Foreman	0.5 * 2 days	1.0		12,000		12,000		
Worker	2.0 * 2 days	4.0		6,000		24,000		
Pump Installation								
Foreman	1.0 * 0.5 days	0.5		12,000		6,000		
Worker	3.0 * 0.5 days	1.5		6,000		9,000		
Personnel Total						371,000		

COST ESTIMATE

BOREHOLE (Successful), 5 inch dia., Average Depth : 80m (Soil:25m, Rock:55mm)

Description	Specs.	No.	Unit	Unit Price		Amount		Remarks
				L.C.(US\$)	F.C.(US\$)	L.C.(US\$)	F.C.(US\$)	
Materials								
Drilling								
Fuel & Lubricant		1100	litres	0.90			990.00	(0.155*336hrs=0.04*215hrs)*6hr*3days
Drill Bit(Trioon 12")		0.108	pcs	4,300.00			464.40	(0.018/m)*6m
Drill Bit(Trioon 10-7/8")		0.342	pcs	3,200.00			1,094.40	(0.018/m)*19m
Drill Bit(8-1/2)		0.275	pcs	5,800.00			1,595.00	(0.005/m)*55m
Bentonite		625	kg	0.55			343.75	
Casing & Screen		80	m	20,000		1,600,000		
Gravel		0.672	m³	30,000		20,160		
Conductor Pipes		6.0	m	60			360.00	@=600*0.1
Miscellaneous	10% of above					162,016	484.76	
Pump Test								
Fuel & Lubricant		27.84	litres	0.90			25.06	
Miscellaneous	10% of above						25.06	
Headworks								
Cement		0.3	tonne	11,000		3,300		C.S.A=1:2.5:3.8
Aggregates		1.10	tonne	18,000		19,800		
Sand		0.8	tonne	7,000		5,250		
Concrete Blocks		60.0	pcs	1,000		60,000		
Form		1.9	m²	30,000		57,000		
Pump Installation								
Handpump Ser (Steel)		0.5	pc	1,200.00			600.00	Each set is installed for
Handpump Ser (Stainless)		0.5	pc	1,800.00			900.00	50% of Total BH Nos.
Materials Total						1,927,526	6,982.42	

COST ESTIMATE				BOREHOLE (Successful), 5 inch dia., Average Depth : 80m (Soil:25m, Rock:55mm)				
Description	Specs.	No.	Unit	Unit Price		Amount		Remarks
				L.C.(US\$)	F.C.(US\$)	L.C.(US\$)	F.C.(US\$)	
Hire Charge of Machinery								
Drilling								
Drilling Rig		4.0	day		558.00		2,232.00	@=500000*(0.000186*6)
Air-Compressor		4.0	day		485.64		1,942.56	@=120000*(0.001349*5)
Cargo Truck		3.0	day		111.60		334.80	@=120000*(0.000155*6)
Waterlorry		1.0	day		75.84		75.84	@=80000*(0.000158*6)
Pickup Truck		6.0	day		22.80		136.80	@=20000*(0.000190*6)
Mudpump		1.0	day		204.16		204.16	@=35000*(0.001681*3)
Pumping Test								
Submersible Pump		2.0	day		53.01		106.03	@=13000*(0.002309*2)
Diesel Generator		2.0	day		39.74		79.49	@=18000*(0.001104*2)
Pickup Truck		2.0	day		26.60		53.20	@=20000*(0.000190*2)
Measuring Devices		2.0	day		74.52		149.04	@=20000*(0.001863*2)
Headworks								
Pickup Truck		1.0	day		3.80		3.80	@=20000*(0.000190*1)
Pump Installation								
Pickup Truck		0.5	day		3.80		1.90	@=20000*(0.000190*1)
Subtotal of Hire Charge of Machinery								
							5,319.61	
TOTAL COST OF BOREHOLE							2,298,526	12,202.03

Appendix C-4 Cost Estimate of Borehole (Dry)

Sheet 1/2

COST ESTIMATE									
BOREHOLE (Dry), 5 inch dia., Average Depth : 80m (Soil:25m, Rock:55mm)									
Description	Specs.	No.	Unit	Unit Price		Amount		Remarks	
				L.C.(US\$)	F.C.(US\$)	L.C.(US\$)	F.C.(US\$)		
Personnel									
Drilling									
Foreman	0.5 * 4 days	2.0	man/day		12,000		24,000		
Driller	1.0 * 4 days	4.0			10,000		40,000		
Asst. Driller	1.0 * 4 days	4.0			8,000		32,000		
Worker	4.0 * 4 days	16.0			6,000		96,000		
Subtotal of Personnels							192,000		
Materials									
Drilling									
Fuel & Lubricant		1100	litres		0.90		990.00	(0.155*336pc=0.04*21.5m)/3hr*3days	
Drill Bit(Trioon 12")		0.108	pcs		4,300.00		464.40	(0.018/m)*6m	
Drill Bit(Trioon 10-7/8")		0.342	pcs		3,200.00		1,094.40	(0.018/m)*19m	
Drill Bit(8-1/2)		0.275	pcs		5,800.00		1,595.00	(0.005/m)*55m	
Bentonite		625	kg		0.55		343.75		
Conductor Pipes		6.0	m		60.00		360.00	@=600*0.1	
Miscellaneous	10% of above						385.76		
Subtotal of Materials							5,233.31		

COST ESTIMATE		BOREHOLE (Dry), 5 inch dia., Average Depth : 80m (Soil:25m, Rock:55mm)						
Description	Specs.	No.	Unit	Unit Price		Amount		Remarks
				L.C.(US\$)	F.C.(US\$)	L.C.(US\$)	F.C.(US\$)	
Hire Charge of Machinery								
Drilling								
Drilling Rig		3.0	day		558.00		1,674.00	@=500000*(0.000186*6)
Air-Compressor		3.0	day		485.64		1,456.92	@=120000*(0.001349*5)
Cargo Truck		3.0	day		111.60		334.80	@=120000*(0.000155*6)
Waterlory		1.0	day		75.84		75.84	@=80000*(0.000158*6)
Pickup Truck		3.0	day		22.80		68.40	@=20000*(0.000190*6)
Mudpump		1.0	day		204.16		204.16	@=35000*(0.001681*3)
Subtotal of Hire Charge of Machinery							3,814.12	

COST ESTIMATE		Dug Well Construction						
Description	Specs.	No.	Unit	Unit Price		Amount		Remarks
				L.C.(US\$)	F.C.(US\$)	L.C.(US\$)	F.C.(US\$)	
Personnel								
Excavation								
Foreman	0.5 * 10 days	5.0	man/day	12,000		60,000		
Worker	4.0 * 10 days	40.0	man/day	6,000		240,000		
Installation of Concrete Ring								
Foreman	0.5 * 5 days	2.5	man/day	19,000		47,500		
Worker	4.0 * 5 days	20.0	man/day	6,300		126,000		
Headworks								
Foreman	0.5 * 2 days	1.0		12,000		12,000		
Worker	2.0 * 2 days	4.0		6,000		24,000		
Pump Installation								
Foreman	1.0 * 0.5 days	0.5		12,000		6,000		
Worker	3.0 * 0.5 days	1.5		6,000		9,000		
</								

COST ESTIMATE			Dug Well Construction					
Description	Specs.	No.	Unit	Unit Price		Amount		Remarks
				L.C.(US\$)	F.C.(US\$)	L.C.(US\$)	F.C.(US\$)	
Materials								
Installation of Concrete Ring								
Concrete Ring		13	pcs	55,000		715,000		
Fuel & Lubricant		65.38	litres		0.90		58.84	@=0.036*2277ps*8hr=1days
Miscellaneous	10% of above					71,500	5.88	
Concrete Works								
Fuel & Lubricant		6.6	litre		0.90		5.90	@=0.117*3=0.135*5.9%
Cement		0.25	Tonne	11,000		2,750		
Aggregate		1.00	Tonne	18,000		18,000		
Sand		0.65	Tonne	7,000		4,550		
Miscellaneous	10% of above					2,530	0.59	
Pump Installation								
Handpump Set (Steel)		1.0	pc		1,200.00		1,200.00	

DOMESTIC ESTIMATE		Protected Spring						
Description	Specs.	No.	Unit	Unit Price		Amount		Remarks
				L.C.(US\$)	F.C.(US\$)	L.C.(US\$)	F.C.(US\$)	
Personnel								
Excavation & Backfill								
Foreman	0.5 * 5 days	2.5	man/day	12,000		30,000		
BF Operator	1.0 * 4 days	4.0	man/day	10,000		40,000		
DT Operator	2.0 * 4 days	8.0	man/day	10,000		80,000		
Worker	5.0 * 5 days	25.0	man/day	6,000		150,000		
Concrete Works								
Foreman	0.5 * 5 days	2.5	man/day	12,000		30,000		
Technician	1.0 * 5 days	5.0	man/day	10,000		50,000		
Worker	2.0 * 5 days	10.0	man/day	6,000		60,000		
Wet Masonry								
Technician	1.0 * 3 days	3.0	man/day	10,000		30,000		
Worker	2.0 * 3 days	6.0	man/day	6,000		36,000		
Fence and Others								
Technician	1.0 * 2 days	2.0	man/day	10,000		20,000		
Worker	2.0 * 2 days	4.0	man/day	6,300		25,200		
Personnel Total						551,200		

DOMESTIC ESTIMATE			Protected Spring					
Description	Specs.	No.	Unit	Unit Price		Amount		Remarks
				L.C.(UShs)	F.C.(US\$)	L.C.(UShs)	F.C.(US\$)	
Materials								
Excavation								
Fuel & Lubricant		533.79	litre		0.90		480.41	@=(0.129*37+0.039*319*2)*6*3
Backfill								
Fuel & Lubricant		177.9	litre		0.90		160.14	@=(0.129*37+0.039*319*2)*6*1
Hardcore		7.5	m ³	10,000		75,000		
Concrete Works								
Fuel & Lubricant		2.2	litre		0.90		1.97	@=(0.117*3+0.135*5.5)*2
Cement		1.0	Tonne	11,000		11,000		
Aggregate		3.80	Tonne	18,000		68,400		
Sand		2.5	Tonne	7,000		17,500		
Bricks		300.00	Nos.	50		15,000		
Miscellaneous	10% of above					11,190	0.20	
Wet Masonry								
Stone		2.00	Tonne	20,000		40,000		
Cement		0.10	Tonne	12,000		1,200		
Sand		0.25	Tonne	7,000		1,750		
Miscellaneous	10% of above					4,295		
Fence & Others								
Pole		21.0	pcs	10,000		210,000		
Barbed Wire		105.00	m	150		15,750		
Materials Total						471,085		

DOMESTIC ESTIMATE		Protected Spring				
Description	Specs	No.	Unit	Unit Price		Remarks
				L.C.(US\$)	F.C.(US\$)	
				Amount		
				L.C.(US\$)	F.C.(US\$)	
Hire Charge of Machinery						
Excavation						
Backfore		4.0	day		96.00	384.00 @ -100000*(0.000160*6)
Dump Truck		4.0	day		162.00	648.00 @ -90000*(0.000150*6)*2
Drainage Pump		12.0	day		1.70	20.36 @ -500*(0.002500+0.000893)
Diesel Generator		12.0	day		7.36	88.34 @ -3600*(0.001212+0.000833)
Concrete Works						
Concrete Mixer		2.0	day		53.90	107.80 @ -20000*(0.001917+0.000778)
Diesel Generator		2.0	day		13.91	27.81 @ -6800*(0.001212+0.000833)
Subtotal of Hire Charge of Machinery						
						1,276.31
TOTAL COST OF PROTECTED SPRING						1,022,285 1,276.31

Appendix C-7 Cost Estimate of Valley Dam

Sheet 1/5

COST ESTIMATE			Valley Dam Construction					
Description	Specs.	No.	Unit	Unit Price		Amount		Remarks
				L.C.(US\$)	F.C.(US\$)	L.C.(US\$)	F.C.(US\$)	
Personnel								
Excavation for Dam Foundation								
Foreman	1.0 * 9 days	9.0	man/day	12,000		108,000		
BD. Operator	1.0 * 9 days	9.0		10,000		90,000		
BF. Operator	1.0 * 9 days	9.0		10,000		90,000		
DT Driver	2.0 * 9 days	18.0		10,000		180,000		
Worker	2.0 * 9 days	18.0		6,000		108,000		
Embankment for Dam Body								
Foreman	1.0 * 75 days	75.0	man/day	12,000		900,000		
BD. Operator	1.0 * 75 days	75.0		10,000		750,000		
BF. Operator	1.0 * 75 days	75.0		10,000		750,000		
DT Driver	2.0 * 75 days	150.0		10,000		1,500,000		
Worker	2.0 * 75 days	150.0		6,000		900,000		
Excavation for Spillway								
Foreman	1.0 * 3 days	3.0	man/day	12,000		36,000		
BD. Operator	1.0 * 3 days	3.0		10,000		30,000		
BF. Operator	1.0 * 3 days	3.0		10,000		30,000		
DT Driver	2.0 * 3 days	6.0		10,000		60,000		
Worker	2.0 * 3 days	6.0		6,000		36,000		
Masonry Work at Spillway								
Foreman	0.5 * 21 days	10.5	man/day	12,000		126,000		
Technician	1.0 * 21 days	21.0		10,000		210,000		
Worker	4.0 * 21 days	84.0		6,000		504,000		

COST ESTIMATE		Valley Dam Construction						
Description	Specs.	No.	Unit	Unit Price		Amount		Remarks
				L.C.(US\$)	F.C.(US\$)	L.C.(US\$)	F.C.(US\$)	
Excavation for Intake Well								
Foreman	0.5 * 4 days	2.0	man/day	12,000		24,000		
BD. Operator	1.0 * 4 days	4.0		10,000		40,000		
BF. Operator	1.0 * 4 days	4.0		10,000		40,000		
DT Driver	2.0 * 4 days	8.0		10,000		80,000		
Worker	2.0 * 4 days	8.0		6,000		48,000		
Backfill & Construction for Intake Well								
Foreman	0.5 * 6 days	3.0	man/day	12,000		36,000		
BD. Operator	1.0 * 6 days	6.0		10,000		60,000		
BF. Operator	1.0 * 6 days	6.0		10,000		60,000		
DT Driver	2.0 * 6 days	12.0		10,000		120,000		
Worker	2.0 * 6 days	12.0		6,000		72,000		
Fence & Others								
Technician	1.0 * 8 days	8.0	man/day	10,000		80,000		
Worker	3.0 * 8 days	24.0		6,000		144,000		
Personnel Total								
						7,212,000		

COST ESTIMATE									
Valley Dam Construction									
Description	Specs.	No.	Unit	Unit Price		Amount		Remarks	
				L.C.(US\$)	F.C.(US\$)	L.C.(US\$)	F.C.(US\$)		
Materials									
Excavation for Dam Foundation									
Fuel & Lubricant		2166	litres		0.90		1,949.40	$=(0.129*94+0.039*242*2)*6*6$	
								$=(0.129*94+0.039*242*2)*6*9$	
Embankment for Dam Body									
Fuel & Lubricant		1549	litres		0.90		13,904.10	$=(0.138*112+0.039*242*2)*6*7.5$	
Riprap Material		800	Tonne	30,000					
Crushed Rock		460	Tonne	18,000		8,280,000			
Drain material		120	Tonne	7,000		840,000			
Miscellaneous	10% of above					912,000	1390.41		
Excavation for Spillway									
Fuel & Lubricant		558.00	litres		0.90		502.20	$=(0.129*94+0.039*242*2)*6*3$	
Masonry Work at Sillway									
Stone		250	Tonne	20,000		5,000,000			
Cement		65	Tonne	11,000		715,000			
Sand		165	Tonne	7,000		1,155,000			
Miscellaneous	10% of above					687,000			
Excavation for Intake Well									
Fuel & Lubricant		744.00	litres		0.90		669.60	$=(0.129*94+0.039*242*2)*6*4$	

COST ESTIMATE									
Valley Dam Construction									
Description	Specs	No.	Unit	Unit Price		Amount		Remarks	
				L.C. (US\$)	F.C. (US\$)	L.C. (US\$)	F.C. (US\$)		
Hire Charge of Machinery									
Excavation for Dam Foundation									
Bulldozer		6.0	day		144.00		864.00	@=120000*(0.000200*6)	
Backfore		9.0	day		96.00		864.00	@=100000*(0.000160*6)	
Dump Truck		9.0	day		162.00		1,458.00	@=90000*(0.000150*6)*2	
Enbankment for Dam Body									
Bulldozer		75.0	day		144.00		10,800.00	@=120000*(0.000200*6)	
Tamping Roller		75.0	day		36.00		2,700.00	@=30000*(0.000200*6)	
Dump Truck		75.0	day		81.00		6,075.00	@=90000*(0.000150*6)	
Excavation for Spillway									
Backfore		3.0	day		96.00		288.00	@=100000*(0.000160*6)	
Dump Truck		3.0	day		81.00		243.00	@=90000*(0.000150*6)	
Excavation for Intake Well									
Backfore		4.0	day		96.00		384.00	@=100000*(0.000160*6)	
Dump Truck		4.0	day		81.00		324.00	@=90000*(0.000150*6)	
Backfill & Construction for Intake Well									
Bulldozer		5.0	day		144.00		720.00	@=120000*(0.000200*6)	
Backfore		5.0	day		32.00		160.00	@=100000*(0.000160*2)	
Dump Truck		5.0	day		81.00		405.00	@=90000*(0.000150*6)	
Total of Hire Charge of Machinery							25,285.00		
TOTAL COST OF VALLEY DAM						30,431,350	45,427.71		

Sheet 1/10

Sheet 1/10

BOREHOLE, 5 inch dia., Average Depth : 200m (Soil:25m, Rock:175mm)

[illegible]

COST ESTIMATE

BOREHOLE, 5 inch dia., Average Depth : 200m (Soil:25m, Rock:175mm)

Description	Specs.	No.	Unit	Unit Price		Amount		Remarks
				L.C.(US\$)	F.C.(US\$)	L.C.(US\$)	F.C.(US\$)	
Materials								
Drilling								
Fuel & Lubricant		2548.56	litres		0.90		2,293.70	(0.155*3360kg+0.04*215kg)*60*7days
Drill Bit(Tricon 10-7/8")		0.103	pcs		3,200.00		345.60	(0.018/m)*6m
Drill Bit(Tricon 8-5/8")		0.342	pcs		1,780.00		608.76	(0.018/m)*19m
Drill Bit(6-1/4)		0.875	pcs		3,770.00		3,298.75	(0.005/m)*175m
Bentonite		625	kg		0.55		343.75	
Casing & Screen		200	m		20,000		4,000,000	
Gravel		1,344	m³		30,000		40,320	
Conductor Pipes		25.0	m		48.00		1,200.00	@480*0.1
Miscellaneous	10% of above						809.06	
Pump Test								
Fuel & Lubricant		27.84	litres		0.90		25.06	
Miscellaneous	10% of above						2.51	
Headworks								
Cement		0.10	tonne		11,000		1,100	C:S:A=1:2.5:3.8
Aggregates		0.37	tonne		18,000		6,660	
Sand		0.27	tonne		7,000		1,890	
Concrete Blocks		20.0	pcs		1,000		20,000	
Form		0.675	m²		30,000		20,250	
Pump Installation								
Submersible Pump		1.0	pc		5,300.00		5,300.00	
Riser Pipe (Stainless)		30.0	m		10.38		311.25	
Electric Wire		350.0	m		0.70		245.00	
Materials Total						4,494,252	14,783.43	

Appendix C-8 Cost Estimate of Level-2 System

COST ESTIMATE				BOREHOLE, 5 inch dia., Average Depth : 200m (Soil:25m, Rock:175mm)						Sheet 4/10
Description	Specs.	No.	Unit	Unit Price		Amount		Remarks		
				L.C.(US\$)	F.C.(US\$)	L.C.(US\$)	F.C.(US\$)			
Hire Charge of Machinery										
Drilling										
Drilling Rig		8.0	day		558.00		4,464.00	@=500000*(0.000186*6)		
Air-Compressor		8.0	day		485.64		3,885.12	@=120000*(0.001349*5)		
Cargo Truck		7.0	day		111.60		781.20	@=120000*(0.000155*6)		
Waterlorry		2.0	day		75.84		151.68	@=80000*(0.000158*6)		
Pickup Truck		10.0	day		22.80		228.00	@=20000*(0.000190*6)		
Mudpump		2.0	day		204.16		408.31	@=35000*(0.001681*3)		
Pumping Test										
Submersible Pump		2.0	day		53.01		106.03	@=13000*(0.002309*2)		
Diesel Generator		2.0	day		39.74		79.49	@=18000*(0.001104*2)		
Pickup Truck		2.0	day		26.60		53.20	@=20000*(0.000190*2)		
Measuring Devices		2.0	day		74.52		149.04	@=20000*(0.001863*2)		
Headworks										
Pickup Truck		1.0	day		3.80		3.80	@=20000*(0.000190*1)		
Pump Installation										
Pickup Truck		0.5	day		3.80		1.90	@=20000*(0.000190*1)		
Subtotal of Hire Charge of Machinery							10,311.77			
TOTAL COST OF BOREHOLE						4,865,252	25,095.20			

COST ESTIMATE

Collecting Reservoir

Description	Specs.	No.	Unit	Unit Price		Amount		Remarks
				L.C.(US\$)	F.C.(US\$)	L.C.(US\$)	F.C.(US\$)	
Personnel								
Clearing								
Foreman	0.5 * 2 days	1.0	man/day	12,000		12,000		
Worker	4.0 * 2 days	8.0	man/day	6,000		48,000		
Concrete Works								
Foreman	0.5 * 24 days	12.0	man/day	12,000		144,000		
Technician	1.0 * 24 days	24.0	man/day	10,000		240,000		
Carpenter	1.0 * 24 days	24.0	man/day	10,000		240,000		
Worker	3.0 * 24 days	72.0	man/day	6,000		432,000		
Transportation								
Truck Driver		8.0	man/day	10,000		80,000		
Personnel Total						1,196,000		
Materials								
Concrete Works								
Fuel & Lubricant		103.0	litre		0.90		92.73 @ (0.117*12+0.135*5.5)*6*8	
Cement		6.8	Tonne	11,000		74,800	C.S.A=12.5:3.8	
Aggregate		25.8	Tonne	18,000		464,400		
Sand		17.6	Tonne	7,000		123,200		
Deformed Bar (d=13)		2000	kg		0.50		1,000.00	
Form		109.0	m ²		10.00		1,090.00	
Miscellaneous	10% of above					66,240	218.27	
Transportation								
Fuel & Lubricant		392.3	litre		0.90		353.03 @ -0.036*227*6*8	
Materials Total						728,640	2754.03	

Collecting Reservoir

[illegible]

COST ESTIMATE

Distribution Reservoir

Description	Specs	No.	Unit	Unit Price		Amount		Remarks
				L.C.(US\$)	F.C.(US\$)	L.C.(US\$)	F.C.(US\$)	
Personnel								
Clearing								
Foreman	0.5 * 2 days	1.0	man/day	12,000		12,000		
Worker	4.0 * 2 days	8.0	man/day	6,000		48,000		
Concrete Works								
Foreman	0.5 * 24 days	12.0	man/day	12,000		144,000		
Technician	1.0 * 24 days	24.0	man/day	10,000		240,000		
Carpenter	1.0 * 24 days	24.0	man/day	10,000		240,000		
Worker	3.0 * 24 days	72.0	man/day	6,000		432,000		
Transportation								
Truck Driver		9.0	man/day	10,000		90,000		
Personnel Total						1,206,000		
Materials								
Concrete Works								
Fuel & Lubricant		103.0	litre		0.90		92.73	@=0.117*12+0.135*5.5)*6*8
Cement		8.3	Tonne	11,000		91,300		C.S.A-1:2.5:3.8
Aggregate		31.4	Tonne	18,000		565,200		
Sand		21.5	Tonne	7,000		150,500		
Deformed Bar (d=13)		2300	kg		0.50		1,150.00	
Form		124.0	m ²		10.00		1,240.00	
Miscellaneous	10% of above					80,700	248.27	
Transportation								
Fuel & Lubricant		441.3	litre		0.90		397.16	@=0.036*227*6*9
Materials Total						887,700	3128.16	

Appendix C-8 Cost Estimate of Level-2 System

COST ESTIMATE		Distribution Reservoir						Sheet 8/10	
Description	Specs.	No.	Unit	Unit Price		Amount		Remarks	
				L.C.(US\$)	F.C.(US\$)	L.C.(US\$)	F.C.(US\$)		
Hire Charge of Machinery									
Concrete Works									
Concrete Mixer		8.0	day		53.90		431.20	@=20000*(0.001917+0.000778)	
Diesel Generator		8.0	day		13.91		111.25	@=6800*(0.001212+0.000833)	
Transportation									
Cargo Truck		9.0	loads		69.75		627.75	@=120000*(0.000155+6)	
Subtotal of Hire Charge of Machinery							1,170.20		
TOTAL COST OF RESERVOIR TANK CONSTRUCTION						2,093.700	4,298.36		

COST ESTIMATE

Pipeline Laying

Description	Specs.	No.	Unit	Unit Price		Amount		Remarks
				L.C.(US\$)	F.C.(US\$)	L.C.(US\$)	F.C.(US\$)	
Personnel								
Pipe Laying (Boreholes ~ Collecting Chamber)								
Foreman	0.25 * 8 days	2.0	man/day	12,000		24,000		
Driver	1.0 * 2 days	2.0	man/day	10,000		20,000		
Ass. Technician	1.0 * 8 days	8.0	man/day	8,000		64,000		
Worker	4.0 * 8 days	32.0	man/day	6,000		192,000		
Pipe Laying (Collecting Chamber ~ Reservoir Tank)								
Foreman	0.25 * 6 days	1.5	man/day	12,000		18,000		
Driver	1.0 * 2 days	2.0	man/day	10,000		20,000		
Ass. Technician	1.0 * 6 days	6.0	man/day	8,000		48,000		
Worker	4.0 * 6 days	24.0	man/day	6,000		144,000		
Pipe Laying (Reservoir Tank ~ Public Fountain)								
Foreman	0.25 * 16 days	4.0	man/day	12,000		48,000		
Driver	1.0 * 2 days	2.0	man/day	10,000		20,000		
Ass. Technician	1.0 * 16 days	16.0	man/day	8,000		128,000		
Worker	4.0 * 16 days	64.0	man/day	6,000		384,000		
Booster Pump Installation								
Foreman	0.5 * 2 days	1.0	man/day	12,000		12,000		
Technician	1.0 * 2 days	2.0	man/day	10,000		20,000		
Driver	1.0 * 1 days	1.0	man/day	10,000		10,000		
Worker	2.0 * 2 days	4.0	man/day	6,000		24,000		
Personnel Total								
						1,176,000		

COST ESTIMATE

Pipeline Laying

Description	Specs	No.	Unit	Unit Price		Amount		Remarks
				L.C.(US\$)	F.C.(US\$)	L.C.(US\$)	F.C.(US\$)	
Materials								
Pipes								
Ø 50mm Stainless Pipe (BH-CC)		1250.0	m		10.40		13,000.00	
Ø 100mm Galvanized Pipe (CC-R1)		700.0	m		21.75		15,225.00	
Ø 80mm uPVC Pipe (RT-PB)		4700.0	m		7.85		36,895.00	
Ø 25mm uPVC Pipe (RT-PB)		200.0	m		1.70		340.00	
Connectors	65% of above						42,549.00	
Fuel & Lubricant		343.22	litres		0.90		308.90	@=0.036*2270m*8m*7days
Public Fountain								
Ø 25mm Tap		20.0	pcs		15.00		300.00	
Concrete Base (1.5m x 1.0m x 0.2m)		0.3	m³	36,143		10,843		@=0.43*18+0.11*11+0.28*7*1000
Subtotal for Materials						10,843	108,617.90	
Hire Charge of Machinery								
Pipe laying								
Cargo Truck		7.0	day		69.75		488.25	@=75000*(0.000155*6)
Subtotal of Hire Charge of Machinery							488.25	
TOTAL COST OF WATER SUPPLY SYSTEM (LEVEL-2) CONSTRUCTION						1,186,842.90	109,106.15	



APPENDIX D

Socioeconomy, Finance and Project Evaluation

APPENDIX D-1	: The Development of the Decentralization Policy	D-1
APPENDIX D-2	: Administration Structure and Political Organization of the Government of Uganda	D-5
APPENDIX D-3	: Population, Population Density, Number of Household and Average Household Size of Whole Nation and District Related to Project in the 1969-, 1980-, and 1991-Censuses	D-6
APPENDIX D-4	: Major Tribe in Uganda	D-7
APPENDIX D-5	: Trends of GDP at Factor Cost in Uganda	D-8
APPENDIX D-6	: Import and Export in Uganda	D-9
APPENDIX D-7	: Index of Industrial Production and Volume of Production of Several Commodities	D-10
APPENDIX D-8	: Consumer Price Index of Major Cities in Uganda	D-11
APPENDIX D-9	: Foreign Exchange Rate in Uganda	D-12
APPENDIX D-10	: Average Population, Number of HH and Average Family Size by Village	D-13
APPENDIX D-11	: Occupation of the People by Community in the Project Area	D-17
APPENDIX D-12	: Occupation in the Project Area	D-23
APPENDIX D-13	: House Type by Community in the Project Area	D-24
APPENDIX D-14	: Population of Live Stocks by Community in the Project Area	D-28
APPENDIX D-15	: Agricultural Land and Products in the Project Area	D-32
APPENDIX D-16	: Organization of Local Government	D-33
APPENDIX D-17	: Organization of the Government and the Ministry of Natural Resources	D-34
APPENDIX D-18	: Organization of Directorate of Water Development	D-35
APPENDIX D-19	: Local Government Budget Cycle	D-37
APPENDIX D-20	: Public Finance	D-38
APPENDIX D-21	: Type of Water Sources and Time Spent to and at Water Sources in Wet and Dry Seasons	D-39
APPENDIX D-22	: Main Water Collector in Wet Season	D-40
APPENDIX D-23	: Estimation of People's Capability to Pay for Water	D-41

APPENDIX D-24 : Income Distribution of Average HH in the Project Area	D-42
APPENDIX D-25 : Annual Disbursement of Construction Cost, O/M and Replacement Costs	D-43
APPENDIX D-26 : Revenue for Operation and Maintenance as Financial Benefit	D-44
APPENDIX D-27 : Financial Internal Rate of Return	D-45
APPENDIX D-28 : Estimation of Economic Benefit	D-46
APPENDIX D-29 : Economic Internal Rate of Return	D-47
APPENDIX D-30 : Affordability to Pay	D-48

APPENDIX D-24 : Income Distribution of Average HH in the Project Area	D-42
APPENDIX D-25 : Annual Disbursement of Construction Cost, O/M and Replacement Costs	D-43
APPENDIX D-26 : Revenue for Operation and Maintenance as Financial Benefit	D-44
APPENDIX D-27 : Financial Internal Rate of Return	D-45
APPENDIX D-28 : Estimation of Economic Benefit	D-46
APPENDIX D-29 : Economic Internal Rate of Return	D-47
APPENDIX D-30 : Affordability to Pay	D-48

APPENDIX D-1

THE DEVELOPMENT OF THE DECENTRALIZATION POLICY

The Government of Uganda has consciously and consistently taken action to refine the democratic decentralization policy since 1986. Major important preparatory activities and process undertaken are indicated hereunder:

1. In August 1986
A Commission of Inquiry into the Local Government System was set up. It issued its report in July 1987. The Commission covered a large number of districts and consulted a cross section of residents in each district. Its report was widely discussed by the news media and the leadership of local authorities both executive and political.
2. In September 1987
A local Authorities Resources Committee was appointed. It issued its report in January 1988 recommending measures to be taken to increase local government revenue.
3. Between 23rd November and 18th December 1987
Two capacity building workshops for District Executive Secretaries, Town Clerks, District Administrators and Treasurers were held at Bishop Tucker Theological College in Mukono District. The workshop, *inter alia*, reviewed the recommendations of the Commission of Inquiry into the Local Government System.
4. On 16th March 1988
Officials of the Ministry of Local Government had a meeting with the Prime Minister and discussed options for strengthening field administration. The need for financial decentralization as an important factor in strengthening field administration was identified.
5. In June 1988
Permanent Secretaries considered the proposed White Paper on the recommendations of the Commission of Inquiry into the Local Government System. The Permanent Secretaries overwhelmingly supported proposals for decentralization. They highlighted the need for devolution of power and responsibility to local institutions, and the importance of closer cooperation between the Ministry of Local Government and that of

Finance to ensure that local Councils are allocated sufficient financial resources, commensurate with their responsibilities.

6. Between 30th of January and 3rd of February 1990

The Annual Seminar of Permanent Secretaries was held, and a paper was presented on Decentralization and Management of Government Policy. The Permanent Secretaries expressed their strong support for the decentralization policy. A Standing Committee on decentralization was appointed under the chairmanship of the Head of the Civil Service. Members included the Solicitor General, the Secretary to the Treasury, the Auditor General, the Permanent Secretary in the Ministry of Public Service, the Secretary for Mass Mobilization (National Resistance Movement = NRM Secretariat), and the Permanent Secretary in the Ministry of Local Government.

7. On 8th of May 1990

A Committee of Experts on Democratic Decentralization was inaugurated. They presented their report on 12th July 1990. On the basis of their report and other contribution, a position paper "Summary of Recommendation for Strengthening Democratic Decentralization in Uganda" was prepared.

8. On 6th August 1990

Copies of the Summary of Recommendation to Strengthen Democratic Decentralization in Uganda were sent to all Resistance Councils, namely RC5, RC4 and RC3's chairmen for their information and comment. Several local councils made comments.

9. In July 1990

The Minister of Local Government briefed the National Resistance Council (NRC) on the policy proposals to strengthen democratic decentralization. After that, copies of the Summary of Recommendation were distributed to all members of the NRC for their information and comment.

10. On 8th August 1991

The Cabinet considered and approved with amendments, "Measures to Strengthen Democratic Decentralization".

11. In September 1991

The Ministry of Justice and Constitutional Affairs was requested to consolidate the laws governing local councils and to amend them to provide for the Measures to Strengthen Democratic Decentralization.

12. On 1st November 1991

A Cabinet extract conveying decisions of Cabinet on the Measures to Strengthen Democratic Decentralization was circulated to all Permanent Secretaries for information and appropriate action. The same cabinet extract was discussed at the Permanent Secretaries monthly meeting of 5th November 1991 with a view to agreeing on broad implementation modalities.

13. In the beginning of 1992

The World Bank took interest in the decentralization programme of the Government of Uganda. They undertook a study of policy papers of Uganda in February 1992. Their study focused on implementation options. They issued a report in June 1992. Between 28th September and 1st October 1992, a committee of Ugandan Experts and 75 field officers, District Administrators, RC Chaimen, District Executive Secretaries, Town Clerks and Treasurers reviewed the World Bank Report. DANIDA Consultants on Decentralization also reviewed the World Bank Report and submitted their views in September 1992.

14. In April 1992

An interdisciplinary Task Force of Uganda Technical Experts was set up from various Ministries and the NRM Secretariat to prepare implementation modalities and to review the draft Local Government Bill.

15. In August 1992

The NRC Sectoral Sub-Committee on Local Government subjected the decentralization policy to scrutiny. They were satisfied with the policy framework and the modalities for implementation which had been drawn. They were also supportive of the Ministry's request for budgetary provisions for both recurrent and development expenditure for the Decentralization Secretariat.

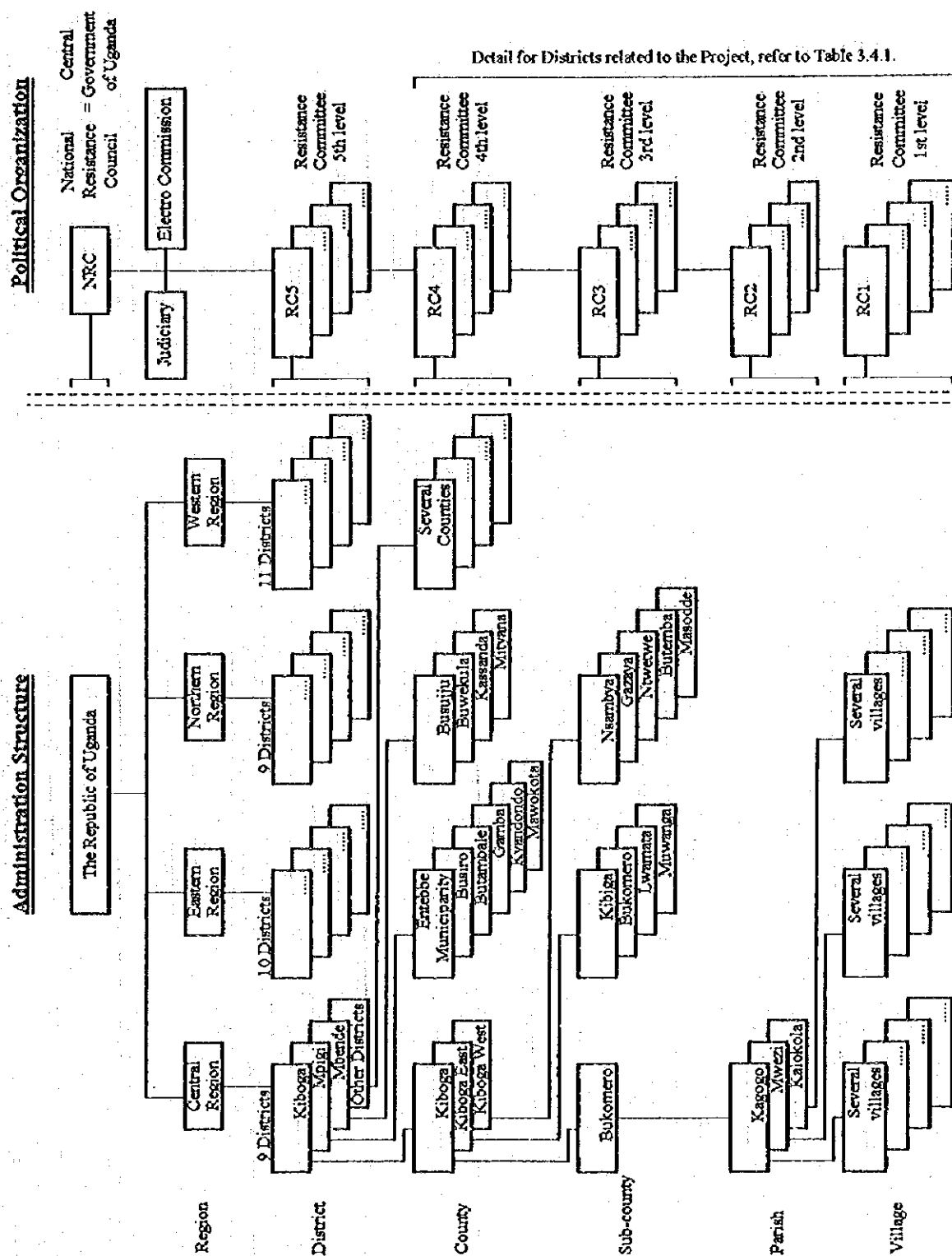
16. On 2nd October 1992

The President of Uganda launched the decentralization policy and issued a major policy statement on decentralization.

17. In June 1993
The Cabinet considered and adopted with amendments, the new Local Governments (Resistance Councils) Bill.
18. In July 1993
The Minister of Local Government met the NRC Sectoral Committee on Local Government and discussed matters relating to the Local Government (Resistance Councils) Bill.
19. In November 1993
The NRC debated and passed Statute No.15 of 1993, The Local Government (Resistance Councils) Statute, 1993.
20. On 31st December 1993
The Local Government (Resistance Councils) Statute, 1993 became effective upon publication in the Uganda Gazette, No.55 Volume LXXXVI.

(Source : Decentralization Secretariat, Ministry of Local Government
"Decentralization in Uganda - The Policy and Its Implication -", 1994.)

APPENDIX D-2 Administration Structure and Political Organization of the Government of Uganda



APPENDIX D-3 Population, Population Density, Number of Household and Average Household Size of Whole Nation and District Related to Project in the 1969-, 1980-, and 1991-Censuses

Region and District	Area (km2)	Population (1,000 persons)			Average annual growth rate (%)			Population density (persons/km2)			Number of household as of 1991 (Nos)	Average household size as of 1991 (psns/HH)	Remarks
		1969	1980	1991	1969-80	1980-91	1969-91	1969	1980	1991			
Nation													
Central	61,509	37,489	2,672.0	3,582.4	4,843.6	2.70%	2.78%	2.74%	71	96	129	1,103,460	4.39
Eastern	39,954	27,957	2,528.4	3,237.4	4,128.5	2.27%	2.24%	2.25%	90	116	148	842,644	4.90
Northern	84,658	82,099	1,902.2	2,424.2	3,152.0	2.23%	2.42%	2.32%	23	30	38	614,309	5.13
Western	54,917	49,551	2,432.6	3,392.1	4,547.7	3.07%	2.70%	2.88%	49	68	92	873,764	5.20
Total of Uganda	241,038	197,096	9,535.2	12,636.1	16,671.8	2.59%	2.53%	2.57%	48	64	85	3,434,177	4.85
Classified by Religion													
Catholic					7,426.5								
Protestant					6,541.8								
Muslim					1,758.1								
Traditional religion					945.4								
District Related to the Project													
Central Region													As of 1995**
Kiboga	4,004	3,872	75.7	138.7	141.6	5.66%	0.19%	2.89%	20	36	37	33,047	4.28
Mpiri	6,278	4,514	513.5	661.2	913.9	2.32%	2.99%	2.65%	114	146	202	209,618	4.36
Mubende	6,308	5,949	255.3	371.6	501.0	3.47%	2.75%	3.11%	43	62	84	111,857	4.48
Total of 3 District	16,590	14,335	844.5	1,171.5	1,556.5	3.02%	2.62%	2.82%	59	82	109	354,522	4.39
													4.70

Source : Final Results of the 1991 Population and Housing Census (Pre-Release), Statistics Department, Ministry of Finance and Economic Planning, Entebbe, Uganda, October 1992.

Note 1. * : According to "Background to the Budget 1995 - 1996", June 1995, Ministry of Finance and Economic Planning.

2. ** : The result of the Inventory Survey made by JICA Study Team, 1995.

APPENDIX D-4 Major Tribe in Uganda

Family Tribe	Homeland of origin	Mainly occupying in: (Name of place or present district of Uganda)	Remarks
Bantu			
Baganda	Congo	Kampala, Mpigi, Mukono, Masaka, Kalangala, Kiboga, Rakai, Mbende.	Language : Luganda
Banyoro	Congo	Hoima, Masindi, Kibale	Language : Ruryolo
Basoga	Katanga in Central Africa	Jinja, Kamuli, Iganga	Language : Rurugbo
Bagisu	Congo	Western and southern halves of Mt. Elgon	Language : Rugisu
Banyankore	Congo	Mbarara, Bushenyi, Ntungamo	Language : Ruryankore
Bakiga	Buganza in Rwanda	Kabale, part of Rukungiri	Language : Rugika
Bafumbira	Congo	Kisoro	Etymologically, they are same as the Banyarwanda of Rwanda. Closely related to Batutsi in Rwanda. Language : Rufumbira
Batooro	Congo	Kabalote, Kasere	Language : Rutooro
Bakonjo	Congo	Western highland of Mt. Rwenzori, Kasere	Language : Rukonjo
Bamba	Congo	Mt. Rwenzori, Kasere	They are called the Bambuti too. Language : Rumbi
Banyole	Congo	Mt. Rwenzori together with Bamba	Closely related to Batutsi in Rwanda. Language : Rurwa
Basamia-Bagwe	Banyola of Kenya Basamia : Juluo of Kenya Bagwe : Banyola of Kenya	Banyole County of Tororo District Tororo, Iganga	Language : Ruryole
Bagwere	Basamia-Bagwe	Tororo, Iganga	Language : Rusamia, Rugwe
Atukuru (referred as Para-Nilotics, Lango or Nilo-Hamites)	Katanga in Central Africa	Pallisa	Language : Lugwere
Lango	Kafia in Ethiopia	Teso, Lango, Kuman	Language : Lango
Karimojong	Kafia in Ethiopia	Keddo, Moroto	Language : Ateso
Iteso	Kafia in Ethiopia	Soroti, Kumi	
Kakwa	Kafia in Ethiopia	Koboko County of Arua District	
Kuman	Kafia in Ethiopia	Teso, south-east of Lango	
Luo			
Acholi	Rumbek in southern Sudan	Gulu, Kiguri	Language : Lucholi
Alur	Rumbek in southern Sudan on the confluence of Nile R.	Okebu, Lendu, Kakwa Aringa and west Nile part of Uganda	
Jonan	Rumbek in southern Sudan	Okebu, Lendu, Kakwa Aringa and west Nile part of Uganda	Language : Lunam
Jonadhola	Rumbek in southern Sudan	Eastern part of Uganda	Language : Lujopadhola
Highland Nilotes			
Sebei	Generally speaking, Ethiopia	Kapchorwa	
Others (Sudanic speakers of West Nile called as the Madi-Moru Group)			
Madi	Southern Sudan	Moyo	
Lugbara	Loleyi, Bar in Sudan	North-western part of Uganda	
Okebu	Southern Sudan	Areas between Alur, Lendu and Lugbara	
Metu	Southern Sudan	Mt. Oze in West Madi	

Source : Richard Nata and Mbaga Niwampa "Peoples and Cultures of Uganda", Fountain Publishers Ltd, Kampala, 1993.

APPENDIX D-5 Trends of GDP at Factor Cost in Uganda

(US\$ billion)
(Figures in calendar year)

Description	At current price:					At 1991 constant price:					Average annual growth rate (%)	
	1987	1988	1989	1990	1991	1992	1993	1994	1995	1996	(87-94)	(95-96)
MONETARY	132,460	389,079	700,183	985,887	1,425,219	2,320,341	2,643,599	3,389,846	3,891,846	4,389,846	10.9%	10.9%
Agriculture	53,911	152,214	279,631	361,699	505,214	843,912	871,834	1,266,355	1,366,355	1,466,355	16.9%	16.9%
Mining & quarrying	204	572	1,065	3,296	6,420	10,617	13,173	12,212	12,212	12,212	79.42%	79.42%
Manufacturing	10,664	33,434	59,718	87,308	122,607	193,774	237,419	287,283	308,088	328,088	10.8%	10.8%
Electricity/water	966	3,521	6,380	10,988	17,586	29,465	35,078	55,114	78,209	101,283	14.2%	14.2%
Construction	6,427	18,220	35,574	63,930	106,172	172,361	213,479	228,187	266,529	308,088	14.2%	14.2%
Commerce	33,133	91,557	159,713	199,394	282,010	426,401	461,237	582,666	606,626	626,626	10.6%	10.6%
Transport/communication	6,438	18,568	38,905	58,416	87,633	132,601	157,061	177,277	177,277	177,277	10.6%	10.6%
Community services	20,717	68,793	119,197	200,456	317,577	511,210	656,198	780,732	879,939	979,939	10.6%	10.6%
NON-MONETARY	82,530	218,973	420,439	510,095	634,674	1,160,368	1,089,403	1,386,337	1,386,337	1,386,337	10.6%	10.6%
Agriculture	75,864	198,652	386,615	451,151	575,334	1,045,284	955,373	1,239,870	1,239,870	1,239,870	10.6%	10.6%
Construction	1,676	5,123	8,584	11,842	15,883	23,559	27,310	26,939	26,939	26,939	48.70%	48.70%
Owner-occupied dwelling	4,990	15,198	25,240	47,102	63,457	91,743	106,720	119,538	119,538	119,538	10.6%	10.6%
GDP in total	214,990	608,052	1,120,622	1,495,982	2,059,893	3,480,927	3,733,002	4,776,183	5,276,183	5,776,183	10.9%	10.9%
Population ('000)	15,301	15,721	16,152	16,597	17,033	17,571	18,102	18,682	19,263	19,844	2.8%	2.8%
Per capita GDP (US\$)	14,031	38,678	69,380	90,336	121,066	198,072	206,331	256,637	274,063	291,066	10.9%	10.9%

Source: Background to the Budget 1995 - 1996, Ministry of Finance and Economic Planning, Entebbe, Uganda, June 1995.
(Note) = Figures of population shown above are those in the end of December in each calendar year.

B. Share in Percentage of Industrial Sector in Total GDP

Description	At current price:					At 1991 constant price:					Average annual growth rate (%)	
	1987	1988	1989	1990	1991	1992	1993	1994	1995	1996	(87-94)	(95-96)
MONETARY	61.61%	63.99%	62.48%	61.90%	68.32%	66.66%	70.83%	70.97%	70.97%	70.97%	2.04%	2.04%
Agriculture	25.08%	25.03%	24.95%	24.18%	24.29%	24.24%	23.34%	26.51%	26.51%	26.51%	0.80%	0.80%
Mining & quarrying	0.09%	0.09%	0.10%	0.22%	0.31%	0.31%	0.39%	0.26%	0.26%	0.26%	15.21%	15.21%
Manufacturing	4.96%	5.83%	5.33%	5.85%	5.89%	5.77%	6.36%	6.01%	6.01%	6.01%	2.79%	2.79%
Electricity/water	0.45%	0.58%	0.57%	0.73%	0.83%	0.83%	0.94%	1.15%	1.15%	1.15%	14.42%	14.42%
Construction	2.99%	3.05%	3.17%	4.27%	5.10%	4.95%	5.72%	4.78%	4.78%	4.78%	6.93%	6.93%
Commerce	15.41%	15.07%	14.25%	13.34%	12.60%	12.25%	12.35%	12.20%	12.20%	12.20%	3.28%	3.28%
Transport/communication	2.99%	3.02%	3.47%	3.90%	4.21%	3.81%	4.21%	3.71%	3.71%	3.71%	3.11%	3.11%
Community services	9.64%	11.31%	10.64%	13.40%	15.27%	14.69%	17.57%	16.35%	16.35%	16.35%	7.84%	7.84%
NON-MONETARY	38.39%	36.01%	37.52%	34.10%	31.48%	33.34%	29.17%	29.03%	29.03%	29.03%	3.91%	3.91%
Agriculture	35.29%	32.67%	34.50%	30.18%	27.66%	30.03%	25.58%	25.96%	25.96%	25.96%	4.52%	4.52%
Construction	0.78%	0.84%	0.77%	0.79%	0.76%	0.68%	0.73%	0.66%	0.66%	0.66%	4.52%	4.52%
Owner-occupied dwelling	2.32%	2.50%	2.25%	3.15%	3.05%	2.64%	2.86%	2.50%	2.50%	2.50%	1.08%	1.08%
GDP in total	100.00%	100.00%	100.00%	100.00%	100.00%	100.00%	100.00%	100.00%	100.00%	100.00%	100.00%	100.00%

(Note) Calculated based on the figures shown in above Table A.

APPENDIX D-6 Import and Export in Uganda

(US\$1,000)
(Figures are in fiscal year : 1981-1981/82)

Commodity group	1981	1982	1983	1984	1985	1986	1987	1988	1989	1990	1991	1992	1993	1994	Average annual growth rate (%)
A. Import															
Food & live animals	47,460	35,150	34,554	26,234	17,377	22,998	25,871	33,173	33,262	19,812	18,667	21,133	-	-	-7.07%
Beverages & tobacco	5,452	2,293	3,345	4,814	4,959	9,614	6,753	3,610	3,031	3,710	1,801	2,777	-	-	-5.95%
Crude materials (excl. fuels)	3,992	1,715	1,896	1,997	2,118	3,209	5,824	12,744	12,869	10,911	12,925	21,868	-	-	16.72%
Mineral fuels, etc.	79,406	87,875	111,341	92,951	93,421	63,405	85,017	81,199	96,350	99,367	81,499	70,409	-	-	-1.09%
Animal/Vegetables oils/fats	2,904	3,758	1,360	1,970	1,415	2,374	10,874	11,449	9,471	15,241	10,145	30,362	-	-	23.78%
Chemicals	26,300	35,019	31,698	29,092	27,556	36,838	48,728	30,113	38,425	38,806	37,655	43,770	-	-	4.74%
Basic manufactures	53,661	45,502	46,573	61,768	56,573	71,245	102,529	92,047	111,075	86,552	110,631	114,680	-	-	7.15%
Machinery/Transport equipment	98,779	104,327	97,093	87,923	96,326	127,312	239,027	214,207	211,310	217,913	198,898	168,994	-	-	5.00%
Misc. manufactured goods	22,433	32,937	18,832	23,193	33,249	37,327	47,303	42,989	47,291	51,970	46,396	49,109	-	-	7.38%
Goods not classified	694	998	3,182	560	7,099	5,367	10,599	10,268	15,204	6,813	4,073	1,268	-	-	5.63%
Total import amount	341,081	349,574	349,879	330,502	342,293	379,709	582,530	531,801	578,288	551,093	522,690	524,432	450,200	708,900	5.79%
Breakdown of machinery and transport equipment															
Non-electrical machinery	19,366	31,252	39,707	30,281	33,299	53,987	100,831	97,532	68,414	70,090	75,305	36,915	-	-	6.04%
Electrical machinery	10,417	20,553	14,194	21,326	18,494	14,976	25,400	19,634	34,389	41,659	44,548	66,693	-	-	18.39%
Transport equipment	68,996	52,521	43,194	36,316	44,732	58,349	112,776	97,041	108,507	106,164	79,044	63,387	-	-	-0.49%

(Figures are in fiscal year : 1981-1981/82)

Commodity group	1981	1982	1983	1984	1985	1986	1987	1988	1989	1990	1991	1992	1993	1994	Average annual growth rate (%)
B. Export															
Food & live animals	244,459	350,710	348,130	362,749	350,350	398,694	311,219	269,393	268,189	153,938	140,247	117,203	-	-	-6.46%
Beverages & tobacco	0	9	909	1,500	400	0	267	58	581	2,826	4,340	4,730	-	-	20.11%
Crude materials (excl. fuel)	3,955	6,349	16,496	35,501	43,340	17,055	12,683	19,721	17,430	25,282	33,521	26,163	-	-	18.74%
Mineral fuels, etc.	6,984	9,082	8,811	6,255	7,016	4,739	6,293	4,342	7,567	5,452	5,413	5,149	-	-	-2.73%
Animal/Veg's oils/fats	0	0	0	0	1	0	0	11	0	86	2	1	-	-	0.00%
Chemicals	106	415	234	140	355	262	227	398	89	242	212	309	-	-	10.22%
Basic manufactures	88	221	210	270	284	630	238	838	298	681	632	689	-	-	20.57%
Machinery/Transport equip.	2,286	4,585	1,477	1,137	1,412	1,107	1,650	4,292	3,342	1,283	1,357	1,512	-	-	-3.69%
Misc. manufactured goods	112	196	158	93	1,221	185	404	676	188	253	294	757	-	-	18.97%
Goods not classified	111	129	88	82	259	179	59	161	448	58	972	49	-	-	-7.16%
Total export amount	258,101	371,696	376,533	408,727	404,638	422,851	333,040	300,090	298,132	190,101	196,010	156,564	253,900	536,700	5.79%
Breakdown of food and live animals															
Fish & fish preparations	0	0	0	16	2	11	3	24	143	1,245	5,468	5,487	-	-	107.44%
Cereals & cereal preparations	29	0	0	17	0	15	0	0	0	3,331	4,426	4,690	-	-	58.78%
Fruits & vegetables	119	177	227	197	329	923	792	569	939	4,429	4,766	3,187	-	-	34.84%
Coffee	243,800	349,400	346,300	359,600	348,500	394,200	307,533	265,279	262,811	140,384	117,350	99,140	172,340	402,140	3.92%
Cocoa	193	187	222	596	496	415	964	389	736	639	461	225	-	-	1.40%
Tea	255	800	1,200	3,300	1,000	3,100	1,900	3,079	3,194	3,566	6,780	7,721	-	-	36.35%
Spices	60	4	14	23	5	14	20	10	297	157	532	493	-	-	21.10%
Others	4	143	187	0	19	18	5	42	69	188	174	262	-	-	46.28%

Source : Background to the Budget 1994/95, and to the 1993 - 1996, Ministry of Finance and Economic Planning, June 1994, and June 1995.
(Note) : - : Lack of data. * : Average annual growth rate for the period 1981 - 1994.

APPENDIX D-7

APPENDIX D-7 Index of Industrial Production and Volume of Production of Several Commodities

A. Index of Production

(Figures are in fiscal year : 1981=1981/82)

Commodity group	1987	1988	1989	1990	1991	1992	1993	1994	Average annual growth rate (%)
Food Processing	100.0	128.0	153.7	174.9	227.4	245.6	245.8	309.7	17.5%
Meat, fish and dairy	100.0	149.4	109.4	127.2	166.8	201.0	245.9	286.3	16.2%
Grain milling	100.0	139.5	139.1	134.7	114.9	104.7	106.9	146.7	5.6%
Bakeries	100.0	131.7	153.4	206.6	284.1	325.2	322.8	345.9	19.4%
Sugar and jaggery	100.0	277.5	514.7	789.3	1,220.5	1,501.3	1,325.6	1,677.1	49.6%
Coffee roasting	100.0	73.1	48.2	74.2	74.3	107.5	46.0	19.4	-20.9%
Coffee processing	100.0	95.6	106.0	81.0	92.8	70.2	90.2	127.1	3.5%
Tea processing	100.0	98.6	130.9	184.1	238.1	247.0	312.1	342.1	19.2%
Other food processing	100.0	115.4	104.9	100.9	91.1	69.5	73.6	83.4	-2.6%
Animal feeds	100.0	101.9	121.0	116.7	161.2	142.2	130.6	196.3	10.1%
Tobacco and Beverages	100.0	139.6	143.7	155.2	176.1	155.2	170.9	227.6	12.5%
Beer and spirits	100.0	127.1	124.2	125.0	129.3	124.5	155.6	208.0	11.0%
Soft drinks	100.0	221.3	253.8	362.4	385.5	311.4	378.4	580.2	28.6%
Cigarettes	100.0	114.1	110.5	89.9	117.7	109.8	98.4	101.7	0.2%
Textiles and Clothing	100.0	121.8	132.7	116.3	110.9	111.9	92.7	68.1	-5.3%
Textiles	100.0	106.4	110.4	79.8	88.2	88.7	67.1	36.7	-13.3%
Textile products	100.0	84.3	107.7	116.5	48.7	52.9	77.1	123.2	3.0%
Garments	100.0	370.9	419.1	477.8	556.0	494.7	387.6	239.3	13.3%
Leather and Footwear	100.0	62.0	62.9	75.3	60.1	79.5	68.4	97.1	-0.4%
Timber, Paper and Printing	100.0	135.1	169.4	183.6	198.2	220.5	251.1	299.7	17.0%
Sawmilling and milling	100.0	96.0	61.5	58.0	58.1	80.3	102.2	107.0	1.0%
Furniture and foam products	100.0	140.0	221.9	190.9	162.3	175.9	149.3	119.5	2.6%
Paper and printing	100.0	173.7	236.1	315.2	389.0	420.0	517.4	693.0	31.9%
Chemicals, paint and soap	100.0	111.2	162.9	183.5	192.9	252.0	339.5	382.7	21.1%
Chemicals	100.0	88.1	88.1	79.9	110.9	137.7	189.7	214.6	11.5%
Paint	100.0	98.3	167.5	62.0	168.2	438.6	614.2	701.1	32.1%
Medicines	100.0	70.1	166.8	284.3	103.6	338.2	461.0	762.8	33.7%
Soap	100.0	114.3	164.6	187.4	200.4	242.7	325.5	355.4	19.9%
Bricks and Cement	100.0	94.5	109.0	154.2	162.6	203.1	261.1	248.6	13.9%
Bricks, tiles, etc.	100.0	98.8	105.2	149.0	167.8	195.3	236.2	248.6	13.9%
Cement	100.0	89.7	113.2	159.8	157.1	211.6	288.0	248.6	13.9%
Steel and steel products	100.0	87.2	98.9	107.7	149.3	190.7	259.0	389.9	21.5%
Iron and steel	100.0	125.1	74.1	57.5	130.8	254.3	526.0	885.3	36.6%
Structural steel	100.0	66.4	134.6	131.0	166.9	141.6	105.6	100.7	0.1%
Steel products	100.0	80.9	69.9	122.6	141.2	201.3	224.5	332.6	18.7%
Miscellaneous	100.0	134.0	204.2	181.3	251.2	272.3	381.0	487.3	25.4%
Vehicle accessories	100.0	104.5	164.0	224.8	299.9	329.3	423.9	453.6	24.1%
Plastic products	100.0	58.2	105.0	10-7.2	187.1	258.5	434.4	666.1	31.1%
Electrical products	100.0	100.9	142.9	110.5	82.1	120.0	353.6	418.3	22.7%
Miscellaneous products	100.0	245.4	372.0	269.0	440.1	402.9	340.3	485.0	25.3%
Whole Commodity Group	100.0	123.7	145.2	155.5	178.2	191.2	215.6	260.3	14.6%

B. Production of Several Manufactured Commodities

Commodity	Unit	Installed capacity	1989	1990	1991	1992	1993	1994	Average annual growth rate (%)
Wheat flour	Tonnes	45,000	13,871	12,865	11,247	12,222	10,090	8,274	-9.8%
Roasted and ground coffee	Tonnes	1,600	38	65	70	99	45	17	-14.9%
Soap	Tonnes	59,040	27,110	30,552	33,284	38,661	47,588	48,539	12.4%
Jerrycans (plastic)	Unit 1,000	2,000	310	311	609	843	859	1,720	40.9%
Cement	Tonnes	507,500	17,378	26,920	27,138	37,881	51,996	45,227	21.1%
Corrugated iron sheets	Tonnes	44,000	1,377	1,254	2,296	5,782	14,331	25,134	78.8%
Other metal products	Tonnes	26,360	1,704	1,791	4,609	9,205	9,813	12,686	49.4%

Source : Background to the Budget 1994/95, Ministry of Finance and Economic Planning, June 1995.

APPENDIX D-8 Consumer Price Index of Major Cities in Uganda
(September 1989 = 100)

(As of June in each year)

City	Sector	Year					Average annual increasing ratio (%) (1990 - 1994)
		1990	1991	1992	1993	1994	
Uganda	General	122.3	156.3	241.5	253.9	279.4	22.9%
	Food	109.3	135.2	223.7	214.8	248.9	22.8%
	Beverages & tobacco	126.8	158.2	248.4	285.2	290.7	23.0%
	Clothing & footwear	135.9	174.2	226.2	238.2	223.5	13.2%
	Rent, fuel & utilities	150.6	211.6	294.7	338.9	374.6	25.6%
	Household & personal goods	120.6	150.4	221.1	338.5	234.7	18.1%
	Transport & communication	143.2	183.2	272.5	288.4	306.0	20.9%
	Other goods and services	141.0	190.9	300.1	375.2	431.0	32.2%
Kampala	General	122.3	156.6	138.7	253.3	277.9	22.8%
	Food	108.1	132.9	214.5	206.5	240.3	22.1%
	Beverages & tobacco	124.7	158.9	245.3	279.7	281.3	22.6%
	Clothing & footwear	135.7	172.9	226.4	239.8	224.0	13.3%
	Rent, fuel & utilities	149.6	211.9	289.6	333.2	366.6	25.1%
	Household & personal goods	120.8	151.3	222.8	236.1	235.2	18.1%
	Transport & communication	139.3	177.9	266.5	285.3	305.9	21.7%
	Other goods and services	146.0	196.2	316.7	400.6	453.4	32.7%
Jinja	General	120.0	151.9	233.9	242.7	266.5	22.1%
	Food	111.5	138.5	225.8	214.3	245.1	21.8%
	Beverages & tobacco	124.8	149.9	224.0	257.9	276.0	21.9%
	Clothing & footwear	134.5	176.6	236.9	247.5	231.2	14.5%
	Rent, fuel & utilities	148.8	215.3	357.8	401.0	463.7	32.9%
	Household & personal goods	118.4	144.6	216.6	226.9	229.8	18.0%
	Transport & communication	127.8	157.9	238.7	248.6	253.7	18.7%
	Other goods and services	131.5	177.7	273.0	312.3	360.0	28.6%
Mbale	General	128.5	166.8	260.1	275.6	304.3	24.1%
	Food	114.5	146.8	246.3	245.8	291.6	26.3%
	Beverages & tobacco	133.9	165.3	279.0	316.7	329.3	25.2%
	Clothing & footwear	137.1	179.9	225.3	233.1	226.6	13.4%
	Rent, fuel & utilities	161.0	223.6	319.7	370.1	394.7	25.1%
	Household & personal goods	121.2	152.4	224.1	237.0	243.1	19.0%
	Transport & communication	186.2	254.1	361.8	387.1	400.6	21.1%
	Other goods and services	130.7	172.5	253.5	304.8	327.0	25.8%
Masaka	General	121.8	155.9	246.5	254.0	284.9	23.7%
	Food	110.8	138.8	240.3	222.3	260.1	23.8%
	Beverages & tobacco	129.1	157.4	254.6	291.0	303.2	23.8%
	Clothing & footwear	136.6	173.9	222.0	232.8	215.6	12.1%
	Rent, fuel & utilities	149.9	207.5	284.5	335.9	372.7	25.6%
	Household & personal goods	102.5	149.8	217.3	227.2	230.9	22.5%
	Transport & communication	139.7	174.0	260.9	274.0	283.1	19.3%
	Other goods and services	137.4	193.1	287.2	371.4	449.5	34.5%
Mbarara	General	120.8	151.8	242.6	251.7	274.6	22.8%
	Food	107.1	130.2	236.4	223.0	249.6	23.6%
	Beverages & tobacco	130.6	158.9	257.8	308.2	307.2	23.8%
	Clothing & footwear	136.4	173.6	219.7	230.7	219.0	12.6%
	Rent, fuel & utilities	149.8	202.1	248.2	285.1	311.1	20.0%
	Household & personal goods	121.1	151.1	219.3	231.2	234.6	18.0%
	Transport & communication	147.3	188.4	277.1	281.6	308.7	20.3%
	Other goods and services	138.4	190.8	297.1	375.4	454.1	34.6%

Source: Background to the Budget 1995 - 1996, Ministry of Finance and Economic Planning, Entebbe, Uganda, June 1995.

APPENDIX D-9

APPENDIX D-9 Foreign Exchange Rate in Uganda

(UShs/US\$)					
Year	Month	Bureau weighted mean		Bureau middle rate	Inter bank mid-rate
		Buying rate	Selling rate		
1992	January	1,211.76	1,268.69	1,240.23	970.00
	February	1,231.44	1,288.71	1,260.08	985.48
	March	1,224.89	1,274.70	1,249.80	1,160.08
	April	1,175.20	1,240.41	1,207.81	1,158.91
	May	1,190.13	1,242.22	1,216.18	1,164.99
	June	1,202.18	1,247.19	1,224.69	1,166.06
	July	1,226.20	1,270.50	1,248.35	1,177.86
	August	1,235.99	1,276.18	1,256.09	1,185.29
	September	1,212.05	1,254.08	1,233.07	1,185.15
	October	1,205.54	1,238.87	1,222.21	1,181.07
	November	1,228.82	1,253.69	1,241.26	1,196.34
	December	1,233.24	1,263.75	1,248.50	1,213.93
1993	January	1,215.60	1,253.83	1,234.72	1,217.12
	February	1,221.29	1,255.14	1,238.22	1,217.09
	March	1,240.49	1,262.14	1,251.32	1,217.52
	April	1,243.38	1,266.44	1,254.91	1,218.09
	May	1,228.69	1,261.81	1,245.25	1,213.27
	June	1,193.40	1,237.99	1,215.70	1,199.09
	July	1,189.87	1,226.94	1,208.41	1,197.57
	August	1,192.64	1,223.81	1,208.23	1,196.65
	September	1,185.06	1,216.69	1,200.88	1,181.99
	October	1,161.47	1,195.08	1,178.28	1,170.84
	November	1,171.31	1,198.10	1,184.71	1,165.01
	December	1,175.80	1,198.43	1,187.12	1,146.00
1994	January	1,141.26	1,177.92	1,159.59	1,112.71
	February	1,046.70	1,117.19	1,081.95	1,047.22
	March	1,092.54	1,121.06	1,106.80	1,079.22
	April	1,047.18	1,085.14	1,066.16	1,007.03
	May	994.52	1,026.95	1,010.74	965.71
	June	952.37	994.27	973.32	962.59
	July	965.01	987.49	976.25	967.06
	August	925.32	963.28	944.30	21.38
	September	922.40	951.31	936.86	920.58
	October	915.87	939.47	927.67	919.78
	November	915.03	934.60	924.82	924.14
	December	921.83	942.83	932.93	929.75
1995	January	919.17	940.00	929.59	925.04
	February	921.14	940.39	930.77	925.53
	March	924.04	939.21	931.63	927.03
	April	28.38	941.38	934.88	928.83
Monthly UShs increasing ratio since december 1992 (%)				1.05%	0.97%
Monthly UShs increasing ratio since January 1992 (%)				0.73%	0.11%

(Note) Up to October, figures represent the Marginal Exchange Rate of the Bank of Uganda's Auction System at the last auction of the month which served as the Official Exchange Rate. From November 1993, the weighted average inter-bank mid-rate replaced the Official Exchange Rate. The Auction market was closed in October 1993 and was replaced by the Inter-Bank Trading System.

Source: Background to the Budget 1995 - 1996, Ministry of Finance and Economic Planning, June 1995.

APPENDIX D-10

APPENDIX D-10 Average Population, Number of HH and Average Family Size by Village

(1/4)

No.	County	Sub-county	Parish (LC2)	Name of village (LC1) or community	Population in a community					Number of HHs	Average Family size	Number of HHs headed by:				
					Pop-ulation	0-200	201-600	601-1000	Over 1000			male	female	(%)		
															(1)	(2)
MPIGI DISTRICT (LC5)																
1101	Gomba	Maddu	Kyabagamba	Kyabagamba	837				1	63	13.60	6	9.52%	57	90.48%	
1102		Maddu	Kyabagamba	Kabale	230		1			80	2.88	65	81.25%	15	18.75%	
1103		Maddu	Kyabagamba	Kigayaza	400		1			80	5.00	72	90.00%	8	10.00%	
1104		Maddu	Kigezi	Kalyanjuba	450		1			67	6.72	60	89.55%	7	10.45%	
1105		Maddu	Kigezi	Kyambobo	300		1			92	3.26	83	90.22%	9	9.78%	
1106		Maddu	Kigezi	Lukonda	400		1			100	4.00	80	80.00%	20	20.00%	
1107		Maddu	Maddu	Makururu	250		1			15	16.67	11	73.33%	4	26.67%	
1108		Maddu	Maddu	Kyamabale	700			1		100	7.00	70	70.00%	30	30.00%	
1109		Maddu	Munyuka	Kasambya	420		1			60	7.00	50	83.33%	10	16.67%	
1110		Maddu	Degeya	Kamengo	436		1			100		95	93.00%	5	5.00%	
1111		Maddu	Degeya	Kirasi	3,550				1	210	16.90	171	81.43%	39	18.57%	
1112		Maddu	Degeya	Nakitembe	300		1			120	2.50	115	95.83%	5	4.17%	
1113		Maddu	Degeya	Buyanja	200	1				130	1.54	110	84.62%	20	15.38%	
1114		Maddu	Ntalagi	Kagongero	800			1		552	1.45	517	93.66%	35	6.34%	
1115		Maddu	Ntalagi	Kabwire	600		1			57	10.53	48	84.21%	9	15.79%	
1116		Maddu	Musale	Kyetume	200	1				288	0.69	266	92.36%	22	7.64%	
1117		Maddu	Degeya	Kyengerera	300		1			70	4.29	65	92.86%	5	7.14%	
1118		Maddu	Kyayi	Kyangabakama	285		1			95	3.00	90	94.74%	5	5.26%	
1119		Maddu	Kyayi	Kyayi	563		1			288						
1120		Maddu	Musale	Nabugayo	420		1			60	7.00	50	83.33%	10	16.67%	
1121		Kabulasoke	Kakubansiri	Kalwanga A	430		1			175	2.37	80	45.71%	93	54.29%	
1122		Kabulasoke	Kakubansiri	Kiryaaonga	350		1			155	2.26	120	77.42%	35	22.58%	
1123		Kabulasoke	Kakubansiri	Kakubansiri B	300		1			136	2.21	113	83.09%	23	16.91%	
1124		Kabulasoke	Butiti	Lubale B	570		1			137	4.16	105	76.64%	32	23.36%	
1125		Kabulasoke	Lugaga	Nkokonjeru	500		1			80	6.25	75	93.75%	5	6.25%	
1126		Kabulasoke	Lugaga	Lugaga	350		1			125	2.80	80	64.00%	45	36.00%	
1127		Kabulasoke	Bulwadda	Lusongode	467		1			103	4.53	80	77.67%	23	22.33%	
1128		Kabulasoke	Bulwadda	Luzira	1,328				1	345	3.85	320	92.75%	25	7.25%	
1129		Kabulasoke	Bulwadda	Bulwadda East	530		1			150	3.53	100	66.67%	50	33.33%	
1129		Kabulasoke	Bulwadda	Bulwadda West	800			1		150	5.33	120	80.00%	30	20.00%	
1130		Kabulasoke	Kisozi	Kawoko	400		1			116	3.45	100	86.21%	16	13.79%	
1131		Kabulasoke	Mawuku	Nakulamudde	800			1		78	10.26	58	74.36%	20	25.64%	
1132		Kabulasoke	Mawuku B	Mawuku	480		1			80	6.00	57	71.25%	23	28.75%	
1133		Mpenja	Sabaddu-Kiriri	Kiriri	1,500				1	300	5.00	230	76.67%	70	23.33%	
1134		Mpenja	Mutuba I	Mpogo	420		1			75	5.60	60	80.00%	15	20.00%	
1135		Mpenja	Mutuba II	Buyinjabutoole	1,000			1		75	13.33	40	53.33%	35	46.67%	
1136		Mpenja	Sabaddu-Kiriri	Part of Kiriri (1133)												
1137		Mpenja	Nkoma	Ngeye	400		1			50	8.00	35	70.00%	15	30.00%	
1138		Mpenja	Mpogo	Busolo	800			1		100	8.00	80	80.00%	20	20.00%	
1139		Mpenja	Munyuka B	Maseruka	960			1		80	12.00	70	87.50%	10	12.50%	
1140		Mpenja	Kanzira A	Kanzira	220		1			44	5.00	40	90.91%	4	9.09%	
1141		Mpenja	Ngomanene III	Ngomanene	432		1			54	8.00	30	55.56%	24	44.44%	
1142		Mpenja	Sabawali	Kyetume	800			1		212	3.77	190	89.62%	22	10.38%	
1142		Mpenja	Sabawali	Kyetume												
1201	Kyadondo	Kyambogo	Wamirongo	Wamirongo	650			1		170	3.82	10	5.88%	160	94.12%	
1202		Kyambogo	Munyuka A	Busukuma	340		1			190	1.79	180	94.74%	10	5.26%	
1203		Kyambogo	Kikoko	Kasambya	491		1			85	5.78	65	76.47%	20	23.53%	
1204		Kyambogo	Kikoko	Kikoko	225		1			100	2.25	94	94.00%	6	6.00%	
1205		Kyambogo	Munyuka A	Setta	185	1				90	2.06	80	88.89%	10	11.11%	
1206		Kyambogo	Magigye	Kijjudde	450		1			280	1.61	224	80.00%	56	20.00%	
1207		Kyambogo	Sabaddu	Magigi	450		1			250	1.80	150	60.00%	100	40.00%	
1208		Kyambogo	Musaale A	Kiwenda T/C	960			1		214	4.49	164	76.64%	50	23.36%	
1209		Kyambogo	Musaale A	Kiwenda												
1210		Kyambogo	Musaale A	Nabitato	750			1		100	7.50	70	70.00%	30	30.00%	
1211		Kyambogo	Sabawali	Buso	750			1		200	3.75	180	90.00%	20	10.00%	
1212		Kyambogo	Mutuba I	Menvu	1,700				1	220	7.73	180	81.82%	40	18.18%	
1213		Kyambogo	Mutuba I	Kasozi	1,500				1	200	7.50	180	90.00%	20	10.00%	
1214		Kyambogo	Mutuba I	Lugo	520		1			300	1.73	247	82.33%	53	17.67%	
1215		Kyambogo	Musale B	Guludd Mairye	800			1		80	10.00	75	93.75%	5	6.25%	
1216		Nangabo	Wampewo	Muny Kazinga	200	1				380	0.53	30	7.89%	350	92.11%	
1216		Nangabo	Wampewo	Muny Bulamu/Kasangati TC	400		1			72	5.56	52	72.22%	20	27.78%	
1217		Nangabo	Munyuka wamp.	Part of Setta (1217)	300		1			105	2.83	87	82.08%	19	17.92%	
1218		Nangabo	Nangabo	Magere	400		1			30	13.33	22	73.33%	8	26.67%	
1219		Nangabo	Kazinga	Kazinga	330		1			113	2.92	78	69.03%	35	30.97%	
1220		Nangabo	Masooli	Kiwajimu	300		1			20	15.00	12	60.00%	8	40.00%	
1221		Nangabo	Wattuba	Kiti A	250		1			150	1.67	70	46.67%	80	53.33%	
1222		Nangabo	Kabubu	Manyangwa	750			1		400	1.88	250	62.50%	150	37.50%	
1223		Nangabo	Gayaza	Nalyamagonja	450		1			900	0.50	700	77.78%	200	22.22%	
1224																
1225		Nangabo	Nangabo	Part of Magere (1218)												
1301	Butambala	Ngando	Lugali	Kiwala	800			1		150	5.33	130	86.67%	20	13.33%	
1302		Ngando	Ngando	Ngando	550		1			100	5.50	100	100.00%	0	0.00%	
1303		Ngando	Kasozi	Kanzira	400		1			150	2.67	135	90.00%	15	10.00%	
1304																

APPENDIX D-10

(2/4)

(1)	(2)	(3)	(4)	(5)	(6)	(7)	(8)	(9)	(10)	(11)	(12)	(13)	(14)	(15)	(16)	
1305	Butambala	Ngando	Kasori	Bwetyaba	475		1			100	4.75	99	99.00%	1	1.00%	
1306		Ngando	Lugali	Lugali	700			1		150	4.67	120	80.00%	30	20.00%	
1307		Ngando	Lugali	Ndibulungu	1,000				1	110	9.09	90	81.82%	20	18.18%	
1308		Ngando	Sawabali	Butode	700				1	85	8.24	71	83.53%	14	16.47%	
1309		Ngando	Bukesa	Bukesa	300		1			75	4.00	60	80.00%	15	20.00%	
1310		Ngando	Lugali	Tufube	400		1			80	5.00	75	93.75%	5	6.25%	
1311		Masulita	Lwamasaka	Bugobango	428		1			110	3.89	84	76.36%	26	23.64%	
1401	Busiro	Masulita/Kiziba	Mutuba IA	Kyengeza	500		1			70	7.14	60	85.71%	10	14.29%	
1402		Masulita/Kiziba	Sabadu A	Wabiyinja	750			1		120	6.25	113	94.17%	7	5.83%	
1403		Masulita/Kiziba	Nakikungube	Nakikungube	249		1			41						
1404		Masulita/Kiziba	Munyuka A	Masulita A	250		1			50	5.00	43	86.00%	7	14.00%	
1405		Namayumba	Ssabagabo	Kyanuna	1,300				1	150	8.67	100	66.67%	50	33.33%	
1406		Namayumba	Ssabagabo B	Kyampisi	500		1			70	7.14	60	85.71%	10	14.29%	
1407		Namayumba	Musaale A	Malangaata	420		1			60	7.00	20	33.33%	40	66.67%	
1408		Namayumba	Musaale A	Bugimba	526		1			89	5.91	50	56.18%	39	43.82%	
1409		Namayumba	Bukondo	Mugufuka	600		1			80	7.50	55	68.75%	25	31.25%	
1410		Namayumba	Mutuba IB	Buso	250		1			40	6.25	37	92.50%	3	7.50%	
1411		Namayumba	Kyasa	Kyasa	630			1		180	3.50	125	69.44%	55	30.56%	
1412		Namayumba	Bembe	Bembe	500		1			70	7.14	65	92.86%	5	7.14%	
1413		Namayumba	Luguzi	Namayumba	500		1			100	5.00	70	70.00%	30	30.00%	
1414		Namayumba	Lutisi	Busaku	800			1		160	5.00	100	62.50%	60	37.50%	
1415		Namayumba	Sabawali	Buwumbo	250		1			95	2.63	70	73.68%	25	26.32%	
1416		Wakiso	Kasengejje	Kasengejje	960			1		240	4.00	35	14.58%	205	85.42%	
1417		Wakiso	Mende	Mende Central	1,000			1		196	5.10	138	70.41%	58	29.59%	
1418		Wakiso	Bukasa	Bukasa T/C	600		1			150	4.00	140	93.33%	10	6.67%	
1419		Wakiso	Kisimbiri	Kisimbiri A-B-C/Wak	3,030				1	350	8.57	300	85.71%	50	14.29%	
1501	Mawokota	Kituntu	Kituntu	Kituntu T/C	630			1		73	8.63	53	72.60%	20	27.40%	
1502		Mpigi Township	Town Council	Mpigi	8,191				1	700	11.70					
1503		Nkozi	Nabusanke	Kikomazi	650			1		121	5.37	51	42.15%	70	57.85%	
Total	Total				67,478		4	59	26	8	14,412	4.68	10,056	69.78%	3,327	30.22%
MUBENDE DISTRICT (LCS)																
2101	Buwekula	Kitenga	Kayebe	Busocoba/Kisombwa	250		1			80	3.13	70	87.50%	10	12.50%	
2102		Kitenga	Kagoma	Kilangwa	327		1			80	4.09	70	87.50%	10	12.50%	
2103		Kitenga	Kalanga	Kyengeza	595		1			85	7.00	70	82.35%	15	17.65%	
2104		Kitenga	Kalanga	Budigaba	602			1		86	7.00	67	77.91%	19	22.09%	
2105		Kitenga	Kalanga	Bwakagga	400		1			80	5.00	68	85.00%	12	15.00%	
2106		Baneza	Kalanga	Kalanga	600		1			200	3.00	170	85.00%	30	15.00%	
2107		Baneza	Nabikakala	Mugungulu	700			1		200	3.50	185	92.50%	15	7.50%	
2108		Baneza	Busaala	Kisingizi	800			1		150	5.33	140	93.33%	10	6.67%	
2109		Baneza	Nabikaakala	Kyanukona	700			1		400	1.75	390	97.50%	10	2.50%	
2110		Baneza	Kisenkende	Kyeguluso	400		1			80	5.00	60	75.00%	20	25.00%	
2111		Baneza	Busa	Bakijulita	325		1			100	3.25	90	90.00%	10	10.00%	
2112		Baneza	Kabowa	Kabowa	350		1			50	7.00	44	88.00%	6	12.00%	
2113		Baneza	Kabowa	Kabubu	400		1			100	4.00	90	90.00%	10	10.00%	
2114		Kasanbya	Kabbo	Kamusongola	1,750				1	250	7.00	230	92.00%	20	8.00%	
2115		Kasanbya	Kabbo	Nakawala/Iwegula	700				1	138	5.07	123	89.13%	15	10.87%	
2116																
2117																
2118		Kasanbya	Sabadu	Nakasaga	500		1			62	8.06	47	75.81%	15	24.19%	
2119		Kasanbya	Kasanbya	Kasanbya T/C	800			1		200	4.00	130	65.00%	70	35.00%	
2120		Madudu	Kikoma	Kikoma	575		1			210	2.74	180	85.71%	30	14.29%	
2121		Madudu	Kakenzi	Ngabano	700			1		128	5.47	123	96.09%	5	3.91%	
2122		Kiyuni	Kayinja	Keloma	400		1			60	6.67	50	83.33%	10	16.67%	
2201	Kassanda	Kassanda	Kitongo	Kassanda	1,700				1	250	6.80	140	56.00%	110	44.00%	
2202		Kassanda	Sabawaali	Namabale	350		1			120	2.92	70	58.33%	50	41.67%	
2203		Kassanda	Kikandwa	Kyabalanzi	280					70	4.00	64	91.43%	6	8.57%	
2204		Kassanda	Bweyongedde	Kanuli	300		1			100	3.00	90	90.00%	10	10.00%	
2205		Kassanda	Bweyongedde	Bweyongedde	362		1			81	4.47	72	88.89%	9	11.11%	
2206		Kassanda	Manyuka B	Kasazi A	700			1		66	10.61	53	80.30%	13	19.70%	
2207		Kassanda	Namabale	Kalama	360		1			78	4.62	60	76.92%	18	23.08%	
2208		Kassanda	Manyuka A	Kikandwa	200		1			28	7.14	20	71.43%	8	28.57%	
2209		Myanzi	Kampiri	Bulyamaganju A	560			1		80	7.00	65	81.25%	15	18.75%	
2210		Myanzi	Kampiri	Makata	700			1		130	5.38	105	80.77%	25	19.23%	
2211		Myanzi	Kyakatebe	Milembe	390		1			57	6.84	48	84.21%	9	15.79%	
2212		Myanzi	Myanzi	Kalama	450		1			150	3.00	147	98.00%	3	2.00%	
2213		Myanzi	Musale	Kyakasengulu	420		1			120	3.50	90	75.00%	30	25.00%	
2214		Myanzi	Nalututu	Kabanyi	532		1			87	6.11	77	88.51%	10	11.49%	
2215		Myanzi	Nalututu	Bukoba	285		1			165	1.73	150	90.91%	15	9.09%	
2216		Myanzi	Kampiri	Lukira	910			1		130	7.00	105	80.77%	25	19.23%	
2217		Myanzi	Kampiri	Kyawababa	630			1		90	7.00	79	87.78%	11	12.22%	
2218		Myanzi	Kasana	Kasana	450		1			90	5.00	72	80.00%	18	20.00%	
2219		Kiganda	Kigalama	Kalaji	500		1			170	2.91	150	88.24%	20	11.76%	
2220		Kiganda	Kamustenene	Kamustenene	600		1			400	1.50	370	92.50%	30	7.50%	
2221		Kiganda	Manyogaska	Manyogaska	740			1		140	5.29	80	57.14%	60	42.86%	
2222		Kiganda	Kinoni	Kasawo	300		1			140	2.14	5	3.37%	135	96.63%	
2223		Kiganda	Lutuku	Lwengenge	470		1			48	9.79	38	79.17%	10	20.83%	
2224		Kiganda	Nsozinga	Mbale	300		1			60	5.00	40	66.67%	20	33.33%	
2225		Bukuya	Ncwamazzi	Mabubi	200		1			67	2.99	37	55.22%	30	44.78%	
2226		Bukuya	Kijuna	Kalongo	400			1		120	3.33	105	87.50%	15	12.50%	
2227		Bukuya	Mundade	Kitumbi	300			1		140	2.14	130	92.86%	10	7.14%	
2228		Bukuya	Makokoto	Kanoga	200		1			25	8.00	20	80.00%	5	20.00%	

APPENDIX D-10

(3/4)

(1)	(2)	(3)	(4)	(5)	(6)	(7)	(8)	(9)	(10)	(11)	(12)	(13)	(14)	(15)	(16)	
2301	Mityana	Busimbi	Katakala	Kikumbi-Kaba	360		1			61	5.90	48	78.69%	13	21.31%	
2302		Busimbi	Nakasetta	Nakasetta	1,200				1	50	24.00	35	70.00%	15	30.00%	
2303		Busimbi	Namnyeso	Namnyeso	300		1			76	3.95	66	86.84%	10	13.16%	
2304		Busimbi	Kabuwambo	Bugabo	500		1			73	6.85	63	86.30%	10	13.70%	
2305		Busimbi	Munyuka	Katakala	600		1			120	5.00	5	4.17%	115	95.83%	
2306		Busimbi	Katakala	Magongolo	700			1		60	11.67	53	88.33%	7	11.67%	
2307		Busimbi	Nakibanga	Nakibanga-Nyanzi	300		1			50	6.00	39	78.00%	11	22.00%	
2308	Mityana T/C		Mityana Town C.	Busimbi	700			1		120	5.83	110	91.67%	10	8.33%	
2309	Mityana T/C		Mityana Town C.	Mityana A	250		1			134	1.87	114	85.07%	20	14.93%	
2310																
2311		Bulera	Mutuba-6	Kalangala	520		1			51	10.20	41	80.39%	10	19.61%	
2312		Bulera	Mutuba I	Lwogero B	890			1		63	13.09	66	97.06%	2	2.94%	
2313		Bulera	Namutamba	Kiwanda	350		1			41	8.54	35	85.37%	6	14.63%	
2314		Bulera	Butumbizi	Lweyo	800			1		100	8.00	80	80.00%	20	20.00%	
2315		Sekanyonyi	Magala	Kasikombe	700			1		94	7.43	80	85.11%	14	14.89%	
2316		Sekanyonyi	Kagelekanu	Katungulu	450		1			60	7.50	55	91.67%	5	8.33%	
2317		Sekanyonyi	Magala	Budimbo	1,000			1		160	6.25	60	37.50%	100	62.50%	
2318		Sekanyonyi	Magala	Kisamba	450		1			57	7.89	42	73.68%	15	26.32%	
2319		Sekanyonyi	Kisamba	Kawolongojjo	680			1		170	4.00	130	88.24%	20	11.76%	
2320		Sekanyonyi	Namungo	Namungo	650			1		117	5.56	100	85.47%	17	14.53%	
2321		Sekanyonyi	Sekanyonyi	Sekanyonyi	600		1			400	1.50	375	93.75%	25	6.25%	
2322		Kikandwa	Nakwaya	Botombo	250		1			50	5.00	40	80.00%	10	20.00%	
2323		Kikandwa	Nakwaya	Kabulanahiro	430		1			87	4.94	74	85.06%	13	14.94%	
2324		Kikandwa	Bambula	Bambula	620			1		121	5.12	119	98.35%	2	1.65%	
2401	Busujju	Maanyi	Kasota	Sserinnya	600		1			150	4.00	100	66.67%	50	33.33%	
2402		Maanyi	Maawa	Nabale	600		1			130	4.62	115	88.46%	15	11.54%	
2403		Maanyi	Kimuli-Mutuba I	Maanyi	600		1			40	15.00	30	75.00%	10	25.00%	
2404		Maanyi	Sabawali	Mpongo	200		1			75	2.67	60	80.00%	15	20.00%	
2405		Maanyi	Mpogo-Sabawali	Misimba	400		1			62	6.45	58	93.55%	4	6.45%	
2406		Maanyi	Kimuli	Kimuli	400		1			100	4.00	90	90.00%	10	10.00%	
2407		Maanyi	Mpongo	Kabele	400		1			50	8.00	43	86.00%	7	14.00%	
2408		Maanyi	Banda	Buwala	500		1			80	6.25	65	81.25%	15	18.75%	
2409		Butayunja	Ngandwa	Bekina	800			1		90	8.89	75	83.33%	15	16.67%	
2410		Butayunja	Kitongo	Kkande	240		1			50	4.80	40	80.00%	10	20.00%	
2411		Butayunja	Kitongo	Kitongo	400		1			99	4.04	79	79.80%	20	20.20%	
2412		Butayunja	Nakaziba	Nakaziba	400		1			100	4.00	80	80.00%	20	20.00%	
2413		Butayunja	Kitebere	Kitebere	1,000			1		230	4.35	80	34.78%	150	65.22%	
2414		Butayunja	Ngandwa	Wahuba	650			1		200	3.25	196	98.00%	4	2.00%	
2415		Kakindu	Vvumbe	Nabwiri	1,000			1		110	9.09	90	81.82%	20	18.18%	
2416		Kakindu	Vvumbe	Bukundugulu	365		1			90	4.06	80	88.89%	10	11.11%	
2417		Kakindu	Mwera	Banaze	1,200			1		200	6.00	162	81.00%	38	19.00%	
2418		Kakindu	Nsambya	Kalama	460		1			97	4.74	74	76.29%	23	23.71%	
2419		Kakindu	Nyagulo	Nyagulo	280		1			70	4.00	50	71.43%	20	28.57%	
2420		Kakindu	Mwera	Mwera	780			1		239	3.26	209	87.43%	30	12.55%	
2421		Kakindu	Mawanda	Kakindu	1,000			1		150	6.67	125	83.33%	25	16.67%	
2422		Kakindu	Vvumbe	Mawanda	330		1			120	2.75	94	78.33%	26	21.67%	
2423		Malangala	Kiwawu-Sabagab	Kiwawu	600		1			52	11.54	45	86.54%	7	13.46%	
2424		Malangala	Magonga	Magonga	370		1			62	5.97	54	87.10%	8	12.90%	
2425		Malangala	Kanyanya	Lulumba	700			1		80	8.75	73	91.25%	7	8.75%	
2426		Malangala	Zigoti	Kasalaga	500		1			110	4.55	80	72.73%	30	27.27%	
Total		Total			33,538		4	61	28	4	11,097	4.82	8,976	80.89%	2,121	19.11%
KIROGA DISTRICT (LCS)																
3101	Kiboga	Bukomero	Musale	Kateera	504		1			126	4.00	96	76.19%	30	23.81%	
3102		Bukomero	Kateera	Kalangala A	900			1		150	6.00	130	86.67%	20	13.33%	
3103		Bukomero	Kikooba	Kalangala RCI			1			60	5.00	55	91.67%	5	8.33%	
3104		Bukomero	Kikooba	Masiriba	300		1			82	5.73	62	75.61%	20	24.39%	
3105		Bukomero	Kalokola	Kalwe	470			1		138	5.00	120	86.96%	18	13.04%	
3106		Bukomero	Lwankonge	Muyenje	690			1		120	6.67	45	37.50%	75	62.50%	
3107		Bukomero	Kyoma	Kayunga	800			1		40	7.00	30	75.00%	10	25.00%	
3108		Bukomero	Kyoma	Kabamba West	280		1			80	4.00	60	75.00%	20	25.00%	
3109		Bukomero	Kyoma	Kabamba East	320			1		104	7.75	89	85.58%	15	14.42%	
3110		Bukomero	Kateera	Bukomero T/C	806			1		170	4.41	128	75.29%	42	24.71%	
3111		Bukomero	Kalokola	Namukoko	750			1		65	5.38	50	76.92%	15	23.08%	
3112		Bukomero	Kapogo	Kapogo	350		1			73	6.58	61	83.56%	12	16.44%	
3113		Bukomero	Mwezi	Mwezi B	480		1									
3114		Bukomero	Mwezi	Mwezi A						55	3.18	34	61.82%	21	38.18%	
3115		Ntwetwe	Bulwagwe	Kambizi	175		1			220	6.00	200	90.91%	20	9.09%	
3116		Ntwetwe	Ndibata	Ndibata	1,320			1		60	7.50	45	75.00%	15	25.00%	
3117		Ntwetwe	Ntiiba	Bugomolwa	450		1			42	12.48	35	83.33%	7	16.67%	
3118		Ntwetwe	Ntwetwe	Ntwetwe T/C	524		1			72	4.00	50	69.44%	22	30.56%	
3119		Ntwetwe	Nakitembe	Kilemetra/Luboga	288		1									
3120		Ntwetwe	Bulagwe	Bulagwe	222		1			94	2.36	90	95.74%	4	4.26%	
3121		Ntwetwe	Nkandwa	Nkandwa B	500		1			98	5.10	88	89.80%	10	10.20%	
3122		Ntwetwe	Ntiba	Nakalana St. Kizito	200		1			130	1.54	100	76.92%	30	23.08%	
3123		Ntwetwe	Ntwetwe	Ntwetwe	540		1			100	5.40	89	89.00%	11	11.00%	
3124		Ntwetwe	Kisoloza	Kikajjo	200		1			30	6.67	20	66.67%	10	33.33%	
3125		Ntwetwe	Ntiba	Lwanjolo	450			1		60	7.50	40	66.67%	20	33.33%	
3126		Kibiga	Kasega	Kasega	380		1			120	3.17	100	83.33%	20	16.67%	
3127		Kibiga	Kasega	Kirinda	600		1			107	5.61	57	53.27%	50	46.73%	
3128		Kibiga	Kizinga	Kizinga	500		1			130	3.85	50	38.46%	80	61.54%	

APPENDIX D-10

(1)	(2)	(3)	(4)	(5)	(6)	(7)	(8)	(9)	(10)	(11)	(12)	(13)	(14)	(15)	(16)	
3129	Kiboga	Kibiga	Kyamaba	Nyamiranga	210					50	4.20	47	94.00%	3	6.00%	
3130		Kibiga	Kagobe	Kagobe	330		1			80	4.13	52	65.00%	28	35.00%	
3131		Kibiga	Sseeta	Sseeta	300		1			40	7.50	30	75.00%	10	25.00%	
3132		Kibiga	Nkandwa	Karobu	400		1			90	4.44	50	55.56%	40	44.44%	
3133		Kibiga	Nkandwa	Karobu	468		1			33	14.18	32	96.97%	1	3.03%	
3134		Kibiga	Nkandwa	Kilyankazi	350		1			80	4.38	75	93.75%	5	6.25%	
3135		Kibiga	Kajjera	Katoma	200	1				100	2.00	80	80.00%	20	20.00%	
3136		Kibiga	Kibiga	Kibiga	800			1		250	3.20	230	92.00%	20	8.00%	
3137		Kibiga	Kibiga	Gogonya	500		1			170	2.94	162	95.29%	8	4.71%	
3138		Kibiga	Kabale	Bukasa	250		1			50	5.00	20	40.00%	30	60.00%	
####					400		1			150	2.67	50	33.33%	100	66.67%	
3139		Kiboga Town C. Kajjere		Kalangala/Kibooga	210		1			67	3.13	60	89.55%	7	10.45%	
3140		Kiboga Town C. Kiboga Town		Bwizibwera B	500			1		200	2.50	180	90.00%	20	10.00%	
3141																
3142		Kiboga Town C. Kifulumba		Lufala	680			1		100	6.80	80	80.00%	20	20.00%	
3143		Kiboga Town C. Kiboga Town		Hospital Village	390		1			90	4.33	45	50.00%	45	50.00%	
3144		Kiboga Town C. Kiboga Town		Bwizibwera A	930			1		200	4.65	180	90.00%	20	10.00%	
3145		Lwamata	Sinde	Sinde	280		1			40	7.00	30	75.00%	10	25.00%	
3146		Lwamata	Lwamata	Kawaawa	320		1			49	6.53	36	73.47%	13	26.53%	
3147		Kisweka	Kisweka	Nikokongeru	1,400				1	200	7.00	86	43.00%	114	57.00%	
3148		Lwamata	Kisagazi	Kyanika	300		1			52	5.77	36	69.23%	16	30.77%	
3149		Lwamata	Lwamata	Lunyia	400		1			70	5.71	50	71.43%	20	28.57%	
3150		Lwamata	Nsala	Nakaziba	360		1			60	6.00	50	83.33%	10	16.67%	
3151		Lwamata	Kasejere	Kijumagwa	280		1			40	7.00	36	90.00%	4	10.00%	
3152		Lwamata	Buninga	Nsanje	350		1			70	5.00	63	90.00%	7	10.00%	
3153		Lwamata	Nsala	Buyonga	470		1			94	5.00	46	48.94%	48	51.06%	
3154																
3155		Lwamata	Kayera	Kabutemba	380		1			76	5.00	64	84.21%	12	15.79%	
3156		Butemba	Nabitakuli	Karobu	235		1			47	5.00	37	78.72%	10	21.28%	
3157		Butemba	Nabitakuli	Kayenza	200		1			25	8.00	22	88.00%	3	12.00%	
3158		Butemba	Nyanjonje	Kyarajoni	515		1			80	6.44	50	62.50%	30	37.50%	
3159		Butemba	Lwebisiriza	Kalanabiro	350		1			70	5.00	57	81.43%	13	18.57%	
3160		Butemba	Lwebisiriza	Kagalama	480		1			120	4.00	110	91.67%	10	8.33%	
3161		Butemba	Byerima	Byerima B	380		1			60	6.33	50	83.33%	10	16.67%	
3162																
3163		Muwanga	Biiko	Biiko	257		1			90	2.86	70	77.78%	20	22.22%	
####		Muwanga	Biiko	Biiko	272		1			45						
3164		Butemba	Kahvu	Buguhuma	310		1			200	1.55	180	90.00%	20	10.00%	
3165		Muwanga	Nabwendo	Nabwendo	600		1			120	5.00	73	60.83%	47	39.17%	
3166																
3167		Muwanga	Nabwendo	Ndiraweru	1,100				1	400	2.75	380	95.00%	20	5.00%	
3168		Muwanga	Nakasozzi	Nakasozzi	350		1			60	5.83	48	80.00%	12	20.00%	
3169		Muwanga	Nakasengere	Nakasengere	300		1			100	3.00	85	85.00%	15	15.00%	
3170		Ntwetwe	Ndibata	Natyle/Magala Men	400		1			78	5.13	50	64.10%	28	35.90%	
3171		Muwanga	Nabwendo	Muwanga	600		1			270	2.22	261	96.67%	9	3.33%	
3172		Nsambya	Kikonda	Kikonda	140		1			35	4.00	30	85.71%	5	14.29%	
3173		Nsambya	Kigando	Buraza												
3174		Nsambya	Masodde	Nakakabala	300		1			50	6.00	43	86.00%	7	14.00%	
3175		Nsambya	Kigando	Kyambugu	580		1			58	10.00	50	86.21%	8	13.79%	
3176		Nsambya	Kigando	Kigando/Buraza	126		1			80	1.58	60	75.00%	6	25.00%	
3177		Nsambya	Bananywa	Mujunza	356		1			90	3.96	80	88.89%	10	11.11%	
3178		Nsambya	Bananywa	Bananywa	1,439				1	300	4.80	240	80.00%	60	20.00%	
3179		Nsambya	Kyakabuga	Nsanbya	195		1			65	3.00	53	81.54%	12	18.46%	
3180		Nsambya	Kyakabuga	Kyakabuga	160		1			30	5.33	25	83.33%	5	16.67%	
3181																
3182																
3183		Masodde	Bamusuta	Bamusuta	850			1		102	8.33	86	84.31%	16	15.69%	
3184		Butemba	Sabawali	Kayunga	280		1			40	7.00	34	85.00%	6	15.00%	
3185		Masodde	Masodde	Masodde	900			1		330	2.73	100	30.30%	230	69.70%	
3186		Masodde	Vvumba	Vvumba	500		1			130	3.85	110	84.62%	20	15.38%	
3187		Masodde	Bamusuta	Kalazi	350		1			150	2.33	110	73.33%	40	26.67%	
3188		Masodde	Watuba	Kiyombya	500		1			42	11.90	36	85.71%	6	14.29%	
3189		Masodde	Kiwaguzi	Kiwaguzi	500		1			130	3.85	126	96.92%	4	3.08%	
3190		Masodde	Kigando	Mulagi	350		1			80	4.38	61	76.25%	19	23.75%	
3191		Masodde	Kigando	Kigando	700			1		200	3.50	174	87.00%	26	13.00%	
####		Masodde	Kigando	Kigando	500		1			200						
3192		Gayaza	Kiyuni	Bulyanzige	450		1			95	4.74	75	78.55%	20	21.05%	
3193		Gayaza	Gayaza	Gayaza West	586		1			65	9.02	50	76.92%	15	23.08%	
3194		Ntwetwe	Kisoloza	Kasambya B	350		1			46	7.61	40	86.96%	6	13.04%	
3195		Gayaza	Gayaza	Nkondo	500		1			80	6.25	70	87.50%	10	12.50%	
3196		Gayaza	Kiryajobyo	Butambuka	520		1			102	5.10	88	86.27%	14	13.73%	
3197		Gayaza	Luwuna	Kiryajobyo West	400		1			70	5.71	60	85.71%	10	14.29%	
3198		Gayaza	Luwuna	Luwuna	300		1			60	5.00	55	91.67%	5	8.33%	
3199		Gayaza	Luwuna	Kisala	750			1		150	5.00	142	94.67%	8	5.33%	
3200		Gayaza	Kiyuni	Kyeteere East	600		1			113	5.31	103	91.15%	10	8.85%	
Total					43,988		10	67	13	4	9,685	4,54	7,368	76.08%	2,058	23.92%

Source: Result of Inventory Survey for RCI made by JICA Study Team, 1995.

APPENDIX D-11 Occupation of the People by Community in the Project Area.

[illegible]

(1)	(2)	(3)	(4)	(5)	(6)	(7)	(8)	(9)	(10)	(11)	(12)	(13)	(14)	(15)	(16)	(17)	(18)	(19)	(20)	(21)	(22)	(23)	(24)	(25)	(26)	(27)	(28)	(29)
1206 Kijundu		230	220					30																				
1207 Magici		250	450		4	5	80	25		2																		
1208 Kiwenda T/C		214	400	20		60	50	50																				
1209 Kiwenda																												
1210 Nabitalo		100		520	20	100	10																					
1211 Buso		200	191	38	11	3	2	100																				
1212 Mervu		220	220																									
1213 Kasazi		200	120	10	3	30	30	20																				
1214 Luro		300	300	250	80	65		38																				
1215 Nariye		80	23	23	6	3	20	5																				
1216 Kazinga		380	350	5	3	10	50	50																				
1216 Bulamu/Kasungu T/C		72	10		2	60																						
1217																												
1218 Magere		30	30		15		50	12																				
1219 Kazinga		300	280	50	50	10	250	100		20																		
1220 Kiwalimu		20				50	50	40																				
1221 Kiti A		150	130	20	4		16	6																				
1222 Manyangwa		400	250	50	8	40	40	50																				
1223 Nalvamaqonia		900	300	150	40	3	70	120																				
1224 Part of Seta (1217)		106	300	2	2	6	8	15																				
1225 Part of Magere (1218)																												
1301 Kiwala		150	140	120	5	5	15	5																				
1302 Nyando		100			10	20	30	40	20																			
1303																												
1304 Kanza		150	70	10	20	15	5	10																				
1305 Eweyaba		475	300	300	1	2																						
1306 Lual		150	150	80	20	1	5	20																				
1307 Ndibulungu		110	80	20	10	5	10																					
1308 Butende		85	30	50	2	5	2	5																				
1309 Bulesa		75	55	65	2	3	3	5																				
1310 Tufibe		80	65	60	20	1																						
1311 Buzobango		110	110	200		7	20	5																				
1401 Kyagera		70	450	500	3	30	10	10																				
1402 Wabiyina		120	120			30	30	5																				
1403 Nalolomube																												
1404 Marutita A		50			20			20																				
1405 Kyemuna		350	350					30		20																		
1406 Kyempisi		70	65	5	15	2	6	5																				
1407 Nalungana		60	60	30	2	13	19	4																				
1408 Bugimba		89	80	40	5	20	10																					
1409 Mapulika		80	75	30	4	20	10																					
1410 Buso			40	10	4	10																						
1411 Kyasa		180	22	158	5	112	68																					
1412 Bembe		70	70	70	1	3	1	10																				
1413 Namayumba		100	20	40	10	10	70	20																				
1414 Busulu		160	120	120	3	20	10																					
1415 Bwembo		95	95	90	5	20	20																					
1416 Kasengele		240	200	15	3	4	15																					
1417 Mende Central		196	196	80	1	2	27																					
1418 Bulasa T/C		150	100	10	1	12	25	15																				
1419 Kisimbiri A-B-C		700	560	32	12	210	50	70																				
1501 Kikundu T/C		73	73	73	12	12	25	45																				
1502 Npigi																												
1503 Kikomazi		121	121	101	4		7	14																				
Total		14,857	12,998	4,980	922	1,224	2,415	2,501	50	93	530	20	2	13	1	15	68	44	5	1	10	5	12	0	0	0	0	0

(1)	(2)	(3)	(4)	(5)	(6)	(7)	(8)	(9)	(10)	(11)	(12)	(13)	(14)	(15)	(16)	(17)	(18)	(19)	(20)	(21)	(22)	(23)	(24)	(25)	(26)	(27)	(28)	(29)
2101	Bisoboa/Krombwa	80	60			1	1	10	30																			
2102	Kilangwa	80	30	50	10	2	50	30	30																			
2103	Kyengeza	85	85	50			15	10	10																			
2104	Budigaba	86	86	30		4	6	15	15																			
2105	Bwakaago	80	80	60		3	10	10	10																			
2106	Kalouza	200	150	100		15	10	15	10																			
2107	Mupungulu	200	200	180		3	3	10	15																			
2108	Kisingizi	150	30	8		3	5	10	10																			
2109	Kyamukona	400	40	40		6	15	10	8																			
2110	Kyeguluro	80	60				10	5	5																			
2111	Bakijulia	100	70	16		1	8	15	5																			
2112	Kabowa	50	32	10		1	1	1	5																			
2113	Kabubu	100	80	15		1	4	15	15																			
2114	Kamungola	250	250	50		3	3	20	15																			
2115	Nakawale/Lwegula	138	80	40		3	47		15																			
2116																												
2117																												
2118	Nakasaga	62	40	20			2	100	5																			
2119	Kasumbiya T/C	200	190	16			50	100	50																			
2120	Kikoma	210	50	10		1			75																			
2121	Nyabano	128	300	20		3	14	10	12																			
2122	Kaoma	60	50	20		3	8	10	10																			
2201	Kassinda	250	220	140			100	40	5																			
2202	Namabale	120	320	1		1	1	28	5																			
2203	Kyabalanzi	70	280	70			44	33	20																			
2204	Kamuli	100	100	90			1	14	14																			
2205	Bweyansedde	81	70	50			50	14	14																			
2206	Kasazi A	66	53	5		3	3	7	5																			
2207	Kalama	28	60	5		2	3	4	5																			
2208	Kiandwa	80	550			1	20	5	5																			
2209	Bulyamagumu A	130	109				3	2	6																			
2210	Makata	57	57	25			9	18	3																			
2211	Kilimbo	150	140	10		4	5	5	20																			
2212	Kalama	130	100	80		1	2	4	4																			
2213	Kyakasenqulu	87	50	37		25	5	6	10																			
2214	Kabanyi	165	285				5	10	10																			
2215	Bukoba	130	850				5	10	10																			
2216	Lukira	90	600	10		5	1	10	10																			
2217	Kyavumba	90	120	80		3	3	7	30																			
2218	Kasana	170	160	50		3	3	7	3																			
2219	Kalasi	400	300	300		30	10	4	3																			
2220	Karusene	140	500	5		5	1	15	15																			
2221	Manyopaseka	140	140	20		3	4	10	30																			
2222	Kasawo	48	48	5		20		1	1																			
2223	Lwenyunge	60	60	30		5	2	2	7																			
2224	Mbale	120	120	100			2	2	20																			
2225	Maburubi	140	110	10		3	1	3	13																			
2226	Kalongo	25	13	10			80	30	40																			
2227	Kimmbi	61	61	30		2	2	80	40																			
2228	Kamoya	76	76	20		3	20	40	20																			
2301	Kikumbi-Kaba	73	500			1	1	2	1																			
2302	Nakaseta	6																										
2303	Namyeso																											
2304	Buzabo																											
2305	Kandala																											

(1)	(2)	(3)	(4)	(5)	(6)	(7)	(8)	(9)	(10)	(11)	(12)	(13)	(14)	(15)	(16)	(17)	(18)	(19)	(20)	(21)	(22)	(23)	(24)	(25)	(26)	(27)	(28)	(29)
2306	Magongoro	60	60	5	3	2	6	8	4																			
2307	Nakobunga-Nyanzi	50																										
2308	Buainbi	120	5		3	400	200	40																				
2309	Minyama A	134	5		2	7	10	112																				
2310																												
2311	Kalenzalo	51	21	38	1	30		7										20										
2312	Iwogero B	68	60	20	10	2	40	12																				
2313	Kiwanda	41	350	15	2	2	50																					
2314	Iweyo	100	100	45	30	11	35																					
2315	Kesikombe	94	90	92	2	27	7																					
2316	Kamugulu	60	60	40	2	2	5											2										
2317	Budinbo	160	160	60		1																						
2318	Kisamba	57	53	40	2	5	4	50																				
2319	Kawolonsolijo	170	170	1		2		2																				
2320	Namunzo	117	117	90		7	7	30																				
2321	Sekanyonyi	400	400	350	30	400	60																					
2322	Boombo	50	30	15	3	5	10	3											2									
2323	Kabulenzidiro	87	87																									
2324	Bambula	121	121	50		1	3																					
2401	Serumya	150	100	500		40	200	6																				
2402	Nabele	130	130	45	1	3	10	10																				
2403	Maznyi	40	3	30	3	12	3	1																				
2404	Mozuro	75	75	20	5	5	5	20																				
2405	Misimba	62	100	10	10		5	75																				
2406	Kimuli	100	350	60		8	2																					
2407	Kabele	50	40			3		5																				
2408	Bwala	80	20	40	10	1	6	20																				
2409	Bekma	90	20	40	4	4	10	1																				
2410	Konde	50	60	50		15	15																					
2411	Kitongo	99	80	20		30	20	10																				
2412	Nakaziba	100	90			5		5																				
2413	Kiebere	230	224	6	2	10	25																					
2414	Wamba	200	175	30	2	6		3																				
2415	Nabwiri	110	15	80	3	10	15																					
2416	Bukundugulu	90	90	80	4		3	5																				
2417	Benzaze	200	550	300	20	10	280	370																				
2418	Kalama	97	24	55	4	6	10	12																				
2419	Nyungulo	70	50	10	2	6	10	20																				
2420	Nwera	239	230	19	7	22	22																					
2421	Kakinda	150	100	20	20	8	50																					
2422	Mawanda	120	10	70		6	5	20																				
2423	Kiwawu	52	15	30	3	12																						
2424	Magonga	62	46	52	3	1																						
2425	Luhumbu	80	10	40																								
2426	Kasalaga	110	110	110	2	20	20	50																				
Total		10,983	12,740	4,552	304	1,308	2,070	1,592	30	2	9	40	19	0	0	0	66	64	9	0	0	0	16	3	2	1	0	0
3101	Kasera	126	126	100		10	10	40																				
3102	Kalanzala A	150	100	80	10	5	2	50																				
3103	Kalanzala RC1	150	150	150	2	3	4	2																				
3104	Mamiriba	60	55	20	1	2	6	30																				
3105	Karwe	82	64	4	4	20	14	31																				
3106	Mnyenje	138	138			1	30	20																				
3107	Kayunga	120	180	95				30																				
3108	Kabumba West	80	80	30		2	50																					
3108	Kabumba East	40	40	20																								

APPENDIX D-11

(1)	(2)	(3)	(4)	(5)	(6)	(7)	(8)	(9)	(10)	(11)	(12)	(13)	(14)	(15)	(16)	(17)	(18)	(19)	(20)	(21)	(22)	(23)	(24)	(25)	(26)	(27)	(28)	(29)
3109	Bukomero T/C	104	104																									
3110	Namukoko	170	160	5	3	2	10	40	5																			
3111	Kasogo	65	65	25	2																							
3112	Mwezi B	73	50	23		1	1	2	13																			
3113	Mwezi A																											
3114	Kambizi	55	5	6	2		9	30	23																			
3115	Ndibaza	220	200	198			5	100	30	20																		
3116	Bugomolwa	60	60	60			3	10	6																			
3117	Nyenwe T/C	42	42	30			20	5	10																			
3118	Kilembe/Lubuga	72	72	60			4	10	14																			
3119																												
3120	Bulagwe	94	94	70			2	2	16																			
3121	Ndandwa B	98	98	88			3	10	30																			
3122	Nakalama St. Kizito	130	100	3	7		10		10																			
3123	Ntuni	100	95	90			2		50																			
3124	Kibajjo	30	20	10																								
3125	Lwanjolo	60	40	5	5		5	5	5																			
3126	Kasega	200	200	70			3		7																			
3127	Kirinda	107	100	10	6		8		10																			
3128	Kirinda	130	130	90			3	8	7																			
3129	Nyemuriza	50	1		12		2		7																			
3130	Kapobe	80	67	8	5		2		10																			
3131	Sesesa	40	37	27	3				10																			
3132	Kambugu	90	150				7	150	100																			
3133	Kambugu	33	245	160			6	72	30																			
3134	Kilyukoni	80	80	5					50																			
3135	Kazoma	100	100	80			6		12																			
3136	Kibiga	250	250	150	4		8	60	100																			
3137	Gogonya	170	170	150			3	12	14																			
3138	Bukasa	50	200		1		1		25																			
3139	Kalansala/Kibooza	67	20	20	1		6	100																				
3140																												
3141	Bwizibwera B	250		18			30	34																				
3142	Lufila	100	30	25	1		60	40	20																			
3143	Hospital Village	90	10																									
3144	Bwizibwera A	200	100	30			120	67	10																			
3145	Sinde	40	40	3			3		4																			
3146	Kawaawa	49	49	4																								
3147	Ntikonjiru	200	130	60			1	30	25																			
3148	Kyamba	52	52	5																								
3149	Lunywa	70	70	40	2		8	10	13																			
3150	Nakaziba	60	40	20			1	15	5																			
3151	Kijumagwa	40	40	5			2	3	3																			
3152	Namje	70	70				3		30																			
3153	Buyonga	94	94	50	20		2	20	8																			
3154																												
3155	Kabuteba	76	42	30	4		20	30	5																			
3156	Kambugu	47	35	12			4	3	8																			
3157	Kayenza	25	25	25			3	100																				
3158	Kyarajoni	80	15	2	80		2		10																			
3159	Katambiro	70	60	5			5	6																				
3160	Kasalama	120	70	20	60		4	15	10																			
3161	Byerina B	60	66	66																								
3162																												
3163	Bukko	90	80	10	4		6	4	12																			

(1)	(2)	(3)	(4)	(5)	(6)	(7)	(8)	(9)	(10)	(11)	(12)	(13)	(14)	(15)	(16)	(17)	(18)	(19)	(20)	(21)	(22)	(23)	(24)	(25)	(26)	(27)	(28)	(29)
3164	Buguluma	200	186	5																								
3165	Nabwendo	80	70	6	4	7	5	15																				
3166		400	320	180		22	15											12										
3167	Ndirawaru	60	60	40		5	9	8																				
3168	Nakasazi	100	89	4	1	2	2	9																				
3169	Nakasempere	78	75	48		12	15	30																				
3170	Nayole/Magala Men	270	600	550		2	11	400																				
3171	Mwanga	100	50	10	5	20	5	10																				
3172	Kitonda	66	66	66		9	6	7																				
3173	Buraza	50				30																						
3174	Nakababala	58		30			9	15																				
3175	Kyamukoko	90																										
3176	Kisando/Buraza	90	90																									
3177	Mujunza																											
3178	Banywa	300	270	120		6	100																					
3179	Nembya	65	65	65		4	2																					
3180	Kyakabusa	30	20	2	0	1	2	5																				
3181																												
3182		102	80	6	6	15		28																				
3183	Bamusuta	40	37	3																								
3184	Kayunga	330	330	20	5	10		100																				
3185	Masodde	130	130	80	2	6	80	30																				
3186	Vumba	150	146					20																				
3187	Kalazi	42	23	18		5		5																				
3188	Kiyombya	130	130	20	1	5	25	4																				
3189	Kiwaguzi	80	46	25	2	6	4	5																				
3190	Milag	200	200			5	2	17																				
3191	Kijando	95	150	70		5	8	20																				
3192	Bulyenzire	65	65	65		4	3	6																				
3193	Geyaza West	46	26	18		1	6	8																				
3194	Kasembya B	80	80	50		5		5																				
3195	Nkondo	102	60	43		5		5																				
3196	Butambuka	70	39	20			8	3																				
3197	Kinyujibye West	60	60	3																								
3198	Lwuma	150	150	2																								
3199	Kimala	113	113	113		6	20	10																				
3200	Kwerere East	9,381	8,852	4,054	266	638	1,403	1,930	0	50	0	61	0	0	0	0	0	0	0	0	0	2	0	0	0	0	0	36
Total		9,381	8,852	4,054	266	638	1,403	1,930	0	50	0	61	0	0	0	0	0	0	0	0	0	2	0	0	0	0	0	36

APPENDIX D-12 Occupation in the Project Area

(As of 1995)

Occupation	District					
	Total		Mipigi		Mubende	
	Number	(%)	Number	(%)	Number	(%)
1 Subsistence farmers	34,570	52.16%	12,598	50.17%	12,740	55.81%
2 Cash crop farmers	13,586	20.50%	4,980	19.22%	4,552	19.94%
3 Dairy farmers	1,492	2.25%	922	3.56%	304	1.33%
4 Shoppers/traders	3,171	4.78%	1,224	4.72%	1,309	5.73%
5 Full time labours	5,888	8.88%	2,415	9.32%	2,070	9.07%
6 Seasonal labours	6,023	9.09%	2,501	9.65%	1,592	6.97%
7 Hunters	80	0.12%	50	0.19%	30	0.13%
8 Brick makers	145	0.22%	93	0.36%	2	0.01%
9 Pastoralists	539	0.81%	530	2.05%	9	0.04%
10 Local brewers	121	0.18%	20	0.08%	40	0.18%
11 Mechanics	21	0.03%	2	0.01%	19	0.08%
12 Bark cloth makers	13	0.02%	13	0.05%	0	0.00%
13 Bee breeders	1	0.00%	1	0.00%	0	0.00%
14 Herdsmen	15	0.02%	15	0.06%	0	0.00%
15 Carpenters	134	0.20%	68	0.26%	66	0.29%
16 Teachers	191	0.29%	44	0.17%	64	0.28%
17 Charcoal makers	14	0.02%	5	0.02%	9	0.04%
18 Doctors	1	0.00%	1	0.00%	0	0.00%
19 Tailors	12	0.02%	10	0.04%	0	0.00%
20 Butchers	5	0.01%	5	0.02%	0	0.00%
21 Civil servants	98	0.15%	12	0.05%	16	0.07%
22 Black smith	3	0.00%	0	0.00%	3	0.01%
23 Security guards	2	0.00%	0	0.00%	2	0.01%
24 Cobblers	1	0.00%	0	0.00%	1	0.00%
25 Nomads	36	0.05%	0	0.00%	0	0.00%
26 Hospital staffs	112	0.17%	0	0.00%	0	0.00%
Total	66,274	100.00%	25,909	100.00%	22,828	100.00%
Number of HHs	35,421	-	14,857	-	10,983	-
Average workers/HH	1.87	-	1.74	-	2.08	-

Source : Result of Inventory Survey for Community made by JICA, 1995.