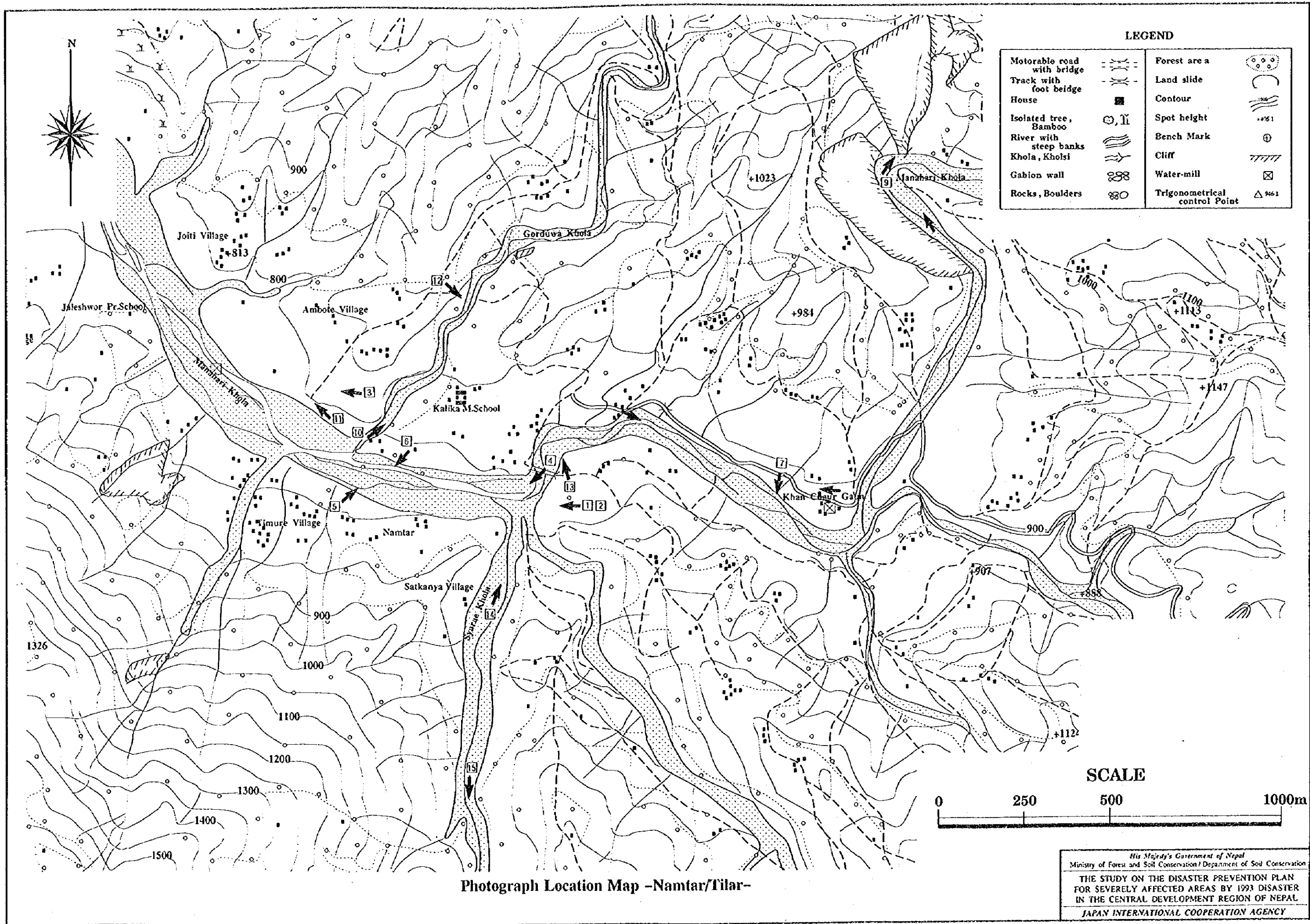


Photographs
-Namtar/Tilar-



LEGEND

Motorable road with bridge	== ==	Forest area	⊙ ⊙ ⊙
Track with foot bridge	- - - -	Land slide	⌋
House	■	Contour	—
Isolated tree, Bamboo	⊙, ⊏	Spot height	+751
River with steep banks	⌋	Bench Mark	⊕
Khola, Kholsi	⌋	Cliff	////
Gabion wall	⊗⊗	Water-mill	⊠
Rocks, Boulders	⊗	Trigonometrical control Point	△ 961

Photograph Location Map -Namtar/Tilar-

His Majesty's Government of Nepal
 Ministry of Forest and Soil Conservation / Department of Soil Conservation
THE STUDY ON THE DISASTER PREVENTION PLAN FOR SEVERELY AFFECTED AREAS BY 1993 DISASTER IN THE CENTRAL DEVELOPMENT REGION OF NEPAL
 JAPAN INTERNATIONAL COOPERATION AGENCY



Photo-1 An Overview of Namtar Bazar before 1993 Disaster (A Date is unknown).

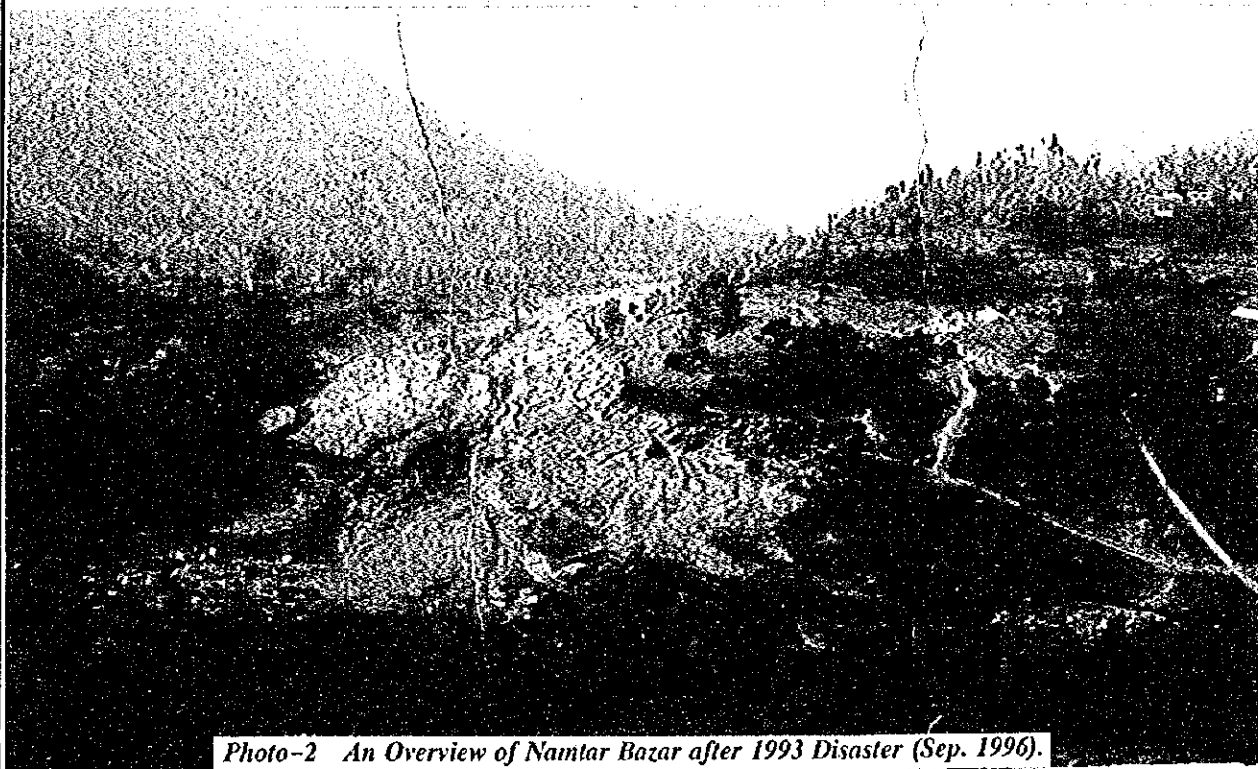


Photo-2 An Overview of Namtar Bazar after 1993 Disaster (Sep. 1996).

The river was expanded remarkably and the accumulation of sediment deposit is observed.

A Photographic Comparison between before and after 1993 Disaster.

His Majesty's Government of Nepal
Ministry of Forest and Soil Conservation/Department of Soil Conservation

**THE STUDY ON THE DISASTER PREVENTION PLAN
FOR SEVERELY AFFECTED AREAS BY 1993 DISASTER
IN THE CENTRAL DEVELOPMENT REGION OF NEPAL**

JAPAN INTERNATIONAL COOPERATION AGENCY

Removable zone to surface deformation

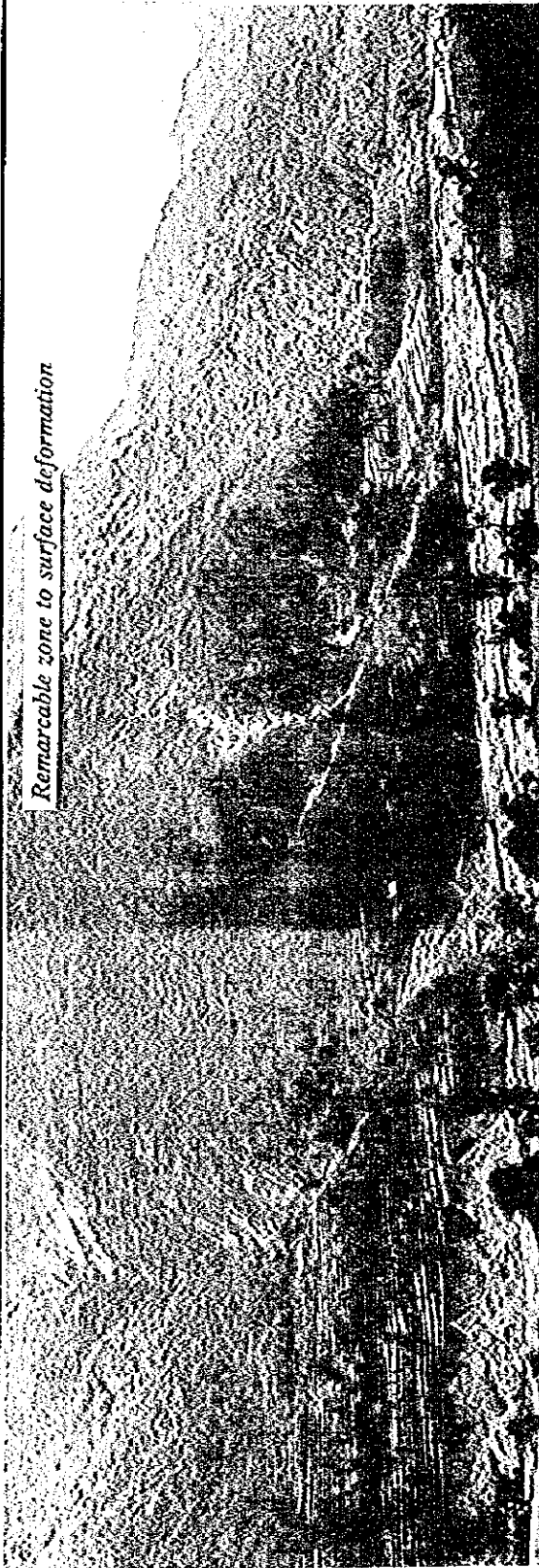


Photo-3 A Panorama View at the left bank towards the downstream from the confluence of the Manhari Khola and the Sarse Khola. The landslides and failures mainly occurred under the knick line, the upper edge of the Photo.

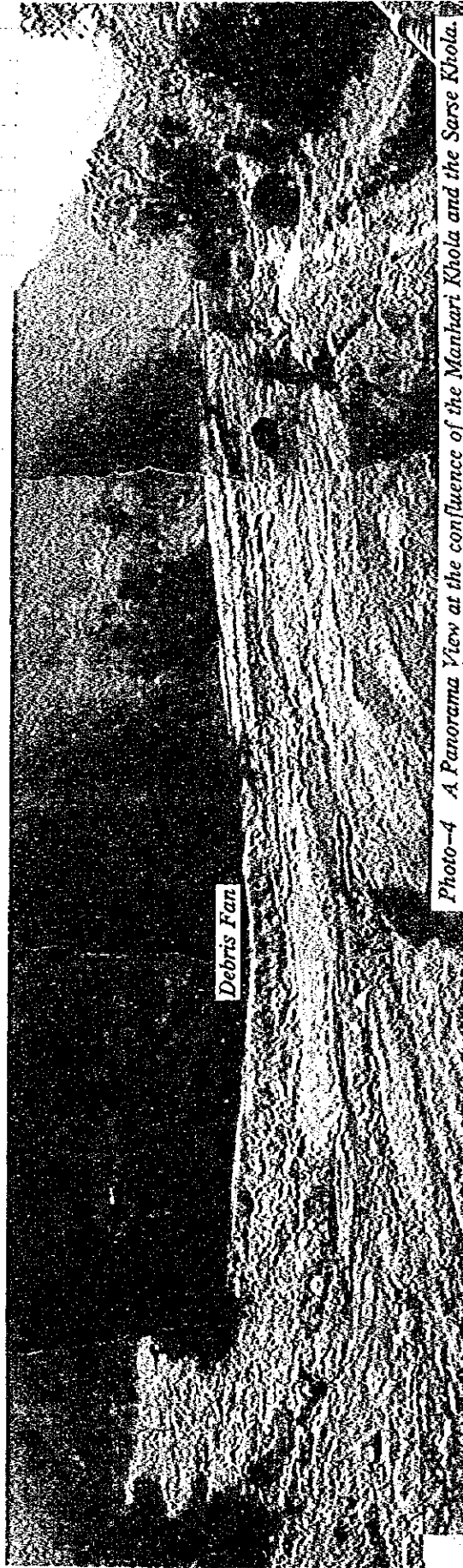


Photo-4 A Panorama View at the confluence of the Manhari Khola and the Sarse Khola.

A part of debris fan remains which was formed by the Sarse Khola.

His Majesty's Government of Nepal
Ministry of Forest and Soil Conservation/Department of Soil Conservation
THE STUDY ON THE DISASTER PREVENTION PLAN
FOR SEVERELY AFFECTED AREAS BY 1993 DISASTER
IN THE CENTRAL DEVELOPMENT REGION OF NEPAL
JAPAN INTERNATIONAL COOPERATION AGENCY



Washed out Land due to 1993 Disaster

Photo-5 A Panorama View of present Namtar Bazar.

The washed out bazar is now forming the lower terrace scarp.

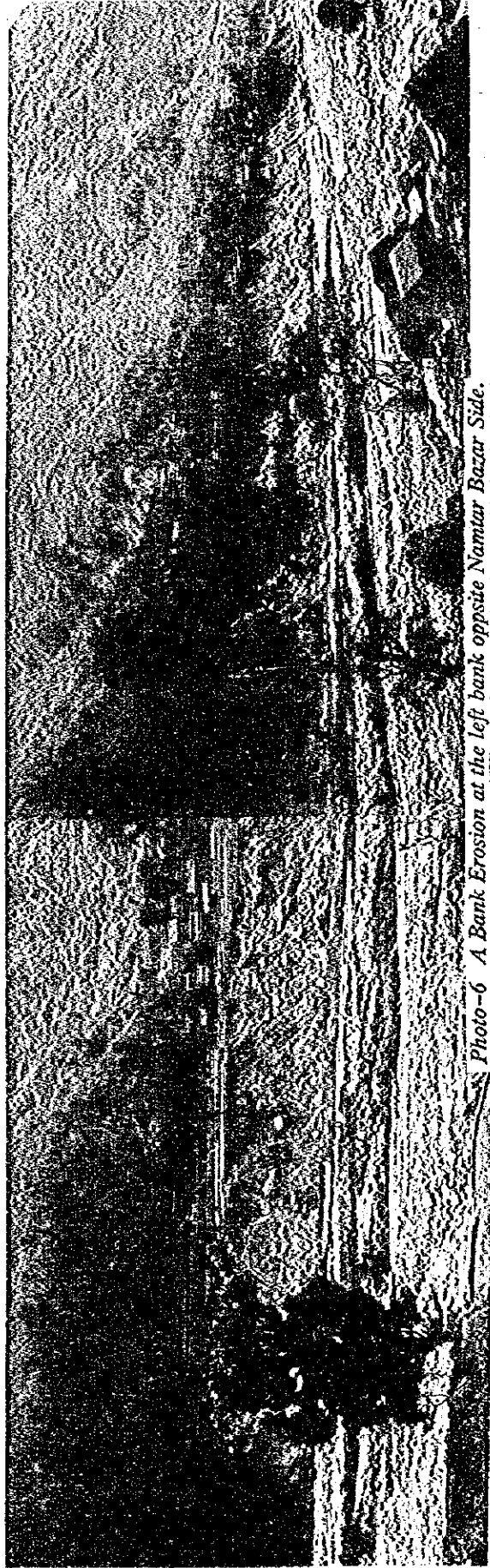


Photo-6 A Bank Erosion at the left bank opposite Namtar Bazar Side.

It is very dangerous to be re-erosion by the future flood.

His Majesty's Government of Nepal
 Ministry of Forest and Soil Conservation/Department of Soil Conservation
**THE STUDY ON THE DISASTER PREVENTION PLAN
 FOR SEVERELY AFFECTED AREAS BY 1993 DISASTER
 IN THE CENTRAL DEVELOPMENT REGION OF NEPAL**
 JAPAN INTERNATIONAL COOPERATION AGENCY



Photo-7 A Bank Erosion



Photo-8 Severe Landslide

A series of big failure occurred on the river bend at the upper Manhari Khola, the deposit is accumulated at the toe portion.

<p><i>His Majesty's Government of Nepal</i> Ministry of Forest and Soil Conservation/Department of Soil Conservation</p> <p>THE STUDY ON THE DISASTER PREVENTION PLAN FOR SEVERELY AFFECTED AREAS BY 1993 DISASTER IN THE CENTRAL DEVELOPMENT REGION OF NEPAL</p> <p>JAPAN INTERNATIONAL COOPERATION AGENCY</p>
--

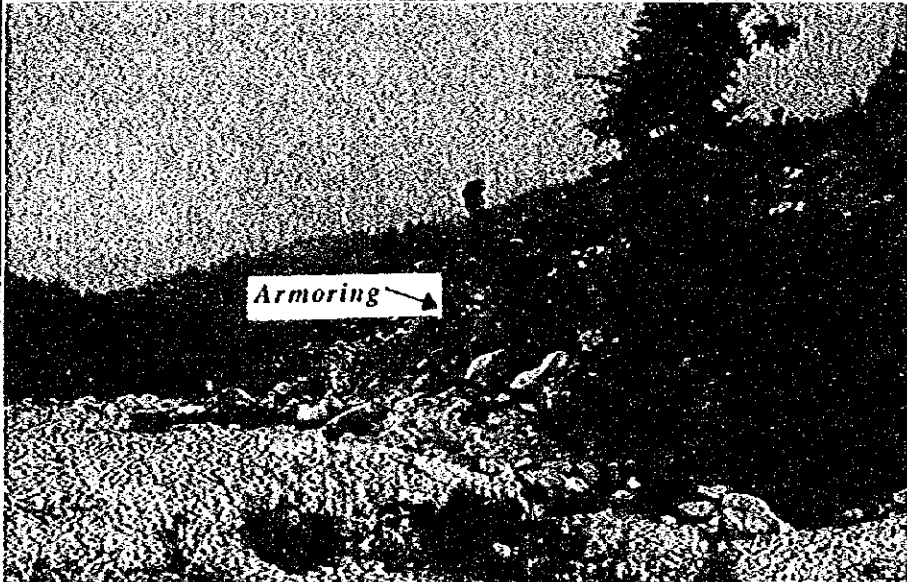


Photo-9 Severe Landslide and these Colluvium.

The terrace of debris formed by the 1993's flood is on the left.



Photo-10 River Bed Condition in the lower stream of the Goruduwa Khola.



The slope is possible to collapse because of unstability.

Photo-11 Armoring on Terrace Scarp at the right bank towards the downstream from the confluence of the Manhari Khola and the Goruduwa Khola.

His Majesty's Government of Nepal
 Ministry of Forest and Soil Conservation/Department of Soil Conservation
 THE STUDY ON THE DISASTER PREVENTION PLAN
 FOR SEVERELY AFFECTED AREAS BY 1993 DISASTER
 IN THE CENTRAL DEVELOPMENT REGION OF NEPAL
 JAPAN INTERNATIONAL COOPERATION AGENCY

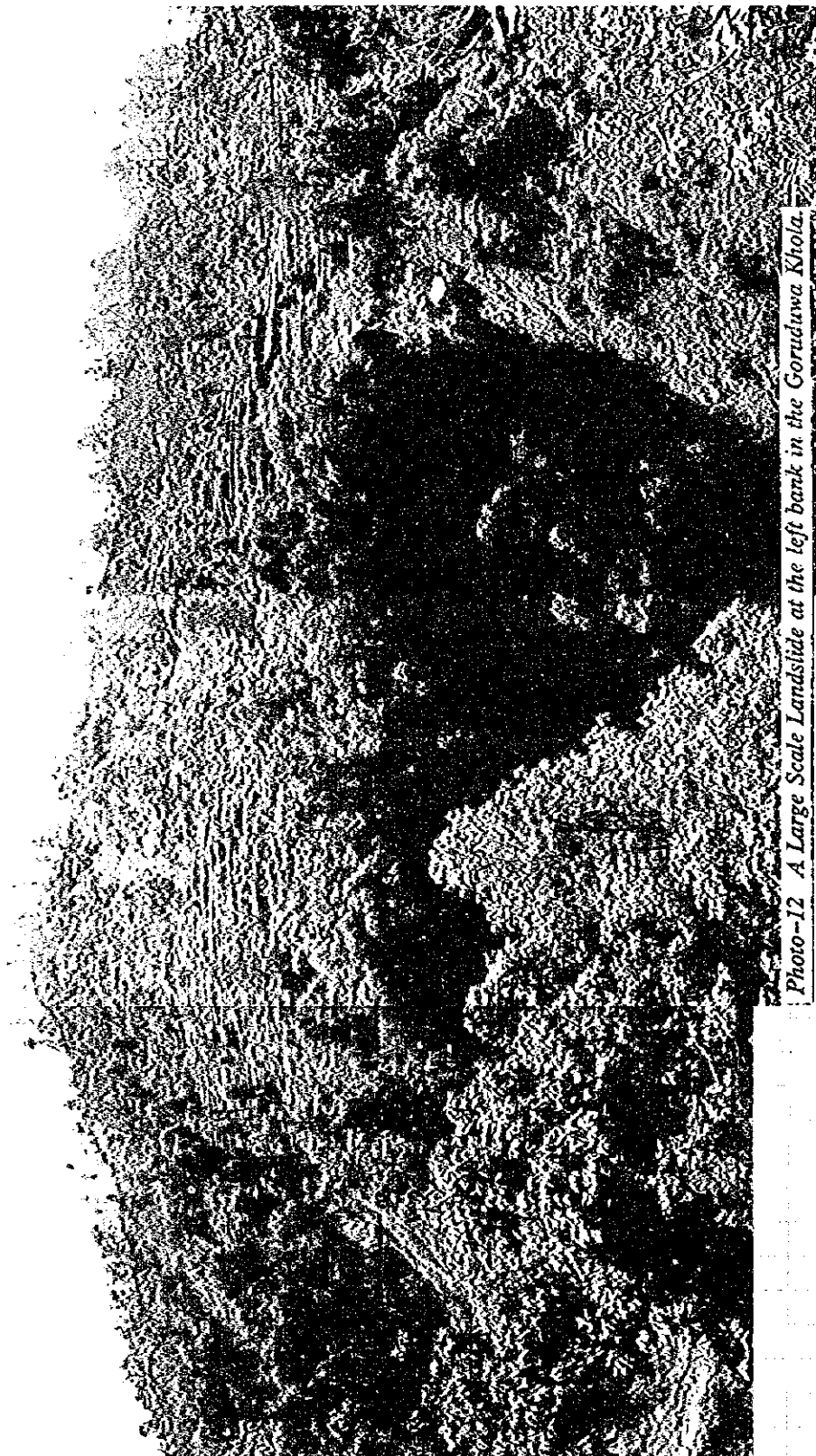


Photo-12 A Large Scale Landslide at the left bank in the Gorudiwa Khola.

His Majesty's Government of Nepal
Ministry of Forest and Soil Conservation/Department of Soil Conservation
THE STUDY ON THE DISASTER PREVENTION PLAN
FOR SEVERELY AFFECTED AREAS BY 1993 DISASTER
IN THE CENTRAL DEVELOPMENT REGION OF NEPAL
JAPAN INTERNATIONAL COOPERATION AGENCY



Re-collapse occurred after remedial protection work.

Photo-13 A Bank Erosion at the right bank near Suspension Bridge.



The left side was river terrace where the old standing tree is seen on the present riverbed.

Photo-14 Debris Mound due to 1993 Disaster and Bank Erosion in the Sarse Khola.



Photo-15 Large Boulder Deposit at the upper stream in the Sarse Khola.

His Majesty's Government of Nepal
 Ministry of Forest and Soil Conservation/Department of Soil Conservation
 THE STUDY ON THE DISASTER PREVENTION PLAN
 FOR SEVERELY AFFECTED AREAS BY 1993 DISASTER
 IN THE CENTRAL DEVELOPMENT REGION OF NEPAL
 JAPAN INTERNATIONAL COOPERATION AGENCY



Photo-16 Failure (with Armoring on Terrace Scarp).

Scattered along the road, comparatively stable

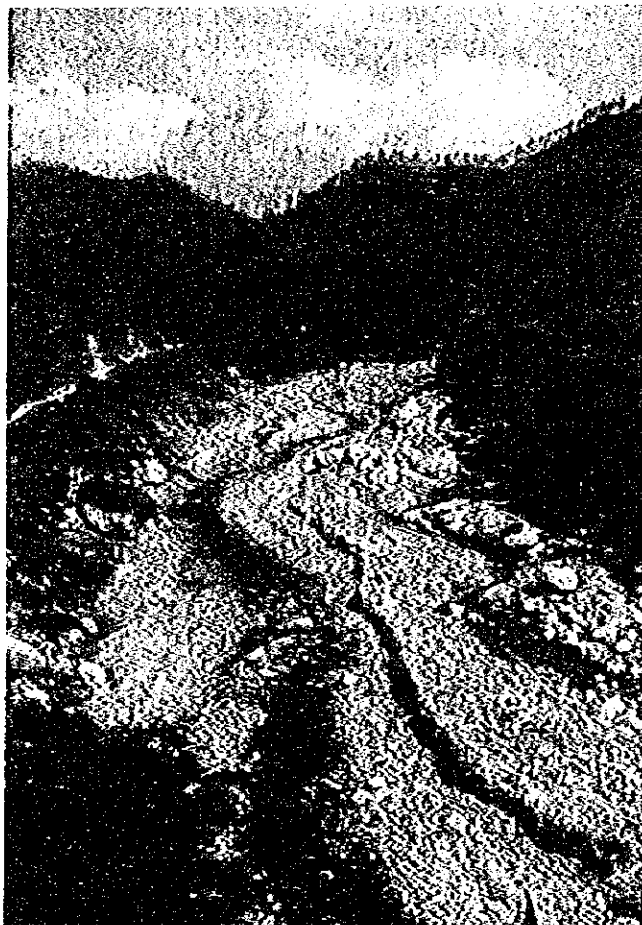


Photo-17 Sediment Deposit and Debris Mound due to 1993 Disaster in the Manhari Khola.

The terrace are being formed by erosion of the deposits of 1993's disaster.

His Majesty's Government of Nepal
 Ministry of Forest and Soil Conservation/Department of Soil Conservation
**THE STUDY ON THE DISASTER PREVENTION PLAN
 FOR SEVERELY AFFECTED AREAS BY 1993 DISASTER
 IN THE CENTRAL DEVELOPMENT REGION OF NEPAL**
JAPAN INTERNATIONAL COOPERATION AGENCY