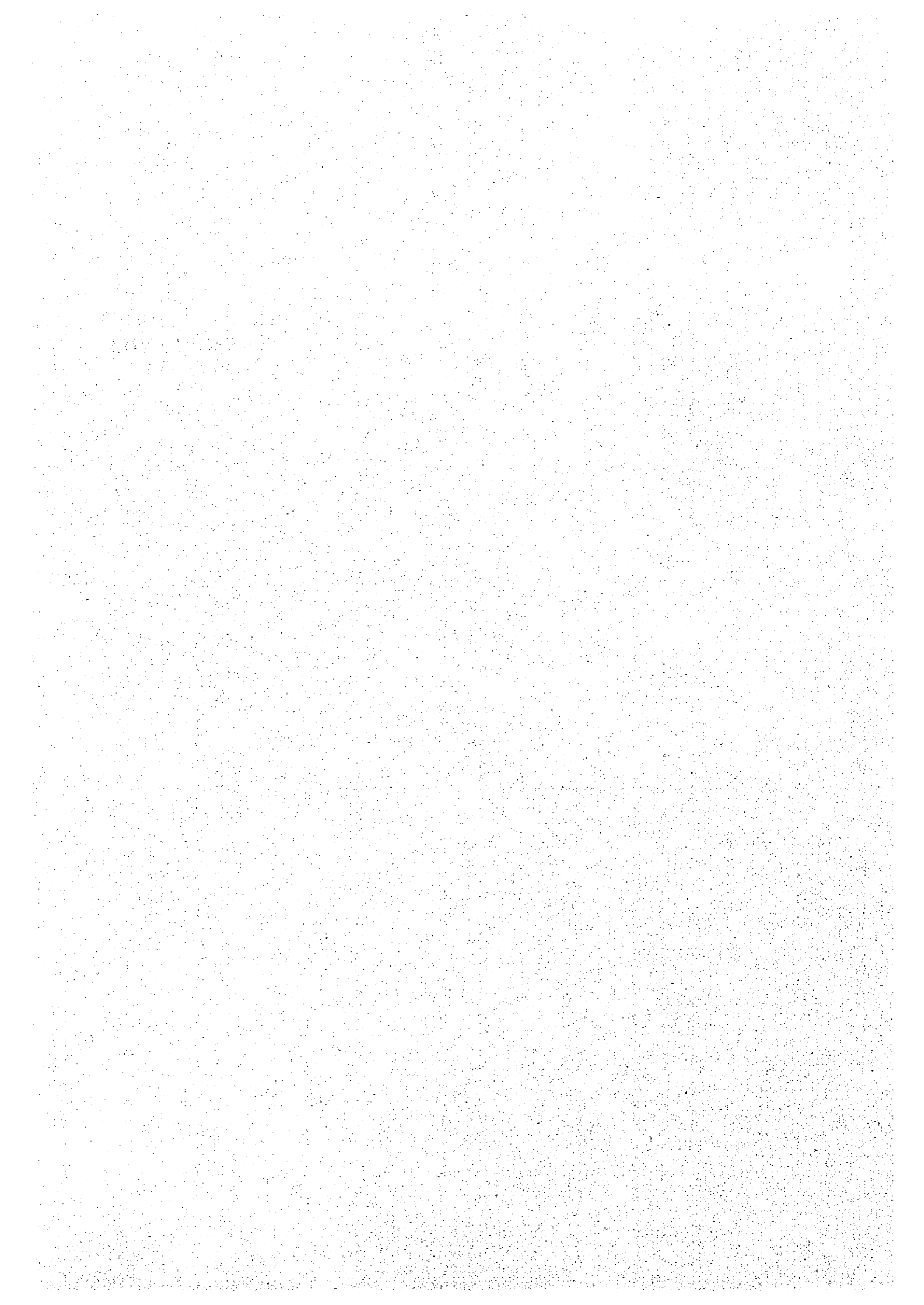


***ANNEX - 1***

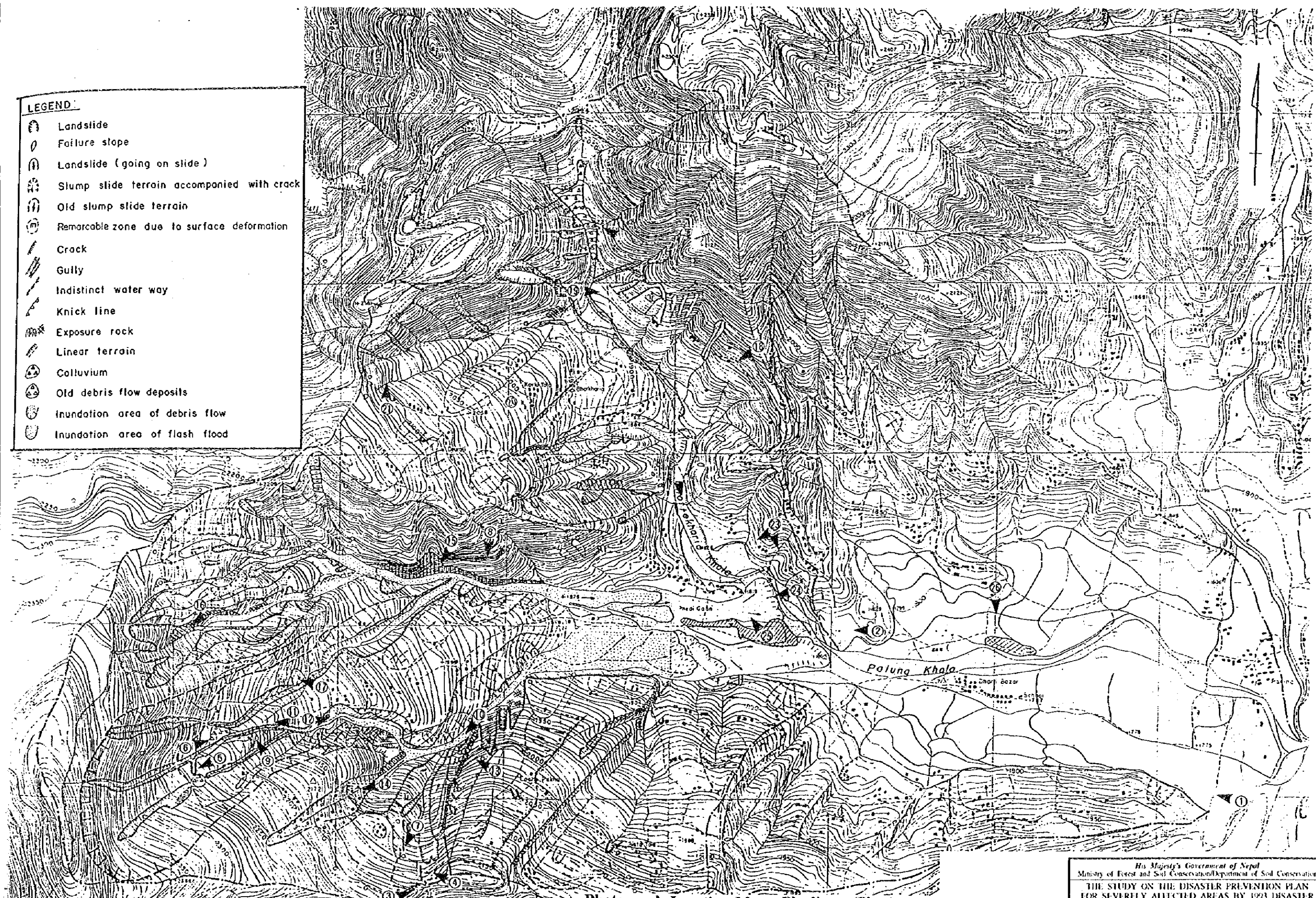
***APPENDIX***



*Photographs*  
*-Phedigaon/Phatbazar-*

**LEGEND**

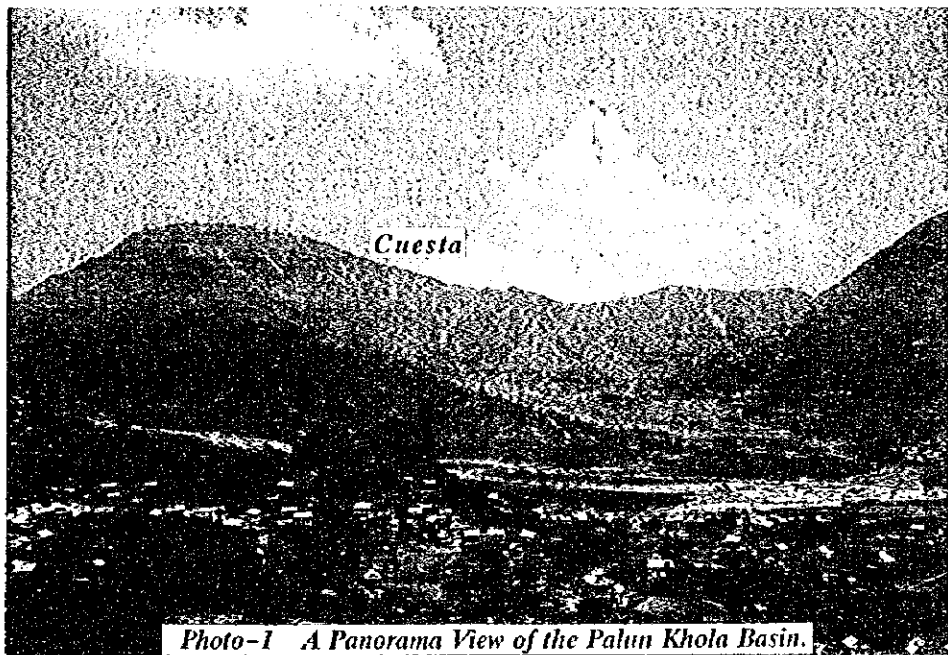
- ① Landslide
- ② Failure slope
- ③ Landslide (going on slide)
- ④ Slump slide terrain accompanied with crack
- ⑤ Old slump slide terrain
- ⑥ Remarcable zone due to surface deformation
- ⑦ Crack
- ⑧ Gully
- ⑨ Indistinct water way
- ⑩ Knick line
- ⑪ Exposure rock
- ⑫ Linear terrain
- ⑬ Colluvium
- ⑭ Old debris flow deposits
- ⑮ Inundation area of debris flow
- ⑯ Inundation area of flash flood



Photograph Location Map - Phedigaou/Phatbazar -

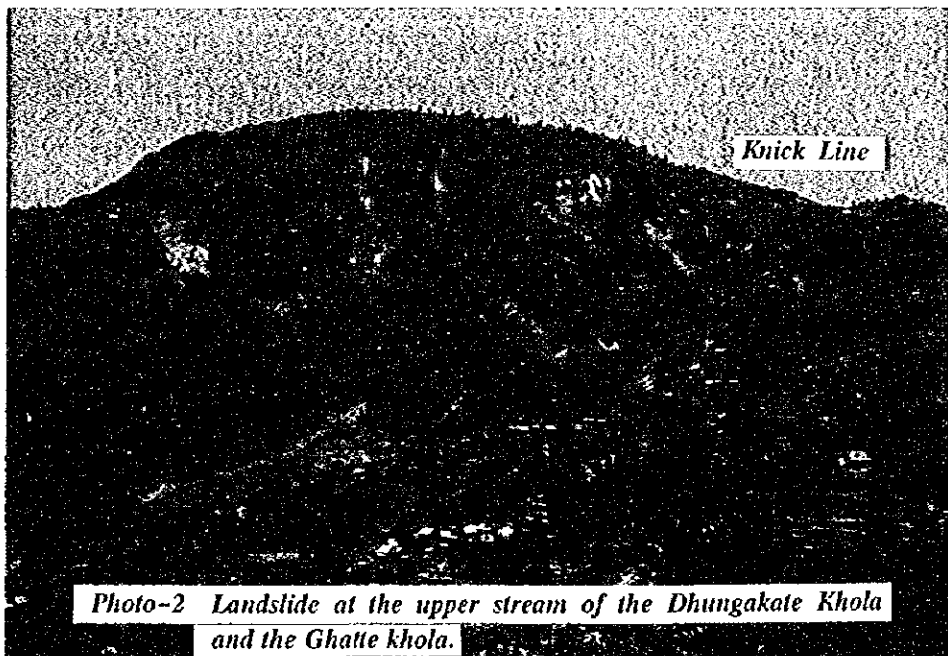
His Majesty's Government of Nepal  
 Ministry of Forest and Soil Conservation/Department of Soil Conservation  
 THE STUDY ON THE DISASTER PREVENTION PLAN  
 FOR SEVERELY AFFECTED AREAS BY 1973 DISASTER  
 IN THE CENTRAL DEVELOPMENT REGION OF NEPAL  
 JAPAN INTERNATIONAL COOPERATION AGENCY





*Photo-1 A Panorama View of the Palun Khola Basin.*

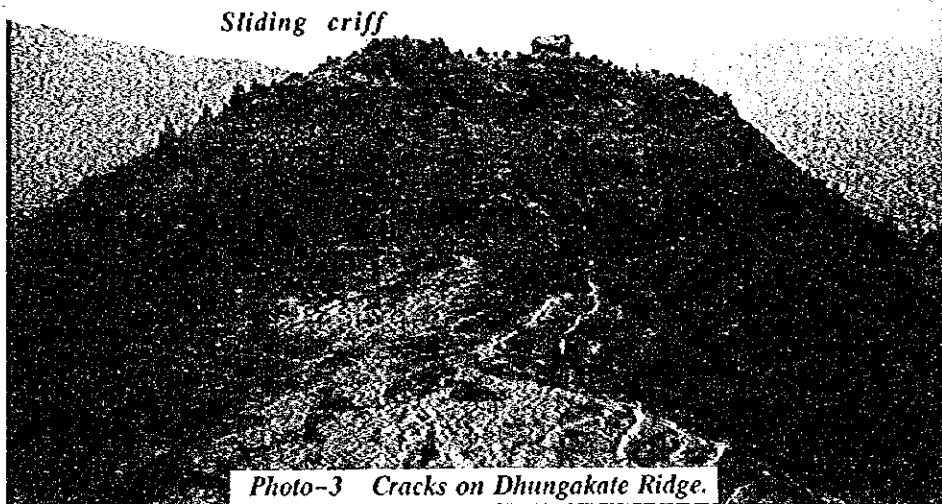
The cuesta landform is observed on the left.



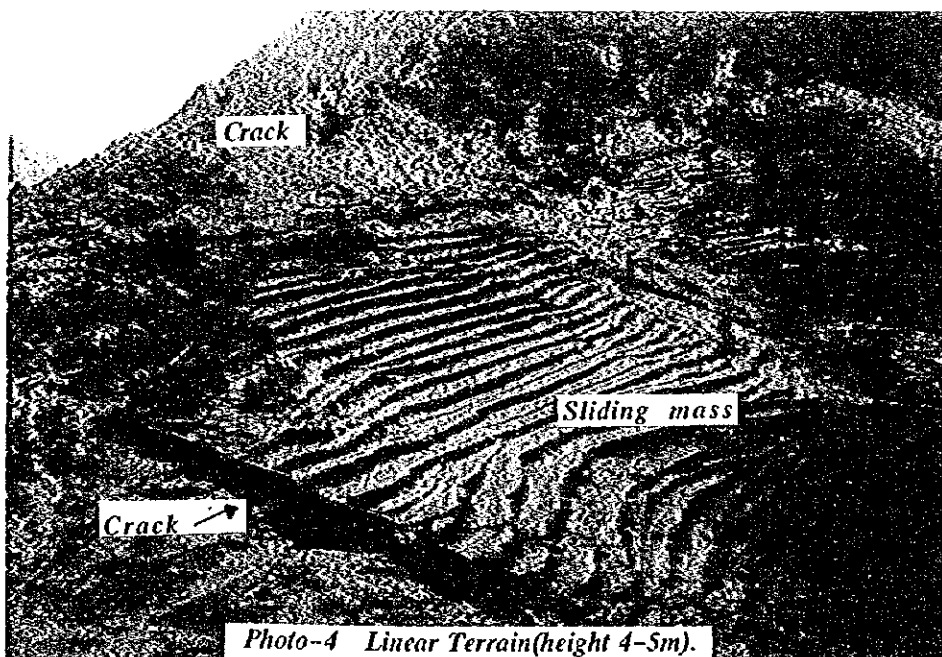
*Photo-2 Landslide at the upper stream of the Dhungakate Khola and the Ghatte khola.*

The edge of vegetation on the mountain is equal to the knick line.

*His Majesty's Government of Nepal*  
 Ministry of Forest and Soil Conservation/Department of Soil Conservation  
 THE STUDY ON THE DISASTER PREVENTION PLAN  
 FOR SEVERELY AFFECTED AREAS BY 1993 DISASTER  
 IN THE CENTRAL DEVELOPMENT REGION OF NEPAL  
 JAPAN INTERNATIONAL COOPERATION AGENCY

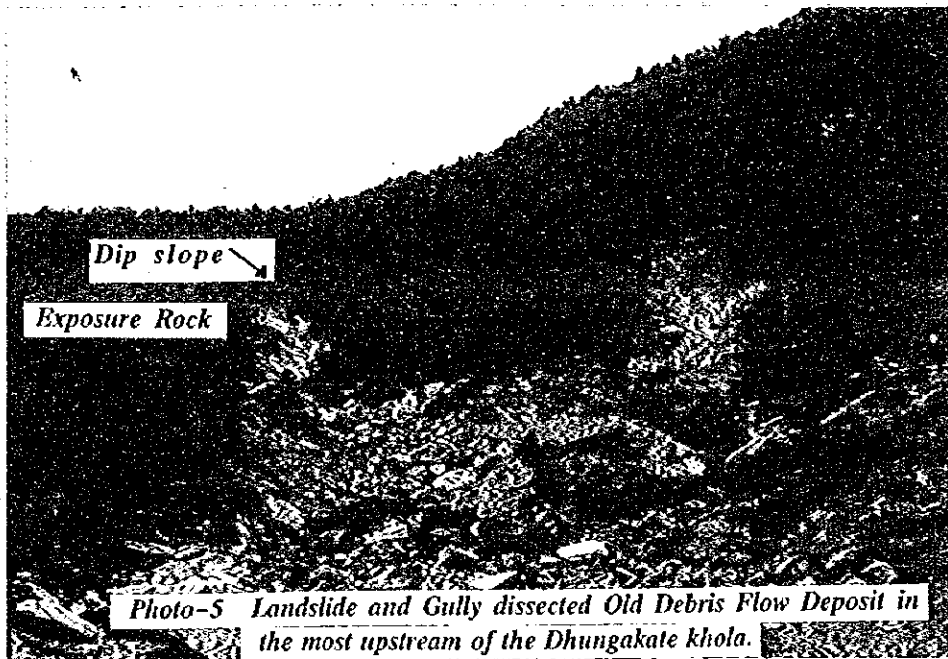


The sliding criff is observed on the ridge.



Cracks at side edge of sliding mass.

<p><i>His Majesty's Government of Nepal</i>          Ministry of Forest and Soil Conservation/Department of Soil Conservation</p> <p><b>THE STUDY ON THE DISASTER PREVENTION PLAN          FOR SEVERELY AFFECTED AREAS BY 1993 DISASTER          IN THE CENTRAL DEVELOPMENT REGION OF NEPAL</b></p> <p><i>JAPAN INTERNATIONAL COOPERATION AGENCY</i></p>
----------------------------------------------------------------------------------------------------------------------------------------------------------------------------------------------------------------------------------------------------------------------------------------------------------------------------------------------------------------------



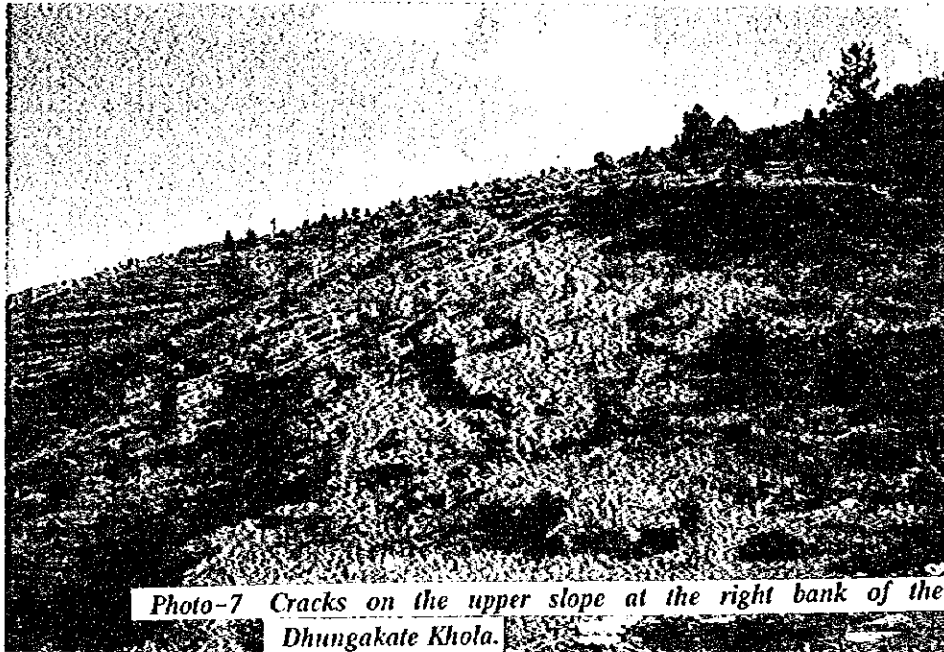
Exposure rock shows dipslope formation on headwater of Dhungakate Khola



The landslide debris trapped on the slope of Dhungakate Khola.

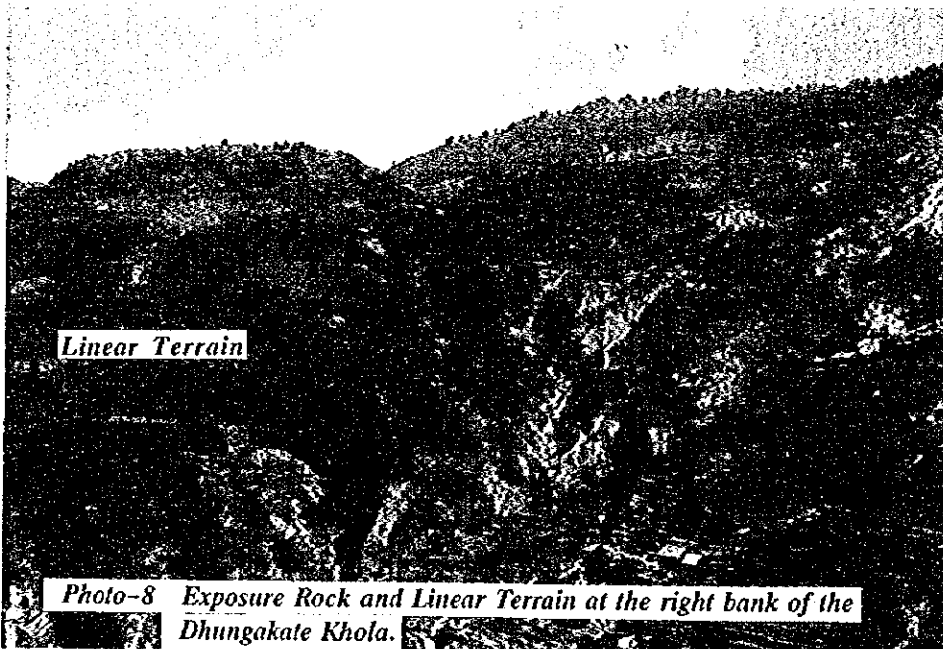
His Majesty's Government of Nepal  
 Ministry of Forest and Soil Conservation/Department of Soil Conservation  
 THE STUDY ON THE DISASTER PREVENTION PLAN  
 FOR SEVERELY AFFECTED AREAS BY 1993 DISASTER  
 IN THE CENTRAL DEVELOPMENT REGION OF NEPAL  
 JAPAN INTERNATIONAL COOPERATION AGENCY





*Photo-7 Cracks on the upper slope at the right bank of the  
Dhungakate Khola.*

The new terrace (1-2 m) by landslide is observed.

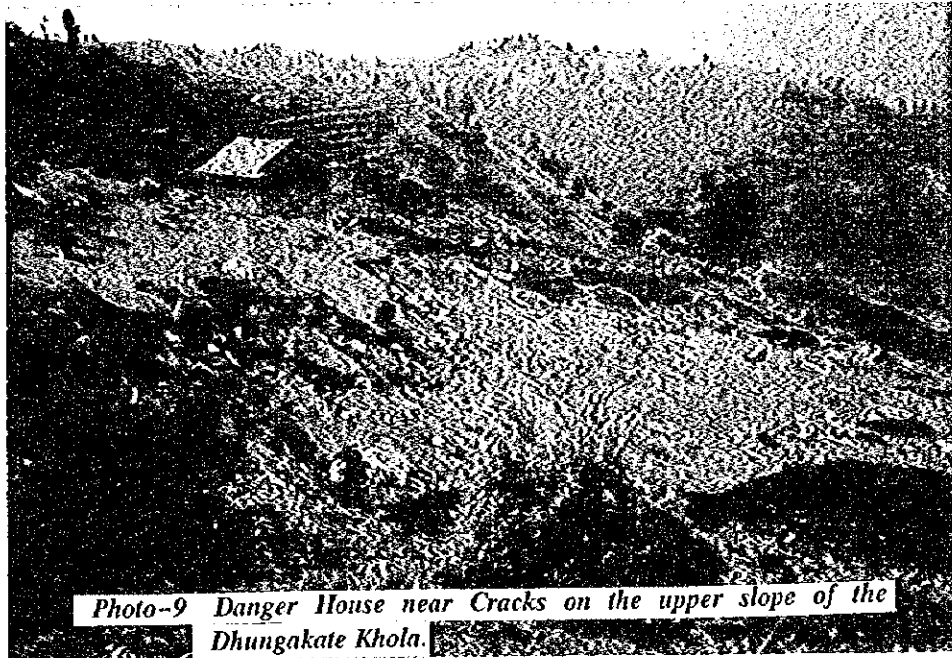


**Linear Terrain**

*Photo-8 Exposure Rock and Linear Terrain at the right bank of the  
Dhungakate Khola.*

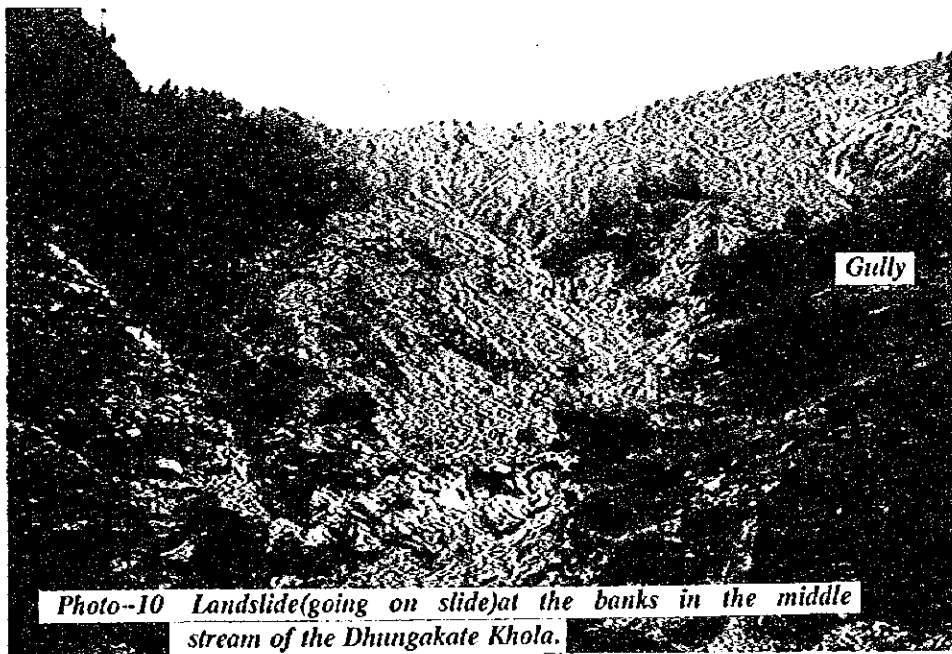
The linear terrain runs vertically. the slopes of upper reaches are separated by blocks and developing the big landslide.

*His Majesty's Government of Nepal*  
 Ministry of Forest and Soil Conservation/Department of Soil Conservation  
 THE STUDY ON THE DISASTER PREVENTION PLAN  
 FOR SEVERELY AFFECTED AREAS BY 1993 DISASTER  
 IN THE CENTRAL DEVELOPMENT REGION OF NEPAL  
 JAPAN INTERNATIONAL COOPERATION AGENCY



**Photo-9** *Danger House near Cracks on the upper slope of the Dhungakate Khola.*

The gentle head scarp is observed unclearly.

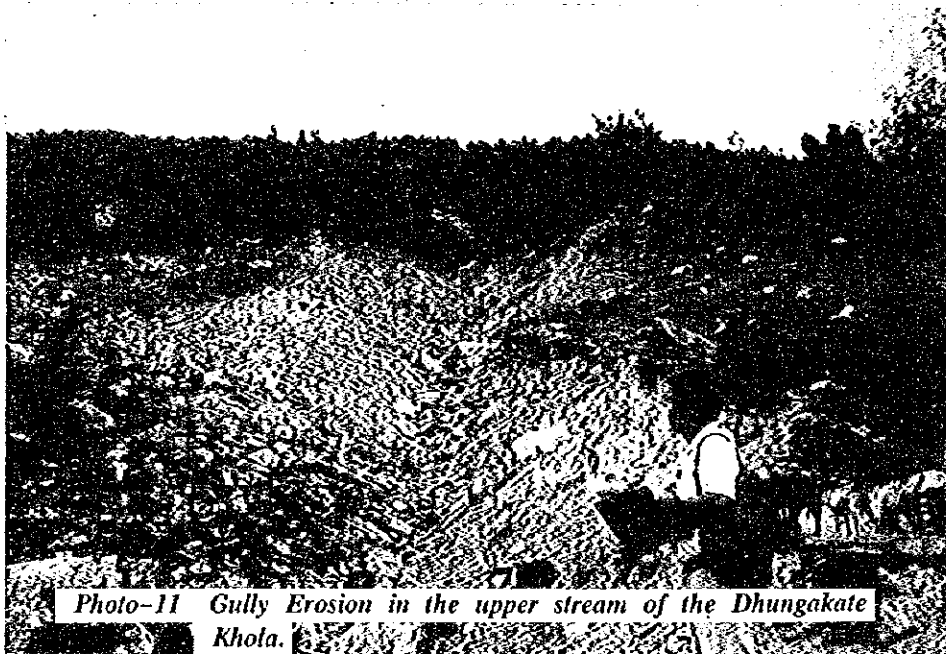


**Photo-10** *Landslide (going on slide) at the banks in the middle stream of the Dhungakate Khola.*

**Gully**

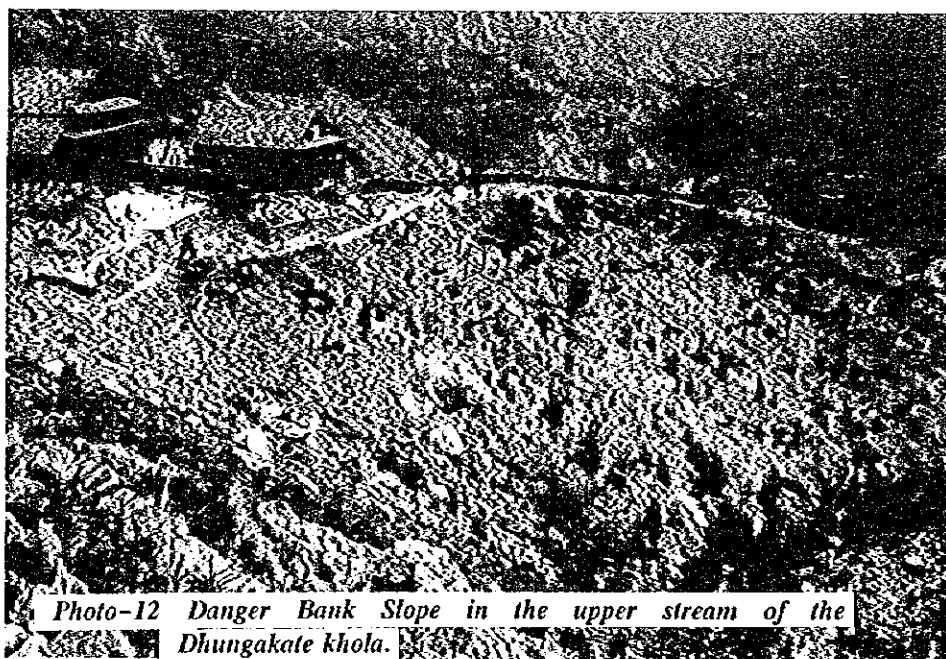
The gully bank slopes was dissected by landslide.

His Majesty's Government of Nepal  
 Ministry of Forest and Soil Conservation/Department of Soil Conservation  
 THE STUDY ON THE DISASTER PREVENTION PLAN  
 FOR SEVERELY AFFECTED AREAS BY 1993 DISASTER  
 IN THE CENTRAL DEVELOPMENT REGION OF NEPAL  
 JAPAN INTERNATIONAL COOPERATION AGENCY



*Photo-11 Gully Erosion in the upper stream of the Dhungakate Khola.*

Many small boulders are deposited on the gully.



*Photo-12 Danger Bank Slope in the upper stream of the Dhungakate khola.*

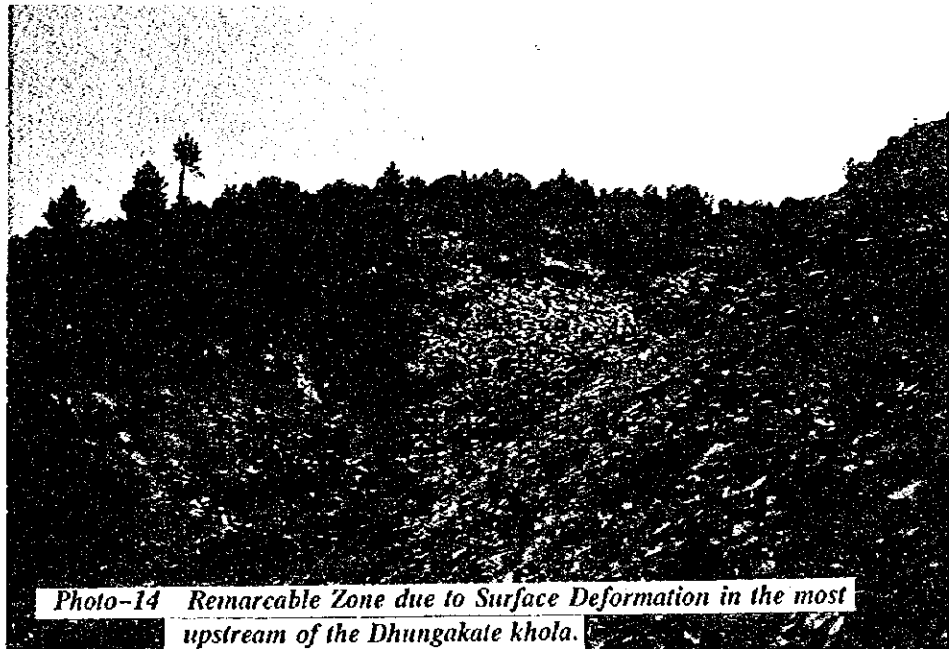
At the bank of gentle slope, the natural vegetation is recovering.

*His Majesty's Government of Nepal*  
Ministry of Forest and Soil Conservation/Department of Soil Conservation  
THE STUDY ON THE DISASTER PREVENTION PLAN  
FOR SEVERELY AFFECTED AREAS BY 1993 DISASTER  
IN THE CENTRAL DEVELOPMENT REGION OF NEPAL  
JAPAN INTERNATIONAL COOPERATION AGENCY



*Photo-13 Old Slump Slide Terrain at the left bank in the middle stream of the Dhungakate khola.*

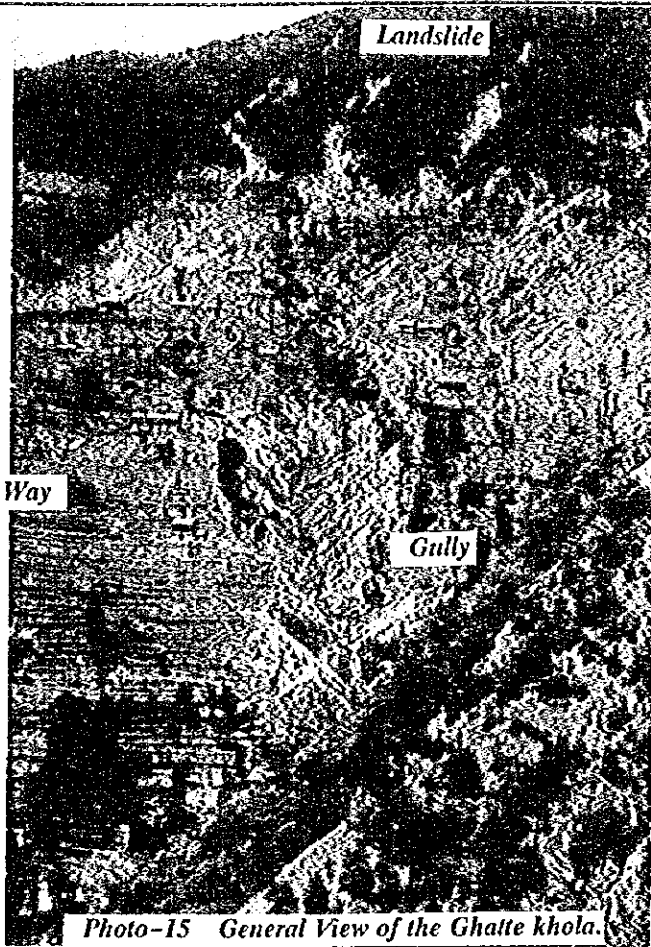
The old slump terrain is made with unhardened landslide deposits.



*Photo-14 Remarkable Zone due to Surface Deformation in the most upstream of the Dhungakate khola.*

Assumed artificial source of debris due to stone mining activities.

His Majesty's Government of Nepal  
 Ministry of Forest and Soil Conservation/Department of Soil Conservation  
 THE STUDY ON THE DISASTER PREVENTION PLAN  
 FOR SEVERELY AFFECTED AREAS BY 1993 DISASTER  
 IN THE CENTRAL DEVELOPMENT REGION OF NEPAL  
 JAPAN INTERNATIONAL COOPERATION AGENCY



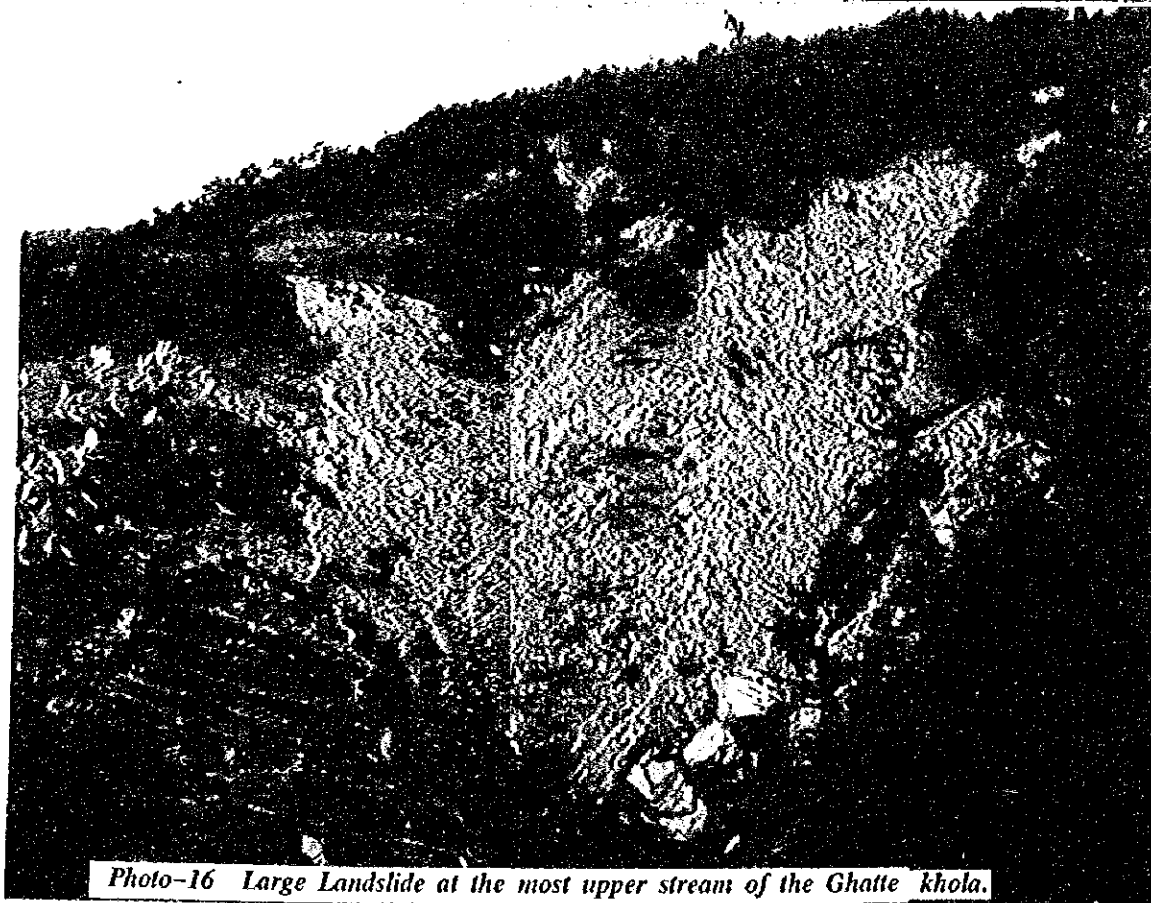
*Indistinct Water Way*

*Landslide*

*Gully*

The gully, landslide, indistinct water way are showed in the Photo.

*Photo-15 General View of the Ghatte khola.*



*Photo-16 Large Landslide at the most upper stream of the Ghatte khola.*

The rock layers are sliced off. The large boulders are accumulating in the right.

*His Majesty's Government of Nepal*  
 Ministry of Forest and Soil Conservation/Department of Soil Conservation  
 THE STUDY ON THE DISASTER PREVENTION PLAN  
 FOR SEVERELY AFFECTED AREAS BY 1993 DISASTER  
 IN THE CENTRAL DEVELOPMENT REGION OF NEPAL  
 JAPAN INTERNATIONAL COOPERATION AGENCY



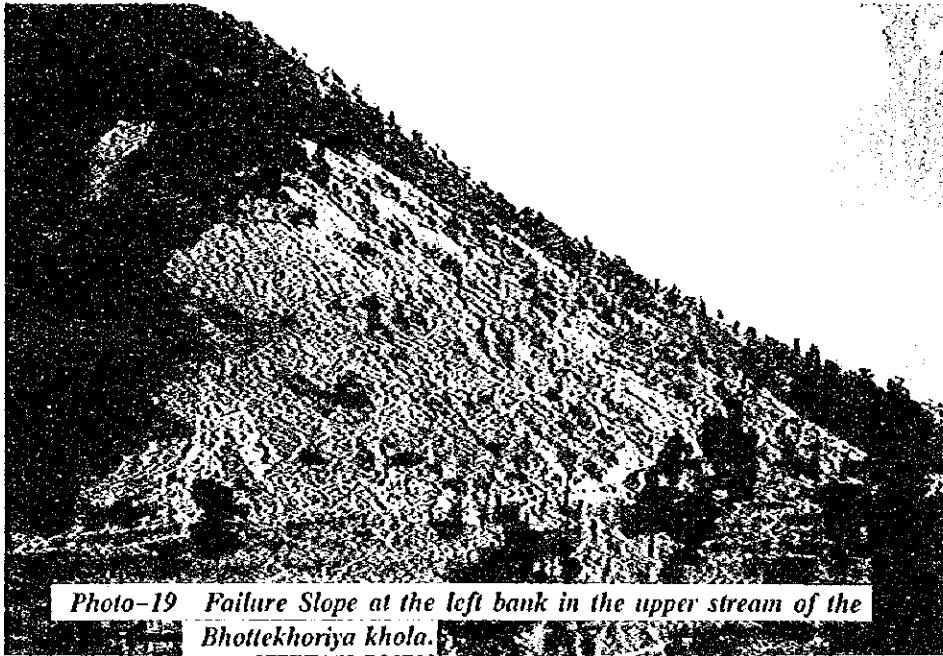
The land is expected to be unstable by the corrosion of the head though the vegetation is recovering.



A typical landslide on dip slope is observed at the upper side.

Photo-18 Slump Slide Terrain accompanied with Crack, Large Landslide and Innudation area of Debris Flow in Bhottekhoria Khola Basin.

His Majesty's Government of Nepal  
 Ministry of Forest and Soil Conservation/Department of Soil Conservation  
 THE STUDY ON THE DISASTER PREVENTION PLAN  
 FOR SEVERELY AFFECTED AREAS BY 1993 DISASTER  
 IN THE CENTRAL DEVELOPMENT REGION OF NEPAL  
 JAPAN INTERNATIONAL COOPERATION AGENCY



**Photo-19** Failure Slope at the left bank in the upper stream of the Bhottekhoriya khola.

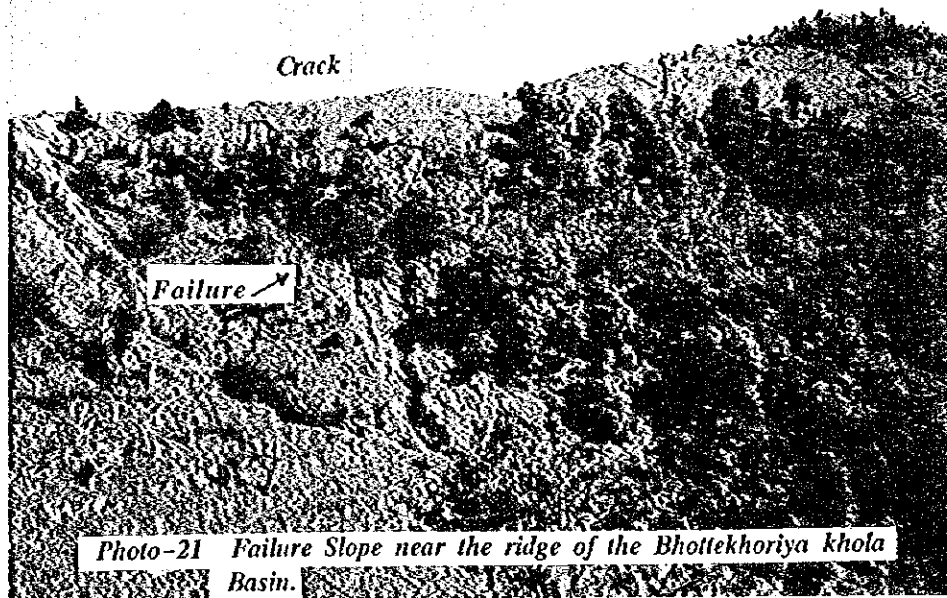
The outer layer of the slopes slipped down.



**Photo-20** Old Debris Flow Deposits in the upper stream of the Bhottekhoriya khola.

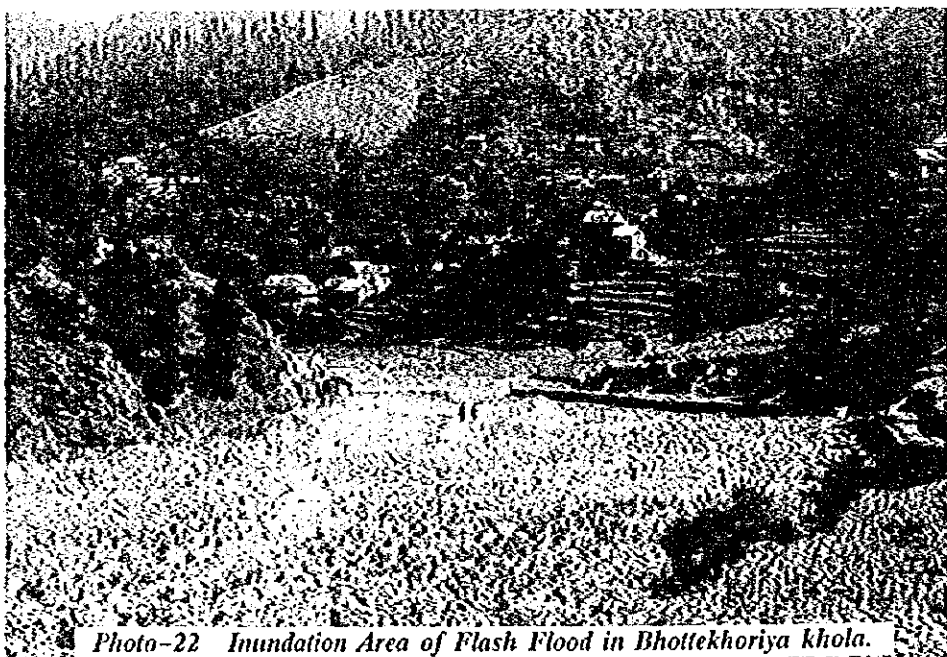
Secondary erosion occurred by the 1993's rainstorm on the old debris fan.

His Majesty's Government of Nepal  
 Ministry of Forest and Soil Conservation/Department of Soil Conservation  
 THE STUDY ON THE DISASTER PREVENTION PLAN  
 FOR SEVERELY AFFECTED AREAS BY 1993 DISASTER  
 IN THE CENTRAL DEVELOPMENT REGION OF NEPAL  
 JAPAN INTERNATIONAL COOPERATION AGENCY



*Photo-21 Failure Slope near the ridge of the Bhottekhoriya khola Basin.*

**The failure occurred on bald slope.**



*Photo-22 Inundation Area of Flash Flood in Bhottekhoriya khola.*

**The riverbed was buried by the 1993's rainstorm and the river width was expanded.**

*His Majesty's Government of Nepal*  
 Ministry of Forest and Soil Conservation/Department of Soil Conservation  
**THE STUDY ON THE DISASTER PREVENTION PLAN  
 FOR SEVERELY AFFECTED AREAS BY 1993 DISASTER  
 IN THE CENTRAL DEVELOPMENT REGION OF NEPAL**  
**JAPAN INTERNATIONAL COOPERATION AGENCY**

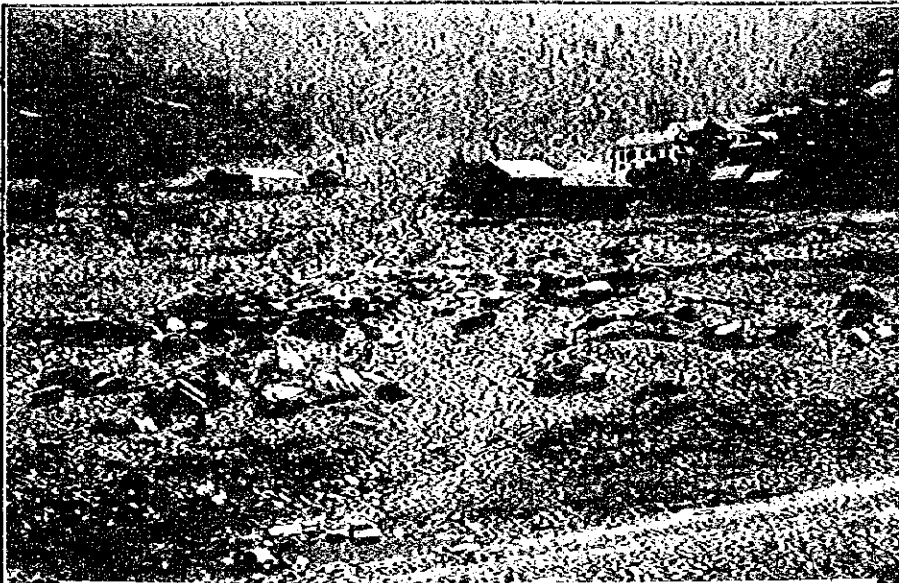




Photo-23 A Panorama View around the Confluence of the Dhungakate Khola and Ghatte Khola.

The alluvium fan area is getting stable after 1993 rainstorm.

His Majesty's Government of Nepal  
 Ministry of Forest and Soil Conservation/Department of Soil Conservation  
 THE STUDY ON THE DISASTER PREVENTION PLAN  
 FOR SEVERELY AFFECTED AREAS BY 1993 DISASTER  
 IN THE CENTRAL DEVELOPMENT REGION OF NEPAL  
 JAPAN INTERNATIONAL COOPERATION AGENCY



The large boulders were accumulated.

Photo-24 Terminal Edge of Inundation Area by Debris Flow.



The cultivation area is all over in the valley.

Photo-25 Over View of Phedigaon Village before 1993 Disaster.



The cultivation land is recovered except along the river.

Photo-26 Inundation Area of Flash Flood around Phatbazar.

His Majesty's Government of Nepal  
 Ministry of Forest and Soil Conservation/Department of Soil Conservation  
 THE STUDY ON THE DISASTER PREVENTION PLAN  
 FOR SEVERELY AFFECTED AREAS BY 1993 DISASTER  
 IN THE CENTRAL DEVELOPMENT REGION OF NEPAL.  
 JAPAN INTERNATIONAL COOPERATION AGENCY

