

FOTOGRAFÍAS

FOTOGRAFÍAS MICROSCÓPICAS

LEYENDA

Qt : Cuarzo

Se : Sericita

Ch : Clorita

Py : Pirita

Cp : Calcopirita

Sp : Esfalerita

Gn : Galena

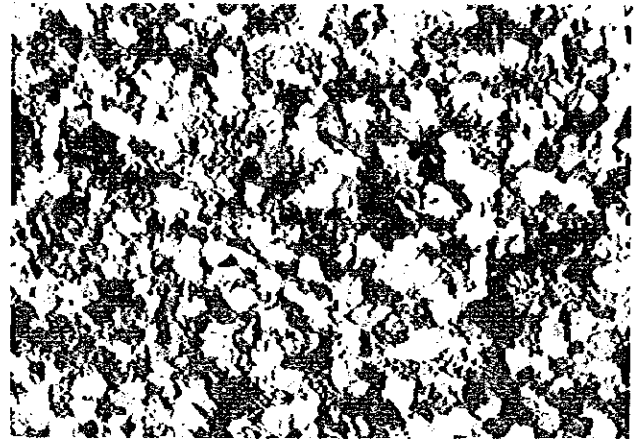
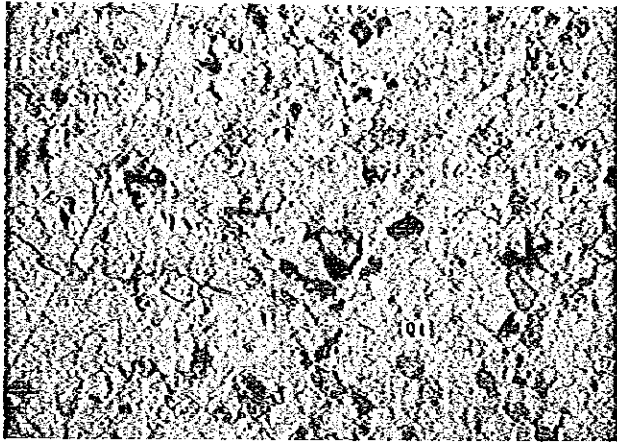
El : Electrum

Cb : Carbon

Bn : Bournonita, ($2\text{PbS} \cdot \text{Cu}_2\text{S} \cdot \text{Sb}_2\text{S}_3$)

T-2: Sección delgada

P-2: Sección pulida

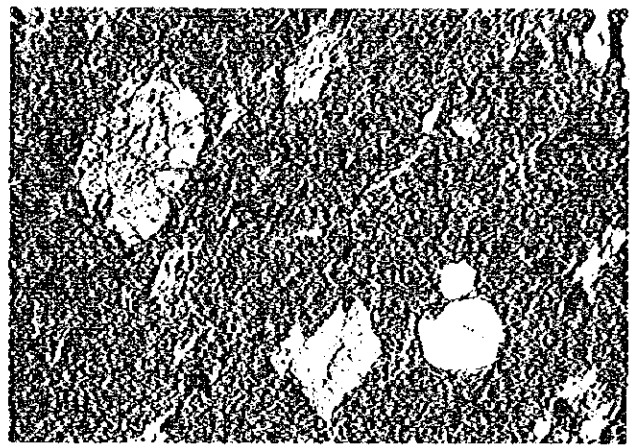
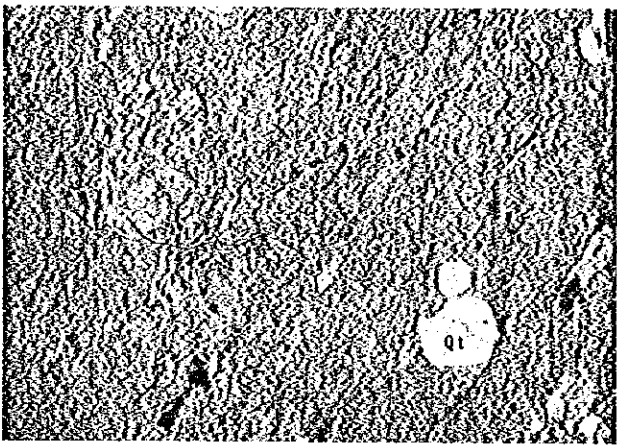


Muestra : LF0600, Arenisca

Localidad : linia-F

Nicoles paralelos 0 0.2mm

Nicoles cruzados

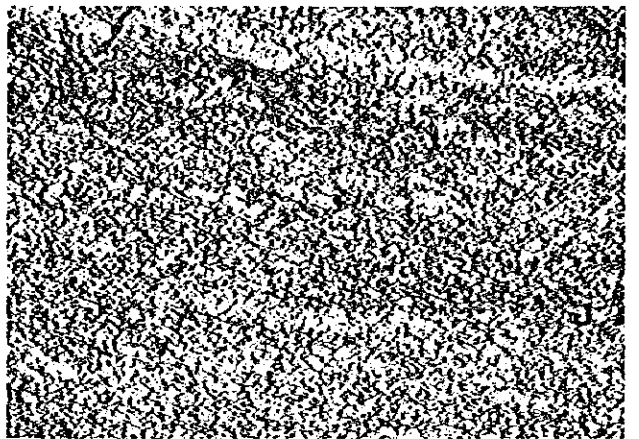
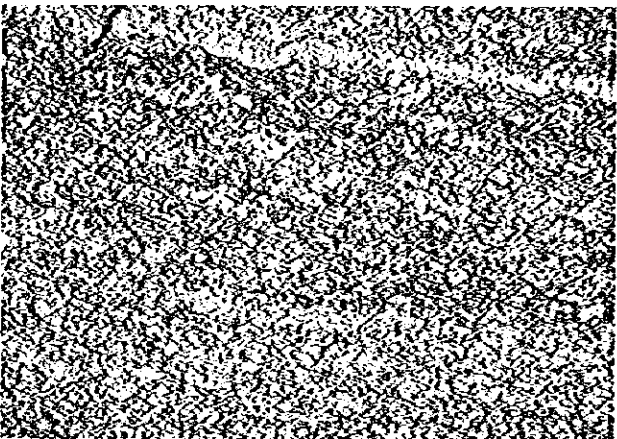


Muestra : SF016 riolita

Localidad : San Francisco

Nicoles paralelos 0 0.2mm

Nicoles cruzados



Muestra : SF018 pizarra

Localidad : San Francisco

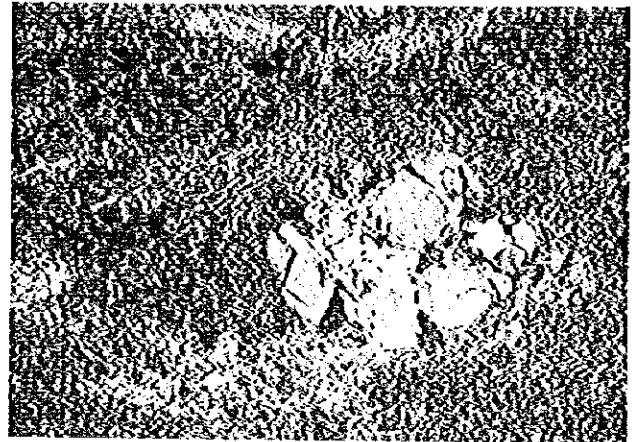
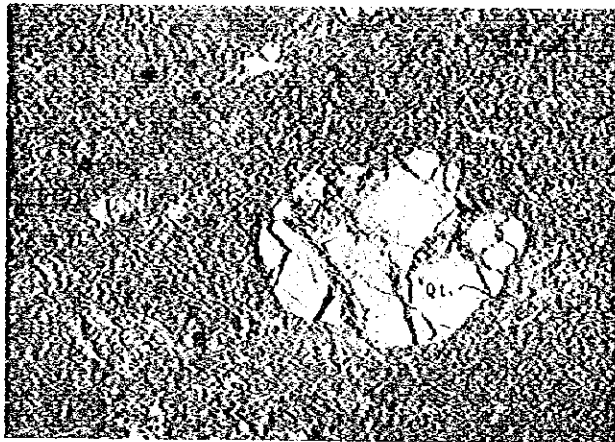
Nicoles paralelos 0 0.2mm

Nicoles cruzados

2

3

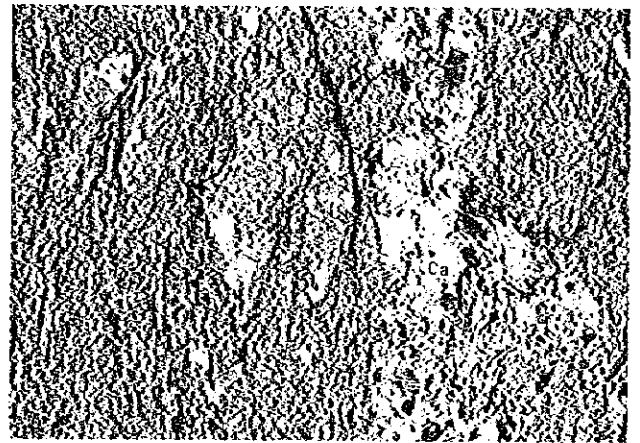
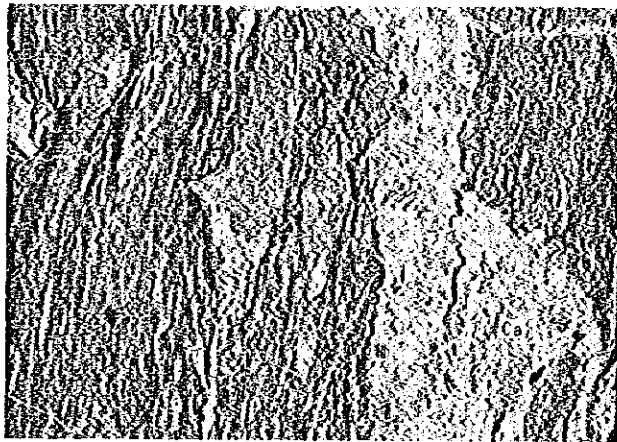
4



Muestra : SF045 riolita

Localidad : San Francisco Nicols paralelos 0 0.2mm

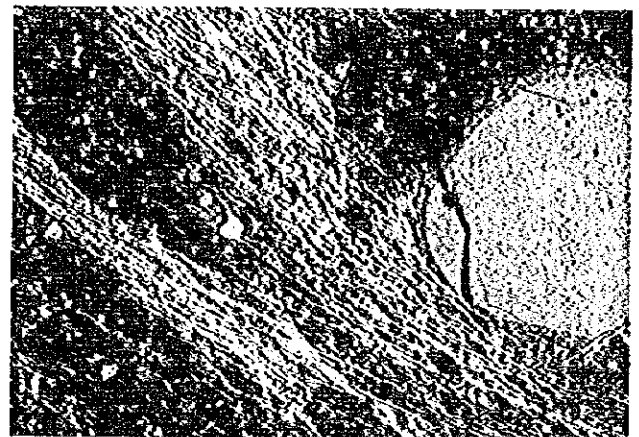
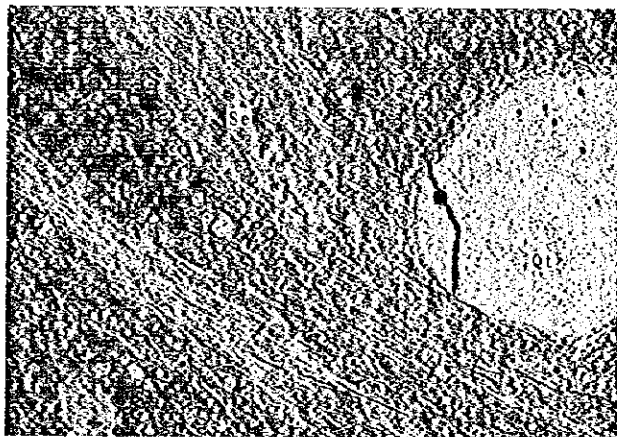
Nicols cruzados



Muestra : TR068 pizarra calcarea

Localidad : La Trinidad Nicols paralelos 0 0.2mm

Nicols cruzados



Muestra : HK-7 Riolita silisificada

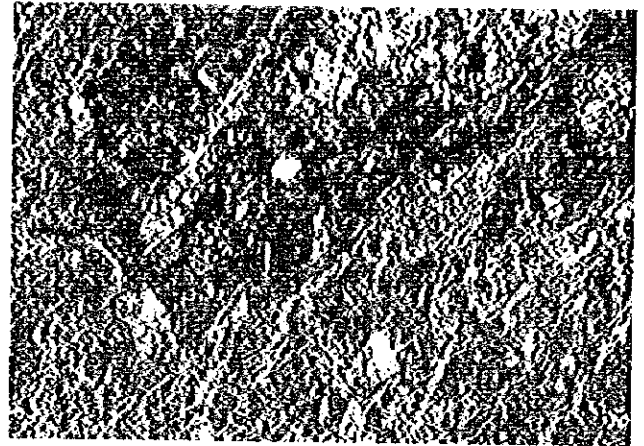
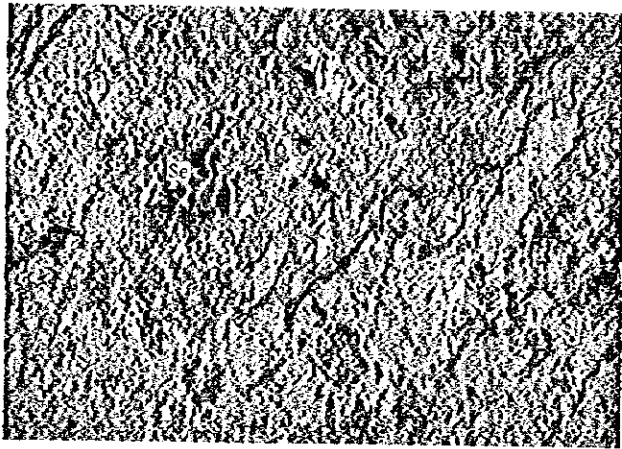
Localidad : Nicols paralelos 0 0.4mm

Nicols cruzados

0

0

0

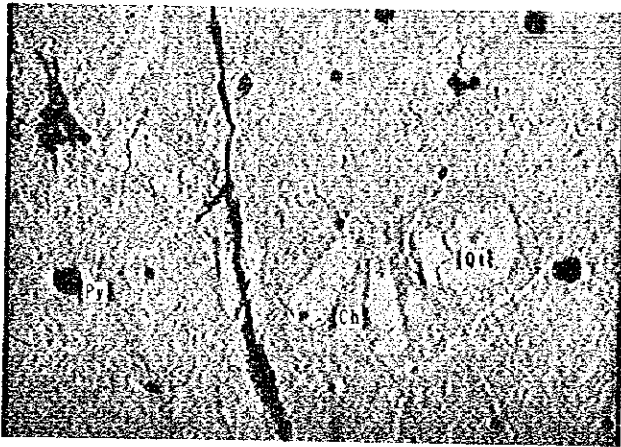


Muestra : 4T-5, MJC-4, riolita

Localidad : 334.00 m Nicoles paralelos

0 0.2mm

Nicoles cruzados

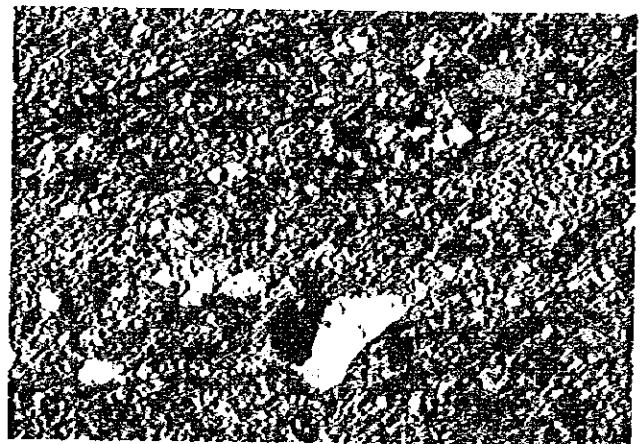


Muestra : 5T-1 MJC-5 riolita

Localidad : 32.70 m Nicoles paralelos

0 0.2mm

Nicoles cruzados



Muestra : 6T-9 MJC-6, arenisca

Localidad : 114.60 m Nicoles paralelos

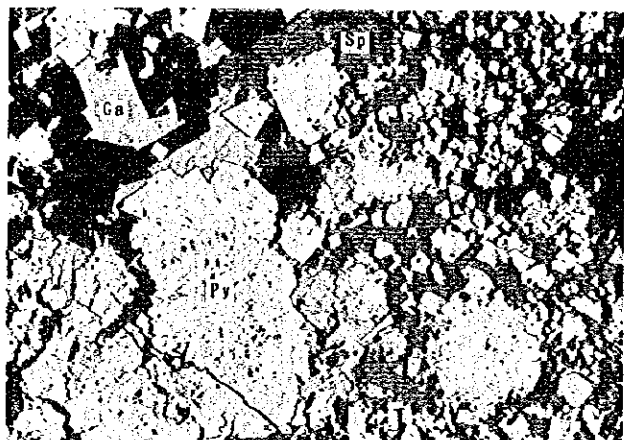
0 0.2mm

Nicoles cruzados

0

0

0

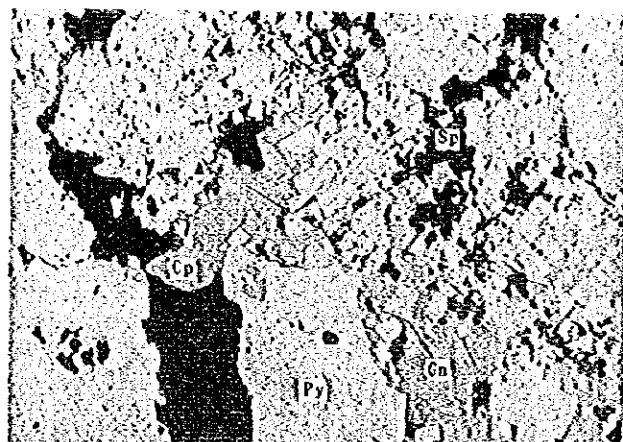


Muestra : LB112A

Localidad : La Libélula

Nicoles paralelos

0 0.2mm

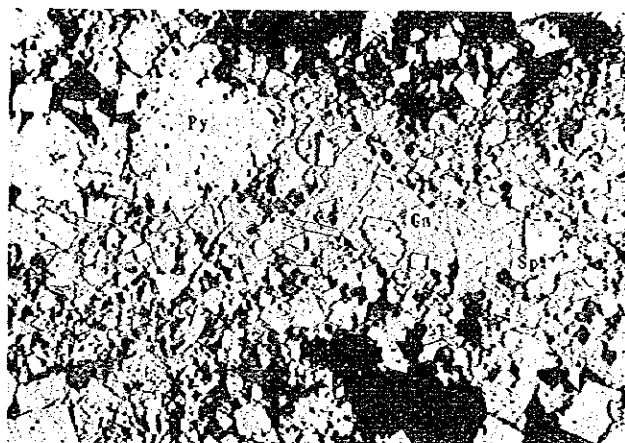


Muestra : LB119B

Localidad : La Libélula

Nicoles paralelos

0 0.1mm

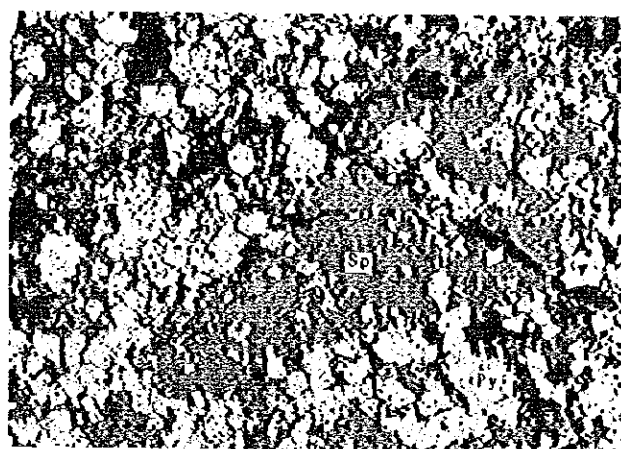


Muestra : LB106A

Localidad : La Libélula

Nicoles paralelos

0 0.2mm

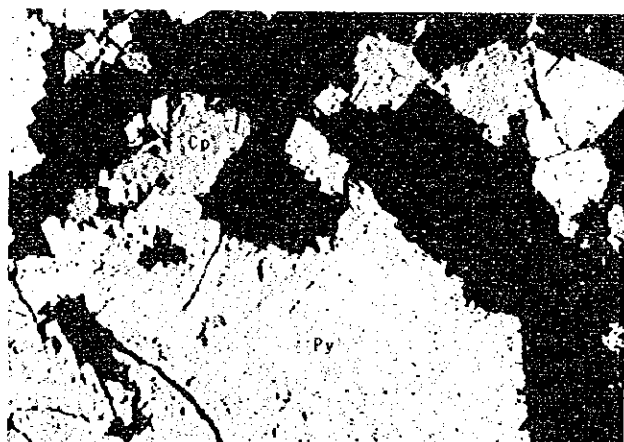


Muestra : LB106C

Localidad : La Libélula

Nicoles paralelos

0 0.2mm

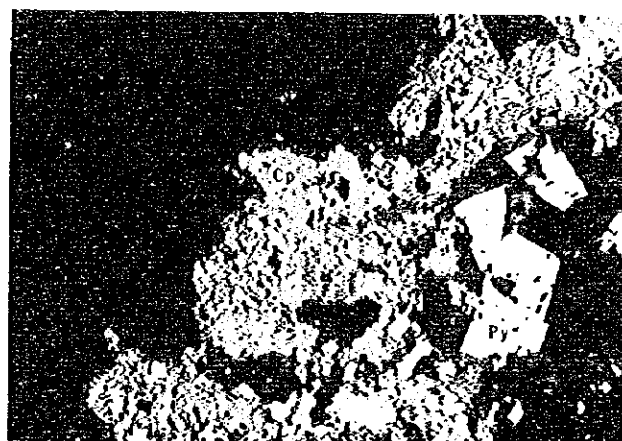


Muestra : LB103A

Localidad : La Libélula

Nicoles paralelos

0 0.2mm



Muestra : HK-27

Localidad : Nicolas Bravo

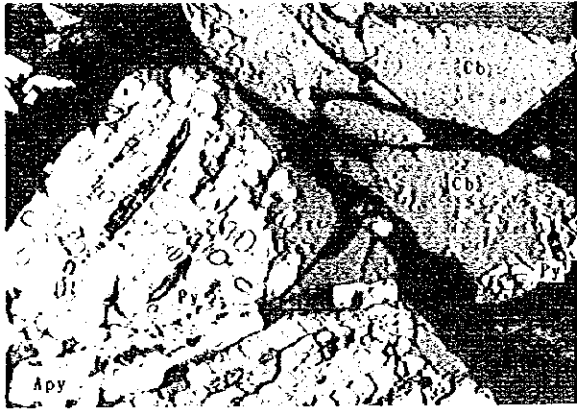
Nicoles paralelos

0 0.2mm

0

0

0

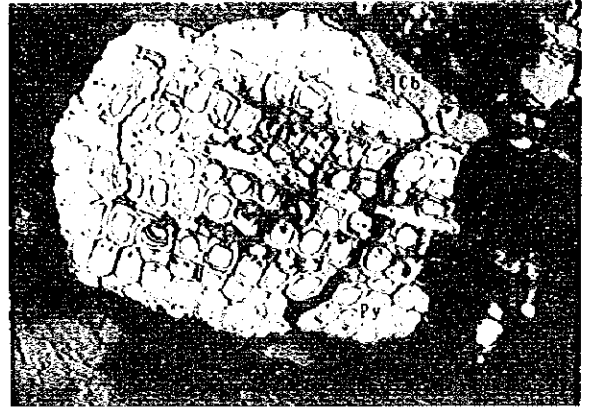


Muestra : 1P-2

Localidad : WJMC-1

Nicoles paralelos

0 0.2mm

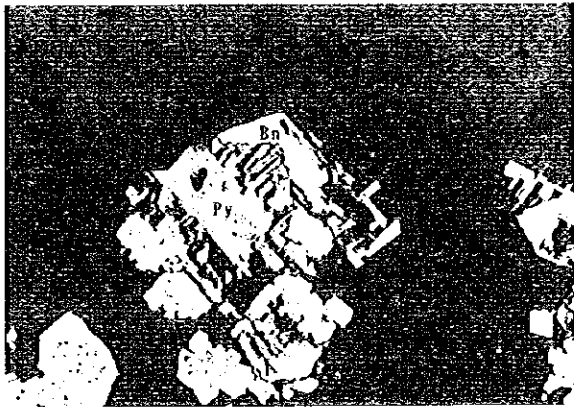


Muestra : 1P-2

Localidad : WJMC-1

Nicoles paralelos

0 0.2mm

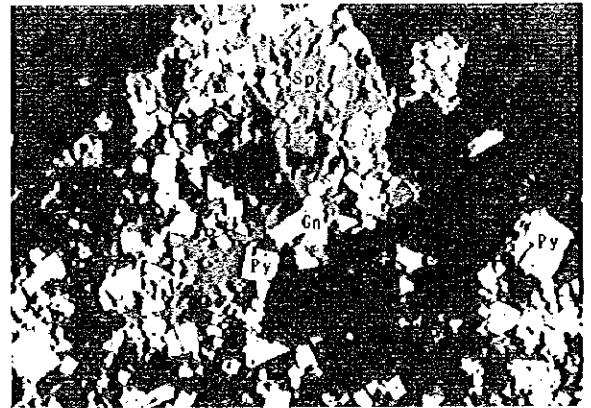


Muestra : 4P-3

Localidad : WJMC-4

Nicoles paralelos

0 0.2mm

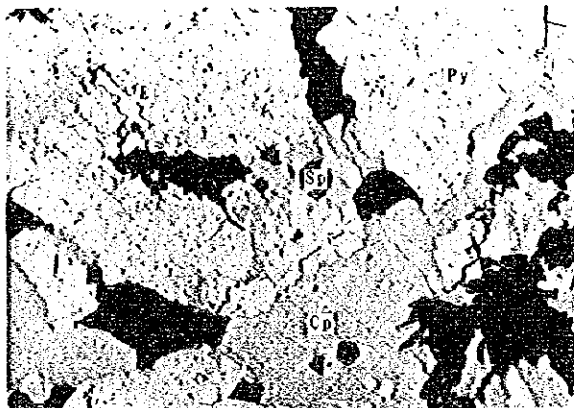


Muestra : 5P-3

Localidad : WJMC-5

Nicoles paralelos

0 0.2mm

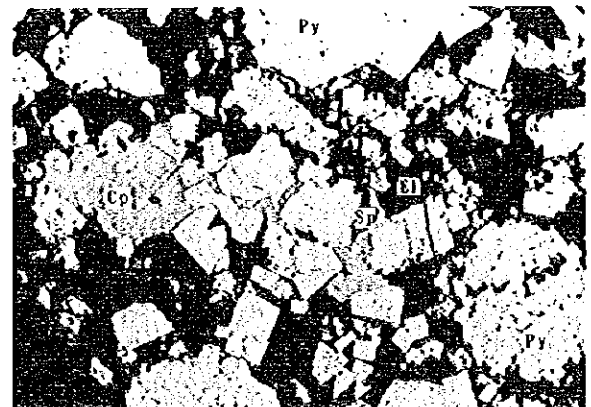


Muestra : 5P-7

Localidad : WJMC-5

Nicoles paralelos

0 0.1mm

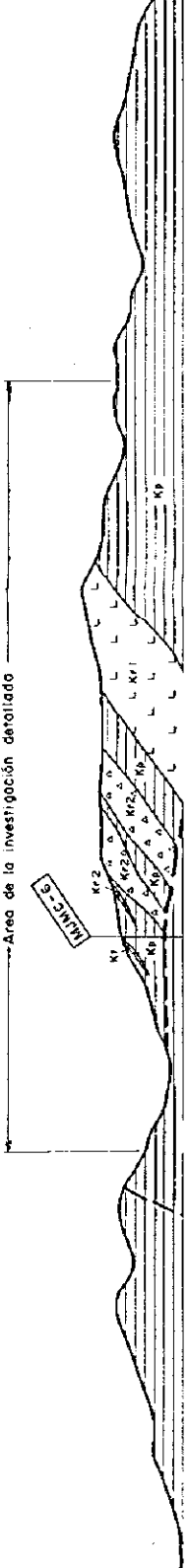
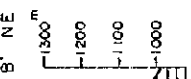
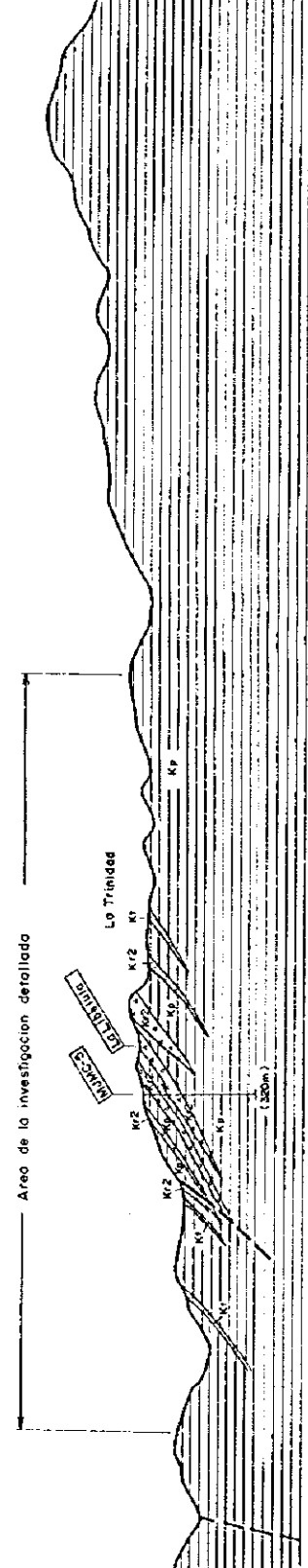
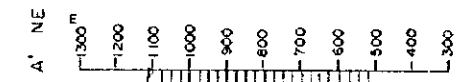
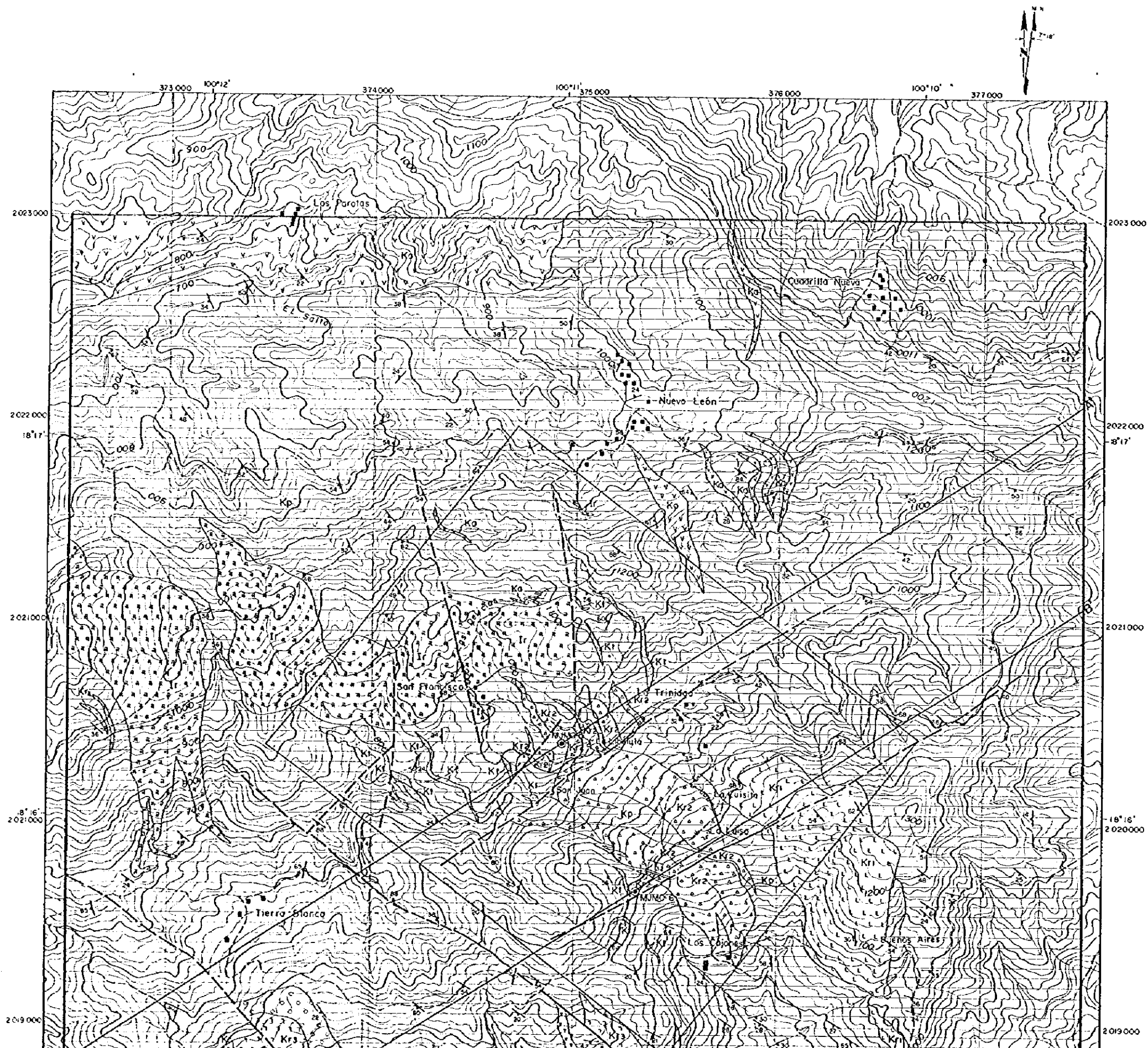


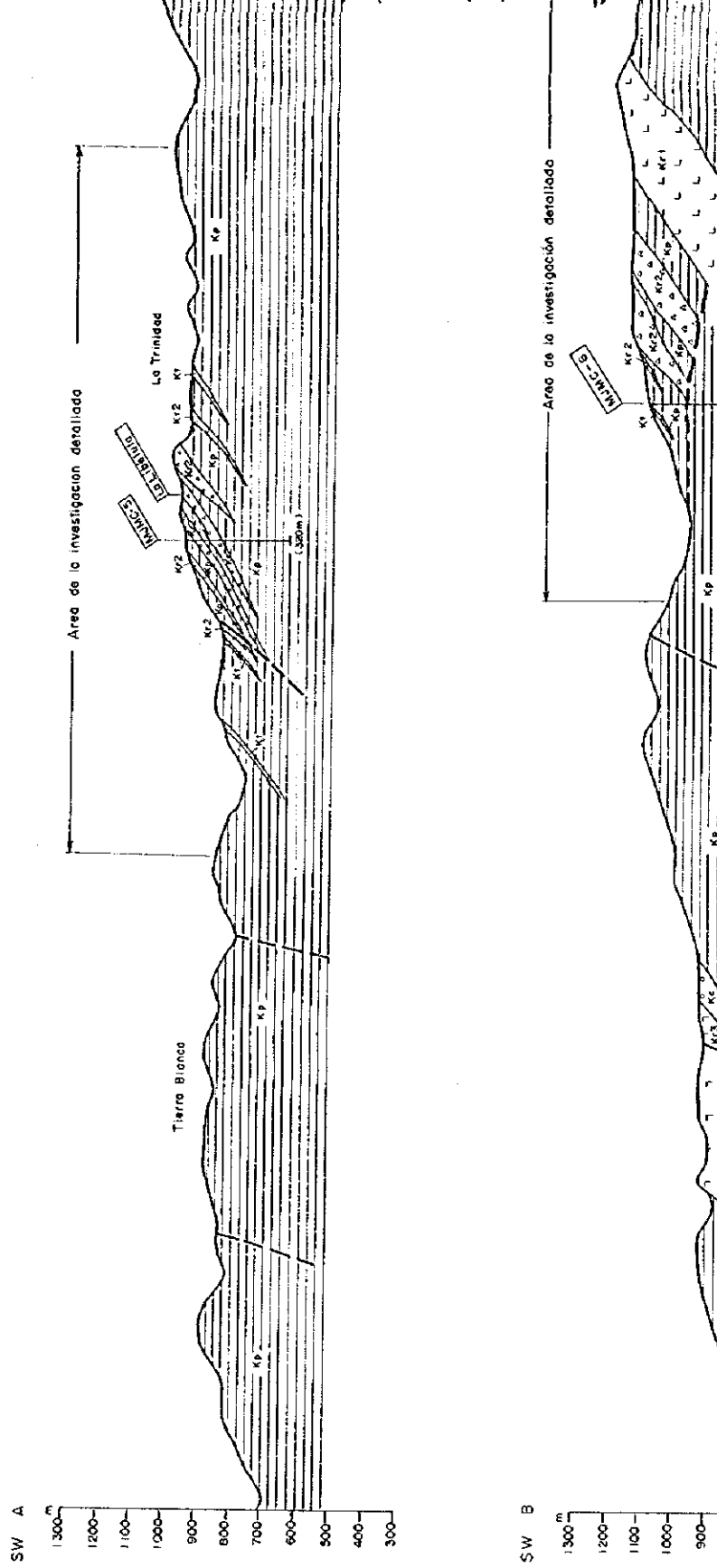
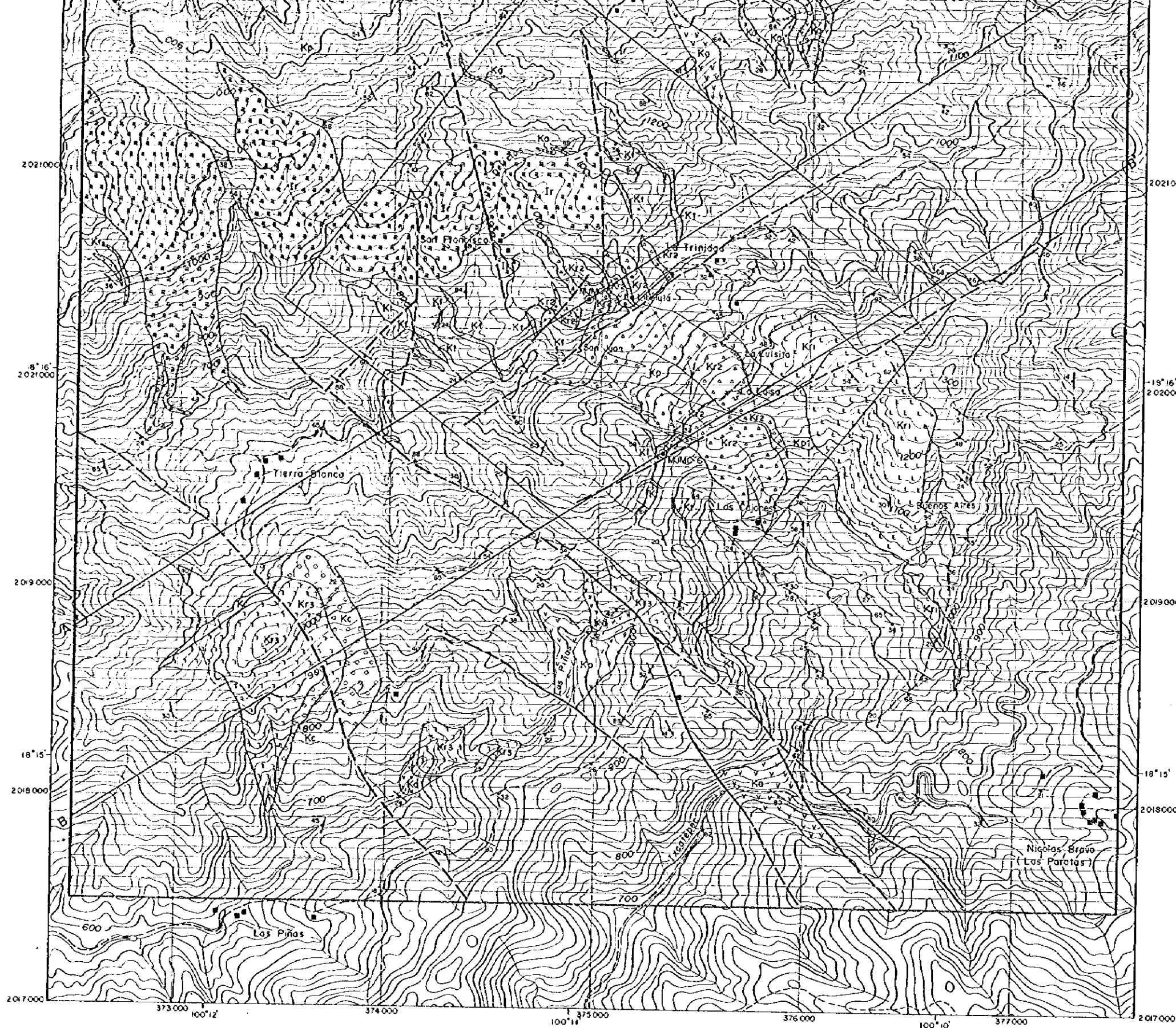
Muestra : 5P-6

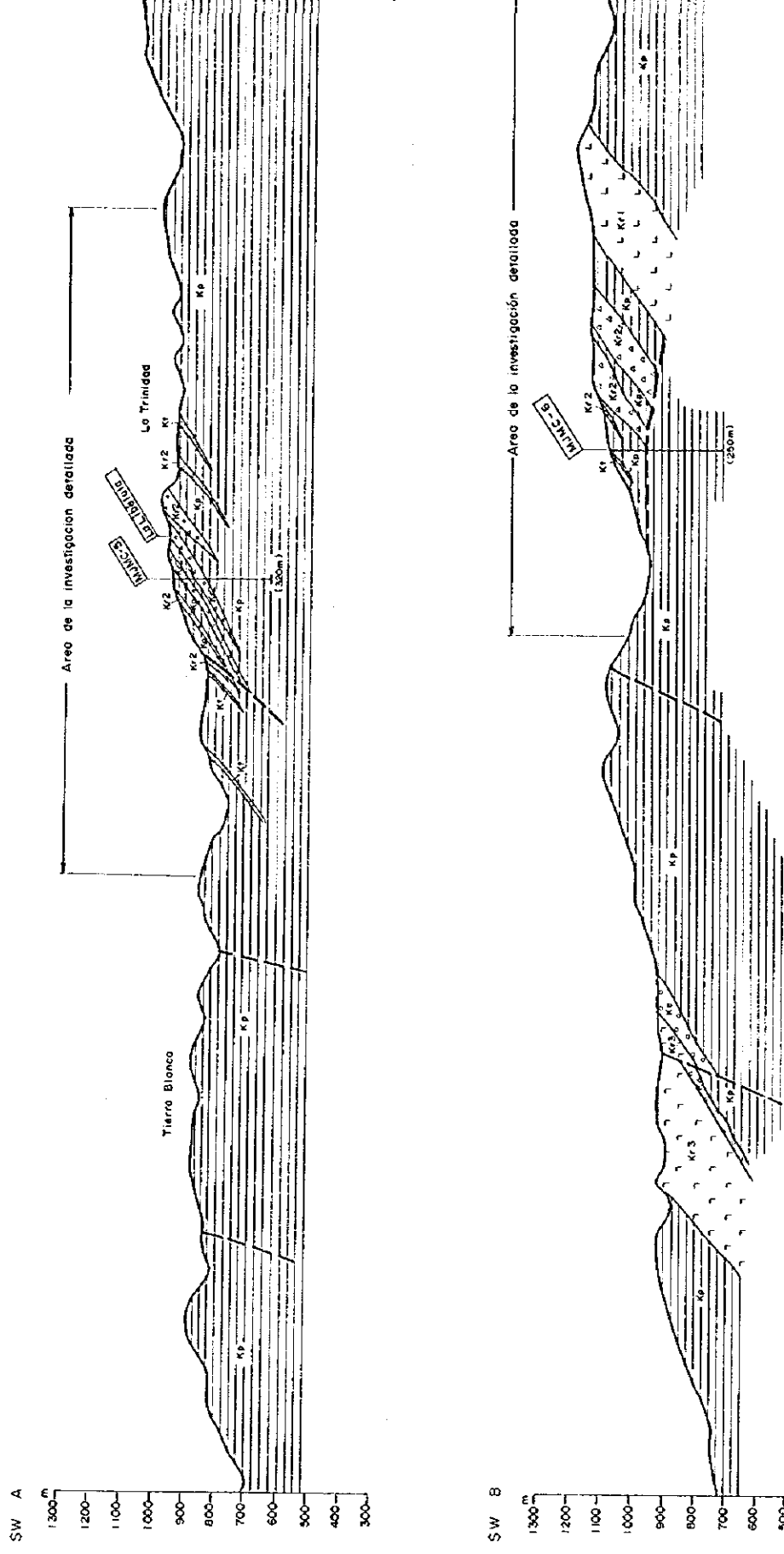
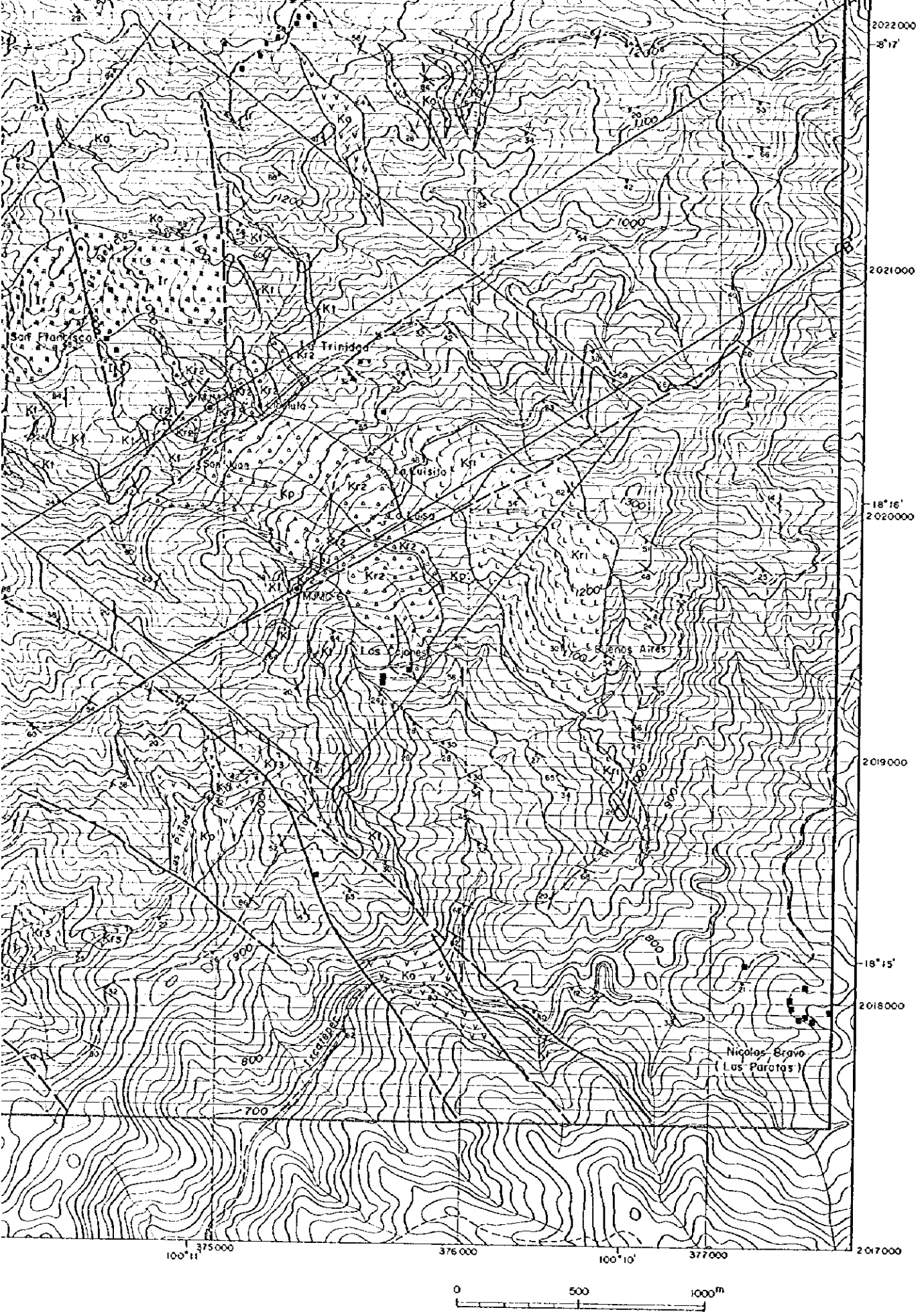
Localidad : WJMC-5

Nicoles paralelos

0 0.2mm



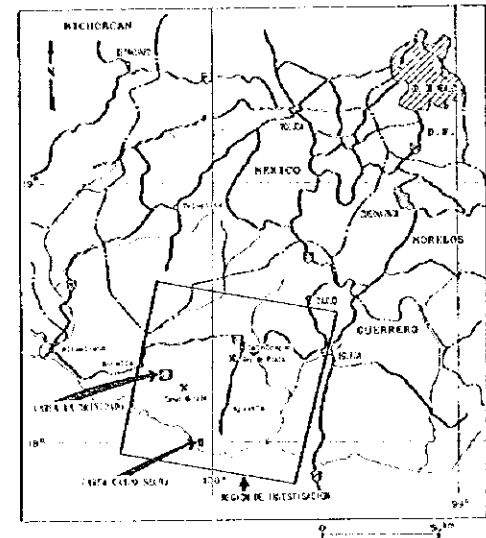




- Leyenda**
- Formación Ixcattepec**
- Ke Conglomerado
 - Kr3 Riolita y toba riolítica
 - Kt Toba riolítica
 - Kr2 Riolita, toba riolítica y arenisca tobasca
 - Kr1 Riolita y toba riolítica
 - Ka Andesita y toba andesítica-riolítica con pizarra
 - Kp Pizarra, alternancia de pizarra y arenisca fina, y arenisca cuarzosa
- Roca Intrusiva**
- Ir Riolita porfídica
- Rumbo e inclinación de foliación
 - Falla
 - Bocamina
 - Barreno
 - Área de investigación detallada
 - Línea de sección geológica

PL. II-2-2
 LA EXPLORACION COOPERATIVA DE MINERAL
 EN
 LA REGION CAMPO SECO
 (FASE II)

MAPA GEOLOGICO DETALLADO
 DEL AREA LA TRINIDAD
 (ESCALA 1 : 2.500)



JAPAN INTERNATIONAL COOPERATION AGENCY
 METAL MINING AGENCY OF JAPAN
 FEBRERO, 1996

Leyenda

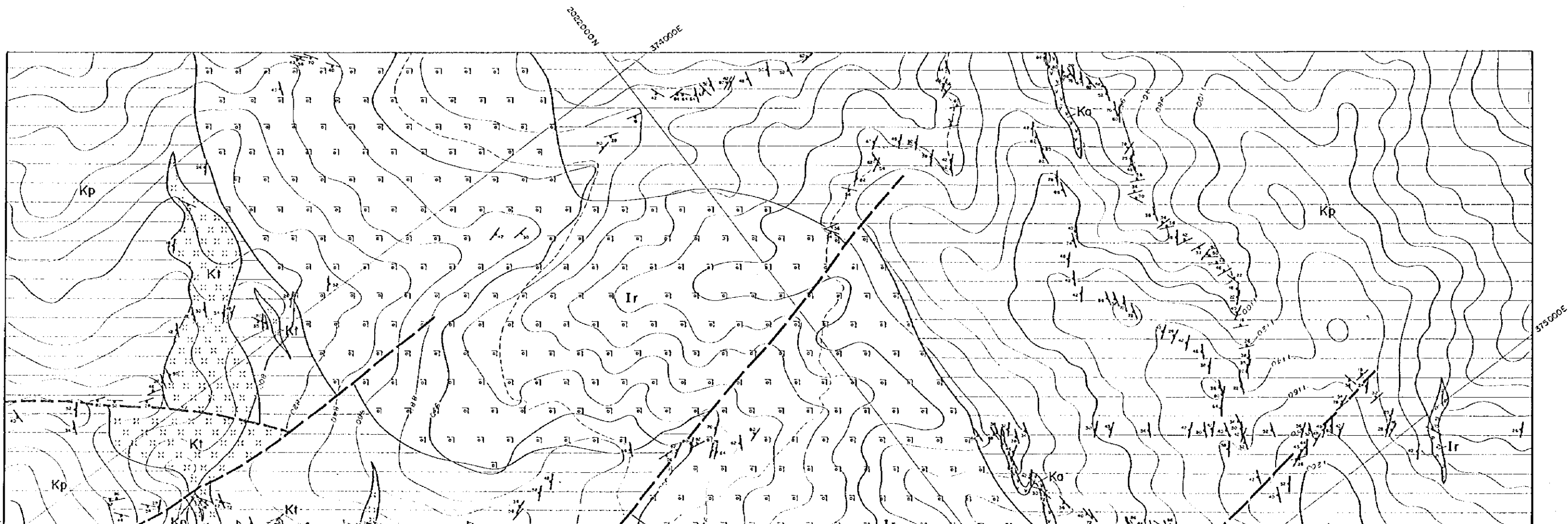
Formación Iscatepec

- Kt Toba riolítica
- Kr2 Riolita, toba riolítica y arenisca tobacea
- Kr1 Riolita y toba riolítica
- Ka Andesita y toba andesítica-riolítica con pizarra
- Kp Pizarra, alternancia de pizarra y arenisca fina, y arenisca cuarzosa

Roca Intrusiva

- Ir Riolita porfídica

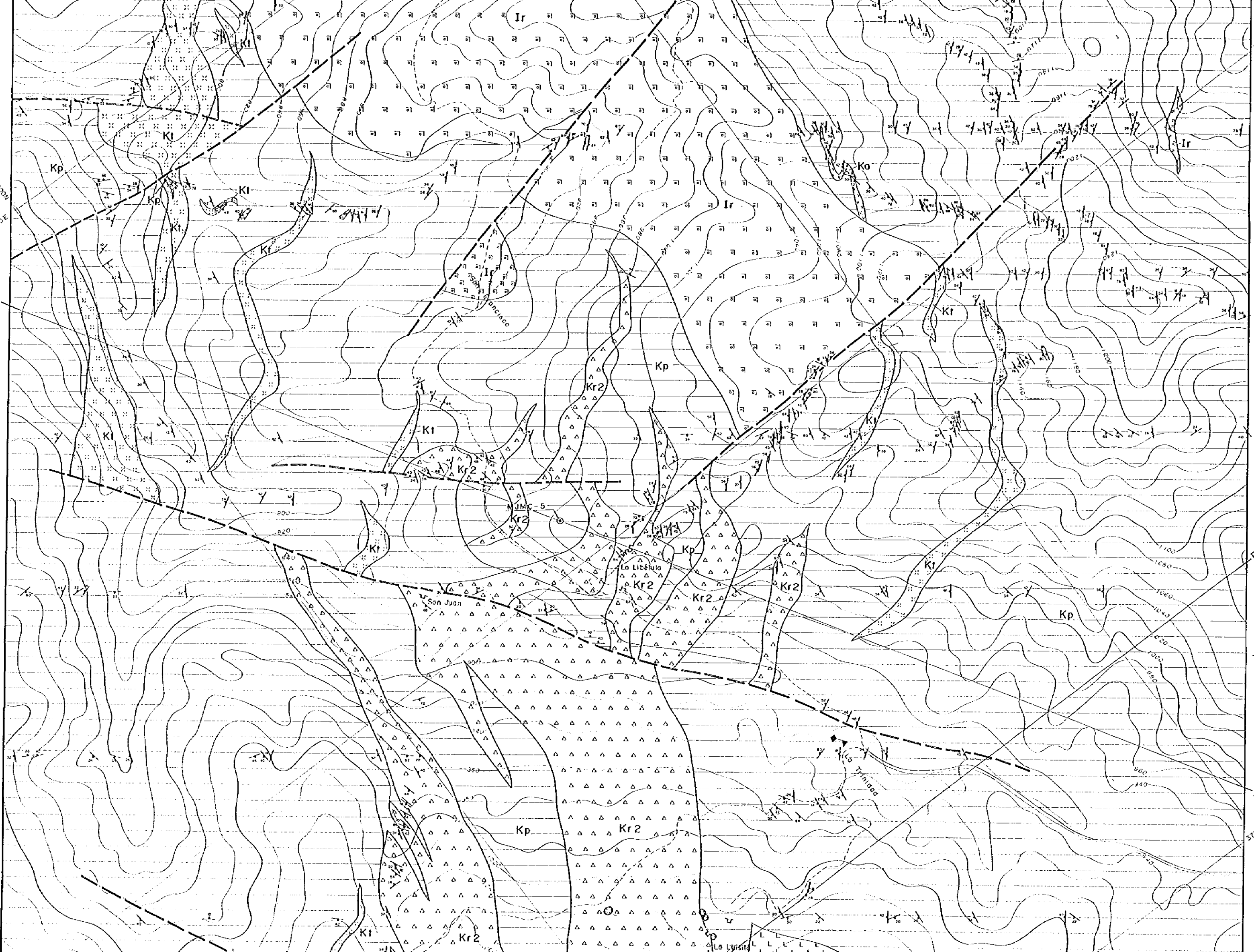
- Rumbo e inclinación de foliación
- Falla
- Bocamina
- Pozo
- Barreno
- Área de investigación detallada
- Línea de sección geológica



374000E
362100N

375000E

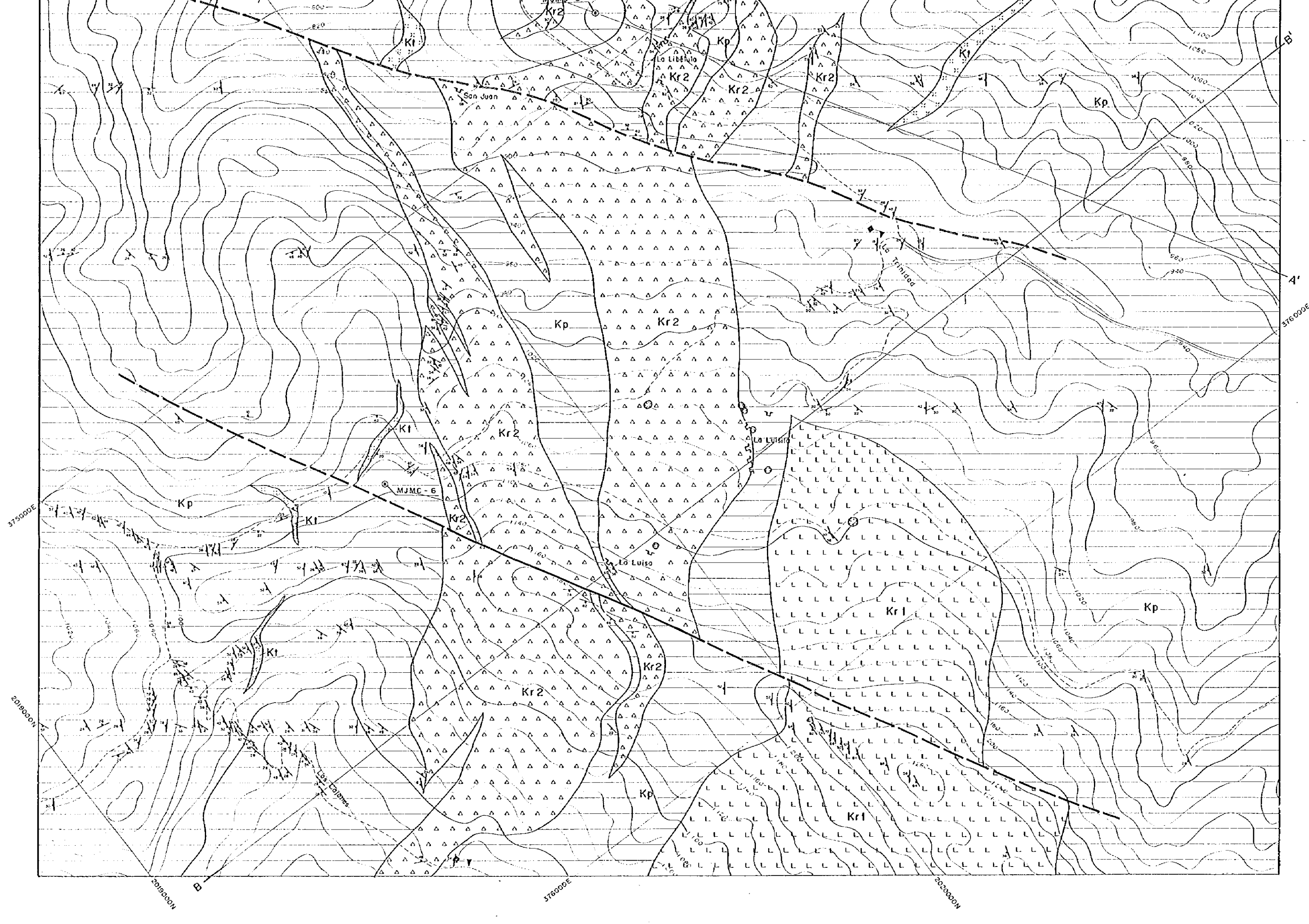
4

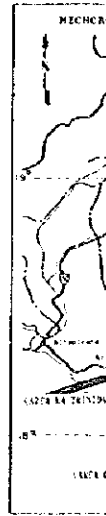


B

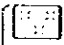
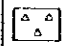

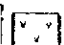

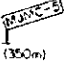
4

376000E

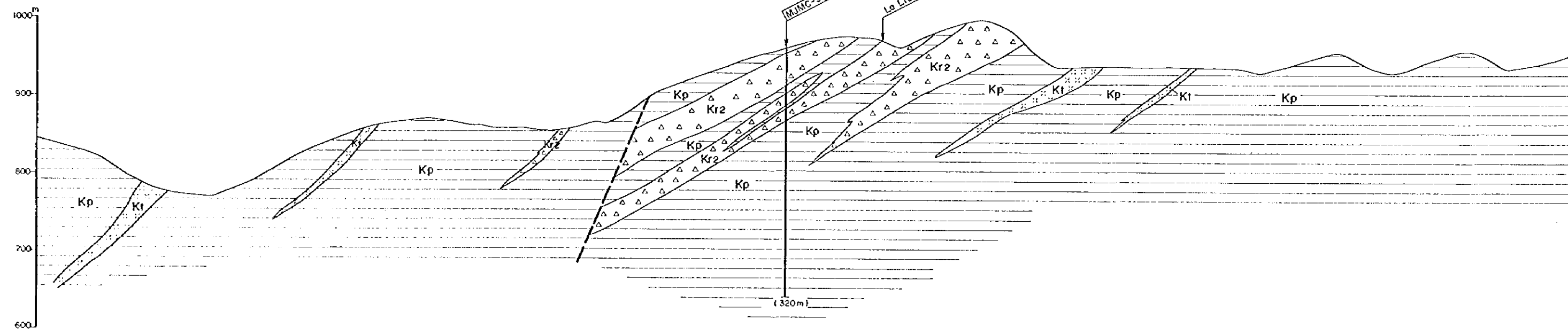




Leyenda

- Formación Ixcatepec
-  K1 Toba riolítica
 -  Kr2 Riolita, toba riolítica y arenisca tobacea
 -  Kr1 Riolita y toba riolítica
 -  Ka Andesita y toba andesítica-riolítica con pizarra
 -  Kp Pizarra, alternancia de pizarra y arenisca fina, y arenisca cuarzosa
- Falla
 Barreno (350m)

SW A



Leyenda

Formación Ixcatepec

- Cretacico
- K1 Toba riolítica
 - Kr2 Riolita, toba riolítica y arenisca tobasca
 - Kr1 Riolita y toba riolítica
 - Ka Andesita y toba andesítica-riolítica con pizarra
 - Kp Pizarra, alternancia de pizarra y arenisca fina, y arenisca cuarzosa

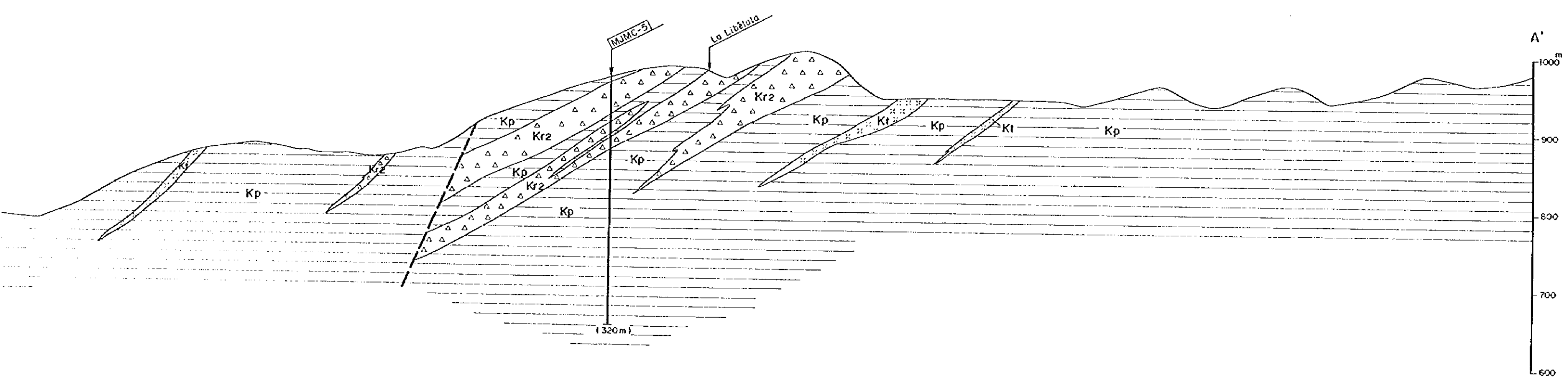
— Falla

Barreno (1350m)

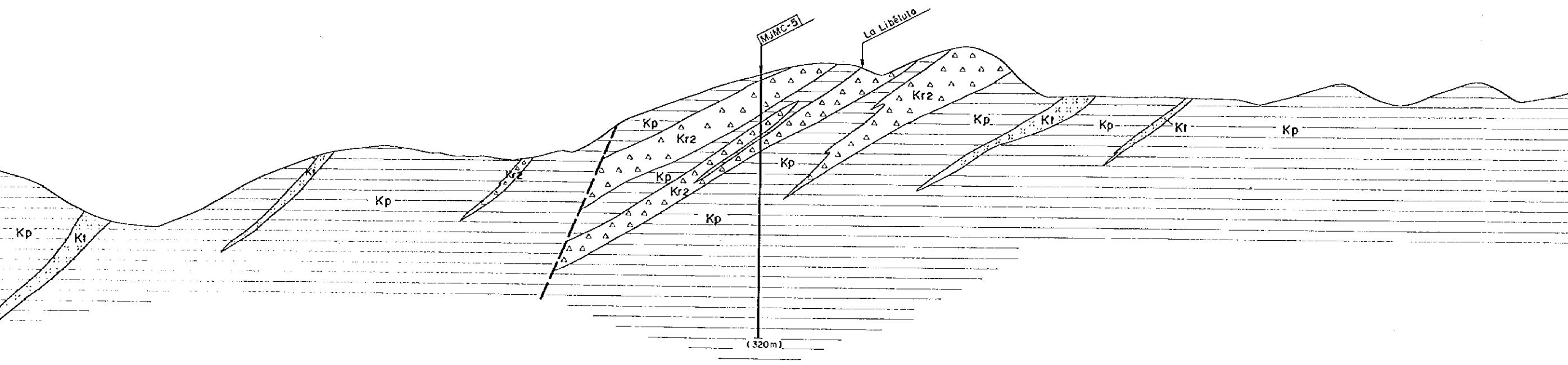
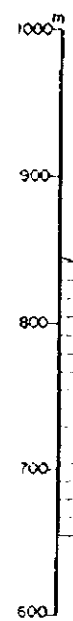
PL. 8-2-3
 LA EXPLORACION COOPERATIVA DE MINERAL
 EN
 LA REGION CAMPO SECO
 (FASE II)

SECCION GEOLOGICA DETALLADA
 DEL AREA LA TRINIDAD
 (ESCALA 1 : 2,500)

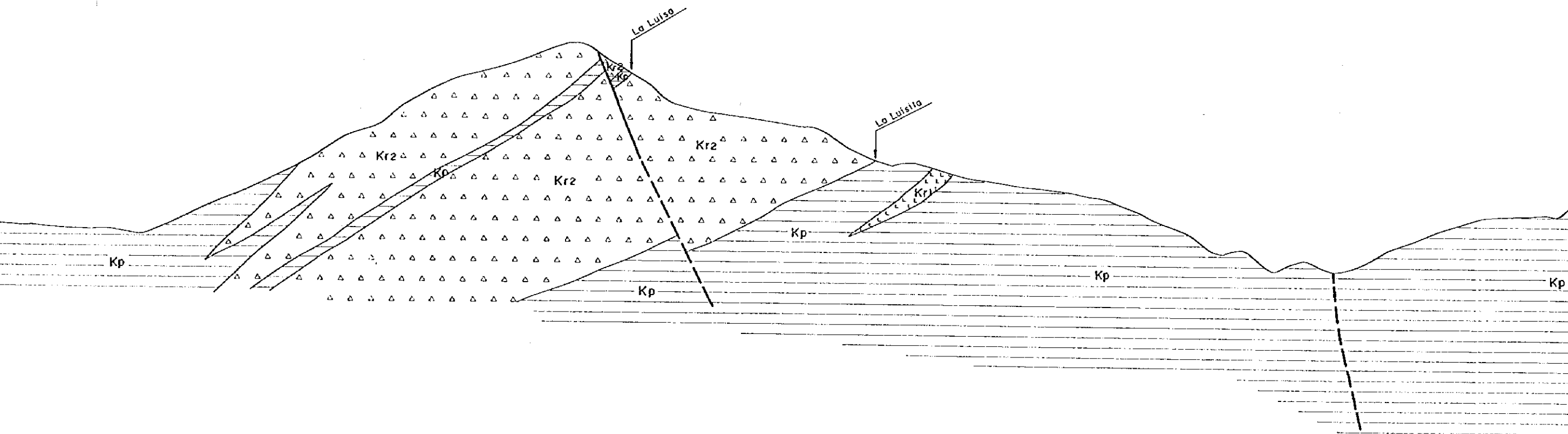
JAPAN INTERNATIONAL COOPERATION AGENCY
 METAL MINING AGENCY OF JAPAN
 FEBRERO, 1996

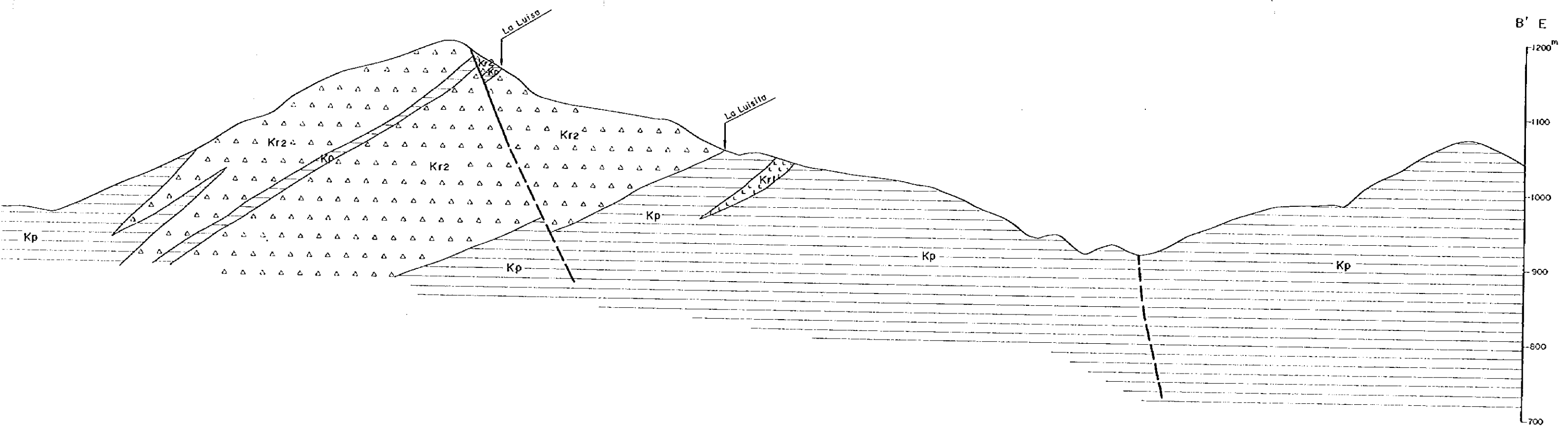
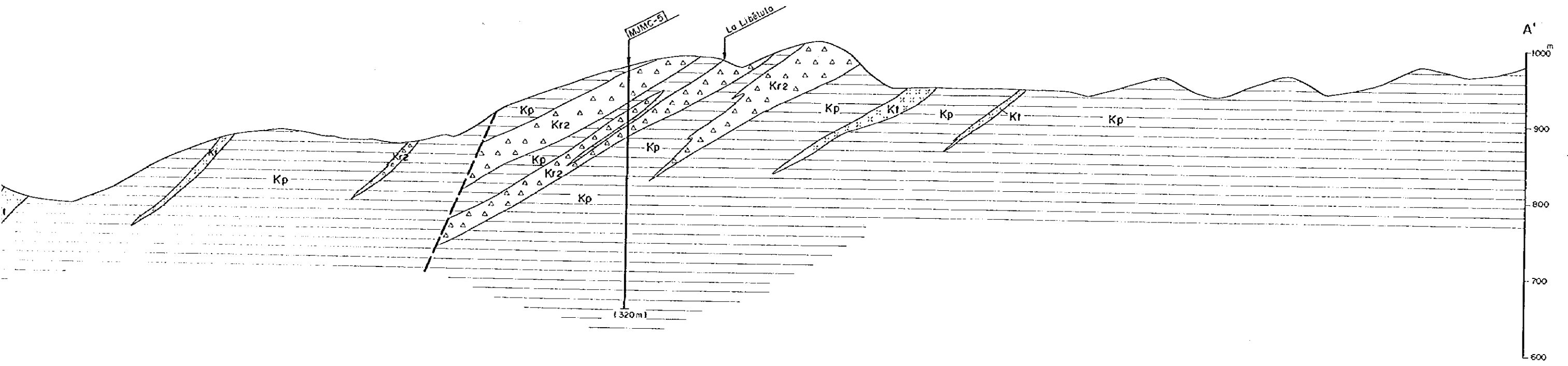


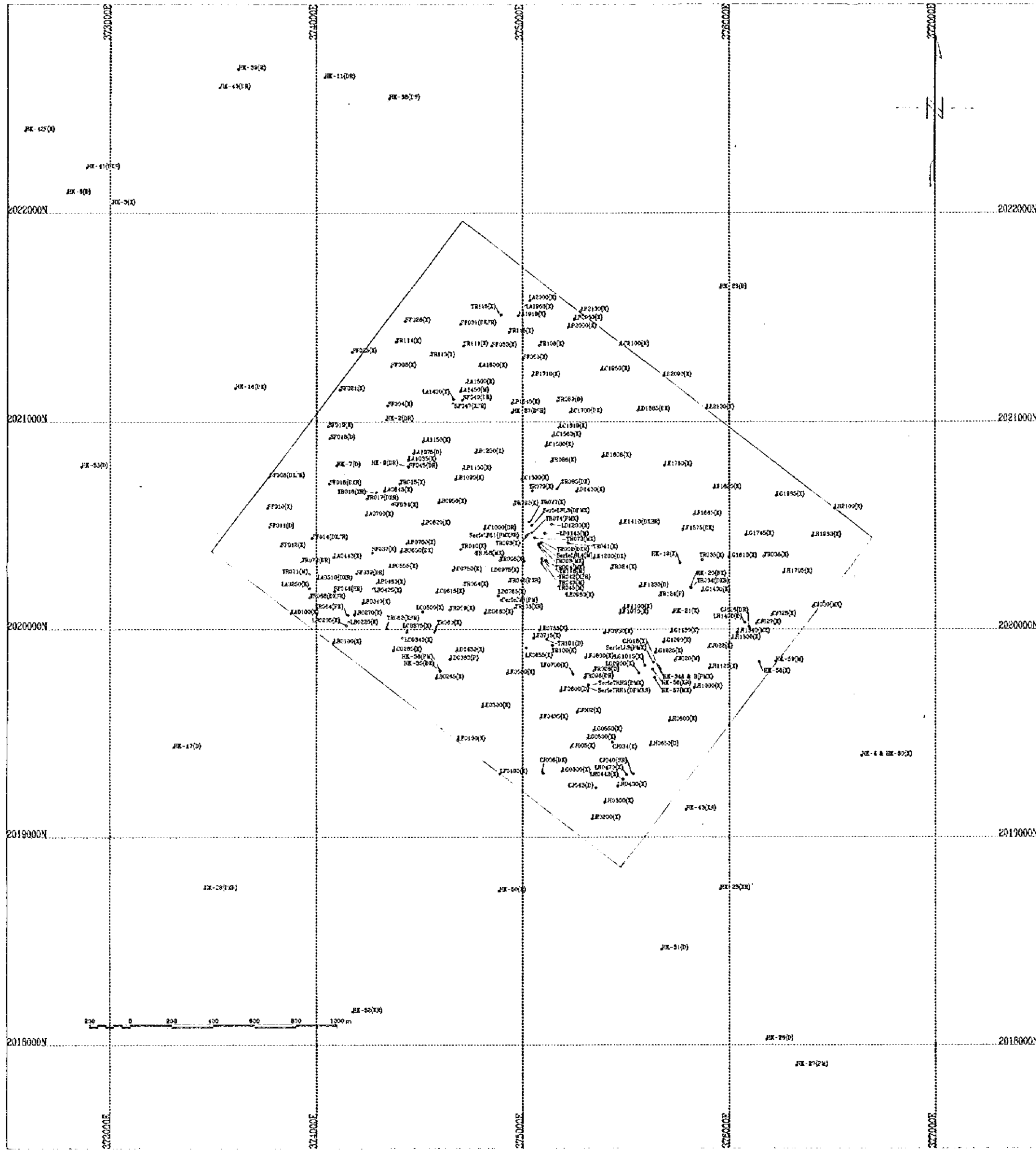
SW A



W B







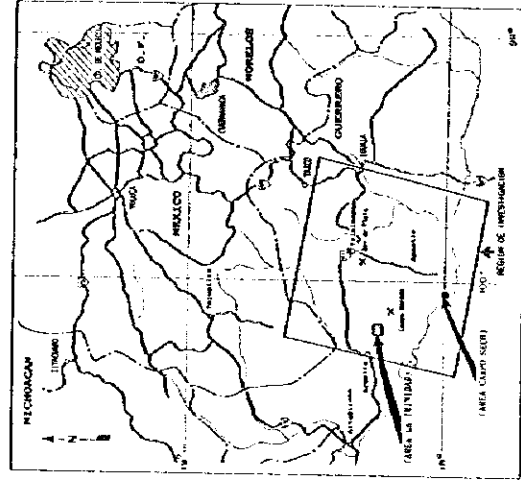
PL. II-2-4
 LA EXPLORACION COOPERATIVA DE MINERAL
 EN
 LA REGION CAMPO SECO
 (FASE II)

MAPA DE UBICACION DE LAS MUESTRAS
 DEL AREA LA TRINIDAD
 (ESCALA 1:10,000)

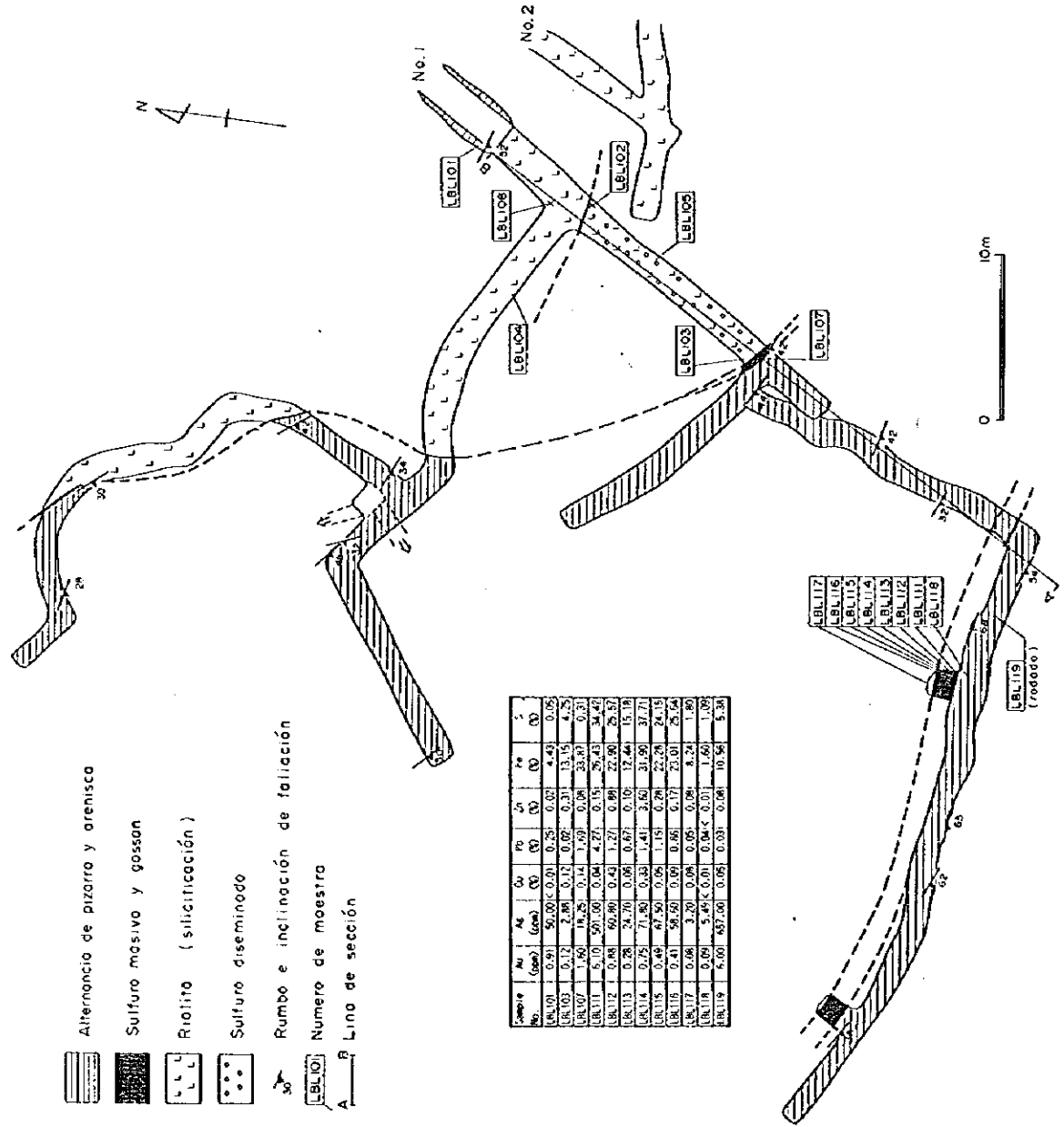
JAPAN INTERNATIONAL COOPERATION AGENCY
 METAL MINING AGENCY OF JAPAN
 FEBRERO, 1996

- Leyenda
- LA1000(DPXSMIR)
 - ▨ Análisis químico de roca total
 - ▧ Análisis químico de mesa
 - ▩ Isotopo de estroncio
 - Análisis de rayo X
 - Sección pulida
 - ▬ Sección delgada
 - Nombre de muestra

CROQUIS GEOLOGICO Y YACIMIENTOS
DEL AREA LA TRINIDAD
(ESCALA 1:200)



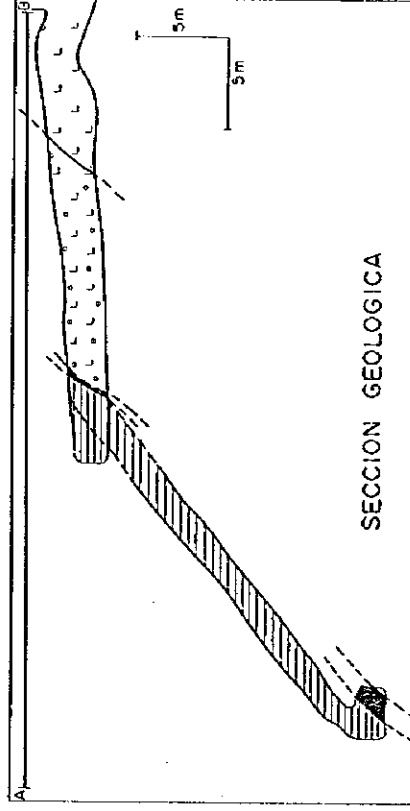
JAPAN INTERNATIONAL COOPERATION AGENCY
METAL MINING AGENCY OF JAPAN
FEBRERO, 1996



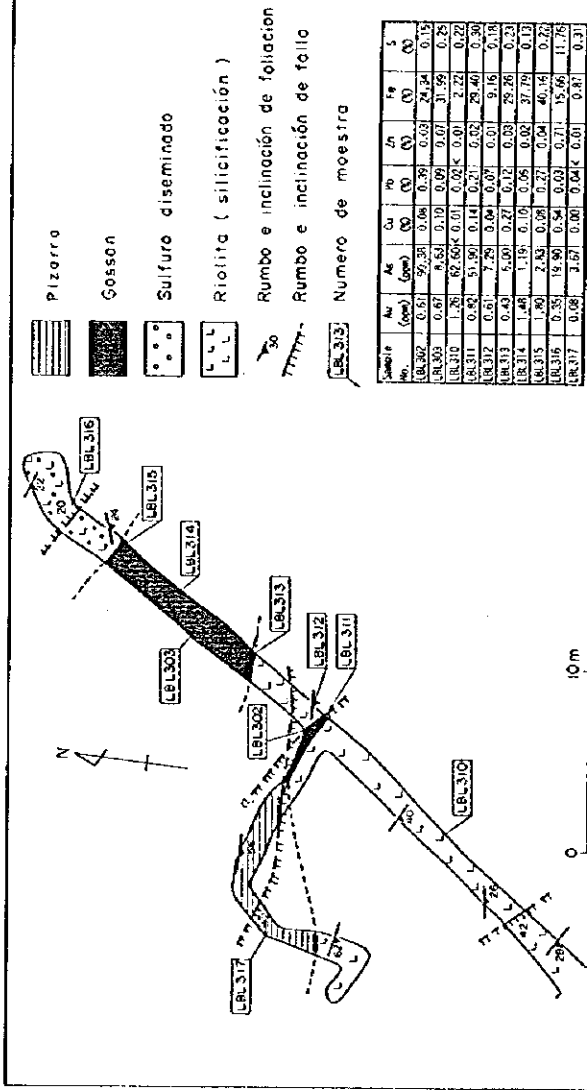
- Alternancia de pizarra y arenisca
- Sulfuro masivo y gossan
- Riolito (silicificación)
- Sulfuro diseminado
- Rumbo e inclinación de foliación
- Numero de muestra
- Línea de sección

Muestra No.	Al	Fe	Cu	Zn	Pb	Sn	Ag	S
LBL101	0.91	50.00	0.01	0.25	0.01	0.01	4.43	0.05
LBL102	0.72	2.80	0.12	0.02	0.31	13.15	4.75	
LBL103	1.60	18.25	0.14	1.09	0.04	33.87	0.31	
LBL104	5.10	501.00	0.04	4.71	0.15	25.43	34.47	
LBL105	0.88	60.80	0.43	1.21	0.09	22.00	25.57	
LBL106	0.28	24.70	0.06	0.07	0.10	17.44	15.18	
LBL107	0.75	71.80	0.33	1.41	3.65	31.90	37.71	
LBL108	0.49	67.50	0.06	1.15	0.29	22.28	24.15	
LBL109	0.41	56.50	0.07	0.95	0.17	23.01	25.54	
LBL110	0.09	3.20	0.04	0.05	0.04	8.24	1.80	
LBL111	0.09	5.45	0.01	0.04	0.01	1.60	1.09	
LBL112	6.00	437.00	0.05	0.03	0.04	10.56	5.38	

CROQUIS DE YACIMIENTO
LA LIBELULA No.1 y No.2



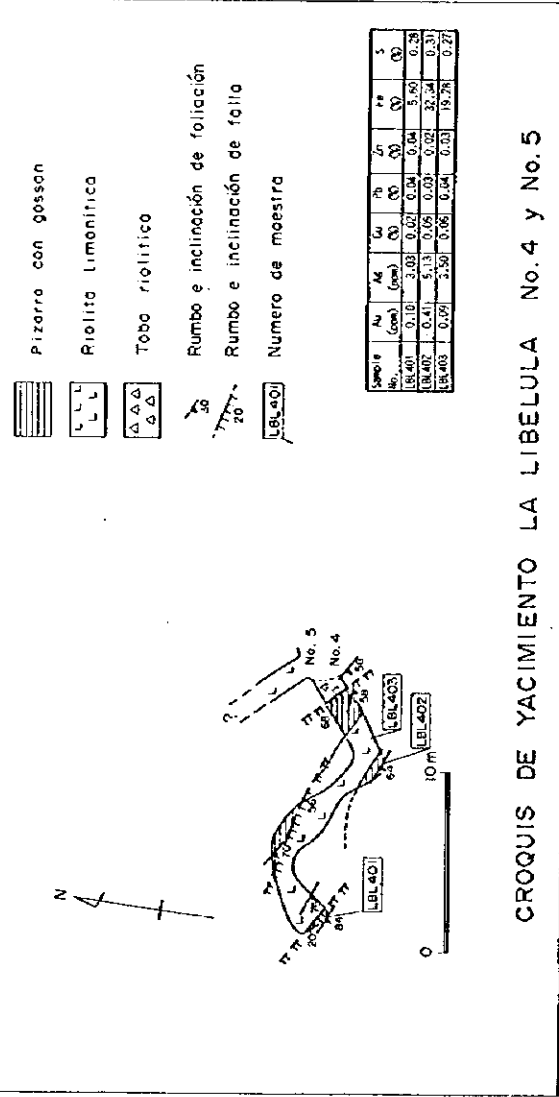
SECCION GEOLOGICA



- Pizarra
- Gossan
- Sulfuro diseminado
- Riolito (silicificación)
- Rumbo e inclinación de foliación
- Rumbo e inclinación de falla
- Numero de muestra

Muestra No.	Al	Fe	Cu	Zn	Pb	Sn	Ag	S
LBL302	0.51	57.30	0.06	0.39	0.03	24.34	0.15	
LBL303	0.81	6.51	0.10	0.09	0.01	31.99	0.75	
LBL304	1.26	67.64	0.01	0.02	0.01	2.21	0.22	
LBL305	0.51	51.50	0.14	0.20	0.02	25.40	0.30	
LBL306	0.51	7.25	0.04	0.09	0.01	9.16	0.18	
LBL307	0.43	5.00	0.21	0.12	0.03	25.26	0.23	
LBL308	1.40	1.15	0.10	0.08	0.02	37.29	0.13	
LBL309	0.33	15.50	0.54	0.03	0.21	35.96	11.76	
LBL310	0.08	2.07	0.01	0.04	0.01	0.81	0.31	

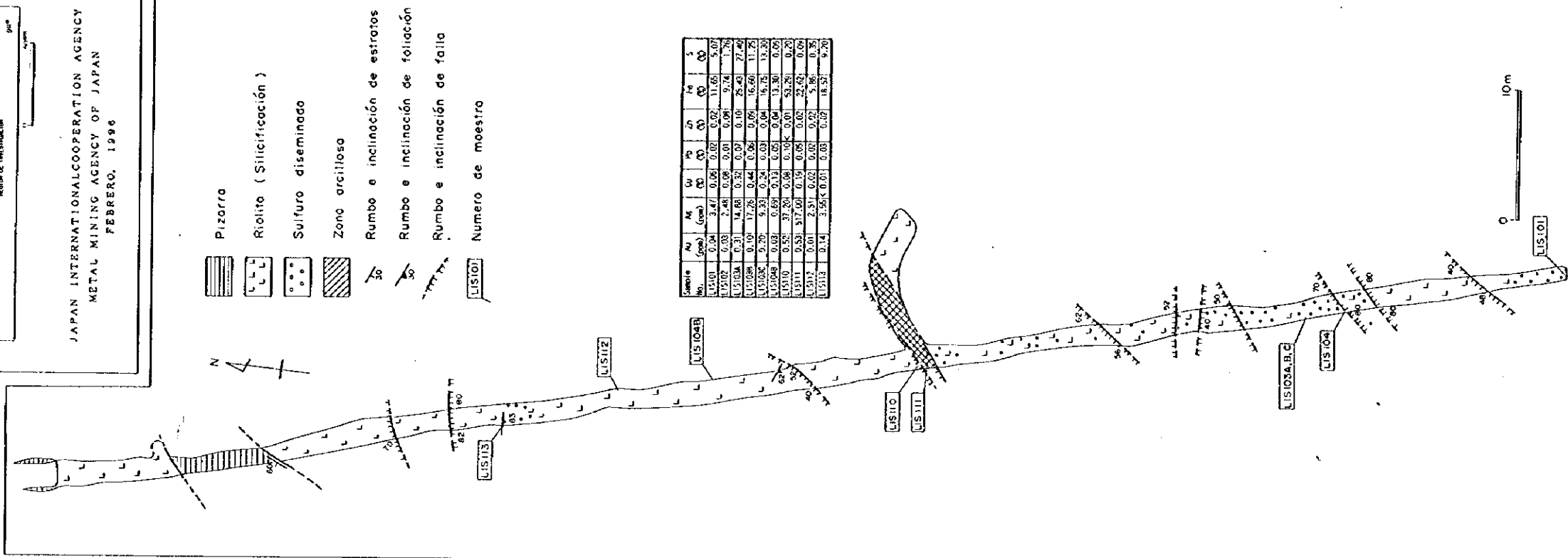
CROQUIS DE YACIMIENTO LA LIBELULA No.3



- Pizarra con gossan
- Riolito limonítico
- Tubo riolítico
- Rumbo e inclinación de foliación
- Rumbo e inclinación de falla
- Numero de muestra

Muestra No.	Al	Fe	Cu	Zn	Pb	Sn	Ag	S
LBL401	0.10	3.03	0.02	0.04	0.04	5.80	0.28	
LBL402	0.41	5.13	0.05	0.03	0.02	32.34	0.31	
LBL403	0.05	2.50	0.05	0.04	0.03	13.78	0.27	

CROQUIS DE YACIMIENTO LA LIBELULA No.4 y No.5



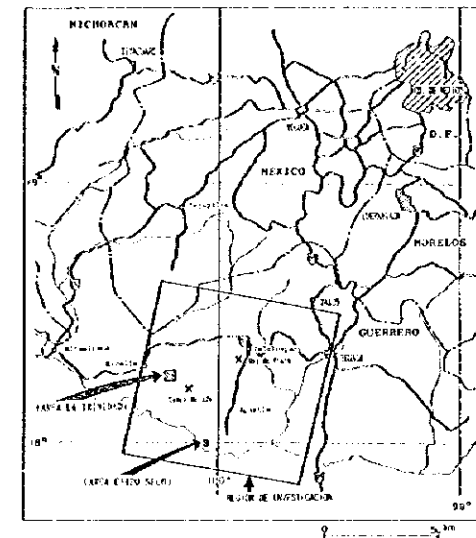
- Pizarra
- Riolito (silicificación)
- Sulfuro diseminado
- Zona arcillosa
- Rumbo e inclinación de estratos
- Rumbo e inclinación de foliación
- Rumbo e inclinación de falla
- Numero de muestra

Muestra No.	Al	Fe	Cu	Zn	Pb	Sn	Ag	S
LIS101	0.04	3.47	0.05	0.02	0.02	11.05	5.10	
LIS102	0.03	3.48	0.06	0.01	0.04	9.24	1.76	
LIS103	0.31	14.68	0.32	0.09	0.10	25.43	27.42	
LIS104	2.37	4.33	0.24	0.03	0.04	5.75	13.23	
LIS105	0.63	6.69	0.13	0.05	0.04	13.30	0.09	
LIS106	0.52	37.28	0.18	0.10	0.01	51.28	0.23	
LIS107	0.01	2.31	0.02	0.02	0.02	22.62	0.04	
LIS108	0.14	3.56	0.01	0.03	0.02	18.32	6.20	

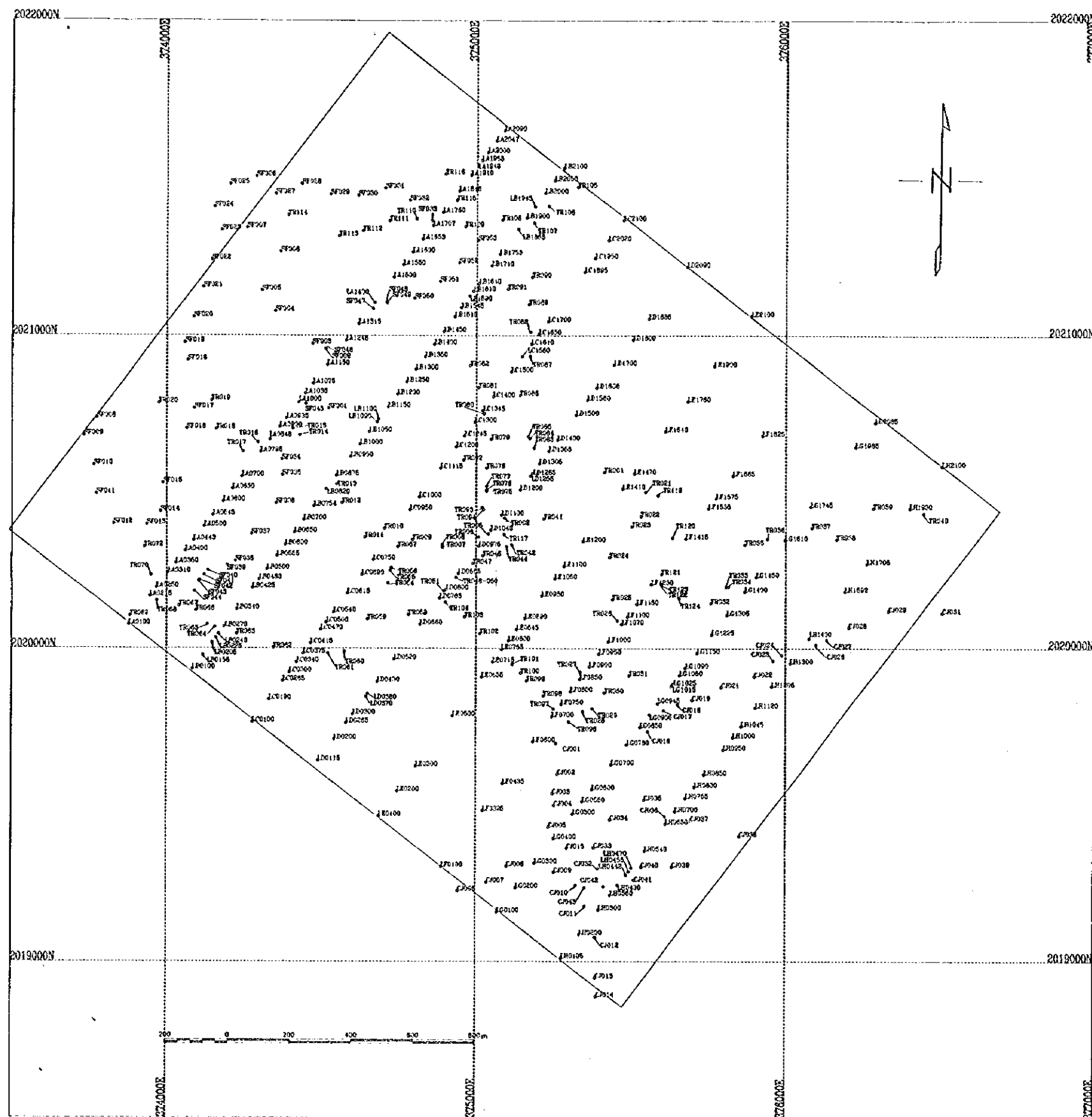
CROQUIS DE YACIMIENTOS LA LUISA

PL. E-2-6
 LA EXPLORACION COOPERATIVA DE MINERAL
 EN
 LA REGION CAMPO SECO
 (FASE II)

MAPA DE UBICACION DE LAS MUESTRAS DE LA EXPLORACION GEOQUIMICA
 DEL AREA LA TRINIDAD
 (ESCALA 1:7,500)



JAPAN INTERNATIONAL COOPERATION AGENCY
 METAL MINING AGENCY OF JAPAN
 FEBRERO, 1996



Leyenda

○ LA1000 Nombre de muestra

謝