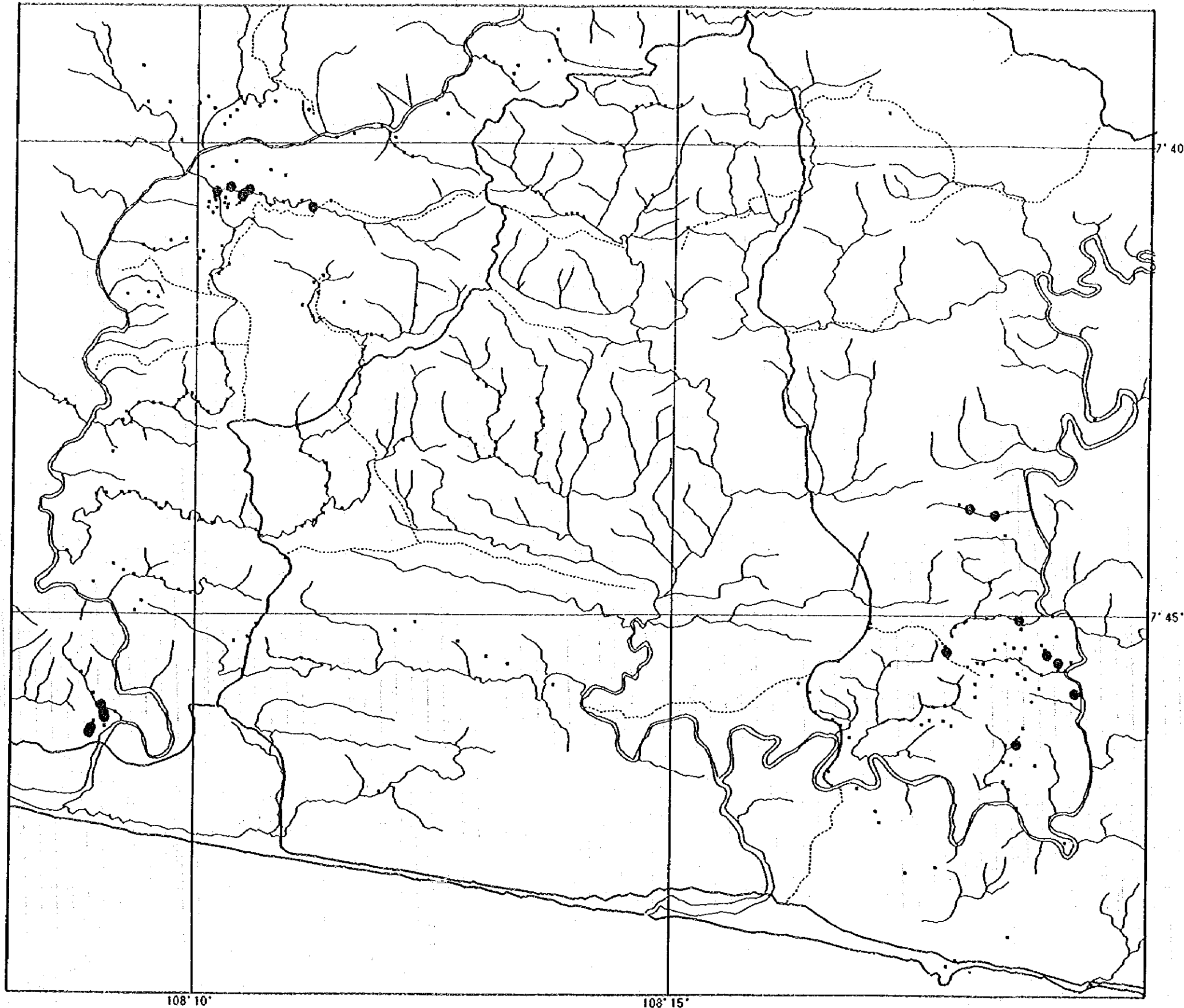


卷末資料 9 岩石地化学異常分布図



Rock Geochemistry
Au

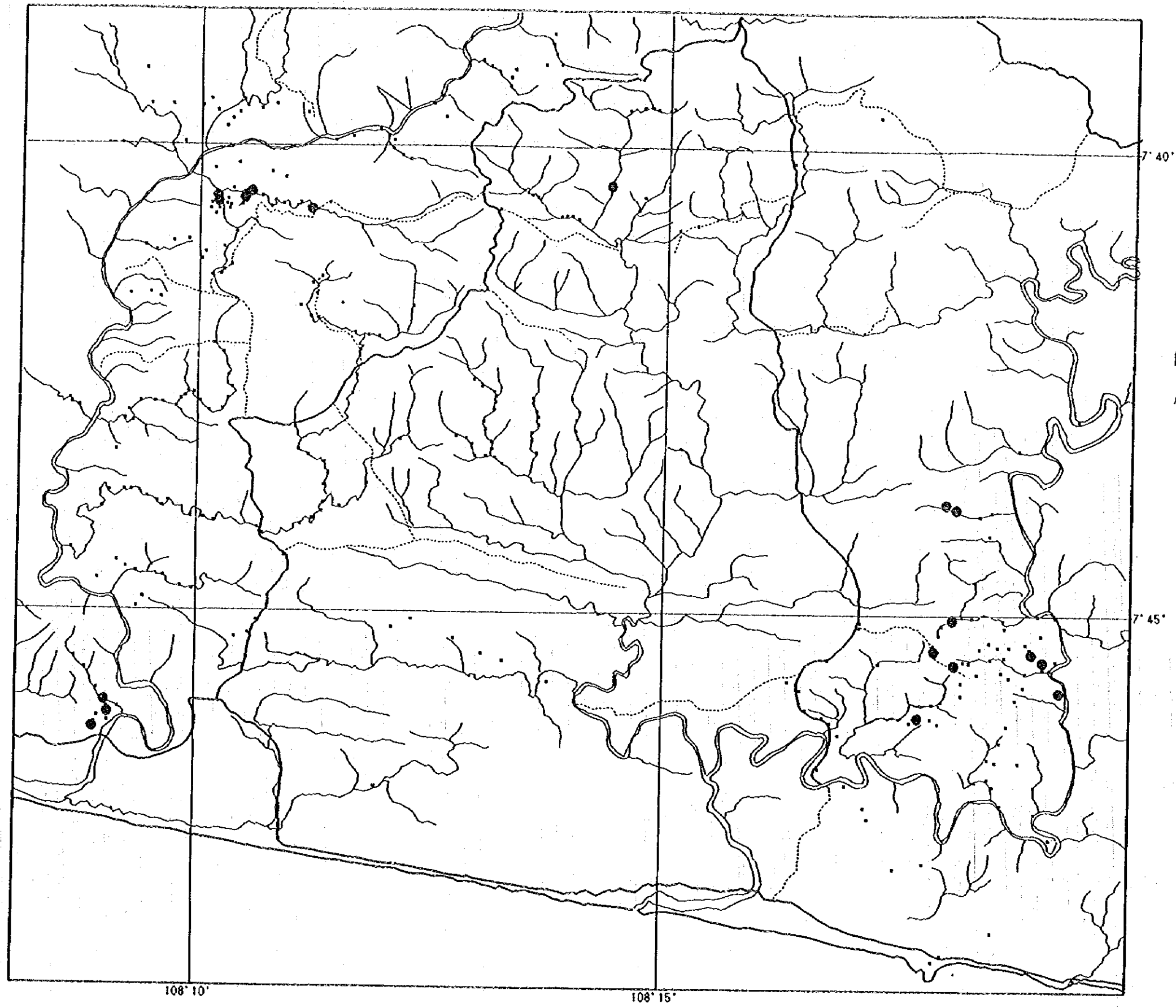
- >3ppb
- <3ppb

108° 10'

108° 15'

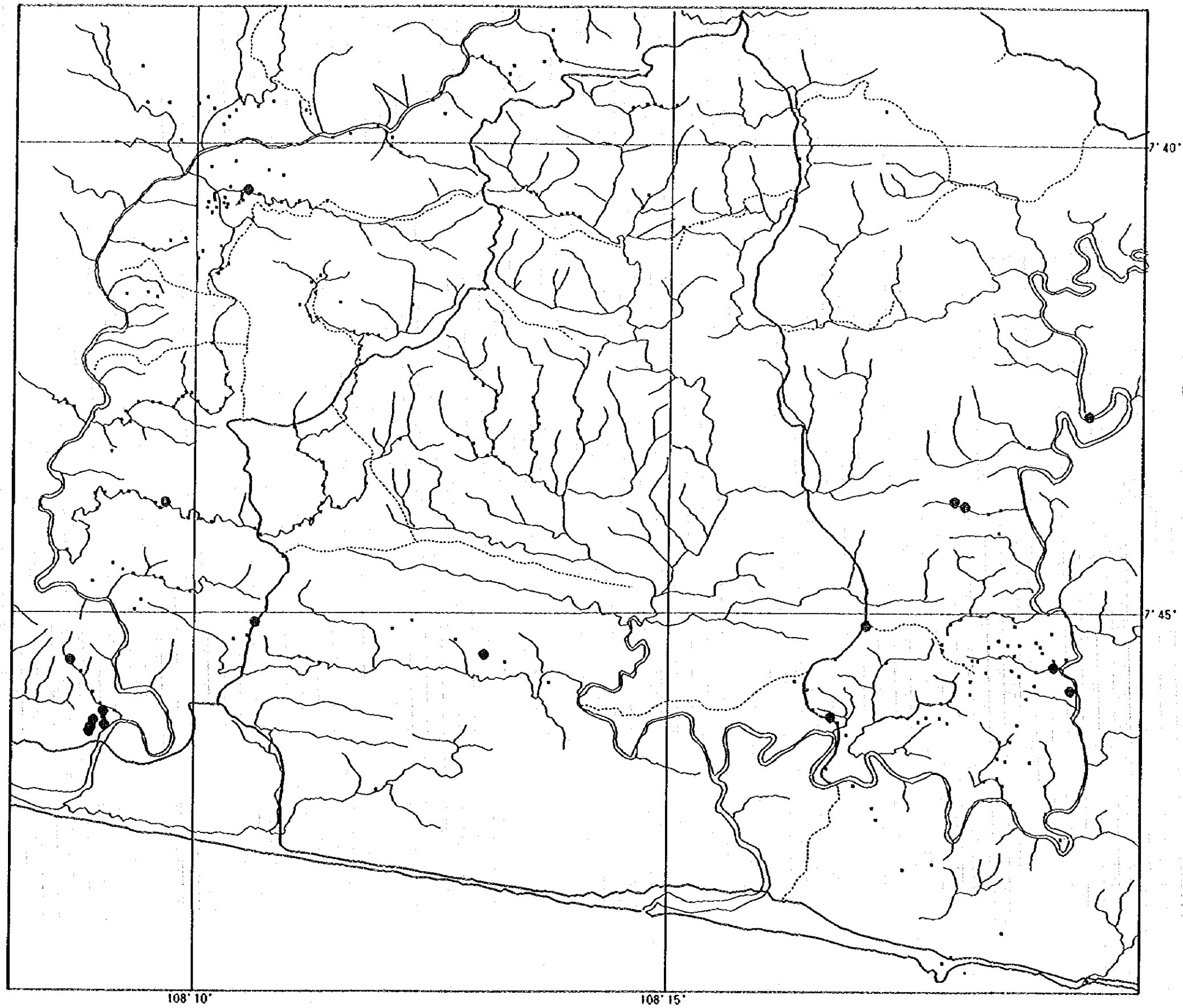
7° 40'

7° 45'



Rock Geochemistry
Ag

- >0.5ppm
- <0.5ppm



Rock Geochemistry
Cu

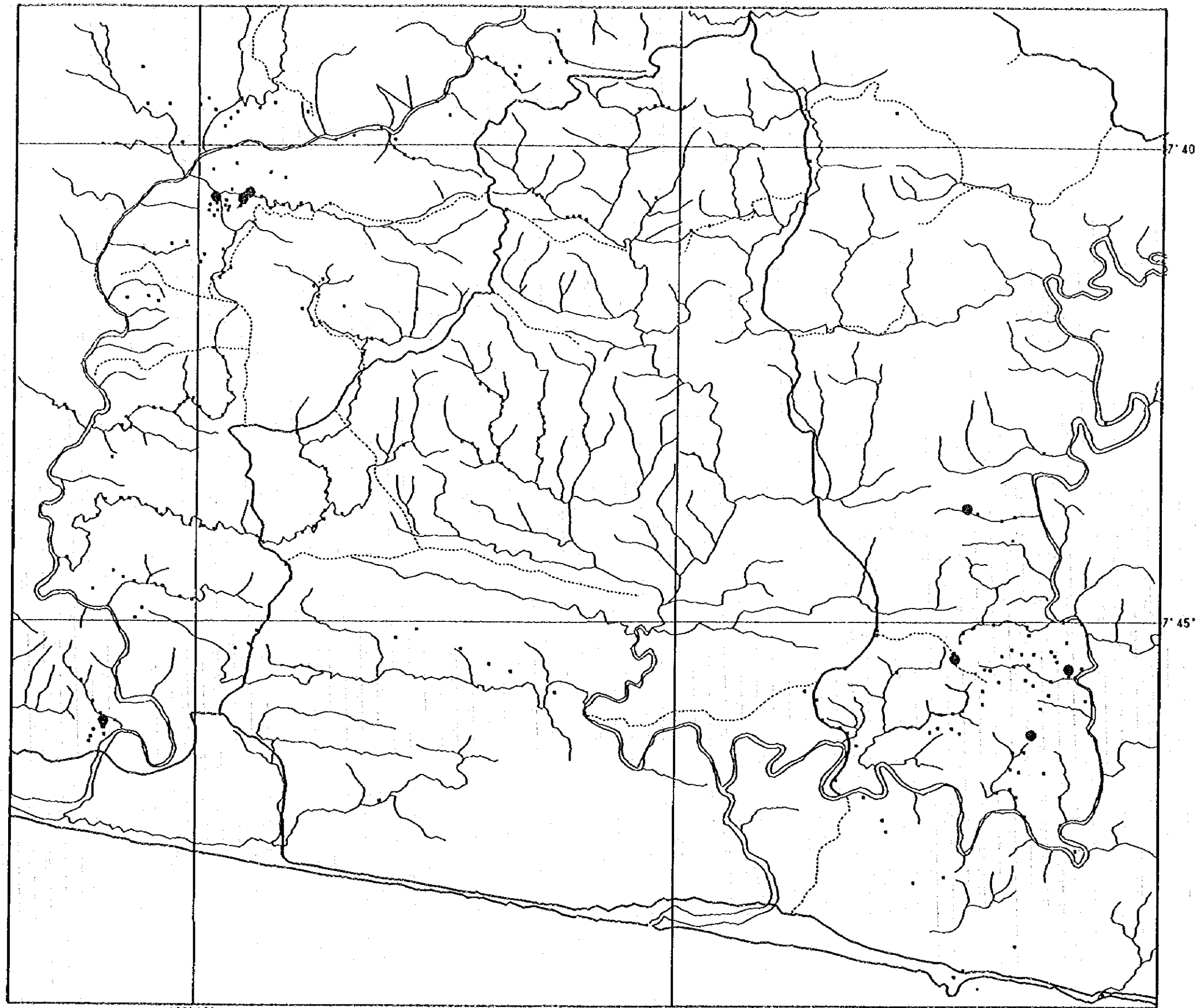
- >70ppm
- <70ppm

108° 10'

108° 15'

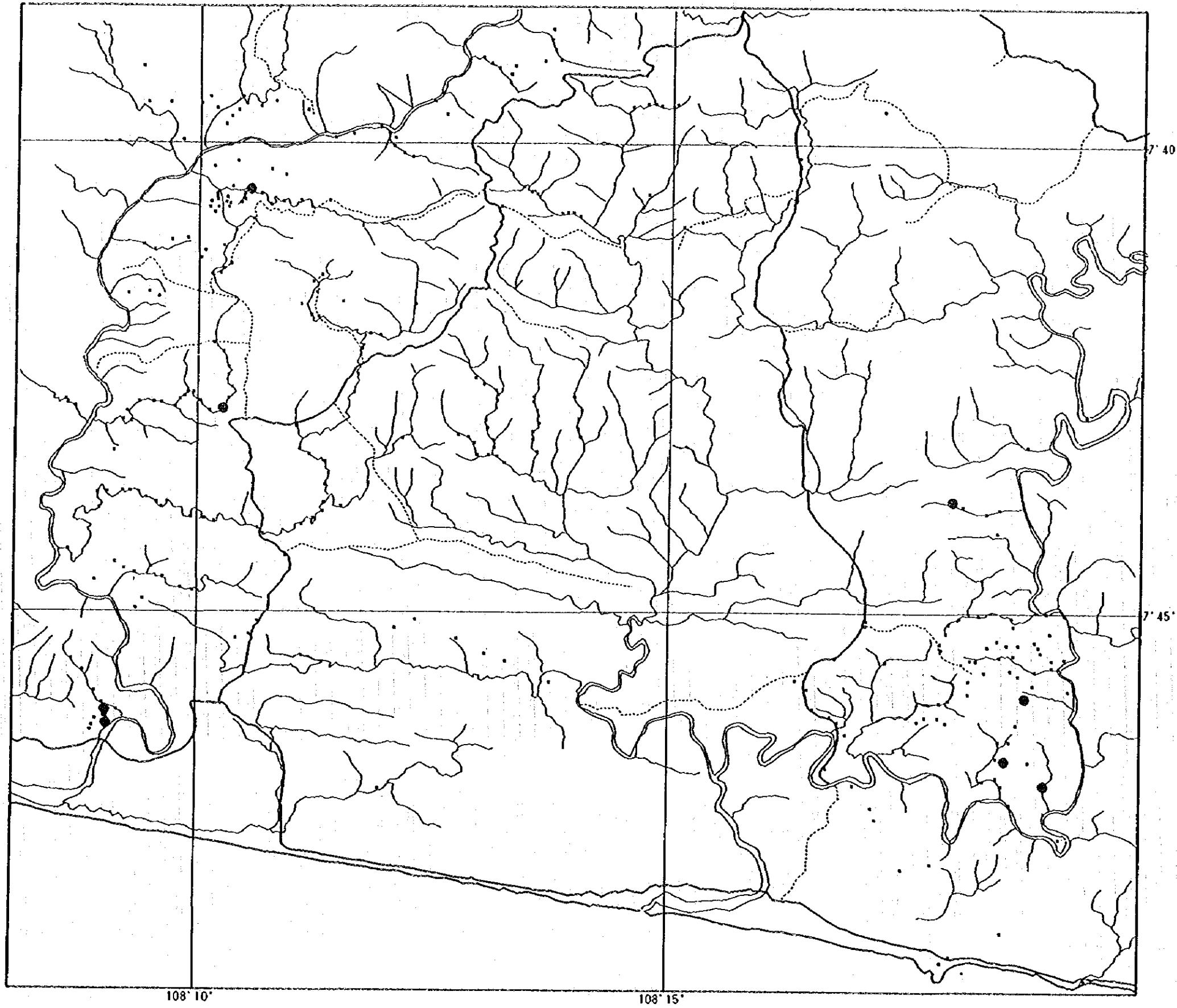
7° 40'

7° 45'



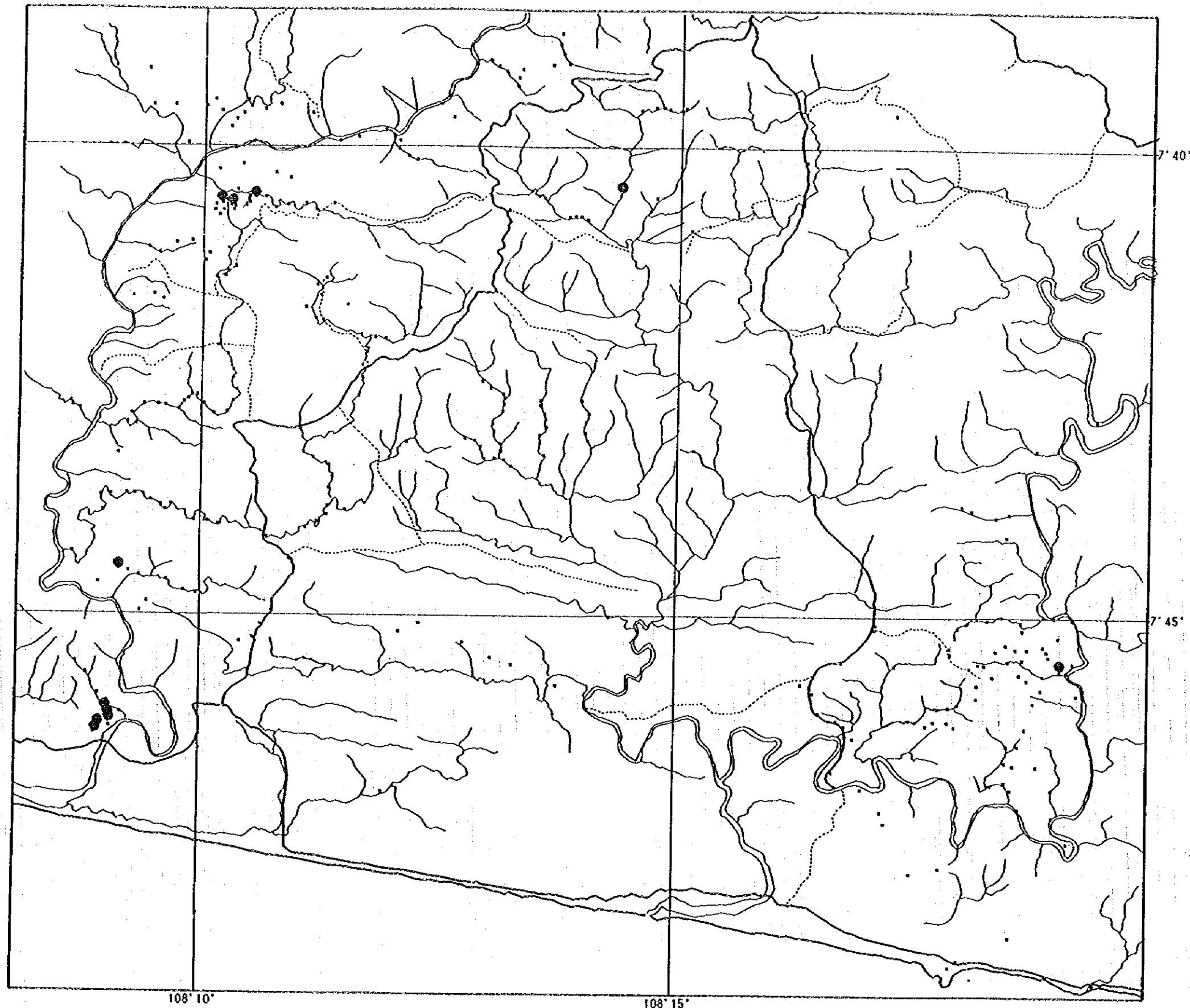
Rock Geochemistry
Pb

- >100ppm
- <100ppm



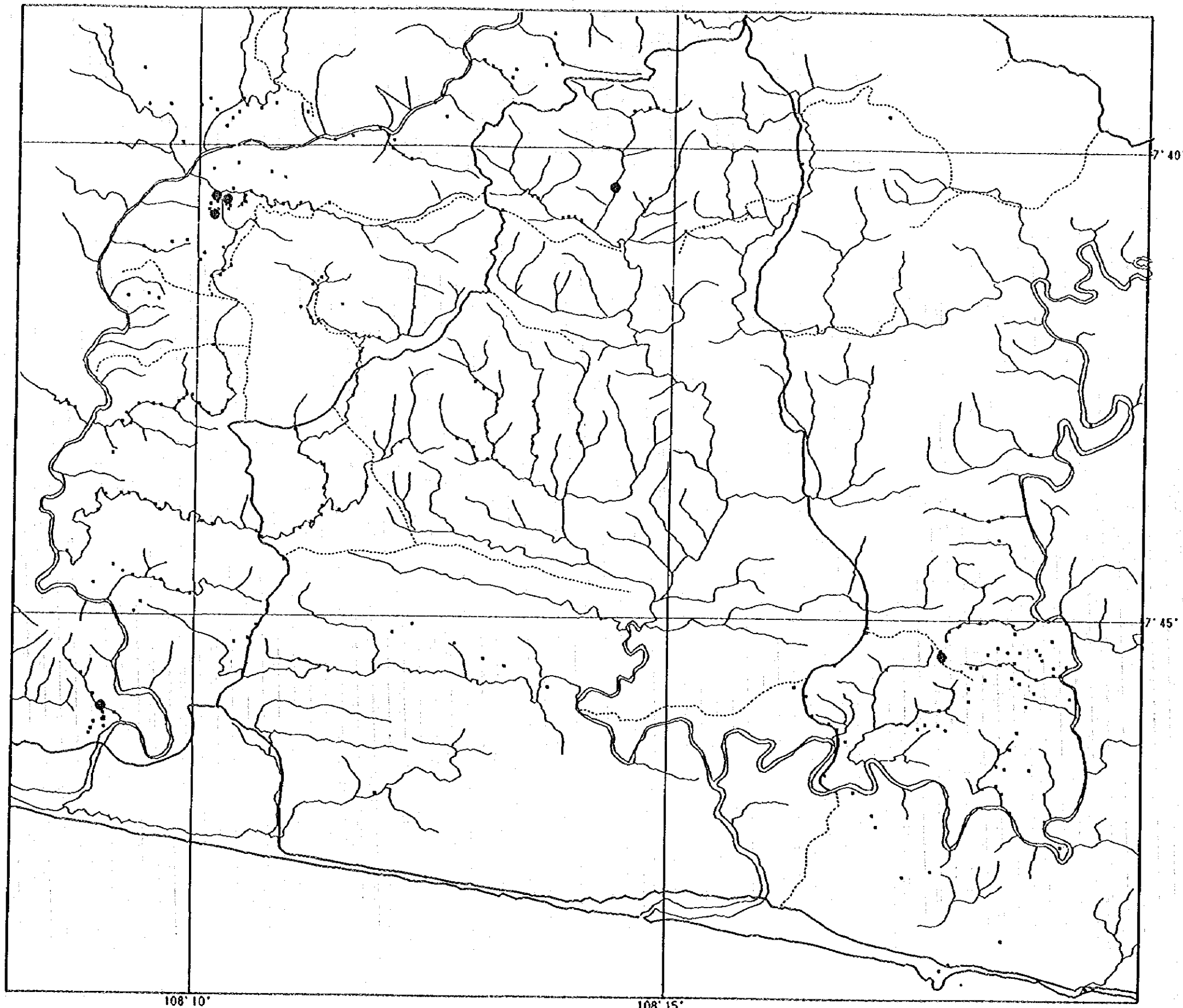
Rock Geochemistry
Zn

- >400ppm
- <400ppm



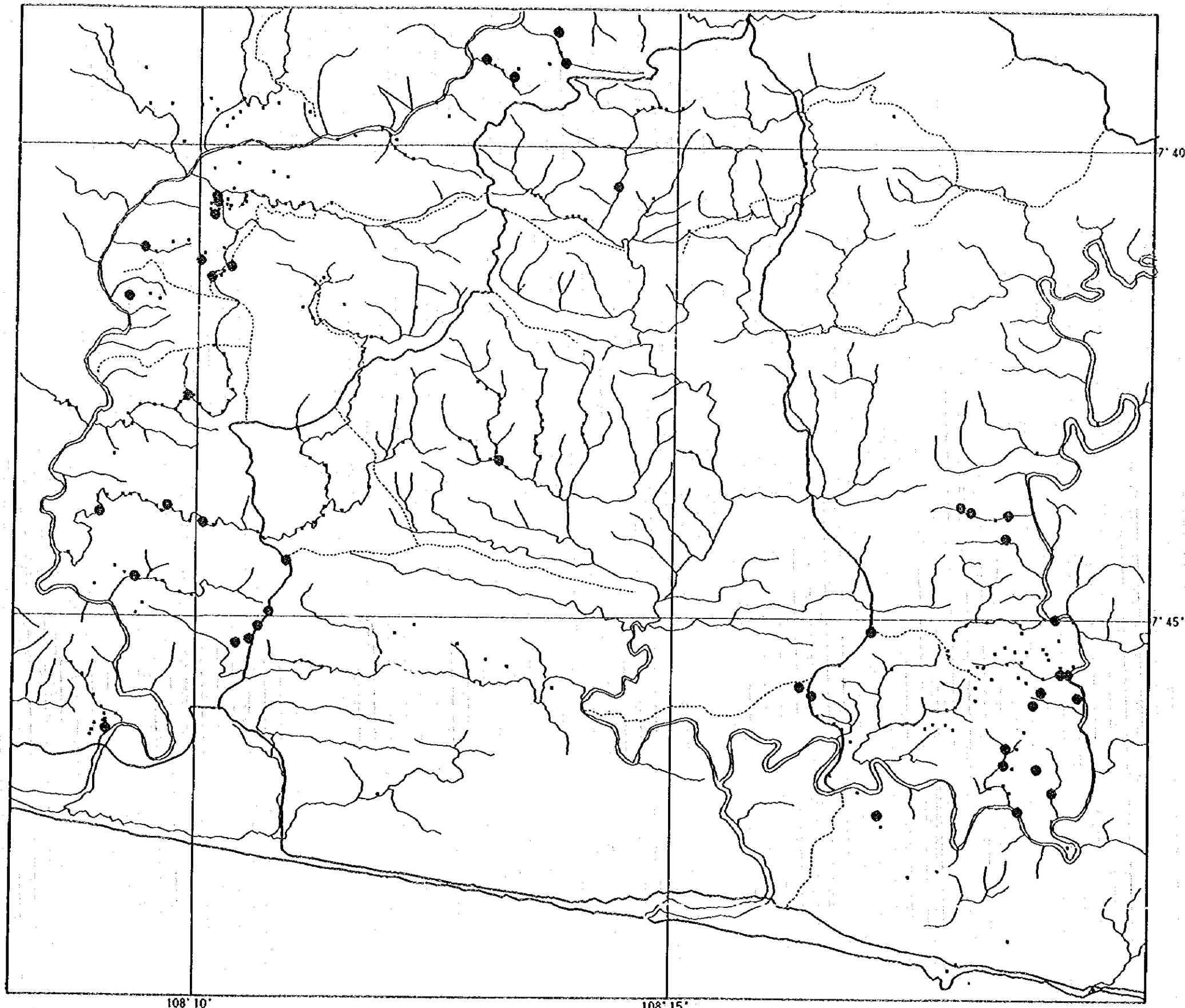
Rock Geochemistry
As

- >100ppm
- <100ppm



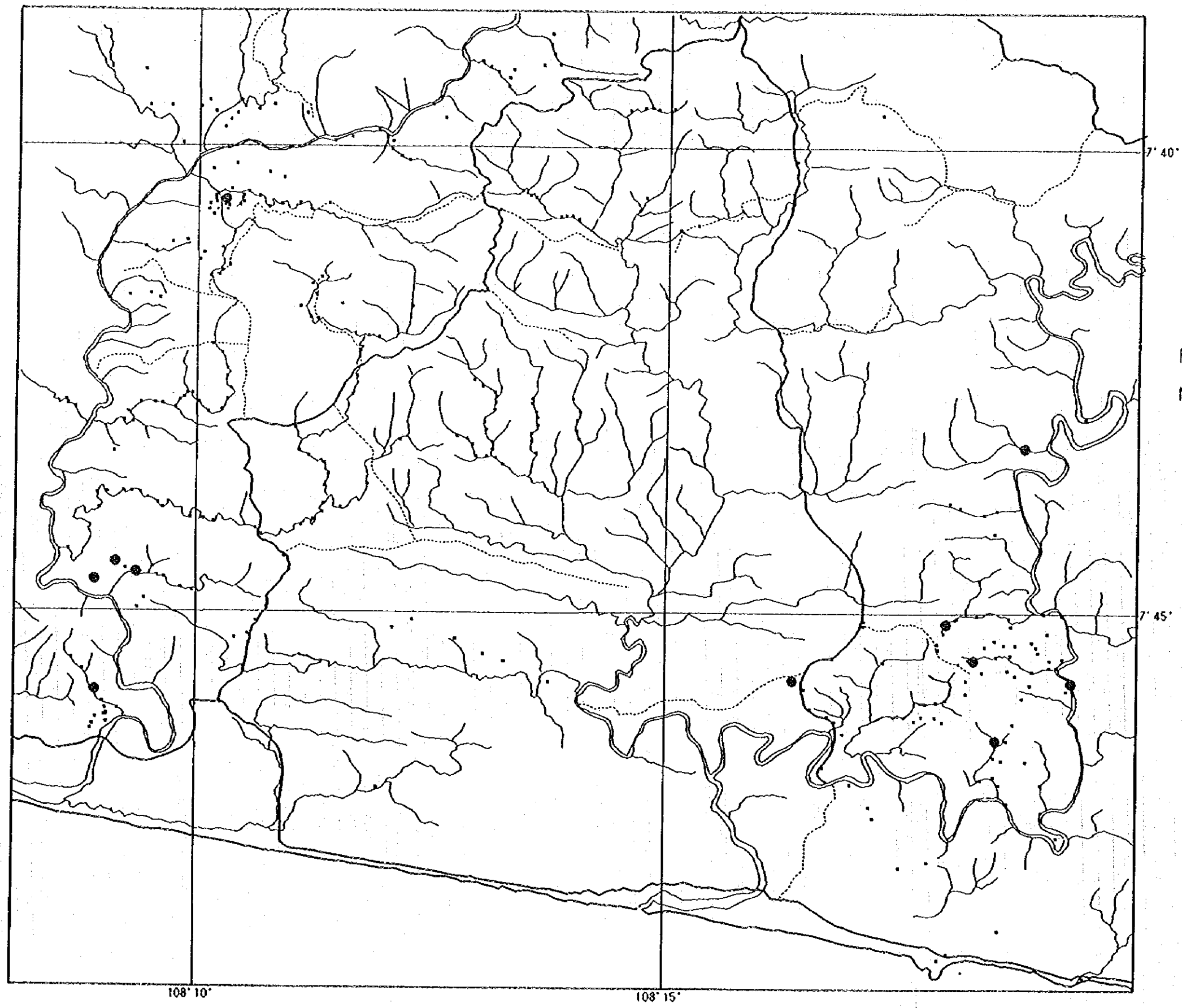
Rock Geochemistry
Sb

- >10ppm
- <10ppm



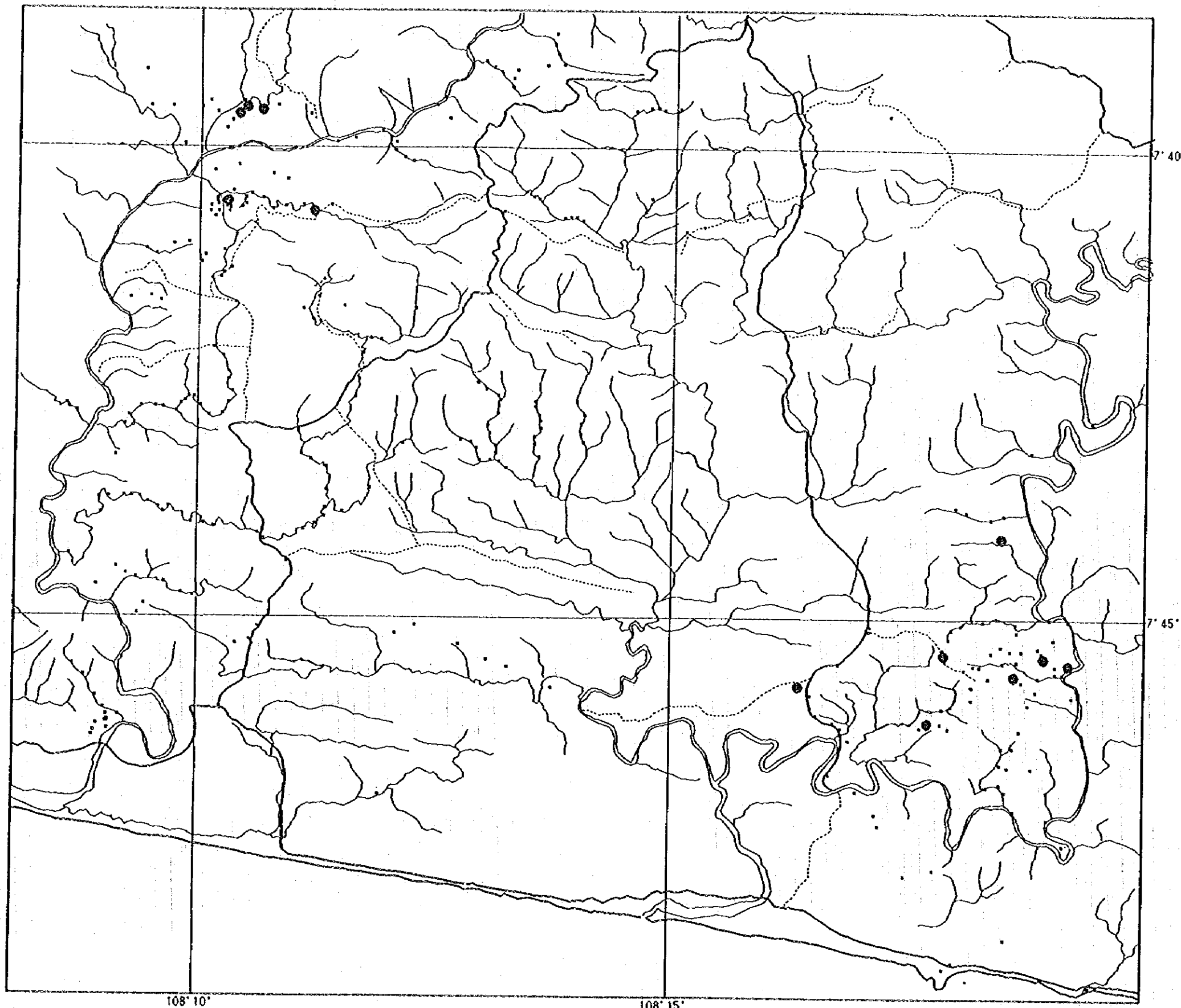
Rock Geochemistry
Fe

- >5x
- <5x



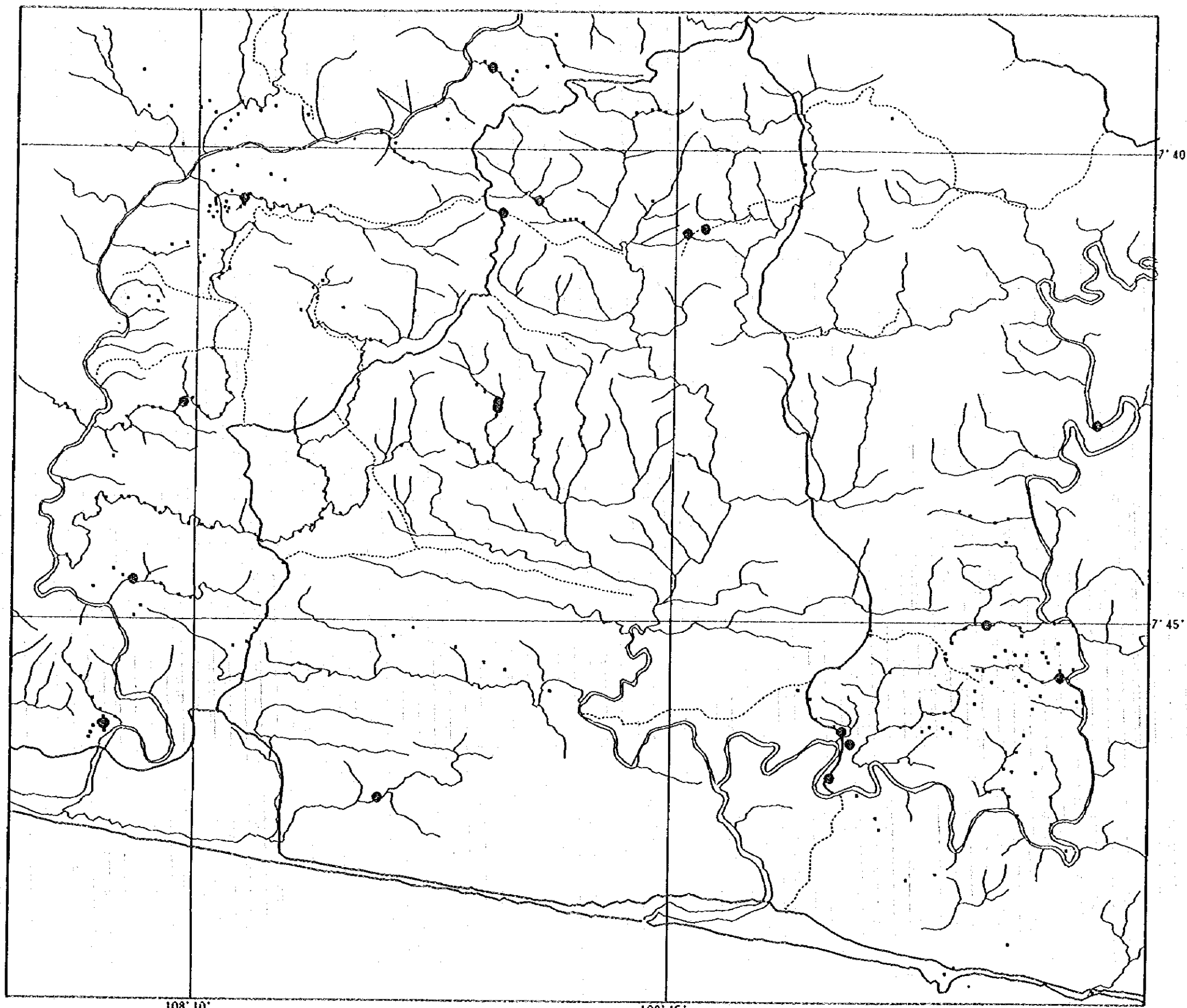
Rock Geochemistry
Mn

- >3600ppm
- <3600ppm



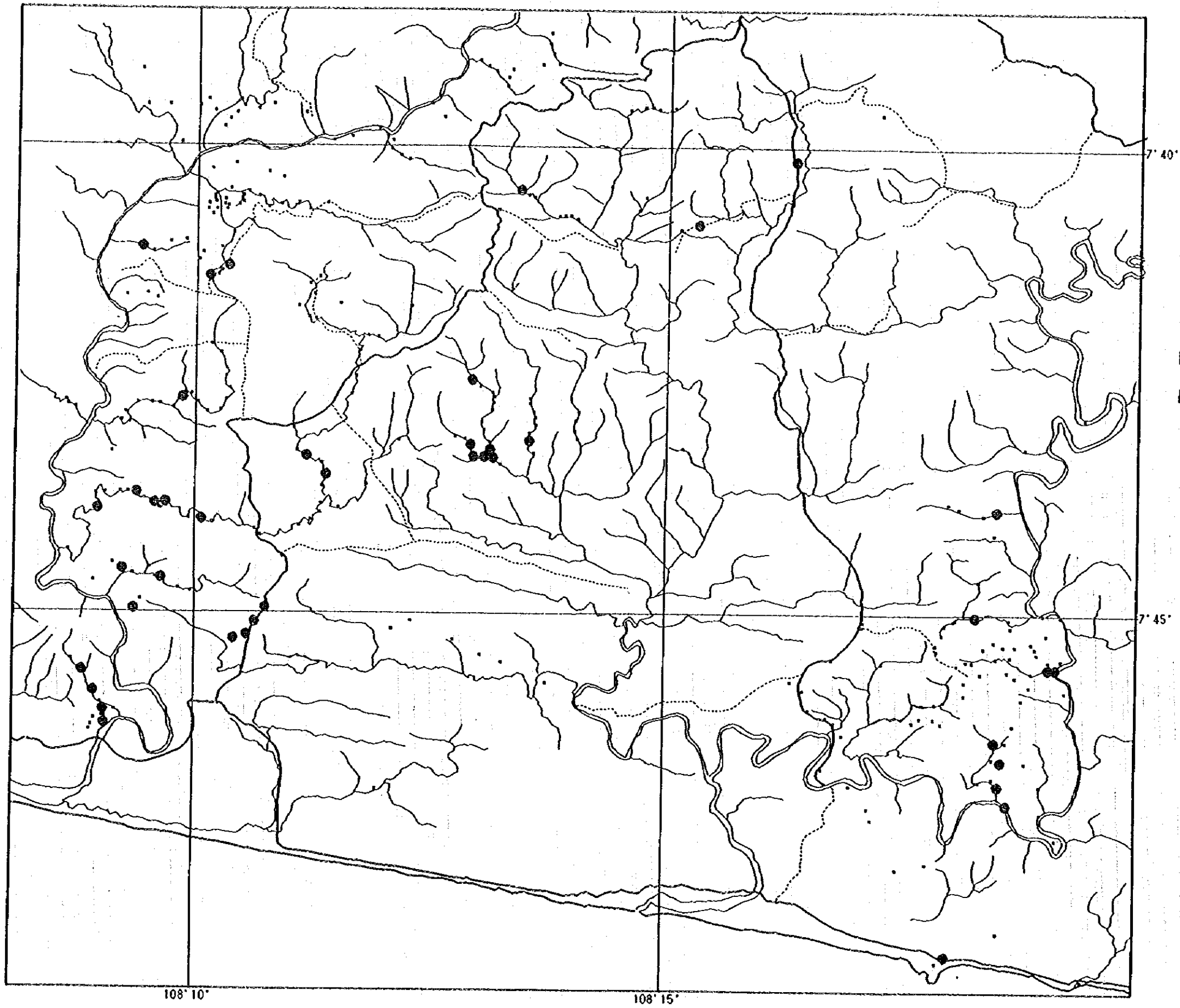
Rock Geochemistry
Ba

- >1800ppm
- <1800ppm



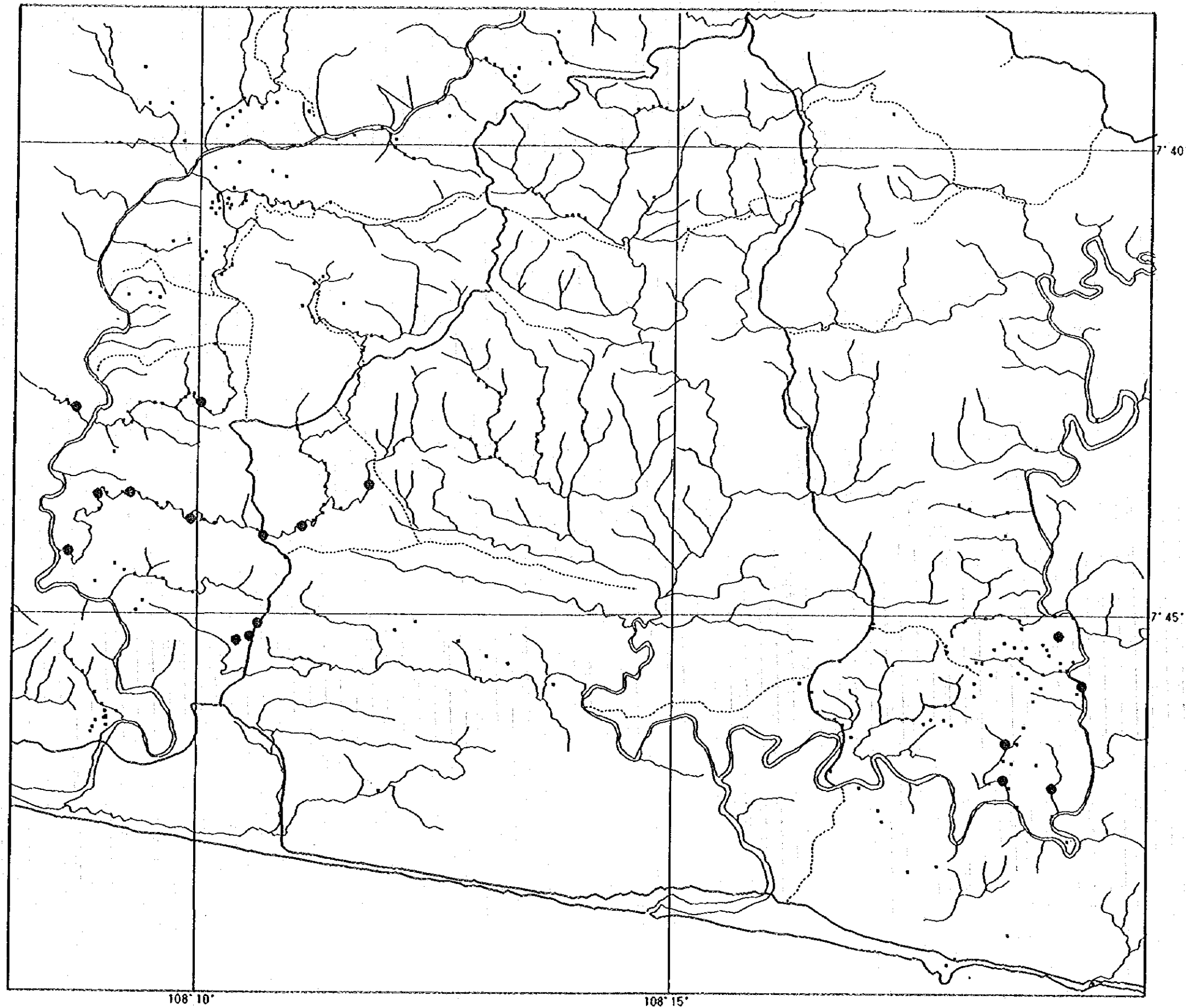
Rock Geochemistry
CaO

- >5%
- <5%



Rock Geochemistry
MgO

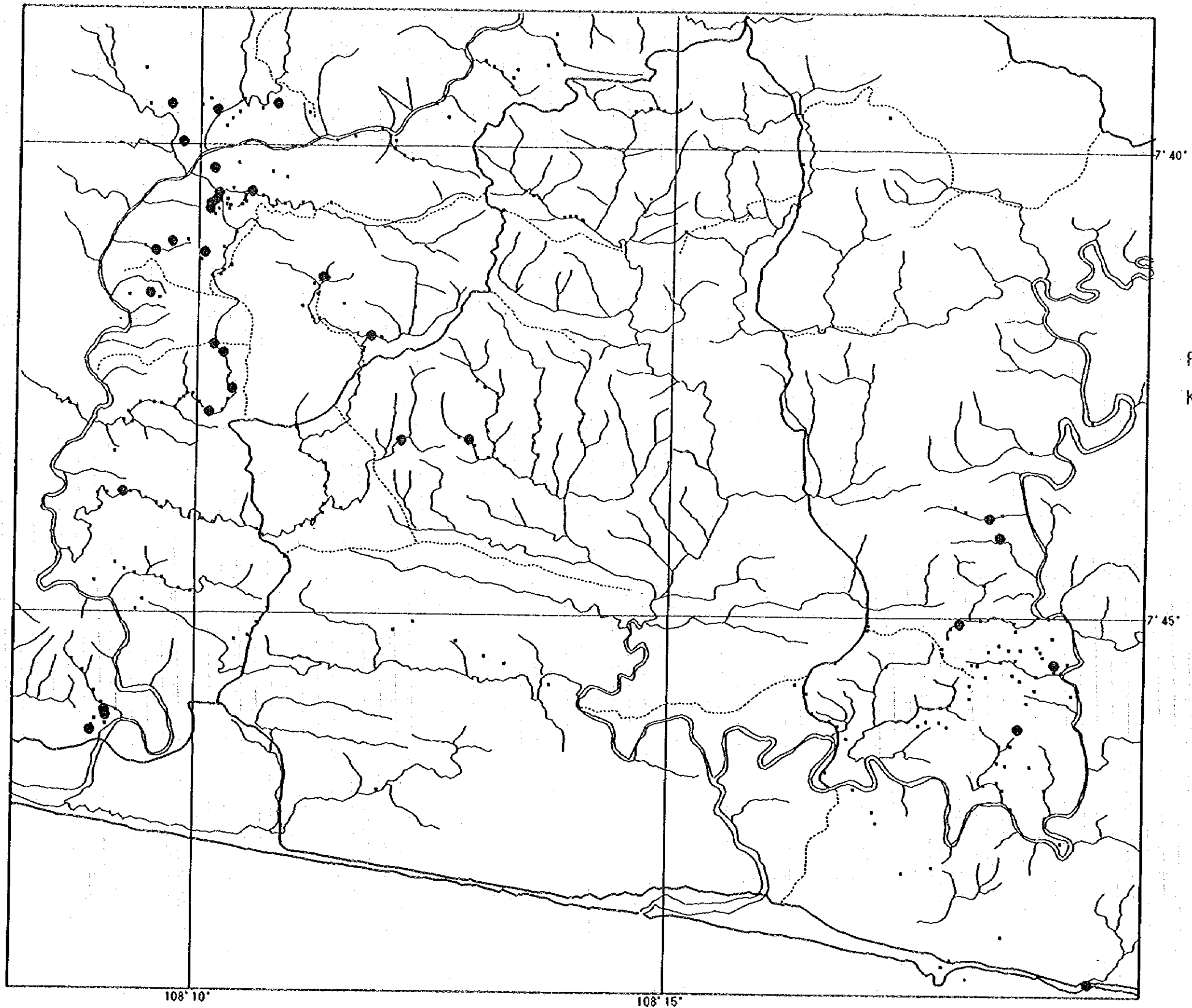
- >3.5%
- <3.5%



Rock Geochemistry
Na₂O

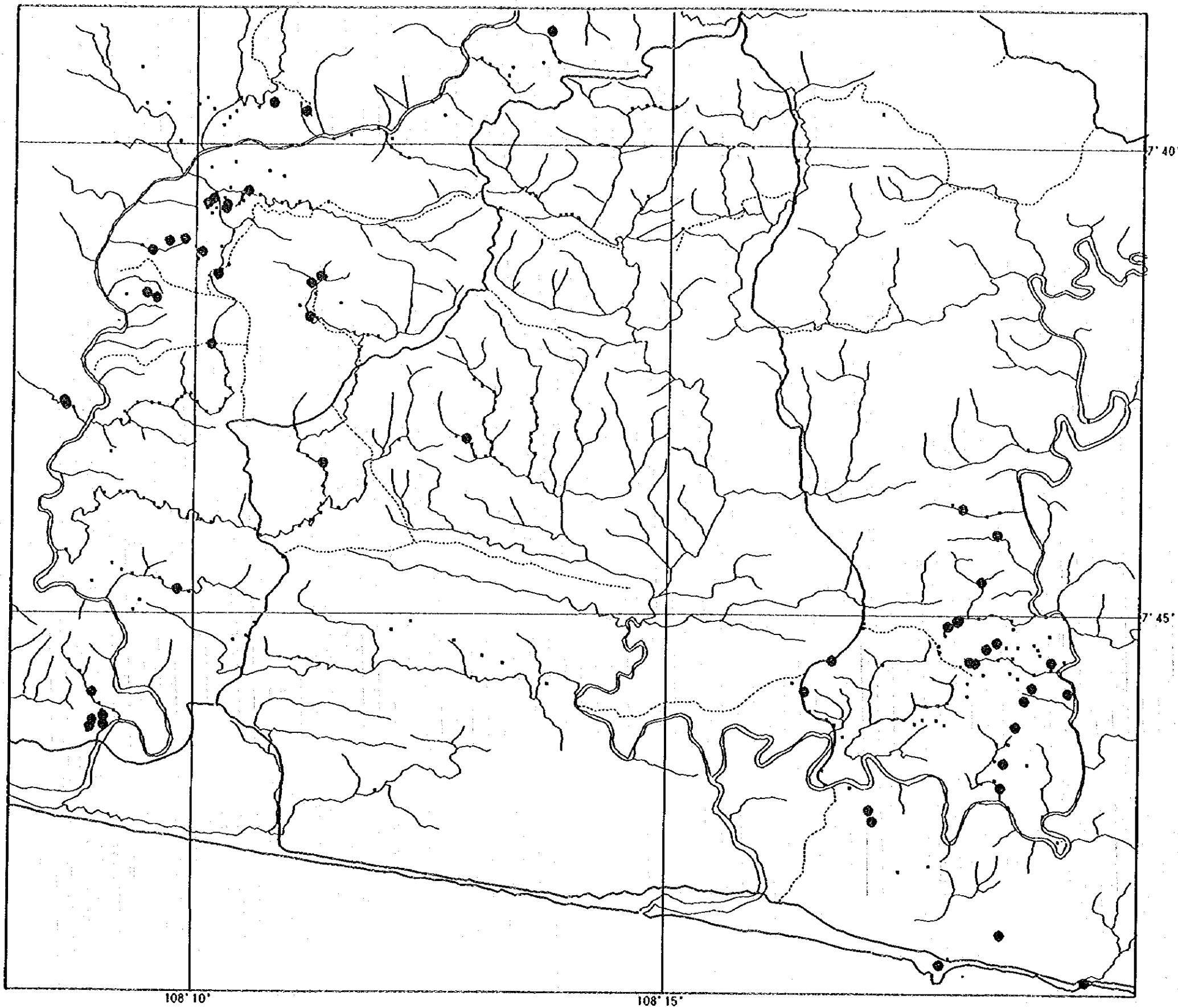
● >3.5%

• <3.5%



Rock Geochemistry
K2O

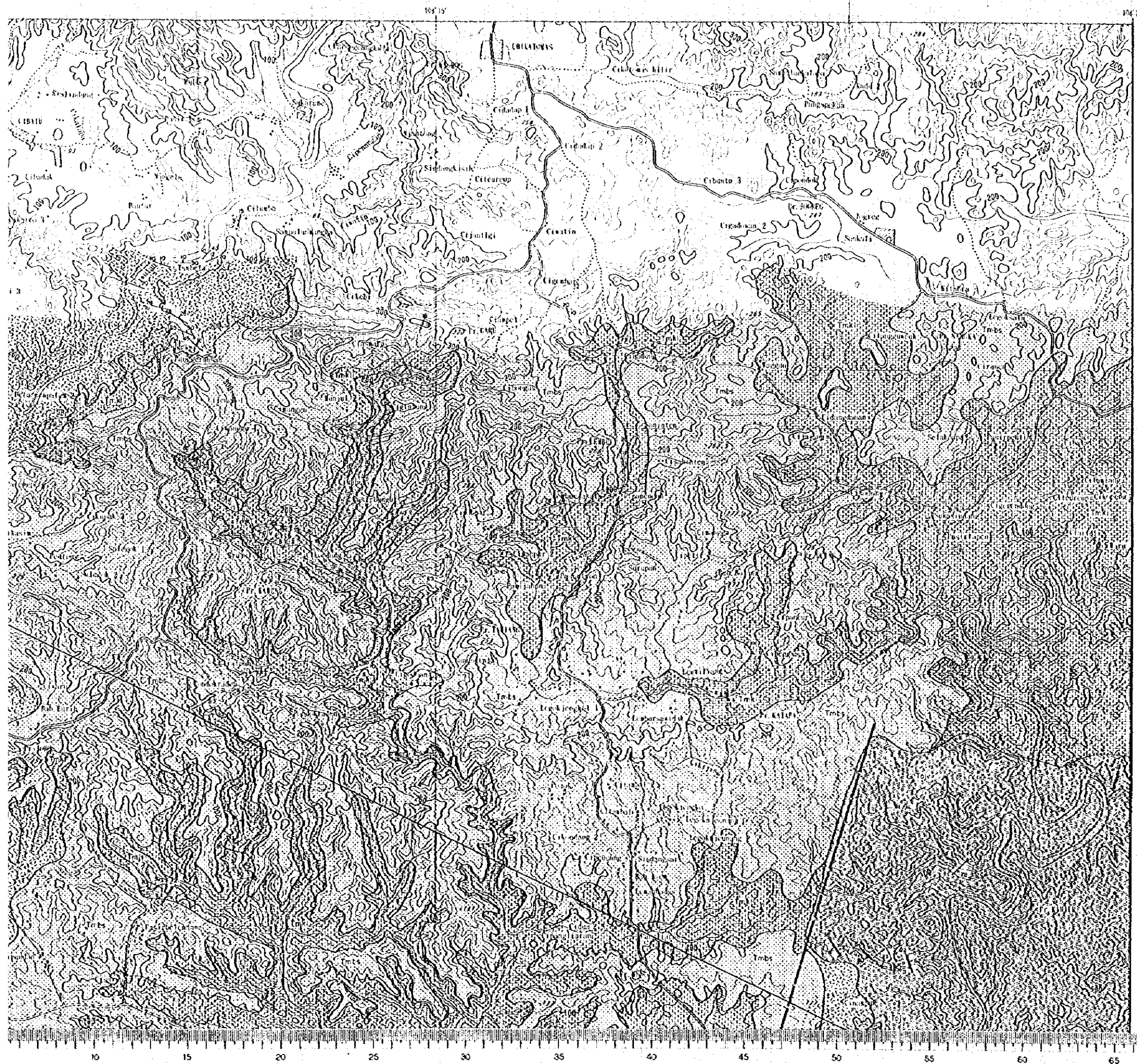
- >3.5%
- <3.5%



Rock Geochemistry
A. I.

● >79%
• <79%



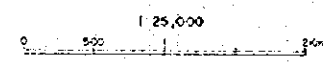


PL 1(1)

REPORT ON THE COOPERATIVE MINERAL EXPLORATION
IN THE TASIKMALAYA AREA, THE REPUBLIC OF INDONESIA
PHASE II

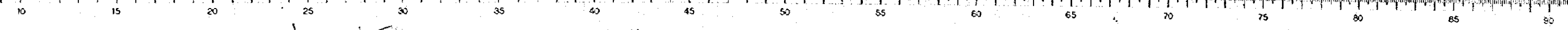
GEOLOGIC MAP AND GEOLOGIC PROFILE OF THE
CISARAH-CIDADAP-CIBUNIASIH AREA

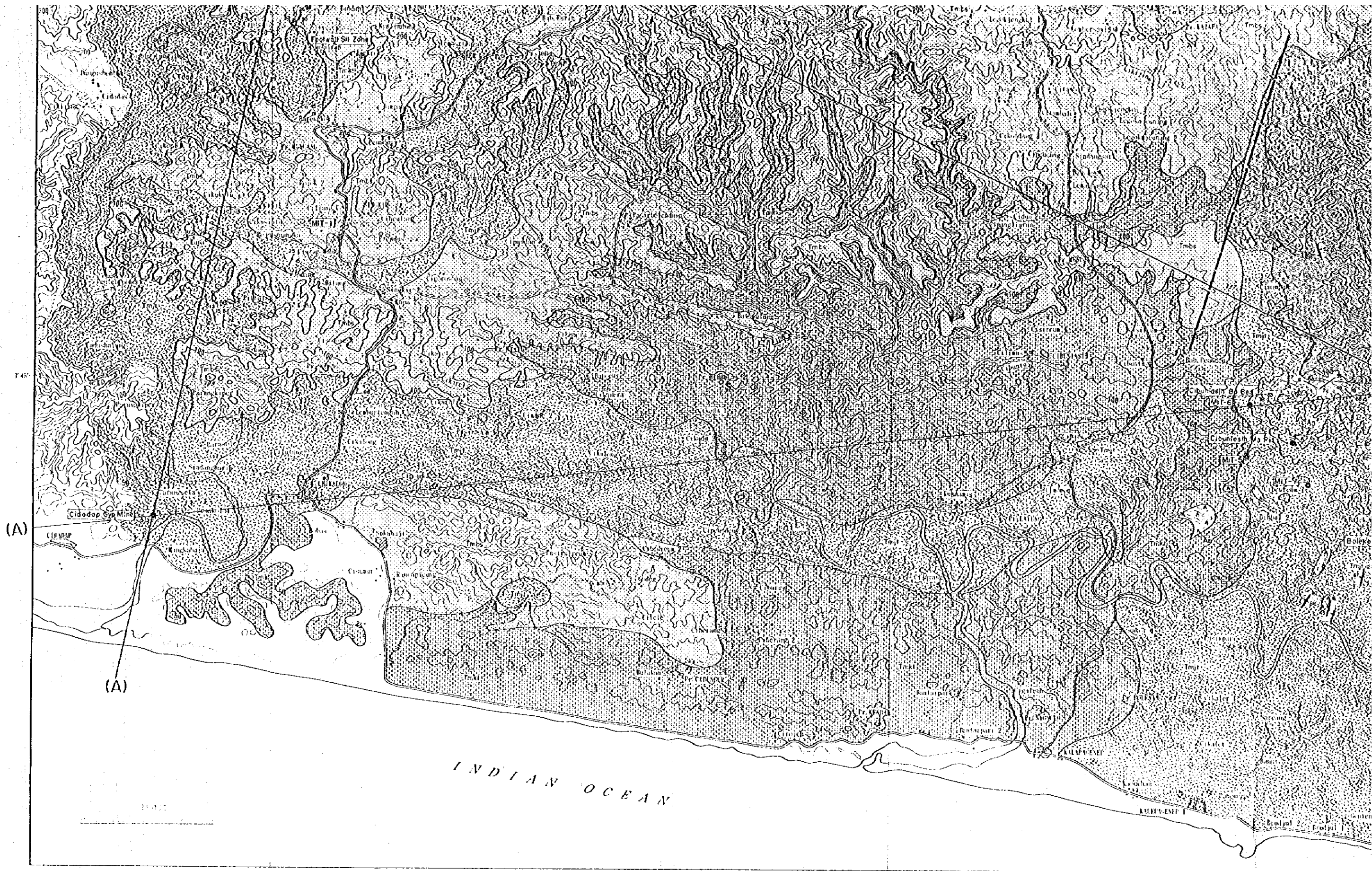
FEBRUARY, 1956
JAPAN INTERNATIONAL COOPERATION AGENCY
METAL MINING AGENCY OF JAPAN



LEGEND

- sandstone-calcareous sandstone, limestone (Bentang F.)
- limestone-calcareous sandstone, mudstone, siltstone (Kalipucang F.)
- dacite-andesitic tuff-breccia, fine tuff (Upper Jampang F.)
- basalt-andesitic volcanic breccia, lava (Lower Jampang F.)
- andesite (extrusive)
- quartz porphyry
- fault
- strike and dip of beds
- mineralization (Ba, Mn, Gys.)
- quartz vein
- A-B Profile line
- Location of Drilling





(A)

(A)

INDIAN OCEAN

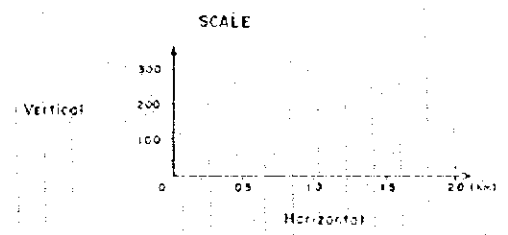
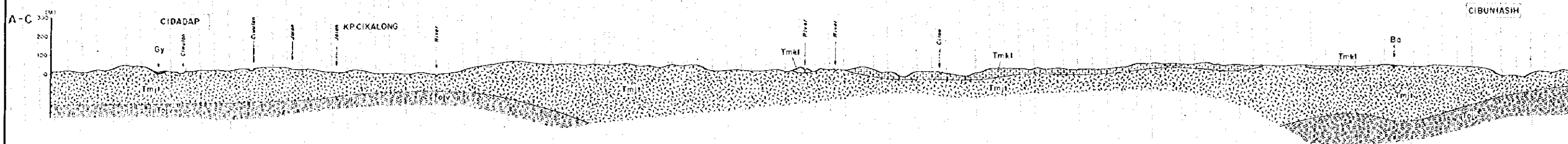
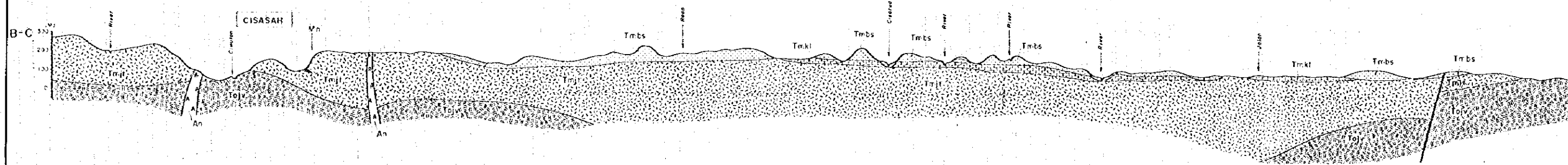
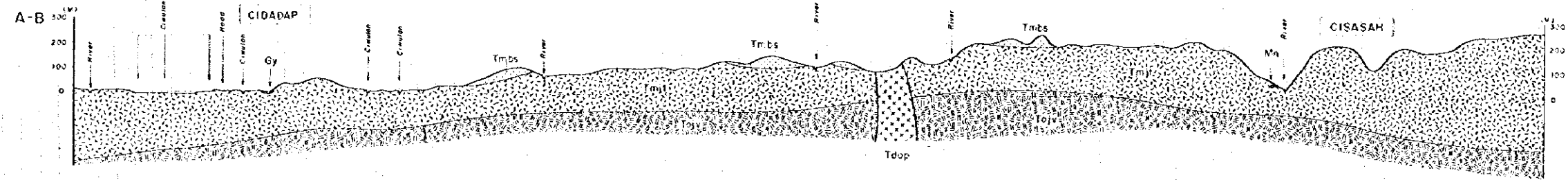




- 759 100 ft
- strike and dip of beds
- mineralization (Bo, Mn, G, P)
- contour
- A—B Profile line
- Location of Drilling

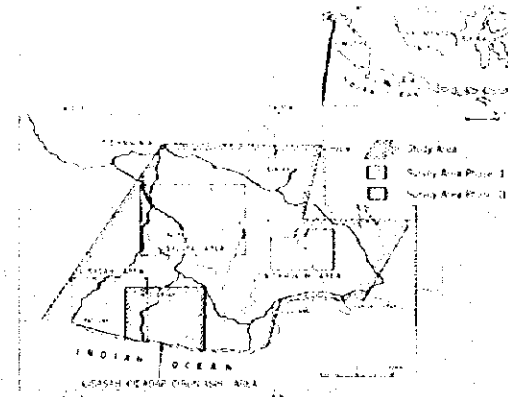
75
(C)





REPORT ON THE COOPERATIVE MINERAL EXPLORATION
IN THE TARUMAJAYA AREA, THE REPUBLIC OF INDONESIA
PHASE II

GEOLOGIC MAP AND GEOLOGIC PROFILE OF THE
DISASAH-CIDADAP-CIBUNIASIH AREA



FEBRUARY 1966

JAPAN INTERNATIONAL COOPERATION AGENCY
METAL MINING AGENCY OF JAPAN

1:25,000

LEGEND

- Sandstone-Calcareous Sandstone, Limestone (Benteng F.)
- Limestone-Calcareous Sandstone, Mudstone, Siltstone (Kalipucang F.)
- Dacitic-Andesitic Tuff-Breccia, Fine Tuff (Upper Jampang F.)
- Basaltic-Andesitic Volcanic Breccia, Lava (Lower Jampang F.)
- Andesite (intrusive)
- Quartz Porphyry
- Fault
- Strike and Dip of Beds
- Mineralization (Ba, Mn, Gyp)
- Quartz Vein
- A-B Profile Line
- Location of Drilling

