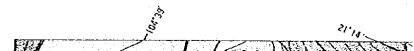
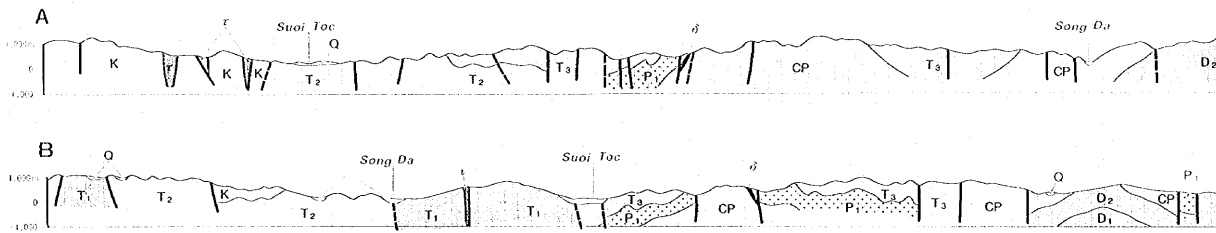
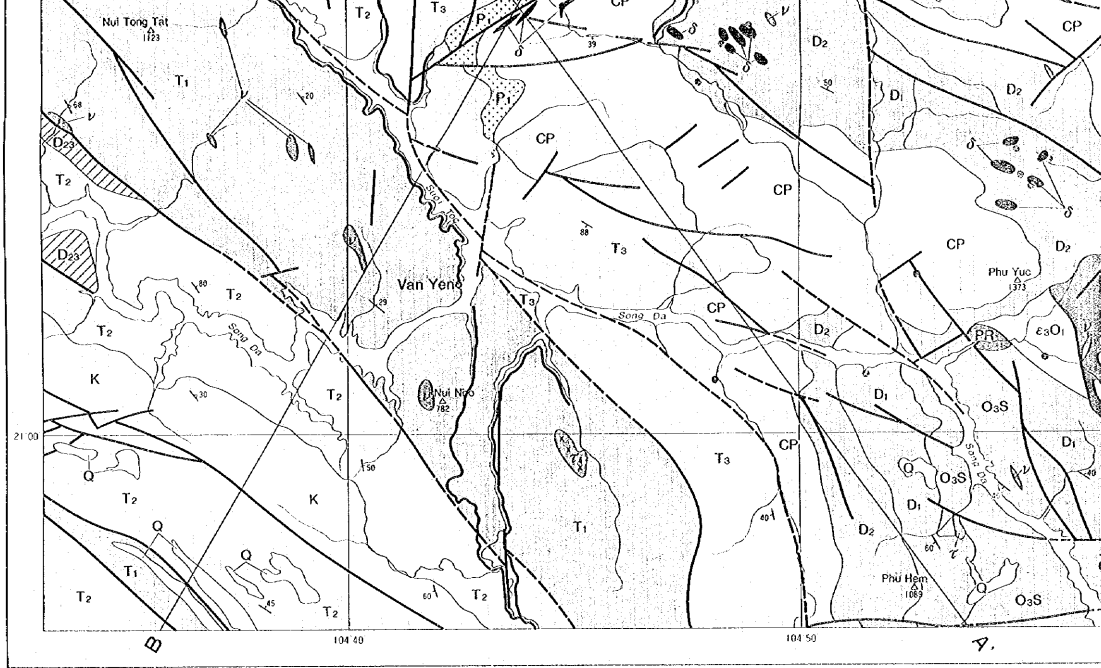


① Suoi Boc Zone

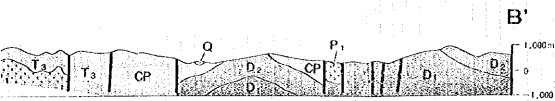
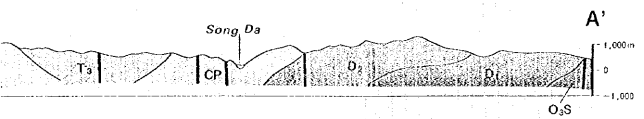
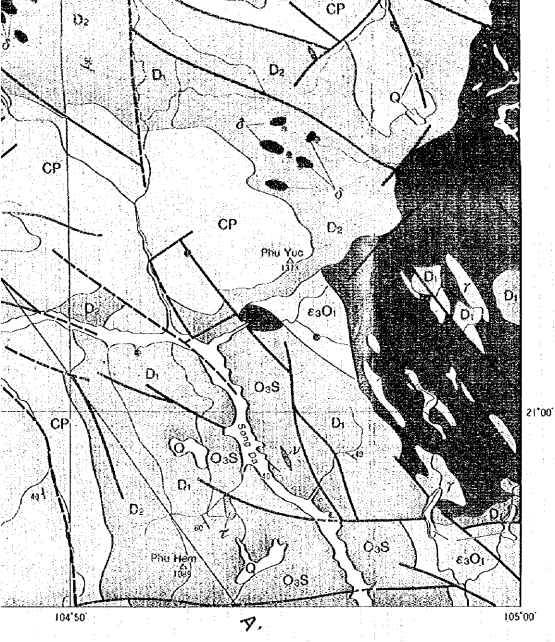
① Suoi Boc—Suoi Cu Zone



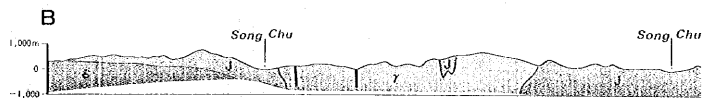
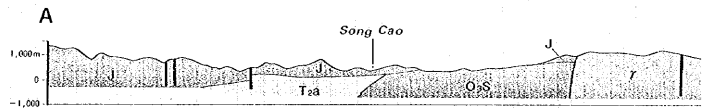


① Suoi Boc Zone

① Suoi Bocu Suoi Cu Zone

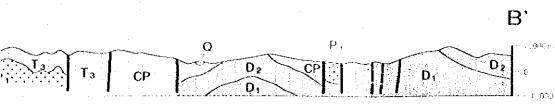
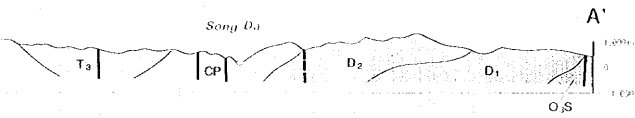
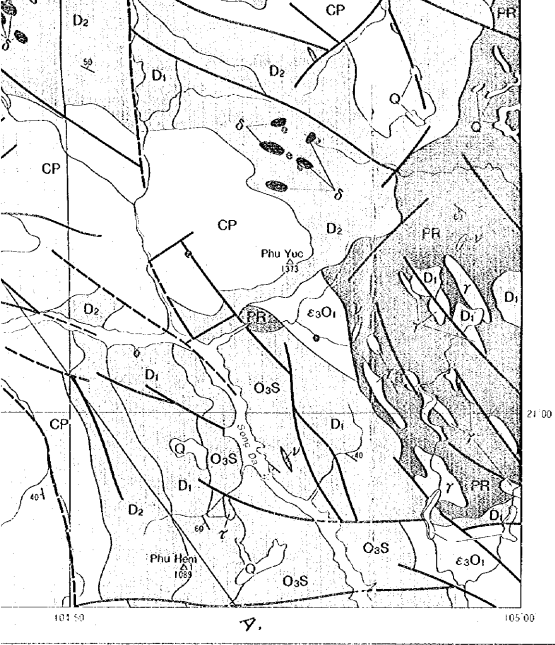


Suoi Boc Zone

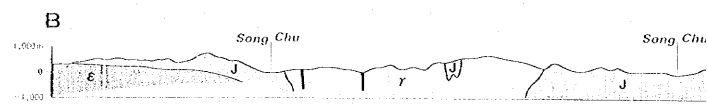
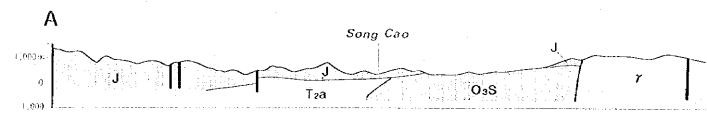
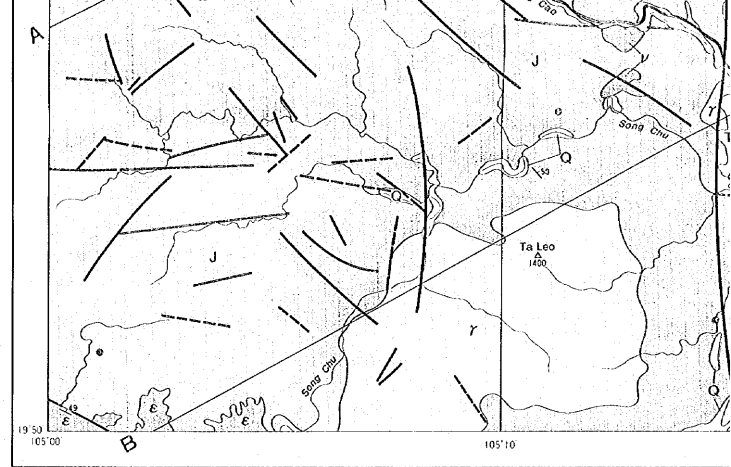


② Luong Son Zone



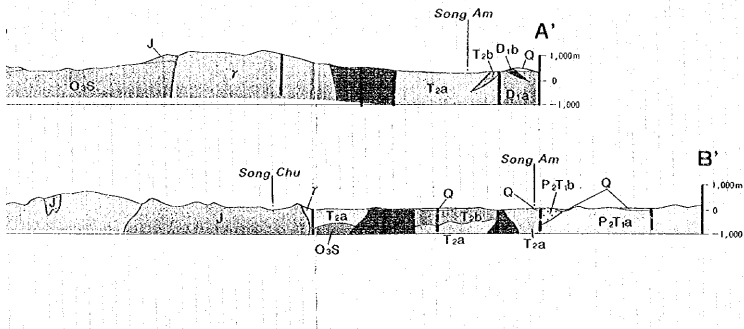
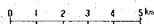
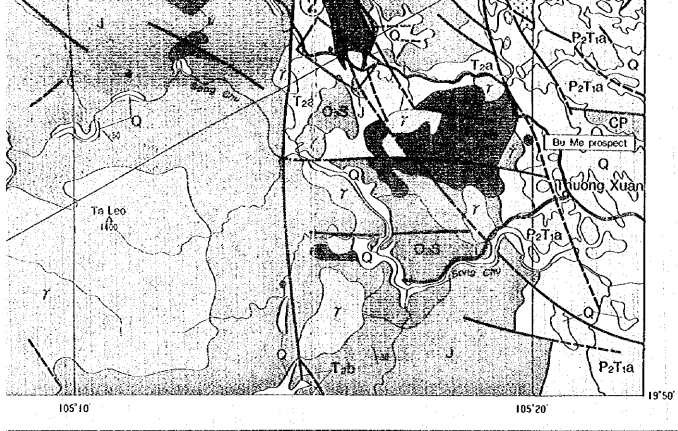


Suoi Boc Zone



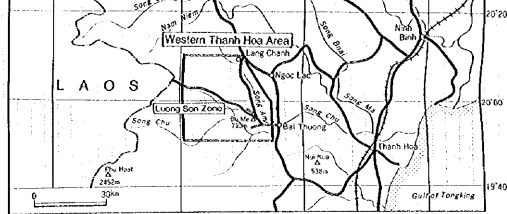
② Luang Son Zone





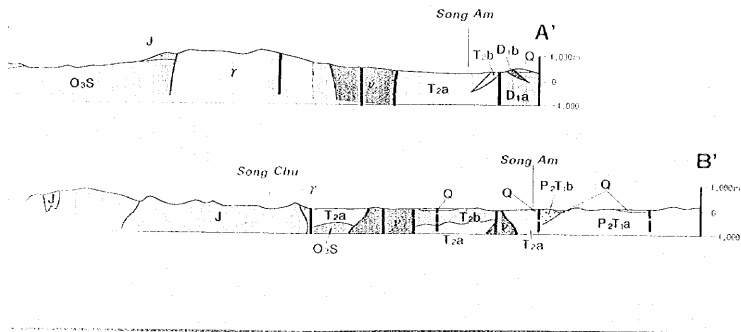
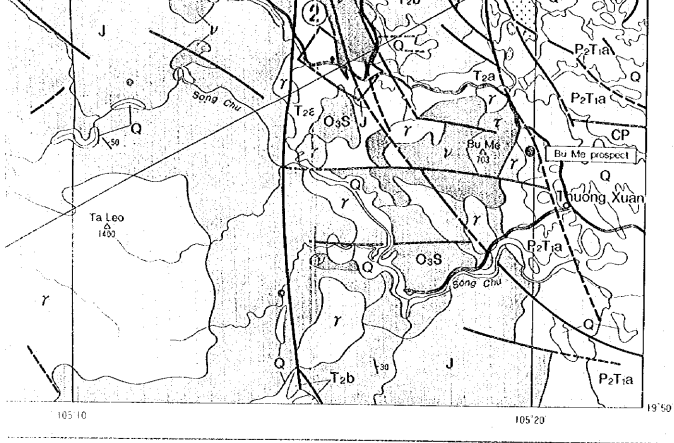
LEGEND

Quaternary		Gravel, Sand, Clay
Cretaceous		Mudstone, Sandstone, Conglomerate, Trachybasalt, Trachybasaltic Tuff, Trachyandesite, Trachyandesitic Tuff and Trachyte
Jurassic		Dacitic Tuff (partly welded), Dacite, Rhyolite, Sandstone Interbeds of Sandstone and Siltstone
Upper Triassic		Limestone, Interbeds of Mudstone and Sandstone.
Middle Triassic		Interbeds of Mudstone and Siltstone, Sandstone Limestone
Lower Triassic		Trachybasalt, Trachyte, Trachytic Tuff, Limestone, Mudstone, Sandstone and Conglomerate
Lower Triassic		Trachybasalt, Trachybasaltic Tuff, Trachytic Tuff, Mudstone, Sandstone, Interbeds of Limestone and Marl
Upper Permian to Lower Triassic		Dacitic Tuff, Mudstone and Sandstone
		Limestone



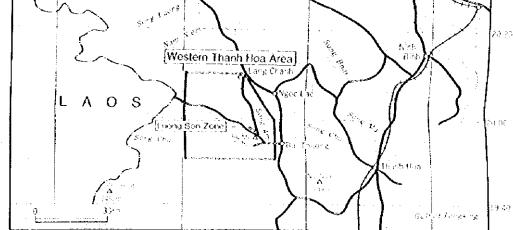
Members of Survey Team

- Phase 1** [Metal Mining Agency of Japan]
 Yoshitaki IGARASHI (Coordinator, Mining Engineer)
 [Vietnamese Members]
 Van Yen Area
 Nguyen Cong Luong (Geological Mapping Division, GSV) Team Leader
 Trinh Huu Nghi (Geological Mapping Division, GSV) Geologist
 Dinh Van Tuy (Geological Mapping Division, GSV) Geologist
 Nguyen Van Cu (Geological Mapping Division, GSV) Geologist
 Le Van Dieu (Geological Mapping Division, GSV) Geologist
 Western Thanh Hoa Area
 Ho Nhiem (Division No.4, GSV) Team Leader
 Dau Ba Quang (Division No.4, GSV) Geologist
 Tran Cong Bong (Division No.4, GSV) Geologist
 Nguyen The Phuc (Division No.4, GSV) Geologist
 Le Ich Nhi (Division No.4, GSV) Geologist
 [Japanese Members]
 Yuya FURUKAWA (NED) Team Leader
 Masataka OCHI (NED) Geologist
 Motomu GOTO (NED) Geologist
 Kazuyasu SUGAWARA (NED) Geologist
 Nozihiko NAGANO (NED) Geologist
- Phase 2** [Metal Mining Agency of Japan]
 Naoki SATO (Coordinator, Geophysicist)
 [Vietnamese Members]
 Van Yen Area
 Nguyen Dai Lu (Geological Mapping Division, GSV) Team Leader
 Pham Van Duong (Geological Mapping Division, GSV) Geologist
 Nguyen The Cu (Geological Mapping Division, GSV) Geologist
 Nguyen Huy Than (Geological Mapping Division, GSV) Geologist
 Tran Dang Hung (Geological Mapping Division, GSV) Geologist
 Dan Nguyen Viet (Geological Mapping Division, GSV) Geologist
 Nguyen Xuan Dong (Geological Mapping Division, GSV) Geophysicist
 Nguyen Duc Nhuong (Geological Mapping Division, GSV) Geophysicist
 Tran Thanh Dy (Geological Mapping Division, GSV) Geophysicist
 Western Thanh Hoa Area
 Ho Nhiem (Division No.4, GSV) Team Leader
 Dau Ba Quang (Division No.4, GSV) Geologist
 Nguyen The Phuc (Division No.4, GSV) Geologist
 Tran Cong Bong (Division No.4, GSV) Geologist
 Nguyen Xuan Toan (Division No.4, GSV) Geologist
 Nguyen Phi Tien (Division No.4, GSV) Geologist
 [Japanese Members]
 Masataka OCHI (NED) Team Leader
 Motomu GOTO (NED) Geologist
 Masami HIGASHIHARA (NED) Geologist
 Takumi ONUMA (NED) Geologist



LEGEND

Quaternary	Q	Gravel, Sand, Clay
Cretaceous	K	Mudstone, Sandstone, Conglomerate, Trachybasalt, Trachybasaltic Tuff, Trachyandesite, Trachyandesitic Tuff and Trachyte
Jurassic	J	Dacite Tuff (partly welded), Dacite, Rhyolite, Sandstone, Interbeds of Sandstone and Siltstone
Upper Triassic	T₂	Limestone, Interbeds of Mudstone and Sandstone,
Middle Triassic	T_{2a}	Interbeds of Mudstone and Siltstone, Sandstone
	T_{2b}	Limestone
	T₂	Trachybasalt, Trachyte, Trachytic Tuff, Limestone, Mudstone, Sandstone and Conglomerate
Lower Triassic	T₁	Trachybasalt, Trachybasaltic Tuff, Trachytic Tuff, Mudstone, Sandstone, Interbeds of Limestone and Marl
Upper Permian to Lower Triassic	P₂T₁a	Dacite Tuff, Mudstone and Sandstone



Members of Survey Team

Phase 1 [Metal Mining Agency of Japan]
 Yoshiaki IGARASHI (Coordinator, Mining Engineer)
 [Vietnamese Members]

Van Yen Area

Nguyen Cong Luong (Geological Mapping Division, GSV) Team Leader
 Trinh Huu Nghia (Geological Mapping Division, GSV) Geologist
 Dinh Van Tuy (Geological Mapping Division, GSV) Geologist
 Nguyen Van Cu (Geological Mapping Division, GSV) Geologist
 Le Van Dieu (Geological Mapping Division, GSV) Geologist

Western Thanh Hoa Area

Ho Nhem (Division No.4, GSV) Team Leader
 Dau Ba Quang (Division No.4, GSV) Geologist
 Tran Cong Bong (Division No.4, GSV) Geologist
 Nguyen The Phuc (Division No.4, GSV) Geologist
 Le Ich Nhi (Division No.4, GSV) Geologist

[Japanese Members]

Yuya FURUKAWA (NED) Team Leader
 Masataka OCHI (NED) Geologist
 Motomu GOTO (NED) Geologist
 Kazuyasu SUKAWARA (NED) Geologist
 Norihisa NAGANO (NED) Geologist

Phase 2 [Metal Mining Agency of Japan]
 Naoki SATO (Coordinator, Geophysicist)
 [Vietnamese Members]

Van Yen Area

Nguyen Dai Lu (Geological Mapping Division, GSV) Team Leader
 Pham Van Duong (Geological Mapping Division, GSV) Geologist
 Nguyen The Cu (Geological Mapping Division, GSV) Geologist
 Nguyen Huy Than (Geological Mapping Division, GSV) Geologist
 Tran Dang Hung (Geological Mapping Division, GSV) Geologist
 Dan Nguyen Viet (Geological Mapping Division, GSV) Geophysicist
 Nguyen Xuan Dong (Geological Mapping Division, GSV) Geophysicist
 Nguyen Duc Nhuong (Geological Mapping Division, GSV) Geophysicist
 Tran Thanh By (Geological Mapping Division, GSV) Geophysicist

Western Thanh Hoa Area

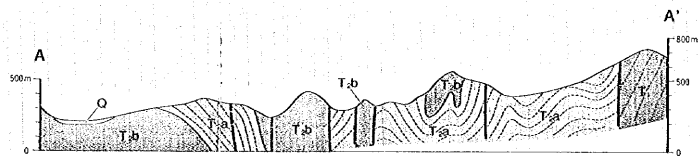
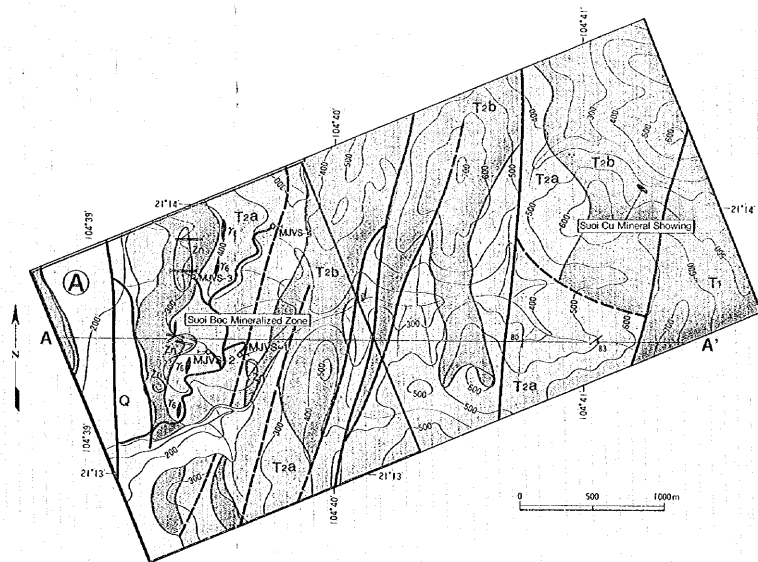
Ho Nhem (Division No.4, GSV) Team Leader
 Dau Ba Quang (Division No.4, GSV) Geologist
 Nguyen The Phuc (Division No.4, GSV) Geologist
 Tran Cong Bong (Division No.4, GSV) Geologist
 Nguyen Xuan Toan (Division No.4, GSV) Geologist
 Nguyen Phi Tien (Division No.4, GSV) Geologist

[Japanese Members]

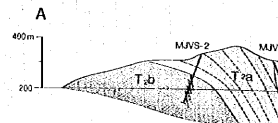
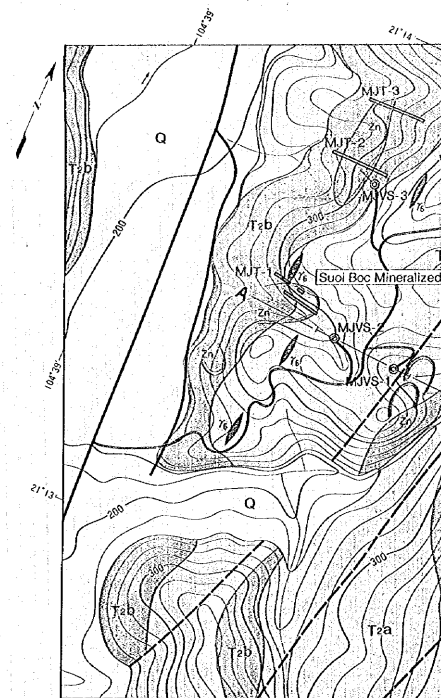
Masataka OCHI (NED) Team Leader
 Motomu GOTO (NED) Geologist
 Masami HIGASHIHARA (NED) Geologist



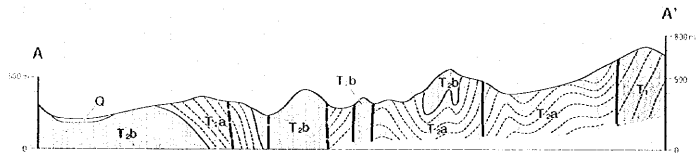
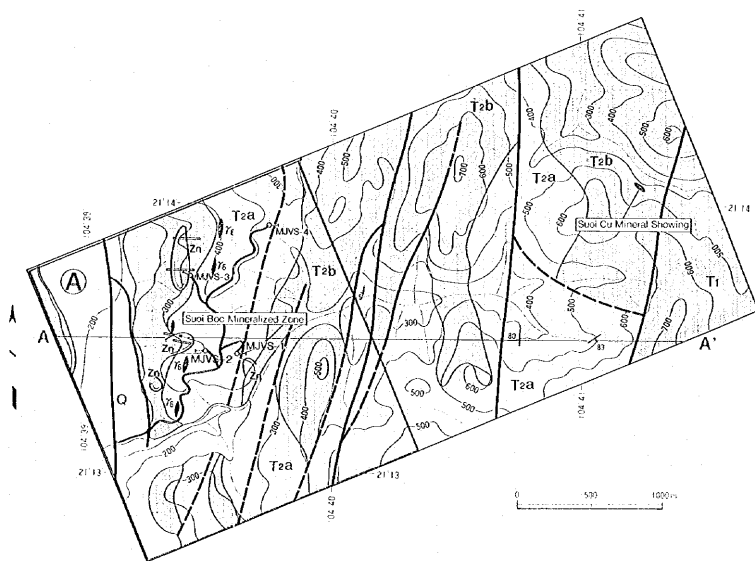
① Suoi Boc—Suoi Cu Zone



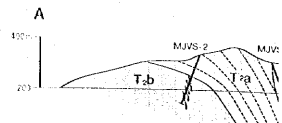
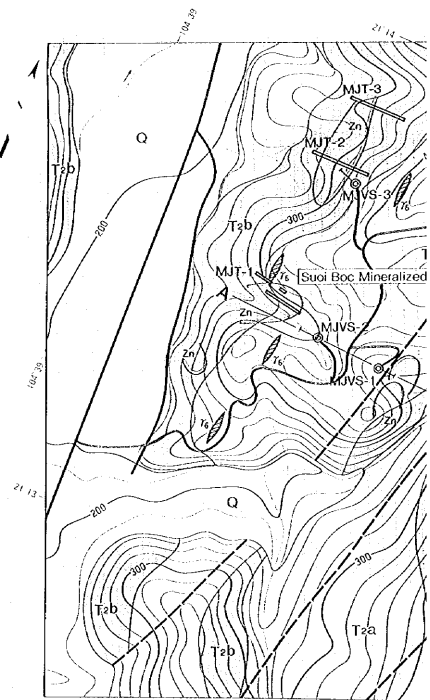
② Suoi Boc Zone



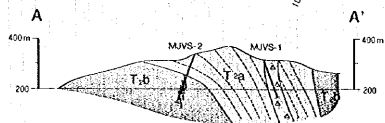
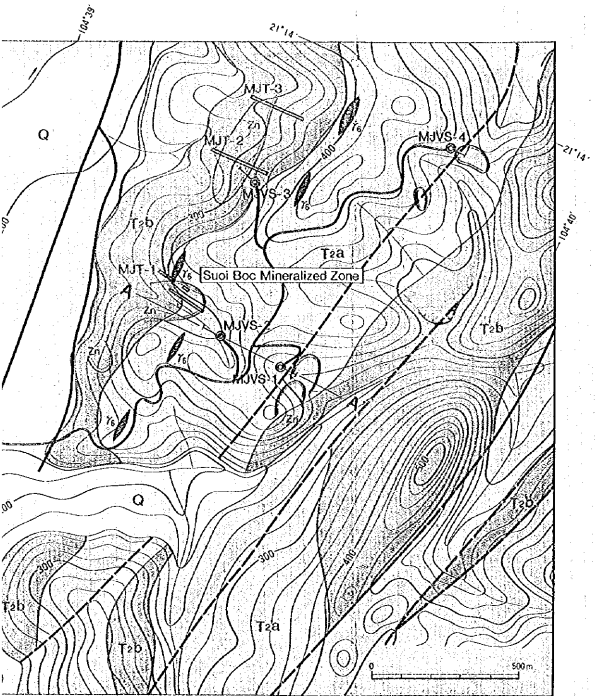
① Suoi Boc--Suoi Cu Zone



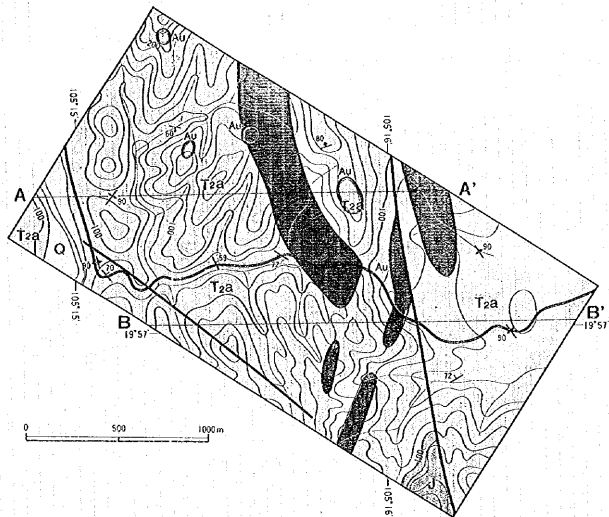
② Suoi Boc Zone



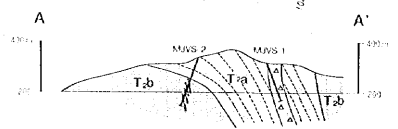
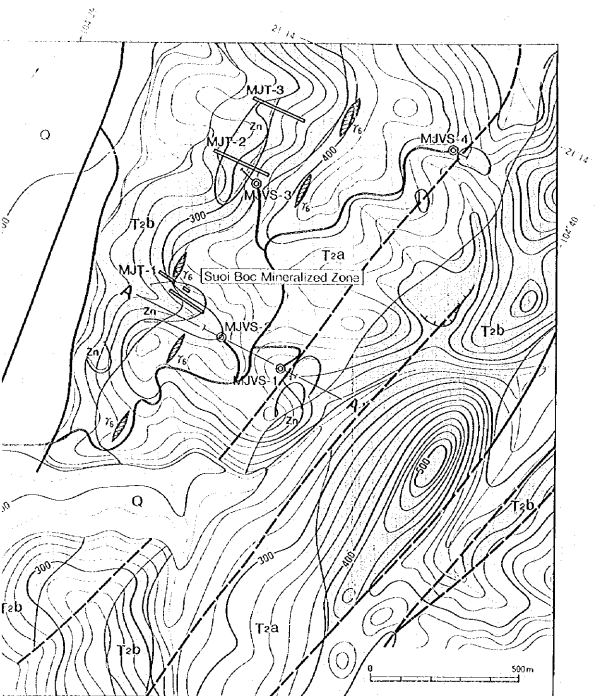
Suoi Boc Zone



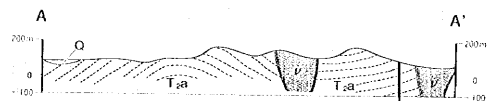
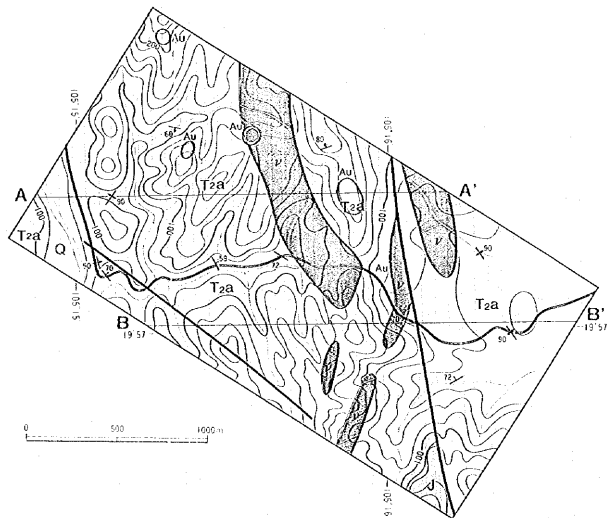
② Luong Son Zone

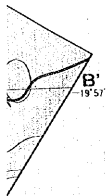


Suoi Boc Zone



② Luong Son Zone





Quaternary		Gravel, Sand, Clay
Cretaceous		Mudstone, Sandstone, Conglomerate, Trachybasalt, Trachybasaltic Tuff, Trachyandesite, Trachyandesitic Tuff and Trachyte
Jurassic		Dacitic Tuff (partly welded), Dacite, Rhyolite, Sandstone Interbeds of Sandstone and Siltstone
Upper Triassic		Limestone, Interbeds of Mudstone and Sandstone,
Middle Triassic		Interbeds of Mudstone and Siltstone, Sandstone Limestone Trachybasalt, Trachyte, Trachytic Tuff, Limestone, Mudstone, Sandstone and Conglomerate
Lower Triassic		Trachybasalt, Trachybasaltic Tuff, Trachytic Tuff, Mudstone, Sandstone, Interbeds of Limestone and Marl
Upper Permian to Lower Triassic		Dacitic Tuff, Mudstone and Sandstone Limestone
Permian		Mudstone, Limestone, Interbeds of Mudstone and Sandstone
Carboniferous to Permian		Mudstone, Sandstone and Limestone
Middle to Upper Devonian		Mudstone, Limestone and Andesitic Tuff
Middle Devonian		Limestone
Lower Devonian		Mudstone, Sandstone and Siltstone Limestone and Basaltic Tuff Mudstone, Sandstone, Limestone, Interbeds of Sandstone and Mudstone, Conglomerate and Basaltic Tuff
Silurian to Devonian		Mudstone, Sandstone, Interbeds of Siltstone and Mudstone, Limestone
Upper Ordovician to Silurian		Sandstone, Mudstone, Limestone and Pelitic Schist
Upper Cambrian to Lower Ordovician		Sandstone, Mudstone, Conglomerate, Pelitic Schist and Psammitic Schist
Cambrian		Pelitic Schist, Gneiss, Granodiorite and Diorite
Proterozoic		Pelitic Schist, Green Schist, Psammitic Schist, Quartzite, Biotite Gneiss and Amphibole Gneiss
Intrusive Rock		Granite
		Dacite Porphyry, Apatite
		Syenite
		Trachyte
		Gabbro and Diorite
		Ultramafic Rocks
		Fault
		Shear Zone
		Dip and Strike of Bed
		Dip and Strike of Schistosity
	Vein	
	Mineralization	
	Geochemical Anomalous Zone	
	High Chargeability Zone	
	Drilling Hole	
	Trench	
	Working Mine	
	Profile Line	

Nguyen Duc Nhuong (Geological Mapping Division, GSV) Geophysicist
 Tran Thanh Dy (Geological Mapping Division, GSV) Geophysicist
 Western Thanh Hoa Area
 Ho Nham (Division No.4, GSV) Team Leader
 Dau Ba Quung (Division No.4, GSV) Geologist
 Nguyen Tho Phuc (Division No.4, GSV) Geologist
 Tran Cong Bong (Division No.4, GSV) Geologist
 Nguyen Kuan Tam (Division No.4, GSV) Geologist
 Nguyen Phi Tien (Division No.4, GSV) Geologist
 [Japanese Members]
 Masataka OCHI (NED) Team Leader
 Motomu GOTO (NED) Geologist
 Masami HIGASHIHARA (NED) Geologist
 Takumi ONUMA (NED) Geologist
 Kazuyasu SUGAWARA (NED) Geologist
 Tomoji SANGA (NED) Geologist
 Takashi YAMASHI (NED) Geophysicist
 Shinichi SUGIYAMA (NED) Geophysicist
 Tadanori IWASAKI (NED) Geophysicist

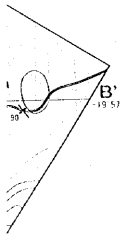
Phase 3 [Vietnamese Member]
 Hoang Minh Hoa (Division No.3, GSV) Geologist
 [Japanese Members]
 Yoneharu MATANO (NED) Team Leader
 Saichi ISHI (NED) Drilling Engineer

Summary of Exploration Work in the Van Yen and Western Thanh Hoa Areas

Phase	Survey	Area	Amount of Work
First	Regional Geological Survey and Geochemical Exploration	Van Yen Area	Area: 1,000 km ² Stream Sediments 699 pcs (Au, Ag, As, Cr, Cu, Hg, Mn, Ni, Pb, Sb, Sn, W, Zn) Pan Concentrates 193 pcs
		Western Thanh Hoa Area	Area: 650 km ² Stream Sediments 532 pcs (Au, Ag, As, Cr, Cu, Hg, Mn, Ni, Pb, Sb, Sn, W, Zn) Pan Concentrates 147 pcs
	Semi-detailed Geochemical Exploration	Bu Me Zone, Western Thanh Hoa Area	Area: 4.5 km ² Soil Samples 241 pcs (Au, Ag, As, Cr, Cu, Hg, Mn, Ni, Pb, Sb, Sn, W, Zn)
	Second	Regional Geological Survey and Geochemical Exploration	Van Yen Area
Western Thanh Hoa Area			Area: 650 km ² Stream Sediments 469 pcs (Au, Ag, As, Cr, Cu, Hg, Ni, Pb, Sn, W, Zn) Pan Concentrates 129 pcs
Detailed Geological Survey and Geochemical Exploration		Suoi Boc-Suoi Cu Zone, Van Yen Area	Area: 10 km ² Soil Samples 100 pcs (Au, Ag, As, Cu, Cd, Hg, Pb, Sb, Zn)
		Luong Son Zone, Western Thanh Hoa Area	Area: 4 km ² Soil Samples 207 pcs (Au, Ag, As, Cu, Hg, Pb, Sb, Zn) Pan Concentrates 15 pcs
Geophysical Survey		Suoi Boc Zone, Van Yen Area	Area: 4.5 km ² IP Lines 15.8 km
Drilling Exploration		Suoi Boc Zone, Van Yen Area	Area: 4.5 km ² Drilling (4 holes) 742.70 m Trench 600.00 m

LEGEND

Quaternary		Gravel, Sand, Clay
Cretaceous		Mudstone, Sandstone, Conglomerate, Trachybasalt, Trachytic Tuff, Trachyandesite, Trachyandesitic Tuff and Trachyte
Jurassic		Diorite Tuff (early welded), Diabase, Rhyolite, Sandstone, Interbeds of Sandstone and Siltstone
Upper Triassic		Limestone, Interbeds of Mudstone and Sandstone
Middle Triassic		Interbeds of Mudstone and Siltstone, Sandstone
		Limestone
		Trachybasalt, Trachyte, Trachytic Tuff, Limestone, Mudstone, Sandstone and Conglomerate
Lower Triassic		Trachybasalt, Trachybasaltic Tuff, Trachytic Tuff, Mudstone, Sandstone, Interbeds of Limestone and Marl
Upper Permian to Lower Triassic		Diorite Tuff, Mudstone and Sandstone, Limestone
Permian		Mudstone, Limestone, Interbeds of Mudstone and Sandstone
Carboniferous to Permian		Mudstone, Sandstone and Limestone
Middle to Upper Devonian		Mudstone, Limestone and Andesitic Tuff
Middle Devonian		Limestone
Lower Devonian		Mudstone, Sandstone and Siltstone
		Limestone and Basaltic Tuff
		Mudstone, Sandstone, Limestone, Interbeds of Sandstone and Mudstone, Conglomerate and Basaltic Tuff
Silurian to Devonian		Mudstone, Sandstone, Interbeds of Siltstone and Mudstone, Limestone
Upper Ordovician to Silurian		Sandstone, Mudstone, Limestone and Pelitic Schist
Upper Cambrian to Lower Ordovician		Sandstone, Mudstone, Conglomerate, Pelitic Schist and Psammitic Schist
Cambrian		Pelitic Schist, Gneiss, Granitoid and Diorite
Proterozoic		Pelitic Schist, Green Schist, Psammitic Schist, Quartzite, Biotite Gneiss and Amphibole Gneiss
Intrusive Rock		Granite
		Diorite Porphyry, Aplité
		Syenite
		Trachyte
		Gabbro and Diorite
		Ultramafic Rocks
		Fault
		Shear Zone
		Dip and Strike of Bed
		Dip and Strike of Schistosity
	Vein	
	Mineralization	
	Geochemical Anomalous Zone	
	High Chargeability Zone	
	Drilling Hole	
	Trench	
	Working Mine	
	Profile Line	



Van Nhon (Division No.4, GSV) Geologist
 Nguyen Xuan Dong (Geological Mapping Division, GSV) Geophysicist
 Nguyen Duc Nhuong (Geological Mapping Division, GSV) Geophysicist
 Tran Thanh Dy (Geological Mapping Division, GSV) Geophysicist
 Western Thanh Hoa Area
 Ho Nhon (Division No.4, GSV) Team Leader
 Dau Ba Quang (Division No.4, GSV) Geologist
 Nguyen Tho Phuc (Division No.4, GSV) Geologist
 Tran Cong Bong (Division No.4, GSV) Geologist
 Nguyen Xuan Team (Division No.4, GSV) Geologist
 Nguyen Phi Tien (Division No.4, GSV) Geologist
[Japanese Members]
 Masataka OCHI (JED) Team Leader
 Motono GOTO (JED) Geologist
 Masami IREGASHIARA (JED) Geologist
 Takumi ONUMA (JED) Geologist
 Kazuyasu SUGAWARA (JED) Geologist
 Tomoji SANGA (JED) Geologist
 Takashi YAMASHI (JED) Geophysicist
 Shinichi SUGIYAMA (JED) Geophysicist
 Tadunori IWASAKI (JED) Geophysicist

Phase 3 **[Vietnamese Member]**
 Hoang Minh Hue (Division No.3, GSV) Geologist
[Japanese Members]
 Yoneharu MATANO (JED) Team Leader
 Saichi ISHI (JED) Drilling Engineer

Summary of Exploration Work in the Van Yen and Western Thanh Hoa Areas

Phase	Survey	Area	Amount of Work
First	Regional Geological Survey and Geochemical Exploration	Van Yen Area	Area: 1,000 km ² Stream Sediments: 893 pcs (Au, Ag, As, Cr, Cu, Hg, Mn, Ni, Pb, Sn, W, Zn) Pan Concentrates: 193 pcs
		Western Thanh Hoa Area	Area: 650 km ² Stream Sediments: 532 pcs (Au, Ag, As, Cr, Cu, Hg, Mn, Ni, Pb, Sn, W, Zn) Pan Concentrates: 147 pcs
	Semi-detailed Geochemical Exploration	Bu Me Zone, Western Thanh Hoa Area	Area: 4.5 km ² Soil Samples: 241 pcs (Au, Ag, As, Cr, Cu, Hg, Mn, Ni, Pb, Sn, W, Zn)
		Van Yen Area	Area: 1,000 km ² Stream Sediments: 915 pcs (Au, Ag, As, Cr, Cu, Hg, Mn, Ni, Pb, Sn, W, Zn) Pan Concentrates: 249 pcs
Second	Regional Geological Survey and Geochemical Exploration	Van Yen Area	Area: 1,000 km ² Stream Sediments: 915 pcs (Au, Ag, As, Cr, Cu, Hg, Mn, Ni, Pb, Sn, W, Zn) Pan Concentrates: 249 pcs
		Western Thanh Hoa Area	Area: 650 km ² Stream Sediments: 468 pcs (Au, Ag, As, Cr, Cu, Hg, Mn, Ni, Pb, Sn, W, Zn) Pan Concentrates: 120 pcs
	Detailed Geological Survey and Geochemical Exploration	Suoi Boo-Suoi Cu Zone, Van Yen Area	Area: 10 km ² Soil Samples: 109 pcs (Au, Ag, As, Cr, Cu, Hg, Pb, Sb, Zn)
		Luong Son Zone, Western Thanh Hoa Area	Area: 4 km ² Soil Samples: 207 pcs (Au, Ag, As, Cr, Cu, Hg, Pb, Sb, Zn) Pan Concentrates: 15 pcs
Third	Geophysical Survey	Suoi Boo Zone, Van Yen Area	Area: 4.5 km ² IP Lines: 15.8 km
	Drilling Exploration	Suoi Boo Zone, Van Yen Area	Area: 4.5 km ² Drilling (14 holes): 742.70m Trench: 600.00m

JICA