

LEGEND

	Program Area
	Regulation Pond
	Main and Secondary Program Canal
	Secondary Drain
	National Block
	District Road
	Village Road
	Farm Road
	Village Area
	Water Way
	Canal
	Highland Vegetation Scheme
	Centre

Figure 2.11 Canal Layout of Upper Champi Scheme (2/2)

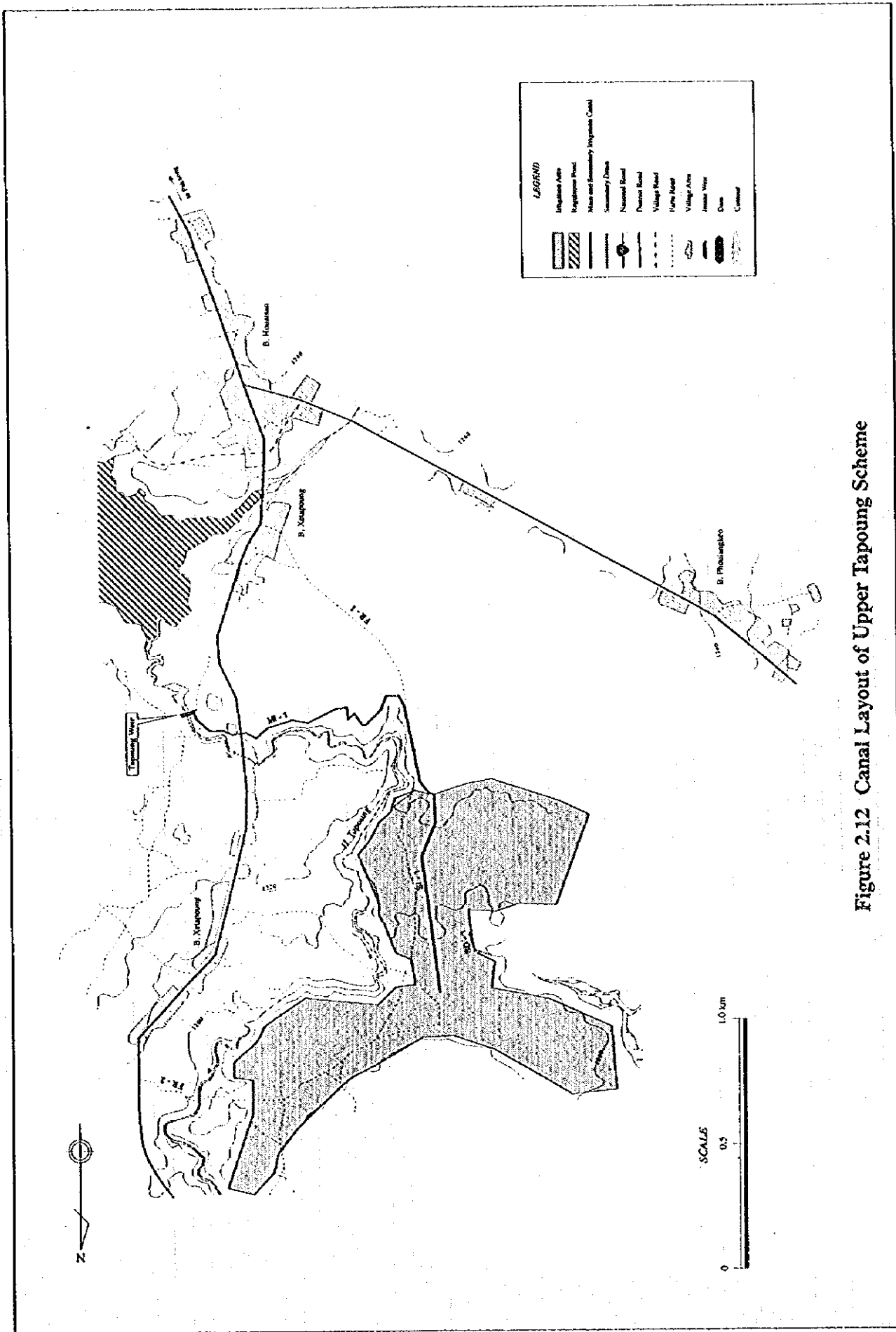


Figure 2.12 Canal Layout of Upper Tapoung Scheme

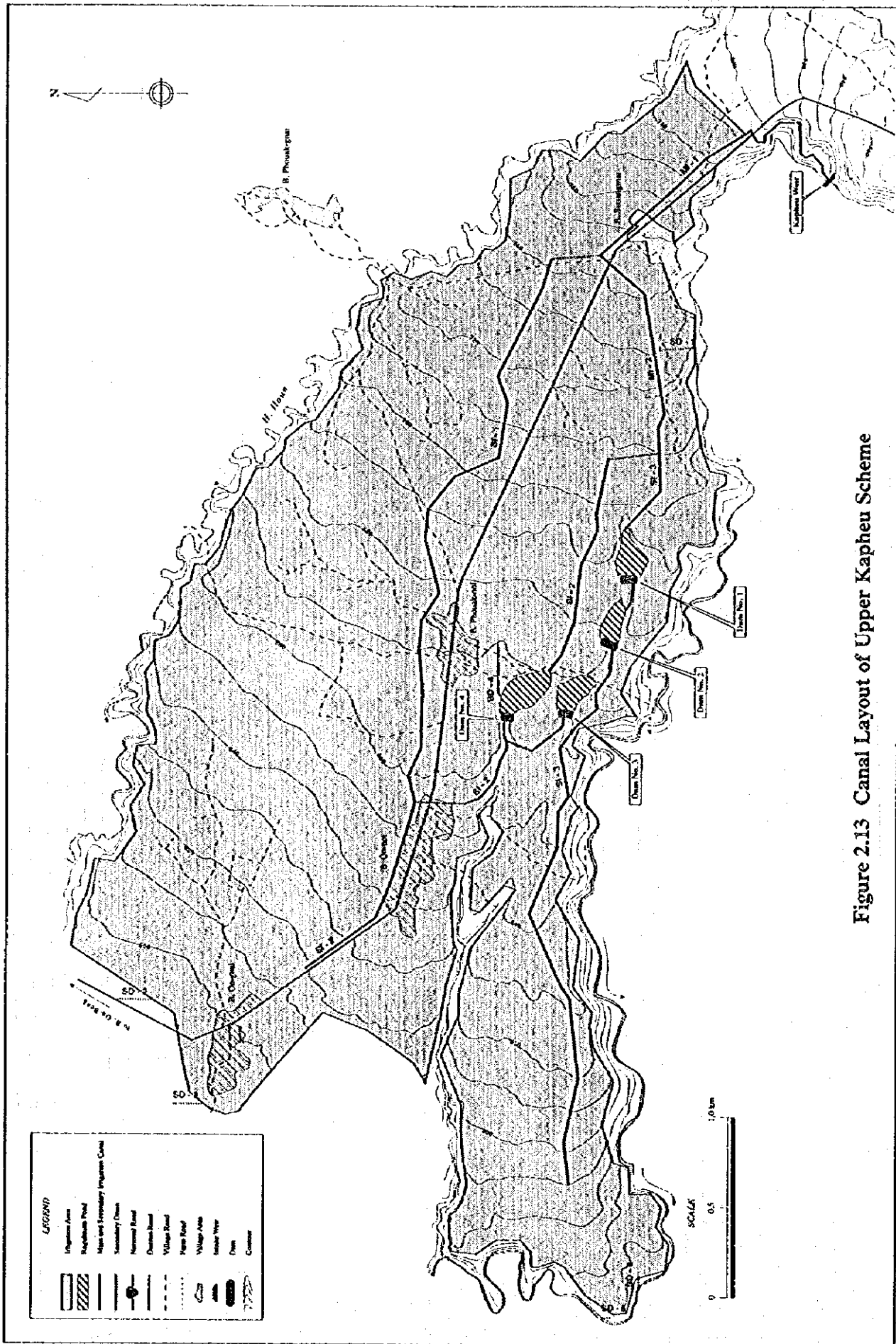
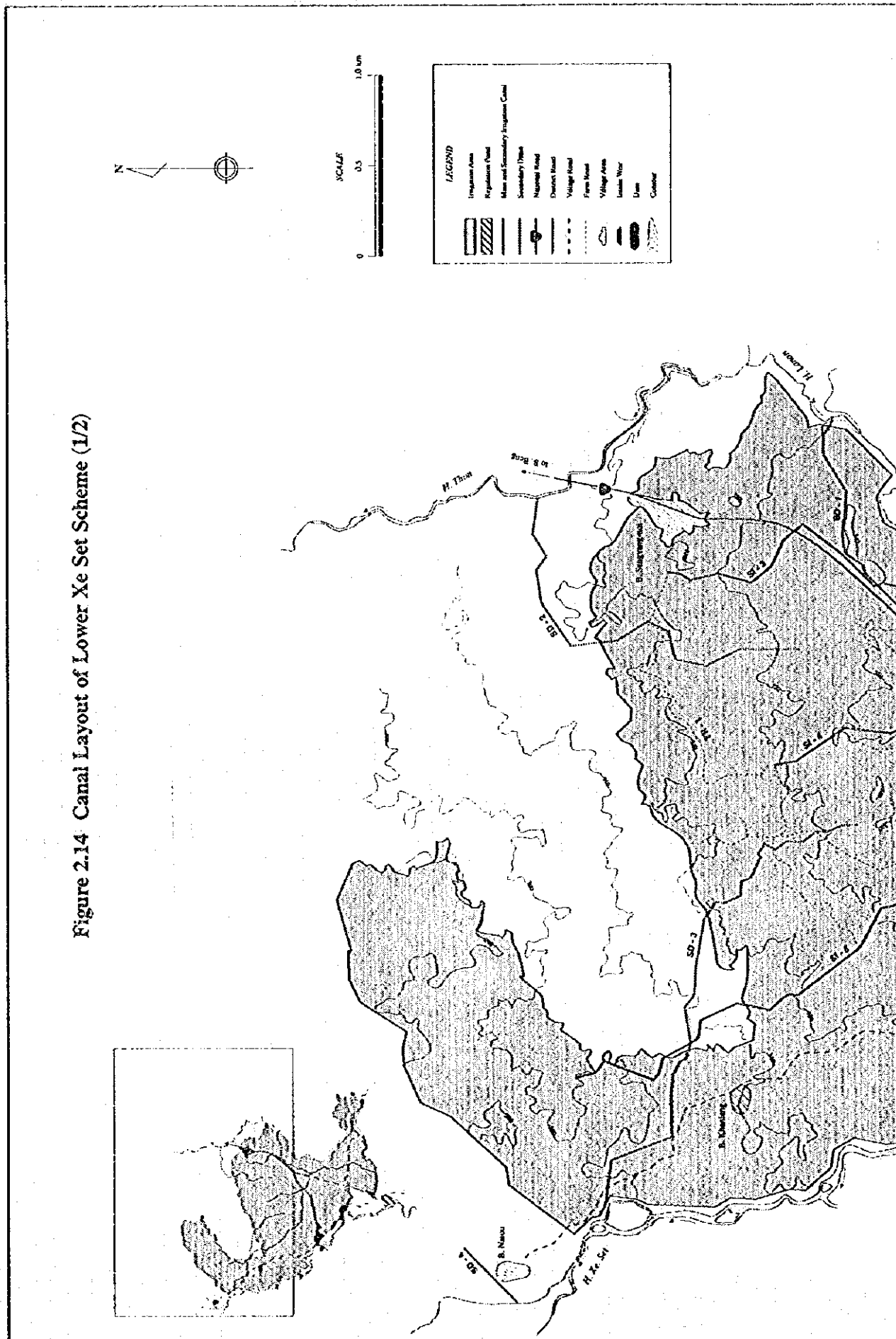


Figure 2.13 Canal Layout of Upper Kaphu Scheme

Figure 2.14 Canal Layout of Lower Xe Set Scheme (1/2)



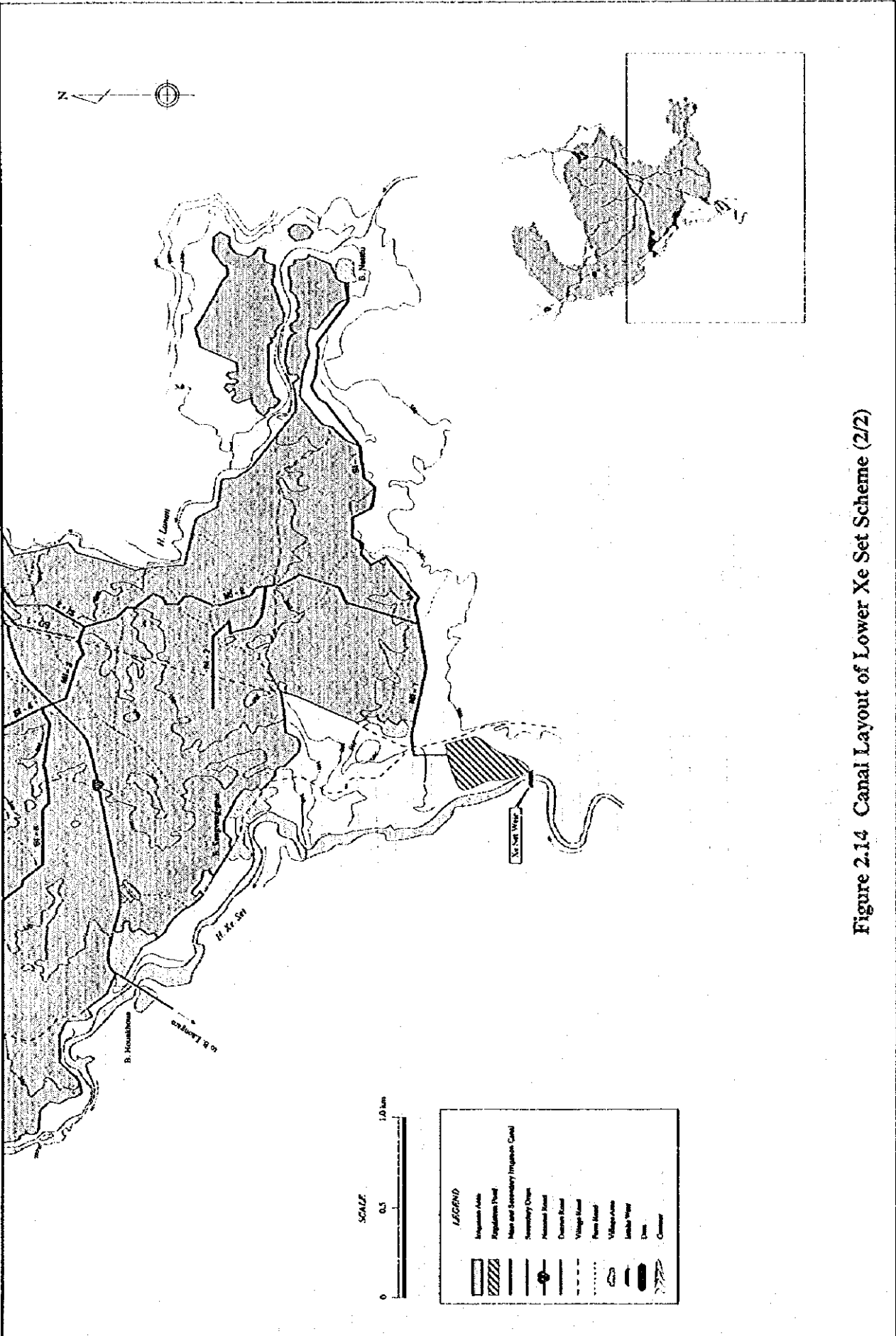
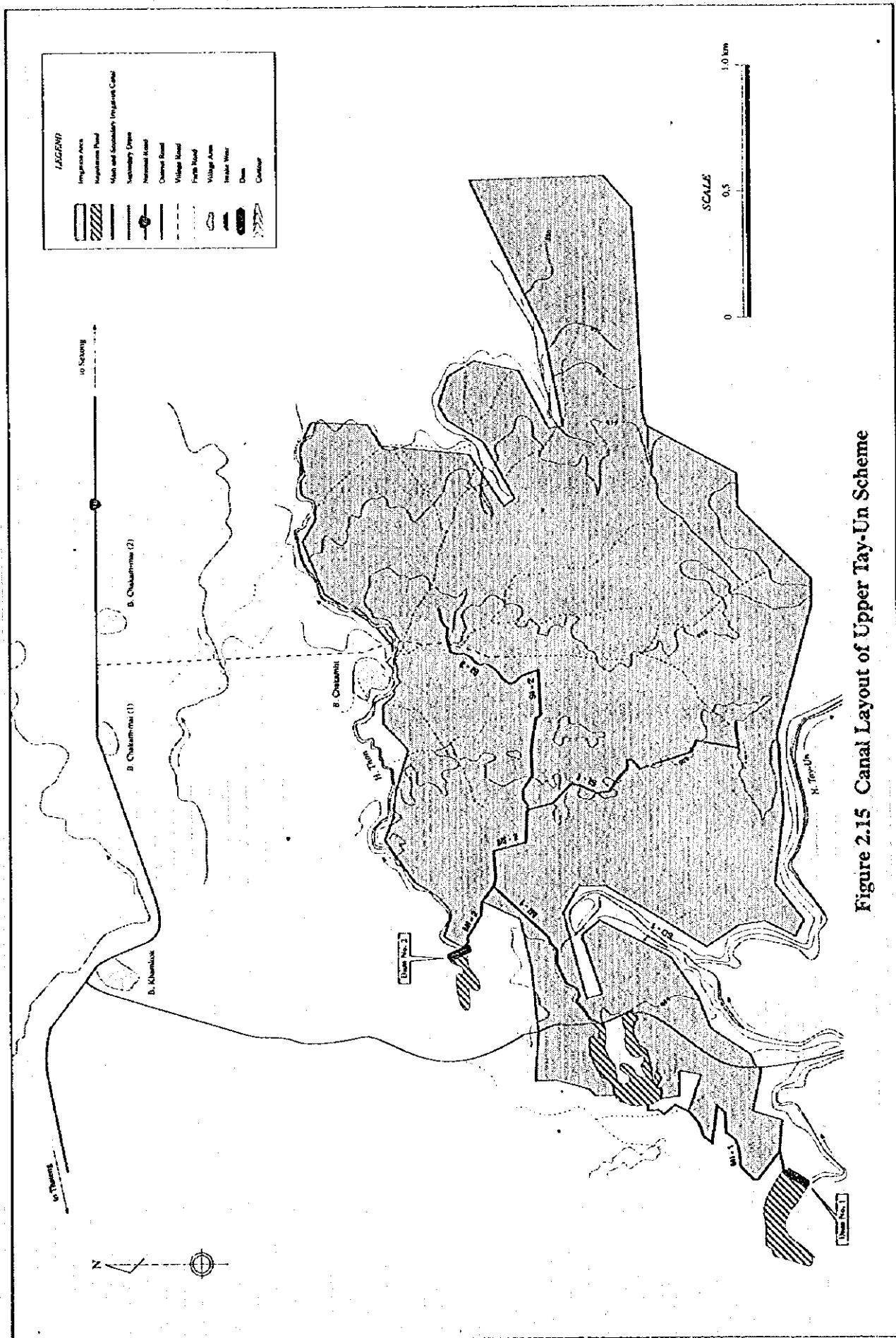
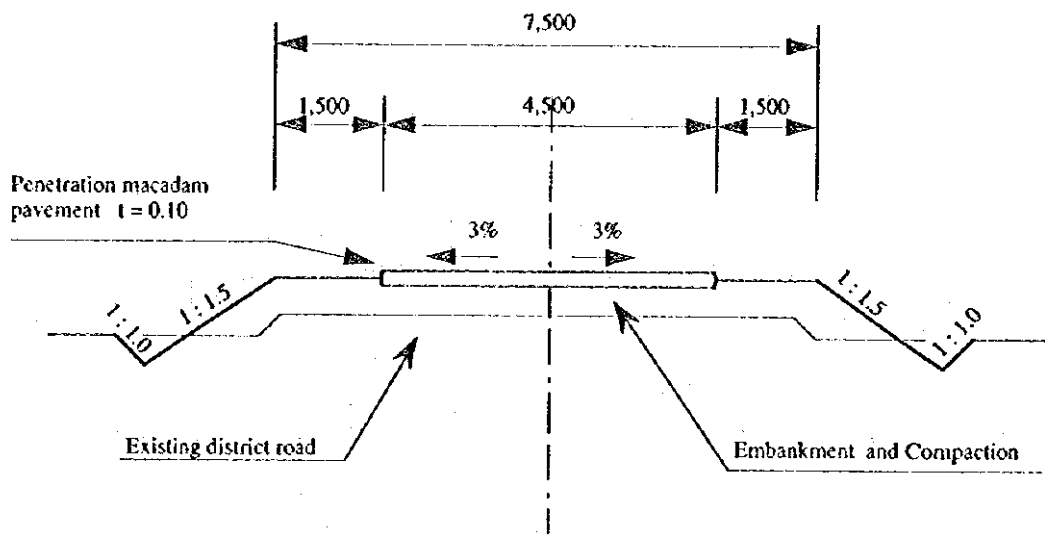
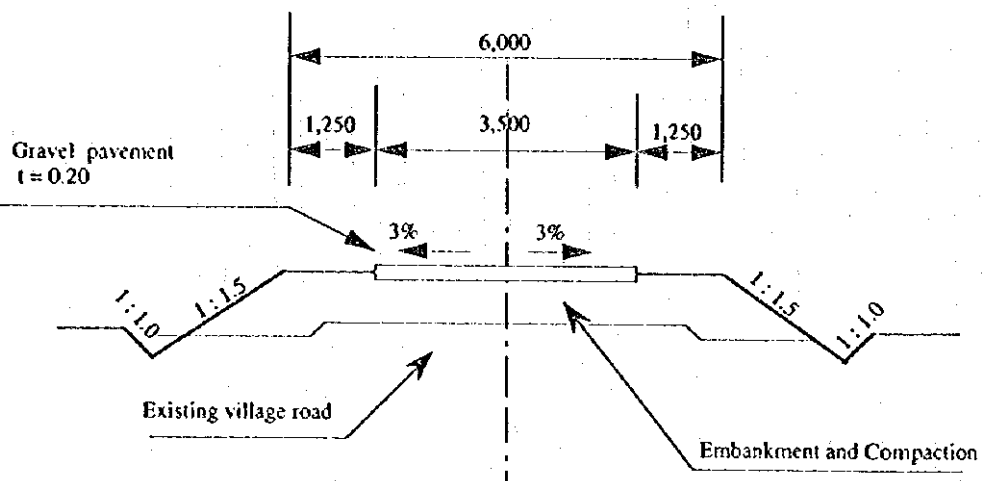


Figure 2.14 Canal Layout of Lower Xe Xe Set Scheme (2/2)





Typical Cross Section of District Road Improvement



Typical Cross Section of Village Road Improvement

Figure 2.16 Proposed Road Improvement (Typical Cross Section)

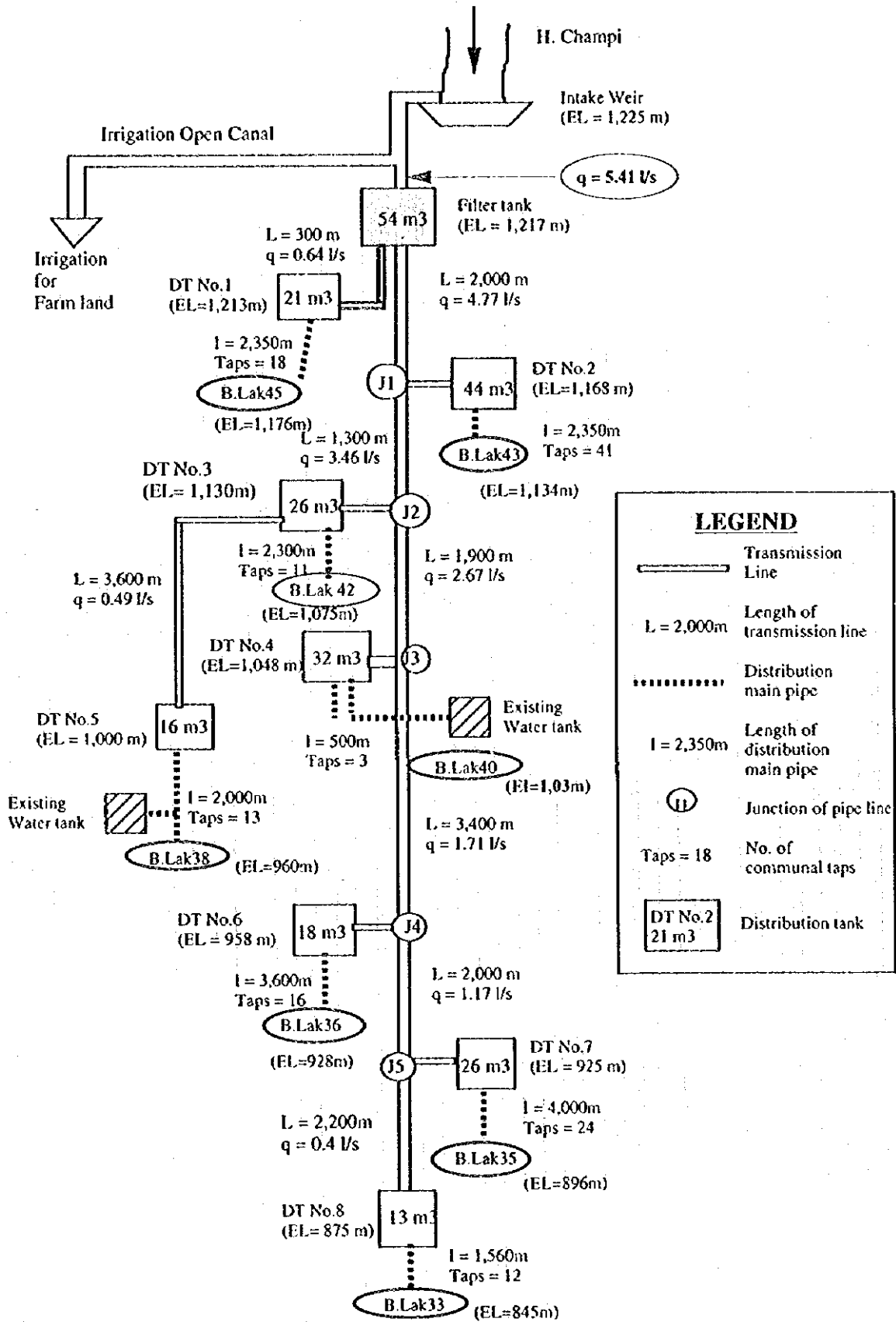


Figure 2.17 Transmission Pipe Line - Upper Champi

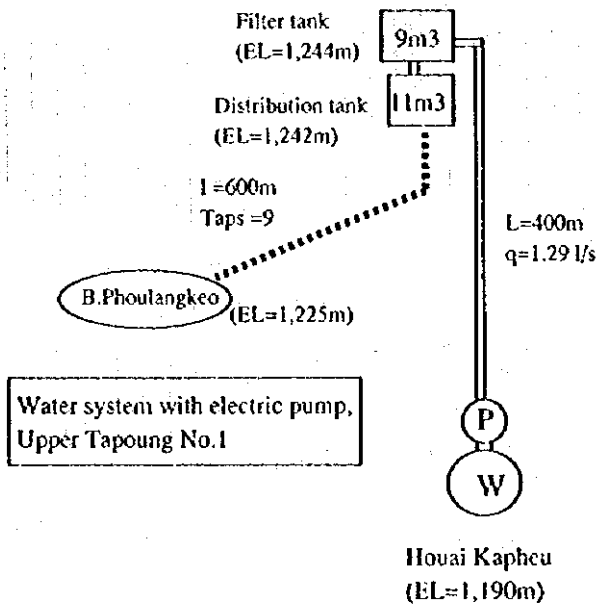
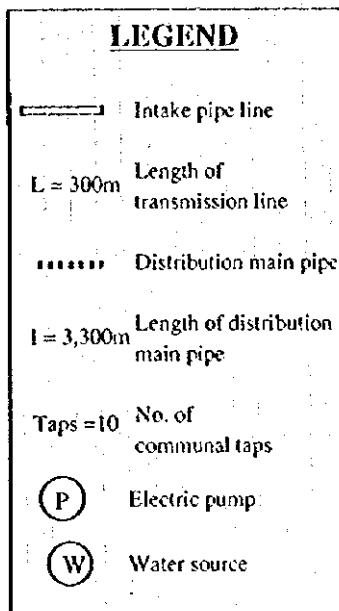
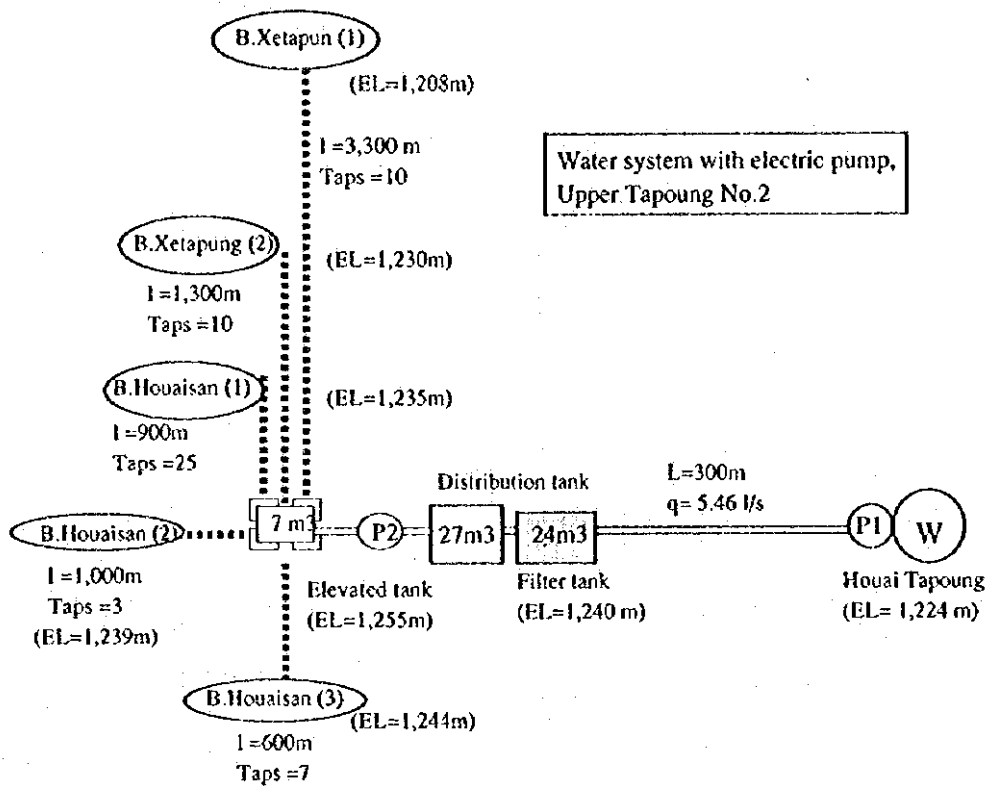


Figure 2.18 Transmission Pipe Line - Upper Tapoung

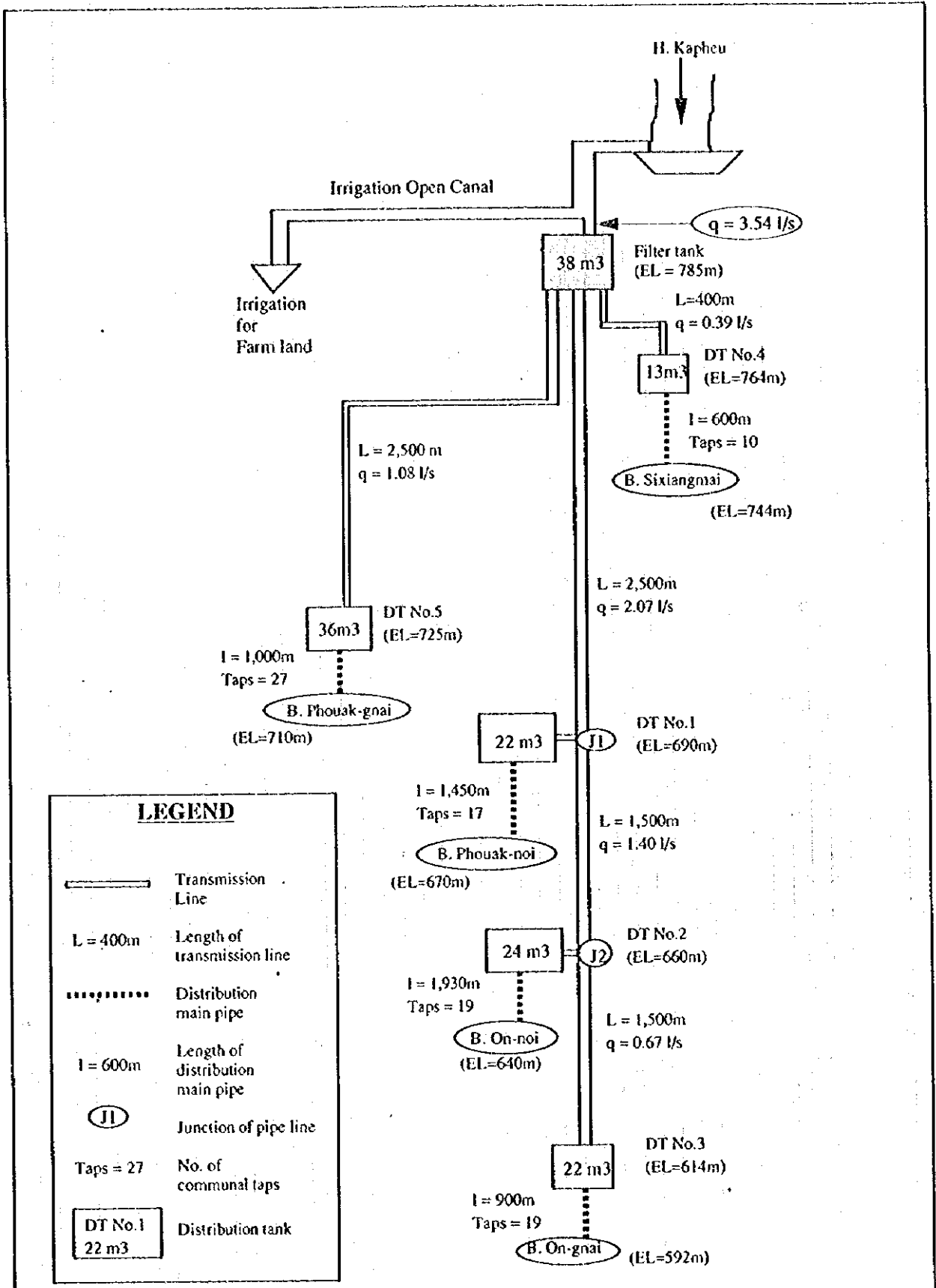


Figure 2.19 Transmission Pipe Line - Upper Kapheu

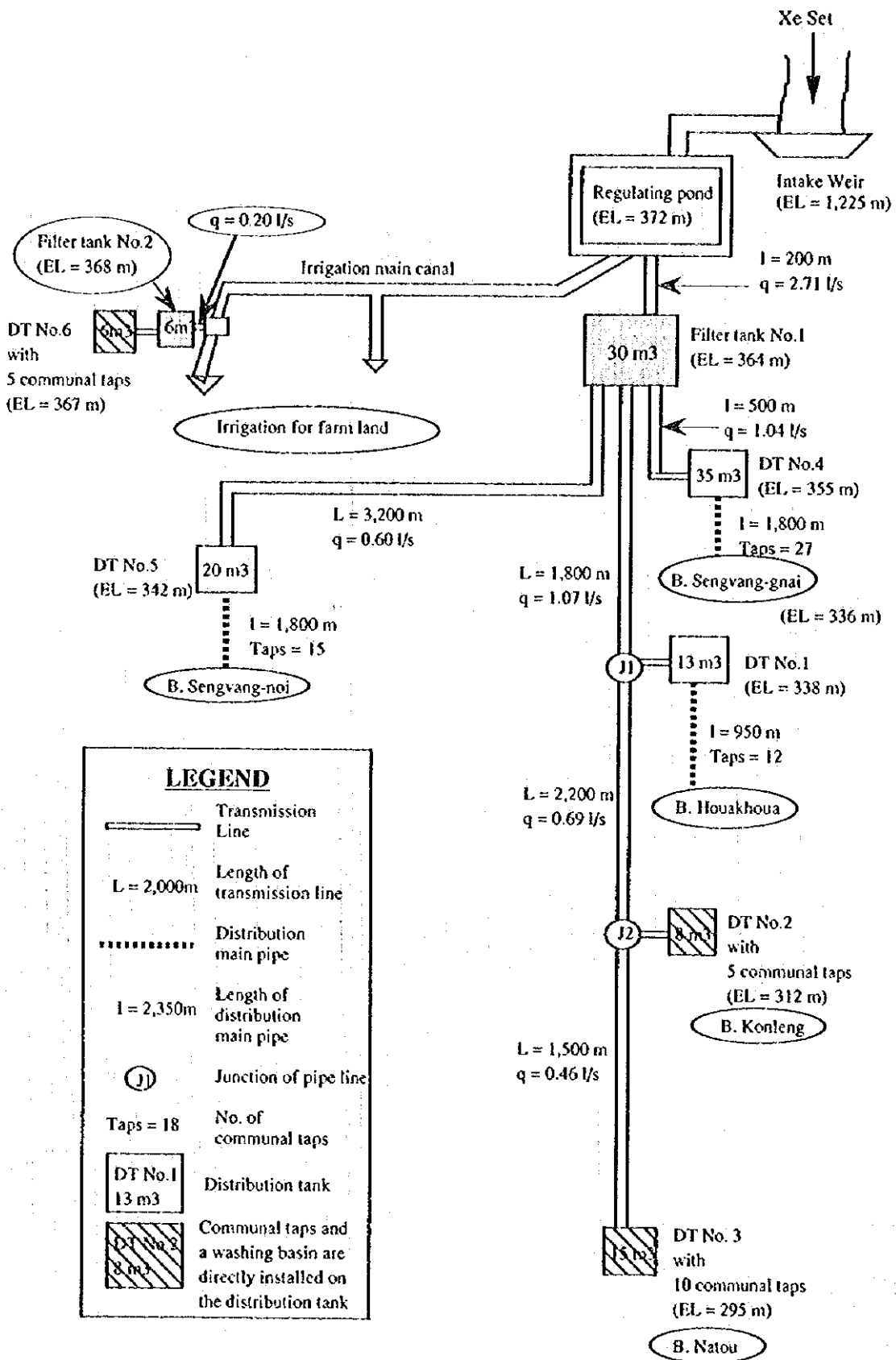


Figure 2.20 Transmission Pipe Line - Lower Xe Set

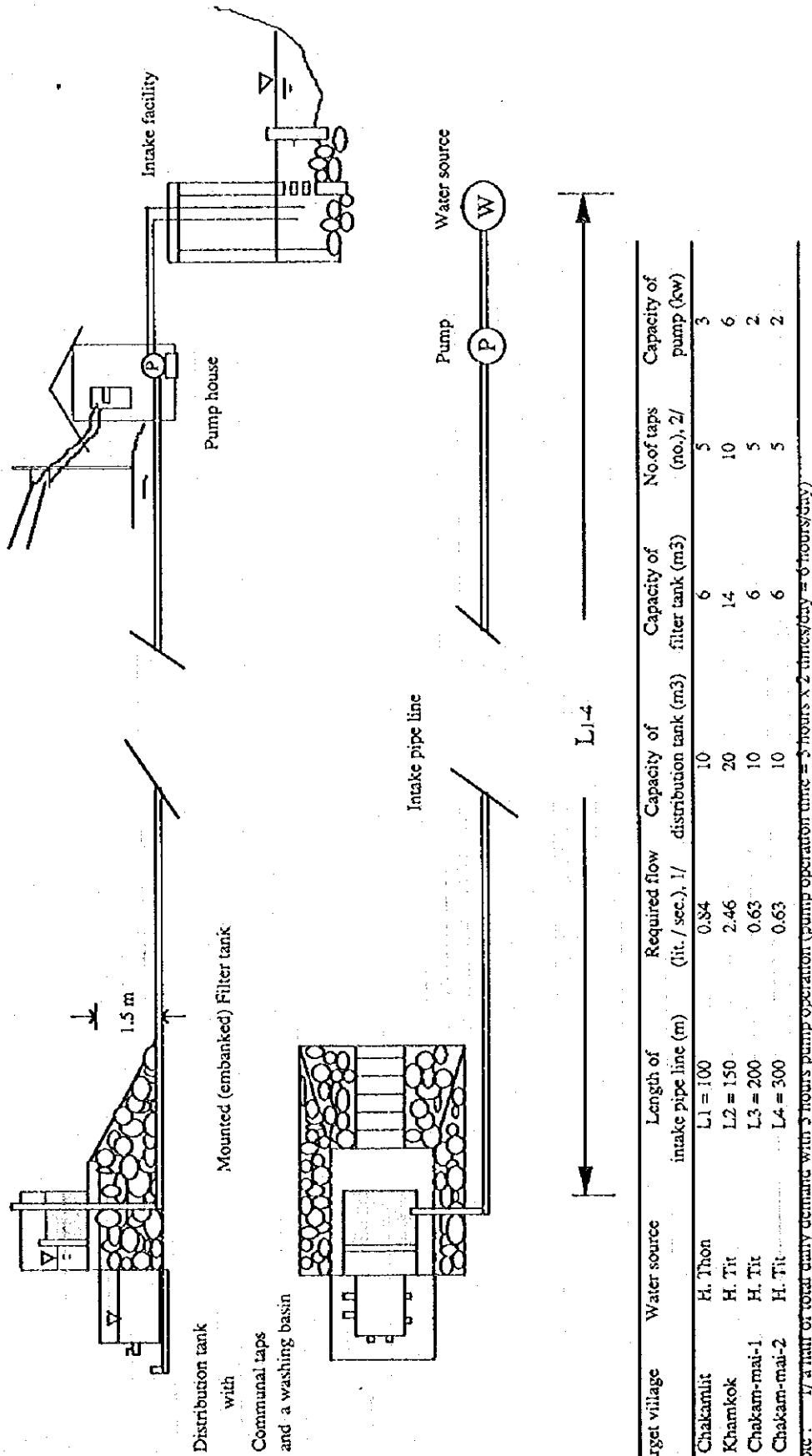


Figure 2.21 Transmission Pipe Line - Upper Tay-Un

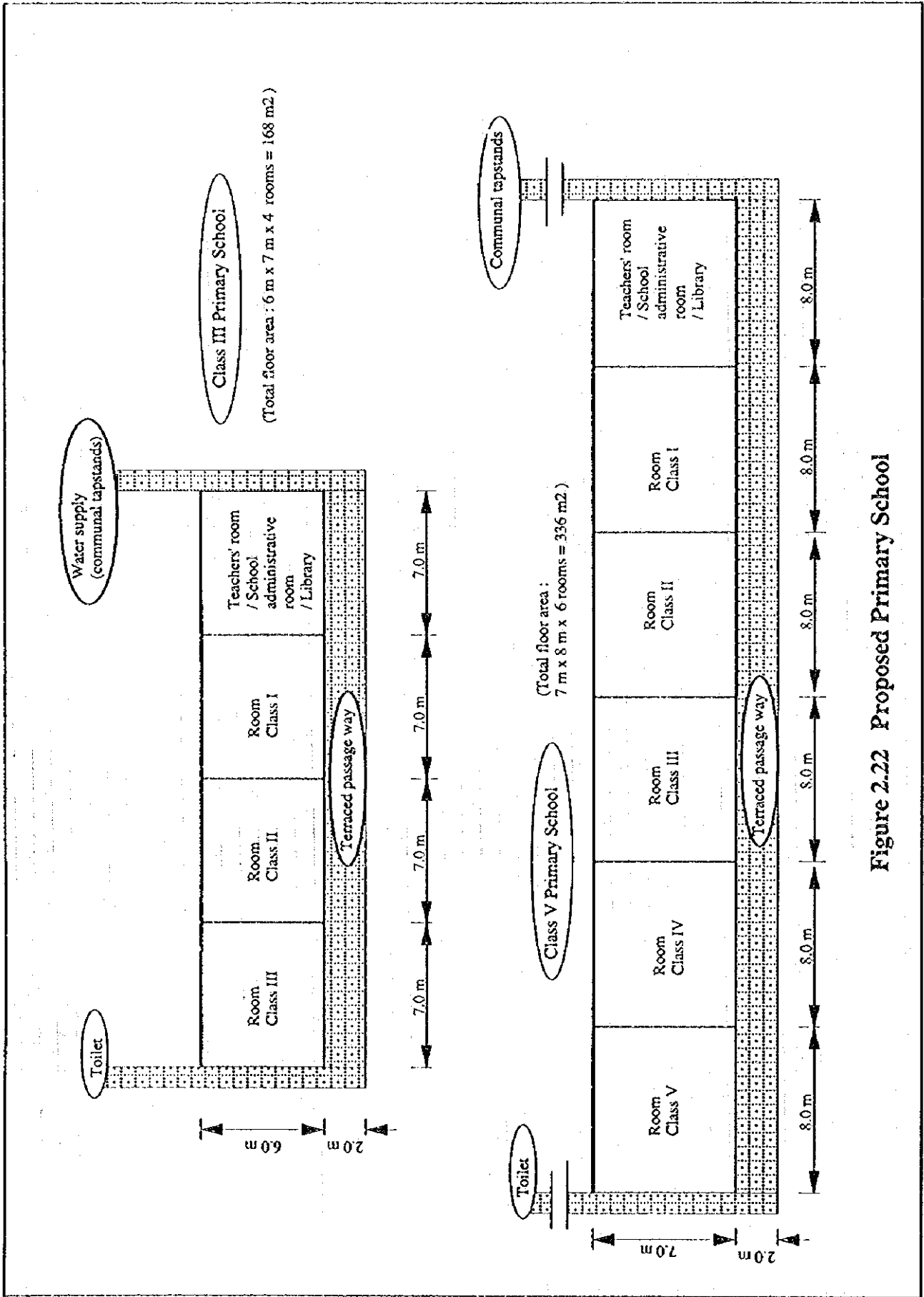


Figure 2.22 Proposed Primary School

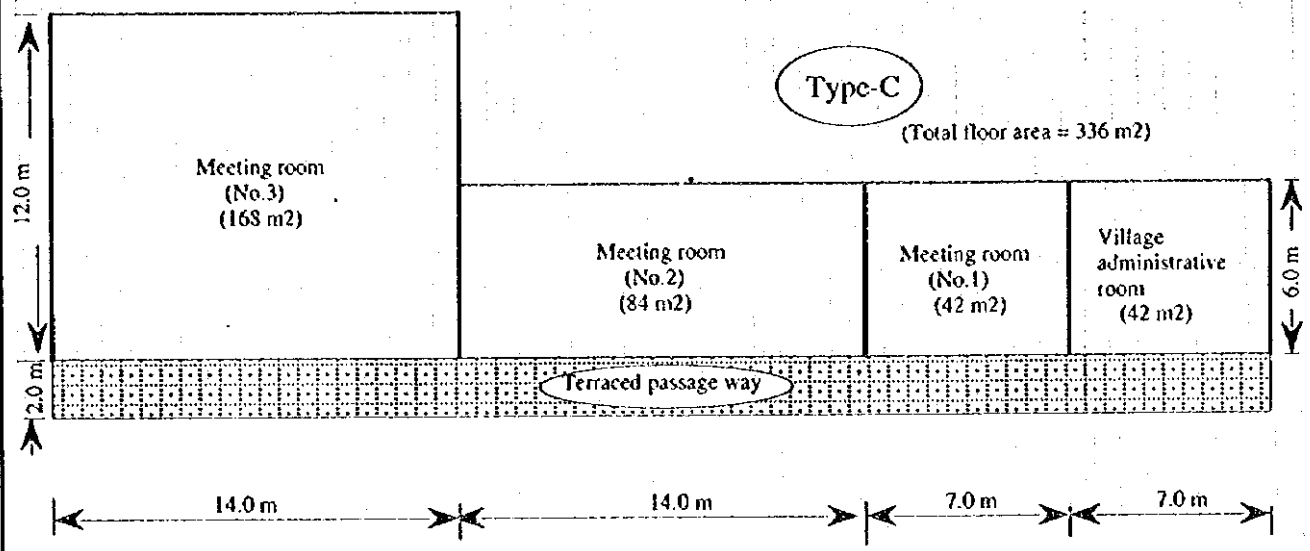
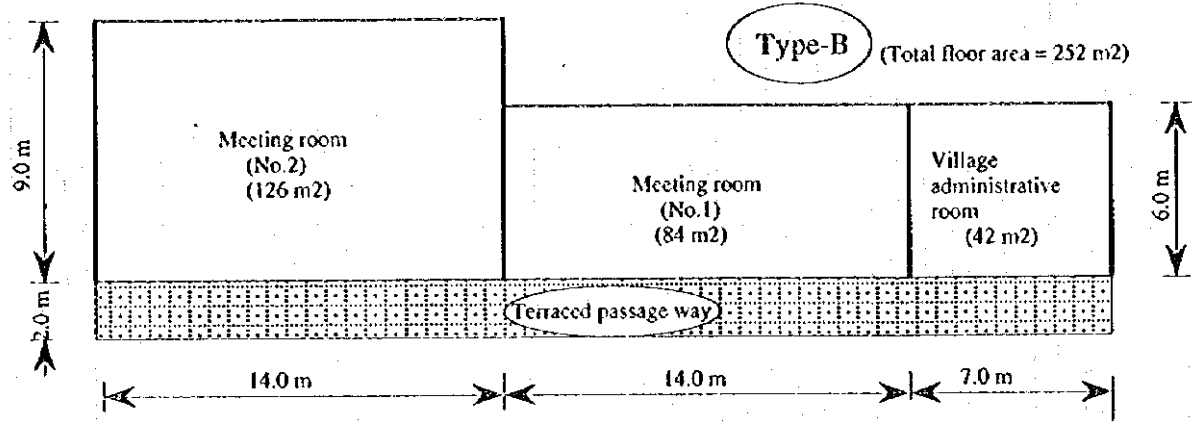
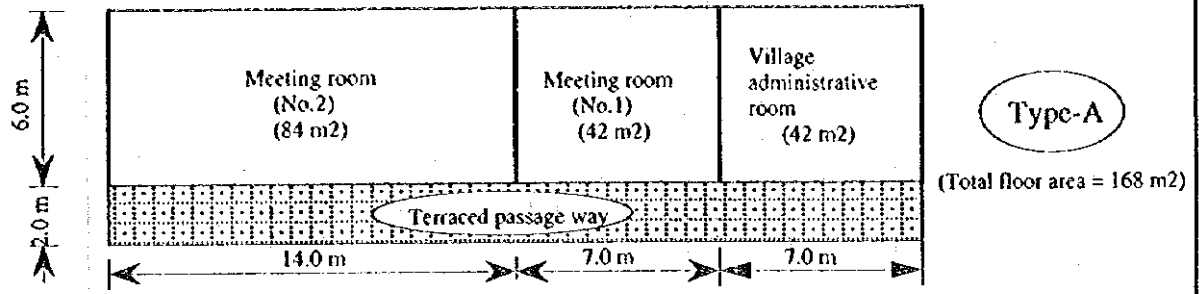


Figure 2.23 Proposed Village Community Hall

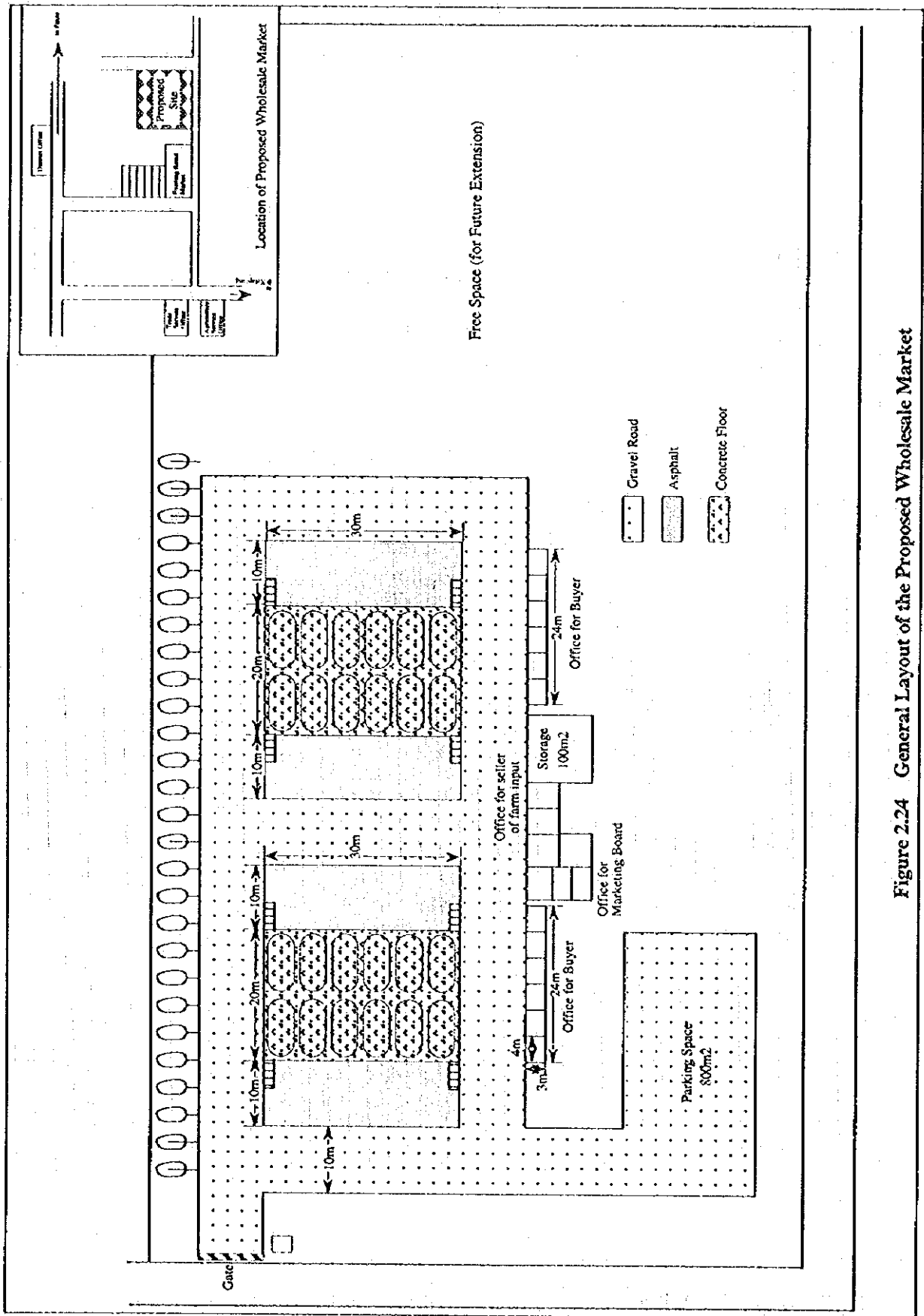


Figure 2.24 General Layout of the Proposed Wholesale Market

Organization Chart of Village Agricultural Association

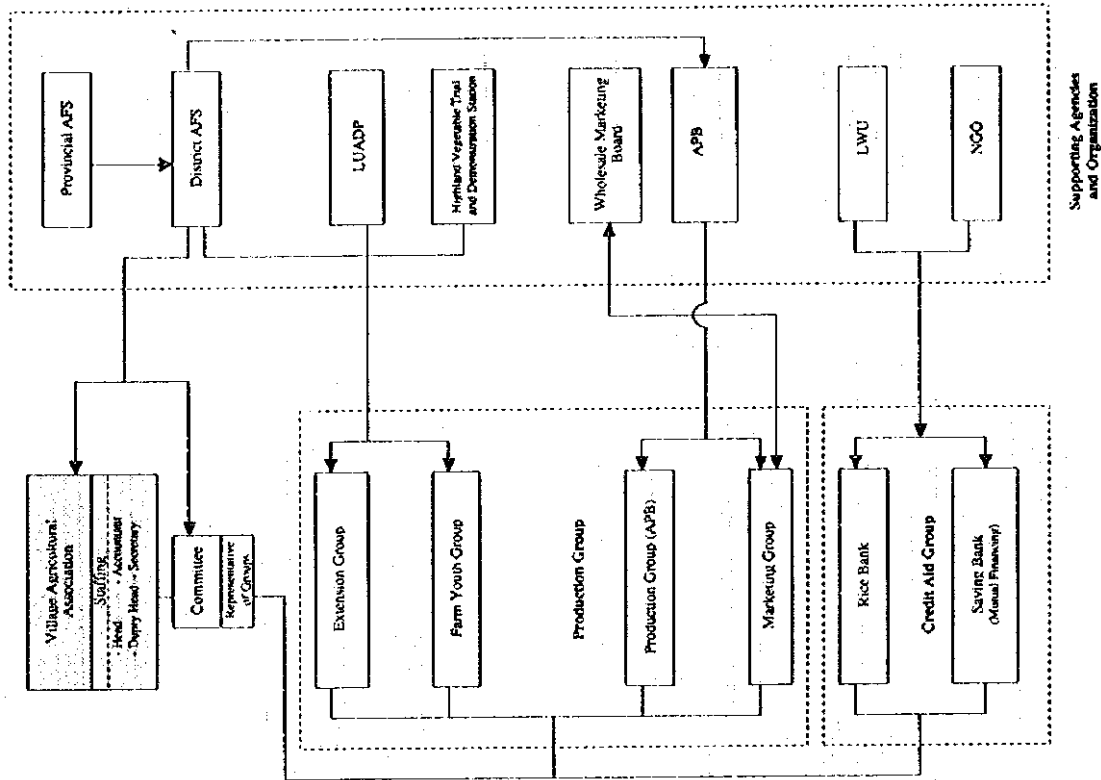
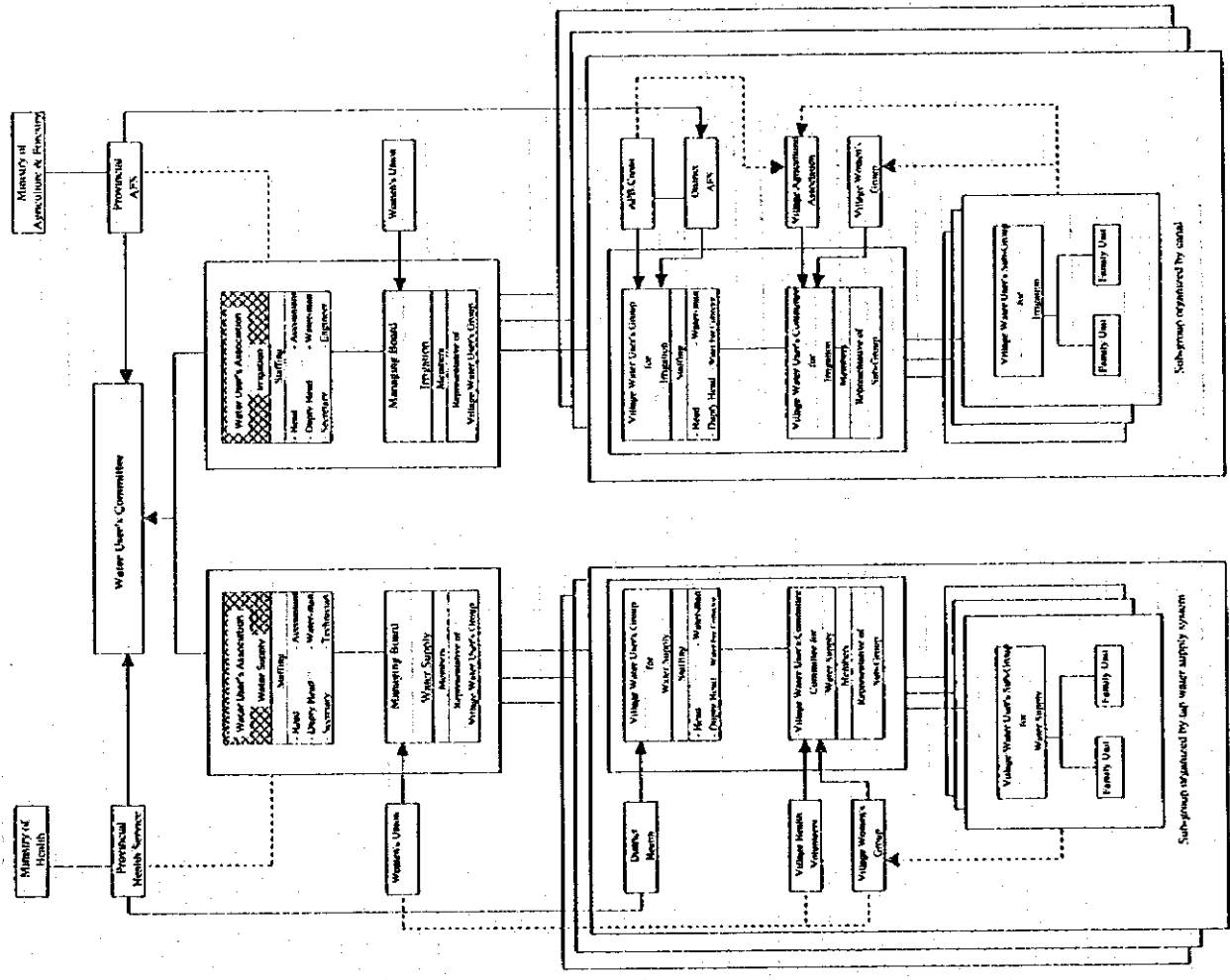


Figure 2.25 Organization Chart of Water Users' Association and Agricultural Association

Organization Chart of Water User's Association



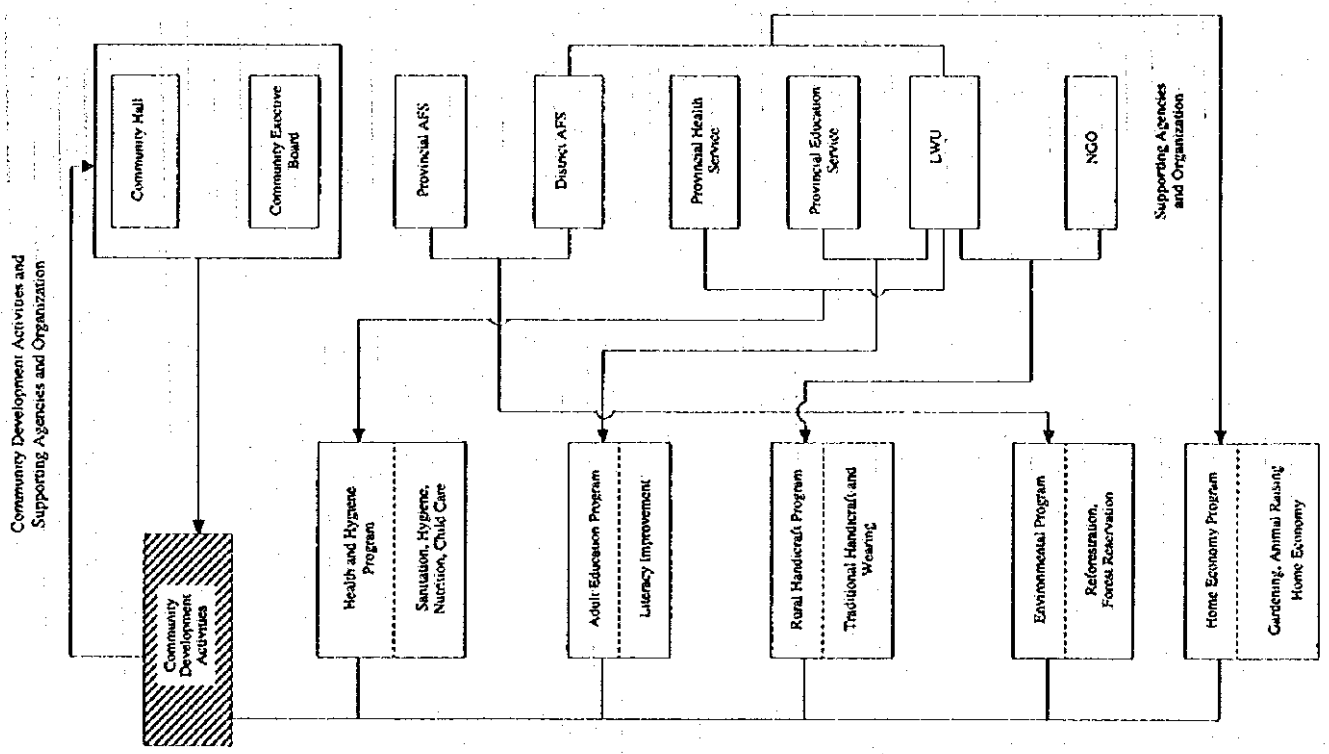
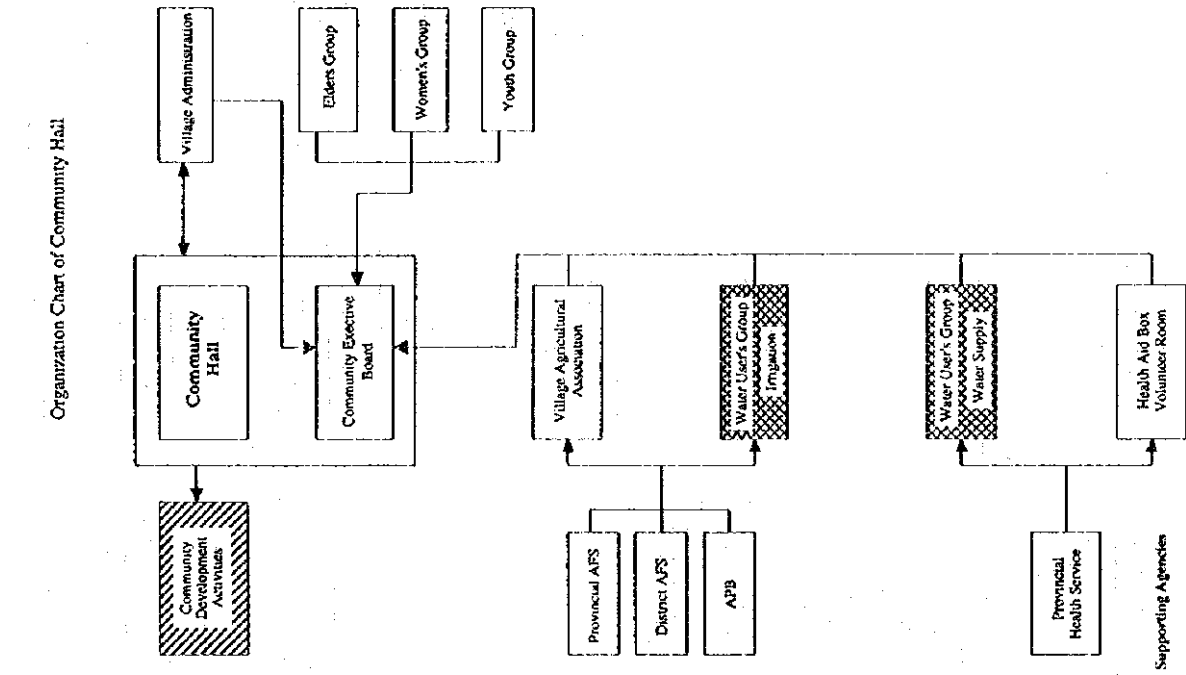


Fig.2.26 Organization Chart of Community Hall

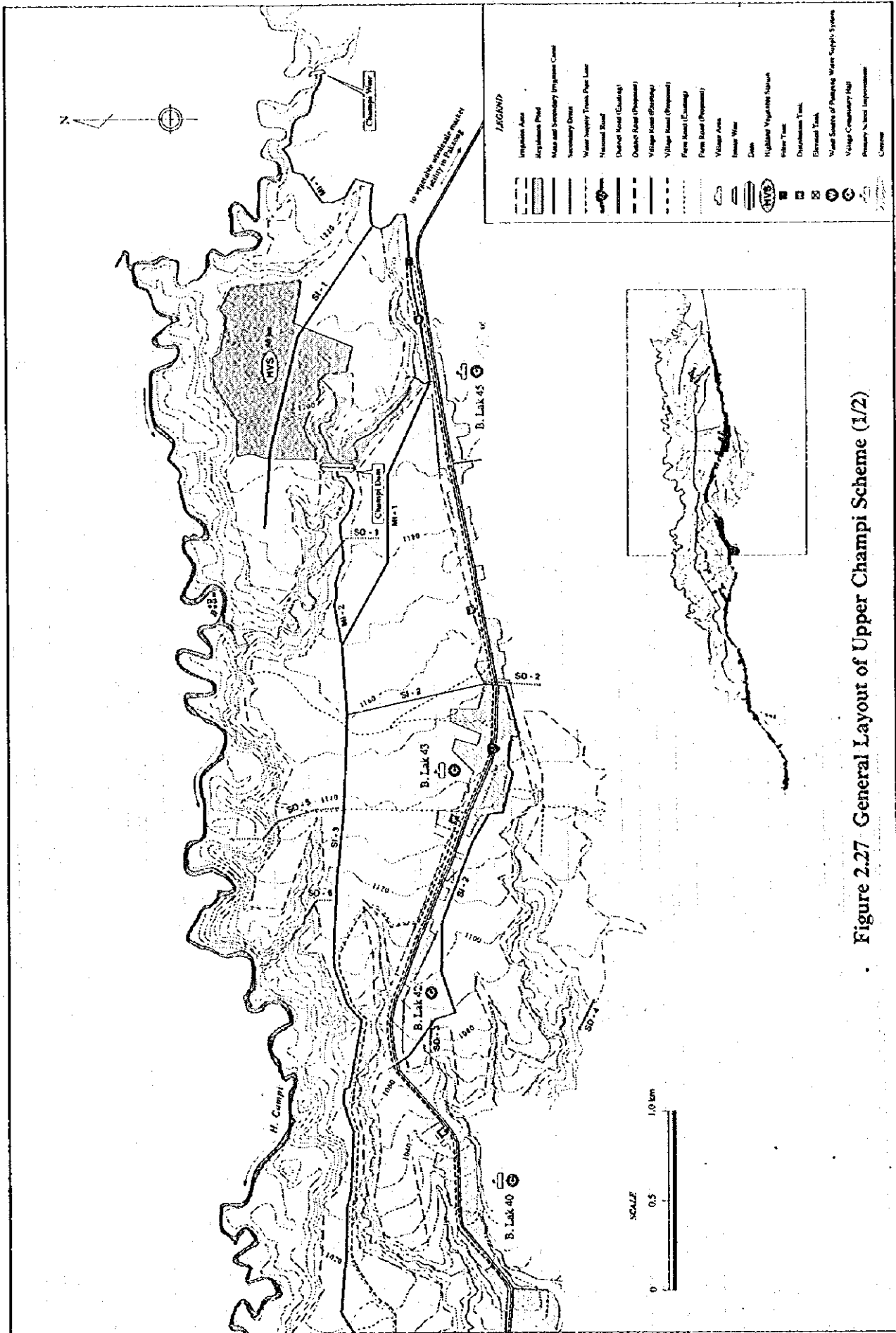


Figure 2.27 General Layout of Upper Champi Scheme (1/2)

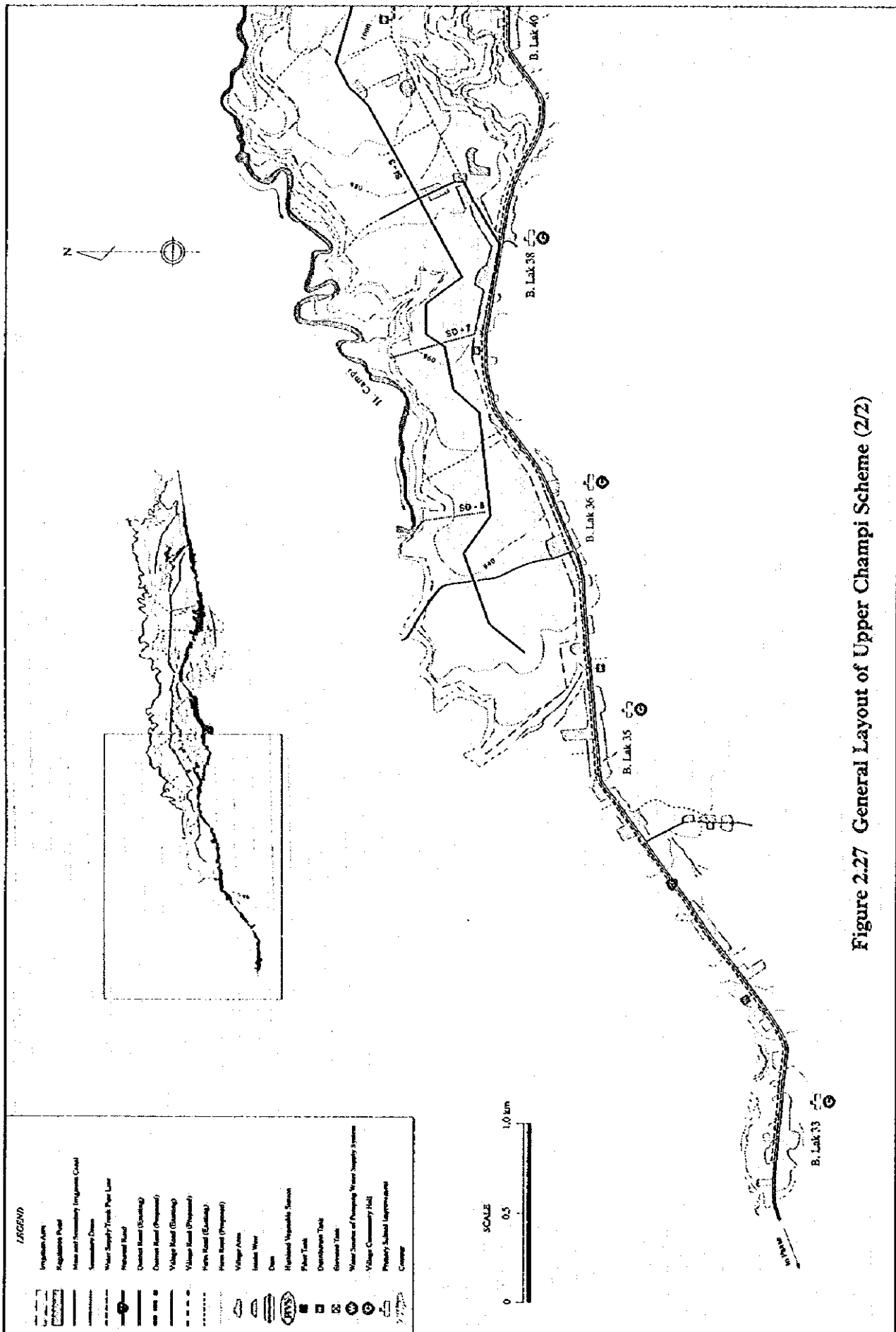
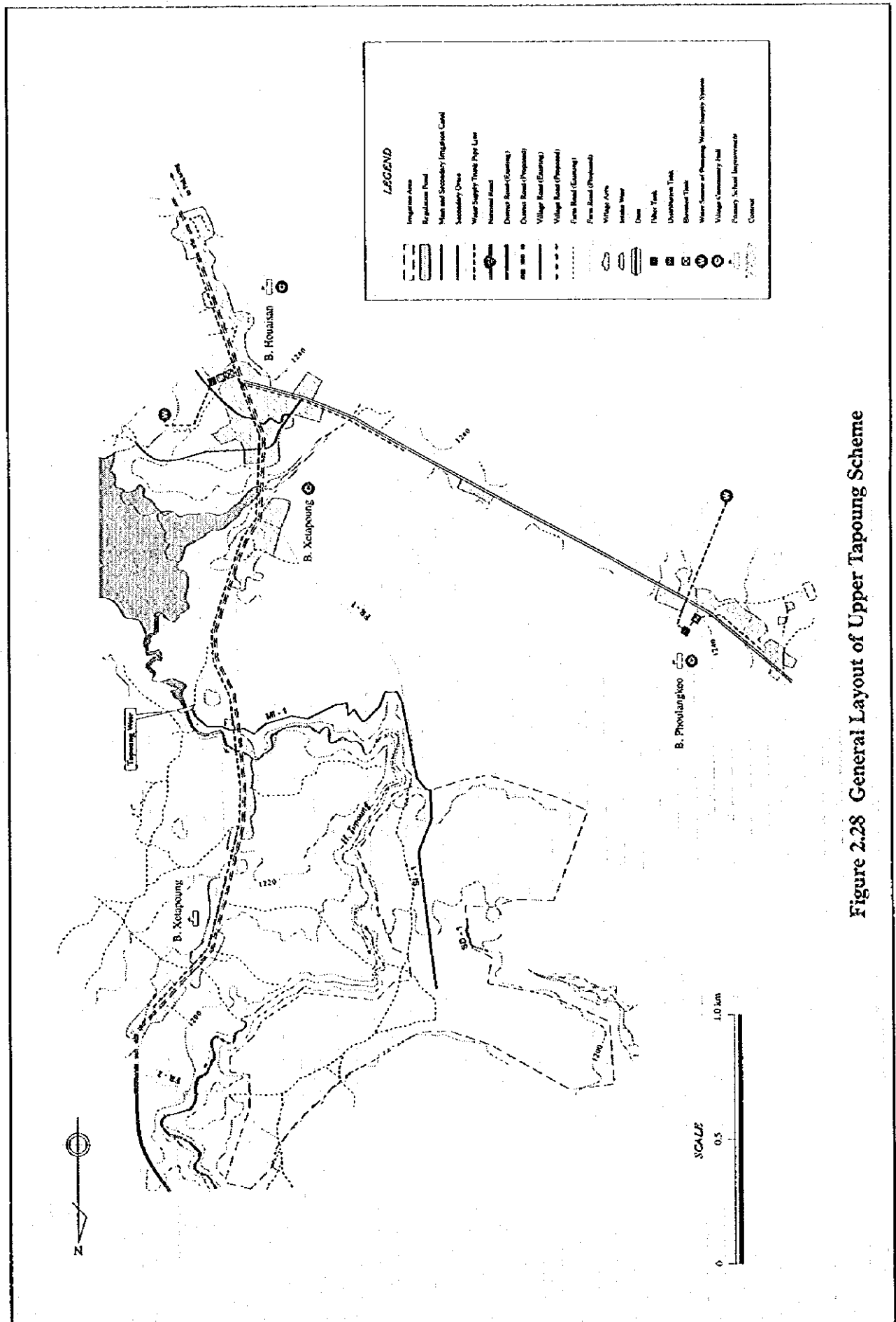


Figure 2.27 General Layout of Upper Champi Scheme (2/2)



LEGEND

	Impregious Area
	Regulation Road
	Main and Secondary (Impregious Canal)
	Secondary Drive
	Water Supply Tank Piped Line
	Narrow Road
	District Road (Existing)
	District Road (Proposed)
	Village Road (Existing)
	Village Road (Proposed)
	Farm Road (Existing)
	Farm Road (Proposed)
	Village Arch
	Irrigation Weir
	Dam
	Filter Tank
	Unearthed Tank
	Elevated Tank
	Water Source of Pumping Water Supply System
	Village Sanitary Hall
	Primary School Improvement
	Contour

Figure 2.28 General Layout of Upper Tapoung Scheme

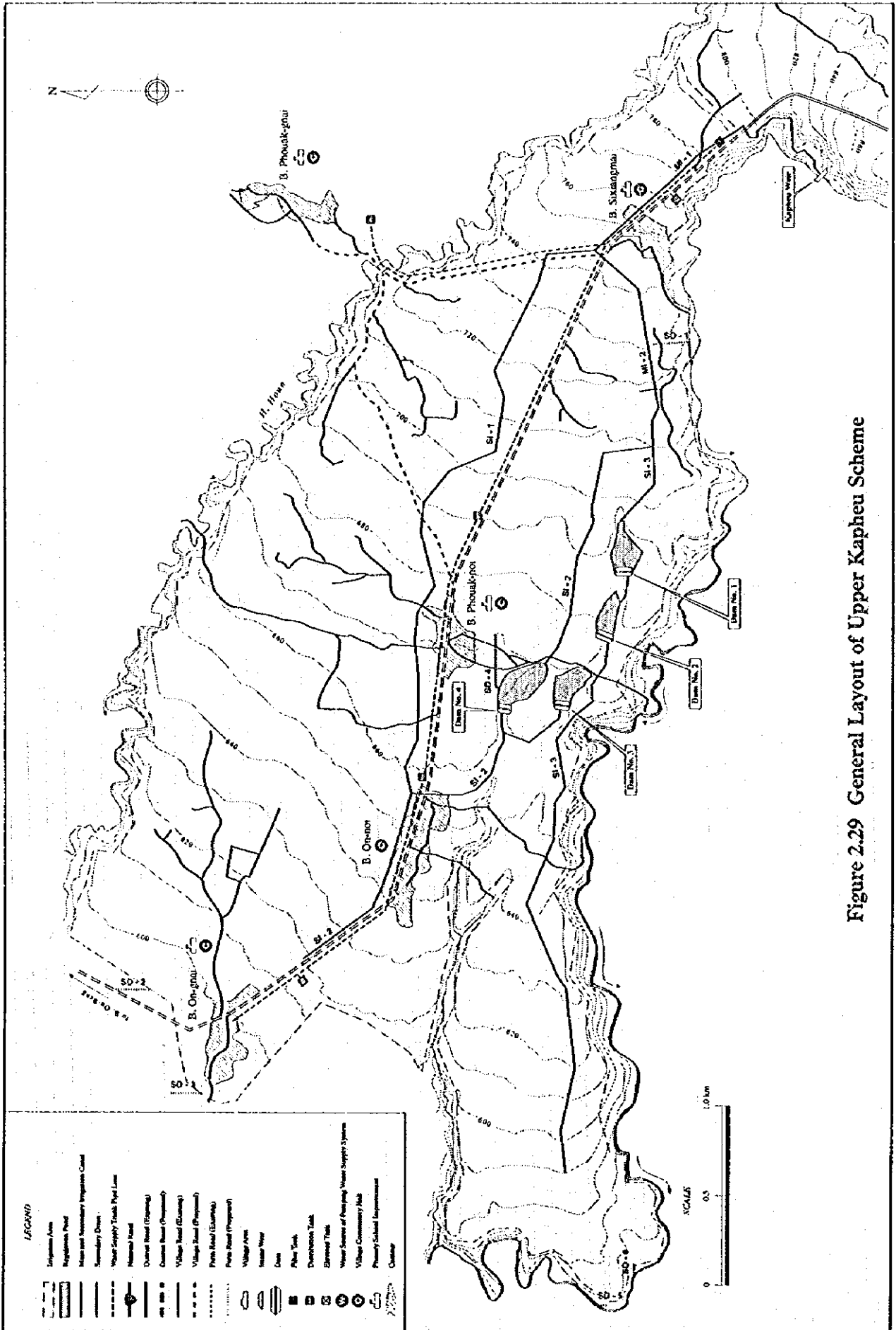
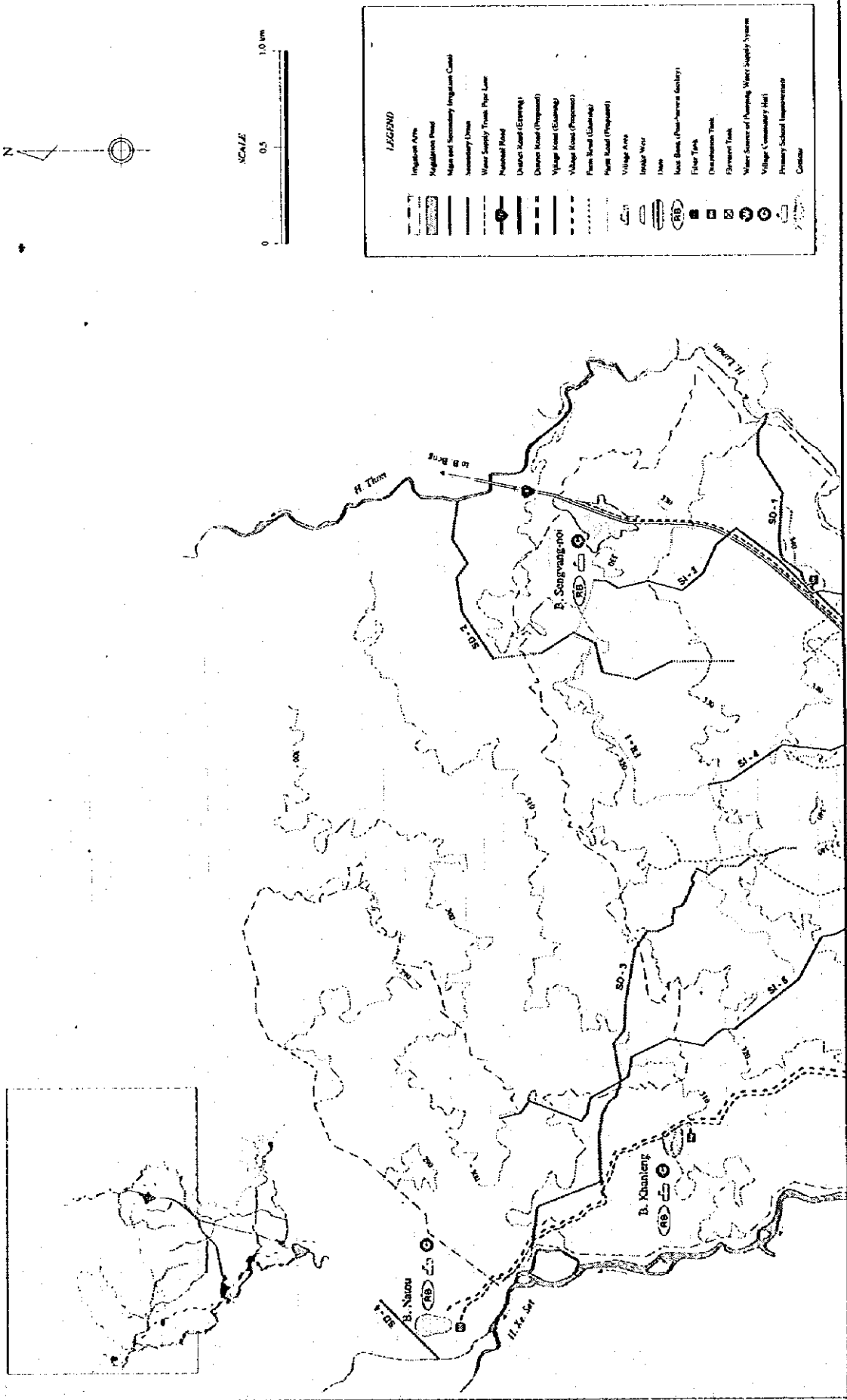


Figure 2.29 General Layout of Upper Kaphou Scheme

Figure 2.30 General Layout of Lower Xe Set Scheme (1/2)



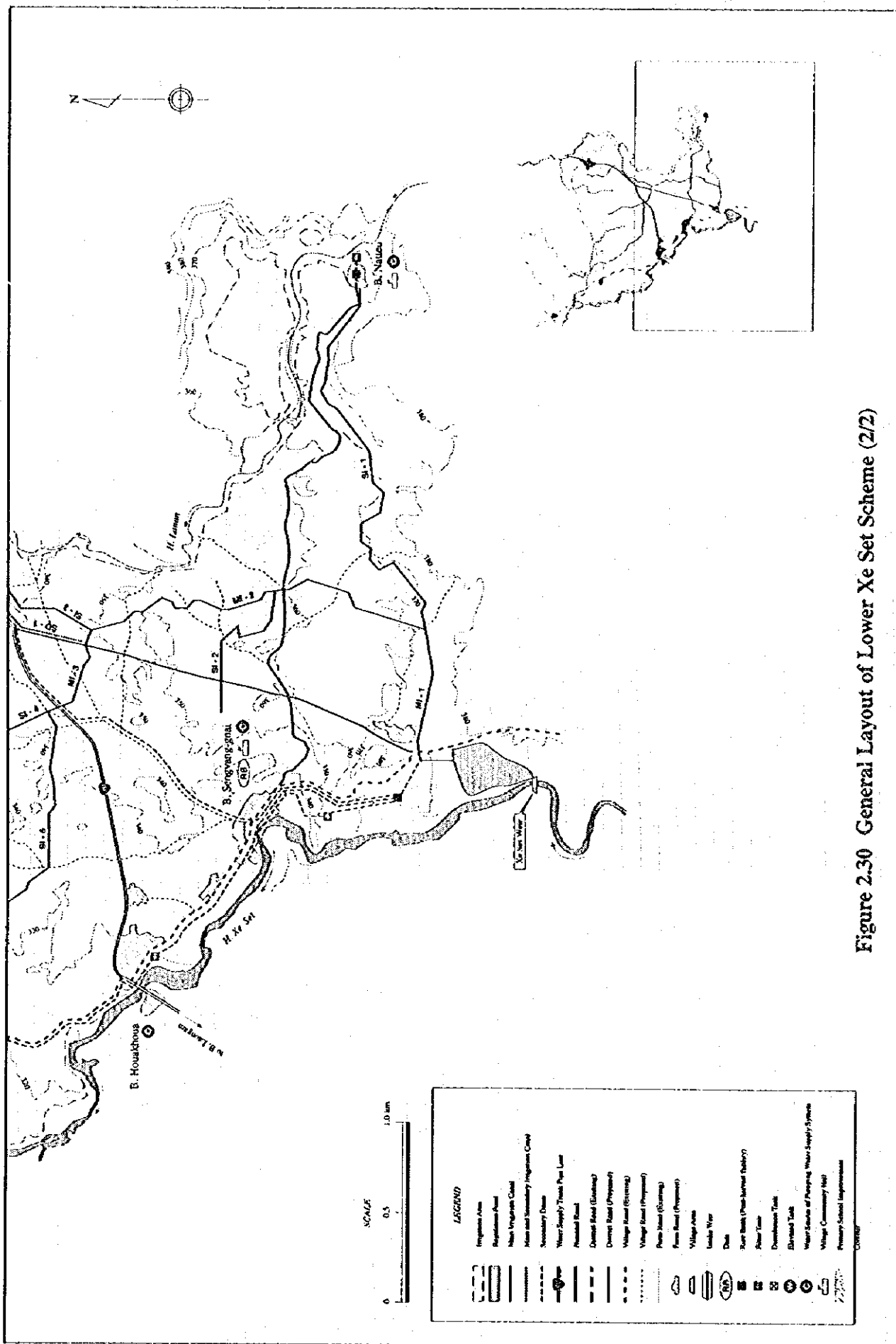


Figure 2.30 General Layout of Lower Xe Set Scheme (2/2)

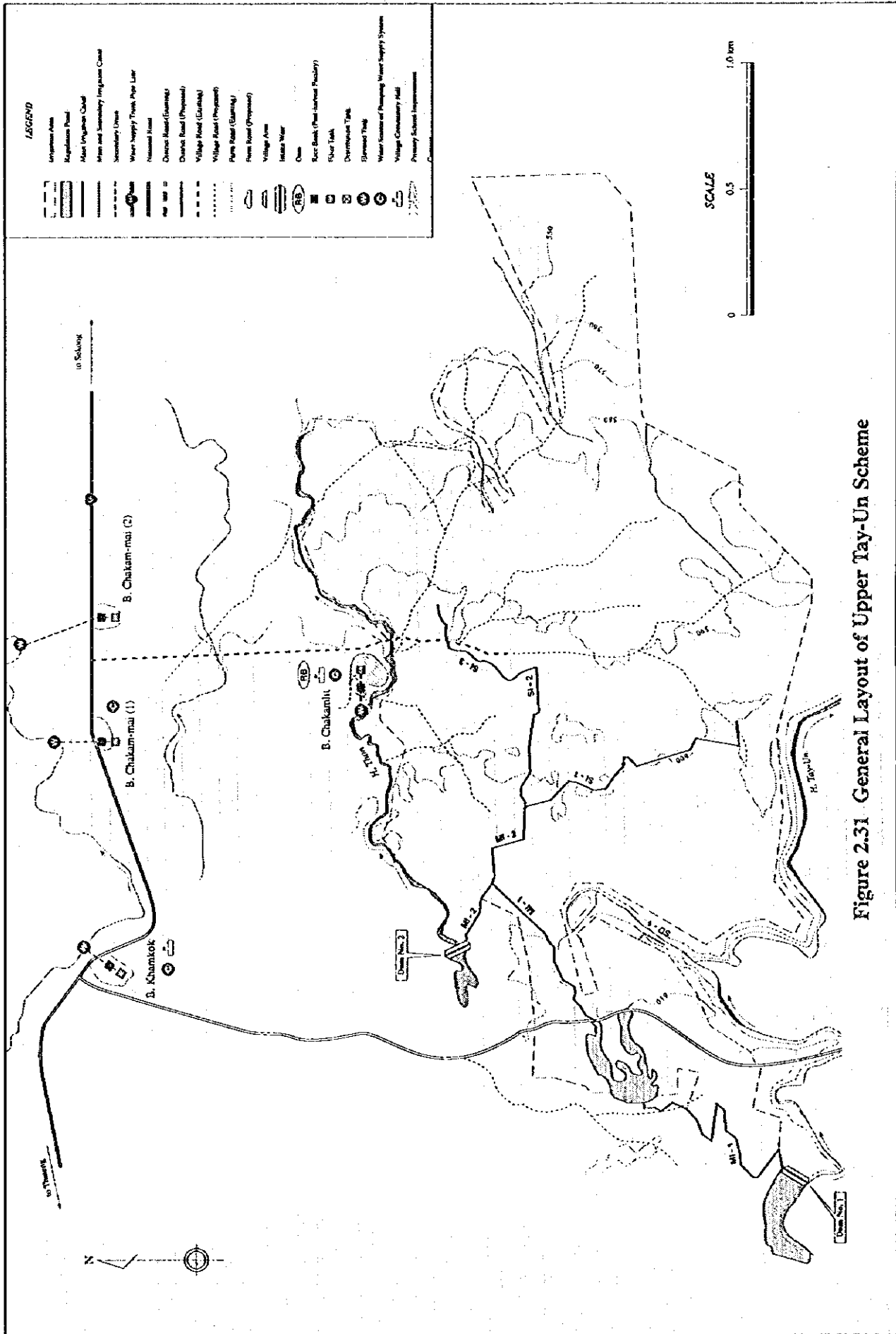


Figure 2.31 General Layout of Upper Tay-Un Scheme

O & M Stage

Governors of
3 Provinces

Construction Stage

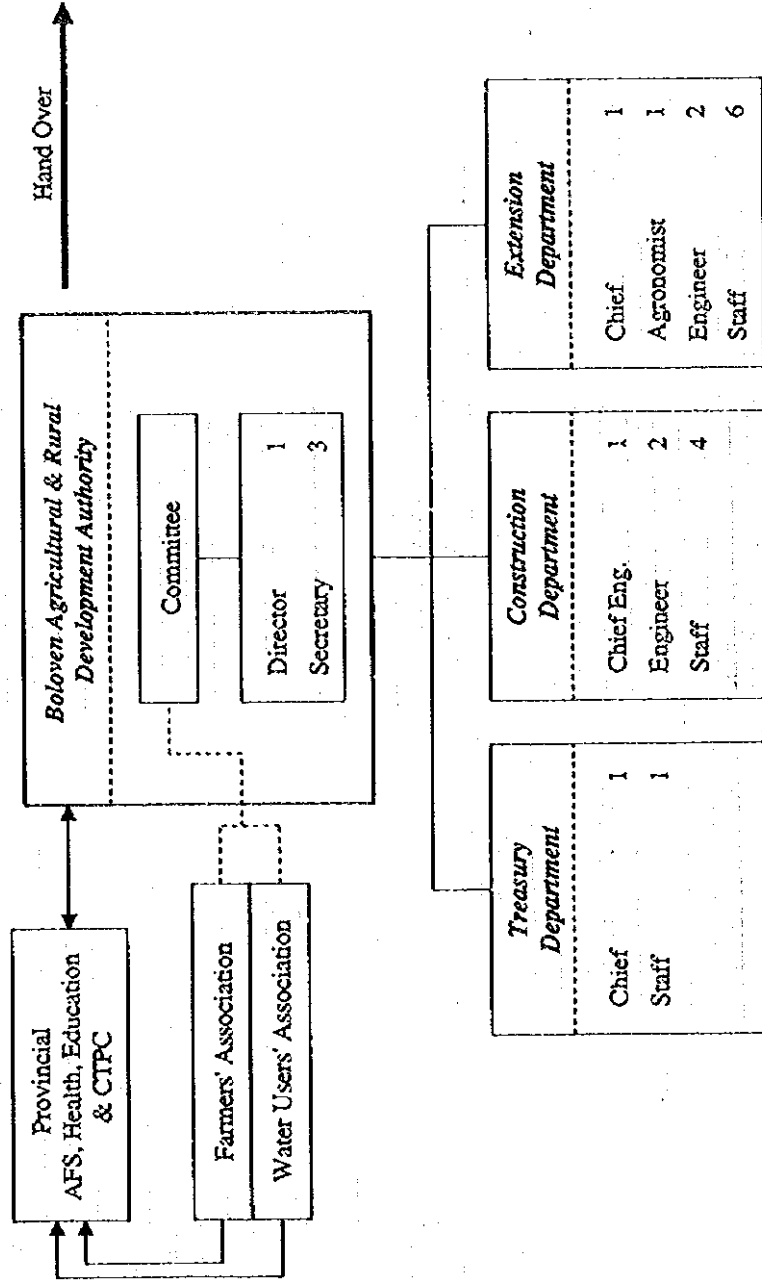
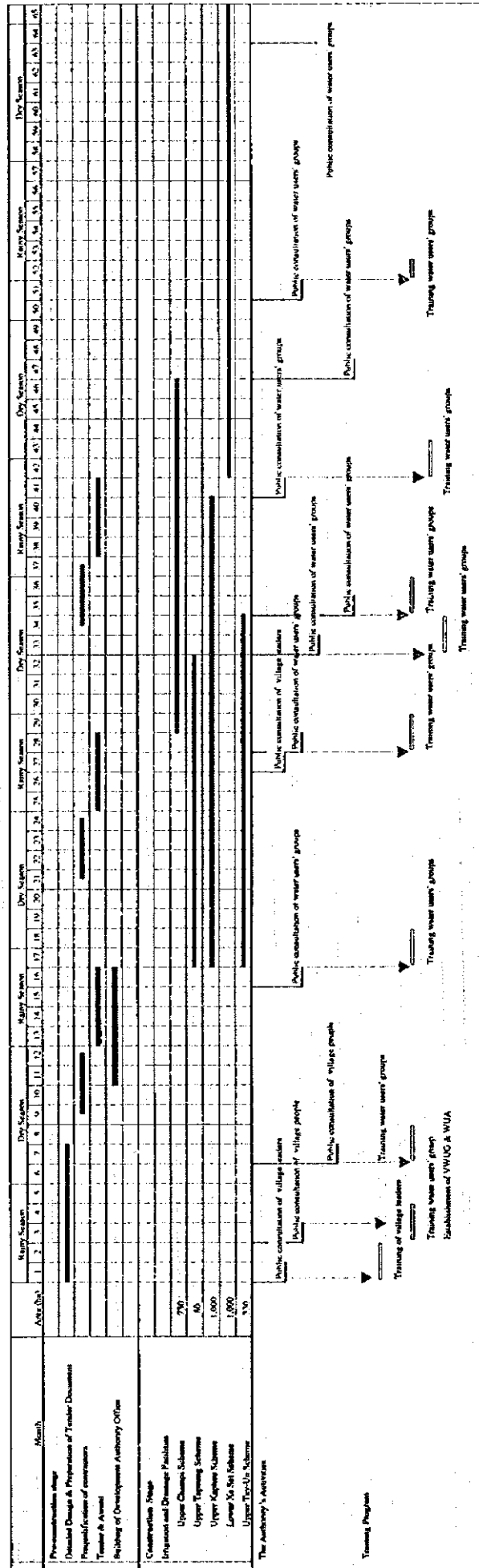


Figure 2.33 Proposed Organization of Implementation

Figure 2.35 Participatory Planning and Management of Agricultural Infrastructure



Attachment

**Comments from LAO Government for Draft Final Report
and
Reply for these from Study Team**

Comments from LAO Government	Reply from Study Team
(a) Seed multiplication farm for vegetable and root.	In the plan of establishment of the Highland Vegetable Trial and Demonstration Station, the seed multiplication for vegetable and root is scheduled to conduct in future. (Refer to Page 54 in Feasibility Study, Main Report)
(b) Small processing plan for fruit, tea and vegetable.	Tea processing facilities will be introduced at the trial level in line with development plan of the Highland Vegetable Trial and Demonstration Station. (Refer to Page 54 in Feasibility Study, Main Report) However, the Study Team thinks that it is too early to introduce the processing facilities for fruit and vegetables, due to low production, technological level and high cost of the facilities. Therefore, the introduction of other processing systems should be considered after achievement of target production and establishment of knowledge for agro-industry through the demonstration works of the station.
(c) Crops extension of maize and soybean for animal feed.	The maize and soybean are also selected as the proposed crops for food stuff and animal feed, but in the initial stage of project implementation. The main purpose of the crop extension of maize and soybean is to increase the production for food stuff, and after attaining the goal, it can be expected to use for animal feed use. The harvested area of upland crops including maize and soybean will extend about 1,200 ha at the final development stage of five schemes. (Refer to Page 40 in Feasibility Study, Main Report)

JICA