

機材維持管理調査表 40

機材番号：JR119

設置場所：SOIL PHYCS LAB

機材名：PETIT BALANCE

管理責任者：Dr. ハイダー

可搬性：可

型式：MF-600

メーカー：CHYO

製造番号：

製造年月：

A. 故障・不具合の事前情報

現地依頼機材。

B. 事前の対応

現地依頼機材。

C. 調査の結果

分解・整備実施。

D. 対応結果

正常動作。

乾電池、ヒューズ交換。

E. 消耗部品

単三乾電池 8 個を予備として引き渡し。

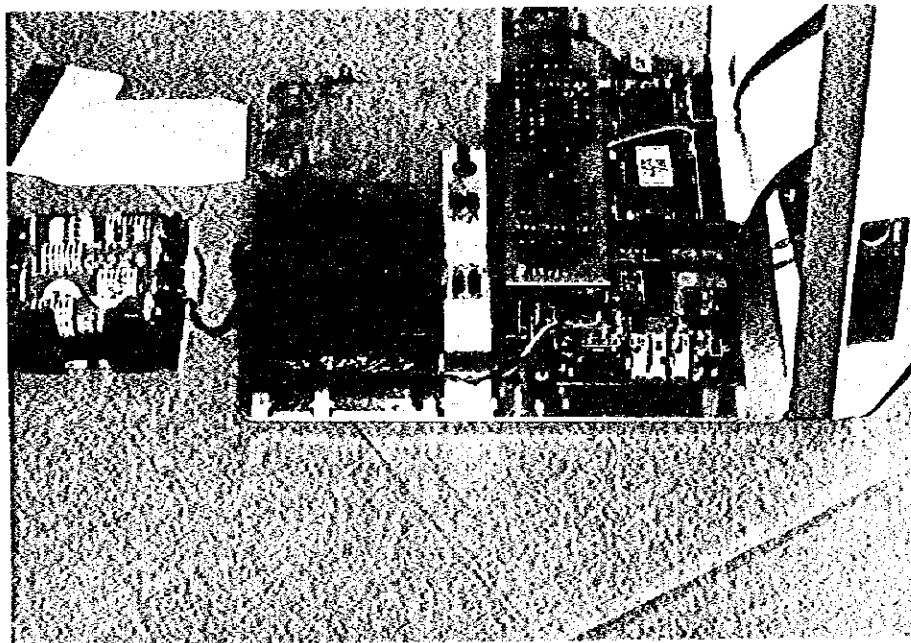
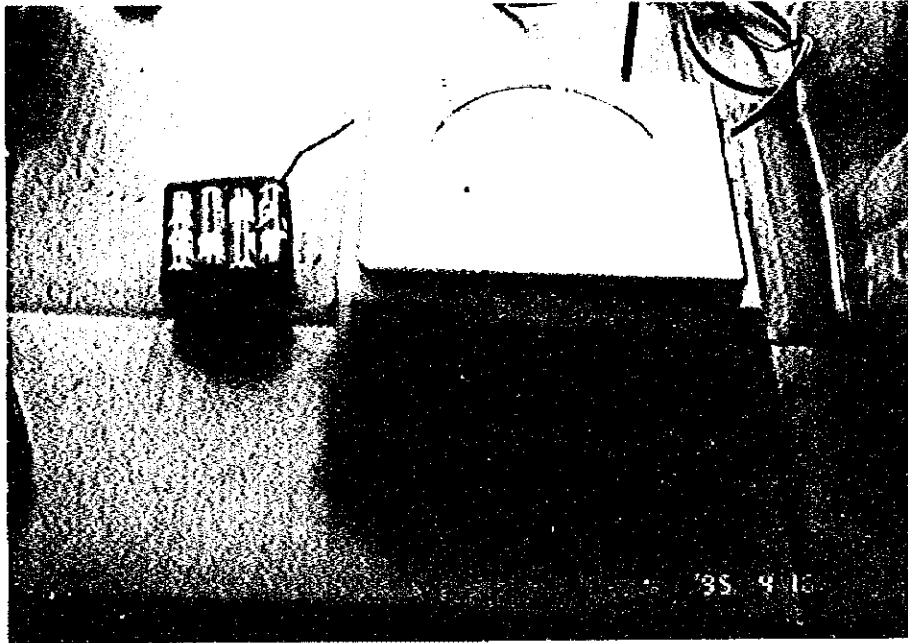
機材維持管理調査表 40

機材番号：JR119

型 式：MF-600

メーカー：CHYO

機材名：PETIT BALANCE



機材維持管理調査表 41

機材番号：JR103	型式：AAM-7
設置場所：AGRONOMY LAB	メーカー：HAYASHI DENKOH
機材名：AUTOMATIC AREA METER	製造番号：1596L
管理責任者：Dr. ハイダー	製造年月：FEB 1986
可搬性：可	

A. 故障・不具合の事前情報

現地依頼機材。

使用開始後、30分以上経過すると指示値が小さくなり、偏差が大きくなる。

B. 事前の対応

現地依頼機材。

C. 調査の状況

部品の発熱、損傷はなく、良好。

装置内の温度上昇により、測定精度が低下する。

D. 対応結果

修理（改善）完了後30分以上の連続使用が可能となった。

温度補償素子を特定し、周辺のカバーに通気口を開け、温度上昇を制御した。

（本来、30分以上連続使用する装置ではないと推測される。）

修理前と後の測定データの記録により、以上が確認された。

E. 消耗部品

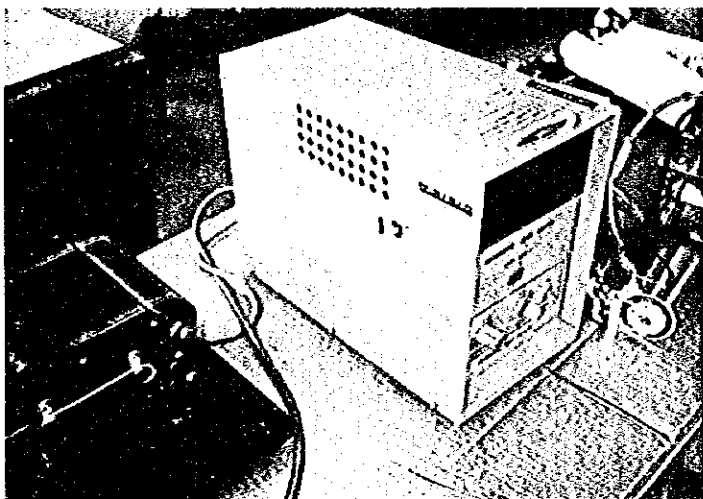
機材維持管理調査表 41

機材番号：JR103

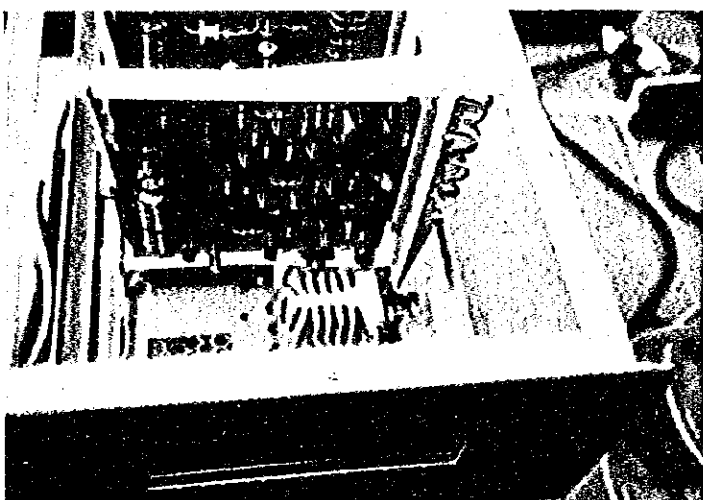
型式：AAM-7

メーカー：HAYASHI DENKOH

機材名：AUTOMATIC AREA METER



丸穴を並べた通風口を
開けて改善した



温度補償素子
黄色の丸い足付きのもの



IPSA
WORK SHOPにおいて
穴開け作業

(WORK SHOP 唯一の
設備：ボール盤)

機材維持管理調査表 42

機材番号：JR818

型式：JFD-300

設置場所：EN LAB

メーカー：JEOL

機材名：FREEZE DRYING DEVICE

製造番号：

管理責任者：Dr. イスマイル

製造年月：

可搬性：不可

A. 故障・不具合の事前情報

現地依頼機材。

油が真空系内へ、真空ポンプ内に水が入り、作動せず。

B. 事前の対応

現地依頼機材。

C. 調査の状況

外観およびガラス系内部目視点検。

D. 対応結果

油分完全除去は、当国では、かなり困難と予測される。

走査型電子顕微鏡にて派遣が予定されている専門家とメーカーが同じなので、同専門家による修理を実施すれば修理可能と判断する。

E. 消耗部品

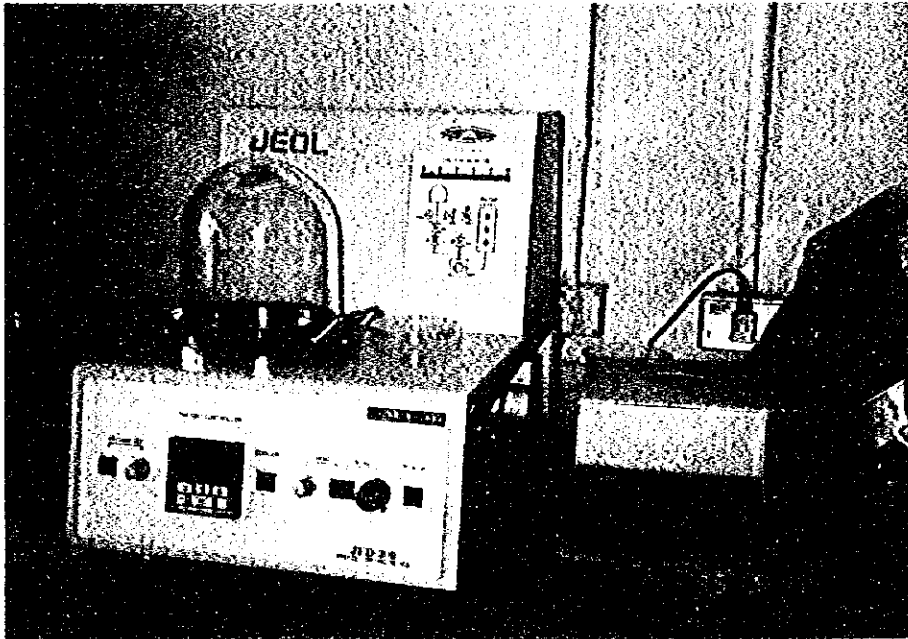
機材維持管理調査表 42

機材番号：JR818

型 式：JFD-300

メーカー：JEOL

機材名：FREEZE DRYING DEVICE



機材維持管理調査表 43

機材番号：JR91043.2

型式：

設置場所：ENT LAB

メーカー：NIPPON MEDICAL&CHEMICAL INSTRUMENTS CO. LTD., TOKYO, JAPAN

機材名：SYSTEM BIOTRON 製造番号：

管理責任者：Dr. アラム

製造年月：

可搬性：不可

A. 故障・不具合の事前情報

現地依頼機材。

湿度調節用給水装置作動不良。

B. 事前の対応

現地依頼機材。

C. 調査の状況

当該機器確認できず。

D. 対応結果

E. 消耗部品

機材維持管理調査表 44

機材番号：JR

型式：

設置場所：日本人専門家リーダー室

メーカー：CANON

機材名：日本語ワープロ

製造番号：

管理責任者：Dr. 坂口

製造年月：

可搬性：可

A. 故障・不具合の事前情報

現地依頼機材。

液晶表示不良 1台。フロッピーユニット不良 1台。

B. 事前の対応

現地依頼機材。

C. 調査の状況

現状確認。

D. 対応結果

正常動作。ただし、他の1台は廃棄。

液晶不良のワープロのフロッピーユニットを取り外し、同ユニットを交換した。

E. 消耗部品

機材維持管理調査表 45

機材番号：JR246.2	型式：BT-23
設置場所：MICROBIOL LAB	メーカー：YAMATO
機材名：SHAKING WATER BATH	製造番号：
管理責任者：Dr. イスマイル	製造年月：
可搬性：不可	

A. 故障・不具合の事前情報

現地依頼機材。

正常と思うが点検整備してほしいと、管理者より依頼あり。

B. 事前の対応

現地依頼機材。

C. 調査の状況

「Lo」表示により、メモリー用バッテリーダウンを明示していたが、担当者は何を意味しているか理解していなかった。

D. 対応結果

修理完了後、正常動作に復帰。

メモリーバックアップ用バッテリーを交換。

ネズミの被害は今後も起こることが明らかなので、裏蓋などのネズミ対策が必要。

管理者はメモリーバックアップの概念を十分理解していなかったため、説明指導し、バッテリー位置と交換時期を指示した。(調査表 No.34参照)

E. 消耗部品

機材維持管理調査表 45

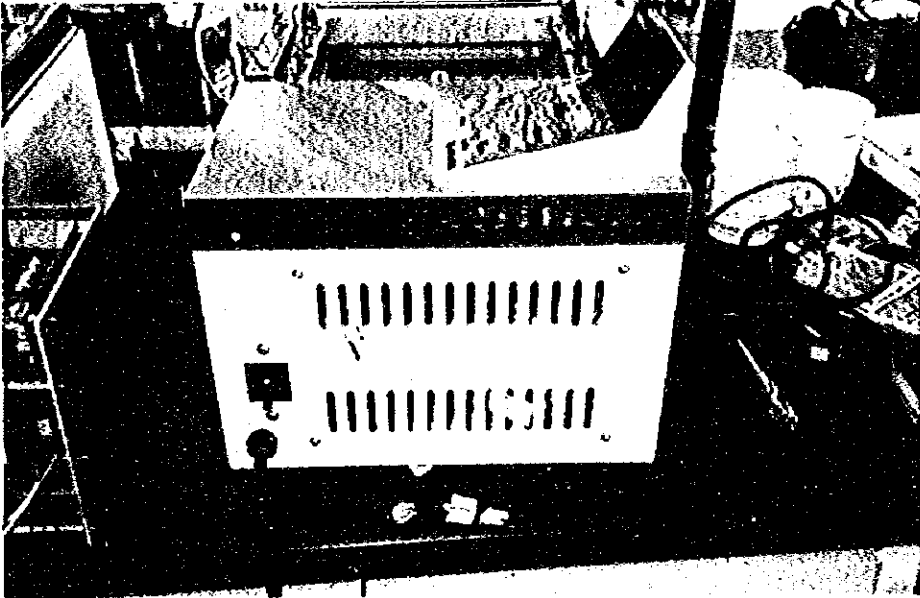
機材番号：JR246.2

型 式：BT-23

メーカー：YAMATO

機材名：SHAKING WATER BATH

操作板には英訳文が添付されていた



交換したメモリー用バッテリーと取り付け位置

機材維持管理調査表 46

機材番号：JR795

型式：EB-330H

設置場所：TISS CUL LAB

メーカー：SHIMAZU

機材名：ELECTRIC BALANCE

製造番号：

管理責任者：Dr. カルク

製造年月：

可搬性：可

A. 故障・不具合の事前情報

現地依頼機材。

B. 事前の対応

現地依頼機材。

C. 調査の状況

不具合箇所発見できず。

取扱上の問題と思われる。

D. 対応結果

正常動作。

使用方法の説明・指導を行った。

E. 消耗部品

機材維持管理調査表 47

機材番号：JR579

型式：Iuchi HS-3E

設置場所：TISS CUL LAB

メーカー：(株)井内盛栄堂

機材名：MAGNETIC STIRRER

製造番号：2672

管理責任者：Dr. カルク

製造年月：IJAFBA

可搬性：可

A. 故障・不具合の事前情報

現地依頼機材。

電源スイッチを入れても作動しない。

B. 事前の対応

現地依頼機材。

C. 調査の状況

ミュゼットヒューズ (500mA) は良好。トランス一次断線と判断される。

D. 対応結果

機能回復できず。

電源トランスの交換で修理可能と判断する。

(機材維持管理表 No.33 参照)

E. 消耗部品

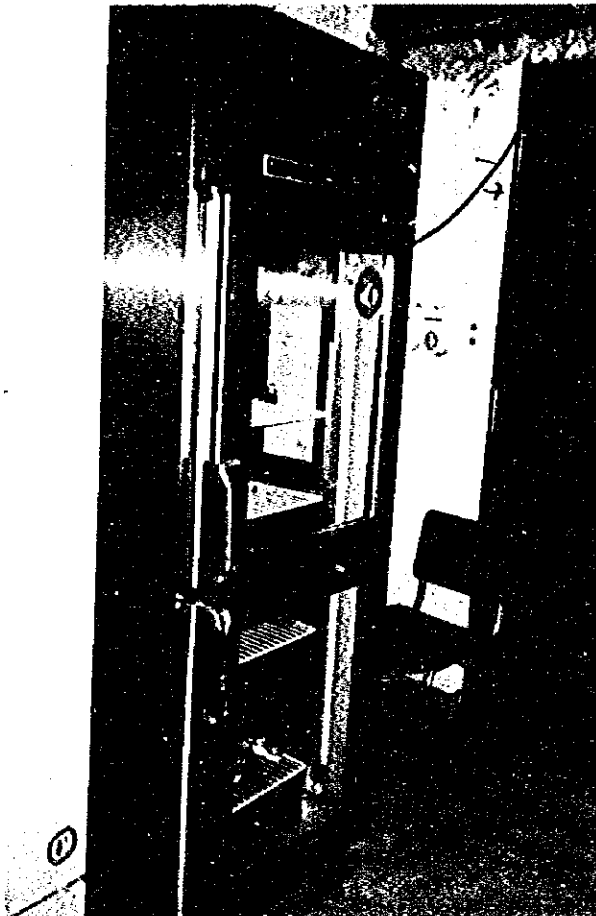
機材維持管理調査表 48

機材番号：JR240

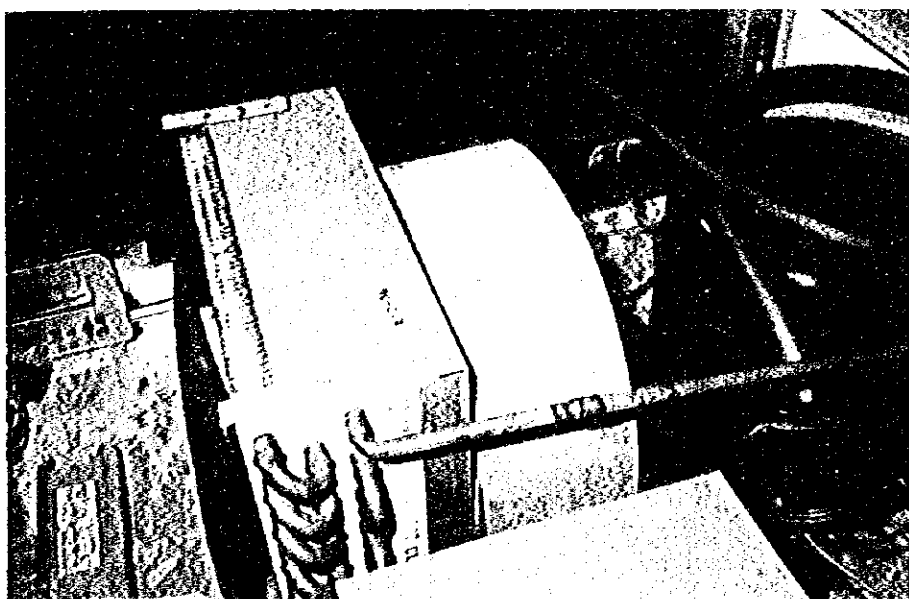
型 式：RS-66F-2G

メーカー：HOSIZAKI

機 材 名：リーチイン冷蔵ショーケース



コンプレッサーは上部に設置



銅配管にガス漏れ箇所があると推測される

機材維持管理調査表 49

機材番号：JR	型式：MPR-504
設置場所：GPB STUD LAB	メーカー：SANYO
機材名：PHARMACEUTICAL REFRIGRATOR	製造番号：
管理責任者：Dr. Bhowmich	製造年月：
可搬性：不可	

A. 故障・不具合の事前情報

現地依頼機材。

温度下がらず。

B. 事前の対応

現地依頼機材。

C. 調査の状況

ファン回らず。コンプレッサーは回るが冷却せず（ガスなし）。蛍光灯は良好動作（15W）。
冷凍機のガス漏れが予想される。

D. 対応結果

機能回復せず。以下の作業にて修理可能と判断する。

1. ファン交換（SANYO,MPR504用）
 2. 冷凍機のガス漏れ箇所を見つけ、ハンダ付け封止。
 3. 冷媒ガスを再封入する。
2. ～ 3. の作業は、IPSA 電気機材修理担当者 Mr. HASHEM によれば、当地業者にて対応可能。

E. 消耗部品

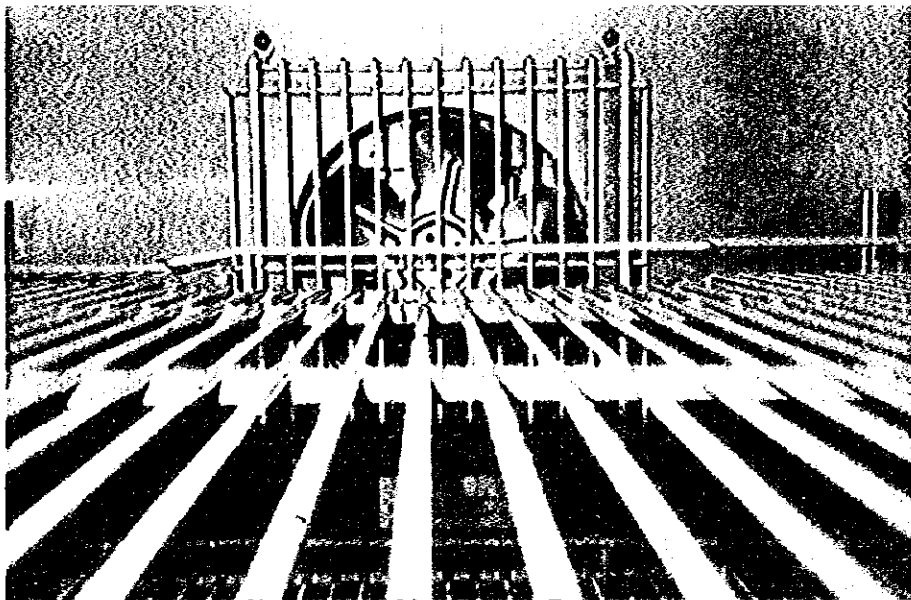
機材維持管理調査表 49

機材番号：JR

型 式：MPR-504

メーカー：SANYO

機材名：PHARMACEUTICAL REFRIGATOR



ファンは回らない

機材維持管理調査表 50

機材番号：JR

型式：

設置場所：COLD STORE

メーカー：SANYO

機材名：REFRIGERATOR

製造番号：

管理責任者：Dr. A. KHALEQUE

製造年月：

可搬性：不可

A. 故障・不具合の事前情報

現地依頼機材。

温度下がらず。

B. 事前の対応

現地依頼機材。

C. 調査の状況

当日、機材担当者が不在のため、点検できず。

D. 対応結果

修理未了だが、IPSA 電気機材修理担当者 Mr. HASHEM の情報から、以下の処置にて修理可能と判断する。

1. 冷凍機のガス漏れ箇所を見つけ、ハンダ付け封止。
2. 冷媒ガスを再封入する。

この作業は当地業者により対応可能。

E. 消耗部品

機材維持管理調査表 51

機材番号：JR

型式：ST-2000W

設置場所：日本人専門家リーダー室

メーカー：NIPPON KEIDENNKI

機材名：FULL AUTO AC VOLT REGULATOR

製造番号：

管理責任者：Dr.坂口

製造年月：

可搬性：不可

A. 故障・不具合の事前情報

現地依頼機材。

機能せず。

B. 事前の対応

現地依頼機材。

C. 調査の状況

機械部の歯車が摩耗し、噛み合わせが外れたことによる故障。

D. 対応結果

正常機能復帰。

分解整備・調整。

E. 消耗部品

供与機材リスト

SI No.	Item	Company/Model	Department/Section	Location	Category	Usage	Condition
	Remarks						
	Air Conditioner	DAIKIN, FT45CVE	AGR	Field Lab	A	A	B
	Quaderat Sample Dryer		AGR	Field Lab	C	U	U
	Magnetic Aut-Shieving Vibrator	TSUTSUI RIKA, M-100	AGR	Crop Phys	C	C	B
	Tool Box		AGR	Crop Phys	A	A	B
	Carried with Dr. Hirota						
	Lux Meter	KIYA, DM-28	AGR	Crop Phys	C	U	U
	Conductivity Meter	WINTEK, 2001	AGR	Crop Phys	C	B	B
	Suncepto Meter	DECAGON	AGR?		A	A	B
	Juicer Blender	Mitamura, VS-7	AGR	Unidentified	C	U	U
	Unidentified.						
	Juicer Blender	National, MJ-170N	AGR	AGR Stud Lab	A	B	B
	Unidentified.						
	Dehumidifier	Philco	GPB	Microscope Lab	A	C	B
	Air Conditioner	DAIKIN, FT45CVE	AGR	Field Lab	A	A	B

Sl No.	Item	Company/Model	Department/Section	Location	Remarks	Category	Usage	Condition
	Gas Generator	CATERPILLAR, 3306 GAS	Engineering	Generator		C	C	B
Not installed.								
	Automatic Soil Sieve	SNF-7, w/Tfs	Unidentified			C	U	U
	Photograph Efficiency Meter		Unidentified			C	U	U
G	Binocular Microscope	KYOWA, UNILUX	GPB	Microscope Lab		C	B	B
G	Binocular Microscope	KYOWA, UNILUX	GPB	Microscope Lab		C	B	B
G	Binocular Microscope	KYOWA, UNILUX	GPB	Microscope Lab		C	B	B
G	Water Bath	KANEKO, No.578-6	GPB	GPB Stud Lab		C	C	B
G	Microscope (Binocular)	KYOWA, UNILUX	PLP	PLP Stud Lab		C	B	B
G	Microscope	AO, A0570	PLP	PLP Stud Lab		C	B	B
G	Oven	KANEKO SCIENTIFIC, K-5	PLP	PLP Stud Lab		C	B	D
Trouble portion uncertain.								
G	Microscope	MITAMURA RIKEN, UNILUX	PLP	PLP Stud Lab		C	B	B

Sl No.	Item	Company/Model	Department/Section	Location	Category	Usage	Condition
	Remarks						
G	Distribution Plate	MITAMURA, WS-1	SSC	SSC Stud Lab	B	C	B
G	Sterile Cup Board	KANEKO, K-120	SSC	SSC Stud Lab	C	C	B
G	Actinograph	KANEKO	SSC	SSC Stud Lab	C	C	B
Out of order since accepting.							
G83001.1	Vehicle, Pick Up	TOYOTA	Admin		A	U	U
G83001.2	Vehicle, Pick Up	TOYOTA	Admin		C	U	U
G83002.1	Vehicle, Mini Bus	TOYOTA	Admin		A	A	B
G83002.2	Vehicle, Mini Bus	TOYOTA	Admin		A	B	C
Completely out of order.							
G83003.1	Vehicle, Sedan	DAIHATSU	Admin	Farm Complex	A	C	C
Completely ut of order.							
G83003.2	Vehicle, Sedan	DAIHATSU	Admin	Farm Complex	A	C	C
Completely out of order							
G83004.1	Vehicle, Micro Bus	TOYOTA	Admin		A	U	U
G83004.2	Vehicle, Micro Bus	TOYOTA	Admin		A	U	U
Yellow Micro Bus							

Sl No.	Item	Company/Model	Department/Section	Location		
				Category	Usage	Condition
G91002.1	Card Case	KIMURA, D-5130D	Library	Library	A A	B
	Wooden case.					
G91002.2	Card Case	KIMURA, D-5130D	Library	Library	A A	B
	Wooden case.					
G91002.3	Card Case	KIMURA, D-5130D	Library	Library	A C	A
	Wooden case.					
G91002.4	Card Case	KIMURA, D-5130D	Library	Library	A C	A
	Wooden case.					
G91003.1	Cardex File	ITO, A5-13, Steel	Library	Library	A A	B
G91003.2	Cardex File	ITO, A5-13, Steel	Library	Library	A A	B
G91004.1	Steel Cabinet	LION, S-165	Library	Library	A C	B
G91004.2	Steel Cabinet	LION, S-165	Library	Library	A C	B
G91004.3	Steel Cabinet	LION, S-165	Library	Library	A A	B
G91004.4	Steel Cabinet	LION, S-165	Library	Library	A A	B
G91005	Magazine Show Case	4481	Library	Library	A C	B
	Revolving type, steel frame.					

Sl No.	Item	Company/Model	Department/Section	Location	Category	Usage	Condition
	Remarks						
G91006	Magazine Show Case	3801	Library	Library	A	A	B
	<u>Revolving type, steel frame.</u>						
G91007-10	Micro Fiche Film Reader	UR320	Library	Library	C	C	B
G91011	Micro Fiche Film Cabinet	ITO, MCF-4	Library	Library	A	C	B
G91012	Micro Fiche Film Cabinet	ITO, MCF-4	Library	Library	A	C	B
G91013.1	Electro Typewriter	CANON, AP-6000	Library	Library	C	A	B
G91013.2	Electro Typewriter	Canon, AP-6000	Admin	Rector R	C	B	B
	<u>With G91014.2, G91015.2</u>						
G91013.3	Electro Typewriter	CANON, AP-6000	Admin	Dean Office	C	B	B
G91014.1	Floppy Disc Drive	CANON, AP-86		Unidentified	C	U	U
G91014.2	Floppy Disc Drive	CANON, AP-86	Admin	Rector R	A	C	B
	<u>With G91013.2, G91015.2</u>						
G91014.3	Floppy Disc Drive	CANON, AP-86	Admin	Unidentified	C	U	U
G91015.1	Interface	CANON, IF-43	Library	Library	C	A	B

SI No.	Item	Company/Model	Department/Section	Location	Category	Usage	Condition
	Remarks						
G91015.2	Interface	CANON, IF-43	Admin	Rector R	A	C	B
	With G91013.2, G91014.2						
G91015.3	Interface	CANON, IF-43	Admin	Unidentified	C	U	U
G91016.1	Paper Cutter	ND-614N	Library	Library	A	A	B
	Cutting width 451 mm.						
G91016.2	Paper Cutter	No.614N	Admin	Unidentified	C	U	U
	Cutting width 451 mm.						
G91017	Plastic Binding Machine	CANON, IM-2000	Library	Library	C	B	B
G91019	Laminating Machine	320 M am.	Library	Library	C	A	B
G91020	Hand Torch	DANDY, FT 25 PGN	Library	Library	C	B	B
	Steel made.						
G91021.1	Stereo Cassette Recorder	SONY, TC-D5N		Unidentified	C	U	U
G91021.2	Stereo Cassette Recorder	SONY, TC-D5N	AEE	AEE Stud Lab	C	C	B
G91021.3	Stereo cassette Recorder	SONY, TC-D5N		Unidentified	C	U	U
G91022	Copying Machine	CANON, NP-1215	Admin	Rector R	A	A	B

Sl No.	Item	Company/Model	Department/Section	Location	Category	Usage	Condition
	Remarks						
G91025	16 mm Projector	EIKI, EX 3500S	Library	Library	C	C	B
G91027	Zoom Converter	EIKI, ZC-16x0.75-x1.25	Library	Unidentified	C	U	U
	16 mm Projector (G91025) parts						
G91028	Screen	PB-7	Library	Library	C	C	B
	1800 x 1800 mm with tripod						
G91029.1	Video Camera	SANYO, VM-D6P, VHS	Library	Library	C	B	B
G91029.2	Video Camera	SANYO, VM-D6P, VHS	AEE	AEE Stud Lab	C	B	B
G91030.1	Monitor TV	SANYO, CTX 2910R, Voot TV	Library	Library	C	B	B
G91030.2	Monitor TV	SANYO, CTX 2910R, Voot TV	AEE	AEE Stud Lab	C	B	B
G91031.1	Video Cassette Recorder	HR 7500PS	Library	Library	C	B	B
	Part of G91029.1 Video Camera						
G91031.2	Video Cassette Recorder	HR 7500PS	AEE	AEE Stud Lab	C	B	B
	Part of G91029.1 Video Camera						
G91034	Overhead Projector (OHP)	CABIN, OHP-12F	Library	Library	C	C	C
	Lamp fused. No spare lamp.						
G91034S	Slide Projector	CABIN, AF II-2500	Library	Library	C	A	B

SI No.	Item	Company/Model	Department/Section	Location	Category	Usage	Condition
				Remarks			
G91035	Book Binding Machine	8103	Library	Library	C	B	B
With Book Binding Tools (G91036)							
G91037.1	Oven	MOV 220	HOR	HOR Stud Lab	C	B	B
G91037.3	Oven	SANYO, MOV-202	CBT	CBT Stud Lab	C	B	B
G91039.1	Germinator	Advantec, AE-215	HOR	HOR Stud Lab	C	B	C
Electric/controller trouble?							
G91039.2	Incubator	ADVANTEC, AE-45	CBT	CBT Stud Lab	C	C	B
G91040	Transformer	1.2 kw	CBT	CBT Stud Lab	A	B	B
G91040.1	Transformer		HOR	HOR Stud Lab	C	B	C
Trouble portion uncertain.							
G91041.1	Refrigerator	MCU 5021	CBT	Cold Storage R	A	B	B
G91041.2	Refrigerator	MCU 5021	CBT	Cold Storage R	A	B	B
G91041.3	Refrigerator	MCU 5021	CBT	Cold Storage R	A	B	B
G91043.1	Incubator	NK system, MCU 5021	HOR	HOR Stud Lab	C	B	B
Growth Chamber							

<i>Sl No.</i>	<i>Item</i>	<i>Company/Model</i>	<i>Department/Section</i>	<i>Location</i>	<i>Remarks</i>	<i>Category</i>	<i>Usage</i>	<i>Condition</i>
G91043.3	Growth Chamber	NKK, PH-200RD	CBT	CBT Stud Lab		C	C	C
	<u>Water supplying part out of order.</u>							
G91044.1	Electric Balance	AND, ER180A	HOR	HOR Stud Lab		C	B	C
	<u>Electric trouble?</u>							
G91044.2	Electric Balance		PLP	PLP Stud Lab		C	B	B
G91044.3	Balance	AND, ER-180A	CBT	CBT Stud Lab		A	B	B
G91046	Leaf Area Meter	Tokyo Photoelectric, Everwell, GA-5	CBT	CBT Stud Lab		C	C	B
G91049	Clean Bench	PCH-843	PLP	PLP Stud Lab		C	C	B
	<u>Not installed</u>							
G91053	Electric Balance	AND, FY3000	CBT	CBT Stud Lab		C	B	B
G91054	Sliding Microtome	PIKA, MMT	PLP	PLP Stud Lab		C	C	B
G91055	Lab Table		PLP	Unidentified		A	U	U
G91056	Distillator		CBT	CBT Stud Lab		C	B	B
G91057.1	Grain Moisture Meter	KETT, FD230	HOR	HOR Stud Lab		C	B	B

Sl No.	Item	Company/Model	Department/Section	Location	Category	Usage	Condition
	Remarks						
G91057.2	Grain Moisture Meter	KETT, FD230	HOR	HOR Stud Lab	C	B	B
G91057.4	Moisture Meter	KETT, FO-230	CBT	CBT Stud Lab	C	C	B
G91057.4	Moisture Meter	FD-230	PLP	PLP Stud Lab	C	C	B
G91058	Cabinet	TKD-1800	AEE	AEE Stud Lab	A	A	B
	For glassware preservation.						
G91059.1	Steel Cabinet		PLP	PLP Stud Lab	A	A	B
	For preservation of microscopes						
G91059.2	Steel Cabinet		CBT	CBT Stud Lab	A	B	B
G91060.1	Steel Drawer		PLP	PLP Stud Lab	A	A	B
G91060.2	Steel Cabinet		CBT	CBT Stud Lab	A	B	B
G91061	Desktop Transparency Maker	4550	AEE	AEE Stud Lab	C	C	B
G91062	Air Compressor	Meiji, FH-04	AGR	Field Lab	C	B	B
G91063	Tresher	OYA, OMN	AGR	Field Lab	B	B	B

SI No.	Item	Company/Model	Department/Section	Location	Category	Usage	Condition
	Remarks						
G91064	Sieve Grader	SG-7W	AGR	Field Lab	B	B	B
G91065.1	Stock Cabinet	ITO, VC1312	AGR	Field Lab	A	A	A
	For seed preservation						
G91065.2	Stock Cabinet	ITO, VC1312	AGR	Field Lab	A	A	A
	For seed preservation						
G91066	Grain Dryer	Yamamoto, FB-38E	AGR	Field Lab	B	B	B
G91067	Electric Balance	AND, FY3000	AGR	Field Lab	A	A	B
G9150	Draft Chamber	ADVANTEC, TOYO, LFLA-1800	CBT	CBT Stud Lab	C	B	B
	Front door unclosed						
(J10)	Refrigerator	SHARP, SJ-10S-K	[JICA Team]	Team Leader R	A	A	B
JR020	Desiccator		PLP	Dark R	A	A	B
JR025	Tractor	YANMAR, YM600D	Farm	Farm Complex	B	B	B
JR026	Tractor	YANMAR, YM330DT	Farm	Farm Complex	B	B	B
JR027	Disc Plow	STAR, MDP 262C-G	Farm	Farm Complex	B	B	B

SI No.	Item	Company/Model	Department/Section	Location	Category	Usage	Condition
	Remarks						
JR028	Disc Plow	STAR, MDP 263C-G	Farm	Farm Complex	B	B	B
JR029	Moldboard Plow	STAR, MMP 1602	Farm	Farm Complex	B	B	B
JR030	Rotary Harrow	KOBASHI, MS 60	Farm	Farm Complex	B	C	C
	Main bearing broken. Bearing supplied by JICA on 1.Aug.1994.						
JR033	Power Tiller	YANMAR, YZP2-N	Farm	Farm Complex	B	A	B
JR034	Gas Chromatograph	SHIMADZU, GC-8A	SSC	Anal Lab	C	B	B
JR035	Recorder (for Gas Chromatograph)	SHIMADZU, R-111	SSC	Anal Lab	C	B	B
JR037	Electron Microscope (TEM)	JEOL, JEM-100sx	PLP	EM Lab	C	B	B
JR038	Beam Stopper	JEOL, EM-BSS	PLP	EM Lab	C	B	B
	EM (JEM-100sx) attachment.						
JR038.1	Vibration Probe Mount (for TEM)	JEOL, EM-AVPS	PLP	EM Lab	C	B	B
	EM (JEM-100sx) attachment.						
JR039	Water Recirculator (for TEM)	HX-50	PLP	EM Lab	C	B	B
	For EM						
JR040	Vacuum Evaporator (for TEM)	JEOL, JEE-4x	PLP	EM Lab	C	B	B
	EM coating device.						

SI No.	Item	Company/Model	Department/Section	Location	Category	Usage	Condition
	Remarks						
JR041	Specimen Rotating Tilting (for TEM)	JEOL, JE-RTS3	PLP	EM Lab	C	B	B
	EM attachment.						
JR042	Automatic Voltage Regulator (for TEM)	MATSUNAGA, SVC-2222-7	PLP	EM Lab	C	B	B
	For EM.						
JR047	Tube Well Pump (for Irrigation)	KUBOTA, BSM 1007BK	Farm	Deep Tube Well	B	A	B
	Well Pump Unit						
JR049	Booster Pump Unit (for Irrigation)	KUBOTA, SV-JA13SAK	Farm	Booster Pump	B	A	B
JR051	Power Control Panel (for Irrigation)	FUJI Electric	Farm	Booster Pump	A	A	B
JR052	Irrigation Set	KYORITSU METAL	Farm	Experimental	B	A	B
JR075	Compressor (for Gas Chromatograph)	HITACHI, BEBICON	SSC	Anal Lab	C	B	B
JR080	Distribution Board	MEIKO, DB-I	General	Fac Lab	A	A	B
JR081.1	Distribution Board	MEIKO, DB-B	PLP	Dark R	A	A	B
JR081.2	Distribution Board	MEIKO, DB-A	GPB	Microscope Lab	A	A	B
JR082	Distribution Board	MEIKO, DB-C	PLP	EM Lab	A	B	B

Sl No.	Item	Company/Model	Department/Section	Location	Category	Usage	Condition
	Remarks						
JR083.1	Distribution Board	MEIKO, DB-D	PLP	Microbiol Lab	A	A	B
JR083.2	Distribution Board	MEIKO, DB-G	PLP	Chem Lab	A	B	B
JR084	Distribution Board	MEIKO, DB-E	AGR	Crop Phys	A	A	B
JR085	Distribution Board	MEIKO, DB-F	SSC	Anal Lab	A	A	B
JR086	Distribution Board	MEIKO, DB-H	HOR	Tiss Cul Lab	A	A	B
JR087	Window Fan	NATIONAL, FV-25ZFB	PLP	Dark R	C	B	B
JR089	Aluminium Frame (for Green House)			Field	A	B	B
	Now used for net house frame.						
JR090	Vehicle, Jeep	TOYOTA, Land Cruiser Station Wagon	[JICA Team]		A	A	B
JR091	Dump Truck	HINO, Dropside Rear Dump, GD171KA, 4x2,	Admin		A	B	B
JR094.1	Air Conditioner	HITACHI, R4S-4AV2	SSC	Chem Lab	A	A	B
JR094.2	Air Conditioner	HITACHI, RAS-4AV2	PLP	EM Lab	A	A	B

Sl No.	Item	Company/Model	Department/Section	Location	Category	Usage	Condition
	Remarks						
JR094.3	Air Conditioner	HITACHI, RAS-4AV2	PLP	Microbiol Lab	A	A	B
JR094.4	Air Conditioner	HITACHI, RAS-4AV2	HOR	Tiss Cul Lab	A	B	B
JR094.5	Air Conditioner	HITACHI, BAS-4AV2		Store R	A	B	B
JR094.6	Air Conditioner	HITACHI, BAS-4AV2	ENT	Ent Fac Lab	A	C	C
	Out of order in compressor.						
JR095	Battery Quick Charger	RH Max 70D	Engineer	Generator	C	B	B
JR098	Air Compressor	IWATA, TUE-22PS		Central Store	A	C	U
	Engine missing 2 times.						
JR099	Hydraulic Garage Jack	BANZAI, M-500M	Farm	Farm Complex	C	A	B
JR101	Tool Box	D-3000	[JICA Team]	Short Term	C	C	U
	Contents stolen.						
JR103	Area Meter	HAYASHI DENKO, AAM-7	AGR	Crop Phys	A	A	B
JR104	Hot Air Rapid Drying Oven	TOYO KAGAKU, KCV-6	SSC	Soil Physcs	C	C	C
	CPU out of order.						
JR105	Oven	TOYO, FC-62	HOR	Tiss Cul Lab	C	A	B

<i>Sl No.</i>	<i>Item</i>	<i>Company/Model</i>	<i>Department/Section</i>	<i>Location</i>
	<i>Remarks</i>			<i>Category Usage Condition</i>
JR109.1	Desiccator	(Plastic), CA-350	PLP	EM Lab A A B
JR109.2	Desiccator	(Plastic), CA-350	AGR	Crop Phys Lab A A B
JR109.3	Desiccator	(Plastic), CA-350	PLP	Dark R A A B
JR109.4	Desiccator	(Plastic), CA-350	SSC	Chem Lab A A B
JR109.5	Desiccator	(Plastic), CA-350	HOR	Tiss Cul Lab A A B
JR109.6	Desiccator	(Plastic), CA-350	PLP	Dark R A A B
JR110	Hot Plate	HITACHI, EH106C	SSC	Chem Lab C B B
JR111.1	Magnetic Stirrer	TOYO SEIKI, MALTESE, Model A-2	PLP	Microbiol Lab C B B
JR111.3	Magnetic Stirrer	MALTESE, Model A-2	SSC	Chem Lab C A B
JR111.4	Magnetic Stirrer	MALTESE, Model A-2	SSC	Chem Lab C A B
JR112	Test Tube Mixer	TOYO SEIKI, TME-21	PLP	Microbiol Lab C B B

<i>Sl No.</i>	<i>Item</i>	<i>Company/Model</i>	<i>Department/Section</i>	<i>Location</i>		
	<i>Remarks</i>			<i>Category Usage Condition</i>		
JR114.1	Voltage Stabilizer	STABILIZER Co., 10 kw	SSC	Chem Lab A	A	B
JR114.2	Voltage Stabilizer	STABILIZER Co., 10 kw	PLP	EM Lab A	B	B
JR114.3	Voltage Stabilizer	STABILIZER Co., 10kw	AGR	Cróp Phys A	A	B
JR114.3	Voltage Stabilizer	STABILIZER Co., 10kw	GPB	Microscope Lab A	A	B
JR114.5	Voltage Stabilizer	STABILIZER Co., 10 kw	PLP	Microbiol Lab A	A	B
JR115.1	Voltage Stabilizer	STABILIZER, 5KW	SSC	Anal Lab A	A	B
JR115.2	Voltage Stabilizer	STABILIZER Co., 5 kVA	HOR	Tiss Cul Lab A	A	B
JR115.3	Voltage Stabilizer	STABILIZER Co., 5 kw	PLP	Dark R A	B	B
JR115.4	Voltage Stabilizer	STABILIZER Co., 5 kw	GPB	Microscope Lab A	A	B
JR116.1	Water Distillator	ADVANTEC, GS-18	PLP	Microbiol Lab C	B	C
	Glass tube damaged					
JR116.2	Water Distillator	TOYO, GS-18	HOR	Tiss Cul Lab C	A	B

<i>Sl No.</i>	<i>Item</i>	<i>Company/Model</i>	<i>Department/Section</i>	<i>Location</i>	<i>Category</i>	<i>Usage</i>	<i>Condition</i>
	<i>Remarks</i>						
JR117	Electric Balance	CHYO, SD-200	SSC	Chem Lab	A	A	B
JR118	Electric Balance	CHYO, JP-3000W	PLP	Microbiol Lab	C	B	B
JR119	Electric Balance	CHYO, Petit Balance, MF-600	SSC		C	C	D
	No electricity.						
JR120	PH Meter	TOA, HM-20E	PLP	Microbiol Lab	C	B	C
	Electrode broken.						
JR121	Digital ION Meter	IN-20E	SSC	Chem Lab	C	C	D
	No electricity.						
JR123	Vibrating Sample Mill	HEIKO, TI-200	SSC	Soil Physcs	C	C	C
	Sample cylinder out of order (stopper is broken).						
JR125	Oven	IKEDA, AHS-SD	PLP	Microbiol Lab	C	B	C
	Temperature control out of order						
JR126	Pressure Chamber Apparatus	DAIKI, DIK-7000	AGR	Crop Phys	C	C	C
	Trouble portion uncertain						
JR127	Compressor	DAIKI, DIK 9260	AGR	Soil Physics	C	B	B
	Moved from Crop Phys Lab.						
JR128	Autoclave	ALP, KT 30 LD	PLP	Microbiol Lab	C	B	B
JR129	Shaking Water Bath	YAMATO, BT-23	PLP	Microbiol Lab	C	C	D
	Digital Indication damaged.						

<i>Sr No.</i>	<i>Item</i>	<i>Company/Model</i>	<i>Department/Section</i>	<i>Location</i>	<i>Category</i>	<i>Usage</i>	<i>Condition</i>
	<i>Remarks</i>						
JR130	Muffle Furnace	IKEDA, MFP-300A	SSC	Soil Physcs	C	C	B
	With automatic pressure controller (DIK 9120), chamber (DIK3400), N gas. Leaking.						
JR133	Spectrophotometer	HITACHI, 200-20	SSC	Anal Lab	C	B	B
JR134	Recorder (for Spectrophotometer)	RIKA DENKI, R-01	SSC	Anal Lab	C	B	B
JR135.1	Vacuum Pump	MITAMURA, GPSV	GPB	GPB Stud Lab	C	B	B
JR135.2	Vacuum Pump	MITAMURA, GPSV	GPB	GPB Stud Lab	C	B	B
JR137	Clean Bench	HITACHI, CCV	PLP	Microbiol Lab	C	B	B
	Emendation for "JR 371" in the 1993 list.						
JR138	Freeze Dryer	IKEDA RIKA, VFD312	PLP	Microbiol Lab	C	B	B
	Emendation for "JR 371" in the 1993 list.						
JR140	Refrigerator	SANYO, MDF-330	PLP	EM Lab	A	A	B
JR141	Refrigerator	HITACHI, R-944 SEB	SSC	Chem Lab	A	A	B
JR142	Refrigerator	TOSHIBA, GR-316CZ	PLP	Microbiol Lab	A	A	B
	Emendation for "JR 371" in the 1993 list.						
JR143	Incubator	SANYO, MIR-151	PLP	Microbiol Lab	C	B	B
	Cf. JR402 (unidentified)						

SI No.	Item	Company/Model	Department/Section	Location		
	Remarks			Category	Usage	Condition
JR144.1	Incubator	YAMATO, IL-61	PLP	EM Lab		
				A	A	B
JR144.2	Incubator (Low Temp.)	YAMATO	SSC	Chem Lab		
				C	B	B
JR149	High Speed Centrifuge	HITACHI, SCR188	PLP	Microbiol Lab		
				C	B	B
JR150	Angle Rotor (for High Speed Centrifuge)	HITACHI, RPR-20-2	PLP	Microbiol Lab		
				C	B	B
JR151	Angle Rotor (for High Speed Centrifuge)	HITACHI, RPR-10-2	PLP	Microbiol Lab		
				C	B	B
JR152	Draft Chamber	TME-1200	SSC	Chem Lab		
				A	A	B
JR162	Rain Gauge	OHTA KEIKI, No.34	SSC	Weather St		
				A	A	B
	["out of order" in '94 list]					
JR163	Combined Wind & Anemometer	OHTA KEIKI, No.112-S	SSC	Weather St		
				A	A	B
JR164	Evaporation Pan	IKEDA KEIKI, EVP 1	SSC	Weather St		
				A	A	B
JR165	Long Term Electrical Pulse Recorder	OHTA KEIKI, No.114	SSC	Weather St		
				A	A	B
	["out of order" in '94 list]					
JR166	Hygro-Thermo Graph	OHTA KEIKI	SSC	Weather St		
				A	A	B

Sl No.	Item	Company/Model	Department/Section	Location	Category	Usage	Condition
				Remarks			
JR167	Actinograph		SSC	Weather St	A	A	B
JR171.1	Desiccator	YB-2, (Vacuum), Teflon Crucible	SSC	Anal Lab	A	A	B
JR171.2	Desiccator	YB-2, (Vacuum), Teflon Crucible	PLP	Unidentified	C	U	U
JR175	Tool Set	SANKY	PLP	EM Lab	C	B	B
Partly missing?							
JR176	Tool Box (for Woodwork)	UOZUMI, UF-30	SSC	Chem Lab	C	C	B
JR195	Camera	NIKON, FE2, 35 mm	Admin	Rector R	C	C	C
Out of order (shutter stucked)							
JR196	Biological Microscope	NIKON, FX-UW-3	PLP	EM Lab	C	C	C
With phase contrast equipment. Lens molded.							
JR197	Copy Stand	KING, DL-2	PLP	Dark R	A	B	B
JR198	Film Washer	KING	PLP	Dark R	C	B	B
JR199	Enlarger	FUJI, SD-690, AC 100v	PLP	Dark R	C	B	B
JR200	Overhead Projector (OHP)	ELMO, HP-3000	ACAD	ENT Fac Lab	C	C	C
Common use for educational purpose. With a screen HW-3. Lighting system is out of order?							

Sl No.	Item	Company/Model	Department/Section	Location	Category	Usage	Condition
	Remarks						
JR208	Microscope	NIKON, Optiphot	PLP	EM Lab	C	B	B
	Connected with a video set.						
JR209	Stereoscopic Microscope	OLYMPUS, X/XTr	PLP	EM Lab	C	B	B
JR210	Scanning Electron Microscope	JEOL, JSM-T220	PLP	EM Lab	C	C	C
	No images.						
{JR210}	Aspirator	TOYO RIKA, EYELA A-3S	SSC	Chem Lab	C	B	B
	JR Number double entry. Renumbering is necessary.						
JR211	PH Meter	TOA, IM-20E	SSC	Chem Lab	C	A	B
JR215	Ion Spatter Coating Device	JEOL, JEC-1100	PLP	EM Lab	C	B	B
JR217	Voltage regulator (Stabilizer)	MATSUNAGA, SVC-2KS	PLP	EM Lab	C	B	B
JR218	Water Circulator	JEOL, CWC	PLP	EM Lab	C	B	B
JR219	Vehicle, Jeep	ISUZU, Trooper UB552C	[JICA Team]		A	A	B
JR219.1	Vehicle, Station Wagon	TOYOTA, Corolla KE70RG-EWKDS	[JICA Team]		A	A	B
JR220	Vehicle, Pick Up	ISUZU, KB27W	Admin		A	A	B

Sl No.	Item	Company/Model	Department/Section	Location		
	Remarks			Category	Usage	Condition
JR221	Net House Set		PLP	Field	A A B	
JR222.1	Lab Table	YAGAMI, YJE-7-1	PLP	Microbiol Lab	A A A	
JR222.2	Lab Table	YAGAMI, YJE-7-1	PLP	Microbiol Lab	A A A	
JR222.3	Lab Table	YAGAMI, YJE-7-1	SSC	Chem Lab	A A B	
JR222.4	Lab Table	YAGAMI, YJE-7-1	SSC	Chem Lab	A A B	
JR222.5	Lab Table	YAGAMI, YJE-7-1	AGR	Crop Phys Lab	A A B	
JR223.1	Lab Table	YAGAMI, YJE-18	PLP	EM Lab	A A B	
JR223.2	Lab Table	YAGAMI, YJE-18	SSC	Anal Lab	A A B	
JR224.1	Lab Table	YAGAMI, YA-161	HOR	Tiss Cul Lab	A A B	
JR224.2	Lab Table	YAGAMI, YA-161	PLP	EM Lab	A A B	
JR225	Lab Table	YAMATO, YP-2GRI	PLP	EM Lab	A A B	

SI No.	Item	Company/Model	Department/Section	Location	Category	Usage	Condition
	Remarks						
JR226.1	Steel Cabinet	YAMATO, MC-124/ 124G/Base	PLP	EM Lab	A	A	B
JR226.2	Steel Cabinet	YAMATO, MC-124/ 124G/Base	PLP	EM Lab	A	A	B
JR226.3	Steel Cabinet	YAMATO, MC-124/ 124G/Base	PLP	EM Lab	A	A	B
JR226.4	Steel Cabinet	YAMATO, MC-124/ 124G/Base	PLP	EM Lab	A	A	B
JR226.5	Steel Cabinet	YAMATO, MC-124/ 124G/Base	SSC	Chem Lab	A	A	B
JR226.6	Steel Cabinet	YAMATO, MC-124/ 124G/Base	SSC	Anal Lab	A	A	B
JR226.7	Steel Cabinet	YAMATO, MC-124/ 124G/Base	ENT	ENT Fac Lab	A	A	A
JR228.1	Steel Cabinet	YAMATO, OC-106	PLP	EM Lab	A	A	B
	With drawers.						
JR228.2	Steel Cabinet	YAMATO, OC-106	ENT	ENT Fac Lab	A	A	A
	With drawers.						
JR229.1	Steel Cabinet	YAMATO	PLP	EM Lab	A	A	B
JR229.2	Steel Cabinet	YAMATO	SSC	Chem Lab	A	A	B

SI No.	Item	Company/Model	Department/Section	Location	Category	Usage	Condition
	Remarks						
JR231	Lab Table	YAMATO	PLP	EM Lab	A	B	B
JR232	Lab Table (Cup Board Unit)	FUM 180G	Unidentified		A	U	U
JR237	Wagon		SSC	Anal Lab	A	A	B
JR238	Ice Maker	HOSHIZAKI, IM20	AGR	Crop Phys	A	C	A
JR240	Refrigerator	HOSHIZAKI, RS-66E-2G	GPB	Microscope Lab	A	C	B
JR241	Medical Freezer	SANYO, MDF 330	HOR	Tiss Cul Lab	A	A	B
JR242.1	Incubator	YAMATO, IS-61	PLP	Microbiol Lab	C	B	B
JR242.2	Incubator	YAMATO, IS-61	PLP	Microbiol Lab	C	B	B
JR243	Incubator	YAMATO, IL-61	PLP	PLP Stud Lab	C	C	B
JR244	Drying Oven	SANYO, MOV-202F	PLP	EM Lab	C	B	B
JR245	Drying Oven	IKEMOTO, 10D-165	SSC	Chem Lab	C	A	B

SI No.	Item	Company/Model	Department/Section	Location	Category	Usage	Condition
	Remarks						
JR246.1	Water Bath	YAMATO, BT-23	HOR	Tiss Cul Lab	C	C	C
	Trouble portion uncertain.						
JR246.2	Water Bath	YAMATO, BT-23	SSC	Microbiol Lab	C	B	B
	PLP Borrowing from SSC						
JR247	Electric Balance	AND, EX 300A	PLP	EM Lab	C	B	B
JR248	Electric Balance	AND, EX3000A	AGR	AGR Stud Lab	A	A	B
JR249	Vacuum Evaporator Pump	YAMATO, WP-25	PLP	Microbiol Lab	C	B	B
JR251.1	Vacuume Sealar Package Set	NIPPON POLYCELLO, FN9A-ANP	SSC	Soil Phycs	C	C	B
	Price includes assembly (JR251.2).						
JR251.2	Vacuume Pump (for Vaccume Sealar)	SHINKO SEIKI, SR-800	SSC	Soil Phycs	C	C	B
JR252	Water Bath	ADVANTEC, B-CS	PLP	Microbiol Lab	C	B	B
JR253	Magnetic Stirrer	Advantec, C-25	HOR	Tiss Cul Lab	C	B	B
JR254	Excel Auto Homogenizer	NICHION, IRIKA, NS-50	PLP	Microbiol Lab	C	B	B
JR255	Clamp (for Excel Auto Homogenizer)	NICHION, IRIKA, L-200	PLP	Microbiol Lab	C	B	B

SI No.	Item	Company/Model	Department/Section	Location	Category	Usage	Condition
	Remarks						
JR255	Clamp (for Excel Auto Homogenizer)	NICHION, IRIKA, L-100	PLP	Microbiol Lab	C	B	B
JR257.1	PH Meter	HORIBA, M-8L	HOR	Tiss Cuf Lab	C	C	C
	Trouble portion uncertain.						
JR257.2	PH Meter	HORIBA, M-8L	SSC	Chem Lab	C	B	B
	Old SI No = JR247, renumbered in Jan. 1995.						
JR258	Porometer	Licor, LI-1600	AGR	Crop Phys	C	C	C
	Leaking in air pressure.						
JR262	Atomic Absorption Spectrophotometer	HITACHI, 170-30	SSC	Anal Lab	C	B	B
JR263	Parts of Atomic Absorption	HITACHI	SSC	Anal Lab	C	B	B
JR264	Recorder (for Atomic Absorption)	HITACHI, 561	SSC	Anal Lab	C	B	B
JR265	Compressor (for Atomic Absorption)		SSC	Anal Lab	C	B	B
JR268	Ultrasonic Homogenizer	US-300	PLP	EM Lab	C	C	D
	Controller out of order. Old SI Number = JR 248, renumbered in Jan. 1995.						
JR269	Turn Table	THOMAS KAGAKU, TM 701	PLP	Microbiol Lab	C	B	B
JR272	Incubator	NK-System, LH-100-RD	ENT	Ent Fac Lab	A	B	A
	Glass window type. Front glass damaged when receiving, repaired in Bangladesh.						

SI No.	Item	Company/Model	Department/Section	Location	Category	Usage	Condition
	Remarks						
JR273	Honey Centrifuge		ENT	ENT Stud Lab	B	C	A
JR275	Insect Cabinet	SHIGA KONCHU	ENT	Ent Fac Lab	A	A	A
	With drawers.						
JR276	Insect Light Trap	IKEDA RIKKA, TM-7	ENT	Field	B	B	C
	Lump Switch out of order.						
JR279	PH Meter	TOA, CM-30ET	SSC	Chem Lab	C	C	D
	Old SI No = JR249, renumbered in Jan. 1995. Trouble portion uncertain.						
JR280	Hot Stirrer	IUCHI, HS-5BH	PLP	Microbiol Lab	C	B	B
JR281.2	Magnetic Stirrer	IUCHI, HS-3B	PLP	Microbiol Lab	C	B	B
JR281.3	Magnetic Stirrer	IUCHI, AS-3B	SSC	Chem Lab	C	C	C
	Trouble portion uncertain.						
JR282	Shaking Incubator	Thomas, TAL-S12	HOR	Tiss Cul Lab	C	C	C
	Trouble portion uncertain.						
JR288.1	Stereoscopic Microscope	OLYMPUS, X-2	PLP	PLP Stud Lab	C	B	U
JR288.2	Stereoscopic Microscope	OLYMPUS, X-2	ENT	ENT Fac Lab	C	B	B
	Old SI No = JR358, renumbered in Jan. 1995.						
JR289	Fiber Optic Light Source	NIKON	ENT	Ent Fac Lab	A	A	A

Sl No.	Item	Company/Model	Department/Section	Location	Category	Usage	Condition
	Remarks						
JR290	Copying Machine	RICHO, FT-5010	[JICA Team]	Team Leader R	A	A	B
JR294	Table Top Centrifuge	HITACHI, SCT-5B	PLP	EM Lab	C	B	B
JR306	Tool Box	TOP	SSC	Chem Lab	C	B	B
JR309	Tool Set	SHIBATA	PLP	EM Lab	C	B	B
JR332	Gas Cylinder	KKP 11671, V10.2W	AGR	Crop Phys	C	C	B
	Attachment for JR126						
JR340	Support Hand Car		Unidentified		C	U	U
JR342	Rotary Vacuum Pump	3/4HP	SSC	Unidentified	C	U	U
JR354.1	Colony Counter	ERMA	PLP	EM Lab	C	C	B
JR354.2	Colony Counter	ERMA	PLP	Microbiol Lab	C	B	B
JR356.1	Stereoscopic Microscope	NIKON, SMZ-2T	ENT	ENT Fac Lab	A	A	A
JR356.2	Fiber Optic Light Source	NIKON	ENT	ENT Fac Lab	A	A	A
	Carrying equipment.						

Sl No.	Item	Company/Model	Department/Section	Location	Category	Usage	Condition
				Remarks			
JR361	Overhead Projector (OHP)	ELMO, HP-2450V	ACAD	Lecture R	C	A	B
<u>Common use for educational purpose. With a screen HW-3. Lighting system is out of order?</u>							
JR362.1	Slide Projector	ELMO, Omnigraphir 252	ACAD	ENT Fac Lab	C	A	B
<u>Common use for educational purpose. With a screen HW-3. Lighting system is out of order?</u>							
JR362.2	Timer	Sansui, AT-700	AGR	Crop Phys	C	C	B
JR363	Air Conditioner	DAIKIN	SSC	Anat Lab	A	A	B
JR363.1	Air Conditioner	DAIKIN, W33 MV1	GPB	Unidentified	A	U	U
<u>Removed from Miroscope Lab. dure to out of order.</u>							
JR364	Disc Harrow	STAR, MTH-2024B	Farm	Farm Complex	C	B	B
<u>Removed from Miroscope Lab. dure to out of order.</u>							
JR365	Trailer	DELICA, DZ-2B	Farm	Farm Complex	C	B	B
<u>Removed from Miroscope Lab. dure to out of order.</u>							
JR366	Arc Welder	KRJ 250		Store R	C	C	B
<u>Future use.</u>							
JR367.1	Refrigerator	SANYO, MPR210	ENT	ENT Fac Lab	A	A	A
JR367.2	Refrigerator	SANYO, MPR210	HOR	Tiss Cul Lab	A	A	B
JR368.1	Incubator	YAMATO, IN-81	HOR	Tiss Cul Lab	A	B	C
<u>Temperature control does not work properly.</u>							

Sl No.	Item	Company/Model	Department/Section	Location	Category	Usage	Condition
	Remarks						
JR368.2	Incubator	YAMATO, IN-81	SSC	Chem Lab	C	B	B
JR369	Incubator	NK-System, LH-100-RDCT	ENT	Ent Fac Lab	A	A	B
JR371	Blender	WARNING	SSC	Chem Lab	C	B	B
JR372	Sunshine Gauge	I185B, I-1908B	Unidentified		C	U	U
	With transformer						
JR373	Clean Bench	HITACHI, CCV, 801EC	HOR	Tiss Cuf Lab	C	B	B
	With transformer.						
JR374	Fluorescent Microscope	NIKON, XF-EFD	ENT	Ent Fac Lab	C	A	B
JR375	Portable Photosynthesis Apparatus	Licor, LI-6250 & LI-6200	AGR	Crop Phys	C	C	U
	Main body, Senser, Printer, Carrying case, Battery charger						
JR377	HPLC (High Performace Liquid Chromatograph)	SHIMAZU	CBT	Anal Lab	C	B	B
	with chromatopac (C-R6A), system controllar (SCL-6A), pump (LC-6A) 2 sets, Detector (SPD-6A)						
JR378	Chromato Cabinet (for Paper Chromatography)	ADVANTEC	SSC	Anal Lab	C	C	B
JR379	Chromatography Apparatus	HC-20	SSC	Unidentified	C	U	U
JR380	Chromatography Vessel	SHIMADZU, MPS-204	SSC	Unidentified	C	U	U

SI No.	Item	Company/Model	Department/Section	Location	Category	Usage	Condition
	Remarks						
JR381	Rotary Evaporator	TOKYO RIKEN, NR-204	PLP	Microbiol Lab	C	U	U
	With stand (JR554)						
JR382	Jet Sucker	ADVANTEC, JS-75A	SSC	Anal Lab	C	C	B
JR384	Low Temperature Shaker	TAKASAKI, TB-50R	HOR	Tiss Cul Lab	C	C	B
JR387	Incubator	Nippon Medical & Chem., LPH-200RDS	HOR	Tiss Cul Lab	A	A	C
	Temperature control does not work properly.						
JR388	Rotary Shaker	TAITEC, R-II	SSC	Chem Lab	C	A	B
JR390	Shaker	TOYO KEIRYOKI, 10B-4	SSC	Chem Lab	C	B	B
JR391	Shaker	OS-200	PLP	Unidentified	C	U	U
JR394	Agregate Analyser for Soil Sedimentation	DAIKI, DIK-2010	SSC	Soil Physcs	C	B	B
[JR398]	Vacuum Pump	TOKYO RIKAKIKAI, A3S	GPB	Tiss Cul Lab	C	B	B
	JR SI Number double entory, renumbering is necessary.						
[JR398]	Vacuum Evaporator Pump	TOKYO RIKAKIKAI, A3S	PLP	Microbiol Lab	C	B	B
	JR SI Number double entory, renumbering is necessary.						
JR399	Compressor	HITACHI, SC-72		Store R	C	C	B
	With transformer. Future use.						

SI No.	Item	Company/Model	Department/Section	Location	Category	Usage	Condition
	Remarks						
JR400	Voltage Regulator	STACO, MV-15	PLP	EM Lab	C	B	B
JR401	Centrifuge	KOKUSAN, H-200	SSC	Chem Lab	C	B	B
JR402	Incubator	SANYO, MIR-151	Unidentified		C	U	U
	With timer 24 H & Transformer.						
JR403	Fiber Optic Light Source	Nikon	ENT	ENT Fac Lab	A	A	B
JR404	Pipette Soil Analyzer	DAIKI, DIK-2030	SSC	Soil Physcs	C	C	C
	Glass pipette broken.						
JR405	Foil Printer	SAKURA, B4C	PLP	Dark R	C	B	B
JR406.1	Water Distillator	ADVANTEC, GS-18	SSC	Soil Physcs	A	C	C
	Cylinder broken (leaking).						
JR406.2	Water Distillator	ADVANTEC, GS-18	SSC	Chem Lab	A	A	B
JR407	Water Distillator	ADVANTEC, GS-60	SSC	SSC Stud Lab	A	C	D
	Out of order since accepting.						
JR409	TV Monitor for Microscope	TOSHIBA, MVC-21C	ENT	ENT Fac Lab	C	B	A
JR411.2	Tool Box	TOYO	PLP	EM Lab	C	B	B
	Partly missing.						

SI No.	Item	Company/Model	Department/Section	Location	Category	Usage	Condition
				Remarks			
JR412.2	Air Conditioner	Daikin, W45-MV1	AGR	Crop Phys	A	C	D
Out of order. Removing from the wall, setting on the floor.							
JR412.3	Air Conditioner	DAIKIN, W45 MV	PLP	Dark R	A	A	B
JR412.4	Air Conditioner	DAIKIN, W45MV	Admin	Rector R	A	A	B
JR413.1	Air Conditioner	DAIKIN, W33 MV 1M	[JICA Team]	Exp R (Dr.	B	A	B
JR416	Tool Box	BANZAI, D-3000	[JICA Team]	Short Term	A	C	B
JR417.2	CO2 Measuring Device		SSC	Chem Lab	C	B	B
JR422	Air Filter (for Atomic Absorption)	SMC, Mist separator (AM-2), Air regulator	SSC	Anal Lab	C	B	B
JR424	Transformer	HAKKO MFG, ATC-1.5k	SSC	Anal Lab	A	A	B
JR425.1	Desiccator	SHIMAZU, L-type	ENT	Ent Fac Lab	A	A	A
Dr. Ogata carrying equipment.							
JR425.2	Desiccator	SHIMAZU, L-type	ENT	Ent Fac Lab	A	A	A
Dr. Ogata carrying equipment.							
JR434	Stereoscopic Microscope	OLYMPUS, VE-3	ENT	ENT Fac Lab	A	B	A

Sl No.	Item	Company/Model	Department/Section	Location	Category	Usage	Condition
				Remarks			
JR451	Berlese Funnel		ENT	ENT Fac Lab	C	B	B
JR461	Gas Bombe (for Air Compressor, JR129)	DAIKI, DIK-9260	SSC	Soil Phycs	C	B	B
JR471.1	Desiccator	3L	ENT	Ent Fac Lab	A	A	A
4 sets.							
JR471.2	Desiccator	3L	HOR	Tiss Cul Lab	A	C	B
Temperature control does not work properly.							
JR471.3	Desiccator	3L	Admin	Rector R	A	A	B
JR472	Slide Projector	KODAK, S-AV2050		Store R	C	C	D
Out of order because of overload.							
JR494	Water Permeability Test Apparatus	DAIKI, DIK-4000	SSC	Soil Phycs	C	B	B
Drs Egashira & Miyazaki carrying equipment.							
JR512	Stereoscopic Microscope	NIKON, SMZ	ENT	ENT Fac Lab	C	B	B
JR522	LC Glass Pump	GM-8	PLP	EM Lab	C	B	B
JR525	Acilyzer Portable Set	FHK, No. 5	SSC	Chem Lab	C	C	B
For measuring organic acid. Dr. Shiraishi carrying equipment.							
JR526.1	Incubator	YAMATO, IN-81	ENT	ENT Fac Lab	C	C	C
Tempeprature control does not work properly.							

SI No.	Item	Company/Model	Department/Section	Location	Remarks	Category	Usage	Condition
JR526.2	Incubator	YAMATO, IN-81	ENT	ENT Fac Lab		C	C	C
					Transformer is out of order.			
JR534	Electric Balance		SSC	Chem Lab		C	A	B
JR545	CO2 Measuring Device		SSC	Chem Lab		C	B	B
JR546.1	Incubator	TOMY, CU-158	HOR	Tiss Cul Lab		A	A	B
JR546.2	Incubator	TOMY, CU-158	HOR	Tiss Cul Lab		A	C	C
					Temperature control does not work properly.			
JR547	Incubator	TOMY, CU-359	HOR	Tiss Cul Lab		A	B	C
					Digital plate out of order.			
JR548.1	Incubator	YAMATO, IL-62	HOR	Tiss Cul Lab		A	A	B
JR548.2	Incubator	YAMATO, IL-62	SSC	Unidentified		C	U	U
JR549	Incubator	SANYO, SR-20	AGR	Crop Phys		A	C	A
JR550	Automatic Spray	MS410EC-S, GEF18RE	HOR	Unidentified		B	U	U
JR554	Stand for Rotary Vacuum Evaporator	TOKYO RIKA, EYCA	PLP	Microbiol Lab		C	B	B

Remarks				Category Usage Condition		
JR556	Colum Oven	SHIMADZU, CTO-6A	GPB	Tiss Cul Lab		
				C	C	B
JR558	Wide Range PF Meter (Pressure Plate Method)	DAIKI	SSC	Soil Phycs		
				C	C	D
	With automatic pressure controller (DIK 9120), chamber (DIK3400), N gas. Leaking.					
JR559.1,2	Cylindrical Intake Rate Meter	DAIKI, DIK-4200	SSC	Soil Phycs		
				C	B	B
JR561.1	Electric Stirrer	MARUTO	SSC	Soil Phycs		
				C	B	B
JR561.2	Electric Stirrer	MARUTO	SSC	Soil Phycs		
				C	C	B
JR563	Centrifuge	KUBOTA, KN-70	SSC	Tiss Cul Lab		
				C	B	B
JR564	Vacuum Pump	Mini-Vac	SSC	Unidentified		
				C	U	U
JR571	Resine Infiltration Mode	NISSIN EM, EM Infiltrator II, SCD	PLP	EM Lab		
				C	B	B
JR572	Incubator	TD-753	PLP	EM Lab		
				C	C	B
	For EM.					
JR574	Stereoscopic Microscope	NIKON, SMZ-10-2	PLP	EM Lab		
				C	B	B
JR580	Magnetic Stirrer	YAMATO, MT-51	HOR	Tiss Cul Lab		
				C	A	B

SI No.	Item	Company/Model	Department/Section	Location	Category	Usage	Condition
				Remarks			
JR581	Electrophoresis Plate	ATTO, AE3711	GPB	Tiss Cul Lab	C	B	B
Part of electrophoresis apparatus							
JR582	Power Supply	ATTO, Crosspower 1000, AE8400	GPB	Tiss Cul Lab	C	B	B
Part of electrophoresis apparatus							
JR583	Gel Drying Apparatus	ATTO	GPB	Tiss Cul Lab	C	B	B
Part of electrophoresis apparatus							
JR584	Centrifuge	TOMY, MC 150	GPB	Tiss Cul Lab	C	B	B
JR587	Refrigerator	NR455ER	AGR	Crop Phys	A	A	B
JR588	Incubator	MIR-152	AGR	Unidentified	C	U	U
Not accepted.							
JR589	Copying Machine	Minolta, EP410Z	AGR	AGR Stud Lab	A	C	D
out of order in recieving.							
JR590	Center Table	GP	Unidentified		A	U	U
JR592.1	Electric Balance	AND, FX-300N	AGR	Crop Phys	C	A	A
JR592.2	Electric Balance	AND, FX-300N	AGR	Crop Phys	C	A	A
JR593	Drying Oven	FC612	AGR	Field Lab	C	C	D
Burnt							

Sl No.	Item	Company/Model	Department/Section	Location	Category	Usage	Condition
				Remarks			
JR595	Drying Oven	FS620	AGR	Field Lab	C	C	D
Damaged in carrying							
JR596	Stereoscopic Microscope	NIKON, SMZ-10-3	ENT	ENT Fac Lab	A	A	B
JR598	Lighting Apparatus	NIKON, HB-1010AF	ENT	ENT Fac Lab	C	A	B
JR599	Photographic Equipment for Microscope	Nikon, UFX-IIA	ENT	ENT Fac Lab	C	A	B
JR603	Disc Plow	STAR, MDP 263C-G	Farm	Farm Complex	B	B	B
JR604	Disc Plow	STAR, MDP 222	Farm	Farm Complex	B	C	B
JR605	Chisel Plow	SUGANO SCP 787	Farm	Farm Complex	C	B	B
JR606	Grader	STAR, MRG 2410	Farm	Farm Complex	C	B	B
For 60HP-class tractor.							
JR607	Grader	STAR, MRG 1810	Farm	Farm Complex	C	B	B
For 30HP-class tractor.							
JR608	Rotary Harrow	NIPLO, LX 1900NA	Farm	Farm Complex	B	A	B
For 60HP-class tractor.							
JR609	Rotary Harrow	NIPLO, SX 1600NA	Farm	Farm Complex	B	A	B
For 30HP-class tractor.							

Sl No.	Item	Company/Model	Department/Section	Location	Category	Usage	Condition
	Remarks						
JR610	Dump Trailer	DELICA, DT 5000D	Farm	Farm Complex	C	B	B
JR611	Power Tiller	KUBOTA, K120	Farm	Farm Complex	B	B	B
JR613	Seed Dryer		AGR	Field Lab	B	C	C
	Trouble portion uncertain.						
JR622	Electric Balance	CHYO, MP 300	HOR	Tiss Cuf Lab	C	B	B
	Dr. Tashiro carrying equipment.						
JR623	N15 Analyzer	JASCO, DP-N150 (Data processor), N-150 (Main)	SSC	Anal Lab	C	B	B
	Price includes attachments.						
JR624	Gasification Apparatus (for N15 Analyzer)	SHOKO, YH-5	SSC	Anal Lab	C	B	B
JR629	Glass Knife Making Machine	MESSER/SUNKY	PLP	EM Lab	C	B	B
JR630	N15 Supply Device	SHOKO	SSC	Soil Phycs	C	B	B
JR631	Transformer	UNION DENKI	SSC	Soil Phycs	C	B	B
JR632	Thermo Bottle for Liquid N	10 liter.	SSC	Unidentified	C	U	U
JR633	Electric Muffle Furnace	HAYASHI DENKO	SSC	Soil Phycs	C	B	B

Sl No.	Item	Company/Model	Department/Section	Location	Remarks	Category	Usage	Condition
JR634	Tesla Coil		SSC	Unidentified		C	U	U
JR635	Hydraulic Press (for N15 Analyzer)	TR-100	SSC	Soil Phycs		C	B	B
JR639	Ultra Microtome	SUPER NOVA, Reichert-J	PLP	EM Lab		C	B	B
JR640	Electric Balance	SATORIUS, L2200S	SSC	Soil Phycs	Digital plate out of order.	C	B	C
JR641	Chlorophyl Meter	Minolta, SPAD-501	AGR	Crop Phys	Drs. Marumoto & Kubota carrying equipment.	C	A	A
JR646	Power Supply	ATTO, Cross power 1000, AE 8400	HOR	Tiss Cul Lab	Electrophoresis Apparatus. Dr. Tashiro carrying equipment.	C	A	B
JR650	Perista Pump	ATTO, AC-2110	GPB	Tiss Cul Lab		C	B	B
JR662	Camera	NIKON, FM-2	AGR	AGR (Dr. T.	With Macro Lens (Micro Nikkor 60m/m F:2.8)	C	B	B
JR683	Tractor	YANMER, F60D	Farm	Farm Complex		B	A	B
JR684	Tractor	YANMER, YM330DT	Farm	Farm Complex		B	A	B
JR685	Power Thresher	KUBOTA, MD500	Farm	Farm Complex		B	B	B

SI No.	Item	Company/Model	Department/Section	Location	Category	Usage	Condition
	Remarks						
JR700.1	Incubator	SANYO, MIR-552	HOR	Tiss Cul Lab	A	C	B
	Shortage of electric capacity in the lab.						
JR700.2	Incubator	SANYO, MIR-552	GPB	GPB Stud Lab	A	C	B
JR701.1	Refrigerator	SANYO, MPR-504	PLP	Unidentified	A	U	U
JR701.2	Refrigerator	SANYO, MPR-504	PLP	EM Lab	C	B	B
JR701.3	Refrigerator	SANYO, MPR-504	GPB	GPB Stud Lab	C	C	B
JR701.4	Refrigerator	SANYO, MPR-504	GPB	GPB Stud Lab	C	B	B
JR701.5	Refrigerator	SANYO, MPR-504	HOR	HOR Stud Lab	A	A	C
	Trouble portion uncertain.						
JR701.6	Refrigerator	SANYO, MPR-504	HOR	HOR Stud Lab	A	A	C
	Trouble portion uncertain.						
JR702	Incubator	TOMY, CU-359	PLP	Unidentified	C	U	U
JR703	Autoclave	ALP, KT-30LD	HOR	Tiss Cul Lab	C	A	B
JR705.1	Refrigerator	SANYO, MPR-210	HOR	Tiss Cul Lab	A	A	B

Sl No.	Item	Company/Model	Department/Section	Location		
	Remarks			Category	Usage	Condition
JR705.2	Refrigerator	SANYO, MPR-210	PLP	EM Lab C	B	B
JR706	Microscope Video System	NAKAMURA RIKA, MVC-21C	PLP	EM Lab C	B	B
JR707.01	Desiccator	TOYO KEIRYOKI, FG 10S-2	GPB	GPB Stud Lab A	B	B
JR707.02	Desiccator	TOYO KEIRYOKI, FG-10S-2	PLP	EM Lab A	B	B
JR707.03	Desiccator	TOKYO KEIRYOKI, FG10S-2	HOR	HOR Stud Lab A	B	B
JR707.04	Desiccator	TOYO KEIRYOKI, FG-10S-2	SSC	Anal Lab A	A	B
JR707.05	Desiccator	TOYO KEIRYOKI, FG-10S-2	SSC	Anal Lab A	A	B
JR707.06	Desiccator	TOYO KEIRYOKI, FG 10S-2	GPB	GPB Stud Lab A	B	B
JR707.07	Desiccator	TOYO KEIRYOKI, FG-10S-2	PLP	Microbiol Lab A	A	B
JR707.08	Desiccator	TOYO KEIRYOKI, FG-10S-2	SSC	Chem Lab A	A	B
JR707.09	Desiccator	TOKYO KEIRYOKI, FG10S-2	HOR	HOR Stud Lab A	B	B

SI No.	Item	Company/Model	Department/Section	Location	Category	Usage	Condition
	Remarks						
JR707.10	Desiccator	TOKYO KEIRYOKI, FG10S-2	HOR	HOR Stud Lab	A	B	B
JR708.1	Transformer	MATSUNAGA, WTC-10KB	PLP	Microbiol Lab	C	C	B
JR708.2	Transformer	MATSUNAGA, WTC-10KB	PLP	Microbiol Lab	C	C	B
JR710.1-5	Assimilation Chamber Set OSK 9880		AGR	Crop Phys	C	C	A
	Not installed						
JR711	Cooling Water Circulator	Yamato Komatsu, CTE 82W	AGR	Crop Phys	C	C	A
	Attachment for JR710 (not assembled)						
JR712	Ultra Centrifuge	HITACHI, CP56G	PLP	Microbiol Lab	C	C	B
JR713	Microplate Reader	BIO-RAD, 450	PLP	EM Lab	C	C	B
JR714	Light Guide Lighting Unit	OLYMPUS, GW-1/GPS	PLP	EM Lab	C	C	B
JR716.1	Vinyl House Set		GPB	Field	B	A	B
	Set up on April, 1993						
JR716.2	Vinyl House Set		GPB	Field	B	A	B
	Set up on July, 1993						
JR716.3	Vinyl House Set		GPB	Field	B	A	B
	Set up on July, 1993						

Sl No.	Item	Company/Model	Department/Section	Location	Category	Usage	Condition
				Remarks			
JR716.4	Vinyl House Set		GPB	Field	B	A	B
				Set up on July, 1993			
JR716.5	Vinyl House Set		GPB	Field	B	A	B
				Set up on July, 1993			
JR716.6	Vinyl House Set		GPB	Field	B	C	B
				Spare for JR716.1-5			
JR717	Water Distillator	MILIPORE, M11-XQ	PLP	Microbiol Lab	C	C	B
				Not installed.			
JR718	Ice Maker	Hoshizaki, F-120C	CBT	CBT Stud Lab	A	C	B
JR719.1	Computer	NEC, PC-9801FA-2	[JICA Team]	Short Term	A	B	B
				The price includes attachments (JR719.1-7). Repaired by Mr. Kasai on 11.Oct.1994.			
JR719.2	Display (for Computer)	NEC, PC-KD1511	[JICA Team]	Short Term	A	B	B
JR719.3	Interface Board (for Computer)	NEC, PC-9801-SSU	[JICA Team]	Short Term	A	B	B
JR719.4	Printer (for Computer)	NEC, VP-2061PC	[JICA Team]	Short Term	A	B	B
JR719.5	Floppy Disc Drive (for Computer)	NEC, PC-FD312, for 3.5" Disk	[JICA Team]	Short Term	A	B	B
JR719.6	Hard Disc Drive (for Computer)	NEC, PC-HD100, 100M	[JICA Team]	Short Term	A	B	B

SI No.	Item	Company/Model	Department/Section	Location	Category	Usage	Condition
	Remarks						
JR719.7	Uninterruptible Power Supply (UPS) (for	YEC, Defensa Jr., UPC 310PC	[JICA Team]	Short Term	A	B	B
JR720.1	Microphone System, Lecture AMP	JVC, PA-L300	Library	AV R	C	A	B
	Price includes attachments (JR720.1-5).						
JR720.2	Transformer (for Microphone System)		Library	AV R	C	A	B
JR720.3	Wireless Tuner (for Microphone System)	JVC, WTU 83B + WT-P811	Library	AV R	C	A	B
JR720.4	Antenna (for Microphone System)	JVC, WT-Q810	Library	AV R	C	A	B
JR720.5	Wireless Microphone (for Microphone System)	JVC, WM-P873	Library	AV R	C	A	B
JR721	Copying Machine	RICOH, FT-2260	Admin	Dean Office	A	A	B
	With main body (JR721.1), stand (JR721.2)						
JR722.1	Overhead Projector (OHP)	ELMO,HP-A305V	ACAD	Lecture R	C	A	B
JR722.2	Overhead Projector (OHP)	ELMO,HP-A305V	ACAD	Lecture R	C	A	B
JR723	Screen	IIS-3	Unidentified		C	U	U
JR724	Autoclave	SS-320	HOR	Tiss Cul Lab	C	C	B
	Not installed. Space and power capacity are not enough.						

Sl No.	Item	Company/Model	Department/Section	Location	Category	Usage	Condition
	Remarks						
JR726	Three Phases Meter	DAIKI, DIK-1120	SSC	Chem Lab	C	C	B
JR730.1,2	Phycrometer (Cyclometer)	SC10A	AGR	Crop Phys	C	B	B
	With volt meter model NT-3.						
JR731	Electric Balance	AEG-220	GPB	Unidentified	C	U	U
JR732.1	Electric Balance	SHIMADZU, ED630-SW	GPB	GPB Stud Lab	C	B	B
JR739	Shieve Shaker	OSK-9406	AGR	Crop Phys	C	C	U
	Not installed						
JR740	Tissue Grinder	GT-R	PLP	Unidentified	C	U	U
	Not installed.						
JR742	Video Camera	SONY, CCD-TR-705E	ENT	ENT Fac Lab	C	B	B
JR743	Video Camera Tripod	SONY, VCT-900	ENT	ENT Fac Lab	C	B	B
JR744	AC Power Adapter for Video Camera	SONY, AC-S10	ENT	ENT Fac Lab	C	B	B
JR745.1	Oven	SPH-5	HOR	Unidentified	C	U	U
JR746	Conductivity Meter	YOKOGAWA, SC-82	HOR	Tiss Cul Lab	C	B	B
	Not installed. Space and power capacity are not enough.						

Sl No.	Item	Company/Model	Department/Section	Location	Category	Usage	Condition
	Remarks						
JR747	CO2 Measuring Device	[Double Rack Type]	SSC	Chem Lab	C	B	B
	With air pump, manometer, plastic frame						
JR749	Pen Recorder	R-4100 (3711-45)	AGR	Crop Phys	C	C	A
JR750	PH Meter	TOA, HM-16S	GPB	Microscope Lab	C	B	B
	With Electrode, GST-5211C.						
JR752.1-2	Steel Cabinet	ITOKI, 53GJYN/53HJYN	ENT	ENT Fac Lab	A	A	A
JR755.1	Crusher	YOSHIDA-WILEY, 1029-B	SSC	Soil Physcs	B	B	B
JR755.2	Crusher	YOSHIDA-WILEY, 1029-B	SSC	SSC Stud Lab	B	B	B
JR756.1	Transformer	SUGANO, SK-2000	SSC	Soil Physcs	A	A	B
JR756.2	Transformer	SUGANO, SK-2000	ENT (tentative)	ENT Fac Lab	C	C	B
JR756.3	Transformer	SUGANO, SK-2000	ENT (tentative)	ENT Fac Lab	C	C	B
JR756.4	Transformer	SUGANO, SK-2000	ENT (tentative)	ENT Fac Lab	C	C	B
JR758.1	Autoclave	ALP, KT30LD	AGR	AGR Stud Lab	C	B	B

SI No.	Item	Company/Model	Department/Section	Location	Category	Usage	Condition
	Remarks						
JR758.2	Autoclave	ALP, KT-30LD	SSC	Chem Lab	C	B	B
JR758.3	Autoclave	ALP, KT-30LD		Store R	C	U	U
JR758.4	Autoclave	ALP, KT-30LD		Store R	C	U	U
JR763.1-5	Fraction Collector Open Column System	MP-3	PLP	Microbiol Lab	C	C	B
	JR763.1: Microtube Pump; 2: Detector; 3: Recorder; 4: Fraction Collector; 5: System Stand.						
JR764	Recorder (for Porometer LI-1600 - JR258)	Intelligent RAM PACK IRP-64, PR-COM, CR 64	AGR	Unidentified	C	U	U
	(See Sugiura list)						
JR765	Densitometer	Advantec, DM303	GPB	Microscope Lab	C	C	B
JR766	Stereoscopic Microscope	OLYMPUS, SZ	PLP	EM Lab	C	C	B
JR767	Automatic Graphic Attachment	OLYMPUS	PLP	Unidentified	C	C	B
	Part of Stereoscopic Microscope (JR766)						
JR768.1	Stereoscopic Microscope	OLYMPUS, SZH	HOR	Tiss Cul Lab	C	B	B
JR768.2	Fiber Optic Light Source	NIKON	HOR	Tiss Cul Lab	C	A	B
JR770.1-7	Root Scanner		AGR	Crop Phys	C	C	B
	Not Installed						

SI No.	Item	Company/Model	Department/Section	Location	Category	Usage	Condition
				Remarks			
JR771.1	Ultrasonic Cleaner	YAMATO, B-2200J4	GPB	Microscope Lab	C	C	B
				Not installed.			
JR771.2	Ultrasonic Cleaner	YAMATO, B-2200J4	PLP	Unidentified	C	U	U
JR772	Ultrasonic Cleaner	42HJ	GPB	Unidentified	C	U	U
JR773	Leaf Area Meter	HAYASHI DENKO, AAM-8	HOR	HOR Stud Lab	C	B	B
JR774	Dyno-Vane Combination Anemograph	OHTA KEIKI, 11-2S	SSC	Soil Physcs	A	C	B
				Not installed.			
JR775	Water Level Recorder	OGAWA SEIKI, NP-50	SSC	Unidentified	A	U	U
JR776.1	Stereoscopic Microscope	OLYMPUS, SZH	PLP	EM Lab	C	C	B
JR776.2	Stereoscopic Microscope	OLYMPUS, SZH	PLP	EM Lab	C	C	B
JR776.3	Stereoscopic Microscope	OLYMPUS, SZH	PLP	EM Lab	C	C	B
				Not installed.			
JR776.4	Stereoscopic Microscope	OLYMPUS, SZH	PLP	EM Lab	C	C	B
				Not installed.			
JR777.1	Dissecting Microscope	OLYMPUS, SD-3045 ILK	GPB	Unidentified	C	U	U

Sl No.	Item	Company/Model	Department/Section	Location	Category	Usage	Condition
	Remarks						
JR777.2	Dissecting Microscope	OLYMPUS, SD-3045 ILK	GPB	Unidentified	C	U	U
JR777.3	Dissecting Microscope	OLYMPUS, SD-3045 ILK	GPB	Unidentified	C	U	U
JR777.4	Dissecting Microscope	OLYMPUS, SD-3045 ILK	GPB	Unidentified	C	U	U
JR778	Illuminating Microscope	OLYMPUS, BH2 RFC-2	GPB	Unidentified	C	U	U
JR779	Low Temperature Incubator	SANYO, MDF 382-AT	GPB	Microscope Lab	A	C	B
	Not installed.						
JR780	Ultrasonic Cleaner	YAMATO, Branson, 8200-J2	HOR	Tiss Cul Lab	C	C	B
	Not installed.						
JR781	Electric Balance	SHIMADZU	Unidentified	[Store R?]	C	U	U
JR782	Chlorophyll Meter	OGAWA SEIKI, OSK 10447	HOR	Unidentified	C	U	U
JR783	Illumination Set for Photograph	LPL	Unidentified	[Store R?]	C	U	U
JR787	Stereoscopic Microscope	NIKON, SMZ-10	HOR	Tiss Cul Lab	C	A	B
	Dr. Yamada carrying equipment.						
JR788	Fiber Optic Light Source		HOR	Tiss Cul Lab	C	A	B
	Dr. Yamada carrying equipment.						

SI No.	Item	Company/Model	Department/Section	Location	Category	Usage	Condition
	Remarks						
JR789	Stereoscopic Microscope	OLYMPUS, SZH-ZB	ENT	ENT Fac Lab	C	C	A
JR791	Centrifuge	KR 8000	AGR	Crop Phys	C	C	B
JR794	Power Supply	ATTO, Crospower 1000, AE8400	GPB	Tiss Cul Lab	C	B	B
	Part of electrophoresis apparatus						
JR795	Electric Balance	SHIMADZU, EB-330H	GPB	Tiss Cul Lab	C	A	B
[JR795]	Hot Stirrer	IUCHI, HS-5BH	SSC	Tiss Cul Lab	C	A	B
	Rent for HOR. JR SI No double entry, renumbering is necessary						
JR797	Camera		GPS	[Dr. M.Ali]	C	A	B
	Dr. Fujieda carrying equipment.						
JR798.1	Incubator	TOMY SEIKOH, CFH-400	AGR	AGR Stud Lab	A	C	D
	Damaged in carrying.						
JR798.2	Incubator	TOMY SEIKOH, CFH-400	AGR	Library	A	C	D
	Seriously damaged in carrying. (On claiming?)						
JR799	Swing Rotator (for Ultra Centrifuge JR712)	HITACHI, RPSS02 (PS0S2)	PLP	Microbiol Lab	A	C	B
JR800	Centrifuge	HITACHI, HIMAC, CF15-D	GPB	Microscope Lab	C	C	C
	Damaged in receiving. Trouble portion uncertain.						
JR801	Stereoscopic Microscope	NIKON, SMZ-1B	ENT	ENT Fac Lab	A	A	A
	Dr. Murakami carrying equipment						

SI No.	Item	Company/Model	Department/Section	Location	Category	Usage	Condition
				Remarks			
JR802	Stereoscopic Microscope	NIKON, SMZ-10	ENT	ENT Fac Lab	A	A	A
JR803	Desiccator	SHIMADZU	ENT	ENT Fac Lab	A	A	A
Dr. Ogata carrying equipment.							
JR804	Desiccator	SHIMADZU	ENT	ENT Fac Lab	A	A	A
Dr. Ogata carrying equipment.							
JR805	Desiccator	NIPPON RIKAGAKU KIKAI, NRT 1305	ENT	ENT Fac Lab	A	A	A
JR806	Portable Photosynthesis Apparatus	Licor, LI6200 & LI-6250	AGR	Crop Phys	C	C	B
JR807	CO2/H2O Analyzer	Licor, LI6262	AGR	Crop Phys	C	C	B
JR808	Seed Counter	Everwell, DC-1 501102	AGR	Crop Phys	A	B	B
Dr. Furuya carrying equipment.							
JR809	Lux Meter	Minolta, T-1H	AGR	[Dr. Hashem]	C	C	B
Dr. Maeda carrying equipment.							
JR810	Hot Plate	HP4530	GPB	Tiss Cul Lab	C	B	B
Dr. Mochizuki carrying equipment							
JR812	Slide Projector	HI-LUX HR, MASTER	AGR	Crop Phys	C	B	A
For photosynthesis measuring use. Dr Kubota carrying equipment.							
JR815	pH Meter	TAKEMURA, PM-53D	PLP	EM Lab	C	C	B

Sl No.	Item	Company/Model	Department/Section	Location	Category	Usage	Condition
	Remarks						
JR816	Freeze Drying Device	JEOL, JFD-300	PLP	EM Lab	C	C	C
	Damaged in transportation.						
JR817	Desiccator	TOYO LIVING, ED 206	PLP	Microbiol Lab	A	C	A
	Dr. Matsuyama carrying equipment.						
JR818	Microwave Oven	SHARP, R-9H10	PLP	Microbiol Lab	C	C	A
	Dr. Matsuyama carrying equipment.						
JR819	Electric Balance	SHIMADZU, Libror AEL 200	SSC	Chem Lab	C	C	A
JR820	Slide Projector	CABIN, Twin Super	SSC	Anal Lab	C	C	B
L	Oven	Ananda Metal	AGR	AGR Stud Lab	C	B	B
L01	Gas Generator	CATERPILLAR, 3306 GAS	Engineering	Generator	C	A	B
L02	Vehicle, Station Wagon	MITSUBISHI	Admin		A	A	B
	1300cc						
L03	Vehicle, Lift Up	TOYOTA, Corolla	[JICA Team]		A	A	B
L04.1	Air Conditioner	MITSUBISHI, Skyline	PLP	EM Lab	A	A	B
L04.2	Air Conditioner	MITSUBISHI, Skyline	PLP	EM Lab	A	A	B

Sl No.	Item	Company/Model	Department/Section	Location		
	Remarks			Category	Usage	Condition
L05	Vehicle, Bus	HINO	Admin	A	A	B
	52 seats					
L06	Telephone System		Admin	A	A	B
	Out 5; In 25.					
L07.1	Air Conditioner	GENERAL, AL-24, JJK	[JICA Team]	Team Leader	R	
				B	A	B
L07.2	Air Conditoner	GENERAL, AL-24, JJK	[JICA Team]	Short Term		
				B	B	B
L07.3	Air Conditoner	GENERAL, AL-24, JJK	[JICA Team]	Coordinator	R	
				B	A	B
L07.4	Air Conditoner	GENERAL, AL-24, JJK	HOR	Tiss Cul Lab		
				A	A	B
L08	Typewriter	AEC, OLYMPIA ES70	[JICA Team]	Dhaka Office		
				C	B	B
L09	Typewriter	OLYMPIA, Electronic Compact	[JICA Team]	Dhaka Office		
				C	B	B
L10	Vehicle, Bus	HINO	Admin	A	A	B
	52 seats					
L12	Refrigerator	GENERAL, ER-14F	PLP	PLP Stud Lab		
				A	A	B
L12	Electric Oven	Tropical Engineering	SSC	SSC Stud Lab		
				C	B	B

Sl No.	Item	Company/Model	Department/Section	Location	Category	Usage	Condition
	Remarks						
L15	Microwave Oven	Electrodux Deco, NF3925/B	HOR	Tiss Cul Lab	C	C	D
	Trouble portion uncertain.						
L18	Oven	Tropical Engineering	AGR	AGR Stud Lab	C	B	B
L19	Voltage Stabilizer	STAC, ST2000W	[JICA Team]	Dhaka Office	A	A	A
L20	Copying Machine	TOSHIBA, BD-5120	[JICA Team]	Dhaka Office	A	A	B
L23	Computer	IBM, PC/Value Point, 425 sx/F48	[JICA Team]	Dhaka Office	A	B	B
L24	Refrigerator	NATIONAL, NR-172-TG-R	GPB	GPB Stud Lab	A	A	B
L25	Refrigerator	KELVINATOR	PLP	EM Lab	A	A	B
L26.1	CPU (for Computer)	IBM, 486 DX, Model M50, type 6384	ASB	Computer R	A	A	B
L26.2	Key Board (for Computer) IBM		ASB	Computer R	A	A	B
L26.3	Display (for Computer)	IBM, 631003	ASB	Computer R	A	A	B
L27	Refrigerator	Tropical Ariston	GPB	Cold Storage R	A	A	B

Sl No.	Item	Company/Model	Department/Section	Location	Category	Usage	Condition
	Remarks						
L27.1	CPU (for Computer)	IBM, 486 DX, Model M50, type 6384	ASB	Computer	R	A	A B
L27.2	Key Board (for Computer)	IBM	ASB	Computer	R	A	A B
L27.3	Display (for Computer)	IBM, 631003	ASB	Computer	R	A	A B
L28	Refrigerator	Tropical Ariston	GPB	Cold Storage	R	A	A B
L28	Printer (for Computer)	EPSON, LQ-1170	ASB	Computer	R	A	A B
L29	Printer (for Computer)	HEWLETT PACKERD, Lazer Jet 4, C2001A	ASB	Dean Office		A	A B
L30.1	Uninterruptible Power Supply (UPS) (for	SENDON, UPS-650T	ASB	Computer	R	A	A B
L30.2	Uninterruptible Power Supply (UPS) (for	SENDON, UPS-650T	ASB	Computer	R	A	A B

JICA