

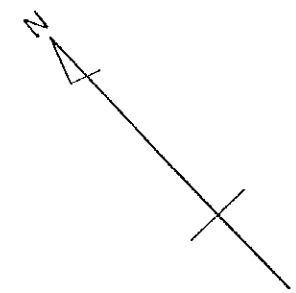
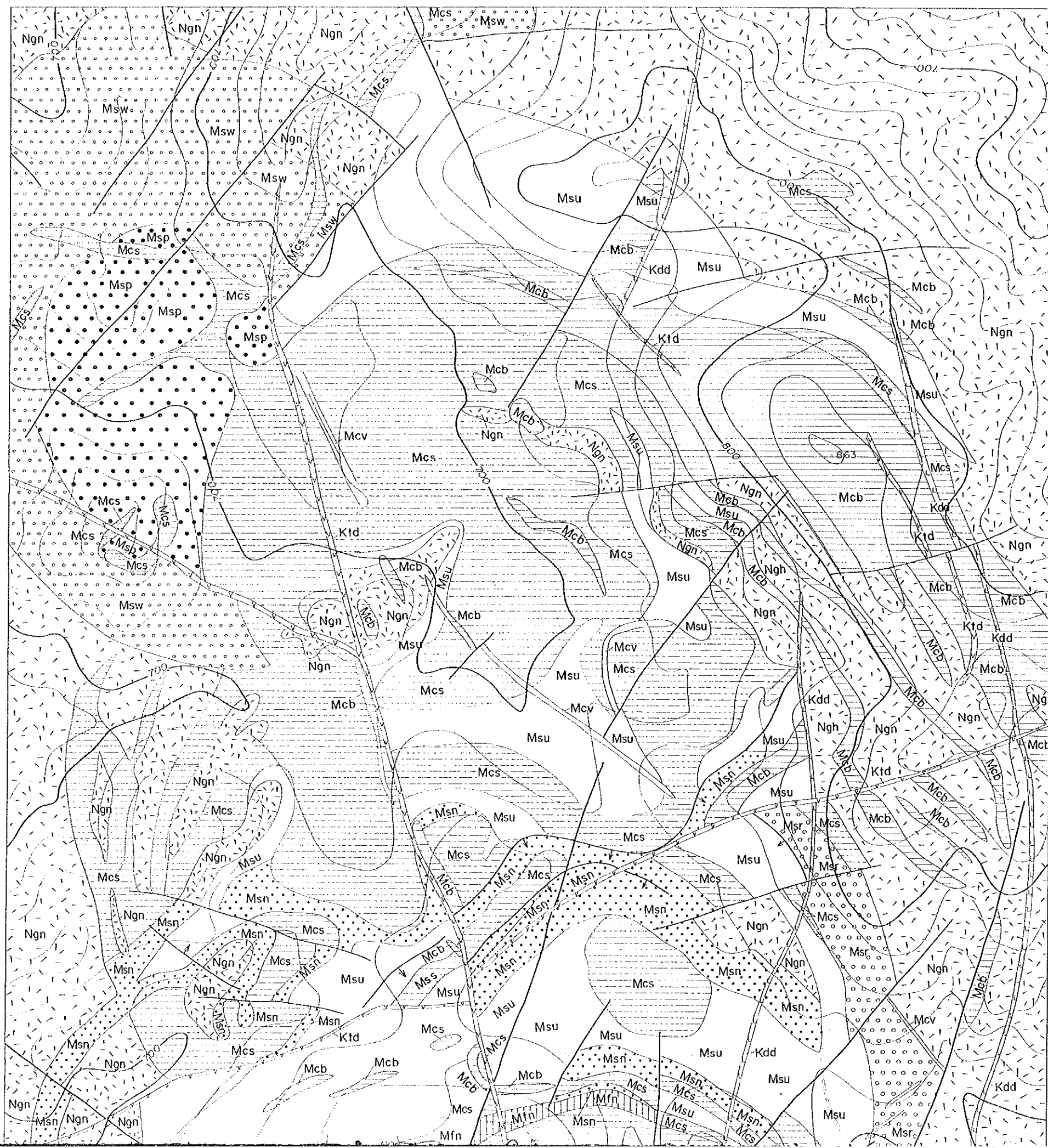
ナミビア共和国  
 オレンジ・カルクフェルド地区  
 資源開発協力基礎調査  
 第1年次

図II-1-3

オレンジ地区のコンパイル地質図  
 (縮尺1:2,500)

国際協力事業団  
 金属鉱業事業団

平成6年2月

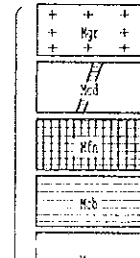


Post- to Syn-  
Karoo intrusions

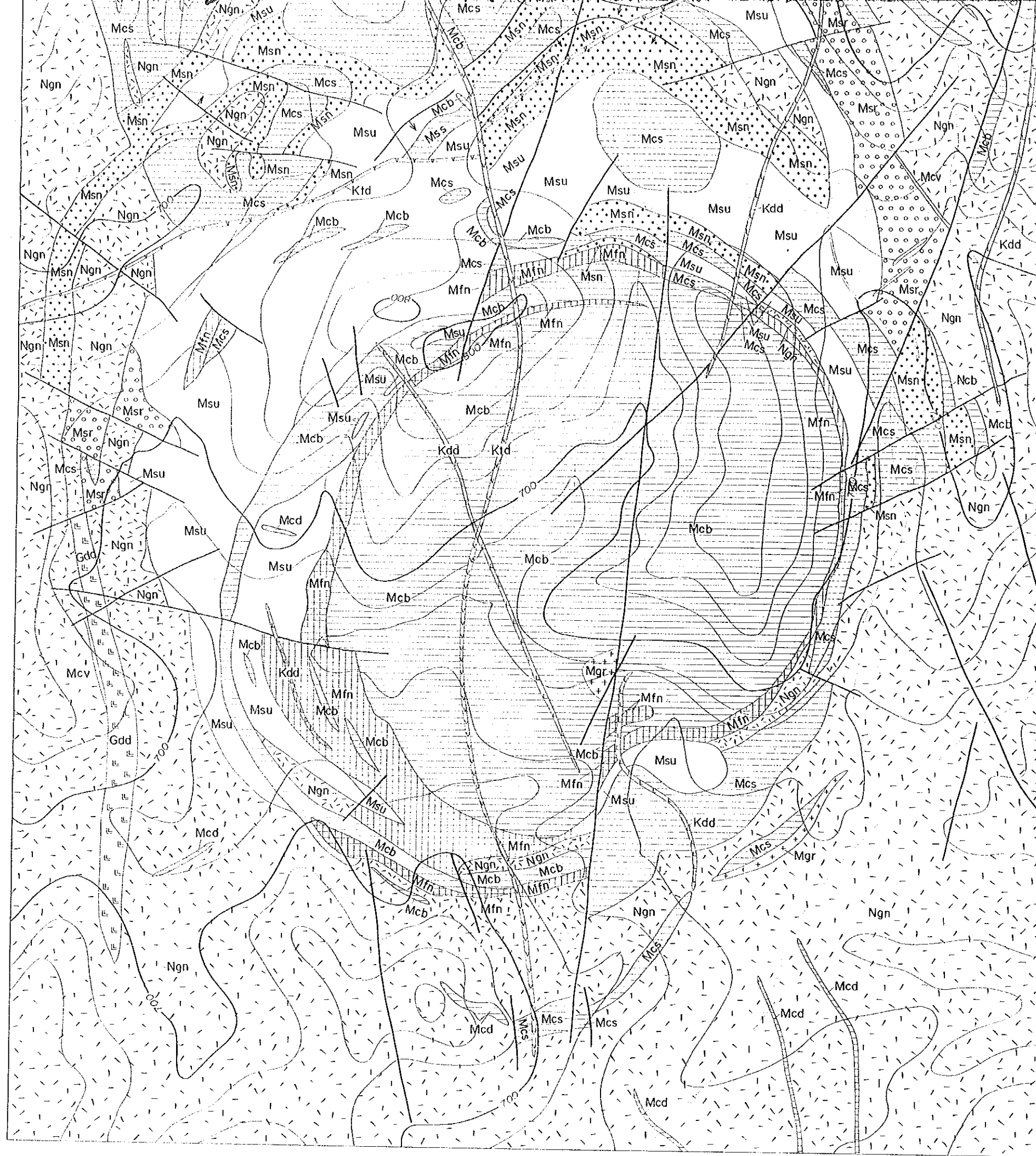


Trachyte dyke  
 Dolerite dyke

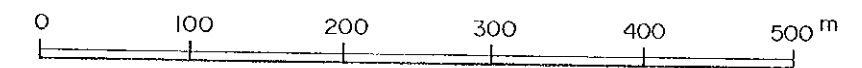
Orange Complex (MOC)



Granophyres and Micro-granite  
 Carbonatite dyke (calcitic- to ankeritic-)  
 Massive fenite  
 Ankeritic beforosite  
 Svenite (undifferentiated)



- |                                   |  |   |
|-----------------------------------|--|---|
| Post- to Syn-<br>Karoo intrusions |  | Trachyte dyke                               |
|                                   |  | Dolerite dyke                               |
| Marinkas Quelle Complex (MOC)     |  | Granophyres and Micro-granite               |
|                                   |  | Carbonatite dyke (calcitic- to ankeritic-)  |
|                                   |  | Massive fenite                              |
|                                   |  | Ankeritic beforosite                        |
|                                   |  | Syenite (undifferentiated)                  |
|                                   |  | Reddish porphyritic nepheline syenite       |
|                                   |  | Micro nepheline syenite sill with dip       |
|                                   |  | Sovite (I- iron rich, P- phlogopite rich)   |
|                                   |  | Porphyritic nepheline syenite (REE bearing) |
|                                   |  | Grey-white porphyritic syenite              |
| Nama Group                        |  | Shale, Quartzite and Grit                   |
| Gariiep Group                     |  | Dolerite dyke                               |
| Namaqua Metamorphic Complex       |  | Quartz-feldspar gneiss                      |
|                                   |  | Fault                                       |
|                                   |  | Track                                       |
|                                   |  | Dry river                                   |



ナミビア共和国  
オレンジ・カルクフェルド地区  
資源開発協力基礎調査  
第1年次

図II-1-4

カルクフェルド地区のコンパイル地質図  
(縮尺1:2,500)

国際協力事業団  
金属鉱業事業団

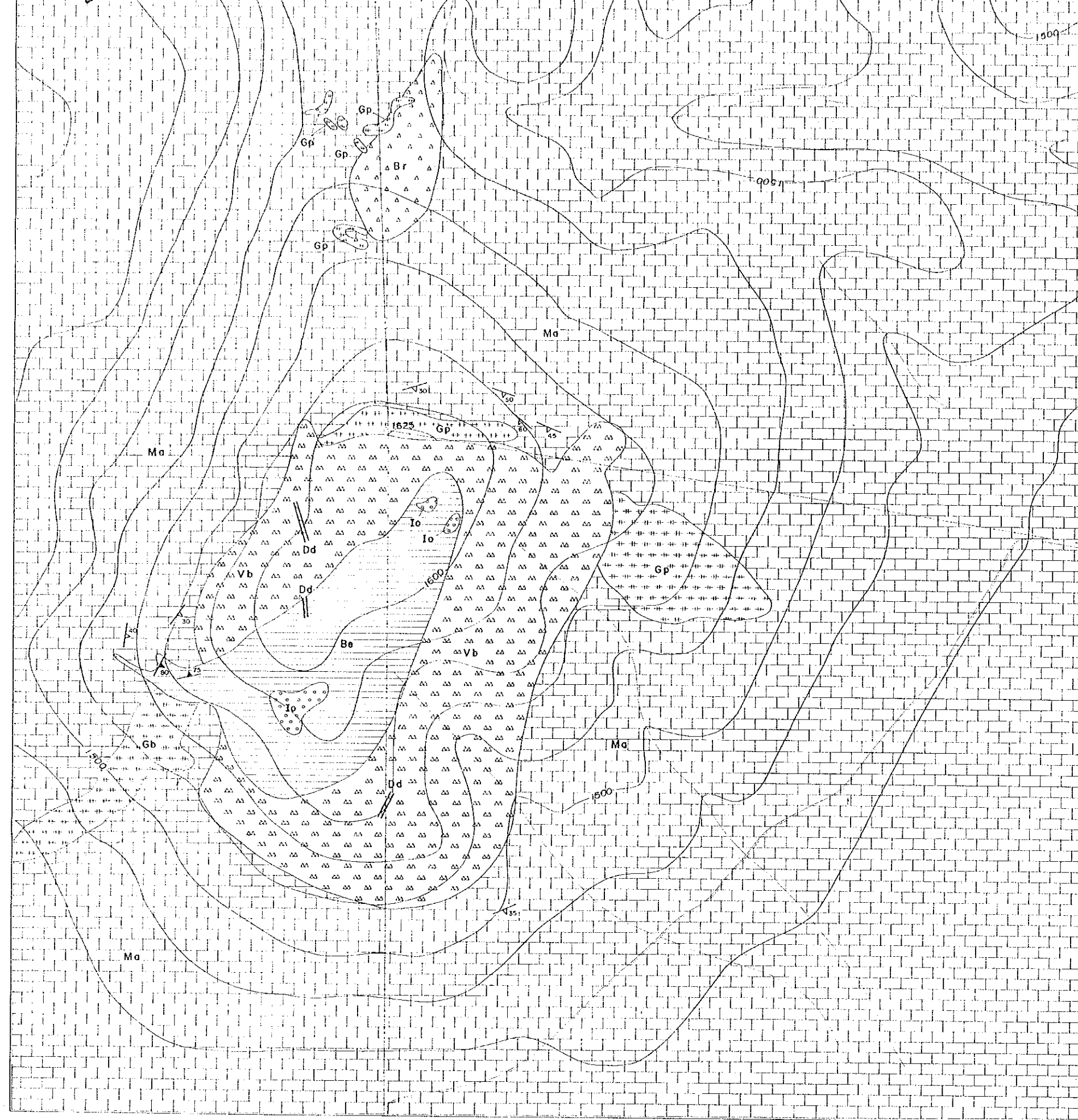
平成6年2月


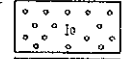
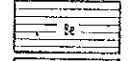
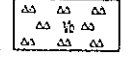
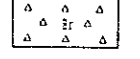
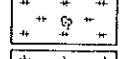
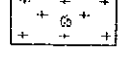
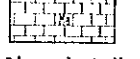

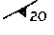
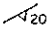





- |                                       |  |                                      |
|---------------------------------------|--|--------------------------------------|
| Post-Karoo Intrusions                 |  | Dolerite                             |
| Osongombo Diatreme                    |  | Iron ore                             |
|                                       |  | Beforsite                            |
|                                       |  | Volcanic breccia                     |
|                                       |  | Brecciated granite and Damara marble |
| Damaran Granitoid                     |  | Pegmatitic granite                   |
|                                       |  | Biotite granite                      |
| Damara Sequence                       |  | marble                               |
| Dip and strike of Geological boundary |  |                                      |

国際協力事業団  
金属鉱業事業団

平成6年2月



- 
Post-Karoo  
intrusions Dolerite
- 
Osongombo  
Diatreme Iron ore
- 
Beforsite
- 
Volcanic breccia
- 
Brecciated granite and Damara marble
- 
Damaran  
Granitoid Pegmatitic granite
- 
Biotite granite
- 
Damara  
Sequence marble
- 
Dip and strike of Geological boundary
- 
Dip and strike of banding structure in carbonatite
- 
Dip and strike of foliation in marble
- 
Fault
- 
Truck
- 
Dry river



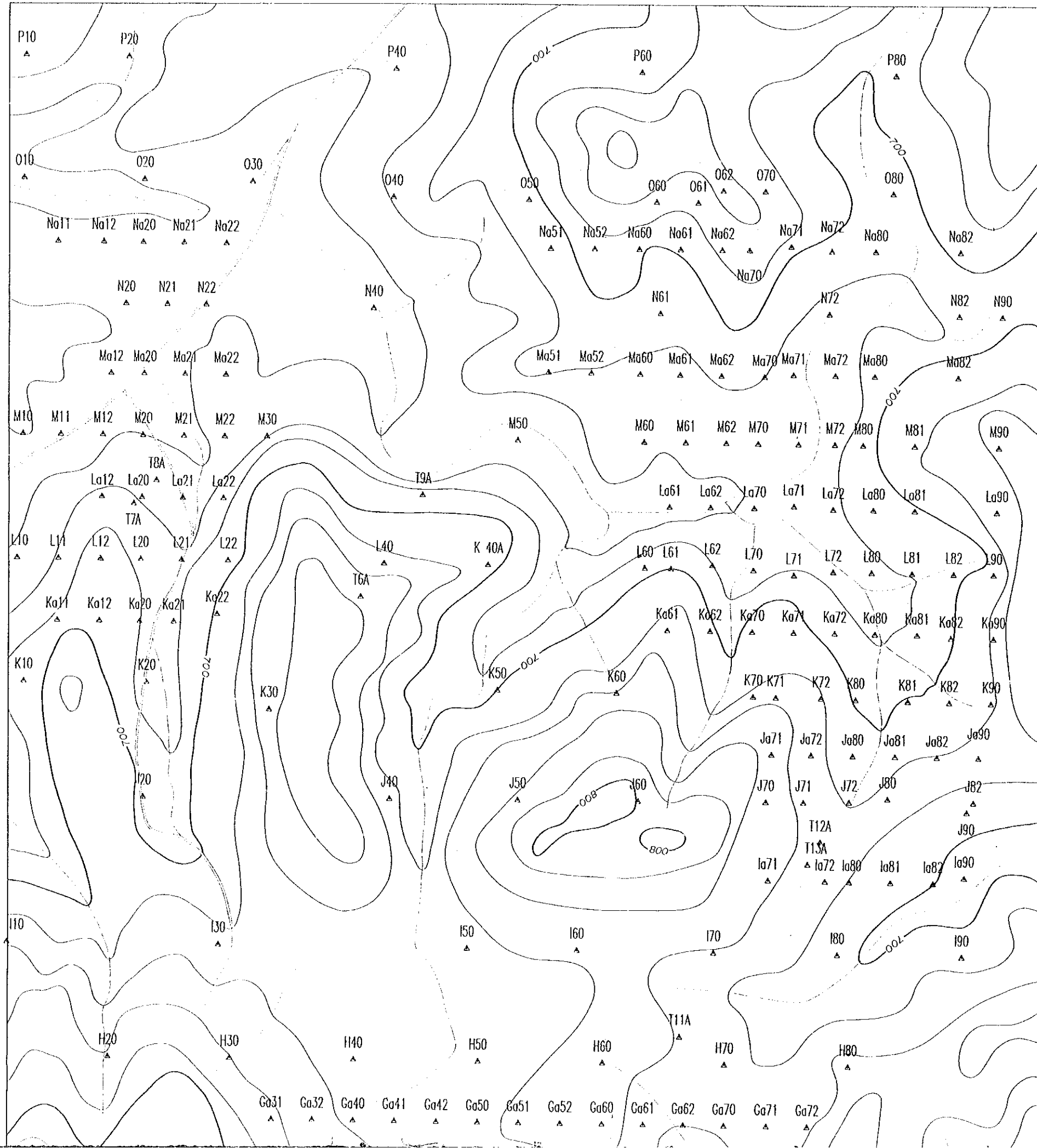
ナミビア共和国  
オレンジ・カルクフェルド地区  
資源開発協力基礎調査  
第1年次

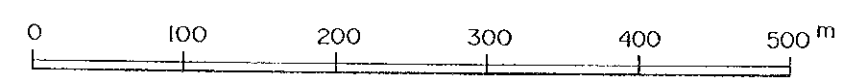
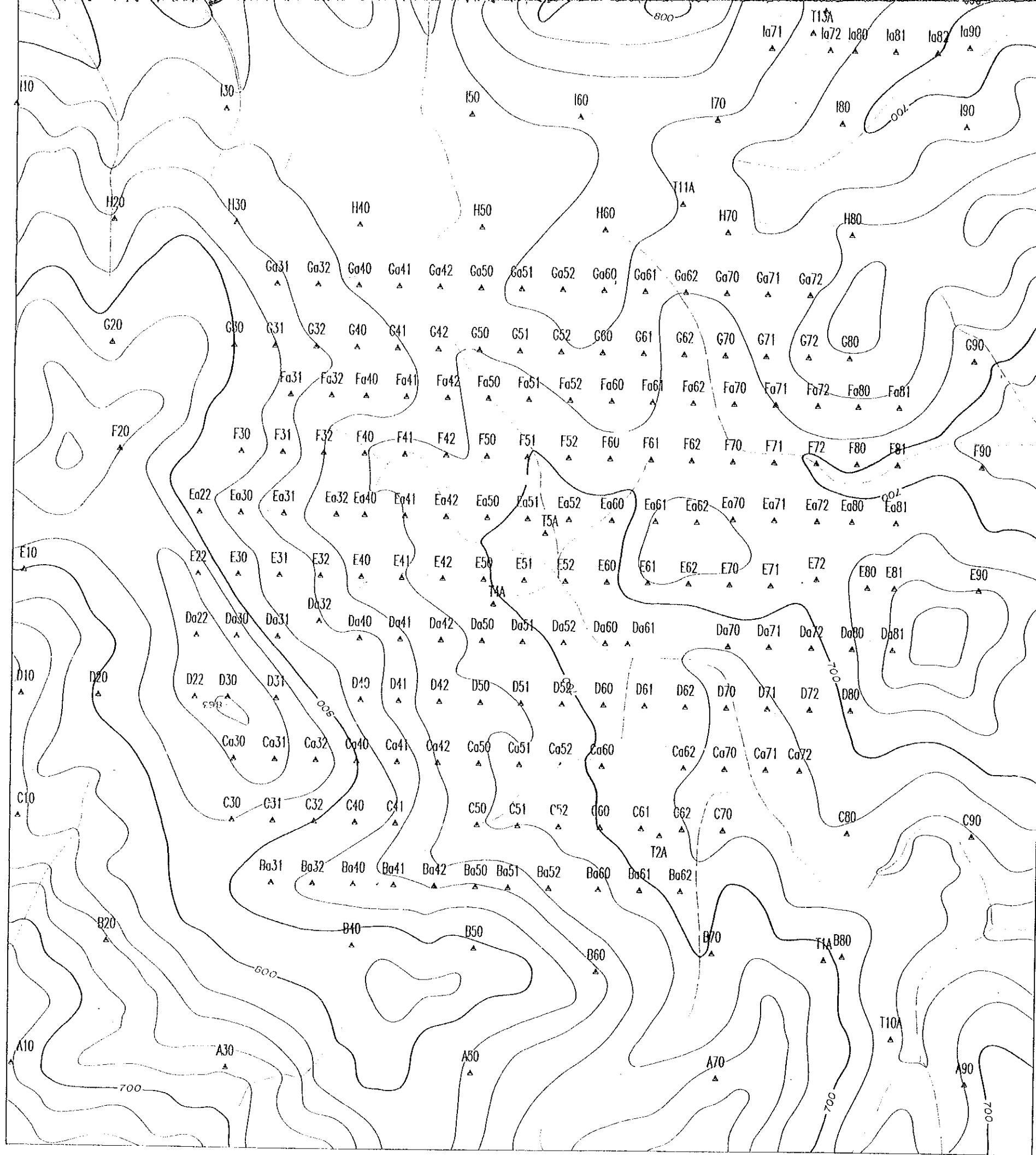
図II-2-5

オレンジ地区地化学調査試料採取位置図  
(縮尺1:2,500)

国際協力事業団  
金属鉱業事業団

平成6年2月





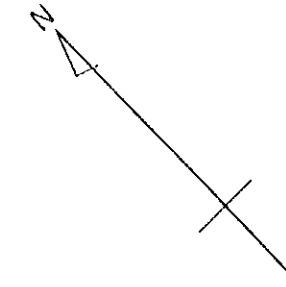
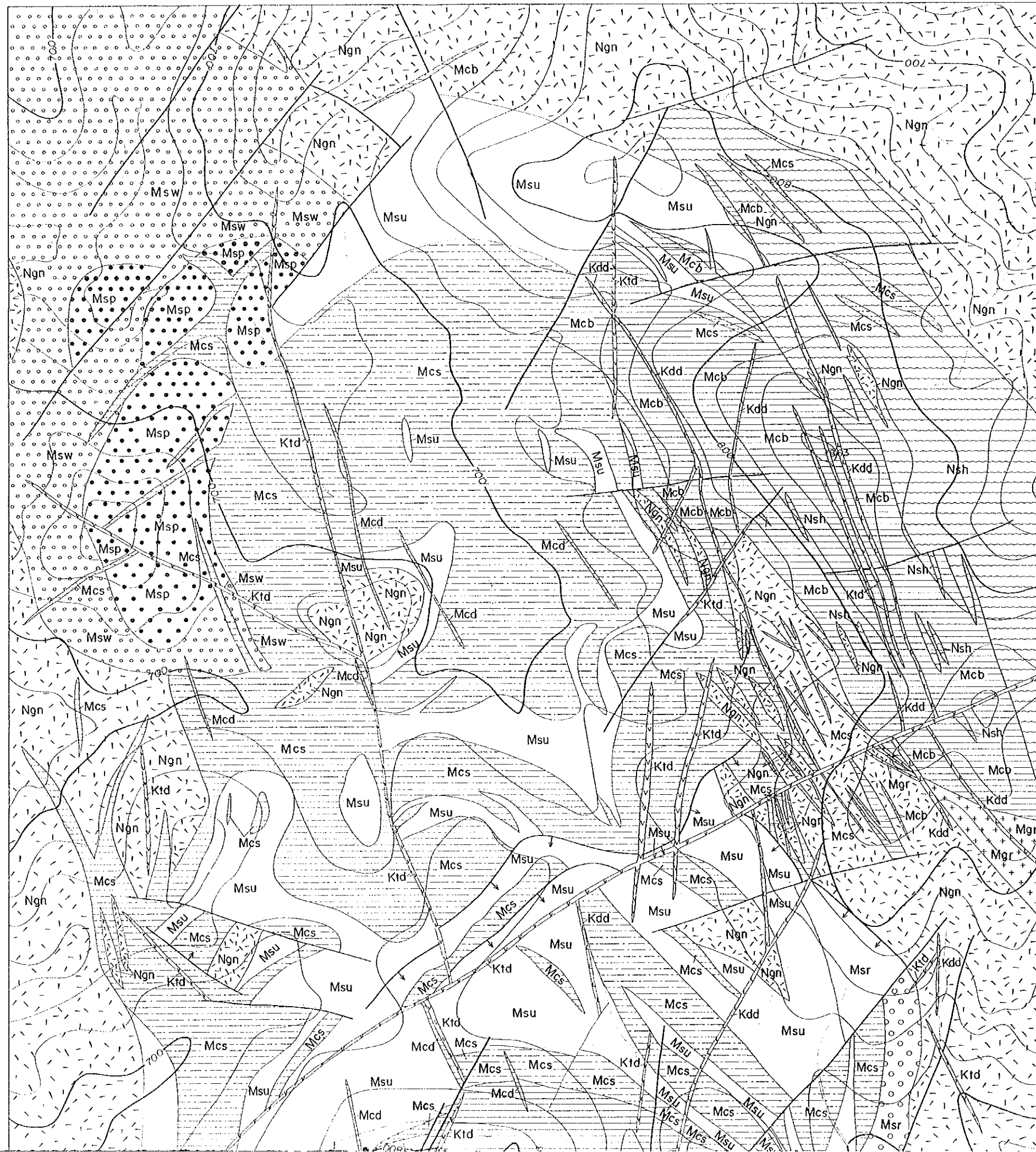
ナミビア共和国  
 オレンジ・カルクフェルド地区  
 資源開発協力基礎調査  
 第1年次

図II-2-2

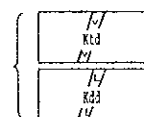
オレンジ地区の地質及び地質断面図  
 (縮尺1:2,500)

国際協力事業団  
 金属鉱業事業団

平成6年2月

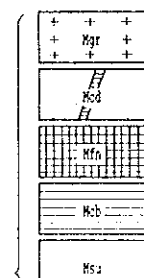


Post- to Syn-  
 Karoo intrusions



Trachyte dyke  
 Dolerite dyke

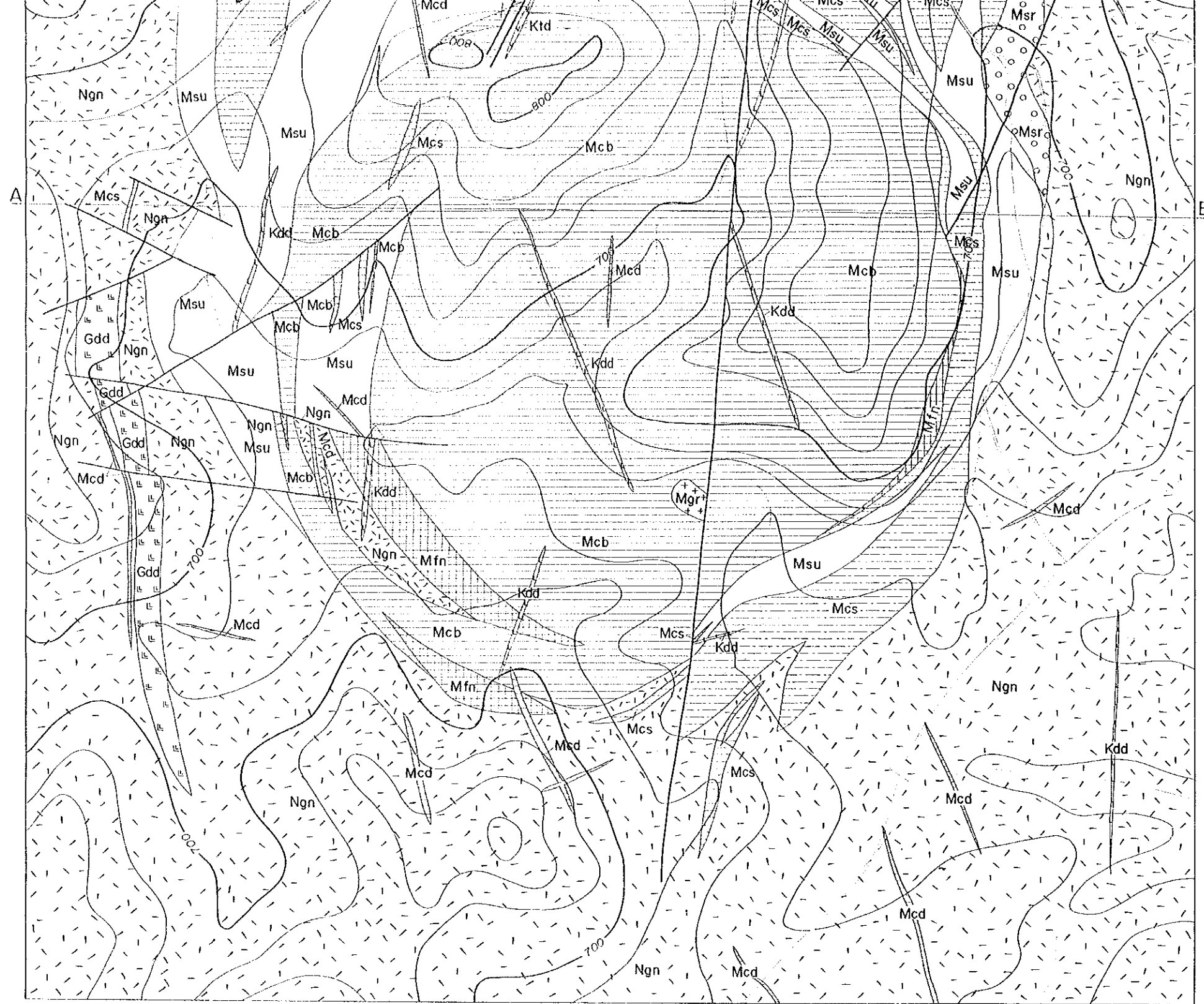
Orange Complex (MOC)



Granophyres and Micro-granite  
 Carbonatite dyke (calcitic- to ankeritic-)  
 Massive fenite  
 Ankeritic beforosite  
 Syenite (undifferentiated)







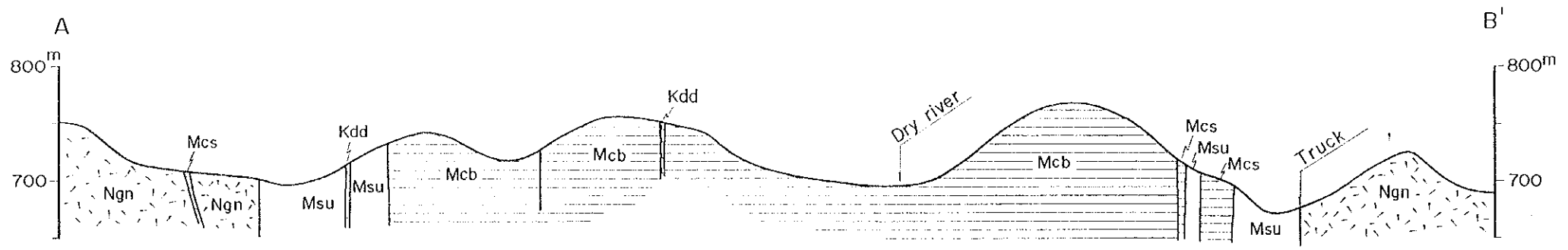
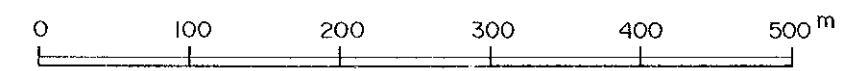
- Marrinkas Quelle Comp.**
- Syenite (undifferentiated)
  - Reddish porphyritic nepheline syenite
  - Micro nepheline syenite sill with dip
  - Sovite (I- iron rich, P- phlogopite rich)
  - Porphyritic nepheline syenite (REE bearing)
  - Grey-white porphyritic syenite

- Nama Group**
- Shale, Quartzite and Grit

- Gartep Group**
- Dolerite dyke

- Namaqua Metamorphic Complex**
- Quartz-feldspar gneiss

- Fault
- Truck
- Dry river

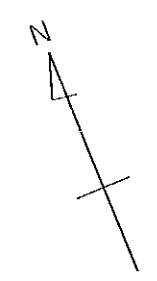
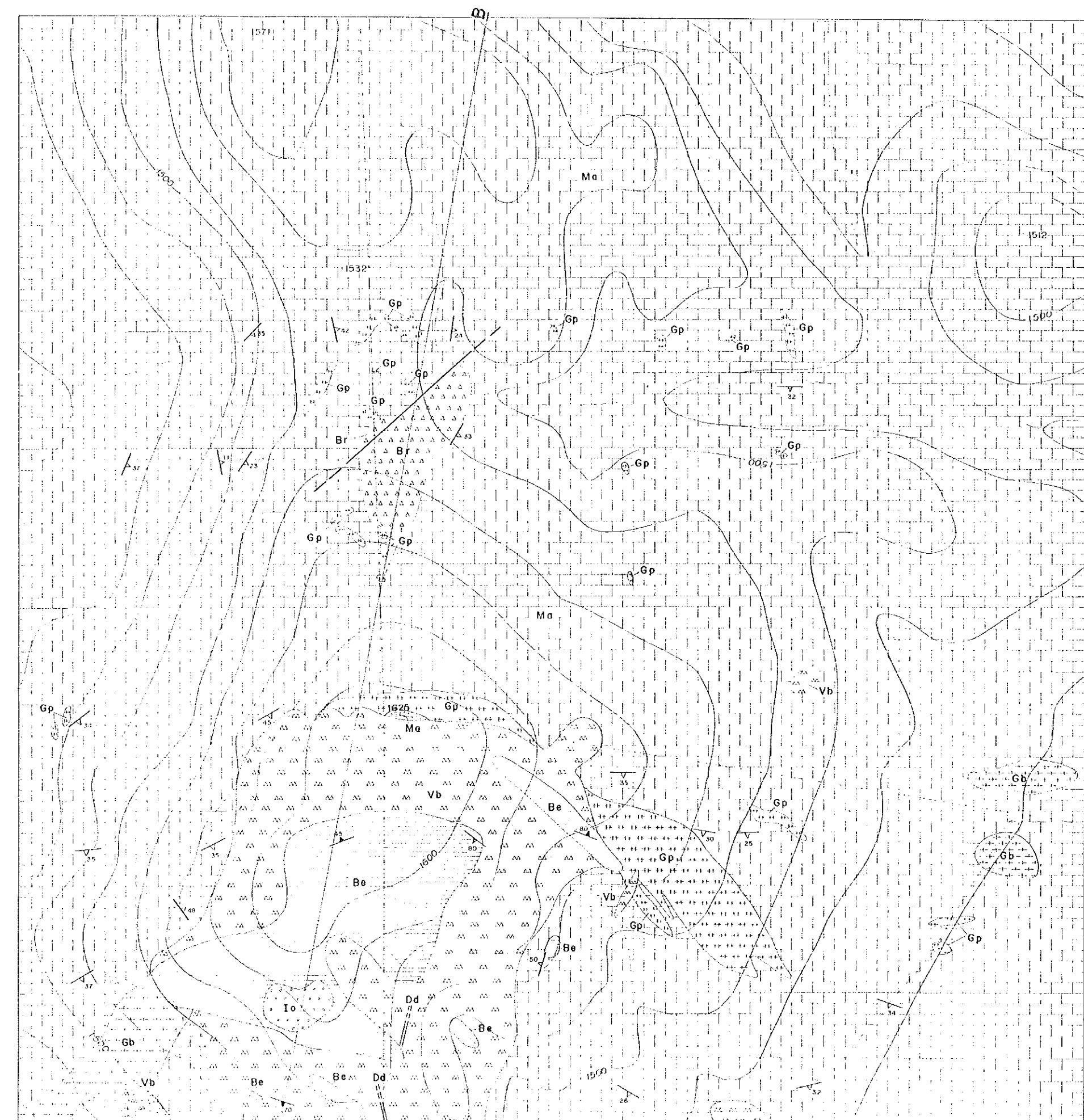


ナミビア共和国  
オレンジ・カルクフェルド地区  
資源開発協力基礎調査  
第1年次

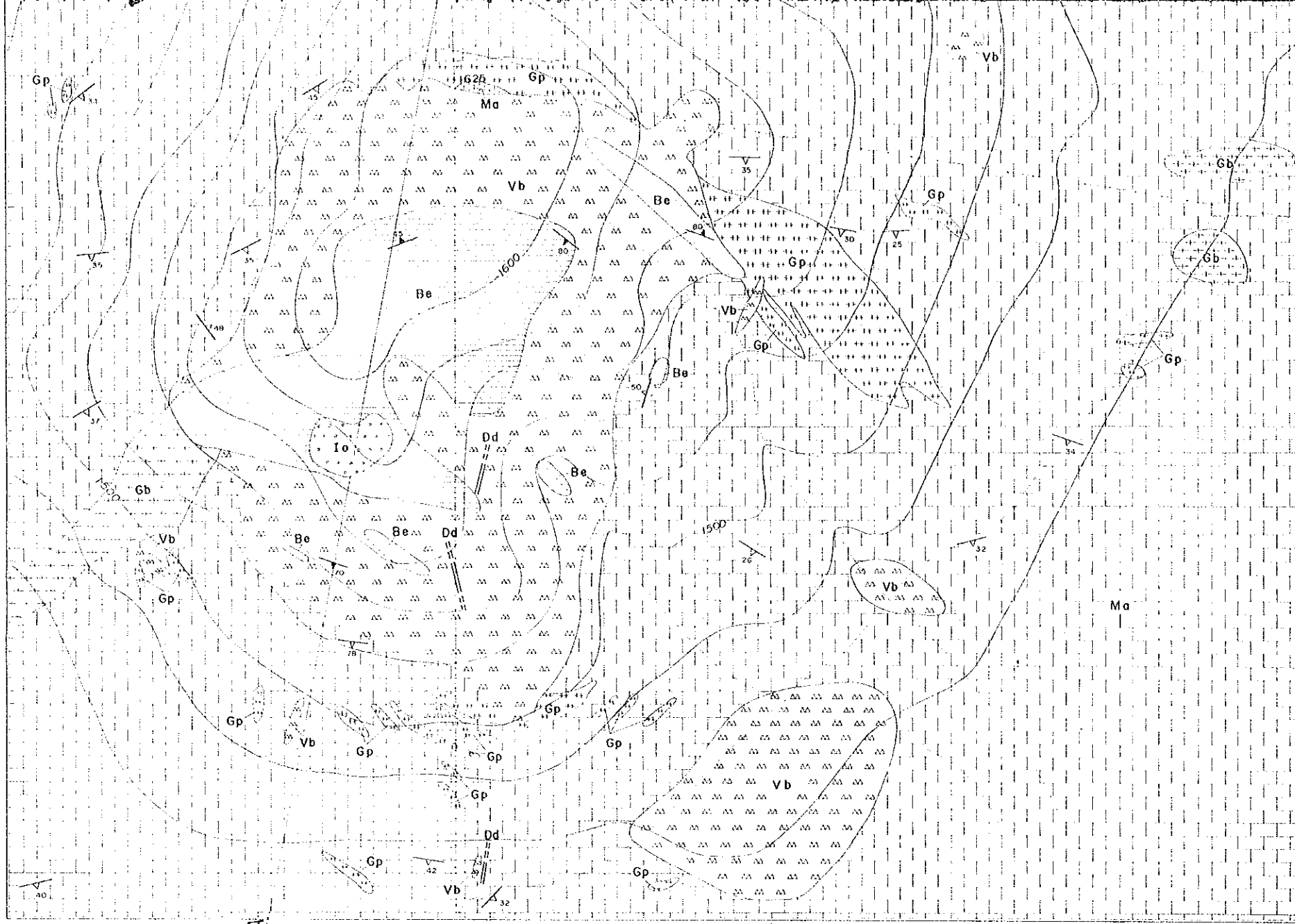
図II-3-2  
カルクフェルド地区の地質及び地質断面図  
(縮尺1:2,500)

国際協力事業団  
金属鉱業事業団

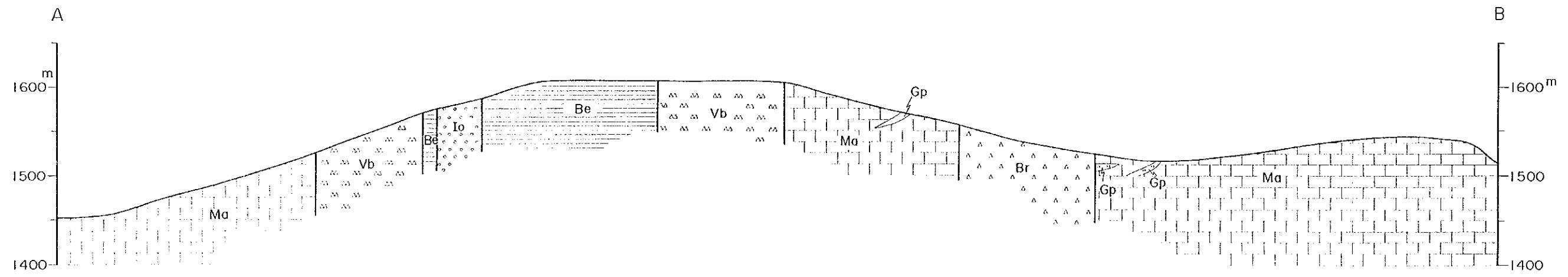
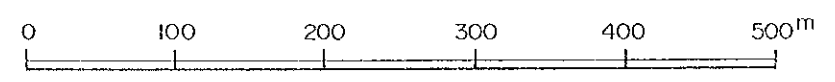
平成6年2月



- Post-Karoo Intrusions
  - Dolerite
- Georgombo Diatreme
  - Iron ore
  - Beforsite
  - Volcanic breccia
- Brecciated granite and Damara marble
- Damara Granitoid
  - Pegmatitic granite
  - Biotite granite
- Damara Sequence
  - marble
- Dip and strike of Geological boundary
- Dip and strike of banding structure in carbonatite



- |                       |  |          |
|-----------------------|--|----------|
| Post-Karoo Intrusions |  | Dolerite |
|-----------------------|--|----------|
- |                    |  |                  |
|--------------------|--|------------------|
| Osongombo Distreme |  | Iron ore         |
|                    |  | Reforsite        |
|                    |  | Volcanic breccia |
- |                   |  |                    |
|-------------------|--|--------------------|
| Damaran Granitoid |  | Pegmatitic granite |
|                   |  | Biotite granite    |
- |                 |  |        |
|-----------------|--|--------|
| Damara Sequence |  | marble |
|-----------------|--|--------|
- Dip and strike of Geological boundary
- Dip and strike of banding structure in carbonatite
- Dip and strike of foliation in marble
- Fault
- Truck
- Dry river



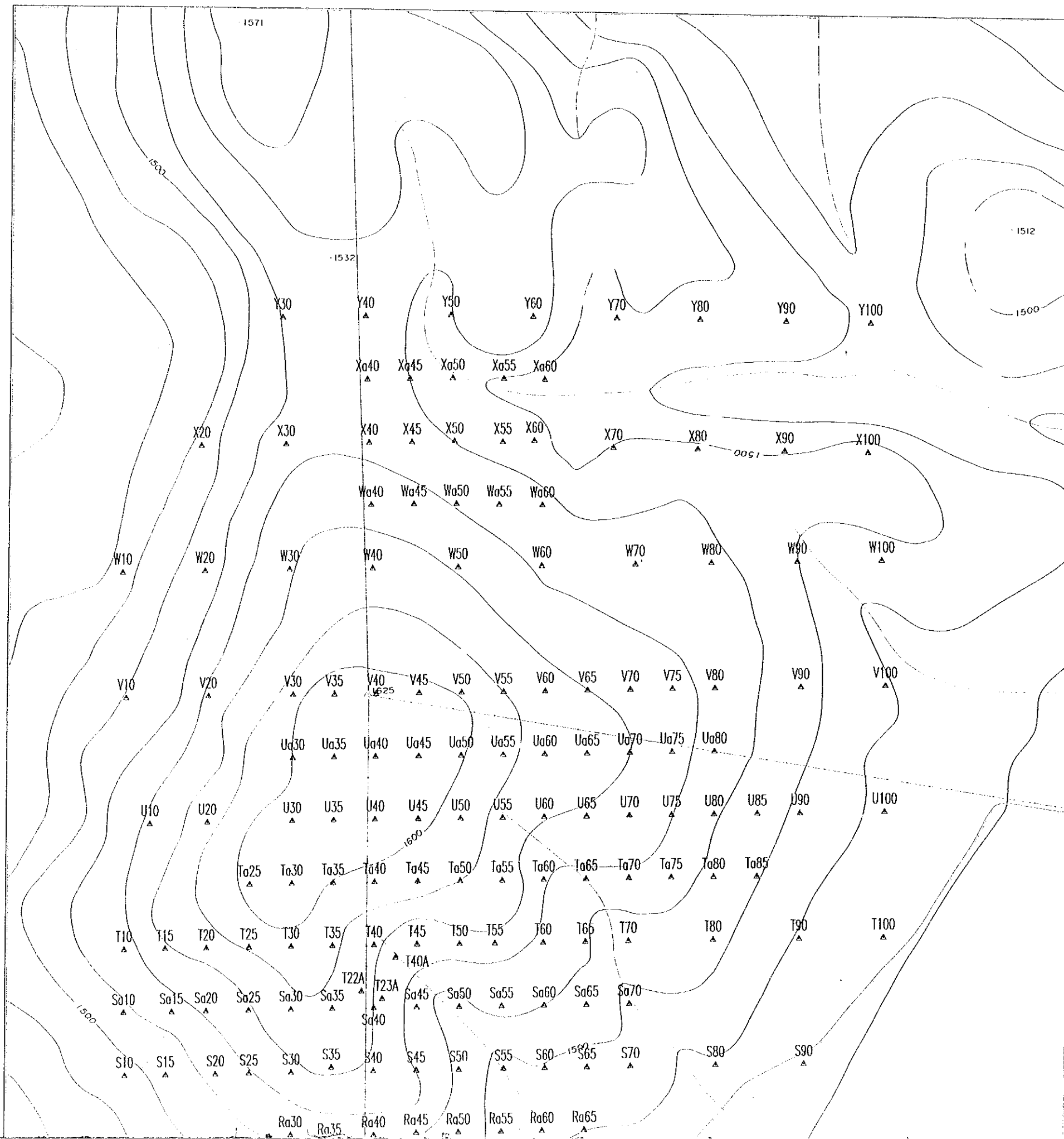
ナミビア共和国  
オレンジ・カルクフェルド地区  
資源開発協力基礎調査  
第1年次

図II-3-5

カルクフェルド地区の地化学調査試料  
採取位置図  
(縮尺1:2,500)

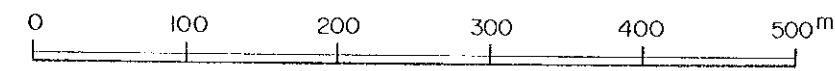
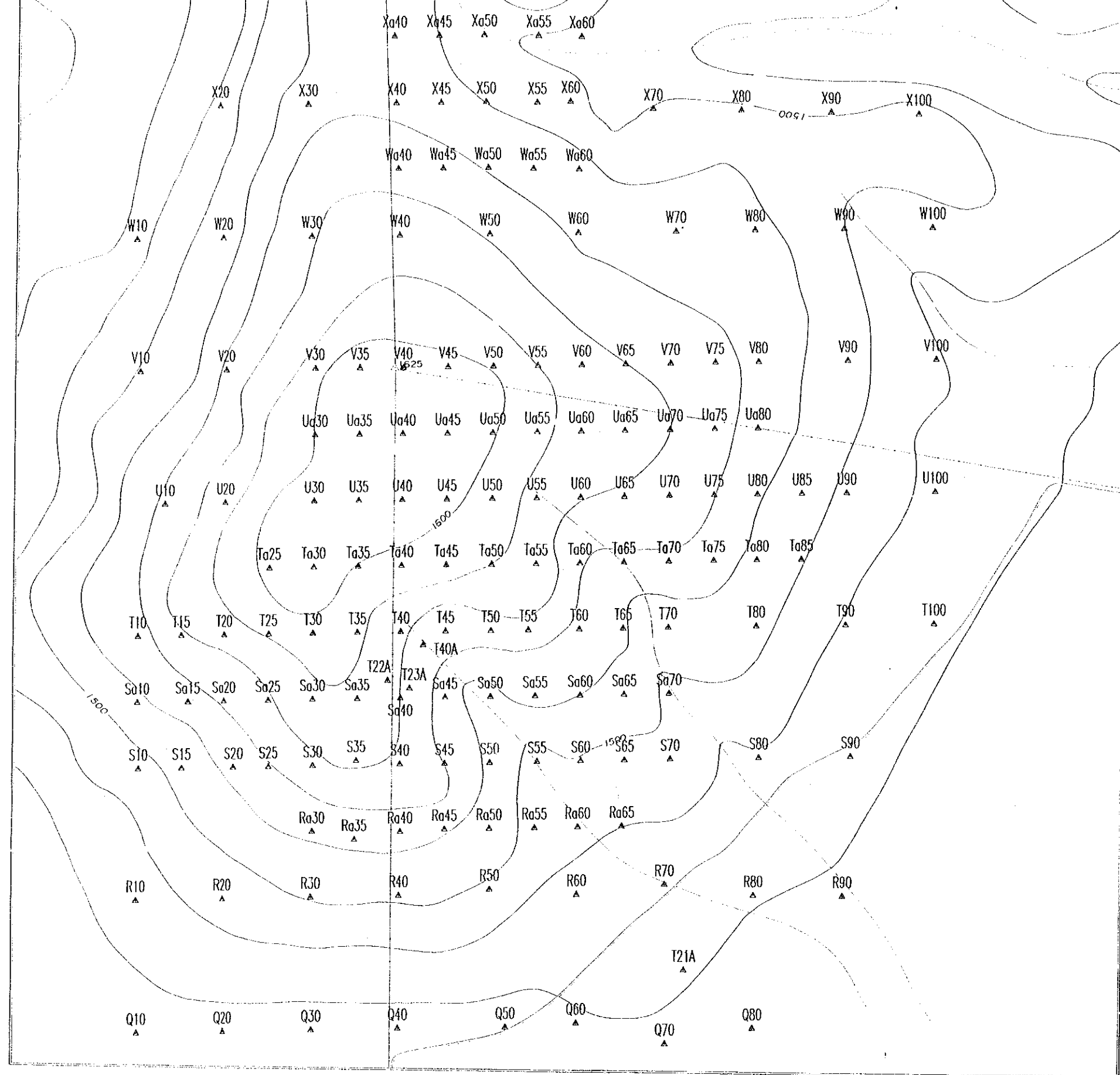
国際協力事業団  
金属鉱業事業団

平成6年2月



国際協力事業団  
金属鉱業事業団

平成6年2月



JICA