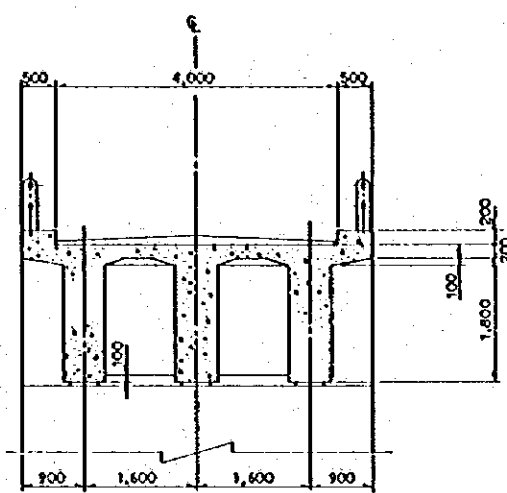
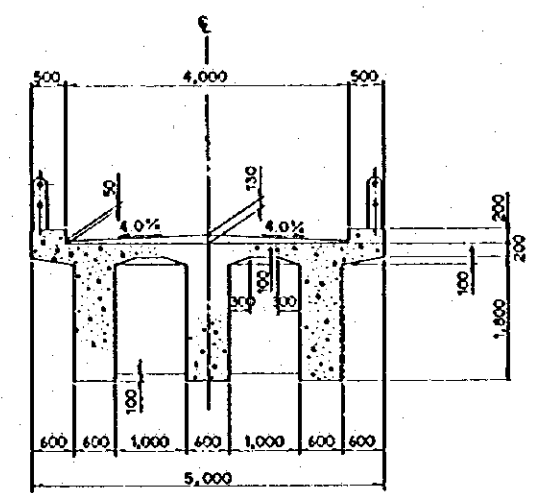


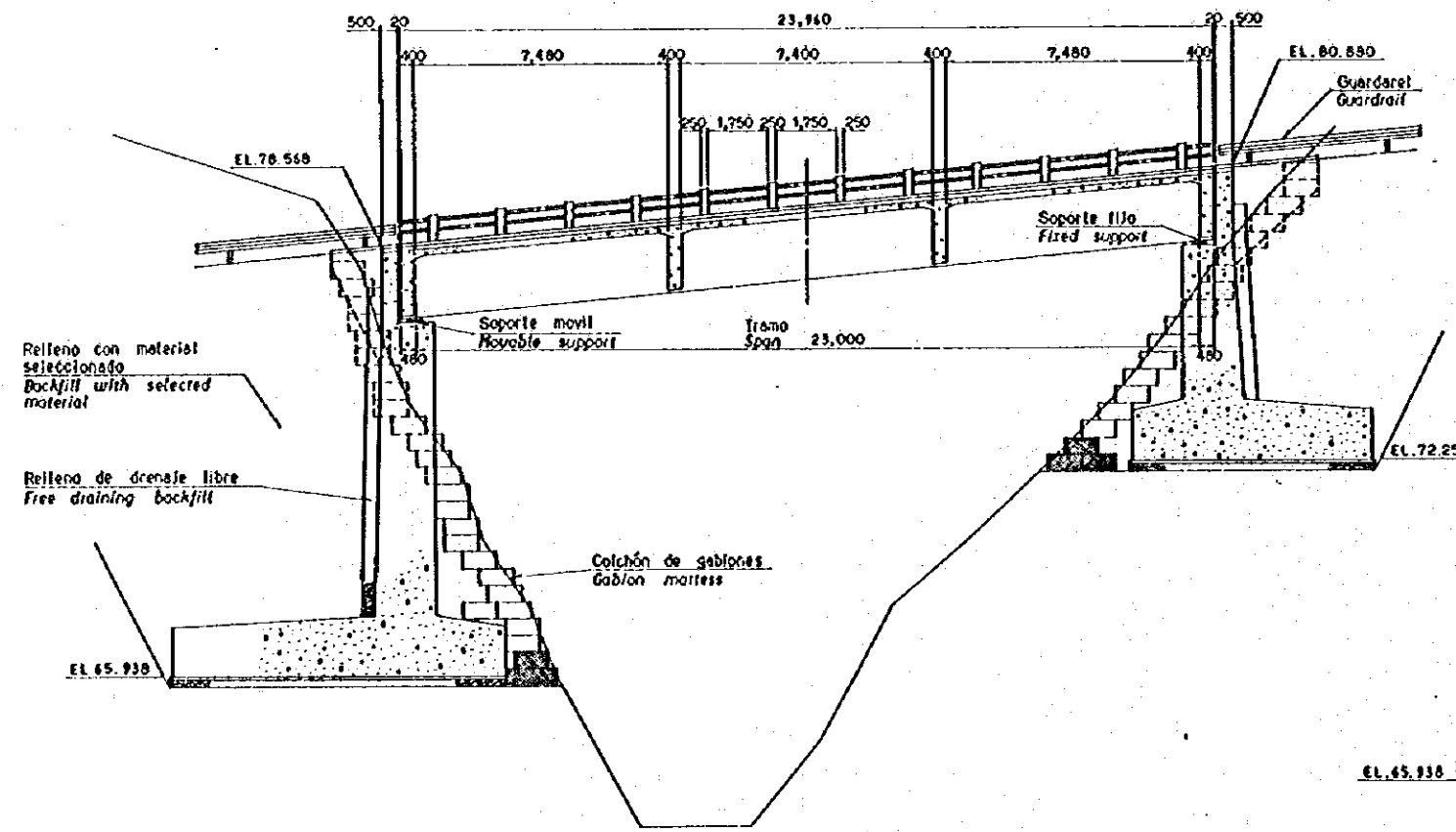
PLANTA ESCALA A  
PLAN SCALE A



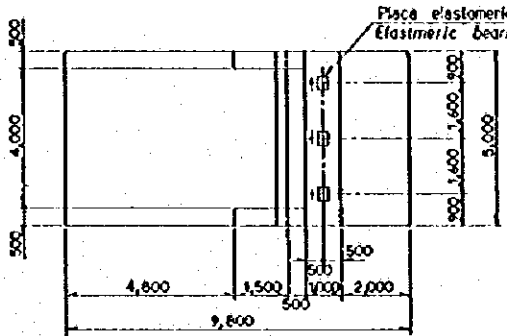
SECCION B - B ESCALA B  
SECTION B - B SCALE B



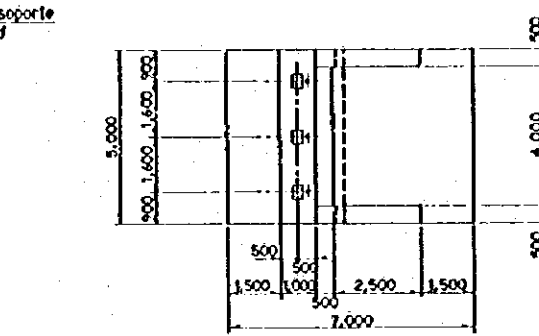
SECCION C - C ESCALA B  
SECTION C - C SCALE B



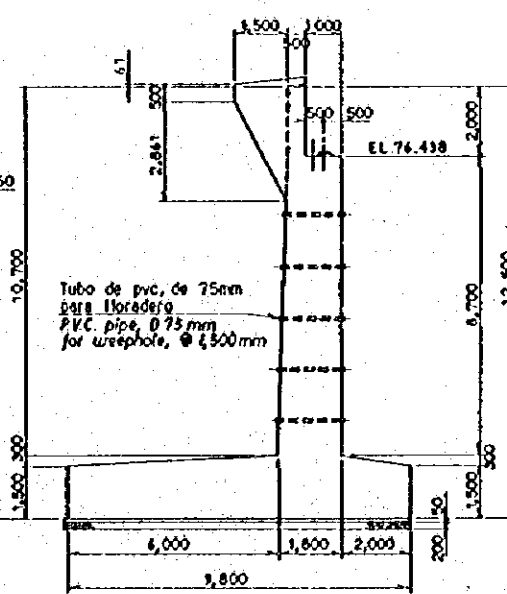
SECCION A - A ESCALA A  
SECTION A - A SCALE A



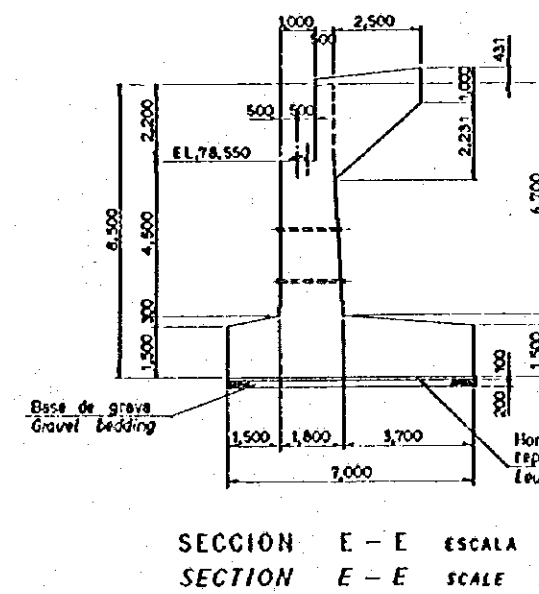
ESTRIBO IZQUIERDO, PLANTA ESCALA A  
LEFT ABUTMENT, PLAN SCALE A



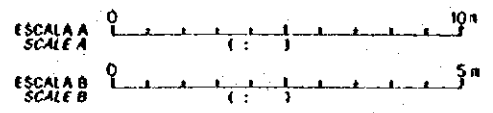
ESTRIBO DERECHO, PLANTA ESCALA A  
RIGHT ABUTMENT, PLAN SCALE A



SECCION D - D ESCALA A  
SECTION D - D SCALE A



SECCION E - E ESCALA A  
SECTION E - E SCALE A



REV. Nº	REVISADO	APROBADO	FECHA

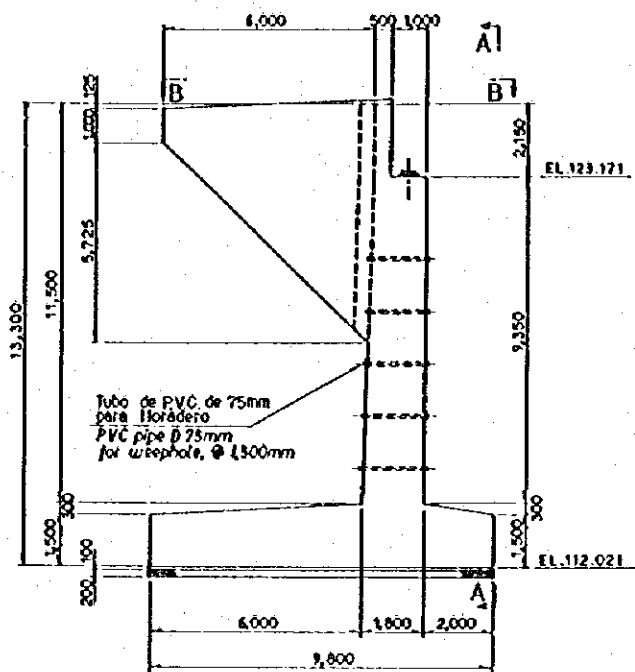
**CRM**  
CENTRO DE REHABILITACION DE MANABI  
REPUBLICA DEL ECUADOR

Estudio de Diseño Detallado de los Traveses de Agua para las Cuenas de Los Rios Chora - Portoviejo  
The Detailed Design Study on the Water Transverse Schemes for Chora - Portoviejo River Basins

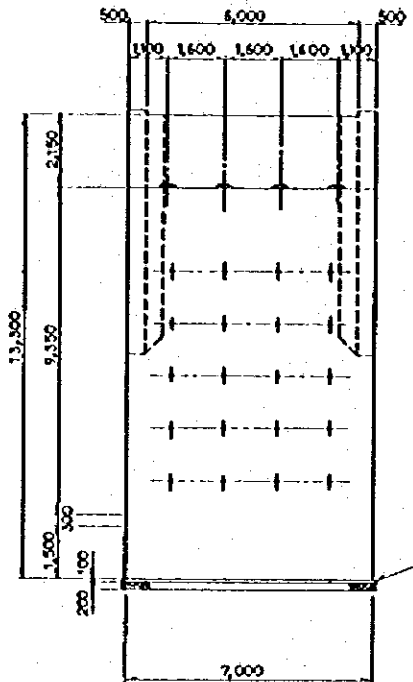
TITULO: CAMINO DE ACCESO / ACCESS ROAD  
DETALLES PUENTE (SALIDA DE MEMBRILLO) / BRIDGE DETAILS (MEMBRILLO OUTLET)

LEVANTÓ / DIBUJO / DISEÑO / REVISÓ / ENTREGÓ / FECHA:	APROBADO / FECHA / DIBUJO Nº / 1-AST-008

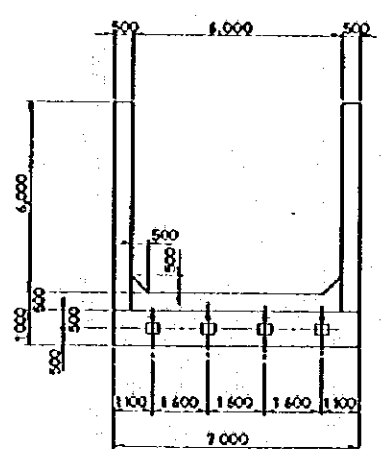




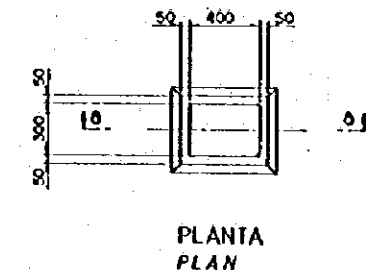
ESTRIBO IZQUIERDO ESCALA A  
LEFT ABUTMENT SCALE A



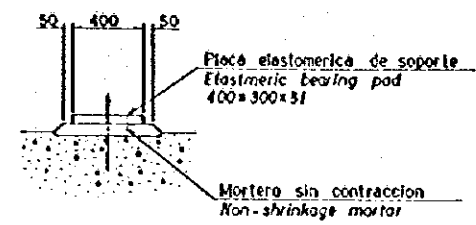
SECCION A-A ESCALA A  
SECTION A-A SCALE A



SECCION B-B ESCALA A  
SECTION B-B SCALE A

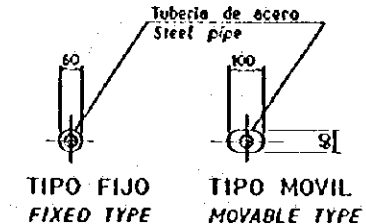
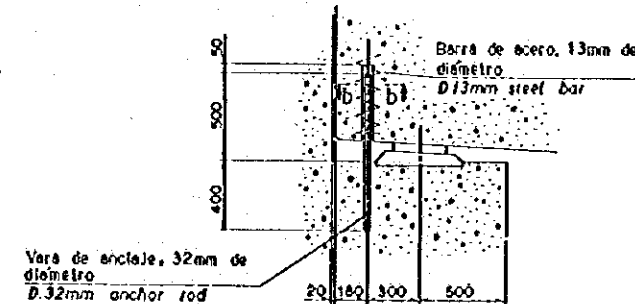


PLANTA PLAN



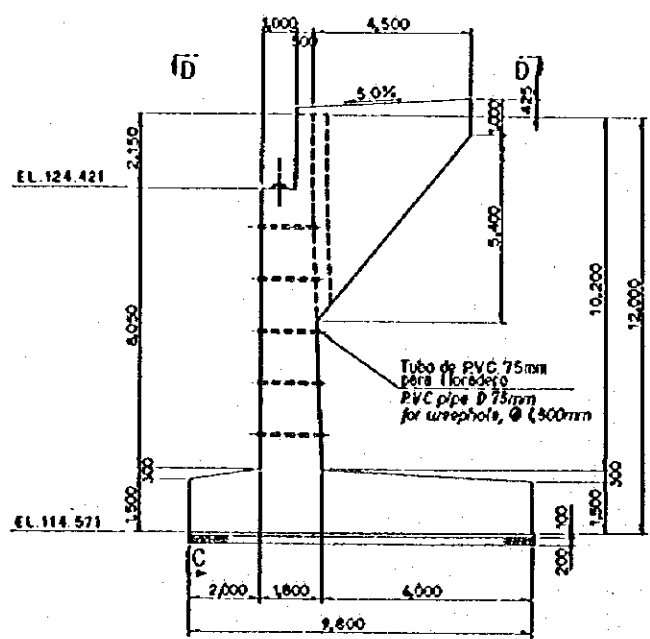
SECCION a-a

DETALLE DE SOPORTE ESCALA B  
BEARING DETAIL SCALE B

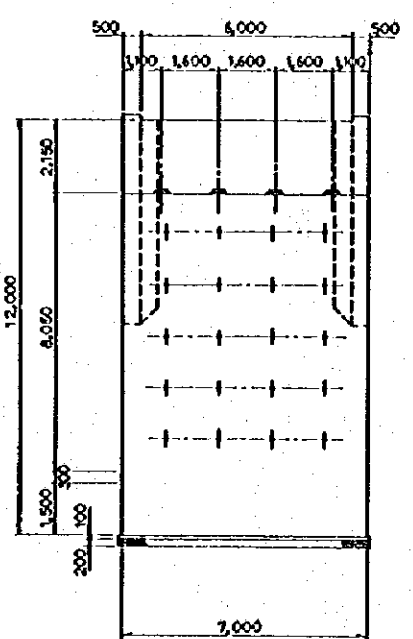


TIPO FIJO FIXED TYPE  
TIPO MOVIL MOVABLE TYPE

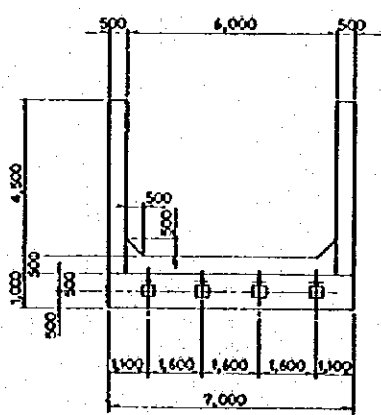
SECCION b-b ESCALA C  
SECTION b-b SCALE C



ESTRIBO DERECHO ESCALA A  
RIGHT ABUTMENT SCALE A

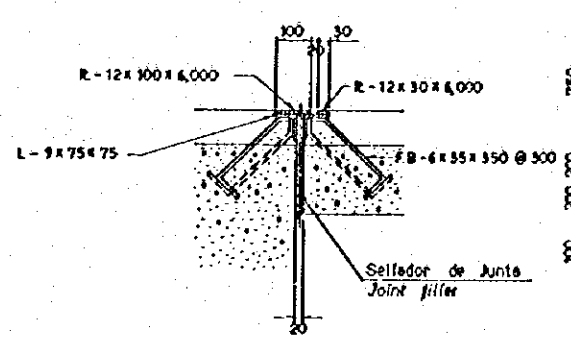


SECCION C-C ESCALA A  
SECTION C-C SCALE A

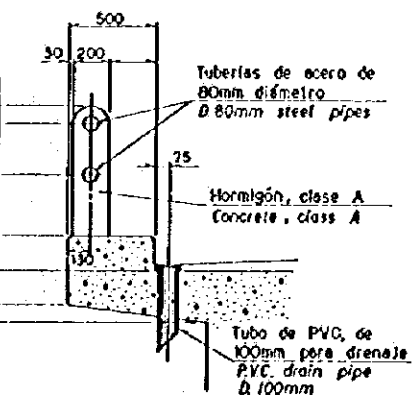


SECCION D-D ESCALA A  
SECTION D-D SCALE A

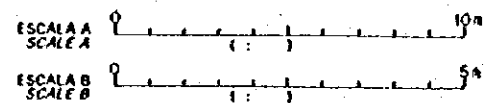
VARA DE ANCLAJE ESCALA B  
ANCHOR ROD SCALE B



DETALLE DE JUNTA DE EXPANSION ESCALA C  
EXPANSION JOINT DETAIL SCALE C



DETALLE DE PASAMANO ESCALA B  
HANDRAIL DETAIL SCALE B



REV. Nº	REVISADO	APROBADO	FECHA

<b>CRM</b> CENTRO DE REHABILITACION DE MANABI	Estudio de Diseño Detallado de las Travesas de Agua para las Cuenca de Los Rios Chona - Portoviejo The Detailed Design Study on the Water Traverses Schemes for Chona - Portoviejo River Basins	TITULO: CAMINO DE ACCESO / ACCESS ROAD DETALLES PUENTE (LOS CUYUES) 2/2 BRIDGE DETAILS (LOS CUYUES) 2/2	LEVANTO: DIBUJO: DISEÑO: REVISOR: ENTREGA: FECHA:	APROBADO: FECHA: DIBUJO Nº: 2-AST-006
	REPUBLICA DEL ECUADOR	REPUBLICA DEL ECUADOR	REPUBLICA DEL ECUADOR	REPUBLICA DEL ECUADOR



JICA