

THE KINGDOM OF CAMBODIA  
MINISTRY OF PUBLIC WORKS AND TRANSPORT

THE FEASIBILITY STUDY  
ON  
CONSTRUCTION OF THE MEKONG BRIDGE  
IN  
THE KINGDOM OF CAMBODIA

FINAL REPORT  
VOLUME 4 : DRAWINGS

JICA LIBRARY



J 1129725 (6)

JULY 1996

NIPPON KOEI CO., LTD. and PADECO CO., LTD.  
JAPAN INTERNATIONAL COOPERATION AGENCY

S	S	F
C	R	(2)
96-090		

LIBRARY



**THE KINGDOM OF CAMBODIA  
MINISTRY OF PUBLIC WORKS AND TRANSPORT**

**THE FEASIBILITY STUDY  
ON  
CONSTRUCTION OF THE MEKONG BRIDGE  
IN  
THE KINGDOM OF CAMBODIA**

**FINAL REPORT  
VOLUME 4 : DRAWINGS**

**JULY 1996**

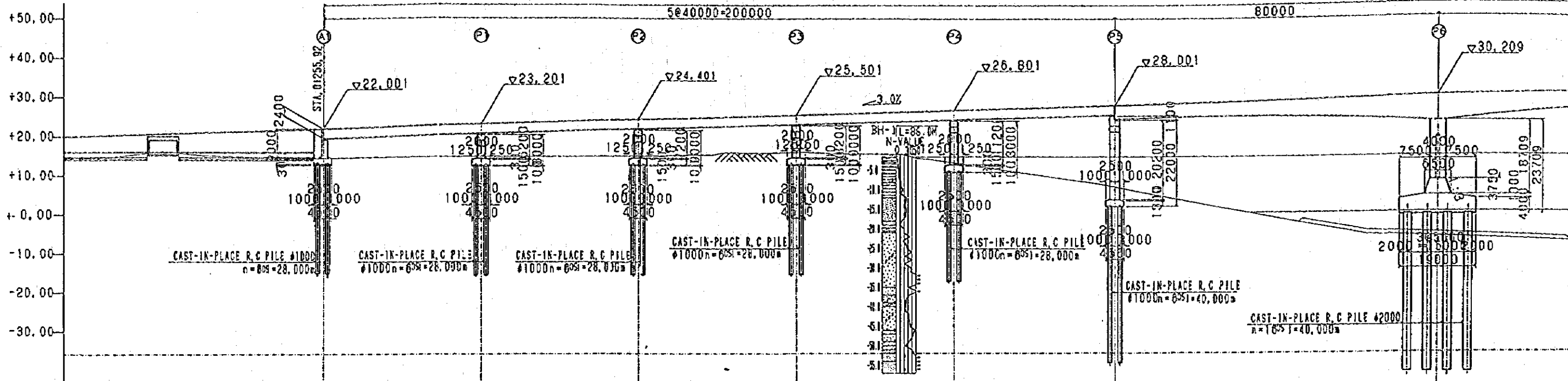
**NIPPON KOEI CO., LTD. and PADECO CO., LTD.  
JAPAN INTERNATIONAL COOPERATION AGENCY**



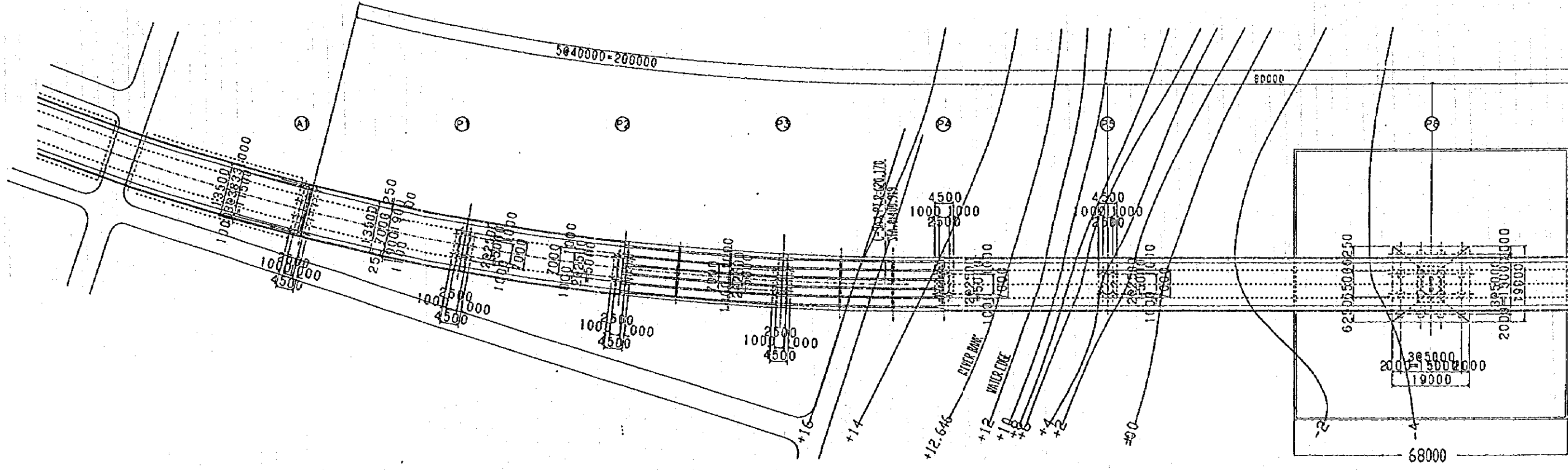
1129725 (6)

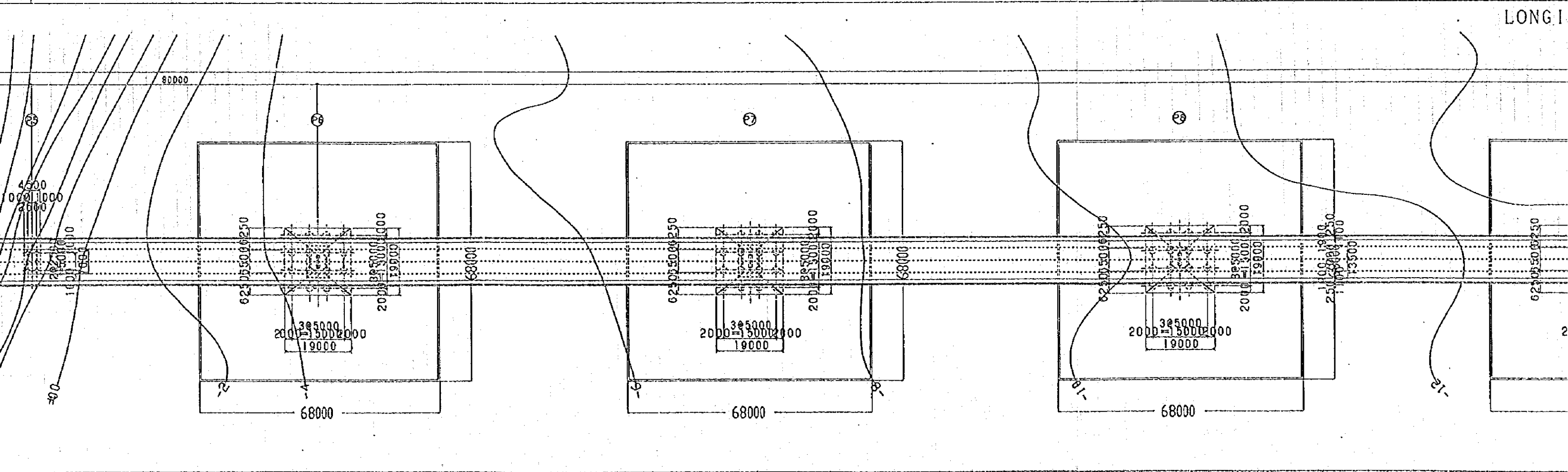
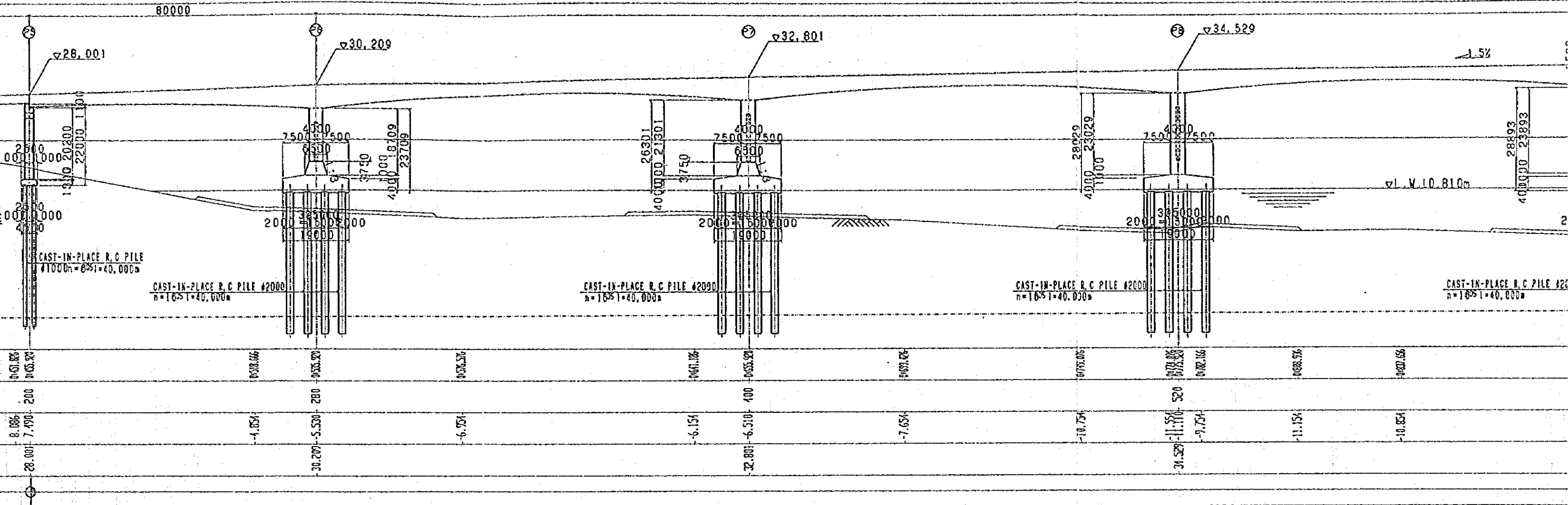
## CONTENTS OF DRAWINGS

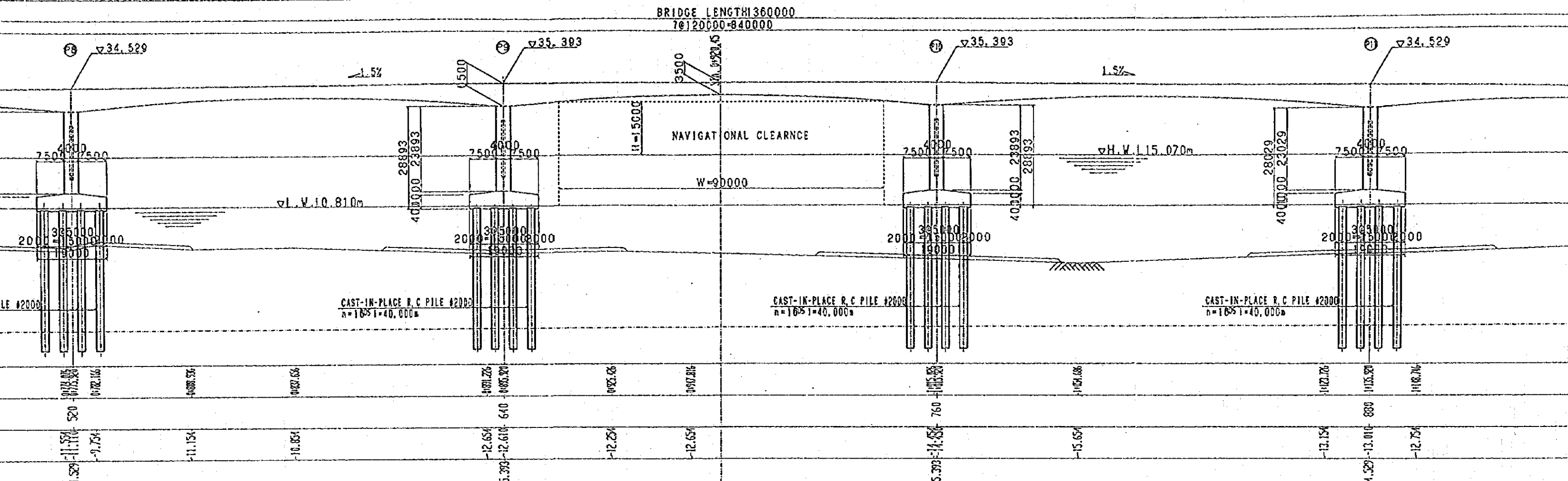
	TITLE	SHEET NO.
1.	GENERAL VIEW OF THE BRIDGE	1/18
2.	SUPERSTRUCTURE : P.C BOX GIRDER	2/18
3.	TRANSVERSE ARRANGEMENT OF P.C CABLE FOR P.C BOX GIRDER	3/18
4.	SUPERSTRUCTURE : P.C T-GIRDER	4/18
5.	SUBSTRUCTURE : PIERS FOR P6, P7, P12 AND P13	5/18
6.	SUBSTRUCTURE : PIERS FOR P8 ~ P11	6/18
7.	SUBSTRUCTURE : PIERS P1 ~ P5 AND P14 ~ P17	7/18
8.	SUBSTRUCTURE : ABUTMENT A1 ~ A2	8/18
9.	BRIDGE ANCILLARIES : LIGHTING, GUARDRAIL, RAILING, AND DRAIN PIPES	9/18
10.	LONGITUDINAL PROFILES (1)	10/18
11.	LONGITUDINAL PROFILES (2)	11/18
12.	GENERAL PLAN AT KOMPONG CHAM	12/18
13.	GENERAL PLAN ON THE EAST BANK	13/18
14.	GENERAL PLAN OF JUNCTION ON THE EAST BANK	14/18
15.	ROUNDAABOUT LAYOUT AND DETAILS	15/18
16.	TYPICAL ROAD CROSS SECTIONS	16/18
17.	ROAD PAVEMENT LA OUT	17/18
18.	DETAILS OF ROAD STRUCTURES	18/18



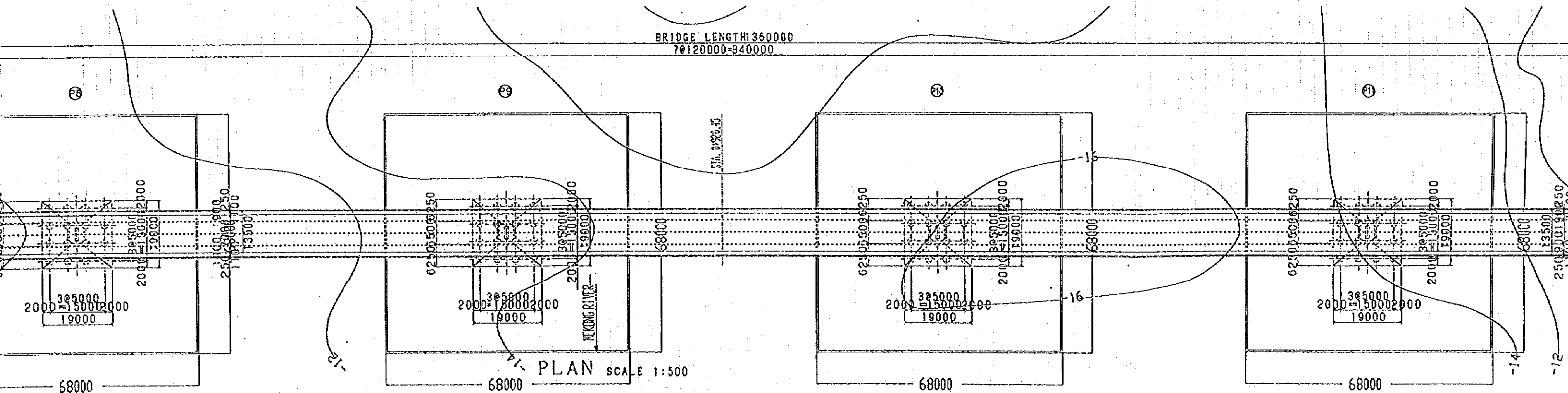
STATION	0+00	0+10	0+20	0+25.92	0+30	0+40	0+50	0+60	0+70	0+80	0+90	0+100	0+110	0+120	0+130	0+140	0+150	0+160	0+170	0+180	0+190	0+200					
DISTANCE				0		40				80				120									200				
EXISTING LEVEL	14.598	16.182	15.200	14.382	14.450	14.721	14.850	14.882	14.897	14.970	15.131	15.438	15.479	16.623	15.882	16.110	15.803	15.677	14.625	14.387	13.340	8.886	7.450	-1.834	-5.550	-5.550	
DESIGN HIGHT				22.001			23.201			24.401				25.501			26.801					28.001				30.209	30.209
GRADIENT														3.0%													





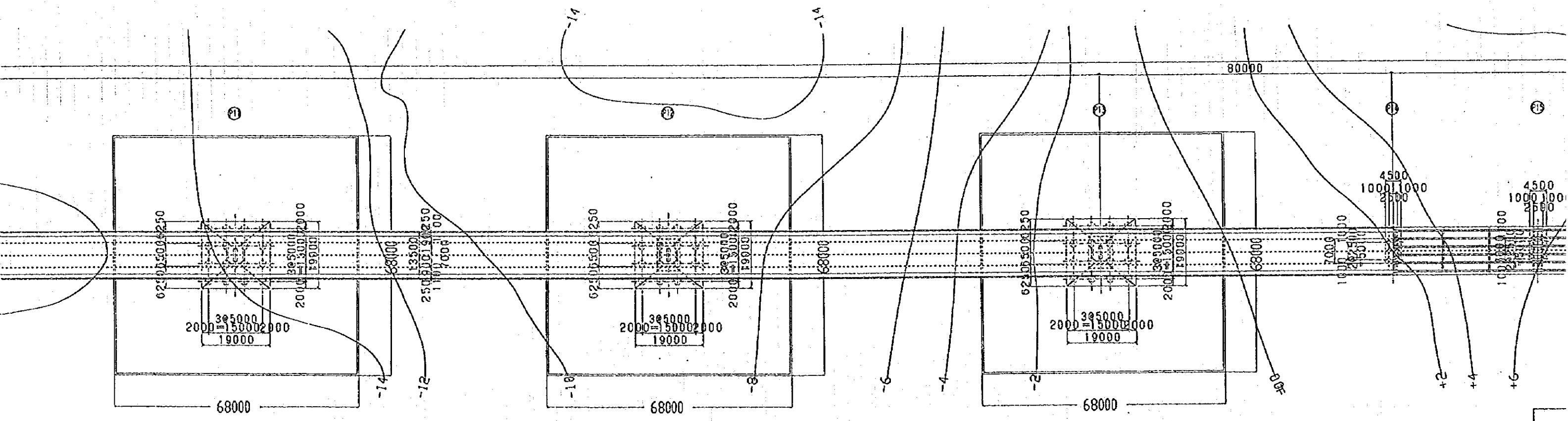
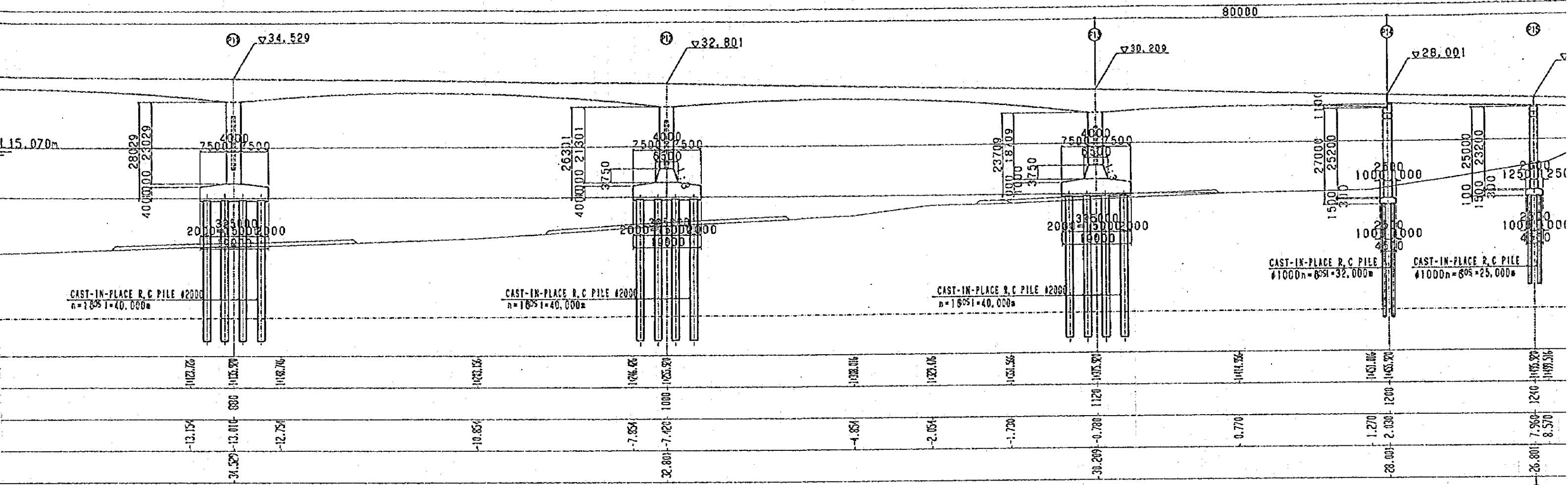


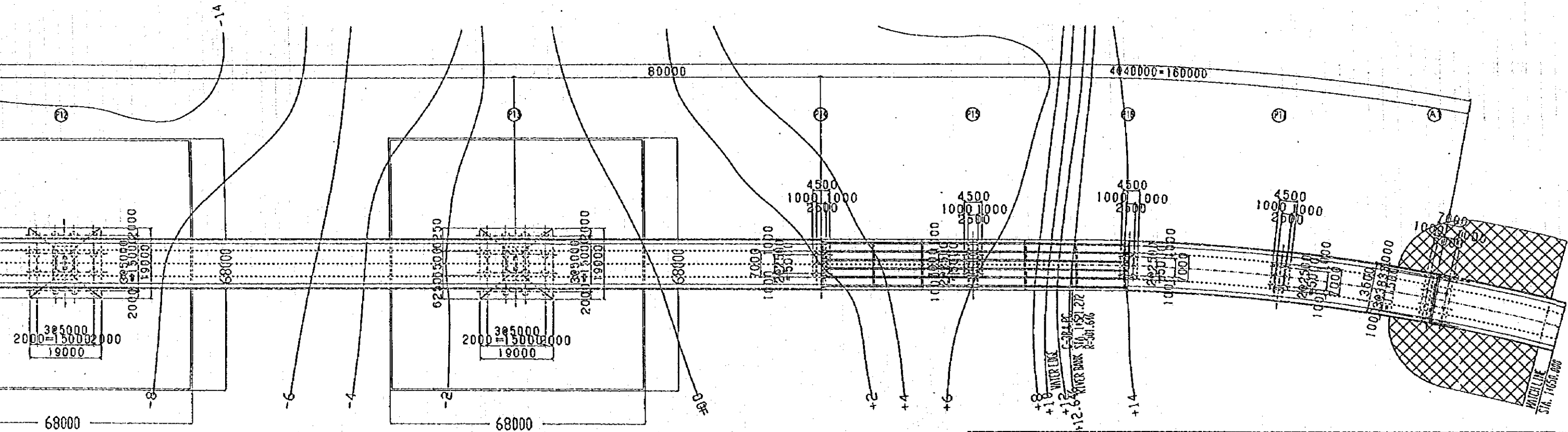
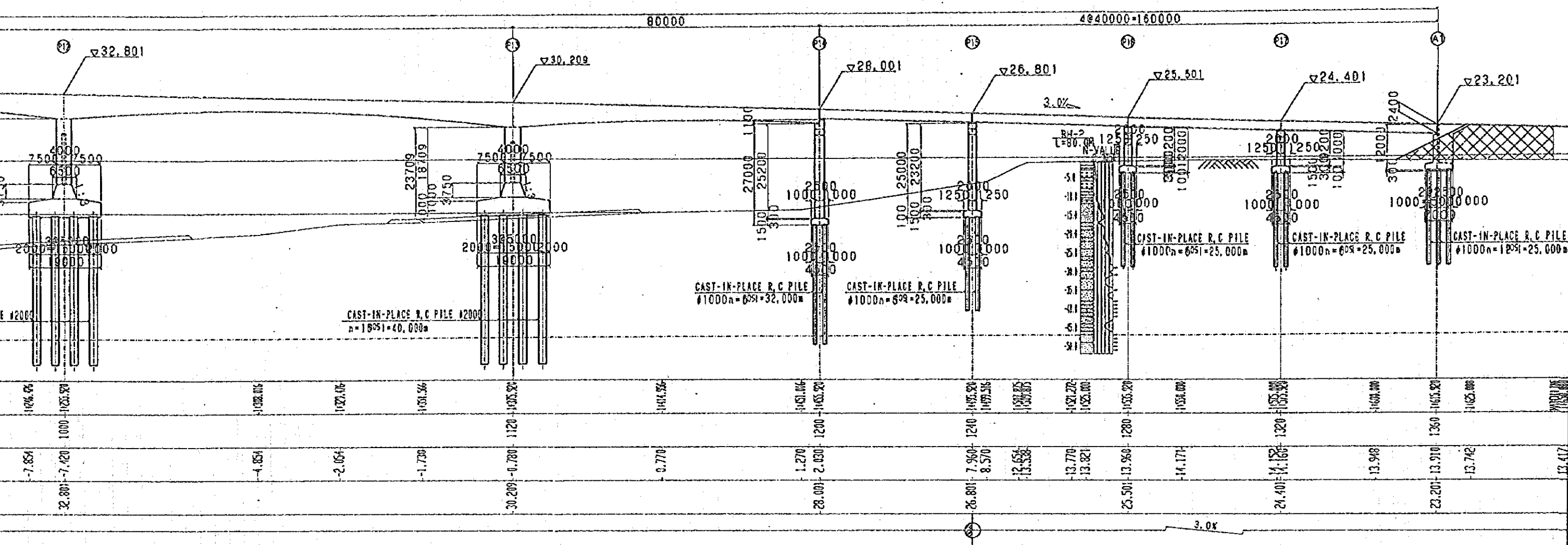
SCALE 1:500



SCALE 1:500

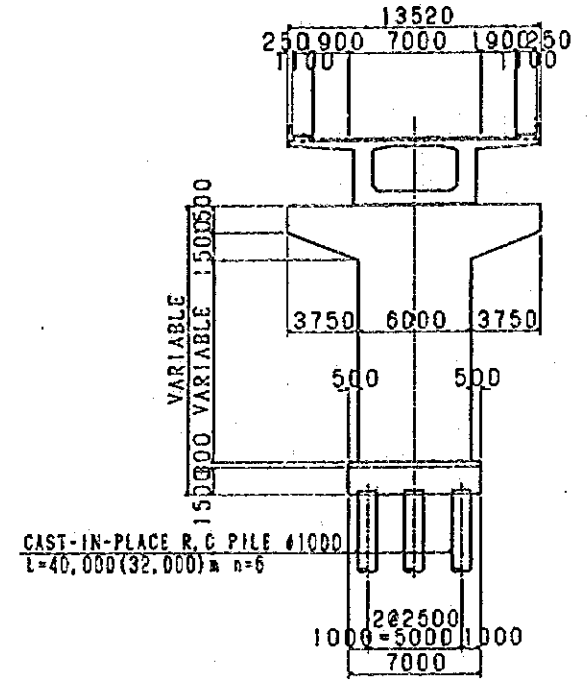
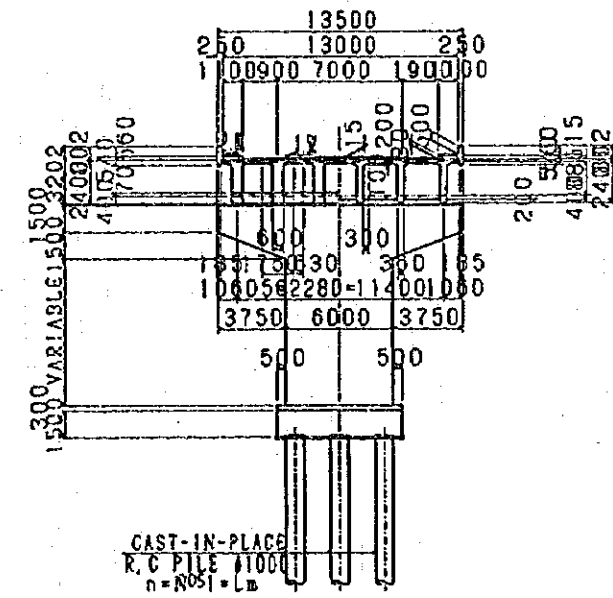
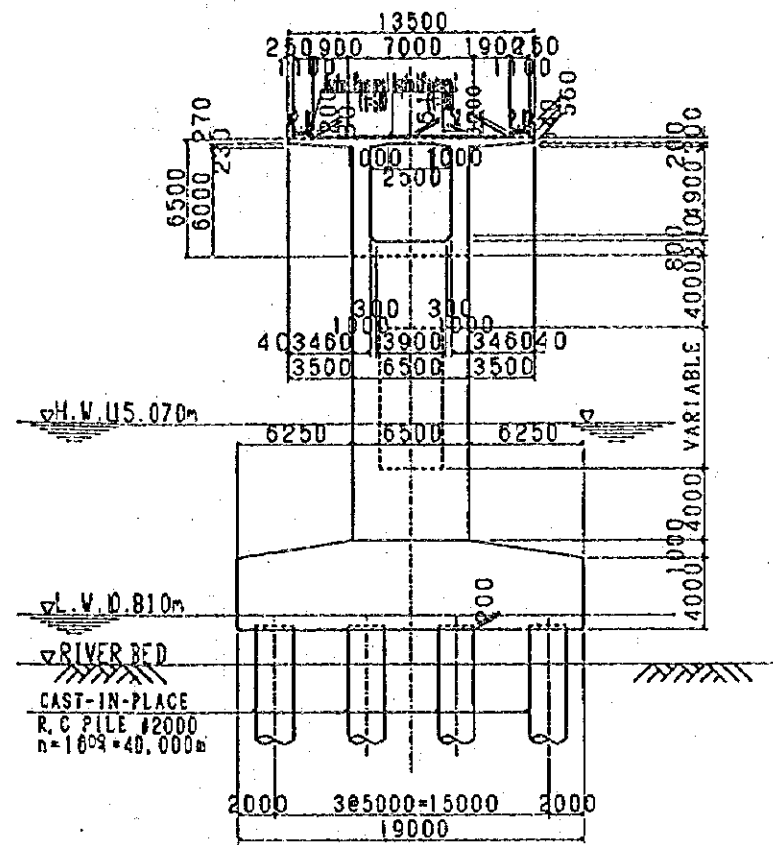
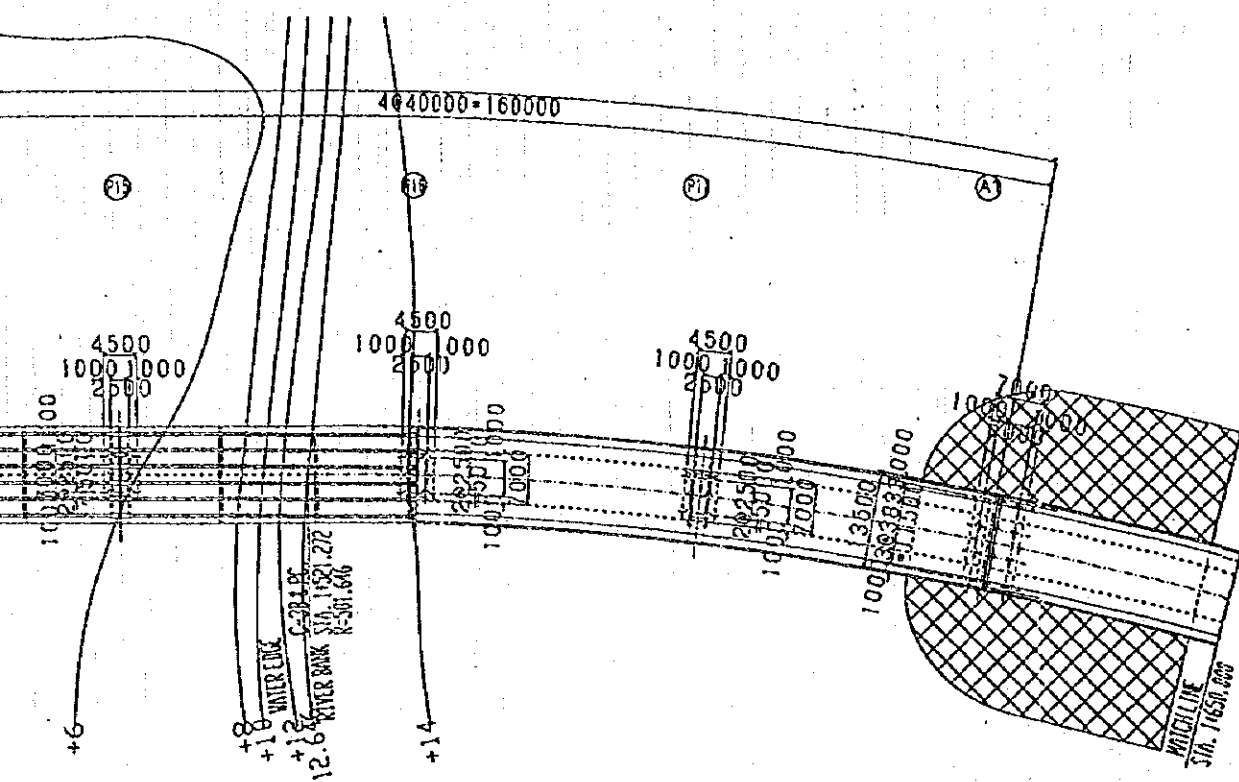
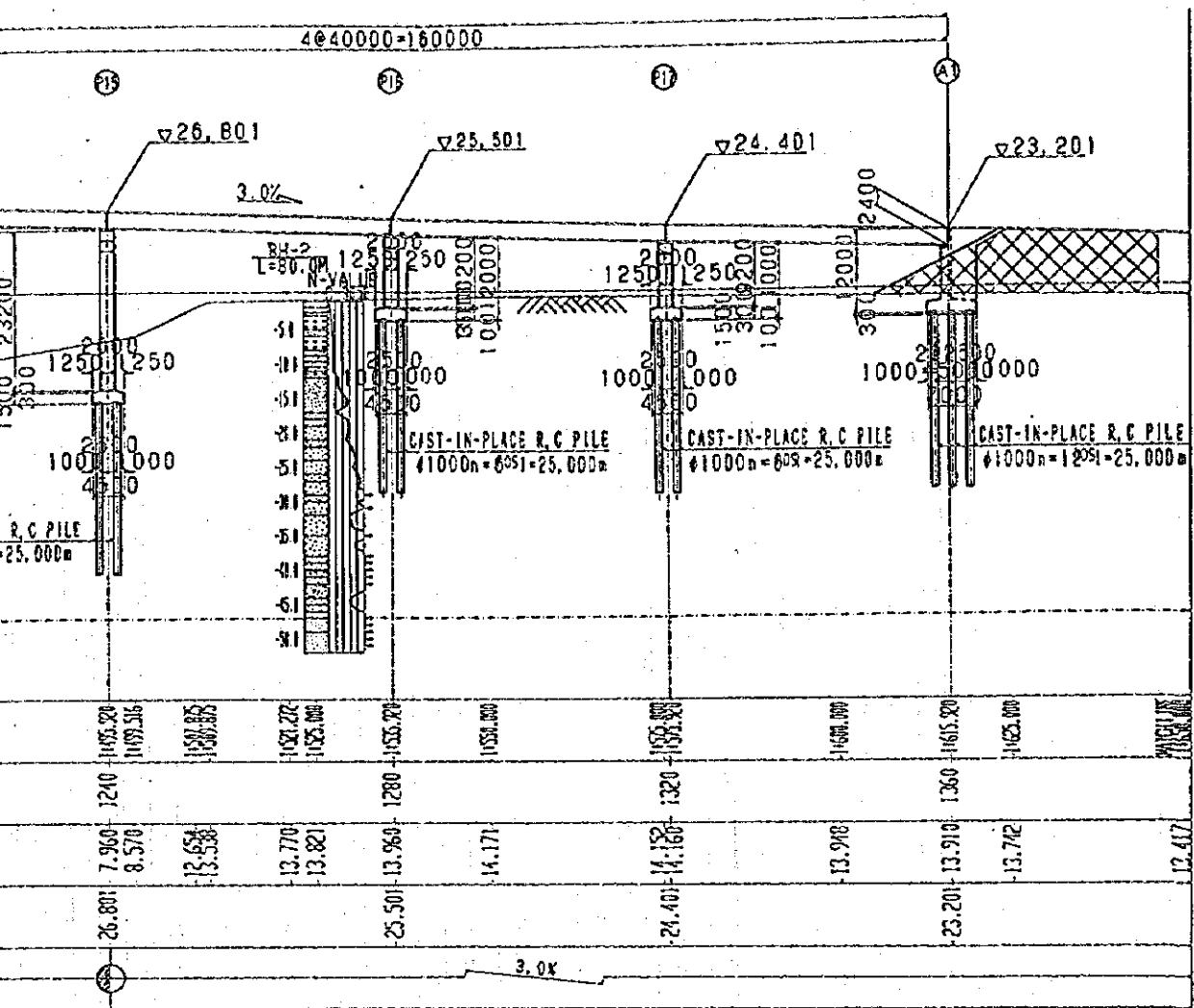






MINISTRY OF PUBLIC WORKS AND TRANSPORT  
 THE KINGDOM OF CAMBODIA

THE FEASIBILITY STUDY  
 ON  
 CONSTRUCTION OF THE MEKONG BRIDGE  
 IN  
 THE KINGDOM OF CAMBODIA

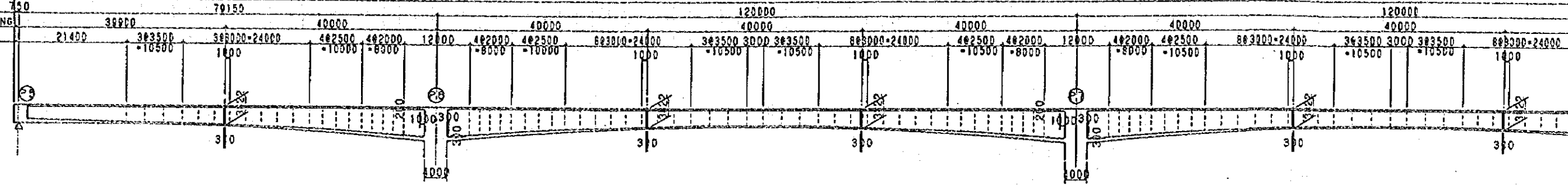


CROSS SECTION SCALE 1:200

0 2.55 07.510 15 20m  
GRAPHIC SCALE 1:200

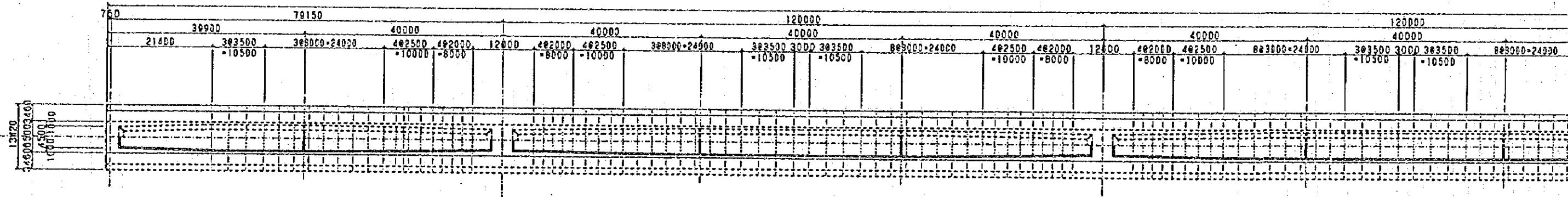
0.5 10.15 20.25 30 40 50m  
GRAPHIC SCALE 1:500

GIRDER LENGTH 100  
 SPAN LENGTH 750  
 DIAPHRAGM SPACING 1  
 SEGMENT IN-SITU

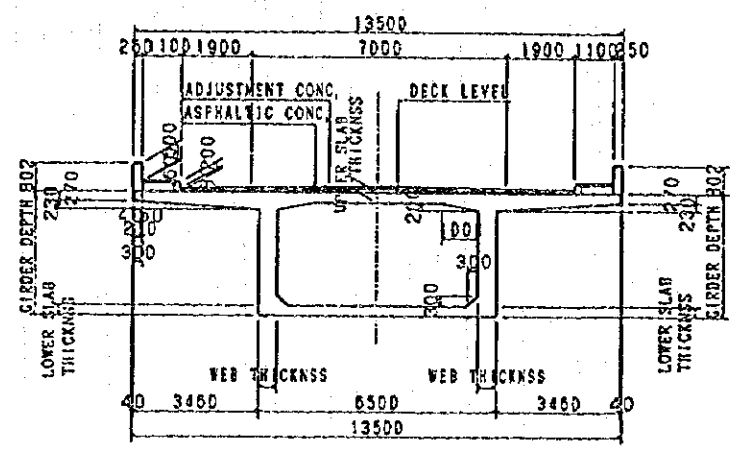


LONGITUDINAL SECTION SCALE: 1/400

GIRDER DEPTH (m)	WEB (m)	LOWER SLAB (m)
800	1000	3500
340	540	3512
300	500	3512
300	500	3516
300	500	3604
300	500	3671
300	500	3756
300	500	3857
300	500	3976
300	500	4111
300	500	4263
354	554	4432
407	607	4619
452	652	4787
496	696	4966
541	741	5158
586	786	5361
627	827	5571
673	873	5771
729	929	6090
800	1000	6500
800	1000	6500
729	929	6090
673	873	5771
627	827	5571
586	786	5361
541	741	5158
496	696	4966
452	652	4787
407	607	4619
354	554	4432
300	500	4263
300	500	4111
300	500	3976
300	500	3857
300	500	3756
300	500	3671
300	500	3604
300	500	3516
300	500	3512
300	500	3500
300	500	3500
300	500	3500
300	500	3512
300	500	3516
300	500	3604
300	500	3671
300	500	3756
300	500	3857
300	500	3976
300	500	4111
300	500	4263
354	554	4432

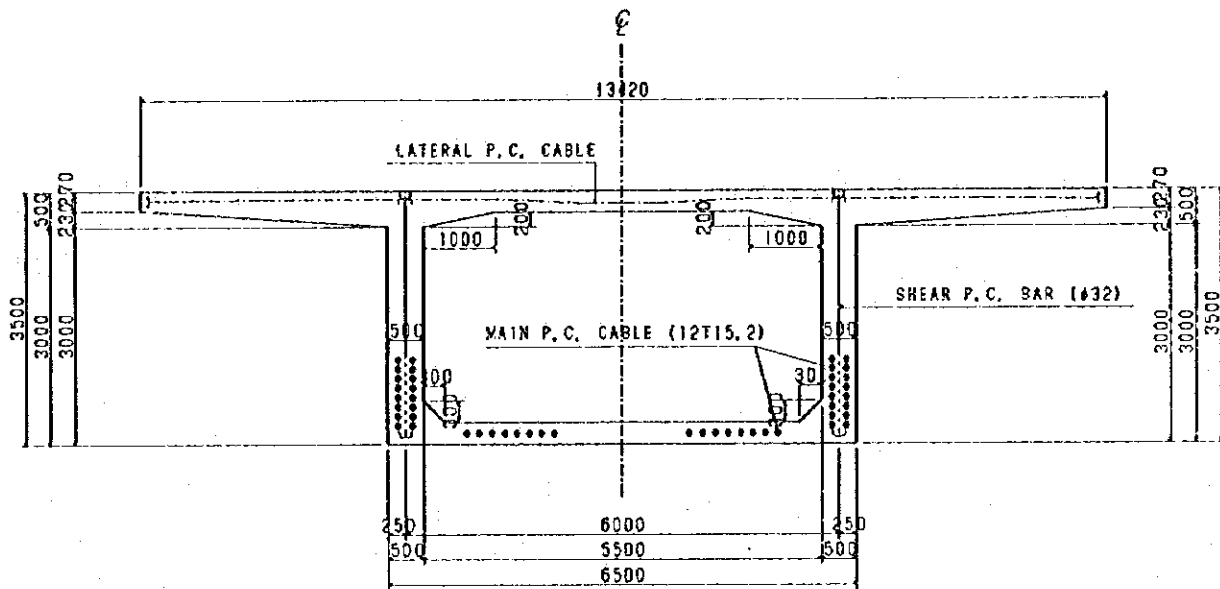


PLAN SCALE: 1/400

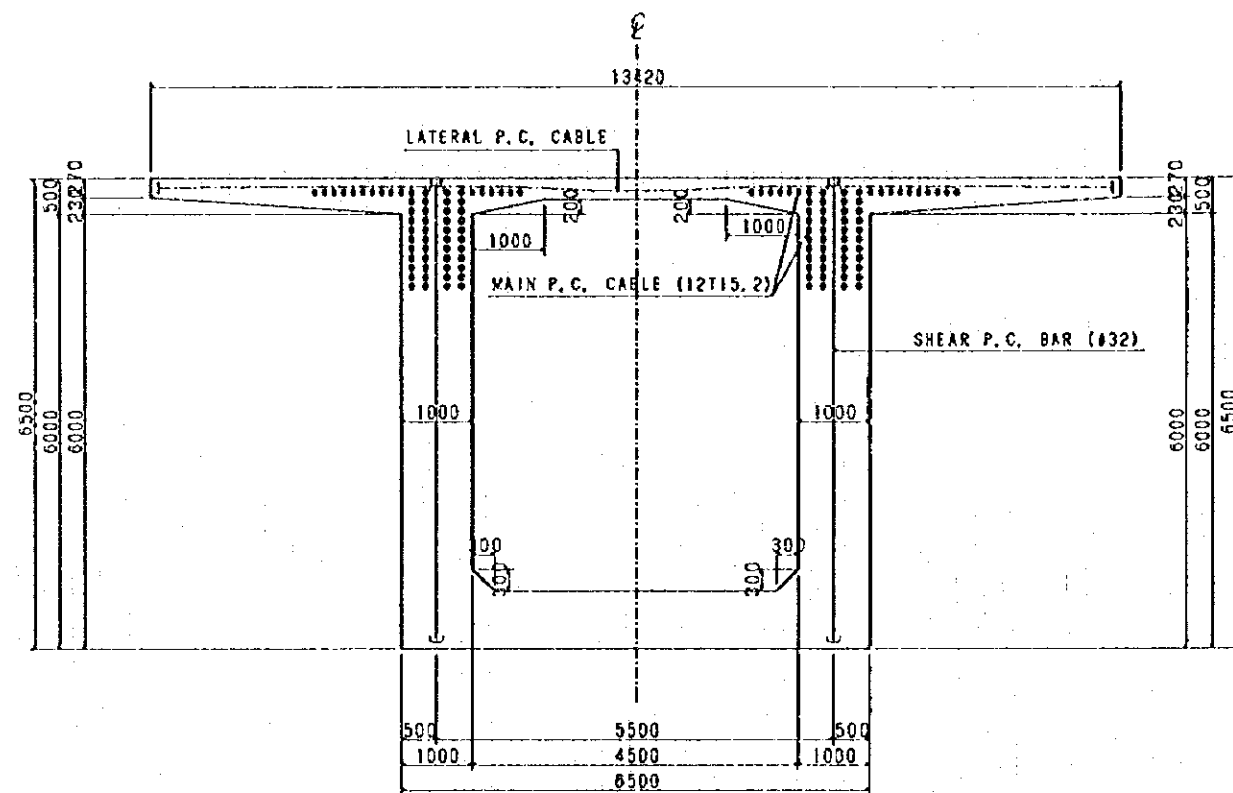


CROSS SECTION SCALE: 1/100

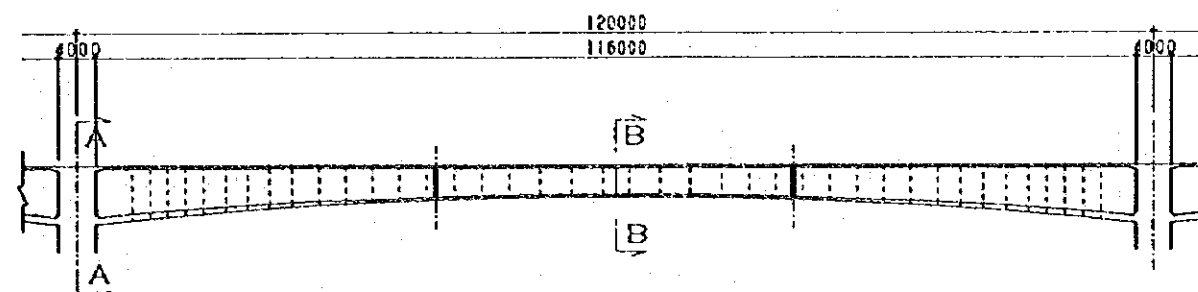




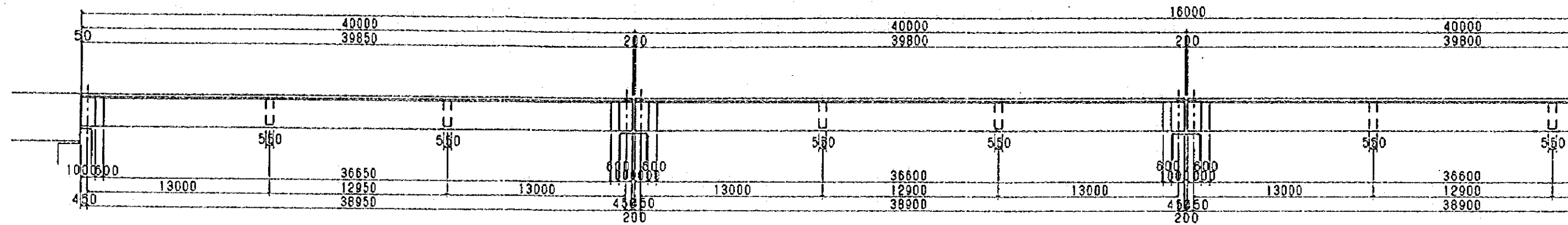
SECTION A SCALE : 1/50



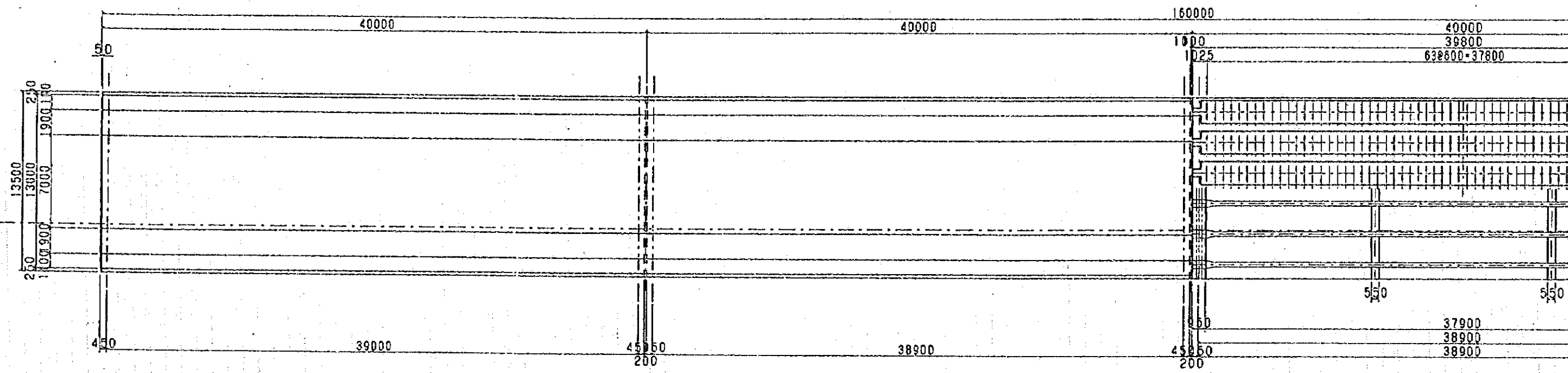
SECTION B SCALE : 1/50



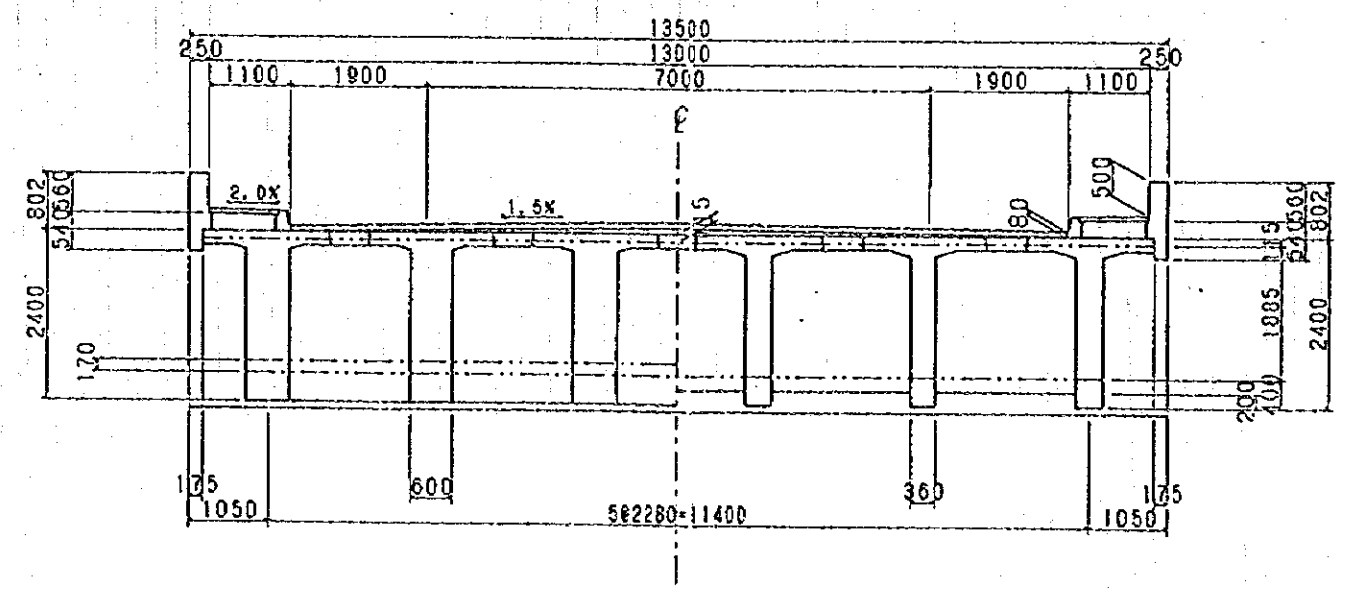
LOCATION MAP OF SECTION A&B SCALE : 1/400



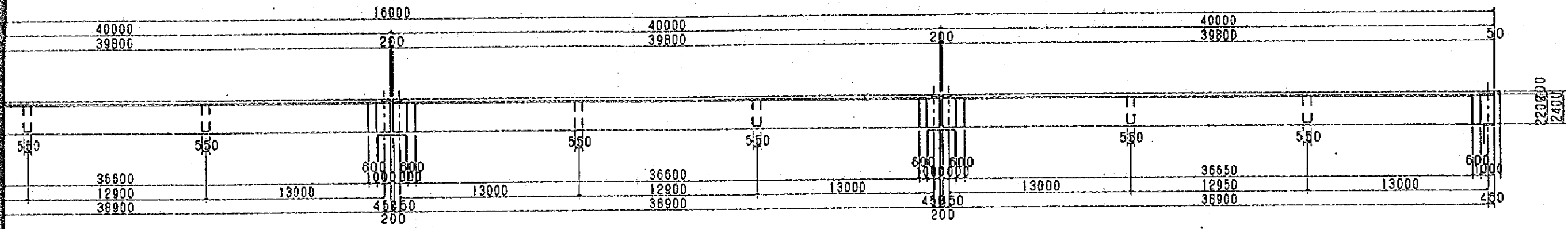
LONGITUDINAL SECTION SCALE: 1/150



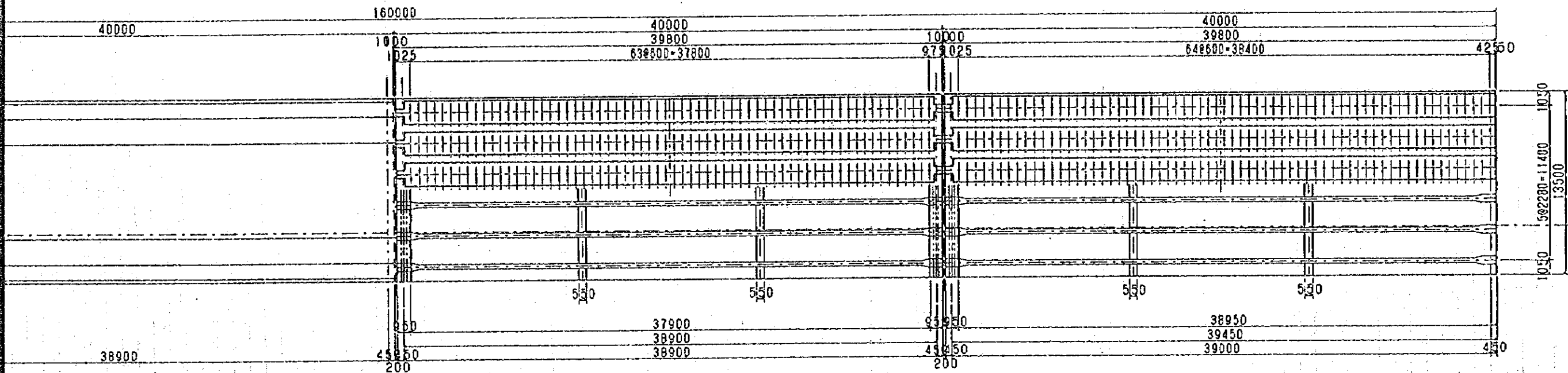
PLAN SCALE: 1/150



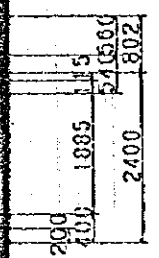
CROSS SECTION SCALE: 1/150



LONGITUDINAL SECTION SCALE: 1/150



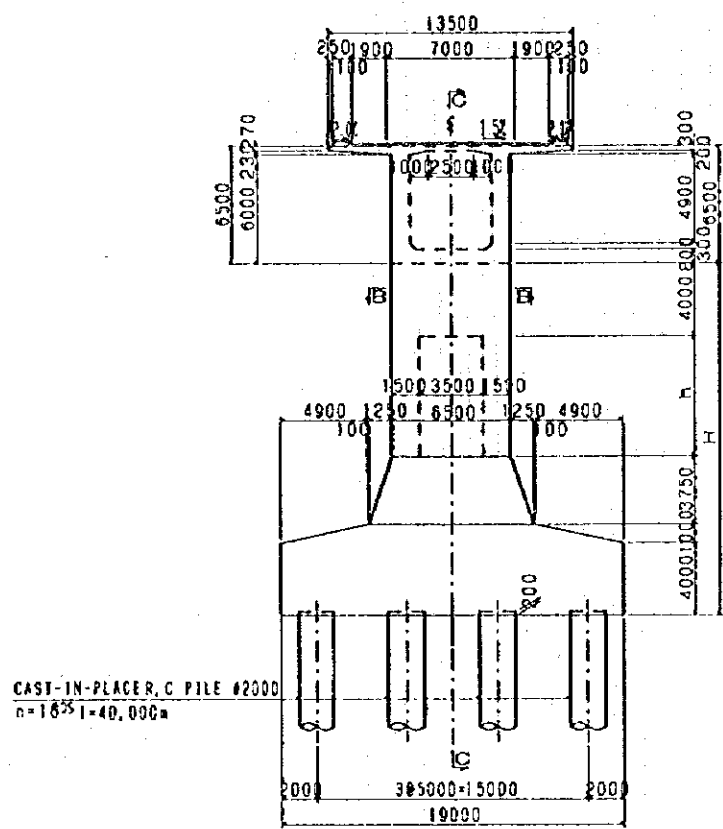
PLAN SCALE: 1/150



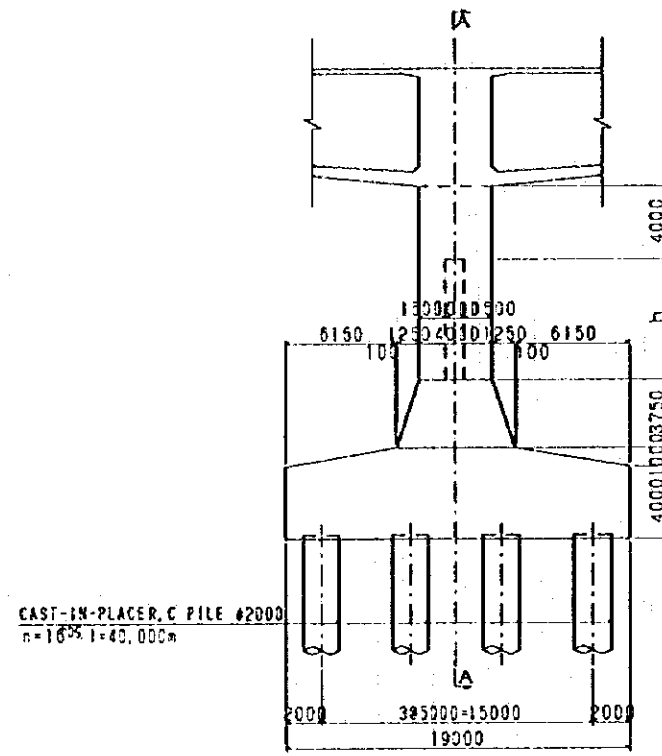
CROSS SECTION SCALE: 1/150

MINISTRY OF PUBLIC WORKS AND TRANSPORT THE KINGDOM OF CAMBODIA	THE FEASIBILITY STUDY ON CONSTRUCTION OF THE MEXONG BRIDGE IN THE KINGDOM OF CAMBODIA	JAPAN INTERNATIONAL COOPERATION AGENCY NIPPON KOEI CO., and PADECO CO., LTD	SUPERSTRUCTURE: P, C T-GIRDER	DATE APRIL, 1998	SEET NO. 4 / 18
---	---	--	-------------------------------	---------------------	--------------------

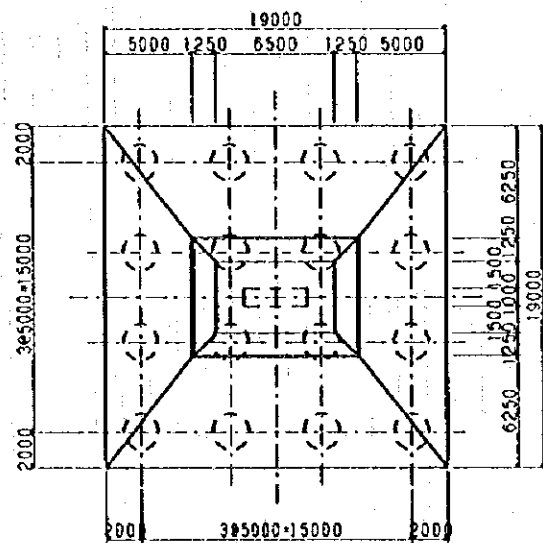




A-A CROSS SECTION SCALE 1:200



C-C CROSS SECTION SCALE 1:200

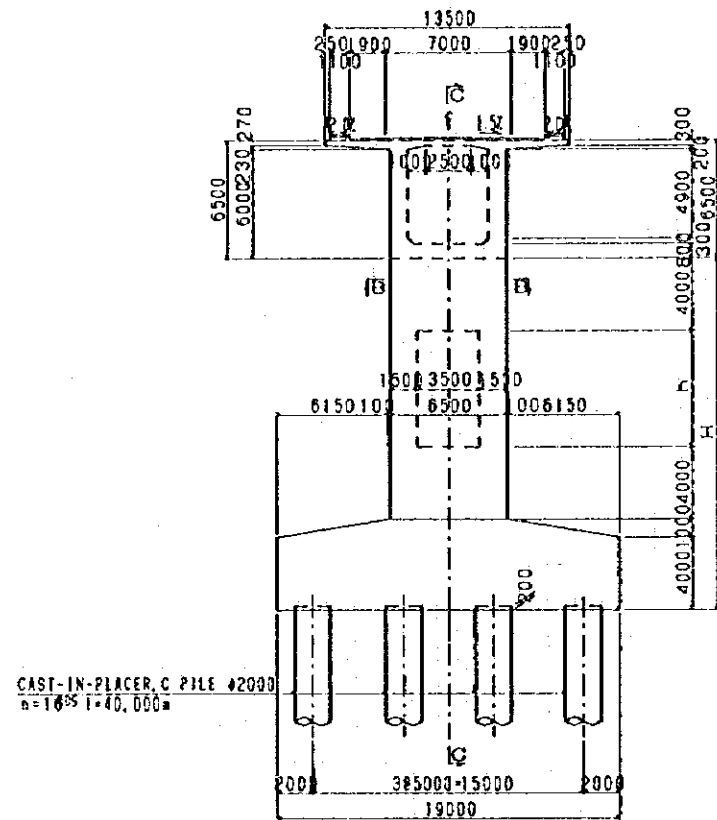


B-B CROSS SECTION SCALE 1:200

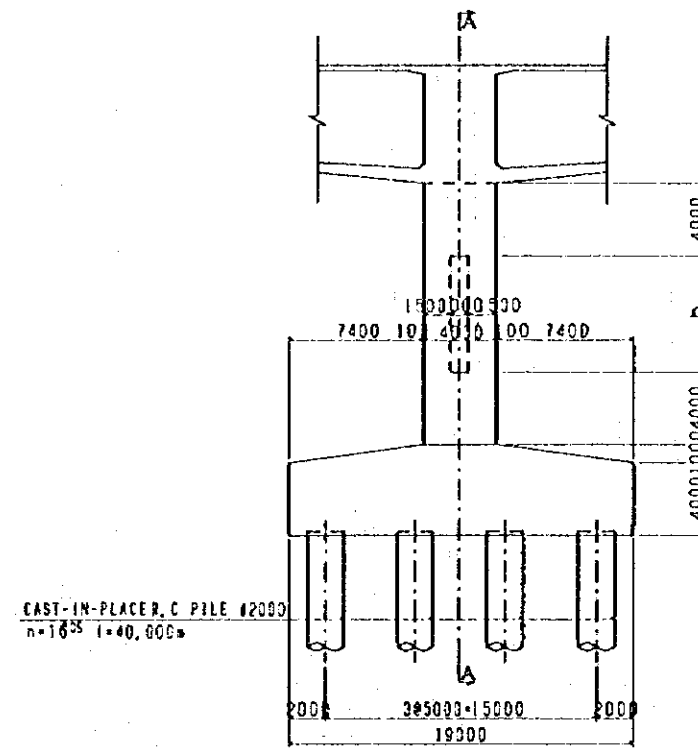
PIER No.	COLOUMN	
	H	h
P6	23709	10959
P7	26301	13551
P12	26301	13551
P13	23709	10959

0 2.5 5.0 7.5 10 15 20M

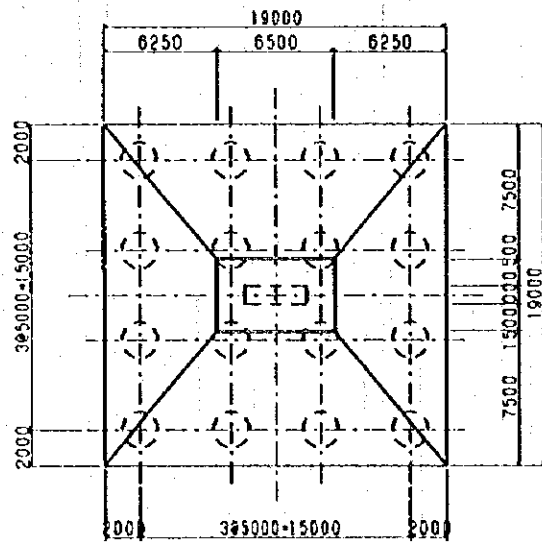
GRAPHIC SCALE 1:200



A-A CROSS SECTION SCALE 1:200



C-C CROSS SECTION SCALE 1:200

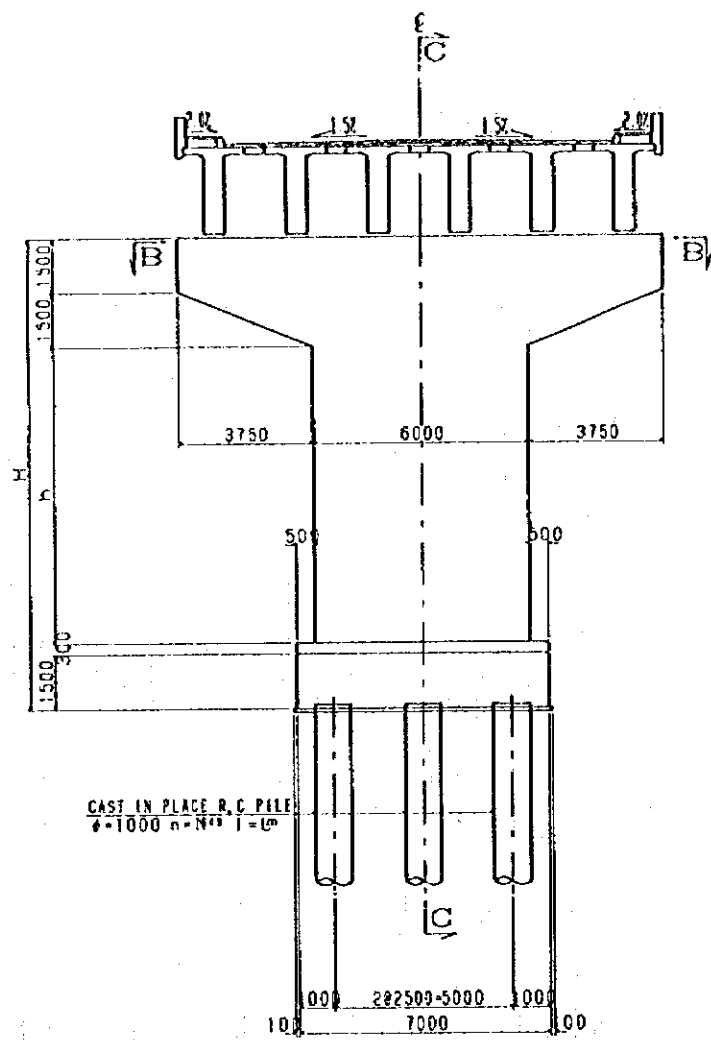


B-B CROSS SECTION SCALE 1:200

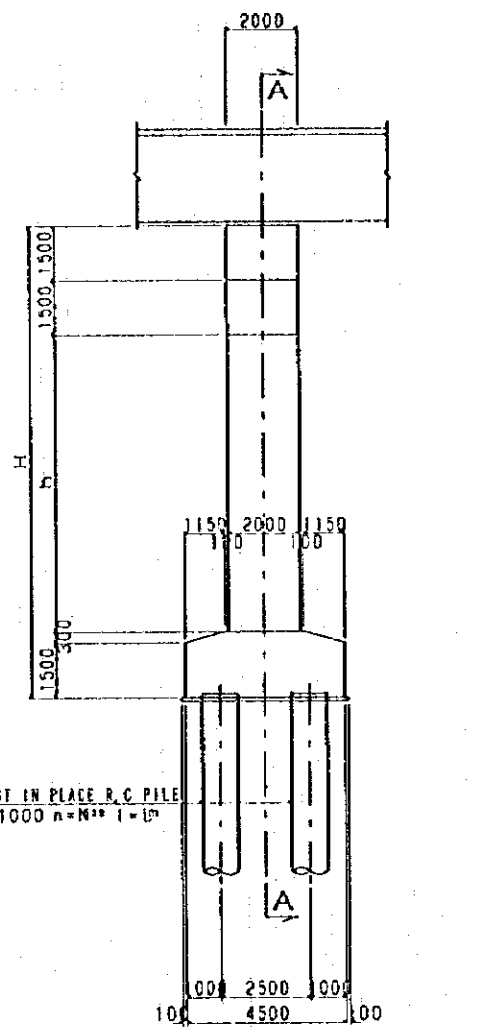
PIER No.	COLUMN	
	H	h
P8	28029	15029
P9	28893	15893
P10	28893	15893
P11	28029	15029

0 2.5 5.0 7.5 10 15 20M

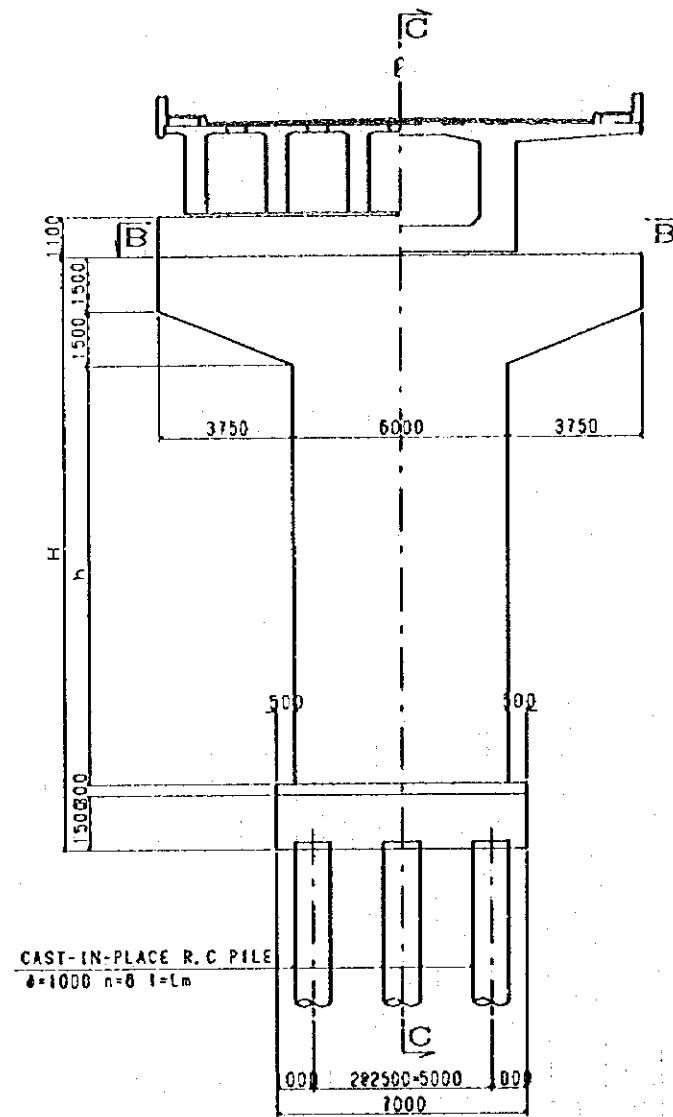
GRAPHIC SCALE 1:200



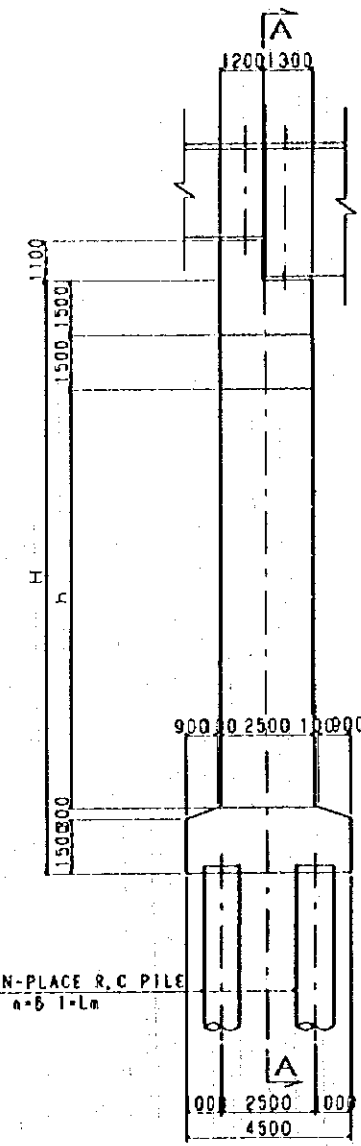
A-A CROSS SECTION SCALE 1:100



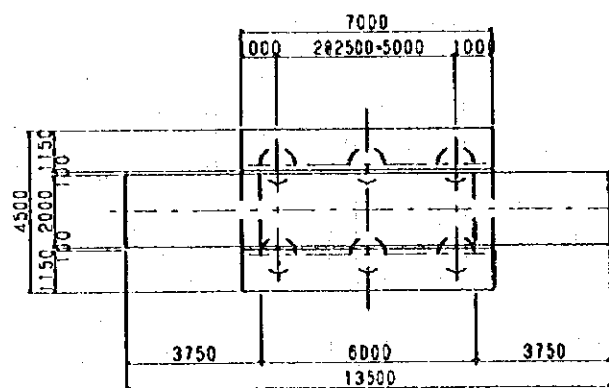
C-C CROSS SECTION SCALE 1:100



P5 (P14) A-A CROSS SECTION SCALE 1:100



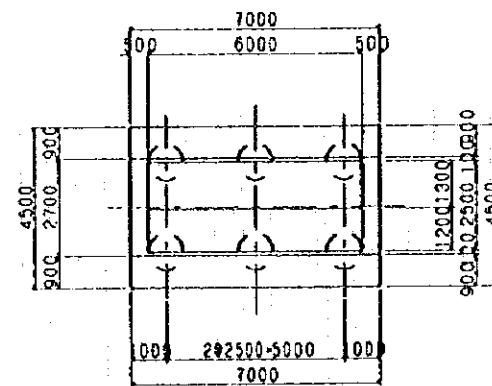
P5 (P14) C-C CROSS SECTION SCALE 1:100



B-B CROSS SECTION SCALE 1:100

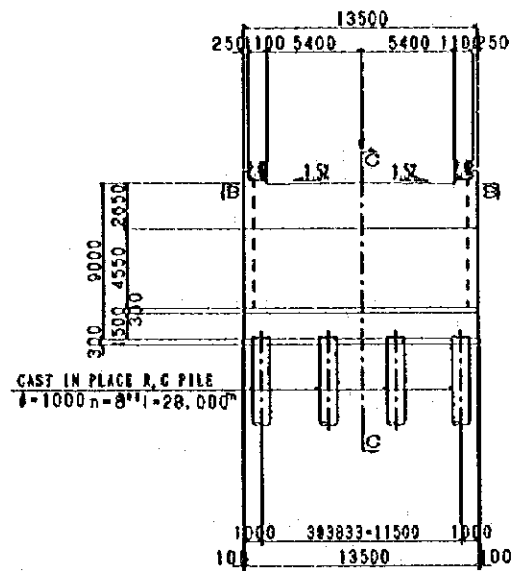
PIER No	COLOUMN		PILE	
	Height H	h	length L	n
P1	8000	3200	28000	6
P2	9000	4200	28000	6
P3	10000	5200	28000	6
P4	13000	8200	28000	6
P15	21000	16200	25000	6
P16	12000	7200	25000	6
P17	11000	6200	25000	6

0 1.25 2.5 3.75 5 7.5 10m  
GRAPHIC SCALE 1:100

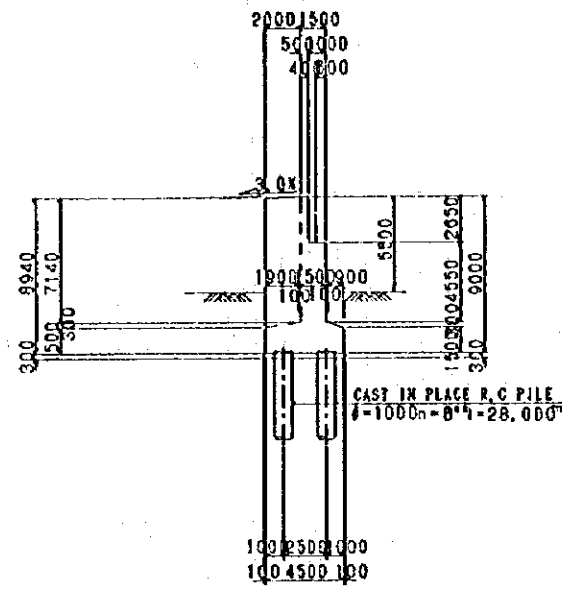


P5 (P14) B-B CROSS SECTION SCALE 1:100

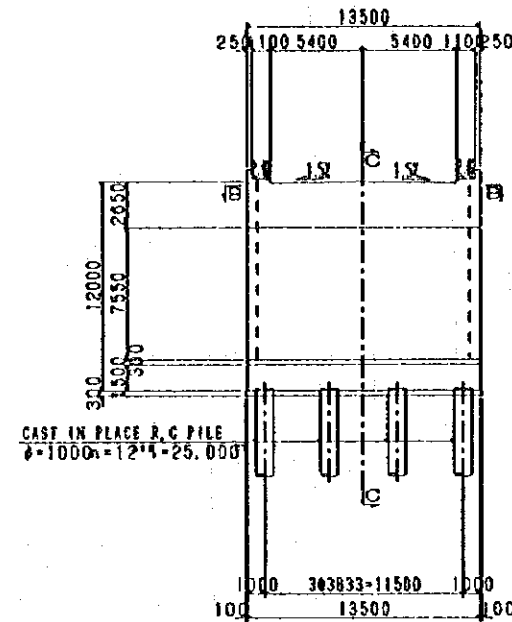
PIER No	COLOUMN		PILE
	Height H	h	length
P4	22000	17200	40000
P14	27000	22200	32000



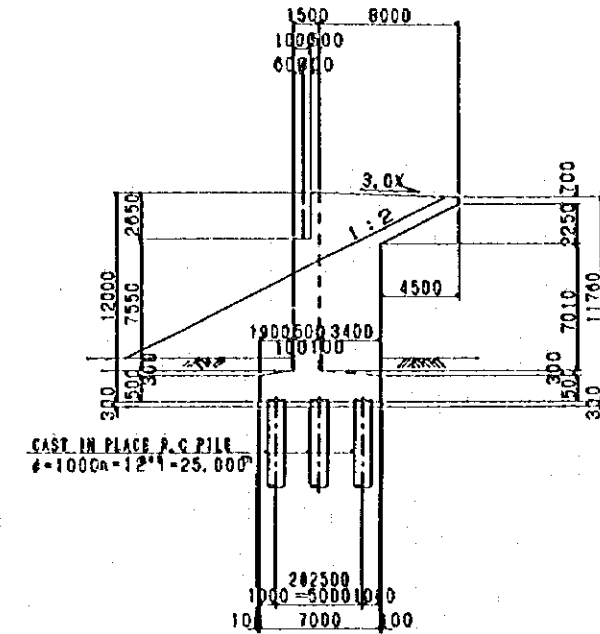
A1 A-A CROSS SECTION SCALE 1:200



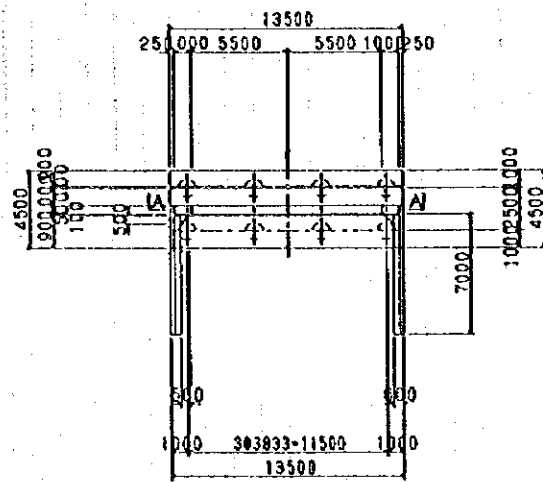
A1 C-C CROSS SECTION SCALE 1:200



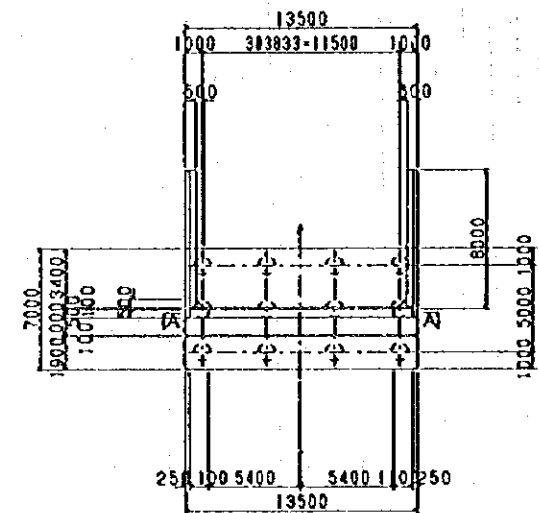
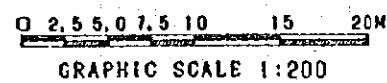
A2 A-A CROSS SECTION SCALE 1:200



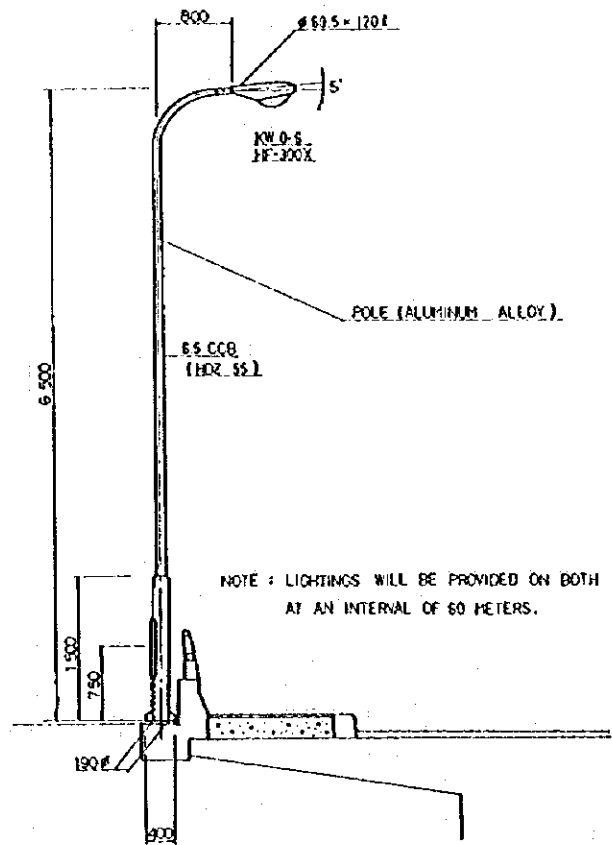
A2 C-C CROSS SECTION SCALE 1:200



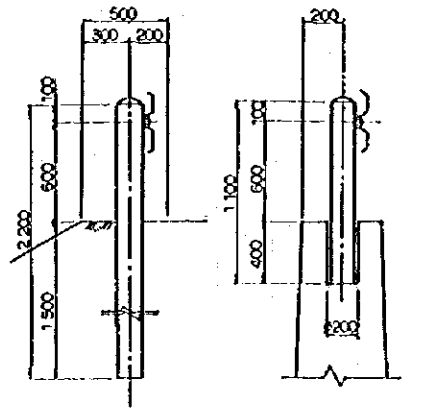
A1 B-B CROSS SECTION SCALE 1:200



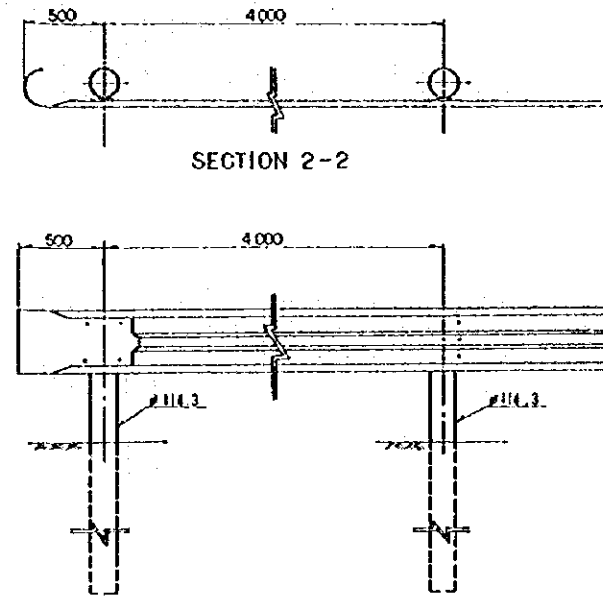
A2 B-B CROSS SECTION SCALE 1:200



FRONT ELEVATION SCALE: 1/100

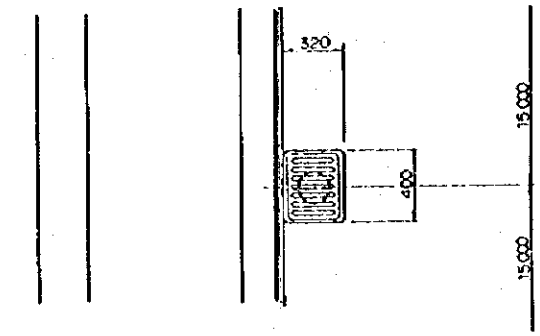


EMBANKMENT RETAININGWALL  
SECTION

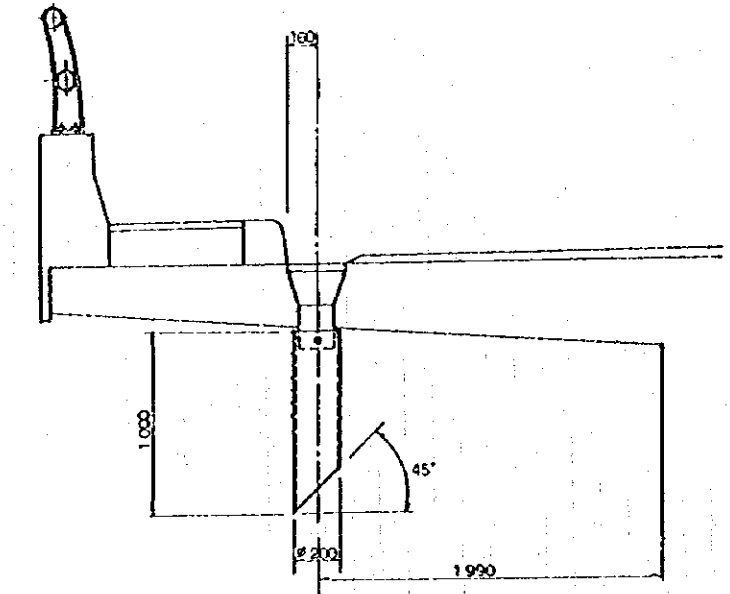


SECTION 2-2  
FRONT ELEVATION

GUARDRAIL  
SCALE: 1/200

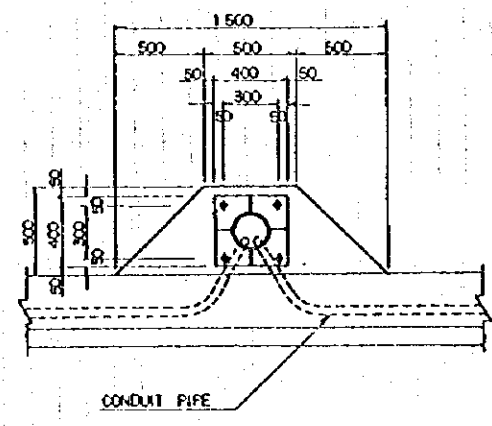


PLAN



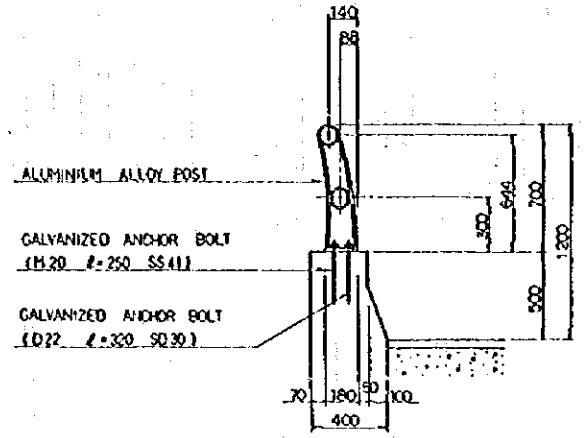
FRONT ELEVATION  
NOTE: DRAIN PIPES WILL BE PROVIDED ON BOTH SIDES, AT AN INTERVAL OF 15 METERS

DRAIN PIPE  
SCALE: 1/40

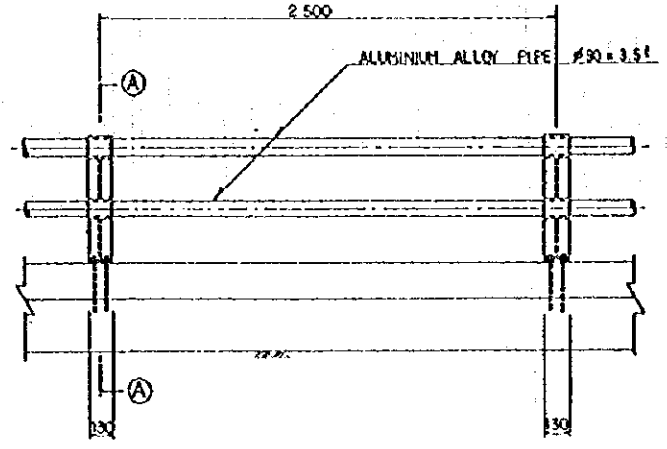


PLAN SCALE: 1/200

LIGHTING



SECTION A-A



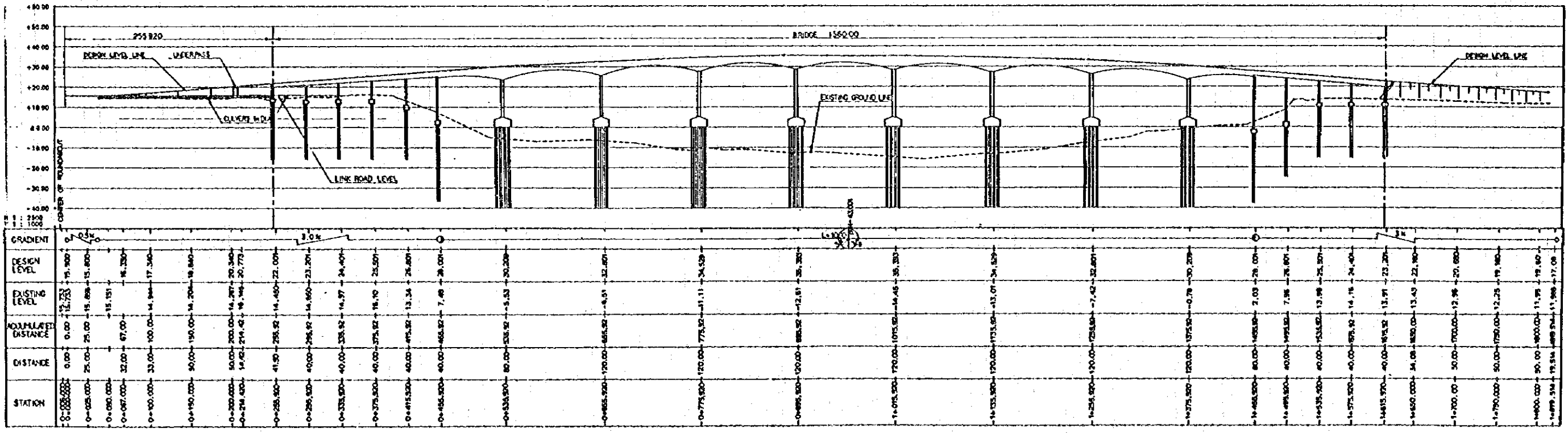
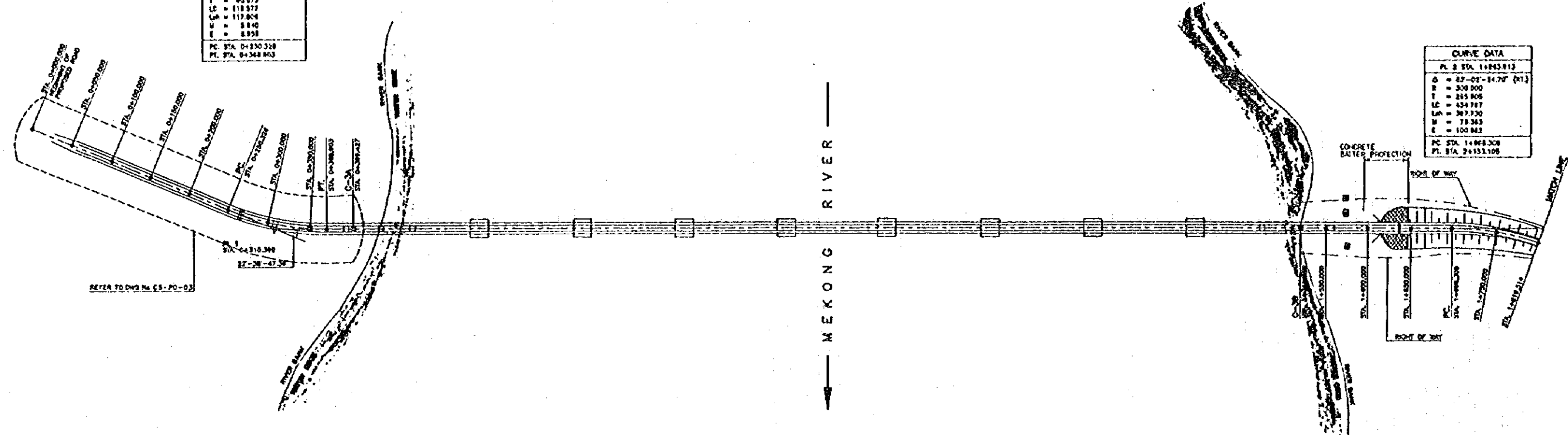
ELEVATION

RAILING  
SCALE: 1/40



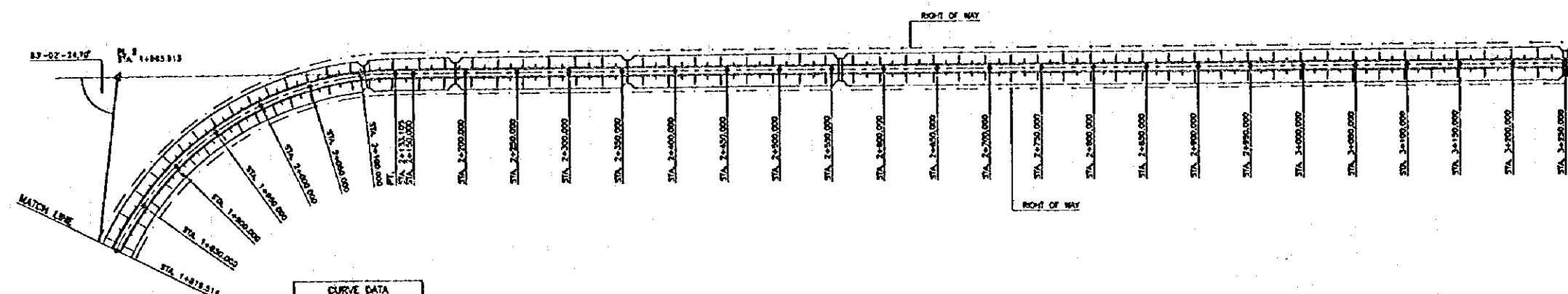
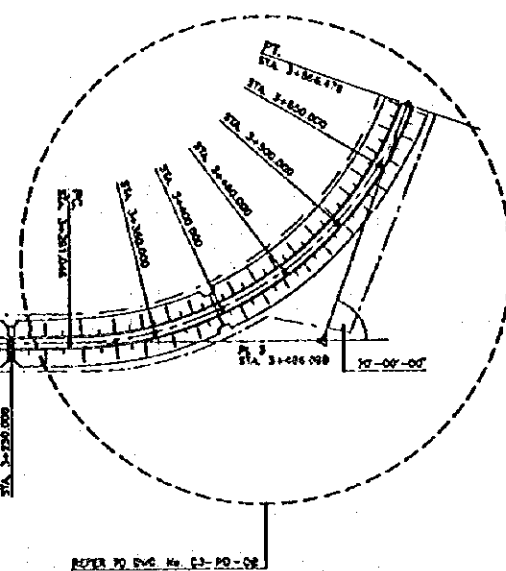
CURVE DATA	
PL 1 STA.	0+310.348
Δ	27-28-47.34" (0.7)
R	300.000
T	80.873
LC	117.877
LS	117.804
E	8.840
E	8.958
PC STA.	0+230.328
PT STA.	0+348.863

CURVE DATA	
PL 2 STA.	1+843.813
Δ	27-02-14.70" (RT)
R	300.000
T	285.808
LC	434.787
LS	297.120
M	73.365
E	100.842
PC STA.	1+468.328
PT STA.	2+133.109

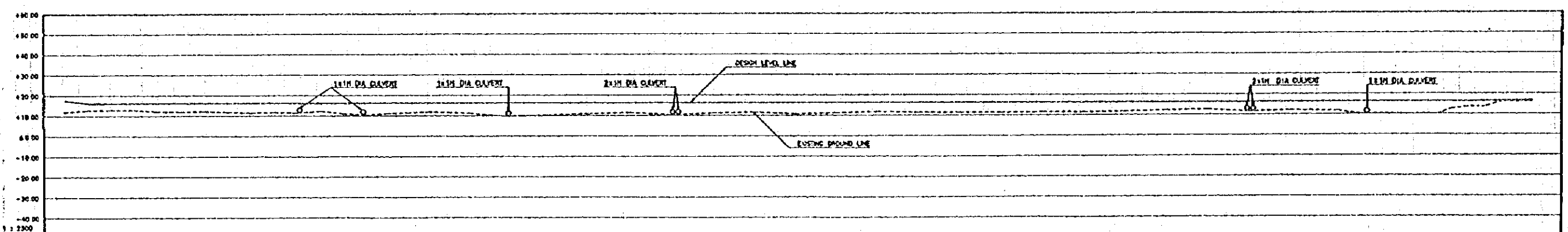




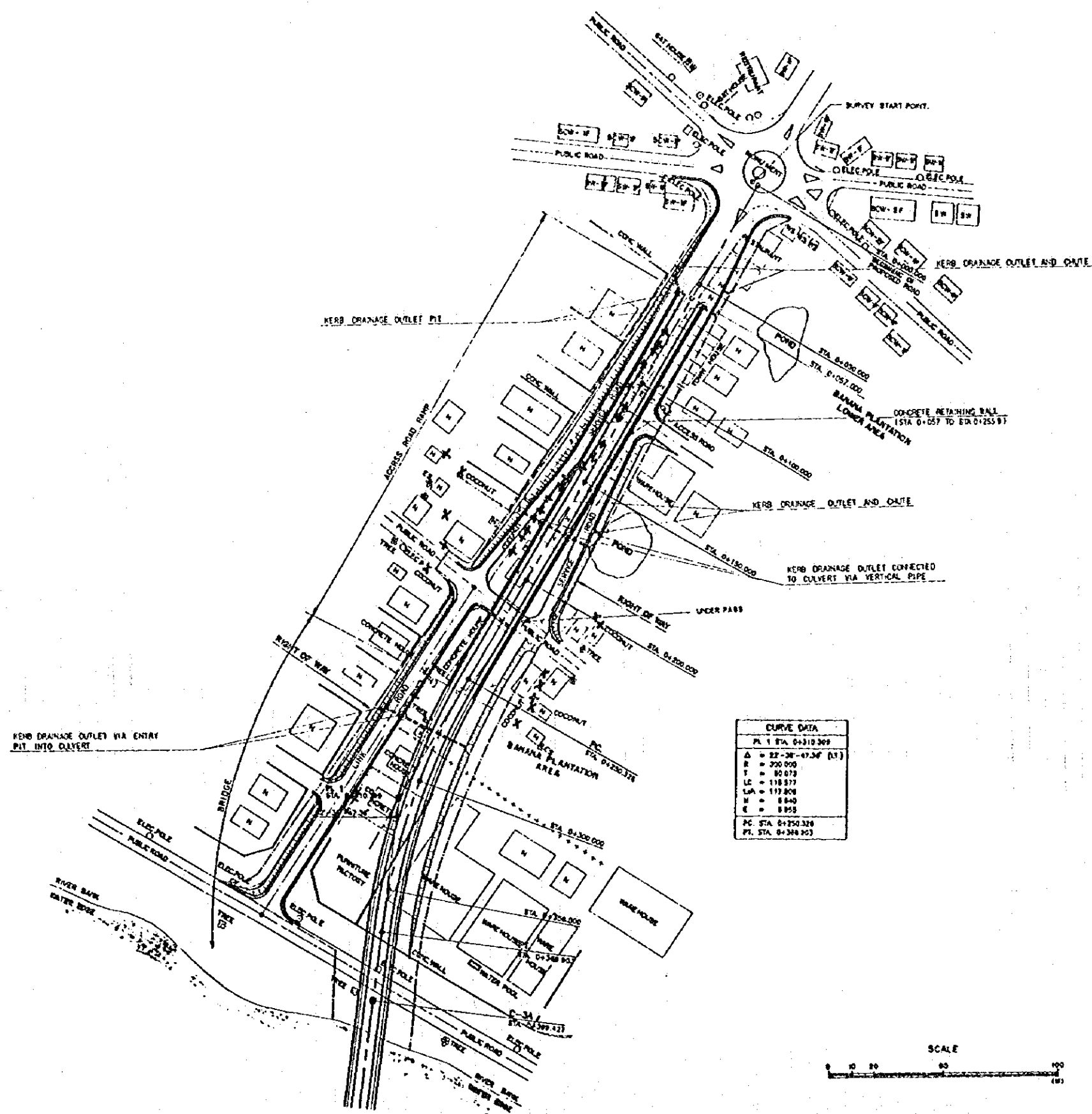
CURVE DATA	
PL 2 STA	1+893.913
Δ	83°-02'-24.78" (RT)
R	300.000
T	253.908
LC	434.787
LM	367.730
M	75.363
E	100.882
PC STA	1+899.308
PT STA	2+153.106



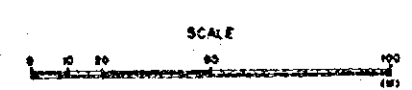
CURVE DATA	
PL 2 STA	1+893.913
Δ	83°-02'-24.78" (RT)
R	300.000
T	253.908
LC	434.787
LM	367.730
M	75.363
E	100.882
PC STA	1+899.308
PT STA	2+153.106



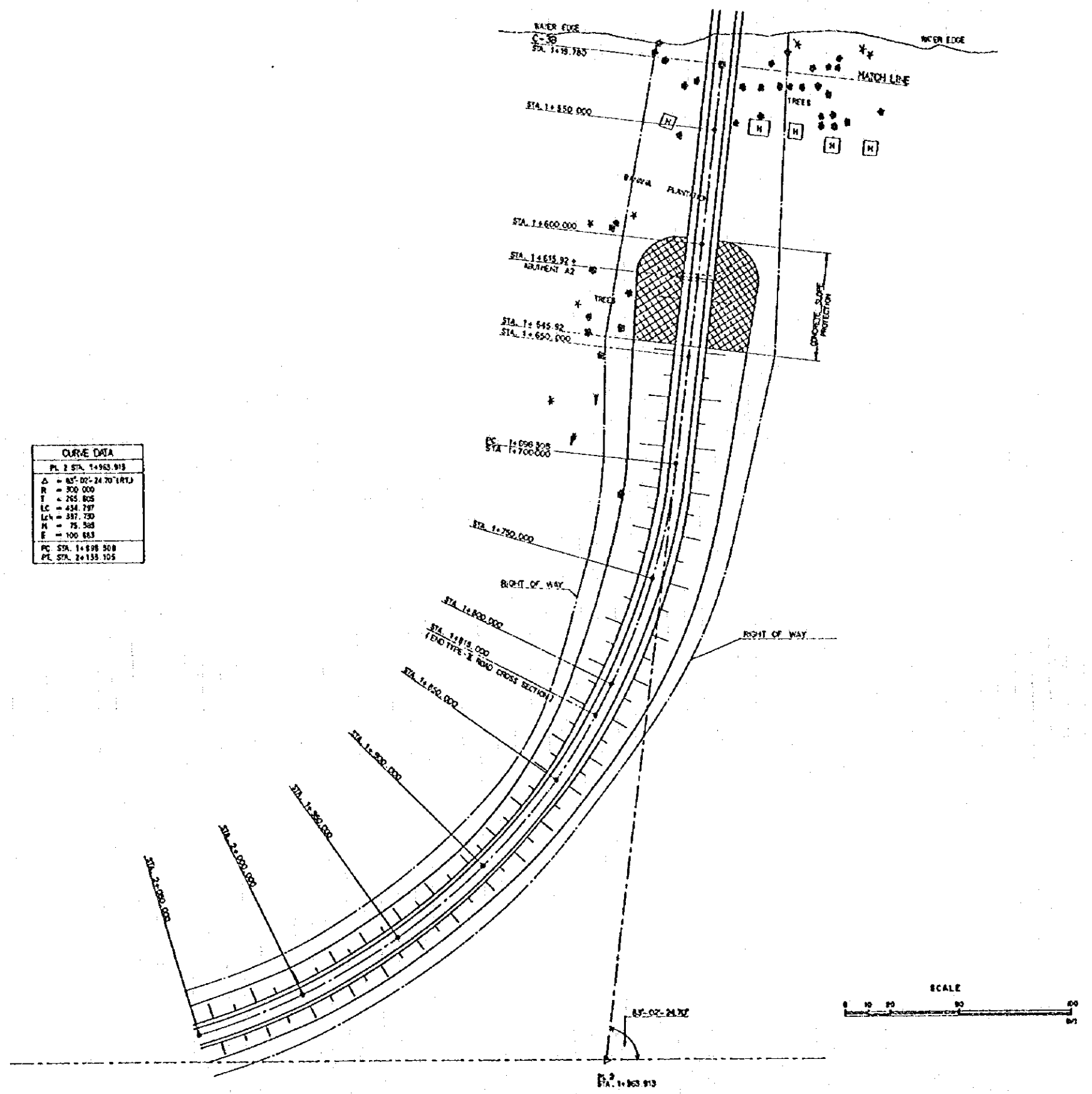
STATION	DISTANCE	ACCUMULATED DISTANCE	EXISTING LEVEL	DESIGN LEVEL	GRADIENT
1+893.913	0.00	0.00	11.28	17.08	0.00
1+900.00	6.08	6.08	12.30	16.40	1.00
1+950.00	56.08	62.16	13.05	16.40	1.00
1+990.00	96.08	102.24	12.50	16.40	1.00
2+000.00	106.08	112.32	12.20	16.40	1.00
2+050.00	156.08	162.40	11.60	16.40	1.00
2+100.00	206.08	212.48	11.70	16.40	1.00
2+150.00	256.08	262.56	11.10	16.40	1.00
2+200.00	306.08	312.64	11.20	16.40	1.00
2+250.00	356.08	362.72	11.35	16.40	1.00
2+300.00	406.08	412.80	11.35	16.40	1.00
2+350.00	456.08	462.88	9.70	16.40	1.00
2+400.00	506.08	512.96	10.60	16.40	1.00
2+450.00	556.08	563.04	11.00	16.40	1.00
2+500.00	606.08	613.12	11.60	16.40	1.00
2+550.00	656.08	663.20	10.45	16.40	1.00
2+600.00	706.08	713.28	11.30	16.40	1.00
2+650.00	756.08	763.36	11.70	16.40	1.00
2+700.00	806.08	813.44	10.85	16.40	1.00
2+750.00	856.08	863.52	11.30	16.40	1.00
2+800.00	906.08	913.60	11.30	16.40	1.00
2+850.00	956.08	963.68	11.50	16.40	1.00
2+900.00	1006.08	1013.76	11.50	16.40	1.00
2+950.00	1056.08	1063.84	11.50	16.40	1.00
3+000.00	1106.08	1113.92	11.80	16.40	1.00
3+050.00	1156.08	1164.00	11.80	16.40	1.00
3+100.00	1206.08	1214.08	11.80	16.40	1.00
3+150.00	1256.08	1264.16	12.40	16.40	1.00
3+200.00	1306.08	1314.24	12.60	16.40	1.00
3+250.00	1356.08	1364.32	11.85	16.40	1.00
3+300.00	1406.08	1414.40	12.30	16.40	1.00
3+350.00	1456.08	1464.48	11.80	16.40	1.00
3+400.00	1506.08	1514.56	10.40	16.40	1.00
3+450.00	1556.08	1564.64	10.10	16.40	1.00
3+500.00	1606.08	1614.72	12.60	16.40	1.00
3+550.00	1656.08	1664.80	15.30	16.40	1.00
3+600.00	1706.08	1714.88	15.50	16.40	1.00



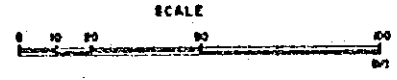
CURVE DATA	
PI. 1	STA. 0+310.309
$\Delta$	$82^{\circ}36'47.36''$ (N)
R	250.000
T	80.073
LC	118.877
LMA	117.808
M	8.840
E	8.953
PC	STA. 0+250.326
PT	STA. 0+348.203

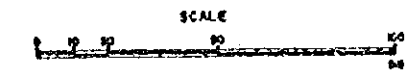
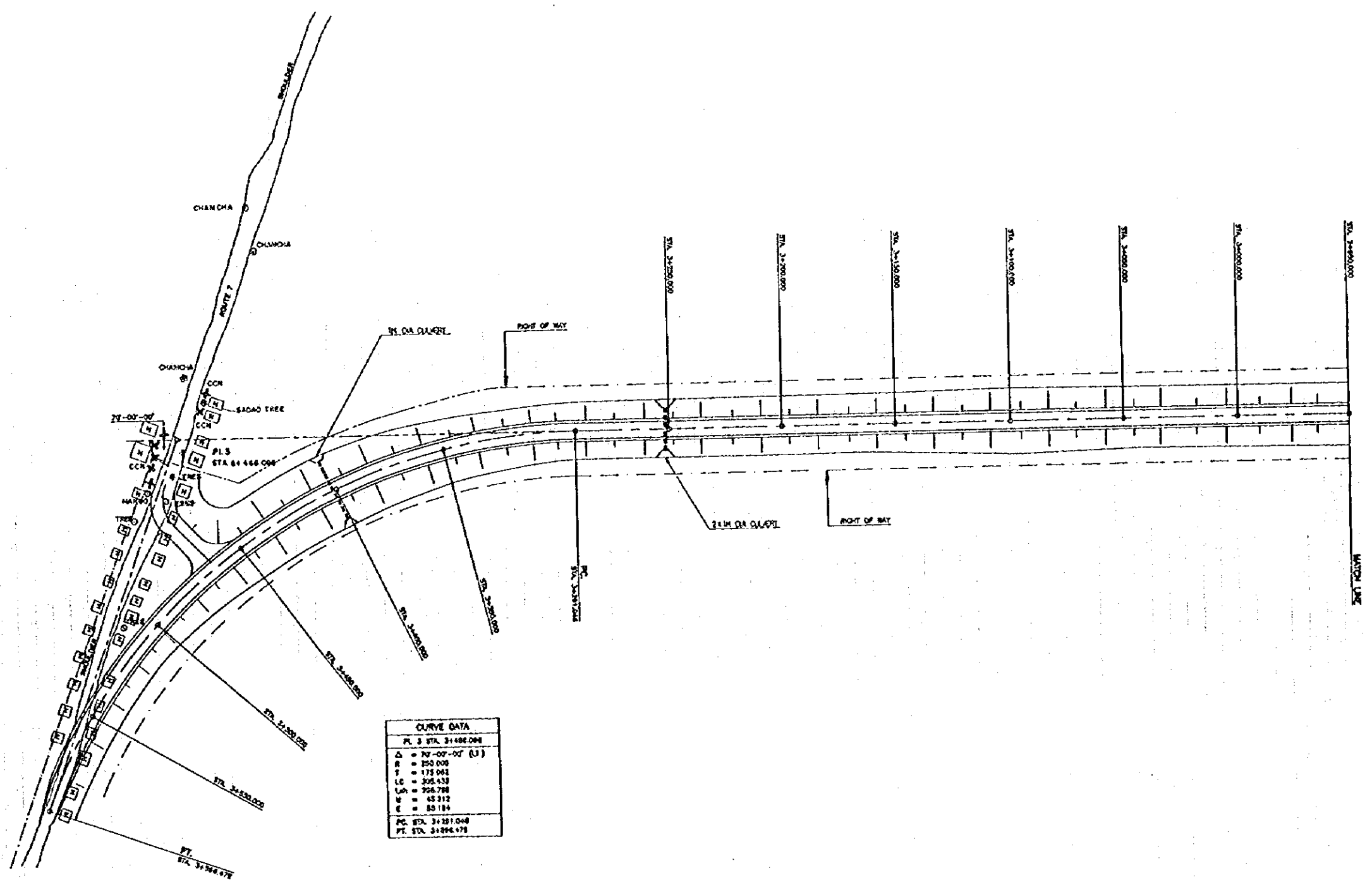
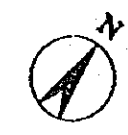




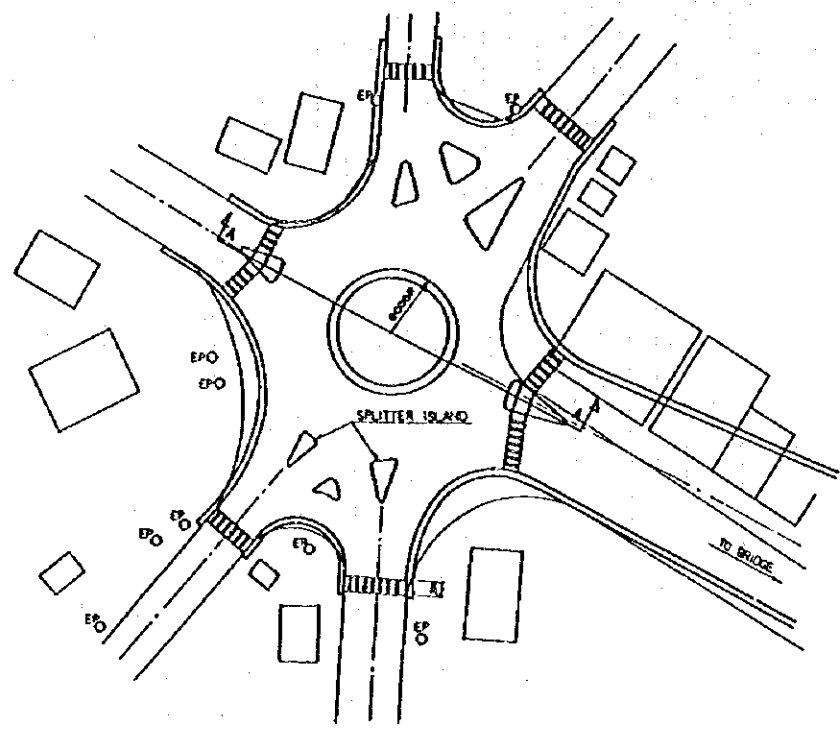


CURVE DATA	
PL. 2 STA.	1+963.913
$\Delta$	$85^{\circ} 00' 24.70''$ (RT)
R	300.000
T	265.825
LC	434.797
LCN	337.730
M	75.568
E	100.863
PC STA.	1+698.308
PL STA.	2+133.105

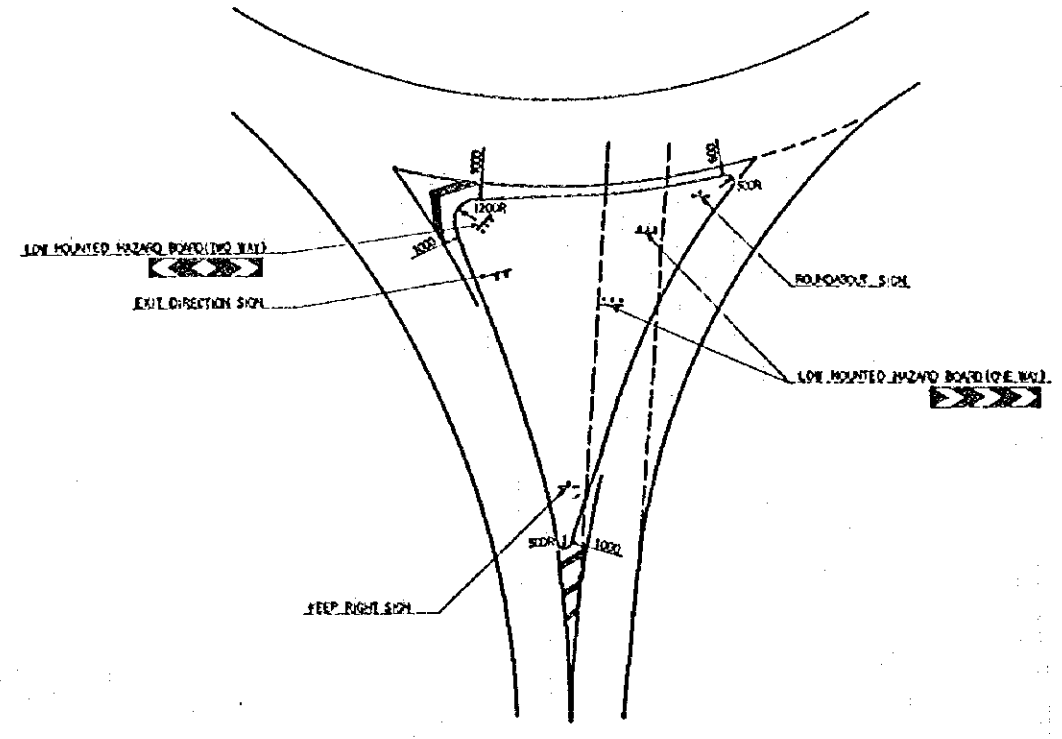




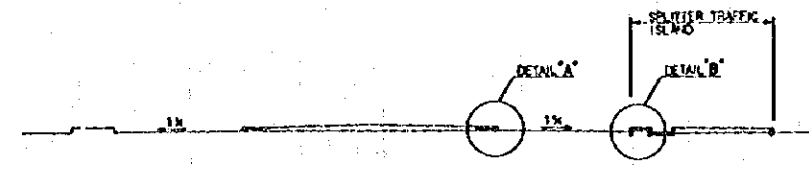
MINISTRY OF PUBLIC WORKS AND TRANSPORT THE KINGDOM OF CAMBODIA	THE FEASIBILITY STUDY ON CONSTRUCTION OF THE MEKONG BRIDGE IN THE KINGDOM OF CAMBODIA	JAPAN INTERNATIONAL COOPERATION AGENCY NIPPON KOEI CO., and PADECO CO., LTD	GENERAL PLAN OF JUNCTION ON THE EAST BANK	SCALE	DATE	SHEET NO.
				1 : 1000	APRIL, 1998	14/18



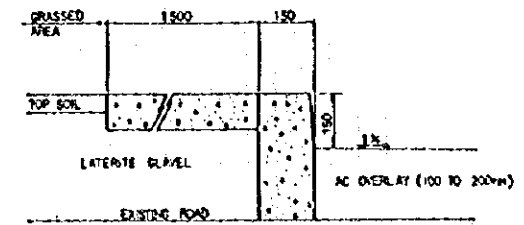
ROUNDABOUT LAYOUT  
SCALE 1:1000



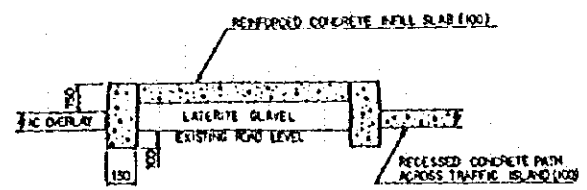
TYPICAL SPLITTER ISLAND LINEMARKING & SIGNS  
(NOT TO SCALE)



SECTION A-A  
SCALE 1:1000

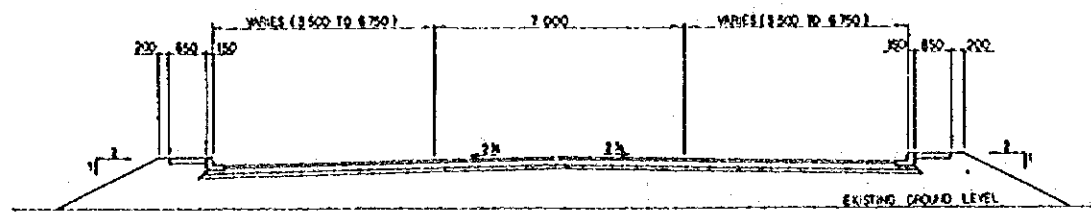


DETAIL A  
SCALE 1:1000

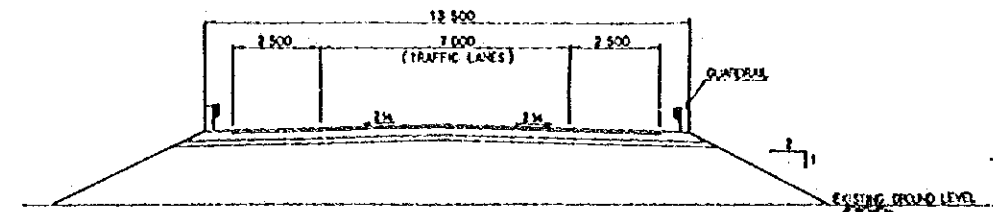


DETAIL B  
SCALE 1:1000

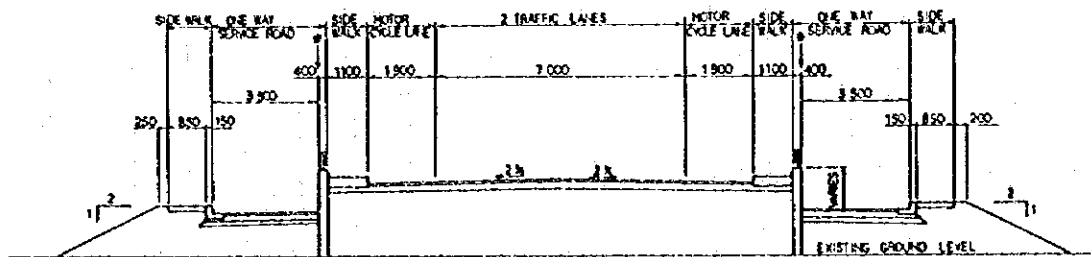
MINISTRY OF PUBLIC WORKS AND TRANSPORT THE KINGDOM OF CAMBODIA	THE FEASIBILITY STUDY ON CONSTRUCTION OF THE MEKONG BRIDGE IN THE KINGDOM OF CAMBODIA	JAPAN INTERNATIONAL COOPERATION AGENCY NIPPON KOEI CO., and PADECO CO., LTD	ROUNDABOUT LAYOUT AND DETAILS	SCALE	DATE	SHEET NO.
				AS SHOWN	APRIL, 1996	15/18



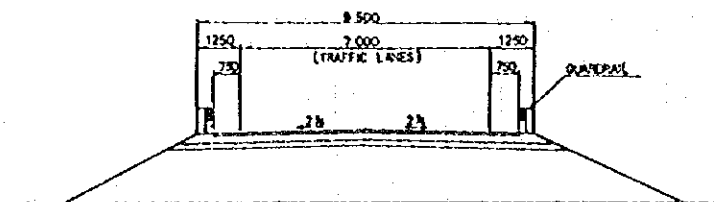
TYPICAL ROAD SECTION STA. 0+020 TO STA. 0+057  
SCALE 1:1000



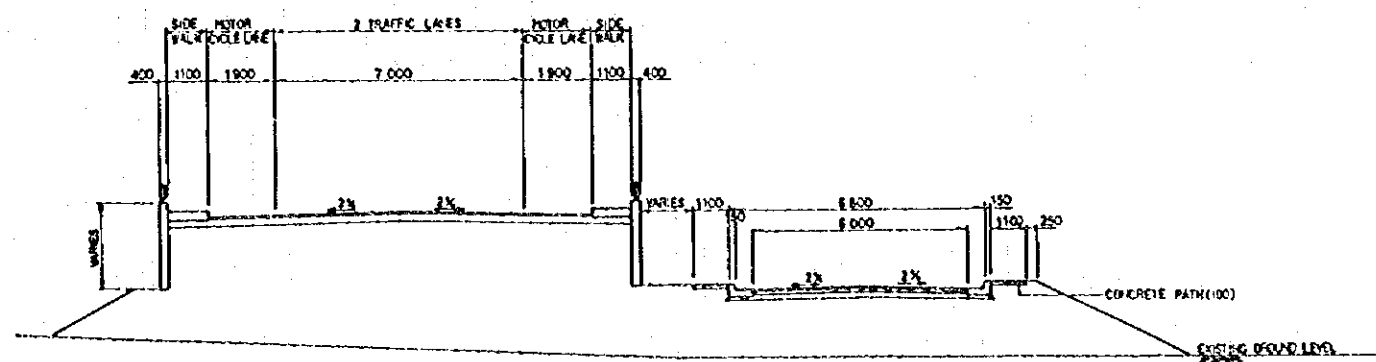
TYPICAL ROAD CROSS SECTION STA. 1+615.82 TO STA. 1+615.82  
NOTE: THE ROAD TAPERES DOWN TO THE WIDTH SHOWN BELOW BETWEEN STA. 1+615.82 & STA. 1+655.82  
SCALE 1:1000



TYPICAL ROAD SECTION STA. 0+057 TO STA. 0+214  
SCALE 1:1000  
NOTE: \* DENOTES THE LOCATION OF A MEDIAN (VARIABLE WIDTH) WHICH IS TO BE PROVIDED FROM STA. 0+167 TO STA. 0+214 BETWEEN THE ELEVATED ROAD AND THE SERVICE ROADS



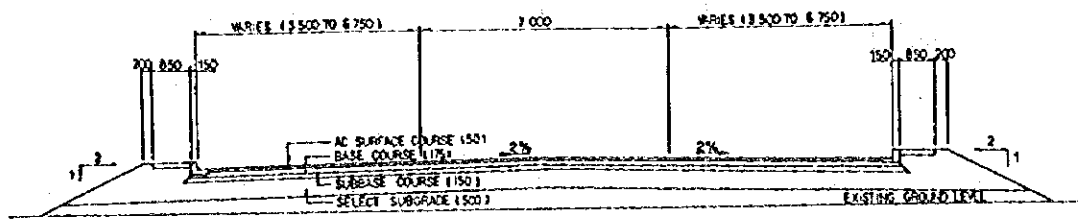
TYPICAL ROAD CROSS SECTION STA. 1+655.82 TO STA. 3+596.5  
SCALE 1:1000



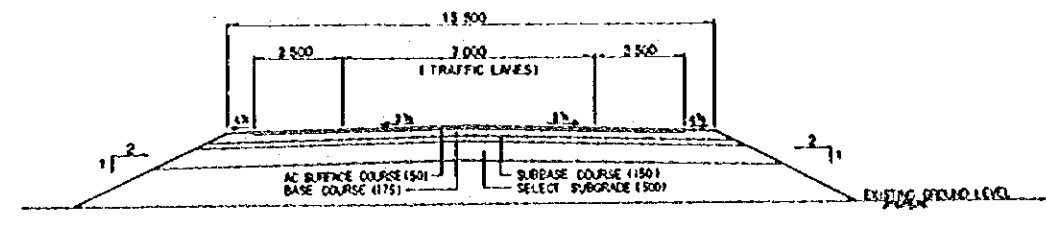
TYPICAL ROAD SECTION STA. 0+214 TO STA. 0+255.82  
SCALE 1:1000

NOTE: ALL DIMENSIONS ARE IN MM UNLESS OTHERWISE STATED

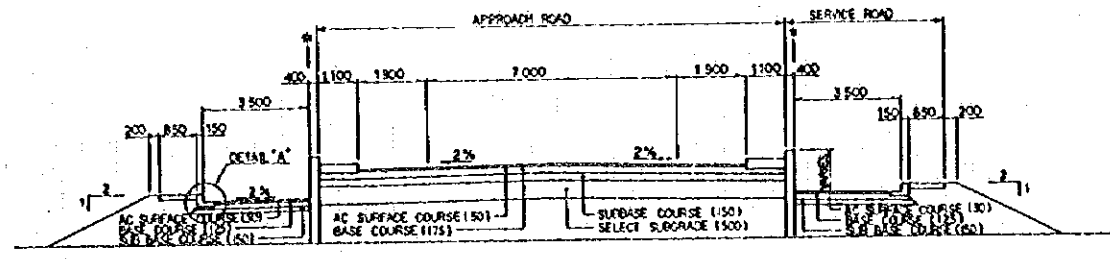
MINISTRY OF PUBLIC WORKS AND TRANSPORT THE KINGDOM OF CAMBODIA	THE FEASIBILITY STUDY ON CONSTRUCTION OF THE MEKONG BRIDGE IN THE KINGDOM OF CAMBODIA	JAPAN INTERNATIONAL COOPERATION AGENCY NIPPON KOEI CO., and PADECO CO., LTD	TYPICAL ROAD CROSS SECTIONS		
			SCALE AS SHOWN	DATE APRIL, 1996	SHEET NO. 16/18



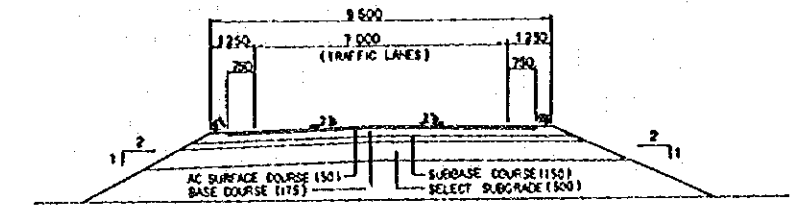
TYPICAL PAVEMENT SECTION—WEST BANK APPROACH ROAD STA. 0+010 TO STA. 0+057  
SCALE 1:100



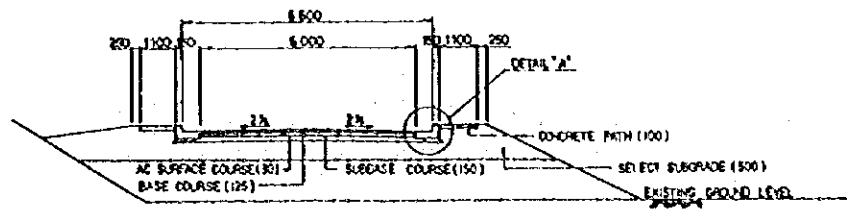
TYPICAL PAVEMENT CROSS SECTION—EAST BANK APPROACH ROAD  
0-200M FROM END OF VIADUCT (TYPE-I)  
SCALE 1:100



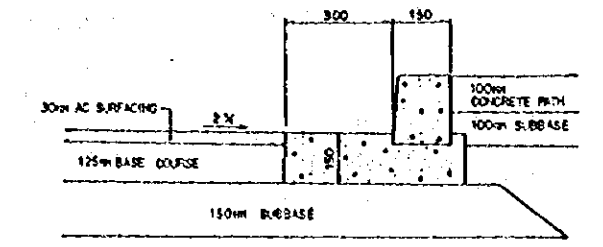
TYPICAL PAVEMENT SECTION—WEST BANK (APPROACH+SERVICE ROADS)  
STA. 0+051 TO STA. 0+214  
NOTE: \* DENOTES THE LOCATION OF A MEDIAN (VARIABLE WIDTH) TO BE PROVIDED FROM STA. 0+147 TO STA. 0+214  
SCALE 1:100



TYPICAL PAVEMENT CROSS SECTION—EAST BANK APPROACH ROAD  
200+M FROM END OF VIADUCT (TYPE-II)  
SCALE 1:100



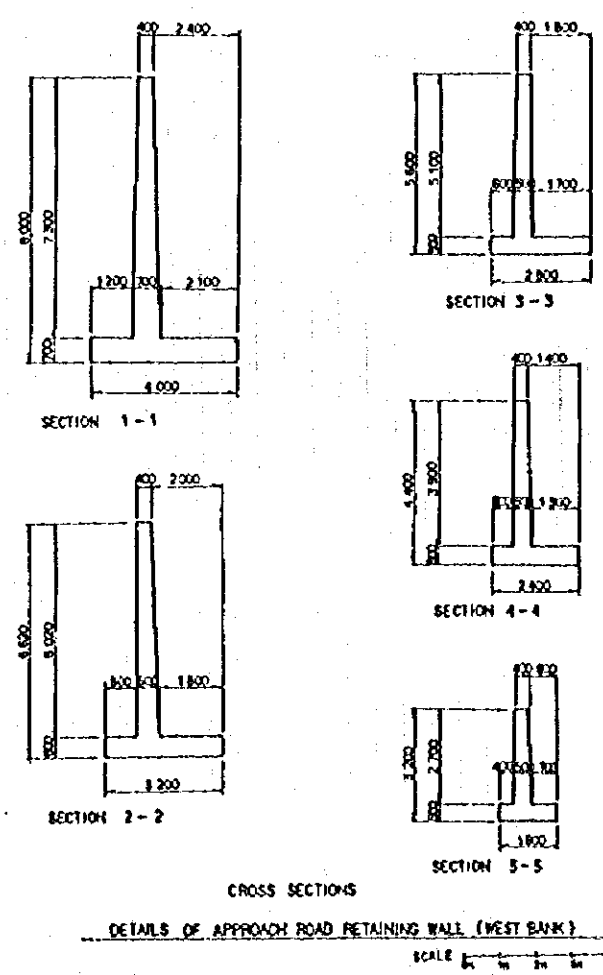
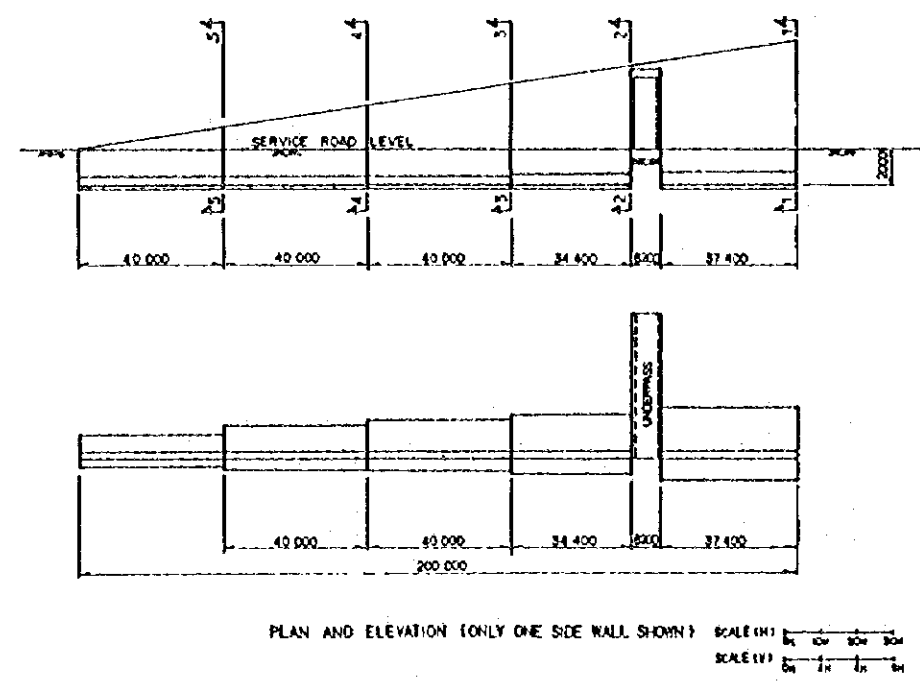
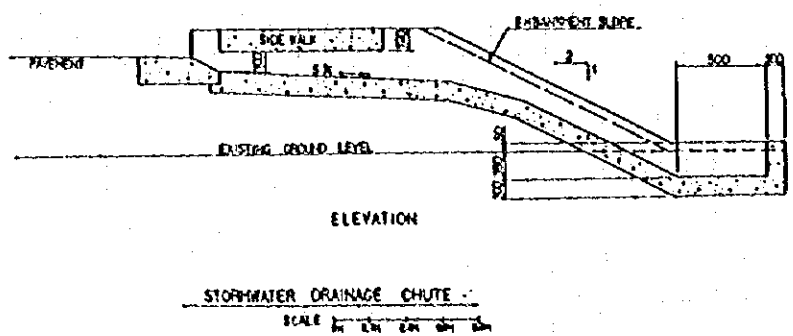
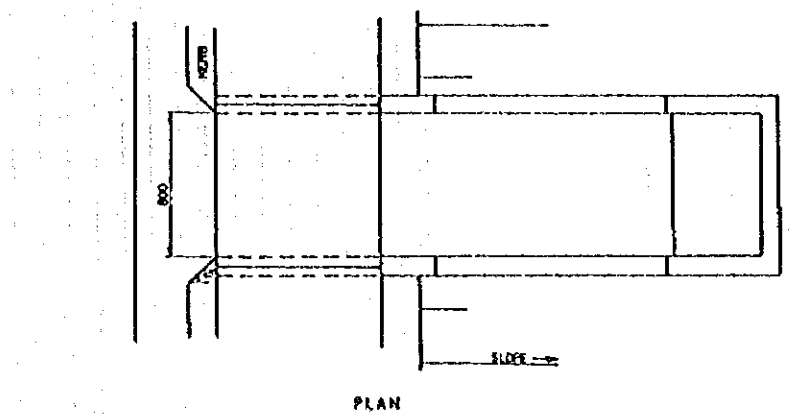
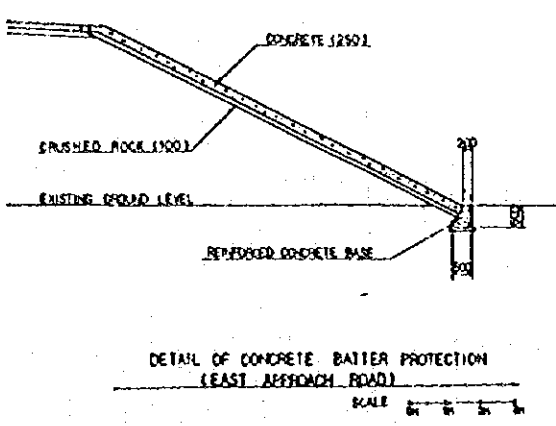
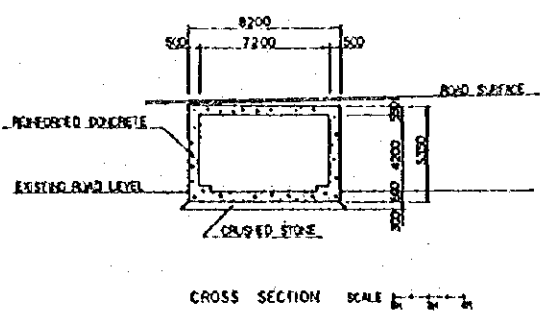
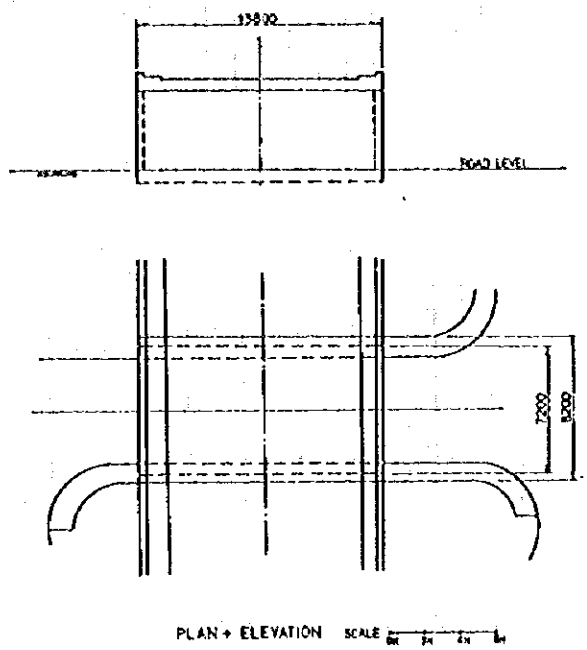
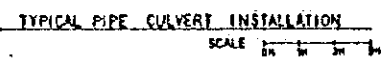
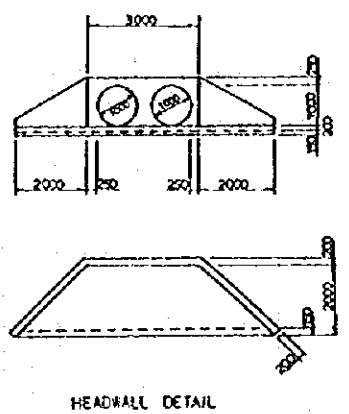
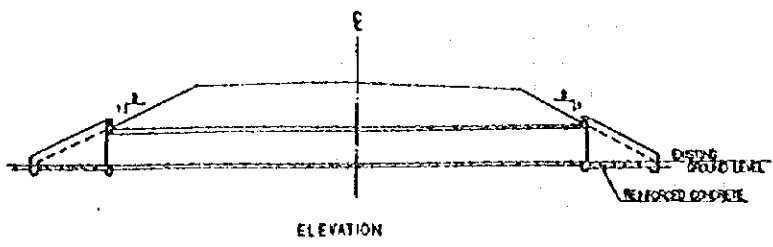
ROAD AND PAVEMENT CROSS SECTION WEST BANK LINK ROAD  
SCALE 1:100



DETAIL "A" SCALE 1:100

NOTE: ALL DIMENSIONS ARE IN MM UNLESS OTHERWISE STATED

MINISTRY OF PUBLIC WORKS AND TRANSPORT THE KINGDOM OF CAMBODIA	THE FEASIBILITY STUDY ON CONSTRUCTION OF THE MEKONG BRIDGE IN THE KINGDOM OF CAMBODIA	JAPAN INTERNATIONAL COOPERATION AGENCY NIPPON KOEI CO., and PADECO CO., LTD	ROAD PAVEMENT LAYOUT	SCALE	DATE	SHEET NO.
				AS SHOWN	APRIL, 1996	17/18



NOTE: UNLESS OTHERWISE SHOWN ALL DIMENSIONS ARE IN MILLIMETERS

MINISTRY OF PUBLIC WORKS AND TRANSPORT THE KINGDOM OF CAMBODIA	THE FEASIBILITY STUDY ON CONSTRUCTION OF THE MEKONG BRIDGE IN THE KINGDOM OF CAMBODIA	JAPAN INTERNATIONAL COOPERATION AGENCY NIPPON KOEI CO., and PADECO CO., LTD	DETAILS OF ROAD STRUCTURES	SCALE AS SHOWN	DATE APRIL, 1996	SHEET NO. 18/18
---	---	--	----------------------------	-------------------	---------------------	--------------------

[The page contains extremely faint and illegible text, likely bleed-through from the reverse side of the document. The text is too light to transcribe accurately.]





JICA

