

JAPAN INTERNATIONAL COOPERATION AGENCY

No. 02

FOLLOW-UP STUDY
OF
DEVELOPMENT STUDIES

MARCH 1996

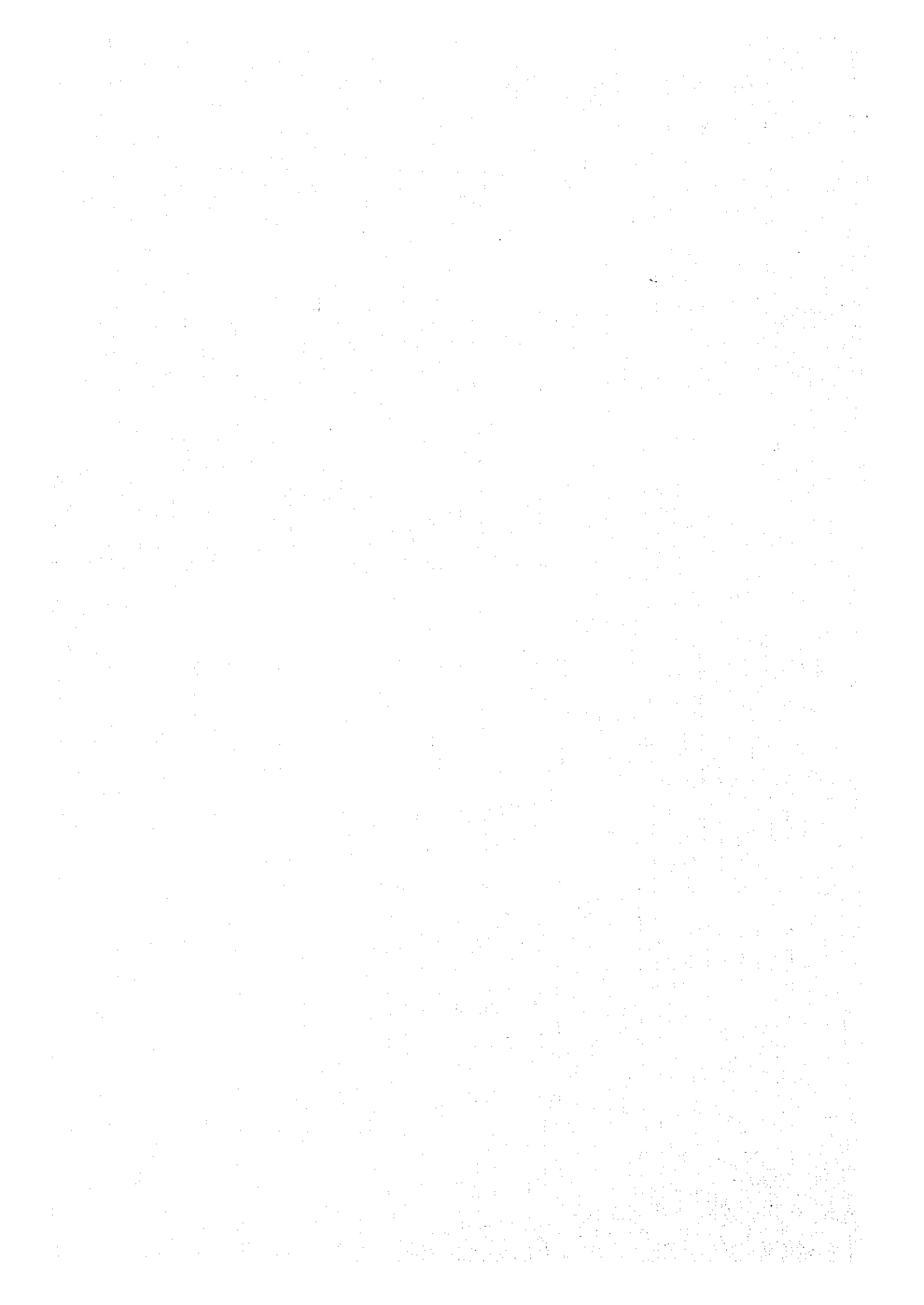
JICA LIBRARY

J 1129547 (4)

JAPAN INTERNATIONAL COOPERATION CENTER
INTERNATIONAL DEVELOPMENT CENTER OF JAPAN

S S P
J R
96-047

LIBRARY





1129547(4)

JAPAN INTERNATIONAL COOPERATION AGENCY

FOLLOW-UP STUDY
OF
DEVELOPMENT STUDIES

MARCH 1996

JAPAN INTERNATIONAL COOPERATION CENTER
INTERNATIONAL DEVELOPMENT CENTER OF JAPAN

CONTENTS

CHAPTER 1. OUTLINE OF THE STUDY

1. Background and Purpose of the Follow-up Study	1
2. Methods Used in the Follow-up Study	2
3. Criteria for Classification of Present Status of Use of Study Results	8
4. Related Information	11

CHAPTER 2. A FULL VIEW OF COMPLETED DEVELOPMENT STUDIES

1. Classification of Development Studies by Year of Completion	11
2. Classification of Development Studies by Region	12
3. Classification of Development Studies by Country	13
4. Distribution of the Number of Studies by Type of Study	16
5. Distribution of the Number of Studies by Sector	17

CHAPTER 3 THE PRESENT STATUS OF THE UTILIZATION OF STUDY RESULTS

1. Introduction	22
2. Present Status of the Use of Study Results of Group A Studies	23
3. Present Status of the Use of Study Results of Group B Studies	28

CHAPTER 4 TECHNICAL TRANSFER

CHAPTER 1 OUTLINE OF THE STUDY

1. Background and Purpose of the Follow-up Study

1-1. Background of the Follow-up Study

Once the development studies were completed, it had been often difficult for JICA to grasp the progress of the proposed projects and the extent of the utilization of the results of the study, due to such factors that it usually takes considerable time before the implementation of the proposed projects and it is difficult to trace a variety of ways to utilize the results of the study, and to obtain sufficient information from the side of the recipient countries. The Follow-up Study of Development Studies was started in 1984 to tackle these problems.

1-2. Purpose of the Study

The purpose of the Follow-up Study is to ascertain the outcome, and the circumstances thereof, of each completed development study systematically, to feed back the findings toward the improved performance of future development studies in terms of project identification, study design and execution, and project analysis and evaluation, and thereby to enhance the realization of the proposed projects/programs.

The FY 1995 Follow-up Study gathered and compiled relevant information on the development studies initiated its preliminary stage after August 1 of 1974 and completed by the end of FY 1995 (the end of March 1995). The result of the analysis are presented by country and region, by year of completion as well as by type of study and by sector. This report provides a clear definition of each concept concerning the present status of the use of study results and/or proposed project(s), and compiles and analyzes the relevant data on development studies in concern based on these concepts.

2. Methods Used in the Follow-up Study

2-1. Guideline of the Follow-up Study

The FY 1995 Follow-up Study is composed of the following surveys as well as collection of information from other relevant sources such as JICA internal materials.

- 1) A questionnaire survey of the consulting firms which undertook the respective development studies.
- 2) A questionnaire survey of relevant government agencies of the recipient countries through JICA overseas offices.
- 3) A survey conducted by JICA's overseas follow-up missions and/or by appointed local consultants in the selected sectors and countries.

2-2. Coverage

The FY 1995 Follow-up Study covers those development studies which were financed by the development study budget under the purview of the Social Development Study Department and the Agriculture, Forestry and Fisheries Development Study Department of Japan International Cooperation Agency (JICA), and were initiated their preliminary stage after August 1 of 1974 and completed by the end of FY 1994 (the end of March 1995). A number of studies are excluded from coverage: basic design studies and special project studies conducted as part of the grant aid program.

The total number of studies in concern comes to 877 (621 in Social Development Sectors and 256 in Agriculture, Forestry and Fisheries Sectors).

(1) Classification of Development Studies by FY of Completion

The FY of Completion is defined as the FY during which the final report of the respective development study was submitted to JICA. Financial statements and attached specification and Annual Report of JICA in respective fiscal year, and the replies of consulting firms to the follow-up questionnaire are referred to for determining the FY of completion.

(2) Classification of Development Studies by Country and by Region

The country and region of development studies are shown by the name listed in the most recent issue (January 1993) of JICA Practical Handbook on Statistics. Those studies the site or area of which ranges over several countries or regions are classified into "plural countries".

(3) Classification by Type of Study

Studies are classified into six types as shown below.

Table 1-1 Type of Studies

Type of Study	Definition
1. M/P	Studies for formulating master plans
2. M/P+F/S	Studies which comprise M/P and F/S
3. F/S	Feasibility studies
4.D/D	Studies for detailed designs
5. Basic Studies	Studies to provide basic data, such as maps of various types, nautical charts and groundwater surveys, forestry and fishery resource studies, and agricultural verification studies
6. Others	Studies to prepare guidelines, operation manuals and other institutional proposals, including follow-up studies

(4) Definition of Development Studies by Type of Studies

The definition of each of these types of development studies is given according to the objectives as follows.

i) Master Plan Studies (M/P)

A master plan study is carried out to determine a basic development strategy by formulating a comprehensive sectional or regional plan. The formulation of a master plan is the first stage in the development project cycle. It serves to coordinate and facilitate efficient implementation of various individual projects. The project proposed by a master plan study may be implemented in line with the recommendation of the study immediately after the completion of the study or may be carried out several years after its implementation.

ii) Master Plan/Feasibility Studies (M/P+F/S)

These are studies in which both the master plan and feasibility studies are undertaken.

iii) Feasibility Studies (F/S)

A feasibility study is made to study the rationale, appropriateness, investment effects, etc. of a particular development project. In general, it is to determine systematically and objectively whether the proposed project is viable and feasible socially, technically, economically and financially as well as from other important consideration, e.g. operation and maintenance, organization and institution, and preservation of social and natural environment. The feasibility report serves as important reference for the concerning government agencies and officials to make a policy decision whether the country should proceed to the implementation of the given proposed project(s). It also provides the bilateral and multilateral aid agencies to which a request for financial assistance is addressed with necessary information to examine whether the proposed project is appropriate to be given such assistance.

iv) Detailed Design Studies (D/D)

A detailed design studies are used to develop the design documents (including data and specific draft drawings and specifications) needed to begin project construction work as planned. In this phase, since the study has to cover all the detailed investigations related to a project's detailed design, considerable cost and a long study period are generally required. This type of studies are followed by the selection of the constructor through competitive bidding, and the actual construction. Detail design studies are indispensable to implement the project orderly and to facilitate the effectiveness of financial assistance.

v) Basic Studies (Long-term Studies, Topographical Studies, Ground-water Development Studies, Studies on the Amount of Forestry and Fishery Resources, etc.)

Long-term Studies

Formulation of region-wide plans such as river conservation or irrigation plan and of integrated regional resource development plan and examination of alternative policy measures for environmental protection often require long-term and continuous accumulation of relevant basic data. The lack of such data or of abilities to collect and compile such data may become a major impeding factor against the implementation of

development plans. In this type of studies, a team of experts are sent to stay in the recipient country for a long period, and collect, record, compile and analyze relevant basic data through long-term observations.

Topographical Studies

The presence of basic maps of national land and cities is a necessary condition for planning and implementation of development projects. However in many regions of developing countries, topographical drawings of national territories and cities have been virtually non-existent, or not appropriate for practical use if ever exist, due to the lack of standard in the method of construction and information contents. This situation leads to difficulty in formulating and implementing development projects as well as in coping with urban problems that are becoming increasingly serious. The results of these studies greatly serve to overcome such difficulties in developing countries by providing basic data and information.

Ground-water Development Studies

These studies survey prospect for ground water and investigate the feasibility of its utilization for irrigation, the supply of drinking water and the supply of water for industry. It is an urgent task to secure the supply of drinking water in such places as the dry land where severe drought hits frequently or as the regions where the quality of water is not suitable for drinking. Also, some regions face such problems that the quality of drinking water is being deteriorated or is being dried up due to overconsumption. Thus, the ground-water development is urgently needed in order to stabilize the lives of the residents in those regions.

Studies on the Amount of Forestry and Fishery Resources

In forestry and fishery, grasp of resource accumulation is premised for overall planning of development and policy making. These studies aim to transfer study technology as well as to provide basic information and contribute to various development planning based on appropriate control of resource through the study.

Agricultural Verification Studies

These studies aim to collect basic data on meteorology, hydrology, pedology and other natural conditions, and to conduct verification studies such as experiments on introduction of new varieties, experiments on the methods of cultivation of new varieties under different conditions and experiments on the introduction of the methods of

transplants.

vi) Other Studies (Studies for Aftercare Services, etc.)

Studies for Aftercare services are carried out when a review on the same project is required several years after the completion of the former study due to the change of socio-economic or natural conditions. There are two types of studies for Aftercare services, which are undertaken in response to the request made by a recipient country. The first type is to be conducted for a short period and relatively small in scale because it is considered to be a supplement to a previous study. The second type of study is to be undertaken with the objective of the promotion of a project proposed by a previous study which has been classified into the group of "Delayed Studies". In this case, the Aftercare study is relatively large in scale so as to reformulate a project on the basis of the results of such Aftercare study. The Aftercare studies are considered to be quite important to facilitate the utilization of the study results by a recipient country. Pre-feasibility studies are also classified into "Other Studies".

(5) Classification by Sector

The sectors are shown by the following classification employed by JICA Practical Handbook on Statistics.

Table 1-2 Sector of Studies

Sector	Subsector	Sub-subsector
1.Planning & Administration	(1) Development Plan	1) General 2) Integrated Regional Development Plan
	(2) Administration	1) General 2) Public Finance & Banking 3) Environmental Problems 4) Statistics 5) Information & Public Relations
2.Public Works & Utilities	(1) Public Utilities	1) General 2) Water Supply 3) Sewerage 4) Urban Sanitation
	(2) Transportation	1) General 2) Road 3) Land Transportation 4) Railway 5) Marine Transportation & Ships 6) Port 7) Air Transportation & Airport 8) Urban Transportation 9) Meteorology
	(3) Social Infrastructures	1) General 2) River & Erosion Control 3) Water Resource Development 4) Urban Planning & Land Development 5) Architecture & Housing 6) Survey & Mapping
	(4) Communications & Broadcasting	1) General 2) Post 3) Telecommunication 4) Broadcasting
3.Agriculture, Forestry & Fisheries	(1)Agriculture	1) General 2) Sericulture 3) Irrigation, Drainage & Reclamation 4) Agricultural Machinery 5) Agricultural Processing

	(2) Animal Husbandry	1) Animal Husbandry 2) Animal Health 3) Livestock Processing
	(3) Forestry	1) Forestry & Forest Conservation 2) Timber Processing
	(4) Fisheries	1) Fisheries 2) Fish Processing
4. Commerce & Tourism	(1) Tourism	1) General 2) Tourism Infrastructure
5. Others	(1) Others	1) Others

3. Criteria for Classification of Present Status of Use of Study Results

Two sets of criteria for classification of the present status of the use of the study results are defined and used according to the types of development studies.

3-1. Group A Studies

For master plan studies (M/P), basic studies (B/S) and other studies, collectively named Group A Studies, the information is sought on whether or not their recommendations (including overall plans and priority programs) or outputs (such as maps, bodies of basic data, and guidelines) have been adopted or utilized toward the realization of development goals. The present status is classified into three categories: 1) In progress or in use, 2) Delayed, and 3) Discontinued.

The criteria for determining the present status for Group A Studies is as follows.

Table 1-3(a) Status for Group A Studies

<p>a. In progress or in use</p>	<p>A study is classified into this category when its results or proposals are satisfactorily utilized in the following manner.</p> <ol style="list-style-type: none"> 1) Based on the proposals, more specific and detailed studies are, or have been, undertaken. Or, the study results are utilized to undertake some development study or planning. 2) Japanese technical cooperation is started on the basis of the proposals or study results. 3) Proposals are incorporated into the development policy or plan of the recipient country. Or, study results are consulted to formulate the development policy or plan. 4) The government of the recipient country is taking some preparatory step to utilize the proposals.
<p>b. Delayed</p>	<p>A study is classified as "delay", when its results or proposals are in one of the following conditions.</p> <ol style="list-style-type: none"> 1) No significant action has been taken by the government of the recipient country to utilize the proposals or results. 2) The government of the recipient country began to act on the proposals, or utilize the results, but the effort was halted for some reason.
<p>c. Discontinued</p>	<p>A study is classified as "discontinued", when its results or proposals are in one of the following conditions.</p> <ol style="list-style-type: none"> 1) The government of the recipient country made an explicit decision not to act on the proposals. 2) The government decided to act on, or utilize, different proposals or results from other sources. 3) A study has been classified as "delay" for the considerable period of time.

3-2. Group B Studies

For feasibility studies (F/S), master plan/feasibility studies (M/P+F/S) and detailed design studies (D/D), collectively named Group B Studies, the information is sought on whether or not the projects or programs they appraised or proposed have been implemented. The present status is classified into four categories: 1) Completed or in progress, 2) Promoting, 3) Delayed or suspended, and 4) Discontinued or canceled. The category of "Completed or in progress" is further divided into four sub-categories: 1a) Completed, 1b) Partially completed, 1c) Implementing, and 1d) Processing.

The criteria for classification of proposed project(s) are shown in the table below.

Table 1-3(b) Status for Group B Studies

Present Status	Criteria
<p>A. Completed or in progress</p> <p>A1. Completed</p> <p>A2. Partially Completed</p> <p>A3. Implementing</p> <p>A4. Processing</p>	<p>The proposed development project has been already implemented and in use.</p> <p>The proposed development project is partially completed and in use.</p> <p>The implementation of the project is underway.</p> <p>The project is at one of the following stages.</p> <p>1) Tenders have been invited.</p> <p>2) Financing of the project has been secured.*</p> <p>3) Following the completion of the JICA feasibility study, the basic design study or some other specific step is being undertaken with bilateral or multilateral financial assistance.</p> <p>4) For some other reasons, the project concerned is considered highly likely to be implemented in the future.</p>
<p>B. Promoting</p>	<p>The project concerned is at one of the following stages.</p> <p>1) The government of the recipient country is requesting financial support from international lending organizations and/or foreign governments including Japan.</p> <p>2) The government of the recipient country has been undertaking the detailed design study or other additional studies subsequent to the JICA feasibility study.</p> <p>3) The recipient country is otherwise actively promoting the implementation of the project.</p>
<p>C. Delayed or Suspended</p>	<p>The project concerned is at one of the following stages.</p> <p>1) The government of the recipient country has not taken any specific action after the completion of the JICA study.</p> <p>2) The government of the recipient country has at one point promoted the proposed project but suspended the effort for some reason.</p>
<p>D. Discontinued or Cancelled</p>	<p>The project concerned is at one of the following stages.</p> <p>1) The government of the recipient country officially cancelled the proposed project.</p> <p>2) The government of the recipient country implemented the</p>

	<p>alternative which was substantially different from the proposal of the JICA study.</p> <p>3)A study has been classified as “delayed” for the considerable period of time.</p>
--	--

4. Related Information

As for the collection of related information, various internal materials and reports were utilized to supplement what had not been included in the previous reports.

CHAPTER 2 A FULL VIEW OF COMPLETED DEVELOPMENT STUDIES

1 Classification of Development Studies by Year of Completion

The total number of development studies completed by the end of FY 1994 (the end of March 1995) is 877; 621 in Social Development Sector and 256 in Agriculture, Forestry and Fisheries Sector (See Table 2-1). The number of studies was around 20-30 per annum during the 1970s, and has been settled around 40-50 per annum since the 1980s.

Table 2-1 Time Trend of the Number of Development Studies

Fiscal Year Completed	Social Development	Agri,Forestry & Fisheries Development	Total	Fiscal Year Completed	Social Development	Agri,Forestry & Fisheries Development	Total
1974	1	0	1	1985	39	12	51
1975	5	0	5	1986	28	12	40
1976	9	4	13	1987	43	10	53
1977	20	7	27	1988	30	19	49
1978	25	7	32	1989	45	23	68
1979	24	12	36	1990	36	23	59
1980	30	7	37	1991	31	14	45
1981	27	9	36	1992	40	17	57
1982	34	18	52	1993	41	12	53
1983	32	13	45	1994	42	22	64
1984	39	15	54	Total	621 (70.8%)	256 (29.2%)	877 (100.0%)

2. Classification of Development Studies by Region

The number of studies carried out in Asia is 521, which accounts for 59.4% of the total. It indicates that development studies have been centered in Asia. The seven countries of ASEAN account for 42.0% (368 studies) of the total. Central and South America ranks next (17.2%) while Near Middle East and Africa have a share of about 10% respectively. We cannot see a marked difference in the distribution of type of study across different regions. All of studies, M/P, M/P+F/S and F/S, are concentrated in Asia, especially in the ASEAN countries. Also, there is no significant difference in the distribution of studies by sector across different regions. Transportation has the largest share in every region except for Near Middle East.

However, difference can be observed at the sub-subsector level of Transportation. In the ASEAN countries and Africa, the share of Road is the largest while, in non-ASEAN countries in Asia and in Central and South America, a largest portion of studies have been conducted in Port. Likewise, in ASEAN countries, Social Infrastructures, Communication & Broadcasting together have a high share, while the share of Agriculture is small compared with other regions.

Table 2-2 Classification by Region

Region	Social Development		Agriculture, Forestry & Fisheries		Total	
Asia	375	60.4%	146	57.0%	521	59.4%
ASEAN	(274)	(44.1%)	(94)	(36.7%)	(368)	(42.0%)
Others	(101)	(16.3%)	(52)	(20.3%)	(153)	(17.4%)
Middle East	56	9.0%	28	10.9%	84	9.6%
Africa	63	10.1%	28	10.9%	91	10.4%
Middle & South America	103	16.6%	48	18.8%	151	17.2%
Oceania	10	1.6%	6	2.4%	16	1.8%
Europe	8	1.3%	0	0.0%	8	0.9%
Plural Countries	6	1.0%	0	0.0%	6	0.7%
Total	621	100.0%	256	100.0%	877	100.0%

3. Classification of Development Studies by Country

The seven countries of ASEAN have 368 studies conducted. It is a region that have received a bulk of development studies within the Asian region. Among them Indonesia has received the largest number of studies (132 studies), followed by Thailand (95 studies), Philippines (88 studies) and Malaysia (46 studies). The next comes China with 42 studies. Apart from these countries, the following 13 countries have had more than 10 development studies conducted: Bangladesh, Nepal, Pakistan and Sri Lanka (in Asia); Egypt (in Middle East), Kenya and Tanzania (in Africa); Bolivia, Brazil, Columbia, Honduras, Mexico and Paraguay (in Central and South America).

Table 2-3 Classification by Country

country	Planning and Administration	Public Works and Utilities	Transportation					Social Infrastructure	Communication and Broadcasting	Tourism	Agriculture	Animal Husbandry	Forestry	Fibberies	Total
			Road	Railroad	Port	Air Transportation and Airport	Others								
Bangladesh			1	1	2	1	1	5	1		6				18
Bhutan											1				1
Brunei							1	1					1		3
Cambodia		1									1				2
China	4	1	4	5	5	2		7	2		11	1			42
India				3	2		1				1				7
Indonesia	5	8	12	7	10		5	7	30	19	3	21		4	132
Korea		1		1					2			1			5
Laos		1	1						1		3				6
Malaysia	2	4	7	3	4		3	10	4	1	4		2	2	46
Mongolia				1											1
Maldives								1							1
Myanmar				2			1	2			4				9
Nepal			2				3	5	2		4				16
Pakistan		1		1	3			5	1	1	9				21
Philippines	3	3	14	1	6	1	7	18	3		26		2	4	88
Singapore			1				1				1				4
Sri Lanka		2	1		4		1		3		8			1	20
Thailand	5	10	15	5	5	1	9	10	5	3	26		1		95
Viet Nam					1			1	1		1				4
Algeria							1				1				2
Egypt	3	5		1	3	1	4	1	3		7	1			29
Iran											2				2
Iraq							1	1			1				3
Jordan	2		1					2			2				7
Morocco				1		1		2			2		1		7
Oman			1		1			1			4				7
Qatar		1													1
Saudi Arabia								2							2
Sudan			2								2				4
Tunisia			1					3					1		5
Turkey	1	1	1		1						1			1	6
United Arab Emirates								2						1	3
Yemen		2			1		1		1		1				6
Burkina Faso											1				1
Cameroon											1				1
Djibouti					1										1
Ethiopia									1						1
Gabon														1	1

Country	Planning and Administration	Public Works and Utilities	Transportation					Social Infrastructure	Communication and Broadcasting	Tourism	Agriculture	Animal Husbandry	Forestry	Fisheries	Total
			Road	Railroad	Port	Air Transportation and Airport	Others								
Ivory Coast											1			1	
Kenya	1	3	4				1	3			3			15	
Liberia			1											1	
Madagascar		1	1		1				1					4	
Malawi											1			1	
Maldives								1			3			4	
Mauritius		2	2					1						5	
Niger							1				3			4	
Nigeria					1			2			1			4	
Rwanda	1							1						2	
Senegal				1			1	2			2			6	
Sierra Leone			1								1			2	
Swaziland							1							1	
Tanzania	1	1	3				2	2		1	3	1		14	
Uganda									1		1			2	
Zaire			1	1			2							4	
Zambia			1				1	1	2		1			6	
Zimbabwe		1		1					2		2			6	
Argentina	1			1	1			1	1		1			6	
Bolivia	1	1	3	2		2		1	1		2	1		14	
Brazil	3			1	2		1	4						11	
Chile			2	1	1			1			2	1		8	
Colombia	1		1				2	2			5	1	1	13	
Costa Rica	1				2	1		1			1		1	7	
Dominican Republic					1			1	1		3			6	
Ecuador							1	2			2	1	1	7	
Guatemala		1			1	1	1	2			2			8	
Honduras					1	1		2	1		5	1	1	12	
Jamaica											2			2	
Mexico	2	1		4	3		1							11	
Nicaragua			1					1						2	
Panama			1		1		3	1	1			1	1	9	
Paraguay	1	1	1				1	4	1	2	5	2		18	
Peru		1			1	1		3			1		2	9	
Trinidad and Tobago		1												1	
Uruguay					1	1						2		4	
Venezuela						1		2						3	
Cook Islands	1				1									2	
Fiji												2	1	3	
Kiribati					1								1	2	
Papua New Guinea		1	1			1			1				1	5	
Solomon Islands						1			1				1	3	
Western Samoa					1									1	
Bulgaria		1												1	
Greece										1				1	
Hungary	1	1												2	
Kyrgyz	1								1					2	
Poland		1					1							2	
Plural Countries							2	2	2					6	
Total	40	60	88	44	71	29	69	148	63	9	307	2	25	22	871

4. Distribution of the Number of Studies by Type of Study

The number of the development studies conducted since 1974 is 877. F/S account for 47.7% of the total development studies. M/P account for 20.8% while M/P+F/S account for 18.4%. The number of M/P has been settled from 10 to 20 per annum since FY 1989 while the annual number of F/S has been between 13 and 31. It is notable that, while the number of F/S, D/D and other studies shows a downward tendency, that of M/P+F/S exhibits an upward tendency. In the recent years, Group A Studies have become increasingly important, and feasibility studies have tended to accompany a master plan study in the same development study. It is inferred that the tendency to fully make use of the results of master plan studies has become strong.

Table 2-4 Distribution by Type of Study

	M/P	M/P+F/S	F/S	D/D	Basic Studies	Other Studies	Total
1974	0	0	0	0	0	1	1
1975	2	0	2	0	0	1	5
1976	1	0	11	0	0	1	13
1977	4	0	15	2	1	5	27
1978	3	2	18	0	7	2	32
Sub Total	10	2	46	2	8	10	78
1979	10	2	17	0	2	5	36
1980	10	2	20	2	1	2	37
1981	4	5	22	1	2	2	36
1982	3	10	29	2	6	2	52
1983	9	5	22	0	5	4	45
Sub Total	36	24	110	5	16	15	206
1984	8	6	37	0	2	1	54
1985	13	6	27	1	4	0	51
1986	9	7	20	1	2	1	40
1987	17	6	25	0	4	1	53
1988	8	9	22	1	4	5	49
Sub Total	55	34	131	3	16	8	247
1989	14	21	29	1	2	1	68
1990	8	14	31	1	5	0	59
1991	15	8	18	1	2	1	45
1992	14	17	18	1	7	0	57
1993	14	20	13	2	4	0	53
Sub Total	65	80	109	6	20	2	282
1994	16	21	22	1	3	1	64
Total	182 (20.8%)	161 (18.4%)	418 (47.7%)	17 (1.9%)	63 (7.2%)	36 (4.1%)	877 (100.0%)

5. Distribution of the Number of Studies by Sector

Outlook

94.4% of the completed development studies are concentrated in two sectors, the Public Works and Utilities Sector and the Agriculture, Forestry and Fisheries Sector. The Public Works and Utilities Sector accounts for 65.2% (572 studies) followed by the Agriculture, Forestry and Fisheries Sector (29.2%, 256 Studies) while the Planning and Administration Sector and the Commerce and Tourism Sector accounts for only 4.6% (40 studies) and 1% (9 studies) respectively. As for the subsectors under the Public Works and Utilities, there are 301 studies in the subsector of Transportation, accounting for 34.3% and 148 studies in Social Infrastructure (16.9%). In the Agriculture, Forestry and Fisheries Sector, 207 studies are categorized under Agriculture, accounting for 23.6%.

5-1 Distribution of Development Studies by Sector

As for the sectional distribution of studies, there is not a large difference among different sectors. Transportation has the largest share in all types of studies except for basic studies (see Table 2-5). Due to the nature of the study, basic studies comprises such studies as topographical studies and underground water development. Thus, many basic studies fall in the category of Social Infrastructure. The share of Forestry and Fisheries, which includes studies on the amount of forestry and fishery resources, is also high in basic studies. In case of F/S, the development studies categorized under the Social Development Sector account for 60% while the share of those categorized under the Agriculture, Forestry and Fisheries Development Sector is 30%. On the other hand, in case of M/P, the share of development studies under the Social Development Sector and the Agriculture, Forestry and Fisheries Development Sector is 70% and 20% respectively.

Table 2-5 Distribution by Sector and Type of Study

	M/P	M/P+F/S	F/S	D/D	Basic studies	Other Studies	Total
Planning and Administration	33 (3.8%)	4 (0.5%)	0 (0.0%)	0 (0.0%)	0 (0.0%)	3 (0.3%)	40 (4.6%)
Public Work and Utilities	2 (0.2%)	30 (3.4%)	27 (3.1%)	1 (0.1%)	0 (0.0%)	0 (0.0%)	60 (6.8%)
Transportation							
Road	8 (0.9%)	11 (1.3%)	59 (6.7%)	4 (0.5%)	2 (0.2%)	4 (0.5%)	88 (10.0%)
Railway	6 (0.7%)	2 (0.2%)	29 (3.3%)	1 (0.1%)	1 (0.1%)	5 (0.6%)	44 (5.0%)
Port	7 (0.8%)	28 (3.2%)	30 (3.4%)	1 (0.1%)	0 (0.0%)	5 (0.6%)	71 (8.1%)
Air Transportation and Airport	2 (0.2%)	9 (1.0%)	17 (1.9%)	0 (0.0%)	0 (0.0%)	1 (0.1%)	29 (3.3%)
Others	31 (3.5%)	5 (0.6%)	27 (3.1%)	1 (0.1%)	1 (0.1%)	4 (0.5%)	69 (7.9%)
Sub Total of Transportation	54 (6.2%)	55 (6.3%)	162 (18.5%)	7 (0.8%)	4 (0.5%)	19 (2.2%)	301 (34.4%)
Social Infrastructure	30 (3.4%)	35 (4.0%)	36 (4.1%)	3 (0.3%)	35 (4.0%)	9 (1.0%)	148 (16.9%)
Communication and Broadcasting	13 (1.5%)	10 (1.1%)	35 (4.0%)	3 (0.3%)	2 (0.2%)	0 (0.0%)	63 (7.2%)
Tourism	3 (0.3%)	2 (0.2%)	3 (0.3%)	0 (0.0%)	0 (0.0%)	1 (0.1%)	9 (1.0%)
Agriculture	37 (4.2%)	20 (2.3%)	144 (16.4%)	2 (0.2%)	4 (0.5%)	0 (0.0%)	207 (23.6%)
Animal Husbandry	0 (0.0%)	1 (0.1%)	1 (0.1%)	0 (0.0%)	0 (0.0%)	0 (0.0%)	2 (0.2%)
Forestry	6 (0.7%)	2 (0.2%)	5 (0.6%)	0 (0.0%)	10 (1.1%)	2 (0.2%)	25 (2.9%)
Fishery	4 (0.5%)	2 (0.2%)	5 (0.6%)	1 (0.1%)	8 (0.9%)	2 (0.2%)	22 (2.5%)
Total	182 (20.8%)	161 (18.4%)	118 (47.7%)	17 (1.9%)	63 (7.2%)	36 (4.1%)	877 (100.0%)

5-2. Distribution of Studies in Major Sub-sector Transportation

Transportation subsector is further classified into nine sub-subsectors. There have been 301 studies conducted for the last 21 years. There are particularly many studies in three sub-subsectors: 88 studies in Road (29%), 71 in Port (24%) and 44 in Railway(15%). These three sub-subsectors account for 68% of the total studies in this subsector. Air Transportation & Airport and Urban Transportation comes next.

Table 2-6 Transportation

Subsector	Number of Studies
General	15 (5%)
Road	88 (29%)
Land Transportation	4 (1%)
Railway	44 (15%)
Marine Transportation & Ships	24 (8%)
Port	71 (24%)
Air Transportation & Airport	29 (10%)
Urban Transportation	25 (8%)
Meteorology	1 (—)
Total	301 (100%)

Social Infrastructure

Social infrastructure subsector comprises six sub-subsectors. There have been 148 studies conducted during the last 21 years. Among these subsectors, the studies are concentrated in two sub-subsectors: 56 in Water Resource Development (38%) and 53 in River & Erosion Control (35%). These two sub-subsectors account for more than 70% of the total studies in this subsector.

Table 2-7 Social Infrastructure

Subsector	Number of Studies
General	0 (0%)
River & Erosion Control	53 (35%)
Water Resource Dev't	55 (38%)
Urban Planning & Land Development	9 (6%)
Architecture & Housing	10 (7%)
Survey & Mapping	21 (14%)
Total	148 (100%)

Public Utilities

Public Utilities subsector is divided into four sub-subsectors. There have been 60 studies carried out during the last 21 years. 28 studies (47% of total) are in Water Supply, 17 studies (29%) in Sewerage, and 15 studies (24%) in Urban Sanitation. No study has been conducted in General (Public Utilities).

Table 2-8 Public Utilities

Subsector	Number of Studies
General	0 (0%)
Water Supply	28 (47%)
Sewerage	17 (29%)
Urban Sanitation	15 (24%)
Total	60 (100%)

Communications & Broadcasting

Communications & Broadcasting subsector is classified into four sub-subsectors. There have been 63 studies conducted during the last 21 years and the overwhelming studies are in Telecommunication (46 studies, 73%)

Table 2-9 Communications & Broadcasting

Subsector	Number of Studies
General	6 (10%)
Post	0 (0%)
Telecommunication	46 (73%)
Broadcasting	11 (17%)
Total	63 (100%)

Agriculture and Animal Husbandry

Agriculture sub-sector is divided into five subsectors, which are General Agriculture, Sericulture, Irrigation, Drainage and Reclamation, Agricultural Machinery and Agricultural Processing. For the last 21 years, 207 studies have been carried out, 84% of which are in General Agriculture. In particular, no study has been conducted in

Sericulture and Agricultural Machinery. In Animal husbandry sub-sector, only two studies have been carried out since 1974.

Table 2-10 Agriculture and Animal Husbandry

Subsector	Number of Studies
General	176 (84%)
Sericulture	0 (0%)
Irrigation, Drainage & Reclamation	27 (13%)
Agricultural Machinery	0 (0%)
Agricultural Processing	4 (2%)
Animal Husbandry	2 (1%)
Total	209 (100%)

Forestry and Fisheries

Forestry sub-sector comprise two sub-subsectors; Forestry Conservation and Timber Processing. All of 25 studies carried out in Forestry sub-sector for the last 21 years are exclusively in Forestry Conservation. As well as Forestry sub-sector, Fisheries sub-sector is composed of two sub-subsectors; Fisheries and Fish Processing. All of 22 studies conducted in this sub-sector are in Fisheries and no study has been ever conducted in Fish Processing.

Table 2-11 Forestry and Fisheries

Subsector	Number of Studies
Forestry, Forestry Conservation	25 (53%)
Timber Processing	0 (0%)
Fisheries	22 (47%)
Fish Processing	0 (0%)
Total	47 (100%)

CHAPTER 3

THE PRESENT STATUS OF THE UTILIZATION OF STUDY RESULTS

I. Introduction

The present status of utilization of study results is classified in two sets of categories; Groups A Studies and Group B Studies.

The present status of master plan studies, basic studies and other studies (Group A Studies) is classified into the three groups as shown in Table 3-1(a). Those studies for which information obtained from domestic and overseas surveys is not sufficient are tentatively classified into the category of "Delayed". The present status of feasibility studies, master plan-cum feasibility studies and detailed design studies (Group B Studies) is classified into the four groups as shown in Table 3-1(b).

The classification above is based on the fact that Group A and Group B Studies are different in the use of their study results, and thereby in the appraisal of and the criteria for the present status.

The Group A Studies are evaluated with "Utilization Rate" while Group B Studies are assessed with "Realization Rate". Group A Studies classified into "In progress or in use" are regarded as "Utilized". The study is classified into "In progress or in use" if (1) the investment fund is, or has been, secured for a proposed project, and thereby, the proposed project has been either implemented or completed or (2) the study findings are incorporated into the development policy or plan of the recipient country. On the other hand, Group B Studies are regarded as "Realized" if a proposed project has been implemented or is highly likely to be implemented. In this case the study is classified into "Completed or in progress".

The use of the study results of master plan and other Group A Studies is not confined to the implementation of proposed project(s). An even more important role of these studies is to contribute to the policy making of government agencies and to the formulation of development plans both at national and regional levels. Basic studies and Other studies are aimed at being used for particular purposes such as facilitation of national land development and development planning by collection and compilation of long-term basic data, and providing recommendations on institutional building by drawing up guidelines, and so forth. On the other hand, it is considered that the implementation of Group B Studies is premised on the assumption that a proposed project will be implemented after a study ascertains technical, economical and financial feasibility of such project. Therefore, a study is regarded as "Realized" only if a proposed project

is, or has been, implemented.

This chapter attempts to analyze the present situation of the use of master plan and other Group A Studies in detail, by noticing the specific nature of these development studies. It also provides analysis of feasible studies and other Group B Studies by centering on the degree of realization of the proposed project(s).

2. Present Status of the Use of Study Results of Group A Studies (Master Plan Studies, Basic Studies and Other Studies)

The total number of Group A Studies, which have been completed from 1974 to 1994 is 281. 248 out of 281 are classified into "In Progress or In Use". The utilization rate is 88.3%. During the 1970s which the Follow-up Studies started, because only very few development studies were conducted, the utilization rate of completed studies varied each year. However, since 1979, the number of development studies has been stable, and the utilization rate has been settled around 85%. It can be judged that the results of the development studies have been well-utilized by recipient countries.

Table 3-1 Present Status of Group A Studies by the Year of Completion

	In Progress or in Use	Delayed	Discontinued	Total
1974	1	0	0	1
1975	3	0	0	3
1976	1	0	1	2
1977	7	1	2	10
1978	11	0	1	12
1979	15	0	2	17
1980	12	0	1	13
1981	7	0	1	8
1982	11	0	0	11
1983	14	1	3	18
1984	9	1	1	11
1985	13	2	2	17
1986	12	0	0	12
1987	19	0	3	22
1988	15	2	0	17
1989	16	1	0	17
1990	12	1	0	13
1991	16	2	0	18
1992	18	2	1	21
1993	18	0	0	18
1994	18	2	0	20
Total	248 (88.3%)	15 (5.3%)	18 (6.4%)	281 (100.0%)

2-1 Analysis by Region

Here the utilization rate will be analyzed by region except for the Oceanic and the European regions where the small number of development studies has been conducted. In Asia, 130 out of 148 Group A Studies are classified into "In Progress or In Use" and the utilization rate is 87.8% which is almost equivalent to the average utilization rate of all Group A Studies. The utilization rate in Middle and South America is 91.5%, which is the highest among all regions. However, even in the African and the Middle East regions where the utilization rates are lower than average, they are 84.4% and 82.1% respectively. It can be concluded that the results of studies are well-used across regions.

Table 3-2 Utilization Rate by Region

Present Status	Asia			Middle East	Africa
	ASEAN	Other Asia	Sub Total		
In Progress or in Use	96 (85.7%)	34 (94.4%)	130 (87.8%)	23 (82.1%)	27 (84.4%)
Delayed	12 (10.7%)	1 (2.8%)	13 (8.8%)	0 (0.0%)	1 (3.1%)
Discontinued	4 (3.6%)	1 (2.8%)	5 (3.4%)	5 (17.9%)	4 (12.5%)
Total	112 (100.0%)	36 (100.0%)	148 (100.0%)	28 (100.0%)	32 (100.0%)
	Middle & South America	Oceania	Europe	Plural Countries	Total
In Progress or in Use	54 (91.5%)	4 (100.0%)	5 (100.0%)	5 (100.0%)	248 (88.3%)
Delayed	1 (1.7%)	0 (0.0%)	0 (0.0%)	0 (0.0%)	15 (5.3%)
Discontinued	4 (6.8%)	0 (0.0%)	0 (0.0%)	0 (0.0%)	18 (6.4%)
Total	59 (100.0%)	4 (100.0%)	5 (100.0%)	5 (100.0%)	281 (100.0%)

2-2 Analysis by Type of Studies

The utilization rate of basic studies is higher than two other studies; M/P and other studies. 59 out of 63 basic studies are considered utilized. As for M/P, 159 out of 182 are classified into "In Progress or In Use" while 83% of other studies (30 out of 36) are in such category. Therefore, it can be said that all three studies are well-utilized.

Table 3-3 Utilization Rate by Types of Studies

Present Status	M/P	Basic Studies	Other Studies	Total
In Progress or In Use	159 (87.4%)	59 (93.7%)	30 (83.3%)	248 (88.3%)
Delayed	12 (6.6%)	2 (3.2%)	1 (2.8%)	15 (5.3%)
Discontinued or Cancelled	11 (6.0%)	2 (3.2%)	5 (13.9%)	18 (6.4%)
Total	182 (100.0%)	63 (100.0%)	36 (100.0%)	281 (100.0%)

2-3 Analysis by Sector

The number of development studies in the Social Development Sector is 208 while 73 studies are in the Agriculture, Forestry and Fisheries Development Sector. In the Social Development Sector, 182 are in "In Progress or In Use" and the utilization rate is 87.5%. In the Agriculture, Forestry and Fisheries Development Sector, 66 out of 73 are utilized and the utilization rate is 90.4%.

Among the sub-sector in the Social Development Sector, Transportation has the largest number of development studies conducted. 68 out of 77 completed studies in this sub-sector are classified into "In Progress or In Use" and the utilization rate is 88.3%. In the Social Infrastructure sub-sector in which 74 development studies have been completed, 60 of them are utilized and the utilization rate is 81.1%. No marked difference is observed concerning the utilization rate among sub-sectors. The utilization rate in total is beyond 80%.

Table 3-4 Utilization by Sector

Present Status	Social Development				Total
	M/P	Basic Studies	Other Studies	Sub Total	
In Progress or In Use	116 (85.9%)	39 (95.1%)	27 (84.4%)	182 (87.5%)	
Delayed	9 (6.7%)	0 (0.0%)	1 (3.1%)	10 (4.8%)	
Discontinued or Cancelled	10 (7.4%)	2 (4.9%)	4 (12.5%)	16 (7.7%)	
Total	135 (100.0%)	41 (100.0%)	32 (100.0%)	208 (100.0%)	
Present Status	Agriculture, Forestry & Fisheries Development				Total
	M/P	Basic Studies	Other Studies	Sub Total	
In Progress or In Use	43 (91.5%)	20 (90.9%)	3 (75.0%)	66 (90.4%)	248 (88.3%)
Delayed	3 (6.4%)	2 (9.1%)	0 (0.0%)	5 (6.9%)	15 (5.3%)
Discontinued or Cancelled	1 (2.1%)	0 (0.0%)	1 (25.0%)	2 (2.7%)	18 (6.4%)
Total	47 (100.0%)	22 (100.0%)	4 (100.0%)	73 (100.0%)	281 (100.0%)

On the other hand, among the sub-sectors in the Agriculture, Forestry and Fisheries Sector in which 73 development studies have been completed, 41 studies are in the Agriculture sub-sector. The Forestry sub-sector comes next and the Fisheries comes after that. There is no significant difference concerning the utilization rate of each sub-sectors, which is between 86% and 93%.

Table 3-5 Utilization Rate by Sub-sector

	Planning and Administration	Public Works and Utilities									Communications & Broadcasting	Agriculture, Forestry & Fisheries					Total
		Public Utilities	Transportation					Social Infrastructure	Tourism	Agriculture-Culture		Animal Husbandry	Forestry	Fisheries			
			Road	Railway	Port	Air Transportation & Airport	Other								Sub Total		
In Progress or In Use	34 (91.4%)	2 (100.0%)	13 (92.9%)	11 (91.7%)	9 (75.0%)	3 (100.0%)	32 (88.9%)	68 (88.3%)	60 (81.1%)	14 (93.3%)	4 (100.0%)	38 (92.7%)	0 (0.0%)	16 (88.9%)	12 (85.7%)	248 (88.3%)	
Delayed	0 (0.0%)	0 (0.0%)	0 (0.0%)	0 (0.0%)	1 (8.3%)	0 (0.0%)	2 (5.6%)	3 (3.9%)	7 (9.5%)	0 (0.0%)	0 (0.0%)	3 (7.3%)	0 (0.0%)	1 (5.6%)	1 (7.1%)	15 (5.3%)	
Discontinued or Cancelled	2 (5.6%)	0 (0.0%)	1 (7.1%)	1 (8.3%)	2 (16.7%)	0 (0.0%)	2 (5.6%)	6 (7.8%)	7 (9.5%)	1 (5.7%)	0 (0.0%)	0 (0.0%)	0 (0.0%)	1 (5.6%)	1 (7.1%)	18 (6.4%)	
Total	36 (100.0%)	2 (100.0%)	14 (100.0%)	12 (100.0%)	12 (100.0%)	3 (100.0%)	36 (100.0%)	77 (100.0%)	74 (100.0%)	15 (100.0%)	4 (100.0%)	41 (100.0%)	0 (0.0%)	18 (100.0%)	14 (100.0%)	281 (100.0%)	

2-4 Details of "In Progress or In Use" Studies

As for Group A Studies, 248 out of 281 are classified into "In Progress or In Use": 159 for M/P, 59 for basic studies and 30 for other studies. In general 248 studies are fallen into either or both of the following two categories:

1. A proposed project has been implemented after the finance for the project was secured; and/or
2. Proposals are incorporated into the development policy or plan of the recipient country. Or, study results are consulted to formulate the development policy or plan.

The largest number of "In Progress or In Use" studies is in category 1. 121 out of 248 studies (48.8%) have been reported to be secured the finance for the proposed projects. In particular, 70.0% of other studies (30 studies) have been already financed since their completion. On the contrary, only 25.4% of basic studies have been financed. This is because basic studies focus on the provision of the basic data or the formulation of topographical map, etc. Proposals made by 62 out of 248 "In Progress or In Use" studies (25.0%) are incorporated into the development policy or plan of the recipient country. Especially, 33.3% of "In Progress or In Use" basic studies are utilized in the formulation of development policy or plan of the recipient country. There are development studies, the projects proposed by which have been implemented as well as whose proposals are incorporated into the development policy or plan of the recipient country.

Concerning 33 studies, Japanese technical cooperation has been undertaken: 13 for the project-type technical cooperation and 20 for the dispatch of experts.

Table 3-6 Details of "In Progress or In Use" Studies of Group A

Details	M/P	Basic Studies	Other Studies	Total
Subsequent Studies	83 (52.2%)	8 (13.6%)	9 (30.0%)	100 (40.3%)
Financed	85 (53.5%)	15 (25.4%)	21 (70.0%)	121 (48.8%)
Tech.Coop. & Expert Dispatch	25 (15.7%)	3 (5.1%)	5 (16.7%)	33 (13.3%)
Nat'l Dev't Policy/Plan	42 (26.4%)	20 (33.9%)	0 (0.0%)	62 (25.0%)
Others	28 (17.6%)	38 (64.4%)	10 (33.3%)	76 (30.6%)
Unknown	8 (5.0%)	2 (3.4%)	0 (0.0%)	10 (4.0%)
Total	188	78	36	302
The number of Studies	159	59	30	248

Because of the multiple entries, the sum is larger than 100%.

3. Present Status of the Use of Study Results of Group B Studies (Feasibility Studies, Master Plan/Feasibility Studies and Detailed Design Studies)

The number of Group B Studies which was completed from 1974 to 1994 is 596. 418 of them are F/S (70.0%), 161 are M/P+F/S (27.0%) and 17 are D/D (3.0%). The number of the development studies which are classified into the category of "Completed or In Progress" is 369, 61.9% of total. The number of the "Promoting" Studies is 122 (20.5%). 48 studies (8.1%) are fallen into "Delayed or Suspended" because no significant action has been undertaken by the government of the recipient country to utilize their proposals or results. And 57 development studies (9.5%) are considered to be "Cancelled" on the ground that the government of the recipient country made an explicit decision not to act on the proposals, or no significant action has been undertaken by the government for the considerable period of time.

Table 3-7 Present Status of Group B Studies by the Year of Completion

Year of Completion	Completed or In Progress	Promoting	Delayed or Suspended	Discontinued or Cancelled	Total	Year of Completion	Completed or In Progress	Promoting	Delayed or Suspended	Discontinued or Cancelled	Total
1974	0 (0.0%)	0 (0.0%)	0 (0.0%)	0 (0.0%)	0 (0.0%)	1985	22 (64.7%)	4 (11.8%)	3 (8.8%)	5 (14.7%)	34 (100.0%)
1975	2 (100.0%)	0 (0.0%)	0 (0.0%)	0 (0.0%)	2 (100.0%)	1986	20 (71.4%)	2 (7.1%)	3 (10.7%)	3 (10.7%)	28 (100.0%)
1976	9 (81.8%)	0 (0.0%)	0 (0.0%)	2 (18.2%)	11 (100.0%)	1987	23 (74.2%)	2 (6.5%)	2 (6.5%)	4 (12.9%)	31 (100.0%)
1977	12 (70.6%)	0 (0.0%)	3 (17.6%)	2 (11.8%)	17 (100.0%)	1988	21 (65.6%)	5 (15.6%)	6 (18.8%)	0 (0.0%)	32 (100.0%)
1978	14 (70.0%)	2 (10.0%)	0 (0.0%)	4 (20.0%)	20 (100.0%)	1989	35 (68.6%)	9 (17.6%)	7 (13.7%)	0 (0.0%)	51 (100.0%)
1979	11 (57.9%)	0 (0.0%)	0 (0.0%)	8 (42.1%)	19 (100.0%)	1990	32 (69.6%)	11 (23.9%)	2 (4.3%)	1 (2.2%)	46 (100.0%)
1980	14 (58.3%)	1 (4.2%)	1 (4.2%)	8 (33.3%)	24 (100.0%)	1991	11 (40.7%)	12 (44.4%)	4 (14.8%)	0 (0.0%)	27 (100.0%)
1981	22 (78.6%)	2 (7.1%)	1 (3.6%)	3 (10.7%)	28 (100.0%)	1992	18 (50.0%)	16 (44.4%)	2 (5.6%)	0 (0.0%)	36 (100.0%)
1982	30 (73.2%)	2 (4.9%)	3 (7.3%)	6 (14.6%)	41 (100.0%)	1993	19 (54.3%)	15 (42.9%)	1 (2.9%)	0 (0.0%)	35 (100.0%)
1983	16 (59.3%)	2 (7.4%)	4 (14.8%)	5 (18.5%)	27 (100.0%)	1994	10 (22.7%)	32 (72.7%)	2 (4.5%)	0 (0.0%)	44 (100.0%)
1984	28	5	4	6	43	Total	369	122	48	57	596

The table 3-7 shows the number of studies and their present status according to the year of completion. For the first five years, the annual number of development studies completed was around 10 and the realization rate was notably high with over 70%. As the increase of the number of development studies from the late 1970s to the 1980s, the realization rate shows the downward tendency and is approximately 60%. Since 1990 the annual number of Group B Studies has been further increased. Most of these studies completed lately are classified into "Promoting" because few years have passed since their completion. It is considered a few more year will be taken before the implementation of the projects proposed by these studies.

3-1 Analysis by Regions

Table 3-8 shows the realization rate by regions. In Asia 251 out of 373 studies are in "Completed or In Progress". The realization rate is 67.3% which is higher than the average of Group B Studies (61.9%). No difference in the realization rate is observed concerning the ASEAN countries and the non-ASEAN countries in Asia. In both regions, the realization rates are 67.3%. In Middle East, the realization rate is higher than one in Asia. 39 out of 56 studies are classified into "Completed or In Progress". The realization rate is 69.6%. In Africa, it is 50.8% and in Central and South America, it is 46.7%. Because the number of studies completed in Oceania, Europe and Plural countries is very small, it is difficult to make any generalization concerning the realization rate of those regions. Focusing on the difference in the present status of studies in the Asian region and other regions, 18.2% of studies conducted in Asia are in "Promoting" while in Central and South America 29.3% of studies are in "Promoting", which means more studies in Central and South America are in process for implementation. In Africa and in Central and South America, 27.2 % and 23.9% are classified into either "Delayed or Suspended" or "Cancelled" respectively. This is the major factor to lower the realization rate of these regions. This is because in these regions the economic situation became worsen from the 1980s, which resulted in the difficulty to obtain the required amount of foreign currencies to promote the proposed projects. However, in Central and South America, the improvement of both economic condition and political situation has been observed since the mid-1990s. Therefore, it is highly likely that the "Promoting" studies, which will be implemented and the realization rate will be improved.

Table 3-8 Realization Rate by Region

Present Status	Asia			Middle East	Africa	Middle & South America	Oceania	Europe	Plural Countries	Total
	ASEAB	Other Asia	Sub Total							
Completed or In Progress	175 (67.3%)	76 (67.3%)	251 (67.3%)	39 (69.6%)	30 (50.8%)	43 (46.7%)	6 (50.0%)	0 (0.0%)	0 (0.0%)	369 (61.9%)
Completed	42 (16.2%)	17 (15.0%)	59 (15.8%)	9 (16.1%)	12 (20.3%)	14 (15.2%)	1 (8.3%)	0 (0.0%)	0 (0.0%)	95 (15.9%)
Partially Completed	47 (18.1%)	22 (19.5%)	69 (18.5%)	16 (28.6%)	8 (13.6%)	7 (7.6%)	0 (0.0%)	0 (0.0%)	0 (0.0%)	100 (16.8%)
Implementing	57 (21.9%)	23 (20.4%)	80 (21.4%)	8 (14.3%)	4 (6.8%)	8 (8.7%)	3 (25.0%)	0 (0.0%)	0 (0.0%)	103 (17.3%)
Processing	29 (11.2%)	14 (12.4%)	43 (11.5%)	6 (10.7%)	6 (10.2%)	14 (15.2%)	2 (16.7%)	0 (0.0%)	0 (0.0%)	71 (11.9%)
Promoting	46 (17.7%)	22 (19.5%)	68 (18.2%)	9 (16.1%)	13 (22.0%)	27 (29.3%)	3 (25.0%)	2 (66.7%)	0 (0.0%)	122 (20.5%)
Delayed or Suspended	14 (5.4%)	11 (9.7%)	25 (6.7%)	4 (7.1%)	7 (11.9%)	9 (9.8%)	2 (16.7%)	1 (33.3%)	0 (0.0%)	48 (8.1%)
Discontinued or Cancelled	25 (9.6%)	4 (3.5%)	29 (7.8%)	4 (7.1%)	9 (15.3%)	13 (14.1%)	1 (8.3%)	0 (0.0%)	1 (100.0%)	57 (9.5%)
Total	260 (100.0%)	113 (100.0%)	373 (100.0%)	56 (100.0%)	59 (100.0%)	92 (100.0%)	12 (100.0%)	3 (100.0%)	1 (100.0%)	596 (100.0%)

3-2 Analysis by Type of Studies

Table 3-9 shows the realization rate by type of studies. 369 out of 596 completed studies are considered "Completed or In Progress". The realization rate is 61.9%. 88.2% of D/D are classified into "Completed or In Progress". The realization rate of D/D is highest among three Group B Studies. The realization rates of F/S and M/P+F/S are alike to each other.

Table 3-9 Realization Rate by Type of Studies

Present Status	M/P+F/S	F/S	D/D	Total
Completed or In Progress	95 (59.0%)	259 (62.0%)	15 (88.2%)	369 (61.9%)
Completed	8 (5.0%)	80 (19.1%)	7 (41.2%)	95 (15.9%)
Partially Completed	35 (21.7%)	63 (15.1%)	2 (11.8%)	100 (16.8%)
Implementing	34 (21.1%)	67 (16.0%)	2 (11.8%)	103 (17.3%)
Processing	18 (11.2%)	49 (11.7%)	4 (23.5%)	71 (11.9%)
Promoting	51 (31.7%)	70 (16.7%)	1 (5.9%)	122 (20.5%)
Delayed or Suspended	9 (5.6%)	39 (9.3%)	0 (0.0%)	48 (8.1%)
Discontinued or Canceled	6 (3.7%)	50 (12.0%)	1 (5.9%)	57 (9.6%)
Total	161 (100.0%)	418 (100.0%)	17 (100.0%)	596 (100.0%)

3-3 Analysis by Sector

Out of 596 Group B Studies, 413 are in the Social Development Sector and 183 are in the Agriculture, Forestry and Fisheries Sector. The realization rate is 64.6% for the former and 55.7% for the latter. In the Social Development Sector, the realization rate of F/S is 64.6% and of M/P+F/S is 62.5% while that of D/D is 85.7%. The reason why the realization rate of D/D is much higher than the rest is because D/D is undertaken on condition that the proposed project will be financed after the completion of study. The similar tendency is observed in the Agriculture, Forestry and Fisheries Sector in which the realization rate of D/D is remarkably higher than that of F/S and M/P+F/S. The realization rate in the Agriculture, Forestry and Fisheries Sector is, however, lower than that in the Social Development Sector. The realization rate of M/P+F/S is 40.0% and of F/S is 57.4%, which are lower than those in the Social Development Sector. The major cause of this difference between two sectors is because in the Agriculture, Forestry and Fisheries Sector more studies are classified into "Promoting" than those in the Social Development Sector: 22% for F/S and 48% for M/P+F/S.

Table 3-10 Realization Rate by Sector

Present Status	Social Development				Agriculture, Forestry & Fisheries				Total
	M/P+F/S	F/S	D/D	Sub Total	M/P+F/S	F/S	D/D	Sub Total	
Completed or In Progress	85 (62.5%)	170 (64.6%)	12 (85.7%)	267 (64.6%)	10 (40.0%)	89 (57.4%)	3 (100.0%)	102 (55.7%)	369 (61.9%)
Completed	7 (5.1%)	53 (20.2%)	5 (35.7%)	65 (15.7%)	1 (4.0%)	27 (17.4%)	2 (66.7%)	30 (16.4%)	95 (15.9%)
Partially Completed	33 (24.3%)	40 (15.2%)	2 (14.3%)	75 (18.2%)	2 (8.0%)	23 (14.8%)	0 (0.0%)	25 (13.7%)	100 (16.8%)
Implementing	30 (22.1%)	43 (16.3%)	2 (14.3%)	75 (18.2%)	4 (16.0%)	24 (15.5%)	0 (0.0%)	28 (15.3%)	103 (17.3%)
Processing	15 (11.0%)	34 (12.9%)	3 (21.4%)	52 (12.6%)	3 (12.0%)	15 (9.7%)	1 (33.3%)	19 (10.4%)	71 (11.9%)
Promoting	39 (28.7%)	35 (13.3%)	1 (7.1%)	75 (18.2%)	12 (48.0%)	35 (22.6%)	0 (0.0%)	47 (25.7%)	122 (20.5%)
Delayed or Suspended	6 (4.4%)	17 (6.5%)	0 (0.0%)	23 (5.6%)	3 (12.0%)	22 (14.2%)	0 (0.0%)	25 (13.7%)	48 (8.1%)
Discontinued or Cancelled	6 (4.4%)	41 (15.6%)	1 (7.1%)	48 (11.6%)	0 (0.0%)	9 (5.8%)	0 (0.0%)	9 (4.9%)	57 (9.5%)
Total	136 (100.0%)	263 (100.0%)	14 (100.0%)	413 (100.0%)	25 (100.0%)	155 (100.0%)	3 (100.0%)	183 (100.0%)	596 (100.0%)

Among the sub-sectors in the Social Development Sector, Transportation sub-sector has the largest number of development studies completed and its realization rate is 61.6%, which is almost equivalent to that of all Group B Studies. In Transportation, the largest number of studies have been conducted in Road sub-subsector and the realization rate is higher (71.6%) than that of all Group B Studies. In the Agriculture, Forestry and Fisheries Sector the overwhelming number of studies has been completed in the Agriculture sub-sector (166 out of 183 studies). The realization rate in this sector is 56.0% which is lower than that of all Group B Studies. The number of development studies completed in Animal Husbandry, Forestry and Fisheries has been so small that no proper realization rate can be obtained.

Table 3-11 Realization Rate by Sub-sector

Present Status	Planning & Administration	Public Works and Utilities										Commerce	Agri., Forestry & Fisheries				Total
		Public Utilities	Transportation						Social Infrastructure	Communications & Broadcasting	Tourism		Agriculture	Animal Husbandry	Forestry	Fisheries	
			Road	Railway	Port	Air Transportation & Airport	Others	Sub Total									
Completed or In Progress	2	42	53	16	33	21	15	138	42	39	4	93	0	5	4	369	
	(50.0%)	(72.4%)	(71.6%)	(50.0%)	(55.9%)	(80.8%)	(45.5%)	(61.6%)	(56.8%)	(81.3%)	(80.0%)	(56.0%)	(0.0%)	(71.4%)	(50.0%)	(61.9%)	
Completed	1	4	13	4	9	3	6	35	7	17	1	28	0	1	1	95	
	(25.0%)	(6.9%)	(17.6%)	(12.5%)	(15.3%)	(11.5%)	(18.2%)	(15.6%)	(9.5%)	(35.4%)	(20.0%)	(16.9%)	(0.0%)	(14.3%)	(12.5%)	(15.9%)	
Partially Completed	1	14	16	5	11	2	3	37	10	13	0	25	0	0	1	100	
	(25.0%)	(24.1%)	(21.6%)	(15.6%)	(18.6%)	(7.7%)	(9.1%)	(16.5%)	(13.5%)	(27.1%)	(0.0%)	(15.1%)	(0.0%)	(0.0%)	(0.0%)	(16.8%)	
Implementing	0	15	14	6	6	8	4	38	14	7	1	24	0	3	1	103	
	(0.0%)	(25.9%)	(18.9%)	(18.8%)	(10.2%)	(30.8%)	(12.1%)	(17.0%)	(18.9%)	(14.6%)	(20.0%)	(14.5%)	(0.0%)	(42.9%)	(12.5%)	(17.3%)	
Processing	0	9	10	1	7	8	2	28	11	2	2	16	0	1	2	71	
	(0.0%)	(15.5%)	(13.5%)	(3.1%)	(11.9%)	(30.8%)	(6.1%)	(12.5%)	(14.9%)	(4.2%)	(40.0%)	(9.6%)	(0.0%)	(14.3%)	(25.0%)	(11.9%)	
Promoting	2	12	13	3	14	2	6	38	20	3	0	42	1	2	2	122	
	(50.0%)	(20.7%)	(17.6%)	(9.4%)	(23.7%)	(7.7%)	(18.2%)	(17.0%)	(27.0%)	(6.3%)	(0.0%)	(25.3%)	(50.0%)	(28.6%)	(25.0%)	(20.5%)	
Delayed or Suspended	0	2	2	2	3	1	5	13	5	3	0	23	0	0	0	48	
	(0.0%)	(3.4%)	(2.7%)	(6.3%)	(5.1%)	(3.8%)	(15.2%)	(5.8%)	(6.8%)	(6.3%)	(0.0%)	(13.9%)	(0.0%)	(0.0%)	(25.0%)	(8.1%)	
Discontinued or Canceled	0	2	6	11	9	2	7	33	7	3	1	8	1	0	0	57	
	(0.0%)	(3.4%)	(8.1%)	(34.4%)	(15.3%)	(7.7%)	(21.2%)	(15.6%)	(9.5%)	(6.3%)	(20.0%)	(4.8%)	(50.0%)	(0.0%)	(0.0%)	(9.6%)	
Total	4	58	74	32	59	26	33	224	74	48	5	166	2	7	8	596	
	(100.0%)	(100.0%)	(100.0%)	(100.0%)	(100.0%)	(100.0%)	(100.0%)	(100.0%)	(100.0%)	(100.0%)	(100.0%)	(100.0%)	(100.0%)	(100.0%)	(100.0%)	(100.0%)	

3-4 Details of "Completed or In Progress" Studies

369 out of 596 completed studies are classified into "Completed or In Progress" and the realization rate is 61.9%. Most of "Completed or In Progress" studies have been already secured the finance for the proposed projects. It is considered that once the finance is secured, the project is implemented smoothly. On the contrary, a few studies

are classified into this category without having had a funding secured. The realization of the project proposed by these studies are determined to be highly likely although their financial sources have been yet to be confirmed. One of these studies is "Development of Chittagong Airport" in Bangladesh, in which the subsequent studies has been already implemented and the finance for which is likely to be secured in near future.

The financial sources of these studies vary; OECF, the Japanese grant aid, the World Bank, the Asian Development Bank, other donor countries etc. Among the various financial sources, the OECF loan, Yen Credit, has been the most important source of fund. However, recently the number of projects implemented with Japanese grant aid or domestic funding has been increasing as well as the number of projects undertaken with private capital. This is because the Asian countries (especially the ASEAN countries) have been making steady economic growth, which enables them to implement projects with domestic funding or private capital without receiving the loan from donors. Also, in non-ASEAN countries and Africa, more projects, mainly the projects in the Agriculture, Forestry and Fisheries, which can be realized with a small amount of capital investment, are now implemented with Japanese grant aid.

In order to facilitate the implementation of the proposed projects it is crucial that the projects are conformed to the development objective and policies of the country and receive high priority among alternative development programs/projects. It is most desirable that each development study propose projects with appropriate scale and design during the stage of the survey and a prompt step toward implementation be taken soon after the survey is completed.

CHAPTER 4 TECHNICAL TRANSFER

In general, technical transfer is carried out in the way of either the provision of OJT or the holding of the seminar at the study period in the recipient country or the provision of technical training in Japan. The technology transferred is expertise or method which can be utilized in research or planning. While the recipient country is usually contented with technical transfer conducted by the Japanese experts, some express their dissatisfaction. The training in Japan as well as OJT in the recipient country have been widely carried out as a method of technical transfer. To make technical transfer more useful to counterparts, it shall be necessary to improve the quality of the training and to conduct the training which is carefully planned for each participants. It should be considered to have counterparts participate into the seminar initiated by JICA.

APPENDIX

PROJECT LIST

No.	Region	Code No.	Country	Name of the Study	Type	Year	Sector	Subsector
1	Asia	BGD/S 401/77	Bangladesh	Television Studio Construction Project	D/D	1977	Communications & B	Broadcasting
2	Asia	BGD/A 301/79	Bangladesh	Narayanganj-Narsingdi Irrigation Project	F/S	1979	Agriculture	(Agriculture in)General
3	Asia	BGD/S 301/84	Bangladesh	Meghna-Gumti Bridges Construction Project	F/S	1984	Transportation	Road
4	Asia	BGD/S 302/85	Bangladesh	Establishment of Railway Carriage and Wagon Manufacturing Plant	F/S	1985	Transportation	Railway
5	Asia	BGD/S 2018/87	Bangladesh	Development Project of Dhaka and Narayanganj Ports	M/P+F/S	1987	Transportation	Port
6	Asia	BGD/S 303/87	Bangladesh	Water Drainage System Improvement Project in Dhaka City	F/S	1987	Social Infrastructure	River & Erosion Control
7	Asia	BGD/A 302/88	Bangladesh	North Rajshahi Irrigation Project	F/S	1988	Agriculture	(Agriculture in)General
8	Asia	BGD/A 101/89	Bangladesh	Model Rural Development Project for Homna and Dandkandi Upazila Comilla District	M/P	1989	Agriculture	(Agriculture in)General
9	Asia	BGD/S 306/89	Bangladesh	Storm Water Drainage System Improvement Project in Dhaka City (updating study)	F/S	1989	Social Infrastructure	River & Erosion Control
10	Asia	BGD/S 304/89	Bangladesh	Development of Chittagong Airport	F/S	1989	Transportation	Air Transportation & Airport
11	Asia	BGD/S 305/89	Bangladesh	Optimization of Capacity Utilization and Improvement of Performance of Chittagong Dry Dock	F/S	1989	Transportation	Marine Transportation & Ships
12	Asia	BGD/A 303/90	Bangladesh	Kurigram Irrigation and Flood Control Project - North Unit	F/S	1990	Agriculture	(Agriculture in)General
13	Asia	BGD/S 307/90	Bangladesh	Development Project of Container Terminal at Dhaka-Narayanganj Port	F/S	1990	Transportation	Port
14	Asia	BGD/A 102/91	Bangladesh	The Model Rural Development Project Phase II for Kachua, Nabnagar, Bancharampur and Debidwar Upazilas Greater Dhaka Protection Project(FAP&A)	M/P	1991	Agriculture	(Agriculture in)General
15	Asia	BGD/S 202B/92	Bangladesh	River & Erosion Control / Drainage Improvement in North West Region	M/P+F/S	1992	Social Infrastructure	River & Erosion Control
16	Asia	BGD/S 203B/92	Bangladesh	Kurigram Irrigation and Flood Control Project -South Unit-	M/P+F/S	1992	Social Infrastructure	River & Erosion Control
17	Asia	BGD/A 304/92	Bangladesh	Geodetic Survey in the People's Republic of Bangladesh	F/S	1992	Agriculture	Irrigation, Drainage & Reclamation
18	Asia	BGD/S 501/94	Bangladesh	Lunich-Mongar Integrated Agricultural Development Project	Basic Study	1994	Social Infrastructure	Survey & Mapping
19	Asia	BTN/A 301/88	Bhutan	Improvement of Brunei Government Printing Department	F/S	1988	Agriculture	(Agriculture in)General
20	Asia	BRN/S 601/83	Brunei	Public Transport System in Negara Brunei Darussalam	Other	1983	Social Infrastructure	Architecture & Housing
21	Asia	BRN/S 101/85	Brunei	Development Survey on the Forest Resources in Brunei Darussalam	M/P	1985	Transportation	(Transportation in) General
22	Asia	BRN/A 503/93	Brunei	Phnom Penh Water Supply System	Basic Study	1993	Forestry	Forestry & Forest Conservation
23	Asia	KHM/S 201/93	Cambodia	Integrated Agricultural and Rural Development Project in Suburbs of Phnom Penh	M/P+F/S	1993	Public Utilities	Water Supply
24	Asia	KHM/A 201/94	Cambodia	Port Construction	M/P+F/S	1994	Agriculture	Irrigation, Drainage & Reclamation
25	Asia	CHN/S 601/79	China	Railway Modernization Project	Other	1979	Transportation	Port
26	Asia	CHN/S 602/81	China		Other	1981	Transportation	Railway

No.	Region	Code No.	Country	Name of the Study	Type	Year	Sector	Subsector
27	Asia	CHN/A 302/84	China	Basic Plan on the Sanjiang Plain Agricultural Experiment Station	F/S	1984	Agriculture	(Agriculture in)General
28	Asia	CHN/A 301/84	China	Sanko Heigen Ryutokyo Model Area Agricultural Development Project	F/S	1984	Agriculture	(Agriculture in)General
29	Asia	CHN/S 303/84	China	Tianjin-Shanghai and Guangzhou Telecommunication Expansion Project	F/S	1984	Communications & B	Telecommunication
30	Asia	CHN/S 301/84	China	Improvement Project of Chimwangzao, Liejunkang and Tuingao Ports	F/S	1984	Transportation	Port
31	Asia	CHN/S 302/84	China	Double Tracking and Electrification Project of Railways between Hengyang and Kwangchow, and Electrification Project of Railways between Chengchow and Paoki	F/S	1984	Transportation	Railway
32	Asia	CHN/S 304/86	China	Port Development Project in Dapeng Bay	F/S	1986	Transportation	Port
33	Asia	CHN/S 305/86	China	Subway Project of Shanghai	F/S	1986	Transportation	Railway
34	Asia	CHN/S 101/87	China	Shanghai Air Pollution Control	M/P	1987	Administration	Environmental Problems
35	Asia	CHN/S 501/87	China	Groundwater Development Project in Tianjin City	Basic Study	1987	Social Infrastructure	Water Resource Development
36	Asia	CHN/S 308/87	China	Hokkou Hiraike Multipurpose Dam Construction Project	F/S	1987	Social Infrastructure	Water Resource Development
37	Asia	CHN/S 307/87	China	Kouhokou River Bridge Construction Project	F/S	1987	Transportation	Road
38	Asia	CHN/S 306/87	China	Shanghai-Nanjing Expressway Construction Project	F/S	1987	Transportation	Road
39	Asia	CHN/S 102/88	China	Hainan Island Integrated Development	M/P	1988	Development Plan	Integrated Regional Development Plan
40	Asia	CHN/A 201B/88	China	Lujingxiang Model Stock-farming Project in Gansu Province	M/P+F/S	1988	Animal Husbandry	Animal Husbandry
41	Asia	CHN/S 201B/88	China	Dalian Port Development Project	M/P+F/S	1988	Transportation	Port
42	Asia	CHN/A 303/88	China	Irrigation Development Project in Northern Hubei	F/S	1988	Agriculture	(Agriculture in)General
43	Asia	CHN/S 309/88	China	Guanyinye Reservoir Project	F/S	1988	Social Infrastructure	Water Resource Development
44	Asia	CHN/S 310/88	China	Beijing Airport International Terminal Area Development	F/S	1988	Transportation	Air Transportation & Airport
45	Asia	CHN/A 304/89	China	Integrated Agricultural Infrastructure Development in Dong Ting Lake Area in Hunan Province	F/S	1989	Agriculture	(Agriculture in)General
46	Asia	CHN/S 312/89	China	Construction Project of Wuhan / Tanhe Civil Airport	F/S	1989	Transportation	Air Transportation & Airport
47	Asia	CHN/S 311/89	China	Construction Projects of the Three Ports	F/S	1989	Transportation	Port
48	Asia	CHN/S 502/90	China	Groundwater Development Project in Urumqi	Basic Study	1990	Social Infrastructure	Water Resource Development
49	Asia	CHN/S 202B/90	China	Municipal Solid Waste Treatment Plan in Xian City	M/P+F/S	1990	Public Utilities	Urban Sanitation
50	Asia	CHN/A 305/90	China	Agricultural Water-use Development Project on Haizi Dam Area in Beijing City	F/S	1990	Agriculture	(Agriculture in)General
51	Asia	CHN/S 313/90	China	Rapid Railway Construction Project in Tianjin	F/S	1990	Transportation	Railway

No.	Region	Code No.	Country	Name of the Study	Type	Year	Sector	Subsector
52	Asia	CHN/A 306/91	China	Improvement of Agricultural Land Reclamation Dike and Agriculture Autonomous Region, Qinzhou Region, Guangxi Zhuang	F/S	1991	Agriculture	(Agriculture in)General
53	Asia	CHN/S 314/91	China	Telephone Network Automatization Plan in Dehui County, Jilin Province	F/S	1991	Communications & B	Telecommunication
54	Asia	CHN/A 202B/92	China	The Integrated Agricultural and Animal Husbandry Development Project in Xiangxi Nanzhi Shanno Area	M/P+F/S	1992	Agriculture	(Agriculture in)General
55	Asia	CHN/A 203B/92	China	Liao-Ho Delta Agricultural Resources Integrated Development Project in the Liaoning Sheng	M/P+F/S	1992	Agriculture	(Agriculture in)General
56	Asia	CHN/S 315/92	China	Flood Forecasting and Warning System in the Middle and Lower Reaches in the Chang Shiang	F/S	1992	Social Infrastructure	River & Erosion Control
57	Asia	CHN/S 316/92	China	Jilin Fengman Dam Rehabilitation Project	F/S	1992	Social Infrastructure	Water Resource Development
58	Asia	CHN/S 102/93	China	Integrated Regional Development Planning Study on Jiujiang City, Jiangxi Province	M/P	1993	Development Plan	Integrated Regional Development Plan
59	Asia	CHN/S 101/93	China	Water Quality Protection for Poyan Lake in China	M/P	1993	Administration	Environmental Problems
60	Asia	CHN/S 202/93	China	Waipochoao District in Pudong New Economic Zone in Shanghai	M/P+F/S	1993	Social Infrastructure	Urban Planning & Land Development
61	Asia	CHN/A 309/93	China	Facilities Improvement Project in Second Irrigation Section in Qianguo Area in Jilin Province	F/S	1993	Agriculture	(Agriculture in)General
62	Asia	CHN/S 301/93	China	Rapid Guided Transport System Planning in Chongqing	F/S	1993	Transportation	Railway
63	Asia	CHN/A 204/94	China	Integrated Agriculture Development Project in Heilongjiang	M/P+F/S	1994	Agriculture	(Agriculture in)General
64	Asia	CHN/S 203/94	China	Primary Road Network Development Study in Zhe-jiang Province	M/P+F/S	1994	Transportation	Road
65	Asia	CHN/A 310/94	China	Improvement Project of Drainage System in Qixing-Polder, Shunde City, Guangdong province	F/S	1994	Agriculture	Irrigation, Drainage & Reclamation
66	Asia	CHN/S 317/94	China	West-bound Trunk Road Construction Project in Municipality of Xiamen	F/S	1994	Transportation	Road
67	Asia	IND/S 302/87	India	Modernization of Rolling Stock Workshop	F/S	1987	Transportation	Railway
68	Asia	IND/S 301/87	India	Railway Improvement Plan of Transport Capacity and Train Speed on the Delhi-Kampur Section	F/S	1987	Transportation	Railway
69	Asia	IND/S 201B/89	India	Development of Calcutta and Haldia Dock Systems of Calcutta Port Trust	M/P+F/S	1989	Transportation	Port
70	Asia	IND/S 303/89	India	Development Plan for the New Delhi Railway Station	F/S	1989	Transportation	Railway
71	Asia	IND/S 304/90	India	Improvement Plan of New Mangalore	F/S	1990	Transportation	Port
72	Asia	IND/A 301/91	India	Irrigation and Drainage Development of Sharda Canal CAD Project	F/S	1991	Agriculture	(Agriculture in)General
73	Asia	IND/S 305/92	India	Transport Infrastructure Development Project in Calcutta	F/S	1992	Transportation	Urban Transportation
74	Asia	IND/S 601/74	Indonesia	Solo River Basin Development(follow-up)	Other	1974	Social Infrastructure	Water Resource Development
75	Asia	IND/S 101/75	Indonesia	Java Regional Study, East Java	M/P	1975	Development Plan	Integrated Regional Development Plan

No.	Region	Code No.	Country	Name of the Study	Type	Year	Sector	Subsector
76	Asia	IDN/S 301/75	Indonesia	Wongiri Multipurpose Dam Project	F/S	1975	Social Infrastructu	Water Resource Development
77	Asia	IDN/A 301/76	Indonesia	Wonogiri Irrigation and Upper Solo River Improvement Project	F/S	1976	Agriculture	(Agriculture in)General
78	Asia	IDN/S 302/76	Indonesia	Wonogiri Irrigation and Upper Solo River Improvement Project	F/S	1976	Social Infrastructu	River & Erosion Control
79	Asia	IDN/S 303/76	Indonesia	Central and East Java Road Betterment Project	F/S	1976	Transportation	Road
80	Asia	IDN/S 102/77	Indonesia	Java Regional Study: Central Java	M/P	1977	Development Plan	Integrated Regional Development Plan
81	Asia	IDN/S 603/77	Indonesia	Brantas Middle Reaches River Improvement Project(follow-up)	Other	1977	Social Infrastructu	River & Erosion Control
82	Asia	IDN/S 602/77	Indonesia	Brantas River Basin Development Plan(follow-up)	Other	1977	Social Infrastructu	River & Erosion Control
83	Asia	IDN/S 304/77	Indonesia	Development Plan of the Banjarmasin Port	F/S	1977	Transportation	Port
84	Asia	IDN/S 103/78	Indonesia	North and West Sumatra Tourism	M/P	1978	Tourism	(Tourism in)General
85	Asia	IDN/A 501/78	Indonesia	Forest Inventory for Management and Logging in Central Java	Basic Study	1978	Forestry	Forestry & Forest Conservation
86	Asia	IDN/S 604/78	Indonesia	Wonogiri Irrigation and River Improvement Project(follow-up)	Other	1978	Social Infrastructu	River & Erosion Control
87	Asia	IDN/S 201B/78	Indonesia	Ular River Improvement Project	M/P+F/S	1978	Social Infrastructu	River & Erosion Control
88	Asia	IDN/S 308/78	Indonesia	Hospital Facilities Improvement Project	F/S	1978	Social Infrastructu	Architecture & Housing
89	Asia	IDN/S 307/78	Indonesia	Development Plan of the Port of Semarang	F/S	1978	Transportation	Port
90	Asia	IDN/S 306/78	Indonesia	Expansion Project of the Bitung Port	F/S	1978	Transportation	Port
91	Asia	IDN/S 305/78	Indonesia	Jakarta Ring Road Project	F/S	1978	Transportation	Road
92	Asia	IDN/S 107/79	Indonesia	Central South Sulawesi Water Resources Development Project	M/P	1979	Social Infrastructu	Water Resource Development
93	Asia	IDN/S 104/79	Indonesia	Shipbuilding Industry Development	M/P	1979	Transportation	Marine Transportation & Ships
94	Asia	IDN/S 605/79	Indonesia	Jakarta-Merak Highway Project: Jakarta/Tangerang Freeway Financial Study (follow-up)	Other	1979	Transportation	Road
95	Asia	IDN/A 302/79	Indonesia	Riam Kanau Irrigation Project	F/S	1979	Agriculture	(Agriculture in)General
96	Asia	IDN/S 310/79	Indonesia	Borobudur Prambanan: National Archeological Parks	F/S	1979	Tourism	(Tourism in)General
97	Asia	IDN/S 309/79	Indonesia	Expansion Project of the Port of Balikpapan	F/S	1979	Transportation	Port
98	Asia	IDN/A 101/80	Indonesia	Watershed Management Plan in Upper Musi Watershed South Sumatra	M/P	1980	Forestry	Forestry & Forest Conservation
99	Asia	IDN/S 106/80	Indonesia	Southern Coast Development Plan, East Java	M/P	1980	Development Plan	Integrated Regional Development Plan
100	Asia	IDN/S 108/80	Indonesia	Land Erosion and Volcanic Debris Control in the Area of Mt.Merapi	M/P	1980	Social Infrastructu	River & Erosion Control
101	Asia	IDN/S 105/80	Indonesia	Removal of Sunken Vessels	M/P	1980	Transportation	Marine Transportation & Ships
102	Asia	IDN/S 109/80	Indonesia	Medan Area Transportation	M/P	1980	Transportation	Urban Transportation
103	Asia	IDN/S 501/80	Indonesia	Local Roads Support Works in Seven Provinces	Basic Study	1980	Transportation	Road
104	Asia	IDN/S 311/80	Indonesia	Small and Medium Sized Town Water Supply Projects in Sulawesi	F/S	1980	Public Utilities	Water Supply
105	Asia	IDN/S 312/80	Indonesia	Reinforcement and Expansion Plan of P.T.IKI Makassar Shipyard at Ujung Pandang	F/S	1980	Transportation	Marine Transportation & Ships
106	Asia	IDN/S 313/80	Indonesia	Madiun River Urgent Improvement Project	F/S	1980	Social Infrastructu	River & Erosion Control

No.	Region	Code No.	Country	Name of the Study	Type	Year	Sector	Subsector
107	Asia	IDN/S 203B/81	Indonesia	Development Project of the Port of Sorong	M/P+F/S	1981	Transportation	Port
108	Asia	IDN/S 202B/81	Indonesia	Low Cost Housing Project in Cengkareng	M/P+F/S	1981	Social Infrastructu	Architecture & Housing
109	Asia	IDN/S 315/81	Indonesia	Improvement of Telephone Network in the City of Jakarta	M/P+F/S	1981	Communications & B	Telecommunication
110	Asia	IDN/A 303/81	Indonesia	Langkeme Irrigation Project	F/S	1981	Agriculture	(Agriculture in)General
111	Asia	IDN/S 318/81	Indonesia	Padang Airport Development	F/S	1981	Transportation	Air Transportation & Airport
112	Asia	IDN/S 317/81	Indonesia	Jakarta Harbour Road Project	F/S	1981	Transportation	Road
113	Asia	IDN/S 314/81	Indonesia	Coastal Radio Communications Maritime Communication System	F/S	1981	Communications & B	Telecommunication
114	Asia	IDN/S 316/81	Indonesia	Telecommunication Network in Developing Areas Surrounding Medan and Ujung Pandang	F/S	1981	Communications & B	Telecommunication
115	Asia	IDN/A 102/82	Indonesia	Postharvest Losses	M/P	1982	Agriculture	Agricultural Processing
116	Asia	IDN/S 110/82	Indonesia	Long Term Development Plan of Maritime Communication System	M/P	1982	Communications & B	Telecommunication
117	Asia	IDN/S 205B/82	Indonesia	Telecommunications Network Development in the Eastern Part	M/P+F/S	1982	Communications & B	Telecommunication
118	Asia	IDN/S 204B/82	Indonesia	Urban/Suburban Railway Transportation in Jabotabek" Area"	M/P+F/S	1982	Transportation	Railway
119	Asia	IDN/A 305/82	Indonesia	Rice Pest Forecasting and Control Project	F/S	1982	Agriculture	(Agriculture in)General
120	Asia	IDN/A 308/82	Indonesia	Santego Irrigation Project	F/S	1982	Agriculture	(Agriculture in)General
121	Asia	IDN/A 307/82	Indonesia	Bila Irrigation Project	F/S	1982	Agriculture	Irrigation, Drainage & Reclamation
122	Asia	IDN/A 306/82	Indonesia	Rice Seed Production and Distribution Project	F/S	1982	Agriculture	(Agriculture in)General
123	Asia	IDN/A 304/82	Indonesia	Komering-1 Irrigation Development Project in the Upper Komering River Basin	F/S	1982	Agriculture	(Agriculture in)General
124	Asia	IDN/S 320/82	Indonesia	Bali International Airport Development	F/S	1982	Transportation	Air Transportation & Airport
125	Asia	IDN/S 319/82	Indonesia	Lower Jeneberang River Flood Control Project/Jeneberang River Flood Control Project (phase II)	F/S	1982	Social Infrastructu	River & Erosion Control
126	Asia	IDN/S 114/83	Indonesia	Long Term Development Programs of the International Telecommunications	M/P	1983	Communications & B	(Comms. & Broad. in) General
127	Asia	IDN/S 113/83	Indonesia	North Banten Water Resources Development	M/P	1983	Social Infrastructu	Water Resource Development
128	Asia	IDN/S 112/83	Indonesia	Urban Development Planning on Gerbangkertosusila Region (Surabaya Metropolitan Area)	M/P	1983	Social Infrastructu	Urban Planning & Land Development
129	Asia	IDN/S 111/83	Indonesia	Electrification Project of Main Railway Lines in Java	M/P	1983	Transportation	Railway
130	Asia	IDN/S 207B/83	Indonesia	Padang Area Flood Control Project	M/P+F/S	1983	Social Infrastructu	River & Erosion Control
131	Asia	IDN/S 206B/83	Indonesia	Development Project of Dumai Port	M/P+F/S	1983	Transportation	Port
132	Asia	IDN/A 309/83	Indonesia	K-C-C Irrigation Development Project	F/S	1983	Agriculture	(Agriculture in)General
133	Asia	IDN/S 321/83	Indonesia	Urban Renewal Housing Project in Jakarta	F/S	1983	Social Infrastructu	Urban Planning & Land Development
134	Asia	IDN/S 209B/84	Indonesia	Jakarta Water Supply Development Project	M/P+F/S	1984	Public Utilities	Water Supply

No.	Region	Code No.	Country	Name of the Study	Type	Year	Sector	Subsector
135	Asia	IDN/S 208B/84	Indonesia	Five-Year Plan for the Integrated Development of Radio and Television Broadcasting	M/P+F/S	1984	Communications & B	(Comms. & Broad. in) General
136	Asia	IDN/S 325/84	Indonesia	Volcanic Debris Control and Water Conservation Project in the Southeastern Slope of Mt. Semeru	F/S	1984	Social Infrastructu	River & Erosion Control
137	Asia	IDN/S 324/84	Indonesia	Grade Separated Crossing in Manggarai Station, Improvements on Merak Line and Track Addition and Other Improvements on Tangerang Line	F/S	1984	Transportation	Railway
138	Asia	IDN/S 323/84	Indonesia	New Railway Line for Cengkareng Airport	F/S	1984	Transportation	Railway
139	Asia	IDN/S 322/84	Indonesia	Nusa Tenggara Area Terrestrial Transmission Network Project	F/S	1984	Communications & B	Telecommunication
140	Asia	IDN/S 117/85	Indonesia	Rural Telecommunications Network	M/P	1985	Communications & B	Telecommunication
141	Asia	IDN/S 116/85	Indonesia	Lower Asahan River Basin Development	M/P	1985	Social Infrastructu	Water Resource Development
142	Asia	IDN/S 115/85	Indonesia	Master Plan on the Development of Aids to Navigation System	M/P	1985	Transportation	Marine Transportation & Ships
143	Asia	IDN/A 502/85	Indonesia	Mosaic Photomap Project of the Downstream Area of the Negara River Basin Basic Study in South Kalimantan	Basic Study	1985	Agriculture	(Agriculture in)General
144	Asia	IDN/S 502/85	Indonesia	Topographic Mapping Project for Upper Stream Area of Negara Basin, South Kalimantan	Basic Study	1985	Social Infrastructu	Survey & Mapping
145	Asia	IDN/S 211B/85	Indonesia	Widas Flood Control and Drainage Project	M/P+F/S	1985	Social Infrastructu	Water Resource Development
146	Asia	IDN/S 210B/85	Indonesia	Ujung Pandang Water Supply Development Project	M/P+F/S	1985	Public Utilities	Water Supply
147	Asia	IDN/S 330/85	Indonesia	Improvement Project of Telephone Network in Medan, Semarang and Solo	F/S	1985	Communications & B	Telecommunication
148	Asia	IDN/S 326/85	Indonesia	Kartian Multipurpose Dam Construction Project	F/S	1985	Social Infrastructu	Water Resource Development
149	Asia	IDN/S 328/85	Indonesia	Electrification Project of Main Line in Java	F/S	1985	Transportation	Railway
150	Asia	IDN/S 327/85	Indonesia	Railway Improvement in Kampung Bandan Station Area	F/S	1985	Transportation	Railway
151	Asia	IDN/S 329/85	Indonesia	Local Road Development	F/S	1985	Transportation	Road
152	Asia	IDN/S 118/86	Indonesia	Long Term Planning for Development of Telecommunications System	M/P	1986	Communications & B	(Comms. & Broad. in) General
153	Asia	IDN/S 213B/86	Indonesia	Airport Development Project in Central Java and Jogjakarta	M/P+F/S	1986	Transportation	Air Transportation & Airport
154	Asia	IDN/S 212B/86	Indonesia	Development Plan of the Port of Semarang (Phase-II)	M/P+F/S	1986	Transportation	Port
155	Asia	IDN/S 331/86	Indonesia	Surabaya-Banjarmasin Submarine Cable Project	F/S	1986	Communications & B	Telecommunication
156	Asia	IDN/A 103/87	Indonesia	Multiplication and Distribution of Improved Soybean Seed and Seed Potato	M/P	1987	Agriculture	(Agriculture in)General
157	Asia	IDN/S 120/87	Indonesia	Regional Development Project in the Western Part of Java	M/P	1987	Tourism	(Tourism in)General
158	Asia	IDN/S 121/87	Indonesia	Future Demand of the Inter-Island Traffic	M/P	1987	Transportation	Air Transportation & Airport

No.	Region	Code No.	Country	Name of the Study	Type	Year	Sector	Subsector
159	Asia	IDN/S 119/87	Indonesia	Arterial Road System Development Study in Jakarta Metropolitan Area	M/P	1987	Transportation	Road
160	Asia	IDN/S 333/87	Indonesia	Trans-Sumatra Terrestrial Digital Transmission System	F/S	1987	Communications & B	Telecommunication
161	Asia	IDN/S 332/87	Indonesia	Solid Waste Management System Improvement Project in the City of Jakarta	F/S	1987	Public Utilities	Urban Sanitation
162	Asia	IDN/S 122/88	Indonesia	Ujung Pandang Area Highway Development Study	M/P	1988	Transportation	Urban Transportation
163	Asia	IDN/S 123/88	Indonesia	Maritime Safety Plan Concerning Search and Rescue	M/P	1988	Transportation	Marine Transportation & Ships
164	Asia	IDN/S 214B/88	Indonesia	Flood Control Plan of the Upper Citaram Basin	M/P+F/S	1988	Social Infrastructu	River & Erosion Control
165	Asia	IDN/A 310/88	Indonesia	Batang Kumu Irrigation Project in Riau Province	F/S	1988	Agriculture	(Agriculture in)General
166	Asia	IDN/S 336/88	Indonesia	Implementation of Intra-City Digital Microwave Subscriber System	F/S	1988	Communications & B	Telecommunication
167	Asia	IDN/S 334/88	Indonesia	Kalimantan-Sulawesi Submarine Cable System	F/S	1988	Communications & B	Telecommunication
168	Asia	IDN/S 335/88	Indonesia	Disaster Prevention Project in the Southeastern Slope of Mt. Galunggung	F/S	1988	Social Infrastructu	River & Erosion Control
169	Asia	IDN/S 337/88	Indonesia	Urgent Bali Beach Conservation Project	F/S	1988	Social Infrastructu	River & Erosion Control
170	Asia	IDN/A 105/89	Indonesia	Improvement of Rice Post Harvest and Marketing in Farmer Groups	M/P	1989	Agriculture	Agricultural Processing
171	Asia	IDN/A 104/89	Indonesia	Negara River Basin Overall Irrigation Development Plan	M/P	1989	Agriculture	(Agriculture in)General
172	Asia	IDN/S 125/89	Indonesia	Integrated Regional Development Plan for the Northern Part of Sumatra	M/P	1989	Development Plan	Integrated Regional Development Plan
173	Asia	IDN/S 216B/89	Indonesia	Integrated Radio and Television Servicing System Project	M/P+F/S	1989	Communications & B	Broadcasting
174	Asia	IDN/S 215B/89	Indonesia	Kemayoran Urban Housing Development Project	M/P+F/S	1989	Social Infrastructu	Urban Planning & Land Development
175	Asia	IDN/S 124/89	Indonesia	Long-Term and Medium-Term Plan for Telecommunications Network in Jabotabek Area	M/P+F/S	1989	Communications & B	Telecommunication
176	Asia	IDN/A 311/89	Indonesia	Industrial Plantation Forest Development Plan in South Sumatra Area	F/S	1989	Forestry	Forestry & Forest Conservation
177	Asia	IDN/S 338/89	Indonesia	Cikampek-Cirebon Tollway Project	F/S	1989	Transportation	Road
178	Asia	IDN/S 126/90	Indonesia	Airport Maintenance and Rehabilitation	M/P	1990	Transportation	Air Transportation & Airport
179	Asia	IDN/A 201B/90	Indonesia	Master Plan Study on Lower Asahan River Basin Development	M/P+F/S	1990	Agriculture	(Agriculture in)General
180	Asia	IDN/S 217B/90	Indonesia	Integrated Transportation System Improvement by Railway and Feeder Service in Jabotabek Area	M/P+F/S	1990	Transportation	Railway
181	Asia	IDN/S 218B/90	Indonesia	Long-Term and Medium-Term Plan for Telecommunications Network in Surabaya and Surrounding Areas	M/P+F/S	1990	Communications & B	Telecommunication
182	Asia	IDN/S 219B/90	Indonesia	Urban Drainage and Wastewater Disposal Project in the City of Jakarta	M/P+F/S	1990	Public Utilities	Sewerage
183	Asia	IDN/A 312/90	Indonesia	Air Selagan Irrigation Project	F/S	1990	Agriculture	(Agriculture in)General
184	Asia	IDN/S 340/90	Indonesia	Maintenance Dredging in the Access Channel of Banjarmasin Port	F/S	1990	Transportation	Port
185	Asia	IDN/S 339/90	Indonesia	Bogor-Bandung Road Project	F/S	1990	Transportation	Road
186	Asia	IDN/S 220B/91	Indonesia	Belawan-Padang Integrated River Basin Development	M/P+F/S	1991	Social Infrastructu	River & Erosion Control
187	Asia	IDN/A 313/91	Indonesia	Nias Island Irrigation and Agricultural Development Project	F/S	1991	Agriculture	(Agriculture in)General
188	Asia	IDN/S 341/91	Indonesia	Surabaya - Mojokerto Toll Road Project	F/S	1991	Transportation	Road
189	Asia	IDN/S 606/92	Indonesia	Telecommunications Network Development Plan for Repelita-VI	M/P	1992	Communications & B	Telecommunication

No.	Region	Code No.	Country	Name of the Study	Type	Year	Sector	Subsector
190	Asia	IDN/S 127/92	Indonesia	Integrated Regional Development Plan for the Southern Part of Sumatra	M/P	1992	Development Plan	Integrated Regional Development Plan
191	Asia	IDN/S 222B/92	Indonesia	The Development of the Nationwide Ferry Service Routes	M/P+F/S	1992	Transportation	Port
192	Asia	IDN/S 221B/92	Indonesia	Development of Coastal Roads in East Coast of Sumatra	M/P+F/S	1992	Transportation	Road
193	Asia	IDN/A 315/92	Indonesia	Rokan River Basin Overall Irrigation Development Plan	F/S	1992	Agriculture	(Agriculture in)General
194	Asia	IDN/A 314/92	Indonesia	Land Development Project Improvement of Land and Irrigation Systems at Farm Level	F/S	1992	Agriculture	(Agriculture in)General
195	Asia	IDN/S 343/92	Indonesia	Cidanau-Cibanten Water Resources Development Project	F/S	1992	Social Infrastructure	Water Resource Development
196	Asia	IDN/S 344/92	Indonesia	The Development of Wastewater Disposal for Denpasar	F/S	1992	Public Utilities	Sewerage
197	Asia	IDN/S 342/92	Indonesia	IKK System Water Supply Project in Provinces of Central Java, East Java and Bali	F/S	1992	Public Utilities	Water Supply
198	Asia	IDN/A 112/93	Indonesia	Formulation of Irrigation Development Program	M/P	1993	Agriculture	(Agriculture in)General
199	Asia	IDN/S 205/93	Indonesia	Water Resources Development, Urgent Flood Control and Urban Drainage in Semarang City and Suburbs	M/P+F/S	1993	Social Infrastructure	Water Resource Development
200	Asia	IDN/S 204/93	Indonesia	Integrated Modernization Plan for Sea Transportation in Eastern Indonesia	M/P+F/S	1993	Transportation	Port
201	Asia	IDN/S 203/93	Indonesia	Solid Waste Management Improvement for Surabaya City	M/P+F/S	1993	Public Utilities	Urban Sanitation
202	Asia	IDN/A 223/93	Indonesia	Upland Plantation and Land Development Project at Citarik Sub-Watershed	F/S	1993	Forestry	Forestry & Forest Conservation
203	Asia	IDN/S 345/94	Indonesia	Urban Arterial Road System Development Project in Jakarta Metropolitan Area	F/S	1994	Transportation	Road
204	Asia	IDN/A 316/94	Indonesia	Coastal Resources Inventory Management and Enhancement	F/S	1994	Fisheries	Fisheries
205	Asia	IDN/S 346/94	Indonesia	Ciujung-Cidurian Integrated Water Resources	F/S	1994	Social Infrastructure	Water Resource Development
206	Asia	KOR/S 301/77	Korea	Rapid Transit Line No.2, Construction Project in Seoul	F/S	1977	Transportation	Railway
207	Asia	KOR/A 301/78	Korea	Southwest Coast Agricultural Land Reclamation Project	F/S	1978	Agriculture	(Agriculture in)General
208	Asia	KOR/S 101/79	Korea	Long-Term Multipurpose Dam Schemes	M/P	1979	Social Infrastructure	Water Resource Development
209	Asia	KOR/S 201B/85	Korea	Seoul Municipal Solid Waste Management System	M/P+F/S	1985	Public Utilities	Urban Sanitation
210	Asia	KOR/S 102/91	Korea	Environmental Management Project on Small-and-medium-sized Rivers of the Han River System	M/P	1991	Social Infrastructure	River & Erosion Control
211	Asia	LAO/S 201B/89	Laos	Improvement of Drainage System in Vientiane	M/P+F/S	1989	Social Infrastructure	River & Erosion Control
212	Asia	LAO/A 301/89	Laos	Agricultural and Rural Development Project in the Suburbs of Vientiane	F/S	1989	Agriculture	(Agriculture in)General
213	Asia	LAO/S 301/90	Laos	The Ngon Bridge Construction Project	F/S	1990	Transportation	Road
214	Asia	LAO/A 101/92	Laos	The Integrated Agricultural Rural Development Project in Savannakhet Province	M/P	1992	Agriculture	(Agriculture in)General
215	Asia	LAO/S 202B/92	Laos	Solid Waste Management System Improvement Project in Vientiane	M/P+F/S	1992	Public Utilities	Urban Sanitation

No.	Region	Code No.	Country	Name of the Study	Type	Year	Sector	Subsector
216	Asia	LAO/A 221/93	Laos	Agricultural Development Project to Control Slash and Burn Cultivation in Oudomxay Province	M/P+F/S	1993	Agriculture	(Agriculture in)General
217	Asia	MYS/S 301/77	Malaysia	Kuantan-Kuching Submarine Cable Project	F/S	1977	Communications & B	Telecommunication
218	Asia	MYS/S 201B/78	Malaysia	Sewerage and Drainage System Project:Butterworth/Bukit Merajam Metropolitan Areas	M/P+F/S	1978	Public Utilities	Sewerage
219	Asia	MYS/S 601/79	Malaysia	Bintulu Deepwater Port Project	Other	1979	Transportation	Port
220	Asia	MYS/A 201B/79	Malaysia	Trengganu Swamp Area Integrated Agricultural Development	M/P+F/S	1979	Agriculture	(Agriculture in)General
221	Asia	MYS/S 202B/80	Malaysia	Kelantan Port Development Project	M/P+F/S	1980	Transportation	Port
222	Asia	MYS/S 302/80	Malaysia	Beluru/Long Lama/Limbak Trunk Road Construction Project in Sarawak	F/S	1980	Transportation	Road
223	Asia	MYS/S 303/80	Malaysia	Flood Forecasting and Warning System in Sabah and Sarawak	F/S	1980	Social Infrastructu	River & Erosion Control
224	Asia	MYS/S 203B/81	Malaysia	Sewerage and Drainage System Project in Alor Setar and its Urban Environs	M/P+F/S	1981	Public Utilities	Sewerage
225	Asia	MYS/S 304/81	Malaysia	VHF/FM Broadcast Coverage for Peninsular Malaysia	F/S	1981	Communications & B	Broadcasting
226	Asia	MYS/S 101/82	Malaysia	National Water Resources Study	M/P	1982	Social Infrastructu	Water Resource Development
227	Asia	MYS/S 204B/82	Malaysia	Urban Transport in Greater Metropolitan Areas of George Town, Butterworth and Bukit Mertajam	M/P+F/S	1982	Transportation	Road
228	Asia	MYS/S 205B/82	Malaysia	Sewerage and Drainage System Project in Kelang, Port Kelang and Its Environs	M/P+F/S	1982	Public Utilities	Sewerage
229	Asia	MYS/S 306/82	Malaysia	Kinabatangan River Basin Development Project	F/S	1982	Social Infrastructu	Water Resource Development
230	Asia	MYS/S 305/82	Malaysia	Reclamation Project of Ex-Mining Land for Housing Development and Other Purposes	F/S	1982	Social Infrastructu	Architecture & Housing
231	Asia	MYS/S 102/83	Malaysia	Railway Development Plan	M/P	1983	Transportation	Railway
232	Asia	MYS/S 307/83	Malaysia	VHF/FM Broadcast Coverage for the States of Sabah and Sarawak	F/S	1983	Communications & B	Broadcasting
233	Asia	MYS/S 308/84	Malaysia	Perlis Port Development Project	M/P+F/S	1984	Transportation	Port
234	Asia	MYS/S 206B/84	Malaysia	JB-Transplan:Road Construction and Improvement Project in Johor Bahru and its Conurbation	M/P+F/S	1984	Transportation	Road
235	Asia	MYS/A 301/84	Malaysia	Afforestation and Settlement Project in Division V of the Bengkoka Area of the State of Sabah	F/S	1984	Forestry	Forestry & Forest Conservation
236	Asia	MYS/S 309/84	Malaysia	Perlis-Kedah-Pulau Pinang Regional Water Resources (National Water Resources Study)	F/S	1984	Social Infrastructu	Water Resource Development
237	Asia	MYS/S 104/85	Malaysia	Regional Water Resources of South Johor (National Water Resources Study)	M/P	1985	Social Infrastructu	Water Resource Development
238	Asia	MYS/S 103/85	Malaysia	Integrated Development of South Trengganu	M/P	1985	Development Plan	Integrated Regional Development Plan
239	Asia	MYS/S 310/85	Malaysia	Tatau-Kapit Trunk Road Project in Sarawak	F/S	1985	Transportation	Road
240	Asia	MYS/S 311/85	Malaysia	New East-West Railway Project and the West Coast Railway Project	F/S	1985	Transportation	Railway

No.	Region	Code No.	Country	Name of the Study	Type	Year	Sector	Subsector
241	Asia	MYS/S 105/86	Malaysia	Klang Valley Transportation Study	M/P	1986	Transportation	Urban Transportation
242	Asia	MYS/S 312/86	Malaysia	Kuantan-Kota Kinabalu Submarine Cable Project	F/S	1986	Communications & B	Telecommunication
243	Asia	MYS/A 302/87	Malaysia	Tanjong Karang Irrigation Development Management Project	F/S	1987	Agriculture	(Agriculture in)General
244	Asia	MYS/S 313/87	Malaysia	Computerised Area Traffic Control System in Penang	F/S	1987	Transportation	Urban Transportation
245	Asia	MYS/S 207B/88	Malaysia	Flood Mitigation of the Klang River Basin	M/P+F/S	1988	Social Infrastructure	River & Erosion Control
246	Asia	MYS/S 314/88	Malaysia	National Tourism Development Plan	F/S	1988	Tourism	(Tourism in)General
247	Asia	MYS/S 208B/89	Malaysia	Kelantan River Basin-Wide Flood Mitigation	M/P+F/S	1989	Social Infrastructure	River & Erosion Control
248	Asia	MYS/S 209B/89	Malaysia	Solid Waste Management for Pulau Pinang and Seberang Perai Municipalities	M/P+F/S	1989	Public Utilities	Urban Sanitation
249	Asia	MYS/S 315/89	Malaysia	Transportation Facilities Projects in Klang Valley	F/S	1989	Transportation	Urban Transportation
250	Asia	MYS/S 316/89	Malaysia	Traffic Control and Management System of Malaysian Expressways and Toll Highways	F/S	1989	Transportation	Road
251	Asia	MYS/A 101/90	Malaysia	Fish Marketing and Distribution System	M/P	1990	Fisheries	Fisheries
252	Asia	MYS/A 202B/90	Malaysia	Rationalization and Crop Diversification in Non-granary Irrigated Areas	M/P+F/S	1990	Agriculture	(Agriculture in)General
253	Asia	MYS/S 210B/90	Malaysia	Flood Mitigation and Drainage in Penang Island	M/P+F/S	1990	Social Infrastructure	River & Erosion Control
254	Asia	MYS/S 317/90	Malaysia	Rail-Based Commuter Services in Klang Valley	F/S	1990	Transportation	Railway
255	Asia	MYS/S 211B/91	Malaysia	Development of Rajang Port	M/P+F/S	1991	Transportation	Port
256	Asia	MYS/S 106/92	Malaysia	Highway Network Development Plan	M/P	1992	Transportation	Road
257	Asia	MYS/S 212B/92	Malaysia	Maintenance and Rehabilitation of Bridges	M/P	1992	Transportation	Road
258	Asia	MYS/S 103/93	Malaysia	Air Quality Management Study for Kelang Valley Region	M/P	1993	Administration	Environmental Problems
259	Asia	MYS/A 311/93	Malaysia	The Pilot Project for Improvement of Fish Marketing and Distribution System in East Johor	F/S	1993	Fisheries	Fisheries
260	Asia	MYS/A 102/94	Malaysia	Forest Plantation Development in Northern Sabah	M/P	1994	Forestry	Forestry & Forest Conservation
261	Asia	MYS/S 213/94	Malaysia	National River Mouths Study in Malaysia	M/P+F/S	1994	Social Infrastructure	River & Erosion Control
262	Asia	MYS/A 312/94	Malaysia	Small Reservoir Development in Peninsular Malaysia	F/S	1994	Agriculture	Irrigation, Drainage & Reclamation
263	Asia	MDV/S 201B/92	Maldives	Seawall Construction Project for Male' Island	M/P+F/S	1992	Social Infrastructure	River & Erosion Control
264	Asia	MNG/S 301/92	Mongolia	Improvement Plan for Transshipment Facilities at Zamin-Uud Station	F/S	1992	Transportation	Railway
265	Asia	MYN/A 101/79	Myanmar	Inrawaddy Basin Integrated Agricultural Development Project	M/P	1979	Agriculture	(Agriculture in)General
266	Asia	MYN/A 301/79	Myanmar	Rice Mill Project	F/S	1979	Agriculture	Agricultural Processing
267	Asia	MYN/A 302/80	Myanmar	South Nawin Irrigation Project	F/S	1980	Agriculture	(Agriculture in)General
268	Asia	MYN/S 301/80	Myanmar	Rangoon International Airport Development	F/S	1980	Transportation	Air Transportation & Airport
269	Asia	MYN/A 303/81	Myanmar	Okkan Dam Irrigation Project	F/S	1981	Agriculture	(Agriculture in)General
270	Asia	MYN/S 302/84	Myanmar	Construction of Dry - Dock Project	F/S	1984	Transportation	Marine Transportation & Ships
271	Asia	MYN/S 303/84	Myanmar	Electrification of Rangoon Circular Railway Line	F/S	1984	Transportation	Railway
272	Asia	MYN/S 305/86	Myanmar	Track, Telecommunication and Signalling Improvement Project	F/S	1986	Transportation	Railway

No.	Region	Code No.	Country	Name of the Study	Type	Year	Sector	Subsector (Transportation in)
273	Asia	MYN/S 304/86	Myanmar	Irrawaddy River Bridge Construction Project	F/S	1986	Transportation	General
274	Asia	NPL/S 301/83	Nepal	Rural Telecommunications Network Project	F/S	1983	Communications & B	Telecommunication
275	Asia	NPL/S 101/84	Nepal	Kosi River Water Resources Development	M/P	1984	Social Infrastructu	Water Resource
276	Asia	NPL/S 201B/87	Nepal	Development Plan of Television Network	M/P+F/S	1987	Communications & B	Development
277	Asia	NPL/S 302/88	Nepal	Sindhuli Road Construction Project	F/S	1988	Transportation	Broadcasting
278	Asia	NPL/A 101/89	Nepal	Integrated Rural Development Project in the Lumbini Zone	M/P	1989	Agriculture	Road
279	Asia	NPL/S 202B/89	Nepal	Development of Civil Aviation	M/P+F/S	1989	Transportation	(Agriculture in)XGeneral Air Transportaion & Airport
280	Asia	NPL/S 501/90	Nepal	Groundwater Management Project in the Kathmandu Valley	Basic Study	1990	Social Infrastructu	Water Resource
281	Asia	NPL/S 203B/92	Nepal	Kathmandu Valley Urban Road Development	M/P+F/S	1992	Transportation	Water Resource Development
282	Asia	NPL/S 105/93	Nepal	National Hydro-meteorological Data Management Project	M/P	1993	Social Infrastructu	Air Transportaion & Airport
283	Asia	NPL/S 104/93	Nepal	Water Resources Development of the Upper Karnali and Mahakali River	M/P	1993	Social Infrastructu	River & Erosion Control Water Resource
284	Asia	NPL/S 501/93	Nepal	Topographic Mapping of Lumbini Zone	Basic Study	1993	Social Infrastructu	Development
285	Asia	NPL/A 308/93	Nepal	Rajkotha Irrigation Project	F/S	1993	Agriculture	Survey & Mapping (Agriculture in)XGeneral
286	Asia	NPL/S 302/93	Nepal	Aftersale Study for Sindhuli Road Construction Project	F/S	1993	Transportation	Road
287	Asia	NPL/A 106/94	Nepal	Terai Groundwater Resources Evaluation and Development Project for Irrigation	M/P	1994	Agriculture	Irrigation, Drainage & Reclamation
288	Asia	NPL/S 204/94	Nepal	Tribhuvan International Airport Modernization Plan in Nepal	M/P+F/S	1994	Transportation	Air Transportaion & Airport
289	Asia	NPL/A 201/94	Nepal	Rehabilitation of Government Developed Irrigation Schemes in the Kathmandu Valley	M/P+F/S	1994	Agriculture	Irrigation, Drainage & Reclamation
290	Asia	PAK/S 601/75	Pakistan	Port Muhammad-Bin-Quasim Project (follow-up)	Other	1975	Transportation	Port
291	Asia	PAK/S 201B/79	Pakistan	Shipping & Shipbuilding Development	M/P+F/S	1979	Transportation	Marine Transportation & Ships
292	Asia	PAK/S 301/80	Pakistan	Construction Project of a Mini-Port in Gwadar	F/S	1980	Transportation	Port
293	Asia	PAK/S 202B/81	Pakistan	Introduction of Containerization	M/P+F/S	1981	Transportation	Port
294	Asia	PAK/A 301/82	Pakistan	Agricultural Development Project with Widening of Pat Feeder Canal	F/S	1982	Agriculture	Irrigation, Drainage & Reclamation
295	Asia	PAK/S 101/83	Pakistan	National Transport Plan	M/P	1983	Transportation	(Transportation in) General
296	Asia	PAK/S 302/83	Pakistan	Pakistan Railways Locomotives Manufacturing Factory Project	F/S	1983	Transportation	Railway
297	Asia	PAK/S 303/84	Pakistan	Conduction of Water from Khanpur to Islamabad/Rawalpindi	F/S	1984	Public Utilities	Water Supply
298	Asia	PAK/A 101/85	Pakistan	Integrated Rural Development Project	M/P	1985	Agriculture	(Agriculture in)XGeneral
299	Asia	PAK/A 102/86	Pakistan	Paddy/Rice Handling and Processing Improvement Project	M/P	1986	Agriculture	Agricultural Processing
300	Asia	PAK/A 302/86	Pakistan	Baluchistan Irrigation Development Project through Groundwater Development	F/S	1986	Agriculture	(Agriculture in)XGeneral

No.	Region	Code No.	Country	Name of the Study	Type	Year	Sector	Subsector
301	Asia	PAK/S 102/87	Pakistan	Name of the Study Water Resources Development Potential for the Metropolitan Area of Islamabad/Rawalpindi	M/P	1987	Social Infrastructu	Water Resource Development
302	Asia	PAK/S 103/87	Pakistan	National Transport Plan (follow-up)	M/P	1987	Transportation	(Transportation in) General
303	Asia	PAK/A 303/88	Pakistan	Upper Kurang River Irrigation Project	F/S	1988	Agriculture	(Agriculture in)General
304	Asia	PAK/A 201B/89	Pakistan	Swar District Integrated Rural Development Project	M/P+F/S	1989	Agriculture	(Agriculture in)General
305	Asia	PAK/S 304/89	Pakistan	Establishment of the Second TV Channel for Education	F/S	1989	Communications & B	Broadcasting
306	Asia	PAK/A 304/90	Pakistan	Water Resource Development Project in Malis Basin	F/S	1990	Agriculture	(Agriculture in)General
307	Asia	PAK/S 303B/91	Pakistan	Comprehensive Study on Transportation System in Lahore	M/P+F/S	1991	Transportation	Urban Transportation
308	Asia	PAK/A 305/92	Pakistan	Development of Irrigation Based on Flood Flows of D.G. Khan Hill Torrents	F/S	1992	Agriculture	Irrigation, Drainage & Reclamation
309	Asia	PAK/S 104/94	Pakistan	National Transport Plan in the Islamic Republic of Pakistan	M/P	1994	Transportation	Urban Transportation
310	Asia	PAK/A 306/94	Pakistan	Chashma Right Bank 1st Lift Irrigation Project	F/S	1994	Agriculture	Irrigation, Drainage & Reclamation
311	Asia	PHL/A 301/76	Philippines	Cagayan Integrated Agricultural Development Project	F/S	1976	Agriculture	(Agriculture in)General
312	Asia	PHL/S 302/76	Philippines	Pan-Philippine Highway Ferry Service Plan	F/S	1976	Transportation	Marine Transportation & Ships
313	Asia	PHL/S 301/76	Philippines	Construction Plan of Subic Ship Repair Yard	F/S	1976	Transportation	Marine Transportation & Ships
314	Asia	PHL/S 303/76	Philippines	Manila Rapid Transit Railway Line No.1	F/S	1976	Transportation	Railway
315	Asia	PHL/A 501/77	Philippines	Fish Finding (skipjack) Survey	Basic Study	1977	Fisheries	Fisheries
316	Asia	PHL/S 601/77	Philippines	Pan-Philippine Highway Ferry Service (follow-up)	Other	1977	Transportation	Marine Transportation & Ships
317	Asia	PHL/A 302/77	Philippines	Grain Terminal Construction Projects in Manila and Cebu	F/S	1977	Agriculture	Irrigation, Drainage & Reclamation
318	Asia	PHL/S 304/77	Philippines	Flood-Forecasting Systems in the Agno,Bicol and Cagayan River Basins	F/S	1977	Social Infrastructu	River & Erosion Control
319	Asia	PHL/S 101/78	Philippines	Pasig-Potrero River Flood Control and Sabo Project	M/P	1978	Social Infrastructu	Water Resource Development
320	Asia	PHL/A 601/78	Philippines	Review on the Feasibility Study of Fishing Port Package-1	Other	1978	Fisheries	Fisheries
321	Asia	PHL/A 303/78	Philippines	Bohol Integrated Agricultural Development Project	F/S	1978	Agriculture	(Agriculture in)General
322	Asia	PHL/S 306/78	Philippines	Telecommunications Network Project in the Northern Part of Luzon	F/S	1978	Communications & B	Telecommunication
323	Asia	PHL/S 305/78	Philippines	C-3 and R-4 and Related Roads Project	F/S	1978	Transportation	Road
324	Asia	PHL/S 102/79	Philippines	Bohol Integrated Area Development Project	M/P	1979	Development Plan	Integrated Regional Development Plan
325	Asia	PHL/S 307/79	Philippines	Hospital Development Project	F/S	1979	Social Infrastructu	Architecture & Housing
326	Asia	PHL/S 103/80	Philippines	Mayon Volcano Sabo and Flood Control Project	M/P	1980	Social Infrastructu	River & Erosion Control
327	Asia	PHL/A 304/80	Philippines	Ilocos Norte Irrigation Project	F/S	1980	Agriculture	(Agriculture in)General
328	Asia	PHL/S 308/80	Philippines	Manila-Bataan Coastal Road and its Related Roads	F/S	1980	Transportation	Road

No.	Region	Code No.	Country	Name of the Study	Type	Year	Sector	Subsector
329	Asia	PHL/S 104/81	Philippines	Davao City Urban Transport and Land Use	M/P	1981	Transportation	Urban Transportation
330	Asia	PHL/S 309/81	Philippines	Rural Telecommunications Project in Regions III (Central Luzon) and IV (southern tagalog)	F/S	1981	Communications & B	Telecommunication
331	Asia	PHL/S 310/81	Philippines	Pampanga Delta Development Project	F/S	1981	Social Infrastructure	River & Erosion Control
332	Asia	PHL/S 501/82	Philippines	Topographic Mapping Project for Cagayan Valley	Basic Study	1982	Social Infrastructure	Survey & Mapping
333	Asia	PHL/S 202B/82	Philippines	Local Water Supply Projects	M/P+F/S	1982	Public Utilities	Water Supply
334	Asia	PHL/S 201B/82	Philippines	Development Project of the Port of Irene	M/P+F/S	1982	Transportation	Port
335	Asia	PHL/A 306/82	Philippines	Alcoegas Project	F/S	1982	Agriculture	(Agriculture in)General
336	Asia	PHL/A 305/82	Philippines	Mabini Agricultural Development Project	F/S	1982	Agriculture	(Agriculture in)General
337	Asia	PHL/S 312/82	Philippines	Metro Manila Outer Major Roads Project (Southern Package)	F/S	1982	Transportation	Road
338	Asia	PHL/S 311/82	Philippines	Dalton Pass Tunnel Project	F/S	1982	Transportation	Road
339	Asia	PHL/S 602/83	Philippines	Mayon Volcano Sabo and Flood Control Project (Re-Study)	Other	1983	Social Infrastructure	River & Erosion Control
340	Asia	PHL/A 309/83	Philippines	Improvement Project of the Operation and Maintenance of National Irrigation Systems (AMRIS)	F/S	1983	Agriculture	(Agriculture in)General
341	Asia	PHL/A 308/83	Philippines	Improvement Project of the Operation & Maintenance of National Irrigation Systems (UPRIIS)	F/S	1983	Agriculture	(Agriculture in)General
342	Asia	PHL/A 307/83	Philippines	Maturo River Development Project	F/S	1983	Agriculture	(Agriculture in)General
343	Asia	PHL/S 313/83	Philippines	Metro Manila Outer Major Roads Project (Northern Package)	F/S	1983	Transportation	Road
344	Asia	PHL/A 101/84	Philippines	Nationwide Ice Plants and Cold Storages Network System	M/P	1984	Fisheries	Fisheries
345	Asia	PHL/S 105/84	Philippines	Infanta - Real Area Urban Development Project	M/P	1984	Social Infrastructure	Urban Planning & Land Development
346	Asia	PHL/A 310/84	Philippines	Gumain River Irrigation Project	F/S	1984	Agriculture	(Agriculture in)General
347	Asia	PHL/S 315/84	Philippines	Development Project on the Meteorological Telecommunication System	F/S	1984	Transportation	Meteorology & Seismology
348	Asia	PHL/S 316/84	Philippines	Philippine Road Disaster Prevention Project	F/S	1984	Transportation	Road
349	Asia	PHL/S 314/84	Philippines	Development Project of the Port of San Fernando	F/S	1984	Transportation	Port
350	Asia	PHL/S 106/85	Philippines	Panay River Basin-Wide Flood Control	M/P	1985	Social Infrastructure	River & Erosion Control
351	Asia	PHL/S 107/85	Philippines	Metro Manila Transportation Planning	M/P	1985	Transportation	Urban Transportation
352	Asia	PHL/S 203B/85	Philippines	Development Project on the Port of Bataangas	M/P+F/S	1985	Transportation	Port
353	Asia	PHL/A 312/85	Philippines	Bohol Irrigation Development Project (Phase II)	F/S	1985	Agriculture	(Agriculture in)General
354	Asia	PHL/A 311/85	Philippines	Asue River Basin Agricultural Development Project	F/S	1985	Agriculture	(Agriculture in)General
355	Asia	PHL/S 318/85	Philippines	Philippine Road Disaster Prevention Project, Stage II	F/S	1985	Transportation	Road
356	Asia	PHL/S 317/85	Philippines	San Roque Multi-Purpose Project (Re-Study)	F/S	1985	Social Infrastructure	Water Resource Development
357	Asia	PHL/S 204B/86	Philippines	Municipal Water Supply Project	M/P+F/S	1986	Public Utilities	Water Supply
358	Asia	PHL/A 102/87	Philippines	Improvement Project of the O&M of Magat River Integrated Irrigation	M/P	1987	Agriculture	(Agriculture in)General
359	Asia	PHL/S 108/87	Philippines	Cagayan River Basin Water Resources Development	M/P	1987	Social Infrastructure	Water Resource Development
360	Asia	PHL/S 320/87	Philippines	Manila South Port Rehabilitation Project	F/S	1987	Transportation	Port

No.	Region	Code No.	Country	Name of the Study	Type	Year	Sector	Subsector
361	Asia	PHL/S 319/87	Philippines	Road Improvement Project on the Pan-Philippine Highway (Philippines-Japan Friendship Highway)	F/S	1987	Transportation	Road
362	Asia	PHL/A 103/88	Philippines	Integrated Agricultural/Rural Development Project in Western Samar	M/P	1988	Agriculture	(Agriculture in)General Survey & Mapping
363	Asia	PHL/S 502/88	Philippines	Establishment of Graphic Information Base Project of National Capital Region	Basic Study	1988	Social Infrastructure	
364	Asia	PHL/A 602/88	Philippines	Preparation of Forest Information in Wide Area and Forest Management Planning	Other	1988	Forestry	Forestry & Forest Conservation
365	Asia	PHL/A 314/88	Philippines	Improvement of Operation and Maintenance in Pumping Irrigation Systems	F/S	1988	Agriculture	Irrigation, Drainage & Reclamation
366	Asia	PHL/A 313/88	Philippines	Highland Integrated Rural Development Project in La Trinidad, Province of Benguet	F/S	1988	Agriculture	(Agriculture in)General
367	Asia	PHL/S 321/88	Philippines	Rural Road Network Development Project	F/S	1988	Transportation	Road
368	Asia	PHL/A 104/89	Philippines	Fish Transport System	M/P	1989	Fisheries	Fisheries
369	Asia	PHL/A 105/89	Philippines	Small Water Impounding Management Project	M/P	1989	Agriculture	Irrigation, Drainage & Reclamation
370	Asia	PHL/A 201B/89	Philippines	Integrated Agricultural Development Project in Marinduque	M/P+F/S	1989	Agriculture	(Agriculture in)General
371	Asia	PHL/S 205B/89	Philippines	Groundwater Development in Panay Island	M/P+F/S	1989	Social Infrastructure	Water Resource Development
372	Asia	PHL/S 206B/89	Philippines	Flood Control and Drainage Project in Metro Manila	M/P+F/S	1989	Social Infrastructure	River & Erosion Control
373	Asia	PHL/S 322/89	Philippines	Rehabilitation and Maintenance of Bridges along Arterial Roads	F/S	1989	Transportation	Road
374	Asia	PHL/A 106/90	Philippines	Improvement of Communal Irrigation Systems through Physical and Institutional Development and Rural Development in Southern Tarlac Province	M/P	1990	Agriculture	(Agriculture in)General
375	Asia	PHL/A 315/90	Philippines	Integrated Jala-Jala Rural Development Project	F/S	1990	Agriculture	(Agriculture in)General
376	Asia	PHL/A 316/90	Philippines	Improvement of Seed Production and Distribution, and Establishment of Appropriate seed Storage System	F/S	1990	Agriculture	(Agriculture in)General
377	Asia	PHL/S 323/90	Philippines	Rural Road Network Development Project (II)	F/S	1990	Transportation	Road
378	Asia	PHL/A 107/91	Philippines	Small-Scale Irrigation Development Project (SSIDP)	M/P	1991	Agriculture	(Agriculture in)General
379	Asia	PHL/S 110/91	Philippines	Ilog-Hilabangan River Basin Flood Control Project	M/P	1991	Social Infrastructure	River & Erosion Control
380	Asia	PHL/S 109/91	Philippines	Calabarzon Integrated Regional Development	M/P	1991	Development Plan	Integrated Regional Development Plan
381	Asia	PHL/S 207B/91	Philippines	Agno River Basin Flood Control	M/P+F/S	1991	Social Infrastructure	River & Erosion Control
382	Asia	PHL/S 324/91	Philippines	Rural Road Disaster Prevention Project	F/S	1991	Transportation	Road
383	Asia	PHL/S 325/91	Philippines	Balara Water Treatment Plant Rehabilitation Project	F/S	1991	Public Utilities	Water Supply
384	Asia	PHL/A 108/92	Philippines	Integrated Rural Development Program in Pampanga	M/P	1992	Agriculture	(Agriculture in)General
385	Asia	PHL/S 111/92	Philippines	Master Plan on Maritime Safety	M/P	1992	Transportation	Marine Transportation & Ships
386	Asia	PHL/S 503/92	Philippines	Groundwater Development in Metro Manila	Basic Study	1992	Social Infrastructure	Water Resource Development
387	Asia	PHL/S 208B/92	Philippines	Nationwide Roll-on Roll-off Transport System Development	M/P+F/S	1992	Transportation	Port

No.	Region	Code No.	Country	Name of the Study	Type	Year	Sector	Subsector
388	Asia	PHL/S 209B/92	Philippines	The Development Plan of Davao International Airport	M/P+F/S	1992	Transportation	Air Transportation & Airport
389	Asia	PHL/A 113/93	Philippines	Study for Strengthening the Agricultural Cooperatives System	M/P	1993	Agriculture	(Agriculture in)General
390	Asia	PHL/S 106/93	Philippines	Luzon Island Strategic Road Network Development Project	M/P	1993	Transportation	Road
391	Asia	PHL/S 107/93	Philippines	Telecommunication Network Project	M/P	1993	Communications & B	Telecommunication
392	Asia	PHL/S 206/93	Philippines	Metro Manila Urban Expressway System Study	M/P+F/S	1993	Transportation	Road
393	Asia	PHL/S 115/94	Philippines	Cebu Integrated Area Development	M/P	1994	Development Plan	Integrated Regional Development
394	Asia	PHL/S 112/94	Philippines	Greater Capital Region Integrated Port Development Study	M/P	1994	Transportation	Port
395	Asia	PHL/S 211/94	Philippines	Flood Control for Rivers in the Selected Urban Centers	M/P+F/S	1994	Social Infrastructure	River & Erosion Control
396	Asia	PHL/A 202/94	Philippines	Mankina Watershed Development Project	M/P+F/S	1994	Forestry	Forestry & Forest Conservation
397	Asia	PHL/A 318/94	Philippines	Development of Viable Agrarian Reform Communities in Southern Palawan	F/S	1994	Agriculture	Immigation, Drainage & Reclamation
398	Asia	PHL/A 317/94	Philippines	Upland Irrigation and Rural Development Project in Southern Luzon	F/S	1994	Agriculture	Immigation, Drainage & Reclamation
399	Asia	SGP/S 101/78	Singapore	Dredging Project of the Strait of Singapore	M/P	1978	Transportation	Port
400	Asia	SGP/S 301/86	Singapore	Plant Renovation Project of the Sentosa-1 Earth Station	F/S	1986	Communications & B	Telecommunication
401	Asia	SGP/S 302/88	Singapore	Singapore Urban Transport Improvement	F/S	1988	Transportation	Urban Transportation
402	Asia	SGP/S 303/90	Singapore	Selected Expressways	F/S	1990	Transportation	Road
403	Asia	LKA/A 301/77	Sri Lanka	Inginimiyi Reservoir Project	F/S	1977	Agriculture	(Agriculture in)General
404	Asia	LKA/S 301/77	Sri Lanka	Outside Colombo Area Telecommunication Development Scheme :Stage II Project	F/S	1977	Communications & B	Telecommunication
405	Asia	LKA/A 302/79	Sri Lanka	Moragahakanda Agricultural Development Project	F/S	1979	Agriculture	(Agriculture in)General
406	Asia	LKA/S 601/80	Sri Lanka	Development Project of the Port of Colombo (follow-up)	Other	1980	Transportation	Port
407	Asia	LKA/S 201B/80	Sri Lanka	Development Project of the Port of Colombo	M/P+F/S	1980	Transportation	Port
408	Asia	LKA/A 303/81	Sri Lanka	Mahaweli Ganga Agricultural Development: System C	F/S	1981	Agriculture	(Agriculture in)General
409	Asia	LKA/S 602/82	Sri Lanka	Colombo Airport Development (follow-up)	Other	1982	Transportation	Air Transportation & Airport
410	Asia	LKA/S 302/82	Sri Lanka	Water Supply Scheme for Amparai Group of Towns	F/S	1982	Public Utilities	Water Supply
411	Asia	LKA/S 304/83	Sri Lanka	Telecommunications Network Improvement Project in Greater Colombo	F/S	1983	Communications & B	Telecommunication
412	Asia	LKA/S 303/83	Sri Lanka	Colombo-Katunayake Expressway and New Port Access Road Project	F/S	1983	Transportation	Road
413	Asia	LKA/S 101/85	Sri Lanka	Master Plan for the Domestic Telecommunication Network	M/P	1985	Communications & B	Telecommunication
414	Asia	LKA/A 304/85	Sri Lanka	Rehabilitation of Tank Irrigation Project	F/S	1985	Agriculture	Immigation, Drainage & Reclamation
415	Asia	LKA/A 101/87	Sri Lanka	Integrated Rural Development Project for Gampaha District	M/P	1987	Agriculture	(Agriculture in)General
416	Asia	LKA/A 102/89	Sri Lanka	Sand Drift in the Southeastern Coast	M/P	1989	Fisheries	Fisheries
417	Asia	LKA/A 201B/89	Sri Lanka	Extension of the Moragahakanda Agricultural Development Project	M/P+F/S	1989	Agriculture	(Agriculture in)General
418	Asia	LKA/S 202B/89	Sri Lanka	Development of the Port of Colombo	M/P+F/S	1989	Transportation	Port

No.	Region	Code No.	Country	Name of the Study	Type	Year	Sector	Subsector
419	Asia	LKA/S 102/91	Sri Lanka	Development of the Port of Galle	M/P	1991	Transportation	Port
420	Asia	LKA/A 305/92	Sri Lanka	Walawe Irrigation Upgrading and Extension Project	F/S	1992	Agriculture	(Agriculture in)General
421	Asia	LKA/A 103/94	Sri Lanka	Agricultural and Rural Development for Up-country Peasantry Rehabilitation Program	M/P	1994	Agriculture	(Agriculture in)General
422	Asia	LKA/S 306/94	Sri Lanka	Kalu Ganga Water Supply Project for Greater Colombo	F/S	1994	Public Utilities	Water Supply
423	Asia	THA/S 301/76	Thailand	Project of Strengthening and / or Replacement of Steel Bridges on the State Railway	F/S	1976	Transportation	Railway
424	Asia	THA/A 301/77	Thailand	Irrigated Agricultural Development Project in the West Bank Tract of the Greater Chao Phraya	F/S	1977	Agriculture	(Agriculture in)General
425	Asia	THA/S 401/77	Thailand	Bangkok Telephone Network Project : Junction Lines	D/D	1977	Communications & B	Telecommunication
426	Asia	THA/S 304/78	Thailand	Rural Long Distance Public Telephone Service	F/S	1978	Communications & B	Telecommunication
427	Asia	THA/S 305/78	Thailand	Phetchabun - Chai Badan Highway Project	F/S	1978	Transportation	Road
428	Asia	THA/S 303/78	Thailand	Separate System of Metropolitan Water Supply in Bangkok	F/S	1978	Public Utilities	Water Supply
429	Asia	THA/S 302/78	Thailand	Pattaya Tourism Development	F/S	1978	Tourism	(Tourism in)General
430	Asia	THA/A 101/79	Thailand	Irrigated Agricultural Development in the Greater Mae Klong River	M/P	1979	Agriculture	(Agriculture in)General
431	Asia	THA/S 101/79	Thailand	Bangkok Suburban Transportation Project	M/P	1979	Transportation	Railway
432	Asia	THA/A 302/79	Thailand	Kamphaeng Saen Irrigated Agriculture Development Project in the Mae Kelong River Basin	F/S	1979	Agriculture	(Agriculture in)General
433	Asia	THA/S 306/79	Thailand	Nong Bua - Ban Lam Chi Bon Highway Project	F/S	1979	Transportation	Road
434	Asia	THA/A 303/80	Thailand	Mae Wang-Kew Lom Irrigated Agriculture Development Project	F/S	1980	Agriculture	(Agriculture in)General
435	Asia	THA/S 307/80	Thailand	Bangkok Urban Truck Terminals Construction Project	F/S	1980	Transportation	Land Transportation
436	Asia	THA/S 402/80	Thailand	Bangkok Telephone Network Project: Local Cable Network	D/D	1980	Communications & B	Telecommunication
437	Asia	THA/A 304/81	Thailand	Kaeng Khoi-Ban Mo Pumping Irrigation Project	F/S	1981	Agriculture	(Agriculture in)General
438	Asia	THA/S 401/82	Thailand	Water Supply Project to Laotian Displaced Persons :Nakhon Phanom Camp and Pak Chom Camp	Basic Study	1982	Social Infrastructu	Water Resource Development
439	Asia	THA/A 201B/82	Thailand	Agricultural Cooperative Promotion	M/P+F/S	1982	Agriculture	(Agriculture in)General
440	Asia	THA/S 203B/82	Thailand	Bangkok Solid Waste Management	M/P+F/S	1982	Public Utilities	Urban Sanitation
441	Asia	THA/S 202B/82	Thailand	Bangkok Sewerage System Project	M/P+F/S	1982	Public Utilities	Sewerage
442	Asia	THA/S 201B/82	Thailand	Road Development in the Northern Region	M/P+F/S	1982	Transportation	Road
443	Asia	THA/A 306/82	Thailand	Mae Kuang Irrigated Agriculture Development Project	F/S	1982	Agriculture	(Agriculture in)General
444	Asia	THA/A 307/82	Thailand	Upper Pasak Medium Scale Irrigation Project	F/S	1982	Agriculture	(Agriculture in)General
445	Asia	THA/A 305/82	Thailand	Phetchaburi-Kaeng Krachan Irrigated Agriculture Development Project	F/S	1982	Agriculture	(Agriculture in)General
446	Asia	THA/S 309/82	Thailand	East Coast Water Resources Development Project	F/S	1982	Social Infrastructu	Water Resource Development
447	Asia	THA/S 308/82	Thailand	Rama VI Bridge Construction Project	F/S	1982	Transportation	Road
448	Asia	THA/S 403/82	Thailand	Rama VI Bridge Rehabilitation Project	D/D	1982	Transportation	Railway
449	Asia	THA/S 404/82	Thailand	Dok Krui - Mab Ta Pud Water Pipe Line Project in the East Coast Area	D/D	1982	Social Infrastructu	Water Resource Development
450	Asia	THA/S 102/83	Thailand	Road Development in the Northeastern Region	M/P	1983	Transportation	Road

No.	Region	Code No.	Country	Name of the Study	Type	Year	Sector	Subsector
451	Asia	THA/S 204B/83	Thailand	Development Project of the Industrial Port on the Eastern Seaboard	M/P+F/S	1983	Transportation	Port
452	Asia	THA/A 308/83	Thailand	Mac Chang Irrigation Project	F/S	1983	Agriculture	(Agriculture in)General
453	Asia	THA/S 312/83	Thailand	Second Stage Expressway System in the Greater Bangkok	F/S	1983	Transportation	Road
454	Asia	THA/S 310/83	Thailand	East Coast Water Resources Development (Phase II)	F/S	1983	Social Infrastructure	Water Resource Development
455	Asia	THA/S 311/83	Thailand	Nong Kho - Lam Chabang Water Pipeline Project	F/S	1983	Public Utilities	Water Supply
456	Asia	THA/S 103/84	Thailand	Sub-Regional Development of the Upper Southern Part	M/P	1984	Development Plan	Integrated Regional Development
457	Asia	THA/S 601/84	Thailand	Traffic Safety Plan for Roads	Other	1984	Transportation	Development Plan (Transportation in)General
458	Asia	THA/S 205B/84	Thailand	Development Project of Lam Chabang Coastal Area	M/P+F/S	1984	Development Plan	Integrated Regional Development Plan
459	Asia	THA/A 309/84	Thailand	Lower Northeast Medium Scale Irrigation Package Project	F/S	1984	Agriculture	(Agriculture in)General
460	Asia	THA/S 314/84	Thailand	Track Elevation Project of Existing Railway Lines in the Bangkok Metropolitan Area	F/S	1984	Transportation	Railway
461	Asia	THA/S 313/84	Thailand	Comprehensive Development of Coastal Shipping	F/S	1984	Transportation	Marine Transportation & Ships
462	Asia	THA/S 206B/85	Thailand	Master Plan on Flood Protection/Drainage Project in Eastern Suburban-Bangkok	M/P+F/S	1985	Social Infrastructure	River & Erosion Control
463	Asia	THA/A 311/85	Thailand	Sakae Krang River Basin Irrigation Project	F/S	1985	Agriculture	(Agriculture in)General
464	Asia	THA/A 310/85	Thailand	Comprehensive Storage Facilities Development Project (Phase II)	F/S	1985	Agriculture	(Agriculture in)General
465	Asia	THA/S 315/85	Thailand	Establishment of a Large Repair Shipyard	F/S	1985	Transportation	Marine Transportation & Ships
466	Asia	THA/S 316/85	Thailand	Sanitary District Water Works Project in the North - Eastern Region	F/S	1985	Public Utilities	Water Supply
467	Asia	THA/S 317/85	Thailand	Road Development in the North - Eastern Region (Phase 2)	F/S	1985	Transportation	Road
468	Asia	THA/S 602/86	Thailand	Road Improvement, Rehabilitation and Traffic Safety in Bangkok	Other	1986	Transportation	(Transportation in)General
469	Asia	THA/A 312/86	Thailand	Bang Nara Irrigation and Drainage Project	F/S	1986	Agriculture	(Agriculture in)General
470	Asia	THA/S 318/86	Thailand	Dredging Plant Development Project	F/S	1986	Transportation	Port
471	Asia	THA/A 102/87	Thailand	Aerial Photography and Forest Management Plan in the Encroached National Reserve Forest	M/P	1987	Forestry	Forestry & Forest Conservation
472	Asia	THA/S 603/87	Thailand	Effective Port Management and Operation System	Other	1987	Transportation	Port
473	Asia	THA/S 320/87	Thailand	Railway Yards Improvement	F/S	1987	Transportation	Railway
474	Asia	THA/S 319/87	Thailand	New Krungthep Bridge Construction and Thonburi Road Extension	F/S	1987	Transportation	Road
475	Asia	THA/S 104/88	Thailand	Flood Forecasting System in the Chao Phraya River Basin	M/P	1988	Social Infrastructure	River & Erosion Control
476	Asia	THA/S 502/88	Thailand	Topographic Mapping of Bangkok Metropolitan Area	Basic Study	1988	Social Infrastructure	Survey & Mapping
477	Asia	THA/S 604/88	Thailand	City Planning Manual	Other	1988	Social Infrastructure	Urban Planning & Land Development
478	Asia	THA/A 202B/88	Thailand	Agricultural Land and Conservation for Integrated Rural Development in the East	M/P+F/S	1988	Agriculture	(Agriculture in)General

No.	Region	Code No.	Country	Name of the Study	Type	Year	Sector	Subsector
479	Asia	THA/S 208B/88	Thailand	Potential Tourism Development for the Southern Region	M/P+F/S	1988	Tourism	(Tourism in)General
480	Asia	THA/S 207B/88	Thailand	Road Development in the Central Region	M/P+F/S	1988	Transportation	Road
481	Asia	THA/S 321/88	Thailand	Project of the Regional Truck Terminals	F/S	1988	Transportation	Land Transportation
482	Asia	THA/A 103/89	Thailand	Water Management System and Monitoring Program in Chao Phraya River Basin	M/P	1989	Agriculture	(Agriculture in)General
483	Asia	THA/S 105/89	Thailand	Telecommunications Development	M/P	1989	Communications & B	Telecommunication
484	Asia	THA/A 203B/89	Thailand	Sebai-Sebok Basin Development Project	M/P+F/S	1989	Agriculture	(Agriculture in)General
485	Asia	THA/S 209B/89	Thailand	Medium to Long Term Improvement / Management Plan of Road and Road Transport in Bangkok	M/P+F/S	1989	Transportation	Urban Transportation
486	Asia	THA/S 210B/89	Thailand	Provincial Water Supply Projects	M/P+F/S	1989	Public Utilities	Water Supply
487	Asia	THA/A 313/89	Thailand	Agricultural Water Development Project on Chantaburi River Basin	F/S	1989	Agriculture	(Agriculture in)General
488	Asia	THA/S 323/89	Thailand	Measures to Promote the Container Handling System through Laem Chabang Port	F/S	1989	Transportation	Port
489	Asia	THA/S 322/89	Thailand	Purification of Klong Water in Bangkok	F/S	1989	Public Utilities	Sewerage
490	Asia	THA/S 106/90	Thailand	Traffic Operation Plan for Roads	M/P	1990	Transportation	Road
491	Asia	THA/S 108/90	Thailand	Development of Pattaya Area	M/P	1990	Development Plan	Integrated Regional Development Plan
492	Asia	THA/S 107/90	Thailand	Upper Central Region Study	M/P	1990	Development Plan	Integrated Regional Development Plan
493	Asia	THA/A 204B/90	Thailand	Agricultural Water Resources Development Project of Bang Pakong River Basin	M/P+F/S	1990	Agriculture	(Agriculture in)General
494	Asia	THA/S 212B/90	Thailand	Bangkok Solid Waste Management (II)	M/P+F/S	1990	Public Utilities	Urban Sanitation
495	Asia	THA/S 211B/90	Thailand	Sewerage and Drainage Improvement Project for Phuket Municipality	M/P+F/S	1990	Public Utilities	Sewerage
496	Asia	THA/A 314/90	Thailand	Sukhothai Integrated Agricultural and Rural Infrastructure Development Project	F/S	1990	Agriculture	(Agriculture in)General
497	Asia	THA/S 405/90	Thailand	Area Traffic Control Project in Bangkok	D/D	1990	Transportation	Urban Transportation
498	Asia	THA/S 109/91	Thailand	Toll Highway Development	M/P	1991	Transportation	Road
499	Asia	THA/S 605/91	Thailand	Traffic Operation Plan for Roads (follow-up)	Other	1991	Transportation	Road
500	Asia	THA/A 205B/91	Thailand	Integrated Rural Development of Salt-affected Land in Northeast Thailand	M/P+F/S	1991	Agriculture	(Agriculture in)General
501	Asia	THA/S 213B/91	Thailand	Road Development in the Southern Region	M/P+F/S	1991	Transportation	Road
502	Asia	THA/A 315/91	Thailand	Integrated Rural Development Project at Lower North Thailand	F/S	1991	Agriculture	(Agriculture in)General
503	Asia	THA/A 206B/92	Thailand	Lam Dom Yai Basin Irrigation Project	M/P+F/S	1992	Agriculture	Irrigation, Drainage & Reclamation
504	Asia	THA/S 214B/92	Thailand	Regional Development Plan for Telecommunication Networks in the Bangkok Metropolitan Area	M/P+F/S	1992	Communications & B	Telecommunication
505	Asia	THA/S 215B/92	Thailand	The Tourism Development of the Hoi-Hin/Cha-Am Beach Area	M/P+F/S	1992	Tourism	(Tourism in)General
506	Asia	THA/A 316/92	Thailand	Integrated Agriculture and Water Resources Development Project of the Menam Chumphon Basin	F/S	1992	Agriculture	(Agriculture in)General
507	Asia	THA/S 324/92	Thailand	Greater Bangkok Truck Terminal	F/S	1992	Transportation	Land Transportation

No.	Region	Code No.	Country	Name of the Study	Type	Year	Sector	Subsector
508	Asia	THA/S 108/93	Thailand	Regional Development Plan for the Lower Northeast and the Upper East Regions in the Kingdom of Thailand	M/P	1993	Development Plan	Integrated Regional Development Plan
509	Asia	THA/S 209/93	Thailand	Sewerage Development Project for Lower Chao Phraya River Basin	M/P+F/S	1993	Public Utilities	Development Plan
510	Asia	THA/S 208/93	Thailand	Phuket International Airport Development Plan	M/P+F/S	1993	Transportation	Sewerage Air Transportation & Airport
511	Asia	THA/S 207/93	Thailand	Application Scheme of Land Readjustment (L/R) National Urban Development Thrust	M/P+F/S	1993	Social Infrastructure	Urban Planning & Land Development
512	Asia	THA/A 310/93	Thailand	Agricultural Development for Peat, Acid Sulfate Soil Areas in Nakhon Phanom Province	F/S	1993	Agriculture	(Agriculture in)General
513	Asia	THA/A 402/93	Thailand	Bang Pakong Diversion Dam Project	D/D	1993	Agriculture	(Agriculture in)General
514	Asia	THA/S 110/94	Thailand	Management of Groundwater and Land Subsidence in the Bangkok Metropolitan Area and its Vicinity	M/P	1994	Social Infrastructure	Water Resource Development
515	Asia	THA/S 606/94	Thailand	Inspection and Maintenance System for the Express Way	Other	1994	Transportation	Road
516	Asia	THA/S 216/94	Thailand	Modernization of Bangkok Port in the Kingdom of Thailand	M/P+F/S	1994	Transportation	Port
517	Asia	THA/S 325/94	Thailand	Inter-City Toll Motorway Project	F/S	1994	Transportation	Road
518	Asia	VNM/S 101/94	Viet Nam	Transport Development in the Northern Part in the Socialist Republic of Viet Nam	M/P	1994	Transportation	(Transportation in)General
519	Asia	VNM/S 201/94	Viet Nam	Urban Drainage and Wastewater Disposal System in Hanoi City	M/P+F/S	1994	Social Infrastructure	River & Erosion Control
520	Asia	VNM/S 301/94	Viet Nam	Cai Lan Port Construction Project	F/S	1994	Transportation	Port
521	Asia	VNM/A 301/94	Viet Nam	Improvement Project of Drainage System in South Bac Duong Agricultural Area	F/S	1994	Agriculture	Irrigation, Drainage & Reclamation
522	Middle East	DZA/A 301/85	Algeria	Projet d'Aménagement agricole de la région périphérique du Lac Fezzara	F/S	1985	Agriculture	(Agriculture in)General
523	Middle East	DZA/S 2018/92	Algeria	Development of the Ports of Algiers, Oran and Annaba	M/P+F/S	1992	Transportation	(Transportation in)General
524	Middle East	EGY/S 301/75	Egypt	Suez Canal Extension Project	F/S	1975	Transportation	Port
525	Middle East	EGY/S 302/76	Egypt	Urban Water Supply Project in the Great Cairo	F/S	1976	Public Utilities	Water Supply
526	Middle East	EGY/S 101/79	Egypt	High Dam Lake Area Integrated Region Development Plan	M/P	1979	Development Plan	Integrated Regional Development Plan
527	Middle East	EGY/S 303/79	Egypt	Cairo - Alexandria Line Electrification for Egyptian Railways	F/S	1979	Transportation	Railway
528	Middle East	EGY/S 304/80	Egypt	Second Stage Development Project of the Suez Canal	F/S	1980	Transportation	Port
529	Middle East	EGY/S 102/81	Egypt	Technical Cooperation Program to the Suez Canal Authority	M/P	1981	Transportation	Marine Transportation & Ships
530	Middle East	EGY/A 301/81	Egypt	South Hossinia Valley Agricultural Development Project	F/S	1981	Agriculture	(Agriculture in)General
531	Middle East	EGY/S 305/81	Egypt	Alexandria PCM Microwave Network Construction Project	F/S	1981	Communications & B	Telecommunication
532	Middle East	EGY/A 302/82	Egypt	Tenth of Ramadan Agricultural Development Project	F/S	1982	Agriculture	(Agriculture in)General
533	Middle East	EGY/S 306/82	Egypt	Cairo - Aswan - Abu Simbel Microwave Network Construction Project	F/S	1982	Communications & B	Telecommunication
534	Middle East	EGY/A 303/83	Egypt	Cold Storage Chain Development Project	F/S	1983	Animal Husbandry	Livestock Processing
535	Middle East	EGY/A 306/84	Egypt	Fayoum Agricultural Development Project	F/S	1984	Agriculture	(Agriculture in)General

No.	Region	Code No.	Country	Name of the Study	Type	Year	Sector	Sub-sector
536	Middle East	EGY/A 305/84	Egypt	North Hussinia Valley Agricultural Development Project :Phase II	F/S	1984	Agriculture	(Agriculture in)General
537	Middle East	EGY/A 304/84	Egypt	South Hussinia Valley & South Port Said Agricultural Development Project	F/S	1984	Agriculture	(Agriculture in)General
538	Middle East	EGY/S 307/84	Egypt	El-Arish Sewerage and Drainage System in the North Sinai Province	F/S	1984	Public Utilities	Sewerage
539	Middle East	EGY/S 308/84	Egypt	Sharqiya Water Supply System	F/S	1984	Public Utilities	Water Supply
540	Middle East	EGY/S 201B/85	Egypt	Refuse Collection Treatment and Disposal in Alexandria	M/P+F/S	1985	Public Utilities	Urban Sanitation
541	Middle East	EGY/S 309/85	Egypt	New Alexandria International Airport Construction Project	F/S	1985	Transportation	Air Transportation
542	Middle East	EGY/S 310/85	Egypt	Safety Improvement of the Suez Canal	F/S	1985	Transportation	& Airport Marine Transportation
543	Middle East	EGY/S 203B/86	Egypt	Development Plan of Suez Canal Area	M/P+F/S	1986	Development Plan	& Ship Integrated Regional Development Plan
544	Middle East	EGY/S 311/86	Egypt	New TV Center at 6th October City	F/S	1986	Communications & B	Broadcasting
545	Middle East	EGY/S 601/88	Egypt	Development Plan of Suez Canal Area (follow-up)	Other	1988	Development Plan	Integrated Regional Development Plan
546	Middle East	EGY/S 202B/88	Egypt	Sharqiya Sewerage System	M/P+F/S	1988	Public Utilities	Sewerage
547	Middle East	EGY/S 103/89	Egypt	Greater Cairo Region Transportation Masterplan	M/P	1989	Transportation	Urban Transportation
548	Middle East	EGY/A 201B/89	Egypt	North Sinai Integrated Rural Development	M/P+F/S	1989	Agriculture	(Agriculture in)General
549	Middle East	EGY/S 501/92	Egypt	North Sinai Groundwater Resources	Basic Study	1992	Social Infrastructu	Water Resource Development
550	Middle East	EGY/A 307/92	Egypt	Rehabilitation and Improvement of Delivery Water System on Bahr Yusef Canal	F/S	1992	Agriculture	Irrigation, Drainage & Reclamation
551	Middle East	EGY/S 109/93	Egypt	The Transportation System and The National Road Transportation Masterplan	M/P	1993	Transportation	Land Transportation
552	Middle East	EGY/S 401/93	Egypt	The Urgent Development Plan of the Suez Bay Coastal Area	D/D	1993	Transportation	Port
553	Middle East	IRN/A 101/86	Iran	Caspian Sea Coastal Area Agricultural Development Project	M/P	1986	Agriculture	(Agriculture in)General
554	Middle East	IRN/A 222/93	Iran	Irrigation and Drainage Development Project in Haraz River Basin	F/S	1993	Agriculture	(Agriculture in)General
555	Middle East	IRQ/A 301/79	Iraq	Kablia Rice Farm Project	F/S	1979	Agriculture	(Agriculture in)General
556	Middle East	IRQ/S 101/84	Iraq	Vocational Training Center Project Study in Bagdad and Mosul	M/P	1984	Social Infrastructu	Architecture & Housing
557	Middle East	IRQ/S 102/87	Iraq	Bagdad City Urban Transport Improvement	M/P	1987	Transportation	Urban Transportation
558	Middle East	JOR/A 301/76	Jordan	Wadi Arab Dam and Irrigation Project	F/S	1976	Agriculture	(Agriculture in)General
559	Middle East	JOR/S 101/79	Jordan	Integrated Region Development of Northern Jordan	M/P	1979	Development Plan	Integrated Regional Development Plan
560	Middle East	JOR/S 301/82	Jordan	Ring Roads Construction Project in Irbid City	F/S	1982	Transportation	Road
561	Middle East	JOR/S 102/87	Jordan	Integrated Regional Development Master Plan for the Karak-Tafila Development Region	M/P	1987	Development Plan	Integrated Regional Development Plan

No.	Region	Code No.	Country	Name of the Study	Type	Year	Sector	Subsector
562	Middle East	JORS 501/87	Jordan	Hydrogeological and Water Use Study of the Mujib Watershed	Basic Study	1987	Social Infrastructure	Water Resource Development
563	Middle East	JORS 502/89	Jordan	Water Resources of the Jafr Basin	Basic Study	1989	Social Infrastructure	Water Resource Development
564	Middle East	JOR/A 302/90	Jordan	Agricultural Development for the Karak-Tafilah Development Region	F/S	1990	Agriculture	(Agriculture in)General
565	Middle East	MARS 301/84	Morocco	Nador Airport Construction Project	F/S	1984	Transportation	Air Transportation & Airport
566	Middle East	MAR/A 301/86	Morocco	Projet d'exploitation des eaux souterraines en vue de developpement rural dans la province d'Oujda	F/S	1986	Agriculture	(Agriculture in)General
567	Middle East	MARS 302/87	Morocco	Projet d'un system de transport urbain de type metro-aerien a Casablanca	F/S	1987	Transportation	Railway
568	Middle East	MAR/S 201B/89	Morocco	Rhens River Basin Small and Medium Scale Dam Construction Project	M/P+F/S	1989	Social Infrastructure	River & Erosion Control
569	Middle East	MAR/S 501/90	Morocco	Topographic Mapping	Basic Study	1990	Social Infrastructure	Survey & Mapping
570	Middle East	MAR/A 101/92	Morocco	Project de developpement hydro-agricole du bassin versant de l'Ouergha	M/P	1992	Agriculture	Irrigation, Drainage & Reclamation
571	Middle East	MAR/A 201/94	Morocco	Planification Regional des Reboisements a Objectif Principal de Production de Bois de Feu	M/P+F/S	1994	Forestry	Forestry & Forest Conservation
572	Middle East	OMN/A 301/82	Oman	Wadi Jizzi Agricultural Development Project	F/S	1982	Agriculture	(Agriculture in)General
573	Middle East	OMN/S 501/85	Oman	Hydrologic Observation Project in the Batinah Coast	Basic Study	1985	Social Infrastructure	Water Resource Development
574	Middle East	OMN/A 401/86	Oman	Wadi Jizzi Agricultural Development Project	D/D	1986	Agriculture	Irrigation, Drainage & Reclamation
575	Middle East	OMN/A 101/89	Oman	Agriculture Development Project in the Najd Region	M/P	1989	Agriculture	(Agriculture in)General
576	Middle East	OMN/A 102/90	Oman	A Master Plan for Agricultural Development	M/P	1990	Agriculture	(Agriculture in)General
577	Middle East	OMN/S 101/90	Oman	Port Development for Northern Oman	M/P	1990	Transportation	Port
578	Middle East	OMN/S 301/94	Oman	Road Development Project in the Sultanate of Oman	F/S	1994	Transportation	Road
579	Middle East	QAT/S 301/86	Qatar	Drainage Improvement Plan : Doha City	F/S	1986	Public Utilities	Sewerage
580	Middle East	SAU/S 601/83	Saudi Arabia	General Hospital : Establishment Project General Hospital : Establishment Project	Other	1983	Social Infrastructure	Architecture & Housing
581	Middle East	SAU/S 602/83	Saudi Arabia	National Cancer Center : Establishment Project	Other	1983	Social Infrastructure	Architecture & Housing
582	Middle East	SDN/S 301/77	Sudan	Road Project el Obeid-Um Ruaba	F/S	1977	Transportation	Road
583	Middle East	SDN/A 301/79	Sudan	Rice Development Project in Abu Gasaba Basin	F/S	1979	Agriculture	(Agriculture in)General
584	Middle East	SDN/S 302/89	Sudan	Construction of the New White Nile Bridge	F/S	1989	Transportation	Road
585	Middle East	SDN/A 302/91	Sudan	Hurga and Nur El Din Pump Scheme Rehabilitation Project	F/S	1991	Agriculture	Irrigation, Drainage & Reclamation
586	Middle East	TUN/S 501/87	Tunisia	Project de cartographie topographique	Basic Study	1987	Social Infrastructure	Survey & Mapping
587	Middle East	TUN/S 301/90	Tunisia	Construction of the Radest - La Goulette Connection Facility	F/S	1990	Transportation	Road
588	Middle East	TUN/A 101/91	Tunisia	Forest Management in the Mejerdanet Basin	M/P	1991	Forestry	Forestry & Forest Conservation

No.	Region	Code No.	Country	Name of the Study	Type	Year	Sector	Subsector
589	Middle East	TUN/S 502/93	Tunisia	La Cartographie Topographique de la Région Centrale Dans la République Tunisienne (Topographic Mapping of Central Region)	Basic Study	1993	Social Infrastructure	Survey & Mapping
590	Middle East	TUN/S 502/93	Tunisia	Flood Protection for Greater Tunis and Sousse	M/P+F/S	1993	Social Infrastructure	River & Erosion Control
591	Middle East	TUN/S 101/85	Turkey	Ankara Air Pollution Control Project	M/P	1985	Administration	Environmental Problems
592	Middle East	TUR/A 301/89	Turkey	Adaptece Irrigation Project	F/S	1989	Agriculture	(Agriculture in)General
593	Middle East	TUR/S 201B/90	Turkey	Development Project of Filyos Port	M/P+F/S	1990	Transportation	Port
594	Middle East	TUR/A 504/93	Turkey	Demersal Fisheries Resource Survey	Basic Study	1993	Fisheries	Fisheries
595	Middle East	TUR/S 211/93	Turkey	Motorway Maintenance, Operation and Traffic Management System	M/P+F/S	1993	Transportation	Road
596	Middle East	TUR/S 301/94	Turkey	Flood Control, Forecasting and Warning System for Seyhan River	F/S	1994	Public Utilities	Urban Sanitation
597	Middle East	ARE/S 301/81	United Arab Emirates	Wadi al Bassterah Basin Water Resources Development Project	F/S	1981	Social Infrastructure	Water Resource Development
598	Middle East	ARE/S 401/81	United Arab Emirates	Al Bassierah Dam Project	D/D	1981	Social Infrastructure	Water Resource Development
599	Middle East	ARE/A 401/85	United Arab Emirates	Maniculture Center	D/D	1985	Fisheries	Fisheries
600	Middle East	YEM/A 101/80	Yemen	Hajjah Province Integrated Rural Development	M/P	1980	Agriculture	(Agriculture in)General
601	Middle East	YEM/S 303/80	Yemen	Rural Water Supply Project Part 2	F/S	1980	Public Utilities	Water Supply
602	Middle East	YEM/S 301/81	Yemen	7th Berth Construction Project of the Port of Hodeidah	F/S	1981	Transportation	Port
603	Middle East	YEM/S 302/84	Yemen	Rural Telecommunications Network	F/S	1984	Communications & B	Telecommunication
604	Middle East	YEM/S 101/88	Yemen	Urban Transport Study	M/P	1988	Transportation	Urban Transportation
605	Middle East	YEM/S 201B/89	Yemen	Improvement of Ma'alla and Tawahi Sewerage System in Aden	M/P+F/S	1989	Public Utilities	Sewerage
606	Africa	BFA/A 301/94	Burkina Faso	Integrated Agricultural Development in the Upper Mouhoun River Basin	F/S	1994	Agriculture	Irrigation, Drainage & Reclamation
607	Africa	CMR/A 301/86	Cameroon	Baigom Agricultural development Project	F/S	1986	Agriculture	(Agriculture in)General
608	Africa	DJI/S 303/93	Djibuti	The Oil-Berths Reconstruction of Port of Djibouti	F/S	1993	Transportation	Port
609	Africa	ETH/S 501/85	Ethiopia	Urgent Groundwater Development Project	Basic Study	1985	Social Infrastructure	Water Resource Development
610	Africa	GAB/A 601/79	Gabon	Fisheries Resources Survey	Other	1979	Fisheries	Fisheries
611	Africa	GHA/A 301/76	Ghana	Aveyime Sugar Production Project in Accra Plains	F/S	1976	Agriculture	(Agriculture in)General
612	Africa	GIN/A 301/80	Guinea	Projet de developpement agricole a Kankan	F/S	1980	Agriculture	(Agriculture in)General
613	Africa	GIN/S 301/81	Guinea	Fleet Expansion Project	F/S	1981	Transportation	Marine Transportation & Ships
614	Africa	GIN/S 501/82	Guinea	Projet Cartographique	Basic Study	1982	Social Infrastructure	Survey & Mapping
615	Africa	CIV/A 301/91	Cote D'Ivoire	Hydro-agricultural Development Project in the Valley of Bou	F/S	1991	Agriculture	(Agriculture in)General
616	Africa	KEN/A 301/81	Kenya	Grain Silos Construction Project	F/S	1981	Agriculture	(Agriculture in)General
617	Africa	KEN/S 301/81	Kenya	Water Supply Augmentation Project of Mombasa - Coastal Area - Hinterland	M/P+F/S	1981	Public Utilities	Water Supply

No.	Region	Code No.	Country	Name of the Study	Type	Year	Sector	Subsector
618	Africa	KEN/S 501/83	Kenya	Land Use Mapping (Topographic Mapping Project) in East Kenya	Basic Study	1983	Social Infrastructure	Survey & Mapping
619	Africa	KEN/S 101/84	Kenya	National Transport Plan	M/P	1984	Transportation	(Transportation in) General Road
620	Africa	KEN/S 302/84	Kenya	Kilifi Bridge Construction Project	F/S	1984	Transportation	Road
621	Africa	KEN/S 303/84	Kenya	Likoni Crossing Construction Project	F/S	1984	Transportation	Road
622	Africa	KEN/S 102/87	Kenya	Integrated Regional Development Master Plan for the Lake Basin Development Area	M/P	1987	Development Plan	Integrated Regional Development Plan
623	Africa	KEN/A 302/87	Kenya	Mwea Irrigation Development Project	F/S	1987	Agriculture	(Agriculture in) General Road
624	Africa	KEN/S 304/87	Kenya	Nairobi Bypass Construction Project	F/S	1987	Transportation	Road
625	Africa	KEN/S 502/90	Kenya	Topographic Mapping of South Kenya	Basic Study	1990	Social Infrastructure	Survey & Mapping
626	Africa	KEN/S 305/90	Kenya	Construction of Dam in Malewa River System for Greater Nakuru Water Supply Project	F/S	1990	Public Utilities	Water Supply
627	Africa	KEN/A 305/91	Kenya	Kano Plain Irrigation Project	F/S	1991	Agriculture	(Agriculture in) General Water Resource
628	Africa	KEN/S 103/92	Kenya	The National Water Master Plan	M/P	1992	Social Infrastructure	Development Road
629	Africa	KEN/S 401/92	Kenya	Nairobi Bypass Project	D/D	1992	Transportation	Road
630	Africa	KEN/S 304/93	Kenya	Nakuru Sewerage Works Rehabilitation and Expansion Project	F/S	1993	Public Utilities	Sewerage
631	Africa	LBR/S 301/80	Liberia	Gbarnga - Kolahun - Mendikoma Highway Project	F/S	1980	Transportation	Road
632	Africa	MDG/S 301/78	Madagascar	Southern Microwave System in Madagascar	F/S	1978	Communications & B	Telecommunication
633	Africa	MDG/S 302/79	Madagascar	Improvement of National Highway No.5	Basic Study	1979	Transportation	Road
634	Africa	MDG/S 303/91	Madagascar	Groundwater Development in Southwestern Area	F/S	1991	Public Utilities	Water Supply
635	Africa	MDG/S 201/94	Madagascar	Development of the Port of Anisiranana	M/P+F/S	1994	Transportation	Port
636	Africa	MW/U/A 301/94	Malawi	Bwanje Valley Smallholder Irrigation Development Project	F/S	1994	Agriculture	Irrigation, Drainage & Reclamation
637	Africa	ML/A 301/81	Mali	Projet de developpement du perimetre de Baguineda	F/S	1981	Agriculture	(Agriculture in) General Water Resource
638	Africa	ML/S 501/82	Mali	La mise en valeur des eaux sous terraines dans la 7 eme region economique	Basic Study	1982	Social Infrastructure	Development
639	Africa	ML/A 302/85	Mali	Baguineda Agricultural Development Project (Updating Study)	F/S	1985	Agriculture	(Agriculture in) General Road
640	Africa	ML/A 303/90	Mali	Kala Upstream Agricultural Development Project	F/S	1990	Agriculture	(Agriculture in) General Road
641	Africa	MUS/S 301/78	Mauritius	Beau Bassin-Port Louis Link Road	F/S	1978	Transportation	Road
642	Africa	MUS/S 401/80	Mauritius	Beau Bassin-Port Louis Link Road	D/D	1980	Transportation	Road
643	Africa	MUS/S 302/89	Mauritius	Port Louis City Water Supply Project	F/S	1989	Public Utilities	Water Supply
644	Africa	MUS/S 303/90	Mauritius	Landslide Protection Project in Port Louis	F/S	1990	Social Infrastructure	River & Erosion Control
645	Africa	MUS/S 402/91	Mauritius	Port Louis Water Supply Project	D/D	1991	Public Utilities	Water Supply
646	Africa	NER/S 601/77	Niger	Plan de consolidation et d'aménagement de la capacite de transport	Other	1977	Transportation	(Transportation in) General
647	Africa	NER/A 301/83	Niger	Aménagement hydro-agricole de la cuvette de Kourani-Baria	F/S	1983	Agriculture	(Agriculture in) General

No.	Region	Code No.	Country	Name of the Study	Type	Year	Sector	Subsector
648	Africa	NER/A 101/89	Niger	Rehabilitation of Oualliam Area	M/P	1989	Agriculture	(Agriculture in)General
649	Africa	NER/A 302/89	Niger	Projet d'aménagement hydroagricole de la cuvette d'Ouana-Kouanza	F/S	1989	Agriculture	(Agriculture in)General
650	Africa	NGA/A 301/77	Nigeria	Agricultural Development Projects in Imo and Bendel States	F/S	1977	Agriculture	(Agriculture in)General
651	Africa	NGA/S 101/81	Nigeria	New Ocean Terminal Project	M/P	1981	Transportation	Port
652	Africa	NGA/S 201B/90	Nigeria	Groundwater Development in Sokoto State	M/P+F/S	1990	Social Infrastructure	Water Resource Development
653	Africa	NCA/S 102/94	Nigeria	National Water Resources Master Plan	M/P	1994	Social Infrastructure	River & Erosion Control
654	Africa	RWA/S 101/85	Rwanda	Rural Water Supply Project in the Eastern Region	M/P	1985	Public Utilities	Water Supply
655	Africa	RWA/S 301/91	Rwanda	Rural Water Supply Project in the Eastern Region (Phase 3)	F/S	1991	Social Infrastructure	Water Resource Development
656	Africa	SEN/S 501/78	Senegal	L'opération de dressage de la carte photographique au moyen de la projection orthographique pour le projet de construction de la ligne de chemin de Ferme	Basic Study	1978	Transportation	Railway
657	Africa	SEN/S 301/80	Senegal	Fleet Expansion Program	F/S	1980	Transportation	Marine Transportation & Ships
658	Africa	SEN/A 301/86	Senegal	Projet de developpement rural de petite envergure et de l'etude experimentale du developpement agricole (Thiago-Guiers)	F/S	1986	Agriculture	(Agriculture in)General
659	Africa	SEN/A 501/90	Senegal	Agricultural Verification Study	Basic Study	1990	Agriculture	(Agriculture in)General
660	Africa	SEN/S 502/91	Senegal	Mapping Project in Western Senegal	Basic Study	1991	Social Infrastructure	Survey & Mapping
661	Africa	SEN/S 201/94	Senegal	Urban Drainage and Wastewater Systems in Dakar City and its Surroundings	M/P+F/S	1994	Social Infrastructure	Water Resource Development
662	Africa	SLE/S 301/80	Sierra Leone	Mekeni-Kamakwie Road Project	F/S	1980	Transportation	Road
663	Africa	SLE/A 301/83	Sierra Leone	Rhombe Swamp Agricultural Development Project	F/S	1983	Agriculture	(Agriculture in)General
664	Africa	SWZ/S 301/80	Swaziland	New International Airport Construction Project	F/S	1980	Transportation	Air Transportation & Airport
665	Africa	TZA/S 101/76	Tanzania	Natural Soda Development in Lake Natron and Related Transportation Facilities	M/P	1976	Transportation	(Transportation in)General
666	Africa	TZA/S 102/77	Tanzania	Kilimanjaro Region Integrated Development Plan	M/P	1977	Development Plan	Integrated Regional Development Plan
667	Africa	TZA/S 301/77	Tanzania	Southern Coastal Link Road Project	F/S	1977	Transportation	Road
668	Africa	TZA/S 302/78	Tanzania	Purchasing of an Additional Passenger - Cum - Cargo Vessel for Tanzania Coastal Shipping Line	F/S	1978	Transportation	Marine Transportation & Ships
669	Africa	TZA/S 103/80	Tanzania	Proposed Mahale Mountains National Park	M/P	1980	Tourism	(Tourism in)General
670	Africa	TZA/A 301/80	Tanzania	Lower-Moshi Agricultural Development Project	F/S	1980	Agriculture	(Agriculture in)General
671	Africa	TZA/A 302/83	Tanzania	Mkomazi Valley Area Irrigation Development Project	F/S	1983	Agriculture	(Agriculture in)General
672	Africa	TZA/A 601/88	Tanzania	Expanded Afforestation Work in the Same District of Kilimanjaro Region	Other	1988	Forestry	Forestry & Forest Conservation
673	Africa	TZA/A 303/90	Tanzania	Lower Hai and Lower Rombo Agricultural Development Project	F/S	1990	Agriculture	(Agriculture in)General
674	Africa	TZA/S 303/90	Tanzania	Road Improvement and Maintenance in Dar es Salaam	F/S	1990	Transportation	Road
675	Africa	TZA/S 304/91	Tanzania	Rehabilitation of Dar Es Salaam Water Supply	F/S	1991	Public Utilities	Water Supply

No.	Region	Code No.	Country	Name of the Study	Type	Year	Sector	Sub-sector
676	Africa	TZA/S 104/94	Tanzania	Water Resources Development in the Ruvo River	M/P	1994	Social Infrastructu	Water Resource Development
677	Africa	TZA/S 501/94	Tanzania	Topographic Mapping of Mwanza-Geita Block	Basic Study	1994	Social Infrastructu	Survey & Mapping
678	Africa	TZA/S 201/94	Tanzania	Dar es Salaam Road Development Plan	M/P+F/S	1994	Transportation	Road
679	Africa	UGA/A 101/94	Uganda	Integrated Agricultural and Rural Development Project in Central Uganda	M/P	1994	Agriculture	(Agriculture in)General
680	Africa	UGA/S 101/94	Uganda	Telecommunication Network in the Republic of Uganda	M/P	1994	Communications & B	Telecommunication
681	Africa	ZAR/S 301/78	Zaire	Projet de la construction du pont sur le fleuve Zaire a Matadi	F/S	1978	Transportation	(Transportation in) General
682	Africa	ZAR/S 101/86	Zaire	Plan - directeur relatif a l'amangement du systeme de transport allant de la ville de Kinshasa a Banana	M/P	1986	Transportation	(Transportation in) General
683	Africa	ZAR/S 302/87	Zaire	Railway Construction Project between Kiseno and Kimbanseke	F/S	1987	Transportation	Railway
684	Africa	ZAR/S 303/89	Zaire	Construction Project of the East-West Road in Kinshasa City	F/S	1989	Transportation	Road
685	Africa	ZMB/S 301/81	Zambia	Microwave Radio Relay Project	F/S	1981	Communications & B	Telecommunication
686	Africa	ZMB/S 302/85	Zambia	Lusaka International Airport Development Project	F/S	1985	Transportation	Air Transportation & Airport
687	Africa	ZMB/S 303/90	Zambia	Kafue Road Bridge Reconstruction Project	F/S	1990	Transportation	Road
688	Africa	ZMB/S 101/91	Zambia	Hydrologic Observation Systems of the Major River Basins	M/P	1991	Social Infrastructu	Water Resource Development
689	Africa	ZMB/A 501/92	Zambia	The Agricultural Verification Study	Basic Study	1992	Agriculture	(Agriculture in)General
690	Africa	ZMB/S 110/93	Zambia	Long Term Plan for Development of Telecommunications Network	M/P	1993	Communications & B	Telecommunication
691	Africa	ZWE/S 601/80	Zimbabwe	Electrification of National Railways	Other	1980	Transportation	Railway
692	Africa	ZWE/S 101/83	Zimbabwe	Rural Water Supply Programme in Communal Lands in Parts of Masvingo and Midlands Provinces	M/P	1983	Public Utilities	Water Supply
693	Africa	ZWE/S 301/83	Zimbabwe	Installation Project of INTELSAT Standard A Earth Station	F/S	1983	Communications & B	Telecommunication
694	Africa	ZWE/A 301/87	Zimbabwe	Medium Size Dams in Masvingo Province	F/S	1987	Agriculture	(Agriculture in)General
695	Africa	ZWE/A 302/90	Zimbabwe	Nyakomba Irrigation Development Project	F/S	1990	Agriculture	(Agriculture in)General
696	Africa	ZWE/S 302/92	Zimbabwe	Rural Telecommunications Network Project	F/S	1992	Communications & B	(Comms. & Broad. in) General
697	Middle & South America	ARG/S 301/79	Argentina	Deep Water Port Construction Project at Punta Medanos	F/S	1979	Transportation	Port
698	Middle & South America	ARG/S 101/86	Argentina	Study on Economic Development	M/P	1986	Development Plan	Integrated Regional Development Plan
699	Middle & South America	ARG/S 302/86	Argentina	Preliminary Design for the Amplification of an Inspection and Repairing Workshop for Electric Rolling Stock	F/S	1986	Transportation	Railway
700	Middle & South America	ARG/S 102/87	Argentina	Development Plan for the Telecommunication and Broadcasting Networks in the Province of Mendoza	M/P	1987	Communications & B	(Comms. & Broad. in) General
701	Middle & South America	ARG/A 101/88	Argentina	Proyecto de desarrollo agricola integrado en el area adyacente a la represa de Yacreta e la Provincia de Corrientes	M/P	1988	Agriculture	(Agriculture in)General
702	Middle & South America	ARG/S 501/94	Argentina	Topographic mapping of North-east region in Argentine Republic	Basic Study	1994	Social Infrastructu	Survey & Mapping

No.	Region	Code No.	Country	Name of the Study	Type	Year	Sector	Subsector
703	Middle & South America	BOL/S 301/77	Bolivia	Viru Viru International Airport Development	F/S	1977	Transportation	Air Transportation & Airport
704	Middle & South America	BOL/S 501/78	Bolivia	Topographic Mapping Project for Chapare Area	Basic Study	1978	Social Infrastructure	Survey & Mapping
705	Middle & South America	BOL/A 501/79	Bolivia	Land Use Mapping Project for Chapare Area	Basic Study	1979	Agriculture	(Agriculture in)General
706	Middle & South America	BOL/S 303/82	Bolivia	National Telecommunication Network Project	F/S	1982	Communications & B	Telecommunication
707	Middle & South America	BOL/S 302/82	Bolivia	Railway Construction/Rehabilitation Project (Eastern Line: Taperas-Robore and Ipias-Robore)	F/S	1982	Transportation	Railway
708	Middle & South America	BOL/S 201B/87	Bolivia	El Alto Airport Modernization Project	M/P+F/S	1987	Transportation	Air Transportation & Airport
709	Middle & South America	BOL/S 305/87	Bolivia	Groundwater Development Project on El Alto District in La Paz City	F/S	1987	Public Utilities	Water Supply
710	Middle & South America	BOL/S 304/87	Bolivia	Mejoramiento de la carretera entre San Borja y Trinidad	F/S	1987	Transportation	Road
711	Middle & South America	BOL/S 401/88	Bolivia	Mejoramiento de la carretera entre San Borja y Trinidad	D/D	1988	Transportation	Road
712	Middle & South America	BOL/A 301/90	Bolivia	Agricultural and Rural Development Project in Santa Ana	F/S	1990	Agriculture	(Agriculture in)General
713	Middle & South America	BOL/S 306/90	Bolivia	Road Improvement between Santa Barbara and Bella Vista	F/S	1990	Transportation	Road
714	Middle & South America	BOL/A 101/91	Bolivia	Forest Resources Management	M/P	1991	Forestry	Forestry & Forest Conservation
715	Middle & South America	BOL/S 101/91	Bolivia	Modernization and Rehabilitation of Bolivian National Railways	M/P	1991	Transportation	Railway
716	Middle & South America	BOL/S 212/93	Bolivia	Control of Water Contamination of the Rivers in the City of Lapaz	M/P+F/S	1993	Administration	Environmental Problems
717	Middle & South America	BRA/S 101/75	Brazil	Plano de construcao da nova ligacao ferroviario ferroviaria	M/P	1975	Transportation	Railway
718	Middle & South America	BRA/S 301/77	Brazil	Praia Mole Port Construction Project	F/S	1977	Transportation	Port
719	Middle & South America	BRA/S 102/79	Brazil	Regional Development of the Three States: Espirito Santo, Minas Gerais and Goias	M/P	1979	Development Plan	Integrated Regional Development Plan
720	Middle & South America	BRA/S 103/80	Brazil	Establishment of the Fire Fighting Training Center in Brasilia D.F.	M/P	1980	Social Infrastructure	Architecture & Housing
721	Middle & South America	BRA/S 104/85	Brazil	Regional Development Plan of the Greater Carajas Program	M/P	1985	Development Plan	Integrated Regional Development Plan
722	Middle & South America	BRA/S 201B/87	Brazil	Icajal River Basin Flood Control Project	M/P+F/S	1987	Social Infrastructure	River & Erosion Control

No.	Region	Code No.	Country	Name of the Study	Type	Year	Sector	Subsector
723	Middle & South America	BRA/S 302/89	Brazil	Flood Control Project in the Lower Itajai River Basin	F/S	1989	Social Infrastructu	River & Erosion Control
724	Middle & South America	BRA/S 202B/90	Brazil	Disaster Prevention and Restoration Project in Serra Do Mar, Cubatao Region	M/P+F/S	1990	Social Infrastructu	River & Erosion Control
725	Middle & South America	BRA/S 105/91	Brazil	Urban Transport in Belem	M/P	1991	Transportation	Urban Transportaion
726	Middle & South America	BRA/S 305/93	Brazil	Recuperation of the Guanabara Bay Ecosystem	M/P	1993	Administration	Environmental Problems
727	Middle & South America	BRA/S 306/94	Brazil	Navigation of the Paraitaba River Basin	F/S	1994	Transportation	Port
728	Middle & South America	CHL/S 101/83	Chile	State Railways Modernization Project	M/P	1983	Transportation	Railway
729	Middle & South America	CHL/S 102/86	Chile	Development Plan of the Ports of Valparaiso and San Antonio	M/P	1986	Transportation	Port
730	Middle & South America	CHL/A 301/86	Chile	Mapocho River Basin Agricultural Development Project	F/S	1986	Agriculture	(Agriculture in)General
731	Middle & South America	CHL/A 302/88	Chile	Proyecto de desarrollo agricola mediante aprovechamiento de aguas subterraneas en Tololo Pampa en la Region de Atacama	F/S	1988	Agriculture	(Agriculture in)General
732	Middle & South America	CHL/S 103/92	Chile	Rehabilitation and Conservation Program of Bridges	M/P	1992	Transportation	Road
733	Middle & South America	CHL/A 501/92	Chile	Forest Resources Management	Basic Study	1992	Forestry	Forestry & Forest Conservation
734	Middle & South America	CHL/S 201/94	Chile	Development of Water Resources in Northern Chile	M/P+F/S	1994	Social Infrastructu	Water Resource Development
735	Middle & South America	CHL/S 301/94	Chile	Feasibility Study on the New Biobio Bridge	F/S	1994	Transportation	Road
736	Middle & South America	COL/S 101/81	Colombia	Simon Bolivar Great Memorial Park Project	M/P	1981	Social Infrastructu	Urban Planning & Land Development
737	Middle & South America	COL/A 501/81	Colombia	Fisheries Resources Survey	Basic Study	1981	Fisheries	Fisheries
738	Middle & South America	COL/S 301/82	Colombia	Bogota-Buenaventura Road Project	F/S	1982	Transportation	Road
739	Middle & South America	COL/S 102/84	Colombia	Comprehensive Urban Transport Study in Barranquilla Metropolitan Region	M/P	1984	Transportation	Urban Transportaion
740	Middle & South America	COL/A 301/84	Colombia	Pamplonita River Basin Agricultural Development Project	F/S	1984	Agriculture	(Agriculture in)General
741	Middle & South America	COL/A 302/86	Colombia	Small Scale Irrigation Package Project in Slope Area	F/S	1986	Agriculture	(Agriculture in)General
742	Middle & South America	COL/S 302/87	Colombia	Urban Development of the Central District of Barranquilla	F/S	1987	Social Infrastructu	Urban Planning & Land Development

No.	Region	Code No.	Country	Name of the Study	Type	Year	Sector	Subsector
743	Middle & South America	COL/A 101/88	Colombia	Quindio Basin Integrated Agricultural Development Project	M/P	1988	Agriculture	(Agriculture in)General
744	Middle & South America	COL/A 303/89	Colombia	ARIARI River Basin Integrated Agricultural Development Project	F/S	1989	Agriculture	(Agriculture in)General
745	Middle & South America	COL/S 103/91	Colombia	Air Pollution Control Plan in Santafe de Bogota City Area	M/P	1991	Administration	Environmental Problems
746	Middle & South America	COL/A 304/91	Colombia	Quindio Basin Integrated Agricultural Development Project	F/S	1991	Agriculture	(Agriculture in)General
747	Middle & South America	COL/S 104/92	Colombia	The Urban Transport Study in the City of Cartagene de Indias.	M/P	1992	Transportation	Urban Transportation
748	Middle & South America	COL/A 502/92	Colombia	Forest Resources Management	Basic Study	1992	Forestry	Forestry & Forest Conservation
749	Middle & South America	CRI/S 101/77	Costa Rica	Regional study of the Hinterland of Caldera and Puntarcnas Ports	M/P	1977	Development Plan	Integrated Regional Development Plan
750	Middle & South America	CRI/S 301/81	Costa Rica	Second Stage Expansion Project of the Port of Caldera	F/S	1981	Transportation	Port
751	Middle & South America	CRI/S 302/86	Costa Rica	Maintenance Project of the Port of Caldera	F/S	1986	Transportation	Port
752	Middle & South America	CRI/A 501/88	Costa Rica	Fieries Resources Survey of the Pacific Coast	Basic Study	1988	Fisheries	Fisheries
753	Middle & South America	CRI/A 2018/88	Costa Rica	Limon Integrated Agricultural Development Project	M/P+F/S	1988	Agriculture	(Agriculture in)General
754	Middle & South America	CRI/S 501/91	Costa Rica	Mapping Project for Metropolitan Area of San Jose City	Basic Study	1991	Social Infrastructure	Survey & Mapping
755	Middle & South America	CRI/S 2018/92	Costa Rica	Development Project of Three International Airports	M/P+F/S	1992	Transportation	Air Transportation & Airport
756	Middle & South America	DOM/A 301/81	Dominican Republic	Proyecto del desarrollo agricola del area Aglipo (El Pozo)	F/S	1981	Agriculture	(Agriculture in)General
757	Middle & South America	DOM/S 301/85	Dominican Republic	Radio and Television Development Project	F/S	1985	Communications & B	Broadcasting
758	Middle & South America	DOM/A 302/86	Dominican Republic	Aguate-Guayabo Agricultural development Project	F/S	1986	Agriculture	(Agriculture in)General
759	Middle & South America	DOM/S 2018/87	Dominican Republic	Development Project of the San Pedro de Macoris	M/P+F/S	1987	Transportation	Port
760	Middle & South America	DOM/A 303/90	Dominican Republic	Constanza Valley Irrigation Project	F/S	1990	Agriculture	(Agriculture in)General
761	Middle & South America	DOM/S 501/92	Dominican Republic	Groundwater Development Project in The Western Region	Basic Study	1992	Social Infrastructure	Water Resource Development
762	Middle & South America	ECU/A 301/82	Ecuador	Proyecto Catarama de desarrollo agricola	F/S	1982	Agriculture	(Agriculture in)General

No.	Region	Code No.	Country	Name of the Study	Type	Year	Sector	Subsector
763	Middle & South America	ECU/S 201B/86	Ecuador	Guayaquil City Urban Transportation Plan	M/P+F/S	1986	Transportation	Urban Transportation
764	Middle & South America	ECU/A 501/88	Ecuador	Estudio forestal de la region noreste	Basic Study	1988	Forestry	Forestry & Forest Conservation
765	Middle & South America	ECU/A 302/91	Ecuador	Small-scale Fishing Port Development Project in Manabí Province	F/S	1991	Fisheries	Fisheries
766	Middle & South America	ECU/S 303/92	Ecuador	Water Resources Development for Chone-Portoviejo River Basins	F/S	1992	Social Infrastructure	Water Resource Development
767	Middle & South America	ECU/A 304/94	Ecuador	Tumbabiro Irrigation Project (Estudio de Factibilidad Proyecto de Irrigacion/Tumbabiro)	F/S	1994	Agriculture	Irrigation, Drainage & Reclamation
768	Middle & South America	ECU/S 401/94	Ecuador	Detailed Design Study on the Water Transbasin Schemes for Chone Portoviejo River Basins	D/D	1994	Social Infrastructure	Water Resource Development
769	Middle & South America	GTM/S 201B/84	Guatemala	Flood Control Project (Archiguate and Pantaleon Rivers)	M/P+F/S	1984	Social Infrastructure	River & Erosion Control
770	Middle & South America	GTM/S 501/86	Guatemala	Ground Water Development Project	Basic Study	1986	Social Infrastructure	Water Resource Development
771	Middle & South America	GTM/A 301/88	Guatemala	Monjas Irrigation Project	F/S	1988	Agriculture	(Agriculture in)General
772	Middle & South America	GTM/S 301/88	Guatemala	Development Project of the Port of Santo Tomas de Castilla	F/S	1988	Transportation	Port
773	Middle & South America	GTM/S 302/89	Guatemala	Development Project of La Aurora and Santa Elena Airports	F/S	1989	Transportation	Air Transportation & Airport
774	Middle & South America	GTM/S 101/91	Guatemala	Comprehensive Urban Transportation System in Guatemala Metropolitan Area	M/P	1991	Transportation	Urban Transportation
775	Middle & South America	GTM/S 202B/91	Guatemala	Solid Waste Management in Metropolitan Area of Guatemala City	M/P+F/S	1991	Public Utilities	Urban Sanitation
776	Middle & South America	GTM/A 101/92	Guatemala	Integrated Agricultural and Rural Development Project in Jutiapa	M/P	1992	Agriculture	(Agriculture in)General
777	Middle & South America	HND/A 301/78	Honduras	Agricultural Development in the Choluteca River Basin	F/S	1978	Agriculture	(Agriculture in)General
778	Middle & South America	HND/S 301/79	Honduras	New Tegucigalpa Airport Development	F/S	1979	Transportation	Air Transportation & Airport
779	Middle & South America	HND/A 502/83	Honduras	Fisheries Resources Survey	Basic Study	1983	Fisheries	Fisheries
780	Middle & South America	HND/A 501/83	Honduras	Inventario forestal del distrito forestal de La Mosquitia	Basic Study	1983	Forestry	Forestry & Forest Conservation
781	Middle & South America	HND/A 302/84	Honduras	Choluteca River Basin Agricultural Development Project (Updating Study)	F/S	1984	Agriculture	(Agriculture in)General
782	Middle & South America	HND/A 303/85	Honduras	Aguan Valley Agricultural Development Project (Saba-Olanehito Area)	F/S	1985	Agriculture	(Agriculture in)General

No.	Region	Code No.	Country	Name of the Study	Type	Year	Sector	Subsector
783	Middle & South America	HND/S 501/89	Honduras	Groundwater Development Project in Comayagua	Basic Study	1989	Social Infrastructu	Water Resource Development
784	Middle & South America	HND/A 304/90	Honduras	Rehabilitation of Coyolar Dam and Irrigation Improvement Project in Comayagua Valley	F/S	1990	Agriculture	Irrigation, Drainage & Reclamation
785	Middle & South America	HND/S 102/92	Honduras	Rural Telecommunications Network Project	M/P	1992	Communications & B	Telecommunication
786	Middle & South America	HND/S 214/93	Honduras	Improvement of the Ports in the Republic of Honduras	M/P+F/S	1993	Transportation	Port
787	Middle & South America	HND/S 213/93	Honduras	Erosion and Sediment Control in the Pilot River Basin, Choloma, San Pedro Sula, Cortes	M/P+F/S	1993	Social Infrastructu	River & Erosion Control
788	Middle & South America	HND/A 305/94	Honduras	Irrigated Agricultural Development Project in Jesus de Oro.	F/S	1994	Agriculture	Irrigation, Drainage & Reclamation
789	Middle & South America	JAM/A 301/85	Jamaica	Intibuca Department Agricultural Development Project on the Black River Lower Morass	F/S	1985	Agriculture	(Agriculture in)General
790	Middle & South America	JAM/A 302/87	Jamaica	Modernization and Expansion of the Rio Cobre Irrigation scheme	F/S	1987	Agriculture	(Agriculture in)General
791	Middle & South America	MEX/S 601/77	Mexico	Mexico City Suburban Railways Construction Project	Other	1977	Transportation	Railway
792	Middle & South America	MEX/S 602/79	Mexico	Suburban Railways Project (follow-up)	Other	1979	Transportation	Railway
793	Middle & South America	MEX/S 603/81	Mexico	Proyecto de electrificación de la línea de Mexico a Irapuato	Other	1981	Transportation	Railway
794	Middle & South America	MEX/S 604/82	Mexico	Development Plan of Industrial Ports	Other	1982	Development Plan	Integrated Regional Development Plan
795	Middle & South America	MEX/S 302/83	Mexico	Development Project of the Industrial Port of Tuxpan	F/S	1983	Transportation	Port
796	Middle & South America	MEX/S 301/83	Mexico	Guanajuato New Railway Development Project	F/S	1983	Transportation	Railway
797	Middle & South America	MEX/S 303/85	Mexico	Development Project of the Port of Manzanillo	F/S	1985	Transportation	Port
798	Middle & South America	MEX/S 304/87	Mexico	Repair Dockyard in Lazaro Cardenas	F/S	1987	Transportation	Marine Transportation & Ships
799	Middle & South America	MEX/S 605/88	Mexico	Air Pollution Control Plan in the Federal District	Other	1988	Administration	Environmental Problems
800	Middle & South America	MEX/S 305/90	Mexico	Improvement of the Pacific Coast Ports	F/S	1990	Transportation	Port
801	Middle & South America	MEX/S 306/94	Mexico	Wastewater Treatment in the Federal District of Mexico	F/S	1994	Public Utilities	Sewerage
802	Middle & South America	NIC/S 306/93	Nicaragua	Water Supply Project in Managua	F/S	1993	Social Infrastructu	Water Resource Development

No.	Region	Code No.	Country	Name of the Study	Type	Year	Sector	Subsector
803	Middle & South America	NIC/S 201/94	Nicaragua	Road Improvement and Rehabilitation Study	M/P+F/S	1994	Transportation	Road
804	Middle & South America	PAN/S 501/81	Panama	Topographic Mapping Project of the Caribbean Coastal Area	Basic Study	1981	Social Infrastructu	Survey & Mapping
805	Middle & South America	PAN/A 501/83	Panama	Fisheries Resources Survey of the Atlantic Coast	Basic Study	1983	Fisheries	Fisheries
806	Middle & South America	PAN/A 502/84	Panama	Inventario forestal del distrito de Donoso	Basic Study	1984	Forestry	Forestry & Forest Conservation
807	Middle & South America	PAN/S 302/84	Panama	Urban Transport Project in the Panama Metropolitan Area (ESTAMPA II)	F/S	1984	Transportation	Urban Transportation
808	Middle & South America	PAN/S 301/84	Panama	Short-Wave Broadcast Station Project	F/S	1984	Communications & B	Broadcasting
809	Middle & South America	PAN/S 303/87	Panama	Corredor Sur Development Project in the Panama Metropolitan Area (ESTAMPA III)	F/S	1987	Transportation	Urban Transportation
810	Middle & South America	PAN/S 215/93	Panama	Rehabilitation Plan and Container Terminal Operation Plan at the Port of Cristobal	M/P+F/S	1993	Transportation	Port
811	Middle & South America	PAN/S 307/93	Panama	Study of Alternatives to the Panama Canal	F/S	1993	Transportation	Marine Transportation & Ships
812	Middle & South America	PAN/S 308/93	Panama	Improvement of Panama-Colon Highway	F/S	1993	Transportation	Road
813	Middle & South America	PRY/S 601/76	Paraguay	La Colmena Highway (follow-up)	Other	1976	Transportation	Road
814	Middle & South America	PRY/S 301/78	Paraguay	Fleet Expansion Project	F/S	1978	Transportation	Marine Transportation & Ships
815	Middle & South America	PRY/S 302/79	Paraguay	New Airport Construction Project in Ciudad Presidente Stroessner	F/S	1979	Transportation	Air Transportation & Airport
816	Middle & South America	PRY/A 301/82	Paraguay	Proyecto de desarrollo agricola en la zona noroeste del lago Ypoa	F/S	1982	Agriculture	(Agriculture in)General
817	Middle & South America	PRY/A 501/83	Paraguay	Forest Inventory in the Northeastern Region	Basic Study	1983	Forestry	Forestry & Forest Conservation
818	Middle & South America	PRY/S 201B/83	Paraguay	National Telecommunications & Broadcasts Development Project	M/P+F/S	1983	Communications & B	(Comms. & Broad. in) General
819	Middle & South America	PRY/A 101/84	Paraguay	Irrigation and Drainage Project in the Adjacent Area to the Yacyreta Dam	M/P	1984	Agriculture	(Agriculture in)General
820	Middle & South America	PRY/A 302/84	Paraguay	Proyecto de reforestacion en la zona de Capitibary, Departamento de San Pedro	F/S	1984	Forestry	Forestry & Forest Conservation
821	Middle & South America	PRY/S 101/86	Paraguay	Transito Urbano de Asuncion y su area metropolitana	M/P	1986	Transportation	Urban Transportation
822	Middle & South America	PRY/S 202B/86	Paraguay	Storm Drainage System Improvement Project in Asuncion City	M/P+F/S	1986	Social Infrastructu	River & Erosion Control

No.	Region	Code No.	Country	Name of the Study	Type	Year	Sector	Subsector
823	Middle & South America	PRY/A 102/87	Paraguay	Proyecto de aumento de la producción de granos principales en el área central del departamento de Itapúa	M/P	1987	Agriculture	(Agriculture in)General
824	Middle & South America	PRY/S 303/88	Paraguay	Transportation Facilities Improvement Project of the Asunción Metropolitan Area	F/S	1988	Transportation	Urban Transportation
825	Middle & South America	PRY/S 102/89	Paraguay	Water Pollution Control Plan for the Lake Ypacarai and its Basin	M/P	1989	Administration	Environmental Problems
826	Middle & South America	PRY/A 303/89	Paraguay	Integrated Rural Infrastructure Improvement Project in La Colmena	F/S	1989	Agriculture	(Agriculture in)General
827	Middle & South America	PRY/S 103/91	Paraguay	National Transport Master Plan	M/P	1991	Transportation	(Transportation in)General
828	Middle & South America	PRY/S 216/93	Paraguay	The Establishment of Educational Television Broadcasting Network	M/P+F/S	1993	Communications & B	Broadcasting
829	Middle & South America	PRY/A 103/94	Paraguay	Integrated Agricultural and Livestock Development Project at Lower Chaco	M/P	1994	Agriculture	(Agriculture in)General
830	Middle & South America	PRY/S 203/94	Paraguay	Solid Waste Management for Metropolitan Area of Asunción	M/P+F/S	1994	Public Utilities	Urban Sanitation
831	Middle & South America	PER/A 301/77	Peru	Proyecto de la construcción del complejo pesquero del centro	F/S	1977	Fisheries	Fisheries
832	Middle & South America	PER/S 201B/83	Peru	Development Project of the Port of Callao	M/P+F/S	1983	Transportation	Port
833	Middle & South America	PER/A 302/84	Peru	Chancay-Huaral Valley Rehabilitation Project	F/S	1984	Agriculture	(Agriculture in)General
834	Middle & South America	PER/S 501/86	Peru	Topographic Mapping Project for Satipo Area, Department of Junin	Basic Study	1986	Social Infrastructure	Survey & Mapping
835	Middle & South America	PER/S 202B/86	Peru	Development Project of Jorge Chavez Lima-Callao International Airport	M/P+F/S	1986	Transportation	Air Transportation & Airport
836	Middle & South America	PER/S 101/87	Peru	Disaster Prevention Project in the Rimac River Basin	M/P	1987	Social Infrastructure	River & Erosion Control
837	Middle & South America	PER/S 301/89	Peru	Improvement of Sewerage System in Southern Part of Lima	F/S	1989	Public Utilities	Sewerage
838	Middle & South America	PER/A 201B/90	Peru	Desarrollo Pesquero y Construcción del Puerto Pesquera en la Costa Central	M/P+F/S	1990	Fisheries	Fisheries
839	Middle & South America	PER/S 502/92	Peru	The Topographic Mapping of Lima Metropolitan Area	Basic Study	1992	Social Infrastructure	Survey & Mapping
840	Middle & South America	TTO/S 201B/91	Trinidad and Tobago	Improvement of Water Supply Supervisory System	M/P+F/S	1991	Public Utilities	Water Supply
841	Middle & South America	URY/A 101/86	Uruguay	Establecimiento de plantaciones de arboles y utilización de la madera plantada	M/P	1986	Forestry	Forestry & Forest Conservation
842	Middle & South America	URY/S 301/89	Uruguay	Development Plan of the International Airport of Carrasco	F/S	1989	Transportation	Air Transportation & Airport

No.	Region	Code No.	Country	Name of the Study	Type	Year	Sector	Subsector
843	Middle & South America	URY/A 301/90	Uruguay	National Reforestation Plan	F/S	1990	Forestry	Forestry & Forest Conservation
844	Middle & South America	URY/S 302/92	Uruguay	Development of New Port Terminals at Montevideo Port	F/S	1992	Transportation	Port
845	Middle & South America	VEN/S 101/80	Venezuela	Design on Cargo Handling Equipments	M/P	1980	Transportation	Port
846	Middle & South America	VEN/S 201B/89	Venezuela	Chama River Basin Conservation Project	M/P+F/S	1989	Social Infrastructure	River & Erosion Control
847	Middle & South America	VEN/S 111/93	Venezuela	Comprehensive Improvement of the Apure River Basin	M/P	1993	Social Infrastructure	River & Erosion Control
848	Oceania	COK/S 201B/92	Cook Islands	Coastal Protection and Port Improvement	M/P+F/S	1992	Development Plan	(Development Plan in) General Port
849	Oceania	COK/S 202/94	Cook Islands	Additional Study on Coastal Protection and Port Improvement	M/P+F/S	1994	Transportation	Port
850	Oceania	FJI/A 501/78	Fiji	Analytical Survey of Coconut Forests in Tavuni Island	Basic Study	1978	Forestry	Forestry & Forest Conservation
851	Oceania	FJI/A 502/82	Fiji	The Survey for Forest Development in Fiji	Basic Study	1982	Forestry	Forestry & Forest Conservation
852	Oceania	FJI/A 503/87	Fiji	Fisheries Resources Survey in Fiji and Tuvalu	Basic Study	1987	Fisheries	Forest Conservation
853	Oceania	KIR/A 501/78	Kiribati	Fishery Resources in the Gilbert Islands	Basic Study	1978	Fisheries	Fisheries
854	Oceania	KIR/S 201/94	Kiribati	Ports Development in Kiribati	M/P+F/S	1994	Transportation	Port
855	Oceania	PNG/A 301/77	Papua New Guinea	Fishing Base Construction Project	F/S	1977	Fisheries	Fisheries
856	Oceania	PNG/S 301/89	Papua New Guinea	Rural Telecommunication Development Plan in Papua New Guinea	F/S	1989	Communications & B	Telecommunication
857	Oceania	PNG/S 401/89	Papua New Guinea	Detailed Design on Road Construction Project in Betsina-Malalaua	D/D	1989	Transportation	Road
858	Oceania	PNG/S 302/91	Papua New Guinea	Tokua Airport Development Project	F/S	1991	Transportation	Air Transportation & Airport
859	Oceania	PNG/S 217/93	Papua New Guinea	Port Moresby Water Supply Development Plan	M/P+F/S	1993	Public Utilities	Sewerage
860	Oceania	SLB/S 301/79	Solomon Islands	Telecommunication Trunk Network Construction Project	F/S	1979	Communications & B	Telecommunication
861	Oceania	SLB/S 302/91	Solomon Islands	Development Project of Henderson International Airport	F/S	1991	Transportation	Air Transportation & Airport
862	Oceania	SLB/A 201/94	Solomon Islands	Development Study on Improvement of Nationwide Fish Marketing System	M/P+F/S	1994	Fisheries	Fisheries
863	Oceania	WSM/S 201B/87	Western Samoa	Development of the Ports in Western Samoa	M/P+F/S	1987	Transportation	Port
864	Europe	BGR/S 201/94	Bulgaria	Solid Waste Management for the Territory of the Sofia Greater Municipality	M/P+F/S	1994	Public Utilities	Urban Sanitation
865	Europe	GRC/S 601/89	Greece	Tourism Promotion	Other	1989	Tourism	(Tourism in) General

No.	Region	Code No.	Country	Name of the Study	Type	Year	Sector	Subsector
866	Europe	HUN/S 218/93	Hungary	Municipal Solid Waste Management in Budapest	M/P-F/S	1993	Public Utilities	Urban Sanitation
867	Europe	HUN/S 101/94	Hungary	Integrated Air Pollution Control Plan for Sajó Valley Area	M/P	1994	Administration	Environmental Problems
868	Europe	KYR/S 101/94	Kyrgyzs	Improvement of Payment System in the Kyrgyz Republic	M/P	1994	Administration	Public Finance, Banking
869	Europe	KYR/S 102/94	Kyrgyzs	Development of Radio and TV Broadcasting in the Kyrgyz Republic	M/P	1994	Communications & B	Broadcasting
870	Europe	POL/S 101/92	Poland	National Transport Plan	M/P	1992	Transportation	(Transportation in) General
871	Europe	POL/S 219/93	Poland	Solid Waste Management for Poznan City	M/P-F/S	1993	Public Utilities	Urban Sanitation
872	Plural countries	PLU/S 101/77	Plural countries	Establishment of Electronic and Navigational Aid Systems Project	M/P	1977	Transportation	Marine Transportation & Ships
873	Plural countries	PLU/S 501/78	Plural countries	ASEAN Submarine Cable Project: Thailand-Malaysia-Singapore Route	Basic Study	1978	Communications & B	Telecommunication
874	Plural countries	PLU/S 502/78	Plural countries	Joint Hydrographic Survey in Malacca and Singapore Straits (one fathom bank area)	Basic Study	1978	Transportation	Marine Transportation & Ships
875	Plural countries	PLU/S 301/79	Plural countries	Construction of Indo-Chinese Refugee Camps	F/S	1979	Social Infrastructure	Architecture & Housing
876	Plural countries	PLU/S 503/82	Plural countries	Joint Production of Common Datum Charts of the Straits of Malacca and Singapore	Basic Study	1982	Social Infrastructure	Survey & Mapping
877	Plural countries	PLU/S 504/84	Plural countries	Medan (Indonesia) -Colombo (Sri Lanka) Submarine Cable Project	Basic Study	1984	Communications & B	Telecommunication

JICA

LIBRARY