

TIME TABLE, SEMESTER I (NUS)

FACULTY OF SCIENCE

A-34

TIME TABLE, SEMESTER II (NUS)

 UPY COURSES FACULTY OF ARTS FACULTY OF SCIENCE

[illegible]

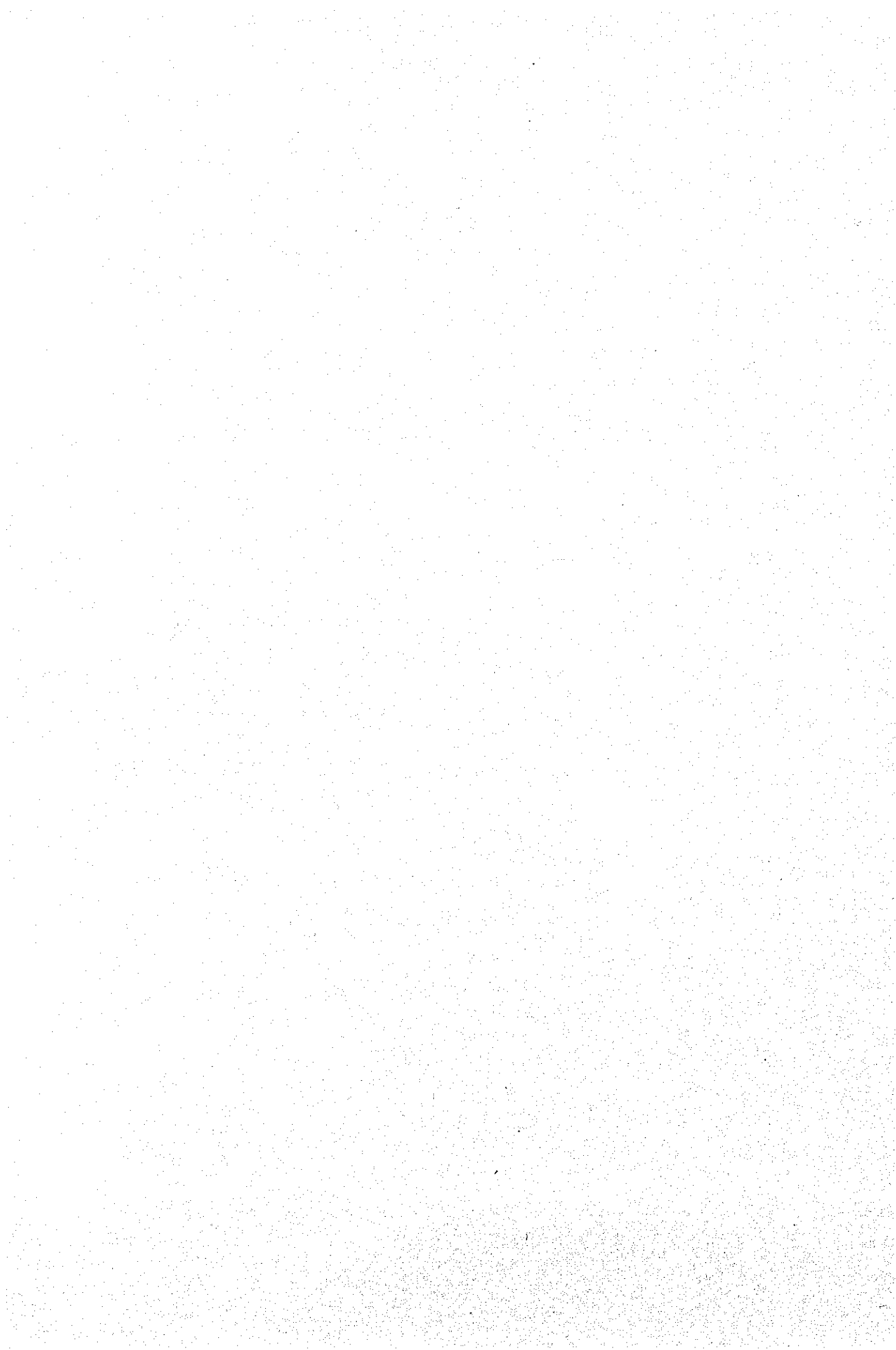
TIME TABLE, SEMESTER I (WSTC)

6-2. Timetable of the Existing Facilities (Western Samoa Teachers College)

ROOM	DATE	MONDAY										TUESDAY										WEDNESDAY										THURSDAY										FRIDAY									
		8:00 S	9:00 S	10:00 S	11:00 S	12:00 S	13:00 S	14:00 S	15:00 S	16:00 S	17:00 S	8:00 S	9:00 S	10:00 S	11:00 S	12:00 S	13:00 S	14:00 S	15:00 S	16:00 S	17:00 S	8:00 S	9:00 S	10:00 S	11:00 S	12:00 S	13:00 S	14:00 S	15:00 S	16:00 S	17:00 S	8:00 S	9:00 S	10:00 S	11:00 S	12:00 S	13:00 S	14:00 S	15:00 S	16:00 S	17:00 S										
		9:00	10:00	11:00	12:00	13:00	14:00	15:00	16:00	17:00	18:00	9:00	10:00	11:00	12:00	13:00	14:00	15:00	16:00	17:00	18:00	9:00	10:00	11:00	12:00	13:00	14:00	15:00	16:00	17:00	18:00	9:00	10:00	11:00	12:00	13:00	14:00	15:00	16:00	17:00	18:00										
Classroom	1	SSR	Coun.	ED 1010	ED 1010		SAM 1301	ED 1301	ED 1301			ENG 0101	ENG 0101	ED 1301	ED 1302		MA 1201	MA 1201	SAM 1301			ED 1201	ED 1201	ED 1101	ED 1101		ED 1301	CPS 1301	CPS 1301			ENG 1301	ENG 1301	MTCG 1301	MTCG 1301		MA 0101	MA 0101	MA 0101			ED 1101	ED 1101		SSR		ED 1101	ED 0101			
	2	SSR	Coun.	SS 1301	SS 1301		SS 0301	SS 0301	ED 1201			SS 1101	SS 1101	ENG 1101	ENG 1101		SS 0301	SS 0301	ENG 1201			SAM 1201	SAM 1201	SSAM 0301	SSAM 0301		ENG 1201	SS 1101				SS 0301	SS 0301	SS 0301	SS 0301		SAM 1201	SAM 1201	ED 1201			SS 1301	SS 1301		SSR		SSAM 1201	SSAM 1201			
	3	SSR	Coun.	MA 1301	MA 1301		ENG 1101	MA 0301	MA 0301			MA 1101	MA 1101	SAM 1101	SAM 1101		SSAM 1301	SSAM 1301	MA 0301			MA 0301	MA 0301	SS 1201	SS 1201			MA 1101				SSAM 1201	SSAM 1201	MTCG 1301	MTCG 1301		ENG 1201	ENG 1201	SAM 1201			MA 1301	MA 1301		SSR		MA 0301	MA 1101			
	4	SSR	Coun.	ENG 1201	ENG 1201		ENG 1201	ENG 1301	ENG 1301			ENG 1201	ENG 1201	ENG 1301	ENG 1301		SENG 1301	SENG 1301	ENG 1301			SENG 1301	SENG 1301	MA 1201	MA 1201		SAM 1301		ENG 1101			SENG 1201	SENG 1201	SAM 1301	SAM 1301		ENG 1301					ENG 1101	ENG 1101		SSR		SENG 1201	SENG 1201			
	5	SSR	Coun.	ED 1201	ED 0301		ED 0301		ED 0301			ED 1201	ED 1201	ED 0301	ED 0301		ED 1101		SAM 1201			SSAM 1301	SSAM 1301	ED 0301	ED 0301		ED 1201		ED 1101			ED 0301	ED 0301	ED 1301	ED 1301		ED 1301					ED 0301	ED 0301		SSR		ED 0301				
Art Room	(6)						ART 1201	ART 1201				ART 1301	ART 1301									MTCG 1301	MTCG 1301	ART 1301	ART 1301								MTCG 1301	MTCG 1301			ART 1301	ART 1301				ART 1201	ART 1201								
Classroom	7	SSR	Coun.	ENG 0301	ENG 0301		ENG 0301		ED 0101					ENG 0201	ENG 0201		ENG 0301	ENG 0301	ENG 0301			ENG 0301	ENG 0301	ENG 0101	ENG 0101		ENG 0301	ENG 0301	MA 0101			SAM 1301	SAM 1301	MTCG 1301	MTCG 1301		ENG 0301		ENG 0201			ENG 0301			SSR		ENG 1101				
	8	SSR	Coun.	ENG 0202	ENG 1201		SAM 0101	SAM 0101	SAM 1201					SAM 0301	SAM 0301		SAM 0201	SAM 0201	SAM 0201			ENG 0201	ENG 0201	SAM 0201	SAM 0201		SAM 0301	SAM 0301	SAM 0301			SAM 0301	SAM 0301	SAM 0301	SAM 0301		SAM 0101	SAM 0101	MA 0201			SAM 0201	SAM 0201		SSR			MA 0201			
	9	SSR	Coun.	SS 0201	SS 0101		MA 0101	MA 0101	SS 0101			SS 0201	SS 0201	SS 0101	SS 0101		SS 1201	SS 1201	MA 0201			MA 0201	MA 0201	SS 0101	SS 0101		SS 0201	ENG 0201	SS 0201			SS 0201	SS 0201	MTCG 0201	MTCG 0201		MA 0201	MA 0201	SS 0101			SS 0201	MA 0201		SSR		SS 0101	SS 1101			
	10	SSR	Coun.	SAM 0301	SAM 0301		SS 0201	MUS 0201	MUS 0201			MUS 0301	MUS 0301	ED 0101	ED 0101		ENG 1101	MUS 0101	MUS 0101			MTCG 1101	MTCG 1101	SAM 1101	SAM 1101						ED 0101	ED 0101	MUS 0201	MUS 0201			MUS 0301	MUS 0301			MUS 0101	MUS 0101		SSR		MA 0101	MA 0301				
	11	SSR	Coun.	BASC 0101	BASC 0201							BASC 0101	BASC 0101	BASC 0201	BASC 0201		BASC 0101	BASC 0201				MTCG 0201	MTCG 0201	BASC 0201	BASC 0201			BASC 0201	BASC 0201			BASC 0101	BASC 0101	MTCG 0201	MTCG 0201								SSR		BASC 0201	BASC 0101					
Seminar Rm (12)				BUST 1301	BUST 1301							BUST 1101	BUST 1101				BUST 1201	BUST 1201				MTCG 1201	MTCG 1201	BUST 1201	BUST 1201			BUST 1101					MTCG 1201	MTCG 1201						BUST 1301	BUST 1301				BUST 1101						
Classroom	13	SSR	Coun.	IPS 0301	IPS 0201		IPS 0201	IPS 0301	IPS 0301			IPS 0201	IPS 0201	IPS 0301	IPS 0301		MA 0301	MA 0301				MTCG 0201	MTCG 0201	MA 0301	MA 0301		IPS 0301	IPS 0301	IPS 0201			IPS 0201	IPS 0201	IPS 0301	IPS 0301		SAM 0201	SAM 0201			SAM 0101	IPS 0301		SSR		IPS 0301	IPS 0301				
	14	SSR	Coun.					ART 1101	ART 1101								ART 0101	ART 0101				MTCG 1301	MTCG 1301											MTCG 1301	MTCG 1301			ART 1101	ART 1101			ART 0101	ART 0101		SSR						
	15	SSR	Coun.				ED 1101	PE 1101	PE 1101			PE 0301	PE 0301				MA 0101					PE 1301	PE 1301				PE 0101	PE 0101				PE 1201	PE 1201	PE 0201	PE 0201		MA 0301	PE 1101	PE 1101					SSR		IPS 0201					
Science Lab				BASC 1101	BASC 1101		BASC 1201	BASC 1201				BASC 1301	BASC 1301	BASC 1201	BASC 1201			BASC 1101	BASC 1101				BASC 1301	BASC 1301		BASC 1101	BASC 1101				BASC 1101	BASC 1101			BASC 1101	BASC 1101		BASC 1101	BASC 1101		BASC 1101	BASC 1101		BASC 1201	BASC 1201			BASC 1301	BASC 1301		
Industrial Arts				INAR 1101	INAR 1101		INAR 1201	INAR 1201				INAR 1301	INAR 1301	INAR 1201	INAR 1201			INAR 1101	INAR 1101				MTCG 1301	MTCG 1301	INAR 1301	INAR 1301		INAR 1101	INAR 1101	INAR 1201			INAR 1101	INAR 1101			INAR 1101	INAR 1101		INAR 1101	INAR 1101		INAR 1201	INAR 1201			INAR 1301	INAR 1301			
Cooking Rm				HEC 1101	HEC 1101		HEC 1201	HEC 1201				HEC 1301	HEC 1301	HEC 1201	HEC 1201			HEC 1101	HEC 1101				MTCG 1301	MTCG 1301	HEC 1301	HEC 1301		HEC 1101	HEC 1101	HEC 1201			HEC 1101	HEC 1101			HEC 1101	HEC 1101		HEC 1101	HEC 1101		HEC 1201	HEC 1201			HEC 1301	HEC 1301			
Sewing Rm																						MTCG 1301	MTCG 1301																												
Hall			Assem- -ble																															CPS	CPS								MASS SING								
Room 16								PE 0201	PE 0201								PE 1301	PE 1301																				PE 0301	PE 0301					PE 1201	PE 1201						

TIME TABLE, SEMESTER II (WSTC)

ROOM	DATE	MONDAY										TUESDAY										WEDNESDAY										THURSDAY										FRIDAY									
		8:00 S	9:00 S	10:00 S	11:00 S	12:00 S	13:00 S	14:00 S	15:00 S	16:00 S	17:00 S	8:00 S	9:00 S	10:00 S	11:00 S	12:00 S	13:00 S	14:00 S	15:00 S	16:00 S	17:00 S	8:00 S	9:00 S	10:00 S	11:00 S	12:00 S	13:00 S	14:00 S	15:00 S	16:00 S	17:00 S	8:00 S	9:00 S	10:00 S	11:00 S	12:00 S	13:00 S	14:00 S	15:00 S	16:00 S	17:00 S										
		9:00	10:00	11:00	12:00	13:00	14:00	15:00	16:00	17:00	19:00	9:00	10:00	11:00	12:00	13:00	14:00	15:00	16:00	17:00	19:00	9:00	10:00	11:00	12:00	13:00	14:00	15:00	16:00	17:00	19:00	9:00	10:00	11:00	12:00	13:00	14:00	15:00	16:00	17:00	18:00										
Classroom	1	SSR	Coun.	ED 1102	ED 1102		ED 1302	SAM 1302	SAM 1302		ED 1102	ED 1102	SAM 1302	SAM 1302		ED 1202	ED 1202	ED 1302			CPS 1202	CPS 1202	SAM 1302	SAM 1302		SS 1202	SS 1202	SAM 1202			SAM 1202	SAM 1202	SAM 1202	SAM 1202		ED 1202	CPS 1302	CPS 1302		ED 1202	ED 1202		SSR		ENG 1102	ED 1102					
	2	SSR	Coun.	SENG 1202	SENG 1202		ED 1302				SS 1202	SS 1202	SS 0302	SS 0302		SS 0302	SS 0302	ED 1302			SS 0302	SS 0302				SS 0302	SS 0302	SAM 1302	SS 1302		SS 1302		ED 1102			SS 1302	SS 1302		SSR		SS 0302	SS 0302									
	3	SSR	Coun.	SSAM 1202	SSAM 1202		SAM 1202	MA 1102	MA 1102		MA 1202	MA 1202	MA 1102	MA 1102		SSAM 1302	SSAM 1302				ED 1302	ED 1302				MA 1202	MA 1202				ED 1202	ED 1202	ENG 1302	MA 1302		MA 1302			MA 1302	MA 1302		SSR		SENG 1202	SENG 1202						
	4	SSR	Coun.	PE 1202	PE 1202		ENG 1202	ENG 1302	ENG 1302		ENG 1102	ENG 1102	ENG 1302	ENG 1302		SENG 1302	SENG 1302				ED 1302	ED 1302	ENG 1302	ENG 1302		ENG 1302	PE 1202	PE 1202			SENG 1302	SENG 1302	ENG 1202	ENG 1202		ENG 1202		ENG 1202		ENG 1202	ENG 1202		SSR		SSAM 1202	SSAM 1202					
	5	SSR	Coun.	ED 0302	ED 0302		ED 0202				ED 0302	ED 0302	ED 0302	ED 0302		ED 1102		ED 0202			MTCG 0302	MTCG 0302				ED 0302					SSAM 1302	SSAM 1302	ED 0302	ED 0302		ED 0202	ED 0202	SAM 0202		ED 0302	ED 0302		SSR			ED 0302					
Art Room	(6)			ART 1302	ART 1302			ART 1202	ART 1202		ART 1302	ART 1302	ART 1202	ART 1202							MTCG 1302	MTCG 1302	ART 1202	ART 1202			ART 1302	ART 1302			MTCG 1302	MTCG 1302						ART 1202	ART 1202			ART 1302	ART 1302								
Classroom	7	SSR	Coun.	ENG 0302	ENG 0302		ENG 0302	SAM 0202			ENG 0302	ENG 0302	ENG 0102	ENG 0102		ENG 1102	ENG 1202	ENG 1202			ENG 0302	ENG 0302	ENG 1102	ENG 1102		ENG 0302					ENG 0302	ENG 0302				ENG 0302			ENG 0302		SSR		ED 1102	ENG 1102							
	8	SSR	Coun.	SAM 1102	SAM 1102		SAM 0101	SAM 0101	SAM 0202				ENG 0202	ENG 0202		SAM 0202	SAM 0202	ENG 0202			MTCG 0202	MTCG 0202				SAM 0202					MTCG 0202	MTCG 0202	MA 0102	MA 0102		ENG 0202	ENG 0202	SAM 0202		SAM 0102	SAM 0102		SSR								
	9	SSR	Coun.	SS 0102	SS 0102		ENG 0202	SS 1102	SS 1102		SS 0102	SS 0102	SS 1102	SS 1102		SAM 1202		SAM 1202			MTCG 0102	MTCG 0102	ENG 0202	ENG 0202		SS 0102	SS 0102				MTCG 0102	MTCG 0102	ENG 0102	ENG 0102		MA 0102	SS 0102	SS 0102		SAM 0202	MA 0202		SSR								
	10	SSR	Coun.	BASC 0302	BASC 0302		MA 0102	MA 0102	MA 0102		BASC 0202	BASC 0202	ED 0202	ED 0202		MA 0102					MTCG 0202	MTCG 0202	ED 0202	ED 0202		MA 0202		MA 0102			MTCG 0202	MTCG 0202	MUS 0202	MUS 0202		BASC 0102			BASC 0302			SSR									
	11	SSR	Coun.	BASC 0202	BASC 0202		BASC 0302		BASC 0102		BASC 0302	BASC 0302	BASC 0102	BASC 0102		BASC 0102					BASC 0202	BASC 0202	BASC 0302	BASC 0302				BASC 0102			BASC 0202	BASC 0202	BASC 0302	BASC 0302		BASC 0302			BASC 0102	BASC 0102		SSR									
Seminar Rm	(12)						BUST 1102	BUST 1102			BUST 1202	BUST 1202	BUST 1102	BUST 1102		IPS 0202	IPS 0202				MTCG 1202	MTCG 1202				BUST 1202	BUST 1202				MTCG 1302	MTCG 1302		BUST 1302			BUST 1302			BUST 1302	BUST 1302										
Classroom	13	SSR	Coun.	IPS 0101	IPS 0101		IPS 0302	IPS 0202	IPS 0202		IPS 0102	IPS 0102	IPS 0302	IPS 0302		IPS 0202	IPS 0202				IPS 0202	IPS 0202	IPS 0302	IPS 0302		IPS 0102	IPS 0102			IPS 0102	IPS 0102				IPS 0302	IPS 0302			IPS 0302	IPS 0302		SSR		IPS 0302							
	14	SSR	Coun.	MA 0202	MA 0202						MA 0202	MA 0202					ART 0102	ART 0102			MTCG 0102	MTCG 0102	ART 0102	ART 0102			ART 1102	ART 1102			MTCG 1102	MTCG 1102				ART 1102	ART 1102		MA 0202	SAM 0202		SSR		ART 0102	ART 0102						
	15	SSR	Coun.	SAM 1102	SAM 1102			PE 1202	PE 0302							MA 0302	MA 0302	MA 0302			MA 0302	MA 0302	MA 0302	MA 0302		SAM 1302	MA 0302				MA 0302	MA 0302	PE 0202	PE 0202		PE 1102	PE 1102					SSR		MA 0302	MA 0302						
Science Lab				BASC 1302	BASC 1302		BASC 1102	BASC 1202	BASC 1202		BASC 1302	BASC 1302	BASC 1202	BASC 1202			BASC 1102	BASC 1102					BASC 1202	BASC 1202		BASC 1102	BASC 1102			BASC 1202	BASC 1202				BASC 1102	BASC 1102			BASC 1102	BASC 1102			BASC 1302	BASC 1302							
Industrial Arts				INAR 1302	INAR 1302		INAR 1102	INAR 1202	INAR 1202		INAR 1302	INAR 1302	INAR 1202	INAR 1202			INAR 1102	INAR 1102					INAR 1202	INAR 1202		INAR 1102	INAR 1102			INAR 1202	INAR 1202				INAR 1102	INAR 1102			INAR 1102	INAR 1102			INAR 1302	INAR 1302							
Cooking Rm				HEC 1302	HEC 1302		HEC 1102	HEC 1202	HEC 1202		HEC 1302	HEC 1302	HEC 1202	HEC 1202			HEC 1102	HEC 1102					HEC 1202	HEC 1202		HEC 1102	HEC 1102			HEC 1202	HEC 1202				HEC 1102	HEC 1102			HEC 1102	HEC 1102			HEC 1302	HEC 1302							
Sewing Rm																																																			
Hall			Assem- ble					MUS 0302	MUS 0302								MUS 0102	MUS 0102								MUS 0102	MUS 0102			MUS 0202	MUS 0202			MTCG					MUS 0302	MUS 0302				MASS SING		MUS 0102	MUS 0102				
Room 16																	PE 0102	PE 0102								PE 0102	PE 0102			PE 0202	PE 0202			PE 1302	PE 1302					PE 0302	PE 0302				PED 0102	PED 0102					



7. Details of Proposed Courses

ANNEX-7 Details of Proposed Courses

Faculty of Arts, First Semester

Code No.	Course Name	Average No. of Students	Lecture Hours /week	Lab Hours /week	Tutor Hours /week	Note
SAM101a	Semantics & Grammar of Samoan	15	2	-	1	
SAM103	Social Organization of Samoa	15	2	-	1	
SAM104	Social Organization	15	2	-	1	
SAM201	Major Social Change of Samoan Society	10	2	-	1	
SAM205	Traditional Building	10	2	-	1	
SAM300	Samoan Literally	5	2	-	1	
SAM301	Samoan Ritual	5	2	-	1	
SAM302	Performing Art	5	2	-	1	
SAM303	Special Topics	5	2	-	1	
E101	Introduction to Literary Study	20	2	-	1	
E102	Introduction to Language	20	2	-	1	Language laboratory
HIS101	Selected Themes from World History	15	2	-	1	
HIS102	National History of Samoa	15	2	-	1	
HIS202	Theory and Methods of History	15	2	-	1	
HIS203	New Zealand Political History	15	2	-	1	
HIS301	Special Topics in Samoan History	15	2	-	1	
SOC100	Introduction to Sociology	10	2	-	1	
SOC200	Social Theory	10	2	-	1	
SOC201	Social Research Methods	10	2	-	1	

Faculty of Arts, Second Semester

Code No.	Course Name	Average No. of Students	Lecture Hours /week	Lab Hours /week	Tutor Hours /week	Note
SAM101	Polynesian History	15	2	-	1	
SAM103	Social Organization Study	15	2	-	1	
SAM105	Concept of Time	15	2	-	1	
SAM202	Important Aspect of Samoan Philosophy	10	2	-	1	
SAM203	Introduction to Samoan Philosophy	10	2	-	1	
SAM204	Samoan Formal Speech	10	2	-	1	
SAM305	Special Topics	5	2	-	1	
SAM307	History of Samoa 1	5	2	-	1	
SAM308	Writers of Samoan Origin	5	2	-	1	
SSL-BEG	Samoan as Second Language Basic	10				
SSL-ADV	Samoan as Second Language Advanced	10				
E101	Introduction to Literary Study	10	2	-	1	
E103	World Literature 1	10	2	-	1	
E104	Children's & Young Adult's Literature	10	2	-	1	
E105	Creative Writing	10	2	-	1	
E201	World Literature 2	5	2	-	1	
E202	Introduction to Linguistics	5	2	-	1	Language laboratory
E203	A Historical Survey of English Literature	5	2	-	1	
E204	Syntactic & Semantics	5	2	-	1	Language laboratory
E205	Sociolinguistics	5	2	-	1	Language laboratory
E206	Poetry of 19th & 20th	5	2	-	1	
E207	Drama in Schools & Communities	5	2	-	1	
E301	Drama Classical & Modern	3	2	-	1	
E303	World Literature 3	3	2	-	1	
E304	Applied Linguistics	3	2	-	1	
E305	Shakespeare	3	2	-	1	
E306	Special Linguistics	3	2	-	1	
E307	Literature in 19th	3	2	-	1	
E308	Psycho linguistics	3	2	-	1	
HIS104	European Expansion & Imperialism	15	2	-	1	
HIS201	Pacific History	15	2	-	1	
HIS204	Introduction to Modern Southeast Asia	15	2	-	1	
HIS302	Advanced Pacific History	10	3	-	1	
HIS304	Modern History of Japan/China	10	2	-	1	
SOC101	Issues and Themes	15	2	-	1	
SOC201	Social Research Methods	10	2	-	1	
SOC202	Marriage and Family	10	2	-	1	

Faculty of Arts(Diploma in Accounting), First Semester

Code No.	Course Name	Average No. of Students	Lecture Hours /week	Lab Hours /week	Tutor Hours /week	Note
D0102a	Communication Skills & Personnel Administration	100	2	-	-	
D0103a	Financial Accounting	100	2	-	-	
D0119	Government Accounting	100	2	-	-	
D0121	Finance Law	100	2	-	-	
D0203	Advanced Financial Accounting	100	2	-	-	
D0213	Trustee Law and Accounting	100	2	-	-	

Faculty of Arts(Diploma in Accounting), Second Semester

Code No.	Course Name	Average No. of Students	Lecture Hours /week	Lab Hours /week	Tutor Hours /week	Note
D0102b	Information System	100	2	-	-	
D0103b	Accounting for Special Entities	100	2	-	-	
D0120	Cost & Management Accounting	100	2	-	-	
D0112	Company Law and Partnership	100	2	-	-	
D0204	Auditing	100	2	-	-	
D0218	Taxation	100	2	-	-	

Faculty of Arts(Certificate in Commerce), First Semester

Code No.	Course Name	Average No. of Students	Lecture Hours /week	Lab Hours /week	Tutor Hours /week	Note
C0102a	Business English	110	2	-	-	
C0103a	Introduction to Accounting	110	2	-	-	
C0106a	Macro Economics	110	2	-	-	
C0111	Introduction to Commercial Law	110	2	-	-	
C0117	Business Statistics	110	2	-	-	

Faculty of Arts(Certificate in Commerce), Second Semester

Code No.	Course Name	Average No. of Students	Lecture Hours /week	Lab Hours /week	Tutor Hours /week	Note
C0102b	Business English	110	2	-	-	
C0103b	Accounting including Taxation	110	2	-	-	
C0106b	Micro Economic	110	2	-	-	
C0110	Introduction to Contract Law	110	2	-	-	
C0117b	Introduction to Computing Systems	110	2	-	-	

Faculty of Science, First Semester

Code No.	Course Name	Average No. of Students	Lecture Hours /week	Lab Hours /week	Tutor Hours /week	Note
MA101	Algebra	10	3	-	1	
MA102	Calculus 1	10	3	-	1	
MA105	Elementary Statistics 1	10	3	-	1	
MA111	Linear Algebra 1	10	3	-	1	
MA121	Calculus 2	10	3	-	1	
MA151	Statistics 1	10	3	-	1	
MA181	Introduction to Computer Applications	20	-	4	4	
MA183	Computer Applications	10	-	4	4	
MA211	Linear Algebra 2	10	3	-	1	
MA222	Differential Equations	10	3	-	1	
MA283	Database Management	10	-	4	4	
MA381	Advanced Pascal Program	10	-	4	4	
BI101	Cellular & Molecular Biology	10	3	3	1	
BI102	Molecular Biology	10	3	3	1	
BI103	Genetics & Evolution	10	3	3	1	
CH101	General & Inorganic Chemistry	10	3	3	1	
CH102	Chemical Structure & Bonding	10	3	3	1	
CH103	Introduction to Analytical Chemistry	10	3	3	1	
CH201	Organic Chemistry 1	5	3	3	1	
CH202	Physical Chemistry	5	3	3	1	
CH203	Inorganic Chemistry & Valence Theory	5	3	3	1	
CH301	Organic Chemistry 2	5	3	3	-	
CH302	Physical Chemistry 2	5	3	3	-	
PH101	Theoretical Physics	10	3	3	1	
PH102	Experimental Physics	10	3	3	1	
PH103	Mechanics & Optics	10	3	3	1	
PH201	Classic Physics	5	3	-	1	
PH202	Quantum Physics	5	3	-	1	
PH203	Advanced Experimental Physics	5	3	3	1	
PH301	Classical & Quantum Physics	5	3	-	1	
PH302	Electromagnetic Fields	5	3	3	1	

Faculty of Science, Second Semester

Code No.	Course Name	Average No. of Students	Lecture Hours /week	Lab Hours /week	Tutor Hours /week	Note
MA111	Linear Algebra 1	10	3	-	1	
MA121	Calculus	10	3	-	1	
MA171	Mathematical Perspective	5	3	-	1	
MA182	Introduction to Computer Applications	20	-	4	4	
MA184	Computer Applications	10	-	4	4	
MA211	Linear Algebra 2	10	3	-	1	
MA222	Differential Equations	10	3	-	1	
MA281	Pascal Programming 2	15	-	4	4	
MA383	Database Theory 2	10	-	4	4	
BI104	Plant Biology	10	3	3	1	
BI105	Biology & Organisms	10	3	3	1	
BI106	Environmental Science	10	3	3	1	
CH104	Principles of Physical Chemistry & Bonding	10	3	3	1	
CH105	Introduction to Biochemistry	10	3	3	1	
CH106	Introduction to Organic Chemistry	10	3	3	1	
CH204	Applied Chemistry	5	3	3	1	
CH205	Biochemistry	5	3	3	1	
CH303	Inorganic Chemistry	5	3	3	1	
CH304	Isotope & Advanced Analytical Chemistry	5	3	3	1	
PH104	Electricity & Magnetism	10	3	3	1	
PH105	Astronomy	10	3	3	1	
PH106	The World of Physics	10	3	3	1	
PH204	Electromagnetism & Nuclear Physics	5	3	-	1	
PH303	Advanced Experimental Physics	5	3	3	1	
PH304	Solid State Physics	5	3	3	1	

Faculty of Education (Diploma of Education, Primary), First Semester

Code No.	Course Name	Average No. of Students	Lecture Hours /week	Lab Hours /week	Tutor Hours /week	Note
ENG0101	Communication & Study Skills	60	4	-	2	Language laboratory
ENG0201	Literacy & Methodology	60	4	-	2	
ENG0301	Primary English Curriculum	60	4	-	2	Language laboratory
SAM0101	Reading & Writing Skills	60	4	-	2	
SAM0201	Methodology	60	4	-	2	
SAM0301	Language Communication	60	4	-	2	
ED0101	Child Development in Samoan Context	60	4	-	2	
ED0201	Teacher & Learner Relationship	60	4	-	2	
ED0301	Measurement & Evaluation in the Primary School	60	4	-	2	
IPS0101	Mathematics and Printing	60	4	-	2	
IPS0201	Language: English & Samoan	60	4	-	2	
IPS0301	Reading	60	4	-	2	
MTCG0101	Micro Teaching Skill 1	60	4	-	1	
TP0201	Teaching Practice 1	60	-	4weeks	-	Practice at schools
TP0301	Teaching Practice 3	60	-	4weeks	-	Practice at schools
SS0101	Introduction to Life Skills	60	4	-	2	
SS0201	Introduction to Social Science	60	4	-	2	
SS0301	Social Science in the Primary Schools	60	4	-	2	
BASC0101	Living Things	60	-	4	2	Science laboratory
BASC0201	Health & Energy	60	-	4	2	Science laboratory
MA0101	Introduction to Primary Mathematics	60	4	-	2	
MA0201	Study of Mathematical Applications & Logic	60	4	-	2	
MA0301	Mathematical Teaching Methods & Resource Making for Geometry	60	4	-	2	
ART0101	Study & Development of Drawing & Painting	60	-	2	1	Art room
ART0201	Study of Collage & Mosaic Techniques	20	-	4	2	Art room
ART0301	Study & Development of Printing Techniques	20	-	4	2	Art room

PE0101	Introduction to Physical Education	20	-	2	1	Gymnasium
PE0201	Teaching of Skills & Minor Games	20	-	4	2	Gymnasium
PE0301	Sports Studies	20	-	4	2	Gymnasium
MUSC0101	Introduction to Music	60	-	2	1	Music room
MUSC0201	Music Development	20	-	4	2	Music room
MUSC0301	Learning & Teaching Music	20	-	4	2	Music room

Faculty of Education (Diploma of Education, Primary), Second Semester

Code No.	Course Name	Average No. of Students	Lecture Hours /week	Lab Hours /week	Tutor Hours /week	Note
ENG0102	Communication & Study Skills	60	4	-	2	
ENG0202	Introduction to Primary curriculum	60	4	-	2	Language laboratory
ENG0302	Reading & Writing Methodology	60	4	-	2	
SAM0102	Reading & Writing Skills	60	4	-	2	
SAM0202	Reading in Samoan	60	4	-	2	
ED0302	Education Planning & Administration	60	4	-	2	
MTCG0102	Micro Teaching Skill 2	60	4	-	-	
TP0202	Teaching Practice 2	60	-	3weeks	-	Practice at schools
TP0302	Teaching Practice 4	60	-	3weeks	-	Practice at schools
SS0102	Population Education	60	4	-	2	
SS0202	Introduction to Social Science	60	4	-	2	
SS0302	Neighbors of Western Samoa	60	4	-	2	
BASC0102	Non-Living Things	60	-	4	2	Science laboratory
BASC0202	Energy & Machines	60	-	4	2	Science laboratory
BASC0302	Teaching Methodologies in Science Education	60	-	4	2	Science laboratory
MA0102	System of Real Number Statistics & Probability	60	4	-	2	
MA0202	Intermediate Algebra Applied Teaching Methods	60	4	-	2	
ART0302	Study & Development of Construction & Sculpture	30	-	4	2	Art room
PE0302	Administration & Management in Physical Education	30	-	4	2	Gymnasium

Faculty of Education (Diploma of Education, Secondary), First Semester

Code No.	Course Name	Average No. of Students	Lecture Hours /week	Lab Hours /week	Tutor Hours /week	Note
ENG1101	Study Skills	60	4	–	2	
ENG1201	Literacy & Methodology	60	4	–	2	Language laboratory
ENG1301	Introduction to South Pacific Literature	60	4	–	2	
SENG1201	Principals & Methods Teaching English in Junior Sec. School	15	4	–	2	
SENG1301	Teaching of English as Second Language	15	4	–	2	
SAM1201	Communication in Samoan	60	4	–	2	Language laboratory
SAM1301	Samoan Culture	60	4	–	2	
SSAM1201	Methodology 1	15	4	–	2	
SSAM1301	Methodology 2	15	4	–	2	
ED1101	Samoan Child, School & Society	60	4	–	2	
ED1201	Introduction to Curriculum Studies	60	4	–	2	
ED1301	Measurement & Evaluation	60	4	–	2	
MTCG1101	Microteaching Skill 1	60	4	–	2	
TP1201	Observation & Teaching Skills	60	–	3weeks	–	Practice at schools
TP1301	Introduction to Classroom Evaluation	60	–	3weeks	–	Practice at schools
SSI101	Basic Social Process	20	4	–	2	
SSI201	Introduction to Development	20	4	–	2	
SSI301	Organization for Cooperation	20	4	–	2	
CPS1201	Pre-History to European Contact	60	2	–	1	
CPS1301	Traditional Creative Expressive Arts of Samoa	60	2	–	1	Lecture theater
BUST1101	Basic Business Economics	15	4	–	2	
BUST1201	Commercial Studies 1	15	4	–	2	
BUST1301	Introductory Accounting 1	15	4	–	2	
BASC1101	Introduction to Basic Process Skills and Matter and Energy 1	20	–	8	2	Science laboratory
BASC1201	Electricity, Magnetism & Machines	20	–	8	2	Science laboratory
BASC1301	Introduction to Earth Environmental Science	20	–	8	2	Science laboratory

MA1101	Revision of Basic Mathematical Concept	20	4	-	2	
MA1201	Study in Measurement Introductory Algebra	20	4	-	2	
MA1301	Study of Real Number Logarithm, Calculator	20	4	-	2	
INA1101 A	Carpentry & Joinery 1	15	-	4	1	Carpentry room
INA1101 B	Technical Drawing 1	15	-	4	1	
INA1201 A	Carpentry & Joinery 3	15	-	4	1	Carpentry room
INA1201 B	Rural Technology 1	15	-	4	1	Metalwork room
INA1301 A	Carpentry & Joinery 5	15	-	4	1	Carpentry room
INA1301 B	Rural Technology 3	15	-	4	1	Metalwork room
HEC1101 A	Food, Nutrition & Family Living Skill 1	15	-	4	1	Cooking room
HEC1101 B	Textiles & Clothing 1	15	-	4	1	Sewing room
HBC1201 A	Food, Nutrition & Family Living Skill 3	15	-	4	1	Cooking room
HEC1201 B	Textiles & Clothing 3	15	-	4	1	Sewing room
HEC1301 A	Food, Nutrition & Family Living Skill 5	15	-	4	1	Cooking room
HEC1301 B	Textiles & Clothing 5	15	-	4	1	Sewing room
ART1101	Learning to See	10	-	4	1	Art room
ART1201	Understanding the Environment	10	-	6	2	Art room
ART1301	Illustrations of the South Pacific	10	-	6	2	Art room
PE1101	Introduction to Physical Education	10	-	4	1	Gymnasium
PE1201	Sports Studies	10	-	4	1	Gymnasium
PE1301	Sports Studies 2	10	-	4	1	Gymnasium
RES1101	Flat Resources	60	2	-	-	Audio-visual room
RES1201	Three-Dimensional Rescues	60	2	-	-	Audio-visual room
RES1301	Multi-Media Kits & Audio-Visual Devices	60	2	-	-	Audio-visual room

Faculty of Education (Diploma of Education, Secondary), Second Semester

Code No.	Course Name	Average No. of Students	Lecture Hours /week	Lab Hours /week	Tutor Hours /week	Note
ENG1102	Information Gathering Presentating Skill 1	60	4	-	2	
ENG1202	Introduction to English Literature	60	4	-	2	
ENG1302	Information Gathering Presenting Skill 2	60	4	-	2	
SENG1202	English Language & Teaching of Reading	15	4	-	2	
SENG1302	Teaching Literature in Ju. Sec. Schools	15	4	-	2	
SAM1202	Communication in Samoan	60	4	-	2	
SAM1302	Samoan Culture 2	60	4	-	2	
SSAM1202	Methodology 2	15	4	-	2	
SSAM1302	Methodology 4	15	4	-	2	
ED1102	Teacher, Learner & School	60	4	-	2	
ED1202	Introduction to Unit Writing	60	4	-	2	
ED1302	Educational Planning & Administration	60	4	-	2	
MTCG1102	Micro Teaching Skill 2	60	4	-	2	
TP1202	Introduction to Unit Writing	60	-	3weeks	-	Practice at schools
TP1302	Classroom Teaching & Management	60	-	3weeks	-	Practice at schools
SS1102	Social Change, Social Control & Social Conflict	20	4	-	2	
SS1202	Process of Government	20	4	-	2	
SS1302	Advanced Population Education	20	4	-	2	
BUST1102	Basic Business Economics 2	15	4	-	2	
BUST1202	Commercial Studies 2	15	4	-	2	
BUST1302	Introductory Accounting 2	15	4	-	2	
BASC1102	Basic Process Skill in Biology	20	-	8	2	Science laboratory
BASC1202	Human Body Process & Disorders	20	-	8	2	Science laboratory
BASC1302	Curriculum Studies	20	-	8	2	Science laboratory
MA1102	Study of Statistics, Probability & Geometry	20	4	-	2	
MA1202	Study of Transformation Geometry	20	4	-	2	
MA1302	Study of Polynomials & Trigonometry	20	4	-	2	

INA1102A	Carpentry & Joinery 2	15	-	4	1	Carpentry room
INA1102B	Technical Drawing 2	15	-	4	1	
INA1202A	Carpentry & Joinery 4	15	-	4	1	Carpentry room
INA1202B	Rural Technology 2	15	-	4	1	Metalwork room
INA1302A	Carpentry & Joinery 6	15	-	4	1	Carpentry room
INA1302B	Workshop Care & Administration	15	-	4	1	Carpentry room
HEC1102A	Food, Nutrition & Family Living Skill 2	15	-	4	-	Cooking room
HEC1102B	Textiles & Clothing 2	15	-	4	-	Sewing room
HBC1202A	Food, Nutrition & Family Living Skill 4	15	-	4	-	Cooking room
HEC1202B	Textiles & Clothing 4	15	-	4	-	Sewing room
HEC1302A	Food, Nutrition & Family Living Skill 6	15	-	4	-	Cooking room
HEC1302B	Textiles & Clothing 6	15	-	4	-	Sewing room
ART1202	Art Expression of South Pacific	10	-	4	-	Art room
ART1302	Where We Live	10	-	4	-	Art room
PE1202	Movement & Dance 1	10	-	4	-	Gymnasium
PE1302	Administration & Management	10	-	4	-	Gymnasium

UPY Program, First Semester

Code No.	Course Name	Average No. of Students	Lecture Hours /week	Lab Hours /week	Tutor hours /week	Note
BIU01	Biology A	40	3	3	1	
CHU01	Chemistry A	40	3	3	1	
ENU01	Communication Study Skill	180	1	-	3 10groups	Audio-visual room
MAU01	Mathematics A	100	4	-	2	Audio-visual room
PHU01	Physics A	40	3	3	1	
SAU01	Samoan 1	180	2	-	2	
SAU02	Samoan 2	40	2	-	2	
TEU01	Technology A	20	3	3	1	
ACU01	Accounting A	80	3	-	1	
ECU01	Economics A	80	3	-	1	
GEU01	Geography A	80	3	-	1	Audio-visual room
HIU01	World History A	50	2	-	1	
ADU03	Administration	100	3	-	1	
STU03	Statistics	20	4	-	1	
HEU03	Human Ecology	80	3	-	1	
SCU01	Social and Culture	80	3	-	1	

UPY Program, Second Semester

Code No.	Course Name	Average No. of Students	Lecture Hours /week	Lab Hours /week	Tutor hours /week	Note
BIU02	Biology B	40	3	3	1	
CHU02	Chemistry B	40	3	3	1	
ENU02	Introduction to Literature	100	1	-	3	Audio-visual room
MAU02	Mathematics B	100	4	-	2	Audio-visual room
PHU02	Physics B	40	3	3	1	
SAU01	Samoan 1	20	2	-	2	
SAU02	Samoan 2	20	2	-	2	
TEU02	Technology B	20	3	1	1	
ACU02	Accounting B	60	3	-	1	
ECU02	Economics B	60	3	-	1	
GEU02	Geography B	80	3	-	1	Audio-visual room
STU03	Statistics	60	4	-	1	
HIU02	World History B	80	3	-	1	
SCU02	Pacific Islands Society	80	3	-	1	
COU03S	Computer (Science)	20	-	4	-	Computer Lab
COU03SS	Computer (Social Sc.)	20	-	4	-	Computer Lab
COU03C	Computer (Commerce)	20	-	4	-	Computer Lab

8. List of Proposed Equipment

THE EQUIPMENT LIST FOR THE GRANT

No.	ITEMS	
CH58	Eye wash station	1
CH226	Fume hood	1
SC10	Fume hood	1
SC29	In-line wash stations	1
MW1	Engineering Laths	1
MW2	Air compressor	1
MW3	Heavy duty grinder	2
MW4	Power hack saw	1
MW5	Drill press (floor)	1
MW6	Metal shear	1
MW7	Metal rolling machine	1
MW10	Electric arc welder	2
MW11	Gas welding equipment	2
MW12	Shaper & cutting tools	1
MW13	Buffer	1
MW14	Metal casting furnace	1
MW15	Disc grinder	2
MW16	Die grinder	2
MW17	Straight grinder 19mmx125mm	2
MW18	T.C.T Saw blade sharpener 120-500mm	2
MW19	Sander polisher	2
MW20	Blower	2
MW21	Planer 3x304	1
MW22	Tap & Die set	4
MW23	Screwdriver set	6
MW24	Carpenters steel square	3
MW25	Spirit level	3
MW26	Claw hammer	3
MW27	Pinch bar	3
MW29	Tin snips set	20
MW30	Wire cutter	20
MW31	Safety goggles	12
MW32	Ear muffs	12
MW33	Drill bit set	20
MW34	Hack saw	2
MW35	Cold chisels	20
MW36	Cross pein hammer 8oz	12
MW37	Welding nozzle set	2
MW38	Pop rivet gun	8
MW39	Plier set	20
MW40	Pincers	12
MW41	Scrapers	6
MW43	Arc welding shields	6
MW46	Scriber	12
MW47	Surface Plate	2
MW48	Surface Gauges	2
MW49	Depth Gauges	2
WW1	Belt Sander 78mm/3"	3
WW2	Belt Sander 100mm/4"	3
WW3	Buffer (Heavy Duty)	4
WW4	Air Compressor	1
WW5	Heavy Duty Grinder 2 Wheels	2
WW6	Chain Saw large/med	4

WW7	Portable Circular saw	4
WW8	Portable plane(Electric)155mmx2mm	4
WW9	Portable jig saw	4
WW10	Portable electric drill 4 speed	4
WW11	Portable plough plane	3
WW12	Battery drill	2
WW13	Router plane 1/2" drill	3
WW14	Router plane 3/8" drill	1
WW15	High speed drill	4
WW16	Finishing sander	2
WW17	Table saw	1
WW18	Band saw	1
WW19	Mitre saw 355mm Blade dia.	1
WW20	Carving tool sst	20
WW21	Screw driver set	6
WW22	Tri square	20
WW23	Carpenter steel square	20
WW24	Spirit level	6
WW25	Claw hammer 12oz	20
WW26	Pinch-bar	4
WW28	Hand Brace	6
WW29	Tin snip (asst)	12
WW30	Wire cutter	12
WW31	Glass Cutter	24
WW32	Safety Goggles	12
WW33	Ear muff	12
WW34	Wood turning lathe tools	4
WW35	Drill Bits High Speed Steel 20 sets	20
WW37	Hack saw	6
WW39	Chisels (asst) 8oz	20
WW40	Cross pein hammer	20
WW42	Pop rivet gun	4
WW43	Pllier (asst)	12
WW44	Pincers	12
WW45	Scrapers	12
WW48	Wood turning lathe	1
WW49	Chisel: Firmer set	20
WW50	Chisel: Mortise set	20
IA2	Drawing boards	20
IA3	T. Squares	20
IA4	Sets Drawing instruments	20
IA5	Drafting machines	2
HE1	Refrigerator	1
HE2	Freezer	1
HE3	Gas stoves	2
HE4	Electric ovens	2
HE5	Microwave oven	1
HE6	Dress model	1
HE7	Dress mirror	1
HE8	Electric sawing machines	4
HE9	Hand sawing machines	4

THE EQUIPMENT LIST FOR THE GRANT

No.	ITEMS	
	FOR LANGUAGE LABO.	
LL1	Language Laboratory System	1
	FOR 200 STUDENTS LECTURE ROOM	
LA1	Audio-visual System	1
	Video projector system	
	PA System	
	Wireless microphon system	
	Other equipments	
	FOR 100 STUDENTS LECTURE ROOM	
LB1	Audio-visual System	1
	Video projector/monitor system	
	PA System	
	Wireless microphon system	
	Other equipments	
	FOR RESOURCE CENTER	
RC1	Video production system	1
	Video shooting system	1
	Video editing system	1
	Other equipments	1
PR1	Printing system	1
PR3	Photocopy machine set inc.spair parts	3
	COMPUTERS	
CO1	Computer system includes;	1
	42 Desk top PCs for multimedia	42
	42 color displays	42
	4 Laser printers	4
	2 TV monitors	2
	Voltage regurators	2
CO2	Network System	1
CO3	Computer Softwares	1
	Auto Cad R12	2
	MicroSoft Office	2
	Norton Utilites 8.0	2
	FoxPro for Windows	2
	Page Maker 5 Windows	2
	Harvard Graphics	2
	Oxford Dictionary	2
	Wordperfect for Windows	2
	Encarta for windows	2
	Visual C++Professional	2
	Cobol Compiler V3.0	2
	Bookshelf for Windows 1994	2
	Groliers Encyclopaedia	2
	Library of Future	2
	Corel Draw	2
	Dynamic English 1	2

Dynamic English 2	2
Dynamic English 3	2
Imagic (for library management)	2

THE EQUIPMENT LIST FOR THE GRANT

No.	ITEMS	
	FOR MAINTENANCE	
	Tools for electrical mentemance	
MA1	Tool set	1
MA2	Portable tool set	1
MA4	Digital multimeter	1
MA5	AC/DC Digital clamp meter	1
MA6	Earth tester	1
MA8	Tube bender (lever tipe)	1
MA9	Pipe threading tool	1
MA10	Pipe cutter	1
	Tools for general purposes	
MA11	Tool set (cabinet type)	1
MA12	Portable tool set	1
MA13	Electric arc welder	1
MA14	Bench drill press	1
MA15	Bench grinder	1
MA16	High-speed cut-off machin	1
MA17	Hammer drill	1
MA18	Portable circular saw	1
MA19	Portable disc grinder	1
MA20	Portable electric drill	1
MA23	Arm bolt clipper	1
MA24	Warter pump plier	1
MA25	Pipe wrench	1
MA26	Measuring tapes 30m	2
MA27	Hard metal tool set(Scriber etc)	1
MA29	Hack saw	1

THE EQUIPMENT LIST FOR THE GRANT

No.	ITEMS	
FN1	Student desks & chairs	630
FN2	Science tables for 8 students	12
FN3	Science preparation tables	5
FN4	Teachers science tables	5
FN5	Woodwork tables with a vise & 4 chairs	7
FN6	Metal work tables with a vise & 4 chairs	7
FN7	Cookig tables for students	4
FN8	Cookig table for teacher	1
FN9	Laboratory stools	193
FN11	Student chairs A for FA & M	48
FN12	Technical drawing desks	31
FN13	Chairs for fale	440
FN17	Laboratory benches	15
FN19B	Library book shelves/Double	33
FN19A	Library book shelves/Single	83
FN20	Library counter unit	2
FN21	Library magazine shelves	2
FN24	Teacher's tables in classroom	27
FN26	Lecturer's platforms for lect. hall	2
FN27A	Wall type tables Type A	2
FN27B	Wall type tables Type B	6
FN27D	Wall type tables Type D	11
FN28A	Wall type work benches Type A	2
FN28B	Wall type work benches Type B	2
FN29A	Steel shelving units Type A	6
FN29B	Steel shelving units Type B	2
FN30	Shelving units Large type A	11
FN30	Shelving units Large type B	4
FN31	Student lockers for 9 p.	4
FN32	Laboratry cupboards	26
FN33	Laboratry cupboards	10
FN34	Laboratry cupboards	2
FN35	Workshop cupboards	26
FN38E	Wooden wall table for office E	1
FN38F	Wooden wall table for office F	1
FN38H	Wooden wall table for office H	4
FN42	Library chairs	122
FN43A	Office desks A	26
FN43B	Office desks B	77
FN44A	Office chairs	152
FN44B	Office chairs	46
FN44C	Office chairs	40
FN46	Steel racks	18
FN47	Tables for office	66
FN48	Material rack for woodwork	1
FN49	Material rack for metal work	1
FN50	Carrel tables	16
FN51	Tables for seminar room	41
FN52A	Tables for computer	22
FN53	Tables for dining room	25
FN54	Chairs for dining room	150
FN55A	Desk for V/C	1
FN55B	Chair for V/C	1

FN56A	Reception chairs	2
FN56B	Reception chairs	4
FN56C	Reception chairs	4
FN56D	Reception tables	2
FN57	Meeting table for 25 people	1
FN58	Lecture desk for lec. hall	2
FN59	Cabinet (4 Shelves)	62

9. List of Eliminated Equipment

PH1	Digital multimeter	3
PH2	Rheostats (4A 0-300HM)	5
PH4	Rheostats	5
PH7	Sodium lamps	1
PH8	Electronic Stroboscope	1
PH9	Wheatstone Bridge	1
PH10	Ammeter 0-5A	5
PH11	Ammeter 0-500mA	5
PH12	Ammeter 0-100mA	5
PH13	Micro Ammeter	5
PH14	Dual trace Oscilloscope	1
PH15	Signal Generator(Amp. & speaker)	1
PH16	0-10VDC	5
PH17	0-1VDC	5
PH18	Bar Magnets	20
PH19	Strong horse shoe magnets	10
PH21	Hall meter(measuring magnetic fields)	1
PH22	Bread Board	10
PH23	AC/DC Power supply 0-12V	10
PH24	Digital Balances	5
PH25	Platform type (0-2kg)	5
PH26	Galvanometer(center-zero type)	5
PH27	Vernier Calipers	20
PK28	Micrometers	20
PH29	Ticker Timers	5
PH30	Roll of tape for No. 29	5
PH32	Tuning fork sets	1
PH34	Connecting Wires 80cm each	10
PH35	Compass (N,S,E,W)	10
PH36	Gyroscopic Compasses	3
PH37	Ripple tank(for water wave)	1
PH38	Decade resistance Box	5
PH39	Magnetic balance	5
PH40	Gold leaf electroscopes	5
PH41	Tuning Capacitors(variable 0-100pF)	5
PH44	Light dependant resistor	1
PH45	Adjustable parallel plate capacitor	1
PH47	Lab. Stands(heavy base)	10
PH48	Set of 1g-2kg Masses	10
PH50	Hanging type 10g-1kg	10
PH51	Springs for Hookes law	20
PH53	"G"Clamps(approx. 10cm)	20
PH54	Pulleys for thin string	20
PH55	Push button switches	10
PH56	2 Way switches(dPdt)	10
PH57	Spring Scales 0-10 Newton	10
PH58	Spring Scales 0-1 Newton	10
PH59	Trolleys to study momentum	10
PH60	Digital Stop watches	20
PH61	Capacitor 1000micro F	10
PH63	Various diodes to rectify	10
PH65	Operational Amplifier 12V	10
PH66	Diffraction Grating(N=1*10 lines/m)	5

PH67	Solenoid (500 Turns of wire)	5
PH69	2.5V Light bulbs	50
PH70	6V Light bulbs	50
PH71	Sockets for bulb	20
PH72	Soft iron U-Cores for transformer	5
PH73	Polarizing filters	10
PH74	Set of color filters	10
PH75	Energy Conversion Dem	1
PH76	Resistors 0.5W 10Kohm	20
PH77	Resistors 0.5W 3.3Kohm	20
PH78	Resistors 0.5W 1Kohm	20
PH79	Resistors 0.5W 680ohm	20
PH80	Resistors 0.5W 330ohm	20
PH81	Resistors 0.5W 100ohm	50
PH82	Resistors 0.5W 68ohm	50
PH83	Resistors 0.5W 33ohm	50
PH84	Resistors 0.5W 10ohm	50
PH85	Resistors 0.5W 50ohm	50
PH86	Resistors 0.5W 20ohm	50
PH87	Resistors 0.5W 1ohm	50
PH91	Wires	20
PH92	Wires	20
PH94	Electric Field Device	5
PH95	Electronic Turntable	1
PH106	Parts for Elec. turntable	1
PH99	Statics Apparatus	1
PH102	Springs 1.2g/mm 20ps/set	2
PH103	Springs 1.4g/mm 20ps/set	2
PH104	Springs 1.8g/mm 20ps/set	2
PH105	Pendulum	10
PH107	Optium fibres	2
PH108	Coulombs law experiment	1
PH109	Kirchoffs law experiment	5
PH110	Electromagnetic Induction Coil	5
PH111	Flemmings Apparatus	2
PH112	Circuit tester	10
PH113	Motor demonstrator	1
PH114	Light Experiment kit	10
BI1	Boiling Flasks	20
BI2	Buckner Flasks	20
BI3	Conical Flasks	20
BI4	Erlenmeyer Flasks	20
BI5	Test-Tube Racks	10
BI7	Laboratory Oven	1
BI9	Magnifier	20
BI10	Measuring Cylinders 10ml	20
BI11	Measuring Cylinders 50ml	20
BI12	Measuring Cylinders 100ml	20
BI13	Glass Petri Dishes	40
BI15	Pressure Cookers	2
BI17	Glass Spreaders	20
BI18	Incubator	1
BI19	Watch Glasses	20
BI20	Dissecting Kits	20

BI21	Staining Accessory Kit	1
BI22	Plastic Syringes 50ml	20
BI23	Slides: Onion Mitosis	2
BI24	Slide: Bacteria Types	1
BI25	Slide: Typical Spirillum	1
BI26	Slide: Typical Coccus	1
BI27	Chart: Connective Tissue	1
BI28	Chart: Muscular Tissue	1
BI29	Chart: Epithelial Tissue	1
BI30	Typical Monocot Stem	2
BI31	Typical Dicot Stem	2
BI42	Chart: Amoeba	1
BI43	Chart: Protozoa	1
BI52	Histology Chart: Nervous Tissue	1
BI53	Chart: Mitosis Klett	1
BI54	Chart: Meiosis Klett	1
BI57	Waterbath	1
BI58	Waterbath Racks	2
BI62	Pasteur Pipetter pk/250	1
BI63	Erlenmeyer flask 250ml narrow neck	10
BI65	Microscopes (Light monocular)	10
BI66	Laboratory Thermometers	10
BI67	Wood Splints	50
BI68	Inoculating Loops 190mm pk/100	1
BI70	Mortar	5
BI71	Electronic Balance	4
BI72	Mechanical Balance	1
BI74	Dissecting Boards	10
BI75	Bunsen Burners	10
BI76	Spirit Burners	15
BI78	Glass Desiccators	5
BI79	Culture Dishes	50
BI81	Laboratory Freezer	1
BI82	Wire Gauze	20
CH1	Burettes	20
CH2	Erlenmeyer Flasks 1Litre	24
CH3	Erlenmeyer Flasks 500ml	24
CH4	Erlenmeyer Flasks 250ml	24
CH5	Test Tubes	100
CH6	Graduated Cylinders 100ml	24
CH7	Graduated Cylinders 50ml	24
CH8	Graduated Cylinders 10ml	24
CH9	Beakers 500ml	24
CH10	Beakers 250ml	24
CH11	Beakers 100ml	24
CH12	Test tube racks	24
CH13	Pasteur pipettes	4
CH14	Pasteur pipette bulbs	24
CH15	Large watch glasses	24
CH16	Crucibles with Cover	24
CH17	Clay Triangles	24
CH18	Ring stands	24
CH19	Clamps for stands	24
CH20	Tongs	20

CH21	Test tube tongs	20
CH22	Glass stirring rods	24
CH23	Thermometers	24
CH24	Volumetric Flasks 1Litre	20
CH25	Volumetric Flasks 500ml	20
CH26	Volumetric Flasks 250ml	20
CH27	Pipettes 10ml	24
CH28	Vulbs for pipettes	24
CH30	Electronic Balances	2
CH32	Wash Bottles	24
CH33	Bunsen Burners	20
CH34	Wire Gauze	24
CH35	Safety goggles	20
CH36	ph Metre	1
CH37	Magnetic stir plate	1
CH38	Hot plate	1
CH44	Water bath	1
CH45	Centrifuge	1
CH46	Gram weights	1
CH47	Mortar with Pestle	24
CH48	Parafilm	3
CH49	Dessicator	1
CH51	Glass funnels	24
CH52	Plastic funnels	24
CH53	Drying racks	2
CH54	Distiller	1
CH55	Nalgene Container & spouts(50L)	1
CH56	Periodic chart	1
CH59	Molecular model kit	1
CH204	ph 7 STD	1
CH205	ph 4 STD	1
CH206	ph 10 STD	1
CH223	Voltmetre/Ammetre	1
CH224	Aligator clips	20
CH227	Chromatography columns	1
CH229	Magmetic stire bars	5
CH232	Freezer & Fridge	1
SC2	Dissecting kits	6
SC3	Ph Meter	1
SC4	Bottle top dispensers 250/500/1000ml	2
SC5	Electronic balance	1
SC6	Doctor scale max320lbs	2
SC7	Barometer-singl cell/wood	2
SC8	Utility bath	1
SC9	Centrifuge 2800rpm	1
SC11	Circuit board kit	4
SC12	Retort clamps set >100mm	6
SC13	Colormeter	1
SC14	Conductivity meter	3
SC15	Compound bar	6
SC16	Dessicators D197mm	2
SC18	Standard Condenser set	1
SC19	Laporatory microscopes	3
SC20	Multimeter	6

SC21	Microwave oven	1
SC22	Seperatory funnels 50-1000ml	6
SC23	Power supplies 2-12VAC/DC	3
SC26	Safety glass/goggles	12
SC31	Safety stepladders	2
SC32	Stop clocks	3
SC33	Aquarium with accessories	1
SC34	Morter/Generator Model	1
SC35	Molecular model set	1
SC36	Light box & Optical set	1
SC37	Bunsen burners	12
MU2	CD Player	1
MU4	P.A System	1
MU5	Keyboards	6
MU6	Speakers whole set	2
MU10	Drums - the whole set	2
MU11	Cymbals	3
MU12	Blockenspiels	2
MU13	Chime bars	2
MU14	Piano Electric Piano (changed from Ordinary Piano)	1
MU15	Violins	2
MU16	Guitars bass, vocal	3
MU17	Clarinets	2
MU18	Horns	2
MU19	Trumpets	2
MU20	Flute	2
MU21A	Saxophone(tenor)	2
MU21B	Saxophone(soprano)	2
MU22	Headphones	5
MU23	Metronome	1
MU24	Stools for keyboard	1
FA11	Carving chisels set	20
FA14	Ceramic wheels (not electricl)	2
FA15	Moving pedestal	4
FA16	Electric kiln	1
FA21	Blackboard ruler	2
FA22	T Square	2
FA23	Compass for Blackboard	2
FA26	Air brush equipment	1
FA33	Silk screen frame set	20
FA34	Silk screen mesh	1
FA53	Fineline drawing pens: black	20
FA54	Mediumline drawing pens: black	20
FA55	Fineline drawing pens: color	20
FA57	Guillotine	2
PE2	Tennis racpuets	12
PE3	Tennis net	2
PE4	Tennis balls	70
PE5	Rugby balls	12
PE6	Tackle pads	12
PE7	Scrum machine	2
PE10	Softballs	12

PE11	Softball bats (all steel)	6
PE12	Mask for catcher (Softball)	2
PE13	Mitt for catcher (Softball)	2
PE14	Chest protector for catcher (Softball)	2
PE15	Gloves (Softball)	18
PE16	Bases (Softball)	3
PE17	Pitchers plate (Softball)	1
PE18	Home plate (Softball)	1
PE19	Volleyballs	12
PE20	Volleyball net	3
PE21	Medicine ball set	12
PE22	Soccer balls	12
PE23	Net for the goal posts :Soccer	2
PE27	Badminton nets	2
PE28	Badminton racquets	12
PE29	Cans of shuttles	12
PE30	High jump stand & cross bar	2
PE31	Some landing pads	2
PE32	Pairs of starting blocks	6
PE33	Stop watches	6
PE34	Hoops	12
PE35	Measuring tape	2
PE37	Whistles	4
PE38	Air pump with needles	2

JICA