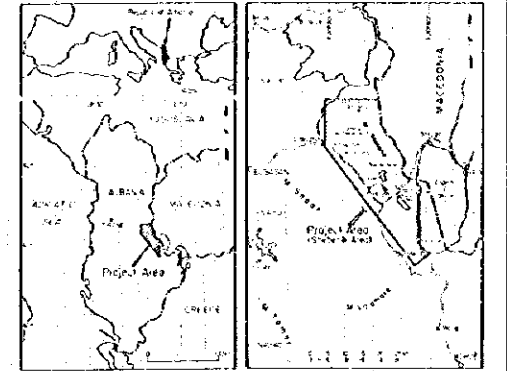
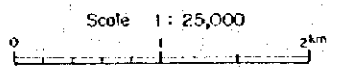


Report on the Mineral Exploration
in
the Shebenik Area, Republic of Albania
(Phase I.)

**Geological Map
of
the Shebenik—Pogradec Ultrabasic Massif**

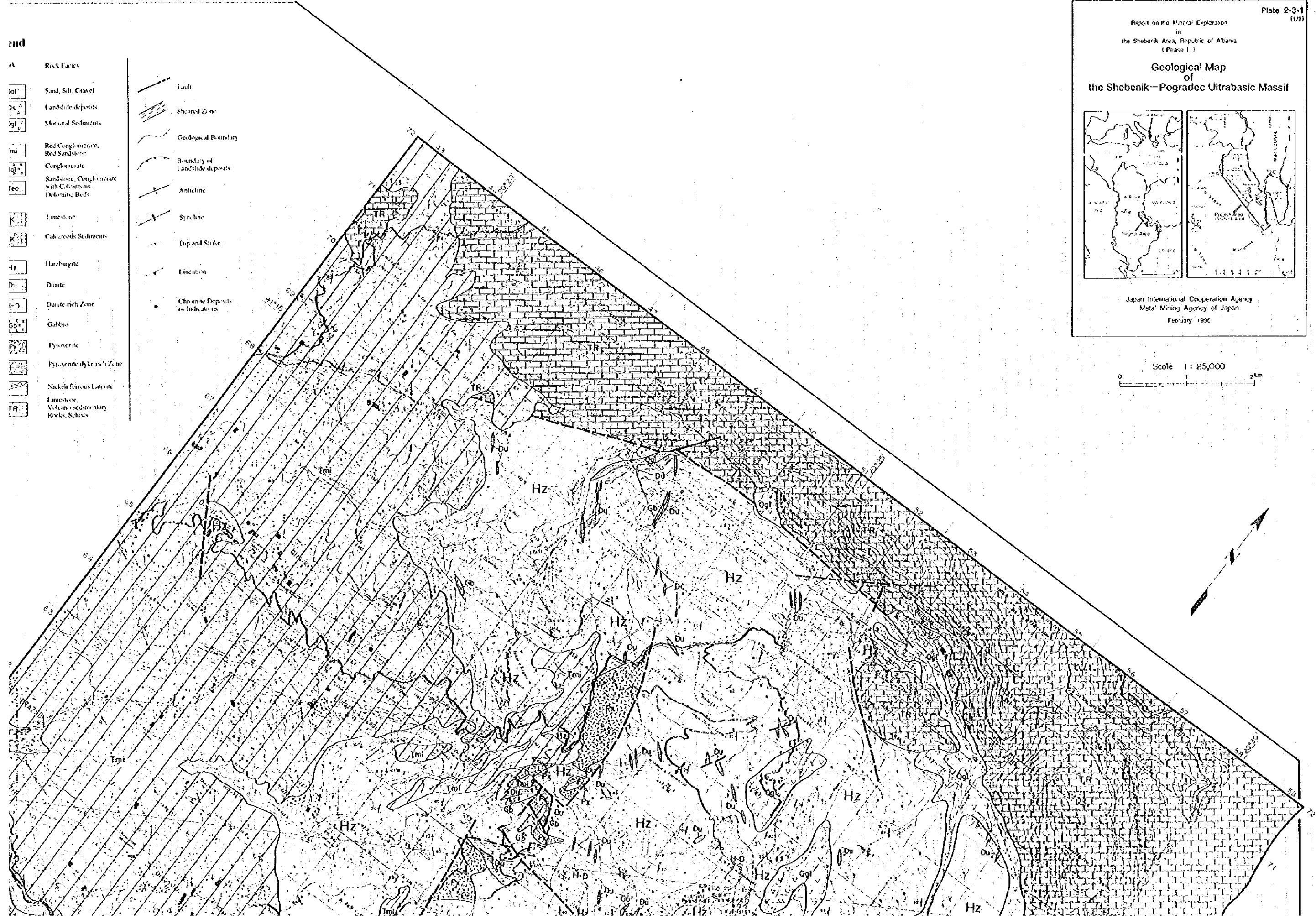


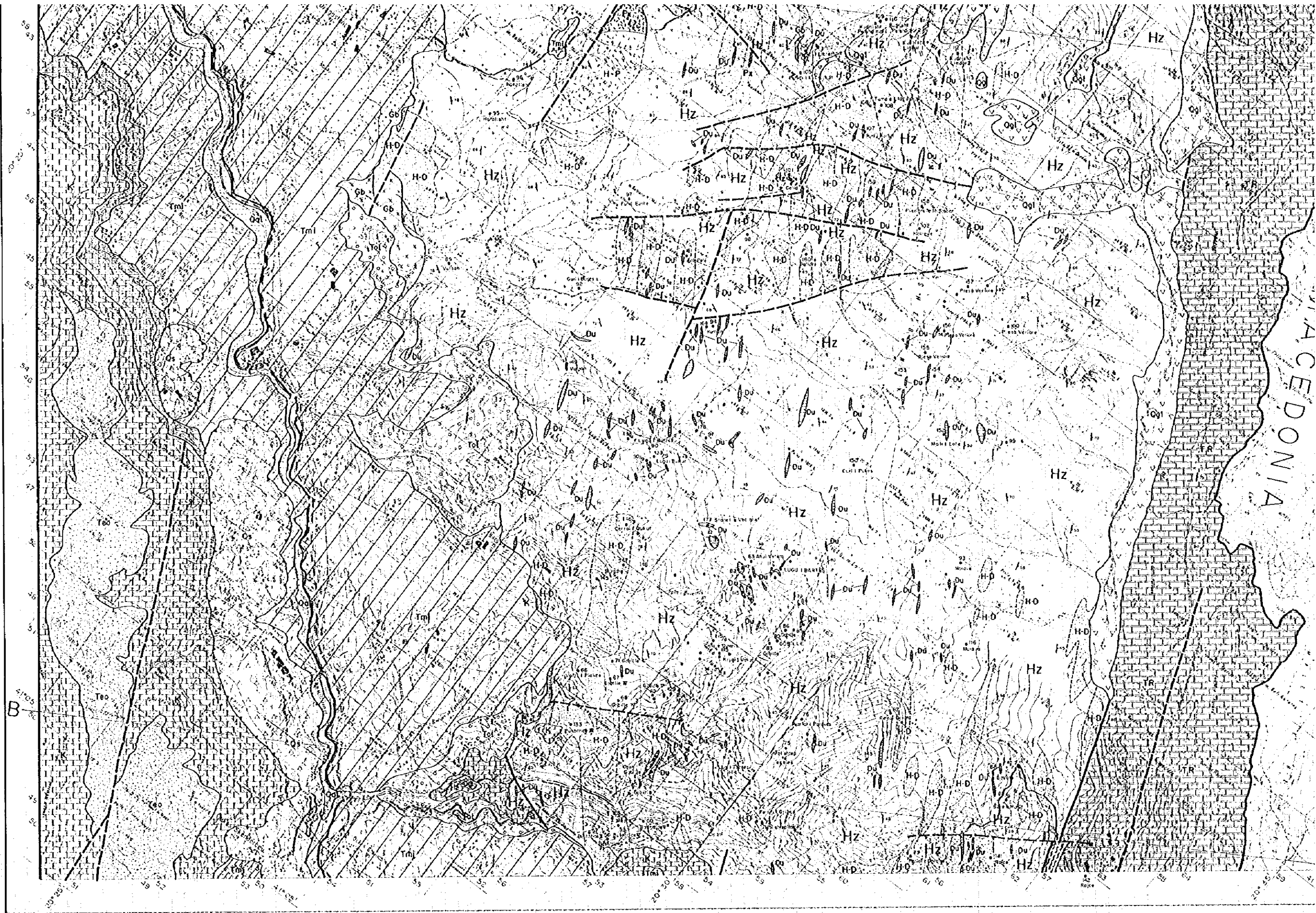
Japan International Cooperation Agency
Metal Mining Agency of Japan
February 1966



and

- | | | |
|--------------------|--|---------------------------------|
| Rock Facies | | Fault |
| | | Sheared Zone |
| | | Geological Boundary |
| | | Boundary of Landslide deposits |
| | | Anticline |
| | | Syncline |
| | | Dip and Strike |
| | | Lineation |
| | | Chromite Deposits or Indicators |
| | | |
| | | |
| | | |
| | | |
| | | |
| | | |
| | | |
| | | |







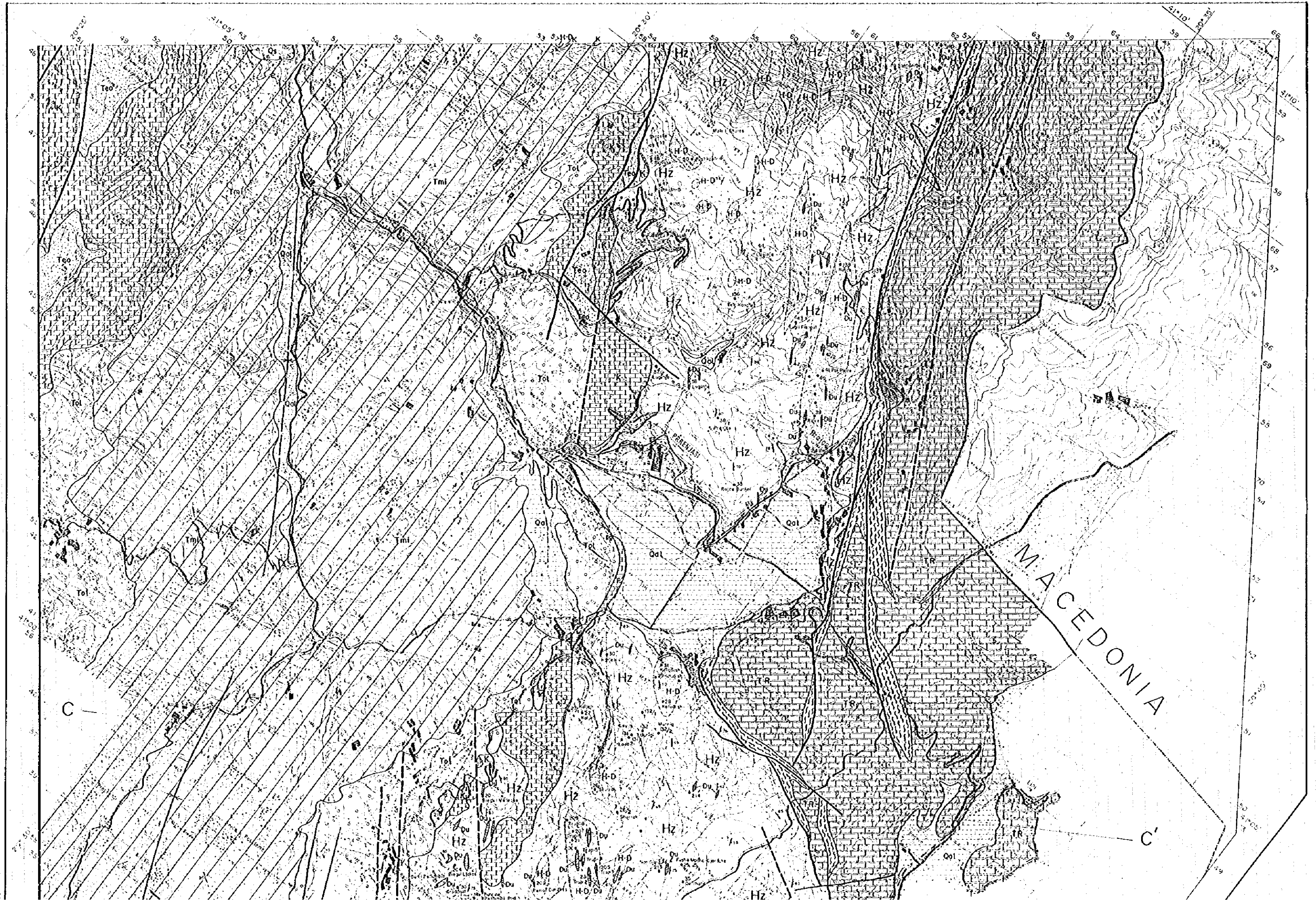
MACEDONIA

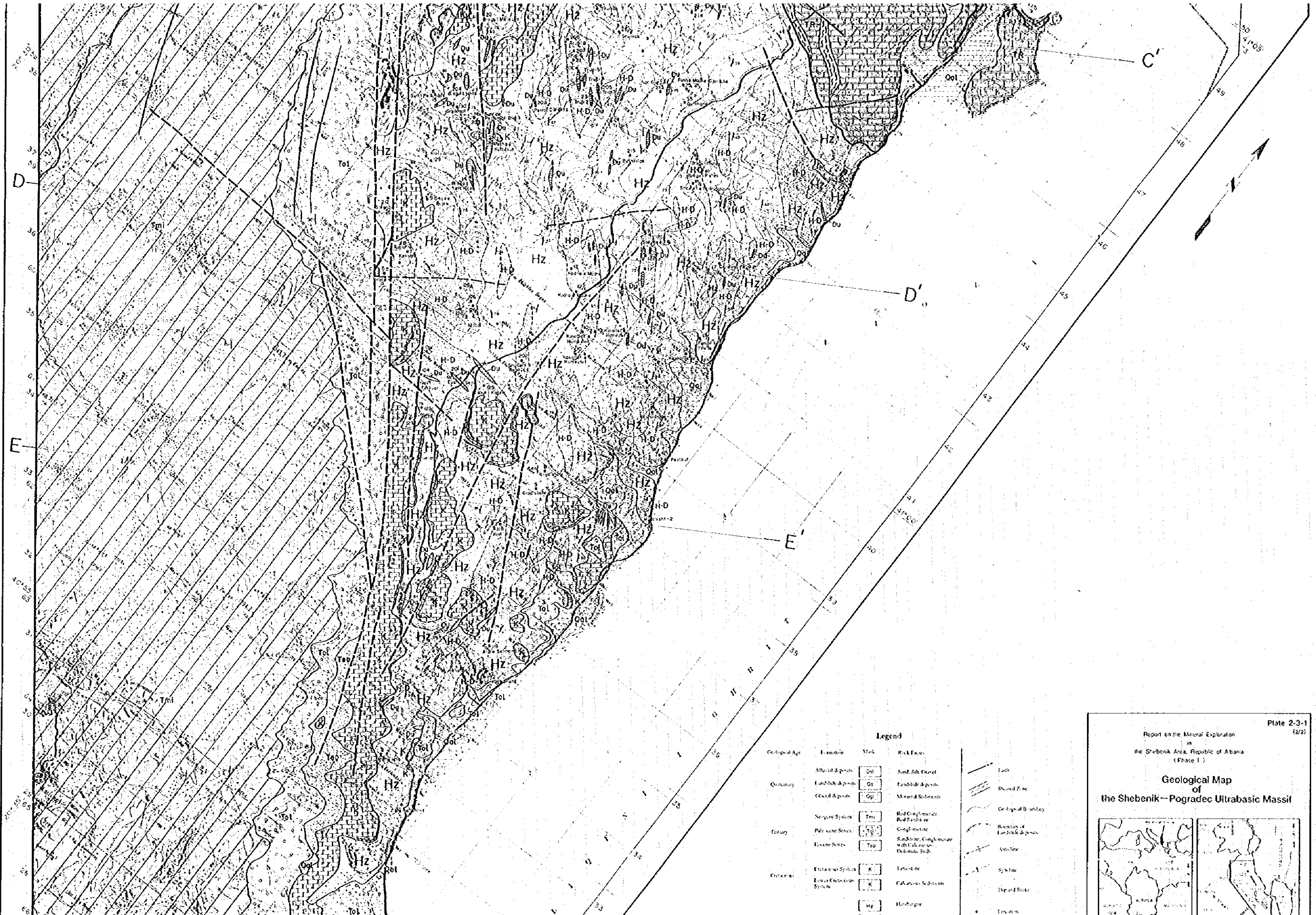
A'

B'

53 54 55 56 57 58 59 60 61 62 63 64 65 66

60 61 62 63 64 65 66 67 68 69 70





Legend

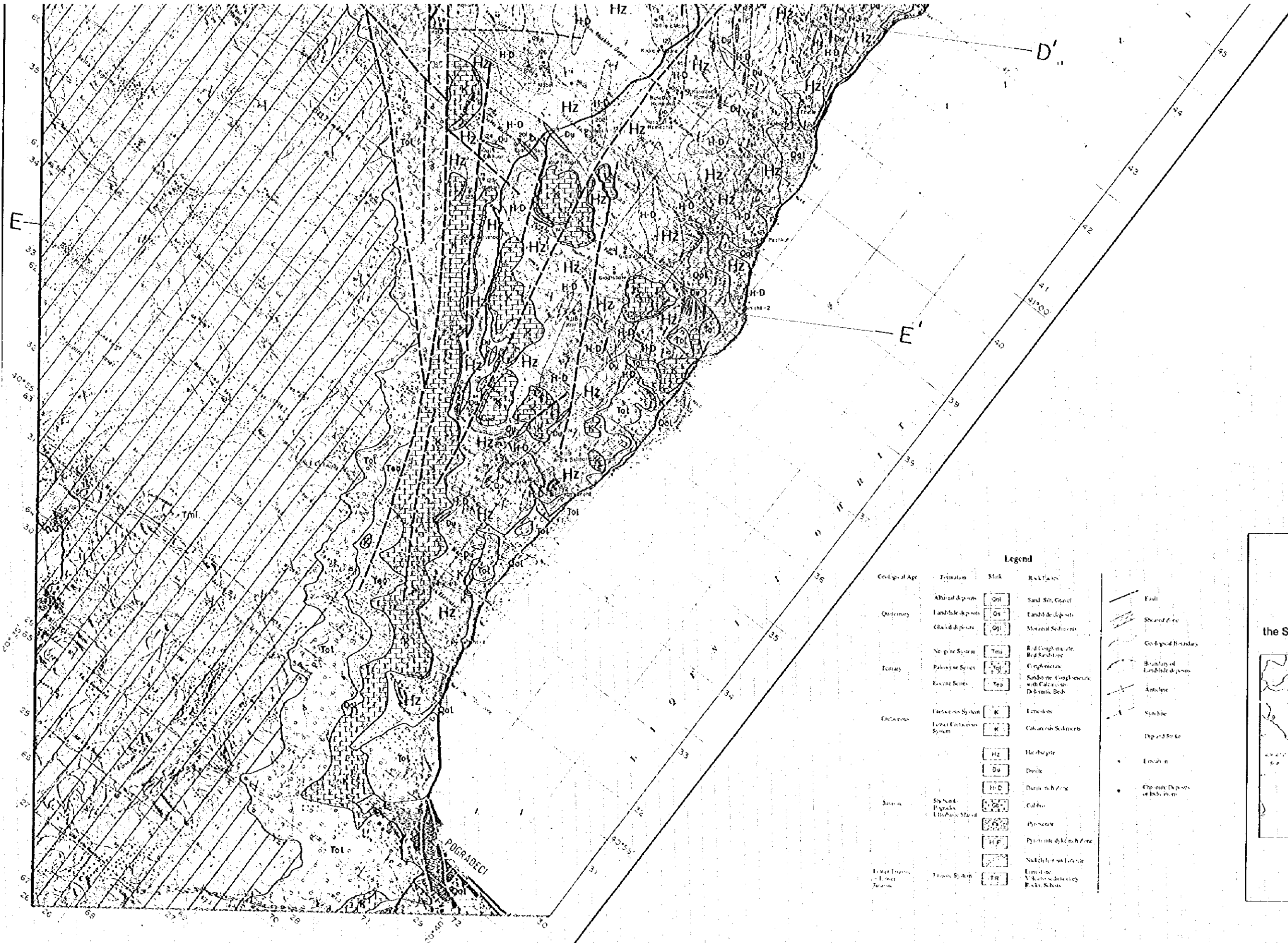
Geological Age	Formation	Mark	Rock Types
Quaternary	Alluvial deposits	Qol	Sand, Silt, Gravel
	Landslide deposits	Qs	Landslide deposits
	Glacial deposits	Qgl	Moraine & Solonchaks
Tertiary	Sengene System	Tm	Red Conglomerate, Red Sandstone
	Paleogene Series	Tp	Conglomerate
	Eocene Series	Teo	Sandstone, Conglomerate with Calcareous Oolitic Bed
Cretaceous	Cretaceous System	K	Limestone
	Eocene-Cretaceous System	K	Calcareous Schists
		HZ	Ultrabasic

- Fault
- Shared Zone
- Geological Boundary
- Boundary of Landslide deposits
- Anticline
- Syncline
- Dip and Strike
- Tectonic

Plate 2-3-1
(2/2)

Report on the Mineral Exploration
in
the Shebenik Area, Republic of Albania
(Phase I)

**Geological Map
of
the Shebenik-Pogradec Ultrabasic Massif**



Legend

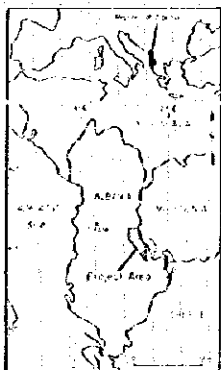
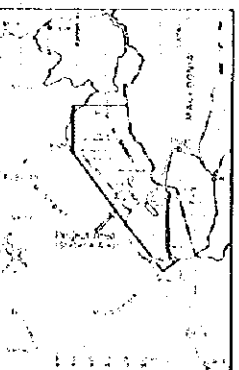
Geological Age	Formation	Strik	Rock Types
Quaternary	Alluvial deposits	Qa	Sand, Silt, Gravel
	Landslide deposits	Qs	Landslide deposits
	Clay deposits	Qc	Miscellaneous
Tertiary	Neogene Series	Tn	Rd Conglomerate, Rd Sandstone
	Paleogene Series	Tp	Conglomerate
	Eocene Series	Te	Sandstone, Conglomerate with Calcareous, Diatomitic Beds
Cretaceous	Cretaceous System	K	Limestone
	Lower Cretaceous System	K	Calcareous Schists
Jurassic		HZ	Harzburgite
		Du	Diorite
		H-D	Dioritic gabbro
	Shebenik-Pogradec Ultrabasic Massif	U	Gabbro
		P	Pyroxene
		HP	Pyroxene dioritic zone
Lower Triassic - Lower Jurassic	Triassic System	TR	Limestone, V. Karst, Schistosity, R.A.C. Schists

- Fault
- Shear Zone
- Geological Boundary
- Boundary of Landslide deposits
- Anticline
- Syncline
- Dip and Strike
- Location
- Chromite Deposits or Inclusions

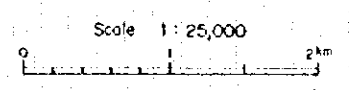
Plate 2-3-1
(2/2)

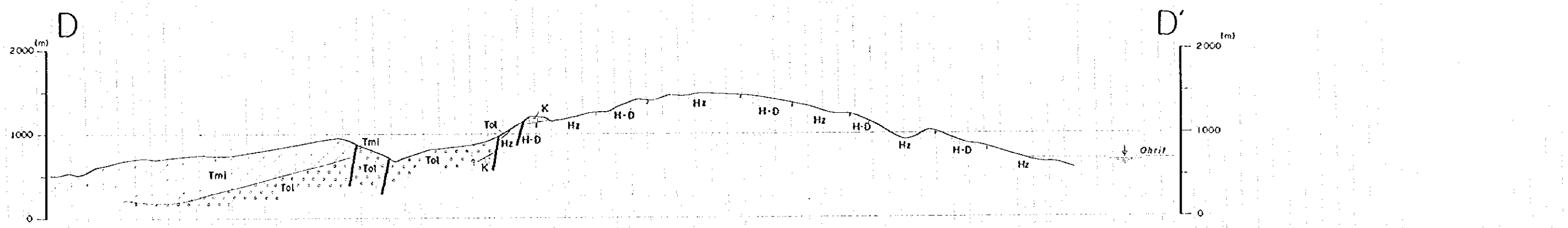
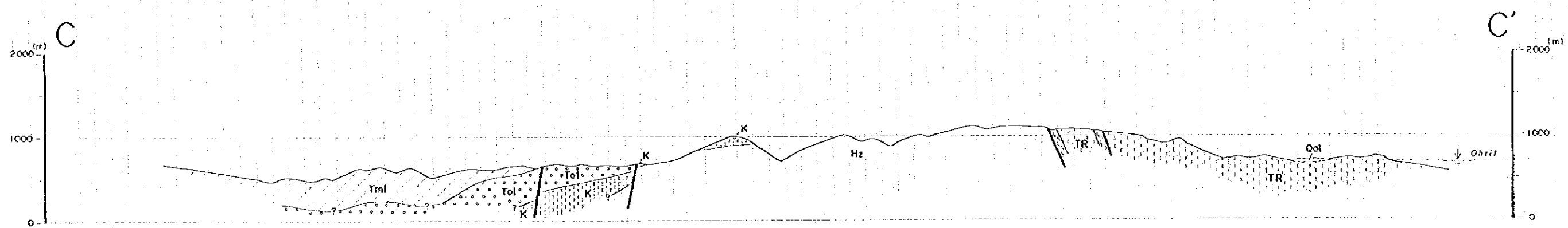
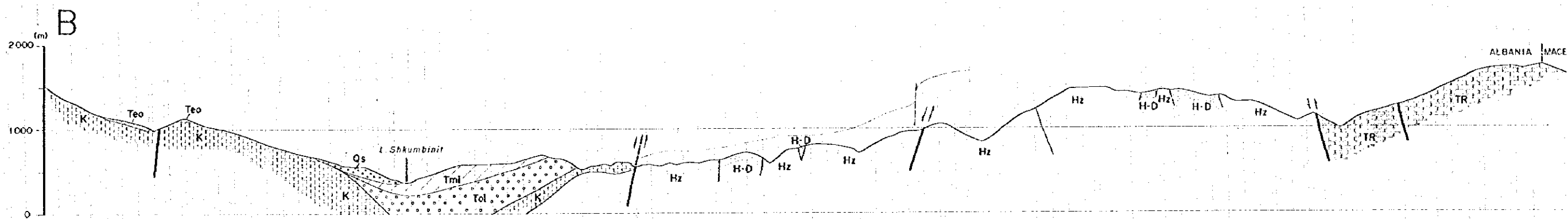
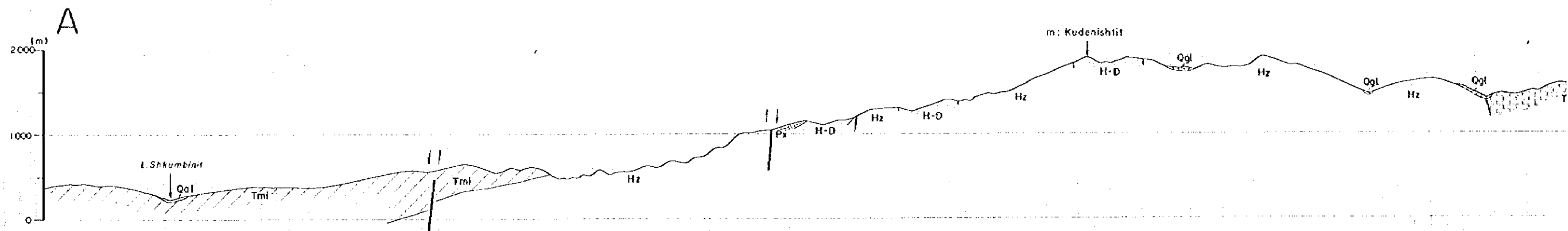
Report on the Mineral Exploration
in
the Shebenik Area, Republic of Albania
(Phase I)

**Geological Map
of
the Shebenik-Pogradec Ultrabasic Massif**

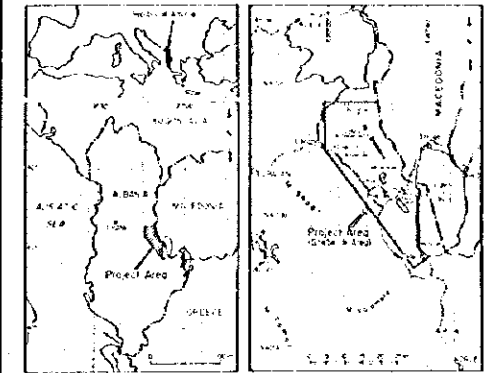
Japan International Cooperation Agency
Metal Mining Agency of Japan
February 1976



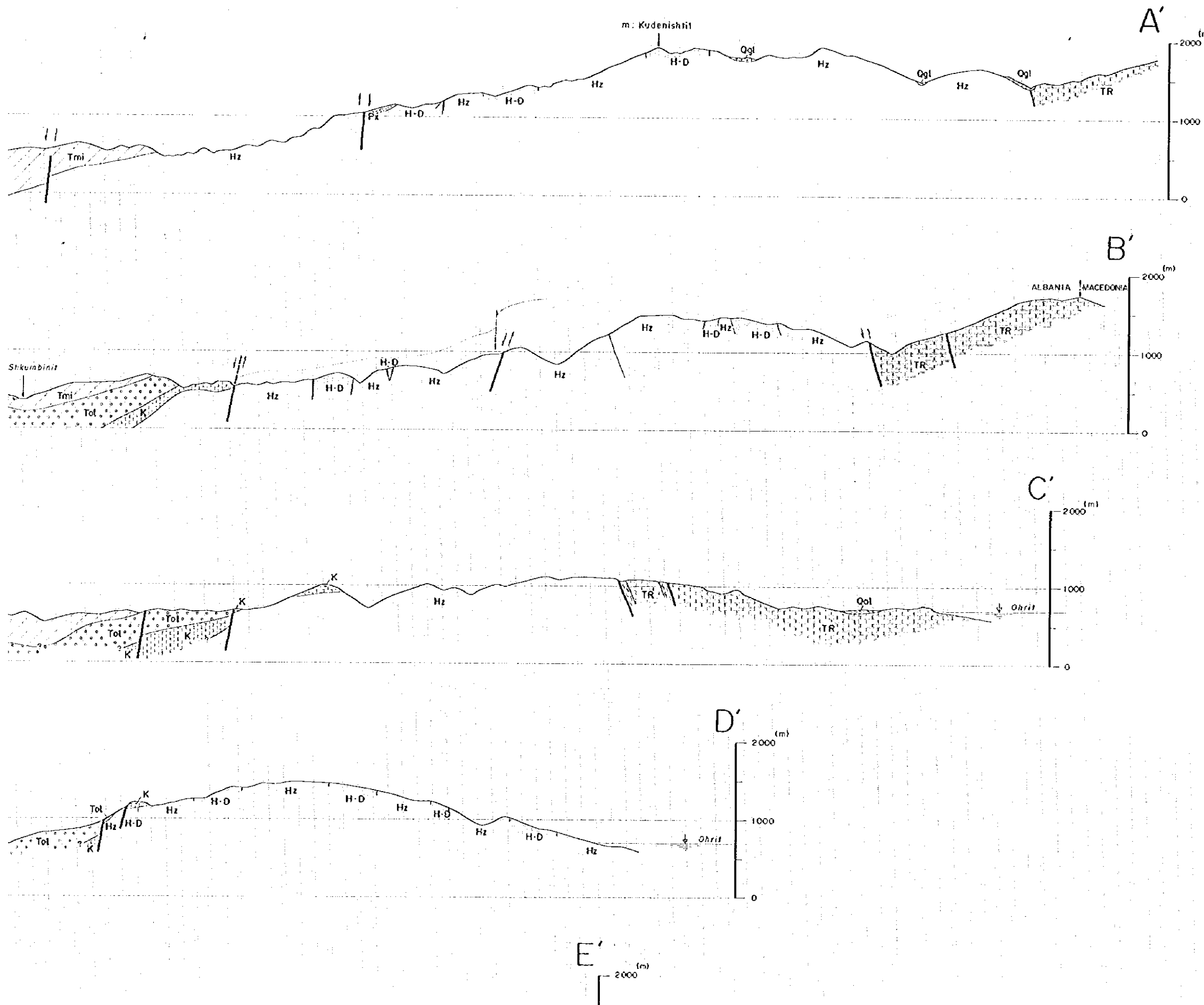
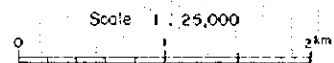


Report on the Mineral Exploration
in
the Shebenik Area, Republic of Albania
(Phase I)

**Geological Profiles
of
the Shebenik-Pogradec Ultrabasic Massif**

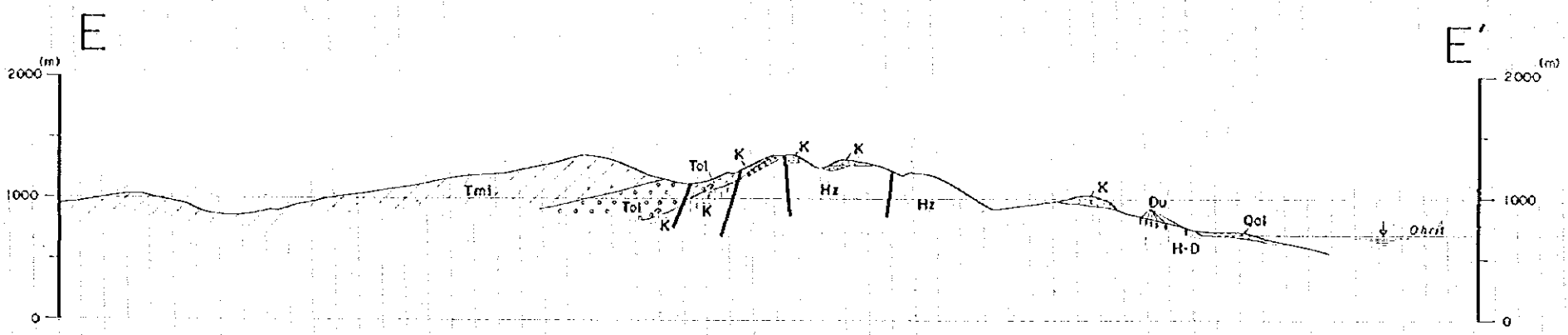
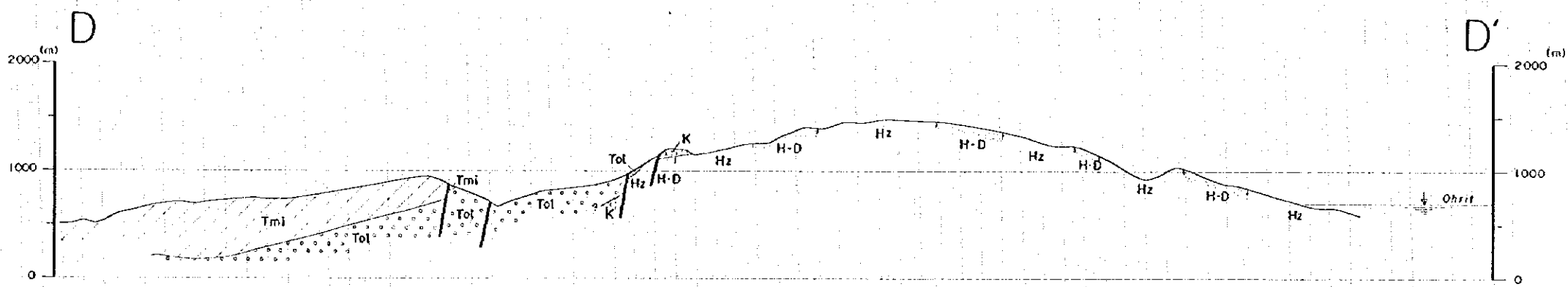
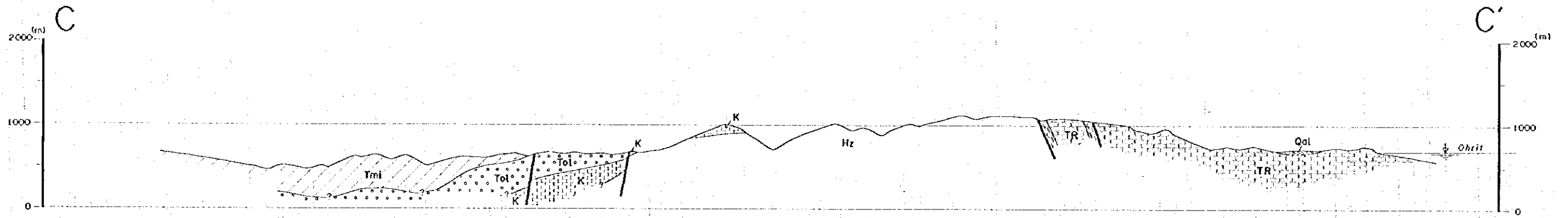
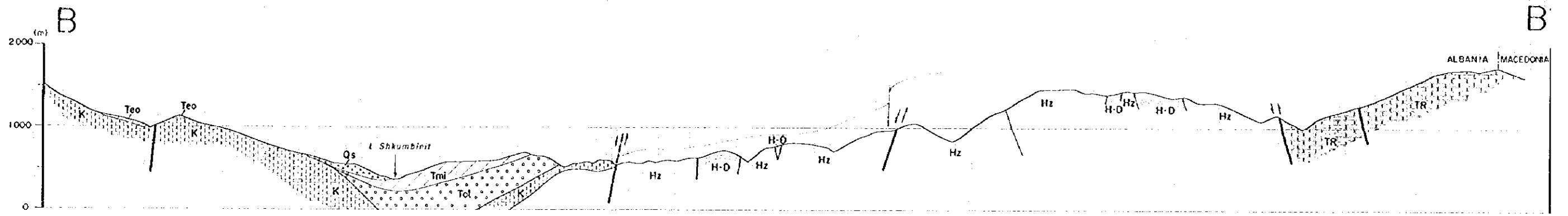


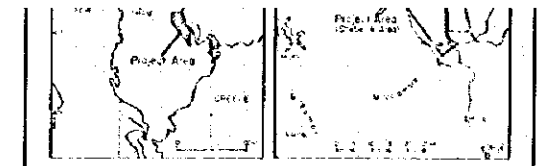
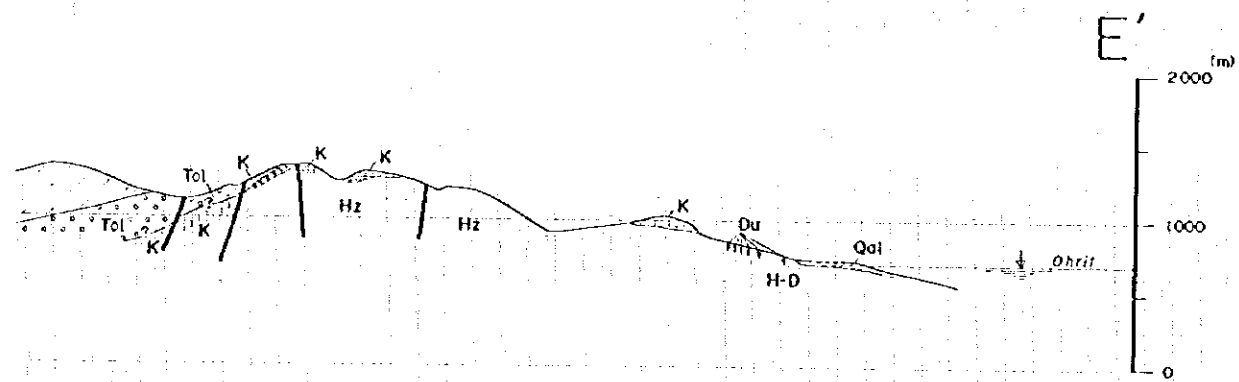
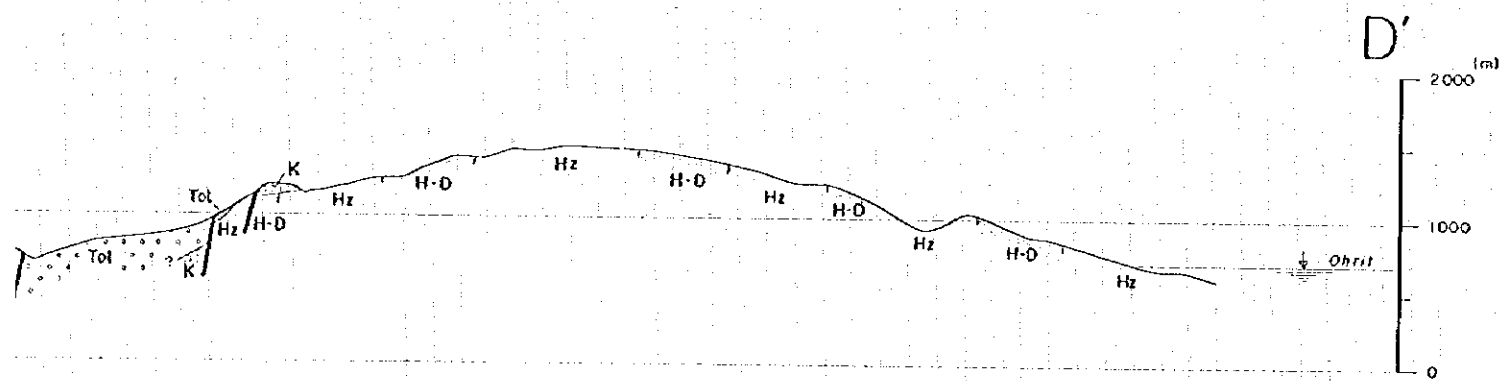
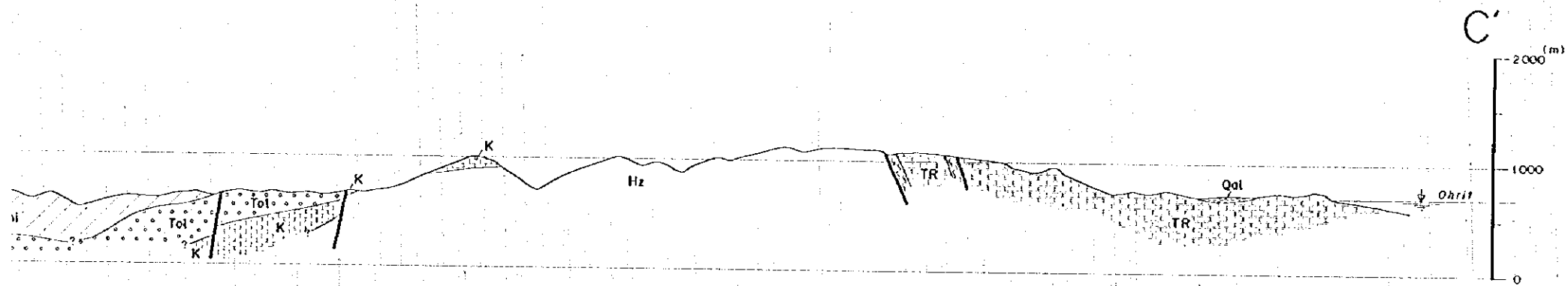
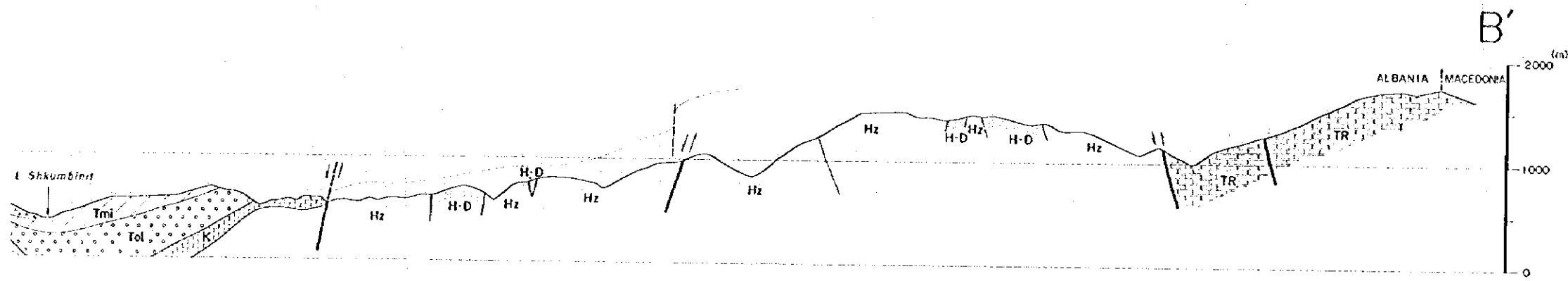
Japan International Cooperation Agency
Metal Mining Agency of Japan
February 1996



Legend

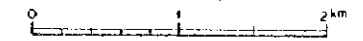
Geological Age	Formation	Mark	Rock Facies
Quaternary	Alluvial deposits	Qol	Sand, Silt, Gravel
	Landslide deposits	Qs	Landslide deposits
	Glacial deposits	Qgl	Morainal Sediments
Tertiary	Neogene System	Tmi	Red Conglomerate, Red Sandstone
	Paleocene Series	Tol	Conglomerate
	Eocene Series	Teo	Sandstone, Conglomerate with Calcareous-Dolomite Beds
Cretaceous	Cretaceous System	K	Limestone
	Lower Cretaceous System	K	Calcareous Sediments
Jurassic		Hz	Hazburgite
		Du	Dunite
		H-D	Dunite-rich Zone
	Shebenik-Pogradec Ultrabasic Massif	GP	Gabbro
		Py	Pyroxenite
Lower Triassic - Lower Jurassic		DP	Pyroxenitic dyke rich Zone
		SL	Nickeliferous Laterite
	Triassic System	TR	Limestone, Volcanic sedimentary Rocks, Schists
		— —	Fault
		///	Sheared Zone





Japan International Cooperation Agency
Metal Mining Agency of Japan
February 1996

Scale 1 : 25,000

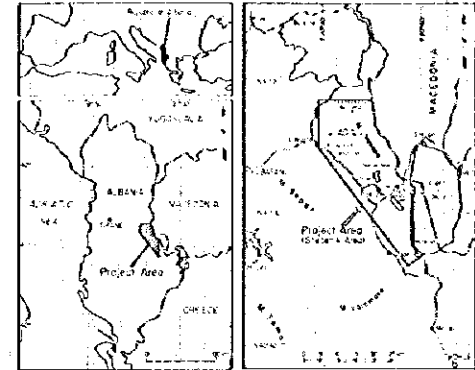


Legend

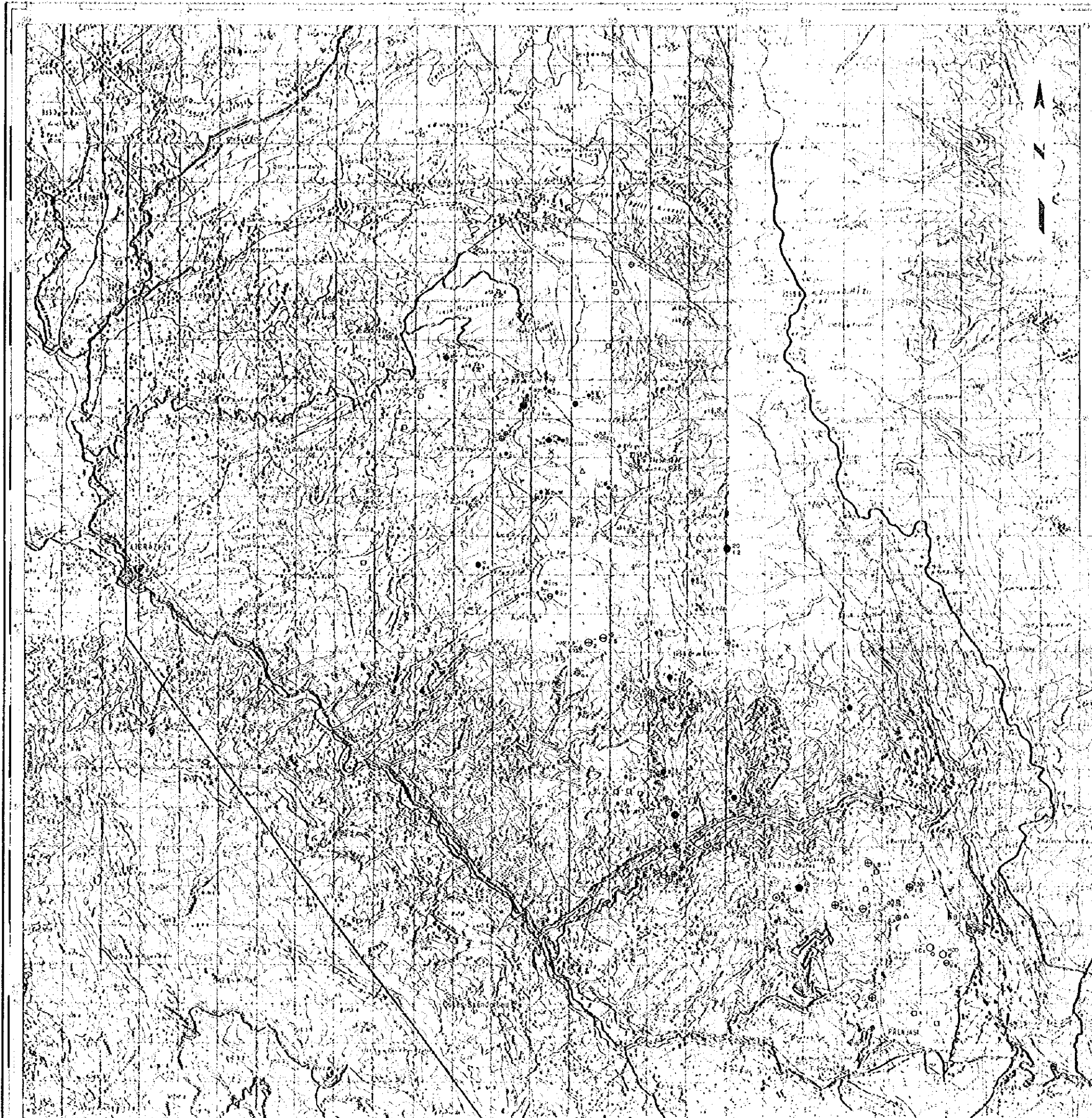
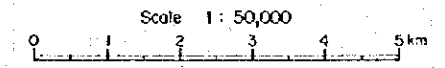
Geological Age	Formation	Mark	Rock Facies
Quaternary	Alluvial deposits	Qal	Sand, Silt, Gravel
	Landslide deposits	Qs	Landslide deposits
	Glacial deposits	Qgl	Morainal Sediments
Tertiary	Neogene System	Tmi	Red Conglomerate, Red Sandstone
	Paleocene Series	Tol	Conglomerate
	Eocene Series	Teo	Sandstone, Conglomerate with Calcareous-Dolomitic Beds
Cretaceous	Cretaceous System	K	Limestone
	Lower Cretaceous System	K	Calcareous Sediments
Jurassic		Hz	Horburgic
		Du	Dunite
		H-D	Dunite-rich Zone
	Shebenik-Pogradec Ultrabasic Massif	Gb	Gabbro
		Px	Pyroxenite
		H-P	Pyroxenite dyke rich Zone
Lower Triassic - Lower Jurassic	Triassic System	TR	Nickeliferous Lignite, Limestone, Volcano-sedimentary Rocks, Schists
		Fault	
		Sheared Zone	
		Geological Boundary	

Report on the Mineral Exploration
in
the Shebenik Area, Republic of Albania
(Phase I)

**Location of Chromitite Deposits
and
Showings in the Shebenik Area**



Japan International Cooperation Agency
Metal Mining Agency of Japan
February 1996



LEGEND

Deposits and showings confirmed in the field work

Mark Major Type Classification of Chromite Deposits or Showings

- ⊙ Residual
- ⊖ Banded
- Massive
- ⊕ Disseminated
- Scatter

Not Recognized in the Field Work

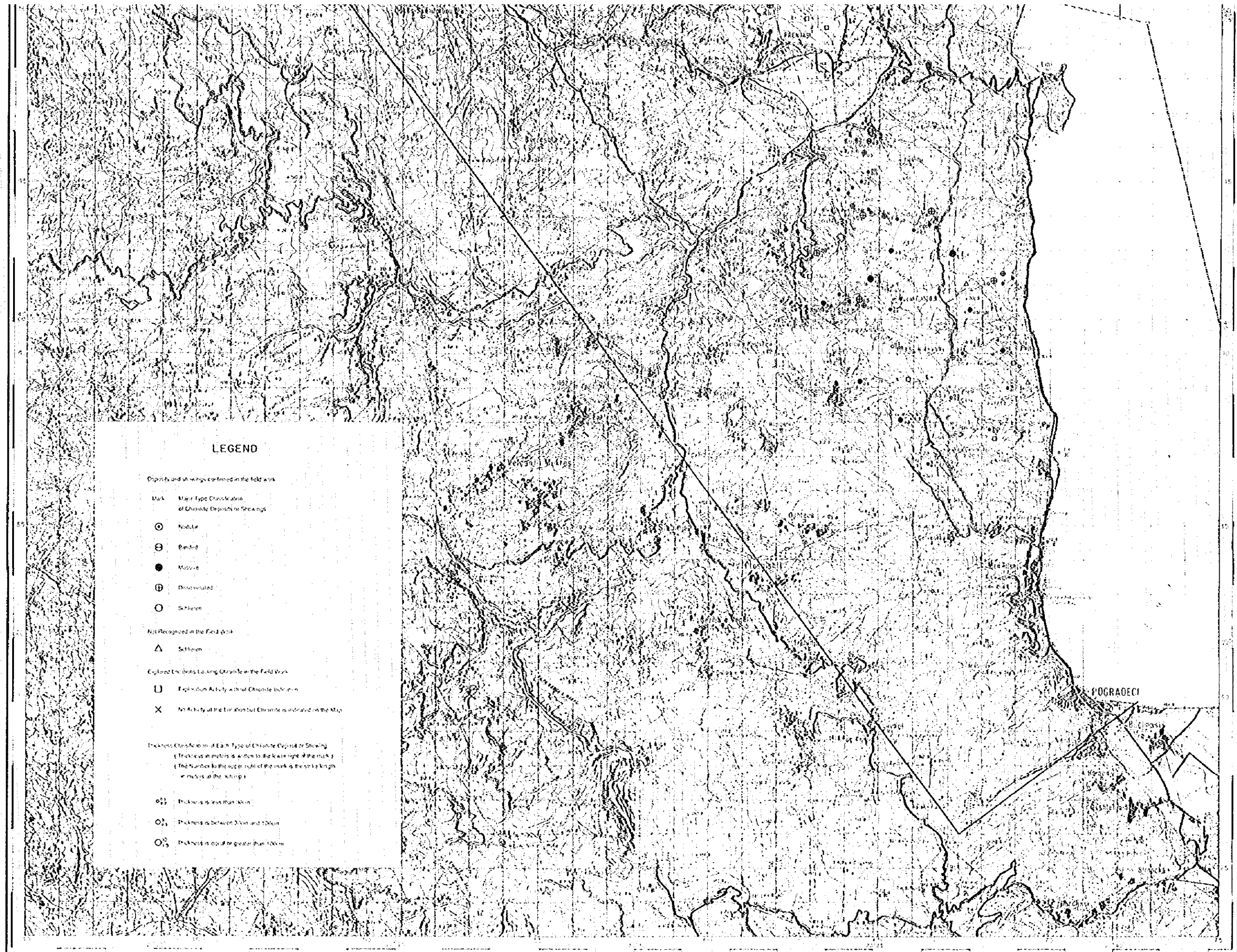
- △ Scatter

Explored Locations Lacking Chromite in the Field Work

- Exploration Activity with no Chromite Indication
- × No Activity at the Location but Chromite is indicated on the Map

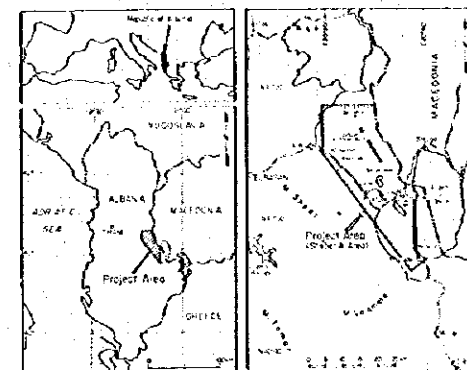
Thickness Classification of Each Type of Chromite Deposit or Showing
 (Thickness in meters is written to the lower right of the mark.)
 (The number to the upper right of the mark is the strike length in meters at the outcrop.)

- ⊙ Thickness is less than 30 m
- ⊖ Thickness is between 30 m and 100 m
- Thickness is equal or greater than 100 m



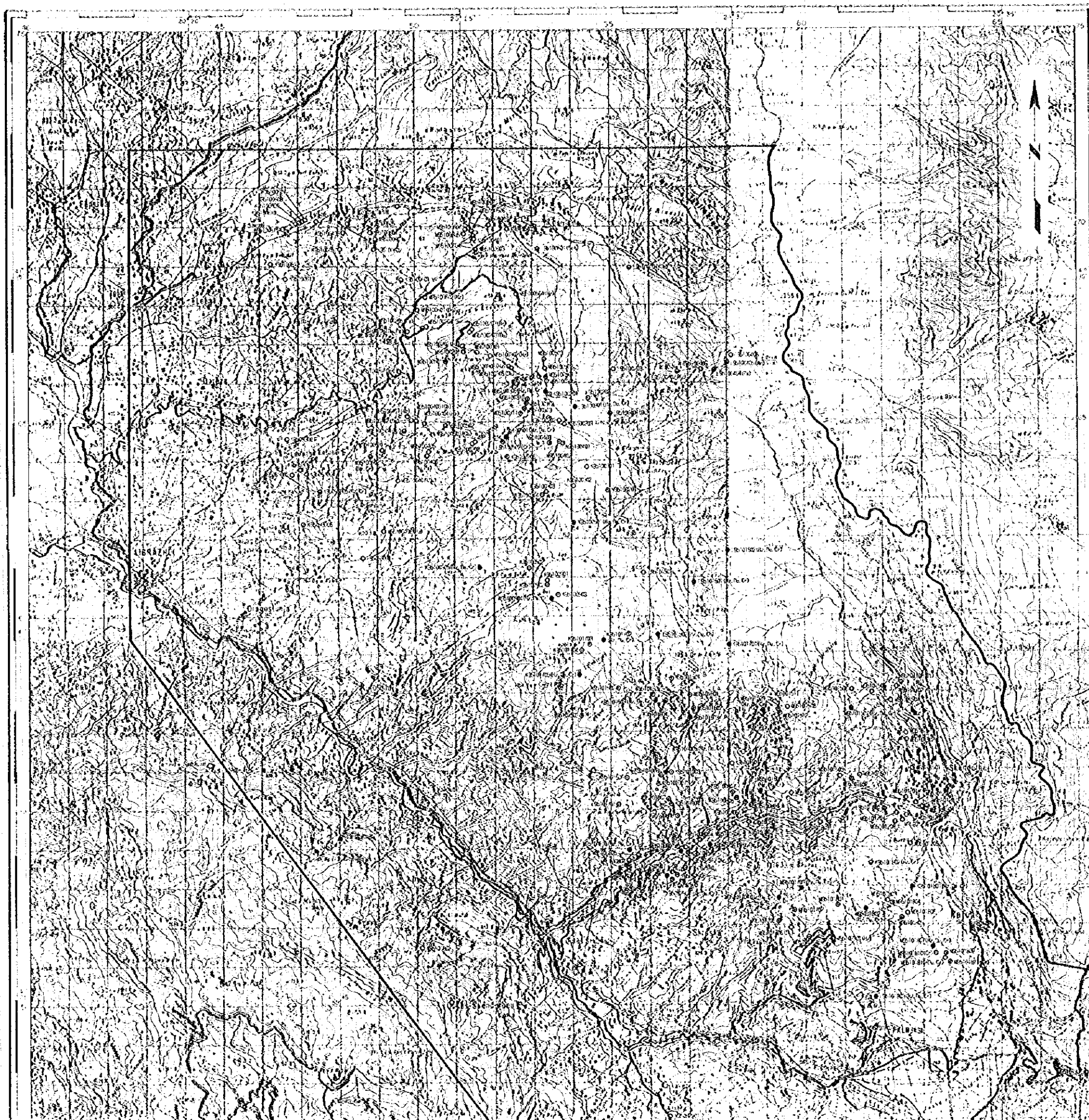
Report on the Mineral Exploration
in
the Shebenik Area, Republic of Albania
(Phase I)

**Location of Geological Samples
for Laboratory Test
in the Shebenik Area**



Japan International Cooperation Agency
Metal Mining Agency of Japan
February 1996

Scale 1: 50,000

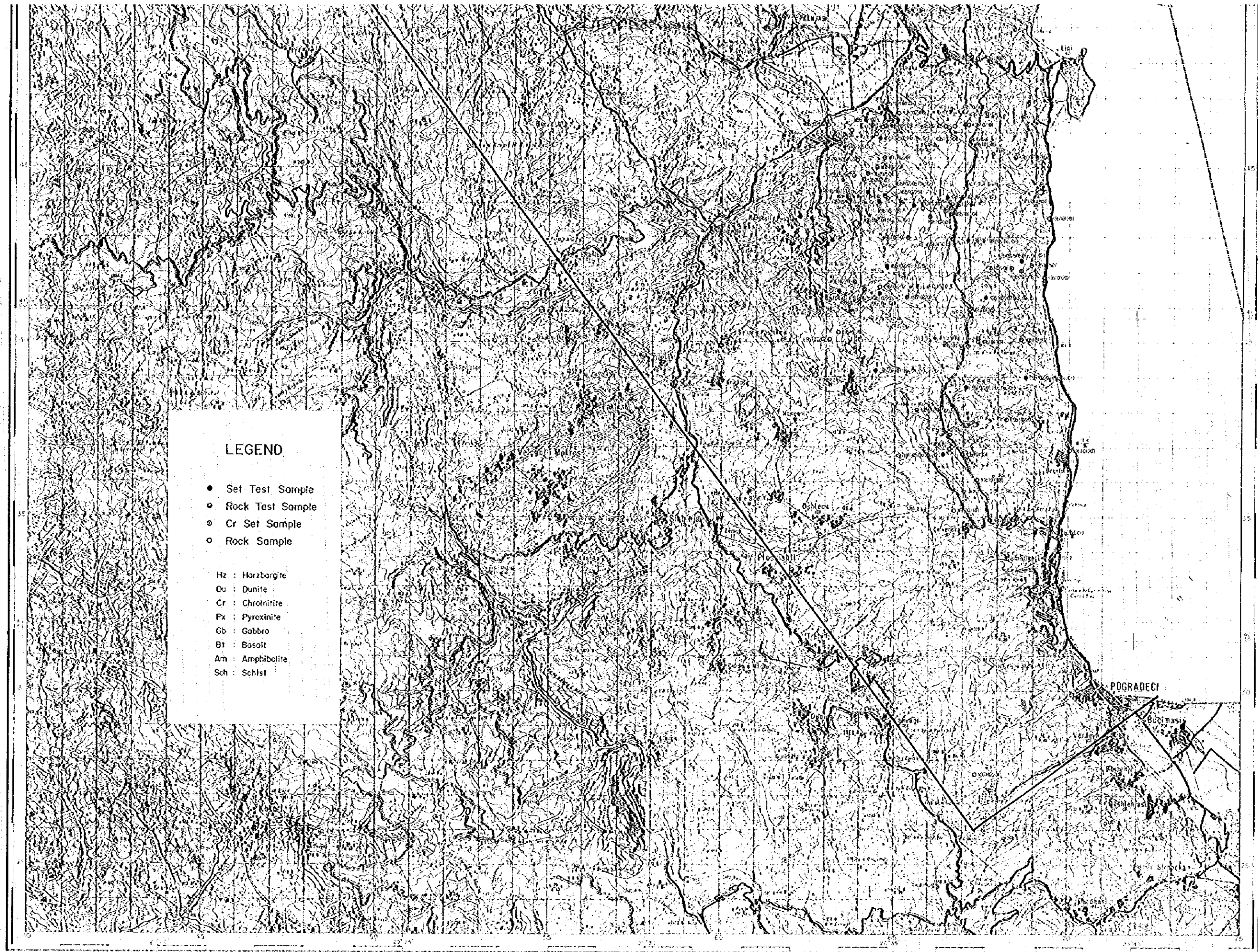


LEGEND

- Set Test Sample
- Rock Test Sample
- Cr Set Sample
- Rock Sample

H_z : Hornblende
D_u : Dunite
C_r : Chromitite
P_x : Pyroxinite
G_b : Gabbro
B_t : Basalt
A_m : Amphibolite
S_{ch} : Schist

POGRADECI



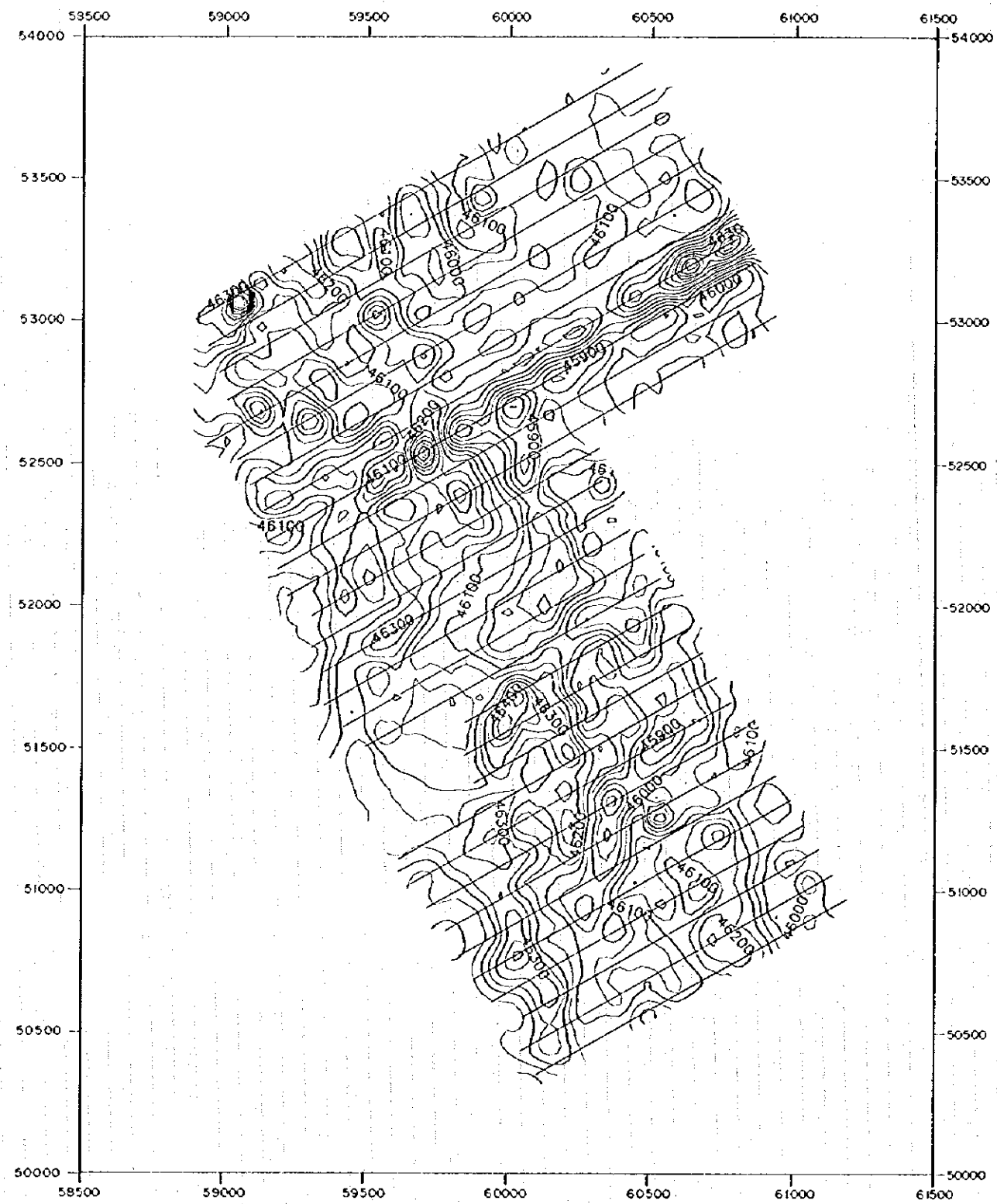
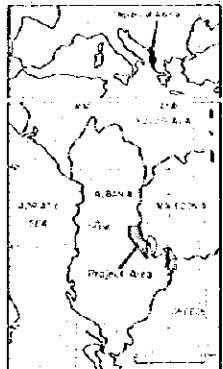
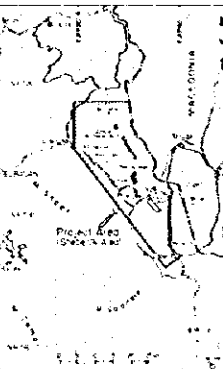


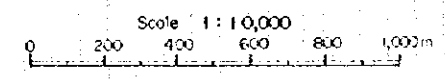
Plate 2-4-1

Report on the Mineral Exploration
in
the Shabank Area, Republic of Albania
(Phase I)

**Total Magnetic Intensity
of
Pishkash Area**

Japan International Cooperation Agency
Metal Mining Agency of Japan
February 1996



LEGEND

~ 50 nT
~ 100 nT

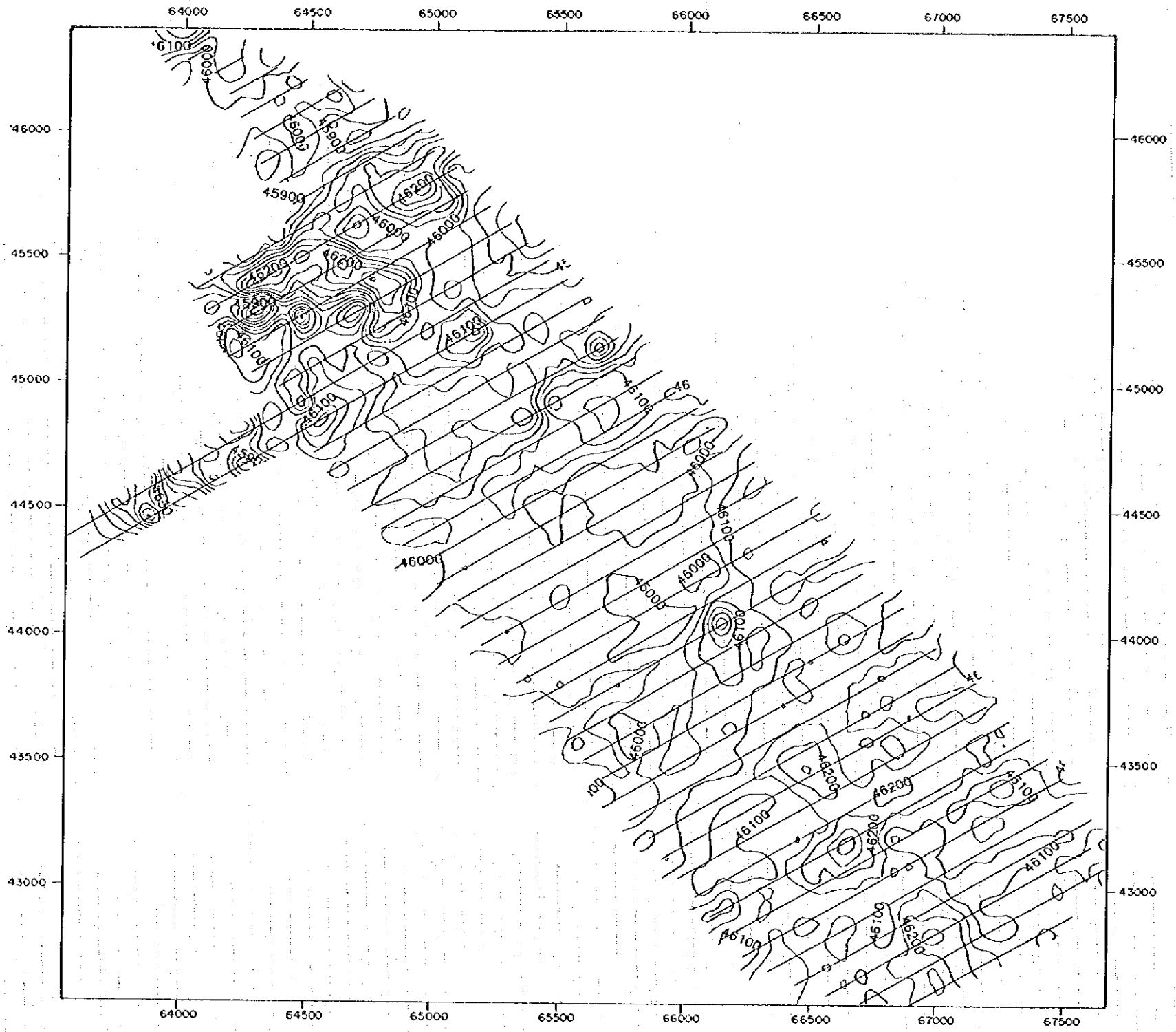
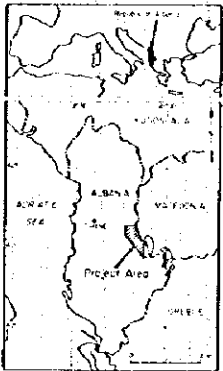
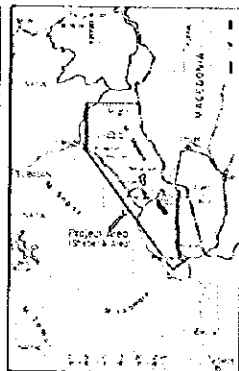


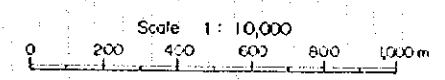
Plate 2-4-2

Report on the Mineral Exploration
in
the Shtebenik Area, Republic of Albania
(Phase I.)

**Total Magnetic Intensity
of
Kotodesh Area**

Japan International Cooperation Agency
Metal Mining Agency of Japan
February 1996



LEGEND

- 50nT
- 100nT

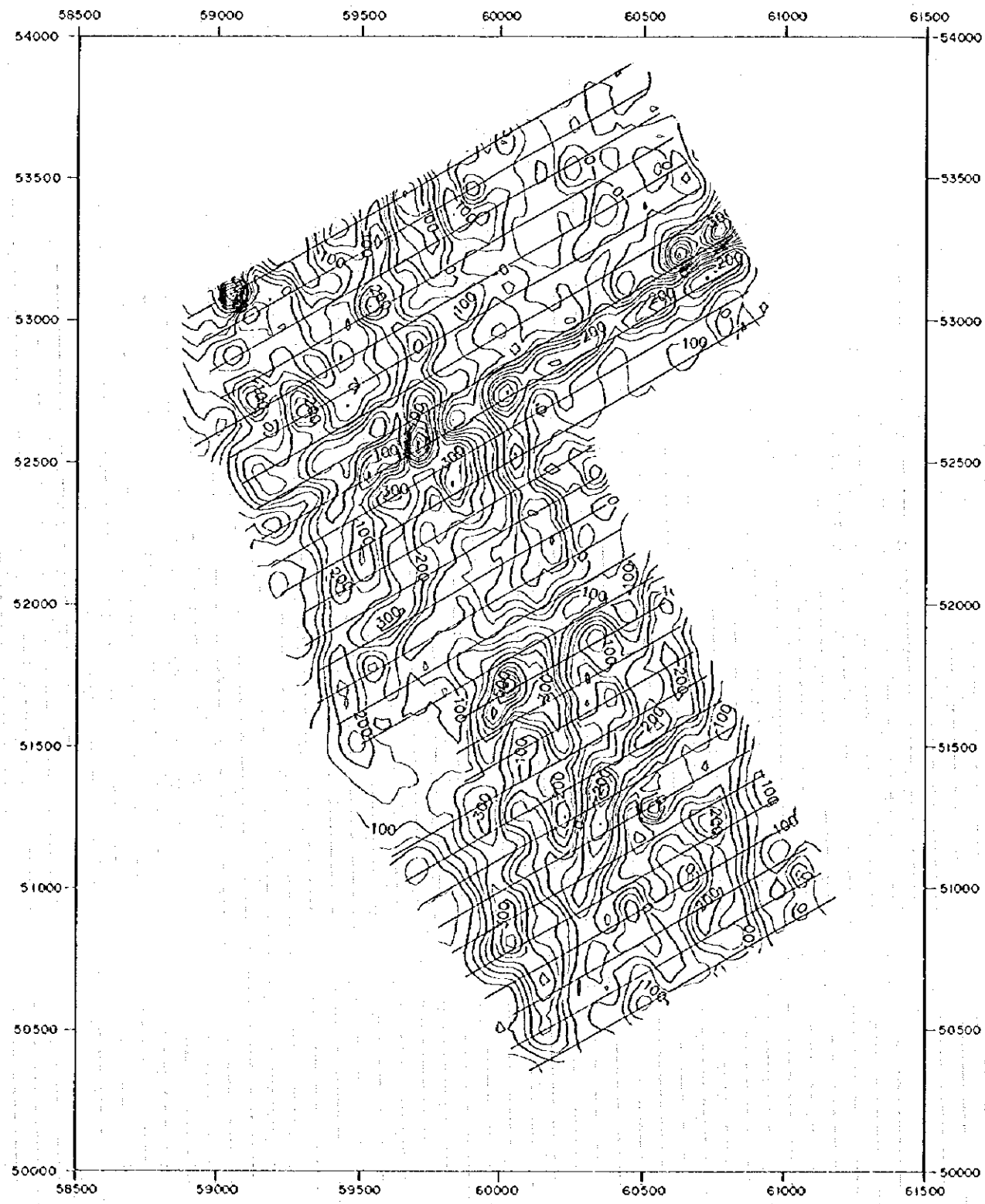
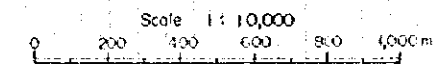


Plate 2-4-3

Report on the Mineral Exploration
in
the Shebenik Area, Republic of Albania
(Phase I)

**Reduced to the Pole Map
of
Pishkash Area**

Japan International Cooperation Agency
Metal Mining Agency of Japan
February 1996



LEGEND

- 50m
- 100m

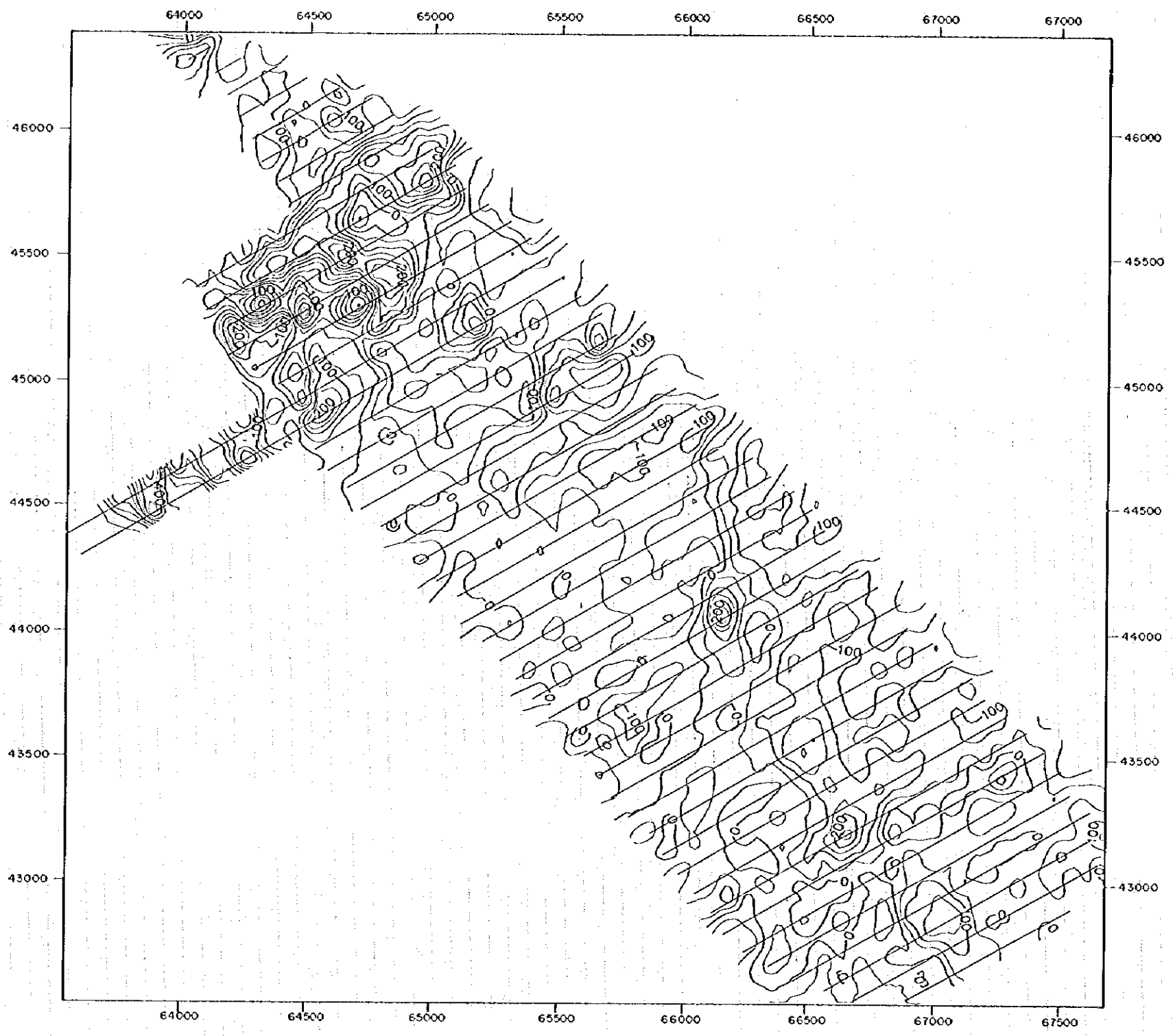
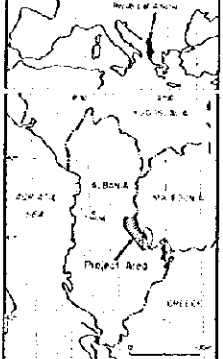
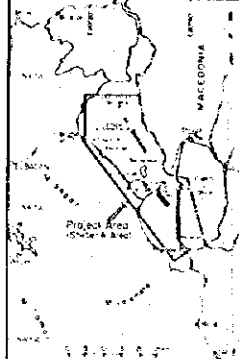


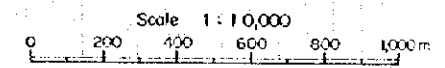
Plate 2-4-4

Report on the Mineral Exploration
in
the Shtetnik Area, Republic of Albania
(Phase I)

**Reduced to the Pole Map
of
Kotodesh Area**

Japan International Cooperation Agency
Metal Mining Agency of Japan
February 1996



LEGEND

~ 50 nT

~ 100 nT

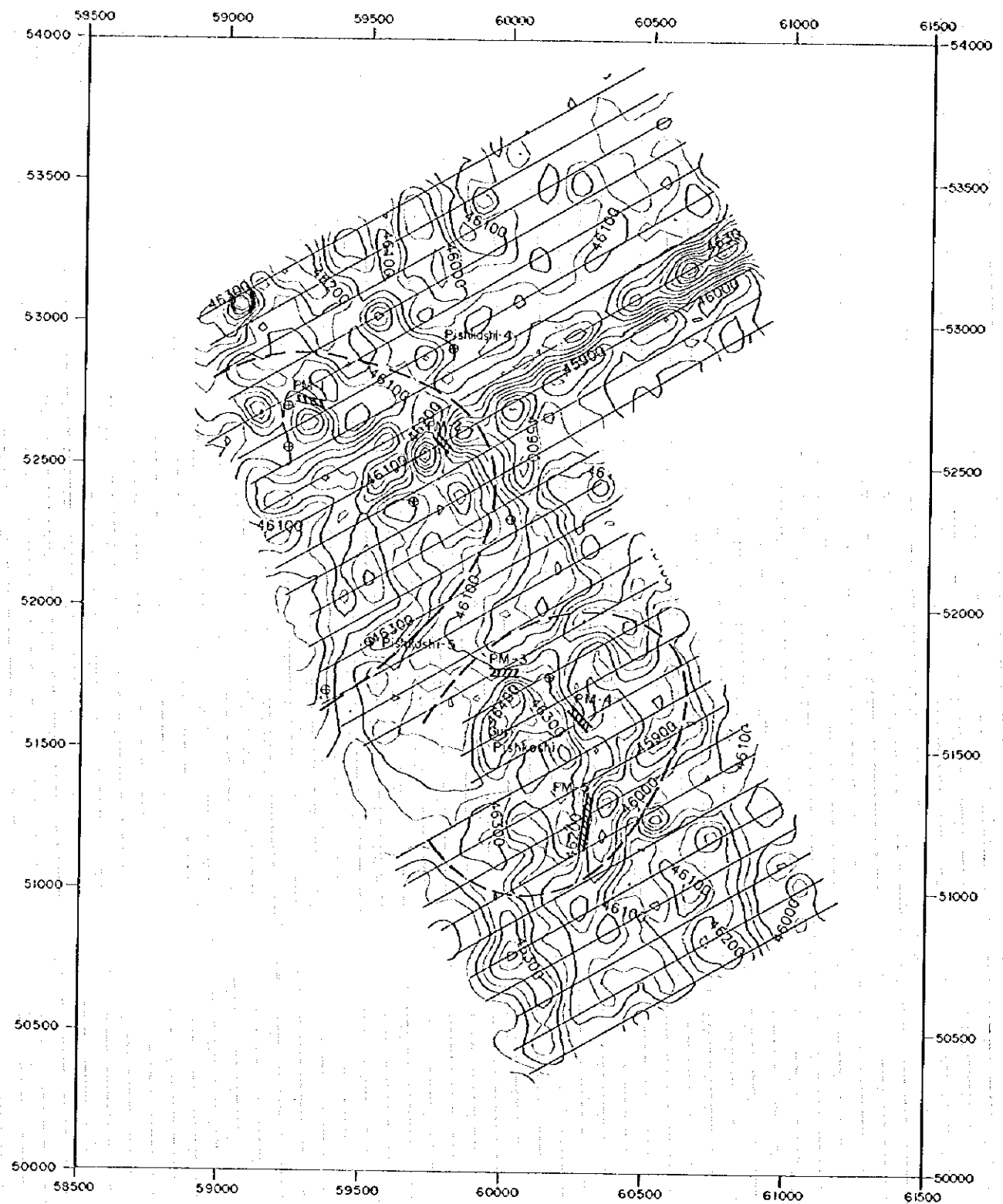
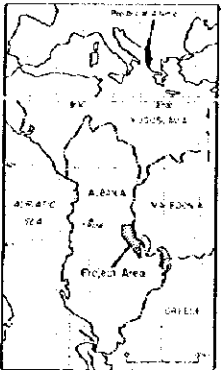
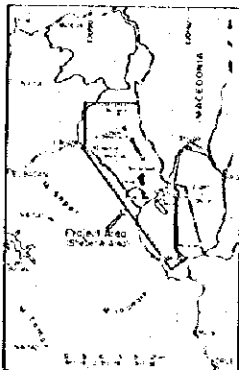


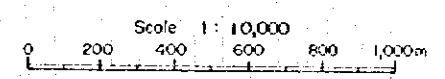
Plate 2-4-5

Report on the Mineral Exploration
in
the Sheberik Area, Republic of Albania
(Phase I)

**Magnetic Interpretation Map
of
Pishkash Area**

Japan International Cooperation Agency
Metal Mining Agency of Japan
February 1956



- LEGEND**
- |||| PM-1 magnetic body
 - ⊙ mineral indication
 - x mine
 - interest zone
 - ~ 50 nT
 - ~ 100 nT

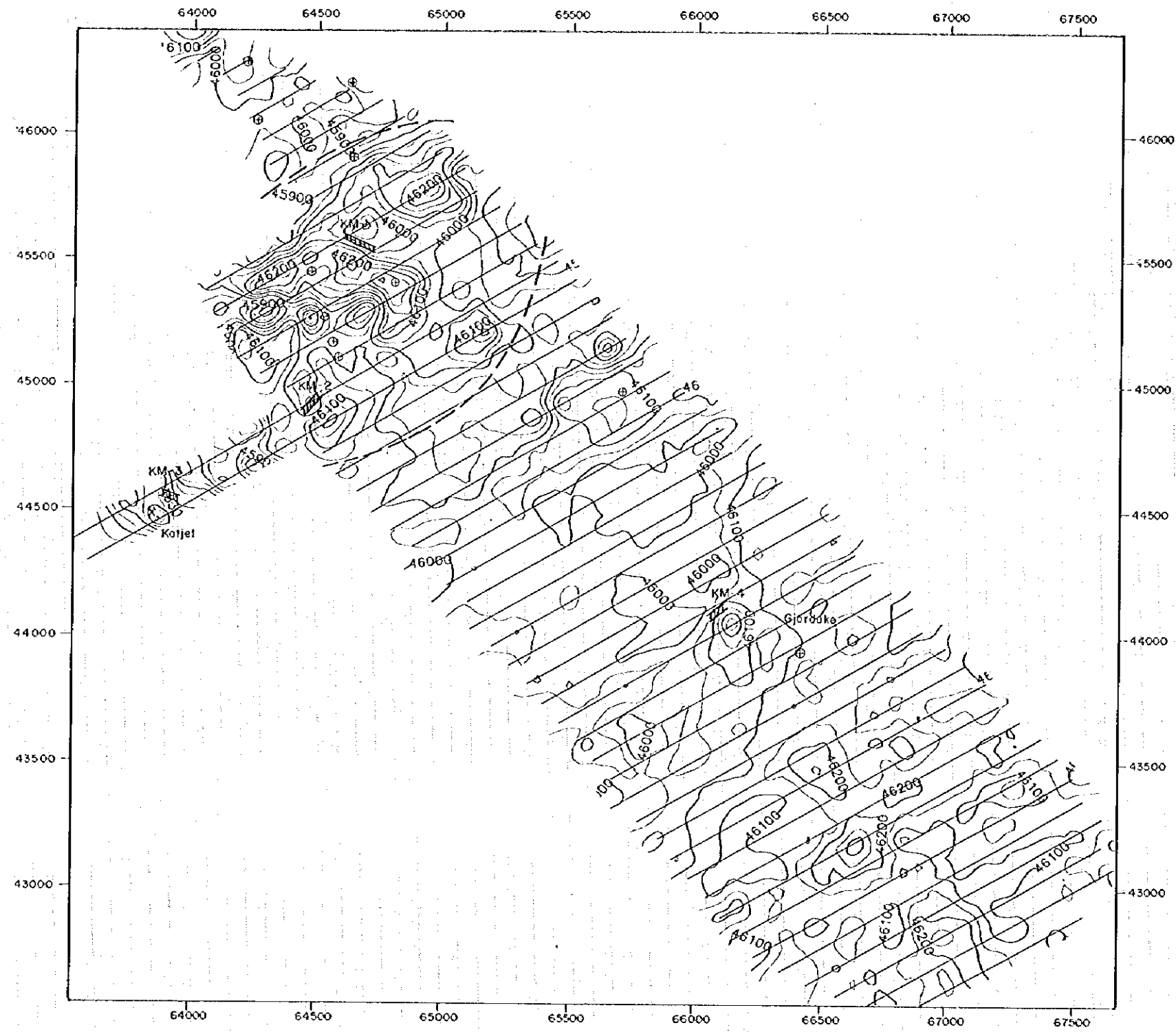
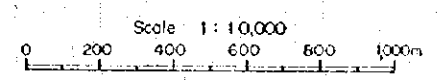


Plate 2-4-6

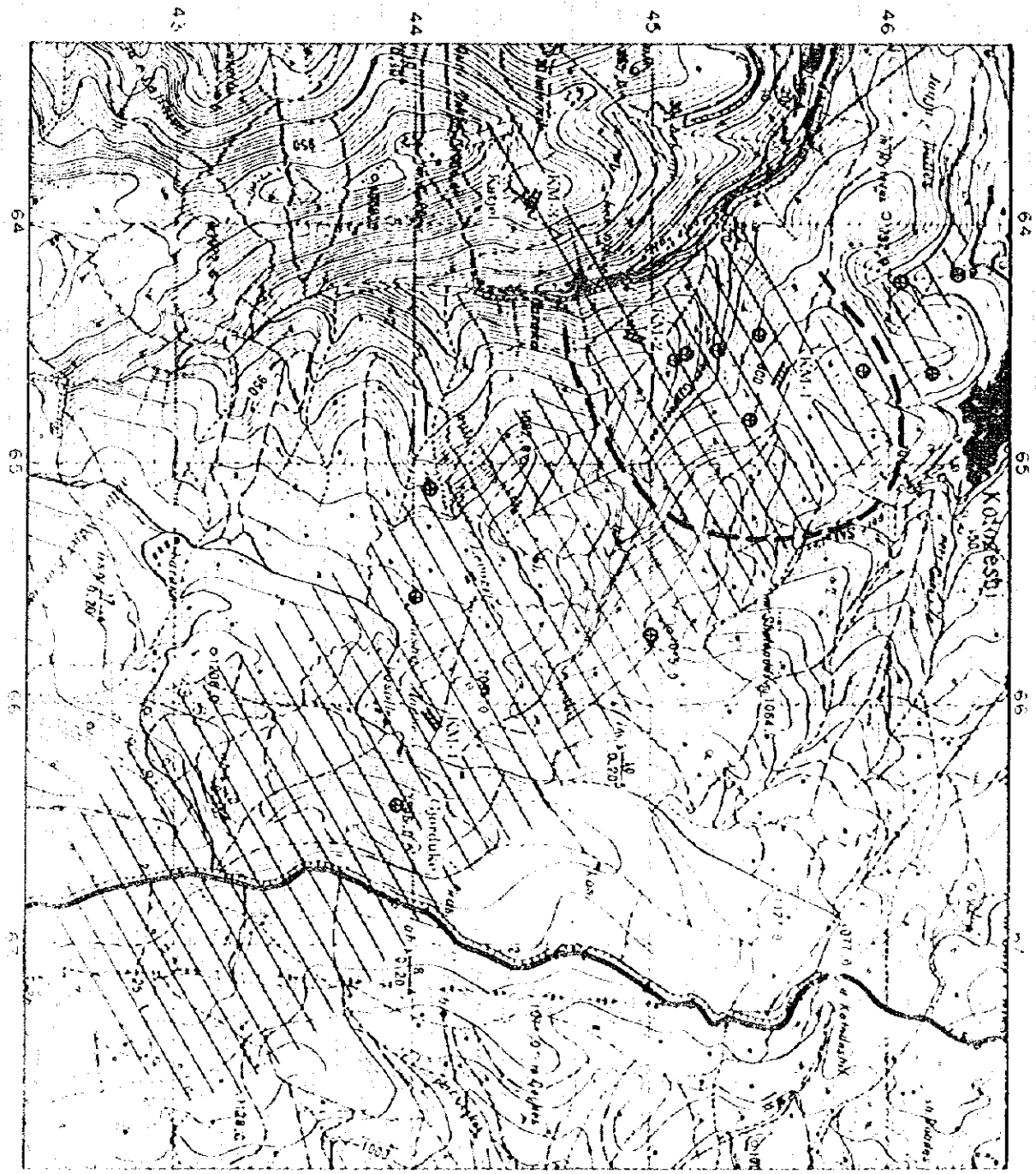
Report on the Mineral Exploration
in
the Shebenik Area, Republic of Albania
(Phase I)

**Magnetic Interpretation Map
of
Kotodesh Area**

Japan International Cooperation Agency
Metal Mining Agency of Japan
February 1996

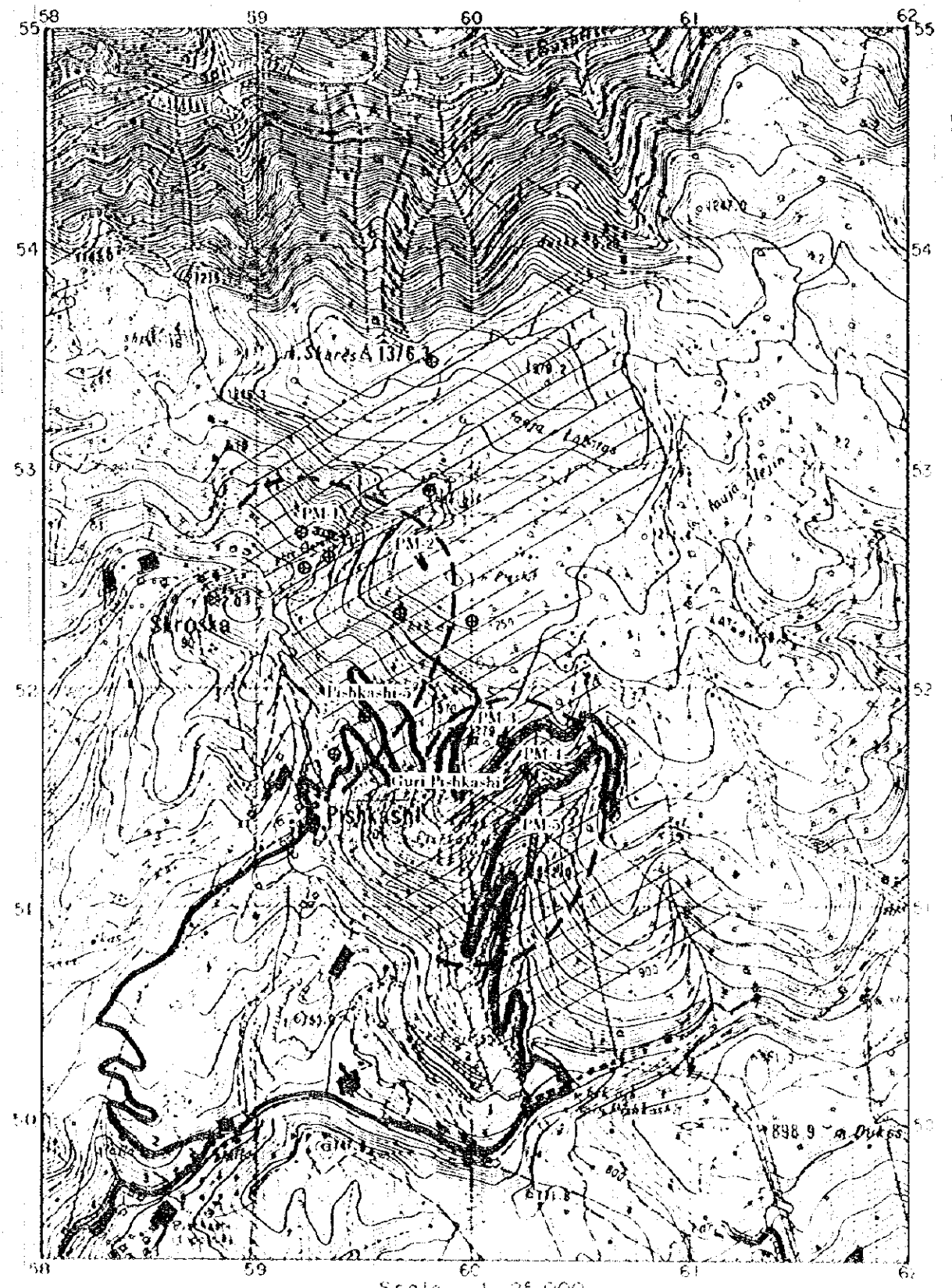


- LEGEND**
- zzzz KM-1 magnetic body
 - ⊙ mineral indication
 - X mine
 - interest zone



- PMI - Anomaly No.
- ZZZ - Magnetic Body
- ⊕ - Mineral Indication
- - Interest Zone
- X - Mine

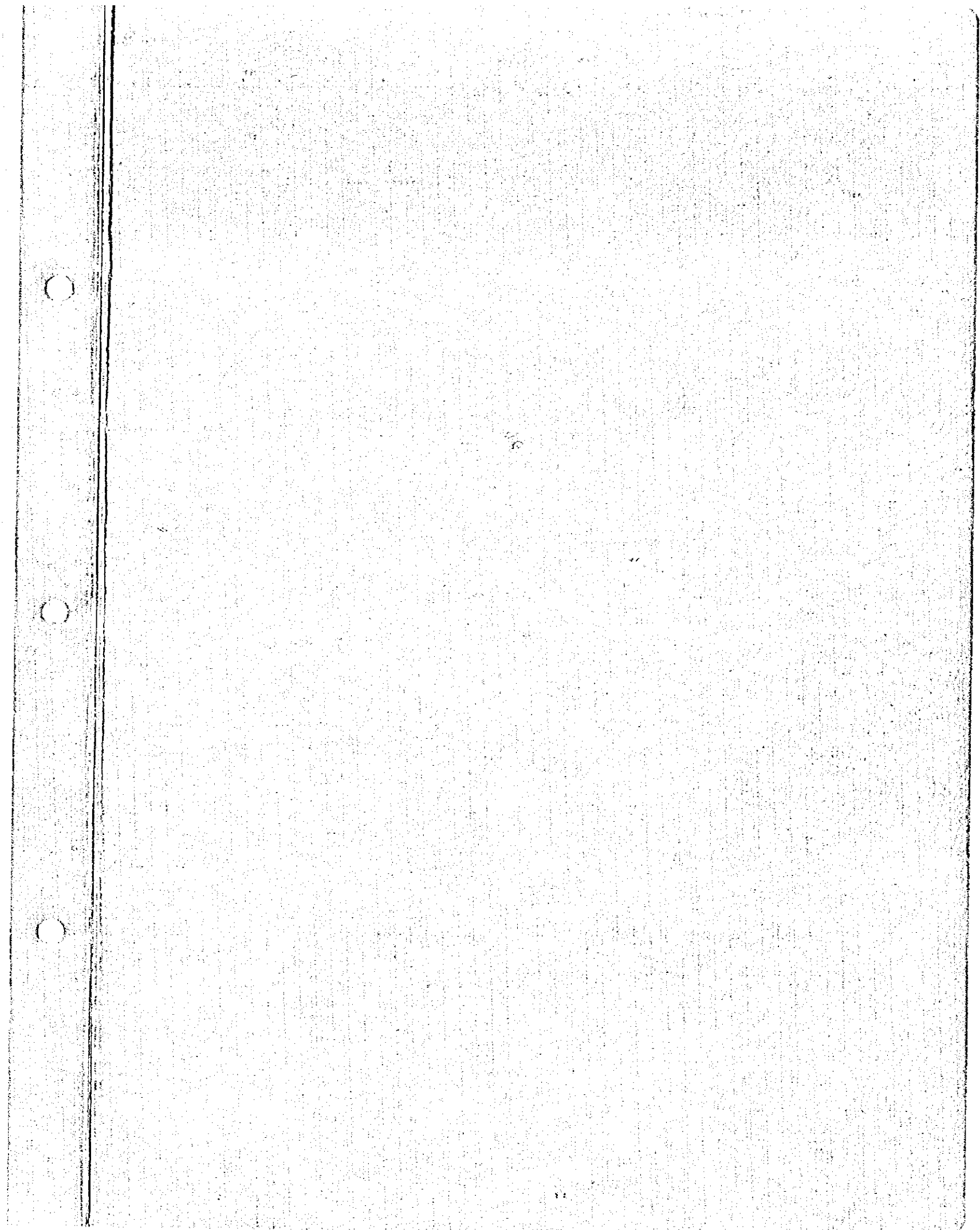
Scale 1:25,000



- PMI - Anomaly No.
- ZZZ - Magnetic Body
- ⊕ - Mineral Indication
- - Interest Zone
- X - Mine

Scale 1:25,000

km



JICA