

## 卷末資料



## 1 收集資料一覽

[Mouta, etc., 1091]

Morgan, B. D. 1974. Report for quarter ended 6 October 1974. Melven Copper Ltd. *Fiji MRD Exploration Report 1091-1*. 27 pp, 4 plans.

Lee, T. F. 1982. Report on exploration for 1981 season. Melven Copper Ltd. *Fiji MRD Exploration Report 1091-14*. 41 pp, 2 figs, 8 plans.

[Koroinasolo, 1093, 1278]

McDonald, M. J. 1976. Report on portion of SPL 1093, Vanua Levu  
Jennings Fiji Ltd. *Fiji MRD Exploration Report 1093-11*.

Buckle, P. 1987. Annual report for period ending 31 December 1987: SPL 1278 Northwest  
Vanua Levu. Report by United Resources (Fiji) Ltd. *Fiji MRD Exploration Report 1078-1*.

[Dakuniba, 1161]

Johnson R. D. and Inoke F. R. 1991. Annual report to 31/3/91. SPL 1246 Dakuniba. (Volume  
1; Texts and Appendices 1-4). Pacific Islands Gold (Fiji) Ltd. *Fiji MRD Exploration Report  
1246-11(a)*. 166 pp, 53 figs, 26 plans, 6 photos.

[Waimotu, 1185]

Brook, W. A. 1987. SPL 1185, Waimotu, Vanua Levu. Annual report for the year ended 31  
March 1987. Geopacific Resources NL and Delta Gold NL. *Fiji MRD Exploration Report  
1185-11*. 99 pp, 9 figs, 3 photos, 4 plans.

[Bill's Hill, 1185]

Brook, W. A. 1987. SPL 1185, Waimotu. Quarterly report to 30 June 1987. Geopacific  
Resources NL. *Fiji MRD Exploration Report 1185-13*. 27 pp, 17 figs.

Buckle, P. 1988. Annual report for period ending 31 December 1988, SPL 1280, Vaturova.  
United Resources (Fiji) Ltd. *Fiji MRD Exploration Report 1280-2*. 6 pp.

Gewargis A. W. 1988. Report on a diamond drilling programme, Bill's Hill Prospect.  
Geopacific Resources NL and Delta Gold NL. *Fiji MRD Exploration Report 1185-12*.

[Nuku, SPL 1185]

Taylor, G. 1988. SPL 1185 - Waimotu, Nuku Prospect drilling report. Report by PacAu (Fiji)

Ltd. Geopacific Resources NL. *Fiji MRD Exploration Report 1185-14*. 57 pp, 4 figs.

Klipfel, P. 1985. SPL 1185, Nailoca, Fiji. First quarter report 1985, Nuku Prospect.

Prepared for the Waimotu J.V. on behalf of Monminex Pty Ltd. Canyon Resources Pty Ltd.

*Fiji MRD Exploration Report 1185-10*. 70 pp, 2 figs, 8 photos, 5 plans.

[Korovula, 1185]

Klipfel, P. 1985. SPL 1185, Nailoca, Fiji. First quarter report 1985, Nuku Prospect.

Prepared for the Waimotu J.V. on behalf of Monminex Pty Ltd. Canyon Resources Pty Ltd.

*Fiji MRD Exploration Report 1185-10*. 70 pp, 2 figs, 8 photos, 5 plans.

[Valeni, SPL 1209]

Dimo, G. 1985. Annual report to the Department of Energy and Minerals for the period 1

January 1984 to 31 December 1984, SPL 1209 - Valeni. Newmont Pty Ltd. *Fiji MRD*

*Exploration Report 1209-1*. 36 pp, 10 figs, 8 plans.

[Waisali, 1213, 1353]

Hudson, G. R. T. 1985. SPL 1213. Annual report 1984 1/1/1984 - 31/12/1984. Text. Report

by Western Mining Corporation (Fiji) Ltd for Amka Minerals Exploration Ltd. *Fiji MRD*

*Exploration Report 1213-1(a)*. 115 pp, 1 fig.

Taylor, G. 1993. Final Report SPL 1353, Waisali, Vanua Levu, Fiji. Report by PacAu (Fiji) Ltd

for Beta Ltd. *Fiji MRD Exploration Report 1353-1*. 22 pp, 6 figs, 13 photos.

[Yasawa, 1214]

Jay, A. 1990. Report on area relinquished at 31 March 1990, SPL 1214, Yasawa area, Vanua

Levu. Placer Exploration Report 91/4. (Volume 1; Text). Placer Exploration Ltd. *Fiji*

*MRD Exploration Report 1214-1(a)*. 72 pp, 7 figs.

[Yasawa, 1217/1214]

Taylor, G. 1986. SPL 1214 and SPL 1217, Vanua Levu Fiji. Relinquishment report for the

period ended 1 April 1986. PacAu (Fiji) Ltd Report 23/86 for Placer Pacific Pty Ltd. *Fiji*

*MRD Exploration Report 1214/1217-3*. 16 pp, 6 figs, 26 plans.

[Tawake, etc, 1214/1217]

Taylor, G. 1986. Appendix 1 [to 1214/1217-3]. Relinquishment report SPL 1214. 1984

Barringer/MRD samples: analytical results. Placer Pacific Pty Ltd. *Fiji MRD Exploration Report 1214/1217-4*. 81 pp.

[Lomaloma, 1220]

Jay, A. 1990. SPL 1220 - Report on partial relinquishment at 31 December 1990. Placer Report 91/9. (Volume 1). *Fiji MRD Exploration Report 1220-2a*. 120 pp, 2 figs, 3 plans.

Jay, A. 1990. SPL 1220 - Report on partial relinquishment at 31 December 1990. Placer Report 91/9. (Volume 2). *Fiji MRD Exploration Report 1220-2b*. 1 pp, 5 figs, 17 plans.

Jay, A. and Royston, M. 1989. Annual report for the period ended 31 December 1988. (Volume 1). Placer Report 19/89. Placer Exploration (Fiji) Ltd. *Fiji MRD Exploration Report 1220-3(a)*. 23 pp, 2 figs, 8 plans.

Jay, A. and Royston, M. 1989. Annual report for the period ended 31 December 1988. (Volume 2; Plans, Figures 9-26). Placer Exploration (Fiji) Ltd. *Fiji MRD Exploration Report 1220-3(b)*. 1 pp, 18 plans.

[Valeni, 1224]

Jay, A. 1989. Annual report for the period ended 31/12/88, SPL 1224, Valeni, Vanua Levu, Fiji. Placer Exploration Ltd Report 43/89. *Fiji MRD Exploration Report 1224-1*. 40 pp, 2 figs, 6 plans.

Jay, A. 1989. Annual report for the period ended 31/12/89, SPL 1224, Valeni, Vanua Levu, Fiji. Placer Exploration Ltd Report 2/90. *Fiji MRD Exploration Report 1224-2*. 19 pp, 3 figs, 9 plans.

Jay, A. 1991. Final and relinquishing report to the period ended 31/12/90, SPL 1224, Valeni, Vanua Levu, Fiji. (Volume 1; Text and appendices). Placer Exploration Ltd. *Fiji MRD Exploration Report 1224-3(a)*. 92 pp, 2 figs, 2 plans.

Jay, A. 1991. Final and relinquishing report to the period ended 31/12/90, SPL 1224, Valeni, Vanua Levu, Fiji. (Volume 2; Plans). Placer Exploration Ltd. *Fiji MRD Exploration Report 1224-3(b)*. 19 plans.

[Koroiva, 1239]

Jay, A. 1987. SPL 1239 Rauriko, Vanua Levu, Fiji. Annual report for the period 1 April 1986 to 31 March 1987. (Placer Report 7/87). Placer Exploration Ltd. *Fiji MRD Exploration*

*Report 1239-1. 30 pp, 1 fig, 15 plans.*

[Vnivesi,1247]

Johnson, R. D. 1991. Annual report to 31/3/91, SPL 1247, Nasasa-Vunivesi. Pacific Islands Gold (Fiji) Ltd. *Fiji MRD Exploration Report 1247-12. 5 pp, 2 figs.*

[SPL 1260]

Anonymous 1987. Annual and relinquishment report SPL 1260 (Nasavu) Vanua Levu, Fiji. [Includes: Mineralogy of panned alluvial concentrates from Fiji and Vanuatu by Minpet Services, Rosebery, NSW, Report 20/87]. Solomon Pacific (Fiji) Pty Ltd. *Fiji MRD Exploration Report 1260-1. 26 pp, 1 fig, 5 plans.*

[Naduri,1262]

Johnson, R. D. 1987. Quarterly Report 31/12/86-31/3/87. Naduri-Dreketi. Nationwide Resources (Fiji) Ltd. *Fiji MRD Exploration Report 1262-4. 82 pp, 2 figs, 3 plans.*

Paris, I. A. and Johnson, R. D. 1989. Annual report for 1988, SPL 1262 Naduri-Dreketi. (Volume 1; Text). Pacific Islands Gold (Fiji) Ltd. *Fiji MRD Exploration Report 1262-12(a). 65 pp, 12 figs, 4 plans.*

Johnson, R. D. and Inoke, F. R. 1990. Annual Report to 31/3/90, SPL 1262 Naduri-Dreketi. (Volume 1). Pacific Islands Gold (Fiji) Ltd. *Fiji MRD Exploration Report 1262-13(a). 441 pp.*

[Savudrodoro,1277]

Lucas, M. 1987. Annual report for period ending 31 December 1987, SPL 1277, Bucalevu. United Resources (Fiji) Ltd. *Fiji MRD Exploration Report 1277-1. 5 pp, 6 plans.*

[Via Creek,1278]

Child, R. and Taylor, G. 1991. Annual report for period ending 31 December 1990, SPL 1278, NE Vanua Levu. United Resources (Fiji) Ltd. *Fiji MRD Exploration Report 1278-4. 8 pp, 9 figs.*

[Vaturova,1280]

Buckle, P. 1988. Annual report for period ending 31 December 1987, SPL 1280, Vaturova. United Resources (Fiji) Ltd. *Fiji MRD Exploration Report 1280-1. 37 pp, 3 figs, 8 plans.*

[Coquloa,1284]

Williams, J. 1987. Vanua Levu, Fiji, SPL 1284 Coqeloa. Progress report for period ended December 1987. [Includes: Petrographic report by R. Townsend]. Esmeralda Exploration (Fiji) Pty Ltd. *Fiji MRD Exploration Report 1284-1*. 43 pp, 9 plans.

{Tabia,1287}

Levings, J. 1988. Tabia - SPL 1287, Vanua Levu. Summary of work completed, analysis of results obtained and recommendations for further exploration. Report by M. Rogers and Associates Pty Ltd for Wavrin Holdings Pty Ltd. *Fiji MRD Exploration Report 1287-1*. 57 pp, 13 figs.

[Nasese,1291]

Telakowska, Z. and Henderson, S. M. 1988. Annual report Tunuloa licence, SPL 1291 for period 1988. Beta Ltd. *Fiji MRD Exploration Report 1291-1*. 85 pp, 1 fig, 14 plates, 9 plans.

Taylor, G. P. and Henderson, S. M. 1989. Annual report Tunuloa, SPL 1291. Beta Ltd. *Fiji MRD Exploration Report 1291-2*. 5 pp, 1 fig, 4 plates, 6 plans.

Henderson, S. M. 1990. SPL 1291 Tunuloa. Relinquishment report, December 1989. Beta Ltd. *Fiji MRD Exploration Report 1291-3*. 9 pp, 2 figs.

Johnson R. D. and Inoke F. R. 1991. Annual report to 31/3/91. SPL 1246 Dakuniba. (Volume 2; Maps). Pacific Islands Gold (Fiji) Ltd. *Fiji MRD Exploration Report 1246-11(b)*. 1 pp, 32 figs, 18 plans.

[Nakoroutari,SPL 1301]

Taylor, G. 1989. Annual report for the period ending 31 December 1988. SPL 1301 - Nakoroutari, Vanua Levu, Fiji. (Volume 1). Report by PacAu (Fiji) Ltd for Paget Gold Mining (Fiji) Ltd. *Fiji MRD Exploration Report 1301-1(a)*. 14 pp.

Taylor, G. 1989. Annual report for the period ending 31 December 1988. SPL 1301 - Nakoroutari, Vanua Levu, Fiji. (Volume 2 ; Appendices 1-3). [Includes: Appendix 1 - An airborne magnetic survey of the Labasa Caldera, Vanua Levu, Fiji. 31 pp. Also includes: Appendix 2 - Ground magnetic and Induced Polarisation surveys at Leli's Prospect,

Nakoroutari, SPL 1301, Fiji, by H Rutter, Geophysical Exploration Consultants Pty Ltd. 10 pp, 14 figs. *Also includes*: Appendix 3 - Petrology of surface samples collected from Leli's Prospect, Vanua Levu, Fiji for PacAu (Fiji) Ltd by A. Coote, Chartered Mineral Services]. Report by PacAu (Fiji) Ltd for Paget Gold Mining (Fiji) Ltd. *Fiji MRD Exploration Report 1301-1(b)*. 25 pp, 10 figs, plus appendices.

Taylor, G. 1989. Annual report for the period ending 31 December 1988. SPL 1301 - Nakoroutari, Vanua Levu, Fiji. (Volume 3; geochemical analytical results and drill-hole logs, and plans showing results of magnetic survey by Geoterrex Pty Ltd). Report by PacAu (Fiji) Ltd for Paget Gold Mining (Fiji) Ltd. *Fiji MRD Exploration Report 1301-1(c)*. 225 pp, pp, 6 plans.

[Quibo, etc., 1327]

Swingler, N. K. 1989. SPL 1327 Quarterly report, Visoqo gold project, Udu Peninsula, Vanua Levu, Fiji. Report by N. K. Swingler and Associates for Kia Pacific Gold Ltd. *Fiji MRD Exploration Report 1327-1*. 64 pp, 2 figs.

Swingler, N. K. 1991. SPL 1327 Final report, Visoqo - Rauriko (Au-Zn-Cu) project, NE Vanua Levu, Fiji. Report by N. K. Swingler and Associates for Kia Pacific Gold Ltd. *Fiji MRD Exploration Report 1327-2*. 39 pp, 9 figs.

[SPL 1330]

Johnson, R. D. and Inoke, F. 1991. Annual report for the period 8/1/90 to 31/12/90, SPL 1330, Nacula. Pacific Islands Gold (Fiji) Ltd. *Fiji MRD Exploration Report 1330-1*. 62 pp, 3 figs.

[Nubu, 1332]

Jay, A. 1993. Annual and relinquishing report for the period ended 30 June 1991, SPL 1332 Korolailai, Vanua Levu, Fiji. [Placer Report FJ02/93]. Placer Exploration Ltd. *Fiji MRD Exploration Report 1332-1*. 19 pp, 2 figs, 1 plan.

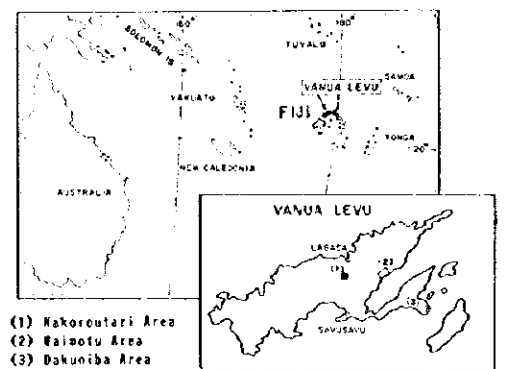
[SPL1348]

Thompson, S. I. 1992. Report on exploration within Seatura SPL 1348, Fiji for the 6 months ending 30 June 1992. [CRAE Report 18136]. Copper Resources (Fiji) Ltd. *Fiji MRD Exploration Report 1348-1*. 46 pp, 5 plans.





GEOLOGIC MAP OF THE NAKOROUTARI AREA



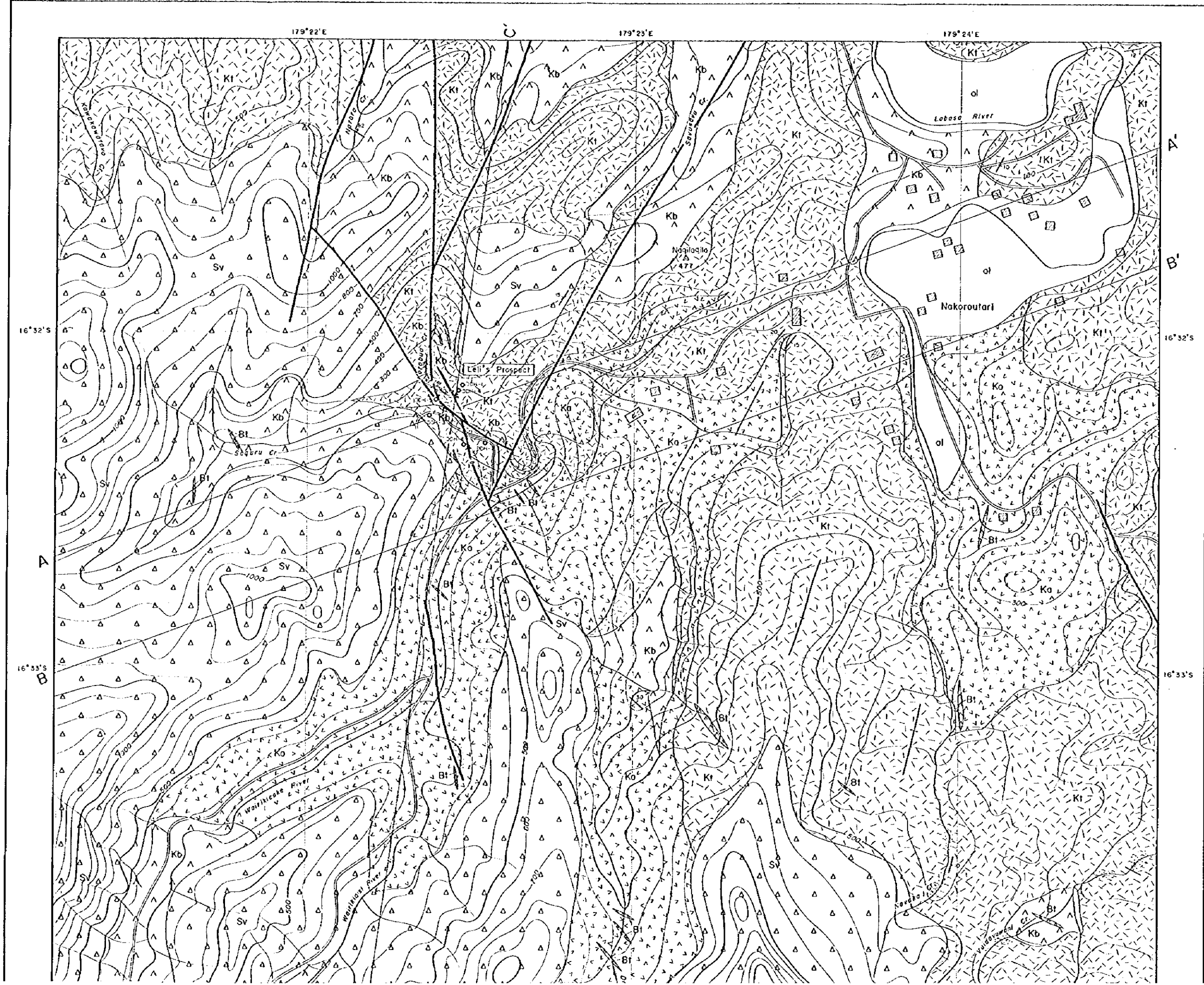
FEBRUARY 1956

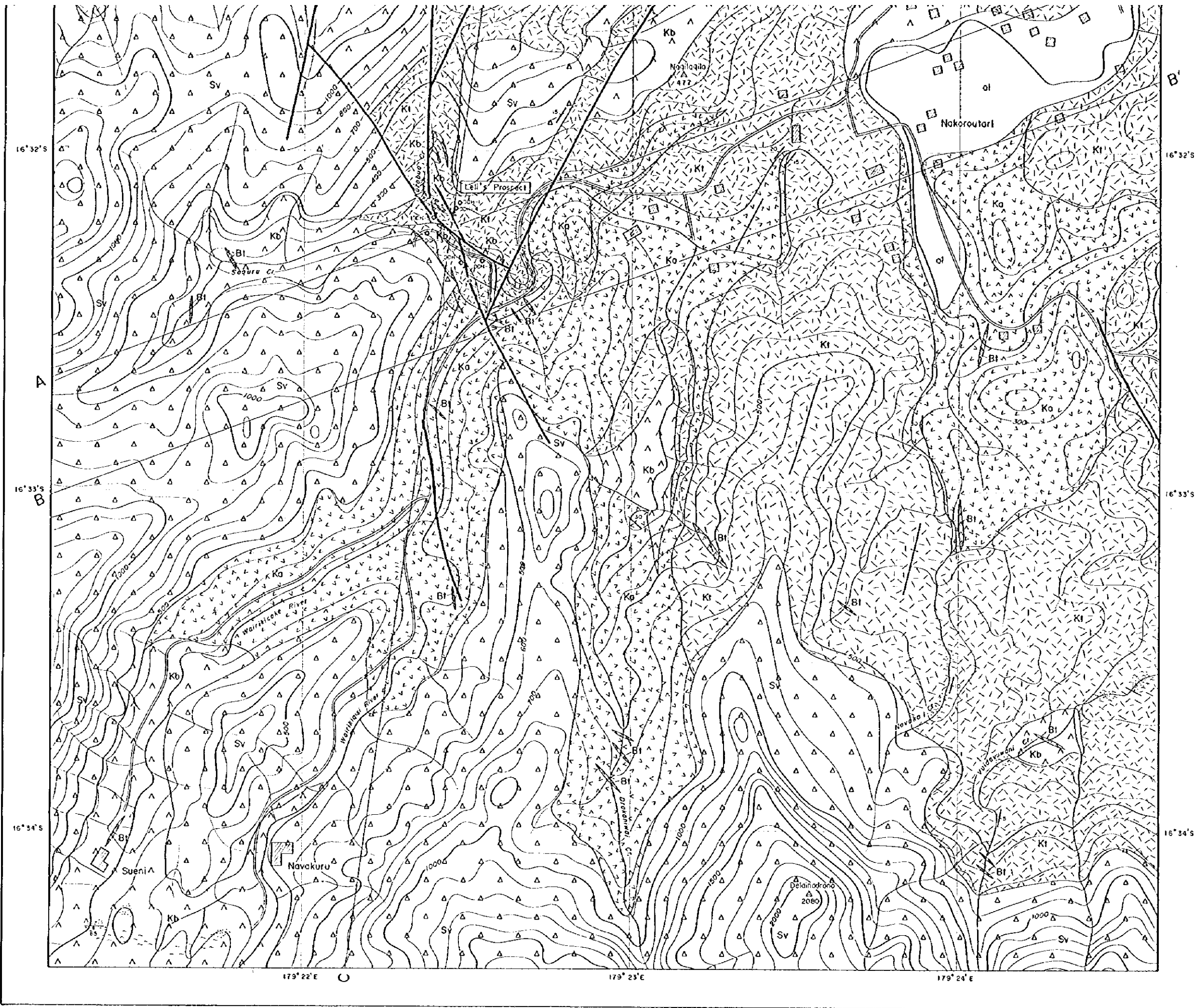
JAPAN INTERNATIONAL COOPERATION AGENCY  
METAL MINING AGENCY OF JAPAN

Scale 1:10,000

LEGEND

- at Alluvium
- Sveni Breccias Sv Andesitic volcanoclastic rocks
- Ki Volcanoclastic rocks
- Koroutari Andesites Ka Andesite - basaltic andesite lavas
- Kb Basalt lavas
- Intrusive rock Bt Basalt
- Fault
- ↘ Dip and strike
- ↗ Anticlinal axis
- ↘ Synclinal axis
- Quartz vein
- ... Pyrite dissemination
- ... Argillization
- Trench
- ⊙ Drill hole
- Profile line
- Elevation in feet





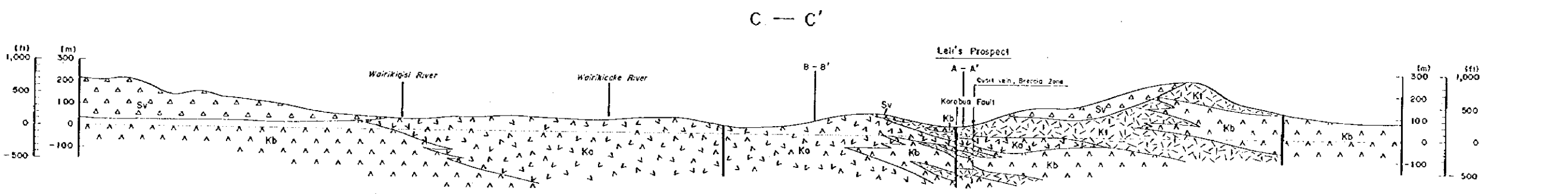
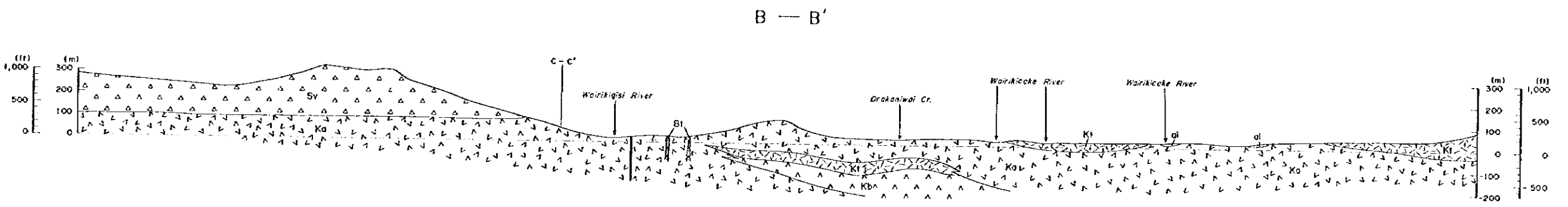
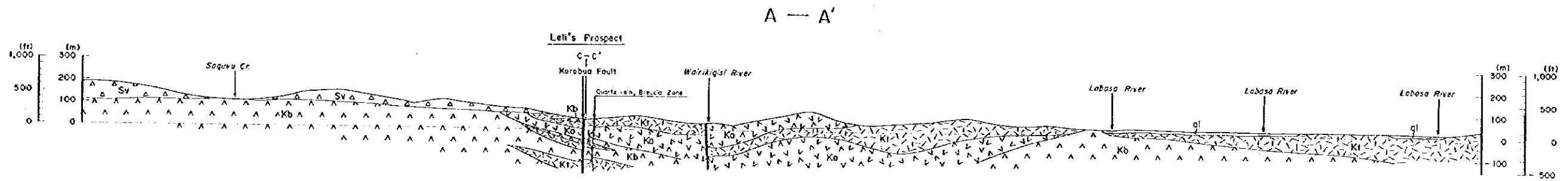
(1) Nakoroutari Area  
 (2) Wairirake Area  
 (3) Dakuniba Area

FEBRUARY 1996

JAPAN INTERNATIONAL COOPERATION AGENCY  
 METAL MINING AGENCY OF JAPAN

Scale 1:10,000

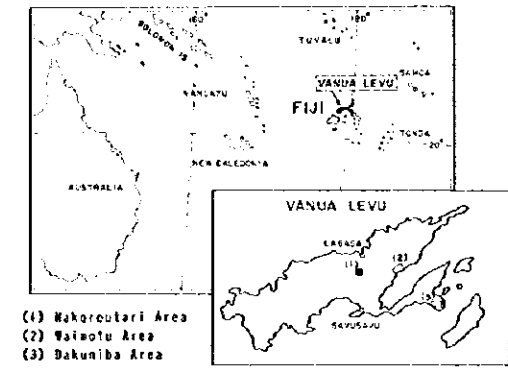
- LEGEND**
- Alluvium
  - Sueni Breccias**
    - Andesitic volcanoclastic rocks
  - Karautari Andesites**
    - Volcanoclastic rocks
    - Andesite ~ basaltic andesite lavas
    - Basalt lavas
  - Intrusive rock**
    - Basalt
  - Fault
  - Dip and strike
  - Anticlinal axis
  - Synclinal axis
  - Quartz vein
  - Pyrite dissemination
  - Argillization
  - Trench
  - Drill hole
  - Profile line
  - Elevation in feet



(1)  
(2)  
(3)

REPORT ON THE MINERAL EXPLORATION  
IN VANUA LEVU  
THE REPUBLIC OF FIJI  
PHASE I

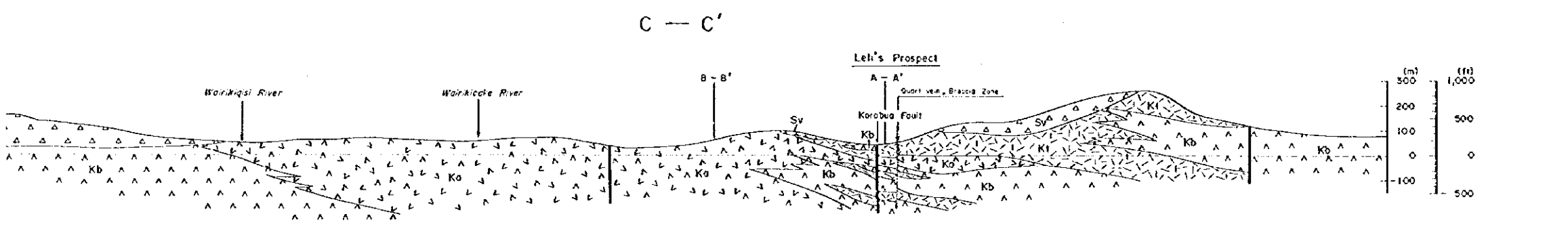
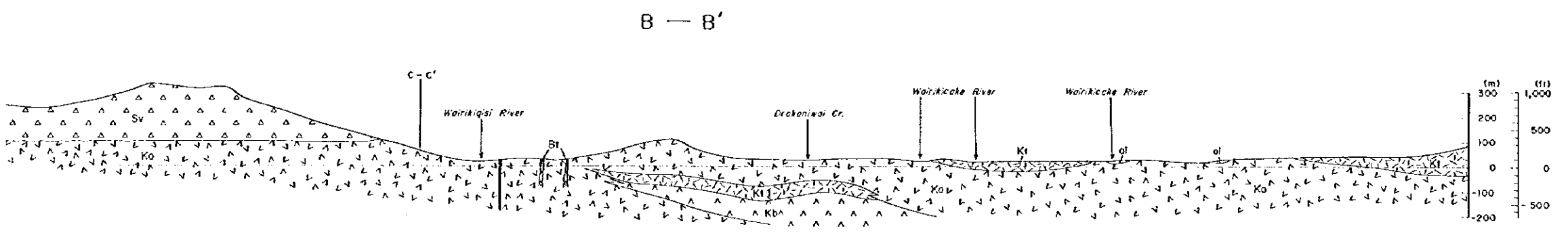
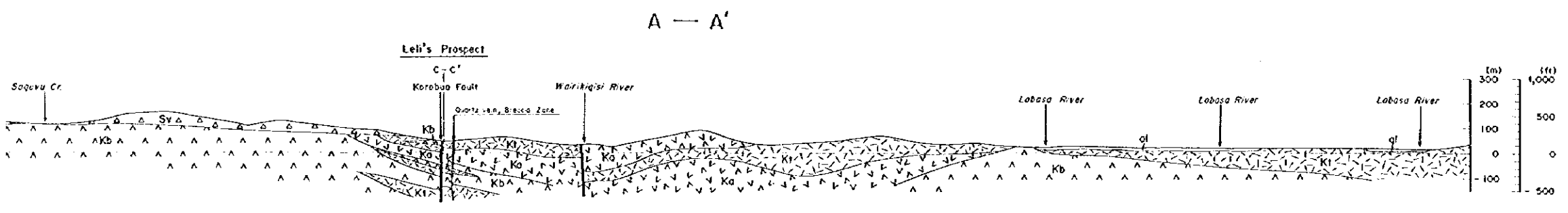
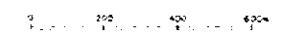
GEOLOGIC PROFILES OF THE  
NAKOROUTARI AREA



FEBRUARY 1996

JAPAN INTERNATIONAL COOPERATION AGENCY  
METAL MINING AGENCY OF JAPAN

Scale 1:10,000

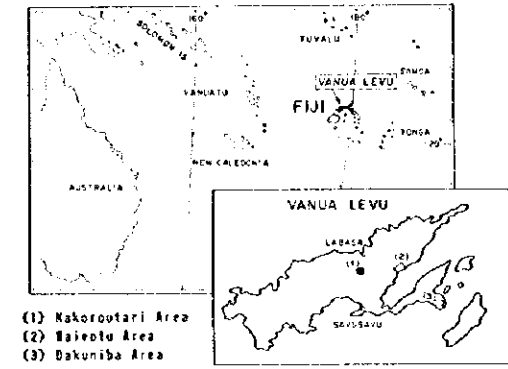


LEGEND

- ol Alluvium
- Sv Breccias
- △ Andesitic volcanoclastic rocks
- Volcanoclastic rocks
- Ko Andesites
- Andesite - basaltic andesite lavas
- Basalt lavas
- Intrusive rocks
- Basalt
- Bt
- Fault
- Quartz vein
- Drill hole

REPORT ON THE MINERAL EXPLORATION  
IN VANUA LEVU  
THE REPUBLIC OF FIJI  
PHASE 1

### SAMPLE LOCATION MAP OF THE NAKOROUTARI AREA



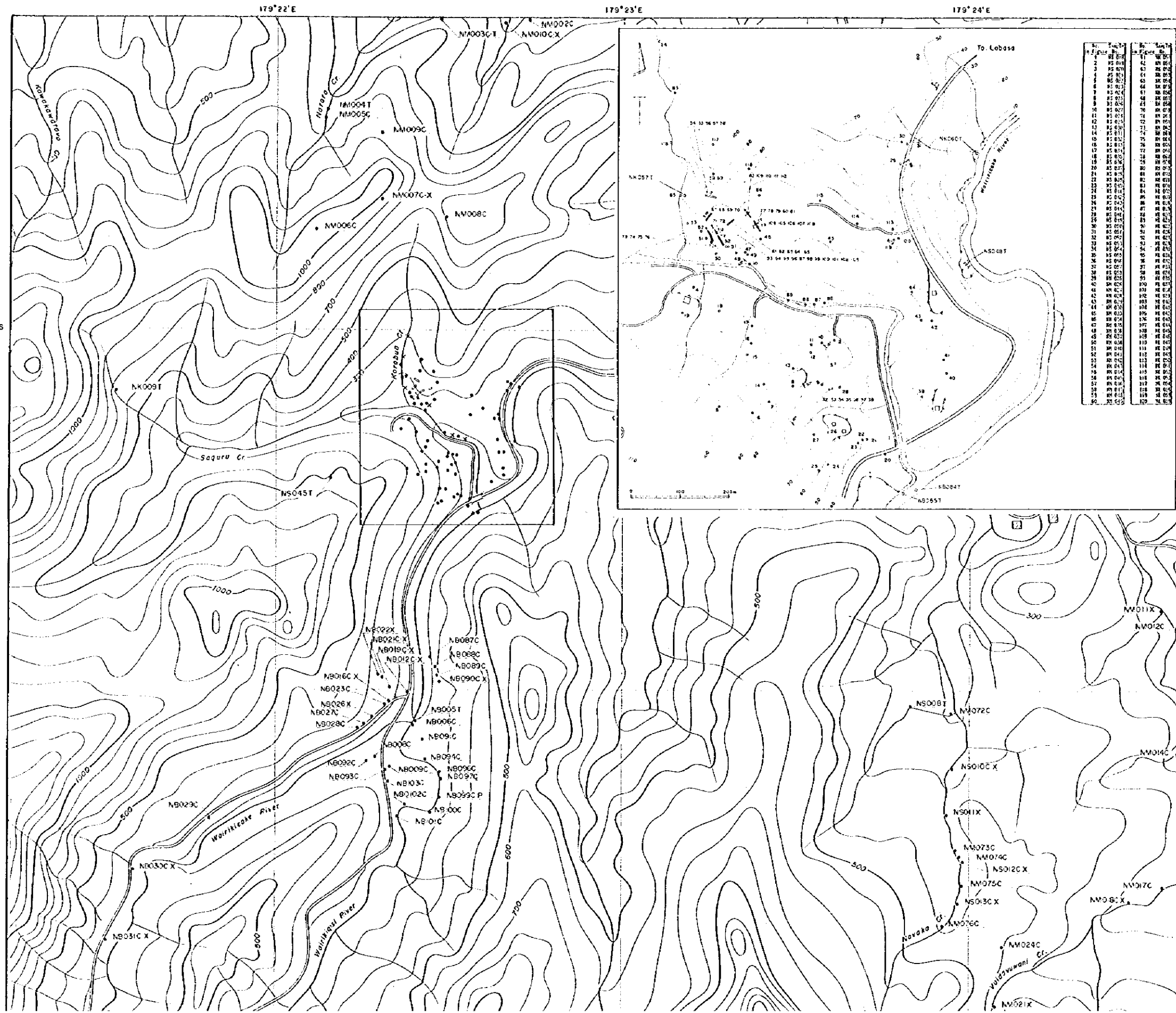
FEBRUARY 1996

JAPAN INTERNATIONAL COOPERATION AGENCY  
METAL MINING AGENCY OF JAPAN

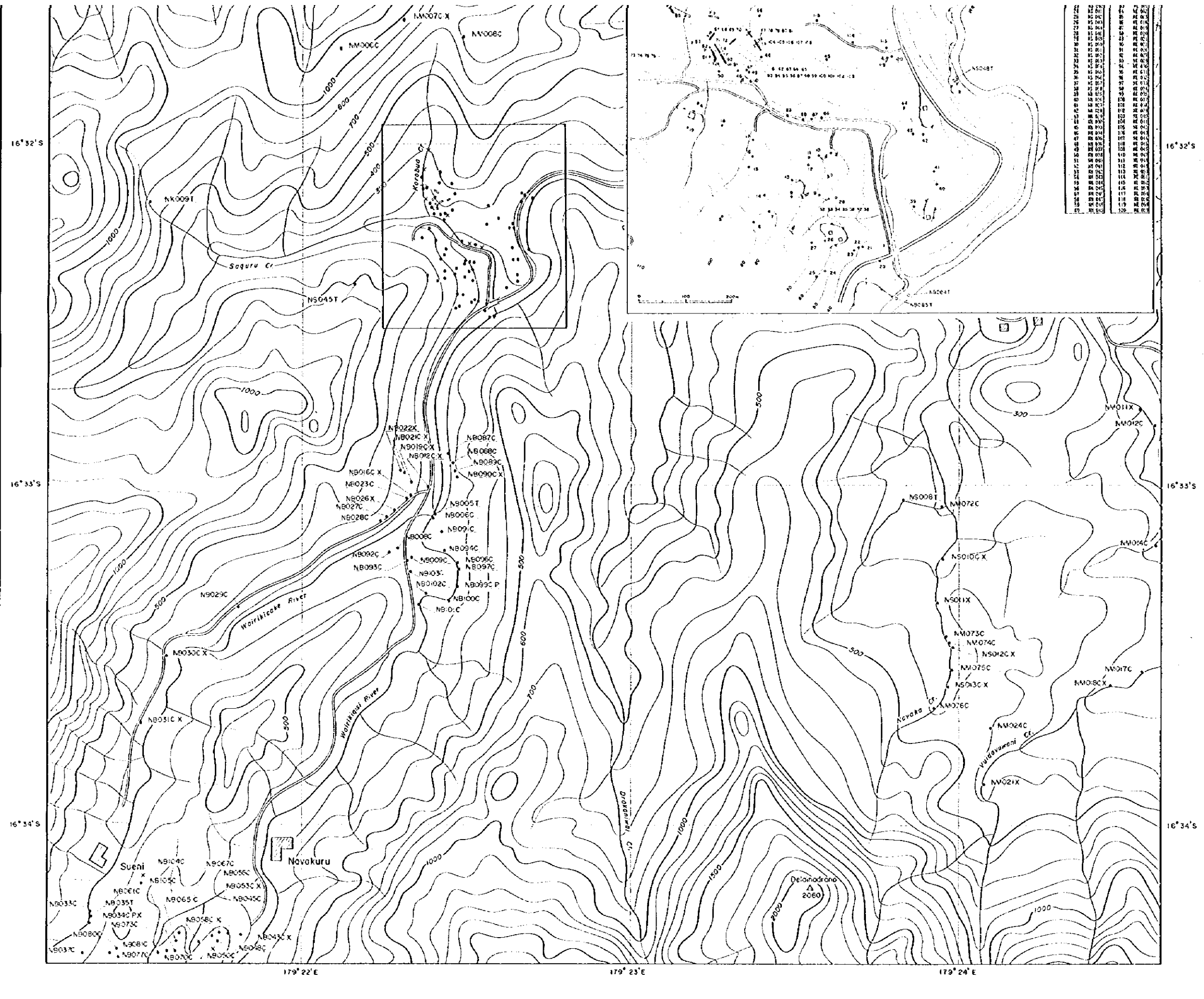
Scale 1:10,000

#### LEGEND

- Outcrop
- x Floor
- NS028C P SampleNo.    C: for Chemical analysis
- T: for Thin section
- P: for Polished section
- X: for X-ray diffraction analysis
- ▬ Trench
- ◉ Drift hole
- ▭ Detailed survey (Le's prospect)



No.	Symbol	Symbol	Symbol
1	•	•	•
2	x	x	x
3	NS028C P	NS028C P	NS028C P
4	▬	▬	▬
5	◉	◉	◉
6	▭	▭	▭
7	C	C	C
8	T	T	T
9	P	P	P
10	X	X	X
11	▬	▬	▬
12	◉	◉	◉
13	▭	▭	▭
14	•	•	•
15	x	x	x
16	NS028C P	NS028C P	NS028C P
17	▬	▬	▬
18	◉	◉	◉
19	▭	▭	▭
20	•	•	•
21	x	x	x
22	NS028C P	NS028C P	NS028C P
23	▬	▬	▬
24	◉	◉	◉
25	▭	▭	▭
26	•	•	•
27	x	x	x
28	NS028C P	NS028C P	NS028C P
29	▬	▬	▬
30	◉	◉	◉
31	▭	▭	▭
32	•	•	•
33	x	x	x
34	NS028C P	NS028C P	NS028C P
35	▬	▬	▬
36	◉	◉	◉
37	▭	▭	▭
38	•	•	•
39	x	x	x
40	NS028C P	NS028C P	NS028C P
41	▬	▬	▬
42	◉	◉	◉
43	▭	▭	▭
44	•	•	•
45	x	x	x
46	NS028C P	NS028C P	NS028C P
47	▬	▬	▬
48	◉	◉	◉
49	▭	▭	▭
50	•	•	•
51	x	x	x
52	NS028C P	NS028C P	NS028C P
53	▬	▬	▬
54	◉	◉	◉
55	▭	▭	▭
56	•	•	•
57	x	x	x
58	NS028C P	NS028C P	NS028C P
59	▬	▬	▬
60	◉	◉	◉
61	▭	▭	▭
62	•	•	•
63	x	x	x
64	NS028C P	NS028C P	NS028C P
65	▬	▬	▬
66	◉	◉	◉
67	▭	▭	▭
68	•	•	•
69	x	x	x
70	NS028C P	NS028C P	NS028C P
71	▬	▬	▬
72	◉	◉	◉
73	▭	▭	▭
74	•	•	•
75	x	x	x
76	NS028C P	NS028C P	NS028C P
77	▬	▬	▬
78	◉	◉	◉
79	▭	▭	▭
80	•	•	•



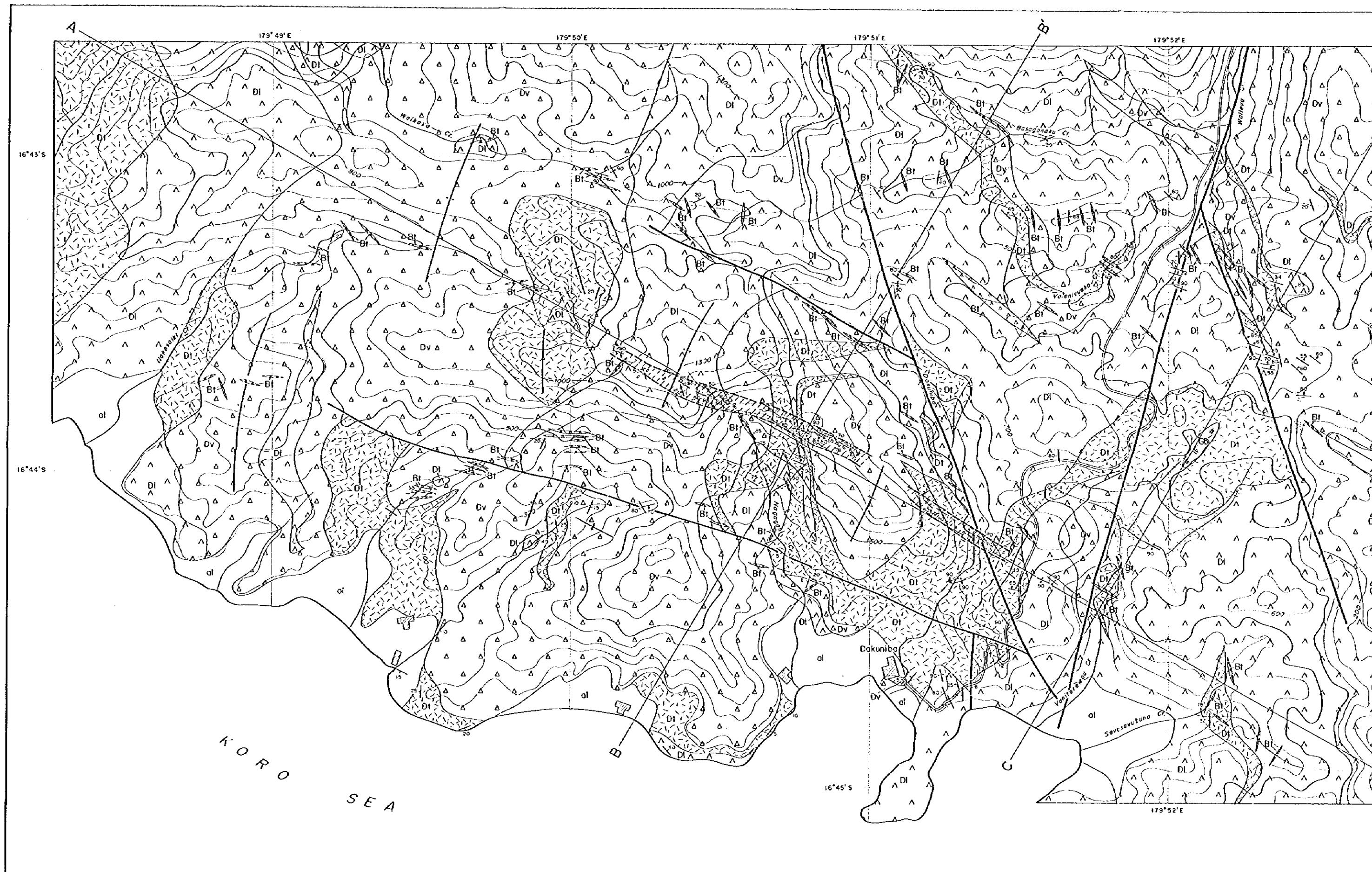
(1) Nakorouari Area  
(2) Wainotu Area  
(3) Dakuniba Area

FEBRUARY 1956

JAPAN INTERNATIONAL COOPERATION AGENCY  
METAL MINING AGENCY OF JAPAN

Scale 1:10,000

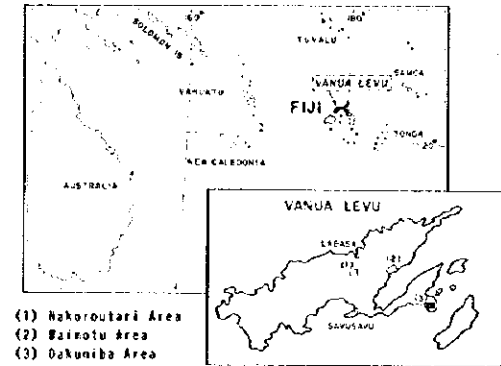
- LEGEND
- Outcrop
  - x Float
  - NS028C P Sample No.
    - C: for Chemical analysis
    - T: for Thin section
    - P: for Polished section
    - X: for X-ray diffraction analysis
  - Trench
  - Drift hole
  - Detailed survey (Ledi's prospect)





REPORT ON THE MINERAL EXPLORATION  
IN VANUA LEVU  
THE REPUBLIC OF FIJI  
PHASE 1

GEOLOGIC MAP OF THE DAKUNIBA AREA



FEBRUARY 1996

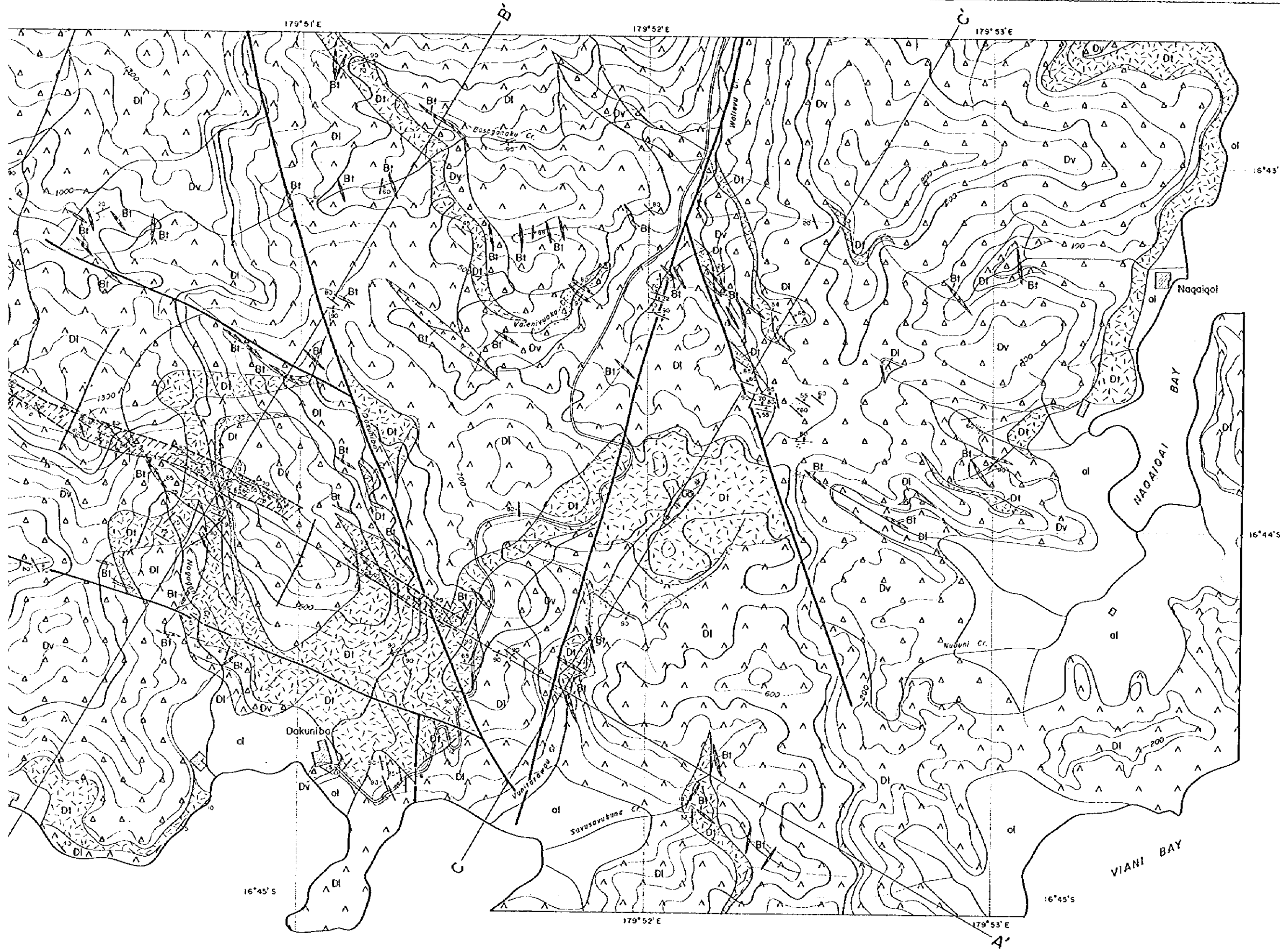
JAPAN INTERNATIONAL COOPERATION AGENCY  
METAL MINING AGENCY OF JAPAN

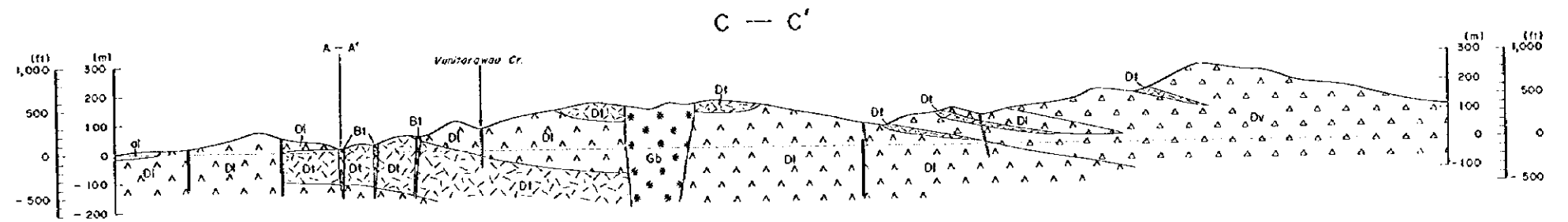
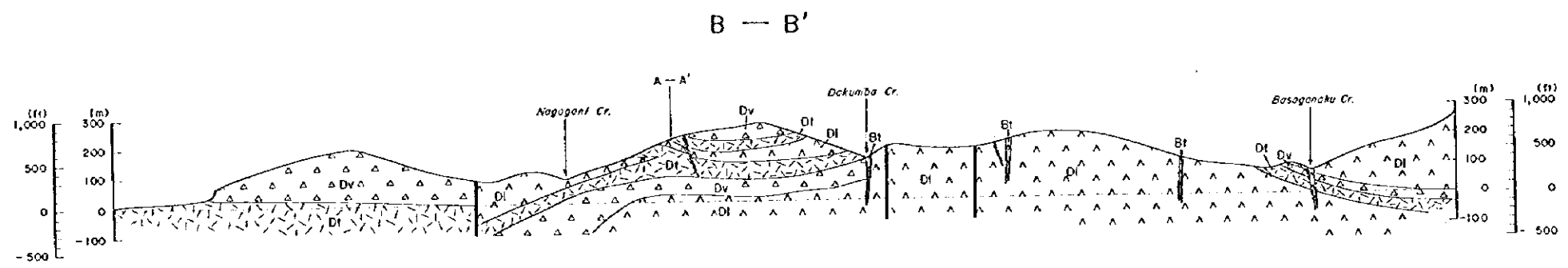
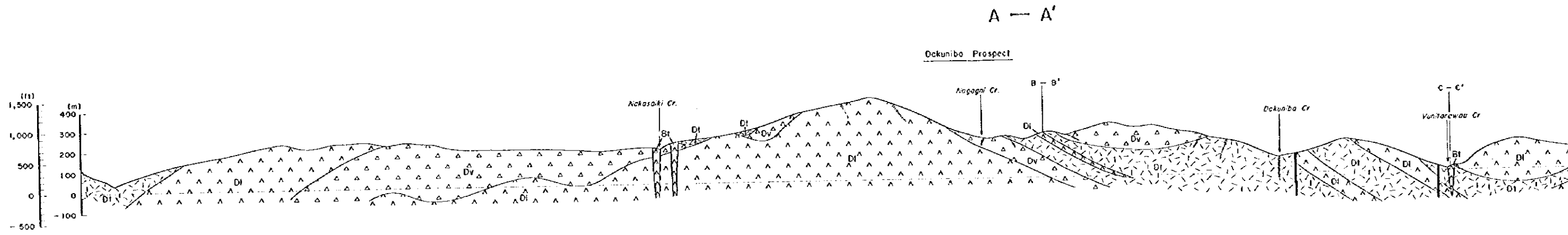
Scale 1:10,000



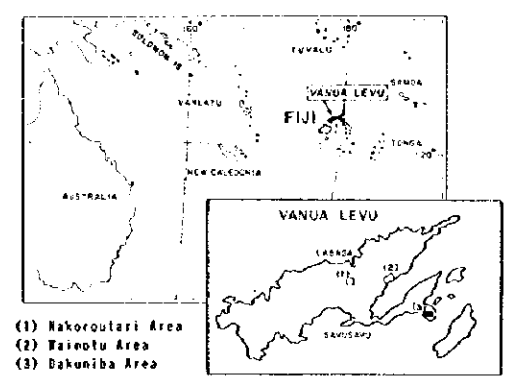
LEGEND

- al Alluvium
- Volcaniclastic rocks (tuff - lapilli tuff, tuff breccia)
- Dakuniba Basalt
  - Basalt (brecciated lavas and volcanic breccias)
  - Basalt (compact lavas)
- Intrusive rocks
  - Basalt
  - Gabbro
- Fault
- 25 Dip and strike
- Anticlinal axis
- Synclinal axis
- 25 Quartz vein
- Mineralization zone
- Pyrite dissemination
- Trench
- Profile line
- 500 Elevation in feet





GEOLOGIC PROFILES OF THE DAKUNIBA AREA



FEBRUARY 1996

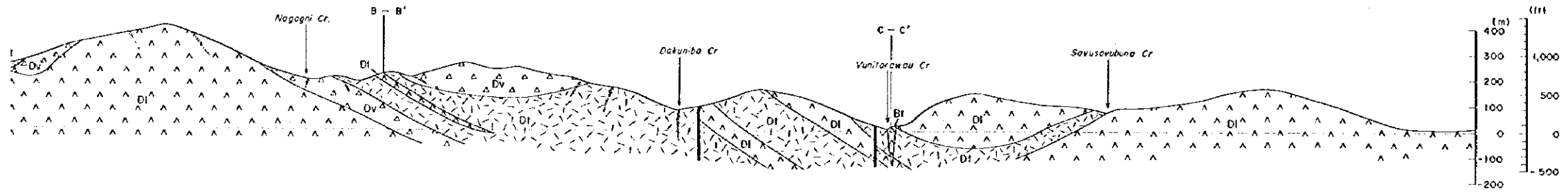
JAPAN INTERNATIONAL COOPERATION AGENCY  
METAL MINING AGENCY OF JAPAN

Scale 1:10,000



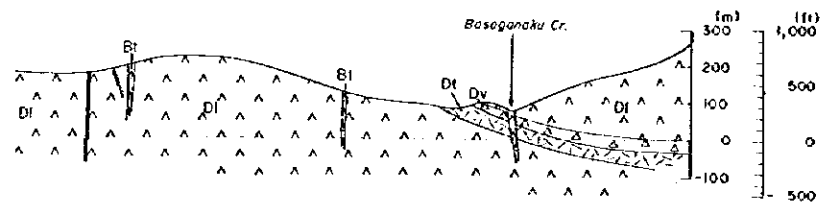
A — A'

Dakuniba Prospect

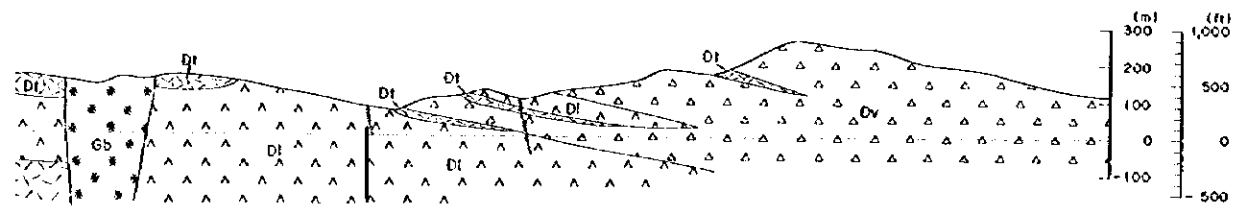


B — B'

Baseganaku Cr.

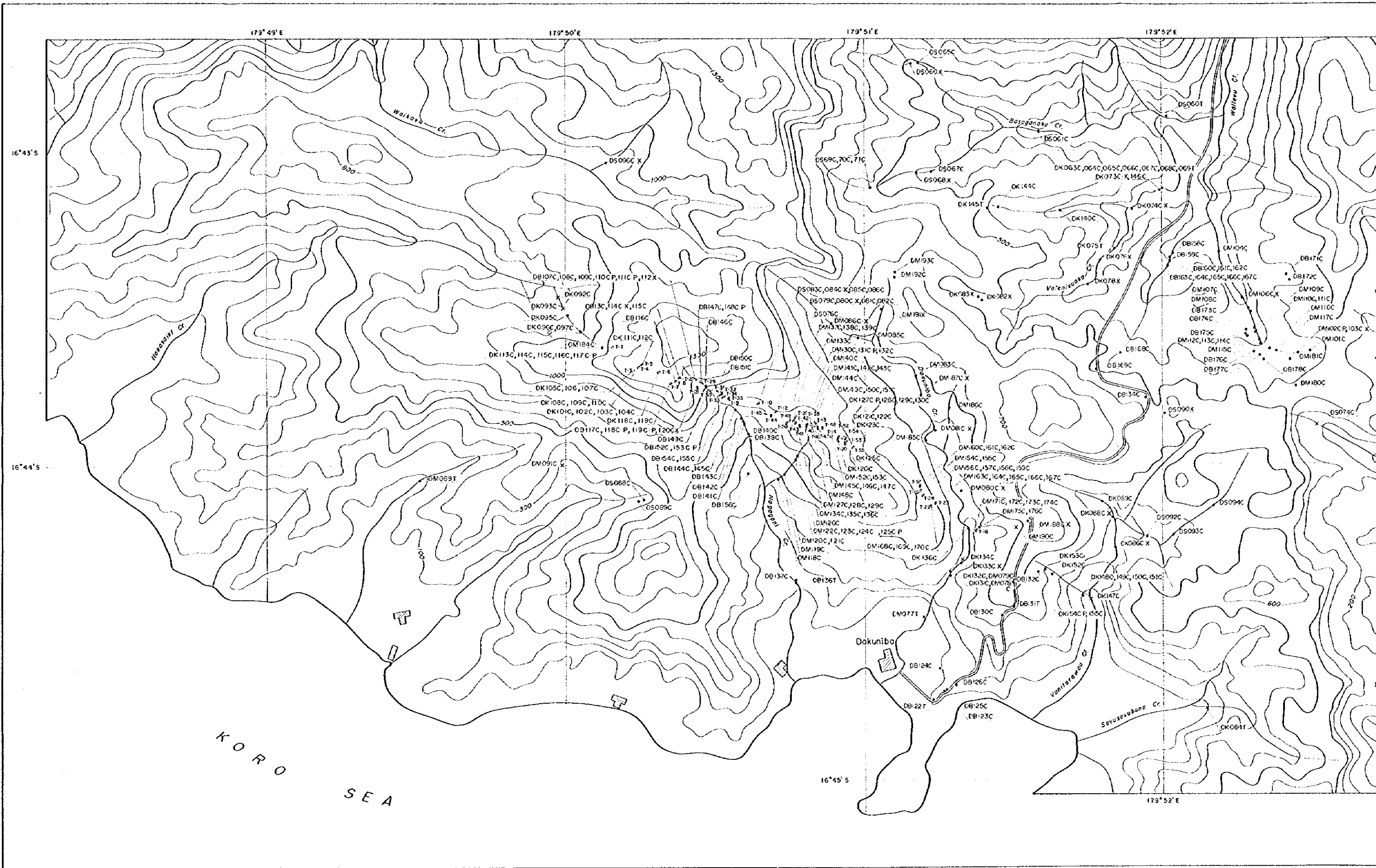


C — C'



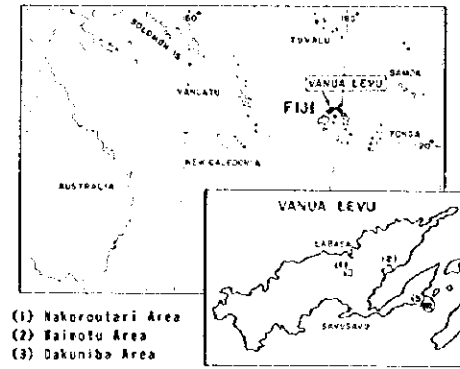
LEGEND

- Alluvium
- Volcaniclastic rocks (tuff-lapilli tuff, tuff breccia)
- ▲ Basalt (brecciated lava and volcanic breccia)
- ▲ Basalt (compact lavas)
- ▲ Basalt (intrusive rocks)
- Gabbro
- Fault
- Quartz vein



REPORT ON THE MINERAL EXPLORATION  
IN VANUA LEVU  
THE REPUBLIC OF FIJI  
PHASE I

SAMPLE LOCATION MAP OF THE  
DAKUNIBA AREA



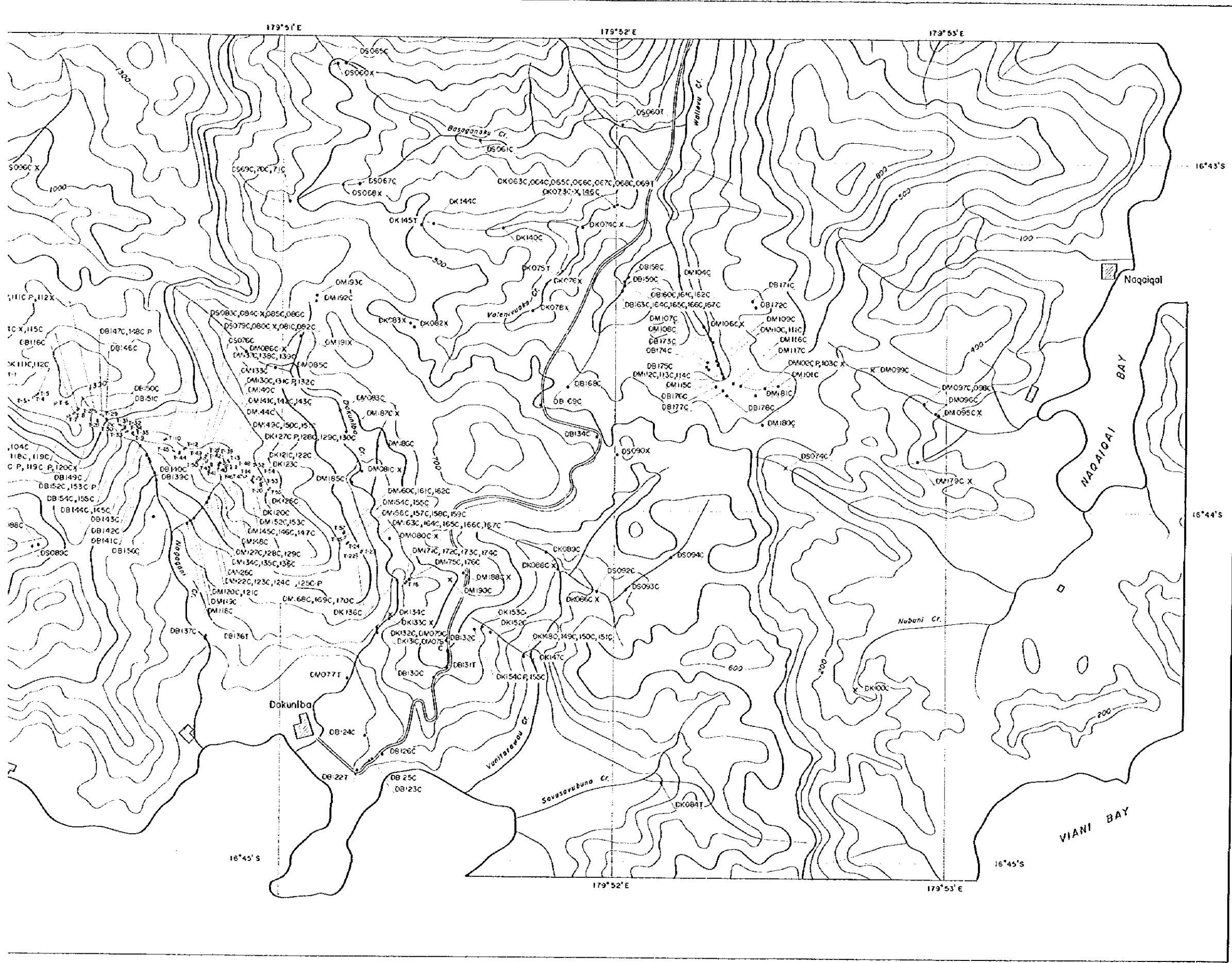
FEBRUARY 1956

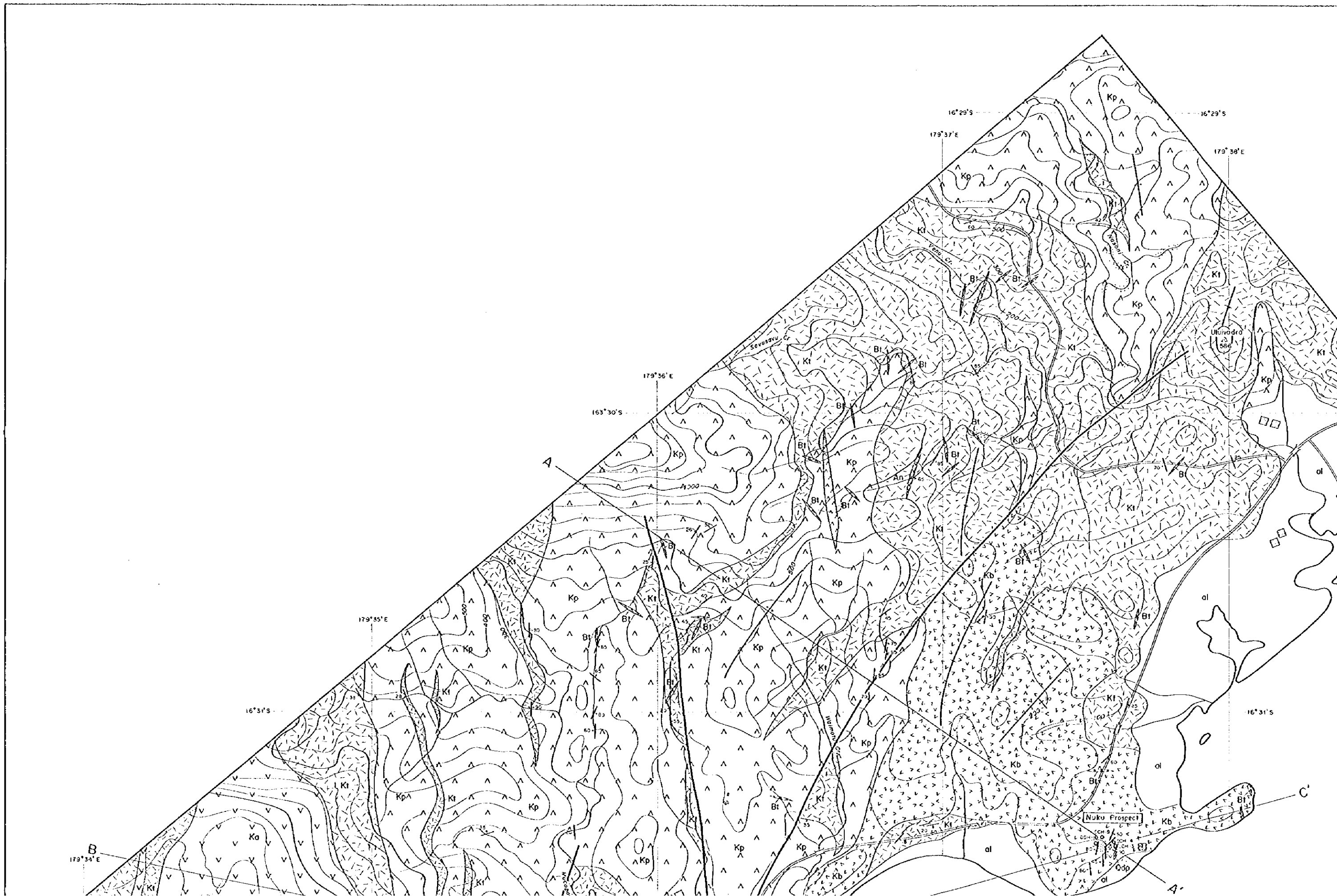
JAPAN INTERNATIONAL COOPERATION AGENCY  
METAL MINING AGENCY OF JAPAN

Scale 1:10,000



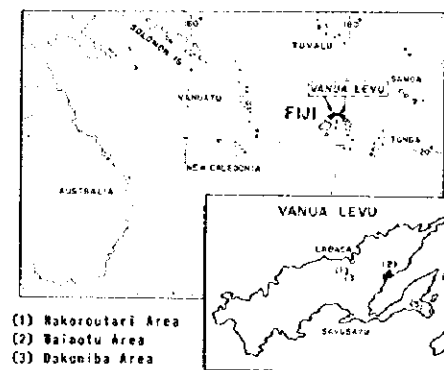
- LEGEND
- Outcrop
  - x Floot
  - OS0600 P Sample No.
    - C for Chemical analysis
    - F for Thin section
    - P for Polished section
    - X for X-ray diffraction analysis
  - ◊ Trench





REPORT ON THE MINERAL EXPLORATION  
IN VANUA LEVU  
THE REPUBLIC OF FIJI  
PHASE I

GEOLOGIC MAP OF THE WAIMOTU AREA



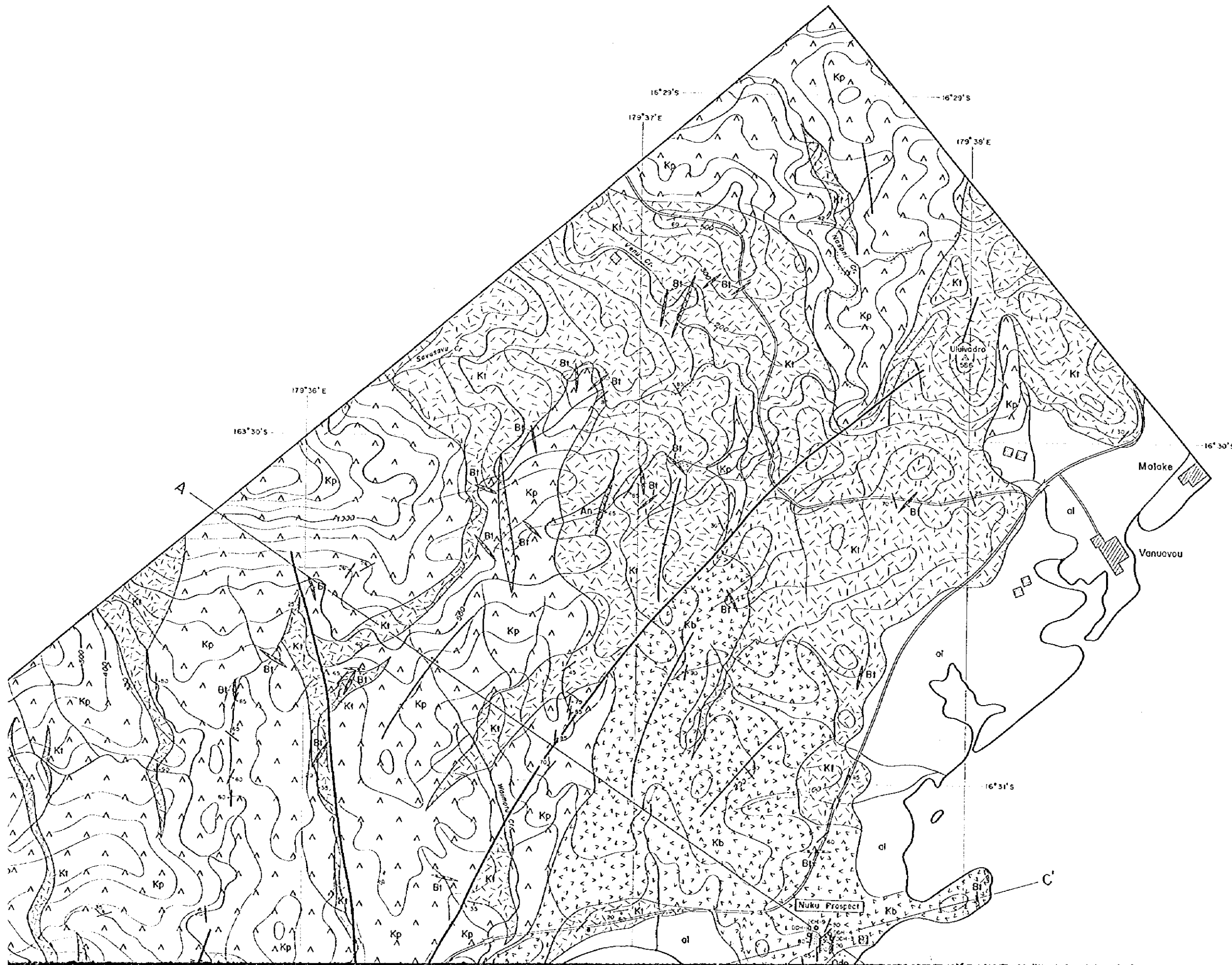
FEBRUARY 1956

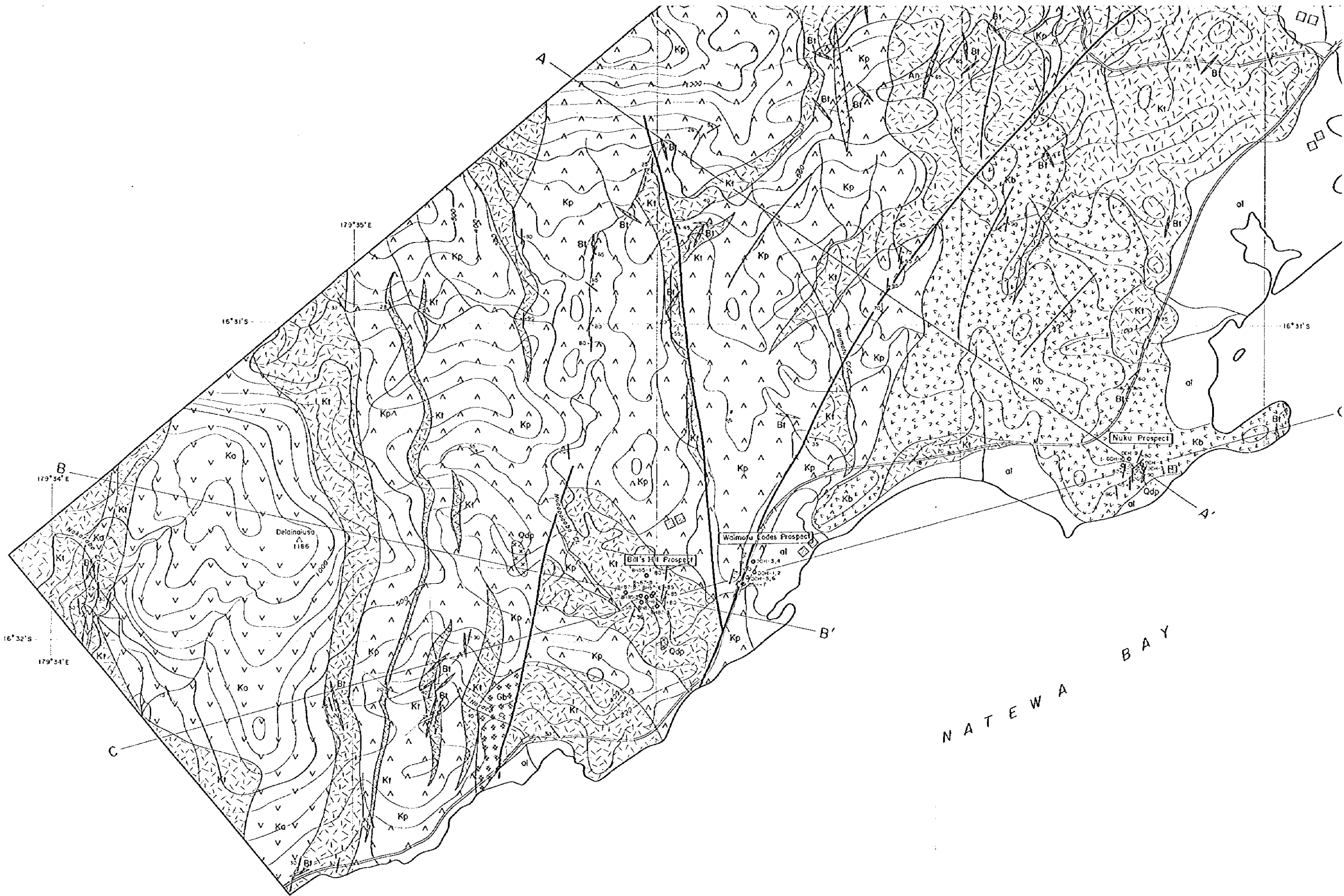
JAPAN INTERNATIONAL COOPERATION AGENCY  
METAL MINING AGENCY OF JAPAN

Scale 1:10,000  
0 200 400 600

LEGEND

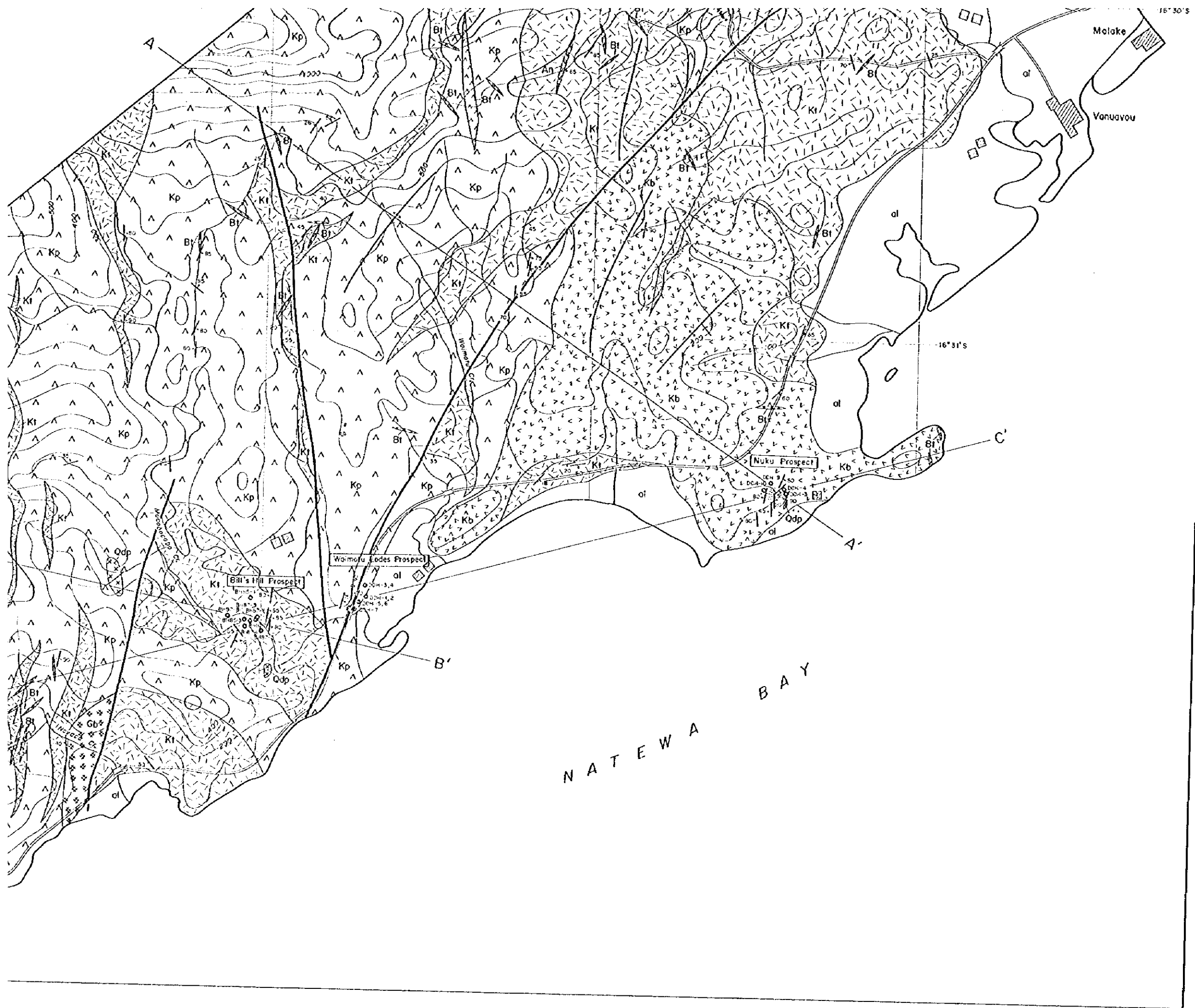
- Karotari Breccias: al Alluvium
- Karotari Breccias: K1 Volcaniclastic rocks
- Karotari Andesites: Ka Andesite lavas
- Karotari Andesites: Kb Basalt - andesite lavas
- Karotari Andesites: Kp Basalt lavas (propylitized)
- Intrusive rocks: An Andesite
- Intrusive rocks: Qdp Quartz diorite porphyry
- Intrusive rocks: Bt Basalt
- Intrusive rocks: Gb Gabbro
- Fault: Fault
- Dip and strike: Dip and strike
- Anticlinal axis: Anticlinal axis
- Synclinal axis: Synclinal axis
- Quartz vein / stockwork: Quartz vein / stockwork
- Pyrite dissemination / Gold mineralization: Pyrite dissemination / Gold mineralization
- Argillization: Argillization
- Partial of tunnels: Partial of tunnels
- Trench: Trench
- Drift hole: Drift hole
- Profile line: Profile line
- Elevation in feet: Elevation in feet





NATEWA BAY

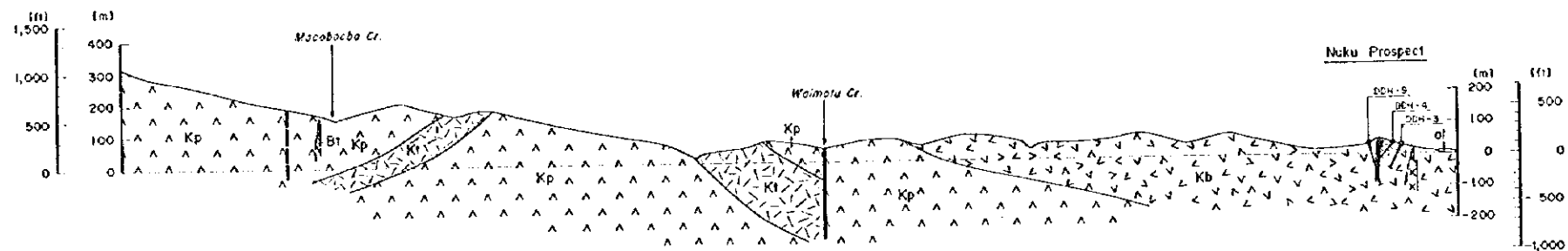




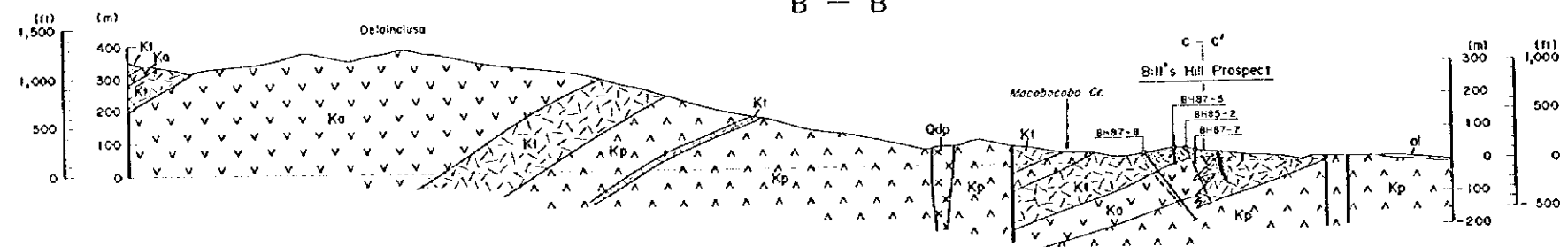
LEGEND

- Korotini Breccias
  - al Alluvium
  - Kt Volcaniclastic rocks
- Korotari Andesites
  - Ka Andesite lavas
  - Kb Basalt - andesite lavas
  - Kp Basalt lavas (prophyzied)
- Intrusive rocks
  - An Andesite
  - Qdp Quartz diorite porphyry
  - Bt Basalt
  - Gb Gabbro
- Structural features
  - Fault
  - Dip and strike
  - Anticlinal axis
  - Synclinal axis
  - Quartz vein / stockwork
- Mineralization
  - Pyrite Dissemination / Gold mineralization
  - Argillization
- Other features
  - Portal of tunnels
  - Trench
  - Drill hole
  - Profile line
  - Elevation in feet

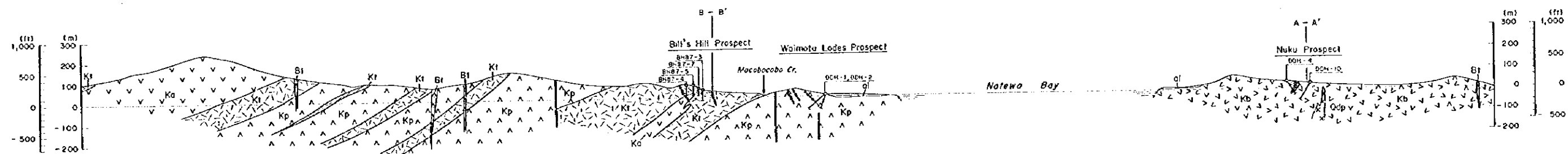
A - A'



B - B'

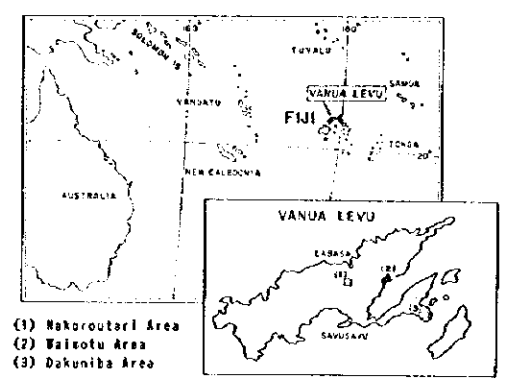


C - C'



REPORT ON THE MINERAL EXPLORATION  
IN VANUA LEVU  
THE REPUBLIC OF FIJI  
PHASE I

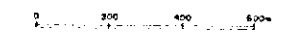
GEOLOGIC PROFILES OF THE WAIMOTU AREA



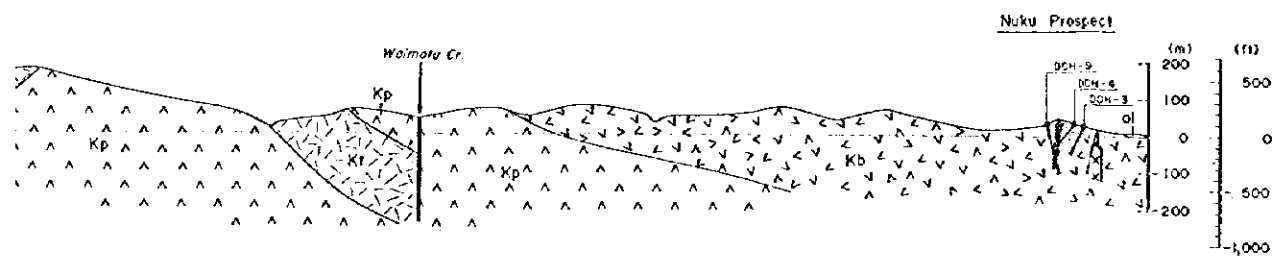
FEBRUARY 1996

JAPAN INTERNATIONAL COOPERATION AGENCY  
METAL MINING AGENCY OF JAPAN

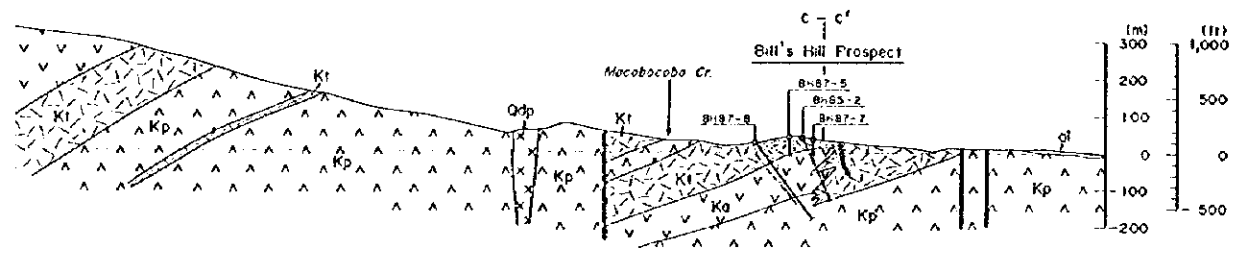
Scale 1:10,000



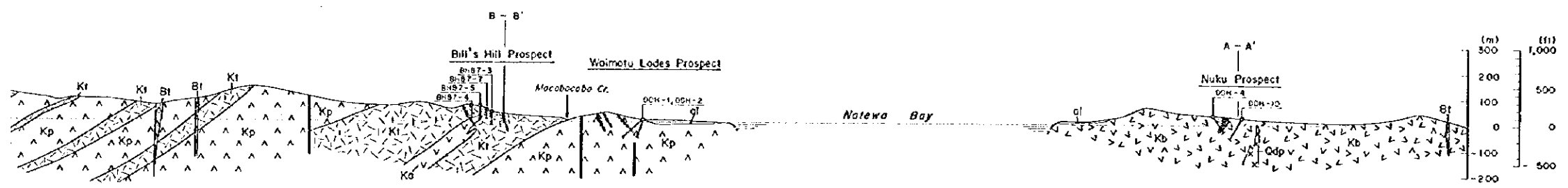
A - A'



B - B'



C - C'



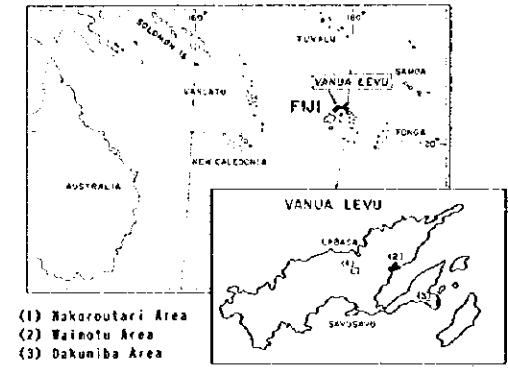
LEGEND

- Korolivi Breccias
  - Altuvium
  - Volcaniclastic rocks
- Korolivi Andesites
  - Andesite lavas
  - Basalt-andesite lavas
  - Basalt lavas (prophyllized)
- Intrusive rocks
  - Quartz diorite porphyry
  - Basalt
- Geological features
  - Fault
  - Quartz vein / stockwork
  - Drill hole



REPORT ON THE MINERAL EXPLORATION  
IN VANUA LEVU  
THE REPUBLIC OF FIJI  
PHASE I

SAMPLE LOCATION MAP OF THE  
WAIMOTU AREA



FEBRUARY 1996

JAPAN INTERNATIONAL COOPERATION AGENCY  
METAL MINING AGENCY OF JAPAN

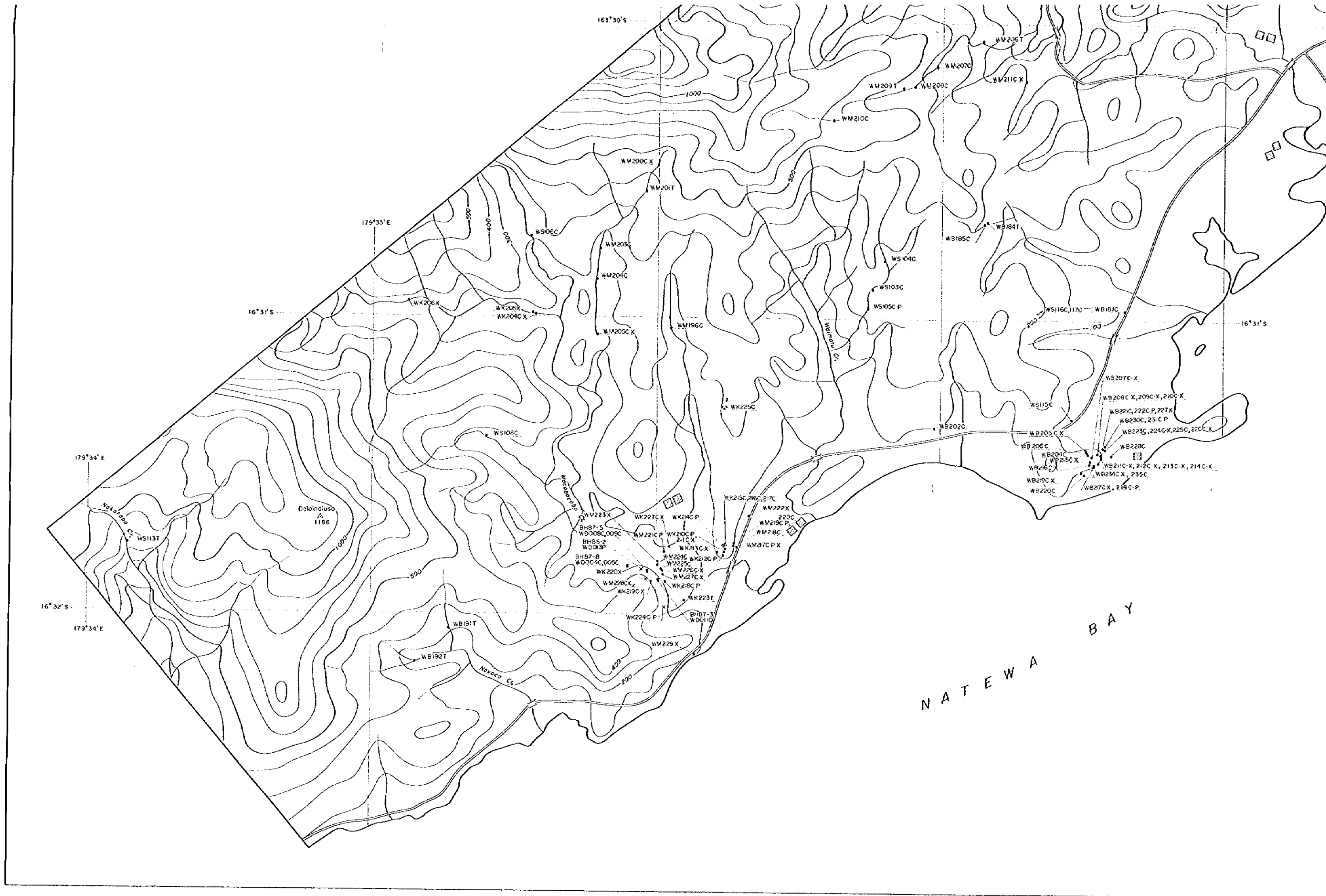
Scale 1:10,000



LEGEND

- Outcrop
- x Float
- WS105C P  
Sample No.      C: for Chemical analysis  
                         T: for Thin section  
                         P: for Polished section  
                         X: for X-ray diffraction analysis
- ◻ Trench
- Drill hole







Scale 1:10,000  
 0 200 400 600

- LEGEND**
- Outcrop
  - x Fault
  - WS105C P Sample No.
    - C: for Chemical analysis
    - T: for Thin section
    - P: for Polished section
    - X: for X-ray diffraction analysis
  - Trench
  - Drill hole

NATEWA BAY

