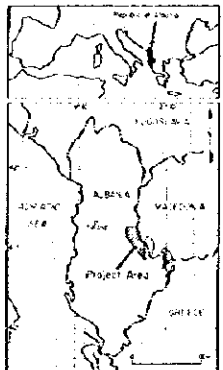
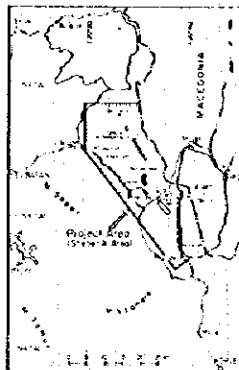


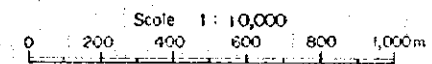
Plate 2-4-5

Report on the Mineral Exploration
in
the Shoberk Area Republic of Albania
(Phase I)

**Magnetic Interpretation Map
of
Pishkash Area**

Japan International Cooperation Agency
Metal Mining Agency of Japan
February 1996



LEGEND

- |||| PM-1 magnetic body
- ⊗ mineral indication
- × mine
- interest zone
- ~~~~ 50 nT
- ~~~~ 100 nT

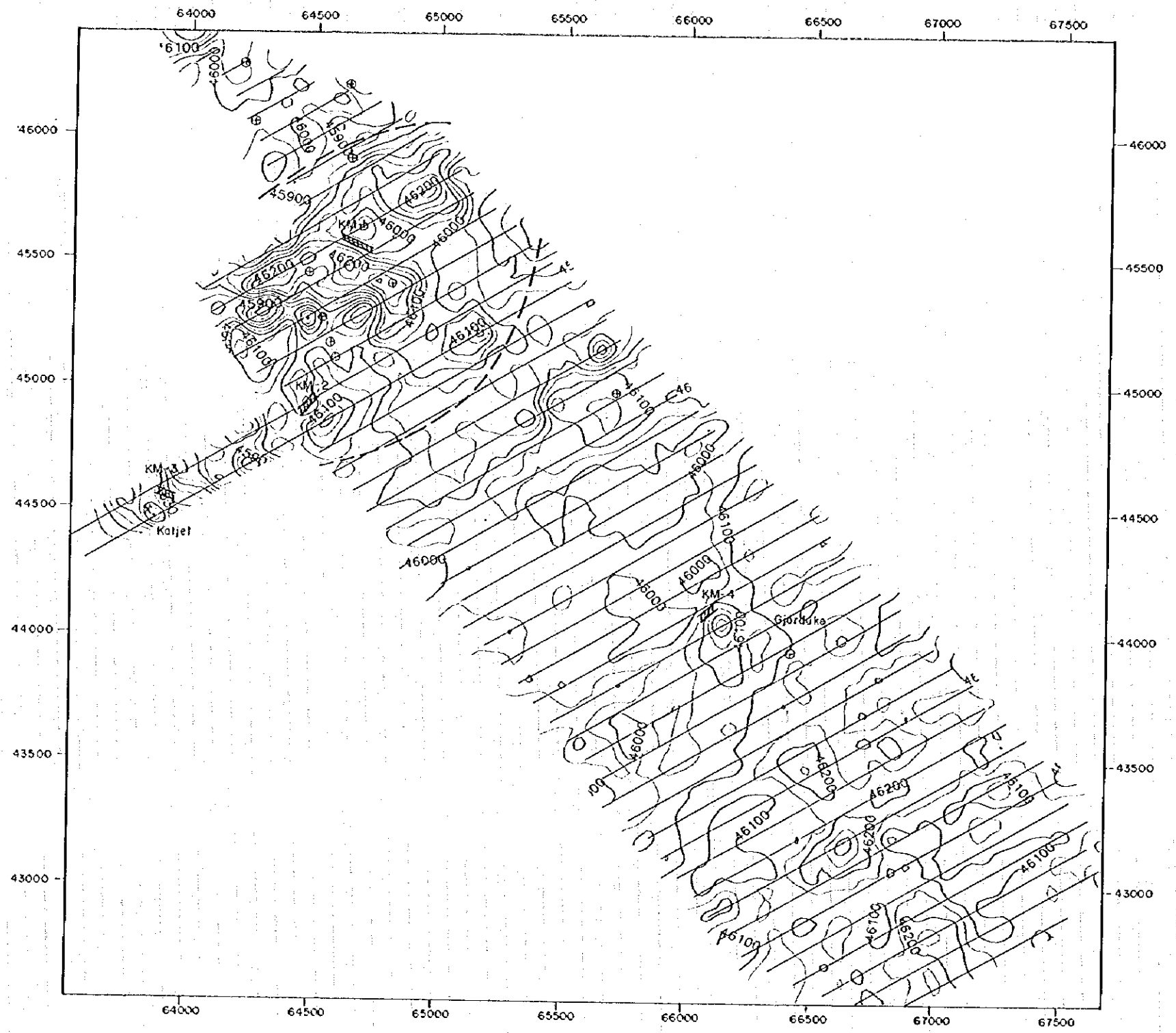
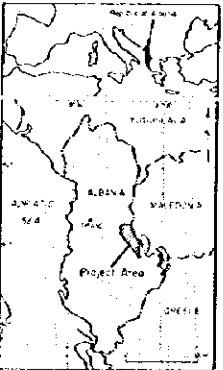
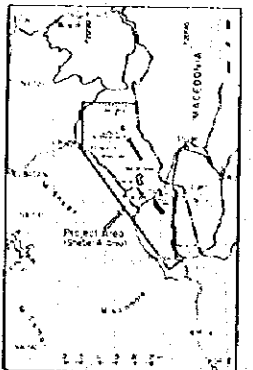


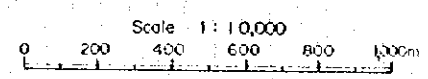
Plate 2-4-6

Report on the Mineral Exploration
in
the Shebenik Area, Republic of Albania
(Phase I)

Magnetic Interpretation Map of Kotodesh Area

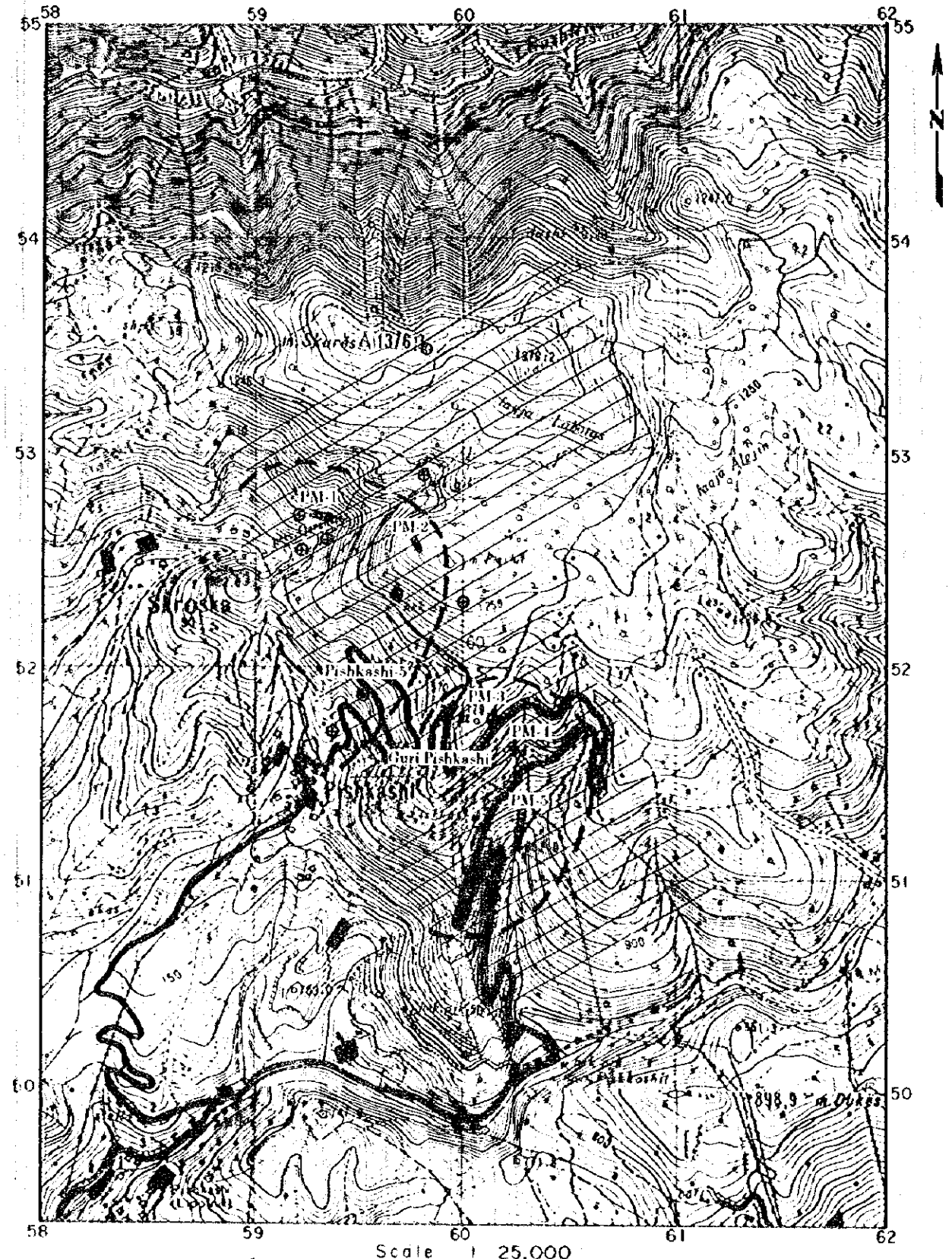
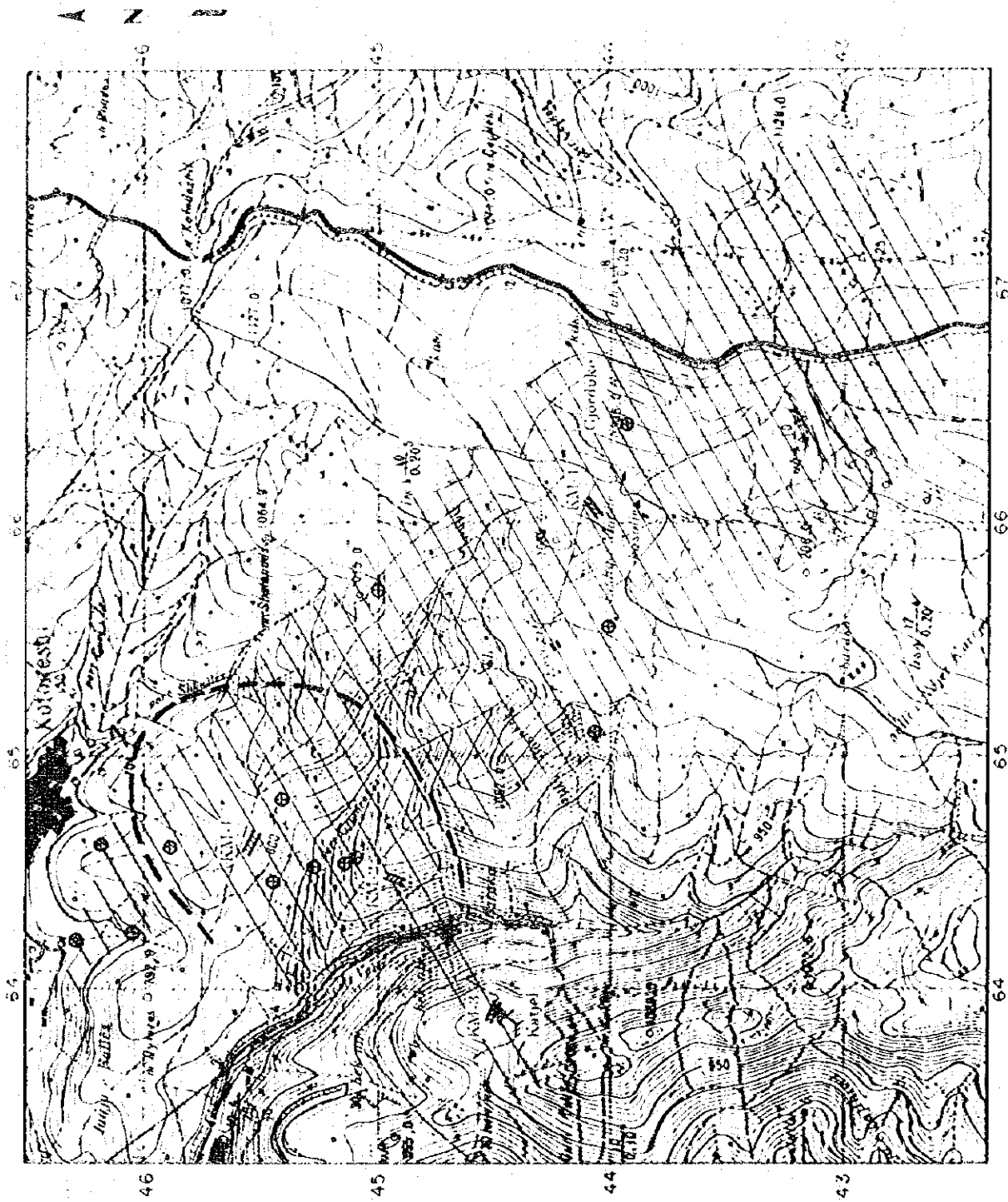



Japan International Cooperation Agency
Metal Mining Agency of Japan
February 1966



LEGEND

- KM-1 magnetic body
- mineral indication
- mine
- interest zone

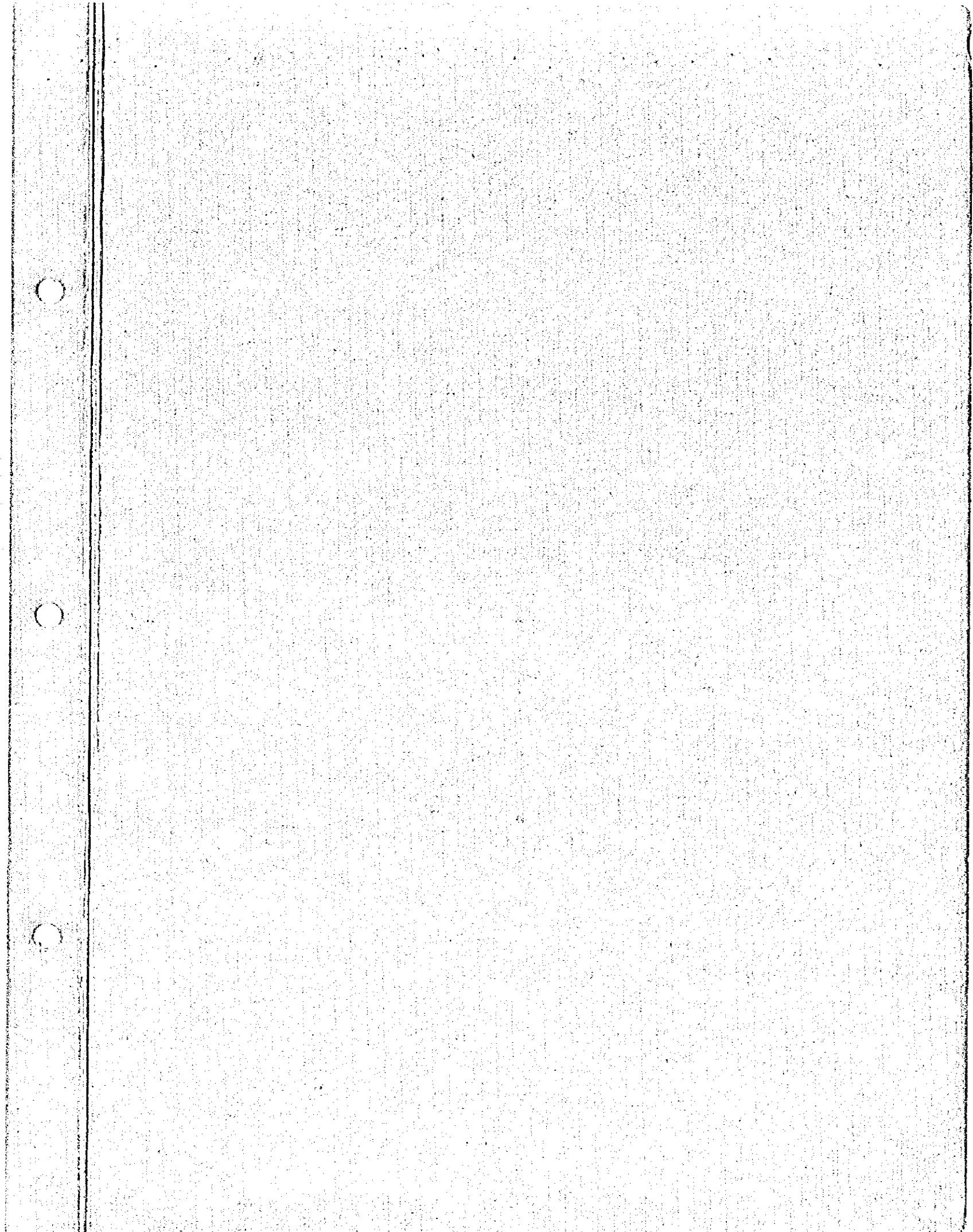


- AM-1 Anomaly No
- ZZZ Magnetic Body
- ⊕ Mineral Indication
- Interest Zone
- ✕ Mine

Scale 1:25,000

- PM-1 Anomaly No
- ZZZ Magnetic Body
- ⊕ Mineral Indication
- Interest Zone
- ✕ Mine

Scale 1:25,000



JICA