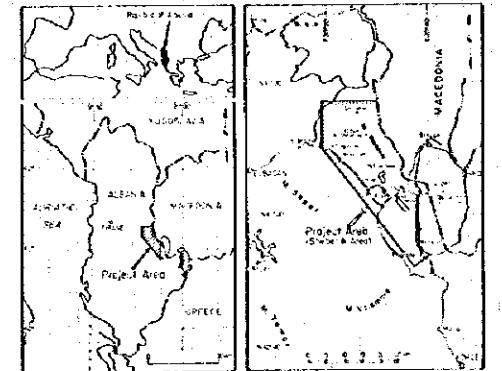


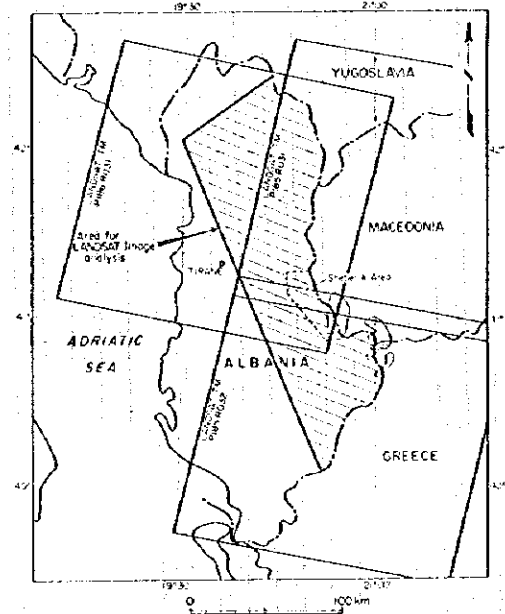
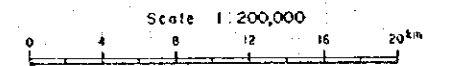


Report on the Mineral Exploration
in
the Shabank Area, Republic of Albania
(Phase I)

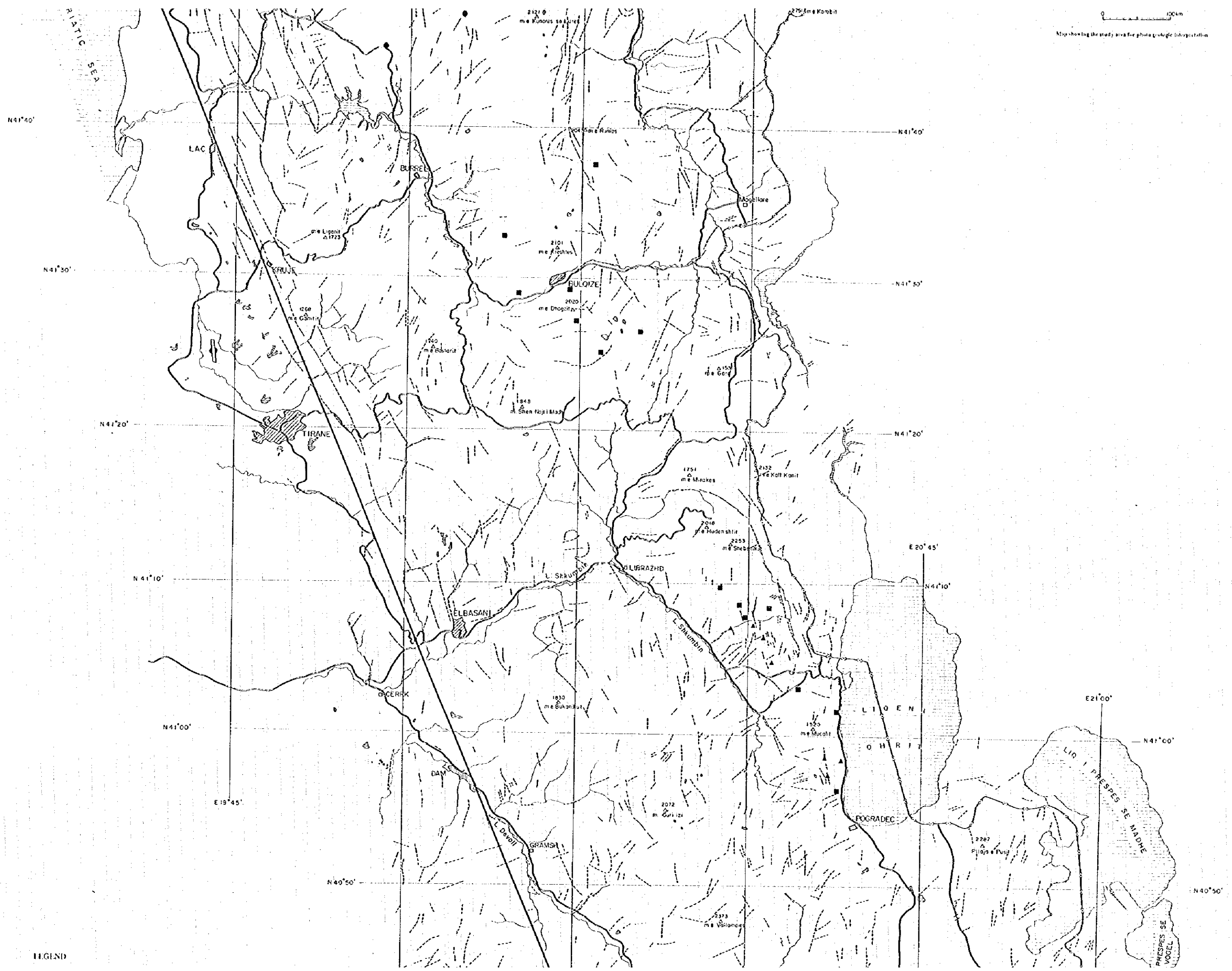
**Lineament Map
of
the Internal Albanides**



Japan International Cooperation Agency
Metal Mining Agency of Japan
February 1996



Map showing the study area for photo geologic interpretation



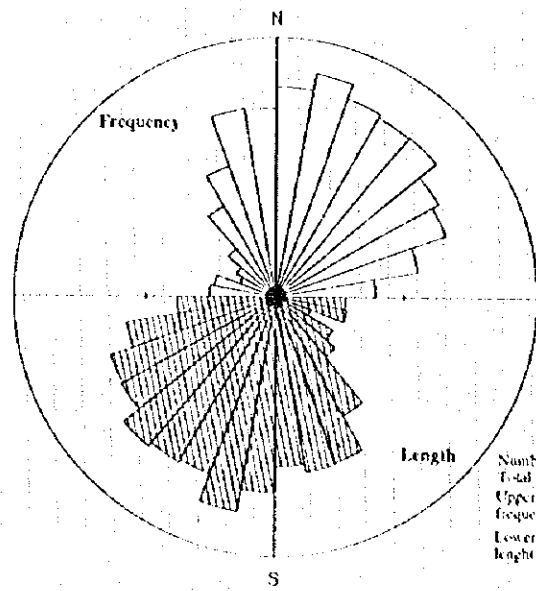
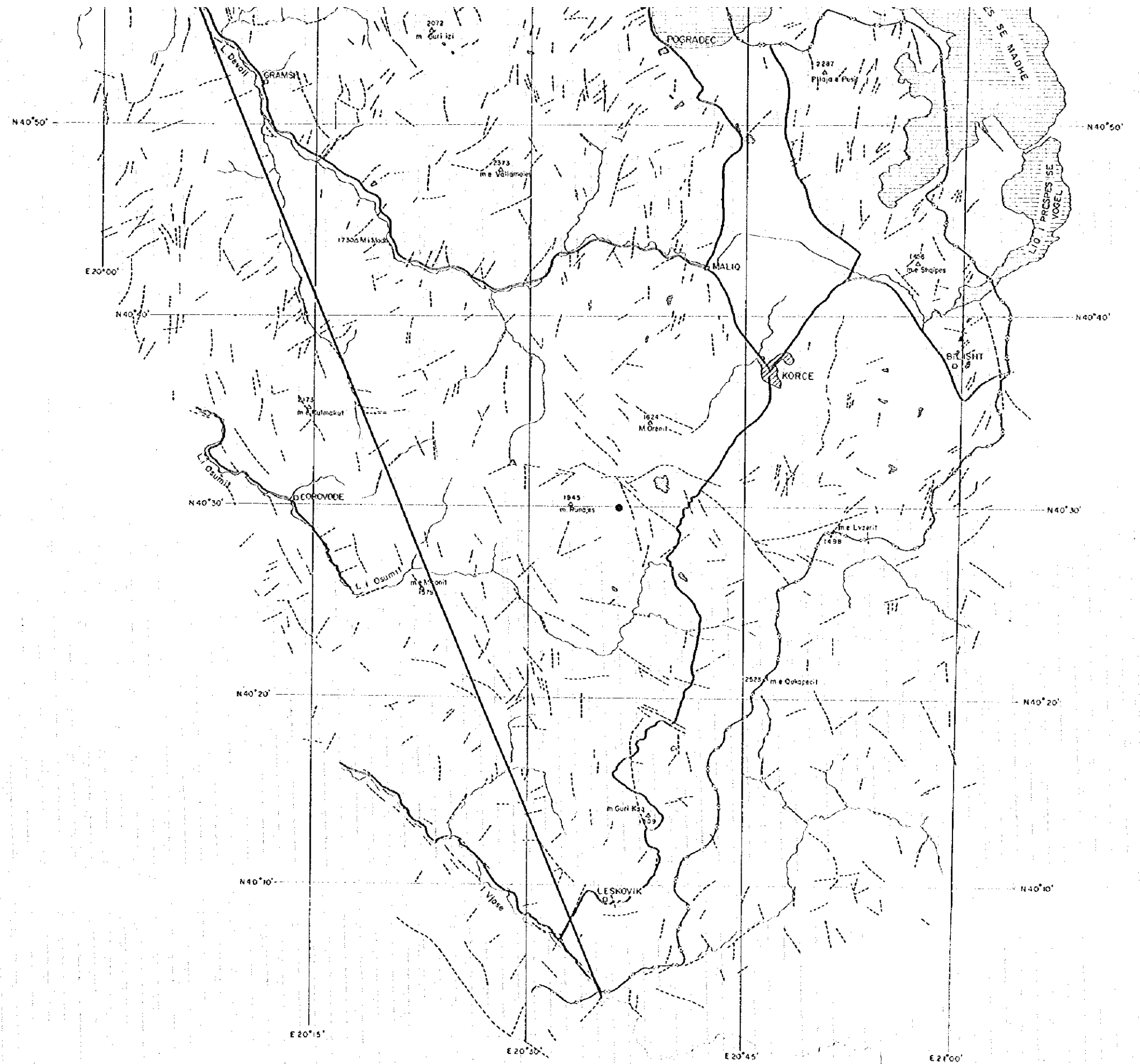
LEGEND

LEGEND

- Lineament
- Lineament (displacement is indistinct)
- National boundary
- Main road
- Lake
- River
- Urban area
- Towns and villages
- Airport
- Mountain (elevation in meters)

Mineral deposits

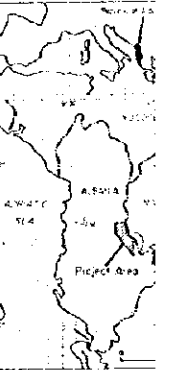
- Copper
- Iron-Nickel
- Chromite



Rose diagram of lineaments

Number of data: 2196
 Total length of lineament: 33637.3km
 Upper hemisphere shows frequency of lineaments in percent
 Lower hemisphere shows length of lineaments in percent

the Shebenik



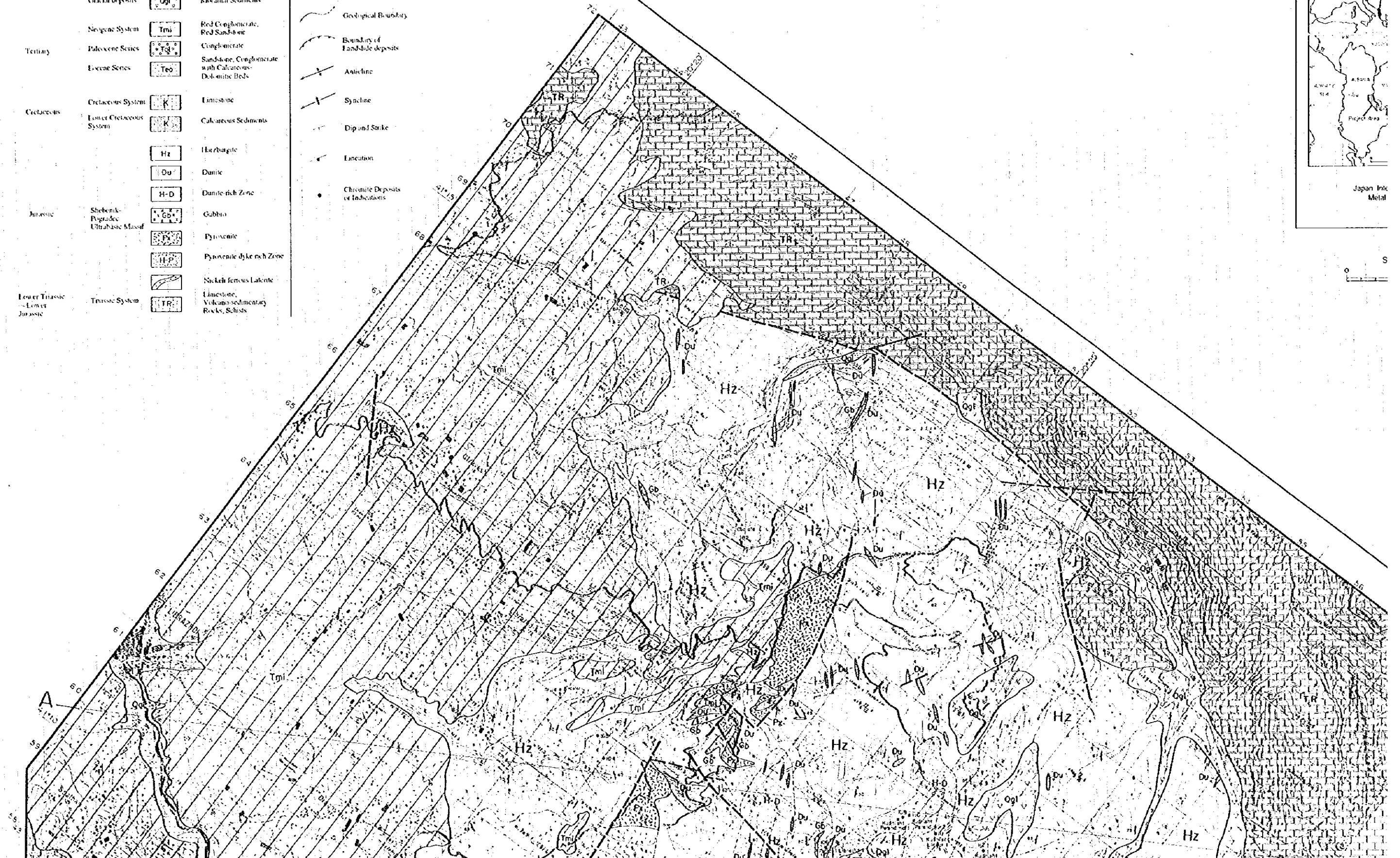
Japan Int'l
Metal



Legend

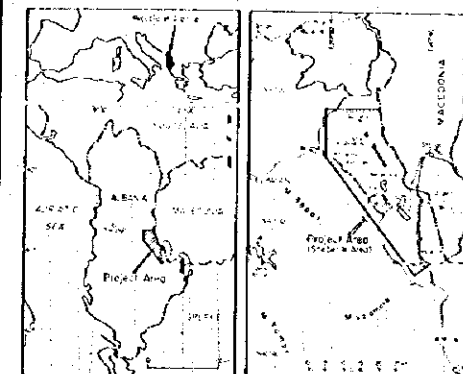
Geological Age	Formation	Mark	Rock Facies
Quaternary	Alluvial deposits	Qol	Sand, Silt, Gravel
	Landslide deposits	Qs	Landslide deposits
	Glacial deposits	Qgl	Miscellaneous Sediments
Tertiary	Neogene System	Tmi	Red Conglomerate, Red Sandstone
	Paleocene Series	Teo	Conglomerate
	Eocene Series	Teo	Sandstone, Conglomerate with Calcareous-Dolomitic Beds
Cretaceous	Cretaceous System	K	Limestone
	Lower Cretaceous System	K	Calcareous Sediments
Jurassic		HZ	Horzbarigte
		Du	Damite
		H-D	Damite-rich Zone
	Shebenik-Pogradec Ultrabasic Massif	Gb	Gabbro
		Px	Pyroxenite
		H-P	Pyroxenite dyke rich Zone
Lower Triassic - Lower Jurassic	Triassic System	TR	Slightly ferrous Lignite, Limestone, Volcano-sedimentary Rocks, Schists

- Fault
- Sheared Zone
- Geological Boundary
- Boundary of Landslide deposits
- Anticline
- Syncline
- Dip and Strike
- Lincation
- Chronite Deposits or Indications



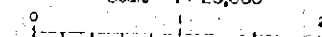
Report on the Mineral Exploration
in
the Shebenik Area, Republic of Albania
(Phase I)

Geological Map of the Shebenik-Pogradec Ultrabasic Massif



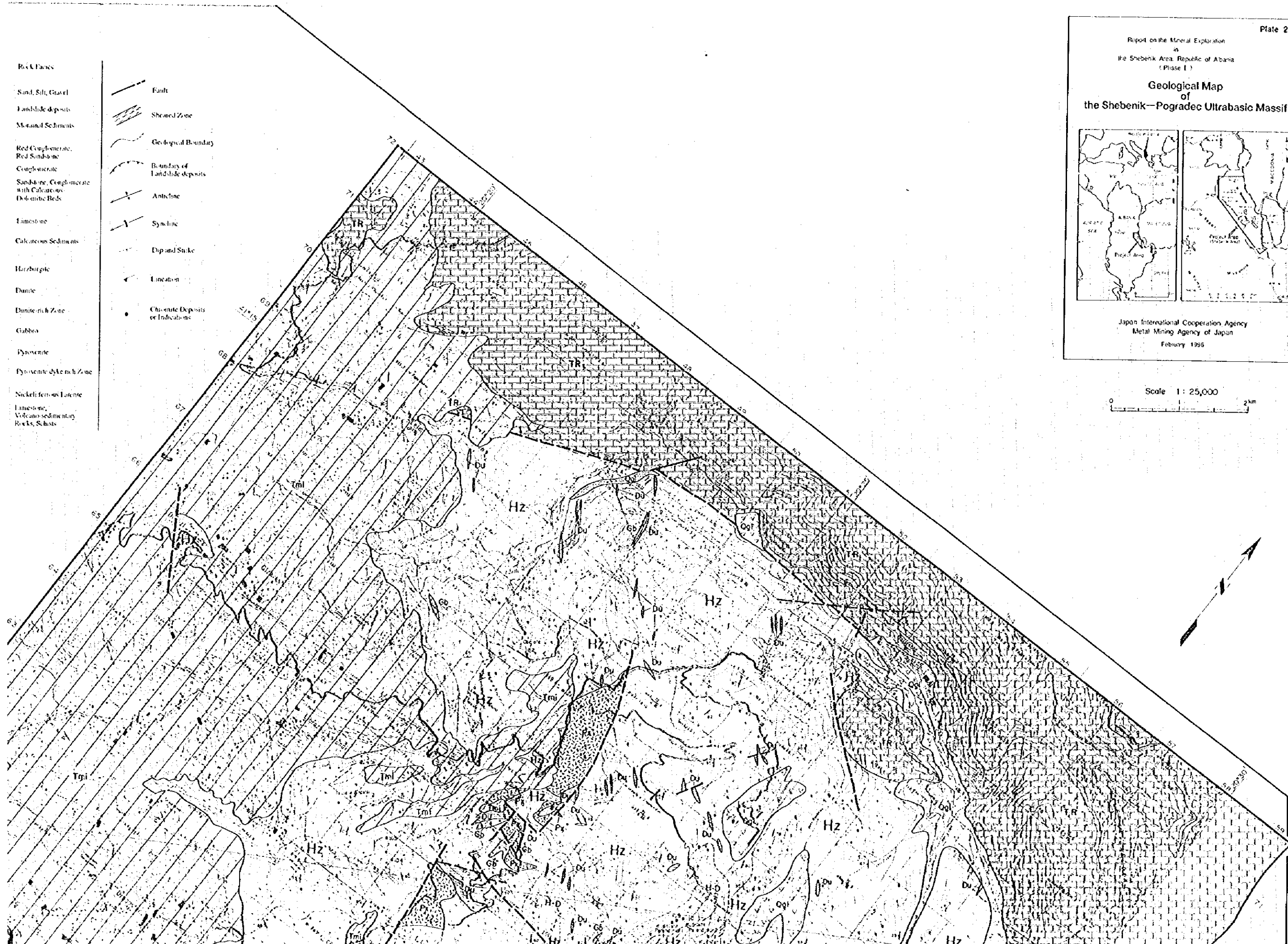
Japan International Cooperation Agency
Metal Mining Agency of Japan
February 1996

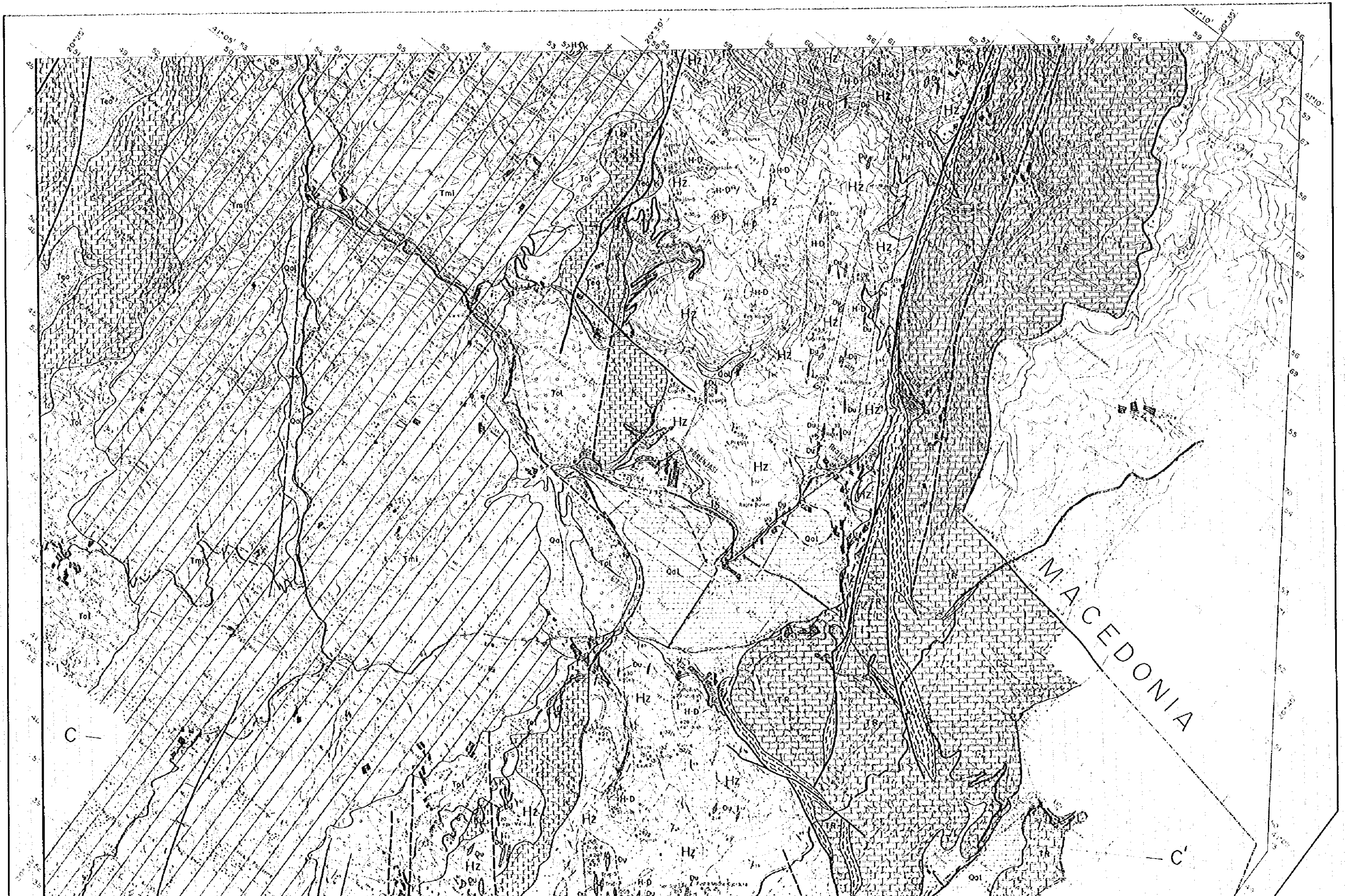
Scale 1:25,000

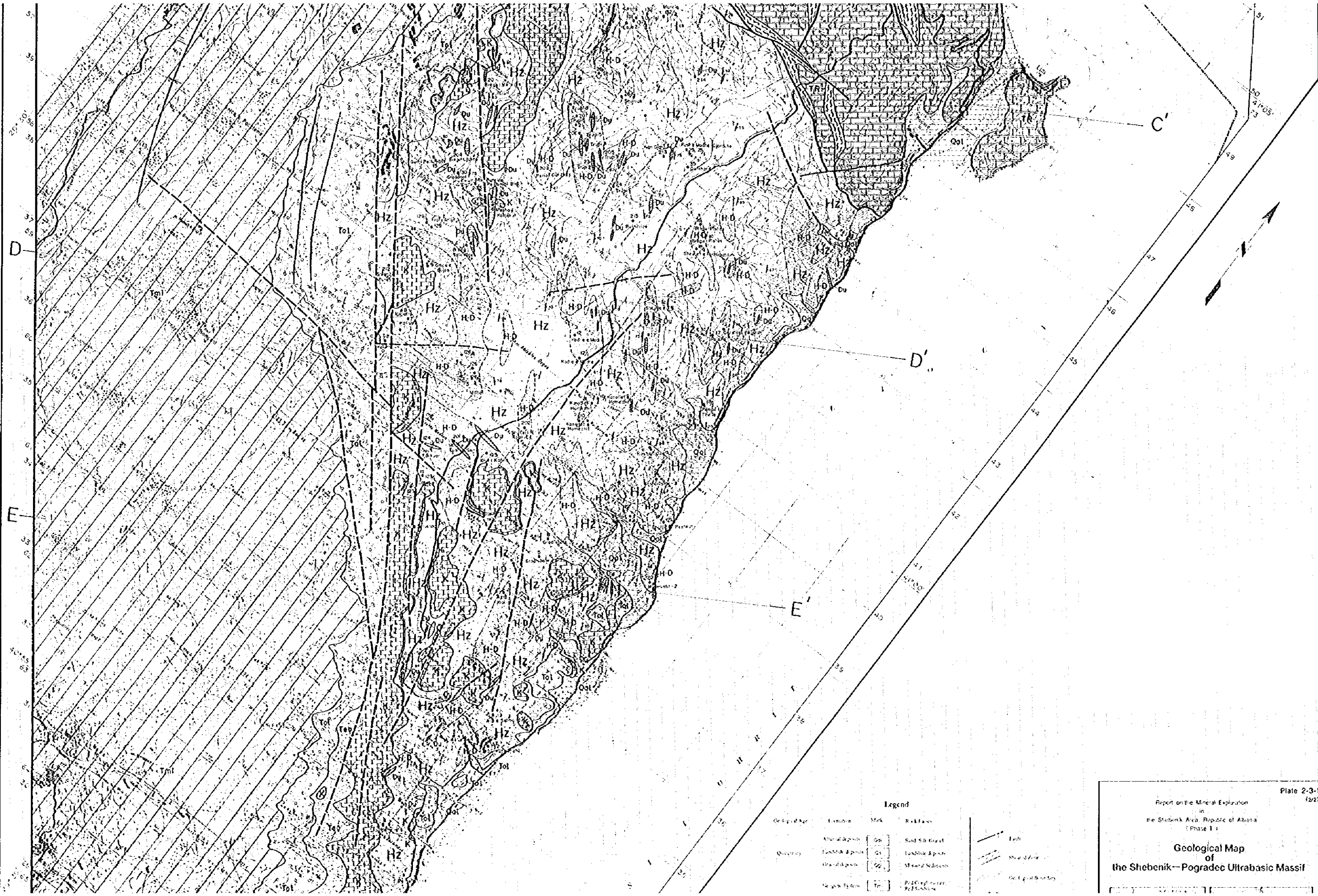


- Rock Facies**
- Sand, Silt, Gravel
 - Landslide deposits
 - Moraine Sediments
 - Red Conglomerate, Red Sandstone
 - Conglomerate
 - Sandstone, Conglomerate with Calcareous Dolomite Beds
 - Limestone
 - Calcareous Sediments
 - Hartzburgite
 - Dunite
 - Dunite rich Zone
 - Gabbro
 - Dysoxente
 - Dysoxente-dyke rich Zone
 - Nickeliferous Latente
 - Limestone, Volcano-sedimentary Rocks, Schists

- Fault
- Sheared Zone
- Geological Boundary
- Boundary of Landslide deposits
- Anticline
- Syncline
- Dip and Strike
- Lincation
- Chromite Deposits or Indications

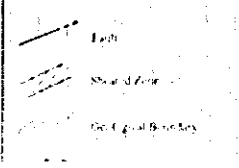






Legend

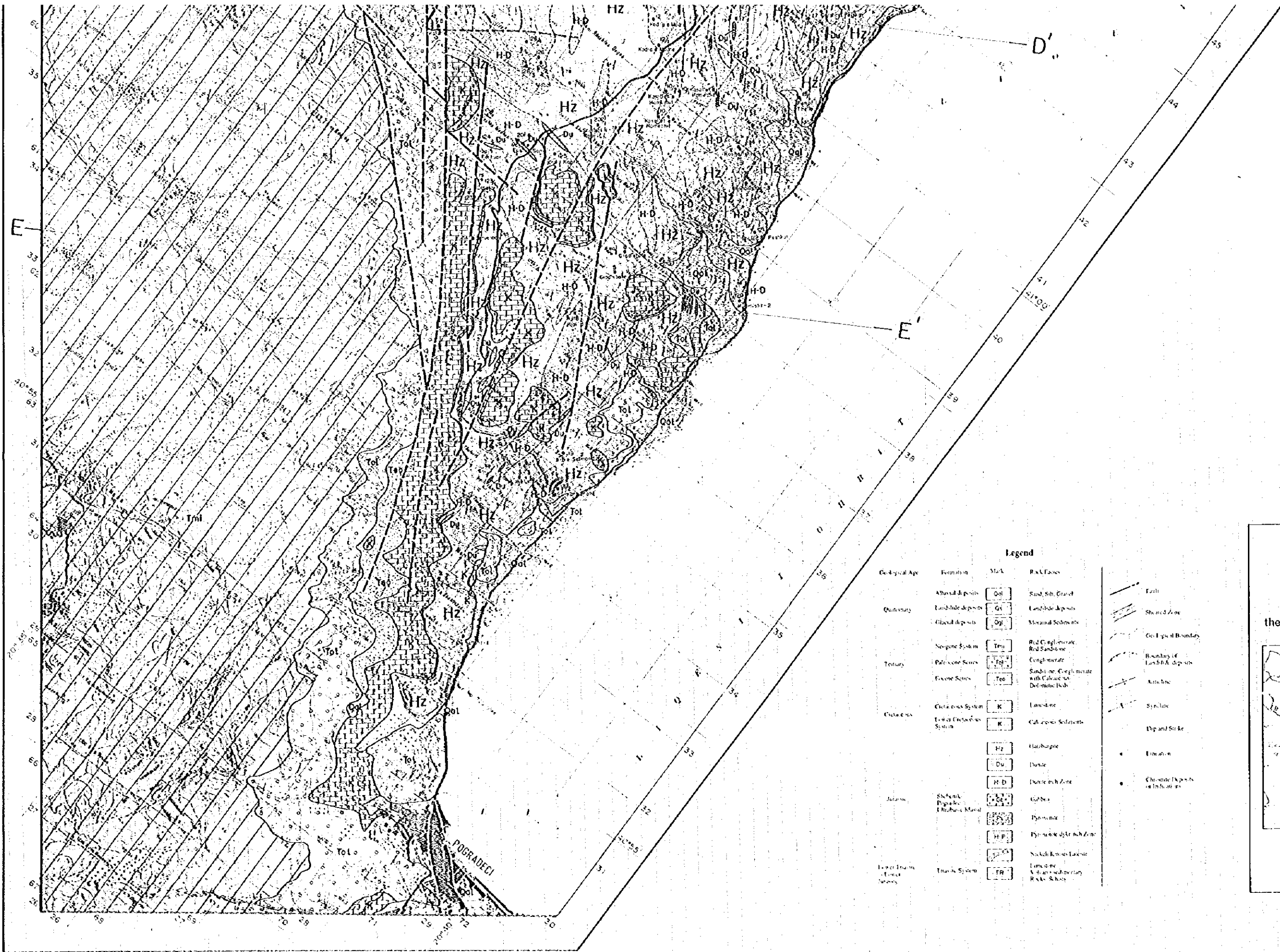
Geological Age	Formation	Mark	Rock Faces
Albanian deposits		□	Sand S.S. Gravel
Quaternary	Quaternary deposits	□	Quaternary deposits
	Quaternary deposits	□	Quaternary deposits
	Quaternary deposits	□	Quaternary deposits



Report on the Mineral Exploration
in
the Shebenik Area, Republic of Albania
(Phase I)

**Geological Map
of
the Shebenik-Pogradec Ultrabasic Massif**

Plate 2-3-1
(2/2)



Legend

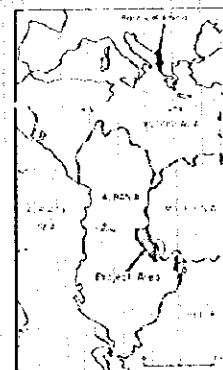
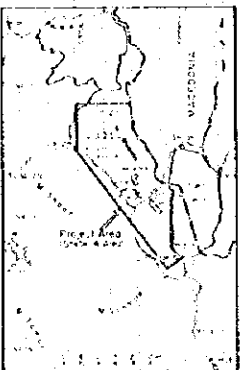
Geological Age	Formation	Mark	Rock Types
Quaternary	Alluvial deposits	Qol	Sand, Silt, Gravel
	Landslide deposits	Qs	Landslide deposits
	Glacial deposits	Qgl	Miscellaneous Sediments
Tertiary	Neogene System	Tml	Red Conglomerate, Red Sandstone
	Paleogene Series	Tol	Conglomerate
	Eocene Series	Teo	Sandstone, Conglomerate with Calcareous Dolomitic beds
Cretaceous	Cretaceous System	K	Limestone
	Lower Cretaceous System	K	Calcareous Sediments
Jurassic		Hz	Gabbroite
		Du	Diorite
		HD	Dioritic Zone
		GP	Gabbro
Tertiary System		HP	Dioritic gabbro zone
		TR	Sakelkensis Limestone, Limestone, Various sedimentary Rocks, Shales

- Fault
- Shear Zone
- Geological Boundary
- Boundary of Landslide deposits
- Anticline
- Syncline
- Dip and Strike
- Elevation
- Chromatic Deposit or Indicator

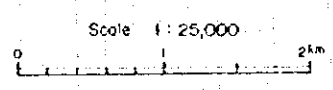
Plate 2-3-1
(2/2)

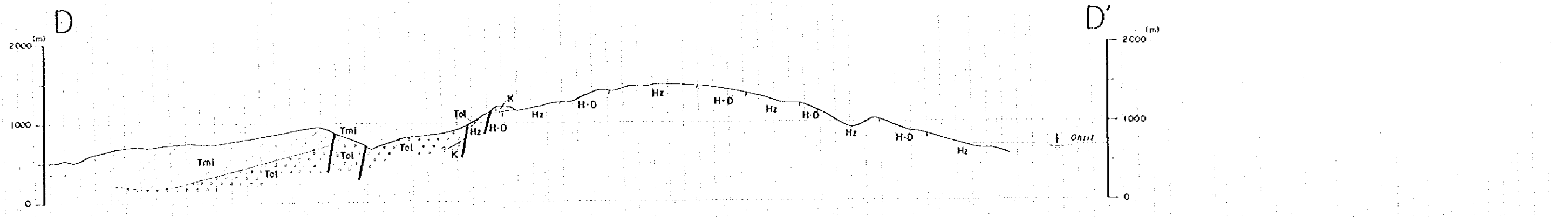
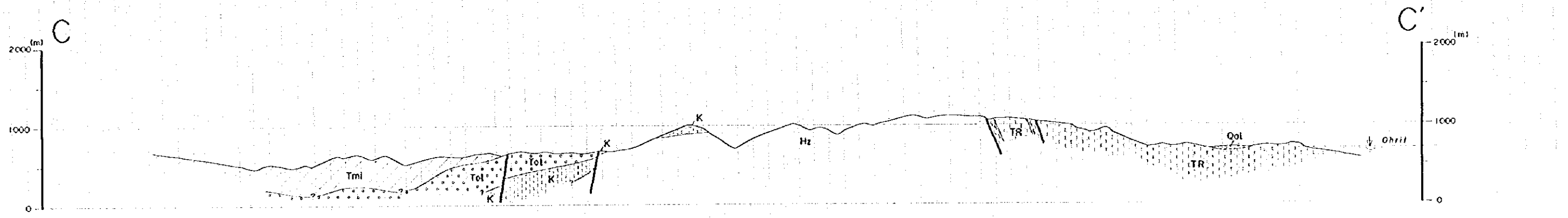
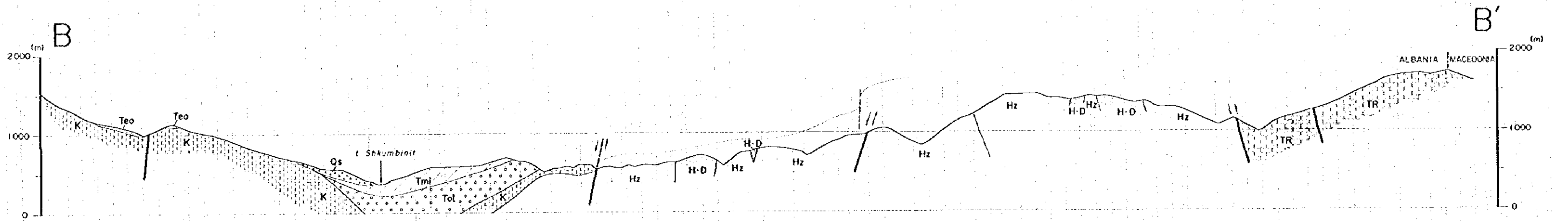
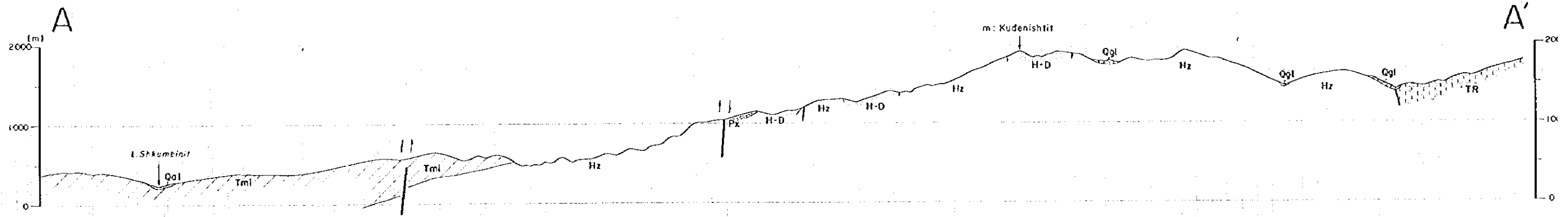
Report on the Mineral Exploration
in
the Shebenik Area, Republic of Albania
(Phase I)

**Geological Map
of
the Shebenik-Pogradec Ultrabasic Massif**

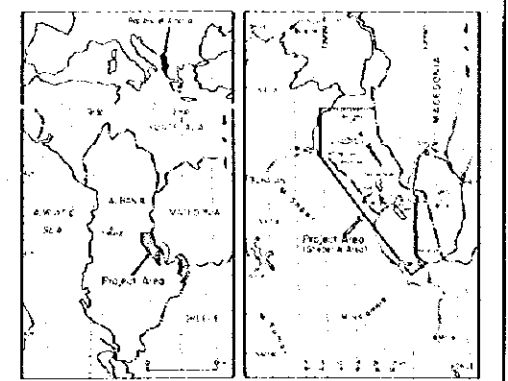
Japan International Cooperation Agency
Metal Mining Agency of Japan
February 1996



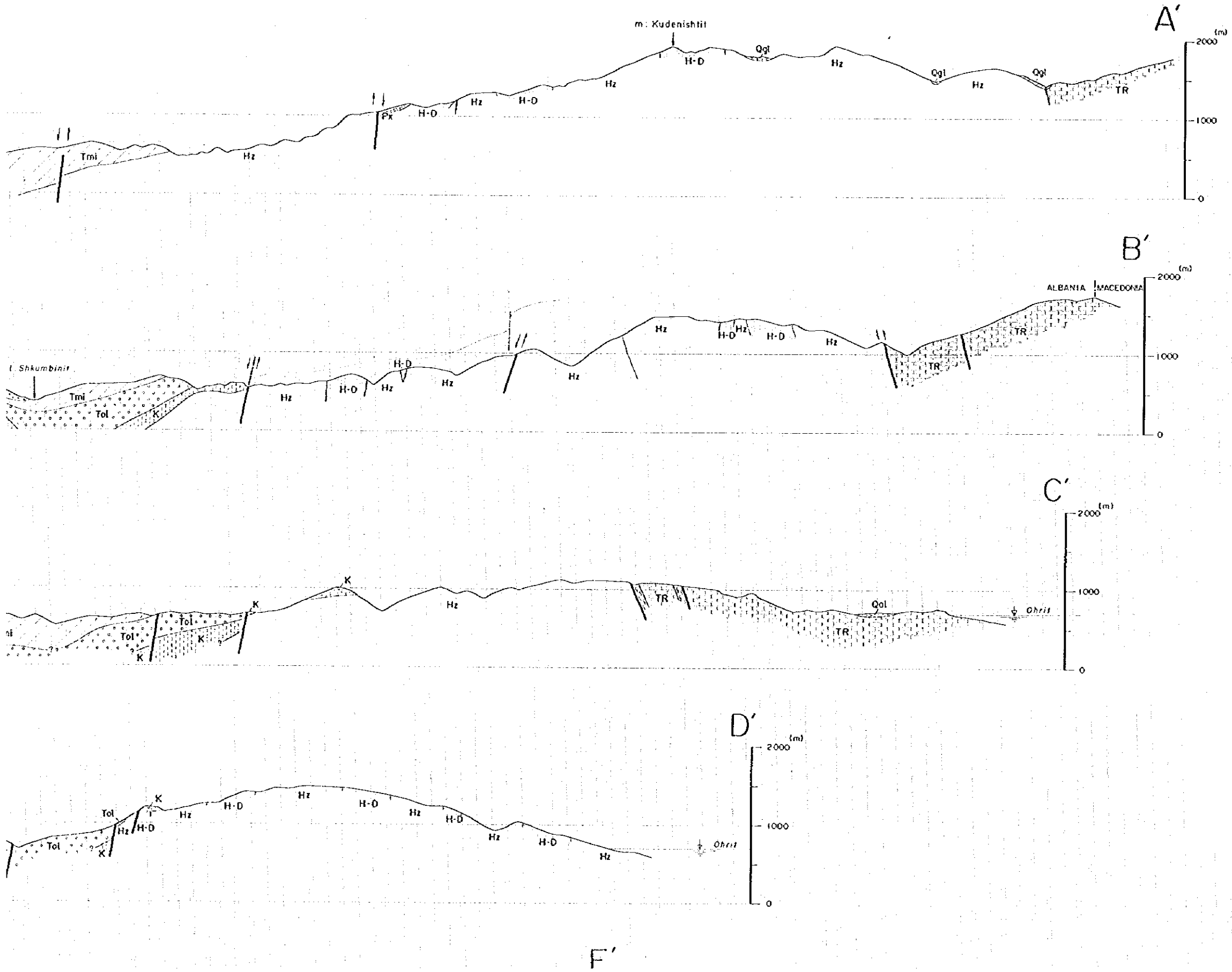
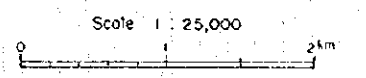


Report on the Mineral Exploration
in
the Shebenik Area, Republic of Albania
(Phase I)

**Geological Profiles
of
the Shebenik-Pogradec Ultrabasic Massif**



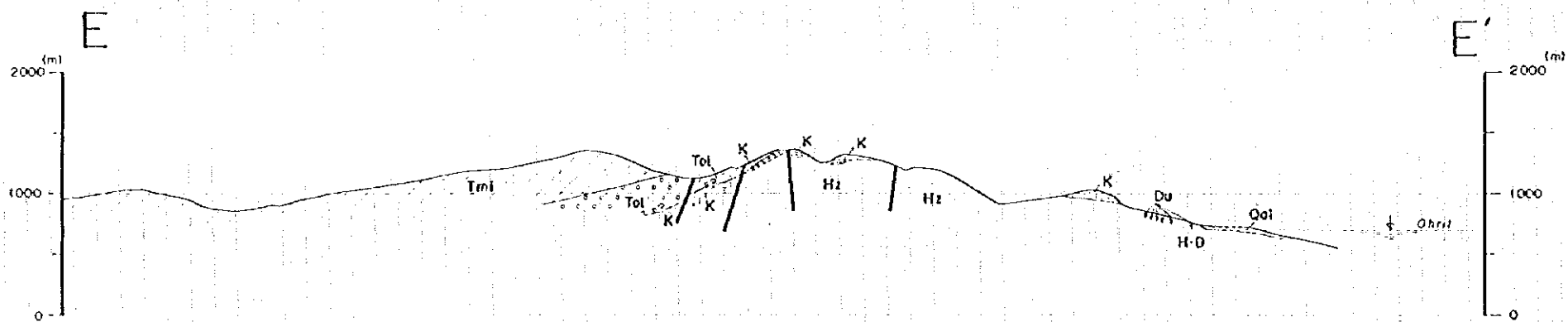
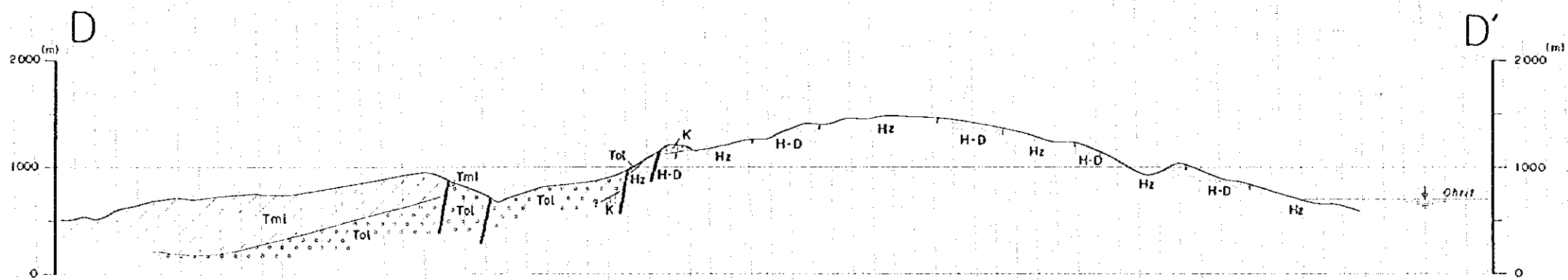
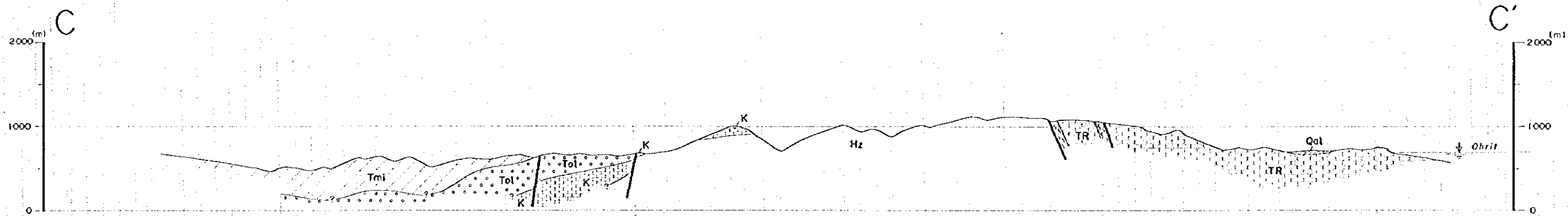
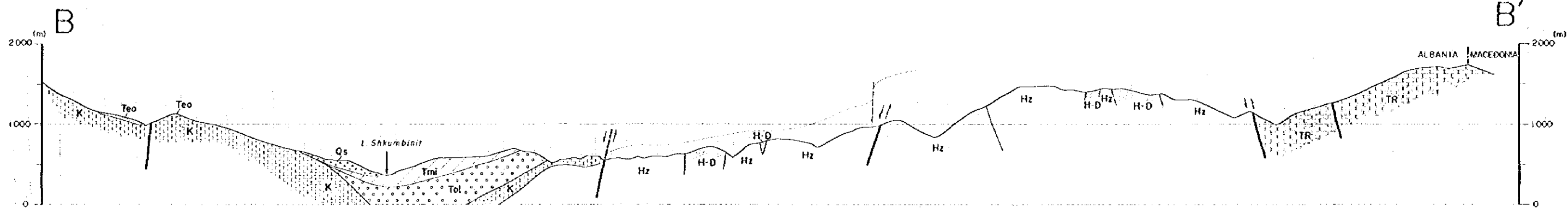
Japan International Cooperation Agency
Metal Mining Agency of Japan
February 1996

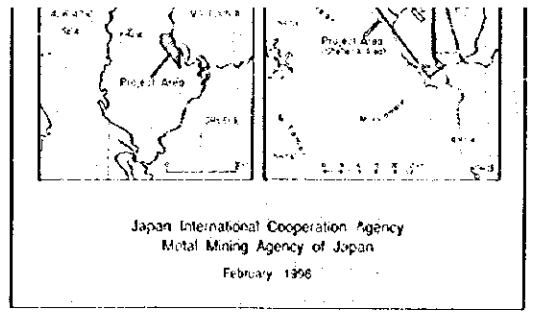
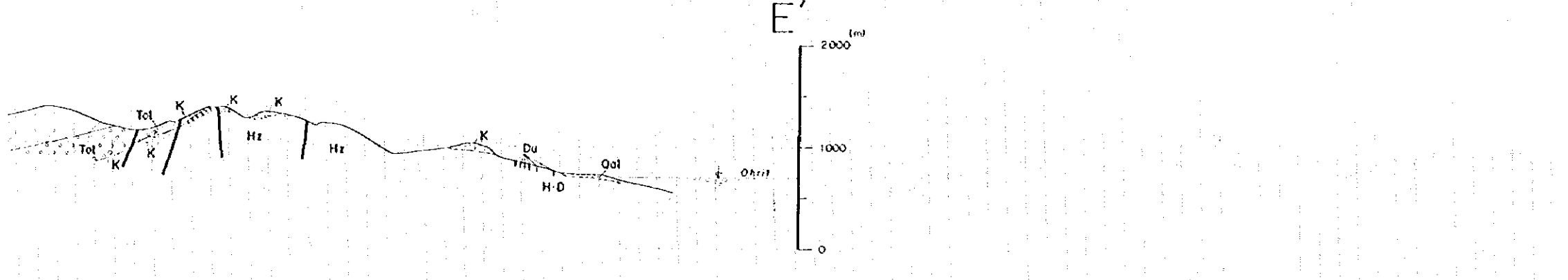
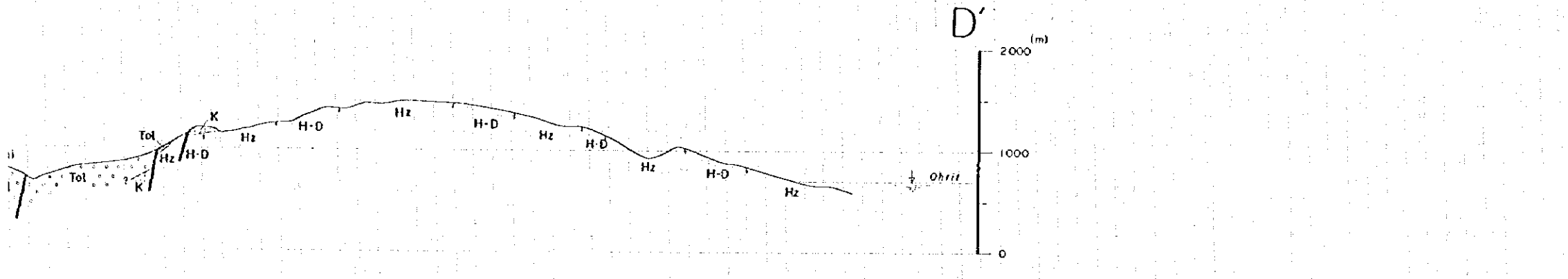
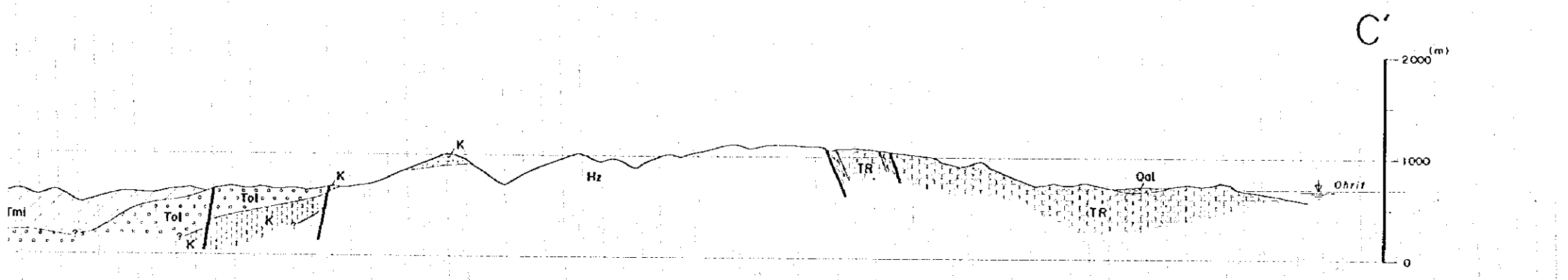
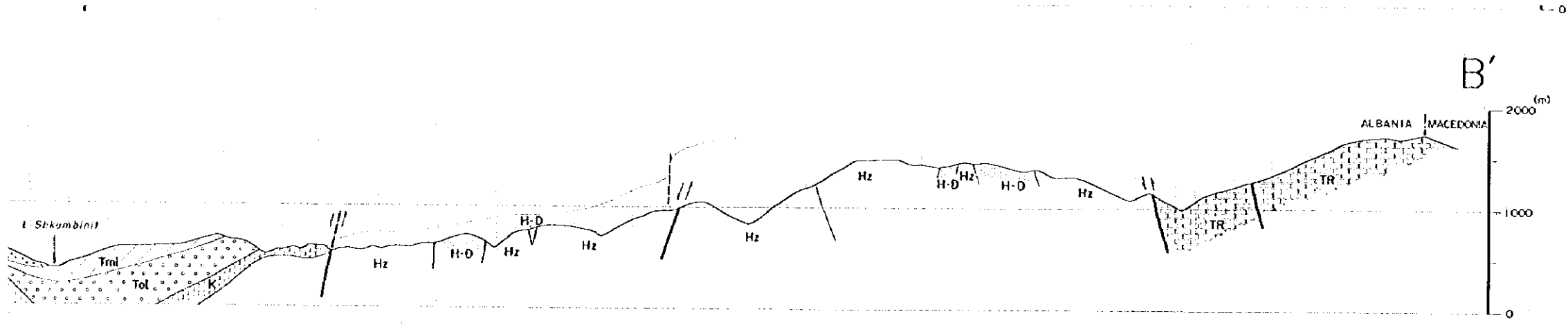


Legend

Geological Age	Formation	Mark	Rock Facies
Quaternary	Alluvial deposits	Qol	Sand, Silt, Gravel
	Landslide deposits	Qs	Landslide deposits
	Glacial deposits	Qgl	Glacial Sediments
Tertiary	Neogene System	Tmi	Red Conglomerate, Red Sandstone
	Paleocene Series	Tol	Conglomerate
	Eocene Series	Teo	Sandstone, Conglomerate with Calcareous-Dolomitic Beds
Cretaceous	Cretaceous System	K	Limestone
	Lower Cretaceous System	K	Calcareous Sediments
Jurassic		Hz	Harzburgite
		Du	Dunite
		H-D	Dunite rich Zone
	Shebenik-Pogradec Ultrabasic Massif	GP	Gabbro
		HP	Pyroxenite Pyroxenite dyke rich Zone
Lower Triassic - Lower Jurassic	Triassic System	TR	Nickeliferous Lignite Limestone, Volcanic sedimentary Rocks, Schists

F'





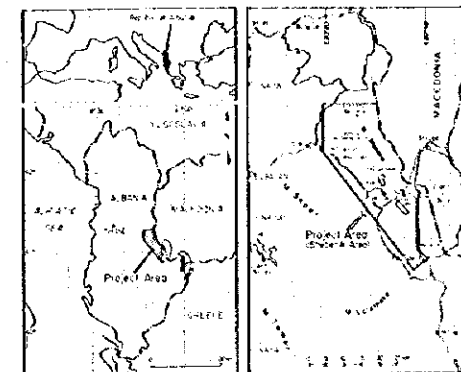
Scale 1 : 25,000
0 2km

Legend

Geological Age	Formation	Mark	Rock Facies
Quaternary	Alluvial deposits	Qol	Sand, Silt, Gravel
	Landslide deposits	Qs	Landslide deposits
	Glacial deposits	Qgl	Moraine Sediments
Tertiary	Neogene System	Tmi	Red Conglomerate, Red Sandstone
	Paleocene Series	Tol	Conglomerate
	Eocene Series	Teo	Sandstone, Conglomerate with Calcareous-Dolomitic Beds
Cretaceous	Cretaceous System	K	Limestone
	Lower Cretaceous System	K	Calcareous Sediments
Jurassic		Hz	Harzburgite
		Du	Dunite
		H-D	Dunite rich Zone
	Shebenik-Varadaric Ultrabasic Massif	Gp	Gabbro
		P	Pyroxenite
Lower Triassic - Lower Jurassic		JFP	Pyroxenite dyke rich Zone
		NFL	Nickeliferous Laterite
	Triassic System	TR	Limestone, Volcano sedimentary Rocks, Schists
		(Double line)	Fault
		(Dashed line)	Sheared Zone
		(Dotted line)	Geological Boundary

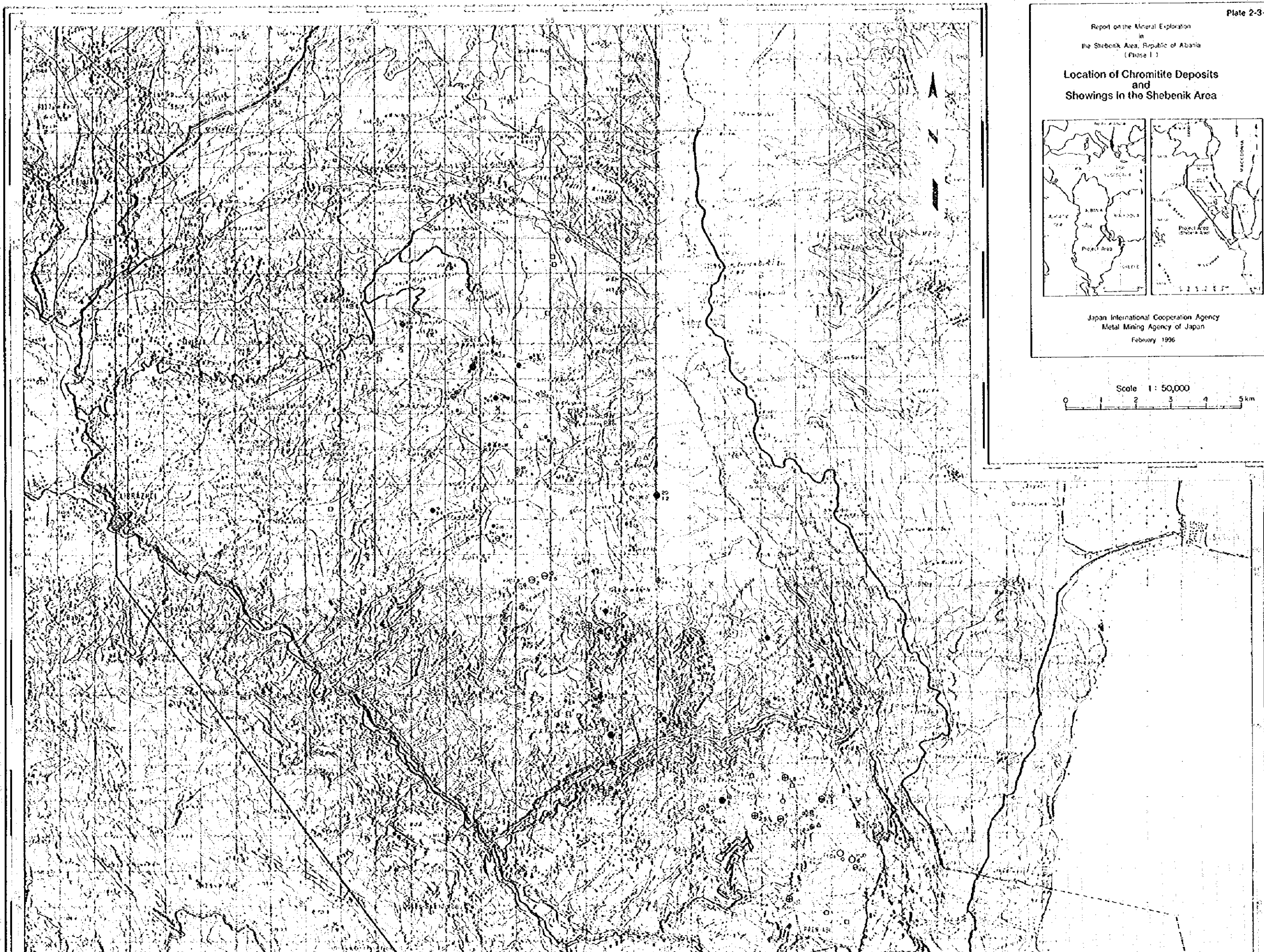
Report on the Mineral Exploration
in
the Shebenik Area, Republic of Albania
(Phase I)

**Location of Chromitite Deposits
and
Showings in the Shebenik Area**



Japan International Cooperation Agency
Metal Mining Agency of Japan
February 1996

Scale 1 : 50,000
0 1 2 3 4 5 km



LEGEND

Deposits and showings confirmed in the field work

Mark Major Type Classification of Chromite Deposits or Showings

⊙ Andite

⊖ Bandite

● Massive

⊕ Disseminated

○ Schiefer

Not Recognized in the Field Work

△ Schiefer

Exploded Locations Lacking Chromite in the Field Work

□ Explosion Activity without Chromite indication

× No Activity at the Location but Chromite is indicated on the Map

Thickness Classification of Each Type of Chromite Deposit or Showing

(Thickness in meters is written to the lower right of the mark)
(The Number to the upper right of the mark is the strike length in meters at the outcrop)

○ Thickness is less than 30cm

○ Thickness is between 30cm and 100cm

○ Thickness is equal or greater than 100cm

POGRADECI

BUCIMASI

POGRADECI

POGRADECI

POGRADECI

POGRADECI

POGRADECI

POGRADECI

POGRADECI

POGRADECI

POGRADECI

POGRADECI

POGRADECI

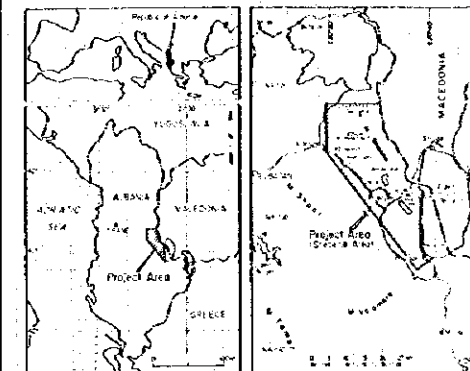
POGRADECI

POGRADECI

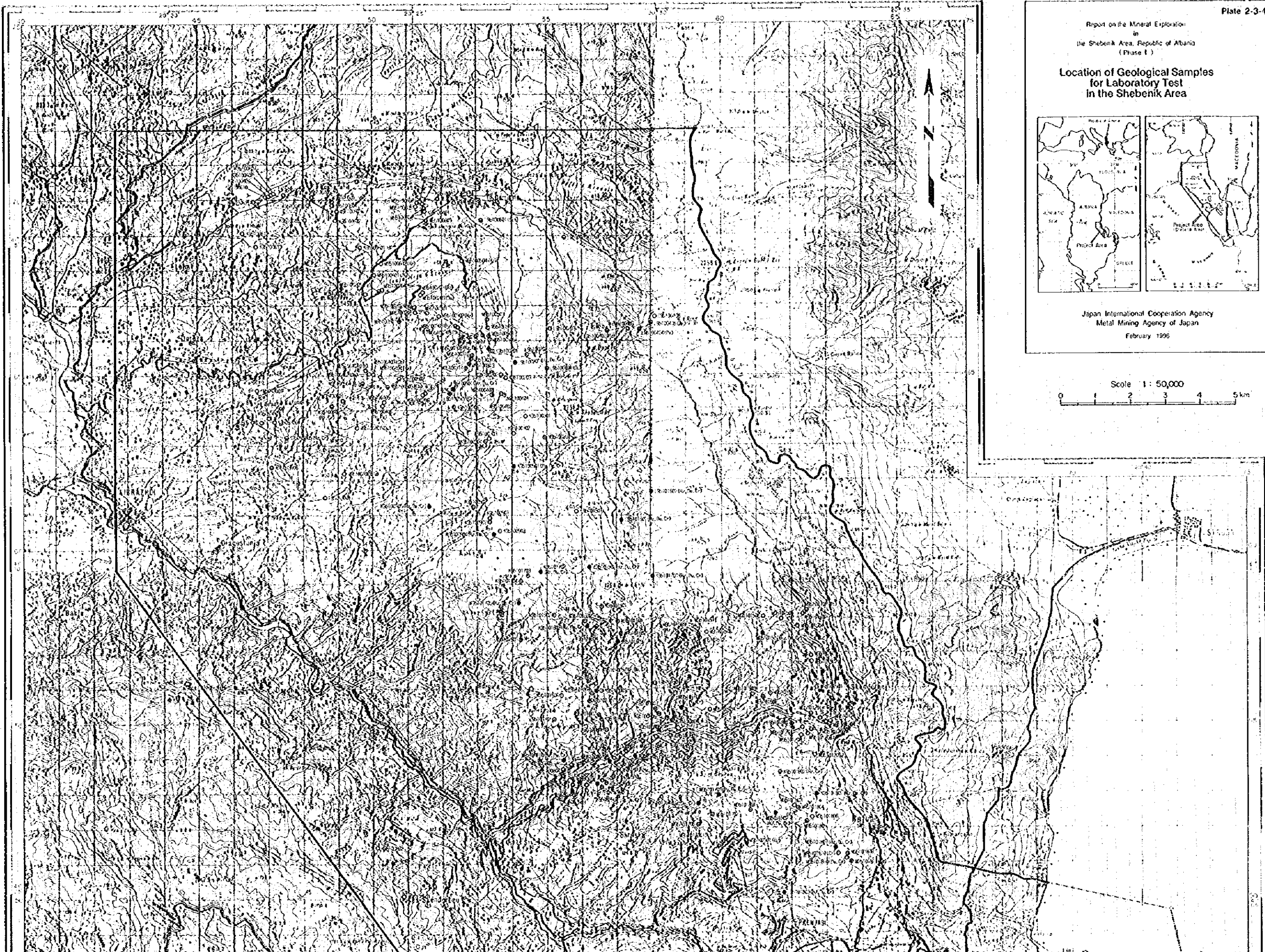
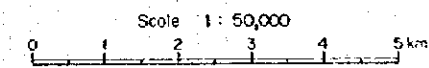
POGRADECI

Report on the Mineral Exploration
in
the Shebenik Area, Republic of Albania
(Phase I)

Location of Geological Samples
for Laboratory Test
in the Shebenik Area



Japan International Cooperation Agency
Metal Mining Agency of Japan
February 1995

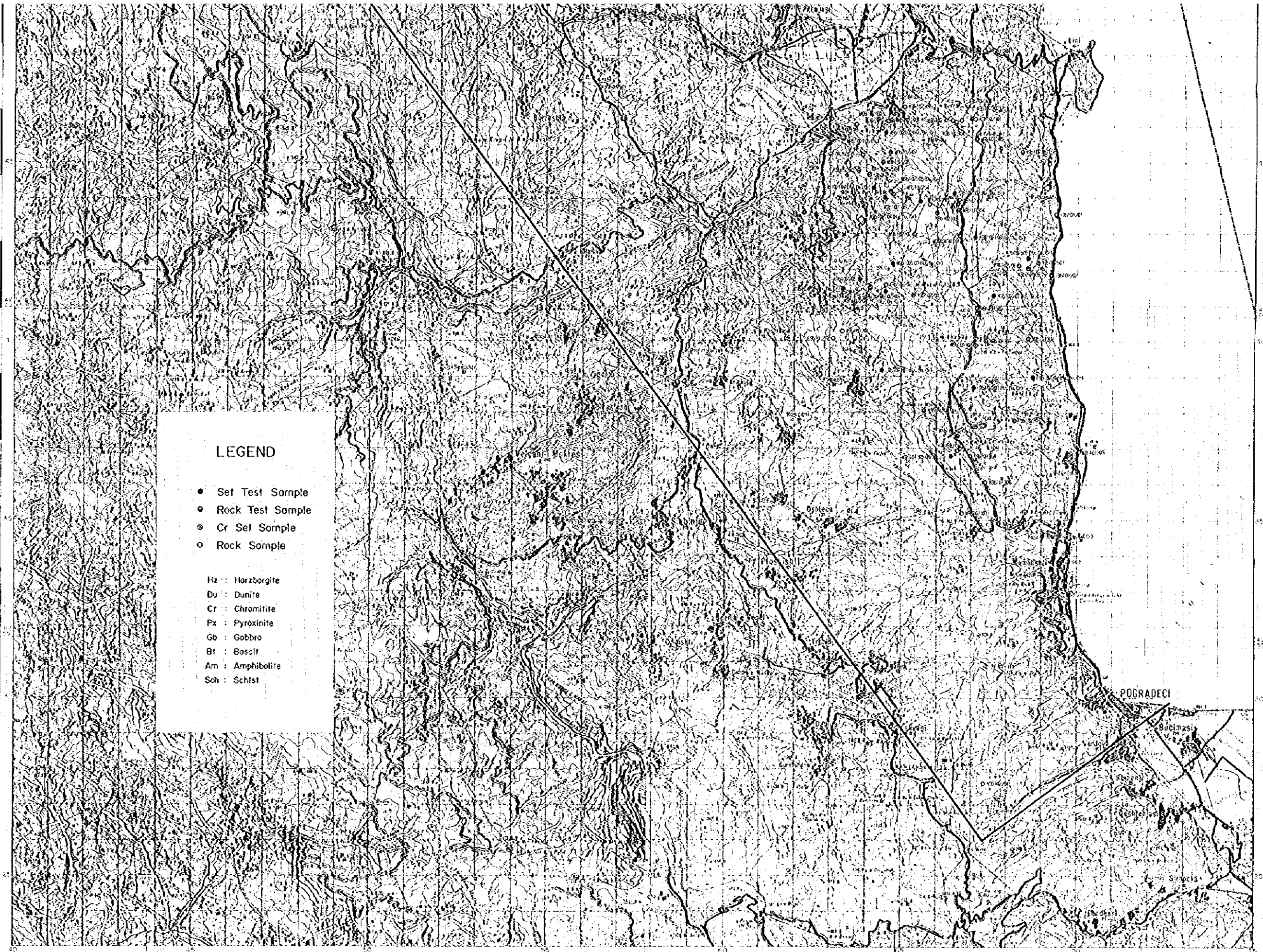


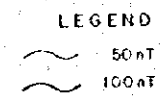
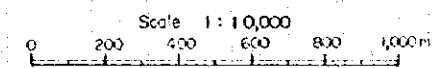
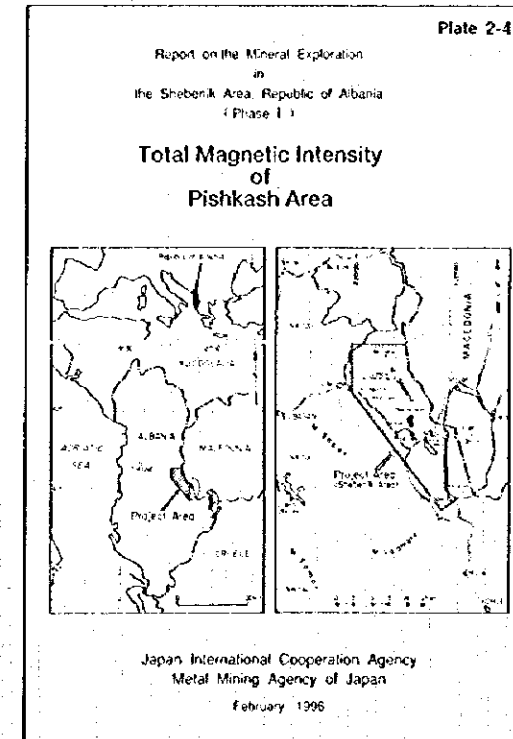
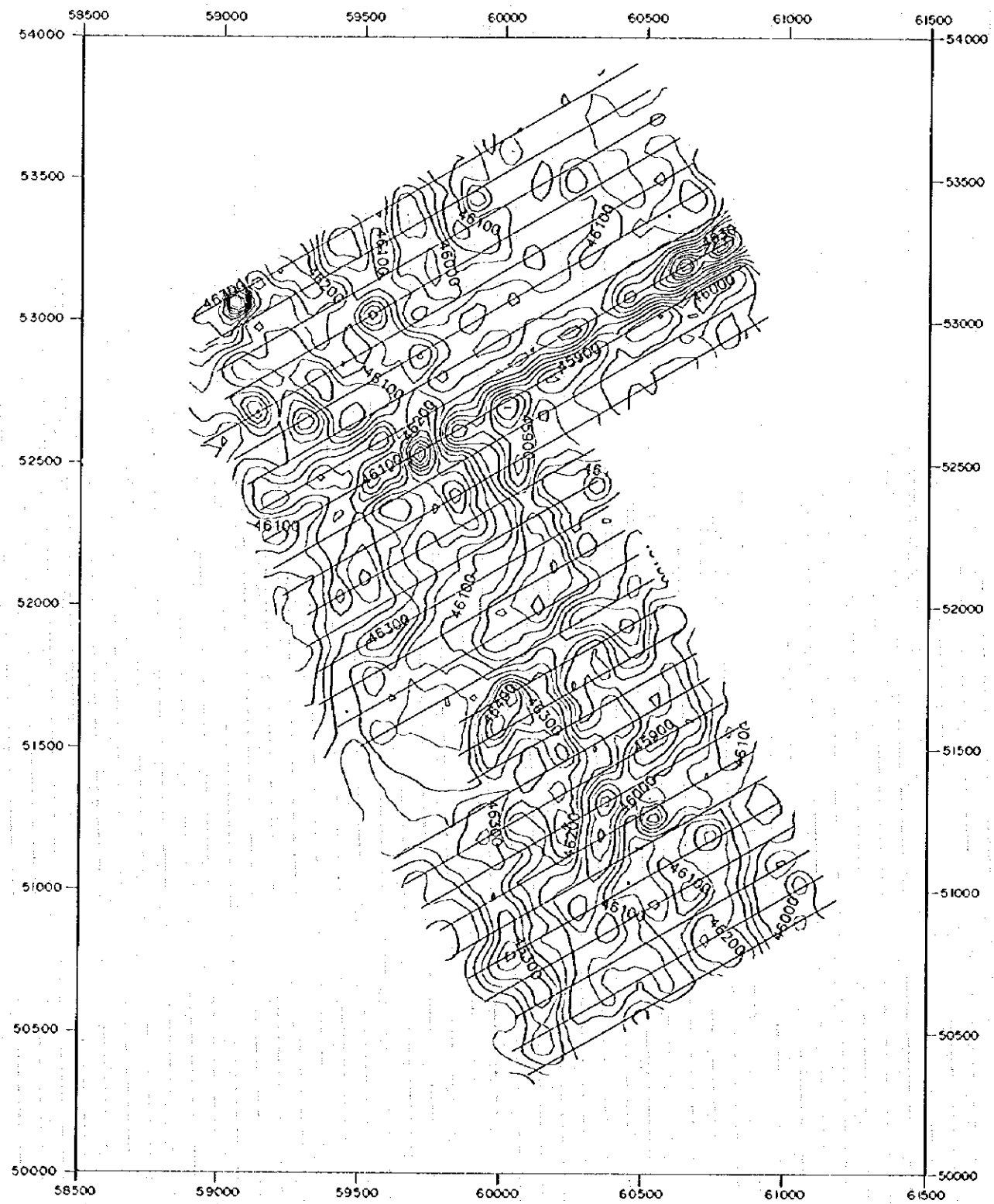
LEGEND

- Set Test Sample
- Rock Test Sample
- Cr Set Sample
- Rock Sample

Hz : Harzburgite
Du : Dunite
Cr : Chromitite
Px : Pyroxinite
Gb : Gabbro
Bt : Basalt
Am : Amphibolite
Sch : Schist

POGRADECI





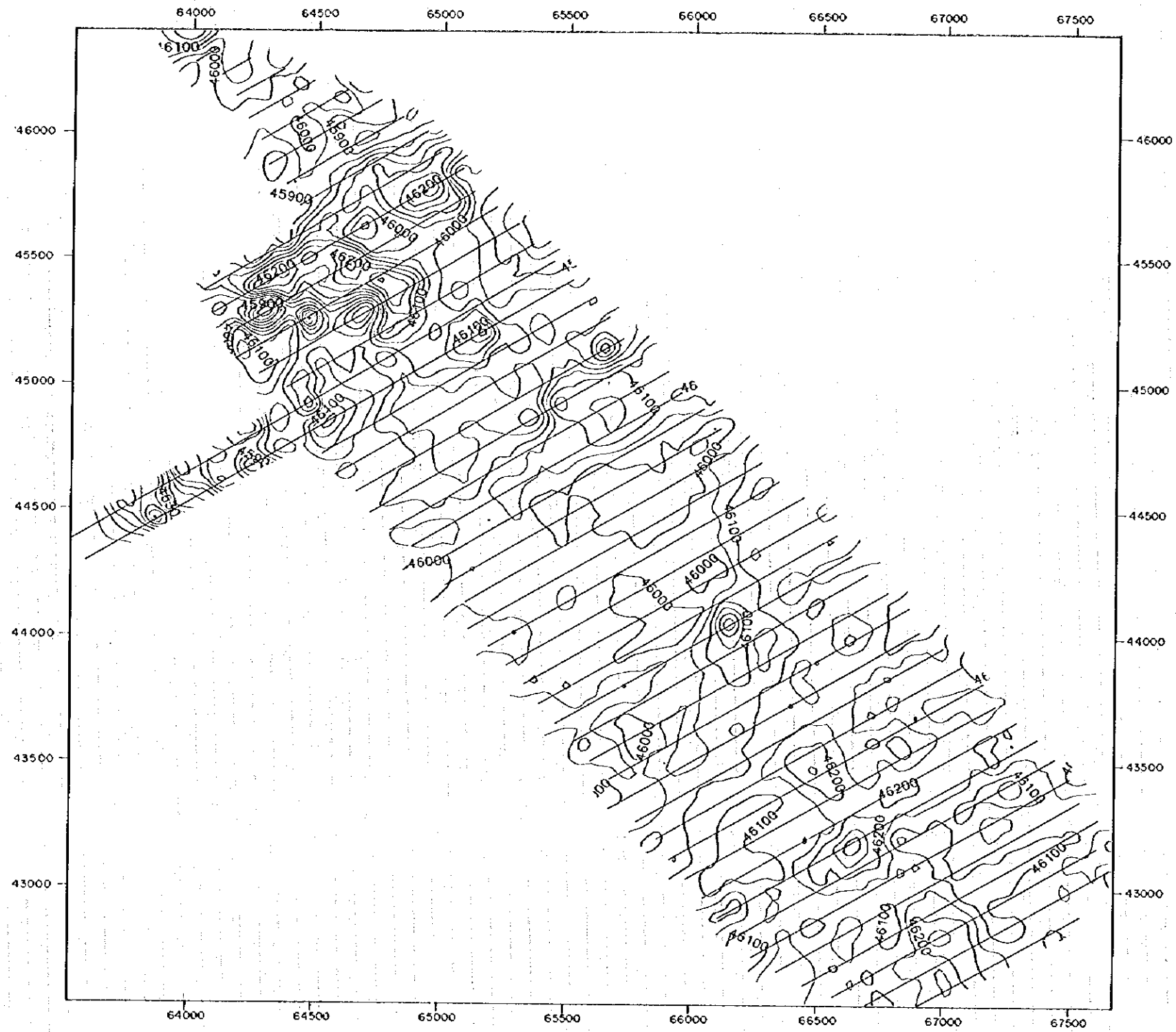
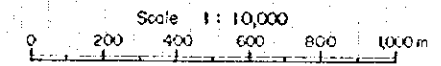


Plate 2-4-2

Report on the Mineral Exploration
in
the Shebenik Area, Republic of Albania
(Phase I)

**Total Magnetic Intensity
of
Kotodesh Area**

Japan International Cooperation Agency
Metal Mining Agency of Japan
February 1996



LEGEND

- 50nT
- 100nT

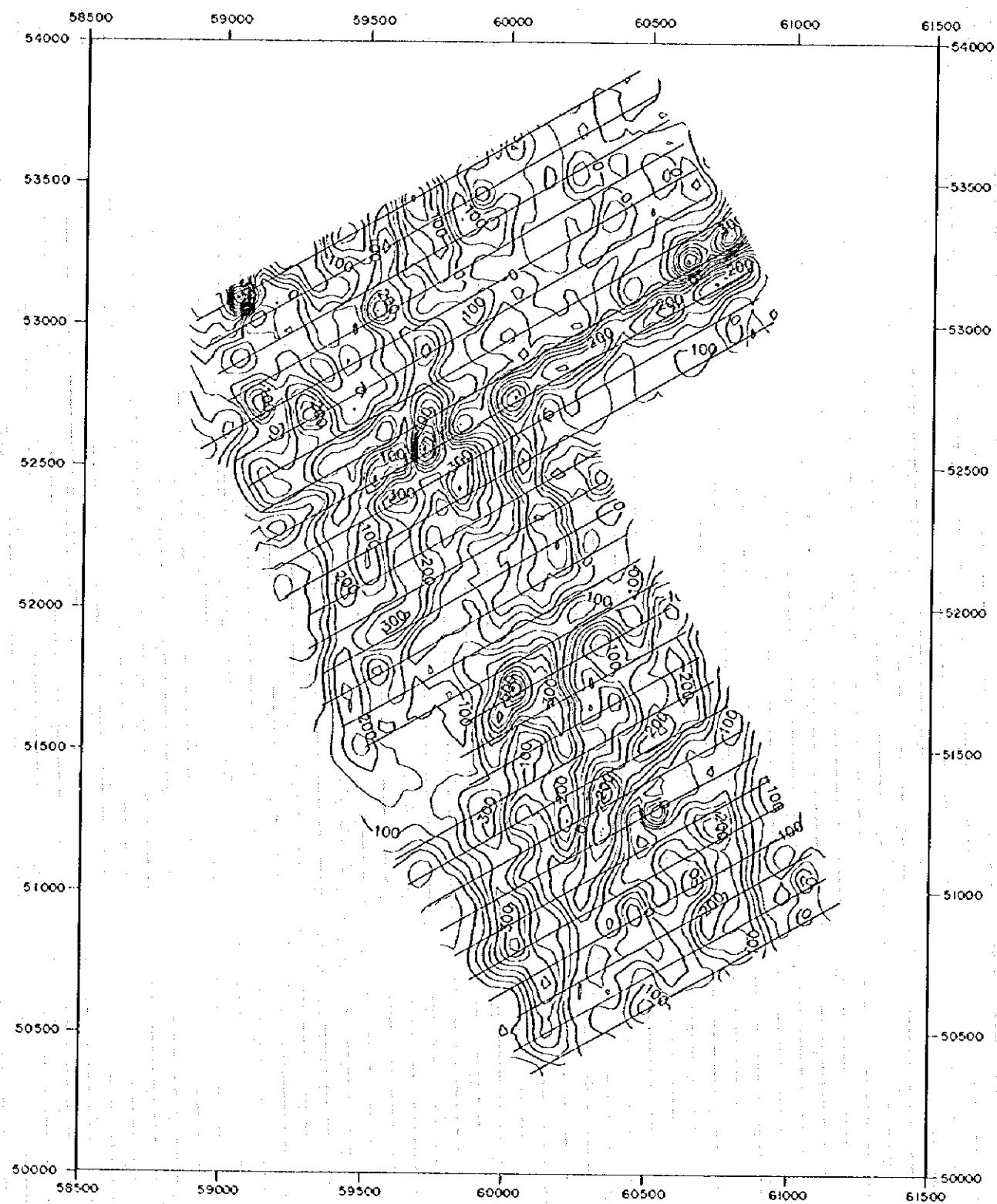
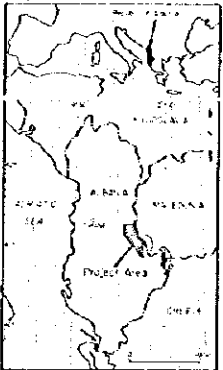
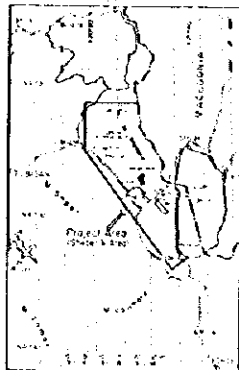


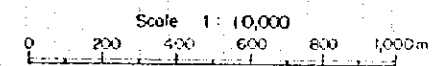
Plate 2-4-3

Report on the Mineral Exploration
in
the Stribenk Area, Republic of Albania
(Phase I)

**Reduced to the Pole Map
of
Pishkash Area**

Japan International Cooperation Agency
Metal Mining Agency of Japan
February 1990



LEGEND

- 50nT
- 100nT

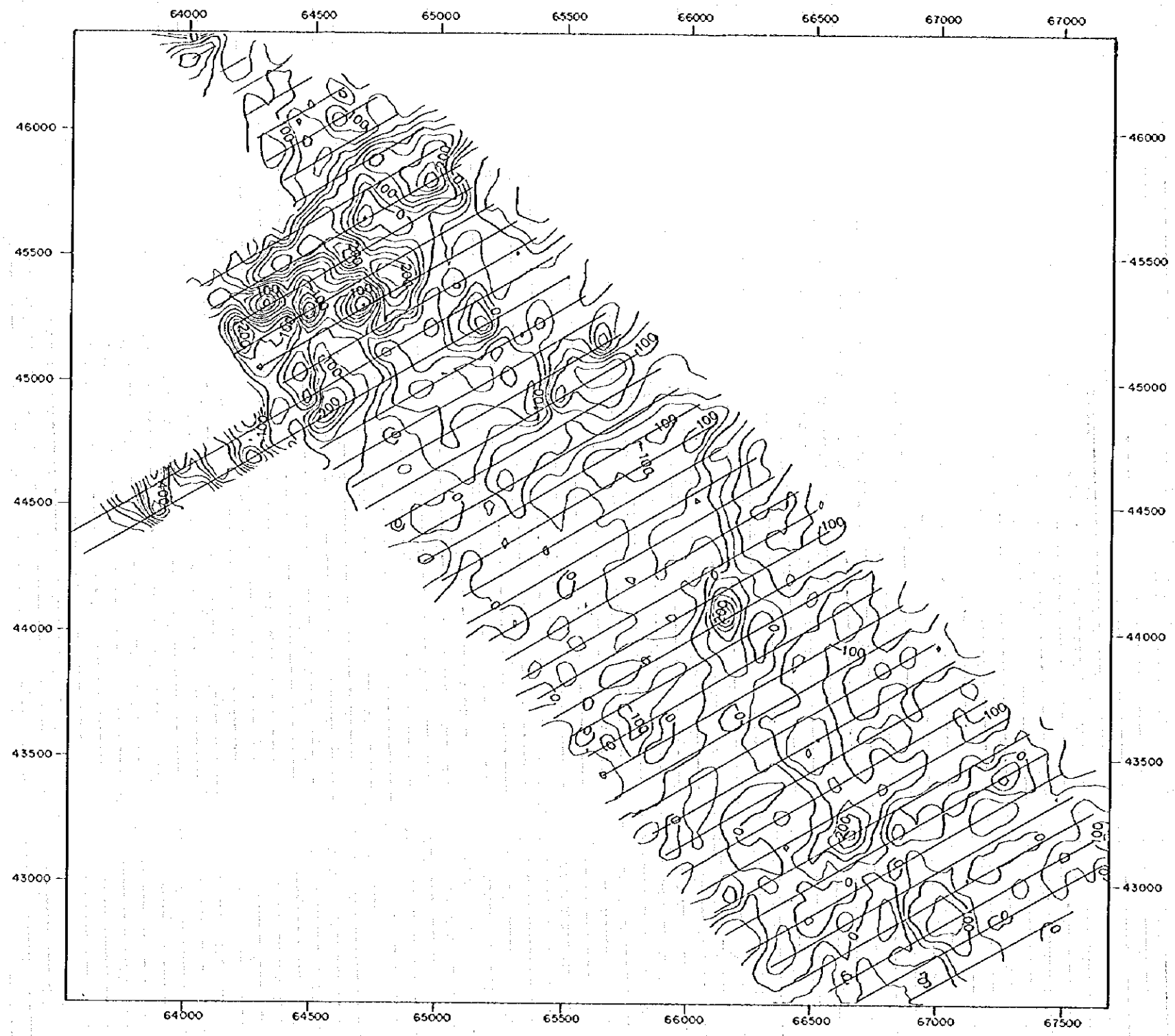
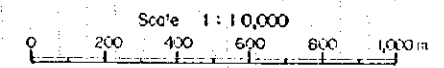


Plate 2-4-4

Report on the Mineral Exploration
in
the Shebenik Area, Republic of Albania
(Phase I)

**Reduced to the Pole Map
of
Kotodesh Area**

Japan International Cooperation Agency
Metal Mining Agency of Japan
February 1996



LEGEND

- 50 nT
- 100 nT