

資 料

1. タイ王室林野局推奨樹種一覧表
2. タイ国でみられる花木樹種一覧表
3. タイ造林訓練計画（JICA）での検討樹種一覧表

INDEX

A	PAGE		PAGE
○ Acacia auriculaeformis	67	○ Bougainvillea	150
○ Acalypha hispida	136	○ Brownea arizea	72
ACANTHACEAE	230, 242	○ Brunfelsia hopeana	174
Aerides crassifolia	239	BUDDLEJACEAE	134
Albizia lebeck	68	Buddleja davidii	134
A. procera	68	B. paniculata	134
ALISMACEAE	209	○ Butea monosperma	90
○ Allamanda cathartica	183		
Alternanthera ficoides	231	C	
AMARANTHACEAE	231	CACTACEAE	228
AMARYLLIDACEAE	210	○ Caesalpinia coriaria	73
Amherstia nobilis	140	○ C. pulcherrima	142
ANACARDIACEAE	31	○ Callistemon lanceolatus	108
○ Andrographis paniculata	242	○ Calliandra haematocephala	141
ANNONACEAE	32, 126, 181	Callophyllum inophyllum	61
○ Annona squamosa	32	○ Calycopteris floribunda	189
Antigonon leptopus	203	○ Cananga odorata	33, 126
APOCYNACEAE	34, 127, 185, 186, 242	CANNACEAE	212
Aquilaria crassna	122	○ Canna generalis	212
ARACEAE	216	CAPPARIDACEAE	42
ARALIACEAE	131	CAPRIFOLIACEAE	187
Artabotrys hexapetalus	181	Cassia angustifolia	244
○ Artocarpus altilis	100	○ C. bakeriana	76
○ A. heterophyllus	99	○ C. fistula	79
A. lakoocha	101	C. grandis	77
Ascocentrum ampullaceum	238	C. javanica	78
A. curuifolium	238	CASUARINACEAE	44
○ Asparagus racemosus	197	○ Casuarina equisetifolia	44
Averrhoa bilimbi	110	C. junghuhniana	45
		○ Cerbera odollam	35
		○ Cestrum diurnum	172
		○ C. noeternum	173
		C. parqui	172
		Chamaecereus rylvestrii	228
		Citrus maxima	115
		C. reticulata	114
		○ Clerodendrum paniculatum	176
		C. thomsonae	205
		○ C. ugandense	179
		C. speciosum	205
		○ Clitoria ternatea	195
		COCHLOSPERMACEAE	46
		○ Cochlospermum religiosum	46
		C. regium	47
		Codiaeum variegatum	135
		Caladium bicolor	216
		COMBRETACEAE	48,
			188, 189, 243

B

Bambusa vulgaris	224
BARRINGTONIACEAE	34
Barringtonia acutangula	34
Bauhinia acuminata	141
B. integrifolia	193
B. purpurea	70
B. variegata	71
○ B. winitii	194
○ Beaumontia grandiflora	184
BIGNONIACEAE	36, 132
BOMBACEAE	40
Bombax ceiba	41

COMPOSITAE	190, 221
CONVOLVULACEAE	191
○ <i>Congea tomentosa</i>	206
○ <i>Cordia sebestina</i>	57
○ <i>Couroupita guianensis</i>	66
CRASSULACEAE	227
<i>Crataera adansonii</i>	43
○ <i>Crataeva magna</i>	42
<i>Cratoxylum formosum</i>	62
○ <i>Crinum amabile</i>	211
○ <i>C. asiaticum</i>	210
CUPRESSACEAE	232
○ <i>Curcuma longa</i>	245
CYCADACEAE	223
<i>Cycas revoluta</i>	223
CYPERACEAE	211
<i>Cyperus papyrus</i>	211

D

○ <i>Delonix regia</i>	80
○ <i>Dendrobium lindleyi</i>	239
<i>D. aphyllum</i>	239
○ <i>Derris scandens</i>	196
○ <i>Desmos chinensis</i>	182
<i>Dialium cochinciiensis</i>	86
<i>Dichrostachys cinerea</i>	67
DILLENACEAE	50, 109, 192
○ <i>Dillenia indica</i>	51
○ <i>D. obovata</i>	50
○ <i>D. suffruticosa</i>	109
<i>Dimocarpus longan</i>	117
<i>Diospyros decandra</i>	57
DIPTEROCARPACEAE	51
<i>Dipterocarpus alatus</i>	51
○ <i>D. obtusifolius</i>	52
<i>D. Queen Sirikit</i>	169
<i>D. tuberculatus</i>	53
<i>Dizygotheca</i>	131
○ <i>Durio zibethinus</i>	40

E

<i>Echeveria runyonii</i>	227
<i>Echinocactus grusonii</i>	229
○ <i>Echinodorus cordifolius</i>	209
EHRETIACEAE	57
○ <i>Eichornia crassipes</i>	215
ELAEOCARPACEAE	58
<i>Elaeocarpus hygrophilus</i>	58
<i>Erythrina variegata</i>	88
<i>E. variegata</i>	89
○ <i>Eugenia malaccensis</i>	107
EUPHORBIACEAE	59, 135, 227
○ <i>Euphorbia</i>	227
<i>Excoecaria cochinchinensis</i>	137

F

<i>Fagraea fragrans</i>	112
<i>Ficus altissima</i>	105
<i>F. bengaleusis</i>	104
<i>F. benjamina</i>	106
<i>F. elastica</i>	103
<i>F. microcarpa</i>	106
<i>F. religiosa</i>	102
FLACOURTIACEAE	60, 138
<i>Flacourtia rukam</i>	60

G

<i>Gaillardia pulchella</i>	221
<i>Garcinia xanthochymus</i>	64
<i>Gardinia coronaria</i>	113
<i>G. jasminoides</i>	156
<i>Gliricidia sepium</i>	143
<i>Gloriosa superba</i>	198
<i>Gmelina philippensis</i>	179
GRAMINEAE	224
<i>Guaiacum officinale</i>	125
<i>Gustavia gracillima</i>	139
GUTTIFERAE	61
<i>Gymnocalycium mihanovichii</i>	229

H

HELICONIACEAE	225
<i>Heliconia rostrata</i>	225
<i>Hamelia patens</i>	170
<i>Hemigraphis alternata</i>	230
<i>Hevea brasiliensis</i>	59
<i>Hibicus mutabilis</i>	148
<i>H. rosa-siamensis</i>	147
<i>Hiptage bengalensis</i>	199
<i>Hopea odorata</i>	53
<i>Hydnocarpus anthelminthicus</i>	60
HYDRANGEACEAE	138
<i>Hydrangea macrophylla</i>	138

I

<i>Ipomoea purpurea</i>	191
<i>Ixora</i> spp. and hybrid	157

J

<i>Jacaranda filicifolia</i>	36
<i>Jacquemontia pentantha</i>	191
<i>Jasminum auriculatum</i>	200
<i>J. grandiflorum</i>	201
<i>J. multiflorum</i>	201
<i>J. rex</i> Craib	200
<i>J. sambac</i>	151
<i>Johannesteijsmannia altiflora</i>	233
<i>Justicia fragilis</i>	230

K

<i>Kerriodoxa elegans</i>	233
---------------------------	-----

L

LABIATAE	243
<i>Lagerstroemia floribunda</i>	93
<i>L. indica</i>	144
<i>L. loudonii</i>	94
<i>L. speciosa</i>	95
<i>Lantana</i> spp. and hybrid	180

<i>L. loddegessii</i>	234
<i>Lawsonia inermis</i>	145
LECYTHIDACEAE	66, 139
LEGUMINOSAE	67, 141, 193 195, 214, 244
<i>Licuala grandis</i>	234
LILIACEAE	197, 198
<i>Litchi chinensis</i>	118
<i>Lonicera japonica</i>	187
LYTHRACEAE	93, 144

M

MAGNOLIACEAE	96
MALPHIGIACEAE	146, 199
MALVACEAE	147
<i>Manmea siamensis</i>	63
<i>Magnifera indica</i>	31
<i>Manihot esculenta</i>	136
<i>Manikara achras</i>	120
<i>M. kauki</i>	120
<i>Maniltoa gemmipara</i>	140
<i>Melastoma malabathricum</i>	149
MELASTOMATACEAE	149
MELIACEAE	97
<i>Melodorum fruticosum</i>	33
MEMECYLACEAE	98
<i>Memecylon ovatum</i>	98
<i>Mesua ferrea</i>	65
<i>Michelia alba</i>	96
<i>M. champaca</i>	96
<i>Milletia brandisiana</i>	87
<i>Millingtonia hortensis</i>	37
<i>Mimusops elengi</i>	119
<i>Mitragyna diversifolia</i>	113
<i>Monochoria hastata</i>	214
MORACEAE	99
<i>Murraya paniculata</i>	171
<i>Musa chiliocarpa</i>	225
MUSACEAE	225
<i>Musa ornata</i>	226
<i>Mussaenda philippica</i>	169
MYRTACEAE	107

N

<i>Nelumbo nucifera</i>	217
<i>Nerium indicum</i>	129
NYCTAGINACEAE	150
<i>Nyctanthes arbor-tristis</i>	177
NYMPHAEACEAE	217
<i>Nymphaea capensis</i>	218
<i>N. lotus</i>	219
<i>N. spp</i>	219
<i>N. stellata</i>	218

O

OLEACEAE	151, 200, 201
<i>Oncoba spinosa</i>	138
<i>Opuntia</i>	228
ORCHIDACEAE	238
<i>Orthosiphon aristatus</i>	243
OXALIDACEAE	110

P

PANDANACEAE	111
<i>Pancratium zeylanicum</i>	210
<i>Pandanus tectorius</i>	111
<i>Pantas lanceolata</i>	157
<i>Parameria barbata</i>	185
<i>Parkinsonia aculeata</i>	81
PASSIFLORACEAE	202
<i>Passiflora hybrid</i>	202
<i>P. vitifolia</i>	202
<i>Pedilanthus tithymaloides</i>	137
<i>Peltophorum pterocarpum</i>	81
<i>Petrea volubilis</i>	207
<i>Phlox drumondii</i>	222
<i>Phyllocarpus septentrionalis</i>	86
<i>Plumeria obtusa</i>	127
<i>P. rubra</i>	128
POLEMONIACEAE	222
POLYGONACEAE	203
<i>Polyscia</i>	131
PONTERIACEAE	214
POTALIACEAE	112
<i>Pterocarpus indicus</i>	92

Q

<i>Quisqualis indica</i>	188
--------------------------	-----

R

<i>Radermachera ignea</i>	37
<i>Randia siamensis</i>	168
<i>Rauwolfia cambodiana</i>	242
<i>Rauwenhoffia siamensis</i>	126
<i>Ravenala madagascariensis</i>	226
<i>R. spetabilis</i>	171
<i>Rosa</i>	153
RUBIACEAE	113, 156, 169, 170
RUTACEAE	114, 171

S

SALICACEAE	116
<i>Salix babylonica</i>	116
<i>Samanea saman</i>	69
SAPINDACEAE	117
SAPOTACEAE	119
<i>Saraca indica</i>	83
<i>S. thaipingensis</i>	82
<i>Schizostachyum brachycladium</i>	224
<i>Schoutenia glomerata</i>	123
SCROPHULARIACEAE	231
<i>Sesbania javanica</i>	214
<i>Shorea obtusa</i>	55
<i>S. robusta</i>	56
<i>S. roxburghii</i>	54
<i>S. siamensis</i>	54
SOLANACEAE	172
SONNERATIACEAE	121
<i>Sonneratia caseolaris</i>	121
<i>Spathodea campanulata</i>	38
STRELITZIACEAE	226
<i>Swietenia macrophylla</i>	97
<i>S. mahogani</i>	97
SYMPHOREMATAACEAE	206

T

<i>Tabebuia chrysantha</i>	133
<i>T. pentaphylla</i>	39
<i>Tamarindus indica</i>	74
<i>Tecoma stans</i>	132
<i>Tectona grandis</i>	124
<i>Terminalia bellirica</i>	48
<i>T. catappa</i>	49
<i>T. chelbula</i>	243
<i>Tetracera loureiri</i>	192
<i>Thevetia peruviana</i>	130
<i>Thryallis glauca</i>	146
<i>Thuja orientalis</i>	232
THUNBERGIACEAE	175, 204
<i>Thumbergia erecta</i>	175
<i>T. grandiflora</i>	204
THYMELAEACEAE	122
TILIACEAE	123
<i>Torenia fournieri</i>	231
<i>Trapa bispinosa</i>	215
TRAPACEAE	215
TURNERACEAE	222
<i>Turnera subulata</i>	222

V

<i>Valkameria fragrans</i>	178
<i>Valleris glabra</i>	186
<i>Vatica diospyroides</i>	56
VERBENACEAE	124, 176, 205, 207
<i>Victoria amazonica</i>	220
VITIDACEAE	208
<i>Vitis vinifera</i>	208

W

<i>Washingtonia filifera</i>	235
<i>Wedelia trilobata</i>	190

Z

ZINGIBERACEAE	245
ZYGOPHYLLACEAE	125
<i>Zamia furfuracea</i>	223

資料 2

FLOWERING PLANTS OF THAILAND

A FIELD GUIDE

Patrick D. McMakin



Acanthaceae



White Lotus

INDEX OF SCIENTIFIC NAMES

- A**
- Abelmoschus moschatus 27, 98
 - Abrus precatorius 76
 - Abutilon indicum 98
 - Acacia auriculaeformis 18
 - Acacia catechu 51
 - Acacia spp. 51
 - Acalypha hispida 16
 - Acalypha indica 92
 - Acalypha wilkesiana 16
 - Acanthus ebracteatus 72
 - Achyranthes aspera 87
 - Adenanthera pavonina 51
 - Adenium obesum 9
 - Adhatoda vasica 1
 - Aeginetia indica 57
 - Aeschynanthus marmoratus 50
 - Aeschynomene indica 83
 - Aganosma marginata 43
 - Aglaia odorata 29
 - Allamanda spp. 6
 - Alpinia purpurata 40
 - Alternanthera philoxeroides 82
 - Alternanthera sessilis 82
 - Althaea rosea 27
 - Alysicarpus nummularifollus 95
 - Amorphophallus sp. 44
 - Anacardium occidentale 104
 - Andrographis paniculata 82
 - Anisomeles indica 93
 - Annona reticulata 104
 - Annona squamosa 105 Annonaceal
 - Anthocephalus cadamba 34
 - Antigonon leptopus 33
 - Apama tomentosa 45
 - Aralia armata 44
 - Ardisia crispa 56
 - Ardisia pilosa 70
 - Argrostemma sp. 59
 - Argyreia mollis 47
 - Argyreia nervosa 14
 - Argyreia splendens 66
 - Aristolochia galeata 9
 - Artabotrys siamensis 6
 - Artocarpus altilis 107
 - Artocarpus heterophylla 107
 - Arundina graminifolia 70
 - Asparagus racemosus 54
 - Asystasia gangetica 87
 - Asystasia intrusa 1
 - Atylosia volubilis 67
- B**
- Baccaurea spp. 105
 - Balanophora latisepala 45
 - Barleria cristata 1
 - Barleria lupulina 2
 - Barleria prionitis 42
 - Barleria siamensis 1
 - Barringtonia racemosa 76

INDEX OF SCIENTIFIC NAMES

- Bauhinia bassacensis* 52
Bauhinia involuclata 52
Bauhinia pottsii 52
Bauhinia pulla 52
Bauhinia spp. 18
○ *Bauhinia winitii* 19
○ *Beaumontia grandiflora* 7
Begonia spp. 45
Belacanda chinensis 18
Biophytum sensitivum 100
Bixa orellana 11
Boerhaavia spp. 99
Bouea macrophylla 104
○ *Bougainvillea spectabilis* 31
Breynia spp. 49
Broussonetia papyrifera 55
Brownea grandiceps 19
○ *Brunfelsia hopeana* 36
Buchnera cruciata 70
Buddleia madagascariense 24
○ *Butea monosperma* 19
Byttneria aspera 60
- C
- *Caesalpinia coriaria* 19
Caesalpinia mimosoides 52
○ *Caesalpinia pulcherrima* 20
Caesalpinia sappan 76
Calamus sp. 58
○ *Calliandra* spp. 20
○ *Callistemon lanceolatus* 30
Calonyction album 74
Calotropis gigantea 88
○ *Calycopteris floribunda* 46
○ *Cananga odorata* 6
Canavalia lineata 77
Canavalia rosea 95
○ *Canna generalis* 12
Capparis micracantha 13
Cardiospermum halicacabum 101
Carica papaya 105 パパイヤ
Carissa carandas 7
Caryota mitis 32
Casearia grewiifolia 60
○ *Cassia bakeriana* 20
○ *Cassia fistula* 20
Cassia garrettiana 52
Cassia glauca 21
Cassia mimosoides 68
Cassia occidentalis 95
Cassia spectabilis 21
Cassia timoriensis 21
Cassia tora 95
Cassytha filiformis 76
○ *Casuarina equisetifolia* 73
Catharanthus roseus 87
Centrosema pubescens 95
Cerbera manghas 6
○ *Cerbera odollam* 72
○ *Cestrum diurnum* 36
○ *Cestrum nocturnum* 36
Chloranthus inconspicuus 46
Christisonia siamensis 70
Cissus aristata 63
Cissus quadrangularis 63
Citharexylum spinosum 38
Citrus grandis 108
Citrus hystrix 108
Citrus microcarpa 80
Clematis spp. 33
Cleome speciosa 13
Cleome viscosa 89
Clerodendron colebrookianum 61
Clerodendron fragrans 38

INDEX OF SCIENTIFIC NAMES

- Clerodendron inerme* 80
Clerodendron infortunatum 62
 ○ *Clerodendron paniculatum* 62
Clerodendron petasites 38
Clerodendron quadriloculare 38
Clerodendron serratum 71
Clerodendron spicatum 62
Clerodendron splendens 39
 ○ *Clerodendron ugandense* 39
Clerodendron villosum 62
Clerodendron wallichii 62
Clinacanthus siamensis 42
 ○ *Clitoria ternatea* 96
Cnestis palala 47
Coccinea indica 91
 ○ *Cochlospermum religiosum* 14
Coix lachryma-jobi 93
Colona auriculata 61
Colubrina asiatica 58
Commelina spp. 83
 ○ *Congea tomentosa* 63
Corchorus spp. 102
Cordia dentata 11
 ○ *Cordia sebestena* 12
Cordia subcordata 73
Costus speciosus 64
 ○ *Couroupita gianensis* 18
 ○ *Crataeva* spp. 13
Crescentia alata 9
Crescentia cujete 10
 ○ *Crinum amabile* 4
 ○ *Crinum asiaticum* 4
Crossandra undulaefolia 2
Crotalaria chinensis 68
Crotalaria mucronata 96
Crotalaria sessiliflora 68
Curculigo orchoides 50
Curcuma alismatifolia 40
Curcuma domestica 40
 ○ *Curcuma* spp. 64
Cuscuta chinensis 90
Cycas pectinata 66
Cyclea peltata 55
- D**
- Datura metel* 101
Decashistia parviflora 69
 ○ *Delonix regia* 21
 ○ *Dendrobium* spp. 56
Dendrophthoe sp. 54
 ○ *Derris scandens* 77
Derris trifoliata 77
Desmanthus virgatus 96
Desmodium amethystinum 68
Desmodium capitatum 96
Desmodium pulchellum 53
Desmodium triquetrum 96
 ○ *Desmos chinensis* 6
 ○ *Dillenia indica* 15
 ○ *Dillenia* spp. 47
 ○ *Dillenia suffruticosa* 15
Dioscorea hispida 48
Dioscorea pyrifolia 48
 ○ *Dipterocarpus obtusifolius* 67
Dolichos lablab 96
Dracaena hookeriana 4
Dracaena lourieri 69
Dunbaria longeracemosa 68
Duranta repens 39
 ○ *Durio zibethinus* 105
- E**
- *Echinodorus cordifolius* 4
Eclipta prostrata 89

INDEX OF SCIENTIFIC NAMES

- *Eichhornia crassipes* 85
Elaeocarpus floribundus 49
Elephantopus scaber 89
Entada phaseoloides 53
Erechthites valerianifolia 89
Eriosema chinense 69
Ervatamia coronaria 7
Erythrina crista-galli 21
Erythrina indica 22
Eucalyptis sp. 30
Eucharis grandiflora 5
○ *Eugenia* spp. 107
Eupatorium odoratum 89
Euphorbia cyathopora 92
○ *Euphorbia geniculata* 93
Euphorbia longana 109
Eurycles amboinensis 5
Exacum tetragonum 67
- F**
Ficus benamina 55
Ficus hirta 55
Ficus racemosa 56
Ficus spp. 30
Flagellaria indica 50
Forrestia griffithii 46
Fuchsia x hybrida 32
- G**
Galphimia glauca 26
Garcinia mangostana 106
Garcinia schomburgkiana 106
Gardenia jasminoides 34
Gliricidia sepium 22
Globba spp. 64
Glochidion littorale 75
Gloriosa superba 77
- Gmelina philippensis* 39
Gomphrena celosiodes 87
Gossypium barbadense 27
Graptophyllum pictum 2
Grewia paniculata 61
Guettarda speciosa 79
Gynandropsis pentaphylla 89
- H**
Habenaria spp. 70
Hamelia patens 34
Hedychium coronarium 41
Heliconia spp. 37
Helicteres hirsuta 80
Helicteres isora 61
Heliotropium indicum 88
Hemerocallis fulva 24
Hewittia sublobata 90
Hibiscus moscheutos 27
Hibiscus mutabilis 28
Hibiscus rosa-sinensis 28
Hibiscus schizopetalus 28
Hibiscus syriacus 28
Hibiscus tiliaceus 78
Hibiscus sabdariffa 98
Hiptage benghalensis 26
Holarrhena densiflora 7
Homonoia riparia 49
Hura crepitans 16
Hydrocleys nymphoides 12
Hymenocallis littoralis 5
Hyptis capitata 94
Hyptis suaveolens 94
- I**
Impatiens masonii 66
Indigofera hirsuta 77

INDEX OF SCIENTIFIC NAMES

- Ipomoea aquatica* 83
Ipomoea carnea 15
Ipomoea digitata 91
Ipomoea indica 91
Ipomoea obscura 91
Ipomoea pes-caprae ssp.
 brasiliensis 74
Ipomoea quamoclit 15
Ipomoea stolonifera 74
Ixora spp. 34, 59
- J**
- Jacaranda mimosaefolia* 10
Jasminum bifarium 78
Jasminum sambac 31
Jatropha curcas 17
Jatropha gossypifolia 93
Jatropha integerrima 17
Jatropha podagrica 17
Jussiaea linifolia 84
Justicia betonica 2
Justicia gendarrusa 2
- K**
- Kaempferia pulchra* 65
- L**
- Lagerstroemia indica* 25
Lagerstroemia speciosa 25
Lansium domesticum 107
Lantana camara 103
Lasia spinosa 44
Lasianthus oligoneurus 59
Leea acuminata 67
Leea rubra 51
Leonotis nepetifolia 94
Leucaena leucocephala 22
- Leucas aspera* 94
Leucas lavendulifolia 67
Licuala grandis 32
Licuala spinosa 58
Limnocharis flava 82
Lindenbergia philippensis 101
Lippia nodiflora 103
Lonicera japonica 13
Ludwigia adscendens 85
Ludwigia octovalvis 85
Lumnitzera racemosa 73
- M**
- Magnolia coco* 25
Malachra capitata 98
Malpighia coccigera 26
Malvaviscus spp. 28
Mangifera indica 104 Anacardiaceae
Manilkara zapota 109
Maniltoa gemmipara 22
Medinilla spp. 29
Melaleuca leucadendron 84
Melanorrhoea usitata 43
Melastoma normale 54
Melia azedarach 29
Melochia corchorifolia 102
Merremia gemella 91
Merremia hirta 91
Messua ferrea 17
Michelia longifolia 25
Milletia atropurpurea 53
Millingtonia hortensis 10
Mimosa pigra 97
Mimosa pudica 97
Mimusops elengi 35
Mitragyna rotundifolia 59
Moghonia strobilifera 53

INDEX OF SCIENTIFIC NAMES

- Momordica charantia* 92
Momordica cochinchinensis 47
Monochoria hastata 86
Mucuna bennettii 22
Mucuna pruriens 97
Murraya paniculata 35
Musa rosacea 30
Mussaenda sanderiana 59
Mussaenda spp. 35
- N**
- Nelumbo nucifera* 84
Nepenthes gracilis 99
Nephelium lappaceum 109
Nephelium litchi 109
Nerium spp. 7
Nyctanthes arbor-tristis 31
Nymphaea lotus 84
Nymphoides aurantiaca 17
Nypa fruticans 79
- O**
- Ochna integerrima* 31
Ochrocarpus siamensis 75
Ocimum sanctum 94
Odontadenia speciosa 8
Odontonema stricta 2
Olax scandens 78
Opuntia vulgaris 73
Orthosiphon grandiflorus 18
Osbeckia chinensis 69
Oxalis corniculata 100
Oxalis rosea 32
Oxystelma esculentum 88
- P**
- Pachystachys lutea* 3
Paederia tomentosa 101
Pancreatium zeylanicum 5
Pandanus odoratissimus 79
Papaver somniferum 32
Paphiopedilum spp. 56
Parkia speciosa 53
Parkinsonia aculeata 23
Passiflora foetida 100
Passiflora laurifolia 33
Pavetta indica 60
Peltophorum inerme 23
Pemphis acidula 78
Peperomia pellucida 58
Pereskia spp. 12
Petrea volubilis 39
Phaeomeria magnifica 41
Phaius tankervilleae 57
Phaseolus calcaratus 97
Phaseolus lathyroides 97
Phyllanthus acidus 106
Phyllanthus pulcher 49
Phyllanthus reticulatus 93
Phyllocarpus septentrionalis 23
Physalis angulata 102
Pistia stratiotes 82
Pitcairnia flammea 12
Pluchea indica 74
Plumbago auriculata 33
Plumeria spp. 8
Polianthes tuberosa 5
Pollicia thyrsofolia 46
Polygonum barbatum 58
Polygonum pulchrum 85
Portulaca pilosa 79
Premna integrifolia 81
Pseuderanthemum graciflorum 42
Pseudocalymma alliaceum 10

INDEX OF SCIENTIFIC NAMES

Psidium guajava 108
Psuederanthemum andersonii 3
Psuederanthemum carruthersii 3
Psuederanthemum setricalyx 3
Pterocarpus indicus 23
Pterospermum diversifolium 37
Pueraria phaseoloides 69
Punica granatum 108

Q

Quassia amara 36
Quisqualis indica 14

R

Rauwenhoffia siamensis 43
Ravenia spectabilis 35
Rhododendron simsii 16
Rhodomyrtus tomentosa 56
Rivinia humilis 100
Rosa hybrida 33
Ruellia tuberosa 87
Russelia equisetiformis 35

S

Salomonina ciliata 100
Samanea saman 23
Sambucus canadensis 14
Sanchezia nobilis 3
Saraca bijuga 24
Sauropus androgynus 106
Sauropus compressus 49
Scaevola taccada 75
Schoutenia peregrina 37
Scindapsus siamense 44
Scutellaria discolor 50
Sesbania roxburghii 83
Seshania grandiflora 24

Sesuvium portulacastrum 72
Shorea roxburghii 48
Sida acuta 99
Sida retusa 99
Smilax sp. 54
Solandra nitida 36
Solanum torvum 102
Solanum trilobatum 102
Sonerila deflexa 55
Sonneratia cascolaris 80
Spathiphyllum clevelandii 9
Spathodea campanulata 10
Spathoglottis plicata 57
Sphenodesma pentandra 63
Spilanthes acmella 90
Spinifex littoreus 75
Stachytarpheta indica 103
Sterculia foetida 37
Stigmaphyllon littorale 26
Striga asiatica 101
Strophanthus gratus 8
Suaeda maritima 73
Swertia angustifolia 67
Synostemon bacciformis 75

T

Tabebuia spp. 11
Tacca leontopetaloides 61
Talauma candollii 26
Tamarindus indica 24
Tecoma stans 11
Tectona grandis 63
Telosma minor 45
Tephrosia purpurea 77
Terminalia catappa 14
Tetracera indica 48
Tetracera loureiri 15

INDEX OF SCIENTIFIC NAMES

Thalia geniculata 29
Thespesia populnea 78
Thevetia peruviana 8
Thunbergia erecta 3
Thunbergia fragrans 42
Thunbergia grandiflora 4
Thunbergia laurifolia 43
Torenia fournieri 60
Trachydium cambogianum 71
Tribulus terrestris 103
Trichosanthes cucumerina 92
Tridax procumbens 90
Tristellateia australasiae 26
Triumfetta pilosa 71
Turnera ulmifolia 38
Tylophora indica 72
Typha angustifolia 86
Typhonium trilobatum 88

U

Uraria crinita 98
Urena lobata 99
Uvaria macrophylla 43

V

Vallisneria spiralis 8
Vernonia cinerea 90
Vernonia sp. 66
Victoria amazonica 31
Vitex ovata 81
Vitex trifolia 40

W

Waltheria americana 102
Wedelia biflora 74
Wedelia prostrata 46
Wrightea dubia 44
Wrightia religiosa 9

X

Xyris pauciflora 86

Z

Zephyranthes spp. 5
Zingiber spectabile 65
Zizyphus jujuba 108

№ 9 - A

資料 3

タイ国の林業

と

森林土壌研究

石塚和裕

タイ国王室林野局

造林研究訓練技術協力計画

ANNEX VI Tree species planted in forest plantations from the beginning to 1984 under the responsibility of Silviculture Division, the Royal Forest Department

<u>Botanical Name</u>	<u>Thai Name</u>	<u>Family</u>
<i>Acacia auriculaeformis</i> Cunn.	กระถินฝรั่ง Kratinnarong	MIMOSACEAE (Wattle)
<i>Acacia catechu</i> (L.f.) Willd.	สีเสียดแก่น Sisiadkaen	LEGUMINOSAE (Catechu tree)
<i>Adenanthera pavonina</i> Linn.	มะกล่ำต้น Maklumton	" (Sandal wood tree)
<i>Adina cordifolia</i> Hk. f. °	เกว Kwao	RUBIACEAE
<i>Azizelia xylocarpa</i> Craib. °	มะค่าโมง Makamong	CAESALPINIACEAE
<i>Allantherus fauveliana</i> Pierre °	มะยมป่า Mayompa	SIMAROUBACEAE
<i>Alangium salvifolium</i> Wang	ปฐ Pru	ALANGIACEAE
<i>Albizia lebeck</i> Benth. °	หูกง Pruek	MIMOSACEAE (Indian walnut)
<i>Alstonia macrophylla</i> Wall	ทุงฟ้า Tungfa	APOCYNACEAE
<i>Anacardium occidentale</i> Linn.	มะม่วงหิมพานต์ Mamuanghimmaphan	ANACARDIACEAE (Catechu nut tree)
<i>Anisoptera costata</i> Korth.	กระบาก Krabaak	DIPTEROCARPACEAE
<i>Anthocephalus chinensis</i>	กระทุง, ตะก Kratum, Takoo	RUBIACEAE
<i>Artocarpus lakoocha</i> Roxb. °	(มะ)หาด (Ma)Haad	MORACEAE
<i>Avicennia alba</i> Bl.	แสม Samae	AVICENNIACEAE (Olive mangrove)
<i>Azadirachta slamensis</i> Valetton °	สะเดา Sadao	MELIACEAE (Neem tree)
<i>Balanocarpus heimii</i> King	ตะเคียนหินเตาเผา Takianchantamaew	DIPTEROCARPACEAE
<i>Bischofia javanica</i>	ประดู่สม Pradusom	BISCHOFIACEAE
<i>Bombax valettonii</i> Hochr.	จันทน์ Ngiewpa	BOMBACACEAE
<i>Bruguiera gymnorhiza</i>	ประสัก Prasak	RHIZOPHORACEAE
<i>Bruguiera parviflora</i> (Roxb.) Wight & Arn. ex Griff.	ตุ้มดำ Tuadum	"

<u>Botanical Name</u>	<u>Thai Name</u>	<u>Family</u>
<i>Calamus</i> spp.	หวาย Hwai	PALMAE
<i>Calamus caesius</i> Blume	หวายตะค้าทอง Hwaitaka	"
<i>Canarium kerrii</i> Craib	มะเค็ด Maleum	BURSERACEAE
<i>Canarium venosum</i> Craib	มะเค็ด Makem	"
<i>Cassia agnes</i> Brenan	จันทน์เทศ Pajapruek	CAESALPINIACEAE
<i>Cassia siamea</i> Britt	ขี้เหล็กบ้าน Kilekban	" (Thai copper pod)
<i>Casuarina equisetifolia</i> J.R. & G. Forst	สนทะเล Sontalei	CASUARINACEAE
<i>Casuarina junghuhiana</i> Miq.	สนประติมากรรม Sonpradipat	" (Common iron wood)
<i>Cerlops roxburghiana</i> Arn.	ไผ่ Prong	RHIZOPHORACEAE
<i>Chukrasia velutina</i> Wight & Arn.	ขมิ้น Vomhin	MELIACEAE
<i>Cleistanthus gracilis</i> Hook. f.	สามพันตา Sampanta	EUPHORBIACEAE
<i>Colocasia gigantea</i> (Bl.) Hook. f.	บุก Koon	ARACEAE
<i>Cotylelobium melanoxyton</i> Pierre	เคี่ยม Kiem	DIPTEROCARPACEAE
<i>Dalbergia cochinchinensis</i> Pierre	พะยอม Payoong	PAPILIONACEAE
<i>Dalbergia oliveri</i> Gamble	ชิงชัน Chingchan	" (Siamese rosewood)
<i>Diospyros mollis</i> Griff.	มะเกลือ Maklue	EBENACEAE
<i>Dipterocarpus alatus</i> Roxb.	ยางนา Yangna	DIPTEROCARPACEAE
<i>Dipterocarpus obtusifolius</i> Teijsm.	ยางเตี้ย Yangtheng	"
<i>Dipterocarpus tuberculatus</i> Roxb.	ยางหลวง Yangluang	"
<i>Duabanga sonneratioides</i> Ham.	ทุ้มเตม Tumten	SONNERATIACEAE

<u>Botanical Name</u>	<u>Thai Name</u>	<u>Family</u>
Eucalyptus spp.	ยูคาลิปตัส Eucalyptus	MYRTACEAE
Eugenia cumini Druce	พวา Ewa	"
Fagraea fragrans Roxb. °	กัมเทรา Frankrao	POTALIACEAE
Ficus annulata Bl.	โหล Sal	MORACEAE
Garuga pinnata Roxb. °	ตะครำ Takrum	BURSERACEAE
Gmelina arborea Roxb. °	ถัก Zot	VERBENACEAE
Hopea odorata Roxb. °	ตะเคียนทอง Takianthong	DIPTEROCARPACEAE
Haldina cordifolia Ridsd. (Adina cordifolia)	ขี้ขาว Khwaao	(Iron wood) RUBIACEAE
Intsia palembanica Mig.	หลุมพ Lumpaw	CAESALPINIACEAE (Malacca teak)
Kandelia candel Druce	รังกะเท Rungkatae	RHIZOPHORACEAE

<u>Botanical Name</u>	<u>Thai Name</u>	<u>Family</u>
Lagerstroemia cuspidata Wall.	ตะแบก	LYTHRACEAE
Lagerstroemia speciosa (L.) Pers. *	Tabaek, อินทนิล	"
Lagerstroemia tomentosa Presl *	Intaninnam เสลา	"
Lanea coromandelica Merr. *	Salap ทุก, ลอยช้าง	ANACARDIACEAE
Leuceana leucocephala, de Wit.	Nguk, Aoychang กระถินยักษ์	MIMOSACEAE
Litsea grandis *	Kratinyaak คิง	LAURACEAE
	Tang	
Mangifera caloneura Kurz *	มะม่วงป่า Mamuangpa	ANACARDIACEAE
Melia azedarach Linn.	เสียน Lian	MELIACEAE (Persian lilac)
Mesua ferrea Linn. *	ยูบารก Boonnaak	GUTTIFERAE
Moringa oleifera Lamk.	มะรุม Marum	MORINGACEAE
Ochroma lagopus Sw.	สำลี, บิลซา Sumlee, Balza	BOMBACACEAE
Oncosperma tigillaria Ridl.	หลาวชะโลม Laochaown	PALMAE
Parkia javanica Merr.	เหียง Rieng	MIMOSACEAE
Parkia speciosa Hassk.	สะตอ Sataw	"
Peltophorum pterocarpum Back.	บุนนัง Nonzi	CAESALPINIACEAE
Pentace burmanica Kurz *	สีเสียด เปลือก Sisiedpleuk	TILIACEAE

<u>Botanical Name</u>	<u>Thai Name</u>	<u>Family</u>
<i>Phyllanthus emblica</i> Linn.	มะขามป้อม	EUPHORBIACEAE
<i>Pinus kesiya</i> Royle & Gordon	Makampom สนสามใบ	PINACEAE
<i>Pinus merkusii</i> Jungh. & de Vriese	Sonsambai สนสองใบ	"
<i>Pithecellobium dulce</i> Benth.	Sonsongbai มะขามเทศ	MIMOSACEAE
<i>Pterocarpus macrocarpus</i> Kurz	Makamdhes ปรางค์	PAPILIONACEAE
	Pradu	
<i>Rhizophora apiculata</i> Bl.	โกงกางใบเล็ก	RHIZOPHORACEAE
<i>Rhizophora mucronata</i> Poir.	Kongkangbailek โกงกางใบใหญ่	"
<i>Rhus succedanea</i> Linn.	Kongkangbaiyai สะเดาฝรั่ง, ฝรั่งเทศ	(Red mangrove) ANACARDIACEAE
	Sadaochang, Rakvietnam	
<i>Samanea saman</i> Merr.	จามจุรี	MIMOSACEAE
<i>Semecarpus reticulata</i> Lec.	Jamjuri รัก	ANACARDIACEAE
<i>Shorea obtusa</i> Wall.	Rak เต็ง	DIPTEROCARPACEAE
<i>Shorea siamensis</i> Miq.	Teng รัง	" (Burma sal)
<i>Shorea talura</i> Roxb.	Rung มะขาม	" (Siamese sal)
<i>Sindora siamensis</i> Teijsm. ex Miq.	Payom มะค่าแค	CAESALPINIACEAE
<i>Spondias pinnata</i> Kurz	Makatae มะกอก	ANACARDIACEAE
<i>Sterculia foetida</i> Linn.	Makok สำโรง	STERCULIACEAE
<i>Swietenia macrophylla</i> King	Sumrong มะฮอกกานี	MELIACEAE
<i>Shorea glauca</i> King	Mahoganybaiyai ไม้แก่น	DIPTEROCARPACEAE
	Mai Ak	

<u>Botanical Name</u>	<u>Thai Name</u>	<u>Family</u>
<i>Tamarindus indica</i> Linn.	มะขาม Makham	CAESALPINIACEAE
<i>Tectona grandis</i> Linn. f.	สัก Sak	VERBENACEAE (Tamarind)
<i>Terminalia alata</i> Heyne ex Roth.	ตะเภา Rokfa	COMBRETACEAE (Teak)
<i>Terminalia bellerica</i> Roxb.	สมออินเดีย Samorpipek	"
<i>Terminalia catappa</i> Linn.	ทุเรียนเทศ Hukwang	" (Beleric myrobalan)
<i>Ternstroemia wallichiana</i> Engler	ค้ำเสา Tumsao	THEACEAE (Umbrella tree)
<i>Tetrameles nudiflora</i> R. Br.	ตะกั่ว, สมอ Kapong, Sompong	TETRAMELACEAE
<i>Thyrsostachys siamensis</i> Gamble	ไทร Pairuak	GRAMINEAE
<i>Toona ciliata</i> M. Roem.	ยอหม้อ Yomhom	MELIACEAE
<i>Toxicodendron succedanea</i> Mold.	ตะคร้อ Sadaochang	ANACARDIACEAE
<i>Vernicia fordii</i> Airy Shaw	ยอ Mayao	EUPHORBIACEAE
<i>Vernicia montana</i> Lour.	ยอ Mayao	"
<i>Xylia kerrii</i> Craib & Hutch.	ตะกั่ว Dang	MIMOSACEAE (Iron wood)

Remark : • Reserved species

ANNEX VII Suitable Tree Species for Forest Plantation

I. Highland Area

<i>Pinus merkusii</i>	Pinaceae
<i>Pinus kesiya</i>	"
<i>Betula alnoides</i>	Betulaceae
<i>Docynia midica</i>	Rosaceae
<i>Gmelia arborea</i>	Verbenaceae
<i>Engelhardtia spicata</i>	Juglandaceae
<i>Albizia chinensis</i>	Mimosaceae
<i>Garuga pinnata</i>	Burseraceae
<i>Fraxinus excelsa</i>	Oleaceae
<i>Choerospondias axillaris</i>	Anacardiaceae
<i>Cinnamomum tanala</i>	Lauraceae
<i>Castanopsis spp.</i>	Fagaceae

II. Saline and Blackish Area

<i>Eucalyptus camaldulensis</i>	Myrtaceae
<i>Nolaleuca leucadendra var. minor</i>	
<i>Calophyllum tetrapterum</i>	Guttiferae
<i>Koompassia malaccensis</i>	Caesalpiniaceae
<i>Macaranga griffithiana</i>	Eupobiaceae

III. Arid Area

<i>Peltophorum dasyrachis</i>	Caesalpiniaceae
<i>Phyllanthus emblica</i>	Euphaobiaceae
<i>Cassia siamea</i>	Caesalpiniaceae
<i>Azadirachta indica var. siamensis</i>	Meliaceae
<i>Albizia lebbek</i>	Mimosaceae
<i>Albizia procera</i>	"
<i>Haldina cordifolia</i>	Rubiaceae
<i>Terminalia chebula</i>	Combretaceae
<i>Terminaria alata</i>	"
<i>Terminaria calamandanai</i>	"
<i>Acacia harmandiana</i>	Mimosaceae
<i>Acacia leucophloea</i>	"
<i>Acacia tomentosa</i>	"
<i>Acacia catechu</i>	"

Suitable Tree Species for Forest Plantation (cont'd)

<i>Erithrophleum succirubrum</i>	Caesalpinaceae
<i>Erithrophleum teysmanii</i>	"
° <i>Acacia auriculiformis</i>	Mimosaceae
° <i>Acacia mangium</i>	"
° <i>Eucalyptus camaludulensis</i>	Myrtaceae
° <i>Eucalyptus deglupta</i>	"
° <i>Eucalyptus saligna</i>	"
<i>Conarium subulatum</i>	
IV. Semi-Arid Area	
<i>Tectona grandis</i>	Verbenaceae
<i>Gmelia arborea</i>	"
<i>Melia dubia</i>	Meliaceae
<i>Azelia xylocarpa</i>	Caesalpinaceae
<i>Xylia xylocarpa</i>	Mimosaceae
<i>Pterocarpus macrocarpus</i>	Papilionaceae
<i>Dipterocarpus alatus</i>	Dipterocarpaceae
<i>Darbergia dongaiensis</i>	Papilionaceae
<i>Dalbergia oliveri</i>	"
<i>Dalbergia cultrata</i>	"
<i>Anthocephalus chinensis</i>	Rubiaceae
<i>Acrocarpus fraxinifolius</i>	
<i>Cassia siamea</i>	Caesalpinaceae
<i>Erythrophleum succirubrum</i>	"
<i>Erythrophleum teysmanii</i>	"
<i>Parkia leiophylla</i>	Mimosaceae
<i>Parkia smatrana</i>	"
<i>Dipterocarpus alatus</i>	Dipterocarpaceae
<i>Hopea odorata</i>	"
<i>Hopea ferra</i>	"
<i>Shorea roxburghii</i>	"
<i>Spondias pinnata</i>	Anacardiaceae
<i>Spondias bipinnata</i>	"
<i>Bombax anceps</i>	Bombacaceae

Suitable Tree Species for Forest Plantation(cont'd)

V. Humid Area

<i>Instia palembanica</i>	Caesalpinaceae
<i>Instia bijuga</i>	"
<i>Parkia speciosa</i>	Mimosaceae
<i>Parkia smatrana</i>	"
<i>Parkia timoriana</i>	"
<i>Dipterocarpus alatus</i>	Dipterocarpaceae
<i>Dipterocarpus gracilis</i>	"
<i>Dipterocarpus kerrii</i>	"
<i>Hopea odorata</i>	"
<i>Shorea roxburghii</i>	"
<i>Shorea leprosula</i>	"
<i>Shorea curtisii</i>	"
<i>Balanocarpus heimi</i>	"
<i>Parashorea stellata</i>	"
<i>Cassia siamea</i>	Caesalpiaceae
<i>Sandoricum koetjape</i>	Meliaceae
<i>Litsea grandis</i>	Lauraceae
<i>Cinnamomum porrectum</i>	Quercaceae
<i>Calophyllum pulcherrimum</i>	Guttiferæ
<i>Alstonia macrophylla</i>	Apocynaceae
<i>Dyera costulata</i>	"
<i>Camposperma auriculatum</i>	Anacardiaceae

VI. Mangrove Area

<i>Rhizophora apiculata</i>	Rhizophoraceae
<i>Rhizophora mucronata</i>	"
<i>Bruguiera gymnorhiza</i>	"
<i>Bruguiera sexangula</i>	"
<i>Xylocarpus moluccensis</i>	Meliaceae
<i>Heritiera littoralis</i>	Sterculiaceae

By Dr. Tem Samittinan, Textbook of Training, RTRP, 1986
 °; Exotic species

ANNEX VIII

Number of Leguminous Species in Different Habits in Thailand

Genus	Sub Family	Plant Habit.						Remark
		Tree	Shrub Tree	Shrub	Under Shrub	Herb	Climber	
1. Abrus	Pap.						2	
△ ② Acacia	Him.	5 (1)	(1)	1			5	
△ 3. Acrocarpus	Caes.	1						
④ Adenanthera	Him.	2						
5. Aeschynomene	Pap.				3			
6. Afgekia	Pap.							
△ ⑦ Afzelia	Caes.	1						
△ ⑧ Albizia	Him.	6					1	
9. Alysicarpus	Pap.			1				
10. Amherstia	Caes.		1					
11. Antheroporum	Pap.	1						
12. Arachis	Pap.					1		
13. Archidendron	Him.	1	6					
14. Atylosia	Pap.						3	
15. Bauhinia	Caes.	1	4 (2)	3 (2)			19	
16. Brownea	Caes.		(2)					
17. Butea	Pap.	2						
18. Caesalpinia	Caes.		1 (1)	(1)			14	
19. Cajanus	Pap.			(1)				
20. Calliandra	Him.			(1)				
21. Canavalia	Pap.						4	Jack bean, sword bean
△ ⑫ Cassia	Caes.	7 (4)	1	1 (6)	3 (2)			
23. Cathormion	Him.	1						
24. Centrosema	Pap.						(1)	
25. Christia	Pap.					3		
26. Cicer	Pap.					(1)		
27. Clitoria	Pap.						1 (1)	
28. Codariocalyx	Pap.						1	
29. Crotalaria	Pap.			1 (2)	9	8 (1)		Sunn heap
30. Crudia	Caes.	1						
31. Cyanopsis	Pap.						(1)	
32. Cylista	Pap.						1	
△ 33. Cynometra	Caes.	3	(1)					
△ ⑭ Dalbergia	Pap.	22					8	
35. Delonix	Caes.	(1)						
36. Dendrolobium	Pap.			8				

(continued)

Number of Leguminous Species in Different Habits in Thailand

Genus	Sub Family	Plant Habit						Remark
		Tree	Shrub Tree	Shrub	Under Shrub	Herb	Climber	
37. <i>Derris</i>	Pap.	2	1				9	
38. <i>Desmodium</i>	Pap.			6	8	2	1	
△ 39. <i>Dialium</i>	Caes.	3						
40. <i>Dicerma</i>	Pap.				1			
41. <i>Dichrostachya</i>	Him.		1					
42. <i>Delichos</i>	Pap.						2	
43. <i>Dumasia</i>	Pap.						1	
44. <i>Dunbaria</i>	Pap.						3	
45. <i>Dysoxylum</i>	Pap.						1	
46. <i>Entada</i>	Him.						3	
47. <i>Enterolobium</i>	Him.	(1)						
48. <i>Eriosema</i>	Pap.				1			
49. <i>Erythrina</i>	Pap.	5 (1)						
△ 50. <i>Erythrophloeum</i>	Caes.	3						
51. <i>Galactia</i>	Pap.						1	
52. <i>Geissaspis</i>	Pap.					1		
53. <i>Glicicidia</i>	Pap.		(1)					
54. <i>Glycine</i>	Pap.					(1)		
55. <i>Hegnere</i>	Pap.				1			
56. <i>Indigofera</i>	Pap.		2	8 (1)		3		
△ 57. <i>Intsia</i>	Caes.	2						
58. <i>Koompassia</i>	Caes.	2						
59. <i>Labiab</i>	Pap.						1	Labiab bean
60. <i>Lathyrus</i>	Pap.						(1)	
61. <i>Leucaena</i>	Him.		1					
△ 62. <i>Hillettia</i>	Pap.	11		1			4	
63. <i>Himosa</i>	Him.				1	(1)		
64. <i>Moghania</i>	Pap.			8				
65. <i>Mucuna</i>	Pap.						7 (1)	
66. <i>Neptunia</i>	Him.					2		

(continued)

Number of Leguminous Species in Different Habits in Thailand

Genus	Sub Family	Plant Habit						Remark
		Tree	Shrub Tree	Shrub	Under Shrub	Herb	Climber	
67. <i>Oryzocarpum</i>	Pap.		1					
68. <i>Oryzias</i>	Pap.	1						
69. <i>Pachychizus</i>	Pap.						(1)	Yam bean
△ 70. <i>Parkia</i>	Him.	4						
71. <i>Parkinaonia</i>	Pap.			(1)				
△ 72. <i>Peltophorum</i>	Coes.	2						
73. <i>Phaseolus</i>	Pap.						3 (3)	Lima bean. Green gram
74. <i>Phytolium</i>	Pap.						1	
75. <i>Phyllocarpus</i>	Coes.	(1)						
76. <i>Phyllodium</i>	Pap.			5				
77. <i>Pisum</i>	Pap.						(1)	
78. <i>Pithecellobium</i>	Him.	(1)						
79. <i>Psopocarpus</i>	Pap.						(1)	Winged bean
△ 80. <i>Pterocarpus</i>	Pap.	2						
81. <i>Pterolobium</i>	Coes.						4	
82. <i>Pueraria</i>	Pap.						5	
83. <i>Pycnospora</i>	Pap.					1		
84. <i>Rhynchosia</i>	Pap.						3	
85. <i>Samanea</i>	Him.	1						
86. <i>Saraca</i>	Coes.	3	2					
87. <i>Sasbania</i>	Pap.		(1)	3 (1)				
88. <i>Shuteria</i>	Pap.						1	
△ 89. <i>Sindora</i>	Coes.	4						
90. <i>Smithia</i>	Pap.					2		
91. <i>Sophora</i>	Pap.			1				
92. <i>Spatholobus</i>	Pap.						3	
93. <i>Strongylodon</i>	Pap.						(1)	
94. <i>Stylosanthes</i>	Pap.					(2)		
95. <i>Tadehagi</i>	Pap.			1		1		
△ 96. <i>Tamarindus</i>	Coes.	1						Tamarind
97. <i>Tephrosia</i>	Pap.				3			

(continued)

Number of Leguminous Species in Different Habits in Thailand

Genus	Sub Family	Plant Habit						Remark
		Tree	Shrub Tree	Shrub	Under Shrub	Herb	Climber	
98. Uria	Pap.				6	1	1	Rice bean, Yard-long bean Damba Groundnut
99. Urariopsis	Pap.				1			
100. Vicia	Pap.						(1)	
101. Vigna	Pap.						7	
102. Vosndela	Pap.					(1)		
△ (10) Xylla	Him.	2						

Source : " Thai Plant Names " by Tem Saltinond 1980

- Notes : Family Name
- 1 Caes. = Caesalpinaceae
 - 2 Pap. = Papilionaceae
 - 3 Him. = Mimosaaceae
 - 4 () = Exotic species

○ : Planted by Silviculture Division

△ : Reserved Tree Species

INTRODUCTION

Now forest resource of Thailand had decreased which is effective people's living. Especially, it is cause of the natural disaster as droughts and floods in many times. And the effects in economic society and security of nation which is increasing every days. Queen knows the condition of the droughts damage. She worries about her people. Then queen tells Lady Supraphada Kasemsan, herroyal secretary to bring the queen's speech to Agriculture and Cooperative Ministry and request to make the regulation to stop the forest damage and to promote urgency the restoration of the forest condition and the maintenance of the watershed area. Queen pleases Ministry consider about water shortage problem which is big problem of nation which have to solve extreme urgently.

Agriculture and Cooperative Ministry had invited speech of queen to be way in the procedure to restore forest condition which is conserved forest area which degenerated urgently. However, procedure by government section only one can't restore forest condition which degenerated on time. If would reforest more quantity in short time for solve crisis problem to get real result, it was necessary to get cooperate and be united in action and spirit and wealth which u sein reforestation from people in nation which in every groups for present to be adoration. Then Agriculture and Cooperative Ministry had arranged project that i s FOREST REHABILITATION TO CELEBRATE THE 50 YEAR REIGN OF HIS MAJESTY THE KING PROJECT. For take the reforestation procedure reach to the purpose, RFD. had mad e handbook of reforestation and plantation maintenance for be the practical way further.

PROCEDURE

Forest rehabilitation to celebrate the 50 year reign of his majesty the king project has target area about 5 million rai for 3 years from 1994-1996. It is divided into

1994	reforest about	1.35	million rai
1995	reforest about	1.65	million rai
1996	reforest about	2	million rai

Reforest follow project that forest rehabilitation to celebrate the 50 year reign of his majesty the king is reforestation on conserved area both in national park area, wildlife sanctuary area and national forest area which have process and way as follows;

REFORESTATION

1. REFOREST ON CONSERVED AREA WHICH ARE MOUNTAIN HILL AND PLAIN WHICH STILL HAVE CONDITION BE FOREST AND HAVE SOME TREE AND SOME FRUIT

Reforest procedure in form implement forest which has process and reforest way as follows;

1.1 AREA PREPARATION

Get rid of weed as necessary for reforest without cut tree and fruit which has value. Don't get rid of weed by fire. In area preparation must avoid to use machine except true necessary case. In operate must use man power mostly. Make fire break all around and small fire break area, least width is 8 m. and provide guard for protect fire.

1.2 DRIVE A POST FOR SETTLE PLANT POSITION AND SHAVE OFF ROUND POST

Use post which is length about 1 m. to drive to settle plant position on unoccupied land not in array or line, and has not plant spacing exactly. Plant likes nature mostly. Shave off weed around post with 1 m. diameter.

1.3 PLANT PIT DIG

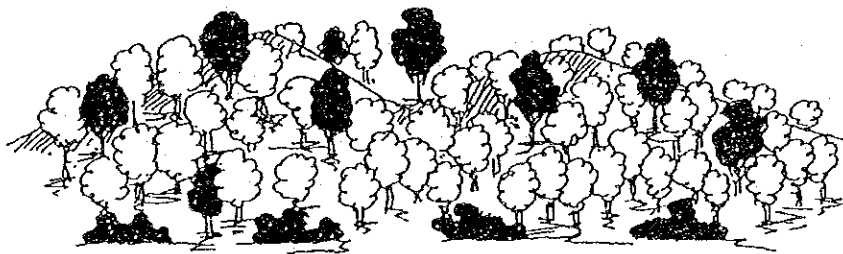
Dig pit has width and depth about 1 foot. The figure of pit is square or circle. Try to chop roll digest and expose soil that dig out to the sun for make it most loose as can do. After dig, underlay the floor of pit with organic matter or manure or substance that keep moisture (polymer) or inorganic. For the case that soil which dig out is clay should use lime (calciumoxide) mix with sand and manure or compost then mix it with soil and expose it to the sun about 1-2 weeks for make soil loose and good. For soil that mix more sand, soil improvement is necessary to put more lime and manure for make soil hold in lump and can keep more water and food.

1.4 PLANT

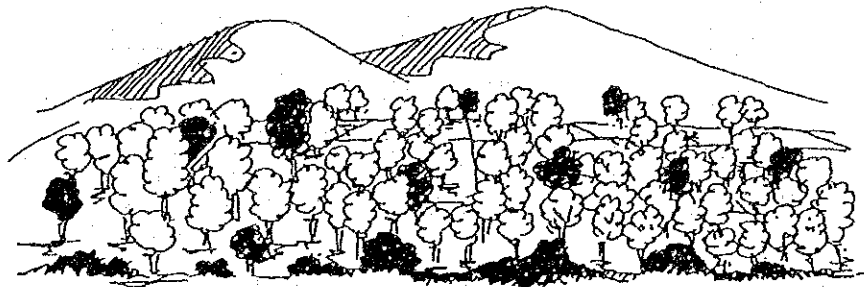
Plant tree 5 species up. First choose tree species which grow on area at least 100 trees per rai. Plant by mix, not plany in row or line. These is not exact space. It is up to area condition. Tree which plant has height about 25-30 cm. Use knife slit plastic bag out. The caution is don't make root of tree get more affection. Then lay seedling in pit by get join mark level between trunk and root is in the same level of pit rim. Next cover pit with loose soil mix sand or soil which has good loose. Don't use clay which tight or soil which has many gravels to cover pit because it will be problem that make root not grow well. After cover pit, step on it to make soil enough tight. bring piece of leaf, blade of grass or straw cover around base of tree for keep moisture and protect water erosion. Bind rope to hold tree with post loosely for help tree balance and protect wind that can make tree shake. Should plant in rainy season, while raining or after rain just fall. Start plant from mountain area and hill at the first step and proceed on low sloping area to plain respectively. If area which plant on mountain or hill are risk to soil erosion, must plant *Saccharum spontaneum* on line of mountain edge under tree which plant for protect soil erosion.

1.5 TREE MAINTENANCE AFTER PLANT

After plant tree should think of danger which may be happen with tree in the beginning which has small size and can't balance itself such as danger from domesticated animal. After plant for 2 months, should survey and plant fill tree which died and remove weeds, put fertilizer, make fire break of dry season make fog shelter for study of helping tree which plant to have moisture in dry season by use death bamboo's leaf.



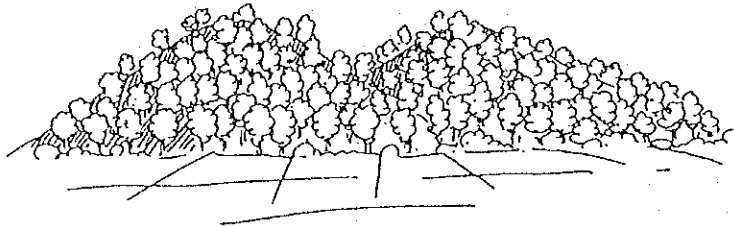
Reforestation on conserved area which are mountain hill that still have forest condition and have some tree or some fruit. Reforest in implemet forest form.



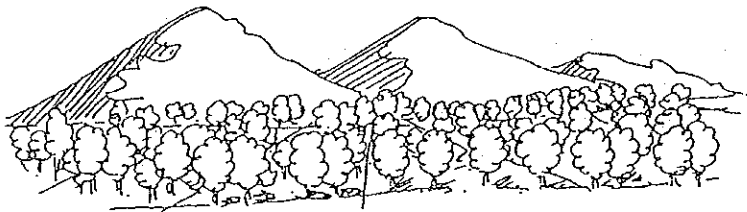
Reforestation on conserved area which is plain that still have forest condition have some tree nad some fruit. Reforest in implemet forest form.

2. REFORESTATION ON CONSERVED AREA WHICH ARE MOUNTAIN HILL AND ALL CLEARED PLAIN

Reforestation on all cleared which are mountain hill or plain have process and method of procedure like reforestation on conserved area which are mountain hill and plain which still have forest condition , some tree and some fruit. It is different only reforestation by first way have to leave spaces of tree or fruit which grow, don't cut it out.



Reforestation on conserved area which are mountain hill which all cleared

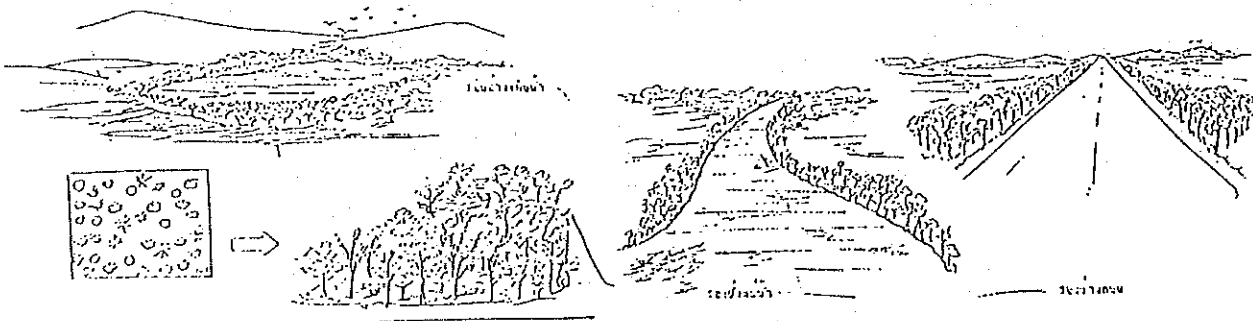


Reforestation on conserved area which is all cleared plain

3. REFORESTATION AT SCHOOL, GOVERNMENT OFFICE, RELIGIOUS PLACE AND PROVINCE AREA plant follow desire and propriety.

4. REFORESTATION ON BOTH SIDES OF PATH plant in row or be forest in many rows follow propriety and beauty.

5. REFORESTATION ON BOTH SIDES OF RIVER BANK, CANEL BANK AND AROUND RESERVOIR plant tree which proper with bank follow desire and propriety.



PLANTATION MAINTENANCE

After reforest in the first year on area had finished follow process already for get tree which plant has survive rate and grow well, so have maintenance next year in each year as follows;

1. GET RID OF WEEDS

Remove weeds around base of tree out, loosen the soil, put fertilizer in the first part of rain season and last part of rain season.

2. FOREST FIRE PROTECTION

Repair fire break which had done around and lane fire break on plant

plot area for point which risk to fire happening. Provide fire suppression unit, reconnoiter unit and fire guard to look after.

3. FILL PLANT

Fill plant replace death tree completely when reach plant season.

NAME LIST OF PLANT SPECIES FOR PLANT ON FOREST REHABILITATION TO CELEBRATE
THE 50 YEAR REIGN OF HIS MAJESTY THE KING PROJECT
(植栽樹種名表)

1. Lithocarpus かし
2. Horsfieldia macrocoma Warb. var. cararioides Sincl.
3. Eagle Wood
4. Dipterocarpus intricatus (Dipterocarpaceae)
5. Fagraea fragrans Roxb.
6. Careya sphaerica Roxb. Syn. c. arborea Roxb.
7. Acacia tomentosa Willd.
8. Sandoricum indicum
9. Sandoricum nervosum
10. Calophyllum inophyllum Linn.
11. Anthocephalus cadamba
12. Anisoptera costata Korth.
13. Hydnocarpus ilicifolius King
14. Millettia leucantha Kurz
15. Cassia bakeriana Craib (Wishing tree, Pink Shower)
16. Acacia craibii Nielsen
17. Betula alnoides Buch.- Ham
18. Millettia pendula (Leguminosae) チンウイン (くせあるが、家)
19. Suregada multiflorum Baill., Syn. Gelonium multiflorum A. Juss
20. Homalium tomentosum Benth.
21. Cassia siamea Britt.
22. Dialium cochinchinense Pierre
23. Parashorea stellata Kurz
24. Vitex glabrata R. Br. にんじんぼく (家具材)
25. Nephelium hypoleucum Kurz.
26. Pisonia aculeata Linn.
27. Albizzia lebbekoides (DC.) Benth.
28. Cotylelobium melanoxylon Pierre
29. Colocasia gigantea (Bl.) Hook. f.
30. Markhamia pierrei P. Dop
31. Bombax ceiba Linn.
32. Ipomoea bona-nox (Convolvulaceae)
33. Barringtonia coccinea Kostel
34. Michelia floribunda Finet & Gagnep
35. Aromadendron elegans Bl.
36. Dalbergia nigrescens (Leguminosae)
37. Eugenia formosana Wall.
38. Dalbergia Oliveri Gamble (Rose wood したん)
39. Bauhinia pottsii G. Don var. decipiens K. & S. Larsen マメ科
40. Gmelina arborea Roxb.
41. Serianthes grandiflora ; Erythrophloeum succirubrum (Leguminosae)
42. Xylia xylocarpa Taub.

43. *Cleidion javanicum* Blume Syn. *C. spiciflorum* Merr.
44. *Schleichera oleosa* (Lour.) Oken
45. *Garuga pinnata* Roxb.
46. *Diospyros embryopteris* (Ebenaceae) ; *Diospyros* spp., ebony, (Ebenaceae)
47. *Lagerstroemia cuspidata* Wall.
48. *Diospyros ehretioides* Wall.
49. *Aphahamixis polystachya* Parker
50. *Shorea obtusa* Wall.
51. *Cratoxylum pruniflorum* (Hypericaceae)
52. *Vitex pinnata* Linn.
53. *Cratoxylum maingayi* Dyer
54. *Hopea odorata* Roxb.
55. *Albizia procera* (Leguminosae), *Sapindus trifoliatus* (Sapindaceae)
56. *Aleurites Fordii* (Euphorbiaceae)
57. *Alstonia macrophylla* Wall.
58. *Durio masoni* Bakh
59. *Ceropegia arnottiana* Wight
60. *Peltophorum dasyrachis* (Leguminosae)
61. *Peltophorum pterocarpum*, (*P. ferrugineum*, *P. inerme*)
62. *Bambusa tulda* (Gramineae), a species of bamboo
63. *Broussonetia papyrifera* Vent.
64. *Sterculia guttata* Roxb.
65. *Pterocarpus macrocarpus* Kurz.
66. *Pterocarpus indicus* (Leguminosae)
67. *Alasgium salviifolium*
68. *Aglaia odoratissima* Bl.
69. *Millingtonia hortensis* Linn.f.
70. *Croton oblongifolius* (Euphorbiaceae), *Croton argyratus* (Euphorbiaceae)
71. *Croton joufra* (Euphorbiaceae)
72. *Shorea floribuda* (Dipterocarpaceae)
73. *Albizia lebbeck* (L.) Benth
74. *Dalbergia cochinchinensis* (Leguminosae) したん (Payung) タイ
75. *Dipterocarpus tuberculatus* (Dipterocarpaceae)
76. *Memecylon floribundum* (Melastomaceae)
77. *Memecylon geddesianum* (Melastomaceae)
78. *Adinandra integerrima* T. Anders. ex Dyer
79. *Holarrhena densiflora* Ridl.
80. *Gardenia hygrophila* Kurz
81. *Oroxylum indicum* (Begoniaceae)
82. *Oroxylum indicum* (L.) Vent.
83. Bamboo
84. *Adenanthera pavonina* Linn.
85. *Diospyros mollis* Griff.
86. *Spondias pinnata* (L.f.) Kurz
87. *Feronia limonia* (L.) Swing
88. *Phyllanthus emblica* Linn.

89. *Afzelia xylocarpa* Roxb.
90. *Sindora siamensis* Teijsm.ex. Miq.
91. *Aegle marmelos* (L.) Corr.
92. *Protium serratum* Engler
93. *Baccaurea sapida* Muell.Arg.
94. *Antidexma velutinum*
95. *Mangifera pentandra* Hook.
96. *Celtis tetrandia* Roxb.
97. *Wrightia tomentosa* Roem. & Schult.
98. *Chukrasia venlutina* W. & A.
99. *Toona ciliata* M. Roem.
100. *Persea Kurzii* Kosterm
101. *Dipterocarpus turbinatus* Gaertn.f.
102. *Dipterocarpus alatus* Roxb.
103. *Calotropis gigantea* (Asclepiadaceae)
104. *Shorea siamensis* Miq.
105. *Hopea ferrea* Pierre
106. *Melodorum fruticosum* Lour.
107. *Melia azedarach* Linn.
108. *Paranephelium longifoliolatum* Lec.
109. *Jacaranda fillicifolia* (Anders.) D.Don
110. *Tectona grandis* Linn.f.
111. *Casuarina equisetifolia* J.R. & G. Forst.
112. *Terminalia bellerica* Roxb.
113. *Terminalia chebula* Retz.
114. *Azadirachta indica* A.Juss.var.siamensis Valetton
115. *Parkia speciosa* Hassk
116. *Pinus kesiya* Royle ex Gordon, *Pinus merkusii* Jungh & de vriese
117. *Acacia catechu* (L.f.) Willd
118. *Bauchinia Acuminata* (Leguminosae)
119. *Cananga latifolia* Finet & Gagnep.
120. *Mammea siamensis* Kosterm
121. *Dillenia obovata* (Bl.) Hoogl
122. *Lagerstroemia tomentosa* (Lythraceae)
123. *Cassia garrettiana* Craib
124. *Strychnos nux-vomica* Linn
125. *Sterculia foetida* (Sterculiaceae)
126. *Eugenia cumini* (L.) Druce
127. *Litsea glutinosa* (Lour.) C.B. Robinson
128. *Symplocos racemosa* Roxb.
129. *Intsia palembanica* Miq.
130. *Cinnamomum bejolghota* Sweet
131. *Odina wodier* (Anacardiaceae)
132. *Hymenodictyon excelsum* (Rubiaceae)
133. *Lagerstroemia speciosa* (L.) Pers.
134. *Lagerstroemia macrocarpa* Wall.

And others kind of plant which is in the beginning on forest area which will plant. Don't plant *Leucaena leucocoechala* de Wit, Eucalyptus, Cashew nut and others agriculture fruit which is not wild plant.

REMARK All of these is on judgement of work unit which nursery seedling who elect kind of plant species proper to area condition which will plant follow project.

EXPANDITURE RATE FOR REFORESTATION PER RAI

(1 Rai当たりの造林、保育経費)

OPERATIONAL PROCESS	COST (BAHT)
1. Site preparation Survey area line mark Remove weeds out Making inspectional path Making fire break Staking and Digging plant pit, putting manure,compost,polymer, or inorganic fertilizer underlaty floor	1,030
2. Seeding transportation and Planting	320
3. Maintenance, Wweeding,Replanting, Fertilzing	650
TOTAL	2,000

OPERATIONAL PROCESS	COST (BAHT)
1. Weeding	350
2. Replanting	50
3. Forest fire protection Repair fire break, inspectional path reconnoiter unit, fire guard	70
TOTAL	500

EXPANDITURE RATE	Plant 1st year	cost	2,000	baht
	Maintain original plantation 2nd year	cost	500	baht
	Maintain original plantation 3rd year	cost	500	baht
	Total		3,000	baht

Governmental Reforestation Sector
 Reforestation Extension Bureau
 Royal Forest Department Tel. 561-4292-3 ext. 515

JICA

