

8. List of equipment for the Project



LIST OF EQUIPMENT FOR THE PROJECT

1-A.SEWING CRAFT / newly prepared

| Equipment | Specification | Quantity per Center | Number of Center | Quantity Total |
|--|--|---------------------|------------------|----------------|
| 1.1 Sewing Machine Electric High Speed (1) Head & Motor | for medium materials max. sewing speed (m.s.s.) :4500spm or more with table,stand,chair,needles | 20 | 23 | 460 |
| (2) Spare Parts | hook, bobbin, etc. | 20 | 23 | 460 |
| 1.2 Sewing Machine Foot Operated (1) Head & Motor | m.s.s.:800spm(tread) or more stitch length: max. 5mm with table,stand,chair,needles | 20 | 23 | 460 |
| (2) Spare Parts | hook, bobbin, etc. | 20 | 23 | 460 |
| 1.3 Button Holing Machine (1) Head & Motor | woven fabric m.s.s.: 3300spm or more stitch width: 2-6mm with table,stand,chair,needles | 2 | 23 | 46 |
| (2) Spare Parts | hook, bobbin(compt), bobbin, etc. | 2 | 23 | 46 |
| 1.4 Button Sewing Machine (1) Head & Motor | button sewing in invert "C" shape m.s.s.: 1500spm or more button size:8-20mm with table,stand,chair,needles | 2 | 23 | 46 |
| (2) Spare Parts | screw, needle bearing, etc. | 2 | 23 | 46 |
| 1.5 Over-Edging Machine (1) Head & Motor | m.s.s.: 6000spm or more stitch length : max.3.3mm with table,stand,chair,needles | 3 | 23 | 69 |
| (2) Spare Parts | screw, etc. | 3 | 23 | 69 |
| 1.6 Garnering Machine (1) Head & Motor | for elastic gathered waistband m.s.s.: 5000spm or more stitch length : max.3.6mm with table,stand,chair,needles | 1 | 23 | 23 |
| (2) Spare Parts | stitch plate, screw, etc. | 1 | 23 | 23 |
| 1.7 Zigzagger (1) Head & Motor | for medium materials m.s.s.: 5200spm or more zig-zag pitch:0-4mm with table,stand,chair,needles | 2 | 23 | 46 |
| (2) Spare Parts | hook, bobbin, etc. | 2 | 23 | 46 |
| 1.8 Machine for Buckles and Snap, Manually Operated | operated by kick pedal wooden made table iron made stand | 1 | 23 | 23 |

| Equipment | | Specification | Quantity per Center | Number of Center | Quantity Total |
|-----------|---------------------------------------|--|------------------------|---------------------|-------------------|
| 1.9 | Five Threads Machine | | | | |
| (1) | Head & Motor | for thick medium machine m.s.s.: 6000spm or more stitch length : max.3.3mm with table,stand,chair,needles | 1 | 23 | 23 |
| (2) | Spare Parts | hook, bobbin, etc. | 1 | 23 | 23 |
| 1.10 | Sewing Tools | | | | |
| (1) | Tailor's Scissors | L=app.240mm made of steel | 25 | 23 | 575 |
| (2) | Pinking Scissors | L=app.230mm made of steel | 25 | 23 | 575 |
| (3) | Scissors for Pattern Making | L=app.240mm made of steel | 25 | 23 | 575 |
| (4) | Small Scissors for Cutting Threads | L=app.105mm made of steel | 25 | 23 | 575 |
| (5) | Roulette | L=app.100mm with wooden handle | 25 | 23 | 575 |
| (6) | Eyelet | L=app.100mm with wooden handle | 25 | 23 | 575 |
| (7) | Chisel (L)(S) | Blade width=app.9 and 15mm with wooden handle | 25 | 23 | 575 |
| (8) | Prick Punch | L=app.100mm with wooden handle | 25 | 23 | 575 |
| (9) | Shuttle Bobbin | made of steel | 25 | 23 | 575 |
| (10) | Tracing Spatula | L=app.115mm made of cow's bone | 25 | 23 | 575 |
| (11) | Pin Cushion | app.70x70mm made of cloth | 25 | 23 | 575 |
| (12) | Ruler | L=app.150mm made of stainless steel | 25 | 23 | 575 |
| (13) | Thimble (L)(S) | for long needles and for short needles | 25 | 23 | 575 |
| (14) | Marking Needle | set of 80pcs | 25 | 23 | 575 |
| (15) | Tailor's Chalk | white and orange | 25 | 23 | 575 |
| (16) | Needle Set | set of 30pcs. with case | 25 | 23 | 575 |
| (17) | Tape Measure | L=app.1.5m "mm" and "inch" | 25 | 23 | 575 |
| (18) | Stitch Ruler | made of steel "mm" and "inch" | 25 | 23 | 575 |
| (19) | Thread Remover | L=app.80mm made of steel | 25 | 23 | 575 |
| (20) | Wooden Case | wooden made for "Sewing Tools" | 25 | 23 | 575 |
| 1.11 | Ruler Set | | 25 | 23 | 575 |
| (1) | Straight Ruler | L=app.1000mm made of stainless steel | 25 | 23 | 575 |
| (2) | Curve Ruler | L=app.600mm made of aluminum | 25 | 23 | 575 |
| (3) | French Curve | made of steel | 25 | 23 | 575 |
| (4) | Square Ruler | L=app.600mm made of aluminum | 25 | 23 | 575 |
| 1.12 | Electric Iron | 1000W,steam and dry type 80 to 200 °C | 2 | 23 | 46 |

| Equipment | Specification | Quantity per Center | Number of Center | Quantity Total |
|-------------------------------|------------------------------------|---------------------|------------------|----------------|
| 1.13 Iron Board | app.L1150xW350xH730mm folding type | 2 | 23 | 46 |
| 1.14 Working Table | app.L1800xW900xH750mm wooden made | 4 | 23 | 92 |
| 1.15 Chair | app.W470xD470xH740mm wooden made | 25 | 23 | 575 |
| 1.16 Mirror | app.W600xH1800mm wood frame | 1 | 23 | 23 |
| 1.17 Tools for sewing machine | pliers, driver, wrench, spanners | 1 | 23 | 23 |

LIST OF EQUIPMENT FOR THE PROJECT

I-B. SEWING CRAFT / partially prepared

| Equipment | Specification | Center / Quantity | | | | | | | Total |
|--|---|-------------------|------------|---------|-----------|-------|----------|------|-------|
| | | Lucena | Marinduque | Antique | Taeleoban | Rizal | Pagadian | Ipil | |
| 1.1 Sewing Machine Electric High Speed (1) Head & Motor | for medium materials max. sewing speed (m.s.s.) :4500spm or more with table,stand,chair,needles | 15 | 20 | 18 | 19 | 10 | 15 | 15 | 112 |
| (2) Spare Parts | hook, bobbin, etc. | 15 | 20 | 18 | 19 | 10 | 15 | 15 | 112 |
| 1.2 Sewing Machine Foot Operated (1) Head & Motor | m.s.s.:800spm(tread) or more stitch length: max. 5mm with table,stand,chair,needles | 20 | 10 | 8 | --- | 10 | 5 | 5 | 58 |
| (2) Spare Parts | hook, bobbin, etc. | 20 | 10 | 8 | --- | 10 | 5 | 5 | 58 |
| 1.3 Button Holing Machine (1) Head & Motor | woven fabric m.s.s.: 3300spm or more stitch width: 2-6mm with table,stand,chair,needles | 2 | 2 | 2 | 2 | 2 | 2 | 2 | 14 |
| (2) Spare Parts | hook, bobbin(compt), bobbin, etc. | 2 | 2 | 2 | 2 | 2 | 2 | 2 | 14 |
| 1.4 Button Sewing Machine (1) Head & Motor | button sewing in invert "C" shape m.s.s.: 1500spm or more button size:8-20mm with table,stand,chair,needles | 2 | 2 | 2 | 2 | 2 | 2 | 2 | 14 |
| (2) Spare Parts | screw, needle bearing, etc. | 2 | 2 | 2 | 2 | 2 | 2 | 2 | 14 |
| 1.5 Over-Edging Machine (1) Head & Motor | m.s.s.: 6000spm or more stitch length : max.3.3mm with table,stand,chair,needles | 3 | 3 | 2 | 3 | 3 | 2 | 2 | 18 |
| (2) Spare Parts | screw, etc. | 3 | 3 | 2 | 3 | 3 | 2 | 2 | 18 |
| 1.6 Garnering Machine (1) Head & Motor | for elastic gathered waistbands m.s.s.: 5000spm or more stitch length : max.3.6mm with table,stand,chair,needles | 1 | 1 | 1 | 1 | 1 | 1 | 1 | 7 |
| (2) Spare Parts | stitch plate, screw, etc. | 1 | 1 | 1 | 1 | 1 | 1 | 1 | 7 |
| 1.7 Zigzagger (1) Head & Motor | for medium materials m.s.s.: 5200spm or more zig-zag pitch:0-4mm with table,stand,chair,needles | 2 | 2 | 2 | 2 | 2 | 2 | 2 | 14 |
| (2) Spare Parts | hook, bobbin, etc. | 2 | 2 | 2 | 2 | 2 | 2 | 2 | 14 |
| 1.8 Machine for Buckles and Snap, Manually Operated | operated by kick pedal wooden made table iron made stand | 1 | 1 | 1 | 1 | 1 | 1 | 1 | 7 |
| 1.9 Five Threads Machine (1) Head & Motor | for thick medium machine m.s.s.: 6000spm or more stitch length : max.3.3mm with table,stand,chair,needles | 1 | 1 | 1 | 1 | 1 | 1 | 1 | 7 |
| (2) Spare Parts | hook, bobbin, etc. | 1 | 1 | 1 | 1 | 1 | 1 | 1 | 7 |
| 1.10 Sewing Tools (1) Tailor's Scissors | app.L=240mm made of steel | 25 | 25 | 25 | 25 | 25 | 25 | 25 | 175 |
| (2) Pinking Scissors | app.L=230mm made of steel | 25 | 25 | 25 | 25 | 25 | 25 | 25 | 175 |
| (3) Scissors for Pattern Making | app.L=240mm made of steel | 25 | 25 | 25 | 25 | 25 | 25 | 25 | 175 |
| (4) Small Scissors for Cutting Threads | app.L=105mm made of steel | 25 | 25 | 25 | 25 | 25 | 25 | 25 | 175 |
| (5) Roulette | app.L=100mm with wooden handle | 25 | 25 | 25 | 25 | 25 | 25 | 25 | 175 |
| (6) Eyelet | app.L=100mm with wooden handle | 25 | 25 | 25 | 25 | 25 | 25 | 25 | 175 |
| (7) Chisel | Blade width=app.9 and 15mm with wooden handle | 25 | 25 | 25 | 25 | 25 | 25 | 25 | 175 |

LIST OF EQUIPMENT FOR THE PROJECT

1-B. SEWING CRAFT / partially prepared

| Equipment | Specification | Center / Quantity | | | | | | | | Total |
|-------------------------------|---|-------------------|------------|---------|----------|-------|----------|------|-----|-------|
| | | Lucena | Marinduque | Antique | Tacloban | Rizal | Pagadian | Ipil | | |
| (8) Prick Punch | app.L=100mm with wooden handle | 25 | 25 | 25 | 25 | 25 | 25 | 25 | 175 | |
| (9) Shuttle Bobbin | made of steel | 25 | 25 | 25 | 25 | 25 | 25 | 25 | 175 | |
| (10) Tracing Spatula | app.L=115mm made of cow's bone | 25 | 25 | 25 | 25 | 25 | 25 | 25 | 175 | |
| (11) Pin Cushion | app.70x70mm made of cloth | 25 | 25 | 25 | 25 | 25 | 25 | 25 | 175 | |
| (12) Ruler | app.L=150mm made of stainless steel | 25 | 25 | 25 | 25 | 25 | 25 | 25 | 175 | |
| (13) Thimble | for long needles and for short needles | 25 | 25 | 25 | 25 | 25 | 25 | 25 | 175 | |
| (14) Marking Needle | set of 80pcs | 25 | 25 | 25 | 25 | 25 | 25 | 25 | 175 | |
| (15) Tailor's Chalk | white and orange | 25 | 25 | 25 | 25 | 25 | 25 | 25 | 175 | |
| (16) Needle Set | set of 30pcs. with case | 25 | 25 | 25 | 25 | 25 | 25 | 25 | 175 | |
| (17) Tape Measure | app.L=1.5m "mm" and "inch" | 25 | 25 | 25 | 25 | 25 | 25 | 25 | 175 | |
| (18) Stitch Ruler | made of steel "mm" and "inch" | 25 | 25 | 25 | 25 | 25 | 25 | 25 | 175 | |
| (19) Thread Remover | app.L=80mm made of steel | 25 | 25 | 25 | 25 | 25 | 25 | 25 | 175 | |
| (20) Wooden Case | wooden made for "Sewing Tools" | 25 | 25 | 25 | 25 | 25 | 25 | 25 | 175 | |
| 1.11 Ruler Set | | | | | | | | | | |
| (1) Straight Ruler | app.L=1000mm made of stainless steel | 25 | 25 | 25 | 25 | 25 | 25 | 25 | 175 | |
| (2) Curve Ruler | app.L=600mm made of aluminum | 25 | 25 | 25 | 25 | 25 | 25 | 25 | 175 | |
| (3) French Curve | made of steel | 25 | 25 | 25 | 25 | 25 | 25 | 25 | 175 | |
| (4) Square Ruler | app.L=600mm made of aluminum | 25 | 25 | 25 | 25 | 25 | 25 | 25 | 175 | |
| 1.12 Electric Iron | 1000W, steam and dry type 80 to 200 °C | 2 | 2 | 2 | 2 | 2 | 2 | 2 | 14 | |
| 1.13 Iron Board | app.L1150xW350xH730mm folding type | 2 | 2 | 2 | 2 | 2 | 2 | 2 | 14 | |
| 1.14 Working Table | app.L1800xW900xH750mm wooden made | 2 | 2 | 2 | 2 | 2 | 2 | 2 | 14 | |
| 1.15 Chair | app.W470xD470xH740mm wooden made | 25 | 25 | 25 | 25 | 25 | 25 | 25 | 175 | |
| 1.16 Mirror | app.W600xH1800mm wood frame | 1 | 1 | 1 | 1 | 1 | 1 | 1 | 7 | |
| 1.17 Tools for sewing machine | pliers, driver, wrench, spenners | 1 | 1 | 1 | 1 | 1 | 1 | 1 | 7 | |

LIST OF EQUIPMENT FOR THE PROJECT

I-C.SEWING CRAFT

Additional for Existing Phase-1 Center

| Equipment | Specification | Quantity per Center | Number of Center | Quantity Total |
|--|---|---------------------|------------------|----------------|
| 1.1 Gartering Machine (1) Head & Motor | for elastic gathered waistbands m.s.s.: 5000spm or more stitch length : max.3.6mm with table,stand,chair,needles | 1 | 16 | 16 |
| (2) Spare Parts | stitch plate, screw, etc. | 1 | 16 | 16 |
| 1.2 Zigzagger (1) Head & Motor | for medium materials m.s.s.: 5200spm or more zig-zag pitch:0-4mm with table,stand,chair,needles | 2 | 16 | 32 |
| (2) Spare Parts | hook, bobbin, etc. | 2 | 16 | 32 |
| 1.3 Five Threads Machine (1) Head & Motor | for thick medium machine m.s.s.: 6000spm or more stitch length : max.3.3mm with table,stand,chair,needles | 1 | 16 | 16 |
| (2) Spare Parts | hook, bobbin, etc. | 1 | 16 | 16 |

LIST OF EQUIPMENT FOR THE PROJECT

2. FOOD PROCESSING AND PRESERVATION

| Equipment | | Specification | Quantity per Center | Number of Center | Quantity Total |
|-----------|--|---|---------------------|------------------|----------------|
| 2.1 | Refrigerator (with generator) | 220 l or more, 2 door (freezer & refrigerator) | 1 | 18 | 18 |
| 2.2 | Pressure Cooker | 14 l or more | 2 | 18 | 36 |
| 2.3 | Process Pressure Retort | Pressure meter, Safety valve, Thermometer Exhaust valve, Inner basket, Burner | 1 | 18 | 18 |
| 2.4 | Gas Oven and Table | LPG gas burner suitable 3 burners | 1 | 18 | 18 |
| 2.5 | Meat Mincer | app.100 - 150 kg/h, 300W app.W210xL550xH300mm | 1 | 18 | 18 |
| 2.6 | Pulper/Finisher | app.150 kgs/hr | 1 | 18 | 18 |
| 2.7 | Food Cutter | app.5~10 kg/cycle, 300W app.W630xL520xH620mm | 1 | 18 | 18 |
| 2.8 | Stuffer | app.9 l, hand operated | 1 | 18 | 18 |
| 2.9 | Smoke Drying Machine | stainless steel, 4 racks | 1 | 18 | 18 |
| 2.10 | Automatic Vacuum Packaging Machine | app.W380xD530xH370mm Vacuum pump exhausting speed: 100 L/min | 1 | 18 | 18 |
| 2.11 | Meat Tenderizer | app.W500xD180xH330 mm | 1 | 18 | 18 |
| 2.12 | Helicoidal Juice Extractor | app.18 l | 1 | 18 | 18 |
| 2.13 | Jelly Meter | Measuring range: app. 100 to 1,100 g | 2 | 18 | 36 |
| 2.14 | Balance (1) - 50 kgs (2) - 100 kgs (3) - 100grams | minimum graduation 200g | 1 | 18 | 18 |
| | | minimum graduation 500g | 1 | 18 | 18 |
| | | minimum graduation 0.5g | 6 | 18 | 108 |
| 2.15 | Kitchen Utensils (1) Turner with whole(L) (2) Turner with whole(S) (3) Turner without hole (4) Measure Cup (5) Measuring Spoon (6) Frying Pan (7) Wok Frying Pan (8) Sauce Pan (L) (9) Sauce Pan (M) | stainless steel, Large | 6 | 18 | 108 |
| | | stainless steel, Small | 6 | 18 | 108 |
| | | stainless steel | 6 | 18 | 108 |
| | | 1/4, 1/3, 1/2, 1 cups stainless steel | 6 | 18 | 108 |
| | | 1/8, 1/4, 1/2 tsp, Tsp stainless steel | 6 | 18 | 108 |
| | | D=app. 400 mm steel | 6 | 18 | 108 |
| | | D=app. 600 mm steel | 6 | 18 | 108 |
| | | app.6l, stainless steel | 6 | 18 | 108 |
| | | app.2.8l, stainless steel | 6 | 18 | 108 |

| Equipment | Specification | Quantity per Center | Number of Center | Quantity Total |
|-------------------------------------|---|---------------------|------------------|----------------|
| (10) Sauce Pan (S) | app.1.5l, stainless steel | 6 | 18 | 108 |
| (11) Colander (L) | D=app.250mm stainless steel | 6 | 18 | 108 |
| (12) Colander (M) | D=app.200mm stainless steel | 6 | 18 | 108 |
| (13) Colander (S) | D=app.150mm stainless steel | 6 | 18 | 108 |
| (14) Bowl (L) | D=app.270mm stainless steel | 6 | 18 | 108 |
| (15) Bowl (M) | D=app.210mm stainless steel | 6 | 18 | 108 |
| (16) Bowl (S) | D=app.150mm stainless steel | 6 | 18 | 108 |
| (17) Basket (L) | D=app.300mm stainless steel | 6 | 18 | 108 |
| (18) Basket (S) | D=app.200mm stainless steel | 6 | 18 | 108 |
| (19) Wooden Ladle (L) | L=app.700mm | 6 | 18 | 108 |
| (20) Wooden Ladle (S) | L=app.600mm | 6 | 18 | 108 |
| (21) Square Vat with cover - Large | app.W482xD338xH80 mm stainless steel | 6 | 18 | 108 |
| (22) Square Vat with cover - Medium | app.W355xD270xH63 mm stainless steel | 6 | 18 | 108 |
| (23) Square Vat with cover - Small | app.W297xD232xH50 mm stainless steel | 6 | 18 | 108 |
| (24) Square Vat with slit - Large | app.W480xD335xH45 mm stainless steel | 6 | 18 | 108 |
| (25) Square Vat with slit - Medium | app.W355xD270xH40 mm stainless steel | 6 | 18 | 108 |
| (26) Square Vat with slit - Small | app.W325xD260xH40 mm stainless steel | 6 | 18 | 108 |
| (27) Steamer 3 layers | app.W260xD260x350H mm aluminum | 2 | 18 | 36 |
| (28) Chopping Board (L, M, S) | plastic | 6 | 18 | 108 |
| (29) Knife for frozen meat | L=app.230mm, stainless steel | 6 | 18 | 108 |
| (30) Kitchen Knife (L) | L=app.270, stainless steel with wooden grip | 6 | 18 | 108 |
| (31) Kitchen Knife (M) | L=app.240, stainless steel with wooden grip | 6 | 18 | 108 |
| (32) Kitchen Knife (S) | L=app.210, stainless steel with wooden grip | 6 | 18 | 108 |
| (33) Peeler | D=app.W60xL130, stainless steel with plastic handle | 6 | 18 | 108 |
| (34) Cleaver Knife | L=app.160mm, Molybdenum steel | 6 | 18 | 108 |
| (35) Paring Knife | L=app.120mm, stainless steel with wooden grip | 6 | 18 | 108 |
| (36) pH Meter - Digital | app.L140xW30xT15 mm | 4 | 18 | 72 |

| Equipment | | Specification | Quantity per Center | Number of Center | Quantity Total |
|-----------|----------------------------|---|------------------------|---------------------|-------------------|
| (37) | Funnel (M) | D=app.180 mm, stainless steel | 6 | 18 | 108 |
| (38) | Foaming Instrument - Large | D=app.330 mm, stainless steel | 6 | 18 | 108 |
| (39) | Foaming Instrument - Small | D=app.240 mm, stainless steel | 6 | 18 | 108 |
| (40) | Kitchen Tong (L) | L=app.400, stainless steel | 6 | 18 | 108 |
| (41) | Kitchen Tong (S) | L=app.240, stainless steel | 6 | 18 | 108 |
| (42) | Oval Dish (L) | W=510mm stainless steel | 6 | 18 | 108 |
| (43) | Oval Dish (M) | W=310mm stainless steel | 6 | 18 | 108 |
| (44) | Oval Dish (S) | W=205mm stainless steel | 6 | 18 | 108 |
| (45) | Bottle Washing | stainless steel | 6 | 18 | 108 |
| (46) | Table Ware Set A | | | | |
| | - Oval Dish (L) | porcelain | 6 | 18 | 108 |
| | - Oval Dish (M) | porcelain | 6 | 18 | 108 |
| | - Oval Dish (S) | porcelain | 6 | 18 | 108 |
| | - Baker Dish | porcelain | 6 | 18 | 108 |
| | - Soup Dish | porcelain | 6 | 18 | 108 |
| | - Bread Dish | porcelain | 6 | 18 | 108 |
| | - Salad Dish | porcelain | 6 | 18 | 108 |
| | - Berry Dish | porcelain | 6 | 18 | 108 |
| | - Flat Dish | porcelain | 6 | 18 | 108 |
| | - Cake Dish | porcelain | 6 | 18 | 108 |
| | - Milk Cup | porcelain | 6 | 18 | 108 |
| | - Coffee Cup | porcelain | 6 | 18 | 108 |
| (47) | Table Ware Set B | | | | |
| | - Table Knife | stainless steel | 6 | 18 | 108 |
| | - Table Fork | stainless steel | 6 | 18 | 108 |
| | - Desert Knife | stainless steel | 6 | 18 | 108 |
| | - Desert Spoon | stainless steel | 6 | 18 | 108 |
| | - Soup Spoon | stainless steel | 6 | 18 | 108 |
| | - Butter Knife | stainless steel | 6 | 18 | 108 |
| 2.16 | Blender | leak-proof, 800cc | 2 | 18 | 36 |
| 2.17 | Kitchen Timer | manual operated with alarm | 6 | 18 | 108 |
| 2.18 | Noodle Extruder | table top, manual, noodle app. D=2.2 mm | 6 | 18 | 108 |
| 2.19 | Sealer ordinary | seal length=app.300mm | 1 | 18 | 18 |
| 2.20 | Miller | app.150 kgs/hr, suitable for bean and nuts | 1 | 18 | 18 |
| 2.21 | Slicer | 1800pcs/h or more app.W280xD130xH90mm | 1 | 18 | 18 |
| 2.22 | Thermometer | app.-10 to 110 °C | 1 | 18 | 18 |
| 2.23 | Hand Refractometer | scale 0-90% Resolution: 0.2% | 1 | 18 | 18 |

| Equipment | Specification | Quantity per Center | Number of Center | Quantity Total |
|---------------------------------------|--|------------------------|---------------------|-------------------|
| 2.24 Salinometer | scale 0-90% resolution: 0.1% | 1 | 18 | 18 |
| 2.25 Cabinet Solar Dryer Movable Type | app.W900xD1760xH1600 mm | 1 | 18 | 18 |
| 2.26 A) Lecture Table (wood) | app.L1800xW900xH750 mm | 2 | 18 | 36 |
| B) Work Table (stainless steel) | app.L1800xW900xH800 mm | 2 | 18 | 36 |
| 2.27 Chair | app.W465xD465xH735 mm | 20 | 18 | 360 |
| 2.28 Meat Thermometer | app.0 to 100 °C app. ϕ 50x150mm | 2 | 18 | 36 |
| 2.29 Service Wagon with caster | stainless steel plate app.L760xW460xH970 mm | 2 | 18 | 36 |
| 2.30 Utility Can | 100 l and 10 l / or more | 6 | 18 | 108 |
| 2.31 Water Purifier | direct attached to faucet | 2 | 18 | 36 |
| 2.32 Tools | pliers, spanners | 1 | 18 | 18 |

LIST OF EQUIPMENT FOR THE PROJECT

3. TOY CRAFT

| Equipment | | Specification | Quantity per Center | Number of Center | Quantity Total |
|-----------|------------------------------|--|---------------------|------------------|----------------|
| 3.1 | Sewing Machine Foot Operated | | | | |
| (1) | Head & Motor | m.s.s.:800spm(tread)or more stitch length: max. 5mm with table,stand,chair,needles | 20 | 2 | 40 |
| (2) | Spare Parts | hook, bobbin, etc. | 20 | 2 | 40 |
| 3.2 | Over-Edging Machine | | | | |
| (1) | Head & Motor | m.s.s.: 6000spm or more stitch length : max.3.3mm with table,stand,chair,needles | 1 | 2 | 2 |
| (2) | Spare Parts | screw, etc. | 1 | 2 | 2 |
| 3.3 | Sewing Kit | | 20 | 2 | 40 |
| (1) | Tailor's Scissors | L=app.240mm made of steel | 20 | 2 | 40 |
| (2) | Pinking Scissors | L=app.230mm made of steel | 20 | 2 | 40 |
| (3) | Small Scissors | L=app.170mm made of stainless steel | 20 | 2 | 40 |
| (4) | Roulette | L=app.100mm with wooden handle | 20 | 2 | 40 |
| (5) | Eyelet | L=app.130mm with wooden handle | 20 | 2 | 40 |
| (6) | Chisel (L)(S) | Blade width=9, 15mm with wooden handle | 20 | 2 | 40 |
| (7) | Prick Punch | L=app.100mm with wooden handle | 20 | 2 | 40 |
| (8) | Shuttle Bobbin | made of steel | 20 | 2 | 40 |
| (9) | Tracing Spatula | L=app.115mm made of cow's bone | 20 | 2 | 40 |
| (10) | Pin Cushion | app.70x70mm made of cloth | 20 | 2 | 40 |
| (11) | Ruler | L=app.150mm made of stainless steel | 20 | 2 | 40 |
| (12) | Thimble (L)(S) | for long needles and for short needles | 20 | 2 | 40 |
| (13) | Marking Needle | set of 80pcs | 20 | 2 | 40 |
| (14) | Tailor's Chalk | white and orange | 20 | 2 | 40 |
| (15) | Needle Set | set of 30pcs. with case | 20 | 2 | 40 |
| (16) | Tape Measure | L=app.1.5m "mm" and "inch" | 20 | 2 | 40 |
| (17) | Stitch Guide | made of steel | 20 | 2 | 40 |
| (18) | Thread Remover | L=app.80mm made of steel | 20 | 2 | 40 |
| (19) | Wooden Case | wooden made for "Sewing Tools" | 20 | 2 | 40 |
| 3.4 | Table Weigh Scale Balance | | | | |
| (1) | 100 g | min. graduration:0.5g | 2 | 2 | 4 |
| (2) | 1 kg | min. graduration:50g | 1 | 2 | 2 |
| (3) | 12 kg | min. graduration:50g | 1 | 2 | 2 |

| Equipment | Specification | Quantity per Center | Number of Center | Quantity Total |
|-----------------------------|---|------------------------|---------------------|-------------------|
| 3.5 Straight Ruler | L=app.1000mm made of stainless steel | 20 | 2 | 40 |
| 3.6 Curve Ruler | L=app.600mm made of aluminum | 20 | 2 | 40 |
| 3.7 Pantograph | L=app.590mm wood with magnetic | 20 | 2 | 40 |
| 3.8 Eye/Nose Setter | plier type L=app.200mm | 20 | 2 | 40 |
| 3.9 Glue Gun | 60W max.melting temp.=app.180°C | 20 | 2 | 40 |
| 3.10 Working Tables | app.L1800xW900xH750 wooden made | 4 | 2 | 8 |
| 3.11 Electric Iron | 1000W,steam and dry type app. 80 to 200 °C | 2 | 2 | 4 |
| 3.12 Iron Board | app.L1200xW350xH750 folding type | 2 | 2 | 4 |
| 3.13 Chairs | app.W470xD470xH740 wooden made | 20 | 2 | 40 |
| 3.14 Tools for sewing tools | pliers, wrench,spanners, driver | 1 | 2 | 2 |

LIST OF EQUIPMENT FOR THE PROJECT

4. HOME AIDE SERVICE

| Equipment | Specification | Quantity per Center | Number of Center | Quantity Total |
|--|---|---------------------|------------------|----------------|
| 4.1 Square Table for 4 Chair | app.L900xW900xH760mm wooden made | 5 | 2 | 10 |
| Chairs | without arm reset app.W450xD450xH450mm | 20 | 2 | 40 |
| 4.2 Wall Fan | D=app.16", Rotary 220V/60Hz | 2 | 2 | 4 |
| 4.3 Garbage Can | 120l or more | 1 | 2 | 2 |
| 4.4 Rag Drier Rack | made of steel pipe app.W700xD1,000xH1500mm | 2 | 2 | 4 |
| 4.5 Fire Extinguisher | D=app.15cm, H=app.45cm | 2 | 2 | 4 |
| 4.6 Sink with Faucet | stainless steel sink app.W1600xD560xH800mm | 1 | 2 | 2 |
| 4.7 Cooking Range with Oven 2 gas & 2 Electric Burners | 2 ovens & 2electric burners | 2 | 2 | 4 |
| 4.8 Refrigerator with Generator | Capa.=220l or more (freezer & refrigerator) | 1 | 2 | 2 |
| 4.9 Demonstration Table with Mirror & Black Board, White Board | Table:app.L1800xW900mm Boards: app.W1800xH900mm | 1 | 2 | 2 |
| 4.10 Dining Table for Setting with 10 Chairs | app.W2100xD760xH760 with 10 chairs | 1 | 2 | 2 |
| 4.11 Exhaust Fan | with automatic shutter AC220V, 50/60Hz | 2 | 2 | 4 |
| 4.12 Set of Measuring Cups | 1000cc, 500cc, 200cc | 2 | 2 | 4 |
| 4.13 Set of Measuring Spoons | 15cc, 7.5cc, 5cc, 2cc, 1cc with spatula | 2 | 2 | 4 |
| 4.14 Dietetic Scale | max capacity: 1kg, min: 10g | 2 | 2 | 4 |
| 4.15 Kitchen Knife Set | L=app.270, 240, 210mm (set) stainless steel with wooden grip | 2 | 2 | 4 |
| 4.16 Potato Peeler | stainless steel | 2 | 2 | 4 |
| 4.17 Cleaver | L=app.180mm stainless steel, wooden handle | 2 | 2 | 4 |
| 4.18 Grater | app.135x143mm stainless steel | 2 | 2 | 4 |
| 4.19 Strainer | app.D210xH58mm stainless steel | 2 | 2 | 4 |
| 4.20 Mortar and Pestle | D=app.210mm | 2 | 2 | 4 |
| 4.21 Chopping Board | app.420x210mm made of plastic | 2 | 2 | 4 |
| 4.22 Utility Tray | app.L410xW240xH20mm made of stainless steel | 2 | 2 | 4 |
| 4.23 Wooden Spoon | handle length=app.300mm wooden made | 2 | 2 | 4 |
| 4.24 Basting Spoon | handle length=app.270mm stainless steel | 2 | 2 | 4 |
| 4.25 Rubber Scraper | W=app.120mm, L=app.200mm | 2 | 2 | 4 |
| 4.26 Rotary Egg Beater | L=app.275mm metal with plastic | 2 | 2 | 4 |
| 4.27 Flour Sifter | app.D100xH130mm stainless steel | 2 | 2 | 4 |
| 4.28 Colander | D=app.150mm stainless steel | 2 | 2 | 4 |

| Equipment | Specification | Quantity per Center | Number of Center | Quantity Total |
|--------------------------------------|---|------------------------|---------------------|-------------------|
| 4.29 Turner | L=app.375mm stainless steel | 2 | 2 | 4 |
| 4.30 Kitchen Tongs | L=app.300mm stainless steel | 2 | 2 | 4 |
| 4.31 Saucepan (set of 2pcs) | 3l and 4.7l /or more stainless steel | 2 | 2 | 4 |
| 4.32 Double Boiler | app.D270xH110x3steps stainless steel | 2 | 2 | 4 |
| 4.33 Covered Skillet | D=app.100mm stainless steel | 2 | 2 | 4 |
| 4.34 Dish Pans L, M, S | L:app.360x240, M:app.310x210, S:app.255x180mm, stainless steel | 2 | 2 | 4 |
| 4.35 Utility Can for Silverware | app.D80xH140 stainless steel | 2 | 2 | 4 |
| 4.36 Can Opener | steel | 2 | 2 | 4 |
| 4.37 Steak Hammer | L=app.250mm stainless steel | 2 | 2 | 4 |
| 4.38 Kitchen Scissors | L=app.210mm stainless steel | 2 | 2 | 4 |
| 4.39 Utility Bowls Set (4kinds bowl) | 1, 2, 3, 4 l | 2 | 2 | 4 |
| 4.40 Tea Strainer | app.D62x29mm stainless steel | 2 | 2 | 4 |
| 4.41 Strainer | app.D100xH100mm stainless steel | 2 | 2 | 4 |
| 4.42 Sets Pie Pans (3pans) | D=app.147, 210, 235mm stainless steel | 2 | 2 | 4 |
| 4.43 Layer Cake Pan | app.D229xH38 stainless steel | 2 | 2 | 4 |
| 4.44 Square Pan | app.310x310xH25mm stainless steel | 2 | 2 | 4 |
| 4.45 Rectangular Pan | app.200x140x15mm stainless steel | 2 | 2 | 4 |
| 4.46 Tube Pan | app. D100xH1000 stainless steel | 2 | 2 | 4 |
| 4.47 Muffin Pan | app.230x166mm made of steel | 2 | 2 | 4 |
| 4.48 Tea Cake Pans | app.D210xH80 stainless steel | 2 | 2 | 4 |
| 4.49 Ice Bucket | app.D195xH195 stainless steel | 2 | 2 | 4 |
| 4.50 Cookie Tray | app.250x280mm Teflon sheets | 2 | 2 | 4 |
| 4.51 Custard Cups (set of 6 kinds) | stainless steel | 2 | 2 | 4 |
| 4.52 Blender | 170W/AC220V stainless steel blades | 2 | 2 | 4 |
| 4.53 Coffee Percolator | 550W, AC220V, 50/60Hz makes up to 4 cups | 2 | 2 | 4 |
| 4.54 Pressure Cooker | 8l or more aluminum cast | 2 | 2 | 4 |
| 4.55 Automatic Mixer | three speed operation 175W | 1 | 2 | 2 |
| 4.56 Electric Egg/Beater | handy type, 75W | 1 | 2 | 2 |
| 4.57 Thermometer | app.-10 to 110 °C | 2 | 2 | 4 |
| 4.58 Timer | with alarm max. time : 1hour | 2 | 2 | 4 |
| 4.59 Rolling Pin | L=app.450mm wooden made | 2 | 2 | 4 |

| Equipment | Specification | Quantity per Center | Number of Center | Quantity Total |
|--|--|---------------------|------------------|----------------|
| 4.60 Pastry Blender | app.D155xH155mm stainless steel | 2 | 2 | 4 |
| 4.61 Bottle Opener (cover & cork) | stainless steel | 2 | 2 | 4 |
| 4.62 Complete Sets (DOZ.) of Wine Glass, Silverware, Chinaware | 3 kinds of wineglass 9 kinds of silverware set 5 kinds of chinaware's set | 2 | 2 | 4 |
| 4.63 Beds & Linen : Blanket, Pillow Case, Bed Spread | 1 bed (app.L1900xW910xH450) 2 pillows, 2 bed sheets, 1 pad 2 pillow covers, 2 bed covers | 1 | 2 | 2 |
| 4.64 Bread Toaster | twin toaster 220V | 1 | 2 | 2 |
| 4.65 Coffee Set (coffee pot, sugar pot, milk pot, tray) | coffee pot :900cc or more stainless steel | 2 | 2 | 4 |
| 4.66 Barbecue Grill | app.L800xW500xH700mm | 1 | 2 | 2 |
| 4.67 Set Racks | 4 steps, all stainless app.W1820xD450xH1600mm | 2 | 2 | 4 |
| 4.68 Tea Kettle | 4l or more stainless steel | 2 | 2 | 4 |
| 4.69 Electric Iron | 1000W, AC220V app. 80-200°C | 1 | 2 | 2 |
| 4.70 Iron Board | folding type app.L1150xW350xH730mm | 1 | 2 | 2 |
| 4.71 Washing Machine | capacity : 4.5kg or more AC220V | 1 | 2 | 2 |
| 4.72 Vacuum Cleaner | 1000W, AC220V tank capacity:35l or more | 1 | 2 | 2 |
| 4.73 Floor Polisher with Accessories | brush size: D=app.8inch code length=app.10m | 1 | 2 | 2 |
| 4.74 Water Purifier | direct attached to faucet replaceable type | 1 | 2 | 2 |
| 4.75 Microwave | 500W(Microwave) | 1 | 2 | 2 |
| 4.76 Intercom (pair) | 3 intercom (tel. type) DC12V | 1 | 2 | 2 |
| 4.77 Sofa | 3 sofa set | 1 | 2 | 2 |
| 4.78 Side Table | app. L1200xW600xH400mm | 1 | 2 | 2 |
| 4.79 Crib | app.L1350xW790xH1330mm with bed mat | 1 | 2 | 2 |
| 4.80 Stroller | folding type, with cover removal sheet body | 1 | 2 | 2 |
| 4.81 Bathing Paraphernalia for baby and toddlers | app.L800xW500xH450mm polyester made | 2 | 2 | 4 |
| 4.82 Musical Instrument (Organ) | foot pedal type | 1 | 2 | 2 |
| 4.83 First Aide Kit | with case | 2 | 2 | 4 |
| 4.84 Tools | pliers, spanners | 1 | 2 | 2 |

LIST OF EQUIPMENT FOR THE PROJECT

5-A. LOOM WEAVING (for Region I and CAR)

| Equipment | Specification | Quantity per Center | Number of Center | Quantity Total |
|--|---|---------------------|------------------|----------------|
| 5.1.a Loom Weaving Machine | counter balance type with chair | 10 | 3 | 30 |
| 5.2.a Accessories Thread | cotton, etc. | 500 | 3 | 1,500 |
| 5.3.a Tools / Accessories (1) Scissors (medium) (2) Threading Spool (3) Spinning Wheel or Warping Mill (4) Shuttle (5) Warping Pegs Land/Frame (6) Heddles (7) Reed | | 10 | 3 | 30 |
| 5.4.a Bobbin Winder | wooden made D=app.500mm | 2 | 3 | 6 |
| 5.5.a Working Table | app.L1800xW900xH750mm wooden made | 2 | 3 | 6 |
| 5.6.a Chair | app.W470xD470xH740mm wooden made | 20 | 3 | 60 |
| 5.7.a Storage Cabinet | app.L1800xW700xH1800mm | 2 | 3 | 6 |
| 5.8.a Foot Operated Machines with motor (1) Head & Motor | m.s.s.:800spm(tread)or more stitch length: max. 5mm with table,stand,chair,needles | 4 | 3 | 12 |
| (3) Spare Parts | bobbin, hook, etc. | 4 | 3 | 12 |
| 5.9.a Sewing Machine Electric High Speed (1) Head & Motor | for medium materials m.s.s.:4500spm or more with table,stand,chair,needles | 2 | 3 | 6 |
| (3) Spare Parts | bobbin, hook, etc. | 2 | 3 | 6 |
| 5.10.a Over-Edging Machine (1) Head & Motor | m.s.s.: 6000spm or more stitch length : max.3.3mm with table,stand,chair,needles | 2 | 3 | 6 |
| (2) Spare Parts | screw, spring, etc. | 2 | 3 | 6 |
| 5.11.a Zigzagger (1) Head & Motor | for medium materials m.s.s.: 5200spm or more zig-zag width : 0-5mm zig-zag pitch:0-4mm with table,stand,chair,needles | 2 | 3 | 6 |
| (2) Spare Parts | hook, bobbin, etc. | 2 | 3 | 6 |

LIST OF EQUIPMENT FOR THE PROJECT

5-B. LOOM WEAVING (for Region V & XII)

| Equipment | Specification | Quantity per Center | Number of Center | Quantity Total |
|---|---|---------------------|------------------|----------------|
| 5.1.b Loom Weaving Machine (Jack Type) | Jack type with chair | 10 | 3 | 30 |
| 5.2.b Accessories | | | | |
| Thread | cotton, etc. | 500 | 3 | 1,500 |
| Dye | assorted colors | 100 | 3 | 300 |
| 5.3.b Tools / Accessories | | 10 | 3 | 30 |
| (1) Scissors (medium) | | | | |
| (2) Threading Spool | | | | |
| (3) Spinning Wheel or Warping Mill | | | | |
| (4) Shuttle | | | | |
| (5) Warping Pegs Land/Frame | | | | |
| (6) Heddles | | | | |
| (7) Reed | | | | |
| 5.4.b Bobbin Winder | wooden made D=app.500mm | 2 | 3 | 6 |
| 5.5.b Working Table | app.L1800xW900xH750mm wooden made | 2 | 3 | 6 |
| 5.6.b Chair | app.W470xD470xH740mm wooden made | 20 | 3 | 60 |
| 5.7.b Storage Cabinet | app.L1800xW700xH1800mm | 2 | 3 | 6 |
| 5.8.b Motorized Rotary Pressed | press for woven fabric | 1 | 3 | 3 |
| 5.9.b Foot Operated Machines with motor | | | | |
| (1) Head & Motor | m.s.s.:800spm(tread)or more stitch length: max. 5mm with table,stand,chair,needles | 4 | 3 | 12 |
| (2) Spare Parts | bobbin, hook, etc. | 4 | 3 | 12 |
| 5.10.b Sewing Machine Electric High Speed | | | | |
| (1) Head & Motor | for medium materials m.s.s.:4500spm or more with table,stand,chair,needles | 2 | 3 | 6 |
| (2) Spare Parts | bobbin, hook, etc. | 2 | 3 | 6 |
| 5.11.b Over-Edging Machine | | | | |
| (1) Head & Motor | m.s.s.: 6000spm or more stitch length : max.3.3mm with table,stand,chair,needles | 2 | 3 | 6 |
| (2) Spare Parts | screw, spring, etc. | 2 | 3 | 6 |
| 5.12.b Zigzagger | | | | |
| (1) Head & Motor | for medium materials m.s.s.: 5200spm or more zig-zag width : 0-5mm zig-zag pitch:0-4mm with table,stand,chair,needles | 2 | 3 | 6 |
| (2) Spare Parts | hook, bobbin, etc. | 2 | 3 | 6 |

LIST OF EQUIPMENT FOR THE PROJECT

6. OFFICE SUPPORT EQUIPMENT

| Equipment | Specification | Quantity per Center | Number of Center | Quantity Total |
|---|--|---------------------|------------------|----------------|
| 6.1 Copying Machine | desk top type max. size :A3 | 1 | 55 | 55 |
| 6.2 Electric Typewriter | 48keys, 96characters max. print width:app.300mm | 1 | 55 | 55 |
| 6.3 Typewriter with Ordinary Ribbon (manual operated) | 46keys, 92characters max. print width:app.300mm | 1 | 55 | 55 |
| 6.4 Slide Projector | 35mm size and half size auto focus | 1 | 55 | 55 |
| 6.5 Overhead Projector | portable type stage size : app.290x290mm | 1 | 55 | 55 |
| 6.6 Camera Set with Built-in Flash and Tripod | with zoom lens | 1 | 55 | 55 |

9. References



9. References

| No. | Title of document | Publisher | Year published |
|-----|---|--|----------------|
| 1 | 1995 Philippine Statistical Yearbook | National Statistical Coordination Board | 1995 |
| 2 | Integrated Survey of Households Bulletin(Series No. 81) | National Statistics Office | 1995 |
| 3 | National Physical Framework Plan, 1993-2022 | National Economic And Development Authority | 1992 |
| 4 | Philippine Development Report, 1987-1992 | National Economic And Development Authority | 1993 |
| 5 | The President's 1994 Socio-Economic Report | National Economic And Development Authority | 1995 |
| 6 | Development Diplomacy and Technology Transfer | University of Philippines | 1994 |
| 7 | Journal of Philippine Development, No. 38,1994 | Philippine Institute for Development Studies | 1994 |
| 8 | National Handbook on Land and Other Physical Resources | National Economic And Development Authority | 1991 |
| 9 | 1992 Social and Economic Trends in Region I | National Statistical Coordination Board | 1992 |
| 10 | 1992 Social and Economic Trends in Region V | National Statistical Coordination Board | 1992 |
| 11 | 1992 Social and Economic Trends in Region VIII | National Statistical Coordination Board | 1992 |
| 12 | 1992 Social and Economic Trends in Region IX | National Statistical Coordination Board | 1992 |
| 13 | 1992 Social and Economic Trends in Region XII | National Statistical Coordination Board | 1992 |
| 14 | Philippine Standard Commodity Classification Rev. 2, 1993 | National Statistical Coordination Board | 1993 |
| 15 | Industry Trends, June 1995 | National Statistics Office | 1995 |
| 16 | Social Development in the Philippines : Vision, Challenges and Imperatives | National Economic And Development Authority | 1995 |
| 17 | 1994 Manpower Factbook | Technical Education and Skills Development Authority | 1995 |
| 18 | Gender and Development Making the Bureaucracy Gender-Responsive | UNIFEM and NCRFW | 1994 |
| 19 | Philippine Country Report on Women 1986-1995, Executive Summary | National Commission on the Role of Filipino Women | |
| 20 | Sex and Gender in Philippine Society | National Commission on the Role of Filipino Women | 1994 |
| 21 | Women in Agriculture, the Philippine Case | National Commission on the Role of Filipino Women | 1994 |
| 22 | Guidelines for Developing and Implementing Gender-Responsive Programs and Projects | National Commission on the Role of Filipino Women | 1993 |
| 23 | The Women's Budget Philippines 1995-1996 | National Commission on the Role of Filipino Women | 1995 |
| 24 | Asean Women, A Statistical Factbook | National Commission on the Role of Filipino Women | 1995 |
| 25 | Philippine Country Report on Women 1986-1995 | National Commission on the Role of Filipino Women | 1995 |
| 26 | Study on Women's Participation for Sustainable Development in the Cordillera | National Commission on the Role of Filipino Women | 1994 |
| 27 | Filipino Women Issues and Trends | National Commission on the Role of Filipino Women | 1995 |
| 28 | Statistics on the Filipino Women | National Commission on the Role of Filipino Women | 1992 |
| 29 | Annual Report 1991, 1992, 1993 and 1994 | Department of Social Welfare and Development | |
| 30 | Guidelines in the Operation of the Productivity Skills Capability Building for Disadvantaged Women | Department of Social Welfare & Development | |
| 31 | Guidelines for the Implementation of the Special Project for " Women in Especially Difficult Circumstances" | Department of Social Welfare & Development | |



10. Project Cost to be borne by the Philippines Government



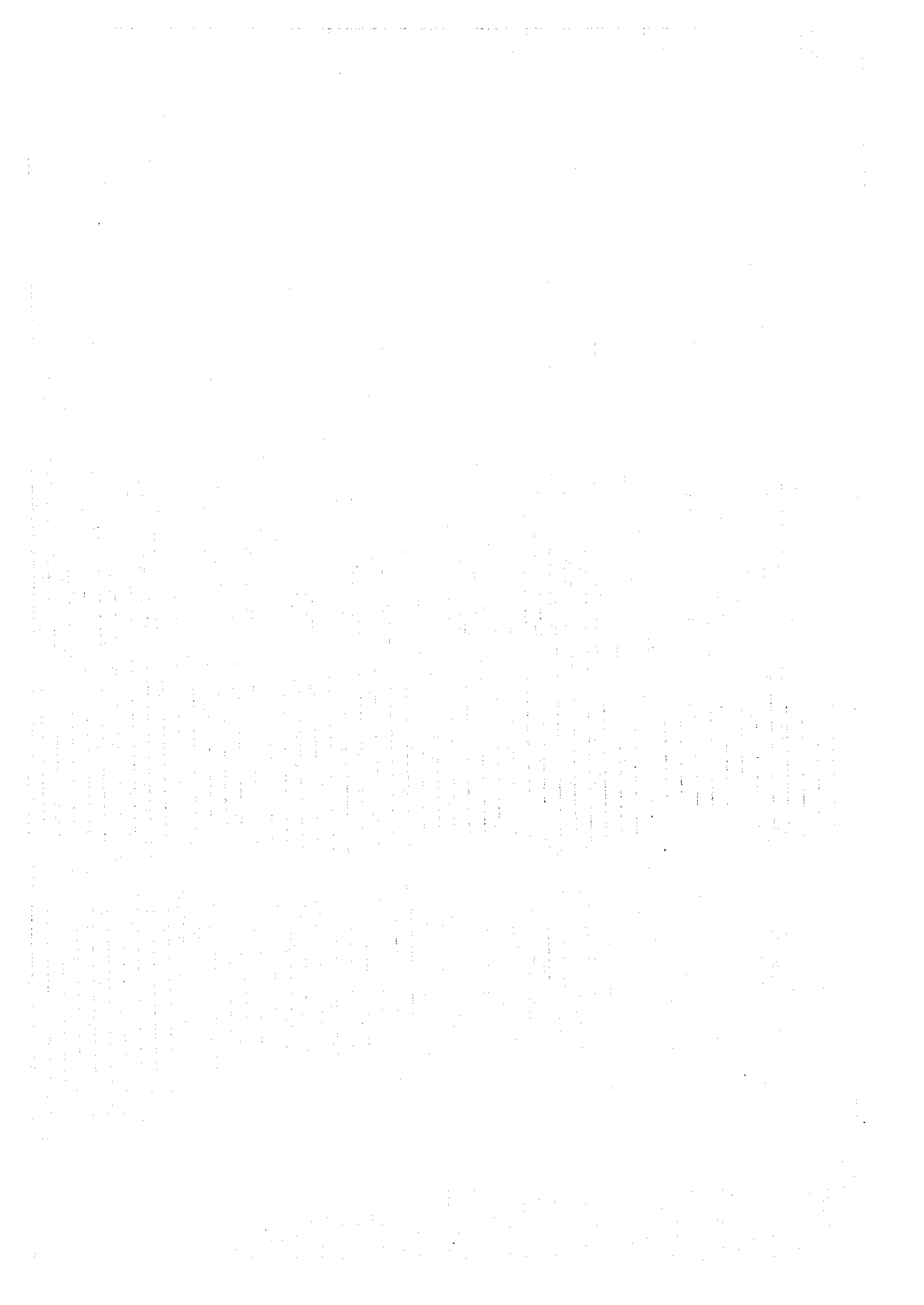
Project cost to be borne by the Philippines Government (1/2)

| REGION | AREA OF SPECIALIZATION | NO. OF CENTERS | LOCATION OF CENTER | ESTIMATED COST AND BUDGET FOR | |
|----------------------------|----------------------------|---------------------------|--|--|---|
| | | | | Repair of Building | Installing of Water & Power Lines |
| I | 1. Food Processing & Pres. | 2 | San Fernando, La Union Dagupan, Pangasinan | 244,000 | 172,000 for a additional water/powerline |
| | 2. Sewing Craft | 1 | Laoag, Ilocos Norte | 122,000 | 86,000 for a additional water/powerline |
| | 3. Loom Weaving | 1 | Bangar, La Union | 122,000 | 86,000 for a additional water/powerline |
| | Sub-Total | 4 | | | |
| II | 1. Food Processing & Pres. | 1 | Bayombong, Nueva Viscaya | 70,000 | 60,000 for a additional water/powerline |
| | Sub-Total | 1 | | | |
| III | 1. Food Processing & Pres. | 3 | Cabanatuan, Nueva Ecija Iba, Zambales, San Jose del Monte, Bulacan | 366,000 | 258,000 for a additional water/powerline |
| | 2. Sewing Craft | 1 | Tarlac, Tarlac | 122,000 | 86,000 for a additional water/powerline |
| | Sub-Total | 4 | | | |
| IV | 1. Sewing Craft | 7 | Boac, Marinduque | 50,000 | 50,000 for a additional water & powerline |
| | | | Odiangan, Romblon | 15,000 | 60,000 for a additional water & powerline |
| | | | Sta. Cruz, Laguna | 200,000 | 60,000 for a additional water & powerline |
| | | | Tanza, Cavite | 50,000 | 60,000 for a additional water & powerline |
| | | | Lucena, Quezon | 50,000 | 40,000 for a additional powerline |
| | | | Padre Garcia, Batangas Cainta, Rizal | 30,000 150,000 | 100,000 for installation of water 80,000 for installation of water & powerline |
| 2. Food Processing & Pres. | 3 | Catapan, Mindoro Oriental | 100,000 | 60,000 for repair of water & powerline | |
| | | Sta. Cruz, Laguna | 50,000 | 40,000 for additional water pipe | |
| | | Tagaytay, Cavite | 50,000 | 40,000 for additional water pipe | |
| Sub-Total | 10 | | | | |
| V | 1. Loom Weaving | 2 | Irosin, Sorsogon Virac, Catanduanes | 150,000 150,000 | 100,000 for additional water pipe and powerline |
| | Sub-Total | 2 | | | |
| VI | 1. Sewing Craft | 2 | Jordan, Guimaras San Jose, Antique | 150,000 100,000 | 80,000 for additional water & powerline 50,000 for additional water & powerline |
| | Sub-Total | 2 | | | |
| VII | 1. Sewing Craft | 2 | Dumaguete, Negros Oriental Cebu City, Cebu | 200,000 50,000 | 120,000 for installation of water & powerline 50,000 for installation of water & powerline |
| | 2. Toy Craft | 1 | Mandaue, Metro Cebu | 200,000 | 120,000 for additional powerline |
| | 3. Food Processing & Pres. | 3 | Tagbilaran, Bohol | 150,000 | 50,000 for water pipe |
| | | | Bais, Negros Oriental Canfaen, Negros Oriental | 200,000 200,000 | 70,000 for installation |
| | 4. Home Aide Service | 1 | Cebu City, Cebu | 50,000 | 50,000 for additional powerline |
| Sub-Total | 7 | | | | |
| VIII | 1. Sewing Craft | 3 | Ormoc, Leyte | 180,000 | 120,000 for additional of water & powerline |
| | | | Tacloban, Leyte | 200,000 | 120,000 for additional of water & powerline |
| | | | Cataman, Northern Samar | 500,000 | 200,000 for installation |
| 2. Food Processing & Pres. | 2 | Masain, Southern Leyte | 180,000 | 150,000 for installation | |
| | | Cataman, Northern Samar | 500,000 | 200,000 for installation | |
| Sub-Total | 5 | | | | |
| IX | 1. Sewing Craft | 4 | Liloy, Zamboanga del Norte | 200,000 | 130,000 for additional of water & powerline |
| | | | Pagadian, Zamboanga del Sur | 150,000 | 60,000 for additional powerline |
| | | | Rizal, Zamboanga del Norte | 100,000 | 60,000 for additional powerline |
| | | | Ipil, Zamboanga del Sur | 100,000 | 60,000 for additional powerline |
| | 2. Food Processing & Pres. | 2 | Dupitan, Zamboanga del Norte | 50,000 | 60,000 for additional powerline |
| | | | Isabela, Basilan | 80,000 | 120,000 for installation of water & doctiriaty |
| Sub-Total | 6 | | | | |

Project cost to be borne by the Philippines Government (2/2)

| REGION | AREA OF SPECIALIZATION | NO. OF CENTERS | LOCATION OF CENTER | ESTIMATED COST AND BUDGET FOR | |
|-----------------|----------------------------|-----------------|--|-------------------------------|--|
| | | | | Repair of Building | Installing of Water & Power Lines |
| X | 1. Sewing Craft | 2 | Ozamis, Misamis Oriental Surigao, Surigao del Norte | 50,000 | 100,000 for installation of water & powerline |
| | 2. Food Processing & Pres. | 1 | Bataan, Agusan del Norte | 30,000 | 100,000 for installation of water & powerline |
| | Sub-Total | 3 | | | |
| XI | 1. Sewing Craft | 3 | Tagum, Davao del Norte Koronadal, South Cotobato Digos, Davao del Sur | 100,000 120,000 | 100,000 for installation of water & powerline 100,000 for installation of water & powerline |
| | 2. Toy Craft | 1 | Davao City, Davao del Norte | 60,000 | 60,000 for installation of water & powerline |
| | Sub-Total | 4 | | | |
| XII | 1. Food Processing & Pres. | 1 | Kidapawan, North Cotobato | 80,000 | 50,000 for installation of water & powerline |
| | 2. Loom Weaving | 1 | Cotobato City, Maguindanao | 50,000 | 50,000 for installation of water & powerline |
| | Sub-Total | 2 | | | |
| NCR | 1. Sewing Craft | 3 | Paranaque, Metro Manila Valenzuela, Metro Manila Calocan, Metro Manila | 60,000 60,000 60,000 | 60,000 for installation of water & powerline 60,000 for installation of water & powerline 60,000 for installation of water & powerline |
| | Sub-Total | 3 | | | |
| | CAR | 1. Sewing Craft | 2 | Bucay, Abra Tabuk, Kalinga | 50,000 60,000 |
| 2. Loom Weaving | | 2 | Benguet, La Trinidad Bangued, Abra | 150,000 50,000 | 200,000 for installation of powerline & water 100,000 for additional water & powerline |
| Sub-Total | | 4 | | | |
| NTCLWWD | 1. Home Aide Service | 1 | Malate, Metro Manila | 250,000 | 180,000 for additional water & powerline |
| Total | | | | 6,861,000 | 4,678,000 |
| Grand Total | | | | 11,539,000 | |





JICA