

### SURVEY SPECIFICATIONS

DATA RECORDING INTERVAL	0.4 SECONDS
SENSOR HEIGHT TERRAIN CLEARANCE	75 METERS
FLIGHT LINE SPACING	150 METERS
FLIGHT LINE TRENDS	NORTH - SOUTH
FLIGHT LINE TRENDS	EAST - WEST

### EQUIPMENT SPECIFICATIONS

TRANSMIT POSITION METER	SCOUTNEY HR 0551 W/URSON
DATA ACQUISITION SYSTEM	RMS DAS-3
FLIGHT LINE TRENDS	RMS DAS-3 27 YEAR
CHART RECORDER	RMS DAS-3 16 CHANNEL
RADIO ALTIMETER	RMS DAS-3
BAROMETRIC ALTIMETER	RMS DAS-3

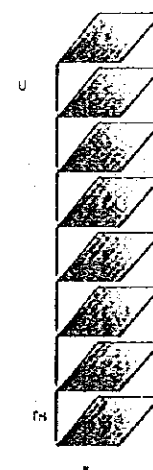
### NAVIGATION SPECIFICATIONS

FLIGHT PATH TRACKING	NATIONAL TR. S. 145 TRACK AIDS
FLIGHT PATH NAVIGATION	DARWIN ORBIT GPS
FLIGHT PATH RECEIVING	POST PROCESSED
FLIGHT PATH PROCESSING	POST PROCESSED

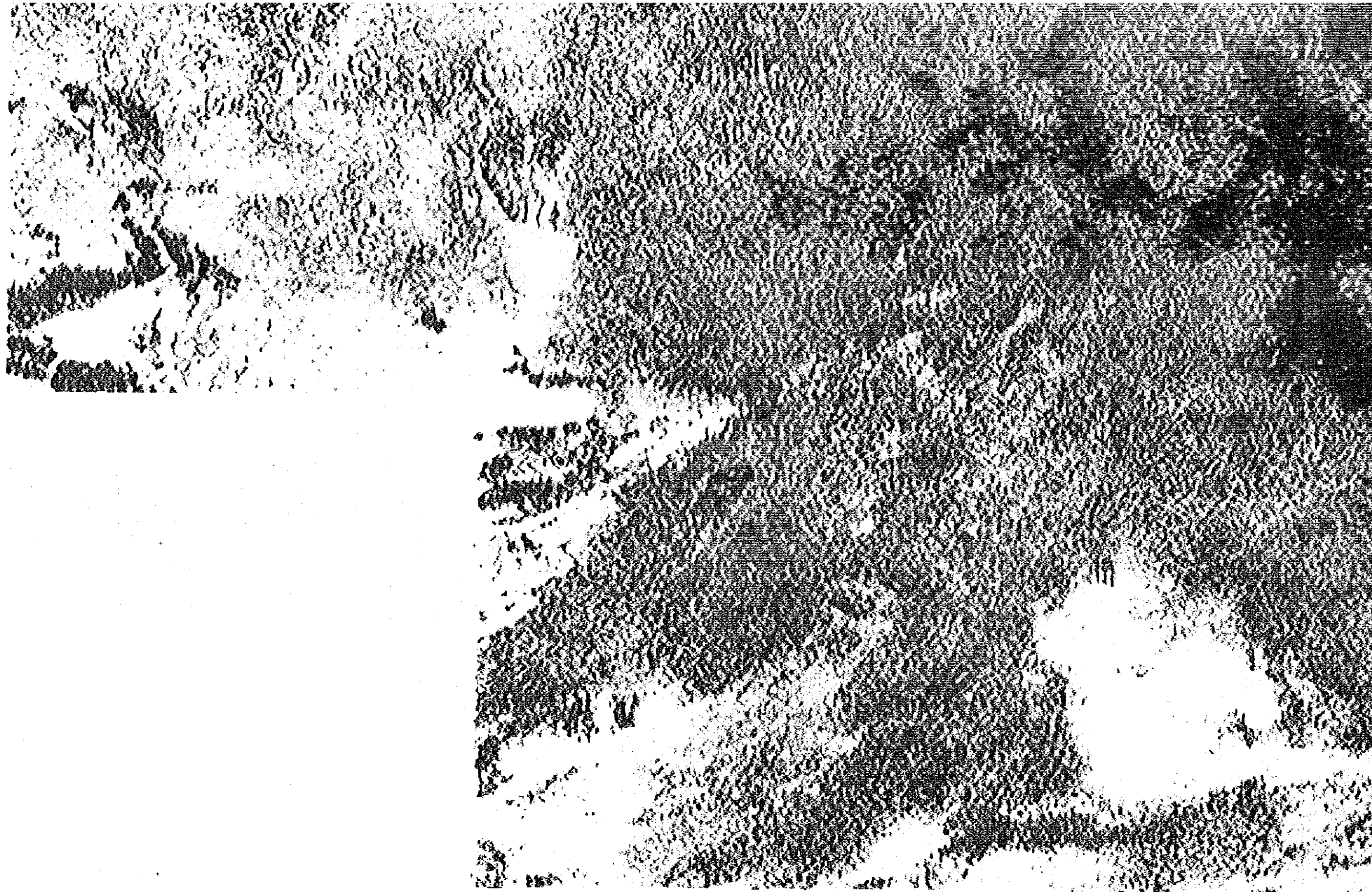
### PLOTTING SPECIFICATIONS

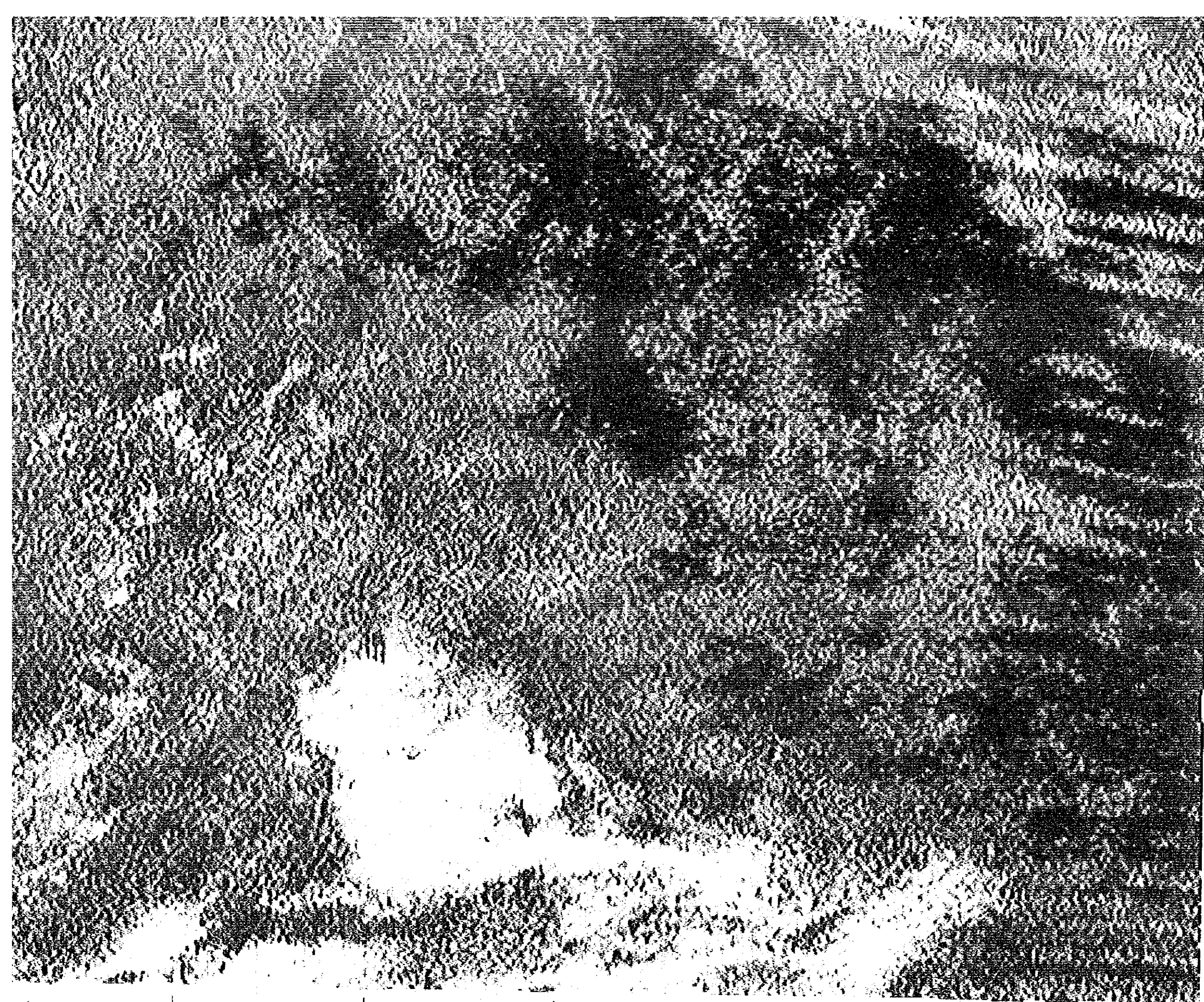
PROJECTION	GRS CONFORM
SPHEROID	BEVEL
CENTRAL MERIDIAN	13 DEGREES EAST
X AXIS	3 METERS
Y AXIS	5 METERS
GRID MESH SIZE	75 METERS
ALTIMETER SUPPLIED BY	SCOUTNEY
ALTIMETER	CELESTRA TOTAL 414 25 40N
DATA ACQUISITION BY	SCOUTNEY
DATA PROCESSING BY	SCOUTNEY

### SURVEY DISPLAY



K





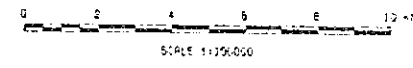
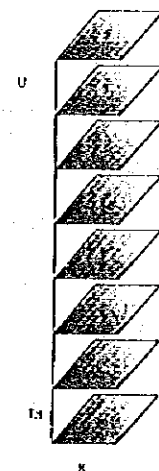
**NAVIGATION SPECIFICATIONS**

FLIGHT PATH TRACKING	NATIONAL INSTRUMENTS
FLIGHT PATH NAVIGATION	DRUM SPIN
FLIGHT PATH RECORDING	POST PROCESSED
FLIGHT PATH PROCESSING	POST PROCESSED

**PLOTTING SPECIFICATIONS**

PROJECTION	GRID CENTER
SPHEROID	BESTER
CENTRAL MERIDIAN	19 DEGREES EAST
X GRID	9 METRES
Y GRID	6 METRES
DATA MESH SIZE	75 METRES
AIRCRAFT SUPPLIED BY	GEOSIS
AIRCRAFT	LETSTAR 117AK 454 23 20K
DATA ACQUISITION BY	GEOSIS
DATA PROCESSING BY	GEOSIS

**TERNARY DISPLAY**

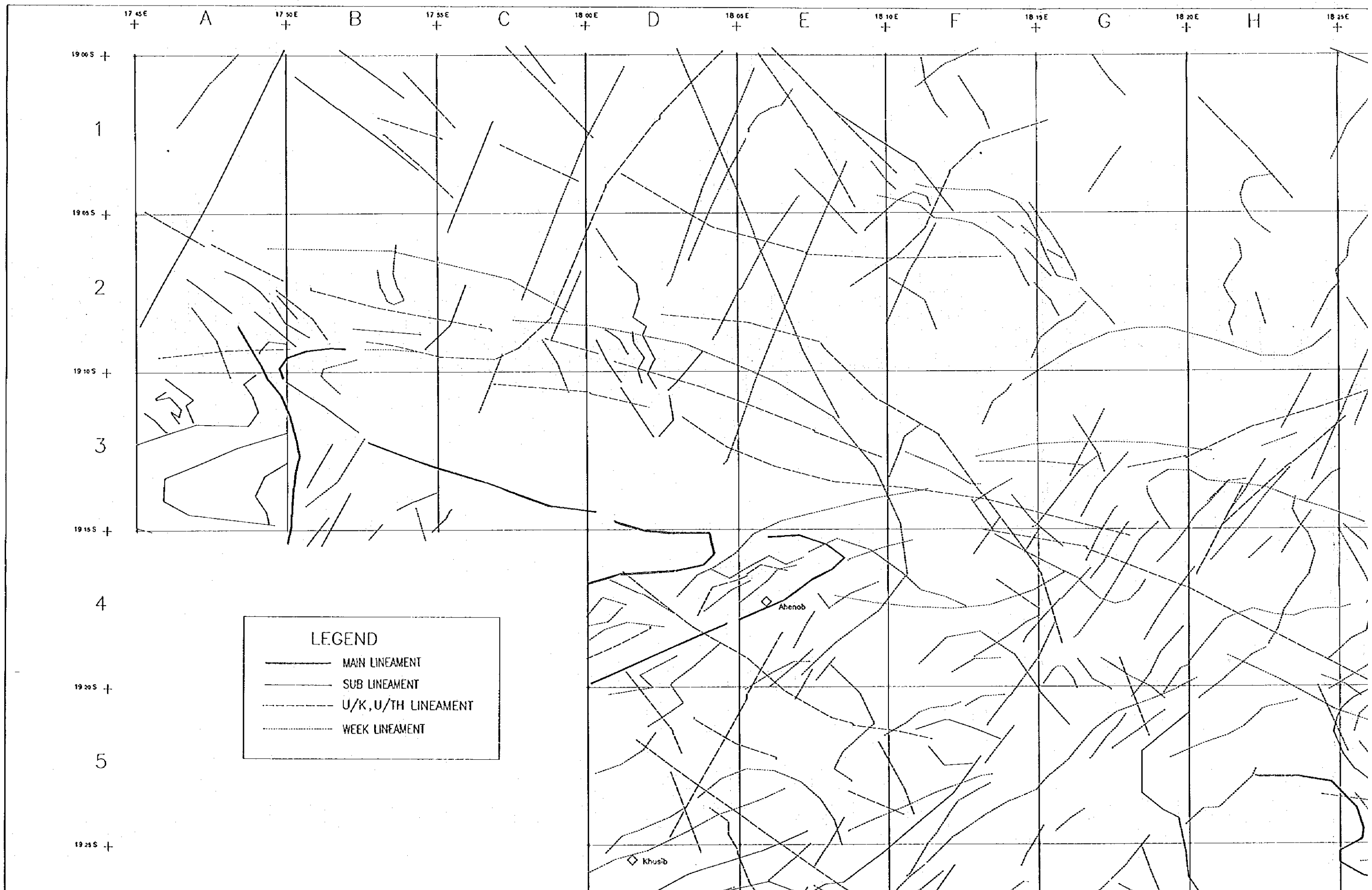


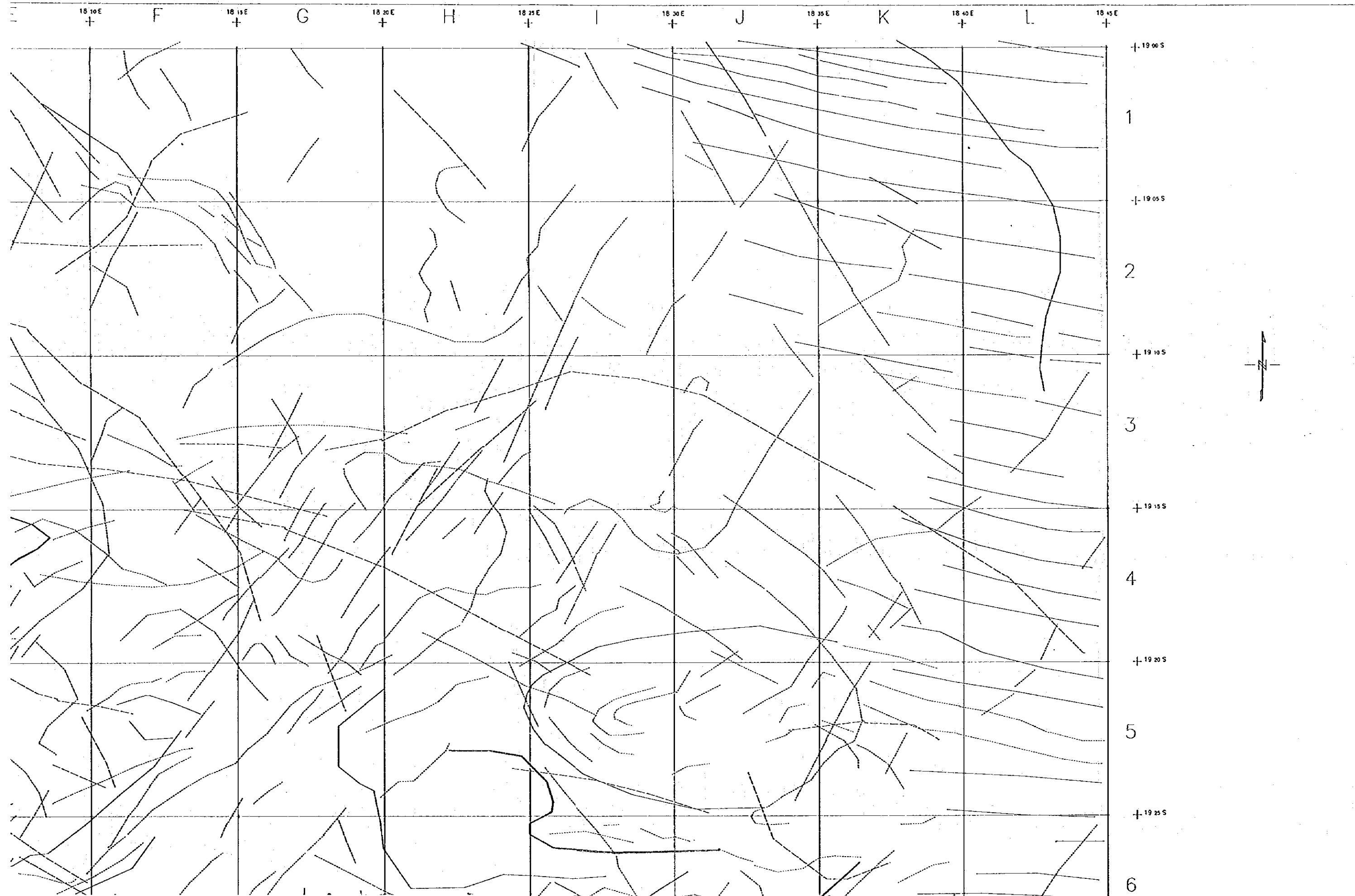
JAPAN INTERNATIONAL COOPERATION AGENCY  
METAL MINING AGENCY OF JAPAN

THE MINERAL EXPLORATION  
IN THE OTAVI MOUNTAIN LAND AREA  
THE REPUBLIC OF NAMIBIA

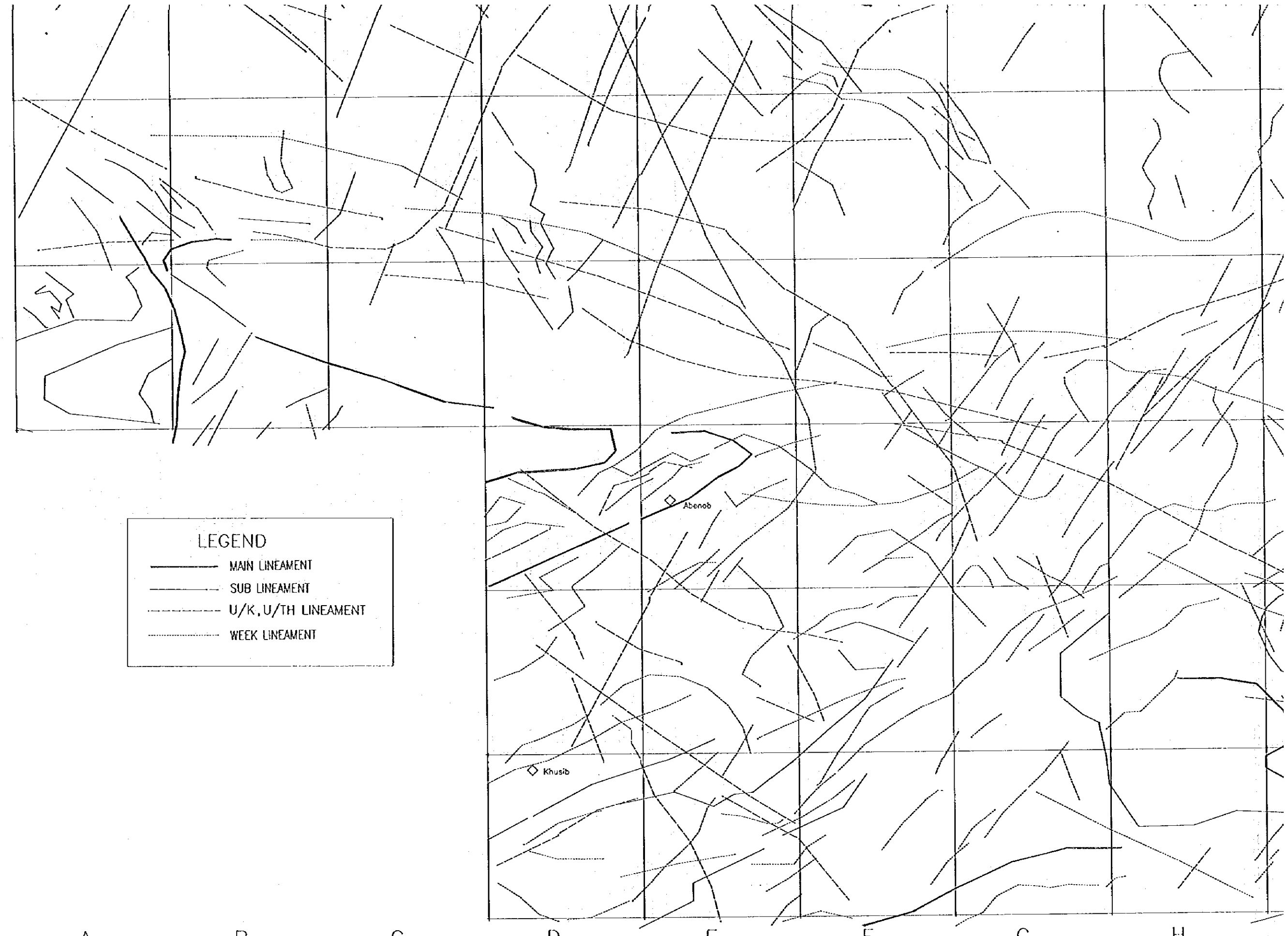
Fig. II-5-6 Radiometric Contour Ternary Map

MARCH 1996





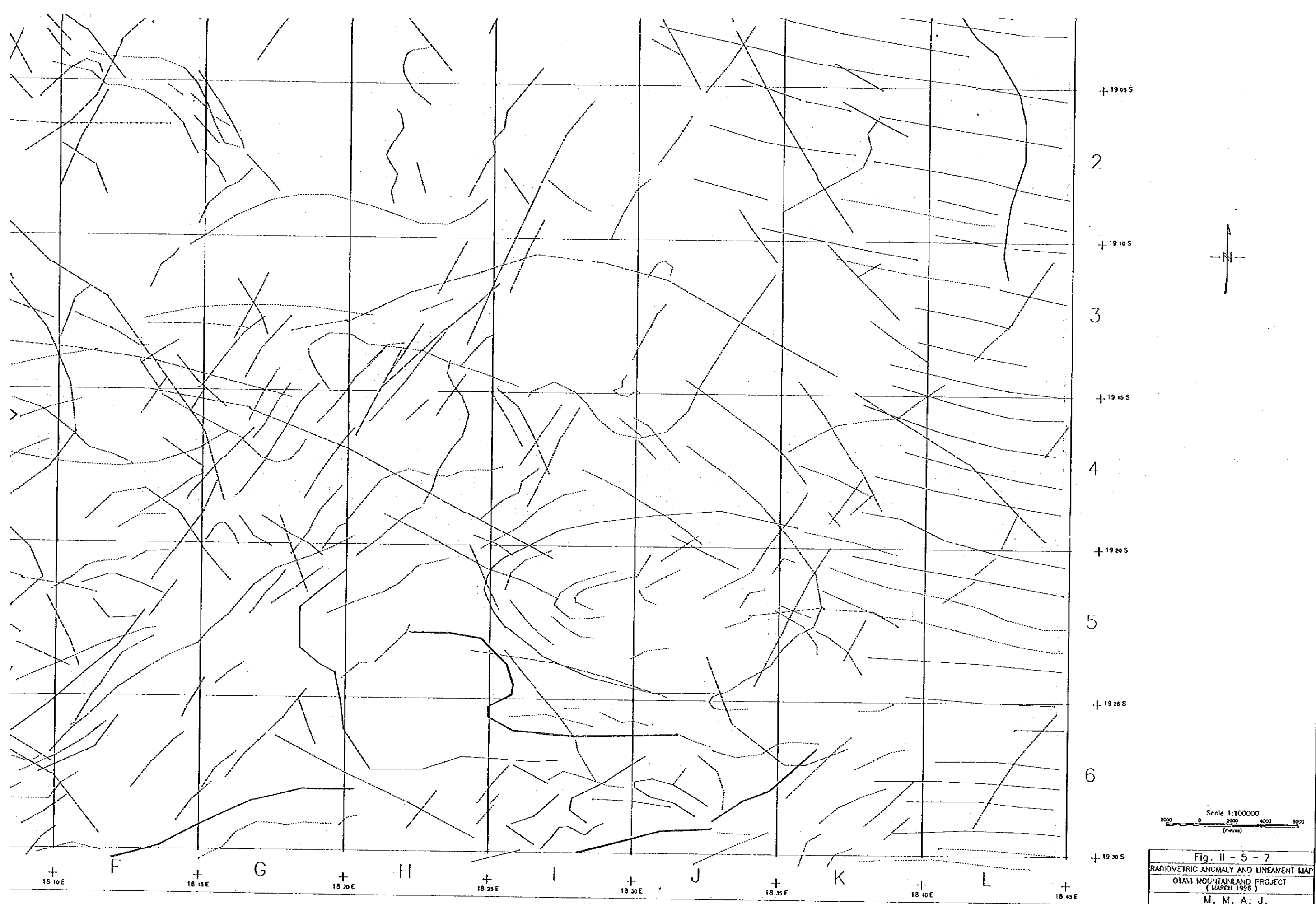
1  
19 05 S +  
2  
19 10 S +  
3  
19 15 S +  
4  
19 20 S +  
5  
19 25 S +  
6  
19 30 S +



LEGEND

- MAIN LINEAMENT
- - - SUB LINEAMENT
- · - · U/K, U/TH LINEAMENT
- · · · WEEK LINEAMENT

+ A + B + C + D + E + F + G + H +  
17 45 E 17 50 E 17 55 E 18 00 E 18 05 E 18 10 E 18 15 E 18 20 E 18 25 E



+ 19 05 S

2

+ 19 10 S

3

+ 19 15 S

4

+ 19 20 S

5

+ 19 25 S

6

+ 19 30 S

+ 18 10 E

F

+ 18 15 E

G

+ 18 20 E

H

+ 18 25 E

I

+ 18 30 E

J

+ 18 35 E

K

+ 18 40 E

L

+ 18 45 E

Scale 1:100000  
 2000 0 2000 4000 6000  
 (meters)

Fig. II - 5 - 7  
 RADIOMETRIC ANOMALY AND LINEAMENT MAP  
 OTAVI MOUNTAINLAND PROJECT  
 (MARCH 1996)  
 M. M. A. J.

THE MINERAL EXPLORATION  
IN THE OTAVI MOUNTAIN LAND AREA  
THE REPUBLIC OF NAMIBIA

PHASE I

Fig. II-6-2

Location Map of Samples  
for Mineralogical and Geophysical Tests

SCALE 1 : 250,000

JAPAN INTERNATIONAL COOPERATION AGENCY  
METAL MINING AGENCY OF JAPAN

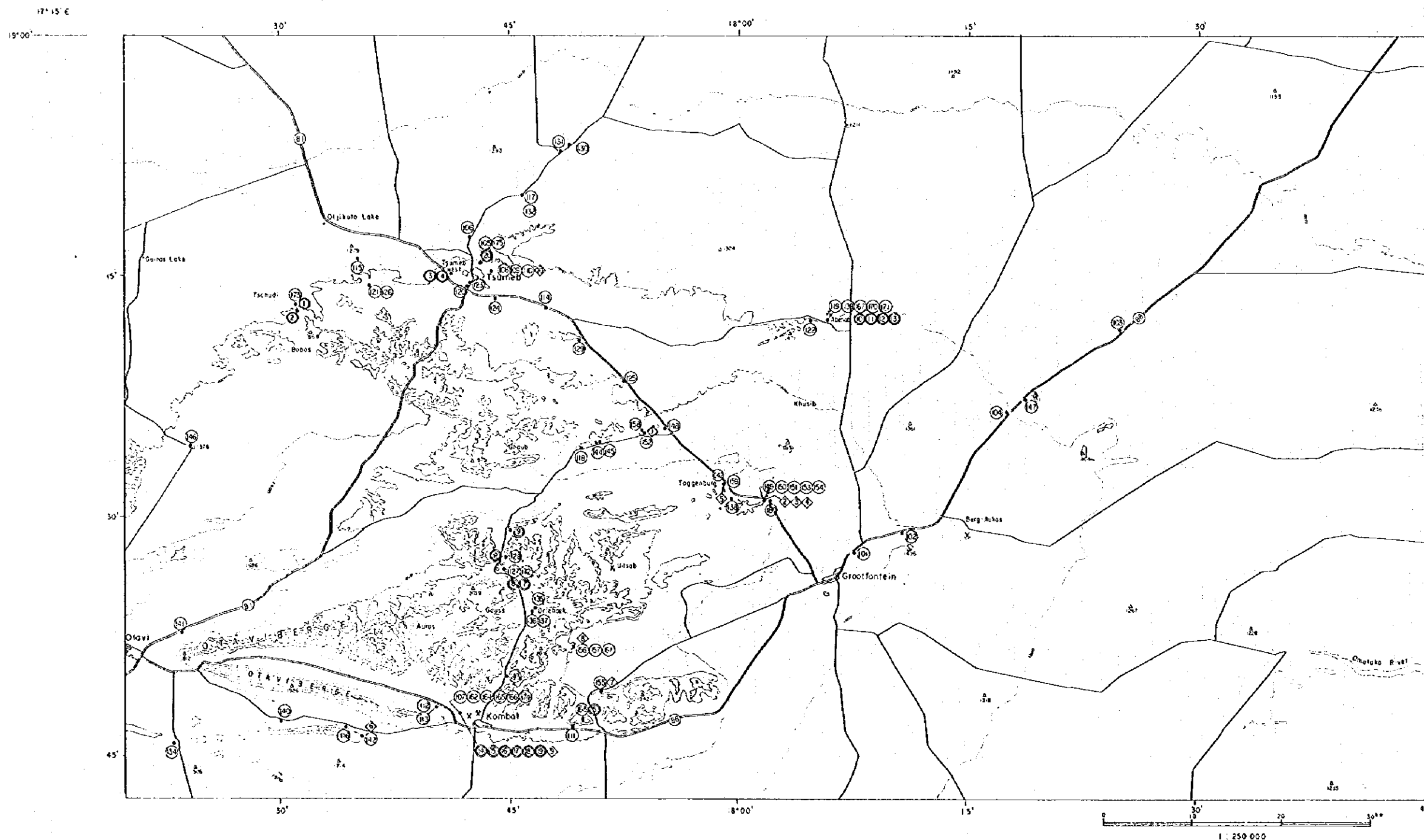
DATE MARCH 1996

Location Map of Samples for Mineralogical  
and Geophysical Tests

LEGEND

- ◊ Samples for thin section
- Samples for polished section
- Ⓜ Samples for measurement  
of geophysical properties

Location number corresponds to head number  
in the Table II-2-3 and II-2-4





JICA