

NAVIGATION SPECIFICATIONS

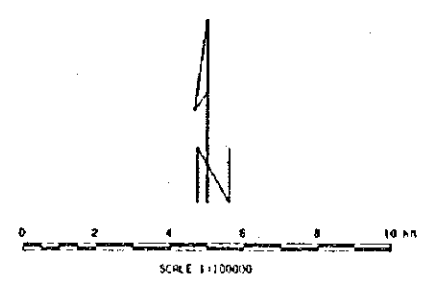
FLIGHT PATH TRACKING	INTERNAL IP 8 YMS OR OUR VIDEO
FLIGHT PATH NAVIGATION	ORIGIN ORIGIN GPS
FLIGHT PATH RECOVERY	POST PROCESSED
FLIGHT PATH PROCESSING	POST PROCESSED

PLOTTING SPECIFICATIONS

PROJECTION	Gauss Conformal
SPHEROID	Bessel
CENTRAL MERIDIAN	18 DEGREES EAST
X OFFSET	0 METRES
Y OFFSET	0 METRES
GRID MESH SIZE	75 METRES
AIRCRAFT SUPPLIED BY	GEOPSS
AIRCRAFT	CESNA 441Q 25-10M
DATA ACQUISITION BY	GEOPSS
DATA PROCESSING BY	GEOPSS

CONTOUR INTERVAL = 5 NT

5 NT CONTOUR	-----
10 NT CONTOUR	-----
50 NT CONTOUR	-----
250 NT CONTOUR	-----

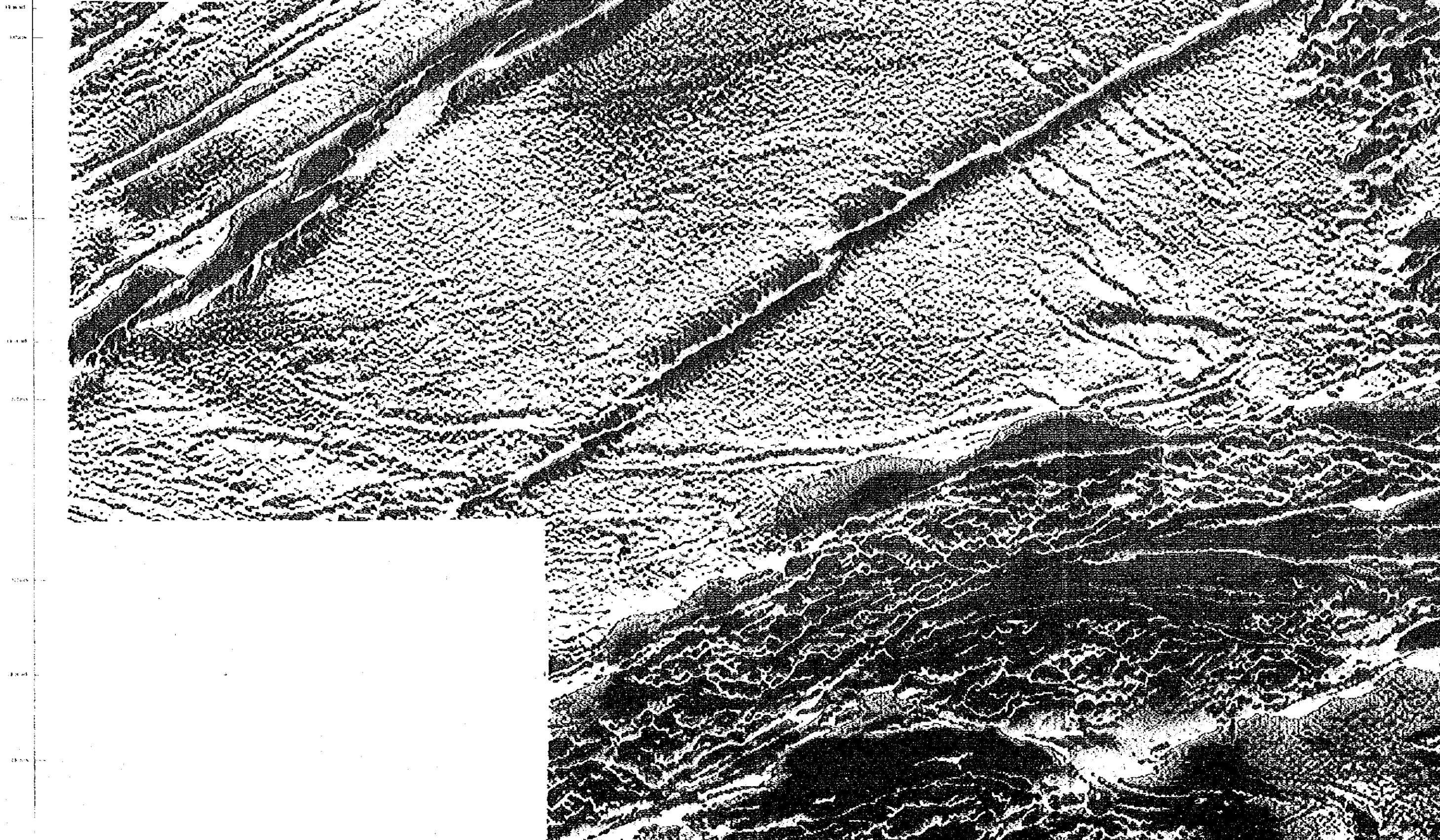


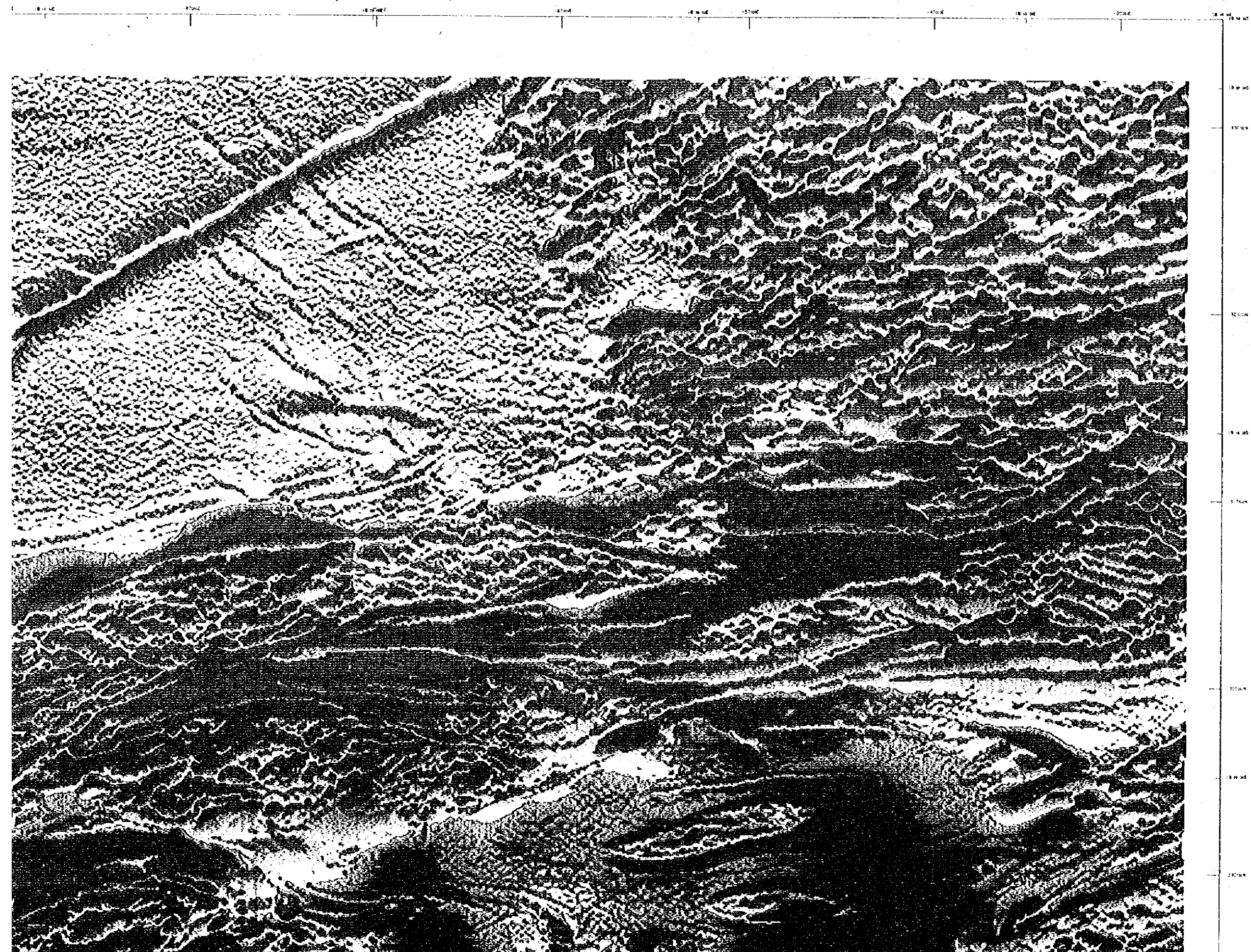
JAPAN INTERNATIONAL COOPERATION AGENCY
METAL MINING AGENCY OF JAPAN

THE MINERAL EXPLORATION
IN THE OTAVI MOUNTAIN LAND AREA
THE REPUBLIC OF NAMIBIA

Fig II-4-4 Total Magnetic Reduced to the Pole Map
MARCH 1996

130000 131000 132000 133000 134000 135000 136000 137000 138000 139000 140000





SURVEY SPECIFICATIONS

DATA RECORDING INTERVAL	0.1 SEC. APPROX. 8 METRES
SENSOR NEAR TERRAIN CLEARANCE	75 M. ALC
FLIGHT LINE SPACING	250 METRES
THE-FLINE SPACING	2500 METRES
FLIGHT LINE TREND	NORTH - SOUTH
THE-FLINE TREND	EAST - WEST

EQUIPMENT SPECIFICATIONS

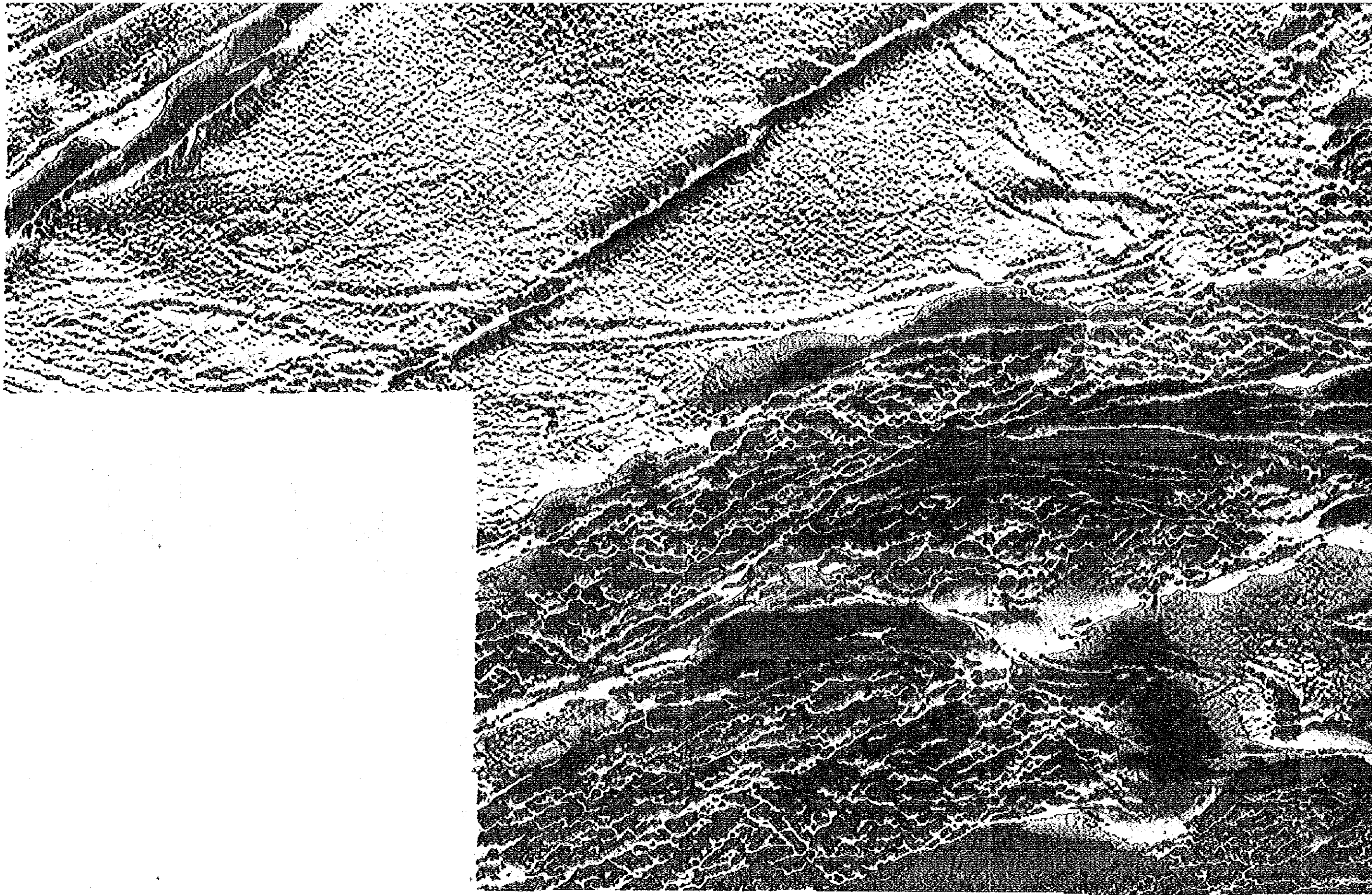
TRACKING INSTRUMENTS	SCOTREX NO DESTIN VISOR
DATA ACQUISITION SYSTEM	AMS DRS-8
AUTOMATIC AIRBORNE DYNAMIC COMPENSATOR	AMS ARCC-27 TERN
CHART RECORDER	AMS CAS-16 CHANNEL
RADIO ALTIMETER	AMS AR2
BAROMETRIC ALTIMETER	WDR2

NAVIGATION SPECIFICATIONS

FLIGHT PATH TRACKING	NATIONAL IP 5-1/2" COLOUR VIDEO
FLIGHT PATH NAVIGATION	ORION SV-11 GPS
FLIGHT PATH RECOVERY	POSE PROCESSED
FLIGHT DATA PROCESSING	POSE PROCESSED

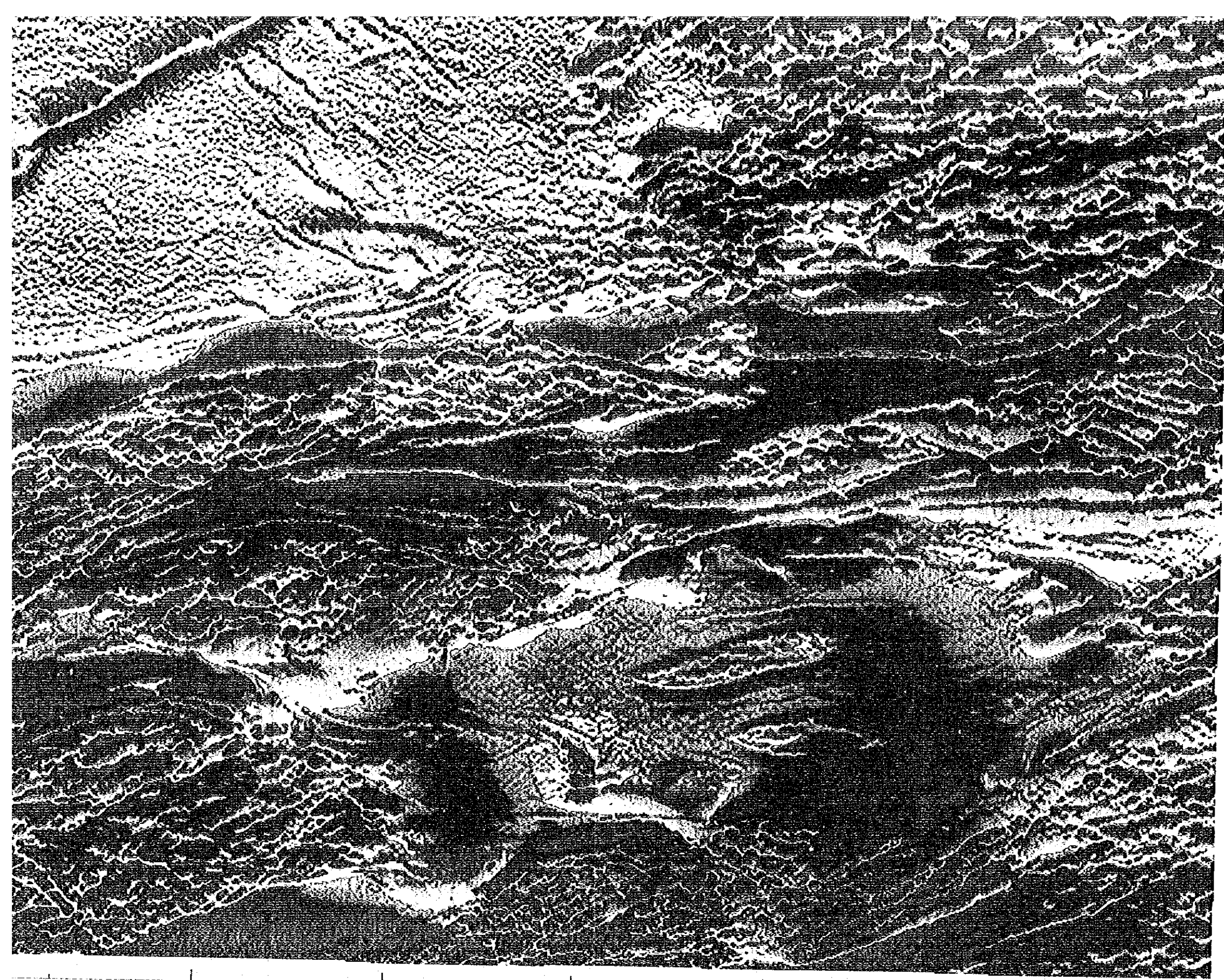
PLOTTING SPECIFICATIONS

PROJECTION	ORIS CONFORM
SPHEROID	BEVEL
CENTRAL MERIDIAN	19 DEGREES EAST
N.B.S.	0 METRES
N.B.S.	3 METRES
GRID MESH SIZE	75 METRES
INVENTORY SUPPLIED BY	GEORSS
RAW DATA	CECNA TETRA FOR 25 ROW
DATA ACQUISITION BY	GEORSS
DATA PROCESSING BY	GEORSS



17 1/2 N 42
17 1/4 N 42
17 1/2 N 42
17 1/4 N 42
17 1/2 N 42
17 1/4 N 42
17 1/2 N 42
17 1/4 N 42
17 1/2 N 42
17 1/4 N 42

17 1/2 W 42 17 1/4 W 42 17 1/2 W 42 17 1/4 W 42 17 1/2 W 42 17 1/4 W 42 17 1/2 W 42 17 1/4 W 42 17 1/2 W 42 17 1/4 W 42



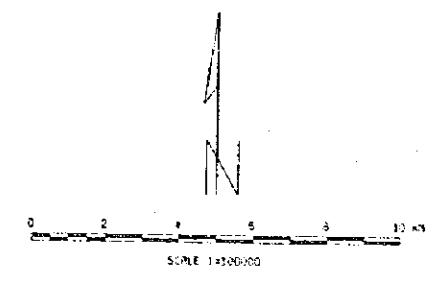
NAVIGATION SPECIFICATIONS

FLIGHT PATH TRACKING	NATIONS, JP 5-115 COLOR VIDEO
FLIGHT PATH NAVIGATION	ORIGIN 0111 025
FLIGHT PATH RECEIVERS	POST PROCESSED
FLIGHT PATH PROCESSING	POST PROCESSED

PLOTTING SPECIFICATIONS

PROJECTION	ORIS COM JRA
SPHEROID	BESSEL
CENTRAL MERIDIAN	19 DEGREES EAST
X BIAS	0 METRES
Y BIAS	0 METRES
GRID MESH SIZE	75 METRES
AIRFRAME SUPPLIED BY	GENCOS
AIRCRAFT	DESIGN TETAN 424 25-124
DATA ACQUISITION BY	GENCOS
DATA PROCESSING BY	GENCOS

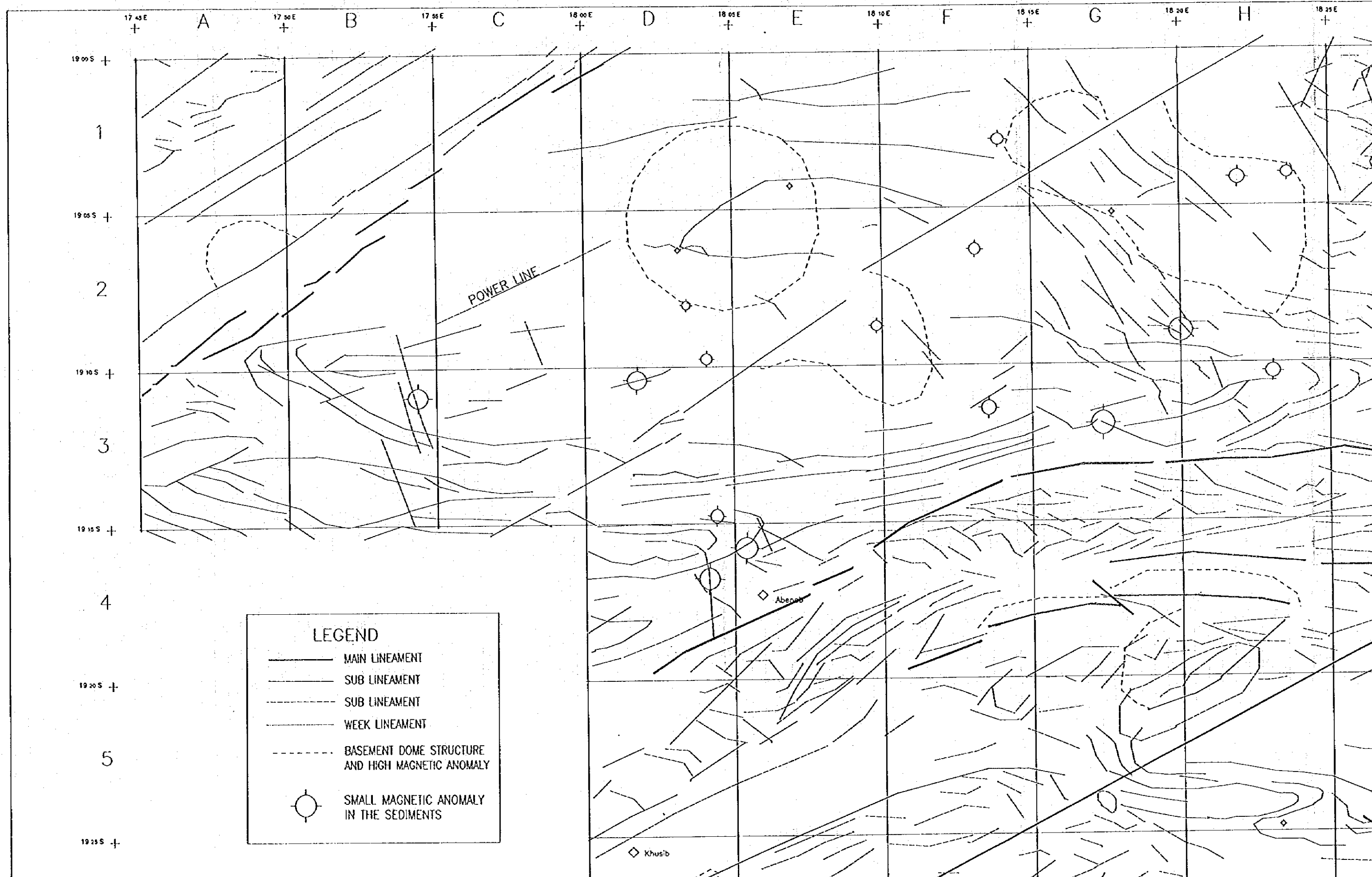
24° 00' N
23° 30' N
23° 00' N
22° 30' N
22° 00' N
21° 30' N
21° 00' N
20° 30' N
20° 00' N
19° 30' N
19° 00' N
18° 30' E
18° 45' E
19° 00' E
19° 15' E
19° 30' E
19° 45' E
20° 00' E



JAPAN INTERNATIONAL COOPERATION AGENCY
METAL MINING AGENCY OF JAPAN

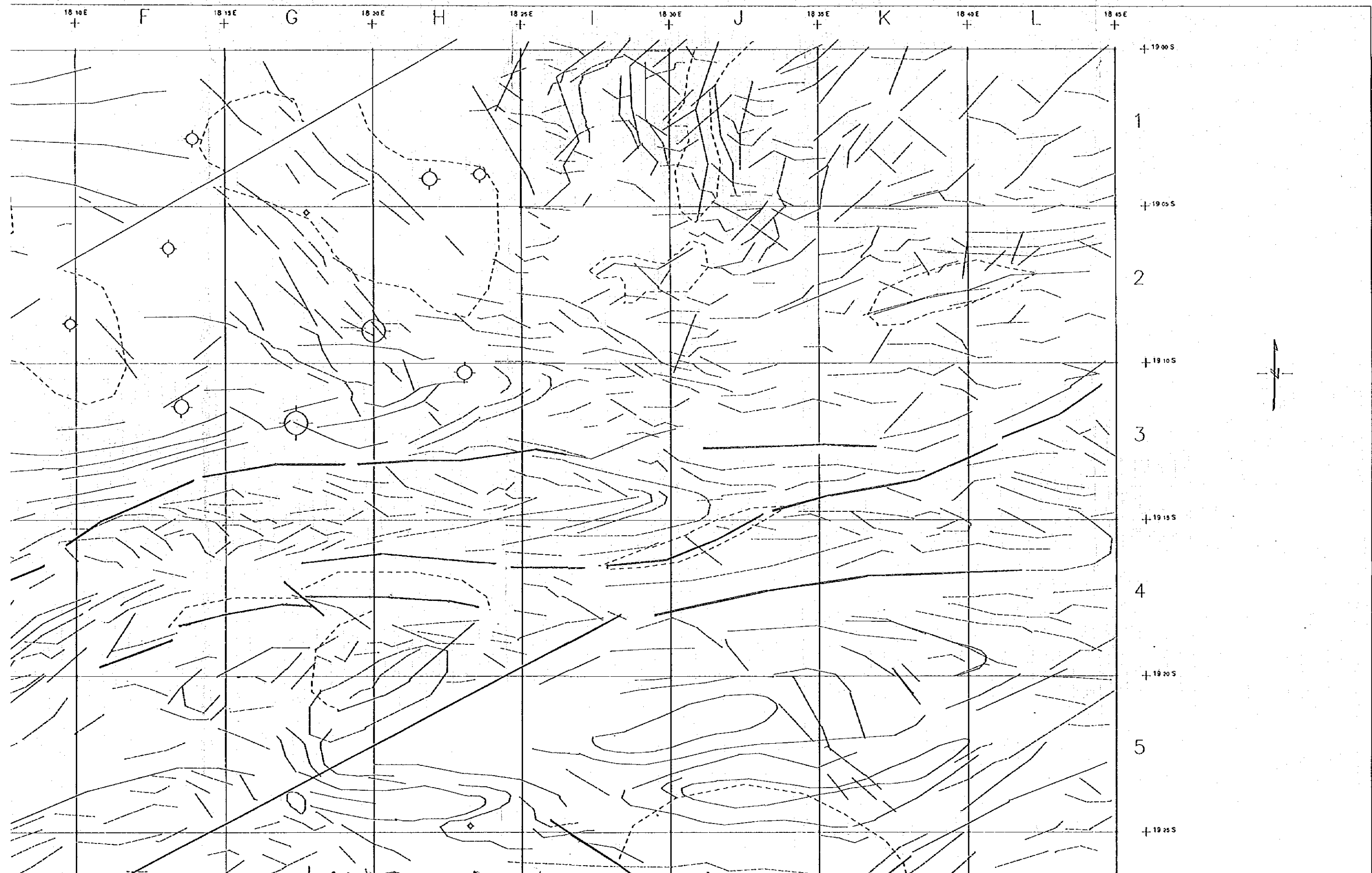
THE MINERAL EXPLORATION
IN THE OTAVI MOUNTAIN LAND AREA
THE REPUBLIC OF NAMIBIA

Fig II-4-5 Magnetic Image Processing Products
MARCH 1996



LEGEND

- MAIN LINEAMENT
- - - SUB LINEAMENT
- · · SUB LINEAMENT
- · · WEEK LINEAMENT
- - - - - BASEMENT DOME STRUCTURE AND HIGH MAGNETIC ANOMALY
- SMALL MAGNETIC ANOMALY IN THE SEDIMENTS



19 05 S +

2

19 10 S +

3

19 15 S +

4

19 20 S +

5

19 25 S +

6

19 30 S +

+ 17 45 E

A

+ 17 50 E

B

+ 17 55 E

C

+ 18 00 E

D

+ 18 05 E

E

+ 18 10 E

F

+ 18 15 E







G

+ 18 20 E

H

+ 18 25 E

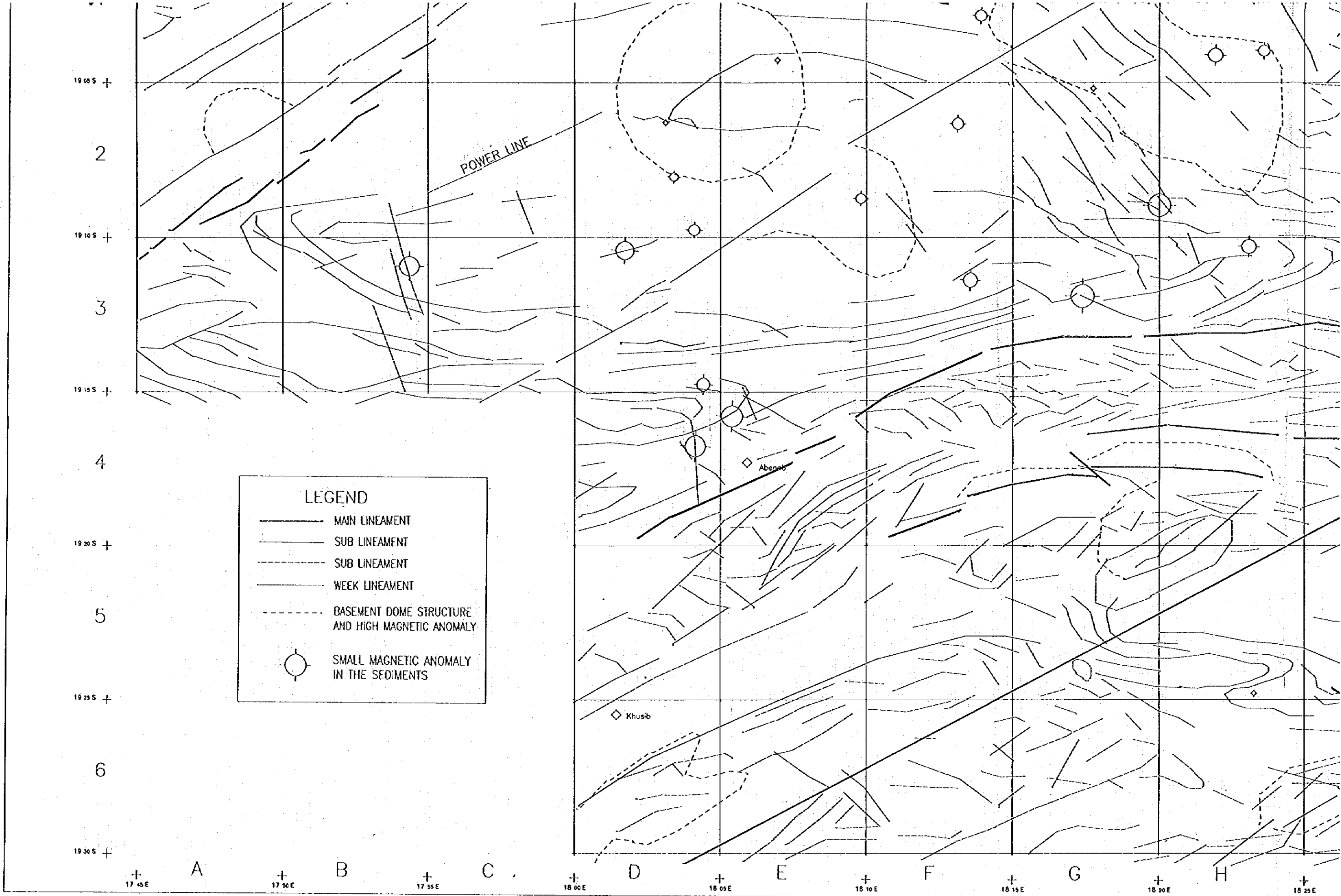
LEGEND

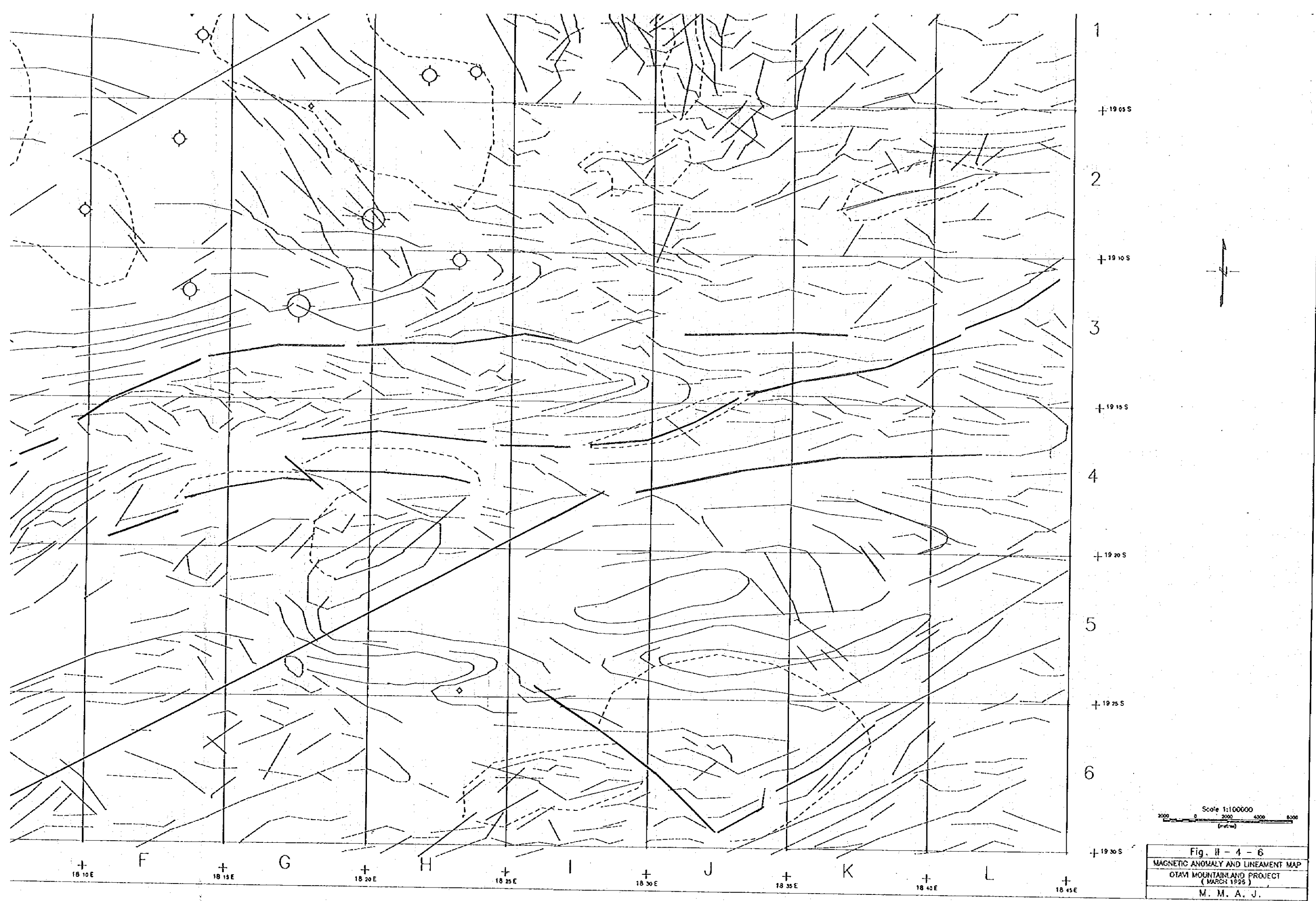
-  MAIN LINEAMENT
-  SUB LINEAMENT
-  SUB LINEAMENT
-  WEEK LINEAMENT
-  BASEMENT DOME STRUCTURE AND HIGH MAGNETIC ANOMALY
-  SMALL MAGNETIC ANOMALY IN THE SEDIMENTS

POWER LINE

Abenab

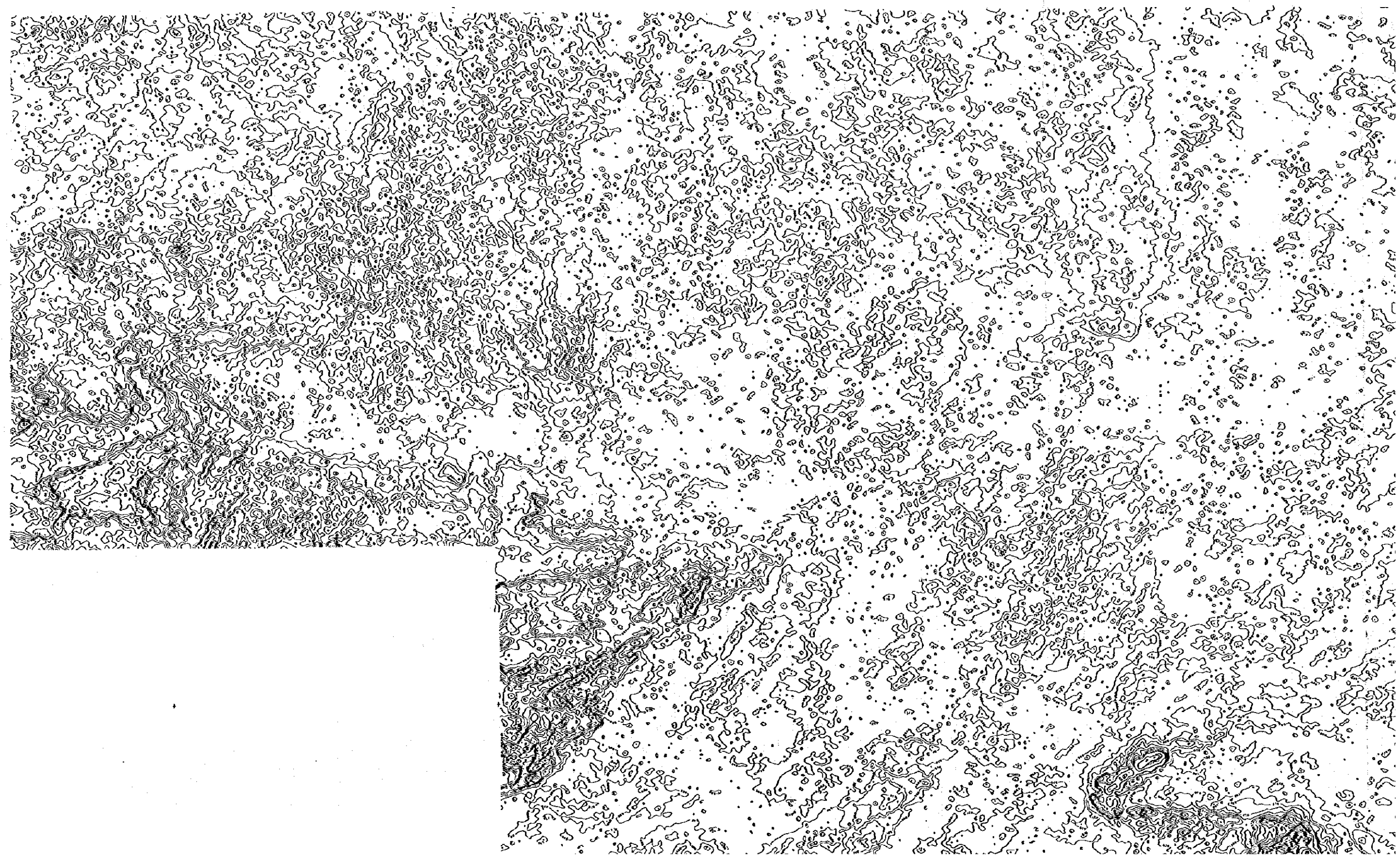
Khusib

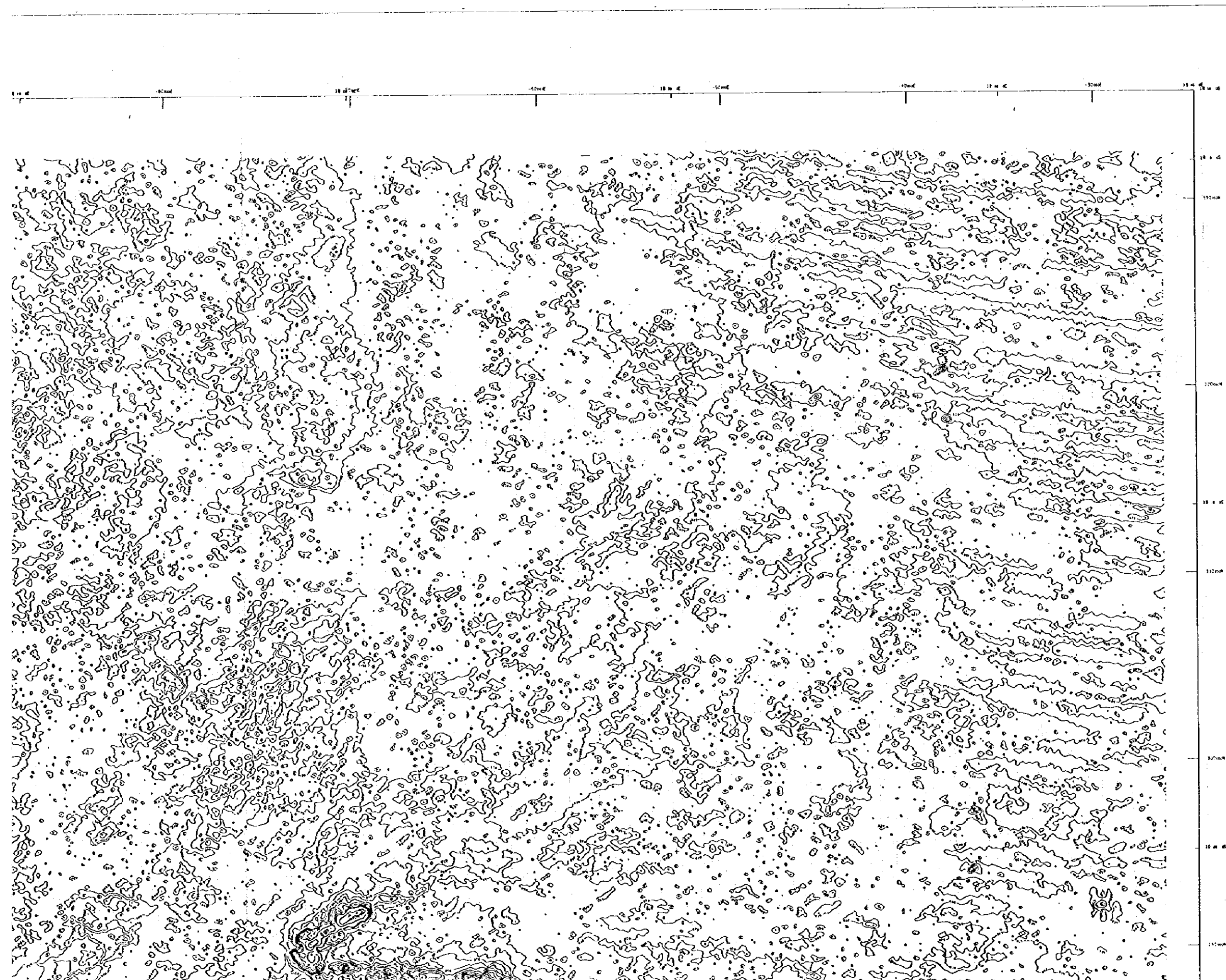




110000 115000 120000 125000 130000 135000 140000 145000 150000

110000
115000
120000
125000
130000
135000
140000
145000
150000





SURVEY SPECIFICATIONS

DATA RECORDING INTERVAL	0.1 SEC. APPROX. 9 METRES
SENSOR NEAR TERRAIN CLEARANCE	75 METRES
FLIGHT LINE SPACING	250 METRES
FLY-LINE SPACING	250 METRES
FLIGHT LINE TREND	NORTH - SOUTH
FLY-LINE TREND	EAST - WEST

EQUIPMENT SPECIFICATIONS

TRIANGULAR INSTRUMENTS	SCIENTRE 4 NB CLEVER VAPOUR
DATA IDENTIFICATION SYSTEM	RMS QMS-8
AUTOMATIC WINDSPEED COMPENSATION	RMS RWK-27 TERN
CHART RECORDER	RMS GP33-16 CHANNEL
RADIO ALTIMETER	RMS R22
BAROMETRIC ALTIMETER	RMS 20

NAVIGATION SPECIFICATIONS

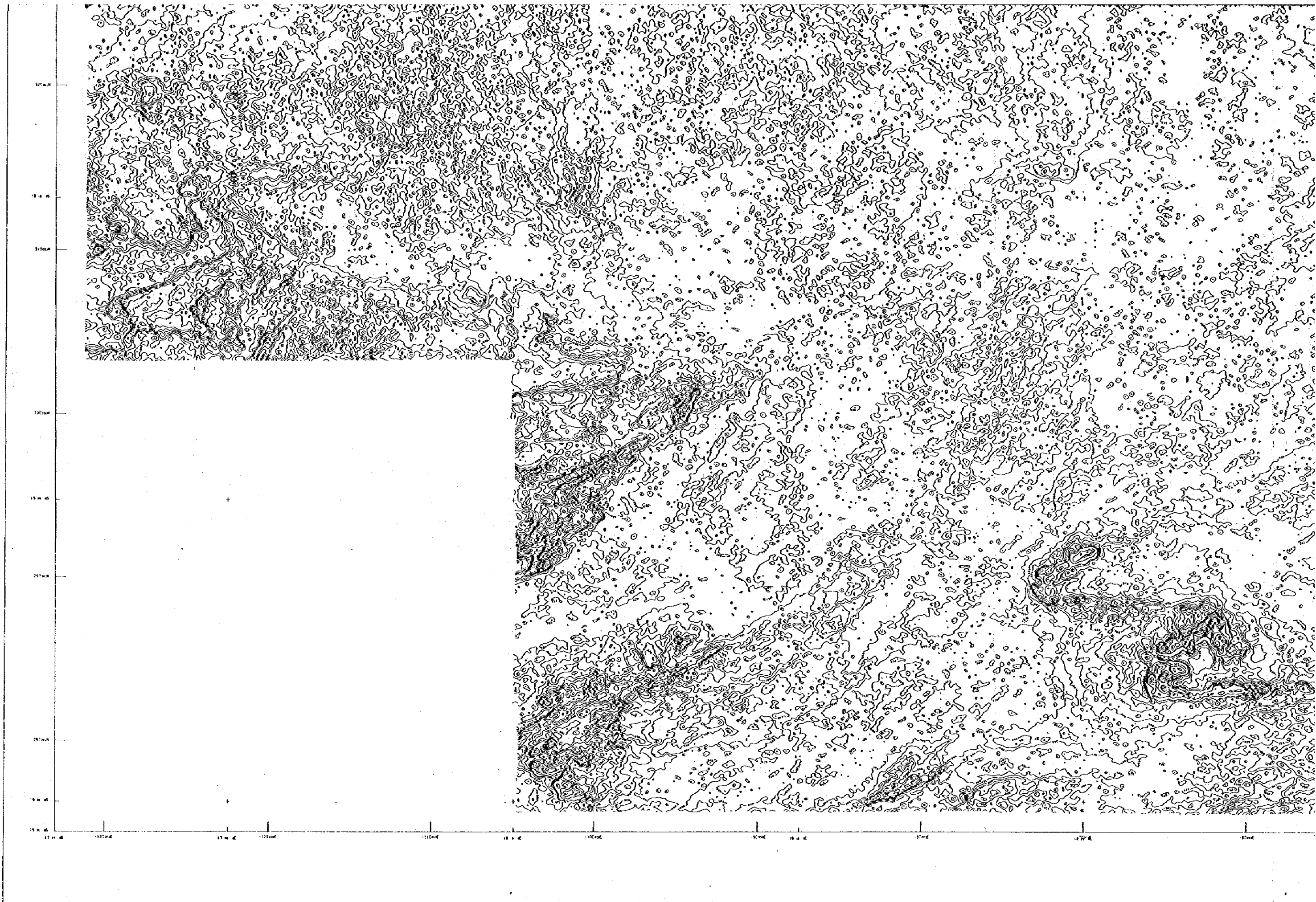
FLIGHT PATH TRACKING	NATIONAL IP 5-FIVE COLOUR VIDEO
FLIGHT PATH NAVIGATION	COORIN SP411 QPS
FLIGHT PATH RECOVERY	POST PROCESSED
FLIGHT PATH PROCESSING	POST PROCESSED

PLOTTING SPECIFICATIONS

PROJECTION	GAUSS EQUATORIAL
SPHEROID	BEASL
CENTRAL MERIDIAN	18 DEGREES EAST
X AXIS	0 METRES
Y AXIS	0 METRES
GRID MESH SIZE	75 METRES
AIRCRAFT SUPPLIED BY	GEORSS
AIRCRAFT	CESSNA 175B ACX 25 021
DATA ACQUISITION BY	GEORSS
DATA PROCESSING BY	GEORSS

CONTOUR INTERVAL = 100 CPS

100 CPS CONTOUR	=====
500 CPS CONTOUR	=====
2500 CPS CONTOUR	=====





NAVIGATION SPECIFICATIONS

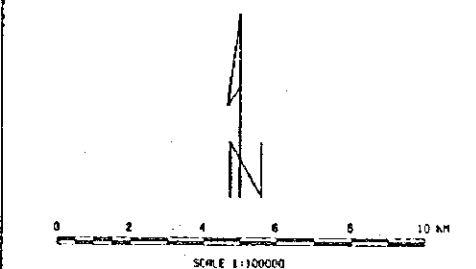
FLIGHT PATH TRACKING	NATIONAL SP-5 VHS COLOUR VIDEO
FLIGHT PATH NAVIGATION	GRAPHIC SAFETY GPS
FLIGHT PATH RECORDING	POST PROCESSED
FLIGHT PATH PROCESSING	POST PROCESSED

PLOTTING SPECIFICATIONS

PROJECTION	Gauss Conformal
SPHEROID	Bessel
CENTRAL MERIDIAN	19 DEGREES EAST
K BARS	0 METRES
L BARS	0 METRES
GRID MESH SIZE	75 METRES
AIRCRAFT SUPPLIED BY	GEOSAS
AIRCRAFT	CESSNA 172B 424 ES-RGN
DATA ACQUISITION BY	GEOSAS
DATA PROCESSING BY	GEOSAS

CONTOUR INTERVAL: 100 CPS

100 CPS CONTOUR: 
 500 CPS CONTOUR: 
 2500 CPS CONTOUR: 



JAPAN INTERNATIONAL COOPERATION AGENCY
 METAL MINING AGENCY OF JAPAN

THE MINERAL EXPLORATION
 IN THE OTAVI MOUNTAIN LAND AREA
 THE REPUBLIC OF NAMIBIA

Fig II-5-2 Radiometric Total Count Map
 MARCH 1995