

**SURVEY SPECIFICATIONS**

DATA RECORDING INTERVAL	0.11 SECONDS APPROX. 9 METRES
SENSOR HEIGHT TERRAIN CLEARANCE	75 METRES
FLIGHT LINE SPACING	250 METRES
FLIGHT LINE SPACING	2500 METRES
FLIGHT LINE TREND	NORTH - SOUTH
FLIGHT LINE TREND	EAST - WEST

**EQUIPMENT SPECIFICATIONS**

TRAVEL PARAMETERS	SCINTREX HQ CESSNA W/BOUR
DATA ACQUISITION SYSTEM	RMS DCS-8
AUTOMATIC AIRBORNE DYNAMIC COMPENSATOR	RMS RMOC-27 TEAM
ENGINE RECORDER	RMS SACS-16 CHANNEL
PRESSURE ALTITUDE	4120 IAS
BAROMETRIC ALTITUDE	8120

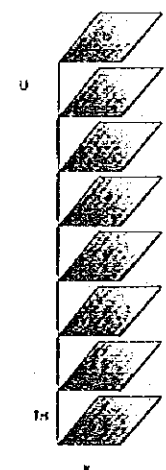
**NAVIGATION SPECIFICATIONS**

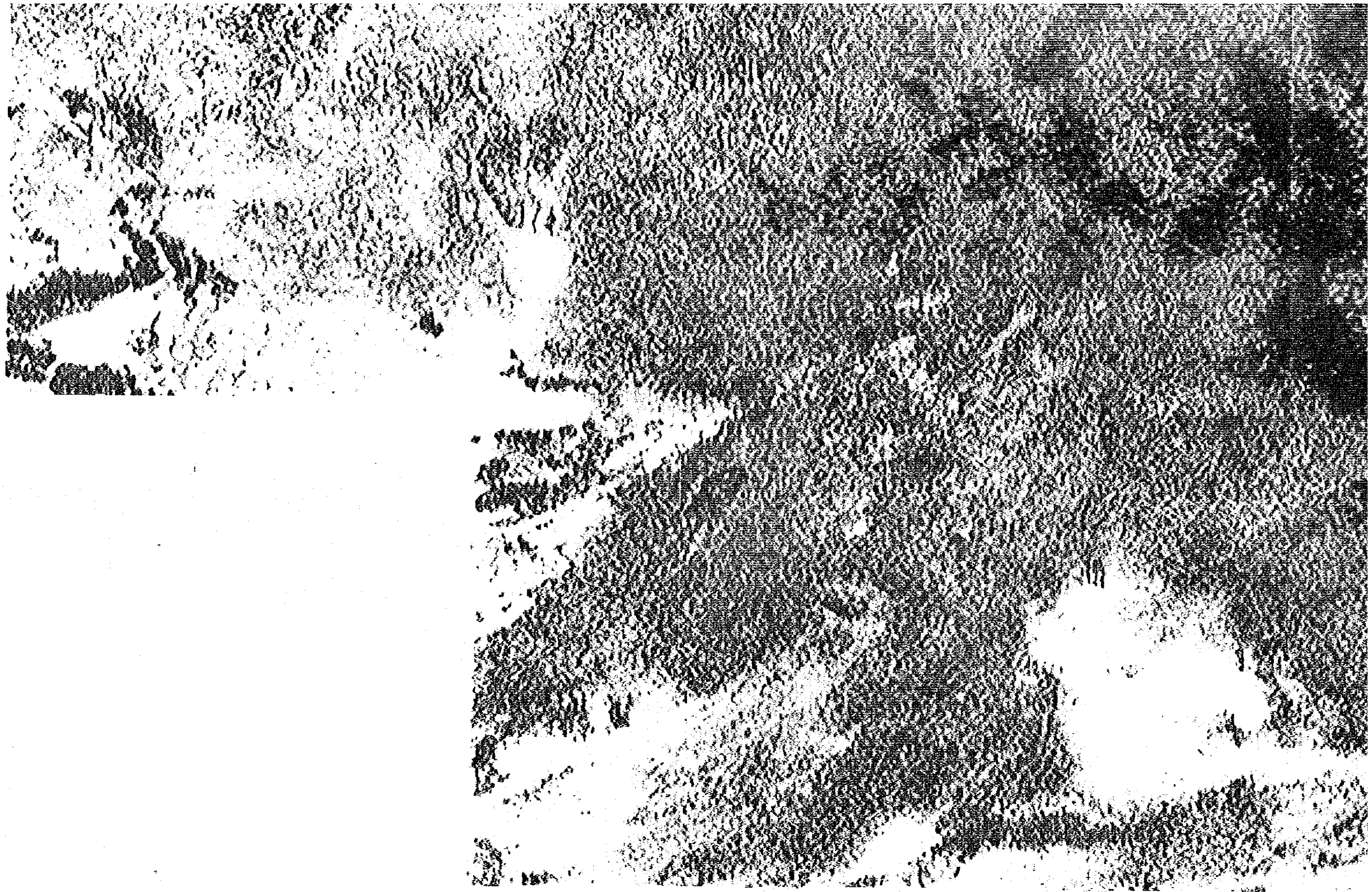
FLIGHT PATH TRACKING	NATIONAL IP - 5145 COLOUR VIBES
FLIGHT PATH NAVIGATION	DATAIN SPACE SAS
FLIGHT PATH RECORDING	POST PROCESSED
FLIGHT PATH PROCESSING	POST PROCESSED

**PLOTTING SPECIFICATIONS**

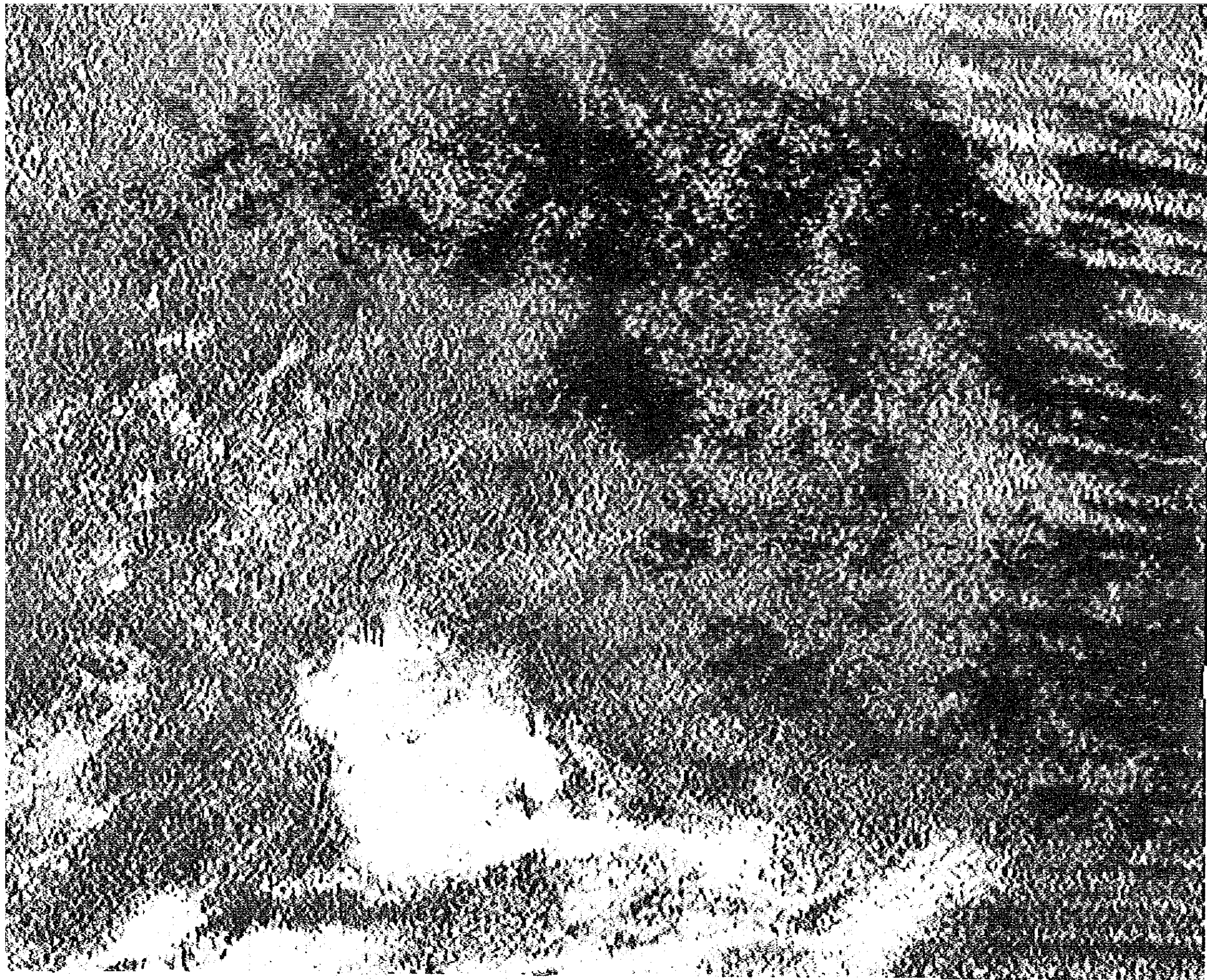
PROJECTION	GAUSS CONFORM
SPHEROID	BEHNE
CENTRAL MERIDIAN	19 DEGREES EAST
X GRID	0 METRES
Y GRID	0 METRES
GRID MESH SIZE	75 METRES
AIRCRAFT SUPPLIED BY	DEGRAS
AIRCRAFT	CESSNA 175M 424 25 20N
DATA ACQUISITION BY	DEGRAS
DATA PROCESSING BY	DEGRAS

**SURVEY DIAGRAM**





13 14 15 16 17 18 19 20 21 22 23 24 25 26 27 28 29 30 31 32 33 34 35 36 37 38 39 40 41 42 43 44 45 46 47 48 49 50 51 52 53 54 55 56 57 58 59 60 61 62 63 64 65 66 67 68 69 70 71 72 73 74 75 76 77 78 79 80 81 82 83 84 85 86 87 88 89 90 91 92 93 94 95 96 97 98 99 100



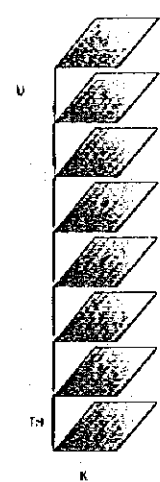
**NAVIGATION SPECIFICATIONS**

FLIGHT PATH TRACKING	NATIONAL TP 5 LINE CODES KING
FLIGHT PATH ACQUISITION	SRINAM 5011 025
FLIGHT PATH REQUEST	POST PROCESSED
FLIGHT PATH PROCESSING	POST PROCESSED

**PLOTTING SPECIFICATIONS**

PROJECTION	GAUSS CONFORM
SPHEROID	BEVEL
CENTRAL MERIDIAN	19 DEGREES EAST
X BIAS	0 METERS
Y BIAS	0 METERS
GRID MERIDIAN	19 DEGREES
REMARKS SUPPLIED BY	GEORGS
PACKAGE	TESLA TETRA 404 25 80A
DATA ACQUISITION BY	GEORGS
DATA PROCESSING BY	GEORGS

**TERNARY DIAGRAM**

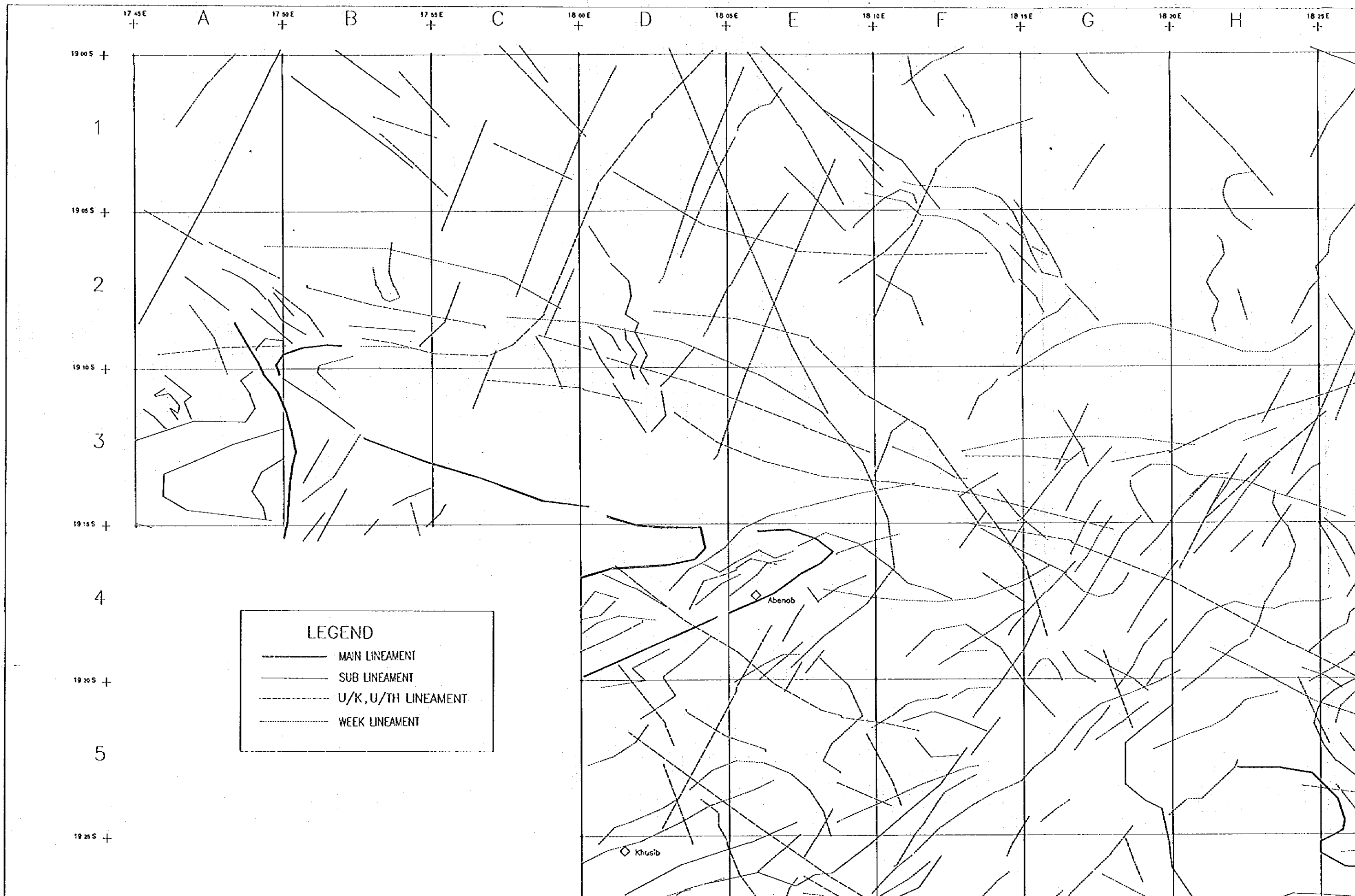


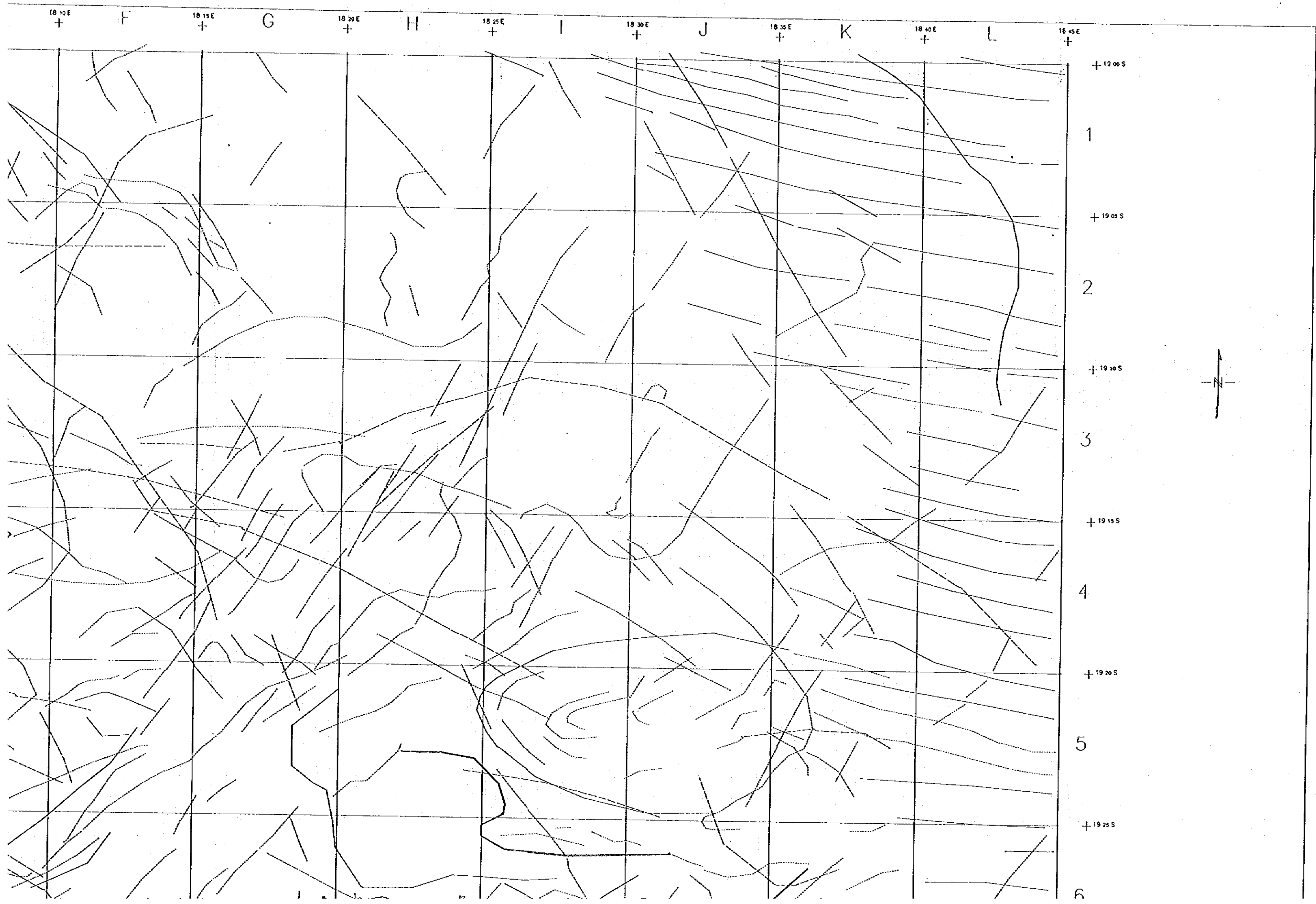
SCALE 1:100000

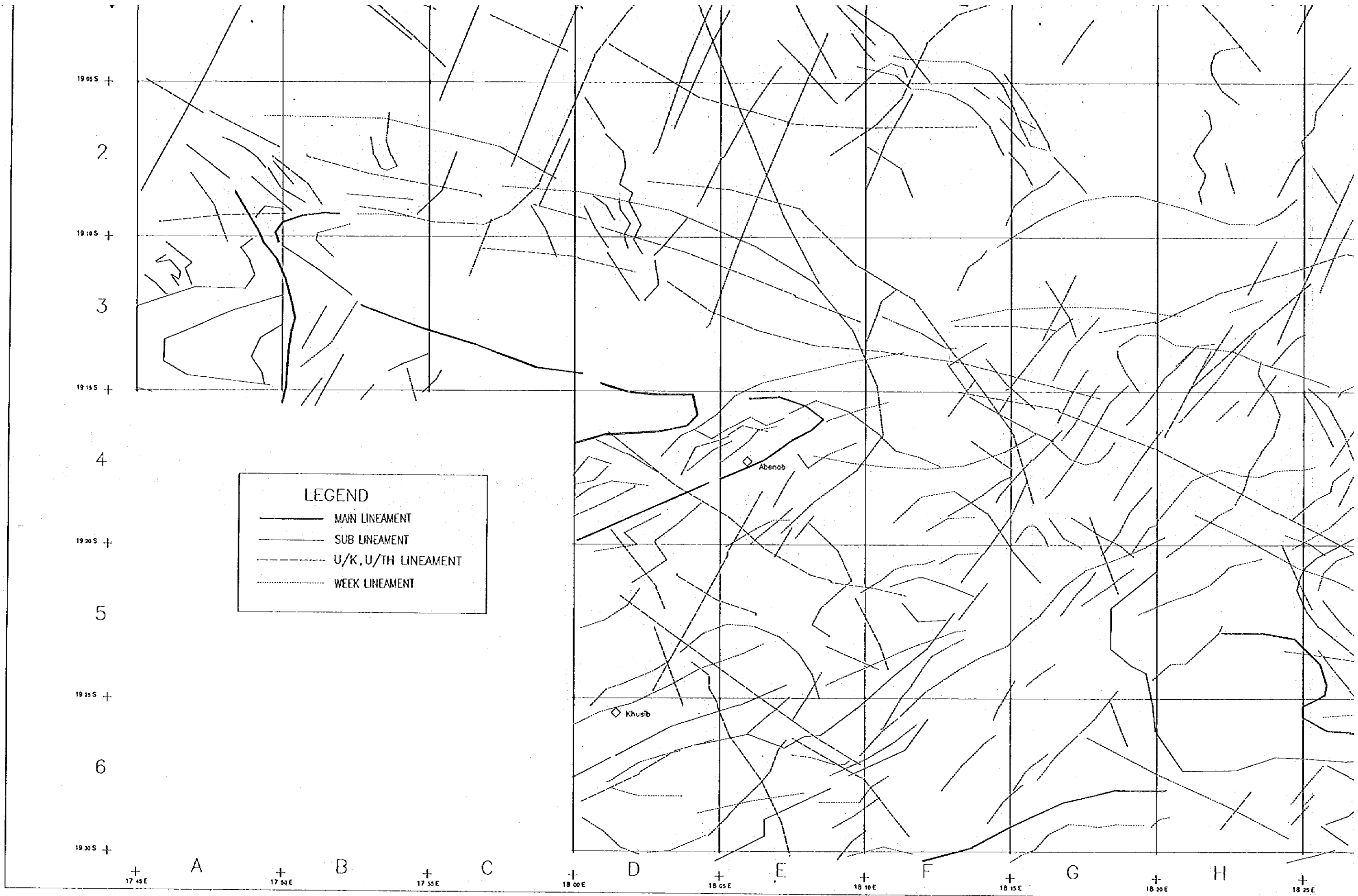
JAPAN INTERNATIONAL COOPERATION AGENCY  
METAL MINING AGENCY OF JAPAN

THE MINERAL EXPLORATION  
IN THE OTAVI MOUNTAIN LAND AREA  
THE REPUBLIC OF NAMIBIA

Fig II-5-6 Radiometric Contour Ternary Map  
MARCH 1996







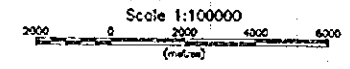
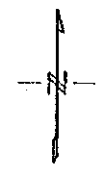
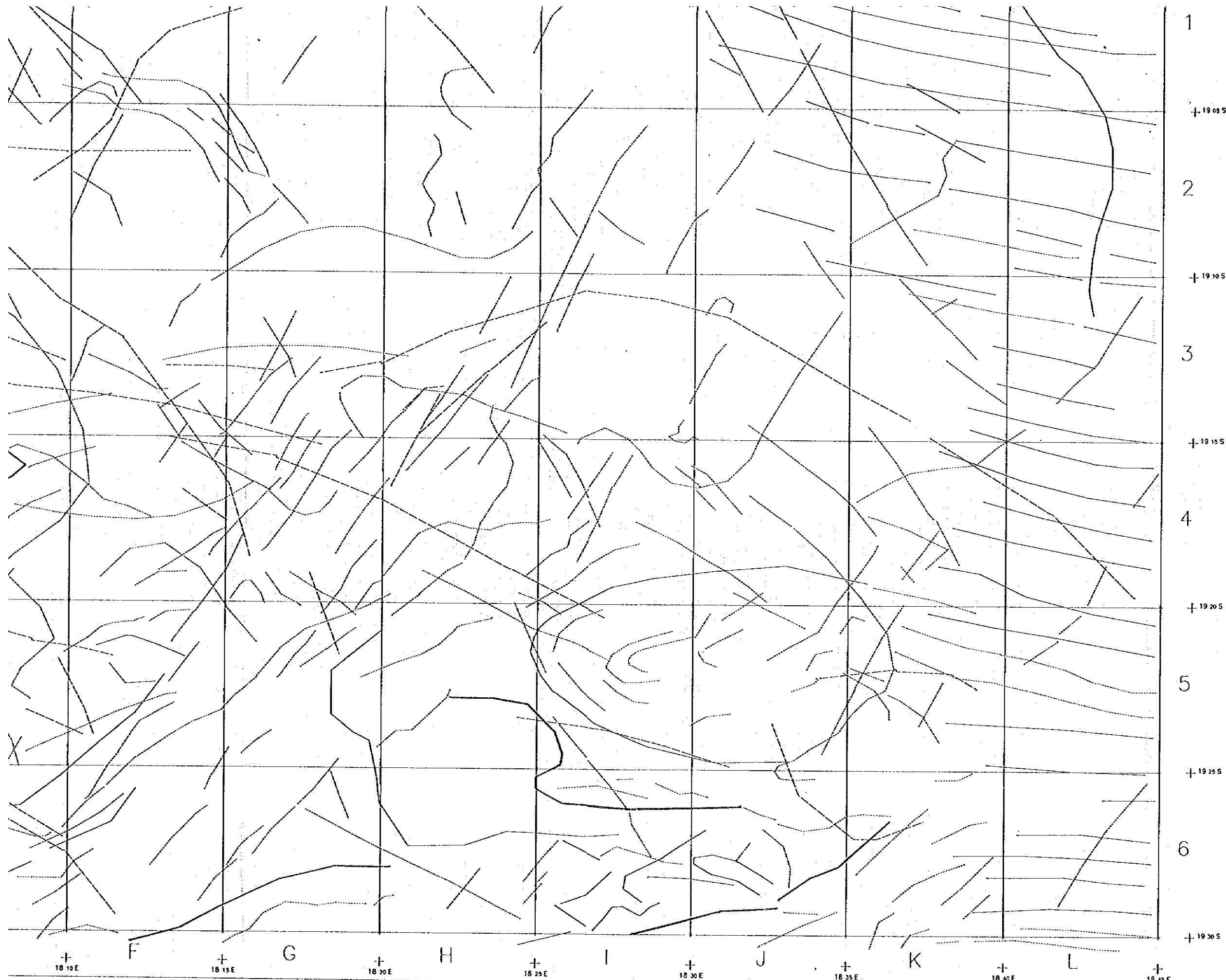


Fig. II - 5 - 7  
RADIOMETRIC ANOMALY AND LINEAMENT MAP  
OTAVI MOUNTAINLAND PROJECT  
( MARCH 1995 )  
M. M. A. J.

THE MINERAL EXPLORATION  
IN THE OTAVI MOUNTAIN LAND AREA  
THE REPUBLIC OF NAMIBIA

PHASE I

Fig. II-8-2

Location Map of Samples  
for Mineralogical and Geophysical Tests

SCALE 1 : 250,000

JAPAN INTERNATIONAL COOPERATION AGENCY  
METAL MINING AGENCY OF JAPAN

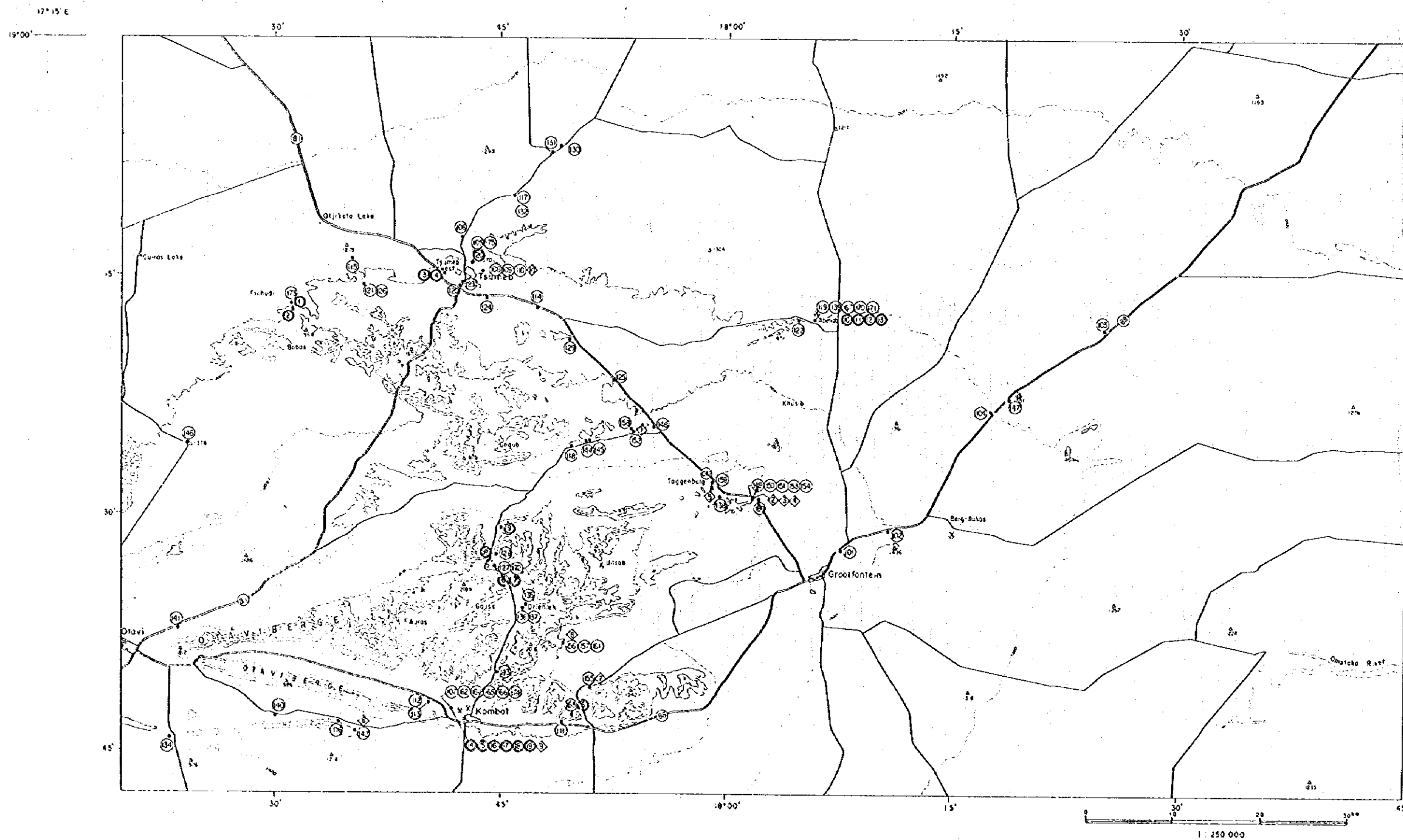
DATE MARCH 1996

Location Map of Samples for Mineralogical  
and Geophysical Tests

LEGEND

- ◊ Samples for thin section
- Samples for polished section
- ⑭ Samples for measurement  
of geophysical properties

Location number corresponds to head number  
in the Table II-2-3 and II-2-4





JICA