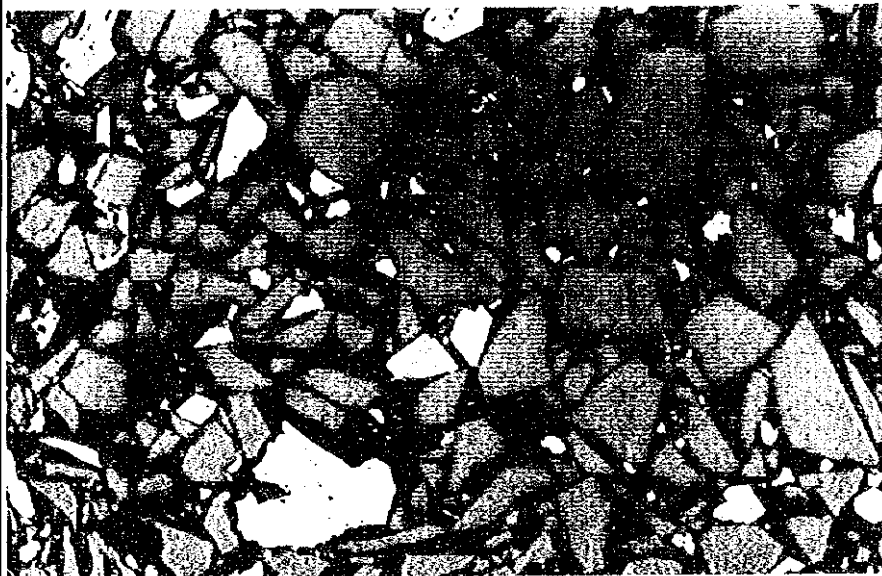




Zn Conc. 2 (BDF)

Mixed particle of pyrite

0 0.4mm



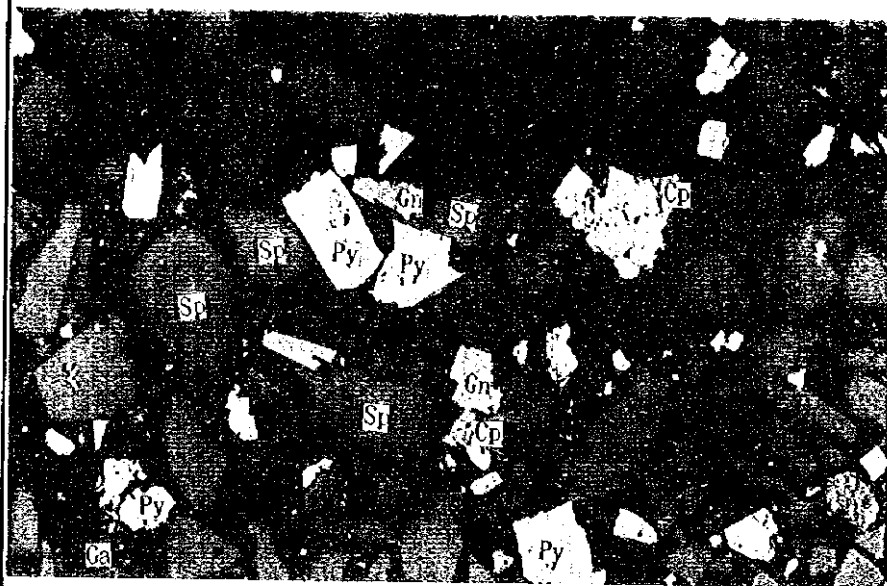
0 0.4mm



Magnified view of same sample

0 0.2mm

Film No. 0887 16, 17, 18



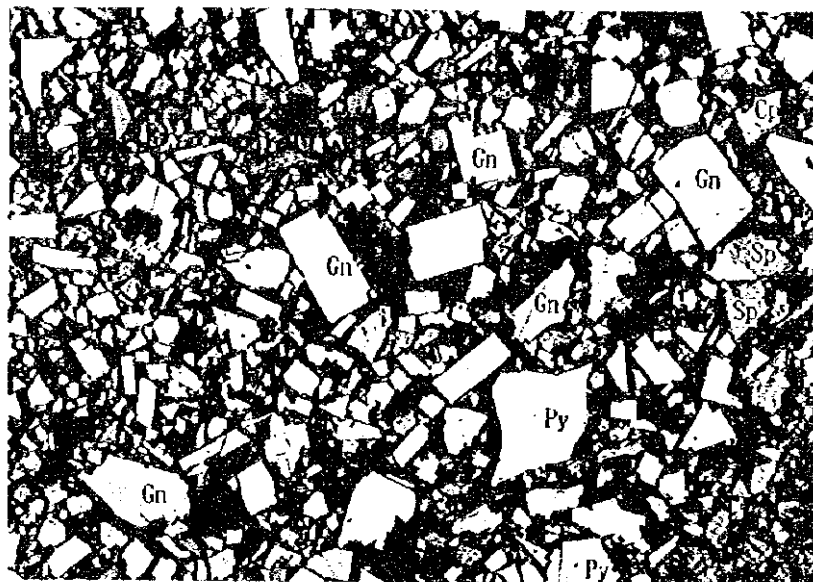
Middling 1 (SOP)
Pb middling



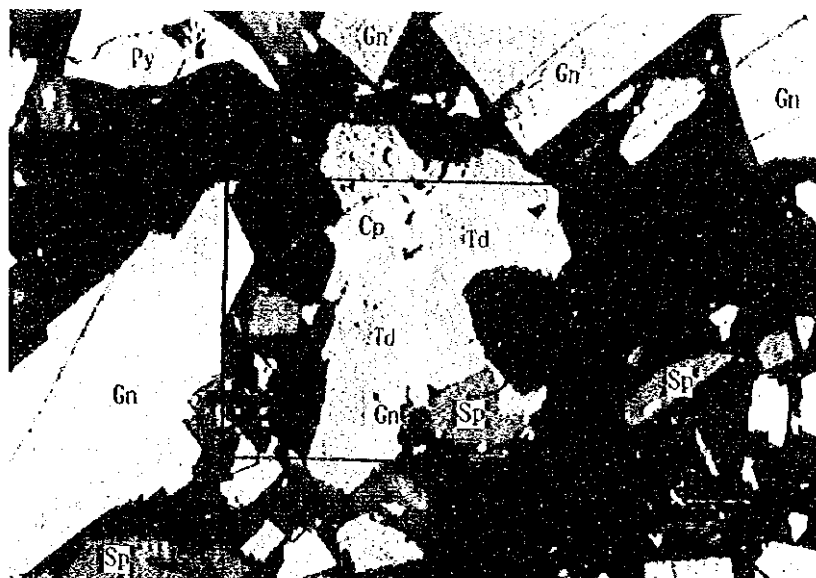
Film No. 0887-19-20

Microphotographs of Polished Sections
(Reflected light)

Middling 1 (SDF)
Pb middling



0 0.2mm



0 0.04mm

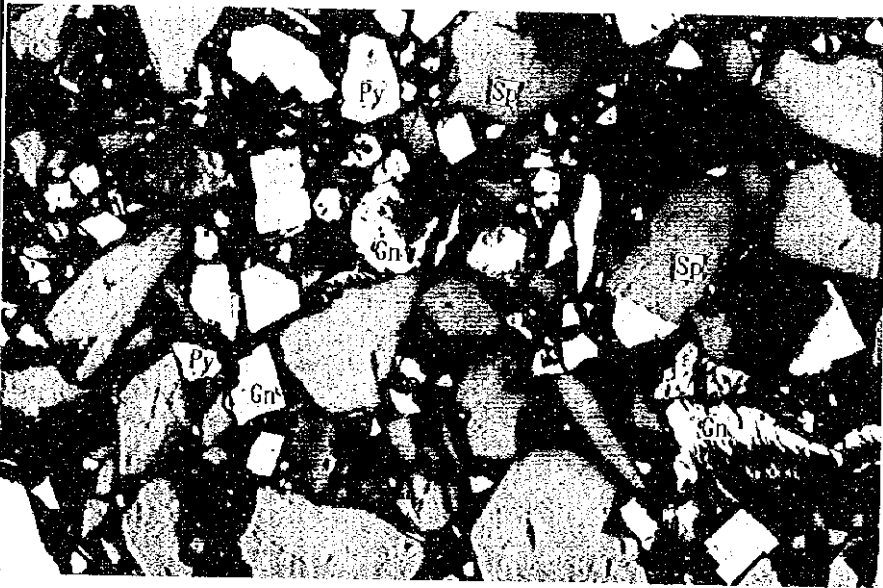
EPMA No. 4

Film No 0964-19-18



Middling 2 (SDF)
Zn middling

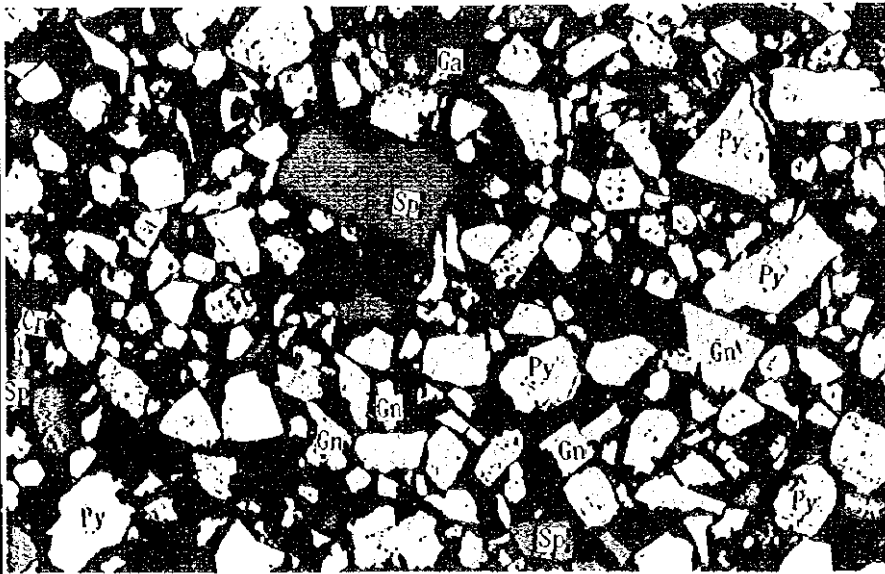
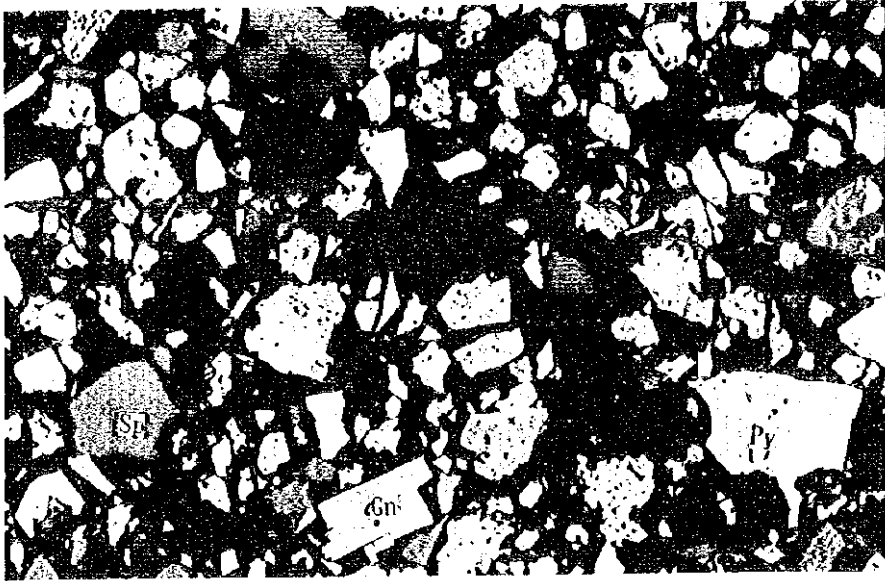
0 0.4mm



0 0.4mm

Film No. 0887-21-22-

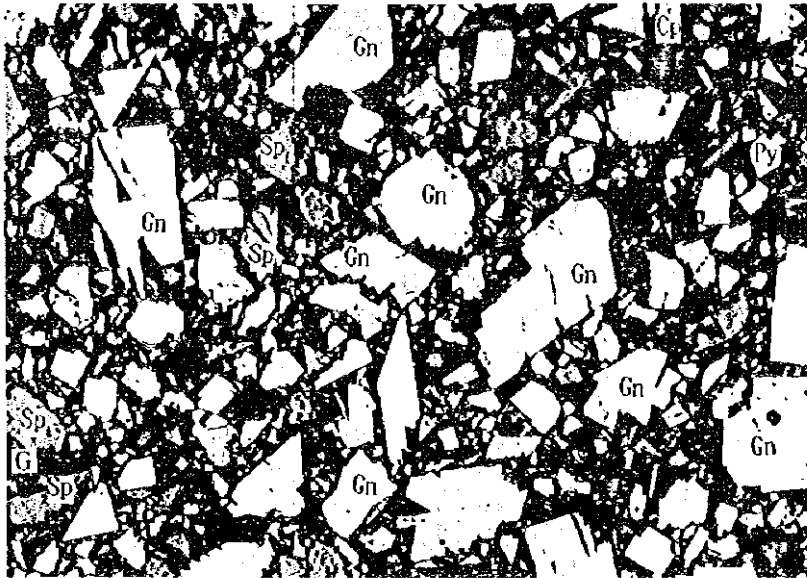
Middling 3 (BDF)
Pb middling



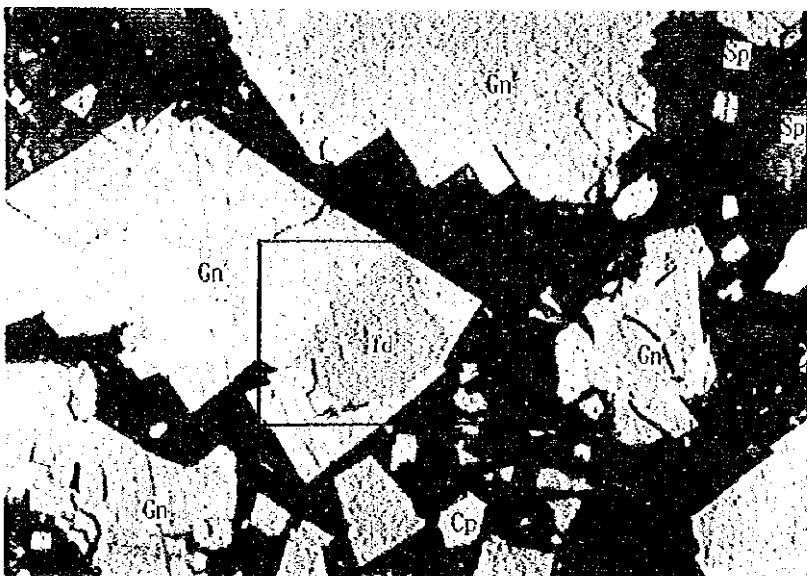
Film No. 0887-23-24

Microphotographs of Polished Sections
(Reflected light)

Middling 3 (BDF)
Pb middling



0 0.2mm



0 0.04mm

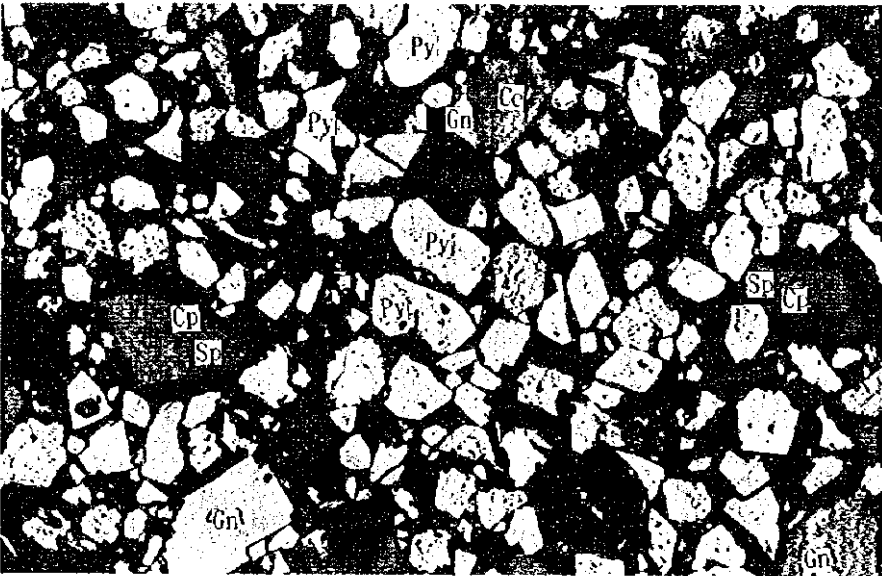
EPMA No. 5

Film No 0469-9.8



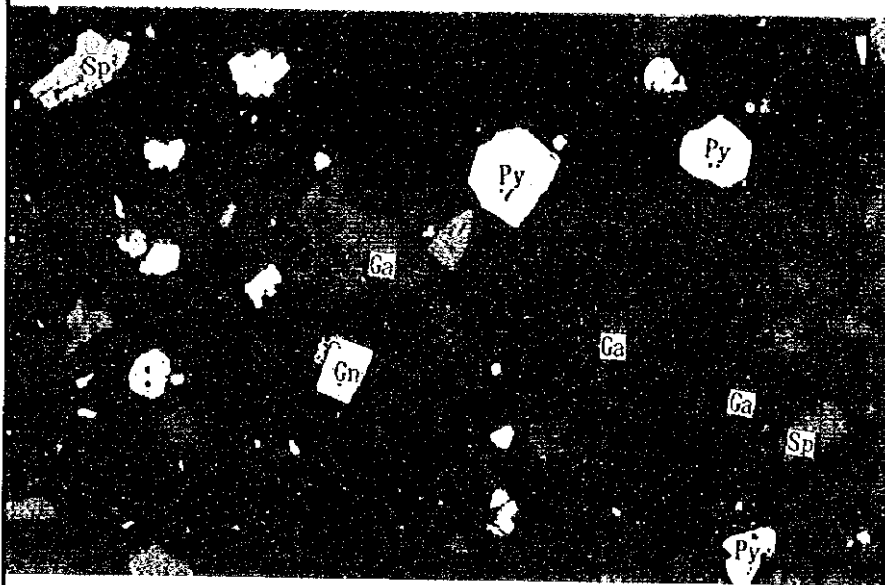
Middling 4 (BDF)
Zn middling

0 0.4mm



0 0.4mm

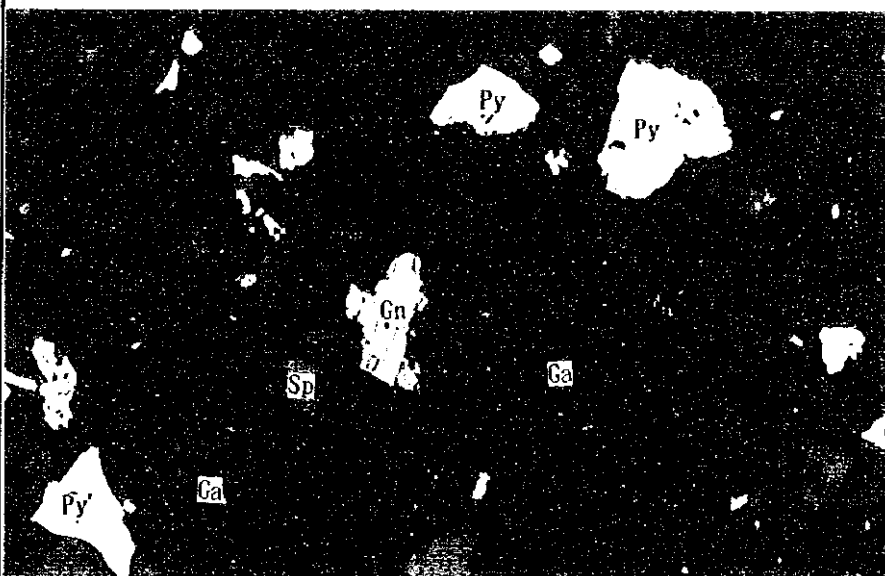
Film No. 0882-25, 26



Tailing 1 (SDF)

Pyrite in free particle

0 0.4mm



Galena in free particle

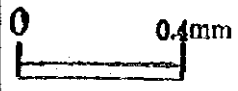
0 0.4mm

Film No. 0887-27-28

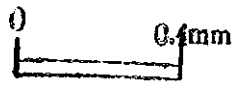


Tailing 2 (8DF)

Sphalerite and galena
in free particle



Sphalerite, galena and
pyrite in middling

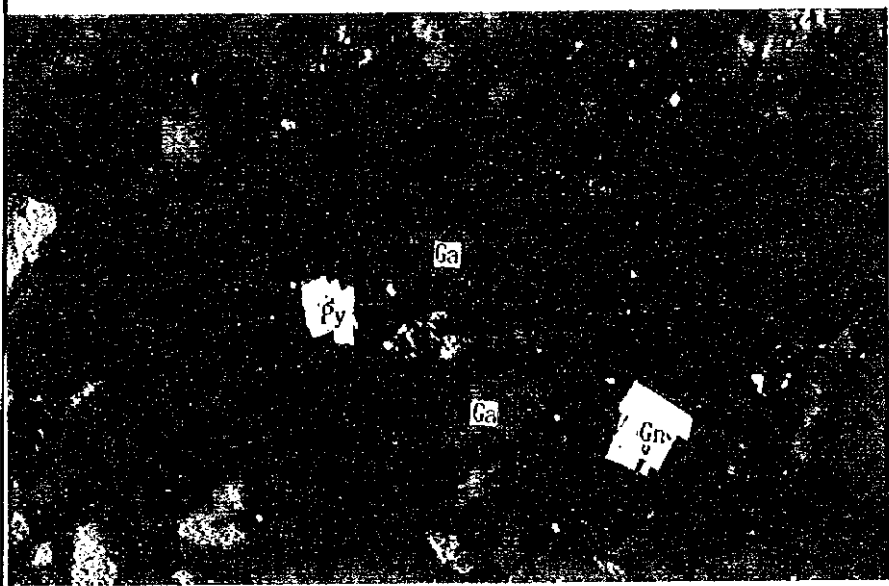
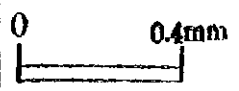


Film No. 0887-27-30

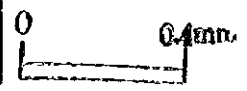


Tailing 3 (BDF)

Pyrite grain



Galena grain



Film No. 0887-31-32



Apx. 21 EPMA Surface Analysis

No.1 : Ore-1

No.2 : Ore-3

No.3 : Pb Conc. (BDF)

No.4 : Pb Mid. (SDF)

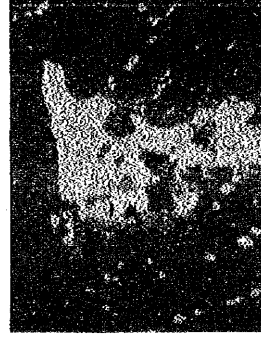
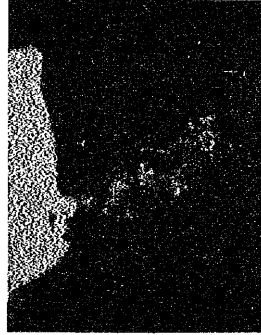
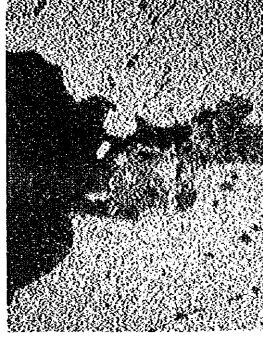
No.5 : Pb Mid. (BDF)



EPMA Test Findings

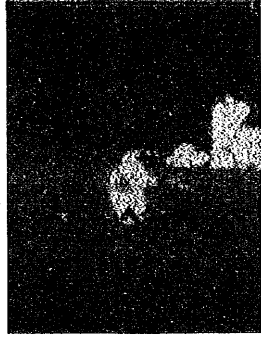
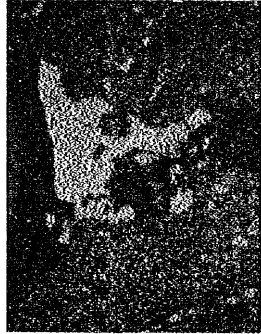
EPMA No. 1

Name of Specimen	Ore-1
Acceleration	15
Voltage	... kV
Current of Electron-Beam	0.05
Electron-Beam	Z/A
Magnification	x 500



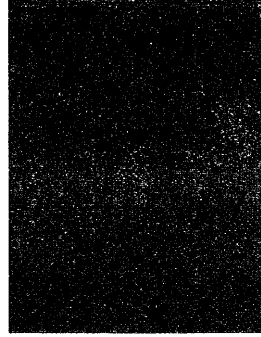
Explanation of Photograph

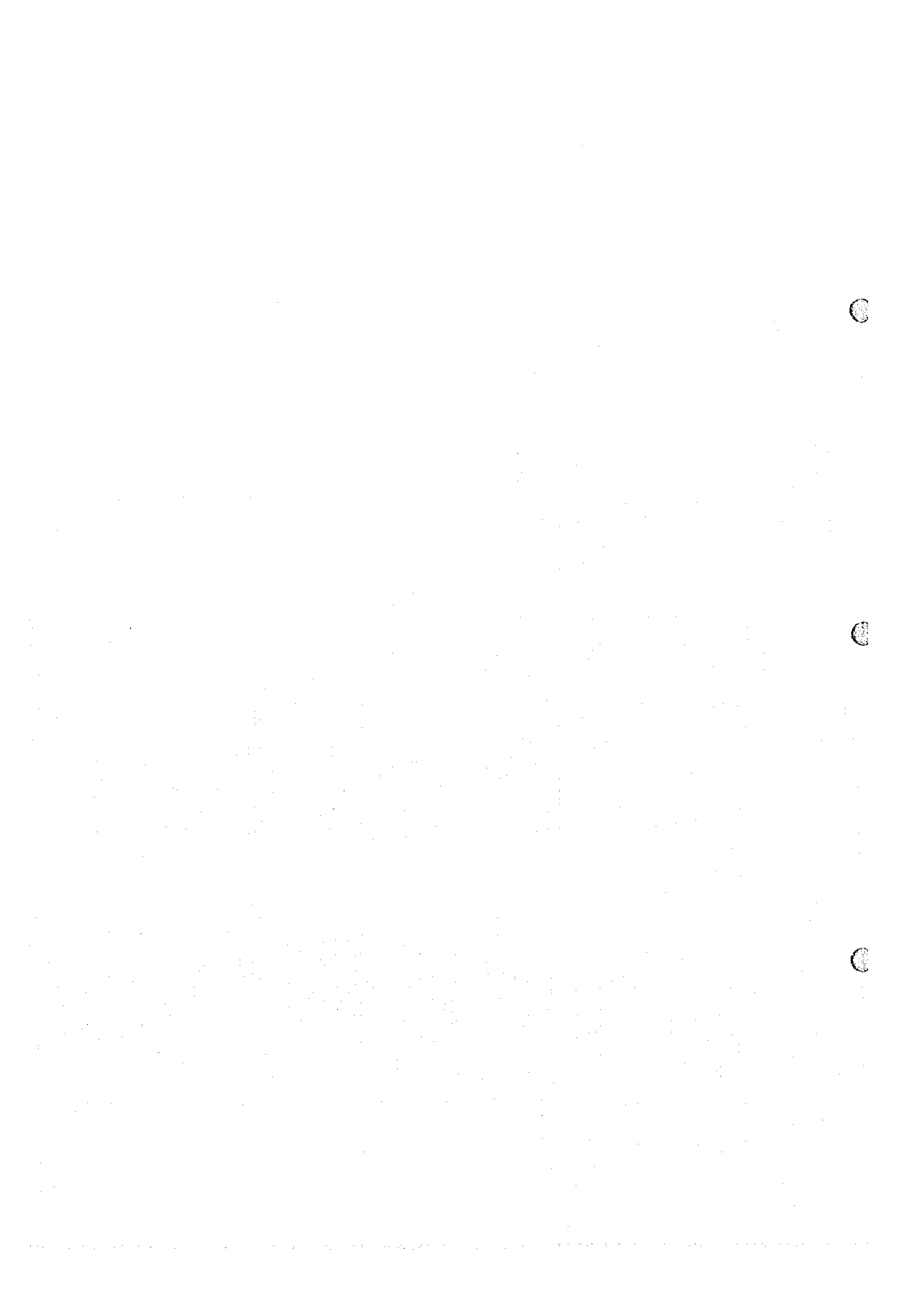
Composition Image	Zn
	Pb
	Cu



Explanation of Photograph

	Fe	Sb
	S	Ag

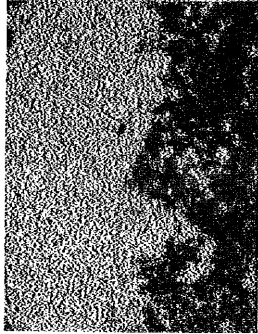
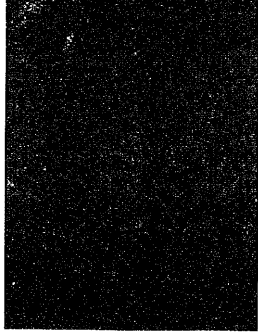
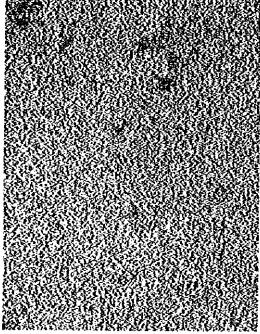
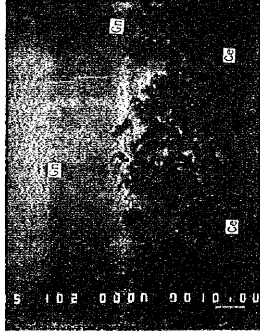




EPMA Test Findings

EPMA No. 2

Name of Specimen	Ore-3
Acceleration	15 kV
Voltage	0.05
Current of Electron-beam	4A
Magnification	x1000



Explanation of Photograph

Composition
Image

Pb

Ac

S

Explanation of Photograph

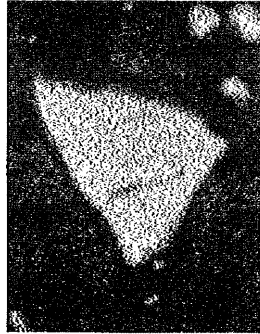
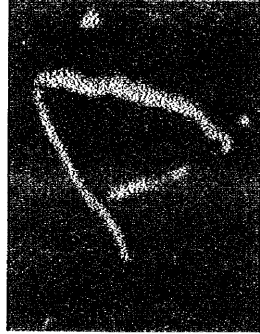
C



EPMA Test Findings

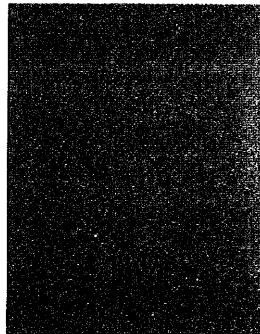
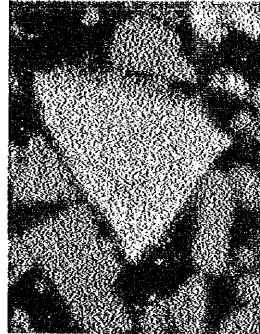
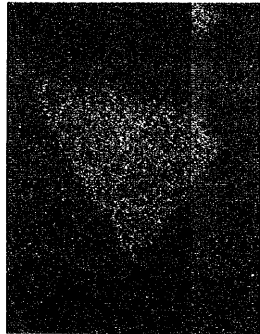
EPMA No. 3

Name of Specimen	Pb Conc (BDF)
Acceleration Voltage	15 KV
Current of Electron-beam	0.05 μ A
Magnification	x1200



Explanation of Photograph

Composition	Cu
Trace	Zn Pb



Explanation of Photograph

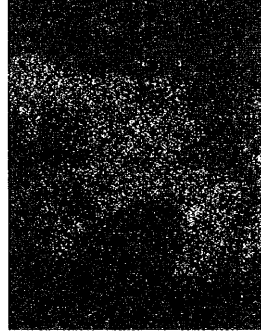
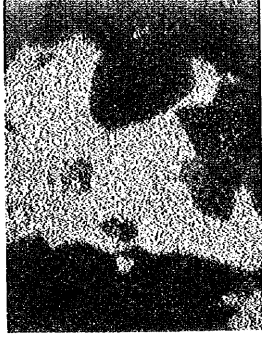
Trace	Fe S
Composition	Cu



EPMA Test Findings

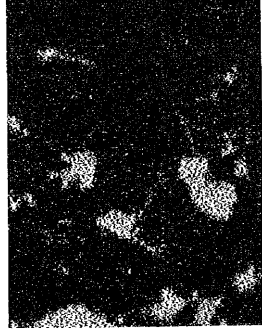
EPMA No. 4

Name of Specimen	Pb Xid (SIF)
Acceleration	15
Voltage	KV
Current of Electron-beam	0.05 μ A
Magnification	x2000



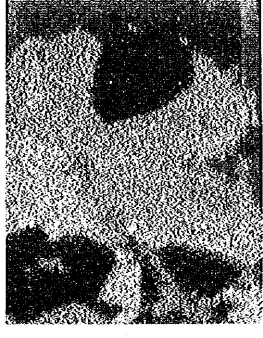
Explanation of Photograph

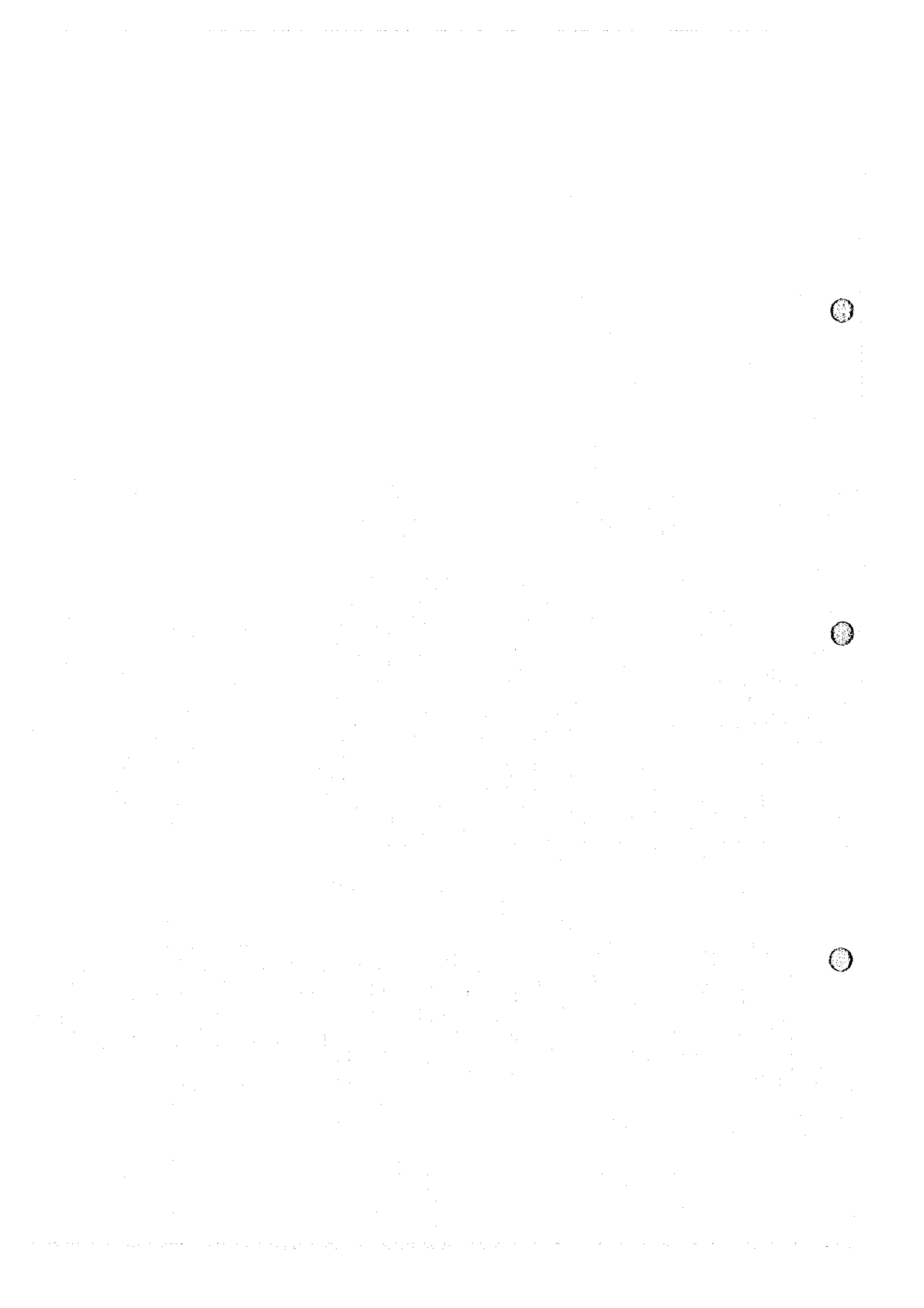
Composition Image	Cu
	Ag Sb



Explanation of Photograph

Pb	Zn
Fe	S

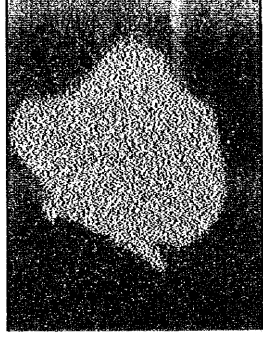
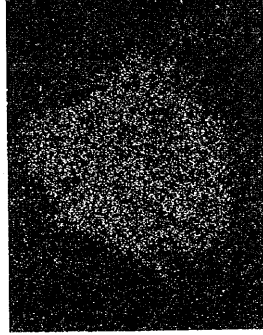
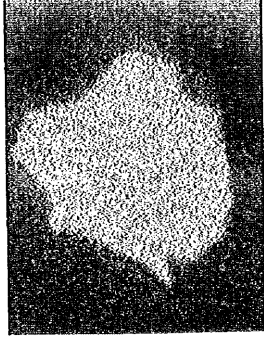




EDXA Test Findings

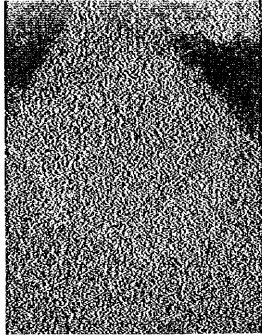
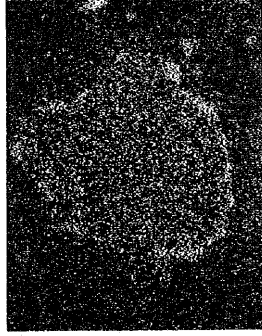
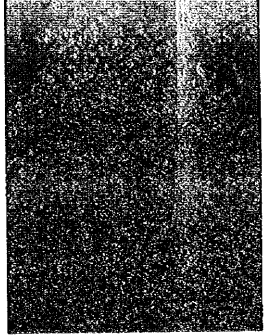
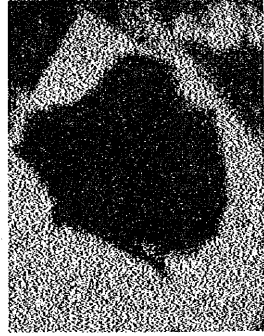
EDXA No. 5

Name of Specimen	Pb Mid (BDF)
Acceleration	15
Voltage	KV
Current of Electron-beam	0.05
Filter	AA
Magnification	x1200



Explanation of Photograph

Composition Image	Cu
	Ag
	Sb



Explanation of Photograph

	Pb	Zn
	Fe	S



Apx. 22 XRD Charts

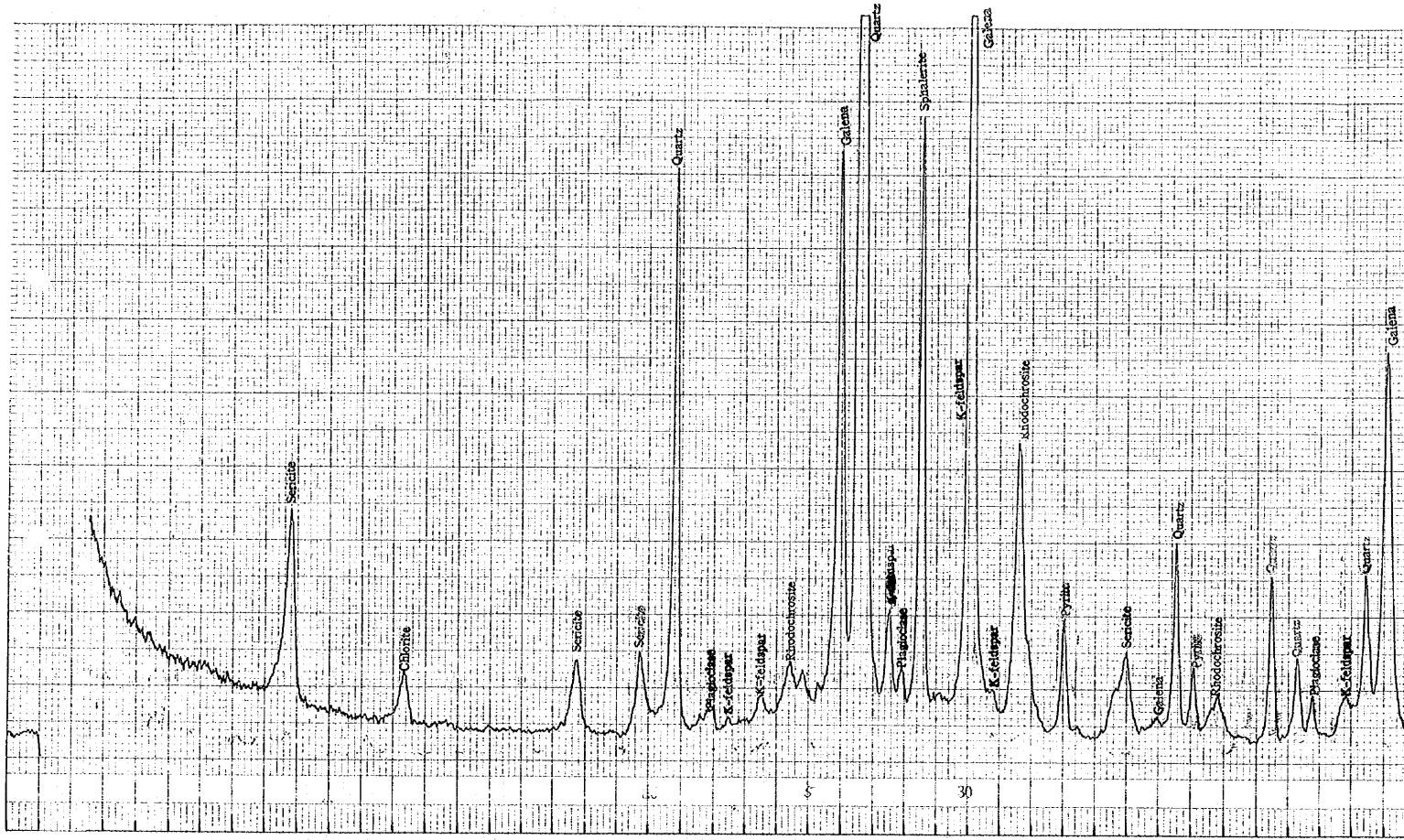
No.1 : Mill Head Sample

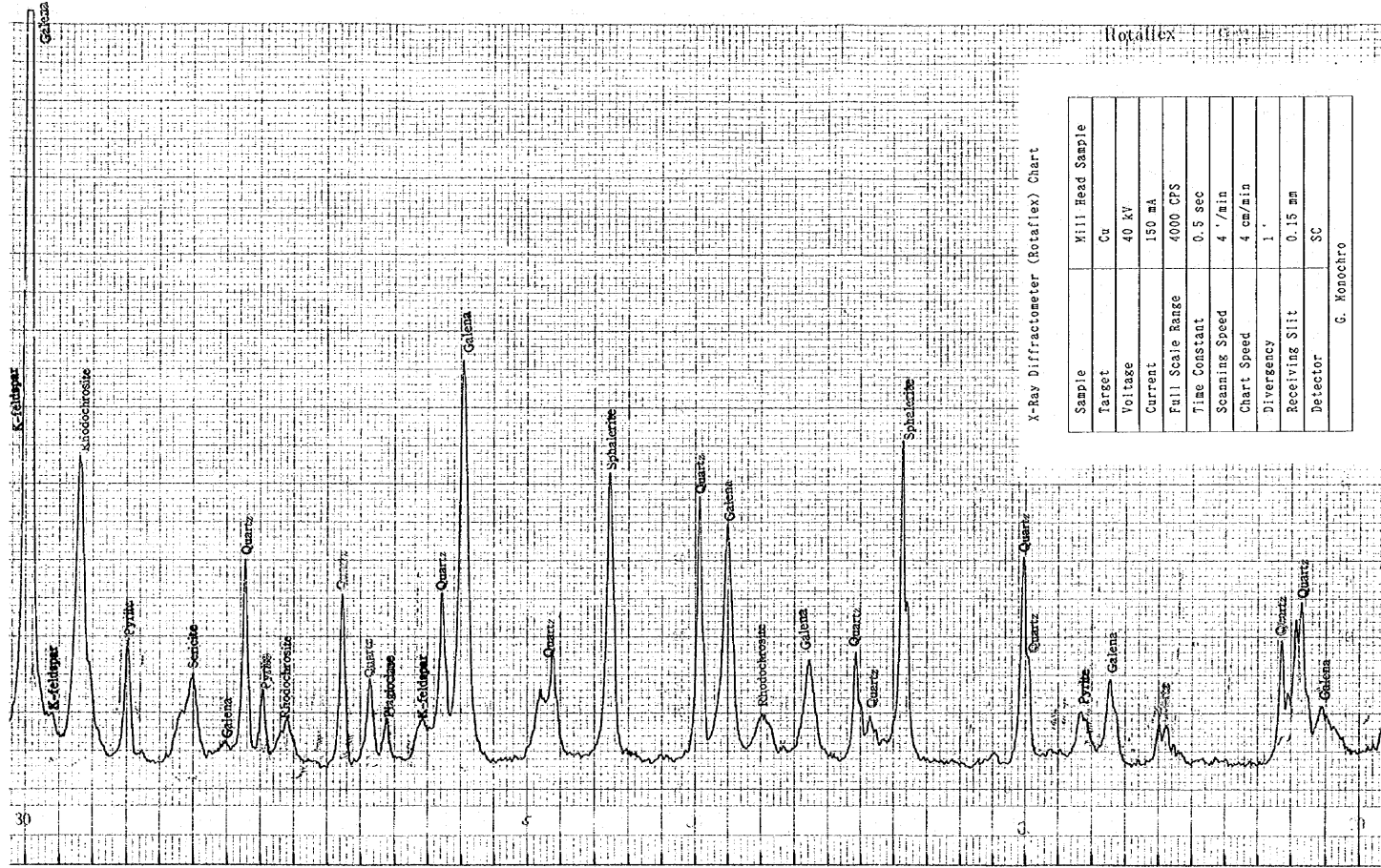
No.2 : Waste-1

No.3 : Tailing-1 (SDF)

No.4 : Tailing-2 (BDF)





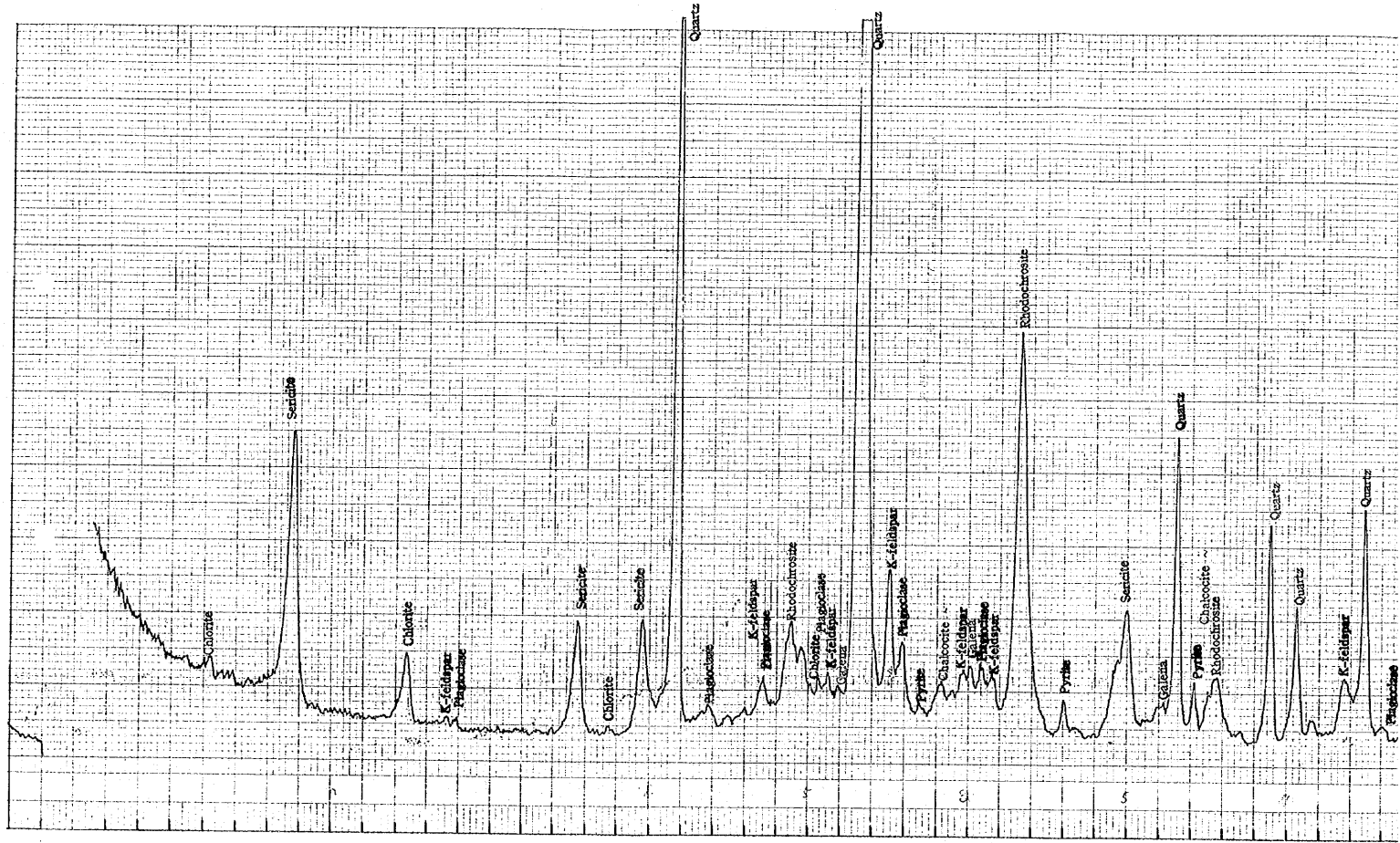


X-Ray Diffractometer (Rotaflex) Chart

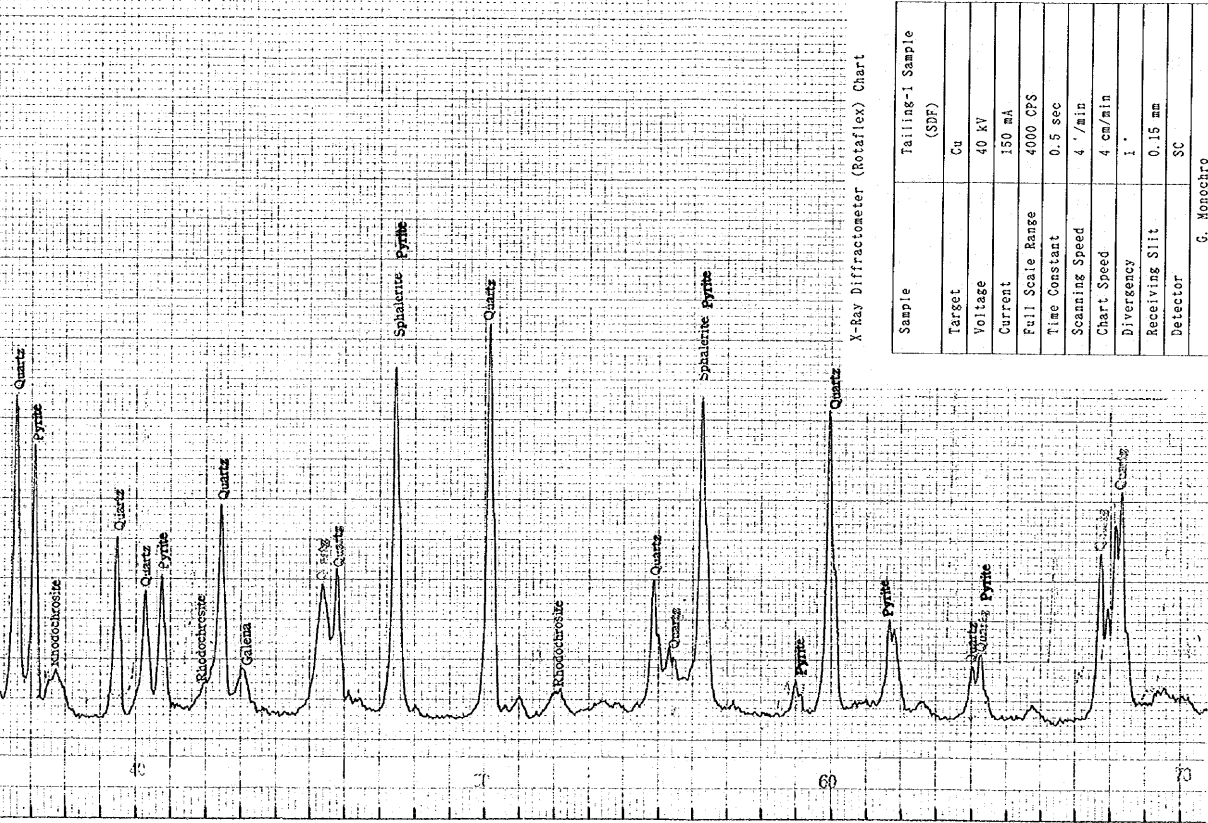
Sample	Mill Head Sample
Target	Cu
Voltage	40 kV
Current	150 mA
Full Scale Range	4000 CPS
Time Constant	0.5 sec
Scanning Speed	4 /min
Chart Speed	4 cm/min
Divergency	1°
Receiving Slit	0.15 mm
Detector	SC
	G. Monochro

Rotaflex





X-Ray Diffractometer (Rotaflex) Chart



Sample	Falling-I Sample (SDF)
Target	Cu
Voltage	40 kV
Current	150 mA
Full Scale Range	4000 CPS
Time Constant	0.5 sec
Scanning Speed	4 °/min
Chart Speed	4 cm/min
Divergency	1 °
Receiving Slit	0.15 mm
Detector	SC

G. Monochro

