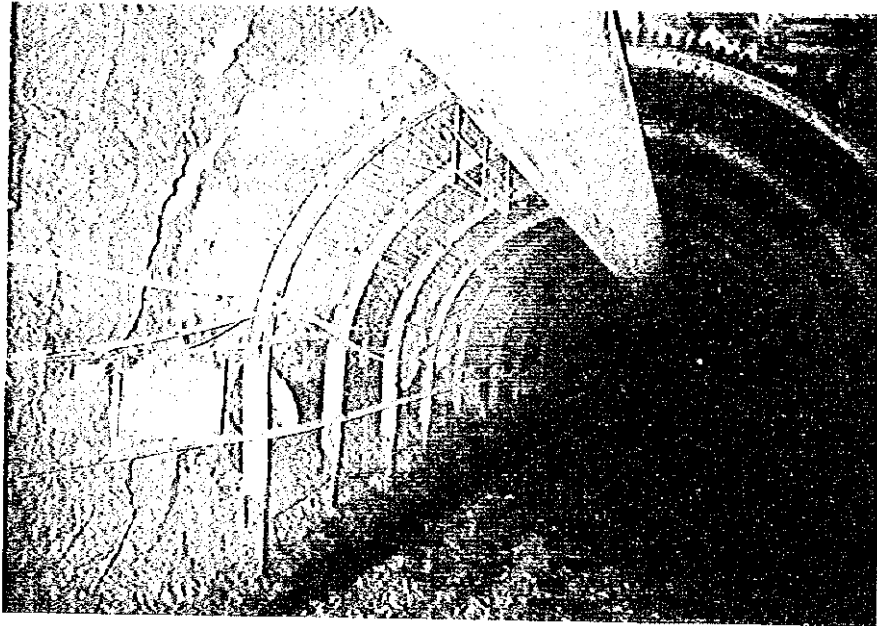
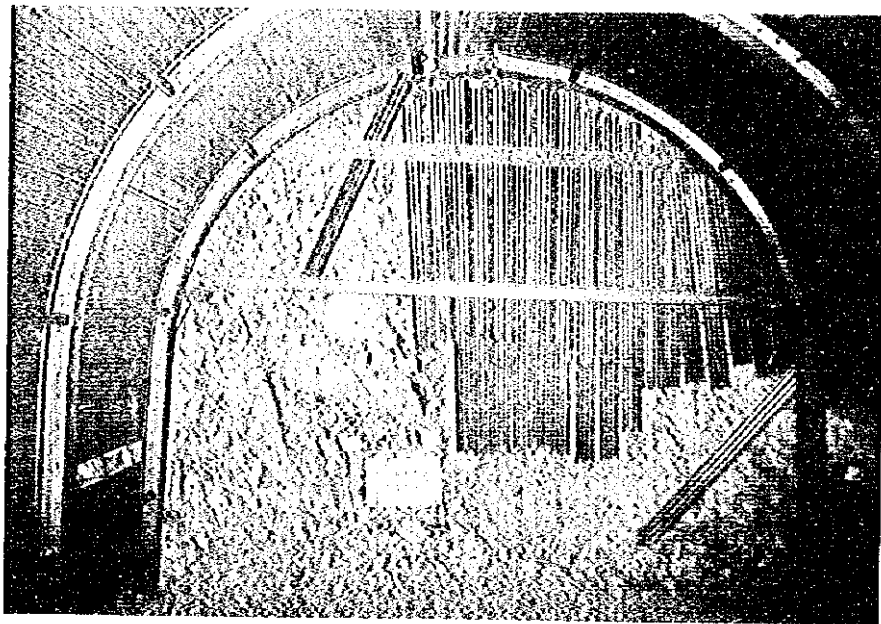


Photographs
of
Working

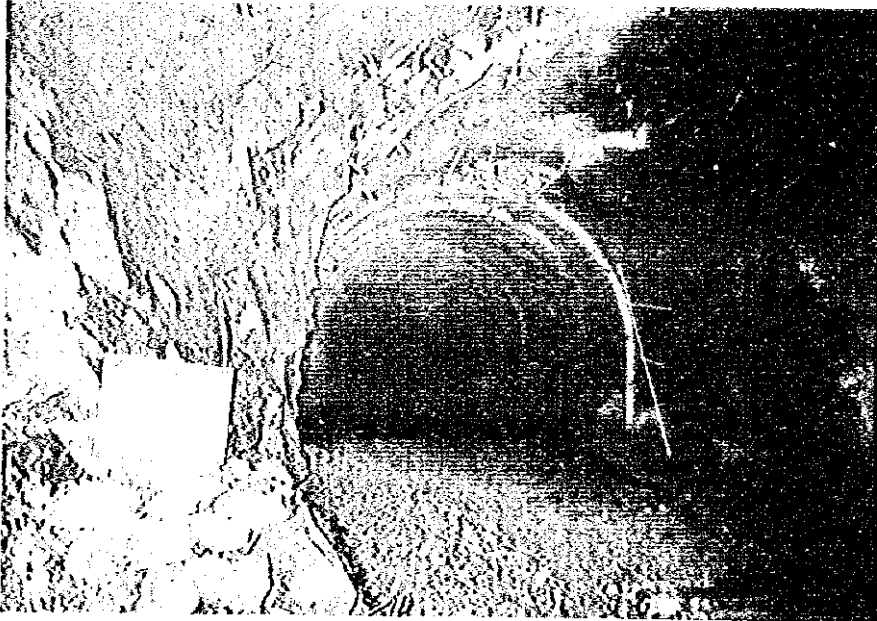




Northward drift Starting point



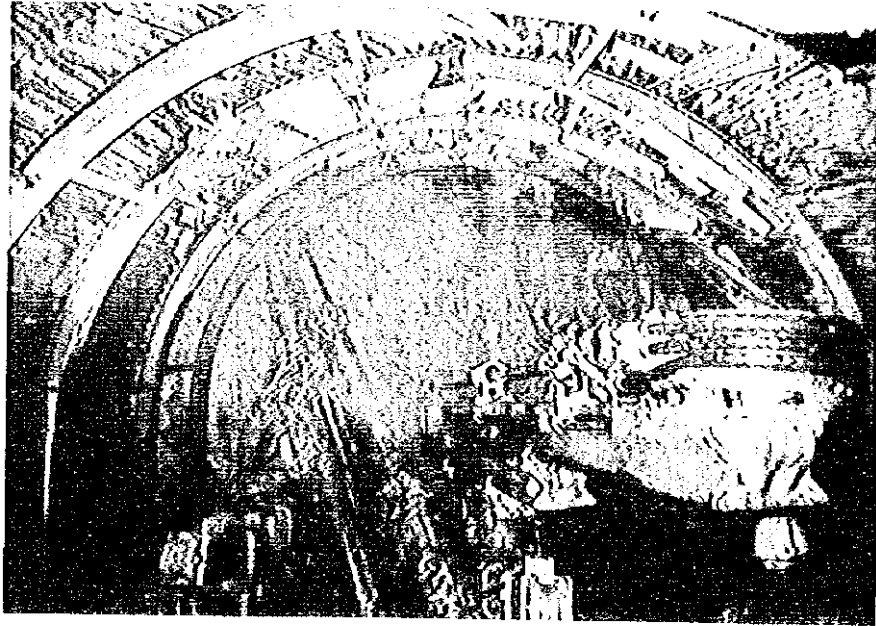
Northward drift Ending point



No.5 Waste pit Starting point



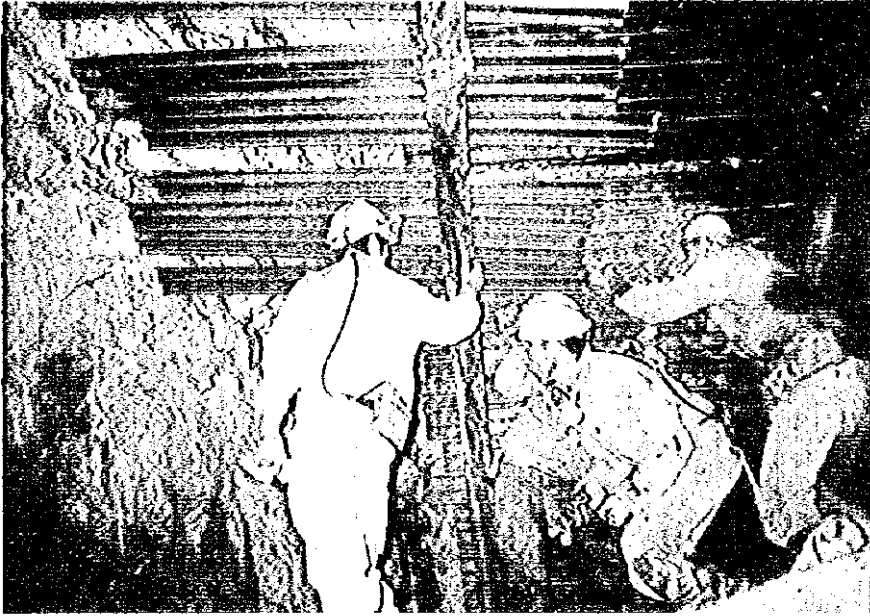
Timbering at face of No.5 Waste pit



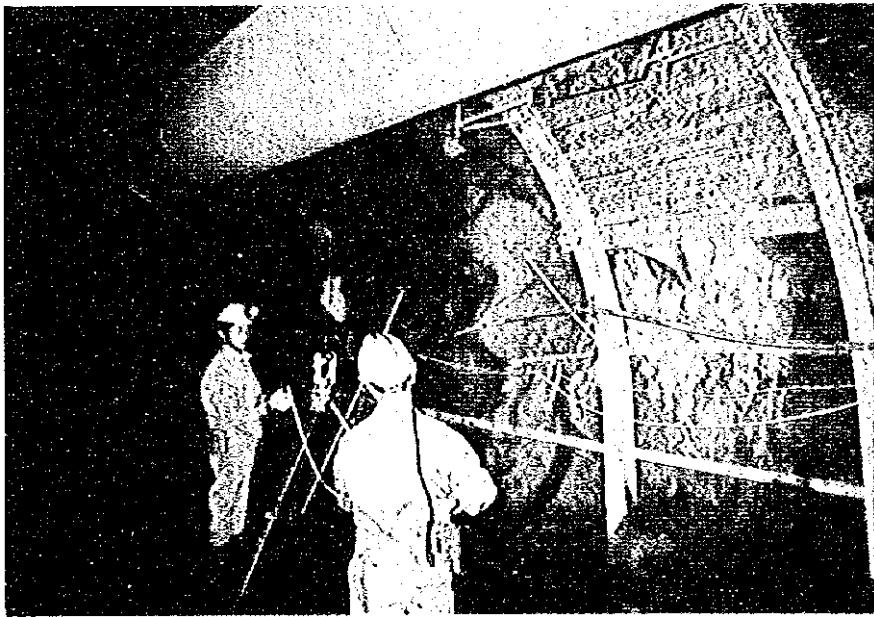
Drilling work (type 2)



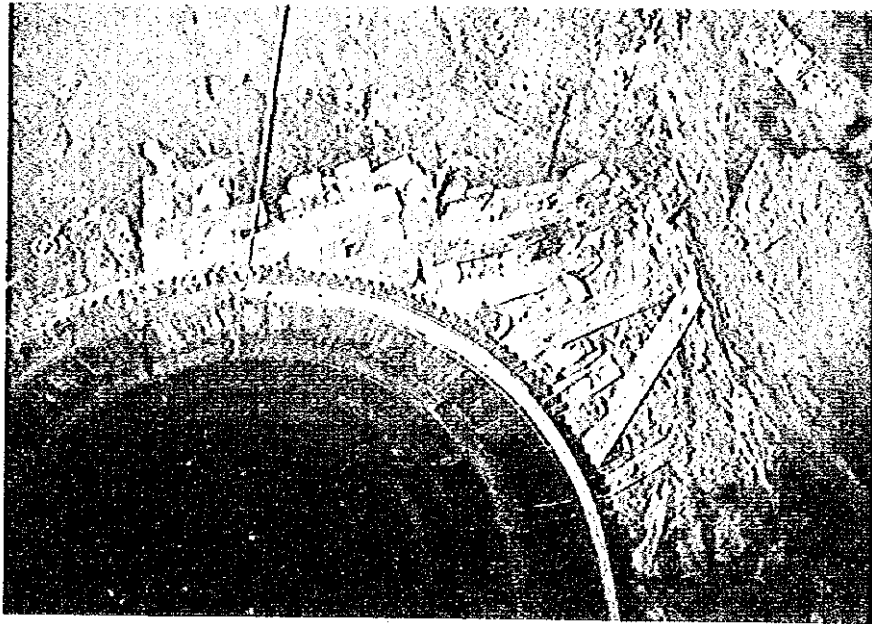
Mucking (Type 1)



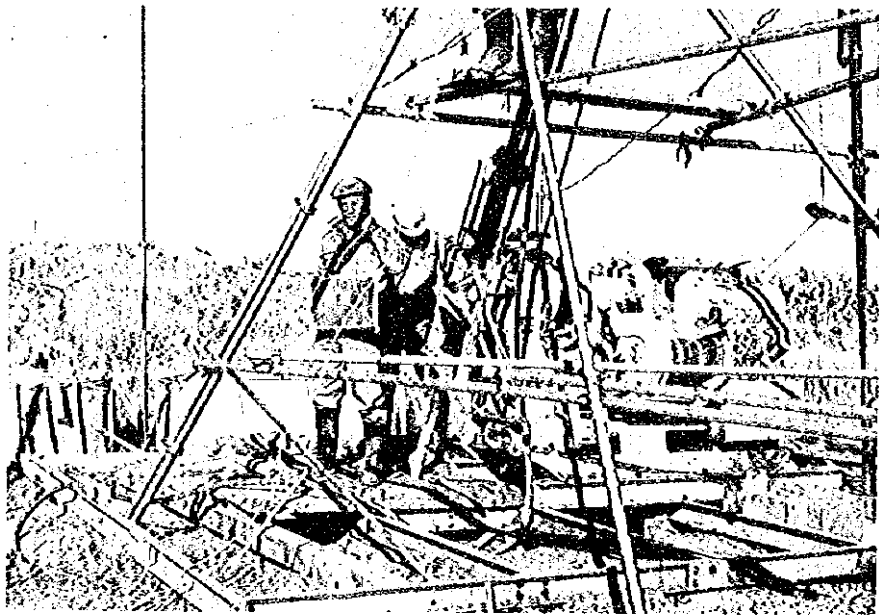
Timbering work (Type 3)



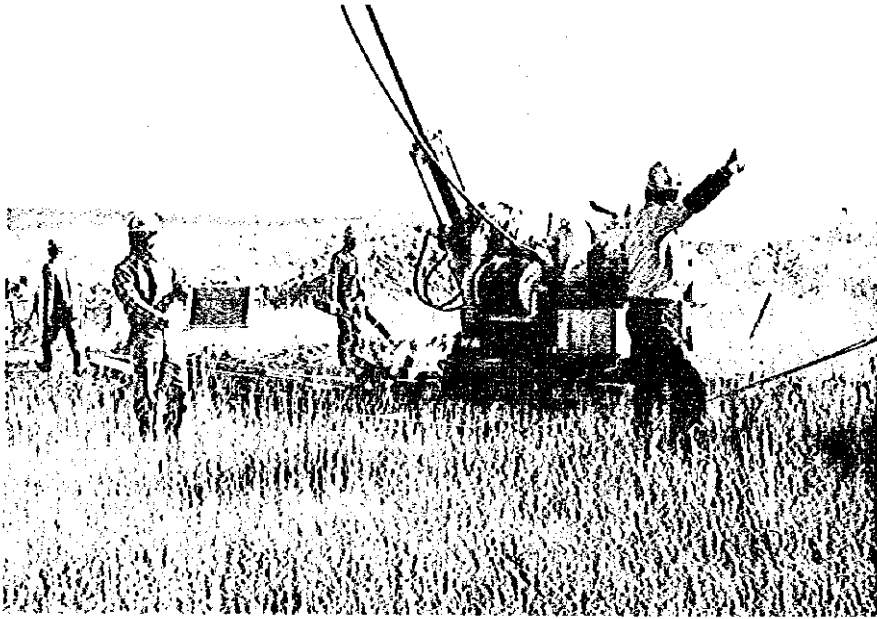
Underground surveying



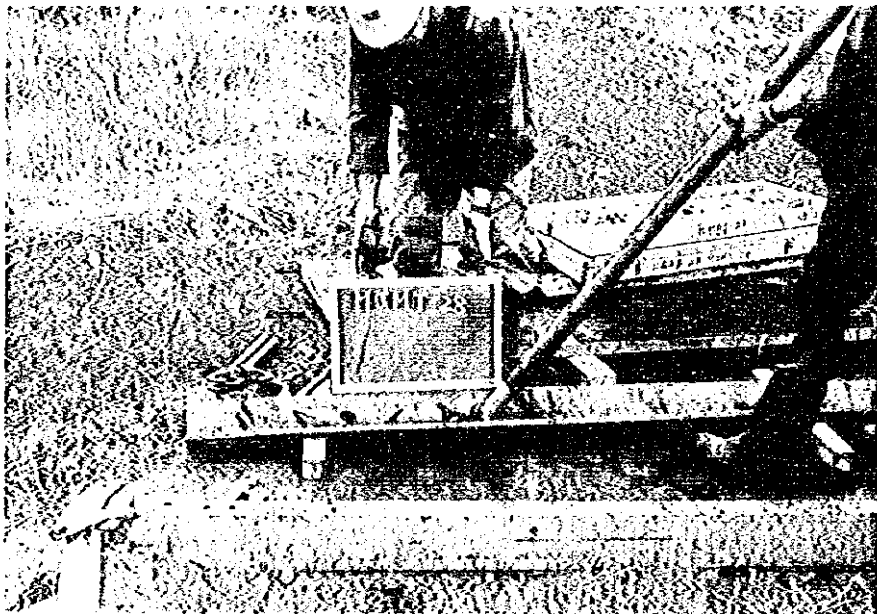
Repair of Support at Northward drift 95m point



Drilling work



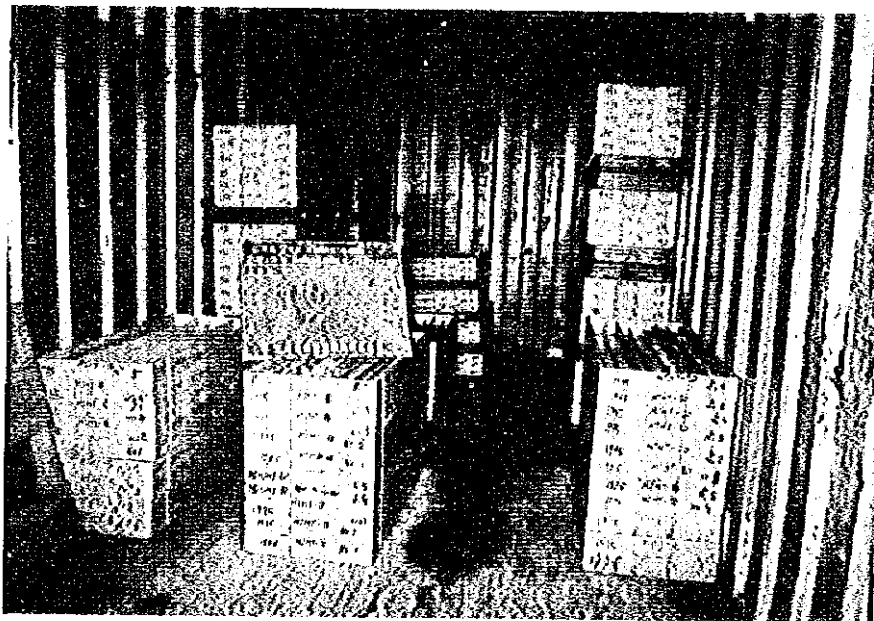
Machine removing



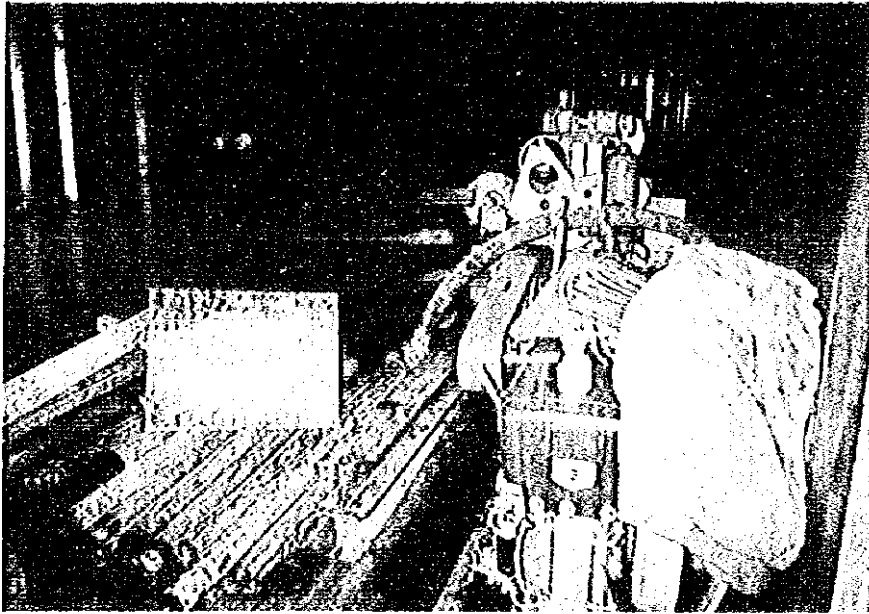
Core extraction



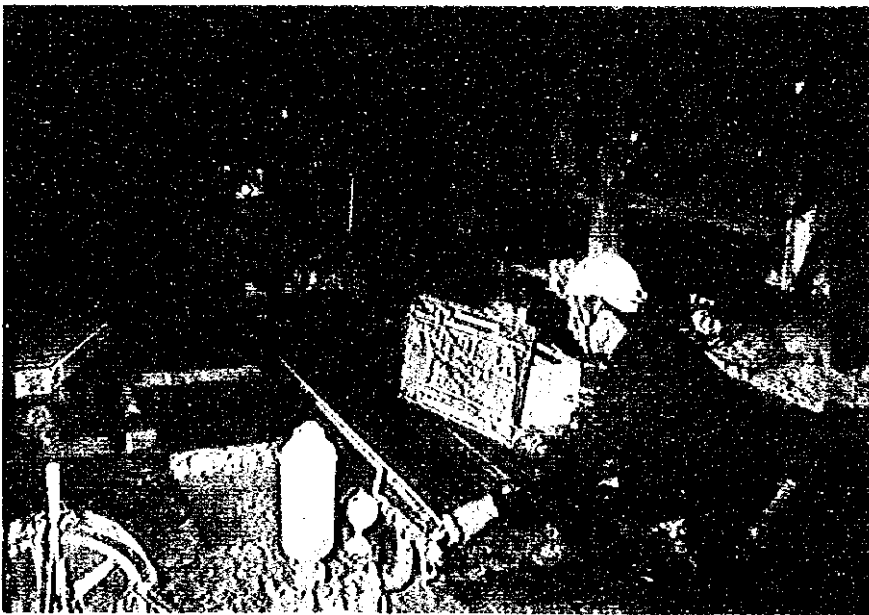
Core logging



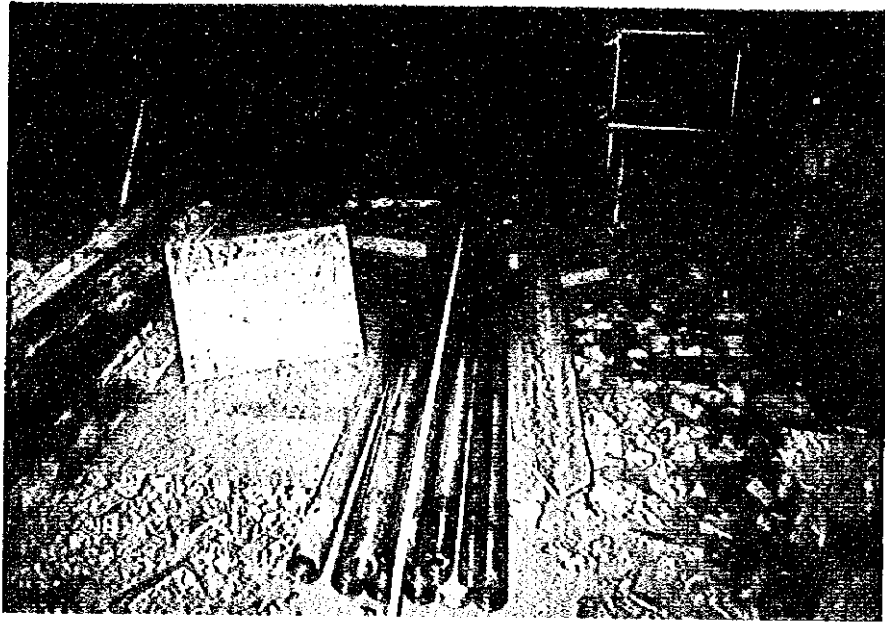
Core storing



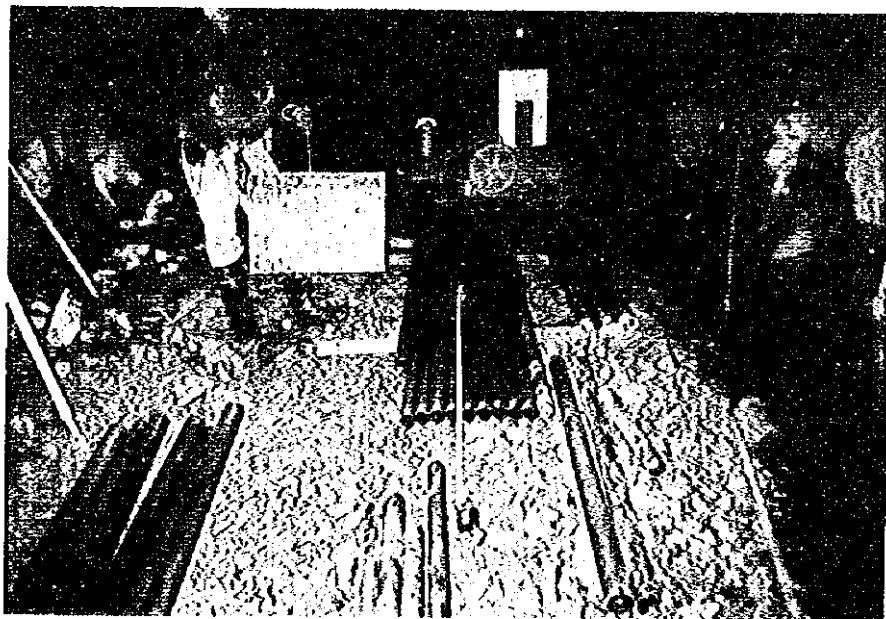
Machine storing



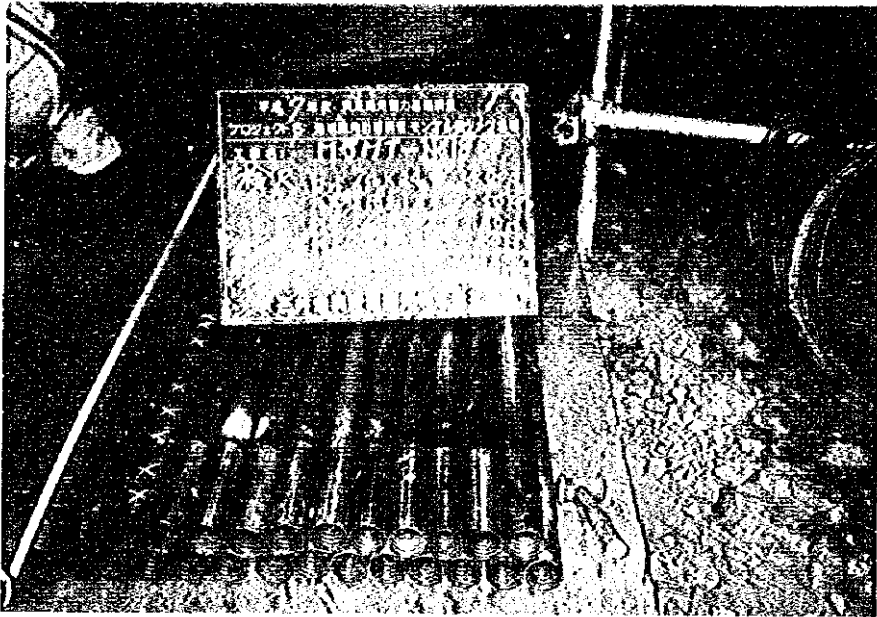
Rod measuring (MJMT-15)



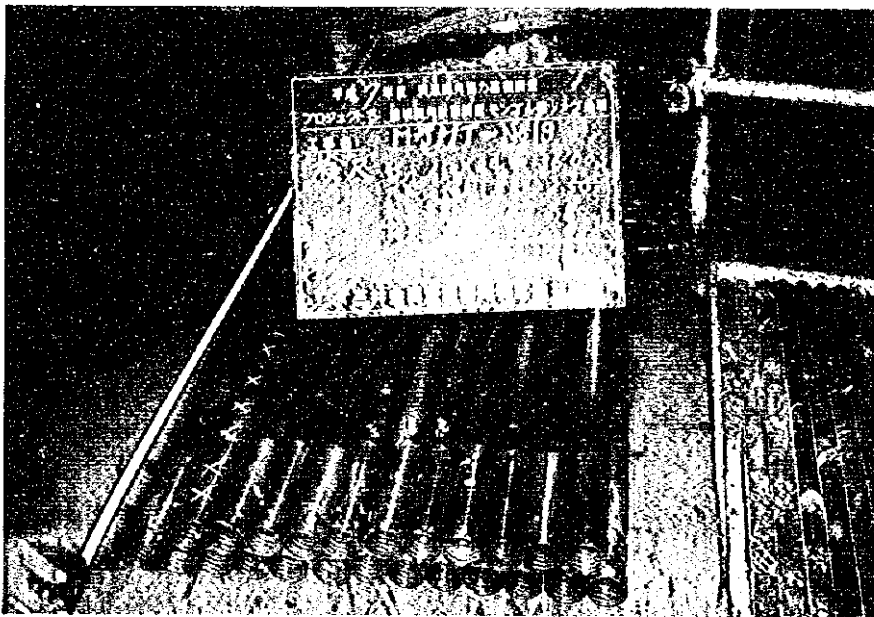
Rod measuring (MJMT-16)



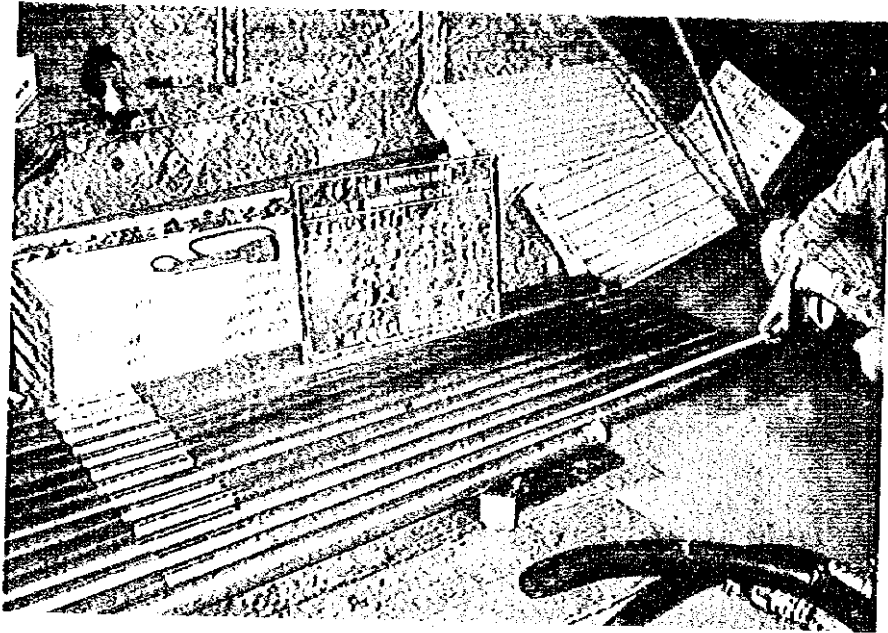
Rod measuring (MJMT-17)



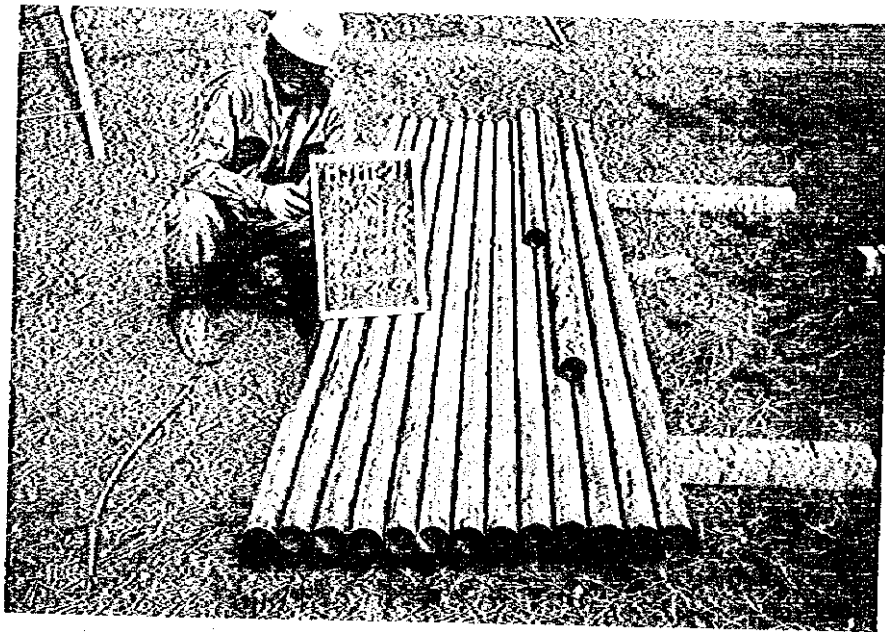
Rod measuring (MJMT-18)



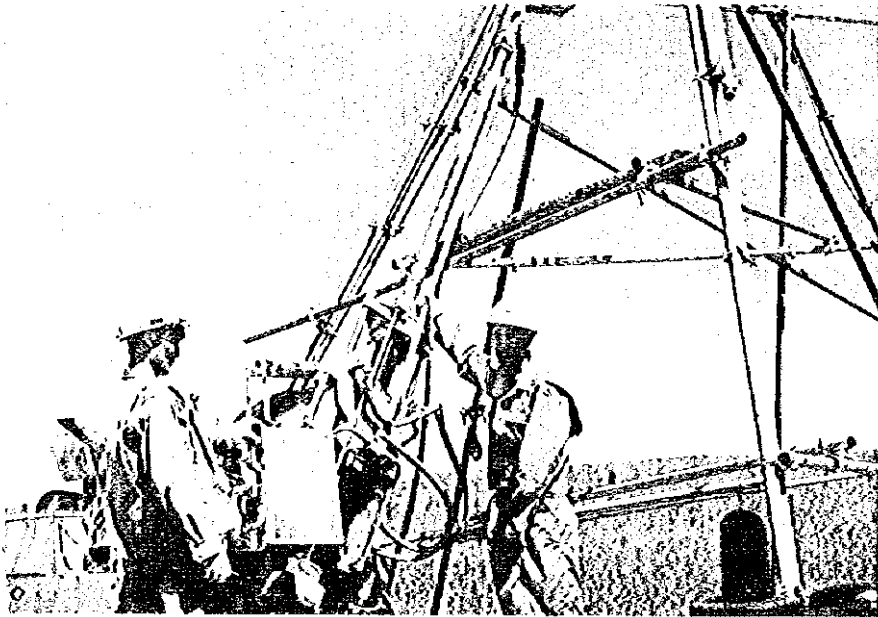
Rod measuring (MJMT-19)



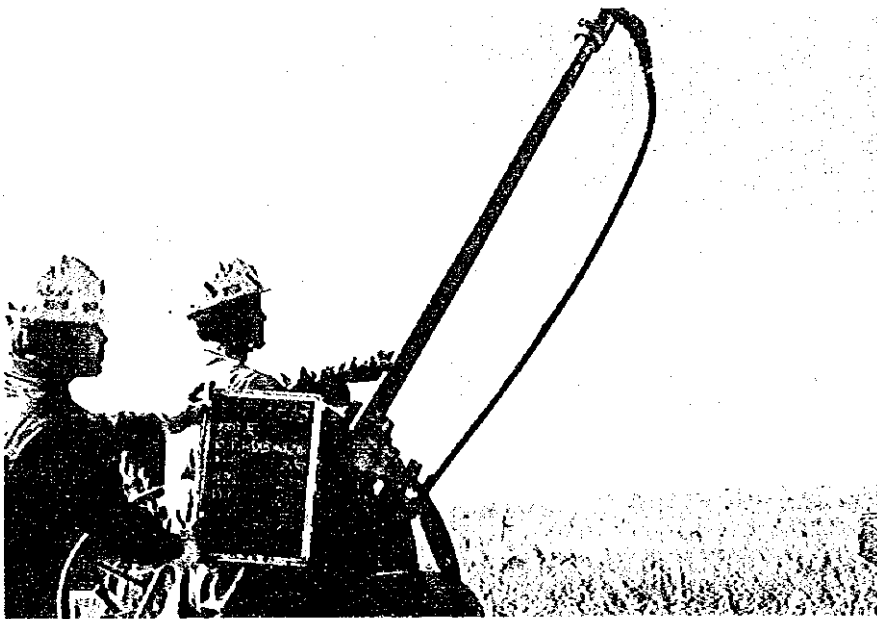
Rod measuring (MJMT-20)



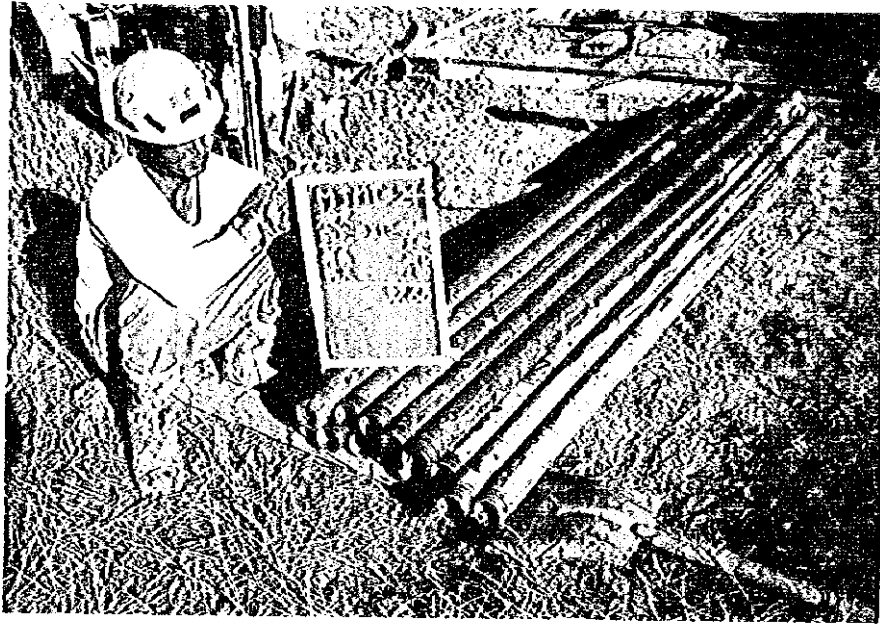
Rod measuring (MJMT-21)



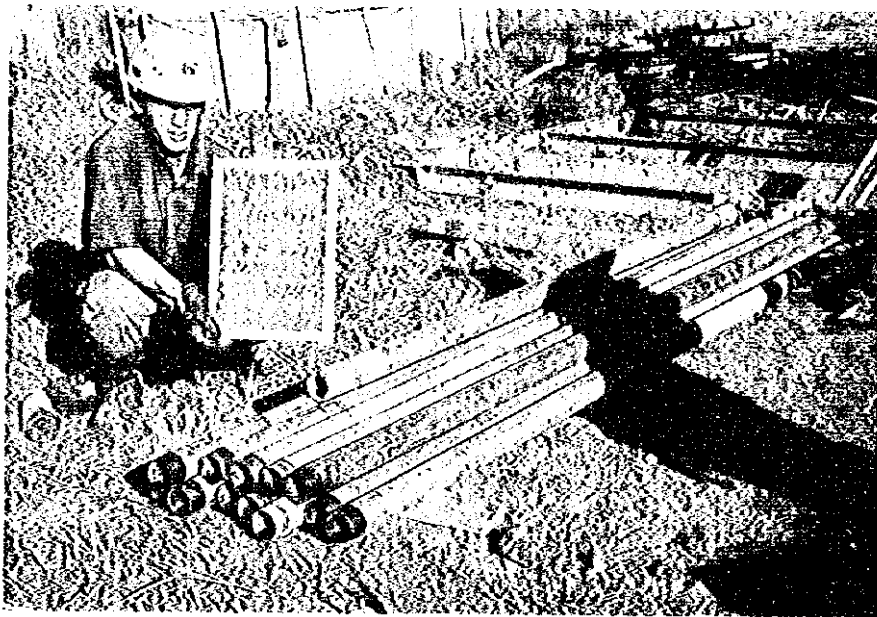
Rod measuring (MJMT-22)



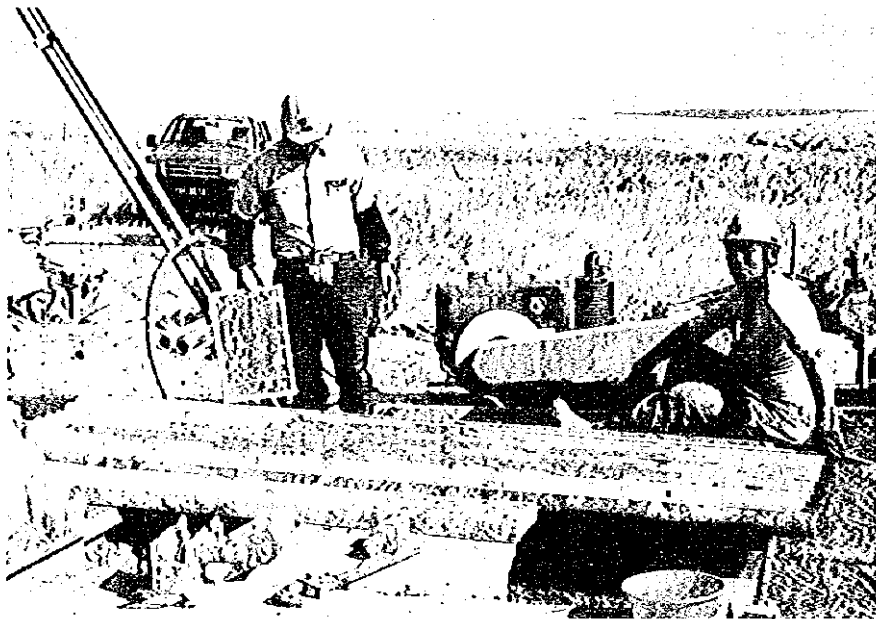
Rod measuring (MJMT-23)



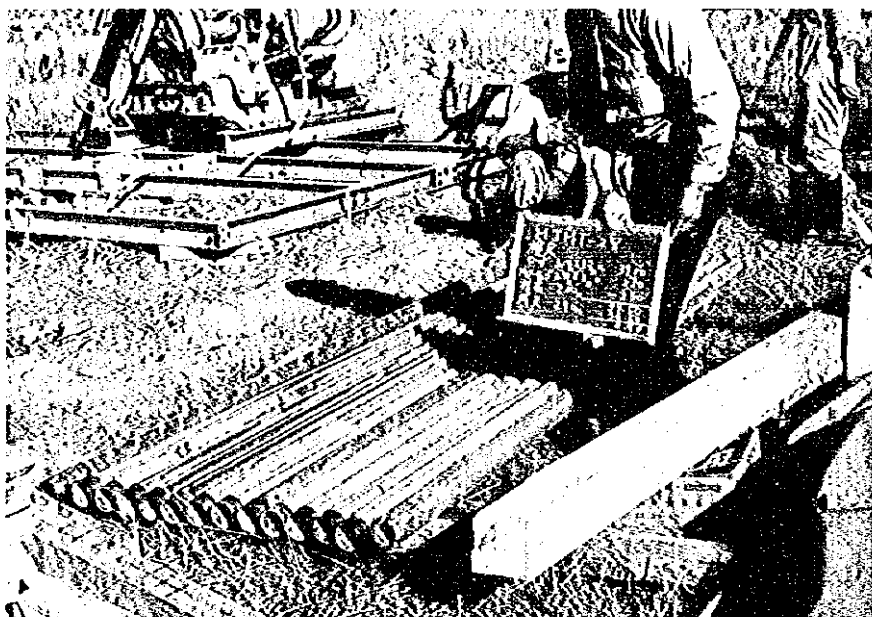
Rod measuring (MJMT-24)



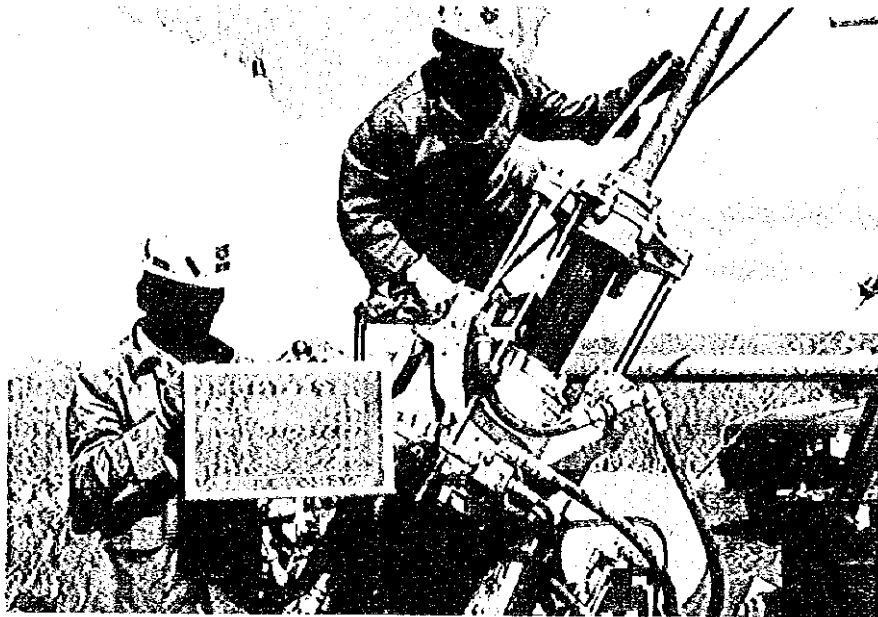
Rod measuring (MJMT-25)



Rod measuring (MJMT-26)



Rod measuring (MJMT-27)



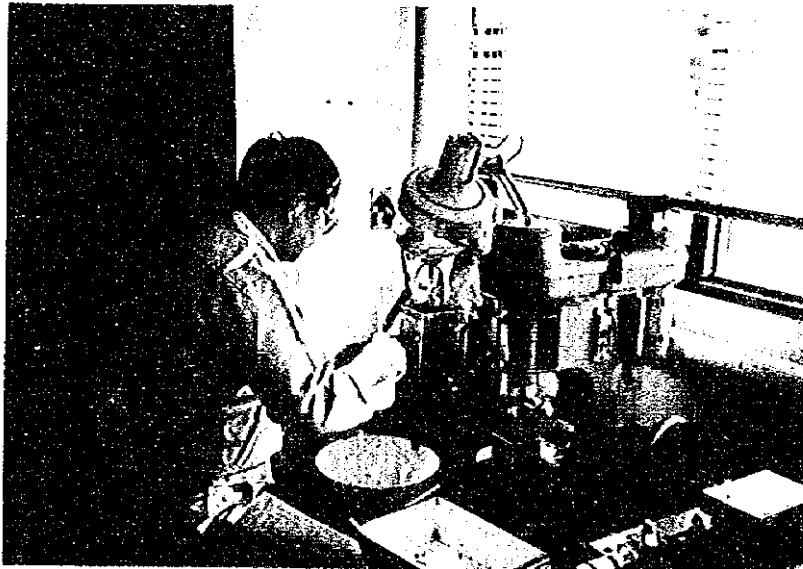
Rod measuring (MJMT-28)



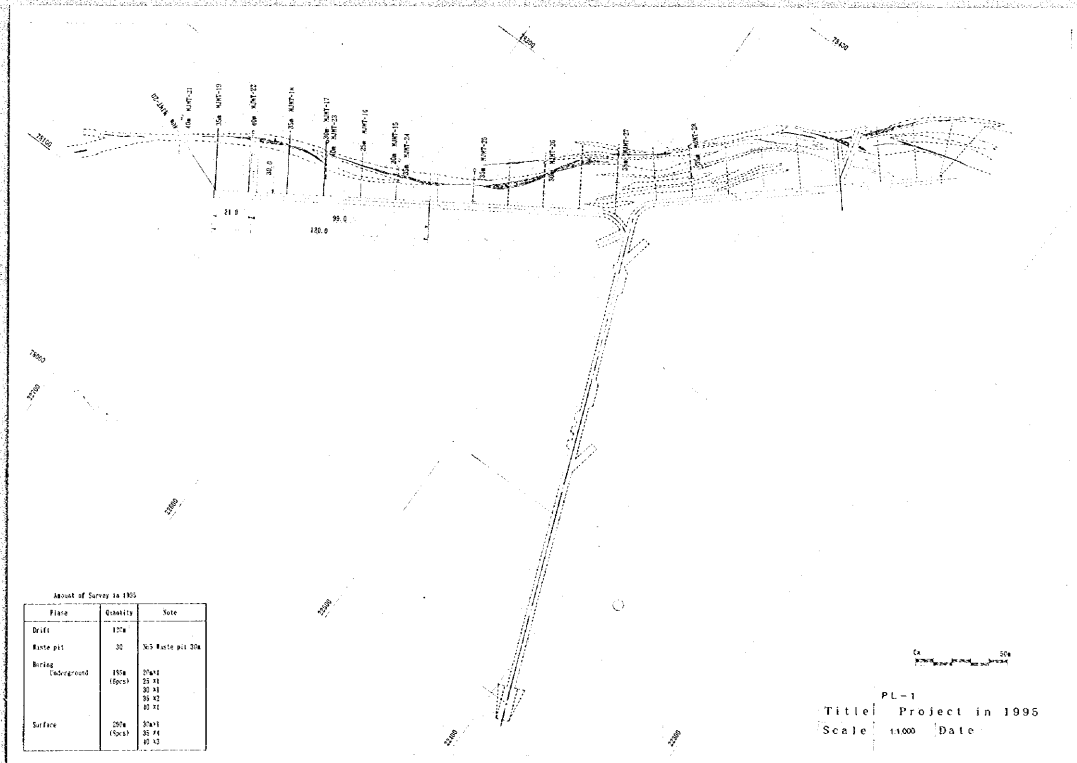
Water Sampling



Sample adjustment



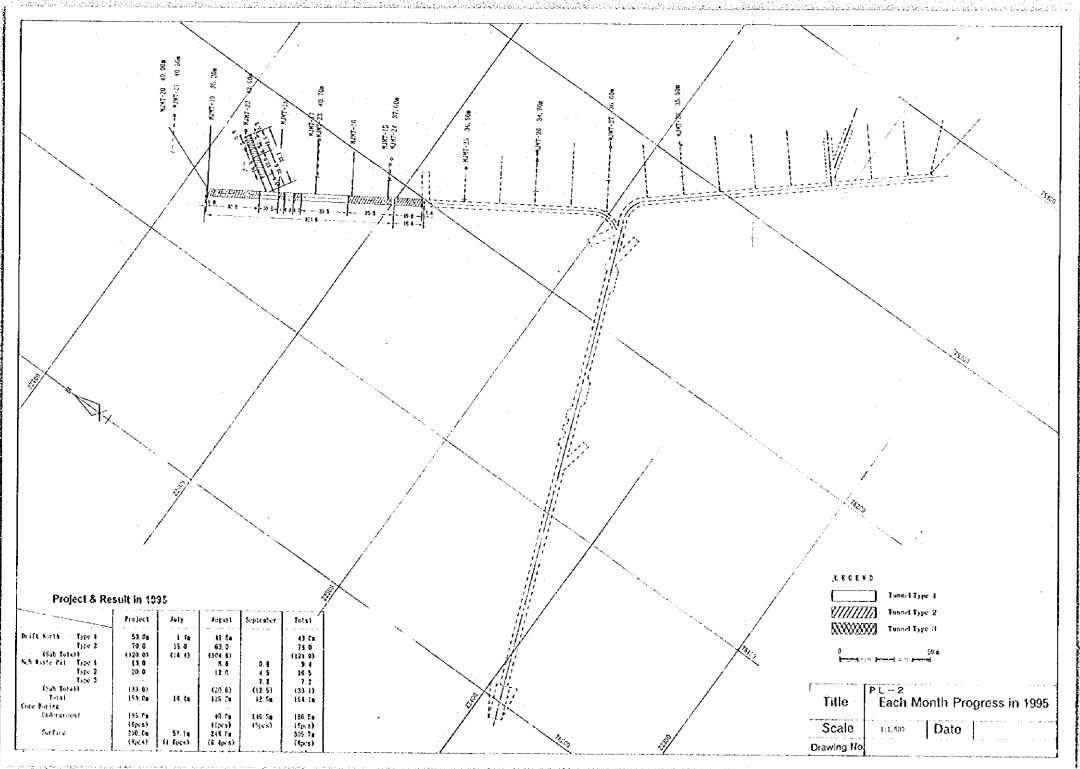
Flotation Test



Amount of Survey in 1995

Plane	Quantity	Note
Drift	1754	
Waste pit	30	X/S Waste pit 204
Boring	1874	
Underground	1874	
	1874	
	1874	
	1874	
	1874	
	1874	
Surface	2574	
	2574	
	2574	

Ca 204
 Title P.L-1
 Project in 1995
 Scale 1:1000 Date

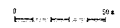


Project & Result in 1995

	Project	July	August	September	Total
Build North	Type 1	53.5a	1.1a	41.5a	43.0a
	Type 2	75.0	16.0	42.0	73.0
USP Total		128.50	17.0	83.5	129.00
N.S. Waste Pit	Type 1	15.0	154.0	0.0	9.0
	Type 2	20.0	17.0	4.5	16.5
	Type 3			7.1	7.1
WSP Total		130.0	220.0	11.6	131.6
Total		158.5a	147.0a	12.5a	114.1a
Over Budget		155.7a	45.7a	116.5a	116.5a
Under Budget		156.0a	120.0a	156.0a	156.0a
Surface		156.0a	57.1a	214.7a	207.7a
	(1.000)	(1.000)	(5.000)	(10.000)	(16.000)

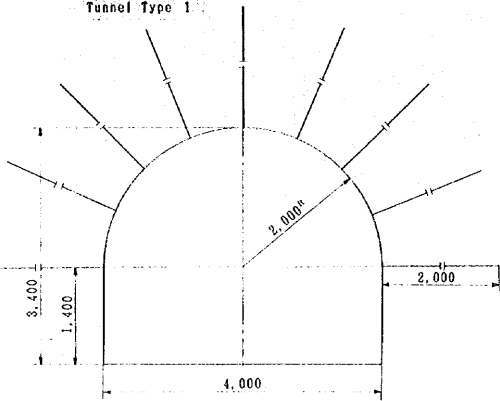
LEGEND

- Zone-1 Type-1
- Zone-2 Type-2
- Zone-3 Type-3

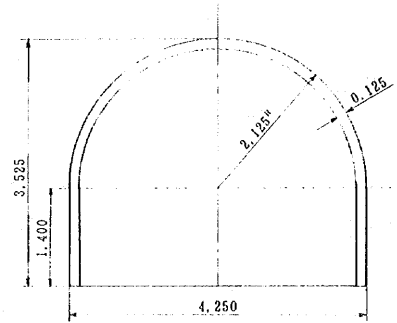


Title	P.C.-2 Each Month Progress in 1995	
Scale	1:1,000	Date
Drawing No.		

Tunnel Type 1



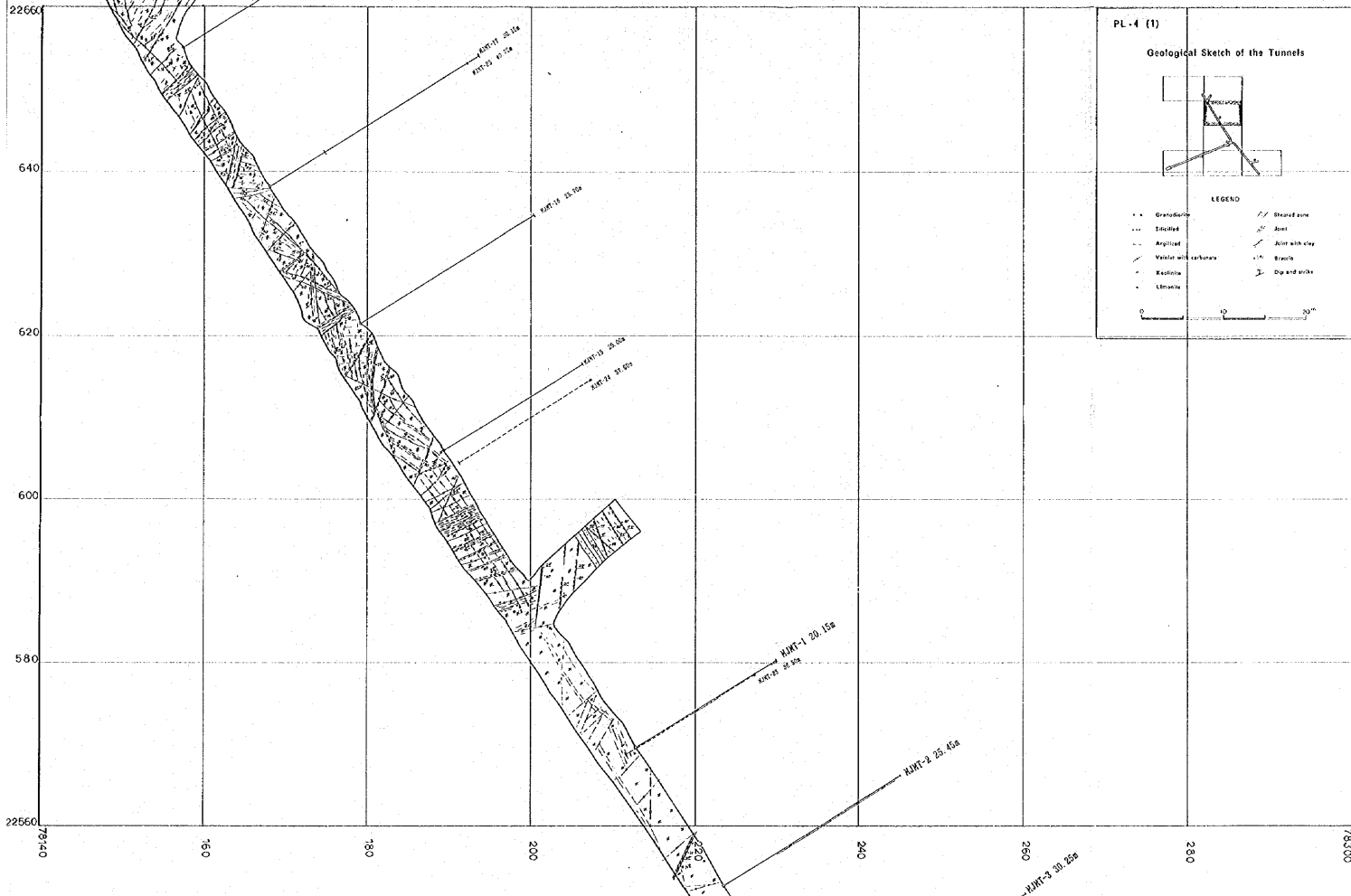
Tunnel Type 2 & Type 3



PL-3 Tunnel Section		
Scale	1:50	Date
Drawing No.	PL-3	

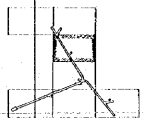
N3E2

N3E1
N2E1
N3E2
N2E2



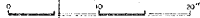
PL-4 (1)

Geological Sketch of the Tunnels



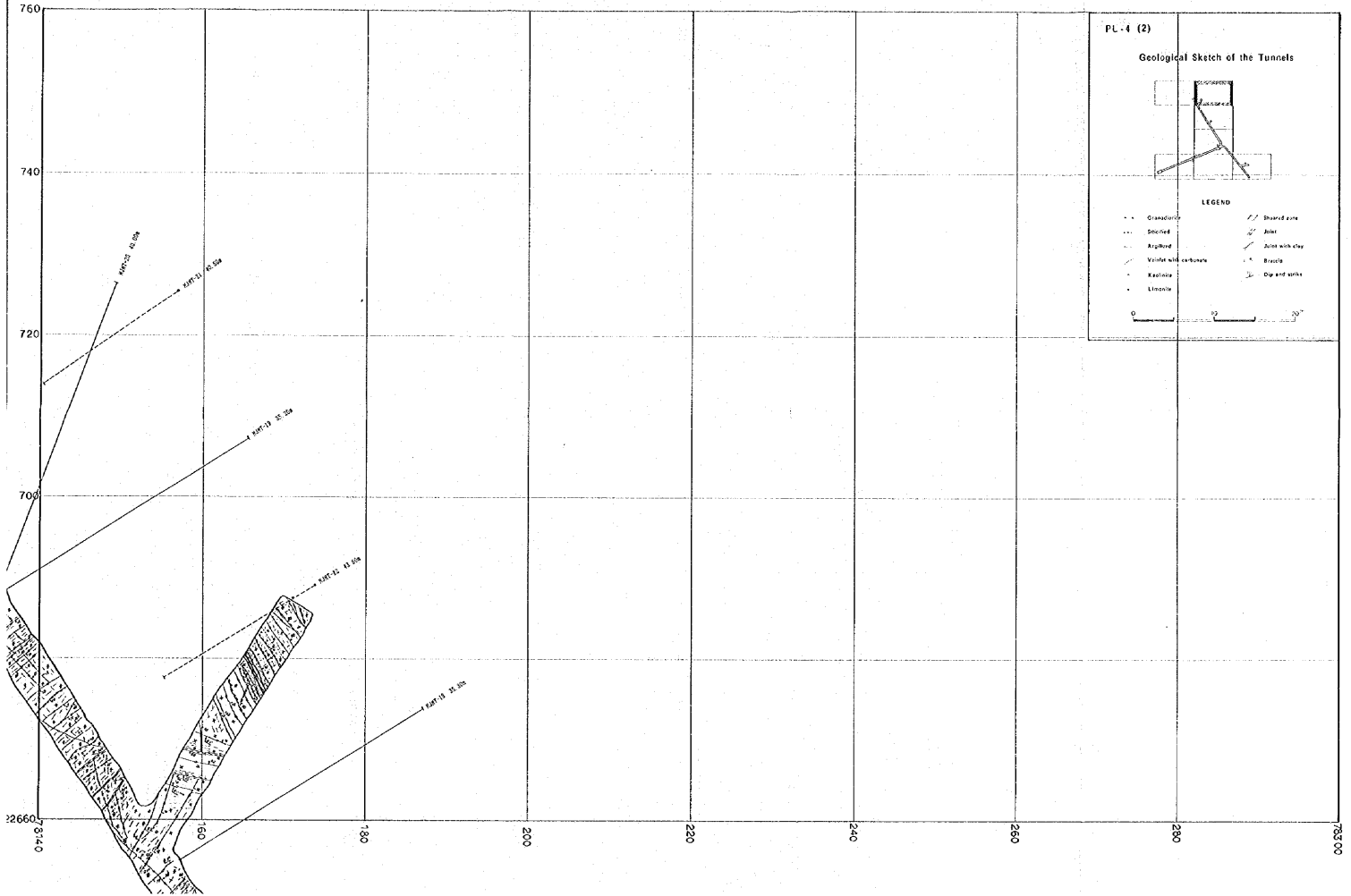
LEGEND

- Granulitic
- Siltstone
- Argillite
- /// Volcanic rock
- Schistite
- Limestone
- /// Sheared zone
- /// Joint
- /// Joint with clay
- Breaks
- Dip and strike



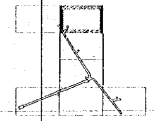
N4E1	N4E2
N3E1	N3E2

N4E2



PL-4 (2)

Geological Sketch of the Tunnels



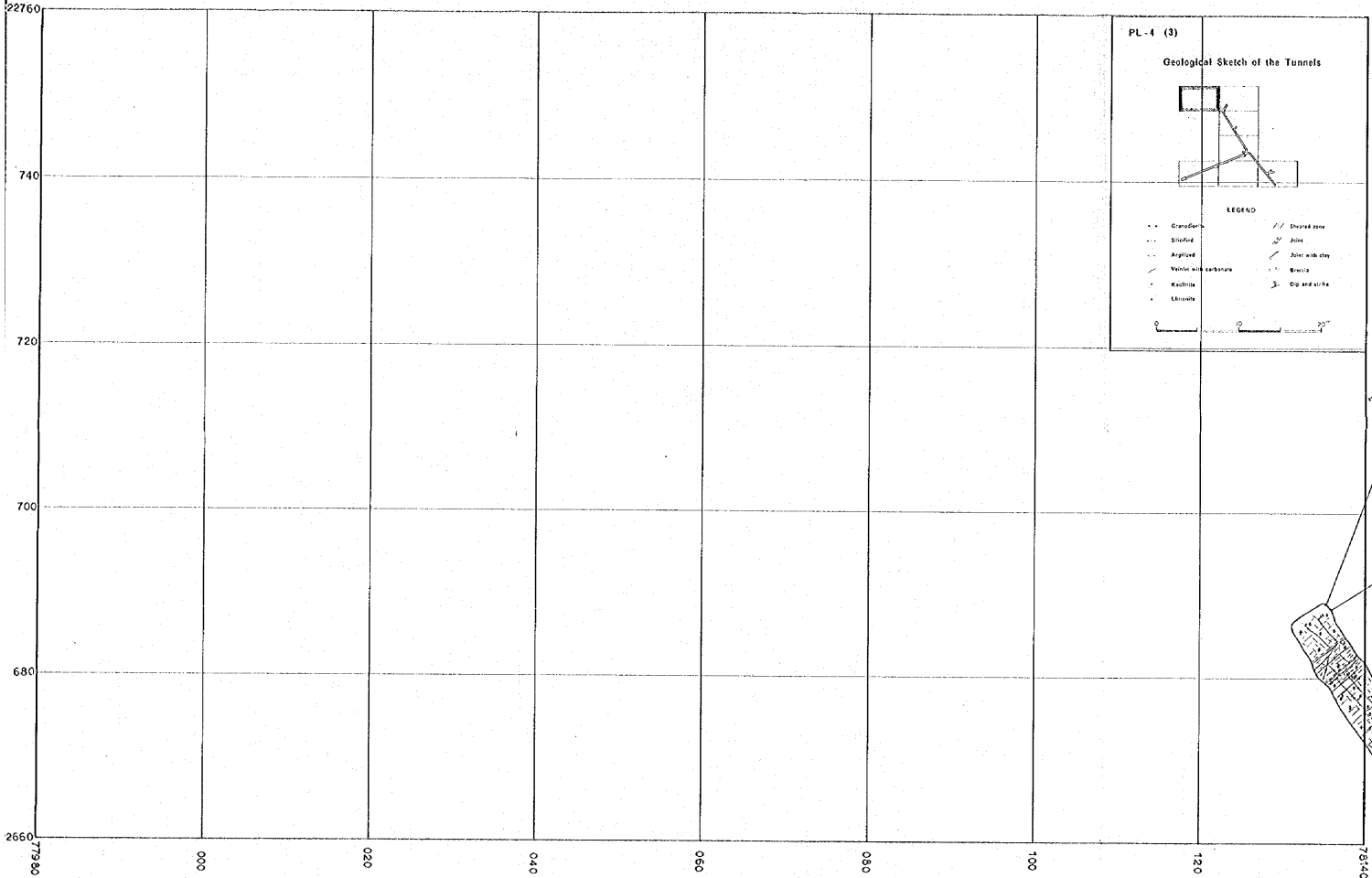
LEGEND

- | | | | |
|-------|---------------------|-----|-----------------|
| - - - | Granite | /// | Shaft zone |
| ... | Spotted | /// | Joint |
| - - - | Argillite | /// | Joint with clay |
| /// | Vertical calcareous | /// | Basalt |
| • | Exfolite | /// | Open end shaft |
| • | Limestone | | |

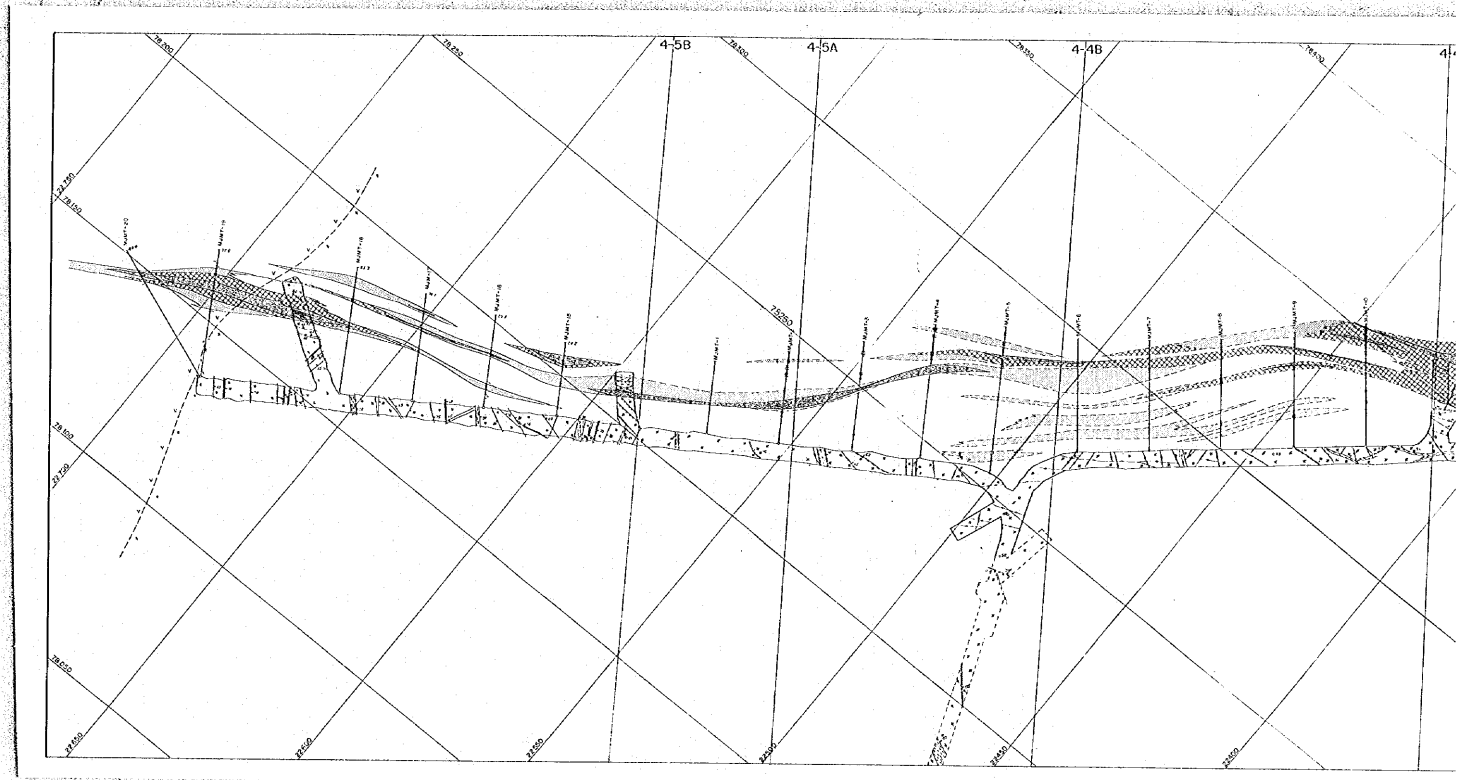


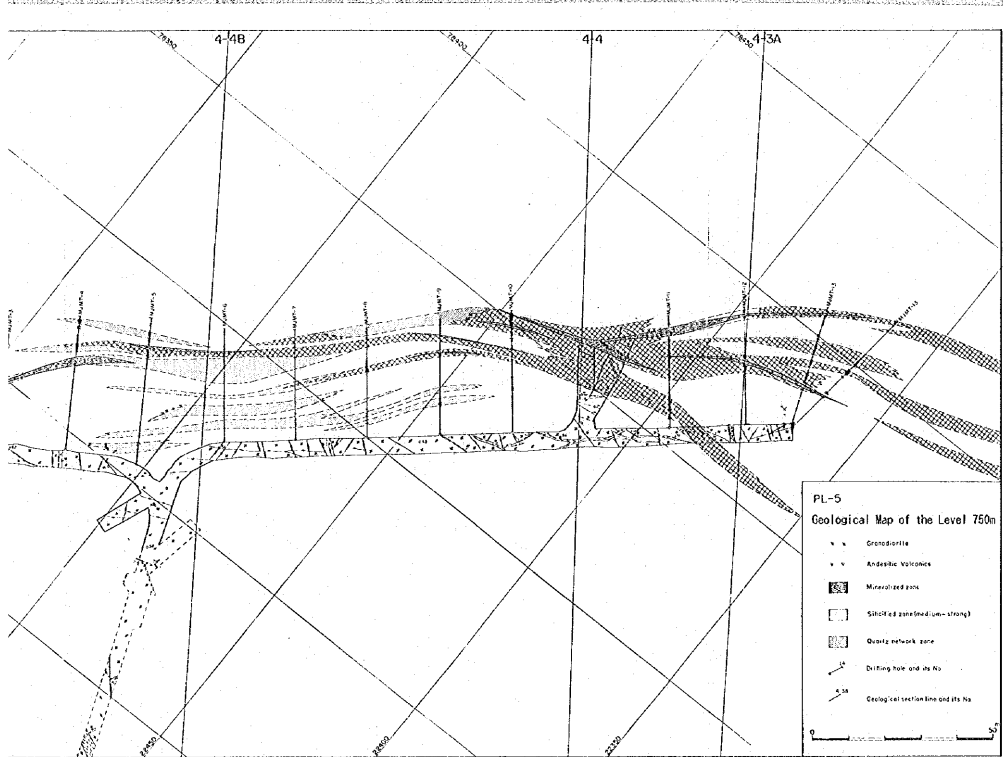
N4E1	N4E2
N3E1	N3E2

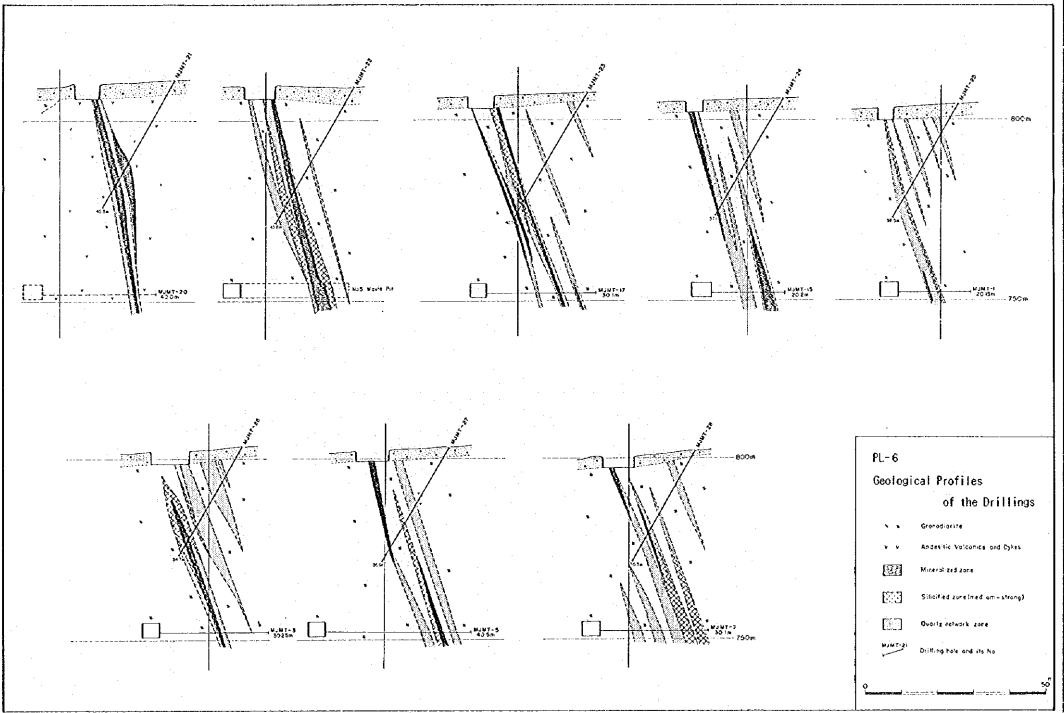
N4E1



67



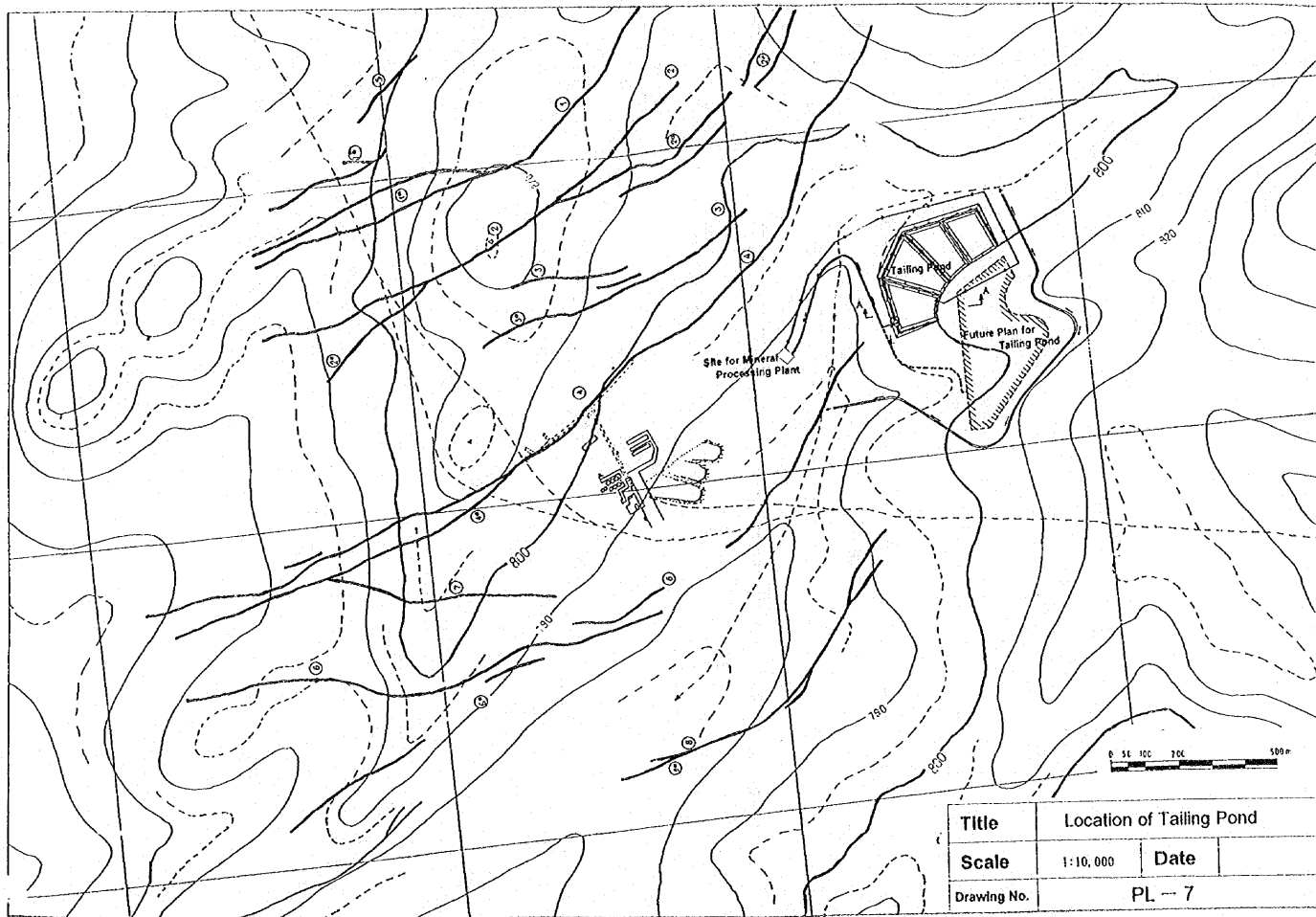




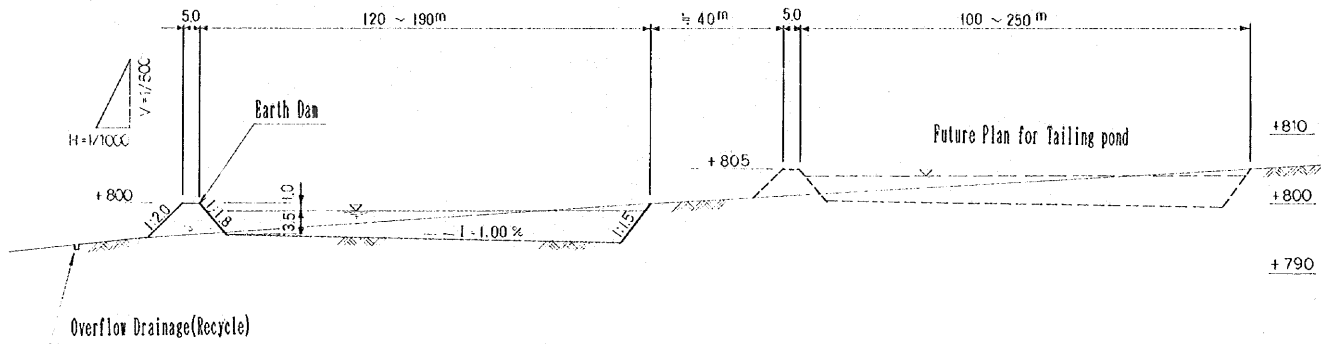
PL-6
 Geological Profiles
 of the Drillings

- ▲ Granodiorite
- ▼ Andesitic Volcanics and Dikes
- ▨ Mineralized zone
- ▤ Silicified zone (un-mineralized)
- ▥ Quartz vein zone
- Drilling hole and its log



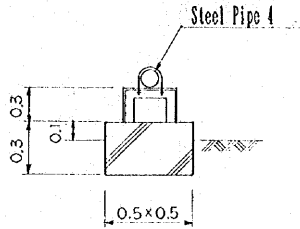


Title	Location of Tailing Pond		
Scale	1:10,000	Date	
Drawing No.	PL - 7		

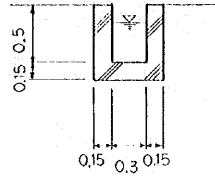


Title	Tailing Pond Section Dwg. (Section A-A)		
Scale	1:100	Date	
Drawing No.	PL - 8		

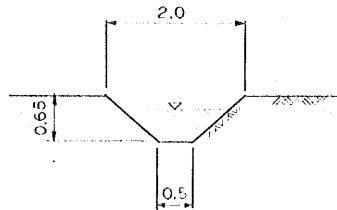
Tailing Pipe Line



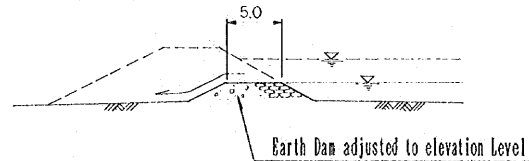
Overflow Drainage(Recycle)



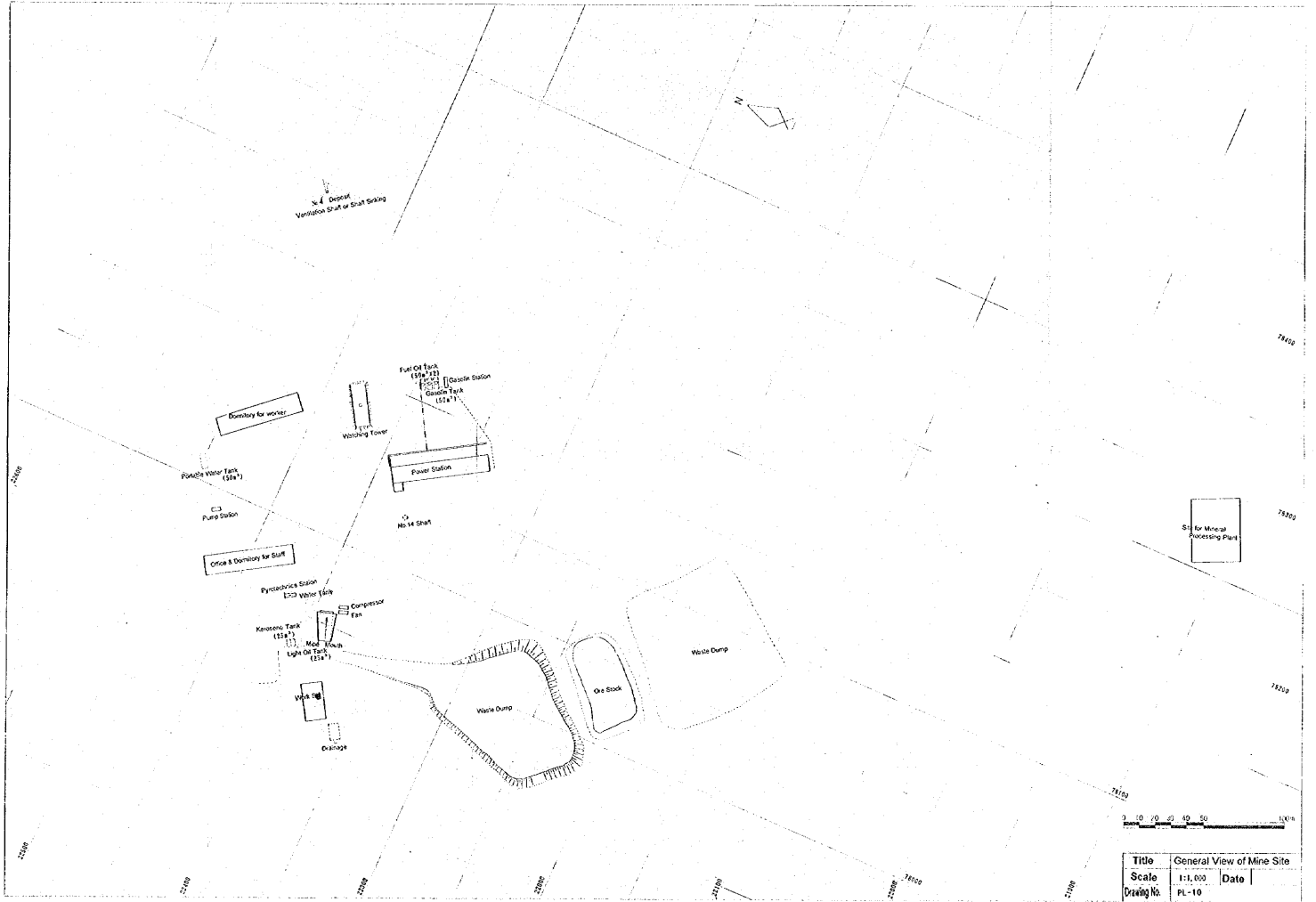
Drainage for Rainfall



Overflow Water Intake



Title	Channel Section Dwg.(Detail)	
Scale	1:30	Date
Drawing No.	PL - 9	



Title	General View of Mine Site	
Scale	1:1,000	Date
Dwg. No.	PL-10	

JICA