

N₂T_j

N1450

B

2000

15

20

10

25

1000

30

30

60

40

20

SARAWAK SARAH INDONESIA

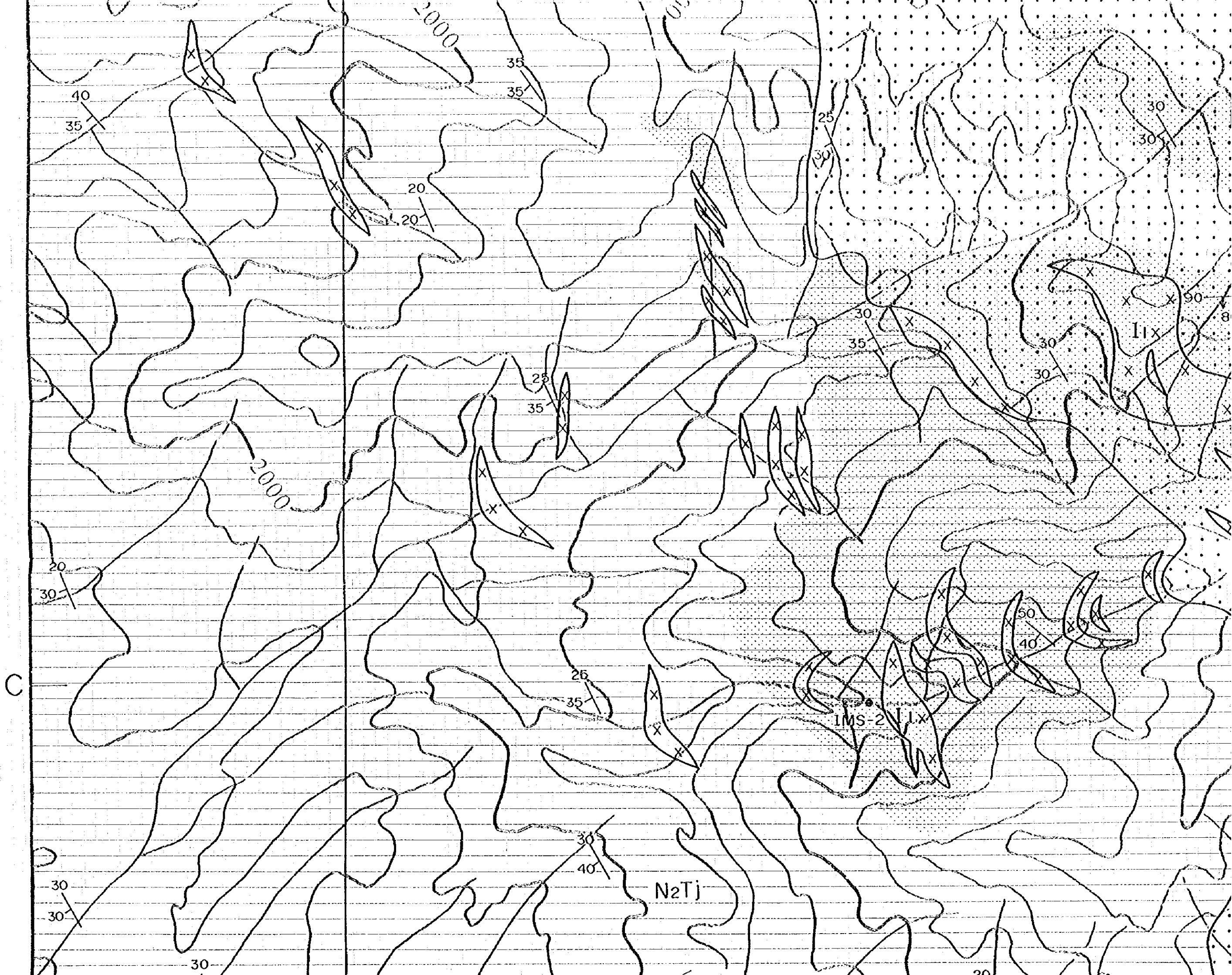
JAPAN INTERNATIONAL COOPERATION AGENCY
METAL MINING AGENCY OF JAPAN

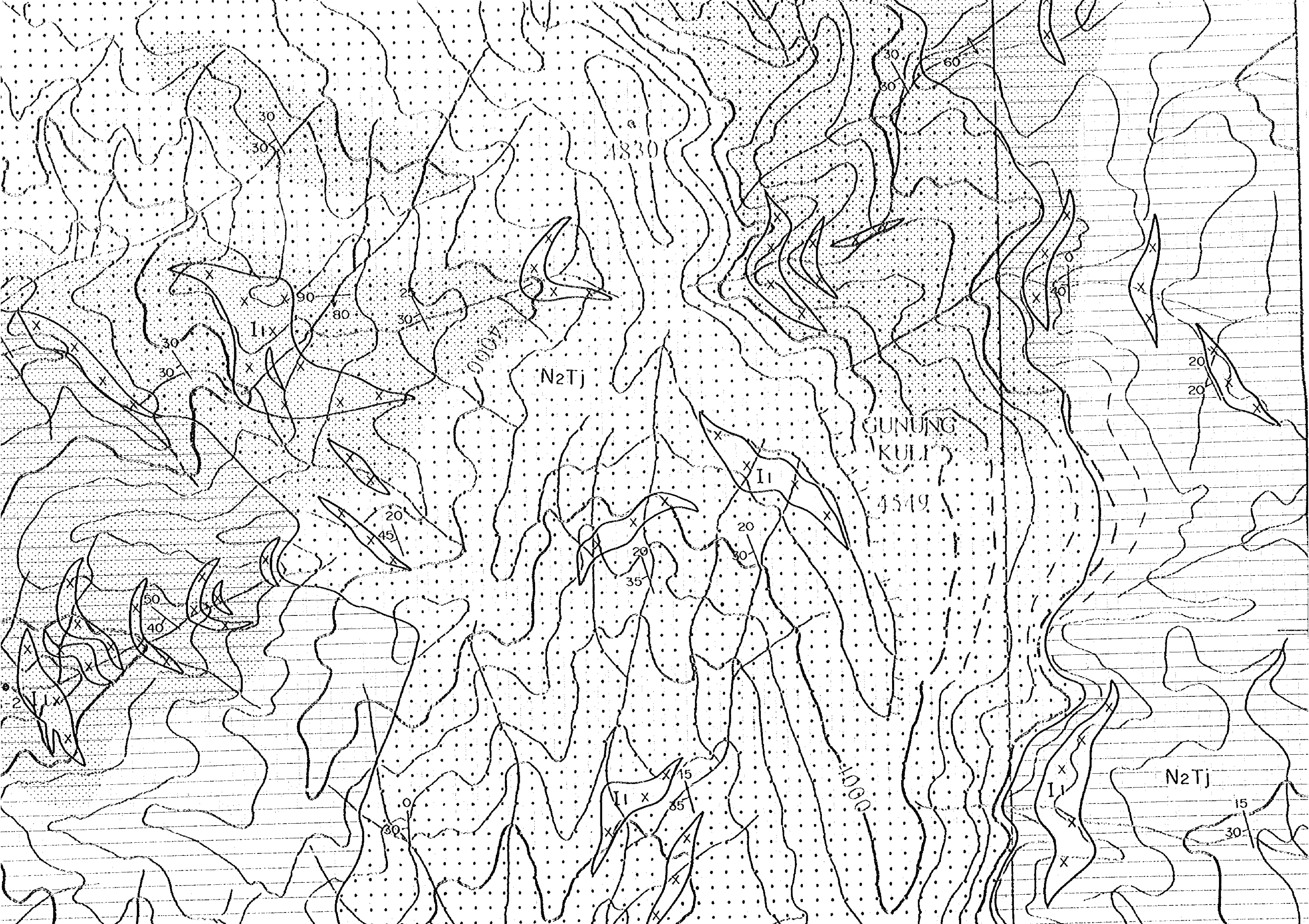
FEBRUARY 1996

LEGEND

- | | | |
|--------------------------------------|--|-------------------------------------------|
| Early Miocene

Middle Miocene | | Tanjung Formation
Mudstone |
| | | Tanjung Formation
Sandstone |
| | | Tanjung Formation
Conglomerate |
| | | Biotite Porphyry |
| | | Silicified and/or
pyrite dissemination |
| | | Strike and dip of bedding |
| | | Strike and dip of vein |
| | | • IMS-1 Location of mineral showing |





1830

N2Tj

GUNUNG
KULI
4549

N2Tj

30
30

90
80
30
20

30
30

I1

20
45

20
35

20
30

I1

50
40

2

I1
15
65

30

1000

I1

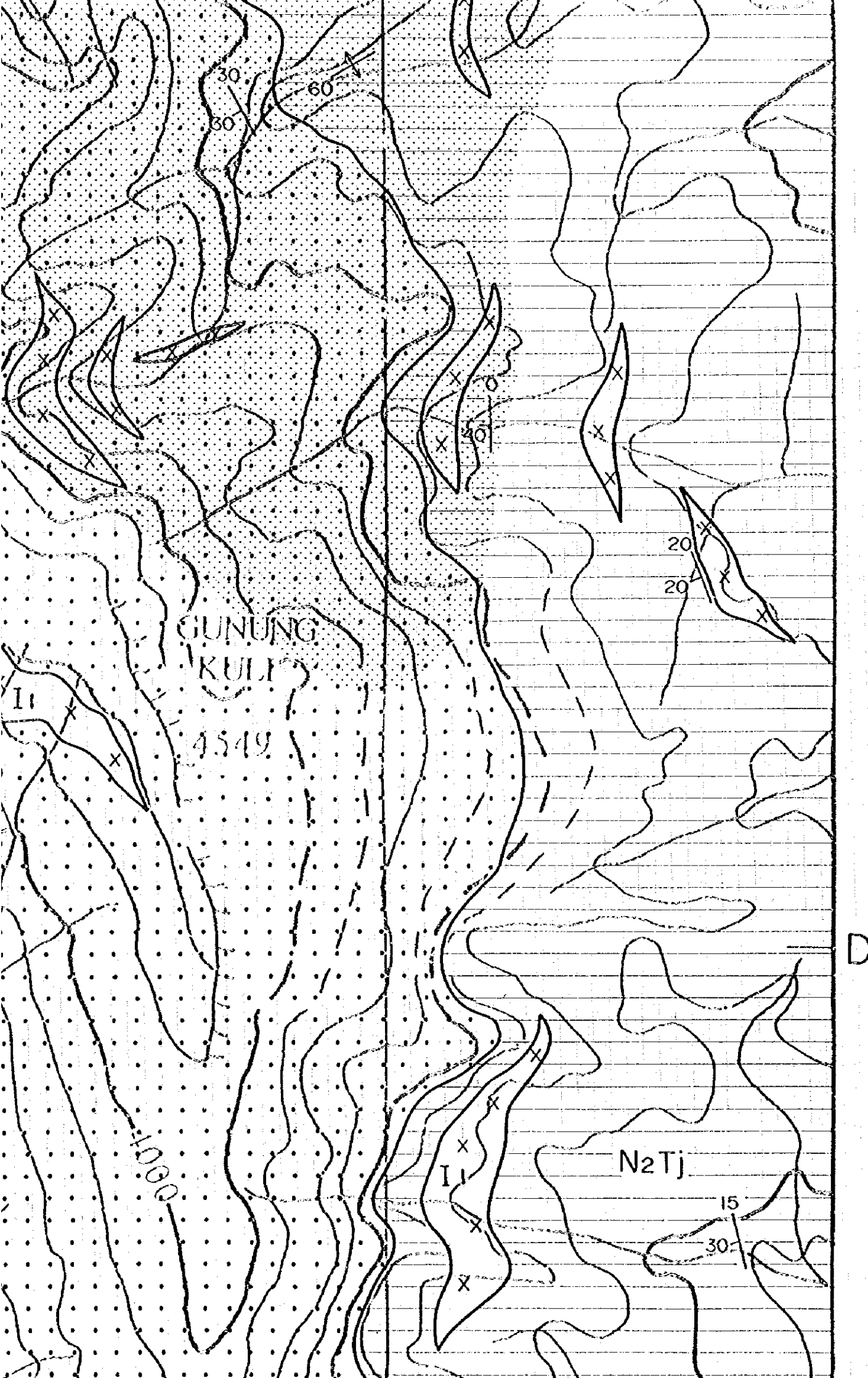
15
30

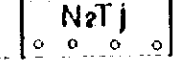
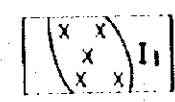
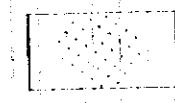
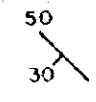
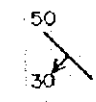

30
30

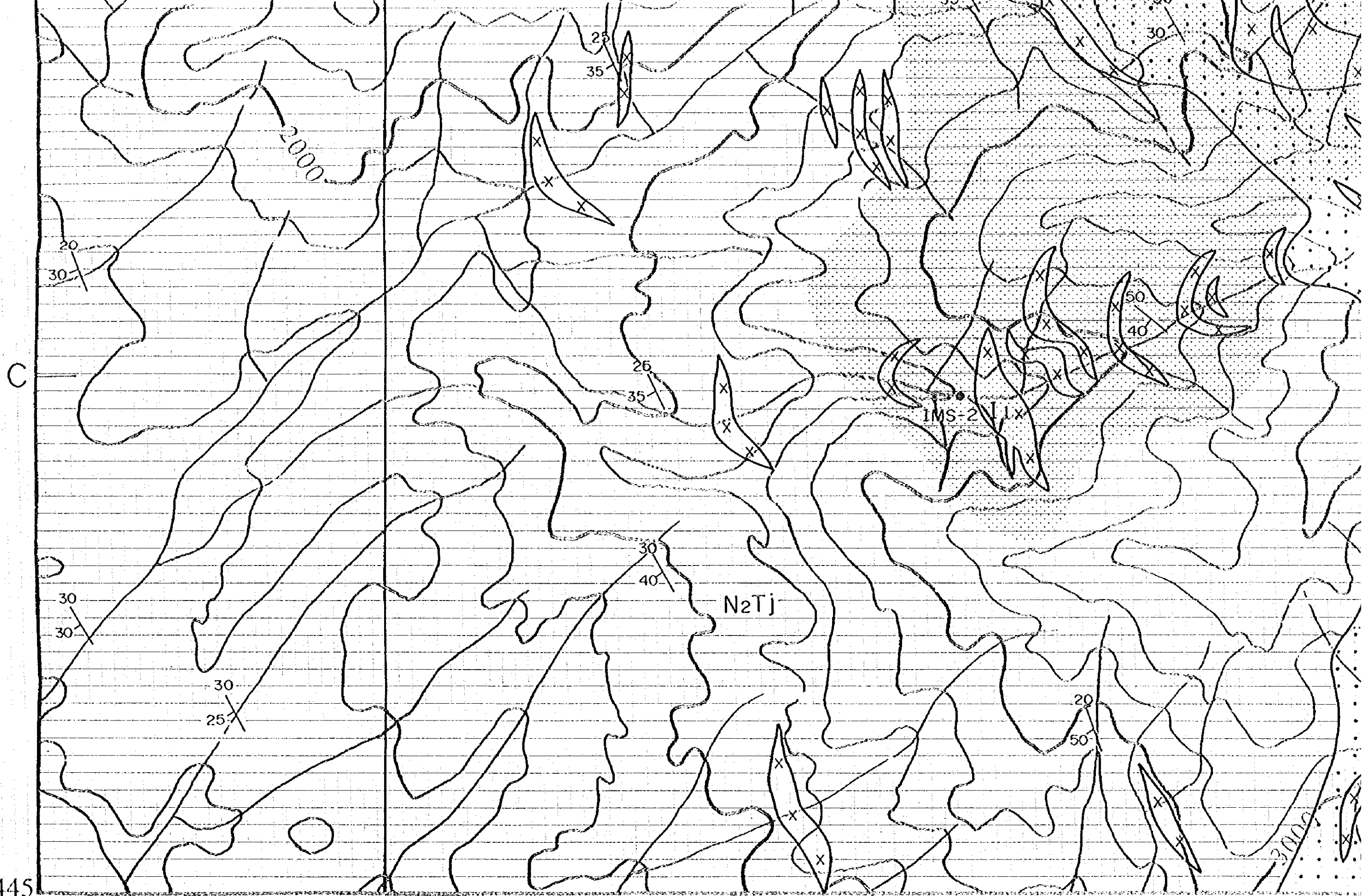
60

40

20
20



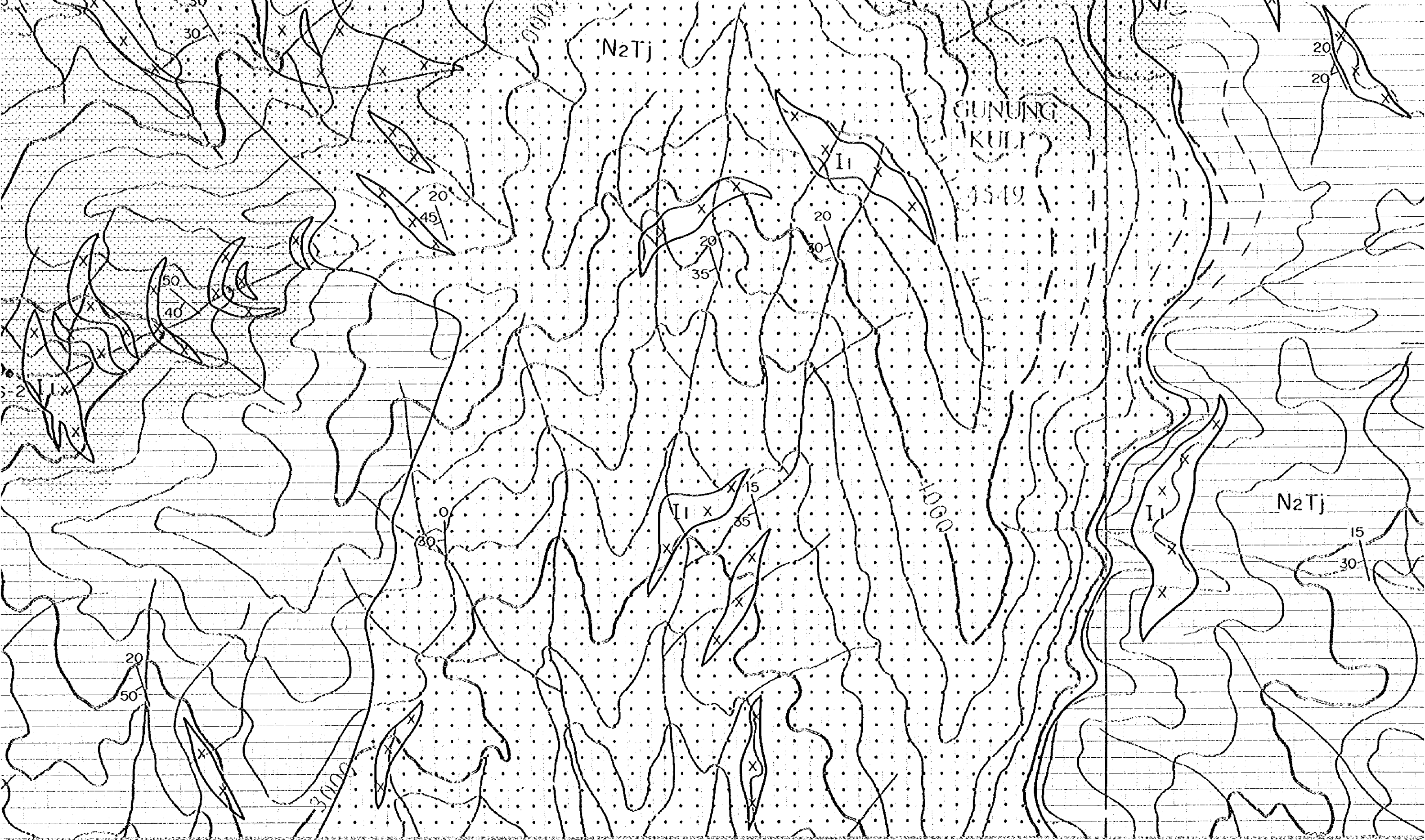
- 
Conglomerate
- 
Diorite Porphyry
- 
Silicified and/or pyrite dissemination
- 
Strike and dip of bedding
- 
Strike and dip of vein
- 
• IMS-1 Location of mineral showing



N1445

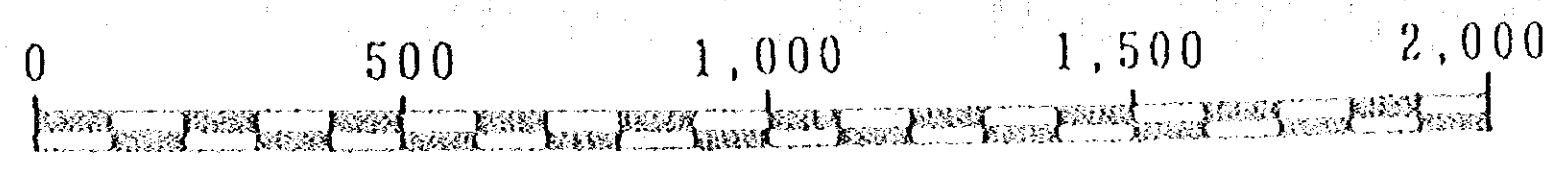
E4679

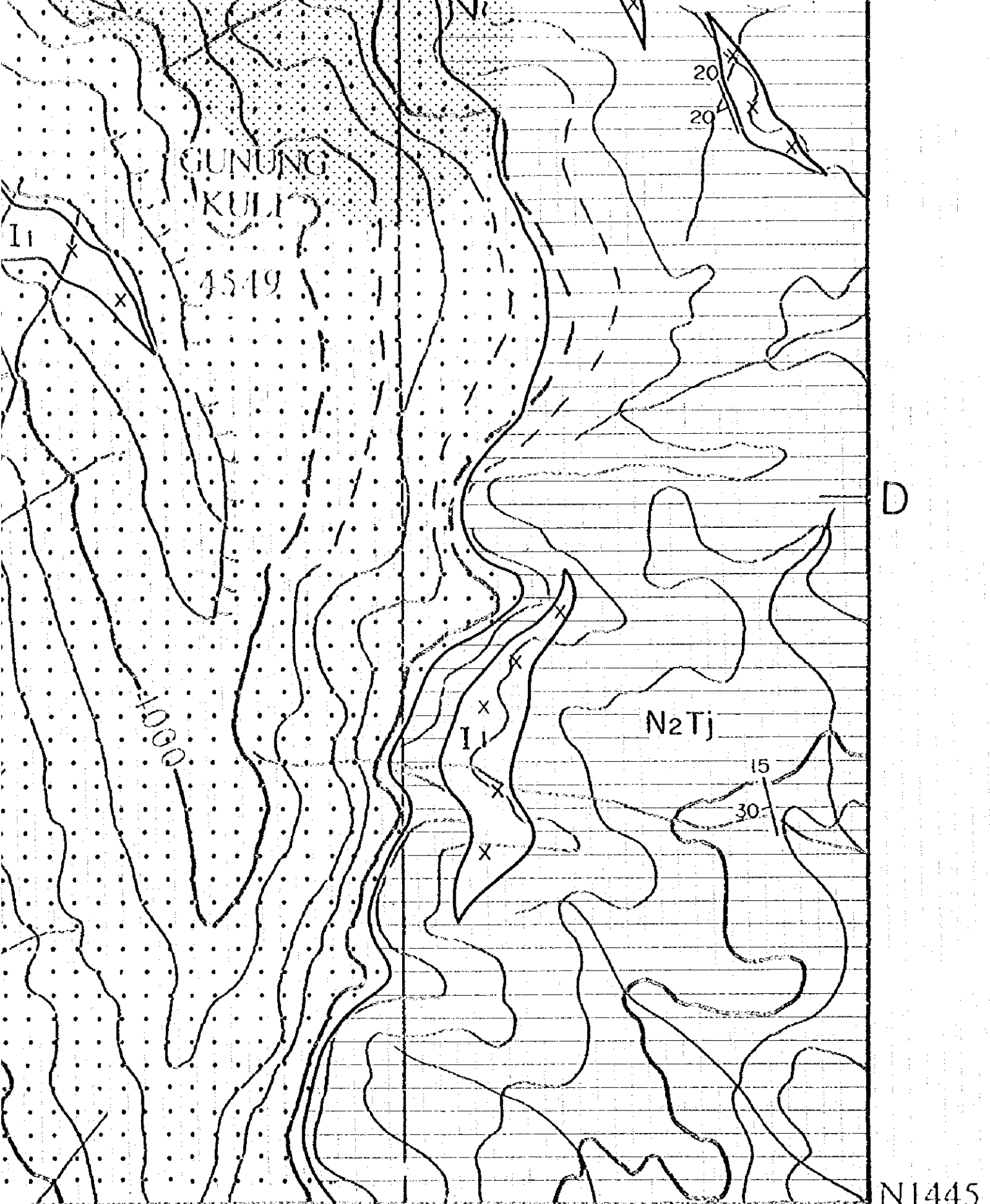
E4680



E4685

E40





GUNUNG
KULIJ

4519

20
20

D

N2Tj

I1

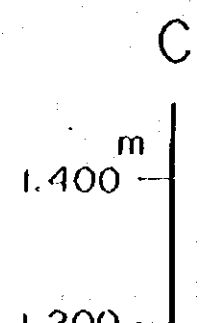
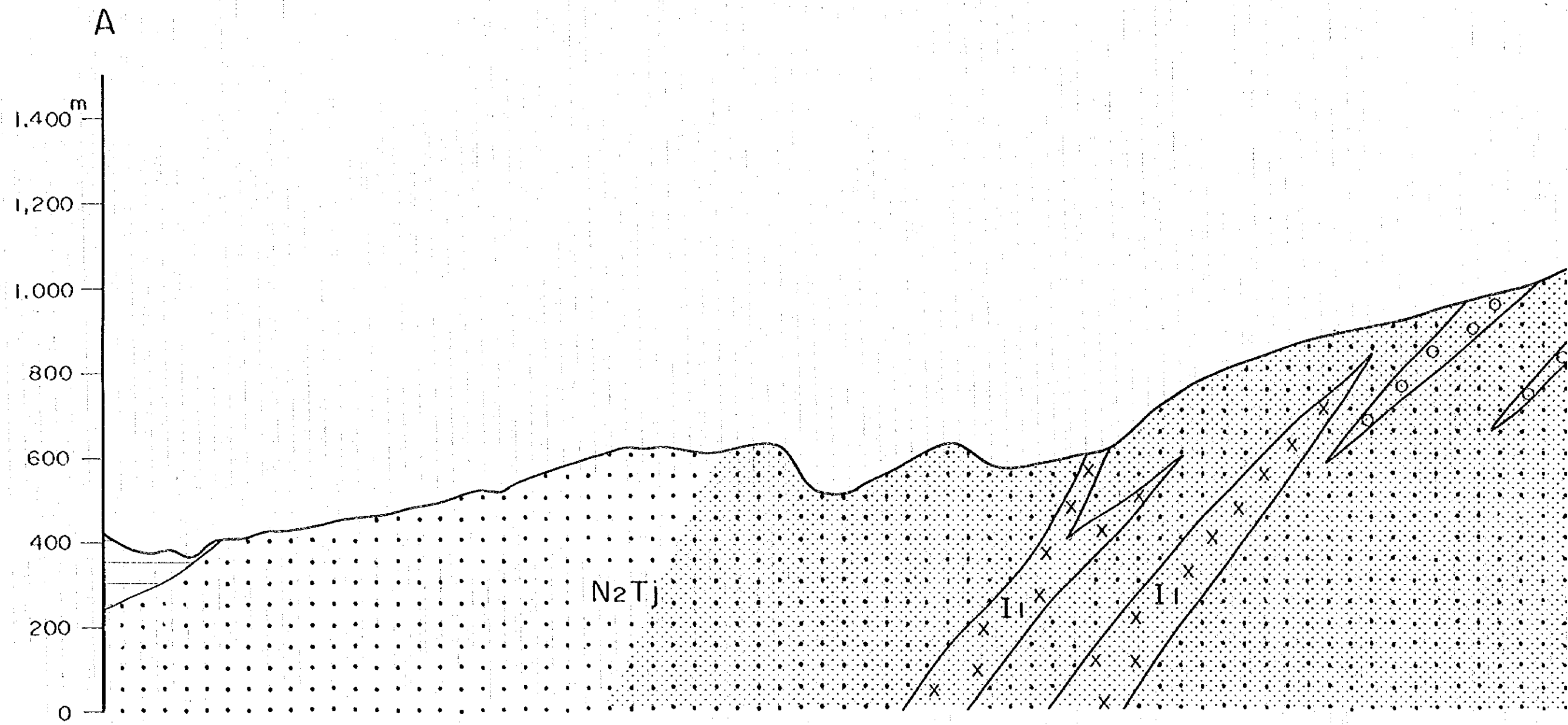
15
30

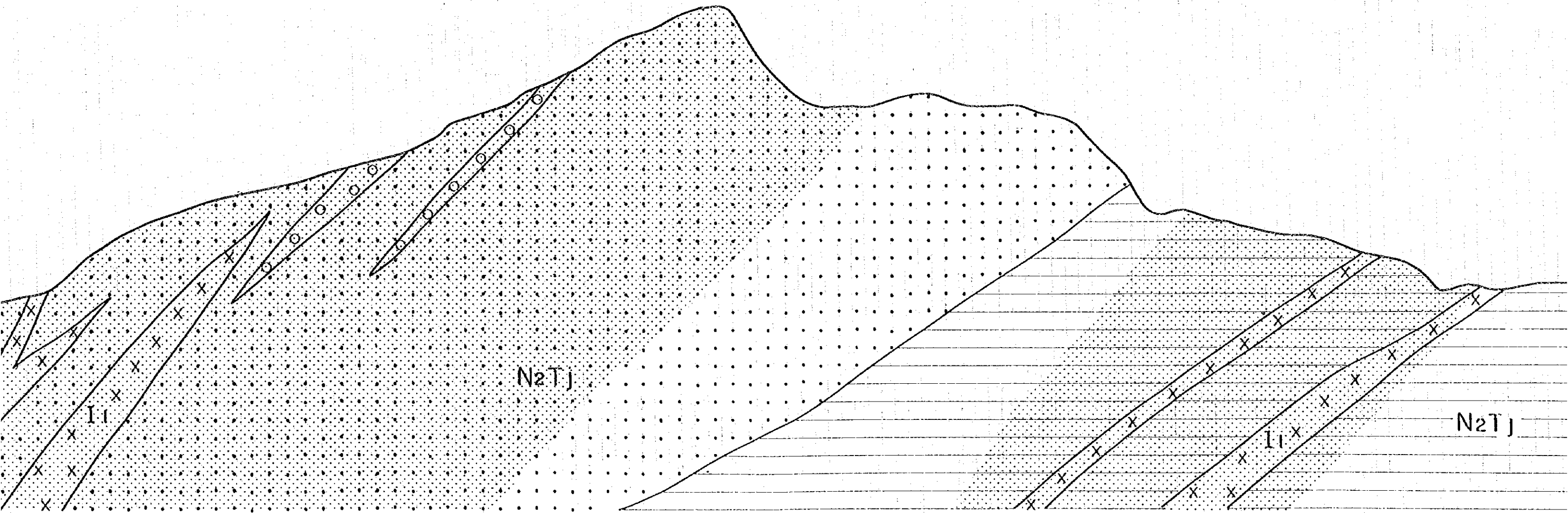
N1445

E4685

E4686

500 1,000 1,500 2,000m

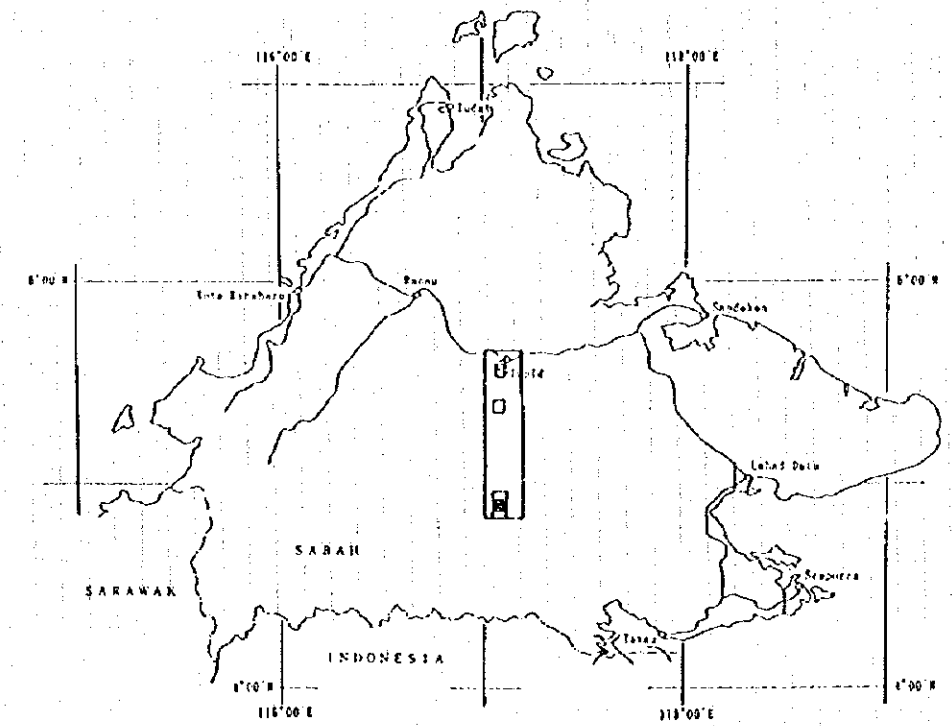




MINERAL EXPLORATION
IN THE CENTRAL SABAH AREA
MALAYSIA
PHASE II

GEOLOGICAL MAP AND CROSS SECTIONS
S. IMBAK SUB-AREA SOUTH

SCALE 1:10,000

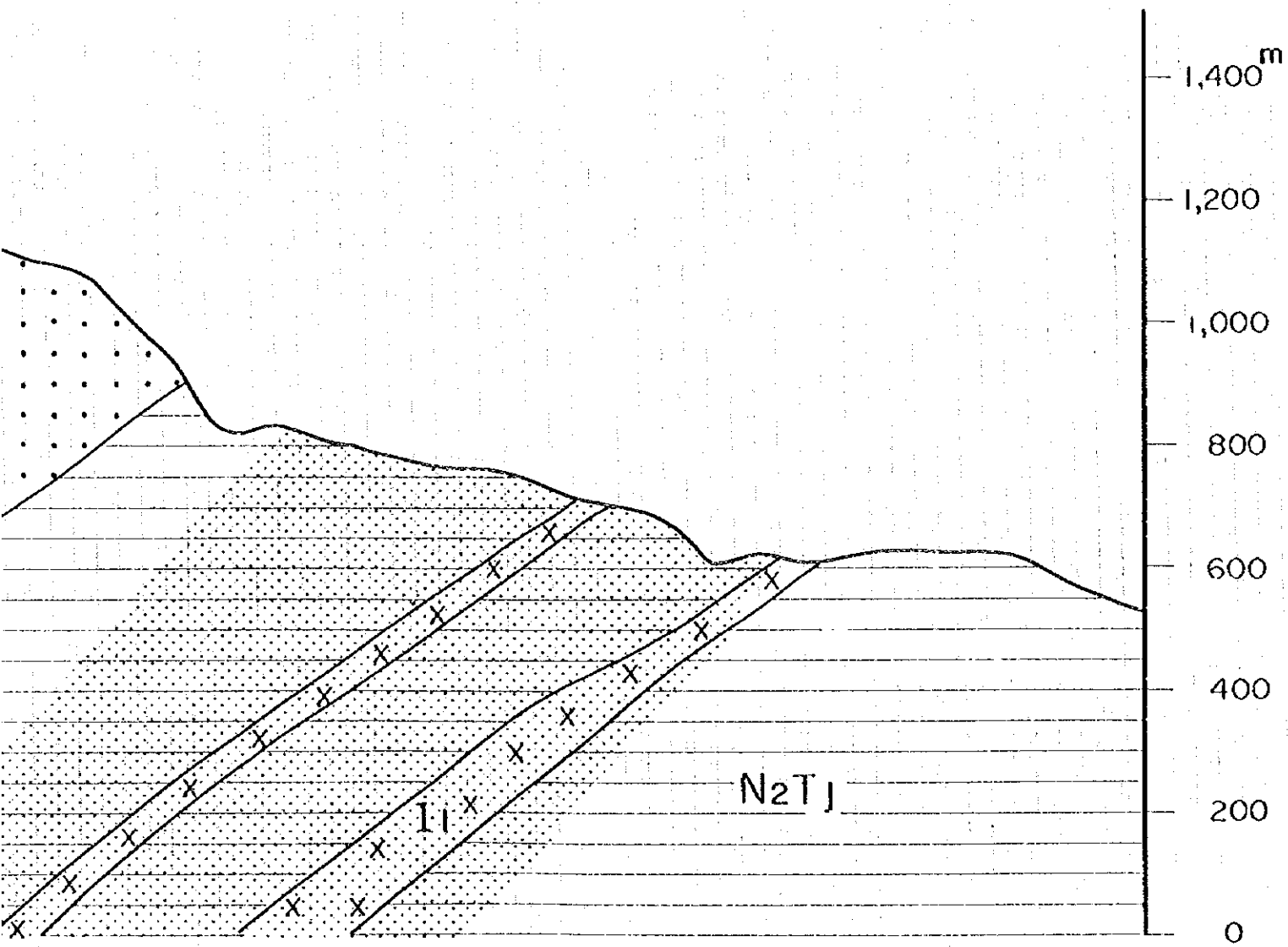


JAPAN INTERNATIONAL COOPERATION AGENCY
METAL MINING AGENCY OF JAPAN

FEBRUARY 1996

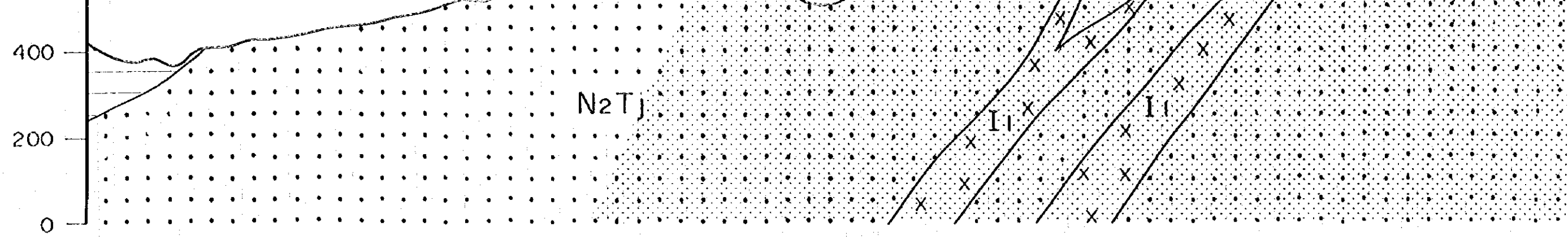
LEGEND

B

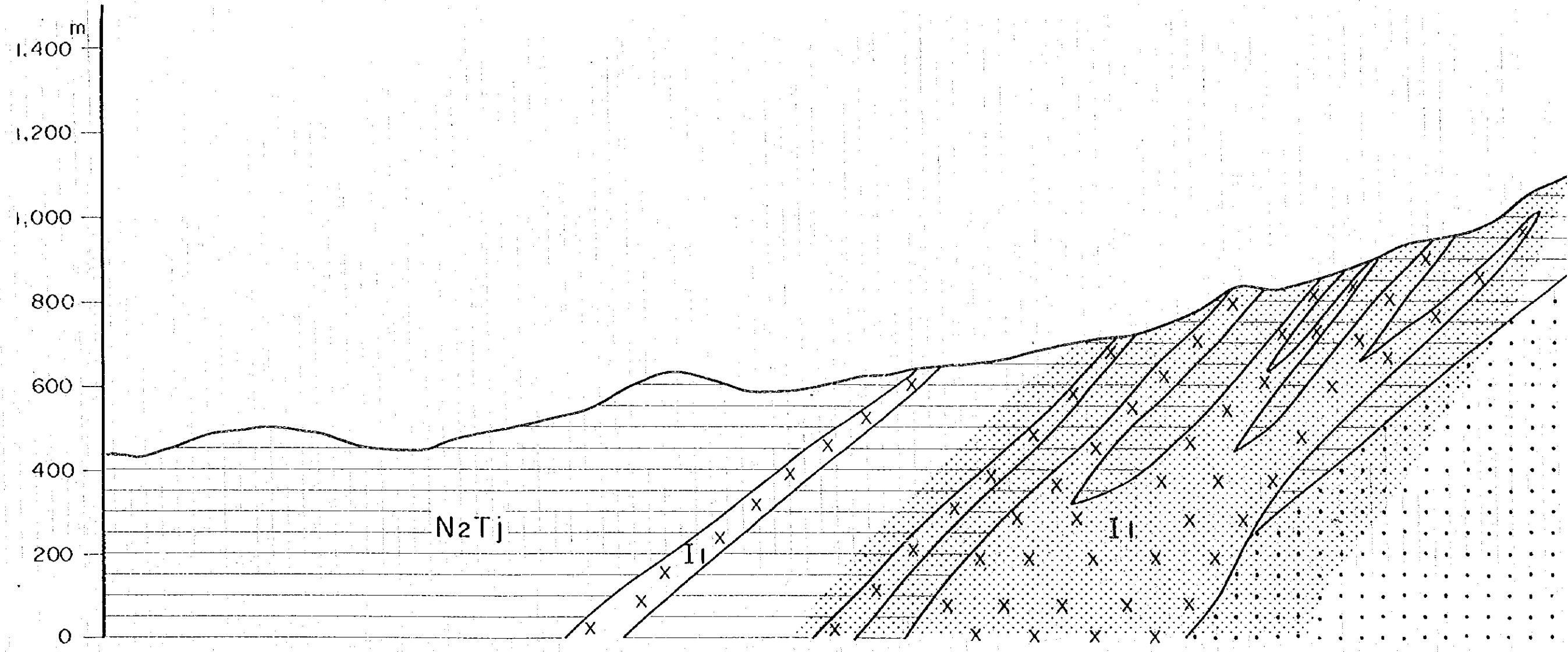


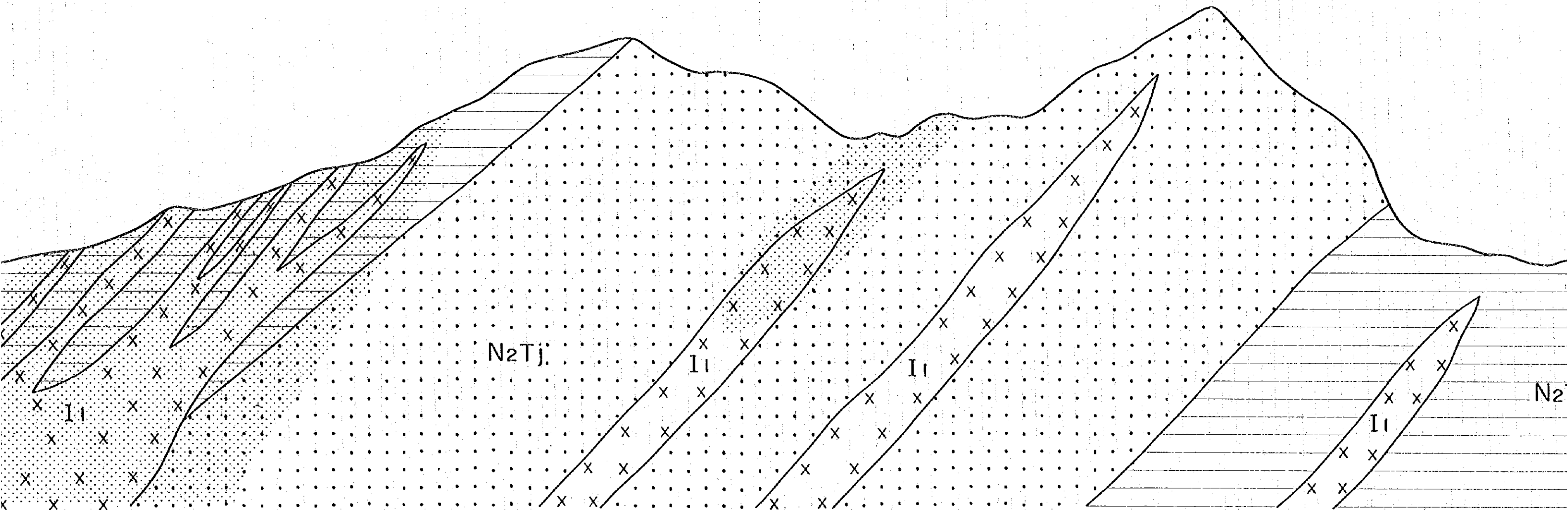
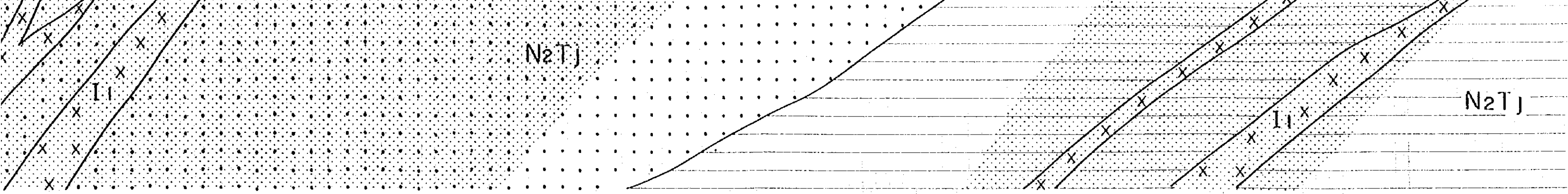
D

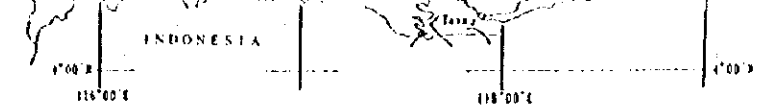




C

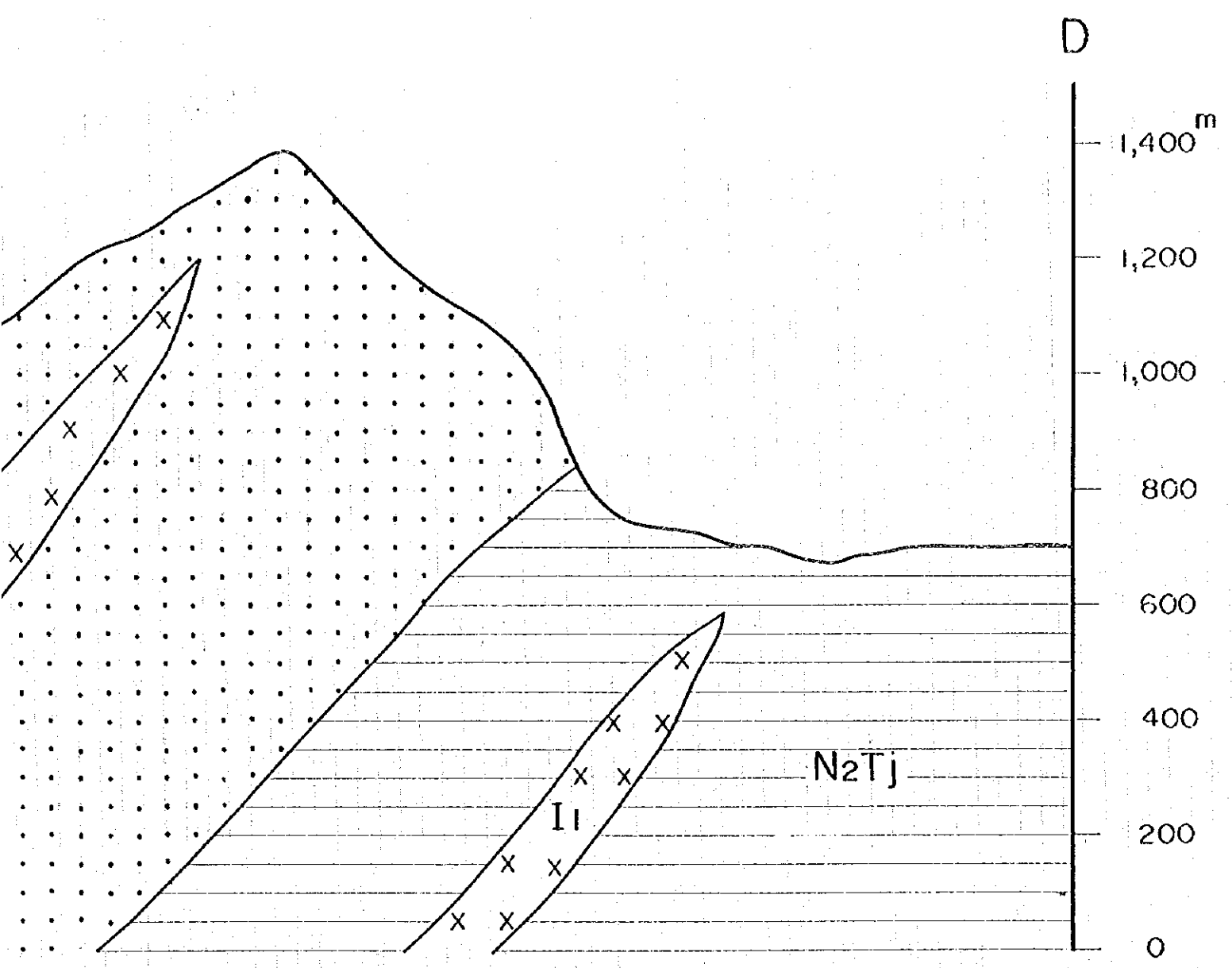
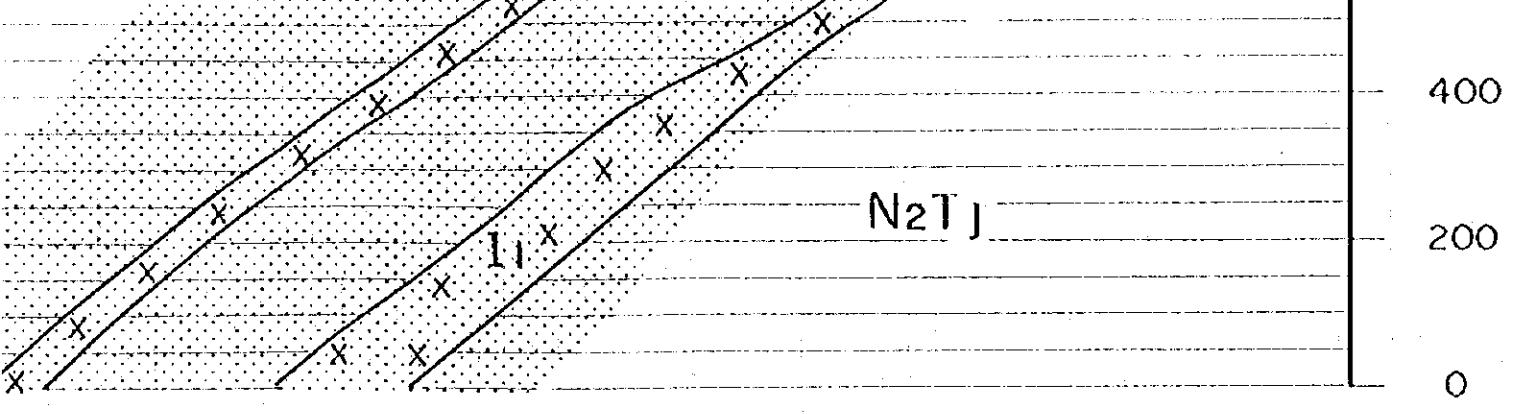






JAPAN INTERNATIONAL COOPERATION AGENCY
METAL MINING AGENCY OF JAPAN

FEBRUARY 1996



LEGEND

- | | | |
|----------------|--|-------------------------------------------|
| Early Miocene | | Tanjung Formation
Mudstone |
| Middle Miocene | | Tanjung Formation
Sandstone |
| | | Tanjung Formation
Conglomerate |
| | | Diorite Porphyry |
| | | Silicified and/or
pyrite dissemination |
| | | Strike and dip of bedding |
| | | Strike and dip of vein |
| | | Location of mineral showing |

JICA